

The Artist's Class Impressions



-the lowly Rat



-the silly Soph



-the Junior -at- large



-the senile Senior



CLASSES

SENIOR CLASS

OFFICERS

| | |
|---------------------------------|---------------------|
| <i>President</i> | JAMES CARPENTER |
| <i>Vice-President</i> | EDWARD J. WILSON |
| <i>Secretary</i> | EARL K. McCORD |
| <i>Treasurer</i> | JOHN E. CONNOR, JR. |





J. AMALFITANO
Don Jose A. & S. Wilmington
 Rifle Team 3.



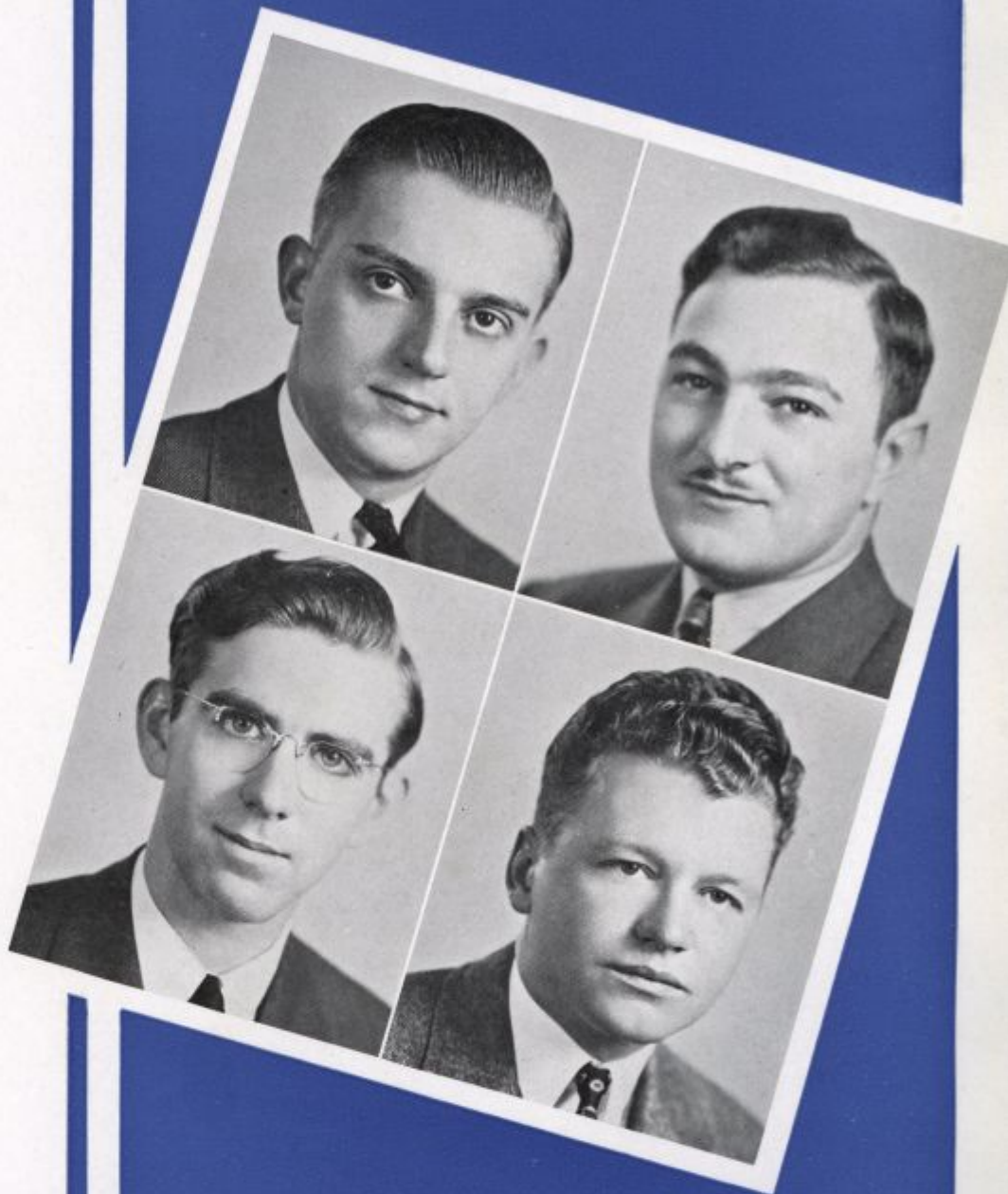
JOHN ABEL, III
Johnnie Ch. E. Elkton, Md.
 Wolf Chemical Club 1, 2; A. I. Ch. E. 3; Treasurer 4; Engineering
 Magazine 4; I. S. C. 2, 3, 4.

SILUS L. AMERICUS
 Si Agr. Wyoming
 Apprentice Players 1; Aggie Club 1, 2,
 Dinner Committee 3, 4; Athenæan Society
 2, 3, 4; *Review* 2; *Aggie News* 1, Circulation
 Mgr. 2, Managing Editor 3, Business Mgr. 4.

MICHAEL AMALFITANO
Mike A. & S. Wilmington
 Freshman-Sophomore Boxing 1.

MERRITT KLAIR ARMOR

M. K. E. E. Marshallton
A. S. M. E. 3, 4; A. I. E. E. 4; Electrical
Engineers' Club 1, 2, 3.



GEORGE ARSENIOS

Bugs A. & S. Wilmington
Football Manager 1, 2.

DAVID W. BAKER

Dave A. & S. Dagsboro
Transfer from Union College, Barboursville,
Ky.; Y. M. C. A. Pres.; Men's Chorus; Var-
sity Chorus; Oxford Club Vice-Pres.

GEORGE W. BAKER

Bake A. & S. Concord
Phi Kappa Phi; I. M. A. Treas. 3, Pres. 4; Sons of Delaware of
Philadelphia Scholarship 4; Humanists 1, 2, Vice-Pres. 3, Pres. 4;
Debating Society Co-Manager 3, Pres. 4; Student Council 2, 3;
Humanist 1, Managing Editor 2; Blue Hen Managing Editor 2;
Athenæan Society 3, 4, I. R. B. Delegate 3; Blue Key, Derelict;
Freshman Handbook, Asst. Editor 3; Commons 2, Asst. Head-
waiter 3; Headwaiter 4; R. O. T. C. 1, 2, 3; Junior Prom Com-
mittee; Review 2, 3.



SEYMOUR BLECHMAN

Smokey Ch. E. Hartly

Sigma Tau Phi

Student Council 1, 2, Secy. 3, Vice-Pres. 4; Review 1; A. I. Ch. E. 2, 3, 4; S. T. P. Sports 1, 2, 3, 4; Junior Prom Committee; Blue Key; Sigma Tau Phi Secy. 1, 2, Vice-Pres. 3, Treas. 4.



J. WALLACE BAKER

Wally A. & S. Wilmington Sigma Phi Epsilon
Football Manager 1, 2, 3, 4; Review 1; Blue Hen Business Staff, 4; Athenæan Society 1, 2, 3, 4; R. O. T. C. 1, 2, 3, 4; Officers' Club; Blue Key.

PAUL J. BRUNO

Garibaldi A. & S. Wilmington
A. S. C. E. 1, 2, 3; Football 1, 2, 3; Basketball 2, 4; Varsity Tennis Manager 1, 2, 3, 4; Student Council 1, 2, 3, 4; Commons Head-waiter 4; Committee of Fifteen; University Orchestra Librarian 3; Review-on-the-Air! Sports Commentator; Economics Club 4; St. Anthony's Club.

JAMES HOWARD CARPENTER, II

Jim M. E. Centerville

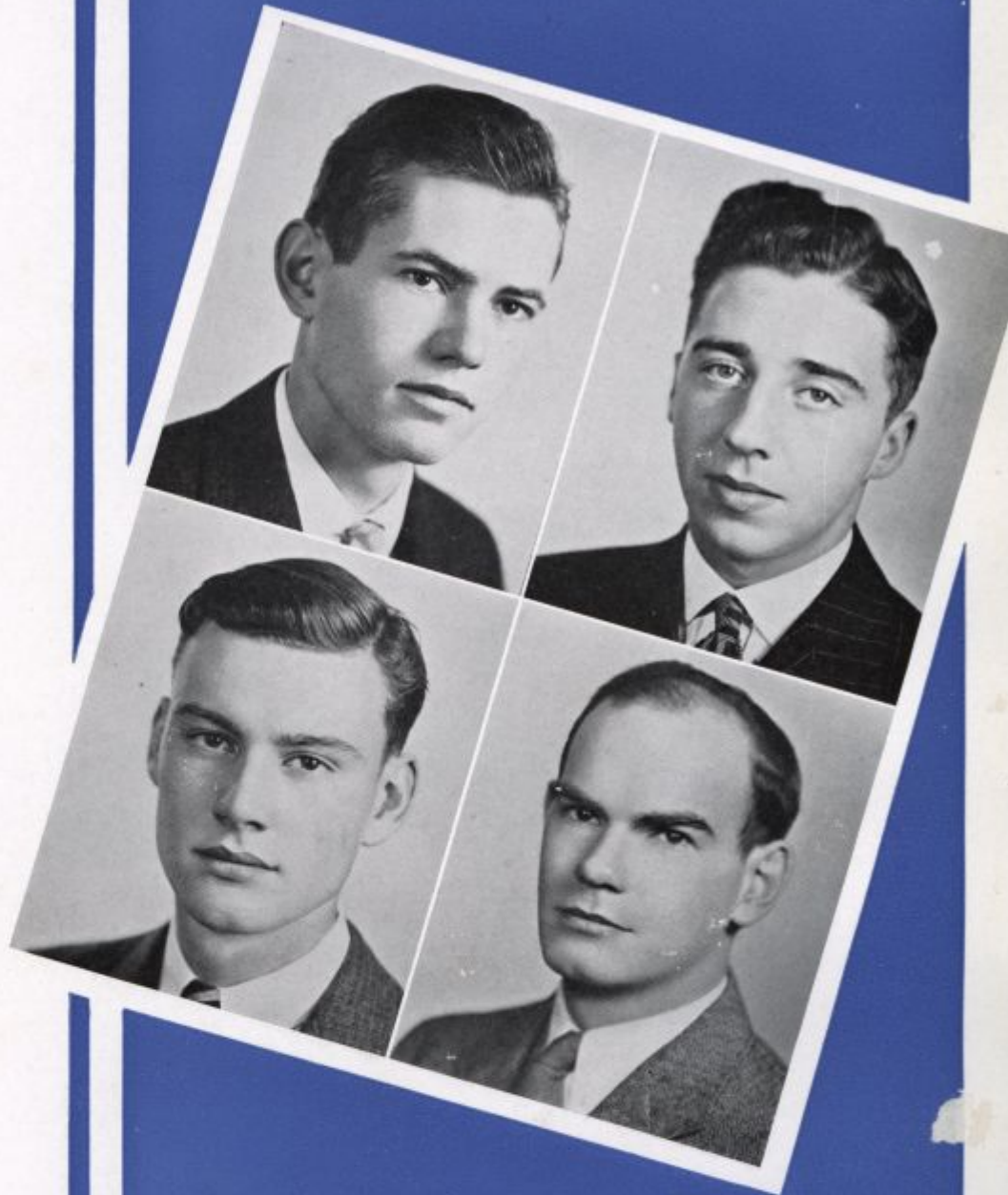
Sigma Nu

Senior Class Pres.; Junior and Sophomore Classes Vice-Pres.; A. S. M. E. 1, 2, 3, Program Chairman 4; Glee Club 1, 2, 3, 4; Dramatics 1; Baseball 1, 2, 3, 4; Intramural Baseball, Football; Sigma Nu Marshall 4.

ANDREW CHAMBERS, JR.

Andy A. & S. Elsmere
Sigma Phi Epsilon

Physics Lab Assistant; Sophomore Military Prize; Intramural Football, Basketball.



JOHN E. CONNOR, JR.

Johnny A. & S. Dover Theta Chi

University Chorus 3, 4; Fencing 1, 2; University Orchestra 1, 2; Student Council 2; R. O. T. C. Band Drum Major 1, 2, 3, 4; General Ernest Smith Award 1, 3; University Band Award 1, 2; Theta Chi Secy. 3, Pres. 4.

JULIUS H. COOPER, JR.

Coop A. & S. Houston

Athenæan Society 3, 4; Economics Club 4; Frosh-Soph Riots 1, 2; I. M. A. 1, 2, 3, 4; R. O. T. C. Band Librarian 3; Intramural Softball 2.

EDWARD F. CURREN

Ed A. & S. Wilmington

University Chorus 3, 4; Review 3; News Editor 4; Wolf Chemical Club 1, 2; A. I. Ch. E. 3, 4; Frosh Football 1; Athenæan Society 3, 4; St. Anthony's Club.



ERNEST A. DAVIDSON

Ernie C. E. New Castle
Rifle Team 2; A. S. C. E. 1, 2, 3, 4; R. O.
T. C. 1, 2, 3, 4; Officers' Club Secy. 4.



JOHN PATRICK DALY, JR.

Jack A. & S. Newark
Football 1, 2, 3; Basketball 1, 2, 3, 4; Baseball 1, 2, 3; Blue Key,
Derelict.

WILLIAM H. DEAVER

Tiny A. & S. Elkton, Md.
Baseball 1, 3, 4; Economics Club 4.

C. LEON DAVIS

Sully A. & S. Wilmington *Kappa Alpha*
Track 1; J. V. Basketball 2, 3; K. A. Basketball 1, 3, 4.

PHILIP GREGG DERICKSON

Doc A. & S. Wilmington
Rifle Team 1, 2, 3, Mgr. and Capt. 4; Ap-
prentice Players 1; I. M. A.



RODNEY BROWN DERICKSON

Rod Agr. Wilmington
Agriculture Club 1, 2, 3, 4.

FRANK J. DiCECCO

Check A. & S. Wilmington

SAMUEL P. DiMATTIA

Sam M. E. Wilmington
A. S. M. E. 2, 3, 4.



ROBERT A. FERGUSON

Fergy C. E. Wilmington

Sigma Phi Epsilon

A. S. C. E. 1, 2, 3, Vice-Pres. 4; Intramural Track, Basketball, Baseball; J. V. Basketball 2, 3; Fresh-Soph Riots 1, 2; Sigma Phi Epsilon Secy. 4.



WILLIAM L. EVERHART

Bill A. & S. Clayton

Debating 1; Apprentice Players 1; School for Husbands 2; Commons 3; University Chorus 4; League of Evangelical Students 1, 2, 3, 4.

MALCOM FINLAYSON

Angus A. & S. Wilmington

ERNEST GEORGE

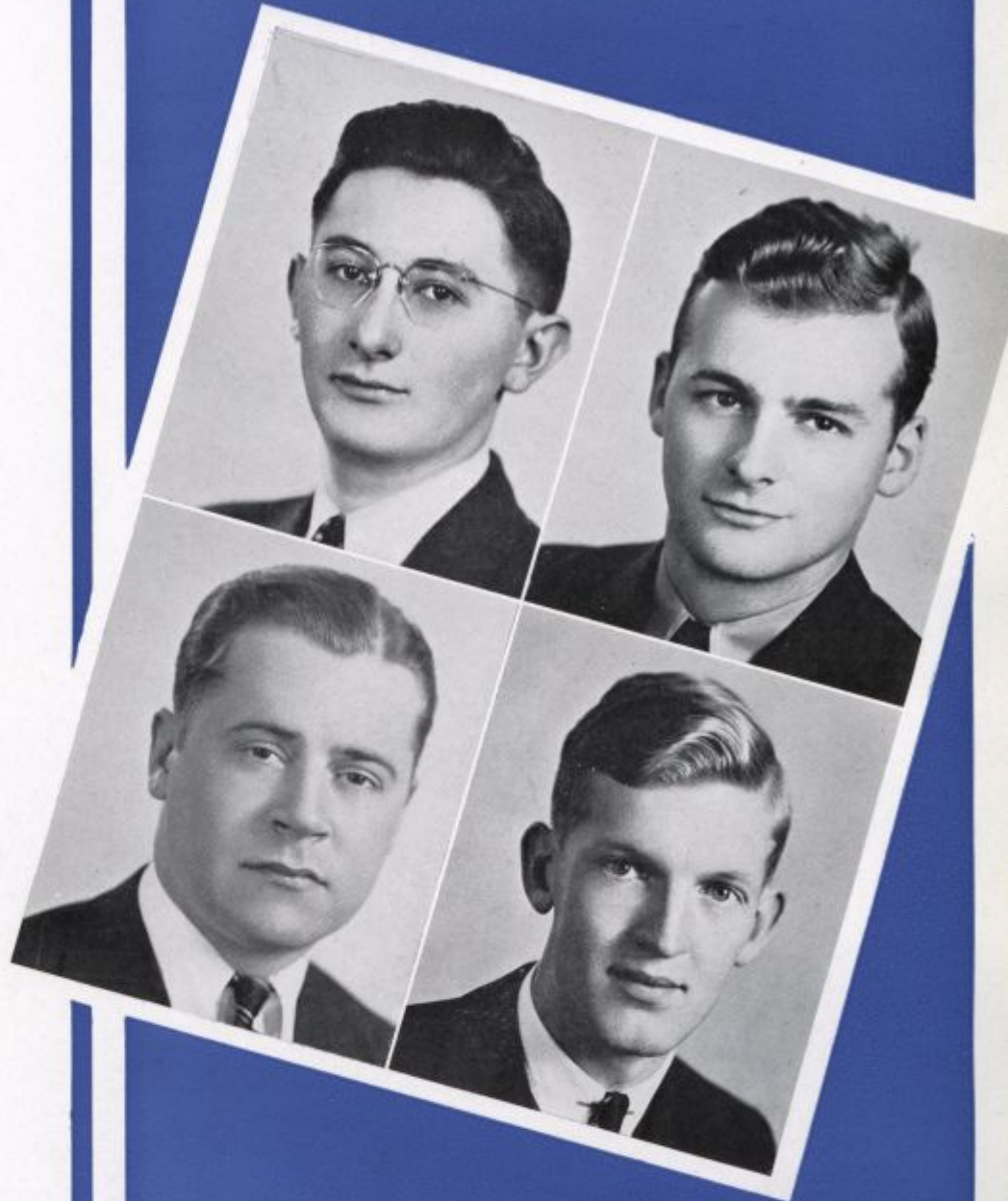
Ernie A. & S. Newark

Football 1, 2, 3, Capt. 4; Baseball 1, 2, 3; J. V. Basketball 1, 2; Intramural Basketball, Track; Intramural Coach Basketball, Track, Volleyball, Badminton, Boxing; Spartan, Derelict.

LOUIS GOLDSTEIN

Louie A. & S.
Sigma Tau Phi

Wilmington



ROBERT E. GOOD

♥ ♦ Goody ♦ Ch. E. Wilmington Sigma Nu
Tau Beta Pi Freshman Prize; Golf 1, 2, Capt. 3, 4; J. V. Basketball
2, 3, 4; J. V. Football 1; A. I. Ch. E. 3, 4; Wolf Chemical Club 1, 2;
Spartan; R. O. T. C. 1, 2, 3, 4; Officers' Club; Sigma Nu House
Mgr. 3.

SAMUEL A. GRAYSON

Sammie A. & S.
Sigma Phi Epsilon

Wilmington

Review 1; Rifle Team 1, 2; Freshman Banquet
Committee; Cheer Leader 1, 2, Capt. 3, 4;
Soccer 1, 2, 3, 4; Swimming 2, 3, 4; R. O.
T. C. 1, 2, 3, 4; Officers' Club; General J.
Ernest Smith Military Prize 2; R. O. T. C.
Saber Award 4.

RALPH GROVES, JR.

Dog-Ears E. E.

Wilmington

Sigma Nu

Student Council 2, 3, Chairman Social Committee 4, Chairman
Senior Advisory Committee 4; Engineers' Council Treas. 4;
A. I. E. E.



EDWARD H. HABER

Ed E. E. Wilmington
 Delaware Electrical Engineers' Club 1, 2, Secy. 3; A. S. M. E. 4;
 A. I. E. E. 4; R. O. T. C. 1, 2, 3; Glee Club 1, 2; Tau Beta Pi 4;
 Frosh-Soph Riots 1, 2.

THOMAS J. HEALY

T. J. A. & S. Wilmington *Sigma Phi Epsilon*
 S. P. E. Track; S. P. E. Basketball; E-52 Players; Track 3, 4;
 Basketball 3; Athenæan Society 1, 2, 3, 4; Derelict; R. O. T. C.
 1, 2, 3, 4; Officers' Club.

JOHN E. HEALY

Johnny C. E. Wilmington
Sigma Phi Epsilon

Tau Beta Pi; Student Council 1, Chairman
 Social Committee 2, 3, 4; Sophomore Class
 Pres.; American College Yearbook 3; Foot-
 ball 1, 3, 4; Basketball 2, 3, 4; S. P. E. Sports
 1, 2, 3, 4; A. S. C. E. 1, 2, Secy.-Treas. 3,
 Pres. 4; Athenæan Society 1, 2, 3; Spartan;
 Officers' Club Pres. 4; Engineers' Council
 Pres. 4; R. O. T. C. 1, 2, 3, 4.



MATTHEW HIRSHOUT

Matt A. & S. Wilmington
 Review 1, 2, Adv. Mgr. 3, 4; Humanist 1;
 Humanists 1; Intramural Basketball, Base-
 ball, Track; Blue Hen Business Mgr. 3, 4.

ROBERT HOFFMAN

Bob A. & S. Newark
Phi Kappa Phi; Athenæan Society 4; I. M. A.
2, 3, 4; Economics Club Founder and Pres. 4.



JAMES H. HULL, JR.

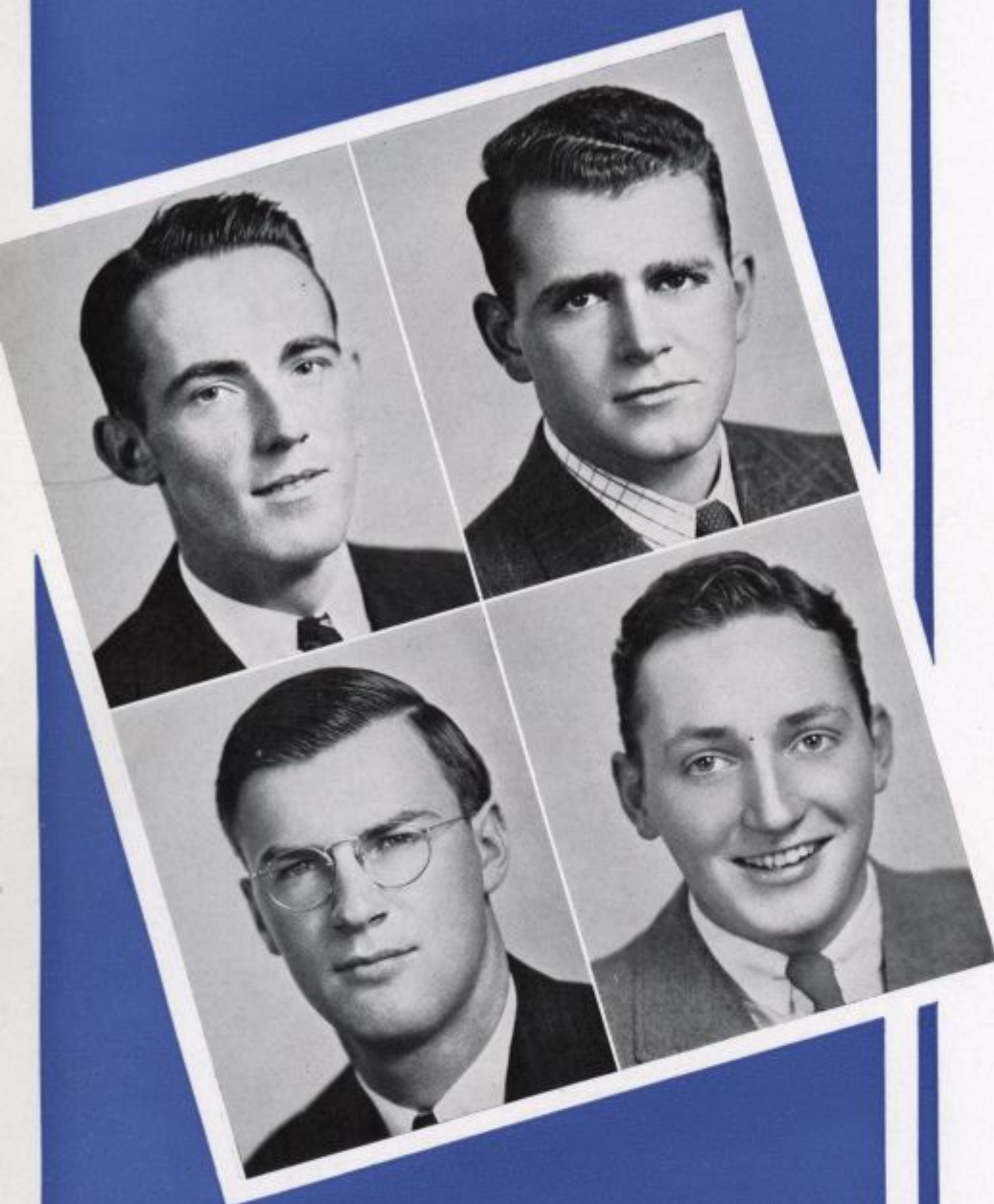
Jim M. E. Wilmington
A. S. M. E. 1, 2, 3, 4; Fencing 2, 3.

A. C. HUSTON, JR.

Art Ch. E. Newark
Sigma Phi Epsilon
Phi Kappa Phi; Tau Beta Pi 3, Recording
Secy. 4; Review 1, Managing Editor 2, 3, 4;
Athenæan Society 2, 3; A. I. Ch. E. 1, 2, 3, 4;
Blue Key, Derelict; R. O. T. C. 1, 2, 3, 4;
Officers' Club.

JAMES H. HUTCHISON, JR.

Hutch A. & S. Newark
Review 1, 2, 3; Apprentice Players 1, 2, 3; E-52 Business Staff 2, 3, 4;
Athenæan Society 1, 2, 3, Treas. 4; Economics Club 4; R. O. T. C.
1, 2, 3, 4; Officers' Club Treas. 4.



JOHN ROSS HUTCHISON

Hutch M. E. Newark *Sigma Phi Epsilon*
 Phi Kappa Phi; Tau Beta Pi 3, 4; A. S. M. E.

GEORGE E. JACKSON

Stoney C. E. Claymont
 A. S. C. E. 1, 2, 3, 4.

RICHARD MARIS IRWIN

Butch A. & S. Newark
Theta Chi
 Swimming Mgr. 1, 2, 3, 4; R. O. T. C. Band
 2, 3; University Orchestra 2; Theta Chi
 Secy. 4.



GEORGE F. KELLY, JR.

Moose A. & S. Wilmington
Sigma Phi Epsilon
 Review 2, 3; Athenæan Society 2, 3, 4;
 Junior Prom Committee; Glee Club 3;
 Excursion 3; S. P. E. Baseball, Basketball,
 Swimming; R. O. T. C. 1, 2, 3, 4; Officers'
 Club; Sigma Phi Epsilon Marshall 2.

G. EDWIN KNAUSS

Eddie M. E. Newark
A. S. M. E. 2, 3; R. O. T. C. Band 1, 2, 3;
University Orchestra 1, 2, 3.



REYNOLDS H. KNOTTS

Brent A. & S. Delaware City
E-52 Players; Le Cercle Francais; Authority on cinema and
cinemaddicts; Co-inventor of the Cue-Master.

JACOB KRESHTOOL

Jake A. & S. Wilmington
Humanist Society 2, 3, 4; Athenæan Society
2, 3, 4; Derelicts 4; Class Treasurer 2, 3;
Junior Prom Committee 3; Editor Review 4;
Associate Editor Cauldron 4; Dramatics 1,
2, 3, 4.

LEO LASKARIS

Agr.

Newark



HENRY Q. LAYMAN, JR.
Hen A. & S.
 Track 2; Economics Club 4; I. M. A.

Wilmington

EUGENE JOSEPH LIPSTEIN
The Jeep Ch. E. Wilmington *Sigma Tau Phi*
 Phi Kappa Phi; Tau Beta Pi 3, Corr. Secy. 4; Interfraternity Council 3, Secy-Treas. 4; A. I. Ch. E. 2, 3, 4; Freshman Handbook Editor 4; Derelict; S. T. P. Sports 1, 2, 3, 4; I. S. C. Convention Committee 3; R. O. T. C. 1, 2, 3, 4; Officers' Club; Sigma Tau Phi Treas. 2, 3, Pres. 4.

ROBERT S. LIPPINCOTT

Bob Agr. Medford, N. J.

Sigma Nu

Aggie Club 1, 2, 3, 4; Soccer 1, 2, 3; Swimming 1, 2, 3; Track 1, 2; Golf 1, 2, 3, 4; Interfraternity Council 3; Cheer Leader 1, 2, 3, 4; Spartan, Blue Key, Derelict; Interfraternity Relay 1.



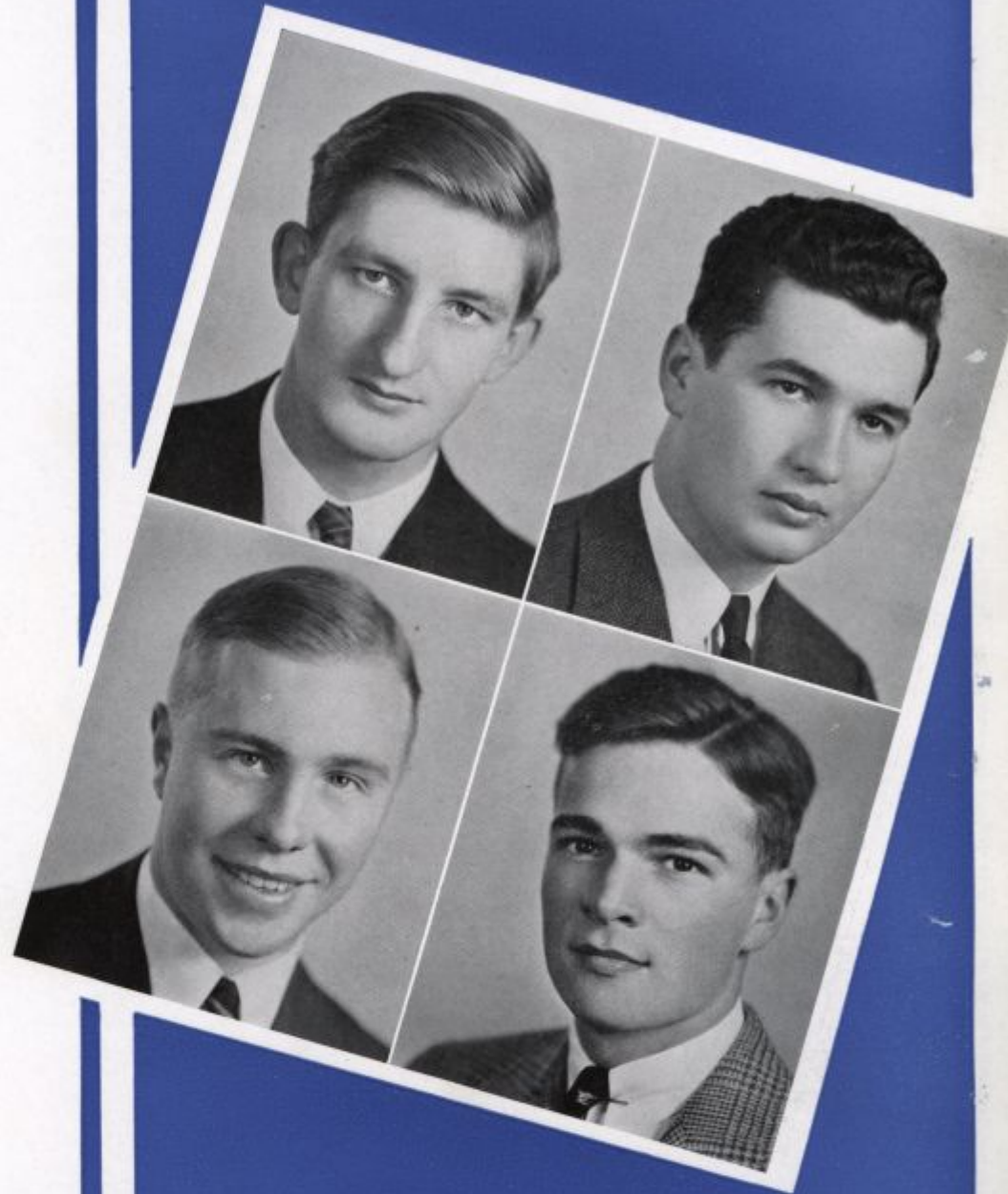
ROBERT K. LOVELESS

Bob E. E. Wilmington

Phi Kappa Phi; Tau Beta Pi Pres. 4; A. I. E. E. 4; Delaware Electrical Engineers' Club 1, Secy. 2, Vice-Pres. 3; Frosh-Soph Riots 1, 2; R. O. T. C. 1, 2, 3, 4; Officers' Club.

THOMAS W. LYNAM
 Tom C. E.
 A. S. C. E. 1, 2, 3, 4.

Wilmington



OSBORNE S. MACKIE, JR.

Ossie A. & S. Newark *Sigma Phi Epsilon*
 French Club 1, 2; Fencing 1; S. P. E. Volleyball 2; Athenæan
 Society 1, 2, Secy. 3, Pres. 4; Economics Club 4.

WILLIAM F. MAI

Bill Agr. Lewes

Theta Chi

Aggie Club 1, 2, Vice-Pres. 3, 4; *Review* 1, 2;
 T. C. Basketball, Football, Volleyball, Base-
 ball; *Aggie News*; *Theta Chi* Vice-Pres. 4.

EDWIN R. MANCHESTER, JR.

Scoop A. & S. Wilmington *Sigma Nu*
 Varsity Swimming 2, 4; S. N. Swimming, Track; Student Council
 2; Interfraternity Council 4; R. O. T. C. 1, 2, 3, 4; Officers' Club
 Vice-Pres. 4; *Sigma Nu* Treas. 3, Commander 4.



GILBERT MANN

Gibbo A. & S. Wilmington
Review 3, Copy Editor 4; *Review-on-the-Air!* Author-Actor; *Blue Hen* 3, Asst. Editor 4; St. Anthony's Club.

H. HARRISON McALLISTER

Happy A. & S. Wilmington *Sigma Phi Epsilon*
 Intramurals.

J. W. MASSEY, JR.

Jake A. & S. Dover
Theta Chi

University Chorus 3, 4; Fencing 2; Track Mgr. 1, 2, 3; Cheer Leader 1, 2; Interfraternity Relay 1; Economics Club 4; Blue Key; Theta Chi Treas. 4.



EARL K. McCORD

Spike M. E. Lansdowne, Pa.
Sigma Phi Epsilon

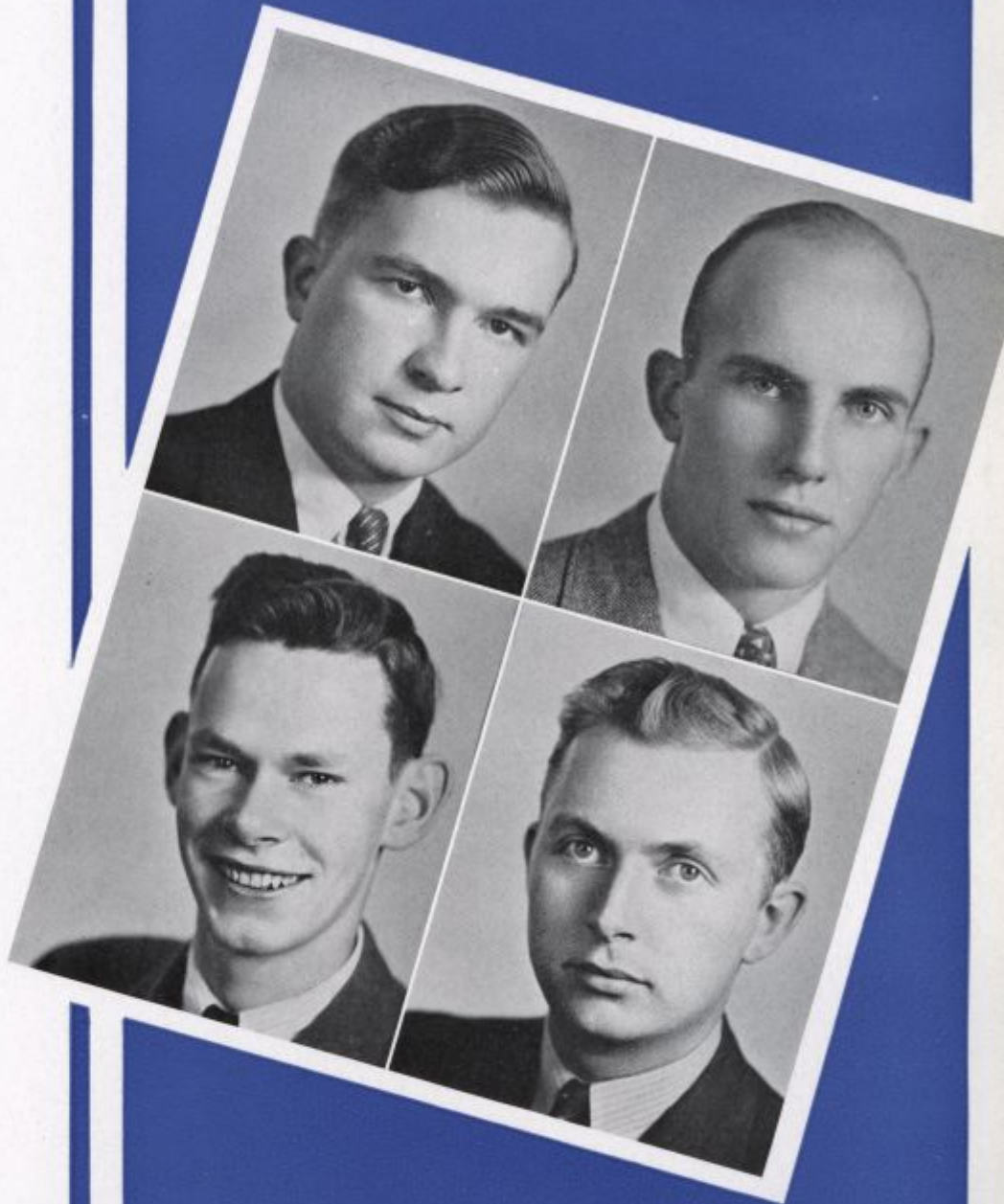
Soccer (D) 1, 2, 3, Capt. 4; Basketball (D) 1, 2, 3, 4; Baseball (D) 1, 2, 3, 4; Spartan, Blue Key Pres., Derelict; A. S. M. E. Vice-Pres. 4; S. P. E. Basketball Coach; Sigma Phi Epsilon Vice-Pres. 4.

FRANCIS L. McKEE

Mac E. E. Dover

Sigma Nu

A. I. E. E. 1, 2, 3, Vice-Pres. 4; A. S. M. E. 3, 4; R. O. T. C. Band 1, 2, 3; University Orchestra 1, 2; Soccer 1; R. O. T. C. 1, 2, 3, 4; Officers' Club.



WALTER EDWARD MOCK

Jeeter A. & S. Wilmington
Review 2, 3, 4; Athenæan Society 2, 3, 4; Tennis 3, Capt. 4; It Can't Happen Here 4; St. Anthony's Club 2, 3, 4.

FREDRIC MYER

Stretch Agr. Bridgeville
Aggie Club 1, 2, 3, Program Chairman 4; Aggie News Associate Editor 4; Dairy Judging 4; Apprentice Players 1; Swimming 3; I. M. A. Social Chairman 3, Vice-Pres. 4.

M. BRINTON PAGE

Page A. & S. Wilmington
Rifle Team 1, 2; Glee Club 2; Lounge Bridge Club 1, 2, 3, 4.



FREDERICK S. PRICE, JR.
Fred A. & S. Wilmington
 Phi Kappa Phi; University Chorus 1, 4;
 League of Evangelical Students 1, 2, 3, 4.



R. HIAL PEPPER
Pep E. E. Rehoboth Beach *Sigma Phi Epsilon*
 Frosh Football; Committee of Fifteen; Student Council 1, 2, 3, 4;
 S. P. E. Baseball, Basketball 1, 2, 3, 4; A. S. M. E.; Junior Prom
 Committee; Peer Gynt Production Staff; Basketball Mgr. 1;
 R. O. T. C. Band 1, 2, 3; Sigma Phi Epsilon House
 Manager 3, 4.

THEODORE R. PYNE
Ted A. & S. Claymont
 Glee Club 1, 2; R. O. T. C. 1, 2, 3; Officers'
 Club.

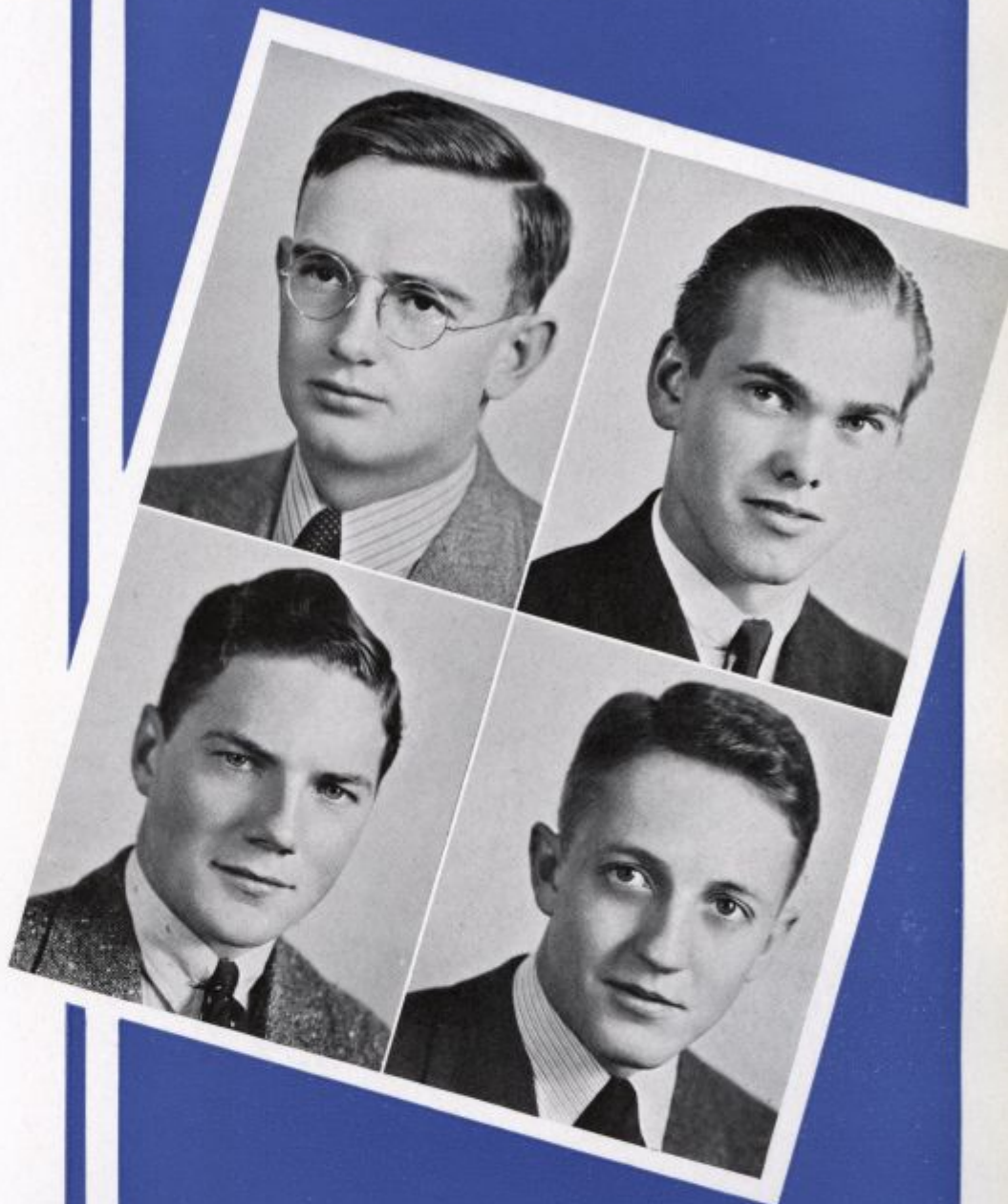
HERVEY THOMAS PYLE
Tom A. & S. Cumberland, Md.

PHILIP REED

Phil A. & S. New Castle

Kappa Alpha

Baseball 1, 2, 3, Captain 4; Basketball 3, 4; Blue Key, Derelict.



ORVILLE LEIGHTON RICHARDSON

Orv M. E.

Newark

Delaware Collegiate Soaring Society 4; Review 1; A. S. M. E. 1, 2, 3, 4; R. O. T. C. Band 1, 2, 3, 4.

JAMES C. ROBINSON, JR.

Pete A. & S. Newark

Soccer 3; R. O. T. C. Band 1, 2, 3; R. O. T. C. 1, 2, 3, Cadet Major 4; Officers' Club.

JOHN DEWITT ROGERS, JR.

Buck M. E. Frankford

Sigma Nu

Tau Beta Pi; Student Council 2; Review 2; Blue Hen 2; Swimming 1, 2, 4; A. S. M. E. 1, 2, 3, Pres. 4; Blue Key; Engineers' Council Outlaw Dance.



E. D. SADOWSKI

Dan Ch. E. Wilmington
 A. I. Ch. E. 3, 4; Wolf Chemical Club 1, 2;
 Football 1, 2, 3; Track 2; Intramural Swimming,
 Track, Softball 2, 3.



THOMAS JOHN RYAN

Tommy A. & S. Belmar, N. J. *Theta Chi*
 Student Council, Treas. 3, Pres. 4; Football 1, 2, 3, Capt. 4;
 Basketball 1, 2, 4; Track 1, 2, 3, 4; Sophomore Class Officer;
 Spartan Pres., Blue Key, Derelict; Junior Prom Committee;
 Debating; St. Anthony's Club 2, 3, 4.

JOHN D. SCHAFER, JR.

Jack A. & S. Wilmington
Sigma Nu
 Basketball 1, 2, 3; Football 3; S. N. Softball
 1, 2, 3; Junior Prom Committee.

EDWARD H. SCHABINGER

Ed Agr. Felton *Sigma Nu*
 Aggie Club 1, Treas. 2, 3, Pres. 4.

CHARLES W. SIGLER, JR.

Chuck A. & S. Harrington
Band 1, 2, 3; Glider Club 2; Review 1, 2, 3;
Footlights 2, 3; Drum Major Band 3; Associate Editor Review 3.



JAMES SPAIN

Jim

A. & S.

Wilmington

ALBERT STIFTEL

Al A. & S.
Sigma Tau Phi

Wilmington

HARRY T. STUTMAN

Harrison A. & S. Wilmington Sigma Tau Phi
Editor of Humanist 2, 3; Review Staff 1, 2, 3; Radio Program 4;
Dramatics 1, 2, 3, 4; Footlights Club E-52; Book Club 4.



HAROLD E. TIFFANY, JR.

Tiff A. & S. Newark

Sigma Phi Epsilon

Football 1, 3; Swimming 1, 2; Track 1; E-52
 Players 3, 4; Footlights 3, 4; Wolf Chemistry
 Club 1, 2; A. I. Ch. E. 3, 4; S. P. E. Swim-
 ming, Baseball, Basketball, Dramatics;
 Frosh-Soph Riots 1, 2; Blue Key Vice-Pres.,
 Derelict; Interfraternity Council Pres. 4;
 Sigma Phi Epsilon Marshall 3, Pres. 4.



RICHARD N. SUNDERLAND, JR.

Dick M. E. Wilmington

A. S. M. E. 1, 2, 3, 4; Swimming 1; Frosh-Soph Riots 1, 2.

H. R. TUNNELL, JR.

Bert Ch. E. Butte, Mont.

Sigma Nu

Football 1, 2; A. I. Ch. E. Pres. 4; Sigma Nu
 Lieutenant-Commander 4.

THEODORE TOWNSEND

Ted A. & S. Milford *Kappa Alpha*

Kappa Alpha Secy. 3, Pres. 4.

EUGENE AXSON VERNON

Gene A. & S. Wilmington
Sigma Nu
Track 1, 2, Captain 3.



CHARLES W. WAGNER

Reds A. & S. Wilmington
Rifle Team 1; Class Swimming 1; Freshman Committee; University Orchestra 2, 3; R. O. T. C. Band 1, 2, 3, 4; Officers' Club.

EARL VENNEL WALKER

A. & S. Delaware City

F. R. WHEELER

Russ A. & S. Wilmington Kappa Alpha
Track 1; J. V. Football 3; Intramural Athletic Award 3; K. A. Track, Softball, Basketball, Ping-Pong.



HAROLD H. WILLIAMS
C. E.
A. S. C. E. 1, 2, 3, 4.

New Castle



EDGAR WILE
Ed

A. & S.

New York City

EDWARD J. WILSON
E. J. A. & S.
Kappa Alpha

Wilmington

Review Sports Editor 2, 3; Junior Class Pres., Senior Class Vice-Pres.; Student Council 2, 3, 4; Spartan, Blue Key, Derelict; Soccer 1, 2, 3; Basketball Mgr. 4; Junior Prom Committee; K. A. Swimming, Basketball.

HARRY S. WILSON
Sol

A. & S.

Newark

Track 1, 2, 3, 4; Intramural Coach Track, Basketball, Softball, Wrestling; Intramural Official Track, Basketball, Softball, Volleyball; Master of Ceremonies at Delaware Interscholastics 3, 4; Intramural Basketball 2, 3, Wrestling 2, 3, 4.

ROBERT T. WILSON

R. T. A. & S. Oxford, Pa.
Student Council 2, 3, Chairman Honor
Points Committee; *Review* 1, 2, 3, News
Editor 4; *Humanist* 2, *Cauldron* Editor 4;
Debating 2, 4; Fencing 1, 2; Athenæan
Society 2, 3, Vice-Pres. 4; Humanists 2, 3, 4;
Excursion, It Can't Happen Here; I. M. A. 3, 4;
Economics Club 4; Derelict Pres. 4; League
of Evangelical Students 2, Pres. 3, 4.



EARLE S. YERGER, Jr.

A. & S. Wilmington
A. S. Ch. E.; Rifle Team 1, 2; Intramurals; R. O. T. C. 1, 2, 3, 4;
Officers' Club.

LEONARD K. YERGER, Jr.

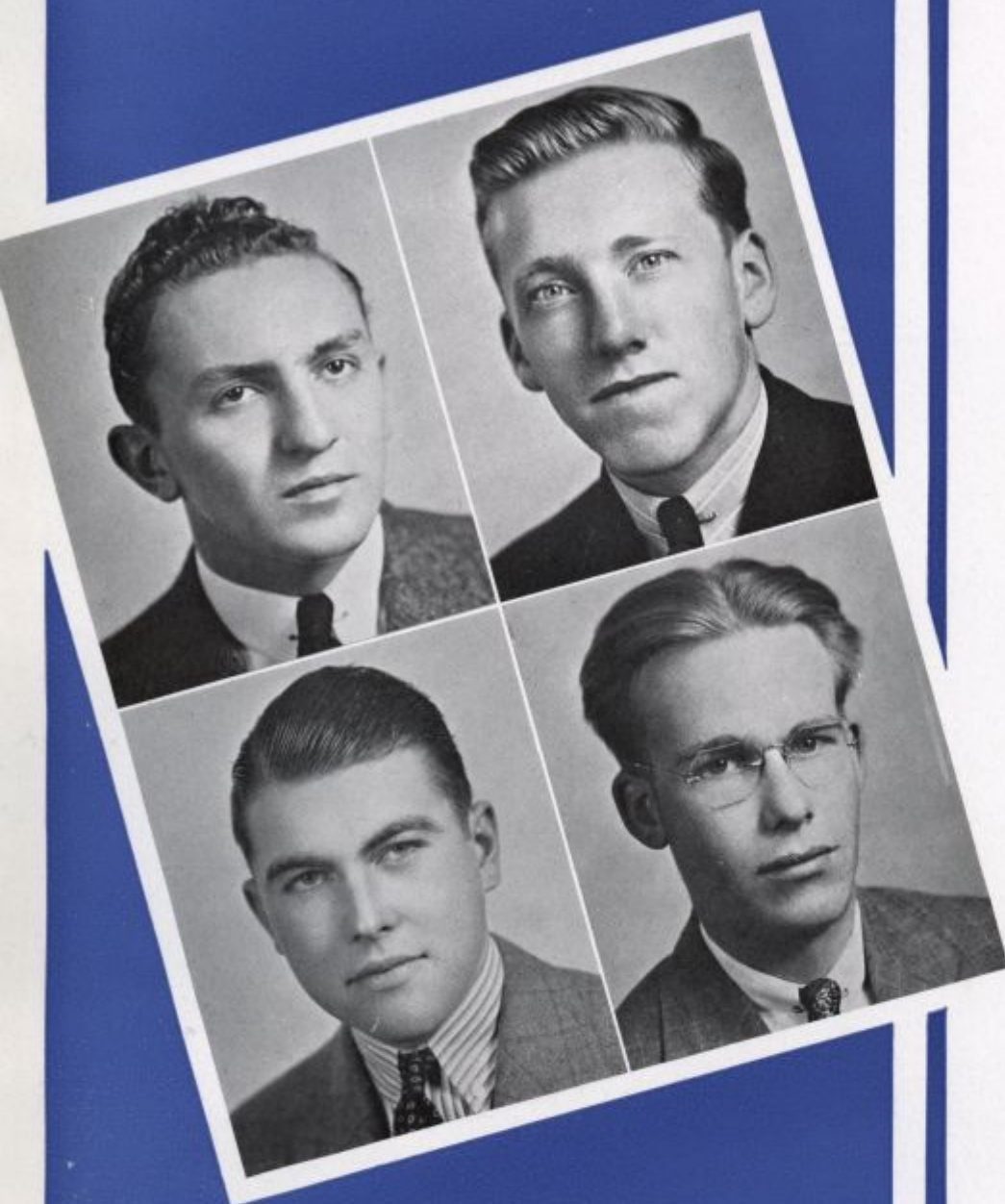
Len E. E. Wilmington
Sigma Nu
Radio Station W3BTQ; Organized Del-
aware Collegiate Soaring Club.

JUNIOR CLASS

OFFICERS

| | |
|---------------------------------|-----------------------|
| <i>President</i> | ROBERT J. BERNDT |
| <i>Vice-President</i> | WILSON F. HUMPHREYS |
| <i>Secretary</i> | WILLIAM C. NIVIN, JR. |
| <i>Treasurer</i> | ROLAND W. BARTLETT |





GEORGE H. ANDERSON, JR.

Sigma Nu A. & S. Alden, Pa.
 Athenæan Society 1, 2, 3; Soccer 1, 2, 3;
 J. V. Basketball 1, 2, 3; J. V. Baseball 1, 2, 3;
 Spartan.



CHARLES CLARENCE ALLEN, JR.

Chick Agr. Seaford *Sigma Nu*
 Aggie Club 1, 2, 3; Football 1, 2, 3; J. V. Baseball 1, 2, 3; Intra-
 murals 1, 2, 3; Spartan, Blue Key.

S. EDWARD ANDERSON, JR.

Eddie A. & S. Wilmington *Sigma Phi Epsilon*
 Athenæan Society 3; Golf 1, 2, 3; Basketball 1, 2, 3; Intramural
 Baseball, Basketball, Football.

SAMUEL A. M. ARMOUR, JR.

Sam Agr. Milford
 Soccer 2, 3; Aggie Club 1, 2, Treas. 3;
 Intramural Basketball, Volleyball, Baseball;
 Asst. Basketball Mgr. 2; Baseball Mgr. 2, 3.

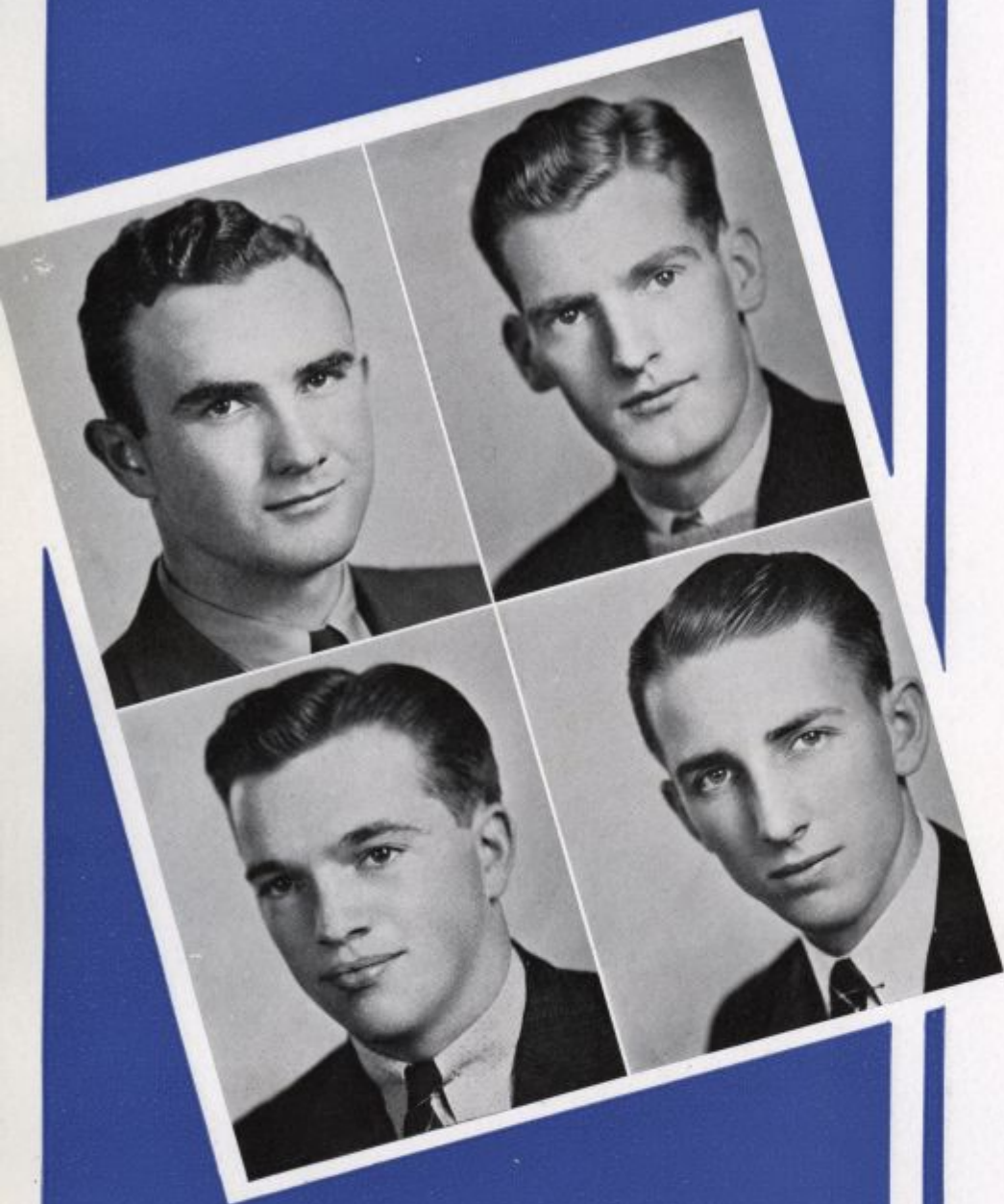
W. CARLTON BACKUS, JR.
Bill A. & S. Wilmington
Sigma Phi Epsilon
 Wolf Chemical Club 1, Secy. 2; J. V. Football 1, 2; Intramural Coach Football, Basketball, Track, Volleyball; Spartan.



CHARLES ROLAND BAKER
Bake A. & S. Pittsville, Md.
 J. V. Baseball 1; R. O. T. C. 1, 2, 3; Officers' Club.

CHARLES S. BAKER
Bake A. & S. Rockland
Sigma Phi Epsilon
 Student Council Corr. Secy. 3, 4; Athenæan Society 1, 2, 3; S. P. E. Softball 1, 2, 3; Sigma Phi Epsilon Freshman Trophy.

STEPHEN W. BARTOSHESKY
Steve A. & S. Wilmington *Kappa Alpha*
 Tennis 1, 2, 3; Junior Prom Committee; Intramurals 1, 2, 3; R. O. T. C. 1, 2, 3; Officers' Club.



MELVIN L. BEATTY

Mel E. E. Henry Clay
 Intramural Baseball, Football, Basketball,
 Volleyball; I. M. A.



ROLAND W. BARTLETT

Bart M. E. Hillcrest
 A. S. M. E. 1, 2; Intramural Football, Basketball; Class Officer,
 Secy. 2, Treas. 3; R. O. T. C. 1, 2, 3; Officers' Club.

CHESTER C. BENSON

Chet M. E. Monchanin
 Tau Beta Pi 3; A. S. M. E. 1, 2, Secy. 3; Rifle Team 2; Swimming 2;
 Intramural Softball, Basketball, Volleyball, Football; R. O. T. C.
 1, 2, 3; Officers' Club.

ROBERT J. BERNDT

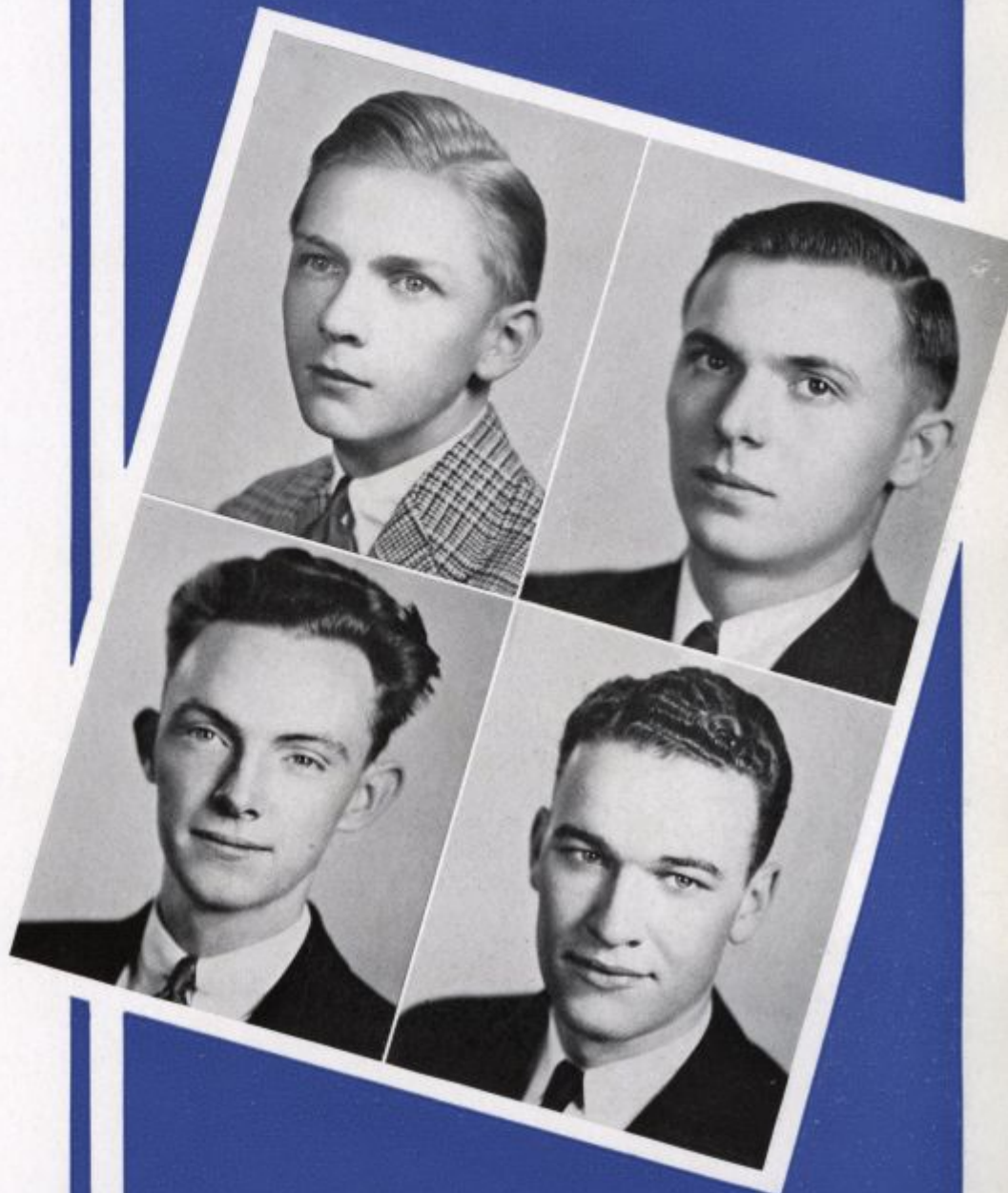
Booby Ch. E. Hillcrest
 A. I. Ch. E. 1, 2, 3; Glee Club 2; Junior Prom
 Chairman; Junior Class Pres.; J. V. Football
 3; R. O. T. C. 1, 2, 3; Officers' Club.

ROBERT C. BERRY

Bob A. & S. Wilmington

Sigma Phi Epsilon

Athenæan Society 1, 2, 3; Basketball Asst. Mgr.; Baseball Freshman Mgr.; S. P. E. Ping-Pong, Badminton.



VINCENT M. BOYCE

Vince C. E. Wilmington

A. S. C. E. 1, 2, 3; R. O. T. C. 1, 2, 3; Officers' Club.

ALEXANDER WILLIAM BOYER

Alex A. & S. Wilmington

Athenæan Society 1, 2, 3; Review 3; Dramatics 1, 2, 3; E-52 Players; Le Cercle Francais 1; Intramural Ping-Pong, Volleyball; I. M. A.; League of Evangelical Students.

NORMAN B. BROWNING

Norm A. & S. Richardson Park

Review 3; Blue Hen Photography Editor 3; Debating 1, Freshman Captain, Co-Mgr. 2, Manager 3; Humanists 1, 2, 3; Intramural Swimming 1; St. Anthony's Club.



ALEX D. COBB, JR.

Cobby M. E. Newark *Sigma Phi Epsilon*
 A. S. M. E. 1, 2, 3, 4; Glee Club 2; J. V. Basketball 1, 2, 3; S. P. E.
 Basketball 1, 2, 3; R. O. T. C. 1, 2, 3, 4; Officers' Club; Sigma Phi
 Epsilon 1, 2, Historian 3, Social Chairman 4.

ROBERT E. COX

Bob A. & S. Wilmington
 Athenæan Society 1, 2, 3, 4; University Chorus 3; Review 2.

PERCY J. COTTY

Perc Ch. E. Wilmington
 Tau Beta Pi; A. I. Ch. E. 1, 2, 3; Intramural
 Softball, Basketball, Volleyball; R. O. T. C.
 1, 2, 3; Officers' Club.



JOSEPH HERTZOG DANNENBERG

The Baron A. & S. Wilmington
Sigma Phi Epsilon
 Six for Dinner Club 2, 3; *Review* 1, 2, 3;
Humanist 1, 2, 3; *Blue Hen* 1; Track 1;
 Student Council 2; Footlights; E-52 Players;
 Spartan, Blue Key; The Scow 3.

HAROLD MORROW DAVIS

Dutch A. & S. Newark
Football 3; Dramatics 1, 2; Intramural Baseball, Volleyball; League of Evangelical Students.



WILLIAM H. DAWSON, JR.

Bill M. E. Newark
J. V. Basketball 1, 2; Intramural Basketball 1, 2; A. S. M. E. 3, Secy.-elect 4.

C. O. DEAKYNE

Deacon Agr. Minquadale
Aggie Club 1, 2, 3, 4.

JAMES LEONARD DICKINSON

Eagle Agr. Townsend
Aggie Club 1, Treas. 2, 3; Football 1, 2, 3; Track 1, 2, 3; Spartan; Intramural Volleyball, Softball, Basketball; R. O. T. C. 1, 2, 3; Officers' Club.



WILLIAM EDWARD DOUGLASS
 Doug M. E. Newark
 Sigma Phi Epsilon
 A. S. M. E. 1, 2, 3; Basketball Mgr. 1, 2, 3;
 Track 1; Soccer 2, 3; S. P. E. Baseball,
 Basketball; Junior Prom Committee; Blue
 Key; R. O. T. C. 1, 2, 3; Officers' Club.



GERALD L. DOUGHERTY, JR.
 Doc A. & S. Wilmington
 Track 1, 2; Football 1, 2; Intramural Swimming, Badminton,
 Wrestling.

WILLIAM M. DUFFY, JR.
 Bill A. & S. Wilmington Sigma Phi Epsilon
 Football 2; Baseball 1, 2, 3; Economics Club; Blue Hen 3; Athenæan
 Society 2, 3; Review 2; Blue Key President; Intramural Basketball,
 Archery, Badminton; R. O. T. C. 1, 2, 3; Officers' Club; St.
 Anthony's Club.

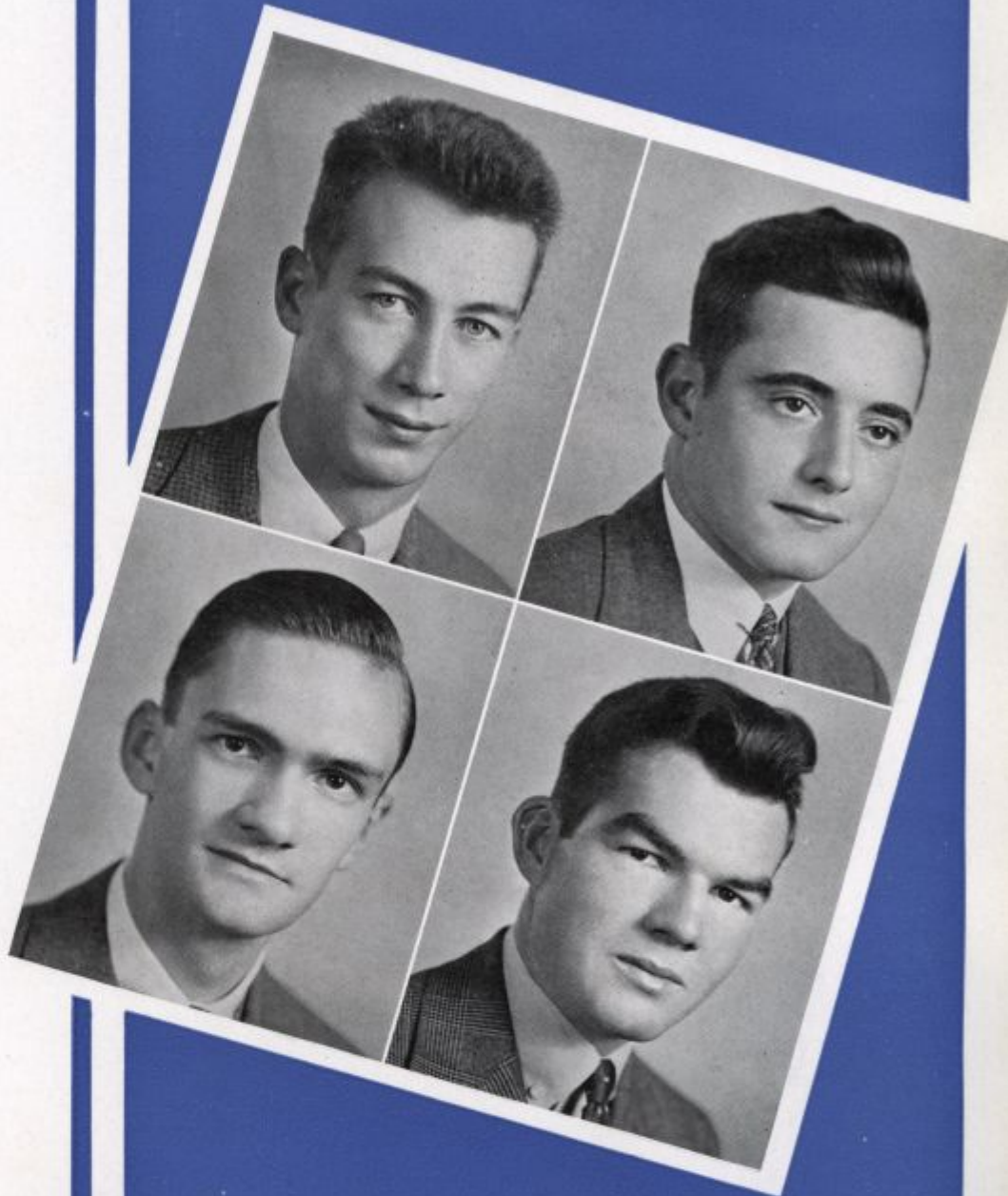
ARTHUR B. EASTMAN
 Abe M. E. Newark
 A. S. M. E. 1, 2, 3.

WILLIAM L. GEROW

Punchy A. & S. Wilmington

Sigma Phi Epsilon

Athenæan Society 3; A. S. M. E. 1; A. S. C. E. 1, 2; Basketball 1, 2, 3; Track 1, 2; *Review* 3; E-52 Business Staff 2; S. P. E. Basketball, Football, Baseball, Track, Badminton;



ALFRED J. GREEN

Alfy A. & S. Wilmington *Sigma Tau Phi*

Review 1, 2, 3; Student Council Corr. Secy. 2, 3; Editor Freshman Handbook 4; Basketball Manager 1, 2; Spartan, Blue Key; Interfraternity Council Pres. 4; Sigma Tau Phi Secy. 3, Pres. 4; R. O. T. C. 1, 2, 3; Officers' Club.

JAMES B. HARDWICK

J. B. M. E. Wilmington

Student Council 2, 3; Athenæan Society 2, 3; A. S. M. E. 2, 3; A. I. Ch. E. 1; Fencing 2; Junior Prom Committee; Intramural Basketball, Volleyball, Softball, Ping-pong; I. M. A.

FRED J. HARPER

Agr. Wilmington

Aggie Club 1, 2, 3; Intramural Softball, Volleyball.



WILLIAM W. HENNING

Bill A. & S. Rehoboth
Sigma Nu



ROBERT V. A. HARRA

Rab A. & S. Wilmington Sigma Nu
Freshman Banquet Committee; Humanists 1, 2; Athenæan Society 1, 2; Junior Prom Committee; R. O. T. C. 1, 2, 3; Officers' Club; Sigma Nu Recorder 3.

WILSON FETTERS HUMPHREYS

Wils A. & S. Camden, N. J.
Athenæan Society 1, 2, Secy. 3; I. R. C. of Middle Atlantic States Vice-Pres.; Junior Class Vice-Pres.; Junior Prom Committee; Review 1, 2, 3; Blue Hen 3; Soccer 1, 2, 3; Track 1, 2, 3; Spartan, Blue Key; Humanists 1, 2, 3; Cauldron 3; I. M. A. 1, 2, Treas. 3; R. O. T. C. 1, 2, 3; Officers' Club.

KENNETH A. HORNER, JR.

Bud A. & S. Wilmington
Intramural Baseball, Football; League of Evangelical Students 1, 2, 3.

C. EDWARD HURLEY

Eddie C. E. Seaford
Kappa Alpha

Review Asst. Adv. Mgr. 1, Adv. Mgr. 2,
Asst. Business Mgr. 3, Business Mgr. 3;
Football Mgr. 1; Football 3; A. S. C. E.
1, 2, 3; Humanist 1; Blue Key; Fencing 1, 2;
K. A. Track, Volleyball, Softball; Interfrat-
ernity Council 3; R. O. T. C. 1, 2, 3;
Officers' Club; Kappa Alpha Historian 1,
Corr. Secy. 2, Vice-Pres. 3, Pres. 3.



HENRY ROBERT HUSHEBECK

Hushy Agr. Newark
Aggie Club 2, 3; Review 1; Track 1.

I. WILLIS JACOBY

Jake M. E. Wilmington
Sigma Tau Phi

A. S. M. E. 1, 2, 3; Student Council Vice-
Pres. (4); Freshman Handbook Asst. Editor
3; S. T. P. Track, Softball, Basketball;
Sigma Tau Phi Vice-Pres. (4).

F. WARREN JAMES

Freddy A. & S. Seaford Sigma Nu
Review 2; Glee Club 1, University Chorus 2, 3; R. O. T. C. Band
1, 2.



CARLETON JOSEPH
Joe E. E. Georgetown
 Tau Beta Pi; A. S. M. E. 1, 2, 3; I. M. A.



JOHN WILLIAM JOHNSTON, JR.
Johnnie Agr. Middletown *Sigma Nu*
 Football 1, 2, 3; Track 1, 2, 3; Intramurals 2, 3; Aggie Club 1, 2, 3;
 Interfraternity Relays 3.

MORTON KEYSER
Morty A. & S. Wilmington
 R. O. T. C. Band 2; University Orchestra
 1, 2, 3.

W. NEWLIN KEEN
 M. E. Wilmington
 A. S. M. E. 1, 2, 3.

JOSEPH A. KIERAS

Joe Ch. E. Wilmington
A. I. Ch. E. 1, 2, 3; Treasurer 4; Tau Beta
Pi 4.



JAMES P. KIMBALL

Jim E. E. Wilmington

GEORGE B. KNOX, JR.

Geebee Agr. Wilmington
Sigma Nu
Aggie Club 1, 2, 3; Tennis 2, 3; J. V. Basket-
ball 1, 2, 3; R. O. T. C. 1, 2, 3; Officers' Club;
Sigma Nu House Mgr. 3.

CHRISTO J. LASKARIS

Chris Agr. Newark
Ag Club 1, 2, 3, 4; Tennis 1, 2.



LEONARD LEONE
Len Ch. E. Wilmington
 A. I. Ch. E. 4; Blue Hen, 4.



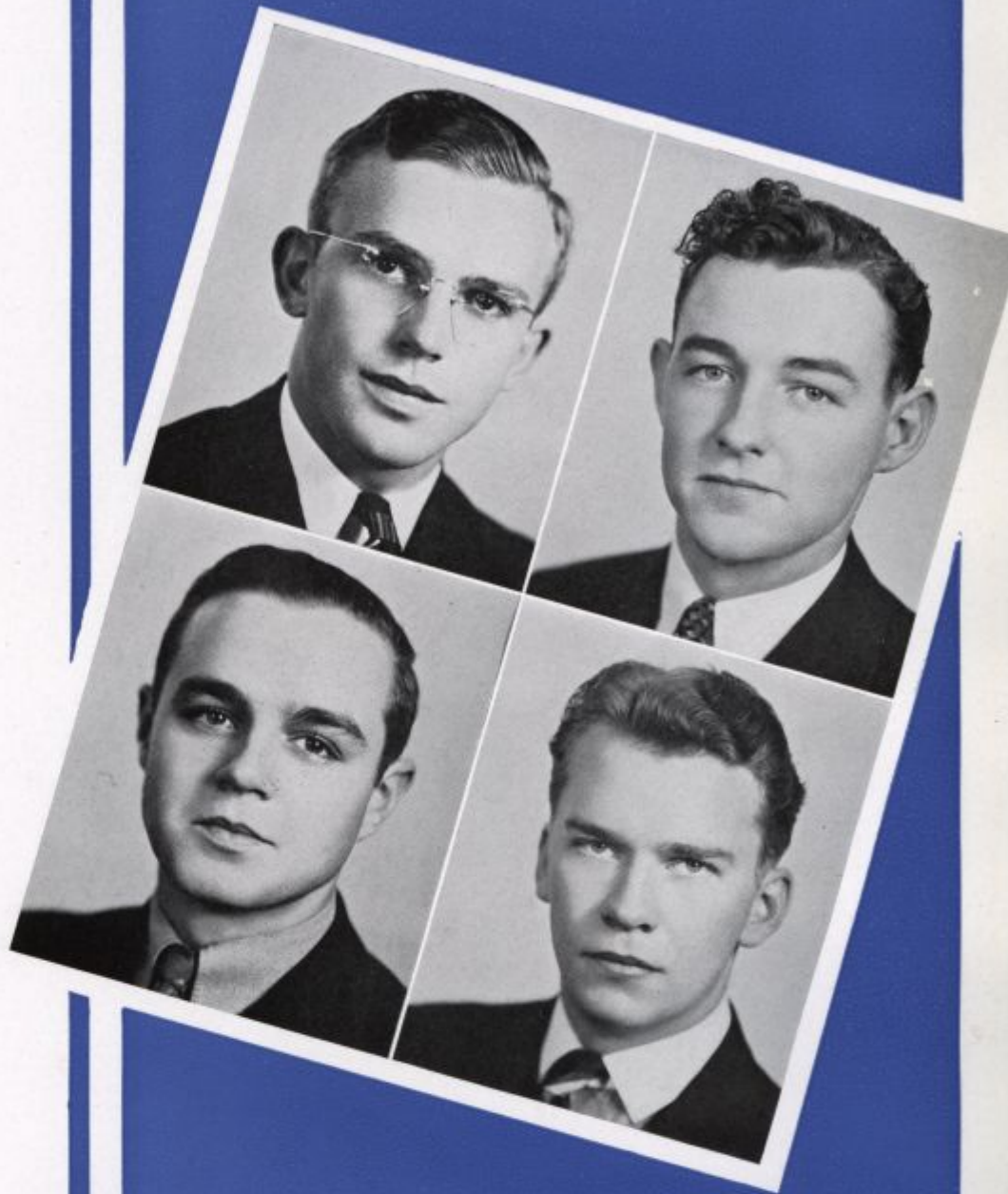
WALTER JOHN LAYTON
Jack A. & S. Harrington
 Soccer 1, 2.

BRUCE C. LINDSAY
 A. & S. Wilmington
 Football 2, 3, 4; Basketball 1, 2, 3, Capt. 4; Blue Key; Intramural
 Coach Baseball, Basketball, Football.

RICHARD EVERETT MAI
Eddie Agr. Greenwood
 Aggie Club 1, 2, Vice-Pres. 3; Soccer 1, 2, 3;
 J. V. Baseball 1, 2; Intramurals 1, 2, 3.

JAMES L. MARVEL

Jim A. & S. Georgetown
Blue Hen 2, 3; Dramatics 2, 3; Intramural
Baseball 2, 3; R. O. T. C. 1, 2, 3; Officers'
Club; I. M. A.



JOSEPH R. MAXWELL

Joe C. E. Newark
A. S. C. E. 1, 2, 3, 4; R. O. T. C. Band 1, 2, 3; University Orchestra
1, 2.

JOSEPH A. MENDENHALL

Joe A. & S. Nottingham, Pa.
Review 3, Co-Editor 3; Cauldron 3; Athenæan
Society 2, 3; Economics Club 3; Soccer 3;
Humanists 2, 3, (4); Le Cercle Francais 2, 3;
Dramatics 2, 3; Intramural Volleyball;
I. M. A.

STANLEY MOLINE

Suede A. & S. Wilmington
Six for Dinner Club; Football 1, 2; Glee Club 1.



ROBERT E. NASE

Bob A. & S. Wilmington

Theta Chi

Freshman Banquet Committee; *Review* 2, 3; *Blue Hen* 3; Intramural Volleyball, Football, Wrestling 3.



ROBERT W. MORGAN

Bob A. & S. Wilmington Theta Chi

Freshman Banquet Committee; Sophomore Class Pres.; Football Mgr. 1, 2, 3; Student Council 2, 3; Golf Mgr. 1, 2, 3; Spartan, Blue Key.

WILLIAM CRAWFORD NIVIN, JR.

Bill A. & S. Oxford, Pa.

Review 3; Junior Class Secy.; Athenæan Society 1, 2, 3; Basketball Mgr. 1, 2; I. M. A. 1, Publicity 2, Secy. 3.

JACK H. NEESON

A. & S. Wilmington

Review 2, 3; Footlights 3; Junior Prom Committee 3; Humanists 2, 3; Co-Inventor of the Cue-Master; *Review-on-the-Air!* Author 3; *The Scow* 3.

RALPH O'DAY

Kappa Alpha Agr. Seaford
Aggie Club 1, 2, 3; Kappa Alpha Secy. 3.



J. E. PLOTTS, JR.
C. E.

Newark

A. S. C. E. 1, 2, Secy.-Treas. 3; Intramural Baseball 1, 2, 3.

EARLE THOMAS RADISH

Hot A. & S. Pittsville, Md.
Soccer 1, 2; Baseball 1; R. O. T. C. 1, 2, 3;
Officers' Club.

JOHN M. RHODES

Jack Ch. E. Wilmington *Sigma Nu*
Rifle Team 1; R. O. T. C. 1, 2, 3, 4; A. I. Ch. E. 1, 2, 3, 4.



THOMAS ROGERS

Tommy A. & S. Wilmington
 Six for Dinner Club (4); *Review* Feature
 Editor 3; Intramural Softball, Football.



WILLIAM MULLETT RICHARDSON

Bill M. Agr. Camden, Del.
 Aggie Club 1, 2, 3; Footlights; Alpha Psi Omega 3; Dramatics
 1, 2, 3.

EDWARD SCHWARTZ

Eddie M. E. Boothwyn, Pa.
 A. S. M. E. Secy. 1, Treas. 2, Pres. 3; *Review*
 1; Delaware Collegiate Soaring Club Organ-
 izer, Pres., Instructor 3.

STEPHEN G. SALTZMAN

Saly A. & S. Wilmington
Review 1, Sports Editor 2; *Blue Hen* 1, Sports Editor 2; *Humanist*
 1, 2; Swimming 1, 2, 3; Playbill 2; Intramurals 1, 2; Sophomore
 Class Vice-Pres.; Spartan; St. Anthony's Club 1, 2, 3.

JOHN C. SCHWIND, JR.

Woodie A. & S. Wilmington

Kappa Alpha

Sophomore Class Treas.; Baseball Mgr. 1, 2, 3; Junior Prom Committee; Student Council 1, 2, Treas. 3, Pres. (4); Spartan Pres., Blue Key; Kappa Alpha 2, Treas. 3.



FRANK K. SCOTT

Scotty A. & S.

Collingswood, N. J.

Sigma Nu

Chairman Freshman Banquet; Student Council 2, Social Chairman 3, 4; Athletic Council 2, 3, 4; Senior Class Pres.; Debating 3; Review 1; Blue Hen Asst. Business Mgr. 3; Sigma Nu Treas. 3.

EARL LAWS SHEATS

Casey Agr. Middletown

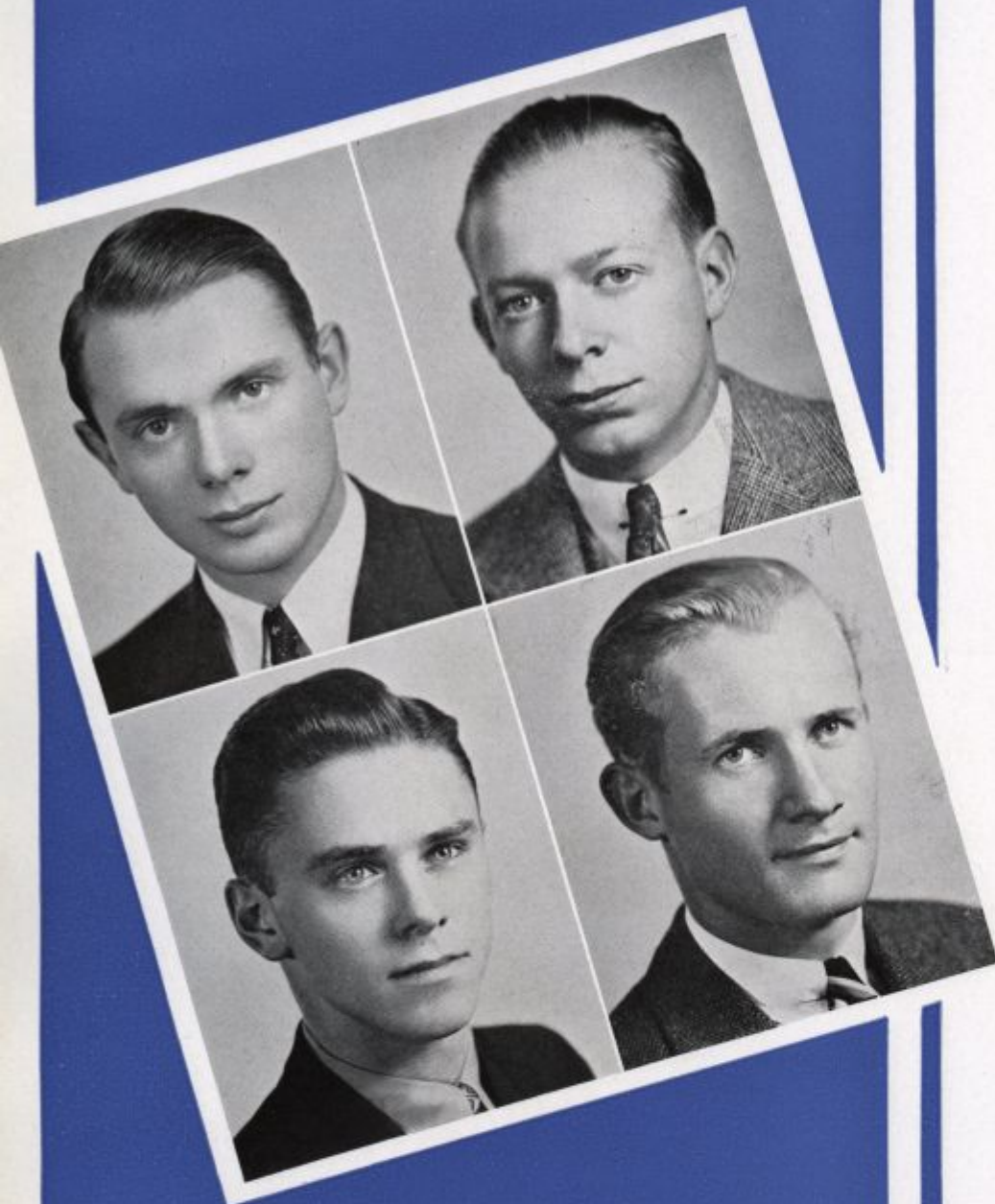
Aggie Club 1, 2, 3; Football 1, 2, 3; Baseball 1, 2, 3; Basketball 1, 2, 3; Spartan, Blue Key.

O. LLOYD SHORTER

E. E.

Wilmington

Electrical Engineers' Club 1, Wilmington Rifle Team 2, Mgr. 3; Intramural Basketball, Football; R. O. T. C. 1, 2, 3; Officers' Club.



WILLIAM C. SLOAN

Dunk Agr. Oxford, Pa.

Theta Chi

Aggie Club 1, 2, 3; Student Council 2, 3;
R. O. T. C. Band 1, 2, 3; University Chorus
2, 3; Swimming Mgr. 1, 2, 3; T. C. Baseball,
Volleyball; Footlights; Officers' Club.



JAMES DENNEY SLAUGHTER

Denney Ch. E. Smyrna

A. I. Ch. E. 2, 3; Wolf Chemical Club 1, 2; *Review* 3; Humanists 3;
R. O. T. C. 1, 2, 3; Officers' Club.

KENNETH C. STEELMAN

Ken E. E. Ocean City, N. J.

Sigma Nu

A. I. E. E. 1, 2, 3; A. S. M. E. 2; E-52 Players;
Footlights Vice-Pres. 3; Dramatics, Lighting
Technician 2, 3; Blue Key.

REID F. STEARNS

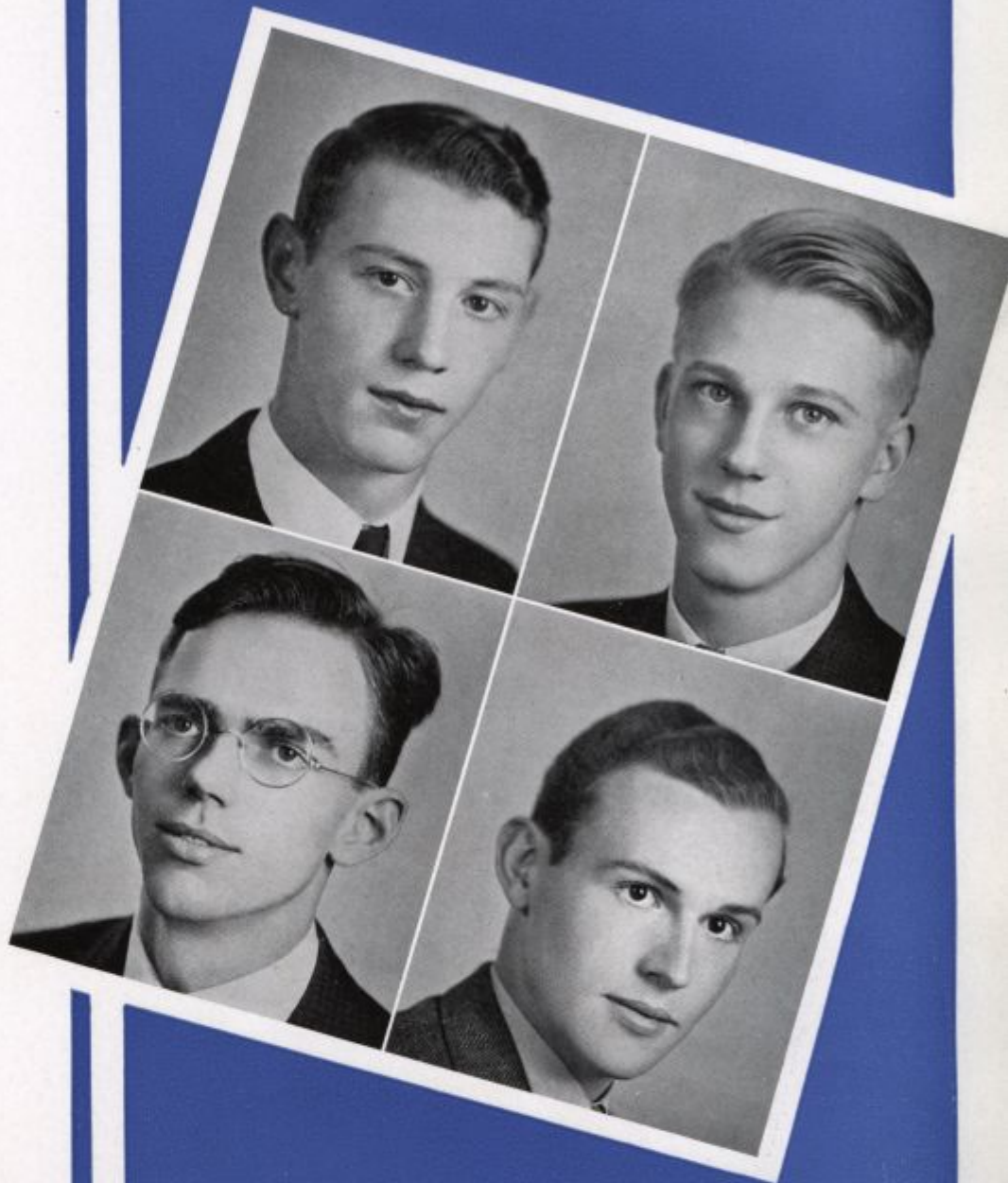
Ch. E. Newark Sigma Phi Epsilon

Tau Beta Pi 3; A. I. Ch. E. 1, 2, 3; *Review* 1; Spartan, Blue Key;
Swimming 1, 2, Capt. 3; R. O. T. C. 1, 2, 3; Officers' Club.

W. FRANKLIN SUMNER

Frank Agr. Oxford, Pa.
Theta Chi

Aggie Club 1, 2, Chairman Constitution Committee, Chairman Banquet Publicity Committee 3; Student Council 3; Athenæan Society 3; Debating 1; Aggie News 1, 2, 3, (4).



CLIFTON C. SUTTON

Cliff Ch. E. Wilmington
A. I. Ch. E. 1, 2, 3; R. O. T. C. 1, 2, 3; Officers' Club.

JOHN D. SWENEHART

Johnny A. & S. Wilmington

Six for Dinner Club 2, 3; Review 1, 2, 3; Blue Hen 1, 2, 3; Humanist 1, 2; Cauldron 3; Humanists Secy.-Treas. 3; Incinerator 2, 3; Review-on-the-Air! Author, Actor 3; Dramatics, Playwright 2, 3; The Scow 3.

JOSEPH TATNALL

Joe A. & S. Marshallton

Le Cercle Francais 1, 2, 3; University Chorus 2; Dramatics 2, 3; Footlights; League of Evangelical Students 1, 2, 3.



LEONARD M. TAYLOR, JR.
Len A. & S. Wilmington
 Athenæan Society 1, 2, 3; Dramatics 1, 3;
 Intramural Volleyball 2; I. M. A.

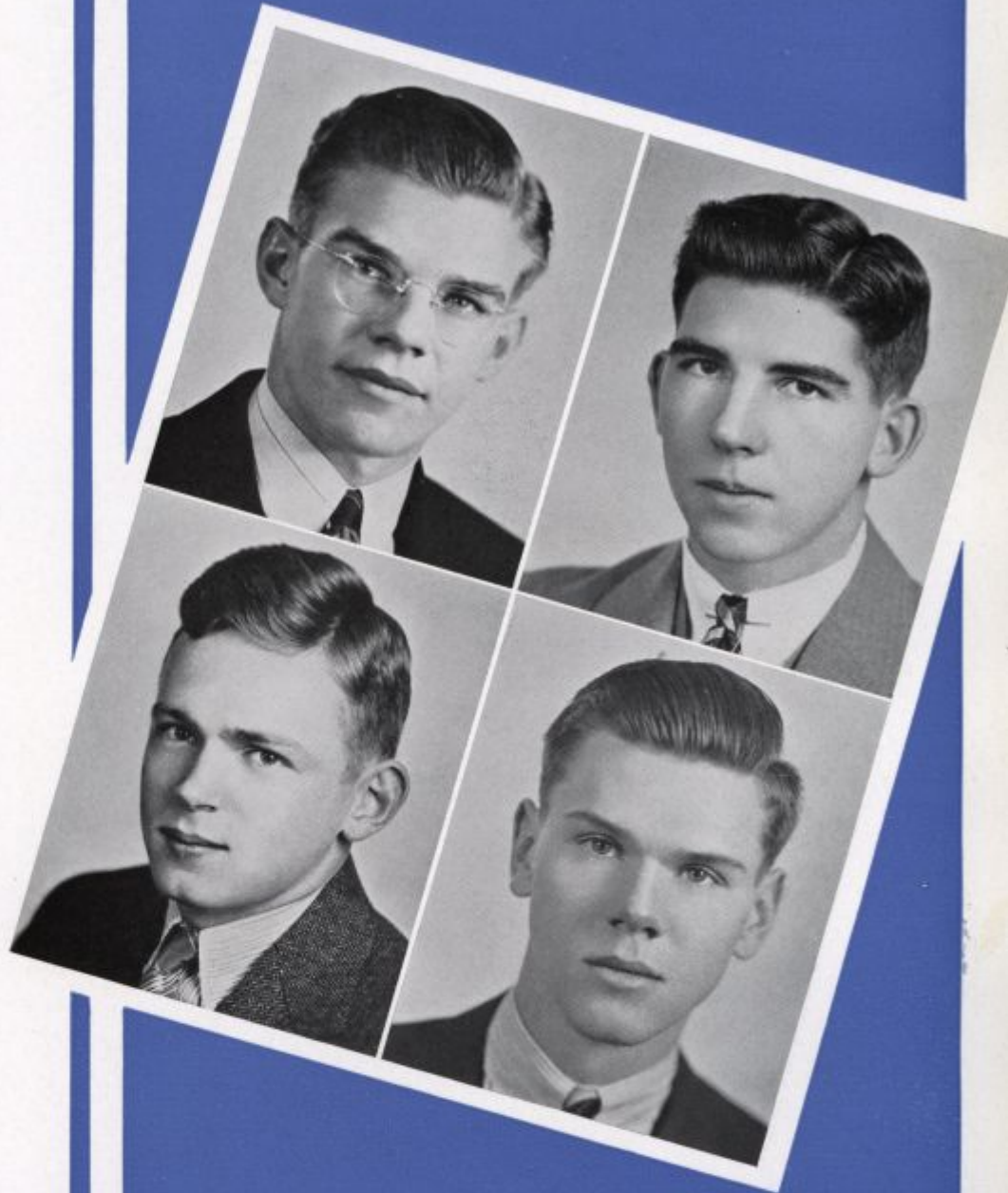


JAMES H. TAYLOR
Jim A. & S. Wilmington
 A. I. Ch. E. 3; *Review* 2; Wolf Chemical Club 1, 2.

WILLIAM E. THOMPSON, JR.
Wolf Agr. Rehoboth Beach
 Aggie Club 1, 2, Secy. 3; Soccer 1, 2, 3, Capt. 4; Glee Club 1;
 Spartan; Intramural Volleyball, Baseball; J. V. Baseball.

ALVIN O. TINGLE
Al A. & S. Frankford
 Theta Chi
 Athenæan Society 1, 2, 3; Student Council
 2; Track Mgr. 1, 2, 3; Intramural Baseball,
 Football, Volleyball; Frosh-Soph Riots 1.

THOMAS J. TOBIN
 A. & S. Elsmere
Kappa Alpha
 Football 2; R. O. T. C. 1, 2, 3; Officers' Club.



PAUL E. TRADER
Pet Ch. E. Harrington
 A. I. Ch. E. 1' 2, 3; Fencing 1, 2; Glee Club 1; I. M. A. 1, 2, 3;
 R. O. T. C. Band 1, 2; Frosh-Soph Riots 1, 2.

FRANK TUGEND
Deacon A. & S. Wilmington
Sigma Nu
 Wolf Chemical Club 1, 2; Soccer 2, 3; Asst.
 Mgr. 3; *Review* Photography Editor 3; Foot-
 lights; E-52 Players; Dramatics Lighting
 Technician 3; Golf Mgr. 2; S. N. Softball 2;
 Economics Club 3; R. O. T. C. 1, 2, 3;
 Officers' Club.

ROBERT H. VANDERGRIFT
Vandy A. & S. Wilmington *Sigma Phi Epsilon*
 Athenæan Society 1, 2, 3; University Chorus 2; Sigma Phi
 Epsilon Historian 2, Comptroller 3.



MILES CHANNING WAGNER

Wag A. & S. Wilmington
 Tennis 2, 3, 4; Swimming 1, 4; Intramural
 Football, Basketball, Swimming, Volleyball,
 Wrestling, Track 1, 2, 3, 4.



HOWARD NORMAN VIDEN

Howy Agr. Glassboro, N. J.
 Aggie Club 1, 2; Football 1, 2, Capt. 3; Baseball 2, 3; Spartan,
 Blue Key; Intramurals 1, 2, 3.

ARTHUR W. WARNER, JR.

Bud A. & S. Media, Pa.
 Review 1; Dramatics 1; University Orchestra
 1, 2, 3; University Chorus 2, 3; Intramural
 Ping-pong.

JAMES J. WALSH

Jimmy A. & S. Ashley
 Debating 1, 2; Intramural Boxing, Basketball; *Blue Hen* 3; R. O.
 T. C. 1, 2, 3; Officers' Club.

GUY LEROY WHARTON

Lazy A. & S. Newark

Sigma Phi Epsilon

Soccer 2, 3, 4; Track 3; Spartans 2; Vice-Pres. Sigma Phi Epsilon 3; Intramurals 1, 2, 3, 4.



WILLIAM E. ZABEL, JR.

Bill A. & S. Haddon Heights, N. J. Sigma Nu

Intramurals; Wolf Chemical Club 1; Footlights; Blue Key; R. O. T. C. 1, 2, 3; Officers' Club.

HARRY DAVID ZUTZ

Zutz A. & S. Wilmington

Debating 1; Review 1; Athenæan Society 1.



SOPHOMORE CLASS

| | |
|-----------------------|-----------------------|
| <i>President</i> | J. FREDERICK MITCHELL |
| <i>Vice-President</i> | WILLIAM W. WENDLE |
| <i>Secretary</i> | LAURENCE G. HODGSON |
| <i>Treasurer</i> | WILLIAM L. BARKER |

- | | | |
|--|--|---|
| + | | + |
| | BRIMJOIN, WILLIAM OWEN <i>Chemical Engineering</i> Middletown | |
| ADAMS, LEON WILLIAM <i>Agriculture</i> Bridgeville | | CLENDANIEL, FRANK, JR. <i>Arts & Science</i> Lincoln |
| | BROWN, CLARENCE WHERRY <i>Agriculture</i> Nottingham, Pa. | |
| APPLEGATE, JOHN <i>Agriculture</i> Newark | | COOCH, EDWARD WEBB, JR. <i>Arts & Science</i> Newark |
| | BUCKSON, DAVID PENROSE <i>Arts & Science</i> Townsend | |
| APSLEY, WILMER VANDENBURG <i>Arts & Science</i> Wilmington | | COOPER, RANDOLPH GRAHAM <i>Chemical Engineering</i> Laurel |
| | BUCKWALTER, JOHN STUMP <i>Agriculture</i> Lititz, Pa. | |
| BAKER, CHARLES SHERWOOD <i>Arts & Science</i> Rockland | | COX, ROBERT EASTWOOD <i>Arts & Science</i> Wilmington |
| | BURNETT, RAYMOND LESLIE, JR. <i>Chemical Engineering</i> Newark | |
| BALLARD, JOHN WILLIAM <i>Arts & Science</i> Farnhurst | | CRAIG, JOHN MCKINLEY <i>Mechanical Engineering</i> Wilmington |
| | CAMPBELL, SINCLAIR CORSE, JR. <i>Electrical Engineering</i> Milton | |
| BARKER, WILLIAM LEWELLYS <i>Arts & Science</i> Wilmington | | CRAIG, WILLIAM WARRINGTON <i>Agriculture</i> Wyoming |
| | CARMEAN, LEWIS OLIVER <i>Agriculture</i> Laurel | |
| BERRY, ROBERT CASTGRAIN <i>Arts & Science</i> Wilmington | | CRANSTON, CHARLES EDWARD <i>Agriculture</i> Newark |
| | CHRISTIE, DANA BIGELOW <i>Arts & Science</i> Wilmington | |
| BOCKIUS, PETER LOGAN, JR. <i>Chemical Engineering</i> Wilmington | | CUBBAGE, ISAAC HAMMOND <i>Arts & Science</i> Felton |
| | CHRISTIE, ROBERT <i>Mechanical Engineering</i> Wilmington | |
| BOULDEN, ELMER RANDOLPH <i>Chemical Engineering</i> Stanton | | CURTIN, GEORGE MORRISON <i>Arts & Science</i> Wilmington |
| | CLARK, LORENZO <i>Arts & Science</i> Claymont | |
| BOVE, JANUAR DOMINICK <i>Arts & Science</i> Wilmington | | CURTIS, JOHN MCCLENTOCK <i>Agriculture</i> Harrington |
| | CLARK, WILLIAM THOMAS <i>Chemical Engineering</i> Wilmington | |
| BOYCE, TRUXTON WRIGHT <i>Arts & Science</i> Wilmington | + | DAUTEL, JOHN FREDERICK <i>Mechanical Engineering</i> Wilmington |

DAWSON, JOHN EDGAR
Mechanical Engineering
Newark

DEAN, JOHN AULDE
Chemical Engineering
Wilmington

DERRICKSON, GEORGE WILLIAMS
Mechanical Engineering
New Castle

DOORDAN, JOHN EDWARD
Agriculture
Newark

DOUGLASS, CARLETON CECIL
Arts & Science
Newark

EBERHARDT, ULRICH SETH, JR.
Mechanical Engineering
Maplewood, N. J.

ECKMAN, ROBERT WIRT
Chemical Engineering
Wilmington

ERNST, JOHN LOUIS
Chemical Engineering
Wilmington

FINESMITH, SAMUEL JOSEPH
Agriculture
Wilmington

FIRST, JOSEPH MILTON
Agriculture
Wilmington

FOOKS, JACK HERBERT
Chemical Engineering
Wilmington

+

FOSTER, WILLIAM LORRAINE
Arts & Science
Wilmington

FRIEDMAN, HAROLD
Arts & Science
Wilmington

GARVIN, CECIL CLEMENT, JR.
Chemical Engineering
Holly Oak

GEROW, WILLIAM LYON
Arts & Science
Wilmington

GLASPEY, ALLEN SMITH
Arts & Science
Salem, N. J.

GORDY, HAROLD BENTON
Agriculture
Georgetown

GREGG, WILLIAM BARRETT
Arts & Science
Wilmington

GUERKE, IRVIN PHILIP
Arts & Science
Wilmington

HABICHT, WILBUR HAROLD
Chemical Engineering
North Bergen, N. J.

HALEY, THOMAS JOSEPH, JR.
Chemical Engineering
Wilmington

HANLEY, ROBERT THOMAS, JR.
Arts & Science
Wilmington

HECHT, RAYMOND HERBERT
Chemical Engineering
Paterson, N. J.

HODGSON, LAURENCE GEORGE
Agriculture
Wilmington

HOLLINGSWORTH, HENRY LEVI
Mechanical Engineering
Hockessin

HOUCHIN, GEORGE ARTHUR
Arts & Science
Newark

HOWARD, LUTHER MARTIN
Mechanical Engineering
Wilmington

ICHLA, BERNARD WILLIAM
Arts & Science
Newark

JACOBY, IRWIN WILLIS
Mechanical Engineering
Wilmington

JULIAN, JOSEPH ALOYSIUS, JR.
Arts & Science
Wilmington

KEE, ROBERT JAMES
Chemical Engineering
New Castle

KEYSER, MORTON
Arts & Science
Wilmington

KIELBASA, EMIL ANTHONY
Agriculture
Milford

+

+

- +
- KING, SAMUEL LEO, JR.
Mechanical Engineer
Elkton, Md.
- KIRSHNER, JOSEPH MARTIN
Chemical Engineering
Wilmington
- KNOPE, MAURICE JAY
Chemical Engineering
Dover
- KUCHARSEY, STEPHEN JOHN
Chemical Engineering
Wilmington
- LADD, DONALD ORSEMUS
Chemical Engineering
Wilmington
- LAIRD, ROBERT WALLACE
Chemical Engineering
Wilmington
- LAWTON, HOWARD STANLEY
Chemical Engineering
Mt. Holly, N. J.
- LEWANDOWSKI, JOHN ANDREW
Chemical Engineering
Wilmington
- LEWARS, THOMAS BELFIELD, JR.
Agriculture
Ardmore, Pa.
- LEWIS, EDWARD FREDERICK
Mechanical Engineering
Claymont
- LOCKWOOD, KENNETH VALENTINE
Agriculture
Pompton Lakes, N. J.
- LOTSTEIN, LEON
Arts & Science
Paulsboro, N. J.
- LOVETT, PAUL DEWITT, JR.
Arts & Science
Newark
- LYNAM, JOHN WESLEY
Chemical Engineering
New Castle
- LYNCH, EDWARD HICKS
Chemical Engineering
Wilmington
- MALONE, THOMAS BECKER, JR.
Arts & Science
Wilmington
- MARGOLIN, RALPH
Arts & Science
Wilmington
- MARKOWITZ, SOLOMON
Agriculture
Felton
- MARVEL, WILLIAM HOWARD, JR.
Arts & Science
Milford
- MATHER, ROBERT WORRELL
Arts & Science
Port Penn
- MAULL, HAROLD VINCENT
Arts & Science
Greenville
- MCLAUGHLIN, HARRY ARVILLE
Mechanical Engineering
Wilmington
- +
- McSWEENEY, JOSEPH FRANCIS, JR.
Arts & Science
Rehoboth Beach
- MERCER, FRANCIS ROBERT
Agriculture
Wilmington
- MEYER, ROBERT CHARLES
Mechanical Engineering
Wilmington
- MICHINI, LOUIS JOSEPH
Arts & Science
Wilmington
- MIDDLETON, JOSEPH NELSON
Mechanical Engineering
Landenberg, Pa.
- MIKESSELL, JOSEPH FRANCIS
Arts & Science
Wilmington
- MILLAR, LEONARD LESLIE
Chemical Engineering
Gordon Heights
- MITCHELL, JULIAN FREDERICK
Arts and Science
Wilmington
- MOCK, ALFRED JAMES
Arts & Science
Wilmington
- MOLINE, STANLEY GUSTAVE ADOLPH
Arts & Science
Wilmington
- O'DONNELL, DANIEL PAUL
Arts & Science
Wilmington
- +

OLSEWSKI, EDWARD PAUL
Arts & Science
Wilmington

OWEN, FRANK CLIFFORD
Arts & Science
Newark

OWENS, FRANCIS ERSKINE
Chemical Engineering
Wilmington

PARKER, LEWIS SHAKESPEARE
Mechanical Engineering
Marshallton

PARKER, WILLIAM LEROY, JR.
Agriculture
Marshallton

PIERCE, ROBERT RADCLIFFE, JR.
Arts & Science
Wilmington

POPPITI, MICHAEL ANTHONY
Arts & Science
Wilmington

PORTER, ALAN CARL
Arts & Science
Greenwood

REINER, THEODORE ROOSEVELT
Arts & Science
New York, N. Y.

RICHARDSON, WILLIAM KERN
Arts & Science
Newark

RICHEY, WILLIAM ARTHUR
Arts & Science
Newport

+

RIGGIN, ALLAN EUGENE
Chemical Engineering
Richardson Park

ROACH, ARVID EDWARD
Electrical Engineering
Wilmington

ROBERTS, ROBERT
Chemical Engineering
Arden

ROE, JAMES BAYNARD, JR.
Mechanical Engineering
Wilmington

RUBIN, MILTON
Arts & Science
Wilmington

SAMUEL, EDWARD, JR.
Electrical Engineering
Wilmington

SATTERFIELD, RALPH CAHALL
Chemical Engineering
Wilmington

SCHNITZER, JAMES CHAYS
Arts & Science
Wilmington

SCHULSON, SOLOMON
Arts & Science
Wilmington

SCHUTZMAN, NOAH
Arts & Science
Wilmington

SCOTT, JAMES HOWER
Electrical Engineering
Wilmington

SEALE, LEWIS BOOKER
Arts & Science
Montchanin

SHARPLESS, CHARLES DAVID
Electrical Engineering
Wilmington

SHAW, WILLIAM GUILLIAN
Arts & Science
Wilmington

SICKLER, GEORGE WEATHERBY, JR.
Mechanical Engineering
Wilmington

SILVERMAN, SIDNEY
Arts & Science
Wilmington

SMITH, WALTER THOMPSON, JR.
Arts & Science
Laurel

STEARNS, DELEVAN HENRY
Mechanical Engineering
Newark

SUCH, EMIL
Arts & Science
Sayville, N. Y.

SWIFT, WILBERT BRUCE
Agriculture
Brookline, Pa.

TALBOT, JOHN MOODY
Arts & Science
Smyrna

TANNEN, MARTIN ROBERT
Arts & Science
Wilmington

+

+

+

TAXTER, DAVID A.
Chemical Engineering
Newark

TAYLOR, HERBERT BENSON
Chemical Engineering
Wilmington

TIMME, ALEXANDER
Chemical Engineering
Glenside, Pa.

TINGLEY, JAMES FRANKLIN, JR.
Arts & Science
Oaklyn, N. J.

VAKLYES, JOHN WILLIAM, JR.
Mechanical Engineering
Wilmington

VANDEGRIFT, ROBERT HARVEY
Arts & Science
Wilmington

VAUGHN, MARTIN WASHINGTON, JR.
Chemical Engineering
Cheswold

WAGNER, WALTER DEWEY
Arts & Science
Wilmington

WALDRON, WILLIAM JAMES
Arts & Science
South Orange, N. J.

WALKER, WILLIAM HARRISON
Agriculture
Woodside

WALLS, CARLTON BECK, JR.
Mechanical Engineering
Lancaster, Pa.

WARD, DONALD WINFIELD
Agriculture
Wilmington

WARREN, JAMES COULLIE
Arts & Science
Wilmington

WEINSTOCK, LEONARD GREENWALD
Arts & Science
Wilmington

WELSH, DANIEL GEORGE, JR.
Chemical Engineering
Wilmington

+

WENDLE, WILLIAM DEWITT
Electrical Engineering
Wilmington

WIGGIN, GEORGE BEARDSLEY
Electrical Engineering
Wilmington

WILLARD, RUSSELL JOHNSON, JR.
Arts & Science
Greenwood

WILTBANK, GILBERT MARRINER, JR.
Arts & Science
Lewes

WOOTTEN, GEORGE EDWARD
Arts & Science
Seaford

WORTH, ARTHUR THOMAS
Arts & Science
Wilmington

ZEIRINSKY, EDWARD
Arts & Science
Wilmington

+



FRESHMAN
CLASS

Chairman ROBERT F. DUFFY

+

ACOCELLA, RALPH ANGELO
Arts & Science
Wilmington

ADAMS, HARRY SHARP, JR.
Chemical Engineering
Ocean City, N. J.

ALTVATER, RICHARD PHILLIP, JR.
Chemical Engineering
Wilmington

ANDRUS, WALTER SCOTT
Agriculture
Bellefonte

ANNAND, FRANK
Arts & Science
Wilmington

ASHBY, STUART DAVIS
Arts & Science
Wilmington

BAIR, ROBERT THOMPSON
Arts & Science
Elmhurst

BALICK, JACOB
Arts & Science
Wilmington

BERG, ALBERT LEWIS
Arts & Science
Middletown

BETTS, CHARLES AMES
Arts & Science
East Orange, N. J.

BETTY, GEORGE LINCOLN
Arts & Science
Wilmington

BEYERLEIN, RAYMOND ELLIOTT
Agriculture
Newark

BISHOP, ROBERT BRADFORD
Chemical Engineering
Wilmington

BLACKSON, JOHN RAYMOND, JR.
Arts & Science
Elsmere

BLECHMAN, MURRAY
Agriculture
Hartly

BOGART, WILLIAM MASK
Mechanical Engineering
Richardson Park

BOYCE, FRANKLIN DUNCAN
Agriculture
Stanton

BRADLEY, JOHN ROY, JR.
Arts & Science
Wilmington

BRENNER, HARRY
Arts & Science
Wilmington

BROOKS, CLAUDE MELVIN
Agriculture
Newark

BUCK, FRANK HALEY, JR.
Arts & Science
Wilmington

BURSLEM, BERT TILSON
Arts & Science
St. Georges

+

CAIN, NOAH MASTEN
Agriculture
Harrington

CHAMBERS, LEON
Mechanical Engineering
Wilmington

CHAMBERS, RICHARD EARLE
Agriculture
Wilmington

CICALA, FRANCIS MARIO
Arts & Science
Wilmington

CLARK, WILLIAM RANDOLPH
Arts & Science
Wilmington

COALE, DONALD GRISWOLD
Arts & Science
Wilmington

COLEMAN, ROBERT LEE
Arts & Science
Wilmington

COLLINS, FREDERICK BURTON
Agriculture
Newark

CONNER, RALPH LESLIE
Arts & Science
Wilmington

CRATER, WILLARD DE CAMP, JR.
Arts & Science
Newark

CROSS, SHERWOOD THOMAS
Chemical Engineering
Wilmington

+

CROWLEY, AMOS MARK
Electrical Engineering
Wilmington

CURTIS, FREDERICK LINDSAY
Arts & Science
Wilmington

DALY, JOHN EDWARD, JR.
Chemical Engineering
Wilmington

DANGEL, JOHN DAVIS
Chemical Engineering
Wilmington

DARRAH, CHARLES HOWARD
Arts & Science
Wilmington

DAVIS, ROBERT HOWARD
Arts & Science
Wilmington

DAVISON, HENRY ROYAL, JR.
Arts & Science
Wilmington

DECKTOR, PHILIP
Agriculture
Harrington

DEERING, GEORGE ROBERT
Mechanical Engineering
Wilmington

DODD, CHARLES MYERS
Agriculture
Lewes

DONALDSON, OWEN DOUGLASS
Arts & Science
Dover

+

DONOFRIO, RALPH NICHOLAS
Electrical Engineering
Wilmington

DONOVAN, JAMES JOSEPH, JR.
Chemical Engineering
Wilmington

DORMAN, CHARLES GILPIN
Arts & Science
Wilmington

DOUGHERTY, WALTER JOHN
Chemical Engineering
Wilmington

DOWNES, JAMES ALBERT, II
Mechanical Engineering
Wilmington

DUFFY, ROBERT FRANCIS
Arts & Science
Wilmington

DURBOROW, JAMES WHARTON
Chemical Engineering
Maplewood, N. J.

EDER, JAMES JOSEPH
Arts & Science
Elkton, Md.

ELIASON, JOHN FRANKLIN, II
Mechanical Engineering
Middletown

ELLIS, ERNEST HEARNE
Arts & Science
Salisbury, Md.

ELLIS, JACKSON PAUL, JR.
Arts & Science
Delmar

ESKRIDGE, AVORY FRANKLIN
Chemical Engineering
Greenville

FARRA, WILLIAM LeSAGE
Electrical Engineering
Wilmington

FENIMORE, HARVEY CURTIS, JR.
Mechanical Engineering
Elsmere

FORMAN, JOHN GARRETT
Agriculture
Elsmere

FORMAN, ROBERT JOHNSON, JR.
Electrical Engineering
Elsmere

GAILEY, WILLIAM CHARLES
Agriculture
Wilmington

GALLAGHER, ANDREW FREDERICK, JR.
Arts & Science
New Castle

GEROW, ROBERT CULBERTSON
Arts & Science
Arlington, N. J.

GERSTINE, MILTON ISAAC
Arts & Science
Arden

GREEN, ALVIN HALLMAN
Mechanical Engineering
Chester, Pa.

GREGG, WILLIAM RAYMOND
Chemical Engineering
Newark

+

+

+

GRIER, WARREN WILLIAM, JR.
Mechanical Engineering
Wilmington

GRUNDY, JOHN WILLIAM
Electrical Engineering
Newark

HANSON, ARNOLD GEORGE
Arts & Science
New Castle

HARKINS, JOHN ANDREW
Arts & Science
Wilmington

HARRINGTON, ELMER EARL
Agriculture
Harrington

HARSHMAN, ROY RUSSELL, JR.
Chemical Engineering
Wilmington

HASTINGS, CLEVELAND NELSON
Agriculture
Bridgeville

HECK, ALFRED LEON, JR.
Arts & Science
Wilmington

HEISLER, WILLIAM FOSTER
Mechanical Engineering
North East, Md.

HENDRICKSON, CHARLES MERRILL
Arts & Science
Wilmington

HERR, IVAN WITMER, JR.
Mechanical Engineering
Wilmington

HOMAN, EDWARD GEORGE
Arts & Science
Cape May, N. J.

HOPKINS, WILLIAM N.
Agriculture
Lewes

HORNER, LEONARD STERLING
Chemical Engineering
Wilmington

HOUCK, JOHN CLARK
Chemical Engineering
Newark

HOUSER, JAMES HUBERT, JR.
Arts & Science
Wilmington

HOUSTON, JOHN BANNING
Mechanical Engineering
Wilmington

HUBBARD, DAVID FOSTER
Chemical Engineering
Richardson Park

HUYETT, DANIEL DUHURST, JR.
Chemical Engineering
Wilmington

JACKSON, ROBERT RAWLINGS
Chemical Engineering
Port Deposit, Md.

JACOBS, ALBERT MAX
Agriculture
Wilmington

JAMISON, FRANCIS JOSEPH
Arts & Science
Wilmington

+

JORDAN, THOMAS WALLS
Arts & Science
New Castle

JOSEPH, WILLIAM BLOCKSON, JR.
Arts & Science
Wilmington

KALMBACHER, ROBERT NORMAN
Chemical Engineering
Wilmington

KIGER, CARVEL DAVIS
Arts & Science
Wilmington

KLOTZ, HAROLD EDWARD, JR.
Chemical Engineering
Little Falls, N. J.

LAMOTTA, JOSEPH ANTHONY
Chemical Engineering
Bridgeport, Conn.

LANCASTER, MAHLON BOYD
Arts & Science
New Castle

LANCASTER, ROBERT VAUGHAN
Arts & Science
New Castle

LAPENTA, SAMUEL PETER
Chemical Engineering
Wilmington

LEMLEIN, ALAN BENJAMIN
Mechanical Engineering
Flushing, N. Y.

LIPSTEIN, LEONARD LARRY
Chemical Engineering
Wilmington

- LOGAN, CHARLES PHILIP, JR.
Arts & Science
New Castle
- LORD, NORMAN FRANKLIN
Agriculture
Lincoln City
- LOWNSBERY, BENJAMIN FERRIS, JR.
Arts & Science
Wilmington
- LYNAM, GEORGE PAUL
Chemical Engineering
Stanton
- MAGNESS, ARTHUR GRAY
Agriculture
Wilmington
- MALECOT, ANDRE
Arts & Science
Wilmington
- MASON, LESLIE WILSON, JR.
Chemical Engineering
Wilmington
- McKAY, LEWIS MAXWELL, JR.
Arts & Science
Dover
- McKENDRICK, HOWARD RAYMOND
Arts & Science
Richardson Park
- McNETT, RICHARD DeFORREST
Mechanical Engineering
Springfield, Ohio
- MELHUNEK, STEPHEN LUDWIG
Agriculture
Dover
- MERRITT, WILLIAM THOMAS
Mechanical Engineering
Easton, Md.
- MICHENER, AUBREY WESTLAKE, JR.
Chemical Engineering
Claymont
- MILLER, RICHARD KLAIR
Arts & Science
Marshallton
- MINKUS, THOMAS WILLARD
Arts & Science
Wilmington
- MITCHELL, JAMES ROBERT
Arts & Science
Wilmington
- MONIHAN, ROBERT LAWRENCE
Chemical Engineering
Ocean City, N. J.
- MOORE, EDGAR SHERMER, JR.
Chemical Engineering
Wilmington
- MULLEN, JAMES FRANCIS
Agriculture
Wilmington
- MURPHEY, JAMES FRANKLIN
Chemical Engineering
Wilmington
- MURRAY, GEORGE WILSON, JR.
Mechanical Engineering
Newark
- NEESE, HARRY GLEN, JR.
Arts & Science
Wilmington
- NEWMAN, GRAY BOWEN
Electrical Engineering
Wilmington
- NORTHWOOD, ALBERT FRED
Agriculture
New Castle
- OAKES, WILLIAM FREDERICK, JR.
Mechanical Engineering
St. Georges
- OSBORNE, ROBERT EARLE, JR.
Agriculture
Pennis Grove, N. J.
- PANARIELLO, DOMENIC ANTHONY
Arts & Science
Wilmington
- PARKER, JOSEPH FRANKLIN
Arts & Science
Clayton
- PARVIS, DAVID ALLEN
Mechanical Engineering
Wilmington
- PATTERSON, WILLIAM STANLEY
Mechanical Engineering
Carney's Point, N. J.
- PEEL, ADELBERT LeROY
Chemical Engineering
Newark
- PERCIVAL, RICHARD CHARLES
Mechanical Engineering
Franklin, N. J.
- PIE, JOHN ARMSTRONG
Chemical Engineering
Newark

+

PIERCE, EDWIN BARKLEY
Mechanical Engineering
Wilmington

PILNICK, ROBERT LEONARD
Arts & Science
Newark

PLUMMER, WILLIAM, III
Arts & Science
Radnor, Pa.

PODOLSKY, LEAMAN BRANHUT
Mechanical Engineering
Wilmington

PORCH, CHARLES CLAUDE
Chemical Engineering
Salem, N. J.

PORDHAM, OLIVER ENNIS
Chemical Engineering
Marshallton

POWELL, FLOYD EDWARD
Mechanical Engineering
Wilmington

PRICE, HERBERT WILSON, JR.
Arts & Science
Newark

PRICE, JOHN CAMPBELL
Mechanical Engineering
Richardson Park

QUILLEN, HARRY DERRICKSON
Arts & Science
Harrington

RAMSEY, ALEXANDER RUSSELL, JR.
Agriculture
Wilmington

RAND, QUENTIN
Arts & Science
Wilmington

RATLEDGE, EDWARD LYNAM
Agriculture
Wilmington

RATLEDGE, WILLIAM BENNETT, JR.
Mechanical Engineering
Flint, Michigan

REHBACH, WILLIAM EDWARD
Agriculture
Wilmington

RICHARDSON, ROBERT ALLEN
Agriculture
Middletown

RIDDLE, JOSEPH HORNER
Agriculture
Wilmington

RILEY, MICHAEL FRANCIS, JR.
Arts & Science
Wilmington

ROBINSON, SAMUEL JAMES, JR.
Arts & Science
Seaford

ROMMEL, RICHARD HAMBLETON
Chemical Engineering
Wilmington

ROSS, FRANK MOORE
Chemical Engineering
Smyrna

ROWE, ROBERT SEAMAN
Chemical Engineering
Wilmington

+

ROWLINSON, HARRY GILSON
Arts & Science
Smyrna

SADOWSKI, CONRAD
Agriculture
Wilmington

SHELL, CHARLES EDWARD
Chemical Engineering
Wilmington

SCHNEIDER, CHARLES HENRY
Chemical Engineering
Folsom, Pa.

SCHOOLMASTER, CLINTON FREDERICK
Arts & Science
Wilmington

SCOTT, WILLARD JAMES
Mechanical Engineering
Wilmington

SEFT, CHRISTIAN FISHER
Arts & Science
Wilmington

SEVIER, JAMES HUBERT
Arts & Science
Wilmington

SHANNON, CHARLES RALPH
Agriculture
Felton

SHAW, ALBAN PEOPLES, III
Chemical Engineering
Wilmington

SHILLING, DAVID
Chemical Engineering
Dover

+

SHORT, HORACE EDWARD
Agriculture
Milford

SHORTALL, JOHN LAURENCE, JR.
Chemical Engineering
Clayton

SIMPLER, JOSEPH RAYMOND
Arts & Science
Rehoboth Beach

SLATER, WILLIAM HERBERT
Agriculture
Claymont

SMITH, ABBOTT METCALF, JR.
Arts & Science
Wilmington

SMITH, ROBERT STEVENSON
Arts & Science
Washington, D. C.

SMITH, THURSTON FRANCIS
Agriculture
Woodstown, N. J.

SMITH, WARREN NEWBOLD, JR.
Chemical Engineering
Wilmington

SNOW, WARREN BUFFINGTON
Chemical Engineering
Plattsburgh Barracks, N. Y.

SNYDER, ROBERT
Arts & Science
Seaford

SPEAKMAN, SAMUEL
Agriculture
Wilmington

+

STREET, WALTER EDGAR
Arts & Science
Bellefonte

SULLIVAN, THOMAS JOSEPH, JR.
Arts & Science
Wilmington

TANBERG, ERIC EMILE
Arts & Science
Wilmington

TAYLOR, ALFRED SCOTT
Electrical Engineering
Wilmington

TAYLOR, EDWARD BOND
Chemical Engineering
Wilmington

TERRY, WILLIAM MERSHON
Arts & Science
Wilmington

THOMAS, ALDEN SYLVESTER
Arts & Science
Richardson Park

THORNTON, GILBERT JOSEPH
Agriculture
Wilmington

TIBBETT, WILLIAM JAMES, JR.
Electrical Engineering
New Castle

TINSMAN, GEORGE HENRY, JR.
Mechanical Engineering
Elmhurst

TOMASES, RALPH
Arts & Science
Wilmington

TWEED, JACK HICKMAN
Arts & Science
Wilmington

TWILLEY, JOHN EMANUEL
Chemical Engineering
Laurel

VAUGHN, MOLLOY CLARK, JR.
Chemical Engineering
Lewes

VIBBERT, CHARLES LEON
Agriculture
Milford

WAHL, ROBERT HERMAN
Arts & Science
Wilmington

WALL, FREDERICK LEROY, JR.
Agriculture
Dover

WALLS, OSBORNE KIRBY
Electric Engineering
Milford

WARREN, ROWLAND LUTHER
Chemical Engineering
Millsboro

WEATHERBY, RAYMOND BRILELY
Agriculture
Wilmington

WELDIN, T. DOWNHAM
Chemical Engineering
Wilmington

WENDLE, HUGH MERTON
Agriculture
Wilmington

+

+

+
WHARTON, ROBERT VERNER
Arts & Science
Wilmington

WHITE, AUSTIN DELOS
Chemical Engineering
Hockessin

WHITE, MEDFORD HARPER, JR.
Arts & Science
Wilmington

WHITEMAN, JOSEPH CARR, JR.
Chemical Engineering
Wilmington

WHITTAKER, WILLARD JAMES
Arts & Science
Wilmington

WILHELM, RAYMOND BRADLEY
Agriculture
Wilmington

WILKINS, HOWARD CORNELIUS
Arts & Science
Milford

WILSON, WILLIAM STERLING
Arts & Science
Newark

+

+
WITSIL, ROBERT VINCENT
Arts & Science
Wilmington

WOOD, VINCENT DAVIS
Arts & Science
Millsboro

WORK, THEODORE HARRISON, III
Mechanical Engineering
Wilmington

YEAGLE, CHARLES FRANCIS, JR.
Arts & Science
Wilmington

Other Seniors

FERRIS L. WHARTON

LEROY W. PANCOAST

JAMES H. MACBRIDE

ROBERT N. HOPKINS

FRANKLIN T. HOLT

THOMAS S. HILL

EDWARD W. ECKSTROM

JOHN E. DEERING

EDGAR J. BUMSTED

E. P. WILSON

Other Juniors

HAROLD V. MAULL

FRANK DANIEL CANNON