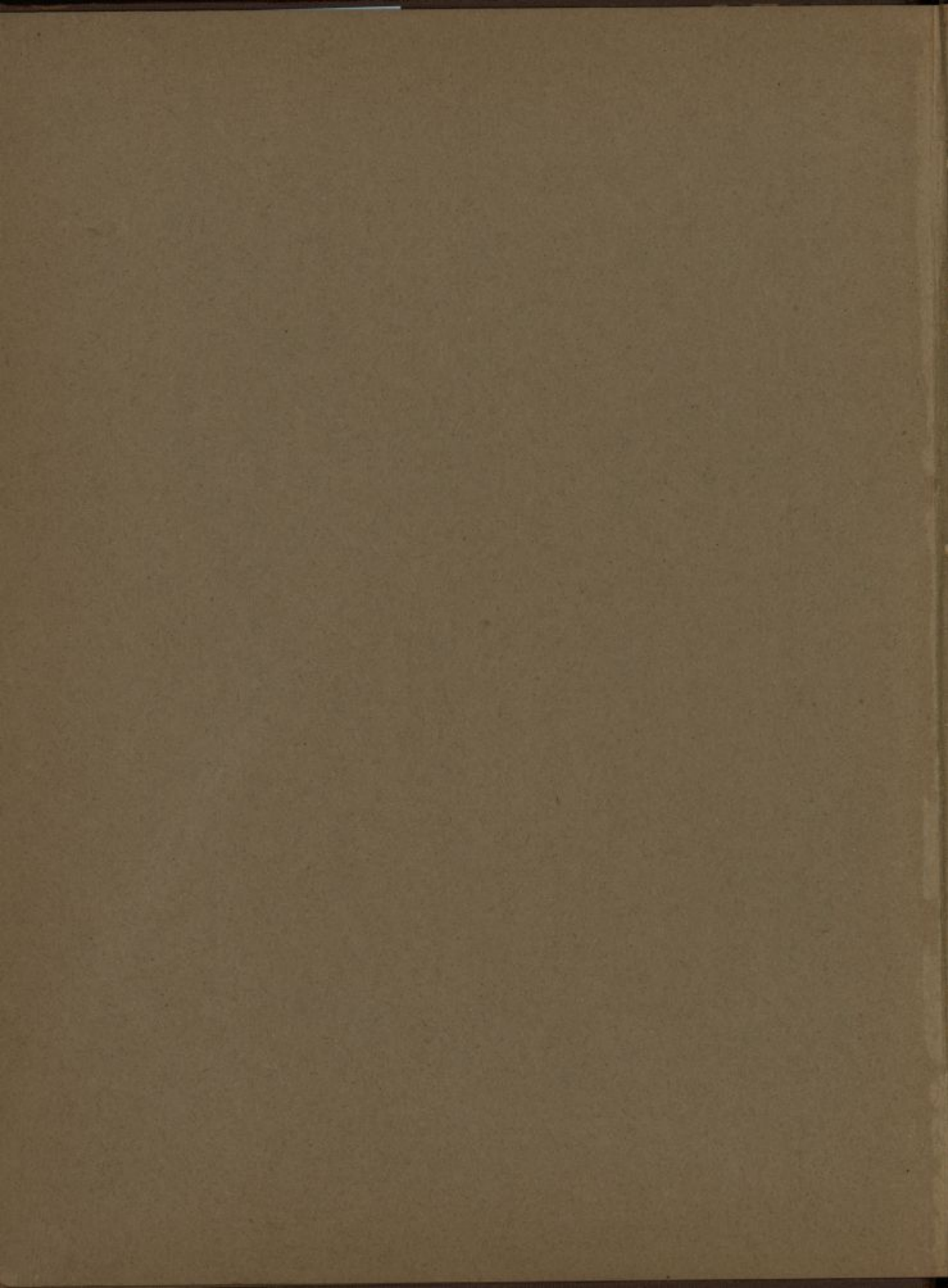
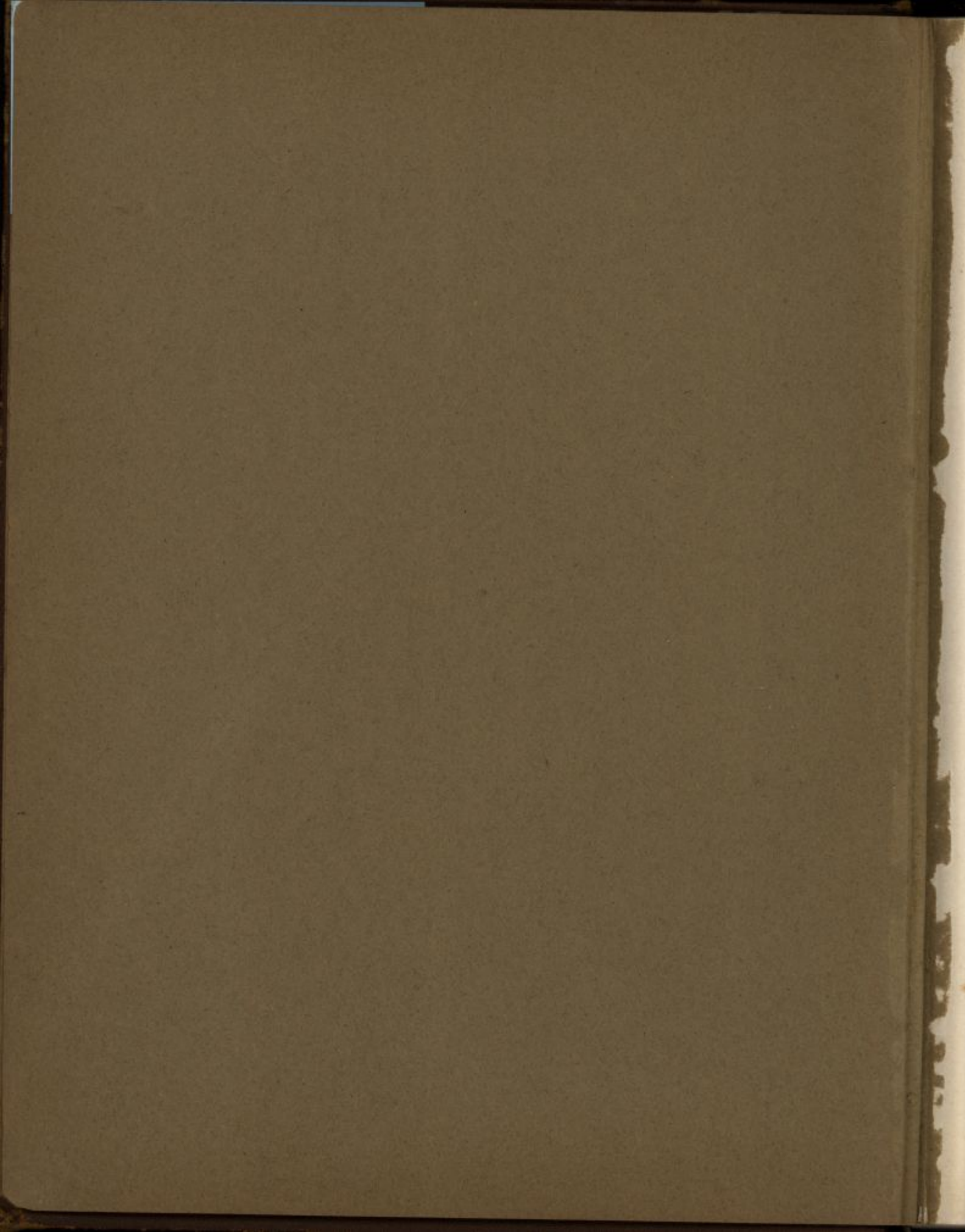


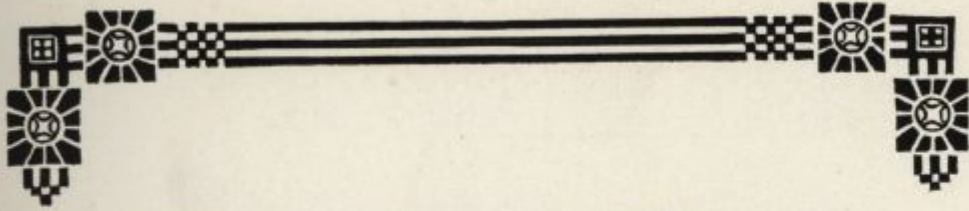
THE
BLUE HEN
CLASSES OF
1921 1922



UNIVERSITY OF DELAWARE LIBRARY







THE BLUE HEN

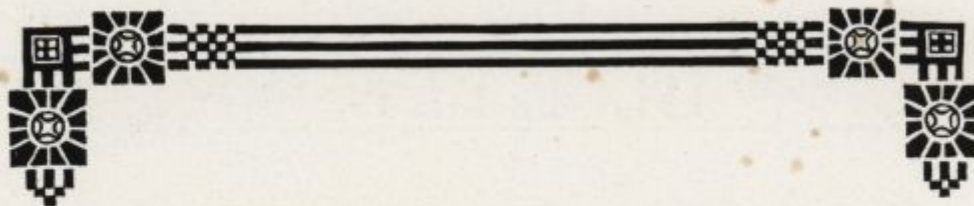
1920-1921



Published by the Classes of
Nineteen Twenty-One and Nineteen Twenty-Two
UNIVERSITY OF DELAWARE



LD
1488
B58
1921-1922
C.2



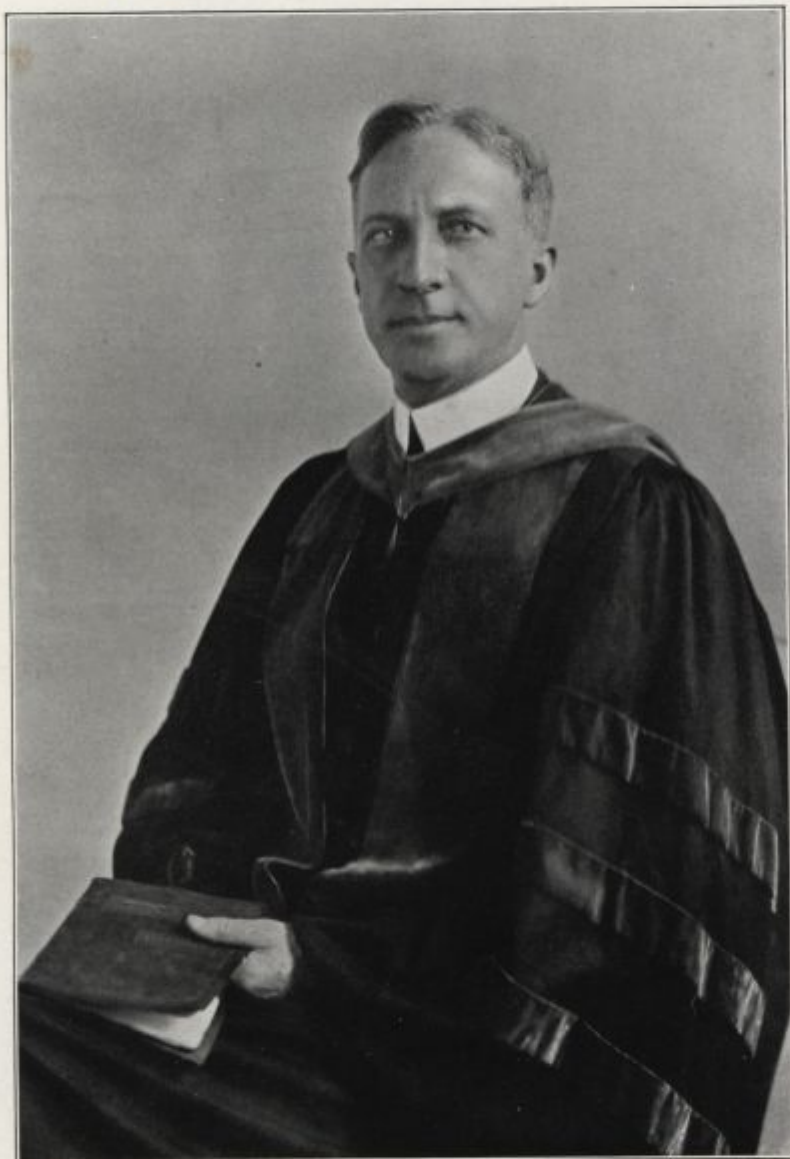
DEDICATION

WE, the Classes of Nineteen Twenty-One and Nineteen Twenty-Two dedicate this volume to one whose signal duty has been the welding of the old Delaware College régime with the new Delaware University. We dedicate our work to one whose lively interest in "Old Delaware" has grown until it assumes the proportion of everlasting fidelity. We dedicate the Blue Hen to Dr. Walter Hullihen.





.1920. BLUE HEN .1921.

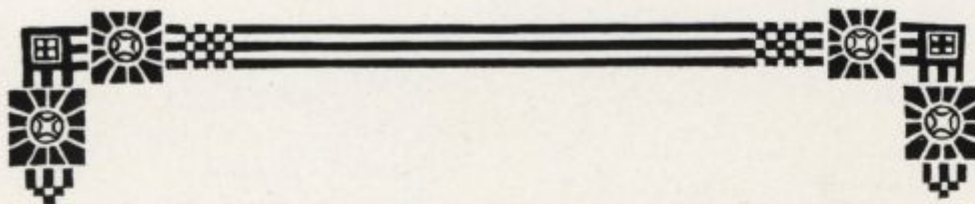


DR. WALTER HULLIHEN





BLUE HEN BOARD, 1920-1921.



THE BLUE HEN BOARDS

1921-1922

1921 CLASS

WILLIAM T. BROUGHALL
Editor-in-Chief

WILLIAM T. ANDERSON
Assistant Editor

GEORGE M. SIPPLE
Business Manager

ARTHUR F. SPAID
Art Editor

STAFF

Advertising

JOHN LEVANDIS
WILLIAM H. FREDERICK

General

C. THOMAS ATTIX
W. ALBERT HEMPHILL
T. WILMER HOLLAND
JAMES A. HORTY
RICHARD H. MCMULLEN
IRA K. STEELE
JOSEPH C. WISE

1922 CLASS

WILLIAM S. LILLY, 3RD
Editor-in-Chief

T. MUNCY KEITH
Assistant Editor

FLORIAN R. DEPPE
Art Editor

MELVIN HOPKINS
Business Manager

STAFF

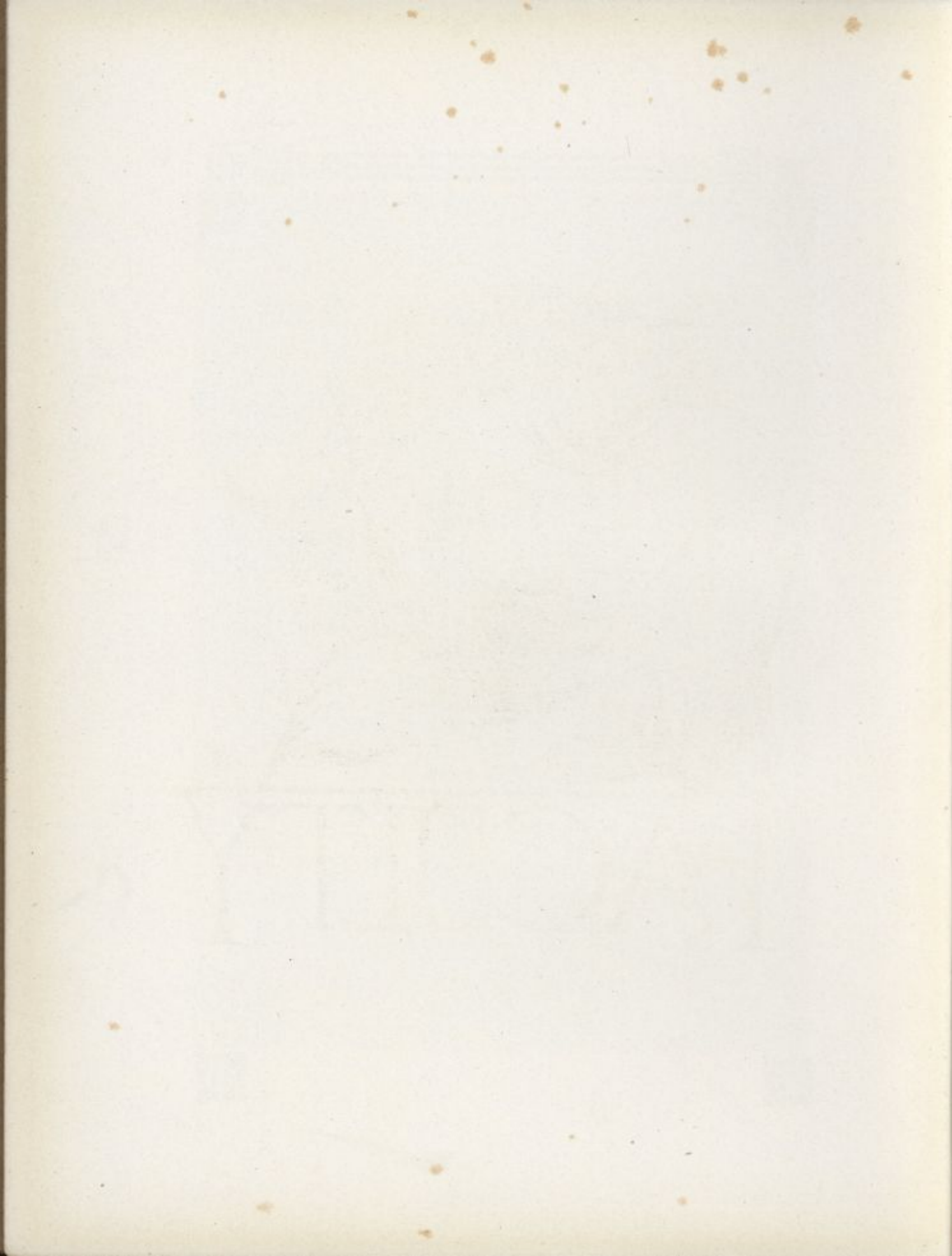
Advertising

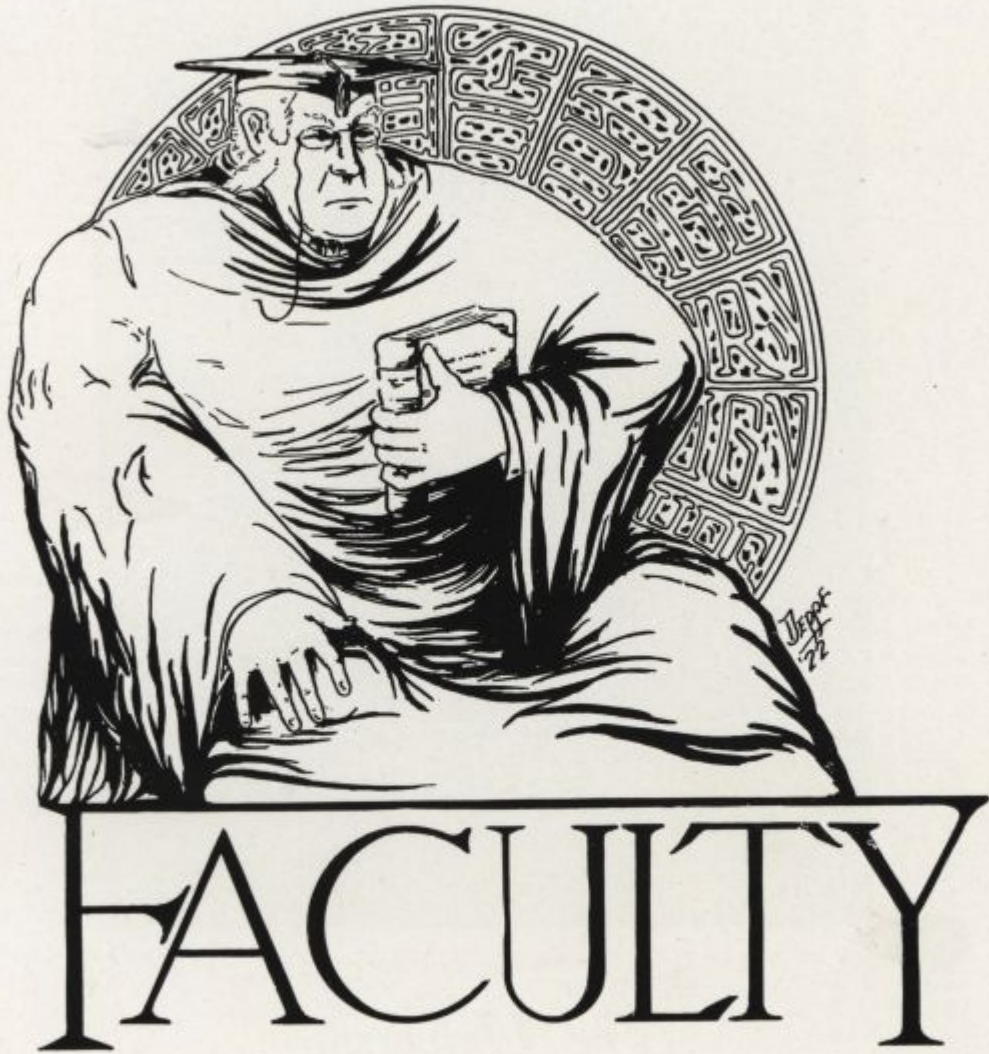
J. G. CHRISTFIELD
A. C. REED
W. P. JACOBS
S. MARONEY
BENJAMIN SACKETT

General

ALVIN ALLAN
ALBERT AYERST
GEORGE GRAY CARTER
LEONARD DALY
T. R. DANTZ
OLIVER GOFFIGAN
A. B. MAGEE
LOUIS ROEMER
GERALD CAMILE SMITH
JOHN E. WILSON
HOWARD P. YOUNG







FACULTY



-1920. BLUE HEN .1921.



DR. WALTER HULLIHEN

The University

Delaware College, founded in 1833, and the Women's College of Delaware, founded in 1913, with their several schools and departments, by an Act of the Ninety-eighth General Assembly of the State of Delaware, signed by Governor Denney on March 28, 1921, have been made the University of Delaware.

Following the established usage of American commonwealths Delaware has given to the colleges comprising its public system of higher education the title of State University.



.1920. BLUE HEN .1921.



The General Assembly has properly decided that the name "college" is not appropriate for a group of colleges and schools embracing general, technical, professional and graduate education for men and women; and in changing the name to the "University of Delaware" has laid the broad foundation upon which the State may build by the addition in years to come of such new departments as the needs of the people of Delaware may require.

The change which has been made is in a certain sense only a change of name. And yet it is, from another point of view, something more than that. We have the same group of schools and colleges and departments, but in the new name we experience a new sense of unity and are quickened by a fresh consciousness of growth and power and by the inspiration of a broader purpose. The new name lends an added dignity to the institution, and should prove a challenge—to faculty and students alike—to prove worthy of that added dignity; a challenge, to continue to cherish the honorable traditions of more than fourscore years as a "college" and to hold fast to the old ideals of sincerity and scholarship, and at the same time to strive to realize the larger vision and the wider outlook of the "university."

DR. WALTER HULLIHEN

DR. WALTER HULLIHEN was born in May, 1875, at Staunton, Virginia. After graduating from Staunton Military Academy in 1893, he attended the University of Virginia and received the degrees of A. B. and A. M. in 1896. He took post-graduate work at the University of Virginia, 1896-97, continuing at Johns Hopkins University from 1897-1900, where the degree of Ph. D. was conferred upon him. At Johns Hopkins he was University Fellow, 1899-1900, and Fellow by Courtesy, 1900-1902. During 1903-1904 he was an instructor in Marston University School, Baltimore. He was Professor of Latin and Greek at the University of Chattanooga, Tennessee, from 1904 until 1907. From 1907 to 1908 he attended the Universities of Leipzig, Munich, and Rome. From 1909 to 1920 he was Professor of Greek at the University of the South. He was also Dean of the College of Arts and Sciences at this institution from 1912-1920. He was director and owner of Camp Greenbrier Summer School, Allegheny Mountains, West Virginia, for several years.

In the late war Dr. Hullihen had very varied experiences. He was commissioned Major of Infantry in August, 1918. Later he was made Adjutant of the 29th Brigade, and Assistant Chief of Operations and Training of the General Staff of the 15th Division at Camp Logan, Texas. In March, 1919, he was commissioned Major of Infantry, Officers' Reserve Corps, United States Army.

Dr. Hullihen is fond of sports and outdoor life. He was faculty director of Athletics at the University of Chattanooga and at the University of the South, and for several years served on the Executive Committee of the Southern Athletic Association. He also served for a time on the Executive Committee of the National Collegiate Athletic Association. He is the author of "Antiquam and Priusquam." He is a member of the American Philological Association, and the Delta Phi and Phi Beta Kappa Fraternities.



THE FACULTY



.1920. BLUE HEN .1921.



The Faculty

If we "had a mind to" we could turn out a "made to order" eulogy upon the merits of our "beloved faculty." We could garnish the composition with the old familiar archaic phraseology. We could even address our "respected professors" as "sapient pedagogues." But "professor" savours of whiskers and a bald head, and pedagogue is only used to fill up space in the Encyclopaedia Britannica. Furthermore, "made to order" poems are only produced by poet laureates and Walt Mason; they are not successful.

What a travesty upon our friendship for "Gimpy" and Bugs" and "Dinny" and "Froggy" to place them, with one grand, dramatic gesture, upon the heights of Olympus! The transition would be too abrupt even for the most imaginative student among us; furthermore, the "sapient pedagogues" themselves no doubt would be ill-content with exigencies of a lonely sojourn upon a classical and barren mountain-top.

After all, the "man's the man," and so we present them here; the Faculty, our pals.





.1920. BLUE HEN .1921.



EDWARD LAURENCE SMITH

Dean Smith was born on March 19, 1877, at Newark, Delaware. He entered Delaware College in 1892 and received the B. A. degree in June, 1896. During the next two years he took post-graduate work at Delaware and a course at a business school in Wilmington. In the scholastic year of 1898-99 he held a University Scholarship in Romance Languages at Columbia University, New York. In 1899-1900 he held a University Fellowship at Columbia in the Romance and Germanic Languages. The degree of M. A. was conferred upon him by Delaware College in June, 1899. In 1900-1901 Dean Smith studied at Universite de Paris, Le College de France, and L'Ecole des Hautes Etudes, at Paris. He returned to America and taught modern languages at Brooklyn Polytechnic Institute. In 1902 he was elected Instructor in Modern Languages at Delaware College, and in 1904 was advanced to the rank of Professor of Modern Languages. In 1915 he was elected Dean of the College, and in 1916 Secretary of the Faculty.

Dean Smith is a member of the Kappa Alpha and the Phi Kappa Phi Fraternities, the Modern Language Association of America, the American Association of Collegiate Registrars, the Executive Committee of the Middle Atlantic States Collegiate Athletic Association, and the Athletic Council of Delaware College. As Dean of the College he is always active in student life and student affairs. To Dean Smith we go daily for advice in this matter or that matter, always sure of his advice being the counsel of a scholar, a gentleman and a friend.





.1920. BLUE HEN .1921.



CHARLES ANDREW McCUE

Professor of Horticulture

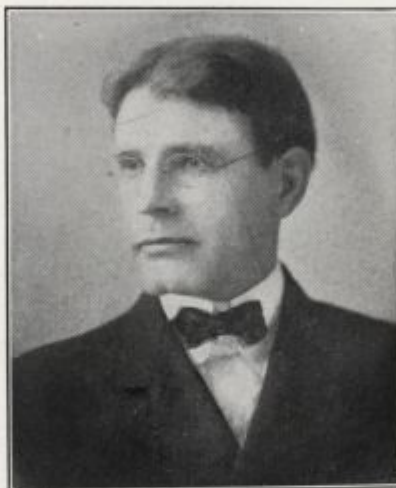
Dean McCue was born in 1879, near Caro City, Michigan. In 1901 he received the degree of S. B. from Michigan Agricultural College. He did graduate work at the same institution from 1903 to 1904, and in 1904 he was elected Instructor in Horticulture which position he held until 1907. He resigned in 1907 to become Professor of Horticulture at Delaware College and Horticulturist of the Delaware College Experimental Station. He pursued graduate work at the University of Pennsylvania in Biology from 1913 to 1915.

Dean McCue was president of the American Society for Horticultural Science in 1918. He is also a member of the American Association for the Advancement of Science, the American Pomological Society, the American Genetic Association, and the Phi Kappa Phi Fraternity.





.1920. BLUE HEN .1921.



MERRILL VAN GIESEN SMITH
Professor of Mechanical Engineering

Professor Smith was born in 1871 at Montclair, New Jersey, where he received his early education in the public schools. After being graduated from the Stevens High School he entered the Stevens Institute of Technology from which he was graduated in 1896 with the degree of M. E. After leaving college he was a member of the Editorial Staff of the *Railway Gazette* for several years. He then became Instructor of Mechanical Engineering at the University of Pennsylvania. In 1902 he was called to Delaware to temporarily fill the position of Professor of Mechanical Engineering. He then went to the Thomas S. Clarkson School of Technology at Potsdam, N. Y.

In 1904 Professor Smith was called to Delaware College again to head the Department of Mechanical Engineering which he has held to the present time. During the present year Professor Smith, as senior professor, has been acting chairman of the Engineering School and chairman of the Engineering Faculty.

He is a member of the American Society of Mechanical Engineers, the Engineers' Club of Philadelphia and the Phi Kappa Phi Fraternity.





GEORGE ABRAM HARTER, M. A., Ph. D.
Professor of Mathematics and Physics

Doctor Harter was born near Leitersburg, Washington County, Maryland. Upon his graduation from St. John's College in 1878 he was made Assistant Professor of Latin and Mathematics, and the same year he did post-graduate work in English and Mathematics. He received from St. John's the degrees of M. A. and Ph. D. From 1880 to 1885 he was principal of the High School at Hagerstown, Maryland. In 1885 Dr. Harter was elected Professor of Mathematics and Modern Languages at Delaware College. From 1888 to 1896 he was Professor of Mathematics and Physics. Upon the resignation of Dr.

Raub, in 1896, he was called to the presidency which he held until he resigned in 1915. Dr. Harter is a member of the Sigma Nu and Phi Kappa Phi Fraternities.



ELISHA CONOVER, A. M.

Professor of Ancient Languages and Literatures

Professor Conover was born in Harrisonville, New Jersey, in 1860. He attended the Pennington Seminary, and upon graduation entered Dickinson College. In 1884 he received his B. A., and in 1887 his M. A. degrees from Dickinson. The next year he did graduate work at Johns Hopkins University. From 1888 to 1891 he was Professor of Latin at the Wilmington Conference Academy. From 1891 to 1895 he was Professor of Latin and Greek at Montpelier Seminary, Vermont. From 1895 he has held the chair of Professor of Ancient Languages and Literatures at Delaware College. Professor Conover is a member of the American Philological Association, the Kappa Phi Fraternity, and the Phi Kappa Phi Fraternity.





.1920. BLUE HEN .1921.



WILBUR OWEN SYPHERD, Ph. D.

Professor of English

Doctor Sypherd was born in Cecil County, Maryland, in 1877. He entered Delaware College in the spring of 1893, and was graduated in 1896 with the degree of B. A. Entering the Junior class of the University of Pennsylvania in 1898, he was graduated in 1900 with the degree of B. S. In 1901 he received the degree of M. A., and in 1906 the degree of Ph. D. from Harvard. Since then he has been Professor of English at Delaware College. In the summer session he gave three courses in English at New York University. He is the author of a number of articles on literature. He is a member of the Sigma Phi

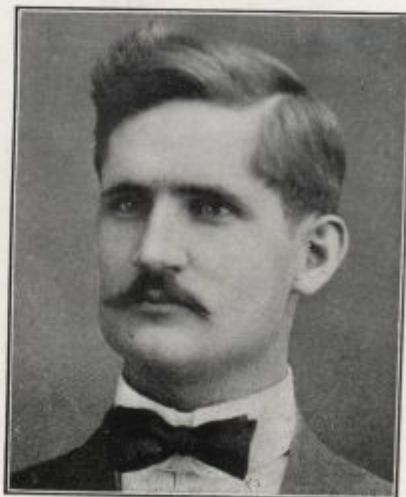
Epsilon and Phi Kappa Phi Fraternities.



REINHOLD EUGEN SALESKI, A. M.

Assistant Professor of Modern Languages

Professor Saleski was born in Meriden, Connecticut, in 1890. From 1903 to 1907 he studied at Tilton Seminary, Tilton, New Hampshire. In 1907 he entered Harvard, and in 1911 was graduated with the degree of A. B. From 1911 to 1912 he was Master of German at Pomfret School, Connecticut. In 1916 he again entered Harvard, and in 1917 the degree of A. M. was conferred upon him by that institution. In 1917 he became Assistant Professor of Modern Languages at Delaware College, which he has held to the present date. He is a member of the Harvard Philosophical Society and the Harvard Aeronautical Club.





.1920. BLUE HEN .1921.



CLINTON OSBORNE HOUGHTON, A. B.

Professor of Biology

Professor Houghton was born at Helena, New York, in 1873. He prepared for college at Potsdam State Normal School, where he was graduated in 1898. In the same year he entered Cornell University, where, in 1902, he was graduated with the degree of A. B. Professor Houghton came to Delaware College in 1902 and has held the chair of Professor of Biology to the present time. He is a member of the American Association of Economic Entomologists, the American Entomological Society, the American Association for the Advancement of Science, the Gamma Alpha

Society and the Sigma Xi and Phi Kappa Phi Fraternities.



EARNEST VANCOURT VAUGHN, Ph. D.

Professor of History and Political Science

Doctor Vaughn received the degree of L. B. from the University of Missouri in 1900. In 1904 he received the degree of A. M. from the same university. In 1910 the degree of Ph. D. was conferred upon him by the University of Pennsylvania. From 1906 to 1911 Dr. Vaughn was Instructor in History at the University of Missouri. In 1911 he was elected to the post of Professor of History and Economics (State of Delaware Chair of History) at Delaware College and he has filled this place to the present time. Dr. Vaughn is the author of many historical papers and is a member of the American Historical Association, the Political Science Association, the Delaware Historical Society, and the Phi Kappa Phi Fraternity.





-1920. BLUE HEN -1921.



GEORGE ALBERT KOERBER, E. E.

Professor of Electrical Engineering

Professor Koerber was graduated from Lafayette College in 1908 with the degree of E. E. After being graduated he remained at Lafayette as Instructor in Electrical Engineering and Physics until 1912. He became Professor of Electrical Engineering at Delaware College in 1913, and remained here until 1919. After a year's absence to engage in business, Professor Koerber again returned to Delaware College as Professor of Electrical Engineering. Professor Koerber is a member of the Sigma Nu and Phi Beta Kappa Fraternities, the American Institute of Electrical Engineers, the Society for

the Promotion of Engineering Education, and the Engineers' Club of Philadelphia.



THOMAS FRANKLIN MANNS, M. S.,
Ph. D.

Professor of Plant Pathology and Soil Bacteriology

Doctor Manns was born in Logan, Ontario, November 7, 1876. In 1901 he received the degree of B. S., and in 1903 the degree of M. S. from North Dakota Agricultural College. He received the degree of Ph. D. from the University of Pennsylvania in 1913. From 1904 to 1907 he was Principal of Provincial High Schools in the Philippine Islands. In 1907 he went to the Ohio Agricultural Experiment Station as Assistant Botanist and Plant Pathologist. In 1912 he became Plant Pathologist and Soil Bacteriologist of Delaware College. He is the author of eight volumes on Plant Diseases, Soil Bacteriology and Soil Fertility. He is also a contributor to several technical journals, and is Collaborator of the United States Plant Disease Survey. Dr. Manns is a member of the Sigma Xi and the Phi Kappa Phi Fraternities.





.1920. BLUE HEN .1921.



WILLIAM ALBERT WILKINSON, A. M.

Professor of Psychology and Education

Professor Wilkinson was born in Buffalo, Missouri, in 1873. He was a student in the high school of that town and of the State Normal School. In 1910 he was graduated from the University of Missouri with the degrees of B. S. and A. M. From 1917 to 1918 he studied at Columbia University. He then taught at the State Normal School, Mayville, N. D., and at the University of Missouri, after which he came to Delaware College as Professor of Psychology and Education. Professor Wilkinson is a member of the Phi Delta Kappa Fraternity.



GEORGE ELLIOTT DUTTON, A. M.

Professor of English

Professor Dutton was born at Seaford, Delaware, in 1881. He was graduated from Seaford High School and entered Delaware College in 1899. In 1904 he was graduated from Delaware with the degree of B. A. From 1905 to 1908 he did graduate work at Johns Hopkins University. In 1910 he entered Harvard, and in 1911 was graduated with the degree of M. A. From 1908 to 1910 Professor Dutton taught English at the University of Missouri. In 1911 he was called to Delaware College as Professor of English, and he has held this position up to the present time. Professor Dutton is a member of the Kappa Alpha and Phi Kappa Phi Frats.





.1920. BLUE HEN .1921.



GUY ERWIN HANCOCK, S. M., E. E.

Professor of Physics

Professor Hancock was graduated from Iowa State College in 1914 with the degree of B. S. in E. E. In 1916 he received the degree of S. M. in E. E. at the University of Nebraska. He was Instructor in the Science Department of Baptist Academy, Kansas; later he became Instructor of Physics, at Hiawatha High School, Kansas. From there he became Principal of a High School in North Dakota, and then Instructor of Physics, Peoria High School, Illinois. In 1919 he came to Delaware College as Instructor of Physics.



CHARLES CONGER PALMER, S. M.,
D. V. M.

Professor of Bacteriology and Hygiene

Doctor Palmer was born in Canton, Ohio, in 1890. He was graduated from Ohio State University in 1912 with the degree of D. V. M. In 1915 he received his M. S. degree from the University of Minnesota, where he was an assistant professor from 1915-1917. In 1917 he became head of the department of Bacteriology, Hygiene and Physiology at Delaware College. He is a member of the Alpha Psi Medical Fraternity, the Minnesota State Medical Society, the A. V. M. O., the Ohio State Alumni Association, and the Sigma Phi Epsilon Fraternity. In 1918 he was given leave of absence from Delaware College and served in the U. S. Army as a second lieutenant, being an instructor in the O. T. Camp Greenleaf, Chickamauga Park, Georgia.





.1920. BLUE HEN .1921.



HOWARD KENT PRESTON, C. E.

Professor of Mathematics and Engineering

Professor Preston was graduated from Lafayette College in 1909, with the C. E. degree. He came to Delaware College in 1912 as Instructor in Mathematics and Engineering. In 1915 he was made Assistant Professor of Mathematics at Delaware, which he held until 1918. In 1918 Professor Preston became a resident Engineer for the New Jersey State Highway Department. He returned to Delaware in 1920 as Professor of Mathematics and Engineering. He is a member of the American Association of Engineers.



RAYMOND WALTER HEIM, S. M.

Professor of Vocational Agricultural Education

Professor Heim was born near Williamsport, Pennsylvania, in 1886. He attended Williamsport Dickinson Seminary and was graduated from Muncy Normal, Pennsylvania, in 1907. He taught school in Pennsylvania from 1905 to 1909, then entering Pennsylvania State College, from which he was graduated in 1913 with the degree of S. B. He was Supervisor of Vocational Agricultural Education at Waterford Academy, Pennsylvania, 1913-1915. From 1915 to 1917 Professor Heim was State Supervisor of Vocational Education, Department of Public Instruction, Harrisburg, Pennsylvania. He was an instructor at Pennsylvania State College Summer School of 1918. From 1918 to 1919 he did graduate work at Cornell University, and at Columbia University. In 1919 Professor Heim came to Delaware College as Professor of Vocational Education, and as State Director of Vocational Education. He is the author of several State and Federal Vocational Bulletins and a member of the National Educational Association.





.1920. BLUE HEN .1921.



THOMAS ALEXANDER BAKER, B. S.

Professor of Animal Husbandry

Professor Baker was graduated from Cornell University in 1914 with the degree of B. S. From 1914 to 1917 he was Instructor of Animal Husbandry, Cornell University; 1917, Instructor General Agriculture, Iowa State Teachers College; 1918, Instructor Animal Husbandry and Dairying, St. John's State School of Agriculture, and 1919, Associate Professor Animal Husbandry, Delaware College. In 1920 he was named Professor of Animal Husbandry at Delaware. Professor Baker is a member of Alpha Zeta and Gamma Alpha Fraternities.



CARLTON FRIEND MILLER, Ph. D.

Professor of Chemistry

Dr. Miller was born in Wallingford, Connecticut, in 1885. He was graduated from Wesleyan University in 1909 with the degree of B. S. From 1909 to 1914 he was Assistant in Chemistry, Cornell University. In 1914 he received the degree of Ph. D. from Cornell University. He was Instructor in Chemistry at North Carolina State College from 1914 to 1917; he was Assistant Professor of Chemistry at the same college from 1917-1919. In 1919 he came to Delaware as Professor of Chemistry. He has been Treasurer of North Carolina State College Summer School, Sessions of 1917-18-19.



Dr. Miller is a member of the Sigma Xi, Delta Sigma Phi and Gamma Delta Rho Fraternities.



.1920. BLUE HEN .1921.



GEORGE LEE SCHUSTER, B. S., M. A.

Professor of Agronomy

Professor Schuster was born in Anderson, Indiana. He was graduated from Ohio State University in 1916 with the degree of B. S. in Agriculture. In 1918 he received the degree of M. S. from Ohio State. He was Assistant Professor of Farm Crops at Ohio State from 1917 to 1918. Professor Schuster served with the War Emergency Board in 1918. Later he became Research Agronomist at West Virginia University, and came to Delaware College as Professor of Agronomy in 1920.



LATHE BURTON ROW,
MAJOR OF INFANTRY, U. S. A.

Professor of Military Science and Tactics

Major Row was born in Larned, Kansas. He entered West Point in 1909, from whence he was graduated in 1913. He has served with the Eleventh U. S. Infantry and as Adjutant in the 52nd U. S. Infantry, also as Adjutant of the Eleventh Infantry Brigade of the Sixth Division. He was Inspector of the 88th Division. While in the A. E. F. Major Row was attached to the Inspector General's Department and stationed at Brest, France. Since 1919 he has been detailed to R. O. T. C. work at Duquesne University, Pittsburgh, and Delaware College.





.1920. BLUE HEN .1921.



ROBERT W. THOROUGHGOOD, C. E.

Professor of Civil Engineering

Professor Thoroughgood was born in Delaware, and received his early education in the public schools and at the Academy at Dover. In 1902 he was graduated from Lehigh University with the degree of C. E. He went to Cornell University in 1905 as Instructor in Civil Engineering, also pursuing graduate work in sanitary engineering. During the summers he studied law at the University of Chicago. From 1908 to 1912 he was Assistant Professor of Civil Engineering at Lafayette College, and from 1912 to 1919 he was Professor of Civil Engineering at the University of Florida. In 1920 he became Pro-

fessor of Civil Engineering at Delaware College. Professor Thoroughgood is a member of the American Association of Engineers.



B. DAVISON, B. S.

Professor of Horticulture

Professor Davison was born October 29, 1896, in Crawford County, Pennsylvania. He attended the grammar schools of Virginia and graduated from Spencer High School. He matriculated at Maryland University in 1914, was out two years in the Army, and graduated in 1920. Since graduating from college he has been assistant to Dean McCue of the Horticultural Department.





.1920. BLUE HEN .1921.



FINLEY MELVILLE KENDALL FOSTER,
Ph. D.

Assistant Professor of English

Dr. Foster was born in New York City in 1892. After being graduated from DeWitt Clinton High School he entered New York University, being graduated from this university with the degree of B. A. in 1913. In 1914 he received the degree of M. A. from the same university, and in the same year entered Columbia, where in 1918 he was graduated with the degree of Ph. D. From 1913 to 1916 he taught at New York University. In 1917 Dr. Foster became Assistant Professor of English at Delaware College. He is a member of the Phi Beta Kappa and Omega Alpha Fraternities.



HOWARD BURTON SHIPLEY

Director of Athletics

Coach Shipley is a graduate of Maryland State College. His record in college for athletics was enviable, for six years he played on both football and basketball teams. In 1912 he was named as all-Maryland quarter-back, and in 1913 as all-Maryland full-back. He was graduated in 1916 from a course for athletic coaches at the University of Illinois. He became Athletic Director at Perkiomen School the next year. Following this he went to Marshall College to fill a similar position. During the war he served in the U. S. Army as Lieutenant of Infantry. In 1919 he came to Delaware College as Director of Athletics where he has been largely responsible for the development of the high-calibre athletic teams representing Delaware since that time.





.1920. BLUE HEN .1921.



HAROLD EDWARD TIFFANY, M. S.

Associate Professor of Chemistry

Professor Tiffany was born at Tunkhannock, Pennsylvania. He was graduated from Bucknell University in 1905 as honor man in Chemistry, with the degree of B. S. In 1906 he received from the Harvard Graduate School the degree of M. S. Professor Tiffany came to Delaware College in 1906 as Assistant Professor of Chemistry. In 1918 he entered the employ of the du Pont Chemical Company. From 1919 to 1920 he was Assistant Professor of Geology at Hunter College. During 1919 he did graduate work at Columbia University, and in 1920 returned to Delaware College as Associate Professor of

Chemistry. Professor Tiffany is a member of the Sigma Phi Epsilon Fraternity, the Masonic Fraternity of Harvard, the Boileston Chemical Club, the American Association for the Advancement of Science, the American Chemical Society, and the American Geographical Society.



WILSON LLOYD BEVAN, M. A., Ph. D.

Associate Professor of History

Doctor Bevan was born in Baltimore, Maryland. He was graduated from Johns Hopkins University with a B. A. degree in 1894. Later he received from Columbia University the degree of M. A., and from the University of Munich the degree of Ph. D. He held the position of Professor of History at the University of the South, and later at Kenyon College, Ohio. Professor Bevan has been engaged in the journalistic world for some time, for several years he was Associate Editor of the *New York Churchman*, which work he relinquished to come to Delaware College as Associate Professor of History in 1920. Dr. Bevan is a member of the Alpha Tau Omega Fraternity, the Authors' Club, and Columbia University Club of New York.





.1920. BLUE HEN .1921.



GEORGE ELDER BRINTON, Ph. B.

Assistant Professor of Modern Languages

Professor Brinton was graduated from Franklin and Marshall College in 1913 with the degree of Ph. B. From 1913 to 1915 he was Instructor in Modern Languages, Whitesville High School, New York, and from 1915 to 1916 Instructor of Modern Languages at Mackensie School. He did graduate work at Columbia University, 1916-1917, and at the University of Grenoble, France, in 1919. In 1919 he came to Delaware College as Assistant Professor of Modern Languages.



RAYMOND WATSON KIRKBRIDE, S. B.

Assistant Professor of Modern Languages

Professor Kirkbride was graduated from Westminster College in 1916 with the degree of S. B. He was engaged in Chautauqua Promotion Work from 1916 to 1917. From 1917 to 1918 he was Instructor at Spiers School. During the war Professor Kirkbride served in the U. S. Ambulance Service of the A. E. F. He did graduate work at the University of Grenoble, France, in 1919, and became Assistant Professor of Modern Languages at Delaware College in the fall of that year.





-1920. BLUE HEN .1921.



WILLIAM FRANCIS LINDELL, B. S.

Instructor in Engineering

Professor Lindell was born in Delaware in 1898 and received his preparatory education in Newark High School. In 1920 he was graduated from Delaware College with the degree of B. S. in Electrical Engineering. He became Instructor in Engineering at Delaware College in 1920. He is a member of the American Association of Engineers and of the American Institute of Electrical Engineers.

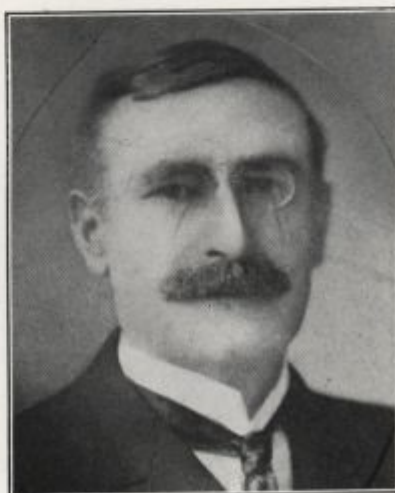


CHARLES LYNDALL PENNY, A. M., Sc. D.

Professor of Chemistry

Dr. Penny was graduated from Bucknell University in 1879 with the degree of A. B. In 1882 he received the degree of A. M. from the same university.

In 1898 the degree of Sc. D. was conferred upon him by Bucknell University. From 1898 to 1907 he was Chemist at the Delaware College Experiment Station. From 1907 to 1909 he was Professor of Agricultural Chemistry at Pennsylvania State College. From 1909 to the present time he has held the position of Professor of Chemistry at Delaware College. Dr. Penny is a member of the Phi Kappa Phi Fraternity.





.1920. BLUE HEN .1921.



EARNEST CANFIELD VAN KEUREN, A. B.

Instructor in English

Professor Van Keuren was born in Cornell, New York. He was graduated from Cornell University in 1920 with the degree of A. B. In 1919 he studied at Ohio-Wesleyan. He came to Delaware as Instructor in English in 1920.



JOHN LINTON COYLE

Instructor in Shop Work

Mr. Coyle came to Delaware College as Instructor in Shop Work after having been connected with many of the large firms of the East in mechanical work. He has been employed by the J. M. Poole Co., the Maryland Steel Co., the Westinghouse Electric and Mfg. Co., the Harlan and Hollingsworth Corp., the Pusey and Jones Co., the Lobdell Car Wheel Co., and the Hilles and Jones Co. For the three years preceding his coming to Delaware he was foreman at the Lobdell Car Wheel Co., Wilmington, Delaware.





.1920. BLUE HEN .1921.



CARL S. RANKIN, C. E.

Instructor in Civil and Electrical Engineering

Professor Rankin was born in Penfield, Pennsylvania. He was graduated with the degree of C. E. from Lafayette College in 1911. He received the degree of B. S. from Teachers' College, Columbia University in 1912. For several years he was Instructor of Mathematics and Athletics at Weih sien School and Shantung Christian University, Shantung, China. During the war Professor Rankin served in the U. S. Army as 2nd Lieutenant of Engineers. In 1920 he came to Delaware College as Instructor of Civil and Electrical Engineering. He is a member of the American Association of Engineers, the Sigma Alpha

Epsilon and the Phi Beta Kappa Fraternities.



CARL JOHN REESE, B. A.

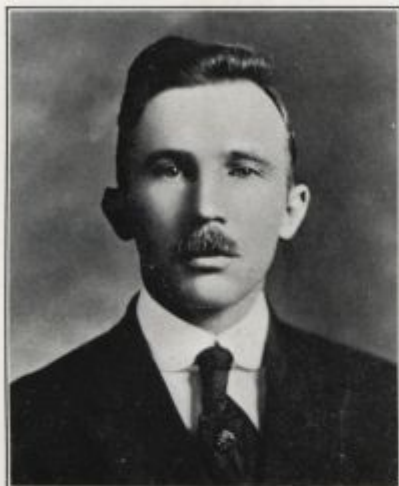
Assistant Professor of Mathematics

Professor Reese was born in Millersville, Pennsylvania. In 1918 he was graduated from Franklin and Marshall College with the degree of A. B. He taught in the departments of Mathematics and Physics at Millersville Normal School and Lancaster High School from 1918 to 1920. In 1920 he came to Delaware College as Assistant Professor of Mathematics.





.1920. BLUE HEN .1921.



THOMAS DARMORE SMITH, B. S.

Assistant Professor of Mathematics and Engineering

Professor Smith was born in Milford, New Jersey. He was graduated from Rutgers in 1913 with the degree of B. S. in Civil Engineering. From 1913 to 1914 he was Instructor of Civil Engineering at Gettysburg College. In 1914 he was connected with the Department of Public Works, City of Philadelphia, which position he relinquished in 1918 to become Assistant Professor of Civil Engineering at the University of Florida. In 1920 he came to Delaware College as Assistant Professor of Mathematics and Engineering. Professor Smith is a member of the American Association of Engineers and of the

Society for the Promotion of Engineering Education.



ALLAN CARRUTH WILLIAMS, B. S.

Instructor in Animal Husbandry

Professor Williams was born in 1897 at Arlington, Massachusetts. He prepared for college at Rockland, Massachusetts, High School. In 1920 he was graduated with the degree of B. S. in Agriculture from Massachusetts Agriculture College. He became Instructor in Animal Husbandry at Delaware College in 1920. Professor Williams is a member of the Commons Club of M. A. C.





.1920. BLUE HEN .1921.



CHARLES RAYMOND RUNK, B. S.

Assistant Professor of Agronomy

Professor Runk was born in Ohio and was graduated from Ohio State University in 1919 with the degree of B. S. in Agriculture. Since then he has been engaged in vocational education work. He came to Delaware as Assistant Professor in Agronomy in 1920. Professor Runk is a member of the Delta Theta Sigma Fraternity.



RALPH B. HARRIS, B. S.

Professor of Business Administration

Professor Harris was born at Cedar Falls, Iowa. He received his preparatory education at the Cedar Falls High School. In 1914 he was graduated from the Wharton School, University of Pennsylvania, with the degree of B. S. Following this Professor Harris did graduate work at the University of Chicago. From 1915 to 1917 he was Professor of Economics at Washington State College, and from 1917-1918 Professor of Business Administration at Pennsylvania Military College. After being engaged in business for two years he came to Delaware College as Professor of Business Administration in 1920. Professor Harris is a member of the Gamma Delta Rho Fraternity.





.1920. BLUE HEN .1921.



JOHN MARVIN LE CATO, A. M.

Associate Professor of Plant Pathology

Professor Le Cato received his early education in the rural schools of Maryland. In 1909 he was graduated from Baltimore City College; in 1910 he returned to post-graduate work. In 1913 he was graduated from the University of Michigan, Biological Course, with the degree of A. B. He received the M. A. degree from the University of Illinois in 1914. During 1913 Professor Le Cato was Teaching Assistant in Biology, University of Michigan, and in 1914, Research Assistant in Plant Pathology, University of Illinois. From 1914 to 1918 he was Head of the Department of Biology, Marshall College, Huntington,

West Virginia. In 1918 Professor Le Cato came to Delaware College as Associate Professor of Plant Pathology. He was from 1914 to 1918 Track Coach of Marshall College and has successfully coached the Delaware Track teams during the seasons of 1919-20-21.



LOUIS REINHOLD DETJEN, B. S., M. S.

Associate Professor of Horticulture

Professor Detjen was born in Algoma, Wisconsin, and received his preparatory education at the Algoma High School. In 1909 he was graduated from Wisconsin University with the degree of B. S. in Agriculture. He was Assistant Nursery Instructor at Wisconsin University in 1909. Later he went to North Carolina State College as Assistant Professor of Horticulture. In 1911 he had the degree of M. S. conferred upon him by this College. He came to Delaware College to his present position in 1920. Professor Detjen is a member of the Alpha Zeta Fraternity, also of the Wisconsin State Horticulture Society, the North Carolina Academy of Science, the American Society of Horticultural Science, and the American Genetic Association.



.1920. BLUE HEN .1921.



RAYMOND MELVILLE UPTON, S. B.

Director of Rehabilitation

Director Upton is a native of Peabody, Massachusetts. He was graduated from the Massachusetts Agricultural College in 1915. He has taken part-time post-graduate courses in Education at Brown University and Johns Hopkins University. After graduation in 1915, he was connected with the Boston Gardening Company at Newton, Massachusetts. In 1917 he was Garden Specialist for the Middlesex County Farm Bureau in the same State. He was Secretary and Agricultural Agent for the North Attleboro Food Production Committee during 1918 and 1919. During 1920 he was Agricultural Agent,

third district, and served under the Federal Board of Vocational Education in the Division of Rehabilitation. He is now Director of the Rehabilitation Division, College of Agriculture, University of Delaware.



LEO BLUMBERG, E. E.

Instructor in Engineering

Professor Blumberg was born in Wilmington in 1894. In 1916 he was graduated from Delaware College with the degree of B. S. in Electrical Engineering and in 1919 the degree of E. E. was conferred upon him by Delaware College. In 1919 he became Instructor in Engineering at the same institution. Professor Blumberg is a member of the American Institute of Electrical Engineers and of the Phi Kappa Phi Fraternity.





.1920. BLUE HEN .1921.



The Transition

THE list is complete and the mere activities mentioned do not do justice to these noble men. Sacrifice is written on their brow, and quite often deep mental scars of which the student body never knows, are inflicted on their brain. This body fluctuates like the student group and every year new faces appear on the scene. Now for the parting word, this group of men represents the greatest, the grandest, and the most glorious Faculty Delaware ever had. Now it is the University Faculty and the peep into the future is most encouraging for perfect co-operation between students and instructors.





TRUSTEES OF THE UNIVERSITY OF DELAWARE

Ex-Officio

- The Governor, WILLIAM D. DENNEY.
- The President of the State Board of Education,
GEORGE B. MILLER, Wilmington
- The Master of the State Grange, JACOB H. ROSA, Milford.
- The President of the College, WALTER HULLIHEN.

| | |
|--|------|
| H. G. M. KOLLECK, M. D., Newark | 1882 |
| J. HARVEY WHITEMAN, Esq., Wilmington | 1892 |
| CHARLES B. EVANS, Esq., Newark | 1894 |
| WILLIAM T. LYNAM, Esq., Wilmington | 1897 |
| CHAS. S. CONWELL, Camden | 1897 |
| DANIEL W. CORBIT, Odessa | 1899 |
| L. HEISLER BALL, M. D., Marshallton | 1900 |
| W. WATSON HARRINGTON, Esq., Dover | 1900 |
| SAMUEL H. MESSICK, Bridgeville | 1902 |
| JAMES E. DUTTON, Seaford | 1904 |
| JOHN BIGGS, Esq., Wilmington | 1905 |
| SAMUEL H. DERBY, Woodside | 1905 |
| THOMAS DAVIS, Esq., Wilmington | 1908 |
| SAMUEL J. WRIGHT, Newark | 1910 |
| EDWARD D. HEARNE, Esq., Georgetown | 1910 |
| HENRY RIDGELY, Esq., Dover | 1911 |
| CHARLES M. CURTIS, Esq., Wilmington | 1911 |
| EVERETT C. JOHNSON | 1911 |
| HENRY B. THOMPSON, Greenville | 1912 |
| EBEN B. FRAZER, Newark | 1913 |
| H. RODNEY SHARP, Wilmington | 1915 |
| W. H. HEALD, Esq., Wilmington | 1915 |
| EDWARD A. EVANS, Cheswold | 1916 |
| CHARLES R. MILLER, Wilmington | 1917 |
| H. F. DUPONT, Winterthur | 1918 |
| HARRY CANNON, Bridgeville | 1918 |
| HENRY P. SCOTT, Delaware City | 1920 |





.1920. BLUE HEN .1921.



OFFICERS OF THE BOARD OF TRUSTEES

HENRY B. THOMPSON, *President*
 SAMUEL H. MESSICK, *Vice-President*
 CHARLES B. EVANS, *Secretary*

EXECUTIVE COMMITTEE

HENRY B. THOMPSON, *Chairman*
 DR. WALTER HULLIHEN
 CHARLES R. MILLER
 H. RODNEY SHARP
 CHARLES M. CURTIS
 SAMUEL H. DERBY
 HENRY RIDGELY

FINANCE COMMITTEE

CHARLES R. MILLER, *Chairman*
 WILLIAM H. HEALD
 CHARLES B. EVANS
 HENRY P. SCOTT
 W. W. HARRINGTON
 HARRY CANNON

GROUNDS AND BUILDINGS

H. RODNEY SHARP, *Chairman*
 CHARLES R. MILLER
 HARRY CANNON
 H. F. DUPONT
 EVERETT C. JOHNSON

AGRICULTURE

SAMUEL H. DERBY, *Chairman*
 H. F. DUPONT
 D. W. CORBIT
 HENRY P. SCOTT
 S. H. MESSICK
 JACOB ROSA

INSTRUCTION

HENRY RIDGELY, *Chairman*
 DR. WALTER HULLIHEN
 S. H. MESSICK
 GEORGE B. MILLER
 EVERETT C. JOHNSON
 CHARLES B. EVANS

WOMEN'S COLLEGE

CHARLES M. CURTIS, *Chairman*
 THOMAS DAVIS





.1920. BLUE HEN .1921.



Old College

