

# CLIMATOLOGICAL DATA ANNUAL SUMMARY MARYLAND AND DELAWARE 1987

VOLUME 91 NUMBER 13



"I CERTIFY THAT THIS IS AN OFFICIAL PUBLICATION OF  
THE NATIONAL OCEANIC AND ATMOSPHERIC ADMINISTRATION  
AND IS COMPILED FROM INFORMATION RECEIVED AT THE  
NATIONAL CLIMATIC DATA CENTER, ASHEVILLE NORTH CAROLINA"  
28801

*Kenneth D. Hadlee*

DIRECTOR  
NATIONAL CLIMATIC DATA CENTER

**noaa**

NATIONAL  
OCEANIC AND  
ATMOSPHERIC ADMINISTRATION

NATIONAL  
ENVIRONMENTAL SATELLITE, DATA  
AND INFORMATION SERVICE

NATIONAL  
CLIMATIC DATA CENTER  
ASHEVILLE NORTH CAROLINA

# TOTAL PRECIPITATION AND DEPARTURES FROM NORMAL (INCHES)

MARYLAND AND  
DELAWARE  
1987

STATION	JAN		FEB		MAR		APR		MAY		JUN	
	PRECIP.	DEPARTURE	PRECIP.	DEPARTURE	PRECIP.	DEPARTURE	PRECIP.	DEPARTURE	PRECIP.	DEPARTURE	PRECIP.	DEPARTURE
MARYLAND												
SOUTHERN EASTERN SHORE 01												
ASSATEAGUE ISLAND NATL SE	M	9.24		2.86		4.59		3.97		3.58		2.10
CRISFIELD SOMERS COVE	M	6.16		1.98	-1.09	3.04	-1.00	2.43	-.54	2.41	-.83	4.21
PRINCESS ANNE	M	7.34		2.51	-.79	4.13	-.14	3.16	-.16	2.41	-.94	3.48
SALISBURY		7.54	4.02	2.92	-.49	3.81	-.41	3.01	-.30	2.53	-.79	3.64
SALISBURY FAA AP		7.75	4.37	2.08	-1.25	4.01	-.07	3.20	-.04	2.14	-1.24	2.73
SNOW HILL 4 N		7.81	4.18	2.48	-1.12	3.96	-.64	3.03	-.29	2.85	-.58	2.02
-- DIVISIONAL DATA -->		7.70	4.28	2.47	-.84	3.92	-.23	3.13	-.03	2.65	-.66	3.03
CENTRAL EASTERN SHORE 02												
CAMBRIDGE WTR TRMT PL		5.22	1.73	2.04	-1.12	2.31	-1.75	2.29	-1.01	2.34	-1.26	1.99
DENTON 2 E		6.75	3.43	1.89	-1.02	2.21	-1.71	2.08	-1.24	3.06	-.44	1.38
ROYAL OAK 2 SSW		6.95	3.51	1.92	-1.28	2.27	-1.80	2.48	-.93	4.24	-.61	2.14
VIENNA	M	5.39		2.69	-.58	2.64	-1.28	2.69	-.65	2.00	-1.02	1.61
-- DIVISIONAL DATA -->		6.31	2.89	2.14	-.98	2.36	-1.57	2.39	-.88	2.91	-.52	1.78
LOWER SOUTHERN 03												
LA PLATA 1 W		4.46	1.32	1.52	-1.36	2.60	-1.16	4.06	.89	4.28	.81	2.40
MECHANICSVILLE 1 E		5.72		1.63		2.31		4.34		3.10		2.36
OWINGS FERRY LANDING		5.39	2.25	1.71	-1.01	2.20	-1.34	4.36	1.12	3.62	-.18	3.12
PATUXENT RIVER		6.88		2.25		2.35		3.98		4.31		3.82
-- DIVISIONAL DATA -->		5.61	2.34	1.78	-1.13	2.37	-1.38	4.19	1.06	3.83	.24	2.93
UPPER SOUTHERN 04												
ANNAPOLIS POLICE BRKS	M	3.19		1.82		1.51		2.35		4.84		3.90
BALTIMORE WSO AP	R	5.85	2.85	2.22	-.76	.99	-2.73	1.86	-1.49	4.16	-.72	2.63
BELTSVILLE		3.42	.51	1.35	-1.15	.92	-2.57	4.01	.64	3.59	-.22	2.69
COLLEGE PARK		5.15	2.14	1.46	-1.33	1.66	-1.99	3.49	-.12	3.53	-.32	4.22
DALECARLIA RESVR D C		3.62	.55	1.26	-1.67	2.54	-1.29	3.35	-.25	2.96	-.81	3.46
GLENN DALE BELL STN	M	3.95		.98		1.92	-1.78	3.07	-.45	3.29	-.65	3.58
LAUREL 3 W		4.31	1.44	1.66	-1.03	2.43	-1.23	3.64	.24	2.96	-1.10	4.74
NATIONAL ARBORETUM D C		4.31	1.14	.12		1.61	-2.14	4.24	.87	2.21	-1.72	4.30
UPPER MARLBORO 3 NNW		3.96	.68	1.38	-1.35	1.82	-1.90	4.23	.91	4.10	-.50	2.61
-- DIVISIONAL DATA -->		4.37	1.31	1.59	-1.20	1.71	-1.97	3.36	-.01	3.52	-.23	3.57
NORTHERN EASTERN SHORE 05												
CHESTERTOWN		4.54	1.26	1.86	-1.09	1.12	-2.86	1.75	-1.50	3.54	-.08	2.41
MILLINGTON 1 SE		5.85	2.69	2.08	-.79	1.48	-2.22	1.90	-1.28	3.66	.24	2.57
-- DIVISIONAL DATA -->		5.20	1.93	1.97	-.91	1.30	-2.46	1.83	-1.37	3.60	.15	2.49
NORTHERN CENTRAL 06												
ABERDEEN PHILLIPS FLD		4.13		1.02		1.49		1.40		3.89		2.53
BALTIMORE WSO CI	R	5.71	2.64	2.21	-.86	1.47	-2.46	1.71	-1.80	5.00	1.37	3.82
BENSON POLICE BARRACKS		5.49	2.06	1.62	-1.26	3.17	-.87	2.05	-1.95	4.50	.45	2.71
BOYDS 2 NW		3.90		1.91		1.71		3.56		2.58		6.35
BRIGHTON DAM		5.01	2.05	2.33	-.39	2.01	-1.72	3.83	.36	3.45	-.48	4.70
CATOCTIN MOUNTAIN PARK		7.97		1.31		4.97		6.19		2.97		3.39
CLARKSVILLE 3 NNE		4.33		1.85		2.56		3.20		3.28		2.17
CONOWINGO DAM		3.67	.34	1.36	-1.49	1.38	-2.61	1.81	-2.01	3.37	-.36	3.01

SEE REFERENCE NOTES FOLLOWING STATION INDEX

# TOTAL PRECIPITATION AND DEPARTURES FROM NORMAL (INCHES)

MARYLAND AND  
DELAWARE  
1987

STATION	JUL		AUG		SEP		OCT		NOV		DEC		ANNUAL	
	PRECIP.	DEPARTURE	PRECIP.	DEPARTURE	PRECIP.	DEPARTURE	PRECIP.	DEPARTURE	PRECIP.	DEPARTURE	PRECIP.	DEPARTURE	PRECIP.	DEPARTURE
MARYLAND														
SOUTHERN EASTERN SHORE 01														
ASSATEAGUE ISLAND NATL SE	5.24		1.52		1.39		3.37		3.52		3.37		44.75	
CRISFIELD SOMERS COVE	2.57	-1.20	1.32	-3.07	4.24	-.97	2.36	-.85	1.46	-1.63	2.49		34.67	
PRINCESS ANNE	4.39	.57	.52	-5.11	3.06	-.91	1.45	-2.23	1.72	-1.52	3.11	-.29	37.28	
SALISBURY	3.67	-.09	1.07	-4.65	2.44	-1.15	2.03	-1.60	2.87	-.24	3.40	-.22	38.93	-5.90
SALISBURY FAA AP	4.30	-1.10	.58	-5.14	4.25	-.31	2.01	-.72	3.08	-.02	3.12	-.59	40.25	-5.19
SNOW HILL 4 N	4.16	.17	.89	-4.54	3.02	-.51	4.58	.78	2.76	-.62	2.75	-.96	40.31	-5.91
--DIVISIONAL DATA----->	4.06	.13	.98	-4.22	3.07	-.52	2.80	-.76	2.38	-.81	3.15	-.37	39.34	-4.43
CENTRAL EASTERN SHORE 02														
CAMBRIDGE WTR TRMT PL	2.37	-1.94	.51	-4.77	2.49	-1.23	2.13	-1.15	5.40	1.68	2.59	-1.12	31.68	-13.52
DENTON 2 E	4.59	-.25	.85	-4.13	2.66	-.84	2.28	-1.09	3.70	-.17	2.86	-.66	34.31	-9.56
ROYAL OAK 2 SSW	1.13	-3.26	1.08	-4.01	2.82	-.90	1.55	-1.91	3.26	-.47	3.13	-.61	32.97	-12.34
VIENNA	4.84	.90	.70	-4.93	2.28		1.68	-1.76			2.55	-1.02		
--DIVISIONAL DATA----->	3.23	-.91	.79	-4.43	2.66	-.99	1.91	-1.42	4.12	.59	2.78	-.82	33.38	-10.74
LOWER SOUTHERN 03														
LA PLATA 1 W	1.15	-2.88	1.96	-2.96	9.48	6.04	2.12	-1.29	4.36	1.16	3.38	-.04	41.77	-.85
MECHANICSVILLE 1 E	4.22		1.94		6.05		1.99		3.30		3.34		40.30	
OWINGS FERRY LANDING	.88	-2.78	1.72	-2.47	4.85	1.33	1.59	-1.68	3.64	.31	3.05	-.24	36.13	-5.28
PATUXENT RIVER	1.78		1.43		6.49		1.78		3.19		3.19		41.45	
--DIVISIONAL DATA----->	2.01	-2.09	1.76	-2.86	6.72	3.22	1.87	-1.40	3.62	.28	3.24	-.14	39.93	-2.56
UPPER SOUTHERN 04														
ANNAPOLIS POLICE BRKS	1.63		1.71		4.18		2.10		4.33		2.88		34.44	
BALTIMORE WSO AP	5.05	1.16	1.61	-3.01	7.34	3.88	2.25	-.86	5.05	1.94	2.07	-1.33	41.08	-.76
BELTSVILLE	1.58	-2.56	1.76	-2.95	7.32	3.61	3.07	-.17	3.82	.85	2.98	-.36	36.51	-5.57
COLLEGE PARK	1.88	-2.18	1.58	-3.42	7.33	3.77	2.88	-.23	4.87	1.77	2.37	-1.01	40.42	-2.31
DALECARLIA RESVR D C	1.15	-2.89	.98	-3.62	8.17	4.75	2.70	-.60	4.03	.88	2.41	-1.08	36.63	-6.25
GLENN DALE BELL STN	.76	-3.55	2.00	-2.91	5.20	1.54	2.95	-.35	4.77	1.43	2.86	-.53	35.33	
LAUREL 3 W	1.88	-2.00	1.89	-2.28	9.33	5.95	3.33	-.20	5.34	1.94	3.18	-.16	44.69	2.82
NATIONAL ARBORETUM D C	5.52	1.32	2.91	-2.19	6.30	2.72	3.25	-.08	3.69	.61	2.53	-.83	40.99	
UPPER MARLBORO 3 NNW	1.98	-2.08	1.99	-2.67	5.54	1.81	2.28	-1.01	5.02	1.86	2.86	-.53	37.77	-5.01
--DIVISIONAL DATA----->	2.38	-1.61	1.83	-2.91	6.75	3.23	2.76	-.38	4.55	1.42	2.68	-.70	39.07	-3.28
NORTHERN EASTERN SHORE 05														
CHESTERTOWN	2.33	-1.61	.62	-3.99	7.93	4.35	1.62	-1.54	3.63	.17	2.74	-1.13	34.09	-9.85
MILLINGTON 1 SE	3.67	-.20	.58	-4.16	6.27	2.48	1.91	-1.14	4.25	.78	2.66	-.92	36.88	-5.62
--DIVISIONAL DATA----->	3.00	-.93	.60	-3.91	7.10	3.43	1.77	-1.29	3.94	.54	2.70	-.95	35.50	-7.14
NORTHERN CENTRAL 06														
ABERDEEN PHILLIPS FLD	2.95		.61		8.19		1.88		2.94		2.18		33.21	
BALTIMORE WSO CI	2.04	-1.99	1.28	-3.29	6.34	2.68	2.47	-.62	4.37	1.03	2.24	-1.54	38.66	-4.73
BENSON POLICE BARRACKS	4.58	.23	1.26	-3.65	9.90	5.72	2.39	-.59	4.31	.42	2.45	-1.54	44.43	-2.57
BOYDS 2 NW	2.18		2.50		8.74		3.07		4.18		1.50		42.18	
BRIGHTON DAM	1.62	-1.92	2.14	-1.99	10.23	6.54	3.71	.59	4.39	1.22	2.39	-1.02	45.81	4.05
CATOCTIN MOUNTAIN PARK	2.81		1.66		5.94		2.40		4.01		2.48		45.50	
CLARKSVILLE 3 NNE	4.75		.66		8.34		3.39		4.00		2.39		40.92	
CONOWINGO DAM	3.42	-.95	3.69	-.85	11.09	7.20	2.60	-.59	4.03	.55	2.08	-1.79	41.51	-3.84

SEE REFERENCE NOTES FOLLOWING STATION INDEX

# TOTAL PRECIPITATION AND DEPARTURES FROM NORMAL (INCHES)

MARYLAND AND  
DELAWARE  
1987

STATION	JAN		FEB		MAR		APR		MAY		JUN	
	PRECIP.	DEPARTURE	PRECIP.	DEPARTURE	PRECIP.	DEPARTURE	PRECIP.	DEPARTURE	PRECIP.	DEPARTURE	PRECIP.	DEPARTURE
DAMASCUS 2 SW	4.44		2.07		1.86		4.20		2.39		6.38	
EMMITSBURG 2 SE	4.05		1.70		2.19		3.82		4.12		2.35	
FREDRICK POLICE BRKS	2.88		.15		1.69		3.66		1.93		3.03	
FREDERICK 3 E	3.72	.84	1.29	-1.26	1.59	-1.93	4.01	.40	2.65	-1.21	3.01	-1.01
PARKTON 2 SW												
POTOMAC FILTER PLANT	3.83		2.23		1.02		3.34		2.46		5.30	
ROCKVILLE 1 NE	3.99	1.04			1.80	-1.74	3.11	-.13	2.67	-1.10	3.29	-.70
TOWSON			2.25	-.93	2.79	-1.25			5.07	1.06	2.68	-1.36
UNIONVILLE	4.77	2.01	1.19	-1.22	1.32	-2.06	3.71	-.20	5.06	1.39	3.27	-.81
WESTMINSTER POLICE BRK	4.31	1.19	.96	-1.86	2.82	-1.10	3.47	-.22	4.46	.59	2.41	-1.68
WOODSTOCK	5.17	2.03	2.18	-.58	2.11	-1.83	2.95	-.67	4.72	.95	2.98	-1.05
-- DIVISIONAL DATA -->	4.76	1.63	1.72	-1.09	2.18	-1.64	3.20	-.43	3.73	-.09	3.36	-.69
APPALACHIAN MOUNTAIN												
CUMBERLAND 2	3.21	.68	.92	-1.49	2.27	-1.34	5.28	1.92	2.59	-1.02	2.42	-1.36
EDGEMONT	3.68	.61	1.13	-1.49	1.41	-2.30	7.54	3.89	3.05	-.77	3.42	-.77
FROSTBURG 2	4.12		1.03		2.55		6.71		2.65		2.24	
HAGERSTOWN	3.22	.42	1.81	-.45	.72	-2.66	4.31	.81	2.96	-.78	2.12	-1.80
HANCOCK FRUIT LAB	3.18	.57	1.10	-1.26	2.02	-1.47	6.01	2.77	2.69	-.72	2.23	-1.63
-- DIVISIONAL DATA -->	3.43	.68	1.22	-1.28	1.89	-1.77	5.58	2.15	2.72	-.97	2.25	-1.50
ALLEGHENY PLATEAU												
MC HENRY 2 NW	4.87		2.15		2.55		4.75		3.70		3.13	
MERRILL	3.33		1.02	-1.70	2.26	-1.66	4.57	.90	3.83	-.04	3.43	-.17
OAKLAND 1 SE	3.45	-.34	1.45	-1.75	2.00	-2.42	4.89	.38	6.26	1.82	3.79	-.57
SAVAGE RIVER DAM	3.24	.64	.91	-1.44	2.73	-.65	4.64	1.16	3.53	-.14	3.78	.28
-- DIVISIONAL DATA -->	3.85	.32	1.50	-1.59	2.43	-1.78	4.76	.57	4.50	.38	3.57	-.57
DELAWARE												
NORTHERN MIDDLETOWN 3 E					1.12		2.71		3.46		2.49	
NEWARK UNIVERSITY FARM	4.76	1.66	1.17		2.29	-1.37	3.25	-.25	3.79	-.27	2.04	-1.71
WILMINGTON WSO AP	4.35	1.24	1.52	-1.47	1.16	-2.71	2.63	-.76	3.15	-.08	2.31	-1.20
WILMGTON PORTER RESVR	5.87	2.58	1.21	-1.79	2.14	-1.93	4.35	.47	4.69	1.12	2.01	-1.99
-- DIVISIONAL DATA -->	4.99	1.86	1.37	-1.50	1.68	-2.09	3.24	-.30	3.77	.41	2.21	-1.48
SOUTHERN DOVER												
GEORGETOWN 5 SW	5.75	2.51	1.20	-1.66	2.42	-1.45	3.85	.64	4.44	-.94	1.43	-2.18
GREENWOOD 2 NE	7.04	3.69	1.53	-1.49	2.73	-1.24	3.24	.04	3.19	-.07	1.89	-1.70
LEWES	5.55		1.91		2.81		2.46		2.57		1.19	
MILFORD 4 SE	8.79	5.32	1.71		4.05	-.16	3.45	.04	2.63	-.91	1.84	-1.86
-- DIVISIONAL DATA -->	7.69	4.30	2.11	-1.02	3.49	-.54	3.09	-.32	3.89	.41	2.74	-.98
-- DIVISIONAL DATA -->	6.96	3.53	1.69	-1.45	3.10	-.93	3.22	-.09	3.34	-.06	1.82	-1.83

SEE REFERENCE NOTES FOLLOWING STATION INDEX  
4

# TOTAL PRECIPITATION AND DEPARTURES FROM NORMAL (INCHES)

MARYLAND AND  
DELAWARE  
1987

STATION	JUL		AUG		SEP		OCT		NOV		DEC		ANNUAL	
	PRECIP.	DEPARTURE	PRECIP.	DEPARTURE	PRECIP.	DEPARTURE	PRECIP.	DEPARTURE	PRECIP.	DEPARTURE	PRECIP.	DEPARTURE	PRECIP.	DEPARTURE
DAMASCUS 2 SW	5.19		1.26		9.87		3.09		4.71		2.54		48.00	
EMMITSBURG 2 SE	3.14		1.35		7.84		2.37		4.84		2.04		39.81	
FREDRICK POLICE BRKS	5.15		1.37		6.36		2.46		3.96		2.33		34.97	
FREDERICK 3 E	5.59	1.95	1.29	-2.42	6.39	2.84	2.84	- .29	5.29	2.13	1.84	-1.39	39.51	-1.35
PARKTON 2 SW														
POTOMAC FILTER PLANT	1.94		1.43		8.42		2.05		4.73		2.25		39.00	
ROCKVILLE 1 NE	1.55	-2.23	2.09	-2.37	10.00	6.54	2.82	- .18	4.29	1.23	2.34	-.66		
TOWSON	3.66	-.47	.96	-3.83	6.76	2.61	3.80	-.37	5.06		3.18	-.64		
UNIONVILLE	3.49	-.10	1.37	-2.39	6.25	2.74	2.57	-.36	5.37	2.28	1.89	-1.41	40.26	.27
WESTMINSTER POLICE BRK	7.12	3.12	1.21	-2.79	6.95	3.12	3.20	.10	4.13	.92	2.04	-1.45	43.08	-.06
WOODSTOCK	5.02	1.46	.78	-3.20	6.92	2.92	3.49	.37	3.93	.65	2.47	-1.05	42.72	.00
--DIVISIONAL DATA-->	3.80	-.10	1.47	-2.83	7.97	4.14	2.80	-.35	4.24	.89	2.27	-1.25	41.50	-1.81
APPALACHIAN MOUNTAIN														
CUMBERLAND 2	.88	-2.31	1.53	-1.80	6.65	3.73	.83	-1.88	2.55	.14	2.65	-.01	31.78	-4.72
EDGEMONT	2.61	-.64	1.64	-2.19	5.38	1.22	2.54	-.76	4.14	.76	1.80	-1.22	38.34	-3.66
FROSTBURG 2	1.81		2.34		6.04		1.29		3.19		3.51		37.48	
HAGERSTOWN	2.73	-.61	1.94	-1.65	5.58	2.28					1.59			
HANCOCK FRUIT LAB	5.96	2.40	1.48	-1.82	6.26	3.04	1.56	-1.37	2.61	-.06	1.58	-1.01	36.68	-.56
--DIVISIONAL DATA-->	2.85	-.57	1.82	-1.69	6.13	2.94	1.23	-1.74	2.78	.04	2.58	-.26	34.48	-3.97
ALLEGHENY PLATEAU														
MC HENRY 2 NW	2.02		3.60		5.60		1.54		4.59		4.65		43.15	
MERRILL	1.64	-2.03	2.01	-1.65	5.61	2.75	1.14	-1.74	3.29	.68	3.10	-.03	35.23	
OAKLAND 1 SE	1.56	-3.12	4.91	-.31	5.51	2.40	1.47	-1.70	3.08	-.06	2.87	-1.03	41.24	-6.08
SAVAGE RIVER DAM	1.86	-1.76	2.26	-1.35	6.30	3.31	.99	-1.89	3.17	.82	2.77	.09	36.18	-.93
--DIVISIONAL DATA-->	1.81	-2.46	3.59	-.59	5.80	2.64	1.33	-1.80	3.61	.61	3.43	-.22	40.18	-4.49
DELAWARE														
NORTHERN MIDDLETOWN 3 E	1.55		1.15		4.41		2.33		3.78		2.41		25.41	
NEWARK UNIVERSITY FARM	4.10	-.22	2.17	-2.33	8.46	4.85	2.08	-1.10	4.32	1.13	1.66		40.09	
WILMINGTON WSO AP	4.09	.19	4.21	.18	4.85	1.26	2.31	-.58	3.50	.17	1.90	-1.64	35.98	-5.40
WILMGTON PORTER RESVR	4.60	.47	2.19	-2.23	6.13	2.32	2.30	-.93	4.55	.79	2.43	-1.31	42.47	-2.43
--DIVISIONAL DATA-->	3.59	-.41	2.43	-1.74	5.96	2.37	2.26	-.91	4.04	.66	2.25	-1.30	37.79	-4.43
SOUTHERN														
DOVER	2.79	-1.48	2.14	-2.98	4.24	.10	2.34	-1.22	2.93	-.60	2.67	-.86	36.20	-8.24
GEORGETOWN 5 SW	3.66	-.36	.78	-4.65	3.85	.34	2.89	-.59	5.33	2.04	2.87	-.72	39.00	-4.71
GREENWOOD 2 NE	4.37		2.17		2.12		2.15		4.11		2.91		34.32	
LEWES	2.52	-1.64	2.39	-2.97	.86	-2.40	3.69	-.36	2.56	-.93	3.65	-.17	38.14	
MILFORD 4 SE	1.07	-3.31	1.01	-3.77	2.62	-1.13	2.81	-.66	3.02	-.41	2.86	-.95	36.40	-8.38
--DIVISIONAL DATA-->	2.88	-1.35	1.70	-3.54	2.74	-.93	2.78	-.69	3.59	.22	2.99	-.74	36.81	-7.86

SEE REFERENCE NOTES FOLLOWING STATION INDEX

# AVERAGE TEMPERATURES AND DEPARTURES FROM NORMAL (°F)

MARYLAND AND  
DELAWARE  
1987

STATION	JAN		FEB		MAR		APR		MAY		JUN		JUL		AUG		SEP		OCT		NOV		DEC		ANNUAL			
	TEMPERATURE	DEPARTURE	TEMPERATURE	DEPARTURE	TEMPERATURE	DEPARTURE	TEMPERATURE	DEPARTURE	TEMPERATURE	DEPARTURE	TEMPERATURE	DEPARTURE	TEMPERATURE	DEPARTURE	TEMPERATURE	DEPARTURE	TEMPERATURE	DEPARTURE	TEMPERATURE	DEPARTURE	TEMPERATURE	DEPARTURE	TEMPERATURE	DEPARTURE	TEMPERATURE	DEPARTURE		
MARYLAND																												
SOUTHERN EASTERN SHORE 01																												
ASSATEAGUE ISLAND NATL SEM			33.9		43.1		50.9		61.6		73.1		78.8		77.0		71.7		55.3		51.6							
CRISFIELD SOMERS COVE	36.4	-1.4	36.3	-1.7	46.2	-3.0	54.4	-2.0	66.1	1.4	74.9	1.1	80.8	2.1	78.6	1.8	73.3	1.4	55.9	-4.9	52.1	1.6	42.9	2.0	58.2	1.1		
PRINCESS ANNE	35.1	-1.5	34.7	-2.6	45.7	-1.7	52.8	-2.0	65.0	1.2	74.3	2.6	78.4	2.4	76.9	1.9	71.7	3.1	53.4	-4.2	50.8	2.8	41.4	2.2	56.7	1.6		
SALISBURY	35.6	-1.1	35.6	-2.8	47.7	1.7	54.5	-1.3	66.5	1.7	75.5	2.9	80.2	3.2	77.6	1.6	71.9	2.0	56.0	-4.1	52.1	2.6	42.9	2.6	57.9	1.8		
SALISBURY FAA AP	33.8	-1.3	33.8	-2.8	44.8	1.6	51.9	-2.3	64.5	1.4	73.8	2.2	78.9	2.4	75.6	3.1	70.5	1.9	52.6	-4.8	49.9	2.2	41.1	2.3	55.9	1.2		
SNOW HILL 4 N	35.4	-1.6	34.1	-3.4	45.3	1.3	52.2	-2.4	65.1	1.6	75.1	3.5	79.0	3.1	76.5	1.5	71.3	2.3	54.5	-3.6	51.6	3.1	42.0	2.5	56.8	1.7		
--DIVISIONAL DATA-->	35.3	-1.7	34.7	-2.8	45.5	1.4	52.8	-2.1	64.8	1.0	74.5	2.5	79.4	2.8	77.0	1.2	71.7	2.1	54.5	-4.2	51.4	2.5	42.1	2.3	57.0	1.4		
CENTRAL EASTERN SHORE 02																												
CAMBRIDGE WTR TRMT PL	35.2	-.5	36.3	0	47.5	3.0	54.8	-1	66.8	2.6	76.5	4.0	81.5	4.6	79.0	3.4	72.5	3.0	55.5	-3.0	52.0	3.6	42.4	3.7	58.3	2.1		
DENTON 2 E	32.7	-1.4	33.4	-2.7	47.0	2.9	52.9	-2.0	65.2	1.9	76.4	3.8	80.8	3.9	76.8	1.2	71.4	2.3	54.0	-3.7	50.1	2.5	40.5	2.7	56.8	1.9		
ROYAL OAK 2 SSW	34.6	-1.4	35.4	-1.3	47.1	1.9	53.9	-1.9	65.9	1.7	75.3	1.8	80.7	3.0	77.6	1.0	71.6	1.3	54.8	-4.5	51.3	2.4	41.9	3.0	57.5	1.6		
VIENNA	35.2	-1.7	36.0	-1.5	48.4	2.8	55.5	-1	68.4	3.6	77.1	4.1	81.4	4.0	78.2	1.9	71.9	2.0	54.4	-4.5	51.3	2.4	41.1	3.5	57.5	1.6		
--DIVISIONAL DATA-->	34.4	-1.6	35.3	-1.4	47.5	2.6	54.3	-1.0	66.6	2.0	76.3	3.4	81.1	3.9	77.9	1.9	71.9	2.2	54.7	-4.0	51.1	2.6	42.0	3.2	57.8	1.2		
LOWER SOUTHERN 03																												
LA PLATA 1 W	34.1	-1.5	35.9	-.9	47.2	2.0	54.4	-1.1	66.0	2.0	73.7	2.1	78.4	2.5	75.4	1.6	69.5	1.7	52.8	-4.8	49.8	2.5	40.7	2.8	56.5	1.7		
MECHANICSVILLE 1 E	33.5		35.2		46.0		53.8		65.5		73.8		79.0		75.0		69.2		51.5		49.9		40.6		56.1			
OHINGS FERRY LANDING	33.5	-1.0	35.2	-1.1	47.1	2.5	54.4	-1.1	66.6	2.2	74.7	2.5	80.1	3.8	76.6	1.6	70.9	2.1	53.1	-4.6	50.0	2.1	40.3	2.2	56.9	1.9		
PATUXENT RIVER	35.5		35.9		46.0		54.2		65.6		75.4		81.5		75.7		69.0		52.3		49.9		40.7		56.8			
--DIVISIONAL DATA-->	34.2	-1.7	35.6	-1.3	46.6	1.4	54.2	-1.5	65.9	1.3	74.4	2.0	79.8	3.1	75.7	1	69.7	1.4	52.4	-5.6	49.9	1.9	40.6	2.0	56.6	1.3		
UPPER SOUTHERN 04																												
ANNAPOLIS POLICE BRKS	33.9		33.9		46.1		54.2		65.5		74.2		79.8		76.2		68.7		51.1		47.5		40.4		56.0			
BALTIMORE WSO AP	32.5	-2	34.3	-1.4	46.2	2.9	53.1	-1.9	65.0	1.6	74.5	2.3	80.0	3.2	76.1	1.5	69.3	1.4	51.5	-5.4	47.8	1.5	39.8	3.3	55.8	1.7		
BELTSVILLE	31.7	-4	34.1	1.1	45.6	3.7	51.8	-1.9	63.3	1.5	73.9	3.6	79.8	4.6	75.9	1.9	68.6	1.4	50.4	-4.6	47.6	2.6	38.9	3.6	55.1	1.6		
COLLEGE PARK	33.2	-8	35.1	-1.1	47.3	2.7	54.1	-1.3	66.2	1.5	76.8	3.9	82.1	4.9	75.4	-1.6	70.1	1.9	53.1	-4.3	48.8	1.9	40.1	2.8	56.9	1.9		
DALECARLIA RESVR D C	34.3	-4	37.7	1.4	47.9	3.0	54.6	-1.1	67.6	2.6	76.2	3.4	81.4	4.2	78.4	2.5	72.0	2.8	52.9	-4.7	48.7	1.7	39.3	1.9	57.6	1.5		
GLENN DALE BELL STN	32.9	-3	34.2	-1.2	46.1	2.2	53.0	-1.2	64.8	1.4	73.0	1.8	78.7	3.1	75.6	1.1	69.0	1.0	51.6	-5.0	48.5	2.2	39.0	2.3	55.5	1.6		
LAUREL 3 W	33.0	-4	35.4	-3	47.3	3.1	53.5	-1.7	67.8	3.4	75.4	2.8	81.2	4.0	77.7	1.5	69.2	-1.4	52.5	-5.7	48.5	1.0	40.1	3.2	56.8	1.9		
NATIONAL ARBORETUM D C	32.4	-2.4	33.8	-3.0	46.7	1.1	52.5	-3.7	64.7	-1.5	74.1	1.7	79.5	1.8	76.4	-1.3	68.9	-1.2	51.9	-6.4	47.6	-1.5	39.2	1.7	55.6	-1.1		
UPPER MARLBORO 3 NNW	31.4		34.0		45.8		52.5		64.0		74.2		80.0		75.3		69.3		50.1		48.2		39.0		55.3			
--DIVISIONAL DATA-->	32.8	-1.4	34.7	-1.4	46.6	2.9	53.3	-1.1	65.4	1.7	74.7	2.8	80.3	3.8	76.3	1.0	69.5	1.8	51.7	-5.3	48.1	1.5	39.5	2.6	56.1	1.8		
NORTHERN EASTERN SHORE 05																												
CHESTERTOWN	32.6	-1.5	33.8	-1.2	46.0	2.6	53.3	-1.8	64.7	1.0	75.5	3.2	80.8	3.9	77.2	1.4	70.2	1.9	53.6	-4.2	49.6	2.6	40.1	3.1	56.5	1.0		
MILLINGTON 1 SE	31.8	-4	32.6	-1.5	46.5	3.7	52.8	-1.4	64.1	1.4	74.1	3.0	78.4	2.8	75.2	1.7	69.3	1.3	52.9	-3.6	49.6	3.5	40.6	4.5	55.7	1.3		
--DIVISIONAL DATA-->	32.2	-1.0	33.2	-1.9	46.3	2.8	53.1	-1.0	64.4	1.9	74.8	2.7	79.6	3.1	76.2	1.8	69.8	1.8	53.3	-4.3	49.6	2.6	40.4	3.4	56.1	1.7		
NORTHERN CENTRAL 06																												
ABERDEEN PHILLIPS FLD			34.3		46.2		54.1		65.4		74.9		78.9		79.4		69.4		54.9		49.8		39.2		59.3			
BALTIMORE WSO CI	36.7	1.2	38.9	1.6	50.3	4.8	56.9	1	70.0	3.7	79.7	4.4	83.5	3.6	78.7	3	71.7	0	54.9	-5.2	49.8	1.6	40.8	1.5	59.3	1.4		
BENSON POLICE BARRACKS	31.6	-4	33.6	0	46.6	4.5	53.4	1.6	65.2	2.8	74.2	3.6	79.4	4.5	75.5	1.7	68.1	1.6	51.6	-4.4	46.4	1.1	37.4	2.3	55.3	1.5		
BOYDS 2 NW	32.2		34.5		45.8		52.7		64.8		73.4		78.1		75.3		68.0		52.3		48.7		39.1		55.4			
CATOCTIN MOUNTAIN PARK	28.9		30.8		43.1		50.1		62.6		70.9		74.8		71.3		64.8		49.8		45.6		35.2		52.3			
CLARKSVILLE 3 NNE	31.4		32.3		44.8		51.8		64.1		73.3		77.8		74.3		67.4		50.7		47.6		38.5		54.5			
CONOWING DAM	29.9	-3	31.8	-1.5	43.6	2.5	51.5	-1.5	62.7	1.7	72.3	1.7	77.7	2.6	72.9	-1.1	65.9	-1.3	48.8	-6.5	44.9	1.8	36.6	2.5	53.2	1.1		
DAMASCUS 2 SW	30.8		33.5		44.8		51.9		64.5		72.9		77.6		74.8		67.5		51.4		47.8		38.4		54.7			
EMMITSBURG 2 SE	29.3		31.8		43.5		51.0		62.9		72.1		76.6		73.6		66.5		49.2		45.5		37.5		53.3			
FREDRICK POLICE BRKS	33.3		35.7		46.7		54.2		66.6		76.2		80.4		77.2		69.6		52.9		50.0		40.5		56.9			
PARKTON 2 SW																												
ROCKVILLE 1 NE	31.3	-2.0			46.4	2.3	54.5	-1.4	67.3	3.4	76.7	5.2	82.6	6.9	78.4	4.0	70.2	2.5	51.5	-5.3	47.9	1.6	39.0	2.6				
TOWSON			29.7		44.6				65.6		74.5								52.0		48.6		39.0					
UNIONVILLE	27.8	-1.7	30.2	-1.7	42.1	1.2	49.7	-1.8	62.5	1.6	70.3	1.0	75.4	1.8	71.3	-1.9	66.3	1.0	48.7	-5.1	44.3	1.1	35.8	2.4	52.0	-1.1		
WESTMINSTER POLICE BRK	30.4	-1.3	32.6	-1.4	46.0	5.0	52.7	-1.5	65.6	4.1	74.3	4.4	78.7	4.5	74.5	1.5	67.3	1.0	50.7	-4.2	47.4	3.1	37.2	3.2	54.8	2.0		

SEE REFERENCE NOTES FOLLOWING STATION INDEX

# AVERAGE TEMPERATURES AND DEPARTURES FROM NORMAL (°F)

MARYLAND AND  
DELAWARE  
1987

STATION	JAN		FEB		MAR		APR		MAY		JUN		JUL		AUG		SEP		OCT		NOV		DEC		ANNUAL	
	TEMPERATURE	DEPARTURE	TEMPERATURE	DEPARTURE	TEMPERATURE	DEPARTURE	TEMPERATURE	DEPARTURE	TEMPERATURE	DEPARTURE	TEMPERATURE	DEPARTURE	TEMPERATURE	DEPARTURE	TEMPERATURE	DEPARTURE	TEMPERATURE	DEPARTURE	TEMPERATURE	DEPARTURE	TEMPERATURE	DEPARTURE	TEMPERATURE	DEPARTURE	TEMPERATURE	DEPARTURE
HOODSTOCK	31.9	.5	33.2	-.3	45.6	3.5	52.6	-.3	65.0	2.6	74.2	3.9	78.7	3.8	75.5	2.0	68.6	1.8	51.6	-3.6	48.2	3.5	39.2	4.0	55.4	1.8
--DIVISIONAL DATA----->	31.2	-.4	33.1	-.6	45.3	3.0	52.7	-.5	65.0	2.4	74.0	3.2	78.6	3.5	74.9	1.0	68.2	.8	51.2	-4.6	47.3	2.1	38.2	2.9	55.0	1.1
APPALACHIAN MOUNTAIN 07																										
CUMBERLAND 2	30.1	-.8	34.2	1.0	44.1	2.0	51.6	-1.9	64.7	1.9	73.4	3.0	78.5	4.1	74.3	1.1	66.4	-.2	49.9	-5.1	46.3	2.2	37.0	2.7	54.2	.8
FROSTBURG 2	25.0		28.5		38.1		45.6		58.0		67.7		72.3		68.5		61.8		45.4		42.3		32.2		48.8	
HAGERSTOWN	30.0	-.6	33.3	.4	44.8	2.7	52.5	-1.1	65.6	2.5	74.5	3.5	79.3	4.4	75.6	2.2	68.5	1.7					38.0	3.8		
HANCOCK FRUIT LAB	30.6	1.4	32.9	1.8	44.1	4.1	50.8	-.3	63.9	3.7	73.1	4.6	77.3	4.4	73.9	2.2	66.2	1.3	49.3	-3.6	45.9	3.1	37.8	4.9	53.8	2.3
--DIVISIONAL DATA----->	28.9	-1.2	32.2	.0	42.8	1.8	50.1	-2.2	63.1	1.5	72.2	2.7	76.9	3.5	73.1	.8	65.7	.0	48.2	-6.1	44.8	1.2	36.3	2.6	52.9	.4
ALLEGHENY PLATEAU 08																										
MC HENRY 2 NW	23.9		28.2		39.1		44.6		60.1		67.0		71.3		68.7		61.6		45.5		41.7		31.0		48.6	
OAKLAND 1 SE	24.8	-1.4	28.5	.5	38.7	2.3	45.9	-1.3	59.3	3.0	67.1	3.5	70.9	3.5	68.4	1.7	61.4	.9	45.8	-3.7	42.4	3.2	33.8	3.9	48.9	1.3
SAVAGE RIVER DAM	26.2	-.2	29.5	1.6	39.7	2.9	47.0	-1.4	60.1	2.3	68.4	3.0	72.8	3.3	69.9	1.3	62.8	.8	46.0	-4.8	42.6	2.3	34.0	3.8	49.9	1.2
--DIVISIONAL DATA----->	25.0	-.5	28.7	1.5	39.2	3.4	45.8	-1.4	59.8	3.2	67.5	3.5	71.7	4.0	69.0	2.2	61.9	1.3	45.8	-3.7	42.2	3.1	32.9	3.5	49.1	1.7
DELAWARE																										
NORTHERN 01																										
MIDDLETOWN 3 E	M31.1		31.7		45.3		52.4		63.5		72.9		78.4		74.1		68.2		51.9		48.4		39.1		54.8	
NEWARK UNIVERSITY FARM	31.4	-.3	32.1	-1.6	45.3	3.2	52.7	-.1	64.6	1.9	74.2	2.9	78.9	3.2	74.6	-.1	68.1	.2	51.6	-4.7	47.9	2.1	38.1	2.5	55.0	.8
WILMINGTON WSO AP	31.4	-.2	31.9	-1.3	44.6	2.8	52.3	-.1	63.1	.9	73.5	2.3	79.1	3.1	74.3	-.5	68.3	.4	51.7	-4.6	47.4	1.8	38.6	3.1	54.7	.7
WILMINGTON PORTER RESVR	31.5	.7	32.9	.3	45.1	4.1	52.9	1.1	64.3	2.7	74.4	4.0	78.8	3.9	74.5	.8	68.4	1.5	52.4	-3.3	47.8	2.6	39.1	4.0	55.2	1.9
--DIVISIONAL DATA----->	31.4	-.2	32.2	-1.3	45.1	3.1	52.6	-.1	63.9	1.5	73.8	2.6	78.8	3.1	74.4	-.1	68.3	.5	51.9	-4.5	47.9	2.1	38.7	3.0	54.9	.8
SOUTHERN 02																										
DOVER	34.1	-.3	33.6	-2.8	47.4	3.1	53.8	-.9	65.9	1.7	76.7	4.1	81.4	4.4	77.4	1.6	71.3	1.7	55.1	-3.5	52.2	4.0	42.2	3.8	57.6	1.4
GEORGETOWN 5 SW	32.1	-2.1	32.0	-3.8	44.4	.9	51.4	-2.2	63.1	.0	73.6	2.1	78.5	2.4	75.6	.7	70.0	1.6	52.9	-4.1	49.4	2.2	40.8	3.0	55.3	.1
GREENWOOD 2 NE	32.9		33.5		45.8		52.7		64.4		74.3		79.1		75.4		70.5		53.6		49.7		41.0		56.1	
LEWES	35.2	.6	33.9	-2.2	45.3	2.0	51.1	-2.0	64.5	2.4	74.9	4.2	79.5	4.3	76.1	1.8	71.3	2.9	55.6	-1.9	51.9	3.9	42.3	3.8	56.8	1.7
MILFORD 4 SE	32.9	-1.4	31.4	-4.4	44.8	.5	51.6	-2.8	64.5	.6	75.2	3.2	79.0	2.5	75.0	-.2	70.2	1.4	54.0	-3.7	50.4	2.8	41.1	3.2	55.8	.1
--DIVISIONAL DATA----->	33.4	-1.1	32.9	-3.2	45.5	1.6	52.1	-2.0	64.5	1.1	74.9	3.1	79.5	3.3	75.9	.8	70.7	2.0	54.2	-3.5	50.7	2.9	41.5	3.2	56.3	.7

SEE REFERENCE NOTES FOLLOWING STATION INDEX





# TEMPERATURE EXTREMES AND FREEZE DATA (°F)

MARYLAND AND  
DELAWARE  
1987

STATION	HIGHEST	DATE	LOWEST	DATE	LAST SPRING MINIMUM OF										FIRST FALL MINIMUM OF										NUMBER OF DAYS BETWEEN DATES				
					16° OR BELOW		20° OR BELOW		24° OR BELOW		28° OR BELOW		32° OR BELOW		32° OR BELOW		28° OR BELOW		24° OR BELOW		20° OR BELOW		16° OR BELOW		16° OR BELOW	20° OR BELOW	24° OR BELOW	28° OR BELOW	32° OR BELOW
					DATE	TEMP.	DATE	TEMP.	DATE	TEMP.	DATE	TEMP.	DATE	TEMP.	DATE	TEMP.	DATE	TEMP.	DATE	TEMP.	DATE	TEMP.	DATE	TEMP.	DATE	TEMP.	DATE	TEMP.	DATE
APPALACHIAN MOUNTAIN 07	100	8/17	1	1/27	2/16	12	3/11	18	3/14	23	3/31	26	4/1	31	10/8	30	10/25	28	11/20	21	11/21	20	12/30	15	31	25	25	20	19
CUMBERLAND 2	91	8/18	1	1/26	3/12	13	4/1	19	4/2	22	4/6	28	4/6	28	10/9	28	10/9	28	11/11	21	11/21	14	11/21	14	25	23	22	18	18
FROSTBURG 2					3/11	15	3/11	15	4/1	23	4/2	28	4/7	32	MSG		MSG		MSG		MSG		MSG						
HAGERSTOWN					3/11	15	3/11	15	4/1	23	4/2	28	4/7	32	MSG		MSG		MSG		MSG		MSG						
HANCOCK FRUIT LAB	98	8/17	-11	1/27	3/14	15	3/14	15	4/1	23	4/1	23	4/29	29	10/5	32	10/9	28	10/26	23	11/22	15	11/22	15	25	23	20	19	15
ALLEGHENY PLATEAU 08																													
MC HENRY 2 NW	91	8/18	-4	1/25	4/1	16	4/2	20	4/4	23	4/6	25	4/30	32	10/4	31	10/9	28	11/11	18	11/11	18	11/21	12	23	22	18	15	17
OAKLAND 1 SE	91	8/17	-18	1/27	3/18	16	4/1	19	4/9	24	5/5	28	5/9	30	9/26	32	10/9	23	10/9	23	10/26	19	11/21	12	24	20	18	15	14
SAVAGE RIVER DAM	94	7/24	-5	1/27	3/11	16	3/17	17	4/2	23	4/4	28	5/1	32	10/9	28	10/9	28	10/26	24	11/21	18	11/22	15	25	24	20	18	16
DELAWARE																													
NORTHERN MIDDLETOWN 3 E 01	99	7/21	-5	1/28	2/26	15	3/11	19	3/11	19	4/1	28	4/6	32	10/15	32	10/26	28	11/21	19	11/21	19	12/30	14	30	25	25	20	19
NEWARK UNIVERSITY FARM	99	7/21	-3	1/28	2/16	8	3/11	17	4/1	24	4/1	24	4/6	32	10/15	31	10/26	28	11/12	22	11/21	15	11/21	15	27	25	22	20	19
WILMINGTON WSO AP	98	7/21	0	1/28	2/16	9	3/11	19	3/11	19	4/1	28	4/5	32	10/26	30	11/21	22	11/21	22	11/22	20	12/30	14	31	25	25	23	20
WILMINGTON PORTER RESVR	96	7/21	-4	1/25	2/15	8	3/11	18	3/11	18	3/14	28	4/1	29	10/27	31	11/21	19	11/21	19	11/21	19	12/30	13	31	25	25	22	20
SOUTHERN DOVER	101	7/21	-4	1/28	2/16	10	3/11	19	3/11	19	4/1	28	4/1	28	10/29	32	11/12	26	11/21	21	11/22	17	12/30	15	31	25	25	22	21
GEORGETOWN 5 SW	100	7/22	-13	1/28	2/17	13	3/6	20	3/11	23	3/25	28	4/6	30	10/9	32	10/26	28	11/21	23	11/22	16	11/22	16	27	26	25	21	18
GREENWOOD 2 NE	100	7/21	-8	1/28	2/16	11	2/16	11	3/11	22	3/14	28	4/6	31	10/26	31	11/21	22	11/21	22	12/30	18	12/31	14	31	31	25	25	20
LEWES	96	7/20	7	1/28	2/16	14	2/16	14	3/10	23	3/11	25	4/6	30	11/7	32	11/21	24	11/21	24	12/30	17	NONE						
MILFORD 4 SE	98	7/21	-4	1/28	2/16	10	3/11	20	3/12	23	3/17	28	4/6	30	10/23	32	11/7	28	11/21	23	12/30	16	12/30	16	31	29	24	23	20

SEE REFERENCE NOTES FOLLOWING STATION INDEX

MONTHLY AND SEASONAL COOLING DEGREE DAYS  
BASE=65 DEGREES FAHRENHEIT

MARYLAND AND  
DELAWARE  
1987

STATION	JAN	FEB	MAR	APR	MAY	JUN	JUL	AUG	SEP	OCT	NOV	DEC	TOTAL	SEASONAL NORM
MARYLAND														
SOUTHERN EASTERN SHORE 01														
ASSATEAGUE ISLAND NATL SE	-	0	0	0	63	250	435	380	218	2	2	-	-	-
CRISFIELD SOMERS COVE	0	0	0	B 1	107	303	497	427	259	0	0	0	B 1594	1423
PRINCESS ANNE	0	0	B	0	103	287	420	376	218	0	4	0	B 1409	1063
SALISBURY	0	0	0	0	122	320	477	394	218	0	2	0	0	1536
SALISBURY FAA AP	0	0	0	0	102	270	438	336	183	0	1	0	0	1330
SNOW HILL 4 N	0	0	0	1	102	311	441	363	200	0	4	0	0	1422
CENTRAL EASTERN SHORE 02														
CAMBRIDGE WTR TRMT PL	0	0	0	3	129	350	518	441	235	0	1	0	1677	1167
DENTON 2 E	0	0	0	4	112	349	498	376	209	0	2	0	0	1550
ROYAL OAK 2 SSW	0	0	0	2	112	317	B 490	400	208	0	0	0	B 1529	1286
VIENNA	0	0	0	4	158	B 370	515	416	219	0	-	B	0	1245
LOWER SOUTHERN 03														
LA PLATA 1 W	0	0	0	4	114	B 268	421	332	155	0	1	0	B 1295	1071
MECHANICSVILLE 1 E	0	0	0	2	97	274	443	321	147	0	3	0	0	1287
OWINGS FERRY LANDING	0	0	0	4	126	299	477	366	194	0	1	0	0	1467
PATUXENT RIVER	0	0	0	0	119	314	517	341	144	0	B 1	0	B 1436	1116
UPPER SOUTHERN 04														
ANNAPOLIS POLICE BRKS	0	0	0	1	100	283	467	358	144	0	0	0	1353	
BALTIMORE WSO AP	0	0	0	7	115	292	473	352	152	0	0	0	1391	1138
BELTSVILLE	0	0	0	1	90	278	469	342	146	0	0	0	0	1326
COLLEGE PARK	0	0	0	B 5	134	360	536	345	178	1	0	0	B 1559	1203
DALECARLIA RESVR D C	0	0	0	4	143	342	B 514	424	224	0	0	0	0	B 1651
GLENN DALE BELL STN	0	0	0	3	101	252	B 434	B 337	145	0	0	0	0	B 1272
LAUREL 3 W	0	0	B	6	166	B 322	509	400	150	0	0	0	0	B 1553
NATIONAL ARBORETUM D C	0	0	0	0	101	280	460	361	142	1	0	0	0	1345
UPPER MARLBORO 3 NNW	0	0	0	0	102	286	474	325	150	0	4	0	0	1341
NORTHERN EASTERN SHORE 05														
CHESTERTOWN	0	0	0	5	108	321	495	386	172	0	0	0	1487	1158
MILLINGTON 1 SE	0	0	0	2	95	281	425	328	147	0	B	0	0	B 1278
NORTHERN CENTRAL 06														
ABERDEEN PHILLIPS FLD	-	0	0	4	109	306	B 435	-	145	-	-	B	0	-
BALTIMORE WSO CI	0	0	0	17	204	449	582	431	213	0	2	0	0	1898
BENSON POLICE BARRACKS	0	0	0	4	109	284	454	333	114	0	0	0	0	1298
BOYDS 2 NW	0	0	0	7	104	259	413	328	116	0	2	0	0	1229
CATOCTIN MOUNTAIN PARK	0	0	0	4	82	193	317	221	52	0	0	0	0	869
CLARKSVILLE 3 NNE	0	0	0	0	85	260	404	305	114	0	0	0	0	1168
CONOWINGO DAM	0	0	0	0	79	229	B 399	256	76	0	0	0	0	B 1039
DAMASCUS 2 SW	0	0	0	6	104	247	400	311	108	0	0	0	0	1176
EMMITTSBURG 2 SE	0	0	0	0	76	222	365	B 284	90	0	0	0	0	B 1037
FREDRICK POLICE BRKS	0	0	0	B 8	137	347	486	B 383	158	0	0	0	0	B 1519
PARKTON 2 SW	-	-	-	-	-	-	-	-	-	-	-	-	-	-
ROCKVILLE 1 NE	0	0	0	14	149	361	555	424	174	0	0	0	0	1063
TOWSON	0	0	0	-	116	296	-	-	211	0	B	0	0	-
UNIONVILLE	0	0	0	0	59	178	329	221	81	0	0	0	0	868
WESTMINSTER POLICE BRK	0	0	0	7	117	285	B 433	304	110	0	1	0	0	B 1257
WOODSTOCK	0	0	0	5	103	285	432	335	132	0	0	0	0	1292
APPALACHIAN MOUNTAIN 07														
CUMBERLAND 2	0	0	0	12	103	B 263	426	310	85	0	0	0	0	B 1199
FROSTBURG 2	0	0	0	0	37	126	250	157	20	0	0	0	0	590
HAGERSTOWN	0	0	0	B 7	119	295	447	341	133	-	-	0	0	-
HANCOCK FRUIT LAB	0	0	0	2	89	254	391	294	95	0	0	0	0	1125

SEE REFERENCE NOTES FOLLOWING STATION INDEX

MONTHLY AND SEASONAL COOLING DEGREE DAYS  
BASE=65 DEGREES FAHRENHEIT

STATION	JAN	FEB	MAR	APR	MAY	JUN	JUL	AUG	SEP	OCT	NOV	DEC	TOTAL	SEASONAL NORM
ALLEGHENY PLATEAU 08														
MC HENRY 2 NW	0	0	0	0	49	109	221	163	22	0	0	0	564	
OAKLAND 1 SE	0	0	0	2	29	110	206	155	22	0	0	0	524	276
SAVAGE RIVER DAM	0	0	0	1	45	139	265	B 195	33	0	0	0	B 678	417
DELAWARE														
NORTHERN 01														
MIDDLETOWN 3 E	B 0	0	0	1	90	247	422	288	123	0	B 0	0	B 1171	
NEWARK UNIVERSITY FARM	0	0	0	3	103	286	436	308	125	0	0	0	0	1261
WILMINGTON WSO AP	R 0	0	0	3	91	264	446	295	129	0	0	0	0	1228
WILMGTON PORTER RESVR	0	0	0	4	102	289	433	302	132	0	B 0	0	B 1262	901
SOUTHERN 02														
DOVER	0	0	B 0	3	136	356	516	390	199	0	2	0	B 1602	1179
GEORGETOWN 5 SW	0	0	0	0	87	272	424	338	171	0	6	0	0	1298
GREENWOOD 2 NE	0	0	0	0	B 108	289	439	333	181	0	1	0	B 1351	1050
LEWES	0	0	0	0	121	301	457	350	200	0	5	0	0	1434
MILFORD 4 SE	0	0	0	0	113	312	442	315	171	0	2	0	0	1355

SEE REFERENCE NOTES FOLLOWING STATION INDEX

# TOTAL EVAPORATION AND WIND MOVEMENT

MARYLAND AND  
DELAWARE  
1987

STATION		JAN	FEB	MAR	APR	MAY	JUN	JUL	AUG	SEP	OCT	NOV	DEC	ANNUAL
MARYLAND														
UPPER SOUTHERN	04													
BELTSVILLE		-	-	-	B 1646	727	709	776	1113	650	1148	-	-	-
		-	-	-	B 3.71	5.16	7.09	8.28	7.13	B 4.94	3.35	-	-	-
		-	-	-	65.1	81.6	92.3	96.5	89.7	82.7	M 65.2	-	-	M -
		-	-	-	45.4	55.6	66.5	70.8	66.6	62.5	M 41.7	-	-	M -
UPPER MARLBORO	3 NNW	-	-	-	B 492	251	338	259	-	-	316	523	-	-
		-	-	-	B 3.49	5.68	7.13	7.97	5.33	B 3.86	2.98	B 2.01	-	-
		-	-	-	64.8	81.1	91.3	95.5	88.7	81.9	64.6	54.7	-	M -
		-	-	-	47.4	58.9	68.2	73.4	69.6	64.8	44.5	40.6	-	M -
ALLEGHENY PLATEAU														
SAVAGE RIVER DAM	08													
		-	-	-	-	766	B 447	347	-	B 361	711	-	-	-
		-	-	-	-	B 6.04	B 4.85	5.71	B 6.20	-	B 2.44	-	-	-
		-	-	-	M 62.2	74.8	-	87.8	82.7	73.1	M 54.0	-	-	M -
		-	-	-	M 41.5	51.6	-	64.6	60.9	55.1	M 38.2	-	-	M -
DELAWARE														
NORTHERN	01													
NEWARK UNIVERSITY FARM		-	-	-	-	1141	1007	726	792	807	896	-	-	-
		-	-	-	-	B 5.46	6.90	B 6.76	B 6.34	B 4.34	B 2.55	-	-	-
		-	-	-	-	-	-	-	-	-	-	-	-	-
		-	-	-	-	-	-	-	-	-	-	-	-	-
SOUTHERN														
GEORGETOWN	5 SW													
		-	-	-	B 3098	2255	2310	1944	1804	1592	2081	-	-	-
		-	-	-	-	B 6.78	B 7.93	B 9.03	8.00	B 5.88	-	-	-	-
		-	-	-	M 66.0	79.8	87.9	95.6	90.5	83.5	M -	-	-	M -
		-	-	-	M 49.6	59.0	69.5	M 73.5	69.7	64.9	M -	-	-	M -

SEE REFERENCE NOTES FOLLOWING STATION INDEX

# STATION INDEX

MARYLAND AND  
DELAWARE  
1987

STATION	INDEX NO.	DIVISION NO.	COUNTY	LATITUDE	LONGITUDE	ELEVATION FEET	YEARS OF RECORD			OPENED OR CLOSED DURING YR		SEE REFERENCE NOTES	
							TEMP.	PRECIP.	EVAP.	MONTH OPENED	MONTH CLOSED		
MARYLAND													
ABERDEEN PHILLIPS FLD	00193	06	HARFORD	39 28	76 10W	57	63	63	0			C	H
ANNAPOLIS POLICE BRKS	01933	04	ANNE ARUNDEL	38 59	76 30W	25	30	30	0				H
ASSATEAGUE ISLAND NATL	03335	01	WORCESTER	38 14	75 8W	7	21	21	0				H
BALTIMORE WSO AP	0465	04	ANNE ARUNDEL	39 11	76 40W	196	54	54	0			C	H
BALTIMORE WSO CI #	04700	06	BALTO CITY	39 17	76 37W	91	118	118	0			C	H
BELTSVILLE	0700	04	PRN GEORGES	39 2	76 53W	120	51	51	4			C	H
BENSON POLICE BARRACKS	0732	06	HARFORD	39 30	76 23W	365	41	41	0				H
BOYDS 2 NW	1032	06	MONTGOMERY	39 13	77 20W	580	36	36	0				H
BRIGHTON DAM	1125	06	MONTGOMERY	39 12	77 1W	330		43	0				H
CAMBRIDGE WTR TRMT PL	1385	02	DORCHESTER	38 34	76 4W	5	94	94	0				H
CATOCTIN MOUNTAIN PARK	1530	06	FREDERICK	39 39	77 29W	1610	22	22	0			C	H
CENTREVILLE	1627	05	QUEEN ANNES	39 3	76 4W	60	36	36	0				H
CHESTERTOWN	1750	05	KENT	39 13	76 4W	40	83	83	0				H
CLARKSVILLE 3 NNE	1862	06	HOWARD	39 15	76 56W	365	22	22	0				H
COLLEGE PARK	1995	04	PRN GEORGES	38 59	76 57W	90	102	102	0			C	H
CONOWINGO DAM	2060	06	HARFORD	39 39	76 10W	40	53	53	0				H
CRISFIELD SOMERS COVE	2215	01	SOMERSET	37 59	75 52W	8	26	26	0				H
CUMBERLAND 2	2282	07	ALLEGANY	39 38	78 45W	730	16	16	0				H
DALECARLIA RESVR D C	2325	04		38 56	77 7W	146	43	43	0				H
DAMASCUS 2 SW	2335	06	MONTGOMERY	39 16	77 14W	720	16	16	0				H
DENTON 2 E	2523	02	CAROLINE	38 53	75 48W	50	38	38	0				H
EDGEMONT	2770	07	WASHINGTON	39 40	77 33W	905	0	50	0				H
EMMITSBURG 2 SE	2906	06	FREDERICK	39 41	77 18W	416	33	33	0				H
FREDRICK POLICE BRKS	3348	06	FREDERICK	39 25	77 26W	380	16	16	0				H
FREDERICK 3 E	3355	06	FREDERICK	39 24	77 22W	385	0	40	0				H
FROSTBURG 2	3415	07	ALLEGANY	39 40	78 56W	2170	17	17	0				H
GLENN DALE BELL STN	3675	04	PRN GEORGES	38 58	76 48W	150	68	68	0				H
HAGERSTOWN	3975	07	WASHINGTON	39 39	77 44W	660	47	47	0				H
HANCOCK FRUIT LAB	4030	07	WASHINGTON	39 42	78 11W	428	55	55	0			C	H
LA PLATA 1 W	5080	03	CHARLES	38 32	77 0W	140	74	74	0				H
LAUREL 3 W	5111	04	PRN GEORGES	39 6	76 54W	400	98	98	0				H
MC HENRY 2 NW	5832	08	GARRETT	39 35	79 22W	2680	18	18	0			C	H
MECHANICSVILLE 1 E	5865	03	ST MARYS	38 27	76 41W	100	27	27	0				H
MERRILL	5894	08	GARRETT	39 36	79 5W	1790	0	37	0				H
MILLINGTON 1 SE	5985	05	KENT	39 16	75 52W	30	92	92	0				H
NATIONAL ARBORETUM D C	6350	04		38 54	76 59W	50	42	42	0				H
OAKLAND 1 SE	6620	08	GARRETT	39 24	79 24W	2420	91	91	0				H
OWINGS FERRY LANDING	6770	03	CALVERT	38 41	76 40W	160	72	72	0				H
PARKTON 2 SW	6844	06	BALTIMORE	39 38	76 42W	600	36	36	0			C	H
PATUXENT RIVER	6915	03	ST MARY'S	38 20	76 25W	38	13	13	0		MAY	C	H
POTOMAC FILTER PLANT	7272	06	MONTGOMERY	39 2	77 15W	270	0	27	0				H
PRINCESS ANNE	7330	01	SOMERSET	38 13	75 41W	20	40	40	0				H
ROCKVILLE 1 NE	7705	06	MONTGOMERY	39 6	77 6W	440	41	41	0				H
ROYAL OAK 2 SSW	7806	02	TALBOT	38 43	76 11W	10	41	41	0				H
SALISBURY	8000	01	WICOMICO	38 22	75 35W	10	82	82	0				H
SALISBURY FAA AP #	8005	01	WICOMICO	38 20	75 31W	48	41	41	0				H
SAVAGE RIVER DAM	8065	08	GARRETT	39 31	79 8W	1495	38	41	3			C	H
SNOW HILL 4 N	8380	01	WORCESTER	38 14	75 23W	28	73	73	0				H
TOWSON	8877	06	BALTIMORE	39 23	76 34W	390	51	76	0				H
UNIONVILLE	9030	06	FREDERICK	39 27	77 11W	430	49	47	0			C	H
UPPER MARLBORO 3 NNW	9070	04	PRN GEORGES	38 52	76 47W	98	33	33	3				H
VIENNA	9140	02	DORCHESTER	38 29	75 50W	12	40	40	0				H
WESTMINSTER POLICE BRK	9440	06	CARROLL	39 33	76 58W	765	10	10	0				H

SEE REFERENCE NOTES FOLLOWING STATION INDEX

# STATION INDEX

MARYLAND AND  
DELAWARE  
1987

STATION	INDEX NO.	DIVISION NO.	COUNTY	LATITUDE	LONGITUDE	ELEVATION FEET	YEARS OF RECORD			OPENED OR CLOSED DURING YR		SEE REFERENCE NOTES
							TEMP.	PRECIP.	EVAP.	MONTH OPENED	MONTH CLOSED	
WOODSTOCK	9750	06	BALTIMORE	39 20	76 52 W	460	119	119	0			H
DELAWARE												
DOVER	2730	02	KENT	39 39	75 31 W	30	101	100	0			H
GEORGETOWN 5 SW	3570	00NN	SUSSEX	38 38	75 27 W	45	43	43	3			C H
GREENWOOD 2 NE	3595	00NN	SUSSEX	38 50	75 35 W	45	44	44	0	JAN		
LEWES	5320	00NN	SUSSEX	38 46	75 8 W	15	45	45	0			H
MIDDLETOWN 3 E	5852	0011	NEW CASTLE	39 27	75 40 W	55	37	37	0			H
MILFORD 4 SE	5915	002	SUSSEX	38 54	75 28 W	30	93	93	0			H H
NEWARK UNIVERSITY FARM	6410	01	NEW CASTLE	39 40	75 44 W	90	76	76	3			C H H
WILMINGTON WSO AP	R 9595	01	NEW CASTLE	39 40	75 36 W	79	41	41	0			C H J
WILMGTN PORTER RESVR	9605	01	NEW CASTLE	39 46	75 32 W	274	77	77	0			H

SEE REFERENCE NOTES FOLLOWING STATION INDEX

# REFERENCE NOTES

MARYLAND AND  
DELAWARE  
1987

## DEFINITIONS

**STATION NAMES:** Name of the city, town or locality. Figures and letters following the station names indicate the distance in miles and direction from the post office or town community center.

**DIVISIONS:** Areas within a state of similar climatological characteristics. Division averages are calculated using data from stations that record both temperature and precipitation (ie: not precipitation alone).

**NORMALS:** The average value of the meteorological element over the time period - 1951-1980. The normals for National Weather Service localities have been adjusted so as to be representative for the current observation site.

**TEMPERATURE EXTREMES AND FREEZE DATA:** Spring minimum dates are obtained from data for January through June; Fall dates are from July through December data. "NONE" indicates temperature threshold not reached. "MSG" indicates available data insufficient to determine date.

**MONTHLY DEGREE DAY TOTALS:** One heating (cooling) degree day is accumulated for each degree that the daily mean temperature is below (above) 65 deg. F

**SOIL TEMPERATURE EXTREMES:** The highest and lowest MAX and MIN temperature for each month and the year.

**WIND:** (As shown in "Evaporation and Wind" table) The total wind movement in miles over the evaporation pan as determined by an anemometer recorder located 6-8 inches above the pan.

## SYMBOLS AND LETTERS USED IN THE DATA TABLES

- No record. Data not recorded, determined unreliable by quality control checks, or not received in time for publication.
- \* Rain gage not read. Precipitation is included in the amount following the asterisks. Time distribution not known.
- // Rain gage equipped with a windshield.
- A Amount of precipitation is the total of observer's entries for the current month. It may include precipitation that occurred during the previous month. Refer to monthly bulletins to determine date of last reading. (HAWAII stations)
- B Estimated total value for wind, evaporation, or cooling degree days.
- M Insufficient or partial data. M is appended to average and/or total values computed with 1-9 daily values missing. M appears alone if 10 or more daily values are missing.
- R Amounts from recording rain gage.
- T Trace. An amount too small to measure.
- V Includes total for previous month(s). (See \* above)
- Z Same as M but the Z has overprinted a Negative sign or leading digit (eg. Z14.6 = M-14.6, Z08.2 = M108.2).

## SYMBOLS AND LETTERS USED IN THE STATION INDEX TABLE

# Thermometers located in a rooftop shelter.

C Station is equipped with a recording rain gage (R) but values in this bulletin are from a non-recording rain gage unless indicated by an R.

G Observations appear in "Soil Temperatures" table.

H Observations appear in "Snowfall and Snow on Ground" table in Monthly "Climatological Data" publications.

J Station also published as a "Local Climatological Data" bulletin.

**Seasonal Tables:** Monthly and seasonal snowfall and heating degree days for the 12 months ending with the June data are published in the July issue of "Climatological Data".

Cooling degree days for the calendar year are published in the "Climatological Data Annual Summary".

Additional precipitation data are contained in the "Hourly Precipitation Data" bulletin for each state, except Alaska.

The graphic displays appearing in this publication were first produced for the 1986 annual. The types of graphs and the information they portray may vary from year to year and from state to state in order to highlight climatic features of state, regional, and historical interest. Some graphs present information for "clusters". A cluster is a group of up to four (4) adjacent divisions that comprise an area of similar climate.

Information concerning the history of changes in locations, exposure, etc. of substations is kept on file at the National Climatic Data Center. Similar historical information for regular National Weather Service Offices is available from the "Local Climatological Data" annual bulletin.

Additional Information regarding the climate of this state may be obtained by writing to the address below or to any weather service office near you. The contents of this publication may be reprinted or otherwise used freely with proper credit to the National Climatic Data Center, Asheville, NC.

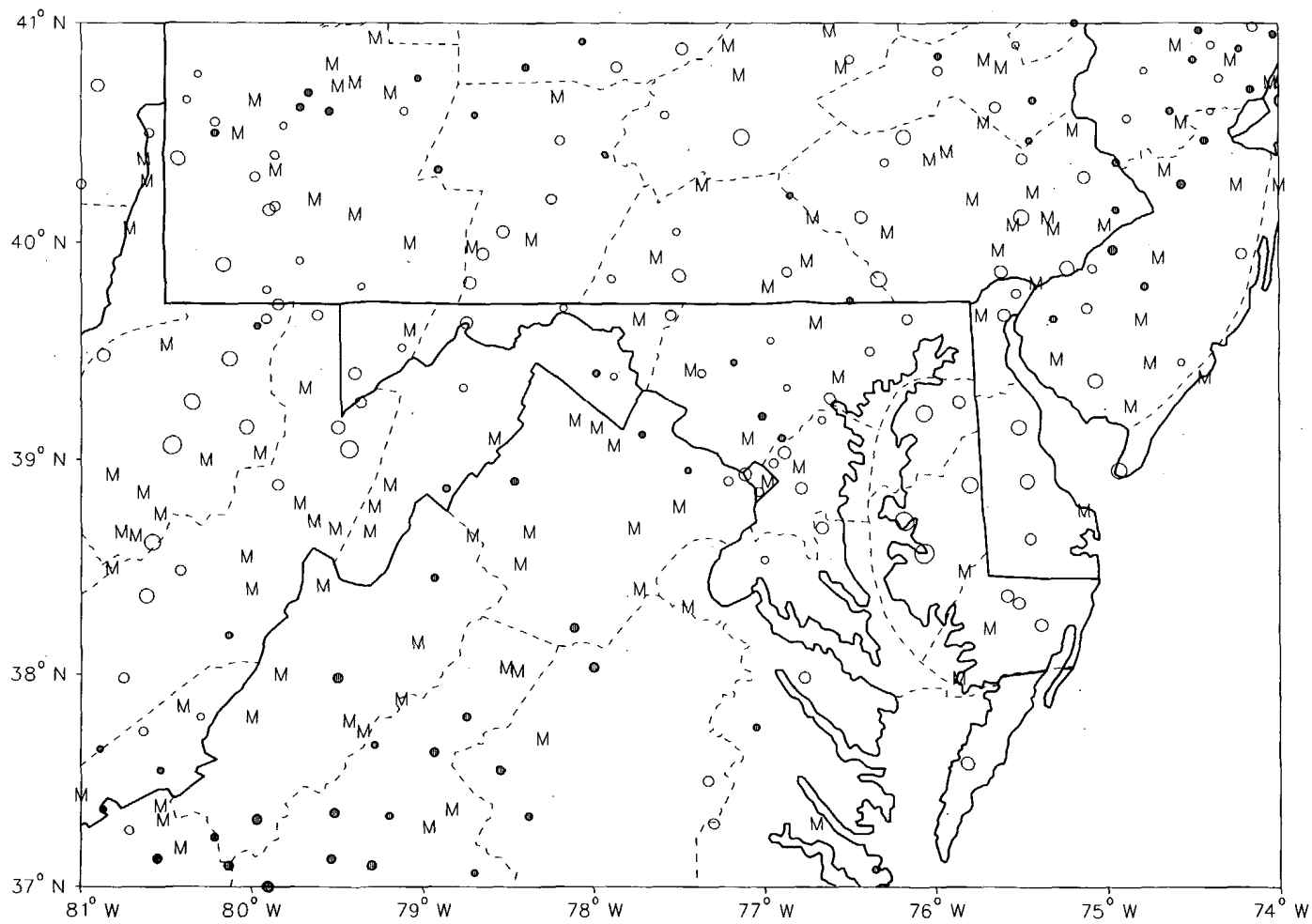
## SUBSCRIPTION, PRICE AND ORDERING INFORMATION AVAILABLE FROM:

NATIONAL CLIMATIC DATA CENTER  
FEDERAL BUILDING  
ASHEVILLE, N. C. 28801-2696

USCOMM-NOAA-ASHEVILLE, N.C. 1987-0585

CUMULATIVE ANNUAL PRECIPITATION DEPARTURE FROM  
 INDIVIDUAL STATION NORMALS (1951-1980)  
 FOR 1987  
 DELAWARE

- M INCOMPLETE DATA FOR THE PERIOD
- ▽ EXACTLY NORMAL
- ○ ○ ○ 5,10,20,... 50% OR MORE BELOW NORMAL
- ● ● ● 10,20,40,...100% OR MORE ABOVE NORMAL



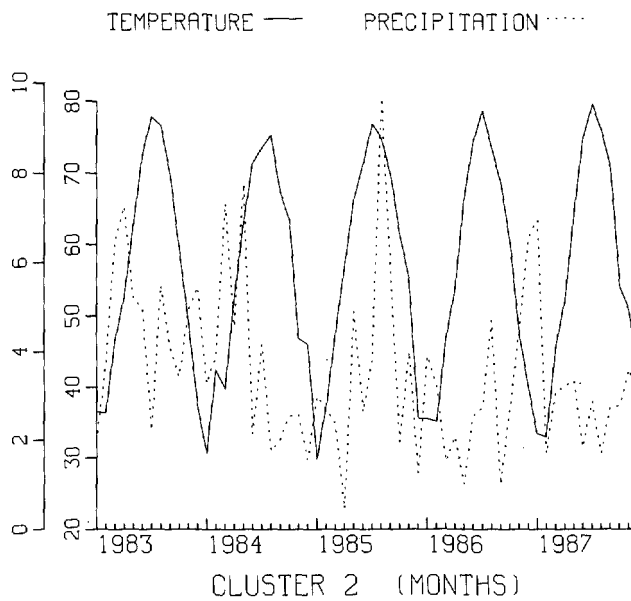
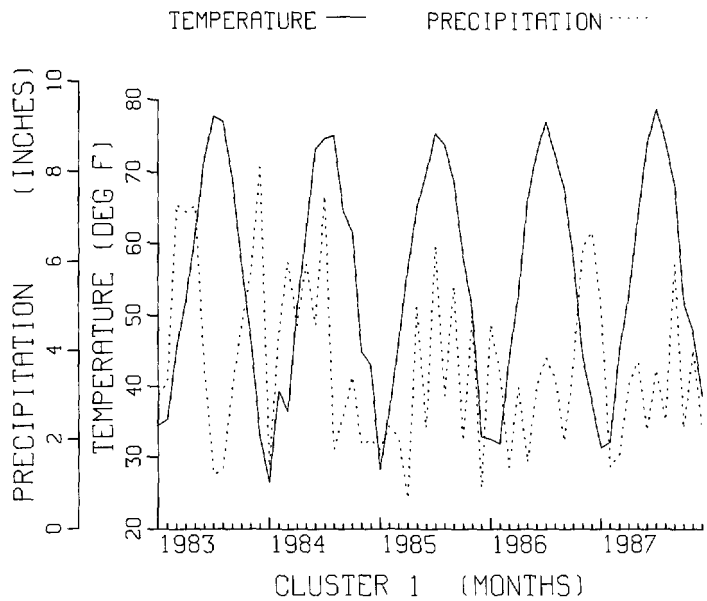
CIRCLE DIAMETER IS PROPORTIONAL TO DEPARTURE ON A CONTINUOUS SCALE



# MONTHLY TEMPERATURE AND PRECIPITATION FOR THE LAST 60 MONTHS ENDING DECEMBER 1987 DELAWARE

CLUSTER 1 -DIVISION(S):  
NORTHERN 01

CLUSTER 2 -DIVISION(S):  
SOUTHERN 02



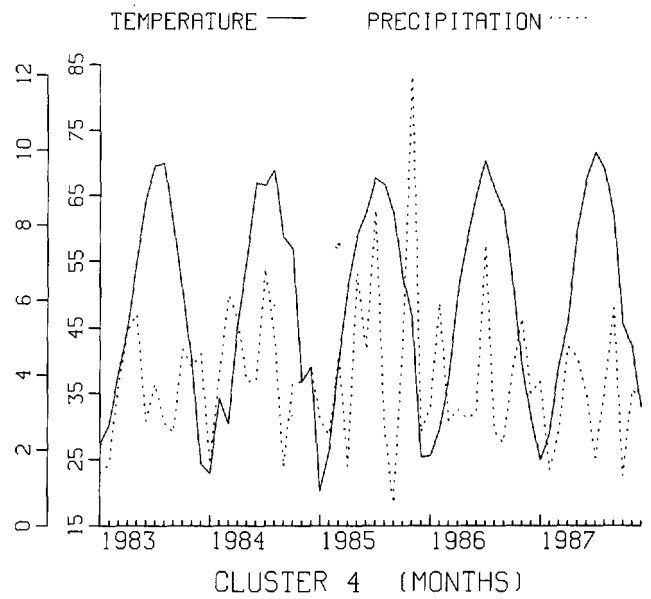
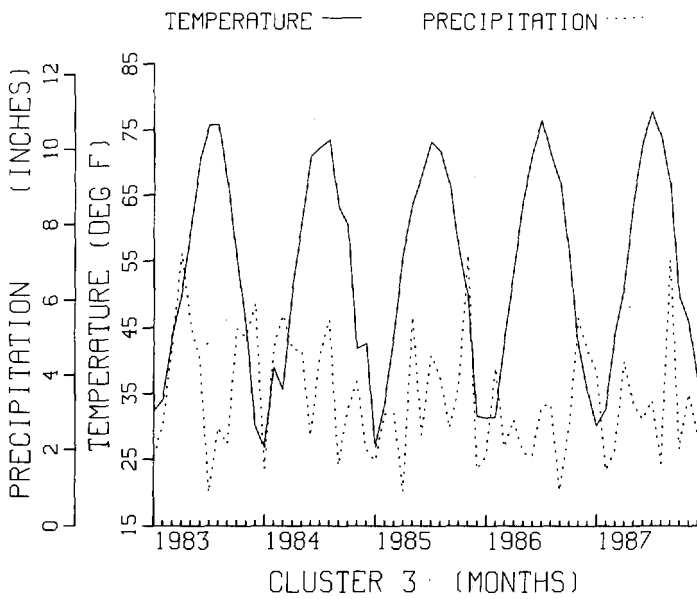
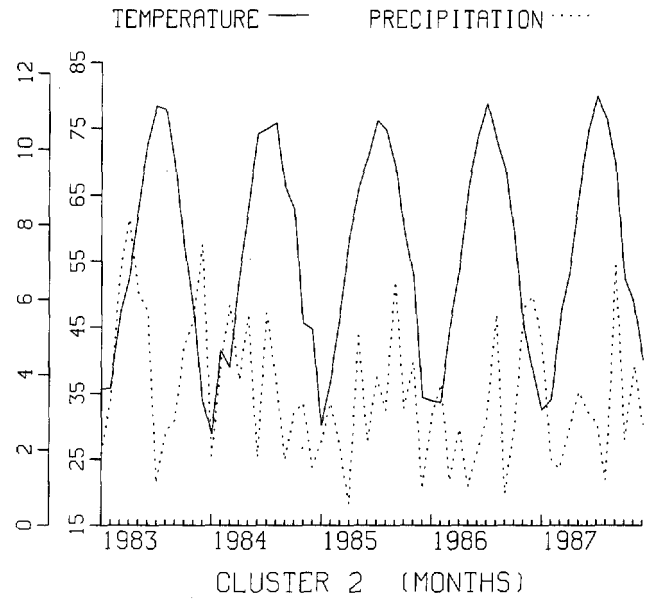
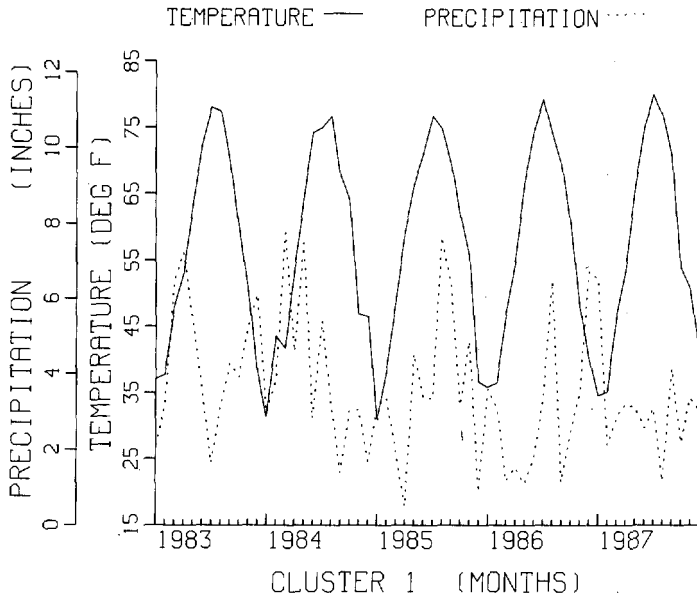
# MONTHLY TEMPERATURE AND PRECIPITATION FOR THE LAST 60 MONTHS ENDING DECEMBER 1987 MARYLAND

CLUSTER 1 -DIVISION(S):  
SOUTHERN EASTERN SHORE 01  
CENTRAL EASTERN SHORE 02  
LOWER SOUTHERN 03

CLUSTER 2 -DIVISION(S):  
UPPER SOUTHERN 04  
NORTHERN EASTERN SHORE 05

CLUSTER 3 -DIVISION(S):  
NORTHERN CENTRAL 06  
APPALACHIAN MOUNTAIN 07

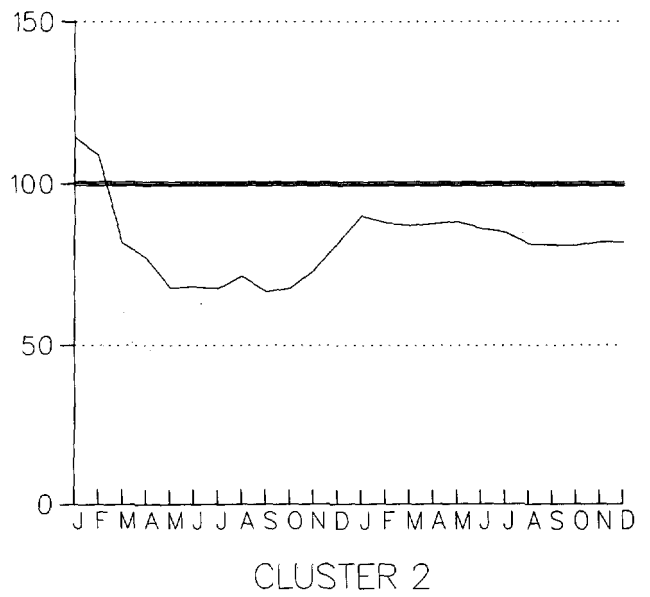
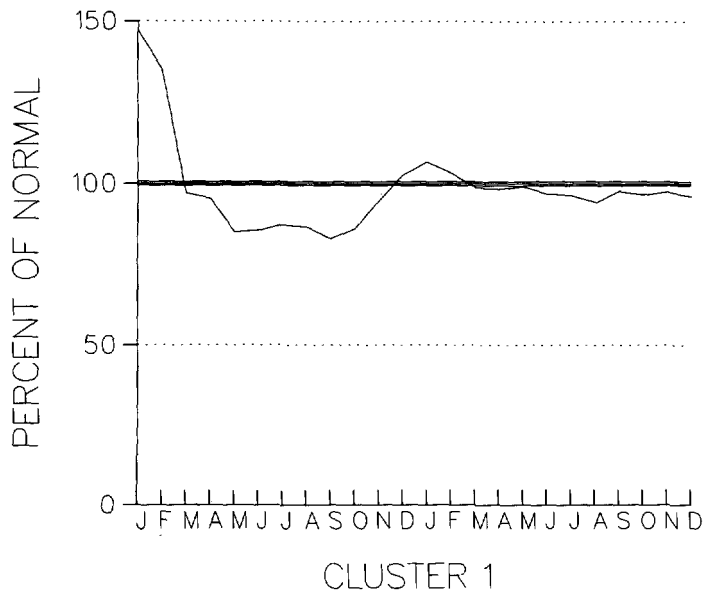
CLUSTER 4 -DIVISION(S):  
ALLEGHENY PLATEAU 08



CUMULATIVE PRECIPITATION DEPARTURES FROM NORMAL (1951-1980)  
 FOR THE LAST 24 MONTHS  
 ENDING DECEMBER 1987  
 DELAWARE

CLUSTER 1 - DIVISION(S):  
 NORTHERN 01

CLUSTER 2 - DIVISION(S):  
 SOUTHERN 02



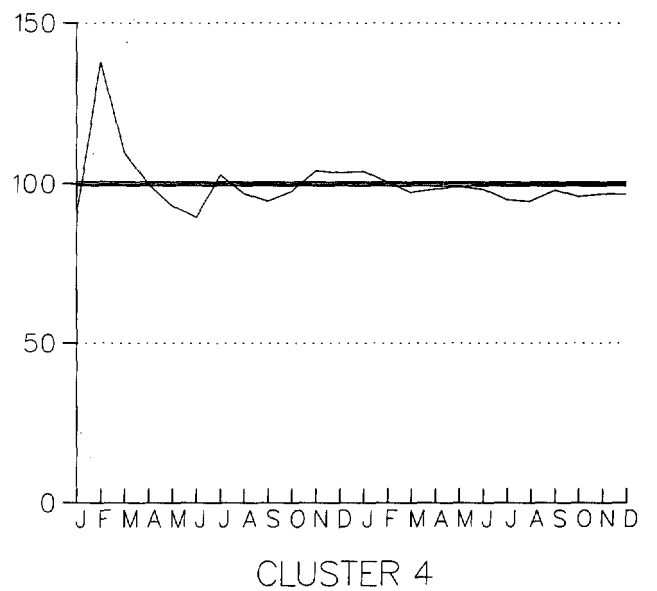
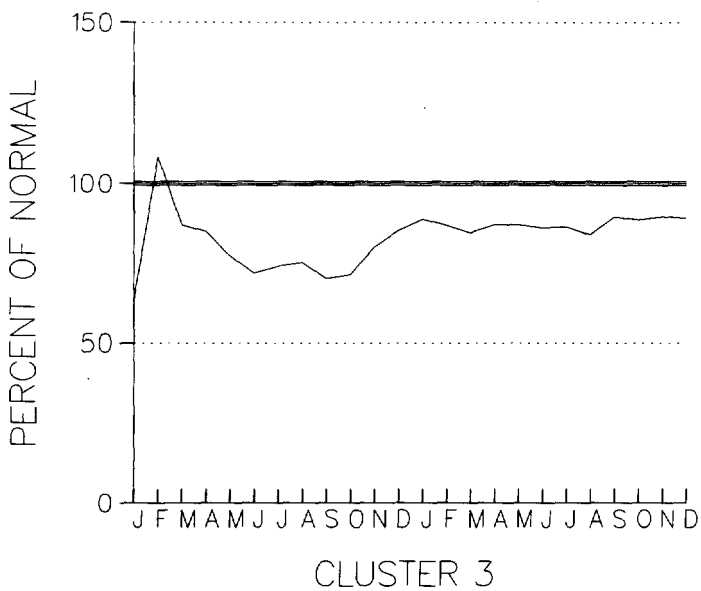
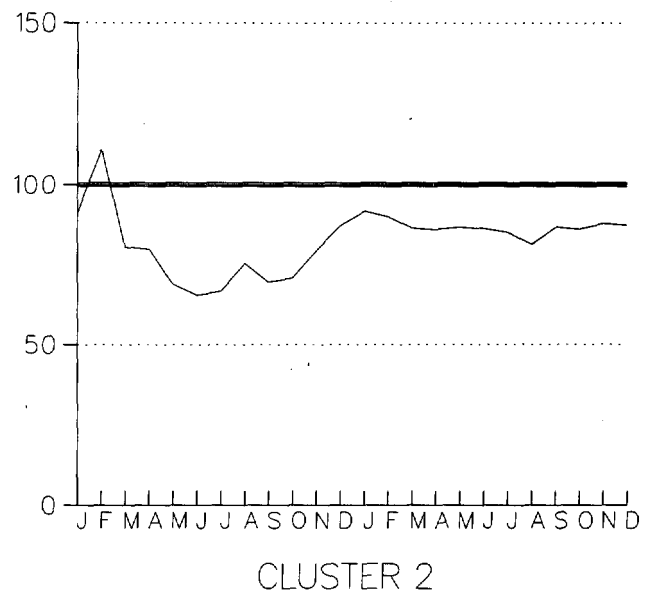
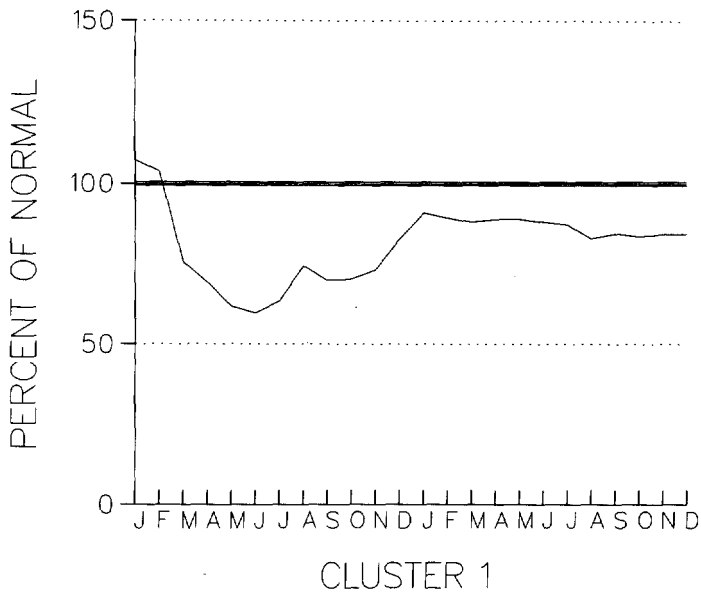
CUMULATIVE PRECIPITATION DEPARTURES FROM NORMAL (1951-1980)  
 FOR THE LAST 24 MONTHS  
 ENDING DECEMBER 1987  
 MARYLAND

CLUSTER 1 -DIVISION(S):  
 SOUTHERN EASTERN SHORE 01  
 CENTRAL EASTERN SHORE 02  
 LOWER SOUTHERN 03

CLUSTER 2 -DIVISION(S):  
 UPPER SOUTHERN 04  
 NORTHERN EASTERN SHORE 05

CLUSTER 3 -DIVISION(S):  
 NORTHERN CENTRAL 06  
 APPALACHIAN MOUNTAIN 07

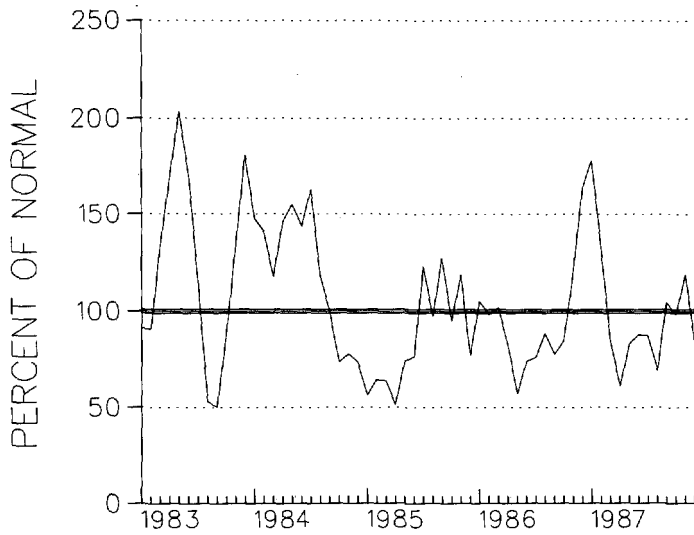
CLUSTER 4 -DIVISION(S):  
 ALLEGHENY PLATEAU 08



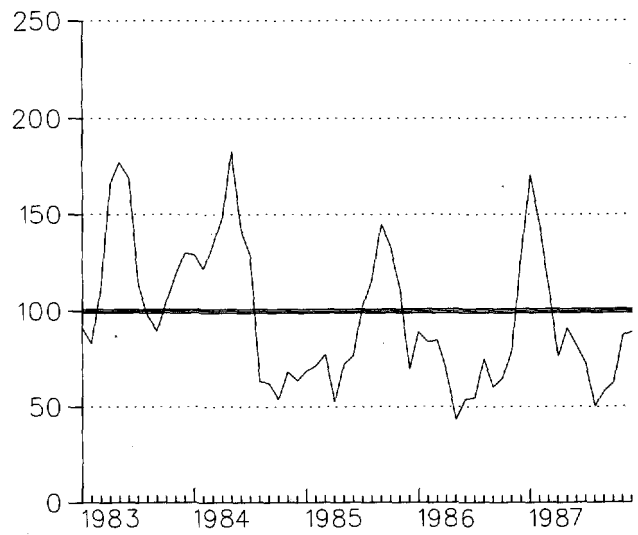
PRECIPITATION DEPARTURES FROM NORMAL (1951-1980)  
THREE MONTH RUNNING MEAN  
FOR THE 60 MONTHS ENDING WITH DECEMBER 1987 DATA  
DELAWARE

CLUSTER 1 -DIVISION(S):  
NORTHERN 01

CLUSTER 2 -DIVISION(S):  
SOUTHERN 02



CLUSTER 1



CLUSTER 2

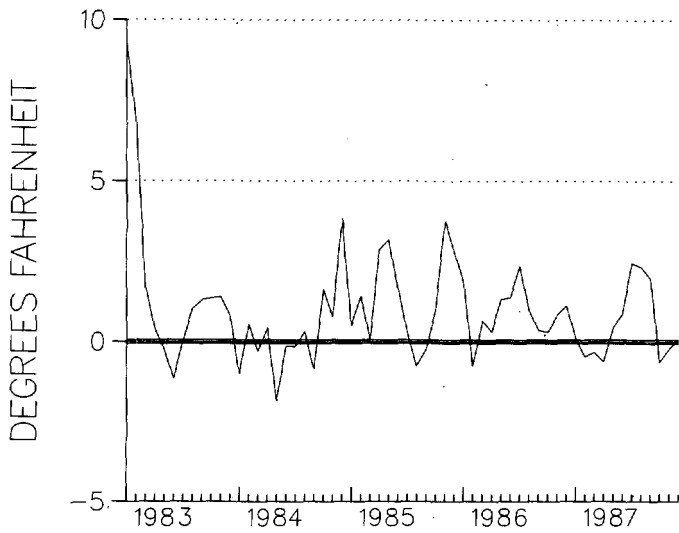
TEMPERATURE DEPARTURES FROM NORMAL (1951-1980)  
 THREE MONTH RUNNING MEAN  
 FOR THE 60 MONTHS ENDING WITH DECEMBER 1987 DATA  
 MARYLAND

CLUSTER 1 -DIVISION(S):  
 SOUTHERN EASTERN SHORE 01  
 CENTRAL EASTERN SHORE 02  
 LOWER SOUTHERN 03

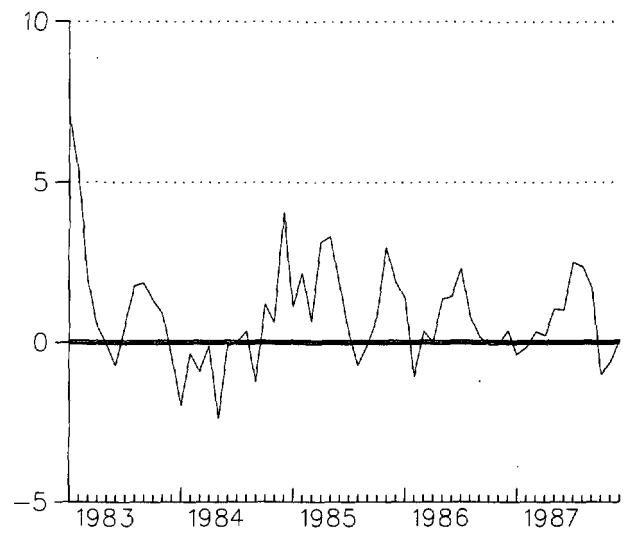
CLUSTER 2 -DIVISION(S):  
 UPPER SOUTHERN 04  
 NORTHERN EASTERN SHORE 05

CLUSTER 3 -DIVISION(S):  
 NORTHERN CENTRAL 06  
 APPALACHIAN MOUNTAIN 07

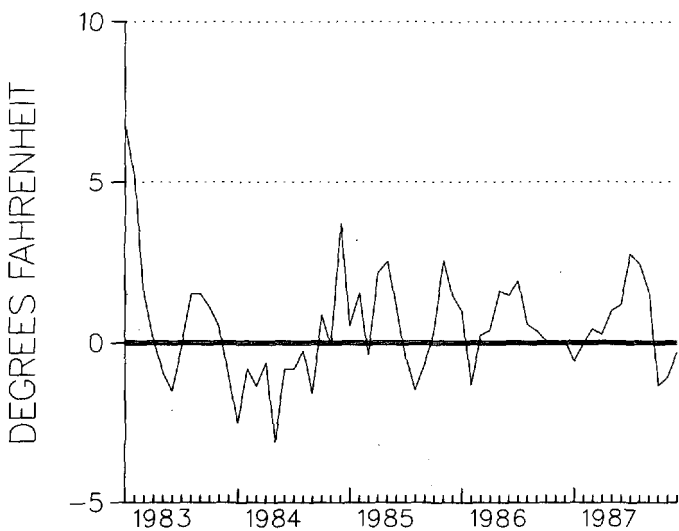
CLUSTER 4 -DIVISION(S):  
 ALLEGHENY PLATEAU 08



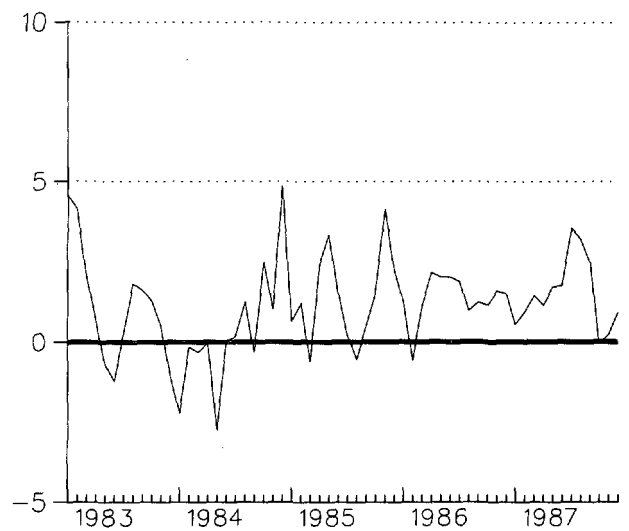
CLUSTER 1



CLUSTER 2

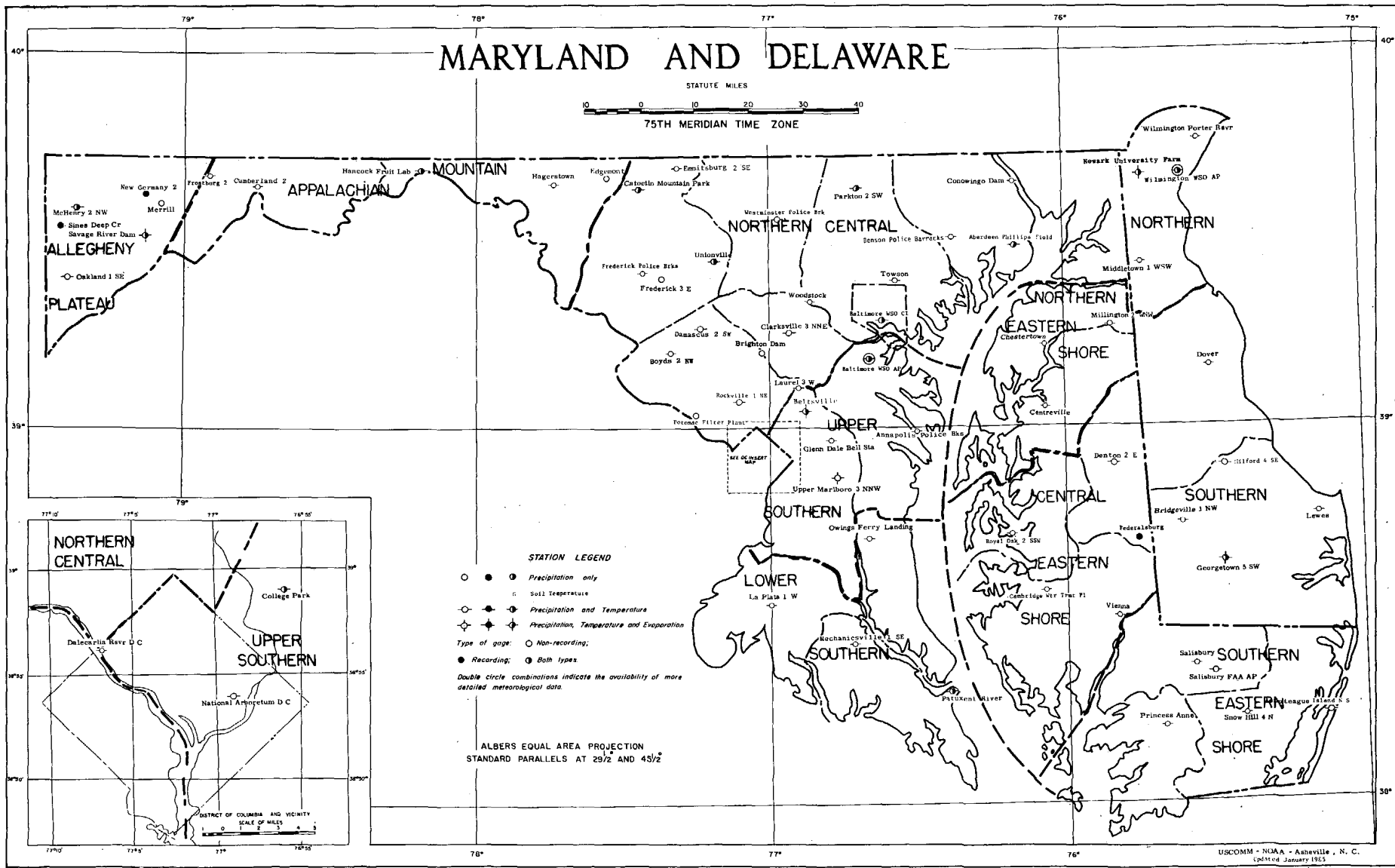
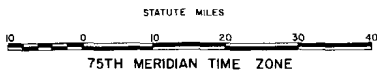


CLUSTER 3



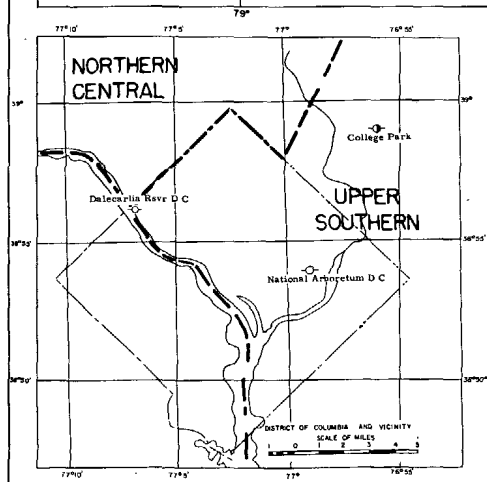
CLUSTER 4

# MARYLAND AND DELAWARE



- STATION LEGEND**
- ● ○ Precipitation only
  - ○ Soil temperature
  - ● ● Precipitation and Temperature
  - ◆ ◆ ◆ Precipitation, Temperature and Evaporation
- Type of gaug: ○ Non-recording;  
● Recording; ● Both types
- Double circle combinations indicate the availability of more detailed meteorological data.

ALBERS EQUAL AREA PROJECTION  
STANDARD PARALLELS AT 29 1/2 AND 43 1/2



CD  
VALIDATED BY:

Ted Burlew  
Jan Carpenter  
Betty Edstrom  
Bruce Emory  
Joyce Morgan  
Betty Shuford

DEPARTMENT OF COMMERCE  
NATIONAL OCEANIC AND ATMOSPHERIC ADMINISTRATION  
NATIONAL ENVIRONMENTAL SATELLITE, DATA, AND INFORMATION SERVICE  
NATIONAL CLIMATIC DATA CENTER  
FEDERAL BUILDING  
ASHEVILLE, N.C. 28801

*TO CHANGE YOUR ADDRESS, PLEASE RETURN A COPY OF  
THE MAILING LABEL ALONG WITH YOUR NEW ADDRESS.*

**BULK RATE  
POSTAGE & FEES PAID**  
United States Department Of Commerce  
NOAA Permit No. G - 19