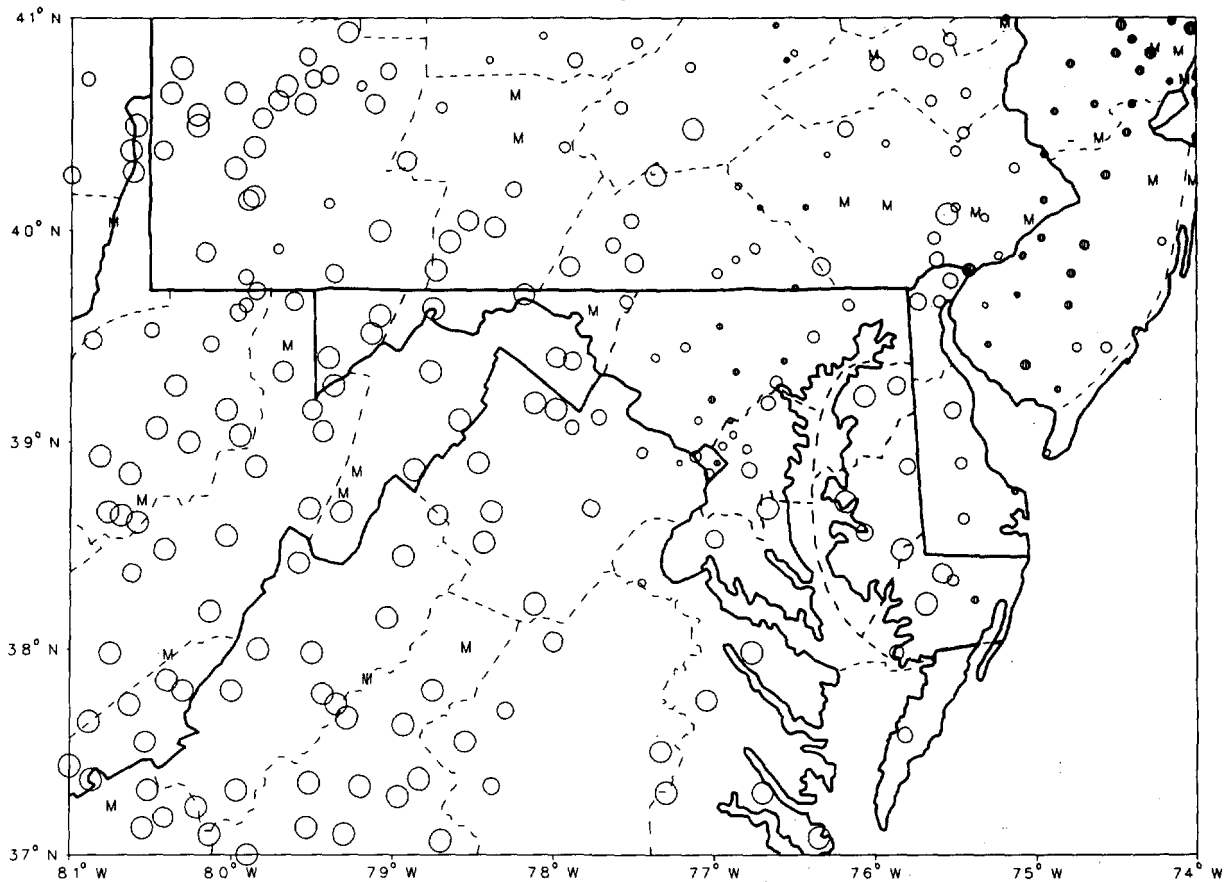


CLIMATOLOGICAL DATA MARYLAND AND DELAWARE

OCTOBER 1987
VOLUME 91 NUMBER 10

MONTHLY PRECIPITATION DEPARTURE FROM INDIVIDUAL STATION NORMALS (1951-1980)

- M INCOMPLETE DATA FOR THE MONTH
- ∇ EXACTLY NORMAL
- ○ 5, 10, 20... 50% OR MORE BELOW NORMAL
- ● 10, 20, 40... 100% OR MORE ABOVE NORMAL



CIRCLE DIAMETER IS PROPORTIONAL TO DEPARTURE ON A CONTINUOUS SCALE

I CERTIFY THAT THIS IS AN OFFICIAL PUBLICATION OF THE NATIONAL OCEANIC AND ATMOSPHERIC ADMINISTRATION AND IS COMPILED FROM INFORMATION RECEIVED AT THE NATIONAL CLIMATIC DATA CENTER.

Kenneth D. Hallean

DIRECTOR, NATIONAL CLIMATIC DATA CENTER

noaa

NATIONAL OCEANIC AND ATMOSPHERIC ADMINISTRATION

NATIONAL ENVIRONMENTAL SATELLITE, DATA AND INFORMATION SERVICE

NATIONAL CLIMATIC DATA CENTER ASHEVILLE NORTH CAROLINA

TEMPERATURE AND PRECIPITATION EXTREMES

MARYLAND AND
DELAWARE
OCTOBER 1987

MARYLAND
HIGHEST TEMPERATURE 80
LOWEST TEMPERATURE 19
GREATEST TOTAL PRECIPITATION 4.58
LEAST TOTAL PRECIPITATION .83
GREATEST 1 DAY PRECIPITATION 2.42

OCTOBER 1
OCTOBER 26

OCTOBER 27

NATIONAL ARBORETUM D C
OAKLAND 1 SE
SNOW HILL 4 N
CUMBERLAND 2
LAUREL 3 W

DELAWARE
HIGHEST TEMPERATURE 77
LOWEST TEMPERATURE 28
GREATEST TOTAL PRECIPITATION 3.69
LEAST TOTAL PRECIPITATION 2.08
GREATEST 1 DAY PRECIPITATION 1.95

OCTOBER 12+
OCTOBER 30+

OCTOBER 28

2 STATIONS
3 STATIONS
LEWES
NEWARK UNIVERSITY FARM
LEWES

MONTHLY SUMMARIZED STATION AND DIVISIONAL DATA

MARYLAND AND
DIVISIONAL DATA
OCTOBER 1987

STATION	TEMPERATURE (°F)											PRECIPITATION (IN)									
	AVERAGE MAXIMUM	AVERAGE MINIMUM	AVERAGE	DEPARTURE FROM NORMAL	HIGHEST	DATE	LOWEST	DATE	HEATING DEGREE DAYS	COOLING DEGREE DAYS	NO. OF DAYS				TOTAL	DEPARTURE FROM NORMAL	GREATEST DAY	DATE	SNOW SLEET		
											90 OR ABOVE	32 OR BELOW	32 OR BELOW	0 OR BELOW					TOTAL	MAX DEPTH ON GROUND	DATE
MARYLAND																					
SOUTHERN EASTERN SHORE 01																					
ASSATEAGUE ISLAND NATL SE	66.5	45.0	55.3		73	12	37	22	295	2	0	0	0	3	-1.85	1.65	28			4	1
CRISFIELD SOMERS COVE	66.7	47.1	55.9	-4.9	71	31	40	27	277	0	0	0	0	2	-1.85	.90	28			4	1
PRINCESS ANNE	66.8	38.1	53.4	-4.2	76	17	27	22	353	0	0	0	1	1	-1.85	.55	4			4	1
SALISBURY	66.7	42.1	55.0	-4.1	76	11	33	26	301	0	0	0	0	1	-1.85	.57	27			4	1
SALISBURY FAA AP	66.0	39.1	52.6	-3.8	76	11	31	29	377	0	0	0	4	1	-1.85	.75	27			4	1
SNOW HILL 4 N	66.3	40.6	54.5	-3.6	77	11	30	29	317	0	0	0	4	1	-1.85	.60	28			4	2
--DIVISIONAL DATA-->																					
CENTRAL EASTERN SHORE 02																					
CAMBRIDGE WTR TRMT PL	67.0	43.9	55.5	-3.0	75	11	33	29	285	0	0	0	0	2	-1.15	.86	28			5	0
DENTON 2 E	67.3	40.6	54.0	-3.7	75	11	28	26	333	0	0	0	5	1	-1.09	.95	3			4	0
ROYAL OAK 2 SSW	65.5	44.0	54.8	-4.5	73	6	33	26	310	0	0	0	0	1	-1.91	.45	3			3	0
VIENNA	67.7	40.9	54.3	-4.6	78	1	31	29	330	0	0	0	2	1	-1.76	.90	4			3	0
--DIVISIONAL DATA-->																					
LOWER SOUTHERN 03																					
LA PLATA 1 W	64.6	41.0	52.8	-4.8	73	20	31	29	372	0	0	0	4	2	-1.29	1.03	27			4	1
MECHANICSVILLE 1 E	63.5	39.5	51.5		73	11	29	27	412	0	0	0	8	1	.99	.72	6			4	0
OWINGS FERRY LANDING	66.0	40.2	53.1	-4.6	73	16	29	27	364	0	0	0	5	1	-1.68	.44	28			5	0
PATUXENT RIVER	62.3	42.3	52.3		72	11	36	29	387	0	0	0	0	1	.78	.66	27			4	0
--DIVISIONAL DATA-->																					
UPPER SOUTHERN 04																					
ANNAPOLIS POLICE BRKS	65.5	36.7	51.1		74	2	28	30	424	0	0	0	8	2	.10	.73	28			5	0
BALTIMORE WSO AP	63.3	39.6	51.5	-5.4	73	22	30	27	412	0	0	0	4	2	.23	1.47	27			3	1
BELTSVILLE	64.1	36.7	50.4	-4.6	74	3	28	26	444	0	0	0	1	3	.07	2.12	28			3	1
COLLEGE PARK	65.5	40.7	53.1	-4.3	75	3	31	27	364	1	0	0	5	2	.88	2.02	28			3	1
DALECARLIA RESVR D C	67.1	38.6	52.9	-4.7	79	2	28	29	371	0	0	0	8	2	.70	.83	28			3	0
GLENN DALE BELL STN	66.7	36.4	51.6	-5.0	74	17	25	26	409	0	0	0	1	3	.95	1.45	28			3	1
LAUREL 3 W	64.7	40.2	52.5	-5.7	75	16	30	16	380	0	0	0	3	3	.33	2.42	27			3	1
NATIONAL ARBORETUM D C	67.0	36.7	51.9	-6.4	80	1	27	26	403	1	0	0	10	3	.55	2.14	28			3	1
UPPER MARLBORO 3 NNW	64.6	35.5	50.1		74	3	25	27	453	0	0	0	9	2	.89	1.25	28			3	1
--DIVISIONAL DATA-->																					
NORTHERN EASTERN SHORE 05																					
CHESTERTOWN	64.9	42.2	53.6	-4.2	75	16	32	26	347	0	0	0	1	1	-1.54	.72	27			4	0
MILLINGTON 1 SE	66.0	39.8	52.9	-3.6	75	16	27	26	367	0	0	0	6	1	-1.14	.71	28			5	0
--DIVISIONAL DATA-->																					
NORTHERN CENTRAL 06																					
ABERDEEN PHILLIPS FLD	64.0	45.8	54.9	-5.2	72	16	29	30	305	0	0	0	4	1	.88	.95	28			3	0
BALTIMORE WSO CI	66.7	36.5	51.6	-4.4	73	5	39	30	408	0	0	0	0	2	.47	1.52	27			3	1
BENSON POLICE BARRACKS	63.3	41.2	52.3		76	16	25	30	388	0	0	0	9	2	.39	1.11	28			3	1
BOYDS 2 NW	63.3	41.2	52.3		73	16	33	29	388	0	0	0	0	3	.07	.96	3			3	0
CATOCTIN MOUNTAIN PARK	59.0	40.5	49.8		67	17	32	22	464	0	0	0	1	3	.40	.78	28			3	0
CLARKSVILLE 3 NNE	65.5	35.9	50.7		74	10	25	26	436	0	0	0	10	3	.39	1.52	28			3	1
CONOWINGO DAM	62.7	34.9	48.8	-6.5	71	16	20	26	494	0	0	0	10	3	.60	1.51	27			4	1
DAMASCUS 2 SW	62.2	40.5	51.4		74	16	20	26	417	0	0	0	3	3	.09	.94	27			4	0
EMMITSBURG 2 SE	61.9	36.5	49.2		70	17	23	26	484	0	0	0	9	2	.37	.90	27			4	0

SEE REFERENCE NOTES FOLLOWING STATION INDEX

MONTHLY SUMMARIZED STATION AND DIVISIONAL DATA

MARYLAND AND
DELAWARE
OCTOBER 1987

STATION	TEMPERATURE (°F)											PRECIPITATION (IN)													
	AVERAGE MAXIMUM	AVERAGE MINIMUM	AVERAGE	DEPARTURE FROM NORMAL	HIGHEST	DATE	LOWEST	DATE	HEATING DEGREE DAYS	COOLING DEGREE DAYS	NO. OF DAYS				TOTAL	DEPARTURE FROM NORMAL	GREATEST DAY	DATE	SNOW SLEET NO. OF DAYS						
											90 OR ABOVE	32 OR BELOW	32 OR BELOW						TOTAL	MAX. DEPTH ON GROUND	DATE	.10 OR MORE	.50 OR MORE	1.00 OR MORE	
													MAX	MIN											0 OR BELOW
FREDRICK POLICE BRKS	64.7	41.0	52.9		74	16	31	30+	370	0	0	0	2	0	2.46		1	12	27	.0	0		4	1	1
ROCKVILLE 1 NE	63.3	39.7	51.5	-5.3	73	16+	28	26+	412	0	0	0	0	0	2.82	-1.18	1	16	27	.0	0		5	3	1
TOWSON	66.6	37.3	52.0		75	17+	30	29+	395	0	0	0	0	0	2.80		1	28	27	.0	0		5	3	1
UNIONVILLE	64.4	33.1	48.8	-5.0	73	16+	22	26+	499	0	0	0	1	0	2.57	-1.36	1	28	27	.0	0		3	2	1
WESTMINSTER POLICE BRK	63.1	38.3	50.7	-4.2	70	17+	28	30	437	0	0	0	7	0	3.20	-1.10	1	08	27	.0	0		5	3	1
WOODSTOCK	64.8	38.3	51.6	-3.6	73	16+	27	30+	409	0	0	0	7	0	3.49	-1.37	1	32	28	.0	0		5	3	1
-- DIVISIONAL DATA ----->																									
APPALACHIAN MOUNTAIN 07																									
CUMBERLAND 2	64.1	35.6	49.9	-5.1	77	2	28	26+	464	0	0	0	9	0	.83	-1.88	.45	28		.0	0		3	0	0
FROSTBURG 2	55.5	35.3	45.4		69	3	27	26	599	0	0	0	2	0	1.29		.31	28		.0	0		6	0	0
HAGERSTOWN																									
HANCOCK FRUIT LAB	64.2	34.3	49.3	-3.6	74	3+	23	26	490	0	0	0	16	0	1.56	-1.37	.61	28		.0	0		4	1	0
-- DIVISIONAL DATA ----->																									
ALLEGHENY PLATEAU 08																									
MC HENRY 2 NW	56.7	34.6	45.7		73	17	28	23+	591	0	0	0	14	0	1.54		.44	2		.0	0		6	0	0
OAKLAND 1 SE	60.0	31.5	45.8	-3.7	72	2	19	26	588	0	0	0	18	0	1.47	-1.70	.44	3		.0	0		6	0	0
SAVAGE RIVER DAM	58.4	33.6	46.0	-4.8	71	3	24	26	579	0	0	0	2	0	.99	-1.89	.24	3		.0	0		4	0	0
-- DIVISIONAL DATA ----->																									
DELAWARE																									
NORTHERN 01																									
MIDDLETOWN 3 E	63.3	40.4	51.9		75	6	28	26	398	0	0	0	5	0	2.33		1	01	27	.0	0		3	2	2
NEWARK UNIVERSITY FARM	64.4	38.7	51.6	-4.7	76	6	28	30+	407	0	0	0	6	0	2.08	-1.10	.68	28		.0	0		5	2	0
WILMINGTON WSO AP	63.1	40.2	51.7	-4.6	73	16+	30	26	406	0	0	0	2	0	2.31	-1.58	1	04	27	.0	0		3	2	1
WILMGTON PORTER RESVR	62.4	42.3	52.4	-3.3	72	6+	31	27	383	0	0	0	1	0	2.30	-1.93	1	10	27	.0	0		3	2	1
-- DIVISIONAL DATA ----->																									
SOUTHERN 02																									
DOVER	67.6	42.5	55.1	-3.5	76	17+	32	29	301	0	0	0	1	0	2.34	-1.22	.80	3		.0	0		4	3	0
GEORGETOWN 5 SW	66.0	39.8	52.9	-4.1	77	12	28	27+	366	0	0	0	6	0	2.89	-1.59	1	61	28	.0	0		4	2	0
GREENWOOD 2 NE	66.3	40.8	53.6		75	11+	29	27	347	0	0	0	4	0	2.15		.77	27		.0	0		5	2	0
LEWES	65.7	45.5	55.6	-1.9	76	11	36	30+	284	0	0	0	0	0	3.69	.36	1	95	28	.0	0		5	2	1
MILFORD 4 SE	66.2	41.7	54.0	-3.7	77	11	29	27	334	0	0	0	3	0	2.81	-1.66	1	37	28	.0	0		5	1	1
-- DIVISIONAL DATA ----->																									

SEE REFERENCE NOTES FOLLOWING STATION INDEX

DAILY PRECIPITATION (INCHES)

MARYLAND AND
DELAWARE
OCTOBER 1987

STATION	TOTAL	DAY OF MONTH																														
		1	2	3	4	5	6	7	8	9	10	11	12	13	14	15	16	17	18	19	20	21	22	23	24	25	26	27	28	29	30	31
MARYLAND																																
SOUTHERN EASTERN SHORE 01																																
ASSATEAGUE ISLAND NATL SE	3.37	.25	.02					.53	.01										.03			.02	.05	.07		.02					1.65	
CRISFIELD SOMERS COVE	2.36			.28	.21			.22													.03							.72		.90		
PRINCESS ANNE	1.45				.55			.32					.03									.13							.42			
SALISBURY	2.03			.35	.30			.25	T			.05																.57	.50			
SALISBURY FAA AP	3.01	T		.69	T		.01	.32			T	.03									T	.21					1.75	T				
SNOW HILL 4 N	4.58	T		.03	.59			1.47				T										.03				T		.86	1.60			
CENTRAL EASTERN SHORE 02																																
CAMBRIDGE WTR TRMT PL	2.13			.53	.25			.28				.06										.03						.12	.86			
DENTON 2 E	2.28			.95	.09			.30														.06						.22	.66			
ROYAL OAK 2 SSW	1.55	T		.45				.33				.03										.08						.18	.38			
VIENNA	1.68				.90		.02		.02													.02						.28	.44			
LOWER SOUTHERN 03																																
LA PLATA 1 W	2.12			.28	.07			.45				.08										.01						1.03	.20			
MECHANICSVILLE 1 E	1.99			.42	.04		.72					.10									T	.19					.66	.05				
OWINGS FERRY LANDING	1.59			.29	T			.38				.05										.19					.24	.44				
PATUXENT RIVER	1.78	T		.52			.40	.14			T	.06									T	T					.66	T				
UPPER SOUTHERN 04																																
ANNAPOLIS POLICE BRKS	2.10			.21	.11			.60					.01									.05						.39	.73			
BALTIMORE WSO AP	2.25			.49		.26	T	.49			T	T									T	.02					1.47	T				
BELTSVILLE	3.07	.04	T		.35			.49														.03						2.12			.02	
COLLEGE PARK	2.88	T			.39			.45														.02	T					.08	.83			
DALECARLIA RESVR D C	2.70			.57	.13			.38																			.71					
GLENN DALE BELL STN	2.95			.10	.50			.50				.01										.05					.34	1.45				
LAUREL 3 W	3.33			.38		.39	.08														.04	.02					2.42		2.14			
NATIONAL ARBORETUM D C	3.25	.09			.48		.49					.03										.02		.02					1.25			
UPPER MARLBORO 3 NNW	2.28	.08			.47		.41					.03										.04										
NORTHERN EASTERN SHORE 05																																
CHESTERTOWN	1.62			.43	T		.35				T	.01										.11					.72					
MILLINGTON 1 SE	1.91			.52	.06		.34				T											.11					.17	.71				
NORTHERN CENTRAL 06																																
ABERDEEN PHILLIPS FLD	1.88			*	*	.27	.35			*	*	*	.04									.09						.18	.95			
BALTIMORE WSO CI	2.47			.35		.49	.01					.03										.07					1.52					
BENSON POLICE BARRACKS	2.39			.25	.03		.43					.03		.02								.15					.37	1.11				
BOYDS 2 NW	3.07			.96			.45					.03										.68					.46	.49				
BRIGHTON DAM	3.71			.60		.20	.53					.03										.50	.32				1.53					
CATOCTIN MOUNTAIN PARK	2.40			.20			.58	.02				.07										.25					.50	.78				
CLARKSVILLE 3 NNE	3.39			.41	.08		.48					.05										.38					.47	1.52				
CONOWINGO DAM	2.60		.03	.29	.02		.51					.04										.19					1.51	.01				
DAMASCUS 2 SW	3.09			.87			.42			T		.05										.60	.09				.94	.12		T		
EMMITSBURG 2 SE	2.37						.52					.05										.10					.90	.80				
FREDRICK POLICE BRKS	2.46			.47	.05		.33					.04										.39					1.12	.06				
FREDERICK 3 E	2.84			.05	.52		.47					.02	.05									.93						.80				
POTOMAC FILTER PLANT	2.05			.64		.21	.05					.02															1.03					
ROCKVILLE 1 NE	2.82			.75	T	.50	.12			T		.02	T									.10	.02				1.16	.01				
TOWSON	3.80			.51	.60		.65	T				.50	.01									.04			.13		.07	1.28				
UNIONVILLE	2.57			.81			.35					.05															1.36					
WESTMINSTER POLICE BRK	3.20			.40			.59					.08										1.08					.30	.75				
WOODSTOCK	3.49			.35	.04		.48					.06										.52					.72	1.32				

SEE REFERENCE NOTES FOLLOWING STATION INDEX
5

DAILY PRECIPITATION (INCHES)

MARYLAND AND
DELAWARE
OCTOBER 1987

STATION	TOTAL	DAY OF MONTH																														
		1	2	3	4	5	6	7	8	9	10	11	12	13	14	15	16	17	18	19	20	21	22	23	24	25	26	27	28	29	30	31
APPALACHIAN MOUNTAIN 07																																
CUMBERLAND 2	.83			.18				.10				.03	T								T	.07										
EDGEHONT	2.54	T		.14	.08		.61	T				T	.07								T	.27						1.37		.45		
FROSTBURG 2	1.29	.12	T	.29	T			.21	.09	.10	T	.02	T								T	.13	T				.02					
HAGERSTOWN	H	-	-	-	-	-	-	-	-	-	-	-	-	-	-	-	-	-	-	-	-	-	-	-	-	-	-	-	-	-		
HANCOCK FRUIT LAB	1.56			.11				.47	T			.03										.05	.08					.21		.61		
ALLEGHENY PLATEAU 08																																
MC HENRY 2 NW	1.54	.08	.44					.20	.30	.10		.05	.06								T	.12					.02			.17		
MERRILL	1.14	.18		.22				.20	.14	.05		.02										.10							.22			
OAKLAND 1 SE	1.47	.08	T	.44			.05	.21	.23			.10									T	.17	T					.10	.09	.01		
SAVAGE RIVER DAM	.99	.05		.24				.18	.08	.05		.04									T	.12	T			T			.23			
DELAWARE NORTHERN 01																																
MIDDLETOWN 3 E	2.33			1.00			.28					.04																1.01				
NEWMARK UNIVERSITY FARM	2.08			.62	.03			.35				.04										.10							.26	.68		
WILMINGTON HSO AP	2.31	T		.90	.01			.30				.01									T	.05				T		1.04				
WILMINGTON PORTER RESVR	2.30			.84	.05			.15				.07									T	.09						1.10				
SOUTHERN 02																																
DOVER	2.34			.80	.53			.25					.03									.03	.04						.70			
GEORGETOWN 5 SW	2.89	.11		.70				.35						.05															1.61			
GREENWOOD 2 NE	2.15			.74	.21			.29				.02	.02									T						.77	.10			
LEWES	3.69			.10	.83			.35				.06										.02						.38	1.95			
MILFORD 4 SE	2.81			.30	.47			.26														.03						.38	1.37			

SEE REFERENCE NOTES FOLLOWING STATION INDEX
6

DAILY TEMPERATURES (°F)

MARYLAND AND
DELAWARE
OCTOBER 1987

STATION	OB. TIME	MAX/MIN	DAY OF MONTH																															AVERAGE
			1	2	3	4	5	6	7	8	9	10	11	12	13	14	15	16	17	18	19	20	21	22	23	24	25	26	27	28	29	30	31	
MARYLAND																																		
SOUTHERN EASTERN SHORE 01																																		
ASSATEAGUE ISLAND NATL	07	MAX OBS MIN	70	67	73	73	59	66	72	71	64	67	68	73	57	59	60	64	66	67	69	67	69	62	58	66	68	63	59	65	67	61	62	65.5
CRISFIELD SOMERS COVE	17	MAX MIN OBS	71	71	71	57	65	68	67	65	60	68	69	64	58	62	61	69	69	67	66	68	67	58	59	66	64	56	66	63	57	63	71	64.7
PRINCESS ANNE	17	MAX MIN	74	73	73	58	69	74	70	66	63	73	76	75	58	62	66	75	76	73	75	75	72	59	65	73	71	61	67	66	59	66	68	68.7
SALISBURY	17	MAX MIN	63	71	73	57	69	75	70	65	63	73	76	67	58	62	66	75	75	73	73	73	71	60	65	74	69	60	72	61	59	67	71	67.9
SALISBURY FAA AP	MID	MAX MIN	65	73	66	57	69	74	69	60	62	73	76	51	58	61	67	73	74	71	73	73	65	58	64	72	61	60	67	59	58	67	69	66.0
SNOW HILL 4 N	18	MAX MIN	72	75	72	57	71	76	70	66	64	75	77	72	57	59	66	73	76	72	73	72	69	58	66	73	68	60	67	65	60	68	68	68.3
CENTRAL EASTERN SHORE 02																																		
CAMBRIDGE WTR TRMT PL	16	MAX MIN	74	72	72	58	70	73	68	70	63	73	75	62	58	62	65	72	71	68	70	70	70	61	63	70	70	57	60	64	62	66	68	67.0
DENTON 2 E	17	MAX MIN	68	73	70	59	70	75	69	66	64	75	75	57	59	61	71	74	73	70	72	73	68	59	65	72	65	61	65	63	60	65	68	67.3
ROYAL OAK 2 SSW	18	MAX MIN	69	73	69	59	69	73	67	63	61	72	70	56	61	63	65	72	68	67	71	72	66	57	64	70	63	58	57	62	60	66	69	65.5
VIENNA	18	MAX OBS MIN OBS	67	70	64	55	71	71	69	67	63	71	78	66	60	63	68	75	75	74	75	73	71	60	64	70	71	61	67	66	60	64	70	67.7
LOWER SOUTHERN 03																																		
LA PLATA 1 W	18	MAX MIN	63	73	70	57	68	70	67	58	61	69	68	60	57	60	64	72	67	66	70	73	69	55	66	72	65	58	51	58	59	66	72	64.6
MECHANICSVILLE 1 E	19	MAX MIN	64	70	65	57	66	69	64	58	60	70	73	57	57	65	70	64	68	69	72	64	55	63	70	59	56	53	58	59	68	67	63.5	
OWINGS FERRY LANDING	17	MAX MIN	69	73	71	60	70	71	69	64	63	73	70	59	58	60	68	73	69	70	71	71	68	56	65	71	69	58	52	59	60	67	68	66.0
PATUXENT RIVER	MID	MAX MIN	61	72	60	56	69	72	64	57	56	71	72	48	53	56	62	69	65	64	64	65	60	57	64	67	59	57	59	59	59	68	65	62.3
UPPER SOUTHERN 04																																		
ANNAPOLIS POLICE BRKS	17	MAX MIN	66	74	72	60	70	72	70	65	60	67	65	60	59	60	68	71	72	69	68	69	68	58	67	69	67	59	53	62	60	65	67	65.5
BALTIMORE WSO AP	MID	MAX MIN	64	73	60	59	68	71	65	59	61	68	62	55	59	59	69	72	66	69	68	68	60	56	66	69	59	58	53	58	57	64	68	63.3
BELTSVILLE	08	MAX OBS MIN OBS	73	64	74	57	59	70	70	70	59	62	72	65	55	58	60	69	72	64	69	71	73	57	58	66	72	58	59	51	58	57	65	64.1
COLLEGE PARK	09	MAX MIN	75	65	75	57	60	72	72	66	63	64	74	65	55	59	61	70	74	70	70	73	74	61	58	67	73	60	60	52	60	60	67	65.5
DALECARLIA RESVR D C	17	MAX MIN	70	79	72	60	71	70	70	62	68	74	70	59	59	61	68	75	71	70	72	74	72	57	67	71	69	59	56	59	59	66	70	67.1

SEE REFERENCE NOTES FOLLOWING STATION INDEX
7

DAILY TEMPERATURES (°F)

MARYLAND AND
DELAWARE
OCTOBER 1987

STATION	OB. TIME	MAX MIN	DAY OF MONTH																															AVERAGE	
			1	2	3	4	5	6	7	8	9	10	11	12	13	14	15	16	17	18	19	20	21	22	23	24	25	26	27	28	29	30	31		
GLENN DALE BELL STN	16	MAX MIN	70 50	74 36	72 42	52 38	71 34	71 40	70 49	66 37	64 29	70 41	70 48	61 40	59 29	61 29	69 26	73 32	74 39	68 37	72 35	72 43	72 46	58 30	63 34	70 35	70 43	61 25	60 30	60 45	60 27	65 27	69 31	66.7 36.4	
LAUREL 3 W	MID	MAX MIN OBS	64 48 59	72 45 41	66 41	59 44	71 40	68 44	65 46	59 40	62 35	72 45	65 44	55 39	60 38	60 30	69 32	75 30	69 45	70 50	71 51	70 56	63 36	58 39	65 35	74 42	60 38	58 33	57 34	58 38	57 34	64 34	71 41	64.7 40.2	
NATIONAL ARBORETUM D C	08	MAX MIN	80 51	78 40	75 41	63 40	60 35	70 43	72 48	66 40	60 32	64 32	73 45	67 39	55 35	60 30	62 29	68 35	74 40	69 40	69 38	73 39	74 48	68 31	66 35	67 35	73 35	66 27	62 28	58 32	60 29	59 29	65 37	67.0 36.7	
UPPER MARLBORO 3 NNW	08	MAX MIN	74 51	65 39	74 40	58 37	59 33	70 38	70 44	66 36	59 30	63 35	72 43	67 40	55 32	58 29	60 28	68 29	73 34	65 38	70 37	71 38	73 46	60 32	57 35	67 34	73 39	60 26	60 25	59 33	66 28	66 36	64.6 35.5		
NORTHERN EASTERN SHORE	05																																		
CHESTERTOWN	23	MAX MIN	66 49	73 46	60 46	58 42	70 43	75 49	68 53	58 46	63 36	70 49	63 49	54 40	59 37	61 35	67 35	75 40	70 44	68 45	72 42	73 50	65 45	56 39	65 42	74 42	61 44	61 32	60 34	59 44	57 34	66 34	64 43	64.9 42.2	
MILLINGTON 1 SE	18	MAX MIN	68 53	72 41	69 49	58 40	70 37	73 44	68 52	68 38	62 32	70 46	64 46	55 42	59 33	62 35	68 30	75 35	70 41	69 47	72 37	72 47	71 48	57 35	64 36	71 39	68 49	60 27	60 29	61 48	59 30	65 29	67 39	66.0 39.8	
NORTHERN CENTRAL	06																																		
ABERDEEN PHILLIPS FLD	16	MAX MIN	70 53	71 40		69 39	70 42	69 41	63 41	59 33					59 40	60 34	68 32	72 38					68 38	68 50	67 48	58 33	62 45		56 29	56 35	58 47	57 31	63 29	M M	
BALTIMORE WSO CI	MID	MAX MIN	65 52	72 50	64 45	59 42	73 46	70 52	68 49	60 45	61 41	69 51	60 46	54 42	58 40	62 42	72 40	72 49	65 52	72 54	68 50	67 56	61 43	59 41	66 42	69 46	60 45	57 41	54 41	61 45	57 42	62 39	68 51	64.0 45.8	
BENSON POLICE BARRACKS	17	MAX MIN	71 42	74 38	72 46	61 34	73 33	73 41	66 48	65 36	62 30	71 41	70 46	57 35	62 32	65 32	73 28	76 37	74 39	72 40	71 37	68 45	67 42	60 31	64 35	70 33	67 41	61 35	55 26	60 42	58 32	62 25	69 37	66.7 36.5	
BOYDS 2 NW	18	MAX MIN	65 48	72 41	69 45	57 38	68 40	66 44	64 49	58 42	60 41	73 47	66 52	53 39	56 35	61 36	67 35	73 44	68 40	68 46	69 44	67 50	63 43	55 35	65 36	69 40	60 43	58 34	51 35	57 42	55 33	63 35	66 45	63.3 41.2	
CATOCTIN MOUNTAIN PARK	17	MAX MIN	64 45	66 44	66 40	54 35	64 42	62 48	60 45	54 40	55 34	64 40	64 47	51 35	52 33	55 40	61 39	67 48	67 43	62 47	65 46	56 42	64 50	49 35	59 36	66 47	64 32	52 36	47 47	50 37	51 35	58 34	62 49	59.0 40.5	
CLARKSVILLE 3 NNE	17	MAX MIN	69 49	72 35	72 47	59 38	70 33	70 37	67 49	61 37	62 29	74 40	61 45	64 38	58 29	61 27	69 27	72 33	72 36	72 37	70 35	68 44	68 48	57 34	65 30	71 32	69 37	59 25	50 27	58 45	58 26	64 26	67 35	65.5 35.9	
CONOWINGO DAM	MID	MAX MIN	65 42	71 37	67 43	59 37	70 34	70 39	67 42	67 32	60 30	64 40	57 43	54 35	58 31	61 30	67 31	71 35	65 37	65 41	65 36	59 44	59 36	57 32	58 33	66 33	57 32	58 20	66 26	59 36	60 28	60 28	66 36	62.7 34.9	
DAMASCUS 2 SW	19	MAX MIN	63 48	71 43	64 43	58 38	69 39	68 44	62 47	56 42	61 32	72 48	59 47	53 38	57 36	60 33	68 33	74 42	68 46	68 46	70 44	65 49	68 41	55 35	63 36	68 42	58 42	57 42	47 30	56 42	53 34	62 34	66 47	62.2 40.5	
EMMITSBURG 2 SE	17	MAX MIN	68 50	70 39	70 47	57 38	67 37	65 37	62 49	58 40	58 30	69 42	68 49	52 38	55 29	57 29	67 27	70 31	70 36	66 35	68 45	65 48	55 33	58 35	67 33	64 40	55 23	54 27	56 44	53 28	59 25	62 33	61.9 36.5		
FREDRICK POLICE BRKS	17	MAX MIN	70 51	72 43	72 47	59 41	71 42	67 45	66 51	62 43	60 34	71 48	71 54	61 41	58 33	60 33	67 35	74 39	71 42	68 41	70 40	68 50	64 49	55 37	57 36	68 39	69 31	61 33	53 45	57 33	55 31	63 44	66 44	64.7 41.0	
ROCKVILLE 1 NE	17	MAX MIN	63 50	73 41	65 43	58 40	69 38	68 49	62 46	57 42	60 32	72 50	62 48	53 40	57 37	61 36	68 30	73 38	67 42	68 46	71 36	72 52	60 38	54 36	65 37	71 39	59 38	57 28	51 30	56 32	55 28	66 30	69 49	63.3 39.7	
TOWSON	18	MAX MIN OBS	73 51 58	72 49 38	75 38	59 36	61 35	63 38	67 39	63 35	67 37	75 33	67 42	53 38	55 37	70 33	73 32	75 38	65 36	68 34	68 37	69 45	68 47	67 42	69 41	71 34	64 42	63 41	60 30	61 33	59 30	66 35	68 31	66.6 37.3	
UNIONVILLE	18	MAX OBS MIN OBS	70 41 31	73 31 38	71 38	59 36	68 33	68 37	62 39	58 34	60 28	71 44	70 44	53 37	56 26	60 25	68 25	73 39	68 35	68 35	68 32	69 40	71 26	57 34	70 22	68 23	68 31	61 22	55 23	57 31	51 24	51 28	62 28	64 31	64.4 33.1
WESTMINSTER POLICE BRK	17	MAX OBS MIN	69 45 42	69 42 42	70 42	55 33	66 38	68 42	66 45	60 38	59 31	68 42	68 45	51 34	64 31	57 36	65 34	70 43	70 41	67 46	67 41	65 47	69 43	55 31	61 35	69 36	65 39	57 29	57 32	55 40	53 32	60 28	62 46	63.1 38.3	
WOODSTOCK	18	MAX MIN	68 49	73 37	69 46	59 37	70 36	68 41	65 49	59 38	62 30	73 42	69 49	55 40	59 34	62 31	70 30	73 37	69 41	69 42	70 37	67 41	65 42	57 33	65 35	70 35	66 45	59 27	51 28	58 45	58 29	64 27	67 40	64.8 38.3	

SEE REFERENCE NOTES FOLLOWING STATION INDEX

DAILY TEMPERATURES (°F)

MARYLAND AND
DELAWARE
OCTOBER 1987

STATION	OB. TIME	MAX/MIN	DAY OF MONTH																															AVERAGE	
			1	2	3	4	5	6	7	8	9	10	11	12	13	14	15	16	17	18	19	20	21	22	23	24	25	26	27	28	29	30	31		
APPALACHIAN MOUNTAIN	07																																		
CUMBERLAND 2	18	MAX	62	77	72	57	72	67	59	52	60	73	66	55	59	60	68	72	72	71	69	64	60	56	68	71	69	60	52	54	52	65	72		
		MIN	37	37	40	36	36	42	45	30	30	48	35	35	30	30	30	35	38	39	39	45	38	35	35	35	28	28	34	31	30	34	38		
FROSTBURG 2	07	MAX	61	53	69	46	50	65	59	50	44	57	65	53	48	51	53	62	65	67	64	67	59	42	49	61	66	46	51	45	45	44	65		
		OBS				69																													
		MIN	41	39	41	33	33	38	43	38	28	28	50	32	34	30	31	31	40	43	39	38	39	31	31	39	34	27	31	35	32	29	37		
HAGERSTOWN	18	MAX																																	
		MIN																																	
HANCOCK FRUIT LAB	16	MAX		74	74	59	70	68	63	57	62	73	70	55	58	60	67	70	70	66	67	66	60	54	67	72	69	58	54	56	54	66	67		
		MIN	50	34	45	39	32	35	45	37	28	42	51	29	30	26	25	31	31	32	39	45	44	34	30	31	33	23	28	33	26	24	32		
ALLEGHENY PLATEAU	08																																		
MC HENRY 2 NW	08	MAX	57	55	60	57	55	66	57	57	50	55	66	49	50	50	57	65	73	71	60	70	55	41	47	59	68	47	56	48	48	46	63		
		OBS	71																																
		MIN	37	38	42	31	31	38	39	34	28	30	36	31	31	32	32	38	42	37	37	42	36	28	28	42	31	30	33	32	29	38	41		
OAKLAND 1 SE	17	MAX	58	72	66	50	66	66	52	48	60	65	62	48	51	57	66	71	71	66	69	62	56	48	59	70	67	57	54	47	43	65	69		
		MIN	39	37	39	33	29	36	40	35	23	45	40	30	24	22	23	27	30	40	28	47	33	29	27	27	29	19	30	31	25	22	37		
		OBS																																	
SAVAGE RIVER DAM	08	MAX	64	57	71	48	54	70	58	52	48	57	68	53	54	55	59	65	68	70	68	66	62	44	51	64	70	51	54	47	48	48	67		
		MIN	44	35	36	37	38	38	42	39	28	28	47	32	29	27	27	28	33	35	34	34	41	33	30	33	33	24	25	33	30	27	43		
DELAWARE																																			
NORTHERN	01																																		
MIDDLETOWN 3 E	17	MAX	64	74	61	57	69	75	62	58	61	67	58	53	57	59	67	72	68	68	67	69	63	56	65	70	58	58	60	60	58	64	64		
		MIN	53	42	48	41	38	46	51	38	34	46	46	41	37	36	32	39	41	47	40	48	47	35	37	39	48	28	31	41	32	30	41		
NEWARK UNIVERSITY FARM	17	MAX	69	74	69	58	69	76	69	62	62	67	58	55	59	61	70	71	68	68	69	70	62	56	63	70	62	59	59	58	58	61	65		
		MIN	42	39	47	38	39	40	50	37	33	42	47	38	38	36	31	39	40	45	40	49	44	32	35	35	42	28	30	45	40	28	40		
WILMINGTON WSO AP	MID	MAX	65	73	62	58	69	72	67	59	59	66	57	54	59	60	69	73	69	68	68	67	59	56	63	67	59	57	60	59	57	59	65		
		MIN	48	43	45	42	40	44	48	40	36	46	45	39	36	36	34	41	42	47	42	53	39	35	41	37	38	30	33	40	34	31	41		
WILMGTON PORTER RESVR	MID	MAX	63	72	64	57	68	72	66	57	59	67	55	54	58	59	69	71	68	68	68	67	59	55	60	67	59	58	59	58	56	59	63		
		MIN	48	44	44	44	43	48	49	41	38	48	44	40	38	38	38	47	47	49	46	52	41	38	41	41	40	36	31	42	38	34	44		
SOUTHERN	02																																		
DOVER	17	MAX	68	75	71	59	70	76	75	63	63	73	70	66	59	62	72	74	76	71	70	70	64	60	66	72	69	62	62	64	61	66	66		
		MIN	60	42	41	38	48	48	52	42	36	56	58	41	37	36	35	39	44	51	40	46	48	36	35	40	42	33	39	47	32	37	37		
GEORGETOWN 5 SW	08	MAX	73	65	73	65	50	70	75	70	59	64	74	77	52	58	60	66	71	74	70	72	74	59	57	71	74	60	60	67	59	60	67		
		MIN	53	39	51	46	35	43	52	41	32	37	45	45	37	35	35	33	39	46	36	42	52	32	30	38	46	28	28	49	30	34	46		
GREENWOOD 2 NE	18	MAX	65	73	67	57	69	75	67	58	61	74	75	54	59	61	69	73	71	70	72	73	63	58	64	72	66	66	68	64	58	65	69		
		MIN	50	41	51	41	37	44	52	40	33	44	48	41	36	37	36	36	42	50	40	45	50	34	34	40	47	31	29	48	31	31	46		
LEWES	17	MAX	71	74	70	57	69	74	74	65	63	73	76	60	57	59	64	68	67	67	66	69	65	57	66	70	64	55	65	65	59	67	62		
		MIN	55	44	55	41	43	49	55	44	40	48	48	45	47	49	50	39	45	45	44	45	51	37	38	45	51	44	36	50	38	36	52		
		OBS																																	
MILFORD 4 SE	17	MAX	69	74	71	57	70	75	70	64	62	73	77	55	58	60	66	68	68	70	68	73	66	58	66	73	67	55	66	64	59	66	65		
		MIN	54	40	51	40	40	43	52	42	33	45	48	42	37	46	36	35	39	50	39	46	50	37	32	41	51	36	29	48	33	31	48		

SEE REFERENCE NOTES FOLLOWING STATION INDEX

EVAPORATION AND WIND

MARYLAND AND
DELAWARE
OCTOBER 1987

STATION	DAY OF MONTH																															TOTAL OR AVG	
	1	2	3	4	5	6	7	8	9	10	11	12	13	14	15	16	17	18	19	20	21	22	23	24	25	26	27	28	29	30	31		
MARYLAND																																	
UPPER SOUTHERN 04 BELTSVILLE	WIND	52	53	62	69	53	15	36	34	50	25	12	65	43	40	23	13	*	*	55	23	42	52	31	*	*	118	18	65	43	28	28	1148
	EVAP	13	14	25	7	10	12	13	14	5	15	2	13	4	10	11	9	*	*	29	9	7	16	7	*	*	36	10	14	11	8	11	3.35
	MAX	75	70	73	58	63	73	68	70	61	66	68	62	63	65	67	70	-	-	-	71	73	63	62	-	-	-	62	49	61	57	60	65.2
	MIN	51	46	46	41	41	42	47	45	38	37	50	45	38	38	37	35	-	-	-	45	51	37	36	-	-	-	38	38	41	39	40	41.7
UPPER MARLBORO 3 NNW	WIND	1	19	34	23	20	2	7	4	11	5	0	23	10	30	11	3	1	1	4	1	9	17	4	13	15	19	2	9	8	4	6	316
	EVAP	12	14	17	5	13	10	12	12	10	10	8	8	9	12	15	4	10	3	10	4	12	12	7	10	13	13	9	3	6	6	9	2.98
	MAX	82	68	72	57	63	70	69	70	61	65	70	64	60	61	64	66	70	65	71	71	67	62	60	62	65	63	61	48	59	58	60	64.6
	MIN	56	49	49	42	42	44	50	49	42	42	51	46	41	40	40	40	45	51	50	48	52	39	38	41	45	41	40	40	42	42	43	44.5
ALLEGHENY PLATEAU 08																																	
SAVAGE RIVER DAM	WIND	59	36	18	84	56	3	3	39	43	8	12	23	17	11	4	3	4	16	16	9	37	27	13	10	27	26	*	28	28	31	20	711
	EVAP	13	7	9	13	*	20	2	8	*	15	4	0	8	*	7	16	5	1	1	8	4	9	23	-	-	-	14	25	0	1	1	2.44B
	MAX	65	53	65	49	54	66	50	52	47	52	55	53	54	50	52	52	55	55	63	55	55	51	45	52	49	54	-	-	-	-	54.0	
	MIN	45	40	40	37	37	38	46	42	37	36	44	39	36	35	35	35	38	38	40	40	46	37	35	36	35	27	-	-	-	-	38.2	
DELAWARE																																	
NORTHERN 01 NEWARK UNIVERSITY FARM	WIND	61	21	23	106	31	11	25	45	26	11	9	38	22	25	12	14	12	23	16	16	39	41	16	11	51	12	12	98	35	18	16	896
	EVAP	-	10	16	10	16	5	15	12	13	3	1	4	4	9	15	7	8	6	7	2	25	5	5	5	8	6	9	9	5	5	2	2.55B
	MAX	-	-	-	-	-	-	-	-	-	-	-	-	-	-	-	-	-	-	-	-	-	-	-	-	-	-	-	-	-	-	-	M
	MIN	-	-	-	-	-	-	-	-	-	-	-	-	-	-	-	-	-	-	-	-	-	-	-	-	-	-	-	-	-	-	-	M

EVAPORATION: IS MEASURED IN HUNDRETHS OF INCHES
WIND: IS MEASURED IN MILES
MAX AND MIN: THE MAXIMUM AND MINIMUM TEMPERATURES (FAHRENHEIT) OF THE WATER IN THE EVAPORATION PAN
SEE REFERENCE NOTES FOLLOWING STATION INDEX

SNOWFALL AND SNOW ON GROUND (INCHES)

MARYLAND AND
DELAWARE
OCTOBER 1987

STATION	DAY OF MONTH																														
	1	2	3	4	5	6	7	8	9	10	11	12	13	14	15	16	17	18	19	20	21	22	23	24	25	26	27	28	29	30	31
MARYLAND																															
APPALACHIAN MOUNTAIN 07																															
FROSTBURG 2				T				T	T																						
ALLEGHENY PLATEAU 08																															
OAKLAND 1 SE																						T									
DELAWARE																															

SNOWFALL: INCLUDES SNOW AND ICE
 SNOW ON GROUND: INCLUDES SNOW, SLEET, ICE AND HAIL
 WATER EQUIVALENT: GIVEN FOR NWS STATIONS ONLY, WHEN SNOW DEPTH IS 2 INCHES OR MORE.
 SEE REFERENCE NOTES FOLLOWING STATION INDEX

STATION INDEX

MARYLAND AND
DELAWARE
OCTOBER 1987

STATION	INDEX NO.	DIVISION	COUNTY	LATITUDE	LONGITUDE	ELEVATION (IN FEET)	OBSERVATION TIME AND TABLES				OBSERVER		
							LOCAL STD TIME						
							TEMP	PRECIP	EVAP	SPECIAL (SEE NOTES)			
MARYLAND													
ABERDEEN PHILLIPS FLD	001506		HARFORD	39 28	76 10W	57	16	16		C	H	ROSS AVIATION INC	
ANNAPOLIS POLICE BRKS	019304		ANNE ARUNDEL	38 59	76 30W	25	17	17		C	H	ANNAPOLIS POLICE BRKS	
ASSATEAGUE ISLAND NATL	033301	SE	WORCESTER	38 14	75 8W	7	07	07		C	H	NATIONAL PARK SERVICE	
BALTIMORE WSO AP	046504	R	ANNE ARUNDEL	39 11	76 40W	196	MID	MID		C	H	NATL WEATHER SERVICE	
BALTIMORE WSO C1	047004	R	BALTO CITY	39 17	76 37W	91	MID	MID		C	H	OCCI COMMANDING OFFICER	
BELTSVILLE	070004		PRN GEORGES	39 2	76 53W	120	08	08		O	B	U S DEPT OF AGRICULTURE	
BENSON POLICE BARRACKS	073206		HARFORD	39 30	76 23W	365	17	17				MARYLAND STATE POLICE	
BOYDS 2 NW	103206		MONTGOMERY	39 13	77 20W	580	18	18				HUNTER F STALEY	
BRIGHTON DAM	112506		MONTGOMERY	39 12	77 1W	330		MID				WASH SUB SANY COMM	
CAMBRIDGE WTR TRMT PL	138502		DORCHESTER	38 34	76 4W	5	16	16		C	H	WASTEWATER TRMT PLANT	
CATOCTIN MOUNTAIN PARK	153000		FREDERICK	39 39	77 29W	1610	17	17		C	H	CATOCTIN MOUNTAIN PARK	
CENTREVILLE	162705		QUEEN ANNES	39 3	76 4W	60	17	17		C	H	INACTIVE 02/01/86	
CHESTERTOWN	175005		KENT	39 13	76 4W	40	23	23		C	H	THOMAS W ELIASON JR	
CLARKSVILLE 3 NNE	186206		HOWARD	39 15	76 56W	365	17	17		C	H	UNIVERSITY OF MARYLAND	
COLLEGE PARK	199504		PRN GEORGES	38 59	76 57W	90	09	09		C	H	UNIVERSITY OF MARYLAND	
CONOWINGO DAM	206006		HARFORD	39 39	76 10W	40	MID	MID		C	H	SUSQUEHANNA ELECTRIC CO	
CRISFIELD SOMERS COVE	221501		SOMERSET	37 59	75 52W	8	17	17				SOMERS COVE MARINA	
CUMBERLAND 2	228207		ALLEGANY	39 38	78 45W	730	18	07			H	TIMOTHY B THOMAS	
DALECARLIA RESVR D C	232504		MONTGOMERY	38 56	77 7W	146	17	17			H	U S CORPS OF ENGINEERS	
DAMASCUS 2 SW	233506		MONTGOMERY	39 16	77 14W	720	19	19			H	RICHARD W SCHWERDT	
DENTON 2 E	252302		CAROLINE	38 53	75 48W	50	17	17			H	ARTHUR REINHOLD	
EDGEMONT	277007		WASHINGTON	39 40	77 33W	905		07				JOHN W HARNE	
EMMITSBURG 2 SE	290606		FREDERICK	39 41	77 18W	416	17	17			H	MRS LUCILLE K BEALE	
FREDRICK POLICE BRKS	334806		FREDERICK	39 25	77 26W	380	17	17			H	MARYLAND STATE POLICE	
FREDERICK 3 E	335506		FREDERICK	39 24	77 22W	385		07			H	MISS I MARY STALEY	
FROSTBURG 2	341507		ALLEGANY	39 40	78 56W	2170	07	07			H	LEE K CLOSE	
GLENN DALE BELL STN	367504		PRN GEORGES	38 58	76 48W	150	16	16			H	USDA PLT INTRODUCT STN	
HAGERSTOWN	397507		WASHINGTON	39 39	77 44W	660	18	18			C	H	HAGERSTOWN RESERVOIR
HANCOCK FRUIT LAB	403007		WASHINGTON	39 42	78 11W	428	16	16			C	H	SHARPSBURG RESEARCH C
LA PLATA 1 W	508003		CHARLES	38 32	77 0W	140	18	18			C	H	C RUSSELL LEVERING
LAUREL 3 W	511104		PRN GEORGES	39 6	76 54W	400	MID	MID			C	H	WASH SUB SANY COMM
MC HENRY 2 NW	583208		GARRETT	39 35	79 22W	2680	08	08			C	H	JOSEPH F JOHENNING
MECHANICSVILLE 1 E	586503		ST MARYS	38 27	76 41W	100	19	19				SANDRA J HASTING	
MERRILL	589408		GARRETT	39 36	79 5W	1790		09				DELWOOD E MERRILL	
MILLINGTON 1 SE	598505		KENT	39 16	75 52W	30	18	18			H	HOWARD L HARVEY	
NATIONAL ARBORETUM D C	635004			38 54	76 59W	50	08	08			H	U S NATL ARBORETUM	
OAKLAND 1 SE	662008		GARRETT	39 24	79 24W	2420	17	17			H	BEA J CROSCO	
OWINGS FERRY LANDING	677003		CALVERT	38 41	76 40W	160	17	17			H	JAMES C RASMUSSEN	
PATUXENT RIVER	691503		ST MARY'S	38 20	76 25W	38	MID	MID			C	NAVAL WEATHER SERVICE	
POTOMAC FILTER PLANT	727206		MONTGOMERY	39 2	77 15W	270		08				POTOMAC WATER FILT PLT	
PRINCESS ANNE	733001		SOMERSET	38 13	75 41W	20	17	17			H	UNIVERSITY MARYLAND EAST	
ROCKVILLE 1 NE	770506		MONTGOMERY	39 6	77 6W	440	17	17			H	WASH GAS & LIGHT CO	
ROYAL OAK 2 SSW	780602		TALBOT	38 43	76 11W	10	18	18			H	JOHN L SWAINE JR	
SALISBURY	800001		WICOMICO	38 22	75 35W	10	17	17				CITY OF SALISBURY	
SALISBURY FAA AP	800501		WICOMICO	38 20	75 31W	48	MID	MID			H	FAA	
SAVAGE RIVER DAM	806508		GARRETT	39 31	79 8W	1495	08	08		O	B	U S CORPS OF ENGINEERS	
SNOW HILL 4 N	838001		WORCESTER	38 14	75 23W	28	18	18			H	CURTIS E SHOCKLEY	
TOWSON	887706		BALTIMORE	39 23	76 34W	390	18	18				BENDIX FRIEZ	
UNIONVILLE	903006		FREDERICK	39 27	77 11W	430	18	18			C	H	CAROLINE R VON EIFF
UPPER MARLBORO 3 NNW	907004		PRN GEORGES	38 52	76 47W	98	08	08		O	B	TOBACCO EXP FARM	
VIENNA	914002		DORCHESTER	38 29	75 50W	12	18	18			H	DELMARVA POWER & LIGHT	
WESTMINSTER POLICE BRK	944006		CARROLL	39 33	76 58W	765	17	17				MARYLAND STATE POLICE	
WOODSTOCK	975006		BALTIMORE	39 20	76 52W	460	18	18			H	JOHN A HILTZ	

SEE REFERENCE NOTES FOLLOWING STATION INDEX

STATION INDEX

MARYLAND AND
DELAWARE
OCTOBER 1987

STATION	INDEX NO.	DIVISION	COUNTY	LATITUDE	LONGITUDE	ELEVATION (IN FEET)	OBSERVATION TIME AND TABLES				OBSERVER
							LOCAL STD TIME				
							TEMP	PRECIP	EVAP	SPECIAL (SEE NOTES)	
DELAWARE											
DOVER	2730	02	KENT	39 9	75 31 W	30	17	17		H	STATE DIV OF HIGHWAYS UNIV OF DEL SUBSTATION DANIEL M SWARTZENTRUBER BOARD OF PUBLIC WORKS DAVID S NEYHARD DAVID S SCHLOTT UNIV OF DELAWARE NATL WEATHER SERVICE WATER DEPARTMENT
GEORGETOWN 5 SW	3570	02	SUSSEX	38 38	75 27 W	45	08	08	08	C H	
GREENWOOD 2 NE	3595	02	SUSSEX	38 50	75 35 W	45	18	18			
LEWES	5320	02	SUSSEX	38 46	75 8 W	15	17	17		H	
MIDDLETOWN 3 E	5852	01	NEW CASTLE	39 27	75 40 W	55	17	17		H H	
MILFORD 4 SE	5915	02	SUSSEX	38 54	75 28 W	30	17	17		H	
NEWARK UNIVERSITY FARM	6410	01	NEW CASTLE	39 40	75 44 W	90	17	17	17	C H J	
WILMINGTON WSO AP	9595	01	NEW CASTLE	39 40	75 36 W	79	MID	MID		C H J	
WILMINGTON PORTER RESVR	9605	01	NEW CASTLE	39 46	75 32 W	274	MID	MID		H	

SEE REFERENCE NOTES FOLLOWING STATION INDEX
13

REFERENCE NOTES

MARYLAND AND
DELAWARE
OCTOBER 1987

DEFINITIONS

STATION NAMES: Name of the city, town or locality. Figures and letters following the station names indicate the distance in miles and direction from the post office or town community center.

DIVISIONS: Areas within a state of similar climatological characteristics. Division averages are calculated using data from stations that record both temperature and precipitation (ie: not precipitation alone).

NORMALS: The average value of the meteorological element over a time period. Effective 1 January 1983, the averaging period is 1951 to 1980. The normals for National Weather Service localities have been adjusted so as to be representative for the current observation site.

MONTHLY DEGREE DAY TOTALS: One heating (cooling) degree day is accumulated for each whole degree that the daily mean temperature is BELOW (ABOVE) 65 degrees Fahrenheit.

PRECIPITATION: Values shown in hundredths of inches are water equivalent totals, i.e. total of liquid and melted frozen precipitation. In the "MONTHLY SUMMARIZED DATA" table the total snow and sleet values shown in tenths of inches are unmelted amounts. The max. depth on ground values of snow and sleet shown in whole inches are cumulative unmelted amounts. The no. of days with .10, .50, 1.00 or more refers to water equivalents.

TEMPERATURE: Original and edited temperature values are given in the Daily Temperature Table. Edited values are produced when an original value is missing or when surrounding stations indicate a suspect original value. When a line labeled OBS is present and contains either a daily temperature (suspect) or *** (missing), the temperature appearing directly above, on the line labeled MAX or MIN, is an edited value. Summary temperature information (averages, departures, extremes, monthly degree day totals) is based on the values labeled MAX/MIN.

WIND: (As shown in "Evaporation and Wind" table) The total wind movement in miles over the evaporation pan as determined by an anemometer recorder located 6-8 inches above the pan.

SYMBOLS AND LETTERS USED IN THE STATION INDEX TABLE

Thermometers located in a rooftop shelter.
// Rain Gage equipped with a windshield.
AR Observation made "after rain" has occurred.
C Station is equipped with recording rain gage (R) but values in this bulletin are from a non-recording rain gage unless indicated by an R.
G Observations appear in "Soil Temperatures" table.
H Observations appear in "Snowfall and Snow on Ground" table.
J Station also published as a Local Climatological Data publication.
MID Observation time is midnight.
MO Rain gage read once monthly, usually the last day.
OC Rain gage readings vary from a few weeks to several months.
R Amounts from recording rain gage.
SR Observation time near sunrise.
SS Observation time near sunset.
VAR Observation time varies.
WI Rain gage read weekly or irregularly.
WM Rain gage read weekly and last day of month.

SYMBOLS AND LETTERS USED IN THE DATA TABLES

(DAILY DATA ARE FOR THE 24 HOURS IMMEDIATELY PRECEDING OBSERVATION TIME.)

BLANK entries in the "Monthly Summarized Data" table indicate no record. BLANK entries in the "Daily Precipitation" and "Snowfall and Snow on Ground" tables indicate zero.

BLANK entries in the "Daily Temperature" table indicate a missing record where an edited value could not be determined. (See *** below)

- No record. Data not recorded, determined unreliable by quality control checks, or not received in time for publication.

+ Precipitation or temperature extremes occurred on one or more previous dates during the month.

*** Missing original temperature which has been estimated during edit.

* Rain gage not read. Precipitation is included in the amount following the asterisks. Time distribution not known. A * preceding the monthly total indicates precipitation amount is being carried forward to next months total, and may include amounts from the previous month(s).

// Rain gage equipped with a windshield.

A Amount of precipitation is the total of observer's entries for the current month. It may include precipitation that occurred during the previous month. Refer to earlier bulletin to determine date of last reading. (HAWAII stations)

B Adjusted monthly value (estimated), (1-7 missing values for wind and evaporation).

M Insufficient or partial data. M is appended to average and/or total values computed with 1-9 daily values missing. M appears alone if 10 or more daily values are missing, (8 or more for wind and evaporation).

R Amounts from recording rain gage.

T Trace. An amount too small to measure.

V Includes total for previous month(s). (See * above)

Seasonal Tables: Monthly and seasonal snowfall and heating degree days for the 12 months ending with the June data are published in the July issue of this bulletin. Cooling degree days for the calendar year are published in the "Climatological Data Annual Summary".

The graphic displays appearing in this publication were first produced for the January 1987 data month. The types of graphs and the information they portray may vary from month to month and from state to state in order to highlight climatic features of state, regional, and seasonal interest. Some graphs present information for "clusters". A cluster is a group of up to four (4) adjacent divisions that comprise an area of similar climate.

Information concerning the history of changes in locations, exposure, etc. of substations is kept on file at the National Climatic Data Center. Historical information for regular National Weather Service Offices may be obtained from the "Local Climatological Data" annual publication. The contents of this publication may be reprinted or otherwise used freely, with proper credit to the National Climatic Data Center, Asheville, North Carolina.

SUBSCRIPTION, PRICE AND ORDERING INFORMATION AVAILABLE FROM:
NATIONAL CLIMATIC DATA CENTER
FEDERAL BUILDING
ASHEVILLE, NC 28801-2696

USCOMM-NOAA-ASHEVILLE, N.C. OCTOBER 1987-0585

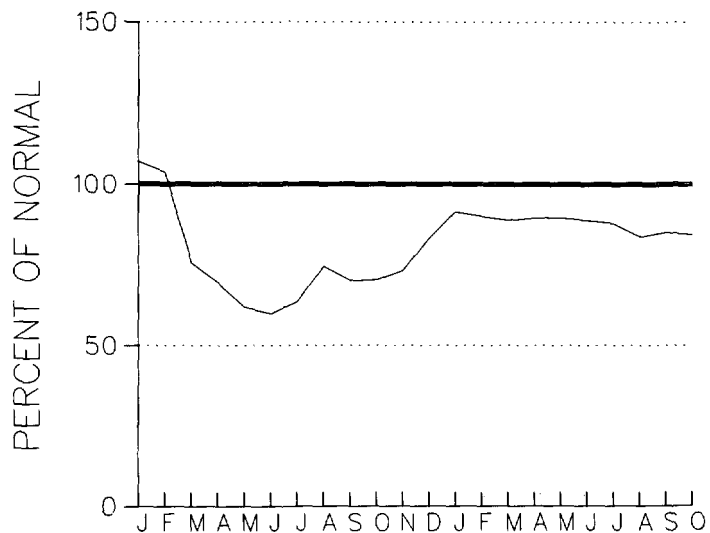
CUMULATIVE PRECIPITATION DEPARTURES FROM NORMAL (1951-1980)
FOR THE LAST 22 MONTHS
ENDING OCTOBER 1987
MARYLAND

CLUSTER 1 -DIVISION(S):
SOUTHERN EASTERN SHORE 01
CENTRAL EASTERN SHORE 02
LOWER SOUTHERN 03

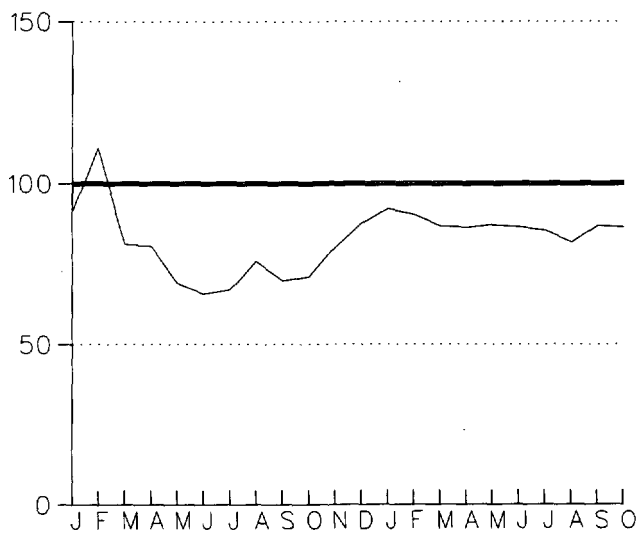
CLUSTER 2 -DIVISION(S):
UPPER SOUTHERN 04
NORTHERN EASTERN SHORE 05

CLUSTER 3 -DIVISION(S):
NORTHERN CENTRAL 06
APPALACHIAN MOUNTAIN 07

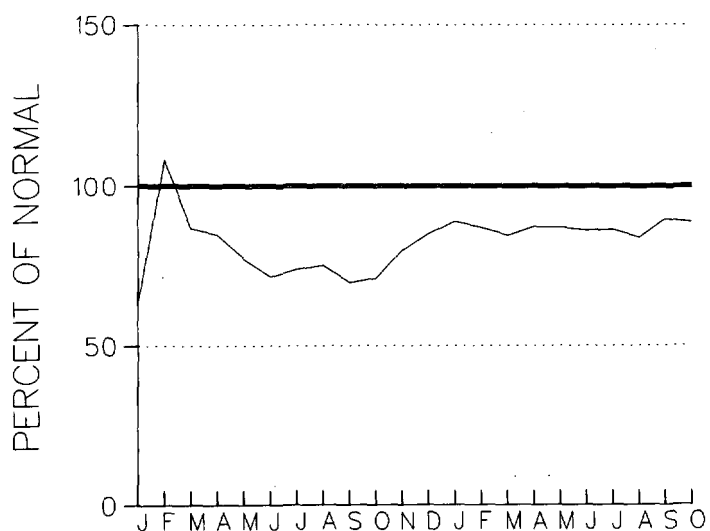
CLUSTER 4 -DIVISION(S):
ALLEGHENY PLATEAU 08



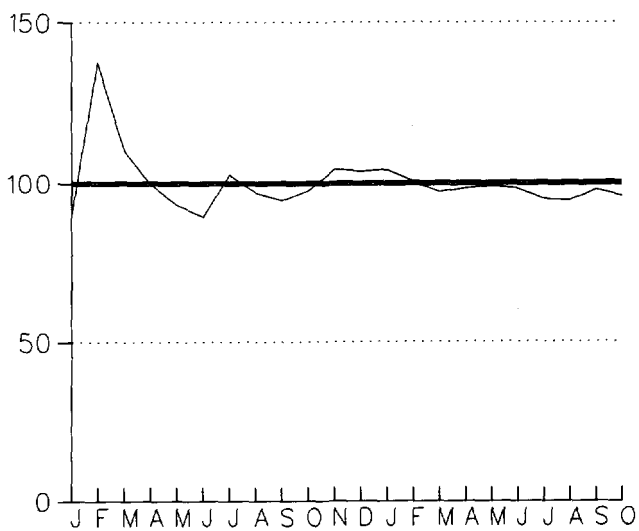
CLUSTER 1



CLUSTER 2



CLUSTER 3



CLUSTER 4

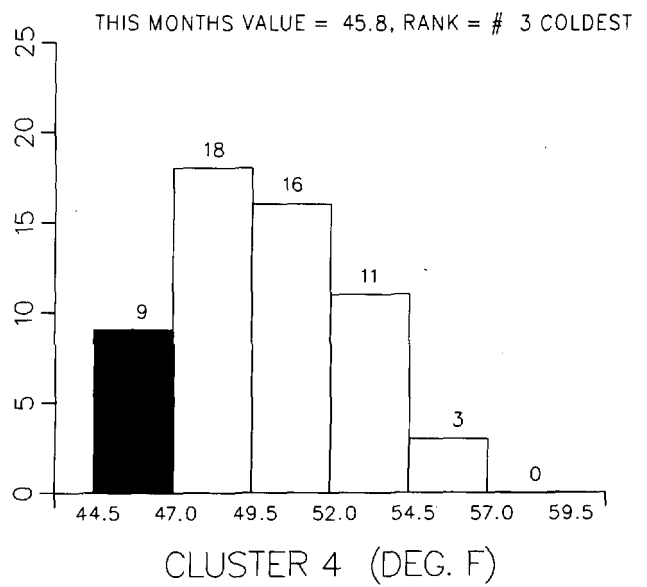
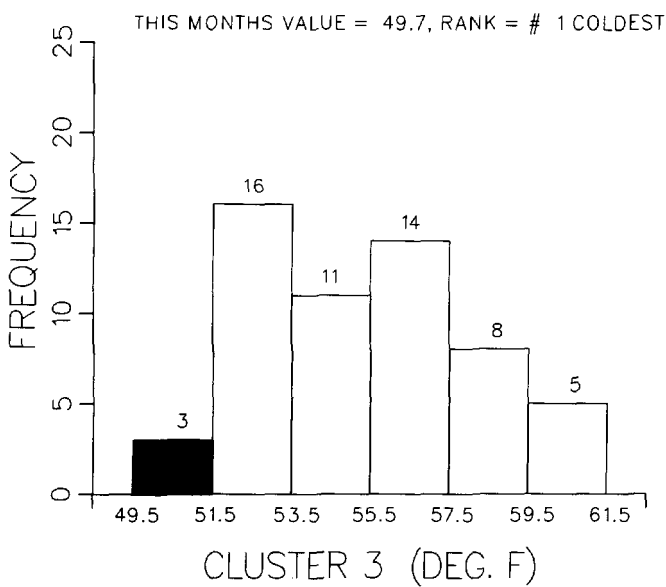
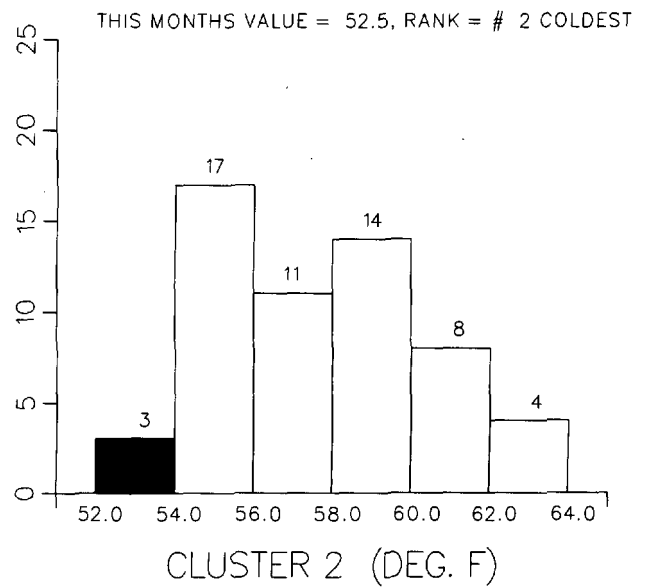
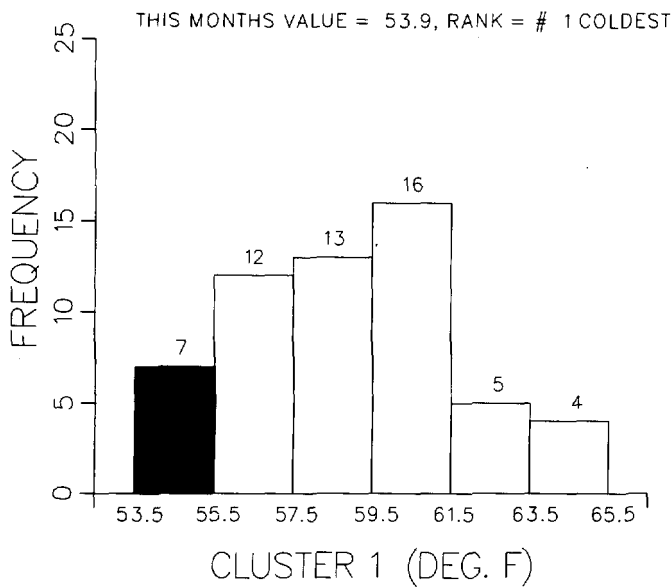
MEAN MONTHLY TEMPERATURE FREQUENCY DISTRIBUTION FOR PERIOD OF RECORD 1931-1987 FOR MONTH OF OCTOBER MARYLAND

CLUSTER 1 -DIVISION(S):
SOUTHERN EASTERN SHORE 01
CENTRAL EASTERN SHORE 02
LOWER SOUTHERN 03

CLUSTER 2 -DIVISION(S):
UPPER SOUTHERN 04
NORTHERN EASTERN SHORE 05

CLUSTER 3 -DIVISION(S):
NORTHERN CENTRAL 06
APPALACHIAN MOUNTAIN 07

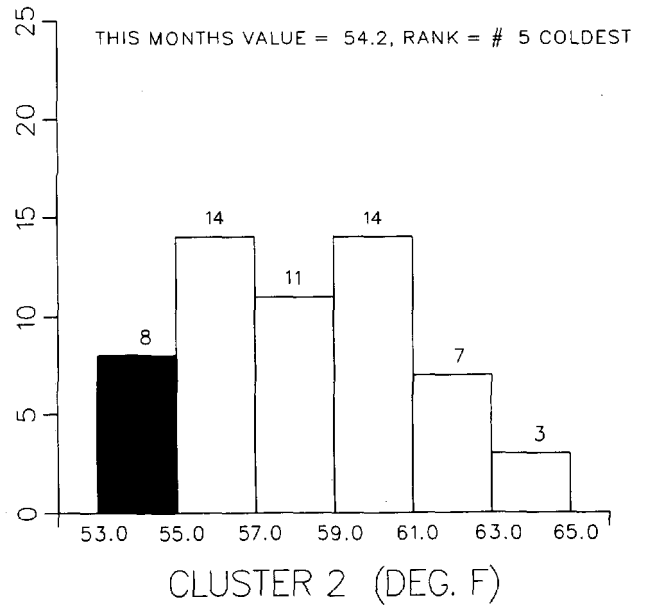
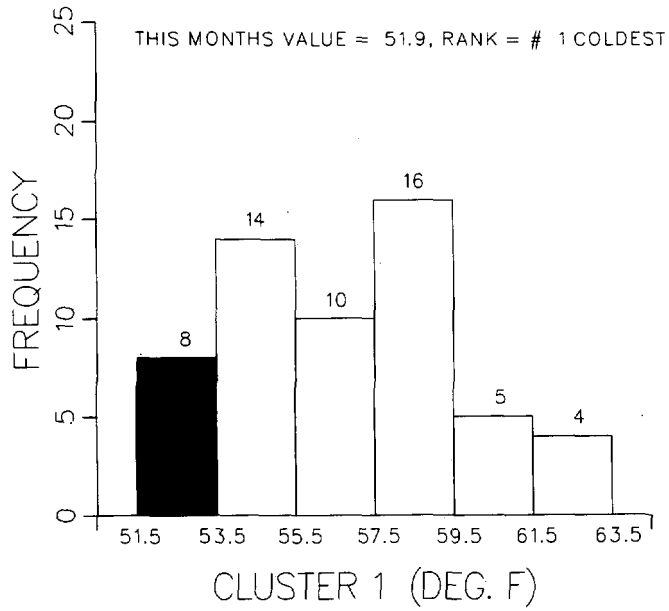
CLUSTER 4 -DIVISION(S):
ALLEGHENY PLATEAU 08



MEAN MONTHLY TEMPERATURE FREQUENCY DISTRIBUTION
 FOR PERIOD OF RECORD 1931-1987
 FOR MONTH OF OCTOBER
 DELAWARE

CLUSTER 1 -DIVISION(S):
 NORTHERN 01

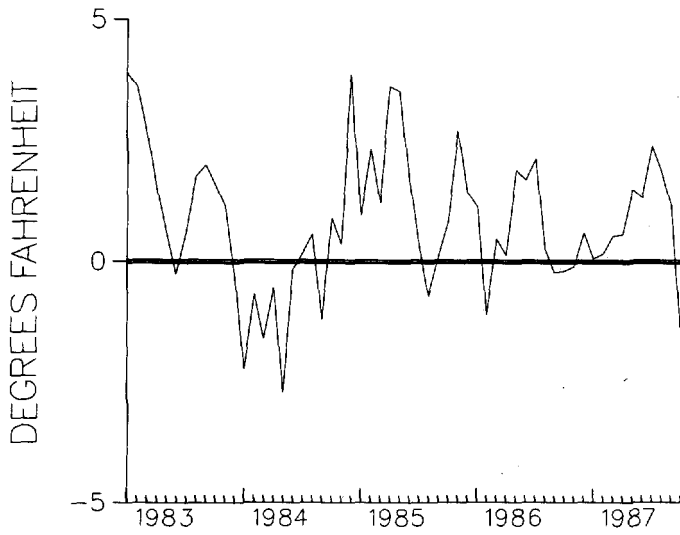
CLUSTER 2 -DIVISION(S):
 SOUTHERN 02



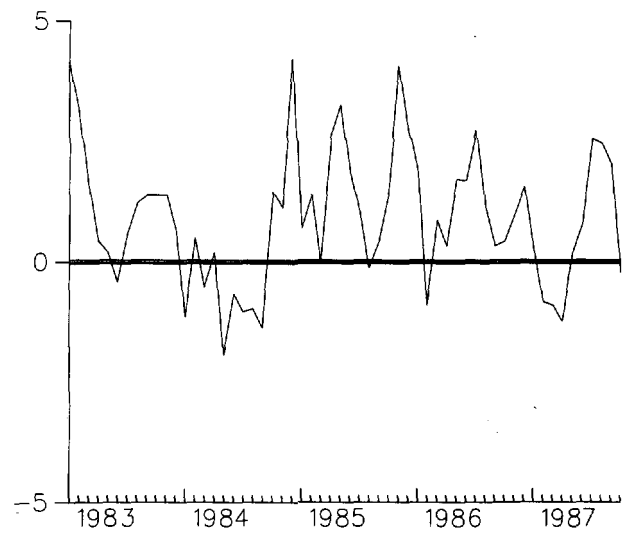
TEMPERATURE DEPARTURES FROM NORMAL (1951-1980)
THREE MONTH RUNNING MEAN
FOR THE 58 MONTHS ENDING WITH OCTOBER 1987 DATA
DELAWARE

CLUSTER 1 - DIVISION(S):
NORTHERN 01

CLUSTER 2 - DIVISION(S):
SOUTHERN 02



CLUSTER 1



CLUSTER 2

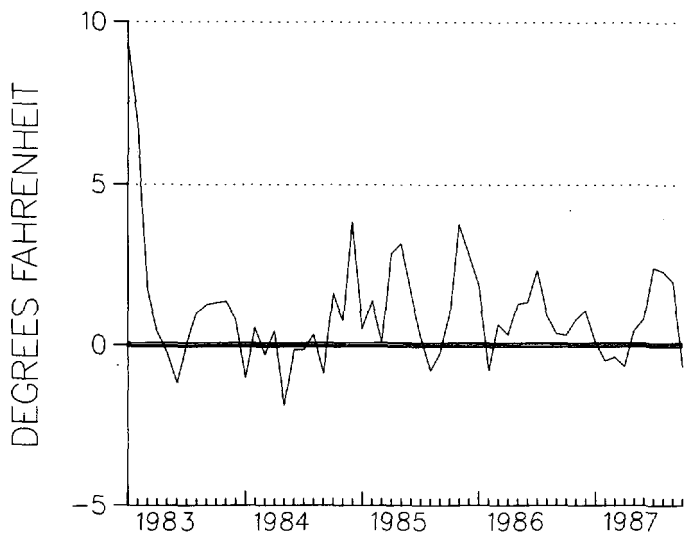
TEMPERATURE DEPARTURES FROM NORMAL (1951-1980)
 THREE MONTH RUNNING MEAN
 FOR THE 58 MONTHS ENDING WITH OCTOBER 1987 DATA
 MARYLAND

CLUSTER 1 -DIVISION(S):
 SOUTHERN EASTERN SHORE 01
 CENTRAL EASTERN SHORE 02
 LOWER SOUTHERN 03

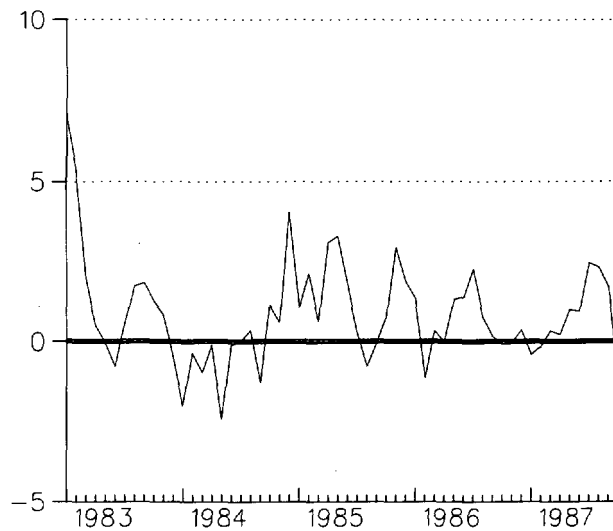
CLUSTER 2 -DIVISION(S):
 UPPER SOUTHERN 04
 NORTHERN EASTERN SHORE 05

CLUSTER 3 -DIVISION(S):
 NORTHERN CENTRAL 06
 APPALACHIAN MOUNTAIN 07

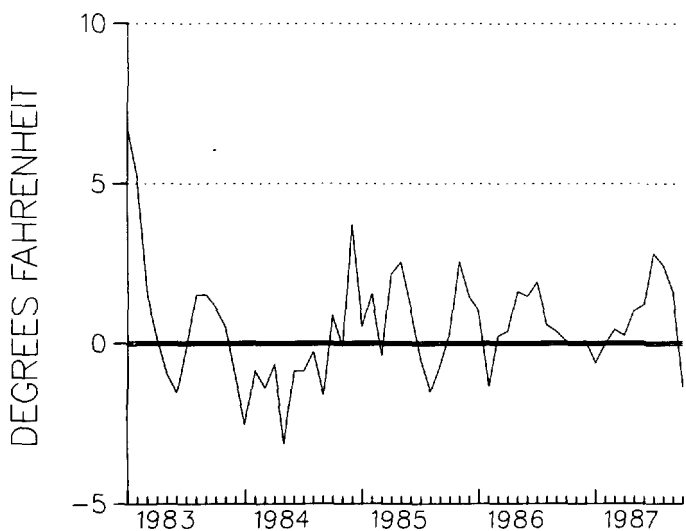
CLUSTER 4 -DIVISION(S):
 ALLEGHENY PLATEAU 08



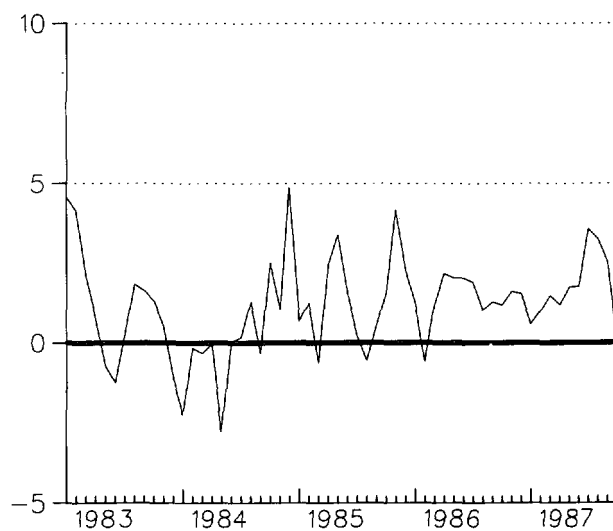
CLUSTER 1



CLUSTER 2



CLUSTER 3

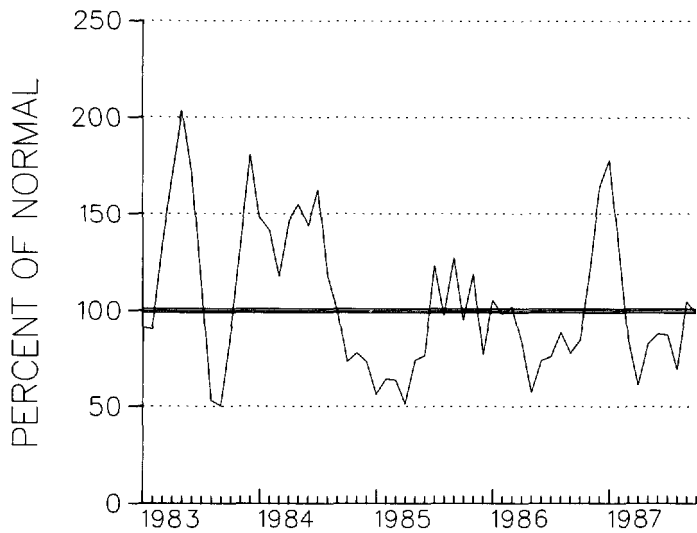


CLUSTER 4

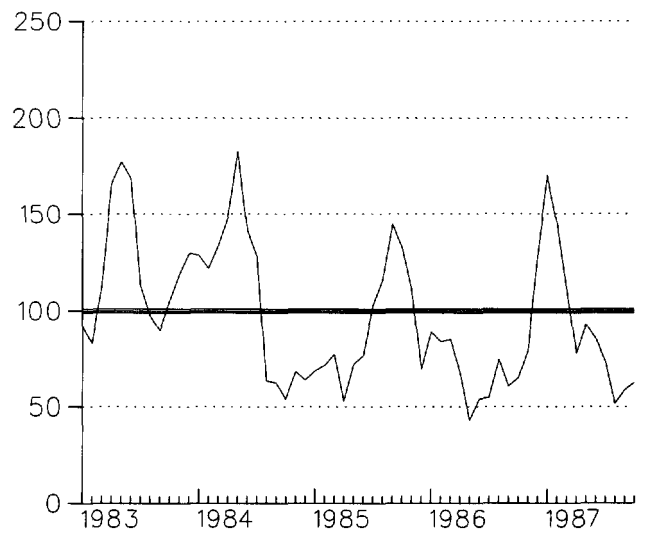
PRECIPITATION DEPARTURES FROM NORMAL (1951-1980)
THREE MONTH RUNNING MEAN
FOR THE 58 MONTHS ENDING WITH OCTOBER 1987 DATA
DELAWARE

CLUSTER 1 -DIVISION(S):
NORTHERN 01

CLUSTER 2 -DIVISION(S):
SOUTHERN 02

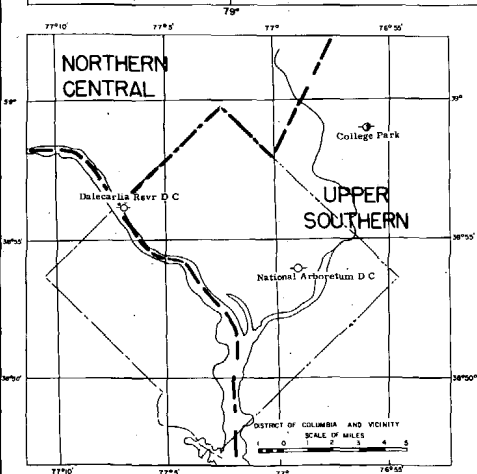
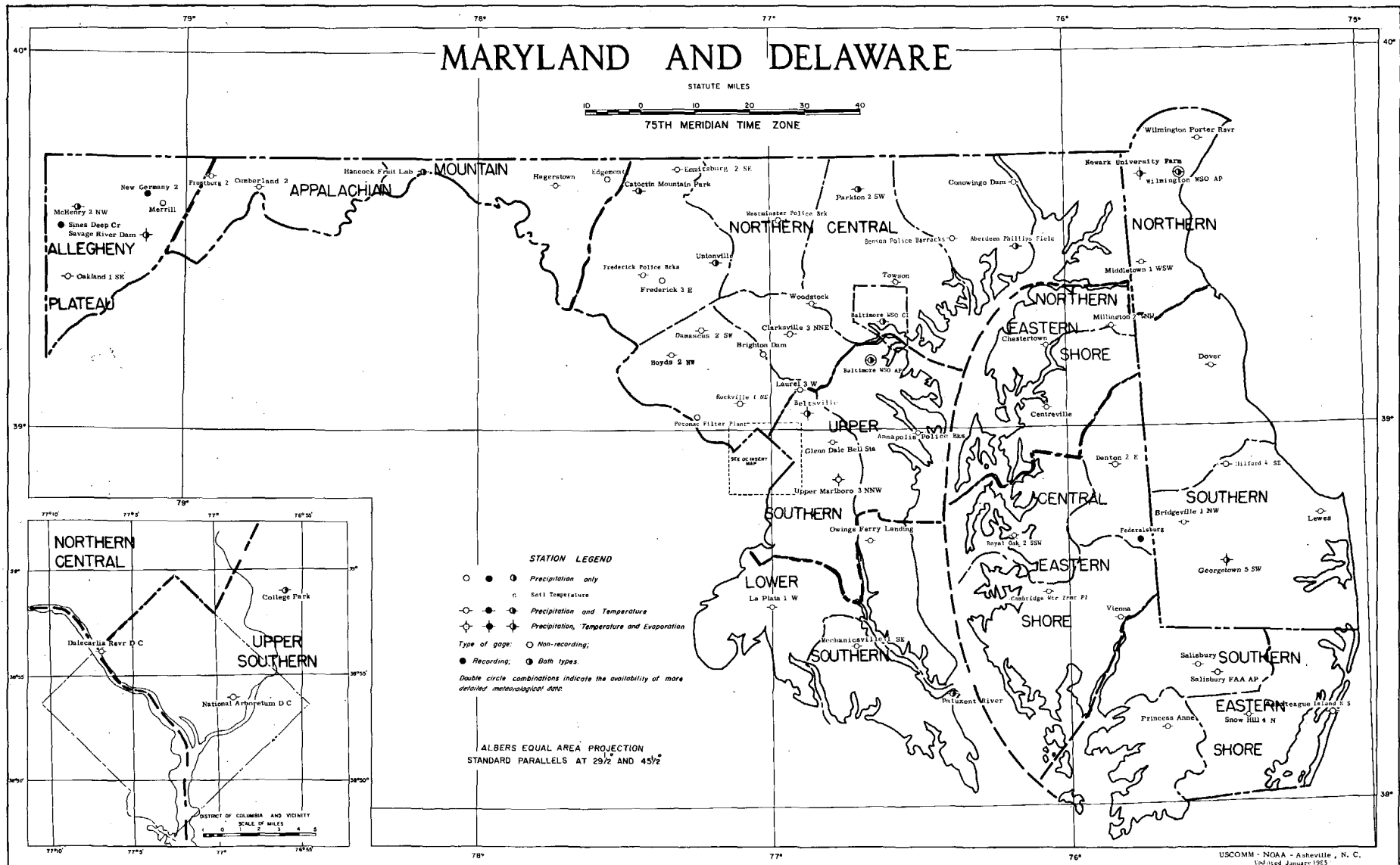
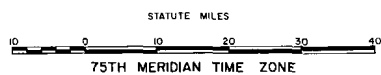


CLUSTER 1



CLUSTER 2

MARYLAND AND DELAWARE



- STATION LEGEND**
- ● ○ Precipitation only
 - ● ○ Soil Temperature
 - ● ○ Precipitation and Temperature
 - ● ○ Precipitation, Temperature and Evaporation
 - Type of gage: ○ Non-recording; ● Recording; ○ ● Both types.
- Double circle combinations indicate the availability of more detailed meteorological data.

ALBERS EQUAL AREA PROJECTION
STANDARD PARALLELS AT 29 1/2 AND 45 1/2

National Oceanic and Atmospheric Administration
NATIONAL CLIMATIC DATA CENTER

World's Largest Weather Records Archive

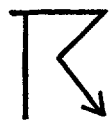
WHY DO YOU NEED WEATHER DATA?



- *Litigation*
- *Insurance Claims*
- *Environmental Studies*
- *Engineering Projects*
- *University Research*
- *Personal Curiosity*



WHAT TYPE OF INFORMATION DO YOU NEED?



- *Station Records*
- *Monthly/Annual Summaries*
- *Long Term Climatic Studies*
- *Surface or Upper Air Charts*



WHICH OUTPUT MEDIA IS BEST FOR YOU?



- *Publications*
- *Paper Copies*
- *Charts*
- *Microfiche/Microfilm*
- *Floppy Disk*
- *Computer Tape*



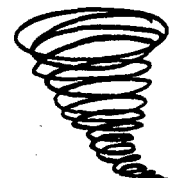
Call or write NCDC and explain your weather related problem.
Our meteorologists will provide the best possible solution.



NATIONAL CLIMATIC DATA CENTER

Federal Building, Asheville, N. C. 28801-2696

Phone (704) 259-0682 or (704)-CLIMATE



CURRENT SERIAL PUBLICATIONS

A WORLD OF INFORMATION

For

- * Industry
- * Research and Development
- * Public Utilities
- * Government Agencies
- * Attorneys
- * Construction
- * Consultants
- * Insurance Companies
- * Colleges and Universities
- * Energy

HOURLY
PRECIPITATION DATA

ARIZONA

DECEMBER
WITH ANNUAL SUPPLEMENT

ISSN 0361

CLIMATOLOGICAL DATA
ANNUAL SUMMARY
ARIZONA

ISSN 0145-0387

NUMBER 13

HOURLY
PRECIPITATION DATA

ARIZONA

VOLUME 35 NUMBER

ISSN 0364-6084

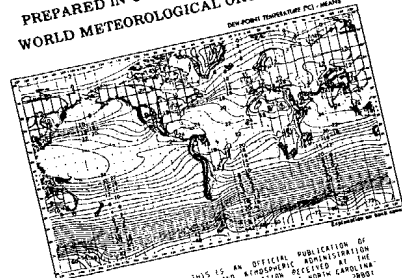
CLIMATOLOGICAL DATA
ARIZONA

ISSN 0145-0387

LOCAL
CLIMATOLOGICAL DATA
Monthly Summary

STATION	DATE	TEMPERATURE	PRECIPITATION	WIND	RELATIVE HUMIDITY	WIND DIRECTION	WIND VELOCITY	WIND GUSTS	WIND SUSTAINED	WIND CALM PERCENT	WIND CALM DURATION	WIND CALM PERIOD	WIND CALM PERCENT	WIND CALM DURATION	WIND CALM PERIOD
...

MONTHLY CLIMATIC
DATA FOR THE WORLD
PREPARED IN COOPERATION WITH THE
WORLD METEOROLOGICAL ORGANIZATION



"I CERTIFY THAT THIS IS AN OFFICIAL PUBLICATION OF THE NATIONAL OCEANIC AND ATMOSPHERIC ADMINISTRATION AND IS DERIVED FROM INFORMATION RECEIVED AT THE NATIONAL CLIMATIC DATA CENTER, ASHEVILLE, NORTH CAROLINA, 1980"

noaa NATIONAL OCEANIC AND ATMOSPHERIC ADMINISTRATION
NATIONAL ENVIRONMENTAL SATELLITE DATA AND INFORMATION SERVICE
NATIONAL CLIMATIC DATA CENTER
ASHEVILLE, N.C.

STORM DATA

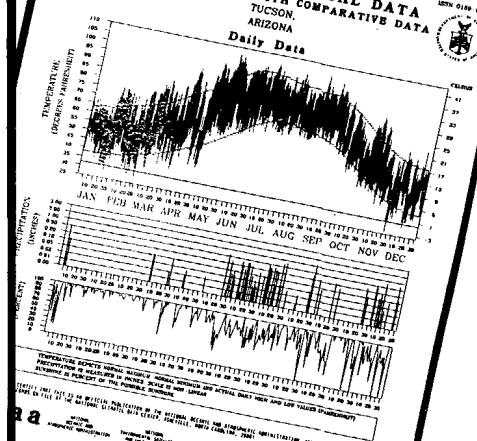


"I CERTIFY THAT THIS IS AN OFFICIAL PUBLICATION OF THE NATIONAL OCEANIC AND ATMOSPHERIC ADMINISTRATION AND IS DERIVED FROM INFORMATION RECEIVED AT THE NATIONAL CLIMATIC DATA CENTER, ASHEVILLE, N.C. 1980"

Director
NATIONAL CLIMATIC DATA CENTER

noaa NATIONAL OCEANIC AND ATMOSPHERIC ADMINISTRATION / NATIONAL ENVIRONMENTAL SATELLITE DATA AND INFORMATION SERVICE / NATIONAL CLIMATIC DATA CENTER ASHEVILLE, N.C.

LOCAL CLIMATOLOGICAL DATA
ANNUAL SUMMARY WITH COMPARATIVE DATA
TUCSON,
ARIZONA
Daily Data



noaa NATIONAL OCEANIC AND ATMOSPHERIC ADMINISTRATION
NATIONAL ENVIRONMENTAL SATELLITE DATA AND INFORMATION SERVICE
NATIONAL CLIMATIC DATA CENTER
ASHEVILLE, N.C.

CD
VALIDATION STAFF:

Ted Burlew
Jan Carpenter
Betty Edstrom
Bruce Emory
Joyce Morgan
Betty Shuford

DEPARTMENT OF COMMERCE
NATIONAL OCEANIC AND ATMOSPHERIC ADMINISTRATION
NATIONAL ENVIRONMENTAL SATELLITE, DATA, AND INFORMATION SERVICE
NATIONAL CLIMATIC DATA CENTER
FEDERAL BUILDING
ASHEVILLE, N.C. 28801

*TO CHANGE YOUR ADDRESS, PLEASE RETURN A COPY OF
THE MAILING LABEL ALONG WITH YOUR NEW ADDRESS.*

BULK RATE
POSTAGE & FEES PAID
United States Department Of Commerce
NOAA Permit No. G - 19