



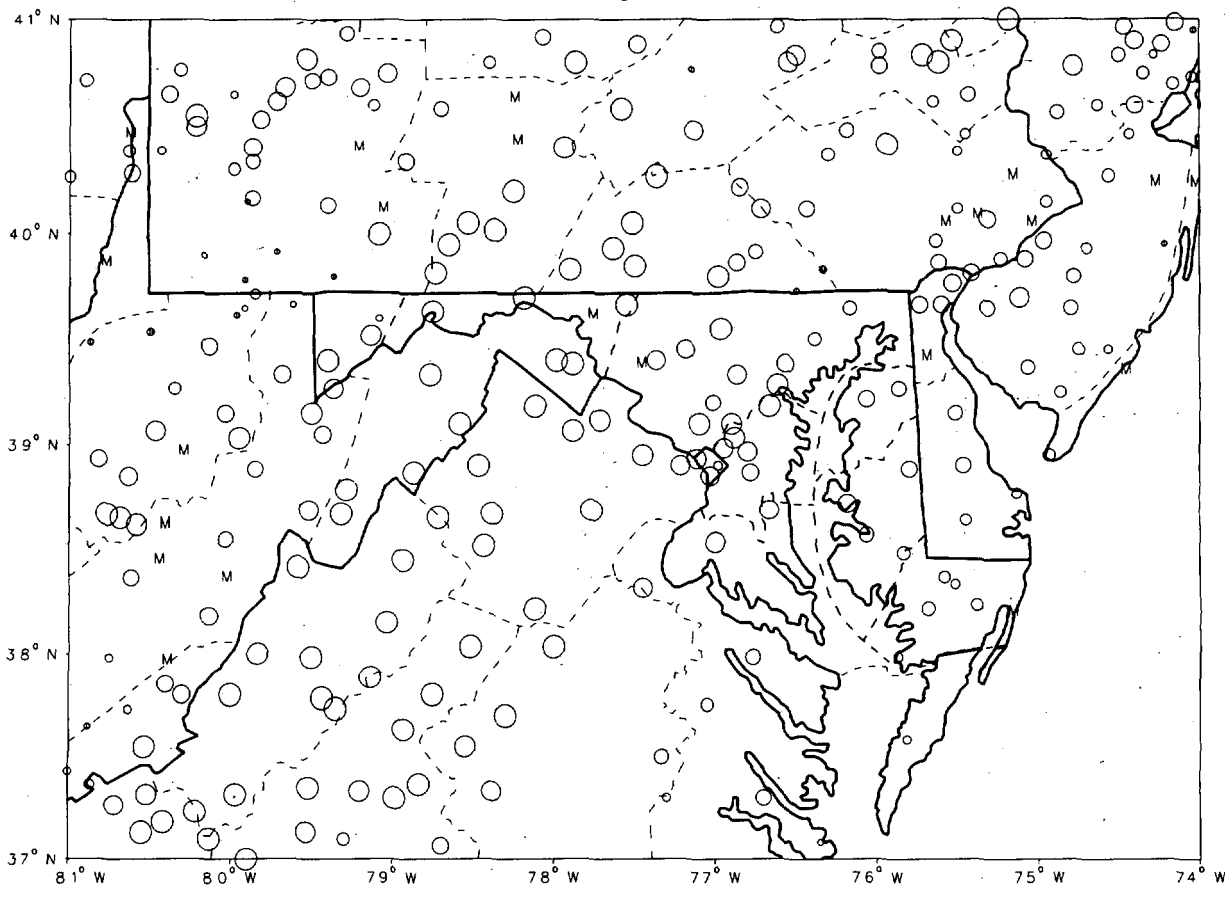
ISSN 0145-0549

CLIMATOLOGICAL DATA MARYLAND AND DELAWARE

OCTOBER 1988 VOLUME 92 NUMBER 10

MONTHLY PRECIPITATION DEPARTURE FROM INDIVIDUAL STATION NORMALS (1951-1980)

- M INCOMPLETE DATA FOR THE MONTH
- ∇ EXACTLY NORMAL
- 5, 10, 20, ... 50% OR MORE BELOW NORMAL
- 10, 20, 40, ... 100% OR MORE ABOVE NORMAL



CIRCLE DIAMETER IS PROPORTIONAL TO DEPARTURE ON A CONTINUOUS SCALE

"I CERTIFY THAT THIS IS AN OFFICIAL PUBLICATION OF THE NATIONAL OCEANIC AND ATMOSPHERIC ADMINISTRATION (NOAA). IT IS COMPILED USING INFORMATION FROM WEATHER OBSERVING SITES SUPERVISED BY NOAA/NATIONAL WEATHER SERVICE AND RECEIVED AT THE NATIONAL CLIMATIC DATA CENTER (NCDC), ASHEVILLE, NORTH CAROLINA 28801."

Kenneth D. Haden

DIRECTOR, NATIONAL CLIMATIC DATA CENTER

noaa

NATIONAL
OCEANIC AND
ATMOSPHERIC ADMINISTRATION

NATIONAL
ENVIRONMENTAL SATELLITE, DATA
AND INFORMATION SERVICE

NATIONAL
CLIMATIC DATA CENTER
ASHEVILLE NORTH CAROLINA

TEMPERATURE AND PRECIPITATION EXTREMES

MARYLAND AND
DELAWARE
OCTOBER 1988

MARYLAND
 HIGHEST TEMPERATURE 85
 LOWEST TEMPERATURE 17
 GREATEST TOTAL PRECIPITATION 3.27
 LEAST TOTAL PRECIPITATION .96
 GREATEST 1 DAY PRECIPITATION 1.47
 GREATEST TOTAL SNOWFALL .3

OCTOBER 1
 OCTOBER 27

 OCTOBER 21

TOWSON
 OAKLAND 1 SE
 SALISBURY FAA AP
 WESTMINSTER POLICE BRK
 CONOWINGO DAM
 FROSTBURG 2

DELAWARE
 HIGHEST TEMPERATURE 83
 LOWEST TEMPERATURE 24
 GREATEST TOTAL PRECIPITATION 2.88
 LEAST TOTAL PRECIPITATION 1.94
 GREATEST 1 DAY PRECIPITATION 1.42

OCTOBER 1
 OCTOBER 31

 OCTOBER 22

GREENWOOD 2 NE
 GEORGETOWN 5 SW
 GEORGETOWN 5 SW
 WILMINGTON WSO AP
 GEORGETOWN 5 SW R

MONTHLY SUMMARIZED STATION AND DIVISIONAL DATA

MARYLAND AND
DELAWARE
OCTOBER 1988

STATION	TEMPERATURE (°F)											PRECIPITATION (IN)								
	AVERAGE MAXIMUM	AVERAGE MINIMUM	AVERAGE	DEPARTURE FROM NORMAL	HIGHEST	DATE	LOWEST	DATE	HEATING DEGREE DAYS	COOLING DEGREE DAYS	NO. OF DAYS				TOTAL	DEPARTURE FROM NORMAL	GREATEST DAY DATE	SNOW SLEET		
											90 OR ABOVE	32 OR BELOW	32 OR BELOW	0 OR BELOW				TOTAL	MAX. DEPTH ON GROUND	DATE
MARYLAND																				
SOUTHERN EASTERN SHORE 01																				
ASSATEAGUE ISLAND NATL SE	M	M	M																	
CRISFIELD SOMERS COVE	62.6	48.7	55.7	-5.1	78	2	35	27	291	9	0	0	0	2	85					
PRINCESS ANNE	64.8	38.0	51.4	-5.2	82	2	26	27	423	9	0	0	0	2	79	1.06	3			
SALISBURY	64.8	42.3	53.6	-5.5	81	2	29	28	358	10	0	0	0	3	97	1.09	3			
SALISBURY FAA AP	63.7	40.8	52.3	-5.1	81	2	29	27	393	0	0	0	0	3	27	1.22	2			
SNOW HILL 4 N	65.5	39.1	52.3	-5.8	83	2	27	27	394	7	0	0	9	3	66	1.74	2			
--DIVISIONAL DATA-->																				
CENTRAL EASTERN SHORE 02																				
CAMBRIDGE WTR TRMT PL	65.8	44.4	55.1	-3.4	83	2	28	27	316	15	0	0	2	2	41					
DENTON 2 E	65.1	40.0	52.6	-5.1	82	2	24	31	386	10	0	0	7	2	27	1.10	2			
ROYAL OAK 2 SSW	63.5	45.2	54.4	-4.9	81	2	29	31	339	15	0	0	3	0	0	1.39	2			
VIENNA	65.8	M	53.3	-5.6	82	3	27	27	367	12	0	0	6	0	0	1.81	2			
--DIVISIONAL DATA-->																				
LOWER SOUTHERN 03																				
LA PLATA 1 W	63.3	41.4	52.4	-5.2	80	2	27	27	393	10	0	0	3	0	98					
MECHANICSVILLE 1 E	62.2	39.6	50.9	-5.1	79	2	26	31	436	7	0	0	7	0	0	1.10	2			
OWINGS FERRY LANDING	64.5	40.6	52.6	-5.1	80	2	26	31	390	12	0	0	9	0	0	1.94	2			
PATUXENT RIVER	62.1	43.8	53.0	-5.0	82	2	33	27	376	8	0	0	0	0	29	1.08	2			
--DIVISIONAL DATA-->																				
UPPER SOUTHERN 04																				
ANNAPOLIS POLICE BRKS	65.6	39.9	52.8	-5.0	81	2	28	27	385	11	0	0	5	0	19					
BALTIMORE WSO AP	62.6	40.0	51.3	-4.6	80	2	27	31	424	8	0	0	5	0	59	1.52	2			
BELTSVILLE	63.1	38.5	50.8	-4.2	80	2	25	31	439	7	0	0	9	0	74	1.50	2			
COLLEGE PARK	63.3	41.4	52.4	-5.0	81	2	27	31	395	11	0	0	3	0	80	1.91	2			
DALECARLIA RESVR D C	64.7	37.6	51.2	-6.4	81	2	22	31	429	9	0	0	12	0	94	1.39	2			
GLENN DALE BELL STN	64.3	37.1	50.7	-5.9	81	3	21	31	444	6	0	0	13	0	94	1.36	2			
LAUREL 3 W	62.2	39.2	50.7	-7.5	78	1	26	31	437	4	0	0	4	0	71	1.42	2			
NATIONAL ARBORETUM D C	65.4	35.3	50.4	-7.9	80	3	22	31	449	4	0	0	13	0	82	1.35	2			
UPPER MARLBORO 3 NNW	63.4	36.6	50.0	-5.0	80	3	22	31	464	5	0	0	12	0	16	1.13	2			
--DIVISIONAL DATA-->																				
NORTHERN EASTERN SHORE 05																				
CHESTERTOWN	63.4	42.9	53.2	-4.6	81	2	27	31	370	10	0	0	3	0	11					
MILLINGTON 1 SE	63.2	39.1	51.2	-5.3	79	2	24	31	427	5	0	0	9	0	17	1.88	2			
--DIVISIONAL DATA-->																				
NORTHERN CENTRAL 06																				
ABERDEEN PHILLIPS FLD	62.4	41.1	51.8	-4.7	78	2	25	31	409	0	0	0	4	0	66					
BALTIMORE WSO CI	63.4	47.3	55.4	-4.7	81	1	36	31	309	15	0	0	0	0	61	1.48	2			
BENSON POLICE BARRACKS	64.8	38.5	51.7	-4.3	80	2	24	31	410	4	0	0	7	0	28	1.70	2			
BOYDS 2 NW	62.0	41.5	51.8	-7.8	78	2	29	14	408	4	0	0	3	0	43	1.43	2			
CATOCTIN MOUNTAIN PARK	57.6	39.7	48.7	-7.3	73	1	26	31	501	0	0	0	6	0	45	1.00	2			
CLARKSVILLE 3 NNE	63.5	36.0	49.8	-8.0	80	2	21	31	466	3	0	0	16	0	84	1.84	2			
CONOWINGO DAM	64.1	35.8	50.0	-5.3	80	2	23	14	465	6	0	0	13	0	40	1.47	2			
DAMASCUS 2 SW	60.6	40.7	50.7	-7.8	78	1	28	31	444	5	0	0	4	0	68	1.68	2			
EMMITSBURG 2 SE	61.2	36.6	48.9	-7.7	77	1	20	27	495	1	0	0	1	0	66	1.66	2			

SEE REFERENCE NOTES FOLLOWING STATION INDEX

DAILY PRECIPITATION (INCHES)

MARYLAND AND
DELAWARE
OCTOBER 1988

STATION	TOTAL	DAY OF MONTH																																	
		1	2	3	4	5	6	7	8	9	10	11	12	13	14	15	16	17	18	19	20	21	22	23	24	25	26	27	28	29	30	31			
MARYLAND																																			
SOUTHERN EASTERN SHORE 01																																			
ASSATEAGUE ISLAND NATL SE	M	-	-	*	1.38	-	-	-	-	-	-	-	-	-	-	-	-	-	.13	.17	*	*	*	-	-	-	-	-	-	-	-	-	-	-	
CRISFIELD SOMERS COVE		2.85																																	
PRINCESS ANNE		2.79		1.06	.42				.19										.02	.05	.20	.85													
SALISBURY		2.97		1.09	.39	T			.13									T		.47	.88						.01		T						
SALISBURY FAA AP		3.27	.59	.65	.33				.16										.25	.04	1.22					.03			T					T	
SNOW HILL 4 N		3.06		.89	.42	T			.15										T	.25		.14	1.19	.01	.01										
CENTRAL EASTERN SHORE 02																																			
CAMBRIDGE WTR TRMT PL		2.41		.27	.41				.02										T	.25		.41	1.01											.04	
DENTON 2 E		2.27		.60	.19				.01													.72	.70											.05	
ROYAL OAK 2 SSW		2.07		.41	.25														.01			.65	.67											.08	
VIENNA		2.63		.50	.50														.05	.33			1.25												
LOWER SOUTHERN 03																																			
LA PLATA 1 W		1.98	.02	.14	.17														.01			.92	.66			.06								T	
MECHANICSVILLE 1 E		2.03	T	.11	.37														T	.04		1.10	.35			.06								.08	
OWINGS FERRY LANDING		1.91		.08	.19														T			.62	.94			.08									
PATUXENT RIVER		2.29	.16	.39	.35				T										.15	.09		1.08				.05								.02	
UPPER SOUTHERN 04																																			
ANNAPOLIS POLICE BRKS		2.19		.48	.09														.03			.47	.99			.11								.02	
BALTIMORE WSD AP BELTSVILLE COLLEGE PARK DALECARLIA RESVR D C GLENN DALE BELL STN 05																																			
BALTIMORE WSD AP	R	1.59	.07	.12	.02														.08	.03		1.16	T	T	.11								T		
BELTSVILLE		1.74		.10	.16															.10			1.22			.16								T	
COLLEGE PARK		1.80	.10	.17	T															.11		T	1.34			.08									
DALECARLIA RESVR D C		1.91		.21	.05				.01											.12	.03		.56	.81			.10							.02	
GLENN DALE BELL STN		1.94		.33	.08															.07			.06	1.28			.12								
LAUREL 3 W NATIONAL ARBORETUM D C UPPER MARLBORO 3 NNW 05		1.71	.05	.10	T														.10			1.31			.15										
NATIONAL ARBORETUM D C		2.82		.30	.15															.90			1.32			.15									
UPPER MARLBORO 3 NNW		2.16		.63	.13	.02														.04			1.16			.11	.01	.06							
NORTHERN EASTERN SHORE 05																																			
CHESTERTOWN MILLINGTON 1 SE		2.11	.36	.06	.06														.03			1.40	.04		.16										
MILLINGTON 1 SE		2.17		.26	.11														.05	T		.48	1.08	.02	.17										
NORTHERN CENTRAL 06																																			
ABERDEEN PHILLIPS FLD	R	2.66	*	*	.38	.07													.04	T		.27	*	*	1.90								T		
BALTIMORE WSD CI		1.61	.06	.16	.03															.03			1.20	.13		.18									
BENSON POLICE BARRACKS		2.28		.29	.01															.05			.35	1.35	.05	.18									
BOYDS 2 NW		1.43		.19																.12			.34	.70	.08										
BRIGHTON DAM		2.20	.40	.20																.30			1.20	.10		T									
CATOCTIN MOUNTAIN PARK		1.45	.10	.02					.01			.07								.22			1.00	.03											
CLARKSVILLE 3 NNE		1.84	.23	.03	.02															.16	T		.39	.82		.19									
CONOHINGO DAM		2.40	.06	.03	.01															.07	.01		1.47	.43		.30								.02	
DAMASCUS 2 SW		1.68	.12	.02	.01				T			.01								.16	.02		.80	.43		.11								T	
ENHITSBURG 2 SE		1.66	.10	.09																.10	.05		.45	.62		.25									
FREDRICK POLICE BRKS FREDERICK 3 E MILLERS 4 NE POTOMAC FILTER PLANT ROCKVILLE 1 NE 06																																			
FREDRICK POLICE BRKS	M	.82	.06	.31																.18			.27												
FREDERICK 3 E		1.91		.22																	.32			1.25	T	.12									
MILLERS 4 NE		2.57	.53	.02	T	T					.01									.14	.01	.01	.48	1.21	.03	.13									
POTOMAC FILTER PLANT		1.60	.11	.05																.14			1.19			.11									
ROCKVILLE 1 NE		1.58	.11	.02																.14	T		1.20			.11									
TOWSON UNIONVILLE WESTMINSTER POLICE BRK WOODSTOCK 06																																			
TOWSON		2.21		.09		.02														.07	.07		.54	1.20	.04	.18									
UNIONVILLE		1.83	.39	.04																.10			.09	1.01											
WESTMINSTER POLICE BRK		.96	.03																	.22		.05	.34	.05	.10	.17	.20								
WOODSTOCK		1.85	T	.12	.02															.15			.58	.77		.21									

DAILY PRECIPITATION (INCHES)

MARYLAND AND
DELAWARE
OCTOBER 1988

STATION	TOTAL	DAY OF MONTH																															
		1	2	3	4	5	6	7	8	9	10	11	12	13	14	15	16	17	18	19	20	21	22	23	24	25	26	27	28	29	30	31	
APPALACHIAN MOUNTAIN 07																																	
CUMBERLAND 2	1.06			.08							.04	.03	T							.42			.45	T	T						.04		
EDGEHONT	1.31			.15																.22			.80	.02	.12								
FROSTBURG 2	1.93			.07					T		.13	.09	.04	T						.55		.07	T	.42	.40	.11					T		
HAGERSTOWN	M .98		.12								T									.03			.14	.09									
HANCOCK FRUIT LAB	1.25			.06		.01					.05	.02								.25			.63	.72	.02	.07							
ALLEGHENY PLATEAU 08																																	
MC HENRY 2 NW	2.78			.30	T	T			.05		.27	T	T						.42	.58	.04		.51	.32	.27	.02					T		
MERRILL	2.74										.25	.15							.45	.02	.30	.06	.65	.65	.20	.01					T		
OAKLAND 1 SE	1.62		.06	.22		.04						.09	T				T		.34		.08	.18	.31	.08	.22					T			
SAVAGE RIVER DAM	1.57			.02		T					.09	.02	T					.28	.27	.03	T	.62	.15	.09	T	T							
DELAWARE NORTHERN 01																																	
MIDDLETOWN 3 E	M																																
NEWMARK UNIVERSITY FARM	2.13			.36	.09														T			.34	1.15		.19								
WILMINGTON WSO AP	1.94		.22	.06	T	.05												.01	T			1.41	.08		.11					T			
WILMINGTON PORTER RESVR	2.03		.28	.28																		1.12	.21		.14								
SOUTHERN 02																																	
DOVER	2.57			.61	.20																	.30	1.30	.10	.03					.03			
GEORGETOWN 5 SW	2.88			.38	.65				.02	.09											.18		1.42	.12	.02								
GREENWOOD 2 NE	2.57			.63	.30			T	.02										T	.01		.83	.78							T			
LEWES	2.87			.49	.45				.12											.07		.40	1.34										
MILFORD 4 SE	2.38			.62	.38															T		.63	.75		T								

SEE REFERENCE NOTES FOLLOWING STATION INDEX

DAILY TEMPERATURES (°F)

MARYLAND AND
DELAWARE
OCTOBER 1988

STATION	OB. TIME	MAX/MIN	DAY OF MONTH																															AVERAGE	
			1	2	3	4	5	6	7	8	9	10	11	12	13	14	15	16	17	18	19	20	21	22	23	24	25	26	27	28	29	30	31		
GLENN DALE BELL STN	16	MAX	75	79	81	63	65	63	60	55	60	64	69	65	55	60	65	65	77	75	67	61	59	54	56	63	64	63	60	68	70	58	55	64.3	
		MIN	53	55	57	54	43	33	31	31	27	38	48	36	29	25	33	40	40	51	45	30	33	40	42	45	28	31	22	32	30	28	21	37.1	
		OBS										27																							
LAUREL 3 W	MID	MAX	78	77	68	65	63	62	60	59	65	68	65	54	51	61	75	75	74	64	61	60	52	56	60	63	58	51	58	66	55	55	50	62.2	
		MIN	52	61	52	48	42	41	36	34	42	38	42	35	34	31	38	43	44	45	40	35	37	37	42	36	41	34	31	30	36	33	26	39.2	
NATIONAL ARBORETUM D C	08	MAX	76	80	80	65	66	63	62	58	60	66	71	66	56	52	62	77	79	77	70	65	62	54	59	64	66	65	64	59	73	57	54	65.4	
		MIN	51	51	56	50	41	34	30	36	29	29	39	36	32	24	25	34	33	40	47	32	33	39	40	41	30	33	23	25	30	29	22	35.3	
		OBS																																	
UPPER MARLBORO 3 NNW	08	MAX	75	78	80	64	64	61	61	55	56	63	69	66	55	50	60	74	75	74	68	62	59	53	57	60	65	64	57	60	70	56	53	63.4	
		MIN	52	52	60	55	45	35	32	34	30	30	41	38	33	26	30	32	38	40	47	33	35	39	40	40	31	34	24	25	32	30	22	36.6	
NORTHERN EASTERN SHORE	05																																		
CHESTERTOWN	23	MAX	79	81	68	64	64	63	55	59	64	70	64	55	52	59	74	78	77	68	63	61	56	55	63	66	61	57	58	66	59	53	54	63.4	
		MIN	59	61	58	54	47	43	38	37	34	46	51	41	39	31	39	44	52	56	46	37	39	47	44	47	38	36	30	38	35	37	27	42.9	
MILLINGTON 1 SE	18	MAX	78	79	67	65	64	62	56	58	63	68	68	57	53	58	72	76	75	71	65	61	55	55	61	64	60	56	57	65	65	53	53	63.2	
		MIN	54	59	59	56	43	37	34	34	30	40	51	35	31	28	34	37	47	47	45	31	35	46	42	49	34	37	25	26	32	31	24	39.1	
		OBS																																	
NORTHERN CENTRAL	06																																		
ABERDEEN PHILLIPS FLD	16	MAX	76	78	66	64	64	61	58	58	62	67	62	62	53	58	70	72	74	73	63	57	55	55	61	62	62	60	56	63	61	53	49	62.4	
		MIN																																	
BALTIMORE WSO CI	MID	MAX	81	80	69	66	66	61	56	58	65	69	67	55	52	62	78	73	73	66	61	61	55	56	63	64	64	56	59	70	56	54	48	63.4	
		MIN	63	64	62	56	50	46	43	42	43	46	51	41	38	38	45	53	56	57	47	46	49	46	47	48	42	44	38	46	43	41	36	47.3	
BENSON POLICE BARRACKS	17	MAX	78	80	73	68	64	62	60	60	65	70	68	61	55	63	75	75	75	72	64	63	60	56	63	63	62	61	60	67	60	56	51	64.8	
		MIN	51	58	54	53	44	37	36	34	31	35	46	35	31	31	34	42	45	51	42	35	35	42	36	44	33	33	25	33	31	32	24	38.5	
BOYDS 2 NW	18	MAX	78	78	70	65	62	59	55	57	65	68	62	55	49	61	76	74	75	70	62	59	54	54	53	60	61	56	58	66	62	50	48	62.0	
		MIN	54	58	58	53	45	38	36	35	34	39	45	38	39	29	39	47	45	54	42	35	42	41	44	43	39	39	30	38	37	38	32	41.5	
CATOCTIN MOUNTAIN PARK	17	MAX	73	69	63	62	60	59	50	51	57	60	57	53	55	60	68	70	69	68	60	54	48	46	56	54	56	51	52	56	55	48	46	57.6	
		MIN	49	59	51	51	42	39	37	34	37	42	45	34	30	32	38	49	47	52	38	35	42	39	40	40	38	35	30	39	30	32	26	39.7	
CLARKSVILLE 3 NNE	17	MAX	78	80	69	65	63	60	58	58	65	68	65	62	51	62	75	75	75	72	63	60	56	56	62	63	62	56	59	67	61	52	49	63.5	
		MIN	50	55	58	54	40	32	29	31	28	35	46	34	32	23	31	37	39	49	40	29	32	41	42	44	30	31	22	29	26	27	21	36.0	
CONOWINGO DAM	MID	MAX	77	80	67	68	66	66	59	62	65	68	65	59	55	63	73	75	75	64	65	62	63	56	64	61	63	55	60	63	60	58	50	64.1	
		MIN	62	52	52	50	42	33	34	33	29	35	40	33	27	23	30	37	41	44	36	29	31	39	32	40	33	32	26	32	32	28	24	35.8	
DAMASCUS 2 SW	19	MAX	78	77	65	65	60	59	55	57	63	67	61	51	48	60	74	75	74	63	58	58	49	52	61	60	59	54	56	64	56	51	48	60.6	
		MIN	55	59	56	53	43	39	35	34	35	40	45	37	31	29	40	47	45	54	40	35	41	40	43	43	39	36	29	38	35	37	28	40.7	
EMMITSBURG 2 SE	17	MAX	77	73	73	66	64	57	57	57	62	65	62	59	49	59	74	75	72	72	65	55	53	50	58	59	58	52	54	59	60	51	49	61.2	
		MIN	53	59	52	53	42	31	29	30	26	38	47	39	29	23	30	39	36	50	34	32	35	44	44	43	41	35	20	29	25	26	21	36.6	
FREDRICK POLICE BRKS	17	MAX	80	78	71	69	66	60	60	57	64	67	67	61	51	60	74	76	73	74	65	59	57	55	61	61	60	60	56	64	62	56	51	63.7	
		MIN	57	60	57	56	45	40	36	36	35	40	49	42	36	31	38	45	45	53	42	41	42	43	46	45	40	40	28	37	40	31	29	42.1	
MILLERS 4 NE	18	MAX	77	78	64	63	59	57	54	53	61	63	59	54	49	57	72	73	71	63	61	57	50	51	57	57	57	51	53	63	54	49	48	59.2	
		MIN	57	59	55	53	42	37	35	36	34	40	46	37	33	30	40	45	47	54	41	34	39	43	41	44	38	35	27	39	35	34	24	40.5	
ROCKVILLE 1 NE	17	MAX	77	78	65	63	60	59	56	56	62	66	62	53	50	61	73	73	73	64	60	58	52	55	59	60	60	53	58	66	53	51	48	60.8	
		MIN	59	63	58	52	47	42	39	39	35	45	48	40	36	35	39	46	47	56	46	40	41	44	48	45	41	36	30	44	38	37	30	43.4	
TOWSON	18	MAX	85	80	74	65	68	60	55	56	62	66	64	59	52	58	74	75	72	68	62	60	51	57	60	61	60	58	66	67	64	59	48	63.4	
		MIN	55	52	56	54	45	38	37	36	34	39	45	36	32	30	38	37	52	54	43	37	36	40	40	44	33	36	27	35	34	33	28	39.9	
UNIONVILLE	18	MAX	78	72	70	69	66	60	55	66	64	67	65	61	50	60	70	73	72	72	64	60	57	55	60	60	60	59	56	58	62	52	52	62.7	
		MIN	46	54	46	46	36	32	29	27	27	30	30	32	27	22	30	40	41	43	32	29	28	28	36	37	30	29	22	29	30	26	21	32.7	
		OBS																																	

SEE REFERENCE NOTES FOLLOWING STATION INDEX

DAILY TEMPERATURES (°F)

MARYLAND AND
DELAWARE
OCTOBER 1988

STATION	OB. TIME	MAX/MIN	DAY OF MONTH																															AVERAGE		
			1	2	3	4	5	6	7	8	9	10	11	12	13	14	15	16	17	18	19	20	21	22	23	24	25	26	27	28	29	30	31			
WESTMINSTER POLICE BRK	17	MAX MIN	77 53	82 55	70 41	70 49	66 41	59 31	58 31	55 30	61 30	65 36	67 44	59 28	48 27	57 29	71 38	73 42	73 41	72 50	63 38	56 34	58 37	50 38	58 30	58 41	57 32	57 35	52 28	60 38	50 32	49 34	47 24	61.2 36.7		
WOODSTOCK	18	MAX MIN	79 53	80 58	77 57	67 55	63 43	60 36	56 32	58 34	64 30	68 38	64 46	60 35	51 30	61 26	76 32	71 40	75 42	68 52	62 41	59 32	54 36	54 41	62 41	63 44	61 34	55 36	58 24	67 37	60 30	53 30	49 24	63.1 38.4		
APPALACHIAN MOUNTAIN	07																																			
CUMBERLAND 2	18	MAX MIN	84 56	79 54	65 49	68 42	62 37	58 37	56 33	59 32	63 33	64 32	58 40	50 34	48 25	66 25	76 37	78 42	75 46	70 41	60 32	60 32	55 41	51 45	60 45	57 42	57 38	53 25	58 25	59 30	55 30	51 24	53 24	61.5 36.5		
FROSTBURG 2	07	MAX MIN	70 49	76 56	63 52	59 46	59 40	47 35	48 33	48 33	49 32	56 32	56 37	50 34	41 27	37 26	57 27	69 47	70 46	68 47	59 38	51 32	51 35	40 35	42 37	53 36	45 35	48 32	42 24	50 27	50 30	45 29	43 24	53.1 35.9		
HAGERSTOWN	18	MAX MIN	78 58	75 60	68 55	68 54	60 43	58 37	57 35	56 34	64 34	66 44	61 47										48 43	52 40	59 48	58 45	59 42	53 36	55 27	62 42		54 35	50 26	M M		
HANCOCK FRUIT LAB	16	MAX MIN	72 54	80 54	70 52	70 52	68 39	59 32	60 31	56 31	56 29	65 33	68 37	62 35	53 30	49 24	62 24	76 31	77 37	76 38	67 37	62 29	59 32	48 40	52 43	63 41	59 40	60 30	54 21	58 27	62 27	56 27	52 20	62.3 34.7		
ALLEGHENY PLATEAU	08																																			
MC HENRY 2 NW	08	MAX MIN	76 50	79 54	62 50	54 40	59 35	43 33	49 32	48 31	50 32	55 33	54 38	50 31	41 24	37 24	54 27	66 44	72 45	68 45	57 37	49 33	49 32	40 32	39 34	50 34	40 31	46 29	42 25	53 25	54 26	42 27	42 25	52.3 34.1		
OAKLAND 1 SE	17	MAX OBS MIN	80 48	78 52	61 51	58 39	56 37	49 29	48 27	48 27	55 27	55 30	54 41	49 32	40 23	56 22	66 31	74 33	68 38	68 48	53 39	52 31	51 36	40 36	53 34	54 37	49 33	47 30	54 17	55 31	47 29	46 25	46 19	55.2 33.3		
SAVAGE RIVER DAM	08	MAX MIN	73 48	78 52	64 53	62 44	63 41	50 36	54 33	52 31	53 30	66 30	59 33	52 37	43 31	43 25	60 26	70 38	73 40	72 42	64 40	53 32	56 35	45 38	45 37	56 37	48 37	52 30	45 23	53 22	52 30	50 29	45 21	56.5 34.9		
DELAWARE																																				
NORTHERN MIDDLETOWN 3 E	01	17	MAX MIN																																	M M
NEWARK UNIVERSITY FARM	17	MAX MIN	79 53	81 58	70 54	67 55	63 42	61 38	60 36	58 37	62 29	68 36	65 44	61 31	52 29	59 28	72 33	74 41	75 45	67 41	64 44	59 34	53 35	55 40	60 40	64 47	59 39	55 38	56 27	65 31	62 33	52 31	50 31	62.8 38.7		
WILMINGTON WSO AP	MID	MAX MIN	76 56	80 57	66 59	67 51	64 45	59 39	54 40	56 36	61 33	68 42	64 43	55 37	52 33	58 30	72 34	73 44	66 49	62 41	59 35	55 39	55 45	60 43	62 48	58 39	54 33	56 29	65 35	54 34	51 30	49 27	61.4 40.5			
WILMGTN PORTER RESVR	MID	MAX MIN	77 58	78 60	66 57	64 53	62 44	58 40	52 41	55 38	60 34	65 43	62 46	54 38	51 34	58 33	71 39	73 47	72 50	65 53	59 42	57 39	54 40	54 44	59 41	62 48	57 38	52 38	53 30	63 38	53 37	50 36	48 28	60.1 42.2		
SOUTHERN	02																																			
DOVER	17	MAX MIN	80 59	79 61	71 53	64 50	64 44	61 38	60 43	56 44	61 38	67 41	65 42	61 36	54 34	59 29	74 36	79 39	75 51	69 51	69 49	62 33	62 36	57 38	66 36	62 43	61 39	59 39	61 27	67 40	65 34	60 33	62 29	64.9 40.8		
GEORGETOWN 5 SW	08	MAX OBS MIN	74 49	79 59	82 60	66 55	63 42	65 40	61 34	62 30	64 39	62 39	69 47	67 41	56 33	53 26	57 32	73 43	75 48	76 51	74 49	62 32	60 36	61 41	57 44	69 46	65 32	59 36	58 25	59 33	67 31	57 33	53 24	64.7 39.7		
GREENWOOD 2 NE	18	MAX MIN	83 53	80 57	75 59	66 56	66 44	61 37	57 35	57 37	61 31	68 40	65 49	59 41	52 35	58 28	73 36	76 42	75 50	72 50	67 48	61 35	56 38	58 38	61 44	65 42	60 35	57 37	58 27	67 37	59 31	62 34	53 27	64.1 40.4		
LEWES	17	MAX OBS MIN	78 55	82 60	79 61	64 57	65 49	62 43	62 42	54 46	61 34	69 44	66 51	64 43	53 36	59 34	73 42	75 49	74 55	68 51	57 39	58 40	59 40	62 44	65 50	64 38	59 41	57 30	70 39	66 41	52 37	50 39	64.5 44.5			
MILFORD 4 SE	17	MAX MIN	79 52	82 57	79 60	63 56	65 45	62 42	57 36	56 41	62 32	69 40	66 48	61 42	52 34	58 29	73 38	76 44	75 53	71 51	68 49	58 35	57 36	59 47	62 43	65 46	62 35	58 38	58 28	70 38	64 35	55 33	49 28	64.4 41.9		

SEE REFERENCE NOTES FOLLOWING STATION INDEX

EVAPORATION AND WIND

MARYLAND AND
DELAWARE
OCTOBER 1988

STATION		DAY OF MONTH																															TOTAL OR AVG	
		1	2	3	4	5	6	7	8	9	10	11	12	13	14	15	16	17	18	19	20	21	22	23	24	25	26	27	28	29	30	31		
MARYLAND																																		
UPPER SOUTHERN	04																																	
BELTSVILLE		WIND	13	34	32	10	22	63	44	37	46	24	60	05	18	82	26	15	*	72	37	48	28	71	54	64	31	72	66	19	67	*	98	
		EVAP	12	11	10	1	6	16	13	8	12	26	*	25	17	11	12	12	17	13	2	10	8	6	10	14	12	15	13	8	17	3	13	
		MAX	80	84	83	83	67	70	65	58	62	67	72	65	61	52	63	69	73	73	63	63	63	50	47	66	67	60	60	58	55	58	57	
		MIN	58	59	59	58	50	43	42	40	40	40	39	42	37	37	37	44	48	48	50	40	41	45	45	46	41	40	37	36	38	37	37	
UPPER MARLBORO 3 NNW		WIND	-	-	-	-	-	-	-	-	-	-	-	-	-	-	-	-	-	-	-	-	-	-	-	-	-	-	-	-	-	-	-	
		EVAP	5	15	13	3	10	12	10	9	9	9	10	15	12	6	10	9	12	7	8	14	9	3	10	13	13	9	8	10	13	12	10	
		MAX	78	64	72	68	63	70	66	56	62	66	68	66	56	50	62	68	68	66	64	66	62	50	56	64	64	62	60	59	65	58	58	
		MIN	58	58	60	60	52	46	44	42	40	40	44	44	38	38	36	42	46	48	52	42	40	42	44	42	42	44	40	39	40	42	38	
DELAWARE																																		
NORTHERN	01																																	
NEWARK UNIVERSITY FARM		WIND	12	23	10	16	29	32	11	23	16	20	75	51	51	39	16	13	12	16	33	23	25	132	22	24	52	42	25	14	47	27	13	
		EVAP	3	5	15	13	23	1	1	19	12	*	16	4	15	11	3	6	6	3	5	12	17	-	6	6	4	25	3	4	13	10	11	
		MAX	-	-	-	-	-	-	-	-	-	-	-	-	-	-	-	-	-	-	-	-	-	-	-	-	-	-	-	-	-	-	-	-
		MIN	-	-	-	-	-	-	-	-	-	-	-	-	-	-	-	-	-	-	-	-	-	-	-	-	-	-	-	-	-	-	-	-
SOUTHERN	02																																	
GEORGETOWN 5 SW		WIND	47	32	02	69	57	58	44	90	55	46	03	83	99	81	33	36	51	60	85	65	25	85	144	95	71	81	57	30	35	83	76	
		EVAP	18	7	16	5	5	16	14	11	8	5	19	20	15	23	7	5	11	12	11	12	7	*	*	38	13	14	13	22	8	1	3	
		MAX	78	82	82	69	65	70	65	64	65	63	70	69	60	56	62	70	73	76	71	64	65	61	67	69	65	61	61	60	71	69	64	
		MIN	57	60	61	57	50	45	43	39	44	40	45	47	38	37	37	46	48	53	51	40	39	44	49	47	42	41	37	37	35	36	35	

EVAPORATION: IS MEASURED IN HUNDRETHS OF INCHES
 WIND: IS MEASURED IN MILES
 MAX AND MIN: THE MAXIMUM AND MINIMUM TEMPERATURES (FAHRENHEIT) OF THE WATER IN THE EVAPORATION PAN
 SEE REFERENCE NOTES FOLLOWING STATION INDEX

SNOWFALL AND SNOW ON GROUND (INCHES)

MARYLAND AND
DELAWARE
OCTOBER 1988

STATION	DAY OF MONTH																														
	1	2	3	4	5	6	7	8	9	10	11	12	13	14	15	16	17	18	19	20	21	22	23	24	25	26	27	28	29	30	30
MARYLAND																															
APPALACHIAN MOUNTAIN 07																															
FROSTBURG 2																															
ALLEGHENY PLATEAU 08																															
MC HENRY 2 NW																															
OAKLAND 1 SE																															
DELAWARE																															

SNOWFALL: INCLUDES SNOW AND ICE. VALUES FOR NWS STATIONS (J INDEX NOTE) ARE MID-MID (LST).
 SNOW ON GROUND: INCLUDES SNOW, SLEET, ICE AND HAIL. VALUES FOR NWS STATIONS (J INDEX NOTE) ARE OBSERVED AT 0000 UTC (GMT).
 WATER EQUIVALENT: GIVEN FOR NWS STATIONS (J INDEX NOTE) ONLY, WHEN SNOW DEPTH IS 2 INCHES OR MORE.
 SEE REFERENCE NOTES FOLLOWING STATION INDEX

STATION INDEX

MARYLAND AND
DELAWARE
OCTOBER 1988

STATION	INDEX NO.	DIVISION	COUNTY	LATITUDE	LONGITUDE	ELEVATION (IN FEET)	OBSERVATION TIME AND TABLES				OBSERVER	
							LOCAL STD TIME					
							TEMP	PRECIP	EVAP	SPECIAL (SEE NOTES)		
MARYLAND												
ABERDEEN PHILLIPS FLD	0011506		HARFORD	39 28	76 10W	57	16	16		C	H	ROSS AVIATION INC
ANNAPOLIS POLICE BRKS	0019304		ANNE ARUNDEL	38 59	76 30W	25	17	17			H	ANNAPOLIS POLICE BRKS
ASSATEAGUE ISLAND NATL	0033501	S	WORCESTER	38 14	75 8W	196	07	07			H	NATIONAL PARK SERVICE
BALTIMORE WSO AP	0046504	R	ANNE ARUNDEL	39 11	76 40W	196	M	M		C	H	NATL WEATHER SERVICE
BALTIMORE WSO CI	0047006	R	BALTO CITY	39 17	76 37W	91	M	M		C	C	OCCI COMMANDING OFFICER
BELTSVILLE	0700004		PRN GEORGES	39 2	76 53W	120	08	08		O	B	U S DEPT OF AGRICULTURE
BENSON POLICE BARRACKS	0732006		HARFORD	39 30	76 23W	365	17	17				MARYLAND STATE POLICE
BOYDS 2 NW	1032006		MONTGOMERY	39 13	77 20W	580	18	18				HUNTER F STALEY
BRIGHTON DAM	1125006		MONTGOMERY	39 12	77 1W	330		M				WASH SUB SANY COMM
CAMBRIDGE WTR TRMT PL	1385002		DORCHESTER	38 34	76 4W	5	16	16			H	WASTEWATER TRMT PLANT
CATOCTIN MOUNTAIN PARK	1530006		FREDERICK	39 39	77 29W	1610	17	17		C	H	CATOCTIN MOUNTAIN PARK
CHESTERTOWN	1750005		KENT	39 13	76 4W	40	23	23			H	THOMAS W ELIASON JR
CLARKSVILLE 3 NNE	1862006		HOWARD	39 15	76 56W	365	17	17				UNIVERSITY OF MARYLAND
COLLEGE PARK	1995004		PRN GEORGES	38 59	76 57W	90	09	09		C	H	UNIVERSITY OF MARYLAND
CONOWINGO DAM	2060006		HARFORD	39 39	76 10W	40	M	M			H	SUSQUEHANNA ELECTRIC CO
CRISFIELD SOMERS COVE	2215001		SOMERSET	37 59	75 52W	8	17	17				SOMERS COVE MARINA
CUMBERLAND 2	2282007		ALLEGANY	39 38	78 45W	730	18	07			H	TIMOTHY B THOMAS
DALECARLIA RESVR D C	2325004			38 56	77 7W	146	17	17				U S CORPS OF ENGINEERS
DAMASCUS 2 SW	2335006		MONTGOMERY	39 16	77 14W	720	19	19			H	RICHARD W SCHWERDT
DENTON 2 E	2523002		CAROLINE	38 53	75 48W	50	17	17			H	ARTHUR REINHOLD
EDGEMONT	2770007		WASHINGTON	39 40	77 33W	905		07				JOHN W HARNE
EMMITSBURG 2 SE	2906006		FREDERICK	39 41	77 18W	416	17	17			H	MRS LUCILLE K BEALE
FREDERICK POLICE BRKS	3348006		FREDERICK	39 25	77 26W	380	17	17			H	MARYLAND STATE POLICE
FREDERICK 3 E	3355006		FREDERICK	39 24	77 22W	385		07				MISS I MARY STALEY
FROSTBURG 2	3415007		ALLEGANY	39 40	78 56W	2170	07	07			H	LEE K CLOSE
GLENN DALE BELL STN	3675004		PRN GEORGES	38 58	76 48W	150	16	16			H	USDA PLT INTRODUCT STN
HAGERSTOWN	3975007		WASHINGTON	39 39	77 44W	660	18	18				HAGERSTOWN RESERVOIR
HANCOCK FRUIT LAB	4030007		WASHINGTON	39 42	78 11W	428	16	16		C	H	SHARPSBURG RESEARCH C
LA PLATA 1 W	5080003		CHARLES	38 32	77 0W	140	18	18			H	C RUSSELL LEVERING
LAUREL 3 W	5111004		PRN GEORGES	39 6	76 54W	4000	M	M				WASH SUB SANY COMM
MC HENRY 2 NW	5832008		GARRETT	39 35	79 22W	2680	08	08		C	H	JOSEPH F JOHENNING
MECHANICSVILLE 1 E	5865003		ST MARYS	38 27	76 41W	100	19	19				SANDRA J HASTING
MERRILL	5894008		GARRETT	39 36	79 5W	1790		09				DELWOOD E MERRILL
MILLERS 4 NE	5934006		CARROLL	39 43	76 48W	860	18	18		C	H	ROBERT P MILLER
MILLINGTON 1 SE	5985005		KENT	39 16	75 52W	30	18	18			H	HOWARD L HARVEY
NATIONAL ARBORETUM D C	6350004			38 54	76 59W	50	08	08			H	U S NATL ARBORETUM
OAKLAND 1 SE	6620008		GARRETT	39 24	79 24W	2420	17	17			H	BEA J CROSCO
OWINGS FERRY LANDING	6770003		CALVERT	38 41	76 40W	160	17	17			H	JAMES C RASMUSSEN
PATUXENT RIVER	6915003		ST MARYS	38 20	76 25W	38	M	M			C	NAVAL WEATHER SERVICE
POTOMAC FILTER PLANT	7272006		MONTGOMERY	39 2	77 15W	270		08				POTOMAC WATER FILT PLT
PRINCESS ANNE	7330001		SOMERSET	38 13	75 41W	20	17	17			H	UNIVERSITY MARYLAND EAST
ROCKVILLE 1 NE	7705006		MONTGOMERY	39 6	77 6W	440	17	17				WASH GAS & LIGHT CO
ROYAL OAK 2 SSW	7806002		TALBOT	38 43	76 11W	10	18	18			H	JOHN L SWAINE JR
SALISBURY	8000001		WICOMICO	38 22	75 35W	10	17	17				CITY OF SALISBURY
SALISBURY FAA AP	8005001	#	WICOMICO	38 20	75 31W	48	M	M			H	FAA
SAVAGE RIVER DAM	8065008		GARRETT	39 31	79 8W	1495	08	08		O	B	U S CORPS OF ENGINEERS
SNOW HILL 4 N	8380001		WORCESTER	38 14	75 23W	28	18	18			H	CURTIS E SHOCKLEY
TOWSON	8877006		BALTIMORE	39 23	76 34W	390	18	18				BENDIX FRIEZ
UNIONVILLE	9030006		FREDERICK	39 27	77 11W	430	18	18		C	H	CAROLINE R VON EIFF
UPPER MARLBORO 3 NNW	9070004		PRN GEORGES	38 52	76 47W	98	08	08		O	B	TOBACCO EXP FARM
VIENNA	9140002		DORCHESTER	38 29	75 50W	12	18	18			H	DELMARVA POWER & LIGHT
WESTMINSTER POLICE BRK	9440006		CARROLL	39 33	76 58W	765	17	17				MARYLAND STATE POLICE
WOODSTOCK	9750006		BALTIMORE	39 20	76 52W	460	18	18			H	JOHN A HILTZ

SEE REFERENCE NOTES FOLLOWING STATION INDEX

STATION INDEX

MARYLAND AND
DELAWARE
OCTOBER 1988

STATION	INDEX NO.	DIVISION	COUNTY	LATITUDE	LONGITUDE	ELEVATION (IN FEET)	OBSERVATION TIME AND TABLES				OBSERVER
							LOCAL STD TIME				
							TEMP	PRECIP	EVAP	SPECIAL (SEE NOTES)	
DELAWARE											
DOVER	2730	002	KENT	39 9	75 31 W	30	17	17		H	STATE DIV OF HIGHWAYS
GEORGETOWN 5 SW	3570	002	SUSSEX	38 38	75 27 W	45	08	08	08	C	UNIV OF DEL SUBSTATION
GREENWOOD 2 NE	3595	002	SUSSEX	38 50	75 35 W	45	18	18			DANIEL M SWARTZENTRUBER
LEWES	3200	002	SUSSEX	38 46	75 8 W	15	17	17		H	BOARD OF PUBLIC WORKS
MIDDLETOWN 3 E	5852	001	NEW CASTLE	39 27	75 40 W	55	17	17		H	DAVID S NEYHARD
MILFORD 4 SE	9915	002	SUSSEX	38 54	75 28 W	30	17	17		H	DAVID S SCHLOTT
NEWARK UNIVERSITY FARM	6410	001	NEW CASTLE	39 40	75 44 W	90	17	17	17	C	UNIV OF DELAWARE
WILMINGTON WSO AP	9999	001	NEW CASTLE	39 40	75 36 W	79	MID	MID		H	NATL WEATHER SERVICE
WILMINGTON PORTER RESVR	6050	001	NEW CASTLE	39 46	75 32 W	274	MID	MID		H	WATER DEPARTMENT

SEE REFERENCE NOTES FOLLOWING STATION INDEX

REFERENCE NOTES

MARYLAND AND
DELAWARE
OCTOBER 1988

DEFINITIONS

STATION NAMES: Name of the city, town or locality. Figures and letters following the station names indicate the distance in miles and direction from the post office or town community center.

DIVISIONS: Areas within a state of similar climatological characteristics. Division averages are calculated using data from stations that record both temperature and precipitation (ie: not precipitation alone).

NORMALS: The average value of the meteorological element over a time period. Effective 1 January 1983, the averaging period is 1951 to 1980. The normals for National Weather Service localities have been adjusted so as to be representative for the current observation site.

MONTHLY DEGREE DAY TOTALS: One heating (cooling) degree day is accumulated for each whole degree that the daily mean temperature is BELOW (ABOVE) 65 degrees Fahrenheit.

PRECIPITATION: Values shown in hundredths of inches are water equivalent totals, i.e., total of liquid and melted frozen precipitation. In the "MONTHLY SUMMARIZED DATA" table the total snow and sleet values shown in tenths of inches are unmelted amounts. The max. depth on ground values of snow and sleet shown in whole inches are cumulative unmelted amounts. The no. of days with .10, .50, 1.00 or more refers to water equivalents.

TEMPERATURE: Original and edited temperature values are given in the Daily Temperature Table. Edited values are produced when an original value is missing or when surrounding stations indicate a suspect original value. When a line labeled OBS is present and contains either a daily temperature (suspect) or *** (missing), the temperature appearing directly above, on the line labeled MAX or MIN, is an edited value. Summary temperature information (averages, departures, extremes, monthly degree day totals) is based on the values labeled MAX/MIN.

WIND: (As shown in "Evaporation and Wind" table) The total wind movement in miles over the evaporation pan as determined by an anemometer recorder located 6-8 inches above the pan.

SYMBOLS AND LETTERS USED IN THE STATION INDEX TABLE

- # Thermometers located in a rooftop shelter.
- // Rain Gage equipped with a windshield.
- AR Observation made "after rain" has occurred.
- C Station is equipped with recording rain gage (R) but values in this bulletin are from a non-recording rain gage unless indicated by an R.
- G Observations appear in "Soil Temperatures" table.
- H Observations appear in "Snowfall and Snow on Ground" table.
- J Station also published as a Local Climatological Data publication.
- MID Observation time is midnight.
- MO Rain gage read once monthly, usually the last day.
- OC Rain gage readings vary from a few weeks to several months.
- R Amounts from recording rain gage.
- SR Observation time near sunrise.
- SS Observation time near sunset.
- VAR Observation time varies.
- WI Rain gage read weekly or irregularly.
- WM Rain gage read weekly and last day of month.

SYMBOLS AND LETTERS USED IN THE DATA TABLES

(DAILY DATA ARE FOR THE 24 HOURS IMMEDIATELY PRECEDING OBSERVATION TIME.)

BLANK entries in the "Monthly Summarized Data" table indicate no record. BLANK entries in the "Daily Precipitation" and "Snowfall and Snow on Ground" tables indicate zero.

BLANK entries in the "Daily Temperature" table indicate a missing record where an edited value could not be determined. (See *** below)

- No record. Data not recorded, determined unreliable by quality control checks, or not received in time for publication.

+ Precipitation or temperature extremes occurred on one or more previous dates during the month.

*** Missing original temperature which has been estimated during edit.

* Rain gage not read. Precipitation is included in the amount following the asterisks. Time distribution not known. A * preceding the monthly total indicates precipitation amount is being carried forward to next months total, and may include amounts from the previous month(s).

// Rain gage equipped with a windshield.

A Amount of precipitation is the total of observer's entries for the current month. It may include precipitation that occurred during the previous month. Refer to earlier bulletin to determine date of last reading. (HAWAII stations)

B Adjusted monthly value (estimated), (1-7 missing values for wind and evaporation).

M Insufficient or partial data. M is appended to average and/or total values computed with 1-9 daily values missing. M appears alone if 10 or more daily values are missing, (8 or more for wind and evaporation).

R Amounts from recording rain gage.

T Trace. An amount too small to measure.

V Includes total for previous month(s). (See * above)

Seasonal Tables: Monthly and seasonal snowfall and heating degree days for the 12 months ending with the June data are published in the July issue of this bulletin. Cooling degree days for the calendar year are published in the "Climatological Data Annual Summary".

The graphic displays appearing in this publication were first produced for the January 1987 data month. The types of graphs and the information they portray may vary from month to month and from state to state in order to highlight climatic features of state, regional, and seasonal interest. Some graphs present information for "clusters". A cluster is a group of up to four (4) adjacent divisions that comprise an area of similar climate.

Information concerning the history of changes in locations, exposure, etc. of substations is kept on file at the National Climatic Data Center. Historical information for regular National Weather Service Offices may be obtained from the "Local Climatological Data" annual publication. The contents of this publication may be reprinted or otherwise used freely, with proper credit to the National Climatic Data Center. The data are also available in digital form on magnetic tape and diskette.

SUBSCRIPTION, PRICE AND ORDERING INFORMATION AVAILABLE FROM:

NATIONAL CLIMATIC DATA CENTER
FEDERAL BUILDING
ASHEVILLE, NC 28801-2696

USCOMM-NOAA-ASHEVILLE, N.C. OCTOBER 1988-0585

MEAN MONTHLY TEMPERATURE FREQUENCY DISTRIBUTION FOR PERIOD OF RECORD 1931-1988 FOR MONTH OF OCTOBER MARYLAND

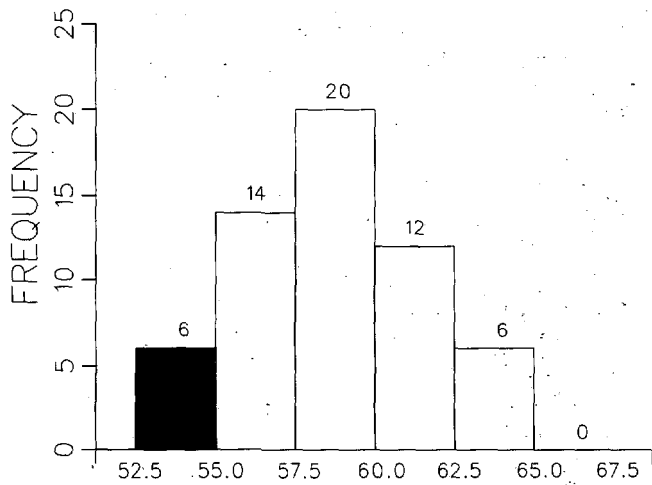
CLUSTER 1 -DIVISION(S):
SOUTHERN EASTERN SHORE 01
CENTRAL EASTERN SHORE 02
LOWER SOUTHERN 03

CLUSTER 2 -DIVISION(S):
UPPER SOUTHERN 04
NORTHERN EASTERN SHORE 05

CLUSTER 3 -DIVISION(S):
NORTHERN CENTRAL 06
APPALACHIAN MOUNTAIN 07

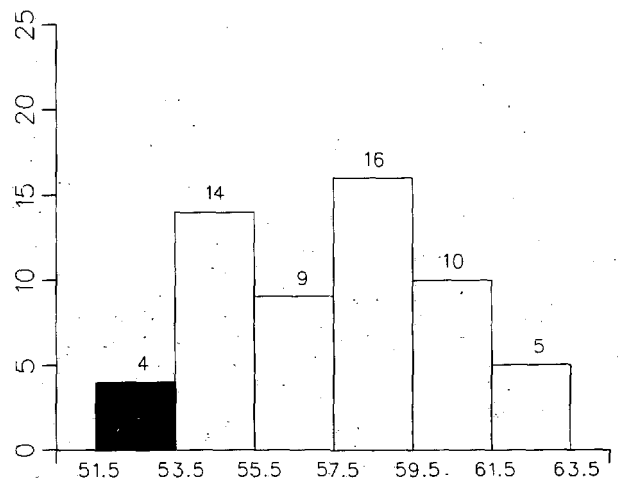
CLUSTER 4 -DIVISION(S):
ALLEGHENY PLATEAU 08

THIS MONTHS VALUE = 53.1, RANK = # 1 COLDEST



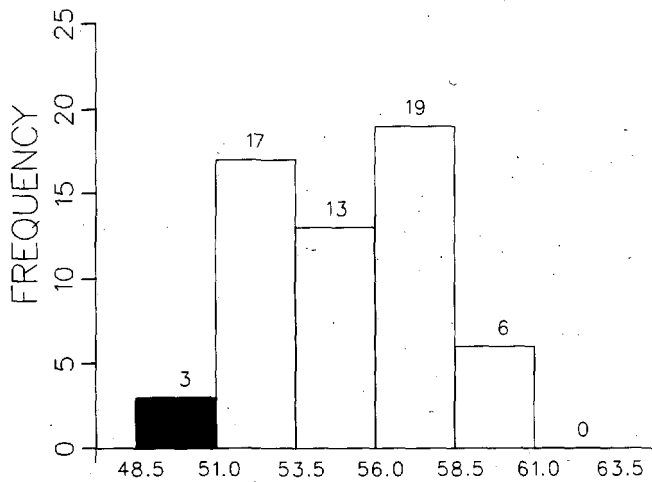
CLUSTER 1 (DEG. F)

THIS MONTHS VALUE = 51.6, RANK = # 1 COLDEST



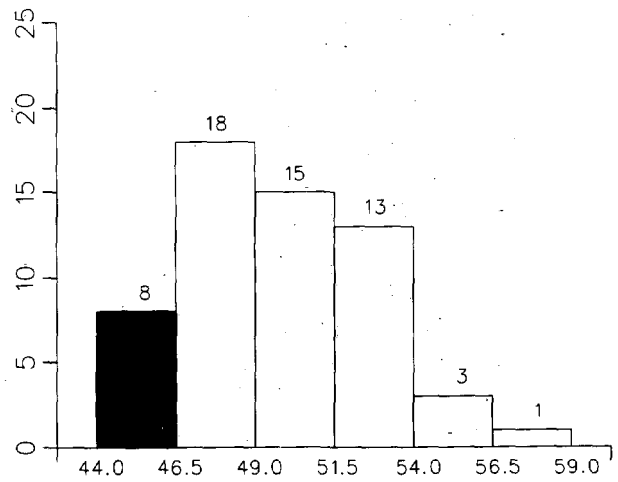
CLUSTER 2 (DEG. F)

THIS MONTHS VALUE = 49.0, RANK = # 1 COLDEST



CLUSTER 3 (DEG. F)

THIS MONTHS VALUE = 44.4, RANK = # 1 COLDEST



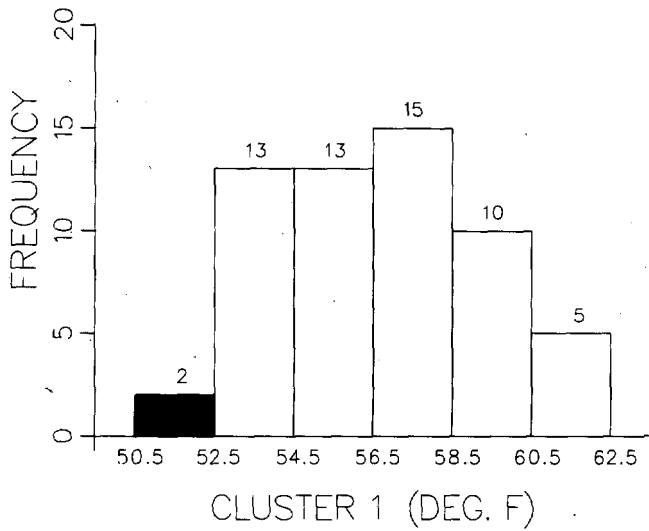
CLUSTER 4 (DEG. F)

MEAN MONTHLY TEMPERATURE FREQUENCY DISTRIBUTION
 FOR PERIOD OF RECORD 1931-1988
 FOR MONTH OF OCTOBER
 DELAWARE

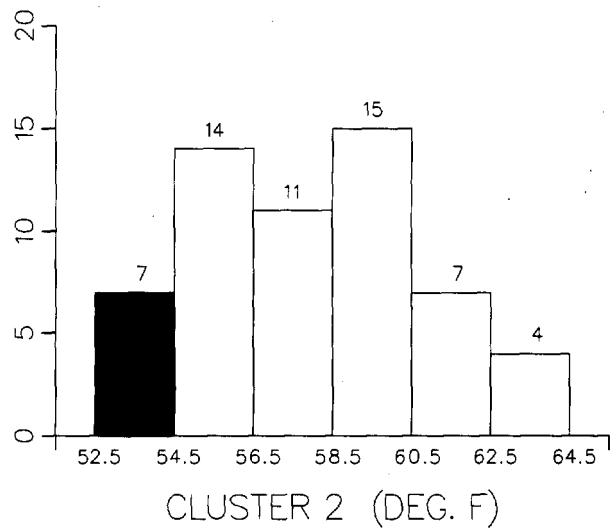
CLUSTER 1 -DIVISION(S):
 NORTHERN 01

CLUSTER 2 -DIVISION(S):
 SOUTHERN 02

THIS MONTHS VALUE = 51.0, RANK = # 1 COLDEST



THIS MONTHS VALUE = 53.0, RANK = # 1 COLDEST



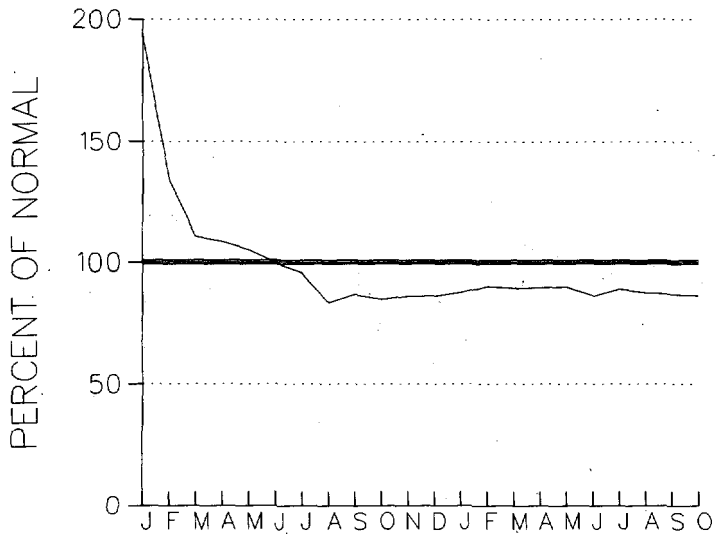
CUMULATIVE PRECIPITATION DEPARTURES FROM NORMAL (1951-1980)
 FOR THE LAST 22 MONTHS
 ENDING OCTOBER 1988
 MARYLAND

CLUSTER 1 - DIVISION(S):
 SOUTHERN EASTERN SHORE 01
 CENTRAL EASTERN SHORE 02
 LOWER SOUTHERN 03

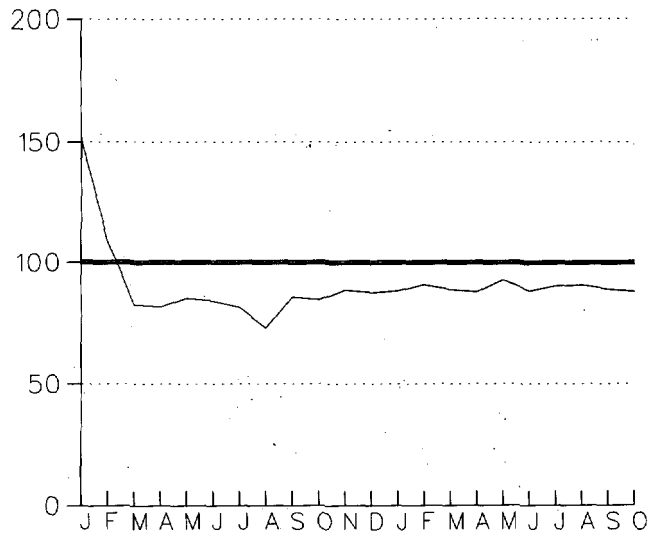
CLUSTER 2 - DIVISION(S):
 UPPER SOUTHERN 04
 NORTHERN EASTERN SHORE 05

CLUSTER 3 - DIVISION(S):
 NORTHERN CENTRAL 06
 APPALACHIAN MOUNTAIN 07

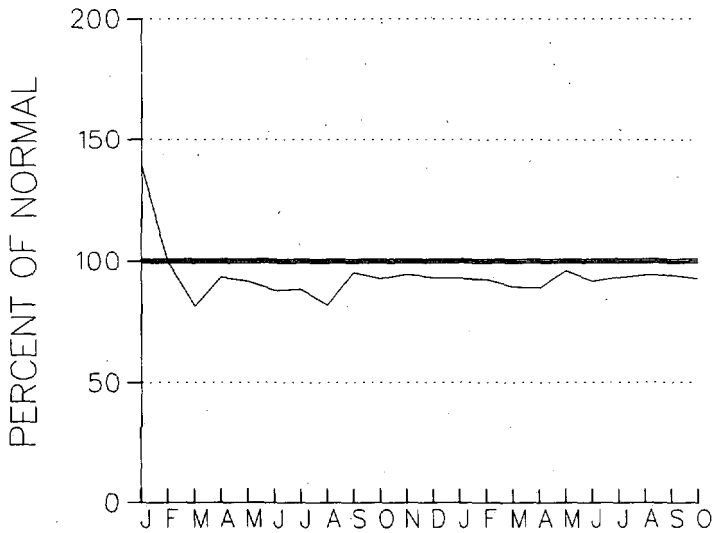
CLUSTER 4 - DIVISION(S):
 ALLEGHENY PLATEAU 08



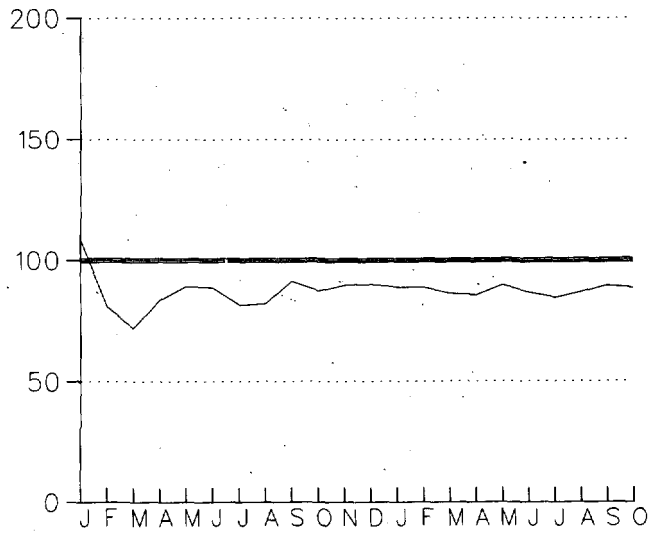
CLUSTER 1



CLUSTER 2



CLUSTER 3

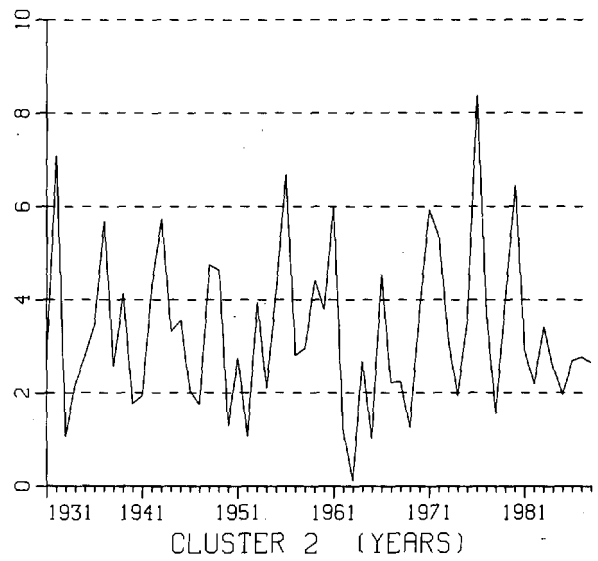
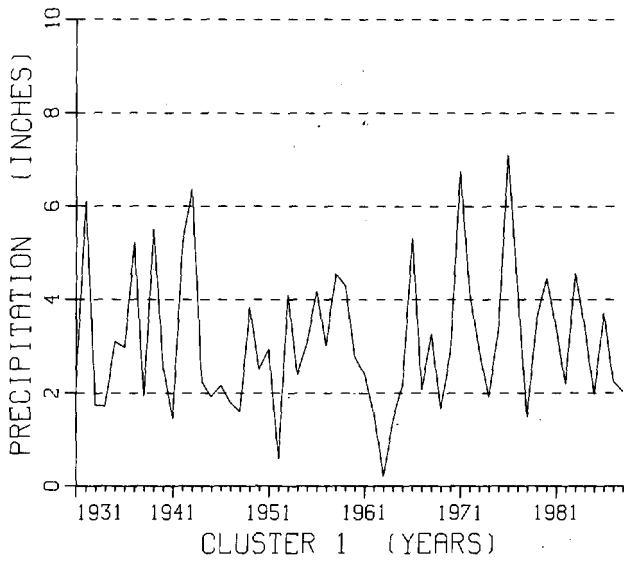


CLUSTER 4

MEAN MONTHLY PRECIPITATION FOR
THE MONTH OF: OCTOBER
THE PERIOD OF: 1931 - 1988
DELAWARE

CLUSTER 1 -DIVISION(S):
NORTHERN 01

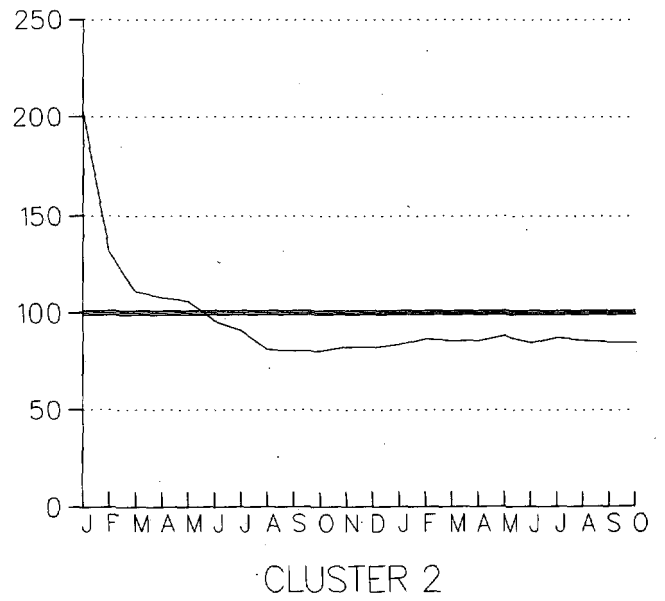
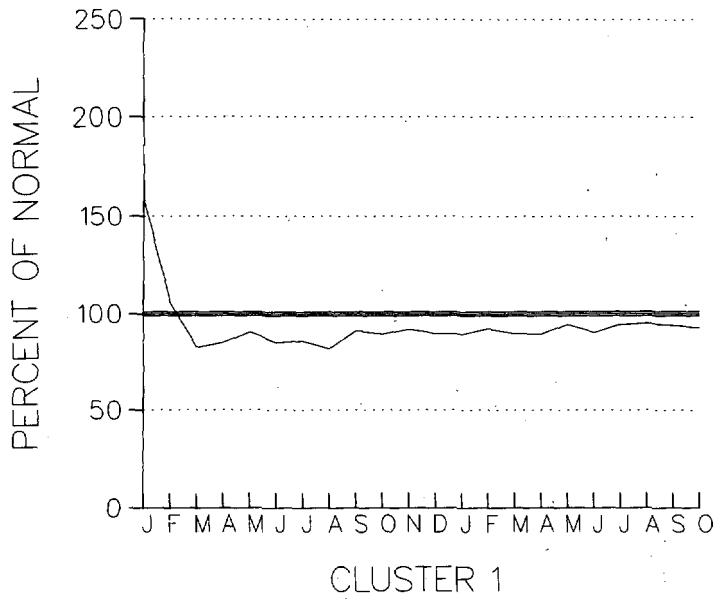
CLUSTER 2 -DIVISION(S):
SOUTHERN 02



CUMULATIVE PRECIPITATION DEPARTURES FROM NORMAL (1951-1980)
FOR THE LAST 22 MONTHS
ENDING OCTOBER 1988
DELAWARE

CLUSTER 1 - DIVISION(S):
NORTHERN 01

CLUSTER 2 - DIVISION(S):
SOUTHERN 02



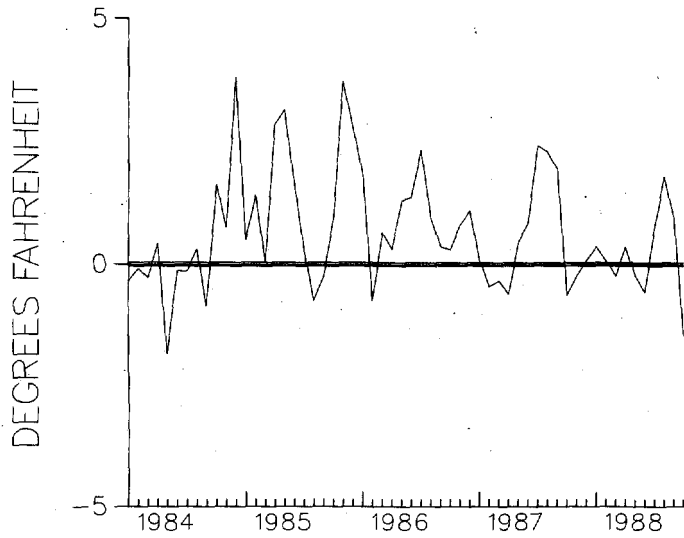
TEMPERATURE DEPARTURES FROM NORMAL (1951-1980)
THREE MONTH RUNNING MEAN
FOR THE 58 MONTHS ENDING WITH OCTOBER 1988 DATA
MARYLAND

CLUSTER 1 -DIVISION(S):
SOUTHERN EASTERN SHORE 01
CENTRAL EASTERN SHORE 02
LOWER SOUTHERN 03

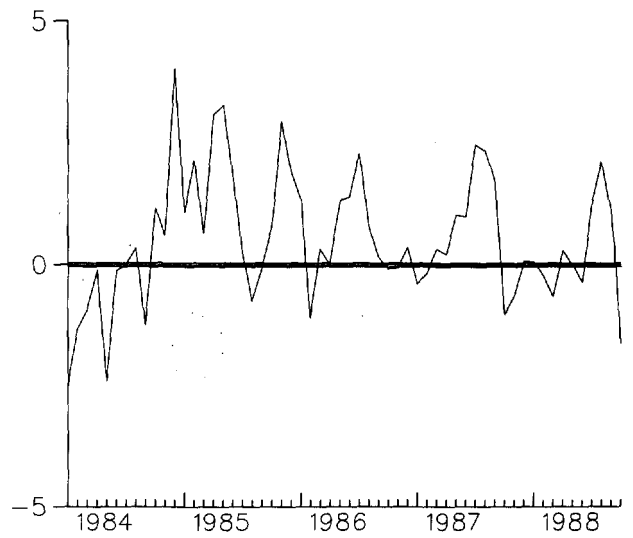
CLUSTER 2 -DIVISION(S):
UPPER SOUTHERN 04
NORTHERN EASTERN SHORE 05

CLUSTER 3 -DIVISION(S):
NORTHERN CENTRAL 06
APPALACHIAN MOUNTAIN 07

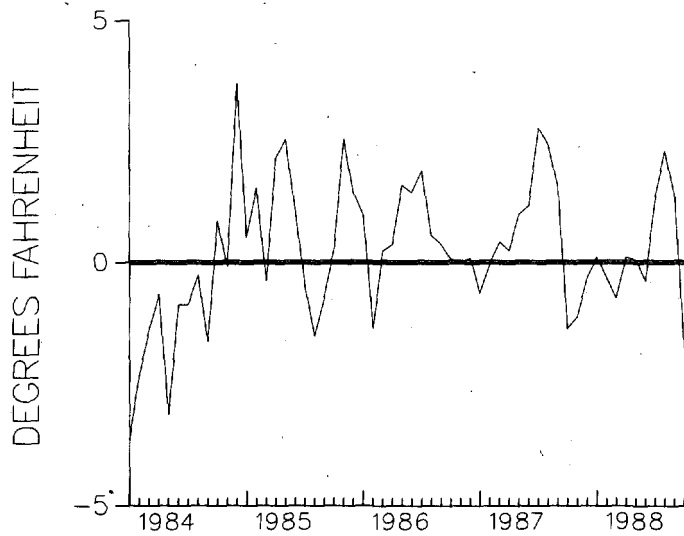
CLUSTER 4 -DIVISION(S):
ALLEGHENY PLATEAU 08



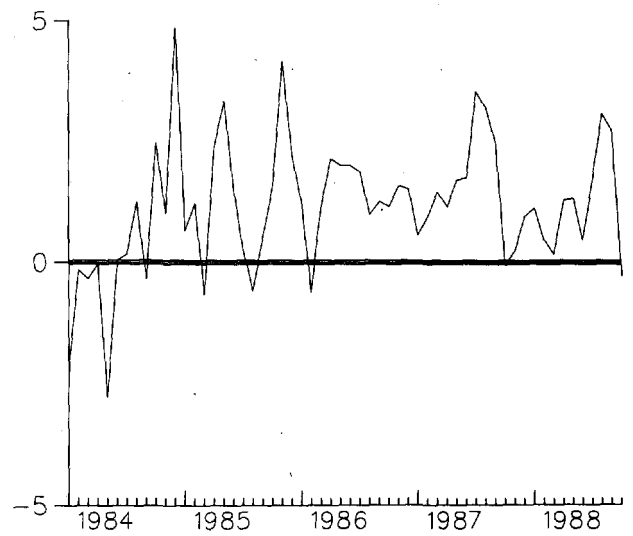
CLUSTER 1



CLUSTER 2



CLUSTER 3



CLUSTER 4

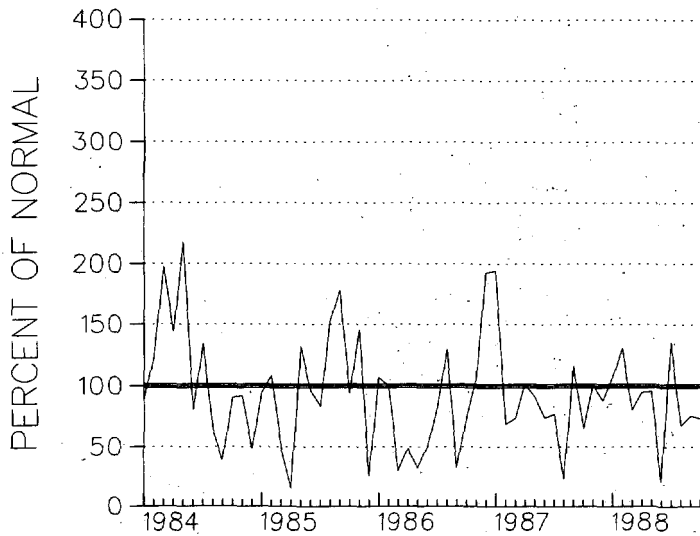
PRECIPITATION DEPARTURES FROM NORMAL (1951-1980)
FOR THE 58 MONTHS
ENDING OCTOBER 1988
MARYLAND

CLUSTER 1 - DIVISION(S):
SOUTHERN EASTERN SHORE 01
CENTRAL EASTERN SHORE 02
LOWER SOUTHERN 03

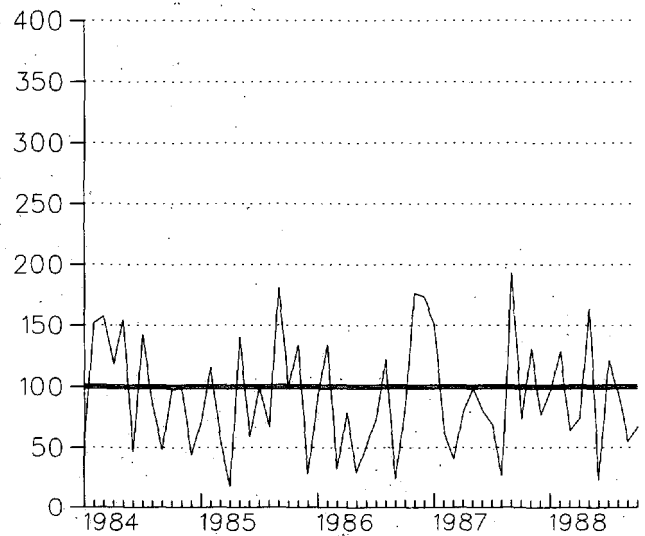
CLUSTER 2 - DIVISION(S):
UPPER SOUTHERN 04
NORTHERN EASTERN SHORE 05

CLUSTER 3 - DIVISION(S):
NORTHERN CENTRAL 06
APPALACHIAN MOUNTAIN 07

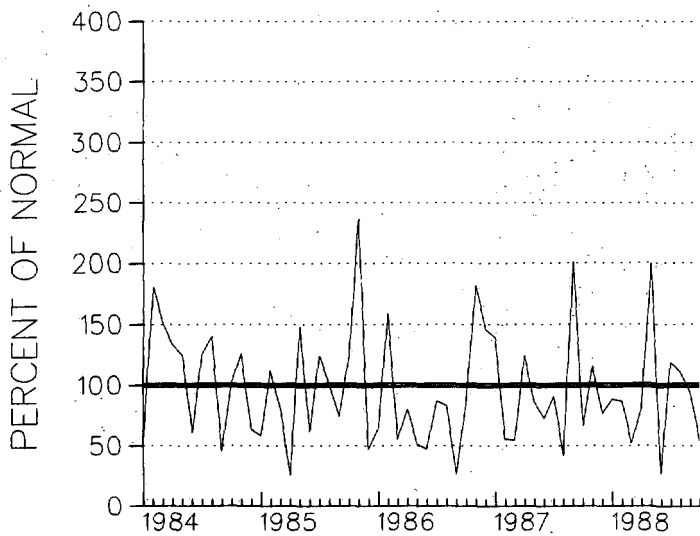
CLUSTER 4 - DIVISION(S):
ALLEGHENY PLATEAU 08



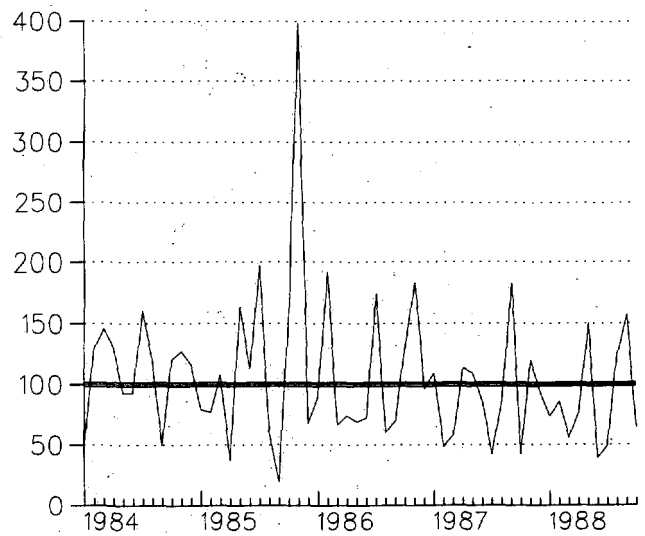
CLUSTER 1



CLUSTER 2



CLUSTER 3

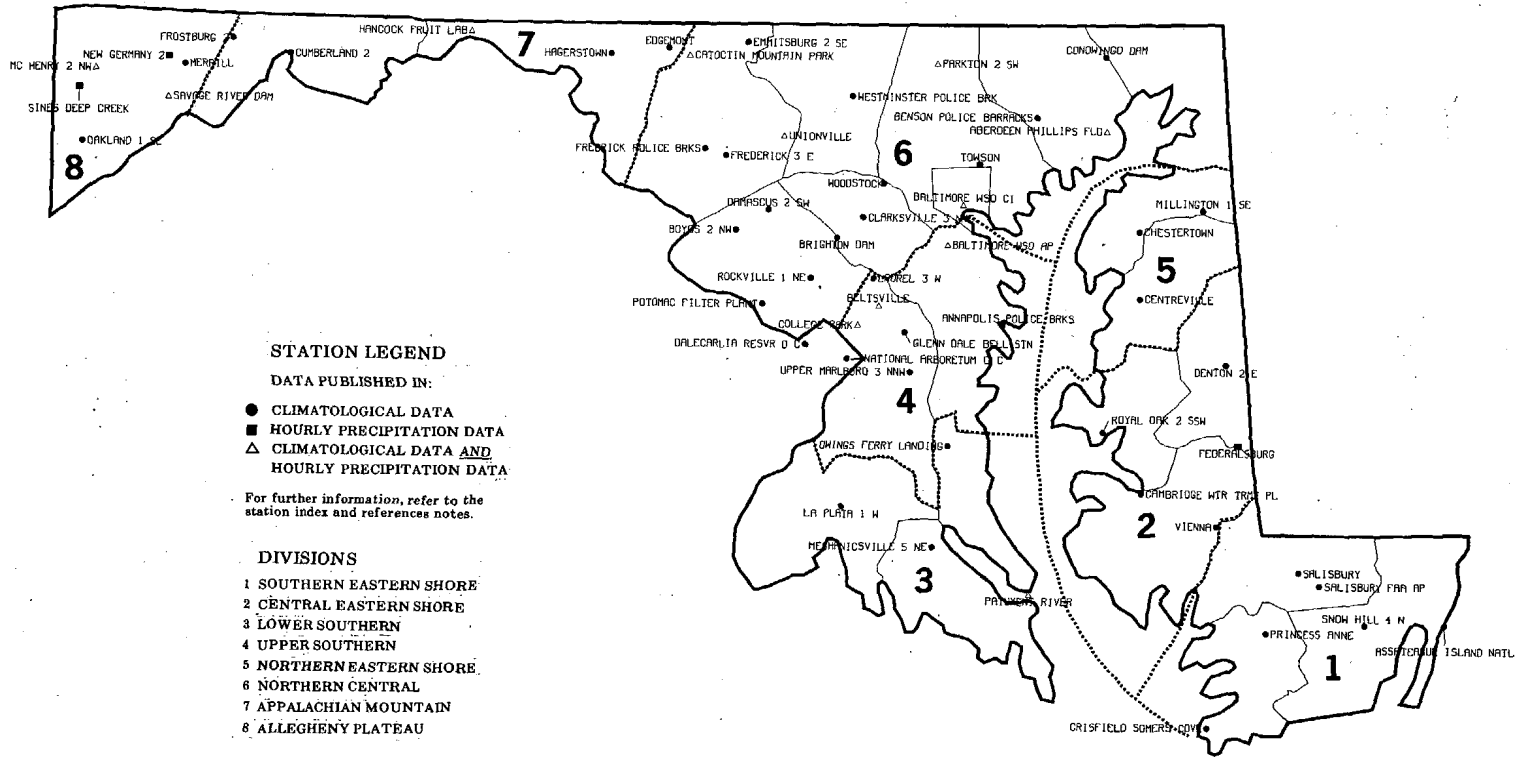
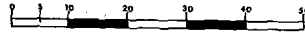


CLUSTER 4

18 - MARYLAND & D.C.

ALBERS EQUAL AREA PROJECTION
STANDARD PARALLELS AT 29.5 AND 45.5 DEGS.

STATUTE MILES



76.0
40.0

75.0

40.0

07 - DELAWARE

ALBERS EQUAL AREA PROJECTION
STANDARD PARALLELS AT 39.5 AND 45.5 DEGS.

STATUTE MILES



STATION LEGEND

DATA PUBLISHED IN:

- CLIMATOLOGICAL DATA
- HOURLY PRECIPITATION DATA
- △ CLIMATOLOGICAL DATA AND HOURLY PRECIPITATION DATA

For further information, refer to the station index and references notes.

DIVISIONS

- 1 NORTHERN
- 2 SOUTHERN

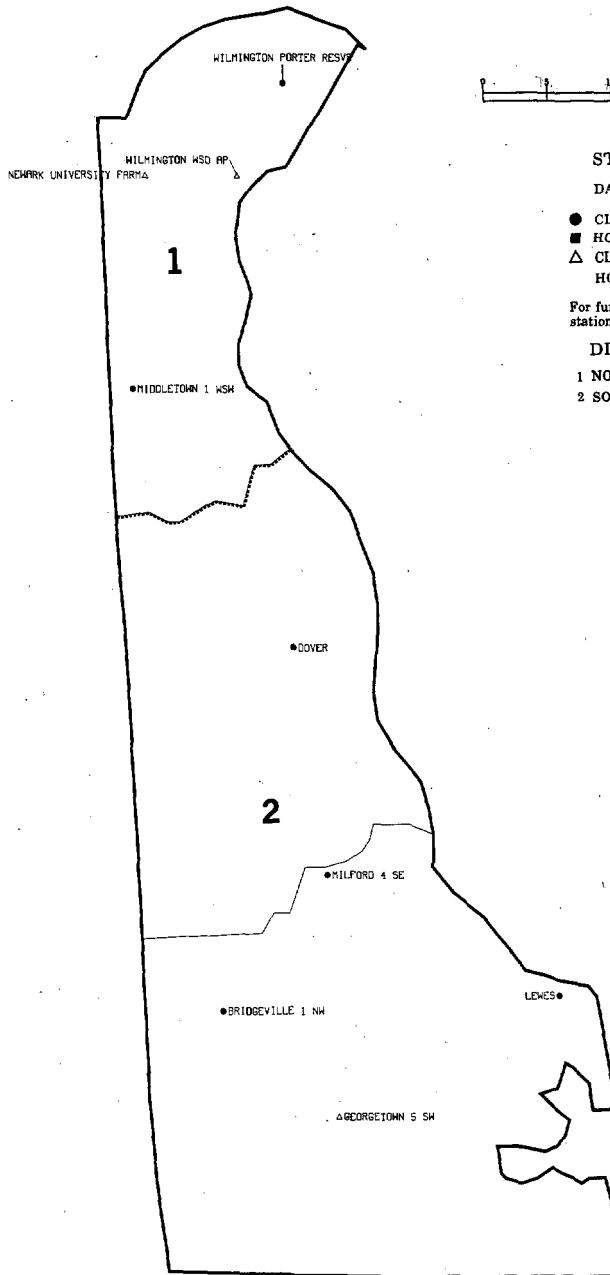
39.0

39.0

76.0
38.0

75.0

38.0



CD
VALIDATED BY:

Ted Burlew
Betty Edstrom
Bruce Emory
Joyce Morgan
Betty Shuford

DEPARTMENT OF COMMERCE
NATIONAL OCEANIC AND ATMOSPHERIC ADMINISTRATION
NATIONAL ENVIRONMENTAL SATELLITE, DATA, AND INFORMATION SERVICE
NATIONAL CLIMATIC DATA CENTER
FEDERAL BUILDING
ASHEVILLE, N.C. 28801

*TO CHANGE YOUR ADDRESS, PLEASE RETURN A COPY OF
THE MAILING LABEL ALONG WITH YOUR NEW ADDRESS.*

**"FORWARDING AND RETURN POSTAGE GUARANTEED -
ADDRESS CORRECTION REQUESTED"**

**BULK RATE
POSTAGE & FEES PAID
United States Department Of Commerce
NOAA Permit No. G - 19**