



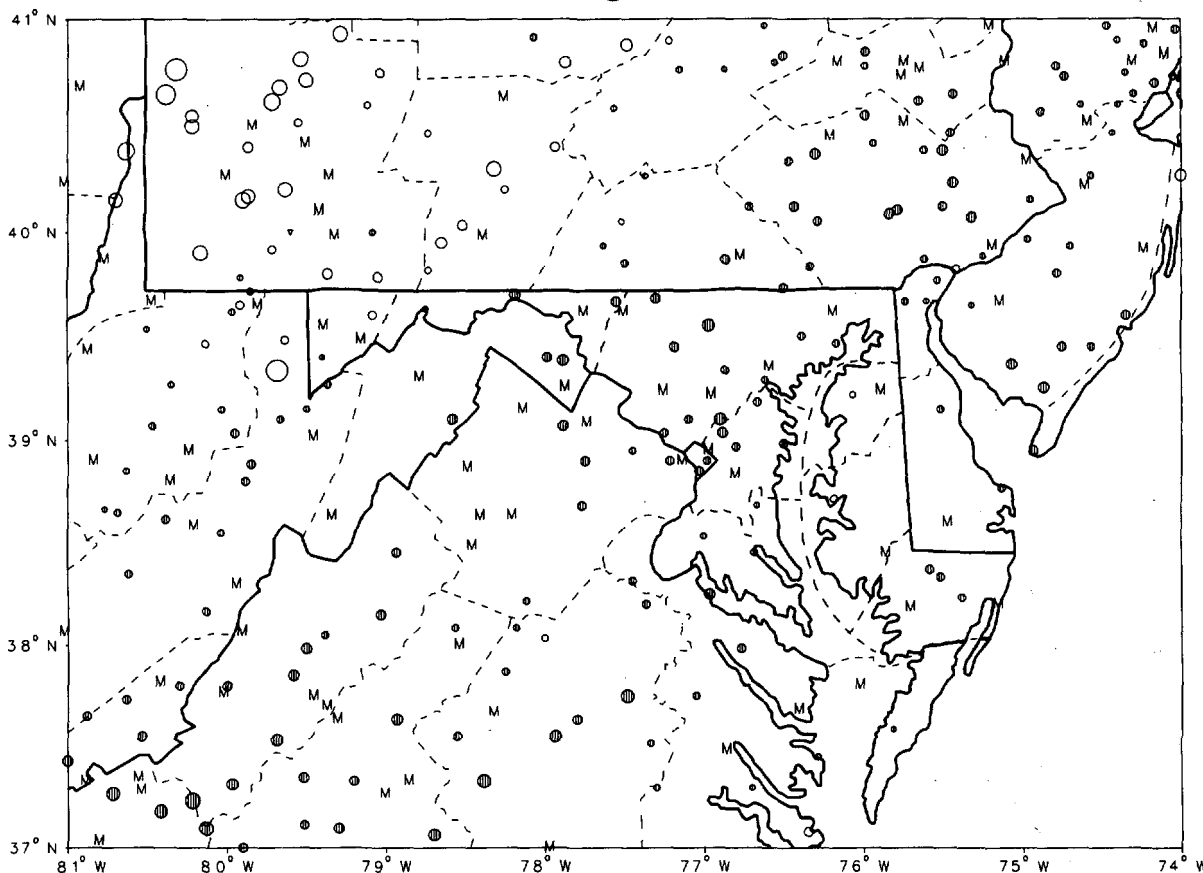
CLIMATOLOGICAL DATA MARYLAND AND DELAWARE

DECEMBER 1993

VOLUME 97 NUMBER 12

MONTHLY PRECIPITATION DEPARTURE FROM INDIVIDUAL STATION NORMALS (1961-1990)

- M INCOMPLETE DATA FOR THE MONTH
- ∇ EXACTLY NORMAL
- ○ ○ ○ ○ 5, 10, 20, ... 50% OR MORE BELOW NORMAL
- ● ● ● ● 10, 20, 40, ... 100% OR MORE ABOVE NORMAL



CIRCLE DIAMETER IS PROPORTIONAL TO DEPARTURE ON A CONTINUOUS SCALE

"I CERTIFY THAT THIS IS AN OFFICIAL PUBLICATION OF THE NATIONAL OCEANIC AND ATMOSPHERIC ADMINISTRATION (NOAA). IT IS COMPILED USING INFORMATION FROM WEATHER OBSERVING SITES SUPERVISED BY NOAA/NATIONAL WEATHER SERVICE AND RECEIVED AT THE NATIONAL CLIMATIC DATA CENTER (NCDC), ASHEVILLE, NORTH CAROLINA 28801."

Kenneth D. Haden

DIRECTOR, NATIONAL CLIMATIC DATA CENTER

noaa

NATIONAL
OCEANIC AND
ATMOSPHERIC ADMINISTRATION

NATIONAL
ENVIRONMENTAL SATELLITE, DATA
AND INFORMATION SERVICE

NATIONAL
CLIMATIC DATA CENTER
ASHEVILLE NORTH CAROLINA

TEMPERATURE AND PRECIPITATION EXTREMES

MARYLAND AND
DELAWARE
DECEMBER 1993

MARYLAND
 HIGHEST TEMPERATURE 65
 LOWEST TEMPERATURE -4
 GREATEST TOTAL PRECIPITATION 6.28
 LEAST TOTAL PRECIPITATION 2.81
 GREATEST 1 DAY PRECIPITATION 3.95
 GREATEST TOTAL SNOWFALL 36.4
 GREATEST DEPTH OF SNOW OR ICE 14

DECEMBER 3
 DECEMBER 31

GLENN DALE BELL STN
 PRINCESS ANNE
 LAUREL 3 W
 CUMBERLAND 2
 WESTMINSTER POL BRKS
 OAKLAND 1 SE
 OAKLAND 1 SE

DECEMBER 5
 DECEMBER 30

DELAWARE
 HIGHEST TEMPERATURE 66
 LOWEST TEMPERATURE 8
 GREATEST TOTAL PRECIPITATION 5.71
 LEAST TOTAL PRECIPITATION 3.51
 GREATEST 1 DAY PRECIPITATION 2.54
 GREATEST TOTAL SNOWFALL 6.8
 GREATEST DEPTH OF SNOW OR ICE 5

DECEMBER 5
 DECEMBER 31

GREENWOOD 2 NE
 NEWARK UNIVERSITY FARM
 GREENWOOD 2 NE
 WILMINGTON WSO ARPT R
 GREENWOOD 2 NE
 GEORGETOWN 5 SW
 GREENWOOD 2 NE

DECEMBER 5
 DECEMBER 29

MONTHLY SUMMARIZED STATION AND DIVISIONAL DATA

MARYLAND AND
DELAWARE
DECEMBER 1993

STATION	TEMPERATURE (°F)											PRECIPITATION (IN)													
	AVERAGE MAXIMUM	AVERAGE MINIMUM	AVERAGE	DEPARTURE FROM NORMAL	HIGHEST	DATE	LOWEST	DATE	HEATING DEGREE DAYS	COOLING DEGREE DAYS	NO. OF DAYS				TOTAL	DEPARTURE FROM NORMAL	GREATEST DAY	DATE	SNOW, SLEET			NO. OF DAYS			
											90 OR ABOVE	32 OR BELOW	32 OR BELOW	0 OR BELOW					TOTAL	MAX DEPTH ON GROUND	DATE	.10 OR MORE	.50 OR MORE	1.00 OR MORE	
MARYLAND																									
SOUTHERN EASTERN SHORE 01																									
ASSATEAGUE IS NATL SEA	46.2	33.0	39.6		59	5	11	31	778	0	0	2	13	0	M	4.16	1.02	15	M	4.29	1.0	10	2	1	0
PRINCESS ANNE	47.4	21.9	34.7	-1.1	64	5	-4	31	933	0	0	2	17	0	M	4.15	1.82	15	M	5.00	0.0	9	9	1	1
SALISBURY	46.1	31.1	38.6	-1.8	64	5	8	31	811	0	0	0	0	0	M	4.76	1.23	15	M	5.00	0.0	9	9	1	1
SALISBURY FAA ARPT	45.6	27.3	36.5	-2.1	61	3	-1	31	876	0	0	4	24	1	M	4.91	1.23	15	M	7.11	0.0	9	9	1	1
SNOW HILL 4 N	46.8	29.0	37.9	-1.9	64	5	2	31	833	0	0	2	23	0	M	4.38	1.94	16	M	6.5	0.0	9	9	3	1
--DIVISIONAL DATA----->																									
CENTRAL EASTERN SHORE 02																									
ROYAL OAK 2 SSW	44.6	30.7	37.7	-1.4	61	5	9	31	840	0	0	4	17	0	M	3.54	-0.18	15	M	5.5	0.0	8	2	1	1
VIENNA	47.0	27.9	37.5	-2.2	64	5	17	31	850	0	0	3	25	0	M	2.68	1.51	5	M	3.29	0.0	4	2	1	1
--DIVISIONAL DATA----->																									
LOWER SOUTHERN 03																									
LA PLATA 1 W	45.1	27.9	36.5	-1.8	61	5+	5	31	876	0	0	4	21	0	M	3.71	.43	15	M	7.30+	0.0	8	2	1	1
MECHANICSVILLE 5 NE	44.0	27.8	35.9	-2.3	60	5	1	31	893	0	0	4	21	0	M	4.07	.73	5	M	8.29	0.0	7	3	1	1
OWINGS FERRY LANDING	43.8	27.3	35.6	-2.4	61	6	0	31	906	0	0	4	22	1	M	3.46	.23	5	M	5.29	0.0	7	2	1	1
--DIVISIONAL DATA----->																									
UPPER SOUTHERN 04																									
ANNAPOLIS POLICE BRKS	44.2	29.2	36.7	-1.7	58	5	14	31	870	0	0	4	22	0	M	4.66	1.22	5	M	4.29	0.0	8	2	1	1
BALTIMORE WSO ARPT	44.0	28.4	36.2	-1.5	61	3	9	31	886	0	0	5	23	0	M	4.45	1.04	5	M	2.9	0.0	7	4	2	0
BELTSVILLE	43.8	26.0	34.9	-1.9	60	4	3	31	926	0	0	5	25	0	M	5.32	1.97	5	M	3.31+	0.0	4	2	0	1
COLLEGE PARK	45.1	29.3	37.2	-1.1	62	5	6	31	855	0	0	5	22	0	M	5.31	0.0	5	M	3.31+	0.0	6	3	0	1
DALECARLIA RESERVOIR	44.9	27.1	36.0	-1.4	62	5	8	31	893	0	0	4	24	0	M	4.44	2.00	5	M	0	0.0	7	3	1	1
GLENN DALE BELL STN	45.7	25.7	35.7	-1.3	65	3	15	26	903	0	0	5	25	0	M	4.39	1.11	5	M	3.29+	0.0	10	3	1	1
LAUREL 3 W	43.7	26.0	34.9	-1.7	60	5	9	31	925	0	0	5	23	0	M	6.28	2.86	5	M	0	0.0	7	4	2	1
NATIONAL ARBORETUM DC	45.3	28.3	36.8	-1.6	58	5	9	31	864	0	0	5	24	0	M	4.32	.99	5	M	3.30+	0.0	5	3	1	1
--DIVISIONAL DATA----->																									
NORTHERN EASTERN SHORE 05																									
CHESTERTOWN	43.9	26.8	35.4	-1.6	61	5	8	31	911	0	0	5	23	0	M	3.70	-.07	15	M	2.4	0.0	6	3	1	1
MILLINGTON 1 SE	44.2	27.5	35.9	-1.3	62	5	7	31	893	0	0	4	24	0	M	3.31	1.44	5	M	2.2	0.0	4	3	1	1
--DIVISIONAL DATA----->																									
NORTHERN CENTRAL 06																									
ABERDEEN PHILLIPS FIEL	43.4	31.5	37.5	-1.8	60	3	17	27	848	0	0	4	11	0	M	4.46	.85	5	M	1.29+	0.0	2	1	0	0
BALTIMORE CITY	44.3	28.7	36.5	-1.8	59	3	16	31+	875	0	0	5	15	0	M	4.48	.73	5	M	5.3	0.0	5	3	2	1
BENSON POLICE BARRACKS	44.3	31.5	37.5	-1.8	61	3	9	31	875	0	0	5	20	0	M	4.94	1.09	5	M	2.29+	0.0	6	2	1	1
CATOCTIN MOUNTAIN PARK	37.8	25.1	31.5	-2.2	52	3	7	26	1030	0	0	8	24	0	M	1.73	0.0	5	M	6.29+	0.0	5	1	0	1
CONOWINGO DAM	44.9	28.0	36.5	-2.2	59	3	13	31	879	0	0	7	21	0	M	5.31	.61	21	M	1.29+	0.0	6	3	1	0
DAMASCUS 2 SSW	40.4	24.6	32.5	-3.1	57	3	4	31	999	0	0	8	26	0	M	4.72	2.06	5	M	2.31+	0.0	7	3	2	1
EMMITSBURG 2 SE	38.7	23.4	31.1	-3.1	55	3	7	29	1046	0	0	7	27	0	M	5.09	1.82	4	M	1.30+	0.0	8	5	3	1
FREDERICK POLICE BRKS	43.6	28.9	36.3	-1.1	59	4	11	29	884	0	0	4	21	0	M	3.94	3.20	4	M	3.0	0.0	8	8	1	1
MILLERS 4 NE	40.0	26.6	33.3	-2.4	56	3	9	31	974	0	0	5	23	0	M	4.71	2.91	5	M	1.31+	0.0	5	3	1	1
ROCKVILLE 1 NE	42.6	28.3	35.5	-2.4	59	5	6	31	910	0	0	9	23	0	M	4.16	1.09	5	M	5.28	0.0	7	3	2	0
TOWSON	44.0	34.4	39.2	-2.3	59	5	13	29	795	0	0	4	11	0	M	1.55	.63	4	M	0	0.0	1	1	0	0
UNIONVILLE	41.6	20.3	31.0	-1.5	53	5+	0	29	1046	0	0	6	29	1	M	4.87	1.67	5	M	3.29+	0.0	8	3	1	1
WESTMINSTER POL BRKS	41.3	27.3	34.3	-1.2	55	4+	12	31+	946	0	0	6	22	0	M	6.05	2.73	5	M	1.31+	0.0	7	3	1	1
WOODSTOCK	42.8	26.2	34.5	-1.2	59	3	4	31	941	0	0	5	23	0	M	4.64	1.16	5	M	3.29+	0.0	8	2	1	1

SEE REFERENCE NOTES FOLLOWING STATION INDEX

DAILY PRECIPITATION (INCHES)

MARYLAND AND
DELAWARE
DECEMBER 1993

STATION	TOTAL	DAY OF MONTH																																		
		1	2	3	4	5	6	7	8	9	10	11	12	13	14	15	16	17	18	19	20	21	22	23	24	25	26	27	28	29	30	31				
MARYLAND																																				
SOUTHERN EASTERN SHORE 01																																				
ASSATEAGUE IS NATL SEA	M 3.66				.01	.55					.27	.27			1.02	.34		.15	.01	.29	.32		.19													
PRINCESS ANNE	M 4.15		.03		.09	.82									.15	.74		.71	.09	.25	.71														.20	.04
SALISBURY	4.76				.10	1.20		.01	T						.23	.85		.01	.05	.06	T	.85		.15										.36	.40	
SALISBURY FAA ARPT	4.91				.14	1.26									.04	.56			.18	.14	.30	.52		.24				T					.37	.27		
SNOW HILL 4 N	4.38				.08	.78		.01							.01	.48			T	.26	.79		.16										.19	.30	T	
CENTRAL EASTERN SHORE 02																																				
ROYAL OAK 2 SSW	3.54				.16	1.09					T	.38				.26	.16			.05		.86		T	T							.34	.22			
VIENNA	M 2.68				.12	1.51			.02											.13		.83		.07	T											
LOWER SOUTHERN 03																																				
LA PLATA 1 W	3.71				.37	1.18					.01	.21				.29	.20			.01		.79		T	T								.47	.18		
MECHANICSVILLE 5 NE	4.07				.30	1.58					T				.37	.24			T	.03	T	.80		T	T							.54	.20			
DNINGS FERRY LANDING	3.46				.21	1.27						.26			.31	.24			T	.02		.78		T	T							.31	.06			
UPPER SOUTHERN 04																																				
ANNAPOLIS POLICE BRKS	4.66				.28	2.42					.02	.15			.44	.32					.73												.20	.10	T	
BALTIMORE WSO ARPT	4.45				1.13	1.55					.10				.64				T	.07	.10	.59			T		.02	T	T			.22	.03	T		
BELTSVILLE	5.32				*	*			3.35						.02	.81		*	.09	.01	.65	.02											T	.19		
COLLEGE PARK	M 5.31					3.35						.18			.01	.80			.11		.67	.01				*		.02				.24				
DALECARLIA RESERVOIR	M 4.44				.37	2.00					.01	.06	.06		.53	.37					.12	.70	.01										.19			
GLENN DALE BELL STN	4.39				.22	1.85		.14			.01				.50	.42				.13		.66				.02						.20	.13	.01		
LAUREL 3 W	6.28				1.40	2.50					.20				.84					.12	.05	.85						.08	.10			.24				
NATIONAL ARBORETUM DC	4.32					2.50		.05				.03				.80				.12		.63						T				.19	T			
NORTHERN EASTERN SHORE 05																																				
CHESTERTOWN	3.70				.75	1.39					.26	.07			.28					.06	.06	.67		T	T	T	T	T	T			.13	.03			
HILLINGTON 1 SE	M 3.31				.25	1.44					.09				.02	.65				.05		.81						T	T	T	T					
NORTHERN CENTRAL 06																																				
ABERDEEN PHILLIPS FIEL	4.46				*	*			3.31			T	*	*	.03		.01	.18		*	*	.03	.79									.09	.02	T		
BALTIMORE CITY	4.48				1.60	1.79					.05				.22				.06			.55											.19			
BENSON POLICE BARRACKS	4.94				.35	3.03					.02	.10			.04	.24				.13	.01	.82			T	T		.02				.09	.03	.01		
CATOCTIN MOUNTAIN PARK	M 1.73				.44						.30				.11	.04				.13	.61							.03	.01	.01		.05				
CONOHINGO DAM	M 5.31					3.28		.84				.15								.06	.10	.56	.23												.09	
DAMASCUS 2 SSW	M 4.72				1.00	2.06			T		.18				.49	.07			.04	.12	T	.66		T	T		.10	T					.05	.10		
EMHITSBURG 2 SE	5.09			T	3.20	.50					.30	.07			.08	T			T	.04	.60			T		.10	.05						.20	.10		
FREDERICK POLICE BRKS	3.94				.60	1.95					.14	.10			.08	.11				.11	.65											.20				
MILLERS 4 NE	4.71				.58	2.91			T		.15	.01			.07	.06			T	.12	.72											.03	.03	.03	T	
POTOMAC FILTER PLANT	4.03				1.12	1.03					.09				.70					.02	.02	.16	.53					.01	.02	T		.22	.02	.03	.03	
ROCKVILLE 1 NE	4.16				1.35	1.03		T			.13				.66				.05	.04	.15	.44										.25	T			
TOWSON	M 1.55				.63			.05	.04		*	*		.60	.05	.05																				.12
UNIONVILLE	4.87				.60	2.70					.22				.19	.06			.03	.14		.65										.10	.05			
WESTMINSTER POL BRKS	6.05				.51	3.95					.05	.10			.05	.15				.14	T	.85										.25	T			
WOODSTOCK	4.64				.43	2.60					.04				.14	.21					.16	.80			T	T						.13	.03			
APPALACHIAN MOUNTAIN 07																																				
CUMBERLAND 2	2.81				.08	1.18					.25	.17			.05	.12					.29													.05	.05	
EDGEMONT	4.65				.14	2.39		.62			.10	.43		.02	.02	.09					.14	.55	.02									.02	.03	T		
FROSTBURG 2	3.05	T			.13	1.11		.07	.02	T	.16	.27		.06	T						.21	.27	.21	T	T	T						.13	.14		T	
HANCOCK	4.26				.02	1.35					.23	.22			.05	.06				.02	.16	.60											1.40			
ALLEGHENY PLATEAU 08																																				
MERRILL	2.85				.03	1.05		.03	.05			.20		.01		.15			*	*	*	.65	*	*	*		.20	.10	.15	T		.05				
OAKLAND 1 SE	3.83				.05	.24		.04	.06	.02		.44	.15	.05		.20	.10			.04	.37		.25	T	.06	.03	.07	.10	.07	.25	T		.04	.02		
SAVAGE RIVER DAM	M 2.51				T	.09		1.21			.16	.13	.02	T		.17			T	.26	T	.25	.02	T	T	T	.07	.10	.07	.03						

SEE REFERENCE NOTES FOLLOWING STATION INDEX

DAILY PRECIPITATION (INCHES)

MARYLAND AND
DELAWARE
DECEMBER 1993

STATION	TOTAL	DAY OF MONTH																																	
		1	2	3	4	5	6	7	8	9	10	11	12	13	14	15	16	17	18	19	20	21	22	23	24	25	26	27	28	29	30	31			
DELAWARE																																			
NORTHERN 01																																			
NEWARK UNIVERSITY FARM	4.23				.26	2.39	.02				.04	.27				.02	.03			.11		.98													
WILMINGTON WSO ARPT R	3.51				1.02	1.22	T				.22	T				.01				.06	.10	.77		T	T		.02		T		.10	.01			
WILMINGTON PORTER RSVR	4.52				1.46	1.58					.30	.03				.02	T		T	.11	.06	.84		T	T		.01		T		.02	.05			
SOUTHERN 02																																			
DOVER	4.32				.29	1.65	.33					.35				.17	T			.30		.98								T		.22	.03	T	.00
GEORGETOWN 5 SW	M 4.05				*		2.44															.63		-	.26							.62	.10		
GREENWOOD 2 NE	5.71				.38	2.54	.01					.53				.45	.22					1.08		.02	.01	.01					.26	.20	T	.00	
LEWES	4.76				.13	1.65	T					.42	T			.20	.61			.09		1.32		.09	.02	.02		T			.05	.18	T		

SEE REFERENCE NOTES FOLLOWING STATION INDEX

DAILY TEMPERATURES (°F)

MARYLAND AND
DELAWARE
DECEMBER 1993

STATION	OB. TIME	MAX/MIN	DAY OF MONTH																															AVERAGE	
			1	2	3	4	5	6	7	8	9	10	11	12	13	14	15	16	17	18	19	20	21	22	23	24	25	26	27	28	29	30	31		
MARYLAND																																			
SOUTHERN EASTERN SHORE 01																																			
ASSATEAGUE IS NATL SEA	07	MAX MIN	49 38	58 34	58 40	57 45	59 46	50 39	55 36	55 35	52 38	56 40	50 29	36 25	48 32	47 35	49 40	48 41	42 33	46 31	49 36	52 29	51 37	43 34	38 33	44 29	39 32	36 27	31 26	33 25	38 21	27 11	37 31	46.2 33.0	
PRINCESS ANNE	17	MAX MIN	47 20	60 23	59 22	56 35	64 41	51 24	53 26	52 24	52 21	59 26	56 23	53 21	49 19	49 17	48 24	49 38	48 24	47 20	49 35	51 19	50 20	48 21	40 27	42 17	39 19	38 18	37 17	28 15	29 11	29 17	36 -4	47.4 21.9	
SALISBURY	17	MAX OBS MIN OBS	47 29	57 37	59 38	55 42	64 46	51 33	53 35	53 34	52 30	56 38	57 35	35 24	50 30	49 32	49 36	50 45	53 39	47 29	49 43	51 27	47 31	41 30	38 33	41 23	38 27	35 22	32 22	27 22	31 22	29 22	34 22	46.1 31.1	
SALISBURY FAA ARPT	MID	MAX MIN	47 27	57 30	61 35	59 40	49 44	50 30	54 30	53 31	52 27	60 36	51 27	36 23	50 29	51 31	48 33	49 35	49 27	48 26	49 29	51 26	51 34	42 29	37 26	42 21	38 25	34 22	31 22	27 22	31 22	26 7	34 -1	45.6 27.3	
SNOW HILL 4 N	17	MAX MIN	46 27	57 30	60 35	56 38	64 47	53 31	53 33	53 30	53 27	58 32	55 35	35 23	50 28	50 31	49 32	49 45	48 28	46 25	46 40	49 25	51 39	51 28	42 31	37 21	42 26	38 26	34 23	31 19	27 24	31 22	26 19	34 32	46.8 29.0
CENTRAL EASTERN SHORE 02																																			
ROYAL OAK 2 SSW	18	MAX MIN	48 26	55 33	58 36	52 41	61 46	49 32	51 41	49 34	52 29	54 42	54 35	37 25	49 33	48 35	45 37	48 43	47 29	46 26	50 41	48 27	46 40	48 32	49 32	38 23	38 24	37 20	32 20	25 20	25 19	28 22	35 9	44.6 30.7	
VIENNA	18	MAX OBS MIN OBS	47 27	57 31	59 35	58 40	64 40	52 34	53 30	54 32	52 28	59 31	56 30	56 24	48 26	48 26	47 31	47 40	47 27	49 40	50 25	50 25	47 26	42 30	40 21	41 19	38 23	40 24	38 19	26 20	27 18	28 19	37 17	47.0 27.9	
LOWER SOUTHERN 03																																			
LA PLATA 1 W	18	MAX MIN	48 25	54 38	61 35	52 40	61 42	52 30	50 35	52 33	51 27	55 38	55 19	37 22	51 29	49 28	45 39	50 39	47 26	44 29	50 35	47 26	45 27	40 26	41 31	39 21	39 22	36 19	32 25	28 20	25 19	26 16	35 5	45.1 27.9	
MECHANICSVILLE 5 NE	19	MAX MIN	46 23	55 31	59 33	52 40	60 47	49 29	52 33	52 33	51 26	55 33	55 30	36 23	51 28	46 30	43 38	48 40	43 26	45 27	50 37	47 24	47 36	40 30	40 21	39 21	37 20	34 22	31 20	24 17	23 11	25 1	35 27	44.0 27.8	
OWINGS FERRY LANDING	17	MAX MIN	45 23	53 23	58 33	52 40	60 46	61 29	50 36	51 31	49 26	54 36	53 32	35 22	51 26	47 31	43 36	48 43	44 25	43 25	48 36	46 24	45 33	38 24	39 31	37 20	36 22	33 16	30 20	29 20	25 19	34 19	43.8 27.3		
UPPER SOUTHERN 04																																			
ANNAPOLIS POLICE BRKS	17	MAX MIN	46 28	53 33	51 36	51 42	58 43	50 29	52 39	51 32	50 28	54 41	54 32	38 22	53 28	50 31	46 42	49 40	41 29	45 27	46 25	45 27	40 25	40 36	38 22	38 23	30 20	30 17	25 23	25 20	27 22	37 14	44.2 29.2		
BALTIMORE WSO ARPT	MID	MAX MIN	46 26	52 39	61 38	51 43	56 40	51 29	51 36	51 32	50 29	54 32	50 25	37 24	54 30	52 30	48 41	50 36	44 27	44 29	50 30	46 30	45 33	39 31	42 28	36 21	36 22	30 18	23 18	24 21	27 19	28 15	35 9	44.0 28.4	
BELTSVILLE	08	MAX OBS MIN OBS	45 23	48 26	54 34	60 35	54 41	55 26	51 32	50 29	50 26	53 29	53 37	39 22	36 25	52 28	52 33	49 33	43 25	44 30	49 27	47 32	44 30	37 27	36 20	29 16	29 17	24 19	23 18	27 18	24 3	43.8 26.0			
COLLEGE PARK	09	MAX OBS MIN OBS	47 25	48 31	55 37	61 45	62 48	50 30	53 34	53 31	53 28	54 31	54 40	41 22	36 27	55 30	52 39	47 41	50 27	46 29	46 39	51 29	49 33	45 31	39 32	42 22	36 24	37 18	30 19	25 21	24 19	27 19	29 6	45.1 29.3	
DALECARLIA RESERVOIR	17	MAX MIN OBS	47 25	54 24	60 35	56 41	62 46	51 19	50 40	50 30	51 28	54 28	51 25	36 27	52 22	50 26	45 36	50 42	46 25	45 30	46 33	51 28	45 31	40 39	42 30	41 32	37 28	35 30	29 32	26 17	24 16	26 12	40 8	44.9 27.1	
GLENN DALE BELL STN	16	MAX MIN	50 18	57 29	65 31	61 39	60 45	54 25	54 38	54 26	52 22	52 28	48 18	38 20	55 22	53 23	52 32	48 42	49 19	48 22	52 37	52 22	46 36	38 27	40 32	39 26	34 18	32 15	28 16	20 17	21 17	28 16	38 19	45.7 25.7	
LAUREL 3 W	MID	MAX MIN	47 23	53 33	50 35	51 39	60 35	52 29	50 35	50 29	52 29	52 35	51 19	36 32	52 32	52 35	46 40	49 31	46 23	45 25	50 32	47 19	43 26	40 25	42 20	37 19	30 11	25 12	23 13	24 11	26 9	36 9	43.7 26.0		
NATIONAL ARBORETUM DC	07	MAX OBS MIN OBS	47 25	48 26	55 37	57 39	58 47	55 31	52 31	51 31	52 28	53 28	55 40	43 25	38 24	54 29	54 33	47 42	51 26	46 27	45 34	50 28	47 32	43 32	40 22	42 31	37 26	31 18	35 19	35 19	32 20	27 18	27 9	28 9	45.3 28.3

SEE REFERENCE NOTES FOLLOWING STATION INDEX

DAILY TEMPERATURES (°F)

MARYLAND AND
DELAWARE
DECEMBER 1993

STATION	OB. TIME	MAX/MIN	DAY OF MONTH																															AVERAGE	
			1	2	3	4	5	6	7	8	9	10	11	12	13	14	15	16	17	18	19	20	21	22	23	24	25	26	27	28	29	30	31		
			(Detailed temperature data for each station follows in the same format as the header, including MAX, MIN, and OBS values for each day.)																																
NORTHERN EASTERN SHORE CHESTERTOWN	05	23	MAX	47	57	58	52	61	50	52	50	51	55	50	35	50	48	45	49	44	46	50	48	44	39	39	38	37	32	23	24	24	28	36	43.9
			MIN	24	33	35	38	40	30	34	32	26	36	24	22	27	30	35	32	25	25	34	28	32	30	28	19	20	16	15	18	18	18	8	26.8
			OBS	47	55	60	51	62	49	53	52	49	55	53	36	50	51	49	48	44	44	50	47	45	41	40	36	35	35	26	23	24	27	34	44.2
			OBS	23	28	33	37	43	30	34	31	25	32	32	22	31	30	27	43	26	25	38	26	39	30	29	19	20	19	17	19	18	20	7	27.5
NORTHERN CENTRAL ABERDEEN PHILLIPS FIEL	06	16	MAX	44	51	60			48	51	50	49	53			50	51	49	49	46			43	43	42	40			21	23	23	25		M	
			MIN	24	39	38			35	37	37	27	40			32	33	42	45	30			30	39	32	32			17	22	20	21		M	
			MID	46	52	61	50	58	49	51	52	49	52	48	34	52	50	45	48	44	45	52	46	45	40	41	37	36	30	22	23	25	26	35	43.4
			MIN	30	38	43	44	41	36	46	37	34	40	22	20	32	38	38	35	30	33	40	38	34	32	32	27	29	17	16	20	19	20	16	31.5
BALTIMORE CITY BENSON POLICE BARRACKS	17	17	MAX	47	55	59	53	55	50	51	52	51	50	49	37	53	55	47	50	45	47	50	46	43	40	42	37	35	32	24	23	23	27	44	44.3
			MIN	25	31	37	40	44	33	35	33	27	32	32	20	30	34	39	43	26	27	37	30	37	31	31	22	23	11	16	21	17	18	9	28.7
			MID	39	45	52	48	49	44	42	42	47	44	45	30	44	47	44	44	41	43	41	39	36	33	34	35	28	28	20	19	19	20	30	37.8
			MIN	22	27	30	44	40	30	34	29	31	35	22	15	25	34	35	36	24	28	32	32	27	24	25	20	18	7	10	12	9	10	12	25.1
CATOCTIN MOUNTAIN PARK CONOWINGO DAM	17	MID	MAX	48	55	59	50	58	58	50	52	47	54	47	38	50	52	55	52	52	44	51	46	46	42	45	40	31	30	28	28	24	28	31	44.9
			MIN	35	26	40	39	38	40	38	32	28	40	26	24	22	30	40	26	24	35	24	33	26	30	25	20	28	22	15	15	14	19	13	28.0
			OBS	48	55	59	50	58	58	50	52	47	54	47	38	50	52	55	52	52	44	51	46	46	42	45	40	31	30	28	28	24	28	31	44.9
			OBS	35	26	40	39	38	40	38	32	28	40	26	24	22	30	40	26	24	35	24	33	26	30	25	20	28	22	15	15	14	19	13	28.0
DAMASCUS 2 SSW EMMITSBURG 2 SE	22	17	MAX	44	50	57	49	51	48	46	47	49	49	46	35	51	48	42	48	42	45	47	43	38	35	39	32	32	25	21	20	19	23	32	40.4
			MIN	22	33	32	38	40	25	29	25	25	34	24	19	23	26	31	32	20	27	34	25	31	28	25	20	17	13	14	17	16	14	4	24.6
			MID	40	45	55	48	50	44	44	45	44	44	44	33	49	49	40	45	43	38	44	44	38	36	35	35	29	28	19	19	20	24	28	38.7
			MIN	17	26	29	36	42	24	37	24	21	27	26	19	23	22	29	39	18	22	31	26	29	28	24	20	16	12	13	15	7	14	8	23.4
FREDERICK POLICE BRKS MILLERS 4 NE	17	18	MAX	45	50	58	59	54	54	48	47	49	48	49	36	51	50	48	49	48	45	47	47	44	40	39	40	35	33	34	23	23	28	30	43.6
			MIN	26	35	39	43	46	34	44	30	28	35	32	21	26	29	29	45	27	29	35	33	32	31	31	26	21	15	15	18	11	18	12	28.9
			OBS	45	50	58	59	54	54	48	47	49	48	49	36	51	50	48	49	48	45	47	47	44	40	39	40	35	33	34	23	23	28	30	43.6
			OBS	26	35	39	43	46	34	44	30	28	35	32	21	26	29	29	45	27	29	35	33	32	31	31	26	21	15	15	18	11	18	12	28.9
ROCKVILLE 1 NE TOWSON	17	MID	MAX	43	50	56	49	51	47	45	46	46	48	46	32	47	47	44	45	44	45	46	43	40	36	37	30	31	29	21	21	23	30	40.0	
			MIN	20	30	37	40	42	32	36	28	27	36	26	18	28	31	37	25	28	34	30	32	28	28	20	20	13	13	17	10	14	9	26.6	
			MID	45	51	58	52	59	50	47	48	49	51	47	35	52	50	46	50	43	44	48	46	42	40	40	36	35	27	23	23	22	26	36	42.6
			MIN	26	37	40	43	39	32	36	30	29	40	24	21	29	34	40	34	27	33	30	30	31	30	27	22	23	15	19	18	19	14	6	28.3
UNIONVILLE WESTMINSTER POL BRKS	17	18	MAX	43	52	50	55	59	50	50	50	50	55	50	36	52	52	48	50	48	50	50	47	46	40	40	38	35	33	28	23	23	26	35	44.0
			MIN	39	42	45	42	40	43	37	42	44	40	32	19		45	42	39	36	31	43	42	35	35	36	31	31	26	19	20	13	23	19	34.4
			OBS	43	52	50	55	59	50	50	50	50	55	50	36	52	52	48	50	48	50	50	47	46	40	40	38	35	33	28	23	23	26	35	44.0
			OBS	39	42	45	42	40	43	37	42	44	40	32	19		45	42	39	36	31	43	42	35	35	36	31	31	26	19	20	13	23	19	34.4
WOODSTOCK APPALACHIAN MOUNTAIN	07	18	MAX	45	49	57	51	52	47	45	49	49	45	45	37	45	38	46	48	42	40	44	42	40	37	37	33	34	30	26	23	26	26	34	40.7
			MIN	22	23	39	42	29	31	26	26	27	32	19	21	22	27	33	34	22	31	37	32	28	26	25	26	12	13	16	13	14	14	16	25.1
			MID	35	36	45	49	48	48	43	34	43	47	48	28	27	43	38	40	37	38	43	33	35	31	31	29	25	27	15	19	16	22	12	34.4
			MIN	23	23	24	40	41	33	32	25	25	28	28	12	15	19	31	33	23	22	31	30	28	21	19	17	17	4	3	11	10	9	6	22.0
HANCOCK	08	18	MAX	46	45	51	60	52	54	47	45	49	47	46	36	37	49	43	47	48	46	44	46	44	39	42	38	37	36	26	25	24	28	24	42.0
			MIN	21	20	18	35	45	29	30	26	23	26	31	20	26	26	28	35	19	20	33	37	32	31	25	23	24	13	15	16	19	18	15	25.1
			OBS	46	45	51	60	52	54	47	45	49	47	46	36	37	49	43	47	48	46	44	46	44	39	42	38	37	36	26	25	24	28	24	42.0
			OBS	21	20	18	35	45	29	30	26	23	26	31	20	26	26	28	35	19	20	33	37	32	31	25	23	24	13	15	16	19	18	15	25.1

SEE REFERENCE NOTES FOLLOWING STATION INDEX

DAILY TEMPERATURES (°F)

MARYLAND AND
DELAWARE
DECEMBER 1993

STATION	OB. TIME	MAX/MIN	DAY OF MONTH																														AVERAGE		
			1	2	3	4	5	6	7	8	9	10	11	12	13	14	15	16	17	18	19	20	21	22	23	24	25	26	27	28	29	30		31	
ALLEGHENY PLATEAU 08	17	MAX	40	56	48	51	50	40	37	43	48	48	47	25	45	43	39	38	44	43	42	34	33	29	29	23	25	22	31	28	25	25	27	37.4	
OAKLAND 1 SE		MIN	26	21	37	37	36	34	30	20	20	32	19	12	6	29	32	33	24	27	29	28	21	20	15	15	19	4	13	14	14	4	7	21.9	
SAVAGE RIVER DAM	08	MAX	36	38	45	53	52	50	46	38	45	48	48	29	29	42	39	44	40	35	44	38	40	35	34	32	30	32	21	24	29	27	16	37.4	
		MIN	24	24	23	38	41	36	36	26	25	26	27	16	17	18	27	32	27	27	32	33	31	25	19	19	20	8	10	16	16	11	6	23.7	
DELAWARE																																			
NORTHERN 01																																			
NEWARK UNIVERSITY FARM	17	MAX	45	54	57	51	58	48	50	50	49	55	50	35	50	51	46	50	45	42	47	46	45	40	40	38	36	33	23	24	24	25	34	43.3	
		MIN	25	29	36	38	43	29	34	35	25	29	29	20	30	30	35	43	26	25	37	29	37	30	30	19	21	16	15	18	14	18	8	27.5	
WILMINGTON WSO ARPT	MID	MAX	46	53	59	53	59	50	52	53	49	57	50	37	52	53	49	52	45	44	48	46	47	40	41	37	36	32	22	25	24	25	32	44.1	
		MIN	25	33	38	41	40	33	36	34	28	38	24	21	30	32	42	34	26	27	30	31	34	32	27	23	24	19	17	19	15	19	15	28.6	
WILMINGTON PORTER RSVR	MID	MAX	44	52	57	56	58	47	50	50	48	56	49	34	50	50	48	49	43	41	46	43	46	38	38	34	33	30	21	24	22	24	32	42.4	
		MIN	29	34	40	42	40	34	38	35	30	35	23	20	31	35	41	35	30	29	33	32	33	31	28	20	23	18	15	19	17	18	15	29.1	
SOUTHERN 02																																			
DOVER	17	MAX	45	53	58	55	60	49	52	52	50	57	56	38	50	48	46	48	48	46	47	47	45	44	38	36	37	35	28	23	25	25	31	44.3	
		MIN	30	31	34	39	49	31	37	34	28	32	36	21	31	33	39	46	29	28	38	26	36	31	31	21	23	20	19	21	21	20	10	29.8	
GEORGETOWN 5 SW	08	MAX	45	47	55	63	58	49	56	52	53	52	51	40	36	48	48	45	49	46	47	49	51	45	40	36	40	37	31	36	30	33	24	44.9	
		MIN	26	28	34	37	37	25	33	31	26	34	31	18	26	25	30	39	27	34	33	24	28	30	30	19	22	21	20	22	24	21	14	27.4	
GREENWOOD 2 NE	18	MAX	44	53	57	58	66	48	50	50	49	57	55	34	48	47	43	47	47	46	47	48	47	47	36	39	35	33	26	23	28	26	35	44.2	
		MIN	26	30	33	38	42	30	33	32	27	33	33	21	28	30	34	41	26	26	37	25	37	31	29	20	24	19	19	20	18	17	15	28.2	
LEWES	17	MAX	46	51	53	55	62	49	51	52	51	57	57	37	46	45	46	47	46	47	49	50	52	41	37	41	37	35	30	26	36	31	36	45.1	
		OBS																																	
		MIN	39	43	38	41	47	36	38	37	31	40	33	23	31	39	38	45	34	29	42	29	40	33	33	25	29	22	22	23	23	22	11	32.8	

SEE REFERENCE NOTES FOLLOWING STATION INDEX

SNOWFALL AND SNOW ON GROUND (INCHES)

MARYLAND AND
DELAWARE
DECEMBER 1993

STATION	DAY OF MONTH																															
	1	2	3	4	5	6	7	8	9	10	11	12	13	14	15	16	17	18	19	20	21	22	23	24	25	26	27	28	29	30	31	
MARYLAND																																
SOUTHERN EASTERN SHORE 01																																
ASSATEAGUE IS NATL SEA																																
SALISBURY FAA ARPT																																
SNOW HILL 4 N																																
CENTRAL EASTERN SHORE 02																																
ROYAL OAK 2 SSW																																
LOWER SOUTHERN 03																																
LA PLATA 1 W																																
MECHANICSVILLE 5 NE																																
OWINGS FERRY LANDING																																
UPPER SOUTHERN 04																																
ANNAPOLIS POLICE BRKS																																
BALTIMORE WSO ARPT																																
BELTSVILLE																																
COLLEGE PARK																																
GLENN DALE BELL STN																																
NATIONAL ARBORETUM DC																																
NORTHERN EASTERN SHORE 05																																
CHESTERTOWN																																
NORTHERN CENTRAL 06																																
ABERDEEN PHILLIPS FIEL																																
BENSON POLICE BARRACKS																																
CATOCTIN MOUNTAIN PARK																																

SNOWFALL: INCLUDES SNOW AND ICE. VALUES FOR NWS STATIONS (J INDEX NOTE) ARE MID-MID (LST).
 SNOW ON GROUND: INCLUDES SNOW, SLEET, ICE AND HAIL. VALUES FOR NWS STATIONS (J INDEX NOTE) ARE OBSERVED AT 0000 UTC (GMT).
 WATER EQUIVALENT: GIVEN FOR NWS STATIONS (J INDEX NOTE) ONLY, WHEN SNOW DEPTH IS 2 INCHES OR MORE.
 SEE REFERENCE NOTES FOLLOWING STATION INDEX

SNOWFALL AND SNOW ON GROUND. (INCHES)

MARYLAND AND
DELAWARE
DECEMBER 1993

STATION		DAY OF MONTH																																
		1	2	3	4	5	6	7	8	9	10	11	12	13	14	15	16	17	18	19	20	21	22	23	24	25	26	27	28	29	30	31		
DAMASCUS 2 SSW	SNOWFALL																					.4	T	T	1.5	T		2.4						
	SN ON GND																					T				T		2	2	2	2			
EMMITSBURG 2 SE	SNOWFALL																			T		.5	T		1.0	-		.5	1.0					
	SN ON GND																											1	1	1	T			
FREDERICK POLICE BRKS	SNOWFALL																																	
	SN ON GND																											T	T	T	T			
MILLERS 4 NE	SNOWFALL																					.5		T	.1	.3	T	.5	.3	.1				
	SN ON GND																							T	T	T	T	1	1	1	1			
ROCKVILLE 1 NE	SNOWFALL																									1.5		T	3.6	T				
	SN ON GND																									2			5			2		
WESTMINSTER POL BRKS	SNOWFALL																																	
	SN ON GND																											T	1.0	T				
WOODSTOCK	SNOWFALL																									T	T	1.0		3.0	.5			
	SN ON GND																										1		3	3	2	2		
APPALACHIAN MOUNTAIN 07																																		
CUMBERLAND 2	SNOWFALL																					3.0												
	SN ON GND																					3	1	1	1	1	1	1	1	1.5	1.0			
FROSTBURG 2	SNOWFALL	T										.3	.8	T		T					.2	T	2.5	3.0	T	T	2.0	1.0	T	2.3	2.0	T		
	SN ON GND							T	T		T	1	T	T	T					T		2	4	4	3	3	5	5	5	7	9	9		
HANCOCK	SNOWFALL																					2.0												
	SN ON GND																										T	T						
ALLEGHENY PLATEAU 08																																		
MERRILL	SNOWFALL																				*	*	*	5.0	*	*	*	6.0	2.0	3.0		1.0		
	SN ON GND																							5			6	5	8	5	6	6		
OAKLAND 1 SE	SNOWFALL											3.0	3.0			T																		
	SN ON GND																																	
SAVAGE RIVER DAM	SNOWFALL																																	
	SN ON GND																																	
DELAWARE																																		
NORTHERN 01																																		
NEWARK UNIVERSITY FARM	SNOWFALL																																	
	SN ON GND																																	
WILMINGTON WSO ARPT	SNOWFALL																																	
	SN ON GND																																	
WILMINGTON PORTER RSVR	SNOWFALL																																	
	SN ON GND																																	
SOUTHERN 02																																		
DOVER	SNOWFALL																																	
	SN ON GND																																	
GEORGETOWN 5 SW	SNOWFALL																																	
	SN ON GND																																	
GREENWOOD 2 NE	SNOWFALL																																	
	SN ON GND																																	

SNOWFALL: INCLUDES SNOW AND ICE. VALUES FOR NWS STATIONS (J INDEX NOTE) ARE MID-MID (LST).
 SNOW ON GROUND: INCLUDES SNOW, SLEET, ICE AND HAIL. VALUES FOR NWS STATIONS (J INDEX NOTE) ARE OBSERVED AT 0000 UTC (GMT).
 WATER EQUIVALENT: GIVEN FOR NWS STATIONS (J INDEX NOTE) ONLY, WHEN SNOW DEPTH IS 2 INCHES OR MORE.
 SEE REFERENCE NOTES FOLLOWING STATION INDEX

STATION INDEX

MARYLAND AND
DELAWARE
DECEMBER 1993

STATION	INDEX NO.	DIVISION	COUNTY	LATITUDE	LONGITUDE	ELEVATION (IN FEET)	OBSERVATION TIME AND TABLES				OBSERVER	
							LOCAL STD TIME					
							TEMP	PRECIP	EVAP	SPECIAL (SEE NOTES)		
MARYLAND												
ABERDEEN PHILLIPS FIEL	00150	06	HARFORD	39 28	76 10W	57	16	16		C H	PHILLIPS ARMY AIRFIELD	
ANNAPOLIS POLICE BRKS	00193	04	ANNES ARUNDEL	38 59	76 30W	25	17	17		H	ANNAPOLIS POLICE BRKS	
ASSATEAGUE IS NATL SEA	00335	01	WORCESTER	38 14	75 8W	10	07	07		H J	NATIONAL PARK SERVICE	
BALTIMORE WSO ARPT	00465	04	ANNE ARUNDEL	39 11	76 40W	148	MID	MID		C C C	NATL WEATHER SERVICE	
BALTIMORE CITY #	00470	06	BALTIMORE CI	39 17	76 37W	120	MID	MID		C C C	NATIONAL WEATHER SERVICE	
BELTSVILLE	00700	04	PRINCE GEORG	39 2	76 53W	120	08	08		O B C	USDA CHEM & BIOPHYS LAB	
BENSON POLICE BARRACKS	07322	06	HARFORD	39 30	76 23W	365	17	17		C H	MARYLAND STATE POLICE	
CATOCTIN MOUNTAIN PARK	15300	06	FREDERICK	39 39	77 29W	1609	17	17		C H	CATOCTIN MOUNTAIN PARK	
CHESTERTOWN	17500	05	KENT	39 13	76 4W	40	23	23		H	THOMAS W ELIASON JR	
CLARKSVILLE 3 NNE	18620	06	HOWARD	39 15	76 56W	370	17	17		H	INACTIVE 09/01/93	
COLLEGE PARK	19950	04	PRINCE GEORG	38 59	76 57W	90	09	09		C H	UNIVERSITY OF MARYLAND	
CONOWINGO DAM	20060	06	HARFORD	39 39	76 10W	40	MID	MID		C H	SUSQUEHANNA ELECTRIC CO	
CUMBERLAND 2	22282	07	ALLEGANY	39 38	78 45W	730	18	07		H	TIMOTHY B THOMAS	
DALECARLIA RESERVOIR	23250	04	DIS COLUMBIA	38 56	77 7W	150	17	17		H	U S CORPS OF ENGINEERS	
DAMASCUS 2 SW	23350	06	MONTGOMERY	39 16	77 14W	722	19	19		H	INACTIVE 01/01/92	
DAMASCUS 2 SSW	23336	06	MONTGOMERY	39 16	77 14W	670	22	22		H	ROBERT J LEFFLER	
EDGEMONT	27700	07	WASHINGTON	39 40	77 33W	905		07			JOHN W HARNE	
EMMITSBURG 2 SE	29060	06	FREDERICK	39 41	77 18W	416	17	17		H	LUCILLE K BEALE	
FREDERICK POLICE BRKS	33480	06	FREDERICK	39 25	77 26W	380	17	17		H	MARYLAND STATE POLICE	
FROSTBURG 2	34150	07	ALLEGANY	39 40	78 56W	2168	07	07		H	KENNETH L CLOSE	
GLENN DALE BELL STN	36750	04	PRINCE GEORG	38 58	76 48W	150	16	16		H	USDA PLANT INTRODUCT STN	
HAGERSTOWN	39750	07	WASHINGTON	39 39	77 44W	660	08	08		H	INACTIVE 11/01/93	
HANCOCK	40300	07	WASHINGTON	39 42	78 11W	428	08	08		C H	TOWN OF HANCOCK	
LA PLATA 1 W	50800	03	CHARLES	38 32	77 0W	140	18	18		C H	C RUSSELL LEVERING	
LAUREL 3 W	51110	04	PRINCE GEORG	39 6	76 54W	400	MID	MID			WA SUBURBAN SANITARY COM	
MC HENRY 2 NW	58320	08	GARRETT	39 35	79 22W	2679	08	08		C H	INACTIVE 12/01/93	
MECHANICSVILLE 5 NE	58650	03	ST MARYS	38 27	76 41W	100	19	19		H	SANDRA J HASTINGS	
MERRILL	58940	08	GARRETT	39 36	79 5W	1790		09		H	DELWOOD E MERRILL	
MILLERS 4 NE	59340	06	CARROLL	39 43	76 48W	860	18	18		C H	BOBBY P MILLER	
MILLINGTON 1 SE	59850	05	KENT	39 16	75 52W	30	18	18			HOWARD L HARVEY	
NATIONAL ARBORETUM DC	63500	04	DIS COLUMBIA	38 54	76 59W	50	07	07		H	US NATIONAL ARBORETUM	
OAKLAND 1 SE	66200	08	GARRETT	39 24	79 24W	2419	17	17		H	BEA J CROSCO	
OWINGS FERRY LANDING	67700	03	CALVERT	38 41	76 40W	160	17	17		H	JAMES C RASMUSSEN	
POTOMAC FILTER PLANT	72720	06	MONTGOMERY	39 2	77 15W	270		08			POTOMAC WATER FILT PLANT	
PRINCESS ANNE	73300	01	SOMERSET	38 13	75 41W	20	17	17			UNIV OF MD EASTERN SHORE	
ROCKVILLE 1 NE	77050	06	MONTGOMERY	39 6	77 6W	440	MID	17		H	WASHINGTON GAS & ELEC CO	
ROYAL OAK 2 SSW	78060	02	TALBOT	38 43	76 11W	10	18	18		H	JOHN L SWAINE JR	
SALISBURY	80000	01	WICOMICO	38 22	75 35W	10	17	17			CITY OF SALISBURY	
SALISBURY FAA ARPT #	80050	01	WICOMICO	38 20	75 31W	50	MID	MID		H	FAA	
SAVAGE RIVER DAM	80650	08	GARRETT	39 31	79 8W	1495	08	08		O B C	US CORPS OF ENGINEERS	
SNOW HILL 4 N	83800	01	WORCESTER	38 14	75 23W	30	17	17		H	CURTIS E SHOCKLEY	
TOWSON	88770	06	BALTIMORE	39 23	76 34W	390	18	18			ENVIRONMENTAL TECH GROUP	
UNIONVILLE	90300	06	FREDERICK	39 27	77 11W	430	17	17		C	ROBERT YOUNG	
UPPER MARLBORO 3 NNW	90700	04	PRINCE GEORG	38 52	76 47W	100	08	08		O B	INACTIVE 09/01/93	
VIENNA	91400	02	DORCHESTER	38 29	75 50W	10	18	18			DELMARVA POWER & LIGHT	
WESTMINSTER POL BRKS	94400	06	CARROLL	39 33	76 58W	765	17	17		H	MARYLAND STATE POLICE	
WOODSTOCK	97500	06	BALTIMORE	39 20	76 52W	460	18	18		H	JOHN A HILTZ	
DELAWARE												
DOVER	27300	02	KENT	39 9	75 31W	30	17	17		H	STATE HIGHWAY DEPT	
GEORGETOWN 5 SW	35700	02	SUSSEX	38 38	75 27W	45	08	08		O B C	UNIV OF DEL SUBSTATION	
GREENWOOD 2 NE	35950	02	SUSSEX	38 50	75 35W	45	18	18		H	DANIEL M SWARTZENTRUBER	
LEWES	53200	02	SUSSEX	38 46	75 8W	15	17	17			BOARD OF PUBLIC WORKS	
NEWARK UNIVERSITY FARM	64100	01	NEW CASTLE	39 40	75 44W	90	17	17		17 C	UNIV OF DEL AGRIC FARM	

SEE REFERENCE NOTES FOLLOWING STATION INDEX

STATION INDEX

MARYLAND AND
DELAWARE
DECEMBER 1993

STATION	INDEX NO.	DIVISION	COUNTY	LATITUDE	LONGITUDE	ELEVATION (IN FEET)	OBSERVATION TIME AND TABLES				OBSERVER
							LOCAL STD TIME				
							TEMP	PRECIP	EVAP	SPECIAL (SEE NOTES)	
WILMINGTON WSO ARPT	R959501		NEW CASTLE	39 40	75 36W	79	MID	MID		C H J	NATIONAL WEATHER SERVICE
WILMINGTON PORTER RSVR	960501		NEW CASTLE	39 46	75 32W	270	MID	MID		H	PUBLIC WORKS

SEE REFERENCE NOTES FOLLOWING STATION INDEX

REFERENCE NOTES

MARYLAND AND
DELAWARE
DECEMBER 1993

DEFINITIONS

STATION NAMES: Name of the city, town or locality. Figures and letters following the station names indicate the distance in miles and direction from the post office or town community center.

DIVISIONS: Areas within a state of similar climatological characteristics. Division averages are calculated using data from stations that record both temperature and precipitation (i.e. not precipitation alone).

NORMALS: The average value of the meteorological element over a time period. Effective 1 January 1993, the averaging period is 1961 to 1990. The normals for National Weather Service localities have been adjusted so as to be representative for the current observation site.

MONTHLY DEGREE DAY TOTALS: One heating (cooling) degree day is accumulated for each whole degree that the daily mean temperature is below (above) 65 degrees Fahrenheit.

PRECIPITATION: Values shown in hundredths of inches are water equivalent totals, i.e., total of liquid and melted frozen precipitation. In the "Monthly Summarized Data" table the total snow and sleet values shown in tenths of inches are unmelted amounts. The max depth on ground values of snow and sleet shown in whole inches are cumulative unmelted amounts. The number of days with .10, .50, 1.00 or more refers to water equivalents.

TEMPERATURE: Original and edited temperature values are given in the "Daily Temperature" table. Edited values are produced when an original value is missing or when surrounding stations indicated a suspect original value. When a line labeled OBS is present and contains either a daily temperature (suspect) or *** (missing), the temperature appearing directly above, on the line labeled MAX or MIN, is an edited value. Summary temperature information (averages, departures, extremes, monthly degree day totals) is based on the values labeled MAX/MIN.

WIND: (As shown in the "Evaporation and Wind" table) the total wind movement in miles over the evaporation pan as determined by an anemometer recorder located 6-8 inches above the pan.

SYMBOLS AND LETTERS USED IN THE STATION INDEX TABLE

Thermometers located in a rooftop shelter.
// Rain gage equipped with a windshield
AR Observation made "after rain" has occurred.
C Station is equipped with recording rain gage (R) but values in this bulletin are from a non-recording rain gage unless indicated by an R.
G Observations appear in the "Soil Temperatures" table.
H Observations appear in the "Snowfall and Snow on the Ground" table.
J Station also published as a Local Climatological Data publication.
MID Observation time is midnight.
MO Rain gage read once monthly, usually the last day.
OC Rain gage readings vary from a few weeks to several months.
R Amounts from recording rain gage.
SR Observation time near sunrise.
SS Observation time near sunset.
VAR Observation time varies.
WI Rain gage read weekly or irregularly.
WM Rain gage read weekly and last day of the month.

SYMBOLS AND LETTERS USED IN THE DATA TABLES

(DAILY DATA ARE FOR THE 24 HOURS IMMEDIATELY PRECEDING OBSERVATION TIME.)

BLANK Entries in the "Monthly Summarized Data" table indicate no record.
BLANK Entries in the "Daily Precipitation" and "Snowfall and Snow on the Ground" tables indicate zero.
BLANK Entries in the "Daily Temperature" table indicate a missing record where an edited value could not be determined. (See *** below)
- No record. Data not recorded, determined unreliable by quality control check, or not received in time for publication.
+ Precipitation or temperature extremes occurred on one or more previous dates during the month.
*** Missing original temperature which has been estimated during edit.
* Rain gage not read. Precipitation is included in the amount following the asterisks. Time distribution not known. A * preceding the monthly total indicates precipitation amount is being carried forward to next months total, and may include amounts from the previous month(s).
// Rain gage equipped with a windshield.
A Amount of precipitation is the total of observer's entries for the current month. It may include precipitation that occurred during the previous month. Refer to earlier bulletin to determine date of last reading. (Hawaii stations)
B Adjusted monthly value (estimated), (1-7 missing values for wind and evaporation).
M Insufficient or partial data. M is appended to average and/or total values computed with 1-9 daily values missing. M appears alone if 10 or more daily values are missing, (8 or more for wind and evaporation).
R Amounts from recording rain gage.
T Trace. An amount too small to measure.
V Includes total for previous months). (See * above)

SEASONAL TABLES: Monthly and seasonal snowfall and heating degree days for the 12 months ending with the June data are published in the July issue of this bulletin. Cooling degree days for the calendar year are published in the "Climatological Data Annual Summary."

The graphic displays appearing in this publication were first produced for the January 1987 data month. The types of graphs and the information they portray may vary from month to month and from state to state in order to highlight climatic features of state, regional, and seasonal interest. Some graphs present information for "clusters." A cluster is a group of up to four adjacent divisions that comprise an area of similar climate.

Information concerning the history of changes in locations, exposure, etc. of substations is kept on file at the National Climatic Data Center. Historical information of regular National Weather Service Offices may be obtained from the "Local Climatological Data" annual publication. The contents of this publication may be reprinted or otherwise used freely, with proper credit to the National Climatic Data Center. The data are also available in digital form on magnetic tape and diskette.

SUBSCRIPTION, PRICE, AND ORDERING INFORMATION AVAILABLE FROM:

NATIONAL CLIMATIC DATA CENTER
FEDERAL BUILDING
ASHEVILLE, NC 28801-2696

USCOMM-NOAA-ASHEVILLE, N.C. DECEMBER 1993-0550

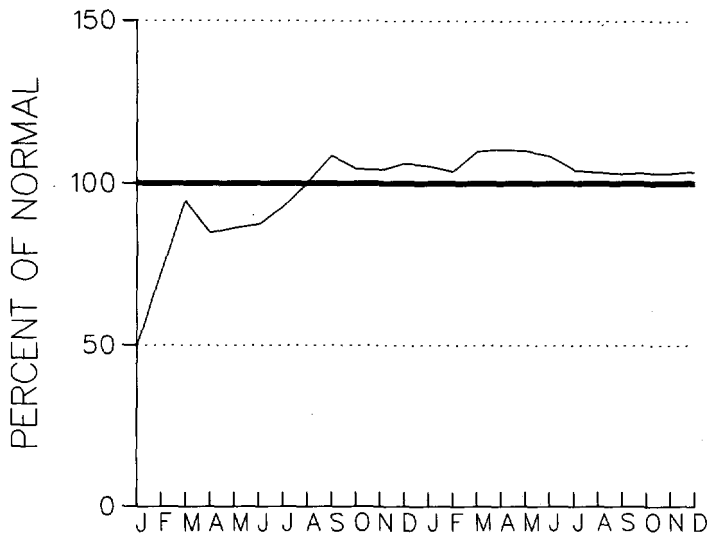
CUMULATIVE PRECIPITATION DEPARTURES FROM NORMAL (1961-1990)
FOR THE LAST 24 MONTHS
ENDING DECEMBER 1993
MARYLAND

CLUSTER 1 -DIVISION(S):
SOUTHERN EASTERN SHORE 01
CENTRAL EASTERN SHORE 02
LOWER SOUTHERN 03

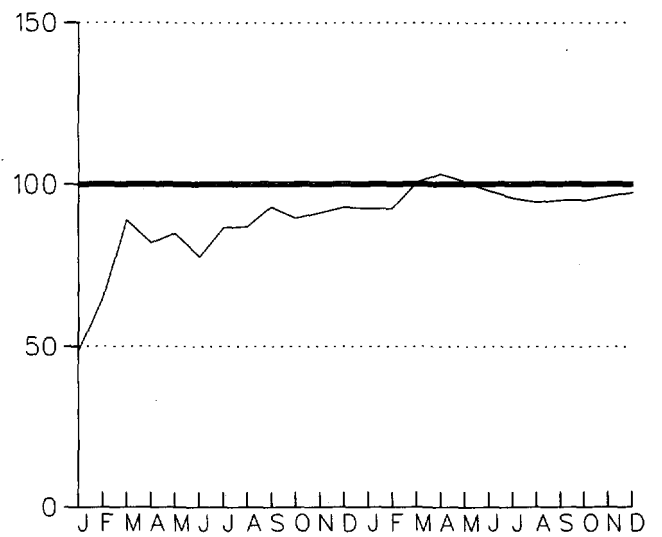
CLUSTER 2 -DIVISION(S):
UPPER SOUTHERN 04
NORTHERN EASTERN SHORE 05

CLUSTER 3 -DIVISION(S):
NORTHERN CENTRAL 06
APPALACHIAN MOUNTAIN 07

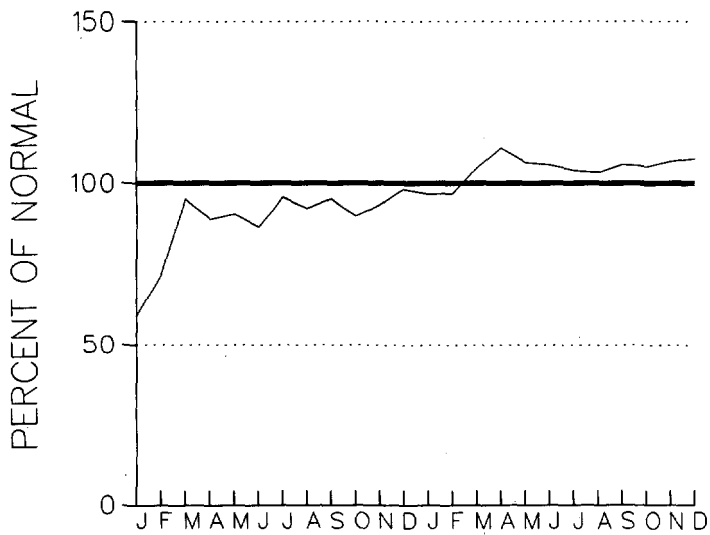
CLUSTER 4 -DIVISION(S):
ALLEGHENY PLATEAU 08



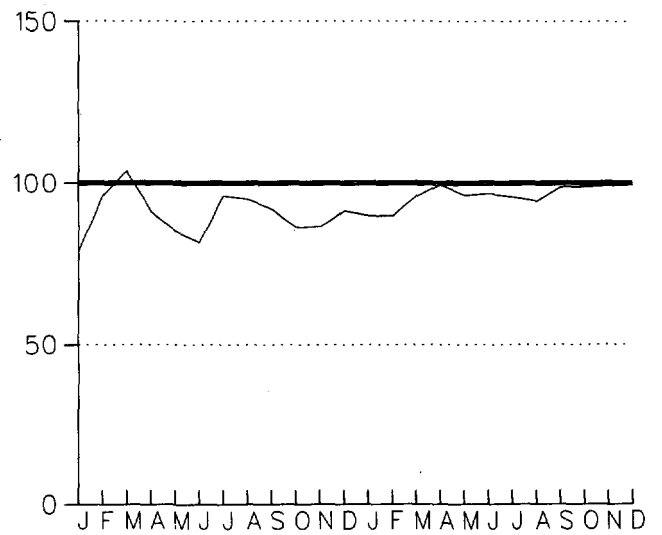
CLUSTER 1



CLUSTER 2



CLUSTER 3

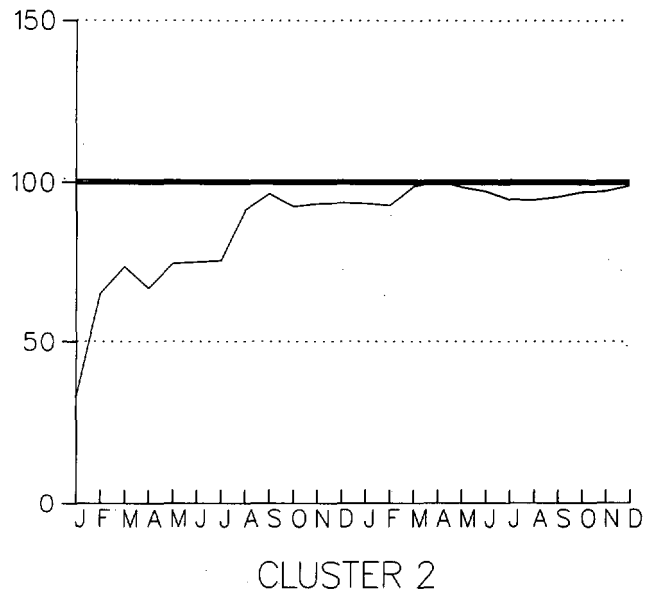
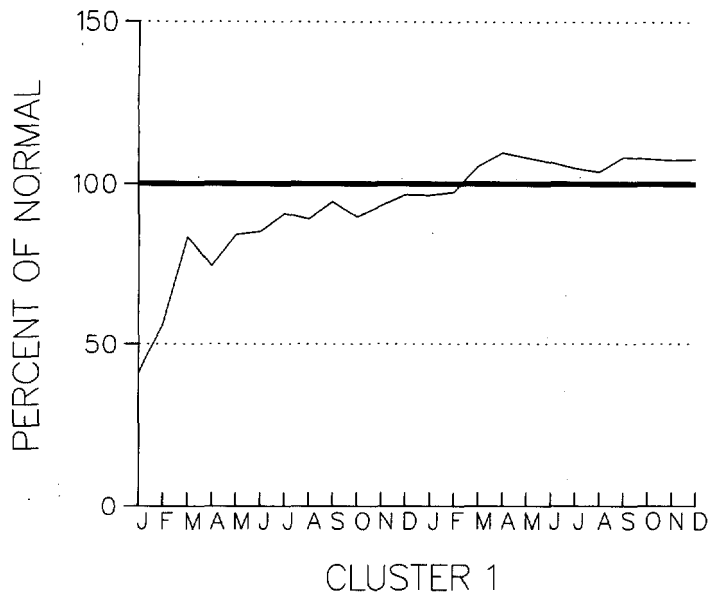


CLUSTER 4

CUMULATIVE PRECIPITATION DEPARTURES FROM NORMAL (1961-1990)
 FOR THE LAST 24 MONTHS
 ENDING DECEMBER 1993
 DELAWARE

CLUSTER 1 -DIVISION(S):
 NORTHERN 01

CLUSTER 2 -DIVISION(S):
 SOUTHERN 02



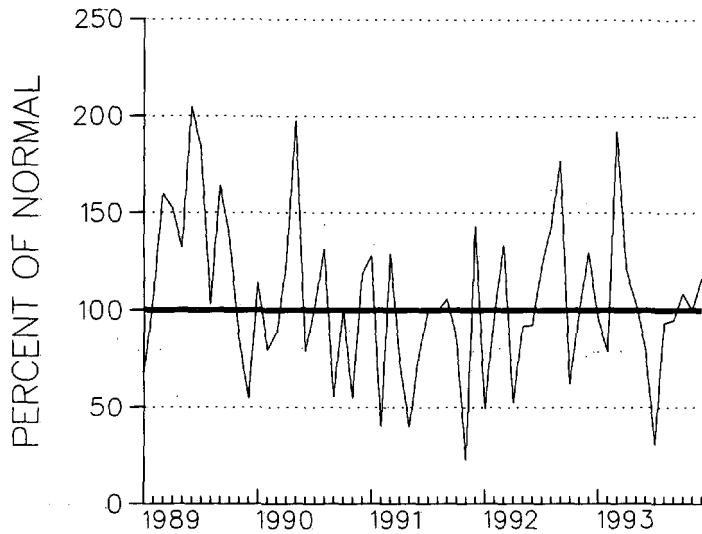
PRECIPITATION DEPARTURES FROM NORMAL (1961-1990)
 FOR THE 60 MONTHS
 ENDING DECEMBER 1993
 MARYLAND

CLUSTER 1 -DIVISION(S):
 SOUTHERN EASTERN SHORE 01
 CENTRAL EASTERN SHORE 02
 LOWER SOUTHERN 03

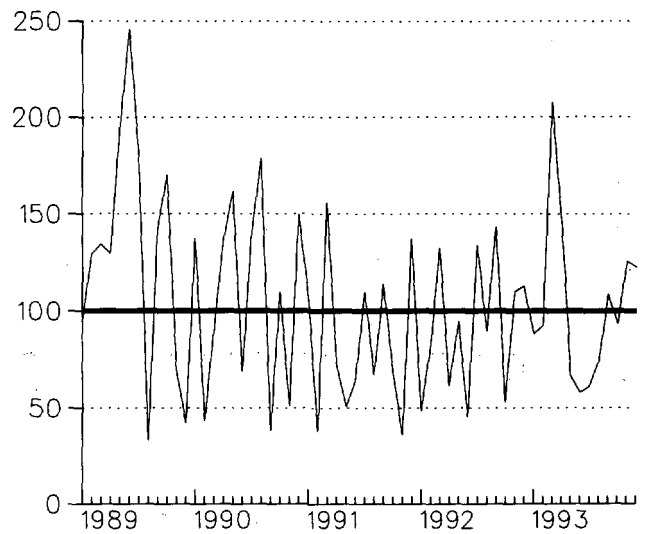
CLUSTER 2 -DIVISION(S):
 UPPER SOUTHERN 04
 NORTHERN EASTERN SHORE 05

CLUSTER 3 -DIVISION(S):
 NORTHERN CENTRAL 06
 APPALACHIAN MOUNTAIN 07

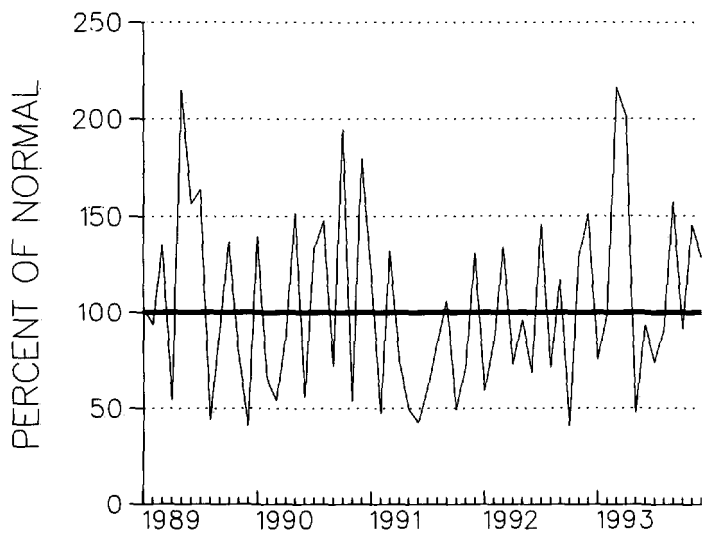
CLUSTER 4 -DIVISION(S):
 ALLEGHENY PLATEAU 08



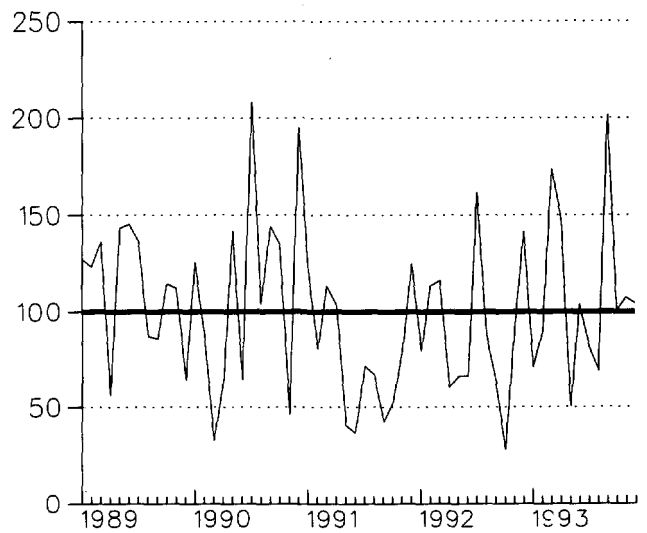
CLUSTER 1



CLUSTER 2



CLUSTER 3

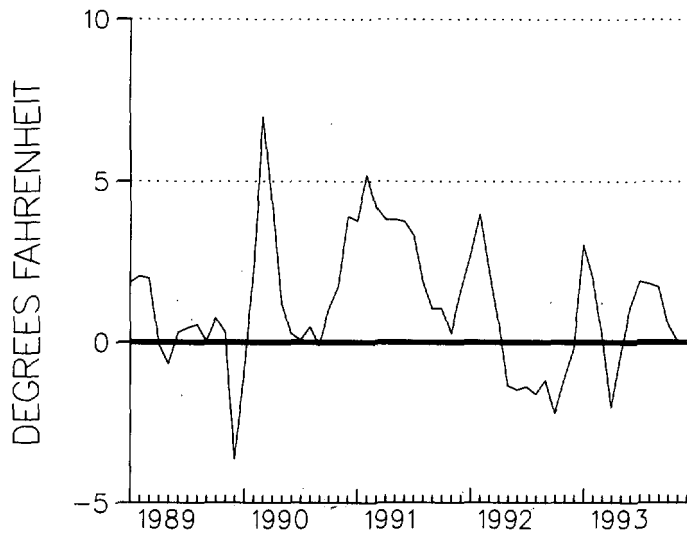


CLUSTER 4

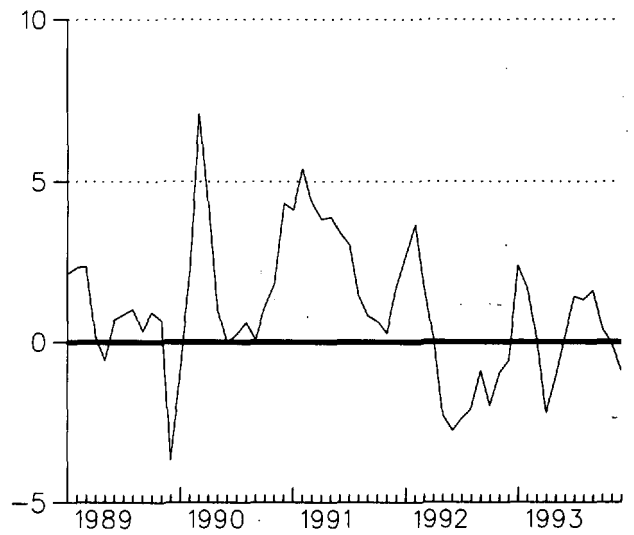
TEMPERATURE DEPARTURES FROM NORMAL (1961-1990)
THREE MONTH RUNNING MEAN
FOR THE 60 MONTHS ENDING WITH DECEMBER 1993 DATA
DELAWARE

CLUSTER 1 -DIVISION(S):
NORTHERN 01

CLUSTER 2 -DIVISION(S):
SOUTHERN 02



CLUSTER 1



CLUSTER 2

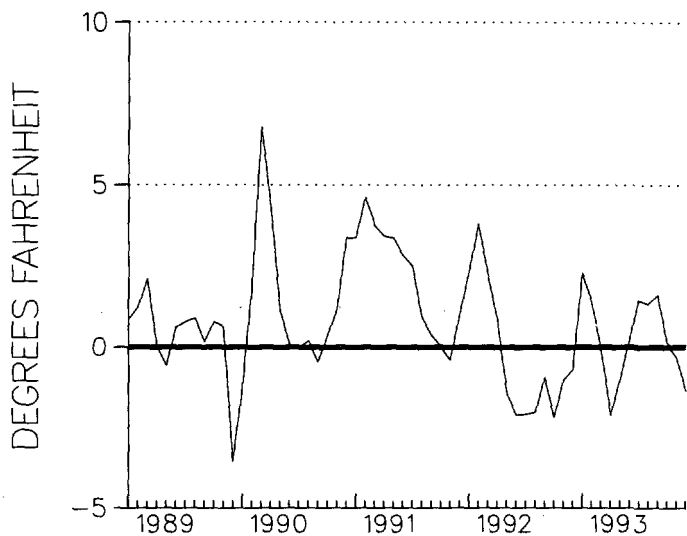
TEMPERATURE DEPARTURES FROM NORMAL (1961-1990)
 THREE MONTH RUNNING MEAN
 FOR THE 60 MONTHS ENDING WITH DECEMBER 1993 DATA
 MARYLAND

CLUSTER 1 -DIVISION(S):
 SOUTHERN EASTERN SHORE 01
 CENTRAL EASTERN SHORE 02
 LOWER SOUTHERN 03

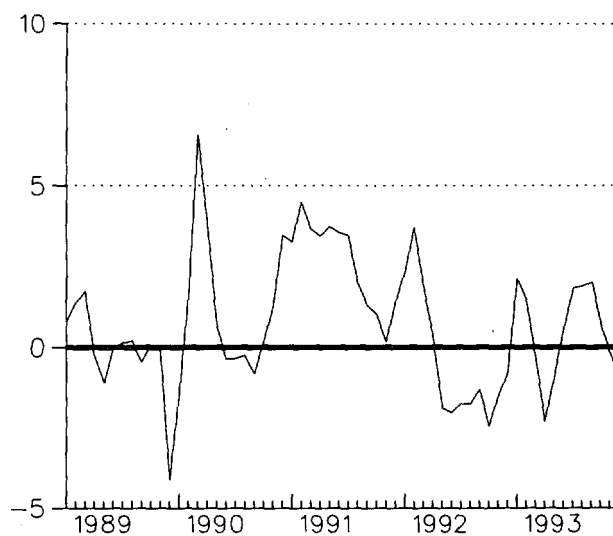
CLUSTER 2 -DIVISION(S):
 UPPER SOUTHERN 04
 NORTHERN EASTERN SHORE 05

CLUSTER 3 -DIVISION(S):
 NORTHERN CENTRAL 06
 APPALACHIAN MOUNTAIN 07

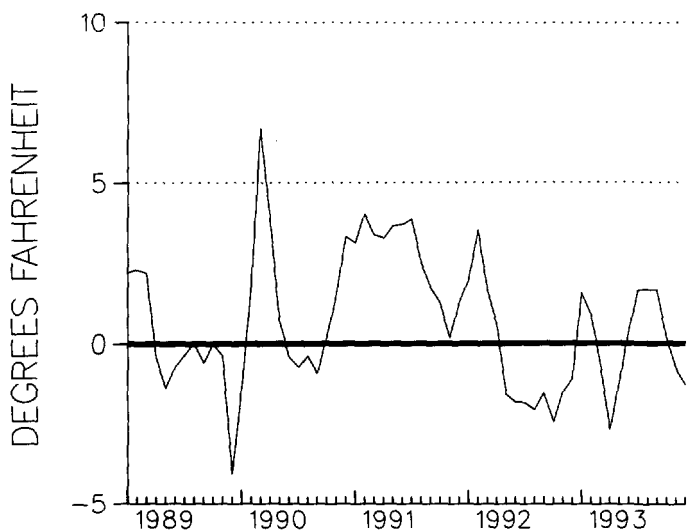
CLUSTER 4 -DIVISION(S):
 ALLEGHENY PLATEAU 08



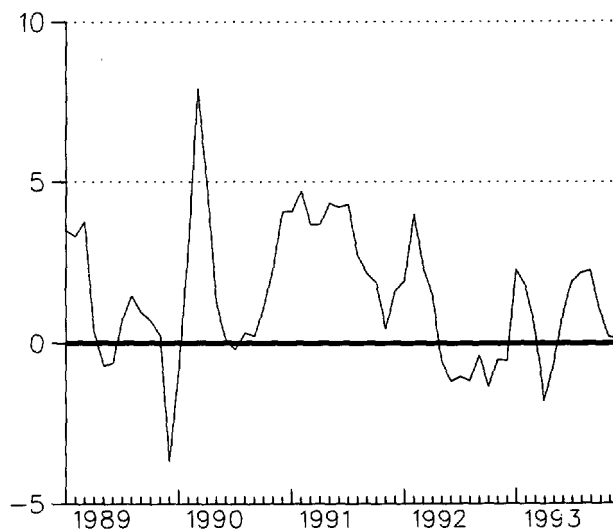
CLUSTER 1



CLUSTER 2



CLUSTER 3

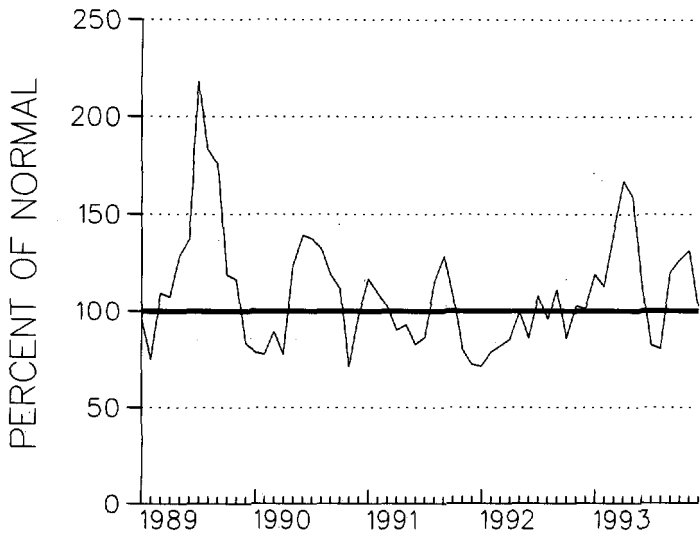


CLUSTER 4

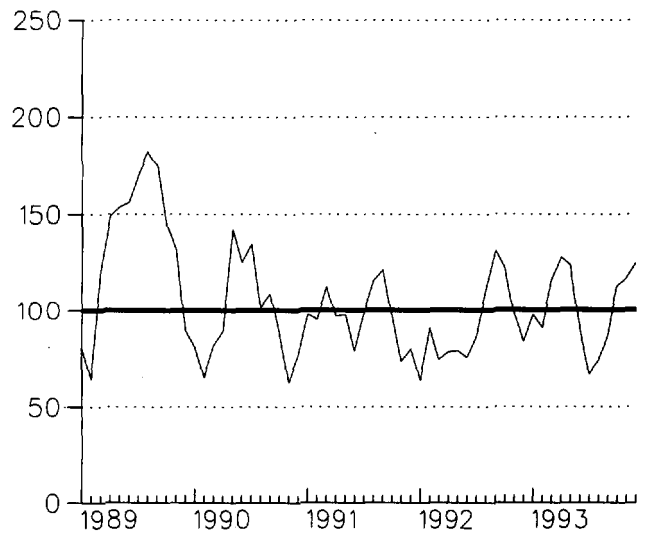
PRECIPITATION DEPARTURES FROM NORMAL (1961-1990)
THREE MONTH RUNNING MEAN
FOR THE 60 MONTHS ENDING WITH DECEMBER 1993 DATA
DELAWARE

CLUSTER 1 - DIVISION(S):
NORTHERN 01

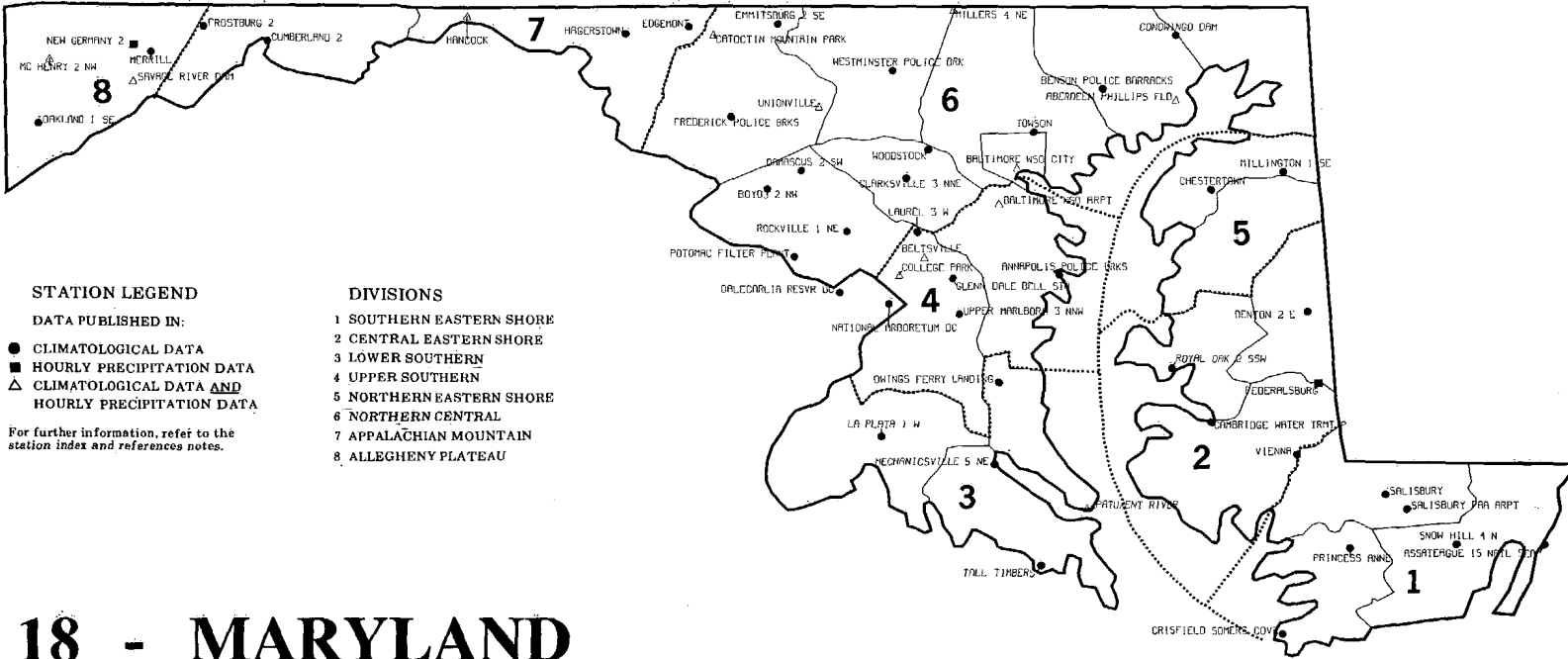
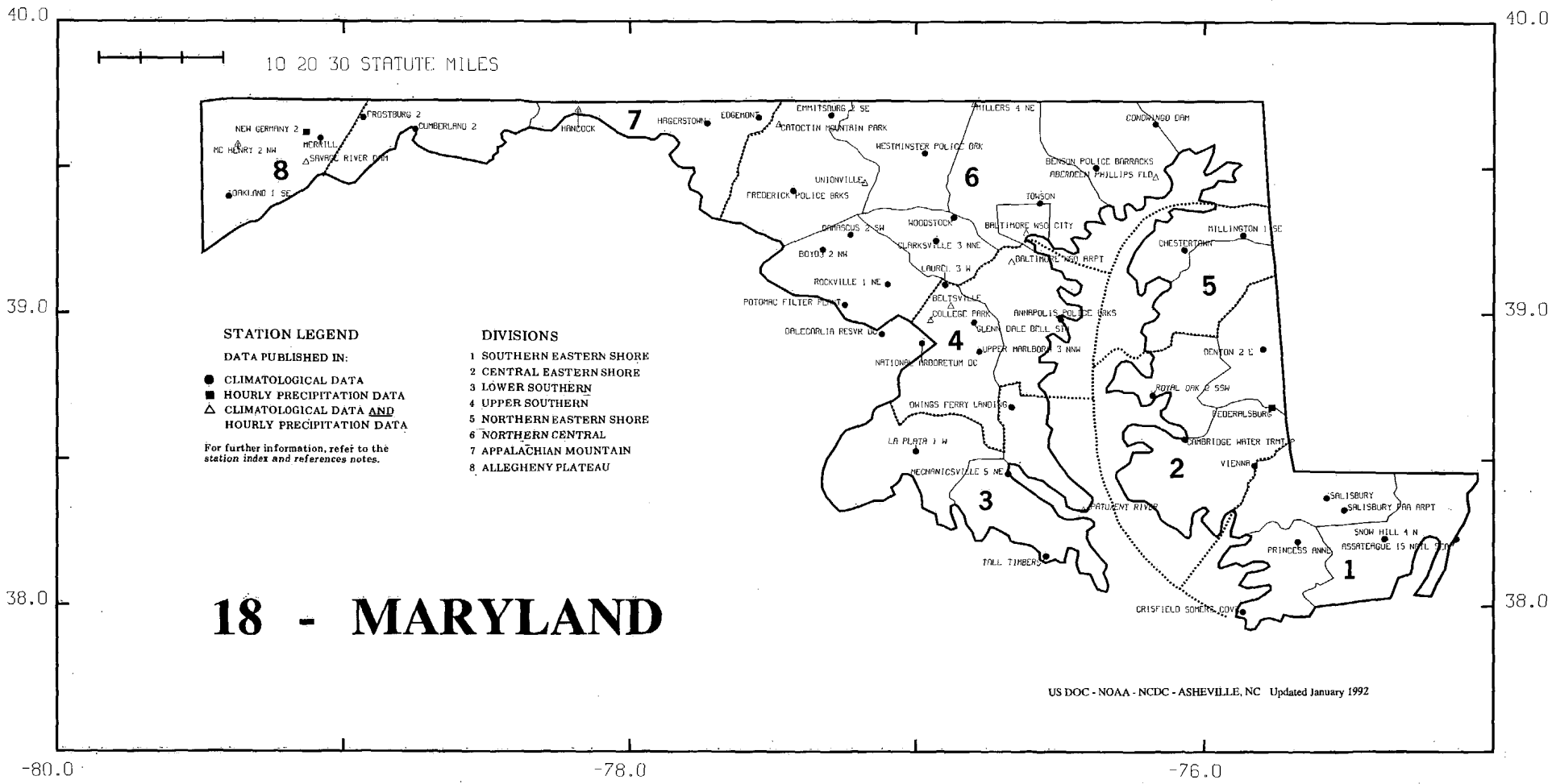
CLUSTER 2 - DIVISION(S):
SOUTHERN 02



CLUSTER 1



CLUSTER 2



40.0

40.0

10 20 30 STATUTE MILES

07 - DELAWARE

1

STATION LEGEND

DATA PUBLISHED IN:

- CLIMATOLOGICAL DATA
- HOURLY PRECIPITATION DATA
- △ CLIMATOLOGICAL DATA AND HOURLY PRECIPITATION DATA

For further information, refer to the station index and references notes.

DIVISIONS

- 1 NORTHERN
- 2 SOUTHERN

WILMINGTON PORTER RSVR

NEWARK UNIVERSITY FARM

WILMINGTON HSO ARPT

DOVER

2

MILFORD 4 SE

GREENWOOD 2 NE

LEWES

GEORGETOWN 5 SW

US DOC - NOAA - NCDC - ASHEVILLE, NC
Updated January 1992

39.0

39.0

38.0

38.0

-76.0

-75.5

-75.0

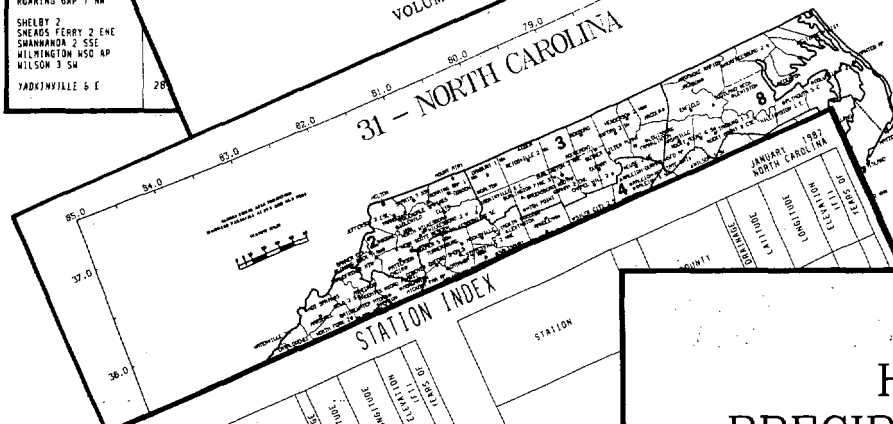
MONTHLY PRECIPITATION TOTALS

ANNUAL 1987
NORTH CAROLINA

STATION	ANNUAL	MONTH												
		JAN	FEB	MAR	APR	MAY	JUN	JUL	AUG	SEP	OCT	NOV	DEC	
NORTH CAROLINA														
ASHEVILLE WSD AP	34.57	1.11	1.85	2.75	0.57	3.55						4.19	5.28	4.28
ASHEVILLE	25.67	0.71	1.57	1.81	0.53	2.68						2.77	4.15	2.94
ASHFORD	35.74E	1.20	2.70	2.90	0.54E							3.80	4.90	4.80
BADIN	-	1.30	2.60	1.20								2.40	4.10	2.90
B EVERETT JORDAN DAM	-	1.70	1.50	3.60	1.20							1.70		
BOONER 5 HSH	-	1.00	2.10											
BURLINGTON 3 NNE	-	0.80	1.92E											
CAPE HATTERAS WSD	48.86	5.75	1.20E											
CARTHAGE 8 SE	-	1.70												
CATALDOCHEE	-	0.60												
CHARLOTTE WSD AP	26.91													
CLINTON 2 NE	33.92													
DALTON	-													
DOBSON	-													
EDEN	-													
ELIZABETH	-													
ELIZABETH	-													
FAYETTESVILLE	-													
FRANKLIN	-													
GREENSBORO	-													
GREENVILLE	-													
HELVON	-													
HOBOKEN	-													
LAKE LURE	-													
LAURINBURG	-													
LEXINGTON	-													
MOORESVILLE 2	-													
MOREHEAD CITY	-													
MOUNT PLEASANT	-													
MILKESBORO 12	-													
POLKTON 2 NE	-													
QUEBEC	-													
RALEIGH-DURHAM WSD	-													
RAVENNA RAPIDS	-													
ROARING GAP 1 NW	-													
SHELBY 2	-													
SNEADS FERRY 2 ENE	-													
SWANBORO 2 SSE	-													
WILKINGTON WSD AP	-													
WILSON 3 SW	-													
YADKINVILLE 6 E	28.0													

HOURLY PRECIPITATION DATA NORTH CAROLINA

DECEMBER 1987
WITH ANNUAL SUPPLEMENT
VOLUME 37 NUMBER 12



STATION INDEX

STATION	COUNTY	STATE	STATION
NORTH CAROLINA	ASHEVILLE	36.0	ASHEVILLE WSD AP
ASHEVILLE WSD AP	ASHEVILLE	36.0	ASHEVILLE
ASHFORD	ASHFORD	35.7	ASHFORD
BADIN	BADIN	35.7	BADIN
B EVERETT JORDAN DAM	BOONER	35.7	B EVERETT JORDAN DAM

MONTHLY PRECIPITATION MAXIMA

STATION	MAXIMA FOR MEASUREMENT PERIODS OF					
	15 MINUTES	30	45	1 HOUR	2	3
NORTH CAROLINA	10 20/1700-20 01/1700	10 20/1700-20 01/1700	20 22/0745-20 01/1700	18 19/0400-18 19/1700	24 19/1700-24 19/1700	30 19/1700-30 19/1700
ASHEVILLE WSD AP	10 20/1700-20 01/1700	10 20/1700-20 01/1700	20 22/0745-20 01/1700	18 19/0400-18 19/1700	24 19/1700-24 19/1700	30 19/1700-30 19/1700
ASHFORD	10 20/1700-20 01/1700	10 20/1700-20 01/1700	20 22/0745-20 01/1700	18 19/0400-18 19/1700	24 19/1700-24 19/1700	30 19/1700-30 19/1700
BADIN	10 20/1700-20 01/1700	10 20/1700-20 01/1700	20 22/0745-20 01/1700	18 19/0400-18 19/1700	24 19/1700-24 19/1700	30 19/1700-30 19/1700
B EVERETT JORDAN DAM	10 20/1700-20 01/1700	10 20/1700-20 01/1700	20 22/0745-20 01/1700	18 19/0400-18 19/1700	24 19/1700-24 19/1700	30 19/1700-30 19/1700

HOURLY PRECIPITATION

STATION	A.M. HOUR ENDING											
	1	2	3	4	5	6	7	8	9	10	11	12
NORTH CAROLINA	0.01	0.01	0.01	0.01	0.01	0.01	0.01	0.01	0.01	0.01	0.01	0.01
ASHEVILLE WSD AP	0.01	0.01	0.01	0.01	0.01	0.01	0.01	0.01	0.01	0.01	0.01	0.01
ASHEVILLE	0.01	0.01	0.01	0.01	0.01	0.01	0.01	0.01	0.01	0.01	0.01	0.01
ASHFORD	0.01	0.01	0.01	0.01	0.01	0.01	0.01	0.01	0.01	0.01	0.01	0.01
BADIN	0.01	0.01	0.01	0.01	0.01	0.01	0.01	0.01	0.01	0.01	0.01	0.01
B EVERETT JORDAN DAM	0.01	0.01	0.01	0.01	0.01	0.01	0.01	0.01	0.01	0.01	0.01	0.01

For further information,
call or write to the
NATIONAL CLIMATIC DATA CENTER
Room 120, 151 Patton Avenue, Asheville, NC 28801-5001
Phone (704) 271-4800 or (704) 271-4010 (TDD)
(704) 271-4876 (Fax)

- ## A WORLD OF CLIMATIC INFORMATION FOR
- * Attorneys
 - * Colleges & Universities
 - * Construction
 - * Consultants
 - * Governmental Agencies
 - * Industry
 - * Insurance Companies
 - * Public Utilities
 - * Research & Development
 - * Energy

HOURLY PRECIPITATION DATA

NORTH CAROLINA

JANUARY 1987

VOLUME 37 NUMBER 1

HOURLY PRECIPITATION DATA is published monthly and presents daily, hourly, and maximum short duration data for recording rain gage stations in each state except Alaska. Also included are a published station index and a locator map for the state. In addition to the regularly published data, the December publication contains a tabulation of monthly and annual total precipitation amounts as an annual supplement.

SHELF STOCK of the printed publication is maintained only for the most recent 3 years. Earlier years are available on microfiche or paper copies reproduced from microfiche. The data is also available in digital form - on magnetic tape or floppy disk.

NATIONAL OCEANIC AND ATMOSPHERIC ADMINISTRATION

NATIONAL ENVIRONMENTAL SATELLITE, DATA AND INFORMATION SERVICE

NATIONAL CLIMATIC DATA CENTER ASHEVILLE, NORTH CAROLINA

To change your address, please return a copy of the mailing label along with your new address to: National Climatic Data Center (Subscription Services).

Inquiries/Comments Call: (704) 271-4800 (Voice)
(704) 271-4010 (TDD)
(704) 271-4876 (Fax)

National Climatic Data Center
Room 120
151 Patton Avenue
Asheville, NC 28801-5001

OFFICIAL BUSINESS
PENALTY FOR PRIVATE USE \$300
ADDRESS CORRECTION REQUESTED

<p>BULK RATE POSTAGE & FEES PAID United States Department of Commerce NOAA Permit No. G-19</p>
--