

CLIMATOLOGICAL DATA ANNUAL SUMMARY MARYLAND AND DELAWARE 1994

VOLUME 98 NUMBER 13



"I CERTIFY THAT THIS IS AN OFFICIAL PUBLICATION OF THE NATIONAL OCEANIC AND ATMOSPHERIC ADMINISTRATION (NOAA). IT IS COMPILED USING INFORMATION FROM WEATHER OBSERVING SITES SUPERVISED BY NOAA/NATIONAL WEATHER SERVICE AND RECEIVED AT THE NATIONAL CLIMATIC DATA CENTER (NCDC), ASHEVILLE, NORTH CAROLINA 28801-5001."

Kenneth D. Haden

DIRECTOR
NATIONAL CLIMATIC DATA CENTER

noaa

NATIONAL
OCEANIC AND
ATMOSPHERIC ADMINISTRATION

NATIONAL
ENVIRONMENTAL SATELLITE, DATA
AND INFORMATION SERVICE

NATIONAL
CLIMATIC DATA CENTER
ASHEVILLE NORTH CAROLINA

TOTAL PRECIPITATION AND DEPARTURES FROM NORMAL (INCHES)

MARYLAND AND DELAWARE
1994

STATION	JAN		FEB		MAR		APR		MAY		JUN	
	PRECIP.	DEPARTURE	PRECIP.	DEPARTURE	PRECIP.	DEPARTURE	PRECIP.	DEPARTURE	PRECIP.	DEPARTURE	PRECIP.	DEPARTURE
MARYLAND												
SHORE												
SOUTHERN EASTERN 01												
ASSATEAGUE IS NATL SEA	M	6.32	5.46		8.73		1.59		1.96		.60	
PRINCESS ANNE		4.30	2.85	-.40	9.80	5.96	2.77	-.50	2.03	-1.32	1.32	-1.86
SALISBURY		3.90	6.29	2.82	8.90	4.66	2.37	-.93	2.33	-1.17	.94	-2.71
SALISBURY FAA ARPT		4.07	6.16	2.70	9.29	5.13	3.00	-.20	2.39	-1.25	1.66	-1.97
SNOW HILL 4 N		3.63	6.67	3.06	10.49	6.19	1.78	-1.43	2.24	-1.28	.55	-2.88
-- DIVISIONAL DATA ----->		3.98	5.49	2.06	9.44	5.32	2.30	-.87	2.19	-1.27	1.01	-2.38
CENTRAL EASTERN												
SHORE												
ROYAL OAK 2 SSW		5.47	6.36	3.06	9.80	6.00	3.62	-.20	2.29	-1.94	4.47	.86
VIENNA		3.51	6.18	2.70	9.74	5.97	2.36	-1.03	2.76	-.75	.79	-3.01
-- DIVISIONAL DATA ----->		4.49	6.27	3.01	9.77	6.03	2.99	-.36	2.53	-1.42	2.63	-1.02
LOWER SOUTHERN												
LA PLATA 1 W												
MECHANICSVILLE 5 NE	M	3.51	5.44	2.52								
OWINGS FERRY LANDING		4.88	6.06	2.68	9.20	5.23	2.60	-.81	1.55	-2.57	5.27	1.21
-- DIVISIONAL DATA ----->		3.81	2.40		11.47	8.16	1.78	-1.43	1.78	-2.47	2.81	-1.00
-- DIVISIONAL DATA ----->		4.35	5.75	2.71	10.34	6.65	2.19	-1.00	1.67	-2.41	4.04	.32
UPPER SOUTHERN												
ANNAPOLIS POLICE BRKS												
BALTIMORE WSO ARPT	R	4.31	1.98		10.16	6.53	2.54	-.86	2.73	-1.33	2.99	-.36
BELTSVILLE		4.59	4.07	.95	8.64	5.26	2.53	-.56	3.02	-.70	2.84	-.83
COLLEGE PARK		4.48	3.75	1.12	8.54	5.29						
DALECARLIA RESERVOIR		4.42	3.15		7.94	4.61	1.80	-1.46	2.55	-1.80	4.07	.37
GLENN DALE BELL STN		4.54	4.14	1.15	8.20	4.68	1.75	-1.75	2.87	-1.32	5.17	-1.56
LAUREL 3 W		4.73	3.82	1.02	8.91		2.84	-.59	3.02	-1.44	2.61	-1.25
NATIONAL ARBORETUM DC		4.49	4.16	1.25	8.49	5.01	3.24	-.17	3.99	-.54	2.53	-1.18
-- DIVISIONAL DATA ----->		3.39	3.64	.63	8.45		2.12	-1.15	2.25	-1.92	2.92	-.88
-- DIVISIONAL DATA ----->		4.37	3.93	.99	8.66	5.25	2.40	-.92	2.92	-1.30	3.30	-.40
NORTHERN EASTERN												
SHORE												
CHESTERTOWN		5.41	4.15	1.09	8.59	4.94	3.43	.19	3.68	-.35	1.40	-2.95
MILLINGTON 1 SE	M	3.41	1.97		8.36		3.23	-.10	3.25	-.77	3.15	-.87
-- DIVISIONAL DATA ----->		5.41	4.15	1.11	8.59	5.04	3.33	.05	3.47	-.54	2.28	-1.71
NORTHERN CENTRAL												
ABERDEEN PHILLIPS FIEL												
BALTIMORE CITY	R	5.59	3.79	1.09	6.34	3.05	2.33	-1.23	3.80		.76	-3.66
BENSON POLICE BARRACKS		4.08	4.22	1.04	8.61	4.98	1.89	-1.35	2.45	-1.60	2.62	-.69
CATOCTIN MOUNTAIN PARK	M	4.36	2.94	-.07	8.39	4.62	2.45	-1.54	5.15	.49	1.13	-3.24
CONOMINGO DAM	M	4.69	4.13		6.51		2.91		4.68		2.56	
DAMASCUS 2 SSW		6.53	3.58	.63	6.48	2.98	2.30	-1.46	4.00		1.51	-2.79
EMMITSBURG 2 SE		4.60	4.78		7.44		2.31		4.00		1.38	
FREDERICK POLICE BRKS		3.80	3.78	.71	6.85	3.32	3.30	-.47	4.18	-.17	2.74	
FREDERICK GAS PLANT		2.09	2.25		6.95		2.68		3.93		1.68	
MILLERS 4 NE		5.33	4.08		7.11		2.79		3.75		1.59	
POTOMAC FILTER PLANT		3.02	3.20	.68	6.85	3.91	2.71	-.28	2.89	-.86	3.59	
ROCKVILLE 1 NE	M	4.37	4.06	1.23	7.09	3.73	2.26	-.93	3.26		1.91	
TOWSON	M	2.05	3.50		5.62	1.69	2.84	-.97	5.35	.31	1.11	-3.05
UNIONVILLE	M	4.92	4.18	1.63	7.54	4.41	3.05	-.24	3.65	-.42	2.62	-1.56
WESTMINSTER POL BRKS		3.83	2.21	-.38	7.64	4.22	2.64	-.83	3.31	-.96	3.06	-.85

SEE REFERENCE NOTES FOLLOWING STATION INDEX

TOTAL PRECIPITATION AND DEPARTURES FROM NORMAL (INCHES)

MARYLAND AND
DELAWARE
1994

STATION	JUL		AUG		SEP		OCT		NOV		DEC		ANNUAL	
	PRECIP.	DEPARTURE	PRECIP.	DEPARTURE	PRECIP.	DEPARTURE	PRECIP.	DEPARTURE	PRECIP.	DEPARTURE	PRECIP.	DEPARTURE	PRECIP.	DEPARTURE
MARYLAND														
SOUTHERN EASTERN SHORE 01														
ASSATEAGUE IS NATL SEA	4.54		1.26		4.06		1.73		2.61		1.01		39.87	
PRINCESS ANNE	4.15	.15	3.78	-1.31	3.23	-.52	1.34	-1.91	3.22	.08	1.83	-1.42	40.62	-2.16
SALISBURY	13.74	9.72	3.21	-1.78	4.84	1.29	.97	-2.26	4.41	1.34	1.77	-1.76	53.67	9.36
SALISBURY FAA ARPT	7.55	3.22	3.30	-2.03	5.41	1.72	1.46	-1.96	4.00	.85	2.20	-1.48	50.49	5.16
SNOW HILL 4 N	5.09	.99	3.02	-2.35	5.58	2.29	1.13	-2.11	5.21	1.99	1.60	-1.84	46.99	2.46
--DIVISIONAL DATA----->	7.01	2.96	2.91	-1.96	4.62	1.21	1.33	-1.85	3.89	.77	1.68	-1.73	45.85	2.60
CENTRAL EASTERN SHORE 02														
ROYAL OAK 2 SSW	7.05	3.09	5.76	1.53	3.26	-.38	.79	-2.36	2.56	-.86	1.27	-2.45	52.70	8.65
VIENNA	3.05		2.72	-2.15	2.14	-1.53	.95	-2.05	4.13	.97	1.64	-1.81	39.97	
--DIVISIONAL DATA----->	7.05	3.11	4.24	-.16	2.70	-.81	.87	-2.20	3.35	.03	1.46	-2.10	48.35	5.02
LOWER SOUTHERN LA PLATA 1 W 03														
MECHANICSVILLE 5 NE	5.90	1.68	6.02	1.96	6.14	2.39	1.01	-2.42	2.65	-.86	1.17	-2.17	52.45	7.74
OWINGS FERRY LANDING	9.26	5.53	5.17	1.60	5.50	2.09	.90	-2.27	2.32	-1.08	1.49	-1.74	48.69	
--DIVISIONAL DATA----->	7.58	3.62	5.60	1.63	5.82	2.15	.96	-2.28	2.49	-.90	1.33	-2.00	52.12	9.56
UPPER SOUTHERN 04														
ANNAPOLIS POLICE BRKS	6.17	2.59	9.71	5.81	3.70	.44	1.16	-2.15	2.29	-1.16				
BALTIMORE WSO ARPT	4.54	.85	3.44	-.48	3.93	.52	1.82	-1.16	1.95	-1.37	1.95	-1.46	43.32	2.56
BELTSVILLE														
COLLEGE PARK	6.15	2.15	4.72	-.28	3.08	-.56	1.58	-1.65	2.28	-1.08	1.94	-1.35	43.68	
DALECARLIA RESERVOIR	5.86	1.97	2.89	-1.40	2.54	-1.04	2.05	-1.45	2.52	-.97	2.93	-.53	45.46	2.47
GLENN DALE BELL STN	8.48	4.32	7.62	3.30	3.10	-.52	1.35	-2.08	2.39	-1.11	1.67	-1.61	50.54	
LAUREL 3 W	3.24	-.74	8.17	4.22	3.32	-.33	1.71	-1.70	2.74	-1.09	3.08	-.34	49.16	6.00
NATIONAL ARBORETUM DC	5.59	1.21	5.30	.91	3.56	-.04	1.59	-1.69	1.47		2.17	-1.16	42.45	
--DIVISIONAL DATA----->	5.72	1.71	5.98	1.81	3.32	-.26	1.61	-1.70	2.36	-1.04	2.29	-1.08	46.86	4.38
NORTHERN EASTERN SHORE 05														
CHESTERTOWN	3.37	-.33	5.77	1.81	1.94	-1.70	1.18	-1.96	2.21		2.05	-1.72	43.18	
MILLINGTON 1 SE	4.26	.47	8.32	4.25	3.02	-.73	1.02	-2.11	2.44	-.87	1.75	-1.88	44.18	
--DIVISIONAL DATA----->	3.82	.02	7.05	3.17	2.48	-1.17	1.10	-2.04	2.44	-.95	1.90	-1.79	46.02	3.33
NORTHERN CENTRAL 06														
ABERDEEN PHILLIPS FIEL	10.09		4.32		2.46	-1.43	.80	-2.33	2.97	-.35	1.84	-1.77	45.09	
BALTIMORE CITY	4.89	1.17	4.50	.22	2.55	-.95	1.17	-1.81	2.52	-1.08	1.92	-1.83	41.42	-.96
BENSON POLICE BARRACKS	7.37	2.79	5.04	.33	3.30	-.65	1.12	-2.14	3.42		2.55	-1.30	47.22	
CATOCTIN MOUNTAIN PARK	4.27		8.43		3.36		1.44		6.13		2.25		51.36	
CONOWINGO DAM	2.44		2.92		2.49	-1.46	.99	-2.24	3.71	-.03	2.68	-1.11		
DAMASCUS 2 SSW	5.79		6.95		3.65		1.34		2.62		2.97		47.83	
EMMITSBURG 2 SE	3.36	.12	5.09	1.48	2.44	-1.53	1.24	-2.21	5.20		2.62	-.65	44.60	
FREDERICK POLICE BRKS	4.90		4.57		3.22		1.90		4.03		2.60		40.80	
FREDERICK GAS PLANT														
MILLERS 4 NE	4.41		5.50		2.54		1.27		4.88		2.75		46.00	
POTOMAC FILTER PLANT	6.70	3.15	6.13	2.52	3.07	-.58	.66	-2.37	2.41	-.89	2.07	-.96	43.30	
ROCKVILLE 1 NE	5.61	1.90	6.25	2.26	3.71	.18	.92	-2.42	1.96	-1.34	2.26	-.81	43.66	
TOWSON	4.76	.56	9.14	4.52	4.93	.93			3.30	-.82	3.12	-.81		
UNIONVILLE	4.99	1.63	4.71	1.56	3.49	.12	2.14	-1.08	4.79	1.36	3.34	-.14	49.42	
WESTMINSTER POL BRKS	4.97	1.16	5.08	1.66	2.59	-1.05	.88	-2.37	2.78	-.57	2.76	-.56	41.75	.40

SEE REFERENCE NOTES FOLLOWING STATION INDEX

TOTAL PRECIPITATION AND DEPARTURES FROM NORMAL (INCHES)

MARYLAND AND
DELAWARE
1994

STATION	JAN		FEB		MAR		APR		MAY		JUN	
	PRECIP.	DEPARTURE	PRECIP.	DEPARTURE	PRECIP.	DEPARTURE	PRECIP.	DEPARTURE	PRECIP.	DEPARTURE	PRECIP.	DEPARTURE
WOODSTOCK	5.22	2.00	3.80	.79	8.13	4.42	2.32	-1.18	4.84	.37	2.54	-1.33
--DIVISIONAL DATA----->	4.56	1.48	3.64	.67	7.19	3.66	2.58	-.95	4.12	-.25	1.88	-2.10
APPALACHIAN MOUNTAIN 07												
CUMBERLAND 2	4.31	1.93	4.85	2.56	6.44	3.36	3.01	-.18	4.10	.44	2.05	-1.29
EDGEMONT	4.63	1.72	4.00	1.17	6.50	3.16	3.38	-.29	3.97	-.40		
FROSTBURG 2	5.55		5.73		7.00		3.31		5.03		1.60	
HANCOCK	4.04		1.14		4.68		3.95	.72	2.22		1.22	
--DIVISIONAL DATA----->	4.93	2.32	5.29	2.74	6.72	3.41	3.42	-.02	4.57	.64	1.83	-1.62
ALLEGHENY PLATEAU 08												
MERRILL	4.85	2.24	4.66	1.99	6.01	2.48	3.49	-.18	4.63	.60	2.00	-1.38
OAKLAND 1 SE	4.85	1.66	6.87	3.92	9.12	5.05	4.75	.41	5.57	.86	4.15	-.23
SAVAGE RIVER DAM	4.13	1.73	4.46	2.22	5.95	2.70	3.20	-.21	4.25	.32	4.48	1.13
--DIVISIONAL DATA----->	4.49	1.31	5.67	2.72	7.54	3.58	3.98	-.09	4.91	.54	4.32	.24
DELAWARE												
NORTHERN 01												
NEWARK UNIVERSITY FARM	3.06		1.83	-.90	7.17	3.91	2.97	-.52	4.41	-.26	1.61	-2.24
WILMINGTON WSO ARPT	5.00	1.97	3.55	.64	7.36	3.93	2.85	-.54	3.69	-.15	2.11	-1.44
WILMINGTON PORTER RSVR	7.02	3.55	3.92	.87	7.33	3.52	3.69	-.32	4.48	.15	2.46	-1.60
--DIVISIONAL DATA----->	6.01	2.83	3.10	.25	7.29	3.82	3.17	-.40	4.19	.14	2.06	-1.70
SOUTHERN 02												
DOVER	5.55	2.17	4.78	1.85	9.24	5.44	2.85	-.65	3.85	-.14	2.39	-1.46
GEDRGETOWN 5 SW	3.71	.04	6.87	3.72			2.99	-.45	3.24	-.41	3.72	.31
GREENWOOD 2 NE	5.15		5.95		9.46		4.38		3.41		3.20	
LEXES	4.60	.84	5.68	2.38	6.46	2.35	2.62	-.94	2.39	-1.37	3.49	.11
--DIVISIONAL DATA----->	4.75	1.11	5.82	2.64	8.39	4.45	3.21	-.27	3.22	-.66	3.20	-.29

SEE REFERENCE NOTES FOLLOWING STATION INDEX

TOTAL PRECIPITATION AND DEPARTURES FROM NORMAL (INCHES)

MARYLAND AND
DELAWARE
1994

STATION	JUL		AUG		SEP		OCT		NOV		DEC		ANNUAL	
	PRECIP.	DEPARTURE	PRECIP.	DEPARTURE	PRECIP.	DEPARTURE	PRECIP.	DEPARTURE	PRECIP.	DEPARTURE	PRECIP.	DEPARTURE	PRECIP.	DEPARTURE
HOODSTOCK	3.58	.13	5.93	2.36	4.18	.59	1.58	-1.65	2.95	-.68	2.57	-.91	47.64	4.91
--DIVISIONAL DATA----->	4.91	1.11	5.93	2.08	3.21	-.50	1.29	-2.05	3.64	.06	2.59	-.88	45.54	2.33
APPALACHIAN MOUNTAIN 07														
CUMBERLAND 2	4.31	-.94	3.98	.68	1.77	-1.31	.56	-2.21	3.91	1.15	2.65	-.04	41.94	6.11
EDGEMONT	3.38	-.08	5.89	2.56	3.56	-.35	1.25	-2.30	4.47	.76	2.22	-.77		
FROSTBURG 2	3.15		5.15		1.25		.36		4.31		3.15		45.59	
HANCOCK	7.08	3.41	6.11	2.96	2.06	-1.12	.48	-2.68	4.72	1.72 ^M				
--DIVISIONAL DATA----->	4.85	1.31	5.08	1.74	1.69	-1.51	.47	-2.70	4.31	1.20	2.90	.08	46.06	7.59
ALLEGHENY PLATEAU 08														
MERRILL	4.26	.14	6.86	3.29	1.66	-1.33	.80	-2.09	3.57	.48	2.57	-.58	45.36	5.66
OAKLAND 1 SE	6.11	.99	5.64	1.47	1.62	-1.65	.82	-2.37	3.70	.06	3.48	-.26	56.68	9.91
SAVAGE RIVER DAM	3.78	-.43	5.50	2.31	1.44	-1.67	1.06	-1.87	3.05	.20	2.55	-.19	43.85	6.24
--DIVISIONAL DATA----->	4.95	.09	5.57	1.74	1.53	-1.79	.94	-2.23	3.38	-.18	3.02	-.66	50.30	5.27
DELAWARE														
NORTHERN 01														
NEWARK UNIVERSITY FARM	10.21	5.69	3.27	-.73	2.01	-1.67	.67	-2.50	2.84	-.44	2.37	-1.13 ^M	42.42	
WILMINGTON WSO ARPT R	7.01	2.78	5.68	2.28	2.10	-1.33	.85	-2.03	2.96	-.31	2.24	-1.24	45.40	4.56
WILMINGTON PORTER RSVR	12.27	7.88	4.88	.83	4.03	.08	1.04	-2.26	3.56	-.24	2.75	-1.09	57.43	11.37
--DIVISIONAL DATA----->	9.83	5.61	4.61	.98	2.71	-.91	.85	-2.28	3.12	-.29	2.45	-1.11	49.39	6.94
SOUTHERN 02														
DOVER	3.67	-.48	6.28	2.03	3.81	-.53	.67	-2.59	3.10	-.05	1.45	-2.09	47.64	3.50
GEORGETOWN 5 SW	4.74	1.04	5.02	-.44	3.76	.35	.80	-2.47	4.34	1.16	1.52	-1.94		
GREENWOOD 2 NE	6.08		5.11		4.95		1.00		3.83		1.19		53.71	
LEWES	7.03	3.05	3.72	-1.52	4.38	1.29	1.95	-1.22	3.61	.33	1.99	-1.69	47.92	3.61
--DIVISIONAL DATA----->	5.38	1.49	5.03	.25	4.23	.59	1.11	-2.12	3.72	.51	1.54	-2.05	49.60	5.65

SEE REFERENCE NOTES FOLLOWING STATION INDEX
5

AVERAGE TEMPERATURES AND DEPARTURES FROM NORMAL (°F)

MARYLAND AND
DELAWARE
1994

STATION	JAN		FEB		MAR		APR		MAY		JUN		JUL		AUG		SEP		OCT		NOV		DEC		ANNUAL				
	TEMPERATURE	DEPARTURE	TEMPERATURE	DEPARTURE	TEMPERATURE	DEPARTURE	TEMPERATURE	DEPARTURE	TEMPERATURE	DEPARTURE	TEMPERATURE	DEPARTURE	TEMPERATURE	DEPARTURE	TEMPERATURE	DEPARTURE	TEMPERATURE	DEPARTURE	TEMPERATURE	DEPARTURE	TEMPERATURE	DEPARTURE	TEMPERATURE	DEPARTURE	TEMPERATURE	DEPARTURE			
MARYLAND																													
SOUTHERN EASTERN SHORE 01																													
ASSATEAGUE IS NATL SEA	32.3		37.3		44.1		55.4		59.5		71.5		75.0		71.6		69.4		59.3		54.3		45.7		45.3		56.3		
PRINCESS ANNE	30.5	-4.5	35.5	-1.8	44.9	-9	59.0	5.0	59.7	-4.0	74.0	1.9	77.8	1.4	70.6	-4.6	65.0	-3.7	54.2	-3.6	50.3	1.3	42.2	2.4	45.3	4.9	58.5	-9	
SALISBURY	33.2	-2.7	38.7	.6	47.2	5	61.6	6.5	62.3	-2.4	77.0	4.2	80.7	3.8	74.6	-1.3	69.2	-9.9	57.7	-1.4	54.2	4.1	45.3	4.9	58.5	1.4			
SALISBURY FAA ARPT	31.4	-3.0	37.0	.4	45.8	7	59.6	5.9	60.1	-3.1	75.8	3.9	80.6	3.9	73.3	-2.0	67.4	-1.2	55.5	-2.0	51.9	3.3	44.0	4.8	56.9	1.0			
SNOW HILL 4 N	32.7	-2.5	37.4	1	46.7	1.1	60.2	6.3	62.0	-1.5	75.9	4.0	80.2	4.4	73.5	-1.2	67.7	-1.0	56.3	-1.6	53.0	3.9	44.3	4.5	57.5	1.4			
--DIVISIONAL DATA--	32.0	-3.3	37.2	-2	45.7	.1	59.2	5.0	60.7	-3.0	74.8	2.6	78.9	2.3	72.7	-3.0	67.7	-1.8	56.6	-2.1	52.7	3.1	44.3	4.2	56.9	.3			
CENTRAL EASTERN SHORE 02																													
ROYAL OAK 2 SSW	29.5	-4.6	36.0	-5	45.0	-7	60.6	5.7	62.6	-2.3	76.9	3.4	79.6	2.1	73.9	-2.3	68.3	-1.5	57.4	-1.7	53.3	3.9	43.5	4.4	57.2	.5			
VIENNA	32.0	-2.9	36.7	-7	45.8	-7	60.8	5.4	62.2	-3.0	76.4	2.8	80.9	3.1	74.8	-1.5	69.1	-.8	57.4	-1.6	53.3	3.9	44.2	4.5	57.8	.7			
--DIVISIONAL DATA--	30.8	-3.4	36.4	-3	45.4	-4	60.7	5.9	62.4	-2.3	76.7	3.4	80.3	2.9	74.4	-1.7	68.7	-.9	57.4	-1.4	53.3	4.1	43.9	4.7	57.5	.9			
LOWER SOUTHERN 03																													
LA PLATA 1 W	28.8	-5.0	36.6	-.4																									
MECHANICSVILLE 5 NE	28.1	-5.2	35.2	-1.1	45.1	-6	60.6	6.2	60.6	-3.3	74.8	2.9	78.0	1.8	72.5	-2.1	65.6	-2.3	54.9	-1.9	51.3	3.7	42.7	4.5	55.8	.2			
OWINGS FERRY LANDING	27.7	-5.8	34.5	-1.7	44.5	-1.0	60.4	5.8	61.1	-3.3	76.0	3.7	78.4	2.3	72.8	-2.1	66.3	-2.4	55.7	-1.9	51.2	2.9	42.3	4.3	55.9	.1			
--DIVISIONAL DATA--	28.2	-5.8	35.4	-1.4	44.8	-1.1	60.5	5.6	60.9	-3.5	75.4	2.9	78.2	1.6	72.7	-2.7	66.0	-3.0	55.3	-2.6	51.3	2.7	42.5	3.7	55.9	-.2			
UPPER SOUTHERN 04																													
ANNAPOLIS POLICE BRKS	31.2	-2.4	35.0	-1.1	44.2	-1.0	61.1	6.3	63.3	-1.3	78.8	5.3	80.9	3.3	75.3	-1.0	69.9	-.1	57.9	-.5	52.9	4.8							
BALTIMORE WSO ARPT	27.1	-4.7	34.0	-.8	43.0	-1.1	59.6	6.2	60.6	-2.8	77.2	4.7	80.1	3.1	74.1	-1.5	68.1	-.4	56.8	-.2	51.9	5.1	42.6	5.9	56.3	1.2			
BELTSVILLE	26.4	-4.1	33.5	-.2	41.7	-1.2																							
COLLEGE PARK	27.7	-4.8	35.4	-.1	43.7	-1.2	60.2	6.2	62.5	-1.7	77.8	4.9	80.8	3.4	75.0	-1.0	69.0	.1	56.8	-.4	52.3	4.9	44.4	7.1	57.1	1.5			
DALECARLIA RESERVOIR	27.4	-5.5	34.7	-1.4	42.7	-2.9	61.4	6.4	61.0	-3.8	76.4	3.3	80.8	3.4	74.6	-1.2	66.9	-2.2	56.3	-1.1	51.5	4.1	42.4	5.0					
GLENN DALE BELL STN	28.1	-4.4	34.3	-1.2	42.9	-1.8	59.8	6.9	61.3	-1.9	76.8	5.5	80.2	4.7	73.4	-.8	67.2	-.5	54.8	-1.6	51.9	4.9	41.2	4.2	56.0	1.1			
LAUREL 3 W	24.8	-7.2	34.8	-.1	43.6	-.8	60.9	6.9	61.6	-2.2	76.5	4.2	80.0	3.0	74.4	-1.4	68.4	-.3	58.0	.7	52.7	5.4	43.3	6.7	56.6	1.3			
NATIONAL ARBORETUM DC	27.4	-5.2	35.5	.3	42.8	-2.0	59.5	5.5	61.1	-2.9	77.2	4.5	79.8	2.8	73.8	-1.9	67.5	-1.1	55.0	-2.1	51.4	4.2	42.2	4.8	56.1	.6			
--DIVISIONAL DATA--	27.5	-4.9	34.7	-.5	43.1	-1.5	60.4	6.5	61.6	-2.1	77.2	4.9	80.3	3.7	74.4	-.9	68.1	-.4	56.5	-.3	52.1	4.9	42.7	5.6	56.6	1.3			
NORTHERN EASTERN SHORE 05																													
CHESTERTOWN	25.7	-6.4	32.4	-2.3	41.9	-2.0	59.0	5.6	60.4	-3.2	75.9	3.4	79.3	2.5	72.5	-3.1	66.6	-2.3	54.6	-2.9	51.8	4.4	41.7	4.7	55.2	-.1			
MILLINGTON 1 SE	27.0	-4.2	33.0	-.9	42.3	-1.1	58.8	6.4																					
--DIVISIONAL DATA--	26.4	-5.8	32.7	-2.2	42.1	-2.1	58.9	5.5	60.4	-3.1	75.9	3.7	79.3	2.8	72.5	-2.7	66.5	-2.1	54.8	-2.5	51.7	4.2	41.8	4.8	55.3	.0			
NORTHERN CENTRAL 06																													
ABERDEEN PHILLIPS FIEL			33.3	-1.8	43.0	-1.3			61.5	-2.1	76.9	4.9			73.2	-1.8	67.7	-.9			54.4	6.9							
BALTIMORE CITY	28.7	-6.2	36.2	-1.1	45.2	-1.4	63.3	6.7	62.8	-4.0	78.4	2.4	82.1	1.7	75.7	-3.0	70.1	-1.5	58.6	-1.4	52.8	3.2	43.3	4.0	58.1	-.1			
BENSON POLICE BARRACKS	27.0	-3.8	37.2	3.4	47.0	3.7	61.0	8.1	62.8	-.3	77.3	5.9	80.2	4.6	74.2	.0	69.0	1.2	57.9	1.4	52.1	5.9	42.5	6.8	57.4	3.1			
CATOCTIN MOUNTAIN PARK	21.5		29.2		37.7		57.5		57.8		71.7		73.6		68.3		63.3		54.7		48.3		39.5		51.9				
COWINGO DAM	24.9	-4.3	32.9	.9	41.2	-.3	59.3	7.9			77.4	6.6	80.6	5.5	74.2	.2	68.1	1.1	56.7	1.6	51.3	6.8	40.2	5.9					
DAMASCUS 2 SSW	22.7		30.7		38.9		56.4		56.6		73.0		75.6		69.5		63.2		52.5		47.8		39.1		52.2				
EMMITSBURG 2 SE	20.2	-8.9	27.2	-4.8	37.1	-4.9	53.9	2.4	55.5	-5.9	70.6	.8	73.6	-.5	68.7	-4.0	64.5	-1.1	52.5	-1.8	48.4	4.1	38.4	4.2	50.9	-1.7			
FREDERICK POLICE BRKS	26.3		33.7		43.1		60.8		62.3		77.0		79.5		73.7		67.8		56.5		51.9		41.5		56.2				
FREDERICK GAS PLANT																													
MILLERS 4 NE	23.4		31.0		39.2		57.0		57.8		73.3		75.8		70.0		64.4		53.9		49.1		40.1		52.9				
ROCKVILLE 1 NE	26.2	-4.5	32.6	-.5	42.7	-.7	60.0	7.6	59.6	-2.4	75.5	5.1	78.5	3.8	72.8	-.2	66.5	.8	55.6	.7	50.8	5.9	41.5	6.4	55.2	1.8			
TOWSON	27.2	-4.8	35.5	1.0	44.3	5	62.3	8.8	60.8	-2.8			80.1	3.4			71.0	2.2			51.0	3.8	41.2	4.3					
UNIONVILLE	21.7	-5.5	29.6	-.1	38.6	-1.6	55.8	7.0	57.5	-2.3	73.1	4.6	76.1	3.1	70.4	-.8	64.0	.2	52.2	-.4	47.2	4.8	38.3	5.8	52.0	1.2			
WESTMINSTER POL BRKS	23.9	-5.6	32.6	.3	40.3	-1.6	59.1	7.2	61.0	-.9	75.9	5.5	78.2	3.6	73.1	.0	67.1	.8	56.3	1.2	50.7	5.6	40.6	6.1	54.9	1.9			
WOODSTOCK	25.2	-5.6	32.9	-.7	41.4	-1.7	59.1	6.5	60.1	-2.6	75.1	4.2	78.0	2.6	72.0	-2.0	65.9	-1.2	54.4	-1.0	49.8	4.1	40.3	4.6	54.5	.6			
--DIVISIONAL DATA--	24.5	-6.3	32.5	-1.0	41.4	-1.6	58.9	6.3	59.7	-2.9	75.0	4.0	77.8	2.6	72.0	-1.8	66.6	-.5	55.2	-.5	50.4	4.6	40.5	5.1	54.5	.7			

SEE REFERENCE NOTES FOLLOWING STATION INDEX.

AVERAGE TEMPERATURES AND DEPARTURES FROM NORMAL (°F)

MARYLAND AND
DELAWARE
1934

STATION	JAN		FEB		MAR		APR		MAY		JUN		JUL		AUG		SEP		OCT		NOV		DEC		ANNUAL	
	TEMPERATURE	DEPARTURE	TEMPERATURE	DEPARTURE	TEMPERATURE	DEPARTURE	TEMPERATURE	DEPARTURE	TEMPERATURE	DEPARTURE	TEMPERATURE	DEPARTURE	TEMPERATURE	DEPARTURE	TEMPERATURE	DEPARTURE	TEMPERATURE	DEPARTURE	TEMPERATURE	DEPARTURE	TEMPERATURE	DEPARTURE	TEMPERATURE	DEPARTURE	TEMPERATURE	DEPARTURE
APPALACHIAN MOUNTAIN 07	24.7	-5.6	32.1	-1.3	40.9	-2.3	58.0	4.4	58.6	-4.5	74.5	3.5	76.2	1.1	71.0	-2.9	64.3	-2.4	53.3	-1.5	48.3	3.7	37.8	3.2	53.3	-1.4
CUMBERLAND 2	18.6		27.3		33.5		51.0		51.9		67.5		69.9		65.3		59.4		49.7		45.4		35.5		47.9	
FROSTBURG 2	22.5	-5.8	30.1	-5	39.0	-1.7	55.7	5.3	56.9	-3.3	72.4	3.9	75.4	2.4	69.7	-1.9	63.6	-9	52.0	-8	47.3	3.9				
HANCOCK																										
--DIVISIONAL DATA-->	21.9	-7.1	29.8	-2.0	37.8	-3.7	54.9	3.4	55.8	-5.4	71.5	2.3	73.8	.6	68.7	-3.2	62.4	-2.8	51.7	-2.1	47.0	3.0	36.7	3.1	51.0	-1.1
ALLEGHENY PLATEAU 08																										
OAKLAND 1 SE	21.2	-4.4	28.4	.6	36.4	-1.1	52.8	6.1	52.1	-4.2	67.6	3.8	69.1	1.4	65.8	-8	58.7	-1.7	49.0	-6	44.7	4.6	36.2	5.9	48.5	.8
SAVAGE RIVER DAM	20.3	-5.2	28.2	.4	35.9	-1.6	52.5	4.8	53.7	-3.9	68.8	3.5	71.0	1.6	66.8	-1.5	60.5	-1.3	48.9	-1.4	45.6	4.8	35.8	5.5	49.0	.5
--DIVISIONAL DATA-->	20.8	-4.0	28.3	1.2	36.2	-.6	52.7	5.9	52.9	-3.7	68.2	4.0	70.1	2.1	66.3	-6	59.6	-1.0	49.0	-5	45.2	5.2	36.0	6.4	48.8	1.2
DELAWARE																										
NORTHERN 01																										
NEWARK UNIVERSITY FARM	25.5	-5.8	31.4	-2.7	41.2	-2.0	58.0	5.4	60.3	-2.8	76.2	4.5	78.6	2.6	72.5	-2.1	66.4	-1.6	54.6	-1.9	50.1	3.4	41.2	5.1	54.7	-.2
WILMINGTON HSO ARPT	26.3	-4.3	31.6	-1.8	41.8	-.9	58.4	6.2	60.0	-2.5	75.8	4.3	79.8	3.4	73.2	-1.8	67.2	-.8	53.9	-2.3	49.7	3.4	40.0	4.2	54.8	.6
WILMINGTON PORTER RSVR	25.1	-5.0	31.0	-1.7	40.7	-1.1	57.6	6.1	59.9	-2.0	74.9	4.1	78.7	3.5	71.9	-1.9	66.3	-.5	55.4	-.2	50.7	5.0	40.8	5.5	54.4	1.0
--DIVISIONAL DATA-->	25.6	-5.2	31.3	-2.2	41.2	-1.5	58.0	5.8	60.1	-2.5	75.6	4.1	79.0	3.1	72.5	-2.0	66.6	-1.1	54.6	-1.6	50.2	3.9	40.7	4.8	54.6	.5
SOUTHERN 02																										
DOVER	28.8	-5.0	34.7	-1.7	43.5	-1.5	59.1	5.0	60.4	-3.8	75.3	2.5	78.6	1.4	72.8	-3.1	67.3	-2.3	56.1	-2.5	52.9	3.9	43.3	4.5	56.1	-.2
GEORGETOWN 5 SW	28.6	-4.1	35.6	.9			57.3	5.0	60.1	-2.2	74.2	3.0	76.1	.3	72.6	-1.7	66.4	-1.2	54.1	-2.5	52.2	5.0	42.6	5.0	57.8	
GREENWOOD 2 NE	28.8		35.0		43.9		58.4		59.8		74.7		78.6		72.3		66.4		55.2		52.0		42.6		55.6	
LEWES	31.5	-3.0	36.7	.1	45.3	.7	60.2	6.9	61.4	-1.5	76.5	4.9	79.3	3.4	73.9	-1.0	69.3	.1	58.7	.3	55.0	5.5	45.2	5.5	57.8	1.8
--DIVISIONAL DATA-->	29.4	-4.3	35.5	-.4	44.2	-.4	58.8	5.4	60.4	-2.9	75.2	3.1	78.2	1.8	72.9	-2.2	67.4	-1.3	56.0	-1.7	53.0	4.5	43.4	4.8	56.2	.5

SEE REFERENCE NOTES FOLLOWING STATION INDEX

TEMPERATURE EXTREMES AND FREEZE DATA (°F)

MARYLAND AND
DELAWARE
1994

STATION	HIGHEST	DATE	LOWEST	DATE	LAST SPRING MINIMUM OF										FIRST FALL MINIMUM OF										NUMBER OF DAYS BETWEEN DATES									
					16° OR BELOW		20° OR BELOW		24° OR BELOW		28° OR BELOW		32° OR BELOW		32° OR BELOW		28° OR BELOW		24° OR BELOW		20° OR BELOW		16° OR BELOW		16° OR BELOW	20° OR BELOW	24° OR BELOW	28° OR BELOW	32° OR BELOW					
					DATE	TEMP.	DATE	TEMP.	DATE	TEMP.	DATE	TEMP.	DATE	TEMP.	DATE	TEMP.	DATE	TEMP.	DATE	TEMP.	DATE	TEMP.	DATE	TEMP.	DATE	TEMP.	DATE	TEMP.	DATE	TEMP.	DATE	TEMP.		
MARYLAND																																		
SOUTHERN EASTERN SHORE																																		
ASSATEAGUE IS NATL SEA	94	7/ 9	1	1/19	1/22	15	2/10	18	2/28	22	3/17	26	3/17	26	11/24	31	12/30	28	NONE	NONE	NONE	NONE	NONE	NONE	NONE	NONE	NONE	NONE	12306	217	216	180	252	
PRINCESS ANNE	96	6/15	-6	1/19	2/28	13	4/ 9	20	4/ 9	20	4/ 9	20	4/23	29	10/ 5	32	10/ 6	27	11/11	24	11/12	20	12/31	20	NONE	NONE	NONE	NONE	NONE	NONE	NONE	NONE	NONE	
SALISBURY	97	6/15	0	1/19	2/10	16	2/28	19	3/17	24	3/17	24	3/18	30	11/12	31	11/24	26	12/30	24	NONE	NONE	NONE	NONE	NONE	NONE	NONE	NONE	NONE	NONE	NONE	NONE	NONE	
SALISBURY FAA ARPT	98	6/15	-1	1/19	2/10	16	2/28	18	3/17	24	4/ 9	28	4/ 9	28	10/29	31	11/24	23	11/24	23	12/30	20	NONE	NONE	NONE	NONE	NONE	NONE	NONE	NONE	NONE	NONE	NONE	
SNOW HILL 4 N	98	7/ 9	-1	1/19	2/28	16	2/28	16	3/18	24	4/ 9	28	4/23	32	10/28	30	11/12	25	11/24	22	12/31	17	NONE	NONE	NONE	NONE	NONE	NONE	NONE	NONE	NONE	NONE	NONE	
CENTRAL EASTERN SHORE																																		
ROYAL OAK 2 SSW	97	6/15	-2	1/21	2/10	15	2/27	17	2/28	21	3/17	26	3/20	32	11/12	29	12/ 1	27	12/31	19	12/31	19	NONE	NONE	NONE	NONE	NONE	NONE	NONE	NONE	NONE	NONE	NONE	
VIENNA	97	6/15	2	1/20	2/28	13	2/28	13	3/17	22	3/17	22	3/21	31	10/28	31	11/12	28	12/20	24	12/30	17	NONE	NONE	NONE	NONE	NONE	NONE	NONE	NONE	NONE	NONE	NONE	
LOWER SOUTHERN																																		
LA PLATA 1 W					MSG		MSG		MSG		MSG		MSG		MSG		MSG		MSG		MSG		MSG		MSG		MSG		MSG		MSG		MSG	
MECHANICSVILLE 5 NE	96	6/15	-4	1/19	2/28	12	2/28	12	3/17	23	3/26	28	4/23	32	10/28	32	11/11	28	12/13	24	12/31	19	NONE	NONE	NONE	NONE	NONE	NONE	NONE	NONE	NONE	NONE	NONE	NONE
OWINGS FERRY LANDING	96	6/19	-5	1/19	2/28	13	2/28	13	3/17	22	3/26	28	3/30	32	10/28	30	11/12	27	11/24	24	12/31	18	NONE	NONE	NONE	NONE	NONE	NONE	NONE	NONE	NONE	NONE	NONE	NONE
UPPER SOUTHERN																																		
ANNAPOLIS POLICE BRKS	98	7/ 9			2/27	16	2/28	20	3/17	24	3/17	24	3/26	32	11/12	32	11/24	26	MSG		MSG		MSG		MSG		MSG		MSG		MSG		MSG	
BALTIMORE HSO ARPT	R101	6/15	-5	1/19	2/28	14	2/28	14	3/17	23	3/17	23	3/26	30	11/12	30	11/24	24	11/24	24	12/31	19	NONE	NONE	NONE	NONE	NONE	NONE	NONE	NONE	NONE	NONE	NONE	NONE
BELTSVILLE					2/28	13	MSG		MSG		MSG		MSG		MSG		MSG		MSG		MSG		MSG		MSG		MSG		MSG		MSG		MSG	
COLLEGE PARK	99	7/ 9	-5	1/21	2/28	14	2/28	14	3/17	23	3/20	28	4/ 8	32	11/11	30	11/24	25	12/27	24	12/31	20	NONE	NONE	NONE	NONE	NONE	NONE	NONE	NONE	NONE	NONE	NONE	
DALECARLIA RESERVOIR	100	6/15	-8	1/19	3/ 1	15	3/17	19	3/17	19	3/22	26	4/ 2	30	10/28	32	11/12	28	12/13	24	12/31	20	NONE	NONE	NONE	NONE	NONE	NONE	NONE	NONE	NONE	NONE	NONE	
GLENN DALE BELL STN	102	6/15	-10	1/21	2/27	13	3/17	20	4/ 8	23	4/23	28	4/23	28	10/ 6	32	11/11	24	11/11	24	11/24	20	NONE	NONE	NONE	NONE	NONE	NONE	NONE	NONE	NONE	NONE	NONE	
LAUREL 3 W	101	6/15	-12	1/19	3/17	14	3/17	14	3/17	14	3/17	14	3/19	29	11/23	30	11/24	25	11/27	22	NONE	NONE	NONE	NONE	NONE	NONE	NONE	NONE	NONE	NONE	NONE	NONE	NONE	
NATIONAL ARBORETUM DC	100	6/16	-5	1/20	2/28	15	3/ 1	19	3/20	22	3/20	22	3/26	32	11/11	30	11/12	28	11/24	23	NONE	NONE	NONE	NONE	NONE	NONE	NONE	NONE	NONE	NONE	NONE	NONE	NONE	
NORTHERN EASTERN SHORE																																		
CHESTERTOWN	99	6/15	-6	1/19	2/28	14	2/28	14	3/17	21	3/21	28	4/ 8	31	11/12	30	11/24	28	12/27	24	12/31	14	12/31	14	12/31	14	12/31	14	12/31	14	12/31	14	12/31	
MILLINGTON 1 SE					2/27	14	2/28	17	3/17	22	3/21	28	MSG		10/28	31	11/12	26	12/13	24	12/30	20	12/31	20	12/31	20	12/31	20	12/31	20	12/31	20		
NORTHERN CENTRAL																																		
ABERDEEN PHILLIPS FIEL	R102	7/ 8	-4	1/19	2/27	13	2/28	18	3/17	22	3/17	22	3/18	32	11/23	31	12/ 2	27	12/ 9	24	NONE	NONE	NONE	NONE	NONE	NONE	NONE	NONE	NONE	NONE	NONE	NONE	NONE	
BALTIMORE CITY	99	6/19	-8	1/19	2/10	16	2/11	20	2/28	22	3/18	28	3/18	28	11/12	30	11/23	27	12/12	23	12/31	19	NONE	NONE	NONE	NONE	NONE	NONE	NONE	NONE	NONE	NONE	NONE	
BENSON POLICE BARRACKS	90	6/16	-18	1/19	3/17	13	3/17	13	3/19	24	4/ 8	25	4/ 8	25	11/11	28	11/11	28	11/24	21	12/12	12	12/12	12	12/12	12	12/12	12	12/12	12	12/12	12	12/12	
CATOCTIN MOUNTAIN PARK					3/17	13	3/17	13	3/17	13	3/30	28	MSG		11/12	32	11/24	24	11/24	24	12/20	20	NONE	NONE	NONE	NONE	NONE	NONE	NONE	NONE	NONE	NONE	NONE	
CONOWINGO DAM					1/21	3/17	13	3/17	13	3/17	13	3/30	28	MSG		11/12	32	11/24	24	11/24	24	12/20	20	NONE	NONE	NONE	NONE	NONE	NONE	NONE	NONE	NONE		
DAMASCUS 2 SSW	94	6/19	-12	1/19	2/28	11	3/17	18	4/ 8	24	4/ 8	24	4/ 8	24	10/11	31	11/11	28	11/12	24	11/24	20	NONE	NONE	NONE	NONE	NONE	NONE	NONE	NONE	NONE	NONE	NONE	
EHMITSBURG 2 SE	94	6/16	-27	1/21	3/12	15	3/17	17	3/21	24	4/23	28	5/14	31	10/11	31	10/28	27	11/12	22	12/12	19	12/31	19	12/31	19	12/31	19	12/31	19	12/31	19		
FREDERICK POLICE BRKS	99	6/16	-8	1/19	2/27	15	2/28	17	3/17	21	3/17	21	4/ 8	30	11/12	29	11/24	26	12/13	23	12/21	18	NONE	NONE	NONE	NONE	NONE	NONE	NONE	NONE	NONE	NONE	NONE	
FREDERICK GAS PLANT					MSG		MSG		MSG		MSG		MSG		MSG		MSG		MSG		MSG		MSG		MSG		MSG		MSG		MSG		MSG	
MILLERS 4 NE	95	6/15	-13	1/19	2/28	12	3/17	17	3/17	17	3/19	27	4/23	32	10/12	32	11/12	28	11/24	21	12/13	20	NONE	NONE	NONE	NONE	NONE	NONE	NONE	NONE	NONE	NONE	NONE	
ROCKVILLE 1 NE	95	7/ 8	-7	1/19	2/28	16	2/28	16	3/17	21	3/17	21	4/ 8	30	11/12	28	11/12	28	12/12	24	12/31	19	NONE	NONE	NONE	NONE	NONE	NONE	NONE	NONE	NONE	NONE	NONE	
TOWSON	97	6/15			2/28	15	2/28	15	3/17	21	3/17	21	3/26	31	MSG		MSG		MSG		12/30	20	MSG		MSG		MSG		MSG		MSG		MSG	
UNIONVILLE	99	6/15	-22	1/21	2/28	7	3/17	17	4/ 8	21	4/23	26	5/28	32	10/11	31	10/17	28	11/11	24	12/12	19	12/31	19	12/31	19	12/31	19	12/31	19	12/31	19		
WESTMINSTER POL BRKS	98	6/15	-13	1/19	3/17	12	3/17	12	3/17	12	4/ 8	27	4/ 8	27	11/11	32	11/24	22	11/24	22	12/12	20	NONE	NONE	NONE	NONE	NONE	NONE	NONE	NONE	NONE	NONE	NONE	
WOODSTOCK	98	6/15	-10	1/19	2/28	10	3/17	19	3/17	19	3/31	27	4/23	30	10/12	31	11/11	27	11/24	22	12/31	16	12/31	16	12/31	16	12/31	16	12/31	16	12/31	16		
APPALACHIAN MOUNTAIN																																		
CUMBERLAND 2	99	6/19	-14	1/19	2/28	10	3/17	20	3/17	20	4/ 8	27	4/ 8	27	10/10	31	11/11	27	12/ 1	22	12/13	20	NONE	NONE	NONE	NONE	NONE	NONE	NONE	NONE	NONE	NONE	NONE	
FROSTBURG 2	88	7/ 7	-21	1/20	3/18	11	3/20	20	4/ 9	23	4/ 9	23	4/24	32	10/12	31	11/12	28	11/23	24	12/12	19	12/13	19	12/13	19	12/13	19	12/13	19	12/13	19		
HANCOCK	98	7/ 7			3/ 1	5	3/18	20	3/18	20	4/22	28	5/ 2	32	10/ 6	31	10/13	27	11/12	22	MSG		MSG		MSG		MSG		MSG		MSG		MSG	

SEE REFERENCE NOTES FOLLOWING STATION INDEX

TEMPERATURE EXTREMES AND FREEZE DATA (°F)

MARYLAND AND
DELAWARE
1994

STATION	HIGHEST	DATE	LOWEST	DATE	LAST SPRING MINIMUM OF										FIRST FALL MINIMUM OF										NUMBER OF DAYS BETWEEN DATES				
					16° OR BELOW		20° OR BELOW		24° OR BELOW		28° OR BELOW		32° OR BELOW		32° OR BELOW		28° OR BELOW		24° OR BELOW		20° OR BELOW		16° OR BELOW		16° OR BELOW	20° OR BELOW	24° OR BELOW	28° OR BELOW	32° OR BELOW
					DATE	TEMP.	DATE	TEMP.	DATE	TEMP.	DATE	TEMP.	DATE	TEMP.	DATE	TEMP.	DATE	TEMP.	DATE	TEMP.	DATE	TEMP.	DATE	TEMP.					
ALLEGHENY PLATEAU 08	88	7/ 6	-25	1/21	3/17	11	4/ 8	18	4/23	23	4/23	23	5/28	30	10/ 4	28	10/ 4	28	10/11	23	10/28	20	12/13	15	27	203	171	164	129
OAKLAND 1 SE	92	7/ 7	-22	1/20	3/18	15	3/18	15	4/ 9	23	4/ 9	23	5/14	32	10/ 5	32	10/ 7	27	11/12	24	12/13	18	NONE		270	217	181	144	
SAVAGE RIVER DAM																													
DELAWARE																													
NORTHERN 01																													
NEWARK UNIVERSITY FARM	98	6/19	-8	1/19	3/17	14	3/17	14	3/17	14	3/31	28	4/23	31	10/12	31	11/12	28	11/23	23	12/30	20	NONE		288	251	226	172	
WILMINGTON HSO ARPT	R100	6/19	-5	1/19	2/28	14	2/28	14	3/17	22	3/17	22	4/ 8	31	11/12	29	11/24	22	11/24	22	12/30	20	NONE		305	252	222	18	
WILMINGTON PORTER RSVR	97	6/19	-7	1/19	2/28	12	2/28	12	3/17	21	3/17	21	3/21	32	11/23	30	11/24	24	11/24	24	12/30	20	NONE		305	252	225	247	
SOUTHERN 02																													
DOVER	94	7/ 8	-3	1/19	2/27	13	2/28	17	3/17	21	3/18	28	3/26	32	11/11	30	11/24	27	12/30	22	12/31	20	NONE		306	288	251	230	
GEORGETOWN 5 SW	99	7/ 9			MSG		MSG		MSG		MSG		4/ 9	30	10/28	30	11/12	27	12/20	24	12/31	17	NONE					202	
GREENWOOD 2 NE	97	6/15	-4	1/19	2/27	14	2/28	17	3/17	22	3/21	28	4/ 9	31	10/28	31	11/12	28	11/24	24	12/31	17	NONE		306	252	236	202	
LEWES	95	7/ 9	-1	1/19	2/28	15	2/28	15	3/17	23	3/17	23	3/18	31	11/24	27	11/24	27	NONE		NONE		NONE					252	251

SEE REFERENCE NOTES FOLLOWING STATION INDEX
9

MONTHLY AND SEASONAL COOLING DEGREE DAYS
BASE=65 DEGREES FAHRENHEIT

STATION	JAN	FEB	MAR	APR	MAY	JUN	JUL	AUG	SEP	OCT	NOV	DEC	TOTAL	SEASONAL NORM
MARYLAND														
SOUTHERN EASTERN SHORE 01														
ASSATEAGUE IS NATL SEA	B	0	0	0	7	11	204	317	212	143	B	7	0	B
PRINCESS ANNE		0	0	0	29	34	286	405	190	62		0	0	0
SALISBURY		0	0	2	61	58	368	492	304	143		4	4	0
SALISBURY FAA ARPT		0	B	1	45	38	338	488	263	109		1	3	0
SNOW HILL 4 N		0	0	2	55	59	342	478	275	122		6	4	0
CENTRAL EASTERN SHORE 02														
ROYAL OAK 2 SSW		0	0	0	42	63	368	458	284	122		8	1	0
VIENNA		0	0	0	47	54	353	496	311	144		8	1	0
LOWER SOUTHERN 03														
LA PLATA 1 W		0	0	-	-	-	-	-	-	-		-	-	-
MECHANICSVILLE 5 NE		0	0	3	46	49	304	413	247	76		1	0	0
OWINGS FERRY LANDING		0	0	0	38	56	340	424	251	83		7	0	0
UPPER SOUTHERN 04														
ANNAPOLIS POLICE BRKS		0	B	0	50	65	418	495	321	155		11	2	-
BALTIMORE WSO ARPT	R	0	0	0	38	49	374	476	292	112		6	3	0
BELTSVILLE		0	0	0	-	-	-	-	-	-		-	-	-
COLLEGE PARK	B	0	0	0	52	80	391	498	313	140		3	3	B
DALECARLIA RESERVOIR		0	0	0	58	45	352	-	303	104		2	0	0
GLENN DALE BELL STN		0	0	0	53	48	362	478	270	100		2	2	0
LAUREL 3 W		0	0	2	50	53	351	471	300	125		7	2	0
NATIONAL ARBORETUM DC		0	0	1	44	52	377	466	280	103		1	2	0
NORTHERN EASTERN SHORE 05														
CHESTERTOWN		0	0	0	34	43	336	452	244	89		2	0	0
MILLINGTON 1 SE		0	0	0	30	-	-	-	87	-		0	0	0
NORTHERN CENTRAL 06														
ABERDEEN PHILLIPS FIEL	R	-	B	B	-	B	60	366	-	262		114	-	-
BALTIMORE CITY		0	0	0	6	72	79	408	537	338		9	6	0
BANSON POLICE BARRACKS		0	B	B	52	66	377	477	290	137		4	1	0
CATOCTIN MOUNTAIN PARK		0	0	0	35	29	221	273	131	44		0	5	0
CONOWINGO DAM	B	0	0	0	52	-	379	488	288	119		4	3	0
DAMASCUS 2 SSW		0	0	0	15	18	265	335	166	46		0	0	B
EMMITSBURG 2 SE		0	0	0	6	6	203	273	152	69		0	0	0
FREDERICK POLICE BRKS		0	0	1	62	69	370	455	278	112		3	0	0
FREDERICK GAS PLANT		0	0	0	-	-	-	-	-	-		-	-	-
MILLERS 4 NE		0	0	0	24	24	265	338	178	64		1	1	0
ROCKVILLE 1 NE		0	0	1	45	40	324	424	246	85		4	4	0
TOWSON	B	0	0	0	61	41	-	475	-	191		-	0	0
UNIONVILLE		0	0	0	8	22	264	350	191	61		1	0	0
WESTMINSTER POL BRKS		0	0	0	41	48	341	415	259	95		3	3	0
WOODSTOCK		0	0	0	40	40	317	412	227	78		3	3	0
APPALACHIAN MOUNTAIN 07														
CUMBERLAND 2		0	0	0	36	36	297	356	200	54		0	1	0
FROSTBURG 2		0	0	0	8	1	135	164	79	25		0	0	0
HANCOCK		0	0	0	20	26	250	328	172	49		0	0	-
ALLEGHENY PLATEAU 08														
OAKLAND 1 SE		0	0	0	1	2	128	138	79	12		0	0	0
SAVAGE RIVER DAM		0	0	0	6	3	159	196	105	25		0	0	0

SEE REFERENCE NOTES FOLLOWING STATION INDEX

MONTHLY AND SEASONAL COOLING DEGREE DAYS
BASE=65 DEGREES FAHRENHEIT

MARYLAND AND
DELAWARE
1994

STATION	JAN	FEB	MAR	APR	MAY	JUN	JUL	AUG	SEP	OCT	NOV	DEC	TOTAL	SEASONAL NORM
DELAWARE														
NORTHERN 01														
NEWARK UNIVERSITY FARM				24	42	349	427	241	91	2	0	0	1176	1033
WILMINGTON WSO ARPT	0	0	0	32	41	334	466	260	99	4	0	0	1236	1046
WILMINGTON PORTER RSVR	0	0	0	21	40	307	432	220	85	2	0	0	1107	930
SOUTHERN 02														
DOVER	0	0	0	35	40	317	432	251	107	0	2	0	1184	1199
GEORGETOWN 5 SW	0	0	-	33	42	293	352	249	93	4	1	0	-	976
GREENWOOD 2 NE	0	0	0	28	30	302	430	238	88	0	0	0	1116	
LEWES	0	0	1	41	43	354	452	284	145	13	6	0	1339	1066

SEE REFERENCE NOTES FOLLOWING STATION INDEX

TOTAL EVAPORATION AND WIND MOVEMENT

MARYLAND AND
DELAWARE
1994

STATION	JAN	FEB	MAR	APR	MAY	JUN	JUL	AUG	SEP	OCT	NOV	DEC	ANNUAL
MARYLAND													
UPPER SOUTHERN 04													
BELTSVILLE	WIND	-	-	-	-	-	-	-	-	-	-	-	-
	EVAP	-	-	-	-	-	-	-	-	-	-	-	-
	MAX TEMP	-	-	-	-	-	-	-	-	-	-	-	-
	MIN TEMP	-	-	-	-	-	-	-	-	-	-	-	-
ALLEGHENY PLATEAU 08													
SAVAGE RIVER DAM	WIND	-	-	-	B 1604	1068	696	-	592	653	811	-	-
	EVAP	-	-	-	B 5.86	B 4.96	B 5.51	-	B 4.30	B 3.69	B 2.66	-	-
	MAX TEMP	-	-	-	-	-	-	-	-	-	-	-	-
	MIN TEMP	-	-	-	-	-	-	-	-	-	-	-	-
DELAWARE													
NORTHERN 01													
NEWARK UNIVERSITY FARM	WIND	-	-	-	-	1412	870	380	436	878	664	1343	-
	EVAP	-	-	-	B 4.60	B 5.70	6.74	B 7.43	B 4.86	4.05	B 2.25	B 1.59	-
	MAX TEMP	-	-	-	-	-	-	-	-	-	-	-	-
	MIN TEMP	-	-	-	-	-	-	-	-	-	-	-	-
SOUTHERN 02													
GEORGETOWN 5 SW	WIND	-	-	-	B 1849	1645	1258	-	-	842	673	-	-
	EVAP	-	-	-	B 6.51	B 7.59	B 7.33	-	-	B 6.01	-	-	-
	MAX TEMP	-	-	-	68.2	73.5	87.5	-	-	80.8	M 69.7	-	-
	MIN TEMP	-	-	-	44.7	50.3	65.0	-	-	56.5	M 45.1	-	-

SEE REFERENCE NOTES FOLLOWING STATION INDEX
12.

STATION INDEX

MARYLAND AND
DELAWARE
1994

STATION	INDEX NO.	DIVISION NO.	COUNTY	LATITUDE	LONGITUDE	ELEVATION FEET	YEARS OF RECORD			OPENED OR CLOSED DURING YR		SEE REFERENCE NOTES
							TEMP.	PRECIP.	EVAP.	MONTH OPENED	MONTH CLOSED	
MARYLAND												
ABERDEEN PHILLIPS FIEL	00115	06	HARFORD	39 28	76 10W	57	71	71	0			C H
ANNAPOLIS POLICE BRKS	01193	04	ANNE ARUNDEL	38 59	76 30W	25	38	38	0			C H H H
ASSATEAGUE IS NATL SEA	03335	01	WORCESTER	38 14	75 8W	10	29	29	0			C H H H
BALTIMORE WSO ARPT	04665	04	ANNE ARUNDEL	39 11	76 40W	148	62	62	0			C C H H J
BALTIMORE CITY #	R0470	06	BALTIMORE CI	39 17	76 37W	14	126	126	0			C C C
BELTSVILLE	07000	04	PRINCE GEORG	39 2	76 53W	120	58	58	5			C C
BENSON POLICE BARRACKS	0732	06	HARFORD	39 30	76 23W	365	49	49	0			C H H H
CATOCTIN MOUNTAIN PARK	1530	06	FREDERICK	39 39	77 29W	1610	30	30	0			C H H
CHESTERTOWN	1750	05	KENT	39 13	76 4W	40	91	91	0			H H H H
CLARKSVILLE 3 NNE	1862	06	HOWARD	39 15	76 56W	370	28	28	0			C H H H
COLLEGE PARK	1995	04	PRINCE GEORG	38 59	76 57W	90	110	110	0			C H H H
CONOWINGO DAM	2060	06	HARFORD	39 39	76 10W	40	61	61	0			C H H H
CUMBERLAND 2	2282	07	ALLEGANY	39 38	78 45W	730	24	24	0			H H H H
DALECARLIA RESERVOIR	2325	04	DIS COLUMBIA	38 56	77 7W	150	51	51	0			H H H H
DAMASCUS 2 SSW	2335	06	MONTGOMERY	39 16	77 14W	722	20	20	0			H H H H
DAMASCUS 2 SSW	2336	06	MONTGOMERY	39 16	77 14W	670	3	3	0			H H H H
EDGE MONT	2770	07	WASHINGTON	39 40	77 33W	905	0	58	0			H H H H
EMMITSBURG 2 SE	2906	06	FREDERICK	39 41	77 18W	416	41	41	0			H H H H
FREDERICK POLICE BRKS	3348	06	FREDERICK	39 25	77 26W	380	24	24	0			C H H H
FREDERICK GAS PLANT	3349	06	FREDERICK	39 27	77 24W	290	1	1	0			C H H H
FROSTBURG 2	3415	07	ALLEGANY	39 40	78 56W	2168	25	25	0			C H H H
GLENN DALE BELL STN	3675	04	PRINCE GEORG	38 58	76 48W	150	76	76	0			H H H H
HAGERSTOWN	3975	07	WASHINGTON	39 39	77 44W	660	53	53	0			C H H H
HANCOCK	4030	07	WASHINGTON	39 42	78 11W	428	63	63	0			C H H H
LA PLATA 1 W	5080	03	CHARLES	38 32	77 0W	140	81	81	0			C H H H
LAUREL 3 W	5111	04	PRINCE GEORG	39 6	76 54W	400	106	106	0			C H H H
MECHANICSVILLE 5 NE	5865	03	ST MARYS	38 27	76 41W	100	35	35	0			H H H H
MERRILL	5894	08	GARRETT	39 36	79 5W	1790	0	45	0			C H H H
MILLERS 4 NE	5934	06	CARROLL	39 43	76 48W	860	10	10	0			C H H H
MILLINGTON 1 SE	5985	05	KENT	39 16	75 52W	30	100	100	0			C H H H
NATIONAL ARBORETUM DC	6350	04	DIS COLUMBIA	38 54	76 59W	50	50	50	0			H H H H
OAKLAND 1 SE	6620	08	GARRETT	39 24	79 24W	2419	99	99	0			H H H H
OWINGS FERRY LANDING	6770	03	CALVERT	38 41	76 40W	160	80	80	0			H H H H
POTOMAC FILTER PLANT	7272	06	MONTGOMERY	39 2	77 15W	270	0	35	0			H H H H
PRINCESS ANNE	7330	01	SOMERSET	38 13	75 41W	20	48	48	0			H H H H
ROCKVILLE 1 NE	7705	06	MONTGOMERY	39 6	77 6W	440	49	49	0			H H H H
ROYAL OAK 2 SSW	7806	02	TALBOT	38 43	76 11W	10	49	49	0			C H H H
SALISBURY	8000	01	WICOMICO	38 22	75 35W	10	90	90	0			C H H H
SALISBURY FAA ARPT #	8005	01	WICOMICO	38 20	75 31W	50	49	49	0			C H H H
SAVAGE RIVER DAM	8065	08	GARRETT	39 31	79 8W	1495	46	49	46			C H H H
SNOW HILL 4 N	8380	01	WORCESTER	38 14	75 23W	30	81	81	0			C H H H
TOWSON	8877	06	BALTIMORE	39 23	76 34W	390	59	84	0			C H H H
UNIONVILLE	9030	06	FREDERICK	39 27	77 11W	430	57	55	0			C H H H
UPPER MARLBORO 3 NNW	9070	04	PRINCE GEORG	38 52	76 47W	100	39	39	39			C H H H
VIENNA	9140	02	DORCHESTER	38 29	75 50W	10	48	48	0			H H H H
WESTMINSTER POL BRKS	9440	06	CARROLL	39 33	76 58W	765	18	18	0			C H H H
WOODSTOCK	9750	06	BALTIMORE	39 20	76 52W	460	127	127	0			C H H H
DELAWARE												
DOVER	2730	02	KENT	39 9	75 31W	30	109	108	0			C H H H
GEORGETOWN 5 SW	3570	02	SUSSEX	38 38	75 27W	45	51	51	43			C H H H
GREENWOOD 2 NE	3595	02	SUSSEX	38 50	75 35W	45	12	12	0			C H H H
LEWES	5320	02	SUSSEX	38 46	75 8W	15	53	53	0			C H H H
NEWARK UNIVERSITY FARM	6410	01	NEW CASTLE	39 40	75 44W	90	84	84	40			C H H H

SEE REFERENCE NOTES FOLLOWING STATION INDEX

STATION INDEX

MARYLAND AND
DELAWARE
1994

STATION	INDEX NO.	DIVISION NO.	COUNTY	LATITUDE	LONGITUDE	ELEVATION FEET	YEARS OF RECORD			OPENED OR CLOSED DURING YR		SEE REFERENCE NOTES
							TEMP.	PRECIP.	EVAP.	MONTH	MONTH	
										OPENED	CLOSED	
WILMINGTON WSO ARPT	R9595	01	NEW CASTLE	39 40	75 36W	74	49	49	0			C H J
WILMINGTON PORTER RSVR	9605	01	NEW CASTLE	39 46	75 32W	270	85	85	0			H

SEE REFERENCE NOTES FOLLOWING STATION INDEX

REFERENCE NOTES

MARYLAND AND
DELAWARE
1994

DEFINITIONS

STATION NAMES: Name of the city, town or locality. Figures and letters following the station names indicate the distance in miles and direction from the post office or town community center.

DIVISIONS: Areas within a state of similar climatological characteristics. Division averages are calculated using data from stations that record both temperature and precipitation (i.e. not precipitation alone).

NORMALS: The average value of the meteorological element over a time period. Effective 1 January 1993, the averaging period is 1961 to 1990. The normals for National Weather Service localities have been adjusted so as to be representative for the current observation site.

TEMPERATURE EXTREMES AND FREEZE DATA: Spring minimum dates are obtained from data for January through June; Fall dates are from July through December data. "NONE" indicates temperature threshold not reached. "MSG" indicates available data insufficient to determine date.

MONTHLY DEGREE DAY TOTALS: One heating (cooling) degree day is accumulated for each whole degree that the daily mean temperature is below (above) 65 degrees Fahrenheit.

SOIL TEMPERATURE EXTREMES: The highest and lowest Max and Min temperature for each month and the year.

WIND: (As shown in the "Evaporation and Wind" table) the total wind movement in miles over the evaporation pan as determined by an anemometer recorder located 6-8 inches above the pan.

SYMBOLS AND LETTERS USED IN THE DATA TABLES

- No record. Data not recorded, determined unreliable by quality control checks, or not received in time for publication.
- * Rain gage not read. Precipitation is included in the amount following asterisks. Time distribution not known.
- // Rain gage equipped with a windshield.
- A Amount of precipitation is the total of observer's entries for the current month. It may include precipitation that occurred during the previous month. Refer to monthly bulletins to determine date of last reading. (Hawaii stations)
- B Estimated total value for wind, evaporation, or cooling degree days.
- M Insufficient or partial data. M is appended to average and/or total values computed with 1-9 daily values missing. M appears alone if 10 or more daily values are missing.
- R Amounts from recording rain gage.
- T Trace. An amount too small to measure.
- V Includes total for previous month(s). (See * above)
- Z Same as M but the Z has overprinted a negative sign or leading digit (e.g., Z14.6 = M-14.6, Z08.2 = M108.2)

SYMBOLS AND LETTERS USED IN THE STATION INDEX TABLE

- # Thermometers located in rooftop shelter.
- C Station is equipped with a recording rain gage (R), but values in this bulletin are from a non-recording rain gage unless indicated by an R.
- G Observations appear in "Soil Temperatures" table.
- H Observations appear in "Snowfall and Snow on the Ground" table in monthly "Climatological Data" publication.
- J Station also published as a "Local Climatological Data" bulletin.

Seasonal Tables: Monthly and seasonal snowfall and heating degree days for the 12 months ending with the June data are published in the July issue of "Climatological Data".

Cooling degree days for the calendar year are published in the "Climatological Data Annual Summary".

Additional precipitation data are contained in the "Hourly Precipitation Data" bulletin for each state, except Alaska.

The graphic displays appearing in this publication were first produced for the 1986 annual. The types of graphs and the information they portray may vary from year to year and from state to state in order to highlight climatic features of state, regional, and historical interest. Some graphs present information for "clusters". A cluster is a group of up to four (4) adjacent divisions that comprise an area of similar climate.

Information concerning the history of changes in locations, exposure, etc. of substations is kept on file at the National Climatic Data Center. Similar historical information of regular National Weather Service Offices is available from the "Local Climatological Data" annual bulletin.

Additional information regarding the climate of this state may be obtained by writing to the address below or to any weather service office near you. The contents of this publication may be reprinted or otherwise used freely with proper credit to the National Climatic Data Center. The data are also available in digital form on magnetic tape and diskette.

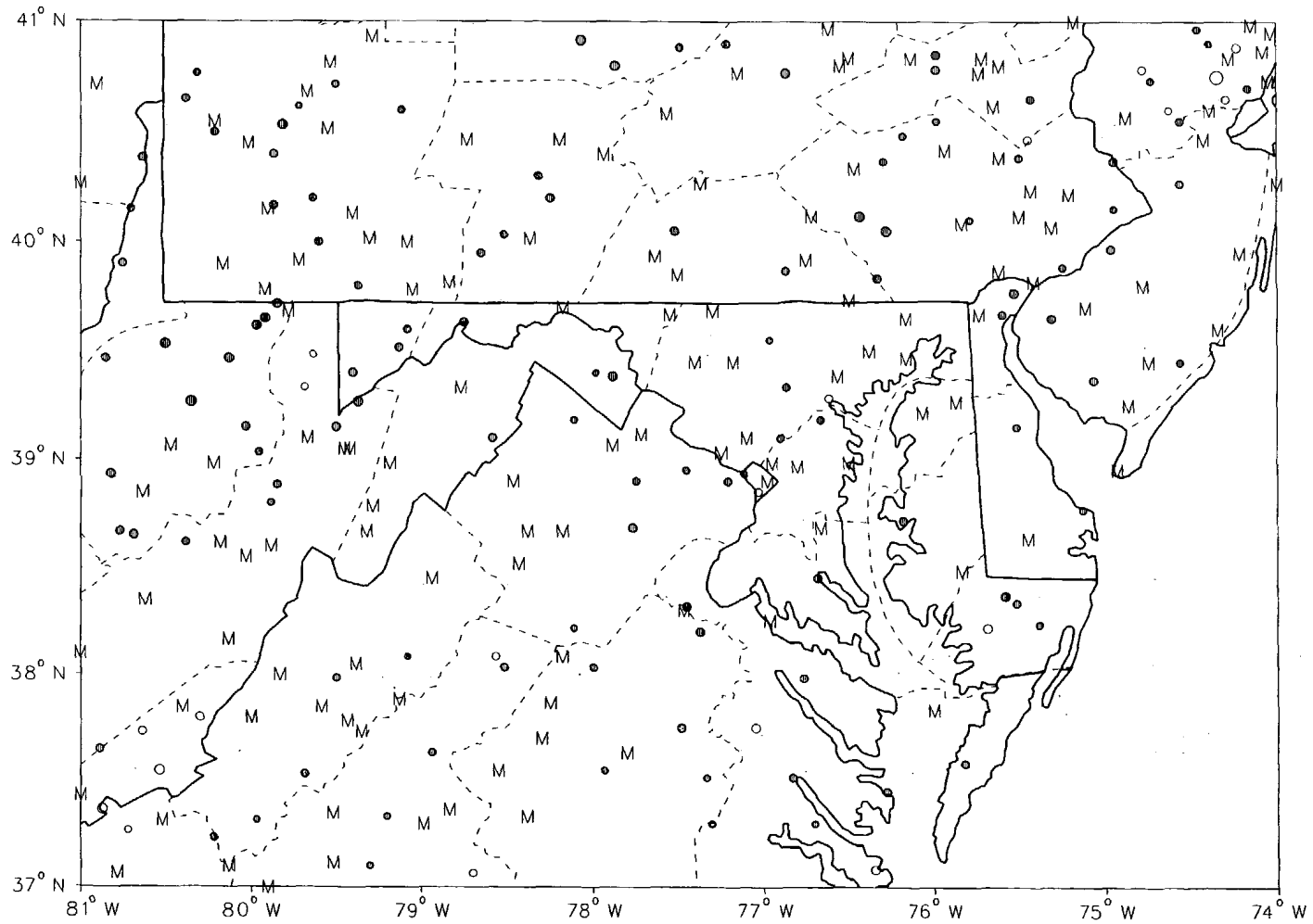
SUBSCRIPTION, PRICE, AND ORDERING INFORMATION AVAILABLE FROM:

NATIONAL CLIMATIC DATA CENTER
ROOM 120
151 PATTON AVENUE
ASHEVILLE, NC 28801-5001

USCOMM-NOAA-ASHEVILLE, N.C. 1994-0425

CUMULATIVE ANNUAL PRECIPITATION DEPARTURE FROM
INDIVIDUAL STATION NORMALS (1961-1990)
FOR 1994
DELAWARE

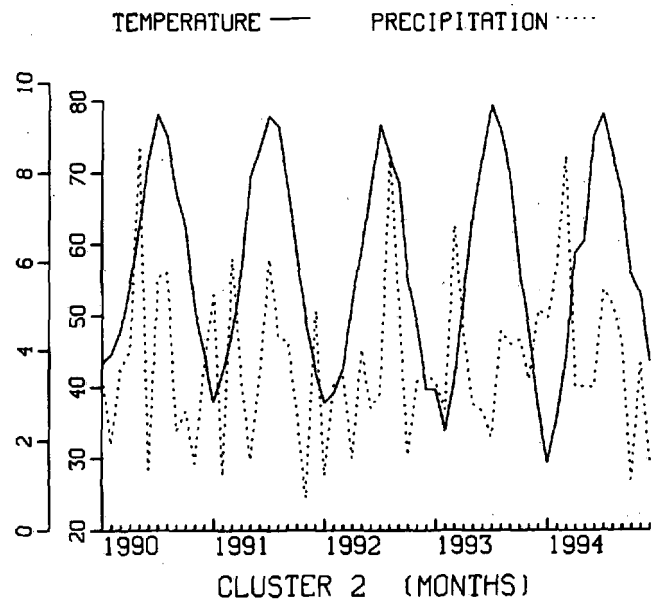
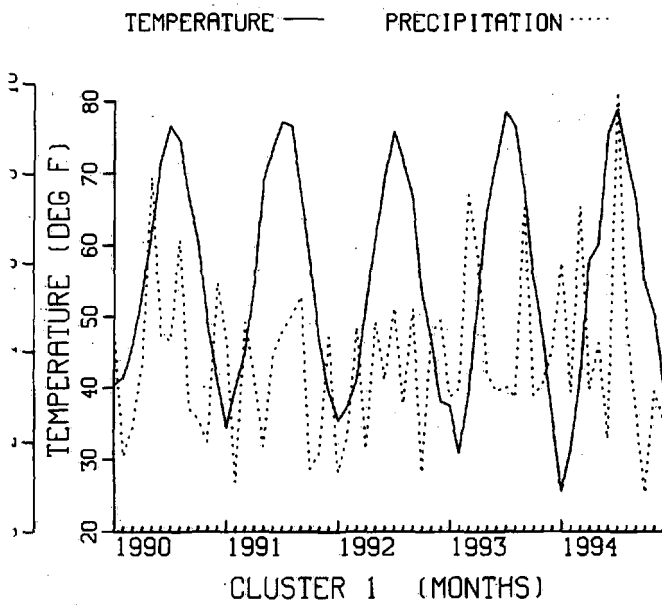
- M INCOMPLETE DATA FOR THE PERIOD
- ▽ EXACTLY NORMAL
- ○ ○ ○ 5,10,20,... 50% OR MORE BELOW NORMAL
- ● ● ● 10,20,40,...100% OR MORE ABOVE NORMAL



MONTHLY TEMPERATURE AND PRECIPITATION FOR
THE LAST 60 MONTHS
ENDING DECEMBER 1994
DELAWARE

CLUSTER 1 -DIVISION(S):
NORTHERN 01

CLUSTER 2 -DIVISION(S):
SOUTHERN 02



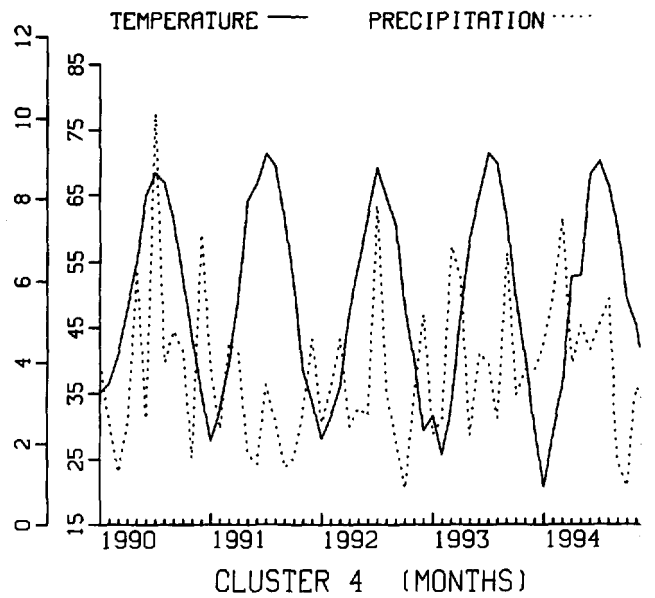
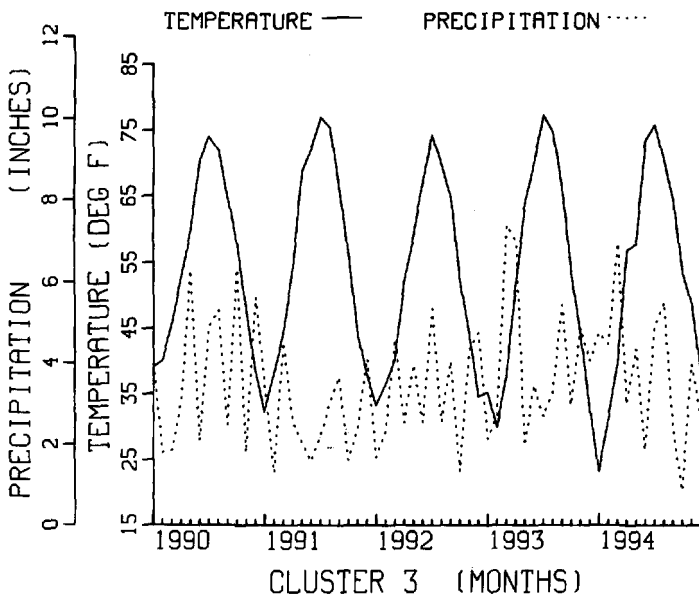
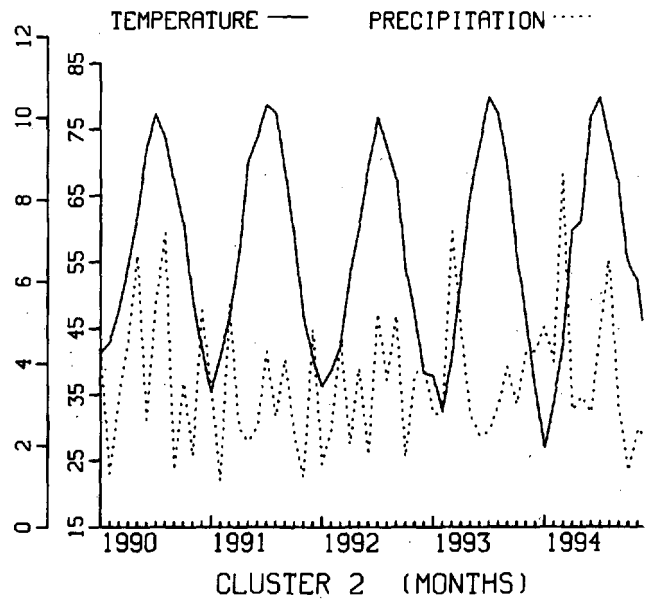
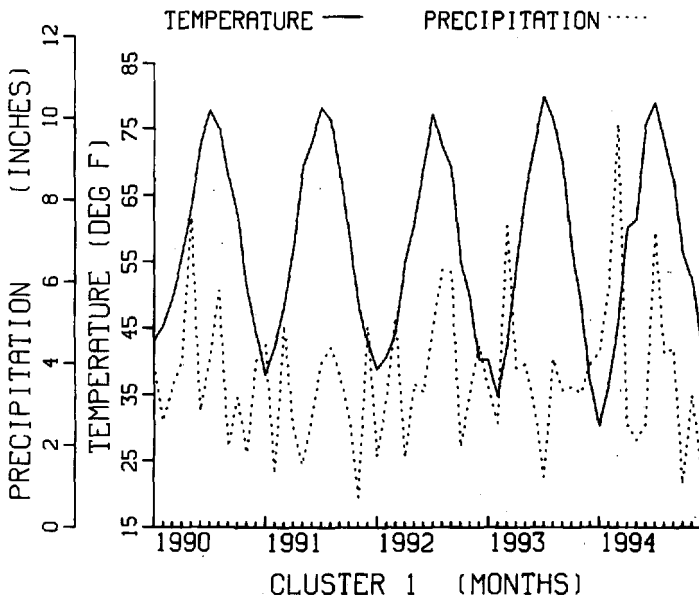
MONTHLY TEMPERATURE AND PRECIPITATION FOR THE LAST 60 MONTHS ENDING DECEMBER 1994 MARYLAND

CLUSTER 1 -DIVISION(S):
SOUTHERN EASTERN SHORE 01
CENTRAL EASTERN SHORE 02
LOWER SOUTHERN 03

CLUSTER 2 -DIVISION(S):
UPPER SOUTHERN 04
NORTHERN EASTERN SHORE 05

CLUSTER 3 -DIVISION(S):
NORTHERN CENTRAL 06
APPALACHIAN MOUNTAIN 07

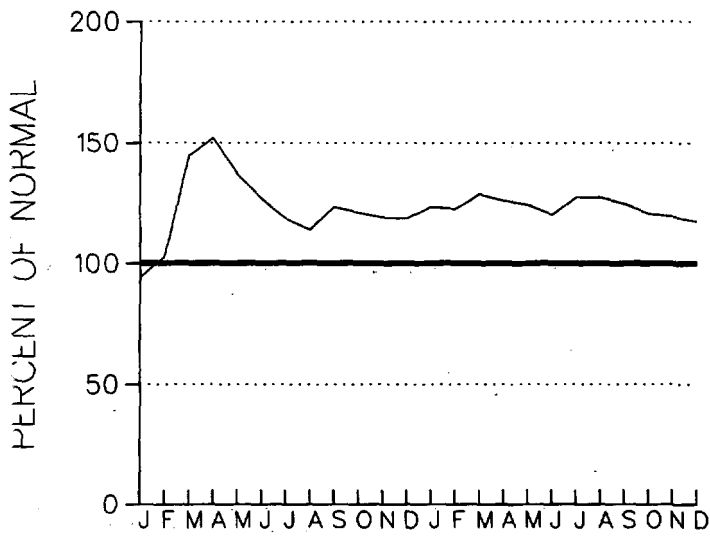
CLUSTER 4 -DIVISION(S):
ALLEGHENY PLATEAU 08



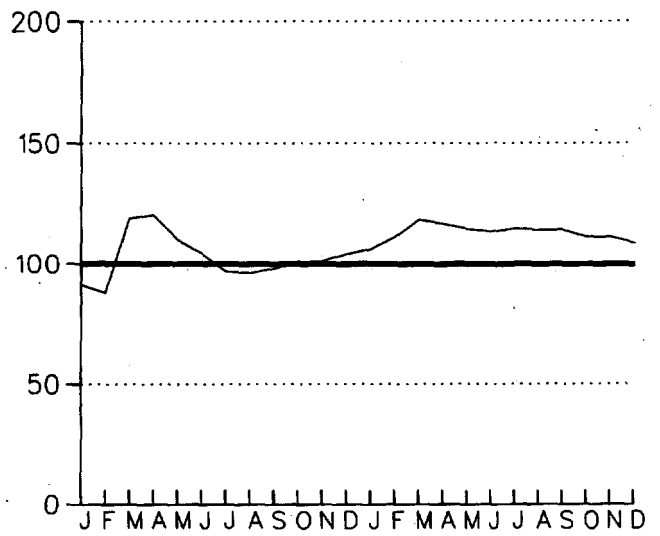
CUMULATIVE PRECIPITATION DEPARTURES FROM NORMAL (1961-1990)
 FOR THE LAST 24 MONTHS
 ENDING DECEMBER 1994
 DELAWARE

CLUSTER 1 -DIVISION(S):
 NORTHERN 01

CLUSTER 2 -DIVISION(S):
 SOUTHERN 02



CLUSTER 1



CLUSTER 2

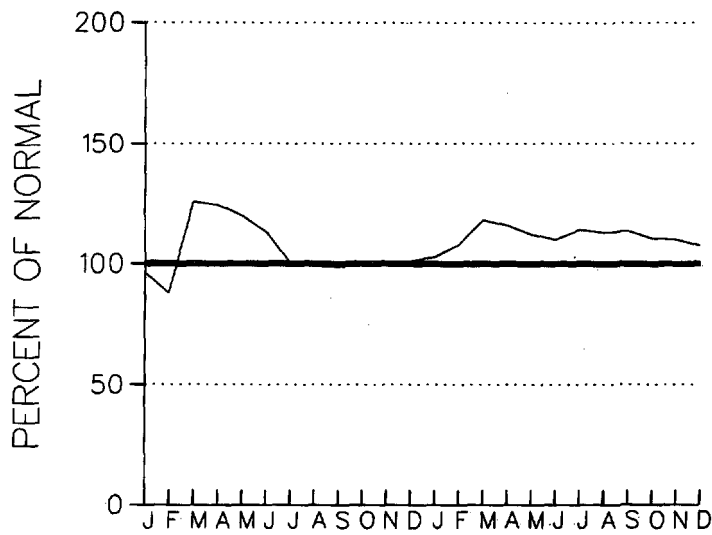
**CUMULATIVE PRECIPITATION DEPARTURES FROM NORMAL (1961-1990)
FOR THE LAST 24 MONTHS
ENDING DECEMBER 1994
MARYLAND**

CLUSTER 1 -DIVISION(S):
SOUTHERN EASTERN SHORE 01
CENTRAL EASTERN SHORE 02
LOWER SOUTHERN 03

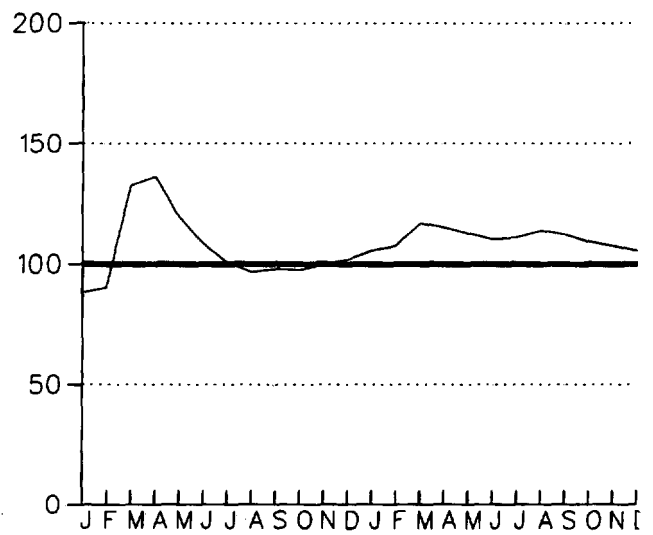
CLUSTER 2 -DIVISION(S):
UPPER SOUTHERN 04
NORTHERN EASTERN SHORE 05

CLUSTER 3 -DIVISION(S):
NORTHERN CENTRAL 06
APPALACHIAN MOUNTAIN 07

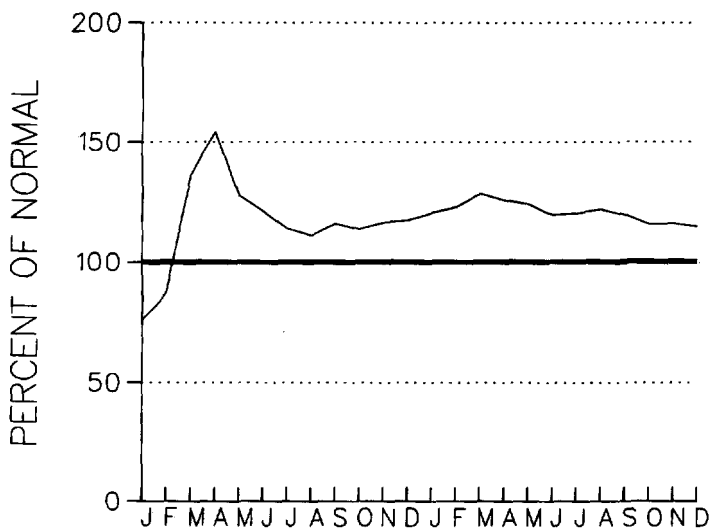
CLUSTER 4 -DIVISION(S):
ALLEGHENY PLATEAU 08



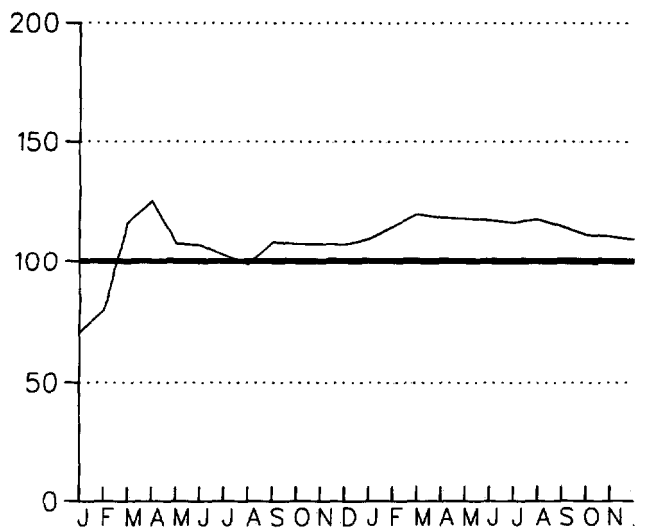
CLUSTER 1



CLUSTER 2



CLUSTER 3

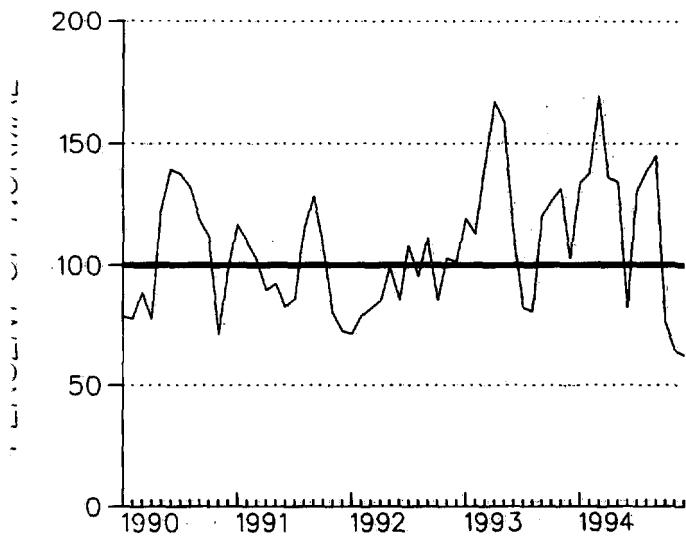


CLUSTER 4

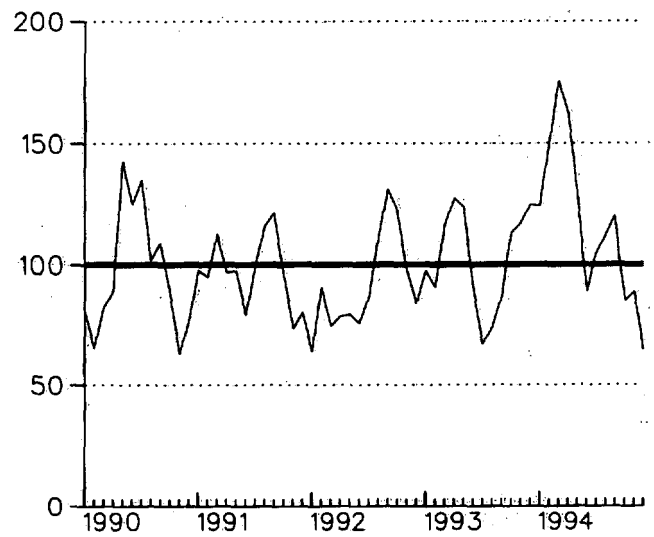
PRECIPITATION DEPARTURES FROM NORMAL (1961-1990)
THREE MONTH RUNNING MEAN
FOR THE 60 MONTHS ENDING WITH DECEMBER 1994 DATA
DELAWARE

CLUSTER 1 - DIVISION(S):
NORTHERN 01

CLUSTER 2 - DIVISION(S):
SOUTHERN 02



CLUSTER 1



CLUSTER 2

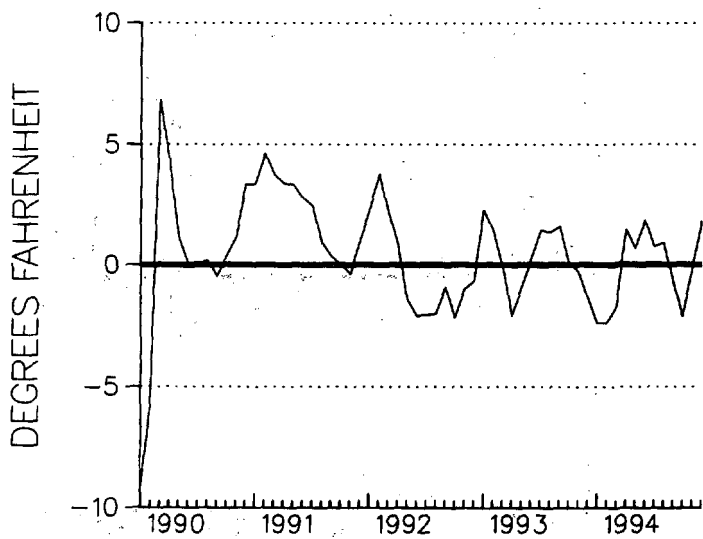
TEMPERATURE DEPARTURES FROM NORMAL (1961-1990)
 THREE MONTH RUNNING MEAN
 FOR THE 60 MONTHS ENDING WITH DECEMBER 1994 DATA
 MARYLAND

CLUSTER 1 - DIVISION(S):
 SOUTHERN EASTERN SHORE 01
 CENTRAL EASTERN SHORE 02
 LOWER SOUTHERN 03

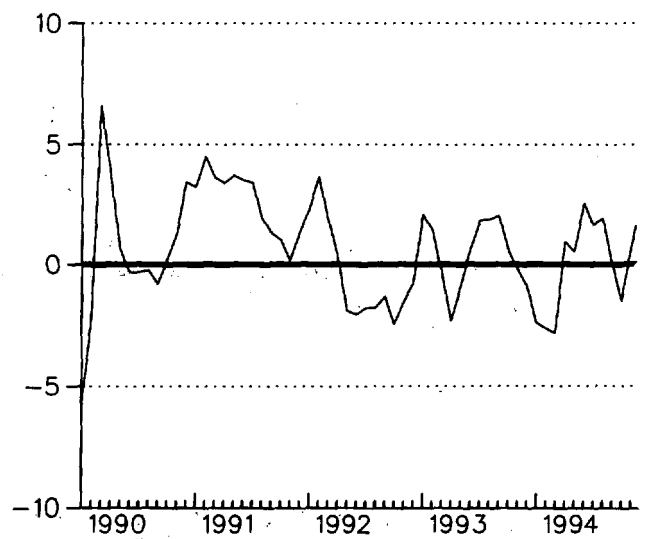
CLUSTER 2 - DIVISION(S):
 UPPER SOUTHERN 04
 NORTHERN EASTERN SHORE 05

CLUSTER 3 - DIVISION(S):
 NORTHERN CENTRAL 06
 APPALACHIAN MOUNTAIN 07

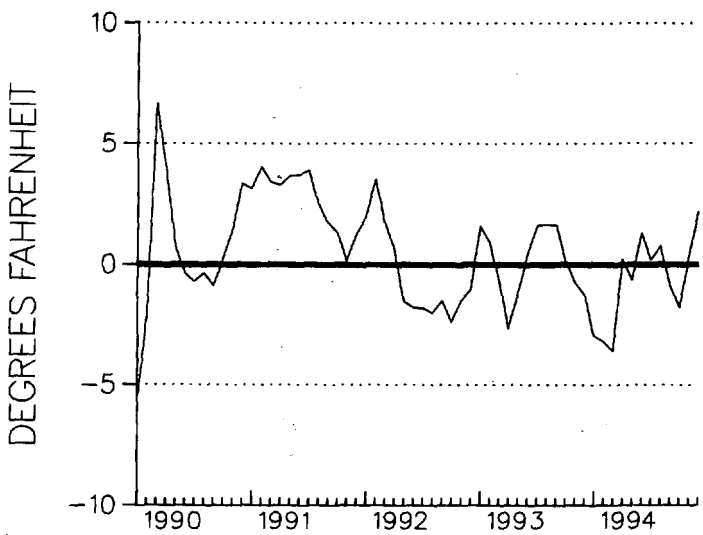
CLUSTER 4 - DIVISION(S):
 ALLEGHENY PLATEAU 08



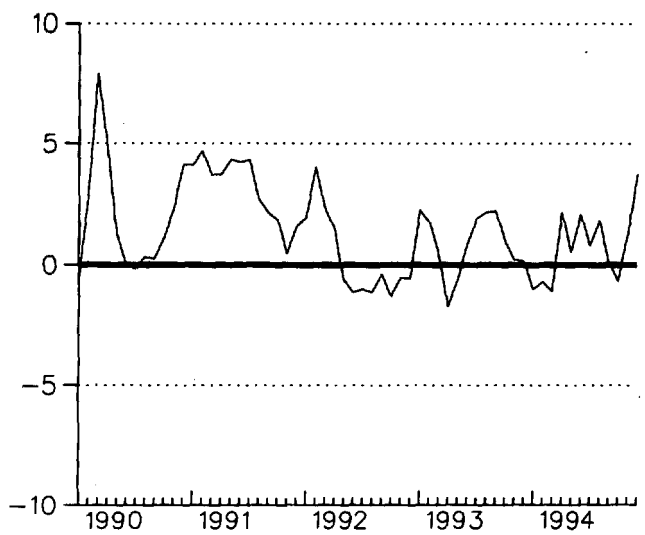
CLUSTER 1



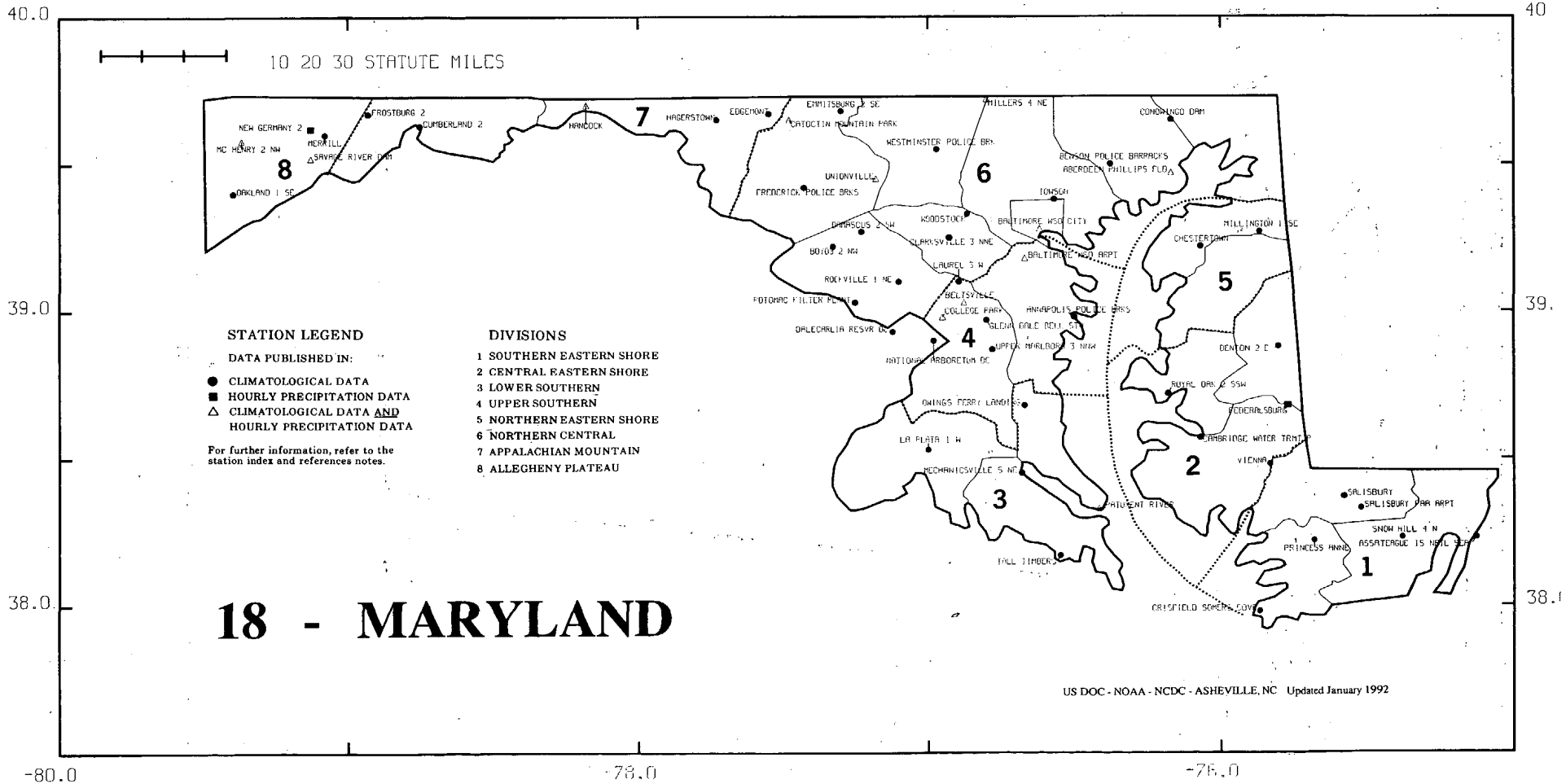
CLUSTER 2



CLUSTER 3



CLUSTER 4



40.0

40

10 20 30 STATUTE MILES

07 - DELAWARE

1

STATION LEGEND

DATA PUBLISHED IN:

- CLIMATOLOGICAL DATA
- HOURLY PRECIPITATION DATA
- △ CLIMATOLOGICAL DATA AND HOURLY PRECIPITATION DATA

For further information, refer to the station index and references notes.

DIVISIONS

- 1 NORTHERN
- 2 SOUTHERN

DOVER

2

MILFORD 4 SE

GREENWOOD 2 NE

LORES

GEORGETOWN 5 SW

US.DOC - NOAA - NCDC - ASHEVILLE, NC
Updated January 1992

39.0

3

38.0

-76.0

-75.5

-75.0

24