



CLIMATOLOGICAL DATA MARYLAND AND DELAWARE

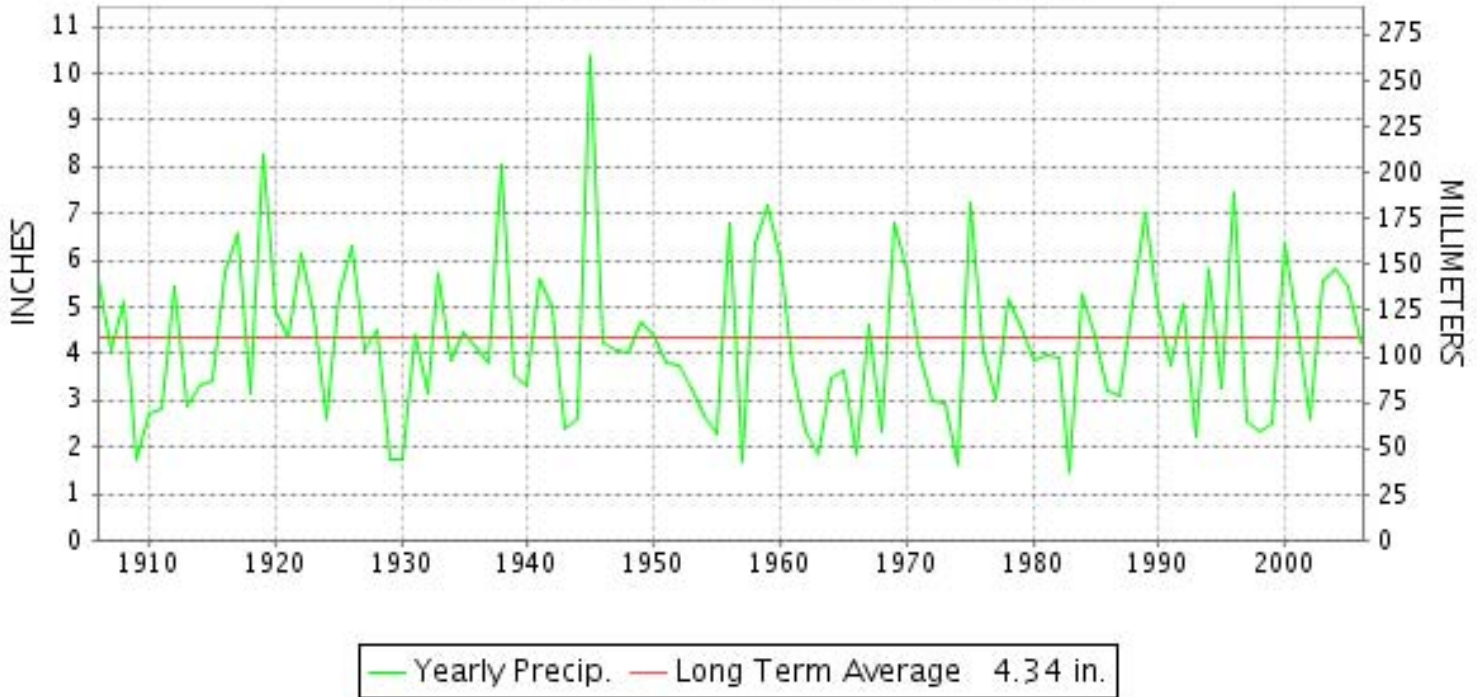


JULY 2006

VOLUME 110 NUMBER 07

ISSN 0145-054

JULY PRECIPITATION BY YEAR



TEMPERATURE AND PRECIPITATION EXTREMES

MARYLAND

HIGHEST TEMPERATURE	103	JULY 17	CUMBERLAND 2
LOWEST TEMPERATURE	44	JULY 7	OAKLAND 1 SE
GREATEST TOTAL PRECIPITATION	9.13		ABERDEEN PHILLIPS FLD
LEAST TOTAL PRECIPITATION	1.49		POTOMAC FILTER PLANT
GREATEST 1 DAY PRECIPITATION	3.28	JULY 6	PRINCESS ANNE

"I certify that this is an official publication of the National Oceanic and Atmospheric Administration (NOAA) It is compiled using information from weather observing sites supervised by NOAA/National Weather Service and received at the National Climatic Data Center(NCDC), Asheville, North Carolina 28801."

Director
National Climatic Data Center

noaa

National
Oceanic and
Atmospheric Administration

National
Environmental Satellite, Data
and Information Service

National
Climatic Data Center
Asheville, North Carolina

DELAWARE

HIGHEST TEMPERATURE	99	JULY 18	LEWES
LOWEST TEMPERATURE	57	JULY 7	WILMINGTON NEW CASTLE R
GREATEST TOTAL PRECIPITATION	6.83		DOVER
LEAST TOTAL PRECIPITATION	3.98		LEWES
GREATEST 1 DAY PRECIPITATION	3.40	JULY 23	DOVER

MONTHLY STATION AND DIVISION SUMMARY

STATION	TEMPERATURE (°F)											PRECIPITATION (IN)												
	AVERAGE MAXIMUM	AVERAGE MINIMUM	AVERAGE	DEPARTURE FROM NORMAL	HIGHEST	DATE	LOWEST	DATE	HEATING DEG. DAYS	COOLING DEG. DAYS	NO. OF DAYS				TOTAL	DEPARTURE FROM NORMAL	GREATEST 24 HOURS	DATE	ICE PELLETS, SNOW			NO. OF DAYS		
											MAX		MIN						TOTAL	MAX DEPTH ON GROUND	DATE	.10 OR MORE	.50 OR MORE	1.00 OR MORE
											>=90	<=32	<=32	<=0										
FREDERICK 2 NNE	87.9	68.0	78.0		96	19	56	9+	0	410	14	0	0	0	2.74		.86	20	.0	0		7	2	0
MILLERS 4 NE	84.8	65.6	75.2	1.3	92	18+	56	7	0	324	2	0	0	0	3.42	-.15	1.32	13	.0	0		8	2	1
PORT DEPOSIT 2 NE	M	M	M																M	M				
ROCKVILLE 1 NE	88.6	70.2	79.4	4.1	97	18	60	7	0	453	16	0	0	0	2.17	-1.74	.60	5	.0	0		6	1	0
SMITHSBURG 2NW	85.7	65.6	75.7		92	19	53	7	0	337	6	0	0	0	2.87		.88	6	.0	0		7	2	0
--DIVISIONAL DATA-----> APPALACHIAN MOUNTAIN 07			77.5	2.2											3.76	-.20			.0					
CUMBERLAND 2	91.0	66.7	78.9	4.4	103	17	54	6	0	436	20	0	0	0	M 2.32		.48	14	.0	0		8	0	0
CUMBERLAND POLICE BRK	M	M	M																M	M				
FROSTBURG 2	79.7	61.1	70.4	1.9	90	18	49	8+	12	185	1	0	0	0	2.62	-1.29	.69	21	.0	0		6	2	0
HAGERSTOWN POLICE BRK	M	M	M																M	M				
SHARPSBURG 5 S	87.4	64.5	76.0		95	18	53	7	0	349	12	0	0	0	M 2.85		.72	28	.0	0		6	3	0
WILLIAMSPORT	87.4	65.7	76.6		95	19+	55	8	0	366	10	0	0	0	4.93		1.64	26	.0	0		8	3	2
--DIVISIONAL DATA-----> ALLEGHENY PLATEAU 08			75.5	2.7											3.78	.14			.0					
OAKLAND 1 SE	79.8	58.4	69.1	.7	90	18	44	7	25	159	1	0	0	0	2.75	-2.48	.55	6	.0	0		7	2	0
SAVAGE RIVER DAM	81.9	61.4	71.7	2.0	99	18	49	7	9	223	3	0	0	0	1.65	-2.54	.43	6	.0	0		6	0	0
--DIVISIONAL DATA----->			70.4	1.8											2.20	-2.67			.0					
DELAWARE NORTHERN 01																								
BEAR 2 SW	M	M	M																M	M				
NEWARK UNIV FARM	M	M	M																M	M				
WILMINGTON NEW CASTLE R	87.0	69.2	78.1	1.5	97	17	57	7	0	412	13	0	0	0	6.05	1.77	1.46	6	.0	0		9	5	2
WILMINGTON PORTER RSVR	86.4	70.1	78.3	3.1	94	18+	62	7	0	416	9	0	0	0	4.72	.33	1.13	6	.0	0		10	3	1
--DIVISIONAL DATA-----> SOUTHERN 02			78.2	2.0											5.39	.89			.0					
DOVER	88.5	71.0	79.8	2.0	97	19+	59	7	0	467	18	0	0	0	6.83	2.67	3.40	23	.0	0		6	2	2
GREENWOOD 2NE	86.8	68.2	77.5	1.8	97	19	59	9+	0	395	11	0	0	0	6.49	1.65	3.37	6	.0	0		7	4	1
LEWES	89.5	71.8	80.7	3.4	99	18	63	9+	0	493	18	0	0	0	3.98	-.21	1.71	6	.0	0		5	3	1
--DIVISIONAL DATA----->			79.3	2.8											5.77	1.85			.0					

MARYLAND AND DELAWARE
JULY 2006

DAILY PRECIPITATION (INCHES)

STATION	TOTAL	DAY OF MONTH																																			
		01	02	03	04	05	06	07	08	09	10	11	12	13	14	15	16	17	18	19	20	21	22	23	24	25	26	27	28	29	30	31					
MARYLAND																																					
SOUTHERN EASTERN SHORE 01																																					
ASSATEAGUE	4.60		.04	.01	.08	2.10	.30								.08							.63	.31	.25						.80							
PRINCESS ANNE	6.76					1.62	3.28																*	1.86													
SALISBURY	5.67					1.25	2.60						T	T									.66	.94	T					.12							
SALISBURY FAA AP	4.53				1.29	.99	.37					T		T				T					.73	.79		T			.11	.05			.14				
SNOW HILL 4 N	2.68			T		.61	.87								.16								.14	.90													
CENTRAL EASTERN SHORE 02																																					
ROYAL OAK 2 SSW	4.69					.60	1.40							.82	.06	T	.10						.59	.95			.02		.15								
VIENNA	M 1.80					.33	.80						.15	*	.12								-	.40													
LOWER SOUTHERN 03																																					
MECHANICSVILLE 5 NE	4.25					.87	.81							.16	T	.02	.17						.90	1.24	.01					.07							
SOLOMONS	3.74			.30	*	1.49	.78	.07						.28	T	*	.20						.46	.15	.01												
UPPER SOUTHERN 04																																					
BALTIMORE WASH INTL AP R	1.86				.05	1.03	.40				T		.19	.01		T				T			.13			T	T	.05									
BELTSVILLE	3.59			.22		.29	1.96							.10								.08		.92											.02		
DALECARLIA RESERVOIR	1.83					.30	.77							.10			.06						.60														
GLENN DALE BELL STN	4.48			.10	1.25		1.95							.63								.05		.50													
LAUREL 3 W	2.87		.88		.07	.05	1.27						.21			.07					.02		.13	.02							.15						
MD SCI CTR BALTIMORE R	3.58				.03	1.92	.43							.15							.04		.54				.34	.03	.10								
NATIONAL ARBORETUM DC	3.90			T	T	.36	2.81	.01					T	.11	T		T					.02		.59	T							T			.03		
OXON HILL	4.78			.78	.01	.42	1.66							1.16	.02	.05							.15	.50													
UPPER MARLBORO 3 NNW	4.18			.01		.53	1.90							.77	T							.09	.56	.32													
NORTHERN EASTERN SHORE 05																																					
CHESTERTOWN	M 2.30						1.46	.24					.25	T		-						.02		*	.26											.07	
NORTHERN CENTRAL 06																																					
ABERDEEN PHILLIPS FLD	9.13			.02		1.04	2.57							.24	.02	.57	1.31					.77		2.38						.21							
CATOCTIN MOUNTAIN PARK	M	-	-	-	-	-	-	-	-	-	-	-	-	-	-	-	-	-	-	-	-	-	-	-	-	-	-	-	-	-	-	-	-	-	-	-	
CONOWINGO DAM	3.18			.39		.29	.73							.16								.30		.36						.71		.24					
CYLBURN	2.80					.11	1.47	.01						.03	.05		.01					.11		.93						.08							
DAMASCUS 3 SSW	M	-	-	-	-	-	-	-	-	-	-	-	-	-	-	-	-	-	-	-	-	-	-	-	-	-	-	-	-	-	-	-	-	-	-	-	
FREDERICK 2 NNE	2.74					.71	.40							.25								.20	.86		.16		.02		.02	.12							
MILLERS 4 NE	3.42			.21	T	.19	.40						.25	1.32	T	T						.36		T	.51			.03	.15						T		
PORT DEPOSIT 2 NE	M	-	-	-	-	-	-	-	-	-	-	-	-	-	-	-	-	-	-	-	-	-	-	-	-	-	-	-	-	-	-	-	-	-	-	-	
POTOMAC FILTER PLANT	1.49			.05		.30	.12	.85					.03	.02		.02							.06	.04													
ROCKVILLE 1 NE	2.17			.36	T	.17	.60	.45					.02	.01									.40				T		.16			T					
SMITHSBURG 2NW	2.87			.01		.04	.88				.04			.30	.15								.73		.05	.03	.26							.15			

MARYLAND AND DELAWARE
JULY 2006

DAILY PRECIPITATION (INCHES)

STATION	TOTAL	DAY OF MONTH																														
		01	02	03	04	05	06	07	08	09	10	11	12	13	14	15	16	17	18	19	20	21	22	23	24	25	26	27	28	29	30	31
APPALACHIAN MOUNTAIN 07																																
CUMBERLAND 2	M 2.32			.08	-	.32	.32						.25	.48	.01							.24	.19	.12			.25		.05		.01	
CUMBERLAND POLICE BRK	M	-	-	-	-	-	-	-	-	-	-	-	-	-	-	-	-	-	-	-	-	-	-	-	-	-	-	-	-	-	-	
FROSTBURG 2	2.62			.07		.51	.23						.12	.08	.14							.69	.01	*	*	*	.62		.10		.05	
HAGERSTOWN POLICE BRK	M	-	-	-	-	-	-	-	-	-	-	-	-	-	-	-	-	-	-	-	-	-	-	-	-	-	-	-	-	-	-	
SHARPSBURG 5 S	M 2.85					.72	.60			T	.03	.01	.40	.03	.03	.03					.12	.10	*	.02	-			.72	.02	.02		
WILLIAMSPORT	4.93					.05	.47				.08	.04	.17	.53							.12		.03	.23	.02		1.64	.15	1.40			
ALLEGHENY PLATEAU 08																																
OAKLAND 1 SE	2.75			.50		.30	.55						.42	.15	.02	.05								.03	.32	.01			.05	.30	.05	
SAVAGE RIVER DAM	1.65			.12		.05	.43						.07	.35	.02	T								.14	.34		.02			.11		
DELAWARE NORTHERN 01																																
BEAR 2 SW	M	-	-	-	-	-	-	-	-	-	-	-	-	-	-	-	-	-	-	-	-	-	-	-	-	-	-	-	-	-	-	
NEWARK UNIV FARM	M	-	-	-	-	-	-	-	-	-	-	-	-	-	-	-	-	-	-	-	-	-	-	-	-	-	-	-	-	-	-	
WILMINGTON NEW CASTLE R	6.05		.83	.19	.02	1.18	1.46					.19	.21		.06			T	.24	T		T	.72	.01			.94	T		T		
WILMINGTON PORTER RSVR	4.72		.06	.12	.46	.19	1.13					.40	.16		.05				.15			.78	.86			.02	.34					
SOUTHERN 02																																
DOVER	6.83					.48	2.19						.06	.03	T						.10		.25	3.40					.32			
GREENWOOD 2NE	6.49				.17	.53	3.37						.19	.01		.31					T		.98	.92	.01							
LEWES	3.98			.02	T	.98	1.71						.04	.02									.54	.32	T				.35			

TOTAL SNOWFALL AND NUMBER OF DAYS WITH ONE INCH OR MORE ON GROUND

STATION	JUL		AUG		SEP		OCT		NOV		DEC		JAN		FEB		MAR		APR		MAY		JUN		TOTAL		TOTAL PRECIPITATION	
	SNOWFALL	1 IN ON GD	SNOWFALL	1 IN ON GD	SNOWFALL	1 IN ON GD	SNOWFALL	1 IN ON GD	SNOWFALL	1 IN ON GD	SNOWFALL	1 IN ON GD	SNOWFALL	1 IN ON GD	SNOWFALL	1 IN ON GD	SNOWFALL	1 IN ON GD	SNOWFALL	1 IN ON GD	SNOWFALL	1 IN ON GD	SNOWFALL	1 IN ON GD	SNOWFALL	1 IN ON GD		
MARYLAND																												
SOUTHERN EASTERN SHORE 01																												
ASSATEAGUE										M .0	-	M .0	0	.5	-										.5	M	30.00	
SALISBURY FAA AP									T	0	3.0	1	T	0	1.0	0	T	0							4.0	1	43.59	
SNOW HILL 4 N											3.0	4	T	0	1.5	0	T	0							4.5	4	40.35	
CENTRAL EASTERN SHORE 02																												
ROYAL OAK 2 SSW									T	0	4.5	4			7.5	3	T	0							12.0	7	54.23	
LOWER SOUTHERN 03																												
MECHANICSVILLE 5 NE									.5	0	M 6.0	-	T	0	8.0	4	.3	0							14.8	M 4	38.80	
SOLOMONS									M .0	0	3.0	1	M .0	0	M .6	3	T	0							3.6	4	43.45	
UPPER SOUTHERN 04																												
BALTIMORE WASH INTL AP R									.5	0	6.0	5	T	0	13.1	5	T	0	T	0					19.6	10	46.89	
BELTSVILLE									.5	1	4.0	4			10.0	5									14.5	10	43.94	
DALECARLIA RESERVOIR											2.3	1			10.0	-									12.3	M 1	50.26	
NATIONAL ARBORETUM DC									T	0	3.9	6			9.4	4									13.3	10	47.57	
OXON HILL	M .0	-							.4	0	6.5	7	T	0	13.3	4	.2	0			M .0	0			20.4	M 11	47.28	
UPPER MARLBORO 3 NNW									.1	0	5.3	6			8.0	5	T	0							M 13.4	M 11	30.83	
NORTHERN EASTERN SHORE 05																												
CHESTERTOWN									T	0	5.1	1	T	0	6.5	4	T	0	T	0						11.6	5	45.88
NORTHERN CENTRAL 06																												
ABERDEEN PHILLIPS FLD											M 5.0	1	T	0	M .9	-	T	0							5.9	M 1	50.05	
CATOCTIN MOUNTAIN PARK											M 3.1	-	M .0	0	15.8	-									18.9	M	48.12	
CYLBURN											M 8.5	-			M .0	6			M .0	-	M .0	-			8.5	M 6	47.04	
DAMASCUS 3 SSW									1.3	1	8.7	17	.4	0	16.2	5	T	0	.2	0					M 26.8	M 23	M 33.02	
FREDERICK 2 NNE											M 2.5	13			10.5	4									13.0	17	43.82	
MILLERS 4 NE									1.4	0	8.6	9	1.0	0	16.6	6	.1	0	.3	0					28.0	15	54.07	
PORT DEPOSIT 2 NE									T	0	6.3	-	.1	0	17.3	-									M 23.7	M	37.41	
ROCKVILLE 1 NE									1.0	-	M .0	-	T	-	M .0	-									1.0	M	43.22	
SMITHSBURG 2NW	M .0										M 3.2	-	M .0	-	7.6	-									M 10.8	M	34.21	
APPALACHIAN MOUNTAIN 07																												
CUMBERLAND 2											3.0	-	M 11.0	17	1.0	1	4.5	-	T	-	T	0			19.5	M 18	35.25	
CUMBERLAND POLICE BRK											T	0	M 13.0	-	-	-	-	-	-	-	-	-	-		M 13.0	M	M	
FROSTBURG 2											3.4	2	4.9	4	16.4	26	4.0	4	16.6	9	M 1.4	2	.8	1		47.5	48	38.21
SHARPSBURG 5 S	M .0	-	M .0	-							M .0	-	M .0	-	4.8	10	T	0	12.5	5	T	0	M .0	0		17.3	M 15	43.52
WILLIAMSPORT											-	-	M 1.1	-	M .0	0	2.0	0								M 3.1	M	34.97
ALLEGHENY PLATEAU 08																												
OAKLAND 1 SE	-	-	-	-							5.0	-	M .0	-	M 8.8	-	M .0	-	M .0	-	M .0	-				M 13.8	M	M 36.95
SAVAGE RIVER DAM											M 4.0	-	M .0	23	M .0	-	M 10.0	-	M .0	-						14.0	M 23	38.05
DELAWARE																												
NORTHERN 01																												
BEAR 2 SW											.2	0	7.1	4	T	0	14.6	5			T	0				M 21.9	M 9	39.89
WILMINGTON NEW CASTLE R											.2	0	7.1	5	T	0	14.6	5			.2	0				22.1	10	42.82
WILMINGTON PORTER RSVR											M .0	0	M 5.0	-	M .0	0	10.4	-								15.4	M	46.13
SOUTHERN 02																												
DOVER																												
GREENWOOD 2NE	-	-	-	-									5.0	5	T	0	9.5	4								M 6.5	M 3	39.90
																										M 14.5	M 9	40.39

DAILY TEMPERATURES (°F)

STATION	OB. TIME	MAX/MIN	DAY OF MONTH																															AVERAGE
			01	02	03	04	05	06	07	08	09	10	11	12	13	14	15	16	17	18	19	20	21	22	23	24	25	26	27	28	29	30	31	
MARYLAND SOUTHERN EASTERN SHORE 01 ASSATEAGUE M	MID	MAX	85	84	84	86	92	79	73	78	80	81	82	81	81	80	85	85	86	95	88	87	92	86	79	82	86	84	87	87	91	94	89	84.8
		OBS														91																		
		MIN	62	62	67	67	70	66	65	60	58	60	68	68	68	68	69	68	70	70	71	67	73	71	69	64	60	64	70	71	70	72	71	67.1
PRINCESS ANNE	17	MAX					94	85	81										97	97	97	90	91			91	89	94	94			96	M	
		MIN					65	57												65	70	67	69	72			59	61	68	72			M	
		OBS					56					54																						
SALISBURY	17	MAX	85	91	91	92	92	80	79	79	82	86	90	90	90	86	83	91	96	96	94	90	90	89	85	86	85	87	91	92	91	92	94	88.5
		MIN	64	68	73	74	71	69	62	63	61	66	73	72	76	77	72	74	73	76	72	73	76	73	70	66	68	72	72	76	75	77	75	71.3
		OBS																																
SALISBURY FAA AP M	MID	MAX	85	91	90	92	85	74	78	79	82	86	89	90	87	85	84	90	96	96	90	89	91	84	80	86	83	86	91	93	92	92	94	87.4
		MIN	57	64	67	69	70	60	59	56	53	62	72	74	73	68	68	68	65	68	67	71	73	72	64	57	60	68	66	73	70	70	66.2	
		OBS																																
SNOW HILL 4 N	17	MAX	86	92	91	94	92	84	81	79	83	85	90	90	89	86	88	90	98	98	93	90	91	90	86	88	83	88	91	93	93	94	96	89.4
		MIN	61	66	69	72	70	69	59	58	56	64	71	73	75	73	69	71	62	71	68	71	74	72	70	60	61	69	68	77	70	73	69	68.1
		OBS																																
CENTRAL EASTERN SHORE 02 ROYAL OAK 2 SSW	18	MAX	85	90	89	93	85	85	78	82	83	86	89	91	86	87	88	89	95	95	92	90	90	85	85	86	84	88	91	91	90	93	93	88.2
		MIN	65	74	72	76	73	67	61	61	63	72	75	78	71	76	74	75	73	74	70	72	78	74	71	64	73	72	76	78	73	74	76	72.0
		OBS															***																	
VIENNA	18	MAX	86	91	93	94	92	86	82	82	80	85	90	91	92	87	87	91	97	98	97	92	89	84	91	87	86	90	90	95	95	94	97	90.0
		MIN	63	66	72	75	71	66	65	61	60	69	69	68	68	74	71	72	70	73	69	73	72	72	70	63	71	71	73	76	74	73	71	69.7
		OBS			62											***																		
LOWER SOUTHERN 03 MECHANICSVILLE 5 NE	07	MAX	84	86	89	88	91	83	74	76	80	82	84	88	90	82	83	85	89	93	94	88	87	89	83	78	85	82	86	91	91	87	90	85.7
		MIN	59	59	68	68	70	66	57	58	59	64	68	70	72	73	71	68	70	72	69	70	74	67	62	66	68	71	74	71	73	72	72	67.7
		OBS				***											***																	
SOLOMONS	08	MAX	87	87	94	90	95	89	75	83	82	85	90	92	93	87	84	90	90	96	95	89	88	94	88	83	87	83	87	95	96	92	94	89.0
		MIN	69	73	71	76	68	68	65	66	66	71	72	77	74	75	76	74	76	77	77	75	77	74	70	70	72	74	76	78	78	78	78	73.3
		OBS				***										***																		
UPPER SOUTHERN 04 BALTIMORE WASH INTL APM	MID	MAX	87	93	90	94	85	80	81	82	84	87	90	92	87	88	91	94	98	99	92	92	94	90	84	88	87	89	95	95	94	96	97	90.2
		MIN	62	70	73	73	68	64	57	60	61	66	73	74	74	72	73	71	70	73	68	75	74	72	65	61	69	70	74	72	73	74	73	69.5
		OBS																																
BELTSVILLE	08	MAX	82	86	92	90	93	84	78	79	81	83	86	90	91	84	88	89	91	96	97	91	89	92	88	82	88	85	89	93	91	91	92	88.1
		MIN	61	69	70	71	71	67	58	60	60	63	71	75	72	71	73	73	68	71	67	70	71	72	69	61	67	69	72	72	74	74	74	68.8
		OBS																																
DALECARLIA RESERVOIR	08	MAX	85	89	95	93	97	86	80	82	83	87	90	93	96	88	89	91	94	98	99	94	92	94	92	89	90	89	92	97	95	93	95	91.2
		MIN	62	71	68	72	72	67	59	61	60	65	72	77	73	73	74	70	71	74	70	73	75	69	65	71	71	75	77	74	73	79	79	70.6
		OBS																																
GLENN DALE BELL STN	08	MAX	82	85	92	92	92	83	79	80	82	83	85	90	91	85	87	90	92	97	97	91	88	93	88	83	86	85	88	93	92	92	94	88.3
		MIN	59	67	68	69	69	59	55	57	59	61	69	71	71	71	71	67	68	70	66	69	71	71	63	60	64	68	71	72	69	71	66.7	
		OBS																																

MARYLAND AND DELAWARE
JULY 2006

DAILY TEMPERATURES (°F)

STATION	OB. TIME	MAX/MIN	DAY OF MONTH																													AVERAGE			
			01	02	03	04	05	06	07	08	09	10	11	12	13	14	15	16	17	18	19	20	21	22	23	24	25	26	27	28	29		30	31	
MD SCI CTR BALTIMORE M	MID	MAX	89	95	93	96	84	80	81	83	87	88	93	94	87	89	92	94	99	97	93	91	94	93	84	90	89	91	96	95	94	94	99	91.1	
		MIN	71	73	76	76	67	67	66	69	67	69	76	77	77	77	78	79	76	75	76	78	74	72	71	73	75	76	78	77	79	81	74.3		
NATIONAL ARBORETUM DC	07	MAX	84	87	93	91	94	83	80	81	83	84	87	91	91	85	87	90	93	98	97	92	90	96	93	84	88	86	90	94	93	92	95	89.4	
		MIN	64	71	71	74	70	67	59	61	63	63	72	77	73	74	74	71	71	76	70	73	76	78	69	64	71	71	75	79	75	78	77	71.2	
OXON HILL	08	MAX	88	87	93	91	93	86	81	82	83	84	87	89	91	85	86	90	94	97	97	91	91	91	90	85	87	86	90	94	92	92	95	89.3	
		OBS																													***	***			
		MIN	63	65	70	72	71	68	60	62	63	66	67	74	72	73	74	74	72	75	72	73	75	75	70	66	66	70	73	76	73	75	75	70.3	
		OBS																													***	***			
UPPER MARLBORO 3 NNW	08	MAX	83	86	93	91	93	83	78	79	81	84	86	91	91	85	87	89	91	97	96	91	89	93	87	82	87	85	88	93	93	92	94	88.3	
		MIN	60	68	69	72	70	66	57	59	61	65	70	76	72	73	72	70	69	72	68	70	74	72	69	63	67	69	73	75	71	74	73	69.0	
NORTHERN EASTERN SHORE 05																																			
CHESTERTOWN	23	MAX	89	94	93	95	86	78	82	82	87	89	93	92	89	89	91	93	99	100	92	93	94	89	85	90	89	96	95	96	96	97	98	91.3	
		OBS													98																				
		MIN	58	68	68	69	68	65	55	65	58	68	67	69	68	66	67	65	67	69	64	65	70	65	64	67	68	65	69	71	69	70	70	66.4	
NORTHERN CENTRAL 06																																			
ABERDEEN PHILLIPS FLD	16	MAX	85	91	91	92	85	78	79	79	83	86	90	90	87	87	87	91	96	96	94	89	90	90	82	86	86	89	92	92	91	92	94	88.4	
		MIN	62	72	71	72	73	68	60	61	62	69	72	78	75	69	71	68	71	73	69	71	77	70	67	64	70	73	77	73	73	75	75	70.4	
CATOCTIN MOUNTAIN PARK	17	MAX																																M	
		MIN																																M	
CONOWINGO DAM	07	MAX	85	88	96	91	95	84	82	81	82	86	88	91	91	89	90	87	95	99	99	92	92	94	91	85	90	90	94	94	95	96	90.4		
		OBS																***							72										
		MIN	56	57	66	72	71	67	60	57	58	57	62	66	67	65	65	66	65	67	63	68	71	75	63	58	64	65	68	66	65	68	68	64.7	
		OBS																***																	
CYLBURN	08	MAX	79	88	87	88	88	81	76	78	83	81	86	90	90	84	85	85	87	92	95	86	85	87	86	78	84	84	88	93	91	87	88	85.8	
		OBS	***									71																							
		MIN	61	68	69	72	69	65	56	59	61	64	69	74	74	72	71	72	67	72	67	69	71	70	66	61	65	70	71	74	75	73	73	68.3	
DAMASCUS 3 SSW	22	MAX																																M	
		MIN																																	M
FREDERICK 2 NNE	07	MAX	83	86	90	91	92	81	79	80	82	84	87	90	91	83	88	89	92	95	96	90	90	90	87	82	87	87	88	93	88	91	94	87.9	
		MIN	61	63	71	73	71	66	56	56	56	65	66	71	71	71	71	67	67	71	69	68	73	72	70	63	65	69	70	72	73	74	76	68.0	
MILLERS 4 NE	18	MAX	82	89	86	86	83	75	77	78	81	83	87	85	83	85	86	87	92	92	86	86	86	85	80	82	83	85	88	86	88	89	89	84.8	
		MIN	57	66	66	70	68	62	56	57	57	61	67	72	69	64	69	67	67	72	64	66	71	69	63	58	64	67	68	69	68	70	69	65.6	
PORT DEPOSIT 2 NE	07	MAX																																M	
		MIN																																	M
ROCKVILLE 1 NE M	MID	MAX	88	93	91	93	84	79	79	80	85	88	92	93	82	87	86	91	96	97	88	90	92	91	80	88	88	87	93	91	91	91	92	88.6	
		MIN	64	70	73	73	66	65	60	61	62	66	72	75	73	72	73	72	72	75	70	70	75	71	67	64	71	70	75	74	75	74	75	70.2	
		OBS										78	80																						
SMITHSBURG 2NW	08	MAX	81	84	90	87	87	78	77	79	79	82	88	88	87	80	88	87	90	91	92	88	87	87	85	81	85	86	87	90	85	89	91	85.7	
		MIN	58	59	68	69	70	64	53	57	59	61	63	73	70	67	70	65	65	62	65	68	70	70	67	59	65	67	69	72	68	69	71	65.6	
APPALACHIAN MOUNTAIN 07																																			

DAILY TEMPERATURES (°F)

STATION	OB. TIME	MAX/MIN	DAY OF MONTH																															AVERAGE	
			01	02	03	04	05	06	07	08	09	10	11	12	13	14	15	16	17	18	19	20	21	22	23	24	25	26	27	28	29	30	31		
CUMBERLAND 2	18	MAX OBS MIN	91 60	97 70	92 70	91 71	81 61	80 54	83 58	86 59	88 61	92 60	96 60	92 67	89 73	92 73	94 68	100 69	103 69	102 69	96 70	94 70	93 70	84 68	78 60	82 62	91 65	95 69	94 70	89 71	96 73	99 74	81 101	91.0	
CUMBERLAND POLICE BRK	17	MAX MIN																																	M M
FROSTBURG 2	07	MAX MIN	74 54	81 55	83 65	79 65	78 64	74 53	68 49	72 49	75 54	77 56	80 56	84 64	81 67	78 65	79 67	80 63	85 66	90 66	87 63	84 64	82 67	83 65	74 60	75 54	81 56	80 60	83 61	83 66	76 66	81 67	83 67	79.7	
HAGERSTOWN POLICE BRK	17	MAX MIN																																	M M
SHARPSBURG 5 S	07	MAX OBS MIN OBS	83 57	85 58	92 68	90 69	92 70	80 62	77 53	80 54	81 57	83 60	87 62	91 68	90 71	82 70	89 70	87 64	92 65	95 67	94 65	88 67	88 69	88 68	87 68	82 66	87 60	88 66	90 66	93 70	85 66	90 67	93 69	87.4	
WILLIAMSPORT	06	MAX MIN OBS	83 59	86 59	93 65	89 70	91 70	79 62	78 56	80 55	81 58	82 62	89 60	90 66	89 72	82 70	89 69	89 67	93 67	95 67	95 67	90 67	87 71	89 71	87 69	83 62	86 62	87 67	88 70	91 70	84 69	90 73	94 65.7		
ALLEGHENY PLATEAU 08																																			
OAKLAND 1 SE	07	MAX OBS MIN OBS	77 80	80 84	84 78	78 79	79 72	72 68	68 71	71 73	73 77	77 79	79 83	83 82	82 75	84 84	81 87	87 90	90 88	88 82	82 88	88 85	88 71	85 71	71 76	76 81	81 81	83 83	83 76	76 78	78 83	83 85	79.8		
SAVAGE RIVER DAM	08	MAX MIN	76 53	80 54	86 66	81 65	81 66	75 55	71 49	73 50	75 53	77 55	80 57	83 63	83 63	78 67	81 69	82 61	88 63	99 65	96 66	88 68	89 67	90 67	76 63	77 55	80 59	85 59	85 64	84 66	79 65	81 66	86 70	81.9	
DELAWARE NORTHERN 01																																			
BEAR 2 SW M	MID	MAX MIN																																	M M
NEWARK UNIV FARM	17	MAX MIN																																	M M
WILMINGTON NEW CASTLE M	MID	MAX MIN	85 62	90 70	87 70	90 73	80 68	78 63	81 57	81 63	81 63	85 67	90 72	90 76	85 71	85 67	80 71	93 70	97 73	96 70	91 69	89 71	88 76	86 72	82 65	84 63	83 69	85 70	91 72	91 72	90 72	91 74	93 73	87.0	
WILMINGTON PORTER RSVRM	MID	MAX MIN	85 63	89 69	88 70	89 70	79 71	75 64	78 62	81 67	83 66	85 67	91 72	90 74	84 73	86 70	81 71	90 71	94 76	94 71	88 69	87 71	90 72	84 72	80 68	85 67	84 70	87 71	91 73	91 70	89 72	88 76	92 75	86.4	
SOUTHERN 02																																			
DOVER	16	MAX MIN	86 65	90 70	90 71	92 71	91 72	82 64	79 59	79 63	83 64	85 70	90 72	90 76	86 72	85 72	90 72	94 73	97 75	97 76	91 70	89 72	88 74	86 72	82 71	84 69	86 72	86 73	87 75	91 74	92 75	90 76	93 75	92 75	88.5
GREENWOOD 2NE	07	MAX MIN	81 61	84 64	91 69	89 72	91 71	84 66	77 59	79 60	78 59	82 64	85 68	89 73	90 72	85 72	85 71	87 72	91 71	96 69	97 71	87 69	88 69	90 69	84 62	81 64	85 68	83 71	88 75	91 71	91 73	89 77	88 77	91 72	86.8
LEWES	17	MAX MIN	88 66	93 70	92 73	94 75	93 71	77 66	77 66	76 63	78 63	82 63	87 68	92 74	91 76	83 73	91 73	90 73	90 73	98 74	99 74	98 76	99 76	89 74	86 70	86 65	86 69	86 71	94 73	95 77	92 77	92 77	94 75	89.5	

MONTHLY AND SEASONAL HEATING DEGREE DAYS

STATION	JUL	AUG	SEP	OCT	NOV	DEC	JAN	FEB	MAR	APR	MAY	JUN	TOTAL	SEASONAL NORM
MARYLAND														
SOUTHERN EASTERN SHORE 01														
ASSATEAGUE	0	0	0	133	381	777	639	698	602	295	118	3	3646	4266
PRINCESS ANNE													M	4198
SALISBURY	0	0	5	163	340	816	604	683	539	174	65	1	3390	3936
SALISBURY FAA AP	0	0	8	249	479	924	699	808	676	333	185	27	4388	4254
SNOW HILL 4 N	0	0	8	173	373	842	619	709	579	233	85	3	3624	4008
CENTRAL EASTERN SHORE 02														
ROYAL OAK 2 SSW	0	0	8	173	366	844	641	682	549	186	63	0	3512	3967
VIENNA	0	0	5	148	388	809	622	706	569	191	72	0	3510	4073
LOWER SOUTHERN 03														
MECHANICSVILLE 5 NE	0	0	12	271	484	940	733	788	622	231	152	15	4248	4299
SOLOMONS	0B	0	0B	147B	289B	838B	674B	696	529B	197	66	2B	B 3438	
UPPER SOUTHERN 04														
BALTIMORE WASH INTL AP R	0	0	12	239	502	955	720	802	598	228	117	4	4177	4720
BELTSVILLE	0	0	10	233	493	954	745	803	627	235	146	7	4253	4707
DALECARLIA RESERVOIR	0	0	1	199	459	910	709	748	562	193	99	2	3882	4382
GLENN DALE BELL STN	0	0	11	250	501	954	733	810	622	255	137	11	4284	4970
MD SCI CTR BALTIMORE R	0	0	3	189	407	871	667	740	540	170	60	0	3647	
NATIONAL ARBORETUM DC	0	0	4	203	440	913	718B	742	560	184	102	2	M 3868	4571
OXON HILL	0	0	4	195	456	896	688	744	567	186	104B	0	B 3840	
UPPER MARLBORO 3 NNW	0	0	8	237	489	940	735	796	630	232	128		M 4195	4785
NORTHERN EASTERN SHORE 05														
CHESTERTOWN	0	0	13	239	483	946	747	800	657	253	102	7	4247	4559
NORTHERN CENTRAL 06														
ABERDEEN PHILLIPS FLD		0B	14B					748B	569B		104B	1B	M 1436	4459
CATOCTIN MOUNTAIN PARK	0	1	19	325	549	1110	838	892	719	312	176	24	4965	5370
CONOWINGO DAM	0	0B								267B	102B	4	M 373	5044
CYLBURN				248B		1008B			649B	263B	147B	11B	M 2326	
DAMASCUS 3 SSW	0	2	18	291	551	1036	783	868	659	277			M 4485	
FREDERICK 2 NNE	0	0	14B	250	539	1019	775	826	665	274	147	5	B 4514	
MILLERS 4 NE	0	0	17	288	533	1049	790	867	692	286	178	20	4720	5162
PORT DEPOSIT 2 NE	0	0	7	272	521	1019	800	864	693	289	139		M 4604	
ROCKVILLE 1 NE	0	0	14	249	520	952	718	801	603	222	108	2	4189	4990
SMITHSBURG 2NW	0	0	16	307	558	1092	799	870	743	308	206		M 4899	
APPALACHIAN MOUNTAIN 07														
CUMBERLAND 2	0B	0	8	230	551	1013	760	814	619	188	141	6	B 4330	5191
CUMBERLAND POLICE BRK	0	0	14	285	583								M 882	
FROSTBURG 2	0	9	41	426	678	1212	940	1019	886	411	314	76	6012	6775
HAGERSTOWN POLICE BRK	0	0	11	243	504								M 758	
SHARPSBURG 5 S	0	0	21	303	467B	1065	785	862	710	310	212	20	B 4755	
WILLIAMSPORT	0	0	13	312		1037	807	835	688	298	187	7	M 4184	
ALLEGHENY PLATEAU 08														
OAKLAND 1 SE			83	450	720	1224	908	1074	916	459	392	107	M 6333	6368
SAVAGE RIVER DAM	0	3	40	370	655	1153	897	971	832	404	313	62	5700	6375
DELAWARE														
NORTHERN 01														
BEAR 2 SW	0	0	20	274	538	979	790	861	670	320		11	M 4463	
NEWARK UNIV FARM	0	0	5										M	4746
WILMINGTON NEW CASTLE R	0	0	15	243	507	964	777	834	640	277	122	9B	B 4388	4888
WILMINGTON PORTER RSVR	0	0	9	254	493	982	772	852	654	278	119	11	4424	5110
SOUTHERN 02														
DOVER	0	0	8	182	380		654	732	584	220	95	3	M 2858	4212
GREENWOOD 2NE		0	5	235	457	913	726	809	674	267	137	11	M 4234	4816
LEWES	0	0	1	156	343	843	610	686	568	209	74	2	3492	4098

EVAPORATION AND WIND

STATION		DAY OF MONTH																															TOTAL OR AVERAGE	
		01	02	03	04	05	06	07	08	09	10	11	12	13	14	15	16	17	18	19	20	21	22	23	24	25	26	27	28	29	30	31		
MARYLAND UPPER SOUTHERN 04 BELTSVILLE	WIND	35	*	70	*	59	28	712	-	-	-	28	21	23	*	*	101	48	20	30	27	23	*	*	84	21	29	25	21	*	*	111	1678	
	EVAP	23	*	55	*	49	19	19	*	*	54	18	24	15	*	*	54	29	24	28	25	21	*	*	66	26	19	22	24	*	*	72	6.86	
	MAX	87	-	93	-	95	86	82	-	-	88	91	95	95	-	-	94	95	102	101	98	96	-	-	97	95	90	96	98	-	-	98	M	
	MIN	64	-	64	-	71	66	60	-	-	62	63	70	64	-	-	69	69	72	70	70	73	-	-	64	67	69	72	73	-	-	70	M	
	UPPER MARLBORO 3 NNW	WIND	-	-	-	-	-	-	-	-	-	-	-	-	-	-	-	-	-	-	-	-	-	-	-	-	-	-	-	-	-	-	-	M
	EVAP	-	-	-	*	56	16	15	*	*	65	25	23	27	10	*	*	61	26	25	25	20	*	*	65	26	16	24	24	*	*	67	6.82	
	MAX	95	93	97	100	101	89	85	90	89	91	95	100	99	89	95	96	101	107	106	102	100	101	95	94	99	95	100	101	96	99	105	96.9	
	MIN	67	68	70	72	71	70	65	66	67	67	68	73	73	74	76	74	74	75	72	73	75	73	71	68	69	70	73	74	72	73	74	71.2	

Evaporation: Is measured in hundredths of inches.

Wind: Is measured in miles.

Max and Min: The maximum and minimum temperatures (Fahreheit) of the water in the evaporation pan.

STATION INDEX

STATION	INDEX NO.	DIVISION	COUNTY	LATITUDE	LONGITUDE	ELEVATION (IN FEET)	OBSERVATION TIME AND TABLES				OBSERVER
							LOCAL STD TIME				
							TEMP	PRECIP	EVAP	SPECIAL SEE (NOTES)	
MARYLAND											
ABERDEEN PHILLIPS FLD	0015	06	HARFORD	39 28	76 10W	57	16	16		C H	US ARMY ABERDEEN TEST CT
ASSATEAGUE	0335	01	WORCESTER	38 4	75 13W	10	MID	MID		H	ASSATEAGUE IS NATL SEA
BALTIMORE WASH INTL AP R	0465	04	ANNE ARUNDEL	39 10	76 41W	156	MID	MID		C HJ	ASOS - FAA
BELTSVILLE	0700	04	PRINCE GEORG	39 2	76 56W	145	08	08	08	C H	USDA AGRI RESEARCH CTR W
CATOCTIN MOUNTAIN PARK	1530	06	FREDERICK	39 39	77 29W	1610	17	17		H	CATOCTIN MOUNTAIN PK
CHESTERTOWN	1750	05	KENT	39 13	76 3W	40	23	23		H	THOMAS W ELIASON JR
CLARKSVILLE 3 NNE	1862	06	HOWARD	39 15	76 56W	370	17	17		H	INACTIVE 12/02/2004
CONOWINGO DAM	2060	06	HARFORD	39 39	76 11W	40	07	07		H	SUSQUEHANNA ELECTRIC CO
CUMBERLAND 2	2282	07	ALLEGANY	39 39	78 45W	730	18	18		H	TIMOTHY B THOMAS
CUMBERLAND POLICE BRK	2285	07	ALLEGANY	39 38	78 50W	970	17	17		H	MARYLAND STATE POLICE
CYLBURN	2308	06	BALTIMORE (C	39 22	76 38W	400	08	08		H	CYLBURN ARBORETUM
DALECARLIA RESERVOIR	2325	04	PRINCE GEORG	38 56	77 7W	150	08	08		H	USA CORPS OF ENGINEERS
DAMASCUS 3 SSW	2336	06	MONTGOMERY	39 16	77 14W	697	22	22		H	ROBERT J LEFFLER
EMMITSBURG 2 SE	2906	06	FREDERICK	39 41	77 17W	416	17	17		H	INACTIVE 10/01/2005
FREDERICK 2 NNE	3353	06	FREDERICK	39 26	77 24W	280	07	07		H	DIR PUBLIC WORK WTP
FROSTBURG 2	3415	07	ALLEGANY	39 40	78 56W	2170	07	07		H	GREGORY P LATTA
GLENN DALE BELL STN	3675	04	PRINCE GEORG	38 58	76 48W	150	08	08		H	US NATL ARBORETUM
HAGERSTOWN POLICE BRK	3980	07	WASHINGTON	39 36	77 44W	560	17	17		H	MARYLAND STATE POLICE
LAUREL 3 W	5111	04	PRINCE GEORG	39 5	76 54W	400		07		H	WA SUBURBAN SANITARY COM
MD SCI CTR BALTIMORE R	5718	04	BALTIMORE (C	39 17	76 37W	20	MID	MID		C H	ASOS - NWS
MECHANICSVILLE 5 NE	5865	03	ST. MARY'S	38 28	76 42W	100	07	07		H	SANDRA J HASTINGS
MILLERS 4 NE	5934	06	CARROLL	39 43	76 48W	860	18	18		C H	ROBERT MILLER
NATIONAL ARBORETUM DC	6350	04	DISTRICT OF	38 55	76 58W	50	07	07		H	US NATIONAL ARBORETUM
OAKLAND 1 SE	6620	08	GARRETT	39 25	79 24W	2420	07	07		H	GARRETT CO MEM HOSPITAL
OXON HILL	6800	04	PRINCE GEORG	38 48	77 0W	120	08	08		H	BRIAN SMITH
PORT DEPOSIT 2 NE	7230	06	CECIL	39 38	76 5W	300	07	07		H	ANTHONY E FESTA
POTOMAC FILTER PLANT	7272	06	MONTGOMERY	39 2	77 15W	270		08		H	POTOMAC WATER FILT PLANT
PRINCESS ANNE	7330	01	SOMERSET	38 13	75 41W	20	17	17		H	UNIV OF MD EAST SHORE
ROCKVILLE 1 NE	7705	06	MONTGOMERY	39 6	77 9W	440	MID	17		H	WASHINGTON GAS & ELEC CO
ROYAL OAK 2 SSW	7806	02	TALBOT	38 43	76 11W	10	18	18		H	JOHN L SWAINE JR
SALISBURY	8000	01	WICOMICO	38 22	75 35W	10	17	17		H	CITY OF SALISBURY
SALISBURY FAA AP	8005	01	WICOMICO	38 20	75 31W	48	MID	MID		H	FAA
SAVAGE RIVER DAM	8065	08	GARRETT	39 31	79 8W	1495	08	08	08	C H	USA CORPS OF ENGINEERS
SHARPSBURG 5 S	8207	07	WASHINGTON	39 24	77 43W	500	07	07		H	DAVID DOWNIN
SMITHSBURG 2NW	8371	06	WASHINGTON	39 40	77 35W	670	08	08		H	SMITHSBURG W W T P
SNOW HILL 4 N	8380	01	WORCESTER	38 14	75 23W	30	17	17		H	CURTIS E SHOCKLEY
SOLOMONS	8405	03	CALVERT	38 19	76 27W	12	08	08		H	CHESAPEAKE BIOLOGIC LAB
UPPER MARLBORO 3 NNW	9070	04	PRINCE GEORG	38 52	76 47W	100	08	08	08	H	UNIVERSITY OF MARYLAND
VIENNA	9140	02	DORCHESTER	38 29	75 49W	10	18	18		H	DELMARVA POWER & LIGHT
WILLIAMSPORT	9570	07	WASHINGTON	39 36	77 50W	360	06	06		H	R C WILSON TRTMT PLT
DELAWARE											
BEAR 2 SW	1200	01	NEW CASTLE	39 36	75 44W	80	MID	MID		H	R. GARY GALLAHER
DOVER	2730	02	KENT	39 16	75 31W	30	16	16		H	DEPT OF TRANSPORTATION
GREENWOOD 2NE	3595	02	SUSSEX	38 49	75 35W	45	07	07		H	DANIEL M SWARTZENTRUBER
LEWES	5320	02	SUSSEX	38 47	75 8W	15	17	17		H	BOARD OF PUBLIC WORKS
NEWARK UNIV FARM	6410	01	NEW CASTLE	39 40	75 45W	90	17	17	17	C H	UNIV OF DE AGR FARM
WILMINGTON NEW CASTLE R	9595	01	NEW CASTLE	39 40	75 36W	79	MID	MID		C HJ	ASOS - FAA
WILMINGTON PORTER RSVR	9605	01	NEW CASTLE	39 46	75 32W	270	MID	MID		H	WILMINGTON WATER DEPT

REFERENCE NOTES

DEFINITIONS

STATION NAMES: Name of the city, town or locality. Figures and letters following the station names indicate the distance in miles and direction from the post office or town community center.

DIVISIONS: Areas within a state of similar climatological characteristics. Division averages are calculated using data from stations that record both temperature and precipitation (i.e. not precipitation alone).

NORMALS: The average value of the meteorological element over a time period. Effective 1 January 2002, the averaging period is 1971 to 2000. The normals for National Weather Service localities have been adjusted so as to be representative for the current observation site.

MONTHLY DEGREE DAY TOTALS: One heating (cooling) degree day is accumulated for each whole degree that the daily mean temperature is below (above) 65 degrees Fahrenheit.

PRECIPITATION: Values shown in hundredths of inches are water equivalent totals, i.e., total of liquid and melted frozen precipitation. In the "Monthly Summarized Data" table the total snow and sleet values shown in tenths of inches are unmelted amounts. The max depth on ground values of snow and sleet shown in whole inches are cumulative unmelted amounts. The number of days with .10, .50, 1.00 or more refers to water equivalents.

PRECIPITATION QUALITY CONTROL: The NCDC quality control process may delete precipitation data that are spatially inconsistent; exceed climatological limits, or are inconsistent with prevailing weather patterns.

TEMPERATURE: Original and edited temperature values are given in the "Daily Temperature" table. Edited values are produced when an original value is missing or when surrounding stations indicated a suspect original value. When a line labeled OBS is present and contains either a daily temperature (suspect) or *** (missing), the temperature appearing directly above, on the line labeled MAX or MIN, is an edited value. Summary temperature information (averages, departures, extremes, monthly degree day totals) is based on the values labeled MAX/MIN.

WIND: (As shown in the "Evaporation and Wind" table) the total wind movement in miles over the evaporation pan as determined by an anemometer recorder located 6-8 inches above the pan.

SYMBOLS AND LETTERS USED IN THE STATION INDEX TABLE

Thermometers located in a rooftop shelter.
// Rain gage equipped with a windshield
AR Observation made "after rain" has occurred.
C Station is equipped with recording rain gage (R) but values in this bulletin are from a non-recording rain gage unless indicated by an R.
G Observations appear in the "Soil Temperatures" table.
H Observations appear in the "Snowfall and Snow on the Ground" table.
J Station also published as a Local Climatological Data publication.
MID Observation time is midnight.
MO Rain gage read once monthly, usually the last day.
OC Rain gage readings vary from a few weeks to several months.
R Amounts from recording rain gage.
SR Observation time near sunrise.

SS Observation time near sunset.
VAR Observation time varies.
WI Rain gage read weekly or irregularly.
WM Rain gage read weekly and last day of the month.

SYMBOLS AND LETTERS USED IN THE DATA TABLES

(DAILY DATA ARE FOR THE 24 HOURS IMMEDIATELY PRECEDING OBSERVATION TIME.)

BLANK Entries in the "Monthly Summarized Data" table indicate no record.

BLANK Entries in the "Daily Precipitation" and "Snowfall and Snow on the Ground" tables indicate zero.

BLANK Entries in the "Daily Temperature" table indicate a missing record where an edited value could not be determined. (See *** below)

- No record. Data not recorded, determined unreliable by quality control check, or not received in time for publication.

+ Precipitation or temperature extremes occurred on one or more previous dates during the month.

*** Missing original temperature which has been estimated during edit.

* Rain gage not read. Precipitation is included in the amount following the asterisks. Time distribution not known. A * preceding the monthly total indicates precipitation amount is being carried forward to next months total, and may include amounts from the previous month(s).
// Rain gage equipped with a windshield.

A Amount of precipitation is the total of observer's entries for the current month. It may include precipitation that occurred during the previous month. Refer to earlier bulletin to determine date of last reading. (Hawaii stations)

B Adjusted monthly value (estimated), (1-7 missing values for wind and evaporation).

M Insufficient or partial data. M is appended to average and/or total values computed with 1-9 daily values missing. M appears alone if 10 or more daily values are missing, (8 or more for wind and evaporation).

R Amounts from recording rain gage.

T Trace. An amount too small to measure.

V Includes total for previous month(s). (See * above)

SEASONAL TABLES: Monthly and seasonal snowfall and heating degree days for the 12 months ending with the June data are published in the July issue of this bulletin. Cooling degree days for the calendar year are published in the "Climatological Data Annual Summary."

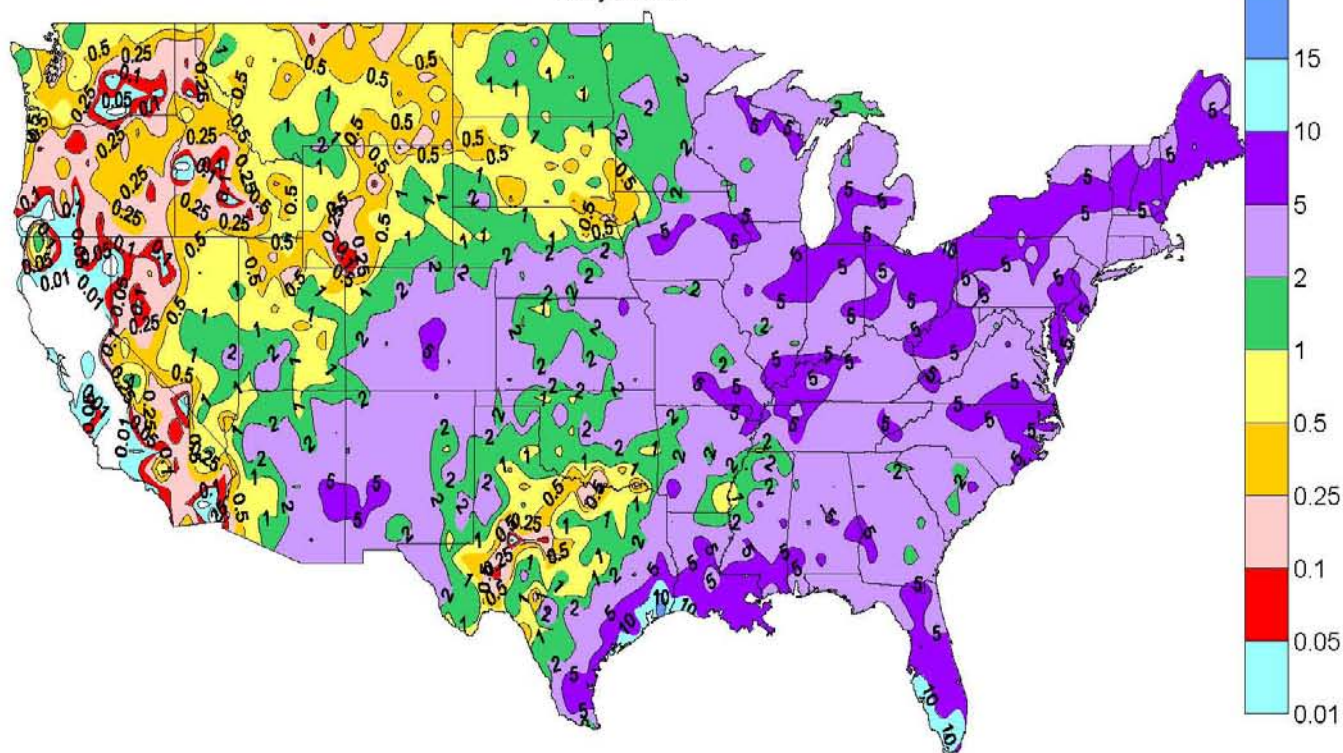
Information concerning the history of changes in locations, exposure, etc. of substations is kept on file at the National Climatic Data Center. Historical information of regular National Weather Service Offices may be obtained from the "Local Climatological Data" annual publication. The contents of this publication may be reprinted or otherwise used freely, with proper credit to the National Climatic Data Center. The data are also available in digital form on magnetic tape and diskette.

SUBSCRIPTION, PRICE, AND ORDERING INFORMATION AVAILABLE FROM:

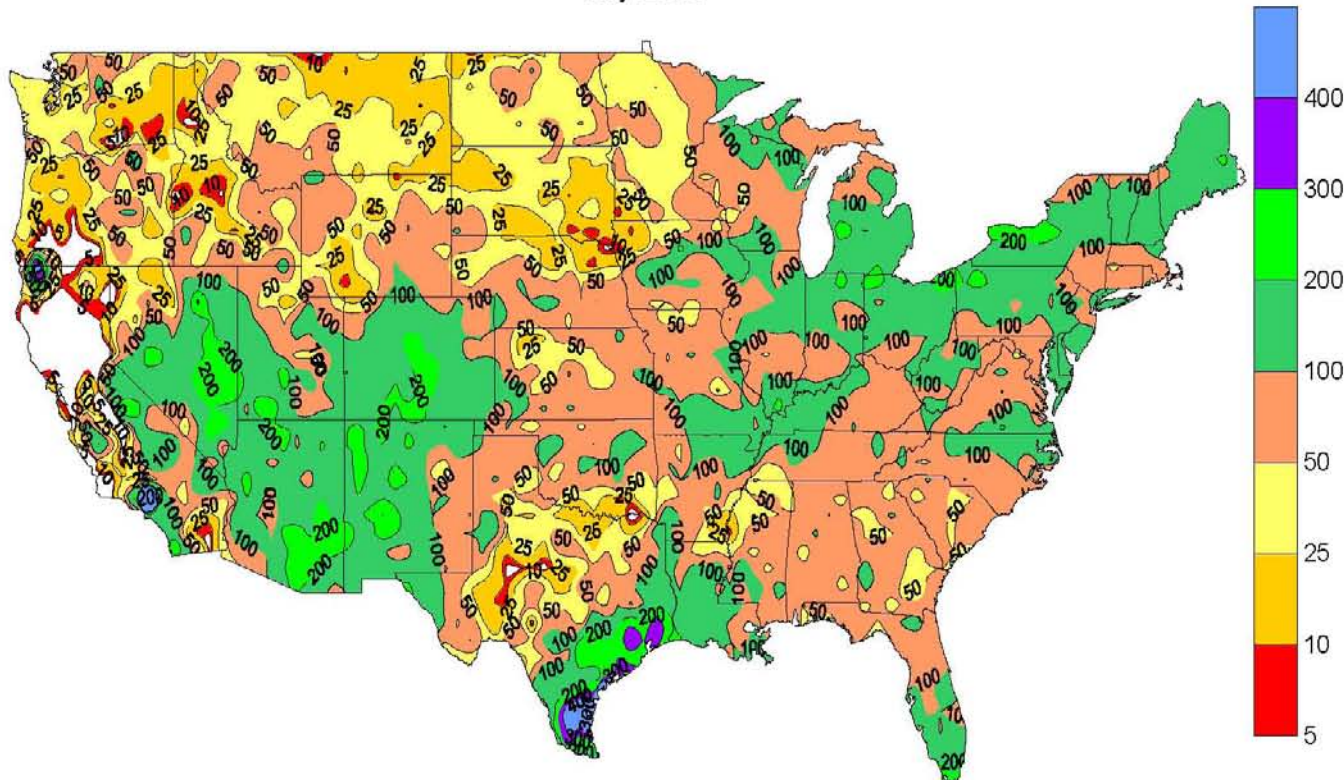
NCDC Subscription Services Center
310 State Route 956
Building 300
Rocket Center, WV 26726

Toll free number: (866) 742-3322
Fax number: (304) 726-4409

Total Precipitation (Inches)
July 2006



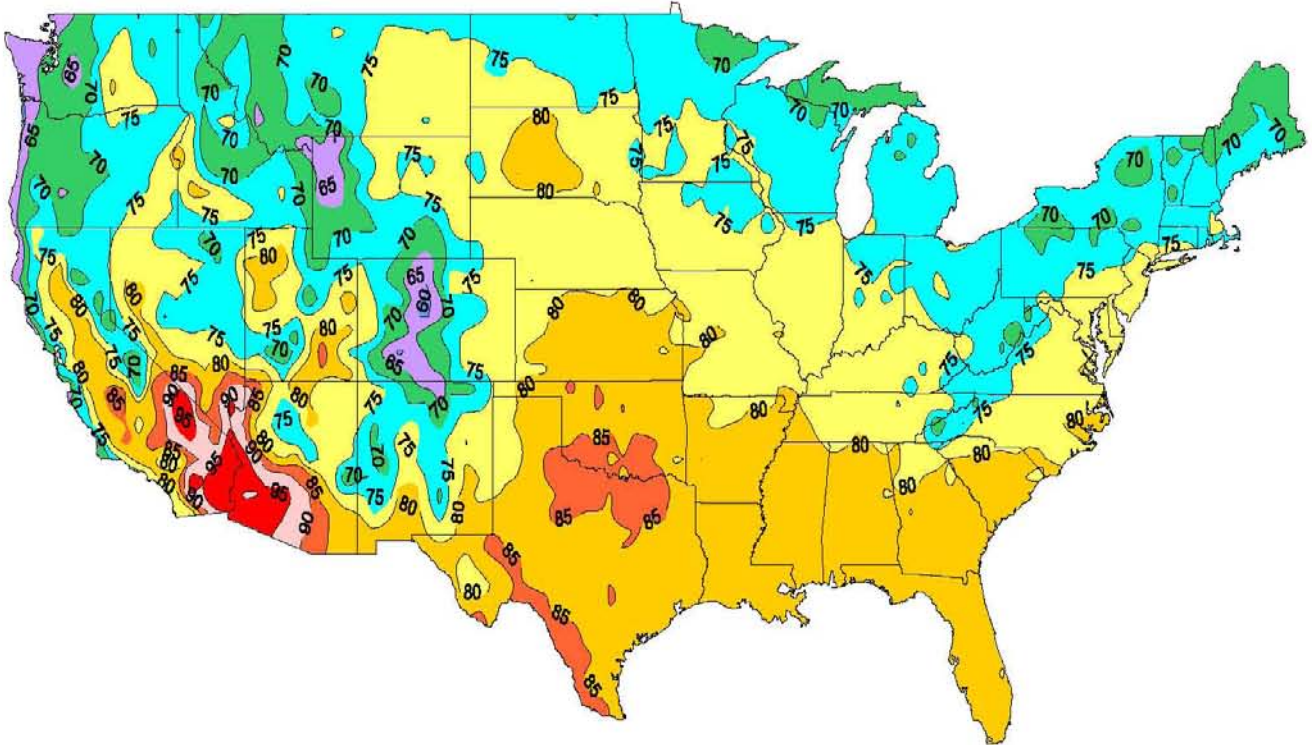
Percent of Normal
July 2006



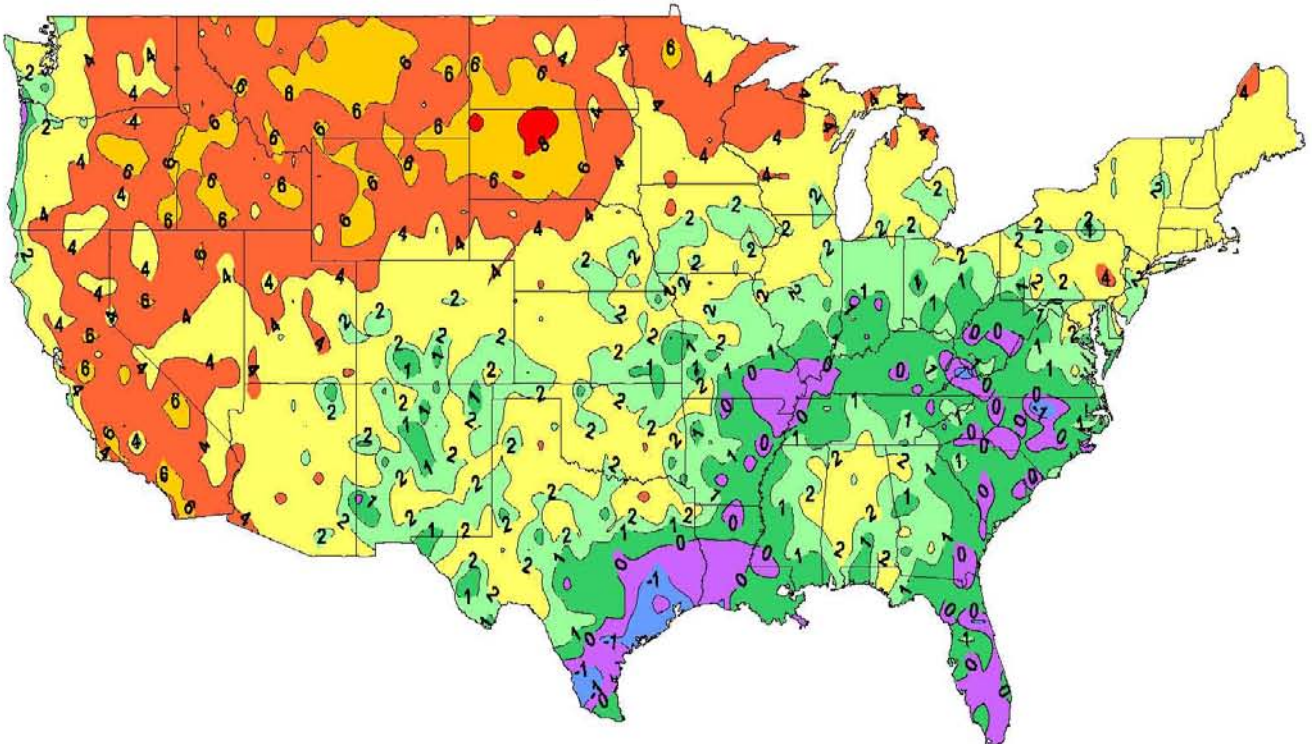
NOTE Contour maps are computer-generated and intended to show general temperature and precipitation patterns. Therefore, contours may not always account for individual datum points.

National Climatic Data Center, NOAA

Average Temperature (Degrees F)
July 2006

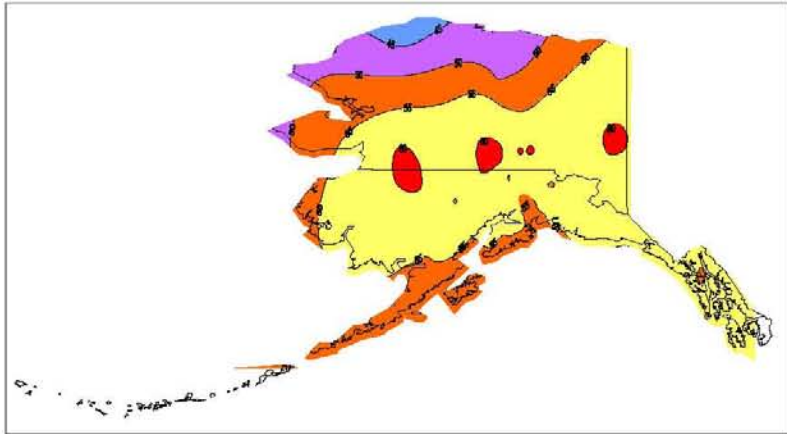


Departure of Average Temperature from Normal (Degrees F)
July 2006

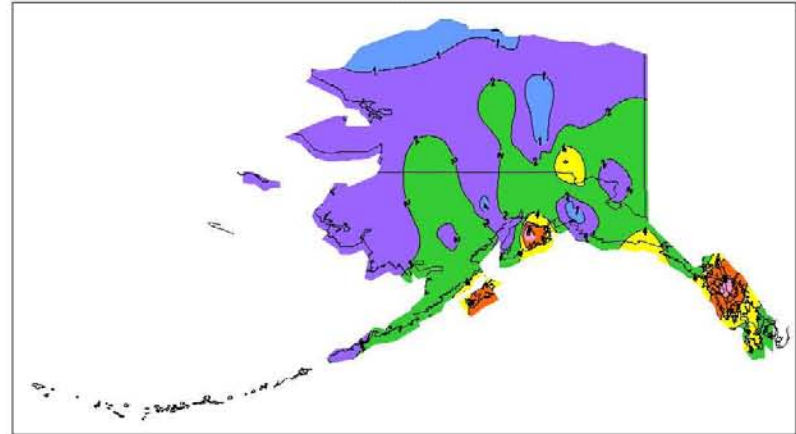


NOTE Contour maps are computer-generated and intended to show general temperature and precipitation patterns. Therefore, contours may not always account for individual datum points.

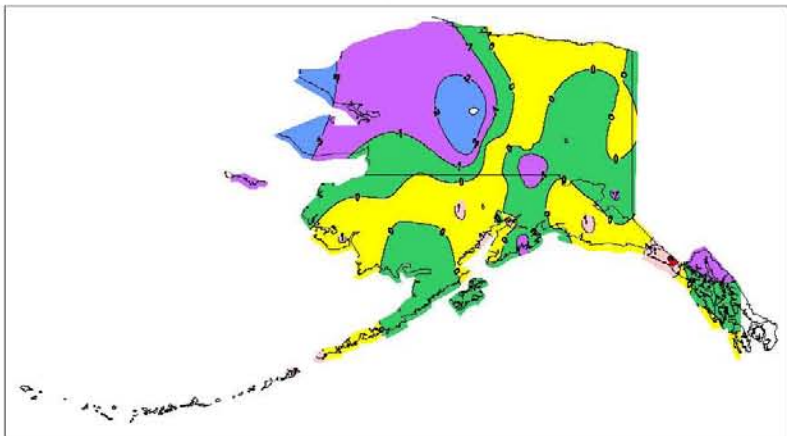
Average Temperature (Degrees F)
July 2006



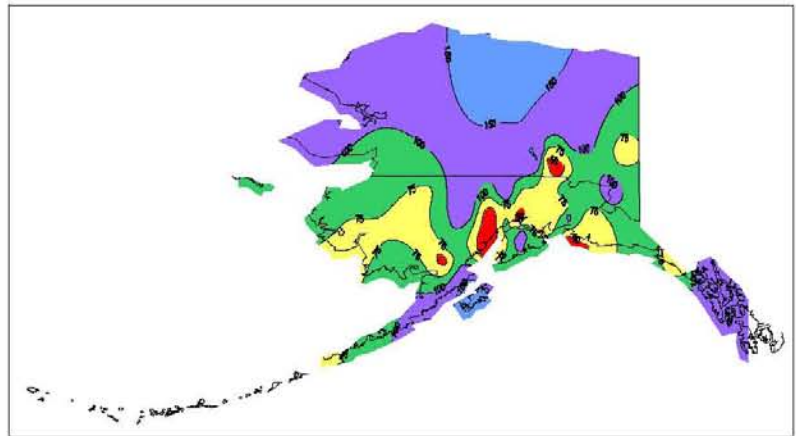
Alaska Precipitation (Inches)
July 2006



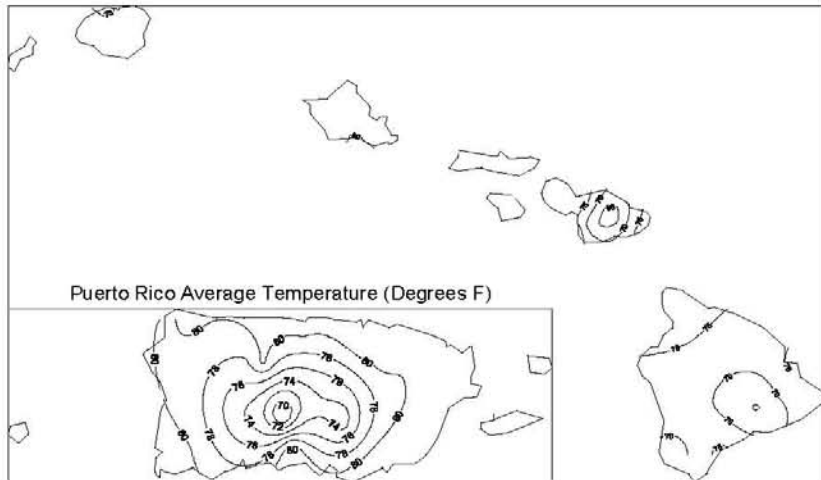
Departure of Average Temperature from Normal (Degrees F)
July 2006



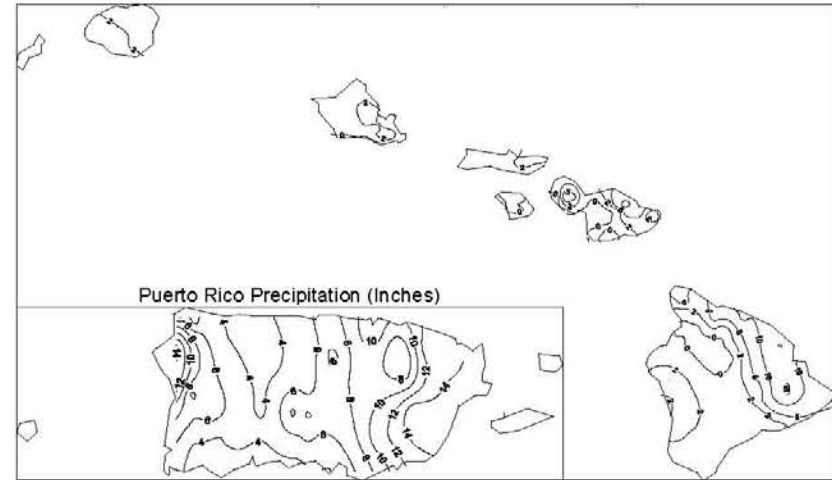
Percent of Normal Precipitation
July 2006



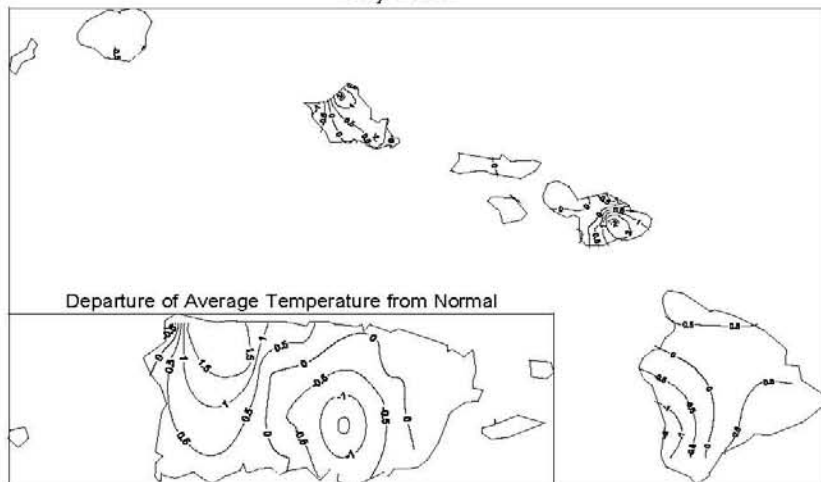
Hawaii Average Temperature (Degrees)
July 2006



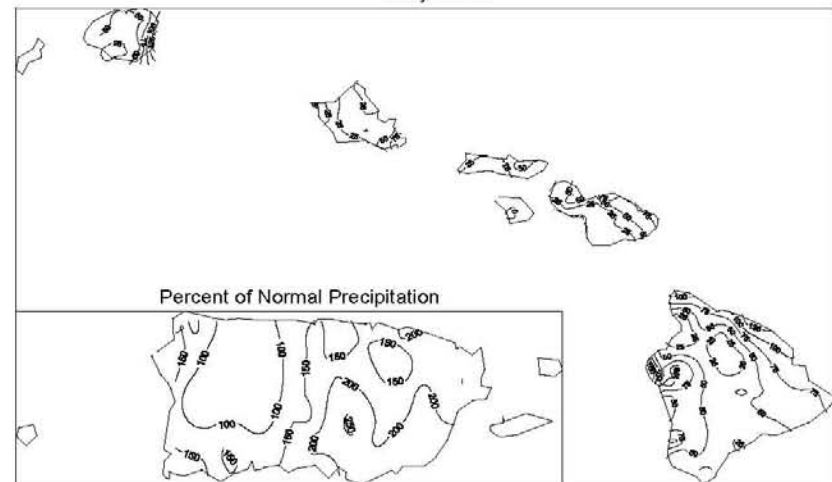
Hawaii Precipitation (Inches)
July 2006



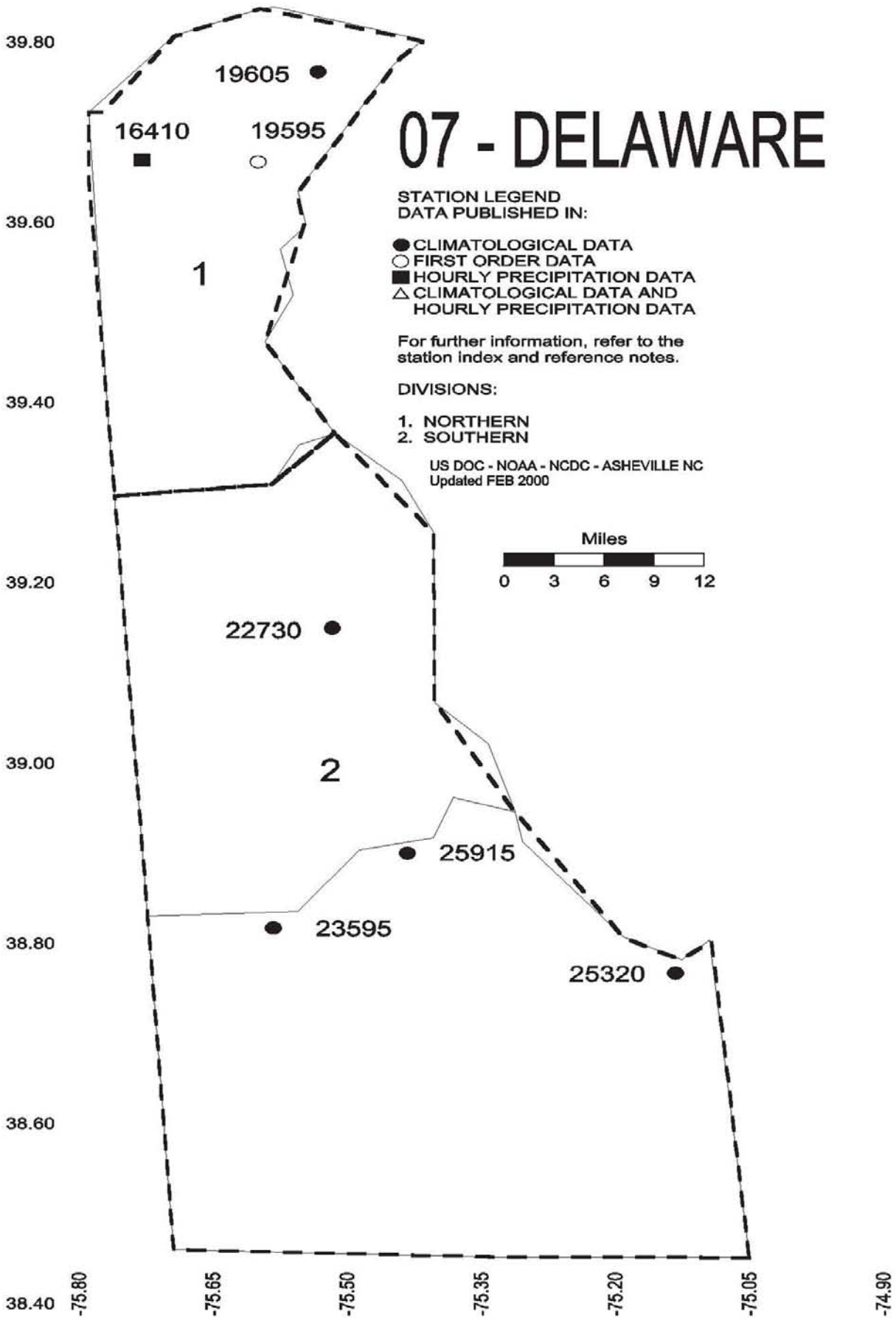
Departure of Average Temperature from Normal (Degrees)
July 2006

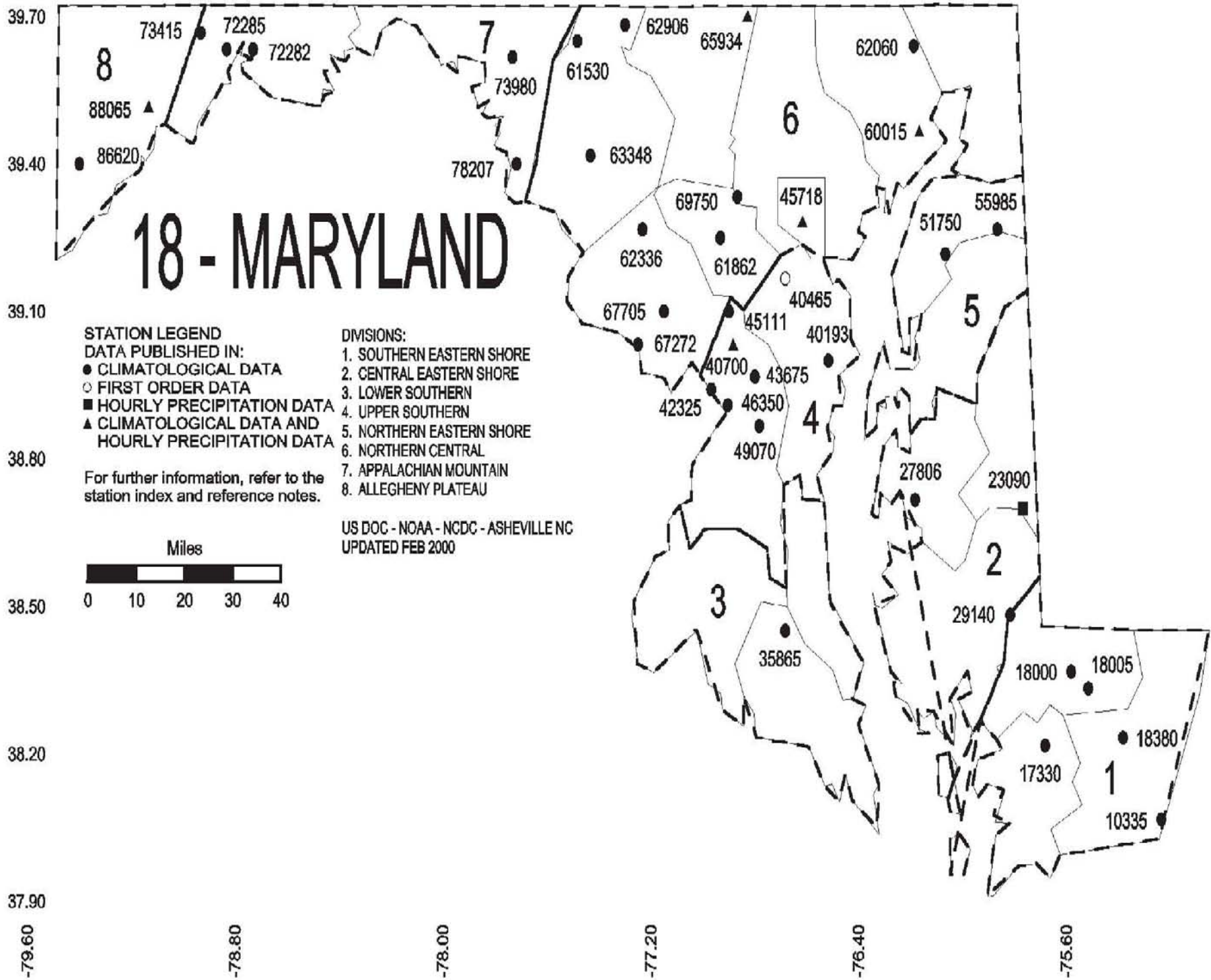


Hawaii Percent of Normal Precipitation
July 2006



07 - DELAWARE





Station ID	Division	Data Type
73415	8	Climatological Data
72285	7	Climatological Data
72282	7	Climatological Data
88065	8	Climatological Data and Hourly Precipitation Data
86620	8	Climatological Data
73980	7	Climatological Data
62906	6	Climatological Data
65934	6	Climatological Data
62060	6	Climatological Data
61530	6	Climatological Data
60015	6	Climatological Data and Hourly Precipitation Data
63348	6	Climatological Data
69750	6	Climatological Data
45718	6	Climatological Data and Hourly Precipitation Data
55985	5	Climatological Data
51750	5	Climatological Data
62336	6	Climatological Data
61862	6	Climatological Data
40465	6	First Order Data
67705	6	Climatological Data
67272	6	Climatological Data
45111	6	Climatological Data and Hourly Precipitation Data
40193	6	Climatological Data
40700	6	Climatological Data and Hourly Precipitation Data
43675	6	Climatological Data
5	5	Division Label
42325	6	Climatological Data
46350	6	Climatological Data
4	4	Division Label
49070	6	Climatological Data
27806	6	Climatological Data
23090	6	Hourly Precipitation Data
3	3	Division Label
29140	6	Climatological Data
35865	6	Climatological Data
2	2	Division Label
18000	1	Climatological Data
18005	1	Climatological Data
1	1	Division Label
18380	1	Climatological Data
17330	1	Climatological Data
10335	1	Climatological Data

These and other publications are available from the National Climatic Data Center

Hourly Precipitation Data

This publication contains hourly precipitation amounts obtained from recording rain gages located at National Weather Service, Federal Aviation Administration, and cooperative observer stations. Published data are displayed in inches and tenths or inches and hundredths at local standard time. HPD includes maximum precipitation for nine (9) time periods from 15 minutes to 24 hours, for selected stations.

Climatological Data

Monthly editions contain station daily maximum and minimum temperatures and precipitation. Some Stations provide daily snowfall, snow depth, evaporation, and soil temperature data. Each edition also contains monthly summaries for heating and cooling degree days (65 degree F base). The July issue contains a recap of monthly heating degree days and snow data for the preceding July through June.

The Annual issue contains monthly and annual averages of temperature, precipitation, temperature extremes, freeze data, soil temperatures, evaporation, and a recap of monthly cooling degree days.

Storm Data

Monthly issues contain a chronological listing, by states, of occurrences of storms and unusual weather phenomena. Reports contain information on storm paths, deaths, injuries, and property damage. An "Outstanding storms of the month" section highlights severe weather events with photographs, illustrations, and narratives. The December issue includes annual tornado, lightning, flash flood, and tropical cyclone summaries.

Monthly Climatic Data for the World

This publication contains monthly means for temperature, pressure, precipitation, vapor pressure, and sunshine for approximately 2,000 surface data collection stations worldwide and monthly mean upper air temperatures, dew point depressions, and wind velocities for approximately 500 observing sites.

Local Climatological Data

LCD publications summarize temperature, relative humidity, precipitation, cloudiness, wind speed and direction observations for several hundred cities in the U.S. and its territories. Each monthly publication also contains 3 hourly weather observations for that month and a hourly summary of precipitation. Annual LCD publications contain a summary of the past calendar year as well as historical averages and extremes.

For Information Call:

(866) 742-3322 (Toll free)

(828) 271-4010 (TDD)

(304) 726-4409 (Fax)

To change your address, please return a copy of the mailing label along with your new address to:

NCDC Subscription Services Center
310 State Route 956
Building 300
Rocket Center, WV 26726

Toll free number:(866) 742-3322
TDD: (828) 271-4010
Fax number: (304) 726-4409

NCDC now offers an annual online subscription for the *Climatological Data* publication. When you purchase this subscription service, you will have **immediate online access** to all previous publications back to October 1997 and all publications thereafter until the expiration of the subscription. Your subscription is valid for one year after purchase. **The total cost is \$36 for online delivery (including back issues) compared to \$50 for offline delivery.** To order this and other subscriptions online with your credit card, go to: **www.ncdc.noaa.gov/mpp.html** and choose subscriptions.

Inquiries/Comments Call: Toll free number:(866) 742-3322
TDD: (828) 271-4010
Fax number: (304) 726-4409

NCDC Subscription Services Center
310 State Route 956
Building 300
Rocket Center, WV 26726

PRSR STD POSTAGE & FEES PAID United States Department of Commerce NOAA Permit No. G-19

OFFICIAL BUSINESS
PENALTY FOR PRIVATE USE \$300
CHANGE SERVICE REQUESTED