



JULY 2006 LOCAL CLIMATOLOGICAL DATA

NOAA, National Climatic Data Center

WILMINGTON, DE
NEW CASTLE COUNTY AIRPORT (KILG)
Lat:39° 40'N Long: 75° 36'W Elev (Ground) 75 Feet
Time Zone : EASTERN WBAN: 13781 ISSN#: 0198-117X



Date 1	Temperature °F						Deg Days BASE 65°		WEATHER 10	SNOW/ICE ON GND(IN)		PRECIPITATION ON GND(IN)		PRESSURE (INCHES OF HG)		WIND SPEED = MPH DIR = TENS OF DEGREES								Date 24
	MAXIMUM 2	MINIMUM 3	AVERAGE 4	DEP FROM NORMAL 5	AVERAGE DEW PT 6	AVERAGE WET BULB 7	HEATING 8	COOLING 9		0700 LST 11	1300 LST 12	2400 LST 13	2400 LST 14	AVERAGE STATION 15	AVERAGE SEA LEVEL 16	RESULTANT SPEED 17	RES DIR 18	AVERAGE SPEED 19	MAXIMUM					
																			5-SEC 20		2-MIN 22			
01	85	62	74	-1	60	66	0	9		0		0.0	0.00	30.06	30.14	6.6	21	7.8	21	22	17	19	01	
02	90	70	80	4	68	71	0	15	TS TSRA RA BR	0		0.0	0.83	29.98	30.06	8.4	22	9.1	56*	26	39*	29	02	
03	87	70	79	3	69	72	0	14	TSRA RA BR VCTS	0		0.0	0.19	29.96	30.04	4.8	23	5.7	24	25	20	25	03	
04	90	73	82	6	70	73	0	17	TS TSRA RA VCTS	0		0.0	0.02	29.88	29.95	4.1	21	6.7	38	30	29	30	04	
05	80	68	74	-2	70	71	0	9	RA BR HZ	0		0.0	1.18	29.84	29.93	2.6	21	5.7	21	22	15	23	05	
06	78	63	71	-5	60	64	0	6	RA BR VCTS	0		0.0	1.46	29.93	30.05	7.1	34	7.8	20	01	16	03	06	
07	81	57*	69*	-7	55	62	0	4		0		0.0	0.00	30.14	30.23	3.8	34	6.0	16	01	13	01	07	
08	81	63	72	-4	60	65	0	7		0		0.0	0.00	30.09	30.17	0.3	17	5.1	14	06	13	08	08	
09	81	63	72	-4	62	66	0	7	VCTS	0		0.0	0.00	29.98	30.06	6.6	18	8.6	21	16	17	16	09	
10	85	67	76	0	66	70	0	11		0		0.0	0.00	29.96	30.05	7.4	17	8.1	20	20	15	21	10	
11	90	72	81	5	71	74	0	16	HZ	0		0.0	0.00	30.01	30.10	7.1	19	8.0	17	21	14	22	11	
12	90	76	83	6	72	75	0	18	RA HZ	0		0.0	0.19	29.96	30.04	8.5	20	8.8	22	23	20	30	12	
13	85	71	78	1	71	73	0	13	RA HZ	0		0.0	0.21	29.86	29.95	5.8	27	7.1	18	29	15	27	13	
14	85	67	76	-1	69	71	0	11	HZ	0		0.0	0.00	29.91	30.00	4.9	14	6.9	20	16	16	15	14	
15	80	71	76	-1	73	74	0	11	RA BR HZ VCTS	0		0.0	0.06	29.85	29.94	4.0	16	4.7	14	17	12	17	15	
16	93	70	82	5	68	72	0	17	FG+ FG BR	0		0.0	0.00	29.89	29.98	6.8	32	7.9	20	31	17	02	16	
17	97*	73	85*	8	69	74	0	20	RA	0		0.0	T	29.90	29.98	3.9	27	5.8	16	26	14	27	17	
18	96	70	83	6	70	74	0	18	TSRA RA BR HZ SQ VCTS	0		0.0	0.24	29.90	29.99	3.8	28	6.6	41	31	35	30	18	
19	91	69	80	3	67	71	0	15	RA	0		0.0	T	29.99	30.10	3.5	05	5.8	24	10	20	10	19	
20	89	71	80	3	68	72	0	15		0		0.0	0.00	29.99	30.06	4.7	33	7.1	17	30	14	30	20	
21	88	76	82	5	72	75	0	17	TS RA HZ	0		0.0	T	29.83	29.90	4.9	20	7.1	20	02	17	01	21	
22	86	72	79	2	72	73	0	14	RA BR HZ VCTS	0		0.0	0.72	29.68	29.76	8.1	19	9.6	32	25	24	25	22	
23	82	65	74	-3	64	68	0	9	RA	0		0.0	0.01	29.76	29.87	4.6	31	5.9	15	36	12	36	23	
24	84	63	74	-3	62	67	0	9		0		0.0	0.00	29.93	30.03	3.3	22	6.0	16	20	13	22	24	
25	83	69	76	-1	68	71	0	11		0		0.0	0.00	29.96	30.04	7.5	16	8.0	17	14	16	16	25	
26	85	70	78	1	71	73	0	13	BR HZ	0		0.0	0.00	29.90	29.97	6.3	16	7.6	20	15	16	16	26	
27	91	72	82	5	71	74	0	17	TS TSRA RA BR HZ SQ VCTS	0		0.0	0.94	29.89	29.98	5.8	19	7.3	38	28	32	28	27	
28	91	72	82	5	71	74	0	17	RA BR VCTS	0		0.0	T	29.87	29.95	8.9	23	10.0	40	25	30	25	28	
29	90	72	81	4	71	74	0	16		0		0.0	0.00	29.86	29.93	6.2	26	7.5	18	28	15	28	29	
30	91	74	83	6	70	74	0	18	HZ	0		0.0	0.00	29.75	29.84	5.1	28	5.8	16	32	14	31	30	
31	93	73	83	6	71	75	0	18	RA	0		0.0	T	29.80	29.90	1.6	20	4.6	23	23	20	23	31	

87.0	69.2	78.1	☼	67.8	71.2	0.0	13.3	< MONTHLY AVERAGES TOTALS >	0.0	6.05	29.91	30.00	3.0	22	7.1	< MONTHLY AVERAGES			
1.0	1.9	1.5		<----- DEPARTURE FROM NORMAL ----->						1.77	SUNSHINE, CLOUD, & VISIBILITY TABLES ON PAGE 3								

DEGREE DAYS				GREATEST 24-HR PRECIPITATION : 2.64 DATE : 05-06				SEA LEVEL PRESSURE			
MONTHLY				GREATEST 24-HR SNOWFALL : 0.0 DATE :				MAXIMUM : 30.25 07 1251			
TOTAL DEPARTURE				GREATEST SNOW DEPTH : 0 DATE :				MINIMUM : 29.70 22 1651			
SEASON TO DATE				NUMBER OF -> DAYS WITH				PRECIPITATION >= 0.01 INCH: 12			
HEATING : 0 -1 0 -1				MAXIMUM TEMP >= 90 : 13				MINIMUM TEMP <= 32 : 0			
COOLING : 412 44 678 22				MAXIMUM TEMP <= 32 : 0				PRECIPITATION >= 0.10 INCH: 9			
				THUNDERSTORMS : 6				HEAVY FOG : 1			
								SNOWFALL >= 1.0 INCH : 0			

JULY 2006
WILMINGTON, DE

HOURLY PRECIPITATION

(WATER EQUIVALENT IN INCHES)

WILMINGTON, DE (KILG)
JULY 2006

WBAN # 13781

Date	FOR HOUR (LST) ENDING AT												Date	FOR HOUR (LST) ENDING AT												Date	Sum of Hourly Data	2400 LST Water Equiv.
	1	2	3	4	5	6	7	8	9	10	11	12		13	14	15	16	17	18	19	20	21	22	23	24			
01													01												01	0.00	0.00	
02													02						0.83	T					02	0.83	0.83	
03					0.17	0.02							03												03	0.19	0.19	
04													04			0.02									04	0.02	0.02	
05		T				T	0.02	T	T				05	T	0.01	T	T		T	T	T	T	0.02	1.13	05	1.18	1.18	
06	1.23	0.10	0.05	0.07	0.01	T							06												06	1.46	1.46	
07													07												07	0.00	0.00	
08													08												08	0.00	0.00	
09													09												09	0.00	0.00	
10													10												10	0.00	0.00	
11													11												11	0.00	0.00	
12													12			T	0.19	T				T	T	12	0.19	0.19		
13		0.21											13												13	0.21	0.21	
14													14												14	0.00	0.00	
15												0.01	15	T	T	T	0.03	0.02							15	0.06	0.06	
16													16												16	0.00	0.00	
17													17												17	T	T	
18													18						0.02	0.19	0.02	0.01			18	0.24	0.24	
19													19												19	T	T	
20													20												20	0.00	0.00	
21													21												21	T	T	
22					0.02	0.01			0.02	T	T		22		T	T	0.01	0.02	0.40	0.19	0.03	0.01		0.01	22	0.72	0.72	
23	0.01	T	T	T	T			T	T				23												23	0.01	0.01	
24													24												24	0.00	0.00	
25													25												25	0.00	0.00	
26													26												26	0.00	0.00	
27													27					0.03	0.63				0.28	27	0.94	0.94		
28		T											28		T	T									28	T	T	
29													29												29	0.00	0.00	
30													30												30	0.00	0.00	
31													31												31	T	T	

* Indicates sum of Hourly and Daily disagree.

MAXIMUM SHORT DURATION PRECIPITATION (See Note)

Time Period (Minutes)	5	10	15	20	30	45	60	80	100	120	150	180
Precipitation (Inches)	0.46	0.70	0.75	0.81	1.07	1.44	1.85	2.15	2.29	2.38	2.44	2.46
Ending Date	02	02	02	02	06	06	06	06	06	06	06	06
Ending Time (Hr/Min)	1844	1845	1850	1854	0023	0009	0023	0042	0058	0105	0126	0205

Note : The hourly and daily precipitation totals are printed in the last 2 columns and hi-lighted in red when they disagree. NWS does not edit ASOS hourly values but may edit daily and monthly totals. Hourly, daily, and monthly totals are printed as reported by the ASOS site.

Date and time are not entered for TRACE amounts.

REFERENCE NOTES & SUPPLEMENTAL SUMMARIES

* = Extreme for the month (last occurrence if more than one).

T = Trace precipitation amount.

+ = also occurs on earlier date.

FG+ = Heavy fog, visibility .25 miles or less.

BLANK entries denote missing or unreported data.

Resultant wind is the vector sum of the wind speeds and directions divided by the number of observations.

Wind direction is recorded in tens of degrees (2 digits) clockwise from true north. '00' = calm, 'VR' = variable.

Precipitation is for the 24-hour period ending at the time indicated in the column heading.

Water Equivalent of snow on the ground is reported only when the depth is 2 or more inches.

NORMALS ARE FOR THE YEARS 1971-2000

WEATHER NOTATIONS

QUALIFIER	WEATHER PHENOMENA		
DESCRIPTOR	PRECIPITATION	OBSCURATION	OTHER
BC Patches	DZ Drizzle	BR Mist	DS Duststorm
BL Blowing	GR Hail	DU Widespread Dust	FC Funnel Cloud
DR Low Drifting	GS Small Hail and/or Snow Pellets	FG Fog	+FC Tornado Waterspout
FZ Freezing	IC Ice Crystals	FU Smoke	PO Well-Developed Dust/Sand Whirls
MI Shallow	PL Ice Pellets	HZ Haze	
PR Partial	RA Rain	PY Spray	SQ Squalls
SH Shower(s)	SG Snow Grains	SA Sand	SS Sandstorm
TS Thunderstorm	SN Snow	VA Volcanic Ash	GL Glaze
VC In the Vicinity	UP Unkown Precipitation		

Intensity (as indicated on pages 4 to 6):
'+' = Heavy '' = Moderate '-' = Light

WILMINGTON, DE JULY 2006

Ceilometer (30-second) data are used to derive cloudiness at or below 12,000 feet. This cloudiness is the mean cloud cover detected during sunrise to sunset (SR-SS), or midnight to midnight (MN-MN).

Satellite data are used to derive cloudiness above 12,000 feet. Effective Cloud Amount is based on the cloud cover and the transparency of the clouds within the satellite field of view (approx. 31x31 miles).

Sky Condition is based on the sum (not to exceed 8) of the sunrise to sunset cloud cover below and above 12,000 feet. Both ceilometer and satellite data must be present to compute Sky Condition. Clear = 0-2 oktas, Partly Cloudy = 3-6 oktas, Cloudy = 7-8 oktas.

A Heating (Cooling) Degree Day is the difference between the average daily temperature and 65 degrees F. The HDD season begins July 1, the CDD season begins January 1.

Dew Point is the temperature to which the air must be cooled to achieve 100% relative humidity. Wet Bulb is the temperature the air would have if cooled to saturation at constant pressure by evaporation of water into it.

Snow Depth, Snowfall, and Sunshine data may come from nearby sites that the National Weather Service deems Climatologically representative of this site.

ADDITIONAL NOTES:

Date	SUNSHINE		CLOUDINESS (OKTAS)				VISIBILITY (MILES)		RESERVED
	TOTAL MINUTES	PERCENT POSSIBLE	SR-SS		MN-MN		MINIMUM	MAXIMUM	
			Sky Cover	Satellite	Sky Cover	Satellite			
01							10.00	10.00	
02							3.00	10.00	
03							5.00	10.00	
04							7.00	10.00	
05							2.00	10.00	
06							4.00	10.00	
07							10.00	10.00	
08							10.00	10.00	
09							10.00	10.00	
10							8.00	10.00	
11							4.00	10.00	
12							2.50	10.00	
13							2.50	10.00	
14							10.00	10.00	
15							0.25	10.00	
16							0.25	10.00	
17							10.00	10.00	
18							6.00	10.00	
19							8.00	10.00	
20							7.00	10.00	
21							5.00	10.00	
22							5.00	10.00	
23							10.00	10.00	
24							10.00	10.00	
25							10.00	10.00	
26							3.00	10.00	
27							5.00	10.00	
28							6.00	10.00	
29							8.00	10.00	
30							3.00	10.00	
31							9.00	10.00	
MONTHLY AVGS							6.24	10.00	
SUNSHINE (Minutes)									
Total :					Possible :				
Percent Possible :									
NUMBER OF DAYS WITH :									
SKY CONDITION									
Clear		Partly CLDY			Cloudy			Missing	
MINIMUM VISIBILITY (MILES)									
<= .25		<= 3.0			>= 7.0				
2		8			15				

OBSERVATIONS AT 3-HOURLY INTERVALS

WILMINGTON, DE
JULY 2006 KILG

WBAN # 13781

HOUR (LST)	SKY COVER	CEILING 100's of FT.	SATELLITE		VISIBILITY (MILES)	WEATHER	TEMPERATURE °F			WIND		PRESSURE (INCHES, HG)		HOUR (LST)	SKY COVER	CEILING 100's of FT.	SATELLITE		VISIBILITY (MILES)	WEATHER	TEMPERATURE °F			WIND		PRESSURE (INCHES, HG)			
			Observation Time (LST)	Eff Cld Amt Oktas			DRY BULB	DEW POINT	WET BULB	RELATIVE HUMIDITY (PCT)	SPEED (MPH)	DIRECTION Tens of Deg	STATION				SEA LEVEL	Observation Time (LST)			Eff Cld Amt Oktas	DRY BULB	DEW POINT	WET BULB	RELATIVE HUMIDITY (PCT)	SPEED (MPH)	DIRECTION Tens of Deg	STATION	SEA LEVEL
SUNRISE: 0436 JUL 01 SUNSET: 1932														SUNRISE: 0439 JUL 07 SUNSET: 1930															
01	CLR	NC			10.00		69	57	62	66	3	11	30.04	30.13	01	CLR	NC			10.00		63	54	58	73	5	33	30.10	30.19
04	CLR	NC			10.00		62	59	60	90	0	00	30.06	30.14	04	CLR	NC			10.00		58	54	56	87	7	32	30.12	30.21
07	CLR	NC			10.00		69	61	64	76	0	00	30.09	30.18	07	CLR	NC			10.00		65	55	59	70	9	33	30.15	30.24
10	CLR	NC			10.00		80	61	68	52	7	VR	30.10	30.18	10	CLR	NC			10.00		74	56	63	54	7	36	30.16	30.25
13	CLR	NC			10.00		84	58	68	41	10	24	30.09	30.17	13	SCT	055			10.00		76	56	64	50	6	32	30.16	30.25
16	CLR	NC			10.00		84	58	68	41	13	21	30.03	30.12	16	SCT	060			10.00		81	54	65	39	6	VR	30.14	30.22
19	CLR	NC			10.00		80	61	68	52	9	18	30.02	30.11	19	FEW	075			10.00		77	53	63	43	0	00	30.14	30.22
22	CLR	NC			10.00		75	60	66	60	10	19	30.04	30.13	22	CLR	NC			10.00		68	59	63	73	3	30	30.15	30.24
SUNRISE: 0437 JUL 02 SUNSET: 1931														SUNRISE: 0440 JUL 08 SUNSET: 1930															
01	CLR	NC			10.00		72	62	66	71	8	20	30.03	30.11	01	CLR	NC			10.00		65	59	61	81	5	30	30.15	30.24
04	CLR	NC			10.00		70	64	66	81	9	20	30.01	30.09	04	CLR	NC			10.00		64	60	62	87	0	00	30.12	30.21
07	CLR	NC			10.00		74	66	69	76	12	22	30.01	30.09	07	CLR	NC			10.00		68	61	64	78	3	35	30.12	30.21
10	CLR	NC			10.00		83	68	73	61	14	23	29.98	30.07	10	CLR	NC			10.00		78	62	68	58	8	02	30.12	30.21
13	CLR	NC			10.00		88	69	75	53	10	22	29.96	30.03	13	CLR	NC			10.00		79	58	66	49	7	08	30.09	30.17
16	CLR	NC			10.00		90	69	76	50	14	23	29.93	30.00	16	CLR	NC			10.00		79	59	67	50	5	19	30.04	30.13
19	OVC	047			3.00	TS+RA	74	66	69	76	0	00	29.96	30.04	19	CLR	NC			10.00		76	60	66	58	6	21	30.02	30.10
22	CLR	NC			6.00	BR	73	70	71	90	3	27	29.98	30.06	22	CLR	NC			10.00		72	61	65	68	6	23	30.02	30.10
SUNRISE: 0437 JUL 03 SUNSET: 1931														SUNRISE: 0441 JUL 09 SUNSET: 1930															
01	CLR	NC			8.00		73	69	70	87	0	00	29.96	30.05	01	CLR	NC			10.00		68	62	64	81	6	25	30.01	30.09
04	OVC	060			5.00	BR	72	70	71	93	6	30	29.98	30.06	04	CLR	NC			10.00		65	60	62	84	6	26	30.01	30.09
07	FEW	100			7.00		72	70	71	93	3	21	30.01	30.09	07	CLR	NC			10.00		70	62	65	76	5	26	30.02	30.10
10	CLR	NC			10.00		79	70	73	74	7	24	30.01	30.08	10	CLR	NC			10.00		79	59	67	50	12	19	30.01	30.10
13	CLR	NC			10.00		86	66	73	51	7	VR	29.96	30.04	13	BKN	070			10.00		80	60	67	51	13	14	29.98	30.06
16	CLR	NC			10.00		87	70	75	57	12	20	29.93	30.01	16	FEW	090			10.00		79	65	70	62	17	15	29.93	30.02
19	CLR	NC			10.00		84	69	74	61	6	21	29.91	29.99	19	CLR	NC			10.00		76	65	69	69	7	19	29.93	30.02
22	CLR	NC			9.00		79	72	74	79	6	22	29.93	30.02	22	CLR	NC			10.00		73	62	66	69	7	18	29.96	30.04
SUNRISE: 0438 JUL 04 SUNSET: 1931														SUNRISE: 0441 JUL 10 SUNSET: 1929															
01	CLR	NC			7.00		76	72	73	87	3	24	29.93	30.01	01	CLR	NC			10.00		70	64	66	81	6	17	29.94	30.03
04	CLR	NC			7.00		74	71	72	90	6	24	29.91	29.99	04	CLR	NC			10.00		68	64	66	87	6	16	29.93	30.02
07	CLR	NC			9.00		76	70	72	82	5	25	29.91	29.99	07	CLR	NC			10.00		71	65	67	81	8	17	29.96	30.05
10	CLR	NC			10.00		84	71	75	65	8	19	29.88	29.97	10	FEW	060			10.00		78	67	71	69	6	23	29.98	30.06
13	CLR	NC			9.00		89	72	77	57	10	24	29.85	29.93	13	FEW	048			10.00		83	67	72	59	12	17	29.96	30.04
16	CLR	NC			10.00		79	68	72	69	7	29	29.83	29.91	16	SCT	060			10.00		83	67	72	59	13	14	29.94	30.02
19	CLR	NC			10.00		75	69	71	82	5	12	29.83	29.90	19	CLR	NC			8.00		81	67	72	63	9	19	29.96	30.04
22	CLR	NC			8.00		75	70	72	85	5	21	29.85	29.92	22	SCT	075			10.00		77	67	70	71	9	18	30.01	30.09
SUNRISE: 0438 JUL 05 SUNSET: 1931														SUNRISE: 0442 JUL 11 SUNSET: 1929															
01	SCT	080			10.00		74	70	71	87	8	23	29.85	29.93	01	CLR	NC			10.00		73	67	69	82	7	17	30.01	30.09
04	FEW	045			10.00		74	68	70	82	9	24	29.85	29.93	04	CLR	NC			10.00		73	69	70	87	5	19	29.99	30.08
07	BKN	080			4.00	-RA BR	72	70	71	93	6	27	29.85	29.93	07	CLR	NC			8.00		76	70	72	82	7	21	30.02	30.10
10	BKN	050			5.00	HZ	77	71	73	82	5	30	29.85	29.94	10	CLR	NC			4.00	HZ	83	71	75	67	8	23	30.03	30.11
13	SCT	041			10.00	-RA	79	70	73	74	0	00	29.85	29.94	13	FEW	038			4.00	HZ	87	73	77	63	13	14	30.02	30.10
16	OVC	065			10.00		75	68	70	79	7	11	29.85	29.93	16	FEW	070			9.00		87	70	75	57	12	21	29.99	30.08
19	FEW	040			9.00	-RA	74	70	71	87	0	00	29.83	29.92	19	CLR	NC			7.00	HZ	84	70	74	63	8	20	30.01	30.09
22	OVC	095			10.00	-RA	73	70	71	90	3	09	29.85	29.94	22	CLR	NC			9.00	HZ	80	72	75	77	7	19	30.03	30.12
SUNRISE: 0439 JUL 06 SUNSET: 1931														SUNRISE: 0443 JUL 12 SUNSET: 1929															
01	OVC	018			4.00	+RA BR	66	66	66	100	3	36	29.85	29.93	01	CLR	NC			8.00	HZ	77	71	73	82	5	20	30.01	30.09
04	OVC	090			7.00	-RA	67	66	66	97	7	02	29.85	29.93	04	CLR	NC			7.00	HZ	77	73	74	88	6	16	30.01	30.08
07	OVC	044			10.00		66	63	64	90	8	35	29.93	30.01	07	CLR	NC			6.00	HZ	78	72	74	82	6	21	30.01	30.09
10	BKN	019			10.00		69	62	65	79	9	34	29.98	30.06	10	CLR	NC			7.00	HZ	81	73	75	77	8	22	30.01	30.08
13	CLR	NC			10.00		73	57	63	57	8	33	29.98	30.07	13	CLR	NC			9.00	HZ	88	72	77	59	13	19	29.96	30.04
16	SCT	048			10.00		77	57	65	50	10	34	29.99	30.08	16	BKN	060			2.50	+RA HZ	77	74	75	91	10	22	29.93	30.02
19	CLR	NC			10.00		73	59	65	62	5	31	30.01	30.10	19	CLR	NC			7.00	HZ	80	73	75	79	13	20	29.88	29.97
22	CLR	NC			10.00		64	57	60	78	7	31	30.06	30.14	22	FEW	065			10.00	HZ	78	70	73	77	15	23	29.93	30.00

OBSERVATIONS AT 3-HOURLY INTERVALS

WILMINGTON, DE
JULY 2006 KILG

WBAN # 13781

HOUR (LST)	SKY COVER	CEILING 100's of FT.	SATELLITE		VISIBILITY (MILES)	WEATHER	TEMPERATURE °F			WIND		PRESSURE (INCHES, HG)		HOUR (LST)	SKY COVER	CEILING 100's of FT.	SATELLITE		VISIBILITY (MILES)	WEATHER	TEMPERATURE °F			WIND		PRESSURE (INCHES, HG)			
			Observation Time (LST)	Eff Cld Amt Oktas			DRY BULB	DEW POINT	WET BULB	RELATIVE HUMIDITY (PCT)	SPEED (MPH)	DIRECTION Tens of Deg	STATION				SEA LEVEL	Observation Time (LST)			Eff Cld Amt Oktas	DRY BULB	DEW POINT	WET BULB	RELATIVE HUMIDITY (PCT)	SPEED (MPH)	DIRECTION Tens of Deg	STATION	SEA LEVEL
SUNRISE: 0443 JUL 13							SUNSET: 1928							SUNRISE: 0448 JUL 19							SUNSET: 1925								
01	SCT	110			10.00	HZ	76	70	72	82	9	24	29.90	29.97	01	CLR	NC			8.00		70	68	69	93	8	31	29.94	30.02
04	CLR	NC			9.00	HZ	74	71	72	90	6	21	29.86	29.94	04	CLR	NC			10.00		70	66	67	87	6	03	29.98	30.05
07	FEW	100			2.50	HZ	75	72	73	90	6	22	29.86	29.95	07	CLR	NC			9.00		73	68	70	84	0	00	30.02	30.11
10	OVC	036			2.50	HZ	79	73	75	82	9	26	29.86	29.94	10	CLR	NC			10.00		83	68	73	61	5	35	30.04	30.13
13	FEW	028			10.00	HZ	84	72	76	67	9	29	29.85	29.93	13	CLR	NC			10.00		88	66	73	48	0	00	30.02	30.10
16	FEW	048			10.00	HZ	82	71	74	69	10	30	29.85	29.93	16	CLR	NC			10.00		90	67	74	47	12	03	29.98	30.06
19	FEW	037			10.00	HZ	80	68	72	67	8	36	29.88	29.95	19	BKN	042			10.00		80	69	73	69	13	09	30.01	30.10
22	CLR	NC			10.00	HZ	73	68	70	84	5	31	29.90	29.98	22	FEW	034			10.00		76	69	71	79	7	05	30.07	30.15
SUNRISE: 0444 JUL 14							SUNSET: 1928							SUNRISE: 0449 JUL 20							SUNSET: 1924								
01	CLR	NC			10.00	HZ	71	68	69	90	0	00	29.91	29.99	01	CLR	NC			10.00		74	71	71	87	8	06	30.06	30.14
04	CLR	NC			10.00	HZ	67	65	66	93	3	02	29.91	30.00	04	CLR	NC			7.00		72	69	70	90	8	36	30.01	30.10
07	CLR	NC			10.00	HZ	74	68	70	82	6	08	29.93	30.01	07	BKN	022			9.00		73	69	70	87	8	35	30.04	30.13
10	CLR	NC			10.00	HZ	82	69	73	65	3	VR	29.94	30.03	10	SCT	026			10.00		81	69	73	67	9	01	30.03	30.11
13	CLR	NC			10.00	HZ	84	71	75	65	9	14	29.93	30.01	13	FEW	036			10.00		87	67	74	52	9	33	29.98	30.06
16	CLR	NC			10.00	HZ	83	68	73	61	15	14	29.91	29.98	16	FEW	050			10.00		88	65	73	47	8	31	29.93	30.01
19	CLR	NC			10.00		78	69	72	74	13	15	29.90	29.98	19	CLR	NC			10.00		82	67	72	61	3	30	29.91	29.99
22	CLR	NC			10.00		74	69	71	84	5	14	29.93	30.01	22	CLR	NC			10.00		79	69	72	72	6	23	29.93	30.01
SUNRISE: 0445 JUL 15							SUNSET: 1927							SUNRISE: 0450 JUL 21							SUNSET: 1923								
01	BKN	006			10.00		73	71	72	93	3	16	29.90	29.98	01	CLR	NC			10.00		78	70	73	77	5	17	29.90	29.98
04	CLR	NC			9.00		72	70	71	93	3	13	29.86	29.95	04	CLR	NC			7.00		76	73	74	90	7	18	29.85	29.94
07	OVC	002			0.75	BR	73	72	72	97	3	14	29.88	29.96	07	CLR	NC			8.00		78	74	75	88	7	18	29.85	29.93
10	OVC	006			1.75	BR	76	73	74	90	8	14	29.88	29.96	10	CLR	NC			8.00		84	74	77	72	9	19	29.85	29.93
13	OVC	013			2.50	BR	78	74	75	88	8	16	29.83	29.92	13	BKN	033			5.00	TS HZ	82	71	74	69	10	32	29.83	29.90
16	SCT	027			2.50	RA BR	78	75	76	91	3	34	29.83	29.92	16	CLR	NC			10.00		84	70	74	63	6	22	29.78	29.85
19	BKN	020			3.00	BR	78	74	75	88	7	15	29.82	29.90	19	CLR	NC			7.00		83	74	77	74	12	15	29.78	29.85
22	CLR	NC			5.00	BR	75	74	74	97	3	19	29.85	29.93	22	CLR	NC			10.00		80	70	73	72	9	21	29.78	29.86
SUNRISE: 0446 JUL 16							SUNSET: 1927							SUNRISE: 0450 JUL 22							SUNSET: 1923								
01	BKN	060			2.00	BR	73	73	73	100	6	31	29.86	29.95	01	CLR	NC			10.00		77	69	72	76	5	13	29.75	29.84
04	CLR	NC			6.00	BR	71	70	70	97	8	31	29.88	29.97	04	OVC	110			8.00	VCTS -RA	75	71	72	87	6	20	29.70	29.78
07	CLR	NC			10.00		76	70	72	82	7	32	29.91	29.99	07	SCT	039			10.00		76	73	74	90	9	15	29.72	29.79
10	CLR	NC			10.00		85	68	74	57	9	35	29.91	30.00	10	OVC	028			10.00		77	72	74	85	13	18	29.67	29.75
13	CLR	NC			10.00		91	66	74	44	12	01	29.93	30.01	13	OVC	029			9.00		82	74	76	77	14	20	29.65	29.72
16	CLR	NC			10.00		91	65	74	42	12	34	29.90	29.98	16	BKN	055			10.00	-RA	81	73	75	77	10	20	29.64	29.71
19	CLR	NC			10.00		84	67	73	57	7	30	29.88	29.97	19	OVC	100			5.00	-RA BR	72	70	71	93	8	10	29.62	29.71
22	CLR	NC			10.00		80	68	72	67	3	26	29.91	29.98	22	OVC	100			10.00		72	71	71	97	7	25	29.69	29.76
SUNRISE: 0446 JUL 17							SUNSET: 1926							SUNRISE: 0451 JUL 23							SUNSET: 1922								
01	CLR	NC			10.00		75	69	71	82	5	25	29.91	29.98	01	SCT	100			10.00	-RA	73	72	72	97	6	27	29.69	29.76
04	CLR	NC			10.00		73	68	70	84	5	27	29.91	29.98	04	BKN	120			10.00		70	68	69	93	5	30	29.72	29.80
07	CLR	NC			10.00		81	70	74	69	3	35	29.94	30.02	07	SCT	110			10.00	-RA	69	67	68	93	5	35	29.75	29.83
10	CLR	NC			10.00		89	68	75	50	6	VR	29.93	30.01	10	BKN	017			10.00		73	64	67	74	6	36	29.82	29.90
13	CLR	NC			10.00		96	65	75	36	5	VR	29.91	29.98	13	SCT	035			10.00		78	63	68	60	7	29	29.82	29.90
16	CLR	NC			10.00		93	69	76	46	10	27	29.88	29.96	16	FEW	043			10.00		81	62	69	53	12	36	29.80	29.87
19	CLR	NC			10.00		88	72	77	59	5	22	29.86	29.94	19	CLR	NC			10.00		77	59	66	54	7	34	29.82	29.90
22	CLR	NC			10.00		84	72	76	67	3	23	29.88	29.96	22	CLR	NC			10.00		68	62	64	81	5	28	29.85	29.93
SUNRISE: 0447 JUL 18							SUNSET: 1925							SUNRISE: 0452 JUL 24							SUNSET: 1921								
01	CLR	NC			10.00		78	73	75	85	6	25	29.88	29.96	01	CLR	NC			10.00		67	62	64	84	0	00	29.88	29.96
04	CLR	NC			7.00		74	72	73	94	5	28	29.88	29.96	04	CLR	NC			10.00		63	61	62	93	5	31	29.91	29.99
07	CLR	NC			6.00	HZ	80	73	75	79	5	30	29.91	29.99	07	CLR	NC			10.00		70	62	65	76	0	00	29.94	30.03
10	CLR	NC			10.00		93	71	78	49	9	36	29.90	29.98	10	CLR	NC			10.00		81	63	69	54	5	VR	29.96	30.04
13	CLR	NC			10.00		95	71	78	46	6	VR	29.88	29.97	13	CLR	NC			10.00		83	58	67	43	9	23	29.96	30.04
16	CLR	NC			10.00		94	71	78	47	8	25	29.86	29.95	16	CLR	NC			10.00		84	57	67	40	9	23	29.94	30.02
19	OVC	100			10.00		76	63	68	64	20	32	29.94	30.02	19	CLR	NC			10.00		80	59	67	49	6	19	29.94	30.03
22	OVC	065			10.00	VCTS -RA	71	67	68	87	8	30	29.98	30.06	22	CLR	NC			10.00		76	70	72	82	7	15	29.98	30.06

OBSERVATIONS AT 3-HOURLY INTERVALS

WILMINGTON, DE
JULY 2006 KILG

WBAN # 13781

HOUR (LST)	SKY COVER	CEILING 100's of FT.	SATELLITE		WEATHER	TEMPERATURE °F			WIND SPEED (MPH) DIRECTION Tens of Deg	PRESSURE (INCHES, HG)													
			Observation Time (LST)	Eff Cld Amt Oktas		VISIBILITY (MILES)	DRY BULB	DEW POINT		WET BULB	RELATIVE HUMIDITY (PCT)	STATION	SEA LEVEL										
SUNRISE: 0453						JUL 25						SUNSET: 1920											
01	CLR	NC				73	65	68	76	5	21	29.98	30.07										
04	BKN	065				70	65	67	84	0	00	29.98	30.06										
07	CLR	NC				73	69	70	87	6	21	30.01	30.09										
10	CLR	NC				79	69	72	72	9	18	30.01	30.08										
13	FEW	033				81	69	73	67	14	13	29.96	30.04										
16	CLR	NC				82	69	73	65	13	16	29.93	30.01										
19	CLR	NC				78	70	73	77	10	14	29.93	30.00										
22	CLR	NC				75	71	72	87	6	16	29.94	30.02										
SUNRISE: 0454						JUL 26						SUNSET: 1919											
01	CLR	NC				72	68	69	87	6	17	29.93	30.01										
04	BKN	110				72	69	70	90	3	23	29.90	29.98										
07	FEW	009			BR	73	72	72	97	3	24	29.91	29.99										
10	FEW	025				80	70	73	72	0	00	29.93	30.00										
13	CLR	NC				84	70	74	63	10	13	29.90	29.98										
16	CLR	NC				84	69	74	61	15	16	29.86	29.94										
19	CLR	NC				80	72	75	77	12	16	29.85	29.94										
22	CLR	NC				77	73	74	88	7	17	29.88	29.96										
SUNRISE: 0455						JUL 27						SUNSET: 1918											
01	CLR	NC				75	71	72	87	7	20	29.90	29.97										
04	CLR	NC				73	70	71	90	7	17	29.88	29.97										
07	OVC	007				76	73	74	90	7	18	29.91	29.99										
10	BKN	017			HZ	83	75	77	77	7	20	29.91	30.00										
13	CLR	NC				89	71	76	55	7	20	29.90	29.97										
16	CLR	NC				90	69	76	50	14	19	29.86	29.95										
19	FEW	080				86	70	75	59	5	18	29.88	29.96										
22	FEW	055			TS	76	73	74	90	3	13	29.91	29.98										
SUNRISE: 0456						JUL 28						SUNSET: 1918											
01	BKN	110				72	70	71	93	7	02	29.93	30.00										
04	CLR	NC				73	72	72	97	0	00	29.90	29.97										
07	CLR	NC			BR	77	74	75	91	7	22	29.91	29.99										
10	FEW	090				85	75	78	72	9	22	29.88	29.96										
13	SCT	065				89	72	77	57	16	21	29.83	29.91										
16	CLR	NC				84	69	74	61	15	24	29.83	29.91										
19	CLR	NC				82	68	73	63	12	25	29.85	29.92										
22	CLR	NC				78	69	72	74	7	23	29.88	29.95										
SUNRISE: 0456						JUL 29						SUNSET: 1917											
01	CLR	NC				76	68	71	76	8	25	29.90	29.97										
04	CLR	NC				73	68	70	84	5	27	29.88	29.97										
07	CLR	NC				76	69	71	79	6	25	29.91	29.99										
10	CLR	NC				84	72	76	67	7	VR	29.88	29.96										
13	FEW	045				89	70	76	54	13	29	29.86	29.95										
16	CLR	NC				90	70	76	52	8	31	29.80	29.88										
19	CLR	NC				85	73	77	67	8	23	29.80	29.87										
22	CLR	NC				80	74	76	82	5	25	29.80	29.89										
SUNRISE: 0457						JUL 30						SUNSET: 1916											
01	CLR	NC				78	74	75	88	6	26	29.77	29.85										
04	CLR	NC				77	70	72	79	6	27	29.77	29.84										
07	CLR	NC			HZ	78	70	73	77	6	25	29.78	29.86										
10	CLR	NC				86	71	76	61	6	VR	29.78	29.85										
13	BKN	065				87	71	76	59	9	25	29.75	29.83										
16	FEW	050				89	69	75	52	8	29	29.73	29.82										
19	CLR	NC				83	69	74	63	7	30	29.73	29.81										
22	CLR	NC				78	71	73	79	5	29	29.77	29.85										

HOUR (LST)	SKY COVER	CEILING 100's of FT.	SATELLITE		WEATHER	TEMPERATURE °F			WIND SPEED (MPH) DIRECTION Tens of Deg	PRESSURE (INCHES, HG)													
			Observation Time (LST)	Eff Cld Amt Oktas		VISIBILITY (MILES)	DRY BULB	DEW POINT		WET BULB	RELATIVE HUMIDITY (PCT)	STATION	SEA LEVEL										
SUNRISE: 0458						JUL 31						SUNSET: 1915											
01	CLR	NC				77	71	73	82	0	00	29.78	29.87										
04	CLR	NC				76	71	73	85	5	35	29.80	29.87										
07	CLR	NC				81	69	73	67	5	08	29.83	29.91										
10	CLR	NC				85	68	74	57	3	20	29.83	29.92										
13	SCT	050				91	71	77	52	3	VR	29.82	29.89										
16	SCT	055				87	73	77	63	12	16	29.78	29.86										
19	FEW	075				82	71	74	69	7	23	29.82	29.89										
22	FEW	050				79	74	76	85	3	20	29.85	29.93										

3-HOURLY OBSERVATION NOTES

Sky Cover is the amount of the sky obscured. CLR or SKC = 0, FEW = 1/8-2/8, SCT = 3/8-4/8, BKN = 5/8-7/8, OVC = 8/8, W = Vertical Visibility = 8/8

Ceiling is reported in hundreds of feet above ground level for clouds at or below 12,000 feet. NC = No Ceiling detected.

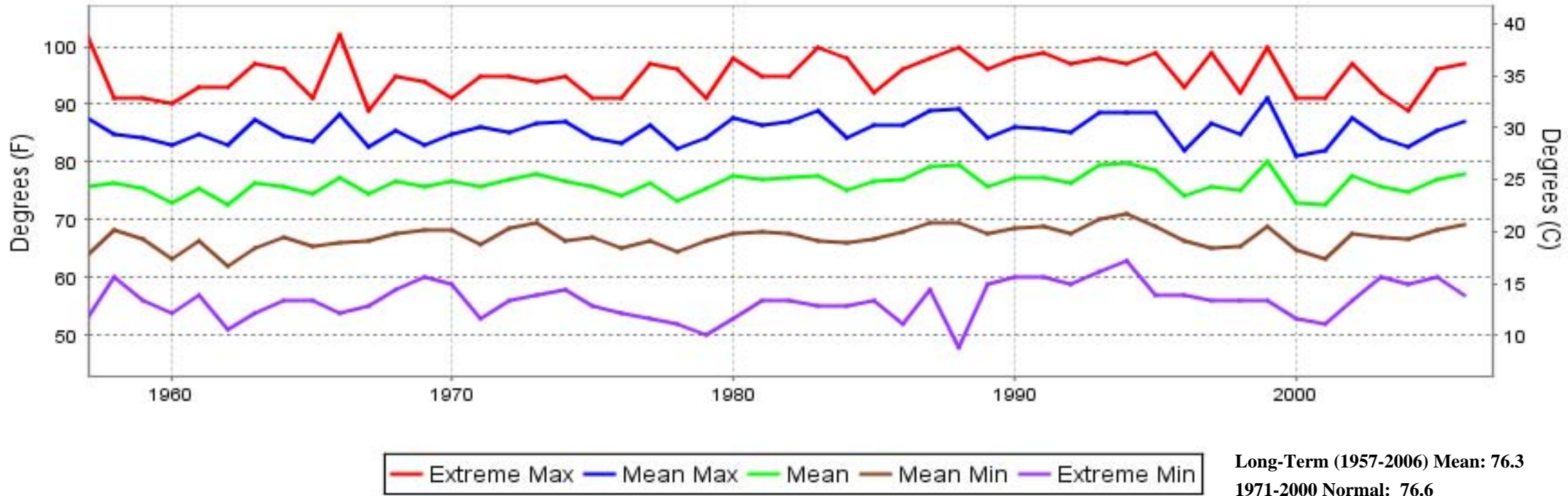
& = Original observation contained additional weather elements.

See page 3 for additional notes.

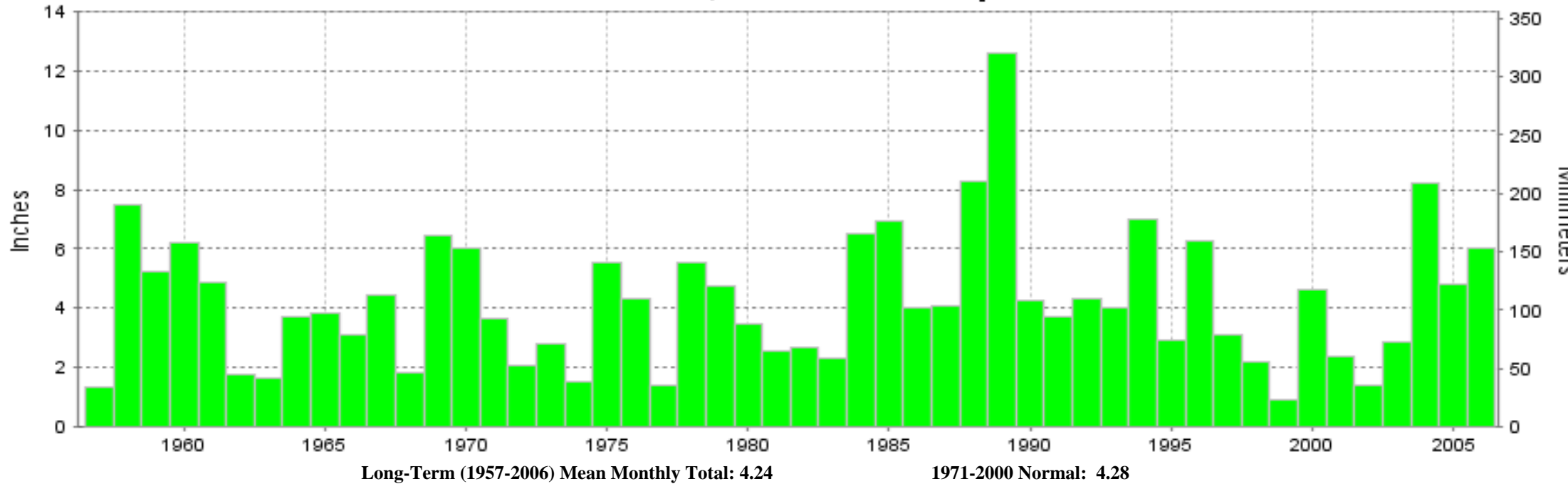
SUMMARY BY HOUR

HOUR (LST)	AVERAGES										RESULTANT WIND (MPH)	
	CEILOMETER	EFF CLD AMT	DRY BULB	DEW POINT	WET BULB	RELATIVE HUMIDITY	PRESSURE (Inches, HG)		VISIBILITY (Miles)	WIND SPEED (MPH)	SPEED	DIRECTION
							STATION	SEA LEVEL				
01			73	68	69	84	29.92	30.01	9.23	5	3	22
02			72	68	69	86	29.92	30.00	9.07	5	4	22
03			71	67	69	88	29.92	30.00	8.90	5	3	22
04			71	67	69	89	29.92	30.00	8.94	5	3	22
05			71	67	68	89	29.93	30.01	8.61	5	3	22
06			72	68	69	88	29.93	30.01	8.39	5	3	22
07			74	68	70	83	29.94	30.02	8.10	6	3	22
08			77	69	71	77	29.94	30.03	8.41	7	4	23
09			79	69	72	72	29.94	30.02	8.59	7	4	23
10			81	68	73	67	29.94	30.02	8.81	7	4	22
11			83	68	73	62	29.94	30.02	9.12	8	3	20
12			84	67	73	59	29.93	30.01	9.48	8	3	21
13			85	67	73	57	29.92	30.00	9.31	9	3	21
14			85	67	73	57	29.91	29.99	9.47	10	4	22
15			84	67	73	58	29.90	29.98	9.50	10	3	23
16			84	67	73	58	29.89	29.97	9.48	11	3	22
17			84	67	73	58	29.89	29.97	9.52	10	3	22
18			82	67	72	61	29.89	29.97	9.55	9	3	22
19			80	67	72	67	29.89	29.98	9.00	8	3	20
20			78	68	71	71	29.90	29.98	9.42	7	3	21
21			76	68	71	76	29.92	30.00	9.39	7	3	20
22			75	69	71	80	29.92	30.00	9.55	6	3	22
23			75	68	71	80	29.92	30.00	9.48	6	3	22
24			74	68	70	83	29.92	30.00	9.06	5	3	22

WILMINGTON, DE JULY Temperatures



WILMINGTON, DE JULY Precipitation





**JULY 2006
WILMINGTON, DE**

**LOCAL CLIMATOLOGICAL DATA
NOAA, National Climatic Data Center**

I certify that this is an official publication of the National Oceanic and Atmospheric Administration (NOAA). It is compiled using information from weather observing sites operated by NOAA-National Weather Service / Department Of Transportation-Federal Aviation Administration and received at the National Climatic Data Center (NCDC), Asheville, North Carolina 28801.

Thomas R. Karl
DIRECTOR

NCDC now offers an annual online subscription for the **Edited Local Climatological Data Publication**. When you purchase this subscription service, you will have **immediate online access** to all previous publications back to July 1996 and all publications thereafter until the expiration of the subscription. Your subscription is valid for one year after purchase. **The total cost for online delivery (including back issues) is significantly less than the cost for offline delivery.** To order this and other subscriptions online with your credit card, go to: **www.ncdc.noaa.gov** and choose subscriptions.

We welcome your questions or comments, please contact us at:

Toll Free Number (866) 742-3322 (voice)

Fax Number : (304) 726-4409

TDD : (828) 271-4010

or Email : ncdc.info@noaa.gov

Local Climatological Data is available at www.ncdc.noaa.gov

United States
Department of Commerce

National Oceanic and
Atmospheric Administration

National Environmental Satellite
and Atmospheric Administration

For address correction, please return a photocopy of this page to Subscription Services indicating changes

NCDC Subscription Services Center
310 State Route 956 Building 300
Rocket Center, WV 26726

OFFICIAL BUSINESS, PENALTY FOR PRIVATE USE \$300

FIRST CLASS
POSTAGE AND FEES PAID
NOAA
PERMIT G-19