

Drive Carefully  
Be Sure That YOU  
Avoid An Accident

# THE NEWARK POST

For News  
Of People You Know  
Read The Post

OL. 49, NO. 33

The Newark Post, Newark, Delaware, Thursday, January 7, 1960

PRICE SEVEN CENTS

## Converted Chicken House Fire Kills 2 Children Near Newark

Three And Six-Year-Old Sisters Lost In Fire  
From Kerosene Space Heater In Former Chicken House  
Condemned By County Building Inspector Last Oct. 27

Two small children died early Saturday morning in a fire at a converted chicken-house inhabited by a family of six at a one-time poultry farm west of Newark.

Their parents escaped, as did an uncle and a seven-year-old sister.

Dead were Linda Lou Steele, 6, and Betty K. Steele, 3, children of Mr. and Mrs. Billy Steele. They died in a double bed only a few feet from a large kerosene space heater.

Admitted to the Wilmington General Hospital were their mother, Mrs. Steele, 24, and the baby, Peggy Sue. The 34-year-old father and Mrs. Steele's brother-in-law, Sebert Massey, Jr., 28, were released.

Kerosene Stove Start  
The building, frame-covered with asbestos shingling, was completely destroyed by the fire which started from a kerosene space heater.

The fire broke out about 2:30 a.m. and flames left the smoldering ruins four hours later.

The building was one of several converted to dwellings from chicken coops on the old Covered Wagon Farm on the Elkton Road, about a mile west of Newark for which residents reportedly paid \$12 a week rent.

An official of the Aetna Home Insurance Co. said the company had been "up in arms" for some time over the conditions of the building.

When the fire broke out, a fireman called from the house and a fire engine was dispatched, but it was too late to save the children.

Thomas Zappacosta, New Castle County building inspector, said "I only had a law with some teeth. We can condemn the house but we don't have a law to say we want it down in 10 days. We can't check back to see if anything has been done, and if it hasn't, we can't take them to court, but it's a process. While you're waiting, there is nothing you can do to protect the families who dwell in these condemned houses, other than to try to warn them of the danger of their house burning down."

Need For Enforcement  
William R. Favalier, state fire marshal, said, "If we had some means to enforce a state fire code, we could do something about these problems like this. A lot of these properties have been existing for some time, and really nothing has been done about them at all. We need someone to complain and bring them to our attention. It's better in New Castle County where they do have a building department, but in the southern two counties we have no code at all."

Favalier could not say whether factors which led to the condemnation of the Steele house had contributed to the fire, but it seemed clear that an existing kerosene space heater had been responsible for the fire. He has been trying for some time to make the use of portable heaters illegal in the state, but men indicated that there was little that can be done to prevent families from living in fire-traps in any of the state's counties and that as long as there are no chances are good that there will be more fires similar to that which occurred Saturday.

A double funeral for three-year-old Betty and Linda Lou Steele, who were held Sunday at the Hicks Memorial Home, Elkton, with interment in Gilpin Manor Memorial Park.

Members Of Commerce  
Plans Annual Election

The Newark Chamber of Commerce will elect officers at the annual night dinner meeting Thursday, Jan. 21, at 6 o'clock at the Newark Country Club.

Guest officers include President George Jackson; Treasurer Clyde Jackson; and Secretary William J. Wick.

Directors are Jack Handloff, Robert Millard, Robert Sheffer, Hollingsworth, Alfred "Doc" Dwyer, Dr. John R. Warren, Ralph E. Rogers, Douglas, Jason J. Randy Fox, and Sam Hand-

son. A Peterson To Speak  
At Rotary Ladies Night

Members of the Newark Rotary Club have invited their wives to a talk on "The New American Living" by Beth Peterson, a home economist, at the regular dinner meeting, next Tuesday at 6:15 in the Newark Country Club.

Peterson's subject covers the latest on homemaking of new developments. She will discuss some of the newest products and explain what makes them possible and how they get from the test tube into the hands of the public.

## Auto Auctioneer



James N. Holland, Jr.

Local automobile salesman, Newark High School graduate, and Naval Air Transport veteran of World War II, James N. Holland, Jr., recently completed training with the Reich American School of Auctioneering at Mason City, Ia. Employed with Wm. H. Porter, Inc., in Newark since 1954, Jim Holland is scheduled to conduct periodic auto auctions in the area.

Mr. and Mrs. Holland reside with their daughter at 1318 Marrows Road.

## Charlie Rutledge Slated To Appear For TV Program

Charles H. Rutledge, manager of product information for the DuPont Company's textile fibers department and former editor of the Newark Post, and his traveling collection of "Mama-Papa" antiques, are scheduled for a return engagement on Art Linkletter's House Party program from Hollywood this Friday.

When on the West Coast to do a wash-and-wear presentation for the Textile Association of Los Angeles last July, Rutledge wound up on the Linkletter show.

He was assigned a four-minute spot, but the assortment of antique washday equipment and other household devices attracted so much attention with the stage crew and studio audience that he did a 15-minute spot instead. Reaction to the show was so good that he was invited to return.

The House Party program is carried twice a week on CBS-TV at 2:30 p.m. EST.

## Registration Ends Saturday in YWCA Winterthur Series

Registrations for the Winterthur Museum lecture program to be conducted at the YWCA Smyth Center in Newark will close this Saturday, and since enrollment will be limited, immediate registration is urged.

The 12-week series of Wednesday lectures will begin Jan. 20, at the Smyth Center, at 8 p.m.

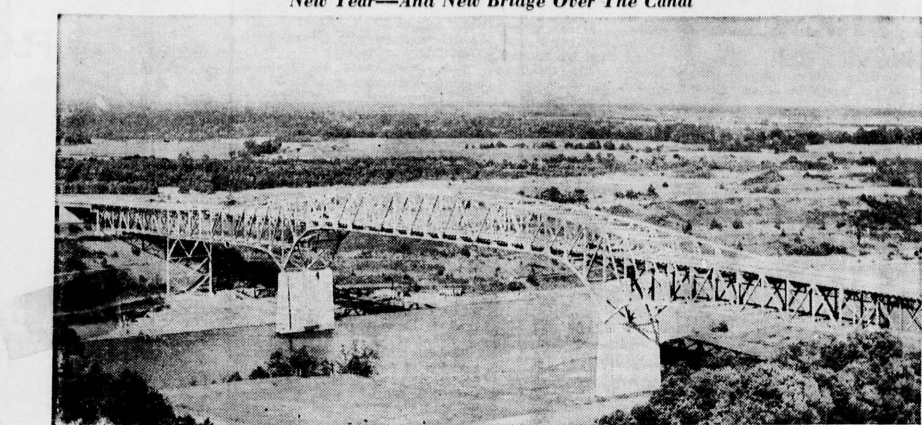
The lecture series schedule, subject to change, includes the Jan. 20 introduction by Dr. E. M. Fleming; Jan. 27, Chippendale furniture, by Mrs. Arthur McKelvie; Feb. 3, Federal and Empire furniture, Mrs. Gail Reid; Feb. 10, Windsor chairs, Catherine Johnson; Feb. 17, needlework, Mrs. George Landon; and Feb. 24, ceramics, by Mrs. Lemuel McGee.

March 2, glass, Mrs. Max Kassar; March 9, lighting devices, Mrs. Horace Woodward; March 16, folk art, Mrs. Matthew Sullivan; March 23, pictures, paintings, prints, and needlework, Mrs. David A. East; March 30, silver, Mrs. Richard M. Westfall; and April 6, miniatures, by Mrs. Ferdinand Schulze.

**SCHOOL BOARD MEETING**  
The regular meeting of the Newark Board of Education will be held on the third Tuesday, Jan. 19, at the Christiana School at 7:30 p.m. The school board is considering the rotation of board meetings during the school year.

Each meeting will be held at a different school each month. The January meeting is scheduled for the third Tuesday because of a State Board of Education Association meeting which coincides with the regular second Tuesday of January.

**Mrs. Louis Bertrand Aids Goucher Alumnae Drive**  
Goucher College alumnae will meet this Friday at the DuPont Country Club for supper and brief session to prepare for the 75th anniversary fund drive of the college, with Mrs. Louis Bertrand, 103 Venus Drive, North Star, as area chairman.



The photograph above shows the new \$7,500,000 high-level fixed highway bridge across the Chesapeake and Delaware Canal at Summit, replacing the old lift bridge. It will be dedicated and opened to public use at 11 a.m., this Saturday, Jan. 9.

This is the fourth span built at this point in the 130-year history of the C&D canal. U. S. Sen. J. Allen Frear, Jr., will be the dedication speaker. The span was built under supervision of U. S. Army Corps of Engineers.

## 1,200 Teen-Agers Attend NRA Events Of Holiday Season

Record 302 High School  
Youths Greet New Year  
At Century Club Dance

The old year bounced out and the new year roared in to the jubilation of 1,200 teen-agers attending the holiday social events sponsored by the Newark Recreation Association to continue the record-breaking trend of the past four years.

The greatest number of dancers in its 22-year history was recorded at the Saturday Night Dance New Year's Eve party, and 302 high school teen-agers packed the Newark New Century Club.

Amid the din of some 300 horns, the dancers joyously greeted the New Year with hats, confetti and serpentine, as a Niagara of balloons cascaded down upon the revelers at midnight.

The junior teen-age set arrived in droves for their annual Christmas-New Year's party-dance at the West Park Place School, and 302 youngsters crowded the dance floor for an evening of musical mixers, contests, and special dances, along with the regular fare of top recorded hits. Refreshments of soda, potato chips, pretzels, ice cream and cookies were served, and the dance was planned by the Friday Night Dance Youth Council.

At the Saturday Night Christmas Dance, strictly a dressed-up affair, 287 older teen-agers danced to the music of the Indigos in a festive atmosphere. The youth council transformed the New Century Club with a lowered ceiling of red and white streamers, tinsel and drapery decorations, and a 12-ft. Christmas tree with lights, and ornaments.

In reporting holiday activities, Barry Kay, assistant director of the Newark Recreation Association said "We can be very proud of these young men and women. Their excellent conduct and attitude during all of these activities reflects credit upon themselves, their parents, and the community."

Parents and interested adults helping with the events were Mr. and Mrs. Fred Kacena, Mr. and Mrs. Fred Nixon, Mr. and Mrs. Robert Derickson, Mr. and Mrs. Harold Bonney, Mr. and Mrs. Harold Schaal, Dr. and Mrs. Howard Reed, Mrs. Fred Taylor, Mrs. Fred Williams, Mr. and Mrs. Hugh Gullede, Mr. and Mrs. Stephen Williams, Mr. and Mrs. Wayne Benner, Mr. and Mrs. Franklin Ennis, Mr. and Mrs. Stanley Francis, Roy Nutter, Jim McMeans, and Barry Kay.

## UD Agriculturists Present Findings For Weed Control

Staff members of the school of agriculture at the University of Delaware are making several reports at the annual Northeastern Weed Control Conference in New York City this week.

Professor E. M. Rahn, U. of D. horticultural department, and vice-president of the organization, said he was impressed by the large number of reports on the program dealing with crabgrass control. There will be eight papers presented on crabgrass.

Professor Rahn, O. M. Bundy and W. F. Donnelly will report on their research on nutgrass, a serious weed in several vegetable crops in Delaware. Rahn and Prof. D. J. Fieldhouse will report on their work with herbicides for strawberries.

Frank B. Springer, agronomy department, will present a paper on effectiveness of two pre-emergence herbicides on corn in Delaware.

**Wilson, Visiting Scholar**  
On Campus At Delaware

Dr. L. R. Wilson, professor of geology at the University of Oklahoma, will be a visiting scholar at the University of Delaware today and Friday.

Tomorrow morning he will discuss "Progress and Problems in Cretaceous and Tertiary Paleontological Studies" at a seminar meeting in the geology laboratory, Robinson Hall, at 10 a.m.

## New Chesapeake-Delaware Canal Bridge To Be Dedicated At Sunday Ceremonies

Dedication exercises and opening of the new Summit Bridge this Saturday at 11 a.m. will mark the fourth in the 130-year history of the Chesapeake and Delaware Canal that a new span has been erected at Summit, according to John E. Qualle, Philadelphia Division, U. S. Army Engineers.

At Saturday's dedication, the principal address will be delivered by U. S. Senator J. Allen Frear, Jr., who initiated legislation in Congress 10 years ago which led to the Engineers' program to improve the canal and build the new four-lane, high-level bridge at the Summit crossing.

Gov. J. Caleb Boggs will extend greetings to Lt. Gen. E. C. Itzhner, Chief, U. S. Army Corps of Engineers, among federal officials attending the opening.

U. S. Senator John J. Williams will unveil a plaque at the north end of the bridge; U. S. Rep. Harris B. McDowell, Jr., will speak, and Senator Frear will cut the ribbon to allow traffic to flow over the span for the first time.

With the cooperation of Delaware State Police, the four lanes will be utilized for south-bound traffic until the ceremonies are over. This will permit officials and the public to park on the approaches to witness the dedication.

Following the exercises, the official party will continue to the south side of the canal where General Itzhner will apply a torch to a girder, signifying that it is permanently closed and demolished.

The new high level span will carry U. S. Routes 71, 301, and Delaware Route 98.

The opening prayer at the dedication will be said by the Rev. Herbert Rimlinger, St. Joseph's Catholic Church, Middletown, while the Benediction will be given by the Rev. Ray C. Kasper, pastor of Summit Bridge Methodist Church.

After the ceremony, the official party will proceed to Kent Manor Inn, Wilmington, for lunch.

## Amrein Heads CDF European Division For Export Sales

Newark Trainee Assigned  
To Munich, Germany With  
CDF Sales Representation

As of Jan. 1, 1960, Continental-Diamond Fibre Corporation, a subsidiary of the Budd Company, has permanent sales representation in Europe.

Rene Amrein, a member of the Budd Company international division (handling CDF export sales) is in Munich, Germany, from where he will cover all of Europe with sales promotion of CDF's line of vulcanized fibre and laminated and molded plastics; closer sales coordination with the company's local representatives, and regular visits to CDF customers in every European country.

Amrein's recent stay at CDF's headquarters in Newark, was the end of a training program which included all of CDF's major plants, several Budd Company plants, as well as visits to major domestic industries that have overseas subsidiaries.

CDF's products also will be shown for the first time at the 1960 Hannover Fair in Germany, which is considered the most important industrial trade fair in the world.

Mr. Amrein will take one of the new compact American-made station wagons with him. Many of the parts going into the manufacture of this car are made by the Budd Company's Gary, Indiana, plant. The metal finishing is done with abrasive discs, made from CDF vulcanized fibre.

Born in France, Amrein received his basic education in that country and in Germany. He is 36, served with the French army during World War II, and came to this country in 1948. Married, he has two children, and is a United States citizen.

**Henry Lee Named  
As Music Teacher  
For Smyth Center**

Henry N. Lee, assistant professor of music at the University of Delaware, will teach music appreciation at the Alice P. Smyth YWCA Center in Newark for 12 consecutive Mondays, beginning Jan. 11.

The course will pursue one area of musical literature such as the symphony or concerto. The special area will be selected or determined by members of the class at the first meeting.

Mr. Lee, originally from Connecticut, has taught at the university since 1950. He resides at 1105 Lakeside Drive, Christine Manor, Newark.

A graduate of Brown University where he received an AB degree, he received his bachelor of music degree from the Yale school of music, and master of arts degree from Columbia University. He is a veteran of World War II.

Mr. Lee, organist at St. Thomas Episcopal Church in Newark, has appeared in many programs presented by the university music department.

Several years ago he conducted a series of classes in "Music for the Listener" at the Wilmington YMCA.

**Police Check 3 Accidents,  
Two Within 10 Minutes**

Three automobile accidents were reported Monday by Newark police—two of them within 10 minutes of each other—at 5:20 and at 5:30 p.m.

The first occurred at the intersection of South College and Delaware Avenues, when a vehicle turning left onto East Delaware was struck by a car moving north on South College Avenue with minor property damage.

Ten minutes later, an automobile backing from a driveway at 529 Capitol Trail, was struck by a vehicle traveling along the highway. No personal injuries were reported.

At 11:05 p.m., a car struck a power pole on Nottingham Road when the driver, in attempting to make a left turn, succeeded in avoiding another vehicle approaching at a high rate of speed. Property damage was estimated at \$220.

## Shue To Offer Public Report On Recent Soviet Union Tour

Newark School Superintendent To Report To Community  
Next Wednesday at 8 P.M. at NHS Auditorium on Recent  
13,000-Mile Flight, Educational Tour Of Soviet Union

Wilmer E. Shue, Newark special school district superintendent, will present an open report to the community on the educational system of the Soviet Union next Wednesday at 8 p.m. in the Newark High School auditorium.

Mr. Shue's report will be presented with colored slides taken on his recent month-long tour of the Soviet Union, and he will offer his observations of the educational system in the Soviet as compared to public schools in America.

## Telephone Vet Retires



Charles L. Davies

Newark's Diamond State Telephone Company private branch exchange repairman Charles L. Davies, 105 Kells Avenue, retired last Friday.

Davies started in the telephone industry as a central office man in 1917, and had been associated with the Diamond State Telephone Company's Wilmington plant department during his entire career as a telephone man.

He served as private branch exchange repairman since 1952. A member of the Telephone Pioneers of America, organization of veteran telephone company employees, Mr. Davies is a member of the Wilmington Power Squadron and the Loyal Order of Moose.

**Our Lady Of Grace  
Home For Children  
Given Dance Check**

A check for \$70.95 was presented last week to Sister Mary Benita, director of Our Lady of Grace Home for children, by the Saturday Night Dance Youth Committee and the Newark Recreation Association as proceeds from the Saturday Night Christmas Benefit Dance at the Newark New Century Club, attended by 180 high school teen-agers.

The history of this annual dance dates back to 1955—to the original Christmas Present Dance—when admission was a Christmas present for a boy or girl from five to 16, and 190 gifts were collected.

In 1956, cash proceeds of the dance were turned over to the Newark Junior Chamber of Commerce for Hungarian relief. The contribution helped bring a Hungarian family to Newark for a new life.

In 1957-58, dance admissions were presented, and hundreds of gifts were turned over to the Newark Central Welfare Council and Our Lady of Grace Home.

This annual dance is sponsored by the Newark Recreation Association.

**Brookside Players  
Plan Mardi Gras  
Coronation Event**

The Brookside Players will present the third annual Mardi Gras Festival on Jan. 23, with Norma Watrous and Patricia Meier as co-chairmen.

The cabaret style dance will be held from 9 p.m. to 1 a.m. in the Cranston Heights Fire Company auditorium, with music by Clyde Bessick and his orchestra.

Costumes will be optional, but the king and queen of the Mardi Gras, as well as their court, will be chosen only from those attending in costume.

Several years ago he conducted a series of classes in "Music for the Listener" at the Wilmington YMCA.

**Police Check 3 Accidents,  
Two Within 10 Minutes**

Three automobile accidents were reported Monday by Newark police—two of them within 10 minutes of each other—at 5:20 and at 5:30 p.m.

The first occurred at the intersection of South College and Delaware Avenues, when a vehicle turning left onto East Delaware was struck by a car moving north on South College Avenue with minor property damage.

Ten minutes later, an automobile backing from a driveway at 529 Capitol Trail, was struck by a vehicle traveling along the highway. No personal injuries were reported.

At 11:05 p.m., a car struck a power pole on Nottingham Road when the driver, in attempting to make a left turn, succeeded in avoiding another vehicle approaching at a high rate of speed. Property damage was estimated at \$220.

## By Role

Rate teaching predominated in the educational program with the typical Soviet child receiving an assignment, reciting from it—receiving the next assignment, and reciting from it—with no opportunity to ask questions, and little opportunity for classroom discussion.

Mr. Shue noted that Soviet teachers are "fired with unusual dedication, vigor, and loyalty toward their professions and have been given a high priority in the Soviet sphere of life." However, the group of U. S. educators found little to praise in the Soviet school system.

Rate teaching predominated in the educational program with the typical Soviet child receiving an assignment, reciting from it—receiving the next assignment, and reciting from it—with no opportunity to ask questions, and little opportunity for classroom discussion.

Mr. Shue noted that Soviet teachers are "fired with unusual dedication, vigor, and loyalty toward their professions and have been given a high priority in the Soviet sphere of life." However, the group of U. S. educators found little to praise in the Soviet school system.

Rate teaching predominated in the educational program with the typical Soviet child receiving an assignment, reciting from it—receiving the next assignment, and reciting from it—with no opportunity to ask questions, and little opportunity for classroom discussion.

Mr. Shue noted that Soviet teachers are "fired with unusual dedication, vigor, and loyalty toward their professions and have been given a high priority in the Soviet sphere of life." However, the group of U. S. educators found little to praise in the Soviet school system.

Rate teaching predominated in the educational program with the typical Soviet child receiving an assignment, reciting from it—receiving the next assignment, and reciting from it—with no opportunity to ask questions, and little opportunity for classroom discussion.

Mr. Shue noted that Soviet teachers are "fired with unusual dedication, vigor, and loyalty toward their professions and have been given a high priority in the Soviet sphere of life." However, the group of U. S. educators found little to praise in the Soviet school system.

Rate teaching predominated in the educational program with the typical Soviet child receiving an assignment, reciting from it—receiving the next assignment, and reciting from it—with no opportunity to ask questions, and little opportunity for classroom discussion.

Mr. Shue noted that Soviet teachers are "fired with unusual dedication, vigor, and loyalty toward their professions and have been given a high priority in the Soviet sphere of life." However, the group of U. S. educators found little to praise in the Soviet school system.

Rate teaching predominated in the educational program with the typical Soviet child receiving an assignment, reciting from it—receiving the next assignment, and reciting from it—with no opportunity to ask questions, and little opportunity for classroom discussion.

Mr. Shue noted that Soviet teachers are "fired with unusual dedication, vigor, and loyalty toward their professions and have been given a high priority in the Soviet sphere of life." However, the group of U. S. educators found little to praise in the Soviet school system.

Rate teaching predominated in the educational program with the typical Soviet child receiving an assignment, reciting from it—receiving the next assignment, and reciting from it—with no opportunity to ask questions, and little opportunity for classroom discussion.

Mr. Shue noted that Soviet teachers are "fired with unusual dedication, vigor, and loyalty toward their professions and have been given a high priority in the Soviet sphere of life." However, the group of U. S. educators found little to praise in the Soviet school system.

Rate teaching predominated in the educational program with the typical Soviet child receiving an assignment, reciting from it—receiving the next assignment, and reciting from it—with no opportunity to ask questions, and little opportunity for classroom discussion.

Mr. Shue noted that Soviet teachers are "fired with unusual dedication, vigor, and loyalty toward their professions and have been given a high priority in the Soviet sphere of life." However, the group of U. S. educators found little to praise in the Soviet school system.

Rate teaching predominated in the educational program with the typical Soviet child receiving an assignment, reciting from it—receiving the next assignment, and reciting from it—with no opportunity to ask questions, and little opportunity for classroom discussion.

Mr. Shue noted that Soviet teachers are "fired with unusual dedication, vigor, and loyalty toward their professions and have been given a high priority in the Soviet sphere of life." However, the group of U. S. educators found little to praise in the Soviet school system.

Rate teaching predominated in the educational program with the typical Soviet child receiving an assignment, reciting from it—receiving the next assignment, and reciting from it—with no opportunity to ask questions, and little opportunity for classroom discussion.

Mr. Shue noted that Soviet teachers are "fired with unusual dedication, vigor, and loyalty toward their professions and have been given a high priority in the Soviet sphere of life." However, the group of U. S. educators found little to praise in the Soviet school system.

Rate teaching predominated in the educational program with the typical Soviet child receiving an assignment, reciting from it—receiving the next assignment, and reciting from it—with no opportunity to ask questions, and little opportunity for classroom discussion.

Mr. Shue noted that Soviet teachers are "fired with unusual dedication, vigor, and loyalty toward their professions and have been given a high priority in the Soviet sphere of life." However, the group of U. S. educators found little to praise in the Soviet school system.

Rate teaching predominated in the educational program with the typical Soviet child receiving an assignment, reciting from it—receiving the next assignment, and reciting from it—with no opportunity to ask questions, and little opportunity for classroom discussion.

Mr. Shue noted that Soviet teachers are "fired with unusual dedication, vigor, and loyalty toward their professions and have been given a high priority in the Soviet sphere of life." However, the group of U. S. educators found little to praise in the Soviet school system.



### Mill Creek Hundred News

Sara Pennington Evans, Correspondent  
Phone CE 9-7798

While judging of holiday decorations in Sherwood Park and Limestone Acres has brought announcement of winners, prizes will not be awarded until later in January.

Mr. and Mrs. Russell Cram of 1120 McKennan's Church Road placed first in Sherwood Park II, while honorable mention went to Mr. and Mrs. Paul Reis, 4 Toby Court; Mr. and Mrs. Richard Moyer, 2730 Bardell Drive; and Mr. and Mrs. Walter Ingalls, 1118 Hygate Road, also of Sherwood Park II.

First place winners in Limestone Acres were Mr. and Mrs. Jack Jones, 2502 Limestone Road; Mr. and Mrs. John Mendenhall, 4603 Springer Lane, were second; and Mr. and

Mrs. Anthony Mezz, 4600 Pickwick Drive, third. Honorable mention went to Mr. and Mrs. Alfred Smith and Mr. and Mrs. John Sentman, Jr.

The Capt. William McKennan Chapter, Daughters of the American Revolution will hold its January meeting on Saturday at 1:30 p.m. at the home of Mrs. George Ford, 2808 Old Capitol Trail. All officers and chairmen will submit yearly reports.

Mrs. Marvin Klair of Limestone Road, is in the Delaware Hospital.

**4-H Club Events**  
Union 4-H Club held Parents' Night on Monday with a special program, awarding of year pins, and

a covered dish supper in the social hall of Ebenezer Methodist Church.

Donald Burton, county leader, showed slides of 1959 activities as did Sandy Craig, of National Congress in Chicago.

Pins were presented to Martha Craig, John B. McVaugh, Jr., Kathy Knowles, Barbara Knowles, Steven Nelson, Peter Blakemore, and Mary Elizabeth Harmon, one year; Frances and Sandy Craig, Lois Nelson, third year; Charlotte Harris, Rodney Dempsey, Dennis and Ronald Nelson, Priscilla Harmon, Tommy Dempsey, and Judith McVaugh, fourth year; Carol Harris, eighth year.

Ronald Nelson told of his trip to Richmond with three other members of the Future Farmers Association in Delaware.

The program was arranged by Priscilla Harmon, Martha Craig, Dennis and Rodney Nelson, with their leaders, Mr. and Mrs. Daniel E. Harris.

The Y's Owl 4-H Club will meet this evening with Mrs. Nelson Goff at Mt. Cuba. There will be a film "Know Your Birds" followed by installation of officers and a business session.

Richard Ulmer, stationed with the U. S. Coast Guard at Cape May, N. J., and Larry Ulmer, U. S. Navy, stationed at Newport, R. I., spent the holidays with their parents, Mr. and Mrs. Laurence Ulmer.

First Day School officers of Hockessin Friends Meeting were announced last Sunday as follows: Alfred Morse, superintendent; Wendell Aldred, ass't superintendent; Christine Berry and Paul Palmer, secretaries; Mrs. Paul W. Mitchell, adult advisor for the children's monthly meeting.

Representatives named from Hockessin to western quarterly meeting on Jan. 16 at West Grove, Pa. Friends Meeting were Mr. and Mrs. Henry C. Mitchell, Mr. and Mrs. W. Lewis Phipps, and Ruth Pierson.

Elwood Wilkins, Jr., will speak on the Cherokee Indians tomorrow evening at the Friends Fellowship supper meeting in the social hall.

**Red Clay Creek Presbyterian Church**

Annual reports of the church will be given and officers will be elected at the annual congregational and corporation meetings to be held next Monday at 7:30 p.m. at the church.

The January meeting of the Women's Fellowship will be held next Wednesday at 8 p.m. at the home of Mrs. W. H. Narvel at 4201 Limestone Road with Mrs. Gifford Nowland as co-hostess.

Ruth Circle held its January meeting last evening with Elizabeth Hancock and Martha Whitcraft at 3005 Duncan Road. Miriam Circle also met last evening at the home of Mrs. Stanley Mackey, Cooper Farm.

Next Sunday is Seminary Sunday and John D. H. Snively, assistant pastor will preach at the 9:30 and 11 a.m. services.

Monthly sewings for the Hockessin branch of the Needlework Guild will start this month and continue until May. The home supply garments have aided several families in the past month. Mrs. James Derickson of 1211 McKennan's Church Road, is home supply chairman.

**Ebenezer Methodist Church**  
Beginning next Sunday at 8 p.m. a series of five-night services for Christ will be held in Stanton Methodist Church with Ebenezer and Christiana churches cooperating. Mrs. W. Floyd Jackson, director of the Ebenezer Choir, will direct the combined choirs each night, Sunday through Thursday. These services will end with a victory rally at Ebenezer on Sunday, Jan. 17 at 8 p.m.

Coach Dave Nelson of the University of Delaware, will speak to the Methodist Men's Club next Tuesday at 8 p.m. in the social hall.

The Booster Circle will be entertained next Monday at 8 p.m. at the home of Mrs. Robert McCall on Chestnut Hill Road. Amity Circle will hold its January meeting next Wednesday at 10 a.m. at the home of Mrs. W. Floyd Jackson on Ebenezer Church Road.

Dale Nowland, aviation electrician's mate, USN, is spending a leave with his parents, Mr. and Mrs. Gifford A. Nowland on Paper Mill Road. A Conrad graduate, Nowland recently completed aviation electrician's mate school at the Naval Training Center in Jacksonville, Fla.

**Limestone Presbyterian Church**  
The Rev. Kenneth Read, pastor, ordained and installed new church officers last Sunday morning at New Year Sunday services. They were: Elders William F. Beveridge, George F. Messersmith, Joseph L. Clements, Mrs. William Simmons, and Rufus Slaughter; Deacons William L. Sayre, Jr., James Stillman, and Joseph Welker, Jr., and Trustees J. Gale Wendle, Jr., and Mr. Messersmith.

## THIS MONTH ONLY FIRST TIME SALE

*Exquisite Form*  
bussieres

FLOATING ACTION BRAS

REGULAR \$2.50  
PRICE

NOW  
\$1.99  
EACH



For those who want  
2-SECTION CUP COMFORT  
Co-Star Style 172

And for those who love a  
4-SECTION CIRCLE STITCHED CUP  
famous style 392

This special Sale is a wonderful opportunity to buy BOTH styles with the famous, original Tangent Strap feature. Anchored at the sides, these fabulous straps hold up the entire bra frame, not just the cup. You can move freely, the bra always stays snugly in place...no drag on tender shoulders, ever! Available in both 4-section and 2-section cups. Come in and try your favorite cup type today, and enjoy the wonderfully trim, sure feeling you get in Exquisite Form's Floating Action Bras. A cup 32-36; B cup 32-40; C cup 32-42.



Newark  
**DEPARTMENT**  
Newark Shopping Center  
Open Wed. & Fri. 9 to 9

1 for the money... 2 for the show... 3 to get ready... 4 to GO!  
they're off to... **CLOVER FARM**  
**DOLLAR DAYS**

**-STAFFORD'S-  
CLOVER FARM MARKET**  
812 So. College Ave.

**FRYERS** ..... Whole or Split lb. 31c



Frying LEGS	Frying BREASTS	Frying WINGS	CUT - UP Tray-Packed
55c LB.	59c LB.	3 lb. \$1	33c LB.

**FRESH BOSTON BUTT PORK ROAST.. 37c lb.**

Corkhill  
**PORK SAUSAGE 3 lbs. 89c**  
**BEEF LIVER 49c lb.**



Maxwell House  
Coffee — Any Grind  
**ONLY 59c lb.**  
WITH PURCHASE of \$5.  
OR MORE  
(Excluding Tobacco Items)

Glendale JELLY, Ass'd Flavors, 10-oz. ....5 for \$1  
Clover Farm Spaghetti with Meatballs ....15-oz. 4 for \$1  
Clover Farm MACARONI .....2 for 29c  
NESCAFE, 6-oz. ....\$1.  
Clover Farm PINEAPPLE and GRAPEFRUIT  
PINEAPPLE & GRAPEFRUIT DRINK, 46-oz. ....3 for \$1  
King Cole GREEN CUT BEANS .....7 for \$1  
Clover Farm Lg. SWEET PEAS .....7 for \$1  
AJAX CLEANSER .....7 for \$1  
Kwik Meal DOG FOOD .....13 for \$1  
FAB Large — 31c, Giant Size 74c DREFT large — 35c  
Aunt Jemima CORN BREAD .....33c  
Aunt Jemima COFFEE CAKE .....37c  
Aunt Jemima OATMEAL BREAD .....31c

**FROZEN food SPECIALS**

Dulaney Fr. FRIED POTATOES .....9 oz. 2 for 35c  
Swanson CHICKEN PIES .....2 for 51c  
Swanson BEEF PIES .....2 for 51c

**FRESH** White Potatoes 10-lbs. **39c**  
FRUITS - VEGETABLES

We reserve the right to limit quantities on any item

AGENT — TRAVELERS EXPRESS MONEY ORDERS

**-STAFFORD'S-  
CLOVER FARM MARKET**

HOURS—Weekdays: 9 am-8 pm; Sunday 11:15 am-6 pm

SPECIALS EFFECTIVE ONLY JAN. 7-8-9

## WESTINGHOUSE APPLIANCE SALES

We do our own service on ALL makes  
of major Appliances

**FAST SERVICE by EXPERT MECHANICS**  
In Radio-Controlled Trucks

Commercial Refrigeration & Air Conditioning Sales  
**HARVEY REFRIGERATION CO.**  
284 E. Cleveland Ave. -- Newark, Del.  
PHONE ENDICOTT 8-8579

## FORD TRACTORS

AND IMPLEMENTS

SALES, PARTS AND SERVICE

**Industrial & Farm  
Equipment Corp.**

Delaware Division—Cooch's Bridge Road  
Newark, RD-1  
PHONE EN 8-1654



**Advice  
to wives:**

clip this ad...  
give it  
to your  
husband

If you have a job or regular income, if you hope to send kids to college, own your own home, or acquire a few of life's extra comforts—then we're talking to you—about savings.

Why?

Because we can't think of anything better to do with your spare dollars than to put them in a Savings Account in Farmers Bank.

You can save for a specific goal or simply to feel safer with a cash reserve for emergencies. At Farmers Bank you can begin saving with any amount. You get compound interest and your money is insured to \$10,000 by FDIC (a Government agency).

Sounds like a pretty good idea, doesn't it?

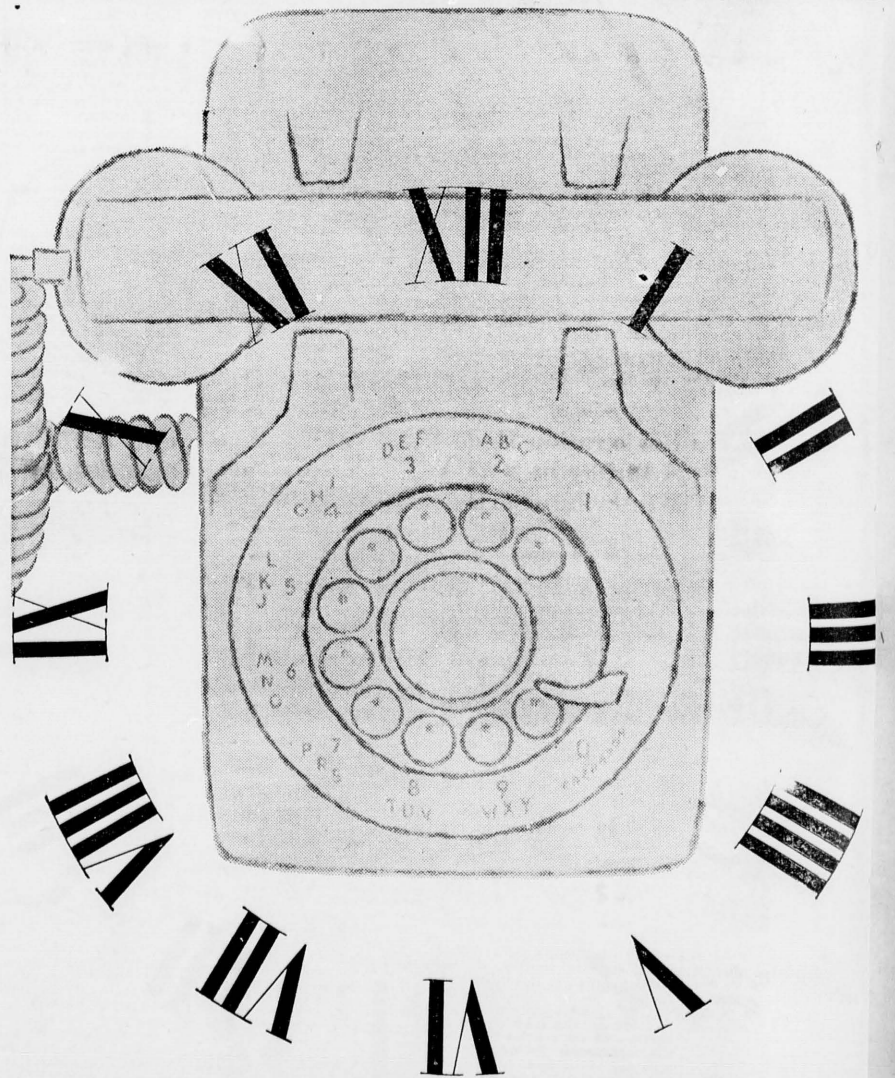
## FARMERS BANK

OF THE STATE OF DELAWARE



Member Federal Deposit Insurance Corporation  
**DELAWARE'S OLDEST BANK**  
FOUNDED 1807

**16** state-wide  
offices



Regularly as the clock's tick, Delaware telephone service grows to match the growth of Delaware itself. In 1960, our investment in telephone expansion and improvement will be more than \$750 every hour of every day—\$19,000 every 24 hours. A big boost, this, for Delaware's economic progress!

**THE DIAMOND STATE TELEPHONE COMPANY**



Your neighbors enlarging your world through service and science



### Christiana Calling

Sylvia P. Jones, Correspondent  
Phone: EA 8-7413

The start of the new year brings with it a series of important events for the Christiana churches. Next Tuesday, the annual congregational meeting of the Christiana Presbyterian Church will be held in the Ernest Freeman Hall Memorial Building at 8 p.m., preceded by a covered dish supper at 6 o'clock. Yearly reports will be heard and church officers elected.

The Rev. Stevenson, who is in the United States on a year's furlough from missionary service, is a young Methodist minister who has directed the printing of Sunday School material, magazines, and books for mission stations in the central Belgian Congo.

A native of Greenville, Pa., Rev. Stevenson is a veteran of World War II and began his career as publisher of a weekly newspaper. Upon arrival in the Congo in 1955, he was appointed director of the Methodist mission press at Lodja, and was ordained to the ministry two years later while in Africa.

The Christiana official board met Tuesday evening, and the Salem Social met Wednesday evening in the church, followed by a meeting of the Salem official board.

Members of the local Methodist charge are invited to participate in "Five Nights for Christ" services which will begin Sunday evening in the Stanton Methodist Church. Mrs. Ruth Ungerer entertained members of her first grade class at her home in Klair Estates last Wednesday afternoon. An elaborate display of electric trains was the chief source of excitement, with a litter of baby hamsters running a close second.

Robert Schulz left from the Philadelphia Airport Sunday morning to resume his studies at Southern Methodist University, after spending the holidays with his parents.

The Rev. and Mrs. Robert F. Coon, Hillside Heights, entertained houseguests from Avoca, N. Y., last

week. Danny Rineer visited relatives in Kennett Square during the Christmas holidays.

Mr. and Mrs. Charles Lee of Dobbs Ferry, N. Y., were guests of Mr. and Mrs. A. H. Jones on Friday and Saturday.

"Modern progress has made the world a neighborhood; God has made it a brotherhood." —Rev. Milton S. Carothers.

### Roofing & Siding Gutter & Spout Work THORP BROS.

111 SILVIEW AVE.  
EN 8-3908  
Phone WY 4-7166  
FREE ESTIMATES

### BRAKE & FRONT END SERVICE SPECIAL

INCLUDES  
• Brake Adjustments  
• Front Wheel Balancing  
• Wheel Alignment

BUCK'S TEXACO  
149 E. CLEVELAND AVE.  
EN 8-5741 or EN 8-9987

### WESTINGHOUSE Electric Housewares

	List Price	SALE PRICE
TOASTERS	21.95	15.50
COFFEE MAKERS—Spoutless	17.95	12.95
STEAM or DRY IRONS	17.95	12.95
11-in. FRY PAN	14.95	10.95
12-in. FRY PAN	16.95	11.95
GRIDDLE	19.95	13.95
PORTABLE MIXERS	21.00	14.95
STAND MIXERS	27.95	19.95

USED TV PRICES START at \$20.00

### HALL'S TV CENTER

182 E. Main St. Phone EN 8-3019

### SELECT YOUR OWN LOBSTER! Live, Fresh Main Lobsters



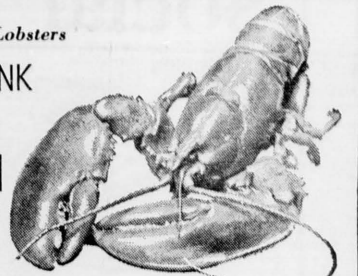
From our refrigerated NEPTUNE TANK

Enjoy the state's most complete selection of Choice, Fresh SEAFOOD at

### THE DELAWARE ROOM

Delaware's Largest Seafood Restaurant  
(Closed Mondays)

WINES — COCKTAILS



Stuffed Shrimp — Tartar Sauce, Choice of Two Vegetables, Tossed Salad, Rolls & Butter, Coffee .....\$2.25  
Oysters on the Half Shell .90—Clams on the Half Shell .70—Steamed Shrimp .90—Steamed Soft Clams & Broth (Basket) 1.00—Lump Crabmeat Cocktail 1.00—Shrimp Cocktail .90—Fresh Snapper Soup .20—40 Oyster Stew .90

### —SEAFOOD SPECIALTIES—



Broiled or Steam Fresh Main Lobster (Chicken) .....\$2.50	Fried Jumbo Butterfly Shrimp 1.85
Broiled or Steamed Fresh Maine Lobster (Medium) .. 3.25	Golden Brown Crab Cakes .....\$1.70
Lobster a la Newburg-Toast Points ..... 1.85	Crab Meat Au Gratin ..... 1.70
Lobster Thermidor ..... 2.00	Combination Sea Food Platter 2.25
Baked Imperial Crab ..... 2.00	Fried Deep Sea Scallops ..... 1.50
	Broiled Steak-Fish of the Day 1.70
	Fried Oysters ..... 1.50

The above includes Choice of Two Vegetables, Rolls, Butter, Coffee

500-yds. North of the Junction of Routes 13 & 40

# FOOD BUDGETS



Prices effective thru Sat., Jan. 9, 1960. Quantity rights reserved.

### Acme Budget-Stretchers

GRAPEFRUIT JUICE	Ideal Not or Sweetened	2 46-oz cans	55¢
PINEAPPLE JUICE	Ideal Hawaiian	2 46-oz cans	55¢
SPAGHETTI	Ideal Prepared	2 16 1/2-oz cans	25¢
FIG BARS	Patsy Ann	2 1-lb pkgs	39¢
IDEAL COFFEE	Vacuum Pack	2 1-lb cans	\$1.29
VAC. PACK COFFEE	Maxwell House, Beechnut, C & S or Wilkins	1-lb can	75¢
MARBIS SALTINES	New Low Price	1-lb pkg	19¢
CLOXOX BLEACH	Price Reduced	1/2-gal jug	33¢

New Low Price!



**BUTTER**  
(4 1/2 lbs) 69¢

**Richland Butter**  
1-lb 67¢

**Prize-Winning IDEAL LARGE FRESH EGGS**  
doz 55¢

### Frozen Food Savings

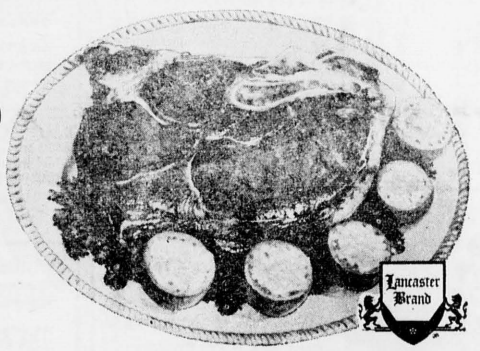
Ideal or Donald Duck	Orange Juice	6 6-oz cans	89¢
Ideal Sliced	Strawberries	3 16-oz pkgs	\$1
Ideal Fancy Calif.	Green Peas	3 10-oz pkgs	49¢
Ideal Leaf or Chopped	Spinach	2 12-oz pkgs	29¢
Seabrook Farms	Broccoli Spears	10-oz pkg	29¢

### SAVE ON BREAD

Farmdale	Supreme	Home Style
1-lb loaf 17¢	1-lb loaf 20¢	1 1/4 lb loaf 25¢
Reg. 59c Orange Iced Chiffon Cakes		special 49c
Reg. 20c Seeded Vienna Bread		2 lbs 37c

## STEAKS

Lancaster Brand RIB STEAKS	lb 79¢
Sno-White Mushrooms	pt box 29¢



## PICNICS

Small, Lean Smoked lb 29¢

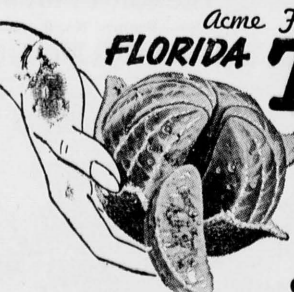
VEAL CHOPS	Meaty Shoulder	lb 65¢
VEAL ROAST	Shoulder	lb 55¢
Breast of Veal	For Filling	lb 45¢
FANCY SHRIMP	MEDIUM (31-42 count)	lb 63¢ 5-lb box \$3.09
JUMBO (15-20 count)		lb 85¢ 5-lb box \$4.19
Morrell's Pride Fresh SAUSAGE		1-lb pkg 29¢
Lancaster Brand Scrapple		2-lb pkg 45¢

## FRESHLY GROUND BEEF

Acme Quality	3-lb pkg	\$1.29
EXTRA SHARP CHEESE	lb	79¢
LONGHORN CHEESE	lb	49¢

Pan Ready Whittings lb 19¢  
Fillet of Haddock lb 39¢  
Sliced Halibut lb 49¢

READY-TO-HEAT-AND-SERVE  
Fried Perch Fillets lb 59¢  
Fried Haddock Fillets lb 65¢  
Fried Scallops lb 89¢



## TEMPLES' Luxury Eating ORANGES

doz 45¢  
Glenside Park WILD BIRD SEED 5-lb bag 69¢

## Crisp Pascal CELERY

2 large stalks 29¢  
Washed Western CARROTS 2 1-lb cello bags 17¢

GET ACME'S BIG 3... QUALITY FOOD... LOW PRICES... S&H GREEN STAMPS





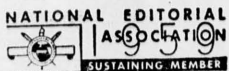


# THE NEWARK POST

Founded January 26, 1910, by the late Everett C. Johnson  
An Independent Newspaper  
Published Every Thursday by The Newark Post, Inc.  
14-16 Thompson Lane, Newark, Delaware  
Locally and Independently Owned and Operated

Legal and Display advertising rates furnished on request.  
R. T. WARE, PUBLISHER  
W. M. H. WAGGAMAN, JR., EDITOR

Entered as second class matter, March 10, 1910, at the Postoffice at Newark, Delaware, under the Act of March 3, 1879.



Newark, Delaware, Thursday, January 7, 1960

Writing in the New York Times, Paul Heffernan tells of Russian debt owed to this country and its citizens. It includes: World War I debt to the U. S. government, \$563 million; Kerensky Regime debt to the U. S. government, \$190 million; Lend-Lease World War II debt, \$11,260,343,000; World War I public loans sold to private American investors, \$75 million.

According to Nation's Business, the older worker could be one of the most valuable assets in the competitive business world of the 60's. It cites a government survey showing that some 45 per cent of manufacturing workers over 40 produce more per man hour than the younger men. The older worker also has some special attributes—experience, greater dependability, mature appreciation of job responsibility.

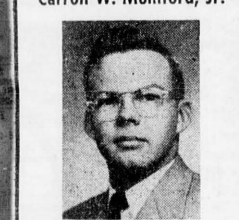
## BOULDEN BROS. Fuel KIDS

IT COMES AS OIL, BUT WE REPEAT, WHAT WE DISPENSE IS REALLY HEAT. Heat is the ingredient that can make winter more fun. Call us at 8-1303 for your heat-producing fuel oil.

BOULDEN BROS. FUEL OIL KEROSENE. 540 BARKDALE RD. NEWARK, DELAWARE. EN-8-1303

## NEW YORK LIFE AGENT

Carroll W. Mumford, Jr.



NEW YORK LIFE

Insurance, nylco Company. Life Insurance, Group Insurance, Accident & Sickness Insurance, Employee Pension Plans. 5 Courtney St. PHONE EN 8-5482

## NEWARK DEPARTMENT Store

### MEN'S SUIT SALE

Famous Brands. \$49.75 Reg. \$65.00. \$39.75 Reg. \$50.00. Broken size assortment of Regulars, Longs, Short, Stouts and Porties. —NO CHARGE for CUFFING—

MEN'S JACKETS and CAR COATS. \$8.99 to \$32.99. Values to \$39.95.

NEWARK DEPARTMENT Store. Newark Shopping Center. Open Wed. & Fri. 9 to 9.

## News of Bear

Mrs. J. Leslie Ford, Correspondent  
Phone EA 8-6484

Among the 41 students who graduated from the Memorial Hospital School of Nursing, in the New Century Club on Sunday, will be Anita Fox and Elaine and Kathleen Kennedy of Bear.

The Ladies Aid Society of Penacader Presbyterian Church will meet at the home of Mr. and Mrs. George Moore on Friday evening at 7:30, with Mrs. Myrna McElwee presiding.

The session and trustees of Penacader Church held a meeting following services on Sunday morning with the Rev. Sydney Venable presiding. An invitation was extended to the Rev. Clarence Hoffman to become our supply pastor since the Rev. Donald Mitchell recently resigned. A congregational meeting will be held Jan. 31.

Bessie Davis returned home Thursday after spending two months with her sister and husband, Mr. and Mrs. George Messick of Rehoboth.

Mrs. Anna Harrington returned home Thursday after spending two weeks with her daughter and family, Mr. and Mrs. Howard Slaughter of Smyrna.

Mrs. George Boyer of Chadds Ford were Christmas visitors with Mr. and Mrs. A. A. Astoli. Mr. and Mrs. Leo Tammi of Newark spent New Year's Day with Mr. and Mrs. A. A. Astoli.

Mr. and Mrs. Emile Walther are receiving congratulations on the birth of a son in Wilmington General Hospital on Dec. 31.

TELEPHONE EN 8-8187  
REAL ESTATE  
grover surratt  
45 east main street  
newark, delaware

## McCANN RENTALS

131 Brookside Blvd.

Split Level .....\$100

25 Merry Rd. Split Level .....\$100

11 Morris La., 2 baths \$120

4 Bedroom Brick, in Country. Ex. condition. \$135

Call EN 8-2538

LOOK FOR STORES DISPLAYING THIS EMBLEM WHEN SHOPPING

RECOMMENDED BY GREETERS, INC.

Newcomer-Welcoming Service

GREETERS recommends dependable firms. In these stores you can buy with confidence.

Hostess MRS. ROSS E. HOFNAGLE EN 8-2490

Robt. T. Jones and Son

FUNERAL DIRECTORS

PHONE EN 8-1627

122 West Main Street NEWARK, DELAWARE

Wesley Mennonite Chapel

Route 896 N.W. of Newark, Del.

SUNDAY SCHOOL—10 a.m. MORNING WORSHIP—11 a.m.

EVENING SERVICES—First Sunday of each month—7:30 p.m.

Pastor Herman N. Glick, Atglen, Pa.

Phone LY 3-5757

ST. PAUL'S LUTHERAN CHURCH

So. College Ave. & Chestnut Hill Rd.

MORNING WORSHIP 8:30 & 11:00

SUNDAY SCHOOL 8:30 & 9:45

HERE is VALUE

OAKLANDS

Enter a world of Gracious Living!

HOMES for YOU

FOR INFORMATION CALL EN 8-8315

HUGH F. GALLAGHER, Jr.

DEVELOPER AND BUILDER

## Congo Missionary To Speak Sunday At Newark Church

Sunday Series Planned By Newark Methodist School For Missions

The annual school of missions will be held at the Newark Methodist Church for the next three Sunday evenings, beginning this Sunday with a missionary from the Belgian Congo as the speaker. The program will begin with a covered-dish supper at 5:30 for all church families.

The speaker will be the Rev. James R. Stevenson, who has been in the Belgian Congo as director of the Methodist Mission Press at Lodja, one of seven Methodist mission stations in the Congo. In charge of publication of church school periodicals and books in the Otetela tribe language, he has trained several Africans as printers and educational workers.

The program on Sunday, Jan. 17, at 7:30 p.m. will be a panel discussion by three members of the church who have traveled widely and who will speak on "Religions of the World." Panelists will be Anna Gallaher, who traveled around the world last summer; Wilmer E. Shue, who visited Russia with other educators in November; and W. S. Van Asdlen, who was in the Near East last summer and fall. Robert Chambers will be the moderator.

On Jan. 24, at 7:30 p.m. a film "New Faces of Africa," will be shown; and the book "The Church and Medical Missions" will be reviewed by Wallace Adams.

This school of missions is sponsored by the commission on missions of the Newark church.

Col. Daniel N. Sundt is chairman of the commission; R. J. Hawes, vice-chairman; and Mrs. T. D. Mylrea, secretary.

## Edward L. Hearn Joins Gallagher, Evans, Dill

Edward L. Hearn has joined the staff of Gallagher, Evans and Dill, Inc., Wilmington advertising agency located at 1009 Washington Street.

Hearn, has been news editor of WDEL since November, 1957. Raised in Ridley Park, Pa., he graduated from high school there, and is a graduate of the Columbia School of Broadcasting.

Mr. Hearn is a member of the board of the Friends of Ferris School Association; the auxiliary board of the Cerebral Palsy Association; and the Rolling Hills-Windermere Civic Association.

## Clay Lancaster To Speak As Winterthur Lecturer

Clay Lancaster, scholar-author in the fields of American and Oriental architecture, will speak at the University of Delaware next Wednesday at 8:15 p.m. in Wolf Hall.

Mr. Lancaster's participation in the 1959-60 Winterthur lecture series is jointly sponsored by the Henry Francis du Pont Winterthur Museum and the University of Delaware. The theme of this year's series is "The Orient and the West."

Mr. and Mrs. Neal Hambleton of Chevy Chase, Md., spent the Christmas holidays with her parents, Mr. and Mrs. Pierce Fox.

Mr. and Mrs. Harry B. Moore were entertained at dinner Saturday evening by Mr. and Mrs. Raymond Lynam of McDonough.

Bear Home Demonstration Club will have an all-day meeting at the home of Mrs. George Weaver on Monday, Jan. 18, with box lunches.

Officers will be installed with Mrs. George Weaver, president; Mrs. Charles Camac, vice-president; Mrs. Thomas McGinnis, secretary; and Mrs. Joseph Marousek, treasurer.

Services for George W. Laws, 74 years old, were held Wednesday at the Spicer Millikin Funeral home. The Rev. Brooke E. Reynolds, pastor of Ashby Methodist Church, officiated. Burial was in Bethel Cemetery, Chesapeake City, Md.

Mr. Laws who was a guest at the Minquadales Home for Men since April, died Saturday at the Delaware Hospital where he had been a patient since April. He was a native of the Glasgow area, living many years between Newark and Glasgow.

The son of the late George and Ella Laws, he is survived by a brother Joshua of Wilmington; two sisters, Mrs. May Reed of Newport and Mrs. Minnie Townsend of Holloway Terrace; and two nieces, Mrs. Frances Millman of Holloway Terrace, and Mrs. Perla Black of Newport.

## County Poultrymen Invited To Attend Middletown Event

A meeting of New Castle County poultrymen has been scheduled for next Tuesday at 8 p.m.

Edward H. Schabinger, county agricultural agent, reports that after a short business meeting, there will be several talks of current interest to poultrymen in the area.

Dr. William E. McDaniel, chairman and professor of agricultural economics at the University of Delaware, will speak on "Future Possibilities of the Broiler and Egg Markets in Delaware."

The final portion of the meeting will include remarks by Ray Lloyd, University of Delaware poultryman, and a general discussion period.

Schabinger says the meeting will be held in Middletown High School, and all interested poultrymen and friends are invited.

## Joseph E. Wilson Named Churchmen's Group Head

At the organizational meeting of the new men's group at the First Presbyterian Church on Dec. 10, officers were elected, with Joseph E. Wilson, chairman.

Other officers are H. Osborne

Aaron, vice-chairman; Eugene Pierce, secretary; Francis Reinhart, treasurer; and William D. Reading, program chairman.

NEWARK SCHOOL OF MUSIC  
Individual Instruction  
GUITAR—ACCORDION  
EN 8-2294

COME, VISIT US!  
Unitarian Fellowship  
101 Sypherd Drive, Newark  
Services & Sunday School 11 a.m.  
Nursery Provided

CENTER Barber Shop  
JACK VINTEM Prop.  
Mon. to Thurs. 9-7  
Friday 9-8  
Saturday 8-5:30  
Haircutting for ALL the Family  
Newark Shopping Center

SCHLOSSER Plumbing & Heating  
Guaranteed Materials and Workmanship  
Gen. Supplies and Fixtures  
Trenching & Back-Filling  
CALL EN 8-4757  
171 E. MAIN ST. NEWARK

## How to Start the New Year without Nagging Bills

A Personal Loan from Wilmington Trust Company can give you money to pay off all nagging bills—can help you with a clean slate.

Then you can repay us, bit by bit, in small amounts. And wiping out your loan is so convenient. See table below:

EASY MONTHLY PAYMENT PLAN			
You Get	24 Payments	18 Payments	
\$ 300	\$ 14.25	\$ 18.50	
800	38.00	49.11	
1200	56.00	72.67	
1500	70.00	90.83	
2500	116.67	151.39	

These terms are so low because Wilmington Trust makes Personal Loans only to employed persons with good credit records. The standard of our borrowers is high—and you benefit. Come to any office of Wilmington Trust and we will talk over your problem with you.

## NEWARK OFFICE WILMINGTON TRUST COMPANY

Wilmington, Delaware

TENTH AND MARKET

Tenth and Shipley 2120 Market 3605 Market

CLAYMONT DELAWARE CITY GREENVILLE

NEWARK NEW CASTLE NEWPORT

GEORGETOWN MILFORD SEAFORD

All Offices Open Friday Nights

## STAYS STEADY!



## PONTIAC-ONLY CAR WITH WIDE-TRACK WHEELS

Wide-Track widens the stance, not the car. With the widest track of any car, Pontiac gives you better stability, less lean and sway, accurate control.

SEE YOUR LOCAL AUTHORIZED PONTIAC DEALER

EDWARDS PONTIAC

165-167 E. MAIN ST. NEWARK, DEL.



## Maynard Conkey, Bob Burton Honored At 4th Newark Touchdown Club Banquet

Halfback Maynard Conkey received the Mayer Brothers Award as Newark High School's outstanding senior football player, and Fullback Bob Burton won the Newark Touchdown Club Award as the squad member who contributed most to team morale and spirit in 1959, at the fourth annual banquet of the Newark Touchdown Club last Monday night in the ballroom of the Newark Country Club.

Wilson (Bill) Worrall, former Yellowjacket and Delaware star lineman, and president of the Newark Touchdown Club in 1958, was presented a gold plated plaque—a past president's award—by former club president, Newark High School and Blue Hen stellar end, Vincent L. (Winnie) Mayer.

Alden "Whitey" Burnham was toastmaster; George A. Hansell, athletic director and football coach at PMU, was the principal speaker; and Bayard Perry, president of the Newark Touchdown Club, presided.

Hansell stressed the importance of physical fitness for success in life, and cited football as a vital means to this end.

Bob Hoffman, Newark High School coach, introduced his senior Yellowjacket gridders, with rundowns of their individual performances of the past season.

These guests of honor included Co-Captains Carl Rice and Monty Jackson, at quarterback and guard; Ends Burt Loftman and Merle Taylor.

### 1960 Dog Licenses

\$1.00

With Your Presentation  
of Rabies Certificate

### JACKSON'S

90 E. Main - EN 8-1695  
OPEN WED., THURS., FRI.  
TIL 9 P.M.

### A NEW IDEA FOR A NEWER

### ONE

Life Insurance Plan  
for your

### WHOLE FAMILY

Nationwide's new Family Policy covers Mom, Dad, and all dependent children under age 18. And new babies covered at no premium increase (after 15 days old). One policy — one low premium — for all family protection!

### R. S. JARMON

14 Kells Ave. EN 8-2232

### NATIONWIDE

LIFE INSURANCE COMPANY  
HOME OFFICE • COLUMBUS, OHIO

### STATE

FREE PARKING  
SHOWS 7 & 9 P.M.  
PHONE EN 8-3161

Saturday Continuous from 2 p.m.  
Sunday Eve 8 p.m.

THURS., FRI. JAN. 7, 8

"Lil Abner"

SATURDAY JAN. 9

Mickey Rooney

"Big Operator"

—AND—

"The Beat"

Generation"

SUN., MON., TUES.

JANUARY 10, 11, 12

DOUBLE FEATURE

"Helen of Troy"

—AND—

"King Of The"

Pharaohs"

WED., THURS., FRI.

JAN. 13, 14, 15

"Wreck of The"

Mary Deare"

### For PROMPT, EXPERT SERVICE

With Your Plumbing & Heating Problems  
CALL EN 8-7611

### Hadley's Plumbing & Heating

"PLUMBING SHOP ON WHEELS"

PIPE-FITTING, CUTTING, TREADING

PLUMBING & HEATING SUPPLIES

Complete Installation Service

82 E. Cleveland Avenue, Newark

### CHRISTIANA INN

Christiana, Delaware

We are now serving your favorite

COCKTAILS, BEER and WINE

With Our FINE FOODS

— Italian Dishes —

Food to Take Out

PIZZA

AT THE LIGHT in CHRISTIANA, DELAWARE

Under Management of Elizabeth McKelvey

Six

### Recreation League Basketball Offers Plenty Of Action

Al Roberson Scores 23  
As Intermediate League  
Bandits Beat Panthers

In Newark Recreation Association basketball Monday night, Maclary's Pros won a nip and tuck 15-13 victory over the Celtics in the Central Junior League. Harry Saunders rang seven baskets and one foul for all Maclary points, and Corky Deck scored six for the Celtics.

In the Recreation Intermediate League, the defending champion Bandits outscored the Panthers, 72-33. Alvin Roberson came off the bench to pace the attack with 23 points. John Link scored 15, and Rod Blansfield and Bob Handloff, 12 points each.

Wayne Weimer and Norm Kugel tied for Panther scoring honors with nine points.

The Falcons outgunned the De-Molay quintet, 75-14. Scoring honors went to Bucky Eller with 22; Gary Reichard with 17; and Archie Peel, 13.

McNeeley had five of the DeMolay points, and Tim Simmons, four.

In the Recreation Senior League, Jackson's Hardware beat the Delaware State Police in the very last second of play as Bob Howarth sank a desperation mid-court shot to give his team a 47-45 win.

Howarth was Jackson's high scorer with 12, followed by Captain Don Hughes with nine, Allen Morehart with six, and Clyde Louth with five.

The scrappy and aggressive Troopers were paced by Cane's 10 points, Billy Knotts nine, and six each by Ed Horney and Captain Clarke Jester.

Avon came back strong in the second half to post a 58-47 victory over a determined Continental squad.

Bill DeLar was impressive with seven baskets and four fouls to account for nineteen of Avon's points. DeLar was closely followed by George Dutton with 17, and John Field with 10 tallies.

Jim Martin paced the Continental scoring with 17 followed by Wendell Osborne's eight.

In the lone game played in the Boys' Oglethorpe League, the Blackhaws edged the Comets, 25-20, in a well-played encounter.

A Blackhawk Buchanan took game scoring honors with 15 points, while Danny Sullivan scored 12 for the Comets.

lor; Tackles Rodney Wilson and Thomas Bridges; Guards Pete Williamson and Fred Williams; Center Allen Beldyk; Halfbacks Maynard Conkey, Marshall Saunders, and Ted Houle; Fullbacks Bill Neide and Bob Burton; and co-managers Cotton Thompson and Robert Horgan.

Delaware Captain Mark Hurn told of his trip to the Copper Bowl, and introduced the Blue Hen senior gridders who were special guests of the Touchdown Club—Jack Turner, Tony Szwedch, John Bowman, Gampy Pellegrini, Leon Dombrowsky, Ray Klapinsky, Bob Reeder, Dan Tripodi, John Mordas, Otto Fad, Jim Garvin, Bob Johnson, Al Huey, Karl Frantz, Don Osmun, Howard Moyer, and Manager Sheldon Sosin.

Lieut. Governor David Buckson, Mayor Frank Durnall; Wayne Polari, coach of Mt. Pleasant's Blue Hen Conference champs, and Gerald "Doc" Dougherty, former Delaware athlete and coach, spoke briefly.

Other special guests included George Sargisson, RP&S director, and national football official; Russell P. Burley, president of the Wilmington Touchdown Club; Mickey Heineken, Delaware football captain-elect; Billy Cole, William Penn coach and former Blue Hen star; Scotty Duncan, Rocky Carzo, Roy Rylander, and Larry Catuzzi, Delaware coaches; Cliff Browning and Dick Musselman, Newark High School coaches; and Bob DeGroat, Tower Hill football coach.

"Winnie" Mayer was banquet chairman; Harold "Swede" Swendson was in charge of program and awards; and Jack Handloff, ticket chairman.

Other officers of the Newark Touchdown Club include LeRoy Hill, vice-president; and Eric G. Mayer, treasurer.

ANN DUNN SCORES 256

Ann Dunn bowled the high game 256 for the first half season in Continental-Diamond Fibre League play, S. Kennedy Fell reports.

NOTICE TO CREDITORS

Notice is hereby given that the shares or interests in the real estate of John A. Szwedch, Francis J. Szwedch, and Estella J. Szwedch will be sold January 13, 1960 and all persons having or claiming an interest in the shares or interest of either or any of the said parties in any or all of said lands and premises are hereby notified to appear and file in the Office of Clerk of Orphans' Court in and for New Castle County, on or before the 22nd day of January, D. 1960, a petition setting forth and making proof of such lien or encumbrance and the amount due thereon.

JOSEPH A. JULIAN, JR., Trustee

Jan. 7



The Newark Post, Newark, Delaware, Thursday, January 7, 1960

### Carl Rice Nets 18 As Newark Cagers Stop Kennett Five

Carl Rice was top scorer with nine field goals as Coach Bill Conrad's Newark High School Yellowjackets nipped the Kennett Square cagers, 40-39, in a Newark home stand last Tuesday night.

Rice, co-captain and quarterback for the 1959 Yellowjacket gridders, was high scorer for the third time in three outings with an average of 19 points per game, as the Yellowjacket cagers balanced the book with a 1-1 entry in their win, over the Kennett crew.

Newark, with a preliminary win over the Yellowjacket Alumni, 52-45, lost the opening interscholastic clash with Brown Vocational High School, 60-44.

Coach Conrad's cagers play their first Blue Hen Conference opponent tomorrow night at home with the visitors from P. S. duPont, and play away with Wilmington High School's Red Devils next Tuesday night in another conference clash.

Marshall Saunders was runner-up for Newark with eight points against Kennett, all scored from the competitive floor.

The Newark Jayvees won the preliminary game from the Kennett juniors, 39-34.

KENNETT SQUAD NEWARK

G. F. P. G. F. P.

Desmarais 0 0 0 Rice 9 0 18

McLane 0 2 4 Goekkel 0 1 1

Webster 4 3 11 Saunders 4 0 8

Borelsang 7 3 17 Studier 1 1 3

Carter 0 0 0 Godbey 0 1 1

Ralph 1 5 7 Adams 3 0 6

Carter 0 0 0 Wells 0 4 4

Pone 1 0 2 Subach 0 0 0

Totals 13 13 39 Totals 17 6 39

Kennett Square 38 11 16-39

Newark 40 39 10-13-40

but several hours later they began coming back — and hundreds of geese hovered with interest over the pits and decoys.

Three bunches dropped down low enough — enough to provide some memories for Messrs. Duncan, Lude and Young — and for Calder, Sawyer, and Taggart, too, although these last shot but one goose — and a second-hand goose at that.

Loose Goose

"He didn't outrun — he outflowed me," Mike Lude said concerning a reported grounded goose that eluded Lude, the Delaware line coach, despite Milo's stellar sprinting.

The goose was one knocked out of the sky by Mike, shooting from a pit near Church Hill, Md., one day last week with Scotty Duncan and Gibby Young. Each of the trio got a goose — although "Doc" Calder, shooting from a pit across the field with Rudy Taggart and Tom Sawyer, reports that Mike Lude's goose's goose was cooked when shot from "our pit after Mike had chased him all over the cornfield.

In the early morning rain, thousands of great, gray Canadian geese stroved high overhead, flying the non-stop aerial turnpike route.

ONLY

\$129.95

Percy Roberts

Du PONT HIGHWAY AT BLACKBIRD, DEL.

Open 9 a.m. to 3 p.m.

### Hen Athletes Return To Action Tonight As Wisniewski's Cagers Meet Bucknell

Winter sports activities resume at the University of Delaware this week after the long holiday break. The basketball team is the first to see action, opening a three-game road trip against Bucknell tonight at Lewisburg, Pa., in a Middle Atlantic Conference contest.

The Hens will stay in the area Saturday night, playing Swarthmore College away, before traveling to Columbus, to meet nationally-ranked Ohio State on Monday.

Delaware will return to Newark's Carpenter Field House next Thursday to entertain conference rival Gettysburg.

Coach Irv Wisniewski's Blue Hens go into the Bucknell clash tonight with a 1-8 record, after absorbing a heart-breaking defeat to take last place in the Downeast Classic in Bangor, Me., last week.

Delaware dropped its first journey game to Bowdoin, 55-53, last following day to St. Michael's, 71-66, and then dropped the finale, 68-64, to Bates.

Co-captains Gil Mahla and Chuck Hamilton, Jack Baly and Tom

Adams set the double-figure pace for the Hens. The Hens lost the game from the free throw line as saw halftime leads go by the board in two of the three outings.

Bucknell, 1-1 against the Hens last season, hosts Delaware with a 2-2 record in regular season play. The Bisons participated in the annual Poinsettia Tournament in Greenville, S. C., which opened New Year's Day. Tonight's tape is at 8:30.

Delaware's wrestling team, 1-1 in the season, will meet Pennsylvania Military College in a home match on Saturday in Carpenter Field House at 2 p.m.

The freshman grapplers, coached by Hal Grosh, senior physical education major from Seaford, De will open their season against the PMU junior varsity in the preliminary match at 1 p.m.

The varsity and freshman swimmers, under coach Harry Rawstree, will return to action Saturday against Lehigh at Bethlehem, Pa. with the freshman meet schedule at 2:30 p.m.

"Safer Boating is More Fun"

### Northeast River Power Squadron

Offers FREE Spring

Piloting Course

Elkton Jr. High School

Wednesday, Jan. 20, 7:30 P.M.

ADVANCE REGISTRATION NOT REQUIRED

Just bring your pencil

"What you learn may save your life!"

### SILVER REPLATING

SALE!

DURING

JANUARY

ONLY

No reason to apologize for the looks of your worn silverware, precious antiques and heirlooms when you can have them repaired and replated to original beauty at such low prices. Take advantage of this timely sale by bringing your worn silver in TODAY.

Regardless of their condition... whether silver, copper, gold or nickel... trophies, churchware, etc... bring them in for free estimates.

EACH PIECE WILL BE GORGEOUSLY REPLATED IN QUADRUPLE SILVERPLATE BY SKILLED SILVERSMITHS.

ARTICLE SALE PRICES

Cream Pitchers ..... \$ 6.95

Sugar Bowls ..... 7.95

Waste Bowls ..... 7.95

Tea and Coffee Pots, ea. ... 11.95

Water Pitchers ..... 11.95

Serving Trays (per sq. in.) .07

LIMITED TIME ONLY... BRING ARTICLES IN TODAY!

MORE THAN A JEWELRY STORE

Minster's

SINCE 1895

HERE'S THRIFT to give your budget a lift!

OLD FASHIONED BARGAINS

JANUARY STOREWIDE  
**CLEARANCE**

**KEENE  
HARDWARE**  
Newark Shopping Center  
Many Items Offered BELOW COST

**HERE'S THRIFT** to give your budget a lift!  
**OLD FASHIONED BARGAINS**



## World War II Vet, Local Businessman Otis Gregg Dies

Otis H. Harvey Gregg, co-owner of Gregg's Jewelry Store in Newark, and World War II veteran, died suddenly Sunday morning from a heart attack.

Funeral services were conducted yesterday at the R. T. Jones Funeral Home, with interment in Newark Cemetery.

Mr. Gregg was stricken while eating breakfast in the State Restaurant in Newark, and a summoned physician pronounced his death.

Born in Maryland, he lived in Newark most of his life.

He was a World War II veteran, serving with the U. S. Army in the European Theatre for 35 months.

Mr. Gregg was co-owner with Helena Barben, of Gregg's Jewelry Store, 178 East Main Street. He was the son of the late Delaware and Lenora Gregg.

Surviving are a brother, Joseph H. of Newark; a sister, Lillian Noll, of Providence, Md., three nephews, one niece, and several cousins.

### NAVY TECHNICIAN

John Stevens, aviation electronics technician second class, USN, son of Mr. and Mrs. Joseph A. Stevens of Route 1, Newark, was promoted to his present rate, Dec. 16, while serving with Airborne Early Warning Squadron Two at the Naval Air Station, Patuxent River, Md.

### Public Sale

DAIRY COWS, MILK EQUIPMENT and FARM MACHINERY  
Located on Capitol Trail—3 Miles East of Newark, Del.

Sale starts at 11:00 o'clock A.M. WEDNESDAY, JANUARY 20, 1960  
45 head of cows, mixed herd, some fresh with calves by side, close springers, the rest in full flow of milk. These cows are TB and blood tested and can go anywhere. This herd has been artificially bred by Curtis Candy & Southern Sires.

MILK EQUIPMENT: 2 milk coolers, milk cans, same as new, buckets, wash tubs, surge water heater, can racks, stainless steel strainer, 3 unit surge milker, pump, 19 stall cocks & pipe, 19 Star water cups and pipe, set of Steward Clippers.

POWER FARM EQUIPMENT: Case Tractor, John Deere & Cultivator model 40, J. D. Grain Drill, new; 4-section spring tooth harrow, J. D. mower, J. D. Corn planter, 8-ft. disc harrow, grass seeder, Hydraulic disc harrow, Hydraulically 14' plow, case rubber tired wagon with sides, rubber tired manure spreader, like new; 2 new hay racks, grain, hay, alfalfa, mixed hay, soy bean hay, wheat straw, oats, corn by the bushel. Lots of hoes, chains, tools and numerous articles by day of sale.

TERMS CASH day of sale.  
WILLIAM PUTTY, Owner  
HAROLD S. HILL, Auctioneer  
Clinton 5-4310  
Lunch will be served  
Jan. 7, 14

## Delaware Food Market Report

By Anne Holberton  
U. of D. Agricultural Extension Service

Despite the season, there are quite a number of fresh fruits and vegetables available at most local markets this week. Bringing sun-drenched fresh fruits and vegetables

to the cold areas of the country is one of the agricultural and transportation marvels of our century. As for vegetables check your favorite market for fresh carrots, celery, iceberg lettuce, yellow onions of medium size; Long Island and Maine potatoes; radishes, green Italian squash, and broccoli.

The nation's winter lettuce crop is above average, however, quality and price vary greatly. This is one vegetable that needs to be watched, so, shop carefully.

Broccoli is a good buy this time of year. This delicious green vegetable fits into almost any menu. Serve it hot or chilled, in casseroles or soups or any of the many other ways this vegetable can be prepared.

Peppers, cucumbers and eggplants are all rather expensive since all are scarce now because of bad weather in their growing area.

Fresh fruits for this week's shopping list include medium to large size avocados, oranges, tangerines, grapefruit and many eastern apples.

Raisins continue to be in heavy supply and many stores will feature this fruit on special sales. Grapes, pears and bananas are

a bit higher in price this week but by shopping around you will find some good buys on these fruits also. Right now cranberry supplies are heavy. This fruit can perk up most any meal. Have you ever tried jelly cranberry sauce served "long side" your scrambled eggs? Delicious is the word for it. Get a supply of fresh or canned cranberries when you market this week. Here's a good buy—eggs. Lots of

fresh eggs are available now at very attractive prices. Supplies are on the increase now and that means bargain prices. Thrifty buys for the main dish include pork, check pork loin roast, chops, smoked ham, sausage and bacon for good buys this week. Other economy meat buys are roast beef, a few steaks and broilers.

Most of the beef coming to market now is from high quality, fattened or grain fed animals. High grade beef has a smooth covering of firm, creamy white fat. The lean of high quality beef is uniform and bright in color ranging from pale to deep red. The lean is well marbled with creamy white fat. The texture of the lean is firm, velvety in appearance and fine in grain. The bones are reddish and porous. These few pointers will help you select high quality beef when you shop.

LETTERS TESTAMENTARY  
Estate of Jeannette C. Hough Deceased. Notice is hereby given that Letters Testamentary upon the Estate of Jeannette C. Hough late of White Clay Creek Hundred, deceased, were duly granted unto Beatrice M. Coady on the Sixteenth day of December A. D. 1959 and all persons indebted to the said deceased are requested to make payments to the Executrix without delay, and all persons having demands against the deceased are required to exhibit and present the same duly probated to the said Executrix on or before the Sixteenth day of September A. D. 1960 or abide by the law in this behalf.

Address Robert E. Scullin Attorney-at-Law 1144 Fidelity Bldg., Philadelphia 9, Pa.

Beatrice M. Coady, Executrix  
Dec. 24, 31; Jan. 7

### Auctioneering

HAROLD S. HILL  
Kemblesville, Pa.  
Call Clinton 5-4310

### IN NEWARK

for  
PHILCO and MAYTAG  
Appliances  
See  
Bob O'Neal

THEO. S. JONES  
APPLIANCES

129 EAST MAIN ST.  
PHONE EN 8-1245

NEWARK STATIONERS  
STATIONERY—BOOKS  
Office Machines **SALES SERVICE**  
44 E. Main EN 8-4030

ALL LINES OF  
INSURANCE  
Fire — Auto — Long Haul Truck  
Cargo Bonds — Outboard Boats  
and Motors  
**HERMAN F. BLACK**  
EN 8-6181  
8 Phelps Lane, Newark

## WARWICK FUNERAL HOME

William J. Warwick, Director

121 W. Park Place

Phone EN 8-6565

## New Year Resolutions

### LIVE BETTER

in a 2-story BRICK COLONIAL, can't be beat for comfortable and gracious living. Only 1 year old, in excellent condition with many improvements.

\$20,400

### ENJOY YOURSELF

more by being the proud owner of your own home. Adjacent to the University, this home is ideal for convenience to schools, shopping and transportation. 2-story masonry with finished 3rd floor suitable for fourth bedroom.

\$16,900

### SAVE MONEY

now and for the future by investing in a home. Roomy, 3 Bedroom Ranch, monthly payments less than rent.

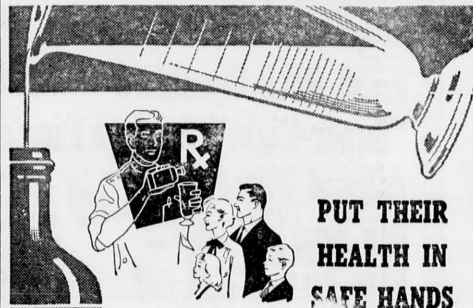
only \$350. cash required

—SEE—

## Newark Real Estate & Insurance Co.

Academy Street  
EN 8-8546

Brookside  
EN 8-8797



Have your family doctor's prescriptions filled at your friendly NEWARK PHARMACY. And visit our newly-remodeled store for a varied selection of

CANDY  
COSMETICS  
TOBACCO

**Newark Pharmacy, Inc.**  
183 E. MAIN STREET PHONE EN 8-8730  
NEWARK, DELAWARE



**GOOD NEWS!** Chrysler 1960's been a winner since the day

it first rolled into dealers' showrooms. People stood in line to see

it—were willing to wait for their favorite model and color. Now, Chrysler's rolling again. Your

dealer is getting new cars every day. So don't wait to see his broad selection. Come in.

Drive The Car Of Your Life For The Time Of Your Life!

# CHRYSLER 1960



New Chrysler Windsor 4-Door Hardtop. Fresh, fiery beauty at a modest price.

HERE'S WHY  
THIS IS THE MOST  
SOUGHT-AFTER  
CHRYSLER EVER!

### Beauty!

One look at Chrysler's sporty grille and flowing lines and you know why it's such a success.

### Brawn!

New Unibody construction unites body and frame in a single, solid piece. Result: the strongest, quietest car you've ever known.

### Comfort!

Lower floors, higher foam rubber seats, rich and rugged fabrics — Chrysler boasts real stretch-out room for all.

Other Chrysler comfort features: wide doors for easy ins and outs, High-Tower driver's seat, deep-pile carpeting door-to-door.

### Convenience!

New AstraDome dash clusters controls at your fingertips. Controls themselves are trigger-quick pushbuttons.

At night, exclusive Panelescent lighting bathes instruments in a glare-free glow that makes them instantly easy to read.

the completely new  
lion-hearted

**CHRYSLER**  
CHRYSLER DIVISION, CHRYSLER CORPORATION

**RITTENHOUSE MOTOR COMPANY** 120-128 Academy Street



A Brand New  
Sewing  
Machine

As low as 59.50

**SINGER SEWING CENTER**  
Newark Shopping Center

## WIN \$12,500.00 IN CASH PRIZES

\$5,000.00 FIRST PRIZE!

\$2,500.00 SECOND PRIZE!

\$500.00 NEXT TEN PRIZES!

For completing a jingle about Family Mealtime! For complete details and entry blank—See the January Issue of Everywoman's FAMILY CIRCLE Magazine now on sale at FOOD FAIR—10c.



BROOKSIDE PARK CENTER  
55 Marrows Road

THURS. TH 9 — FRI. TH 10  
SAT. 8 to 6

P.S.G. Top Quality Genuine Young

**LEG of LAMB**  
WHOLE LEGS **55¢** lb.

**SHOULDER LAMB** Square Cut or Lifted FOR ROASTING **lb. 37c**  
**SHOULDER LAMB CHOPS** . . . . **lb. 59c**  
**LAMB COMBINATION** 2 MEALS in ONE CHOPS, STEW . . . **lb. 33c**

From the Clean Clear Waters of NEW BEDFORD Fresh Cut

**FLOUNDER FILLETS** Skinless and Boneless **lb. 69c**  
In the Piece  
**TASTY BOLOGNA** . . . . **lb. 49c**

"FRESH FROM NEARBY FARMS"  
**LARGE FRESH EGGS** doz. **49¢**  
FOOD FAIR GRADE "A" WHITE

SUNSWEET PRUNE JUICE	2 32-oz. bts.	81c	CAMPBELL'S BEANS	In Tomato Sauce	3 16-oz. cans	38c
HEINZ Tomato KETCHUP	14-oz.	23c	MIRACLE WHIP SALAD DRESSING		qt. jar	51c
MUSSELMAN'S APPLESAUCE	4 15-oz. Jars	59c	FRE-MAR Seedless or Nectar RAISINS		15-oz. pkg.	23c

All Prices Effective thru Sat., Jan. 9, 1960—We reserve the right to limit quantities

**BROCCOLI**  
Fresh Tender CALIFORNIA bunch **19¢**

**GRAPEFRUIT** SEEDLESS RED or PINK **6 for 35c**  
**FRESH SPINACH** 10-oz. pkg. **19c** 20-oz. pkg. **35c**

Get Double Savings Plus Merchants Green Stamps!



## YMCA to Distribute Brochures in Newark For Nine Class Adult Education Program

John Cronin, chairman of the 1960 mid-winter, informal adult education series of the Newark YMCA, announced today that registrations for all nine classes are coming in daily, and that brochures received today will be distributed in Newark this weekend.

The series on rapid reading, to be taught Mondays from 7:15 to 8:30

New York Life Agent  
**LEE DICKEY**



New York Life  
**INSURANCE COMPANY**  
Life Insurance, Group Insurance,  
Accident & Sickness Insurance,  
Employee Pension Plans  
PHONE EN 8-2388

again has proved a popular course. Enrollment is limited to 12 persons, and the public is urged to register immediately.

Landscape appreciation and design, has enrolled people from as far away as Claymont, and this course will be given Tuesdays for eight weeks, with enrollment limited to 15.

Intermediate to advanced bridge will also be given Tuesday evenings, with Mrs. Frank A. Pehrson, well-known bridge teacher, as instructor.

The series on great religions, to be given jointly with the Newark YMCA, is receiving local interest, and the joint course in ballroom

**YOU SET THE PRICE!**  
Buy At Auction  
70—USED CARS—70  
SAT. JAN. 9, 1960—11 AM  
**WM. H. PORTER, Inc.**  
Buick—Chevrolet  
Cleveland Ave. & Capitol Trail  
J. N. HOLLAND, Jr.—Auctioneer  
L. A. HIGMAN—Clerk

**CITY OF NEWARK**  
Delaware  
**PLANNING COMMISSION**  
SPECIAL MEETING AGENDA  
January 18, 1960 8:00 P.M.  
A Special Meeting of the Planning Commission will be held Monday Jan. 18, 1960 at 8:00 P.M. to discuss and review the Swimming Pool proposal including recommendations of plans and method of financing. Also the Planning Commission will discuss Procedures of Planning Commission Operation and the Charles Grubb Report.  
Jan. 7, 14

## Northeast Power Squadron Offers Free Pilot Course

Commander Alvin L. Gursha of Newark, announces that the Northeast River Power Squadron again will offer free courses in navigation, small boat handling and safety at sea.

The spring piloting course will start Wednesday, Jan. 20, 7:30 p.m., at Elkton Junior High School. Advanced registration is not required.

The course consists of 10 weekly lectures conducted by instructor members of the squadron, to be held each Wednesday evening.

Subjects to be covered include rules of the nautical road; equipment required by law; seamanship; the compass, and some chart work.

An examination concludes the course and candidates for membership must pass the examination.

Classes are open to men and women, regardless of whether they own boats.

**LETTERS TESTAMENTARY**  
Estate of Ida W. Weldie Deceased. Notice is hereby given that Letters Testamentary upon the Estate of Ida W. Weldie late of Christiana Hundred, deceased, were duly granted unto Calvin Maurice Weldie on the Twenty-first day of December A. D. 1959 and all persons indebted to the said deceased are requested to make payments to the Executor without delay, and all persons having demands against the deceased are requested to exhibit and present the same duly probated to the said Executor on or before the Twenty-first day of September A. D. 1960 or abide by the law in this behalf.

Address: Robert B. Walls, Jr., Attorney-at-Law, Bank of Delaware Bldg., Wilmington, Del.  
Calvin Maurice Weldie, Executor  
Dec. 31; Jan. 7, 14

**FLY**  
at  
**Lovett Airport, Inc.**  
Newark-Elkton Rd.  
PH. ELKTON EXPORT 8-2680

## Cleo T. Satterfield Funeral Services Conducted Tuesday

Services for Mrs. Cleo T. Satterfield, 55, of 115 Capitol Place, Delaware Manor, Newark, were conducted Tuesday afternoon in Calvary Baptist Church, Newark, with the Rev. Paul E. Cook, pastor, officiating.

Interment was in Gilpin Manor Memorial Park, Elkton.

Funeral arrangements were conducted by the William J. Warwick Funeral Home, Newark.

Mrs. Satterfield, the wife of Coye B. Satterfield, died Saturday at Wilmington General Hospital.

Born in Charleston, W. Va., Mrs. Satterfield had lived in the Newark area for the past 17 years. For the last nine years she had been employed at the National Vulcanized Fibre Company in Newark.

Mrs. Satterfield was a charter member of Calvary Baptist Church, Newark. She had been among leaders of the church as a member of the choir; Missionary Society, and is a former trustee.

In addition to her husband she is survived by a daughter, Mrs. Ruth I. Lucas, who made her home with her parents, and three grandchildren.

Funeral services for Herman T. Renshaw, former Newark restaurant owner and proprietor of a Wilmington dry cleaning business, were held Sunday in the Nichols Funeral Home, Newport, with interment in Head of Christiana Cemetery.

Mr. Renshaw, who had a heart illness, died Dec. 31 in Delaware Hospital.

Born in Newark, he lived at 23 Calahan Drive, Simonds Gardens. Surviving are his wife, Mrs. Pansy M. Renshaw; a son, Gary W. 11, and his mother, Mrs. Ada A. Renshaw, at home.

**Newark Bird Club Views 26 Species On Field Trip**

Minnie Smithers, of Chesapeake City, entertained members of the Newark Bird Club at breakfast last Sunday, after which they enjoyed a birding trip to Earlesville, Md., where 26 species were listed, among them hundreds of Canadian geese. Upon their return, they saw a western tanager on the bird feeder of Sara Potts in Newark.

**BIRTHS**

**Memorial Hospital**  
Mr. and Mrs. James Burket, Dec. 29, a daughter.  
Mr. and Mrs. Alvin Malone, Dec. 29, a daughter.

**Wilmington General Hospital**  
Mr. and Mrs. Robert Willey, Jan. 2, a daughter.

**Delaware Hospital**  
Mr. and Mrs. Robert Lemon, 160 Madison Dr., Jan. 1, a son.  
Mr. and Mrs. Eugene Thompson, 2908 Ogletown Road, Jan. 1, a son.

**St. Francis Hospital**  
Mr. and Mrs. John Seador, 607 Apple Road, Jan. 2, a daughter.

**Plymouth In Third Place For Sales, Deliveries**

On the basis of reported retail deliveries, Plymouth has maintained its traditional third place through Dec. 20, 1959.

In production, too, Plymouth and Valiant assemblies for the year are in third place with a total of 394,144 units.

## A HAPPY HINT FOR HOUSEHOLD TREASURERS BUDGET SHOP A&P for 1960



**BONELESS ROUND ROASTS**  
lb. **75¢**

Boneless Round Steaks lb. **85¢**

Fresh Pork Shoulders lb. **29¢**

"Super-Right" Smoked Picnics 4 to 8 Pounds lb. **29¢**

Allgood Sliced Bacon 1-lb. pkg. **35¢** 2 1-lb. pkgs. **69¢**

Rib Roasts Oven Ready "Super-Right" 10-inch cut lb. **59¢** 7-inch cut lb. **69¢**

Rump Roasts Super-Right Boneless lb. **89¢** Rib Steaks 7-inch Cuts lb. **69¢**

Medium Size Shrimp 5-lb. box **\$2.85** lb. **59¢**

Sea Scallops North Atlantic lb. **59¢** Halibut Steaks Sliced lb. **39¢**

**DELICIOUS, FLORIDA SWEET EATING, EXTRA LARGE**

**TEMPLE ORANGES**  
dozen **49¢** NONE PRICED HIGHER

**FRESH MUSHROOMS** None Priced Higher lb. **39¢**

**GOLDEN BANANAS** None Priced Higher 2 lbs. **25¢**

**BRUSSELS SPROUTS** None Priced Higher Pint box **23¢**

**Crestview Large Eggs** Brown and White 2 dozen in 83¢

**Mother's Oats** 2 18-oz. pkgs. **39¢** 42-oz. pkg. **41¢**

**Nabisco or Keebler Saltines** 1-lb. box **25¢**

**Campbell's Beans** 3 16-oz. cans **38¢** 2 21-oz. cans **33¢**

**Spam, Treet or Prem** 2 12-oz. cans **89¢**

**Syrup** Leg Cabin 12-oz. bottle **28¢** 24-oz. bottle **52¢**

**Clorox** 1/2 gallon bottle **33¢** 1 gallon bottle **53¢**

**Cleasers** Comet or Bob-O 2 giant cans **43¢**

**Kellogg's Corn Flakes** 12-oz. box **25¢**

**Skippy Peanut Butter** 12-oz. jar **37¢**

**Sugar** 1-lb. bag **55¢** 10-lb. bag **\$1.08**

**Green Giant Corn** 2 17-oz. cans **33¢**

**Spry** 1-lb. can **29¢** 3-lb. can **70¢**

**Cake Mixes** Duncan Hines 3 10-oz. pkgs. **\$1.00**

**Waxed Paper** Cut 12 12 1/2 x 12 1/2 rolls **49¢**

**Egg Noodles** Ann Page 1-lb. box **29¢**

**Mayonnaise** Ann Page 1 1/2 quart jar **35¢** 4 quart jar **49¢**

**Ketchup** Ann Page 2 14-oz. bottles **35¢**

**Instant Coffee** A&P brand 10-oz. jar **\$1.35**

**Warwick Thin Mints** 1-lb. box **39¢**

**Pineapple Juice** A&P brand 3 46-oz. cans **79¢**

**Iona Tomatoes** 9 16-oz. cans **\$1.00**

**A&P Tomato Juice** 2 46-oz. cans **49¢**

**A&P Prune Plums** 2 30-oz. cans **55¢**

**Sultana Rice** 1-lb. bag **14¢** 2-lb. bag **27¢**

**Ann Page Peanut Butter** 3 12-oz. jars **1.00** 24-oz. jar **59¢**

**Gold or Marble Pound Cake** Special Price! Large 8-inch size **45¢**

**Jane Parker Apple Pie** Peach, Cherry or Pineapple 2-lb. jar **55¢**

**Ann Page Preserves** 2-lb. jar **55¢**

**LOOK WHAT 10¢ WILL BUY AT A&P**

**Iona Cut Green Beans** 15 1/2-oz. cans **10¢**

**Duffs Pancake Mix** 8-oz. pkg. **10¢**

**A&P Sliced Beets** 10-oz. can **10¢**

**Sultana Beans** 15-oz. can **10¢**

**Iona Golden Corn** 15-oz. can **10¢**

**A&P White Potatoes** 15-oz. can **10¢**

**Seaside Butter Beans** 15-oz. can **10¢**

**Your Choice! Can or Pkg. 10¢ each**

**Fab Detergent** 3c off each pkg. 2 large pkgs. **61¢**

**Floriant Aerosol** 5 1/2-oz. can **69¢**

**Ajax Cleanser** 2 14-oz. cans **29¢** 2 giant cans **43¢**

**Ad Detergent** With Dinnerware 17-oz. pkg. **38¢**

**Rinso Blue** 2 large pkgs. **67¢** giant pkg. **79¢**

**Banquet Brand** Dinners Meat Pies 5 pkgs. **99¢**

All Prices Effective Through Saturday, Jan. 9, 1960

## DEATH TAKES NO HOLIDAY!

Six automobile deaths on Delaware Highways over the New Year Holidays — APPALLING! —

THEY DID NOT DRIVE SAFELY.

It's so easy to drive safe at all times. Better late than not at all!

Another advance in F.H.A. & G.I. Mortgage rates makes the home we have for sale with G.I. 4 1/2% Mortgage takeovers much more attractive with much larger savings to the purchasers—saving hundreds of dollars in interest.

It will be much to your advantage with savings to come in and get the particulars.

## BEAUTIFUL COUNTRY HOME

Almost in city, on Nottingham road, Cape Cod. 4 Bedrooms, L. R. with stone fireplace, attached garage, D.R., modern kitchen, fine bath, tiled; Full basement. Beautifully landscaped lot 100x300-ft. School bus at door. Possession at settlement. A real bargain at \$13,000—can be financed. Shown by appointment only.

## GEORGE READ VILLAGE

One of the most attractive homes there, beautiful condition, new siding, aluminum storm doors and windows; oil heat, fenced yard, private parking, on Bassett Place. Open field in back, close to Senior High School. Ideal location for retired couple or small family. Either side \$8,000 or you can buy both sides and rent one at \$75.00 per month. Beat the high rent and live at home.

## EAST PARK PLACE

Beautiful home, 5-rooms, bath, oil heat, H.W. Floors. Shade trees and shrubbery, nice basement, Aluminum storm doors and windows. In pink of condition. One of Newark's most desirable areas. Close to University and Schools. Only \$14,000.

## ROSEVILLE PARK

Beautiful Cape Cod, with 4 bedrooms, two knotty pine-paneled, tiled bath, H.W. floors, full-size high basement cemented with inside and outside entrances, aluminum storm doors and windows, sewer, abundant supply of water. Paved street, 1-block from bus line. Exceptional buy at \$12,500.00.

If you are interested in buying a home or in a lot on which to build, it will pay you to call us before buying.

**LAWSON STARCHER, Broker**

Delaware, Maryland & Pennsylvania

Phone Newark EN 8-6510

267 E. Main Street

**Satisfy your sense of value.**



...with Oldsmobile's dollar-saving Dynamic 88!

More miles-per-dollar! That's what you get with the Regular Rocket Engine—standard equipment on every Dynamic 88 Oldsmobile for 1960! Yes, this Olds thrives on the thrift of lower-cost, regular gasoline—you save about a dollar bill on every tankful over premium-cost fuels! And because of its unique characteristics, the Regular Rocket Engine gives you traditional Rocket get-up-and-go while reducing operating and upkeep costs. Your local Olds dealer has the money-saving facts on this car that makes it mighty easy and satisfying to Rocket out of the ordinary.

SEE YOUR LOCAL AUTHORIZED OLDSMOBILE QUALITY DEALER!

**ED FINE OLDSMOBILE**

**NEW LONDON AVENUE**

SEE THE DENNIS O'KEEFE SHOW • EVERY WEEK ON CBS-TV... HEAR LOWELL THOMAS AND THE NEWS • MONDAY THRU FRIDAY ON CBS RADIO

**GO OLDS '60!**