

**MID-ATLANTIC HISTORIC BUILDINGS & LANDSCAPE SURVEY
DIGITAL PHOTO LOG**

Huber Farm Complex

CHAD #

2008.01.0007.01

East side of Route 13, South of Boyds Corner Rd

DE CRS # N-5181

McDonough Vicinity

New Castle County, Delaware

Photographer: CHAD Staff

Date: October 2008

Photo #

Barn

- 46 Perspective of west and south elevations, looking northeast
- 50 Perspective of east and north elevations, looking southwest
- 53 Interior, first floor: view of east and south walls of south room, looking southeast
- 56 Interior, first floor: view of south and west walls of center room, looking
southwest
- 59 Interior, first floor: view of center staircase, looking west
- 60 Interior, second floor: view of east, south, and west walls, looking south



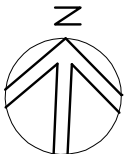
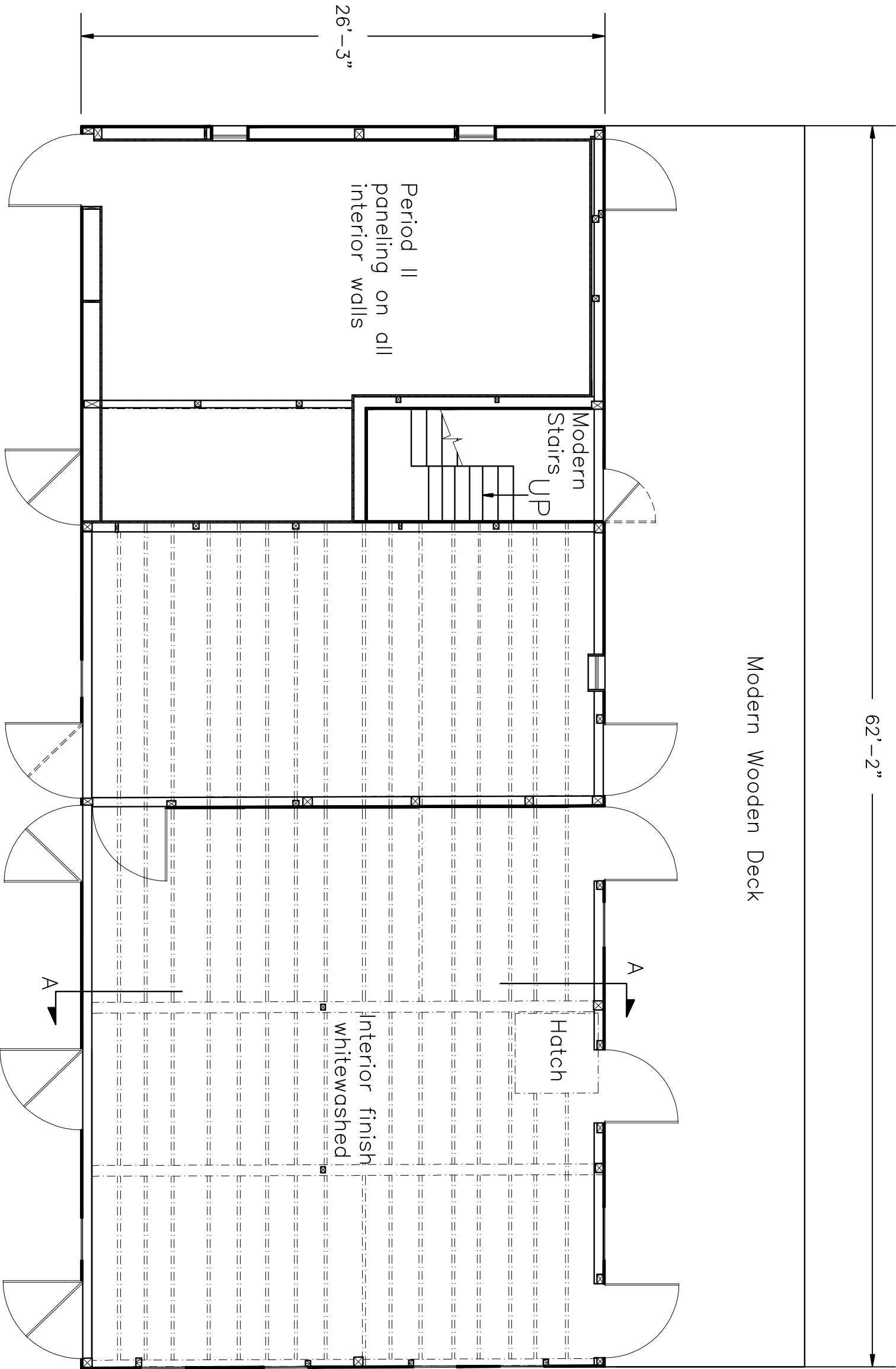




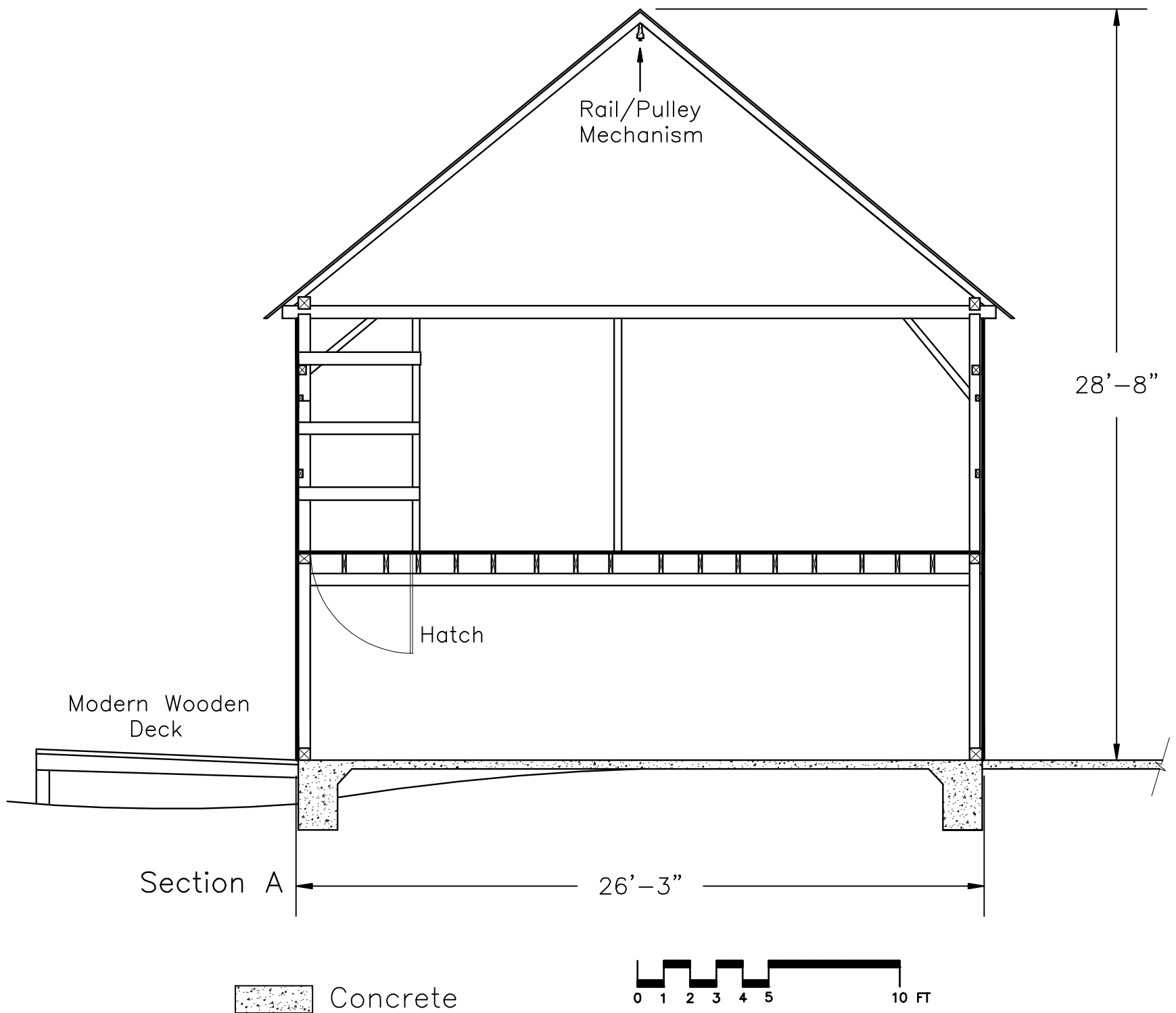








<div><div>THE CENTER FOR HISTORIC ARCHITECTURE AND DESIGN</div><div>UNIVERSITY OF DELAWARE</div><div>AUSON HALL ACADEMY STREET NEWARK, DE 19716</div><div>Phone (302) 831-8097 ■ ■ ■ ■ ■ Fax (302) 831-4548</div></div>		<div>Project Name: Huber Farm Complex</div> <div>Location: East Side of Route 13, South of Boyds Corner Road, McDonough Vicinity, New Castle County, DE</div>		Barn, First Floor Plan	Sheet #8 of 9
CHAD#: 2008.01.0007.01		DE CRS#: N-5181		DRAWN BY: Archer	
				DATE: Oct. 30 2008	



THE CENTER FOR HISTORIC ARCHITECTURE AND DESIGN
UNIVERSITY OF DELAWARE

ALISON HALL ACADEMY STREET NEWARK, DE 19716
Phone (302) 831-8097 ■ ■ ■ ■ Fax (302) 831-4548

Project Name:
Huber Farm Complex

Location:
East Side of Rt. 13,
South of Boyds Corner Road
McDonough Vicinity
New Castle County, DE

Barn, Framing Section (A - A)
Sheet #9 of 9

CHAD #: 2008.01.0007.01

DE CRS#: N-5181

DRAWN BY: Archer

SCALE: As noted

DATE: Oct. 30, 2008