

**MISSING  
PAGE(S)**

# SPORTS

March 2, 1989

Newark Post

B Section

## Wm. Penn wrestles title away from St. Mark's

by David Woolman

DOVER — It was just like last year's state high school wrestling championships. A team places multiple wrestlers in the finals, scoring so many points that they all but win the title sometime during the semifinal rounds.

Except three-time defending state champion St. Mark's High wasn't that team Sunday. William Penn, runner up the past two years, confirmed the conclusions drawn from their dual meet victory over the Spartans last month to outpoint them 169½-125½ and win the title. St. Mark's maintained a 20 point margin over Caesar Rodney for second.

"There was really no way we could catch Penn," said Spartan coach

Steve Bastianelli. "We knew coming into the tournament that we didn't have the studs. We just had a good solid team."

"Unfortunately, our draws weren't that great and that put us in a position where we had to wrestle-back strong. In the wrestlebacks, we lost some ground."

"I'm not happy with the way everything went here and a lot of that is me. We had a lot of new kids here and you have to change your coaching style."

St. Mark's did crown two champions, Sheldon Thomas at 103 pounds and Paul Collier at 135. Thomas, a freshman who has won 20 national titles in various wrestling styles, suffered only one loss this season and easily advanced to the finals. There, he ran into some trouble and was taken down three times before scor-

ing the last eight points of the match to win 10-6.

"At the beginning, I couldn't stop him (Sussex Central's Kirk Rogers)," said the diminutive Thomas, whose opponent's natural weight is often 20 pounds greater than his own. "With everything he got he took me down. He was strong and used his weight well. Third period, he started gassing."

Being outsized rarely bothers him — it just makes him more careful.

"If they throw you on your back, you ain't getting up. Hopefully, I don't get put on my back."

Collier won all four tournament matches by technical fall. Two of them, including the final against Blue Hen Conference champion Jim Moody, came in the first round.

See WRESTLING/3b



State 119-pound wrestling champion Dwight Beadle of Christiana High (left of sign) and runner-up Ryan Swift of St. Mark's.

## Diana Pitts among East's best sprinters

by David Woolman

As Diana Pitts runs faster and faster, things get harder and harder for the Christiana High School junior.

Thursday's state indoor track championships had her doing her pre-race stretching on the tartan basketball court of the Delaware Fieldhouse, quiet and withdrawn, sticking close by her coach, Paul Ramseur.

"I normally don't get real nervous, but I was a little tight and tense today, mainly because people are watching me," said Pitts. "Coach got me down here early so I could loosen up."

Just as assuredly as some came to see her take a crack at two state records, others were there from colleges to see how good she really is. She knew that.

"My coach keeps saying people are going to be watching me, so go ahead and do your best," said Pitts. Which she just about did.

After setting and then breaking her own meet record in the 400 meters at Tower Hill this winter, Pitts shattered the state record by more than half a second with a 58.64. Less than half an hour later, she missed the 300 record by fourteen one-hundredths of a second, with a 41.29.

"In the 300, I got tired on the last turn, and I shouldn't have," said Pitts, who feels she is far from peaking this year. "I'm going to have to work on that. I can do a little better this spring."

Pitts first earned notice as a freshman, finishing second in state in the 200 and 400 meters. Last year, as a sophomore, she broke school records on the way to winning state titles in those two events.

That was also the year Christiana girls track coach Charles Michael started having to make adjustments for her talent, making her run with Paul Ramseur's boys team just to have someone around to push her.

Currently, Padua's Amy Gleason is the only sprinter around who can get within hearing distance of Pitts. After Gleason graduates, Pitts isn't sure of what she's going to do.

"If I don't have anyone to push me," said Pitts, "I might stay at the same times. I want to improve so colleges will recognize me."

As it is right now, she has a tendency to go to the lead and stay there. It doesn't exactly give her anything to run to.

See PITTS/4b



Christiana High's Diana Pitts runs to victory in state indoor 400-meter race.

Photos/Robert Craig

## Newark sophs superb

Just as assuredly as caterpillars turn into butterflies, April showers bring May flowers and the sun rises every morning, fabulous freshmen turn into superb sophomores, and the Newark High School girls track team is no exception.

In fact, the Yellowjackets appear to be multiplying as well, as evidenced at the state indoor track championships Thursday in the University of Delaware Fieldhouse, where they topped all local teams by finishing sixth.

"And we're going to be better next year..." threatened Deanna Harden.

"...like vintage wine gets better with age," continued Christina Penn.

The relay team of Harden, Penn, Catenna Evans, and Danielle Grinnage, all sophomores, finished third in the 4x200 meters with a time of 1:51.83, harking back to last spring's state meet when Evans, Harden Penn and Shelly Butcher finished second in the 4x100 as freshman.

The group, which grew up together and ran together even before they attended Shue Middle School, earned individual notices as well, with Penn taking third in the 55 meter hurdles (8.63), Grinnage finishing third in the long (16' 0") and triple (33' 11¼") jumps, and Harden

See SOPHS/4b

## Four teams have shot at state title

The state high school boys basketball tournament opens this week and four area teams — Newark, St. Mark's, Christiana and Caravel — have a legitimate chance to claim the championship.

The most powerful of the local teams would appear to be Newark High, the Blue Hen Conference Flight A champion.

Newark plays its first game of the tournament Saturday, March 4 against the winner of a first round game between the Henlopen South third place team and an at-large team.

Newark's stiffest challenge will probably come in the semifinals, Thursday, March 9, where it could meet Independent champion Sanford, unless that team runs afoul of Flight B runner-up Wilmington, the defending state champion, in the second round.

The 'Jackets played neither

### AT A GLANCE/GIRLS TOURNAMENT

The Delaware high school girls basketball tournament opened not with a tipoff but with a drawing to determine seeds by breaking ties in both the Blue Hen and Catholic conferences.

The drawing gave St. Mark's High School the third seed in the Catholic Conference and Newark High the third seed in Blue Hen Conference Flight A.

Both teams went into action last night. Should St. Mark's have

Should the Yellowjackets have made it through the first round, they will play Blue Hen Conference Flight B champion Howard Friday, March 3. Newark defeated Howard 55-48 in their first game of the season.

won it's first game, the Spartans will face Independent Conference champion Tower Hill Friday, March 3. They lost to Tower Hill 44-40 in January.

team during the season. They would like to avenge last year's state tournament semifinal loss to Wilmington. Either Newark-Sanford or Newark-Wilmington could turn out to be the best game of the tournament.

In defeating Salesianum twice, St. Mark's moved to the top of the pile of non-conference

teams and into the role of a serious challenger in this year's tournament.

"It does feel good," admits coach Steve Johnson. "They've been dominant. We hope it's a changing of the guard. We don't want to be a flash in the pan."

Having the best record (17-4) of the non-conference teams

"was one of our goals. I had confidence in the team. We just had to prove ourselves."

The Spartans made the step up with a few additions to their usual style. The team has played the good defense and tight team ball for which it has gained a reputation, and has benefitted from the addition of a pure scorer in Jason Matthews and a bench that Johnson is "not as hesitant to use" as in the past.

That plus the maturation of Gary Lynch at point guard and Mark Hendrix inside has allowed St. Mark's competitive with any team.

"The thing that's tough is the kids all have to play very well or we can look very bad. We have no superstars," says Johnson. "I give them credit for coming to play every day."

See BASKETBALL/3b



Devon Chambers leads Newark into the state tournament.



## SPORTS

SPORTS  
SCHEDULE

## Lacrosse

- Virginia at Delaware, mens, 1 p.m. Saturday, March 4.
- Lehigh at Delaware, mens, 3 p.m. Wednesday, March 8.
- Yale at Delaware, mens, 1 p.m. Saturday, March 11.

## Baseball

- Howard at Delaware, doubleheader, noon Saturday, March 11.
- University of Maryland-Baltimore County at Delaware, doubleheader, noon Sunday, March 12.

## Youth sports

- Western Branch YMCA is accepting registration for its spring instructional youth soccer program. Designed for boys and girls ages 4-13, the program teaches basic soccer skills while keeping competition in perspective. All games and practices are held at the Western Y's soccer complex off Kirkwood Highway. Registration will be accepted until March 25. Call 453-1482 for a registration form.
- Newark Wrestling Club registration is now being accepted by the Newark Department of Parks and Recreation. The club will meet 7:30-9:30 p.m. Wednesdays starting March 8 in the back gym of Newark High School. Sessions continue through May 31. Fall sessions will be held Sept. 20 to Nov. 8. Fee is \$32 for city residents, \$35 for non-residents. The club is open to beginners and experienced wrestlers. Fee covers insurance and a USA wrestling card, which allows each wrestler to participate in tournaments. Paul McCloskey, Newark High assistant wrestling coach, will be the instructor.
- Newark Department of Parks and Recreation t-ball, Colt, Ponytail and Pony leagues will hold registration during regular office hours weekdays in the Newark Municipal Building, 220 Elkton Rd. The fee is \$23 for city residents, \$26 for non-city residents. Checks should be payable to the City of Newark. The leagues emphasize participation, fundamentals, teaching, and good sportsmanship rather than intense competition. The t-ball league is for 6-7 year olds, the Colt league for 8-9 years olds and utilizes a pitching machine. The Ponytail league is softball for girls nine to 13, and the Pony league is for 10-12 year olds with the players pitching. Practices start the week of April 3, and games begin the week of May 1. For more information, call 366-7030.

## Running

- The St. Patrick's five kilometer run to benefit WXDR, the University of Delaware's public radio station, will be held at 11 a.m. Saturday, March 11. The flat, TAC-certified course begins and ends on Academy Street in Newark. Multi-color WXDR logo t-shirts will be given to the first 500 runners registered, and a post race party including pizza and giveaways will be held. Awards will be given to the overall winners and the top three finishers in each category. Pre-registration is \$7 before March 8, 5 p.m. at Delaware Sporting Goods and Marathon Sports. Post-registration is \$9 on race day, 9:30-10:30 a.m.

## Benefit

The Philadelphia Eagles will play a team of Cecil County teachers in a basketball game to benefit the Elkton Touchdown Club at Elkton High School at 7 p.m. Friday, March 3. This second annual affair will feature Eagles Andre Waters, Don McPhearson, William Fitzgerald and Mike Golic. There will be an autograph session following the game. Tickets are \$4 in advance and \$5 at the door. For tickets, call Larry Keen at (301) 398-7374, Bob Unterreiner at (301) 398-0397, or Bob Frank at (301) 398-1224. Advance tickets are also available at Elkton High School, Mac Millan's Sporting Goods and Newark Sporting Goods.

## Fishing

- Start making plans for the 1989 fishing season by getting a 1989 Delaware fishing license. The new licenses are now available at the Department of Natural Resources and Environmental Control Building, 89 Kings Highway, Dover and at license agents throughout the state. Licenses are \$8.50 for residents, \$15 for non-residents. Non-residents may also purchase a seven day consecutive license for \$5.20. Licenses are required for anglers 17 through 64 years of age, and are valid through December 31. All monies receive federal matching funds to support sportfishing projects. For more information, call 736-4506.

AFTER  
30 YEARSCECIL  
FURNITURE229 South Bridge St.  
Elkton, MD  
(301) 398-3401—(302) 366-8621GOING OUT  
OF  
BUSINESS  
SALE!SELLING  
OUT TO  
THE BARE  
WALLS\$2,000,000  
FURNITURE  
LIQUIDATION  
SAVE  
30% to 70%  
OFF EVERYTHINGHOURS  
MONDAY-  
FRIDAY  
10-9  
SATURDAY  
10-5  
SUNDAY  
NOON-5

CLOSING AFTER 30 YEARS

AN IMPORTANT STATEMENT  
By Cecil Furniture

After 30 YEARS as a leading furniture store, Cecil Furniture has made the painful decision to CLOSE IT'S STORE IN ELKTON, MD AND GO OUT OF BUSINESS FOREVER. Now we have to LIQUIDATE OUR ENTIRE INVENTORY of name brand quality furniture and bedding immediately.

Starting TODAY, Cecil is having a massive GOING OUT OF BUSINESS, FURNITURE LIQUIDATION. Right now, you can save from 30% TO 70% off every piece of furniture — THIS IS A COMPLETE SELLOUT—Everything goes regardless of cost or loss. NOTHING WILL BE HELD BACK.

The best selection and biggest savings are available now. Don't miss out—THIS IS THE BIGGEST SALE IN OUR 30 YEAR HISTORY.

Sincerely,  
Cecil FurnitureSALE  
STARTS  
THURSDAY  
12 NOONAMERICA'S BEST  
RESPECTED BRAND NAMES

- BENCHCRAFT
- STANLEY
- VIRGINIA HOUSE
- NATHAN HALE
- ENGLAND-BASSETT
- BASSETT
- SEALY

- LANE
- GLOBAL
- PULASKI
- WEBB
- SINGER

PLUS  
MANY  
MORE!ENTIRE SHOWROOM  
MUST BE LIQUIDATED

OUT GO ALL . . .

- BEDROOMS
- RECLINERS
- SLEEP SOFAS
- MATTRESSES
- WALL UNITS
- CURIOS

- LIVING ROOMS
- DINING ROOMS
- WATERBEDS
- DESKS
- BUNK BEDS
- LAMPS
- DINETTES
- ACCESSORIES & MUCH MORE

## TERMS OF SALE

- ALL SALES FINAL
- NO EXCHANGES OR REFUNDS
- ALL MERCHANDISE SOLD AS IS
- DELIVERY AVAILABLE AT EXTRA CHARGE
- CASH-CHECKS-CREDIT CARDS
- FINANCING AVAILABLE
- ALL ITEMS SUBJECT TO PRIOR SALE

CECIL  
FURNITURE229 S. BRIDGE ST., ELKTON, MD  
RT 213 JUST NORTH OF RT. 40 NEAR THE BIG ELK MALL

Be a good sport!

Follow your favorite teams in the NewArk Post



# Delaware's Raymond says recruits outstanding



Delaware coach Tubby Raymond likes what he sees in the latest class of recruits.

With an emphasis on size, University of Delaware football coach Tubby Raymond and staff have landed what they believe to be one of the better groups of high school football players ever recruited to play for the Fighting Blue Hens.

Three first team All-State players will join the Hens in their defense of the Yankee Conference title.

"We feel that this class is outstanding compared to previous ones," said Raymond. "The objective of our recruiting was to fit our needs rather than recruit across the board. We did not recruit a quarterback or a defensive back. We went with big people, linemen, some linebackers, a spread end and a tight end, and we got an outstanding group."

Salesianum's Greg Peden, a two-time first team All-State lineman, is the lone Delaware recruit. The other first team All-State signees are Mark Hrubar, a lineman from Philadelphia's Central High School, and Matt

Wildes, a two-way tackle at Farmingdale, N.Y. High.

Peden, a 6-foot 4-inch 250-pounder who was Delaware's Player of the Year and who earned mention in USA Today, led the Sals with 76 total tackles. He was first team All-State going both ways this year.

"(Peden) may be the best line prospect in the East and he is a player who could step in and help us right away," said Raymond.

Hrubar, 6-feet 4-inches, 245 pounds, is the only first-team All-Pennsylvania player ever successfully recruited by the Hens.

Wildes, 6-feet 4-inches, 240, was All-New York State and earned All-USA honorable mention in USA Today.

Other players signed were: Richard Anderson, 6-feet 4-inches, 241, a defensive end and tight end from Wyoming Seminary, Kingston Pa., where he was Defensive Player of the Year for the team.

Tom Fitzpatrick, 6-feet, 4-inches, 220, an All-Catholic, All-City, All-Delaware County tight end-defensive end at Monsignor Bonner in Philadelphia, Pa. Also recruited for basketball.

Brian Little, 5-feet 9-inches, 175, a second team All-State running back-split end at two-time New Jersey state champion Holy Spirit High of Atlantic City.

Lanue Johnson, 5-feet 10-inches, 180, who as running back-defensive back for Penncrest High, Media, Pa., gained 1,200 yards and scored 14 touchdowns his senior season.

Scott McMurphy, 6-feet 2-inches, 220, a fullback-linebacker for Plum High, Pittsburgh, Pa.

Matthew Morrill, 6-feet 4-inches, 225, a tight end-defensive end for Somerville High, Neshanic Station, N.J.

Clifton Vance, 6-feet 1-inch, 190, who averaged 12 tackles a game in his senior season as a defensive back for Schenley High, Pittsburgh, Pa.

## Newark outruns Dickinson for Blue Hen crown

by David Woolman

There wasn't much stress, strain or argument in Newark High School's 104-65 victory over Dickinson for the Blue Hen Conference championship Thursday. All that came a day or two before.

The coaching staff and most of the Blue Hen Conference Flight A-champion Newark High basketball team saw Wilmington come back in the final seconds to tie Dickinson and go on to defeat them in overtime Tuesday. The win gave Wilmington the Flight B championship and ended a rather mild disagreement on the Newark coaching staff. Or so they thought.

See, the winner of that game would play the 'Jackets two days later for the overall Blue Hen Conference championship, a game important to Newark for a number of reasons, not the least of which was that it would be perfect preparation for the state tournament which starts this week.

Junior varsity coach Butch Simpson wanted to play Dickinson. Varsity coach Jim Doody wanted to play Wilmington.

"That's who our kids wanted to play, and I think that's what our fans wanted to see," said Doody. The 'Jackets were just a-buzzing for revenge ever since Wilmington's state tournament semifinal victory over Newark last year.

The big payback fell by the wayside, at least for last week, when the Devils had to forfeit four Flight B games for using an ineligible player. This dropped them out of the tie for first place in Flight B, making Tuesday's game meaningless because now Dickinson was Flight B champion.

Newark's staff and team found out about the change an hour before Wednesday's prac-

tice, so no time was spent preparing for the wrong team. For the most part, it was just a mental shift for the coaching staff.

"We had mixed emotions about it on the staff," said Doody. "I didn't think there was any difference between the two teams talent-wise."

The real difference was in preparation — Dickinson and Wilmington are two very different teams. Dickinson has speed and plays man-to-man defense. Wilmington has size and plays zone.

As far as results are concerned, it wouldn't have mattered. No one was going to beat Newark Thursday, as the 'Jackets "played as well as Newark is going to play," according to Doody. "We played extremely well offensively."

Newark quickly put together a 10-point lead and Doody substituted freely as they maintained the advantage to go into halftime on top 49-36. The 'Jackets scored the first 12 points of the third quarter as part of a 19-2 run that all but finished off the Rams.

Devon Chambers led the team with 25 points. Larry Wise wasn't far behind with 24. The pair might have missed half a dozen shots from the floor between them.

Wise blocked two shots early in the game to set the tone, and played his best complete game since the Christmas tournament in Trenton, according to Doody. Sophomore Derrick Jackson continued his surprising development into the teams' seventh man with a fine effort and Blair Sokol played well off the bench as well.

As far as preparation goes, Doody felt the game served its purpose. For revenge, the 'Jackets have to hope Wilmington gets past Sanford, among others, so they can meet in this year's state tournament semifinals.



Newark High's Larry Wise scored 24 points in Blue Hen Conference championship against Dickinson.

## FOUR SEEK STATE BASKETBALL TITLE

The Spartans will play their first game Saturday, March 4 against the winner of the match between the Henlopen South second seed and an at-large team. In all probability, they will face Blue Hen Conference Flight B champion Dickinson March 7.

While no one on Caravel Academy's basketball team has ever been past the first round of the tournament, Buc coach Lou DiMascio has. Teams he has been associated with as a coach are 20-1 in the tournament, and DiMascio is intent on passing that experience onto his squad.

The last month of practice has been geared towards mentally preparing his team for the experience, and with the Bucs playing to a 14-6 record, they

could take that preparation a long way. At very least, DiMascio is not misleading himself or his team when he says they have a chance to win every game.

"We're capable of pulling some upsets if we don't beat ourselves," says DiMascio. "We can't show a lot of youth."

Youth, inexperience and a surprising lack of basketball basics greeted DiMascio when he took the coaching job at the beginning of the year. From that he has built a sound sophomore-oriented squad, with useful senior help from scoring machine George Dykes and second team floor leader Warren Russell, like Newark's Dunkley an English exchange student.

"As the season has progressed, the players have begun to understand why I want them to be fundamentally sound, to play their roles, and what they have to do to be successful in the tournament," says DiMascio. "The best team does not always win the tournament. The team that can get up for that week and a half does it."

The exact pairings are uncertain, but it looks as if Caravel will be either the non-conference second or third seed and play an at-large opponent in the first round. Their second round opponent would then be either Henlopen champion Milford or Blue Hen Conference Flight A runner-ups William Penn or Concord.

Christiana (12-8) will not receive an automatic bid, having finished fourth in Flight A, but it seems unlikely the Vikes will be denied an at-large bid. The season ended on a difficult note for the team, as they lost their last three games by a basket, two in overtime, to fall out of second place in the flight.

Though coach Ron Hollis thought his team should have won those games, he is happy with what he has gotten out of the squad this year.

"I think our team is playing well," says Hollis. "I'm pleased to make the playoffs considering we only had one returnee. The kids have responded well despite their inexperience."

Despite losing star forward Damotte Chittum to an off-

season aneurysm, the team got off to a fast start, thanks mostly to the talents of point guard and leading scorer Cleon Stewart. As the season progressed, teams began to double and triple team Stewart, forcing him to dump the ball off most of the time, often to teammates unprepared to shoulder the scoring responsibility.

These role players are a year away, says Hollis, and this season, as well as the tournament, will help bring them along for next year. Seven players with experience will be back for next year, more than Hollis has ever had before.

The Vikings will play their first game tonight (Thursday, March 2). The opponent depends on their at-large seeding.

## WRESTLING

"I wasn't really tested in Delaware this year," said Collier, who will spend next year at Blair post-graduate academy before going to college. "I knew I had the potential. I just had to do it."

"I've never had anyone that dominant for that long," said Bastianelli. "The guys he beat were the best in the weight."

Also placing for St. Mark's were Ryan Swift, second at 119, John Ormsby, third at 125, Doug Devenney, fourth at 145, and Chris Wilson, fifth at 112.

Christiana finished 12th overall, led by Dwight Beadle, who defeated Swift at 119 for the championship. Beadle was undefeated in his weight class this year, and was 27-1-1 overall after taking on some of the best wrestlers in heavier classes.

"He dedicated himself to this season," said Christiana coach Drew Yeager. "He lifted weights all summer. I don't think there was anyone stronger than him in this weight class."

Beadle dominated all of his matches, including the final, not letting Swift turn a move until the final period. Rob Gates finished third at 171, defeated Tower Hill's Independent champion Stu Markley twice by one point to do it. He won the consolation final 1-0.

"I was kind of worried because the first match was close — I just hung on," said Gates, who felt some disquiet from the low scoring matches. "It makes the match seem a lot longer. In the third period he took down and I had to ride him out for two minutes."

Jeff Katris (145) reinjured his knee while finishing second in the Blue Hen Conference. The original injury had reduced his season to a few matches before that tournament.

Katris gamely attempted to participate in the states, and won his first two matches before losing to eventual champion Earl Walker. He could not continue, and defaulted his remaining matches to finish sixth.

Injury-plagued Newark finished 13th on fourth place finishes by Tyler Tomashek at 135 and Steve Fierro at 140, as well as a sixth place finish by Brian Conley at 112. The cast came off Fierro's broken leg a month ago, and he came back to wrestling Feb. 6.

"Twenty days isn't enough to get ready for a whole season," said Fierro. "My timing was off, my conditioning was off, I made a few dumb mistakes."

"I feel that I could have wrestled better. I also feel that I might not have even been here."

The surprise of the tournament was Glasgow's John Grant, who came off a third place in the Blue Hen tournament to finish second in the state at 152. Two come from behind upsets, a 13-10 decision over Henlopen champion Shawn Cook of Smyrna, and a 7-6 decision over Dickinson's Stan Szepepanek propelled him into the finals, where he lost by technical fall to two time state champion Bill Anderson of A.I. duPont.



## SPORTS

## PITTS ON TOP

"I just run until I hear them (behind me)," said Pitts. "Then, I push."

"It's going to happen. It looks good."

"She's on schedule," said a pleased Ramseur. "I really feel she'll run in the low 54s in the spring (in the 400; her current best outdoors is 56.5)."

"In the next year, she's going to do something very special. She's ranked in Track and Field News, and there's only one high school quarter-miler on the East Coast who has a faster time than she had last year. Sometime in the spring, we're going to move her up to the half (mile)."

"She's ahead of where Terry Dendy (a Concord High grad and a member of one of last summer's Olympic relays) was at this point. She's way ahead of Dana Coombs (a Padua grad)."

"Vicki Huber (and Olympic finalist in the 1600 and 3200 meters), when she was here, her quarter-mile times were nowhere in the range of Diana's. As much as I respect Vicki, Diana Pitts is going to break her 800 record before she graduates. That's a goal she told me she has; she has so much respect for Vicki."

For Pitts, the different distances, the different goals, just keep things interesting.

"I'm looking forward to running the 800 and I'm going to try and do the long jump."

As do her turns in the relay with her teammates, which she does at the sacrifice of her personal races. She ran leadoff for the 4x400 Thursday at Ramseur's request, missing a chance at a medal in the 55 meter dash.

"She's such a good person," said Ramseur. "She gets along with the rest of the team. As good as she is, if I ask her to run the relay, there's no question."

Maybe the best part is the show she puts on in the relays. Regardless of the leg she runs, she improves the team's position by 20 or 30 or more yards, opening up huge leads for her team early or sweeping past other teams on the backstretch or final turn on the anchor, as if to answer the question of how much better she is than the average high school middle distance running girl. A great deal better.

## NEWARK SOPHS

finishing fifth in the 55 meters (7.60) and sixth in the long jump (14' 11"). It hardly bothers coach Frank Smith that they are so good, yet so young.

"I'm happy," he said with a near sinister smile and laugh. "Laura McDowell (finalist in the 400 and high jump) wasn't considered one of the fabulous freshmen, but she's come on to be one of the super sophs. Now I've got five."

"All I have to do is add a few more; we don't have anyone in the distance events."

That's already begun to happen, with the addition of freshman Meredith Tarpley. With upperclassmen Carrie Rash and Tonya Fussell throwing the shot put (Rash finished third with a 29' 1 3/4", Fussell is defending state outdoor champion), spring girls coach Pat Walker has something to work with this season, and beyond.

To the sophomores, who have

already begun to efficiently rewrite Newark's record book in their own image, statewide notice, if not domination, is just a matter of time. The few juniors and seniors in front of them now will soon graduate, leaving them on top of the heap.

"They work well together, they stay together," said Smith. "I see them growing together."

Newark's boys also topped the local teams with an eighth place finish, led by John Brannon's third place in the 3200 meters (10:05.70). Jermaine Jones finished fourth in the 300 meters (37.11) and Jeff Taylor took fifth place in the triple jump (41' 4 1/2").

The efforts of Diana Pitts helped Christiana's girls to a seventh place finish in the state. She won the 300 (41.29), the 400 (58.64) and led off the sixth place 4x400 relay (4:24.00). After only a few weeks of practice, Wanda Brown (30' 9") threw well enough for second place in the shot put, and the 4x800 relay finished fifth (10:37.6).

The Viking boys team finished fifteenth, with Jason Williams earning the team's points with a sixth place finish in the triple jump (40' 8 3/4").

"My surprise has been the overall performance of the team," said St. Mark's coach Brandon McCall of his Spartans. "I've had everybody get better every week. I had every single kid run their personal best tonight."

The boys team finished tenth, led by Marty McCarthy's fourth place finish in the shot put (43' 4 1/2"). Jason Green finished



Newark High's Christina Penn clears hurdle in state indoor championship meet.

Photos/Robert Craig

## STEER THIS WAY

By Barry Williams

Big American cars are back again. The new models have a roomy feel and a smooth, comfortable ride. Some even have hints of grills and tail fins we haven't seen in 30 years.

Proper pedal adjustment can avoid or correct clutch slip or drag. Driving habits are important, too: resting the left foot on the pedal while driving may encourage clutch slippage.

Leaking fuel is a leading cause of car fires. Good tune-ups include inspection of all fuel lines and connections, extra-important with increased fuel pressure on newer cars.

More people are arrested for drunk driving than for any other crime. Blood alcohol level of 0.10 percent is automatically trouble, but even lesser amounts can impair driving ability and judgment.

Who's buying? Women influence 80 percent of all car-buying decisions, says the Motor Vehicle Manufacturers Association.

New-Used Cars Who's buying? Smart shoppers, men and women both, find the cars they want at terrific prices at

**WILLIAMS**  
Chevrolet-Geo  
208 W. Main St., Elkton, MD  
398-4500

Talk to us about the new (or late model used) car you want

## LEGAL NOTICE

**NOTICE OF DIVORCE ACTION**  
TO: ADAM (NMI) BROCKIE, Respondent  
FROM: Clerk of Court - Divorce

New Castle County  
DORA MAE BROCKIE, Petitioner, has brought suit against you for divorce in the Family Court of the State of Delaware for New Castle County in Petition No. 0161, 1989. If you do not serve a response to the petition on Petitioner's Attorney

DORA M. BROCKIE, PRO SE  
804 CENTRAL AVENUE  
NEW CASTLE, DE 19720  
or the petitioner if unrepresented, and the Court within 20 days after publication of this notice, exclusive of the date of publication, as required by statute, this action will be heard without further notice at Family Court. Date Mailed: FEB. 21, 1989 np 3/2-1

**NOTICE OF DIVORCE ACTION**  
TO: MARY J. ARNOLD, Respondent  
FROM: Clerk of Court - Divorce

New Castle County  
CLARK S. ARNOLD, Petitioner, has brought suit against you for divorce in the Family Court of the State of Delaware for New Castle County in Petition No. 200, 1989. If you do not serve a response to the petition on Petitioner's Attorney

NORMAN E. LEVINE, ESQ.  
928 FRENCH STREET  
WILMINGTON, DE 19801  
or the petitioner if unrepresented, and the Court within 20 days after publication of this notice, exclusive of the date of publication, as required by statute, this action will be heard without further notice at Family Court. Date Mailed: FEB. 16, 1989 np 3/2-1

**NOTICE OF DIVORCE ACTION**  
TO: SPG3 PERRY SHAWN WILHELM, Respondent  
FROM: Clerk of Court - Divorce

New Castle County  
VICTORIA M. WILHELM, Petitioner, has brought suit against you for divorce in the Family Court of the State of Delaware for New Castle County in Petition No. 136, 1989. If you do not serve a response to the petition on Petitioner's Attorney

VICTORIA M. WILHELM, PRO SE  
304 EARTH COURT  
STONYBROOK, CLAYMONT, DE 19703

or the petitioner if unrepresented, and the Court within 20 days after publication of this notice, exclusive of the date of publication, as required by statute, this action will be heard without further notice at Family Court. Date Mailed: FEB. 22, 1989 np 3/2-1

## LEGAL NOTICE

**IN THE COURT OF COMMON PLEAS FOR THE STATE OF DELAWARE**  
IN AND FOR NEW CASTLE COUNTY  
IN RE: CHANGE OF NAME OF Jacqueline Rae Bolgar  
MICHELLE LYNN BOLGAR PETITIONER(S)

TO  
Jacqueline Rae Tweed  
Michelle Lynn Tweed  
**NOTICE IS HEREBY GIVEN** that Jacqueline Rae Bolgar and Michelle Lynn Bolgar, intends to present a Petition to the Court of Common Pleas for the State of Delaware, in and for New Castle County, to change their name to Jacqueline Rae Tweed and Michelle Lynn Tweed.  
Patricia Ann Tweed  
Petitioner(s)  
for Jackie & Shelly  
Dated: February 22, 1989  
np 3/2-3

**NOTICE OF DIVORCE ACTION**  
TO: LILLIAN STRANGE, Respondent  
FROM: Clerk of Court - Divorce

New Castle County  
DARRIN L. STRANGE, Petitioner, has brought suit against you for divorce in the Family Court of the State of Delaware for New Castle County in Petition No. 225, 1989. If you do not serve a response to the petition on Petitioner's Attorney

DARRIN L. STRANGE, PRO SE  
112 E. INDEPENDENCE BLVD.  
NEW CASTLE, DE 19720  
or the petitioner if unrepresented, and the Court within 20 days after publication of this notice, exclusive of the date of publication, as required by statute, this action will be heard without further notice at Family Court. Date Mailed: FEB. 23, 1989 np 3/2-1

**IN THE COURT OF COMMON PLEAS FOR THE STATE OF DELAWARE**  
IN AND FOR NEW CASTLE COUNTY  
IN RE: CHANGE OF NAME OF CARLINA MARIE WEIST  
PETITIONER(S)

TO  
CARLINA MARIE MARSH  
**NOTICE IS HEREBY GIVEN** that Carlina Marie Weist intends to present a Petition to the Court of Common Pleas for the State of Delaware in and for New Castle County, to change her name to Carlina Marie Marsh  
Carlina M. Weist  
Petitioner(s)  
Dated: February 6, 1989  
np 2/16-3

**NOTICE OF DIVORCE ACTION**  
TO: MANUEL RIVERA, Respondent  
FROM: Clerk of Court - Divorce

New Castle County  
SANDRA I. CORCHADO RIVERA, Petitioner, has brought suit against you for divorce in the Family Court of the State of Delaware for New Castle County in Petition No. 191, 1989. If you do not serve a response to the petition on Petitioner's Attorney

SANDRA I. CORCHADO RIVERA  
1111 LANCASTER AVE.  
WILMINGTON, DE. 19805  
or the petitioner if unrepresented, and the Court within 20 days after publication of this notice, exclusive of the date of publication, as required by statute, this action will be heard without further notice at Family Court. Date Mailed: FEB. 16, 1989 np 3/2-1

## LEGAL NOTICE

**HOTEL - RESTAURANT TAPROOM - STORE**  
Mary Y. Marsh T/A Mary's Kountry Kitchen Restaurant hereby intends to file application with the Delaware Alcoholic Beverage Control Commission for a Restaurant license to sell alcoholic liquors for consumption on the premises where sold, said premises being located at 222 Main Street, Stanton, Delaware 19804.  
np 2/16-3x

**NOTICE OF DIVORCE ACTION**  
TO: WILLIAM E. WHARTON, Respondent  
FROM: Clerk of Court - Divorce

New Castle County  
DOROTHY M. WHARTON, Petitioner, has brought suit against you for divorce in the Family Court of the State of Delaware for New Castle County in Petition No. 1807, 1988. If you do not serve a response to the petition on Petitioner's Attorney

Dorothy M. Wharton Pro Se  
P.O. Box 1336  
Wilmington, DE 19899  
or the petitioner if unrepresented, and the Court within 20 days after publication of this notice, exclusive of the date of publication, as required by statute, this action will be heard without further notice at Family Court. Date Mailed: 2/22/89  
np 3/2-1

## LEGAL NOTICE

Estate of Flessie Hubbard, Deceased.  
Notice is hereby given that Letters Testamentary upon the Estate of Flessie Hubbard who departed this life on the 16th day of December, A.D. 1988, late of 830 Broadfield Dr., Newark, De., were duly granted unto Lillie Mae Hubbard Thompson on the 23rd day of January, A.D. 1989, and all persons indebted to the said deceased are requested to make payments to the Executor without delay, and all persons having demands against the deceased are required to exhibit and present the same duly probated to the said Executor on or before the 15th day of August, A.D. 1990 or abide by the law in this behalf.  
Lillie Mae Hubbard Thompson  
Executor  
Bruce E. Hubbard, Esquire  
224 E. Delaware Avenue  
Newark, De 19715  
np 2/16-3x

## LEGAL NOTICE

Estate of Roger V.L. Houghton, Deceased.  
Notice is hereby given that Letters Testamentary upon the estate of Roger V. L. Houghton who departed this life on the 15th day of January, A.D. 1989, late of 302 Shipley Road, Wilm., De., were duly granted unto James V. Blackwell on the 15th day of January, A.D. 1989, and all persons indebted to the said deceased are requested to make payments to the Executor without delay, and all persons having demands against the deceased are required to exhibit and present the same duly probated to the said Executor on or before the 15th day of September, A.D. 1990, or abide by the law in this behalf.  
James V. Blackwell  
Executor  
Piet H. vanOgtrop, Esquire  
206 East Delaware Avenue  
Newark, Delaware 19711  
np 2/16-3x

## SPORTS NOTES

• Newark's George Taylor took five medals home from the New Jersey Athletic Congress Masters Indoor Track and Field Championships, held at Fairleigh Dickinson University Sunday, Feb. 26.

Taylor, competing in the 55-59 age division, won the long jump and the triple jump. He finished second in the pole vault, 55 meter hurdles and 500 meter run.

NEWARK BABE RUTH  
Late Signups & Try-outs

Kirk School  
Gymnasium  
Chestnut Hill Rd.  
Newark

**SATURDAY, MARCH 4 - 9-3**  
Ages 13 to 15 and 16 to 18  
(New to League must bring birth certificate)

## Scuba Instruction



NAUI Certified Scuba Instruction  
NEXT CLASS STARTS  
APRIL 3RD  
**998-6357**  
FIRST STATE SPORTS, INC.

**ASAP.**

Do yourself a favor. File your taxes now and file accurately.  
If you need help doing your taxes, call or visit your local IRS office.

Make your taxes less taxing.  
Do them ASAP.

A Public Service of This Publication & Ad Council



JOIN THE  
SMOKE  
FREE  
FAMILY

AMERICAN  
LUNG  
ASSOCIATION  
The National Asthma Program



## BUSINESS

## BUSINESS FILE



Kirkwood Motors, located on Kirkwood Highway east of Newark, has announced it is now carrying the Aeromate van.

• Tetra Tech Richardson of Newark has been awarded the 1989 Engineering Excellence Award by the Consulting Engineers of Delaware. The firm was recognized for its enhanced bioremediation work for the Frick Company in Waynesboro, Pa. Frick Chairman Robert N. Pokelwaldt told Tetra Tech Richardson, "We believe your approach to this cleanup project has been quite innovative. We realized a substantial cost savings and have been most pleased with the way you have succeeded in convincing the Department of Environmental Resources to allow us to use such an innovative technology as bioremediation to remediate the site."

Honorable mention went to Gredell and Paul Inc., Paragon Engineering Corp. and Tatman and Lee Associates.

• Kirkwood Motors Inc., 4800 Kirkwood Highway, near Newark, has announced the addition of the innovative Aeromate mini walk-in van to its line. The agile Aeromate can handle about one ton of payload, has a 15-foot turning radius and gets 17 miles per gallon.

• Medlab Inc. has announced the appointment of three people — Dr. William J. Boyd, James E. Stockwell and J.A. "Babe" Price — to its staff. Boyd, formerly with St. Thomas Hospital in Nashville, Tenn., has been named laboratory director. Stockwell, a University of Delaware graduate and former teacher, has joined the marketing department as marketing analyst and writing specialist, and Price has been named supervisor of facilities at the new Medlab headquarters in Riveredge Park.

• McDonalds has announced the return of the "shamrock shake" to raise money to the Ronald McDonald Houses in Philadelphia and Camden, and for the future facility in Wilmington. Ronald McDonald Houses are homes away from home for families of children suffering serious illnesses. Families are provided a nurturing environment while their children are treated at nearby hospitals. Last year, Delaware Valley McDonald's raised more than \$35,000 for the cause.

• DeVon Williams Daniels of the Newark-based Wilmington Financial Group has been named

president of Delaware Financial Advisors Inc., the company's registered investment advisor corporation. Delaware Financial Advisors provides financial planning services to families and businesses in Delmarva. Wilmington Financial Group is a diversified financial and insurance organization with headquarters here.

• Martha M. Lodge, a University of Delaware graduate, has been named public relations coordinator of Peninsula United Methodist Homes Inc. In the new position, Lodge will handle public and media relations, as well as publications.

• A business management workshop will be offered by the U.S. Small Business Administration from 8:45 a.m. to 4 p.m. Wednesday, March 15 in the Carvel State Building, Wilmington. Fee is \$10 and prepayment is required. For details, call 573-6295.

• DuPont Company's Glasgow site will hold its annual Flower Festival craft show 10 a.m. to 3 p.m. Saturday, March 18. The show will be held in the cafeteria of Building 500, and will feature flowers, centerpieces, wreaths, decorations and Easter items.

## FYI

• In case of fire, Liberty Mutual Insurance Company's Newark office recommends that you keep an accurate record of all your household possessions to clearly document what you own and what it is worth.

A household inventory does more than just substantiate a claim following a loss. It can be of great value beforehand in determining just how much insurance coverage you require.

Look in every room, closet and cabinet and keep a permanent record of each item, particularly those items of significant value.

List serial numbers, manufacturer's name and model number and hold on to warranty cards. In addition to keeping a written

account, Liberty Mutual suggests videotape or photographs of personal belongings. Keep all videotapes or photographs in a fire-proof box or in a safe deposit box at your bank.

Once you have a complete household inventory, check it periodically, adding or deleting as necessary.

## Carper: Dredging is vital

Delaware Congressman Tom Carper will oppose a Bush Administration proposal to sharply curtail maintenance dredging of small harbors and rivers in Delaware and throughout the nation.

Under the proposed Bush plan, the U.S. Army Corps of Engineers will halt maintenance dredging at about 74 small harbors and waterways next year and up to 542 other navigable waters will not be dredged by the Corps in subsequent years.

Carper, a Democrat, said the new policy, which will require congressional approval, would halt Corps-funded dredging for all navigation projects which annually have less than 25,000 tons of commerce.

In Delaware, that would mean an end to dredging at Indian River Inlet, the Intracoastal Waterway canal between Rehoboth Bay and Delaware Bay and the waterway that connects Indian River Inlet to Rehoboth Bay.

In addition, the Corps would no longer be authorized to dredge at the Appoquinimink River, Broad Creek River, Broadkill River, Cedar Creek, Leipsic River, Little River, Mispillion River, Murderkill River, Pepper Creek, Smyran River or St. Jones River.

Only the Port of Wilmington would continue to get routine dredging.

"Commerce which relies upon the channels will be restricted and eventually curtailed," he said. "Recreational users will have their access to the sea choked off and lives and property will be threatened as navigation of the channels becomes increasingly more difficult."

Carper said recreational boating and commercial fishing are important to Delaware and to all coastal communities. "To ignore that economic value in setting Corps policies is just not smart budgeting," he said.

## Patterson-Schwartz makes changes

Patterson-Schwartz Real Estate Company plans to close the former Century 21 Goldsborough office in Newark's College Square shopping center.

The company, which purchased Century 21 Goldsborough on Feb. 7, announced the plans last week.

Sales associates at the College Square office will be offered positions at the Patterson-Schwartz offices in Newark, Limestone, Hockessin and Glasgow.

With the purchase, Patterson-

Schwartz now has about 350 sales associates and 131 staff and management personnel. Active residential listings total nearly 700.

Also last week, Patterson-Schwartz announced that Sharon Gearhart will remain manager of the Limestone Road office and that Jack Teague has been named manager of the Glasgow office.

Teague has been with Patterson-Schwartz for 12 years, the last two as assistant manager of the Newark office.



Jack Teague, Glasgow office manager.

1989 Kmart Corporation

\*Limited tread wear warranty - Details in store. Mounting included - No trade-in required. Road hazard warranty available. Tires And Service Available Only In Stores With Service. Open Daily 8 AM-6 PM. Closed Sun.

**AA Promise**  
Service • Value  
Satisfaction  
That's our promise.

**TAKE ADVANTAGE OF OUR EVERYDAY LOW TIRE PRICES**

**Mohawk RUBBER COMPANY**

**CUSTOM A/S**

**\$25** P155/80R13

• 35,000-mi. warranty\*  
• All-surface traction

SIZE	PRICE	SIZE	PRICE
P155/80R13	\$25	P205/75R14	\$40
P165/80R13	\$30	P205/75R14	\$42
P175/80R13	\$33	P215/75R15	\$43
P185/80R13	\$35	P225/75R15	\$45
P185/75R14	\$36	P235/75R15	\$46
P195/75R14	\$38		

**BRIDGESTONE**

**\$402**

**37<sup>97</sup>** P155/80R13

• 55,000-mile warranty\*  
• Responsive handling  
• "A" traction rating

SIZE	PRICE	SIZE	PRICE
P155/80R13	\$37.97		
P165/80R13	\$41.97		
P175/80R13	\$44.97		
P185/75R14	\$49.97		
P195/75R14	\$53.97		
P205/75R14	\$56.97		
P205/75R15	\$58.97		
P215/75R15	\$60.97		
P225/75R15	\$63.97		
P235/75R15	\$66.97		

**Mohawk RUBBER COMPANY**

**DIMENSION IV**

• 45,000-mile warranty\*  
• Crisscross tread, smooth ride

SIZE	PRICE	SIZE	PRICE
P155/80R13	\$29	P195/75R14	\$39
P165/80R13	\$31	P205/75R14	\$41
P175/80R13	\$34	P205/75R15	\$43
P185/80R13	\$36	P215/75R15	\$44
P185/75R14	\$37	P225/75R15	\$46
P185/70R14	\$38	P235/75R15	\$48

**Mohawk RUBBER COMPANY**

**SR1000 GT**

• 45,000-mile warranty\*  
• Speed rated to 112 mph

SIZE	PRICE	SIZE	PRICE
P175/70SR13	\$41.97	P215/65SR14	\$49.97
P185/70SR13	\$45.97	P245/65SR14	\$59.97
P185/75SR14	\$48.97	P235/65SR15	\$60.97
P195/75SR14	\$49.97	P255/65SR15	\$64.97
P205/75SR14	\$51.97	P215/65SR15	\$57.97
P225/70SR15	\$59.97		

**Mohawk RUBBER COMPANY**

**OLYMPIAN XT**

• 55,000-mile warranty\*  
• Our best steel belted radial

SIZE	PRICE	SIZE	PRICE
P155/80R13	\$34.97	P205/75R14	\$45.97
P165/80R13	\$36.97	P205/75R14	\$47.97
P175/80R13	\$39.97	P205/75R15	\$50.97
P185/80R13	\$41.97	P215/75R15	\$52.97
P185/75R14	\$42.97	P225/75R15	\$54.97

**FRONT-END ALIGNMENT ... 19.97**

For many U.S. and import cars. Additional parts, services extra.

Limited 30,000-mile Warranty\*

**59.97**

**Sale Price. 2-wheel disc or drum brake job for many U.S. cars, imports, lt. trucks higher.**

Semi-metallic pads extra. Additional parts, services extra. \*Details in store.

**39.97**

**Fuel injector service helps improve performance, mileage. For most injector systems.**

Additional parts, services extra.

**13.88**

**Major brand oil, lube and filter special available for many cars and light trucks.**

Additional parts, services extra.

**STARTERS AND ALTERNATORS AVAILABLE**

**ARRESTOR** 1-yr. Warranty\*

The Last Muffler You Will Buy For Your Car\*

**MONROE**

**45-month Warranty\***

**65** 65-month Warranty\*

**15.97**

**Installed. Arrestor muffler for many U.S. cars, light trucks.**

**Arrestor Plus Muffler ... 19.97**

Additional parts, services extra. Single unit (welded systems) excluded. \*Limited warranty - Details in store.

**24.97** Sale Price

**Ea. Carryout. Super Struts\*, GMX Or A Cars ... 29.97**

**Ford/Mercury Cars ... 34.97**

\*For Omni, Horizon. Additional parts, services extra. Alignment recommended on many cars with strut replacement. Gas shuts \$20 more per car.

**52.97**

**Everyday Low Price. Motorvator 65; up to 550 CCA's. Motorvator 45; 370 CCA's, 32.97**

Batteries are \$3 less with exchange. \*Limited warranty - details in store.

**ON SALE MON., FEB. 27 THRU SAT., MARCH 4**

**NEWARK** M-F 8-5  
**CLOSED SUNDAY**

**ELKTON** Sat. 7-5

**MEET A NEIGHBOR WHO HAS HAD AN INTERESTING EXPERIENCE**

**Hear One or More of the Special Speakers Presented By the Christina Adult Continuing Education Program**

**EAST GERMANY with Cliff Armour** Monday, March 13

A visit to the German Democratic Republic by an American who travelled as a guest of the Christian Democratic Union. Visit several cities such as Berlin, Wittenberg, Jena, and Erfurt and meet the leadership of the CDU and the Christian Peace Conference.

**OLYMPIC EXPERIENCE with Scott Gregory** Wednesday, April 12

Calgary and Olympic gold were the goals. Meet a world class competitor and learn of the highlights of amateur athletics from a medalist. And, learn what is involved in reaching international recognition in competitive ice skating.

Each session is at Newark High School Room D-105, 7 to 9 pm.  
Seating is limited and by ADVANCE reservation ONLY.  
Cost is \$4 per session. Complete and mail the Reservation Form or Come to Newark High School Room B-102 Evenings 6 to 9 pm.

**Registration Form For Adult Continuing Education Program**  
**All Payments by Check, Please. Payable to Christina School District**  
**FEE MUST ACCOMPANY REGISTRATION**  
**Please send a separate check for each course in which you want to enroll.**  
**Send to: Christina School District, Adult Programs Office**  
**83 E. Main Street, Newark, DE 19711**

Name \_\_\_\_\_ (Print) Last Name \_\_\_\_\_ First Name \_\_\_\_\_

Address \_\_\_\_\_ City \_\_\_\_\_ State \_\_\_\_\_ Zip \_\_\_\_\_

Telephone - Home \_\_\_\_\_ Work \_\_\_\_\_

Course \_\_\_\_\_ Cost \_\_\_\_\_ Day \_\_\_\_\_ Time \_\_\_\_\_

Course \_\_\_\_\_ Cost \_\_\_\_\_ Day \_\_\_\_\_ Time \_\_\_\_\_

CHECK ONE ☐ I understand that I will NOT be notified of acceptance in this course. I will report to the first class unless I am contacted.  
☐ I ENCLOSE A STAMPED ADDRESSED ENVELOPE for you to mail me receipt to me as acknowledgement of my registration.

Date \_\_\_\_\_ Check No. \_\_\_\_\_ FOR OFFICE USE ONLY Bank \_\_\_\_\_ Amt. Pd. \_\_\_\_\_ Receipt No. \_\_\_\_\_



# CLASSIFIEDS

Office Hours: Monday-Friday, 8:30 A.M.-5:00 P.M.

Call 302-737-0905

Saturdays - 9:30 A.M.-1:00 P.M.

Call 1-800-523-5397 (Chesapeake Publishing Co.)

Deadlines: Tuesday, 11 A.M.

## DIRECTORY



**ANNOUNCEMENTS**

102 Auctions  
104 Card of Thanks  
106 Lost & Found  
108 Notices  
110 Personals  
112 Teddy Ads  
114 Yard/Garage Sales  
150 Wanted



**EMPLOYMENT**

202 Help Wanted  
204 Jobs Wanted  
206 Schools/Instructions



**SERVICES**

301 Accounting  
302 Air Conditioning/Heating

304 Appliance Repair  
306 Auto  
308 Building Contractors  
310 Car Pools  
312 Caterers  
314 Chimney Sweep  
316 Cleaning Services  
317 Computer Services  
318 Concrete  
320 Day Care  
324 Dry Cleaning  
326 Electrical Contractors  
327 Entertainment  
328 Excavations  
330 Extermination  
331 Flooring  
332 Fuel  
340 Hardware  
341 Hauling/Removal  
342 Home Improvement  
344 Income Tax Service  
346 Insurance

348 Instruction  
350 Kennels  
352 Landscaping  
353 Lawn Services  
354 Masonry  
356 Miscellaneous Services  
358 Moving & Storage  
359 Office Supplies  
360 Orchards  
362 Painting  
364 Plumbing  
366 Radio/TV repair  
368 Restaurants  
370 Roofing  
372 Service Stations  
373 Sewing  
374 Shoe Repair  
376 Taxidermist  
378 Tutoring  
380 Upholstering  
382 Welding



**GENERAL MERCHANDISE**

401 Animals  
402 Antiques  
403 Arts/Crafts  
404 Appliances  
406 Bicycles & Mopeds  
408 Boats & Motors  
410 Building Supplies  
412 Clothing  
413 Computers/Videos  
414 Farm Equipment  
416 Firewood  
418 Flea Market  
420 Furniture  
422 Garden/Lawn  
423 Hay/Straw  
424 Homemade  
426 Household Goods

428 Livestock Supplies  
430 Miscellaneous  
432 Musical Instruments  
434 Produce  
436 Seeds & Plants  
440 Sports Equipment  
441 Swimming Pools  
442 TV/Stereoes  
444 Tools



**BUSINESS OPPORTUNITIES**

502 Business Opportunities  
504 Money to Lend  
508 Mortgages



**RENTALS**

602 Room  
604 Furnished Apartments  
608 Unfurnished Apartments  
610 Mobile Homes for Rent  
612 Property for Rent  
614 Commercial Property  
616 House for Rent  
618 Misc. for Rent  
620 Vacation Rentals



**REAL ESTATE**

702 Housing for Sale

704 Property for Sale  
706 Commercial for Sale  
708 Mobile Home for Sale  
710 Housing Wanted



**TRANSPORTATION**

802 Motorcycles  
804 Recreation Vehicles  
806 Trucks/Vans  
808 Automobiles  
810 Automobile Leasing  
812 Automobile Equipment/Parts  
814 Towing  
816 Automobiles Wanted

### PRIVATE PARTY ADVERTISING RATES

Your Private Party ad will reach 25,000 homes in Newark, De.  
15 WORDS OR LESS - 25¢ PER ADDITIONAL WORD

1 INSERTION ..... \$3.70 3 CONSECUTIVE INSERTIONS ..... \$10.35  
2 CONSECUTIVE INSERTIONS ..... \$6.90 4 CONSECUTIVE INSERTIONS ..... \$13.55  
Cecil Whig, same day pick up, per issue ..... \$1.00  
(Reach an additional 17,500 homes in Cecil Co., Md. area)  
South County Courier, same day pick up, per issue ..... \$1.00  
(Reach an additional 10,000 homes in Middletown, De. area)

COMMERCIAL RATES UPON REQUEST

Please check your ad the 1st time it appears. We can be responsible for only 1 incorrect insertion

### CLASSIFIED ORDER FORM

YOUR AD

Name \_\_\_\_\_  
Address \_\_\_\_\_  
Phone \_\_\_\_\_  
Dates of Publication \_\_\_\_\_ to \_\_\_\_\_  
Cecil Whig ☐ South County Courier ☐  
(\$1.00 extra, each, per issue)  
☐ MC/Visa ☐ Exp. Date \_\_\_\_\_  
☐ Send Bill ☐ Payment Enclosed  
Ad Classification Number \_\_\_\_\_

Send to: NewArk Post  
153 E. Chestnut Hill Rd.  
Newark, DE 19713

### LIBERTY BELL 76....

A great place to work!

#### Now Hiring:

- LINE COOKS
- KITCHEN HELPERS
- WAITRESSES

All shifts available  
Immediate openings.

We Offer  
Competitive Wages  
Excellent Benefits  
Flexible Hours

Apply at:  
1400 Elkton Rd.  
Rt. 279 & I-95  
398-7000



OPEN 24 HOURS A DAY - 7 DAYS A WEEK



### ANNOUNCEMENTS

102 Auctions

\$\$\$ CASH \$\$\$  
For Unwanted Items  
NORTH EAST  
AUCTION GALLERY  
US Rt. 40 North East, MD  
Household, Estates, Tools  
Every Tuesday, 6pm.  
Auto/Trucks  
Every Thursday, 7pm.  
301-287-5588  
1-800-233-4169

### 106 Lost & Found

FOUND!! Around Christmas-time, Piece of Jewelry, Vicinity of Encore Bookstore in College Square Shopping Center. 302-239-3585.

Get your free yard sale kit when you advertise your sale in The Cecil Whig Classified section. Call us today at 398-1230!

### 110 Personals

I will not be responsible for any debts other than those contracted for by myself.  
Joseph DiPalma  
126D Chestnut Crossing  
Newark, DE

### 150 Wanted

WANTED TO BUY  
Sturdy Weight Bench  
301-398-2426  
Evenings & Weekends



### EMPLOYMENT

### 202 Help Wanted

BOOKKEEPER  
Needed part time for busy bookkeeping service. Pay based on experience.  
301-398-2298

### 202 Help Wanted

AAA ACTION  
JOB RESUME \$9.00  
& UP WRITE-EDIT-TYPE  
All Fields  
Trainee To Executive  
NEWARK  
302-453-1858  
Wilmington 302-656-8494  
Eve/Sat Hrs. Avail.

ADVERTISING  
SALES REP  
Potentially lucrative part time Advertising Sales position with popular boating and leisure publication. Expenses plus commission. Familiarity with upper Chesapeake Bay waterfront area helpful. Must be motivated self-starter. No phone calls. Send letter or resume c/o General Manager, The Mariner, P.O. Box 429, Elkton, MD 21921.

ANSWERING SERVICE  
Answering Service in Newark needs Dispatchers. Flexible full-time or part time hours available. For more information please call Monday thru Friday, 10am-3pm at:  
302-737-2164

BANKCARD  
PROCESSING  
The following full time positions are available on various shifts:  
MAIL SORTER  
SECURITY GUARD  
MACHINE OPERATOR  
MAINTENANCE/WAREHOUSE  
Please Apply In Person  
M-F, 9am-3pm To:  
SSBA DELAWARE  
502 White Clay Center Dr  
Newark, DE 19711  
E.O.E.

### 202 Help Wanted

Bakery  
Opportunity in cake department. Icing cakes, trying pastries & cookies and other related duties. Closed Sun. & Mon. Call for interview.  
Bing's Bakery  
Newark, DE  
302-737-5310

CARPENTERS  
Jobs Available  
Framer & Laborers needed  
Call after 4pm  
301-398-1520  
CARPET CLEANING  
Excellent pay & benefits if you're willing to work for a growing company. Call 302-733-0855.

LAYOUT & DESIGN  
Growing local newspaper needs artistic individual to do layouts and graphic art for newspaper ads. Macintosh experience preferred. General office skills & good telephone manner essential. Good starting salary and excellent company benefits. Send resume to:  
NewArk Post  
attn. Advertising Manager  
153 E. Chestnut Hill Rd.  
Newark, DE 19713

### The Old Barn

RESTAURANT  
IS NOW HIRING:  
Hostess Position  
Line Cooks  
Waitress Position

APPLY IN PERSON  
Rts. 896 & 40  
Glasgow, DE

### 202 Help Wanted

CASHIERS  
WANTED  
Part time.  
Apply in person at:  
VLAMIS LIQUORS  
in Elkton

COUNTER HELP  
& DELIVERY DRIVERS  
Good starting salary. Apply in person:  
Papa Ricardo's  
19 Salem Village Square  
Newark, DE

Evening Supervisor  
F/T & P/T  
National telemarketing agency seeks self-motivated individual to oversee a multiproject, professional telemarketing operation. Includes scheduling, ongoing coaching, & motivation. Ideal candidate will have supervisory & telemarketing experience. Highly visible position with future advancement opportunities. Salary commensurate with experience.

TELE-CALL, INC.  
731-4700

### 202 Help Wanted

CASHIERS  
WANTED  
Part time.  
Apply in person at:  
VLAMIS LIQUORS  
in Elkton

COUNTER HELP  
& DELIVERY DRIVERS  
Good starting salary. Apply in person:  
Papa Ricardo's  
19 Salem Village Square  
Newark, DE

Evening Supervisor  
F/T & P/T  
National telemarketing agency seeks self-motivated individual to oversee a multiproject, professional telemarketing operation. Includes scheduling, ongoing coaching, & motivation. Ideal candidate will have supervisory & telemarketing experience. Highly visible position with future advancement opportunities. Salary commensurate with experience.

TELE-CALL, INC.  
731-4700

CASHIERS  
WANTED  
Part time.  
Apply in person at:  
VLAMIS LIQUORS  
in Elkton

COUNTER HELP  
& DELIVERY DRIVERS  
Good starting salary. Apply in person:  
Papa Ricardo's  
19 Salem Village Square  
Newark, DE

Evening Supervisor  
F/T & P/T  
National telemarketing agency seeks self-motivated individual to oversee a multiproject, professional telemarketing operation. Includes scheduling, ongoing coaching, & motivation. Ideal candidate will have supervisory & telemarketing experience. Highly visible position with future advancement opportunities. Salary commensurate with experience.

TELE-CALL, INC.  
731-4700

### AUCTION SERVICE

### PUBLIC AUCTION

### SPRING CONSIGNMENT AUCTION

SAT. MARCH 18th, 1989  
10:00 A.M.

HAULING AVAILABLE  
- RESTAURANT ON GROUNDS -  
INVITING:

TRACTORS - BALERS - LAWN & GARDEN EQUIPMENT - TOOLS - LUMBER - WIRE - VEHICLES

PHONE YOUR CONSIGNMENTS IN NOW 301-658-6400  
TURN YOUR UNWANTED ITEMS INTO CASH - SELL THE AUCTION WAY - EXPERIENCED AUCTION STAFF - DON'T FORGET PHONE IN YOUR CONSIGNMENTS NOW.

YOUR AUCTION FAMILY:  
NORMAN E. CAROL A.  
& CHRIS E. HUNTER

AUCTION HELD AT:  
HUNTER'S SALE BARN, INC.  
RT. 276  
PHONE 301-658-6400  
RISING SUN, MD 21111

"CECIL COUNTY'S LEADING AUCTION SERVICE"

### AUCTION SERVICE

### List Your Auction Now

for the Spring Season!

FREE consulting about what an auction can do for you.

PHONE 301-658-6400

Norman E. Hunter

Licensed & Bonded in Maryland, Delaware and Pennsylvania

### AUCTION EVERY MONDAY - 6 PM

### FLEA & FARMERS MARKET

### EVERY MONDAY 3-9 PM

Why Have a Yard Sale?

We have buyers here every week. Immediate payment.

HAULING AVAILABLE HOURS:  
8-4:30 Mon.-Fri.  
HUNTER'S SALE BARN  
Route 276 Rising Sun, MD  
PHONE 301-658-6400

### SALES/AUTO CAREER

### AT THIS OPPORTUNITY

NO EXPERIENCE NEEDED

Men and Women

Wanted for

CARMAN L/M/MERKUR\*

CASTLE FORD

FREE Training Program

"No Cold Calls - No Canvassing"

If you're not making \$34,000 to \$51,000 you're missing the boat! Business is booming and we need help. Here's your opportunity to enter the exciting money-making automobile business WITHOUT ANY EXPERIENCE. To guarantee your success, you will be trained by the experts, National Auto Sales Consultants, of Phila., at our dealership at our own expense.

### WE GIVE YOU:

- \* FREE Training Program
- \* FREE Career Evaluation
- \* New Car Plan
- \* Salaried Apprenticeship
- \* Bonus/Incentives
- \* Excellent Medical Plan
- \* Paid Vacation

EARN FROM

\$34,000-\$51,000

1st year

Let's Talk This Opportunity is Now!

Sat., March 4 - 10 AM-4 PM

Mon., March 6 - 10 AM-8 PM

Apply In Person

CARMAN LINCOLN/MERCURY/MERKUR

3420 Kirkwood Highway

(Prices Corner)

Wilmington, DE

No Phone Calls Please

## Your tomorrow begins today at CHEMICALBANK (DELAWARE)

You can be part of the growing team at the new Chemical Bank (Delaware) Credit Card Production Services operation at Pencader Corporate Center (Routes 40 and 896) in Glasgow.

We offer competitive salaries, excellent benefits, growth potential, free parking and convenient access to I-95, US 40 and Old Baltimore Pike.



### Computer Operators

We need people with experience on IBM Systems 3174 & 4248, Paradyne tape drivers, AT&T systems 75, PCs, modems and patch panels. If you have three to five years' experience and have strong technical skills, we want to talk with you. We have positions open for both day and night shifts.

### Card Issuance

For those people with card embossing and vault control experience, we have both day and night shifts available.

### Credit Applications Processing

If you have data entry and analytical skills, we have evening shift (2:30 pm to 10 pm) positions available. You will be keying application information and must be able to make some processing decisions.

### Payments Processing

If you're looking for a part-time position, we've got the shift to fit your schedule, any day of the week or time of the workday. Shifts range from 6 am to noon to 1:00 pm to 7:00 pm. Midday and weekend single-day shifts are also available.

Positions working more than 20 hours a week will be eligible for benefits.

If you want to become a part of the Chemical Bank (Delaware) team, send your resume to:

Linda Heffernan  
Manager, Human Resources  
Chemical Bank (Delaware)  
222 Delaware Avenue  
Wilmington, DE 19899

or stop in and fill out an application at:

Chemical Bank (Delaware)  
225 Corporate Blvd.  
Suite 110  
Pencader Corporate Center  
Newark, DE 19702

We are an equal opportunity employer.

Member FDIC

### CHEMICALBANK (DELAWARE)

The bottom line is excellence®



## 202 Help Wanted

Earn \$  
Educate & enjoy. Demonstrate  
Discovery toys part-time or full-  
time. Call: Paullette.  
302-834-1331.

**CLEANING OFFICES**  
Elkton area. Part time even-  
ings. Monday thru Friday.  
1-800-441-9222 or  
302-571-9587

**FOOD SERVICE**  
**CONCESSIONS MANAGER**

Administers and controls daily  
operations and cash control of  
concessions, mobile vending  
units and vending machines;  
responsible for food conces-  
sion sales at all athletic events  
and mobile vending sales; re-  
cruits, trains and supervises  
employees; processes requis-  
itions for all products and equip-  
ment; maintains records, and is  
responsible for the mainte-  
nance, sanitation, safety and  
security of concessions and  
vending units. Degree in Hotel,  
Restaurant and Institutional  
Management or a related with  
2 years of effective experience.  
Concessions and vending ex-  
perience a plus. Send resume to:  
Dept. 212, Personnel Office,  
Food Service Department, 178  
Graham Hall, University of De-  
laware, Newark DE 19716.

The UNIVERSITY OF DELA-  
WARE is an equal opportunity  
employer which encourages  
applications from qualified mi-  
nority groups and women.

## LEGAL NOTICE

**CITY OF NEWARK**  
**DELAWARE**  
**CITY COUNCIL**  
**PUBLIC HEARING**  
**NOTICE**  
MARCH 13, 1989 - 8 P.M.  
Pursuant to Section 27-  
21(b)(3)(e) of the City of  
Newark Subdivision and  
Development Regulations,  
notice is hereby given of a  
public hearing at a regular  
meeting of Council in the  
Council Chamber, Newark  
Municipal Building, 220  
Elkton Road, Newark,  
Delaware, on Monday,  
March 13, 1989, at 8 p.m., at  
which time the Council will  
consider the application of  
Shopping Center Associates for  
the approval of the major  
subdivision of a 2.54  
acre parcel of land located  
on the west side of Library  
Avenue for the construction  
of a 25,000 square-foot office  
facility to be known as the  
Library Avenue Profes-  
sional Offices.  
ZONING CLASSIFICA-  
TION - BL (LIMITED  
BUSINESS)  
Susan A. Lambach, CMC  
City Secretary  
np3/2-2

**CITY OF NEWARK**  
**DELAWARE**  
**CITY COUNCIL**  
**PUBLIC HEARING**  
**NOTICE**  
MARCH 13, 1989 - 8 P.M.  
Pursuant to Section 402.2  
of the City Charter of the  
Code of the City of Newark,  
Delaware, notice is hereby  
given of a public hearing at  
a regular meeting of the  
Council in the Council  
Chamber at the Municipal  
Building, 220 Elkton Road,  
Newark, Delaware, on  
Monday, March 13, 1989, at  
8 p.m., at which time the  
Council will consider for  
Final Action and Passage  
the following proposed or-  
dinances:  
BILL 89-9 - An Or-  
dinance Amending Ch. 20,  
M.V.T. By Prohibiting Left  
Turns from McKee's Lane,  
Northbound, Onto East  
Cleveland Avenue.  
Susan A. Lambach,  
City Secretary  
np3/2-2

**IN THE COURT**  
**OF COMMON PLEAS**  
**OF THE**  
**STATE OF DELAWARE**  
**IN AND FOR**  
**NEW CASTLE COUNTY**  
IN RE: Change of Name  
JOSEPHINE FAULKNER  
to  
JOSEPHINE BALAGUER  
NOTICE IS HEREBY  
GIVEN that Josephine  
Faulkner, intends to pre-  
sent a Petition to the Court  
of Common Pleas for the  
State of Delaware, in and  
for New Castle County, to  
change her name to  
Josephine Balaguer  
Josephine Faulkner  
Dated: 2/6/89  
np2/23-3

**IN THE COURT**  
**OF COMMON PLEAS**  
**OF THE**  
**STATE OF DELAWARE**  
**IN AND FOR**  
**NEW CASTLE COUNTY**  
IN RE: Change of Name of:  
ROGER A. BRENEE to  
ROGER A. JACKSON  
NOTICE IS HEREBY  
GIVEN that Roger A.  
Brenee intends to present a  
Petition to the Court of  
Common Pleas for the State  
of Delaware in and for New  
Castle County, to change  
his name to Roger A.  
Jackson  
Roger A. Brenee  
DATED: 1/19/89  
np2/23-3

**LEGAL NOTICE**  
Estate of Helen E. Ford,  
Deceased.  
Notice is hereby given that  
Letters Testamentary upon  
the Estate of Helen E. Ford  
who departed this life on  
the 24th day of November,  
A.D. 1988, late of 605  
Cheltenham Rd., Wil-  
m., De., were duly granted unto  
Jane F. Vogelsang on the  
7th day of February, A.D.  
1989, and all persons in-  
debted to the said deceased  
are requested to make  
payments to the Executrix  
without delay, and all per-  
sons claiming against the  
estate of the deceased are  
required to exhibit and pre-  
sent the same duly pro-  
ved to the said Executrix  
on or before the 24th day  
of July A.D. 1989, or abide  
by the law in this behalf.  
Jane F. Vogelsang  
Executrix  
Piet H. VanOgrop, Esquire  
304 E. Delaware Avenue  
Newark, De 19711  
np2/23-3

## 202 Help Wanted

## CLERKS

Call  
OLSTEN  
and  
Discover How Great  
A Temporary Service Can Be  
Long & Short Term  
Assignments Available  
Call For Appointment Today  
NEVER A FEE OR CONTRACT

## OLSTEN

Temporary Services  
284 E. MAIN ST.  
NEWARK, DE.  
302-738-3500  
M/F/H

## 202 Help Wanted

## DRAFTSPERSON

McCrone Engineering has a  
position available for an entry  
level Draftsperson in surveying  
and civil engineering drafting.  
Excellent benefit package. Car-  
eer opportunity to grow with an  
established expanding com-  
pany. Send resume to:  
McCRONE INC  
118 North St  
Elkton, MD 21921  
E.O.E.

ESTIMATOR  
Experienced individual needed  
to estimate heavy & highway  
projects. Good salary with ben-  
efits. Send detailed resume in  
confidence to:  
DAISY CONSTRUCTION CO  
3128 New Castle Ave  
New Castle, DE 19720

## 202 Help Wanted

## ESCORTS

For Dating Service. Flexible  
Hours. Good Pay. Transporta-  
tion Provided. For Information,  
Call:  
301-398-1132

**FIRE SAFETY TRAINEES**  
No experience necessary  
Part-time/Full-time

**\$12/HR.**

Call 9-6pm, 302-737-2278  
**GROUNDKEEPER/  
ESTATE MANAGER**  
Good working conditions on  
lovely estate near Corner  
Ketch. Variety of duties. Good  
benefits. Write to:  
Mr. White  
Box 3998  
Wilmington, DE 19807

## 202 Help Wanted

## Government Jobs

\$15,400-\$72,500 Now hiring.  
Excellent benefits. Call  
1-312-742-1142, Ext. J-7097  
(For Directory).

**FRIENDLY RESTAURANT**  
Full & part time positions open  
for our daytime shifts. Above  
average earnings & benefits.  
Opportunity for advancement.  
NOW HIRING FOR:  
Waitresses/Waiters  
Supervisors  
Dishwashers  
Prep Work  
Cooks  
Apply in Person Or Call Manager At:  
Newark, DE  
302-453-9775

**HORSE FARM**  
Exercise Rider & Groom for TB  
Farm. References. Non-  
smoker preferred.  
301-392-0146

## 202 Help Wanted

HAIR STYLIST/  
NAIL TECHNICIAN

For Newark Area. Full or Part  
Time. Salary/Commission.  
Benefits Available. Experience  
With Some Following  
Preferred.  
302-738-6056

**HOUSEKEEPER**  
Apply in Person:  
COMFORT INN  
1120 S. College Ave  
Newark, DE

**ASST MANAGER TRAINEE**  
\$70-\$100/Day  
4 POSITIONS  
AVAILABLE IMMEDIATELY  
All Have Overtime You Want  
Must Have Dependable Auto  
Call between 10am-Noon Only  
Wed. & Thurs.  
Ask For Mr. Hammack  
With Jewelry Exchange  
301-392-3060

**MASON DIXON REALTY**

**OPEN HOUSE**

**SUNDAY, MARCH 5, - 1:00-4:00 PM**

**82 TOPEKA RD., CONOWINGO - \$99,500**

You are invited to our OPEN HOUSE. These are homes you will enjoy seeing! Three brand new ranchers w/one-car attached garages. All have 3 BRs, 2 full baths, LR, DR, FR, and lovely KIT. All are situated on over an acre lots w/land-of-peace privacy. Skylights, Andersen windows & designer front doors are a few of the many extras you will enjoy seeing. COME SEE FOR YOURSELF!

**NEW CONSTRUCTION - \$96,900**

to be completed for spring occupancy. 3 BRs, 2 baths, 2 car garage & heat pump on lovely corner lot in Holland Acres. Come out & meet your hostess Carol A. McDaniel & have her help you choose cabinets & carpet selections to put the finishing touch to this beautiful bi-level.

**DIRECTIONS:** From Rt. 276, turn on Dr. Jack Rd. Follow for several miles. Holland Acres is on right side of road. See signs. Lot #89, Dutch Dr., Holland Acres, Conowingo.

For more information, please call JUDY KIMBALL at the Elkton office 301-396-9444 or 302-738-7301.

**-Barry Montgomery, Broker-  
Rising Sun, MD**

**MLS**

**NOW HIRING  
BREAKFAST  
&  
DAY SHIFTS  
\$4.25/hr  
MIDNIGHT  
SHIFT  
\$ 4.75/hr.**

Apply In Person

**Hardee's®**

ELKTON  
299 East Pulaski Hwy.

We're out to win you over.

An Equal Opportunity Employer

UNIVERSITY OF DELAWARE  
FOOD SERVICE DEPARTMENT

**FOOD SERVICE UTILITY WORKERS:**  
FULL TIME W/BENEFITS  
\$5.85/HR.

**FOOD SERVICE WORKERS:**  
FULL TIME W/BENEFITS  
\$5.43/HR.

**PART TIME CAFETERIA WORKERS:**  
\$5.00/HR.



APPLY: 178 Graham  
Hall Academy Street  
(between Delaware  
Ave. & Lovett Ave.)  
Newark, DE 19716.

The University of Delaware is an AA/EEO Employer

PICK YOUR COLORS  
NOW

on this 2300 sq. ft. custom contemporary, ready for  
you to move in 30 days. Located on 2 acres on Lom-  
bard Rd., 15 minutes from Newark. Master BR suite  
with spa on first floor. Country kitchen with  
breakfast nook, formal DR, LR and FR with 2 way  
fireplace, 40' deck and vaulted ceilings. 3 BRs and  
bath on 2nd level, plus balcony and lounge that  
overlooks FR. Exterior is stone cedar and stucco.  
Much more. \$239,900. Call Harry Marcus.

MINUTES FROM NEWARK  
OR WILMINGTON

Ranch in Deerhaven, first floor has LR, DR, country  
kitchen, 3 BRs and laundry room; lower level has 4th  
BR, family room with fireplace and basement area  
and central air. Private water-oriented community  
with boat ramp. Owner wants to build. Reasonable  
offers considered. \$113,900. Call Harry Marcus.

## Weichert, Realtors

Call Collect  
0-302-999-1400

**Be Our Neighbor**

**TimberBrook**

North East, MD

**Come Visit Our Models PHASE III NOW OPEN**

**OPEN: Mon.-Thurs. 12 Noon-5 PM  
Sat. & Sun. 12 Noon-5 PM  
After 5 by Appointment**

**STANDARD FEATURES—**

- \*2 or 3 Bedrooms
- \*Full Bath & Powder Room
- \*Congoleum No-Wax Floors
- \*Range & Range Hood
- \*Garage Disposal
- \*Andersen Windows
- \*French Doors
- \*Baseboard Heat

**MANY OPTIONAL FEATURES AVAILABLE**

**Starting at \$64,900**

**Low Down Payment  
FHA - Approved**

Located on Rt. 272 off Route 40, 1/4 mile north of traffic light.  
Take first right just past North East Plaza

**CALL 301-287-2277  
FOR ADDITIONAL INFORMATION**

A New P.L.D. Community With Something Special To Offer!

## A. C. Litzenberg &amp; Son

Realtors · Appraisers · Builders



**TIMBER BROOK TOWNHOUSE**  
Almost new townhouse with heat pump,  
8x10 deck, basement. Stainmaster  
carpeting. Lots of extras. 3 bedrooms,  
1 1/2 baths. \$78,900. 392-3425. #30-2244

**WATERVIEW HOME  
IN ELK RANCH PARK**  
3 BR Ranch on double corner lot. Large deck  
with privacy - Family room with woodstove  
and workshop in lower level. 398-3877  
\$98,000. #20-2236.

**PROPOSED NEW CONSTRUCTION**  
On 1A+/- within walking distance to Chan-  
tilly Golf Course. Call now & have your  
choice of colors, carpet, in this 3 BR Cape  
Cod. Call Bill Smith at 658-3966. \$189,900.  
#50-2226.

**FOR THOSE WHO  
APPRECIATE THE PAST**  
Solidly constructed, older home located  
with in-town conveniences. Convenient to  
Harford County. Call Pam Feldscher 398-  
8234 or 398-3877. \$115,000. #40-2241.

**SECLUSION AT IT'S BEST**  
Enjoy the woods in this rancher situated on 2  
3/4 acres. Many possibilities for expansion.  
\$94,500. #50-2242.

**ARE YOU LOOKING**  
for a well-maintained home in the country?  
This 2-story on 2.46 acres with a detached  
garage might be just what you're looking  
for. Call 392-HOME for more information.  
\$87,500. #50-2161.

**NORTH EAST SCHOOL DISTRICT**  
Room for the children to play is found in this  
large Cape Cod Home. Many amenities.  
\$110,000. 398-3877. #30-2189.



**CONTEMPORARY FLAIR**  
This new construction offers you 3 BR, 1 3/4  
baths on a wooded parcel. Near marinas.  
Call Pam Feldscher for details. 398-8234 or  
398-3877. \$86,900. #10-1218.

**DELAWARE AVE., ELKTON**  
3 BR., 1.5 Bath brick front rancher, im-  
maculate condition, remodeled and enlarged  
kitchen with cherry cabinets. Finished base-  
ment with family room and workshop. Call  
Carolyn Loftus at 398-7015 or 398-3877.  
\$87,500. #20-2217.

**COMFORTABLE 4 BR HOME**  
Has a large brick fireplace in FR. Features:  
eat in kitchen, + wrap around deck on over  
an acre of ground for \$111,900.00. 398-3877.  
#20-2228.

**"COUNTRY LIVING AT ITS' BEST"**  
Nice 3 BR., 2B. rancher on 1 acre of non-  
development land. Call today for details.  
Home Owners' Warranty Included. \$89,900.  
398-3877. #20-2224.

## COMMERCIAL/INDUSTRIAL

Corner of Bridge St. & Railroad Ave., .24 acres  
zoned C-2. #20-2179  
Elkton, 70 acres +/-, zoned R-1, R-2, C-2.  
\$1,084,000. #20-2110  
Elkton, 3 1/2 acres +/-, zoned C-2.  
\$350,000. #20-2111  
Elkton, 93 acres +/-, zoned R-2, R-3. #20-2112  
Elkton area. Industrial Property (IM-2) on 3.3  
acres. \$250,000. #20-2235  
2 bldgs (6,000 sq. ft. masonry & 6,000 sq. ft. pole  
barn)  
Industrial/commercial - towing & salvage  
business. C-2 - M-2. #525,000. #20-2151  
North East area. C-2 parcel 2.24 acres on  
Rt. 40. #250,000. #20-2178



**"MOVE IN THE SPRINGTIME"**  
Your new home is located in Harbor View  
near marinas and boating. Great starter  
home in a nice community for your family.  
Maintenance free rancher. \$78,900. 398-  
3877. #10-2219.

**NICE RETIREMENT  
OR STARTER HOME**  
Town convenience comes with this 2 BR  
with large family room, home also features 2  
car detached garage and many extras. Call  
Mark Murray for details 398-3877. \$74,000.  
#20-2238.

**"RAISE YOUR CHILDREN  
IN THE COUNTRY"**  
New construction on a rural wooded 1 acre  
lot. Beautiful country kitchen includes  
disposal, dishwasher, range in sliders to an  
8x10 deck. Purchase this 3 BR rancher now.  
Upgrades and options available. Call Mark  
Murray 398-3877 for details. \$85,900.  
#50-2220.

**IF YOUR FAMILY  
IS OUTGROWING**  
your present home we have just the home  
for you - this 4 BR., 1 1/2 bath split-level on 1  
acre has 2 fireplaces, a den and a family  
room. Call today for more info. 392-HOME  
\$121,900. #30-2181.

## NEW HOME CONSTRUCTION

A.C. Litzenberg & Son offers  
you Quality new homes to be  
built on your lot or ours. Call our  
New Construction Manager for  
details.  
Mark Murray: 398-3877



**OWNER TRANSFERRED**  
This nicely built home on beautiful lot has a  
large deck. Great area for the growing fam-  
ily. Close proximity to Harford County.  
\$85,500. 287-8700. #50-2198.

**FIRST TIME BUYERS**  
Come see this cozy three bedroom home in a  
good location - recently painted - has large  
walk in closet in Master bedroom. Bath is  
remodeled. Bay Window in Living Room.  
\$69,900. #70-2245.

**LOTS FOR SALE**  
Chesapeake Haven - various bldg. lots starting at  
\$15,500. #10-1656  
Blue Ball Rd. - 7.5 acres wooded. Owner financing  
available \$81,500. #20-2195  
Chesapeake Isle - great bldg. lot in prime water-oriented  
community. \$40,000. #30-2210  
Fair Hill Area - prime bldg. lot 8.8 acres. No builder tie-  
in. \$75,000. #50-2240  
Non-development bldg. lot - .75 acres, perc approved,  
North East. \$26,000. #30-2209  
Near I-95 Perryville, 1/4 acre lot. Town water/sewer.  
\$31,500. #40-2185.

## American Real Estate Institute, Inc.

**Cecil County's Only Independent  
Real Estate School**

**"Be Ready for the Spring Season"**  
Accelerated 4 Week Course  
Beginning March 21, 1989  
Registration thru the 20th of March

\* Cost: Only \$150  
\* Includes Books & Fees  
\* Experienced Instructors

**Call Today:  
287-8700 or  
398-3877**



398-3877

207 W. MAIN ST.  
ELKTON, MD 21921

SINCE 1948

CECIL & NEW CASTLE COUNTY MULTI-LIST SERVICES  
AGENTS AVAILABLE 7 DAYS A WEEK

287-8700

4 S. MAIN ST.  
NORTH EAST, MD. 21901





## ATTENTION

### First Time Home Buyers— Be Ready For The Next Release Of CDA BOND MONEY

Stop by today and let G&S go over the CDA program with you. We can let you know if you qualify. You could be in your new home by Spring!

**BE A STEP AHEAD — CALL FOR YOUR  
APPOINTMENT TODAY — 301-398-9616**



**OUR OFFICE IS LOCATED AT  
133 HEARTHSTONE DRIVE- ELKTON**

**RIISING SUN  
LOCATION**  
Queen & Cherry Sts.  
Rising Sun  
301-658-4911  
301-378-2901



**MASON  
DIXON  
REALTY**  
BARRY MONTGOMERY, BROKER

#### 202 Help Wanted

**INSURANCE**  
Established territory with century old company. Experience preferred. Company paid benefits plus... Call: 302-656-0342

#### CLASSIFIED ADS WORK

##### Work Near Home

Work in the neighborhood... See Friendly for full or part-time positions. Excellent earnings, up to \$10 per hour or more with base wage plus tip potential on waiter/waitress position. Openings in other job functions too... Experience not required. Flexible hours... Ideal for homemakers, students and senior citizens. Call for an interview: 302-738-0178.

**Friendly**  
restaurants

2670 Kirkwood Hwy.  
Newark, DE 19711  
EOE M/F

#### 202 Help Wanted

**IF YOU DON'T SELL AVON PRODUCTS... Here's some reasons WHY YOU SHOULD!**  
High as 50% earnings on a product that sells itself. Create your own working hours and be your own boss. Orders delivered right to your door at no charge. Discounts on your own Cosmetics, Beauty Aids, Jewelry and Gift Items. Win fabulous gifts and prizes. Come join the family of Avon Representatives. You'll be glad you did! Call after 5pm, 301-658-5958.

**LAWN & GARDEN MECHANIC**  
Experienced desired but, will consider beginner. Salary based on experience. Call: 301-275-8200 or 301-648-5467

#### 202 Help Wanted

**MARINE MECHANIC**  
Experienced desired but, will consider beginner. Salary based on experience. Employee benefits. Call: 301-275-8200 or 301-648-5467

**MODELS/ACTORS**  
Casting, Casting, Casting for TV commercials, local films, & catalogue work. Experienced & non-experienced wanted. \$150-\$1000 per day. For appointment, call 215-519-4240 or 609-795-2212.

**NURSE AIDES**  
Full & part time Nurse Aides. Openings on all 3 shifts. Excellent benefits. Fine home to work in.

**LITTLE SISTERS OF THE POOR**  
Joanne Jugan Residence  
185 Salem Church Rd  
Newark, DE 19713  
302-368-5886

#### 202 Help Wanted

**JAZZercise-Aerobic Dance**  
Fitness. Morning classes in Bear & Newark. Babysitting available. For more information, call Lisa 834-1616.

**NURSING ASSISTANT**  
Excellent benefits, yearly raises as long as employed. Certification not req. Will train.

**RN or LPN**  
Part time night shift.

Apply in person at:  
254 West Main St.  
Newark, DE 19711  
Mon-Fri, 9am-5pm

**PRODUCTION**  
Immediate opening for persons to sort, grade, & fold work clothing. Good work environment. Excellent benefits. Day work. Call 302-764-7553 or apply at:

Nixon Uniform  
2925 Northeast Blvd.  
Wilmington, DE

#### 202 Help Wanted

**PRODUCTION WAREHOUSE**  
Immediate opening. No experience necessary. Will train dependable & ambitious person. Steady work. Excellent company benefits. Opportunity for advancement. Apply in person, 9am to 5pm at:  
American Moulding Inc.  
6 Industrial Dr.  
Peninsula Ind. Park  
North East Md.

**SALES**  
Need assertive, personable, hardworking individual to represent quality, import automobile dealership. Call Ken or Bob at Colonial Honda.  
301-642-2433  
302-453-9175

#### SECRETARIES TYPISTS

Osten Means... Experience! And We Offer  
The Best Temporary Positions With The Best Companies

**PLUS:**  
Friday Pay  
(the same week you work)  
Holiday Pay  
Vacation Pay  
Major Medical Insurance  
Free Cash-In Hospital Pay  
Free Word Processing Training  
(To Qualified Applicants)

Call For Appointment Today  
NEVER A FEE OR CONTRACT

#### OLSTEN

Temporary Services  
284 E. MAIN ST.  
NEWARK, DE  
302-738-3500  
EOE M/F/H

#### 202 Help Wanted

**SAW OPERATOR**  
Needed immediately. Experience helpful, but will train dependable & ambitious person. Steady work. Excellent company benefits. Opportunity for advancement. Apply in person, 9am to 5pm at:  
American Moulding Inc.  
6 Industrial Dr.  
Peninsula Ind. Park  
North East Md.

**SECRETARY/RECEPTIONIST**  
Part-time position available. Individual must be a skilled typist. Pay commensurate with experience. Please apply in person at Laurelwood Nursing Center, 100 Laurel Dr., Elkton, MD. SECRETARIAL

\*Are you bright, energetic, ready to jump in to a busy work environment?  
\*Are you looking for that chance of a lifetime to upgrade your job?  
\*Do you have excellent phone skills?

**CAREERS USA** has just the job for you. Many opportunities available for permanent secretarial positions in the Newark area. Call us today to arrange a confidential interview.

**SURVEY FIELD PERSON**  
Established expanding survey/engineering firm needs chainman/instrument man for field position in Elkton area. No experience necessary. Excellent benefit package. Send resume to:  
McCRONE INC.  
118 North St.  
Elkton, MD 21921  
EOE.

## PETRO STOPPING CENTER NOW HIRING:

**Deli Cashiers**  
4 p.m. - 12 midnight  
Both shifts

**Fuel Attendants**  
4 p.m. - 12 midnight  
12 midnight-8 a.m.

**Contact  
CHERYL LITTLE  
Between 12 Noon & 9 PM at  
301-392-3050  
E.O.E.**



**HOW WOULD YOU LIKE** to remodel a true colonial inn? This structure, now a house, needs work, but what a charming setting in the country village of Lewisville, Lewisville is in southern Chester County on Route 213, but the property is just in the edge of Maryland above Fair Hill. Small horse barn and pasture if you want a good place for horses.



**CELEBRATION** - One year old 3,000 sq. ft. contemporary cedar rancher situated on 5 1/2 acres partly wooded with stream. This home is in immaculate condition. Minutes to Newark. \$239,900. Call Rosemarie Quinn for inspection.



**FOR THE TRUE COUNTRY LOVERS** this tastefully renovated, well maintained 3 story Farm House is situated on 10 rural acres near West Nottingham in Cecil County. This home offers an abundance of space including 7 bedrooms. An old granary could make an excellent garage with some remodeling or a stable.

**LOTS FOR SALE.** Trinity Church Rd. Out of 8 lots, only 3 left: 6.3, 10.5 and 14.75 acres. Call Susette Cissel for more information, 398-6653.



**TWO RIVERS** - NEW! Contemporary cypress ranch with southern view of Bohemia River. Features 3 BR, 2 baths, large FR with fireplace. Pick your carpets and move in! Ask for Lloyd Sanders.



**MANCHESTER PARK** - Enlarged 3 BR ranch home with added MBR and private bath. Also included is a sunroom/FR addition. Priced to sell at \$112,900. Call soon, it won't last long. Call George H. Williams for details.



**DELAWARE-MARYLAND-PENNSYLVANIA**

## Williams Co. REALTORS

Stop By Our Convenient Location  
"SERVING THE GREATER CHESAPEAKE"  
5800 Telegraph Rd. (Rt. 273), Elkton, Maryland 21921

**301-398-2300**  
DELAWARE-MARYLAND-PENNSYLVANIA

## WESTMORELAND REALTORS-BUILDERS

Waterfront • Lots  
New Homes • Investments

500 S. Main St.  
North East, MD  
301-287-5657



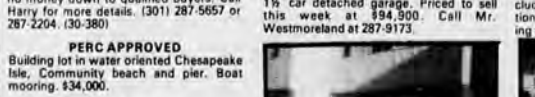
**WHAT A VIEW**  
New waterfront listing on the Bay. 3 BR, 2 bath ranch on 1 acre with 104 ft. waterfront. Sits up high for panoramic view. Cathedral ceilings in LR with stone fireplace, over 1800 sq. ft. with full walkout basement, pre-spring price \$330,000. (40-359). Call Chuck at 301-287-5657.



**NEW LISTING**  
It takes more than a picture and a thousand words to describe this quaint farmette. Just one look and you will agree for the right person it is a rare find. Needs a little work. If you thought a small farmette was out of your reach look at this one and think again. Orchard and tools included. Call Harry 287-5657. (40-365) Make us an offer.



**NEW LISTING**  
Beautiful ranch style home larger than normal, 2 BRs, situated on 1 1/2 acre wooded lot near community beach & boating area. Includes in-ground pool & 1 1/2 car detached garage. Priced to sell this week at \$94,900. Call Mr. Westmoreland at 287-5173.



**PERC APPROVED**  
Building lot in water oriented Chesapeake lake. Community beach and pier. Boat mooring. \$34,000.

**LOVELY RANCHER**  
Almost one acre lot with 16'x32' in-ground pool and huge deck. Ready for immediate occupancy. 3 BR, full basement. Near I-95 & Route 40. Asking \$91,900. Call Joyce 642-6420. (40-372)

**NEW LISTING**  
2 bedroom row house in Perryville. Good investment property, shows good. Priced to sell at \$32,500. Call Harry Patchell at 287-2304 or 287-5657.



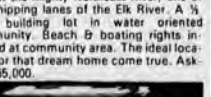
**VALUABLE COMMERCIAL PROPERTY**  
Located on S. Main St. in Port Deposit, MD. Building on .465 acre is in very good condition, clean. Won't last long at \$125,000. Call Harry 287-5657 or 287-2304. (40-375)



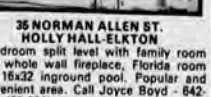
**PERC APPROVED**  
Building lot in St. Johns Manor. Over 2 acres with beach rights. Builder ready to begin construction now. \$55,000. (30-374)



**NEW LISTING**  
Finally a home for sale in popular Hances Point! A beautifully appointed ranch home with a 2 car garage, situated on 1.3 acres with a commanding country view from a private knoll. Near the Northeast River & marinas. Asking \$125,000. Harry Patchell, listing agent.



**HANCES POINT**  
Finally a home for sale in popular Hances Point! A beautifully appointed ranch home with a 2 car garage, situated on 1.3 acres with a commanding country view from a private knoll. Near the Northeast River & marinas. Asking \$125,000. Harry Patchell, listing agent.



**2 VIEWS**  
One of the mighty Northeast River, one of the shipping lanes of the Elk River. A 1/2 acre building lot in water oriented community. Beach & boating rights included at community rate. The ideal location for that dream home come true. Asking \$65,000.

#### LEGAL NOTICE

**IN THE COURT OF COMMON PLEAS FOR THE STATE OF DELAWARE AND FOR NEW CASTLE COUNTY IN RE: CHANGE OF NAME OF:**  
Ingrid Reid  
PETITIONER(S)

**TO INGRID REID-PRICE**  
NOTICE IS HEREBY GIVEN THAT Ingrid Reid intends to present a Petition to the Court of Common Pleas for the State of Delaware in and for New Castle County, to change her name to Ingrid Reid-Price.

DATED: February 17, 1989  
Petitioner(s)  
np3/2-3

#### LEGAL NOTICE ANNUAL ASSESSMENT

**APPEAL**  
The Annual Assessment Roll for New Castle County for the tax year beginning July 1, 1989 may be inspected in the offices of the Assessment Division of the New Castle County Department of Finance, Third Floor, City/County Building, 800 French Street, Wilmington, from 9:00 a.m. to 4:30 p.m., Monday through Friday.

Property owners who believe that their properties have been incorrectly assessed may appeal those Assessments to the Board of Assessment Review of New Castle County. Forms to appeal an assessment may be obtained from the Assessment Division at the address aforesaid. Appeal forms must be completed and filed with the Assessment Division no later than 4:30 p.m. on Wednesday, March 15, 1989.

The Board of Assessment Review will sit in the City/County Building to hear appeals. Appeal hearings will be scheduled between March 15 and April 30, 1989, unless continued by the Board. Persons who file appeals before the statutory deadline will, in accordance with 9 Del. C. Sec. 8311, be notified of the exact date and time at which their appeal will be heard.

## POWELL LTD. REALTORS

**398-4300**

104 Northside Plaza • Elkton, Md.

1-800-345-6772



**FAIR HILL AREA**  
3BR, 1B Ranch. Family room, playroom, and above ground pool. AC. Beautiful landscaped and blacktop driveway. Ceiling fan in kitchen included. Offered at \$91,500. \$189-20. Call for an appointment at office or home 301-658-2645.



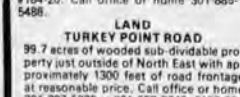
**ELKTON-MANCHESTER PARK**  
Beautiful 3 bedroom, 2 1/2 bath two story, brick front. Heat pump, cathedral ceiling in family room. 2 car garage, 1/2 wooded lot. Price \$199,900. \$152-20. Call office or home 301-392-4756.



**NEWLY CONSTRUCTED**  
3BR Raised Ranch home in Fair Hill area. Still time to select carpet. Many extras including ceramic tile in foyer, kitchen, & baths. Large deck, spacious family room, utility room, and walk out lower level. Offered at \$104,900. \$159-20. Call office or home 301-287-5330 or 301-658-2645.



**INVESTORS**  
Must see this duplex. Each unit has 1 bedroom, 1 bath, living room & kitchen. Front porch. New high efficiency gas furnace. Offered at \$54,900. \$184-20. Call office or home 301-885-5488.



**LAND TURKEY POINT ROAD**  
99.7 acres of wooded sub-dividable property just outside of North East with approximately 1300 feet of road frontage at reasonable price. Call office or home 301-287-5330 or 301-658-2645. \$115-60.



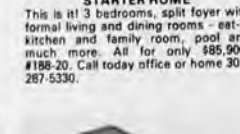
**BEULAHLAND**  
3BR, 2B, Bi-Level. Cathedral ceilings in LR, and Kitchen. Family room - entry to the two car garage. Above ground pool. Offered at \$119,900. \$191-30. Call office or home 301-658-2645 or 301-287-5330.



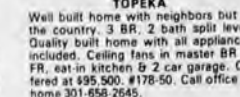
**TWO STORY VICTORIAN**  
3BR, 2 1/2 B, fireplace, full basement situated on 2.78 acres with private community beach. Buy now and have choice of carpet color. Offered at \$169,900. \$158-30. Call office or home 301-287-9616 or 301-392-4756.



**IF YOU ARE LOOKING FOR THE PERFECT STARTER HOME**  
This is it! 3 bedrooms, split foyer with formal living and dining rooms - eat-in kitchen and family room, pool and much more. All for only \$85,900. \$188-20. Call today office or home 301-287-5330.



**TOPEKA**  
Well built home with neighbors but in the country. 3 BR, 2 bath split level. Quality built home with all appliances included. Ceiling fans in master BR & FR, eat-in kitchen & 2 car garage. Offered at \$95,500. \$178-50. Call office or home 301-658-2645.



**LAND**  
40 acres - Open and wooded near Fair Hill. For further information call office or home. 301-392-4756 or 301-658-2645.



**PRINCIPIO HEIGHTS PRICE REDUCED**  
Value for your money, this home is ready to move in only 6 months old. 3 BRs w/room to grow to 4 & family room. ONLY \$89,900. \$155-50. Owners anxious. Call office or home 301-287-9616 or 301-392-4756.



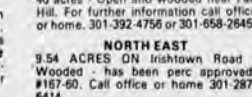
**RAISED RANCH**  
On over an acre with a garden its own. Satellite dish, 2 Baths, Family Room, Eat-in kitchen, blacktopped driveway. Room for a growing family 2 miles out of town. Offered at \$99,900. \$179-50. Call office or home 301-658-2645.



**NEW HOME**  
Loaded ranch - lot of extras. Heat pump, central air, eat-in kitchen, full basement. Dining room has ceiling fan, all Andersen windows, sliding glass door to a larger than average deck. Offered at \$94,900. \$168-50. Call office or home 301-658-2645 or 301-287-5330.



**LOW MAINTENANCE**  
Partial brick 3BR Bi-Level. Centrally located with excellent access to major highways within Elkton area. New vinyl in kitchen and bath area, new carpet in Master bedroom. Family room with woodstove. Offered at \$93,500. \$192-30. Call office or home 301-287-6687.



**LAND**  
40 acres - Open and wooded near Fair Hill. For further information call office or home. 301-392-4756 or 301-658-2645.

**NORTH EAST**  
9.54 ACRES ON Irishtown Road - Wooded - has been pre-approved. \$167-60. Call office or home 301-287-6414.



## 202 Help Wanted

**SECURITY GUARDS**  
BONUS IF HIRED  
All hours available, no experience needed. Male/female. Retired welcome. Top pay & benefits. 302-368-3489.

**SURVEY**  
**OFFICE TECHNICIAN**  
Established, expanding Land Surveying & Civil Engineering Firm seeks a Survey Technician competent in boundary line computations. A minimum of 1 year experience is required. Excellent career opportunity with a good benefits package. Send resume to:  
McCRONE INC  
118 North St  
Elkton, MD 21921  
E.O.E.

**TEACHER**-Newark area day-care center. 4 a.m. preschool only until June. Experience necessary. Start ASAP. 302-454-1122.

**TELEMARKETING**  
Full-time & part-time hours available. \$5/hr. plus commission. Flexible hours. Call 302-836-0270.

**"WAITRESS"**  
3pm-11pm  
**"COOKS"**  
**"CASHIERS"**  
**"MAINTENANCE"**  
Apply in Person  
SCOT FUEL STOP  
391 Belle Hill Rd  
Elkton, MD

## HELP WANTED!

Lumber Yard Help Wanted; also need reliable Sales Clerks for Lumber Counter. All company benefits, ins., paid vacations, etc.  
Call Gail at Bldrs. Choice  
398-9585

## 202 Help Wanted

**SOCIAL WORKER**  
Medical Social Worker to provide services to clients of Union Hospital's Adult Day Care Center. Part time contractual position requiring at least 8 hours per week. Applicants must be in compliance with the Licensure requirements of the State of Maryland and have at least 1 year of recent professional experience. Contact:  
UNION HOSPITAL  
OF CECIL COUNTY  
106 Singler Ave  
Elkton, MD  
301-398-4000  
Ext. 5051

## 202 Help Wanted

**WAREHOUSE/DRIVERS**  
United Electric Supply, a growing electrical distributor has opportunities for better than average workers who take pride in their work. Salary, benefits, incentives. Great situation for someone just starting out or embarking on second career.  
E.O.E. M.F. Write to:  
OPERATIONS MANAGER  
P.O. Box 10287  
Wilmington, DE 19850  
Woman to watch 2 children in my home. 5 Days a week. Must have own transportation. Call for interview. 302-733-0855.



## 306 Auto

**PAXTON'S CAR CARE**  
BUFF & SHINE  
Simonize Wax Specials  
CARS \$30.  
TRUCKS \$40.  
OPEN YEAR ROUND  
301-287-3019  
301-398-4077  
Call For Appointment!

## 316 Cleaning Services

**EXPERT CLEANING**  
Residential, commercial, new construction, estate clean-up. Also, total floor care services. Call Rita at Moch One at: 302-368-1980

## GENERAL ACCOUNTANT

Maryland Railcar Inc., has an immediate opening for the position of Accountant. Qualified individual must possess a BS in Accounting and 1 to 2 years experience. Responsibilities will include: monthly closings, payroll, taxes & assist with billing. Previous personal computer experience and good communication skills required. Salary commensurate with experience. Please send resume to: Mr. Edward Richtelli, P.O. Box 10, Elk Mills, MD 21920.

## D.S. Roofing &amp; Siding

David R. Stoltzfus  
"The Amish Men from Lancaster"  
Shingles & Siding Installed  
10% Discount  
On All Roofing Repairs Till March 15th  
151A N. Weavertown Rd.  
Ronks, PA 17672  
Call Between 6-9 PM  
717-768-7329

## MORE CASH FOR CANS AND GLASS BOTTLES &amp; JARS

Mon.-Fri. 8-4 Sat. 8-1  
NORTH EAST  
AUCTION GALLERY  
U.S. Route 40  
North East, MD  
287-5588  
2 CN

## JODLBAUER &amp; LIDUMS, P.A.

ATTORNEYS AT LAW



## PROPERTY SETTLEMENTS \$350

Fee includes:  
1. Conducting settlement (line 1101 on HUD-1 Settlement Sheet)  
2. Completing the examination (line 1103)  
3. Preparation and recording of all documents (line 1105)  
4. Certificates of title to owner and/or lender  
We would like to stress that all title examinations, preparation of all legal documents and settlement will be supervised and approved by attorneys authorized to practice law in the State of MD.  
\*a settlement of 10 lots or more in Cecil Co., MD.

200 East Main Street  
Elkton, Maryland 21921  
301-398-6220  
301-398-3332

## The #1 Best Sellers



Here's the Patterson-Schwartz team from the Newark Real Estate Center. They're experts in the Newark and Cecil County areas, and they can help you sell your home, or buy a new one, better than anyone else. Would you like to know what your home is worth in today's market? Call any one of these people today and ask for a free, no-obligation Home Evaluation Report.

**Patterson Schwartz**  
REAL ESTATE

Newark Real Estate Center, 680 South College Avenue, (302) 733-7000 or (301) 398-6262

## LANDVEST REALTY

Real Estate • Builders • Developers



**ELKTON - GLEN MARY HEIGHTS**  
New construction. 4 BR, 2 1/2 Bath, 2 story colonial with oversized one car garage. Located on a sloping 1/2 +/- acre, walking distance to schools and shopping. Take advantage of town living without town taxes. Extras include paved drive, brick front, full basement, heat with AC, lawn raked and seeded. Buyer to select carpet colors. \$179,900. Reduced \$149,900.

## 1 ACRE WOODED

Md. Rt. 273, minutes from Newark. Located directly across from Covered Bridge Farms. Will build to suit — \$150,000 minimum building package. Landvest Builders. Call for details.

## 7 ACRES LIGHTLY WOODED

Lewis Shore Rd., located 3 miles South on Rt. 213. Will build to suit your plans or ours. \$165,000 minimum building package. Landvest Builders.

## DEERHAVEN

3 BR ranch, 1 1/2 bath, full basement, heat pump with A/C, 1 car garage, and partial brick. Water rights to C&D Canal. \$94,900.

## DEERHAVEN — BI-LEVEL WITH 2 CAR GARAGE

3 BR, 2 bath, heat pump with A/C, separate dining room, full basement, partial brick. Water rights to C&D Canal. \$114,900.

Other lots available. Call for details.

(301) 398-2401

Evenings & Weekends  
Call (301) 398-8326

## DAVITT-MACKIE, INC. REALTORS

364 Fair Hill Drive Elkton, MD 21921  
(301) 398-2025

## PERRYVILLE

New bi-levels with 2 BRs, 1 bath, heat pump and 10 yr. Home Warranty. Homes qualify for CDA financing. Call Tom Wheeler for info.

## PEMBREY

Prime lot in water oriented community, acres & acres of open space & beach access for all lot owners. \$49,900.

## PRICE REDUCED

Two wooded building lots no builder tie-in, ready for you to have your plans approved & start your home.

## FAIRHILL

Large rambling ranch, 3 BRs, 2 baths, new heater, freshly painted int., fireplace, enclosed porch, family rm. & much more.

## PEMBREY

Water rights, enjoy your summer on the water, but come home to this fine colonial home all year, featuring 4 BRs, 2 1/2 baths, LR, DR, family rm., study & 2 car garage.

## LOW MAINTENANCE

New construction with low maintenance exterior, 3 BRs, 2 baths, central air, large lot plus 1 car garage, call for app. to review floor plans.

## \$3,000.00 SETTLEMENT HELP

2 story colonial. 2 1/2 baths, family room & 1st floor study, 2.5 Ac. +/- Hurry, this ones ready in 45 days.

## BRANTWOOD

Beautiful bi-level eat-in kitchen, DR, 3 BRs, 1 1/2 baths, woodstove in family rm. Call Tom Wheeler.

## NEW CONSTRUCTION

Ready to move into. 3 BR ranch, 2 full baths, 2 car garage, heat pump with A/C, plus 3/4 Ac. +/- lot. Call for showing.

## WYN LEA AT FAIR HILL

For the discriminating buyer, truly the finest residential community in Cecil County. Beautiful large rolling, home sites from 1.5 to 5 Ac. with home packages from your plans or ours. Call for details.

## OLD LINE VILLAGE OF FAIR HILL

New 2 story colonial with 4 BRs, 2 1/2 baths, LR, DR, study, family rm. with fireplace, front porch, rear deck, 2 car garage, gas heat and A/C. All for \$172,990.

Horse lovers dream, renovated 3 BR stone & frame farm house, country kitchen with stone fireplace, 2 baths & loft plus 3.9 Ac. +/- for the horses. \$189,990.

## Representing Davitt-Baldwin Inc. Custom Builders

Building Fine Homes On Your Lot Or Ours, From Your Plans Or Ours.

Office Hours Mon.-Fri. 8:30 a.m.-5:30 p.m.  
Wed. til 7:30 p.m., Sat. 9 a.m.-4:00 p.m.  
Sunday 1:00 p.m.-4:00 p.m.



## WATER-ORIENTED COMMUNITY

Beautiful 2-Story Colonial in a quiet bay-front community includes beach, boat ramp, seasonal view of the bay. Call Allison Hammond for more information. \$119,900. #10-106.

## BEAUTIFUL WATER VIEW HIDEAWAY

Live in this year round waterfront 2 BR home. Enjoy 25 acres of Community water-front property. Cozy up in front of your wood stove. Call Hal or Marion Woodruff at 392-5999. \$95,000. #10-107.

## VACATION TRAILER &amp; LOT - NEARBY

This is a price you can afford, in a water front community. Tennis court, swimming pool, fishing, boat launching, pavilion. All of this and much more. Call Bill Johnson. Offered at \$9,700. #10-110.

## VACATION PARADISE

This nice camping trailer set up in water-front community has swimming pool, fishing, tennis court, teen center, boat launching, police security. All this and more. Includes trailer and lot. \$18,800. Call Bill Johnson. #10-111.

## WATER FRONT ON THE CHESAPEAKE BAY

Just 45 minutes from Philadelphia, Wilm., and Chester Co. Don't miss this opportunity to own an EXCLUSIVE Water-Front Estate. Enjoy boating, fishing, waterskiing, a picnic on the beach. Call now for this limited opportunity. Evelyn Combs. Prices start at \$185,000. #10-104.

## PERFECT STARTER HOME

Three BR Cape Cod in move-in condition minutes from shopping and University of Delaware. Includes new range and refrigerator also hardwood floors, mini blinds, washer and dryer, tilt thermo-pane windows and whole house fan. Call Tom Horgan. Offered at \$94,500. #70-710.



## WATERFRONT WINDOW ON THE WORLD

Executive 5BR Contemporary in prestigious Green Haven Pt. offers 335' on the Elk River w/a panoramic view. Situated on 1.8 acres. Includes brick F/P in L/R, Florida room, cathedral ceiling in L/R and kitchen. Meticulously maintained throughout. Betty Weed. 398-6285. #20-235.

## VACANT LAND

1.295 acres of vacant land is zoned C-2 located on US Rt. 40 S/E of Elkton. Call Stan Young for information. Offered at \$200,000. #20-216.

## OFFICE COMPLEX

Close proximity to Hospital, Banks, County and State offices. Parking area for approximately 40 vehicles. \$600,000. Call Marie Sherrard. #20-218.

## START PLANNING FOR SUMMER

Real nice 3 BR Rancher with H/W floors, fireplace, beautiful landscaping, deck, deeded water rights, picnic area, pier slip through pier association. Hal and Marion Woodruff 392-5999. \$101,500. #20-222.

## A REAL CREAMPUFF

3BR L-shaped rancher in Holly Hall features oversized family room off kitchen, formal dining room and full basement. Rear patio is accessed through atrium doors in family room. Offered at \$89,900. Call Betty Weed for details. #20-253.

## CLOSE TO DELAWARE

Convenient to shopping too. Comfortable 3 BR rancher in Buckhill Farms feature laundry off kitchen and plenty of counter space. Large partially wooded lot provides privacy. Priced to sell at \$74,900. Call Betty Weed for details. #20-254.

## 1 ACRE +/- WITH WATER RIGHTS

On the Elk River, This 3 BR/4 BR max. has what you need. Wood stove in den, sun deck and screened porch. Property backs MD. Forest land. Nicely landscaped. Offered at \$141,500. #20-257.



## SUPER INVESTMENT PROPERTY WITH 281' ROAD FRONTAGE

on Rt. 40 containing over one acre. Improved by a 10 unit motel and an 80'x100' building containing two bars, restaurant and package store. All equipment included. Potential is unlimited for right investor. Owner financing to qualified buyer. Call Dick Walbeck. #20-252.

## RANCHER ON .8 ACRES

Flowers, trees and lots of nature surround this rancher in Glen Farms. Lovely lot with an abundance of nature and it will all blossom this spring. Ready for new owner. \$122,900. Call Nancy Simpser. #20-264.

## CONVENIENCE PLUS

Roomy 3 BR, 1 1/2 bath Townhouse in Village Knoll. Offers oversized family room. This unit has economical Natural Gas hot air heat and central air. No downpayment to qualified buyers. Call Betty Weed at 398-6285 for details. \$65,900. #20-267.

## PRIME DEVELOPMENT LAND

466 +/- acres of land. Partial M1 Zoning, remaining 193 acres zoned A/R. Sewage available, presently used as truck terminal, frontage on Rt. 40 and Rt. 7. #30-305.

## SPACIOUS COUNTRY SETTING

3 BR, 2 full baths, formal d./room, eat-in kitchen, future family room ready for your w/stove. Buy now and you can pick your colors. Just 5 min. from I-95. Call RoseAnn. Offered at \$124,900. #30-317.

## NICE STARTER HOME

in this 3 BR, 4/max. range and refrigerator included. Call Dick Walbeck at 287-6548. Offered at \$10,900. #30-322.

## POSSIBILITIES ABOUND

Be your own boss! Room for expansion in this growing business on main thoroughfare. Possible owner financing. Offered at \$55,900. #40-412.



## COUNTRY LIVING AT IT'S FINEST.

3BR, 2 bath Rancher on 1/2 acre +/- lot, in a beautiful country setting, Country Kitchen, large living room, Andersen thermopane windows, patio doors that lead to a 12x20 deck. Call Rose Ann Holmes for more details. Offered at \$84,900. #40-421.

## BUILDING LOT AVAILABLE

3/4 acre corner lot. Percolation approved, partially wooded, ready to build your home on. Call Bill Johnson 287-5685. \$25,000. #50-516.

## COUNTRY CLUB LIVING

Yet convenient to I-95. New 3BR Bi-level in Chantilly Manor features formal D/R, cherry kitchen cabinets, two full baths, and central a/c. All situated on .8 acre lot. Call Betty Weed for details. \$134,900. #50-518.

## 12.58 WOODED ACRES

and a 2-story home with 3 BR and 2 baths. Located in the Colors area. 5 ac. of wooded land and 7 ac. of pasture. Possible owner financing. Call for more details. Offered at \$149,000. #50-519.

## 14.89 ACRES

Beautiful rolling land waiting for your family and horses. 4 BR passive Solar Contemporary is easy to maintain. Southern exposure of house is windows providing plenty of solar heat in the window. Barn with five horse stalls, center aisle, stall fronts, kickboards and tackroom. Some three board fencing has been installed. 7.209 acres is a parcel approved building lot. Great purchase with future investment potential. Offered at only \$227,000. Call Marie Sherrard for details. #50-520.

## LARGE WATERFRONT ACREAGE ON CHOPTANK RIVER

38 acres. Secluded yet near town. Open & wooded. Swim, fish, hunt and boat at your leisure. Build your own estate or subdivide. Owner financing with 20% down may be negotiable. #60-600.

## NEAR RIVER

3 BR, 3-story older home, 1 block from river, close to stores and main road. Call Bill Johnson 287-5685. \$67,600. #60-601.



OPEN 7 DAYS A WEEK-9 AM-9 PM



## 316 Cleaning Services

MUM'S PLUS  
Professional cleaning/Offices,  
Businesses, New Construction.  
Reasonable rates. Excellent  
references. 302-292-2526.

STEAM CLEANING  
Call today to get your carpets &  
or furniture Steam Cleaned.  
FREE ESTIMATES  
302-454-8011  
302-737-3841

## 320 Day Care

For a listing of Licensed Family  
Daycare Homes in Bear, Glas-  
gow, & surrounding areas. Call  
302-324-0117 or  
302-834-8482.

123 123 123 123  
1 ITEM, \$1000 OR LESS  
2 ISSUES OF THE WHIG  
FOR JUST \$3.00  
398-1230  
302-834-1739  
123 123 123 123

## 320 Day Care

Three licensed family daycare  
have openings for part-time,  
full-time, before/after school &  
summercare. Vicinity of Rt.40 &  
72. Call each for more  
information.

302-836-1768  
Lic.# 1500099200  
302-834-4580  
Lic.# 1500096000  
302-834-1739  
Lic.# 1500083200

## 320 Day Care

Licensed family daycare. All  
ages. Call Roxanne.  
302-737-8741  
Lic.# 1500113000

327 Entertainment  
DISC JOCKEY  
Rick Evans, 25 years of Music  
Experience for every entertain-  
ment situation.  
302-738-5722

## 328 Excavations

EDGAR RHOADES  
AND SONS, INC.  
Excavating & Septic System  
Free estimates  
301-398-8637

## 332 Fuel

GLASGOW FUEL  
Call For Best In Town  
25-50-100  
Gallons Or More  
1-302-834-0570  
1-301-398-5219

SOUTHERN STATES CO-OP  
ELKTON, MD  
FUEL OIL  
SERVICES OFFERED  
•Automatic Delivery  
•Budget Heating Plans  
•24 Hour Emerg. Service  
•Products Include:  
Fuel Oil, K-1 Kerosene  
Diesel Fuel &  
Regular unleaded gas  
Super no-lead  
Call in Cecil County  
301-398-2181  
Toll Free from DE  
302-366-1644

## 342 Home Improvement

TRADESMEN  
CONSTRUCTION  
Quality Home Improvements  
★FREE ESTIMATES★  
302-834-4913

Train for careers in  
•AIRLINES  
•CRUISE LINES  
•TRAVEL AGENCIES

HOME STUDY/RES. TRAINING  
•FINANCIAL AID AVAIL.  
•JOB PLACEMENT ASSIST.

1-800-327-7728  
A.C.T. TRAVEL SCHOOL  
Natl. Hdqrs. Pompano Bch., FL.

Train to be a Professional  
•SECRETARY  
•EXECUTIVE SEC.  
•WORD PROCESSOR

HOME STUDY/RES. TRAINING  
•FINANCIAL AID AVAIL.  
•JOB PLACEMENT ASSIST.

1-800-327-7728  
THE HART SCHOOL  
A Div. of A.C.T. Corp.  
Natl. Hdqrs. Pompano Bch., FL.

## 344 Income Tax Service

COMPUTERIZED  
ACCOUNTING  
AND  
TAX SERVICES  
AT AFFORDABLE  
RATES  
322-5999  
LOCATED IN BEAR, DE

Income Taxes prepared by  
CPA. Call 302-454-8820 after  
6pm or leave message.

## 352 Landscaping

SHAMROCK  
TREE SERVICE  
Expert Service In Trimming,  
Feeding, Removal & Stump Grinding  
301-392-9020 or  
302-368-4133

## 352 Landscaping

LEE LARSON  
Bulk & Small Quantities Mulch  
Minimum load, 3 yards  
All Mulch Delivered  
392-5175

## 355 Misc. Services

## FENCING

•4' high 9 gauge, green vinyl  
chainlink Just \$3.45/ft.  
Installed. End posts extra.  
•Pressure treated split rail  
•Heavy duty cedar stockade

Save \$100's  
On Larger Installations.  
Ross Mason 475-1650

## 355 Misc. Services

BAD CREDIT HISTORY  
SLOW CREDIT  
NO CREDIT AT ALL

EAST COAST  
CREDIT ALLIANCE  
We not only repair bad credit up  
to \$10,000 including bank-  
ruptcy, but we also improve &  
get new credit established  
along with a valid credit card  
valued at \$5000 from Master-  
card or Visa. The fee is only  
\$75. Every applicant is guaran-  
teed approval. Call collect  
Monday-Sunday, 24 hours.  
301-523-6301 or  
301-523-6306.

CONFIDENTIAL  
DATING SERVICE  
Most Attractive Escorts  
At Lowest Rates In Area  
Call Anytime 301-398-1132

## 355 Misc. Services

STAMP SHOP  
Stamp & Philatelic Supplies  
Open weekdays,  
10-5 (most days)  
Please Call  
301-287-7840/41  
Ray L. Coughlin  
101 Old Mill Plaza  
North East, MD

TYPING  
Reasonable rates. Call for ap-  
pointment. Monday-Friday,  
5-9pm & Saturday, 12-8pm.  
302-322-1871.

362 Painting  
RICHARDSON BROS.  
INTERIOR & EXTERIOR  
Quality Work. Free Estimates.  
No One Can Beat Our  
Guaranteed Low Prices.  
CALL TODAY!!!  
302-322-5859



## 401 Animals

TB Broodmares for sale or  
lease. No vices. 16h +. Well  
bred.  
301-392-0146

## 402 Antiques

Buying Gold & Silver coins &  
jewelry. Cash.  
MERRILL'S JEWELRY  
& ANTIQUES  
Kirkwood Hwy & DuPont Rd.  
Elmers  
Wilm. DE  
302-994-1765  
OPEN 10AM-7PM

**HONDA**

IT'S EASY TO  
FIND SAVINGS  
ON EVERY...

COLONIAL HONDA  
IS IN PERRYVILLE!

Many customers come to  
Colonial Honda from PA., DE., VA.  
and throughout MD, because they  
know where to find a GOOD DEAL and  
QUALITY SERVICE.  
REPEAT BUSINESS  
SPEAKS FOR  
ITSELF.

HONDA  
• CRX  
• CIVIC  
• ACCORD  
• PRELUDE

NEW CARS • USED CARS • LEASING • SERVICE • PARTS

**Colonial Honda**

ROUTE 40,  
5439 PULASKI HWY., PERRYVILLE, MD  
Local 642-2433 Baltimore 575-7249  
AWARD WINNING SALES AND SERVICE

**BAYSHORE AUTO. INC.**  
West End of High Street, Elkton, Md.  
Your Oldsmobile - GMC Dealer

MD. 301-398-7770 or Dial 1-800-255-7770

"Pre-Owned Special of the Week"  
**1986 BUICK CENTURY - 4 DOOR**

"Super Sharp"

6 Cyl., Automatic, Power Steering, Power  
Brakes, Power Windows & Door Locks-

Come See  
This Car! **\$7495.\***

\*Plus Tax, Title, & Tags  
Also get \$50 to take your sweetheart out  
to dinner with, on Bayshore

**NOT A PENNY MORE!**

A Regal Way To Drive  
America's BEST SELLING MID SIZE CAR

1989  
REGAL

Stock  
#9047

**DRIVE OUT PRICE**  
**\$13,397<sup>00</sup>**

\* Includes auto. trans., air cond., cruise control, tilt wheel, AM/FM stereo/cass., rear defog-  
ger. Delaware Doc fee, title, destination and all factory incentives included.

Out of state buyers subject to  
state tax.

**YOU CAN'T  
BEAT THAT!**

**Eden**  
BUICK, INC.

Other REGALS  
to Choose  
from.

Sale Ends  
March 6th  
1989

2100 Pennsylvania Ave.  
Wilmington, Del.  
655-4404

Committed to Customer Satisfaction through Service Excellence

**LATE MODEL  
USED TRUCKS**

1987 CHEV. ASTRO 7  
PASSENGER VAN - p. locks, p.  
windows front & rear, AC, front &  
rear heat, AM/FM cassette -  
LOADED.  
**\$10,695.**

1987 CHEVROLET BLAZER (Full  
Size) 4X4  
**\$11,695.**

1986 GMC S15 JIMMY 4X4 - 1  
owner, super nice.  
**\$10,975.**

1987 DODGE 1/2 TON TRUCK -  
Good work vehicle.  
**\$5,895.**

1985 MITSUBISHI 1/2 TON - Like  
new, only 9,000 miles. With cap.  
**\$4,995.**

1986 FORD F150 1/2 TON - Good  
work truck.  
**\$6,700.**

1976 CHEV. SILVERADO 1/2  
TON - Camper top, loaded.  
**\$2,700.**

1985 CHEV. ASTRO VAN - 5  
passenger, auto, AC.  
**\$8,495.**

**LATE MODEL  
USED CARS**

1988 Chevrolet Corsica  
4 dr. .... **\$8,995.**

1988 Chevrolet Beretta  
2 dr. .... **\$9,295.**

1987 Chevrolet Cavalier  
S/W ..... **\$5,595.**

1986 Chevrolet Cavalier  
2 dr. .... **\$5,295.**

1986 Chevrolet Celebrity  
Europort, 4 dr. .... **\$6,695.**

1986 Chevrolet Monte Carlo  
SS ..... **\$10,495.**

1986 Chevrolet Classic  
4 dr. .... **\$6,995.**

1985 Chevrolet Camaro ..... **\$6,695.**

1985 Chevrolet Chevette ..... **\$2,395.**

1983 Chevrolet Celebrity ..... **\$4,695.**

1985 Buick LeSabre  
4 dr. .... **\$7,995.**

1984 Pontiac Fiero ..... **\$2,695.**

1985 Olds Cutlass Calais  
2 dr. .... **\$6,195.**

1986 Olds Custom Cruiser  
S/W ..... **\$9,995.**

1986 Honda Civic ..... **\$4,700.**

**SPECIAL**

1983 Toyota Corolla Like New  
4 dr., auto, PS, PB, AC, only 38,000 **\$3900.**  
miles. Local 1 owner car.

**Chevrolet Williams Geo**

De., Pa. & N.J.  
1-800-826-0580

208 W. Main St.  
Elkton, Md.

Maryland  
398-4500

**NEW CHEVROLET CAR SPECIALS**

**CORVETTE**

**1989 CHEVROLET CORVETTE**

6 way power seats, gray leather bucket  
seats, cooling boost fan, illum. visor mirror,  
h.d. cooling, electronic AC, Delco-base  
sound system, bronzed lift-off roof panel,  
charcoal metallic. Stock #9081. List price -  
\$34,636.

**LIST PRICE \$34,636.**

**SALE  
PRICE \$28,599.\***

**SAVE \$6,037.**

**CORSICA**

**1988 CHEVROLET CORSICA 4 DOOR**

2.0 liter fuel injection, front wheel drive,  
automatic, p. steering, p. brakes, air condi-  
tioning, delay wipers, rear defog, w/w all  
season tires, AM/FM stereo cassette, heavy  
duty battery, mats, tinted glass, aux.  
lighting.

**SALE  
PRICE \$10,700.\***

**NEW CHEVROLET TRUCK SPECIALS**

**BLAZER 4x4**

**1989 FULL  
SIZE K-5  
BLAZER  
4X4  
SILVERADO**

350 V-8, PS, PB, AC, sliding side windows,  
door edge mldgs, deep tinted glass, rear  
seat, mats, delay wipers, eyeliner mirrors,  
cruise control, shields, tilt wheel, AM/FM  
stereo cassette equalizer, p. windows, p.  
locks, automatic transmission, cast  
aluminum wheels, tow hooks,  
P235/75R1500R/bw tires, auto locking hubs,  
deluxe 2 tone paint. List - \$21,098.

**SALE  
PRICE \$17,999.\***

**SAVE \$3,099.**

**5-10 PICKUPS**

**1989  
CHEVROLET  
S-10  
"EL" TRUCK**

1000 lb. payload, 2.5 liter fuel injection, 5  
speed manual trans., P195/75R14 all season  
tires, AM radio, rear step bumper, full size  
spare, 20 gal. fuel tank, rally wheels, p.  
brakes.

**SALE  
PRICE \$7,757.\***

\*All prices include destination and any applicable rebates, all dealer prep., etc. You pay only sales tax, title & tag fees.

**THE Heartbeat OF AMERICA** **TODAY'S CHEVROLET**

**Williams Chevrolet Geo**

Maryland  
398-4500

208 W. Main St.  
Elkton, Md.

De., Pa. & N.J.  
1-800-826-0580

Baltimore  
AREA



## 408 Boats &amp; Motors

**CAPTAIN'S LICENSE**  
and  
**INTERMEDIATE NAVIGATION**  
Courses Now Forming  
Also •Celestial Navigation  
•Loran-C •Radar  
Call for FREE Brochure  
**AMERICAN**  
**MARINE TRAINING**  
1-800-548-4512

## 410 Building Supplies

Corrugated galvanized steel for  
roofing & siding. All sizes in  
stock. **CHEAP**. Cash & carry.  
215-831-9800.

## 416 Firewood

**LEE LARSON**  
**FIREWOOD**  
Heavy Seasoned Slab \$75/Cord  
Split Firewood \$95/cord  
Long Slabs \$40/Cord  
(long slabs 2-cord minimum)  
DELIVER  
•SAWDUST •MULCH  
**392-5175**

## 418 Flea Markets

**RUMMAGE SALE**  
9-5pm, March 4th & 5th. Qui-  
gley's Market, Rt. 273. (Be-  
tween Rt.19 & 141 New Castle,  
DE).

## 422 Garden/Lawn

**MULCH**  
Pure shredded hardwood bark.  
\$18 per cubic yard, by 20 yard  
load. 1-717-548-2540.

## 423 Hay/Straw

**ALFALFA/HAY**  
High Hook Farm  
Odessa, DE  
302-378-4097  
**HAY FOR SALE**  
Can Deliver  
Call After 6pm  
301-398-3974

## 432 Musical Instruments

Trumpet with case in excellent  
condition. \$90. Call at:  
301-398-7705

## 441 Swimming Pools

**SWIMMING POOLS**  
**PRE-SEASON SALE**  
Delaware company, over 30  
years experience. We install &  
service all our pools. 80 models  
reduced! A pool for every  
budget. From \$1188. Buy now  
& save! Call collect.  
302-328-7722. Ask for Timmy.  
**FREE HOME ESTIMATES**  
**FINANCING AVAILABLE**



## 502 Business Opport.

**CONVENIENCE MARKET**  
Excellent location off major  
highway in Cecil Co. Positive  
cash flow of \$50K plus. \$70,000  
down with good terms. Addi-  
tional sources of revenue avail-  
able to new owner. Confidential  
listing. For further information  
call Michael Garrity Commer-  
cial Department.  
301-398-3877



## 602 Rooms

Elkton & North East. Room or  
efficiency. Color TV. From \$12  
Daily. 301-398-4400 or  
398-9855 or 287-9877.  
Room or efficiency. Wilm. &  
New Castle area. Airport vic-  
inity. Color TV, phone, refig.  
From \$12 daily. 302-658-4191  
or 328-7529.

## 604 Furnished Apts.

1 & 2BR modern apartments for  
\$670-\$870. Call Winding Brook  
Garden Apartments Mon, Tues,  
Thurs, Fri, 9-5, Wed, Noon-8,  
Sat, 1-4, Closed Sun.  
301-398-9496.

## 608 Unfurnished Apts.

A quiet country setting with  
modern 1 & 2BR apartments  
starting at \$410. 2BR Special  
50% off 1st 2 months rent with  
good credit. Call Winding Brook  
Garden Apartments Mon, Tues,  
Thurs, Fri, 9-5, Wed, 12-8, Sat,  
11-4, Closed Sun.  
301-398-9496.

Newark near University  
Monthly: Room \$185; eff.  
\$275; 1 BR Apt \$335; 2 BR  
furnished house \$575.  
302-737-7319, 9am-5pm  
weekdays.

## 614 Commercial

**CHERRY HILL AREA**  
C-2 garage & office for rent. No  
auto repairs. \$275/month.  
301-398-0123

## 614 Commercial

**MEDICAL OFFICE**  
Furnished, for rent in Elkton.  
Located conveniently on U.S.  
Rt. 40 in a professional building  
with ample free parking. Call  
301-398-6800.

## 616 House for Rent

**COLLEGE PARK-3br, 2 bath**  
house. Available June 1.  
\$625/mo. plus utilities. Call  
215-388-6622.

**NEWARK**-Large executive  
type house. Minutes from Uni-  
versity of Delaware & I-95.  
4BR, 5 baths, new carpeting &  
all appliances including  
washer/dryer. 302-731-5576,  
9am to 5pm, Monday-Friday or  
301-287-6681 anytime.

## 620 Vacation Rentals

**OCEAN CITY MD** Green Dol-  
phin Apartments, 13th at Balti-  
more, Ocean side, 3 BR. From  
\$600 weekly.  
301-532-3090



## 702 Housing for Sale

**CHERRY HILL MANOR**-2 story  
townhouse, 3BR, 1 1/2 bath plus  
extras. Near University. Call  
302-368-5902.

## 702 Housing for Sale

**GOVERNMENT HOMES** from  
\$1.00 (U Repair) Foreclosures,  
Repos, Tax Delinquent Prop-  
erties. Now selling. Call  
1-315-736-7375 Ext. H-DE-N1  
for info. 24 HRS.

## 708 Mobile Home/Sale

**\$1,200 FULL PRICE**  
12x60 mobile home. Must be  
moved.  
302-994-8245

**DELROSE**-1986, Sale or Rent.  
Dishwasher, A/C, washer/dryer  
included. Call Bill  
302-996-0832 after 5pm.

**737-0905**  
FOR QUICK  
CLASSIFIED  
RESULTS!!!

## 710 Housing Wanted

Married couple with 2 small  
children must find inexpensive  
rental home. Newark area. Be-  
ginning June. Will consider  
anything. Have skills, will fix up.  
References available.  
302-836-4589.



## 802 Motor Cycles

**HD-1978 1/2** Electrolite, An-  
niversary Edition. 33,000 miles.  
\$3,100 or b.o.  
301-398-2047

## 806 Trucks/Vans

**CHEVROLET**-1985 C10  
Pickup. Long bed, V6 4spd.  
standard transmission. P/S,  
P/B, AM/FM radio. Good condi-  
tion. Must sell. Best offer.  
302-368-4922

**LEASE/PURCHASE**  
3 Trailers For  
\$393.73/Per Month (All Three)  
Already tagged & ready to go!!  
1. Texas Bragg Enterprise  
16'x6'3/4" max capacity  
2. Texas Bragg Trailers  
6'x12'

**ANDERSON**  
**LEASING, INC.**  
1633 ELKTON ROAD  
302-453-1920  
301-392-5500

\*Lease/Purchase for 60mo! Residual value  
at end of the lease \$1,000, 1 month security  
and 1st month due with lease.

## 808 Automobiles

**BMW** 325-1986. 29k miles.  
\$15k or assume lease at  
\$330/mo. Mint condition.  
302-323-1528.

**FORD**-1986 Escort hatchback.  
A/C, P/S, P/B, AM/FM stereo.  
Excellent condition. \$3800.  
302-834-4322 after 10am.

**TOYOTA**-1977 Celica GT.  
Sspd., A/C, AM/FM stereo,  
sport radials. Have records.  
\$900 or best offer.  
302-368-4086.

## 812 Auto Parts

**DATSUN**-1979 Z-10SW. Not  
running. Good transmission,  
body fair, all glass good, \$150  
or best offer.  
301-287-2610  
after 6pm

**DON'T WAIT — LIMITED TIME!**

**McCoy FORD-LINCOLN MERCURY**

**OVER 150 NEW & USED  
CARS & TRUCKS PLUS OVER 25  
FACTORY DEMOS & PROGRAM CARS**

**ROWS OF 1988/89 BRONCO II'S**



**PRICED FROM**

**\$12,995**

**ROWS OF 1989 AEROSTARS**



**PRICED FROM**

**\$13,995**

**ROWS OF 1988 TAURUS & SABLES**



**FULL PRICE**

**\$9,999**

**ROWS OF 1988 THUNDERBIRDS & COUGARS**



**FULL PRICE**

**\$10,999**

**ROWS OF 1989 PROBES**



**PRICED FROM**

**\$10,999**

**ROWS OF 1989 FESTIVAS**



**PRICED FROM**

**\$5,995**

**ROWS OF 1988/89 ESCORTS**



**PRICED FROM**

**\$6,995**

**ROWS OF 1988/89 RANGER PICKUPS**



**PRICED FROM**

**\$7,995**

**ALL CARS & TRUCKS HAVE BEEN REDUCED  
TO MAKE ROOM FOR SHIPMENTS OF 89'S.**

**ALL FORD-LINCOLN & MERCURY MODELS INCLUDED**

**ALL USED CARS & TRUCKS HAVE BEEN REDUCED TO MAKE ROOM FOR SHIPMENTS OF 89'S**

<b>1988 MERCURY SABLE</b> Sedan fully equipped, 30,000 Miles. <b>\$7,995</b>	<b>1984 PONTIAC TRANS AM H/B</b> Fully equipped, 22,500 Miles. <b>\$7,995</b>	<b>1984 CHEV CAMARO</b> Z-28 H/B, every option, T-roads. <b>\$6,995</b>	<b>1987 FORD BRONCO</b> Eddie Bauer Wgn., black/tan, like new. <b>\$14,995</b>	<b>1988 FORD BRONCO II</b> Wagon, red, 20,000 miles. <b>\$11,995</b>
<b>1986 FORD TAURUS</b> Station wgn. All options, 6 cyl. <b>\$6,995</b>	<b>1988 LINCOLN TOWN CAR</b> Loaded, leather interior. <b>\$16,995</b>	<b>1988 FORD TEMPO GL</b> Sedan, AT, PS, PB, air, 22,000 miles. <b>\$7,995</b>	<b>1987 MERCURY GRAND MARQUIS</b> Sedan. Every op- tion available. <b>\$9,995</b>	<b>1986 FORD MUSTANG LX</b> Coupe, 6 cyl., AT, PS, PB, AC, 24,000 miles. <b>\$6,995</b>
<b>1984 FORD F150</b> Pickup, 8 cyl., PS, PB, 44,000 miles. <b>\$5,995</b>	<b>1985 FORD ESCORT</b> Coupe, 4 cyl., 5 spd., PS, PB, AC. <b>\$2,995</b>	<b>1983 OLDS CUTLASS SUPREME</b> Coupe, 8 cyl., AT, PS, PB, AC. <b>\$4,995</b>	<b>1980 LINCOLN</b> Town car. Loaded. <b>\$3,995</b>	<b>1985 MERCURY LYNX</b> Coupe, 4 cyl., 4 spd., blue. <b>\$2,995</b>
<b>1984 FORD TEMPO GL</b> Sedan, 4 cyl., AT, PS, PB, AC. <b>\$3,995</b>	<b>1984 DODGE ARIES</b> Station wgn., AT, PS, PB, AC, 45,000 miles. <b>\$5,995</b>	<b>1984 DODGE OMNI</b> Sedan, 4 cyl., AT, PS, PB. <b>\$4,995</b>	<b>1986 FORD THUNDERBIRD</b> Turbo coupe, loaded, red, 25,000 miles. <b>\$10,995</b>	<b>1983 FORD RANGER</b> Pick-up, 4 cyl., 4 spd., tan. <b>\$2,995</b>
<b>1986 MERCURY CAPRI RS</b> Hatchback, V8, loaded, white. <b>\$8,995</b>	<b>1984 FORD THUNDERBIRD</b> Coupe, V8, load- ed, sunroof. <b>\$6,995</b>	<b>1986 FORD AEROSTAR XLT</b> 7 pass. wagon, loaded, silver. <b>\$10,995</b>	<b>1986 FORD MUSTANG LX</b> Coupe, 4 cyl., 4 spd., PS, PB, A/C, 20,000 miles. <b>\$6,995</b>	<b>1986 FORD RANGER</b> Super cab, 4x4, 28,000 miles. <b>\$8,995</b>

**McCoy Motor Company**

**FORD MOTOR COMPANY'S ONLY AUTHORIZED FULL LINE DIRECT FACTORY DEALER IN THE TRISTATE AREA!!!**

**ROUTE 273 (TELEGRAPH ROAD) RISING SUN, MD**  
**PHONE (301) 658-4801 • (301) 642-6700 • (302) 737-5038**

**SPECIAL 50% OFF**  
First two mos. on 2 BR  
Unfurn. Apts.  
• with  
• and  
• credit

**A Quiet Country Setting  
WINDING BROOK APTS.  
Modern 1 & 2 BR Apts.  
start \$410.**

**All With:**  
• Balcony or Patio  
• 24 HR. on-site maintenance  
• Senior Citizen Discount  
• Open Spaces  
• Cable Available  
Mon., Tues., Thurs., Fri. 9-5  
Wed. Noon to 8; Sat. 11 to 4  
CLOSED SUNDAY  
(301) 398-9496  
1 mile off Elkton Rd. at DE/MD line

## HOUSE FOR SALE



**Cedar Raised Ranch in Woodcrest Shores** situated  
on 1.3 A. wooded lot on cul-de-sac. Lg. LR, DR, &  
KIT with antique wood floors, cath. ceilings,  
exposed beams & opening skylight. 3 BR, 2 Bath,  
2 Fire Plc., partially fin. FR, Laun. Rm., 2 car G.,  
Sylvan 33 1/2' x 15' inground pool w/ lg. deck &  
water rights on the Elk River. \$185,000.  
◇ Call 301-398-9268 ◇

**WHILE YOU'RE  
LOOKING AT  
USED APARTMENTS  
ARE YOU  
DREAMING OF A  
NEW ONE?**

There's nothing quite like your own  
brand new apartment and  
**TURNQUIST APTS. IN ELKTON**  
has 4 types to choose from — you're  
bound to find one to your satisfac-  
tion.

Both the 1 & 2 bedroom units in-  
clude frost-free refrigerator,  
continuous-clean range, stack-on  
washer and dryer, d/w and disposal.  
In addition, ea. unit is fully carpeted  
and air conditioned.

**FOR LEASING INFO  
CALL 392-0099**  
George L. Schnader, Jr., Inc.  
Builders • Real Estate Developers

MID-ATLANTIC  
REALTY

☆ **VICTORIA MEWS** ☆

- Private Entrances
- New Thermo Windows
- Pets Welcome
- Short-Term Leases Available

**LOCATED:** Elkton Rd. &  
O'Daniel Ave. in Newark  
**368-2357**

☆ **FOXCROFT TOWNHOUSES** ☆

within walking distance of University  
of Delaware. Perfect for College  
Students.

Wilbur & North Sts.

**368-2357**

\*See Our Free Coupon In Phone Book



## COMMUNITY CALENDAR

## FRIDAY

3

• **American Association of University Women, Newark Branch**, will hold its annual used book sale today, Friday and Saturday at Newark United Methodist Church, 69 E. Main St. Fiction, non-fiction, textbooks, records and children's books will be available. As a special feature this year, AAUW will hold a raffle for a complete set of used Encyclopaedia Britannica, with bookcase included. Book sale hours are 10 a.m. to 8 p.m. today and 10 a.m. to 1 p.m. Saturday.

• **Newark Senior Center**, 9 a.m., bowling at Blue Hen Lanes, income tax help with American Association of Retired Persons; 9:30 a.m., shopping; 10 a.m., Signing Group; 10:30 a.m., program on Parkinson's Disease; 1 p.m., Senior Players.

## SATURDAY

4

• **Glasgow Lions Club** will hold its annual pancake breakfast 7 a.m. to noon in the Pencader Grange Hall, Del. 896 south of Glasgow. Tickets will be available at the door and cost \$3.50 for adults and \$3 for children ages 5-11. Children under 5 will be admitted free. There is a 50-cent per ticket discount for tickets purchased in advance. Tickets are available from Glasgow Lions and from the Glass Kitchen restaurant on U.S. 40. Proceeds of the breakfast benefit the Glasgow Lions Service Foundation Inc.

• **American Association of University Women, Newark Branch**, will hold its annual used book sale 10 a.m. to 1 p.m. at Newark United Methodist Church, 69 E. Main St.

• **Girl Scout Troop 798** will sell Girl Scout cookies today in front of the Roy Rogers restaurant on Main Street.

• **Delaware State Junior Miss Pageant** will be held at 7:30 p.m. at Delaware Technical and Community College in Georgetown. Among the contestants is Catherine Denise McCarthy of Newark, a student at A.I. duPont High School. Tickets will be sold at the door and cost \$7 for adults and \$5 for students.

• **Delaware City Jaycees** will hold a spring fling dance and beef-n-beer at 8:30 a.m. in the Delaware City Fire Hall. Tickets cost \$15 per person and will be available at the door or by calling 731-8481.

## SUNDAY

5

• **Girl Scout Troop 798** will sell Girl Scout cookies today at the Super Fresh store in Castle Mall.

• **American Heart Association Fashion Show** will be held at 11 a.m. in Macy's at Christiana Mall. There will be a champagne brunch and two-hour presentation of spring and formal fashions from Macy's. For information, call 654-5269.

• **Delaware Museum of Natural History**, Del. 52, Greenville, will hold a "behind-the-scenes tour" at 2 p.m. Dr. Barbara Butler, museum director, will show the scientific and collection areas of the natural history museum, with special emphasis on the 1.7 million specimen shell collection. The tour is free.

with regular museum admission of \$3.50 for adults, \$2.50 for senior citizens and \$2 for children 3-18. For details, call 658-9111.

## MONDAY

6

• **Newark Free Library** will host a two-part series on gardening today and Monday, March 13. The first session will be on vegetables, and the second will cover perennials. The programs are presented by the Wilmington Garden Center and are geared to the weekend gardener. There will be slide presentations and plenty of time for questions and answers. For information, call 731-7550.

• **March of Dimes** will open its 1989 WalkAmerica fund raiser with a pep rally at 7 p.m. in Boscov's, Concord Mall. On hand will be the Phillie Phanatic. The walk itself will be held April 30 at Delaware Stadium.

• **Mended Hearts of Delaware** will meet at 7:30 p.m. in Room 1306 of Christiana Hospital. Dr. James K. Bouzoukis will discuss "Organ Donors and Transplants." Mended Hearts is a national organization which provides moral support to cardiac patients and their families.

• **Diamond State Aquarium Society** will meet at 7:30 p.m. in the Community Room of Christiana Mall.

• **Rockwood Museum**, 610 Shipley Rd., Wilmington, will host a slide-lecture presentation on Ireland's Kilwaughter Castle at 7:30 p.m. The lecture is free but seating is limited so reservations are necessary. Call 571-7776.

• **Newark Senior Center**, 10 a.m., knitting instruction; 11 a.m., Band and Stretch; 11:45 a.m., Ice Capades trip; 12:30 p.m., canasta, Monday movie; 12:40 p.m., bridge.

## TUESDAY

7

• **Preschool story hour** will be held at 10:30 a.m., 2 p.m. and 7 p.m. at the Newark Free Library, 750 Library Ave. Story hour is for children ages 3½ to 6. For information, call 731-7550.

• **Newark Deltones barbershop chorus** will meet at 7:30 p.m. in the Education Building of First Presbyterian Church, West Main Street. Men of harmony are welcome.

• **"Chesapeake Bay Settlements,"** an illustrated presentation on ancient Indian life by Wayne Clark of the Jefferson Patterson Park and Museum in St. Leonard, Md., will be held at 7:30 p.m. at the Delaware Museum of Natural History, Del. 52, Greenville.

• **Newark Senior Center**, 9 a.m., bowling at Blue Hen Lanes; 10 a.m., Bible study, Over 60 Fitness, Stamp Group; 12:30 p.m., shuffleboard, 500, and Tuesday After Lunch program on "Teaching in China" by Gertrude Weaver; 1 p.m., appliance repair.

## WEDNESDAY

8

• **American Association of Retired Persons, Newark Chapter** 3517, will meet at 1 p.m. in St.

Nicholas Episcopal Church on Old Newark Road at Chestnut Hill Road. The program will be on cancer. For information, call 368-3169.

• **New Ark Fife and Drum Corps** will meet at 6:30 p.m. at 268 Oakfield Dr., Scottfield. Anyone who can play or is interested in learning to play the fife, drum or bugle is welcome to attend. For information, call 368-7655.

• **First State OWL**, the Delaware chapter of the Older Women's League, will meet in the conference room of the Visiting Nurse Association in Corporate Commons. There will be coffee at 6:30 p.m. and a program at 7 p.m. The program will feature a discussion of legislative issues that affect older women in Delaware. Guest speakers will be State Rep. Jane Maroney and Barbara Corrozi, executive director of the Delaware Commission for Women. For information, call Helen Barnett at 475-1596.

• **Newark Senior Center**, 9 a.m., chess; 10 a.m., art class, needlepoint; 12:30 p.m., pinocle; 12:45 p.m., bingo.

## THURSDAY

9

• **Harmony Weavers Guild** will meet at 10 a.m. in the Center for Creative Arts, Yorklyn. Jean Neel will demonstrate casserole dyeing. The public is invited to attend.

• **Newark Jaycees** will meet at 7:30 p.m. in the Brookside Community Center, Marrows Road. Guest speaker will be Joseph Flickinger, New Castle County register of wills. For information, call 368-8415.

• **Newark Senior Center**, 10 a.m., ceramics, Choral Group, Discussion Group; 12:30 p.m., duplicate bridge, membership meeting, shuffleboard; 1:30 p.m., dancing, Scrabble.

## FRIDAY

10

• **Newark Senior Center**, 9 a.m., bowling at Blue Hen Lanes; 9:30 a.m., income tax help with the American Association of Retired

Persons; 10 a.m., Signing Group; 1 p.m., Senior Players.

• **Wilmington Flower Market Fashion Shows** will be held at 10:30 a.m. and 6 p.m. in the Wilmington Country Club, Kennett Pike, Greenville. Tickets cost \$25 per person. Call 655-7477 for reservations.

• **Delaware City Fire Company Ladies Auxiliary** will hold a fund raising ladies' night out, which includes refreshments and entertainment by Sunset Strip with TNT, at 9 p.m. Tickets cost \$7 in advance, \$8 at the door. Call 834-4194, 834-7345 or 834-3570.

## FUTURE

• **Mount Cuba Astronomical Observatory** in Greenville is offering two special programs this spring.

"Modern Astronomy" will meet at 7:30 p.m. Tuesdays and Thursdays, March 23 through April 11. Fee is \$30. For reservations send check or money order, along with name, address and telephone number to the observatory, P.O. Box 3915, Greenville, DE 19807, or call 654-6407.

"Telescope and Sky," a short course in astronomy and the use of telescopes for high school students and adults, will meet 7:30-9:30 p.m. Tuesdays and Thursdays, May 2-11. At the end of the course, participants should be able to identify the main constellations and stars in the current sky and be able to adjust and focus a telescope to see keep sky objects. For class reservations, send check for \$20 to the observatory at the address above. Be sure to include your name, address and telephone number. Registration is limited to the first 30 persons.

• **Knights of Columbus** is selling tickets to a benefit bull roast and casino night to be held Saturday, April 1 at St. Peter's Gym, New Castle. There will be dinner, music and dancing. Tickets cost \$17.50 per person or \$30 per couple, and proceeds benefit the Bayard House. For tickets, call Jerry Boyle at 834-4877, Henry Cowell at 731-8190, Ed Amtrano at 328-5414, or Tom Koval at 834-8983.

CAR OF THE WEEK



## '86 FORD BRONCO

4WD, XLT Package, Air, Cruise, Tilt, AM/FM, V-8, Low Mileage

**\$12,500**

'86 DODGE Shadow, 4 dr., auto., air	\$8500.
'87 PLYMOUTH SUNDANCE, 2 dr., auto., air, 20,000 mi.	\$7300
'87 FORD MUSTANG, 5 speed, A/C, AM/FM	\$8800.
'87 DODGE SHADOW, 2 dr., hatchback, auto, air	\$8800.
'86 OLDS CUTLASS, 4 dr., auto., V-6, Tilt, cruise, AM/FM Cass., Low mileage	\$7495.
'86 BUICK Century, 8 Pass. Wgn., a/c, cruise, luggage rack, am/fm	\$8850.
'86 DODGE OMNI, 4 speed, air	\$3800.
'86 PLYMOUTH Reliant wagon, auto., air	\$4850.
'86 CHRYSLER LASER, auto., air	\$5000.
'85 DODGE 600, 4 dr.	\$4795.
'85 DODGE Caravan SE, 3 seat, 2.6 eng., auto., air	\$6895
'85 DODGE LANCER ES, Turbo, 4 dr., Hatchback, power seats, locks, windows, air, cruise, tilt, stereo cass.	\$8850.
'84 DODGE ARIES Wagon, bucket seats, air, auto., light beige	\$3500.
'83 SUBARU GL 2 dr., auto., air	\$1195.
'83 DODGE Challenger, auto., air, 52,000 miles	\$4250.
'82 OMNI 024, 5 speed, air	\$1295.
'82 NISSAN 200 SX, 2 door, 5-spd., air	\$2950
'77 VOLVO, 4 dr.	\$1300.

MANY MORE TO CHOOSE FROM!

**Rittenhouse Motor Company**

250 Elkton Rd., Newark • 368-9107

## Lower the numbers and raise your odds.

Controlling your blood pressure can reduce your chances of heart disease. Have your blood pressure checked. And keep it in check for life.



American Heart Association  
WE'RE FIGHTING FOR YOUR LIFE

# CARMAN

FREE SHUTTLE TO WILM. & CONCORD PIKE — Pickup & Delivery



# LINCOLN-MERCURY

## MERKUR

KIRKWOOD HWY. • PRICES CORNER 995-2222



## 1989 TRACER 2 DR

Front wheel drive, 1.6 liter, 5 speed, 4 cyl. Stereo 4 speaker, rear defroster, power mirrors, body side molding, Rack & pinion steering, 13" BSW radials, digital clock, tachometer, tinted glass.

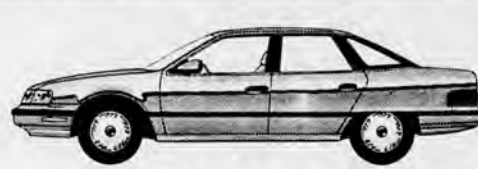
**\$6,999\***



## 1989 TOPAZ — 4 DR

2.3 liter, 4 cyl., auto, air, PS, PB, rear def., stereo, tinted glass, power locks, 14" BSW tires, C/C package. Much more standard equipment.

**\$9,999\***



## 1989 SABLE 4 DR

3.0 liter, V-6 Auto overdrive, Air, PS, PB, speed control, rear defroster, power windows & locks, cassette, power mirrors, 14" BSW tires. Much more standard equipment.

**\$12,599\***



## 1989 COUGAR 2 DR

All new 3.8 V-6 Automatic overdrive, PS, PB, air, tinted glass, power windows, front carpal mats, tilt, speed control, dual power seats, rear defroster, elec. cassette, power locks, luxury light group, 15" tires plus much more standard equipment.

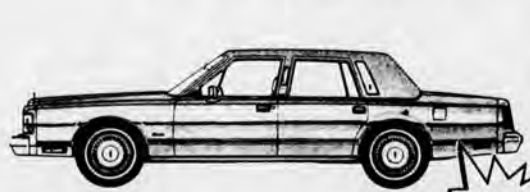
**\$14,999**



## 1989 GRAND MARQUIS 4 DR

GS 4 dr., 5.0 liter V-8 Automatic overdrive, air, power mirrors, tinted glass, power windows, intermittent wipers, cruise, rear defroster, 15" tires plus much more standard equipment.

**\$15,299**



## 1989 LINCOLN TOWN CAR

V-8, Auto overdrive, air, PS, PB, Power windows & locks, driver seat, tilt, cruise, cassette, rear def, full size spare. Plus much more.

**\$22,399**

\*Rebates Applied to Sale Price

**CARMAN LINCOLN MERCURY — complete satisfaction is our goal**