

NEWARK POST

LIBRARY
UNIVERSITY OF DELAWARE
JUL 13 2010
NEWARK, DELAWARE

❖ Greater Newark's Hometown Newspaper Since 1910 ❖

101st Year, 26th Issue © 2010

July 9, 2010

www.newarkpostonline.com

Newark, Del.

ENHANCED

Heating &
Air Conditioning

SERVICE AND INSTALLATION

Integrity and Quality is our Policy

\$79⁰⁰
A/C
TUNE-UP



- We Service & Install All Brands
- Competitively Priced
- Emergency Service
- Local, Dependable, Professional
- Licensed, Insured, Bonded

\$25⁰⁰ OFF
Any Heating/AC
Service Call
Excluding diagnostic fees
& tune-ups. When you
mention this ad



your comfort this summer, Call:

302-836-1921



Fresh is best



(PHOTOS BY MARK CORRIGAN)

The University of Delaware Farmers Market continues to draw shoppers, despite the hot weather. The market is held on Thursdays on Mentors' Circle and features locally grown seasonal produce.

Sallie Mae to hire locally for new headquarters

By DOUG RAINEY

RAINEY@CHES PUB.COM

Sallie Mae, the student lending giant, is moving its headquarters to northern Delaware, with the Newark area a possible site. The move from Reston in northern Virginia is expected to add more than 1,000 jobs to the company's current Delaware workforce of more than 900.

In a telephone press conference late last week Sallie Mae CEO Albert Lord talked about the move from Reston, Va. and how Delaware ended up as the new home of the publicly traded company. Delaware will officially become the headquarters state for the company in late March of next year, although additional jobs are expected to be added over a period of years.

While the decision caught some by surprise, Lord said Delaware has emerged as more than just another servicing center for Sallie Mae.

At about the time of the meltdown of financial markets in 2008, Sallie Mae had acquired the former Nationwide-Continental American building in Christiana. The hiring of hundreds of Delawareans for collections and other customer service positions at the time provided some good news at a time when job losses were accelerating.

Lord called the move into Delaware an experiment that turned out to be a success. The

company was attracted to the state, due to its reputation for being the nation's center for consumer credit and a large talent pool, Lord said.

He noted that top managers have been shuttling back and forth between northern Virginia and northern Delaware prior to last week's announcement.

Lord said a new headquarters building is a "strong possibility." The current service center is filled to capacity, he said.

Both Lord and Gov. Jack Markell, who added another victory in his administration's quest for jobs with Sallie Mae announcement, confirmed they had been in touch ever since the governor came into office. Lord said he came away impressed with the governor's understanding of business.

Lord added that Markell was "hugely influential" in the final decision to relocate to Delaware.

While some Sallie Mae staffers will transfer to Delaware from other locations, including Reston, most of the job growth will come from persons hired in Delaware.

Sallie Mae is in the midst of a major restructuring that is closing service centers in Texas and Florida. The company no longer makes federal student loans (that task is now entirely handled by the government itself following passage of legislation).

See SALLIE MAE, 11 ►

Cell phone driving restrictions
become effective in January.....3

Western mustangs offered
to good homes.....9

0000554 07/24/2010 980
*****3-DIGIT 197
KAREN DIAS
UNIVERSITY OF DELAWARE LIBRARY
181 S COLLEGE AVE SERIALS UNIT
NEWARK DE 19717
P-1 P53
###

COMMUNITY NEWS

Eagle Diner
RESTAURANT

Open 24 Hours
136 A. Elton Road, Newark
302-369-8600 • 302-369-2589

**SPECIAL
20% OFF**
Any Entree
\$10 minimum
Coupons cannot be combined
Not valid on holidays
expires 8/15/10

Let Us Do The Cooking!

Are you a VICTIM?

...assaulted?
...robbed?
...sexually assaulted?
...abused by a spouse,
boyfriend or girlfriend?

If you answered "yes" to any of these questions and are interested in learning of the possible resources available to crime victims in the City of Newark, the Newark Police Victim Services Unit can help.

If you would like more information about our services, please contact the Newark Police Department Victim Services Unit at 366-7110 ext 137 on Mondays and Wednesdays between the hours of 9 am and 5 pm.

*The Newark Police Department Victim Service program is funded through the Delaware Criminal Justice Council by the U.S. Department of Justice, Office for Victims of Crime.



Something terrible happens when you don't advertise...Nothing! Call 737-0724 to place an ad.

Editor's note: Want to get the word out on our popular website, newarkpostonline.com? It's easy. Just submit a calendar item for your next event? Just use this link. - <http://newarkpostonline.com/calendar/submit/>

UD Alumni Clubs to host Alumni Day

The University of Delaware Kent/Sussex and New Castle County Alumni Clubs will welcome Blue Hens, their families and friends from across the region to Dewey Beach for Alumni Day on Saturday, July 17.

Events for the day kick off at 12 p.m. at northbeach at 125 McKinley Street for a semiprivate party till 4 p.m. with drink specials and appetizers.

After enjoying northbeach, Blue Hens can take a trolley ride to the Bottle & Cork at 1807 Coastal Highway where they'll enjoy "back door" admission to the world-famous Jam Session.

All UD alumni and friends are welcome to attend and mingle with fellow alumni. A fee of \$10 per person covers: Commemorative wristbands; Commemorative T-shirts to attendees who register in advance (while supplies last); 15% off dinner at the Rusty Rudder; and Entry into northbeach, the Bottle & Cork and the Rusty Rudder with no line, no cover - and a complimentary drink ticket at each venue. For more details and to register, Stephen Mangat, UD Alumni Relations, 302-831-2341, smangat@udel.edu.

Local students earn honors

The following Newark residents and Doctor of Pharmacy students have been named to the spring 2010 Dean's List at University of the Sciences in Philadelphia: Pranali Patel, Sara Ahmed, Puja Patel, Elizabeth Ryan, Timothy Wu, John Lehman and Jayme Pieniaszek.

Charisse Michelle Brown, a resident of Bear, received a Bachelor of Arts degree in Biology from the College of Notre Dame of Maryland at its 115th Commencement held on Saturday, May 22, at the Baltimore Convention Center. Hal Smith, executive director emeritus of Catholic Relief Services, was the commencement speaker.

City of Newark Preschool

Newark Preschool is a developmental preschool program that offers children their own special school experience and an opportunity to make new friends in a warm and supportive environment. The 3 year olds meet on Tuesdays and Thursdays from 9-11:30am. The fee per month is \$117.00 and the Newark resident discount fee is \$111.00 per month. The 4 year olds meet on Mondays, Wednesdays and Fridays from 9-11:30 am. The fee per month is \$159.00 and the Newark resident discount fee is \$153 per month. The City of Newark Preschool is located at 708 West Church Road near Casho Mill Road.

Contact the Recreation office for more information at 366-7060, or 366-7033 ext. 200 after 5:00pm and on weekends or visit their website at www.cityofnewarkde.us/parksrecreation

Rep. Kowalko's Breakfasts

Rep. John Kowalko's breakfast meetings at Friendly's Restaurant, 1115 S. College Ave. in Newark will resume September. The meetings, which are an opportunity for area residents to have coffee and conversation with the representative, will resume on Tuesday, September 7, at 7 a.m. As always, constituents may call 302-577-8342 with questions or concerns.

Girl Scout Camps

The Girl Scouts of the Chesapeake Bay Council offers camps at four great locations throughout Delaware and Maryland. Summer camp is a place where girls can challenge themselves, learn new skills, try new things and have fun!

The Council offers a variety of activities and programs to choose from, including science, technology, space exploration, swimming, hiking, horseback riding, sailing, boating, roasting s'mores, outdoor survival, and more. There are many camping options, including day, resident and weekend programs. Girl Scout camps are open to all girls entering 1st to 12th grades, not just Girl Scouts. Girl Scout Camp is affordable and financial aid is

available.

Camp Country Center, Hockessin, DE - Science Dazzle July 19- 23 and Aug. 9- 13, 2010 from 9:00 a.m. to 4:00 p.m.

Camp Grove Point, Earleville, MD - Resident and Day Camps - Weekend and Weekday Camps running now through August 13, 2010 - Transportation Available.

Camp Todd, Denton, MD - Summer Daze Day Camps - July 12-16, 2010 - 8:30 a.m. to 4:30 p.m. with optional overnight on Thursdays - Transportation Available.

Camp Sandy Pines, Fruitland, MD - Ocean Exploration and Outdoor Adventure - July 19-23, 2010 - 8:30 a.m. to 4:30 p.m. with optional overnight on Thursday.

To receive a camp brochure please contact 1-800-341-4007 or visit www.GSCB.org.

Camp Imagine

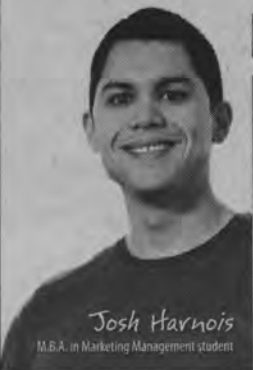
Calling all creative kids between seven and 12 years old to take part in the most



Camp Imagine participants pose with sunglasses.

See NEWS, 9 ►

EVERYONE HAS A STORY. YOURS STARTS HERE.



My name is Josh.

Classical music has always been an inspiration for me. Studying MARKETING MANAGEMENT at Wilmington University will give me the skills I need to effectively market myself as a musician and artist.

To learn more about my story, visit: wilmu.edu/Josh



WILMINGTON
UNIVERSITY

1-877-456-7003 | wilmu.edu/MyStory

ALTRA, INC.

HARDSCAPE • LANDSCAPE

"How has winter shaped your landscape?"

Broken and Bent!

Let Altra repair, replace and rejuvenate



EXPERTS IN OUTDOOR BEAUTY SINCE 1992

(443) 309-0962 • www.altra-inc.com
email: email@altrainc.net

Minster's
of Newark
Jewelers since 1895

Wearable Art for Summer

a Minster Design

Designed by

Marilyn Minster

Unique and Affordable



Newark Shopping Center, Newark, DE
302-737-5947

Email: info@minstersjewelers.com www.minstersjewelers.com

POLICE BLOTTER

Newark man charged with Wilmington murder

A Newark man has been charged with first degree murder, after being transported to Delaware from neighboring Cecil County, Md.

Omaire Clark, 23, of Gill Drive in Newark, was taken to Wilmington Police headquarters, from Cecil County, after waiving extradition.

In addition to the murder charge, he was also charged with Possession of a Deadly Weapon During the Commission of a Felony. He was transported to Howard Young prison and is currently being held without bail.

Clark is accused of stabbing Wyatt Brower, 44, of Wilmington, to death with a

kitchen knife, late last month outside Brower's home on the 1300 block of West Fifth Street.

Wilmington detectives said Brower attempted to break up a fight between Clark and a 17 year-old girl. The case, more than likely, turned into a 1st Degree Murder charge because Clark reportedly left the scene only to return and stab Brower, who later died at Christiana Hospital.

Detectives said Clark fled the scene. They were able to track his location based on text messages to the 17 year-old girl.

Clark was located hiding in a Hampton Inn motel room in Elkton Md. and was taken into



Clark

custody with the assistance of Elkton Police early Wednesday without incident.

Drowning reported

New Castle County Detectives are currently investigating the drowning death of a 28 year old Newark man who had attended a party on July 3rd at a private home in Stanton. The victim's body was found inside the pool later Sunday morning by the homeowner.

On the morning of July 4th, County Police and Paramedics responded to a home in the unit block of West Redmont Road for a report of a male subject who had drowned in a private pool. When emergency personnel arrived, they found the victim deceased and it appeared he had been in the pool for an extended

period of time.

The investigation has revealed the victim was attending a party at the residence late Saturday night into early Sunday morning. Police have discovered the victim was last seen before he entered the swimming pool sometime after 1 a.m. Police have found no obvious signs of foul play, however the investigation remains active.

The victim has been identified as Lavelles Augustin, a 28 year old male who resides in the Courtyard Apartments in Newark.

Maryland man loses luxury car, cash

New Castle County Detectives are currently investigating an early Saturday morning assault, robbery and

kidnapping of a Maryland Man who was accosted at gunpoint. The victim was beaten and robbed of his personal property and his 2008 Infiniti G37 luxury sports car. The stolen vehicle is a dark blue/gray sedan that should display a Maryland registration plate 2A08257.

At 3 a.m., County Police responded to the William Penn Village Apartments for a report of a robbery. When police arrived, they found the 28 year-old male victim who said he was robbed at gunpoint. The victim reported he was at a bar in the Fox Run Shopping Center and was about to leave when a white female approached him in the parking lot and started to "flirt" with him. After a brief conversation, the victim agreed to give the female a ride home to the William Penn Village Apartments in the New Castle area.

When the two arrived at the Amstel Drive location, the female indicated she had to call her roommate to let her in as she forgot her keys. While waiting for the "roommate," the victim was accosted by two male subjects who began assaulting him and "pistol-whipped" him with a handgun. The suspects stole the victim's cash, jewelry, phone and his car before speeding off. The female from the bar also disappeared.

To offer information regarding this investigation, please call the New Castle County Police Department at 395-8110 or visit our website at www.nccpd.com. Citizens may provide a text tip at: 847411 (TIP411), begin your message with NCCPD and then type your message. Tipsters may call Crime Stoppers as well at

See **POLICE**, 3 ►

Cell phone driving ban signed into law

Delaware became just the eighth state to restrict cell phone use while driving on Tuesday, when Governor Jack Markell signed legislation requiring motorists to use a hands-free device while driving. The ban goes into effect on Jan. 2, 2011.

The bill requires drivers to use a hands-free device to talk while driving and also prohibits text messaging, sending or reading e-mails or browsing websites while the vehicle is moving. Delaware also becomes the 30th state to prohibit texting while driving with the signing of this law.

The bill allows a driver to use a speakerphone or other hands-free device to talk on a

cell phone while driving. It also permits a driver to punch in a number or activate the hands-free device.

"Some people objected to it saying: 'Well, people do lots things in the car that are distracting. They listen to the radio; they talk to passengers; they eat,'" said state Sen. Peterson, D-Stanton, the bill's chief Senate sponsor. "But I've never almost been run over by someone eating a Big Mac, but I have been almost hit a dozen times in the past year by someone talking on a cell phone."

Supporters also believe that banning the use of handsets would make it easier for police those who are texting from their phones, since they are some-

times punching in messages below the line of sight of other drivers.

The new law creates a statewide regulation of the use of electronic communication devices while driving rather than building a patchwork system that varies by municipality. The cities of Wilmington and Elsmere have laws on the books restricting the use of cell phones while driving. Newark's City Council did not consider a cell phone measure, believing that a statewide bill would be passed.

A first violation of this primary offense would carry a civil penalty of \$50. A second offense would carry a fine of \$100-\$200. Violators would not

accumulate any points on their licenses. Drivers would be permitted to punch in the phone number or activate the hands-free device, but then cannot have the phone in their hands.

"This legislation has been a long time in coming," said State Office of Highway Safety director Tricia Roberts. "Between now and January 2 - when the law takes effect - the Office of Highway Safety will launch a statewide public awareness campaign. OHS has begun these efforts and we will be reaching out to the public and law enforcement agencies with a comprehensive public awareness strategy that will include the development of Delaware specific fliers, posters, radio

ads and potentially signage as well."

The bill allows exemptions for police, firefighters and other emergency personnel, permitting them to use a hand-held cell phone while performing their duties. It also allows drivers to use a hand-held cell phone to report an accident, fire, reckless driver or another emergency.

A companion measure allows employees to use two-way radios in their business vehicles to communicate with co-workers or headquarters. It covers radios mounted to a motor vehicle, but not CB fans. Another bill carves out an exemption for FCC-licensed amateur radio operators who work in emergencies.

NEWARK POST

Suite 109, Pomeroy Station 218 E. Main St.
Newark, DE 19711.

HOURS: Mon. - Fri. 8:30 a.m. to 5 p.m.

PHONE: (302) 737-0724

FAX: (302) 737-9019

E-MAIL: postnews@chespub.com

SUBSCRIPTIONS: 1-800-220-3311

CLASSIFIED ADVERTISING

1-800-220-3311

DISPLAY ADVERTISING

(302) 737-0724

PUBLISHER / REGIONAL V.P.

DAVID FIKE

EDITOR

DOUG RAINEY

INTERACTIVE MEDIA DIRECTOR

MARTY VALANIA

REGIONAL ADVERTISING DIRECTOR

KONRAD LA PRADE

ADVERTISING MANAGER

HARRY PORTER

MARKETING DIRECTOR

RENEE QUIETMEYER

ASSISTANT EDITOR /

RESEARCH DIRECTOR

MARK CORRIGAN

ART DIRECTOR

JONATHAN WADDELL

The Newark Post is published Friday by Chesapeake Publishing & Printing. News and local sales offices are located in Pomeroy Station, Suite 109, 218 E. Main St., Newark, DE 19711. All advertising and news are accepted and printed only at the sole discretion of the publisher. The Newark Post is a member of the Maryland-Delaware-D.C. Press Association, Suburban Newspapers of America and the National Newspaper Association.

POSTMASTER: Send address changes to: Newark Post, Suite 109, 218 E. Main Street, Newark, DE 19711. Periodicals postage paid at Newark, Del., and additional offices. (USPS #6465) Known office of publication 218 E. Main Street, Newark, DE 19711.

Do you want to work out
for FREE this summer?

The sooner you join, the more months you receive for FREE!

Stop in and sign a 12 Month Agreement and workout for FREE during the months of

June, July, and August! www.anytimefitness.com

ANYTIME FITNESS

201 Louviers Dr. Newark, DE 19711 • 302-738-2407

Trade ya!
Your club for ours!

Simply bring this ad in with your membership card from another club, we'll exchange it for one of ours and you'll receive

Two months ... for only \$29!

Come see what's new and exciting at Fusion Fitness Center and experience the difference! At the end of 60 days - we bet that you'll want to exchange your old card for an offer that's even better - joining us!

**280 East Main St., Suite 118
Newark, DE 19711
302.738.4580
fusionfitnesscenter.com**

Find us on facebook

IN THE NEWS



Miracle-Ear, The #1 Choice for Hearing Aids

Rediscover The Life You've Been Missing!

Patrick Duffy, Actor



5 REASONS WHY MIRACLE-EAR IS AMERICA'S #1 CHOICE IN HEARING AIDS

- 1 Free, no-obligation hearing test* and consultation
- 2 Custom-fit for maximum comfort and performance
- 3 State-of-the-art technology for clear, crisp sound
- 4 60 years of expertise and over 1200 stores nationwide
- 5 Satisfaction guaranteed and FREE lifetime care**

FREE Miracle-Ear® Hearing Test!

Use this coupon for a comprehensive hearing test with a Local Specialist.

More than 1,200 locations nationwide!

State-of-the-art technology for clear, crisp sound

No cost and no obligation. This coupon is good for one FREE comprehensive hearing test at a Miracle-Ear location. This coupon is only valid for hearing tests scheduled over the phone.

Miracle-Ear offers the best value, service and technology.

Call to schedule your FREE hearing test now!

1-888-255-6044

*Hearing tests are always free. Not a medical exam. Audiometric test to determine proper amplification needs only. Good only from participating Miracle-Ear representatives. **3-Year Warranty on all models. See store for complete warranty details. Adjustments, check-ups, cleaning and demos are always free. Hearing aids do not restore natural hearing. Individual experiences vary depending on severity of hearing loss, accuracy of evaluation, proper fit and ability to adapt to amplification.

History Museum reopening

Public visits to the reopened Newark History Museum will begin Sunday, July 25 from 1 to 4 p.m. announced William McLain, president of the Newark Historical Society, this week. 2010 public hours will continue each Sunday from 1 to 4 p.m. through November 28. Admission is free. Donations are welcome.

Additional hours are available by appointment for

groups, individuals, and special programs. Make advance arrangements for these visits by calling 302-368-9845.

The Newark History Museum is located in the historic 1877 train station on South College Avenue beside the bridge on the town side of the tracks. The museum was previously in this location and was temporarily moved to a Main Street storefront for the citywide celebration of the

250th anniversary of the 1758 Market Charter held in 2008. More than 3,000 visitors came to the Main Street site.

New exhibits at the train station reflect themes that permeate Newark's history, growth, changes, lifestyles, and personalities. "The museum is a major step for the Newark Historical Society to fulfill our mission pledge to 'share Newark's past,'" said McLain.



Main Street Dental

Thomas D. Cox, DDS

Erin E. Cox, DDS

96 East Main Street
Newark, DE 19711

302.368.2558
(Fax) 302.366.0911

Vacation in your own backyard this summer

Residential & Commercial

get your patio today
so you can enjoy it
all summer long

YOUR ONE-STOP PATIO & HARDSCAPE SPECIALIST

HARDSCAPING
Design & Installation
Paver Patios & Walls
Walkways • Driveways
2 yr. written warranty

LANDSCAPING
Design & Installation
Landscaping Maintenance Programs
Land grading for Proper Drainage
Landscape Accent Lighting
Water Features

ECS LANDSCAPING INC.
DELAWARE - 302-367-6649

Licensed - Fully Insured! Locally Owned & Operated!

Visit us online at
www.newarkpostonline.com

IN THE NEWS

Full-Day Kindergarten expands in Christina District

The Christina School District will offer additional Full-Day Kindergarten seats in all suburban elementary schools beginning in August 2010.

"This is a fantastic opportunity for Christina families, and we are thrilled that we can offer expanded Full-Day Kindergarten seats this coming school year, rather than having to wait until next year," said Christina Superintendent

Dr. Marcia Lyles. "We want to thank our residents and elected officials for supporting this important opportunity." The expansion of the program was due to approval of an operating referendum by voters last spring.

Some families participated in the School Choice option for Full-Day Kindergarten for 2010, and have received notification about their child's choice placement for 2010.

Those families will have priority to either stay in their choice school or return to their feeder school for Full-Day Kindergarten. Those families will be contacted first to discuss their preferences, and to submit required forms.

Families who were placed on waiting lists after the choice process will also receive priority.

All suburban elementary schools will now offer a total of 44 choice seats for Full-Day Kindergarten. The program is already in operation in the city of Wilmington. Schools offering limited Full-Day Kindergarten seats for the first time this fall include Brader, Brookside, Gallaher, Jones, Keene, Leasure, Marshall, and Smith Elementary Schools.

If the District receives more applications than seats available, a lottery process will go into effect for those seats, with priority assigned to feeder stu-

dents.

The deadline for applying for Full-Day Kindergarten is July 15, 2010.

Parents will be notified by mail during the week of July 26.

All remaining students will be assigned to half-day Kindergarten. All suburban schools will continue to offer half-day Kindergarten.

Full implementation of unlimited Full-Day Kindergarten is anticipated in 2011.

Children must be age 5 by August 31 to attend Kindergarten.

The deadline for Full-Day Kindergarten Choice Re-Opening applications is Thursday, July 15, 2010 at 4 p.m. Kindergarten Choice Re-Opening Forms are available in English and Spanish at every Christina Elementary School, and at the District Administrative Office. They

are also available online at www.christina.k12.de.us/FDK. For more information, please contact the Education Options office at 552-2618.

Completed applications must be mailed, faxed or

hand-delivered to: School Choice/Education Options Office, 600 North Lombard Street, Wilmington, DE 19801. Fax completed applications to: 302-429-4138. Schools will not accept applications.

OUT OF THE ATTIC



This week's Out of the Attic item is an undated early photograph of the Continental Fibre Company Cornet Band organized by Mr. S. J. Wright, founder and then president of the company, on February 11, 1919. Cornet bands started in England and soon became popular at industrial plants and towns across the USA. The 35 piece Continental Cornet Band became known as "The First Band from the First State". Until that time there had been no band in Newark to play at civic, religious, or community functions. Composed of Continental Fibre employees, the band quickly became well known throughout Delaware through their concerts and radio broadcasts. The band traveled in a special train to Washington, D. C. in March 1924 to participate in the inaugural parade for President Coolidge. For many years the bandleader was Dave Chalmers of the shipping department who recalls "many happy hours spent with the band bringing the pleasure of their music to thousands of their listeners".

The picture is on loan to the Newark Post from the Newark Historical Society collection (from CDF Topics, July 1961). Visit the Newark History exhibits at the Newark Free Library and the Municipal Building. The Society invites donations or loans of objects, stories, pictures and other artifacts of places, activities, and life styles in the Greater Newark Area for its permanent collections and the Newark History Museum. The Museum will be open to the public Sundays from 1 to 4 starting July 25, 2010.

Contact the Newark Historical Society by voice mail at 302-224-2408, by postal mail to P. O. Box 711, Newark, DE 19715, or by email to newarkdehistoricalsociety@yahoo.com.

WILMINGTON & WESTERN RAILROAD

Create Childhood Memories!

June 27, July 3, 4 & 5

MT. CUBA EXPRESS

12:30pm & 2:30pm

Saturday, June 26

MT. CUBA EXPRESS

12:30pm

HOCKESSIN EXPRESS

2:30pm

EVERY Friday, Saturday & Sunday in July

FAMILY DAYS

KIDS ride FREE with accompanying full priced adult ticket on any Mt. Cuba Express Train!

Reservations can be made online at

WWW.WWRR.COM or by calling 302-998-1930

Greenbank Station is on Newport-Gap Pike, Rt. 41N in Delaware
1/4 mile from intersection Kirkwood Hwy. Rt. 2

July 25

WILD WEST ROBBERY TRAIN*

12:30pm & 2:30 pm. *Family Days not applicable.

July 4

FIREWORKS EXPRESS TRAIN

Take the train to the Hockessin Fireworks!
Departs 7pm - Reservations Required

Friday, July 16

MURDER MYSTERY TRAIN

7pm. Reservations Required

Tuesday, July 13

BACK BURNER DINNER TRAIN

7pm. Reservations Required

American Spirit...
Let us make a difference in your life!



American Spirit
Federal Credit Union

1110 Elkton Road, Newark, DE 19711

(302) 738-4515

Membership is open to anyone who:
lives • works • worships • goes to school or belongs to
any association in the City of Newark

www.americanspirit.org



Dr. Yvonne Kneisley
OPTOMETRIST

- Clear Explanations of Procedures
- Professional & Caring Staff
- Most Insurances & HMO's Accepted

KNEISLEY EYE CARE **(302)224-3000**
The Main Street Galleria
45 East Main Street, Suite 201 • Newark
www.kneisleyeyecare.optometry.net

Eye Examinations • Contact Lenses • Fashion Eyewear • Treatment of Ocular Diseases

Something terrible happens when
you don't advertise...Nothing!
Call 737-0724 to place an ad.

WILMINGTON UNIVERSITY

Wherever You
Want to Be...

Start Here.

Undergraduate and
Graduate Degrees
Register Anytime
Classes start every 8 weeks!



WILMINGTON UNIVERSITY

DELAWARE • NEW JERSEY • ONLINE

WILMU.EDU

1-877-967-5464

OBITUARIES

■ *Obituaries are printed free of charge as space permits. Information is usually supplied to the newspaper by the funeral director.*

Irene B. Warren

Irene B. Warren, 80, of Newark, DE, died peacefully surrounded by family at Paoli Hospital, PA, on Monday July 5, 2010, of complications following a stroke.

Irene was born in Chicago, IL on Sept. 29, 1929 to Joseph and Mary (McKendry) Belous. She spent her childhood in Chicago, and after graduating as class valedictorian from South Shore High School moved to Los Angeles. There she earned a BA and a MA from UCLA, and engaged in a remarkable variety of pursuits including modeling

and professional singing. In Los Angeles she met fellow UCLA student Robert Warren; they were married in 1959. They moved to Seattle, WA where Bob taught at the University of Washington. Irene completed her Ph.D. in Voice Science at the University of Washington, while raising two children and the first of many Borzoi dogs. After a brief stop in Palos Verdes, CA, the family settled in Newark, DE in 1975.

At the start of her career, Irene taught at California State University Long Beach and the University of Delaware. Subsequently,



Warren

she joined the Christina School District as a speech pathologist in its autistic program. This was followed by decades of service in a number of schools in the District helping an inestimable number of children. In the latter part of her career, much of her work and commitment was focused at Bancroft Elementary in Wilmington. At the time of her death, she was secretary-treasurer for the Delaware Speech-Language and Hearing Association (DSHA). She especially contributed to the profession as a member of its executive board and secretary-treasurer since the 1980s.

Irene will be remembered for her love of animals and always having Borzois as faithful friends, her incomparable cooking skills, her continually blooming greenhouse garden, her devotion to aquacizing, and her sharp wit, which she used unsparingly to the end. The house on Dallam Road was like a 5 star restaurant, benefitting friends, family, and colleagues.

Irene is survived by her husband of 51 years, Robert, at home, daughter Stacy Warren (Dan Israel) of Spokane, WA, son Colin Warren (Virginia Parks) of Chicago, IL, step-daughter Miranda Sacharin (Ken) of New York City, and step-son Jeffrey Warren (Linda) of Denver, CO. She is also survived by her sister Catherine Armstrong and niece Allison Fanara of Madison, WI, sister-in-law Bea Belous of Pensacola, FL, brother Philip Belous (Carol), and brother-in-law Jim Yocum (Kathy) of Eugene, OR. Irene enjoyed her grandchildren Claire and Robin Israel, Ian Parks, Emily Sacharin, and Elad,

Nathaniel, Joe, and Penina Warren, grand-nephew Giovanni and grandniece Katerina Fanara, and numerous cousins, grand cousins, grand nieces, nephews, and other relatives and a wide network of friends, neighbors, and colleagues too extensive to list. She was predeceased by her brother Russell Belous and nephew Mark Belous.

The family thanks the staff at Paoli Hospital, and especially nurses Cindy and Rob, for the compassionate care they gave Irene and the support they extended to her family in her final days.

A memorial service will be held at 4 pm on Saturday, July 10, 2010, at the Spicer-Mullikin Funeral Home, 121 West Park Place, Newark DE, where visitation will begin at 3 pm.

In lieu of flowers, donations in Irene's name should be made to Tri-State Bird Rescue & Research, 110 Possum Hollow Road, Newark, DE 19711. (302)737-9543 / tristatebird.org. To sign guest book, visit spicermullikin.com

Jimmy Alman

Mr. Jimmy W. Alman, 63, of Newark, died on Friday, June 25.

Born in Union, SC, on November 11, 1946, Mr. Alman was the son of the late James B. Alman and Margaret Evans Alman. He was a graduate of Union High School and later attended Baptist College (now Charleston Southern University) in Charleston, SC.

Alman proudly served his country in the U.S. Navy for 25 years. After his retirement from the military, he accepted a position with Batta Environmental Associates, where he worked as an environmental inspector.

A devout Christian, he was an active member of Pleasantville Baptist Church, serving as assistant treasurer and usher, as well as in many other church ministries.

In addition to his parents, he was preceded in death by his beloved wife, Janice Going Alman, in 2008. He is survived by his son, Robert C. Alman, his daughter, Rebecca Jane Levan, his brothers, Dennis Alman, James Ronnie Alman, and Gerald Alman, his sisters, Cathy Parker (Rusty) and Patsy Gibson; and three grandchildren.

A funeral service was held on Friday, July 2, at Pleasantville Baptist Church, 162 Christiana Road, New Castle. A second funeral service was held at 1 pm on Monday, July 5, at the Holcombe Funeral Home, Inc., 310 W. South St., Union, SC. Interment followed in Union Memorial Gardens.

In lieu of flowers, contributions may be made to the Pleasantville Baptist Church Building Fund, 162 Christiana Road, New Castle, DE 19720. To sign guest book, visit spicermullikin.com.

Ethelreda Bender

Mrs. Ethelreda Bender, loving wife of Anthony Bender, age 82, of Newark, DE, died suddenly on Friday, July 2, 2010 at Christiana Hospital.

Mrs. Bender was born on October 4, 1927 in Chicago, IL to the late Stanley Mitchell and Alice Sirvid Mitchell. A talented homemaker and adoring mother, Mrs. Bender devoted her life to her family.

Mrs. Bender was predeceased by her husband, Anthony, in 2009. She is survived by her daughter, Carol J. Antoff and hus-

band, Richard of Bear, DE; and her grandchildren, Andrew Antoff, Theresa Antoff, and Bonnie Rex.

Services will be private and at the convenience of the family.

To sign guestbook, visit: spicermullikin.com

Kyle Hebert

Kyle Aaron Hebert, 14, of Bear, died suddenly on June 27, while vacationing with his family in Maine. Born in Wilmington, he was the loving son of Danny and Dodi Hebert.

Kyle was an avid BMX rider, a blue belt in karate and had just finished 8th grade.

In addition to his parents, Kyle is survived by his brothers, Ryan (18) and Dylan (11); grandparents, Nancy Pedrick, Phillip Hebert and Theresa Pelletier; many aunts, uncles, cousins and friends. He was preceded in death by his grandfather: David Pedrick.

Relatives and friends were invited to attend the viewing on Monday, July 5, and on Tuesday, July 6, at Cornerstone United Methodist Church, 3135 Summit Bridge Rd., Bear. Kyle's funeral service was held in the Church on Tuesday at 11 am. Interment was private.

In lieu of flowers, contributions can be made to: Hebert Education Fund at WSFS Bank.

Arrangements made by Beeson Funeral Home of Newark. Condolences may be made by visiting www.griecocares.com.

Joseph Russell Maxwell, Sr.

Joseph Russell Maxwell, Sr. died peacefully on July 7, 2010. See **OBITS, 7**

WET BASEMENTS STINK !!

Mold, mildew and water leakage into your basement causes health and foundation damage. What can be done to fix the problem? Allstate American Waterproofing is an honest, hardworking local company. We will give you a **FREE** evaluation and estimate and a fair price. We have repaired thousands of basements in the area; we can provide local references. When your neighbors needed waterproofing, they called Allstate American. Why don't you? Call now to receive a 20% discount with your **FREE ESTIMATE**. MHIC#36672

CALL 1 800 420 7783 NOW!

Large enough to offer a great selection, small enough for friendly customer service!

CONTRACT LIQUIDATORS
The Furniture Store

Family Owned and Operated Since 1990!
312 South DuPont Hwy
New Castle, Delaware 19720
We're located just 1/4 mile south of the Route 13 & 40 Split!

302-328-8888

Monday-Thursday 11am - 7:30pm
Friday 11am - 8pm
Saturday 10am - 6pm
Sunday 12pm - 4pm

Immediate Pick up or Delivery Available on Most Items!
Layaway Available
90 Days Same as Cash
All Ashley Products Available

www.contractliquidatorsfurniture.com

THE MORE HIS GRADES DROP, THE MORE YOUR HEART SINKS.

PRIVATE TUTORING FOR
SAT/PSAT/
ACT PREP

Huntington
LEARNING CENTER

Your Child Can Learn.
Call Huntington Learning Center Today.

Newark • 34 Liberty Plaza • Kirkwood Hwy. • 302-737-1050
Independently owned and operated. ©2007. Huntington Learning Centers, Inc.

Corolla, NC Vacation Homes!

Brindley Beach
VACATIONS & SALES

Over 500 Vacation Homes from Duck to Corolla, Oceanfront to Soundfront, Private Pools, Hot Tubs, Pets and More...

Book Online at www.brindleybeach.com
1-877-64-BEACH
"SERVICE FIRST... FUN ALWAYS!"

got scrap?
CASH PAID FOR SCRAP!

Cash for all types of metals & cars including:
Steel • Batteries • Aluminum
Stainless • Brass • Copper

Demolition Services Available

ELKTON RECYCLING

410-392-2980
53 Dogwood Rd., Elkton, MD
(Corner of Blueball & Dogwood Road)
www.elktonrecycling.com

It's right here. It's easy.
302-998-9192
4565 Kirkwood HWY | Wilmington

GEICO
Local Office

www.geico.com

"Hagley? Oh, yeah, I remember going there on a field trip in fourth grade."

You've changed. Come see how we've changed.

www.hagley.org

OBITUARIES

▶ OBITS, from 6

fully June 29, 2010.

Born November 30, 1917, Joe lived a full and fulfilling life. A 1935 Newark High School graduate, Joe became his class valedictorian, served as class president, and captained the "34" Yellow Jackets football team. A 1940 graduate of the University of Delaware in civil engineering, Joe began his working career with the Pennsylvania Railroad Co. before moving to the Philadelphia Electric Co., where he worked for thirty-two years. He was a professional engineer and a member of many engineering societies and associations. Joe was an accomplished musician, working his way through college playing in numerous local orchestras as well as two summers at the Delaware Park bugler. He maintained a musical interest throughout his life as a frequent visitor to the Philadelphia Orchestra and Wilmington's Grand Opera House. Joe reached Grand Master status in his second love, duplicate bridge.

Joe was preceded in death by his parents, James Hamilton and Lillian Morris Maxwell, his brother Paul, and his lifelong and loving wife of sixty-eight years, Betty. He is survived by two sons, James H. Maxwell, Ph.D. and Joseph R. Maxwell, Jr., daughters-in-law, Valerie and Kirsten, five grandchildren, and seven great grandchildren.

The family wishes to thank Millcroft retirement community and Delaware Hospice for their compassionate care of Dad.

Services will be held privately.

In lieu of flowers, contributions made to Delaware Hospice, 3515 Silverside Road, Wilmington, DE 19810, would be appreciated.

Sean McCann

Mr. Sean Aaron McCann, 38, of Newark, died on Thursday, June 24.

Born in Bronx, NY, on May 22, 1972, Mr. McCann attended Claymont High School and would go on to graduate from Brandywine High School. He later attended Delaware Technical and Community College, where he studied both criminal justice and computer science.

He is survived by his wife, Sarah Johnson McCann; children, Jordan Pase and Lili McCann; father, Melvin McCann; mother, Daria Cameron McCann; maternal grandmother, Evelyn Cameron; sisters, Jai Montgomery and Latrell Montgomery; a large extended family; and his pet cat, Cosmo.

A memorial service was held on Thursday, July 1, at the Spicer-Mullikin Funeral Home, 121 West Park Place, Newark.

In lieu of flowers, contributions in memory of Mr. McCann may be made to Children and Families First, 2005 Baynard Boulevard, Wilmington, DE 19802. To sign guest book, visit spicermullikin.com.

Caroline W. Neal

Mrs. Caroline W. Neal, age 85, of New Castle, DE, passed away Friday, July 2, 2010 at Christiana Hospital.

Born in Bear, DE on April 26, 1925, Mrs. Neal was the daughter of the late William H. Walther and Dora Thorp Walther. After a long career, Mrs. Neal retired from WSFS which afforded her the opportunity to offer her services as a volunteer as an

Ombudsman with the State of Delaware. Additionally, she was a member of the Bear Ladies Club, the Claymore Quilting Group, and the Friendship Quilting Stars Group of St. Georges. Mrs. Neal was a longtime member of the Church of God of Prophecy.

A loving mother, grandmother, and great-grandmother, she greatly enjoyed spending time with her family.

Mrs. Neal was predeceased by her husband, A. Harlan Neal, Sr., in 1998, and her sister, May Proud. She is survived by her sons, Albert H. Neal, Jr. and wife, Grace, and Alvin H. Neal and wife, Alex, all of New Castle, DE; daughters, Louise Havens and husband, Joseph of Dover, DE, and Carol Walton and husband, William of Wilmington, DE; brother, William Walther; sisters, Sylvia Walther, Dora Edwards, Wilma Gott and husband, Wally, Frances Rogers, and Ruth Scott; 10 grandchildren; 17 great-grandchildren; and many nieces and nephews.

A funeral service will be held at 11 am on Wednesday, July 7, 2010 at Spicer-Mullikin Funeral Home, 1000 N. DuPont Parkway, New Castle. Interment will follow in Gracelawn Memorial Park, 2220 N. DuPont Parkway, New Castle. A visitation will be held from 6 to 8 pm on Tuesday, July 6, 2010 at the funeral home.

Contributions in Caroline's memory may be made to your favorite charity.

Kevin Reynolds

Kevin W. Reynolds, 49, of Newark, died at his home Saturday June 26.

Kevin was born in Wilmington, on May 10, 1961, the son of Doris P. Reynolds and the late James D. Reynolds. He was a 1981 graduate of Fairwinds Christian School and worked as a foreman for AFL Network Svcs.

In addition to his mother, he is survived by his wife of 26 years, Cathy Reynolds as well as numerous aunts, uncles and cousins.

A celebration of Kevin's life was held at

Middletown Baptist Church, 419 Armstrong Corner Road, Middletown, on Saturday July 3. Burial was in Sudlersville Cemetery.

Charitable contributions in Kevin's memory may be made to Middletown Baptist Church c/o R.T. Foard & Jones Funeral Home, 122 West Main St., Newark, DE 19711. To send condolences, visit www.rtfoard.com.

John J. Schnepf

Mr. John J. "Jack" Schnepf, age 85, of Newark, DE, formerly of Brigantine, NJ, died on Monday, June 28, 2010, surrounded by his loving family at Heartland Hospice House in Wilmington, DE.

Born in Philadelphia, PA, on July 13, 1924, Mr. Schnepf was the son of the late Francis J. Schnepf and Alice G. Curran Schnepf. He proudly served his country in the US Army during World War II, and, following his honorable discharge from

military duty, would go on to receive his bachelor's degree from LaSalle University. He later earned his MFA from the Catholic University of America.

Mr. Schnepf made his career with the RCA Corporation in Cherry Hill, NJ, where he retired as public relations director in 1987. A devout Catholic, he was a dedicated member of Holy Family parish in Newark, DE. In his leisure hours, he greatly enjoyed watching favorite movies and reading on a wide variety of subjects.

In addition to his parents, he was preceded in death by his sister, Frances M. Schnepf. He is survived by his beloved wife of 45 years, Elizabeth "Liz" Brennen Schnepf; daughters, Jacqueline S. Allman (Matthew) of Bel Air, MD, and Elizabeth S. Detor (Lucas) of London, UK; and grandchildren, Eric H. Allman, Victoria F. Allman, Samantha R. Detor, Jessica E. Detor, and Addison M. Detor.

Mass of Christian Burial will be offered

at 11 am, on Tuesday, July 13, at Holy Family R.C. Church, E. Chestnut-Hill and Gender Roads, Newark, DE, 19713, where visitation will begin at 10 am. Interment will be held privately.

In lieu of flowers, contributions may be made to Holy Family R.C. Church, 15 Gender Road, Newark, DE 19713.

To sign guest book, visit spicermullikin.com

Don't Let Anything Cloud Your Vision

- Cataract and LASIK surgery
- Diabetic and Ocular Disease Management
- Glaucoma and Retina Evaluation and Treatment
- Eyeglasses and Contact Lenses

5 convenient locations to serve you!

DOVER	MILFORD	SMYRNA	NEWARK	BEAR
833 S. Governors Ave. 674-1121	110 N.E. Front St. 422-5155	10 S. Market St. 653-9200	333 E. Main St. 368-9105	1721 Pulaski Hwy. 836-5410

Accepting Most Insurances



Gary I. Markowitz, M.D.
Board Certified Ophthalmologist

DELAWARE EYE CARE CENTER

Complete Eye Care
Schedule your appointment today!
800-900-2020
www.delawareeyecare.com

HOLLOWAY EYE CARE & OPTIQUE

2015-C Pulaski Hwy
Havre de Grace, MD. 21078

Phone: (410) 939-7717

202-B South Bridge St.
Elkton, MD 21921

Phone: (410) 392-2323

Featuring: Tiffany & Co.

Oakley, Coach
Vera Bradley and
Many More!!

Evening and Saturday hours
Most Major Insurances Accepted
Outside Prescriptions Welcome

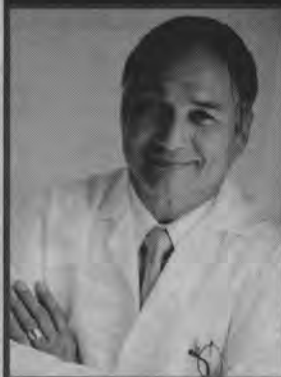


Dr. Holloway & Dr. Shilts

"EXPERIENCE DISTINCTION" Visit us today!!

www.hollowayeyecare.com

We're Focused on Eye CARE!



- COMPETENT, EXPERIENCED DOCTORS
- COMPREHENSIVE EYE CARE & EYE EXAMS
- 1000'S OF AFFORDABLE, DESIGNER EYEWEAR
- WIDE SELECTION OF CONTACT LENSES
- MOST INSURANCES AND HMOs ACCEPTED
- EVENING AND SATURDAY HOURS
- NEW PATIENTS WELCOME
- 27 YEARS PROVIDING QUALITY EYE CARE

MICHAEL KORS GUCCI Salvatore Ferragamo NINE WEST kate spade
Calvin Klein AIX BANANA REPUBLIC Dior GIORGIO ARMANI

SIMON EYE ASSOCIATES

Bear
116 Fox Run Drive
Fox Run Shopping Center

Pike Creek/Hockessin
5301 Limestone Road
Suite 128

Middletown
472 E. Main Street
Middletown Crossing

Wilmington
912 N. Union Street
Union Plaza

Newark
19 Haines Street
Suite B

North Wilmington
2625 Concord Pike
Suite A

Call or Visit Us Online Today!
302-239-1933 | www.simoneye.com

Summer Activities for Kids!



Family Movies
First Full Weekend of
Every Month
(Thurs. & Fri. in July)

July 17: "Crazy Praise Experience-
A Christian Concert" 5:30 pm

July 23 & 24: Monthly family movie
(to be determined)

July 26 thru July 30: One Act Workshop
from 9 am -12:30 pm.
A starting out experience for kids
6 to 8 years old. For more info
contact Gina at 302-737-8215.

Aug. 6&7: Monthly family movie.
Showtimes 7:30 pm each night.
\$6 adults, \$4 children.

Aug. 21: Olde Tyme Peach Festival.
A town wide, all day event
featuring street vendors.



Gibby Summer Arts Camp
Two-week long sessions of fun. Art activities
for preschool to 7th. Brochures available at
www.theGibby.com • 449-5396

Church Directory

To Advertise or make changes call Nancy Tokar 1-800-220-1230 or voice mail 443-245-5072. Prices starting as low as \$12.00 a week. Deadline for changes Friday 4:30pm for the following edition



**Evangelical
Presbyterian Church (PCA)**
Christ Centered • Biblically Based

**Sunday Worship 10:45am & 6pm
9:30 Sunday School**

308 Possum Park Rd., Newark
302-737-2300
www.epcnewark.org

The Way Ministries
(an extension of Highway Gospel Community Temple, West Chester PA)

Highway Word of Faith Ministries is presently worshipping @ The George Wilson Community Center 303 New London Rd., Newark, DE

Sunday:
8:00-9:00am Christian Education classes for all ages
9:00am Sunday Morning Celebration

Wednesday: Location
7:00-8:00pm Bible Enrichment Class at Prayer Temple
49 New London Rd.
Newark, DE 19711
Mailing Address: P.O. Box 220
Bear, Delaware 19701-0220
Visit us online @ www.theway.ws or send us a note at theway238@aol.com



Pastor Carl A. Turner Sr. & Lady Karen B. Turner
For further information or directions please call:
302-834-9003



**First Church
of Christ,
Scientist**

48 West Park Place, Newark
Sunday Service & Sunday School 10:00am
Wednesday Testimony Meetings 7:30pm
Childcare available during services.

**302-456-5808
ALL ARE WELCOME
www.fccsnewark.org**




The Episcopal Church
Welcomes You

St. Thomas's Parish
276 S. College Ave. at Park Place,
Newark, DE 19711

Across from UD Health Center
(302) 368-4644
Church Office: 9:00-1:00 Mon-Fri
www.stthomasparish.org

Sunday Worship
8:00 am & 10:30 am Holy Eucharist
5:30 pm Postponed for Summer,
resume on September 5
Child care & summer Sunday School
begins at 10:15am

Weekday Services
Mon.-Fri. Eve. Prayer 5:15pm
Wed. Holy Eucharist 12:10 pm

The Rev. Paul Gennett - Rector
Marc F. Cheban,
Organist & Choir Master
God meets you where you are!
And So do we. Come and see...



**"We get more hits
from this one
ad than any
other advertising
we do."**

-Good Shepherd
Episcopal Church

**Call Nancy Tokar to place
your ad at
1-800-220-1230**


Wisdom from many sources



Sunday Service 10am
Childcare and Sunday School

Unitarian Universalist Fellowship
420 Willa Road, Newark
302.368.2984 uufn.org

Come Join Us!
Speaker: Rev. Greg Chute



**GLORIOUS
PRESENCE
CHURCH**

**Sunday 8:30 a.m.
Acoustic Worship
Sunday 10:30 a.m.
Electric Worship**

Pastoral Team
Curtis E. Leins, Ph.D.
Robert F. McKnight
Theodore Lambert, III
James L. Ford

Located 1 1/2 miles N. of Elkton
on Rt.213

(410) 392-3456

**NEW LIFE CHRISTIAN
FELLOWSHIP**

Sunday Service 9:30 AM
Multimedia Children's Ministry!
Contemporary Worship!
Relevant messages!

Church Office: 999-1800
Check out our web page:
www.NewLifeDE.org
2712 Old Milltown Rd.
Wilmington, DE
(near Kirkwood Hwy & Milltown Rd)



good shepherd
EPISCOPAL CHURCH

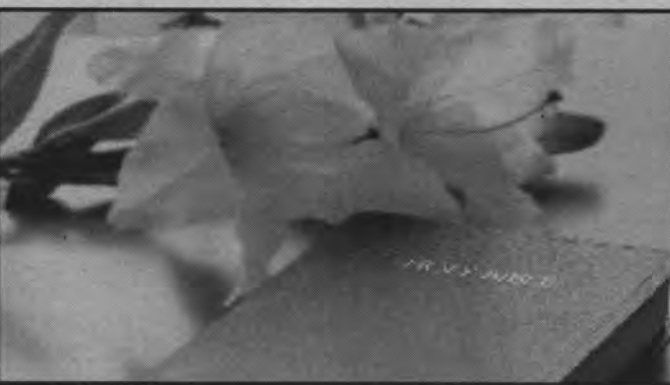
Episcopal tradition,
contemporary music

Join us for
weekly worship on
Sundays at 11am
at St. Nicholas Church,
10 Old Newark Road

Brightening lives, nourishing souls, connecting to God

302 547-7849 • www.GoodShepherdDE.org
Sponsored by the Diocese of Delaware

We can do internet advertising for churches. All we need is 5-7 pictures explaining what is taking place in the pictures, and service days and times and church address. It's that easy! These can be forwarded to friends on Facebook, My Space, Twitter or email. Help make your church go viral! Call Nancy Tokar at 443-245-5072 for details.



You are welcome at



Ebenezer
United Methodist Church

**SUN SERVICES 8:30 & 11:00am
SUNDAY SCHOOL 9:45am**
Contemporary Worship
Every 3rd Saturday at 5:30 p.m.
525 Polly Drummond Road
Newark 302-731-9494
Handicapped Accessible • Child Care
TED DAY, PASTOR

IN THE NEWS

Mustang adoption offered this month

The Bureau of Land Management (BLM) periodically offers horses to the general public for adoption. One such unique opportunity is coming to Harrington on Saturday, July 17, from 8 a.m. – 5 p.m. The preview is on Friday, July 16, from 2-7 p.m. for the mustangs, all in need of good, caring homes.

The adoption is on a first come, first served basis at a cost of only \$125 for animals less than three-years-old and \$25 for animals three-years-old and over. In addition, you can take home a buddy animal for only \$25 when you adopt any animal at the full fee of \$125. The event is free of charge and open to the public.

Wild horses that have been gentled have been trained to participate in western riding events, dressage, and trail riding. They are noted for their endurance and intelligence and make great additions to your farm or ranch. With patience and perseverance, so much is possible with your mustang as well as hours of recreation. Delaware has a number of equestrian trails in area parks

such as Bellevue State Park and Lums Pond State Park, not to mention private stables located in Newark and adjacent areas.

"While the adoption process is simple and straightforward, anyone considering adopting a wild horse or burro should remember that the animals are wild and require gentling and training," BLM official said. Many adopters are delighted to provide a home for a wild horse or burro that western rangelands cannot support.

Prospective adopters must have sturdy corrals that are 20' x 20' (or larger), at least 6 feet high for an adult horse and at least five feet high for burros and horses younger than 18 months, and have a shelter directly attached to the corral. Adopters must provide a stock-type, step up trailer (ramps or split two-horse type trailers are not allowed). The BLM staff will halter and load animals onto the adopters' trailers.

For more information on the application process, call 1-866-4MUSTANGS or visit www.wildhorseandburro.blm.gov to download an application.

► NEWS, from 2

all-encompassing arts camp in Delaware, according to sponsors. Twenty-four campers are teamed with arts professionals to learn visual art, modern dance, a capella singing, and improv. theater techniques all in one imaginative camp. This year's art professionals include Rowena Macleod for visual arts, Tonia Potts for modern dance and Stephanie Lord for theater and singing.

Camp Imagine, now in its 12th year, is sponsored by the Newark Arts Alliance, will be held for two weeks, July 26 to Aug. 2, Monday through Friday, 9am to 4:15pm at the Newark Arts Alliance located at 276 E. Main St., Suite 102, Newark, DE. Scholarships are available for low to moderate income families from all areas and entitle the campers to discounts of up to 90%. Camp Imagine costs \$200 per week, and campers may take one or both weeks. A final performance and art show is planned for the last day of the camp.

Download a brochure with

registration form at www.newarkartsalliance.org, or call 302-266-7266. The Newark Arts Alliance is a non-profit community arts organization with a mission of "developing community through the arts". Visit www.newarkartsalliance.org for info. about all of their programs.

Beyond the Basics

This 3-hour course is for the kayaker who knows the basics and wants to expand their skill set. Class will be held July 10 from 9 a.m.-12 p.m. Fee is \$80 and the Newark resident discounted fee is \$69. For more information contact the Recreation Office at 302-366-7060 or visit www.cityofnewarkde.us/parskcreation to register online.

William Penn Class of 1965 Reunion

The William Penn High School Class of 1965 is once again celebrating. This class has had a successful reunion every five years since 1975 and

a committee is working hard to make the 45th Class Reunion memorable. The event is scheduled for Saturday, July 10, at Delaware National Country Club on the grounds of the former Hercules Country Club. It will begin at 6 pm with a social hour, dinner, fun activities and a DJ with plenty of "oldies" for dancing. Other activities throughout the week and weekend are being offered. Contact information for many classmates is missing or outdated. If you are a member of this class and have not received an invitation, please contact Richard Markey at richmarkey@aol.com.

Piano Plus

The City of Newark Parks and Recreation Department is taking registration for the Piano Plus program. Piano Plus is a unique music camp for 7 to 9

year olds, where your child will learn about the piano as well as learn to enjoy and appreciate music. Participants will spend time learning the piano, doing music crafts, learning how instruments make sound and actually making instruments from household materials. There is no homework and keyboards are provided. A short concert will be held the last day of camp. This is a chance for your child to "test drive" a piano. Session available July 12-16 from 1 to 4pm. The fee for the Piano Plus is \$95 and the Resident discount fee is \$77. For additional information, please call the City of Newark Parks and Recreation office at (302) 366-7060. You may also visit us or register online at www.cityofnewarkde.us/park-recreation.

See NEWS, 11 ►

DONATE YOUR CAR



to the Outreach Center "Car for Kids" Program

- Free Pick-up and Tow
- Any Model or Condition
- IRS Tax Deductible

1-800-601-7171

NEED A LAWYER?

Offering affordable legal services at
1400 Peoples Plaza, Suite 121

EXPERIENCE COUNTS
Over 25 years in practice

- Auto Accidents
- Divorce & Custody
- PFA
- Work Injuries
- Bankruptcy
- Criminal Law/DUI

Our firm's goal is to provide affordable legal services to our clients. We utilize a team approach combining the efforts of experienced paralegals and attorneys, coupled with aggressive, affordable representation, maximizing your recovery, protecting your rights, to provide the most effective personal legal services available.

Rahaim & Saints

ATTORNEYS AT LAW

1400 Peoples Plaza
Suite 121
Newark, Delaware

302-832-1800
www.rahaimandsaints.com

2055 Limestone Road
Suite 211
302-892-9200

Amputee Services

We Are Certified and Experienced
for All Amputation Levels

We Build & Design In-House:

- Lifelike Restorations & Specialty Designs
- Complete Prosthetic Limbs
- Routine Maintenance
- Insurance Verifications
- Warranty Service

Call for a Free Consultation:

Glasgow, DE (302) 392-1947
MD Offices, (410) 569-0606
MD Eastern Shore, (410) 810-1370

~Appearance~Mobility~Comfort
~Experience~Devotion & Care

www.RealLifeProsthetics.com



Wesley's
All-You-Can-Eat
on the Loft...

Thursday Night

#1 Maryland Crabs

Includes: Fried Chicken, Hush Puppies, Fries,
Soup & Salad Table

Friday Night:

XLarge Alaskan Snow Crab Legs

Includes: Fried Chicken, Hush Puppies, Fries,
Soup & Salad table

Reservations Start at 5 pm

Seafood Buffet on Tuesdays and Wednesdays
in The Dining Room starting at 5 pm

3700 Telegraph Rd. • Elkton, MD 21921
www.wesleyrestaurant.com • 410-398-3696
ATM • Keno • All Major Credit Cards

Something to Smile About! Implant Dentistry

An exciting alternative
to bridges or dentures.
Laugh, talk and eat confidently
with teeth that feel
and look like your own

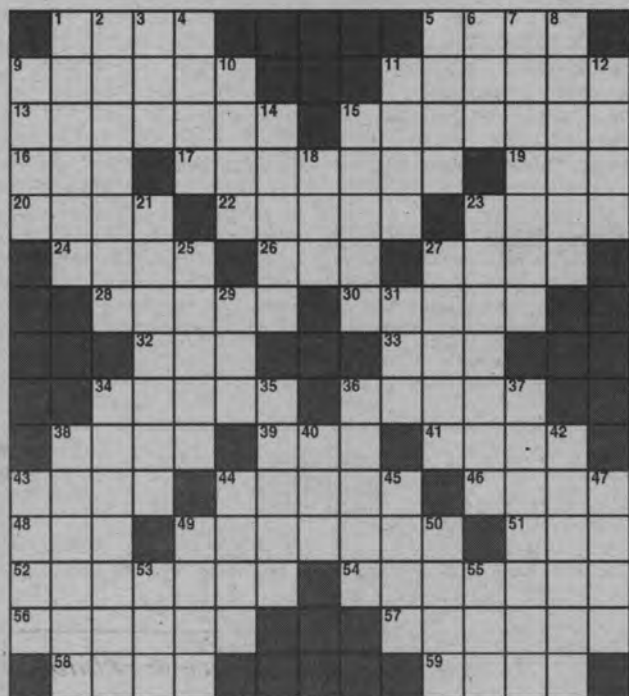
Dr. Barry Kayne, D.D.S.
Specialist with over
25 years experience

Omega Professional Center
Suite F-58 • Newark, DE 19713
Across from Christiana Hospital

302-456-0400
Fax: 302-456-0396
www.delawareperio.com



IN THE NEWS

THE POST
STUMPER

ACROSS

1. A bottle that contains a drug
5. Mated
9. The "C" in CO₂
11. Took a trip on a boat
13. Stimulates
15. Price to get on a bus or trolley
16. Container for storage
17. Summer footwear
19. Used to fry eggs in
20. Six (Spanish)
22. Thomas _____ American patriot
23. Egyptian goddess
24. Insect repellent
26. I.M. _____ architect
27. Soviet city
28. Gulf of, in the Aegean
30. Short-billed rails
32. The common gull of Eurasia and north-eastern N. America
33. Ancient Egyptian king
34. Italian city
36. Infections; aches
38. Herb _____ San Francisco columnist
39. The cry made by sheep
41. Evergreen trees and shrubs having oily, one-seeded fruits
43. Bert _____ Oz lion

44. Pertaining to or containing gold
46. Mass of matter
48. Actress _____ Thurman
49. An eight-sided polygon
51. France: shortened form
52. Denunciations
54. A spirited, graceful and intelligent riding horse native to Arabia
56. Stirs; excites
57. Conical parts
58. Smallest bills
59. Arthur _____ Wimbledon champion

DOWN

1. Made different in some way
2. Literary sarcasms
3. _____ Dhabi, Arabian capital
4. Not a gain
5. Pubs
6. Moroccan coastal region
7. Passes, as in time
8. Cause to run off the tracks
9. Taxis
10. Tide
11. A discount on prices
12. Hideaways

14. Noises made using the friction between two fingers
15. Type genus of the Canidae
18. "Live And Let _____"
21. More disreputable
23. In an angry way
25. Made of wood
27. W. Bolivian city
29. To have something
31. Word element meaning ear
34. Pertaining to a particular large African desert
35. Edges
36. Goatlike antelope of central Eurasia having a stubby, proboscis-like nose
37. Egotistical
38. _____ Wilson
40. Macaws
42. Expose to the circulation of air for purification
43. Stringed instrument
44. Scores on the serve
45. Mine wagon
47. Supernatural force
49. Lyric poems
50. Ancient Japanese religious center
53. Dined
55. School transportation device

ANSWERS ON PAGE 11

Making the case for job growth in Delaware

By MELISSA MARSHALL

NEWARK POST COLUMNIST

Wearing a bright purple cap and T-shirt, Terri Patrick and her co-workers may have stood out from the crowd, but on Tuesday night they were dressed for unity. "We're here to bring back the good jobs that this state wants and deserves," said Patrick who attended the "Keep It Made in America" Newark Town Hall Meeting with fellow union members from Local SEIU 32BJ Wilmington. Held at the Executive Banquet and Conference Center, Glasgow, the meeting — sponsored by the Alliance for American Manufacturing (AAM) — included a presentation by AAM Executive Director Scott Paul and a panel discussion with Sam Latham, president of Delaware AFL-CIO; Alan Levin, Director of Delaware Economic Development; Jim Wolfe, CEO of the Delaware State Chamber of Commerce; and Deborah Armstrong, United Way of Delaware. While the panel represented a cross-section of the political opinions, the answer to what Delaware needed remained consistent — jobs.

Since the start of the recession, Delaware has lost more than 5,000 manufacturing jobs and suffered the closing of its auto-manufacturing plants. And even though Levin's congratulatory remarks on the reopening of the PBF-Petroplus refinery drew a loud round of applause, all panel members admitted that much more still had to be done. "We have to make sure that we bring good paying jobs — union jobs — to the state. And we have to make sure that Delawareans fill those jobs," Latham said.

The evening's discussion repeatedly returned to green initiatives as a means to create manufacturing jobs, citing the Fisker Automotive purchase of the idle General Motors plant

as an optimistic example.

"The health of the environment and the economy go hand-in-hand," explained Jim Black, Community Outreach Director of the Clean Air Council, who biked all the way from Philadelphia to attend the meeting. "We need to look at long range sustainability of the environment and the economy," he continued.

Bonnie Yeatman, an attendee and active member of the state's Democratic Party, simply summed up the AAM's message, "I 100 percent believe unless we start making things in this country, our economy is not healthy," she said.

The meeting ended with a call to action for encouraging the more than 200 residents in attendance to write to their representatives — and to President Obama — urging the government to support the creation of manufacturing jobs and to hold China accountable for what the AAM describes as "unfair trade practices" and "currency manipulation." "We have a special spirit of willingness to work together," said County Executive Chris Coons, who delivered the meeting's opening comments, about the Delaware workforce. "All of us have a common commitment — getting Delaware back to work."



PHOTO BY MARK CORRIGAN

Joining in the panel discussion were (from left to right): Sam Latham, President, Delaware AFL-CIO; Alan Levin, Director, Delaware Economic Development Office; Jim Wolfe, President, Delaware State Chamber of Commerce; and Deborah Armstrong, United Way of Delaware.

Enjoy this... **BIG POOL**

100% Financing! FREE Installation!

The Mariner 31'x19'x5.0' Family Size Pool

Summer Sale! Includes: Sundeck, Fence & Filter Installation Extra

\$1850.

Free Backyard Survey!

Homeowners! Call Us Now **1-888-590-6466**

www.sunshinebackyardpools.com

Sunshine Backyard Pools

YOUR PHARMACY FOR ALL SEASONS

Michael Spinn PharmD, Becky Marshall PharmD, Chai Gadde R.Ph, David Ayres R.Ph

POISON IVY

Ye Olde Pepper Company

Northside Rx Pharmacy Your needs! Your pharmacy! Fast, friendly, courteous service.

707 Bridge St., Suite B, Elkton, MD 21921 • 410-398-DRUG (3784)

Visit us online at www.newarkpostonline.com

IN THE NEWS

WEDDING ANNOUNCEMENT

Jack and Mary Franks of Newark are pleased to announce the marriage of their son, Steve, to Ellen van Wilgenburg, daughter of Henk and Ans van Wilgenburg, The Netherlands. The couple were wed in New York City on May 7th. A reception for family and friends was held that same weekend at the Bellevue Mansion in Wilmington. Steve is an assistant professor in biological sciences at Fordham University. Ellen holds a doctorate in zoology and currently has a dual appointment as a research fellow at the University of California, Berkeley and the University of Melbourne. The couple reside in New York and are spending the summer conducting research at Berekley.



Cool jazz on a hot day at Newark Library

By MARGARET DARBY

NEWARK POST COLUMNIST

Editor's note: Margaret Darby writes about the arts in Delaware for deartinfo.blogspot.com

On Wednesday, the Friends of the Newark Library sponsored a concert of cool jazz for a summer evening's entertainment.

E. Shawn Quissaunee showed his musical versatility with his complex introductions and accompaniment for the mellow voice of Sharon Sable. Although they are both young, their music is inspired by the coolest jazz of days gone by.

Sharon Sable has a deep melodic resonance to her voice and a warm, engaging stage presence. She closes her eyes and raises her shoulders and coos and whispers into the microphone — seemingly heedless of both audience and Quissaunee.

But heedless she is not. She knows just when to enter after Quissaunee's complex introductions and just when to stop short to let him play his interlude. And her ability to place the lyrics and divide words — drawing syllables out or cutting them short — keeps you on the edge of your seat.

Quissaunee's interludes are a concert in themselves. His technical achievements on the guitar let him decorate any tune with brilliantly fast scale passages, bar chords, harmonics. He provides a mixture of styles and doesn't give away the tune until he absolutely must. When he started the Beatles tune And I love her, he managed to work in the melody of Blackbird into the complex layers of his prelude.

There were times when Quissaunee's experimentation went a bit close to the edge — dropping off suddenly in the middle of one of Sable's phrases or making such wild key changes that the listener and the singer were taken by surprise — but

these are signs of his keen spirit of musical invention.

Quissaunee, who was born in Kabul, has also worked on Afghan music, using original instruments and putting his own spin on the traditional music. Although he did not risk bringing the rubab or dutar out in the

humid summer weather — he played an Afghan-inspired piece which had an eclectic mix of styles — even country at times.

Sable and Quissaunee are extremely gifted musicians. You can find samples of their music online at www.esqmusic.com and www.sharonsable.com.

Sallie Mae to hire locally

► SALLIE MAE, from 1

Sallie Mae is still in the business of private student loans and is exploring other opportunities that leverage its expertise. That could include forming a bank, although Lord said the new ventures would be a tiny part of the overall company.

Sallie Mae would receive money from Delaware's Strategic Fund, which ties assistance to the number of new jobs from a

company.

Markell and Delaware Development Office did take pains to emphasize that the state's efforts are not confined to big companies. The state offers incentives to companies with as few as three people, with its BFF program. BFF offers incentives to companies that refer other businesses relocating to the state. The approach is similar to a finder's fee.

"Every job matters in Delaware," Markell said.

David J. Athey joins Duffield Associates

David J. Athey, P.E., has joined Duffield Associates, Pike Creek, as a Senior Project Manager.

Athey has over 25 years experience in a broad range of civil engineering fields specializing in water resources and public works including stormwater conveyance design, stormwater quality and quantity management, hydrologic and hydraulic studies, and development of plans and specifications for infrastructure repair and replacement projects. His program administration experience includes stormwater utility

evaluations, levels of service studies, rate determinations, and asset management applications.

He has been a Director in the Delaware chapter of the American Public Works Association since 2001 and was elected to the State regulatory board for professional engineering in 2002. In 2007, Athey became the first Certified Professional in Storm Water Quality practicing in Delaware through a program developed by the Soil and Water Conservation Society and the International Erosion Control Association.

He is also a member of the Newark City Council.

Athey has a Bachelor of Civil Engineering degree from the Georgia Institute of Technology and a Master of Public Administration degree from the University of Delaware. He is a registered Professional Engineer in Delaware, Pennsylvania, and Maryland.

Duffield Associates has offices in Pike Creek and Georgetown, DE, Philadelphia and Carlisle, PA, Cape May Court House, NJ, and North East, MD.



David J. Athey, P.E.

► NEWS, from 9

Summer 2010 Boating Skills Seminars

July 14, 6:30 pm – 8:30 pm: Basic Coastal Navigation (Activity #3500-210). Learn practical techniques to plan, navigate, and check your progress on the water. Develop situational awareness skills using your eyes and navigation tools to quickly point to your position on a chart, and be able to use backup techniques when the electronic navigation sys-

tems become suspect.

July 21, 6:30 pm – 8:30 pm: Boat Handling Under Power (Activity #3500-220)

This seminar shows boaters how to depart and dock under a variety of conditions as well as steering, handling in rough seas, and trimming the boat underway.

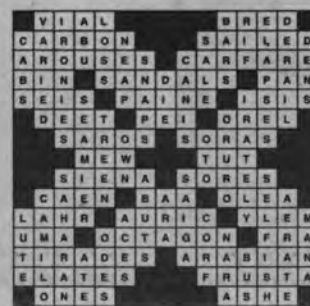
These boating skills seminars will raise your skill and proficiency in key areas that every boater should know. They are applicable to power or sail and any size boat. They start with Partners in Command that will help a novice boater, first mate or crew assist the skipper or manage on their own during emergencies. Four addi-

tional seminars expand on the skills needed to be confident in your boating. They include Basic Coastal Navigation, Power Boat Handling, GPS Navigation, and Using VHF/DSC Marine Radio.

These seminars will be held in their Newark Senior Center at 200 White Chapel Drive, Newark, DE 19713, www.newarkseniorcenter.com/ and taught by the Wilmington Sail and Power Squadron. Cost for each seminar is \$20/person for Newark residents and \$28/person for non-residents. For more information about the courses from the Wilmington Sail and Power Squadron, contact Sut Anderson at 302-733-

0289 or at sailhappy@comcast.net. Learn more about the club at www.wilmingtonpowersquadron.org

POST STUMPER SOLVED



Valley Road Produce & Flowers

SEASONAL PRODUCE • PLANTS

Market Packs • Hanging Baskets
Annuals • Perennials • Herbs

**TWO FREE Market Packs With Purchase
of Any Hanging Basket With Coupon**

HOURS: Mon., Wed., Fri., 10am-6pm • Thurs. 1-6pm
Sat. 9am-6pm • Sun. 11am-5pm • Closed Tuesday

302-339-0674
Off Barksdale Road, Just Over Maryland Line
Right on Valley Road

1614

Fitness, Tanning & Aerobics
"Expect The Very Best"

www.1614fitness.com
Newark's only Family Fitness Center

\$19.99
SPECIAL TO THE FIRST 50

Includes:

- ZUMBA • Tanning
- Aerobics • Fitness

302-738-1614
318 S. College Avenue • Newark, DE 19711

Stop in and get a FREE 3 day pass

Jodlbauer's

The Furniture People, Rte 40 Elkton,
2 miles west of DE/MD line

4th of July

HELD OVER!
HURRY FINAL WEEKEND

Come See the Area's Largest
Selection of Brand Names
At Jodlbauer's Furniture

Freedom to Choose

Great Savings on all our quality name brands!



BUY ANY BEDROOM SET AND GET FREE BEDDING!!*

**BUY ANY LIVING ROOM SET AND GET
A MATCHING CHAIR OR RECLINER FOR FREE!!***

- OVER 30 BEDROOMS ON DISPLAY
- LARGEST SELECTION OF DINETTES AND PUB TABLES
- UNLIMITED UPHOLSTERY AND LEATHER
- STYLISH DINING ROOMS FOR ENTERTAINING
- DON'T MISS OUR KIDS' LINE

*If Price and Selection are Important to You,
DON'T MISS THIS SALE!*



BUY NOW...

SAVE NOW...

ENJOY NOW...

**NO INTEREST CHARGE
FOR 1 YEAR**



901 E. Pulaski Hwy., Elkton
410-398-6201



It's not furniture unless it's Jodlbauer's furniture.

***See store
for details**



701 E. Pulaski Hwy., Rt. 40, Elkton
410-398-5402

SPORTS

Swimming coach's passion for sport extends into summer

By JON BUZBY

JONBUZBY@HOTMAIL.COM

Newark High School coach Brian Polaski spends the high school winter swim season indoors, standing on a deck with the smell of chlorine emanating in an often-overheated building with little or no indication of life outside its surrounding brick walls.

And then summer rolls along, and while many coaches want nothing to do with the sport that consumes their life for the better part of the school year, Polaski dives right back into the sport he loves before the smell of chlorine has even had a chance to escape his nasal passages.

"I love it," he says of the smell. "I've been around it since I was a young kid. I'll never grow tired of it."

Polaski is the co-head coach, along with veteran Chris Collier, of the Nottingham Green Swim Club Gators. It's a team made up of kids ages eight to 18, some swimming competitively for the first time while others use the team as an off-season

training program for the regular high school varsity swim season. Meets are held Wednesday nights and Saturday mornings at swim clubs throughout New Castle County and Southeastern, Pa.

"There is nothing greater than working with a group of kids and watching them improve during the summer season," Polaski, who teaches social studies at Christiana High School, replied when asked what motivates him to coach during his summer vacation. "We can see the kids grow by leaps and bounds in just a matter of weeks during the summer."

Polaski says over the last three years the Gators, whose record stood at 2-1 heading into Wednesday's meet at Sherwood Park, have developed into one of the best and largest swim teams in the league. It's a fact the young coach takes great pride in, especially given his swimming roots.

"Growing up at Nottingham and swimming for the team and Chris Collier was one of the greatest experiences of my life," Polaski boasted. "When I came

back to coach the team in 2006 there were just 85 kids. Now we have 190."

According to Polaski, the main purpose of the swim team is to help grow the sport in the area and help the swimmers improve their strokes and times. However, he is quick to point out that the coaches never lose focus of their first priority, which is to make sure the kids have fun. Yet, he says winning is still one of the goals: "We typically write our lineups to win the meet. It's a delicate balancing act between making sure everyone is getting an opportunity to compete and help the team, while still trying to win the meet."

Polaski and Collier don't limit their involvement to just coaching the team on Wednesdays and Saturdays. Last summer the coaches offered a two-week stroke clinic and each swimmer walked away with an individualized DVD, complete with voice-over comments from the coaches on what improvements could be made. It was something that the coaches did purely out of their love for the sport.

"Coaching these kids is a



PHOTO BY SIMON CLEGHORN

Nottingham Green swim coach Brian Polaski's first priority is making sure his swimmers have fun.

feeling that is difficult to describe with words," Polaski said. "It's a feeling of pride, admiration and joy when swimmers achieve their goals, drop time or learn how to swim a new stroke. We care a lot about our kids and only want them to succeed. We will do whatever it takes to help the

kids achieve their goals.

"I love the fact that I can share my experiences and knowledge with a new group of swimmers in the summer. My job is more than just to improve their strokes and times: My job is also to help the swimmers have a great experience, grow as young

people, and develop memories and friendships that they will have for a lifetime -- just like I experienced at Nottingham as a kid. I think it's a great place to spend the summer."

Fortunately for the Gator swimmers, Polaski never gets tired of the smell of chlorine.

Local athlete competes in National Wheelchair Games

The Fourth of July celebration in Denver took on special importance this year when more than 500 wheelchair athletes, who are all military veterans, began competition at the 30th National Veterans Wheelchair Games. The event, presented each year by the Department of Veterans Affairs (VA) and Paralyzed Veterans of America, ran July 4 through July 9. Wheelchair athlete Larry Binger, of Newark, was Delaware's only athlete participating in this year's games.

"Honoring those who have given so much to this Nation is appropriate on the day we celebrate America's independence," said Secretary of Veterans Affairs Eric K. Shinseki. "The National Veterans Wheelchair Games exemplify America's commitment to its disabled Veterans and the continuing heroism of these men and women."

The games provide an annual multi-event sports rehabilitation program that is open to Veterans who use wheelchairs for sports competition due to spinal cord

injuries, amputations or certain neurological problems and who receive care at any VA medical facility. Athletes attending can be first-time wheelchair athletes or experienced Paralympians. Six of this year's participants have previously competed at the world-class Paralympic level.

"Independence Day is the perfect day to kick off this year's National Veterans Wheelchair Games," said Gene A. Crayton, national president of Paralyzed Veterans of America. "For 30 years, the Wheelchair Games have helped to empower thousands of paralyzed Veterans to get back into life after serious injury, and to eventually lead full and independent lives."

At the National Veterans Wheelchair Games, Veterans competed in 17 different sports, including air guns, archery, basketball, bowling, field events, handcycling, nine-ball, a motorized wheelchair relay, power soccer, quad rugby, softball, swimming, table tennis, track, trapshooting, weightlifting and wheelchair slalom. This year,

an exhibition event will also be held in kayaking. Binger, a medal-winning archer and skeet shooter, participated in archery with compound bow, bowling, trapshooting, and kayaking.

The 30th National Veterans Wheelchair Games began on Sunday, July 4, with a quad rugby demonstration in Civic Center Park in downtown Denver. Kids Day at the games took place Thursday, July 8, at City Park, where local children with disabilities met the athletes and learned about wheelchair sports. Other events were held at Brunswick Zone, Invesco Field at Mile High Stadium, Family Shooting Center, Fishback Park, the Colorado Convention Center and other area venues.

The VA Eastern Colorado Health Care System in Denver and the Mountain States Chapter of Paralyzed Veterans of America hosted the 2010 Games.

For more information about the National Veterans Wheelchair Games, visit the Games Web site at www.wheelchairgames.va.gov.

Wild Horse and Burro ADOPTION

July 16 -17

Harrington, DE

Delaware State Fair

18500 S DuPont Hwy

Friday Preview: 2 - 7pm

Saturday Adoption: 8am - 5pm

Pick out your favorite yearling, mare, stud / gelding or burro.

Adoption is first come, first served.

Adoption Fees Range from \$25 - \$125.

Directions: From Wilmington/Philadelphia: Take I-95 toward Baltimore. Merge onto DE-15 via exit #4A toward Christiana/Mall Rd (Portions toll). Exit 97 to 13 Salisbury/Norfolk. Bear left onto US Rt 13S; follow South toward Harrington. After passing over DE-14, look for the fairgrounds on your right. From Baltimore/Washington DC: Take US-50E/US-301N (Portions toll). At US-50/US-301 split, bear right taking the US-50E exit toward Ocean City. Turn left onto MD-404E toward Denton/Rehoboth. Continue to follow MD-404E. Take the MD-313 ramp toward Denton/Greensboro. Turn left onto MD-313N. Turn right onto MD-317E. As you cross into Delaware, MD-317 becomes DE-14. Continue to follow DE-14E toward Harrington. Follow signs to fairgrounds.



866-4MUSTANGS (866-468-7826) blm.gov

U.S. Department of the Interior
Bureau of Land Management
Wild Horse and Burro Program

Posted

8 PM 800-220-3311 410-398-1230

• Real Estate
• Job Search
• Services
• Classifieds

• Real Estate
• Job Search
• Services
• Classifieds



ANNOUNCEMENT

20 NOTICES

3.46+/- ACRES
w/2,893+/-sf Convenience Store. Tax Assessed: \$596,900. High traffic count. 7237 Timberlake Rd, Lynchburg, VA. AUCTION: July 15th at 12pm. www.countsauction.com (434) 525-2991 (VAAF93)

AAAA DONATION**
DONATE YOUR CAR, Free Pick-up/Tow, Any Model or Condition, IRS Tax Deductible. Help Underprivileged Children. Outreach Center 1-800-601-7171

DONATE AUTOS, TRUCKS, RV'S. LUTHERAN MISSION SOCIETY. Your donation helps local families with food, clothing, shelter. Tax deductible. MVA licensed. Lutheran-MissionSociety.org 410-636-0123 or toll-free 1-877-737-8567.

LOST & FOUND

LOST BLACK male shepherd mix. 14 years old, last seen on St. Marks Church Rd in Perryville on July 4th. He was scared. Please call 410-642-2603

LOST DOBERMAN Pinscher from Charlestown. Her name is Mini, very small, very young. Black & tan, docked tail. 443-945-4561

LOST CAT long hair black female lost in the vic of 2300 block of Turkey Point Rd call 410-287-2643



EMPLOYMENT

110 HELP WANTED FULL-TIME**New Today**

AUTO ESTIMATOR wanted for busy collision repair facility. Computer skills needed, exp preferred. 410-398-7725 or email resume: rogerscustoms@aol.com

ASSISTANT IN FOOD & NUTRITION Cecil County Public Schools currently has a vacancy for an Assistant in Food & Nutrition Services. For more information, please go to our website www.ccps.org. Look under employment opportunities. Follow directions as listed under Application Procedure at the end of the posting. All requested information must be received by CCPS by 4pm on Friday, July 16, 2010

Computers Data Modeler/Analyst. Wilmington, DE. Define data reqs. Design corp data archit. Define corp metadata defin. for all Data Services supported dbases. Dev. logical/phys data models to doc source data. Dev mapping spreadsheets. Master's in Eng., Info Mgmt, Comp Sci; or Bach plus 5 yrs exp req'd. Contact ING Direct at careers@ingdirect.com

Driver: NE Regional Drivers

- Company drivers average \$800/wk gross pay
- Weekly home time
- Immediate Benefits
- CDL-A w/ 1 yr exp. 23 years of age
- Call NFI Sunday or anytime

888-504-9944
www.nficareers.com

DRIVERS - INTERMODAL OWNER OPERATORS. High Weekly Pay, Practical Miles, Home Daily, Regional Runs. 2 years intermodal exp., CDLClass A. Contact David Johnson at 410-631-9091



ANY WAY YOU LOOK AT IT, CHESAPEAKE CLASSIFIED CAN WORK FOR YOU!

LEGAL NOTICE**SHERIFF'S SALE**

By virtue of a writ of #10-011951-345 Property Address: 6 Battle Drive, Newark, DE 19702.

Parcel No.: 11-014310-034

All that certain lot, piece or parcel of land situate in Pencader Hudnred, New Castle County and State of Delaware, known as 6 Battle Drive, Newark, Delaware 19702, also known as Lot 3, on the Plan of Cannonshire as said Plan is recorded in the Office of the Recorder of Deeds in and for New Castle County in Microfilm No. 9330 prepared by Franco Bellafante and Associates, and being more particularly bounded and described as follows, to wit:

Being the same lands and premises which Teresa Childress-Gilliam, did grant and convey unto Adrian S. Wilson, by deed dated June 29, 2006 and recorded on June 30, 2006 in the Office of the Recorder of Deeds, in and for New Castle County, State of Delaware, in Deed Book Instrument 20060630-0063089.

SEIZED AND TAKEN IN EXECUTION AS THE PROPERTY OF ADRIAN WILSON. TERMS OF SALE: 10% DOWN AT TIME OF SALE. BALANCE DUE ON OR BEFORE AUGUST 18, 2010.

MAY 31, 2010

NP 7/2,9

2169803

LEGAL NOTICE**SHERIFF'S SALE**

By virtue of a writ of Sheriff #: 10-010988 Property Address: 548 E Hanna Dr Newark, DE 19702

Parcel No. 09-037.30-037

ALL that certain lot, piece or parcel of land, with the building thereon erected, known as 548 Hanna Drive East, situate in White Clay Creek Hundred, New Castle County and State of Delaware, and being Lot No. 74, Block C, of the subdivision of Piermont Woods, Section II, Microfilm No. 4104, and being more particularly bounded and described in accordance with a survey by The Pelsa Company dated April 20, 2006 as follows, to wit:

Being the same lands and premises which Stewart M. Schiffman and Laura J. Schiffman did grant and convey unto George A. Robinson by deed dated April 28, 2006 and recorded on May 4, 2006 in the Office of the Recorder of Deeds, in and for New Castle County, State of Delaware, in Deed Instrument 20060504-0043236

SEIZED AND TAKEN IN EXECUTION AS THE PROPERTY OF George A. Robinson TERMS OF SALE: 10% DOWN AT TIME OF SALE. BALANCE DUE ON OR BEFORE AUGUST 18, 2010.

MAY 31, 2010
2167380

np 7/2,9

CHESAPEAKE CLASSIFIEDS

CALL 410-398-1230, 800-220-1230 or www.chesapeakeclassified.com

Paradise Motors

1-800-611-9801

www.paradisemotors.com

Make It Your Own Today!

CALL FOR INSTANT CREDIT APPROVAL!!

All payments include 2% cash or trade down and are subject to final bank appl.

**05 CHEVY CAVALIER**

\$89/month
4 Cycle, Auto, AC, CD, Low Miles, MD St. Inspected, Ready for Beach!

00 FORD MUSTANG

\$120/month
Low Miles, MD St. Inspected, PL, PM, PS, Keyless Entry, New Brakes & Tires

07 SATURN ION 3

\$99/month
MD St. Insp., CD, New Brakes & Tires, PW, PS, PL, Low Mileage, Radial Tires

04 HYUNDAI ELANTRA GT

\$139/month
PW, PS, Bench Seat, Radial Tires, CD, MD St. Inspected

02 NISSAN MAXIMA SE

\$163/month
MD St. Inspected, Low Mileage, Sunroof, PW, PS, PL, Leather Interior, Loaded

05 NISSAN ALTIMA

\$147/month
Low Mileage, New Tires, PW, PL, PS, CD, Tilt Wheel, MD St. Inspected

03 TOYOTA CELICA GT

\$210/month
Child Seat, New Brakes, New Tires, Low Mileage, MD St. Inspected

06 PONTIAC GRAND PRIX

\$165/month
Md. St. Inspected, Low Mileage, One Owner, Bucket Seats, CD, PS, PW

08 FORD F150 XL

\$259/month
MD St. Inspected, Off Road Pkg., Tow Pkg., Traction Control

08 MAZDA 3S SPORT

\$229/month
Sunroof, PW, PL, PS, Rear Bench Seat, Keyless Entry, Balance of Mazda Warranty

07 MAZDA 6i SPORT

\$195/month
CD, New Brakes, New Tires, PW, PL, PS, Off Road Pkg., MD St. Inspected

06 CHEVY TRAILBLAZER LS

\$192/month
CD, Off Road Pkg., New Tires, New Brakes, Luggage Rack, Low Miles, Sunroof

03 LINCOLN TOWNCAR SIGNATURE

\$179/month
Leather Interior, Heated Seats, Low Miles, New Brakes & Tires, One Owner, Remote Entry

06 CADILLAC ESCALADE

\$450/month
ESV Platinum AC, Power Steering, PW, Auto Headlights

09 FORD FLEXI SEL

\$410/month
CD, Child Seat, PW, PL, PS, Sunroof, Keyless Entry

07 FORD F150 XLT

\$359/month
PW, PL, Power Steering, Tow Package, CD Player

07 FORD F250 XL

\$325/month
New Tires, Tow Pkg., CD, Low Mileage, Off Road Pkg.

04 FORD F450

\$277/month
MD St. Inspected, Runs Perfect, Low Mileage, Lockable Storage

929 W. Pulaski Hwy., Elkton., MD 21921

New Today

HVAC TECHS
Growing 30 yr old family company - seeking tech w/ 10 + yrs exp. Res / Comm plumbing, heating & a/c in Southern Chester Co. Duties to include estimation of jobs, setting work schedule, ordering supplies, etc. Paid health & retirement. Wage commensurate w/ exp 610-742-6071

LANDSTAR INDEPENDENT AGENT
needs Owner Operators for steady Drop & Hook & Live Freight out of Maryland going to the NE. Great Pay. 1 year OTR & Hazmat required. Call Diane 717-865-4218.

New Today

MILLING MACHINE OPER Exp a must - Immediate opening DE & MD projects. Top wages, health & 401 plans. Fax resume 302-658-7413 Aps avail @ Daisy Const. 3128 New Castle Ave, N.C., DE 19720

MOTIVATED? Good with People? Love the Sun? Free to Travel? Call Deanna at 888-355-6755. Paid Training and Free Transportation

SALES

Seeking applications for full time Advertising Sales Executives. You will be responsible for exceeding budget and securing additional business from new customers. Proven track record of excellence in sales, strong oral and written skills with attention to accuracy a must. Send resumes to:
Sales
218 E. Main St., Suite 109
Newark, DE 19711

SALES REPRESENTATIVE NEEDED. Most earn \$50K-\$100K or more. Call our branch office at 410-696-2855x217. Ask for Susan Stepke, or e-mail susan.stepke@insphereis.com. Visit www.insphereis.com

TRUCK DRIVERS WANTED! MORE HOMETIME! TOP PAY! EXCELLENT BENEFITS! NEWER EQUIPMENT! Up to \$.48/mile company drivers! HEARTLAND EXPRESS 1-800-441-4953 www.heartland-express.com

200 BUSINESS OPPORTUNITIES

ALL CASH CANDY VENDING ROUTE!
Be your own boss on your own schedule. 25 local machines and candy, all for \$9,995. Call today! (888) 632-8192



ANY WAY YOU LOOK AT IT, CHESAPEAKE CLASSIFIED CAN WORK FOR YOU!

**RENTALS****305 APARTMENTS UNFURNISHED**

*Ask about 1 month free rent 1 & 2 BR Apts in historic North East, walking distance to Main Street shops
BEACON
410-287-6111

WWW.CHESAPEAKECLASSIFIED.COM

New Today

CHESAPEAKE CITY (SOUTH) 2BR, washer/dryer, a/c, fridge. \$725/mo. Ref's req'd no pets, non-smoking environ.
410-275-8841

CLASSIFIEDS
410-398-1230
800-220-1230

ELKTON 1br w/ fridge near public transportation, parking, medical facility. \$625. Contact Scott 732-575-9540

New Today

ELKTON Lg studio in private home. \$895/mo. Includes all utils. TV. 410-937-5997

Are You Ready To Fill These Shoes?



Check Our Classified Pages Everyday For The Latest Job Opportunities
Let Chesapeake Classifieds Work For You!

New Today

First Month Rent FREE!!

RISING SUN- Meadowside TH's. Immediate occupancy for 1 & 2 BR's. Close to schools & shopping. Country setting. Handicap accessible. Please call: 410-658-2798 Mon-Fri. 9am-4pm. Equal Housing Opportunity. TDD#1-800-735-2258

PERRYVILLE Accepting Apps. for 2 BR 2BA Deluxe Apts. Ref. req. 410-642-0224

New Today

RISING SUN- 1 & 2 br apts., \$525/mo. No pets, ready now. 610-476-3368



CHECK OUT CHESAPEAKE CLASSIFIEDS EVERYDAY FOR THAT NEW JOB!

New Today

TURNQUIST APARTMENT'S

ECONOMY BUSTER SPECIAL! *

Big price Drop!

ELKTON: Small community with w/w carpet, a/c, and w/d in each apartment. 1 and 2 Bedrooms available. Call about this special. \$15.00 App. Fee And 1/2 Sec. Dep.* (w/qualified application).

410-392-0099

315 HOUSES FOR RENT

100 Beech Dr 1, 2, 3 & 4BRs Homes for Rent in Elkton \$795/mo & up **NO PETS** Credit issues? No problem **CALL FOR AN APPT** 443-309-1602 www.thehomesforlife.com

100 Beech Dr 1, 2, 3 & 4BRs Homes for Rent in Elkton \$795/mo & up **NO PETS** Credit issues? No problem **CALL FOR AN APPT** 443-309-1602 www.thehomesforlife.com

LEGAL NOTICE**SHERIFF'S SALE**

By virtue of a writ of Sheriff #: 10-010854 Property Address: 9 Verdi Circle Newark, DE 19702 Parcel No. 10-032.20-046 All that certain lot, piece or parcel of land, known as Lot No. 380, in the subdivision of Taylortowne also known as Christiana Falls, located in New Castle Hundred, New Castle County and State of Delaware, more particularly bounded and described by a recent survey by David G. Williams, Professional Land Surveyor, dated May 20, 1989, as more particularly bounded and described as follows, to-wit: Being the same premises which Empire Investments, a Delaware Partnership of New Castle County and State of Delaware, by Deed dated 05/31/89 and recorded 06/01/89 in the Office for the Recorder of Deeds in and for the County of New Castle, and State of Delaware in Deed Book Volume 878, Page 203, granted and conveyed unto Wendy L. Sass and Karen E. Hengeler, grantors/mortgagors herein. **SEIZED AND TAKEN IN EXECUTION AS THE PROPERTY OF Robert F. Rhea, Sr.** **TERMS OF SALE: 10% DOWN AT TIME OF SALE. BALANCE DUE ON OR BEFORE AUGUST 16, 2010.**

np 7/2,9

MAY 31,2010 2167061

SHERIFF'S SALE

By virtue of a writ of Sheriff #: 10-010931 Property Address: 16 Laxford Drive-Newark, DE 19702 Parcel No. 10-043.10-648 ALL that certain lot, piece or parcel of land, with the buildings thereon erected, situate in New Castle Hundred, New Castle County and State of Delaware, known as 16 Laxford Drive, being Lot No. 223, on the Plan of Wellington Woods, as the Plan thereof is of record in the Office of the Recorder of Deeds, in and for New Castle County in Microfilm No. 10595, and being more particularly bounded and described in accordance with a survey prepared by AES Surveyors, Professional Land Surveyors., dated 08/09/05, as follows to-wit: Being the same lands and premises which Scott J. Matthews and Summer A. Oldham, did grant and convey unto Peterson K. Nyoro, by deed dated August 31, 2005 and recorded on September 6, 2005 the Office of the Recorder of Deeds, in and for New Castle County, State of Delaware, in Deed Instrument 20050906-0090103. **SEIZED AND TAKEN IN EXECUTION AS THE PROPERTY OF Peterson K. Nyoro** **TERMS OF SALE: 10% DOWN AT TIME OF SALE. BALANCE DUE ON OR BEFORE AUGUST 16, 2010.**

np 7/2,9

MAY 31,2010 2167303

LEGAL NOTICE**SHERIFF'S SALE**

By virtue of a writ of Sheriff #: 10-010833 Property Address: 11 North Merriment Drive Newark, DE 19702 Parcel No. 10-033.30-286 ALL that certain lot, piece or parcel of land with the dwelling thereon erected, situate in New Castle Hundred, New Castle County and State of Delaware, being Lot No.3, as shown on the Record Resubdivision Plan of Taylortowne, Section E, as said Plan is recorded in the Office for the Recording of Deeds, in and for New Castle County, Delaware, in Microfilm Record No. 11605, and being more particularly bounded and described in accordance with a recent survey by East Coast Survey, Professional Land Surveyors, dated January 3, 2006, as follows, to-wit: Being the same lands and premises which John B. Fruits, did grant and convey unto Pledge Sanders, by deed dated January 23, 2006 and recorded on January 24, 2006 the Office of the Recorder of Deeds, in and for New Castle County, State of Delaware, in Deed Instrument 20060124-0007728. **SEIZED AND TAKEN IN EXECUTION AS THE PROPERTY OF Pledge Sanders** **TERMS OF SALE: 10% DOWN AT TIME OF SALE. BALANCE DUE ON OR BEFORE AUGUST 16, 2010.**

np 7/2,9

MAY 31,2010 2167052

SHERIFF'S SALE

By virtue of a writ of Sheriff #: 10-010852 Property Address: 11 Juniper Drive Newark, DE 19702 Parcel No. 09-034.40-135 ALL THAT CERTAIN lot, piece or parcel of land with the dwelling thereon erected, situate in White Clay Creek Hundred, New Castle County and State of Delaware, known as 11 Juniper Drive, being lot 28 as shown on the Record Major Subdivision Plan of Rain-tree Village, as said Plan is recorded in the Office of the Recorder of Deeds in and for New Castle County, in Microfilm 7667, and being more particularly bounded and described in accordance with a survey by The Pelsa Company, dated July 22, 1997. as follows, to-wit: Being the same lands and premises which David E. Herrick and Sherri A. Herrick did grant and convey unto Dickson N. Besong by deed dated June 30, 2000 and recorded on July 12, 2000 in the Office of the Recorder of Deeds, in and for New Castle County, State of Delaware, in Deed Book 2860 Page 207. **SEIZED AND TAKEN IN EXECUTION AS THE PROPERTY OF Dickson N. Besong** **TERMS OF SALE: 10% DOWN AT TIME OF SALE. BALANCE DUE ON OR BEFORE AUGUST 16, 2010.**

np 7/2,9

MAY 31,2010 2167057

LEGAL NOTICE**SHERIFF'S SALE**

Cristiana, Inc., t/a La Tolnateca, has on June 28, 2010 filed an application with the Office of Alcoholic Beverage Control Commissioner for a restaurant liquor license to include Sunday for the service and consumption of alcoholic beverages on the premises known as Center Pointe Plaza, II, 1237 E. Churchman's Road, Newark, DE 19713 Persons who are against this application should provide written notice of their objections to the Commissioner. For the Commissioner to be required to hold a hearing to consider additional input from persons against the application, the Commissioner must receive one or more documents containing a total of at least 10 signatures of residents or property owners located within 1 mile of the premises or in any incorporated areas located within 1 mile of the premises. The protest(s) must be filed with the Office of the Alcoholic Beverage Control Commissioner at the 3rd Floor, Carvel State Building, 820 North French Street, Wilmington, Delaware 19801. The protest(s) must be received by the Commissioner's office on or before July 28, 2010. Failure to file such a protest may result in the Commissioner considering the application without further notice, input or hearing. If anyone has questions regarding this matter, please contact the Commissioner's office at (302) 577-5222.

np 7/2,9,16

2169885

SHERIFF'S SALE

By virtue of a writ of Sheriff #: 10-010673 Address: 237 North Star Road, Newark, Delaware 19711 Parcel No.: 08-023.20-051 ALL, that certain lot, piece or parcel of land, with the buildings thereon erected, situate Mill Creek Hundred, New Castle County, Delaware, known as 237 North Star Road, being Lot No. 18A, on the Plan of North Star, as the Plan thereof is of record in the Office of the Recorder of Deeds, in and for New Castle County in Microfilm No. 790, and described in accordance with a survey prepared by Zebley & Associates, Inc., Professional Land Surveyors, dated April 24, 1990. BEING the same land and premises that Florence E. Perkins by deed dated April 26, 1990 and recorded in the Office of the Recorder of Deeds in and for New Castle County, Delaware, in Deed Book 1022, Page 223, did grant and convey unto Keith J. Quesenberry and Lise A. Quesenberry, his wife, in fee. Keith J. Quesenberry departed this life on July 16, 2004, leaving Lise A. Quesenberry sole tenant. **SEIZED AND TAKEN IN EXECUTION AS THE PROPERTY OF Lisa A. Quesenberry** **TERMS OF SALE: 10% DOWN AT TIME OF SALE. BALANCE DUE ON OR BEFORE AUGUST 16, 2010.**

np 7/2,9

MAY 31,2010 2167033

LEGAL NOTICE**SHERIFF'S SALE**

By virtue of a writ of Sheriff #: 10-011400 PROPERTY ADDRESS: 6 WRIGHT CIRCLE, NEWARK, DE 19702 PARCEL NO. 10-032.40-100 All that certain lot, piece or parcel of land, with the building thereon erected, known as 6 Wright Circle, situate in New Castle Hundred, New Castle County and State of Delaware, and being Lot No. 116 of the subdivision of Taylortowne, Microfilm Number 4188, and being more particularly bounded and described in accordance with a survey by The Pelsa Company dated September, 1993. BEING the same lands and premises which Susan M. Lord did by deed dated August 29, 2007 and recorded in the office aforesaid in Instrument No. 20070920-0083553 did grant and convey unto Frank Lare. **SEIZED AND TAKEN IN EXECUTION AS THE PROPERTY OF Frank Lare** **TERMS OF SALE: 10% DOWN AT TIME OF SALE. BALANCE DUE ON OR BEFORE AUGUST 16, 2010.**

np 7/2,9

MAY 31,2010 2168144

SHERIFF'S SALE

By virtue of a writ of Sheriff #: 10-011684-282 Property Address: 900 Birchwood Drive Newark, DE 19713 Parcel No. 09-023.30-306 ALL that certain lot, piece or parcel of land with the buildings thereon erected, situate in White Clay Creek Hundred, New Castle County and State of Delaware, County as Lot 7, Block A, on the plan, of Birchwood Park, Section 2, as said plan is of record in the Office of the Recorder of Deeds, in and for New Castle County aforesaid in Plat Record 4 Page 24, and more particularly bounded ad described in accordance with a more recent survey prepared by John J. Klekotka & Associates, Inc., Civil Engineers and Surveyors of Wilmington, Delaware, dated June 26, 1974, as follows to wit: Being the same lands and premises which Royal R. Lowthert and Kathleen Lowthert, did grant and convey unto and Walter Duncan and Faye L. Duncan, by deed dated July 27,1979 and recorded on August 1, 1979 in the Office of the Recorder of Deeds, in and for New Castle County, State of Delaware, in Deed Instrument Rec. S106 at Page 91. **SEIZED AND TAKEN IN EXECUTION AS THE PROPERTY OF Allan Duncan and The Estate of Faye L. Duncan** **TERMS OF SALE: 10% DOWN AT TIME OF SALE. BALANCE DUE ON OR BEFORE AUGUST 16, 2010.**

np 7/2,9

MAY 31,2010 2169235

New Today

CONOWINGO 2-3Br
2ba cape cod.
Recently renovated.
Hard wood flrs, cntrl
air, lg yard, shed.
\$1,000/mo 410-658-4976

New Today

CALVERT / R.SUN
AREA 3Br, 1ba.
\$1,000/mo + sec dep
& utils. Avail immed.
302-593-6615

ELKTON Brick
rancher on 1.8ac. 3Br,
1Ba, 2 car grg + 1.5
car grg / wrk shop.
Pond views from deck
Quiet neighborhood.
Rent incentives for on
time payments. Will
consider lease/purch
or sale. \$1600/mo.
Avail by Aug 1. Call
Dave 804-366-2306

CLASSIFIEDS

410-398-1230
800-220-1230
WEBSITE AT
WWW.CHEESAPEAKE
CLASSIFIED.COM

LEGAL NOTICE**SHERIFF'S SALE**

By virtue of a writ of Sheriff #: 10-010945
Property Address: 55 Chaucer Drive
Newark, DE 19713
Parcel No. 11-002.20-030

ALL that certain lot, piece or parcel of land,
with the dwelling thereon erected, known as
No. 55 Chaucer Drive, situate in Pencader
Hundred, New Castle County and State of
Delaware, and being Lot No. 189, Section C
on the Plan of Brookside Park, as said Plan
is of record in the Office of the Recorder of
Deeds in and for New Castle County and
State aforesaid, in Microfilm Record 760,
being more particularly bounded and
described in accordance with a survey pre-
pared by A.E.S. Surveyors dated June 1999,
as follows, to wit:

Being the same lands and premises which
Household Finance Corporation did grant
and convey unto Karen M. Mack and Louie
Alfred by deed dated June 8, 1999 and
recorded on June 8, 1999 in the Office of the
Recorder of Deeds, in and for New Castle
County, State of Delaware, in Deed Book
2668 Page 66.

SEIZED AND TAKEN IN EXECUTION AS
THE PROPERTY OF **Louie Alfred and
Karen M. Mack**

TERMS OF SALE: 10% DOWN AT TIME OF
SALE. BALANCE DUE ON OR BEFORE
AUGUST 16, 2010.

MAY 31, 2010

np 7/2,9

2167314

SHERIFF'S SALE

By virtue of a writ of Sheriff #: 10-011022
Property Address: 302 Evergreen Drive
Newark, DE 19702
Parcel No. 11-021.10-083

ALL that certain lot, piece or parcel of land,
with the improvements erected thereon, sit-
uate in Pencader Hundred, New Castle Coun-
ty, Delaware being designated Lot 74, as
shown on the Record Major Subdivision Plan
of Woodland Village, of record in the Office
of the Recorder of Deeds in and for New
Castle County, Delaware on Microfilm No
12614 said lot also known as 302 Evergreen
Drive, and being now more particularly
bounded and described by A.E.S. Survey-
ors, Wilmington, Delaware, dated 1/25/99,
as follows to wit:

Being the same lands and premises which
NVR, Inc (formerly NVR Homes, Inc), a Vir-
ginia Corporation did grant and convey unto
Arnett D. Richardson, Jr. and Cindy Richar-
dson by deed dated January 26, 1999 and
recorded on February 2, 1999 in the Office of
the Recorder of Deeds, in and for New Cas-
tle County, State of Delaware in Deed Book
2580 Page 0137

SEIZED AND TAKEN IN EXECUTION AS
THE PROPERTY OF **Arnett D. Richardson
and Cindy Richardson**

TERMS OF SALE: 10% DOWN AT TIME
OF SALE. BALANCE DUE ON OR
BEFORE AUGUST 16, 2010.

MAY 31, 2010

np 7/2,9

2167396

New Today

ELKTON, 3 br.
1 & 1/2 bath
\$850/mo. + 1 months
security. Call 410-
441-0830 or
410-658-3059

New Today

ELKTON Hollings-
worth Manor, Rd #3
partially furnished 2br
\$675/mo + sec &
utils. 410-392-3127

CHEESAPEAKE CLASSIFIEDS
410-398-1230 800-220-1230
www.chesapeakeclassified.com

New Today

ELKTON Winding
Brook. 3Br, 1.5Ba.
\$800/mo + sec dep +
water & sewer.
410-287-3858

New Today

ELK NECK 3br, 1ba.
\$1000 mo + sec. No
pets, non smok envr.
410-287-8603

New Today

ELKTON
2-4 BR's T/H-S/F
Good neighborhood
410-620-1345

New Today

ELKTON- TH, 4BR,
updated kitch, carpet,
paint, garage. \$975.
410-620-3626

**RID YOUR HOME OF
ALL THAT CLUTTER!
HAVE A YARD SALE
AND ADVERTISE IT
WITH US!**

**322 FARMHOUSES
FOR RENT****New Today**

LEEDS AREA 3br,
1.5ba, LR, DR. \$750 +
utils. Non smoking.
302-731-1254

**CALL
OR EMAIL
CHEESAPEAKE
CLASSIFIED**
410-398-1230
800-220-1230
www.chesapeake
classified.com

**325 VACATION/
RESORT RENTALS****OCEAN CITY,
MARYLAND.**

Best
selection of afford-
able rentals. Full/par-
tial weeks. Call for
FREE brochure. Open
daily. Holiday Real
Estate. 1-800-638-
2102. Online reserva-
tions:
www.holidayoc.com

**332 TOWNHOUSE
FOR RENT**

ELKTON 3Br T/H,
1.5ba, full basement.
\$935 per mo + sec.
No pets. 410-398-
2487

N EAST / ELKTON
2 & 3br's 1.5ba c/ac
starting at \$1000/mo
pets neg 410-398-5724

**345 ROOMS FOR
RENT****New Today**

ELKTON Furn rm in
my home. \$540/mo
incl's utils.w/d sm sec
dep req 410-441-1648

**RECLINE
RELAX &
RESELL**

350 To Share**New Today**

CHEESAPEAKE
CITY Sunny room for
rent on water. \$550
per mo. 410-658-
1857

**355 LOTS/ACREAGE
FOR RENT**

LAND BARGAIN 24
AC / Stream
\$127,871 Was
\$179,900. Mix of
woods and meadows
w/ awesome sunset
views. Park-like set-
ting waiting for you to
enjoy. Hike, fish,
camp, build. New
perc, new road, new
survey! Great financ-
ing. Only one! CALL
NOW 800-888-1262

**365 COMMERCIAL
RENTALS**

CECIL CO. com-
mercial property
2250 sq ft \$1200/mo
Call 443-350-0621

FAIRHILL VILLAGE
Store/office front.
Conv. loc. Rt 213 &
Rt 273 410-398-5724

REAL ESTATE

**405 HOUSES FOR
SALE**

**ACTIVE ADULT
COMMUNITY** (55
Plus) in Beautiful, His-
toric Smyrna,
Delaware. New Single
Home Develop-
ment near beaches &
bay areas. Purchase
prices from \$99,900.
CALL 302-659-5800.
Visit www.bonayre-
homes.com

***FORECLOSED
HOME AUCTIONS***
300+ NE Homes/ Auc-
tions: 7/31 Open
House: July 17, 24 &
25 REDC/ View Full
Listings *www.Auc-
tions.com* RE Brkr
632690

**RETIREMENT AND
FUTURE MOVE?** Dis-
cover Delaware and
our gated community.
Manufactured homes
from the mid 50's to
low 100's. Brochures
available 1-866-629-
0770 Or search
www.coolbranch.com

Classified
is the
key
to more
sales.

LEGAL NOTICE**SHERIFF'S SALE**

By virtue of a writ of Sheriff #: 10-010992
Property Address: 25 Corbit St
Newark, DE 19711
Parcel No. 18-013.00-187

ALL THAT CERTAIN OT, PIECE OR PAR-
CEL OF LAND SITUATE ON THE NORTH-
WEST SIDE OF CORBIT STREET, IN THE
CITY OF NEWARK, WHITE CLAY CREEK
HUNDRED, NEW CASTLE COUNTY AND
STATE OF DELAWARE, AS FOLLOWS, TO-
WIT:

Being the same lands and premises which
Delores D. Hackett as Executrix of the
Estate of Naomi Lewis did grant and convey
unto Carmen D. Hackett and Roslyn L.
Hackett, by deed dated February 23, 2006
and recorded on April 13, 2006 the Office of
the Recorder of Deeds, in and for New Cas-
tle County, State of Delaware, in Deed
Instrument 20060413-0034949.

SEIZED AND TAKEN IN EXECUTION AS
THE PROPERTY OF **Carmen Hackett and
Roslyn L. Hackett**

TERMS OF SALE: 10% DOWN AT TIME
OF SALE. BALANCE DUE ON OR BEFORE
AUGUST 16, 2010.

MAY 31, 2010

np 7/2,9

2167387

SHERIFF'S SALE

By virtue of a writ of Sheriff #: 10-011578-
260
PROPERTY ADDRESS: 318 HUDSON
DRIVE, NEWARK, DE 19711
PARCEL NO. 08-060.20-058

ALL that certain lot, piece or parcel of land,
with the dwelling house thereon erected sit-
uate in Mill Creek Hundred, New Castle
County, State of Delaware, being Lot No. 20,
Block C, Sycamore Gardens, as shown n
Plan of Sycamore Gardens prepared by
Edward H. Richardson Associates, Inc.,
Consulting Engineers, and of record in the
Office for the Recording of Deeds, in and for
New Castle County, Delaware, in Plat Book
4, Page 49, and being more particularly
bounded and described in accordance with a
recent survey by On Point Inc., Land Sur-
veying, dated June 15, 2003.

BEING the same lands and premises which
Elise G. Fortinper n/k/a Elise G. Figurelle, by
Deed dated June 25, 2003 and recorded in
the Office of the Recorder of Deeds, in and
for New Castle County and State of
Delaware, in Instrument # 20030702-
0079577, did grant and convey unto George
G. Gibson and Elsie D. Dewee.

SEIZED AND TAKEN IN EXECUTION AS
THE PROPERTY OF **George G. Gibson
and Elsie D. Gibson**

TERMS OF SALE: 10% DOWN AT TIME
OF SALE. BALANCE DUE ON OR BEFORE
AUGUST 16, 2010.

MAY 31, 2010

np 7/2,9

2168894

LEGAL NOTICE**SHERIFF'S SALE**

By virtue of a writ of Sheriff #: 10-010986
Property Address: 33 Danbury Drive
Newark, DE 19702
Parcel No. 10-038.30-132

ALL that certain lot, piece or parcel of land,
with the building thereon erected, known as
33 Danbury Drive, situate in New Castle
Hundred, New Castle County and State of
Delaware, and being Lot No. 191 of the sub-
division of Wellington Woods, Section 1,
Microfilm No. 4115, and being more particu-
larly bounded and described in accordance
with a survey by The Pelsa Company dated
October 13, 2005, as follows, to wit:

Being the same lands and premises which
Abdallah H. Karam did grant and convey
unto Shelley R. Davis by deed dated Octo-
ber 26, 2005 and recorded on November 2,
2005 in the Office of the Recorder of Deeds,
in and for New Castle County, State of
Delaware, in Deed 20051102-0112447.

SEIZED AND TAKEN IN EXECUTION AS
THE PROPERTY OF **Shelley R. Davis**

TERMS OF SALE: 10% DOWN AT TIME
OF SALE. BALANCE DUE ON OR BEFORE
AUGUST 16, 2010.

MAY 31, 2010

np 7/2,9

2167379

SHERIFF'S SALE

By virtue of a writ of Sheriff #: 10-011342
Property Address: 204 Dunsmore Drive,
Newark, DE 19713
Tax Parcel No. 09-028.20-172

ALL that certain piece, parcel or tract of
land with the buildings thereupon erected
situate in White Clay Creek Hundred, New
Castle County, and State of Delaware, being
204 Dunsmore Drive, Lot No. 20, on the
Record Major Subdivision Plan of Dunsmore
as recorded in the Office of the Recorder of
Deeds in and for New Castle County,
Delaware on Microfilm No. 10718.

BEING the same lands and premises
which B. Q. Development, a Delaware Gen-
eral Partnership, by deed dated November
18, 1992, and recorded in New Castle Coun-
ty records, State of Delaware, in Deed Book
1430, Page 107, did grant and convey unto
Dunsmore, Inc., a Delaware Corporation, in
fee.

BEING the same premises which Dun-
smore, Inc., by Deed dated October 31,
1996 and recorded in the Office for the
Recorder of Deeds in and for the County of
New Castle, and State of Delaware in Deed
Book 2197, Page 317, granted and con-
veyed unto Mitchell N. Massie and Cheryl A.
Covington grantor/mortgagor herein.

SEIZED AND TAKEN IN EXECUTION AS
THE PROPERTY OF **Cheryl A. Covington**

TERMS OF SALE: 10% DOWN AT TIME
OF SALE. BALANCE DUE ON OR BEFORE
AUGUST 16, 2010.

MAY 31, 2010

np 7/2,9

2167470

LEGAL NOTICE**SHERIFF'S SALE**

By virtue of a writ of Sheriff #: 10-010896
Property Address: 11 S Fawn Drive
Newark, DE 19711
Parcel No. 18-023.00-008

ALL that certain lot, piece or parcel of land
with the building thereon erected, situate in
the City of Newark, New Castle County and
State of Delaware, known as 11 South Fawn
Drive, being Lot No. 6, Section 1, on the
Plan of Elan in Hunting Hills, and more par-
ticularly bounded and described according to
a survey by Mann-Talley, Inc., Registered
Surveyors, as follows, to-wit:

Being the same lands and premises which
Joseph Ferranto and Susan L. Ferranto, did
grant and convey unto Joseph Ferranto, by
deed dated April 30, 1981 and recorded on
May 4, 1981 the Office of the Recorder of
Deeds, in and for New Castle County, State
of Delaware, in Deed Book 0114 at Page
211.

SEIZED AND TAKEN IN EXECUTION AS
THE PROPERTY OF **Joseph Ferranto**

TERMS OF SALE: 10% DOWN AT TIME
OF SALE. BALANCE DUE ON OR BEFORE
AUGUST 16, 2010.

MAY 31, 2010

np 7/2,9

2167065

SHERIFF'S SALE

By virtue of a writ of Sheriff #: 10-011134
Property Address: 8 Para Lane, Newark,
DE 19702
Tax Parcel No. 10-043.20-122

All that certain lot, piece or parcel of land
with the improvements thereon erected, sit-
uate in New Castle Hundred, New Castle
County and State of Delaware, having desig-
nated as Lot 22 on the Plan of Glendale in
and for New Castle County, Delaware on
Microfilm No.8778, said lot also known as 8
Para Lane and being more particularly
bounded and described in accordance with a
recent survey by Zebley & Associates, Inc.,
dated January 22, 1997.

BEING the same lands and premises
which Mary L. Kreider, by Deed dated Feb-
ruary 25, 1997, and recorded in the Office
aforesaid in Deed Book 2251, page 281 did
grant and convey unto Christopher Connolly
and Justin Holt party hereto, in fee.

BEING the same premises which Christo-
pher Connolly and Justin Holt party hereto,
by Deed dated October 25, 2002, and
recorded October 10, 2003, in the Office for
the Recorder of Deeds in and for the County
of New Castle, and State of Delaware in
Deed Instrument Number 20031010-
0130800, granted and conveyed unto Justin
Holt grantor/mortgagor herein.

SEIZED AND TAKEN IN EXECUTION AS
THE PROPERTY OF **Justin Holt**

TERMS OF SALE: 10% DOWN AT TIME
OF SALE. BALANCE DUE ON OR BEFORE
AUGUST 16, 2010.

MAY 31, 2010

np 7/2,9

2167454

**415 WATERFRONT
FOR SALE**

FINAL CLOSE-OUT! James River-front 5 AC- Only \$159,900 w/ 257' Private Sand BeachWay below appraised value! On quiet cul-de-sac. Last one like this. Excellent financing. Call now 866-764-5238, x 1918 Variv-er.com

GREAT LAND & Spectacular Oceanfront- Surf & turf, the best of all worlds at OCEANVIEW on Virginia's Eastern Shore below Ocean City. Spectacular 1 to 4 acre lots, many with deepwater frontage on the mainland overlooking pristine oceanfront island less than 2 miles away. Each lot includes deeded ownership in private oceanfront parcel with crashing surf. Sun, sail, swim, fish, clam, and play on your private island during the days and dine at nearby quaint restaurants at night. Unique opportunity makes these lots available at prices last seen in 1986! Waterfront lots \$100,000, pond lots \$65,000 and view lots at \$40,000. Every lot has DIRECT ocean views. Owner (757) 665-4410, email: oceanlandtrust@yahoo.com or see web http://Wibiti.com/4XRV

CHESAPEAKE CLASSIFIEDS
www.chesapeakeclassified.com

**432 MOBILE
HOMES FOR SALE**

14X76 home in quiet Nottingham Country Park. 3br, 2ba with comfortable living space & nice kitchen. Call 610-932-4600 for showing and pricing. Lease to purchase possibility

**440 LOTS/ACREAGE
FOR SALE**

BANK FORCED LIQUIDATION SMOKY MTN LAKE PROPERTY/TN. PRICED PENNIES ON THE DOLLAR! ALL REASONABLE OFFERS ACCEPTED! AMENITIES! CLOSE-OUT SALE! JULY 9-10-11 CALL MAP & PRICING. 877-644-4647 x303



SERVICES

**520 HOME
IMPROVEMENT
SERVICES**

Cleaning of Homes and Decks, Deck Treatments 11 years of Professional Service purepressure powerwashing.com 443-967-0125



K. Spencer Home Improvements, Inc.
When Quality Comes First!

- Garages
- Basements
- Kitchens & Baths
- Additions
- Crown Molding
- Porches
- Window / Door Replacement

FREE ESTIMATES

REFERENCES LICENSED & INSURED

No Job too small
MHIC#127618

410-378-9219

**550 LAWN & GARDEN
SERVICES****LARSON'S
TREE &
LANDSCAPING**

- Tree Take Downs
 - Stump Grinding
 - Clearing
 - Topsoil Spread
 - Mulching
 - Landscape Pkgs
 - Hardscaping
 - Bulk Mulch Deliveries
- License # 00-3352
Reasonable Rates
410-392-5175
MHIC 73455
Since 1978

570 Instruction

AIRLINE MECHANIC - Train for high paying Aviation Maintenance Career. FAA approved program. Financial aid if qualified - Job placement assistance. CALL Aviation Institute of Maintenance (866) 823-6729.

DID YOU RECENTLY GRADUATE? Are you unemployed or need better pay. Why not train to be a Paramedic. Work on an ambulance, fire engine, in a ER or on a helicopter. Free training for those that qualify call (202) 552-7385 or email: Thewestlinkcl@live.com

MASSAGE THERAPY - Learn fast, earn fast. Financial aid if qualified. A new career is at your fingertips. Call Centura College 877-206-3353



CHECK OUT CHESAPEAKE CLASSIFIEDS EVERYDAY FOR THAT NEW JOB!

LEGAL NOTICE**SHERIFF'S SALE**

By virtue of a writ of Sheriff # : 10-011568-255
ADDRESS: 14 Mary Ella Drive, Newark, DE 19711
PARCEL: 08-060.30-001

All that certain lot, piece or parcel of land with the buildings thereon erected, situate in Millcreek Hundred, New Castle County, and State of Delaware, being Lot No. 7, also known as 14 Mary Ella Drive, as shown on the record subdivision plan of Millcreek, as recorded in the Office of the Recorder of deed for New Castle County and State of Delaware in Microfilm No. 7917 and being more particularly bounded and described in accordance with a survey made by AES Surveyors as follows:

BEING the same lands and premises Sherritta D. Sampson FKA Sherritta D. Williams and Wendell R. Sampson joint tenants with right of survivorship, by Deed dated August 21, 2003 and recorded in the Office of the Recorder of Deeds, in and for New Castle County and State of Delaware, in Instrument No. 20031117-0146876, did grant and convey unto Wendell R. Sampson and Sherritta D. Sampson.

SEIZED AND TAKEN IN EXECUTION AS THE PROPERTY OF Wendell R. Sampson Sherritta D. Sampson
TERMS OF SALE: 10% DOWN AT TIME OF SALE. BALANCE DUE ON OR BEFORE AUGUST 16, 2010.

np 7/2,9

MAY 31,2010
2168886**SHERIFF'S SALE**

By virtue of a writ of Sheriff # : 10-011845-306
Property Address: 12 Strauss Way
Newark, DE 19702

Parcel No. 10-032.20-250
ALL that certain lot, piece or parcel of land with the buildings thereon erected, situate in New Castle Hundred, New Castle County and State of Delaware, known as 12 Strauss Way, being Lot No. 331 on the Plan of Taylortowne, as the Plan thereof is of record in the Office of the Recorder of Deeds in and for New Castle County, Delaware in Microfilm No. 4188, and being more particularly bounded and described in accordance with a survey prepared by EAST COAST SURVEY, Professional Land Surveyors, dated February 28, 2007, as follows, to-wit:

Being the same lands and premises which Jose H. Guzman and Maria E. Guzman, did grant and convey unto Debra N. Lamonaca and Andres Burgos, by deed dated March 9, 2007 and recorded on March 9, 2007 the Office of the Recorder of Deeds, in and for New Castle County, State of Delaware, in Deed Instrument 20070309-0022806. **SEIZED AND TAKEN IN EXECUTION AS THE PROPERTY OF Debra N. Lamonaca and Andres Burgos**
TERMS OF SALE: 10% DOWN AT TIME OF SALE. BALANCE DUE ON OR BEFORE AUGUST 16, 2010.

np 7/2,9

MAY 31,2010
2169285**LEGAL NOTICE****SHERIFF'S SALE**

By virtue of a writ of Sheriff # : 10-011576-259
PROPERTY ADDRESS: 63 Avignon Drive, Newark, DE 19702
PARCEL NO. 11-025.30-003

All that certain piece, parcel or tract of land with the buildings thereon erected situate in Pencader Hundred New Castle County and State of Delaware known as 63 Avignon Drive Frenchtown Woods Newark Delaware 19702 being Lot No. 144 on the Record Resubdivision Plan of Frenchtown Woods as recorded in the Office of the Recorder of Deeds in and for New Castle County Delaware on Microfilm No. 9990 and being more particularly bounded and described in accordance with a recent survey by East Coast Survey Professional Land Surveyors dated July 25, 1995 as follows, to wit:

BEING the same lands and premises which Eugene M. Julian and Joseph R. Julian, Trustees by Deed dated August 25, 1995 and recorded in the Office of the Recorder of Deeds, in and for New Castle County and State of Delaware, in Deed Book 1972, page 81, did grant and convey unto Paul W. Weyant and Sharon Weyant.

SEIZED AND TAKEN IN EXECUTION AS THE PROPERTY OF Paul W. Weyant
TERMS OF SALE: 10% DOWN AT TIME OF SALE. BALANCE DUE ON OR BEFORE AUGUST 16, 2010.

np 7/2,9

MAY 31,2010
2168890**SHERIFF'S SALE**

By virtue of a writ of Sheriff # : 10-011616-272
Property Address: 37 Valley Forge Court, Newark, DE 19702

Parcel ID: 10-039.10-286
All that certain lot, piece or parcel of land, with the buildings thereon, situate in New Castle Hundred, New Castle County, Delaware, being designed Lot 36, as shown on the record major land development plan of Centennial Village, of record in the Office of the Recorder of Deeds in and for New Castle County, Delaware on Microfilm No. 5538, said Lot also known as 37 Valley Forge Court and being now more particularly described according to a survey by The P.E.L.S.A Company, dated October 29, 2007, as follows, to wit:

Being the same lands and premises which Earnest F. Poteat, did grant and convey unto Lamont A. Murray, by deed dated October 29, 2007 and recorded on November 6, 2007 in the Office of the Recorder of Deeds, in and for New Castle County, State of Delaware, in Deed Instrument 20071106-0096489.

SEIZED AND TAKEN IN EXECUTION AS THE PROPERTY OF Lamont A. Murray
TERMS OF SALE: 10% DOWN AT TIME OF SALE. BALANCE DUE ON OR BEFORE AUGUST 16, 2010.

np 7/2,9

MAY 31,2010

2169212



MERCHANDISE

602 ANIMALS/PETS**New Today**

AKC BLACK LAB
Female 2 yrs old. All shots. Needs new home with home with lots of room to run! Loves water! Crate Trained \$250 443-939-0228



BEAGLE PUPS
AKC Hunting and show background. 2 lemon & white \$400 & 2 tri color \$300. All males 443-413-0461

BEAUTIFUL AKC
St. Bernard for stud. 200lbs 3yrs proven breeder 410-939-1226

BENGLE KITTEN
16 WKS OLD F5, gorgeous & sweet \$400. 410-378-4111

CATS 2 1/2 & 3 1/2
yr old male cats, could be barn cats, both have long hair & 5 mo old female & (2) 8wk old kittens all free to good home 410-620-3575

New Today

CHOW CHOW pups.
Parents w/ papers on premises. Raised w/ kids & other pets. Reduced \$150 Cecil County 443-466-1703

New Today

COCKA POO PUPS
Wormed, shots, farm raised. Very cute & adorable. Do not shed hair! \$750 each. Call 717-862-3093

New Today

CHIA POM PUPS
Male & female, small 1st S/W, black & brown. \$300 410-658-2463

CAT: Free to good indoor home. Pretty multi colored spayed female 443-907-6160

New Today

COCKAPOO PUPS
Born 5/11/10. Small females. S&W. \$425. 410-275-9076

LEGAL NOTICE**SHERIFF'S SALE**

By virtue of a writ of Sheriff # 10-011120
Property Address: 5 Leafy Lane, Newark, DE 19702

Tax Parcel No. 11-017.20-095
ALL that certain lot, piece or parcel of land, situate in Pencader Hundred, New Castle County and State of Delaware, known as 5 Leafy Lane, being Lot No. 117 on the Plan of Four Seasons and being more particularly bounded and described in accordance with a recent survey by Zebley & Associates Inc., Professional Land Surveyors and Site Planners, dated June 4, 1997.

BEING the same lands and premises which Robert L. Hubbard and Elizabeth A. Hubbard, by Deed dated February 14, 1986, and record February 18, 1986, in the Office of the Recorder of Deeds, in and for New Castle County, Delaware, in Deed Book 340, Page 189, did grant and convey unto David A. Jones and Carol A. Jones, his wife, in fee.

BEING the same premises which David A. Jones and Carol A. Jones, his wife, by Deed dated June 13, 1997, and recorded June 16, 1997, in the Office of the Recorder of Deeds in and for the County of New Castle, and State of Delaware in Deed Book 2285, Page 0205, granted and conveyed unto William D. Copeland and Letha D. Copeland grantor/mortgagor herein.

SEIZED AND TAKEN IN EXECUTION AS THE PROPERTY OF Letha S. Copeland
TERMS OF SALE: 10% DOWN AT TIME OF SALE. BALANCE DUE ON OR BEFORE AUGUST 16, 2010.

np 7/2,9

MAY 31,2010
2167446**LEGAL NOTICE****SHERIFF'S SALE**

By virtue of a writ of Sheriff # : 10-010920
Property Address: 125 Coopers Drive-
Newark, DE 19702

Parcel No. 11-021.10-029
All that certain lot, piece or parcel of land with the improvements thereon erected, situate in Pencader Hundred, New Castle County and State of Delaware being known as Lot No. 69 as said Lot appears on the Record Major Subdivision Plan of Cooper's Run, said Plan being of record in the Office of the Recorder of Deeds in and for New Castle County and State of Delaware in Microfilm No. 8857, said Lot being also known as 125 Cooper's Drive and being particularly bounded and described according to a survey prepared by Taylor, Wiseman & Taylor, dated August 15, 1991, last revised March 6, 1992, as follows, to-wit:

Being the same lands and premises which Patricia A. Munley did grant and convey unto Arthur K. Legg, III and Candace C. Legg by deed dated September 27, 1996 and recorded on October 1, 1996 in the Office of the Recorder of Deeds, in and for New Castle County, State of Delaware, in Deed Book 2178 Page 190

SEIZED AND TAKEN IN EXECUTION AS THE PROPERTY OF Candace C. Legg and Arthur K. Legg III
TERMS OF SALE: 10% DOWN AT TIME OF SALE. BALANCE DUE ON OR BEFORE AUGUST 16, 2010.

np 7/2,9

MAY 31,2010

2167071

**BRINGING YOU
UP TO DATE**
www.cecilwhig.com

LEGAL NOTICE

SHERIFF'S SALE

By virtue of a writ of Sheriff #: 10-011057
PROPERTY ADDRESS: 16 Foxton Drive,
Newark, DE 19702
PARCEL NO. 10-043.10-702

ALL that certain lot, piece or parcel of land with the buildings thereon erected, situate in New Castle Hundred, New Castle County and State of Delaware, known as 16 Foxton Drive, being Lot No. 277 on the Record Resubdivision Plan of Wellington Woods, Section I & III, as said plan is of record in the Office of the Recorder of Deeds in and for New Castle County, Delaware, in Microfilm Record No. 10,595, and being more particularly and bounded and described in accordance with a recent survey by Woodlin, Wending & Associates, Inc., Professional Land Surveyors, dated April 16, 1998, as follows, to-wit:

BEING the same lands and premises which Ronald D. Brown and Joyce A. Brown, Co-Executors of the Estate of Ronda M. West by Deed dated February 20, 2007 and recorded in the Office of the Recorder of Deeds, in and for New Castle County and State of Delaware, in Instrument Number 20070313-0023792, did grant and convey 1/2 interest of property unto Wayne Shannon. Also being being the same lands and premises which Matthew H. West by Deed dated March 9, 2007 and recorded in the Office of the Recorder of Deeds, in and for New Castle County and State of Delaware, in Instrument Number 20070313-0023793, did grant and convey remaining 1/2 interest of property unto Wayne Shannon.

SEIZED AND TAKEN IN EXECUTION AS THE PROPERTY OF **Wayne Shannon**

TERMS OF SALE: 10% DOWN AT TIME OF SALE. BALANCE DUE ON OR BEFORE AUGUST 16, 2010.

MAY 31, 2010
2167421

np 7/2,9

SHERIFF'S SALE

By virtue of a writ of Sheriff #: 10-011264
Property Address: 35 Meadow Lane Brookside,
Newark, DE 19713
Tax Parcel No. 11-002.40-228

ALL that certain lot, piece or parcel of land, with the dwelling thereon erected, known as No. 35 Meadow Lane, situate in Pencader Hundred, New Castle County and State of Delaware, and being Lot No. 338, Section M, on the plan of Brookside Park, as said Plan is of record in the Office for the Recording of Deeds, in and for New Castle County and State aforesaid, in Plat Record W-75, Page 581, and more particularly bounded and described in a recent survey prepared by Zebley and Associates, Inc., Professional Land Surveyors of Wilmington, Delaware, dated March 14, 1980.

BEING the same lands and premises which Aubrey W. McClure and Helen M. McClure, his wife, by Their Deed dated January 21, 1972, and recorded in the Office of the Recorder of Deeds, in and for New Castle County and State of Delaware, in Deed Record W, Volume 85, Page 335, did grant and convey unto Henry C. Mullen, Jr., and Marybelle F. Mullen, his wife.

BEING the same premises which Henry C. Mullen, Jr., and Marybelle F. Mullen, his wife, by Deed dated March 19, 1980 and recorded March 20, 1980 in the Office for the Recorder of Deeds in and for the County of New Castle, and State of Delaware in Deed Book Volume Q109, Page 85, granted and conveyed unto John E. Mahek and Lynn D. Mahek grantor/mortgagor herein.

SEIZED AND TAKEN IN EXECUTION AS THE PROPERTY OF **John Mahek and Lynn Mahek**

TERMS OF SALE: 10% DOWN AT TIME OF SALE. BALANCE DUE ON OR BEFORE AUGUST 16, 2010.

MAY 31, 2010
2167465

np 7/2,9

EMU'S - for sale, 1 month old \$95 ea call 443-350-0475

FREE KITTENS 410-877-7305

LAB PUPS AKC Wormed, 1st shots. Black \$350, chocolate \$375. **BLACK FEMALE, AKC**, about 1.5yrs old. Housebroken \$400 410-658-8340 / 443-309-7713

FREE! 10 y/o cats, siblings, spayed/neutered, declawed. Moving, need a loving home. 410-444-1199

LEGAL NOTICE

SHERIFF'S SALE

By virtue of a writ of Sheriff #: 10-011040
Property Address: 85 Kenmar Drive
Newark, DE 19713
Parcel No. 11-006.20-070

ALL that certain lot, piece or parcel of land with the improvements thereon erected, situate in Pencader Hundred, New Castle County and State of Delaware, being designated as Lot No. 268, as shown on the Record Major Subdivision Plan of Brookside Park, Section K, as said Plan is of record in the Office of the Recorder of Deeds, in and for New Castle County, State of Delaware, in Deed Volume 2, Page 79, and being more particularly bounded and described in accordance with a Mortgage Inspection Plan prepared by East Coast Survey, Professional Land Surveyors, of Wilmington, Delaware, dated May 24, 2000, as follows, to-wit:

Being the same lands and premises which Rosaire T. Lee and Cindy M. Marshallsea did grant and convey unto Richard A. Yarnall, Jr by deed dated June 22, 2000 and recorded on June 23, 2000 in the Office of the Recorder of Deeds, in and for New Castle County, State of Delaware, in Deed Book 2849 Page 316.

SEIZED AND TAKEN IN EXECUTION AS THE PROPERTY OF **Richard Jr Yarnall, A**

TERMS OF SALE: 10% DOWN AT TIME OF SALE. BALANCE DUE ON OR BEFORE AUGUST 16, 2010.

MAY 31, 2010

np 7/2,9

2167410

SHERIFF'S SALE

By virtue of a writ of Sheriff #: 10-011123
Property Address: 17 Gogh Circle, Newark,
DE 19702-0000
Tax Parcel No. 10-032.40-059

ALL that certain lot, piece or parcel of land, with the buildings thereon erected, situate in New Castle Hundred, New Castle County and State of Delaware, known as 17 Gogh Circle, being Lot No. 246, on the Record Major Subdivision Plan of Taylortowne, as the Plan thereof is of record in the Office of the Recorder of Deeds, in and for New Castle County in Microfilm No. 4188, and being more particularly bounded and described in accordance with a survey prepared by A.E.S. Surveyors, Professional Land Surveyors, dated September 14, 2006.

BEING the same lands and premises which Aaron J. Beres and Tina M. Cooper, n/k/a Tina M. Beres, by Deed dated April 28, 2000, and recorded May 1, 2000, in the Office of the Recorder of Deeds in and for New Castle County, Delaware, in Deed Book 2819, Page 70, did grant and convey unto Steven W. Quist, in fee.

BEING the same premises which Steven W. Quist, by Deed dated September 28, 2006, and recorded September 29, 2006, in the Office for the Recorder of Deeds in and for the County of New Castle, and State of Delaware in Deed Instrument Number 20060929-0093413, granted and conveyed unto Jason A. Chapell and Elizabeth M. Chapell, husband and wife, grantor/mortgagor herein.

SEIZED AND TAKEN IN EXECUTION AS THE PROPERTY OF **Elizabeth M. Chapell and Jason A. Chapell**

TERMS OF SALE: 10% DOWN AT TIME OF SALE. BALANCE DUE ON OR BEFORE AUGUST 16, 2010.

MAY 31, 2010

np 7/2,9

2167449

New Today

MALE Jack Russell Puppy. Born May 11th, 8 wks old on July 6th. All white with brown spots on tail \$375. Call 443-309-8027

New Today

POMERANIAN PUPS 1st, 2nd shots, wormed. Very small. \$350 410-378-2720

Pug Mix pups, some black, some fawn, avail Aug 7th \$300 410-378-5664 lv msg

SHIH TZU PUPS Females, born 4/26. No papers. 1st shots \$400. 302-652-3988

HORSES/TACK/ EQUIP./SUPPLIES

HAY FOR SALE \$3 per bale 1st cut orchard grass, small square bales 30-30# ea. Please call 410-241-6295

Classified is the key to more sales.

LEGAL NOTICE

SHERIFF'S SALE

By virtue of a writ of Sheriff #: 10-010934
Property Address: 2655 Old Country Road
Newark, DE 19702
Parcel No. 11-031.00-016

ALL that certain lot, piece or parcel of land, with the buildings thereon erected, situate in Pencader Hundred, New Castle County and State of Delaware, known as 2655 Old Country Road, and being more particularly bounded and described in accordance with a survey prepared by AES Surveyors, Professional Land Surveyors, dated December 11, 2006, as follows, to-wit:

Being the same lands and premises which Beverly J. Mahan, did grant and convey unto Scott Michael Teets and Kerri Lynn Teets, by deed dated January 5, 2007 and recorded on January 17, 2007 the Office of the Recorder of Deeds, in and for New Castle County, State of Delaware, in Deed Instrument 20070117-0004824.

SEIZED AND TAKEN IN EXECUTION AS THE PROPERTY OF **Scott Michael Teets and Kerri Lynn Teets**

TERMS OF SALE: 10% DOWN AT TIME OF SALE. BALANCE DUE ON OR BEFORE AUGUST 16, 2010.

MAY 31, 2010

np 7/2,9

2167307

SHERIFF'S SALE

BY VIRTUE OF A WRIT OF SHERIFF #: 10-011597-266
Property Address: 259 S Dillwyn Road,
Newark, DE 19711
Parcel ID 09-016.30-128

ALL that certain lot, piece or parcel of land with the building thereon erected, situate in White Clay Creek Hundred, New Castle County, Delaware, and known as Lot No. 260. Block K, on the Plan of Section 2, Windy Hills (now known as Wingate Park) as said Plan is of record in the Office of the Recorder of Deeds in and for New Castle County in Microfilm Plat Record No. 747 and being more particularly bounded and described in accordance with a mortgage inspection plan by The PELSA Company, Land Consultants and Surveyors of Newark, Delaware, dated August 2007, as follows, to-wit:

Being the same lands and premises which Albert L. Powell Jr., did grant and convey unto Kenneth N'ell Hall Sr., by deed dated September 24, 2007 and recorded on September 29, 2007 in the Office of the Recorder of Deeds, in and for New Castle County, State of Delaware, in Deed Instrument 20070926-0084979.

SEIZED AND TAKEN IN EXECUTION AS THE PROPERTY OF **Kenneth N. Hall, Sr.**

TERMS OF SALE: 10% DOWN AT TIME OF SALE. BALANCE DUE ON OR BEFORE AUGUST 16, 2010.

MAY 31, 2010

np 7/2,9

2169205

615 APPLIANCES

KENMORE electric cooktop 30x21. Exc cond. Almond. Paid \$940, asking \$395. **GE wall oven** 30h x26w. Exc cond. Almond. \$295. **Broan Economy range hood** Good cond. Almond \$135. Remodeled kitchen 410-879-0436 / 410-322-1616

WASHER Kenmore Limited - 5 water levels, 7 temp settings, 5 spds \$125. **Dryer** Kenmore 80 series 3 temp settings. \$125. Both \$200 410-392-3161

620 COMPUTERS & ACCESSORIES

SAMSUNG monitor 900S. Not flat screen. \$50. 410-877-7305

625 FURNITURE/FURNISHINGS

BEDROOM SET 2 dresser and night stand & frame. Dark Cherry pine, good cond. \$200. Call 443-206-1325

BED FRAME. Twin, with oak head board. \$25. 302-593-5426

BED. Single w/rails, good condition. \$20. 410-398-5391

CHERRY BEDROOM SET. Solid Wood, never used, brand new in factory boxes. English Dove-tail. Original cost \$4500. Sell for \$795. Can deliver. 240-482-8721

DINING TABLE solid wood w/ drop leaves. \$50. 410-392-2707

FIRE PLACE Free standing heavy duty steel \$45. 410-392-2707

LEATHER LIVING ROOM SET. In original plastic, never used. Orig price \$3000, Sacrifice \$975. Can deliver. Call Bill 301-841-7565

TAILORING TABLE Very sturdy, 47x42, smoothie formica top. \$50. 410-642-2698

640 GENERAL MERCHANDISE

ANTIQUE ROCKER Pegged together, \$20. Dog crate \$20. Call 410-398-5895

HOMEOWNERS WANTED! Kayak Pools looking for Demo homesites to display new maintenance free Kayak pools. Save thousands of \$. Unique opportunity! 100% financing available. 1-877-377-7665

JET 3 MOBILITY CHAIR. New batteries. Like new \$950. **ALUMINUM FOLDING RAMP** \$300 Call 410-592-6197 lv msg

SCREEN CANOPY Nordic cross 10x10. Zipper sides. Used 1 yr, exc cond. \$50 firm 410-284-2722 Dundalk

SEWING machine. Sears floor model with attachments. \$50. 410-398-0477

New Today

WANTED Diabetic test strips. Up to \$22 per box, sealed, unexpired. 716-633-4873

642 SPORTING GOODS

AB LOUNG II. Blue, good condition. \$20. 410-620-6902

New Today

ELLIPTIC Climber Pro form, calc. All new seldom used. \$400 410-284-2722 Dundalk

np 7/2,9

2168897

POOL TABLES 2
coin operated 8'
\$1000, each. 410-
598-0707

MUSICAL

New Today



GUITARS WANTED
(also banjos & mandolins)

Collector paying top \$\$ for Gibson, Fender, Martin & others. Any condition.
410-419-1795

PIANO. Brande upright, old. Needs tuning. \$25. You haul.
410-272-2366

YARD SALES



ELKTON
Elkwood Estates Community Sale off Rt 213 South
Sat July 10th
9am - 2pm
New collectible dolls, futon, educational materials, games, science kits, plus size clothes & much more!
Rain Date 7/11

New Today



ELKTON 103
Lafayette Dr in Colonial Ridge, **Sat 7/10**
7:30 - 1:30 HUGE
Multi family yard
sale furn h/h items baby items lawn & garden name brand clothing & much more

ELKTON- 42 Lake Forest Dr., June 10th, 8-2, Rt. 40, Landing Ln, Rt. on Old Field Pt Rd, go 5.5 mi, rt Lake Forest Dr. 5th house on left. Kid's items, toys, furniture, Upright Freezer, Desk, sofa table, end table, tv stand, sm TV, videos, fish tank.

ELKTON- 25 Crestview Dr., 7/10/10, 8am-2pm, toys, adult clothing, children's clothing, much more.

FAIRHILL 139
Providence Rd off Rt 213. Thurs, Fri, Sat, July 8, 9, 10, 9am-3pm. Horse equipment & housewares.

NORTHEAST 60
Wardson Dr (about 1.5 miles from Cecil College) Fri, Sat, Sun, July 9, 10, 11, 8am-3pm. Womens clothes & scrubs, pocketbooks, designer fragrances - many new, household items, Nascar items, tools - some Snap On.

NORTH EAST
FOOD LION yard sale on 7/17/10 8am-2pm. \$10 a table to benefit Children's Miracle Network. Come to store to reserve space.

CHECK OUT OUR WEBSITE AT
WWW.CHESAPEAKE CLASSIFIED.COM



PERRYVILLE- 154
Woodall Road off of Carpenters Point Rd. Saturday July 10th, 8am-1pm. Household items, boat items, tools.

WWW.CHESAPEAKE CLASSIFIED.COM

PERRYVILLE- 110
Greenbank Road, 21903. Saturday & Sunday July 10th & 11th, 8-3. Furn, toys, rabbit cage, 4 wheelers (50cc), doors, and much more.

PERRYVILLE- 54
Riverview Drive, off Rt 40 and Chesapeake Landing. Saturday July 10th, 7-3. Bike, sewing machine, teacher items, crafts and many more.

LEGAL NOTICE

CITY OF NEWARK DELAWARE

PUBLIC NOTICE

The Council of the City of Newark, at its regular meeting held June 28, 2010, adopted the following resolution:

RESOLUTION NO. 10-R - Approving the Major Subdivision of 1001 Ogletown Road in order to construct an approximately 81,000 square foot armed forces training facility.

Patricia M. Fogg, CMC
City Secretary

np 7/9

2171275

SHERIFF'S SALE

By virtue of a writ of Sheriff #: 10-010664
Property Address: 371 Norman Drive, Newark, DE 19702

Tax Parcel No. 11-017.40-172

ALL that certain lot piece or parcel of land, with the dwelling thereon erected known as 371 Norman Drive, situate in Pencader Hundred, New Castle County and State of Delaware, being Lot No. 52, as shown on the Record Major Subdivision Plan for EAGLE TRACE, dated May 16, 1996, and recorded July 10, 1996, in the Office of the Recorder of Deeds in and for New Castle County, Delaware, in Microfilm No. 12907, and begin more particularly bounded and described in accordance with a recent survey prepared by A.E.S. Surveyors, Professional Land Surveyors, dated July 14, 2006.

BEING the same lands and premises which Seung Mook, by Deed dated April 29, 2002, and recorded in the Office of the Recorder of Deeds in and for New Castle County, in Instrument # 20020501-0040213, did grant and convey unto Simon Sachar and Cassandra L. Sachar, in fee.

BEING the same premises which Simon Sachar and Cassandra Sachar, by Deed dated July 31, 2006, and recorded August 1, 2006, in the Office of the Recorder of Deeds in and for the County of New Castle, and State of Delaware in Deed Instrument Number 20060801-0072757, granted and conveyed unto Anne R. Achieng grantor/mortgagor herein.

SEIZED AND TAKEN IN EXECUTION AS THE PROPERTY OF Anne Achieng
TERMS OF SALE: 10% DOWN AT TIME OF SALE. BALANCE DUE ON OR BEFORE AUGUST 16, 2010.

np 7/2,9

MAY 31,2010

2167017

LEGAL NOTICE

SHERIFF'S SALE

By virtue of a writ of Sheriff #: 10-011565-253

ADDRESS: 104 Blueridge Place, Newark, DE 19702

PARCEL: .09-038.30-343

ALL that certain lot, piece or parcel of land, with the building thereon erected, situate in White Clay Creek Hundred, New Castle County, and State of Delaware, known as 104 Blue Ridge Place, and being Lot No. 131, as shown on the Plan of Barrett Run, as said Plan is of record in the Office of the Recorder of Deeds in and for New Castle County, Delaware in Microfilm No. 13847, and being more particularly bounded and described in accordance with a survey prepared by A.E.S. Surveyors, dated April 12, 2005, as follows, to-wit:

BEING the same lands and premises which Malcom Buck by deed dated January 25, 2006 and recorded in the Office of the Recorder of Deeds in and for New Castle County, Delaware in Deed Instrument Number 20060126-0009389 did grant and convey unto, Malcom Buck II and Kate R. Buck, SEIZED AND TAKEN IN EXECUTION AS THE PROPERTY OF **Malcom A. Buck and Kate R. Buck**

TERMS OF SALE: 10% DOWN AT TIME OF SALE. BALANCE DUE ON OR BEFORE AUGUST 16, 2010.

np 7/2,9

MAY 31,2010
2168881

SHERIFF'S SALE

By virtue of a writ of Sheriff #: 10-010610
Property Address: 337 Stanley Plaza Boulevard, Newark, DE 19713

Tax Parcel No. 09-028.20-129

ALL that certain lot, piece or parcel of land situate in White Clay Creek Hundred, New Castle County, State of Delaware, being designated Lot No. 34 on the Record Major Subdivision Plan for Red House Plantation, of record in the Office of the Recorder of Deeds in and for New Castle County, Delaware, in Microfilm No. 10,235, said lot also known as 337 Stanley Plaza Boulevard, and being more particularly bounded and described in accordance with a recent survey prepared by Site Dimensions dated September 24, 2006.

Being the same lands and premises which were conveyed to Susan J. Schaible, party of the first part, by Deed of Douglas A. Brown and Diane E. Brown (formerly known as Diane A. Dougherty), dated September 29, 1994 and recorded in the Office of the Recorder of Deeds, in and for New Castle County and State of Delaware, in Deed Book 1815, Page 320, in fee.

Being the same lands and premises by which Susan J. Schaible by Deed dated October 6, 2006 and recorded in the Office of the Recorder of Deeds in and for New Castle County, Delaware as Instrument No. 20061011-0096115, did grant and convey to Jacqueline B. Okumu.

SEIZED AND TAKEN IN EXECUTION AS THE PROPERTY OF Jacqueline B. Okumu
TERMS OF SALE: 10% DOWN AT TIME OF SALE. BALANCE DUE ON OR BEFORE AUGUST 16, 2010.

MAY 31,2010

np 7/2,9

2167008

LEGAL NOTICE

SHERIFF'S SALE

By virtue of a writ of Sheriff #: 10-010925
Property Address: 3 Thistleberry Drive-
Newark, DE 19702

Parcel No. 11-017.10-109

ALL that certain lot, piece or parcel of land with the improvements thereon erected, situate in Pencader Hundred, New Castle County, State of Delaware, being Lot No. 118 (also known as 3 Thistleberry Drive) on the Record Subdivision Plan of THORNWOOD, as said Plan is of record in the Office of the Recorder of Deeds, in and for New Castle County, State of Delaware, in Microfilm No. 11599, and being more particularly bounded and described in accordance with a Mortgage Inspection Plan prepared by East Coast Survey, Professional Land Surveyors, dated March 7, 2006, as follows, to-wit:

Being the same lands and premises which Robert C. Oncay and Karen S. Oncay, did grant and convey unto April Pruitt, by deed dated March 31, 2006 and recorded on April 4, 2006 the Office of the Recorder of Deeds, in and for New Castle County, State of Delaware, in Deed Instrument 20060404-0031528.

SEIZED AND TAKEN IN EXECUTION AS THE PROPERTY OF April Pruitt and The United States Of America

TERMS OF SALE: 10% DOWN AT TIME OF SALE. BALANCE DUE ON OR BEFORE AUGUST 16, 2010.

np 7/2,9

MAY 31,2010

2167292

SHERIFF'S SALE

By virtue of a writ of Sheriff #: 10-011838-304

Property Address: 1001 Birchwood Drive-
Newark, DE 19713

Parcel No. 09-023.30-365

ALL that certain lot, piece or parcel of land, with the buildings thereon erected, situate in White Clay Creek Hundred, New Castle County and State of Delaware known as Lot no. 299, Block J, on the Plan of BIRCHWOOD PARK, SECTION 2, as said Plan is of record in the Office of the Recorder of Deeds, in and for New Castle County aforesaid, in Plat Record 4, Page 24, and more particularly bounded and described in accordance with a survey by Edward H. Ricardson Associates, Inc., Consulting Engineers, Newark, Delaware, dated June 27, 1957, and in accordance with a more recent survey prepared by Zebley & Associates Inc., Professional Land Surveyors and Site Planners of Wilmington, Delaware, dated December 15, 1976, as follows, to wit:

Being the same lands and premises which Eugene Williams, Jr., did grant and convey unto Eugene Williams and Eliza B. Williams, by deed dated July 17, 1986 and recorded on July 18, 1986 in the Office of the Recorder of Deeds, in and for New Castle County, State of Delaware, in Deed Book 481 at Page 58.

SEIZED AND TAKEN IN EXECUTION AS THE PROPERTY OF Eliza B. Williams
TERMS OF SALE: 10% DOWN AT TIME OF SALE. BALANCE DUE ON OR BEFORE AUGUST 16, 2010.

np 7/2,9

MAY 31,2010

2169245

LEGAL NOTICE

CITY OF NEWARK Delaware

Traffic Committee Meeting Notice

The City of Newark Traffic Committee meeting scheduled for **Tuesday, July 20, 2010** has been cancelled due to a lack of agenda items.

np 7/9

2170614

SHERIFF'S SALE

By virtue of a writ of #10-011899-333
Property Address: 3 Verdant Court, Newark, De 19702

Parcel No.: 09-040.20-147

ALL that certain lot, piece or parcel of land with buildings thereon situate in White Clay Creek Hundred, New Castle County, Delaware, being designated as LOT TWO (2) as shown on the Record Major Subdivision Plan of Beechers Lot 2, of record in the Office of the Recorder of Deeds, in and for New Castle County, Delaware, in Microfilm No. 9145, said lot also designated as 3 Verdant Court and being more particularly bounded and described in accordance with a recent survey prepared by Associated Engineers & Surveyors, Inc. dated October 21, 1991.

BEING the same lands conveyed unto James Lee Strugis, by deed of James Lee Strugis and Karen J. Strugis, husband and wife, dated the 8th day of July 2003, and of record in the Office of the Recorder of Deeds, in and for New Castle County, Delaware, in Deed Instrument No. 20040805-0085737.

BEING the same premises which James Lee Strugis, by Deed dated July 11, 2003, and recorded August 5, 2004, in the Office for the Recorder of Deeds in and for the County of New Castle, and State of Delaware in Instrument No. 20040805-0085738, granted and conveyed unto Alice Strugis and John Strugis, grantor/mortgagor herein.

SEIZED AND TAKEN IN EXECUTION AS THE PROPERTY OF JOHN STURGIS AND ALICE STURGIS.

TERMS OF SALE: 10% DOWN AT TIME OF SALE. BALANCE DUE ON OR BEFORE AUGUST 16, 2010.

MAY 31, 2010

NP 7/2,9

2169791

SHERIFF'S SALE

By virtue of a writ of Sheriff #: 10-011818-301

Property Address: 106 Martindale Drive
Newark, DE 19713

Parcel No. 11-002.20-158

ALL that certain lot, piece or parcel of land, with the dwelling thereon erected, situate in Pencader Hundred, New Castle County and State of Delaware, being Lot No 229, as shown on the Plan of BROOKSIDE PARK, Section M, Part 2, as said Plan is recorded in the Office for the Recording of Deeds, in and for New Castle County, in Plat Record 3, Page 52, and being more particularly bounded and described in accordance with a recent mortgage inspection survey by Zebley & Associates, Inc., Professional Land Surveyors and Site Planners, Wilmington Delaware, dated July 31, 1996, as follows to wit:

Being the same lands and premises which Paul F. Susie and Jeanne R. Susie did grant and convey unto Teresa L. Truitt by deed dated August 30, 1996 and recorded on September 3, 1996 in the Office of the Recorder of Deeds, in and for New Castle County, State of Delaware, in Deed Book 2163 Page 0017.

SEIZED AND TAKEN IN EXECUTION AS THE PROPERTY OF Teresa L. Truitt
TERMS OF SALE: 10% DOWN AT TIME OF SALE. BALANCE DUE ON OR BEFORE AUGUST 16, 2010.

MAY 31,2010

np 7/2,9

2169238

Boss just step out of the office? Now is the perfect time to check out what is in the **Chesapeake Classifieds** section of your paper or go to **www.chesapeakeclassified.com**



LEGAL NOTICE

SHERIFF'S SALE

By virtue of a writ of Sheriff #: 10-011617-273
Property Address: 34 Reubens Circle
Newark, DE 19702
Parcel No. 10-032-40-041

ALL that certain lot, piece or parcel of land, with the buildings thereon erected, known as 34 Reubens Circle, situate in New Castle Hundred, New Castle County and State of Delaware, and being Lot No. 265 of the subdivision of Taylortowne, and being more particularly bounded and described in accordance with a survey by the Pelsa Company dated November 9, 1998 as follows, to wit: Being the same lands and premises which Francis A. Sacco did grant and convey unto Ivanetta S. Thomas by deed dated November 20, 1998 and recorded on January 15, 1999 in the Office of the Recorder of Deeds, in and for New Castle County, State of Delaware, in Deed Book 2573 Page 106. SEIZED AND TAKEN IN EXECUTION AS THE PROPERTY OF **Ivanetta S. Thomas**
TERMS OF SALE: 10% DOWN AT TIME OF SALE. BALANCE DUE ON OR BEFORE AUGUST 16, 2010.

MAY 31, 2010
2169228

np 7/2,9

LEGAL NOTICE

CITY OF NEWARK
DELAWARE
COUNCIL MEETING AGENDA

July 12, 2010 - 7:00 PM - CC

SILENT MEDITATION & PLEDGE OF ALLEGIANCE

1. ITEMS NOT ON PUBLISHED AGENDA:

- A. Public (5 minutes per speaker)
- B. University
 - (1) Administration
 - (2) Student Body Representative
- C. Council Members

2. APPROVAL OF CONSENT AGENDA:

- A. Approval of Regular Council Meeting Minutes - June 28, 2010
- B. Receipt of Alderman's Report - July 2, 2010

CONSENT AGENDA - Those items on the Consent Agenda are considered routine and non-controversial and will be acted upon by a single vote of the Council. There will be no separate discussion of these items unless a member of Council so requests, in which event the matter shall be removed from the Consent Agenda and considered a separate item.

3. ITEMS NOT FINISHED AT PREVIOUS MEETING: None

4. FINANCIAL STATEMENT

5. RECOMMENDATIONS ON CONTRACTS & BIDS: None

*6. ORDINANCES FOR SECOND READING & PUBLIC HEARING: None

*7. RECOMMENDATIONS FROM THE PLANNING COMMISSION AND/OR PLANNING & DEVELOPMENT DEPARTMENT:

A. Request of Newark Seasons Pizza, Inc. for a Special Use Permit for the Sale of Alcoholic Beverages, Limited to Beer and Wine, at their Restaurant Located at 203 E. Main Street, Newark, Delaware

*8 ITEMS SUBMITTED FOR PUBLISHED AGENDA:

- A. Council Members:
 - 1. Parks and Recreation Fees Discussion - Councilman Temko
 - 2. Resolution 10-__: Retirement of Master Corporal Susan A. Farrell

9. SPECIAL DEPARTMENTAL REPORTS:

- A. Special Reports from Manager & Staff: None

***OPEN FOR PUBLIC COMMENT** - The above agenda is intended to be followed, but is subject to changes, deletions, additions, and modifications, as permitted under the Freedom of Information Act of the State of Delaware. Copies may be obtained at the City Secretary's Office, 220 Elkton Road, or online at www.cityofnewark.de.us

np 7/9

2171224

New Today



RISING SUN- 321
Roop Road, (Rt 1
South to Conneley
Right to Roop). Satur-
day July 10th, 8-3.
RD 7/17. Estate liqui-
dation, HH, furn,
tools, clothes, toys,
Everything must go!

RISING SUN 53
Bard Cameron Rd.
From Biggs Hwy, left
on Ebenezer, approx
1 mile, left on Bard
Cameron. Sat, July 10
8am-1pm. Lots of
household, baby items
age 1-3, etc.

CLASSIFIEDS
410-398-1230
800-220-1230

New Today



**Victory in Praise
Fellowship Church**
Rt 213 & Whitehall
Rd Sat 7/10 8a-2p
Furniture galore, 4
AC's, lawn furniture,
games, linens,
pictures, curtains,
pots & pans, shoes,
tools, so much
more! Rain: 7/17

CHECK OUT
OUR WEBSITE AT
[WWW.CHESAPEAKE
CLASSIFIED.COM](http://WWW.CHESAPEAKECLASSIFIED.COM)

WORTON- 25179
Porters Grove Rd.
7/10 & 11, 7am to
1pm, lots of stuff!
Come look!

LEGAL NOTICE

**THE COURT OF
COMMON PLEAS
FOR THE STATE
OF DELAWARE IN
AND FOR NEW
CASTLE COUNTY**
IN RE: CHANGE OF
NAME OF
Angela Ching Yin
PETITIONER(S)
TO
Angela Ching Chen-
NOTICE IS HERE-
BY GIVEN that
Angela Ching Yin
intends to present a
Petition to the Court
of Common Pleas
for the State of
Delaware in and for
New Castle County,
to charge his/her
name to Angela
Ching Chen.

Yang Chen
Petitioner
Dated: 7/1/10

np 7/9,16,23
2171180

**THE COURT OF
COMMON PLEAS
FOR THE STATE
OF DELAWARE IN
AND FOR NEW
CASTLE COUNTY**
IN RE: CHANGE OF
NAME OF

Camari Terrell
Carter
PETITIONER(S)
TO
Camari Terrell Gist
NOTICE IS HERE-
BY GIVEN that
Camari Terrell
Carter intends to
present a Petition to
the Court of Com-
mon Pleas for the
State of Delaware in
and for New Castle
County, to charge
his/her name to
Camari Terrell Gist
Tina M. Owens
Mother of
Petitioner
Dated: 7/2/10

np 7/9,16,23
2171258

654 LAWN & GARDEN EQUIPMENT

New Today

**CHIPPER SHRED-
DER** Troybilt, 5hp.
\$250. Call 410-879-
4068

LAWN furniture.
Table (needs glass)
and 4 chairs. Cush-
ions. Like new. \$75.
410-398-9115

New Today

MOWER. Goodall
walk behind, 54" cut
with sully. \$1000.
443-807-0212

MURRY riding
mower. Needs parts to
run. Free. You haul.
410-398-9115

CHESAPEAKE CLASSIFIEDS
www.chesapeakeclassified.com

LEGAL NOTICE

**PUBLIC AUCTION
SENTINEL SELF STORAGE**
1100 Elkton Road
Newark, DE 19711
(302) 731-8108

A Public Auction will be held on Wednesday, 08/11/2010 at 10:00 AM. The contents of the following storage units will be auctioned:
Unit 1016- Stephen D. Mendala: bags, boxes, china cabinet, kitchen chairs, clothing closet, pictures, shelving, sports equipment, fencing equipment, dining table, truck, stool, tool box, assort. Misc. household items
Unit 4214- Tyrone D. Hodges: couches, coffee table, dining table, totes

**PUBLIC AUCTION
SENTINEL SELF STORAGE**
200 First State Blvd
Wilmington, DE 19804
(302) 999-0704

A Public Auction will be held on Wednesday, August 11th at 11:00 AM. The contents of the following storage units will be auctioned:
Unit # 0211 Martin G. Berster III- Boxes, clothing, ice chest, stereo, suitcase, toolbox and TV stand.
Unit #0309 James Newton- Books, boxes, ladder, pictures, shelving, totes, albums, mailbox and Christmas ornaments.
Unit #1202 Dorine Houston- Bags, boxes, china cabinet, beach chair, clothing and tables.
Unit # 5120 Nicole DiDonato- Baby crib, boxes, chest of drawers, couch, exercise equipment, dresser, stereo, table, totes and weights.
Unit # 6105 Ed McGuire- Boxspring, headboard, mattress, couch, desk and loveseat.
Unit # 6217 Sarah Cassidy- Bags, boxes, chair, chest of drawers, desk, dresser, lamp, stereo, totes and hutch

Sentinel Self Storage
141 Edgemoor Road
Wilmington, DE 19809
302-762-3626

A Public Auction will be held on 8/11/10 at 1pm at the above address. All sales are cash only. All sales are final. The unit(s) to be auctioned are as follows:
Unit # 124 - Sharon Cross - Bags, boxes, and totes

**PUBLIC AUCTION
SENTINEL SELF STORAGE**
465 Pulaski Hwy
New Castle, DE 19720
(302) 328-5810

A Public Auction will be held on Wednesday, August 11th, 2010 at 2:00 PM. The contents of the following storage units will be auctioned:
Unit #1141-Michael Turko-Bed Frame, Headboard, Speakers, Coffee Table, Totes, (2) Sets of Golf Clubs, Barbie Dolls
Unit #4034-William Horn-Bags, Boxes, Chair, Radio, Stereo, Stool, Coffee Table, End Table, Kitchen Table

Sentinel Self Storage
333 E. Lea Blvd.
Wilmington, DE 19802
302-764-6300

A Public Auction will be held on 8-11-10 at 12:00PM at the above address. All sales are cash only. All sales are final. The units to be auctioned are as follows:
Unit # 93 - Brenda Bland - Bags, Books, Boxes, Computer, Pictures, Totes, TV, Vacuum
Unit # 126 - Cheryl Banks - Bags, Boxes, Table Lamp, Microwave, Stool, Totes
Unit # 154 - Donna Maxwell - Folding Chairs, Shelving, Boxes, Shoes, Display Cases, Office Equipment
np 7/2,9

WANTED TO BUY

New Today

WANTED TO BUY-
Hotdog cart needed
for Church Ministrie.
srpp@comcast.net

LEGAL NOTICE

SHERIFF'S SALE

By virtue of a writ of #10-011913-340
Property Address: 34 Upland Court, Newark,
DE 19713

Parcel No.: 09-033.10-158
ALL that certain lot, piece or parcel of land, with the buildings thereon erected, situate in White Clay Creek Hundred, New Castle County and State of Delaware, known as 34 Upland Court, being Lot No. 86, on the Plan of Breezewood, as the Plan thereof is of record in the Office of the Recorder of Deeds, in and for New Castle County in Microfilm No. 1920, and being more particularly bounded and described in accordance with a survey prepared by East Coast Survey, Professional Land Surveyors, dated August 2, 2007, as follows, to-wit:

BEING the same lands and premises which William K. Southwick, Jr. and Krisite L. Southwick, did grant and convey unto George A. O'Dell Jr., and Shelly A. O'Dell, by deed dated August 8, 2007 and recorded on August 9, 2007 the Office of the Recorder of Deeds, in and for New Castle County, State of Delaware, in Deed Instrument 20070809-0071104.

SEIZED AND TAKEN IN EXECUTION AS THE PROPERTY OF **GEORGE A. O'DELL**.
TERMS OF SALE: 10% DOWN AT TIME OF SALE. BALANCE DUE ON OR BEFORE AUGUST 16, 2010.

MAY 31, 2010

NP 7/2,9

2169797

Estate of **JOHN A. COVINO**, Deceased.
Notice is hereby given that **Letters of Successor Administration** upon the estate of **JOHN A. COVINO** who departed this life on the 6th day of May, A.D. 2007, late of 701 **EDGEMOOR ROAD, WILMINGTON, DE 19809**, were duly granted unto **JOSEPH J. MASTERS** on June 21, 2010, and all persons indebted to the said deceased are requested to make payments to the **Personal Representative** without delay, and all persons having demands against the deceased are required to exhibit and present the same duly probated to the said **Personal Representative** on or before **January 6, 2008**, or abide by the law in this behalf.

Address
Weaver, John R., JR.
John R. Weaver, JR., P.A.
831 N Tatnall St., Ste 200
Wilmington, DE 19801
Personal Representative
Joseph J. Masters
File # 141241

np 7/9,16,23

2171060

SHERIFF'S SALE

By virtue of a writ of #10-011876-319
Property Address: 2 Chaucer Drive, Newark,
De 19713.

Parcel No.: 09-027.20-076
All that certain lot, piece or parcel of land with the improvements thereon erected, situate in White Clay Creek Hundred, New Castle County and State of Delaware, known as Lot No. 78, on the Plan of Brookside Park, Section C, of record in the Office of the Recorder of Deeds in and for New Castle County, Delaware, in Plat Book 2, Page 85, and being more particularly bounded and described in accordance with a recent survey by Zebley & Associates, Inc., as follows to-wit:

Being the same lands and premises which Paula E. Hickam, did grant and convey unto Paula E. Lander and Benjamin J. Lander, by deed dated November 24, 2003 and recorded on January 20, 2004 in the Office of the Recorder of Deeds, in and for New Castle County, State of Delaware, in Deed Instrument 20040120-0008000.

SEIZED AND TAKEN IN EXECUTION AS THE PROPERTY OF **BENJAMIN J LANDER** AND **PAULA E LANDER**.
TERMS OF SALE: 10% DOWN AT TIME OF SALE. BALANCE DUE ON OR BEFORE AUGUST 16, 2010.

MAY 31, 2010

NP 7/2,9

2169766

LEGAL NOTICE

SHERIFF'S SALE

By virtue of a writ of Sheriff #: 10-011449-221

STREET ADDRESS: 2 CHARLES COURT, NEWARK, DELAWARE
PARCEL NO. 09-041.10-370

ALL THOSE CERTAIN lots, pieces or parcels of land, situate in White Clay Creek Hundred, New Castle County and State of Delaware, being Lot No. 102 as shown on the Recorded Major Subdivision Plan of River Walk as prepared by KCI Technologies, Inc., dated November 4, 1996 and as said Plan was recorded on July 24, 1997 in the Office of the Recorder of Deeds in and for New Castle County, State of Delaware in Microfilm No. 13261. The improvements thereon being known as 2 Charles Court, Newark, DE 19702.

BEING the same lands and premises which PULTE HOME CORPORATION, a Michigan corporation, by Deed dated January 29, 1999 and recorded in the Office of the Recorder of Deeds in and for New Castle County, Delaware, in Deed Book 2592 page 110 did grant and convey unto TIA M. COOPER and VALERIE COOPER.

SEIZED AND TAKEN IN EXECUTION AS THE PROPERTY OF Tia M. Cooper and Valerie Cooper

TERMS OF SALE: 10% DOWN AT TIME OF SALE. BALANCE DUE ON OR BEFORE AUGUST 16, 2010.

MAY 31, 2010

np 7/2,9

2168149

LEGAL NOTICE

SHERIFF'S SALE

By virtue of a writ of Sheriff #: 10-011048
ADDRESS: 41 E. Newtown Place, Newark, DE 19702

PARCEL: 09-038.40-054

ALL that lot, piece or parcel of land with the improvements erected thereon situate in White Clay, Creek Hundred, New Castle County, State of Delaware, being Lot 122 as shown, on the Record Major Subdivision and Land Development. Plan for "Barrett Run", prepared by Karins and Associates, Professional Engineers and Land Surveyors, Drawing No. 769-3648, Sheet 3 of 7, dated June 25, 1992, recorded January 14, 1993 in the Office of the Recorder of Deeds in and for New Castle County on Microfilm No. 11521 and being more particularly bounded and described in accordance with, a recent mortgage inspection plan by Karins and Associates, "Inc.", dated May 13, 1999, as follows to wit:

BEING the same lands and premises which NVR, Inc. Deed dated May 18, 1999 and recorded in the Office of the Recorder of Deeds, in and for New Castle County and State of Delaware, in Deed Book 2645, Page 240, did grant and convey unto Bryan W. Handberry.

SEIZED AND TAKEN IN EXECUTION AS THE PROPERTY OF Bryan W. Handberry
TERMS OF SALE: 10% DOWN AT TIME OF SALE. BALANCE DUE ON OR BEFORE AUGUST 16, 2010.

MAY 31, 2010

np 7/2,9

2167418

LEGAL NOTICE

SHERIFF'S SALE

By virtue of a writ of Sheriff #: 10-011558-249

Address: 14 Merry Road, Newark, Delaware 19713

Parcel No.: 11-002.40-318

ALL that certain lot, piece or parcel of land, with the buildings thereon erected, situate the Pencader Hundred, New Castle County and State of Delaware, known as 14 Merry Road, being Lot No. 295 on the Plan of Brookside Park, Section N-2, as the Plan thereof is of record in the Office of the Recorder of Deeds, in and for New Castle County in Microfilm No. 67, and described in accordance with a survey prepared by East Coast Survey, Professional Land Surveyors, dated October 21, 2004.

BEING the same land and premises that Cheryl D. Cain by Deed dated November 12, 2004 and recorded in the Office of the Recorder of Deeds, in and for New Castle County in Deed Instrument 20041118-0124411, did grant and convey unto Wilder Pinto and Maria Crespo Pinto aka DePinto, in fee.

SEIZED AND TAKEN IN EXECUTION AS THE PROPERTY OF Wilder Pinto and Maria Crespo Depinto

TERMS OF SALE: 10% DOWN AT TIME OF SALE. BALANCE DUE ON OR BEFORE AUGUST 16, 2010.

MAY 31, 2010

np 7/2,9

2168873

LEGAL NOTICE

SHERIFF'S SALE

By virtue of a writ of Sheriff #: 10-011495-229

PROPERTY ADDRESS: 65 THREE RIVERS DRIVE, NEWARK, DE 19702
PARCEL NO. 10-043.10-397

ALL that certain lot, piece or parcel of land with the buildings thereon erected, situate in New Castle Hundred, New Castle County and State of Delaware, known as 65 Three Rivers Drive and being Lot No. 256 on the Record Resubdivision Plan of Walden Glen, Section II, at Wellington Woods, as said plan is of record in the Office of the Recorder of Deeds, in and for New Castle County in Microfilm No. 9333 and being more particularly bounded and described in accordance with a recent Mortgage Inspection Plan prepared by East Coast Survey, Professional Land Surveyors, dated October 2, 2006.

BEING the same lands and premises which Marie Sydnor, by Deed dated October 31, 2006 and recorded in the Office of the Recorder of Deeds, in and for New Castle County and State of Delaware, in Instrument # 20061103-0104621, did grant and convey unto Huseyin Oral.

SEIZED AND TAKEN IN EXECUTION AS THE PROPERTY OF Huseyin Oral

TERMS OF SALE: 10% DOWN AT TIME OF SALE. BALANCE DUE ON OR BEFORE AUGUST 16, 2010.

MAY 31, 2010

np 7/2,9

2168508

SHERIFF'S SALE

By virtue of 10-011879-321

Property Address: 81 Mercer Drive, Newark, DE 19713

Parcel No.: 11-002.30-015

ALL that certain lot, piece or parcel of land with the buildings thereon erected, situate in Pencader Hundred, New Castle County, State of Delaware, described as Lot No. 87, also known as 81 Mercer Drive, on a certain plat entitled Brookside Park, Section M, prepared by Whitman Reguardt and Associates, Consulting Engineers, dated May 7, 1953, and recorded in the Office of the Recorder of Deeds, in and for New Castle County, at Wilmington, Delaware, in Plat Book 3, page 10.

BEING the same lands and premises which James W. Wood and Deborah H. Wood, his wife, by deed dated December 13, 1979, and recorded in the Office of the Recorder of Deeds, in and for New Castle County, Delaware, in Deed Record P. Volume 108, Page 308, granted and conveyed unto Deborah H. Wood, Kimberly Wood and James Wood in Fee.

BEING the same premises which Deborah H. Wood k/n/a Deborah H. Ferguson, Kimberly Wood and James Wood, by Deed dated December 14, 1992, and recorded December 14, 1992, in the Office of the Recorder of Deeds in and for the County of New Castle, and State of Delaware in Deed Book, Volume 1442, Page 0091, granted and conveyed unto Deborah H. Ferguson and George C. Ferguson, grantor/mortgagor herein.

SEIZED AND TAKEN IN EXECUTION AS THE PROPERTY OF GEORGE C. FERGUSON AND DEBORAH H. FERGUSON

TERMS OF SALE: 10% DOWN AT TIME OF SALE. BALANCE DUE ON OR BEFORE AUGUST 16, 2010.

NP 7/2,9

2169777

SHERIFF'S SALE

By virtue of a writ of Sheriff #: 10-011357
Property Address: 10 Stevenson Way, Newark, DE 19702

Tax Parcel No. 10-032.40-110

ALL that certain lot, piece or parcel of land with the buildings thereon, situate in New Castle Hundred, New Castle County and the State of Delaware and being designated as Lot 106 as shown on the Record Subdivision Plan of Taylortowne, as recorded in the Office of the Recorder of Deeds in New Castle County, Delaware, in Microfilm No. 6398, said lot now being known as 10 Stevenson Way and shown on a Mortgage Inspection Plan by Site Dimensions, LLC, dated November 13, 2007, Job Number 70629.

BEING the same lands and premises conveyed to Rose Finocchiaro by Deed from James A. Harrington Dated June 26, 2003 and recorded on June 30, 2003 in the Office of the Recorder of Deeds in and for New Castle County in Deed instrument No. 20030630-0077906.

BEING the same premises which Rose Finocchiaro, by Deed dated November 30, 2007, and recorded January 2, 2008, in the Office of the Recorder of Deeds in and for the County of New Castle, and State of Delaware in Deed Instrument Number 20080102-0000510, granted and conveyed unto John W. Galloway and Maria J. Galloway a/k/a Maria J. Simas-Galloway grantor/mortgagor herein.

SEIZED AND TAKEN IN EXECUTION AS THE PROPERTY OF John W. Galloway and Maria J. Galloway

TERMS OF SALE: 10% DOWN AT TIME OF SALE. BALANCE DUE ON OR BEFORE AUGUST 16, 2010.

MAY 31, 2010

np 7/2,9

2167472

SHERIFF'S SALE

By virtue of a writ of Sheriff #: 10-011341
Property Address: 517 Banyan Road, Newark, DE 19713

Tax Parcel No. 09-022.30-015

ALL that certain lot, piece or parcel of land with the dwelling thereon erected, known as 517 Banyan Road, situate in White Clay Creek Hundred, New Castle County, and State of Delaware, known as Lot No. 1, Block N, as shown on the Plan of Todd Estates, Section 2, of record in the Office of the Recorder of Deeds in and for New Castle County, Delaware, in Plat Book 4, Page 55, and being more particularly bounded and described in accordance with a survey prepared by Merestone Consultants, Inc., dated November 20, 2001.

BEING the same lands and premises which Paul J. Scribner and Christine C. Scribner, by Deed dated December 14, 2001, and recorded in the Office of the Recorder of Deeds in and for New Castle County, Delaware, in Instrument 20011220-0108227, did grant and convey unto Tracy K. Friswell and Scott Jacobs, in fee.

BEING the same premises which Tracy K. Friswell now known as Tracy Friswell Jacobs and Scott Jacobs, by Deed dated October 26, 2007, and recorded November 2, 2007, in the Office for the Recorder of Deeds in and for the County of New Castle, and State of Delaware in Deed Instrument Number 20071102-0095449, granted and conveyed unto Elizabeth K. Brackbill grantor/mortgagor herein.

SEIZED AND TAKEN IN EXECUTION AS THE PROPERTY OF Elizabeth K. Brackbill

TERMS OF SALE: 10% DOWN AT TIME OF SALE. BALANCE DUE ON OR BEFORE AUGUST 16, 2010.

MAY 31, 2010

np 7/2,9

2167468

SHERIFF'S SALE

By virtue of a writ of Sheriff #: 10-010817
Property Address: 1 Defoe Circle, Newark, DE 19702

Tax Parcel No. 10-033.10-493

ALL that certain lot, piece or parcel of land, with the building thereon erected, situate in New Castle Hundred, New Castle County and State of Delaware, known as 1 Defoe Circle, and being Lot No. 31, as shown on the Record Major Land Development Plan of Taylortowne, as said Plan is of record in the Office of the Recorder of Deeds in and for New Castle County, Delaware in Microfilm No. 5753 and being more particularly bounded and described in accordance with a survey prepared by The Pelsa Company, Inc., Land Consultants and Surveyors, dated November, 2007.

BEING the same lands and premises which were conveyed unto Steven L. Raymond by deed if Luis F. Martinez and Sarah Michelle Martinez dated June 25, 2004 and recorded in the Office of the Recorder of Deeds in and for New Castle County, Delaware in instrument No. 20040702-0073456.

BEING the same premises which Steven L. Raymond, by Deed dated November 30, 2007 and recorded December 4, 2007 in the Office for the Recorder of Deeds in and for the County of New Castle, and State of Delaware in Deed Instrument Number 20071204-0103023, granted and conveyed unto Keith A. Westerman.

SEIZED AND TAKEN IN EXECUTION AS THE PROPERTY OF Keith A. Westerman

np 7/2,9

2167034



TRANSPORTATION

815 POWER BOATS

New Today

36' STINGER
Chriscraft '88 Twin
2000 mcrs. Needs
minor work. New tan-
dem tri-axle trlr. \$10K
Pam 443-500-2141

'95 Crownline 23'
new 454 dry exhaust/
bolster seats, exc
cond, '03 dual axle trlr
7000lb \$11,500 443-
945-0346 lv msg

821 PERSONAL WATERCRAFT

'03 POLARIS MSX
140 Wave runner gen-
tly used 66 hrs, \$6500
'06 Yamaha FX 1100
HO Wave Runner
gently used 33 hrs
\$9500 410-275-1033

830 MARINE ACCESS./STORAGE

BOAT MOTOR
'06 Mercury 4 stroke
15 HPR. Great motor,
low hours, well
maintained \$1400 b/o
443-350-3361

840 RECREATIONAL VEHICLES

29' JAYCO JAY
FLIGHT Travel Trlr
'05 slide out, slps 6-
8. Very good cond.
Must sell. \$12,000
obo. Colora/
Rising Sun area
443-907-2877

New Today

31' COACHMAN
'04 w/ extension.
20K, Exc cond.
\$45,000 410-287-
7487

865 TRAILERS

New Today

4'X6' homemade
utility trailer. Road
ready with tag & title.
\$500. 410-734-7283

870 TRUCKS/SPORT UTILITY VEHICLES

New Today

Honda Pilot EXL '07.
Loaded, 4WD, auto,
87K, seats 8 people.
Exc. cond. \$17,500
obo. 410-275-8676

SELLING YOUR CAR?

WE HAVE GREAT PACKAGES FOR AUTOS WITH COVERAGE NO ONE ELSE CAN GIVE YOU!

GET YOUR AD IN FRONT OF MORE EYES THAN WITH ANY OTHER LOCAL PUBLICATION.

CALL TODAY! 410-398-1230 or TOLL FREE 800-220-1230

EMAIL TO CLASSADS@CHES PUB.COM



878 ANTIQUE AUTOS

1971 CHEVELLE-
402 bored 30 over,
3,000 miles new. 750
Holley. 12 bolt, new
interior, new grill.
Runs/ sounds great!
\$16,000 410-398-6242



1984 Red Corvette
350 engine, auto
trans, power every-
thing. \$5900.
410-398-8660

New Today

1928 FORD 2dr
sedan. Street Rod.
Good cond. \$23,500
b/o 410-905-9680

CHESAPEAKE CLASSIFIED

880 AUTOS

BMW Z3 Roadster
'97. 6cyl. 5 spd, black,
tan top & int. 40k miles
Loaded. \$9500 obo.
302-376-0665

New Today

FORD TAURUS SE
'98 great shape, body,
interior, loaded, ask-
ing \$1695. Call Jim
443-553-6634

410-398-1230 • 800-220-1230

HONDA prelude '98,
exc cond. Appox 95K
mi, pearl white, 5spd,
V-tech, 2 dr, sunroof,
air, full pwr. \$7500bo.
410-275-2448
WWW.CHESAPEAKECLASSIFIED.COM

New Today

LINCOLN CONTI-
NENTAL '99 4 dr, 4.6
V8, good cond.
\$5,000 410-398-4238

www.chesapeakeclassified.com

Pontiac Bonneville
'97. All pwr V6 tilt
am/fm/cass. Broke AC
\$800. 410-275-9197

CLASSIFIEDS
410-398-1230
800-220-1230

890 WANTED TO BUY

DONATE YOUR VEHICLE RECEIVE FREE VACATION VOUCHER UNITED BREAST CANCER FOUNDATION Free Mammograms, Breast Cancer Info www.ubcf.info FREE Towing, Tax Deductible, Non-Runners Accepted, 1-888-468-5964

DONATE VEHICLE: Receive \$1000 GROCERY COUPONS. Your Choice. NOAH'S ARC. NO KILL Animal Shelters. Advanced Veterinary Treatments. Free Towing. IRS TAX DEDUCTION. Non-runners 1-866-912-GIVE



LEGAL NOTICE

LEGAL NOTICE RE: DEADLY WEAPON
I, James Michael Farley residing at, 515 Garrick Road, Hockessin, DE 19707 will make application to the judges of the superior court of the State of Delaware in and for New Castle County at Wilmington for the next term for a license to carry a concealed deadly weapon, or weapons, for the protection of my person(s), or property, or both.
James Farley
6/30/10
np 7/9
2170885

LEGAL NOTICE RE: DEADLY WEAPON

I, Lowell Edwin Trescott residing at, 35 Whitehall Circle, Wilmington, DE 19808 will make application to the judges of the superior court of the State of Delaware in and for New Castle County at Wilmington for the next term for a license to carry a concealed deadly weapon, or weapons, for the protection of my person(s), or property, or both.
Lowell Edwin Trescott
6/30/10
np 7/9
2170891

LEGAL NOTICE

SHERIFF'S SALE

By virtue of a writ of Sheriff #: 10-011025
Property Address: 16 Auckland Drive
Newark, DE 19702
Parcel No. 10-043.10-633
ALL that certain lot, piece or parcel of land with the buildings thereon erected, situate in New Castle Hundred, New Castle County and State of Delaware, being designated as Lot 208, on the Record Resubdivision Plan of Wellington Woods, as said plan appears of record in the Office of the Recorder of Deeds in and for New Castle County, Delaware on Microfilm No. 10595, said lot also known as 16 Auckland Drive, and being more particularly bounded and described in accordance with a recent survey by A.E.S. Surveyors, dated July 25, 2002, as follows, to-wit:
Being the same lands and premises which Robert T. Dawn did grant and convey unto Almika J. Pernsley by deed dated August 1, 2002 and recorded on August 7, 2002 in the Office of the Recorder of Deeds, in and for New Castle County, State of Delaware, in Deed Instrument 20020807-0076250
SEIZED AND TAKEN IN EXECUTION AS THE PROPERTY OF **Almika J. Pernsley**
TERMS OF SALE: 10% DOWN AT TIME OF SALE. BALANCE DUE ON OR BEFORE AUGUST 16, 2010.
MAY 31,2010

np 7/2,9 2167404

LEGAL NOTICE

SHERIFF'S SALE

By virtue of a writ of Sheriff # 10-011856-311
Property Address: 4 Washington Ct.,
Newark, DE 19702
Parcel No.: 11-013.40-006
ALL that certain piece, parcel or tract of land with the buildings thereon erected situate in Pencader Hundred, New Castle County and State of Delaware, being Lot No. 63, on the Record Major Subdivision Plan of Pencader Village, as recorded in the Office of the Recorder of Deeds in and for New Castle County, on Microfilm No. 8672, and being more particularly bounded and described with a recent mortgage inspection plan by East Coast Survey, Professional Land Surveyors, dated February 24, 2006, as follows, to-wit:
Being the same lands and premises which Andree R. Galindo and Antonio Oquendo, did grant and convey unto Timothy L. Wheatley and Kristen Desmond, by deed dated March 17, 2006 and recorded on March 21, 2006 the Office of the Recorder of Deeds, in and for New Castle County, State of Delaware, in Deed Instrument 20060321-0027109.
SEIZED AND TAKEN IN EXECUTION AS THE PROPERTY OF **KRISTEN DESMOND AND TIMOTHY L. WHEATLEY**
TERMS OF SALE: 10% DOWN AT TIME OF SALE. BALANCE DUE ON OR BEFORE AUGUST 16, 2010.
MAY 31, 2010

NP 7/2,9 2169761

LEGAL NOTICE

SHERIFF'S SALE

By virtue of a writ of Sheriff #: 10-010924
Property Address: 647 Lockhaven Court
Newark, DE 19702
Parcel No. 1102330024
All that certain lot or parcel of land situate in the City of Newark, County of New Castle, State of Delaware, and being more particularly described as follows: All that certain lot, piece or parcel of land with the dwelling thereon erected situate in Pencader hundred New Castle County and state of Delaware known as 647 Lockhaven Court, lot no. 96 as shown on the plan of Glasgow Pines as said plan is recorded in the office of the recorder of deeds in and for New Castle County, Delaware in microfilm no. 5145 and being more particularly bounded and described according to a survey prepared by the Pelsa Company, professional land surveyors, dated august 20, 2002, as follows, to wits:
Being the same lands and premises which Mary K. Jones, did grant and convey unto Angelia Lenker, by deed dated September 3, 2002 and recorded on September 6, 2002 the Office of the Recorder of Deeds, in and for New Castle County, State of Delaware, in Deed Instrument 20020906-0086309.
SEIZED AND TAKEN IN EXECUTION AS THE PROPERTY OF **Angelia Lenker**
TERMS OF SALE: 10% DOWN AT TIME OF SALE. BALANCE DUE ON OR BEFORE AUGUST 16, 2010.
MAY 31,2010

np 7/2,9 2167078

LEGAL NOTICE

SHERIFF'S SALE

By virtue of a writ of Sheriff #: 10-010587
PROPERTY ADDRESS: 3 Bergen Court,
Newark, DE 19702
PARCEL NO. 10-043.10-402
All that certain lot, piece or parcel of land with the buildings thereon erected, situate in New Castle Hundred, New Castle County and State of Delaware, known as 3 Bergen Court, being Lot No. 297 on the Plan of Walden Glen, Section Two at Wellington Woods, as the Plan thereof is of record in the Office of the Recorder of Deeds in and for New Castle County, Delaware in Microfilm No. 9333, and being more particularly bounded and described in accordance with a survey prepared by East Coast Survey, Professional Land Surveyors, dated March, 2006, as follows, to-wit:
BEING the same lands and premises which TNT General Contracting, LLC, a Delaware Limited Liability Company by Deed dated March 30, 2006 and recorded in the Office of the Recorder of Deeds, in and for New Castle County and State of Delaware, in Instrument Number 20060331-0030836, did grant and convey unto David M. Harris.
SEIZED AND TAKEN IN EXECUTION AS THE PROPERTY OF **David Harris**
TERMS OF SALE: 10% DOWN AT TIME OF SALE. BALANCE DUE ON OR BEFORE AUGUST 16, 2010.
MAY 31,2010

np 7/2,9 2166936

SHERIFF'S SALE

By virtue of a writ of Sheriff #: 10-011258
Property Address: 4 Eastwind Court,
Newark, DE 19713
Tax Parcel No. 09-033.10-250
ALL THAT CERTAIN lot, piece or parcel of land, with the buildings thereon erected, known as 4 Eastwind Court, situate in White Clay Creek Hundred, New Castle County and State of Delaware, being Lot 18, Block B, Section II as shown on the Record Major Subdivision Plan of Breezewood Section II prepared by Karins and Associates, Inc., Professional Engineers and Land Surveyors, Drawing No. 437-681-F, Sheet 2 of 2, dated November 22, 1976 and last revised December 8, 1976, recorded June 16, 1977 under Microfilm No. 4490 in the Office of the Recorder of Deeds, in and for New Castle County.
BEING the same premises which Department of Veterans Affairs, by Deed dated February 22, 2001 and recorded June 28, 2001 in the Office for the Recorded of Deeds in and the County of New Castle, and State of Delaware in Deed Instrument Number 20010628-0051382, granted and conveyed unto Bankers Trust Company of California, grantor herein.
BEING the same premises which Deutsche Bank National Trust Company as Trustee formerly known as Bankers Trust Company of California, N.A., as Trustee, by Indenture dated September 23, 2002 and recorded October 4, 2002 in the Office for the Recorder of Deeds in and for the County of New Castle, and State of Delaware in Deed Instrument Number 20021004-0095852, granted and conveyed unto Gary Natalie, grantor/mortgagor herein.
SEIZED AND TAKEN IN EXECUTION AS THE PROPERTY OF **Gary Natalie**
TERMS OF SALE: 10% DOWN AT TIME OF SALE. BALANCE DUE ON OR BEFORE AUGUST 16, 2010.
MAY 31,2010

np 7/2,9 2167459

SHERIFF'S SALE

By virtue of a writ of Sheriff #: 10-011116
Property Address: 128 Cannonball Lane,
Newark, DE 19702
Tax Parcel No. 09-038.10-351
All that certain lot, piece or parcel of land, with the buildings thereon erected, situate in White Clay Creek Hundred, New Castle County and State of Delaware, known as 128 Cannonball Lane, and being Lot No. 15 on the Record Resubdivision Plan of Christina Green, Phase Three-Townhomes, as said Plan is of record in the Office of the Recorder of Deeds in and for New Castle County and State of Delaware in Microfilm No. 10747 and being more particularly bounded and described in accordance with a survey prepared by David G. Williams, Professional Land Surveyor of Wilmington, Delaware, dated June 24, 1991.
BEING the same lands and premises which John T Osborne and Christine A. Prosceno, n/k/a Christine A. Osborne, husband and wife, dated 21st February 1994, and recorded on 10th March 1994, in the office of the Recorder of Deeds in and for New Castle County, Delaware, in Deed Book 1692, Page 0142, did grant and convey unto John T. Osborne and Christine A. Osborne, husband and wife.
BEING the same premises which John T. Osborne and Christine A. Osborne, husband and wife, by Deed dated April 27, 2001, and recorded May 3, 2001, in the Office for the Recorder of Deeds in and for the County of New Castle, and State of Delaware in Deed Instrument Number 20010503-0033285, granted and conveyed unto Albert Jannette grantor/mortgagor herein.
SEIZED AND TAKEN IN EXECUTION AS THE PROPERTY OF **Albert Jannette**
TERMS OF SALE: 10% DOWN AT TIME OF SALE. BALANCE DUE ON OR BEFORE AUGUST 16, 2010.
MAY 31,2010

np 7/2,9 2167436

SHERIFF'S SALE

By virtue of a writ of #10-011895-330
Property Address: 41 Montvale Road,
Newark, DE 19713.
Parcel No.: 11-002.40-035
ALL that certain plot, piece or parcel of land, with the buildings and improvements thereon erected, situate lying and being in Pencader Hundred, New Castle County and State of Delaware.
BEING the same premises which Robert Greeley Knight and Dorothy C. Knight, by Deed dated November 25, 1960, and recorded November 25, 1960, in the Office for the Recorder of Deeds in and for the County of New Castle, and State of Delaware in Deed Book Volume A-67, Page 553, granted and conveyed unto George S. Simperts and Elma Jeanne Grandstaff Simperts, in fee. The said George S. Simperts departed this life on or about February 4, 2004, leaving Elma Jeanne Grandstaff Simperts as surviving tenant by the entirety. The said Elma Jeanne Simperts departed this life on or about March 17, 2005. James A. Simperts was appointed Administrator of the Estate of Elma Jeanne Simperts in Will Record 135033, recorded in the Office of the Register of Wills in and for the County of New Castle, and State of Delaware.
BEING the same premises which James A. Simperts, Administrator of the Estate of Jeanne Simperts, by deed dated February 13, 2009, and recorded July 21, 2009, in the Office for the Recorder of Deeds in and for the County of New Castle County, and State of Delaware, in Instrument Number 20090721-0047636, did grant and convey unto James A. Simperts.
SEIZED AND TAKEN IN EXECUTION AS THE PROPERTY OF **JAMES A. SIMPERS**
TERMS OF SALE: 10% DOWN AT TIME OF SALE. BALANCE DUE ON OR BEFORE AUGUST 16, 2010.
MAY 31, 2010

NP 7/2,9 2169782

SHERIFF'S SALE

By virtue of a writ of 10-011877-320
Property Address: 61 Greenridge Road,
Newark, DE 19711
Parcel No.: 09-010.30-160
ALL that certain lot piece, or parcel of land, with the buildings thereon erected, situate in White Clay Creek Hundred, New Castle County, Delaware, being Lot No. 46, Block E as shown on the final Plan of Brookhave, dated August 24, 1960, revised to January 18, 1961, and recorded in the Office for the Recording of Deeds in and for New Castle County, Delaware, in Microfilm Record 772, and being more particularly bounded and described in accordance with a survey prepared by Howard L. Robertson, Civil Engineer and Surveyor.
BEING the same lands and premises which Vilone Enterprises, Inc., a corporation of the State of Delaware, by Deed dated July 6, 1964, and recorded in the office of the Recorder of Deeds in and for New Castle County, Delaware in Deed book G-73, Page 648, did grant and convey unto Dennis Gene Jarrell and Patricia May Jarrell, his wife, Subsequently, the said Patricia May Jarrell departed this life on September 25, 2000, title thereby vested in Dennis Gene Jarrell by right of survivorship.
BEING the same premises which Dennis G. Jarrell, by Deed dated January 19, 2005, and recorded January 20, 2005, in the Office for the Recorder of Deeds in and for the County of New Castle, and State of Delaware in Deed Instrument No. 20050120-0007504, granted and conveyed unto John Pananewicz and Pamela Pananewicz, grantor/mortgagor herein.
SEIZED AND TAKEN IN EXECUTION AS THE PROPERTY OF **PAMELA PANANSEWICZ AND JOH PANANSEWICZ**
TERMS OF SALE: 10% DOWN AT TIME OF SALE. BALANCE DUE ON OR BEFORE AUGUST 16, 2010.
NP 7/2,9

LEGAL NOTICE

THE COURT OF COMMON PLEAS FOR THE STATE OF DELAWARE IN AND FOR NEW CASTLE COUNTY

IN RE: CHANGE OF NAME OF

Amos K Kinkins

PETITIONER(S)

TO

Amos K Kibe

NOTICE IS HEREBY GIVEN that Amos K. Dinkins intends to present a Petition to the Court of Common Pleas for the State of Delaware in and for New Castle County, to charge his/her name to Amos K. Kibe

Mercy Dinkins
Petitioner

Dated: 6/29/10

np 7/9,16,23

2170878

SHERIFF'S SALE

By virtue of a writ of Sheriff #: 10-011136
Property Address: 40 Shenandoah
Drive, Newark, Delaware

Tax Parcel No. 18-049.00-001

ALL that certain lot or parcel of land with the buildings thereon erected, situate in the City of Newark, in the County of New Castle, State of Delaware.

BEING the same property conveyed by deed date June 13, 1988 from Ridgewood Glen Development Corp. to Charles W. Stahl and Phyllis J. Stahl and recorded in the Office of the Recorder of Deeds for New Castle County on June 20, 1988 at Book 717, Page 232.

SEIZED AND TAKEN IN EXECUTION AS THE PROPERTY OF **Charles W. Stahl and Phyllis J. Stahl**

TERMS OF SALE: 10% DOWN AT TIME OF SALE. BALANCE DUE ON OR BEFORE AUGUST 16, 2010.

MAY 31,2010

np 7/2,9

2167457

Estate of **STEPHEN V. PACKARD**,
Deceased.

Notice is hereby given that **Letters Testamentary** upon the estate of **STEPHEN V. PACKARD** who departed this life on the 10th day of June, A.D. 2010, late of 606 Cambridge Drive, Newark, DE 19711, were duly granted unto **KARA PACKARD** on June 24, 2010, and all persons indebted to the said deceased are requested to make payments to the **Personal Representative** without delay, and all persons having demands against the deceased are required to exhibit and present the same duly probated to the said **Personal Representative** on or before **February 10, 2011**, or abide by the law in this behalf.

Address

Kara Packard

606 Cambridge Drive

Newark, DE 19711

Personal Representative

Kara Packard

File # 148589

np 7/9,16,23

2171050

Estate of **DORIS ANN EDMONDS**,
Deceased.

Notice is hereby given that **Letters of Administration** upon the estate of **DORIS ANN EDMONDS** who departed this life on the 21st day of April, A.D. 2009, late of 1625 Gilpin Avenue, Wilmington, DE 19806, were duly granted unto **LEROY FRANCIS EDMONDS SR.** on June 22, 2010, and all persons indebted to the said deceased are requested to make payments to the **Personal Representative** without delay, and all persons having demands against the deceased are required to exhibit and present the same duly probated to the said **Personal Representative** on or before **December 21, 2009**, or abide by the law in this behalf.

Address

Leroy Francis Edmonds Sr.

2251 Stateville Blvd.

Salisbury, NC 28147

Personal Representative

LEROY FRANCIS EDMONDS SR.

File # 148570

np 7/9,16,23

2171053

CECIL WHIG CLASSIFIEDS

410-398-1230 or 800-220-1230

WEBSITE AT

WWW.CHESAPEAKECLASSIFIED.COM

LEGAL NOTICE

SHERIFF'S SALE

By virtue of a writ of Sheriff #: 10-010936
Property Address: 25 Chippendale Circle
Newark, DE 19713

Parcel No. 09-027.20-005

ALL that certain lot, piece or parcel of land, with the buildings thereon erected, situate in White Clay Creek Hundred, New Castle County and State of Delaware, known as 25 Chippendale Circle, being Lot No. 161, on the Plan of Brookside Park Sec C, as the Plan thereof is of record in the Office of the Recorder of Deeds, in and for New Castle County in Microfilm No. 668, and being more particularly bounded and described in accordance with a survey prepared by AES Surveyors, Professional Land Surveyors, dated March 1, 2007, as follows, to-wit:

Being the same lands and premises which Brian J. Gilkin did grant and convey unto Kalin Gregg and Amanda Gregg, by deed dated March 30, 2007 and recorded on April 2, 2007 the Office of the Recorder of Deeds, in and for New Castle County, State of Delaware, in Deed Instrument 20070402-0030194.

SEIZED AND TAKEN IN EXECUTION AS THE PROPERTY OF **Kalin Gregg and Amanda Gregg**

TERMS OF SALE: 10% DOWN AT TIME OF SALE. BALANCE DUE ON OR BEFORE AUGUST 16, 2010.

MAY 31,2010

np 7/2,9

2167311

Estate of **FRANCIS U. SWIFT**, Deceased.
Notice is hereby given that **Letters Testamentary** upon the estate of **FRANCIS U. SWIFT**, aka **FRANCIS UPSHUR SWIFT** who departed this life on the 3rd day of April, A.D. 2010, late of 2200 GARFIELD AVENUE, WILMINGTON, DE 19809, were duly granted unto **LINDA L. WHITE** on June 8, 2010, and all persons indebted to the said deceased are requested to make payments to the **Personal Representative** without delay, and all persons having demands against the deceased are required to exhibit and present the same duly probated to the said **Personal Representative** on or before **December 3, 2010**, or abide by the law in this behalf.

Address

Linda L. White

106 Academy Drive

Elkton, MD 21921

Personal Representative

Linda L. White

File # 148245

np 6/25,7/2,9

2168115

Estate of **WILLIAM C. BERGER JR.**,
Deceased.

Notice is hereby given that **Letters Testamentary** upon the estate of **WILLIAM C. BERGER JR.** who departed this life on the 16th day of May, A.D. 2010, late of 513 DEFOE ROAD, HOCKESSIN, DE 19707, were duly granted unto **WILLIAM C. BERGER SR.** on June 15, 2010, and all persons indebted to the said deceased are requested to make payments to the **Personal Representative** without delay, and all persons having demands against the deceased are required to exhibit and present the same duly probated to the said **Personal Representative** on or before **January 16, 2011**, or abide by the law in this behalf.

Address

William C. Berger Sr.

406 Rodman Road

Wilmington, DE 19809

Personal Representative

William C. Berger Sr.

File # 148516

np 7/9,16,23

2170402

LEGAL NOTICE

THE COURT OF COMMON PLEAS FOR THE STATE OF DELAWARE IN AND FOR NEW CASTLE COUNTY

IN RE: CHANGE OF

NAME OF

Kevin David

Wiechecki

PETITIONER(S)

TO

Keira Allison

Wiechecki

NOTICE IS HEREBY

GIVEN THAT

Kevin David

Wiechecki intends to

present a Petition to

the Court of Com-

mon Pleas for the

State of Delaware in

and for New Castle

County, to charge

his/her name to

Keira Allison

Wiechecki.

Kevin Wiechecki

Petitioner

Dated: 7/1/10

np 7/9,16,23

2171191

THE COURT OF COMMON PLEAS FOR THE STATE OF DELAWARE IN AND FOR NEW CASTLE COUNTY

IN RE: CHANGE OF

NAME OF

Jillian Mary

Liszkiwicz

PETITIONER(S)

TO

Jude Matthew

Liszkiwicz

NOTICE IS HEREBY

GIVEN THAT Jil-

lian Mary

Liszkiwicz intends

to present a Petition

to the Court of Com-

mon Pleas for the

State of Delaware in

and for New Castle

County, to charge

his/her name to

Jude Matthew

Liszkiwicz

Jillian Mary

Liszkiwicz

Petitioner

Dated: 7/1/10

np 7/9,16,23

2171204



CHECK OUT
CHESAPEAKE
CLASSIFIEDS
EVERYDAY FOR
THAT NEW
JOBI

Boss just step out of the office? Now is the perfect time to check out what is in the **Chesapeake Classifieds** section of your paper or go to www.chesapeakeclassified.com



LEGAL NOTICE

SHERIFF'S SALE

By virtue of a writ of Sheriff #: 10-011560-

250

Address: 5 Foxton Drive, Newark,

Delaware 19702

Parcel No.: 10-043.10-717

ALL that certain lot, piece or parcel of land with the building thereon erected, situate in New Castle Hundred, New Castle County, Delaware, known as 5 Foxton Drive, being Lot No. 292 on the Record Resubdivision Plan of Wellington Woods, Section II & III, as said plan is of record in the Office of the Recorder of Deeds in and for New Castle County, Delaware, in Microfilm Record No. 10,595 and described in accordance with a survey by Zebley and Associates, Inc., Professional Land Surveyors of Wilmington, Delaware, dated December 27, 1991.

BEING the same land and premises that Oilman Development Company By deed dated January 8, 1992 and recorded in the Office of the Recorder of Deeds, in and for New Castle County in Deed Book 1274, Page 191, did grant and convey unto Beverly V. Benson, in fee.

SEIZED AND TAKEN IN EXECUTION AS

THE PROPERTY OF **Beverly V. Benson**

TERMS OF SALE: 10% DOWN AT TIME OF SALE. BALANCE DUE ON OR BEFORE AUGUST 16, 2010.

MAY 31,2010

np 7/2,9

2168876

SHERIFF'S SALE

The following Real Estate will be exposed for Public Sale at the CITY/COUNTY BLDG., 800 N. French Street, City of Wilmington, New Castle County, Delaware, by Michael P. Walsh, Sheriff, on **TUESDAY the 13TH day of JULY, 2010 at 10: A.M.**

SHERIFF'S SALE

By virtue of a writ of (Sheriff #: 10-010403)

PROPERTY ADDRESS: 2901 Creekside

Drive, Newark, DE 19711

PARCEL NO.: 08-055.30-218 C0089

ALL that certain unit of real property existing under and by virtue of the Unit Property Act of Delaware, known as Unit 2901, Building 7 in Creekside at Green Valley as said unit is more particularly bounded and described in: (1) Enabling Declaration Establishing Plan for Condominium Ownership dated October 21, 1986 and of record in the office of the Recorder of Deeds, in and for New Castle County, Delaware, in Deed Book 483 Page 166; and lastly amended in Deed Book 659 Page 1; (2) the Declaration Plan of Creekside at Green Valley recorded in the office aforesaid in Microfilm No. 8467.

TOGETHER with a proportionate undivided interest in the Common Elements of TOWN ESTATES CONDOMINIUM APARTMENTS as said Common Elements are more particularly bounded and described in said Declaration and said Declaration Plan, which proportionate undivided interest expressed in terms of a percentage of the Common Elements equals 1.0416%.

BEING the same lands and premises which Nicole M. Walker did by deed dated March 3, 2006 and recorded in the office of the Recorder of Deeds, aforesaid in Instrument No. 20060307-0022200 did grant and convey unto Geoffrey J. Ward.

SEIZED AND TAKEN IN EXECUTION AS

THE PROPERTY OF **Geoffrey J. Ward**

TERMS OF SALE: 10% DOWN AT TIME OF SALE. BALANCE DUE ON OR BEFORE AUGUST 16, 2010.

MAY 31,2010

np 7/2,9

2166910

LEGAL NOTICE

SHERIFF'S SALE

By virtue of a writ of Sheriff #: 10-011492-

228

ADDRESS: 120 Couples Drive, Newark, DE

19702

PARCEL: 11-017.40-214

ALL that certain piece, parcel, lot or tract of land known as 120 Couples Drive, being Lot 11 as shown on the Record Major Subdivision Plan of Eagle Trace (plan recorded in and for New Castle County on microfilm number 121907), situate in Pencader Hundred, New Castle County, State of Delaware and being more particularly described according to the metes and bounds as shown on the above said plan, as follows, to wit:

BEING the same lands and premises Handler Construction, Inc., by Deed dated July 28, 2000 and recorded in the Office of the Recorder of Deeds, in and for New Castle County and State of Delaware, in Deed Book 2876, Page 41, did grant and convey unto Jerry B. Murphy, Jr.

SEIZED AND TAKEN IN EXECUTION AS THE PROPERTY OF **Jerry B. Murphy, JR**

TERMS OF SALE: 10% DOWN AT TIME OF SALE. BALANCE DUE ON OR BEFORE AUGUST 16, 2010.

MAY 31,2010

np 7/2,9

2168157

SHERIFF'S SALE

By virtue of a writ of Sheriff #: 10-011383

Property Address: 13 Carnegie Court,

Newark, DE 19713

Tax Parcel No. 09-021.40-028

All that certain lot piece or parcel of land, with the dwelling thereon erected, situate in White Clay Creek Hundred, New Castle County and State of Delaware, and known as Lot No. 90, Block C, on the Plan of GREENBRIDGE, prepared by Howard L. Robertson, Civil Engineer and Surveyor of Wilmington, Delaware dated September 30, 1966 revised December 14, 1966 and recorded in the Office of the Recording of Deeds in and for New Castle County and State of Delaware, in MF Record 925, and more particularly bounded and described in accordance with a survey by East Coast Survey, dated April 4, 2005.

SUBJECT to any and all restrictions, reservations, conditions, easements and agreements of record in the Office of the Recorder of Deeds in and for New Castle County, Delaware.

BEING the same lands and premises which previous grantor Ella Mae Hackett, by deed dated September 18, 1997 and recorded on September 22, 1997, in the Office of the Recorder of Deeds, in and for New Castle County and State of Delaware, in Deed Book 2331, Page 293, did grant and convey unto Ella Mae Hackett, sole Trustee in fee. BEING the same premises which Ella Mae Hackett, sole Trustee, by Deed dated May 3, 2005, and recorded May 6, 2005, in the Office for the Recorder of Deeds in and for the County of New Castle, and State of Delaware in Deed Instrument Number 20050506-0043523, granted and conveyed unto Norberto Quispe grantor/mortgagor herein.

SEIZED AND TAKEN IN EXECUTION AS THE PROPERTY OF **Norberto Quispe AKA Norberto Ferrufino**

TERMS OF SALE: 10% DOWN AT TIME OF SALE. BALANCE DUE ON OR BEFORE AUGUST 16, 2010.

MAY 31,2010

np 7/2,9

2167696

PLACE YOUR CLASSIFIED AD
24 HOURS A DAY • 7 DAYS A WEEK
CHESAPEAKE CLASSIFIED
410-398-1230 • 800-220-1230
www.chesapeakeclassified.com

AMSTEL SQUARE

A Great Summer Stop!



Mon-Fri 9 am-7 pm
Sat 9 am-4 pm
Closed Sunday

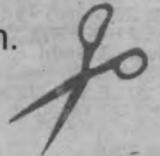
302-368-4066

\$5 OFF Any Haircut



Limit 1 per customer with this coupon.
Valid through July 31, 2010

AMSTEL BARBERSHOP



Mon-Fri 6:30 am-8 pm
Sat 7:30 am-8 pm
Sun 8 am-6 pm

302-731-9500

Enjoy our **COLD** summer beverages!
Medium Iced Latte or Frolatte!®
HALF PRICE between 1 pm and 5 pm

Limit 1 per customer with this coupon.

Valid through July 31, 2010



Mon-Thu 10 am-11 pm
Fri-Sat 10 am-1 am
Sun 11 am-9 pm

302-453-9500

Buy 1 Stromboli
Get a second at
HALF PRICE!

Limit 1 offer per coupon
Valid through 7/31/10

SUMMER SPECIAL!

\$1 DRAFTS
Mon to Wed
6 pm – 10 pm

Large Pizza
3 Toppings
\$11.99

Limit 1 offer per coupon
Valid through 7/31/10

Fast! Friendly! Convenient!
FREE PARKING at AMSTEL SQUARE

57 Elkton Road at Amstel Avenue in Newark

