

THE NEWARK POST

The Newark Post, Newark, Delaware, Thursday, April 30, 1959

For News
Of People You Know
Read The Post

PRICE FIVE CENTS

New Council In First Meeting Faced With Financial Problem

Diehl Urges Wilbur Street Drainage Ditch Correction As Promised With Bond Issue; Water Main Assessments For Elliott Heights Waived; Annexation To Be Studied

Newark's new City Council met in public session for the first time last Tuesday night, with Samuel L. Diehl, Jr., and Newark's first councilwoman, Mrs. John H. McClen-don, occupying the council table seats recently vacated by William M. Doyle and William R. Gregg as middle and western district representatives.

Returning to the council table after an absence of two years, Diehl was officially and speedily confronted with the city's current financial dilemma.

Urging fulfillment of city promise made in obtaining the second bond issue—to correct the condition of the Wilbur Street drainage ditch—he was informed there was no money available for the estimated cost of \$40,000 to eliminate this health hazard—and that there was insufficient money to meet city obligations of some \$100,000 for February and March bills—payments which council approved pending availability of funds.

Newcomer

Mrs. McClen-don, as a newcomer at the council table, could participate little in the discussion of "old business by councilmen" which was placed well forward on the agenda. "New business" was relegated to the closing minutes of the meeting—after 11 o'clock—and brevity was encouraged.

"Both Mr. Coverdale and Mr. Wilson managed to discuss 'new business' early in the meeting," Newark's first councilwoman observed to Mayor Durnall, "and I hope that in the future I shall be accorded the same privilege," she said.

Council approved a resolution waiving assessment of Elliott Heights residents for water main construction, and deferred action at the second annual reading of an ordinance for the annexation of 25.55 acres in the Fairfield housing development off New London Road, pending further study of city cost commitments and a return on such investment with annexation.

Builder Hugh Gallagher, Jr. advised that a study be conducted to determine what affect any annexation will have on the city, with a view to capital gains and assets as they may affect future bond issues, versus outlay.

Finance Committee Chairman Vernon Steele announced his selection of Charles L. Cole, Richard L. Cooch, and Avery H. Goddin as members of the finance committee, and was in turn named to head the Newark Memorial Day parade and program.

Considerable discussion was devoted to economies to be effected in the municipal insurance program, and the action taken by City Manager J. J. Salvoara—who had been urged by council to expedite a "package deal" insurance coverage—was termed "premature" in connection with recent advertisement for such insurance bids. The bids have been requested for May 7.

Councilman George Wilson questioned city payment of \$20.50 to Alderman Clarence Foster for "case dismissal," and the city manager explained that the payment had been made since the county had discontinued such payments.

Solicitor John Sinclair observed that "it's unhealthy to collect costs when a verdict of guilty is rendered, and to receive no payment for acquittal."

Wilson urged that the newly-created position of constable be eliminated, along with the 50 cent fee paid by the city for the issuance of warrants; Mrs. McClen-don questioned the practice of fines returned direct to the alderman instead of the city; and Diehl requested preparation of an ordinance covering the alderman's responsibilities and duties.

Council approved Diehl's motion to complete the paving job on the Academy Building parking lot at a cost of \$2,500; withheld approval of a \$500 city contribution proposed by Paul Bock for a cooperative study with the University of Delaware, the State Highway Department, and the Federal Government, on rainfall drainage with East Cleveland Avenue as the test site; and approved the removal of trees at 17 Annabelle Street at city expense.

Marvin L. Fitzgerald was confirmed for reappointment as a Newark police officer, although the Councilman Wilson expressed the opinion that Fitzgerald may be "too well qualified for the job"—a reason Wilson cited as cause for rejection of two Negro applicants.

Ass't Building Inspector Wilson urged employment of a temporary assistant for Building Inspector Clarence Eder, and Walter Robinson, a retired plumber, is to be asked to serve as a temporary plumbing inspector to relieve the work load.

Mrs. McClen-don reported that costs for the Gray's Lane sanitary sewer were below the estimate; Councilman Steele announced that the auditors had reported "great progress" in the city accounting system for the first quarter; and Election Board Chairman Harold Grant requested council consideration for use of voting machines at the next municipal election.

Mayor Durnall called for a budget hearing to be held next Tuesday night at the council office.

Goodwill Collection Center Established



Representatives of Goodwill Industries and the Newark Shopping Center place the first bags of repairable articles in the new collection center, the first of its kind in the State of Delaware. Left to right in the photograph are Jack Handloff, vice-president, Pomeroy Realty; Douglas S. Wallace, Goodwill Industries operations director; Jerome Weinberg, treasurer, Pomeroy Realty; Clinton H. Brown, president of the board of directors, Goodwill Industries; and J. Carlyle Simmons, Goodwill executive director.

Goodwill Provides First Outdoor Center At Newark To Help Handicapped Persons

Goodwill Industries has established its first outdoor collection center in the state on the parking lot of the Newark Shopping Center. The agency also maintains a sales office where articles repaired by handicapped persons are sold. Main offices and workshop are maintained at 214 Walnut Street, Wilmington.

Officials of the shopping center joined with Goodwill Industries personnel last weekend to formally open the collection center. The depository, constructed of steel, is painted a bright yellow and is located where shoppers can drive up to it for depositing repairable articles.

Merchants of the Newark Shopping Center have agreed to distribute 10,000 flyers which publicize Goodwill Week, May 3-9.

Employment and training are being provided for physically and mentally handicapped persons in northern Delaware by the Wilmington Goodwill Industries. This is made possible through usable clothing, furniture, shoes, electrical appliances and other household items which are contributed by local homemakers. These articles are cleaned, repaired, painted and serviced by handicapped workers. The refurbished goods are then sold in Goodwill Industries stores.

Part of the cost of operation is met by the public through the United Community Fund. Most of Goodwill Industries' income, however, is earned through the sale of reconditioned merchandise.

Syndicate Awarded School Bond Issue At 3 3/4 Per Cent

The Newark special school district received an interest rate of 3 3/4 per cent on a \$800,000 bond issue awarded last week to a syndicate headed by the Philadelphia National Bank.

The money, plus a premium of \$3,254, will be used for improvement to a dozen buildings including five elementary schools. Building contracts for the five were awarded recently. The voters approved the bond issue last December.

Others in the syndicate are Mercantile Safety Deposit and Trust Company, Laird, Bissell and Meeds, Inc., and Laird and Company.

Two other bids were opened at the board of education office in Newark by Wilmer E. Shue, secretary, and John Pearce Cann, attorney.

Both were for 3 3/4 per cent offered a lower premium or none at all.

Offering a bonus of \$1,904 were Francis I. duPont and Company, Harris Trust and Savings Bank of New York, and First Boston Corporation.

The Farmers Bank of the State of Delaware offered no premium.

Tom Skripps Heads Drive For Savings Bond Sales

Thomas L. Skripps of Newark is payroll savings chairman for the Share-in-America Savings Bond campaign to be conducted May 18-22.

A goal of 2,800 new payroll savings accounts through the sale of U. S. Savings Bonds in some 385 businesses and agencies in the area, has been established.

Mildred Ludwig Wins \$1,000 Scholarship As State Champ In National Essay Test

Mrs. Mildred Davis Ludwig, Cooch's Bridge, Newark, has been awarded a \$1,000 scholarship by the Underwood Typewriter Company as Delaware state winner in the first national essay contest sponsored by the company.

Mrs. Ludwig, a 1943 graduate of the University of Delaware, plans to use the award to continue her graduate work at the university.

The mother of two children, she hopes to become a high school science teacher after gaining the credits necessary for certification.

The award was presented to Mrs. Ludwig by Reginald B. Rockwell of Newark Stationers, local Underwood sales agency.

Mrs. Ludwig said that she believes strongly in recent reports issued by the Rockefeller Foundation

Board of Education Approves Addition To Main St. Bldg.

Portion Of Parking Lot To Be Utilized For New Warehouse And Garage

Approval of preliminary plans for the addition of a warehouse and garage to the Newark Public School Administration Building at 83 East Main Street have been announced by the Newark Board of Education.

The addition is to be added to the rear of the old school house on Main Street and will serve the district as a centralized facility.

It is expected that final plans will be completed early in June, with construction to be completed early next fall.

The proposed addition to the old school building will provide storage space for bulk items, and garage space for vehicles belonging to the school district, some of which are being stored in the public parking lot.

The addition is expected to cover a space approximately 100x100 ft. abutting onto the existing building. An estimated 20 parking spaces from the public parking lot belonging to the school district will be lost.

The public parking lot, however, will still be available for use by the general public, the only change being probable relocation of the sidewalk from the parking lot to Main Street which will be placed next to the Farmers Bank. It is planning to build the new facility over the property line on the west side of the parking lot to take advantage of greater width.

A representative of the school administrative staff said that the proposed building will "not interfere in any way with the existing driveway by the Sheaffer property and the parking lot," since the addition to the school building will be at the northern end of the parking lot.

The Newark area will be well represented at the Miss Delaware Pageant in The Playhouse on Saturday at 8 p.m. under the auspices of the Wilmington Junior Chamber of Commerce.

In addition to Miss Newark, Joan Palese, a secretary at Louviers, the 13 contestants for the crown include Esther Olney, daughter of Mr. and Mrs. H. O. Olney, Glasgow Road; Margaret Dalecki, 1721 Lime-stone Road, and a student at the University of Delaware, and Joan Wolhar, secretary at Avon Products.

They will compete for a \$1,000 educational scholarship and some \$4,000 in other prizes including a 1959 MG convertible as Miss Delaware's official car for a year.

The winner will travel to Atlantic City in September to compete in the Miss America finals.

Theme of the pageant will be "Around the World," featuring scenes in Paris, Hollywood, England, and a special salute to Hawaii, the 50th state.

The production, most elaborate staged by the Jaycees, is directed by James W. Mackie; master of ceremonies will be Jim Termini, Wilmington radio personality; and Chuck Laskin's orchestra will play.

Tickets are available at the box office.

YWCA TEA CANCELED

The monthly tea scheduled for this Friday at the Alice P. Smyth YWCA Center in Newark has been cancelled to avoid any conflict with local participation in the May Fellowship Day program to be conducted tomorrow by the Newark Council of United Church Women at the First Presbyterian Church.

Perkins To Visit Colleges In State Department Tour

Dr. John Perkins, president of the University of Delaware, will visit three universities in the Near East as a representative of the Department of State and the American Council on Education.

He will leave New York tomorrow for Lebanon via London where he will visit the American University at Beirut.

On May 10 he will leave Beirut for Istanbul, Turkey, to inspect Roberts College; on May 12, he will leave for his final stop at American University, Cairo, Egypt; and will return to the United States via London, arriving in New York on May 17.

Mrs. Ludwig said that she believes strongly in recent reports issued by the Rockefeller Foundation

Apartment House Construction Scheduled To Begin This May

Property South Of Academy Street, Wollaston Avenue To Be Site For 81-Unit Apartment Project Conducted By Long Island Developer After Local Housing Survey

Plans to begin construction of an 81-unit apartment house this May, south of Wollaston Avenue and Academy Street, and north of the Pennsylvania Railroad near the Chrysler plants, were announced this week.

The property is zoned RD, permitting the erection of multiple housing units on the open field between the city sewer pumping station and South College Avenue.

The project involves three groups: a two-story garden apartment, with playground and parking areas.

The developer is State Housing Corporation, of which Abraham G. Green, of Long Island, N. Y., is the principal stockholder.

Mr. Z. Killoran of Killoran & Mount, attorneys for the building group, said that Cohen has built a number of apartment and housing projects in Long Island.

The apartments will be built under a plan designated in the city zoning act, No. 11, of the National Housing Act.

According to FHA, the plans for the new apartments were decided after a survey of the housing situation in Newark.

The project involves three groups: a two-story garden apartment, with playground and parking areas.

The developer is State Housing Corporation, of which Abraham G. Green, of Long Island, N. Y., is the principal stockholder.

Mr. Z. Killoran of Killoran & Mount, attorneys for the building group, said that Cohen has built a number of apartment and housing projects in Long Island.

The apartments will be built under a plan designated in the city zoning act, No. 11, of the National Housing Act.

According to FHA, the plans for the new apartments were decided after a survey of the housing situation in Newark.

The project involves three groups: a two-story garden apartment, with playground and parking areas.

The developer is State Housing Corporation, of which Abraham G. Green, of Long Island, N. Y., is the principal stockholder.

Mr. Z. Killoran of Killoran & Mount, attorneys for the building group, said that Cohen has built a number of apartment and housing projects in Long Island.

The apartments will be built under a plan designated in the city zoning act, No. 11, of the National Housing Act.

According to FHA, the plans for the new apartments were decided after a survey of the housing situation in Newark.

The project involves three groups: a two-story garden apartment, with playground and parking areas.

The developer is State Housing Corporation, of which Abraham G. Green, of Long Island, N. Y., is the principal stockholder.

Mr. Z. Killoran of Killoran & Mount, attorneys for the building group, said that Cohen has built a number of apartment and housing projects in Long Island.

The apartments will be built under a plan designated in the city zoning act, No. 11, of the National Housing Act.

According to FHA, the plans for the new apartments were decided after a survey of the housing situation in Newark.



Music Teacher Recital Presented By Eleanor Hardy

A recital of accordion and piano students was presented by Mrs. Eleanor Hardy last Thursday evening at the Masonic Temple, with 33 students participating before 100 parents and friends.

Mrs. Hardy is the wife of the Rev. Norman L. Hardy, pastor of the Wesleyan Methodist Church of Newark.

Students in the recital included Ronald Love, Sharon Loffland, Rein Oberlin, Dorothy and Marjorie Yoder, James Uniastowski, Ronald Eldridge, Joyce, Arthur, and Bonnie Boltz, Rickey Cronin, Joan Greenwell, Frank Hohn, Ricky Davis, Arlene Baker, Sharon Rein, Judy Shugart, Persia Huangswan, Diane Walbridge, Diana Stiuber, Joyce Mitchell, Linda and Jim Cox, Tad Tweed, Joan Lane, Meredith Beauchamp, Kristin Otto, Stacy Kravetz, Joanna Dawson, Patricia Seimen, Renee Short, and Michael Felix.

Students Replace Faculty For Day At Newark High

Student Day was observed last week at Newark High School, as the high school staff stepped aside for students to act as teachers, administrators, and caretakers.

Student teachers were elected by the classes, and to be eligible to teach, a student must have had a "B" or better average in the class he teaches.

Donald Woodmansee, Student Council president, replaced Dr. Fred B. Kutz, as principal for the day. Student Council Vice-President Dick Feeny, and Treasurer Dennis Conlan replaced Charles W. Hoover, and Kay Hocker, secretary, replaced Jeanette Thoroughgood, as guidance counselors.

Governor Cites Program To Save State \$5,000,000 Gov. J. Caleb Boggs declared last night that the establishment of a department of finance in this state government would save Delaware taxpayers an estimated \$5,000,000 in the next 10 years.

The Governor called the creation of a modern department of finance, "the first step in putting our financial house in order," and urged state-wide bipartisan support of the plan.

A Pair Of Newark Dancing Stars

Dancers in the Lincoln Community Players production of "Dick Whittington and his Cat," recently presented at Avon Grove High School, and to be presented May 29 at Oxford High School, are Tammy Skripps, and Donna, daughter of Mr. and Mrs. Thomas Skripps, and Donna, daughter of Mr. and Mrs. Joseph Moore of Newark. Both Donna and Tammy are students at Kay Jaynes School of Dancing.

Donna Moore Dancers in the Lincoln Community Players production of "Dick Whittington and his Cat," recently presented at Avon Grove High School, and to be presented May 29 at Oxford High School, are Tammy Skripps, and Donna, daughter of Mr. and Mrs. Thomas Skripps, and Donna, daughter of Mr. and Mrs. Joseph Moore of Newark. Both Donna and Tammy are students at Kay Jaynes School of Dancing.

Tammy Skripps Eight-year-old Tammy has studied dancing for five years and has participated in ballet, toe, and acrobatic, and solo numbers in dance recitals.

Donna, 11, has studied ballet, toe, acrobatic, tap, and baton dancing for six years.

Both youngsters will appear in Kay Jaynes' dance recital on May 21-22 at the Newark New Century Club.

In Combat Training



Five Riding In Auto Unhurt As B&O Freight Demolishes Vehicle

Five persons escaped injury when the car in which they were riding was struck and nearly demolished by a Baltimore & Ohio freight train at the West Main-New London Road grade crossing in Newark early yesterday.

Newark police said the driver, John B. Perry, 27, of 409 Bennington Road, Westfield, turned too sharply off West Main Street and drove down the railroad tracks.

Police said the car involved in the Newark grade crossing accident had traveled approximately 10 feet on the tracks when it was struck by the freight train which was traveling in the same direction, heading for Baltimore.

The train, however, saw the car on the right side, Newark police said, dragging it several feet. Perry was thrown from the machine but escaped injuries. The others were also uninjured. Car damage was estimated at \$600.

Perry was taken before Magistrate Clarence Foster of Newark and fined \$100 and costs on a charge of reckless driving.

The train's engineer, C. E. Sweeney, of Baltimore, told police he saw the car turn down the tracks but was unable to stop the train in time.

Perry, police said, crashed through one of the warning gates just prior to the accident.

Festival Of Arts To Begin Friday For Scholarship

The Newark Arts Festival has established a scholarship at the Delaware Art Center for a young artist between eight and 14. Mrs. Gina Plungian, sculptress, painter and chairman of the Newark festival, has announced.

Mrs. Plungian said the scholarship fund will come from a 10 per cent commission on sales of exhibits, and a small entry fee.

The Newark festival, scheduled May 1-28 at the Newark Department Store, will coincide with the 25th annual Delaware Festival of Arts.

Painters and sculptors are invited to bring two exhibits to the shopping center gallery between 9 a.m. and 9 p.m. tomorrow.

A reception between 7 and 9 p.m. next Wednesday has been arranged for the public to meet the artists.

Postmaster Cooch Welcomes New Aide

Newark Postmaster F. Allyn Cooch congratulates Pharmacist Charles Cooch (left), upon the opening of a new branch of the Newark Post Office at Orlow in Coletta's Chestnut Hill Pharmacy.

The new Orlow branch was opened April 13, with dedication ceremonies conducted by Ass't Postmaster Corbit Crompton of Newark.

Pastor Hugus To Address YWCA Luncheon Meeting

The topic for next Thursday's luncheon program at the Alice Smyth PWCA Center in Newark will be "The Christian Family" by the Rev. Howard S. Hugus, pastor of St. Paul's Lutheran Church. This program is opened to the public at no charge. Guests may bring lunch, and a beverage is served by the "Y."

A nursery is available for children over three years of age.

Mrs. Clarence L. Smith is chairman for this program.

DREXEL ALUMNAE

Mrs. Catherine Bieber, of 107 East Park Place, a 1949 home economics graduate, attended the annual alumnae luncheon on April 23 at Drexel Institute of Technology.

SUNSET PARK

(On U.S. Route 1, Between West Grove and Oxford, Pa.)

SUNDAY, MAY 3

The
OSBORN BROS.
from WWA Wheeling Jamboree
MEL PRICE
and His Santa Fe Rangers
THE TRAIL BLAZERS
From Wananie, Pa.
EDDIE MATHERLY, M.C.

ADMISSION: \$1.00
Children under 12, Free
1st SHOW — 1:00 P.M.
RADIO PROGRAMS
WCOJ—Thurs., Fri., Sat., 3:15 to 3:30 p.m.; Thurs., Fri., eve., 9:30 to 9:35 p.m.

WANT TO SEE?

Building Sites, City & Country
from \$2500 to \$10,000

Brookside Ranch \$10,500
3 bedrooms & bath

Miracle Split Level \$14,800
3 bedrooms, den & bath

Executive Ranch \$18,500
3 bedrooms, 2 baths,
UNBELIEVABLE LAWN

Faces East Campus \$17,000
4 bedrooms

Oppo. Century Club \$17,500
2 story brick

Center Street \$22,500
Brick, 8 rooms. Completely
redecorated

Kells Avenue \$24,000
4 bedrooms & den. Brick,
large trees

Orchard Road \$25,000
English Cottage Style.
Location, Location, Location

West Park Manor
Semi-custom built, any style
Split Levels from \$18,000

REAL ESTATE
grover surratt
45 east main street
newark, delaware

Willard Wood Dies At 81; Services To Be Held Friday

Willard F. Wood, 81, of Chapel Road, R.D. 2, Newark, died Tuesday at the Fairview Nursing Home, where he had been a patient for the past 10 days.

Mr. Wood was born at Klamens, near Newport, and was engaged in farming most of his life. In later years he was employed as an accountant by the Rittenhouse Motor Company, Newark.

Mr. Wood was an 1899 graduate of the University of Delaware, then Delaware College. His wife, Mrs. Bertha P. Wood, died 19 years ago. He is survived by a son, Herbert F., Newark; a sister, Mrs. Mary F. Leal; two grandchildren, Willard H. Wood and Mrs. Edna E. Cox, Newark; and two great-grandchildren, Robert A. Wood and Ronald Cox.

Funeral services will be held at 2 p.m. Friday at the funeral parlors of R. T. Jones, Newark, with interment at Friends Burying Grounds, Hockessin. Friends may call tonight at the funeral home.

PTA Panel Cites Educational Needs After High School

The need for education beyond high school was the topic of the Newark Junior-Senior High School PTA meeting last week in a panel discussion moderated by Mrs. Bruce Dearing with Mrs. Mina Press Brown, Mrs. William Dively, and Mrs. Samuel Handloff participating in the AAUW-sponsored program.

It was pointed out that higher education is the key not only to career opportunities, but to a full personal life, happy family relations, effective community participation, and better citizenship.

The many career opportunities for women were pointed out; ways of financing higher education were discussed, and assistance available to the student willing to work for education was explained.

Candidates for office in the coming year are Richard Leedom for president; Dr. Edmund Cain and Dr. Holger Schumann, vice presidents; Mrs. William Mowll, secretary, and Eugene Smith, treasurer.

PTA members approved recommendations of the executive committee for donations of \$100 to the American Field Service scholarship and \$30 to the school dental health program.

President Arthur Stevenson announced that the May meeting would be a musical program presented by students of the junior and senior high schools.

New S&H Catalog Distributed Here By Acme Markets

The Acme Markets today announced distribution here of the new S&H Green Stamp Catalog. This issue is more than a catalog. It is a handbook of interior decorating ideas by such world-renowned designers as William Pahlmann, Dorothy Draper, Melanie Kahane, Guy Rupp, Ellen Lehman McCluskey, Mary E. Dunn, and James Amster.

The catalog lists twice the number of items as in previous years. More than 1,000 items of merchandise are shown, including an electric kitchen, six patterns of sterling silver, and 59 decorator items, all new.

The catalog has 84 pages, 60 per cent more pages than in any previous edition. The catalog is reported to be the largest business publication in the nation.

The current S&H Catalog indicates the increased growth and use of green stamps. Twenty-three million American families now save S&H Green Stamps.

**Friday Square Dancing
Scheduled For May 8th**
Frank Mullen, Newark YMCA executive, announced today that the May Square Dance sponsored by the Newark YMCA will be on Friday, May 8, beginning at 8:30 p.m., at the Medill School on Kirkwood Highway.

The square dances this past winter and spring have been gaining in attendance. Both the newcomer and the experienced dancer are welcome to attend this hoedown. Refreshments will be available.

FINAL WEEK! MILLER BROTHERS FREE VACATIONS & HONEYMOONS WITH EVERY PURCHASE OF \$500. SHOP FRIDAY FROM 9 AM TO 9 PM 3-ROOM 499. OUTFIT PLUS A HONEYMOON



9-PIECE LIVING ROOM SET
239⁹⁵

Includes a 100% NYLON sofa and matching chair, two step-end tables, two table lamps and two sofa pillows. This honey moon special can be purchased separately or as an entire group.

WITH A PURCHASE OF \$500. OR MORE!

Onawa Lodge . . . Poconos

4 Days and 3 Nites

Transportation, Meals, Lodging!

4 DAYS AND 3 NITES at this wonderful mile high resort in the Pocono Mountains. Acres of wooded landscape, courts for tennis, badminton, volleyball, shuffleboard and croquet, a tremendous pool, sports field, casino, trap shooting range. Bicycles and horses are available. You'll enjoy delicious, skillfully prepared meals . . . and you'll enjoy your evenings in the modern cocktail lounge, or the quiet of the reading room. You'll love it!

WITH A PURCHASE OF \$1000. OR MORE!

Del Monica . . . Miami Beach

6 Days and 5 Nites

Transportation, Meals, Lodging!

6 DAYS AND 5 NITES at the ocean front resort on Miami Beach. A beautiful, modern, air-conditioned hotel designed for luxurious comfort, combined with sincere hospitality makes this resort a vacation haven. With private beach, pool, solarium and deck sport facilities. You'll long remember the scrumptious meals, the enchanting evenings in the umbrella room and the romantic Miami moon.

WITH A PURCHASE OF \$2000. OR MORE!

Hotel St. George . . . Bermuda

6 Days and 5 Nites

Transportation, Meals, Lodging!

6 DAYS AND 5 NITES in the middle of the tropical Atlantic Ocean. You'll be whisked by four engine Jet-prop to this island paradise. Picturesque St. George, continental British hospitality, delectable English dishes, Calypso rhythms, crystal clear lagoons or fresh water pool, perfect fishing . . . you'll have so much to remember during your royal holiday. The perfect place for a first or second honeymoon.

ALL 3 ROOMS PLUS TRIP . . . \$50. DOWN!

NO CHARGE FOR CREDIT!

Miller Brothers

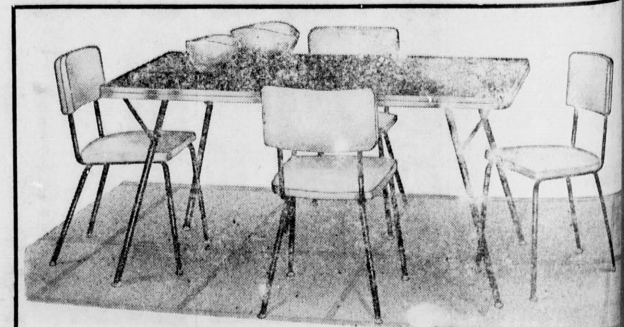
56 E. MAIN ST. — NEWARK



7-PIECE MODERN
BLOND BEDROOM SET

199⁹⁵

Bedroom has a double dresser, mirror, chest and full size case headboard bed. All drawers dove-tailed and with center pull DuPont finish. Also included HONORBILT innerspring mattress and matching box spring and pillows.



5-PIECE WROUGHT IRON DINETTE

59.

A handsome modern kitchen set finished in practical wrought iron. Extension table has a formica top and an extra leaf. All four matching chairs with washable vinyl plastic upholstery. A real buy!



PUT THEIR
HEALTH IN
SAFE HANDS

YOU can depend upon your druggist at NEWARK PHARMACY to provide you with the best in prescription service—just as your family physician orders—with the best in modern drugs.

And for sundries—cosmetics, candy, soda, ice cream, magazines, and tobacco—

VISIT YOUR FRIENDLY

Newark Pharmacy, Inc.
183 E. MAIN STREET PHONE EN 8-8738
NEWARK, DELAWARE

Parents Cautioned Of Bathroom Hazards Top Home Danger For Small Children

Bathroom medicine cabinets which can poison unwary children. In addition, sharp piercing instruments are often stored in the bathroom. Unattended children sometimes drown themselves in just a few inches of water in the bathtub, or are scalded through playing with the hot water faucet.

The board is sponsoring Child Safety Week as a highlight of the year-round program pushed by both the board and the safety council, to reduce the tragic toll of accidents to children in the home.

Enjoy the CBS
Baseball Game
Of the Week!

presented by
your friendly
State Farm Agent



FREE!
BASEBALL BOOK
This exciting illustrated booklet of facts and figures will help you know and enjoy baseball better. Get your free copy from your nearby State Farm agent.

STATE FARM MUTUAL
AUTOMOBILE INSURANCE CO.
Home Office: Bloomington, Ill.

They sure treat us
right here!



DRIVE-IN CLEANERS
11 N. CHAPEL ST.
Shirt Laundry—Storage Vault
FREE PICK-UP AND DELIVERY!
FREE S & H GREEN STAMPS!



Fresh Sweet Corn Garden Plantings Cited By Stevens

If your garden is large enough, it's easy to have a constant supply of fresh sweet corn from July to frost, according to Robert Stevens, extension horticulturist at the University of Delaware.

Home-grown sweet corn picked just before cooking is an unexcelled tasty treat. By making several plantings of different varieties you can have a continuous supply of this delicious vegetable, Stevens said.

Start planting now. Always plant sweet corn in blocks as pollination is an important factor in well-filled ears. By planting three rows at a time or a block of hills good pollination will result. About three or four small plantings will provide the family with a continuous supply. Plant early varieties now.

North Star, Golden Beauty and Seneca Dawn are good early varieties which will mature in early July. Only one of these varieties needs to be planted now. Make another planting about May 1 to 6 of a mid-season variety such as Carmelcross, Mammoth or Barbeque. Then the main crop may be planted May 10-20 of Golden Cross Bantam, Seneca Chief, Tendermost, Stowell's Evergreen or any of the other popular varieties.

Another planting for a late crop will extend the picking season into September. This planting is made about May 25 to June 5, the specialist said.

U. of D. Senior Honored As Engineering Scholar

Delmer W. Nicholson, senior electrical engineering student at the University of Delaware, was honored as the top electrical engineering student in the Philadelphia area at an awards dinner of the Institute of Radio Engineers in Philadelphia recently.

A dean's list student, Nicholson is a Wilmington commuter. He was awarded a brief case as top prize in competition with students from eight colleges and universities in the Philadelphia section.

Mrs. William N. Cann, the council's vice-president for home safety, said recent surveys show that 33 per cent of all deaths to children under five years of age from home poisoning result from ingestion of drugs generally found within easy reach of exploratory children.

"Even ordinary medicines, such as aspirin and laxatives, which are harmless when taken as directed, may become lethal poisons for small children," Dr. Kenyon pointed out. "All medicines—not just those that carry the familiar skull and crossbones poison label—should be kept out of reach at all times, preferably under lock and key."

Many common cosmetics found in the bathroom also are poisonous when imbibed by children, such as depilatories, nail polish remover, permanent wave solution, and perfumes, the two officials said.

"Sharp instruments, such as father's razor blades and mother's manicuring implements also hold peril for heedless tots," he added.

Drowning or scalding in the bathtub is another common childhood bathroom accident. Many small children have perished in a few inches of water in the bathtub, while mother went "for just a minute" to answer the phone or doorbell. Others have been seriously or fatally scalded when playing with the faucets.

Dr. Kenyon urged that parents make a thorough check of their bathrooms to see that all child hazards are removed.

To assist in this, he said that the State Board of Health has a free home safety check list available to parents for checking their homes, room by room.

Just address a postcard to the State Board of Health, Dover, Delaware, with the words, "Home Safety Check list" to obtain your free copy.

Now at ACME... Come in and get your FREE New S&H Green Stamp Ideabook

THE LARGEST, MOST EXCITING TRADING STAMP CATALOG EVER PUBLISHED

Lancaster Brand Tender SIRLOIN

STEAKS

79¢

Lancaster Rib Steaks 79¢
Tender Chuck Steaks 69¢

STEAKS

89¢

HAMS

49¢

SKINLESS FRANKS

47¢

LEAN SLICED BACON

45¢

FARMDALE PIES

95¢

Here's a Sweet Saving! EXTRA SPECIAL!
IDEAL FINEST QUALITY PURE FRUIT
PRESERVES
Strawberry -- Peach -- Plum -- Grape
Seedless Blackberry -- Apricot-Pineapple
Seedless Red Raspberry -- Elderberry
Pineapple -- Crushed Cherry

Mix or Match 4 12-oz jars \$1.00 Stock Up!

IDEAL FANCY SWEET OR NATURAL
Grapefruit Juice
2 big 48-oz cans 49¢ Acme Special

NEW LOWER PRICES ON COFFEE
WIN-CREST COFFEE 57¢ lb
ASCO COFFEE 61¢ lb
IDEAL COFFEE 69¢ lb

Go Acme for the Best Produce Values in Town --- YOU NEVER HAD IT SO FRESH!

LETTUCE

2 large heads 23¢

CAL. PEAS

2 lbs 29¢

APPLES

4 lb bag 49¢

Hot House Tomatoes

39¢

CRISP, FRESH ICEBERG
CRISP SPRING RADISHES 3 bags 15¢
FRESH SPRING ONIONS 3 bunches 15¢

ACME FROZEN FOOD SAVINGS
IDEAL BRAND FANCY CAL. PEAS 3 10-oz pkgs 49¢
FRENCH FRIES 2 9-oz pkgs 35¢
FROZEN WAFFLES Nifty Brand 3 pkgs 29¢
STRAWBERRIES 10-oz Ideal 5 pkgs 99¢
ORANGE JUICE Donald Duck 6 cans \$1.00

Seabrook Farms Offers You a Real, Live LEMON TREE for just 50¢
and the label from one Seabrook Farms Frozen Vegetable Wrapper. Mail to Seabrook Farms Co., Box 290, New York 46, N. Y. Be sure to get yours now.
Prices effective thru May 2, 1959. Quantity rights reserved.



Acme
SUPER MARKETS
Where Quality Counts and Your Money Goes Furthest

New Frozen Meats
YOUR CHOICE
8-oz pkg 49¢ Mix or Match

VIRGINIA LEE BAKERY SAVINGS
Reg. 25c Supreme Old Fashion Sesame Seed Bread 2 lbs 45¢
REG. 59c PEACH STREUSSEL PIES ea 49¢
REG. 39c BUTTER CRUMB CAKES ea 35¢
SUPREME ENRICHED BREAD 1-lb loaf 20¢
Farmdale 1-lb loaf 17¢ Home Style 1 1/2-lb loaf 25¢

ACME DAIRY DEPT. SAVINGS
Loella The Finest Butter in America (1/4's) lb 69¢
LONGHORN CHEESE 1 lb 49¢
ICE CREAM Sundydel 6 Flavors 1/2 gal ctn 79¢
FRESH EGGS Ideal Large 2 doz 87¢
MARGARINE Princess Enriched 2 lbs 33¢

KINGSFORD QUALITY Charcoal 10 69¢

Anderson's Mich. PEAT 100 1-bag \$1.98
5-10-5 FERTILIZER 50 1-bag \$1.29
GOLDEN VIGORO 50 1-bag \$3.49
LAWN GRASS SEED Glenside Park 5 1-bag \$1.39

Get Your Illustrated Home Library ENCYCLOPEDIA On Our Book-A-Week Plan Start Your Set Today Vol. 1 Only 25¢

FREE American Family and School DICTIONARY WITH PURCHASE OF VOLUME 2 while supply lasts

Vol. 4 99¢ ea Now on Sale

better balance!



WIDE-TRACK PONTIAC!

Wheels are five inches farther apart. This widens the stance, not the car, gives you road-hugging stability, less lean and sway. Only Pontiac has Wide-Track Wheels!

SEE YOUR LOCAL AUTHORIZED PONTIAC DEALER
EDWARDS PONTIAC
165-167 E. MAIN ST. NEWARK, DEL.

Your Dollar's Worth More at Acme... S&H Green Stamps too!
NEWARK SHOPPING CENTER
-ACRES OF PARKING-
PARK 'N' SHOP CENTER
263 ELKTON ROAD

Phi Beta Kappa Initiates Eight, Elects Officers

Eight University of Delaware students have been elected to membership in the Delaware Alpha chapter of Phi Beta Kappa, honorary scholastic society. All are expected to graduate at the June Commencement.

New initiates include Robert M. Cater, 59 Chouteau Street, Newark, a philosophy major.

Officers for the coming year include E. Wakefield Smith, associate professor of economics and business administration, president; Dr. Kimberly S. Roberts, chairman of the department of modern languages and literature, vice-president; Dr. John M. Dawson, director of libraries, secretary; Dr. Robert F. Jackson, professor of mathematics, treasurer; and Dr. Quessita C. Drake, professor emerita of chemistry, historian.

The annual Phi Beta Kappa dinner and initiation ceremony will be held tomorrow evening in the Morgan and Vallandigham rooms of the Student Center.

"Of course women make fools of men—but they get lots of cooperation."

—Lorraine Mathison

ADVERTISEMENT FOR BIDS

Sealed proposals will be received by the State Highway Department of the State of Delaware at the office of the Chief Engineer (Room 202) in the Highway Administration Building in Dover, Delaware, until 2:00 P.M., E. D. S. T., May 13, 1959, and thereafter shall be publicly opened for a contract involving the following approximate quantities:

CONTRACT I-1 (9)
Federal-aid Project I-01 (9)
BRIDGES 7E, 7W, 8E AND 8W AT
FARMHURST INTERCHANGE
New Castle County
118 Mile

Steel and Concrete Structures
1,100 C. Y. Excavation and Grubbing
3,400 C. Y. Excavation for Structures
370,000 C. Y. Borrow
100 C. Y. Borrow Pit Stripping
1,700 C. Y. Select Borrow
200 C. Y. C. C. Masonry in Sub-foundations
2,120 C. Y. C. C. Masonry in Footings
3,000 C. Y. C. C. Masonry in Piers above Footings
1,590 C. Y. C. C. Masonry in Abutments, Wingwalls and retaining Walls Above Footings
2,033 C. Y. C. C. Masonry in Decks
1,500 C. Y. C. C. Masonry in Approach Slabs
1,000 S. Y. Superficial Waterproofing
1,350,000 Lbs. Bar Reinforcement
1.5 Structural Steel for Bridges Nos. 7E & 7W (Approx. Wt. 1,850,000 Lbs.)
1.5 Structural Steel for Bridges Nos. 8E & 8W (Approx. Wt. 532,000 Lbs.)
20 L. F. 15" C. M. Pipe
62,000 L. F. Cast in Place Concrete Piles
1,100 L. F. Steel Shell Test Piles
2,000 S. Y. Topping
8,000 S. Y. Topping
2 A. Seeding
10,000 S. Y. Mulching
900 S. Y. Sodding
S. S. Bridge Drainage
Bridges 7E & 7W
L. S. Bridge Drainage
Bridges 8E & 8W
3,520 L. F. Aluminum Railing
7,000 S. Y. Slope Paving with Cement Concrete Blocks
L. S. Electrical Facilities
Bridges 7E & 7W
Bridges 8E & 8W
L. S. Removal of Existing Concrete Storm Sewers
5 S. Y. Jiggle Bar Dividers
2 Each Railroad Grade Crossing

Attention is called to the Special Provisions in the proposals, the specifications and the Contract Agreement. The provisions of the Federal-aid Highway Act as amended are applicable to Federal-aid Projects.

Minimum wage rates for this project have been predetermined by the Secretary of Labor and are set forth in the advertised specifications.

The employment agency for these contracts shall be the Delaware State Employment Service whose offices are located at 601 Shipley Street, Wilmington, 135 South Bradford Street, Dover, and North Race Street, Georgetown.

Performance of contract shall commence within ten (10) days after execution of the contract and be completed as specified.

Monthly payments will be made for ninety (90) percent of the construction completed each month.

Bidders must submit proposals upon complete forms as provided by the Department for bidding purposes.

Each proposal must be accompanied by a surety bond, certified check, or money to the amount of at least ten (10) percent of the total amount of the proposal.

The envelope containing the proposal must be marked "Proposal" for the construction of State Highway Contract No. _____

The contract will be awarded or rejected within thirty (30) days from the date of opening proposals.

The right is reserved to reject any or all bids.

Prospective bidders who have been prequalified in accordance with the requirements of the Standard Specifications may obtain contract documents from the Highway Department office, Room 202, Arden Building, 11 E. North Street, upon payment of five dollars (\$5.00) for each set. Contract documents need not be returned and the above payment will not be refunded.

Make checks payable to the Delaware State Highway Department.

DELAWARE STATE HIGHWAY DEPARTMENT

By: J. Gordon Smith, Chairman
R. A. Haber, Chief Engineer

April 15, 1959
Dover, Delaware
April 23, 30

News of Bear

Mrs. J. Leslie Ford, Correspondent
Phone EA 8-6484

The Ladies Aid Society of Pencader Church met at the home of Mr. and Mrs. Joseph Laws, Jr., on Tuesday evening, with a prayer by J. Leslie Ford, singing led by Mrs. Mamie Palmer, and devotions read by Mrs. Ellen Snyder.

A ham and chicken salad supper will be served on Saturday, May 9, and the May meeting will be held at the home of Mr. and Mrs. Christian Zeitler.

Mrs. Mamie Palmer and Miss Christine Zeitler were in charge of recreation, and refreshments were served by Mrs. Laws and Mrs. Dorothy Allen.

David Allen has returned home after surgery in Memorial Hospital. Mrs. James Morris, who has been a patient in Wilmington General Hospital, has returned home.

Alfred Davidson, who has been a patient in Delaware Hospital has returned to his home, much improved.

Randall Slaughter of Smyrna spent the weekend with his grandmother, Mrs. Anna Harrington. John Jordan has been confined to his home with virus this week.

Mrs. Mabel Kleppinger spent the weekend in Tamaqua, Pa.

Mrs. Herbert King of Bear was elected president of the New Castle Hundred Republican Women's Club, as 17 women attended the organizational meeting in the Town and Country Diner at Tybout's Corner, adopted by-laws and voted to join the National Federation of Republican Women.

Other officers are Mrs. Frank Long of New Castle, vice-president; Mrs. Joseph Booker of Manor Park, recording secretary; Mrs. Russell Kemery of New Castle, corresponding secretary, and Mrs. Herbert Lee of Red Lion, treasurer.

Pencader Grange met recently with Joseph Laws, Jr., presiding, as William Mowll and Edward Priest of the Del-Mar-Va Boy Scout Council urged Pencader to sponsor a Boy Scout troop. The grange will discuss the proposal at its meeting on May 18.

The Grange Hall, occupied last October, will be dedicated Monday, May 4 at 8 p.m.

Mrs. Melvin Brooks, lecturer, is being assisted in planning by J.

Cooper Wins Membership In Middlebury Players

Among seven new members named to the Middlebury (Vt.) College Players is Peter B. Cooper, Newark.

Membership depends upon accumulation of 100 points in dramatic activities. Directing, acting, and production work are graded in varying numbers of points to determine eligibility. The 100 points must be earned each year to retain membership.

Pete, a sophomore, is the son of Mr. and Mrs. Edward B. Cooper, 104 Brent Lane, Newark.

Leslie Ford, Mrs. C. C. Brooks, and Mrs. Delbert Gooden. The public is invited.

Pencader Grange will attend church services in a body in Pencader Presbyterian Church on Sunday, May 17, at 2 o'clock.

Past State Master William Naudain and Mrs. Naudain; Wills Passmore, lecturer of Pomona Grange; and State Lecturer Wallace Caulk and Mrs. Caulk were visitors.

The community project committee will hold a card party in Grange Hall this Saturday evening.

Miss Belle Carpenter spent Sunday with Mr. and Mrs. Robert Carpenter of Port Penn.

Ernest Wilder, instrumental music instructor, is planning special work with the children from Eden who will participate in the Memorial Day parade in Newark.

The 11th annual Roller Revels was held at Merryland Roller Rink on Monday and Tuesday evening of last week for the benefit of the skaters who qualify to skate in the American Championships to be held in Boston, Mass.

Merryland is conducted by John E. Paxson, Jr., with Manager Charles Weldin; Professional Rolly Matson, and Organist Gordon Van Keuren.

Other local staff members are Helen Woerner, Anna Brown, Jeanette Brooks and Ruth McCormick.

Local skaters who participated were John, Jeanne and Francis Woerner; Henry, Jeanne and Melissa Brooks; Jo Ann Brown, James Mullaney and Wayne Dalton.

Mrs. Evelyn Burris and Mrs. Fenstermaker, fourth grade teachers, are planning a field trip for their pupils to visit historical spots within a radius of 12 miles.

Mrs. Groschke and her second graders are planning a trip to a local golf mill.

Mrs. May B. Leasure, charter member of Delta Kappa Gamma, national honorary teachers sorority, attended a banquet on Friday evening at the Powder Mill, and the State Convention on Saturday at the DuPont Country Club.

Mr. and Mrs. J. Leslie Ford spent Sunday with Mr. and Mrs. Bradley Ford of Greenville.

Mr. and Mrs. Paul Burge and sons visited with Mr. and Mrs. Clarence Highfield on Sunday at Mill Creek Trailer Park.

Mrs. Kathryn Keenan is on the sick list.

The Eden PTA held the last meeting of the year on Wednesday evening with William Mowll presiding.

Officers elected for next year are President Mrs. Francis Webb; Vice presidents Joseph Laws, Jr. and Mrs. Margaret Reiser; Secretary

Mrs. George Moore; and Treasurer Mrs. Ruth Kucharsky.

Dr. Charles J. Katz, Wilmington, psychiatrist, spoke on "Child Discipline." Dr. Katz, a veteran of Bataan, who survived life in a Japanese prison camp in the Philippines, came to Delaware as clinical director of the mental hygiene clinic of Delaware State Hospital in 1949. He left to enter private practice two years later.

Refreshments were served by Mrs. Broome and her committee.

FAST APPLIANCE SERVICE

By Expert Mechanics
IN RADIO CONTROLLED TRUCKS

Washers
Dryers
Electric Stoves
Electric Water Heaters
Garbage Disposals
Dishwashers

Refrigerators
Commercial Refrigeration
Freezers
Air Conditioners
Milk Coolers
Store Refrigeration

Commercial Refrigeration & Carrier Air Conditioning Sales

HARVEY REFRIGERATION CO.

234 E. Cleveland Ave. Newark, Del.

PHONE ENDICOTT 8-8579

Take Advantage of
BLUE HEN'S BIG DISCOUNT

on all Laundry and Dry Cleaning at our
NORTH STREET PLANT

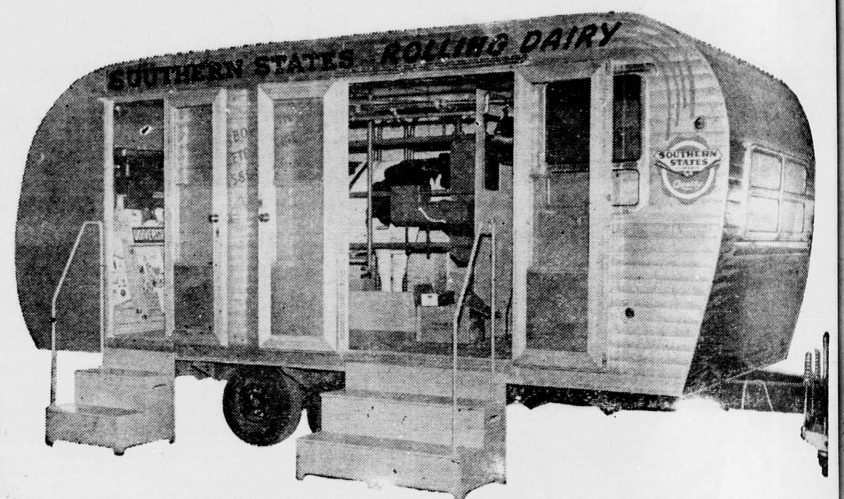
SAVE NOW on your
SPRING CLEANING NEEDS

4-HR. SERVICE at our Plant at
27 NORTH ST.

Invisible Mending Now Available at Our Plant

BLUE HEN LAUNDRY
MARK OF QUALITY
DRY CLEANING

See Southern States Fully Equipped Rolling Dairy



You are invited to tour Southern States Rolling Dairy—a trailer completely equipped with modern milking machines, bulk tanks, etc.

The Rolling Dairy will be at
SOUTHERN STATES NEWARK CO-OP
ALL WEEK BEGINNING MONDAY, MAY 4-- 9 a.m. to 5 p.m.

• See "Bossy" in a Universal pipe line milker assembly with tandem stall... watch milk flow directly to bulk tank. Also -cow-to-can milker... floor type milker... suspended milker... stainless steel wash-up tank... and water heater.

Southern States rolling dairy will show in detail why you get more quality milk per dollar invested with a Southern States Universal pipe line or regular milker. Faster milking with less labor and a better conditioned cow too.

You will have the opportunity to discuss the pipe line method of milking with a milking machine specialist who will be on hand. Make your plans now to stop by and see Southern States Rolling Dairy. Don't forget the date—mark your calendar now.



SOUTHERN STATES NEWARK CO-OP
Elkton Road
Phone EN 8-1212

YOUR SOUTHERN STATES COOPERATIVE SERVICE AGENCY

LATE CITY EDITION

Forecast for today... for the whole year long... fair weather for Springweave suits.

This is perfect Springweave weather

See our great assortment of Springweave suits by *Palm Beach* only \$55.00

*Reg. T.M. Palm Beach Co., 50% Wool, 40% Mohair in most styles
†Reg. T.M. Goodall-Sanford, Inc.

Newark DEPARTMENT Store

Newark Shopping Center
Open Every Wednesday & Friday, 9 to 9

Why pay the big-car price penalty?



Go Rambler
Pay hundreds of dollars less—save more than ever on gas and upkeep



See why Rambler now outsells most big cars. Get bigger savings, highest resale, easier parking, plus full 6-passenger room. Try Personalized Comfort: separate sectional sofa front seats. See your Rambler dealer.

DENNISON MOTOR CO. 19 Haines St. Newark EN 8-4241

GRAND OPENING - SATURDAY, MAY 2!

9 AM to 6 PM!

Bring Your Week's Laundry
WASH and DRY...

Use Our NEW DOUBLE LOAD Commercial
PHILCO-BENDIX WASHERS

Yes! Twice the Capacity of Other Washers

SOFT WATER

NEWARK LAUNDERCENTER

FREE!

SAVE OVER 60%

ON YOUR LAUNDRY BILLS

Everything Free!

Including:

- SOAP
- ALL SOFT WATER
- HOT WATER
- DRYING

OPEN 24 HOURS - INCLUDING SUNDAY
COIN OPERATED - SELF SERVICE - WASHING and DRYING

Elkton & Beverly Roads
NEWARK, DEL.
Next to Towne Cleaners

THE NEWARK POST

Founded January 26, 1910, by the late Everett C. Johnson

An Independent Newspaper
Published Every Thursday by The Newark Post, Inc.
14-16 Thompson Lane, Newark, Delaware
Locally and Independently Owned and OperatedLocal and Display advertising rates furnished on request.
12 Memorial and Cards of Thanks 7 cents per square line.PUBLISHER
H. WAGGAMAN, JR.EDITOR
J. H. WAGGAMAN, JR.Subscription price of this paper in the United States is \$2.00 per year.
Canadian and foreign subscriptions \$3.00 per year. IN ADVANCE.
Single copies 5 cents. Make all checks payable to The Newark Post.

Newark, Delaware, Thursday, April 30, 1959

WELL, WE ASKED FOR IT!

SURE YOU'RE FREE,
TO DO WHAT I TELL YOU!

CHICKEN FEED?

Biggest item in the non-defense budget is the farm program, high in the billions. And recent news developments show U.S. payments in six figures to huge land holders, and receipts of a few thousands from Michigan poultry farmer Stanley Yankus.

Because they participated in the government scheme to keep prices high by cutting down production, big wheat, rice, and peanut farmers draw subsidies paid out of our treasury.

Because Stanley Yankus grew three extra acres of wheat to feed his own chickens, and refused to participate in government handout, his \$1,700 bank account was seized, and a government bureau, without trial, ran his total penalties to more than \$4,000.

It was a big blow to Stanley Yankus, but it was a big blow to freedom, too, and any impairment of freedom hurts all of us.

The lesson in the Yankus case was a clear one: when government pays the piper, the government calls the tune, and soon assumes the right to make everyone dance to it, whether they want to or not.

Troop 55 Scouts
Bike-Hike, Camp
On Justis Farm

Boy Scouts of Troop 55, sponsored by Calvary Baptist Church, spent last weekend camping at Bob Justis farm behind Beck's Pond on the Salem Church Road, hiking by the pond with food and sleeping gear. The troop's new tents were used, and the Scouts practiced for the district camporee in May.

On Sunday, transportation was provided by Acting Scoutmaster Theodore Van Kirk, and George Williams to enable Catholic Scouts to attend mass in Newark.

MOTHERS DAY

"The unselfish devotion, tenderness, understanding, patience and loving discipline, bestowed upon us by our Mothers, creates a benevolent influence that can—and should—guide us throughout our lives," Governor J. Caleb Boggs said this week in proclaiming Sunday, May 10, as Mothers' Day in Delaware.

Assistant Scoutmaster Charles Eastman led an outdoor chapel service for Protestants at the campsite. Attending were Ken Weing, Tom Van Kirk, Bill Beattie, Herb Cole, John Collins, Greg Taylor, Larry Weing, Wayne Gale, Barry Griffiths, Ken Haney, Steve Henriksen, Pete Lutz, Don Reyburn, George Thomas, Jeff Frank and Floyd Kemske.

Have You Drained Your
Anti-Freeze?

Let us drain your cooling system, inspect hoses, connections and radiator for possible leaks, flush radiator and add rust inhibitor. Safe guard your car for the hot summer driving ahead.

Drive in today. Inspection free.

FADER MOTOR CO.

"Since 1911"

FORD SALES & SERVICES

42 W. Main Street

NEWARK, DELAWARE

A Look At Newark High School

No. 1 in a Series

Prepared by Local School Administrators

In the past several years, secondary schools have received a hard look by the public and by professional school people, and criticism about the school—both reasonable and unreasonable—has appeared in books, pamphlets, and other literature.

The book "The American High School Today," by Conant, is one of the most valuable and constructive comments on our high schools. Local school officials believe, and report that Newark High School has been following Dr. Conant's recommendations.

A person going over the check list might say "yes" to most of Conant's recommendations. Local officials state, "except in some few instances where it would require a great deal more money to run this type of program. Under the framework of our unit system, we are restricted in number of teachers and cannot open advanced classes for small groups of students."

Some basis thinking at Newark High School in terms of pupils, is self-discipline on the part of the students and, from an educational point of view, developing a child to the greatest point of his potential. In summary the purposes of education may be said to include:

(1) Education for all American youth, regardless of sex, race, or geographic location.

(2) Effective participation in a democracy through development of ethical values and patterns of democratic living.

(3) Meeting preparatory needs of youth, which involve the social, emotional, moral, mental, and physical fitness needs for life; the development of special abilities and interests; and guidance in the achievement of a philosophy of life, self-realization, and an intelligent self-direction.

(4) Skill in developing good human relations, in cooperation, and in making progress toward maturity in social relationships with age-mates and adults.

(5) Achievement of vocational competence through opportunities for vocational exploration and orientation, and through successful entry into appropriate occupations.

(6) Stimulation of intellectual competence through arousing intellectual curiosity, engendering satisfaction in achievement, and cultivating ability for rational thinking, effective expression, and intelligent understanding.

NOW IS

THE TIME!

SPRING IS HERE! BIRDS ARE CHIRPING! FLOWERS ARE BUDDING AND HOME SEEKERS ARE BEGINNING TO STIR!

SIMONDS GARDENS: All masonry, 3 spacious bedrooms. 4½ Mts. (#1082).

TUXEDO PARK: Full basement, oil heat, garage. \$9,200. (#977).

WRANGLE HILL ROAD: Rancher with fireplace, full basement. Country living. (#1086).

MARSHALLTON HEIGHTS: 4 bedrooms, full basement, 2 baths. FHA—\$900 dn. (#1089).

BROOKSIDE: Rancher, patio and carport. FHA—\$400 dn. (#1092).

RICHARDSON PARK: 2 apts., full basement, enclosed porch. Only \$10,900. (#1096).

SILVERBROOK GARDENS: Brick, full basement, gas heat. 4½ G. I. Mts. (#1106).

DUNLINDEN ACRES: All brick, 4 bedrooms, 2 baths, only \$450 dwn. (#1108).

KIRKWOOD HIGHWAY: All masonry, 3 bedrooms, lot 85x304. A buy at \$12,900. (#1113).

BROOKSIDE: Split level, rec. room, 3½ years old. Only \$12,500. (#1115).

CHESTNUT HILL ESTATES: Split level, 3 bedrooms, rec. room, den and patio. (#1117).

BROOKLAND TERRACE: Compact bungalow, full basement, gas heat, lot 40x200. Only \$5,600. (#1118).

ELSMERE: All brick, full basement, only \$250 down. (#1119).

FOREST BROOK GLEN: New rancher, all masonry, fireplace, TV room, rec. room and basement. (#1130).

NEW CASTLE AREA: 3 bedrooms, oil heat, G. I. takeover. Only \$11,900. (#1125).

GORDY ESTATES: 3-bedroom rancher, gas heat. FHA — \$300 down. (#1127).

BRACK-EX: 2 apt. duplex, full basement, lot 50x200. Only \$14,000. (#1134).

SHERWOOD PARK: Corner lot, 3 bedrooms, basement and garage. (#1135).

KIRKWOOD GARDENS: Spacious 3 bedroom rancher, oil heat, 3 yrs. old. (#1137).

C. J. HARRIS

Realtor

SY8-6933 Anytime WY8-2231

ENdicott 8-2591

Troop 112 Girl Scouts
Win Second Class Pins

Intermediate Girl Scout Troop 112, with Mrs. Lloyd Forbes and Mrs. James Mackrell, leaders, camped at Grove Point, Md. early in April, when Scouts completed requirements for Second Class badges which they received at a court of awards on April 14 at the Newark New Century Club.

Receiving Second Class badges were Maureen Bracken, Ann Burrows, Sandra Crompton, Ellen Crowe, Barbara Forbes, Linda Handloff, Janet Herring, Barbara and Jane Keppel, Mary Kranz, Ruth Ann Mayer, Mary Lou Perry, Carol Munroe, and Barbara Thompson.

leader among secondary schools in the pupil activity program which provides time from homeroom and assembly so that these homerooms become significant social units in the school.

On the twelfth grade social studies level, a course is given to all pupils which develops an understanding of the American form of government and of the economic basis of our free society. It also helps, along with the homeroom, to develop responsibility and understanding between individuals and all students.

Within the last two years only two public high schools in the state of Delaware have had National Merit Scholars. One of those is Newark High School.

Letters have been received where visits have been made by local pupils, commenting on fine attitudes, good behavior, and good grooming.

Two evaluations of this school were made within the last two years which have commended the faculty, the board of education, and the community on the good spirit of team work between teachers and pupils, and the high morale of the student body.

SENIOR CITIZENS

Governor J. Caleb Boggs this week urged all Delawareans to participate in observance of May as Senior Citizens Month by "showing personal concern for the health, well-being and happiness of our senior citizens at home, at work and at leisure." Visits to those aged persons confined in hospitals, nursing homes and other establishments were suggested by the chief executive.

Tomato Rates No. 1 Spot
With Home Gardeners

The tomato is unchallenged as the No. 1 vegetable in the home garden according to Robert Stevens, extension service horticulturist at the University of Delaware. They grow well in a wide variety of soils but respond best to a good, well drained, loamy soil. In order to pick right through from early July until frost, it's necessary to plant at least two varieties. The early red varieties which start producing in early July if you transplant them now, are Valiant, Morton Hybrid, and Burpee's Early Hybrid. Midseason varieties include Queens, Pritchard and the old Bonny Best. Rutgers has the best quality of the late varieties.



OAKLANDS

Custom-Built

HOMES
for
YOUfor information
CALL EN 8-8315HUGH F. GALLAGHER, Jr.
Developer and Builder

Again A&P Presents Its Biggest Sale of the Year . . .

MANAGERS & CLERKS WEEK

Tremendous values and cash savings await you at A&P all this week, during our Managers and Clerks special observance of their Company's 100th Birthday Celebration. Items listed in this "ad" are only a part of the many values which have been selected by our Managers and Clerks, as those items most popular with their customers.



"Super-Right" Top Quality SIRLOIN or PORTERHOUSE

STEAKS	None Priced Higher	lb.	77¢
			(None Priced Higher)

"Super-Right" Quality BELTSVILLE

TURKEYS	5 to 9 pound	lb.	39¢
	Ready-to-Cook Turkeys		

SLICED BOILED HAM	"Super-Right" Thin Center Slices	12-oz. pkg.	89¢
FRANKFURTERS	"Super-Right" . . . 19 to 20 Franks in each bag	big 2-lb. Pliofilm bag	99¢
FRESH GROUND BEEF	lb.	55¢	3 lbs. \$1.59
DEEP SEA SCALLOPS	5-lb. box	\$2.89	lb. 59¢

Allgood Sliced Bacon	1-lb. pkg.	49¢	Canned Hams	Ty-Nee or Hormel Hams	3-lb. can	\$2.89
"Super-Right" Bologna	in the piece	49¢	Medium Size Shrimp	5-lb. box	\$3.59	lb. 73¢
Beef Liver, Allgood Bacon	lb.	49¢	Sliced Swordfish Steaks			lb. 45¢

Florida Juicy	216-Size	dozen	35¢
ORANGES		dozen	\$1.00
GOLDEN BANANAS	None Priced Higher	lb.	12¢
APPLES	Western Winesap or Roma Beauty Apples	3-lb. bag	35¢
STRAWBERRIES	California Fresh	full pint box	35¢
FROZEN PEAS	None Priced Higher	6 pks.	79¢
Banquet Pies	Beef, Turkey or Chicken	5 pks.	89¢

BUTTER	Sunnyfield Fancy Creamery	1-lb. solid	65¢	In ¼-lb. Prints	lb.	67¢
HEINZ TOMATO KETCHUP		20-oz. bottles	\$1.00			
ZION FIG BARS		2-lb. box	39¢			
KOSHER DILL PICKLES	Miller's Brand	½-gallon jar	49¢			

Banquet Chicken	whole cooked chicken	3¼-lb.	95¢	Ann Page Mayonnaise	pint	29¢	quart 49¢
Gold Cup Juice		2 quart bottles	69¢	Tomato Soup	Ann Page 20-oz. cans	99¢	10 cans 99¢
Iona Tomatoes	Also Peas, Wax Beans or cut Green Beans	4 cans	47¢	Nabisco Ritz Crackers	2 boxes	65¢	

LARGE EGGS	Crestview brown and white	2 dozen in dated cartons	79¢
EXTRA SHARP CHEDDAR CHEESE		lb.	69¢
COFFEE	Mild and Mellow	3-lb. bag	\$1.65
	EIGHT O'CLOCK	1-lb. bag	57¢

Orange Juice	Our Finest Quality	6-oz. cans	99¢
"A MANAGERS and CLERKS SPECIAL"			

BUTTER	Sunnyfield Fancy Creamery	1-lb. solid	65¢	In ¼-lb. Prints	lb.	67¢
HEINZ TOMATO KETCHUP		20-oz. bottles	\$1.00			
ZION FIG BARS		2-lb. box	39¢			
KOSHER DILL PICKLES	Miller's Brand	½-gallon jar	49¢			

Banquet Chicken	whole cooked chicken	3¼-lb.	95¢	Ann Page Mayonnaise	pint	29¢	quart 49¢
Gold Cup Juice		2 quart bottles	69¢	Tomato Soup	Ann Page 20-oz. cans	99¢	10 cans 99¢
Iona Tomatoes	Also Peas, Wax Beans or cut Green Beans	4 cans	47¢	Nabisco Ritz Crackers	2 boxes	65¢	

LARGE EGGS	Crestview brown and white	2 dozen in dated cartons	79¢
EXTRA SHARP CHEDDAR CHEESE		lb.	69¢
COFFEE	Mild and Mellow	3-lb. bag	\$1.65
	EIGHT O'CLOCK	1-lb. bag	57¢

Orange Juice	Our Finest Quality	6-oz. cans	99¢
"A MANAGERS and CLERKS SPECIAL"			

BUTTER	Sunnyfield Fancy Creamery	1-lb. solid	65¢	In ¼-lb. Prints	lb.	67¢
HEINZ TOMATO KETCHUP		20-oz. bottles	\$1.00			
ZION FIG BARS		2-lb. box	39¢			
KOSHER DILL PICKLES	Miller's Brand	½-gallon jar	49¢			

Banquet Chicken	whole cooked chicken	3¼-lb.	95¢	Ann Page Mayonnaise	pint	29¢	quart 49¢
Gold Cup Juice		2 quart bottles	69¢	Tomato Soup	Ann Page 20-oz. cans	99¢	10 cans 99¢
Iona Tomatoes	Also Peas, Wax Beans or cut Green Beans	4 cans	47¢	Nabisco Ritz Crackers	2 boxes	65¢	

LARGE EGGS	Crestview brown and white	2 dozen in dated cartons	79¢
EXTRA SHARP CHEDDAR CHEESE		lb.	69¢
COFFEE	Mild and Mellow	3-lb. bag	\$1.65
	EIGHT O'CLOCK	1-lb. bag	57¢

Orange Juice	Our Finest Quality	6-oz. cans	99¢
"A MANAGERS and CLERKS SPECIAL"			

BUTTER	Sunnyfield Fancy Creamery	1-lb. solid	65¢	In ¼-lb. Prints	lb.	67¢
HEINZ TOMATO KETCHUP		20-oz. bottles	\$1.00			
ZION FIG BARS		2-lb. box	39¢			
KOSHER DILL PICKLES	Miller's Brand	½-gallon jar	49¢			

Banquet Chicken	whole cooked chicken	3¼-lb.	95¢	Ann Page Mayonnaise	pint	29¢	quart 49¢
Gold Cup Juice		2 quart bottles	69¢	Tomato Soup	Ann Page 20-oz. cans	99¢	10 cans 99¢
Iona Tomatoes	Also Peas, Wax Beans or cut Green Beans	4 cans	47¢	Nabisco Ritz Crackers	2 boxes	65¢	

LARGE EGGS	Crestview brown and white	2 dozen in dated cartons	79¢
EXTRA SHARP CHEDDAR CHEESE		lb.	69¢
COFFEE	Mild and Mellow	3-lb. bag	\$1.65
	EIGHT O'CLOCK	1-lb. bag	57¢

Orange Juice	Our Finest Quality	6-oz. cans	99¢
"A MANAGERS and CLERKS SPECIAL"			

BUTTER	Sunnyfield Fancy Creamery	1-lb. solid	65¢	In ¼-lb. Prints	lb.	67¢
HEINZ TOMATO KETCHUP		20-oz. bottles	\$1.00			
ZION FIG BARS		2-lb. box	39¢			
KOSHER DILL PICKLES	Miller's Brand	½-gallon jar	49¢			

Banquet Chicken	whole cooked chicken	3¼-lb.	95¢	Ann Page Mayonnaise	pint	29¢	quart 49¢
Gold Cup Juice		2 quart bottles	69¢	Tomato Soup	Ann Page 20-oz. cans	99¢	10 cans 99¢
Iona Tomatoes	Also Peas, Wax Beans or cut Green Beans	4 cans	47¢	Nabisco Ritz Crackers	2 boxes	65¢	

LARGE EGGS	Crestview brown and white	2 dozen in dated cartons	79¢
EXTRA SHARP CHEDDAR CHEESE		lb.	69¢
COFFEE	Mild and Mellow	3-lb. bag	\$1.65
	EIGHT O'CLOCK	1-lb. bag	57¢

Social Events

SKILLINGTON-AMISON ENGAGEMENT

Mr. and Mrs. Robert W. Skillington, of West Grove, Pa., have announced the engagement of their daughter, Miss Kay Althea Skillington, to Mr. Francis F. Jamison, son of Mr. and Mrs. Ernest M. Jamison, of 87 North College Ave.

Miss Skillington is a graduate of Avon-Grove High School, West Grove, and Goldy Beacom School of Business. She is employed by the law firm of Connolly, Cooch and Rose, Wilmington.

Mr. Jamison is a graduate of Newark High School, Newark, Del., and is employed by the Rittenhouse Motor Company of Newark.

MRS. HARRIS HEADS MOTHERS OF DEMOLAY

The Mothers' Circle of the Robert S. Gallaher chapter, Order of Demolay, has been organized and installed officers with President Mrs. M. Benson Harris, Vice-President Mrs. Barbara Livingston, Secretary Mrs. Charles Schultheiss, and Treasurer Mrs. Jack Christman.

Mrs. Harris has named the following committees: Sunshine, Mrs. Nancy Smith; Installation, Mrs. Livingston and Mrs. Smith; Ways and Means, Mrs. Charles Long, Sr.; Membership, Mrs. William Stockton; Entertainment, Mrs. Elmer Crossan; Telephone, Mrs. Smith; Mrs. Crossan, and Mrs. Richard Potter; Audit, Mrs. John Link; Publicity, Mrs. Potter; and Chaplain, Mrs. William Mote.

Meetings are held in the Masonic Temple the first and third Wednesdays of each month.

Activities for the newly organized group included a bake sale on April 24 under chairmanship of Mrs. Richard Potter.

A covered dish supper will be served at the Masonic Temple this Saturday at 5 p.m.

ANNIVERSARY LUNCHEON PLANNED BY DAR GROUP

The Capt. William McKennan Chapter, Daughters of the American Revolution, will observe its 11th anniversary with a covered dish luncheon and meeting this Saturday at noon in Red Clay Creek Presbyterian Church.

Officers will be installed and a report of the Continental Congress will be given by the retiring regent, Mrs. Sara P. Evans. American music will be the subject of the program arranged by Mrs. Franklin Jarmon, and presented by Mrs. Jesse Harmon of Hockessin, pianist; and Mrs. Ned Beard of Limestone Gardens, soloist.

Mrs. T. William Elliott, Mrs. Paul R. Leach, Jr., and Mrs. George Houchin are the committee for luncheon arrangements.

FIRST PRES. WOMEN HOLD LUNCHEON

The Women's Association of the First Presbyterian Church will have its annual luncheon meeting at the church on Monday, May 4, at 12 o'clock. Miss Anna Frazer will be in charge of arrangements for the luncheon.

Miss Sue Althouse, former assistant to the pastor at West Church in Wilmington, will talk on "World Mission of the Church as Reflected Through Work in Japan."

A nursery will be provided.

PLEASANT VALLEY CLUB TO VISIT AT LONGWOOD

The Pleasant Valley Home Demonstration Club will start from the home of Mrs. William A. Johnson at 10 a.m. next Tuesday for a trip to Longwood Gardens.

The club is planning a tea for their next regular meeting on May 7 at Ott's Chapel, beginning at 1 p.m.

BROOKSIDE CLUB PLANS OPEN HOUSE PROGRAM

In observance of National Home Demonstration Week, May 3-9, the Brookside Home Demonstration Club will hold open house tea at the Brookside Community Building this Sunday from 1 to 4 p.m.

Committee chairmen include: Tables, Mrs. James Newman; Cooks, Mrs. Richard Ellis; Advertising, Mrs. Joseph Zappo, Jr.; Building, Mrs. Richard Potter; Displays, Mrs. Elwood Rittenbender; Tableware, Mrs. Harold Cooke and Mrs. Don Crossan; Refreshments, Mrs. Walter Mickle, Jr., Mrs. Joseph Kuenzle, Mrs. Albertus Waters; Napkins, Mrs. Donald Hughes; Decorations, Mrs. George Watrous; and Hostesses, Mrs. John Askin.

Mrs. Robert Rowlands, and Mrs. Richard Potter are in charge of a window display to be placed in the Brookside Shopping Center during the week, and a prize drawing for refurnishing furniture to be held next Wednesday at 1 p.m. in Agricultural Hall will be attended by Mrs. Potter, Mrs. Hughes and Mrs. Waters.

Reservations for the luncheon in Dover on May 6 must be made with Mrs. Rowlands by May 1.

JOB'S DAUGHTERS INSTALLATION MAY 13

Bethel No. 3, International Order of Job's Daughters, Newark, will hold public installation of officers at 8 o'clock, on Wednesday evening, May 13, in the Masonic Temple, Newark.

Retiring Honored Queen, Virginia Artz, will be the installing officer assisted by Marjorie Correll of Bethel No. 3, Donna Eveland, Bethel No. 4, Dorothy Southerly, Bethel No. 4, Geraldine D'Angelo, Bethel No. 3, and Francis Florence Williams.

Miss Helen Ray, the daughter of Mr. and Mrs. Jesse S. Ray of 593 Hollingsworth Avenue, Elkton, will be installed as Honored Queen. Other officers will be: Senior princess, Betsy Ray; Junior princess, Dale Reynolds; Guide, Barbara Sager; Marshal, Suzanne Argo; Chaplain, Sharon Young; Recorder, Jull Conlon; treasurer, Becky O'Neal; librarian, Leah Bredde; J.C. Custodian, Charlotte Fuller; J.C. Custodian, Andria Cole; 1st messenger, Nancy Ennis; 2nd messenger, Geny Fuller; 3rd messenger, Carol Artz; 4th messenger, Alaire Williams; 5th messenger, Diane Donnell; Inner Guard, Mildred Hebb.

FASHION SHOW—PARTY JEWELRY COMMUNITY

The Women's Branch of the Newark Jewish Community will have a children's fashion show and dessert card party next Tuesday, at 7:30 p.m. at the Brookside Elementary School.

Mrs. Elaine Markel is in charge of arrangements; Mrs. Fran Rothenstein, tickets; Mrs. Cynthia Stoll, prizes; Mrs. Fay Shatzkin, publicity; Mrs. Dorothy Kutner, fashions; Mrs. Estelle Linden, fashion co-ordinator and Mrs. Lorraine Galinsky, refreshments.

There will be door and table prizes. Cards will be supplied. Tickets may be purchased at the door.

FOR RENT APARTMENTS

Furnished or Unfurnished. One or Two Bedrooms. Elkton Rd., Newark. PHONE EN 8-3357

C. T. "PETE" CROSSAN Electrical Contractor

One Outlet or Complete House Wiring. CALL EN 8-6022

NEWARK BEAUTY SHOP

Evelyn Wright Love. Open Evenings by Appointment (Free Parking in Rear). Call EN 8-3373 or EN 8-6319

CONSTANCE SMITH Tailoring—Alterations

Invisible Mending—Dressmaking. 65 E. Main St.

BLANCHE MAE EVERETT SLIP COVERS, DRAPES AND UPHOLSTERING

Estimates free with or without material. Newark, Del. Rt. 1—Oglethorpe Rd. Phone EN 8-6405

LITTLE LEAGUE and BASEBALL SHOES

PILNICK'S SHOE STORE. 48 E. Main St.

Personals

A general meeting of all circles of the Women of St. Paul's will be held at 8 p.m. next Tuesday at the home of Mrs. William Burke, 540 Capitol Trail, Mrs. Harold Dute, program chairman, will discuss "JCLU" Joint Commission of Lutheran Unity.

Miss Lois Brandt of Washington, D.C. is a house guest of her brother-in-law and sister, Mr. and Mrs. Arthur Tomhave, 20 West Main Street.

Word has been received of the birth of a son to M/Sgt. and Mrs. Robert Gregg on Thursday, April 23, at the base hospital Sufferage Air Base, Michigan. There are two other sons in the Gregg family, Butch and Mark.

Mrs. F. W. Johns, Jr., president of the Newark New Century Club will entertain club officers and committee chairmen at her home next Monday and Wednesday for dessert bridge.

Mrs. Robert C. Lewis will spend the coming weekend in Washington, D.C. She will be the guest of her son, Mr. Wilson Lewis and family.

The annual meeting and luncheon of the Mental Health Association was held today in the Gold Ballroom of the Hotel DuPont.

Francis J. Braceland, M.D. psychiatrist-in-charge at the Institute of Living in Hartford, was guest speaker, his subject "Mental Health and the Individual."

The marriage of Miss Carolyn J. Guthrie and Mr. Richard D. Wilds took place Saturday, April 18, in New London, Pa. Methodist Church. The Rev. William J. Keidler, pastor, officiated.

The bride is the daughter of Mr. and Mrs. C. Edwin Guthrie, Sr. of Kennett Square. Mr. Wilds is the son of Mr. and Mrs. Walter E. Wilds of Larchmont.

Mrs. Wilds is a teacher in the Kemblesville, Pa. school.

Miss Miriam Tull of Pocomoke City, Md., is a house guest this week of her brother and sister-in-law, Rev. and Mrs. Robert W. Tull, 1001 Nottingham Road.

Mrs. Rodney Dann, Mrs. Rees Jarman, Mrs. David Eastburn and Mrs. Raymond W. Helm attended the 68th Continental Congress of the DAR held in Washington, D.C., last weekend.

Mrs. Robert W. Tull and children, Susan and Robin, spent several days last week visiting relatives in New Church, Va., and Pocomoke City, Md., while Rev. Tull was on the preaching mission as the Evangelist at Cool Spring Presbyterian Church, Georgetown.

Mrs. George Scout, past Department President of the American Legion Auxiliary will entertain all past presidents at a luncheon on Saturday at the Wayside Inn in Smyrna.

Miss Irene Markert and Miss Dorothy Markert of 716 Chestnut Hill Road, have been entertaining their mother Mrs. L. G. Markert of Milford.

Recent guests at the home of Mr. and Mrs. Dick Shively, 40 E. Stephen Dr., were Mrs. Shively's brother and sister-in-law, Mr. and Mrs. Stanley Moline of Allentown, Pa., and parents Mr. and Mrs. G. A. Moline of Wilmington.

Mr. and Mrs. E. Ross Winchler of Mount Vernon spent the past weekend visiting with their son and daughter-in-law, Mr. and Mrs. Lee Winchler of Mercer Dr.

Mr. and Mrs. Charles Morgan of 32 Martindale Dr. had as guests over the past weekend Mr. and Mrs. James Harlow, Mrs. Morgan's parents, and Mr. Michael Morgan, Mr. Morgan's mother, from Long Island, N.Y.

Mrs. Ralph Betty, Mrs. Helder Darrell and Mrs. Harold Stanley will attend the Home Demonstration Day in Dover on May 6.

J. A. O'Daniel Unit No. 10 American Legion Auxiliary will meet in the Post Home—George Reed Village on Monday evening, May 4.

The annual spring luncheon of the First Presbyterian Church will be held Monday, May 4, at 12 noon in the church school auditorium.

Mr. and Mrs. John R. Fader, Mrs. James M. Conner and Miss Winifred Fader are visiting in Beckley, W. Va., this week.

W.S.C.S. CIRCLES MEET TUES. MAY 5

Circles of the W.S.C.S. Newark Methodist Church will meet next Tuesday as follows:

Circle 1—Mrs. Earl Dawson, 243 W. Main St. at 8 p.m.

Circle 2—Mrs. Laura Nichols, 182 Orchard Rd. at 8 p.m.

Circle 3—Mrs. Ernest Jeffrey, Coventown Rd. at 8 p.m.

Circle 4—Mrs. Robert Davis, 54 E. Cleveland Ave. at 8 p.m.

Circle 5—Mrs. Leighton Jackson, 104 Old Oak Rd. at 8 p.m.

Circle 6—Mrs. Thomas F. Manns, 57 W. Park Place at 1:30 p.m.

Circle 7—Mrs. Edward Ginther, 121 W. Main St. at 1:30 p.m.

Circle 8—Mrs. Leon Ryan, Sr., 409 Nottingham Rd. at 1:30 p.m.

Circle 9—Mrs. Henry R. Folsom, Jr., 2 Marlyn Drive, at 10:30 a.m.

Circle 10—Mrs. Hobart Hare, Glasgow Rd. at 10:30 a.m.

ST. ANDREWS WOMEN MEET MAY 5

The evening circle of the Women's Society of St. Andrews United Presbyterian Church in Brookside will meet on May 5 at 8:00 at the home of Mrs. Harry Davidson, 52 Chauker Drive, Brookside. Mrs. Frank Kintzler will be co-stress. Mrs. Herbert Rosdinger will be in charge of devotions and Bible study. All women who are members or friends of St. Andrews are invited to attend this meeting. For information concerning the activities of the circle or for transportation, please contact Mrs. William Elasing in Brookside.

"Mother and Children" banquet held annually by the society will be at the church on the evening of May 12. All women of the church are welcome to attend this event.

LEGION AUXILIARY MEETS MONDAY, MAY 4

The American Legion Auxiliary will meet Monday evening, May 4, at 8 o'clock at the American Legion Home, Delaware Circle. George Reed will preside for the annual poppy sale will be presented by the chairman, Mrs. Conrad K. D. Lewis.

NEWARK DEM. CLUB PLANS SPECIAL WEEK

The Newark Home Demonstration Club will hold its annual tea this Sunday, at 2:30 p.m. in observance of National Home Demonstration Week. Mrs. Edward Spear will be in charge of refreshments.

Speakers in the symposium on "Woman's Place in the Space Age" will include Dr. Sam Gwin, state 4-H leader; and Margaret Black, student counselor, University of Delaware.

CLASSIFIED

CARD OF THANKS
I wish to thank relatives, friends, neighbors and employees of the Continental Diamond Fibre Corporation for their many expressions of sympathy shown during my recent bereavement in the death of my wife, Elsie M. Biansfield.

Howard C. Biansfield.

COVERED DISH SUPPER PYTHIAN SISTERS

A covered dish supper will be held this Friday at 6:30 by members of Friendship Temple No. 6, Pythian Sisters to which the public is invited in Redmen's Hall, Benny Street.

LOCAL O.E.S. MEETS THURSDAY, MAY 7

Newark Chapter 10, Order of the Eastern Star, will honor grand deputy lecturer, Mrs. Ida Case, at a meeting held May 6 at 8 p.m. at the home of Mrs. Curtis Wallace, 109 Neptune Drive, North Star.

NORTH STAR COUNTRY GARDENERS

The North Star Country Gardeners met at the home of Mr. and Mrs. Donald Wright, for their April meeting. Curtis Wallace, Jr., president, introduced the speaker, Mark Hagmann, from Philadelphia.

Mr. Hagmann, a teacher by profession, has gained semi-professional standing as a photographer and has been complimented by Eastman for his quality pictures.

Mr. Hagmann showed slides of the West and unusual, colorful flowers found in "The Barrens" in New Jersey.

The May meeting will be held at the home of Mr. and Mrs. William Krall, Venus Drive, Mrs. William Benthum, chairman of the 1959 Spring Flower Show, will demonstrate flower arranging.

W.S.C.S. CIRCLE NO. 3 MEETS TUES., MAY 5

Circle No. 3, Woman's Society of Christian Service, Newark Methodist Church will meet Tuesday with Mrs. Ernest Jeffrey on Coventown Road, Elkton, Md.

Miss Doris Hoover will speak on children and missions.

University Women's Club Plans Luncheon Finale

A luncheon meeting on Wednesday, May 13 at 12:30 p.m. at the Bankers Club will wind up the University Women's Club program for the year.

Mrs. Bruce Dearing and Ruth Alford have asked Mrs. Dale Bray to entertain at the luncheon with a monologue.

A business meeting will precede the program and officers for next year will be elected.

Mrs. William A. Thompson and Mrs. Edward Pellicciaro are in charge of reservations, which must be made before May 6.

MacInnes Presents Awards To Pack 255 Cub Scouts

Awards were presented to Cub Scouts of Pack 255 by Phil MacInnes, substituting for Cubmaster Randy Reed at last Friday's meeting of the pack in the Newark Methodist Church.

Bobcat pins were presented Steve Deck and Stewart Handloff; Wolf arrows to Glenn Lomax, Gerry Carpenter, and Bill MacInnes; Bear arrows to David Foster; and Webelos awards to Tom Worrall and Ed Berg.

Graduation certificates were presented to William Reinhardt, Perry Mitchell and Edward Berg; denner and assistant denner stripes to Craig Reed, Dale Coover, Kirby Bailey, Dan Hermann, and Bob Forsaker; and service stars to Kirk Bailey, Bill Thorpe, Tom Worrall, and Tom Siklas.

Montero, Sports Speaker At K. of C. Anniversary

Sallies' Coach "Dim" Montero was the guest speaker at a Sports Night program conducted at Holy Angels School on April 22 in observance of the first anniversary of Newark's St. Michael's Council, Knights of Columbus.

Grand Knight Robert Gorski was presented the council charter by District Deputy Andy Vallante; and Gorski and Francis Staudt were named delegates to the state K. of C. convention, with George Kohns and Richard Dressel, alternates.

Leonard J. Kalns was chairman for the Knights' night.

BIRTHS

Memorial Hospital
Mr. and Mrs. Harold Hambleton, Jr., April 22, a daughter.
Mr. and Mrs. Arthur Abrams, April 23, a daughter.

Delaware Hospital
Mr. and Mrs. Robert J. Hammel, 27 McCord Drive, April 23, a daughter.
Mr. and Mrs. Charles Kenneth Wallace, Jr., 612 Shue Drive, April 23, a son.

Wilmington General Hospital
Mr. and Mrs. Raymond Bias, 33 Ray Street, April 26, a son.
Mr. and Mrs. Thomas Ray Binkley, 602 South Chapel Street, April 27, a son.

Help Wanted

EXPERIENCED WAITRESSES—Newark Dining Room. Apply 9 a.m. to 5 p.m. 4-2-54.
WAITRESS WANTED—Apply in person. Delux Candy Shop, 7 a.m. to 3 p.m. 4-2-54.

SMALL PROFESSIONAL OFFICE desires private secretary. Pleasant working conditions 5 day week. Typing, shorthand, dictaphone and mimeographing necessary. Write Box 50, EN 8-1902.

SALSLADIES—Part-time. Day & evening hours. Apply Newark Department Store. 4-2-54.
FEMALE—Ages 20-30. No experience necessary. Counter work. Apply in person. M&M Cleaners, Newark, Del. 4-2-54.

SALSLADY wanted in ladies wear. Experienced only. Good salary. Write letter of application to Box 4-2-54.

RELIABLE COMPANION housekeeper. care for elderly woman able to cook about but frail. May live in. References. EN 8-1902.

MATURE WOMAN—for kitchen of small restaurant. Hours 11 a.m. to 3 p.m. Experience not nec. Apply Rustic Inn, 501 Capitol Trail.

For Rent
ROOM—Gentlemen preferred. Home privileges. 1314 Nottingham Road. Phone EN 8-3004 after 5:00 p.m.

APARTMENT—155 E. Main St. Adults only. Call EN 8-1451. 4-2-54.
WALLPAPER STEAMER—Call Sheaffer's Wallpaper & Paint Store. EN 8-5507.

OFFICE SPACE—44 East Main St. Call Mrs. Spencer. EN 8-1655. 10-22-54.
HOUSE—4 bedrooms, 2 baths, storm and screen, venetian blinds. Call EN 8-1475 after 5 p.m. 4-2-54.

APARTMENT—Furnished. Also unfurnished. EN 8-2295. 12-11-54.
SEVEN ROOMS IN NEWARK—Love home. Large grounds. Electric dishwasher. Garage. \$100. EN 8-534.

APARTMENTS—1 or 2 bedrooms. \$82.50—\$97.50. Contact Rowland Ginn. 1314 Nottingham Road. EN 8-3004 after 5:00 p.m.

W.F. HAY RENTALS—\$85 and up. Handy Patterson & Schwartz, 71 E. Main St. EN 8-6748.

ONE OR TWO BEDROOM APARTMENT—Garage, yard privileges. Lots of storage. Good location. Available May 1. Call after 6 p.m. EN 8-6551. \$40.00.

ROOM FOR GENTLEMAN—Semi-furnished. Bath. Private entrance. EN 8-4765. 4-2-54.
APTS.—See Mr. Nardo, 16 or 24 Academy St. EN 8-2953.

APARTMENT—3 rooms, bath with large store room. Adults only. Call EN 8-1217.

Found
A BETTER WAY TO WASH YOUR clothes. Use a Frigidaire Automatic Washer from Newark Electric. Price 179.55 with trade. 2-9-54.

Wanted
1000 RUGS TO CLEAN—Geo. F. Lang Co., Rug Cleaners, 407 N. Adams St. Phone Wilmington OL 5-1855. 8-20-54.

SMALL RADIOS—As charity gifts for hospital patients. Call Bill Durlock. EN 8-1664. 4-17-54.

PIANO TUNING & REPAIRING—Estimates cheerfully given. Mr. Harb. EN 8-5467. 1-8-54.

BAVEY PLAY PEN—In good condition. Call EN 8-9063 after 5 p.m. 4-30-54.

MANS TENNIS RACKET—In good condition. Call EN 8-2165. 4-30-54.

USED PORTA-CRIB—Phone EN 8-5821. 4-30-54.

Situation Wanted
ALL KINDS OF LAWN-YARD WORK. Phone EN 8-1250. 12-11-54.

ADEN'S FOR YOUNG FOLKS
See Our NEW PRE-TEEN DEPT. 50 E. MAIN ST. in NEWARK

Bing's Bakery

NEWARK'S MAIN STREET AND IN BROOKSIDE

APPLESAUCE CREAM CHEESE ROLL—A pleasant combination
BUTTERSCOTCH CONFECTION ROLLS—A real favorite
BUTTER CINNAMON LOAF—A wonderful coffee cake
SHOO-FLY PIE—GERMAN CHOCOLATE CAKE

For Mother's Day, order soon
COCONUT LAYER CAKE—With a hand-made rose
BEAUTIFULLY DECORATED HEART-SHAPED CAKE

Other decorated cakes in sizes to suit each family
Phone EN 8-2226 in Newark—in Brookside, EN 8-2802

RHODES Drug Stores, Inc.

C. Emerson Johnson, Pres.
(Serving This Area For Over 100 Years)

Brookside Shopping Center 36 E. Main St.
Brookside, Del. Newark, Del.
EN 8-2601 EN 8-8581

NITE PHONE: After 10 P.M. EN 8-1593

Prescriptions Called for & Delivered

EASTMAN KODAKS AND FILM
WHITMAN'S CANDIES
JANE LOGAN ICE CREAM

We serve the suburban area from both stores with our deliveries.
Charge Accounts Are Welcomed.

Business Opportunities

MAN WANTED—Unexpected change. Quota vacancy in N. New Castle Co. Splendid opportunity to take over established business. Many Dealers earning \$100 per week & up. For details write Rawleigh's Dept. DEC-12-RGC, Chester, Pa. 3-19-74c

Help Wanted
EXPERIENCED WAITRESSES—Newark Dining Room. Apply 9 a.m. to 5 p.m. 4-2-54.
WAITRESS WANTED—Apply in person. Delux Candy Shop, 7 a.m. to 3 p.m. 4-2-54.

SMALL PROFESSIONAL OFFICE desires private secretary. Pleasant working conditions 5 day week. Typing, shorthand, dictaphone and mimeographing necessary. Write Box 50, EN 8-1902.

SALSLADIES—Part-time. Day & evening hours. Apply Newark Department Store. 4-2-54.
FEMALE—Ages 20-30. No experience necessary. Counter work. Apply in person. M&M Cleaners, Newark, Del. 4-2-54.

SALSLADY wanted in ladies wear. Experienced only. Good salary. Write letter of application to Box 4-2-54.

RELIABLE COMPANION housekeeper. care for elderly woman able to cook about but frail. May live in. References. EN 8-1902.

MATURE WOMAN—for kitchen of small restaurant. Hours 11 a.m. to 3 p.m. Experience not nec. Apply Rustic Inn, 501 Capitol Trail.

For Rent
ROOM—Gentlemen preferred. Home privileges. 1314 Nottingham Road. Phone EN 8-3004 after 5:00 p.m.

APARTMENT—155 E. Main St. Adults only. Call EN 8-1451. 4-2-54.
WALLPAPER STEAMER—Call Sheaffer's Wallpaper & Paint Store. EN 8-5507.

OFFICE SPACE—44 East Main St. Call Mrs. Spencer. EN 8-1655. 10-22-54.
HOUSE—4 bedrooms, 2 baths, storm and screen, venetian blinds. Call EN 8-1475 after 5 p.m. 4-2-54.

Rehoboth Coach Frank Coveleski Named Gold Team Pilot For All-Star Benefit

Frank Coveleski, veteran coach at Rehoboth Beach High School, last night was appointed head coach of the Gold squad that will meet the Blues in the Fourth Annual Delaware All-Star High School Football Game on Saturday afternoon, Aug. 22, at Delaware Stadium in Newark to benefit the Delaware Foundation for Retarded Children.

Coveleski today announced that his two assistants will be Edward Hurley, of Rehoboth, and Dick Smith, Caesar Rodney High School coach.

To Coveleski, former Penn State halfback, goes the assignment of trying to bring the Gold All-Stars their first victory in this fixture among June graduates.

His predecessors, Bill Horney of Smyrna; Bobby Dowd of Seaford, and Don Miller of Newark, were outpointed by the upstate Blues.

Coveleski has been turning out perennial winners at Rehoboth, despite a small student body. In 12 years at the resort school, he has won 56 games, lost 41 and tied seven and has had only three teams finish below .500. He hasn't had a loser since '51. Last autumn, Rehoboth posted a 4-3-1 log.

A native of Erie, Pa., Coveleski attended Union City High in Erie County and was noted "outstanding athlete" of his senior class after excelling in football, basketball and baseball.

At Penn State, he played half-back for Coach Bob Higgins, and second base on the baseball team under Coach Joe Bedenk. He graduated in 1940, and later earned his master's degree at Pitt. Coveleski began his coaching career at Union City High for one year, switched to Atlantic City, N.J., for three and has been at Rehoboth ever since.

The new All-Star strategist is a one-man head coaching corps at Rehoboth, where he also bosses basketball, baseball and track. In 11 basketball seasons, his teams have won 141 games and lost 41. In baseball, his record is 70 up and 35 down. Coveleski, in addition, is athletic director. For the last eight summers, he captained the beach patrol at Rehoboth.

Boundary Change For Blue & Gold Teams Announced

A change in the personnel boundary line for dividing teams in the fourth annual Delaware All-Star High School Football Game was announced today.

The new dividing line is the southern boundary of the City of Wilmington, extending west on the Lancaster Pike to Pennsylvania.

All high schools north of this line will supply players for the Blue team—schools south of the border will represent the Golds.

This change will put Conrad High School and Sanford Prep—formerly with the Blues—with the Gold squad.

Sanford barely becomes eligible for the Gold, being on the southern side of Lancaster Pike.

This year's game, which again will benefit the Delaware Foundation for Retarded Children, will be played Saturday afternoon, Aug. 22, at Delaware Stadium in Newark.

Rain, Default Cost Hens Swardmore Golf Match

A defaulted match proved costly to Delaware's golf team yesterday as Coach Irv Wisniewski's linksmen dropped a 10-8 decision to Swardmore on the Louviers course.

The default, in the final match, was caused by Jimmy Hagen's failure to appear. The Hen golfer thought the contest was postponed because of threatening weather.

Delaware was left with a 2-2 record.

Want a Beautiful Lawn? See Newark Lumber Company!

You will do better with TURF BUILDER

The surface beauty of your lawn depends on what you feed the roots. Never any dust or dirt with Turf Builder; no manure odor; so easy to use . . . less than half the usual weight.

SAVE Turf Builder for 10,000 sq. ft. reg. \$9.95; Scott's Spreaders 18" reg. \$16.95. ONLY \$7.00 \$18.90

STOP DAMPNES In Basement Walls!

Apply THOROSEAL

Seals water out and decorates your masonry walls at the same time. Just mix THOROSEAL with water and brush on!

50 lbs. \$7.50 25 lbs. \$4.25

Newark Lumber Company
221 E. Main Street
Open daily 8 to 5:30; Saturday 8 to noon
Phone EN 8-8504; Wilmington OL 6-9768
HAVE A CUP OF COFFEE WITH US WHILE YOU'RE WAITING

Hurley, his All-Star aide, has been assisting Coveleski at Rehoboth for eight years. A graduate of Seton Hall College, he received his master's degree at Rutgers. Prior to his Rehoboth appointment, he coached three years at Glen Ridge High in New Jersey and played three years of Army football with Fort Benning, Ga.

By the time of the All-Star Game, Smith no longer will be with Caesar Rodney High, for he recently resigned to join the athletic staff at Conrad High School. The change will become effective with the next term. He is 28, a graduate of Fairmount State, West Virginia College and has been at Caesar Rodney for four football seasons. His last two teams have been outstanding with 13 wins, three defeats and one tie.

At Penn State, he played half-back for Coach Bob Higgins, and second base on the baseball team under Coach Joe Bedenk. He graduated in 1940, and later earned his master's degree at Pitt. Coveleski began his coaching career at Union City High for one year, switched to Atlantic City, N.J., for three and has been at Rehoboth ever since.

The new All-Star strategist is a one-man head coaching corps at Rehoboth, where he also bosses basketball, baseball and track. In 11 basketball seasons, his teams have won 141 games and lost 41. In baseball, his record is 70 up and 35 down. Coveleski, in addition, is athletic director. For the last eight summers, he captained the beach patrol at Rehoboth.

Sanford barely becomes eligible for the Gold, being on the southern side of Lancaster Pike.

This year's game, which again will benefit the Delaware Foundation for Retarded Children, will be played Saturday afternoon, Aug. 22, at Delaware Stadium in Newark.

A defaulted match proved costly to Delaware's golf team yesterday as Coach Irv Wisniewski's linksmen dropped a 10-8 decision to Swardmore on the Louviers course.

The default, in the final match, was caused by Jimmy Hagen's failure to appear. The Hen golfer thought the contest was postponed because of threatening weather.

Delaware was left with a 2-2 record.

Sanford barely becomes eligible for the Gold, being on the southern side of Lancaster Pike.

This year's game, which again will benefit the Delaware Foundation for Retarded Children, will be played Saturday afternoon, Aug. 22, at Delaware Stadium in Newark.

A defaulted match proved costly to Delaware's golf team yesterday as Coach Irv Wisniewski's linksmen dropped a 10-8 decision to Swardmore on the Louviers course.

The default, in the final match, was caused by Jimmy Hagen's failure to appear. The Hen golfer thought the contest was postponed because of threatening weather.

Delaware was left with a 2-2 record.

Sanford barely becomes eligible for the Gold, being on the southern side of Lancaster Pike.

This year's game, which again will benefit the Delaware Foundation for Retarded Children, will be played Saturday afternoon, Aug. 22, at Delaware Stadium in Newark.

A defaulted match proved costly to Delaware's golf team yesterday as Coach Irv Wisniewski's linksmen dropped a 10-8 decision to Swardmore on the Louviers course.

The default, in the final match, was caused by Jimmy Hagen's failure to appear. The Hen golfer thought the contest was postponed because of threatening weather.

Delaware was left with a 2-2 record.

Sanford barely becomes eligible for the Gold, being on the southern side of Lancaster Pike.

This year's game, which again will benefit the Delaware Foundation for Retarded Children, will be played Saturday afternoon, Aug. 22, at Delaware Stadium in Newark.

A defaulted match proved costly to Delaware's golf team yesterday as Coach Irv Wisniewski's linksmen dropped a 10-8 decision to Swardmore on the Louviers course.

The default, in the final match, was caused by Jimmy Hagen's failure to appear. The Hen golfer thought the contest was postponed because of threatening weather.

Delaware was left with a 2-2 record.

Sanford barely becomes eligible for the Gold, being on the southern side of Lancaster Pike.

This year's game, which again will benefit the Delaware Foundation for Retarded Children, will be played Saturday afternoon, Aug. 22, at Delaware Stadium in Newark.

A defaulted match proved costly to Delaware's golf team yesterday as Coach Irv Wisniewski's linksmen dropped a 10-8 decision to Swardmore on the Louviers course.

The default, in the final match, was caused by Jimmy Hagen's failure to appear. The Hen golfer thought the contest was postponed because of threatening weather.

Delaware was left with a 2-2 record.

Sanford barely becomes eligible for the Gold, being on the southern side of Lancaster Pike.

This year's game, which again will benefit the Delaware Foundation for Retarded Children, will be played Saturday afternoon, Aug. 22, at Delaware Stadium in Newark.

A defaulted match proved costly to Delaware's golf team yesterday as Coach Irv Wisniewski's linksmen dropped a 10-8 decision to Swardmore on the Louviers course.

The default, in the final match, was caused by Jimmy Hagen's failure to appear. The Hen golfer thought the contest was postponed because of threatening weather.

Delaware was left with a 2-2 record.

Sanford barely becomes eligible for the Gold, being on the southern side of Lancaster Pike.

This year's game, which again will benefit the Delaware Foundation for Retarded Children, will be played Saturday afternoon, Aug. 22, at Delaware Stadium in Newark.

A defaulted match proved costly to Delaware's golf team yesterday as Coach Irv Wisniewski's linksmen dropped a 10-8 decision to Swardmore on the Louviers course.

The default, in the final match, was caused by Jimmy Hagen's failure to appear. The Hen golfer thought the contest was postponed because of threatening weather.

Delaware was left with a 2-2 record.

Sanford barely becomes eligible for the Gold, being on the southern side of Lancaster Pike.

This year's game, which again will benefit the Delaware Foundation for Retarded Children, will be played Saturday afternoon, Aug. 22, at Delaware Stadium in Newark.

A defaulted match proved costly to Delaware's golf team yesterday as Coach Irv Wisniewski's linksmen dropped a 10-8 decision to Swardmore on the Louviers course.

The default, in the final match, was caused by Jimmy Hagen's failure to appear. The Hen golfer thought the contest was postponed because of threatening weather.

Delaware was left with a 2-2 record.

THE NEWARK POST

The Newark Post, Newark, Delaware, Thursday, April 30, 1959

Eight

Yellowjackets Beat Conrad As Pollari Hurls One-Hitter

Newark's Bill Pollari shut out the Redskins with a one-hitter last Friday as Coach Joe Talarowski's Yellowjackets stopped Conrad, 3-1, at Woodcrest.

Pollari struck out 10 men in halting the Redskins' two-game victory march in the Blue Hen Conference. The Yellowjackets scored their three runs in the second inning as Centerfielder Lloyd Wells; Adams at third base; and Catcher Walt Mackey crossed the plate.

Pollari, Wells, and Mackey came up with the three Newark hits off the combined offerings of Conrad's Bruce Clinton and Ralph Cicconi. All Blue Hen Conference contests were postponed Tuesday because of rain.

First Hole-In-One Scored By Woman At Newark Course

Mrs. Marvin Barrett scored a hole-in-one Sunday at the Newark Country Club, using a No. 6 iron on the 129-yard drive. It was the first "ace" scored by a woman golfer on the Newark course.

She played in a foursome with her husband and Mr. and Mrs. Edwin Woodhouse.

Peter is a lively, clean-cut Maine boy, an honor student and a star player on his school basketball team.

His hobbies, in order of preference, are fishing, sailing and astronomy.

Imagine how this young angler will savor the joys of anticipation during the coming months! Maps of Brazil will get a good workout, and the history, climate and geography of "the United States of Brazil" will be scrutinized closely. He may even brush up a bit on Portuguese, official language of the country.

During April, May, June and July, an additional four grand prize winners will be drawn and it is expected that the entire group of 10 people (winners and companions) will fly down in a group come October.

To enter the Sweepstakes all you have to do is pick up a Cortland Fishing Forecaster entry blank from your favorite tackle shop, fill it in and mail it.

And good luck to you! Dick Jennings of Cortland echoes.

Second Flight: Dean defeated Straughn, 1 up; Richtell defeated Bove, 7 and 5; McSpadden defeated Webb, 5 and 4.

Third Flight: Uhle defeated Mead, 3 and 2; Kempke defeated Tims, 2 and 1; Simone defeated Barrows, 1 up; Williams defeated Stephenson, 1 up.

Fourth Flight: Walter defeated Tweed, 1 up; Matthewson defeated Matthes, 2 and 1; Shaeffer defeated Backel, 1 up.

Fifth Flight: Sinclair defeated Miller, 4 and 3; Osterloh defeated Parsons, 3 and 1; Angstadt defeated Emerson, 3 and 1; Watson defeated Smith, 2 and 1.

Sixth Flight: Dine defeated Eastburn, 4 and 2; Pinto defeated Cathcart, 6 and 5; Fisher defeated Voorhees, 3 and 2; Dolan defeated Ingram, 3 and 2.

Seventh Flight: MacDonald defeated Carr, by default; Barrett defeated Anderson, 3 and 2; Angstadt, beat Sharp, 1 up; and Dugan won over Scott, 1 up.

The freshmen grabbed firsts in every event but the high jump for a 93-32 verdict that evened things at 1-1.

Ed Moore of Seaford, and Alan Flinn, Philadelphia, scored doubles to lead the varsity. Moore took the 100-yard dash and broad jump and Flinn won the 120 high and the 220 low hurdles.

Schroek set one record, winning the 220 low hurdles in 25.5 and tied the 100 yard dash mark in 10.4.

Wes Stack won the two-mile in a record time of 10:40.

Final Managers' Meetings Set For Softball Leagues

Stanley Francis, director of the Newark Recreation Association, has announced that the final managers' meeting for the NRA City and Industrial Softball Leagues will be held May 5, and the final managers' meeting for the Church Softball League will be held May 6—both at 7:30 p.m. at the Newark Recreation Association offices, when final plans, schedules, and regulations will be discussed.

Eight teams have entered in the City and Industrial Softball Leagues and six teams have entered the Church Softball League.

Softball play is expected to begin by May 11.

Authorized Schwinn, Lionel American Flyer, HO—Sales and Service. New and Used Bikes—We Trade.

DORSMAN'S
HOBBY — TOYLAND
Phone EN 8-7396
162 E. MAIN NEWARK
"The most unusual store in Delaware"

WE REPAIR
• DOLLS
• BIKES
• TRIKES
• TRAINS
• LAMPS

FOR 3 TUBS — WASH AND DRY "Round-the-Clock"

Average Service, Same WASH 1.20 DRY .60 Total 1.80

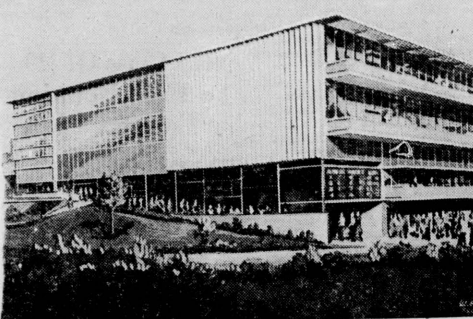
WASH 1.25 DRY .30 Total 1.55

YOUR SAVINGS — \$1.65

Westinghouse Equipped and Approved

"Round-the-Clock" **SUPER LAUNDROMAT**
Park-N-Shop Shopping Center Elkton Road, Newark

New \$3,500,000 Delaware Park Clubhouse



The modern and spacious Delaware Park clubhouse is among the major improvements ready for the opening of the thoroughbred race season on Friday, May 29. The four-level structure, one of the largest in the country, embodies the latest patron facilities—escalators, galleries overlooking the walking ring and paddock, closed circuit television, acoustical ceilings, air-conditioned dining room, lounge and cafeteria.

New construction enables Delaware Park to offer racegoers private dining areas for groups of 25 to 200, and clubhouse reserved seats in preferred locations.

The architect's drawing shows the rear of clubhouse and terraced galleries at right.

Hens' Al Neiger Suffers 1st Loss In Six Contests

Delaware's Al Neiger was handed his first pitching defeat of the season here last Saturday and it took a former U. of D. athlete to gain the verdict over the Hens' current ace.

Johnny Leverage, the ex-Seaford High mainstay who transferred to Washington College last year, came off winner in a tight 3-2 decision.

Poor support helped bring about Neiger's first loss in six games and Delaware's third against seven wins and a tie.

He gave up his first earned run of the season in the ninth inning after 55 frames.

Neiger allowed only four hits, while Leverage gave up five. Upsetting the Hens is old stuff to Leverage. He's the same lad who tossed in the winning basket in a 36-35 victory over his former classmates last winter.

The Hens hope to regain their winning form this afternoon against Lafayette at Easton, Pa.

Temple's Owls will be the next attraction here, on Saturday afternoon at 2 o'clock.

Newark High Football Coach Don Miller Resigns To Take Amherst Coaching

Don Miller, 25-year-old football coach at Newark High School, has submitted his resignation at Newark to accept a post as line coach at Amherst College, Mass.

Miller leaves the Yellowjackets with an amazing four-year record of 31 victories, two defeats and with the first Blue Hen Conference championship in Newark possession.

"Newark has been a wonderful place to coach, and the cooperation from the administration and the boys has been unbeatable," the former All American quarterback for Delaware said.

Miller also said that "another unfortunate part about leaving is that I have to break away from Dave Nelson and his University of Delaware staff. These are the people I played for and learned most of my football from."

Eight years ago, Miller showed up at Delaware as a freshman from Prospect Park, Pa. High. The Blue Hens could use frosh with the varsity then, and Miller started his first college game at quarterback.

By the time he graduated, the dexterous 160-pound ball-handler and passer had started

of his career; had steered to a post-season Referee championship and had placed level Little American.

In his four seasons, the 24, lost 10. Miller still has Delaware passing records.

Wilmer Shue, superintendent of the Newark school system, can't say too many things about Don Miller. We've done anything to keep him short of preventing him from advancing in his career.

Miller is going to take the line coach for new Jim Ostendarp.

Amherst, an all-male college, plays one competitive plateau and of eight last season.

The Lord Jeff, 1959, will be the same—Springton, Bowdoin, Coast Guard, Wesleyan, Tufts, Williams.

The average woman, to have a roof over her head, the right to raise it

It's the Talk of the Town!

NEW!
NEW!
NEW!
NEW!

"Round the Clock"

SUPER LAUNDROMAT

COIN OPERATED - SELF SERVICE

NOW *Open*

AT **PARK-N-SHOP**
SHOPPING CENTER
ELKTON ROAD
IN NEWARK

OPEN **24** HOURS
DAY AND NIGHT
7 DAYS A WEEK
(365 DAYS A YEAR)

ALL LAUNDRY
FRIDAY - SATURDAY
MAY 1 & 2
10 pounds
10c

"TAKE-IT-EASY" PRICES

WASH **20c** DRY **10c**

9 POUNDS 10 MINUTES

COMPARE THESE PRICES

FOR 3 TUBS — WASH AND DRY "Round-the-Clock"

Average Service, Same WASH 1.20 DRY .60 Total 1.80

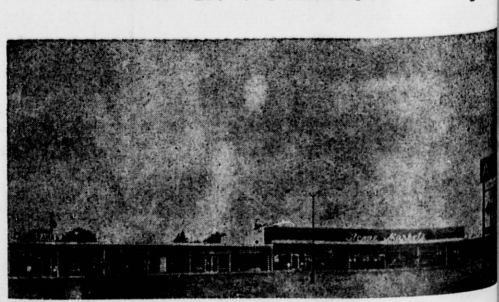
WASH 1.25 DRY .30 Total 1.55

YOUR SAVINGS — \$1.65

Westinghouse Equipped and Approved

A Special Feature is The Built-in Table For Folding Finished Laundry

CONVENIENT AND SPACIOUS DRIVE-IN LOCATION



"Round-the-Clock" **SUPER LAUNDROMAT**
Park-N-Shop Shopping Center Elkton Road, Newark

Middlebury College Honor
Recorded To Susan Gore

Susan W. Gore of Newark has been elected to the student policy committee for the 1959 Middlebury College Conference.

Gore, a member of the Middlebury College Honor Society, was one of the persons invited to the committee for a two-day discussion of a student question.

Gore is a member of the Middlebury College Honor Society and is a member of the Middlebury College Honor Society.

Conlan, Winners
U. of D. Math Contest

Newark public school students won honors in the recent University of Delaware mathematics contest.

Dr. G. Cuthbert Webber, chairman of the math department at the college, was a winner in the contest.

Dr. Shue, superintendent of the Newark school system, said that too many students are not doing their best in the classroom.

COUNTRY PROPERTIES

Is going to Amber...
coach for new...
first, an all-male...
students, plays on...
tive plateau and...
last season.

Lord Jeff's 1959...
the same—Spring...
woodin, Coast Gu...
esleyan, Tufts, Tri...
s.

average woman is...
a roof over her...
to raise it occas...

MCCANN REALTY CO.
McCann Insurance
Agency
INC.
Phone EN 8-2538

MOTHER'S DAY GIFT PLANTS
THE PLANT SHOP

Kitty Roemer, RD-2, Newark, Del.
AFRICAN VIOLETS, CALADIANS, PETUNIAS, etc.



THE
PLANT
SHOP

Ministers Renew
Old Association
In Newark Church

The Rev. Theodore Simonson, formerly associated with the Rev. Milton H. Keene, as associate minister of Harrison Street Church, Wilmington, now fills the same role in the Kingswood-of-Brookside Methodist Church.

Mr. Simonson, minister and author, recently moved to Brookside to offer his services to the new suburban congregation.

Mr. Simonson is a graduate of Washington College, Md., and Temple University School of Theology. While attending college in Chestertown, he resided with the Keenes, who were then living in the college town.

The new church assistant, with his wife, Charlotte, united with the church April 5. With their three children, Annie, Jill, and David, they reside at 1017 Marrows Road.

Mr. Simonson has contributed to religious magazines, and for several years has been a script writer for a film company near West Chester, Pa. He has two full-length motion picture feature scripts to his credit.

Robt. T. Jones
and Son

FUNERAL
DIRECTORS

PHONE EN 8-1627

122 West Main Street
NEWARK, DELAWARE

Christiana Calling

Sylvia P. Jones, Correspondent
Phone: EA 8-7413

A fried chicken dinner will be served Saturday in the Hall Memorial Building of the Christiana Presbyterian Church, beginning at 4:30 p.m. for benefit of the street light fund of the Christiana Improvement Association. The public is invited.

The teachers' salary referendum for the Christiana-Salem school district, scheduled to be held May 2, has been cancelled by the board of school trustees for legal technicalities.

The referendum on consolidation with the Newark special school district will be held May 9 as scheduled, from 2 to 9 p.m., in the school auditorium.

A public meeting for re-discussion and questions on consolidation will be held in the school auditorium at 8 p.m. next Monday. This announcement was made by Mrs. William Graden, PTA chairman of the referendum committee, which has arranged for representatives of the State Department of Public Instruction to be present to answer questions. Parents, taxpayers, and other interested residents of the district are invited to attend.

Fact sheets answering most frequently asked questions on consolidation, have been widely distributed in this area and are available on request at the school office.

Mrs. Olga Graden was elected president and Mrs. Ella Walker vice-president of the Christiana-Salem PTA at a meeting in the school last Wednesday. Re-elected for second terms as secretary and treasurer were Mrs. Anna Stafford and Mrs. Anna Bollman.

The Christiana elementary school chorus, composed of selected singers from the fourth, fifth, and sixth grades, participated in the Music Festival at the Anna P. Mote School yesterday morning. Mrs. Rachel Jane Lee directs the group.

Scout News

Lee Burkins was declared owner of the fastest model car and Johnny Redding was winner of the second heat in the "Pinewood Derby" at the meeting of Christiana Cub Pack 75 in the Methodist Church on Friday evening.

This Saturday the pack's twice-postponed kite-flying contest will be held on the school grounds at 2 p.m.

The boys will continue their sale of vanilla and pepper until May 20.

William Graden and Charles Garner have been invested as new members of Christiana Boy Scout Troop 75.

Fourteen boys and three adult leaders spent last weekend at Camp Rodney.

Mothers of Troop 75 will hold a bake on Saturday morning, May 9, in front of the Newark Department Store for the purchase of new tents.

A Parents Night for discussion of scouting activities, is scheduled for May 11 in the Methodist church.

Mrs. Carolyn Bennett, Mrs. Charlotte Crosby, Mrs. Rachel Justis and Mrs. Marion Kee represented the local Presbyterian women's group at Tuesday's Presbyterial meeting at Concord Church.

At the Young People's Rally in Wilmington last Sunday John Holsten, Jr., and Pamela Bailey, of the Christiana Presbyterian Church, were discussion recorders and presented a report to the plenary session.

The Rev. Donald Crosby will attend church officer training sessions at Overbrook Presbyterian Church in Philadelphia, May 6-8.

Tomorrow evening at 8 o'clock there will be a meeting in the Methodist Church of all who would like to help with the summer Bible School for the Christiana area. The Methodist and Presbyterian Churches will again cooperate in this project.

The Christiana-Salem Methodist softball team will meet the Red Lion Methodist men on the Christiana school grounds at 6:30 p.m. May 4.

Louise Barlow, daughter of Mr. and Mrs. Gilbert Barlow, received an award as the outstanding student in business education at Newark High School at Saturday evening's second annual business education banquet. Louise will graduate in June and is looking forward to a business career.

Congratulations to Elaine Cole, daughter of Mr. and Mrs. George Cole of Chapman Road, on winning first place for her collection in the Junior high division of the Newark School Science Fair.

Mr. and Mrs. Robert Long are receiving congratulations on the birth of their first child, Stafford Golden.

Sympathy is extended to the family of Mrs. Elsie May Blansfield, who died suddenly on April 19. Mrs. Blansfield, who was living in Newark at the time of her death, spent most of her life in Christiana and was a member of the Christiana Methodist Church.

No man has a right to do as he pleases, except when he pleases to do right. —C. Simmons

CITY OF NEWARK

MUNICIPAL DELAWARE INSURANCE

Sealed Bids

The subject portfolio may be reviewed and sealed proposals for providing an equivalent coverage via a single carrier will be received until 4 p.m. Thursday May 7, 1959 in the Secretary-Treasurer's Office, Newark Academy Building, Academy & Main Streets, April 23, 30.

Mitchell Urges Planting
Of Sudan Grass in State

Delaware farmers are urged to plant Sudan grass as supplemental summer pasture by Extension Agronomist William H. Mitchell, University of Delaware.

Reasons for planting the grass, and other recommendations are available in a Delaware Agricultural Extension Service fact sheet compiled by Professor Mitchell.

Ask for the fact sheet "Improve Summer Pasture with Sudan Grass," AAE (C-2).

LETTERS TESTAMENTARY

Estate of John H. Dennison Deceased. Notice is hereby given that Letters of Administration upon the Estate of John H. Dennison late of Mill Creek Hundred, deceased, were duly granted unto John Mitchell Dennison and Elizabeth Dennison Dudgeon on the Fourteenth day of April A. D. 1959 and all persons indebted to the said deceased are requested to make payments to the Administrators without delay, and all persons having demands against the deceased are required to exhibit and present the same duly probated to the said Administrators on or before the Fourteenth day of January A. D. 1960 or abide by the law in this behalf.

Address James Rankin Davis, Attorney-at-Law, Bank of Delaware Bldg., Wilmington, Del.
John Mitchell Dennison and Elizabeth Dennison Dudgeon Administrators
April 23 30; May 7

DEMOCRATIC DINNER

Former Lt. Gov. Alexis I. du Pont Bayard, whose family's history parallels that of the Democratic Party, will be the toastmaster of the Jefferson-Jackson Day dinner in the State Armory, 10th and Du Pont Streets, Wilmington, on Thursday, May 14.

asked for the fact sheet "Improve Summer Pasture with Sudan Grass," AAE (C-2).

NOTICE OF REDUCTION
OF CAPITAL

LOUGHBOROUGH DEVELOPMENT CORPORATION, a Delaware corporation, pursuant to the provisions of Section 244 of the General Corporation Law of the State of Delaware, has reduced its capital to the extent of Fifty-One Thousand Eight Hundred Thirty-Two Dollars and Fifty Cents (\$51,832.50) by reducing the par value of Three Thousand Four Hundred Fifty-Five and One-Half (3,455½) shares of preferred stock issued and outstanding, from Thirty Dollars (\$30.00) to Fifteen Dollars (\$15.00) each.
April 23, 30; May 7

WARWICK
FUNERAL HOME

William J. Warwick, Director

121 W. Park Place

Phone EN 8-6565

Money to spend for whatever we want
... home repairs, clothes, vacation,
medical expenses, unexpected bills...

All we have to do is write a check.
We've established our personal
line of credit with a...

BANK of DELAWARE
Check = Credit Account

With a Check-Credit Account, you have money available instantly—to spend for whatever you want, whenever you need it. Simply make one application. As soon as it is approved, you write your check for the cash you want. As you write checks, you create your own loans. No need to apply each time. No red tape.

What is a Check-Credit Account?

It is a personal line of credit dependent upon your ability to pay on a 24-month basis. When you need money, you draw checks against your credit line. Bank of Delaware Check-Credit Account checks look exactly like other checks.

How much credit can I have?

It depends upon your ability to pay on a 24-month basis. Use the following table to select payment you wish to make when your account is fully active. You may request a change in your maximum check-credit at any time.

If you can pay this much:	You can have this much:
\$18.84	\$400
22.60	480
28.25	600
37.67	800
47.09	1,000

How do I use my Check-Credit Account?

Make one application. As soon as it is approved, Bank of Delaware sends you a free supply of name-imprinted checks. Use checks in amounts of \$25 or more—for whatever you wish. Loans result when you write checks. Each month you receive a statement, cancelled checks, and notice of any payment due.

How does a Check-Credit Account work?

Suppose on May 1 your application is approved for maximum credit of \$480, and you agree to pay back, in 24 monthly instalments, the \$480, plus interest and service charge. You select the 25th as your monthly payment date. If during the first two months you use none of the credit, you therefore make no payments. On June 26, you write a check for \$200 covering medical expenses. On July 15, you receive a statement showing you have drawn a \$200 check. You are asked to pay \$9.42 by July 25. This figure includes payment on principal, interest, and service charge, and represents 1/24 of your total loan obligation. You may use your account again immediately. It does not matter how many things you buy or how many bills you pay, as long as you do not exceed the balance of your maximum check-credit and do not

write checks for less than \$25. You restore the credit available for future use by the amount of your monthly payment applied to principal.

What is the charge for a Check-Credit Account?

Nothing until you use it. No charge for opening a Check-Credit Account, for checks or monthly statements. When you use a check, you are charged interest at 6% per year in advance, and a small service charge of 1%. Charges are included in your monthly payments.

Is my Check-Credit Account covered by insurance?

Your loan balance is insured up to \$5,000. This protection is provided against the death of the principal borrower up to age 65.

How do I open a Check-Credit Account?

You easily qualify if you have a steady income and good credit standing. Check-Credit Accounts are available at all of Bank of Delaware's 11 offices. Phone the office nearest you; ask for Check-Credit. Or, fill in coupon; take or mail to any office.

BANK of
DELAWARE

Member: F.D.I.C.
Federal Reserve System

11 offices serving all of Delaware
Greater Wilmington Area Offices—OL 6-9911
Ninth & Market
Sixth & Market
Second & Union
DuPont Experimental Station Facility (Limited to DuPont Personnel)
Community Offices
Newark—EN 8-1679 Odessa—FR 8-9801 Smyrna—OL 3-5761
Dover—RE 4-5986 Seaford—NA 9-1114 West Seaford—NA 9-9143
Extra Banking Hours on Fridays

MAIL THIS COUPON NOW—TO:

Check-Credit Division
Bank of Delaware
Sixth and Market Streets
Wilmington, Delaware

Please send me an application for your new Check-Credit Account that lets me borrow simply by writing a check.

Name _____

Street _____

City _____ Zone _____ State _____

EDSEL
the king-size value
in the low-price field

Priced right down with Plymouth, Chevrolet and Ford. 2 V-8 engines and an economy Six perform best on regular gasoline. Many luxury extras as standard equipment.

You've never seen so much car for so little! 1959 EDSEL

1959 EDSEL



TOM LAWRIE MOTORS INC
66 E. MAIN STREET
PHONE EN 8-8751

Mrs. Louis Brown Named Girl Scout Area Coordinator

Mrs. Louise J. Brown, 101 Briar Lane, has been elected to serve as Newark district Girl Scout coordinator, for a term of two years, succeeding Mrs. Robert Hall.

Newark delegates participating in this recent election included Mrs. Robert Balmer, Mrs. Robert Johnson, Mrs. Fred Mueller, Mrs. John Morris, Mrs. Wendell Olson, and Mrs. Ernest Wilder.

Newly elected members to the board of directors are Mrs. Brown, Mrs. Arnold Clark, and Mrs. Reuben Sammis.

Mrs. Brown has announced her district committee, with Mrs. Louise Richardson as secretary; Mrs. Lowell Perkins, cookie chairman; and Mrs. Richard Darsie, publicity.

New neighborhood chairmen are Mrs. Robert Johnson, Mrs. Joseph McGuire, Mrs. Dwight Newman, and Mrs. Anthony Kosey.

The art of conversation consists as much in listening politely, as in talking agreeably. —George Atwell

LICENSE APPLICATION
I, Paul J. Fix, intend to file an application with the Delaware Alcoholic Beverage Control Commission for a retail liquor store not for consumption on the premises where so sold, said premises being located at the corner of Old South Baltimore Pike and Salem Church Road, White Clay Creek Hundred, New Castle County, Delaware.

LETTERS TESTAMENTARY
Estate of George E. C. Davis Deceased. Notice is hereby given that Letters of Administration upon the Estate of George E. C. Davis late of White Clay Creek Hundred, deceased, were duly granted unto Mary L. Davis on the Third day of April A. D. 1959 and all persons indebted to the said deceased are requested to make payments to the said Administratrix on or before the Eighth day of January A. D. 1960 or abide by the law in this behalf.

Address: John P. Cann, Attorney-at-Law, Industrial Trust Bldg., Wilmington, Del.

LETTERS TESTAMENTARY
Estate of George E. C. Davis Deceased. Notice is hereby given that Letters of Administration upon the Estate of George E. C. Davis late of White Clay Creek Hundred, deceased, were duly granted unto Mary L. Davis on the Third day of April A. D. 1959 and all persons indebted to the said deceased are requested to make payments to the said Administratrix on or before the Eighth day of January A. D. 1960 or abide by the law in this behalf.

Address: John P. Cann, Attorney-at-Law, Industrial Trust Bldg., Wilmington, Del.

LETTERS TESTAMENTARY
Estate of George E. C. Davis Deceased. Notice is hereby given that Letters of Administration upon the Estate of George E. C. Davis late of White Clay Creek Hundred, deceased, were duly granted unto Mary L. Davis on the Third day of April A. D. 1959 and all persons indebted to the said deceased are requested to make payments to the said Administratrix on or before the Eighth day of January A. D. 1960 or abide by the law in this behalf.

Address: John P. Cann, Attorney-at-Law, Industrial Trust Bldg., Wilmington, Del.

LETTERS TESTAMENTARY
Estate of George E. C. Davis Deceased. Notice is hereby given that Letters of Administration upon the Estate of George E. C. Davis late of White Clay Creek Hundred, deceased, were duly granted unto Mary L. Davis on the Third day of April A. D. 1959 and all persons indebted to the said deceased are requested to make payments to the said Administratrix on or before the Eighth day of January A. D. 1960 or abide by the law in this behalf.

Address: John P. Cann, Attorney-at-Law, Industrial Trust Bldg., Wilmington, Del.

LETTERS TESTAMENTARY
Estate of George E. C. Davis Deceased. Notice is hereby given that Letters of Administration upon the Estate of George E. C. Davis late of White Clay Creek Hundred, deceased, were duly granted unto Mary L. Davis on the Third day of April A. D. 1959 and all persons indebted to the said deceased are requested to make payments to the said Administratrix on or before the Eighth day of January A. D. 1960 or abide by the law in this behalf.

Address: John P. Cann, Attorney-at-Law, Industrial Trust Bldg., Wilmington, Del.

LETTERS TESTAMENTARY
Estate of George E. C. Davis Deceased. Notice is hereby given that Letters of Administration upon the Estate of George E. C. Davis late of White Clay Creek Hundred, deceased, were duly granted unto Mary L. Davis on the Third day of April A. D. 1959 and all persons indebted to the said deceased are requested to make payments to the said Administratrix on or before the Eighth day of January A. D. 1960 or abide by the law in this behalf.

Address: John P. Cann, Attorney-at-Law, Industrial Trust Bldg., Wilmington, Del.

LETTERS TESTAMENTARY
Estate of George E. C. Davis Deceased. Notice is hereby given that Letters of Administration upon the Estate of George E. C. Davis late of White Clay Creek Hundred, deceased, were duly granted unto Mary L. Davis on the Third day of April A. D. 1959 and all persons indebted to the said deceased are requested to make payments to the said Administratrix on or before the Eighth day of January A. D. 1960 or abide by the law in this behalf.

Address: John P. Cann, Attorney-at-Law, Industrial Trust Bldg., Wilmington, Del.

LETTERS TESTAMENTARY
Estate of George E. C. Davis Deceased. Notice is hereby given that Letters of Administration upon the Estate of George E. C. Davis late of White Clay Creek Hundred, deceased, were duly granted unto Mary L. Davis on the Third day of April A. D. 1959 and all persons indebted to the said deceased are requested to make payments to the said Administratrix on or before the Eighth day of January A. D. 1960 or abide by the law in this behalf.

Address: John P. Cann, Attorney-at-Law, Industrial Trust Bldg., Wilmington, Del.

LETTERS TESTAMENTARY
Estate of George E. C. Davis Deceased. Notice is hereby given that Letters of Administration upon the Estate of George E. C. Davis late of White Clay Creek Hundred, deceased, were duly granted unto Mary L. Davis on the Third day of April A. D. 1959 and all persons indebted to the said deceased are requested to make payments to the said Administratrix on or before the Eighth day of January A. D. 1960 or abide by the law in this behalf.

Address: John P. Cann, Attorney-at-Law, Industrial Trust Bldg., Wilmington, Del.

LETTERS TESTAMENTARY
Estate of George E. C. Davis Deceased. Notice is hereby given that Letters of Administration upon the Estate of George E. C. Davis late of White Clay Creek Hundred, deceased, were duly granted unto Mary L. Davis on the Third day of April A. D. 1959 and all persons indebted to the said deceased are requested to make payments to the said Administratrix on or before the Eighth day of January A. D. 1960 or abide by the law in this behalf.

Address: John P. Cann, Attorney-at-Law, Industrial Trust Bldg., Wilmington, Del.

LETTERS TESTAMENTARY
Estate of George E. C. Davis Deceased. Notice is hereby given that Letters of Administration upon the Estate of George E. C. Davis late of White Clay Creek Hundred, deceased, were duly granted unto Mary L. Davis on the Third day of April A. D. 1959 and all persons indebted to the said deceased are requested to make payments to the said Administratrix on or before the Eighth day of January A. D. 1960 or abide by the law in this behalf.

Address: John P. Cann, Attorney-at-Law, Industrial Trust Bldg., Wilmington, Del.

LETTERS TESTAMENTARY
Estate of George E. C. Davis Deceased. Notice is hereby given that Letters of Administration upon the Estate of George E. C. Davis late of White Clay Creek Hundred, deceased, were duly granted unto Mary L. Davis on the Third day of April A. D. 1959 and all persons indebted to the said deceased are requested to make payments to the said Administratrix on or before the Eighth day of January A. D. 1960 or abide by the law in this behalf.

Address: John P. Cann, Attorney-at-Law, Industrial Trust Bldg., Wilmington, Del.

LETTERS TESTAMENTARY
Estate of George E. C. Davis Deceased. Notice is hereby given that Letters of Administration upon the Estate of George E. C. Davis late of White Clay Creek Hundred, deceased, were duly granted unto Mary L. Davis on the Third day of April A. D. 1959 and all persons indebted to the said deceased are requested to make payments to the said Administratrix on or before the Eighth day of January A. D. 1960 or abide by the law in this behalf.

Address: John P. Cann, Attorney-at-Law, Industrial Trust Bldg., Wilmington, Del.

LETTERS TESTAMENTARY
Estate of George E. C. Davis Deceased. Notice is hereby given that Letters of Administration upon the Estate of George E. C. Davis late of White Clay Creek Hundred, deceased, were duly granted unto Mary L. Davis on the Third day of April A. D. 1959 and all persons indebted to the said deceased are requested to make payments to the said Administratrix on or before the Eighth day of January A. D. 1960 or abide by the law in this behalf.

Address: John P. Cann, Attorney-at-Law, Industrial Trust Bldg., Wilmington, Del.

LETTERS TESTAMENTARY
Estate of George E. C. Davis Deceased. Notice is hereby given that Letters of Administration upon the Estate of George E. C. Davis late of White Clay Creek Hundred, deceased, were duly granted unto Mary L. Davis on the Third day of April A. D. 1959 and all persons indebted to the said deceased are requested to make payments to the said Administratrix on or before the Eighth day of January A. D. 1960 or abide by the law in this behalf.

Address: John P. Cann, Attorney-at-Law, Industrial Trust Bldg., Wilmington, Del.

LETTERS TESTAMENTARY
Estate of George E. C. Davis Deceased. Notice is hereby given that Letters of Administration upon the Estate of George E. C. Davis late of White Clay Creek Hundred, deceased, were duly granted unto Mary L. Davis on the Third day of April A. D. 1959 and all persons indebted to the said deceased are requested to make payments to the said Administratrix on or before the Eighth day of January A. D. 1960 or abide by the law in this behalf.

Address: John P. Cann, Attorney-at-Law, Industrial Trust Bldg., Wilmington, Del.

LETTERS TESTAMENTARY
Estate of George E. C. Davis Deceased. Notice is hereby given that Letters of Administration upon the Estate of George E. C. Davis late of White Clay Creek Hundred, deceased, were duly granted unto Mary L. Davis on the Third day of April A. D. 1959 and all persons indebted to the said deceased are requested to make payments to the said Administratrix on or before the Eighth day of January A. D. 1960 or abide by the law in this behalf.

Address: John P. Cann, Attorney-at-Law, Industrial Trust Bldg., Wilmington, Del.

LETTERS TESTAMENTARY
Estate of George E. C. Davis Deceased. Notice is hereby given that Letters of Administration upon the Estate of George E. C. Davis late of White Clay Creek Hundred, deceased, were duly granted unto Mary L. Davis on the Third day of April A. D. 1959 and all persons indebted to the said deceased are requested to make payments to the said Administratrix on or before the Eighth day of January A. D. 1960 or abide by the law in this behalf.

Address: John P. Cann, Attorney-at-Law, Industrial Trust Bldg., Wilmington, Del.

LETTERS TESTAMENTARY
Estate of George E. C. Davis Deceased. Notice is hereby given that Letters of Administration upon the Estate of George E. C. Davis late of White Clay Creek Hundred, deceased, were duly granted unto Mary L. Davis on the Third day of April A. D. 1959 and all persons indebted to the said deceased are requested to make payments to the said Administratrix on or before the Eighth day of January A. D. 1960 or abide by the law in this behalf.

Address: John P. Cann, Attorney-at-Law, Industrial Trust Bldg., Wilmington, Del.

LETTERS TESTAMENTARY
Estate of George E. C. Davis Deceased. Notice is hereby given that Letters of Administration upon the Estate of George E. C. Davis late of White Clay Creek Hundred, deceased, were duly granted unto Mary L. Davis on the Third day of April A. D. 1959 and all persons indebted to the said deceased are requested to make payments to the said Administratrix on or before the Eighth day of January A. D. 1960 or abide by the law in this behalf.

Address: John P. Cann, Attorney-at-Law, Industrial Trust Bldg., Wilmington, Del.

City Employees Witness Electrical Demonstration

The Westinghouse Distribution Apparatus Caravan conducted an electrical demonstration recently for employees of the City of Newark at the garage and central storeroom on Phillips Lane.

Municipal employees witnessing the demonstration included J. J. Salavara, Francis Neide, R. H. Bolling, Jr., Ted Murphy, A. Wooster, J. Morrison, R. Gamble, Alex. Harper, Curt Morrison, C. Haller, and J. Hill.

**Sinclair Wins Fellowship
For Williamsburg Study**

Williamsburg, Va. — Joseph Bruce Sinclair, 330 Delaware Circle, Newark, is one of 12 winners of the first National Trust Fellowships for study in the administrative phase of historic preservation.

Sinclair is a third-year graduate student at the University of Delaware.

He will attend a six-week seminar for historical administrators to be held here June 15 through July 24.

**CITY OF NEWARK
PROCLAMATION**

WHEREAS, the physically and mentally handicapped citizens of our City want to be self-supporting, self-respecting members of our community; and

WHEREAS, the training of handicapped people for normal employment and the providing of employment to them serves the community as well as the handicapped people; and

WHEREAS, the Goodwill Industries of Newark is a leading institution of the community which provides the training needed by handicapped people to become employable and offers sheltered employment to those with severe handicaps; and

WHEREAS, the period of May 3 to 9, 1959, has been set aside nationally as a time of official recognition of the good will toward handicapped people express in the Goodwill Industries program.

NOW, THEREFORE, I FRANK M. DURNALL, as Mayor of the City of Newark, do hereby proclaim May 3 to 9, 1959 as

GOODWILL WEEK

in and for the City, and I urge all citizens to support the Goodwill Industries of Newark by providing the necessary materials to further the rehabilitation, training, and employment program for the physically and mentally handicapped of our Greater Newark area.

FRANK M. DURNALL, Mayor

Attest Charles D. Long
Seal of the City
of Newark

Mary L. Davis,
Administratrix

April 16, 23, 30

**NEWARK
ELECTRIC**

180 E. MAIN EN 8-1155

SEWING CENTER

**NEWARK
ELECTRIC**

180 E. MAIN EN 8-1155

SEWING CENTER

**NEWARK
ELECTRIC**

180 E. MAIN EN 8-1155

SEWING CENTER

**NEWARK
ELECTRIC**

180 E. MAIN EN 8-1155

SEWING CENTER

**NEWARK
ELECTRIC**

180 E. MAIN EN 8-1155

SEWING CENTER

**NEWARK
ELECTRIC**

180 E. MAIN EN 8-1155

SEWING CENTER

**NEWARK
ELECTRIC**

180 E. MAIN EN 8-1155

SEWING CENTER

**NEWARK
ELECTRIC**

180 E. MAIN EN 8-1155

SEWING CENTER

**NEWARK
ELECTRIC**

180 E. MAIN EN 8-1155

SEWING CENTER

**NEWARK
ELECTRIC**

180 E. MAIN EN 8-1155

SEWING CENTER

Seed Certification Application Blanks Offered Farmers

If you desire to certify any small grain crop for seed and have no made application, Frank Springer, agronomist at the University of Delaware says you should send in an application as soon as possible.

Barley applications must be in by May 15. Applications for certification of oats, wheat, and rye, must be in by June 1.

You can get application blanks from your county agent or the agronomy department of the University of Delaware.

An inspector of the Delaware Crop Improvement Association inspects every field for trueness of type, isolation, diseases, noxious weeds and other conditions necessary for production of certified seed. These inspections will begin about May 25.

BOULDER BROS. FUEL OIL

USE OUR FUEL OIL FOR YOUR HEATING. AS THE SPRING LAMBS DO THEIR BLEATING.

Spring is the time to watch out for colds. To avoid them, call us. We'll give you an even inside temperature with steady fuel oil.

BOULDER BROS. FUEL OIL

USE OUR FUEL OIL FOR YOUR HEATING. AS THE SPRING LAMBS DO THEIR BLEATING.

Spring is the time to watch out for colds. To avoid them, call us. We'll give you an even inside temperature with steady fuel oil.

BOULDER BROS. FUEL OIL

USE OUR FUEL OIL FOR YOUR HEATING. AS THE SPRING LAMBS DO THEIR BLEATING.

Spring is the time to watch out for colds. To avoid them, call us. We'll give you an even inside temperature with steady fuel oil.

BOULDER BROS. FUEL OIL

USE OUR FUEL OIL FOR YOUR HEATING. AS THE SPRING LAMBS DO THEIR BLEATING.

Spring is the time to watch out for colds. To avoid them, call us. We'll give you an even inside temperature with steady fuel oil.

BOULDER BROS. FUEL OIL

USE OUR FUEL OIL FOR YOUR HEATING. AS THE SPRING LAMBS DO THEIR BLEATING.

Spring is the time to watch out for colds. To avoid them, call us. We'll give you an even inside temperature with steady fuel oil.

BOULDER BROS. FUEL OIL

USE OUR FUEL OIL FOR YOUR HEATING. AS THE SPRING LAMBS DO THEIR BLEATING.

Spring is the time to watch out for colds. To avoid them, call us. We'll give you an even inside temperature with steady fuel oil.

BOULDER BROS. FUEL OIL

USE OUR FUEL OIL FOR YOUR HEATING. AS THE SPRING LAMBS DO THEIR BLEATING.

Spring is the time to watch out for colds. To avoid them, call us. We'll give you an even inside temperature with steady fuel oil.

BOULDER BROS. FUEL OIL

USE OUR FUEL OIL FOR YOUR HEATING. AS THE SPRING LAMBS DO THEIR BLEATING.

Spring is the time to watch out for colds. To avoid them, call us. We'll give you an even inside temperature with steady fuel oil.

BOULDER BROS. FUEL OIL

USE OUR FUEL OIL FOR YOUR HEATING. AS THE SPRING LAMBS DO THEIR BLEATING.

Spring is the time to watch out for colds. To avoid them, call us. We'll give you an even inside temperature with steady fuel oil.

BOULDER BROS. FUEL OIL

USE OUR FUEL OIL FOR YOUR HEATING. AS THE SPRING LAMBS DO THEIR BLEATING.

Spring is the time to watch out for colds. To avoid them, call us. We'll give you an even inside temperature with steady fuel oil.

BOULDER BROS. FUEL OIL

USE OUR FUEL OIL FOR YOUR HEATING. AS THE SPRING LAMBS DO THEIR BLEATING.

Spring is the time to watch out for colds. To avoid them, call us. We'll give you an even inside temperature with steady fuel oil.

BOULDER BROS. FUEL OIL

USE OUR FUEL OIL FOR YOUR HEATING. AS THE SPRING LAMBS DO THEIR BLEATING.

Spring is the time to watch out for colds. To avoid them, call us. We'll give you an even inside temperature with steady fuel oil.

BOULDER BROS. FUEL OIL

USE OUR FUEL OIL FOR YOUR HEATING. AS THE SPRING LAMBS DO THEIR BLEATING.

Spring is the time to watch out for colds. To avoid them, call us. We'll give you an even inside temperature with steady fuel oil.

BOULDER BROS. FUEL OIL

USE OUR FUEL OIL FOR YOUR HEATING. AS THE SPRING LAMBS DO THEIR BLEATING.

Spring is the time to watch out for colds. To avoid them, call us. We'll give you an even inside temperature with steady fuel oil.

BOULDER BROS. FUEL OIL

USE OUR FUEL OIL FOR YOUR HEATING. AS THE SPRING LAMBS DO THEIR BLEATING.

Spring is the time to watch out for colds. To avoid them, call us. We'll give you an even inside temperature with steady fuel oil.

Mill Creek Hundred News Sara Pennington Evans, Correspondent Phone CE 9-7798

The Ebenezer Church Cemetery Association will sponsor a turkey supper on June 6. Mrs. Alexander Jarrell and Mrs. Louise Dempsey are co-chairmen.

The associations elected its officers last week with Clarence Jester, president; Robert P. Major, vice president; Mrs. Edith Little, secretary; G. Melvin Dempsey, treasurer.

Youth of Harmony Grange took charge of its recent session by filling offices and furnishing the program.

George Parris, Jr., served as master and Howard Maclary was overseer. Others taking part were Frances Craig, Ronald and Dennis Nelson, Carl Lynam, Lois Maclary, Billy and Sandra Naudain, Joanne Nowland, Linda Mitchell, Sandy Craig, and Roberta Taylor.

The program included a detailed account of his trip to Delaware Boys' State by G. Parris; piano solo by Doris Jarmon, jokes by H. Maclary, reading by Lois Maclary, and games by L. Mitchell.

The charter was draped and resolutions were adopted on the death of Henry Ward, who died suddenly on April 17. Mrs. Joseph Mitchell, chaplain, had charge of charter ceremonies.

Winners in the annual sewing contest were announced by the economics chairman, Mrs. Edward Naudain as follows:

Class D adults—Mrs. Deloris Marcantoris, first; Miss Joan Brown, second; Mrs. Julia Walter, third; Class B, youth—Sandra Naudain, first; Class C—Young teen-agers, Barbara Kent, first, and second; Class D—Mrs. Marcantoris.

Go-to-church Sunday will be held this Sunday at Barrett's Chapel at 2 p.m. for grangers all over the state.

Grangers were treated with a wedding cake presented by Mr. and Mrs. Raymond Lindell, newlyweds.

There were 91 women at the home economics luncheon last Wednesday at the grange hall and over \$95 was cleared.

A card party will be held at the hall next Tuesday evening with Mrs. Elma Marshall in charge.

Ebenezer Methodist Church
The Women's Society of Christian Service will elect officers next Tuesday at 8 p.m. in the social hall with Mrs. Alex Jarrell, Mrs. R. P. Major, and Mrs. Lindsay Greenplate as the nominating committee. A daytime circle is being formed by the society and all women in the church are invited to join.

Five women of this church are providing jello for the May fellowship tomorrow at the First Presbyterian Church in Newark.

The Helping Hands Circle elected officers last week with Mrs. Leonard Hagg, president; Mrs. Leonard Nelson, vice-president; Mrs. Carl Reagan, secretary; Mrs. Roy T. Walton, treasurer. The annual banquet will be held May 19 at the church with the Mite Circle serving. Mrs. Hagg, Mrs. Walton and Betty Clements are the banquet committee.

The Ebenezer Fellowship will meet next Wednesday at 8 p.m. with Mr. and Mrs. Earl Lynch in Newark.

Members of the Three-in-One Homemaker's Club will attend morning worship next Sunday at 11 o'clock as part of their observance of National Home Demonstration Week. Next Sunday evening, the MYF group will attend the sub-district rally at Newark. Officers will be elected.

Friends of Mrs. Edith Patterson will be happy to learn she is now convalescing at the home of her

flowers, pansies, geraniums, and perennial plants.

The junior and senior high groups enjoyed a hayride last Saturday evening.

Of local interest is the announcement of the engagement of Miss Beth Fay Charlton of New Orleans, La., to Lamar LeBron II, son of Mr. and Mrs. Lamar C. LeBron of Hillside Farm, Hockessin. The wedding will take place June 1 at 7 p.m. in St. Charles Avenue Christian Church, New Orleans.

The daughter of Mr. and Mrs. Clarence D. Charlton, she graduated from St. Martin's Episcopal School in New Orleans, attended Texas Christian College and is attending South Eastern Louisiana College.

Mr. LeBron graduated from West Nottingham Academy, Colona, Md., and studied ranch training at Texas Christian College.

Mr. and Mrs. Paul Mitchell of Woodside Farms with Mrs. Mitchell's parents, Mr. and Mrs. W. Penn Hoopes of Kennett Square, Pa., spent the past weekend at Atlantic City.

Mr. and Mrs. John Donovan and son, Tony, moved last week from the Brackin residence to the former Skinner home on Limestone Road.

Carter Wins State Honor in Club Work

New Castle County 4-H Club members have been selected to receive the highest honor any state can give on its 4-Hers.

Collins, daughter of Mr. and Mrs. W. C. Carter, New Castle, was chosen to represent the club at the National 4-H Convention in Washington, D. C., June 1-5.

Collins has been in 4-H Club for 11 years and has completed more than 20 units of projects. From construction of an 800-raising calves. She is a member of the University of Delaware.

Carter has 10 years of 4-H experience to his credit, with 30 units completed. He was a delegate to the National 4-H Congress in 1956. His club program, has held 4-H camps, and he has been a junior leader for four years. He is a freshman at the University of Delaware.

Sam Quinn, state 4-H Club champion, will accompany the delegation on their trip.

Stansels Win Top Honor in Duplicate Bridge Play

Mr. and Mrs. Jack Stansel were first place winners in recent play by the Greater Newark Duplicate Bridge Club, with Mr. and Mrs. Earl Saunders, second; and Mrs. Philip Hayward and Mrs. Joseph Fisher, third.

The next meeting will be conducted Monday at 7:45 p.m. at the Alice Smyth Center—the club's charity play for the benefit of the YWCA.

Smoot Addresses DPFG On Conservation Values

Frank Smoot, artist and sports-writer for the Baltimore News-Post, addressed a meeting of the DuPont Fish and Game Association early this week in the Nemours Auditorium, on conservation of topsoil, water, and wildlife resources for our country's future.

Smoot, a member of the Maryland Game and Fish Commission, cited examples of civilizations which have declined because people did not practice conservation of natural resources.

His talk was accompanied with artist sketches done on the spot at the request of some 35 junior sportsmen in the audience.

At THE PHOTO CENTER, INC.
Newark Branch — 63 E. Main St.
DAYS ONLY - THUR. FRI. SAT.

WE'RE SHOOTIN' THE WORKS!

DURING OUR
TARGET TRADE DAYS
TREMENDOUS SAVINGS!
SENSATIONAL FREE OFFER!
TRADE YOUR OLD CAMERA OR PROJECTOR NOW!

TRADE and SAVE on the Infallible Bell & Howell ELECTRIC EYE 127 CAMERA OUTFIT

You'll never spoil a shot! Light sets the lens for you automatically. No focusing.

- Get 12 perfect pictures out of 12—every time.
- Full color or black-and-white—indoors and out.
- Automatic green light tells you "Shoot!"
- ...red says "Don't shoot! Light's too dim!"

\$79.95 LESS TRADE IN

Complete with matching flash and leather case

TERRIFIC VALUES!!

TRADE and SAVE!

the Explorer Bell & Howell TOTALLY AUTOMATIC SLIDE PROJECTOR

No other projector combines so many automatic features. Exclusive Point-A-Ray even gives you arm chair control of the show. Choose from 4 models.

- Shows all 2x2 slides brilliantly—forward or reverse—automatically.
- Each slide positively locks in focus—no pop, 40 per tray.
- Automatic, illuminated fingertip controls.
- Everything's built-in—nothing to remove.

\$79.95 FROM **\$79.95** LESS TRADE-IN

FREE! WATT EARP BUNTLIN SPECIAL FOR KIDS

OFFICIAL HUGH O'BRIAN REPLICA WORLD'S LONGEST 6-SHOOTER INCLUDES KNEE HOLSTER FREE WITH ANY TRADE-IN ESTIMATE (while limited supply lasts)

COME IN NOW & SAVE
THE PHOTO CENTER INC.
Two Convenient Addresses

WILMINGTON
2002 Market St.
OL 6-9436

NEWARK
65 E. Main St.
EN 8-3500

"IF IT'S PHOTOGRAPHIC, WE HAVE IT"

Remember MOTHER on Her Day

WORLD'S BEST MOM
"LOVING" Cup



Give that extra touch to your MOTHER'S DAY Gift by tying on this gold colored loving cup mounted on ivory-like base.

3 1/2 inches tall

only 25c

Ship'n Shore

very special blouse in precious Sea Island cotton

3.50



That rare, rich cotton...softest, silkiest you can find. Beautifully tailored with a clearly defined French-line collar, new flap detail and impeccable banded front. Very important looking in white, tropic pastels. Laundered superbly! Sizes 30 to 40.

You've seen Ship'n Shores in all the top magazines!



air conditioned slip by Barbizon

ZEPHAIRE® BATISTE

of course!

6.00

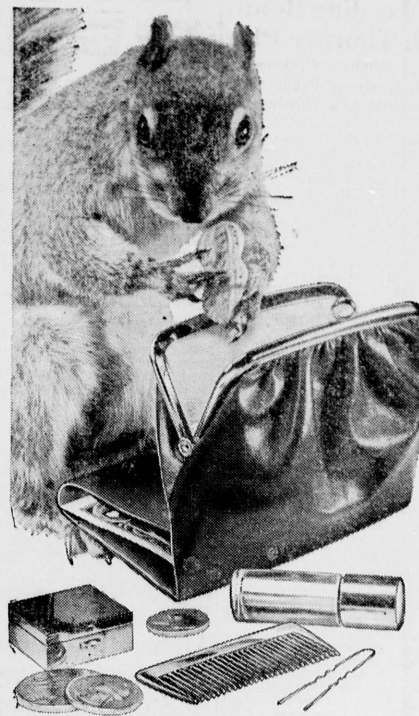
A clean line smooth shaped slip that's shadowproof. Washes in a wink, requires no ironing. Prettily pleated at hem and bodice. Miss 12-20, Lady 38-44, Little Lady 14 1/2-22 1/2

with a gift from

Newark **DEPARTMENT Store**

Come in today for that very special gift for that very special person. Choose from our many gift sections. Lingerie — Hosiery — Cosmetics — Fancy Linens — Home Accessories — Sportswear — Handbags — the list is endless.

A Cloud of Loveliness...
at fingertip touch
COTY MIST
L'Aimant
Emeraude
L'Origan
Paris
3.50 plus tax



An elegant place to store things:
Shirred French Purse by LADY BUXTON

Note the neatly shirred leather of our sleek new French Purse. It will expand like the proverbial squirrel's cheeks—to hold all your little niceties and necessities. Yet it never looks bulky. Choose from colors you love in rich, supple leather. \$5.00, plus tax.

as seen on TV

magic!
the stay-firm underlift panels of new

playtex fashion-magic bra

You'll say it's magic with everything you wear. A new youthful uplift is built into this bra.

The secret? Revolutionary new underlift panels, made of laminated cotton, that stay firm, yet soft...even after 65 machine washings. And another Playtex feature—new mold-to-shoulder straps that always lie flat, never cut or wrinkle. 32A-40C in white. \$2.50

please send me the following Playtex Fashion-Magic bras:

style	color	size	price	how many?
Playtex Fashion-Magic	white			

name _____
address _____
city _____ state _____
☐ Charge ☐ C. O. D. ☐ Money Order ☐ Check

© 1959 BY INTERNATIONAL LATEX CORP. PRINTED IN U. S. A.

Visit our Newest Department . . .



GOURMET FOODS

LOWER LEVEL

Newark **DEPARTMENT Store**
NEWARK SHOPPING CENTER
Open Wed., Fri. 9—9

