

INSIDE: LIFE IS GOOD HERE, SEE THE DIGEST, PAGE 3!

NEWARK POST

❖ Greater Newark's Hometown Newspaper Since 1910 ❖

87th Year, Issue 19

© 1997

May 30, 1997

Newark, Del. • 50¢

THIS WEEK

IN SPORTS

CARAVEL
DROPS
HEARTBREAKER
TO
B'WINE. 15

IN LIFESTYLE

ENGRAVED
IN MEMORY. 8

IN THE NEWS

RESERVOIR
GOES
DOWN
THE DRAIN. 3

RAISE FOR
STATE
EMPLOYEES
IN THE
WORKS. 4

INDEX

NEWS	1-5
POLICE BLOTTER	2
OPINION	6
LIFESTYLE	8
THE ARTS	9
DIVERSIONS	10
CROSSWORD PUZZLE	11
SPORTS	15-19
OBITUARIES	20
REAL ESTATE	21
CLASSIFIEDS	22-28



SPECIAL TO THE NEWARK POST JOHN CHABALCO

Chapel Street fire under investigation

A FRIDAY EVENING fire at 37 North Chapel Street remained under investigation this week although authorities said it does not appear suspicious.

"We have not been able to determine the cause," said Newark fire marshal Kenneth Farrall. "Both the Newark Police and the fire marshal's office are investigating."

A specially-trained police officer routinely investigates all fires when the fire marshal is unavailable, Farrall explained.

According to Farrall, the fire

was discovered around 11:35 p.m. on Friday night when someone apparently told people standing on the porch of the rental home that flames were visible in an upstairs bedroom.

"I haven't been able to talk to the occupants yet or find out exactly who discovered the fire," said Farrall on Wednesday. "Investigating fires in rentals at this time of year is always a problem because the kids disperse, taking exams and moving away."

Firefighters took about an hour to put out the blaze which

was "blowing out the windows" when they arrived.

"The fire traveled through voids in the walls until it finally reached the attic and went through the roof," said Farrall. "There was also a lot of smoke."

One firefighter was overcome by smoke and another was injured during the mopping up operation. "He was struck in the mouth and broke a tooth while they were trying to pull a piece of wood off the building," explained Farrall. "Both are OK now."

Good enough, says DeIDOT

By MARY E. PETZAK

NEWARK POST STAFF WRITER

IT TOOK THREE months but DeIDOT finally finished analyzing possible design changes to the Route 896/Old Baltimore Pike intersection.

Community activist Victor Singer, who received the results of the analysis, said it took "three months to declare that nothing will be done."

In early February, Singer wrote to Raymond Harbeson, chief engineer for DeIDOT, to express his concern that because the elevation of the new Route 896 was higher than the previous roadway, sightlines were dangerously obstructed for traffic crossing Route 896 at the intersection.

See INTERSECTION, 14 ►

UD ups alcohol penalties

UNIVERSITY of Delaware officials are defending their sweeping new policy on alcohol against criticisms and complaints from the local community.

Rick Armitage, director of government and public relations, told Newark city council on Monday night that the increased sanctions scheduled to go into effect in September are uniformly directed at students on and off campus.

See ALCOHOL, 12 ►

Q-Stix spreads out

Q-STIX BILLIARDS in the Newark Shopping Center has not let a few setbacks set them back.

The 4-year-old business with a large following of teens has expanded their space again to add a 75-by-25-foot arcade room under the former Hobbi-Art store at the center.

"We're still getting games in," said manager Scott Butz, showing off the new room. "We plan to have 30 to 35 when it's complete."

As in the billiards rooms, persons under age 18 are not permitted in the arcade before 3 p.m. on

See BILLIARDS, 13 ►

Can we help?

Offices: The paper's offices are located conveniently in the Robscott Building, 153 E. Chestnut Hill Rd., Newark, DE 19713. Office hours are 8:30 a.m. to 5 p.m. weekdays.

Phone: (302) 737-0724

Facsimile: (302) 737-9019

e-mail: newpost@dca.net

On the Internet: http://ncbl.com/post/

To subscribe: Call 737-0724 or 1-800-220-3311. Cost is \$15.95 per year to New Castle County addresses. To begin a subscription, simply call.

To place a classified: Call 1-800-220-1230

To place a display ad: Call 737-0724.

THE STAFF of the *Newark Post* is anxious to assist readers and advertisers. Reporters, writers, editors and salespeople can be contacted as listed below:



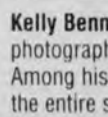
James B. Streit, Jr. is the publisher of the *Newark Post*. He sets policies and manages all departments in the Newark office. Call him at 737-0724.



Mary E. Petzak is the associate editor. She reports on government, education and police news. She can be contacted at 737-0724.



Marty Valania prepares the sports pages of this newspaper. The sports editor is seldom in the office, however, he checks in frequently. Leave messages for Marty at 737-0724.



Kelly Bennett is the Newark Post's staff photographer and production editor. Among his assignments is coordinating the entire staff's work and assembling it onto the news pages each week. Call him at 737-0724.



Julia R. Sampson is the office manager and editorial assistant who processes most press releases. She prepares obituaries and the Divisions calendar. Julia also writes feature and news stories. Contact her at 737-0724.

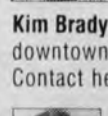
Phil Toman has been the paper's arts editor since 1969. Well-known in the arts community, he writes his weekly column from his Newark home. Leave messages for him at 737-0724.

Other contributing writers include Jack Bartley, Elbert Chance, Marvin Hummel, Ruth M. Kelly, Patricia A. Koly, James McLaren and Shirley Tarrant. Leave messages for them at 737-0724.

Interns this spring session include Amy Sims, of the University of Delaware, and photographer Christine Fuller. Leave messages for them at 737-0724.



Tina Winmill is the Newark Post's advertising director and manages the local sales team. She can be reached at 1-800-220-3311.



Kim Brady sells advertising in the downtown and greater Newark area. Contact her at 737-0724.



Jim Galoff services advertising clients in the south Newark, Bear, Glasgow and Routes 40/13 area. Call him at 737-0724.

Linda Streit is the advertising assistant. She can assist callers with questions about advertising rates, policies and deadlines. Call her at 737-0724.

Other advertising reps include Demps Brawley, Julie Heffner, Kay P. McGlothlin, Renee Quietmeyer, Jerry Rutt and Kim Spencer. Bonnie Lietwiler is the classifieds advertising manager. Her staff includes Kathy Beckley, Chris Bragg, Shelley Dolor, Jacque Minton, Sonni Salkowski and Nancy Tokar.



Our circulation manager is Bill Sims. **Abby Johnson**, left, handles Newark Post subscriptions. Call her at 1-800-220-3311.

The Newark Post is published Friday by Chesapeake Publishing Corporation. News and local sales offices are located in the Robscott Building, 153 E. Chestnut Hill Rd., Newark, DE 19713.

It is the policy of the Newark Post not to withhold from the public those items of information which are a matter of public record. All advertising and news are accepted and printed only at the sole discretion of the publisher.

Readers are encouraged to use the Opinion Page to speak their minds. Please remember: Letters should be thought provoking and concise. Letters deemed libelous will not be printed. We reserve the right to edit for clarity. Writers must include a telephone number so that letters can be verified before publication. The Newark Post is a proud member of the Maryland-Delaware-D.C. Press Association, the National Newspaper Association and the Newark Business Association.



Maryland-Delaware-D.C. Press Association

POSTMASTER: Send address changes to: Newark Post, 153 East Chestnut Hill Road, Newark, DE 19713. Periodicals postage paid at Newark, Del., and additional offices.

■ *Police Blotter* is compiled each week from the files of the Newark Police Department, the New Castle County Police Department and the Delaware State Police by staff writer Mary Petzak.

Burglary charges pending

Charges are pending against a 26-year-old Wilmington man for a burglary at an apartment in the 300 block of Main Street. Police said that the man allegedly entered the residence sometime between midnight and 6:30 a.m. on May 20 and removed an undisclosed amount of cash.

Electronic equipment taken

Sometime between 4 and 10 a.m. on May 18 unknown persons entered a residence on Victoria Court. Taken were a Sony TV, a Sharp stereo, a cordless phone, a Smith Corona word processor and assorted video tapes. Police are investigating.

Attempted break-in

Police report that sometime on the evening of May 19 unknown persons attempted to break into the home of an elderly resident on Kells Avenue. Police said the rear porch was entered and a window was broken on the kitchen door.

Bonsai trees removed

Sometime between 3 p.m. on May 23 and 10 a.m. on May 26 unknown persons entered a greenhouse attached to Newark High School. Taken were six bonsai trees and several garden tools valued at \$320. Police are investigating.

Grotto closed after Monday night fire

Grotto Pizza was closed overnight and patrons of the Galleria on Main Street were briefly inconvenienced when a fire broke out on Monday night.

According to city fire marshal Kenneth Farrall, the fire in a clothes dryer in Grotto's caused only minor damage.

Customers and staff at stores throughout the mall were evacuated for about 30 minutes while the firefighters

put out the fire. "It's standard procedure to evacuate in these cases," said Farrall.

Grotto's remained closed for the rest of the night until the Board of Health could make an inspection. "We have to call them to inspect whenever there is food service," said Farrall. "The Board was unavailable on Monday night so we had to wait until the next day."

Twister visits Cecil Co.

By JIM DECOURCEY

SPECIAL TO THE NEWARK POST

A tornado slammed four homes in an upscale residential community near Fair Hill, Md., on Sunday.

Chet Hendrickson, a retired National Weather Service meteorologist who specializes in investigating tornadoes, verified that a tornado with winds between 125 to 135 mph, swept through the Foxcatcher community around 7:30 p.m. on May 25.

No injuries were reported but the four houses and neighboring Sharpes Cemetery were damaged.

Wandering through a thicket of twisted, topped trees and limb-littered yards, Hendrickson surveyed the devastation early Monday before the flood of traffic for the Fair Hill races arrived.

He labeled Sunday's twister quite

serious for the region. Hendrickson estimated that the tornado cut a path as half-mile long and nearly 100 yards wide, said Art Kraus, a National Weather Service meteorologist in Mount Holly, N.J.

The tornado lasted only about two minutes, but it caused nearly \$300,000 in damage. Kraus said it caused "severe structural damage" to two of the four homes, damaged more than 100 large trees and almost 100 tombstones in the cemetery.

Between the time it formed over farmland near Foxcatcher and reached the cemetery, the funnel stayed approximately 30 to 40 feet from the ground, Hendrickson estimated. If it had been on the ground as it neared the houses, those homes could have easily been demolished, Kraus said.

Former UD basketball star booked

A former co-captain and star of the University of Delaware mens basketball team has been charged with receiving stolen property.

According to UD police Capt. James J. Flatley, former Blue Hens guard, Rob Garner, was arrested Tuesday following a quick investigation by campus police on May 23.

The 22-year-old victim said she was studying on the second floor of the Morris Library when she left her belongings on a table at 2 p.m. to go meet a friend. When she returned 10 minutes later, her text book was missing.

At 2:20 p.m., the victim called the campus bookstore and identified her book. "They had my book already," the student said. Campus police then were called.

Garner, a resident of Temple Hills, Md., played three seasons from 1993 to 1996 as a 6'2" guard and co-captained the mens squad in 1995-96, according to Scott W. Selheimer, UD's sports information director.

Garner is a student at the university and was in class Wednesday, Selheimer said.

Trespasser found twice on DelChapel site

Newark Police were called to the former Continental Fibre/Budd site on South Chapel Street two times in one week to arrest the same man for trespassing.

According to media officer Curt Davis, Thomas Jester, 19, was first found on the DelChapel Associates property around 10:40 a.m. on May 19.

Four days later on May 23, two officials from the Department of Natural Resources were touring the site around 4:30 p.m. with owner Thomas Rugar when the man was seen on the roof of a building. Police were again notified after the man did not leave.

Unconfirmed reports indicate that Jester, whose last known address is in Elsmere, may have been sleeping on the factory site which has been a favorite spot for juveniles and other trespassers.

In 1996, Judge Loreto Rufo of Alderman's Court ordered DelChapel to completely secure the property as a safety precaution after numerous complaints from Newark's building department.

DelChapel has appealed an Order entered by Rufo on March 5, 1997, to demolish all buildings on the property by September 1997.

NEWARK POST

DON'T MISS A SINGLE ISSUE!

New subscribers can enjoy local school, government, convenient mail delivery police and sports news! at an introductory rate of Rush the coupon to us just \$9.99 for a one-year subscription. 52 today...so that you won't miss a single issue! issues, jam-packed with

YES!

I want to take advantage of your Special Introductory Rate of just \$9.99 for a one-year subscription to the Newark Post. My check is enclosed. Start my subscription immediately!

SORRY, THIS OFFER FOR NEW SUBSCRIBERS ONLY!

NAME _____

ADDRESS _____

CITY _____

STATE _____

ZIP _____

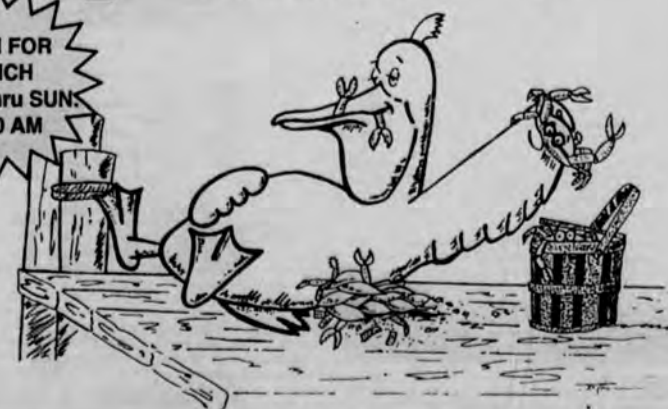
DAYTIME PHONE _____

EVENING PHONE _____

MAIL TO: Newark Post, 153 E. Chestnut Hill Rd., Newark, DE 19713

Woody's
CRAB HOUSE

OPEN FOR LUNCH
TUES. thru SUN.
11:30 AM



Featuring Jumbo Alaskan King Crab Legs

• Crabs • Snow Crab • Shrimp

• Steak • Chicken Pasta...Plus More!

MAIN ST., NORTH EAST, MD
410-287-3541

OPEN Tues.-Thurs. & Sun. 11:30-9
Fri. & Sat. 11:30-10 • Closed Monday

Here we go again!

Second ethics complaint filed against Godwin

By MARY E. PETZAK

NEWARK POST STAFF WRITER

A community activist and a former political opponent have filed the second ethics complaint in less than three months against city councilmember Harold Godwin.

According to Oaklands resident Shirley Tarrant, the complaint arises from statements made by Godwin about the appointment of University of Delaware professor Leslie Goldstein, nominated by councilmember Nancy Turner, to the city Board of Ethics. Turner and Tarrant have long worked together on community traffic organizations, including Citizens Against Traffic, which Turner helped found, and the Western Newark Traffic Relief Committee which Turner heads and on which Tarrant serves.

Tarrant also has been a long time columnist on local issues for the *Newark Post*.

Abbotsford resident Scott Bowling, who filed an ethics



Godwin



Tarrant

complaint against Godwin during his recent unsuccessful bid for Godwin's council seat, also filed a complaint this time alleging the same facts as those presented by Tarrant.

According to Tarrant's papers, Godwin attempted to block Goldstein's appointment. First by having

the item removed from the council agenda for further research and discussion, and then by sending a memorandum to other councilmembers in which he objected to her not being "politically neutral."

In the memo dated April 29, 1997, Godwin states: "May I suggest that in our search for appointees to our Ethics Board that we look for Newarkers who are politically neutral and should have a keen knowledge of our Ethics Code and an ability to apply it equitably and without prejudice."

Tarrant alleges: 1) because the Municipal Code does not list any qualification for Ethics Board members other than Newark residency; and 2) because Goldstein won a lawsuit filed against Godwin's gas station business in 1981, that Godwin acted unethically in objecting to her appointment and in not disclosing the fact of the lawsuit.

Godwin stated that the lawsuit was handled by his insurance carrier, and that he only remembered it after the complaint was filed. "I have absolutely no hard feelings against Leslie Goldstein," said Godwin following the charge. "As for the lawsuit, it was almost 20 years ago, I didn't even remember it."

Godwin said he was reserving any other comments about the matter until the Board hearing.

Prior to filing the complaint, Tarrant said that she was investigating this matter because she could not understand why anyone would oppose Goldstein's appointment. She said she uncovered the fact of the lawsuit but did not ask Godwin about it, claiming he knew about it already, and she believed that was the real reason he objected to the appointment.

Council voted 6-0 to appoint Goldstein on May 12. Godwin said he did not vote; however, according to the city secretary's office, that counted as a "yes" because he did not "abstain" on the record.

Reservoir goes down the drain

The state will not pay to finish a required environmental study for a proposed regional reservoir, putting off the \$56 million project indefinitely, an administration official said.

"It is very clear that the reservoir option that has been discussed for many years is both too costly and not practical," said Jeffrey Bullock, chief of staff for Gov. Thomas Carper at an executive session of the Water Resources Agency for New Castle County.

Water agency staff had been pushing for a \$300,000 infusion needed to complete the impact study on construction of the reservoir off Thompson Station Road north of Newark.

Other water resources options also under consideration in the study included a pipeline to Philadelphia and desalinization.

Newark Mayor Ronald Gardner said the governor's decision was "very disturbing," especially since as

recently as a month ago he was assured that the state would see the project to completion.

"It is especially unfortunate when the end was in sight for the Environmental Investment Study," said Gardner. "A ten-year study should not be stopped by a political decision, and this is a political decision."

Gardner said it is clear to him that the current system of two and four-year terms for government officials is incompatible with long range planning.

"It's very sad," concluded Gardner. "I hope we haven't heard the last of it."

About \$2.2 million has already been spent on the work. Reservoir supporters said northern New Castle County needs the 1.2 billion gallon reserve to meet future water supply shortfalls during a drought like one which occurred in 1995.

Play in memory of local businessman

On Sunday, June 1 at 7:30 p.m., the Everett Theater will host a benefit performance of Joseph and the Amazing Technicolor Dreamcoat. The production, staged by the New Jersey-based community theater group The Road Company, will benefit the Immanuel United Methodist Church in Townsend.

The performance is being done in memory of church member Charlie "B" Friswell, who died this

past December. Together with his wife, Friswell operated Charlie "B" Travels on Main Street in Newark.

Featured in the production is Friswell's daughter, Tracy, who portrays Mrs. Potiphar. The role of Joseph is played by Ed Corsi, from Wilmington. Tickets are \$12 for adults and \$10 for senior citizens and children under 12. For information, call 378-2431.

Bike lane mapped out on Chapel St.

Following recommendations by state and regional agencies, Newark city council has approved the elimination of all parking on the west side of Chapel Street south of Main Street.

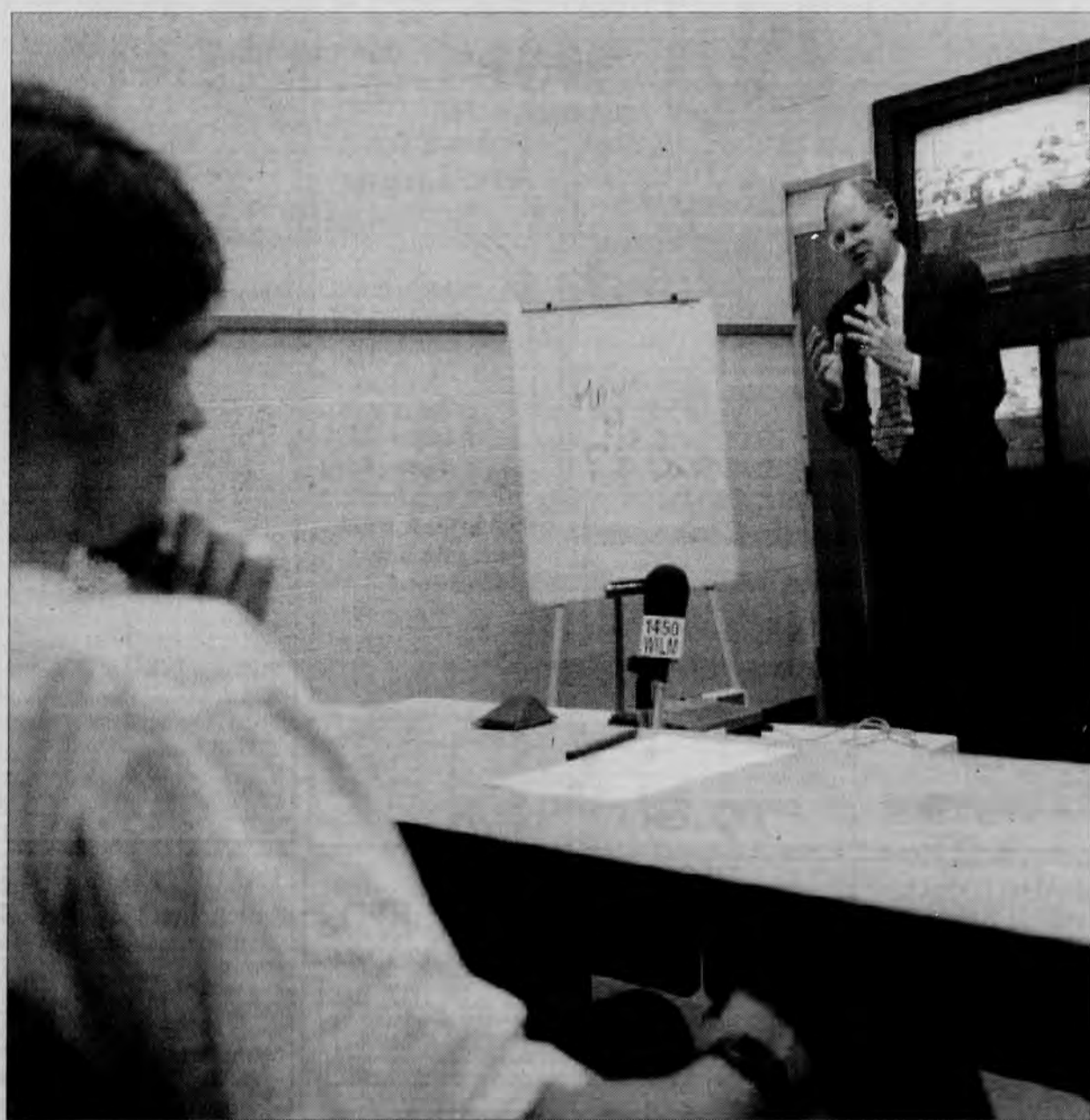
According to city manager Carl Luft, the recommendation came out of the Newark Area Bicycle Report prepared by the Department of Transportation and the Wilmington Area Planning Council.

In order to accommodate a bicycle path, no parking will be allowed on the west side of South Chapel from Main Street south to the city limits.

"This is not really as big a change as it may sound," explained planning director Roy Lopata. "You can't park on much of South Chapel Street now because of yellow lines on the sidewalk and fire hydrants."

Lopata said the ordinance was just "catching up" with the actual conditions and eliminating the parking which still existed between Lovett Avenue and Chambers Street.

According to Chief William Hogan, the city's Traffic Committee sent 12 survey letters to the property owners on South Chapel Street and eight responses were received with six in favor of the restriction, and only two opposed.



NEWARK POST PHOTO BY KELLY BENNETT

DON'T BE AFRAID TO ASK

U.S. Congressman Michael Castle (R-Delaware) spent an hour at Newark High School on Tuesday fielding questions from students and residents on issues of national and local interest.

Life is good here, claim parents

Believe it or not, all Delawareans do not think their quality of life is slipping.

A poll in the April 1997 issue of Reader's Digest, listed the Wilmington/Newark metropolitan area, and Dover as two of the top 50 places in America to raise a family.

The survey weighed the responses of parents nationwide with the help of the Roper Center for Public Opinion Research.

Dover ranked 17th and the Wilmington/Newark area, grouped together, placed 27th on the list in which Sheboygan, Wis., finished first.

Some of the factors used to vote, ranked in order of importance by parents, were: low crime rate; low drug/alcohol problems; good public schools; quality health care; clean environment; affordable cost of living; strong economic growth; and extracurricular school activities.

"It's no secret that Delaware is a terrific place to raise a family," said Gov. Thomas R. Carper. "I commend Reader's Digest for pointing out what we've known all along—that when we mention strengthening families (in Delaware), we don't just 'talk the talk'—we also 'walk the walk.'"

Raise for state employees in the works

Although a three percent raise for all state employees has been recommended by the State Joint Finance Committee, not everyone is happy.

"The Joint Finance Committee's recent decision to fund a three percent salary increase for (state) employees — up only one percent from

Governor Carper's proposal — is still insulting," said Mary Ann Fry, president for the Delaware State Education Association. "It's still a long way from the very modest five percent we are seeking."

Fry said that the association, which represents 8,600 state public school employees, established

the five percent goal before the recent projections of a state revenue surplus.

"The message we hear from state legislators is 'do more with less,'" said Fry. "Teachers are extremely frustrated and are looking for recognition for what they're accomplishing and what the public expects from them in

the future."

According to Fry, the DSEA will continue to lobby the legislature on this issue.

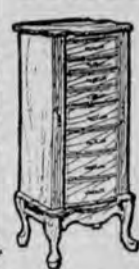
House Speaker Terry R. Spence (R-Stratford), said he is pleased with the Committee's recommendation although he also called for a five percent salary increase after

the Governor proposed only two percent. Spence noted that under the proposal, employees below the mid-point salary range would also receive an extra \$300 in addition to the three percent increase.

The General Assembly will vote on the increase when it considers the budget at the end of June.

FURNITURE AND FREIGHT LIQUIDATION SALES INC.

Jewelry Armoire



Oak or Cherry
Finish
Reg. Retail
\$699.95
YOUR CHOICE
\$129.95

Bar Stool



Reg. Retail \$99.95
YOUR CHOICE
Under Wholesale
Price
\$24.88

Hall Tree



Reg. Ret. \$109.95
Cash Price \$19.95
WITH COUPON
\$15.88

CLAIM YOUR BARGAIN FREE SET OF SOUP MUGS

With purchase of Bassett or Serta Bedding
BASSETT MATTRESS & BOX SPRING
This is top of the line bedding and one of the best deals that we ever made!
These are all overruns, cancellations and close-out fabrics.
This is one heck of a price on bedding, complete with
a warranty of one full year replacement at no charge.

	Reg. Ret.	OUR CASH PRICE	SPECIAL
Single	\$589.95	\$259.95	\$129.95
Double	\$729.95	\$309.95	\$159.95
Queen	\$859.95	\$399.95	\$219.95
King	\$1099.95	\$519.95	\$279.95

SERTA MATTRESS & BOX SPRING			
SINGLE...Reg. Ret.	\$609.95	OUR CASH PRICE	\$149.95
DOUBLE...Reg. Ret.	\$749.95	OUR CASH PRICE	\$189.95
QUEEN...Reg. Ret.	\$889.95	OUR CASH PRICE	\$249.95
KING...Reg. Ret.	\$1129.95	OUR CASH PRICE	\$299.95

PRICES INCLUDE BOTH PIECES!

Absolutely the best prices on Leather-Mate and leather sofas and love seats

TWIN/DOUBLE FUTON BUNK BED

Trailer Load, Dealer refusal
with 8" Futon Mattress
• Red • Black
• White
Reg. Ret. \$899.95
Our Cash Price
\$329.95
SPECIAL SALE PRICE
\$279.95



TWIN/DOUBLE BUNK BED

Dealer Refusal • 200 Sets Available
• Red
• Black
• White
Bedding Sold
Separately
Our Cash Price
\$239.95
SPECIAL SALE PRICE
\$169.95 WITH COUPON
\$149.95



SWIVEL ROCKER CLOSEOUT

Reg. Ret.
\$279.95
Our Price
\$119.95
CASH PRICE
\$99.95



Entertainment Center Closeout

choose from black or oak
Reg. Ret.
\$269.95
Sale
Price
\$89.95 WITH COUPON
\$79.95



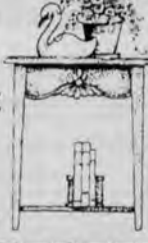
BEDROOM CLOSE-OUT

Armoire Chest Headboard • Mirror
WHILE THEY LAST
YOUR CHOICE GREEN/
BLACK/WHITE STYLES VARY
Reg. Ret.
\$1699.95
ONLY **\$339.04**
Get 2nd Night Stand FREE With Purchase



OCCASIONAL TABLE

* Mahogany
* Chain Store Refusal
Reg. Ret. \$229.95
CLOSEOUT PRICE
\$39.95
WHILE THEY LAST



CHANGING
TABLE
CLOSEOUT
Reg. Ret. \$249.95
WITH COUPON
\$69.88

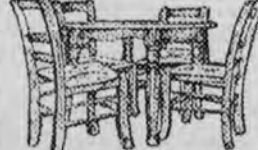


CRADLE
Reg. Ret.
\$249.95
CLOSEOUT PRICE
\$69.99
with coupon



4 PC. DINETTE

• Natural • Natural/White
• Natural/Green • Cane Seating
Reg. Ret. 3 DIFFERENT FINISHES
\$599.95
Reg. sale price \$259.95
CLOSEOUT PRICE
\$239.95



4 DRAWER CHEST

Pine Finish and
Brass Hardware
Reg. Ret.
\$149.95
OUR CASH PRICE
\$69.95
WITH COUPON
\$39.04



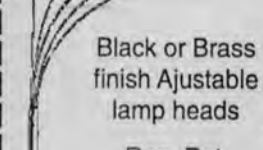
SOFA & LOVESEAT CLOSEOUT

Reg. Ret.
\$1089.95
CASH PRICE
\$399.95
WITH COUPON
\$349.04



Arc Lamp

Black or Brass
finish Adjustable
lamp heads
Reg. Ret.
\$399.95
SALE PRICE
\$89.95



Contemporary Table Set

• Black Laquered Finish
• Mirrored Tops
Reg. Ret.
\$599.95
SALE PRICED
\$119.95



Catnapper Lounger

Dealer Refusal
Under
Wholesale!
Can't Beat!
Reg. Ret.
\$849.95
200 To Sell! Won't Last!
YOU PAY **\$249.04**



RECLINER

Reg. Ret. \$389.95
OUR CASH
PRICE
\$129.95
WITH COUPON
\$89.88



BED CLOSEOUT KING/QUEEN/DOUBLE

Reg. Ret.
\$399.95
While they last
\$109.95
*rails extra



Crib Closeout

Light
Maple
Finish
Reg. Ret.
\$249.95
with coupon
\$79.88



3 Piece Oak Pack Parquet Top Closeout

Reg. Ret.
\$449.96
with coupon
\$129.95



(CANTED) FRONT CURIO

Cherry Finish
• 5 glass shelves
• Two doors
• Lighted interior
• Mirrored back
Volume Buy!!
Reg. Ret. \$559.95
OUR SPECIAL PRICE
\$159.88



VICTORIAN WICKER BED

* White finish
Reg. Ret. \$499.95
Available in Double or King
Bedding and Rails are extra
CLOSEOUT
PRICE
\$39.95



Crib Closeout

Light
Maple
Finish
Reg. Ret.
\$549.95
with coupon
\$149.95



TRADITIONAL TABLE SET

• Queen Anne Legs
And Brass
Hardware
• Oak Or
Cherry,
Your Choice Reg.
Ret. \$339.90
OUR CASH PRICE
\$169.95
WITH COUPON
\$99.88



BIG SELECTION OF WOOD & METAL BUNK BEDS

HUNDREDS OF OTHER ITEMS!
We are a five store chain not affiliated with any other stores.
Stores in: LANCASTER • YORK • CARLISLE, PA • ELKTON, MD
STORE HOURS MON-SAT 9AM-9PM SUN 12 PM - 6 PM
FINANCING AVAILABLE
To purchase by check, you must have
a phone number and drivers license
Not responsible for typographical errors. We reserve the right to substitute gift items.

Rt. 40 Pulaski Hwy. • The Village at Elkton
Elkton, MD 21921 • 1 (410) 398-5989
STORE HOURS MON-SAT 9AM-9PM SUN 12 PM - 6 PM

CANOPY CLOSEOUT

Reg. Ret. **\$449.95**
Black Matte Finish. Available in
Double Or
King. Bedding
And Rails Not
Included.
CLOSEOUT
PRICE
\$109.95
Other styles
available for
same price



SECTIONAL SLEEPER

Reg. Ret. \$2389.95 - Dealer Refusal
Features A Loveseat With Side By Side
Recliners And Center Console Plus
Sofa With Hide-A-Bed.
OUR CASH PRICE
\$1,049.95 WITH COUPON
\$889.88





SPECIAL TO THE NEWARK POST

Recently elected officers of the FFA chapter at Christiana High School include: From left to right: (front) Mike Frazer, executive board; Amy Phillips, secretary; Helen Ounjian, vice president; Courtney Miller, sentinel; Bernadette Lineback, Ppresident; (back) Lisa Fuhrmeister, treasurer; Katie Meginniss, historian; and Mike Leventry, vice president. Not pictured are: Steve Thompson, reporter; Sarah Noonan and Katie Lawson, executive board.

CHS presents Ag awards

Every member of the Christiana High School FFA Chapter was honored at the recent 26th annual Parent/Member Banquet. Awards and accomplishments included:

The Greenhand Degree was presented to Cody Allen, Greg Aluise, Jayme Baker, Rand Baker, Dan Bogart, Joe Brietenbach, Regina Cho, Jenny Clark, Devon Conn, Martin Connell, Sara Crowe, Michelle Dillon, Chris Farra, John Fritts, Joyce Goddard, Erin Halfen, Kevin Hardy, Jen Hetland, Tiffany Hetzer, John Hurst, Susan Jarmon, Mark Jeandell, Shannon Koeber, Tara Lake, Kris Lensbower, Andrea Leventry, Mike Leventry, Matt Logue, Kathy Micheal, Brooke Molina, Apryl Neuhauser, A.J. Pingitore, Kim Sentman, Holly Sloniewski, Dayna Smith, Dave Vanderslice, Kris Vento, Pamela Weaver, Ashley Welsh, Matt Zakutny, Sara Zakutny and Jessica Rose.

The Chapter Degree went to Shawn Baker, Tina Blair, Jason Boone, Jen Facciolo, Mike Kerr, Nichelle Lanier, Kaiti Lawson, Mike Leventry, Eric Masciarelli, Robbie McCurdy, Justin Mills, Seth Murauskas, Sarah Noonan, Andrea Palady, Danielle Ragazzo, Andrew Rose, Kirsten Rose, Don Schretzman, Chris Schwartz, Holly Sloniewski, Christina Turner and Kelly Zayakosky.

High GPA awards were presented as follows: Greenhouse Mgt. I: John Fritts; Greenhouse Mgt. II, Joyce Goddard; Floral Design I, Kathy Micheals; Adv. Floral Design, Bernaclette Lineback; Wildlife Conservation I, Justin Mills; Wildlife Conservation II, Amy Phillips; Ag Mechanics I, Shawn Baker; Ag Mechanics II, Mike Leventry; Landscaping: Jayme Baker; Animal Science, Chris Farra; Animal Science II, Christina Turner; Vet. Tech, Brian Stanton; and Ag. Lab. Assist., Lisa Fuhrmeister.

Proficiency awards were presented as follows: Ag. Mechanics, Tom Ciccoriella, Raul Cordova, John Maichle and Brian Russell; Horse, Jen Faccioli, Kaiti Lawson and Christina Turner; Ag Sales/Services, Kevin Arnold, Joyce Goddard and Don Schretzman; Poultry Production, Helen Ounjian; Volunteerism, Mike Leventry; Floriculture, Tara Lake, Courtney Miller and Brooke Molina; Dairy Production, Jenny Clark, Jen Hetland, Kaiti Lawson and Sarah Noonan; Forest Management, Lisa Fuhrmeister, Jen Furman, Mike Leventry and Courtney Miller; Specialty Animal, Nicole Fries, Joe Holtzman and Nichelle Lanier; Ag Electrification, John Maichle; Wildlife Management, Cory Best and Dave Watras; Turf and Landscape Management, Jayme Baker, Erin Halfen, John Fritts and Helen Ounjian.

The honorary Chapter Degree went to Jane Barfield. Mrs. Sterling and Ms. Rumschlag received citations of appreciation.



SPECIAL TO THE NEWARK POST

Christiana High School senior Bernadette Lineback has been named winner of the 1997 Dekalb Agricultural Accomplishment Award. Often considered the highest honor an agricultural student can receive on the local level, the award is presented at nearly 3,000 schools annually to the outstanding senior agricultural student. Lineback, who plans to participate in the Honors Program at the University of Delaware next fall, has served as secretary, vice president and president of the FFA chapter at Christiana.

Open burning restricted in summer

Delaware's annual ban on the burning of fallen branches, limbs and residential shrubbery goes into effect in June, and EPA officers will be on the lookout for violators, according to the Delaware Department of Natural Resources and Environmental Control.

Beginning June 1, it will be illegal in Kent and New Castle counties, where the ozone problem is classified as severe, to burn anything except cooking fires and campfires. In Sussex County, residents can still burn cut or fallen branches, limbs or shrubs.

Statewide, it is never legal to burn leaves or trash or to use "burn barrels."

Open burning is typically conducted using burn barrels, screened pits, backyard incinerators, and just plain "piling up" refuse, trash, yard trimmings or leaves and setting them aflame.

Many harmful chemicals are produced and released into the air when trash and leaves are burned.

Some of these chemicals are toxic to people, animals, and plants and, in addition, react with nitrogen oxides in the air to produce ozone especially during hot, sunny weather.

Rain eventually washes toxic chemicals into the land and waterways. "Bad" ozone (smog) forms after illegal burning can damage building material, as well as crops and other vegetation. Another result, acid rain, causes fish kills, plant and property damage.

Open burning of trash and leaves has been associated with cancer, heart and lung damage and has been linked to Sudden Infant Death Syndrome (SIDS). It can increase your chances of catching colds, the flu, and other diseases.

Asthma attacks, other respiratory problems, and eye irritation are often triggered by burning.

DNREC recommends recycling glass, plastics, aluminum, used motor oil, and other recyclable materials at the recycle

igloos nearest you. Take your non-recyclable trash to a licensed landfill.

Most organic material including leaves, grass clippings and vegetables, etc., can be turned into compost.

The burning of leaves has been prohibited statewide since February 2, 1995.

Delaware has prohibited all burning of trash since 1968. Penalties for burning trash or leaves range from a simple warning with a copy of the state regulations to fines from \$50 to \$500 dollars plus a criminal record for more serious violators.

Enforcement officials are on duty 24 hours a day, and people can report illegal activity by calling 1-800-662-8802. Bell Atlantic Cellular phone users can dial #DNR.

For additional information, contact DNREC's Division of Air and Waste Management at (302) 739-4791.

If You're Medicare-Eligible, Find Out Why 99% Of All The U.S. Healthcare Golden Medicare Plan Members Surveyed Would Recommend U.S. Healthcare To Others.

Nearly 54,000 members of the U.S. Healthcare Golden Medicare Plan responded to our 1995 survey. Of those, 99% gave a favorable response when questioned about the overall medical care at their doctor's office, the ability to make doctor's appointments and the ability to obtain referrals to specialists. And 99% of respondents would recommend the plan to others.

Find out more. Please join us for complete information on the U.S. Healthcare Golden Medicare Plan. Our comprehensive, no-deductible plan can provide significant cost savings and more benefits than federal Medicare plus many supplemental/gap plans combined! Benefits include:

- Zero premium plan option* (You must continue to pay your Medicare Part B premium)
- Prescription drugs covered with a \$10 copay per prescription for generic and \$15 copay per prescription for name brand (\$500 annual maximum)
- Coverage for referred specialists, hospitalization and home health care (copay may apply)
- Vision care, hearing aid allowance, preventive dental care, and more (limitations and copays may apply)

Call for a personal appointment or to reserve space at an upcoming meeting:

1-800-856-2700



Don't miss out! Make plans to attend one of the following U.S. Healthcare Golden Medicare Plan meetings to be held this month.

Dover

Sheraton Inn—Dover
1570 North Dupont Highway
Thurs., June 5, 11:00 a.m.
Thurs., June 5, 3:00 p.m.
Thurs., June 5, 6:30 p.m.
Thurs., June 19, 10:00 a.m.
Thurs., June 19, 11:30 a.m.

Newark

Christiana Hilton
100 Continental Drive
Tues., June 3, 11:00 a.m.
Tues., June 3, 3:00 p.m.
Tues., June 3, 6:30 p.m.
Tues., June 24, 10:00 a.m.
Tues., June 24, 11:30 a.m.

Holiday Inn

1203 Christiana Road
Mon., June 16, 10:00 a.m.
Mon., June 16, 11:30 a.m.

New Castle

Ramada
I-295 & Route 13
Tues., June 10, 10:00 a.m.
Tues., June 10, 11:30 a.m.

Wilmington

Holiday Inn—Wilmington North
4000 Concord Pike
Wed., June 25, 11:00 a.m.
Wed., June 25, 3:00 p.m.
Wed., June 25, 6:30 p.m.

Open to Medicare-eligible individuals living in the state of Delaware. The U.S. Healthcare Golden Medicare Plan has continuous open enrollment.

U.S. Healthcare 1995 Medicare Plan Member Survey: 92,453 surveys sent, 53,799 surveys returned. * \$0 is the monthly plan premium for the U.S. Healthcare Medicare 10 Plan option in Delaware. Current U.S. Healthcare members see your member handbook for specific exclusions, limitations and copayments. A federally qualified HMO with a Medicare contract. © 1997 U.S. Healthcare, Inc.

02702DE



Opinion

EDITORIALS • COLUMNS • PAGES FROM THE PAST • LETTERS

896 design needs work

THE DESIGN of the intersection of Old Baltimore Pike and Route 896 is not one of the biggest issues in highway construction.

Still, an intersection that seems flawed to even the casual observer is worth more than a passing comment.

Civic activist Victor Singer deserves credit for continuing to undertake a seemingly lonely crusade to improve the design of the intersection against the intractable bureaucracy of the Delaware Department of Transportation.

As you may know by now, Old Baltimore Pike appears to slope upward in meeting the intersection of an elevated 896.

Given the tendency of some idiots to speed through intersections and growing evidence that people instinctively have a heavy foot on wide highways, it isn't hard to imagine what will take place.

Despite assurances from DelDOT, some idiot will speed through the intersection and perhaps do a Dukes of Hazzard-style flying leap into the side of a speeding truck.

The problem with the sightline will trouble even cautious drivers and add another element of risk on a highway that already has a highly dangerous intersection at Route 40 and 896.

In fact, the design of the entire Route 896 project seems to indicate the degree that Delaware has

"cheaped out" in designing this important project.

While spending lavishly on multi-lane ribbons of concrete that encourage speeding, neighbors will see ugly, hard-to-maintain berms, rather than sound walls that are frequently used in suburban areas.

Also, underpasses and overpasses have been dismissed as overly expensive.

This doesn't have to be the case. At the edge of "Chateau Country" on Route 141, planners found enough money for an underpass near the A.I. duPont Institute and the DuPont Country Club, complete with some nice stonework.

True, such work would add tens of millions of dollars to the overall cost and small groups of neighbors might object. DelDOT cites neighborhood concerns in justifying the current Old Baltimore intersection design.

However, the expense would be more than offset by a far larger group of happy neighbors and the added safety of fewer intersections.

In making their unsuccessful case for a higher gas tax, the Carper administration rarely addressed the issue of improving highway designs that frustrate and endanger motorists and neighborhoods.

Our guess is that tying funding to such improvements would have reduced opposition to the fuel tax and given the state a real shot at improving clearly substandard projects such as Route 896.

UPON MY WORD

'I can celebrate life'

By SHIRLEY M. TARRANT

NEWARK POST COLUMNIST

GOSH! It's 8 a.m.! Better get up and get dressed. Do the wash. Vacuum. Noon committee meeting at Christiana Hospital. I don't feel right. Heavy feeling in the center of my chest. Never felt this before. Probably sore from raking those leaves yesterday. Oh, well, better get going. Feels like something really heavy on my chest. After this meeting, I think I'll amble on down the hall to the Emergency Department. Someone suggests that I see my family doctor. That's easy. My doctor is right across the road from the hospital. I'll drive over and then I can go right home. Maybe my doctor isn't in today. The receptionist seems pretty concerned about my symptoms. I'll sit here.

Good, my doctor is in. Into the exam room. Blood pressure is 146 over 86. Wha-a-t? My normal is 110 over 70. Nurse checks my pulse. Says it's skipping a beat. She calls for an EKG. Now a nitroglycerine tablet under my tongue. It will taste bitter, I'm told. Right you are! Blood pressure checked every two minutes. Oxygen tubes in my nose. Now I'm in an ambulance heading back across the road to the hospital. I'm scared. This all is happening so fast. What am I doing here?



Tarrant

What is going on? My heart is pounding. The pressure feels worse. I say I'm embarrassed. Creating all this fuss. Nurse tells me not to be embarrassed. Just taking precautions.

Put on the hospital gown. Blood sample. IV is starting. How do I feel? — on a scale of one to ten: a four. Scared! Doctor is examining me. He's pressing on my chest. Oh-h-h, that hurts. Orders another nitro tablet. What? I had three tablets at the doctor's office. What is happening? More nitro? More oxygen? The pressure is worse. The doctor orders morphine. Here it comes right into my IV line. Hey, this looks serious! Am I having a heart attack? The ceiling is getting closer. I'm floating.

My friend Nancy walks in. What a surprise! Oh, that's right... I called her. When? What can she do for me? How about getting my husband here so he can pick up my car that's still across the road? She's telling me I need pajamas, toothbrush, slippers, clothes, makeup. No makeup.

Who is peeking around the ER curtain? Cardiologist. Heavy feeling is about gone. He wants an EKG, more blood tests and a chest x-ray. He's telling me he may admit me to the hospital. I'm telling him it's a wild goose chase. I'm feeling better. We'll see, says he.

See WORD, 7 ▶

OUT OF THE ATTIC



This week, "Out of the Attic" features a photograph of the Aetna Hose, Hook and Ladder Company's 1913 Thomas engine. Realizing the need to purchase motorized fire equipment but unable to afford the acquisition, in 1911 the volunteers organized a fund-raising carnival. The first event raised \$1,749. The following summer, a second fund raiser netted \$2,410, therefore Aetna officials began a search for their first motor-driven fire engine. This appara-

tus arrived in Newark in Sept. 1913 at a cost of \$7,500. Aetna paid \$6,000 cash and borrowed the remainder. "Out of the Attic" features historic photographs from Newark's history, recent and long ago. Readers who have a historic photo and would like to share it with other readers are invited to loan their photos for reprinting in this space. Special care will be taken. For information, call the *Newark Post*, weekdays, 8:30 a.m. to 5 p.m., at 737-0724.

PAGES FROM THE PAST

• News as it appeared in the *Newark Post* throughout the years

■ May 31, 1922

School children exhibit their work

On last Thursday afternoon the children of the primary school, the fourth, fifth and sixth grades of the grimmer school and the Opportunity Class gave an exhibition of the work completed during the year.

This year is the first one in which an organization of art instruction has been introduced.

The exhibition was planned to provide an opportunity for the parents to see the work of their children and also to give the children a chance to see what the others have been doing, the thought being to inspire them to do better work.

New store here

Walter Powell is making alterations to the building adjoining his restaurant on Main street.

The alterations will make another store for Newark for it is understood that a branch of the Atlantic and Pacific Tea Company will occupy the site when the alterations are completed.

The company has been trying to locate here for some time but have been unable to locate a place suitable.

Freshies begin living

The red and green caps of the Delaware College Freshmen disappeared from

Newark last Friday. There is probably not a person in Newark that has not noticed this disappearance.

With the passing of these "ink spots" came joy to every Freshies heart for then he began living the life of a real "rah-rah" boy.

The shades of night had scarcely fallen over the campus when there came a faint flicker of light in the space between Harter Hall and Wolf Hall.

■ May 31, 1972

New record

Newark High's Jim Bray make it look easy on his approach to the wire at the end of his record mile run last Saturday in the Delaware Interscholastic Track and Field Championships.

Bray, who got a strong challenge from Salesianum's Tom Gottemoller in a featured race, broke the existing record using A.I. duPont's tartan track. His 4:16.4 effort surpassed the old mark of 4:24.2 set in 1968.

Cider Mill destroyed

Arson is suspected in the fire which destroyed on the Newark's most cherished landmarks, the old cider mill on Creek Road, early Wednesday morning. George Schaeen took over the mill's operation in 1941, buying it outright in 1960.

Schaeen, gravely ill, has not been told of the fire. He had allowed the mill's insurance

policy to expire in 1970. Cider, made annually at the mill since 1917, had attracted visitors from many states along the east coast.

The fire is still under investigation.

■ May 29, 1992

Hang a poster, hand city \$500

Night clubs and rock bands beware: Newark City Council voted Tuesday to fine anyone posting flyers on public property.

The fines go for as much as \$500.

City officials say the company whose name is on a given poster will be the one the city prosecutes.

Newark kisses the Maryland line

Newark city limits will extend to the Maryland state line following city council's decision Tuesday to annex 65-acres of privately owned land on Elkton Road.

By adding the area to the city, council members said development could be monitored more closely than if the area were to remain under county jurisdiction.

"Pages from the Past" is compiled from early editions of the *Newark Post* and its forerunners by staffer Julia Sampson. Efforts are made to retain original headlines and style.

I'm going fishing...

► WORD, from 7

Nurse asks if I'm hungry. I don't want dinner. Just a turkey sandwich. Feeling better. Sandwich looks good. Three bites and I'm done. My heart is pounding again. Heaviness is back. Push the call button. The nurse chatters about morphine. Here's Fred (my husband). Everything is light and blurry and loud. I'm chattering away — about what? Nurse says something about a room, more tests, precautions. Up to a room. Can I scoot from the gurney onto the bed? Sure!

Bed by the window. Oh-h-h, that's the main entrance down there. Clock on the wall reads 8:20 p.m. What am I doing here? Nurse asks questions about me: residence, advance directives, allergies. On the scales. Blood sample. Blood pressure. Oxygen tubes in my nose. Sip some ginger ale. Feel better. Read this pamphlet about stress test tomorrow. Who, me?

I can't sleep. I'm afraid to sleep! The clock looks at me and says 3:15 a.m. It's dark outside. Heavy feeling is back. Nauseous. Push the call button. Nurse, hand me that basin. Four heaves — up comes the ginger ale. Tranquilizer. 6 a.m. I must have slept. Nurse says stress test at 10 a.m.

Plenty of time to wash up and dress. Bran flakes — ugh! I hate cereal. Little bit of orange juice. Roommate says my color is good. She just knows I'm fine. Blood pressure is 130 over 72. Better. Here comes the wheel chair.

Off we go for my stress test. Step on the treadmill. Thallium going into my IV. This isn't so bad. No

pain. Trudge...trudge...trudge. Can I go two more minutes the doctor wants to know. Sure! Faster. My throat is so-o-o dry. I am really breathless.

Stop the music! What? I lasted twice as long as you expected? The doctor says the longer the time, the more information. Swell! Sit down, rest, drink of water.

Next, the heart imagery procedure. Stretch onto shelf. Technician is sliding me into a huge cylinder like a pizza oven. Is that the camera moving above my chest? Good thing my head is outside this thing! Warm air and a whirr inside. How long will this take? Eighteen minutes. Boring!

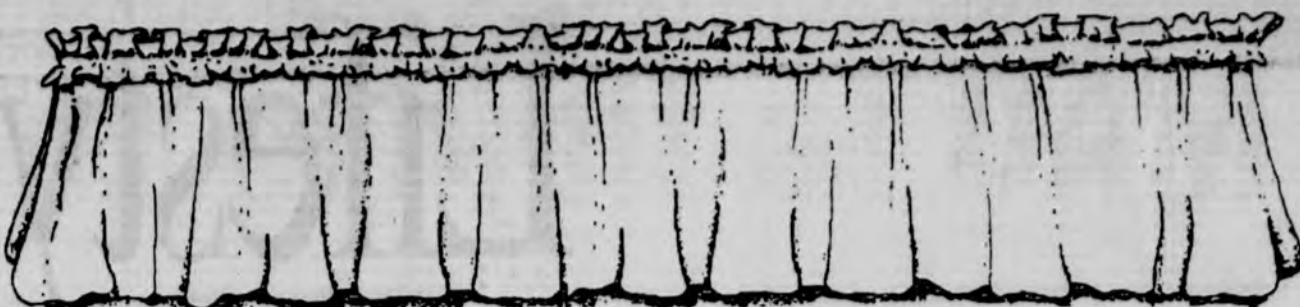
Back to my room. Wait two hours for second part of test.

Pick up at 1 p.m. How long is this test? Only 15 minutes. Boring! Back to my room. Test results ready by 3:30 p.m. Right! I'm pacing the floor and chattering to my roommate. She likes my stories about my encounters with snakes, deer and blue heron. glad somebody is amused!

Here comes the nurse. It's 4:10 p.m. She says I must be in bed to receive the report. I race across the room and jump into bed. "Heart is fine. You can resume all activity," she tells me.

Wow! I can go home! I can celebrate Mother's Day with my family! I can go shopping with my daughter Marci tomorrow and we can go out to lunch! I can go fishing on June 5th! I can celebrate life!

■ A contributing writer to the Newark Post for many years, Tarrant has been a long-time Newark community activist.



We're moving, but we're doing it in style.

SAVE 10-70% OFF ALL DECORATIVE FABRICS AND ACCESSORIES. HURRY...BEFORE WE TURN THE LIGHTS OFF!

Dannemann

NEWARK LOCATION ONLY
400 Ogletown Road • Newark, DE • (302) 738-0655

SUBSCRIBE TODAY!

Don't miss a single issue of your community's hometown journal.

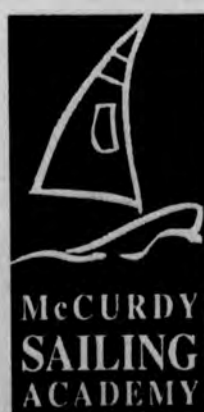
Enjoy convenient mail delivery and excellent savings!

737-0724

Baby Girls From China
are now being placed with area singles and couples.
98 adoptions in 1996!
Find out more at a **FREE INFO. MEETING**
Mon., June 9th at 7 pm
(302) 658-8883
Adoptions From The Heart

USE OUR
CONVENIENT
E-MAIL ADDRESS!
newpost@dca.net

Start Your Summer Fun In Sailing Class!



Adults \$40

Youth \$25

FIVE LECTURES
Thurs. 7-9 pm
5/29 - 6/28

FOUR LABS
Sat. 10 am-3 pm
6/7 - 6/28

To apply
call Wally McCurdy
at (302)-368-3306

All profits donated to Newark UCC,
300 East Main St., Newark, DE.

Whitfield®

Hearth Products

©1996, Pyro Industries, Inc.

FREE
½ TON PELLETS
With any Pellet Stove
Purchase During Sale.



We Service
What
We Sell!

No Chimney? No Problem.

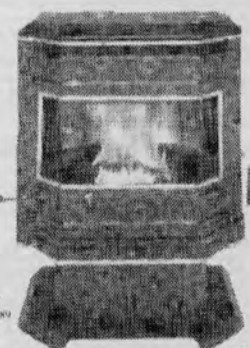


**Burning Desire
Gas Stove**

Reg. \$1099 Sale! **\$999**

- No Vent Pipe Required.
- No Assembly Required.
- 16,000 — 27,000 BTU'S.
- Optional Wall Thermostat.
- Works During Power Outage.
- Both Natural Or LP Gas Models Available.
- Variable Speed Blower.
- Optional Remote Control.
- Beautifully Designed To Fit Any Decor.
- 18KT Gold Trim.
- Mobile Home Approved.

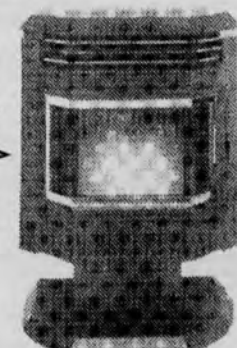
END-OF-SEASON BLOW-OUT



Advantage Plus Pellet Stove

Reg. \$2499
Now Only **\$1899**

Installation
Available

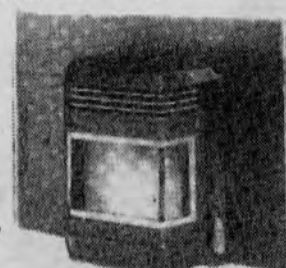


Reg. \$1919
NOW ONLY **\$1499**
Quest Freestanding

- (Fireplace insert also available)
- 5,500-28,000 BTU/HR.
 - 81-85% Overall Efficiency.
 - Quiet 2-Speed Convection Blower.
 - Variable Fuel Feed Setting.
 - Optional Self Ignition System.
 - Powder Coat Finished

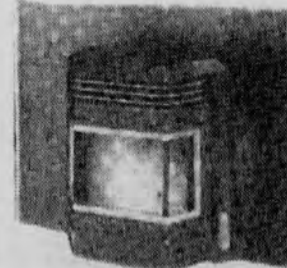
Advantage Plus Pellet Inserts

#1 Selling Brand In America!



Reg. \$2399
Now Only **\$1799**

- No Chimney Required.
- 7,000-38,000 BTU/HR.
- Burns Up To 80 Hrs. ON One Load of Pellets.
- Quiet Variable Speed Convection Blower.
- Automatic 5 Position Fuel Feed.
- Optional Wall Thermostat & Self Igniter.
- Empty Ash Pan Once Or Twice Per Year.



Quest Pellet Insert*

- Easily Installs Into Existing Fireplaces
- 5,500-28,000 BTU/HR.
- 81-85% Overall Efficiency.
- Quiet 2-speed Convection Blower.
- Variable Fuel Feed Setting.
- Optional Self Ignition System.

* Shield extra



AMERICAN HOME AND HARDWARE

W. Main & Bridge Sts., Elkton
(410) 398-1900

STORE HOURS: Mon.-Thurs. 7 a.m.-6 p.m.; Fri. 7 a.m.-8 p.m.; Sat. 7:30 a.m.-5 p.m.; Sun. 10 a.m.-3 p.m.



Lifestyle

RELIGION • PEOPLE • DIVERSIONS • THE ARTS

NEWARK OUTLOOK

Innovative farming

■ This weekly feature on the Lifestyle page is authored by the staff of the Newark-based Cooperative Extension Service.

IN AN ATMOSPHERE of global markets and intense pressure for land and development, local farmers must continually access and evaluate new information and technology to maintain their competitiveness.

In this regard, farming is no different from any other business enterprise.

Earlier this month local farmers gathered near Middletown in a farm field designated for research and demonstration at the University of Delaware College of Agricultural Sciences.

The purpose of this New Castle County

Cooperative Extension-sponsored twilight meeting was to evaluate in-progress studies, to introduce additional studies not yet established and to encourage farmers to visit the plots throughout the season, so they can observe and take notes for comparison with the data provided when the studies end.

This year's comparison trials include small grains (wheat and barley) for varietal performance and disease control; soybeans for varietal performance and new weed control technology; and corn for hybrid performance and new insect controls.

Extension specialists were on hand to discuss their studies, answer questions and provide current-season crop updates.

Earlier in the year, 50 New Castle County farmers attended an Extension educational program on crop production and technology, and about 30 farmers received basic computer training followed by a session on the Internet geared to agriculture.

In this day of on-the-go yield monitors and an emerging Global Positioning System technology, farming activities, such as milking cows, plowing, planting and harvesting, may be the traditional and widely visible signs associated with farming.

But as in any successful business, there is a lot more going on behind the scenes.

The University of Delaware College of Agricultural Sciences and Cooperative Extension provides local farmers with the types of programming they need to maximize a successful farming operation and contribute to a healthy Delaware Agricultural Industry.



By Carl Davis



NEWARK POST STAFF PHOTOS BY KELLY BENNETT

Lieutenant General James F. Fretterd, the Adjutant General of the State of Maryland, was among those honoring retired Lt. Col. Victor McCool (with cane) on Sunday when the Elkton Armory was renamed for him. McCool, a longtime member of the Newark Senior Center, served in the Army and National Guard from 1935 to 1966.

ENGRAVED IN MEMORY

By AMY C. SIMS
and MARY E. PETZAK

RECOGNITION of past achievement and service can be as simple as a pat on the back or a certificate of appreciation. Elkton resident Victor McCool has been honored with a little more clout; he had a National Armory dedicated in his name.

Members of the Maryland Army National Guard and others who served with the retired Lieutenant Colonel attended dedication ceremonies on May 25 at the Elkton Armory on Railroad Avenue in Elkton, Md.

According to Sgt. 1st Class James Moran, the 29th Infantry Division Association nomi-

nated McCool for the honor.

"I've been based here for 30 years, and I know him and his family," said Moran. "He had an outstanding military career, and he is an exceptional man."

Moran said McCool, who is also a longtime member of the Newark Senior Center, served on active Army duty and in the National Guard from 1935 to 1966.

Infantry Rifleman (retired) James Kennedy said he has known McCool all his life. "He's older than me but we went to the same school in Elkton," said the 76-year-old Kennedy. "He's a nice man and deserves the honor."

Kennedy noted that McCool and he both served in the European Theatre during World War II but not together. "I know he left here

as a Captain with the 29th Infantry Division and was part of the Normandy invasion," recalled Kennedy.

While confirming that he had participated in the D-Day invasion on June 6, 1944, and that he had served as company commander at the Armory from 1947 to 1957, McCool was unwilling to discuss many details of his career in or out of the military.

"I am very pleased (with the honor)," said McCool. "But at the same time I have the feeling of 'why me?' I wasn't any special person in the war."

The 81-year-old retired military leader insisted that he was not being humble. "It's the Armory and the unit that really counts," he said.

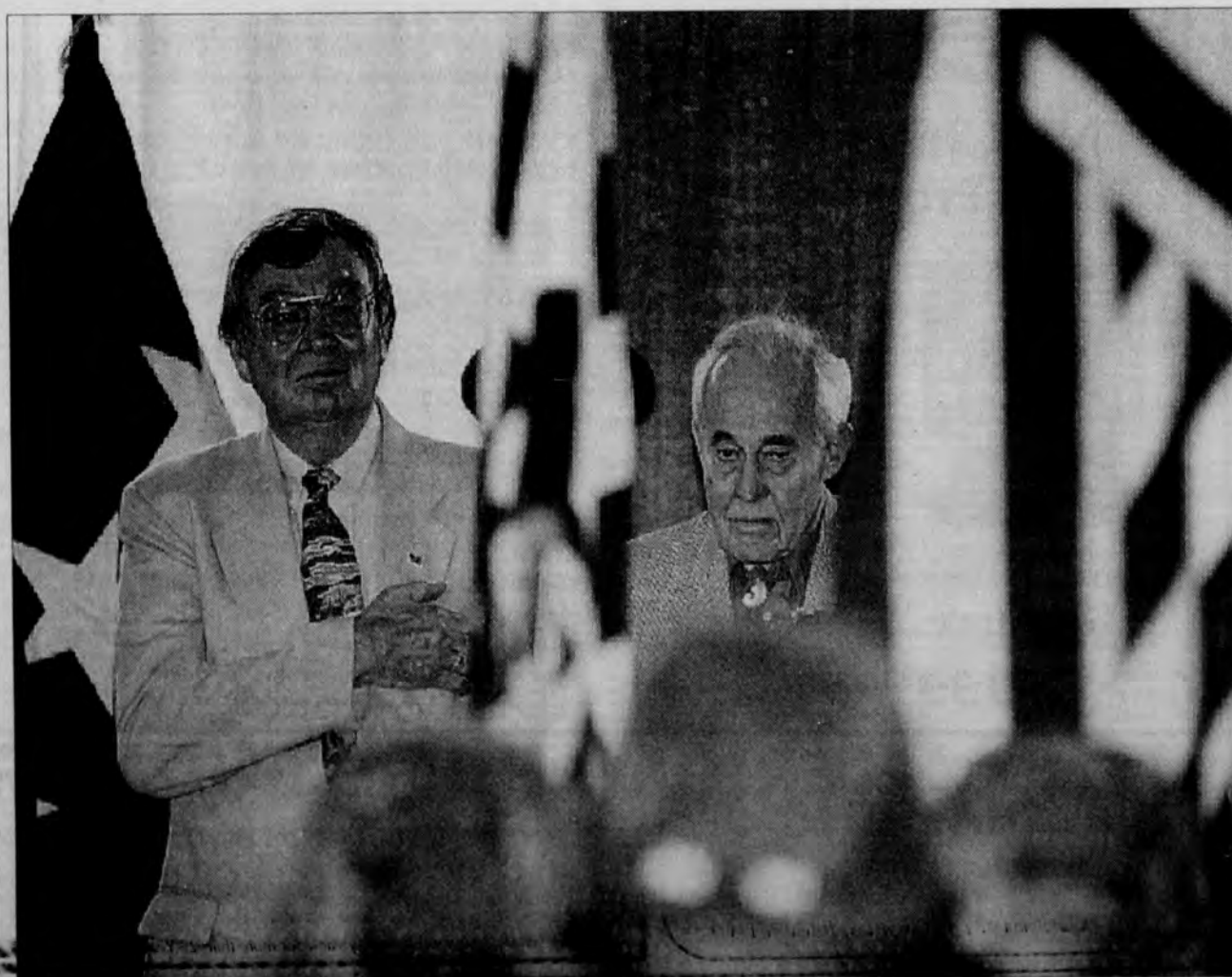
Presently a total of 107 citizen-soldiers train at the Armory with the 2nd Battalion, 115th Infantry of the Maryland Army National Guard. They drill there, store their weapons, and house offices.

"It's quite a large building," said McCool, who trained at the same armory when he was a member of the same unit.

McCool said the armory was recently renovated. "They have done quite extensive work on the armory," he said. "In Maryland, they started fixing up various armories a few years ago and when one is completed, someone in the community is commemorated."

A lifelong resident of Elkton, McCool graduated from Elkton High School in 1934. He is a widower and has a daughter, Alice Davis McCool, 44.

He enjoys visiting the Newark Senior Center where he likes to play bridge. "(Newark) has an excellent senior center," he said.



THROUGH JUNE 22

Archibald Knox exhibit at DAM

TWO VERY interesting exhibits are running concurrently at the Delaware Art Museum through June 22. One honors the work of Albert Paley, the other Archibald Knox. Each of the traveling exhibitions compliments the other. Together they make for a delightful visit to 2301 Kentmere Parkway in Wilmington.

The Archibald Knox exhibit is the first retrospective of this artist's career. Wilmington is the first stop on an international tour of the show. The current offering brings together 55 of Knox's designs for metalwork, textiles and wallpapers from the collection of the Silver Studio in London and 80 objects from public and private collections including silver, pewter, jewelry watercolors and drawings. To say the very least, this is a very complete, broad-based in time, style and medium, touring program.

Knox, who lived from 1864 to 1933, was an amazingly versatile artist. The works on display clearly prove that. In addition, he was one of the most influential designers in British history. His modernist and uniquely elegant interpretations of Celtic design really defined British Art Nouveau and contributed immensely to the success of Liberty and Company in London, Britain's leading design firm.

Archibald Knox once described himself as a "venturesome Modernist." I think he lived up to his own words. He was a native of the Isle of Man and was inspired by it, particularly the evidence of ancient Celtic culture. Lise Monty, director of public relations at DAM commented about this influence. "This is apparent in his graceful and highly stylized plant and animal forms that relate to the style of interlacing ornamentation known as entrelac."

Lise went on to explain that Knox abstracted motifs that were both aesthetically pleasing and merged closely to the functional properties of the items he designed. It is easy for us to see in this exhibit the highly personal reflection of his identity and their popularity testified to a broad interest in nationalism and folk culture at the turn of the last century.

The other touring exhibit is titled "Inspiration and Context: The Drawings of Albert Paley. It features 50 drawings and five models by the renowned iron sculptor. The show offer us a rare opportunity for a behind-the-scenes look at the creative process of this important American artist.

THE ARTS



By PHIL TOMAN

Most writers credit Paley with changing contemporary metalworking from a utilitarian craft into a dynamic form. While he has been acclaimed on both sides of the Atlantic, he is best known for three of his monumental architectural commissions in this country. The three are: "Portal Gates" for the Senate Chamber of New York State in Albany; "Synergy," the entrance to the Museum Towers complex in Philadelphia and another "Portal Gates," this time at the Renwick Gallery of the National Museum of American Art at the Smithsonian Institution in Washington.

Paley began his career as a jeweler, working in gold, silver and copper. Drawings have been important elements in his transformation from jeweler to sculptor. This exhibit documents for 20 years of his drawings from rough studies to polished presentation drawings.

In 1972 his drawings earned him his first chance to work on a monumental architectural sculpture, the gates of the Renwick Gallery. Since that time he has done increasingly more complex work in forged iron. These projects have become bolder and more dynamic.

The Knox exhibition was mounted by Middlesex University of London and the Paley by the Memorial Gallery of Art in

Rochester, New York.

By the way, while you are there, don't miss the many other great galleries at the museum. You never know what strike your fancy in our art museum. If you are looking for a very special gift for a very special person, may I also recommend a quick visit to the Museum Store?

The Delaware Art Museum is open Tuesday through Saturday from 10 a.m. to 5 p.m. and on Sunday from noon to 5 p.m. Admission is \$5 for adults and \$2.50 for children and students with proper ID.



A 1904 work in silver, enamel and turquoise called simply "Vase," is one of the many works by Archibald Knox on display in the two exhibitions now on at the Delaware Art Museum.

Phil Toman has been a columnist for the Newark Post since 1969. An enthusiastic supporter of the arts locally, he has a vast knowledge of the arts in the area.

HATS OFF!

To all graduates!

Celebrate graduation with Grotto Pizza, a perfect place to enjoy the days festivities, great food, drinks and entertainment!

Grotto Pizza
the legendary taste

Main Street, Newark

Bridal Showcase

► SOLUTION TO SUPER CROSSWORD ON PAGE 11

CARP TESS SHOP ETC
SABOR OTTO CALE MURAL
ODIST CHURCHILL EBONY
MISSISSIPPI RIGORANCE
ASH ERIC ELA ETUI ESS
ANON SNIPPELASTA
ADMITS DETAILS HUSTLE
LEADS SUR ALAIS SLEET
MACE RIMOSE AGEES ANNA
ARK DELAWARE SAVANNAH
EMOLA SWINE NOLTE
PANORAMA KENTUCKY SRA
ADZE YIPS SEABEE TSAR
RAITTI SATI PES GREAT
THEIRS RECOVER BREEDS
COWS TEXAS BRUT
INS PAUL SEN ALOE GAB
TOMBIGBEE YELLOWSTONE
STOIC MINNESOTA OWING
AETNA IGNI SWAT MINES
SEEL THAT ASIS EGGS

WE BUY
YOUR
DIAMONDS
AND GOLD

IMMEDIATE
CASH PAYMENT

Colonial Jewelers

116 E. Main St., Elkton, MD
410-398-3100

CRYSTAL INN

Call (410) 287-7100



for our special wedding
rates & packages!

Indoor pool & Jacuzzi • Exercise Room
• Complimentary Continental breakfast

Double Queen mini-suite • Deluxe King Suite
• Jacuzzi Suite • Executive King Suite

Visit the newest lodging facility in Cecil County and see what we have to offer!

At The Flying J Travel Plaza
I-95 & Rt. 272, North East, MD



We request the honor of your presence at
The Resale Boutique

to find the designer gown of your dreams at a
fraction of the original price. We offer wedding
gowns and beautiful veils, and women's & chil-
dren's clothing at the only consignment shop in
town that specializes in bridal apparel.

Consignment Gowns Welcome
RSVP 302-764-3646

Mon-Fri 10am-5pm & Sat 10am-4pm

818 Philadelphia Pike • Wilmington, Delaware 19809

Formal Wear



FORMAL AFFAIRS
FREE
GROOMS TUXEDO

with wedding parties of 4 or more
• OVER 55 DIFFERENT STYLES IN STOCK
• OVER 120 STYLES OF ACCESSORIES TO
CHOOSE FROM

OUR PRICE ALWAYS INCLUDES

Your Choice of:

- ▷ Bow Tie & Cumberbund
- ▷ Vest & Tie
- ▷ Shirt Styles
- ▷ Cufflinks & Studs

\$29-\$59
Wedding
Special

Just A Commitment
to Quality

No Surprise Cost!

302-734-7900
201 Lookerman
Dover, DE

302-737-1519
129 E. Main St.
Newark, DE

302-475-6900
1708 Foulk Rd.
N. Wilmington, DE

M-F 10-9 • Sat 10-6 • Sun 12-5

Serving Delaware, Maryland & Pennsylvania for more than 25 Years

Honeymoon

To
Advertise
Call
Jacque:

410-398-1230

Diversions

THEATRE • EVENTS • EXHIBITS • NIGHTLIFE • MEETINGS

■ MAY 30

SQUARE DANCING 8 to 10:30 p.m. The 2x4 Square Dance Club will be holding its plus level dance at Wilson Elementary School, Newark. For information, call 368-8663.

ACOUSTIC BLUES 9:30 p.m. Performer Michael Mulvaney at the Iron Hill Brewery and Restaurant, Newark. For information, call 266-9000.

■ MAY 31

GIANT TAG SALE 9 a.m. to 2 p.m. at the Sterck School parking lot, E. Chestnut Hill Road, Newark. For information, call 475-2216.

Y'ART SALE 1 to 4 p.m. First-ever Y'Art sale at the Newark Arts Alliance House, Delaware Avenue, Newark. For information, call 266-7266.

BARBECUE & DANCE 7 p.m. to midnight. The Newark NAACP will be holding a barbecue and dance at the UAW Local 1183, Old Baltimore Pike, Newark. Tickets: \$25. For information, call 322-0914.

OPEN STUDIO 11 a.m. to 3 p.m. Wynn

Breslin's 26th Annual Open Studio in Delaware historic "Wedge" area, 470 Terrapin Lane, Newark. For information or special appointment, call 731-5738.

ANIMALS OF THE FOREST 10:30 a.m. Designed for children ages 5-8, this program offers a look at the natural world through the rituals and wisdom of the Lenni Lenape tribe at White Clay Creek State Park, Newark. For information, call 368-6560.

YARD SALE 9 a.m. to 2 p.m. The New London Presbyterian Church Women's Association will be holding a yard sale at Bowman's Garage on Route 896, just north of the church. For information, call 610-869-2140.

■ JUNE 1

TOUR DE CURE 7 a.m. The American Diabetes Association, Delaware Affiliate, will hold its fifth annual Tour De Cure Bike Ride starting and ending at Kahunaville, Wilmington. For information, call 1-800-TOUR-888.

NATIVE AMERICAN STORIES 1 p.m. The park naturalist will relate stories of the Native

inhabitants of our land at White Clay Creek State Park, Newark. For information, call 368-6560.

JOSEPH AND THE AMAZING TECHNICOLOR DREAMCOAT 7:30 p.m. at the Everett Theatre, Middletown. Tickets: \$12 for adults; \$10 for senior citizens and children under 12. For information, call 378-2431.

SPRING FESTIVAL Noon to 4 p.m. "Animals: Wild and Wonderful, Tame and True" at the Iron Hill Museum on Old Baltimore Pike, Newark. For information, call 368-5703.

TONY AWARDS 7 p.m. A Tony Awards party will take place at Three Little Bakers Dinner Theatre, Wilmington. Donation: \$10 to benefit the John Wills Memorial Fund or AIDS Delaware Inc. For information, call 368-1616.

OPEN STUDIO See May 31.

■ JUNE 3

VELVETEEN RABBIT 10:30 a.m., 1:30 and 7 p.m. Parents and children ages 3 to 6 at the Newark Free Library, Newark. For information, call 731-7550.

BLUEGRASS 7:30 p.m. Bucks County's



Wynn Breslin's 26th Annual Open Studio will be held 11 a.m. to 3 p.m., May 31 and June 1, and June 7 and 8 in Delaware's historic 'wedge' area, at 470 Terrapin Lane, Newark. For information or special appointment, call 731-5738.

Mountain Laurel Bluegrass Band at Longwood Gardens, Kennett Square, Pa. For information, call 610-388-1000 ext. 451.

SPRING FLING 1 to 2:30 p.m. Music, prizes and refreshments at the Mid-County Senior Center, Sherwood Park II, Newark. For information, call 996-6728 or 995-6555.

■ JUNE 4

GREEK FESTIVAL 10 a.m. to 11 p.m. A Greek festival will be held on North Broom Street, Wilmington, through June 7. For information, call 654-4447.

■ JUNE 5

CONCERT 7 p.m. The Banjo Dusters on the Academy Building Lawn, Main and Academy streets, Newark. For information, call 366-7060 or 366-7147.

POP AND ROCK 9:30 p.m. Paul Lewis will be performing at the Iron Hill Brewery & Restaurant, Newark. For information, call 266-9000.

BASTIEN AND BASTIENNE 8 p.m.

Brandywine Baroque at the Delaware Theatre Company, Wilmington. For information, call 594-1100.

■ JUNE 6

DAMN YANKEES 8 p.m. Musical comedy at the Cecil Community College Cultural Center, North East, Md. For information, call 410-287-1037.

RESALE SHOP 11 a.m. to 4 p.m. The Red Lion Christian Academy is holding a ten cent clothes sale at the Academy, Bear. For information, call 834-2526.

CONCERT 9:30 p.m. The Pushstars at the Iron Hill Brewery & Restaurant, Newark. For information, call 266-9000.

■ JUNE 7

NEWARK PARKS & RECREATION SUMMER FUN Registration for residents only 10 a.m.-noon today and 8:30 a.m. to 5 p.m. during the week at the Newark Municipal Building, Elkton Road. Non-residents may register starting June 10. 366-7060.

MEETINGS

■ JUNE 1

ZEN MEDITATION 7 p.m. The meeting for the Zen meditation group will be meeting in the Fellowship Hall, Unitarian Universalist Fellowship, Newark. For information, call 368-2984.

■ JUNE 2

THE MOMS CLUB 10 a.m. at Good Shepherd Baptist Church, Porter Rd. Information on participation in playgroups, field trips, babysitting co-ops, crafts, more. Baby sitting available. 836-3530.

NEWARK ROTARY CLUB 6:15 to 7:30 p.m. The Newark Rotary Club will hold the meeting at the Holiday Inn, Newark. For information, call Jim Streit at 737-0724 or 737-1711.

CHORUS OF THE BRANDYWINE 7:30 p.m. The Chorus of the Brandywine will hold its meeting at the MBNA Bowman Conference Center, Newark. For information, call 369-3063.

DEEP SKY OBJECTS 8 p.m. Illustrated talks and discussions on astronomy at Mt. Cuba Astronomical Observatory, Greenville. For information, call 654-6407.

CAREGIVERS SUPPORT 7 to 8:30 p.m. A meeting of the caregiver's support group will be held at the Union Hospital Medical Adult Day Care Center, Elkton. For information, call 392-0539.

BEAR/GLASGOW CCO 7 p.m. The Bear/Glasgow Council of Civic Organizations is holding a maintenance corporation roundtable meeting at the Glasgow Medical Center, Glasgow.

■ JUNE 3

QUIT SMOKING? 6:30 to 7:30 p.m. Need a little support to quit smoking? A support group for smokers trying to quit will be held at the Visiting Nurses Association, New Castle. For information, call 324-4227.

NEWARK LIONS CLUB 6:30 p.m. The Newark Lions Club meeting will be held at the Holiday Inn, Newark. For information, call 731-4892.

■ JUNE 5

PARENTS WITHOUT PARTNERS 8 p.m. The Parents Without Partners Brandywine Chapter will be meeting at Aldersgate Methodist Church, Fairfax. For information, call 762-8272 or 610-793-3361.

SECOND CHANCE 7 p.m. A substance abuse and addictions meeting will be held at Agape Christian Center, Wilmington. For information, call 654-4577.

CONFERENCE 11:30 a.m. to 7 p.m. The 1997 Governor's Conference on Small Business will be held at the Dover Sheraton Inn and Conference Center, Dover. For information, call Clinton Bunting at 302-739-4271.

MOMS CLUB 9:30 a.m. The Pike Creek Moms club will be meeting at the Limestone Presbyterian Church, Limestone Road, Newark. For information, call 292-1451.

■ JUNE 6

ALLIANCE FRANCAIS noon. A meeting for lunch and discussion in French at the Cafe Ninety, Newark. For information, call 737-3369.

golden corral

Steaks, Buffet & Bakery

DID YOU KNOW???

Golden Corral Features
1" thick Sirloin Steaks

Our Petite Sirloin is only...\$5.49

1/2 Pound is only...\$6.49

& the Full Pound Steak Lovers
Sirloin is just...\$8.99!!!!

WE FEATURE...

the Golden Choice Buffet
for only...\$5.29 on Mon.-Fri. 11-4
& only...\$6.49 for Dinner on Sat. & Sun.

OR

just add it to your
meal for...\$1.99
(Dine-in only)

Be Sure To Start The Weekend Right...

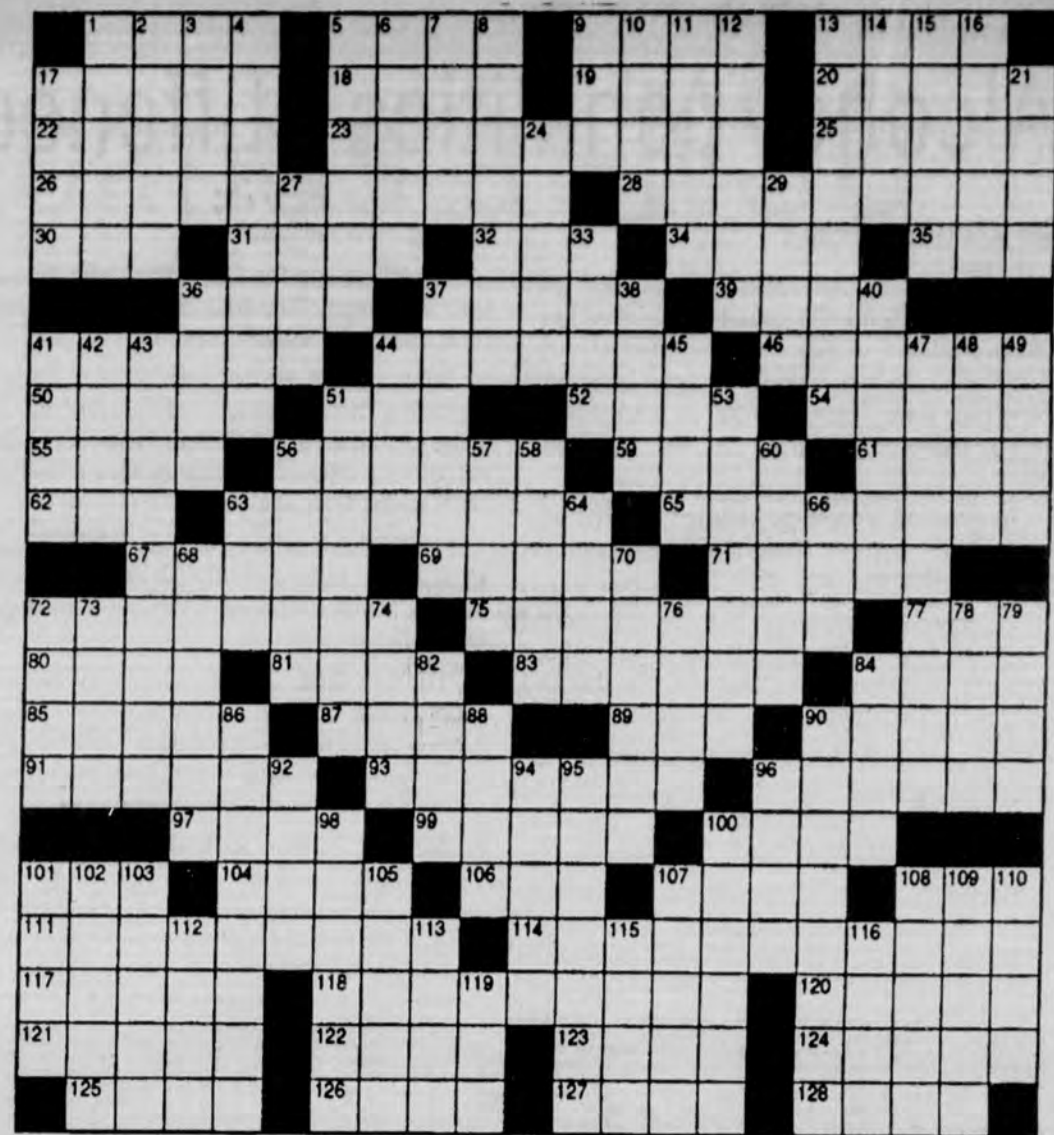
on Saturday & Sunday with our
Breakfast Buffet for...\$4.89

Please let us welcome you
to our Golden Corral.
We hope to see you soon.

Rt. 40, Elkton, MD
410-398-1450

NEWARK POST • CROSSWORD PUZZLE

- ACROSS**
- 1 Nag, nag, nag
5 D'Urberville lass
9 Go to the mail
13 Engrave with acid
17 Island group north of Tonga
18 Native American
19 Gypsy
20 Sert's forte
22 Pindar, for one
23 River flowing to Hudson Bay
25 Valuable dark wood
26 Huckleberry Finn's river
28 U.S.-Mexico border river
30 Bat wood
31 TV soap star
32 Guido's highest note
34 Reticule
35 Dangerous curve
36 Presently
37 Game bird of the marshes
39 Pet of Nick and Nora
41 Recognizes as valid
44 Selects for special duty
46 Work
- energetically
50 Investigative clues
51 Round or mount starter
52 Word of woe
54 Winter forecast
55 Cooking spice
56 Branching
59 American author/critic
61 Christie or Karenina
62 It landed on Ararat
63 Washington crossed it
65 Long river in Georgia
67 — Gay; historic plane
69 Contemptible person
71 Nick of Hollywood
72 Unobstructed view
75 River to the Ohio
77 Mrs. In Madrid
80 Cutting tool
81 Canine cries
83 Construction serviceman
84 Russian despot
85 Bonnie of songdom
87 Wife of Siva
89 Footlike organ
90 Lakes or
- Plains
91 Not ours
93 Regain one's health
96 Engenders
97 Meadow munchers
99 DDE's home state
100 Dry, as wine
101 Political incumbents
104 Muni or McCartney
106 Capitol VIP
107 Lotion ingredient
108 Chew the fat
111 Alabama river
114 Missouri River feeder
117 Uncomplaining one
118 River rising in Big Stone Lake
120 Being in debt
121 Sicilian volcano: var.
122 Potent or puncture starter
123 Attack the fly
124 Rich sources
125 Blind
126 "— Hamilton Woman" (1941 movie)
127 Sale condition
128 Cake ingredients
DOWN
1 Moslem
- judges
2 Strict
3 Mennonites
3 Seamstress
4 Doctors' clients
5 Warning signal
6 Element in moral philosophy
7 London fog?
8 Eden invader
9 Kind of sailing ship: abbr.
10 Broadway musical
11 Kukla's friend
12 Jal alai
13 Retired from active duty
14 Wind instrument
15 Hag
16 Members of the crew
17 Intoxicating plant juice
21 Corrosives used in soap
24 Eyelashes
27 Broadway hit signs
29 Flatter effusively
33 Town on 17 Across
36 Military assistant
37 Goat antelopes
38 Logan or Fitzgerald
- 40 Obliquely
41 — mater
42 Beloved
43 River rising in Great Slave Lake
44 Russian council
45 Droops in the middle
47 River feeding the Ohio
48 Chanteuse
49 Greenland settlement
51 Highly seasoned sausages
53 Medium's sessions
56 Kind of race
57 Siamese measure
58 Lake, port and canal
60 Call forth
63 June beetle
64 Nine: comb. form
66 Like a pub drink
68 Existing in the intellect
70 Public warehouses
72 Actor's portion?
73 Esau's wife
74 On — (equivalent to)
76 Above, in Aachen
78 Electric
- catfish
79 Part of B.A.
82 Proofreader's mark
84 Weight allowance
86 Sultry
88 Cooling desserts
90 Repulsive
92 Stolen goods
94 Kind of daisy
95 Redgrave of the theater
96 Forehead
98 Put forward an opinion
100 Swells with fluid
101 "— girl!"
102 Observes
103 Struck heavily
105 The original "Scarlett"
107 Asian mountain system
108 "— My Way" form
109 Baxter and Bancroft
110 Asks for charity
112 Twinning stem
113 Sicilian tourist town
115 Makes meadow sounds
116 Small branch
119 — picker (overly fussy one)



A WONDERFUL FAMILY EXPERIENCE

- Scandinavian • European
- South American • Asian
- Russian

Exchange Students attending High School. Become a Host Family. AISE!

Call: 1-800-SIBLING

TV & VCR REPAIRS THE VCR WORKSHOP, INC.

"Where Most Repairs Are Only \$40⁰⁰"

FREE
ESTIMATE IF
MAJOR

15 N. Broad St.
Middletown, DE
(302) 376-1288

NEVER
A
DEPOSIT

Electronic Repairs that Don't Cost So Much

Emphysema?

Still Paying for your Proventil, Alupent, Albuterol Sulfate, Metaproterenol, Mucomyst or other Nebulizer medications?

3592 Corporate Drive
Columbus, Ohio 43231
(Not applicable for inhalers)

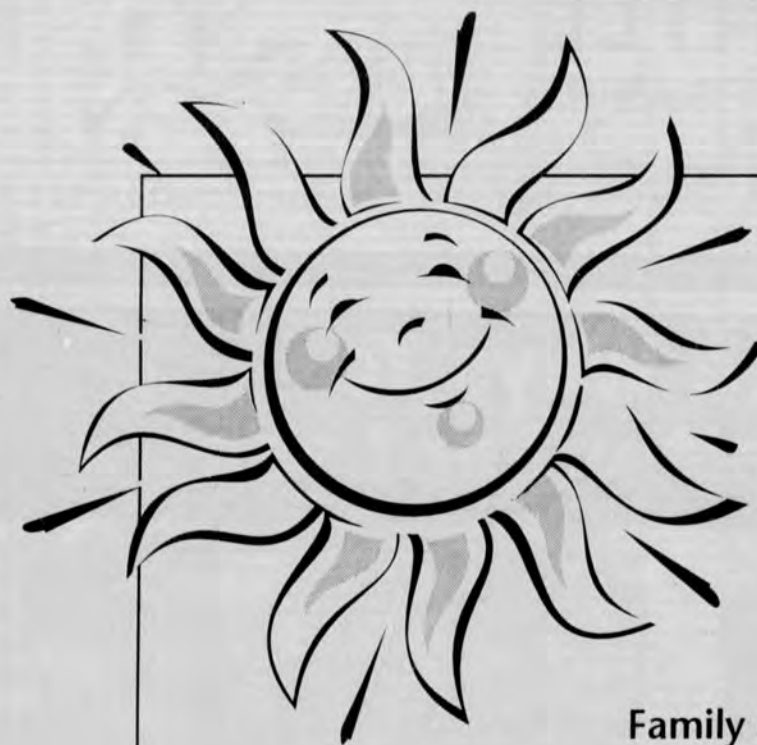
Call

**EXPRESS
MED**

1-800-678-5733

Are you mad? Want to get something off your chest?
Write a letter to the editor!
USE OUR CONVENIENT E-MAIL ADDRESS!
NEWARK POST newpost@dca.net

State Line Gourmet
FEAST of FLAVORS Deli
Specialty Food & Cheese Shoppe
Epicurean Delights
Marinades, Salad Dressings, Salsas & Chips,
BBQ & Hot Sauces, Mustards, Jellies, Seasonings
and Dip Mixes, Olive Oils & Vignettes, Olives,
Gourmet Coffees, Soup Mixes, Pasta & Cheese
Delicious Subs, Sandwiches and Salads
Custom-Made Gift Baskets
And Party Trays
OPEN 7 DAYS
PREMIUM CIGARS
We're Located Inside
STATE LINE LIQUORS
1610 ELKTON ROAD, ELKTON, MD
1-410-398-3838 OR 1-800-446-9463



*Fun under
the sun!*

UNIVERSITY OF DELAWARE
**OUTDOOR POOL
OPENS MAY 24**

Family membership, \$175

Individual membership, \$90

Discounts available for UD employees

Register at Gold Ice Arena, Route 896,
noon-6 p.m., weekdays.

Olympic-sized pool, diving well, baby pool,
swimming lessons, swim team, Aquacize!

FOR INFORMATION, CALL
(302) 831-2868.

NEW BABY POOL!

SUBSCRIBE TODAY!

Don't miss a single issue of your community's hometown journal.

Enjoy convenient mail delivery and excellent savings!

Alcohol penalties stiffened

► ALCOHOL, from 1

"The local law enforcement authorities will inform the campus judicial system of any alcohol-related violations committed by students who do not live in campus housing," Armitage said. "Those hardest to track will be the violations occurring in the residence halls."

In addition, Armitage claimed that the policy will not displace students into the community as residents fear.

"Upperclass students will be suspended from the University entirely for a year under this policy," explained Armitage. "In the past they were suspended from the halls only."

According to Armitage, 40 students were suspended from the student halls at the University last year. "Most of them go home to live," said Armitage.

Beginning this fall, freshmen who violate the University's alcohol policy will receive fines and there will be parental notification starting with the first offense. Repeat offenses could lead to suspension from the student

halls or even the University.

"We're giving the freshmen some leeway," said Armitage, "because maybe they need a little time to mature."

Sophomore, junior and senior students, including those who live off campus, face the same penalties as freshmen. However, a third offense by upperclassmen brings a one-year suspension from the college.

"We inherit a lot of kids with drinking problems, kids already drinking in high school," said Armitage. "Anyone who doesn't think that is naive."

The revision of the sanctions does not change the current alcohol policy at the University which prohibits unauthorized and/or underage possession, use, manufacture or distribution of alcohol on campus.

Newark Mayor Ronald Gardner said he particularly liked the requirement to notify parents. "I've always believed," Gardner said, "that if parents are made aware of some of the unacceptable behavior of their children, then that would result in positive changes."

Reflections winners announced

Students from the Christina School District were among those honored at the Delaware PTA Convention for their participation in the Reflections cultural arts program. This year's theme, "It Could Happen..." allowed over 3,500 K-12 students to

express themselves in visual arts, photography, music and literature.

District winners included: first place in literature-Sarah Barni of Bancroft Academy; honorable mention, Kelly Simmons of Jones Elementary School; first place in photography-Sean Kelly of Bancroft

Academy; first place in visual arts-Melissa Day, Martin Dominguez, and Neddie Hughes of Bancroft Academy; honorable mention, Laura Yarnall of Wilson Elementary; honorable mention in music-Andrea Simms of Bancroft Academy.

Cecil Community College expanding

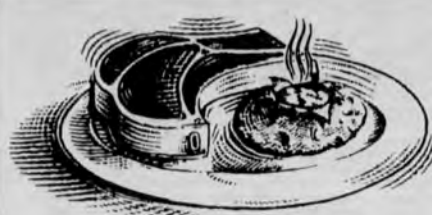
Officials at Cecil County Community College recently broke ground for their new \$8.5 million Center for Academic and Communications Technology.

The 64,000 square-foot Center will house an amphitheater and a state-of-the-art conference and interactive communications center. Also in the four-story facility will be a book-

store and classrooms for career programs in allied health, electronics, computer information systems, data processing, truck drive training, and visual communications.

Completion of the new facility, scheduled to open in Fall 1998, will allow the College to accommodate as many as 1000 people at one time.

**WE'VE ONLY BEEN OPEN A SHORT WHILE,
BUT WE'RE ALREADY IN OUR PRIME!**



EACH SUNDAY FROM 5:00 - 9:00, WE'RE SERVING A 14 OZ PRIME RIB DINNER WHICH INCLUDES A TOSSED GREEN SALAD, BAKED POTATO, PINT OF BEER OR GLASS OF WINE FOR \$13.95. STOP BY AND SEE WHY SUNDAYS ARE PRIME TIME!

REGIONAL AMERICAN FARE | HANDCRAFTED BEERS | WINES AND SPIRITS | BILLIARDS AND DARTS

IRON HILL
BREWERY & RESTAURANT



NEWARK'S FIRST. DELAWARE'S FINEST. 147 EAST MAIN STREET NEWARK © 266.9000

American Racing
BUY • SELL • TRADE
Hubcaps & Wheels
14 Albe Drive, Suite J
Newark, DE 19702
Centers, New Sets, Trim Rings
Thousands in Stock
Wendy (302) 369-1044

SPRING GARDEN
RESTAURANT
A Family Restaurant Serving
Breakfast • Lunch & Dinner
GOOD HOME COOKED MEALS
Open 6 a.m. - 9 p.m. M-SAT • 6 a.m. - 2 p.m. Sun.
Breakfast Buffet on
Saturday & Sunday from
8:00 a.m. 'til 1:00 p.m.
\$4.95

More Ways To See Better For Less

**Featuring
Singer/Specs'
EXCLUSIVE
Eyecare Packages!**

Coupons must be presented at time of order and cannot be combined with other offers.

Designer Eyeglass Package

\$99.⁹⁵

Includes plastic, single-vision lenses plus your choice from a special selection of frames by these designers and many others:

• Liz Clairborne • Perry Ellis • Cheryl Tiegs
• Reg. \$127.⁹⁵ • Metal frames \$10 additional

Get a 2nd pair from the same group for only \$69.⁹⁵

±4 SPH, -2.00 CYL. Visit store for details. Expires 6/15/97.

No-line Bifocal Package

\$139.⁹⁵

• Reg. \$197.⁹⁵

No-line progressive bifocals make it easy to enjoy sharp, clear vision at every distance. Includes your choice of frame from our specially-tagged group.

Visit store for details. Expires 6/15/97.

Lens Option Package

\$24.⁹⁵

• Reg. \$45.⁰⁰ • Scratch Protection • Ultraviolet protection • Fashion tint
Save over \$20.⁰⁰ - Protect your new lenses!

Visit store for details. Expires 6/15/97.

Budget Eyeglass Package

\$49.⁹⁵

• Reg. \$78.⁹⁵

• Single vision plastic lenses PLUS frames • Choose from over 100 frames

• Flat-top 28 plastic bifocal lenses additional \$30.⁰⁰

±4 SPH, -2.00 CYL. Visit store for details. Expires 6/15/97.



College Square, Newark
(302) 737-3880

Sterling For The Way
OPTICAL You Live.

Singer/Specs

DISCOUNT VISION CENTERS

CIGARETTE CITY

Discount Cigarettes & Fine Cigars

2 LITER SODAS .60¢ EACH

SODA's - 12 oz. 24 CASE CANS - \$3.99 PER CASE

Marlboro Cartons	\$13.41 w/STICKER	GPC Cartons	\$9.95 w/STICKER
Marlboro Packs	\$1.40 w/STICKER	Kool Cartons	\$11.41 w/STICKER
Basic Cartons	\$10.95 w/STICKER	Misty Cartons	\$9.95 w/STICKER
Pyramid Cartons	\$9.95 w/STICKER	Style Cartons	\$10.45 w/STICKER
Newport Cartons	\$13.41 w/STICKER		
Winston Cartons	\$13.41 w/STICKER	Newports	
Camel Cartons	\$13.41 w/STICKER	Buy 2 Packs Get a Free T-Shirt or	
Eagle Cartons	\$9.31 w/STICKER	Beach Sandals While Supply Lasts	

Colibri
lighters

(with stickers)

Zippo
lighters

FINE CIGARS

• H. UPMAN • PARTAGAS • MACANUDO • HOYA •
DeMONTERREY • BERING • THOMAS • HINDS • ROYAL JAMAICA

CIGARETTE CITY, INC

10% OFF
HUMIDORS
& PIPES

238 Peoples Plaza
Newark, DE 19702
Rt. 40 East and Old 896
302-836-4889
FAX 302-836-4733

511 College Square
Newark, DE 19711
Rt. 40 East, turn left at Rt. 72.
College Sq. Shopping Ctr. on right
302-369-8203
FAX 302-369-8171

SURGEON
GENERAL'S
WARNING
CIGARETTE SMOKE
CONTAINS
CARBON
MONOXIDE



Underground expands at NSC

► BILLIARDS, from 1

school days. "Kids come in all the time and I tell them they need an early dismissal pass," said Butz. "They say, 'Oh, man,' but they have to leave."

Twice in the past two years, Scott and his father, Michael Butz, have gone before Newark City Council to ask for a special use permit to allow them to serve alcoholic beverages in a restricted section of the business. They were denied both times.

"We were hurting a little bit when we applied for the special use permits," admitted Butz. "But we decided to do what the city wants and help ourselves, too. Basically, we're taking kids off the street by giving them a place to go and that's what the city wants."

Butz said Q-Stix, open noon to 1 a.m. daily, is "nothing but" high school kids on the weekends but a

lot of college age people come on weeknights. "We also get a fair amount of local business people in the afternoons, especially if the weather is bad," Butz noted. "It's not unusual to have seven or eight tables going during the day."

Despite its well-earned reputation as the place to go for teens, Butz said they never allow alcohol inside and have never had a fight since they opened. "We have bouncers — all good-sized guys — walking around at night," said Butz with a laugh. "All the kids are afraid of them because if they get thrown out, we don't allow them back for a month — sometimes permanently."

Butz said that is the teens' worst fear. "They want to be allowed in, because this is where all their friends come."

Q-Stix now covers 18,000 square feet beneath other businesses in the center. "People are always surprised

when they first come down here," said Butz. "We could expand even further in both directions — to under Woolworth's or as far as the bank."

Expansion in the future is not out of the question but Butz said he and his father are taking everything one step at a time. "We try different things and test them out a little, trying to see what works."

Butz added. "If the arcade room takes off, we might expand that

more and add virtual reality."

The billiard rooms presently have 36 tables, including six in a private party room. "The tables in the private room are 'pro-type' to attract a more sophisticated player," said Butz. "We'd still like to have pros from the billiards circuit playing here someday."

Butz would also like to expand the hours of business. "That's something we might take up with coun-

cil," said Butz. "A lot of people are still looking for a place to go after the bars close."

Some billiard parlors around the country stay open 24 hours a day, said Butz, and the Blue Hen Bowling Lanes, also in the center, is open later than 1 a.m. on weekends.

MAY SPECIALS



Charlie's Painting Service Since 1984

- Wallpaper Special
- Free Power Washing (\$250⁰⁰ value) with exterior painting
- 10% off per room for all interior painting

Many Other Discounts

(302) 454-1159 or (410) 392-3919

THE UNIVERSITY OF DELAWARE COMMUNITY MUSIC SCHOOL

presents

SUMMER PROGRAMS for students ages 15 months-college age!

EARLY CHILDHOOD CAMPS

Children Ages 15 months-6 years

June 23-27

WIND ENSEMBLE CAMP*

High School and College Woodwind and Brass Players

July 7-11

PERCUSSION CAMP*

High School and College Percussionists

July 7-11

HIGH SCHOOL CHORAL CAMP

High School Vocalists

July 28-31

KEYBOARD FOR KIDS

Children Ages 6-9

August 4-8

MIDDLE SCHOOL BAND CAMP

Middle School Woodwind, Brass and Percussion Players

August 4-8

*Overnight Accommodations Available

For a Detailed Brochure and
Registration Information call

(302) 831-2577

Restaurant DIRECTORY

AMERICAN

TAILGATES RESTAURANT & PUB

4126 STANTON-OGLETOWN ROAD
NEWARK, DE 19713
(302) 738-8009

WED. NIGHT
LADIES
NIGHT

SATELLITE
TV'S
INCLUDING
NTN TRIVIA

Daily Specials

Mon. 1/2 Price Burgers

Tues. \$ 4.00 Domestic Pitchers

Wed \$1.50 16 oz. Domestic

Thurs. 1/2 Price Wings

Fri. Shooter Specials

OPEN 7 DAYS A WEEK

AMERICAN

Buck's

Est. 1937

"Cecil County's Finest Steak & Seafood House"
Authentic Regional American Cuisine
Gift Certificates • Carry-Out Available
Reservations Suggested • All Major Credit Cards
OPEN:

Lunch: Tues-Sat 11-4 • Dinner: Tues-Sat 4-10
Sunday Brunch 9-1 • Closed Mondays

(410) 658-BUCK

314 E. Main St., Rising Sun, MD, Rt. 273

AMERICAN

The Fair Hill Inn

Continental American Cuisine
Bar & Lounge



Dinners
Tuesday Thru Sunday,
4:30 p.m.-9 p.m.
Serving Delicious Lunches
From 11:30 a.m.,
Tuesday Thru Friday
Full Course Brunch Served
Sunday 11:30-2:30

Routes 273 and 213, Fair Hill
Elkton, MD
398-4187

VISA

MASTERCARD

American Express

AMERICAN

25% OFF
(Food Bill Only)



with this Ad
Good for

Lunches & Dinners
Not valid with any other offers.
Please enjoy by 5/31/97

Mirage Restaurant

100 Elkton Road • Newark, DE 19711 • (302) 453-1711

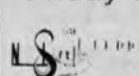
AMERICAN

Swiss Inn

Restaurant & Lounge

Featuring our delicious
Sunday Brunch Buffet

Thursday- Carved Beef Buffet
Friday & Saturday - Prime Rib



Reservations
Suggested

D.J. & Dancing
Fri. & Sat. Eves.

902 E. Pulaski Hwy., Elkton, MD • 410-398-3252

AMERICAN

The Wharf Restaurant

(under new management)

Daily Specials for

Breakfast • Lunch • Dinner

Fresh Seafood

Steak + Prime Rib

1 North Main Street

North East, MD

410-287-6599

SEAFOOD

Moore's Tavern

OF NORTHEAST

"Specializing in Steamed Shrimp
and Charbroiled Hamburgers"

Call for Specials

Lunch Served Wednesday - Monday
Dinners Served Thursday - Sunday

107 S. MAIN STREET • NORTH EAST, MD 21901
(410) 287-3512

New Restaurant? Call Kathy!
to place your ad in our directory

410-398-1230

Intersection still unsafe, says Rt. 896 activist

► INTERSECTION, from 1

In addition, the alignment of completed traffic lanes on Old Baltimore Pike could possibly "require 'S' or 'Z' weaves in at least one of the directions," according to Singer.

Harbeson initially told Singer that the intersection would be safe when complete because "the design consultant (for the project) proposed using a 20 mph design speed for the crossing profile and sight distance."

However, Harbeson agreed to review the design to determine if any improvements were possible.

In a letter dated May 9, Harbeson stated without amplification that "alignment should not be a problem."

In regard to sightlines, Harbeson noted that "Old Baltimore Pike is designed for 40 mph, with speed reduction at the Route 896 intersection."

East of Route 896 the design speed is 20 mph and west the design speed exceeds 25 mph, according to Harbeson. Reducing speed on a minor road at a major road crossing is a common practice, said Harbeson, because the "minor road-

EDITORIAL, PAGE 6

way is considered as coming to a stop" at the intersection.

Previously Harbeson had agreed that 20 mph at the crossing would be "less than desirable" for Old Baltimore Pike.

Harbeson claimed that community objections to changes in front of their homes on Old Baltimore Pike prevented DelDOT from designing the best possible intersection. "Overall, we believe the design consultant and our engineers did a good job in developing this design with

the many constraints placed on them by the community," said Harbeson. "While the crossing is not the most desirable, it is acceptable within our standards, and is safe."

Singer said the original decision to build Route 896 higher was the real problem and "stormwater design requirements," the reason given for the road's elevation by DelDOT, did not make sense.

"It isn't my recollection that the old 896 suffered unduly from potholes (due to poor drainage)," said Singer. "This suggests that it was already high enough to avoid undue

maintenance..."

Under the design speeds given by Harbeson, Singer said "green time" and signal timing to prevent conflicts for traffic might eventually have to be adjusted on both roads.

"What will be the level of service on Old Baltimore Pike at this intersection if the present traffic count persists, and what is it now?" asked Singer, who still contends that the finished intersection will be unsafe.

"It remains to be seen what will be the collision frequency that the short sightlines will produce," Singer concluded.



SOLID CHERRY JUBILEE!

All Solid Cherry Furniture Is On Sale Now At Miller's!

Solid Cherry Bonus Buy!

Save 47%	Comp.	SALE
Queen Size Rice Carved Bed	1,507.00	\$ 799

Sold with the purchase of any additional matching bedroom furniture. Bed includes headboard, footboard, wood rails and metal support system.

Solid Cherry Bedroom Specials!

Save Up To 39%	Comp.	SALE
Queen Poster Bed	1,026.00	\$ 649
Queen Panel Bed	833.00	\$ 529
Queen Sleigh Bed	1,420.00	\$ 899
62" Triple Dresser With Pediment Mirror	1,509.00	\$ 969
72" Door Dresser With Wing Mirror	2,227.00	\$ 1399
48" Bureau With Bureau Mirror	2,233.00	\$ 1399
Chest-On-Chest	1,188.00	\$ 799
Door Chest	1,636.00	\$ 999



The tradition and elegance of the 18th Century Queen Anne furniture design is combined with the function and durability required of today's lifestyles. Hand-finished by expert craftsmen, each piece is sure to become tomorrow's heirloom. The style is timeless, but the extraordinary savings are for a limited time only. So hurry to Miller's and save!

Bedroom • Dining Room • Living Room

Solid Cherry Dining Room Specials!

Save Up To 39%	Comp.	SALE
Oval Table & 4 Side Chairs	2,699.00	\$ 1799
60" Two Piece China	2,944.00	\$ 1799
Server On Casters	1,347.00	\$ 899



90 DAYS SAME AS CASH FOR QUALIFIED BUYERS!



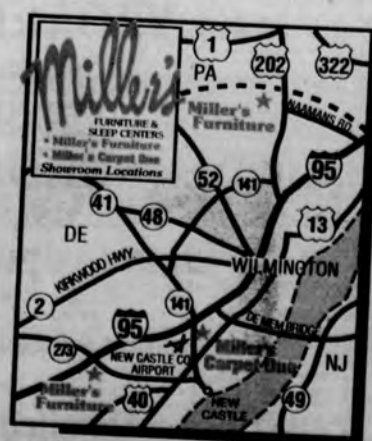
You can charge your purchase using your convenient Miller's Revolving Charge, Visa, MasterCard or Discover Card, or ask about our convenient credit plan.

Wilmington
(302) 478-6900
(302) 475-8900

Concord Pike (Rt. 202)
1/2 mile south of the PA line
Mon., Wed., Thurs. & Fri. 10 - 9
Tues. 10 - 5; Sat. 10 - 6; Sun. 12 - 5

Newark
(302) 738-7700

University Plaza (Rt. 273)
just south of exit 3 off I-95
Mon., Wed., Thurs. & Fri. 10 - 9
Tues. 10 - 5; Sat. 10 - 6; Sun. 12 - 5



Sports

HIGH SCHOOLS UNIVERSITY OF DELAWARE • LEAGUES

Caravel drops quarterfinal heartbreaker

Unbelievable 7th inning dooms Bucs

By MARTY VALANIA

NEWARK POST STAFF WRITER

EVEN IF YOU SAW the seventh inning of Saturday's state quarterfinal softball game between Brandywine and Caravel, it is still tough to believe what happened.

Freshman (yes freshman) pinch-hitter (yes pinch-hitter) Jamie Schneider, who was hitless (yes hitless) all season, came off the bench in the top of the seventh and blasted the first pitch she saw (off All-State pitcher Megan Biddle no less) deep over the left fielder's head and circled the bases for a home run. The homer, a two-run shot to boot, lifted the Bulldogs (undefeated, top-seeded, defending champs and ranked 18th in the country) to a 3-2 victory over Caravel at Delcastle Recreation Area to advance to the semifinals of the Delaware High School Softball Tournament.

The inning started off harmless as Biddle retired the first batter to move the Bucs within just two outs of the victory. The next batter, though, reached on an error and Brandywine's coach Sandy Kupchick decided to put Schneider in as a pinch-hitter.

"She just crushed that ball," said Caravel coach Steve Baker. "There's no doubt about it. You can't ever imagine that happening."

If the top of the seventh wasn't cruel enough for the eighth-seeded Bucs then came the bottom.

Rose Tassone, who had picked up what appeared to be a game-winning, run-scoring single in the fourth inning, led off the inning with a sharp single to left field to breathe life into Caravel. Before the Bucs even had a chance to take advantage of the newly-found life, however, Tassone was called out for leaving the base too early as Brandywine pitcher Carrie Green prepared to throw a pitch to the next batter.

The Bucs, though, still wouldn't



NEWARK POST STAFF PHOTO BY KELLY BENNETT

Caravel's Stephanie Rice gets thrown out at home plate in bottom of the seventh inning of Saturday's state quarterfinal game against Brandywine. Rice, the potential tying run, was the game's final out as Brandywine held on for a 3-2 victory.

die easily. Rice, who was at the plate when Tassone was called out, singled up the middle. Tiffany Eshelman followed with a line shot to right field – but it was caught.

With two outs, Megan Heuberger then doubled down the left field line. Rice, who was running from first base, tried to tie the game but was thrown out at home plate on perfect relay by the Bulldogs.

"I don't like to complain about umpires," Baker said. "But how do you make that call in that situation. That took us right out of the game. We got two more hits. We get three hits in the last inning off and don't get the tying run."

"I mean it's the bottom of the seventh inning of a one-run game in the state quarterfinals. I can see, maybe, if the ball was hit and she

had a big jump. But the ball wasn't hit, she wasn't stealing, it didn't have any affect on the game."

"We've had other situations where the umpire has warned the girl or the first base coach first."

Brandywine took a 1-0 lead in the third inning but Caravel bounced back with two runs in the fourth.

With two outs, Melissa Beatson started a rally with a single to center

field. Megan Biddle followed with a ground ball that went past both the shortstop and the left fielder enabling Beatson to score.

Tassone then ripped a single to center to score Biddle and give the Bucs a 2-1 lead.

Biddle, who allowed seven hits and struck out eight, shut down the

See CARAVEL, 19 ►



NEWARK'S SARAH BARNHOUSE BOOTS BALL IN SATURDAY'S 3-0 WIN OVER ARCHMERE.

Newark advances to final

Marx goal lifts Jackets over Dickinson

By MARTY VALANIA

NEWARK POST STAFF WRITER

BEAR – After two straight years of upset losses in the state tournament, Newark High finally finds itself in a state championship game.

Julie Marx, on an assist from Jen Jones, scored the game's lone goal in the 28th minute. The goal helped the second-seeded Yellowjackets to a win over sixth-seeded Dickinson Wednesday night in the semifinals of the Delaware High School Girls' Soccer Tournament at Caravel Academy's Bob Peoples Stadium.

Newark, now 15-1-2, will play in the state championship match Saturday at 7 p.m. at Caravel.

Goalkeeper Meredith McIntosh, with the help of sweeper Emily Marx and a strong defense,

earned the shutout. McIntosh made seven saves.

"It was nice," said Newark coach Hugh Mitchell, who will be heading to his fourth state championship game including three with the Newark High boys soccer team. "I was really impressed with the composure we showed in the defensive zone – especially when Dickinson was putting pressure on us."

"We showed the most patience and composure when we needed it most."

"Meredith, for her first year playing soccer, did a great job in goal and Emily played like the All-Stater that she is."

Newark kept relentless pressure on the Rams, outshooting them 26-11.

"We kept good pressure and couldn't take advantage of all our chances," Mitchell said. "But we were able to get enough."

Newark, upset by Ursuline and Sanford in each of the last two state tournaments, will make its first state championship appearance.

"I'm so happy for the girls," Mitchell said. "Especially for our only two seniors – Julie and Emily. They've put a lot into this program and they deserve it."

SPECIAL TO THE NEWARK POST JOHN CHABALCO

NEWARK POST ♦ SPORTS

ATHLETE OF THE WEEK

DANA TRAVIS - ST. MARK'S

IT'S NOT OFTEN a freshman makes a huge impact on any high school team.

The ones that do often go on to great things. That certainly wouldn't be surprising for St. Mark's freshman softball pitcher Dana Travis.

Travis has posted a 17-2 record this year for St. Mark's and has helped lead the Spartans into Saturday's state championship game against Brandywine.

The right-hander had a huge week in helping St. Mark's navigate its way through the state tournament.

First, in Saturday's quarterfinal win over third-seeded

Milford, Travis pitched a two-hitter in the Spartans' 4-3, eight-inning victory.

She also scored a run in the victory.

Then in Wednesday's 9-0 semifinal victory over Sussex Central, Travis, also the Spartans' lead-off hitter, pitched a one-hitter as well as picking up two hits and scoring two runs.

The lone hit she gave up came with two outs in the fourth inning to Sussex Central's All-State shortstop Kelly Houghton.

"For a freshman, she's really cool under pressure," said St. Mark's coach Guy Townsend.

"She really makes good decisions out there."

Lacrosse All-Star games Saturday

The Boys and Girls High School All-Star Lacrosse games will be held May 30 at Alexis I. DuPont High.

The doubleheader is sponsored by the Delaware Lacrosse Foundation and the Boys and Girls Clubs of Delaware.

Newark American plays host to French exchange students

By MARTY VALANIA

NEWARK POST STAFF WRITER

Baseball is more than just a game to Americans. It's part of the American culture.

That's why a group of French children visiting Newark got a dose of the game at the Newark American Little League complex.

With the help of the Little League and a select group of Newark American players the French kids participated in their first-ever baseball game after attending Newark's Memorial Day Parade.

"We thought it would be a neat experience," said Newark American president John Hall. "Once we got the OK from the district and Little League officials, we decided to go ahead with the game."

The French children, ages 9-12, are staying with host families with children in the Christina School District for three weeks. The Christina School District children will then return to France with the

French kids for a three-week stay of their own.

The program is called "Back to Back" and has been in existence in the Christina School District for 12 years.

"At the beginning of each school year we invite children in the fourth, fifth or sixth grades to be a part of the program," said Tammy Sadot, who helps direct the Back to Back program. "The kids have to come to three-hour meetings every Saturday during the school year where they learn some French language and about French culture."

"It's a big commitment on the part of the kids and the families."

The kids that come can be part of the entire experience - hosting French children and then making the trip to France - or just be a host.

"We have about 25 kids in the program this year," Sadot said. "And 15 of them will be making the trip to France."

The total cost for someone that wants to host and make the trip is \$1,400. The club also participates in many fund raisers throughout the

year.

"Some people worry that the kids are too young to make such a trip," said Sadot, who will be making her fourth trip to France beginning June 9. "But we find that the kids do great. They're a little wide-eyed at first, but they really do travel well. There's that great universal language of playing and this age group is perfect for that."

"In fact we probably experience less problems with the kids this age than if they were older."

This year the Newark are youngsters will be staying in St. Maximin, about 90 miles north of Paris. They will go to school with their French hosts and go on numerous field trips throughout the country.

They will also participate in traditions and customs of the French culture like the one that the Newark hosts provided with the baseball game at Newark American.

"It's really a great experience," Sadot said. "We would encourage anybody or family that wants to be involved either as just a host or both to do it."

Caravel's Tassone earns national honor

Caravel Academy's Rose Tassone was recognized for her achievement as an America's Champion Athlete Award by the United States Achievement

Academy.

Tassone will appear in the U.S. Achievement Academy Official Yearbook, which is published nationally.

PARKS & REC

Softball Standings

Blue League

Newark Fence	14	5
East End Cafe	12	7
Shear Magic	10	9
Deer Park	9	10
Crab Trap	8	11
Brickyard	3	16

Gold League

Fair Hill Auto	15	2
Reed Const	12	5
FMC	11	6
Carhartt	7	10
Stone Balloon	5	12
Aetna	1	16

Youth League Standings

Colt League

Red Sox	6	1
Mets	6	1
Mariners	5	2
Tigers	3	4
Orioles	3	5
Indians	1	6
Pirates	1	6

Pony League

Braves	9	1
Twins	6	4
Royals	5	5
Mets	0	10

Ponytail League

Robins	8	1
Flamingos	5	4
Orioles	4	4
Cardinals	3	6
Penguins	2	7

Senior Girls

Blue Rocks	5	2
Dodgers	4	4
Marlins	2	4

CBT

June 6, 7, 13, 14, 20 & 21 at 8 pm
Sunday, June 15 & 22 at 3 pm

Damn Yankees



The Summer Baseball Musical-Comedy!

Season Producers:
Mason-Dixon Realty
CCC Cultural Center

Producer:
New England
Financial Group

Tickets \$12 & \$15 • (410) 287-1037

Covered Bridge Theatre • North East, MD



"Our Martial Arts summer camp will give your child these six great benefits!"

1. Respect for parents, teachers, law and order
2. Ability to set and achieve goals
3. Training to say "No!" to unhealthy peer pressure
4. Development of motor skills, coordination and strength
5. Rules for safety
6. Physical and mental self-defense

Summer Special
\$99



©Copyright Educational Funding Company

Master John Godwin's

KOREAN MARTIAL ARTS INSTITUTES
Newark Hockessin Stanton
Park n' Shop Ctr. Lantana Square Shoppes at Stanton
369-9300 234-1966 992-7999

Open 24 Hours

Best Cooking In Delaware!

Eagle
Diner & Restaurant

Come Try Our Specials!

DAILY DINNER SPECIALS !!!

Breakfast Special - 3 eggs, 2 sausage, 2 strips of bacon, home fries, toast, all for \$2.05
5 a.m. - 11 a.m. - with this coupon

Lunch Special - Free soup & Dessert with this coupon (towards any lunch special from \$3.75) 11 a.m.-3 p.m.

Daily Dinner Specials from \$5.95
Monday through Friday

Where can you get great food, quick and Friendly Service and still be smiling... after they give you the check?

DINNER SPECIALS From \$5.95

Breakfast Specials: 7 a.m.-11 a.m.

Lunch Specials: 11 a.m.-3 p.m.

Monday through Friday.

136 A Elkton Road • Newark, DE 19711 • (302) 369-8600 • 369-2589



JOCK'S HOBBIES

114 Fox Run Shopping Center
Bear, DE 19701
302-832-2228

Specializing in Plastics, R/C, Trains & Accessories,
Balsa Wood Gliders & Hobby Accessories.

Gift Certificates Available

Hours:

Mon.-Thurs. 12:00 p.m. - 6:00 p.m.

Fri. & Sat. 12:00 p.m. - 7:30 p.m.

Sorry Closed on Sunday

- Mon: 10% Off All Paints
- Tues: 10% Off All Plaster Kits
- Wed: Buy 2 Get 1 Free Floquil Brushes
- Thurs: Gliders & Wood 10% Off
- Fri: 10% Off All Trains, Race Tracks & Nascar Items
- Sat: 10% Off All R/C Kits & Supplies



Christiana ousted by Brandywine

By MARTY VALANIA

NEWARK POST STAFF WRITER

BRANDYWINE HUNDRED — Christiana High's unexpected ride through the Delaware High School Baseball Tournament was ended Tuesday by a familiar nemesis.

The Vikings, which ended their season with a 12-8 record, fell 3-1 to Flight A champion Brandywine in a quarterfinal round game.

Jimmy Murphy got Christiana off to a good start with a first-inning blast that landed in the right field woods at Brandywine High's field. The solo shot gave the Vikings a 1-0 lead.

Unfortunately, for 12th-seeded Christiana, that would be all the runs it would be able to produce as Bulldogs' pitcher Dan Kerrick allowed just one hit the rest of the game.

Vikings' pitcher Jordan Donovan had a fine effort as well. Donovan did not allow a base runner through

the first three innings of the game.

The Bulldogs, however, struck for two unearned runs in the fourth inning. Brandywine managed two hits in the inning but also took advantage of an error, two walks and a wild pitch.

Brandywine picked up another unearned run in the fifth inning.

In all, Donovan allowed just four hits.

"Jordan pitched his best game of the season," said Christiana coach Scott Tuozzolo. "[Brandywine] didn't get an earned run off us. But they made all the plays and we didn't."

Donovan also picked up the Vikings' only other hit of the game.

Christiana's loss to the Bulldogs was its third in as many tries this season.

"I've said all along, with no disrespect to the other teams, that I think Brandywine is the best team in the state," Tuozzolo said. "They have two good pitchers and they hit the ball and they make the plays defensively."

BASEBALL

To get to the quarterfinal round, Christiana upset fifth-seeded William Penn Saturday.

Joey Rineer led the way by pitching a six-hitter and blasting a two-run home run.

Andrew Allen also hit a triple and scored on Paul Oakes' sacrifice fly. The fourth run came on a bases-loaded walk.

Despite the loss to Brandywine, the Vikings ended one of their best seasons in many years.

"It was a good year," said Tuozzolo, who resigned after the season. "It was the first time since the ice age that Christiana has qualified for the state tournament. We might have fallen a little short of expectations but we did some good things."

"I really believe the program is headed in the right direction."

St. Mark's advances to semis

St. Mark's High advanced to the semifinals of the Delaware High School Baseball Tournament with victories over Tower Hill and Archmere.

The Spartans, behind a strong pitching effort from sophomore Brian Hudock, downed Catholic Conference rival Archmere 8-1 in Tuesday's quarterfinals.

Hudock gave up just one hit in six innings while striking out nine and not allowing a walk. The 16-year-old left-hander also had a two-run single.

Neil Jarom led the Spartans' offense with a three-run home run homer and a run-scoring single.

It was the third straight time this year that St. Mark's knocked off Archmere. The win improved the Spartans' record to 14-5 entering Thursday's semifinal against Seaford, which was played at Frawley Stadium.

The winner of the Seaford-St. Mark's semifinal advanced to Saturday's state championship game to be played at Frawley Stadium. Salesianum and Brandywine played in the other

semifinal.

The Spartans advanced to the quarterfinals with a 5-1 victory over Tower Hill Saturday.

Anthony Argiroudis blasted a three-run homer in the first inning to lead St. Mark's to help lead St. Mark's to the win.

Pitcher John Warren scattered seven hits to get his third win of the season for the Spartans.

Hudock added two hits while Andrew Veveiros and Eric Trzcinski also added singles.

KSC Blue Hens tryouts

The under-14 girls KSC Blue Hens will hold tryouts June 2 and 5 at Skyline Middle from 5:30-7 p.m. For more information call Mike Armstrong at 834-2404.

Under-10 girls teams tryouts

The KSC will be holding tryouts for its under-10 girls teams June 2, 5 from 6-8 p.m. For more information contact Steve Kappler at 378-2049.

Under-12 KSC boys tryouts

The Kirkwood Soccer Club will be holding tryouts for its under-12 rep teams June 4 from 6-8 p.m. at the KSC complex. For more information call Matt Beatty (Phoenix) at 239-6094 or Jeff Hall (Pythons) 234-0106 or call the KSC at 328-9228.

Kirkwood Scorpions tryouts

Tryouts for the under-11 boys Scorpions will be June 9, 11 at 6 p.m. at

SOCCER TRYOUTS

the KSC complex. For more information call Jeff Burr at 368-8962.

Kirkwood Mustangs tryouts

The under-15 KSC Mustangs will hold tryouts for the 1997-98 season for girls born on or after Aug. 1, 1982. Tryouts will be held June 10, 12, 17 at field #3 of the KSC complex from 6-7:30 p.m. For more information, call Leroy Fisher at (610) 255-5287 or (610) 255-4342.

KSC Roadrunners hold tryouts

Tryouts for the under-12 girls KSC Roadrunners will be held June 3, 10 from 5:30 to 7:30 p.m. at the KSC complex. For more information call Arnold J. Sisco at 322-4886 or Wayne Bunting at 994-3850.

KSC Explosion and Typhoon hold tryouts

The KSC under-13 rep teams will be holding tryouts June 3, 5 from 6-8 p.m. at the KSC complex. Call Jeff Thomas (Explosion) 731-0634 or Jim Lawruk (Typhoon) 731-5027 for more information.

New KSC under-9 team tryouts

A new KSC under-9 boys rep team will hold tryouts from 6:30 to 8 p.m. June 2 at McVey Elementary, June 5 at Wilmington Christian, June 8 at Cedar Lane Elementary and June 12, 18 at the KSC. For more information call Jerry Wegman at 292-8549.

Kirkwood Talons tryouts

The KSC Talons, an under-13 rep team, will hold tryouts June 3, 5, 11 at the Kirkwood Soccer Complex. For more information call Dwayne Robinson at 999-9884.



Cafe Tivoli II
Ristorante Italiana & Bar

Great Friends,
Great Time,
Great Dinner,
Great Prices!

Make Reservations Today!



We Specialize In Authentic
Italian Cuisine

• Eat-In Or Take-Out •

Come In And Discover Fine
Dining at a Reasonable Price

PEOPLES PLAZA

830 Peoples Plaza, Newark, Delaware 19702

302-832-2272 / 302-832-2276 • Fax: 302-832-2260

Mon. -Thurs. 11 AM - 10 PM, Fri. - Sat 11 PM, Sunday 12-9



Is your child
caught in a
failure chain?

Your child may need help with weak study skills or poor reading or math skills. He or she may be

Weak Basic Skills

Frustration with School

Lack of Confidence

No Motivation

unmotivated or lack confidence, despite a good I.Q.

Our certified teachers help children overcome frustration and failure. A few hours a week can help gain the Educational Edge.



HUNTINGTON
LEARNING
CENTER

Your child can learn.

Individual testing and tutoring in Reading, Study Skills, Writing, Phonics, Spelling, Math and SAT/ACT prep.

DRUMMOND OFFICE PLAZA
Newark, DE
(302) 737-1050

Your team can make sports history! Fax your news releases to sports editor Marty Valania. 737-9019

"Service.
Selection.
Savings."

Remodeling my own deck required both wood and wisdom. At Shone Lumber I found both, plus affordable prices and a great selection of high quality products.

Remodeling without the risk.

That's why I shop at Shone Lumber."

Think of Shone Lumber for

- Lumber
- Building Materials
- Windows and Doors
- Kitchens and Bathrooms
- Home Improvement Supplies

Janet Kilpatrick
Homeowner, Shone Lumber Customer

SHONE
LUMBER

Route 7 • Stanton, DE
One mile north of
the Christiana Mall
(302) 998-3357

SNAPPER
FACTORY BONUS OFFERS!

ONLY \$1399.99
MODEL 250H18E

MOWERS STARTING AT \$299.99
MODELS 180000 / 180002

ONLY \$1999.99
LITHIUM ION / LITHIUM ION

• 8 H.P. BRIGGS & STRATTON
• 25" Hi Vac® CUTTING DECK
• 5 SPEED, ON-THE-GO SHIFTING
• CONVERTS TO MULCHING OR BAGGING

• 5 H.P. BRIGGS & STRATTON
• 20" MOWER DECK
• MULCHING OR SIDE DISCHARGE
• SOLID STEEL AXLES
• CONVERTS TO BAGGING

• 14.5 H.P. BRIGGS & STRATTON OHV ENGINE
• 38" TWIN BLADE MOWER DECK
• HYDROSTATIC TRANSMISSION
• CONVERTS TO PATENTED NINJA® MULCHING OR REAR-MOUNTED BAGGING

Factory Bonus Offer
HEAVY DUTY CART
Buy this heavy duty 10 CU. FT. utility cart with pneumatic tires with the purchase of a new Snapper riding mower or tractor and save \$100.00

ONLY \$39.99
CART

• 10 C.F. 800 L.B. CAP.
• REMOVABLE TAILGATE
• PNEUMATIC TIRES
• MF SUGGESTED RET \$139.99

Factory Bonus Offer
Buy any one of these great accessories as a factory bonus for only \$39.99 with a purchase of a new Snapper mower and save up to \$55.00

SNAPPERIZER
FOR EASY LEAF SHREDDING
MFG SUGG. \$84.99

BAGGING KIT
CONVERT MOWER TO BAGGER
MFG SUGG. \$84.99

THATCHERIZER
STRIPS AWAY THATCH
MFG SUGG. \$84.99

HURRY, OFFER ENDS SOON

SNAPPER

1997
Newark Kubota Inc.

RENTAL RATES

2063 Pulaski Highway
Newark, DE 19702
(302) 737-3100
(302) 737-3578 FAX
800-955-3031

To help you find us...

1-95
Rt. 40
Rt. 72
Rt. 13
Rt. 1

Newark shuts out Archmere

Jackets' win advances team to semifinals

GLASGOW — Newark High dominated Archmere Academy 3-0 in Saturday's quarterfinals of the Delaware High School Girls' Soccer Tournament.

The second-seeded Yellowjackets, after a scoreless first half, scored three second-half goals enroute to their victory. The win improved Newark's record to 14-1-2 on the season and advanced it to Wednesday's semifinal matchup against sixth-seeded Dickinson.

The championship game is scheduled for Saturday night at 7 at Caravel Academy.

"We played well," said Newark coach Hugh Mitchell. "We just didn't finish our chances in the first half. We made a couple of adjustments at halftime and

SOCCER TOURNAMENT

they turned out to be the difference in the second half." Freshman Clare Poynton started the scoring for Newark with an unassisted goal eight minutes into the second half.

Poynton then assisted on Stephanie English's goal just six minutes later to give the Yellowjackets a two-goal lead. Zara Bartley added Newark's third goal, on an assist from Julie Marx, in the game's 64th minute.

Newark outshot seventh-seeded Archmere 24-4. Yellowjackets' goalkeeper Meredith McIntosh made two saves.

"I think we played good team defense," Mitchell said. "We did a nice job of controlling the play and our defense as a whole did a great job."

— by Marty Valania

St. Mark's falls to Dickinson in state quarters

4-goal outburst hurts Spartans

By MARTY VALANIA

NEWARK POST STAFF WRITER

GLASGOW — Nothing went right for St. Mark's in the last 20 minutes of its quarterfinal round game of the Delaware High School Girls Soccer Tournament.

The result was a four-goal outburst for Dickinson that led to a 6-2 Rams' victory and the right to have

played Newark in Wednesday's semifinal match.

With the score tied 2-2, Dickinson erupted for four goals in the match's final 20 minutes. The win improved the sixth-seeded Rams' record to 15-2-1 while the third-seeded Spartans ended their season with a 13-2-2 mark.

"Things just snowballed," said St. Mark's coach Tom DeMatteis. "Our effort was there but we just didn't get it done."

Dickinson took advantage of a speed advantage and repeatedly, with long passes, broke girls loose

one-on-one with the Spartans' keeper. The Rams were able to take advantage of their opportunities.

Melissa Sabol scored twice to lead Dickinson while Shauna Davis, Jen Loble, Monica Gelsinger and Sarah Graff each scored once.

Becky Ragard scored both goals for the Spartans.

"We still had a good year," DeMatteis said. "We only lost two games but this loss, even though it was tied with 20 minutes to go, looks so decisive. That's really not fair to the girls. Our only other loss was to A.I."



SPECIAL TO THE NEWARK POST JOHN CHABALCO

St. Mark's Anjulee Alvares works the ball upfield against Dickinson.

Professional Quality Power Tools Make Yard Work Easy.

NEW
Split Boom
Models



GT2000SB
Curved Shaft Split Boom
\$199.99
Regularly \$219.95



SRM2100SB
Straight Shaft Split Boom
\$259.99
Regularly \$299.95

2 YEAR CONSUMER WARRANTY

ECHO® Ask Any Pro!

TWO TOOLS IN ONE A Grass Trimmer & An Edger!

The new Echo Trimmers feature an interchangeable lower shaft which allows it to be converted from a trimmer to an edger in seconds (edger attachment optional). Plus, there's only one engine to maintain!

- 21.2cc Engine with Pro-Fire Electronic Ignition for Quick, Easy Starts.
- Easy to Use Two-Strand Semi-Automatic Cutter Head.
- Lightweight, Quiet Design.

OPTIONAL
EDGER
ATTACHMENT
\$89.99



SRM2100 TRIMMER/CUTTER

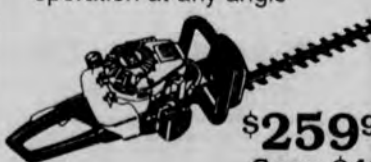
- Powerful 21.2cc two-cycle engine with Pro-Fire Electronic Ignition
- For occasional yard work or professional brush cutting in all weather conditions
- Debris shield with adjustable cut-off knife
- SRM2110 Blade Ready Trimmer Available



\$219.99
Save \$50

HC1500 HEDGE CLIPPER

- Powerful 21.2cc two-cycle engine with Pro-Fire Electronic Ignition
- For occasional hedge trimming and sculpting in all weather conditions
- 20" double-sided cutting bar
- Front hand guard for operator protection
- Diaphragm carburetor allows operation at any angle



\$259.99
Save \$40

PERFECT CLEAN-UP TOOL

- Powerful 21.2cc two-cycle engine with Pro-Fire Electronic Ignition
- Quickly reduces yard waste volume by as much as 12 to 1
- Long, 35" intake tube
- Easily converts to a hand-held blower (tubes included)



SALE PRICE
\$199.99
Save \$30

ES2100
Shred 'n' Vac®

* Sale ends June 30, 1997. Prices and features subject to change and may vary by dealer. See your local dealer for details.

Hockessin
Gravelly Hockessin
654 Yorklyn Rd.
302-239-4201

Middletown
Woodward Outdoor
Equipment
226 W. Main St.
302-378-2849

Middletown
Hoover Equipment Inc.
1130 Middletown/
Warwick Rd.
302-378-9555

New Castle
Delaware Small Engine
Center
22 Parkway Circle (Suite 10)
302-328-8689

Newark
Newark Kubota
2063 Pulaski Hwy.
(Rte. 40)
302-737-3100

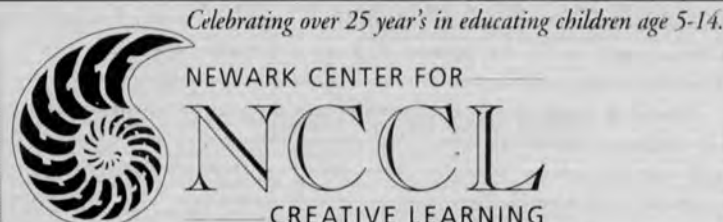
Newark
Bowersox Lawn &
Garden
2911A Ogletown Rd.
302-368-7006

North Wilmington
Talley's Garage Inc.
1209 Foulk Rd.
302-652-0463

Stanton
Leasure's Lawn &
Garden
537 Main St.
302-994-8845

Wilmington
D. S. Turf Equipment
Co.
703 S. Market St.
302-655-2790

Wilmington
Suburban Lawn &
Equipment
1601 Naamans Rd.
302-475-4300



Celebrating over 25 years in educating children age 5-14.

NEWARK CENTER FOR
NCCL
CREATIVE LEARNING

NCCL has immediate Kindergarten enrollment opportunities for Fall of '97!

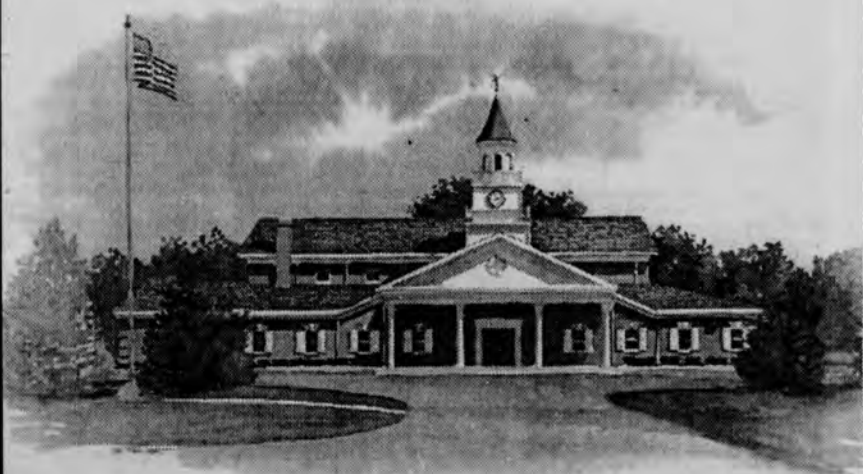
Offering a supportive, hands-on student-centered education with a student teacher ratio of 10:1. We welcome you and your child to visit us during school hours and discover NCCL for yourself.

NEWARK CENTER FOR CREATIVE LEARNING
401 Phillips Avenue Newark, DE (302) 368-7772

Tell our advertisers you appreciate their support of your hometown paper!

Discover Your Potential at Caravel Academy COLLEGE PREPARATORY

Programs Available from 3 Years Old through Twelfth Grade



Now Accepting Applications for the 1997/1998 School Year

For more information
Call Mr. George Glynn (302) 834-8938

CARAVEL ACADEMY
2801 Del Laws Road • Bear, DE 19701

YOUTH LEAGUE BASEBALL SCORES

Newark American Seniors

NALL Rangers 5, CS Indians 2 — The Rangers scored four runs in the first inning and held on for their ninth victory in 10 tries this season. Bobby Genau hit a two-run single to highlight the rally. Tony Manno and Billy Reid also had singles in the rally. James White had an RBI.

Newark American Minors

Royals 6, Pirates 5 — The

Royals' Aaron Gonce scored a sixth inning run following a base hit by David Degirolano to defeat the Pirates 6 to 5. Kenny Finnegan pitched three strong innings, allowing one run while striking out eight. The Pirates were led by Zach Quimby, who scored two runs and pitched three strong innings.

Scores can be submitted from any local league by faxing (737-9019) or e-mailing (newpost@dca.net) results to us.

We appreciate your cooperation.

Caravel beaten in quarters

► CARAVEL, from 15

Bulldogs in the fifth and sixth innings — getting the three, four and five hitters in order in the sixth — to set up the seventh.

Caravel was hurt by errors in each of the innings Brandywine scored runs. Only one of the three Bulldogs' runs was earned.

The loss ends Caravel's season with a 14-5 record.

"It was a good year," Baker said. "We really didn't think we got a whole lot of respect. If we could've beaten Brandywine maybe we could have gotten some of that. We beat Smyrna and Milford — two teams that were ranked ahead of us and had the same number of losses.

"But we really had a good group of seniors and they were great all year."

St. Mark's advances to state final

Spartans rip S. Central 9-0 in state semifinal

By MARTY VALANIA

NEWARK POST STAFF WRITER

St. Mark's hit Sussex Central early and often on its way to a 9-0 victory in Wednesday's semifinal game of the Delaware High School Softball Tournament.

The win improved the Spartans' record to 18-2 and advance them into Saturday's state championship game against defending champion and top seed Brandywine — a 2-0 winner over Smyrna in the other semifinal. The championship game will be played at 11 a.m. at Caravel Academy.

Sixth-seeded St. Mark's struck early as the first four batters it sent to the plate in the first inning scored. That would be more than enough for the Spartans' freshman pitcher Dana Travis, who fired a one-hitter and struck out nine.

"I think it was very big that we

hit the ball hard in that first inning," said St. Mark's coach Guy Townsend, who guided the Spartans to the 1995 state championship game only to lose to Sussex Central. "When we jumped on them I think it rattled their defense a little bit. That's normally a good defensive team and we got to them today."

Travis and Katie Loomis both singled and scored in the first inning rally while Amanda Cariello and Sarah Weir both reached base and scored as well.

Travis and Weir both scored in the second inning as well to stretch the lead to 6-0. Jen Nicolais singled and scored in the third inning to improve the lead to 7-0. The final margin was provided in the sixth as Amanda Cariello walked and scored and Loomis doubled and scored.

St. Mark's will be making its fourth appearance in a state title game but have not won the championship since 1981.

"I'd be lying if I didn't say there wasn't a little bit of revenge from that '95 title game," Townsend said. "It's nice to come back and knock off the team that beat you — especially in a big game like this."

Christine Cariello also picked up two hits to help the offense while

SOFTBALL

Bree Tease also collected one.

St. Mark's 4, Milford 3 — St. Mark's advanced to the semifinals with a come-from-behind 4-3 victory over third-seeded Milford in Saturday's quarterfinal round.

Sarah Weir's ground ball scored pinch-runner Michele Barker with the winning run in the bottom the eighth inning.

Amanda Cariello blasted a home run in the third inning to give the Spartans a 1-0 lead. A run in the fourth stretched the lead to 2-0.

Milford, though, scored three runs in the sixth to take the lead.

The Spartans, however, battled back to tie the game in the bottom of the seventh inning as Dana Travis scored on Samantha Knight's infield grounder.

St. Mark's then won the game in the eighth as Christine Cariello led the rally off by reaching first on an error. Becca Elkins then doubled to put runners on second and third base and setting up Weir.

Travis, the winning pitcher, allowed just two hits.

9th Annual



SATURDAY, JUNE 7th
10 a.m.-5 p.m.
Rain or Shine!
Rising Sun, MD

Continuous Free Entertainment & Demonstrations
Activities for All Ages Throughout the Day!

For Additional Information Call 410-658-5416

SPONSORED & ORGANIZED BY THE RISING SUN BUSINESS ASSOCIATION

- ★Arts & Crafts
- ★Antiques & Collectibles
- ★Childrens Area
- ★Food
- ★Hayrides & Pony Rides
- ★Free Parking
- ★Drawings & Prizes
- ★and Much More !!

Use our convenient,
time-saving e-mail
address today!

newpost@dca.net

NEWARK POST
FOR INFORMATION,
CALL 737-0724



CONSOLIDATE DEBT!

Low rates & low payments

NO EQUITY, NO PROBLEM

Up to 35K OR
125% of Property Value

- No appraisal
- No out of pocket expenses
- Apply by phone



THE MORTGAGE CONSULTANTS, INC.

Other Programs

- ☆ Equity loans 100K up to 100% LTV+
- ☆ High LTV & High Debt Ratio Programs
- ☆ Slow credit specialist
- ☆ No application fees
- ☆ 48 hour approval
- ☆ Rental Property ok

Call today!

(302) 832-1999

NEWARK POST

Greater Newark's Hometown Newspaper Since 1910

BUSINESS & PROFESSIONAL D.I.R.E.C.T.O.R.Y


AUTO GLASS & TOWING

B & G GLASS CO. (BETTS GARAGE)
A COMPLETE  SERVICE
"Windshields Repaired & Replaced"
Glass Installed While-You-Wait
24 Hour Towing - 7 Days - Local & Long Distance
302-834-2284 or 410-392-3074
INS WORK • FREE ESTIMATES • GLASCOW

AUTOMOBILE PARTS & SUPPLIES

Metro 
Mark Battaglia
Store Manager
334 E. Pulaski Hwy. **410-398-8844**
Elkton, MD 21921

EMPLOYMENT SERVICES

CUT COSTS WITHOUT CUTTING CORNERS
Improving profitability shouldn't mean sacrificing productivity. The solution: The Olsten Flexible WorkForce - Highly skilled, qualified temporary assignment employees who come to you with a guarantee of satisfaction.
 To find out how your company can profit from our flexible staffing solutions, call Olsten at:
Newark (302) 738-3500 Wilmington (302) 478-6110

TRASH REMOVAL & RECYCLING

CORRON'S TRASH REMOVAL
Our Specialty
Residential Service
Scheduled Recycle Pick-Ups
Reasonable Rates • Free Estimates
Elkton and Surrounding Areas
Ronald Corron 410-398-0869



To advertise here
Call Mark at

1-800-745-1942



IN THE SPOTLIGHT

Trusted By Medical Professionals



— the most modern facility in the community providing long-term care for its chronic and sub-acute residents, 24 hours a day; every day.

Call Medpointe for further information on chronic and sub-acute care.

410-398-6474

One Price Drive • Elkton, MD 21921



MEDICAL AND PROFESSIONAL

NURSING HOMES

MEDPOINTE
Continuing Care Center
1 Price Dr. Elkton, MD
• Modern / State of the Art Facility
• 24 hr. Professional Care Staff
• Home Away from Home
• The Best Rehab in Cecil Co.
1-800-899-2121 • 410-398-6474

HOSPITAL & MEDICAL EQUIPMENT

ESTB 1962 **City PHARMACY INC**
ELKTON MEDICAL PARK
"MEDICAL EQUIPMENT SPECIALISTS"
All Appliances Fitted by Accredited Medical Equipment Fitters in Private Fitting Room
• Surgical Appliances • Braces • Wheel Chairs
• Hospital Beds • Commodes • Walkers • Etc.
410-398-4383 or 800-728-4374

NEWARK POST ♦ OBITUARIES

Local obituaries are printed free of charge as space permits.

Joseph M. Farnan Jr., business owner

Newark resident Joseph M. Farnan Jr. died Monday, May 12, 1997, at home.

Mr. Farnan, 30, owned Blue Hen Painting for 10 years.

He is survived by his mother and stepfather, Judy and John Wierzbicki of Newark; father, Joseph M. Farnan Sr. of Wilmington; sister, Kellie DiMaio of Newark; stepbrother, John Farnan of Wilmington; stepsister, Jodie Farnan of Wilmington; maternal grandparents, Glenna Burridge and Harold Wilborn, both of New Castle; former stepfather, Dominick DiTomasso of Newark; stepgrandparents, Edward and Linda

Wierzbicki of New Castle; and former stepgrandparents, Michael and Marguerite DiTomasso of Wilmington.

A service was held May 16 at Mealey Funeral Home, Milltown. Entombment was in Gracelawn Memorial Park, Minquadales.

The family suggests contributions to Delaware Hospice, Wilmington 19810.

Francis J. Hennessy, engineer

Former Newark resident Francis J. Hennessy died Tuesday, May 13, 1997, at Port Charlotte Hospital in Port Charlotte, Fla.

Mr. Hennessy, 89, was an engineer. He worked for the DuPont Co. in Wilmington for 19 years, and at Hercules Inc. in Wilmington, until he retired in the 1970s.

He is survived by his wife, Lucy Hennessy; sons, Francis M. of Newark and John of Mission Hills, Calif.; daughter, Margaret Hennessy of Bull Shoals, Ark.; stepson, Alan Kimbrell of Missouri; brother, Carl of Pacific Palisades, Calif.; 10 grandchildren and eight great-grandchildren.

Both service and burial were private.

Marie DiBenedetto, retired from UD

Former Newark resident Marie B. DiBenedetto died Thursday, May 15, 1997, in Churchmans Village, her residence for several years.

Mrs. DiBenedetto, 82, was a custodial worker at the University of Delaware. She retired in 1979. Earlier, she worked at Continental Diamond & Fibre Co., and later at

Budd Co.

She is survived by her husband of 53 years, Dominick DiBenedetto; son, Edward T. Burke of Newark; three grandchildren and three great-grandchildren.

A service was held May 19 at Robert T. Jones & Foard Funeral Home, Newark. Burial was in Newark Cemetery.

The family suggests contributions to the Alzheimer's Association, Delaware Chapter, Wilmington.

Tula G. Stacy, foster care mother

Newark resident Tula G. Stacy died Wednesday, May 14, 1997, of complications from a stroke in Gilpin Hall, Wilmington.

Mrs. Stacy, 74, was a waitress at the Blue Hen, Country Maid and

Royal diners. She was a foster care mother for more than 20 years, and provided child care for neighbors and friends.

She is survived by her children, Kay W. Lynnville of Wilmington, Elizabeth J. Bednash of Bear, Kermit of Newark, and William of Colorado Springs, Colo.; daughter-in-law, Emily Stacy, with whom she had lived with in Newark; brother, George Gemrose of Battle Creek, Mich.; sister, Elizabeth S. Taylor of Ayer, Mass.; nine grandchildren and four great-grandchildren.

A service was held May 17 at Spicer-Mullikin Funeral Home, Burial Gracelawn Memorial Park, Minquadales.

Anna M. Smith DePietro, waitress

Newark resident Anna M. Smith

Church Directory

New ads and changes should be sent to:

Church Directory 601 Bridge St., P.O. Box 429 Elkton, MD 21921 or call Shelley Dolor for more information at

410-398-3311 or 1-800-220-3311.

Ad deadline is Monday before the Friday run. The Church Directory is published by the Newark Post.



In Ministry to the Faith Communities of Newark, the University, and the World.

NEWARK
United Methodist Church

69 East Main Street
Newark, DE 19711
(302) 368-8774

We are fully accessible to all!

Sunday Morning Worship 8:00, 9:30 & 11:00 a.m.

9:15 & 11:00 a.m. Nursery and Church School - all ages

11:00 a.m. Wesley Foundation Campus Ministry

9:30 a.m. Worship Service Broadcast on WNRK 1260AM

Stop! Look no further!

You have found what you've been searching for... a church on fire and ready to build relationships for

ETERNITY!

GLASGOW CHURCH OF GOD
Pencader Grange Hall
Rt. 896 & S. Entrance to Peoples Plaza
SUNDAY 10:45AM & 6:00PM



First Church of Christ, Scientist

Delaware Ave. & Haines St., Newark, DE 19711

Sunday Service* & Sunday School* Sunday, 10-11 a.m.
Testimony Meeting* Wednesday, 7:30-8:30 p.m.
Reading Room Saturday, 10 a.m. - 12 noon

* Child care is provided

All Are Welcome

<http://member.aol.com/NewarkFCCS>



Glorious Presence Church

410-392-3456

A Spirit-Filled Bible-Believing Church

Praise and Worship with Communion 10:00 a.m.

CHILDREN CHURCH AVAILABLE

The Rev. Curtis E. Leins, Ph.D.

Parakletos Biblical Institute
Registrar: Gordon Croom

GLASGOW REFORMED PRESBYTERIAN CHURCH

2880 Summit Bridge Rd. • Bear, DE (1-1/2 mi. S. of Rt. 40 & Rt. 896)

834-4772

Sunday School..... 9:00 a.m.
Morning Worship... 10:30 a.m.

(Signing for the hearing impaired)

Sr. Pastor Rev. Charles F. Betters
Assoc. Pastor Rev. Douglas Perkins

NEWARK WESLEYAN CHURCH
706 West Church Rd. - Newark
(302) 737-5190

Sunday School- all ages 9:30 a.m.

Morning Worship..... 10:30 a.m.

Sunday Evening Adult & Youth Activities.. 6:30 p.m.

Handicapped Accessible/Nursery Provided

Small Group Bible Studies - throughout the week

≈ Pastor James E. Yoder III

RED LION UNITED METHODIST CHURCH

1545 Church Road Bear, DE 19701

Crossroads Radio Broadcast 9:00 a.m.

Radio Station WNRK 1260AM

Sunday School (Ages 2-Adult) 9:00 a.m.

Sunday Worship 10:15 a.m.

Nursery Available

Wednesday Evening Service 7:00 p.m.

Join our Hand Bell Choir, Choir, Kid's Club, Singles Club, Couples Club & Seniors

Rev. Gary S. Tulak, Senior Pastor

Rev. Robert Simpson, Associate Pastor

834-1599

THE FELLOWSHIP
Meeting At YWCA
218 S. College Ave., Newark, DE
737-3703 • 325-2970

Sunday Bible Classes

(All Ages)..... 9:00 a.m.

Worship Service

(Nursery Available)..... 10:00 a.m.

"Sharing Christ In Mutual Ministry"

ALL WELCOME

Head of Christiana

Presbyterian Church

A caring community welcoming you

to a life in Christ.

Founded in 1706 Church School 9:30 a.m.

Worship Service 11:00 a.m.



Nursery Provided.

Church School 9:30 a.m.

Worship Service 11:00 a.m.

1100 Church Rd. Just off 273 West of Newark.

Ph. 302-731-4169

SALEM UNITED METHODIST CHURCH
469 Salem Church Road
(302) 738-4822

Morning Worship..... 10:30 a.m.
Christian Ed For All Sept.-May

HANDICAPPED ACCESSIBLE

Little Lambs Nursery, All Programs & Children's Church, Available All Services

"YOU ARE WELCOME"

Rev. Charles O. Walter, Pastor

The Episcopal Church Welcomes You

St. Thomas's Parish

276 S. College Ave. at Park Place, Newark, DE 19711

(302) 368-4644 Church Office (9:00-1:00 Mon.-Fri.)

(302) 366-0273 Parish Information Hotline

Sunday Worship and Education

8:00 a.m. Holy Eucharist, Rite One

9:15 a.m. Christian Education (all ages)

10:30 a.m. Holy Eucharist, Rite Two

& Children's Worship (Nursery Provided)

5:30 p.m. Holy Eucharist

Youth Groups: Jr. High at 4:00 p.m.

Sr. High at 7:30 p.m.

The Rev. Thomas B. Jensen, Rector

The Rev. Krenton D. Baldrige, Associate and Vicar for University Mission

OUR REDEEMER LUTHERAN CHURCH
Johnson At. Augusta
Ches. Hill Est., Newark
(302) 737-6176

Sunday School

& Bible Classes..... 8:45 a.m.

Divine Worship..... 10:00 a.m.

Summer Worship..... 9:00 a.m.

Holy Communion..... 1st & 3rd Sunday

CARL H. KRUELLE, JR., PASTOR

The Glorious Church of the Living Word

Services Sunday

11 a.m. - 2 p.m.

Bible Teaching Tuesday

7 p.m. - 8 p.m.

Praise & Worship Thursday

7 p.m. - 8 p.m.

Pastor, Anthony Cornish, Sr.

Located at 1218 B Street

In The Neighborhood Building

Wilmington, DE 19802

1-302-994-3218

FIRST ASSEMBLY OF GOD

129 Lovett Avenue
Newark, DE 19713

368-4276 731-8231

Hugh Flanagan, Pastor

SUNDAY SERVICES
Bible Study 9:30 a.m.

WORSHIP SERVICES

Morning Worship 10:30 a.m.

Junior Churches 10:30 a.m.

Evening Worship 7:00 p.m.

FAMILY NITE
WEDNESDAY 7:00 p.m.

Adult Bible Study

Rainbow • Missionettes

Royal Rangers

Nursery Provided

AGAPE FELLOWSHIP
(302) 738-5907

A Spirit-Filled Local Expression Of The Body Of Christ

Sunday Worship..... 10:00 a.m.

At Howard Johnson's, Rt. 896 & I-95

Wednesday

Home Meeting..... 7:30 p.m.

Calvary Baptist Church
An American Baptist Church

SUNDAY

• Praise Service..... 9 a.m.

• Sunday School..... 10 a.m.

• Worship Service..... 11 a.m.

WEDNESDAY

• Dinner..... 6 p.m.

• Singspiration..... 6:30 p.m.

• Bible Study..... 6:45 p.m.

• Youth Programs..... 6:45 p.m.

• Adult Choir..... 7:50 p.m.

WEEKDAYS

• Two & Four-Day Preschool

Handicapped Accessible • Nursery

COME TO CALVARY

GROW WITH US

215 E. Delaware Ave.

Newark, DE 19711

302-368-4904

PENCADER PRESBYTERIAN CHURCH

Corner of Rt. 896 & 40

9:30..... Church School

11:00..... Church Service

Our friendly, caring, inclusive community of faith

invites you to join us in

MISSION, EDUCATION & WORSHIP

215 E. Delaware Ave.

Newark, DE 19711

302-368-4904

CHRISTIANA PRESBYTERIAN CHURCH

15 N. Old Baltimore Pike

Christiana, DE

368-0515

Worship at 10:00 a.m.

NURSERY AVAILABLE

HANDICAPPED ACCESSIBLE

Robert Bruce Cumming, Pastor

DePietro died Monday, May 12, 1997, of heart failure in Christiana Hospital.

Mrs. DePietro, 63, was a waitress at the Wilmington Country Club for eight years and then at the Columbus Inn. She retired in 1979.

She is survived by her daughter, Doris Garcia of Newark, with whom she lived; sister, Mary Taylor of Elmhurst; five grandchildren and three great-grandchildren.

A graveside service was held May 20 in Cathedral Cemetery.

Joyce C. Maxson, chemist technologist

Bear resident Joyce C. Maxson died Thursday, May 15, 1997, of cancer at home.

Mrs. Maxson, 52, was a chemist technologist at the DuPont Co. and Dade International, Glasgow, for nine years. She was a member of Good Shepherd Baptist Church and the American Association of Clinical Pathologists. She was a 1966 graduate of the University of Delaware.

She is survived by her husband of 25 years, the Rev. Dr. Leland C. Maxson Sr.; sons, Edward C. Wayland of Newark and Leland C. "Buck" Maxson Jr., at home; daughter, Carol L. Winward of Newark; parents, Joseph C. and Helen M. Buckworth of Wilmington; and a grandson.

A service was held May 19 at Spicer-Mullikin Funeral Home, Wilmington Manor. Burial was in Silverbrook Cemetery.

The family suggests contributions to Delaware Hospice, Wilmington.

Nancy Mary Emily Phillips, volunteer

Bear resident Nancy Mary Emily

Phillips died Thursday, May 15, 1997, of cancer at home.

Ms. Phillips, 57, served as construction chairperson for Habitat for Humanity, and received the group's lifetime achievement award in 1995. She also volunteered at Emmaus House in Newark and the YWCA, where she worked for four years in job rehabilitation for women. More recently, she worked at Lowe's in Bear. She attended St. Nicholas Episcopal Church, Newark.

She is survived by her daughters, Margreta Loughlin of Bear and Kathryn Lillich of Atlanta; parents, Ruth and Joseph Gardiner of Ontario, Canada; and a grandson.

A memorial service was held May 20 at St. Nicholas Episcopal Church.

The family suggests contributions to Habitat for Humanity or the Wellness Community, both in Wilmington.

Margaret Lee Snyder, companion aide

Bear resident Margaret Lee Snyder died Wednesday, May 14, 1997, of cancer in Christiana Hospital.

Mrs. Snyder, 75, had been a companion aide for Quality Care, Wilmington, for 11 years. Previously, she worked at Habersetts Sausage Co., Aston, Pa., for 15 years. She had been a waitress and hostess for many years at Wilmington-area restaurants. She attended Cornerstone United Methodist Church, Bear.

She is survived by her husband of 23 years, Walter E.; sons, Edgar Good Jr. of Boothwyn, Pa., and Wayne Good of Upper Chichester, Pa.; daughters, Joyce Steinmacher and Shirley Ann Good, both of Wilmington, and Donna Lynn Baldwin of Newark; stepsons, Barry

Snyder of Coatesville, Pa., and Walter E. Snyder of Ovov, Va.; stepdaughters, Donna Lee Carver of Bear, Carolyn Ann Roulston and Patricia Margaret Snyder, both of La Crescenta, Calif.; brother, Gordon D. Reagor of New Jersey; sister, Bobbie Jean Nall of Billings, Mont.; 19 grandchildren and 14 great-grandchildren.

A service was held May 19 at Cornerstone United Methodist Church, Bear. Burial was private.

The family suggests contributions to Cornerstone United Methodist Church or American Cancer Society.

Edward Menkiewicz, retired from GM

Newark resident Edward A. "Pat" Menkiewicz died Thursday, May 15, 1997, of heart failure in Christiana Hospital.

Mr. Menkiewicz, 79, was an assembly line worker for more than 29 years at General Motors Corp.'s Boxwood Road plant. He retired in 1983. He was a member of Holy Family Catholic Church, Newark.

He is survived by his wife, Dorothy B. Kaladas Menkiewicz; son, Richard E. of Wilmington; brother, Joseph of Slaton, Pa.; and Alice Grimes of Shenandoah, Va.

A mass was held May 19 at Holy Family Catholic Church, Newark. Burial was in All Saints Cemetery.

James C. Morris, sheet metal worker

Newark resident James C. Morris died Friday, May 16, 1997.

Mr. Morris, 23, was a sheet metal worker for N. Barton Associates, Marshallton.

He is survived by his wife, Jessica; daughter, Kayleigh April

Morris, at home; father, Ronnie Morris of Fayetteville, W.Va.; mother, Lois Ann Riddle and stepfather, David Riddle of New Castle; brother, Shannon Roy Shockey of Hartly; stepsisters, Rhonda Morris and Michelle Morris, both of Fayetteville; paternal grandmother, Betty Morris of Fayetteville; maternal grandmother, Nina Shockey of Fayetteville; and stepgrandmother, Norma Riddle of Oak Hill, W.Va.

Both service and burial were held May 24 at Huse Memorial Park, Fayetteville, W.Va.

The family suggests contributions to the Kayleigh April Morris Trust Fund, in care of Wilmington Trust Co.

Jeffrey C. Palmer, equipment operator

Newark resident Jeffrey C. Palmer died Saturday, May 17, 1997.

Mr. Palmer, 39, was a power equipment operator at Delmarva Power Co. He served in the Navy.

He is survived by his sons, Matthew C. and Jesse C., both of Middletown; daughter, Jordan L. Palmer of Middletown; mother, Norma Jean Palmer of Newark; brothers, Ronald H. of Stanton and Mark L. of Newark; and sister, Connie M. Williams of Bethany Beach.

A service was held May 21 at Mealey Funeral Home. Burial was in Delaware Veterans Memorial Cemetery, Summit.

Stanley Thomas Zion Sr., technician

Newark resident Stanley Thomas Zion Sr. died Monday, May 19, 1997, at home.

Mr. Zion, 80, retired in 1975 from Ogden-Howard, Wilmington, as a tele-

vision service technician. During World War II, he served in the Navy. He was a member of the VFW, Newark.

He is survived by his wife, Ellen M.; sons, Richard A. and Stanley T. Jr., both of New Castle; daughter, Diane Lenderman of Hockessin; brothers, Joseph Zajackowski of Hockessin, and Thomas Zajackowski of Elsmere; sisters, Lucille Zajackowski of Elsmere, and Helen Skolodowski of Wilmington; and four grandchildren.

Visitation was held May 22 at Yaski Funeral Home. Burial was in Delaware Veterans Memorial Cemetery, Summit.

The family suggests contributions to Delaware Hospice.

Mary Ellen Bennett, secretary

Newark resident Mary Ellen Bennett died Friday, May 16, 1997, in Ingleside Care Center, Hockessin.

Mrs. Bennett, 95, graduated from Goldey College, Wilmington. She was a secretary at Deemer Steel Co., New Castle, and Remington Rand, Wilmington. She was a member of New Castle United Methodist Church and Pythian Sisters. Her husband, Morton E., died in 1969.

She is survived by her daughters, Phyllis B. Wilson of Newark, Gloria B. Sterner of Pomona Park, Fla., and Mary Ellen Brown of Hartly; sisters, Virginia M. Henderson of Marco Island, Fla., and Lorelle M. Ward and Peggy M. Wilhelme of New Castle; five grandchildren and four great-grandchildren.

A service was held May 23 at New Castle United Methodist Church. Burial was in Gracelawn Memorial Park, Minquadales.

The family suggests contributions to New Castle United Methodist Church.

STILL YOUR BEST CHOICE!

Whether you're in your easy chair or at your keyboard, the Newark Post remains your best source of local information! Bookmark the Newark Post's home page on the World Wide Web and surf it for the latest Newark offerings!

It's easy to link to...



Useful information from the city



The Newark Symphony Orchestra's page



The UD's web page that has received rave reviews



Artistic offerings galore from the Arts Alliance



Updated info about the downtown revitalization



Many other great papers, including the Post's sister publication, the Business Ledger, the "nation's newspaper," and even the Boston Globe!



Up-to-the-minute weather facts



CHECK OUT

REVIEW THE WEEK'S TOP HEADLINES!

USE E-MAIL TO SEND A LETTER TO THE EDITOR!

SEND NEWS RELEASES VIA E-MAIL!

SUBSCRIBE OR CHANGE YOUR ADDRESS!

<http://www.ncbl.com/post/>

Real Estate

RESIDENTIAL • COMMERCIAL • INDUSTRIAL • ZONING • PLANNING • PEOPLENEWS

Millcroft adds assisted living center

Millcroft, a Marriott Senior Living Community, located on Possum Park Road in Newark has begun construction on a 26-bed assisted living center as well as an expansion of their current nursing & rehabilitation center.

Currently the senior living community includes 62 independent living apartments as well as a 100-bed health care center. The addition of the assisted living center will give Millcroft's residents a full continuum of care.

According to general manager Janet NeVile, assisted living will be a residential option for seniors who need some assistance with daily living activities such as bathing, dressing and medication reminders, but do not need the skilled medical care provided in a nursing home.

"We are excited about our new assisted living center, and the variety of senior care options we offer," said NeVile. "There is a definite need for this level of care in the greater Newark area."

NeVile pointed out that if health changes

occur, the on-site health care center can meet the needs of residents without the necessity of another move.

Construction on the new facilities is to be completed by early Fall of this year.

Marriott Senior Living Services, a division of Washington, D.C. based Marriott International Inc. is the largest provider of senior living communities in the United States. It operates 75 full service and assisted living communities with over 14,500 residences.

Other Marriott International operations include hotels operated and franchised under the Marriott, Courtyard, Residence Inn, Fairfield Inn, TownPlace suites and Ritz-Carlton brands; vacation club resorts; food service and facilities management for clients in business, education, and health care and food service distribution. The company has approximately 4,600 operating and units in 50 U.S. states and 28 countries and territories. It has annual sales of \$9 billion and employs approximately 185,000 associates.

Waltermire earns GRI designation

A Delaware realtor was recently awarded the Graduate Realtor Institute designation.

Beth Waltermire of Fox & Lazo Inc., Realtors, in Pike Creek completed the curriculum to join others in the real estate industry who hold the designation across the country.

Subjects in the curriculum include contract law, professional standards, sales and marketing finance, and risk reduction as well as the fundamentals of brokerage and other areas of real estate specialization. Waltermire is a Wilmington resident.

Scott honored by Junior Achievement

Patterson-Schwartz Real Estate announced that general manager Gary

A. Scott is a recipient of Junior Achievement's Bronze National Leadership Award. Scott was co-chairman of the Governor's Invitational Golf Tournament which raised over \$52,000 to help fund workforce readiness programs in Delaware for Junior Achievement. One of only three persons in the state to be honored on behalf of Junior Achievement of Delaware, Scott also has been involved in the organization's classroom mentoring program.

Levy named residential specialist

Barbara K. Levy, sales associate at the Brandywine Center of Patterson-Schwartz Real Estate, was recently named a Certified Residential Specialist by the Residential Sales Council of the Realtors National Marketing Institute, an affiliate of the National Association of Realtors.

Love The Arts?



Exciting Opportunity to own part of the revitalization of Kennett Square Business District! Fine Arts & Crafts Gallery thriving business for sale **Only \$42,000!** Owner Financing Possible! Call Maria Anzaldo at Coldwell Banker Advantage Real Estate **610-444-5200 or 610-869-2786**



26 BOOMDECKER COURT, (OFF McCLEARY RD.) FAIR HILL, MD \$149,900
Country home for sale - 3 BR, 2B, full basement, CA, 2 car oversized garage, breezeway, deck, plus Andersen Windows & masonry stone & wood front. All situated on 1.7 acres.
FOR SALE BY OWNER
PLEASE CALL EVENINGS AFTER 5:00PM 410-398-6027

An Updated Look At MORTGAGE RATES In New Castle County

Lender	FEE TO APPLY	15 YEAR Fixed			30 YEAR Fixed			1 YEAR ARM			3 YEAR ARM			5 YEAR ARM		
		%	PTS.	APR	%	PTS.	APR	%	PTS.	APR	%	PTS.	APR	%	PTS.	APR
BANK AMERICA MORTGAGE (410) 642-4768	\$300															
ENCORE MORTGAGE (888) 249-8272		6%	3	7.125	7.125	3	7.392	6	0	6.83	7 1/2	0	8.125	8	0	8.625
ENTRUST HOME FINANCING (302) 576-4100	\$325	7.750	.125	7.78	8.250	.125	8.25	5.375	.5	8.273	7.125	.250	8.23	7.5	.125	8.16
MNC MORTGAGE (800) 654-3410	\$350	7%	3	7.6614	7%	3	7.9682	4%	3	8.4224	6 1/2	2 1/2	8.6544	6%	3	8.5516
NORWEST MORTGAGE (800) 380-8780	\$350	7	3	7.4	7.5	3	7.8	5.75	2	8.2				6.75	3	8.5
PNC MORTGAGE (800) 743-3599	\$325	7%	1%	7.49	7%	2	7.90	6	1%	8.51	6%	2%	8.21	6%	3	8.23
SHALLCROSS (410) 287-8484																
*Please call for rates.																

*Please call for rates.

These rates effective 5/27/97, were provided by the lenders and are subject to change. Other terms may be available. These rates are for existing first mortgages. Points may vary on refinances. Down payment requirements may vary. *Caps and length may vary on adjustable rates. The APR is based on a \$100,000 mortgage with a 20 percent down payment and in addition to interest, included points, fees and other credit costs. To list your mortgage rates in the Cecil Whig, call Renee Quietmeyer at (800) 220-3311. These mortgage rates are a paid advertising feature of The Newark Post.



Refinance Now!

Interest Rates are on the rise, lock in now! Encore Mortgage Services offer the Equity Builder at 5.75%. This program is a bi-weekly 30 yr. amortization with a pay-out from 18 to 20 yrs. This program allows the borrower to cash-out up to 80% LTV with no PMI! You can even pay your own escrow account without any fee. No income verification, borrowers are welcome at the same rate. The Equity Builder can save homeowners thousands of dollars in interest every month.

Home Buyers Take Advantage utilizing Encore's innovative programs, today's home buyer can qualify for much more home. If your "dream home" is just out of reach, you may be able to realize those dreams today because you're qualified at **5.75%, not 8%.**

Save Thousands By Consolidating You've heard the term "giving 110%." Well, Encore exceeds even that, with debt consolidation programs up to 120% of the value of your property. Encore's loan officers can save you thousands of dollars with a home equity program. Get in touch with an experienced professional loan officer with hundreds of different programs available. Let Encore find the one that's right for you.

Credit Problems Understood

Been turned down? Quoted outrageous rates? Let Encore help! As a full service mortgage banker, their extensive experience in conventional, FHA, VA and nonconforming programs have benefited hundreds of customers who have been turned down elsewhere. Encore even has programs to help people in Bankruptcy and foreclosure.

Average Family Budget

TYPE OF LOAN	INTEREST RATE	BALANCE	MONTHLY PAYMENT
1st Mortgage	9.25%	\$65,000	\$534.95
Auto Loan	12%	\$15,000	\$310.00
Home Equity	11%	\$25,000	\$344.50
Credit Cards	18%	\$5,000	\$127.96
Department Stores	21%	\$2,500	\$52.50
Total		\$112,500	\$1,369.91
Consolidation		Loan Amount	Monthly Payment
Refinance	5.75%	\$112,500	\$657.00

This family can save \$712.91 a month with a new 5.75% mortgage!! *Rates subject to change without notice

encore Mortgage Services, Inc.

Suite 6, Trolley Square Wilmington, DE
1-888-249-8272 • 302-777-4430

Established 1985



EQUAL HOUSING OPPORTUNITY

All real estate advertised herein is subject to the Federal Fair Housing Act, which makes it illegal to advertise any preference, limitation or discrimination based on race, color, religion, sex, handicap, familial status or national origin or intention to make any such preferences, limitations or discrimination.

State laws forbid discrimination in the sale, rental or advertising of real estate based on factors in addition to those protected under federal law. In Maryland, discrimination based on marital status or physical or mental handicap is prohibited.

We will not knowingly accept any advertising for real estate which is in violation of the law. All persons are hereby informed that all dwellings advertised are available on an equal opportunity basis.

Classifieds

CALL 1-800-220-1230 • BUY • SELL • HELP WANTED • SERVICES • NOTICES

202 Acreage & Lots

CALVERT- GENTLY sloping picturesque lot 3.27 Acres (+ or -) 5 min. to I-95! \$52,900 Call (410) 398-2432.

RT 40 Havre de Grace, Md. 14.5 Acre Shopping Center Development site w/Water & Sewer. Close to New 30 million dollar Golf Course Resort. Call Jim Murray Realty. 410-378-5470

210 Houses for Sale



ELKTON FS80 Nice & neat! Great 1st. time buyer/investor 3 B/R, 1 BA, fenced yd. All appl. \$78,000 410-398-9474

236 Mobile Homes for Sale

GLASCOW PINES, DE - Holly Park Model, many updates, new C/A, 2 B/R, 1 BA. Great cond. Shed incl. 302-834-9368

☆☆☆☆

1994 16X80 MOBILE HOME. 3 BR, 2 FULL BATHS, GARDEN TUB, C/A & NATURAL GAS. IMMACULATE COND. MUST SELL!! LOCATED GLASCOW TRAILER COURT. \$32,000 WILL PAY SETTLEMENT CALL 410-620-4223 ANYTIME

254 Apartments, Unfurnished

NOTTINGHAM TOWER Apts. 1BR & 2BR's available, 1st month rent FREE! Call 610 932-3331.

260 Houses Unfurnished

ELKTON - 3BR townhouse. \$575/mo. No pets. Call 410 398-8223 after 4 pm.

302 Antiques, Art

FOURTH QUARTER 19th Century Sofa, Chippendale Style, Colonial Revival Period. Mahogany, C-scrollled, canted arms, plain seat rail on three cabriole front legs w/ carved knees and paw feet. Reupholstered in striped velvet, excellent condition, exceptional styling. \$4,500. Call 410 392-3247

ROCKING CHAIR, American, Ca. 1890-1920 Golden Upholstered back w/ serpentine top, open curved arms with gargoyle terminals, plain legs, socket rockers. Reupholstered in cut velvet. \$450. 410-392-3247

LEGAL NOTICE

SHERIFF'S SALE

The following Real Estate will be exposed the Public Sale at the Court House Southeast Corner of Eleventh and King Streets, City of Wilmington, New Castle County, DELAWARE, on Tuesday, the 10TH day of June, 1997 at 10:00 AM By Virtue of Writ of

SHERIFF'S SALE

By virtue of a writ of LEV FAC #02 AP A.D., 1997

PARCEL # 11-023.20-285

ALL THAT CERTAIN lot, piece or parcel of land with the buildings thereon erected, known as 14 Lake Tahoe Circle, New Castle County, Bear, DE 19701.

BEING the same lands and premises which Intergroup Builders, Inc., by Deed dated May 29, 1992, and recorded in the Office of the Recorder of Deeds in and for New Castle County, State of Delaware, in Deed Book 1342, Page 153, did grant and convey unto Timothy J. Cooper and Karen D. Brown, in fee.

Seized and taken in execution as the property of TIMOTHY J. COOPER AND KAREN D. BROWN.

TERMS OF SALE: 10% DOWN AT TIME OF SALE. BALANCE DUE ON OR BEFORE JULY 7, 1997.

APRIL 30, 1997

SHERIFF'S SALE

By virtue of a writ of LEV FAC #13 AP A.D., 1997

TAX PARCEL NO. 11-023.10-164

ALL THAT CERTAIN lot, piece or parcel of land with the buildings thereon erected, known as 710 Kilgor Court, Glasgow Pines, Newark, New Castle County, Delaware

BEING the same land which John A. Hedrick and Sheri D. Hedrick, by Deed dated March 26, 1991 and recorded in the Office of the Recorder of Deeds on March 27, 1991, in and for New Castle County Delaware, in Deed Book 1155, Page 198, did grant and convey to Earl W. Wheeler and Lisa A. Wheeler in fee.

Seized and taken in execution as the property of EARL W. WHEELER AND LISA A. WHEELER

TERMS OF SALE: 10% DOWN AT TIME OF SALE. BALANCE DUE ON OR BEFORE JULY 7, 1997

APRIL 30, 1997

SHERIFF'S SALE

By virtue of a writ of LEV FAC #09 AP A.D., 1997

PARCEL # 10-043.30-232

ALL THAT CERTAIN lot, piece or parcel of land with the buildings thereon erected, known as 443 Feather Drive, New Castle County, Newark, Delaware 19702.

BEING the same lands and premises which Pulte Home Corporation, by Deed dated October 25, 1994, and recorded in the Office of the Recorder of Deeds in and for New Castle County, State of Delaware, in Deed Book 1832, Page 229, did grant and convey unto Joseph S. Wojcik, III and Christine J. Wojcik, in fee.

Seized and taken in execution as the property of JOSEPH S. WOJCIK, III AND CHRISTINE J. WOJCIK HUSBAND AND WIFE

TERMS OF SALE: 10% DOWN AT TIME OF SALE. BALANCE DUE ON OR BEFORE JULY 7, 1997.

APRIL 30, 1997

SHERIFF'S SALE

By virtue of a writ of LEV FAC #07 AP A.D., 1997

PARCEL NO. 08-053.10-058

ALL THAT CERTAIN piece, parcel or lot of land with the dwelling thereon erected, situate in Mill Creek Hundred, New Castle County, State of Delaware known as 197 Possum Park Road (f/k/a 201 Possum Park Road), Newark, Delaware 19711.

BEING a part of the same lands and premises which MARK S. HURM by his Indenture bearing date the 13th day of May, 1983, and recorded in the Office of the Recorder of Deeds, in and for New Castle County, Delaware, in Deed record F, Volume 122, Page 255, did grant and convey unto MARK S. HURM and BRENDA B. HURM, husband and wife, in fee.

Seized and taken in execution as the property of BRENDA B. HURM

TERMS OF SALE: 10% DOWN AT TIME OF SALE. BALANCE DUE ON OR BEFORE JULY 7, 1997.

APRIL 30, 1997

SHERIFF'S SALE

By virtue of a writ of VEND EXP #06 AP A.D., 1997

Tax Parcel No.: 11-007.10-006

ALL THAT CERTAIN LOT, piece or parcel of land with the buildings thereon erected, known as Lot No. 109, Block U, Scottfield, Section Four, also known as 14 Arkfield Court.

BEING THE SAME LANDS and premises which Scottfield, Inc. by certain Deed dated the 4th day of May, A.D., 1971 and recorded in the Office of the Recorder of Deeds in and for New Castle County, Delaware, in Deed Book V, Volume 84, Page 311 did grant and convey to William J. Weaver and Janet B. Weaver, his wife, herein, in fee.

Seized and taken in execution as the property of

WILLIAM J. WEAVER, JANET B. WEAVER, RONALD J. SLUTTER AND NANCY G. SLUTTER, MASTER ELECTRIC SERVICE, INC., A DELAWARE CORPORATION

TERMS OF SALE: 10% DOWN AT TIME OF SALE. BALANCE DUE ON OR BEFORE JULY 7, 1997.

APRIL 30, 1997

SHERIFF'S SALE

By virtue of a writ of LEV FAC #04 AP A.D., 1997

TAX PARCEL NO. 09-023.40-053

ALL THAT CERTAIN lot, piece or parcel of land with the buildings thereon erected, known as 800 South Harmony Road, Newark, Delaware

BEING THE SAME LANDS and premises which Robert J. Sartori, by certain Deed dated the 9th day of August, A.D. 1994 and recorded in the Office of the Recorder of Deeds in and for New Castle County, Delaware in Deed Book 1793, Page 85, did grant and convey to Robert J. Sartori and Doreen F. Sartori, his wife, herein, in fee.

Seized and taken in execution as the property of ROBERT J. SARTORI, SR. AND DOREEN F. SARTORI

TERMS OF SALE: 10% DOWN AT TIME OF SALE. BALANCE DUE ON OR BEFORE JULY 7, 1997.

APRIL 30, 1997

SHERIFF'S SALE

By virtue of a writ of ALS LEV FAC #03 AP A.D., 1997

PARCEL # 11-022.40-042

ALL THAT CERTAIN lot, piece or parcel of land with the buildings thereon erected, known as 31 Broadleaf Drive, New Castle County, Newark, Delaware 19702.

BEING the same lands and premises which Tdd A. Sutton and Pamela E. Sutton, h/w, by Deed dated May 23, 1989, and recorded in the Office of the Recorder of Deeds in and for New Castle County, State of Delaware, in Deed Book 847, Page 248, did grant and convey unto John N. Kabino, Jr. and Anne P. Kabino, h/w, in fee.

Seized and taken in execution as the property of JOHN N. KABINO, JR., ANNE P. KABINO

TERMS OF SALE: 10% DOWN AT TIME OF SALE. BALANCE DUE ON OR BEFORE JULY 7, 1997.

APRIL 30, 1997

SHERIFF'S SALE

By virtue of a writ of LEV FAC #76 AP A.D., 1997

PARCEL # 11-002.40-293

1 MERRIMAN ROAD, NEWARK, DELAWARE 19713

ALL THAT CERTAIN plot, piece or parcel of land, the buildings and improvements thereon erected, situate in Pencader Hundred, New Castle County and State of Delaware, being No. 1 Merriman Road, Known as Lot No 253 on a certain plot entitled BROOKSIDE PARK, Section M-2 prepared by Whitman Requaardt and Associates, Consulting Engineers, dated August 16, 1954, and recorded in the Office of the Recorder of Deeds in and for New Castle County, at Wilmington, Delaware in Plot Book 3, Page 52, on September 14, 1954.

BEING the same lands and premises which ROBERT E. ROLPH, III and OLGA J. ROLPH, his wife, by Deed dated March 27, 1987 and recorded in the Office of the Recorder of Deeds in and for New Castle County, Delaware in Deed Book 795, Page 33, did grant and convey unto ALAN W. STOOPS and LORI D. STOOPS, his wife.

Seized and taken in execution as the property of ALAN W. STOOPS AND LORI D. STOOPS

TERMS OF SALE: 10% DOWN AT TIME OF SALE. BALANCE DUE ON OR BEFORE JULY 7, 1997.

APRIL 30, 1997

SHERIFF'S SALE

By virtue of a writ of LEV FAC #74 AP AD., 1997

PARCEL NO. 11-014.30-006

2 PEBBLE PLACE, NEWARK, DELAWARE 19702
ALL THAT CERTAIN lot, piece or parcel of land, with the buildings thereon erected, known as 2 Pebble Place, situate in Pencader Hundred, New Castle County and State of Delaware, being Lot 69, Block D, on the Record Major Subdivision Plan of STONES THROW, as said plan is of record in the Office of the Recorder of Deeds, in and for New Castle County, Delaware in Microfilm No. 2270.

BEING the same lands and premises which JEFFREY A. WOLF and LINDA G. WOLFE, now known as LINDA G. WOLF, husband and wife, by Deed dated April 30, 1992 and recorded in the Office of the Recorder of Deeds in and for New Castle County, Delaware in Deed Book 1323, Page 244, did grant and convey unto ROBERT E. NORMAN and KELLY A. NORMAN, in fee.

Seized and taken in execution as the property of ROBERT E. NORMAN AND KELLY A. NORMA

TERMS OF SALE: 10% DOWN AT TIME OF SALE. BALANCE DUE ON OR BEFORE JULY 7, 1997.

APRIL 30, 1997

SHERIFF'S SALE

By virtue of a writ of LEV FAC #73 AP A.D.,

1997 PARCEL NO. 11-023.20-027
12 ASHKIRK PLACE, NEWARK, DELAWARE 19702

ALL THAT CERTAIN lot, piece or parcel of land with the buildings thereon, situate in Pencader Hundred, New Castle County, Delaware being designated Lot 14, as shown on the Record Major Subdivision Plan of Glasgow Pines, Phase II, of record in the Office of the Recorder of Deeds in and for New Castle County, Delaware on Microfilm No. 8408.

BEING the same lands and premises which CHESTNUT HILL BUILDERS, INC., a Delaware corporation, by Deed dated January 30, 1989 and recorded in the Office of the Recorder of Deeds in and for New Castle County, Delaware in Deed Book 824, Page 124, did grant and convey unto JAMES MAYNARD and DONNA MAYNARD, his wife.

Seized and taken in execution as the property of JAMES MAYNARD AND DONNA M. MAYNARD

TERMS OF SALE: 10% DOWN AT TIME OF SALE. BALANCE DUE ON OR BEFORE JULY 7, 1997.

APRIL 30, 1997

SHERIFF'S SALE

By virtue of a writ of LEV FAC #72 AP A.D., 1997

PARCEL NO. 09-022.10-045

2901 OGLETOWN ROAD, NEWARK, DELAWARE 19713

ALL THAT CERTAIN lot, piece or parcel of land with the improvements thereon erected situate in White Clay Creek Hundred, New Castle County and State of Delaware, and being known as Lot No. 2, Block No. 3, on a Plan of Chestnut Hill Estate, Section 1, Plan dated May 6, 1953 prepared by Meyers-Richardson Associates, Consulting Engineers and of record in the Office of the Recorder of Deeds, in and for New Castle County, in Plat Book 3, Page 13.

BEING the same lands and premises which DIANE EDWARDS PHILLIPS, RONALD MURPHY and JOSEPH MURPHY, by Deed dated December 5, 1988 and recorded in the Office of the Recorder of Deeds in and for New Castle County, Delaware in Deed Record 798, Page 289, did grant and convey unto JAMES MACK and ANNIE B. MACK, his wife.

Seized and taken in execution as the property of JAMES MACK AND ANNIE B. MACK

TERMS OF SALE: 10% DOWN AT TIME OF SALE. BALANCE DUE ON OR BEFORE JULY 7, 1997.

APRIL 30, 1997

SHERIFF'S SALE

By virtue of a writ of LEV FAC #70 AP A.D., 1997

PARCEL NO. 09-028.30-002

40 LYNCH FARM DRIVE, NEWARK, DELAWARE 19713

ALL THAT CERTAIN lot, piece or parcel of land, with the dwelling thereon erected, situate in White Clay Creek Hundred, New Castle County and State of Delaware, and known as Lot No. 8, Block Q, on the Plan of Todd Estates, Section 4, as said Plan is of record in the Office of the Recorder of Deeds in and for New Castle County, Delaware, on Microfilm Record No. 723.

BEING the same lands and premises which MARIA L. GOLD, by Deed dated March 14, 1995 and recorded in the Office of the Recorder of Deeds in and for New Castle County, Delaware in Deed Book 1903, Page 256, did grant and convey unto ROBERT F. GOLD, in fee.

Seized and taken in execution as the property of ROBERT F. GOLD AND MARIA L. GOLD

TERMS OF SALE: 10% DOWN AT TIME OF SALE. BALANCE DUE ON OR BEFORE JULY 7, 1997.

APRIL 30, 1997

SHERIFF'S SALE

By virtue of a writ of ALS LEV FAC #55 AP A.D., 1997

Tax Parcel No.: 11-027.20-200

ALL that certain lot, piece or parcel of land with the building thereon erected, situate in Pencader Hundred, New Castle County and State of Delaware, known as 404 Pheasant Circle, Rosewood and being Lot No. 319 on the Record Resubdivision Plan of FOX RUN, Phase 1, as said plan is of record in the Office of the Recorder of Deeds, in and for New Castle County, in Microfilm No. 9396.

BEING the same lands and premises which Double S. Associates, Inc., by Indenture dated February 28, 1990 and recorded in the Office of the Recorder of Deeds, in and for New Castle County, Delaware in Deed Book 1001, Page 236, granted and conveyed unto Guy F. Salvadori and Victoria A. Salvadori, husband and wife.

Seized and taken in execution as the property of GUY F. SALVADORI AND VICTORIA A. SALVADORI

TERMS OF SALE: 10% DOWN AT TIME OF SALE. BALANCE DUE ON OR BEFORE JULY 7, 1997

APRIL 30, 1997

SHERIFF'S SALE

By virtue of a writ of LEV FAC #50 AP A.D., 1997

PARCEL # 08-037.10-047

LEGAL NOTICE

ALL THAT CERTAIN lot, piece or parcel of land with the buildings thereon erected, known as 4 Gregg Court, New Castle County, Wilmington, DE 19808.

BEING the same lands and premises which Glasgow Pines Construction Company by Deed dated August 31, 1987, and recorded in the Office of the Recorder of Deeds in and for New Castle County, State of Delaware, in Deed Book 596, Page 174, did grant and convey unto Henry C. Warren, in fee.

Seized and taken in execution as the property of HENRY C. WARREN AND MARY ANN E. WARREN, H/W

TERMS OF SALE: 10% DOWN AT TIME OF SALE. BALANCE DUE ON OR BEFORE JULY 7, 1997.

APRIL 30, 1997

SHERIFF'S SALE

By virtue of a writ of LEV FAC #47 AP A.D., 1997
PARCEL NO.: 09-034.30-015

ALL that certain lot, piece or parcel of land, with the improvements thereon erected, situate in White Clay Creek Hundred, New Castle County and State of Delaware, known as 8 Martha Washington Avenue, Newark, Delaware 19702.

BEING a part of the same lands and premises which W.S. Realty Corp., a corporation of the State of Delaware, by deed dated May 17, 1982, and recorded in the Office of the Recorder of Deeds, in and for New Castle County, Delaware, in Deed Record Q, Volume 118, Page 157, granted and conveyed unto Woodshade South Partners, P.A., a General Partnership of the State of Delaware, in fee.

Seized and taken in execution as the property of ROCKFORD BUILDERS, INC.

TERMS OF SALE: 10% DOWN AT TIME OF SALE. BALANCE DUE ON OR BEFORE JULY 7, 1997.

APRIL 30, 1997

SHERIFF'S SALE

By virtue of a writ of LEV FAC #33 AP A.D., 1997

Parcel No. 11-009.00-067

Property address: 1035 Summit View Drive, Newark, DE

ALL that certain lot, piece or parcel of land with the buildings thereon erected, situate in Pencader Hundred, New Castle County and State of Delaware, being Lot No. 49 on the Final Plat of Summit View and being more particularly bounded and described as follows, to-wit:

BEING the same lands and premises which Summit View Associates, by deed dated July 7, 1992 and recorded in the Office of the Recorder of Deeds in and for New Castle County, Delaware in Deed Record 1363, Page 92, granted and conveyed to Walter R. Hancock and Linda M. Hancock, herein in fee.

Seized and taken in execution as the property of WALTER R. HANCOCK AND LINDA M. HANCOCK

TERMS OF SALE: 10% DOWN AT TIME OF SALE. BALANCE DUE ON OR BEFORE JULY 7, 1997.

APRIL 30, 1997

SHERIFF'S SALE

By virtue of a writ of LEV FAC #30 AP A.D., 1997
PARCEL # 11-026.30-164

ALL THAT CERTAIN lot, piece or parcel of land with the buildings thereon erected, known as 25 Wisteria Drive, Newark, DE 19702.

BEING the same lands and premises which NVR Homes, Inc., successor by merger to Ryan Operations, G.P., by Deed dated February 20, 1996, and recorded in the Office of the Recorder of Deeds in and for New Castle County, State of Delaware, in Deed Book 2072, Page 194, did grant and convey unto Annie L. Simmons, in fee.

Seized and taken in execution as the property of ANNIE L. SIMMONS, UNMARRIED.

TERMS OF SALE: 10% DOWN AT TIME OF SALE. BALANCE DUE ON OR BEFORE JULY 7, 1997.

APRIL 30, 1997

SHERIFF'S SALE

By virtue of a writ of LEV FAC #25 AP A.D., 1997
TAX PARCEL NO. 09-022.30-365

ALL THAT CERTAIN lot, piece or parcel of land with the buildings thereon erected, known as 51 Augusta Drive, Newark, Delaware.

BEING THE SAME LANDS and premises which Chestnut Knolls, Inc., a corporation of the State of Delaware, by certain Deed dated the 22nd day of July, A.D. 1955 and recorded in the Office of the Recorder of Deeds in and for New Castle County, Delaware in Deed Record T, Volume 56, Page 188, did grant and convey to Leonard A. Jeffrey and Wanda L. Jeffrey, his wife, herein, in fee.

Seized and taken in execution as the property of LEONARD A. JEFFREY AND WANDA L. JEFFREY

TERMS OF SALE: 10% DOWN AT TIME OF SALE. BALANCE DUE ON OR BEFORE JULY 7, 1997.

APRIL 30, 1997

SHERIFF'S SALE

By virtue of a writ of LEV FAC #22 AP A.D., 1997
PARCEL NO.: 08-038.40-389

Property address: 3812 Katherine Avenue, Wilmington, DE

ALL that certain lot, piece or parcel of land, with the buildings thereon erected, situate in Mill Creek Hundred, New Castle County and State of Delaware, known as Lot No. 8, Block A, on the Plan of DunLinden Acres, as said Plan is of record in the Office of the Recorder of Deeds, in and for New Castle County, in Plat Record 2, Page 90, said lot, piece or parcel of land being more particularly bounded and described in accordance with a survey made by Mann-Talley Engineers and Surveyors, dated July 7, 1987, as follows, to-wit:

BEING the same lands and premises which Thomas E. Hall and Brenda S. Hall by deed dated July 30, 1987 and recorded in the Office of the Recorder of Deeds in and for New Castle County, Delaware, in Deed Record 575, Page 171 granted and conveyed to Victoria A. Serwinski, herein in fee.

Seized and taken in execution as the property of VICTORIA A. SERWINSKI

TERMS OF SALE: 10% DOWN AT TIME OF SALE. BALANCE DUE ON OR BEFORE JULY 7, 1997.

APRIL 30, 1997

SHERIFF'S SALE

By virtue of a writ of LEV FAC #15 AP A.D., 1997

Parcel No.: 10-043.10-116

All that certain parcel or lot of land known as Lot 179, Section One, Brookmont Farms, New Castle County, State of Delaware, being more particularly bounded and described as follows, to-wit:

BEGINNING at a point on the southwesterly side of Flamingo Drive (60 feet wide), said point being located the following two (2) courses and distances from the southerly end of a 20 feet radius junction curve joining the southerly side of Curlew Drive (50 feet wide) with the easterly side of Flamingo Drive; (1) South 55 degrees 30 minutes 30 seconds West, 60 feet to a point; (2) South 34 degrees 29 minutes 30 seconds East, 280.45 feet to the point of beginning; thence, from point of beginning continuing along the southwesterly side of Flamingo Drive, South 34 degrees 29 minutes 30 seconds east, 30.00 feet to a point, a corner for Lot 180; thence, by the same, South 55 degrees 30 minutes 30 seconds West, 100.00 feet to a point on line of COMMON OPEN SPACE, thence, by the same, North 34 degrees 29 minutes 30 seconds West, 30.00 feet to a point, a corner for Lot 178; thence, by the same, North 55 degrees 30 minutes 30 seconds East, 100.00 feet to the first mentioned point or place of beginning. Be the contents thereof what they may.

SUBJECT to the restrictive covenants, conditions, easements, reservations and agreements of records.

AND BEING the same lands and premises conveyed to Theodore G. Berry and Elizabeth M. Berry by deed of Meyer C. Rose and Jeraldine Rose, his wife, dated October 28, 1977 and recorded in the Office of the Recorder of Deeds in Deed Book C-99 page 9.

Seized and taken in execution as the property of ELIZABETH M. BERRY, MENDE GEORGE, ADMINISTRATRIX OF THE ESTATE OF THEODORE G. BERRY, DECEASED AND USA DEFENDANTS AND NEW CASTLE COUNTY, WILMINGTON TRUST COMPANY, DEFENDANTS FOR NOTICE PURPOSES ONLY

TERMS OF SALE: 10% DOWN AT TIME OF SALE. BALANCE DUE ON OR BEFORE JULY 7, 1997.

APRIL 30, 1997

Michael P. Walsh
Sheriff
Sheriff's Office
Wilmington, Delaware
np 5/30, 6/6

**CITY OF NEWARK, DELAWARE
CITY COUNCIL
PUBLIC HEARING NOTICE
JUNE 9, 1997 - 7:30 PM**

Pursuant to Section 402.2 of the City Charter of the City of Newark, Delaware, notice is hereby given of a public hearing at a regular meeting of the Council in the Council Chamber at the Municipal Building, 220 Elkton Road, Newark, Delaware, on Monday, June 9, 1997 at 7:30 p.m., at which time the Council will consider for Final Action and Passage the following proposed Ordinance:

BILL 97-19 - An Ordinance Amending Chapter 25, Sewers, By Revising the Sewer Charges for All Customers Effective July 1, 1997, to Equal the Revised Charges Imposed by New Castle County
Susan A. Lamblack, CMC/AEE
City Secretary

np 5/30, 6/6

**CITY OF NEWARK, DELAWARE
PUBLIC NOTICE**

The Council of the City of Newark, at its regular meeting held May 27, 1997 adopted the following Ordinances:

ORDINANCE NO. 97-12 - An Ordinance Annexing and Zoning to RH (Single-Family, Detached) a 1.46 Acre Parcel of Land Located at 13 Brentwood Lane
ORDINANCE NO. 97-13 - An Ordinance Annexing and Zoning to RH (Single-Family, Detached) and OFD (Open Floodway District) a 1.84 Acre Parcel of Land Located at 99 Covered Bridge Road
Susan A. Lamblack, CMC/AEE
City Secretary

np 5/30

**IMPORTANT
ANTIQUE AUCTION
SAT., MAY 31, 1997 • 9:30 AM**

(RARE) Chippendale desk - dropleaf, highchest, Joseph Wills - grandfathers clock, Hepplewhite table, country pine: corner cupboard, drysink, Vict. 3 pc. marble-top BR suite, Royal Doulton, Mettlich, Tiffany candy dish, Lionel trains, duck decoys, guns, JD 212 riding mower, etc.
HELD AT "HOFFMAN COMMUNITY BUILDING"
Rt. 472, Quarryville, PA

By Order: J. Charles Hays,
Hances Pt., MD (formerly Oxford, PA)
w/Prominent Lancaster Estate Collection

JEFFREY E. WHITESIDE AU-2368
(610) 932-2114
ANTIQUE ESTATE & TRANSPORT SERVICES
SERVING THE TRI-STATE AREA SINCE 1979

LEGAL NOTICE

Estate of EVELYN MAE RICHARD, Deceased. Notice is hereby given that Letters Testamentary upon the estate of EVELYN MAE RICHARD who departed this life on the 9th day of MAY, A.D. 1997, late of 19 WESTERLY STREET, KIMBERTON, NEWARK, DE 19713 were duly granted unto JANET LOUISE KULICK on the 13th day of MAY, A.D. 1997, and all persons indebted to the said deceased are requested to make payments to the Executrix without delay, and all persons having demands against the deceased are required to exhibit and present the same duly probated to the said Executrix on or before the 9th day of JANUARY, A.D. 1998, or abide by the law in this behalf.

VANCE A. FUNK, III, ESQ.
BAYARD, HANDELMAN & MURDOCH
273 E. MAIN ST., STE. A
NEWARK, DE 19711
JANET LOUISE KULICK
Executrix
np 5/30, 6/6, 13

**IN THE COURT
OF COMMON PLEAS
FOR THE
STATE OF
DELAWARE
IN AND FOR
NEW CASTLE
COUNTY**

IN RE: CHANGE OF NAME OF
MELISSA BETHEA
PETITIONER(S)
TO
MELISSA BOYCHAK

NOTICE IS HEREBY GIVEN that MELISSA BETHEA intends to present a Petition to the Court of Common Pleas for the State of Delaware in and for New Castle County, to change his/her name to MELISSA BOYCHAK
Melissa Bethea
Petitioner(s)
DATED: 5/14/97
np 5/23, 5/30, 6/6

LEGAL

Michael E. Harris, T/A The Saville Cafe Restaurant hereby intends to file application with the Delaware Alcoholic Beverage Control Commission for a license to sell beer and wine in a restaurant for consumption on the premises where sold, said premises being located at 520 Market Street Mall, Saville Building, Market Street Mall at Sixth Street, Wilmington, DE 19801.
np 5/30, 6/6, 13

LEGAL

Hee Bok Song, T/A Korean B-B-Q Restaurant hereby intends to file application with the Delaware Alcoholic Beverage Control Commission for a license to sell alcoholic beverages in a restaurant for consumption on the premises where sold, said premises being located at 3 Liberty Plaza, Newark, DE 19711.
np 5/30, 6/6, 13

**317
Crafts & Hobbies**

NEON SIGNS

MICHELOB
BUD DRY
LITE (OPEN)
OTHER BEER RELATED
ITEMS
CALL 410 398-9362

**319
Farm Equip**

REPOSSESSED 3 quonset steel arch buildings. 1-40x60, 1-45x80, 1-50x100. will sell for balance due. 1-800-334-2933

**322
Furniture**

BED BLACK iron canopy, queen w/ lux firm mattress set still boxed, sacrifice \$399. 302 777-5552

**362
Yard & Garage
Sales**

ACADEMY HILL MULTI FAMILY YARD SALE: Fri May, 30 9-12 & Sat. May 31, 8-1 Toys, Clothing, H-h Items, Bikes & lots more! Take 213 N., Left on Academy- watch for balloons on participating mail-boxes each day.

CECILTON Elem School 5/31 8 a.m. to 2 p.m. 2nd Annual PTO YARD SALE refresh. & baked goods available!

ELKTON 128 Hearth Stone Dr. Multi-Family Yard sale, Infant items, Kids clothes & toys H/hold items & crafts Sat. 5/31 8 A.M. to ?

ELKTON 3 Family Yard Sale baby cloth. & baby furn. Women's cloth., h/hold items, toys & misc. 1954 Old Field Point Rd. Sat. 5/31 8 a.m. to ?

ELKTON 503 Bridge St in front of Lena's, 5/31, 8-2, multi family. Furn, clothes, tovs. H/H. car access

NORTH EAST Multi-Family-Yard Sale, Dishes, Ant. Clothes, Furn., Tools, Coll.Fri. 1 p.m. to 5 p.m., Sat. 8 a.m. to 2 p.m. 414 East Cecil Ave.

PORT DEPOSIT, 41 Thomas Stone Court, 5/31, 9-3 Rain Or Shine!!! Montgomery Independence

RISEING SUN 86 Wilson St (off Rte 274) Multi-family. 5/31 8 - ?? Lots of items - too much to mention!!

RISEING SUN Lg Multi-Family Yard Sale. QUAL. Clothing for inf., tod. women & men. Nice Womens size suits. CD player strollers & treadmill. H/hold items, toys & misc. Sat 5/31 8a.m. to ? 569 Bids Hwy.

**386
Dogs**

AKC ENGLISH SPRINGER
SPANIEL FOR STUD.
CALL 302 378-7720
AFTER 5 PM.

**401
Help Wanted**

**CHESAPEAKE
TELEMARKETING
SERVICE**

Is accepting applications for its telemarketing department in NEWARK, DE. No experience necessary, will train.

(shifts available)
5:30-8:45pm MON-THUR. The positions offer an hourly wage plus an excellent bonus and commission structure in a pleasant working environment. For more information call MICHELE at (302) 737-4218 between 2pm-8pm, MOM-THUR.

**COLLEGE STUDENTS
\$12 TO START**

50 Summer Positions available immed. Fun atmosphere, all Majors welcomed, good resume exp. No tele-marketing. Call Now 302 426-9856

**COLLEGE STUDENTS
SUMMER JOBS
EXCELLENT SALARY**

Positions available with our growing business publishing division. Work in our air conditioned Newark, DE. office. Salary: \$6 to \$13 per hour. Hours: 8:30-5:00, Mon.-Fri. Call 302-292-1978 for interview.

Progressive Business
Publications

LIGHT INDUST. Long term assign. F/T hours. Great pay. Newark area. Must have valid driver's lic. TAD Staffing Serv. (302) 777-3994.

**MACHINE
OPERATOR
INSERTING/STITCH &
TRIM DEPARTMENT**

Taking applications for a dayshift position for a machine operator.

Must be experienced in operating and maintaining inserting or stitch/trim equipment. Will accept applications only 9AM-4PM. No phone calls please!

CECIL WHIG
601 BRIDGE ST
ELKTON, MD

PUBLIC NOTICE

Notice is hereby given that the undersigned will sell at PUBLIC AUCTION on -6-25-97 at 3801 N. Dupont Hwy., New Castle, DE 19720 at 10:00 a.m. the personal property heretofore stored with the undersigned by:

#A104 - Rudolph V. Black Sr. - chair, table, lamp
#A127 - Louise Davis - bags
#A270 - Stephen Szostkowski - dresser, table, bags, boxes, clothing
#B443 - Norman Steward - chair, dresser, table, bags, clothing
#E1034 - Yvette Dale - boxes, bags, clothing
np 5/23, 30

Spring is here...
W/W CARPET
12 BALCONIES
WASHER DRYER
TURNQUIST APTS.
410-392-0099

401 Help Wanted

OTR DRIVERS

TEAMS OR SINGLES
31¢ to 35¢ per mile to start
Co matched 401k, Up to 3
weeks vacation, paid health,
dental ins. 1 yr. exp. required
800-695-9643
LAND SPAN

RETAIL SALES- Retail store
in Elkton, Md., P/T approx. 24
hrs. wkly. Jewelry exp.
helpful. Call betw. 10am-4pm
(410)398-3101. Ask for Mr.
Reynolds.

710 Carpet, Floor Svcs.

DONALD G. VARNES AND SONS, INC.

Hardwood Floors

- Sanding/Finishing
- Installation

*Our Family's Been
Doing Floors For
Over 30 Years*

**(302)
737-5953**



Do your carpets look
shabby? Call the Carpet
Specialist.

We can take care of your
new carpet installations,
old carpet re-installations,
carpet repair work
(restretch, burn holes,
water damage, etc.) &
new carpet sales.

For **FREE ESTIMATES**
Reasonable Rates
Call (410) 893-4828

717 Contractors

**BACKHOE WITH
OPERATOR
\$280 PER DAY.**
All types of concrete &
blockwork
410 620-1163

733 Lawn Care, Landscape

**Siple's Lawn
Maintenance**
★ Free estimates.
★ Insured.
★ Reasonable rates.
610 932-5047

**CITY OF NEWARK
Delaware
May 27, 1997
Meeting Notice**
The Traffic
Committee will meet on
Tuesday, June 17, 1997,
at 9 a.m. in the Police
Department upper level
conference room to dis-
cuss the following:
1. Review request for
4-way stop sign at
Cullen Way and Walker
Way, Hunt at Louvers
2. Review request to
remove four parking
meters on East
Delaware Avenue in
front of Newark High
School
3. Review request for
installation of parking
meters on portions of
Choate Street and
Haines Street
4. Review recommen-
dations for improving
Newark's bicycle system
The Traffic
Committee may add
items to the agenda at
the time of the meeting
and make recommenda-
tions to the City
Manager on all issues
discussed.
Any questions regard-
ing the above topics may
be directed to Chief
William A. Hogan,
Newark Police
Department, at 366-7104,
prior to the meeting.
np 5/30

733 Lawn Care, Landscape

BRUMITS LAWN SERVICE

GRASS CUTTING
CLEAN-UPS
TRIMMING
MULCHING
EDGING
LIGHT HAULING
STUMPS
SNOW REMOVAL
**FREE ESTIMATES
CALL ANYTIME**

**HOME #410-620-4223
PAGER # 302 431-0509**

Miscellaneous Svcs.

BOB CAT RENTAL - With
Operator. Driveways, yards,
above ground pools. 410
398-3460 \$30 per hr.

**R & M POWER
WASHING**
• Houses
• Boats
• Decks
• **FREE ESTIMATES**
410 392-5693
Jim Richardson

YOU SERVED YOUR COUNTRY. NOW HOW ABOUT YOUR COMMUNITY?

You can use your military experience to
help your community by serving in the
Army National Guard. Retain many of
your military benefits while getting the
excitement and adventure of your active
duty service.

You'll also get the satisfaction of serving
your neighbors when they need you the
most, during natural disasters and other
state emergencies. Find out how part-time
Guard service can make a difference.
Call today:

302-737-2000



740 Painting, Papering

D & M Painting Contractors.
Interior & Exterior, Residen-
tial. 17 yrs exp. Cert./Lic.
410-658-3213 Prsr. wash, Lt.
restorations. **FREE EST.**

745 Power Washing

POWERTEK MOBILE PRESSURE SYSTEMS

We Do
Residential & Commercial
Driveways, Concrete, Fleet
Vehicles, Boats, Decks,
Docks and More, Insured.
Call for Free Estimate.
(410) 778-3762

TRI-COUNTY POWER WASH
Specializing in Decks
Cedar & Redwood Siding
Free Estimates 302-369-1780

756 Trash Removal

STINE'S TRASH SERVICE
Why pay high prices for
trash service? For quality
and clean service at only
\$16/month for residential
service, give us a call at
410 392-9613 Serving
from Elkton to Conowingo
and Port Deposit area.

HONDAS COST LESS AT COLONIAL HONDA

1997 HONDA CIVIC COUPE



\$159*

Per Month 24 Month Lease

1997 HONDA CIVIC HATCHBACK



\$159*

Per Month 24 Month Lease

1997 HONDA CIVIC SEDAN



\$159*

Per Month 24 Month Lease

1997 HONDA ACCORD COUPE



\$229*

Per Month 24 Month Lease

HONDA

PARTNERS
IN
EXCELLENCE

1997 PRESIDENT'S AWARD

*Colonial Honda Is The Area's Only
Honda Dealership To Receive
American Honda's Most
Distinguished "Partners In
Excellence" Award For Outstanding
Performance Levels In Customer
Satisfaction, New Vehicle Parts &
Service, New Employee Training &
Business Management Reporting.*

1997 HONDA ACCORD SEDAN



\$229*

Per Month 24 Month Lease

'89 Chevrolet Beretta GT
Auto, A/C, PS, FW, PL,
Alloy Wheels **\$3,879**
'92 Mercury Topaz
4 Door, Auto, A/C, PS,
PB, Cassette **\$6,832**
'90 Mercury Cougar LS
V6, 3.8 Liter, Auto,
Power Everything **\$6,987**

'94 Honda Civic
2 Door, Auto, Sunroof
A/C, PS, PB **\$8,138**
'90 Honda Civic LX
4 Door, Auto, PW, PL,
PS, PB **\$7,782**
'92 Mitsubishi Eclipse
AT, Sunroof,
Loaded **\$8,397**

*Total Net Cap Cost and base monthly payment does not include tax, license, registration, options, and the like. Calculations are based on Honda Division's suggested lease pricing to achieve target base monthly payment. \$1,150 down payment required, mileage allowed 12,000/year.

**Intersection of
Rt. 40 and Rt. 222
Perryville, MD**
Minutes from Havre de Grace on Rt. 40
410-575-7249
Used Car Lot: 410-642-2499

John Eisenlohr's



**Easy Credit
Financing Available
- Call For
Immediate Credit
Approval**

AUTO DEALER DIRECTORY NEW & USED



Buick

**ANCHOR
Pontiac & Buick**
123 Bridge St.
Elkton, MD
410-398-0700

Dodge

**ADVANTAGE
AUTOLAND**
503 E. Pulaski Hwy.
Elkton, MD
1-800-394-2277

Ford

**BAYSHORE
Ford**
4003 N. DuPont Highway
Route 13 at I-495
800-241-6644
**NO HASSLE LOW PRICES
LARGE SELECTION**

Honda

**Colonial
HONDA**
RT 40 & 222, PERRYVILLE
642-2433/1-800-818-8680
Mon-Thurs 9-9/Fri 9-8/Sat. 9-5
#1 In Service-4 Years in a row!

Nissan

CHAPMAN
IF THIS EMBLEM ISN'T ON YOUR NEW
NISSAN, YOU PROBABLY PAID TOO MUCH!
**2323 N. DuPont Highway
Rt. #13 Btwn. I-295 & I-495
302-652-3200**
*Always 300 New
Nissans in Stock*
75 Used Cars!

Toyota

**NEWARK
TOYOTA**
1344 Marrows Rd.,
Newark
302-368-6262
USED CARS
No Credit
Bad Credit
No Problem!
**Newark Toyota
Import Outlet**

**PINNO
Oxford, PA**
Oxford, PA
610-932-2892

Ford
**ADVANTAGE
AUTOLAND**
560 E. PULASKI HWY.
410-398-3600
1-800-899-FORD

GMC

**BAYSHORE
OLDSMOBILE-GMC TRUCKS**
**WEST END OF
HIGH ST. •
ELKTON, MD**
398-7770
800-255-7770

Hyundai

**PORTER
HYUNDAI**
Bad Credit
No Credit
NO PROBLEM!
**Cars That Make
SENSE!!**
Cleveland Ave. &
Kirkwood Hwy.
Newark, DE
302-453-6800

Pontiac

**PINNO
Oxford, PA**
Oxford, PA
610-932-2892

Subaru

**MATT SLAP
SUBARU, Inc.**
255 E. Cleveland Ave.
Newark, DE
302-453-9900

Chevrolet

**PORTER
CHEVROLET**
"SINCE 1925"
• New Car Center
• New Truck Center
• Used Car Center
• Body & Paint Shop
Geo
Cleveland Ave. &
Kirkwood Hwy.
Newark, DE
302-453-6800

**WILLIAMS
CHEVROLET**
208 W. Main St.,
Elkton, MD

410-398-4500
Geo

**McCoy Ford -
Lincoln Mercury**
1233 Telegraph Rd.
Rising Sun, MD 21911
410-658-4801
410-642-6700

*To Advertise
Here Call
Kathy
410-398-1230*

Geo

**WILLIAMS
CHEVROLET**
208 W. Main St., Elkton, MD
410-398-4500

Honda

BEL AIR HONDA
408 Baltimore Pike
Bel Air, 1 Blk. North Of
Harford Mall
838-9170 • 893-0600

Jeep

**ADVANTAGE
AUTOLAND**
601 E. Pulaski Hwy
Elkton, MD
1-800-420-JEEP

Toyota

**YOUR AD
COULD BE HERE!
TO ADVERTISE
CALL KATHY
410-398-1230**

Volkswagen

**SMITH
VOLKSWAGEN, LTD.**
4304 Kirkwood
Highway,
WILMINGTON, DE
302-998-0131

With \$3,000 Discounts

Our Cars Are Flying Out of Here!



NUCAR 322-2277
CONNECTION
Import Outlet

MAZDA
ISUZU
SUBARU

Rt. 13 Across From the New Castle Airport

*\$3,000 discount applies to all 97 Mazda 626 LX 4cyl. in stock. Includes all Factory discounts and incentives, cannot be used with Mazda America Credit Lease.

Pontiac SuperStore at NuCar Pontiac

Trans Sport



Starting at:
\$21,299*

Stk #15139
7 Passenger,
Auto, PW,
PL, Cruise,
Cassette

*After all incentives

Grand Am

4.9% APR
up to 60 Months



After \$1,000 Rebate

*4.9% in lieu of rebate subject to GMAC Approval

SE Sedan
Starting at:
\$14,799

Receive a **FREE Rand McNally Road Atlas** with
every test drive of the all new Trans Sport!

**Look for KIA coming to NuCar
Pontiac in June!!**

Firebird



Stk #14730
5-Spd, CD
Starting At:
\$18,599

Sunfire Coupe

5.9% APR
up to 60 Months



Stk #15025
SE Coupe
Starting At:
\$13,799

30 Available
*Subject to GMAC Approval

**Open
Saturday
9-5**

NUCAR
PONTIAC

250 E. CLEVELAND AVE. NEWARK, DE (302) 738-6161
Just off Kirkwood Highway on Auto Row in Newark

All Offers Expire 5/30/97



We give people a lot of credit.

MBNA is a company of people with a single-minded focus on Customer satisfaction. We are a Fortune 500 company and the country's second-largest credit card lender, with offices throughout this country and the United Kingdom.

We are currently seeking people to fill the following positions:

- **10-Key Data Entry Operators** (10,000 kph minimum)
Tuesday through Saturday, 11 p.m. to 7:30 a.m.
Tuesday through Saturday, 4 p.m. to 12:30 a.m.
Monday through Friday, 4 p.m. to 12:30 a.m.

MBNA rewards commitment to excellence by offering the following:

- **Convenient locations in Newark**
- **Overtime**
- **Competitive salaries**
- **Excellent incentives**

Interested candidates should mail or fax resumes and include Job Number 7AA58 to:

MBNA Personnel Office
Shari Volgenau
Wilmington, DE 19884-5954
Fax: 302-456-8615
Phone: 302-456-8669

MBNA Hallmark Information Services is an Equal Employment Opportunity/Affirmative Action Employer.
©1997 MBNA America Bank N.A.

CLAD 5-356-97

806 Motor Homes

MOBILE HOME 1993 2br,
frplace, garden tub a/c elec.
shed, d/w, w/ d & kit. floor, ALL
NEW. \$23,900. Any G. Hunt-
ers Run (302) 832-9283 after
6 p.m.

860 Autos Under \$1000



NISSAN '85 300 ZX 2+2.
Engine runs great. \$1,500.
Call Eric 302 239-6769 or
Michele 302 737-4218

860 Autos Under \$1000

77 FORD LTD
Passed emissions. Very
good interior - exterior
some rust. New tires, ra-
dio, radiator. Needs muf-
fler. Smooth ride. \$395.
410 287-9392

78 FORD LTD II
Passed emissions. Good
condition. No rust. Runs
great. Would make nice
restoration vehicle. \$695.
410 287-9392

862 Autos Under \$5000

HONDA, CIVIC 1987 4 DR
P/S, P/B, Sunroof, Tilt,
AM/FM Cassette. Resealed
motor, new belts, MD
inspected. \$2500 (410) 287-
6512 after 6PM

864 Autos Over \$5000

MERCURY COUGAR 1989,
V6, auto, PS, PB, PL, PW.
42,000 miles. Cabriolet top.
Luggage rack. Loaded. One
owner. Real Beauty. Must see.
\$5,000. (410) 398-9149

**THINK SPRING !
OWNER
ANXIOUS TO SELL!
1993 DODGE SHADOW
CONVERTIBLE ES**
White w/black top, AC,
PW, PB, PS, AirBag, Ft.
Wheel Drive, AM/FM
Cassette, 65 K Miles! Exc.
Cond.! **\$8,500! FIRM**
Call: 410-392-3883
evenings!

'78 CORVETTE Baby blue,
Auto, T tops. Looks good.
Asking \$6500 neg. Call 410-
398-3381 'til 9pm.

974 Seminars

COLLEGE Student Summer \$
Nyse Brokerage Firm
Need Telemarketers
Int. Lois / Jami
731-2131 or 800-355-2130

Use our
convenient time-
saving e-mail
address today!
Newpost@dca.net

Newark Post

For information call
(302) 737-0724

SUBSCRIBE TODAY!

Don't miss a single issue of your community's hometown journal.
Enjoy convenient mail delivery and excellent savings!

NEWARK POST

**Everything
you want to
know.**

**Everything
you need to
know.**

Every week.

Subscribe today!
Enjoy convenient
mail delivery.
Just \$15.95
per year,
in-county.

Call 737-0724.

**NEWARK
POST**

NEWARK



DODGE

250 ELKTON RD • (302) 456-1600

**WE WILL
MEET OR BEAT
ANY DEAL**

ANNOUNCES FACTORY AUTHORIZED

3.9% APR

**TOP DOLLAR
FOR YOUR
TRADE**

**WE WELCOME
CHRYSLER
EMPLOYEES**

**FOR UP TO 60 MOS.
ON THESE SELECT GREAT VEHICLES**

97 DODGE NEON

FROM

\$9,587



AIR CONDITIONING, DUAL AIR BAGS, AM/FM STEREO, REAR DEFROST, DUAL EXTERIOR MIRRORS, & MUCH MORE. STK #17036

FROM

\$14,317

97 DODGE STRATUS



AUTOMATIC, AIR CONDITIONING, P/WINDOWS, P/LOCKS, AM/FM CASSETTE, DUAL AIR BAGS & MUCH MORE. STK #27027

97 DODGE INTREPID

FROM

\$17,208



AUTOMATIC, AIR CONDITIONING, P/WINDOWS, P/LOCKS, AM/FM CASSETTE, DUAL AIR BAGS & MUCH MORE. STK #37032

FROM

\$14,428

97 DODGE AVENGER



AUTOMATIC, AIR CONDITIONING, P/WINDOWS, P/LOCKS, AM/FM CASSETTE, DUAL AIR BAGS & MUCH MORE. STK #47008

\$2500 CASH OR TRADE. TAX & TAGS EXTRA. PRIOR SALES EXCLUDED. *4.9% A.P.R. FOR 60 MOS. TO QUALIFIED BUYERS.

NEWARK DODGE



250 Elkton Rd.
Newark, DE 19711

302-456-1600

Hours:

**Monday - Friday
9:00 AM - 9:00 PM**

Saturday

9:00 AM - 5:00 PM

**NEWARK DODGE
We're Here**

