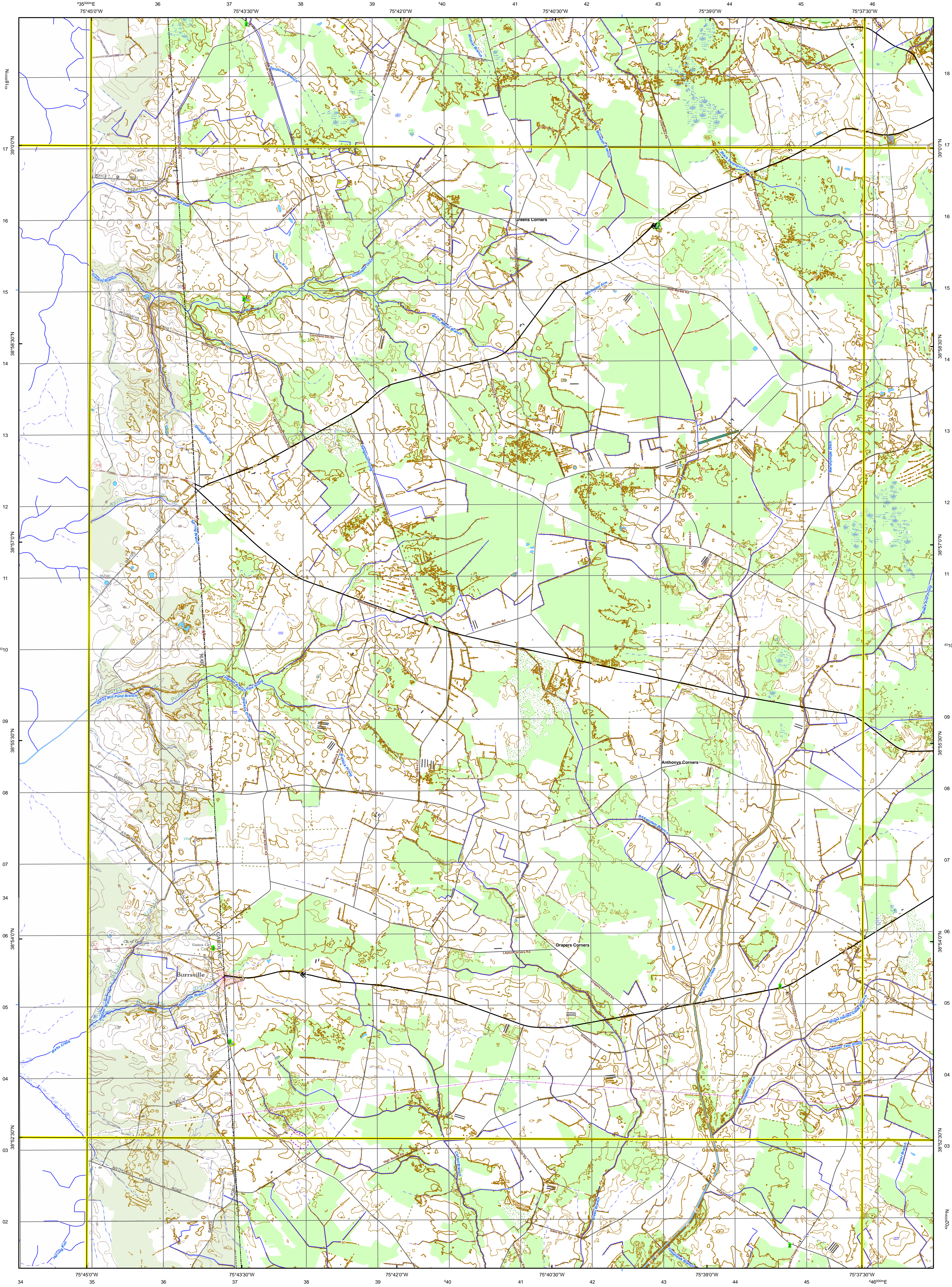




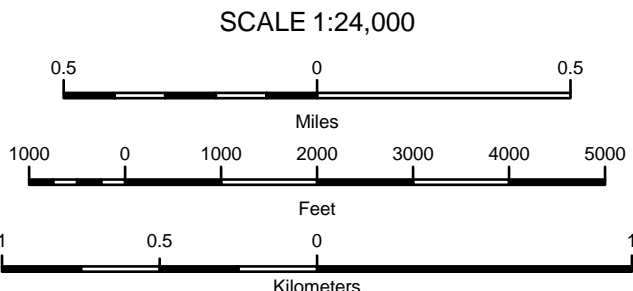
State of Delaware

Burrsville Quadrangle

Delaware DataMIL
7.5 Minute Series (Topographic)
Quadrangle



- Legend**
- Boundary Monument
 - Boat Ramp
 - Campground
 - Church
 - Coring Station
 - Gate
 - Helipad
 - Sand/Gravel Pit
 - Picnic Area
 - Tank
 - Tower
 - Well
 - Boardwalk
 - Airport
 - Embarkment
 - Fence Line
 - Landing Strip
 - Pier/Breakwater/Jetty
 - Pipeline
 - Power Transmission Line
 - Racetrack
 - Railroad or Siding (Underpassing)
 - Railroad or Siding
 - Municipalities
 - Athletic Field
 - Building
 - Cemetery
 - Landmark Site
 - Oil Sump/Sludge Pit
 - Pier/Breakwater/Jetty
 - Pipeline Regulation Station
 - Power Site
 - Raceway
 - Railroad Yard
 - Refinery/Industrial Site
 - Rest Site
 - Substation
 - Tank
 - Water Treatment Site
 - Federally Administered Area
 - State Lands
 - Park
 - Swamp
 - Rapids



3

Magnetic Declination
Approx. 11 degrees

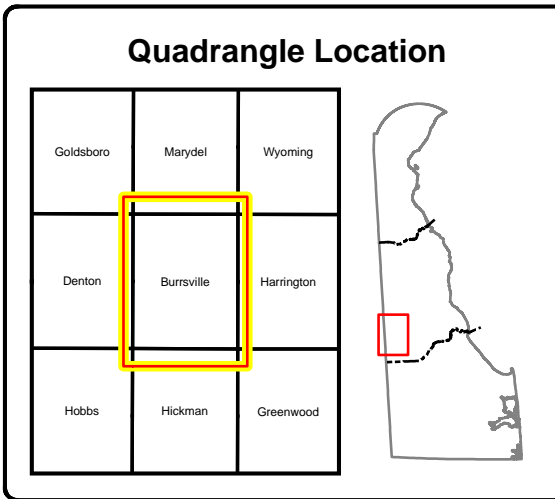
CONTOUR INTERVALS: 0-10 Feet / 2-foot Contour Interval; 10-100 Feet / 10-foot Index with a 6-foot Intermediate Contour Interval; Greater than 100 Feet / 10-foot Contour Interval

VERTICAL REFERENCE:
NATIONAL GEODETIC VERTICAL DATUM OF 1929 (NGVD29)
(TO CONVERT ELEVATIONS TO THE NORTH AMERICAN VERTICAL DATUM OF 1988, SUBTRACT 1 FOOT)
DEPTH CURVE DATA COMPILED FROM NOS CHARTS IN FEET
SHORELINE SHOWN REPRESENTS THE APPROXIMATE LINE OF MEAN HIGH WATER
MD, PA, AND NJ BORDER QUADRANGLES SHOW USGS DRG IMAGES OUTSIDE OF DELAWARE BORDER WITHIN QUADRANGLE

HORIZONTAL REFERENCE:
NORTH AMERICAN DATUM OF 1983 (NAD83) HIGH ACCURACY REFERENCE NETWORK 1991 (HARN 91)
MAP PROJECTION IS 1983 DELAWARE STATE PLANE METERS
1,000-meter grid: Universal Transverse Mercator, zone 18
10,000-foot tick: Delaware Coordinate System of 1983
Latitude/Longitude grid ticks: NAD83(HARN91)

Map Produced by the Delaware DataMIL
Using the following Data Sources

USGS Delaware Geographic Names 2006
USGS Delaware Boundary Monuments 2002
USGS Delaware Boundaries - County Boundary [lines] 1993
USGS Delaware Boundaries [lines] 2002
USGS Delaware Boundaries [areas] 1993
USGS Delaware Miscellaneous Features [points] 1993
USGS Delaware Miscellaneous Features [lines] 1993
USGS Delaware Railroads 1993
USGS Delaware Miscellaneous Features [areas] 1993
USGS 7.5-minute Digital Raster Graphics 1992-93 (DRG)
Delaware 7.5-minute Quadrangle Index 2002
National Hydrography Dataset (NHD) - High Resolution -
DE Lakes Points Areas 2005
National Hydrography Dataset (NHD) - High Resolution -
DE Rivers and Streams 2005
Delaware Contours 2005 (Sussex) and 2007 (NC and Kent)
Delaware Municipal Boundaries 2008
Delaware Land Use and Land Cover 2007
Delaware Private Schools 2007
Delaware Public Schools 2007
DelDOT Atlas Roads 2008
New Castle County Communities 2006
Kent Communities 2006
Sussex County Communities 2006



Burrsville
Delaware DataMIL: <http://datamil.delaware.gov>

Created: 2/1/2009

Disclaimer:
This Delaware DataMIL 7.5-minute topographic map replaces the USGS 7.5-minute Primary Map Series for the State of Delaware. Reasonable efforts have been made by Delaware DataMIL staff to verify that this map and the digital data provided herein accurately portray the source data used in its preparation; however, this map may contain omissions and errors in scale, resolution, rectification, positional accuracy, development methodology, and other circumstances. This map is also data specific. Data information on the individual layers comprising this map are given as part of the metadata of this map. This map was prepared for a scale of 1:24,000 and should not be used at larger scales, nor should this map should be used for navigational, engineering, legal, or any other site-specific use. Nothing contained herein shall be deemed an expressed or implied waiver of the sovereignty immunity of the State of Delaware or its duly authorized representatives, agents, or employees.