

À Monsieur RICHARDO VIÑES

"...D'une vie antérieure"

1. La promenade des bonzes

2. Parade dans le matin

3. Chœurs-souris

ENCORE-BÉBÉ

"...D'une vie antérieure"

à M. RICARDO VINES

Bibliothèque Musicale
RICARDO VINES

1 LA PROMENADE DES BONZES

CHARLES-BÉAUFORT

Loin

LENT ET TRÈS RYTHMÉ

Handwritten musical score for the first system. It features a grand staff with treble and bass clefs, a key signature of three sharps (F#, C#, G#), and a common time signature (C). The music is marked 'Loin' and 'LENT ET TRÈS RYTHMÉ'. The first measure of the bass line is marked 'P.A.' in red. The system concludes with a red line and four bar lines.

Handwritten musical score for the second system. It continues the grand staff notation with treble and bass clefs, three sharps, and common time. The system includes a red line with a slur over the first two measures of the treble staff. The system concludes with a red line and four bar lines.

Handwritten musical score for the third system. It continues the grand staff notation with treble and bass clefs, three sharps, and common time. The system includes a red line with a slur over the first two measures of the treble staff. The system concludes with a red line and four bar lines.

PLUS PRÈS

Four red chord symbols connected by a horizontal line.

DOUX

SANTÉ

Four red chord symbols connected by a horizontal line.

FORT

Four red chord symbols connected by a horizontal line.

PLUS

Four red chord symbols connected by a horizontal line.

Handwritten musical score for the first system, featuring a grand staff with treble and bass clefs, a key signature of three sharps (F#, C#, G#), and a 3/4 time signature. The music includes various note values and rests. A red line is drawn across the top of the system. Below the staff, there are red markings: a red 'x' followed by a horizontal line, and a red 'x' followed by a horizontal line with a vertical tick mark.

Handwritten musical score for the first system, featuring a grand staff with treble and bass clefs, a key signature of three sharps (F#, C#, G#), and a 3/4 time signature. The music includes various note values and rests. A red line is drawn across the top of the system. Below the staff, there are red markings: a red 'x' followed by a horizontal line, and a red 'x' followed by a horizontal line with a vertical tick mark.

TRÈS FORT

Handwritten musical score for the second system, featuring a grand staff with treble and bass clefs, a key signature of three sharps (F#, C#, G#), and a 3/4 time signature. The music includes various note values and rests. A red line is drawn across the top of the system. Below the staff, there are red markings: a red 'x' followed by a horizontal line, and a red 'x' followed by a horizontal line with a vertical tick mark.

Handwritten musical score for the second system, featuring a grand staff with treble and bass clefs, a key signature of three sharps (F#, C#, G#), and a 3/4 time signature. The music includes various note values and rests. A red line is drawn across the top of the system. Below the staff, there are red markings: a red 'x' followed by a horizontal line, and a red 'x' followed by a horizontal line with a vertical tick mark.

moins

Handwritten musical score for the third system, featuring a grand staff with treble and bass clefs, a key signature of three sharps (F#, C#, G#), and a 3/4 time signature. The music includes various note values and rests. A red line is drawn across the top of the system. Below the staff, there are red markings: a red 'x' followed by a horizontal line, and a red 'x' followed by a horizontal line with a vertical tick mark.

Handwritten musical score for the third system, featuring a grand staff with treble and bass clefs, a key signature of three sharps (F#, C#, G#), and a 3/4 time signature. The music includes various note values and rests. A red line is drawn across the top of the system. Below the staff, there are red markings: a red 'x' followed by a horizontal line, and a red 'x' followed by a horizontal line with a vertical tick mark.

TRÈS DOUX

Handwritten musical score for the fourth system, featuring a grand staff with treble and bass clefs, a key signature of three sharps (F#, C#, G#), and a 3/4 time signature. The music includes various note values and rests. A red line is drawn across the top of the system. Below the staff, there are red markings: a red 'x' followed by a horizontal line, and a red 'x' followed by a horizontal line with a vertical tick mark.

Handwritten musical score for the fourth system, featuring a grand staff with treble and bass clefs, a key signature of three sharps (F#, C#, G#), and a 3/4 time signature. The music includes various note values and rests. A red line is drawn across the top of the system. Below the staff, there are red markings: a red 'x' followed by a horizontal line, and a red 'x' followed by a horizontal line with a vertical tick mark.

UN PEU PLUS FORT

Handwritten musical score for the first system, featuring a treble and bass staff with a key signature of three sharps (F#, C#, G#). The music includes a triplet of eighth notes in the treble staff and a triplet of eighth notes in the bass staff. Red lines and brackets are used to group notes and indicate phrasing. The word "Lain" is written in red below the bass staff.

DE PLUS EN PLUS LAIN

Handwritten musical score for the second system, continuing the piece. It features a treble and bass staff with a key signature of three sharps. The music includes a triplet of eighth notes in the treble staff and a triplet of eighth notes in the bass staff. Red lines and brackets are used to group notes and indicate phrasing.

Handwritten musical score for the third system, concluding the piece. It features a treble and bass staff with a key signature of three sharps. The music includes a triplet of eighth notes in the treble staff and a triplet of eighth notes in the bass staff. Red lines and brackets are used to group notes and indicate phrasing. The word "Lain" is written in red below the bass staff.



"...d'une vie intérieure"

Dr. Ricardo Viñes

2 PARCOURS DANS LE MATIN

ᠰᠢᠷᠠᠨᠪᠡᠷᠠᠳ

755EZ LENT

Handwritten musical notation on a five-line staff. The notation includes a treble clef, a key signature of three sharps (F#, C#, G#), and a common time signature (C). The melody is written in a series of notes, including quarter notes, eighth notes, and rests. There are also some handwritten markings that appear to be "P.P.P." and "L.E.N.T." in red ink.

一 中 中 中 中 中

LÉGER

Handwritten musical score for a piece in D major, 3/4 time. The score is written on two staves. The first staff contains a treble clef and a key signature of two sharps (F# and C#). The second staff contains a bass clef and a key signature of two sharps (F# and C#). The music consists of several measures, including a final measure with a 3/4 time signature. The notation includes various note values, rests, and a large red bracket under the final measure.

Handwritten musical score for the first system. It features a grand staff with treble and bass clefs, a key signature of three sharps (F#, C#, G#), and a 4/4 time signature. The melody in the treble clef includes a red 'P.' marking. The bass clef part has a red 'P.' marking. Below the staff, there are four red horizontal lines, each starting with a red 'P.' marking.

Handwritten musical score for the second system. It continues the grand staff notation with treble and bass clefs, key signature of three sharps, and 4/4 time signature. The melody in the treble clef includes a red 'P.' marking. The bass clef part has a red 'P.' marking. Below the staff, there are three red horizontal lines, each starting with a red 'P.' marking.

Handwritten musical score for the third system. It continues the grand staff notation with treble and bass clefs, key signature of three sharps, and 4/4 time signature. The melody in the treble clef includes a red 'P.' marking. The bass clef part has a red 'P.' marking. Below the staff, there are two red horizontal lines, each starting with a red 'P.' marking.

Handwritten musical score for the fourth system. It continues the grand staff notation with treble and bass clefs, key signature of three sharps, and 4/4 time signature. The melody in the treble clef includes a red 'P.' marking. The bass clef part has a red 'P.' marking. Below the staff, there are two red horizontal lines, each starting with a red 'P.' marking.

M.F.

Handwritten musical notation for the first system, featuring a grand staff with treble and bass clefs, a key signature of three sharps (F#, C#, G#), and a 3/4 time signature. The notation includes various note values, rests, and a red wedge indicating a crescendo. Below the staff, there are red markings: a cross, a cross, a cross with a horizontal line, a cross with a horizontal line, and a cross with a horizontal line.

Handwritten musical notation for the second system, continuing the grand staff and key signature. It includes triplets and a red wedge indicating a crescendo. Below the staff, there are red markings: a cross with a horizontal line, a cross with a horizontal line, a cross with a horizontal line, a cross with a horizontal line, and a cross with a horizontal line.

Handwritten musical notation for the third system, featuring a grand staff with treble and bass clefs, a key signature of three sharps (F#, C#, G#), and a 3/4 time signature. The notation includes various note values, rests, and a red wedge indicating a crescendo. Below the staff, there are red markings: a cross with a horizontal line, a cross with a horizontal line, a cross with a horizontal line, a cross with a horizontal line, a cross with a horizontal line, and a cross with a horizontal line.

LEGER

7 TEMPO

Handwritten musical notation for the fourth system, featuring a grand staff with treble and bass clefs, a key signature of three sharps (F#, C#, G#), and a 3/4 time signature. The notation includes various note values, rests, and a red wedge indicating a crescendo. Below the staff, there are red markings: a cross with a horizontal line, a cross with a horizontal line, a cross with a horizontal line, a cross with a horizontal line, and a cross with a horizontal line.

FORT

Handwritten musical score for the first system, marked "FORT". The system consists of two staves. The upper staff is in treble clef with a key signature of three sharps (F#, C#, G#) and a 4/4 time signature. It contains a series of eighth notes and a final measure with a 5/4 time signature. The lower staff is in bass clef with the same key signature and contains a series of eighth notes and a final measure with a 5/4 time signature. A red line is drawn across the system, and a red cross is marked at the end of the system.

Handwritten musical score for the second system. The system consists of two staves. The upper staff is in treble clef with a key signature of three sharps (F#, C#, G#) and a 4/4 time signature. It contains a series of eighth notes and a final measure with a 5/4 time signature. The lower staff is in bass clef with the same key signature and contains a series of eighth notes and a final measure with a 5/4 time signature. A red line is drawn across the system, and a red cross is marked at the end of the system.

TRÈS FORT

Handwritten musical score for the third system, marked "TRÈS FORT". The system consists of two staves. The upper staff is in treble clef with a key signature of three sharps (F#, C#, G#) and a 4/4 time signature. It contains a series of eighth notes and a final measure with a 5/4 time signature. The lower staff is in bass clef with the same key signature and contains a series of eighth notes and a final measure with a 5/4 time signature. A red line is drawn across the system, and a red cross is marked at the end of the system.

LOINTAIN

FORT

Handwritten musical score for the fourth system, marked "LOINTAIN" and "FORT". The system consists of two staves. The upper staff is in treble clef with a key signature of three sharps (F#, C#, G#) and a 4/4 time signature. It contains a series of eighth notes and a final measure with a 5/4 time signature. The lower staff is in bass clef with the same key signature and contains a series of eighth notes and a final measure with a 5/4 time signature. A red line is drawn across the system, and a red cross is marked at the end of the system.

M.F.

incolorae

Handwritten musical score for the first system. It features a grand staff with treble and bass clefs, a key signature of three sharps (F#, C#, G#), and a 5/4 time signature. The music consists of several measures with various note values and rests. A red bracket is drawn under the first two measures. Below the staff, there are red markings that appear to be chord symbols or fingerings: a series of connected horizontal lines with vertical stems, and a group of five individual notes.

outta

Handwritten musical score for the second system. It continues the grand staff notation with treble and bass clefs, the same key signature, and a 5/4 time signature. The music includes some triplet markings. A red bracket is drawn under the first two measures. Below the staff, there are red markings similar to the first system, including connected horizontal lines and individual notes. The word "unperplexed" is written in cursive below the staff.

très lointain

Handwritten musical score for the third system. It continues the grand staff notation with treble and bass clefs, the same key signature, and a 5/4 time signature. The music includes triplet markings. A red bracket is drawn under the first two measures. Below the staff, there are red markings including connected horizontal lines and individual notes. The word "P.A.P." is written in red below the staff.

deten

Handwritten musical score for the fourth system. It continues the grand staff notation with treble and bass clefs, the same key signature, and a 5/4 time signature. The music includes triplet markings. A red bracket is drawn under the first two measures. Below the staff, there are red markings including connected horizontal lines and individual notes. The word "P.A.P." is written in red below the staff.



"... д'une vie intérieure "

Dr. RICARDO VIÑES

CHQUES-SOURIS

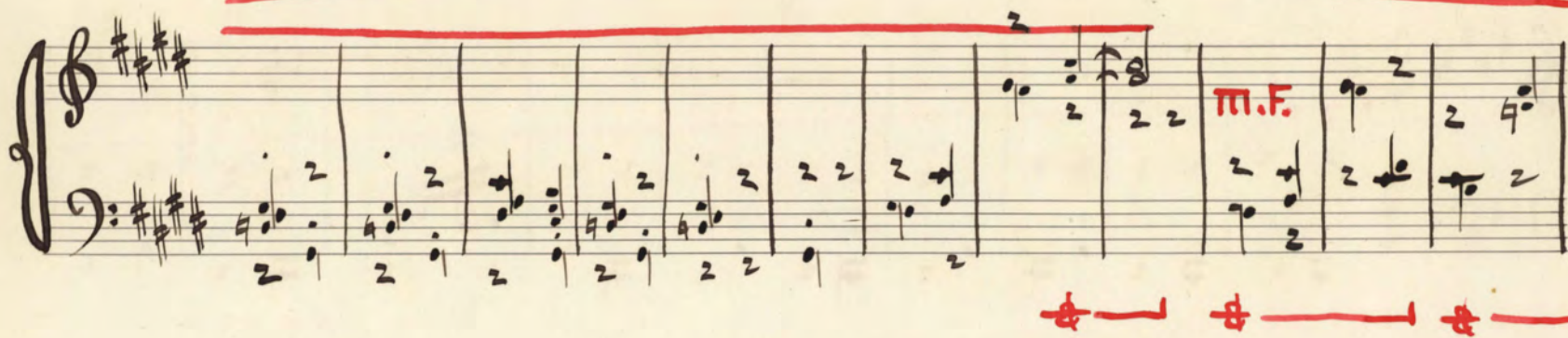
EΓΑΡΟΛ = ΒΕΑΓΓΑΔ

пéсoр дoпнé

Handwritten musical score for a piano piece in D major, 2/4 time. The score is written on two staves. The right hand (treble clef) has a melody with a red line indicating a rising and then falling contour. The left hand (bass clef) has a bass line with a red line indicating a rising and then falling contour. The piece is marked 'P.P.R.' in red ink. The notation includes various musical symbols such as clefs, key signature, time signature, and notes with fingerings.

Handwritten musical score for a piano piece. The score is written on a grand staff (treble and bass clefs) with a key signature of three sharps (F#, C#, G#) and a common time signature. The notation includes various musical symbols such as notes, rests, and fingerings. A red line is drawn across the staves, indicating a specific melodic or harmonic path. The score is divided into measures by vertical bar lines.

Handwritten musical score for a piece in D major, 2/4 time. The score is written on two staves, treble and bass clef. It features a key signature of two sharps (F# and C#) and a time signature of 2/4. The music consists of a series of chords and single notes, with some measures containing multiple notes. There are red markings above the staff, including a large 'X' and a horizontal line. A red circle with a vertical line through it is at the bottom left.



sans se hater

♯ ————— ♯ ————— ♯ —————

♯ ————— ♯ ————— ♯ —————

Faible et assez lent

♯ ————— ♯ ————— ♯ ————— ♯ ————— ♯ —————

très

♯ ————— ♯ ————— ♯ —————

Handwritten musical score system 1. It consists of a grand staff with treble and bass clefs. The key signature has three sharps (F#, C#, G#). The music features various notes, rests, and fingerings. Red lines are drawn across the staves, and red symbols (a cross-like shape) are placed below the staff at several points.

Handwritten musical score system 2. It continues the piece with a grand staff. Above the staff, the handwritten text "un peu plus lent" is visible. The system includes dynamic markings "F.F." and "F.F.F." in red ink. Red lines and symbols continue from the previous system.

Handwritten musical score system 3. This system features a grand staff with a treble clef and a bass clef. It includes the dynamic marking "F.F.F." in red ink. The handwritten text "plus lent" is written below the staff. Red lines and symbols are present throughout the system.

Handwritten musical score system 4. It is the final system on the page, featuring a grand staff. The dynamic marking "P.P.P." is written in red ink. The handwritten text "1er mouvement" is written above the staff. Red lines and symbols are present throughout the system.

Handwritten musical notation on a grand staff (treble and bass clefs). The key signature is three sharps (F#, C#, G#). The notation includes various notes, rests, and dynamic markings. A red line is drawn across the top of the staff, and a red "ff" (fortissimo) marking is present. A red "ff" marking is also visible below the staff.

Handwritten musical notation on a grand staff. The key signature is three sharps. The notation includes various notes, rests, and dynamic markings. A red line is drawn across the top of the staff, and a red "ff" (fortissimo) marking is present. A red "ff" marking is also visible below the staff.

Handwritten musical notation on a grand staff. The key signature is three sharps. The notation includes various notes, rests, and dynamic markings. A red "p.p.p." (pianississimo) marking is present. A red "p." (piano) marking is also visible.

Handwritten musical notation on a grand staff. The key signature is three sharps. The notation includes various notes, rests, and dynamic markings. A red line is drawn across the top of the staff, and a red "ff" (fortissimo) marking is present. A red "ff" marking is also visible below the staff.

Handwritten musical notation on a grand staff (treble and bass clefs). The key signature is three sharps (F#, C#, G#). The notation includes various notes, rests, and dynamic markings. A red line is drawn across the top of the staff, and another red line is drawn below the staff. The notation is written in black ink.

Handwritten musical notation on a grand staff. The key signature is three sharps (F#, C#, G#). The notation includes various notes, rests, and dynamic markings. A red line is drawn across the top of the staff, and another red line is drawn below the staff. The notation is written in black ink. There are red markings "M.F." and "F.F." written above the staff. A red line is drawn across the top of the staff, and another red line is drawn below the staff. The notation is written in black ink.



