

NEWARK POST

❖ Greater Newark's Hometown Newspaper Since 1910 ❖

101st Year, 43rd Issue © 2010

November 5, 2010

www.newarkpostonline.com

Newark, Del.

Democrats roll to victory



Chris Coons, right was joined by U.S. Sen. John Kerry, center, at a veterans event last week in Newark. Shown, from left at the event were: Attorney General Beau Biden, Congressional candidate John Carney, Kerry and Coons. Newark was the site of a number of events attended by Coons and his Republican challenger Christine O'Donnell.

By DOUG RAINEY

.....
DRAINEY@CHES PUB.COM

Chris Coons and John Carney ended up with easy victories Tuesday night as Delaware bucked the national trend toward Republican gains in the House and Senate.

As the night wore on, political observers were wondering if Coons' victory in Delaware would allow the Democrats to keep control of the U.S. Senate. The House ended up firmly in Republican hands.

It was a different story in Delaware as Democrats appeared to keep their majorities in both the State House and Senate. The one loss came when powerful Democratic budget writer Nancy Cook lost her bid for re-election to the State Senate.

Both men ended up with comparable vic-

tory margins in their races for U.S. Senate and House.

New Castle County Executive Coons ended up with a 16 point victory margin over perennial Senate candidate Christine O'Donnell, while former Lt. Gov. Carney ended up a little short of 16 in his race with Sussex County businessman Glen Urquhart.

The victory margin for Coons and Carney also appeared to help candidates further down on the ticket.

Prior to running for office, Coons worked for Newark-based W.L. Gore and Associates as an attorney and even as County Executive was believed to have done some work with the company.

Coons' mother married into the Gore family and opponents unsuccessfully attempted to

See **ELECTION, 15** ►

Transit grants announced

Gov. Jack Markell and Delaware's Congressional Delegation announced the awarding of five important federal grants that will improve rail and transit infrastructure in the First State. The grants, awarded by the U.S. Department of Transportation (USDOT), the Federal Transit Administration (FTA) and the Federal Railroad Administration (FRA), will provide needed funding to complete major rail projects along the Northeast Corridor, improve transit facilities in Sussex County, and replace aging buses in the DART First

State fleet.

All the grant funds are from the fiscal 2010 appropriations funds, which is not affiliated with the Federal Stimulus program. Congress appropriated the discretionary money to USDOT, which was then required to award the money through a competitive grant process.

Grants include:

- \$13 million from the Federal Railroad Administration for the construction of a third track on the Northeast Corridor south of Wilmington and into Newark. The project will increase travel

times and reduce train conflicts in the area. This funding completes the \$40 million needed to begin the project. The project is expected to start in early 2011 and will produce 115 construction jobs and up to 15 permanent jobs over time.

- \$3.7 million FTA grant to replace seven transit buses with 40-foot hybrid diesel buses.

- \$2.25 million planning grant from USDOT to address transportation needs and design expansion of the Newark Rail Station. The grant will be

See **TRANSIT, 2** ►

Serving his country



Major Kevin Conley of the Delaware National Guard was part of a group at Forward Operating Base "Romero" with the New Zealand Army in Afghanistan. He is embedded at the location. Shown is the Delaware flag that flew over Cooch's Bridge Battlefield, near Newark, prior to flying at Romero. Conley was the Newark VFW O'Daniel Post 2008 Teacher of the Year and was a long time Track/CrossCountry coach at Glasgow/Christiana High prior to opening MOT Running Company in Middletown. Kevin resides in Middletown Crossing.

(US ARMY PHOTO)

HEATING & AIR CONDITIONING • SERVICE & INSTALLATION

• We Service
& Install
All Brands

• Competitively
Priced

• Emergency
Service

\$79⁰⁰
Heater
Tune-Up
Call Tune-Up \$159

ENHANCED
HEATING &
AIR CONDITIONING

Integrity And Quality Is Our Policy

LICENSED • INSURED • BONDED

302-836-1921

Enhance your comfort this winter

Local, Dependable,
Professional



Any Heating/AC Service Call

When you mention this ad.

(Excluding diagnostic fees & tune-ups)



\$25⁰⁰
OFF

306909 NP060509

IN THE NEWS

DOWNTOWN POSTINGS



Juice bar provides healthy alternatives

Although, it has been open at its new location for over a month, Main Squeeze Café and Organic Juice Bar at 131 E. Main St. is no newcomer to the area. Formerly located at 280 E. Main, the establishment brings its array of juices, smoothies, salads, wraps, paninis and other treats to the center of downtown.

Main Squeeze is open seven days a week, from 10 a.m. to 7 p.m. and University of Delaware students can take advantage of the healthy alternatives as the business accepts

the OCMP card. For more info or to place an order by phone, please call 302-366-0540.

More ethnic restaurants on their way

A few new signs have popped up on Main Street promising additional culinary choices. At the site of the former TCBY, Indian Sizzler Indian Restaurant has placed a sign in the window advertising lunch and dinner buffets and the option to either eat-in or take-out.

Indian cuisine had not been around for years, following the closing of a restaurant at the former Granary site on Elkton Road.

No word on when it will open, but be sure to look out for it in the coming months. According to their sign, those interested in learning more can call 302-738-3445.

Permits have been posted and light construction is occurring at 155 E. Main St., the site of the former Sunglasses by E.C. Shades, for a Chinese restaurant. Once again, no word on the completion date, but workers were busy last week entering and exiting the building.



An "Evening of Art & Wine"

An "Evening of Art & Wine" is being held Friday, November 5, from 5-9 p.m., sponsored by the Newark Arts Alliance at the luxurious Washington House Condominiums in downtown Newark. Admission is free. The wine tasting and harvest table, presented by the Stone Balloon Winehouse, is \$8 until 8 p.m. Tours of the condominiums will also be available.

Nine artisans from the Newark Arts Alliance will be showing and selling their work. They include Karen Hornor, jewelry; Doortje Shover, glass ornaments; Brenna Crowther, fabric ornaments; Navanjali Jagatpal Kelsey, fabric bags and watercolors; Richard Aldorasi, marbled silk scarves; Eleanor Fink, jewelry; Estelle Lukoff,

jewelry; Jen Mrozik, collage; and Arlene Finocchiaro, jewelry.

Washington House is located at 115 East Main Street, above the Stone Balloon Winehouse.

The Newark Arts Alliance is a nonprofit organization dedicated to "developing community through the arts." For

more information on NAA events, exhibits, and classes, visit the Web site (www.newarkartsalliance.org) or call 302-266-7266.

The NAA is located at 276 East Main Street, Suite 102, in the Market East Plaza. Hours are Tuesday-Sunday, 11 a.m.-3 p.m., with extended hours on Thursday until 6 p.m.



Funds for train station project

▶ TRANSIT, from 1

used to plan integration of the University of Delaware's transit oriented development of the former Chrysler vehicle assembly plant, now owned by the University.

One additional grant was awarded for multi-state planning for the Northeast Corridor. A joint application

by eleven states was awarded \$10 million by the FRA for a multi-state effort to create a high speed improvement service development plan and environmental analysis for the Northeast Rail Corridor. Delaware, other regional states and the District of Columbia will organize the study, which will provide an environmental assessment needed to acquire future additional federal funding for improving the

Corridor.

"These grants help us move forward with several major projects important to public transportation in our state," said Governor Jack Markell. "Each project meets growing demand for mobility in different ways. As they get off the ground, these projects will provide jobs for the construction and engineering

industries which are critical to strengthening our economy."

"Delaware's Congressional delegation played a critical role in obtaining these grants. DelDOT is grateful for the leadership of Sen. Tom Carper, Sen. Ted Kaufman and Rep. Mike Castle in helping to secure the important funding for Delaware's transportation needs," said Transportation Secretary Carolann Wicks.

Winter Toy Resale Extravaganza

Toys • Equipment • Books • Games • Videos • Winter Clothes • Accessories

Sponsored By 2nd Chance Resale

Mark Your Calendar!

Wonderful Toy Selection!!!
Delaware's Premier Resale Event!!!

Friday, November 12th, 2010
(5:00 p.m. - 9:00 p.m.)

Saturday, November 13th, 2010
(8:00 a.m. - 1:00 p.m.)

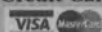
FREE ADMISSION!!!

Eden Square Shopping Center

The vacant Children at Play Center
585 Eden Circle • Bear, DE 19701

(Same Shopping Center as Lowe's and Super G Next to Sheila's Party World)

Cash and Credit Cards Accepted



Bring a Friend!!!

For more information call (302) 836-1914
www.2ndchanceresale.com

Italian Grill **Ciao** Pizzeria

Full Family Dining Experience!
Great Menu & Daily Specials

Now Serving Beer & Wine

Open 7 Days a Week!
Carry Out

200 University Plaza Shopping Center,
Newark 302-738-6810

Hardwood Floor Specials

We have Many Specials from over 30 Companies

Five Top Picks This Week Plus.

Bruce Hardwood Starting \$3.55 S.F.	Engineered Brazilian Cherry 5 inch \$5.10 S.F.
Chelsea Oak 3/4 x 3", 4", 5" \$5.10 S.F.	Bamboo (clic) Carbonized Vertical \$3.19 S.F.
Mirage \$750 Cash Back 9/27/10 ~ 10/20/10 Ask for Details	

Plus Lots more Factory specials to Consider!!

Mayer, Inc.

www.mayerflooringde.com

1014 Elkton Rd., Newark, DE • 302-366-1311

POLICE BLOTTER

UD camera helps collar four robbery suspects

Editor's note: Police blotter items are compiled from reports from area agencies. For the latest police news, log on to newarkpostonline.com.

University of Delaware Police have charged four individuals and are seeking a fifth person in connection with an attempted armed robbery of a UD student that occurred around 3:37 a.m. on Sunday, Oct. 31, at the intersection of North College Avenue and Ray Street.

Charged with second degree attempted robbery and second degree conspiracy were Brian T. Sanders, 21, of Wilmington; Richard F. DeMoss III, 22 of Newark; Alexis A. Pennington, 23, of Aston, Pa., and Kelli N. John, 20, of Wilmington. Sanders also was charged with third degree assault.

Police reported the student had just crossed over the pedestrian bridge from the Laird Campus, when police say Sanders got out of a Dodge Durango at the intersection of North College Avenue and Ray Street, rapidly approached the student and began assaulting him with his fists. He told the student he was "about to get robbed by Juggalos," an apparent reference to a group that claims to be inspired by a song by the hip hop group, Insane Clown Posse.

After being struck in the head, the student noticed four others getting out of the parked Durango, so he pushed the suspect away and began running toward Cleveland Avenue. Two of the men from the Durango gave chase, while continuing to make statements about taking the student's money. They gave up and returned to the Durango.

After the incident was reported to University Police, an officer searching for suspects saw the vehicle fleeing from the scene on Cleveland

Avenue and noted the registration number. He was able to confirm the vehicle when he viewed surveillance video from the incident.

A computer check led University Police to a Stanton area trailer park, where Sanders and Pennington were apprehended in the Durango without incident. According to police, Pennington was driving during the attempted robbery.

Sanders and Pennington were taken back to the University of Delaware Public Safety Building where they were processed and later video arraigned at JP Court 11. Sanders was released on \$5,000 unsecured bond, and Pennington was released on \$4,500 unsecured bond, pending a preliminary hearing in the Court of Common Pleas.

Further investigation led to the identification of DeMoss and John. Police said DeMoss did not physically assault the victim but assisted Sanders in chasing him. John did not physically assault the victim but she exited the Durango in support of the attempted robbery and assault, police said. DeMoss and John were arrested without incident on Nov. 1 and are awaiting arraignment at the time of this release. A fifth suspect has yet to be identified.

According to police, the suspects admitted to jumping other students on Saturday evening, including someone dressed in a gorilla costume.

Anyone with information about this incident or these suspects is asked to contact University Police at (302) 831-2222.

"The initial assault, the five defendants and the suspect vehicle were all captured by the University's new Intelligent Campus Safety Video System, which is part of a significant investment the University has made in Public Safety technology and other resources to

enhance the safety and welfare of our students, faculty and staff. As a direct result of this technology, four of the five suspects in this incident were charged, and the video evidence will be used during the prosecution phase of this investigation," UD Police Chief Patrick A. Ogden said.

Break-in suspect found eating hot dog

University of Delaware Police have charged Franklin Blunt III, 19, formerly of Dover, in connection with a burglary at the grounds garage and campus shops at Delaware Stadium on Sunday and Monday, Oct. 24-25.

According to UD Police reports, Blunt broke into the grounds garage on the north end of the stadium through a window and then removed tools and two cans of spray paint some time on Sunday. He sprayed objects inside the garage and both sides of a door. "UD" was painted on the door with a line on it. He then entered the campus shop on the west side of the stadium by breaking a lock and used nail polish to paint "UD" on the counter and steal clothing. The door to the campus shop on the east side of the stadium had the lock pried open, and tools taken from the grounds garage were found next to the door. Nothing appears to have been taken from the east side campus shop, but a nearby ATM was tampered with.

Early Monday morning, UD Police found Blunt inside



Franklin Blunt III

a concession stand cooking a hot dog. His fingernails were painted blue, the same color as the graffiti inside the west stadium campus shop.

During an interview, Blunt admitted to the Sunday evening incident and assisted detectives in recovering seven jackets he had stolen.

He was committed to the Howard R. Young Correctional Institution in lieu of \$9,750 secured bond, and he was ordered to have no contact with the university.

Canine finds unconscious woman

A New Castle County Police canine has been credited with saving the life of a suicidal 41-year old female who had taken around 80 Clonazepam pills late last night.

Last Wednesday at 11:43 p.m., police went to a home in the unit block of Gill Drive, in the community of Robscott Manor, near Newark, for a report of a missing suicidal woman who had just ingested

a large amount of prescription pills. When the officers arrived, they learned the woman had been in a verbal dispute with family members before taking the pills and fleeing the residence on foot.

Corporal Paul Chickadel and his canine partner Renzo went to the home and began a track from the driveway area where the woman was last seen. Renzo started tracking toward the rear yard and then along the sidewalk heading west on Cordrey Road. Renzo located the woman unconscious lying on the ground in the back yard of a home on Cordrey.

The woman was rushed to the Christiana Hospital where she was treated and admitted for an evaluation.



New Castle County Police canine Renzo is shown in photo provided by County Police.

S. College business robbed in morning

Police are on the lookout for a suspect who robbed Tobacco Zone, located at 1023 S. College Ave., last Monday. The victim, a store employee, told police that she had opened the door at 9 a.m. to let some air in, when a white male wearing a tan leather jacket with a gray or dark-colored hooded sweatshirt underneath walked in to request cigarettes. When the clerk got the cigarettes, the suspect jumped over the counter and pulled a knife on the employee, demanding her to open the register. When she complied, the suspect grabbed

See **POLICE**, 4 ►

NEWARK POST

Suite 109, Pomeroy Station 218 E. Main St.
Newark, DE 19711.

HOURS: Mon. - Fri. 8:30 a.m. to 5 p.m.

PHONE: (302) 737-0724

FAX: (302) 737-9019

E-MAIL: postnews@chespub.com

SUBSCRIPTIONS: 1-800-220-3311

CLASSIFIED ADVERTISING
1-800-220-3311

DISPLAY ADVERTISING
(302) 737-0724

PUBLISHER / REGIONAL V.P.
DAVID FIKE

EDITOR
DOUG RAINEY

INTERACTIVE MEDIA DIRECTOR
MARTY VALANIA

REGIONAL ADVERTISING DIRECTOR
KONRAD LA PRADE

ADVERTISING MANAGER
HARRY PORTER

MARKETING DIRECTOR
RENEE QUIETMEYER

ASSISTANT EDITOR /
RESEARCH DIRECTOR
MARK CORRIGAN

ART DIRECTOR
JONATHAN WADDELL

The Newark Post is published Friday by Chesapeake Publishing & Printing. News and local sales offices are located in Pomeroy Station, Suite 109, 218 E. Main St., Newark, DE 19711. All advertising and news are accepted and printed only at the sole discretion of the publisher. The Newark Post is a member of the Maryland-Delaware-D.C. Press Association, Suburban Newspapers of America and the National Newspaper Association.

POSTMASTER: Send address changes to: Newark Post, Suite 109, 218 E. Main Street, Newark, DE 19711. Periodicals postage paid at Newark, Del., and additional offices. (USPS #6465) Known office of publication 218 E. Main Street, Newark, DE 19711.

Locust Point Farm

Fresh Natural Turkeys
Taste the Difference!

ORDER NOW!

410-398-8765



Main Street Dental

Thomas D. Cox, DDS

Erin E. Cox, DDS

96 East Main Street
Newark, DE 19711

302.368.2558
(Fax) 302.366.0911

POLICE BLOTTER

► POLICE, from 3

approximately \$250 in cash out of the drawer and fled out of the store.

When interviewed, the employee described the suspect as a white male, 5'10 to 6'00 tall, 170-190 lbs., between 30-40 years old, with black hair and a goatee. The knife blade was approximately 5 inches long with no description of the handle. Additionally, interviews with witnesses and the employee showed that the suspect had frequented several of the businesses in the plaza and is thought to live nearby.

Police issued a warrant for a known subject who matches the description and who lives on Old Cooches Bridge Road.

Bicyclist robbed in tunnel

A 26 year-old Newark man reported that he had been robbed by three unknown assailants as he was riding home on his bicycle. The event occurred in the tunnel off Casho Mill Road, near Blair Court. The victim said that he

had been riding home with a pizza and some groceries, after he had finished his shift at work, when he saw three males in the tunnel. As he walked his bike through, one of the suspects hit the victim on the side of the head as all three males were yelling at the victim to give up his wallet. One of the suspects took the wallet, which contained over \$200 in cash, and all three suspects fled on foot.

The victim described the suspects as young teenagers, approximately 14 to 16 years old, due to the high pitch of their voices when they were yelling. The victim stated that one suspect was a light-skinned black or Hispanic male, while another was wearing a dark-colored hooded sweatshirt. The victim said he did not get a better look due to the lights being off in the tunnel.

Police searched the area only to find a \$5 bill and the victim's pizza on the ground. Both were retrieved for fingerprint analysis. A purple mountain bike that was part of another crime earlier the same night was also found in the vicinity, but police are

unsure if the two incidents are related.

Suspect breaks into elderly victim's home

Last Monday, Newark, officers responded to a burglary call on Rahway Dr., where an elderly woman told police that someone had taken a camera and some jewelry. The victim stated that after she had returned home, she had noticed that her rear kitchen window screen had been cut, a rear sliding glass door was half-way open, and the rear porch door was unlocked. A search of the house showed that her Kodak digital camera on the kitchen table and a gold bracelet from her jewelry cabinet were the only items missing. A neighbor told police that she had seen a white female, approximately 30 years of age with long, pulled back light-colored hair, and wearing long black pants walking along the driveway, into the rear yard of the house.

A search of the area showed a child's picnic table, with a

shoeprint on it, was pushed up to a rear window. Several items on the window sill were disturbed as well. Fingerprint evidence was obtained, but no suspects have been named thus far. The case has been forwarded to the Criminal Investigation Department for further review.

Sexual assault reported

University of Delaware Police are investigating the report of a sexual assault that occurred around 3 a.m., Sunday in a residence hall in the Rodney Complex.

A student reported that an unknown man followed her into her residence hall and into her room. She was able to text her RA, and when the RA arrived they were able to get the suspect to leave. The suspect then attempted to enter another residence hall but was stopped by additional RAs.

The suspect is described as a white male in his 20s, 5 feet 5 inches to 5 feet 8 inches tall, with an average build and short brown hair. He was wearing a long-sleeve red shirt or sweater

and blue jeans.

Safety alert signs have been posted in the area, and extra patrols are being conducted in the area by University Police.

Anyone with information should contact University Police at (302) 831-2222.

Robscott Manor man sought

A man who lives in the Robscott Manor community near Newark is being sought in the shooting of a man in the Kimberton-Brookside area.

New Castle County Detectives have arrest warrants on file for Lamar Washington, 18, who resides in the unit block of Cordrey Road.

He is wanted for a shooting that occurred on Saturday in the community of Whispering Pines in the Kimberton-Brookside area that left a 22 year-old male victim in stable condition after he was rushed to Christiana Hospital and underwent emergency surgery.

For the past few days, detectives have been following up on leads that were generated from this investigation. As a result, Washington was developed as



Lamar Washington

a potential suspect. Detectives were able to link him to the crime through interviews and follow-up investigation.

The investigation indicated that the 22 year old victim and Washington engaged in an argument while in front of a residence located in the 100 block of Elliot Street in the Brookside area. (The location was in error in a previous Newark Post report).

The argument continued as they walked away from the residence and shots were heard. The victim was later found in a back alley way that leads to Old Newark Road from Elliot Street.

SAINT MARK'S HIGH SCHOOL

LIVE FAITH • ACHIEVE EXCELLENCE • EMBODY HUMILITY • UPHOLD INTEGRITY



- Five academic levels to meet the needs of each student

- More than 100 service organizations, clubs and athletic teams

- \$1 million in need-based tuition assistance available each year

- 97% of graduates pursue higher education

OPEN HOUSE: Sunday, November 7 • 12:30 PM to 3:30 PM

ENTRANCE TEST: Saturday, December 4 or December 11



2501 Pike Creek Rd.
Wilmington, DE
www.stmarkshs.net
302.757.8721

IN THE NEWS

Sprinklers aid firefighters

A sprinkler system limited potential damage from a fire on the night of Oct. 27 at the West Knoll Apartments at 206 Elkton Road in Newark.

John H. Farrell, IV, public information officer for the Aetna Hose Hook & Ladder Co. said the fire originated in the basement of Building E in the complex, which consists of two apartment structures.

When firefighters arrived at around 9 p.m., they found smoke coming from common area. The sprinkler system had confined the fire to the common basement area in the building and the blaze was extinguished in 20 minutes.

"This is another example of the importance of early detection and containment of fire by automatic sprinkler systems," Farrell said. "Without the effective performance of the sprinkler system, the fire in this unoccupied area of the building had the potential for rapid extension and trapping the occupants on the floors above the fire."

Forty firefighters were called and crews remained on the scene for more than an hour removing smoke from the buildings. No one was displaced by the fire and all residents were able to re-occupy their apartments.

The fire departments on the scene



PHOTO COURTESY OF AETNA HOSE HOOK & LADDER CO.

Firefighters from a number of area departments responded to the fire in Newark.

included Aetna, Christiana Fire Co., Mill Creek Fire Co. and Singerly Fire Co. of Elkton.

The fire is under investigation by the Newark City Fire Marshal. There were no injuries.

Don't throw away your pumpkins!

By ANNA STOOPS

NEWARK POST CONTRIBUTING WRITER

Halloween is over – and if you carved your pumpkin into a Jack-O-Lantern, chances are it is looking like a scary Halloween character by now. However, if you have a whole pumpkin (not carved) they should last at least several weeks after being picked. Keeping them outside can prolong their shelf life if the weather stays relatively cool. Even though Halloween is over, there are many great uses for pumpkins. You can leave them around until Thanksgiving for added festive decorations or decide to create a delicious pumpkin dish for the Thanksgiving holiday. Pumpkins are absolutely edible and are quite nutritious. They contain vitamin A, vitamin B, vitamin C and potassium, among other nutrients, and are also high in fiber. There are many great pumpkin recipes available – just take a browse on the Internet or find a great cookbook. There's pumpkin soup, pumpkin

bread, pumpkin cookies, pumpkin pie, pumpkin ice cream, pumpkin rolls, pumpkin muffins, pumpkin doughnuts... I am starting to feel like Forrest Gump here! The idea is that the possibilities are endless and are only limited by your creativity and maybe a bit on cooking talents. Check out <http://www.pickyourown.org/pumpkinpie.php> for a recipe to make a pumpkin pie from scratch, among others.

Pumpkin seeds are actually edible and quite tasty (by this author's opinion), too. If you didn't save the seeds this year, next year write yourself a reminder! When scooping out the innards, remove the seeds and clean off the pumpkin remnants. Rinse the seeds and roast them for a tasty and healthy snack. The seeds are not only edible, but you can save a handful for planting next year, too! This can be a great teaching tool for children, showing them the cycle of plant life. And what a great experience to be able to carve a pumpkin that you grew yourself.

If you've already carved your

pumpkin or aren't Rachel Ray in the kitchen, a great way to be green is to recycle your pumpkin. You can do this a variety of ways, whether into your own compost pile or a local yard waste drop-off site, for example. You can also leave it out for wildlife to feed on. You can add a sprinkling of bird seed and peanut butter inside of the pumpkin, or just set it out 'au naturel'. Then sit back and enjoy the wildlife and birds that come to feed on the pumpkin in your own backyard. Unfortunately, there is not much that can be done in the edible sense once you have carved a pumpkin for food safety reasons.

Before you throw your pumpkin into the dumpster, be adventurous and use your imagination!

New Castle County Extension has information to help you with your all of your agricultural needs. Stop in our office located at 461 Wyoming Road in Newark, Delaware, call 302-831-2506, or visit <http://ag.udel.edu/extension/ncc/nccindex.php> for more information.

Aunt Margaret's
Antique Mall
LLC

OPEN 7 Days a week til 5 pm

Antiques, Collectibles, Primitives & more
Tax Free

Mon. - Sat. 10 - 5 pm, Sun. 12 - 5 pm

www.auntmargaretsantiquemall.com

294 E. Main Street, Newark, DE 19711 • 302-454-8007

Discover Your Potential at
Caravel Academy



**Programs Available from
3 Years Old through Twelfth Grade**

- College Preparatory, Advanced, Honors & AP Courses
- Safe and Disciplined Classrooms
- Close Parent/Teacher Interaction
- Bus Transportation
- Extended Day Program
- Full Athletic Program
- Reading Program in Kindergarten

OPEN HOUSE SUNDAY, Nov. 14, 2010, 1:30 - 3:00 p.m.
SCHOLARSHIP TESTING, Saturday, Nov. 20, 2010 - 9 a.m.
Scholarship testing is for grades 5-12, please call to pre-register for test.

For more information or a tour of our facilities call:

(302) 834-8938

Visit Our Website at www.Caravel.org
CARAVEL ACADEMY
2801 Del Laws Rd, Bear, DE 19701

CECIL COLLEGE



JOIN US

REAL STUDENTS. REAL SUCCESS.

INFORMATION NIGHT

Wednesday, November 10, 2010, 6:30 - 8:30 p.m.
Cecil College, North East Campus

ENGAGE WITH...

Faculty, students, and staff

LEARN ABOUT...

Admissions, Support Services, Student Activities, Academics

Everyone is invited! R.S.V.P. to 410-287-1000

WWW.CECIL.EDU Toll Free • 866-966-1001 | TTY • 410-287-2701

**Your One-Stop
Eye Care Solution**

Eye Examinations

Contact Lenses

Fashion Eyewear

Treatment of Ocular Diseases

- Clear Explanations of Procedures
- Professional & Caring Staff
- Most Insurances & HMO's Accepted

KNEISLEY EYE CARE

Dr. Yvonne Kneisley
Optometrist

(302) 224-3000

The Main Street Galleria
45 East Main Street
Suite 201 • Newark

www.kneisleyeyecare.optometry.net



SPORTS

Blue Hens move up in poll during bye week

Despite a bye week and a painful loss, the University of Delaware football team made improvements in both national polls announced Monday, moving up to No. 4 in the American Football Coaches Association Championship Subdivision poll and to No. 5 in The Sports Network rankings. Delaware also remained at No. 2 in the ECAC Meadowlands Lambert Cup Eastern poll.

The Blue Hens (7-1, 4-1

Colonial Athletic Association), who are coming off a 17-16 setback to William & Mary back on Oct. 23, will return to action Saturday when they host CAA foe Towson (1-7, 1-5 CAA) at 3:30 p.m. at Delaware Stadium as part of Homecoming festivities. Plenty of tickets remain at www.bluehens.com.

Delaware has now appeared in the top 10 in both polls each of the last seven weeks.

Following the setback to

William & Mary, Delaware dropped four spots from No. 2 to No. 6 in both polls. This week, the Hens improved two spots in the AFCA poll and one position in the TSN rankings. Appalachian State (8-0) remained in the top spot in both polls, earning 134 of the 154 votes in The Sports Network poll and 27 of the 28 first place votes in the AFCA rankings.

The CAA placed four teams in the top 10 and seven in the

top 25 in both polls.

In The Sports Network poll, Appalachian State was followed by Jacksonville State (16 first place votes), Villanova (one), William & Mary (three), Delaware, Eastern Washington, Wofford, New Hampshire, Southeast Missouri State, and Stephen F. Austin in the top 10. Bethune-Cookman was at No. 11 followed by Montana State, Montana, Liberty, Massachusetts, South Carolina

State, Northern Iowa, Penn, Cal Poly, Richmond, Grambling, James Madison, Jacksonville, Western Illinois, and North Dakota State.

In the AFCA rankings, Appalachian State was followed by Jacksonville State, Villanova, Delaware, William & Mary, Eastern Washington, Wofford, New Hampshire, Stephen F. Austin, Southeast Missouri State, Montana State, Liberty, Bethune-Cookman, South

Carolina State, Massachusetts, Montana, Northern Iowa, Cal Poly, Penn, North Dakota State, Western Illinois, Richmond, James Madison, Grambling, and Jacksonville.

In the ECAC Meadowlands Lambert poll, William & Mary remained at the top spot followed by Delaware, Villanova, New Hampshire, Pennsylvania, Massachusetts, Robert Morris, Lehigh, Richmond, and James Madison.

ATHLETE SPOTLIGHT

Jessica Anton

Senior volleyball player (libero), Glasgow High School

Hometown: Newark

Other varsity sports: soccer

School activities other than sports: Future Farmers of America, National Honor Society, Spanish Honor Society, 2011 class vice-president

Next year's plans: "I plan to

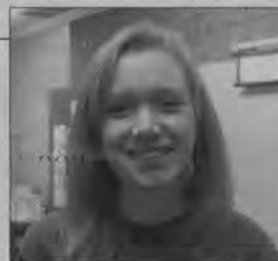
go to college for either veterinary medicine or environmental science. Also, I plan to play volleyball and soccer in college."

First fell in love with the sport: "In eighth-grade gym class everyone else would complain but I'd be so excited! We didn't play by the official rules then but it definitely made me start to love volleyball."

Thoughts on this past season:

"Unfortunately we don't have a winning record (5-10), but I think the team did great this year. We managed to bond not only as teammates, but also as friends, and I think that is what helped us do so well in the season."

Coach Kim Pirisino says: "Jess is an amazing student-athlete who is successful in everything she does. She has a great presence on and off the court and has the ability



to make everyone around her smile."

Send sports stories, news and information to jonbuzby@hotmail.com.

Glasgow boys soccer returns to playoffs

By JON BUZBY

JONBUZBY@HOTMAIL.COM

The coaches and players on the Glasgow soccer team find themselves in unfamiliar territory this week as they await the draw for the upcoming state tournament.

The team is led on offense by senior forward Paul Amponsah (25 goals), who set a new single-season scoring record, and junior forward Nate Dehel (12 goals). The talented one-two punch usually find themselves on the receiving end of passes from junior midfielder Jeremy Euston (13 assists).

"Paul is just a pure goal scorer and Nate is technically one of the best players I have coached,"

says first-year Glasgow coach Brian Grant, whose only other appearance in the tournament came when his Hodgson team won the Flight B title in 2006. "Jeremy is a solid attacking midfielder whose vision allows for our goal scorers to be successful."

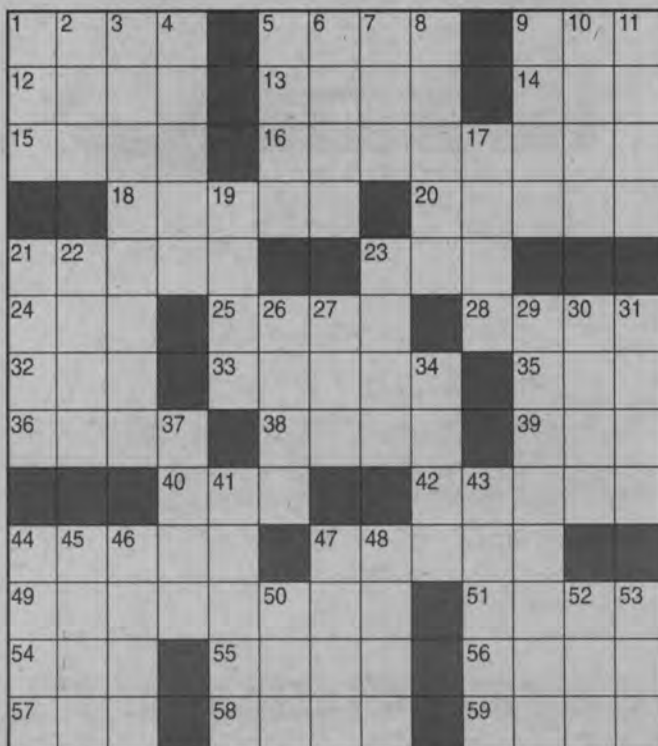
Defensively Grant says there is no standout, but rather it's a team effort that led to nine shutouts.

"Everyone has bought into the style and system of play," Grant says of his team, which finished the regular season 11-3-1. "They truly are a team. They have an 'us against the world' mentality."

Note: Follow Glasgow's progress in the state tournament at www.newarkpostonline.com.

THE POST STUMPER

ANSWERS ON PAGE 18



ACROSS

1. Word that stops Dobbin
5. Uses a scythe
9. Campanella of baseball
12. "I Never _____ For My Father"
13. Blind as _____ (2 wds.)
14. Julian Lennon's stepmom
15. Ruse
16. Cretaceous creature
18. Commencement
20. Coddle a drink at the bar
21. Finish start
23. Itsy
24. Mouse-sighting shout
25. Muck
28. Bellboy's signal
32. Three, in Pisa
33. Chirp
35. Once known as
36. Attain through work
38. Mother of Pollux
39. Actor Elliott
40. Bad _____, Germany
42. Fish partner
44. French term of endearment
47. London bye-byes
49. Antiquated
51. BYU's state
54. Friday, e.g.: abbr.
55. Blend
56. Scope lead-in

DOWN

1. Vane dir.
2. Bali _____
3. Witness
4. Secret _____
5. Formulated
6. Newspaper item, for short
7. Sallow
8. Sly and the Family _____
9. MGM film start
10. Load
11. Ancient times
17. Took to court
19. Flue dirt
21. Sampras of tennis
22. Jealous wife of mythology
23. Lawn blemish
26. Controversial birds of the Northwest
27. Tappan _____ Bridge (Hudson River span)
29. Demanded
30. Tide type
31. Jewels
34. Verbal finesse
37. Twerp
41. Home of the Heat
43. _____ couture
44. Outlay
45. *Les Misérables* author
46. Rock Hall of Famer James
47. Kiss' partner

EARN YOUR BACHELOR OF EDUCATION DEGREE

— RIGHT IN CECIL COUNTY



Wilmington University has partnered with CECIL COLLEGE and now offers UNDERGRADUATE EDUCATION courses —right in downtown Elkton.

SPRING 2011 COURSES

- EDU 312 Integrated Curriculum in Schools
- EDU 313 Classroom Culture and Student Behavior
- EPY 302 Educational Assessment
- EPY 303 Advising, Mentoring and Counseling Techniques

Relevant curriculum.
Flexible schedules.
Convenient locations.



WILMINGTON
UNIVERSITY

1-877-456-7003 | wilmu.edu/Cecil

SPORTS

Newark stings Glasgow in backyard rivalry

By TREVOR BRANCATO

SPECIAL TO THE NEWARK POST

It was a wild Friday night at Glasgow High School with the stage set for the Dragons to take on backyard nemesis Newark. All week players and fans alike predicted this rivalry game to be a shootout between two of the state's top quarterbacks. Instead, it turned into a blowout win for Newark, 52-14.

"We were surprised to jump out so quickly," Newark coach Butch Simpson said. "We have some athletic kids and so do they. We knew we were going to be very similar in what we were going to try and do to one another and we expected a heavyweight fight. Things happened the way you'd love to script a game and the next thing you know we are ahead of a team in a game we thought could go either way."

Newark jumped out to its early lead by junior quarterback Taylor Reynolds doing what he does best. It began on the very first drive, when Reynolds would drop back to pass, see an opening and run for a first down ... time and time again. It looked as though Glasgow had prepared well for the Newark passing game, but Reynolds knew exactly what to do when his stable of receivers were covered. Ironically, however, he did find David Grinnage open in the end zone for an 18-yard touchdown to put Newark on the scoreboard first.

On his team's second drive Reynolds wasted no time driving the Yellowjackets down the field, and this time, using his legs to scamper into the end zone from 12 yards out, put Newark ahead, 14-0.

Just when the Yellowjackets appeared ready to score again, the momentum turned in the Dragons' favor when Raymond Mangold recovered a Newark fumble on Glasgow's 8-yard line. But just as quickly as Glasgow got their hands on the ball, they fumbled it in their own end zone and watched as Newark's Brandon Ciarlo fell on it for a touchdown. And it was at that point the Dragons looked as though they were down for the count as the Yellowjackets made it a three-possession game, 21-0.

Things didn't get much better for Glasgow on Newark's next two possessions. Reynolds hit wide receiver Shanin Bennefield for a 48-yard touchdown and Mike Perry's 38-yard field goal made it 31-0.

Glasgow did get on the

scoreboard just before the half when junior Clifton Armstead hauled in a 46-yard touchdown pass from sophomore quarterback Khari Ngozi.

In the second half it looked like the Dragons might come out of the locker room a different team, scoring on their first possession when a 45-yard reception by Edward Davis set up an 8-yard touchdown run by Armstead to pull Glasgow within a manageable 17 points.

But Newark scored again on a 9-yard run by running back Jordan Imekparia, and Jelani Russell would add 5- and 10-yard rushing touchdowns to provide the final knockout punches.

Reynolds, who completed 8 of 14 passes for 169 yards and two touchdowns and ran for 71 yards and another score, had this to say after the game: "A win like this over Glasgow gives us great momentum going into this week's game (against Brandywine). Last night's win gave us a lot of confidence."

Simpson picked up his 256th win and is now tied with Wilmington Friends coach Bob Tattersall for the state record. Simpson will try to surpass or at least keep pace with Tattersall next Friday at home when Newark (4-4, 3-2 Flight

A) takes on Brandywine (0-8, 0-5) at 7.

"At one point we were back up against the wall with a 2-4 record and it was kind of spirit breaking," Simpson said. "We weren't happy with where we were, but I'm very proud of our

accomplishments the past two weeks."

Glasgow (2-6, 1-4) will try to get back on track at home against Christiana (1-7, 1-4), also on Friday at 7.

Trevor Brancato is an intern at the Newark Post.

Save Now for the Holidays
Use Minster's Layaway

20% off, no fees,
easy payments

Marilyn Minster
Designs
ready for the Holidays

Minster's

of Newark
jewelers since 1895

Newark Shopping Center, Newark, DE
302-737-5947
Email: info@minstersjewelers.com
www.minstersjewelers.com

Home Buyer Round Table

When: Saturday November 13, 2010
10:00 am - 11:30 am

Where: Newark Embassy Suites
645 S. College Av., Newark, DE 19713

Get all
the details
about:

- Low interest rates & low monthly payments
- Loan programs, conventional, FHA, VA, Bond
- Closing costs, down payment
- What the home inspection covers
- What happens at settlement

The Real Estate Ladies



Patterson
Schwartz
REAL ESTATE

TOLL FREE:
(800) 220-7028
OFFICE: 302-733-7000

PNC MORTGAGE™
LEADING THE WAY
Diana Miller

CALL TO RESERVE YOUR
COMPLIMENTARY SEAT TODAY!

Donna Planck
Cell: (302) 545-2500

Sharyn Nesnow
Cell: (302) 545-8355

WILMINGTON & WESTERN RAILROAD

Create Childhood Memories!

HAYRIDE EXPRESS

November 5
7:00pm

MT. CUBA EXPRESS

November 7, 13, 14
12:30pm & 2:30pm

AUTUMN LEAF SPECIAL

November 6
12:30pm* & 2:30pm**
*1½ Hours **2½ Hours

BACK BURNER DINNER TRAIN

November 9
7pm *Reservations Required

MURDER MYSTERY TRAIN

November 19
7pm *Reservations Required

SANTA CLAUS EXPRESS

November 27, 28
12:30pm & 2:30pm
*Reservations Suggested



Reservations can be made online at
www.WWRR.COM or by calling 302-998-1930

Greenbank Station is on Newport-Gap Pike, Rt. 41N in Delaware
1/4 mile from intersection Kirkwood Hwy. Rt. 2

Get a free rate quote today.

GEICO
Local Office

• Auto • Home • Cycle • Boat • RV
Licensed in DE, MD, PA and NJ



302-998-9192

4565 Kirkwood Hwy
Wilmington, DE 19808
M-F 9-6, Sat. 9-1

Some discounts, coverages, payment plans and features are not available in all states or in all GEICO companies. Motorcycle, ATV and RV insurance are currently not available in some states. Boat and PWC coverages are written through non-affiliated insurance companies and are secured through Insurance Counselors Inc., the GEICO Property Agency, doing business as GEICO Insurance Agency in CA, MA, MI, NJ, NY, OK, SD, UT. Government Employees Insurance Co. • GEICO General Insurance Co. • GEICO Indemnity Co. • GEICO Casualty Co. These companies are subsidiaries of Berkshire Hathaway Inc. GEICO: Washington, DC 20076. ©2009 GEICO

OBITUARIES

■ Obituaries are printed free of charge as space permits. Information is usually supplied to the newspaper by the funeral director.

Audrey Blevins

Mrs. Audrey C. Blevins, 82, of Newark, died on Monday, October 25.

Her husband, Earl C. Blevins, Sr., died in 2000. She is survived by her son, Earl C. Blevins, Jr. (Sherry); brother, Norman Cree; sisters, Hazel Washington and Shirley Tielleman; grandchildren, Crystal Wolfe (Robert) and Lee Blevins (Tabitha); and great grandson, Andrew Blevins.

A funeral service was held on Thursday, October 28, at Spicer-Mullikin Funeral Home, 121 W. Park Place, Newark. Interment was in Delaware Veterans Memorial Cemetery, Bear. To sign guest book, visit www.spicermullikin.com.

Helen Davis

Mrs. Helen Davis, 99, of Newark, formerly of Garfield, NJ, died on Friday, October 22, at Newark Manor, her residence for the past several years.

Born in Passaic, NJ, on December 11, 1910, Helen was the daughter of the late Joseph Barcszewski and Francese Fielaka Barcszewski. She was employed with Westin Biscuit in Clifton, NJ, for 25 years until her retirement. Active in



her community, Helen was a member of the Garfield Seniors Club, Golden Ages, and the AARP.

She was preceded in death by her husband, John J. Davis, a daughter, Anna Kowal, and brother, Charles Barris. She is survived by her daughters who love her and will deeply miss her, Rosemarie Sander and husband, William, of Newark, DE, and Joan Pranio of Barnegat, NJ; son-in-law, John Kowal of FL; eight grandchildren; 11 great grandchildren; and three great great grandchildren.

Mass of Christian Burial was offered on Tuesday, November 2, at St. Peter and Paul Polish National Catholic Church, 126 River Drive, Passaic, NJ 07055. Interment followed in East Ridgeland Cemetery.

In lieu of flowers, contributions may be made to St. Peter and Paul Polish National Catholic Church at the address above or to Newark Manor, 254 W. Main Street, Newark, DE 19711. To sign guest book, visit www.spicermullikin.com.

Scott Emig

Scott T. Emig, 17, of Newark, died tragically on Thursday, October 28.

Born in Wilmington on October 11, 1993, Scott was a junior at St. Georges Technical High School, where he was studying to become a professional electrician and had also been interested in pursuing a career in law enforcement. He was a gifted athlete and a standout player on the school's baseball team.

Scott was preceded in death by his maternal grandfather, Clark T. Gardiner II, and paternal grandfather, David A. Emig. He is survived by his mother, Carin A. Gardiner Neff, father, Denny A. Emig, brother, Brian M. Emig (Leanna), sister, Heather E. Emig, maternal grandmother, Patricia Gardiner, and paternal grandmother, Charlene R. Hibbert. He was also very much loved by his many aunts, uncles, and cousins.

Mass of Christian Burial was



held on Tuesday, November 2, at St. Matthew's R.C. Church, 901 E. Newport Pike, Woodcrest, Wilmington. Interment followed in Gracelawn Memorial Park, 2220 N. DuPont Parkway, New Castle.

In lieu of flowers, contributions in memory of Scott may be made to St. Matthew's R.C. Church, 1 Curtis Avenue, Wilmington, DE 19804. To sign guest book, visit www.spicermullikin.com.

George Loos

George Loos, of Newark, died suddenly on October 27. A native of Brooklyn, NY, he was a graduate of Brooklyn Technical High School and served his country as second lieutenant in the infantry during the Korean War. He attended The Cooper Union (BS & MS in Engineering) and held management positions at several engineering firms in NJ and PA. A longtime parishioner of St. Peter the Apostle (Parsippany, NJ) and St. Rose of Lima (North Wales, PA), he most recently belonged to St. Mary of the Assumption (Hockessin, DE), where he served on the board of the Parish Council. He was an active member of the St. Vincent de Paul Society and the Sages, as well as a Eucharistic minister at Christiana Cares.

He is survived by his loving wife of 53 years, Sylvia, and seven children, Pamela, Margaret Kieffer (Joe), Emily Maier (Michael), George (Cathy), Ted (Eileen), Cecilia, Katherine Major (David), and eight grandchildren.

Viewing was held at Doherty Funeral Home, 3200 Limestone Road, Wilmington, Friday, October 29. Mass of Christian Burial was on Saturday, October 30, at St. Mary of the Assumption Church 7200 Lancaster Pike, Hockessin. Interment at a later date.

In lieu of flowers, donations may be made to the St. Vincent de Paul Society, c/o St. Mary of the Assumption Church. To send online condolences, please visit www.dohertyfh.com.

Dorothy Mason

On October 24, Dorothy "Dot" Piety Mason, 89, died peacefully at her home at the Gardens of White Chapel in Newark, following a brief illness.

Born in Bruceville, Indiana, she was the daughter of Theda Kathryn and Noah Piety. Dot was predeceased by her husband "Ted," and by brothers, Robert and William Piety, sister, Theda DeBruler, nephews, Robert Jr. and Charles Piety, and by her much loved in-laws, Alton Mason, Jerry Boring, Billie Harbison and Virginia Miller. She is survived by her daughter, Theda Ellis, son-in-law, Warren, and grandson, Keith Chaffee-Ellis, as well as nieces, Susan Duncan, Janay DeBruler, Nancy Boring, Jimmie McConnell, Jerry Self, Linda Thompson, and nephews, Jerry, James, Daniel, and William Piety, Tom Mason, Scott Boring, Steve Harbison, and John, Michael and Robin Miller.

Dot graduated from Bruceville High School at age 16 and won a county scholarship to Indiana University in 1937. Family finances and cus-



toms didn't support college, so she attended the Indiana Business College and worked as an office manager from age 16 until retirement at age 60. Dot and Ted lived in Indianapolis until retirement, when they moved to Maryville, Tennessee. Following Ted's passing, Dot became active with the Newark Senior Center.

Memorial services were held on Wednesday, October 27, at the Unitarian Universalist Fellowship of Newark, 420 Willa Road, Newark.

In lieu of flowers, the family suggests contributions to the Newark Senior Center, 200 White Chapel Drive, Newark, Delaware 19713; or to the Unitarian Universalist Fellowship of Newark at the address above. To sign guest book, visit www.spicermullikin.com.

Berniece Murray

Berniece Betty Long Murray, died peacefully in her 80th year on October 23, surrounded by her loving family.

Betty was born in Wilmington, DE on June 14th, 1930, daughter of the late Charles D. Long Sr. and Alma Long (Johnson). Betty grew up in Newark, DE and graduated from Newark High School in 1948. Betty married Ralph Edward Murray in 1948. She then devoted her life to her family. Ralph and Betty raised five children along with owning and operating a family farm on Old Capital Trail. Soon after they started a second business, Millcreek Mobile Home Park, on part of the farm. Between the two, Ralph dug the ditches and Betty was the sole bookkeeper of what became a very successful business, Murray Manor.

She was preceded in death

See **OBITS**, 9 ►

WELCOME BACK, ED McKEOWN

Funeral Director Ed McKeown is back in Elkton!

When Ed left Elkton five years ago, the community was terribly sad to see him go. After R.T. Foard Funeral Home purchased Gee Funeral Home, we decided to bring back this much loved funeral director. We are proud to have Ed join our exceptional staff at R.T. Foard Funeral Home in Elkton!

With more than 40 years of funeral director experience, Ed offers professional, compassionate care to every family he serves. He looks forward to working with Elkton families once again. If you made prearrangements with Ed at another firm, we will honor them here at R.T. Foard Funeral Home. For more information, contact us today.

— A Life Celebration® Home —



R. T. Foard Funeral Home, P.A.
R. T. Foard and Jones, Inc.
Funeral Directors and Crematory since 1903

111 S. Queen St.
Rising Sun, MD
(410) 658-6030

318 George St.
Chesapeake City, MD
(410) 885-5916

122 W. Main St.
Newark, DE
(302) 731-4627

259 E. Main St.
Elkton, MD
(410) 398-3388

(formerly Gee Funeral Home)

www.rtfoard.com

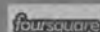
LOOKING FOR A CHANGE?

Trade ya!
Your Club for ours!

Simply bring it in your membership card from another club, we'll exchange it for one of ours & you'll receive

Two months...for only \$29!

NO CONTRACTS! GREAT RATES!



280 East Main Street | Newark, DE 19711

Come see what's new and exciting at Fusion Fitness Center and experience the difference!

At the end of 60 days - we bet that you'll want to exchange your old card for an offer that's even better — joining us!

*first-time guests only ~ Expires 12-31-10

302.738.4580 • www.fusionfitnesscenter.com

OBITUARIES

► OBITS, from 8

by her brothers, Charles D. Long Jr., and John W. Long, and a grandson: Thomas Lupton. She is survived by her adoring husband of 62 years, Ralph Murray, sister: Anita Rydel and her husband Frank of Wilmington, DE, her son: Lee Murray and his wife Kathy of Newark, DE, daughters: R. Lynn Raeburn and her husband Steve of Morehead City, NC, Joyce Bowers and her husband Dave of Landenberg, PA, Kathy Persoleo and her husband Mike of Wilmington, DE, Gale Lupton of Landenberg, PA. Grandchildren: Stephen, Sarah, Daniel, Katie, Michael, Laura, Anna, Matthew, Emilee. She is also survived by many beloved nieces, nephews and relatives, along with her two dear caregivers, Earlene Dorsey and Nelson Seligh.

Funeral services for Betty were celebrated on Thursday



October 28 at the White Clay Creek Presbyterian Church, 15 Polly Drummond Hill Road, Newark. Interment followed in the White Clay Creek Cemetery.

In lieu of flowers, contributions in memory of Betty may be made to the American Diabetes Association, 100 W. 10th Street, Suite 1002, Wilmington DE, 19810 or Wills Eye Institute, for Retina Research, 840 Walnut Street Suite 1540, Philadelphia, PA 19107. To offer on-line condolences, visit www.dohertyfh.com.

Khipma Pounthareuangsy

Khipma Pounthareuangsy, 86, of Newark, died on Sunday, October 24.

Mrs. Pounthareuangsy was a loving sister, mother and grandmother who will be dearly missed by loving family and friends.

A visitation for family and friends will be held on Saturday, November 6, in the Strano & Feeley Family Funeral Home, 635 Churchmans Road, Newark, DE 19702 from 4-7 pm and again on Sunday, November 7th in the funeral home from 12 noon-4:30 pm. Burial will be private. For directions and to express an online condolence, visit www.stano-feeley.com.

Frank Selby

Frank Lee Selby Jr., 94, of Newark, died on Friday, October 29, peacefully at home surrounded by his loving family. He proudly served as a Staff Sergeant with the U.S. Army during World War II.

Mr. Selby is survived by his loving wife of 65 years, Mamie R. Selby; son, Frank Lee Selby III; and daughter, Michelle L. Selby Goldston.

Services and burial will be private. To express an online condolence, visit www.strano-feeley.com.

James R. Soles

James R. Soles died on October 29, 2010. He was preceded in death by his beloved wife of fifty years, Ada Leigh Soles and is survived by his older daughter, Nancy Beth Garrett, her husband, Dan and their four children, Elizabeth, Tom, Maggie, and James (Jack); and by his younger daughter, Catherine Pomeroy, her husband, Paul, and their two children, Paul and Julia.

Dr. Soles was the Alumni Distinguished Professor Emeritus of the Department of Political Science and International Relations at the University of Delaware, where he taught for thirty-four years, and Chairman of the Board of

Trustees of Delaware Technical and Community College.

During his forty year residence in Delaware he served in numerous positions of university, public, and civic responsibility and was honored for his professional, public and civic contributions on numerous occasions. Professor Soles wished to be remembered for his love of his family, his commitment to teaching and his students, and his life long commitment to encouraging active citizenship. Though he received many accolades for his contributions to the community, he was a modest man who requested that his accomplishments not be listed here.

The family would like to thank his caregivers, Ginger Nacrelli and Nick Jenner, for their devotion and support.

A memorial service was held at 10:30 a.m., Wednesday, November 3 at Saint James Episcopal Church-Millcreek, 2106 St. James Church Road, Wilmington, DE.

Memorials may be made to the James R. Soles Citizenship Endowment

c/o University of Delaware Development Office, 011 Hullahen Hall, Newark, DE 19716 or The Food Bank of Delaware, 14 Garfield Way, Newark, DE 19713. To express an online condolence, visit www.strano-feeley.com.

Amy Stevens

Amy C. Stevens, 16, of Newark, died tragically in a car accident, on Thursday, October 28.

Born on March 21, 1994 in Newark, Amy was a junior at St. Georges Technical High School, where she was in the Nurse Tech Program. Amy was taking a college course at DelTech and had wanted to become an anesthesiologist. She played field hockey but her true passion was playing soccer. She was selected second team all-state last year as a sophomore. She also played travel soccer for many years and was currently a member of the Concord Courage College Showcase Team.

Amy is survived by her parents, Bart H. and Julie A. McDermott Stevens, brother, Sean C. Stevens of Newark; sister, Erin F. Stevens of



Newark; maternal grandparents, Ann and John McDermott of Ocean City, MD; and paternal grandmother, Enid Stevens of Lauderhill, FL. She was preceded in death by her sister, Erica Lynn and paternal grandfather, Frank Stevens.

A Mass of Christian Burial was offered on Wednesday, November 3, at Our Lady of Fatima Roman Catholic Church, 801 N. DuPont Boulevard, New Castle.

In lieu of flowers, the family suggests contributions be made to the B+ Foundation, 101 Rockland Circle, Wilmington, DE 19803.

To sign guest register, visit spicermullikin.com.

John Thompson

John Ernest Thompson, 71, of Newark, died at home on Saturday, October 23.

Born in Wilmington, John was the son of Reuben Thompson Jr. and Lucille (Nesler) McClelland. He was a truck driver for 24 years, retiring in 2000. He was a member of the Moose Lodge.

He will be dearly missed by his daughters and sons-in-law, Candace and Rudolph Eckheard of New Castle, Stephanie and Carlos Garcia of Newark, Kristen Brown and Robert

See OBITS, 11 ►

tranzon AUCTION FORECLOSURE Commercial Building



- ♦ 18,000+/- sf, 16 office/retail suites
- ♦ 1.67+/- acres, C-2 zoning
- ♦ Rent roll available
- ♦ Frontage on US Rt 40 signage

Fri, Nov. 19th @ 11am

216 E. Pulaski Hwy, Elkton, MD

tranzon FOX



VAAF423

888-621-2110 | www.tranzon.com

Bead Show

Hosted by
Northeast Bead Extravaganza

Saturday, November 6th, 10am-5pm

Sunday, November 7th, 10am-4pm

Aetna Fire Hall

400 Ogletown Rd. (Rt. 273) Newark, DE 19711

410-864-8409 • 610-639-6091

\$4.00 SATURDAY • \$3.00 SUNDAY

Premier Vendors

Africa Gems • Bead Dreams of NY • Bead Peddler • Beads Bagan • J & M Gems 'N' Things
Mominia Beads • Moss Hollow Pottery • The Odyssey & Bead Expressions
Priscilla Marban • Silver in Style • Talisman Associates • Tammi's Collection • Twisted Sistah • Veni Vidi Beadi
Elephant Eye Beads • Newtique Beads

VENDORS VARY BY SHOW

www.northeastbeadextravaganza.com

\$1.00 OFF WITH THIS AD

Church Directory

To Advertise or make changes call Nancy Tokar 1-800-220-1230 or voice mail 443-245-5072. Prices starting as low as \$14.00 a week, but now includes the internet. Deadline for changes Friday 4:30pm for the following edition

**"We get more hits
from this one
ad than any
other advertising
we do."**

*-Good Shepherd
Episcopal Church*
Call Nancy Tokar to place
your ad at
1-800-220-1230

The Way Ministries

(an extension of Highway Gospel Community Temple, West Chester PA)

Highway Word of Faith Ministries is presently worshipping @ The George Wilson Community Center 303 New London Rd., Newark, DE

Sunday:

8:00-9:00am Christian Education classes for all ages
9:00am Sunday Morning Celebration

Wednesday: Location

7:00-8:00pm Bible Enrichment Class at Prayer Temple 49 New London Rd. Newark, DE 19711
Mailing Address: P.O. Box 220 Bear, Delaware 19701-0220
Visit us online @ www.theway.ws or send us a note at...theway238@aol.com



Pastor Carl A. Turner Sr. and Lady Karen B. Turner
For further information or directions please call:
302-834-9003



The Episcopal Church
Welcomes You

St. Thomas's Parish

276 S. College Ave. at Park Place,
Newark, DE 19711

Across from UD Health Center
(302) 368-4644

Church Office: 9:00-1:00 Mon-Fri
www.stthomasparish.org

Sunday Worship

8:00 am & 10:30 am & 5:30 pm
Education for children & adults 9:30 am
Weekday Worship Services - Mon.-Fri.:
Evening Prayer @ 5:15 pm
Wednesday: Holy Eucharist 12:10 pm
(Healing Service on 2nd & 4th Wed.)
The Rev. Paul Gennett, Jr. - Rector
The Rev. Deacon Cecily Sawyer Harmon
- Episcopal Campus Chaplain
Marc F. Cheban - Organist & Choirmaster

God meets you where you are!
And So do we. Come and see...



Wisdom from many sources



Sunday Service 10am
Childcare and Sunday School

Unitarian Universalist Fellowship
420 Willa Road, Newark
302.368.2984 uufn.org

Come Join Us!

Speaker: Rev. Greg Chute

A Newark Handbell Festival

Tintinnabulation Two - A Joyous sound
Saturday, November 13th at 4:30 p.m.



Tintinnabulation Two - A Joyous Sound

Festival Music will include massed ringing with organ, trumpet and percussion plus individual choir solo singing.

First Presbyterian Church

Contemporary Worship - Sundays at 9:00 a.m.
Traditional Worship - Sundays at 10:30 a.m.
Adult and Children's Sunday School at 9:00 a.m.

292 West Main Street, Newark, DE 19711
(302) 731-5644 • www.firstpresnewark.org

Rev. Steve Brundage, Pastor
Rev. Beth Thomas, Children and Youth
Handicapped Accessible

Worshiping, Knowing and Serving God



St. Barnabas' Episcopal Church

Worship Services:

Saturday 5:30 p.m.

Sunday 7:30, 10:00 a.m.

Sunday School 9:45 a.m.

Child Care (0-3) available during 10 a.m. service

302-994-6607

www.stbarnabasde.org

2800 Duncan Road, Wilmington, DE 19808



You are welcome at

Ebenezer

United Methodist Church

website: www.ebenezerumcnewark.org
email: eumc1824@aol.com

SUN SERVICES 8:30 & 11:00am
SUNDAY SCHOOL 9:45am
Contemporary Worship

Every 3rd Saturday of the month 5:30 pm

525 Polly Drummond Road

Newark 302-731-9494

Handicapped Accessible • Child Care

TED DAY PASTOR



First Church
of Christ,
Scientist

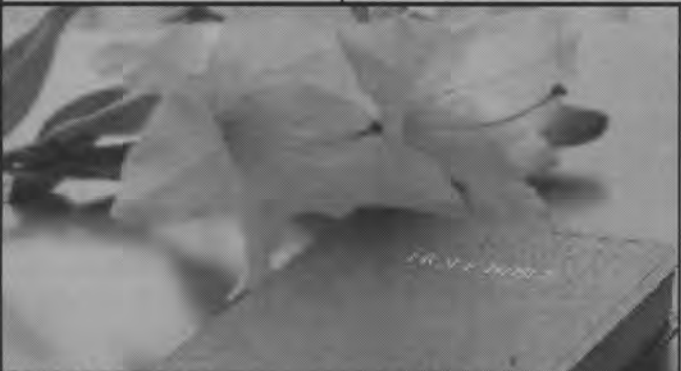
48 West Park Place, Newark

Sunday Service & Sunday School 10:00am
Wednesday Testimony Meetings 7:30pm

Childcare available during services.

302-456-5808

ALL ARE WELCOME
www.fccsnewark.org



NEW LIFE CHRISTIAN FELLOWSHIP

Sunday Service 9:30 AM

Multimedia Children's Ministry!

Contemporary Worship!

Relevant messages!

Church Office: 999-1800

Check out our web page:

www.NewLifeDE.org

2712 Old Milltown Rd.

Wilmington, DE

(near Kirkwood Hwy & Milltown Rd)

LETTER TO THE EDITOR

Hot pink was the color in October

Letter to the Editor...

To: Editor

In Delaware, the incidence of breast cancer makes it a focus of the American Cancer Society and increasing awareness about the disease is of paramount importance. For the third year, Newark city officials, the business and edu-

cational community were contacted by ACS volunteers in the hopes that Newark would become a Hot Pink town for the month of October. Once again the response was outstanding as over fifty businesses, the town and the University of Delaware joined in turning the town pink.

If you walked down Main Street and the surrounding area during October, you saw the evidence of a community working to raise awareness about the disease that currently affects 1 in 8 women. From ribbons on the streetlights, window displays, a Pink Out on the Green held by the

University of Delaware's chapter of Colleges Against Cancer, to the variety of fundraisers (benefitting the American Cancer Society's Making Strides Against Breast Cancer campaign) held by businesses, pink was out there!

Your ACS volunteers wish to express our sincere appreciation to everyone in the town of Newark who helped us once again prove that Newark is a wonderful place in which to live and run a business. While it is our hope that the disease will be conquered in the very near future, we are sure that if it is not by next fall, Newark will once again embrace the challenge to let everyone know that they care and turn pink once again.

Here are a list of businesses that supported the effort. Thank you to the Newark community for supporting the Hot Pink Newark Project during October. A special thanks to the businesses and organizations who turned Newark hot pink in the fight against breast cancer.

AT&T
Amalfi
Ambitions
Applebee's
Bagelmania
Bing's Bakery
Boulden Propane
Caffe' Gelato
Catherine Rooney's
The Cereal Bowl
Christiana High School
Claymont Steak Shop
Clothes in the Past Lane
Curves at Suburban
Deer Park Tavern
Delaware Book Exchange
Embassy Suites
Formal Affairs
Flip Flop Shop
Gecko Fashions
Fulton Paper Company
Gallagher Jewelers
Grassroots
Grotto Pizza
Groucho's Deli
Iron Hill
Kirk's Flowers
Klondike Kates
Kneisley Eye Care
Ledger

Lieberman's Book Store
Louviere Federal Credit Union
Matilda's Pub
Mainstream Nutrition
Margherita's Pizzeria
Minster's
Mojo
National
Newark ARTS Alliance
Newark Deli and Bagels
Newark Natural Foods
Old Lamplighter
Pita Pit
Primo Hoagies
SAS cupcakes
Salon by Anthony
Seasons Pizza
Simon Eye
John E. Kater
Starbucks
TGI Friday
Courtyard Marriott at UD
UD Colleges Against Cancer
Village Imports
Wilmington Trust at Suburban

Thank you,
"The Hot Pink Ladies"
Sandra Baldino
Lois Capone

► OBITS, from 9

DeFelice of Elkton, Jennie Brown of New Castle, and Amber Brown of Elkton; his sons, Christopher Thompson Sr. and his wife, Patricia of Beauford, SC, Timothy Brown of New Castle, DE, and Jonathan Thompson of his wife, Kristen of Wilmington; 14 grandchildren; and a sister, Marlene Wengert and her husband, Charles of Ellendale, CA.

Services were held on Friday, October 29, at the chapel at the Delaware Veterans Memorial Cemetery, 2465 Chesapeake City Road, Bear.

In lieu of flowers the family suggests contributions to the Leukemia and Lymphoma Society, 100 W. 10th Street #209, Wilmington, DE 19801. To send condolences, please visit www.mealeyfuneralhomes.com.

Joan Tucker

Mrs. Joan A. Tucker, 75, of Newark, died on Tuesday, October 26, in the presence of her loving family after losing her battle with cancer.

Born in Wilmington, DE, on June 5, 1935, Joan was the daughter of the late Margaret and Harvey Starr. She retired from the former MBNA after 20 years of dedicated service. She was a member of St. John's-Holy Angels parish and Santa Maria Council #195 Knights of Columbus Ladies Auxiliary.

She was preceded in death by her husband of 34 years, John B. Tucker. He is survived by her daughter, Kathleen M. Brooking and her husband, Gene, of Newark, DE; her son, Robert J. Tucker and his wife, Rebecca, of Newark, DE; her son, John B. Tucker Jr. and his



wife, Reta, of Elkton, MD; her grandchildren, Eric and Lauren Brooking, Blake and Olivia Tucker, and Megan and Ashley Tucker; her brothers, Harvey, James, and Charles Starr; and her sister, Peggy Farley.

Visitation was held on Monday, November 1, at the Spicer-Mullikin Funeral Home, 121 W. Park Place, Newark. Mass of Christian Burial followed at St. Thomas the Apostle R.C. Church, 301 North Bancroft Parkway, Wilmington. Interment was in All Saints Cemetery, 6001 Kirkwood Highway, Wilmington.

In lieu of flowers, contributions may be made to Helen F. Graham Cancer Center, c/o Christiana Care, P.O. Box 1668, Wilmington, DE 19899. To sign guest book, visit www.spicermullikin.com.

Charles Wagner

Charles J. "Charlie" Wagner, 96, of Wilmington, died on Tuesday, October 26, at Christiana Hospital surrounded by his family.

Born in Delaware, Mr. Wagner was the son of the late John H. and Elizabeth (Smerbeck) Wagner. He graduated from Newark High School in 1933. He also was a graduate of Goldey Beacom College and George Washington

University. He retired from the State of Delaware, Department of Labor in 1979. He was formerly president of Local 1212 Chrysler Tank Plant office employees and also president of Local 2038 Department of Labor Employees Union. He was a member of St. John the Beloved Knights of Columbus. He was predeceased by his first wife, Harriet and by a son, Richard M. Johnson.

Through Mr. Wagner's efforts, St. John the Beloved Catholic Church was built on his property on Milltown Road.

He is survived by his loving wife of 25 years, Marie (Johnson) Wagner; his son, Mark D. Johnson and wife Donna of West Dundee, IL; a daughter, Jeanne Tunell and her husband Michael of Newark; and six grandchildren: Kristin Chuman and her husband Paolo; Kathryn Tunell; Michael Tunell, Jr.; Matthew Johnson; and Ryan Johnson.

Mass of Christian Burial was celebrated on Tuesday, November 2, at St. John the Beloved Church, 907 Milltown Road, Wilmington. Interment followed at All Saints Cemetery, Wilmington. To leave a condolence, please visit www.mealeyfuneralhomes.com.



NEWARK CHARTER SCHOOL

"Excellence In Academics and Decorum"

Applications are being accepted: Oct. 11 through Nov. 22, 2010

For students who will be entering grades K-8 in Sept. 2011

Applications for enrollment may be obtained by:

- downloading a copy from our web site: www.newarkcharter.org
- stopping by our school
- visiting our Open House

2001 Patriot Way, Newark, Delaware 19711

(302) 369-2001

School Rating 2003: "SUPERIOR SCHOOL"
School Rating 2004: "SUPERIOR SCHOOL"
School Rating 2005: "SUPERIOR SCHOOL"
School Rating 2006: "SUPERIOR SCHOOL"
School Rating 2007: "SUPERIOR SCHOOL"
School Rating 2008: "SUPERIOR SCHOOL"
School Rating 2009: "SUPERIOR SCHOOL"
School Rating 2010: "SUPERIOR SCHOOL"

National
Blue Ribbon
School 2010

by United States
Department of
Education

by Delaware Department of Education

OPEN
HOUSE

Wednesday,
November 10

6:00 - 8:00 PM

Win \$1000

Shop one of the businesses below from
November 8th until November 21st
and register to win \$1000 on us!

Watch for their ads in The Cecil Whig & Newark Post
from November 8th to November 19th

Grand In the Hand

CONCORD
PET FOODS & SUPPLIES
"For Everything Your Pet Needs"

Rt. 213- Redner's Shopping Center, Elkton
Suburban Plaza, Newark

**PREMIER
AUTO & TIRE**
KEEPING AMERICA ROLLING!

Rt. 40 & Main St., Elkton

ANCHOR

BUICK GMC

Rt. 40, Elkton

Jodlbauer's
fine furniture ...
at affordable
prices

Rt. 40, Elkton

**WILLIAMS
CHEVROLET**

Rt. 40, Elkton

Northside
Pharmacy

Bridge St., Elkton

este's
Family Hair Care

Rt. 213- Redner's Shopping Center,
Elkton

**City
Pharmacy**

Bridge St., Elkton

Sun Pharmacy
Your Hometown Drugstore
and More!

Queen St., Rising Sun

www.williamsused.com

WILLIAMS FAMILY AUTOMOTIVE
USED CARS & TRUCKS

Rt. 40, Elkton

Sun Cellular
verizon

Delancey Plaza, Elkton
Main St., Rising Sun

**ELKTON LIQUOR
WAREHOUSE**

Rt. 213- Redner's Shopping Center, Elkton

**ANDREW GALLAGHER
JEWELERS**
A Family Tradition Since 1947

Suburban Plaza, Newark

The Rendezvous- Perryville • **Colonial Jewelers-** Elkton • **Vision Associates-** Elkton

JoJo's Super Dogs- Elkton • **Elkton Car Wash-** Elkton • **Barker Insurance-** Elkton

The Purr-fect Gift- Glasgow

Don't be caught empty handed- PUT A GRAND IN YOUR HAND!

*No purchase necessary. Chesapeake Publishing & Printing employees and family members not eligible. One entry per person.

COMMUNITY EVENTS

'Living with Loss' aids those dealing with grief

Sunday, November 7, 1 p.m.-4:30 p.m., Newark Senior Center. Delaware Grief Awareness Consortium invites



you to attend their 2nd Annual Grief Awareness Festival. This free festival includes art activities, grief education and resources, and opportunities to commemorate those we love. Meet local authors and experts on grief, and listen to the hopeful, comforting music of John Flynn who will be performing live in concert. Those of all ages experiencing any type of loss are welcome. Refreshments will be served. Reservations are recommended. Please contact Dr. Patti Tillotson at 302-383-3300 or visit www.degac.org for more information or to register.

Open House

Sunday, November 7, 12:30 to 4 p.m., Saint Mark's High School, 2501 Pike Creek Road, Wilmington, DE 19808. 302-738-3300 for information. Contact: Clarice Kwasnieski.

Guests are invited to tour the facility, meet students and staff, and learn more about the diverse educational and co-curricular opportunities available at this outstanding co-educational, college preparatory high school situated on 59 beautiful acres in Pike Creek Valley.

Political Seminar at UD

The University of Delaware faculty and students are hosting a public event on Tuesday, November 9, at Clayton Hall, entitled "Civic Engagement 2.0: Emotions, Perceptions, and Participation in Online Politics." The project, the first funded interdisciplinary scholarship to emerge since UD's designation by Bloomberg News as the "epicenter of politics," is supported by UD's Center for Political Communication.

The event will feature special guest Lee Rainie, Director of the national Internet & American Life Project at the Washington-based Pew Research Center. UD's research panel includes Professors Lindsay Hoffman and Dannagal Young from the Department of Communication, Professors Phil Jones and Julio Carrion from the Department of Political Science and International Relations, and student panelists Paige Barton and Bill Humphrey.

University students, faculty, staff and Newark community members are invited to attend a reception at 6:30 p.m. in Clayton Hall before the event. Light refreshments will be provided. The event will begin at 7 p.m. in Room 125 of Clayton Hall.

Career Information Session

Cecil College will hold a free Career Information Session from 6 p.m. to 8 p.m. Wednesday, Nov. 10, at the college's Career and Job Placement Services headquarters across from the North East campus at 3135 Biggs Highway.

Advisors from the college's credit and non-credit programs will be on hand to talk to prospective students about workforce training classes, degree and certificate programs, career development services, financial aid, and student support services. For more information, contact

Chrys Ellerton at 410-287-6060, ext. 641 or cellerton@cecil.edu.

Free Shred Day

Louviers FCU will be hosting their first ever Community Shred Day for all members, Newark residents and organizations on Saturday November 13. Those who would like to participate can drop off up to 2 banker-sized boxes of paper only at 185 Elkton Road, Newark, between the hours of 9 a.m. and 1 p.m.

The new Louviers building on Elkton Road has a large parking lot which will be sectioned off to accommodate the shredding truck, event traffic and parking for those needing to transact business inside the credit union.

All documents will be shredded on site by Shred-it®, a NAID certified shredding company, known for their environmental friendly recycling services. Shredding documents such as old statements is a great way to prevent identity theft or get rid of old paperwork.

For more information, contact Louviers FCU at (302) 733-0426 or visit www.shredit.com/community-shredding.asp.

New York Holiday Trip

UAW Local 1183 Emergency Food Closet is offering a Bus Trip to New York City to see the Rockettes Christmas Show

Spectacular. Bus transportation from Newark, DE and Orchestra Seating is \$ 125.00 per person. Proceeds benefit Emergency Food Closet of UAW Local 1183. Contact Alena Bandy at 302-738-4500 x11 for information.

Delaware Futures 2nd Annual 5K Run/Walk.

The event will be held on Saturday, November 6, at Joe's Crab Shack, located on the Christina Riverfront. Registration is at 8 a.m. and the race will start promptly at 9 a.m. For more information, please contact Andrea Guinn at 302-652-8619, ext. 4, or at aguinn@delawarefutures.org.

New Parkinson's Support Group

A new support group for people with Parkinson's Disease (PD) has been organized in Newark, DE. The coordinator, David Kaplan, was diagnosed with PD in June, 2006. In October, 2009, he was encouraged by his wife, Terri, and a PhD. Nurse, Ingrid Pretzer-Aboff, to attend an institute from the Parkinson's Disease Foundation in which he was trained as a clinical research liaison. Topics will include keeping

See **EVENTS, 14** ▶

OUT OF THE ATTIC

This week's Out of the Attic item is an undated picture of Main Street during one of the community festivals. It was published in the 2005 City of Newark Map and Information Guide. Over most of the 300 plus years of town history, houses on Main Street had front porches where residents could sit out to relax and visit with neighbors and passers-by. People from surrounding farms and villages would come into town Saturday evenings and stroll Main Street visiting with friends. The porches downtown are gone now, replaced by "modern" storefronts as the houses were converted to business use during the 20th century. Some of these houses still stand behind their commercial facades. People from the surrounding area still gather on Main Street and in the many restaurants and specialty shops.

Folks throng to Newark's many festivals held throughout the year. The annual Newark Memorial Parade started about 1935. Firemen's Carnivals and Firemen's Convention parades date even earlier. Newark Community Day, Halloween Parade, Winterfest, Newark Night, Taste of Newark, and other events draw thousands



of people of all ages to Main Street. The picture is from the Newark Historical Society collection (courtesy of the City of Newark).

Visit the NEWARK HISTORY MUSEUM located at the historic passenger train station on South College Avenue. The museum is open to the public Sundays from 1 to 4 p.m. now through November 28, 2010. The museum is also open all year by appointment for groups, individu-

als, and special events. Call 368-9845 for arrangements. The Society invites donations or loans of objects, stories, pictures and other artifacts of places, activities, people, and life styles in the Greater Newark Area for its permanent collections.

Contact the Newark Historical Society by voice mail at 302-224-2408, by postal mail to P.O. Box 711, Newark, DE 19715, or by email to newarkdehistorical.society@yahoo.com.

EYE CARE for life.

Providing 27 years of quality family eye care

- 12 competent and experienced doctors
- Most insurances & HMO's accepted
- Comprehensive adult and pediatric eye care
- LASIK
- Contact Lenses
- Thousands of affordable and designer frames
- Accepting new patients and outside prescriptions

SIMON EYE ASSOCIATES

Bear 116 Fox Hunt Drive
Newark 19 Haines Street Suite B

www.simoneye.com
302.239.1933

6 convenient locations

Bear | Concord Pike | Hockessin/Pike Creek
Middletown | Newark | Wilmington

COMMUNITY EVENTS

EVENTS, from 13

up to date on ways to cope with PD and learning methods for functioning better, as well as providing a place for those who wish to share their feelings, frustrations, and successes in connection with PD. Meetings will be held at the Newark Senior Center from 10:15 to 11:45 a.m. on the first Thursday of each month. David Kaplan can be reached at PDyodah@yahoo.com or (302) 239-1190.

Sports Card and Collectible Show

November 6, St Mary's of the Assumption Church Hall (Lower parking lot), 7200 Lancaster Pike, Hockessin, DE 19707, 10 am - 4 pm, \$2. Admission (Children 12 and under FREE.) Over 30 tables of the area's finest dealers. Proceeds benefit Knights of Columbus Member's daughter, Jessica Albanese, who has Muscular Dystrophy. For information or reservations please contact (302) 983-2636, a2zshows1@yahoo.com or www.a2zshows1.com.

Longaberger Basket Bingo

Sunday, Nov. 7, 3 p.m. (Doors open at 2 p.m.), Holy Angels Fremont Hall, 82 Possum Park Road, Newark, DE 19711. Featuring 20 games, 2 specials, raffles, door prizes!

Beautiful, filled new and retired baskets! Great food - including Patti's Barbeque Sandwiches. Tickets: \$20/person (if purchased by Nov. 6),

\$25 at the door (no one under 21 admitted). Tables of 8 may be reserved. Please call Holy Angels Parish Office, 731-2200, or Annie Adams, 836-4103.

St. Mark's open house

Sunday, November 7, 12:30 to 4 p.m., Saint Mark's High School, 2501 Pike Creek Road, Wilmington, DE 19808. 302-738-3300 for information. Contact: Clarice Kwasniewski.

Guests are invited to tour the facility, meet students and staff, and learn more about the diverse educational and co-curricular opportunities available at this outstanding co-educational, college preparatory high school situated on 59 beautiful acres in Pike Creek Valley.

Political Seminar at UD

The University of Delaware faculty and students are hosting a public event on Tuesday, November 9, at Clayton Hall, entitled "Civic Engagement 2.0: Emotions, Perceptions, and Participation in Online Politics." The project, the first funded interdisciplinary scholarship to emerge since UD's designation by Bloomberg News as the "epicenter of politics," is supported by UD's Center for Political Communication.

The event will feature special guest Lee Rainie, Director of the national Internet & American Life Project at the Washington-based Pew Research Center. UD's research panel includes Professors Lindsay Hoffman

and Dannagal Young from the Department of Communication, Professors Phil Jones and Julio Carrion from the Department of Political Science and International Relations, and student panelists Paige Barton and Bill Humphrey.

University students, faculty, staff and Newark community members are invited to attend a reception at 6:30 p.m. in Clayton Hall before the event. Light refreshments will be provided. The event will begin at 7 p.m. in Room 125 of Clayton Hall.

Career Information Session

Cecil College will hold a free Career Information Session from 6 p.m. to 8 p.m. Wednesday, Nov. 10, at the college's Career and Job Placement Services headquarters across from the North East campus at 3135 Biggs Highway.

Advisors from the college's credit and non-credit programs will be on hand to talk to prospective students about work-force training classes, degree and certificate programs, career development services, financial aid, and student support services. For more information, contact Chrys Ellerton at 410-287-6060, ext. 641 or cellerton@cecil.edu.

Free Shred Day

Louviers FCU will be hosting their first ever Community Shred Day for all members, Newark residents and organizations on Saturday November 13. Those who would like to participate can drop off up to 2 banker-sized boxes of paper only at 185

Elkton Road, Newark, between the hours of 9 a.m. and 1 p.m.

The new Louviers building on Elkton Road has a large parking lot which will be sectioned off to accommodate the shredding truck, event traffic and parking for those needing to transact business inside the credit union.

All documents will be shredded on site by Shred-it®, a NAID certified shredding company, known for their environmental friendly recycling services. Shredding documents such as old statements is a great way to prevent identity theft or get rid of old paperwork.

For more information, contact Louviers FCU at (302) 733-0426 or visit www.shredit.com/community-shredding.asp.

Arts & Craft Show

Saturday, November 13, Aetna Fire Hall, 400 Ogletown Road (across from the Newark Post Office), Newark, DE 10 a.m. - 3 p.m., FREE Admission. Over 50 Tables of the area's finest dealers. For information or reservations please contact (302) 983-2636, a2zshows1@yahoo.com or visit our website www.a2zshows1.com.

A Newark HandBell Festival

Bell Choirs from Ebenezer United Methodist Church, First Presbyterian Church Newark and Newark United Methodist Church will perform Tintinnabulation Two ~ A Joyous Sound on Saturday, November 13, at 4:30 p.m. in the Sanctuary of First Presbyterian

Church Newark, 292 West Main Street, Newark, DE. Festival music will include massed ringing with organ, trumpet and percussion plus individual choir solo ringing. The public is invited to attend and a free-will offering will be taken. Parking is available and the church is handicapped accessible. If you have further questions please call First Presbyterian Church at (302) 731-5644.

Come and Join us for an "English Tea"

November 14, Sunday, 1-3 p.m., Christiana Presbyterian Church's Hall Building. Cost: \$12.00 per ticket. For Tickets: Call 737-7013 Kae Lynn Freely. Special Performance by Evelyn Swensson portraying Anna Leon Owens. Anna Leon Owens was the English Widowed Teacher that went to Thailand to tutor the King. Her story was told in the international play and movie "The King and I". Through monologue and music Ms. Swensson will describe the times in which Anna Leon Owens lived. Sponsored by Christiana Presbyterian Church's Youth Group. This presentation has been made possible through a grant from the Delaware Humanities Forum

Wine Tasting Benefiting Flower Market

A Wine Tasting at Deerfield Fine Wines in Newark, Delaware, on November 18, Bring Cheers to Delaware's Children, will benefit the Wilmington Flower

Market,

Delaware's largest children's charitable organization. The Wine Tasting will be from 4 - 8 p.m., and will include fine wines from nine regions. Guests will also enjoy hors d'oeuvres, raffle prizes, and live music entertainment. Suggested \$10 donation at the door. Deerfield Fine Wines is located in the Shoppes at Louviers, 205 Louviers Drive, Papermill Road, Newark, DE 19711. Phone: 302-266-8061. www.deerfieldwines.com.

Super Science Saturday

On November 20, Iron Hill Museum will have Super Science Saturday. It is a day learning all about Native Americans. The event focuses on the Lenape. Presentations will be at 10:30 a.m., 12:30 p.m., and 2:30 p.m. Find out how the Lenape lived in Delaware. Admission to the museum is the day is just \$2, but children under the age of 4 are free.

If you wish to know more information about our programs, please contact the staff at the Iron Hill Museum, 1355 Old Baltimore Pike, Newark, DE 19702. Telephone: 302-368-5703; Fax: 302-369-4297; E-mail: info@ironhill-museum.org; Website: www.ironhill-museum.org.

12th Annual Survivors Program

Delaware Hospice and Exceptional Care for Children will host the 12th Annual Survivors of Suicide Day Program on Saturday, November 20, with a program held at Exceptional Care for Children, 11 Independence Way, Newark, from 9:00 a.m. to 12:30 p.m.

Sponsored by the Delaware End-of-Life Coalition and the Mental Health Association, the program will offer a time of remembrance and healing as suicide survivors connect with others who have survived the tragedy of suicide loss. A panel of local survivors of suicide loss will begin the program, which will be followed by the 12th National Survivors of Suicide Day Video Conference, sponsored by the American Foundation for Suicide Prevention. There is no fee for this community outreach program, but registration is required by November 10.

Register online at www.deolc.org/events, or contact Patti Tillotson, PhD: 302-383-3300, pteverest@verizon.net, or Vicki Costa, LCSW: 302-478-5707 or 302-856-7717, or vcosta@delawarehospice.org.

We Are Here For You!



Michael Spinn PharmD, Becky Marshall PharmD, Chai Gadde R.Ph, David Ayres R.Ph



Get Immunized against the Flu Here

Call for appointment



Your needs! Your pharmacy!
Fast, friendly, courteous service.

707 Bridge St., Suite B, Elkton, MD 21921 • 410-398-DRUG (3784)

ASSESSING NEEDS. INCREASING SCORES.

SAT/ACT prep



PRIVATE TUTORING FOR SAT/ PSAT/ ACT
Prep for students seeking dramatic score improvements

Call (302) 737-1050

34 Liberty Plaza / 34 Possum Park Mall
Newark, DE 19711

www.newark.huntingtonlearning.com



Huntington
LEARNING CENTER

©2006 Huntington Learning Centers, Inc. Independently owned and operated. SAT and PSAT are registered trademarks of the College Entrance Examination Board. ACT is a registered trademark of ACT, Inc. The College Entrance Examination Board and ACT Inc. were not involved in the production of and do not endorse this program.

IN THE NEWS

Newark played key roll in Senate race

ELECTION, from 1

claim his ties to the company would lead to huge profits for Gore, a diversified manufacturer of everything from cable to medical products.

Newark also played a key role in the Senate race, with the University of Delaware serving as the location for a debate between Coons and O'Donnell that was nationally televised on CNN.

In the race for State Treasurer, Democrat Chip Flowers eked out a victory over state legislator Colin Bonini. In the race for State Auditor, long-time GOP incumbent Tom Wagner

won by a one percent margin over Richard Korn. Flowers, of Middletown, is the first African American to be elected to statewide office in Delaware.

In county races, New Castle County Police officer Trinidad Navarro won by a 69 to 27 percent margin over Newark resident William Hart.

O'Donnell's stunning victory over longtime Delaware U.S. Rep. Mike Castle quickly captured the imagination of the national and even global media.

But with fame came a lot of baggage from television appearances in the 1990s where she admitted to dabbling in witchcraft and took controversial

positions on social issues.

The O'Donnell campaign also seemed to struggle with organizational skills that are needed in a tough race including a slip-up last week in submitting a 30-minute commercial on cable TV, not to mention a thorny relationship with some members of the media.

While supporters did not mind the controversy, but they were not numerous enough to overcome the large edge in voter registration by Democrats.

In the end, even former Alaska Gov. Sarah Palin seemed to write off O'Donnell's candidacy when she did not make an appearance in Delaware in the waning days of the campaign

Her endorsement of O'Donnell in the Republican primary was credited with providing a major boost to her campaign.

O'Donnell did get the endorsement of conservative talk show hosts like Mark Levin and Rush Limbaugh, but also drew rebukes from Republican party stalwarts like Bush campaign strategist Karl Rove.

Urquhart was praised for running a good campaign, but seemed to be caught in a Democratic tide. He also lacked the telegenic presence of O'Donnell.

In races of interest to Newark, incumbents won easy victories, perhaps aided by the strong performance at the top

of the ticket.

Democrat Teresa Schooley ended up with a 68 to 32 margin over Republican William Stritzinger and John Kowalko, often labeled as the most liberal member of the Delaware House won easily over Republican Gordon Winegar by a 65 to 34 percent margin.

It was a similar story for Republican State Rep. Joe Miro, who easily earned another term with a 67 to 33 margin over David E. Ellis.

Democratic incumbent State Sen. David Sokola also won easily over Republican challenger A. Louis Saindon by a 61 to 39 margin



Voting was steady during Tuesday at Newark polling places. Shown in this photo are yard signs outside the polling place at West Park Place Elementary School.

Christina teachers receive history aid

Twenty-three Christina School District teachers have been selected to participate in the Teaching American History (TAH) Grant's Freedom Project. The Freedom Project is a partnership between the University of Delaware's Center for Teacher Education, the Gilder Lehrman Institute of American History, the Historical Society of Delaware, and the Delaware Public Archives, and is funded by a Teaching American History Grant from the U.S. Department of Education. It is open to teachers in grades 3-12 that teach American History in

Christina and Red Clay School Districts.

The teachers include Tami Hartz from Bayard Middle School, Erica Varites, Stacy Sutton and Kimberly Dorda from Brookside Elementary School, Lisa Giobbe and Fran Miller from Downes Elementary School, Robert N. McCormick, Jr. from Gauger-Cobbs Middle School, Michael E. Weller from Glasgow High School, Ann E. Fleckenstien and Nancy Hawkins from Jones Elementary School, Amy Carlson from Keene Elementary School, Patrick Hudson

from Kirk Middle School, Amanda Ramsey from Leasure Elementary School, Catherine Brunt, Amy Selheimer and Moira J. Snider from Marshall Elementary School, Amy Cunningham from McVey Elementary School, Brent J. Freccia, Staci Garber, Matthew Hammond, and Carol L. Ralph from Newark High School, Jennifer Grant from Porter Road Elementary School, Anthea H. Bedminster from Shue-Medill Middle School.

The Teaching American History Grant provides \$500 per year in classroom resources,

stipends to participating teachers, opportunities for graduate credit and Advanced Placement U.S. history training, field trips and seminars, content enrichment by award-winning historians, partnerships with area museums, and collaboration on the development of exemplary US history lessons. In return, teachers are expected to attend two workshops and one summer institute per year, participate in project evaluations, and participate in lesson studies aimed at developing exemplary, standards-based U.S. history lessons.

DONATE YOUR CAR

to the Outreach Center "Car for Kids" Program

- Free Pick-up and Tow
- Any Model or Condition
- IRS Tax Deductible

Help Kids in Need

1-800-601-7171

Breathe Easier & Save Energy! Air Duct Cleaning

Includes 10 Vents, 1 Main & 1 Return! **\$79⁹⁵** Regularly \$165!

Additional vents \$10 ea., returns \$15 ea., mains \$50 ea. Multiple systems will vary. Written work order and complete system inspection included with this offer.

VCLEAN
vclean.com
Live Healthy

888-787-3088
Serving DC, MD NoVA and DE!
OFFER EXPIRES 11/08/2010

promo code
MP101101

Don't Let Anything Cloud Your Vision

- Cataract and LASIK surgery
- Diabetic and Ocular Disease Management
- Glaucoma and Retina Evaluation and Treatment
- Eyeglasses and Contact Lenses

5 convenient locations to serve you!

DOVER	MILFORD	SMYRNA	NEWARK	BEAR
833 S. Governors Ave. 674-1121	110 N.E. Front St. 422-5155	10 S. Market St. 653-9200	333 E. Main St. 368-9105	1721 Pulaski Hwy. 836-5410

Accepting Most Insurances



Gary I. Markowitz, M.D.
Board Certified Ophthalmologist

DELAWARE EYE CARE CENTER

Complete Eye Care
Schedule your appointment today!

800-900-2020
www.delawareeyecare.com

WET BASEMENTS STINK !!

Mold, mildew and water leakage into your basement causes health and foundation damage. What can be done to fix the problem? Allstate American Waterproofing is an honest, hardworking local company. We will give you a **FREE** evaluation and estimate and a fair price. We have repaired thousands of basements in the area; we can provide local references. When your neighbors needed waterproofing, they called Allstate American. Why don't you? Call now to receive a 20% discount with your **FREE ESTIMATE**. MHIC#36672

CALL 1 800 420 7783 NOW!

Now that you have elected them...

HOW ARE YOU GOING TO HOLD THEM ACCOUNTABLE?



THE VOTER EFFECT.COM

It's time for voters to have an effect on how our senators and representatives vote on bills and how **WE** want them to stand on issues.

Posted

8 AM 800-220-3311 410-398-1230
5 PM



ANNOUNCEMENT



ANNOUNCEMENT

NOTICES

PUBLIC NOTICE



View Public Notices from around the State of Maryland, visit:
www.publicnoticeads.com/md

ADOPTIONS

♥ WE ARE A LOVING Childless couple wishing to adopt and nurture along an infant or young child. Medical and legal expenses paid. Let's help each other. Please call Debbie and Dan 855-255-BABY (2229)

RECLINE, RELAX & RESELL

LOST & FOUND

FOUND- CAT, male, orange and cream long haired. Seems young. Found in the Sunnybrook/Williams Road. area. Please Call: 410-398-9739

FOUND BLACK/BROWN rottweiler near Port Deposit area. Call 410-378-4453

FOUND PUG/CHIHUAHUA. Brindall colored female North East Animal Hospital tag on collar. 443-567-8042



ANNOUNCEMENT

FOUND: PUPPY near entrance W. Creek Village Apts. and Fletcherwood Rd. in Elkton. 484-942-7167

FOUND ROT-TWEILER in Port Deposit area on Thurs. Oct. 28th 410-378-4453

LOST CAT: grey & white male, neutered. Black stripe down center of back. Lost in the vicinity of Brothers Pizza & Main St. in Elkton, missing since May 23. \$100 Reward Call collect if nec 302-423-2166

LOST CAT all white with grey tail & 2 grey spots between ears. Lost in Hollingsworth Manor, on the week of Oct 18th. Reward offered. Please call 443-485-6254

LOST 1 YEAR old Siamese female cat. Last seen 10/28 on Nazarene Camp Rd. Reward for return 443-553-7736

MALE CAT 3 yrs, neutered, declawed, all shots. Free to good home only 443-243-6342



SHEPHERD / ROTT MIX Free to good home. 5 yrs old. Housebroken, kid friendly, loves attention. Please call 443-877-0434



EMPLOYMENT

HELP WANTED FULL-TIME

CONSTRUCTION PUMP AND TANK SUPERINTENDENT 10 yr. min. exp. **PUMP AND TANK MECHANIC,** 5 yrs. min. exp. Cert. req'd. for AST & UST, manage installation and repairs of fuel systems & components for industrial & commercial projects. Ref's req'd. Contact **Joseph T Hardy & Son New Castle DE 302-328-9457**



CHECK OUT CHESAPEAKE CLASSIFIEDS EVERYDAY FOR THAT NEW JOB!

OR PLACE AN AD TO FIND NEW EMPLOYEES!
www.chesapeakeclassified.com
410-398-1230
800-220-1230



EMPLOYMENT

New Today

Looking for a solid career?

Service Today, Delmarva's largest HVAC / Refrigeration / Plumbing / Electrical business now has openings in Northern Delaware. Applicants must have a valid Drivers License and a good driving record, and at least 3 years experience. The following positions are available:

HVAC Installers HVAC Service Technicians

In addition to great pay, benefits include:
♦ 401K plan
♦ Medical coverage
♦ Life insurance
♦ Paid vacation
♦ 7 paid holidays
AND COMPANY STOCK OWNERSHIP

Fax resume to: 410-754-8920

Manager needed Liberty Tax, strong customer service, tax background preferred
410-392-0020

Classified is the key to more sales.



RENTALS

APARTMENTS UNFURNISHED

CECILTON 3br, 1ba. \$785 mo. + electric. 1 month sec. John 443-206-3727

New Today

ELKTON renovated 2br/ 1ba w/ laundry, no pets, \$775/mo avail 11/1. 443-945-6384

New Today

ELKTON 1br on 2nd flr. Full kit., W/D, gar. Quiet area. \$650mo + elec. 443-691-1818

Fall Move in Special *1/2 off 1st months rent, for qualified applicants
1 & 2 BR Apts in historic down town North East.
***Rents starting 1br \$695 - 2br \$825 BEACON 410-287-6111**

New Today

Fairhill area 2br, pet neg., non smok env \$600/mo. + utils, sec & refs req 410-392-9700

WWW.CHAPEAKE CLASSIFIED.COM



RENTALS

NORTH EAST- lrg 1br, full kitch w/ DW + WD, off st prking, water sewer and trash removal incl. Non smok env. No pets. \$675/mo. Call 443-566-2532

New Today

North East 2 Br's w/laundry room. \$850 mo. + utils. Pets considered 443-907-6649

New Today

NORTH EAST 1Br, 2nd story. \$575/mo + \$575 sec & utils. Call 443-309-0752

NORTH EAST-1BR 1st flr, newly renv. \$660/mo. + sec.No pets. 410-287-8888

New Today

RISEING SUN- Meadowside TH's. Immediate occupancy for 1 & 2 BR's. Close to schools & shopping. Country setting. Handicap accessible. Please call: 410-658-2798 Mon-Fri. 9am-4pm. Equal Housing Opportunity. TDD#1-800-735-2258

R. SUN- lrg. 2 & 3 br apt, incl. water, sewer/trash. \$900-\$950/mo No pets 410-658-2660



RENTALS

New Today

S. CHES CITY 1br, waterfront. Off st prk, \$750/mo. Water incl. 410-392-9173

RID YOUR HOME OF ALL THAT CLUTTER! HAVE A YARD SALE AND ADVERTISE IT WITH US!

LEGAL NOTICE

np 11/5/12,19



RENTALS

HOUSES FOR RENT

Chesapeake City Beautiful, 3 br, 2 ba, single family home, with large yard, pets ok \$1400/mo Call 410-656-4183

WWW.CHAPEAKE CLASSIFIED.COM

LEGAL NOTICE

2202556

LEGAL NOTICE

SHERIFF'S SALE

By virtue of a writ of #10-017324 and 111 Nov. 9, 2010.
PARCEL NO.: 08-054.40-027
PROPERTY ADDRESS: 109 Brewster Dr, Newark, DE 19711.
ALL that certain lot, piece or parcel of land with the buildings thereon erected situate in the Town of Middletown, New Castle County, State of Delaware, being Lot 240, on the Record Major Subdivision Plan of The Estates of Dove Run, as recorded in the Office of the Recorder of Deeds in and for New Castle County, on Instrument No. 200204250038601, and being more particularly bounded and described, in accordance with a recent survey by A.E.S. Surveyors, dated November 28, 2006 as follows, to-wit: BEING the same lands and premises which Jason M. Donovan and Joanna M. Donovan did grant and convey unto Shannon Tusso by deed dated December 15, 2006 and recorded on December 19, 2006 in the Office of the Recorder of Deeds, in and for New Castle County, State of Delaware, Deed instrument number 20061219-0118696.
SEIZED AND TAKEN IN EXECUTION AS THE PROPERTY OF SHANNON TUSO.
TERMS OF SALE: 10% DOWN AT TIME OF SALE. BALANCE DUE ON OR BEFORE DECEMBER 20, 2010.

NP 10/29,11/5

2194256

LEGAL NOTICE

SHERIFF'S SALE

By virtue of a writ of #10-017271 and 98 Nov. 9, 2010.
PARCEL NO.: 08-023.20-051
PROPERTY ADDRESS: 237 North Star Road, Newark, Delaware 19711.
ALL that certain lot, piece or parcel of land, with the buildings thereon erected, situate Mill Creek Hundred, New Castle County, Delaware, known as 237 North Star Road, being Lot No. 18A, on the Plan of North Star, as the Plan thereof is of record in the Office of the Recorder of Deeds, in and for New Castle County in Microfilm No. 790, and described in accordance with a survey prepared by Zebley & Associates, Inc., Professional Land Surveyors, dated April 24, 1990. BEING the same land and premises that Florence E. Perkins by deed dated April 26, 1990 and recorded in the Office of the Recorder of Deeds in and for New Castle County, Delaware, in Deed Book 1022, Page 223, did grant and convey unto Keith J. Quesenberry and Lise A. Quesenberry, his wife, in fee. Keith J. Quesenberry departed this life on July 16, 2004, leaving Lise A. Quesenberry sole tenant.
SEIZED AND TAKEN IN EXECUTION AS THE PROPERTY OF LISE A. QUESENBERRY.
TERMS OF SALE: 10% DOWN AT TIME OF SALE. BALANCE DUE ON OR BEFORE DECEMBER 20, 2010.

NP 10/29,11/5

2194210

SHERIFF'S SALE

By virtue of a writ of #10-017082 and 39 Nov. 9, 2010.
PARCEL NO.: 08-026.30-175
PROPERTY ADDRESS: 2600 Mill Creek Road, Wilmington, DE 19808.
All that certain lot, piece or parcel of land with the buildings thereon erected situate in Crossgates, Mill Creek Hundred, New Castle County, State of Delaware, known as 2600 Mill Creek Road, being Lot No. 82, as shown on the final plan of Crossgates, dated November, 1963 and recorded in the Office of the Recorder of Deeds in and for New Castle County, Delaware, on Microfilm No. 847, and being more particularly bounded and described in accordance with a survey by the Pelsa Company, Inc., dated May 29, 2003 as follow to wit: Being the same lands and premises which Ramon L. Rodriguez, did grant and convey unto Timothy D. Bradley, by deed dated May 29, 2003 and recorded on May 30, 2003 the Office of the Recorder of Deeds, in and for New Castle County, State of Delaware, in Deed Instrument 20030530-0065552.
SEIZED AND TAKEN IN EXECUTION AS THE PROPERTY OF TIMOTHY D. BRADLEY.
TERMS OF SALE: 10% DOWN AT TIME OF SALE. BALANCE DUE ON OR BEFORE DECEMBER 20, 2010.

NP 10/29,11/5

2194080

See's CANDIES

HOLIDAY GIFT CENTERS

• COMPETITIVE SALARY

\$9.35/hr

• FLEXIBLE SCHEDULES
• EMPLOYEE DISCOUNTS

SEASONAL holiday positions available

TEAM MEMBERS - \$9.35/hr

Customer service experience required

CHRISTIANA MALL

Bring resume and apply in person on
Friday, November 5th
between 10:00 AM - 1:00 PM
and 6:00 PM - 8:00 PM
Christiana Mall Food Court



RENTALS



RENTALS



RENTALS



RENTALS



RENTALS



RENTALS



RENTALS



REAL ESTATE



REAL ESTATE

New Today

CHARLESTOWN
2br, all new flooring,
\$750/mo. + util's. no
pets 410-398-9779

Elkton NEW 3BR
house w/gar \$1175/
month & no pets
Elkton 4br exc home
1 ac, \$2700/m opt to
buy 410-398-3447

New Today

ELKTON / North
East- Arundel 3br 3ba
LR, DR, kit, Fam rm 2
car gar no pets ref's &
sec dep \$1325/mo.
410-392-3154

ELKTON NEW 3BR,
2BA rancher on 1ac
priv wooded lot. Non
smok envir, no pets.
Ref's & sec. \$1200
mo. 410-658-2906

New Today

ELKTON- 2BR, &
850/mo. **NORTH**
EAST- 3BR, 2 car
garage. \$1000/mo +
sec. No pets. Call
410-658-5423

New Today

ELKTON 3Br town-
houses. All appli-
ances. \$1150-\$1250
per mo. 410-392-9214

ELKTON 4br 2.5 ba
single family home w
bsmnt & gar. \$1450/
mo 410-398-5724

New Today

ELKTON Hollings-
worth Manor, Rd #3
2br \$675/mo + sec
& utils. 410-392-3127

New Today

Elkton/NE from \$975
2-3br T/H S/F Great
neighborhood, pleasant
landlord 410-620-1345

FAIRHILL Gorgeous
luxury home \$2,500/
MO OBO. 3400 sq ft,
partially furnished,
central air, land-
scaped, finished
basement, garage
parking, laundry,
refrigerator, storage
shed, washer, 5BR, 4
bath on 2 acres with
playset. Call 701-282-
4301

New Today

Fair Hill/ Oxford 3br
2.5 ba 1 yr old on 1 ac
\$1800/mo rent to own
avail 410-398-5724

New Today

LOCUST PT turn 1
br waterfront, \$1200/
mo 410-398-2368

New Today

MD/DE LINE Nice
3br, 1.5ba T/H, w/d,
fenced yd. \$780 + util's.
Pet neg 302-375-6602

New Today

NORTH EAST,
Elk Neck area, 3 br,
1ba, 1 acre lot. Full
basement, Sunroom,
decks, \$1,300.
410-656-9591

New Today

N EAST 2BR, lg. yard,
quiet area, off st. park-
ing, \$915/mo. + sec.
dep. 410-444-2954

New Today

CLASSIFIEDS
410-398-1230
800-220-1230
WEBSITE AT
WWW.CHEESAPEAKE
CLASSIFIED.COM

New Today

PORT DEPOSIT 2br
2ba, LR, DR kitchen
w/breakfast nook, rear
deck front encl patio
full basement 1 & 1/2
ac lot in mature neigh-
borhood in country 5
mins from new casino
exit 93 on I 95.
\$1050/mo + sec dep &
oil, non smoking envi-
ron, no pets.
410-378-2661

New Today

335 DUPLEXES
FOR RENT

New Today

PERRYVILLE Small
2Br. No pets. Ref's &
sec dep req'd. \$650/
mo 410-620-3824

New Today

340 MANUFACTURED
HOMES FOR RENT

New Today

CONOWINGO- close
to I-95. \$650/ mo.
Share electric & cable
tv. 443-604-1708

ELKTON small room
& I have a lot of pets,
full house priv's,
\$100/wk 443-617-4621

New Today

NEWARK close to
UofD, use of all facili-
ties, in ground pool,
female preferred.
\$500/mo incl's utils.
Must love dogs. Call
302-893-4326

New Today

SENIOR PERSON
Looking for someone
to relocate to Myrtle
Beach and share
condo. 443-309-1838

CHESAPEAKE CLASSIFIEDS

410-398-1230 or 800-220-1230

360 HUNTING

PROPERTY FOR RENT
AVAILABLE- DAILY
CANADIAN GOOSE
Hunting & shelled
Deer corn. For info
call 410-348-5287

360 HUNTING

PROPERTY FOR RENT
CHECK OUT
OUR WEBSITE AT
WWW.CHEESAPEAKE
CLASSIFIED.COM

365 COMMERCIAL

RENTALS
FAIRHILL VILLAGE
Store/office front
Conv. loc. Rt 213 &
Rt 273 410-398-5724

CLASSIFIEDS

410-398-1230
800-220-1230

432 MOBILE

HOMES FOR SALE
NEW TODAY

RISE SUN Rent
3br, 1ba, kit, DR, LR.
New carpet & flooring.
443-350-5026

Sell it here fast!

440 LOTS/ACREAGE

FOR SALE
NEW TODAY

Rising Sun, MD 14
ac's, rich soil, perfect
setting for a Christmas
tree farm or nursery.
FSBO. 410-658-6233
or 443-907-3473

LEGAL NOTICE

SHERIFF'S SALE

By virtue of a writ of #10-017278 and 101
Nov. 9, 2010.
PARCEL NO.: 09-028.30-087
PROPERTY ADDRESS: 7 Anderson Road,
Newark, DE 19713.

ALL that certain lot, piece or parcel of land,
with the dwelling thereon erected known as
7 Anderson Road, situate in White Clay
Creek Hundred, New Castle County and
State of Delaware, and being Lot No. 12,
Block T, as shown on the Plan of TODD
ESTATES, as said Plan is of record in the
Office of the Recorder of Deeds in and for
New Castle County, Delaware, in Microfilm
No. 723, and being more particularly bound-
ed and described in accordance with a sur-
vey prepared by Zebley & Associates, Inc.,
Professional Land Surveyors of Wilmington,
Delaware, dated February 13, 2007, as fol-
lows, to-wit:

BEING the same lands and premises which
Patricia F. Groff did grant and convey unto
Ronald E. Keller by deed dated February 26,
2007 and recorded on March 2, 2007 in the
Office of the Recorder of Deeds, in and for
New Castle County, State of Delaware, Deed
instrument number 20070302-0020350.
SEIZED AND TAKEN IN EXECUTION AS
THE PROPERTY OF RONALD E. KELLER.
TERMS OF SALE: 10% DOWN AT TIME OF
SALE. BALANCE DUE ON OR BEFORE
DECEMBER 20, 2010.

NP 10/29,11/5

2194219

LEGAL NOTICE

SHERIFF'S SALE

By virtue of a writ of #10-017096 and 42
Nov. 9, 2010.
PARCEL NO.: 09-040.20-159
PROPERTY ADDRESS: 33 Sherin Drive,
Newark, DE 19702.

All that certain lot, piece or parcel of land sit-
uate in White Clay Creek Hundred, New
Castle County, State of Delaware, known as
Lot No. 571 (also known as 33 Sherin Drive)
as shown on the Record Major Subdivision
plan of Salem Woods, Phase III (three), pre-
pared by Karins and Associates, Inc.; record-
ed 30 November 1989 in the Office of the
Recorder of Deeds in and for New Castle
County, State of Delaware, in Microfilm No.
101500. The said Lot being more particular-
ly bounded and described by a recent survey
of Fanco Tell Associates dated June 2, 1994,
as follows, to-wit:

Being the same lands and premises which
Ronald F. Bright and Kimberly E. Bright, did
grant and convey unto John E. White, by
deed dated January 27, 2005 and recorded
on January 31, 2005 the Office of the
Recorder of Deeds, in and for New Castle
County, State of Delaware, in Deed Instru-
ment 20050131-0010839.
SEIZED AND TAKEN IN EXECUTION AS
THE PROPERTY OF JOHN E. WHITE.
TERMS OF SALE: 10% DOWN AT TIME OF
SALE. BALANCE DUE ON OR BEFORE
DECEMBER 20, 2010.

NP 10/29,11/5

2194106

SHERIFF'S SALE

By virtue of a writ of #10-017219 and 77
Nov. 9, 2010.
PARCEL NO.: 09-034.30-248
PROPERTY ADDRESS: 16 Penny Lane,
Newark, Delaware 19702.

ALL that certain lot, piece or parcel of land
with the buildings thereon erected, situate in
White Clay Creek Hundred, New Castle
County, Delaware, known as 16 Penny
Lane, being Lot No. 71 on the Record Major
Subdivision Plan for Norwegian Woods, Sec-
tion One, as said plan is of record in the
Office of the Recording of Deeds in and for
New Castle County, Delaware, in Microfilm
Record No. 12,526 and described in accor-
dance with a survey by Zebley and Associ-
ates, Inc., Professional Land Surveyors of
Wilmington, Delaware, dated July 11, 1997.

BEING the same lands and premises which
Wilson Road Development Company, a
Delaware corporation, by Deed dated July
18, 1997, and recorded on July 21, 1997, in
the Office of the Recorder of Deeds in and
for New Castle County, Delaware, in Deed
Book 2302, Page 85, did grant and convey
unto Kevin Miller and Danita D. Miller, in fee.
SEIZED AND TAKEN IN EXECUTION AS
THE PROPERTY OF DANITA D AND KEVIN
MILLER.

TERMS OF SALE: 10% DOWN AT TIME OF
SALE. BALANCE DUE ON OR BEFORE
DECEMBER 20, 2010.

NP 10/29,11/5

2194166

SHERIFF'S SALE

By virtue of a writ of #10-017185 and 65
Nov. 9, 2010.
PARCEL NO.: 18-044.00-173
PROPERTY ADDRESS: 319 Cannons Way,
Newark, DE 19713.

ALL that certain lot, piece or parcel of land,
with the buildings thereon, situate in the City
of Newark, New Castle County, Delaware
being designated Lot 5, as shown on the
Record Major Subdivision Plan of Cannons
Gate, of record in the Office of the Recorder
of Deeds in and for New Castle County,
Delaware on Microfilm 8610, said lot also
known as 319 Cannon's Way and being
more particularly described according to a
survey by A.E.S. Surveyors, dated June 14,
2001.

BEING the same lands and premises which
Mel R. Martinez, Secretary of Housing and
Urban Development, of Washington, D.C.,
acting by and through the Federal Housing
Commissioner, by Deed dated June 25,
2001 and recorded in the Office of the
Recorder of Deeds, in and for New Castle
County and State of Delaware, in Instru-
ment# 20010625-0049694, did grant and
convey unto Sylvester Marchman, Jr.

SEIZED AND TAKEN IN EXECUTION AS
THE PROPERTY OF SYLVESTER MARCH-
MAN, JR.
TERMS OF SALE: 10% DOWN AT TIME OF
SALE. BALANCE DUE ON OR BEFORE
DECEMBER 20, 2010.

NP 10/29,11/5

2194135

YARD SALES

660 YARD SALES

HUGE SALE

ELKTON 2021
Blue Ball Rd Sat
11/6, 8:30am-till
Lots of elect
heaters, sofa, wing
back chairs, trunk,
dishes, curtains,
bed spreads,
lamps & pic's, pots
& pans, area &
throw rugs, dehu-
midifier, benches,
dolls, lots of winter
grown up & kids
winter clothing,
much much more
Please come

ESTATE SALE
(inside) S. Newark.
Nov 6 only, 10-4.
Call for directions.
302-981-4197

RID YOUR HOME OF
ALL THAT CLUTTER!
HAVE A YARD SALE
AND ADVERTISE IT
WITH US!

FAIRHILL AREA 1C
Tally Ho Court, Rt 273
between Blue Ball Rd
& Wesleys, turn onto
Fairview Rd, turn a
next left onto Tally Ho
Dr, go to stop sign
turn left on Tally Ho
Court. **Indoor moving**
sale, you don't want
to miss! Sat, Nov 6
9am-4pm. No Early
Birds! Checks only
accepted with notori-
zied note from bank
denoting amount
authorized. Great
prices! Furniture
antiques, chandeliers
jewelry, clothes, 6 per-
son hot tub w/ chemi-
cals, brand new May-
tag front loader wash-
er / dryer, new Room-
ba vacuum, solid cher-
ry dinnette set, much
more! Great Christ-
mas gifts. **Breakfast**
and lunch available
also.



FAIR HILL 201
Fairview Rd Sat. Nov
6th 8am-2pm. HH
clothes, bikes, etc
Garage rain or shine

New Today

HUGE

NORTH EAST
Truth & Life Center
1924 W. Pulaski Hwy.
Annual Holiday
Bazaar,
Bigger & Better than
ever! **Nov 5&6**
8:30-4:30pm, Crafts,
Baked goods Lunch -
eat in or take out
Vendor tables avail
Contact Pastor Trout
at 410-287-0450

New Today

WARWICK (MID-
DLETON DE
AREA) Estate Sale.
35 Bridle Run Dr. Fri.
11/5 & Sat. 11/6
9am-3pm both days
furniture vintage dolls
& toys, linens, beer
signs, garage tins,
toy sewing machines,
antiques & h/h. For
dir's 410-275-1413

Classifieds Work!

HUGE

NORTH EAST
Truth & Life Center
1924 W. Pulaski Hwy.
20TH ANNUAL HOLIDAY
BAZAAR,
Bigger & Better than ever!
Nov 5 & 6, 8:30am-4:30 pm,
CRAFTS

Christmas Wreaths, Home-made Crafts,
Flower Arrangements, Needlework,
Quilted Aprons, Afghans and much more

BAKED GOODS & MORE

Cherry & Apple Pies, Pumpkin Pies,
Breads, Christmas candies, Jellies &
Jams, Spaghetti Sauce and more

LUNCH
EAT IN OR TAKE OUT
Sandwiches, Pasta, Home-Made
Soups, Drinks and Desserts
Try our famous Apple Dumplings
Vendor Tables available-
Contact Pastor Trout at 303-359-2727



SERVICES



MERCHANDISE



MERCHANDISE



MERCHANDISE



MERCHANDISE



MERCHANDISE



MERCHANDISE



MERCHANDISE



MERCHANDISE

520 HOME IMPROVEMENT SERVICES

K. Spencer Home Improvements, Inc.
When Quality Comes First!

- Painting
- Garages
- Basements
- Kitchens & Baths
- Additions
- Crown Molding
- Porches
- Window / Door Replacement

FREE ESTIMATES
REFERENCES LICENSED & INSURED

No Job too small
MHIC#127618

410-378-9219
550 LAWN & GARDEN SERVICES

LARSON'S TREE SERVICE & LANDSCAPING

- Fall specials on:
- Lawn renovations
 - Trees & Shrubs
 - Hydro-seeding
 - All phases of tree work
 - Topsoil spreading
 - Hardscaping
- Fall is best time for lawn planting**
 Since 1978
 Quick estimates & service
 410-392-5175



MERCHANDISE

602 ANIMALS/PETS

New Today
AKC Tiny Yorkie Pups Adorable, M&F, S&W. Family raised. 410-836-3187

BEAGLE- Miniature, female, 6 years old. **FREE** to good home. Looks like a puppy, would be great for elderly person. Our other dog does not get along with her. Call: 410-885-2673

Sell it here fast!
New Today
BEAGLE PUPS
 Pure bred, 8 wks old. \$200 each
 443-807-4930

New Today
CHIHUAHUA PUPS
 Females, very small 1st S/W. \$400.
 410-920-7896

CATS: 2 loving males. Neutered, shots. \$10 each to good indoor home. 443-907-6160

CLASSIFIEDS
 410-398-1230
 800-220-1230
 WEBSITE AT
 WWW.CHEESAPEAKE
 CLASSIFIED.COM

New Today
DALMATION puppies for sale, cute & loveable, you can't resist! Champion Bloodline, males and females. 410-378-9169

DOBERMAN AKC pups. 5 black & tan, 1 red & tan. \$400.
 443-615-6603

Classifieds World
FREE ADORABLE kittens to good loving homes only! Please call Jane at 443-566-0421

FREE PUPPY TO good home. Female, excellent with kids. 410-658-8023, 410-920-1571

New Today
GERMAN shepherd pups AKC white. 1st & 2nd shots, wormed. \$400. 443-207-6194

KITTENS. Free to good home. Litter trained. Ready. North East 443-945-6774

ANY WAY YOU LOOK AT IT, CHESAPEAKE CLASSIFIED CAN WORK FOR YOU!

LABRADOR RETRIEVERS Yellow/White 3 Male, 6 Female \$500.00 Litter is Registered and first shots included. Are available for pick up on 12/10/10. If interested please contact Boyd or April Buckland 443-350-0573.

MEDIUM SIZE dog, grey, puppy. He was dropped off at our home, loves to play, loves kids. I have 3 dogs already. **FREE.** 410-575-7115 or 443-928-5000 Aberdeen

New Today
MAGNIFICENT GOLDEN Retriever pups. Ready 11/14. \$500 410-310-6337

MINIATURE DACHSHUND PUPS AKC \$200 (2 males), long-haired. 443-350-6944

New Today
POODLES. Toys, poodle cross, multi-poops & bicha-poops. S&W, vet check. Ready now. \$325ea. 717-354-4412

Classifieds Work!
LEGAL NOTICE
SHERIFF'S SALE

 By virtue of a writ of #10-018347 AND (288) NOV. 9, 2010.
 Parcel No. 08-054.20-046
 Property Address: 107 Richards Land, Newark, DE 19711

ALL that certain lot, piece or parcel of land, known as Lot No. 47 situate in Mill Creek Hundred, New Castle County and State of Delaware, as shown on a Record Major Subdivision Plan of Richards Lane, prepared by Hillcrest Associates, Inc., dated May 24, 1993, last revised June 24, 1993 and recorded in the Office of the Recorder of Deeds in and for New Castle County, State of Delaware, in Microfilm No. 11760.

BEING a part of the same lands and premises which Richard Lane, Inc., by their Indenture dated September 27, 1996, of record in the Office of the Recorder of Deeds, in and for New Castle County and State of Delaware, in Deed Book 2180, Page 293, granted and conveyed unto Willie Mae Johnson and Pauline Johnson, in fee.

SEIZED AND TAKEN IN EXECUTION AS THE PROPERTY OF WILLIE M. JOHNSON AND PAULINE JOHNSON.

TERMS OF SALE: 10% DOWN AT TIME OF SALE. BALANCE DUE ON OR BEFORE DECEMBER 20, 2010.

np 10/29,11/5

2195360

LEGAL NOTICE
SHERIFF'S SALE

 By virtue of a writ of #10-018319 AND (274) NOV. 9, 2010.
 Parcel No. 11-021.10-080
 Property Address: 308 Evergreen Drive, Newark, Delaware 19702

ALL that certain lot, piece or parcel of land with the improvements erected thereon situate in Pencader Hundred, New Castle County, Delaware, being designated Lot 77, as shown on the Record Major Subdivision Plan of Woodland Village of record in the Office of the Recorder of Deeds in and for New Castle County, Delaware on Microfilm No. 12641, said lot also known as 308 Evergreen Drive and described in accordance with a mortgage inspection plan by A.E.S. Surveyors, dated September 28, 1999.

BEING the same land premises that NVR, Inc. by Deed dated October 26, 1999, and recorded in the Office of the Recorder of Deeds, in and for New Castle County in Deed Book 2732, Page 327, did grant and convey unto Paul A. Bogia and Tara Bogia, in fee.

SEIZED AND TAKEN IN EXECUTION AS THE PROPERTY OF PAUL BOGIA AND TARA BOGIA.

TERMS OF SALE: 10% DOWN AT TIME OF SALE. BALANCE DUE ON OR BEFORE DECEMBER 20, 2010.

np 10/29,11/5

2195356

LEGAL NOTICE
SHERIFF'S SALE

 By virtue of a writ of #10-018222 AND (252) NOV. 9, 2010.
 Parcel No. 09-022.40-119
 Property Address: 5 Merion Road, Newark, Delaware 19713

ALL that certain lot, piece or parcel of land, with the buildings thereon erected, situate in White Clay Creek Hundred, New Castle County and State of Delaware, known as 5 MERION ROAD, being Lot No. 32, on the Plan of Chestnut Hill Estates, as the Plan thereof is of record in the Office of the Recorder of Deeds, in and for New Castle County in Microfilm No. 162, and being more particularly bounded and described in accordance with a survey prepared by EAST COAST SURVEY, Professional Land Surveyors, dated November 10, 1998.

BEING the same lands and premises which Dorothy B. Menkiewicz, by Deed dated November 17, 1998 and recorded in the Office of the Recorder of Deeds, in and for New Castle County and State of Delaware, in Deed Book 2543 Page 190, did grant and convey unto Terry E. DeGroat.

SEIZED AND TAKEN IN EXECUTION AS THE PROPERTY OF TERRY E. DEGROAT.

TERMS OF SALE: 10% DOWN AT TIME OF SALE. BALANCE DUE ON OR BEFORE DECEMBER 20, 2010.

np 10/29, 11/5

2195329

LEGAL NOTICE
SHERIFF'S SALE

 By virtue of a writ of #10-017641 and 181 Nov. 9, 2010.
 PARCEL NO.: 11-006.30-127
 PROPERTY ADDRESS: 41 Bobby Drive, Newark, DE 19713.

ALL that certain lot, piece or parcel of land with the dwelling thereon erected, situate in Pencader Hundred, New Castle County, Delaware, and known as Lot No. 31, Block J, on the Plan of ROBSCOTT MANOR, Section One, as said Plan is of record in the Office of the Recorder of Deeds in Microfilm No. 707, being more particularly bounded and described in accordance with a Survey prepared by A.E.S. Surveyors, Wilmington, Delaware, dated February 23, 2005.

AND BEING the same lands and premises conveyed unto Constance Newton by deed of Richard H. Shorter and Michelle E. Shorter, dated August 8, 2005 and of record in the Office of the Recorder of Deeds in and for New Castle County and State of Delaware at Instrument Number 20050809-0079203.

SEIZED AND TAKEN IN EXECUTION AS THE PROPERTY OF CONSTANCE NEWTON.

TERMS OF SALE: 10% DOWN AT TIME OF SALE. BALANCE DUE ON OR BEFORE DECEMBER 20, 2010.

NP 10/29,11/5

2194331

SHERIFF'S SALE

 By virtue of a writ of #10-018079 AND (236) NOV. 9, 2010.
 Parcel No. 09-037.40-115
 Property Address: 200 Megan Court, Newark, DE 19702

ALL that certain lot, piece or parcel of land with the buildings thereon erected, situate in White Clay Creek Hundred, New Castle County and State of Delaware, known as 200 Megan Court, being Lot No. 116 on the record major land development plan of Salem Woods as said plan is of record in the Office of the Recorder of Deeds in and for New Castle County, Delaware, in Microfilm No. 7018, and being more particularly bounded and described in accordance with a survey prepared by East Coast Survey, Professional Land Surveyor, dated July 15, 2002 as follows, to-wit:

BEING the same lands and premises which Michael F. Metcalf and Michelle A. Metcalf, did grant and convey unto Robert J. Zetuskus and Lauren Zetuskus, by deed dated July 26, 2002 and recorded on July 29, 2002 in the Office of the Recorder of Deeds, in and for New Castle County, State of Delaware, in Deed Instrument 20020729-0072613.

SEIZED AND TAKEN IN EXECUTION AS THE PROPERTY OF LAUREN ZETUSKY AND ROBERT J. ZETUSKY.

TERMS OF SALE: 10% DOWN AT TIME OF SALE. BALANCE DUE ON OR BEFORE DECEMBER 20, 2010.

np 10/29,11/5

2195320

SHERIFF'S SALE

 By virtue of a writ of #10-017810 AND (221) NOV. 9, 2010.
 Parcel No. 09-037.40-255
 Property Address: 20 Flinthill Drive, Newark, DE 19702

ALL that certain lot, piece or parcel of land, with the buildings thereon erected, situate in White Clay Creek Hundred, New Castle County, Delaware, being Lot 28 (AKA 20 Flinthill Drive), as shown on the Record Resubdivision Plan of "Salem Woods", Phase II, prepared by Karin and Associates, Inc., Professional Engineers and Land Surveyors, Drawing No. 512-2036, Sheet 2 of 6 dated October 20, 1986, recorded November 19, 1986, in the Office of the Recorder of Deeds, in and for New Castle County on Microfilm No. 8393 and more particularly bounded and described in accordance with a mortgage inspection plan prepared by Zebbley & Associates, dated August 13, 1996, as follows, to-wit:

BEING the same lands and premises which Jeff Willis and Kimberly A. Willis by Deed dated July 10, 2008 and recorded in the Office of the Recorder of Deeds, in and for New Castle County and State of Delaware, in Instrument Number 20080806-0054431, did grant and convey unto Jeff Willis.

SEIZED AND TAKEN IN EXECUTION AS THE PROPERTY OF JEFF WILLIS.

TERMS OF SALE: 10% DOWN AT TIME OF SALE. BALANCE DUE ON OR BEFORE DECEMBER 20, 2010.

np 10/29, 11/5

2195304

SHERIFF'S SALE

 By virtue of a writ of #10-017786 AND (212) NOV. 9, 2010.
 Parcel No. 09-022.30-031
 Property Address 502 Banyan Road, Newark, DE 19713

ALL that certain lot, piece or parcel of land with the buildings thereon erected, situate in White Clay Creek Hundred, New Castle County and State of Delaware, known as 502 Banyan Road, being Lot No. 11 on the Plan of Todd Estates, Block O; Section 3, as the Plan thereof is of record in the Office of the Recorder of Deeds in and for New Castle County, Delaware in Microfilm No. 569, and being more particularly bounded and described in accordance with a survey prepared by EAST COAST SURVEY, Professional Land Surveyors, dated August 24, 2007.

BEING the same lands and premises which David H. Willerton, III and Kelly Willerton, husband and wife, by Deed dated August 31, 2007 and recorded in the Office of the Recorder of Deeds, in and for New Castle County and State of Delaware, in Instrument #20010831-0077757, did grant and convey unto Rafael Opio and Jennifer E. Mackey.

SEIZED AND TAKEN IN EXECUTION AS THE PROPERTY OF RAFAEL OPIO AND JENNIFER E. MACKEY.

TERMS OF SALE: 10% DOWN AT TIME OF SALE. BALANCE DUE ON OR BEFORE DECEMBER 20, 2010.

np 10/29, 11/5

2195296

SHERIFF'S SALE

 By virtue of a writ of #10-017699 and 187 Nov. 9, 2010.
 PARCEL NO.: 08-036.20-027
 PROPERTY ADDRESS: 4723 Mermaid Boulevard, Wilmington, DE 19808.

ALL that certain lot, piece or parcel of land with the buildings thereon erected, situate in Mill Creek Hundred, New Castle County and State of Delaware, known as 4723 Mermaid Boulevard, being Lot No. 62, Block C, on the Plan of Linden Heath, as the Plan thereof is of record in the Office of the Recorder of Deeds, in and for New Castle County in Microfilm No. 1773.

BEING the same lands and premises which John E. Koval, Jr., by Deed dated September 27, 1995, and recorded September 27, 1995, in the Office of the Recorder of Deeds in and for New Castle County, Delaware, in Deed Book 1986, Page 0092, did grant and convey unto Joyce L. Coleman, in fee.

BEING the same premises which Joyce L. Coleman, by Deed dated July 30, 2004 and recorded August 4, 2004 in the Office for the Recorder of Deeds in and for the County of New Castle, and State of Delaware in Deed Instrument No. 20040804-0085023, granted and conveyed unto Jennifer J. Pacella grantor/mortgagor herein.

SEIZED AND TAKEN IN EXECUTION AS THE PROPERTY OF JENNIFER J COOPER.

TERMS OF SALE: 10% DOWN AT TIME OF SALE. BALANCE DUE ON OR BEFORE DECEMBER 20, 2010.

NP 10/29,11/5

2194333

LEGAL NOTICE

LEGAL NOTICE

MG Panchals, LLC has on October 28, 2010, applied with the Alcoholic Beverage Control Commissioner for a Restaurant alcoholic liquor license, including Sundays, for a premises located at 1108 South College Avenue, Newark, DE 19713. Persons who are against this application should provide written notice of their objections to the Commissioner. For the Commissioner to be required to hold a hearing to consider additional input from persons against the application, the Commissioner must receive one or more documents containing a total of at least 10 signatures of residents or property owners located within 1 mile of the premises or in any incorporated areas located within 1 mile of the premises. The protest(s) must be filed with the Alcoholic Beverage Control Commissioner at the 3rd Floor, Carvel State Building, 820 North French Street, Wilmington, DE 19801. The protest(s) must be received by the Commissioner's office on or before November 29, 2010. Failure to file such a protest may result in the Commissioner considering the application without further notice, input or hearing. If anyone has questions regarding this matter, please contact the Commissioner's Office.

np 11/5,12,19

2201732

NOTICE OF PETITION TO OBTAIN TITLE TO ABANDONED PROPERTY

A petition has been filed to obtain title to the following abandoned property:

1994 FORD PROBE (VIN #: 1ZVLT20A8R5107951)

The petition was filed by:

A&R FUEL, INC. (ANTHONY DELLAVER-SANO)

770 Grantham Lane, New Castle, DE 19720 (302)420-3171

The following persons have been identified as owners or other persons with an interest in the property:

MIGUEL A. DORANTES

1657 Old Baltimore Pike, Avondale, PA 19311

If judgment is entered for the Property Holder/Petitioner, the Petitioner will be awarded complete and absolute title to the property pursuant to 25 Del. C. 4002 and any existing liens or other interests against it will be void. Anyone with a legal interest in this property may contest the petition by filing an Answer (J.P. Civ. Form No. 53) by November 9, 2010 with Justice of the Peace Court No. 13, 1010 CONCORD AVENUE, WILMINGTON, DE 19802 (302.577.2550)

Date: October 20, 2010

np 11/5

2202329

CITY OF NEWARK

DELAWARE

BOARD OF ADJUSTMENT
PUBLIC HEARING

November 18, 2010 - 7:00 P.M.

Pursuant to Chapter 32, Article XIX of the Code of the City of Newark, Delaware, notice is hereby given of a public hearing at a regular meeting of the Board of Adjustment on Thursday, November 18, 2010 at 7:00 p.m. in the Council Chamber, Newark Municipal Building, 220 Elkton Road, Newark, Delaware, to hear the following application:

1. Appeal of University Garden Associates, 281 Beverly Road, for the following variance:

a) Ch. 32-11 (a)(1) (a) - Dwelling units per gross acre - permits a maximum of 16 dwelling units per acre. Proposed plan increases the number of dwelling units from 68 existing (non-conforming) to 76 units on 4.2126 acres.

ZONING CLASSIFICATION: RM

The applications and related materials may be examined at the City Secretary's Office, 366-7070, prior to the meeting.

Clayton S. Foster
Chairman

np 11/5

2202639

LEGAL NOTICE

SHERIFF'S SALE

By virtue of a writ of #10-017650 and 185 Nov. 9, 2010.

PARCEL NO.: 08-042.10-192

PROPERTY ADDRESS: 59 Vansant Road, Newark, DE 19711.

ALL that certain lot, piece or parcel of land with the dwelling thereon erected, situate in Mill Creek Hundred, New Castle County and State of Delaware, being Lot No. 190, Block J, on the Record Subdivision Plan of Deacon's Walk, as prepared by Mann-Talley, Inc., Civil Engineers and Surveyors of Wilmington, Delaware, dated July 27, and recorded in the Office of the Recorder of Deeds in and for New Castle County, Delaware in Microfilm No. 1617, and a more recent survey by First State Mortgage Surveyors, Inc., dated April 8, 1996.

BEING the same lands and premises which Donald B. Lindsay and Alise C. Lindsay, by Deed dated July 17, 2003 and recorded in the Office of the Recorder of Deeds, in and for New Castle County and State of Delaware, in Instrument #20030722-0086392, did grant and convey unto Alise C. Lindsay.

SEIZED AND TAKEN IN EXECUTION AS THE PROPERTY OF ALISE C. LINDSAY.

TERMS OF SALE: 10% DOWN AT TIME OF SALE. BALANCE DUE ON OR BEFORE DECEMBER 20, 2010.

NP 10/29,11/5

2194332

NOTICE OF PETITION TO OBTAIN TITLE TO ABANDONED PROPERTY

A petition has been filed to obtain title to the following abandoned property:

1992 RED XLH 900CC HARLEY DAVIDSON MOTORCYCLE VIN #1HD4CAM16NY120023

The petition was filed by:

JOSEPH M SHAFFER

The following persons have been identified as owners or other persons with an interest in the property:

JEFF BINDER

ALAN T BOYD

If judgment is entered for the Property Holder/Petitioner, the Petitioner will be awarded complete and absolute title to the property pursuant to 25 Del. C. 4002 and any existing liens or other interests against it will be void. Anyone with a legal interest in this property may contest the petition by filing an Answer (J.P. Civ. Form No. 53) by November 30, 2010 with Justice of the Peace Court No. 13, 1010 CONCORD AVENUE, WILMINGTON, DE 19802 (302.577.2550)

Date: October 25, 2010

np 11/5

2202331

PUBLIC HEARING SCHEDULED FOR
DECEMBER 20, 2010

FY 2010 Annual Plan Amendment
Public Hearing Notice

Reference: Firearms Policy
Non Smoking Policy

The Newark Housing Authority invites residents and the public to attend a public hearing to discuss changes to the Public Housing Lease and Admissions and Continued Occupancy Policy to incorporate Firearms Policy and Non Smoking Policy. A copy of these policies can be reviewed during business hours from 9:00am - 12:00 noon and from 1:00pm - 4:00pm Monday through Friday. A copy of public hearing notice will be posted for 45 days in the lobby of the Administration Building. All comments be submitted in writing within the 45 day review period. Any comments received resulting in a change will be posted for review. A public hearing is scheduled for Monday, December 20th at 5:30 pm at the Newark Housing Authority's Administration Building located on 313 E. Main Street Newark, DE 19711.

np 10/29 - 12/17

2200401



MERCHANDISE

PUG PUPS. 1 male 3 females, fawn w/black, AKC cert., S&W. \$450 ea. 443-299-9356 email or firellie28@yahoo.com

New Today

POMERANIAN PUPS Vet checked, shots. Party colored. \$350 717-529-3558

New Today

YORKI PUPS (3) males, (1) female. Ready 12/12 in time for Christmas. CKC, 1st shot & wormed. \$650. 302-528-8713

CHECK OUT
OUR WEBSITE AT
WWW.CHEESAPEAKE
CLASSIFIED.COM



MERCHANDISE

**605 HORSES/TACK/
EQUIP./SUPPLIES**

16H GELDING TB, 6 yr old bay, handsome, great disp., started jumping. Best offer. 410-836-1235

3 Shetland Ponies Double Registered. \$400 & up 410-838-7579

615 APPLIANCES

DORM ROOM refrigerator \$50 Call 410-838-4749

New Today

ELECTRIC RANGE GE. Black / almond. 4 yrs old. Cost \$699 new will sell used for \$250 410-538-6564



MERCHANDISE

New Today

FREEZER Med sz upright. New cond. Pd \$329, sell for \$195 410-287-6381

WHIRPOOL extra lg cap dryer 220 volt, exc cond., moving must sell \$45 443-466-0155

New Today

WASHER, DRYER, FRIDGE. \$125 ea. Can deliver. Also repairs. 410-258-5519

617 BUILDING MATERIALS

New Today

GARAGE DOORS (2) as new, with remote. Wayne Dalton 4 windows each. \$300 ea 443-299-6277

620 COMPUTERS & ACCESSORIES

Compaq comptuer, compl. w/keyboard & scanner all in gd. cond \$40 302-547-4065

OAK & BLACK WORK station with file cabinet exc cond. \$40 302-547-4065

627 ELECTRONICS

TV 50" Mitsubishi. Recent repair stopped working again. FREE. 410-652-0636

**625 FURNITURE/
FURNISHINGS**

New Today

4 antique side chairs. Cane bottoms, walnut finish. Exc. cond. \$200. 410-939-3902

ANTIQUE CHINA CABINET \$50 obo. Call 443-502-2048

WWW.CHEESAPEAKE
CLASSIFIED.COM



MERCHANDISE

DINING TABLE Oval. 4 chairs, 2 extra leaves \$150. Maple desk w/ 8 drawers & chair \$50, maple chest of 4 drawers w/ extra mirror \$40. Please call 410-939-3902

DINING SET Beautiful solid oak, ivy carving, lrg china cabinet, table, 7 chairs, very good. cond. \$850. 443-206-3492

Lg sectional couch with recliner, beige, micro fiber, best offer 443-752-8348

Sell it here fast!



MERCHANDISE

Moving: Ethan Allen maple Windsor chairs (6) (\$200). Mauve wing chair (\$100). Mauve upholstered rocking chair (\$50). Cherry and glass coffee table (\$25) All in excellent condition. Executive desk, needs refinishing (Free). Call 410-392-3417

ROCKING CHAIR- Large Ward's rocker, dark wood, like new. Nice gift. \$40 firm. Whiteford area. 410-836-1249

SMALL TABLE Call 410-838-4749

LEGAL NOTICE

THE COURT OF COMMON PLEAS
FOR THE STATE OF DELAWARE IN
AND FOR NEW CASTLE COUNTY

IN RE: CHANGE OF NAME OF
DOLLY DELALI FORSON
Petitioner(s)

TO
DELALI AFIA FORSON

NOTICE IS HEREBY GIVEN that DOLLY DELALI FORSON

Intends to present a Petition to the court of Common Pleas for the State of Delaware in and for New Castle County, to change his/her name to DELALI AFIA FORSON

DOLLY DELALI FORSON

Petitioner

Dated: 10-27-10

np 11/5,12,19

2202242

THE COURT OF COMMON PLEAS
FOR THE STATE OF DELAWARE IN
AND FOR NEW CASTLE COUNTY

IN RE: CHANGE OF NAME OF
ANTOINETTE LEAH HOLCOMB-BENJAMIN
Petitioner(s)

TO
ANTOINETTE LEAH BENJAMIN

NOTICE IS HEREBY GIVEN that ANTOINETTE LEAH HOLCOMB-BENJAMIN

Intends to present a Petition to the court of Common Pleas for the State of Delaware in and for New Castle County, to change his/her name to ANTOINETTE LEAH BENJAMIN

ANTOINETTE LEAH HOLCOMB-BENJAMIN

Petitioner

Dated: 10-22-10

np 10/29,11/5,12

2200266

LEGAL NOTICE

Interested persons are invited to comment on the wireless telecommunications facility (Site #1NC8438A) at 715 Christiana Mall in Newark, New Castle Co., DE and specifically on potential effects to historic properties located at or near this facility, if any. The proposed activities will consist of installing six (6) antennas on existing 187 foot monopole. Comments regarding potential effects to historic properties should be submitted to Scott Horn, by email to scotthorn@acerasociates.com, by mail to Acer Associates, LLC, 403 Bloomfield Dr., Unit 2, West Berlin, NJ 08091, or phone 856.809.1202.

NP 11/5

2202282

LEGAL NOTICE

GARAGE KEEPER SALE
6 NORTH PARK DRIVE
WILMINGTON, DE 19805
DECEMBER 2, 2010 @ 10:00 AM

1998 BUICK CENTURY.....VIN# 2G4WS52M2W1608693
1997 IZUZI RODEO.....VIN# 4S2CM58V0V4351283
2001 ACURA 3.2CL.....VIN# 19UYA42441A026413
2001 HYUNDAI SANTA FE.....VIN# KM8SB82B41U017485
1999 CADILLAC SEVILLE.....VIN# 1G6KS54Y7XU906006

np 11/5

2201128



MERCHANDISE



SOLID WOOD
King waterbed
includes mattress with
2 sec baffle, heater,
mattress cover and
filler / drain kit.
EXCELLENT condi-
tion. \$350.00 or b/o
Call 443-466-5789

CLASSIFIEDS
410-398-1230
800-220-1230



MERCHANDISE

New Today

TABLE Wood
62"x35" rectangle w/6
padded chairs. \$350
obo. Electric washer &
dryer, hardly used,
\$350 set. Will sepa-
rate Ask for Janice
410-734-6627

**CHILDREN /
BABY ITEMS**

CHILDS DESK and
Chair for homework/art,
lots of storage, for
ages 3-7, great condi-
tion \$45 410-529-1598



MERCHANDISE

630 FIREWOOD

**A-1 Seasoned Fire-
wood**, oak & other
quick delivery, full
cord \$175, 1/2 cord
\$105 410-392-5175

New Today

Buck fire place insert,
24" wood, good cond.
\$595. hearth pad make
offer 443-617-5209



MERCHANDISE

**640 GENERAL
MERCHANDISE**

2 BRAND NEW filters
for Aprilaire/Space-Gard
2200/2250 \$49
Call 443-858-3761

6- (35 OZ) ONEIDA
stainless steel coffee
pots (as used in cater-
ing) all for \$50. Call
410-620-3171

**BARBIES, SPE-
CIAL** Edition. New in
box \$20 each.
410-836-7069



MERCHANDISE

New Today

BOWFLEX Extreme
SE, gently used,
\$400. Kitchen Aid SS
side-by-side
refrigerator ~freezer,
\$300. Ceramic top
GE Profile digital
range w/convection,
\$250.

443-466-9724

CLASSIFIEDS
410-398-1230
800-220-1230



MERCHANDISE

BARBIE ITEMS

Too many items to
list. Great Christmas
gift \$50. Please call
(410)529-1598.

CHINA Set of 12
white w/sm. pink &
blue flower pattern.
\$45. 410-676-7223

CLASSIFIEDS

410-398-1230

800-220-1230

WEBSITE AT

WWW.CHESAPEAKE

CLASSIFIED.COM



MERCHANDISE

New Today

HOT TUB. 6 person,
plus lounge. Very
good condition. New
\$5500 asking, \$2000
obo. 443-350-7160

LADIES NEW

Northface black ski
jacket XL. Orig. \$85
asking \$25 410-335-
2211

Sell it here fast!

Cecil Whig, providing all the local news
and events since 1841. The "go to" news
source for Cecil County.

CHESAPEAKE CLASSIFIED
410-398-1230
800-220-1230
www.chesapeakeclassified.com

LEGAL NOTICE

SHERIFF'S SALE

By virtue of a writ of #10-017116 and 47
Nov. 9, 2010.
PARCEL NO.: 11-008.30-037
PROPERTY ADDRESS: 74 Highland Circle,
Newark, DE 19713.
ALL that certain piece, parcel or tract of land
with the buildings thereon erected situate in
Pencader Hundred, New Castle County and
State of Delaware, known as 74 HIGHLAND
CIRCLE and being Lot No. 9., on the Record
Resubdivision Plan of Sandy Brae Town-
houses, as recorded in the Office of the
Recorder of Deeds in and for New Castle
County, Delaware, on Microfilm 13056, and
being more particularly bounded and
described in accordance with a recent sur-
vey by East Coast Survey, Professional
Land Surveyors, dated June 2, 1999, as fol-
lows, to-wit:
BEING the same lands and premises which
Magness Construction Co. did grant and
convey unto Karen Williams and John P.
Williams by deed dated June 25, 1999 and
recorded on June 28, 1999 in the Office of
the Recorder of Deeds, in and for New Cas-
tle County, State of Delaware, in Deed Book
2664 Page 11.
SEIZED AND TAKEN IN EXECUTION AS
THE PROPERTY OF KAREN WILLIAMS
AND JOHN P. WILLIAMS.
TERMS OF SALE: 10% DOWN AT TIME OF
SALE. BALANCE DUE ON OR BEFORE
DECEMBER 20, 2010.

NP 10/29,11/5

2194127

LEGAL NOTICE

THE COURT OF COMMON PLEAS
FOR THE STATE OF DELAWARE IN
AND FOR NEW CASTLE COUNTY
IN RE: CHANGE OF NAME OF
Mercy Ngonyo Dinkins
Petitioner(s)
TO
Mercy Ngonyo Gachinga
NOTICE IS HEREBY GIVEN that Mercy
Ngonyo Dinkins
Intends to present a Petition to the court of
Common Pleas for the State of
Delaware in and for New Castle County, to
change his/her name to Mercy Ngonyo
Gachinga

Mercy Dinkins
PetitionerDated: 10-20-10
np 10/29,11/5,12

2200046

SHERIFF'S SALE

By virtue of a writ of #10-017774 and 206
Nov. 9, 2010.
PARCEL NO.: 09-034.30-250
PROPERTY ADDRESS: 4 Abbey Road,
Newark, DE 19702.
ALL that certain lot, piece or parcel of land,
situate in White Clay Creek Hundred, New
Castle County, Delaware, being Lot 73 as
shown on the Record Major Subdivision Plan
of Norwegian Woods, of record in the Office
for the Recording of Deeds in and for New
Castle County, Delaware, in Microfilm No.
12526, and being more particularly bounded
and described according to a recent survey
by First State Mortgage surveys, Dated
October 19, 1998 as follows, to-wit:
SUBJECT to Restriction as set forth in Deed
Record 2067, Page 163
SUBJECT to Utility Agreement in Deed
Record 2106, Page 214
SUBJECT to Development Grant in Deed
Record 2054, Page 46
SUBJECT to Maintenance Agreement in
Deed Record 1990, Page 293
SUBJECT to Memorandum of Agreement in
Deed Record 1856, Page 191
SUBJECT to Easements and conditions as
shown in Microfilm No. 12526.
BEING THE SAME LANDS and premises
which Wilson Road Development Company,
by certain Deed dated the 18th day of
December, A.D. 1998, Recorded the 28th
day of December, A.D. 1998 the Office of the
Recorder of Deeds in and for New Castle
County, in Deed Book 2562, Page 0139, did
grant and convey unto Robert White, Jr. and
Kim L. Draper a/k/a Kim L. White, h/w.
SEIZED AND TAKEN IN EXECUTION AS
THE PROPERTY OF KIM L WHITE AND
ROBERT WHITE JR.
TERMS OF SALE: 10% DOWN AT TIME OF
SALE. BALANCE DUE ON OR BEFORE
DECEMBER 20, 2010.

NP 10/29,11/5

2194339

SHERIFF'S SALE

By virtue of a writ of #10-017579 and 170 Nov. 9, 2010.
PARCEL NO.: 18-026.00-140 (l/k/a 18-026.00-140; 18-026.00-141;
18-026.00-142; 18-026.00-218)
ALL that certain lot, piece or parcel of land with the buildings there-
on erected, known as No. 171 South Chapel Street, situate in the
City of Newark, New Castle County and State of Delaware, and more
particularly bounded and described as two parcels as follows, to-wit:
Being the same lands and premises which Aileen C. Sauscermen, by
deed dated July 31, 2000 and recorded in the Office of the recorder
of Deeds in and for New Castle County and State of Delaware in
Deed Record 2870, Page 291, did grant and convey unto Fairglen
Associates, III, a Delaware general partnership, in fee.
PARCEL NO. 2.
All that certain tract or parcel of land, with the improvements thereon
erected known as 163 South Chapel Street, situate on the west side
of South Chapel Street in the City of Newark, White Clay Creek Hun-
dred, New Castle County and State of Delaware, and being more
particularly bounded and described in accordance with a survey pre-
pared by Franco Bellafante, Associates, dated May 12, 1995, as fol-
lows, to-wits:
Being the same lands and premises which PNC Bank, Delaware
Executor of the Estate of Catherine A. Manning, by deed dated May
26, 1995 and recorded in the Office of the Recorder of Deeds in and
for New Castle County and State of Delaware in Deed Record 1937
Page 151, did grant and convey unto Fairglen Associates, III, a
Delaware general partnership, in fee.
PARCEL NO. 3
All that certain piece, parcel or lot of land situate in the City of
Newark, New Castle County and State of Delaware, being Lot No. 2
as shown on the Minor Subdivision Plan No. 185 South Chapel
Street, Lands of John W. Richter, II and Linda C. Richter, his wife, as
prepared by hwoard L. Roberston, Inc., Professional Engineers and
Surveyors, dated October 2, 1981 and being more particularly
bounded and described as follows, to-wit:
Being the same lands and premises which The John W. Richter, II
and Linda C. Richter Charitable Remainder Unitrust, by deed dated
May 31, 2000 and recorded in the Office of the Recorder of Deeds in
and for New Castle County and State of Delaware in Deed Record
2850, Page 161, did grant and convey unto Fairglen Associates, III,
in fee
PARCEL NO. 4
All that certain lot, piece or parcel of land with the improvements
thereon erected, situate in the City of Newark, New Castle County
and State of Delaware, known as 175 South Chapel Street, as hown
on the property line plan, dated 14 November 1991 prepared by
Franco R. Bellafante, Inc., Professional Land Surveyor and being
more particularly bounded and described in accordance therewith
as follows, to-wit:
Being the same lands and premises which James A. Powell, by deed
dated November 19, 1991 and recorded in the Office of the Recorder
of Deeds in and for Castle County and State of Delaware in Deed
Record 1258, Page 184, did grant and convey unto Fairglen Associ-
ates, II, a partnership of the State of Delaware, in fee.
BEING the same lands and premises conveyed unto Delta Eta Cor-
poration, a Delaware corporation, by deeds of Fairglen Associates, II
and Fairglen Associates, III, each a Delaware general partnership,
dated May 15, 2002 and recorded o May 16, 2002 in the Office of the
Recorder of Deeds in and for New Castle County, Delaware as
Instrument Numbers 20020516-0046411 and 20020516-0046412.
SUBJECT to all declarations, conditions, easements, rights-of-way,
restrictions, dedications, agreements, covenants and plans of
record.
SEIZED AND TAKEN IN EXECUTION AS THE PROPERTY OF
DELTA ETA CORPORATION.
TERMS OF SALE: 10% DOWN AT TIME OF SALE. BALANCE DUE
ON OR BEFORE DECEMBER 20, 2010.

NP 10/29,11/5

2194320

SHERIFF'S SALE

By virtue of a writ of #10-017318 and 109
Nov. 9, 2010.
PARCEL NO.: 26-036.30-401
PROPERTY ADDRESS: 904 Kirkwood
Street, Wilmington, Delaware 19808.
ALL that certain lot, piece or parcel of land
with the two-story brick dwelling thereon
erected, known as 904 Kirkwood Street, sit-
uate in the City of Wilmington, New Castle
County and State of Delaware.
BEING the same land and premises that
Andrew H. Scott by Deed dated November
23, 2004 an recorded in the Office of the
Recorder of Deeds, in and for New Castle
County in Deed Instrument 20050405-
0032021 did grant and convey unto Andrew
H. Scott and Jennie T. Scott, in fee.
SEIZED AND TAKEN IN EXECUTION AS
THE PROPERTY OF ANDREW H SCOTT
AND JENNIE T SCOTT.
TERMS OF SALE: 10% DOWN AT TIME OF
SALE. BALANCE DUE ON OR BEFORE
DECEMBER 20, 2010.

NP 10/29,11/5

2194219

SHERIFF'S SALE

By virtue of a writ of #10-017732 and 194
Nov. 9, 2010.
PARCEL NO.: 09-034.20-077
PROPERTY ADDRESS: 21 Dawes Drive,
Newark, DE 19702.
ALL that certain lot, piece or parcel of land
with the improvements thereon erected, sit-
uate in White Clay Creek Hundred, New Cas-
tle County and State of Delaware, being Lot
No. 11, Block A, as shown on the Plan of
VARLANO as said Plan is recorded in the
Office for the Recording of Deeds, in and for
New Castle County, in Microfilm No. 940,
and being more particularly bounded and
described in accordance with a mortgage
inspection survey by East Coast Survey,
Inc., Dated October, 2005.
BEING the same lands and premises which
previous grantor Irene Blevins, by deed
dated October 24, 2004, and recorded in the
Office of the Recorder of Deeds, in and for
New Castle county and State of Delaware, in
Deed Instrument # 200410250115528, did
grant and convey unto Amanda I. Blevins, in
fee.
BEING the same premises which Amanda I.
Blevins, by Deed dated October 28, 2005,
and recorded November 15, 2005, in the
Office for the Recorder of Deeds in and for
the County of New Castle, and State of
Delaware in Deed Instrument No. 20051115-
0117643, granted and conveyed unto Penny
Cousins and Williams Cousins grantor/mort-
gagor herein.
SEIZED AND TAKEN IN EXECUTION AS
THE PROPERTY OF PENNY COUSINS
AND WILLIAM COUSIN.
TERMS OF SALE: 10% DOWN AT TIME OF
SALE. BALANCE DUE ON OR BEFORE
DECEMBER 20, 2010.

NP 10/29,11/5

2194334

SHERIFF'S SALE

By virtue of a writ of #10-017130 and 49
Nov. 9, 2010.
PARCEL NO.: 0803630184
ALL that certain lot, piece or parcel of land,
with the buildings thereon erected, situate in
Mill Creek Hundred, New Castle County and
State of Delaware, being designated as Lot
9, Section 1, on the Record Major Subdivi-
sion Plan of MIDDLE RUN CROSSING, as
said Plan is of record in the Office for the
Recording of Deeds in and for New Castle
County, Delaware in Microfilm No. 11762,
said lot also known as 5 Vireo Circle, and
being more particularly described in accor-
dance with a survey by Morris Ritchie Asso-
ciates, Inc., dated August 11, 1994, as fol-
lows, to-wit:
SUBJECT to the Declaration of Restrictions
as contained in Deed Book 1782, page 289;
Deed Record L, Volume 32, page 394 and
Deed Book 1130, page 201.
SUBJECT to the Agreements as contained in
Deed Book 1708, page 71; Deed Book 1699,
page 286; Deed Book 1661, page 61 and
Deed Book 1661, page 69.
SUBJECT to all declarations, easements,
rights-of-way, restrictions, dedications,
agreements, covenants, conditions and
plans of record.
BEING the same lands and premises by
which Pulte Home Corporation did grant and
convey unto Randall W. Rogers and Debo-
rah C. Rogers, husband and wife, by deed
dated August 24, 1994 and recorded on
August 25, 1994 in the Office of the
Recorder of Deeds in and for New Castle
County, Delaware in Deed Book 1797, Page
055.
SEIZED AND TAKEN IN EXECUTION AS
THE PROPERTY OF RANDALL W
ROGERS AND DEBORAH C ROGER.
TERMS OF SALE: 10% DOWN AT TIME OF
SALE. BALANCE DUE ON OR BEFORE
DECEMBER 20, 2010.

NP 10/29,11/5

2194132



MERCHANDISE

LARGE CHRISTMAS Tree Balls. 150, 6 inch, multi-colors. Used to decorate a 25 ft. Holly tree. Can be used indoors, \$75. 25 multi color light sets included. Please Call: 410-398-7706 or 443-350-1781

New Today
LADY'S Porcelain doll collection. New. Priced to sell. 410-939-3902

LAUNDRY SOAP. Retail \$40, sell \$8. 5 gallons available. 410-658-0858

NEW - HOSPITAL SIZE, deep fitted sheets, \$2.00 each 410-398-5197

Old baseball cards WANTED. 1973 and older 302-420-5866

RECORD ALBUMS. About 100 LP's. \$30 for all. Call for list 410-638-1348 after 7pm

SMOKE FREE electronic cigarette, w/batteries & charger. 4 cartons of mint flavored cigarette cartridges. \$50. 410-441-8005

New Today
WOOD STOVE Schrader. Best offer. Good condition. Call 302-547-7584

LEGAL NOTICE

LEGAL NOTICE
RE: DEADLY WEAPON
I, George Kenneth Janney, residing at 601 Langwater Drive, Newark, DE, 19711 will make application to the judges of the superior court of the State of Delaware in and for New Castle County at Wilmington for the next term for a license to carry a concealed deadly weapon, or weapons, for the protection of my person(s), or property, or both.
George Kenneth Janney
10/28/10

np 11/5
2202238



MERCHANDISE

642 SPORTING GOODS
New Today
20 SETS Quality made goose V-Boards. Ready to go. \$400. 410-920-0181

AB CIRCLE PRO Like new, includes book & DVD. \$50. 410-441-8005

GUN COLLECTION FOR SALE. CALL \$950. 302-419-5474

Classifieds World



MERCHANDISE

PROFORM exercise bike. Model 940S. \$45. 410-658-0858

643 SEASONAL
6' Artificial Christmas tree w/stand & storage bags. \$45. 410-378-2288

644 LAWN & GARDEN EQUIPMENT

Craftsman riding mower with sweeper, 20 hp, 42" cut. Excellent condition. \$450. Call 410-392-3417.



MERCHANDISE

672 TOOLS
New Today
RADIAL SAW 10" \$125. 6" joiner, Delta, \$225. Drill press, table top \$95 410-676-7223

New Today
SNAP- ON KRL756 roll tool chest. Teal, 7 drawer, no scratches. Paid \$3300 in '06. 1st \$1075 takes it. 443-309-4326



MERCHANDISE

680 WANTED TO BUY
New Today
TRAINS WANTED. Buying Lionel, Ives, Voltamp. 410-913-9484. Save this ad!

WWW.CHESAPEAKE CLASSIFIED.COM



MERCHANDISE

LOOK
WANTED; DIABETIC TEST STRIPS up to \$18/ box. Cash on the spot. Any kind/any brand. Unopened will pick up. Debbie 410-820-6540

WWW.CHESAPEAKE CLASSIFIED.COM



MERCHANDISE

120 POULTRY/MEATS
BLACK FREEZER Local, naturally raised. No growth hormones or antibiotics. 1/4's and 1/2's available. \$2 per pound. Trial Run Farm. 410-838-5373

WWW.CHESAPEAKE CLASSIFIED.COM

CHESAPEAKE CLASSIFIED
What's in it for you?

410-398-1230 800-220-1230
whigclassified@chespub.com whigclassified@chespub.com

LEGAL NOTICE

SHERIFF'S SALE
By virtue of a writ of #10-017534 and 168 Nov. 9, 2010.
PARCEL NO.: 08-036.40-085
PROPERTY ADDRESS: 4829 Plum Run Court Pike Creek, DE 19808.
ALL that certain lot, piece or parcel of land with the buildings thereon erected, known as 4829 Plum Run Court, and being Lot No. 49 in the Record Major Subdivision of Village of Plum Run, located in Mill Creek Hundred, New Castle County and State of Delaware, prepared by Mann-Talley, Inc., Civil Engineers and Surveyors, dated March 31, 1976 and of record in the Office of the Recorder of Deeds in and for New Castle County, Delaware, in Microfilm No. 4164, and being more particularly bounded and described in accordance with a recent survey by On Point, Inc. dated April, 2004, as follows, to-wit:
BEING the same lands and premises which Peter P. Smith and Georgia T. Smith did grant and convey unto James J. Protack, jr. by deed dated April 30, 2004 and recorded on May 5, 2004 in the Office of the Recorder of Deeds, in and for New Castle County, State of Delaware, Deed Instrument number 20040505-0049900.
SEIZED AND TAKEN IN EXECUTION AS THE PROPERTY OF JAMES J PROTACK, JR.
TERMS OF SALE: 10% DOWN AT TIME OF SALE. BALANCE DUE ON OR BEFORE DECEMBER 20, 2010.

NP 10/29,11/5 2194307

Visit one of these local dealers and drive home happy!

VOLKSWAGEN
Smith
VOLKSWAGEN, LTD.
4304 Kirkwood Highway,
WILMINGTON, DE
302-998-0131
Drivers wanted

Contact Laurie To Advertise HERE
410-398-1230
800-220-1230
Lamici@chespub.com

REACH OVER 50,000 READERS WEEKLY!
Call Laurie at 800-220-3311 to Advertise Here!

LEGAL NOTICE

CITY OF NEWARK DELAWARE COUNCIL MEETING AGENDA

November 8, 2010 - 7:00 PM - CC

SILENT MEDITATION & PLEDGE OF ALLEGIANCE
Presentation of Certificates to Citizens Academy Participants
1. ITEMS NOT ON PUBLISHED AGENDA:
A. Public (5 minutes per speaker)
B. University
(1) Administration
(2) Student Body Representative
C. Council Members
2. APPROVAL OF CONSENT AGENDA:
A. Approval of Regular Council Meeting Minutes - October 25, 2010
B. Approval of Special Council Meeting Minutes - October 25, 2010
C. Receipt of Alderman's Report - November 4, 2010
D. Setting Date for Public Hearing of 2011 General Operating Budget for November 22, 2010
E. Receipt of Quarterly Pension Report
F. Receipt of Real Estate Tax Assessment Quarterly Supplemental Roll
CONSENT AGENDA - Those items on the Consent Agenda are considered routine and non-controversial and will be acted upon by a single vote of the Council. There will be no separate discussion of these items unless a member of Council so requests, in which event the matter shall be removed from the Consent Agenda and considered a separate item.
3. ITEMS NOT FINISHED AT PREVIOUS MEETING:
*A. Bill 10-09 - An Ordinance Amending Chapter 7, Building, Code of the City of Newark, Delaware, By Establishing a Newark LEED Based Energy Conservation Program (Tabled 6/14/10 - Revised 10/7/10)
1. Authorization to Execute Licensing Agreement with U.S. Green Building Council, Inc.
4. FINANCIAL STATEMENT - Next Meeting
5. RECOMMENDATIONS ON CONTRACTS & BIDS: None
*6. ORDINANCES FOR SECOND READING & PUBLIC HEARING: None
*7. RECOMMENDATIONS FROM THE PLANNING COMMISSION AND/OR PLANNING & DEVELOPMENT DEPARTMENT:
A. Request of Janet E. Jacobson for a Special use Permit for a Proposed Customary Home Occupation in a Residential Dwelling In Order to Sell Home Baked Pretzels Wholesale at 22 Minquill Drive In Silverbrook, Newark, Delaware
*8 ITEMS SUBMITTED FOR PUBLISHED AGENDA:
A. Council Members:
1. Resolution No. 10- In Appreciation of Representative Michael N. 'Mike' Castle
B. Others:
1. WILMAPCO Presentation re Regional Transportation Plan
9. SPECIAL DEPARTMENTAL REPORTS:
A. Special Reports from Manager & Staff: None
*OPEN FOR PUBLIC COMMENT - The above agenda is intended to be followed, but is subject to changes, deletions, additions, and modifications, as permitted under the Freedom of Information Act of the State of Delaware. Copies may be obtained at the City Secretary's Office, 220 Elton Road, or online at www.cityofnewark.de.us
np 11/5 2202378

LEGAL NOTICE

PUBLIC AUCTION
SENTINEL SELF STORAGE
200 First State Blvd
Wilmington, DE 19804
(302) 999-0704

A Public Auction will be held on Wednesday, December 8, at 11:00 AM. The contents of the following storage units will be auctioned:
Unit # 211- Martin G. Berster III- Boxes, clothing, ice chest, stereo, portable TV., grill
Unit # 221- Heather Hoopes - Bags, bed frame, box spring, mattress, boxes, pictures, shelving, totes, vacuum
Unit # 9333- Jessica Felsburg- Bags, book case, boxes, kitchen chair, couch, hamper, table lamp, mirrors, suitcase, coffee table, dining table, end table, wall clock, model ship
Unit # 6281- Frances Chambers- Air conditioner, books, boxes, rug, totes, toys

Sentinel Self Storage
333 E. Lea Blvd.
Wilmington, DE 19802
302-764-6300

A Public Auction will be held on 12-8-10 at 12:00PM at the above address. All sales are cash only. All sales are final. The units to be auctioned are as follow:

Unit #	Name	Contents
10	Carolyn Virginia	Bags, Boxes, Fan, Hamper, Shelving, Doors, Golf Clubs
59	Schonda L. Harris	Boxes, Bags, Upholstered Chair, Clothing
74	Diane E. Whittaker	Boxes, Chest of Drawers, Dresser, Drum Kit
67	Oliver Patterson	Bags, Boxes, Pictures, Suitcase, Snack Table, Totes, Heater, Alcohol
197	Romaine Boyd	Boxes, Fan, Hamper, Ice Chest, Pictures, Shelving, Stool, Tool Box, Snow Blower, Pressure Washer, Helmet
397	Angela Scott	Boxes, Bags, Kitchen Table, Chairs, Couch
447	Charlotte E. McKinley	Bags, Bed Frame, Box-Spring, Mattress, Boxes, Kitchen Chair, Rocking Chair, Chest of Drawers, Dresser, Table Lamp, Suitcase, Snack Table, TV, Sword

PUBLIC AUCTION
SENTINEL SELF STORAGE
465 Pulaski Hwy
New Castle, DE 19720
(302) 328-5810

A Public Auction will be held on Wednesday, December 8th, 2010 at 2:00 PM. The contents of the following storage units will be auctioned:

Unit-#3055-Richard Bryant-Bags, Boxes, Car Jack, Tent
Unit-#5020-Loren Kellerman-Box Spring, Mattress, Bicycles, Boxes, Chair, Entertainment Center, Ladder, Floor Lamp, Table Lamp, Lawn-mower, Shelving, Toolbox, Grill, Heater
Unit-#1012-Loren Kellerman-Boxes, Filing Cabinet, Fan, Refrigerator, Shelving, Hand Truck, Metal Cabinets
Unit-#3014-Crystal Williams-Bags, Clothing, Ice Chest, Table, Totes, Albums, French Horns

PUBLIC AUCTION
SENTINEL SELF STORAGE
1100 Elton Road
Newark, DE 19711
(302) 731-8108

A Public Auction will be held on Wednesday, 12/08/2010 at 10:00 AM. The contents of the following storage units will be auctioned:
Unit 3005 Britany S. Brown: bags,mattress,bed frame,box spring,kitchen chairs,dining table,totes,toys,shoes,purses
Unit 4108 James Gaylord Jones: Bags,boxes,clothing,dressor,totes,stereo,pot and pans,fishing equipment,hamper,dvd
Unit 9109 Justin Sosa: boxes,filing cabinet,office chairs,shelving
np 11/5,12 2202278



TRANSPORTATION

815 POWER BOATS

13' BOSTON WHALER All new wood. Boat & trailer \$1,000. **14' ALUMINUM BOAT**, 2 seats with trailer \$300 443-907-4370

840 RECREATIONAL VEHICLES

38' Gulfstream, Prairie Schooner, dble slide, dble axle, 1992, 5th wheel. 4 burner stove/oven, ref, AC, and all tires new. Has gooseneck adapter, but pin-box intact, just remove adapter. Needs new roof. First \$1,200.00 takes her home 410-984-9779

845 CAMPERS/POP-UPS**17' COACHMAN TRAVEL TRAILER '07**

Full bath, kitchen with microwave, stove, fridge & freezer. A/C, heat, dual axle, dual batteries, dual LP tanks, solar battery charger, like new awning. Recent MD inspection. \$8,350 443-907-4403

Great Buy**New Today****Great Buy**

36' CARDINAL 5TH WL '09 4 season, (2) a/c's, king bed, FP, 3 slides, Gel-Coat, sep ba, (2) TV's. Loaded! Perfect cond. Priced below mkt. \$39,900. 443-907-7110 for info and pictures.

CLASSIFIEDS
410-398-1230
800-220-1230



TRANSPORTATION

850 MOTORCYCLES/ATVs

2001 KAWASAKI zx6r 21,300 mi, very good condition. \$2,500, contact Dave, 443-553-3531

WWW.CHESAPEAKE CLASSIFIED.COM



TRANSPORTATION

860 AUTO PARTS & ACCESSORIES

'04 DODGE FULL size pickup tailgate. Exc condition. make offer. 443-350-4541

865 TRAILERS

18' DOWNS TRAILER '06 Equipped with trimmer racks & side gate. \$2,000 Please call 443-463-3421



TRANSPORTATION

ALUMINUM BOX TRAILER, NEVER USED \$1500 call 410-658-7701



TRANSPORTATION

870 TRUCKS/SPORT UTILITY VEHICLES

'74 FORD F100 P/U 74K orig miles. All straight, all orig miles. Runs great. \$2100 443-907-4370

WWW.CHESAPEAKE CLASSIFIED.COM



TRANSPORTATION

870 TRUCKS/SPORT UTILITY VEHICLES

'07 TOYOTA Tundra Ltd fully loaded 4 whl dr, over \$12k in extras including stereo & others. Special Etd TRD 22" Wheels, \$22,000 443-988-2927



TRANSPORTATION

'87 CHEVY 4 whl drive, w/ snow blade make offer. Call 443-350-4541

CHEVROLET SILVERADO 2500 '03 4x4, heavy duty, red, cew cab. 28K orig mi. Great cond. \$14,800 410-937-4746

Sell it Now fast!



TRANSPORTATION

New Today

CHEVY 1/2 TON P/U CUSTOM DELUXE '87 4 whl dr, 99% restored. Exc cond \$5500 b/o 410-378-4566



TRANSPORTATION

CHEVY S10 '89, 350 V8, 5 speed, alloy wheels. 410-392-5161 or 302-598-1771

Ford F250 '09 XLT. Super duty, ext cab, 36k auto, V10. Exc. cond. \$27,000 obo. 410-688-1164

LEGAL NOTICE

SHERIFF'S SALE

By virtue of a writ of #10-018285 AND (270) NOV. 9, 2010
Parcel No. 10-043.10-822
Property Address: 16 Cromwell Court, Newark, DE 19702

ALL THAT CERTAIN PIECE, PARCEL OF TRACT OF LAND SITUATE IN NEW CASTLE HUNDRED, NEW CASTLE COUNTY, STATE OF DELAWARE, BEING LOT 28 ACCORDING TO THE RECORD MAJOR SUBDIVISION PLAN OF WELLINGTON MEADOWS AS RECORDED IN THE RECORDER OF DEEDS IN AND FOR NEW CASTLE COUNTY ON MICROFILM NUMBER 12225 AND AS PER A MORE RECENT PLAN PREPARED BY RAMESH C. BATIA ASSOCIATES, P.A., CONSULTING ENGINEERS AND LAND SURVEYORS, PLAN NO. 86389 3-A-10663 AND MORE PARTICULARLY DESCRIBED AS FOLLOWS, TO WIT:

BEING the same lands and premises which Mel R. Martinez did grant and convey unto Geoffrey M. Arisi by deed dated April 8, 2003 and recorded on April 8, 2003 in the Office of the Recorder of Deeds, in and for New Castle County, State of Delaware, Deed Instrument number 20030408-0043293.

SEIZED AND TAKEN IN EXECUTION AS THE PROPERTY OF GEOFFREY M. ARISI.
TERMS OF SALE: 10% DOWN AT TIME OF SALE. BALANCE DUE ON OR BEFORE DECEMBER 20, 2010.

NP 10/29,11/5

2195339

LEGAL NOTICE

SHERIFF'S SALE

By virtue of a writ of #10-018128 AND (247) NOV. 9, 2010.
Parcel No. 11-020.30-109
Property Address: 200 Barrington Court, Newark, DE 19702

ALL that certain lot, piece or parcel of land with the improvements thereon erected, situate in Pencader Hundred, New Castle County and State of Delaware, known as Lot No. 72, as shown on the Record Major Subdivision Plan of BARRINGTON, as said Plan is of record in the Office of the Recorder of Deeds, in and for New Castle County, State of Delaware, in Microfilm No. 12961, and being more particularly bounded and described in accordance with a Mortgage Inspection Plan prepared by East Coast Survey, Professional Land Surveyors, of Wilmington, Delaware, dated January 20, 2003.

BEING the same lands and premises which Glenn A. Needham and Michelle M. Needham, by Deed dated January 28, 2003 and recorded in the Office of the Recorder of Deeds, in and for New Castle County and State of Delaware, in Instrument #20030205-0015186, did grant and convey unto Kwame A. Solomon.

SEIZED AND TAKEN IN EXECUTION AS THE PROPERTY OF KWAME A. SOLOMON.

TERMS OF SALE: 10% DOWN AT TIME OF SALE. BALANCE DUE ON OR BEFORE DECEMBER 20, 2010.

NP 10/29,11/5

2195325

LEGAL NOTICE

SHERIFF'S SALE

By virtue of a writ of #10-017419 and 151 Nov. 9, 2010.
PARCEL NO.: 10-039.10-599
PROPERTY ADDRESS: 201 Bellwether Ct., Newark, DE 19702.

ALL that certain lot, piece or parcel of land, known as Lot No. 1 situate in New Castle Hundred, New Castle County, State of Delaware, as shown on the Record Major Subdivision Plan of Bellwether Manor, prepared by Landmark Engineering, dated September 15, 1994, and recorded in the Office of the Recorder of Deeds in and for New Castle County, State of Delaware, in Microfilm No. 12379.

BEING the same lands and premises which Jo Anna Francis did by deed dated June 30, 2003 and recorded in the office of the Recorder of Deeds, in and for New Castle County, Delaware in Instrument No. 20030702-0079174 did grant and convey unto Jo Anna McRae.

SEIZED AND TAKEN IN EXECUTION AS THE PROPERTY OF JO ANNA MCRAE.
TERMS OF SALE: 10% DOWN AT TIME OF SALE. BALANCE DUE ON OR BEFORE DECEMBER 20, 2010.

NP 10/29,11/5

2194274

SHERIFF'S SALE

By virtue of a writ of #10-017448 and 157 Nov. 9, 2010.
PARCEL NO.: 10-039.10-009
PROPERTY ADDRESS: 2342 Milton Place, Newark, DE 19702.

ALL that certain piece, parcel or tract of land, situate in the New Castle Hundred, New Castle County, State of Delaware, being lot 4-4-A according to the Record Resubdivision Plan of The Cobblestones - Taylortowne as recorded in the Recorder of Deeds Office in and for New Castle County, Delaware on Microfilm No. 4446 and per a recent plan prepared by Ramesh C. Batta Associates, P.A., Professional Engineers and Land Surveyors, plan number 89129-A-16098.

BEING the same lands and premises which P. Eileen Spory, by Deed dated October 31, 1984, and Recorded November 1, 1984, in the Office of the Recorder of Deeds, in and for New Castle County and State of Delaware, in Deed Book 170, Page 21, did grant and convey unto Barbara A. Steward.

BEING the same premises which Barbara Steward, by Deed dated May 28, 2004, and recorded June 4, 2004, in the Office of the Recorder of Deeds in and for the County of New Castle, and State of Delaware in Deed Instrument No. 20040604-0061218, granted and conveyed unto Lisa S. Cook and Peter J. Cook, grantor/mortgagor herein.

SEIZED AND TAKEN IN EXECUTION AS THE PROPERTY OF PETER J COOK AND LISA S COOK.

NP 10/29,11/5

2194291

SHERIFF'S SALE

By virtue of a writ of #10-017104 and 45 Nov. 9, 2010.
PARCEL NO.: 11-016.20-037
PROPERTY ADDRESS: 209 Cunane Circle, Newark, DE 19702.

ALL THAT CERTAIN LOT PIECE OR PARCEL OF LAND, SITUATE IN PENCADER HUNDRED, NEW CASTLE COUNTY, AND STATE OF DELAWARE, AND BEING LOT NUMBERED FIVE (50 AS SHOWN OF THE RECORD MAJOR SUBDIVISION PLAN OF FOREST RIDGE, AS SAID PLAN IS OF RECORD IN THE OFFICE OF THE RECORDER OF DEEDS IN AND FOR NEW CASTLE COUNTY, DELAWARE ON MICROFILM NUMBER 14369. THE IMPROVEMENTS THEREON BEING KNOWN AS 209 CUNANE CIRCLE, NEWARK, DE 19702. THE IMPROVEMENTS THEREON BEING COMMONLY KNOWN AS 209 CUNANE CIRCLE, NEWARK, DELAWARE 19702.

BEING the same lands and premises which Pulte Home Corporation did grant and convey unto Errol G. Charlton by deed dated March 14, 2002 and recorded on April 12, 2002 in the Office of the Recorder of Deeds, in and for New Castle County, State of Delaware, Deed instrument number 20020412-0035020.

SEIZED AND TAKEN IN EXECUTION AS THE PROPERTY OF ERROL G CHARLTON.

TERMS OF SALE: 10% DOWN AT TIME OF SALE. BALANCE DUE ON OR BEFORE DECEMBER 20, 2010.

NP 10/29,11/5

2194111

SHERIFF'S SALE

The following Real Estate will be exposed for Public Sale at the CITY/COUNTY BLDG., 800 N. French Street, City of Wilmington, New Castle County, Delaware, by Michael P. Walsh, Sheriff, on TUESDAY the 9TH day of NOVEMBER 9, 2010 AT 10:00 A.M.

By virtue of a writ of #10-016883 and 9 Nov. 9, 2010.

PARCEL NO.: 09-027.20-179
PROPERTY ADDRESS: 107 Elliot Street, Newark, Delaware 19713

ALL THAT CERTAIN lot, piece or parcel of land with the buildings thereon erected, situate in White Clay Creek Hundred, New Castle County and State of Delaware, known as 107 Elliot Street, being Lot No. 67, Block B, Kimberton as shown on the Record Land Development Plan, Section One, Kimberton of record in the Office of the Recorders, in and for New Castle County, Delaware in Microfilm No. 1819 and being more particularly bounded and described in accordance with a recent survey by Zebley & Associates, Inc., dated February 6, 2007.

BEING the same lands and premises conveyed to Larry P. Wheeler, by Deed from Robert E. Rowe and Brent L. Rowe, dated February 28, 2007, and recorded on March 2, 2007, in the Office of the Recorder of Deeds, in and for New Castle County, and State of Delaware, in Instrument No. 20070302-0020559.

SEIZED AND TAKEN IN EXECUTION AS THE PROPERTY OF LARRY P WHEELER.
TERMS OF SALE: 10% DOWN AT TIME OF SALE. BALANCE DUE ON OR BEFORE DECEMBER 20, 2010.

NP 10/29,11/5

2194018

LEGAL NOTICE

SHERIFF'S SALE

By virtue of a writ of #10-017429 and 153 Nov. 9, 2010.
PARCEL NO.: 09-034.30-248
PROPERTY ADDRESS: 16 Penny Lane, Newark, Delaware 19702.

ALL that certain lot, piece or parcel of land with the buildings thereon erected, situate in White Clay Creek Hundred, New Castle County, Delaware, known as 16 Penny Lane, being Lot No. 71 on the Record Major Subdivision Plan for Norwegian Woods, Section One, as said plan is of record in the Office of the Recording of Deeds in and for New Castle County, Delaware, in Microfilm Record No. 1,526 and described in accordance with a survey by Zebley and Associates, Inc., Professional Land Surveyors of Wilmington, Delaware, dated July 11, 1997.

BEING the same lands and premises which Wilson Road Development Company, a Delaware corporation, by Deed dated July 18, 1997, and recorded on July 21, 1997, in the Office of the Recorder of Deeds in and for New Castle County, Delaware, in Deed Book 2302, Page 85, did grant and convey unto Kevin Miller and Danita D. Miller, in fee.

SEIZED AND TAKEN IN EXECUTION AS THE PROPERTY OF DANITA D MILLER AND KEVIN MILLER.

TERMS OF SALE: 10% DOWN AT TIME OF SALE. BALANCE DUE ON OR BEFORE DECEMBER 20, 2010.

NP 10/29,11/5

2194279

SHERIFF'S SALE

By virtue of a writ of #10-016899 and 17 Nov. 9, 2010.
PARCEL NO.: 18-009.00-074
PROPERTY ADDRESS: 3 Moss Court, Newark, DE 19711

All that certain lot, piece or parcel of land with the buildings thereon erected, situate in the City of Newark, New Castle County and State of Delaware, known as 3 Moss Court, being Lot No. 59 on the major subdivision plan of Ridgewood Glen, as said plan is of record in the Office of the Recording of Deeds in and for New Castle County, Delaware, in Microfilm Record No. 8447.

BEING a part of the same lands and premises which John Paul Jaquette and Louise B. Jaquette, his wife, by deed dated the 30th day of July 1986 and of record in the Office of the Recorder of deeds, in and for New Castle County, Delaware, in Deed Book 408, Page 115, did grant and convey unto Ridgewood Glen Development Corporation, a Delaware Corporation, in fee.

BEING the same premises which Ridgewood Glen Development Corporation, by Deed dated August 1988 and recorded August 22, 1988 in the Office for the Recorder of Deeds in and for the County of New Castle, and State of Delaware in Deed Book 748, Page 261, granted and conveyed unto Robert E. Methvin and Jeanne P. Methvin, grantor/mortgagor herein.

SEIZED AND TAKEN IN EXECUTION AS THE PROPERTY OF ROBERT E METHVIN AND JEANNE P METHVIN.

TERMS OF SALE: 10% DOWN AT TIME OF SALE. BALANCE DUE ON OR BEFORE DECEMBER 20, 2010.

NP 10/29,11/5

2194020



TRANSPORTATION

FORD '97 RANGER
PU V6 auto., 180k mi.,
2 sets of whsl & tires
\$2400 443-350-0254

**875 VANS/
MINI VANS**

New Today

CHEVY VENTURA
'01 Looks & runs
great. Silver color.
87K. \$3500. Please
call 410-398-7258

New Today

CHEVY Deluxe '87.
Insp. Everything in
excellent cond. \$2500
410-398-4221

878 ANTIQUE AUTOS

New Today

'69 CAMARO
\$3500, Rough but all
there. Call 410-658-
5423

New Today

'72 Grand Prix Clas-
sic Beautiful show car.
Low miles. Tagged.
\$7000. 410-398-4221

880 AUTOS

**Just
Reduced!!!**

2005 Mercury
Grand Marquis LS in
very good condition.
Blue w/86000 miles
and all options.
Excellent power, yet
super gas mileage.
NADA Retail
\$12,275.00 GRAND-
PA HAS TO MANY
CARS! \$10,275.00
obo 410-984-9779



Call Us Today
To Place Your Ad.
Let Chesapeake
Classified Work
For You!

410-398-1230
800-220-1230 or
www.chesapeake-
classified.com

LEGAL NOTICE

SHERIFF'S SALE

By virtue of a writ of #10-018354 AND (293) NOV. 9, 2010.
Parcel No. 11-014.30-001C0822
Property Address: 822 Cobble Creek Curve, Newark, DE 19702

ALL that certain unit of real property existing under and by virtue of the Unit Property Act of Delaware, known as Unit No. 822, in the Commons at Stones Throw, Phase UI, a Condominium community situate in Pencader Hundred, New Castle County and State of Delaware.

BEING the same lands and premises which Nancy Pedrick, by Deed dated August 27, 2007, and recorded in the Office of the Recorder of Deeds in and for New Castle County and State of Delaware in Instrument No. 20080227-0013069, granted and conveyed unto Household Finance Corporation II, in fee.

BEING the same premises which Household Finance Corporation II, by Deed dated April 9, 2008, and recorded April 21, 2008, in the Office for the Recorder of Deeds in and for the County of New Castle, and state of Delaware in Deed Instrument No. 20080421-0026980, granted and conveyed Drew Chicklo, grantor/mortgagor herein.

SEIZED AND TAKEN IN EXECUTION AS THE PROPERTY OF DREW R. CHICKLO.

TERMS OF SALE: 10% DOWN AT TIME OF SALE. BALANCE DUE ON OR BEFORE DECEMBER 20, 2010.

np 10/29,11/5 2195365

SHERIFF'S SALE

By virtue of a writ of #10-017227 and 79 Nov. 9, 2010.
PARCEL NO.: 11-006.10-264
PROPERTY ADDRESS: 55 Kenmar Drive, Newark, DE 19713.

ALL THAT CERTAIN PROPERTY SITUATED IN THE CITY OF NEWARK IN THE COUNTY OF NEW CASTLE AND STATE OF DELAWARE, BEING DESCRIBED AS FOLLOWS: LOT 233, SECTION K, BROOKSIDE PARK, CITY OF NEWARK.

BEING the same lands and premises which were conveyed to Gerald E. Bowerson and Mary Jane P. Bowerson, husband and wife, by Deed of Gerald E. Roberts and Madeline C. Roberts, husband and wife, dated October 6, 1980 and recorded in the Office of the Recorder of Deeds, in and for New Castle County and State of Delaware in Deed Book H, Volume 112, Page 44, in fee. Thereafter, the said Mary Jane P. Bowerson did depart this life on April 14, 2002, leaving said lands and premises to Gerald E. Bowerson, party of the first part, as tenant by the entirety. BEING the same premises which Gerald E. Bowerson, by Deed dated September 26, 2005, and recorded January 23, 2006, in the Office for the Recorder of Deeds in and for the County of New Castle, and State of Delaware in Deed Instrument No. 20060123-0006995, granted and conveyed unto Gerald E. Bowerson, grantor/mortgagor herein.

SEIZED AND TAKEN IN EXECUTION AS THE PROPERTY OF THE ESTATE OF GERALD E. BOWERSON, GERALD BOWERSON, JR AND MEGAN MAIE STONER. TERMS OF SALE: 10% DOWN AT TIME OF SALE. BALANCE DUE ON OR BEFORE DECEMBER 20, 2010.

NP 10/29,11/5 2194185

LEGAL NOTICE

SHERIFF'S SALE

By virtue of a writ of #10-018226 AND (253) NOV. 9, 2010.
Parcel No. 09-038.10-162
Property Address: 15 Woodcrest Court, Newark, DE 19702

ALL that certain lot, piece or parcel of land with the buildings thereon erected situate in White Clay Creek Hundred New Castle County and State of Delaware known as 15 Woodcrest Court, being Lot No. 53 on the record Major Land Development Plan of Valley Stream Village, Phase III, as said plan is of record in the office for the Recording of Deeds in and for New Castle County, Delaware in Microfilm Record 10257, and being more particularly bounded and described in accordance with a recent mortgage inspection plan by East Coast Survey, Professional Land Surveyors, dated June 9, 1999.

AND BEING the same lands and premises conveyed unto Stacy R. Williams, by deed of Jeffrey S. Simendinger dated September 17, 1999 and of record in the Office of the Recorder of Deeds in and for New Castle County and State of Delaware in deed Book 2712, Page 241.

SEIZED AND TAKEN IN EXECUTION AS THE PROPERTY OF STACY R. WILLIAMS.

TERMS OF SALE: 10% DOWN AT TIME OF SALE. BALANCE DUE ON OR BEFORE DECEMBER 20, 2010.

np 10/29,11/5 2195334

SHERIFF'S SALE

By virtue of a writ of #10-016992 and 30 Nov. 9, 2010.
PARCEL NO.: 10-016992
PROPERTY ADDRESS: 103 Landers Lane, New Castle, Hundred, DE 19720.

All that certain lot, piece or parcel of land, situate in New Castle Hundred, New Castle County and State of Delaware, known as 103 Landers Lane and also known as Lot No. 56 on the Plan of Swanwyck Gardens, (Extension), a said Plan is of record in the Office of the Recorder of Deeds, in and for New Castle County and State of Delaware in Plat Record No. 3, Page 33

BEING the same lands and premises which EMC Mortgage Corporation, by Deed dated April 29, 1998, and recorded April 30, 1998 in the Office of the Recorder of Deeds in and for New Castle County, Delaware in Deed Book 2433, Page 0146 did grant and convey unto Michael P. McCaffery, Jr., in fee.

BEING the same premises which Michael P. McCaffery, Jr., by Deed dated November 30, 1999 and recorded December 1, 1999 in the Office for the Recorder of Deeds in and for the County of New Castle, and State of Delaware in Deed Book 2748, Page 0207, granted and conveyed unto James P. McCaffery, III and Linda McCaffery, grantor/mortgagor herein.

SEIZED AND TAKEN IN EXECUTION AS THE PROPERTY OF ESTATE OF JAMES P. MCCAFFERY, III AND LINDA MCCAFFERY. TERMS OF SALE: 10% DOWN AT TIME OF SALE. BALANCE DUE ON OR BEFORE DECEMBER 20, 2010.

NP 10/29,11/5 2194063

LEGAL NOTICE

SHERIFF'S SALE

By virtue of a writ of #10-017825 AND (223) NOV. 9, 2010.
Parcel No. 10-039.10-572
Property Address 12 Spring Drive, Newark, DE 19702

ALL that certain lot, piece or tract of land situate in New Castle Hundred, New Castle County, State of Delaware, being Lot No. 115, according to the Record Major Subdivision Plan of Brookfield, as recorded in the Office of the Recorder of Deeds in and for New Castle County, Delaware, in Microfilm No. 12071, and being more particularly bounded and described in accordance with a recent survey prepared by A.E.S. Surveyors dated February 27, 2006, as follows, to wit:

BEING the same lands and premises which Dinesh B. Shah and Nisha Shah did grant and convey unto John Kamau Wanene and Rose Kamau Wairimo by deed dated March 3, 2006 and recorded on March 6, 2006 in the Office of the Recorder of Deeds, in and for New Castle County, State of Delaware, Deed Instrument number 20060306-0021911.

SEIZED AND TAKEN IN EXECUTION AS THE PROPERTY OF JOHN KAMAU WANENE AND ROSE KAMAU WAIRIMO.

TERMS OF SALE: 10% DOWN AT TIME OF SALE. BALANCE DUE ON OR BEFORE DECEMBER 20, 2010

np 10/29, 11/5 2195308

SHERIFF'S SALE

By virtue of a writ of #10-016945 and 20 Nov. 9, 2010.
PARCEL NO.: 18-047.00-044
PROPERTY ADDRESS: 438 Douglas D Alley Drive, Newark, DE 19713.

All that certain lot, piece or parcel of land with the buildings thereon erected, situate in the City of Newark, New Castle County and State of Delaware, known as 438 Douglas D. Alley Drive, and being Lot No. 12, as shown on the Plan of Yorkshire Woods, as said Plan is of record in the Office of the Recorder of Deeds in and for New Castle County, Delaware in Microfilm No. 11559.

BEING the same lands and premises which Yorkshire Woods Development Corp., by Deed dated August 25, 1995, and of record in the Office of the Recorder of Deeds, in and for New Castle County and State of Delaware, in Deed Book 1970, Page 206, did grant and convey unto Robert F. Rogers and Eileen G. Rogers, in fee.

BEING the same premises which Robert F. Rogers and Eileen G. Rogers, by Deed dated August 10, 2004 and recorded August 18, 2004 in the Office for the Recorder of Deeds in and for the County of New Castle, and State of Delaware in Deed Instrument Number 20040818-0091769, granted and conveyed unto John H. DeShields and Claudette DeShields grantor/mortgagor herein.

SEIZED AND TAKEN IN EXECUTION AS THE PROPERTY OF JOHN H. DESHIELDS AND CLAUDETTE DESHIELDS. TERMS OF SALE: 10% DOWN AT TIME OF SALE. BALANCE DUE ON OR BEFORE DECEMBER 20, 2010.

NP 10/29,11/5 2194030

Chesapeake Classified

What's in it for you?

410-398-1230
toll free
800-220-1230

email to classads
@chespub.com

LEGAL NOTICE

SHERIFF'S SALE

By virtue of a writ of #10-017011 and 37 Nov. 9, 2010.
PARCEL NO.: 09-023.10-312
PROPERTY ADDRESS: 8 Coronet Ct, Newark, DE 19713.

All that certain lot, piece or parcel of land, situate in White Clay Creek Hundred, New Castle County, State of Delaware, being Lot No. 228, (also known as 8 Coronet Court), as shown on the Record Resubdivision Plan of Harmony Crest, Section II, prepared by Karins & Associates, Inc. Professional Engineers and Land Surveyors, Drawing No. 346-1369, Sheet 3 of 3, dated January 28, 1983, revised February 29, 1983, and recorded in the Office of the Recorder of Deeds, in and for New Castle County, State of Delaware, on June 17, 1983, in Microfilm No. 6776, and being more particularly bounded and described as follows, to-wit:

Being the same lands and premises which Magness Builders, Inc., did grant and convey unto John W. Tarburton and Mary Ann Tarburton, by deed dated October 28, 1983 and recorded on October 28, 1983 the Office of the Recorder of Deeds, in and for New Castle County, State of Delaware, in Deed Book 1124 at Page 7..

SEIZED AND TAKEN IN EXECUTION AS THE PROPERTY OF JOHN W. TARBURTON AND MARY ANN TARBURTON.

TERMS OF SALE: 10% DOWN AT TIME OF SALE. BALANCE DUE ON OR BEFORE DECEMBER 20, 2010.

NP 10/29,11/5 2194069

SHERIFF'S SALE

By virtue of a writ of #11-005.40-048 and 114 Nov. 9, 2010.
PARCEL NO.: 11-005.40-048
PROPERTY ADDRESS: 51 Sanford Drive Newark, DE 19713.

ALL THAT CERTAIN LOT, PIECE OR PARCEL OF LAND WITH THE DWELLING THEREON ERECTED, SITUATED IN PENCADER HUNDRED, NEW CASTLE COUNTY AND STATE OF DELAWARE AND KNOWN AS LOT NO. 23, BLOCK N, ON THE PLAN OF ROBSCOTT MANOR, SECTION TWO, AS SAID PLAN IS OF RECORD IN THE OFFICE FOR THE RECORDING OF DEEDS IN AND FOR NEW CASTLE COUNTY, DELAWARE, IN MICROFILM RECORD 798 AND BEING MORE PARTICULARLY BOUNDED AND DESCRIBED IN ACCORDANCE WITH A SURVEY PREPARED BY ZEBLEY AND ASSOCIATES, INC., REGISTERED SURVEYORS, WILMINGTON, DELAWARE, DATED JULY 6, 1994, AS FOLLOWS, TO WIT:

BEING the same lands and premises which Deutsche Bank National Trust Company as Trustee formerly known as Bankers Trust Company of California, N.A. as Trustee did grant and convey unto Delmont Farmer and Debra Farmer by deed dated July 25, 2005 and recorded on August 12, 2005 in the Office of the Recorder of Deeds, in and for New Castle County, State of Delaware, Deed instrument number 20050812-080552. SEIZED AND TAKEN IN EXECUTION AS THE PROPERTY OF SHANNON TUSO. TERMS OF SALE: 10% DOWN AT TIME OF SALE. BALANCE DUE ON OR BEFORE DECEMBER 20, 2010.

NP 10/29,11/5 2194257

BRINGING YOU
UP TO DATE
www.cecilwhig.com

Fall Into One of These Events or Weekly Specials

Sunday, Nov. 14 • 1 pm - 5 pm

Wellwood Fall Seafood Buffet

- * Salad Bar and Soup * Oyster Rockefeller*
- * Shrimp Creole * Saute Station with Fresh Fish*
- * Steamed Shrimp, Mussels, Clams & Crab Legs*
- * Smoked Salmon * Fried Oysters, Shrimp and Clams*
- * Raw Oysters * Macaroni & Cheese*
- * Potato & Vegetable of the Day*
- * Our "Famous Fried Chicken", * Dessert Table *

\$29⁹⁹ per person
(plus tax and gratuity)

Thursday, November 25

Wellwood Thanksgiving Feast

- * Salad Bar * Homemade Soup * Smoked Salmon
- * Carving Station with Turkey, Ham & Wild Game
- * Fish of the Day * Traditional & Oyster Stuffing
- * Mashed Potatoes * Sweet Potatoes
- * Fresh Vegetables * Macaroni & Cheese
- * Sauerkraut * Cranberries
- * Assorted Dessert Table *

\$22⁹⁹ per person
(plus tax and gratuity)



**** Make your reservations early ****

SEASONAL DINE IN FEATURES

Sunday - Land Lover's favorite "Prime Special"

Buy one prime rib entree, get the 2nd prime rib entree 1/2 price (dine in only)

Wednesday is Burger Day 1/2 price burgers all day

All You Can Eat Pasta Night on Wednesday 10.99

Special Italian menu freshly prepared by our staff!

Thursday Night is Seafood Night beginning at 4:30

Choose One of These Favorites for 17.99

All You Can Eat Shrimp with fried chicken & two sides
(steamed, fried & scampi)

Whole Maine Lobster Dinner with two sides
Clams or Mussels

Kid's menu is free for children under 12 on Thursday!

All You Can Eat Crabs with fried chicken 29.99 p.p.

Friday, Saturday or Sunday



**The
Wellwood
is the
Perfect Place
for your
Holiday
Party!**

Now accepting
reservations



The
Wellwood
an experience for every taste

Join our VIP Club Today • 410-287-6666
523 Water Street • Charlestown, MD
Open Wed. - Sun. 11:30 - close • Serving Lunch & Dinner
www.wellwoodclub.com