

100th Year, 7th Issue

© 2009

March 6, 2009

Newark, Del.

UP FRONT

Where the market stops, no one knows

By MARK SISK

NEWARK POST COLUMNIST

I left the Newark Newsstand with the latest issue of Rolling Stone magazine in hand many times in 1970.

But it didn't occur to me that the buck I spent for the magazine might have been better invested in its publisher Straight Arrow Publications.

Straight Arrow, the Microsoft of its day, increased its value a hundred-fold in the next decade.

I failed to see around corners, not for the first time and certainly not for the last.

A recent story in a Philadelphia daily paper got me thinking about corners. Two cornerstone American businesses over the last 40 years – newspapers and shopping malls – are now both in deep trouble. The story analyzed all small businesses and determined that success or failure depends on the public's view.

If you're thought of as a necessity, you'll be OK. If not, your life will take a turn for the worst, if it hasn't already.

As the possibilities of the Internet were dawning on people 10 years ago, those who do see around corners predicted a quick demise for newspapers and shopping malls. After all, who would buy a newspaper that could be read online? Who would go to a shopping mall, when anything could be purchased online?

After a few years passed and the predictions didn't come true, it looked like everything was going back to normal. But in hindsight, it now looks like it simply took longer than the doomsayers predicted.

See **UPFRONT**, 10 ▶



Sisk



Snow happens

By SCOTT GOSS

POSTNEWS@CHESPUB.COM

Nearly all of Newark was impacted by the first major storm of the winter season, which dumped about four inches of snow on city Sunday and Monday.

The storm snarled traffic throughout Newark, forced statewide school cancellations and postponed countless events planned throughout the city.

The Newark Police Department attended to more than a dozen minor traffic accidents, many attributable to the icy road conditions, between Monday night and Tuesday afternoon. Cpl. Gerald Bryda said that's about twice the number of accidents usually reported during a two-day period.

Newark Community Affairs Officer Dana Johnston said road crews were out both days in an effort to keep the city's 94 miles of roadways as clear as possible.

By Wednesday, the city had used 200 tons of salt out of its 500-ton supply.

"The storm was really more of a nuisance with the plowing and the salting," Johnston said. "We have to accomplish the same with four inches of snow as we do with 12

inches, meaning we have to go through the same motions for the smaller storms as we do the larger storms."

The snowfall did convince officials with the city and the University of Delaware to close on Monday, however.

Officials with the university and city government both said they reached their decision after participating in a telephone conference hosted by the Delaware Emergency Management Agency on Monday morning.

Although it wasn't exactly the blizzard Newark experienced in 1997, state climatologist David Legates, who is based at UD, said he believes this week's storm might have been the heaviest snowfall the city has seen in at least three years.

"Last year, we had virtually nothing and if you had asked me two weeks ago, I would have figured this year to be a low snow year too," Legates said. "It's fairly unusual to have a snow storm this late in the season, but this week we had a combination of a Nor'easter and cold weather, and so snow happens."

Legates said he expects this week's storm to have been our last for the winter. But he stopped short of making any guarantees.

"The odds of one storm in March are low, so to have two storms would be very rare," he said. "But it will be cold, so who knows? I never say never."

PHOTO BY
MATTHEW BASHAM

Rita Kiel, Alicia Wengart and Diana Roberts were not going to let the kids have all the fun at Glasgow Park on Tuesday.



NAA to celebrate Sweet 16 with show

Anniversary exhibit opens Friday

By SCOTT GOSS

POSTNEWS@CHESPUB.COM

The Art House. Downtown with the Arts. The very first mural.

The artists who will be featured in the Newark Art Alliance's Sweet 16 anniversary show are some of the people who remember the organization's early days.

The exhibit, which opens today at 6 p.m., will feature works by 16 of the founding and original members from way back in 1993.

The opening reception will feature live music and 16 delectable, international cuisine appetizers created by Chef Natalia, the executive chef of Natalia's International and Latin Cuisine.

The exhibit will run through March 28. Featured artists include Pamela Bounds

See **NAA**, 3 ▶

Siemens Award winner in New Castle County

Middletown High earns prestigious AP honor

By MARY E. PETZAK

MPETZAK@CHESPUB.COM

Middletown High School, in the Appoquinimink School District, was singled out from all of Delaware's public, private and charter schools to receive the Siemens Award for the 2008-2009 school year.

The Siemens Foundation, located in Iselin, N.J., bestows the annual honor to one high school in each state to recognize exceptional student participation and performance in Advanced Placement (AP) courses in science, math and technology.

This year, Middletown High had 15 AP Scholars – students who received grades of 3 or higher on at least three AP exams; six AP Scholars with Honor – students who received an average score of at least 3.25 on all their AP exams, including at least four on which they scored a

See **SCHOOLS**, 11 ▶

Can we help?

Offices: The paper's offices are located conveniently in Suite 109, Pomeroy Station, 218 E. Main St., Newark, DE 19711. Office hours are 8:30 a.m. to 5 p.m. weekdays.

Phone: (302) 737-0724

Facsimile: (302) 737-9019

E-mail: postnews@chespub.com

To subscribe: To begin a convenient home-delivery subscription, call 1-800-220-3311.

To place a classified ad: Call 1-800-220-3311.

To place a display ad: Call 737-0724.

THE STAFF of the *Newark Post* is eager to assist readers and advertisers. Reporters, writers, editors and salespeople can be contacted as listed:

Marty Valania is the General Manager of the Newark Post. He sets policies and manages all departments in the Newark office. Call him at **737-0724**.

Scott Goss is the news editor. He leads the day-to-day operation of the newsroom. Call him at **737-0724**.

Mary E. Petzak is a staff reporter and specializes in education coverage. Reach her at **737-0724**.

Other contributing writers include Ruth Kelly, Alfred Gruber, Elbert Chance, Marvin Hummel and Mark Sisk. Leave messages for them at **737-0724**.

Ruth Kelly is our Office Manager/Editorial Assistant. She can be reached at **737-0724**.

Novalee Woodruff is our Graphic Designer. She handles the advertisement designs.

Jonathan Waddell is our Design Director. He designs the layout of the pages.

Renee Quietmeyer is the Newark Post's advertising manager who manages the local sales team. She can be reached at **1-800-220-3311**.

Jim Galoff handles accounts in the New Castle area and is an automotive account specialist. Call him at **1-302-737-0724**.

Betty Jo Trexler sells real estate advertising. She can be reached by calling **1-800-220-3311**.

Nancy Beaudet and Lance Burris sell ads in the downtown Newark and surrounding area. They can be reached by calling **1-302-737-0724**.

Our circulation manager is **Mary Ferguson**. For information regarding subscriptions, call **1-800-220-3311**.

The Newark Post is published Friday by Chesapeake Publishing & Printing. News and local sales offices are located in Pomeroy Station, Suite 109, 218 E. Main St., Newark, DE 19711. All advertising and news are accepted and printed only at the sole discretion of the publisher. The Newark Post is a member of the Maryland-Delaware-D.C. Press Association, Suburban Newspapers of America and the National Newspaper Association.

POSTMASTER: Send address changes to: Newark Post, Suite 109, 218 E. Main Street, Newark, DE 19711. Periodicals postage paid at Newark, Del., and additional offices. (USPS #6465) Known office of publication 218 E. Main Street, Newark, DE 19711.

■ *Police Blotter* is compiled each week from the files of the Newark Police Department, New Castle County Police and the Delaware State Police.

Thefts and robberies

An unknown suspect stole 20 silver communion plates, collectively valued at \$744, from the Newark United Methodist Church in the **unit block of East Main Street** between 12:30 p.m. on Feb. 1 and noon on Feb. 23.

An unknown suspect stole clothing with an estimated value of \$115 from a 17-year-old **Newark High School** student's gym locker between 7:05 a.m. on Feb. 5 and 12:35 p.m. on Feb. 12.

Police charged a 16-year-old **Newark High School** student with theft at 10:51 a.m. on Feb. 9, after he was identified as the person who stole a cell phone, valued at \$400, from a classmate's gym locker. The student also was found to be in possession of a knife with a three-inch blade.

A teacher at **Newark High School** told police someone stole \$7 from her purse sometime between 10:50 a.m. and 11:50 a.m. on Feb. 11.

A 24-year-old Lewes, Del. resident told police someone stole his Nintendo Wii, valued at \$250, during a party at his apartment in the **600 block of Lehigh Road** between 8 p.m. on Feb. 13 and 2:30 a.m. on Feb. 14.

A 17-year-old **Newark High**

School student told police someone stole her cell phone, valued at \$400, from her purse or jacket while she was in the D. cafeteria between 10:40 a.m. and 10:50 a.m. on Feb. 19.

Police charged **Anthony T. Dean Sr., 43**, of Newark, with shoplifting at 3:33 p.m. on Feb. 23, after he allegedly tried to steal a \$100 stereo from K-Mart in the **College Square Shopping Center**.

Police charged two 15-year-old Wilmington residents with shoplifting and conspiracy at 10:32 a.m. on Feb. 26 after they were identified as having stolen \$58 worth of merchandise from Payless Shoe Store and Sally's Beauty Salon, both in the **College Square Shopping Center**.

A 20-year-old Newark resident told police someone stole an Xbox 360 and 10 video games, collectively valued at \$900, from his Park Place apartment in the **600 block of Lehigh Road** between 11 a.m. and 9 p.m. on Feb. 26.

A 16-year-old **Newark High School** student told police that a group of male classmates took her purse, dumped out its contents and stole a cell phone valued at \$200 during class at 12:35 p.m. on Feb. 26.

Two men in their 20s told police someone entered their apartment in the **unit block of Wilbur Street** and caused \$950 in damages between 11 p.m. on Feb. 27 and 2:30 a.m. on Feb. 28.

Vehicles targeted

An unknown suspect stole an iPod valued at \$150 from a 1994 Toyota Camry parked in the **Newark High School parking lot** between 7:09 a.m. and 12:05 p.m. on Feb. 13.

An unknown suspect caused an estimated \$600 in damages to a Mazda 3 parked in the **400 block of Wollaston Avenue** between 4 p.m. on Feb. 16 and 5 p.m. on Feb. 17.

An unknown suspect broke into a 2001 Acura TL parked in the **700 block of Scholar Drive** and stole items collectively valued at \$205 between 3:30 p.m. on Feb. 18 and 6:30 a.m. on Feb. 19.

An unknown suspect broke the side mirrors off of a 2002 Ford Explorer parked in the **3000 block of Woolen Way** between 7 p.m. on Feb. 20 and 4 p.m. on Feb. 23. Damages were estimated at \$175.

Police charged **George B. Shaw Jr., 20**, of Delaware City, and **James L. Verucci, 18**, of Newark, with third-degree burglary and theft of a motor vehicle, after they were found in possession of a Honda Accord, valued at \$30,000, that had been stolen from the storage lot of Martin Honda in the **200 block of East Cleveland Avenue** between Feb. 21 and Feb. 23.

An unknown suspect stole a Delaware license plate, valued at \$20, from an unidentified vehicle parked in the **unit block of Turnbridge Road** between noon and 3:30 p.m. on Feb. 23.

An unknown suspect broke out the driver's side window of an Infiniti SUV parked in the **unit block of West Delaware Avenue** and stole a GPS unit valued at \$300 between 6 p.m. on Feb. 26 and 12:15 p.m. on Feb. 27. Damages were estimated at \$100.

An unknown suspect broke the side mirror off of a 1990 Honda Accord parked in the **200 block of East Main Street** between 12:01 a.m. and 10 a.m. on Feb. 27. Damages were estimated at \$200.

An unknown suspect damaged the side mirror of an unidentified vehicle parked in the **300 block of Delaware Circle** between 12:30 a.m. and 10:23 a.m. on Feb. 28. Damages were estimated at \$75.

An unknown suspect used a brick to crack the windshield of a 2003 Honda Civic parked in the **unit block of East Main Street** between 4:45 p.m. on Feb. 28 and 3 a.m. on March 1. Damages were estimated at \$350.

Fights and assaults

Police charged **Joshua L. Cole, 28**, of Elkton, Md., with two counts of assault and one count of offensive touching at 1:27 a.m. on March 1, after he allegedly shoved a man and a woman during an altercation in the **Newark Shopping Center** parking lot.

See **BLOTTER, 3** ►



Complete Eye Care

(302) 368-9105
www.delawareeyecare.com

Specializing in:

- Comprehensive Eye Exams and Diagnostic Evaluations
- Eyeglasses and Contacts
- No-stitch, No patch Cataract Surgery
- Glaucoma Evaluation and Treatment
- Treatment of Diabetic Eye Diseases
- Retina Evaluation and Treatment
- Vision Custom-Vue LASIK & Epi-LASIK

5 convenient locations to serve your eye care needs

Dover	Newark	Bear
833 S. Governors Ave. (302) 674-1121	333 E. Main Street (302) 368-9105	1721 Pulaski Hwy. (302) 836-5410
Millford 110 N.E. Front Street (302) 422-5155	Smyma 10 S. Market Street (302) 653-9200	

We accept Superior Vision, VSP, VBA, Davis and most other insurance plans.



Gary L. Markowitz, M.D.
Board Certified Ophthalmologist
Primary eye care, Ocular Disease Management
Cataract and LASIK surgery



Home Grown Cafe

Local Flavor

\$10 TUESDAYS

Join us every Tuesday through the end of April 2009 for a \$10 LUNCH

Enjoy any of our sandwiches and a cup of soup from our regular menu for only \$10.

Valid between 11 am and 4 pm only. Plate sharing is not available for this offer. No coupons or other discounts may be used with this offer. Dine in only. No coupon necessary.

WEEKEND BRUNCH

Saturday and Sundays
10 am - 2 pm

126 E. Main Street, Newark • 302.266.6993
www.homegrowncafe.com

NOT JUST TRUCKS

If it's Black & Round, Big or Small, we've got it or can get it!



TRUCK TIRES AMERICA, LTD.

2615 Pulaski Hwy
Glasgow, DE
302-731-4141



FEATURING
BRIDGESTONE
Firestone

Take Control Of Your Utility Bills!

2008 PRESIDENT'S AWARD

Power Off? We Sell Generators!

Hentkowski, Inc.
"Your Key To Comfort"
Heating, Air Conditioning & Electrical

INFINITY SYSTEM

302-998-2257

"Doing Business since 1968"
www.hentkowski.com

Newark Arts alliance turns 16

► NAA, from 1

Seemans, Maggie Creshkoff, Arlene Finocchiaro, Terry Foreman, Debbie Hegedus, Caryn Hetherston, Dragonfly Leathrum, Rowena Macleod, Lucy Moise, Barbara Proud, Dain Simons, Wendy Shipman, Pamela Skwish, Sherri Sobocinski and Bruce Tucker.

The Newark Arts Alliance's 16 years of "developing community through the arts" has included hundreds of artists, exhibits, events and classes; a dedicated staff, board and committee members; countless volunteer hours; and a belief in the power of art to inspire, amaze and bring people together.

Evidence of the Newark Arts

Alliance's impact on the city can be seen throughout the downtown area. Murals decorate several buildings – including the community "photo album" on the side of Primo's Hoagies at 223 E. Main St. and the tile mural on the Grassroots building at 93 E. Main St.

Mosaic murals have been created on the back of NAA's first home on Delaware Avenue and its current location in Market East Plaza at 276 E. Main St., Suite 102.

In the spring and summer, the "Art to Go" program brings free projects for children to the city's parks. Other annual events sponsored by the NAA include the Holiday Art Market and the Sidewalk Chalk Festival.

The NAA's current home is also a busy space, with the Gallery Shop, which features art for sale by NAA members; classes for all ages; concerts; and a weekly poetry session.

The NAA has recently added two new music projects – a drum circle every fourth Friday from 7 p.m. to 8:30 p.m. and the Every Sunday Music Jam from 2 p.m. to 6 p.m.

For more information on the NAA's exhibits, projects, classes, and events, please visit their Web site at www.newarkartsalliance.org or call 266-7266.

The NAA's gallery is open Tuesdays through Fridays from noon to 6 p.m., Saturdays from 10 a.m. to 3 p.m. and Sundays from noon to 3 p.m.



KNEISLEY EYE CARE (302) 224-3000
The Main Street Galleria
45 East Main Street, Suite 201 • Newark
www.kneisleyeyecare.optometry.net

• Clear Explanations of Procedures
• Professional & Caring Staff
• Most Insurances & HMO's Accepted

Eye Examinations • Contact Lenses • Fashion Eyewear • Treatment of Ocular Diseases

► BLOTTER, from 2

Other incidents

Police charged **Justin M. Bowie, 20**, of Newark, with harassment at 11:13 a.m. on Feb. 23, after he allegedly left several sexually explicit messages on the cell phone of a 17-year-old Newark High School student between Jan. 23 and Feb. 23. He was released on a \$1,000 unsecured bond.

An unknown suspect caused an estimated \$150 in damages by using spray paint to leave graffiti on the side of a railroad bridge in the **100 block of Capitol Trail** between 6 p.m. on Feb. 24 and 7:41 a.m. on Feb. 25.

An unknown suspect used a rock to cause an estimated \$150 in damages to the window

of a home in the **300 block of Manuel Street** between 3 a.m. and 3:30 a.m. on Feb. 27.

Noise and alcohol

Police charged **Jorge H. Garcia, 28**, of Wilmington, with driving under the influence, driving off the roadway, crossing the centerline, failure to provide proof of registration, failure to provide proof of valid insurance and driving without a license at 3:14 a.m. on Feb. 27, after an officer pulled him over on **Elkton Road**. Garcia had a reported blood alcohol content of 0.207 percent.


Police charged **Eduardo Ramirez, 29**, of Newark, with driving under the influence, driving without a license and other traffic violations at 11:57

p.m. on Feb. 27, after a traffic stop near **East Main and Academy streets**. Ramirez reportedly had a blood alcohol content of 0.22 percent.

Christopher M. Pioli, 19, of Newark, noise violation, **unit block of Annabelle Street**, at 12:15 a.m. on Feb. 28.

Police charged **Keenan R. Brady, 22**, of Middletown, Del., with driving under the influence and failure to provide valid insurance at 1:15 a.m. on Feb. 28, after an officer found him passed out in his car near **Capitol Trail and East Cleveland Avenue**. Brady had a reported blood alcohol content of 0.253 percent.

Alexander R. Brenner, 21, of Newark, noise violation, **200 block of West Main Street**, at 1:26 a.m. on March 1.



Complete Eye Care
DELAWARE EYE CARE CENTER
(302) 368-9105

Specializing in:

- Comprehensive Eye Exams and Diagnostic Evaluations
- Eyeglasses and Contacts
- No-stitch, No patch Cataract Surgery
- Glaucoma Evaluation and Treatment
- Treatment of Diabetic Eye Diseases
- Retina Evaluation and Treatment
- Visx Custom-Vue LASIK & Epi-LASIK

We accept Superior Vision, VSP, VBA, Davis and most other insurance plans.

Gary I. Markowitz, M.D.
Board Certified Ophthalmologist
Primary eye care,
Ocular Disease Management
Cataract and LASIK surgery

5 convenient locations to serve your eye care needs

Dover	Milford	Newark	Smyrna	Bear
833 S. Governors Ave. (302) 674-1121	110 N.E. Front Street (302) 422-5155	333 E. Main Street (302) 368-9105	10 S. Market Street (302) 653-9200	1721 Pulaski Hwy. (302) 836-5410

www.delawareeyecare.com
1-800-900-2020

Are Your Headaches Killing You?

If you suffer from headaches and are currently taking medication to alleviate your pain, then you need to call the Headache Sufferer's Hotline and discover what your doctor may not know about the real cause of most headaches. Learn what medical studies have proven to be the most effective headache treatment to date. And the best thing of all is that this treatment doesn't involve any pills or surgery of any kind! To hear why headache sufferers have been left in the dark for so long and how they can finally live pain free, without over-the-counter medication, call the Toll-Free, 24 Hour Recorded Message at:

1-888-610-7124

ADVERTISEMENT

Join us in New Jersey at the ...

"KNOW BEFORE YOU GO" EXPO

Spaces available starting at only \$150

Reach the Ft. Monmouth, New Jersey audience

Saturday & Sunday, March 21 & 22

- Home Buyer • Community Profile

...and other seminar topics available for your business!

Register with: Cecil County Office of Economic Development
410-996-8467 or 410-996-6292
equesenbery@ccgov.org or
crouchcarolyn@yahoo.com or
bracincecil@ccgov.org

Sponsored & presented in partnership of
Cecil County Office of Economic Development & Cecil County Chamber of Commerce



In Our Schools

EDUCATION NEWS FOR NEWARK FROM LOCAL SCHOOLS

NOTE PAD

School board meeting

The next regular meeting of Christina District's school board will be 7 p.m. on Tuesday, March 10, at Pulaski Elementary School in Wilmington. School board meetings are open to the public. A copy of the meeting agenda is posted at www.Christina.k12.de.us.

Sites needed for Summer Food program

The Summer Food Service Program, federally funded and managed locally by Delaware's Department of Education (DOE), is searching for feeding sites statewide to increase the number of K-12 children who receive meals during the summer months.

The program targets children in low-income areas, but meals and snacks are also available to persons with disabilities, over age 18, who participate in school programs.

Local government agencies, camps, schools and private nonprofit organizations that participate are eligible to receive reimbursements for meals served and administrative expenses.

The DOE provides training and continued support for sponsors during the program. All sponsors must agree to serve meals to all children regardless of their race, color, national origin, sex, age or disability. For information, call 302-735-4060 or visit <http://www.doe.k12.de.us/> and click on Food and Nutrition Programs.

High school musicians to perform

Newark High School students Enoch Lee, Sharon Song and Gabriella Stout will perform in an Orchestra Honors Recital on Sunday, March 29, at 4 p.m. Admission is free for the Recital that takes place at Cherry Hill United Methodist Church, 33 Elk Mills Road, Elkton, Md.

The first annual New Castle County Orchestra Festival will be held on Thursday, April 2, at noon in P.S. duPont Elementary School, 701 West 34th Street, Wilmington.

Maclary Elementary celebrates 100th Day

Students and staff at Maclary Elementary School in the Christina School District held a school-wide food drive to help those in need, as part of their 100th Day celebration.

Elementary schools often use the 100th day of school for an activity involving math, reading and other skills, but Maclary wanted to extend this effort to include a community outreach activity by collecting food and toiletry items for the Food Bank of Delaware.

Update letters were sent home to parents for several weeks leading up to the 100th school day and teachers said that the whole school got caught up in the excitement of trying to reach the goal.

Students tracked the number of items, made graphs of their progress and decorated the



school with posters advertising the food drive and encouraging participation. The goal for each classroom was to collect 100 non-perishable items by the 100th day of school on Feb. 11.

Second-grade teacher Rita

Davis said Maclary hopes to make this an annual event to celebrate the 100th day of school. "Everyone throughout the school really helped with the effort," Davis said. "The participation of so many Maclary families is what really

made it worthwhile."

Almost all of the preschool through fifth grade classrooms met the goal, with many exceeding 100 items. A total of 21 classrooms participated and the school collected 2,530 items.

Pike Creek school presents "The Mouse That Roared"

Financial crisis has forced the small European nation Grand Fenwick to declare war on the United States in "The Mouse That Roared" this year's spring play by the Wilmington Christian School.

"There is no more profitable and sound step for a nation without money or credit to take than declare war on the United States and suffer a total defeat," states Duchess Gloriana, ruler of Grand Fenwick, in the play.

However, defeat does not occur and the obscure nation becomes the most important and powerful nation in the world. The play is taken from a novel written in 1955 by Leonard Wibberley and made into a film in 1959 starring the late actor Peter Sellers.

The story has been adapted for the stage by Christopher Sergel and will be performed by Wilmington Christian students at the school's new fine arts center on March 6-7 and March 13-14 at 7 p.m.

"The Mouse That Roared" is being directed by Gerard Hausheer, who has directed or produced 38 shows, developed three theatre departments and has 25 years teaching experience.

This is the professional actor, playwright and composer's first production with Wilmington Christian School.

Barbara Schiller, the school's director of fine arts, is overseeing the production and has been involved with stage productions at the school since 1996.

Tickets \$10 for reserved seating and \$7 for general admission for this family show. Tickets can be purchased by calling Lori Donovan at Wilmington Christian School 239-2121 ext. 3321 or ordered online at www.wilmingtonchristian.org. Wilmington Christian School is located at 825 Loveville Road in Hockessin.



Local schools receive mini-grants

The Creative Mentoring program has announced that six schools in New Castle County were among 21 Delaware schools to receive funds from the Valero Energy Foundation for their school-based mentoring programs.

Local grantees include: Brader Elementary School (Glasgow); Lombardy Elementary School (Wilmington); McVey Elementary

School (Newark); Mt. Pleasant Elementary School (Wilmington); Shue-Medill Middle School (Newark); Springer Middle School (Wilmington).

The grantee schools can use the funds to provide materials, supplies and/or events that will directly impact the students participating in the Creative Mentoring program.

Some of the more creative uses of the funds include:

using the grant money to purchase a Nintendo Wii and sports bundle; materials to encourage mentors and mentees to read together to make keepsake picture frames for each other; and a camera, camera case, and color printer.

Connecting Generations, the nonprofit organization that is home to the Creative Mentoring program, was able to fund all of the

See GRANTS, 5 ►



Local eighth graders earn high school scholarships

Holy Angels School in Newark announced that seven eighth graders in the Class of 2009 were offered partial scholarships by area high schools.

Eighth grader Nathan Swain received scholarship offers from Salesianum School, St. Mark's High School and Archmere Academy.

Other students and their chosen high schools include:

Jacob Beck, St. Mark's High School; Kerry Bree, Padua Academy; Sean Brown, St. Mark's High School; Carrie Hinte, St. Mark's High School; Emily Luck, St. Mark's High School; John Marine, St. Mark's High School.

The scholarships are based on the students' Catholic High School placement exam results and academic performance.

Established in 1956, Holy Angels School educates more than 400 children through a challenging curriculum based on Catholic values in the Franciscan tradition. Class sizes are limited to 28 students. For more information, please visit www.holyangels.net/has or call 731-2210.

Program seeks more mentors

► GRANTS, from 4

schools that applied for this year's grants.

The Valero Texas Open Benefit for Children's Charity Golf Classic, a project of the Valero Energy Foundation, raises money for children's charities in the communities where Valero has major operations. The Creative Mentoring program was nominated in 2007 by employees at Valero Energy Corporation's site in New Castle County.

Connecting Generations is a nonprofit organization, offering the Creative Mentoring, Seasons of Respect and Creative Transitions programs.

Creative Mentoring, the only statewide, free mentor training program supported by Delaware's Department of Education, has more than 700 active adult mentors in more than 80 school programs in Delaware.

Creative Mentoring needs more mentors to spend one hour a week in a mentoring program near where they live or work.

The program provides free training and support to mentors.

Anyone interested in becoming a mentor can get

more information at www.CreativeMentoring.org or by calling Rachel Markowitz at 656-2122 ext. 15.

14 Day Free Trial Membership

Newark's Downtown Fitness Center



Fusion
fitness center

(Next to East End Cafe)

280 E. Main Street,
Suite 118 Market East Plaza
Newark, DE 19711

302.738.4580

www.fusionfitnesscenter.com

New Members Only. Can not be combined with any other offers.



Women Medical Care Obstetrics and Gynecology

Inspiring Women to Wellness

Board Certified Physicians Accepting New Ob & Gyn Patients

- 3D Ultrasound in Office
- Normal Pregnancies
- High Risk Pregnancies
- Infertility
- Gynecologic Surgery
- Laparoscopy
- Menopause
- Urinary Incontinence
- Pelvic Pain
- Accept Most Insurances



Maryam Awan, MD & Zahid Aslam, MD

410-398-0590

111 West High Street, Suite 207, Elkton, Maryland 21921
266 South College Avenue, Newark, Delaware 19711

Solution to The Post Stumper on Page 7.

DAD SEPIA STEM FACTS
IDOL ICING PELE ACHOO
JAMES POLKA ALIT REATA
ONETO LASH CALM RAY
NODDLES SERVILE ELLE
PETERMINUET GAMES
DOM CLIO SIT LES
ORE CHAIRS NOW WINTER
CANAPE SEEPS ANECDOTE
AWARE ALA NUDE NOD
VOICE PAULLINDY BAND
ASH OREG EMO SCOUT
SLEAZIER FRITZ ADDLES
TOMTOM AIL NOODLE AGE
BAN VAT NOEL BOW
HELEN JAKELAMBADA
PAGE CHINESE TOUCHON
EMU ROOM HELP CHARD
CLINE RIFE WALTZKELLY
KENYA SNOW AMUSE SLOE
STEEL EYRE YEMEN ENS



Holy Angels School

CELEBRATING OVER 50 YEARS OF EXCELLENCE

Maximum Class Size: 28 Students (Kindergarten: 25)

Full-Day Kindergarten-8th grade

302-731-2210

www.holyangels.net

82 Possum Park Rd. Newark, DE 19711

Now Accepting Applications

Turn to the experts!

Certified Public
Accountants Since 1997

Specializing in both business and
individual tax return preparation

Reasonably priced & very
easy to work with

Office with free off-street
parking located at:

**Corner
stone**
GROUP, LLC

Carol Ann Wasko, CPA Wendy Hassiepen, CPA

282 E. Main St., Suite 203
Newark, DE 19711
302-377-7165

www.cpacornerstone.com • info@cpacornerstone.com

NEED A LAWYER?

Offering affordable legal services at
1400 Peoples Plaza, Suite 121

EXPERIENCE COUNTS
Over 25 years in practice

- Auto Accidents
- Divorce & Custody
- PFA
- Work Injuries
- Bankruptcy
- Criminal Law/DUI

Our firm's goal is to provide affordable legal services to our clients. We utilize a team approach combining the efforts of experienced paralegals and attorneys, coupled with aggressive, affordable representation, maximizing your recovery, protecting your rights, to provide the most effective personal legal services available.

Rahaim & Saints

ATTORNEYS AT LAW

1400 Peoples Plaza
Suite 121
Newark, Delaware

302-832-1800
www.rahaimandsaints.com

2055 Limestone Road
Suite 211
302-892-9200

C & D Furniture

Quality Furniture
by Amish Craftsmen

**PRE-SEASON
SAVINGS**
up to 20%
ON DISPLAY AND
SPECIAL ORDER PLAY SETS



Bedrooms • Dining Rooms
Tables & Chairs • Hutches
Desks • Playsets
Lawn Furniture

NEW FOR 2009!

Sheds and Storage Buildings
Standard sizes or custom built.
Our prices are right - give us a try!

Rt 213, Chesapeake City, MD • 1-866-386-2572

3 miles So. of the Chesapeake City Bridge at the 2nd Light

Now Curves works for you, your budget and your community.

Our 30-minute circuit works every major muscle group so you can burn up to 500 calories. It's good for everyone.

JOIN FOR FREE*

WHEN YOU DONATE A BAG OF GROCERIES.

Curves
curves.com



[OVER 10,000 LOCATIONS WORLDWIDE]

302-292-2920
400 Suburban Plaza
Newark, Delaware 19711

*Food or cash donation required to local food bank determined by club. Offer based on first visit enrollment, minimum 12 mo. c.d./e.f.t. program. New members only. Not valid with any other offer. Valid only at participating locations through 3.28.09. ©2009 Curves International, Inc.

Opinion

EDITORIALS COLUMNS • PAGES FROM THE PAST • LETTERS

POST COLUMNIST

More truths about how to prevent and treat drug abuse

By **STEVE K.D. EICHEL, PH.D.**

NEWARK POST COLUMNIST

In my last column, I presented a few hard facts about drug abuse. What about prevention and treatment?

Programs that rely on scare tactics, blatant lies, and a "Just say No" approach do not work.

Research has shown that DARE-type schemes are ineffective and a waste of money. Just ask the average teenager.

So what is the best prevention? On this issue, common sense is borne out by research. Teens with good social skills, a decent family life, an active involvement in sports, clubs, community groups or church and a sense of their own future are at lower risk for substance abuse.

Developing and supporting programs that support these kinds of skills and activities – sort of a "just say yes" approach – is where our drug prevention money should be going.

Age also matters. Research shows that the longer we are able to delay a person from experimenting with drugs and alcohol, the better their chance of not developing a problem.

The single most common gateway drug: nicotine. Children who smoke cigarettes are far more likely to experiment with other substances at younger ages. The best thing parents can do to keep their children away from cigarettes is to quit smoking themselves.

As for treatment, there was a time when we relied primarily on the 12 steps and a "break them down, then build them up" approach popularized by Synanon, a notoriously cult-like drug treatment program.

We have since learned confrontational approaches that rely on psychological abuse and humiliation do not work in the long run. In fact, the relapse rate among people in those kinds of programs is higher than the rate of those who were just left alone. For teenagers, treatment that involves their family, their school or their church – an approach called multisystemic family therapy – has proven most effective.

This approach is strength-based rather than punitive and confronting. Dealing with the family is vital. When I work with parents and families in these situations, their very understandable feelings of panic, anger and frustration

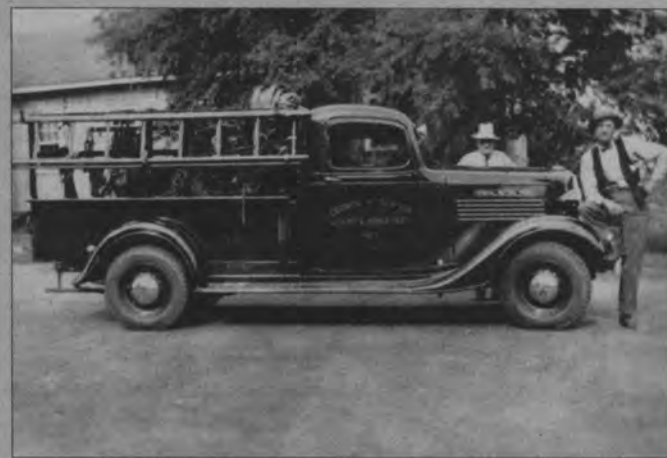
must be dealt with before we can hope to see any change in the addict.

For adults, the treatment of choice involves a process called "motivational enhancement" and tailoring the intervention to the stage the drug user is in. Forcing someone into Alcoholics Anonymous before they have even acknowledged they have a problem actually can be harmful. Working with that person in a nonjudgmental way to examine their behavior is more likely to work.

It's not an easy thing to do. An addictions counselor or psychologist requires specialized training and a great deal of skill and patience to work with these clients. Parents and loved ones need help to understand why this approach is generally best.

Sometimes, the awful reality is that there is nothing that can be done. For many, time and the real consequences of addiction will eventually bring about some degree of healing. For those folks, minimizing the amount of danger they present to themselves and others until they are ready to recover – an approach called "harm reduction" – may be all we can do.

OUT OF THE ATTIC



This week's Out of the Attic features a June 14, 1934 view of the Newark Electric Department's first motorized truck along with employees Joshua Wood and Mr. Hauber. Newark first offered electricity service in 1890. By Jan. 2, 1891, East Main Street had electric street lights. The town started generating its own electricity the following year when it bought the former Knauf Organ Company on Cleveland Avenue. The photograph is on loan to the Newark Post from the Newark Historical Society collection. Visit the Newark History Museum at 148 E. Main St. (between Choate and Haines streets) on Thurs. 5 – 8 p.m., Fri. noon – 3 p.m. and weekends 2 – 5 p.m. Admission is free. Contact the Historical Society by phone at 224-2408, by e-mailing newarkdehistoricalsociety@yahoo.com or by postal mail at P. O. Box 711, Newark, DE 19715.

Charging non-residents more for water is unfair

State Rep. John Kowalko
Newark

I wish to thank your paper for the article on the proposed Newark city water rate increases but there are some facts referred to in the article that are misleading and lead to inaccurate conclusions.

The average home outside the city would have experienced a substantially higher increase than the \$80 number arrived at by the city. Calculating the average usage of homes in the unincorporated areas, which are larger and have a large land/

See **LETTERS**, 7 ►

**Assessing Needs.
Increasing Scores.**

SAT ACT
prep

**SAVE
\$95
CALL TODAY!**
Offer Good on Diagnostic
Test Only.

**PRIVATE TUTORING FOR
SAT/ PSAT/ ACT**

Prep for students seeking dramatic
score improvements

**Call
(302) 737-1050**

**34 Liberty Plaza / 34 Possum Park Mall
Newark, DE 19711
www.newark.huntingtonlearning.com**



**Huntington
LEARNING CENTER**

©2006 Huntington Learning Centers, Inc. Independently owned and operated. SAT and PSAT are registered trademarks of the College Entrance Examination Board. ACT is a registered trademark of ACT, Inc. The College Entrance Examination Board and ACT Inc. were not involved in the production of and do not endorse this program.

got scrap?

**ELKTON
RECYCLING**



Top Dollar Paid For Scrap! "Cash for all types of metals and cars!"

We buy batteries, copper, brass,
aluminum, stainless & electric motors!

We buy old farm equipment!

We buy complete junk vehicles!

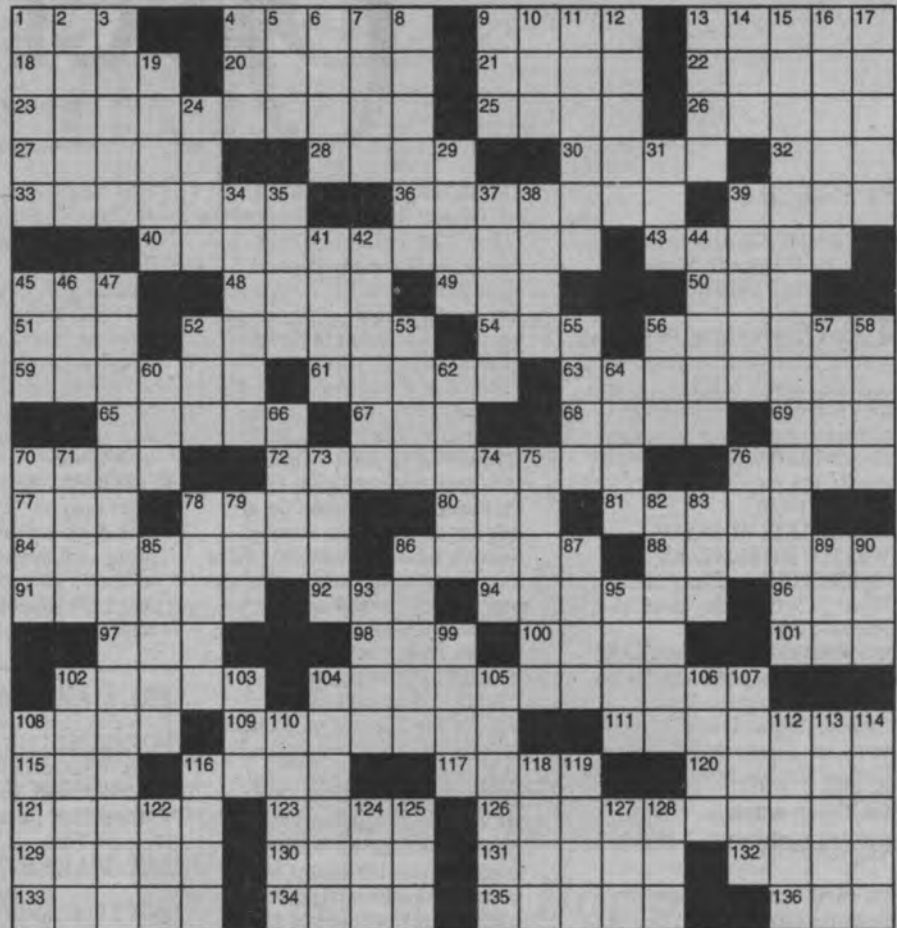
UP TO \$350

410-392-2980

**53 Dogwood Road, Elkton, MD
(Corner of Blueball & Dogwood Road)**



- ACROSS**
- 1 Martin Sheen, to Emilio Estevez
- 4 Photo tint
- 9 Pipe part
- 13 TV's "The — of Life"
- 18 Baal or Elvis
- 20 Bonus
- 21 Soccer superstar
- 22 Cold sound
- 23 Dancing president?
- 25 Landed
- 26 Range rope
- 27 — a customer
- 28 Whip
- 30 Tranquil
- 32 — 4 (Toyota model)
- 33 Little lumps
- 36 Fawning
- 39 Parisian pronoun
- 40 Dancing colonist?
- 43 Go Fish and golf
- 45 Comic DeLuise
- 48 Muse with a scroll
- 49 Command to a corgi
- 50 Meyerbeer's —
- Huguenots"
- 51 Prospector's prize
- 52 "The Twelve —" (70 film)
- 54 At once
- 56 Freezin' season
- 59 Finger food
- 61 Trickle
- 63 Short story
- 65 Cognizant
- 67 In the manner of
- 68 Bare
- 69 Start to snooze
- 70 Viva —
- 72 Dancing comic?
- 76 "— of Gold" (70 hit)
- 77 Gray matter?
- 78 Northwestern st.
- 80 Philips of "UHF"
- 81 Tonto's horse
- 84 More disreputable
- 86 Director Lang
- 88 Flusters
- 91 Percussion instrument
- 92 Feel awful
- 94 Bear
- 96 Make cheddar better
- 97 Prohibit
- 98 Wine vessel
- 100 Yuletide
- 101 Piglet's parent
- 102 Hunt or Hayes
- 104 Dancing boxer?
- 108 Kid at court
- 109 Hailing from Hunan
- 111 Mention briefly
- 115 Aussie walker
- 116 Space
- 117 Assistance
- 120 Spanish guitarist
- 121 "Crazy" singer
- 123 Widespread
- 126 Dancing cartoonist?
- 129 Neighbor of Somalia
- 130 Singer Phoebe
- 131 Entertain
- 132 Sour fruit
- 133 Novelist Danielle
- 134 Bronte heroine
- 135 Aden's locale
- 136 Minnesota twins?
- DOWN**
- 1 Mustard type
- 2 Hersey setting
- 3 Like the Taj Mahal
- 4 Use a straw
- 5 Word form for "environment"
- 6 It may be bitter
- 7 "— Dinka Doo" ('33 song)
- 8 '92 Wimbledon winner
- 9 Health resort
- 10 — Aviv
- 11 Draw forth
- 12 Copper or cobalt
- 13 "Green Acres" setting
- 14 "Stroker —" ('83 film)
- 15 Dancing body-builder?
- 16 Wrecks the Rolls
- 17 Italian wine
- 19 Abate
- 24 Seafood selection
- 29 Coop crowd
- 31 Pantyhose part
- 34 Rembrandt or Whistler
- 35 Ward of "Sisters"
- 37 Wreckage
- 38 Reject
- 39 Touch up the text
- 41 Journalist Jacob
- 42 Jeanne of "Jules and Jim"
- 44 Mrs. Kramden
- 45 Bandleader Severinsen
- 46 "... man — mouse?"
- 47 Dancing statesman?
- 52 Numbers pro
- 53 Push a product
- 55 Trick stick
- 56 Tie the knot
- 57 Thames town
- 58 Funnymen Foxx
- 60 Veneration
- 62 Less vivid
- 64 Van —, CA
- 66 Piece of fencing?
- 70 Enormous
- 71 European capital
- 73 Akbar's city
- 74 "— the Mood for Love" ('35 song)
- 75 "— bet!"
- 76 Sprout
- 78 It's up in the air
- 79 Volcano part
- 82 Peruvian port
- 83 Keats composition
- 85 Dickens title start
- 86 Peel off
- 87 Move like mad
- 89 Self-esteem
- 90 Make a muumuu
- 93 Psychologist Pavlov
- 95 Obligation
- 99 TV host John
- 102 Village
- 103 Sgt. or cpl.
- 104 Disney cricket
- 105 Margin
- 106 Mallard or teal
- 107 Suffers
- 108 Acts like a chicken
- 110 Neighsayer?
- 112 Actress Berry
- 113 Synthetic textile
- 114 "The Highwayman" poet
- 116 Genuine
- 118 Fancy fabric
- 119 Horner's fruit
- 122 Carrie or Louis
- 124 On behalf of
- 125 Ovine female
- 127 Poetic monogram
- 128 — Buddhism



LETTERS, from 6

lawn footprint, puts that number at over \$150. This figure is also verified in the finance director's revenue projections.

When the revenue projec-

tions of \$470,000 from in-city customers (with the 15 percent increase) is compared to \$350,000 from outside-city customers (with the 30 percent increase) the difference is indeed \$120,000. The reality, however, lies in the fact that

there are 7,425 in-town customers (an average increase of \$63.30 per year) and only 2,185 out-of-town customers (an average increase of \$160 per year). Even halving the increase proposed for out-of-town customers to 15 percent still leaves,

according to the finance director's own numbers, an average increase of \$80.09 per year for out-of-town customers.

Calculate in the fact that the reservoir cost is incorporated into the usage rate and is the base number for the already

existing 33 percent disparity for out-of-town customers, in addition to any increase to out-of-city customers widening that gap, and you have an unfair and unjustified disadvantage imposed on out-of-city water customers.

St. John's Evangelical Lutheran Church School

ENROLLING
1ST THROUGH 8TH GRADE

- Quality Christ-centered education in all subjects
- Affordable tuition rates
- Academically challenging classes
- Christian family atmosphere
- Low teacher-to-student ratio per classroom
- Graduates have succeeded at public and private high schools

St. John's Lutheran School
135 S. Old Baltimore Pike, Newark, DE 19702
(302) 738-6806 (school)

Andrew Monday, principal | Rev. Dale Schulz, pastor
www.stjohnsde.org

WILMINGTON & WESTERN RAILROAD

March 22nd & April 16th
Mt. Cuba Express
at 12:30 and 2:30

Proudly presents a tradition continued.
April 4th, 5th & 10th, 11th
Easter Bunny Express

Reservations can be made online at
www.wwr.com or by calling **302-998-1930**

Greenbank Station is on Newport-Gap Pike, Rt. 41N in Delaware
1/4 mile from intersection Kirkwood Hwy. Rt. 2

Bring In for Special Offer

50% OFF
Rebate On Your First Interest Payment!

Payday Loans
up to \$1,000

Takes 15 Minutes
JUST BRING IN:

- Valid driver's license
- Most recent bank statement
- Most recent pay stub
- Check Book

Don't let money get in the way of what you need.

EZ LOAN\$
661 College Square
Newark, DE
(302) 709-3340

322 Fox Hunt Dr. Bear, DE (302) 834-1800

Not valid with any other offer - New loans only. Only one coupon per 90 days.
Payday advances should be used for short-term financial needs only, not as a long-term financial solution. Customers with credit difficulties should seek credit counseling.

Toll FREE: 877-297-0011
ezloansdelmarva.com

Visit us online at
www.newarkpostonline.com

Diversions

THEATRE • EVENTS • EXHIBITS • NIGHTLIFE • MEETINGS

FRI. MARCH 6

DIXIE HUMMINGBIRDS 8 p.m. The Grand, 818 N. Market St., Wilmington. World-renowned gospel quartet. For tickets, 652-5577.

UNLACING THE VICTORIAN WOMAN 6:30 p.m. Delaware Art Museum, 2301 Kentmere Parkway, Wilmington. Relive a day in the life of a fashionable turn-of-the-century society woman, with on stage costume changes, right down to her chemise. Free. Info, (302) 571-9590.

THE COMPLETE WORKS OF WILLIAM SHAKESPEARE (ABRIDGED) 8 p.m. Chapel Street Players, 27 N. Chapel St., Newark. \$5-\$15. Info, 368-2248.

JOHN STEINBECK'S "OF MICE AND MEN" 2 p.m. The Professional Theatre Training Program and the Resident Ensemble Players, UD Roselle Center for the Arts, Gore Recital Hall, Orchard Road and Kent Way, Newark \$8-\$20. Info, 831-8508.

SAT. MARCH 7

LIVE MUSIC 9:30 p.m. Featuring Fat Daddy Has Been w/Belly Up, Deer Park Tavern, 108 W. Main St., Newark. Info, 369-9414.

PAINT PLAY 10:30 - Noon Newark Arts Alliance, 100 Elkton Road, Newark. Explore the wonders of painting for ages 5-7. Good overview for young artists. \$40 members, \$44 for non-members. Info, 266-7266.

CONCERT 7 p.m. Grace Episcopal Church, 4900 Concord Pike, Wilmington. The Legendary Sinners play American music, blues and rock and roll. Free will offering, \$10/person suggested.

ADHD CONFERENCE 9 a.m. Dickinson High School, Milltown Road, Wilmington. Program is hosted by the Greater Newark Chapter of CHADD along with UD Center for Disabilities Studies. Dr. Jeff Bernstein will be talking about the power of communication; Dr. Ari Tuckman will present "Getting Inside the Working ADHD Brain." Programs are for parents, caregivers, educators, students and adults with ADHD. Two separate workshops. \$45 for whole day (including lunch), \$25 for either half-day session. Info, greater-newark@chadd.net.

4th ANNUAL EARTH SCIENCE GEM

AND MINERAL SHOW 10 a.m. - 6 p.m. Delaware Technical and Community College @ I-95 Exit 4B, Churchmans Road (Route 58) Newark. Delaware Mineralogical Society, Inc. hosting program to foster interest in geology, mineralogy, paleontology and the lapidary arts. \$5 adults; \$4 seniors, \$3 juniors, free for children under 12 with an adult. Info, 234-4488 or 998-0686.

7th ANNUAL CAN'T WAIT FOR SPRING FLING 10 a.m. - 3 p.m. Christiana Presbyterian Church, 15 N. Old Baltimore Pike, Christiana. Get an early start on spring holiday shopping. Nationally known and local vendors will be displaying cosmetics, jewelry, candles, specialty food items, home décor, crafts, bake table and door prizes. Table fee for vendors \$30. Info, 737-0212 or 322-1998.

THE COMPLETE WORKS OF WILLIAM SHAKESPEARE (ABRIDGED) 2 p.m. and 8 p.m. Chapel Street Players, 27 N. Chapel St., Newark. \$5-\$15. Info, 368-2248.

JOHN STEINBECK'S "OF MICE AND MEN" 2 p.m. The Professional Theatre Training Program and the Resident Ensemble Players, UD Roselle Center for the Arts, Gore Recital Hall, Orchard Road and Kent Way, Newark \$8-\$20. Info, 831-8508.

SUN. MARCH 8

UNITARIAN UNIVERSALIST FELLOWSHIP OF NEWARK BISTRO AND BAKE SHARE 8:30 a.m. Unitarian Universalist Fellowship of Newark, 420 Willa Road, Newark. Coffee and conversation with Rick Scarfe. Info, 368-2984.

OLIVER TWIST 1:30 p.m. Delaware Art Museum, 2301 Kentmere Parkway, Wilmington. Come to the museum for an afternoon of art and film. Free. Info, 571-9590.

ACOUSTIC JAM 2-6 p.m. Newark Arts Alliance, 276 E. Main Street, Newark. Musicians are invited to bring their portable instruments and join a music jam with other musicians every Sunday, March 8-29. Listeners welcome. Free. Info, 266-7266

MON. MARCH 9

LISTENING CAMPAIGN 6 p.m. Newark Free Library, 750 Library Ave., Newark. County Executive Chris Coons will gather public input on the government's financial

crisis. There will be a presentation followed by a group discussion, with a chance for residents to ask questions and offer their opinion.

WEAVING THE FABRIC OF DIVERSITY Noon. Unitarian Universalist Fellowship of Newark, 420 Willa Road, Newark in MacKinnon Hall. Workshop exploring ableism, discrimination or prejudice against people with disabilities, particularly physical disabilities. Light lunch served.

EVERYBODY NEEDS A WILL 7 p.m. Bear Library, 101 Governor's Place, Bear. Workshop to explain the importance of having a will, things to consider and how to change a will if you already have one. Info, 1-877-307-6858. Pre-register at www.delawaremoneyschool.com. Call prior to

attending to confirm that schedule has not changed.

TUES. MARCH 10

TAX TALK TODAY PROGRAM 2 p.m. YWCA DCWE Technology Lab, 153 E. Chestnut Hill Road, Newark. "Surviving the IRS Audit". \$15. Register 320-224-4060 ext. 216.

FAITH, DOUBT, BELIEF IN BRITAIN 12:30 p.m. - 1:45 p.m. UD Munroe Hall. A history workshop. Vernon Lushing and the Religion of Humanity. Free

WED. MARCH 11

ETHICS AND MODERN LIFE 7-9 p.m. The Unitarian Universalist Fellowship of Newark, 420 Willa Road, Newark. Six-

week speaker series. ethics and medicine. Free. Info, 368-2984. One more session March 11.

SHOWTIME TRIVIA 8 p.m. Deer Park Tavern, 108 W. Main St., Newark. Info, 369-9414.

HEALING SERVICE 7:30 - 8:30 New Life Church, 2712 Old Milltown Road, Newark. Healing service and teaching on healing. Info, 367-4298.

TOWN HALL MEETING WITH GOV. MARKELL 7 p.m. Newark Senior Center, 200 White Chapel Drive, Newark. Gov. Markell holding briefing hosted by State Reps. John Kowalko, Terri Schooley and State Senator Bethany Hall-Long. Residents are encouraged to come out and meet their legislators and ask questions. Info, 737-2336.

MEETINGS

FRI. MARCH 6

JAZZERCISE LITE 8:30 - 9:30 a.m. Low impact, modified version for seniors. Newark Senior Center, 200 White Chapel Drive. Info, 737-2336.

SAT. MARCH 7

MEN'S BREAKFAST 7:30 a.m. \$5 donation goes to missions. Life Community Church, 750 Otts Chapel Road, Newark. Info, 738-1530.

JAZZERCISE 8:45 - 9:45 a.m. Certified instructor Nadine Weisenbach. George Wilson Center, 303 New London Road, Newark. Info, 366-7069 or www.newarkjazz.net.

SUN. MARCH 8

OVEREATERS ANONYMOUS 1 - 2 p.m. Westminster House, 292 W. Main St., Newark. Info, 453-9075.
KNITTING KNUTZ GUILD 1 p.m. Limestone Medical Center, Room 005, 1941 Limestone Road, Wilmington. Info, 452-0146.

MON. MARCH 9

MHA DEPRESSION SUPPORT

GROUP 7 - 9 p.m. Sponsored by Mental Health Association in Delaware. To protect privacy of members, meeting locations provided only with registration. Info, 654-6833.

OVEREATERS ANONYMOUS 7:30 - 8:30 p.m. Newark United Church of Christ, 300 E. Main St., Newark. Info, 377-6746.

NEWARK ROTARY CLUB 6:15 - 7:30 p.m. Timothy's, 100 Creek View Road, Newark. Info, 453-8853.

SCOTTISH DANCING 7:30 p.m. St. Thomas Episcopal Church, 276 S. College Ave., Newark. Info, 368-2318

ENGLISH CLASSES 1 p.m. and 7 p.m. English conversational classes. Free. Newark United Methodist Church, 69 E. Main St., Newark. Info, 368-8774 or esl-nunc@hotmail.com.

TAI CHI 2:30-3:30 p.m. Mon. or 3:30-4:30 p.m. Self-directed classes. Newark Senior Center, 200 White Chapel Drive. Info, 737-2336.

TAI CHI 10 - 11 a.m. and 11:45 a.m. -

12:30 p.m. Mon. through Fri. \$70/month. Shaolin Martial Monks School, 181 E. Main St., Newark. Info, 373-2918.

JAZZERCISE LITE 9 - 10 a.m. Low impact, modified version for seniors. Newark Senior Center, 200 White Chapel Drive. Info, 737-2336.

JAZZERCISE 5:45 - 6:45 p.m. Certified instructor Nadine Weisenbach. George Wilson Center, 303 New London Road, Newark. Info, 366-7060 or www.newarkjazz.net.

PILATES 11:30 a.m. - 12:30 p.m. Mon., 9 - 10 a.m. Tues., 6:45 - 7:45 p.m. Wed., 10:15 - 11:15 a.m. Thurs. Newark Senior Center, 200 White Chapel Drive, Newark. Info, 737-2336.

STRENGTH TRAINING 10:15 - 11:15 a.m. Mon., Wed. and Fri.; 6:45 - 7:45 p.m. Tues. and Thurs. Newark Senior Center, 200 White Chapel Drive. Info, 737-2336.

STRENGTH & FLEXIBILITY CLASS 9:30 - 10:30 a.m. Mon. Wed. and Fri.; \$4 per session/\$50 for six weeks. First Presbyterian Church, 292 W. Main St., Newark. Info, 731-5644.

KUNG FU 6 - 7 p.m. and 7 - 8 p.m. Mon.,

See **MEETINGS, 11** ►

Minster's
Spring Designs
are Here
New Designs
with a
Vintage Appeal
Minster's
of Newark
jewelers since 1895



Newark Shopping Center, Newark, DE
302-737-5947
Email: info@minstersjewelers.com
www.minstersjewelers.com

Because every child should know how to swim,

we are the, **KIDS FIRST Swim Schools**

Maryland's #1 provider of indoor year-round swimming lessons
with 8 convenient locations across Maryland



"We don't teach children to play basketball on an adult court. It's just as silly to teach children to swim in an adult pool. Come find out what thousands of young families have learned about **KIDS FIRST** specialty pools"

- Gary Roth, Owner

Present this
coupon to save
\$10.00 off
your next 6 week
session of
swimming lessons

Now Open!!!
677A East Pulaski Highway
Elkton, MD 21915
(410)620-1012



Visit us on the web @ www.kidsfirstswimschools.com

► MEETINGS, from 10

Wed., and Fri. \$70/month. Shaolin Martial Monks School, 181 E. Main St., Newark. Info, 373-2918.

KUNG FU 6:30 p.m. Mon., Wed. and Fri.; 10 a.m. Sat. \$100/month, unlimited sessions. Shao Lin Tiger and Crane Kung Fu Academy, Market East Plaza, 280 E. Main St., Newark. Info, 737-4696.

PANIC RELIEF 7 p.m. Mon. and Wed. Phone workshop. Programs available. Overcome fears, anxiety, agoraphobia and achieve positive self-image. Info, 732-940-9658.

DIVORCARE 6:30 – 8:30 p.m. Berea Presbyterian Church, 957 Old Lancaster Pike, Hockessin. Info, 737-7239.

ENGLISH FOR SPEAKERS OF OTHER LANGUAGES 9 a.m. to 11:30 a.m. Jan. 26-April 1, Elton Station, Room 328. Info, 410-392-3366.

UNITARIAN UNIVERSALIST FELLOWSHIP OF NEWARK 5:30 p.m. Unitarian Universalist Fellowship of Newark, 420 Willa Road, Newark. Social Justice Steering Committee Meeting.

TUES. MARCH 10

OVEREATERS ANONYMOUS 6–7 p.m. Newcomers meeting follows at 7 p.m. Aletheia School, 91 Salem Church Road, Newark. Info, 824-6317.

CONSTITUENT BREAKFAST 7–8 a.m. Join State Rep. John Kowalko for coffee and conversation. Friendly's Restaurant, 1115 S. College Ave., Newark. Info, 577-8342.

NEWARK DELTONES 7:45 p.m. For men who like to sing. New Ark United Church of Christ, 300 E. Main St., Newark. Info,

376-8934.

DIAMOND STATE CHORUS OF SWEET ADELINES 7:30–10 p.m. Women's acapella singing group. Curious and enthusiastic singers welcome. Limestone Presbyterian Church, 3201 Limestone Road, Wilmington. Info, 731-5981.

PARKINSON'S STRENGTH TRAINING 10:30 a.m. Newark Senior Center, 200 White Chapel Drive, Newark. Info, 737-2336.

JAZZERCISE LITE 5:30–6:30 p.m. Low impact, modified version for seniors. Newark Senior Center, 200 White Chapel Drive. Info, 737-2336.

JAZZERCISE 8:45–9:45 a.m. and 4:30–5:30 p.m. Certified instructor Nadine Weisenbach. George Wilson Center, 303 New London Road, Newark. Info, 366-7060 or www.newarkjazz.net.

TAI CHI 6–7 p.m. and 7–8 p.m. \$70/month; Shaolin Martial Monks School, 181 E. Main St., Newark. Info, 373-2918.

TAI CHI 6:30 p.m. Tues. and Thurs. \$70/month, unlimited sessions. Shao Lin Tiger and Crane Kung Fu Academy, Market East Plaza, 280 E. Main St., Newark. Info, 737-4696.

MOMS CLUB/NEWARK 9:30 a.m. New Ark United Church of Christ, 300 E. Main St., Newark. Info, 454-1431.

COPING WITH LIFE & MS 4–5:30 p.m. St. Paul's United Methodist Church, 1314 Foulk Road, Wilmington. Info, 478-3135.

STAMP GROUP 1 p.m. Newark Senior Center, 200 White Chapel Drive. Info, 737-2336.

NEWARK LIONS 6:30 p.m. Lions meeting with program. Deerfield Country Club, Thompson Station Road, Newark. Info, 731-1972.

WED. MARCH 11

CONSTITUENT BREAKFAST 7:30–8:30 a.m. State Rep. Terry Schooley will attend to field questions and concerns. Eagle Diner, Elton Road, Newark. Info, 577-8476.

DIVORCARE 7-8:15 p.m. A support group at Praise Assembly, 1421 Old Baltimore Pike, Newark. Info, 737-5040.

OVEREATERS ANONYMOUS 7:30–8:30 p.m. Asbury United Methodist Church, 300 E. Basin Road, New Castle. Info, 610-444-5194.

EVENING YOGA 5:30–7 and 7–8:30 p.m. Sponsored by Newark Parks & Recreation. \$65, Newark resident \$55. Newark Senior Center, 200 White Chapel Drive, Newark. Info, 366-7060.

JAZZERCISE LITE 9–10 a.m. Low impact, modified version for seniors. Newark Senior Center, 200 White Chapel Drive. Info, 737-2336.

JAZZERCISE 5:45–6:45 p.m. Certified instructor Nadine Weisenbach. George Wilson Center, 303 New London Road, Newark. Info, 366-7060 or www.newark-jazz.net.

TAI CHI 9:30 a.m. and 5:30 p.m. Free for people touched by cancer. The Wellness Community in New Castle, 4810 Lancaster Pike, Wilmington. Info, 995-2850.

DIVORCARE 6:30–8:30 p.m. Support group meeting. Evangelical Presbyterian Church, 308 Possum Park Road. Info, 737-2300.

GRIEF SHARE 7 p.m. Seminar and support group for those who have lost someone close to them. Praise Assembly, 1421 Old Baltimore Pike. Info, 737-5040.

For a complete list of meetings visit our website: www.newarkpostonline.com

Turn to the experts!

Certified Public Accountants Since 1997
Specializing in both business and individual tax return preparation

Reasonably priced & very easy to work with

Office with free off-street parking located at:

Cornerstone
GROUP, LLC

Carol Ann Wasko, CPA Wendy Hassiepen, CPA

282 E. Main St., Suite 203
Newark, DE 19711
302-377-7165

www.cpacornerstone.com • info@cpacornerstone.com

304883-cw011909



8-day Caribbean cruise.
More Caribbean paradise for less.

FARES FROM

\$599

- Unequaled dining – Choose traditional or flexible Anytime Dining™
- Unsurpassed Service – Providing an unforgettable escape
- Unparalleled fleet – Big Ship variety with a Small Ship Feel™
- Unforgettable views – More affordable balconies



PRINCESS CRUISES
escape completely™

The Cruise Shoppe

250 E. Chesnut Hill Road, Suite 2, Newark DE 19713
302.737.7220 www.cruiseshoppe.us

A Fuel Supplement of \$9 per person per day, up to a maximum of \$126 per person, is included in fares shown, and subject to change. Please contact Princess Cruises for their fourth-birth fares and full supplements. Government fees and taxes are additional. Air add-ons are available. See applicable Princess' brochures for terms, conditions and definitions that will apply to your booking. Offer available to residents of U.S. and Canada. ©2008 Princess Cruises. Ships of Bermuda registry.



Put Mr. Handyman to work for you!

- ✓ Cabinetry/Counters
- ✓ Drywall repair/Painting
- ✓ Wood rot
- ✓ Caulking/Grouting
- ✓ Windows/Doors
- ✓ And much more!

BONDED & INSURED / EXPERIENCED EMPLOYEES

PROFESSIONAL, SAFE AND RELIABLE

302-525-4382

www.mrhandyman.com

COMMUNITY EVENT

HIDDEN DANGERS

in Genetically Modified Foods

Find out what the FDA is allowing into the food supply despite warnings from its own scientists. Don't miss this *one-time-only* event. **Saturday March 14, Noon – 4:00**, Ebenezer United Methodist Church, 525 Polly Drummond Hill Road, Newark, DE 19711

Join nationally known speaker, author, & organic farmer, Bob Gregory, agronomist, agriculture director for Hartland College, presenting what you really need to know to protect yourself and your family from the dangers in man-made foods. Don't miss this one-time-only event. **FREE** to first-timers.

Sponsor: altmedangel.com through **YOU – Your Own Understanding**. Email altmedangel@comcast.net - Phone: 302-738-3304. Seating is limited. Pre-Registration suggested. **RSVP by Wednesday 3/11/09** by email if possible.

News and malls suffer in poor economy

► UPFRONT, from 1

The Christiana Mall is an excellent example of what happened. Two of the three anchor department stores are gone, their business models having failed them. Today, the stores

between the anchors – which offer luxuries such as \$5 lattes, frou frou house furnishings and electronic gadgetry – are beginning to thin out, as well.

The specifics in the newspaper business are different. Even if the content wasn't online, free and available every day,

there's no escaping the reality that fewer people are reading any news at all.

The Chinese symbol for danger also means opportunity. Maybe that's why a colleague recently told a small business-

person who works in financial services, "Don't miss the opportunity in this recession."

Here's the opportunity: a popular buzzword for those making it in this economy is "niche." Niche means you fit

a definition of necessity. Main Street and its natural extension out to Elkton Road are already successful niche retail markets, with lots of room for upward expansion.

Community journalism, embodied locally by this paper, is another necessity. The Internet robbed print journalism of its immediacy – exclaiming "Stop the presses" seems as dated now as the Model T.

But community journalism – and its ability to feature in-depth stories of local interest – still lives. Small business people who are considering whether to spend their precious dollars on advertising understand that a community paper has a shelf life of a week, while the daily paper will be under the dog by dinner time.

Unfortunately, I've never been able to see around the corner far enough to make a buck from these observations. So, if you can, please do me a favor and clue me in.



Taurance N. Bishop, DDS

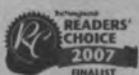
SMILE BRITE Dental Care

**NEW & EMERGENCY
PATIENTS WELCOME!**

(Rt. 40, near Peoples Plaza & Rt. 896)

302-838-8306

www.smilebriterdentalcare.com



*"Be true to your teeth or they
will be false to you"*

Pacientes Nuevos Bienvenidos



ETHICS Science ♦ Environment Religion ♦ Medicine ♦ The Media

A Panel of Distinguished Speakers: Doctors Alan Fox,
Richard Hanley and more...

FREE and Open to the Public

February and March
Wednesdays 7:00-9:00pm

Unitarian Universalist Fellowship of Newark
420 Willa Road, Newark, DE

www.uufn.org 302.368.2984

**SPRUCE UP FOR
SPRING**

**Newark
Barber Shop**

**NEWARK
BARBER SHOP**
Est. 1956

- Licensed Barbers
- Reasonable Cost
- True Barber Shop Atmosphere

Mon. 9:00 – 3:00
Tues. 9:00 – 5:30
Wed. 9:00 – 5:30
Thurs. 9:00 – 6:30
Fri. 9:00 – 5:30
Sat. 8:00 – 12:00
Sun. – Closed

241 Elkton Road • Newark, DE
(Located across from City Hall)
www.newarkbarbershop.com
302-368-5666

OBITUARIES

■ Local obituaries are posted each week on the Newark Post Web site. Obituaries of the following persons will be posted on the web this week:

Joyce Boyle
Horace Carroll
Alfred Ciccone
Doris G. Craig
Kathryn Doochak
George Hammond
Nicholas Ivone
Cedrick Justis
Arthur Olin
Patricia McDaniels
Martin Pierson



presents

Persephone

an exciting new Ballet by Artistic Director Patrick Korstange

"...because she is wise and touches that which is in motion." -Plato

Friday, March 27 @ 7:00 pm

Saturday, March 28 @ 1:00 and 5:00

Mitchell Hall Theatre, University of Delaware

Purchase tickets online at www.ticketmaster.com,
by phone at 302-984-2000, or at the UD box offices
located at the Bob Carpenter Center or Trabant Center

Tickets \$27, \$22, \$15



This program made possible in part by
Delaware Division of the **Arts**

For information call the MAB Studios at 302-266-6362 or visit www.midatlanticballet.org.



We're focused on
eyeCare.

COMPETENT, EXPERIENCED DOCTORS
CERTIFIED OPTICIANS & STAFF

EYE EXAMS
ALL MAJOR INSURANCES/HMO'S ACCEPTED
1000'S OF AFFORDABLE AND DESIGNER EYEWEAR
WIDE SELECTION OF CONTACT LENSES
LASIK

WELCOMING NEW PATIENTS
OUTSIDE PRESCRIPTIONS FILLED
STATE-OF-THE-ART TECHNOLOGY
EVENING AND SATURDAY HOURS
TREATMENT OF EYE DISEASES
SE HABLA ESPAÑOL

**SIMON EYE
ASSOCIATES**

"Eye Care for Life"

302.239.1933 | www.simoneye.com

Bear | Middletown | Newark | Pike Creek | Concord Pike | Union Street

MHS tops on AP test

► SCHOOLS, from 1

3 or higher; and one AP Scholar with Distinction, Ryan Christ, who scored a perfect 5 on five different AP exams.

A message posted on Middletown High's Web site noted that the school's seniors outperformed the state average on this year's AP exams.

Diane Tsukamaki, director of the College Board's national recognition and scholarship programs, noted in a letter to Middletown High that the school "... has been identified as having one of the best student success rates in AP math, science and technology courses in Delaware."

In addition to Christ, students who scored a perfect 5 on the final exam in at least one AP course included: Charlotte Lin (three courses); Carl Brugazli (three courses); Claire Sibley (two courses); Shahab Ali (chemistry); Hamza Bhatti (chemistry); Rem Carey (chemistry); Rolling Carey (chemistry); Jason Coan (chemistry); Will Egerton (chemistry); Tom Gray (chemistry); Haley Kavelek (chemistry); Donald Lloyd (chemistry); Lindsey Notigan (chemistry); Torey Roesch (chemistry); Veronica Plischke (chemistry); Larry Shores (chemistry); Nicole Wells (chemistry); Akudo Ogubunka (chemistry); Michael Wyatt (chemistry) and Dante Keane (physics).

"Trends continue to show that more and more of Delaware's students are taking Advanced Placement coursework and scoring a 3 or higher on AP exams," said Lillian Lowery, the state secretary of education. "Scoring a 3 or higher usually results in course credit at many colleges and universities across the country."

According to the state department of education, 13.8 percent of Delaware's 2008 graduating class earned a 3 or higher on one or more AP exams, compared to 15.2 percent for the rest of the nation.

Recent winners of the Siemens Award in Delaware include Archmere Academy (2007-2008); Concord High School (2006-2007); Alexis duPont High School (2005-2006) and Caesar Rodney High School (2003-2004).

Winning schools all receive a \$1,000 grant from the Siemens Foundation to support math and science education.

The Siemens Foundation selects schools for its prestigious award based on data supplied by The College Board in its annual "Advanced Placement Report to the Nation," which includes the scores of all schools that offer AP programs.

The report identifies top-performing schools by examining student participation and perfor-

mance data within the context of each school's population and racial/ethnic demographics.

Established in 1998, the Siemens Foundation provides more than \$2 million in college scholarships and awards to talented high school students in the United States each year.

For more information about the award or the foundation, please visit www.siemens-foundation.org.

Imaginative
Japanese Cuisine
Okura

Open 7 Days A Week
www.okurarestaurant.net

Tatami Room • Sushi Bar • Cocktails
Catering • Private Parties • Take-Out

Wellington Plaza
703 Ace Memorial Drive
Hockessin
302.239.8486
Fax 302.239.6892

(On Rt. 41 N. 1/2 mile from
Wawa, next to Toadstool)

Lunch: Mon. - Sat. 11 a.m. - 2:30 p.m.
Dinner: Mon. - Thurs. 4 p.m. - 10 p.m. • Fri. & Sat. 4 p.m. - 11 p.m.
Sun. 3 p.m. - 10 p.m.



Don't play games with your family's health.

You and your children may be exposed to up to 70 times more pollution inside your home than outside. In the trapped air of your home, dangerously high concentrations of carcinogens and toxins can build up. The list includes bleach and other cleaning products, dry cleaning fumes, mold, mothballs and air fresheners. You do have alternatives. Learn more about them today—and limit your exposure.

**LIMIT YOUR
EXPOSURE.**
REDUCE YOUR CANCER RISK.



DELAWARE HEALTHY HOMES PROGRAM
Cancer • Public Health
Health Department

Made possible with the cooperation of the
Delaware Cancer Consortium, and underwritten
in part by the Delaware Health Fund

1-800-464-HELP www.delawarehealthyhomes.org

Sports

HIGH SCHOOLS UNIVERSITY OF DELAWARE • LEAGUES

Getting cut from a sports team is never fun

Spring tryouts underway

By JON BUZBY

JONBUZBY@HOTMAIL.COM

Once the snow clears, tryouts for most spring sports will begin.

So right about now, many parents are no doubt wondering if their child will make the team this year. Even when those children are guaranteed to make a sports team, there is always a concern over whether it will be the "A" team or the "B" team.

The sport is irrelevant. It's simply the fact that your child might experience the disappointment of failing to make the "better" team. And for many high school sports, they might not make the team at all.

So how do we parents deal with it?

As sports parents, we have committed the better part of our adult lives to making sure our kids get to practices and games on time and have the best training possible. This has meant countless hours at the drive-thru

lane and even more hours sitting in bleachers. As a result, parents ask themselves when it will all pay off.

Many parents whose children are playing sports went through their own tryout experience as players. But you can't imagine how stressful tryouts are until you go through it as a parent.

There really isn't anything we parents can do about it. We can't control how hard our kids hit the ball or whether they use the correct technique to shoot and score. If there are politics involved in the decisions, we can't control that, either.

It's simply a hard fact of life that not every child is going to make every team. If it's our child who is going to experience the disappointment of being cut, our hope is he or she will take from it what we all want our kids (and ourselves) to take away from every decision, good or bad — a lesson learned for the future.

During the next few weeks, disappointed would-be athletes will be all over the Newark area. Our job as parents is to make sure that we don't let our frustrations show. No child tries out for

a team hoping to get cut. Some don't prepare properly (according to us parents), but the last thing they need to think is that they've let us down by not making a team.

The message all parents need to convey to any child cut from a team is that they are disappointed for them, not in them.

Wouldn't it be great if every parent teamed up and did that?

Won't you join that team? There are no cuts, I promise.

News and Notes

The Hodgson basketball team swept the Blue Hen Conference Championships last weekend ... Six St. Mark's wrestlers won state championships in their weight class, including Tyler Pendergast, Sean Boylan, Sean

Dolan, Ty Snook, Corey Olsen and Bobby Telford ... Junior Yellowjacket Nicole Osman won her third straight 100-yard butterfly state championship ... Former Newark High lineman Orien Harris has re-signed with the Cincinnati Bengals ... Visit newarkpostonline.com for updates throughout the high school basketball state tournaments.

'Pardon the Interruption' to visit UD

Tony Kornheiser and Michael Wilbon, the hosts of ESPN's "Pardon the Interruption," will be in Newark later this month for a special appearance at the University of Delaware's Bob Carpenter Center.

Although the duo won't be taping an episode of "Pardon the Interruption" during their appearance at UD, Kornheiser and Wilbon are expected to bring the witty banter and rapid-fire commentary that has made their program so popular since its debut in 2001.

Kornheiser and Wilbon's on-air repartee is based on their nearly 20-year friendship that began when both men were hired as sports columnists for the Washington Post in 1979 and 1980, respectively.

Today, Wilbon continues to write for the Washington Post, while also co-hosting the weekly "GMC NBA Countdown" on ABC. Kornheiser recently completed his second year as a color analyst on "Monday Night Football."



Tony Kornheiser (left) and Michael Wilbon, the hosts of ESPN's "Pardon the Interruption," will be in Newark on March 20.

Together on "PTI," their combative style is often compared to "Siskel and Ebert" and combines opinionated analysis with a breadth of sports knowledge.

The format of "PTI" has also become a staple of sports analysis programs on both ESPN and other networks.

Tickets for their March 20 appearance at UD are limited

to four tickets per person and can be purchased at Ticketmaster locations or the UD box offices.

The show at the Bob Carpenter Center will start at 8:30 p.m., with doors opening at 7:30 p.m.

The Student Centers Programming Advisory Board is sponsoring their appearance.

For more information, please visit www.scpab.com.

Follow me to
great rates on
car insurance.



There's a GEICO office in your neighborhood! With low down payments and convenient payment plans, saving on auto and motorcycle insurance is easy.

GEICO
Local Office

AUTO • HOME • RENTERS • MOTORCYCLE • BOAT

Call Now!
302-998-9192
M-F 9-6, Sat 9-1

Home, renters, and boat coverages are written through non-affiliated insurance companies and are secured through Insurance Counselors Inc., the GEICO Property Agency. Some discounts, coverages, payment plans, and features are not available in all states or in all GEICO companies. © 2007 GEICO. The GEICO gecko image © GEICO 1999-2007



- No security deposit or administration fee
- Armed/24 hour surveillance • Month to month leases available
- Located just minutes from I95 and the University of Delaware

960 S. Chapel Road, Newark, DE 19713 • 302-731-7500

www.Route72SelfStorage.com
Route72SelfStorage@verizon.net

the ultimate BRIDAL EXPO

March 14th, 2009 • 12:00 - 4:00pm

MOT Jean Birch Senior Center
300 S Scott St., Middletown, DE
Pre-Order tickets at www.middletownbridalexpo.com
\$5 in advance • \$7 at the door
Champagne & Wine Tasting

Many door prizes available!
Register to win 2 free tickets on Air Jamaica!
3 Night All-Inclusive stay for 2 at
Dreams Palm Beach in Punta Cana

Sponsored by:
Uniglobe Tour 'N Travel, The Middletown Transcript and Air Jamaica



CORRECTION

An article in the Feb. 27 edition of the Newark Post incorrectly identified the location of the final three regular season football games between the University of Delaware and Delaware State University scheduled for 2012, 2013 and 2014.

All four football games, including the Sept 19 first-ever regular season meeting between the state's two largest universities, will be held at Delaware Stadium in Newark.

Church Directory

For new ads or changes call by Friday at 4:00pm
for next Friday's edition
Call 1-800-220-1230 ask for Nancy Tokar




**Evangelical
Presbyterian Church (PCA)**
Christ Centered • Biblically Based
Sunday Worship 10:45am & 6pm
9:30 Sunday School
308 Possum Park Rd., Newark
302-737-2300
www.epcnewark.org

 The Episcopal Church Welcomes You
St. Thomas's Parish
276 S. College Ave. at Park Place, Newark, DE 19711
(302) 368-4644 Church Office: (9:00-1:00 Mon-Fri)
www.stthomasparish.org
Sunday Worship
Sunday Service times: 8am, 10:30am & 5:30pm
Sunday School begins at 9:30am
Sunday Adult Education Programs 9:30-10:15am
Fr. Paul Gennett
Rev. Sarah Brockmann, Associate Campus Minister
Marc F. Cheban, Organist & Choir Master

**"We get more hits
from this one
ad than any
other advertising
we do."**
- Rev. Jay - Good Shepherd
Episcopal Church
Call Nancy Tokar to place
your ad at
1-800-220-1230

Families. Worship. And You.
Rev. Jay Angerer and Family


Sunday Worship Service, 9:30am
William B. Keene Elementary School
200 Lagrange Avenue, Newark
302-547-7849
www.GoodShepherdDE.org
Sponsored by the Diocese of Delaware

**The Way
Ministries**
(an extension of Highway Gospel Com-
munity Temple, West Chester PA)
Highway Word of Faith Ministries is
presently worshipping @ The George
Wilson Community Center
303 New London Rd., Newark, DE
Sunday:
8:00-9:00am Christian Education
classes for all ages
9:00am Sunday Morning Celebration
Wednesday: Location
7:00-8:00pm Bible Enrichment Class at
Prayer Temple
49 New London Rd.
Newark, DE 19711
Mailing Address: P.O. Box 220
Bear, Delaware 19701-0220
Visit us online @ www.theway.ws or send us
a note at...theway238@aol.com

Pastor Carl A. Turner Sr. & Lady Karen B. Turner
For further information or directions please call:
302-834-9003

Wisdom from many sources

Sunday Service 10am
Childcare and Sunday School
Unitarian Universalist Fellowship
420 Willa Road, Newark
302.368.2984 uufn.org
Come Join Us!
Speaker: Rev. Greg Chute

**Our Redeemer
Lutheran Church**

Adult Bible Class 8:45 am
Divine Worship 10:00 am
Children's Sun. School 10:00 am
Pastor Jeremy Loesch
www.orlcde.org LCMS
10 Johnson Rd., Newark (near Rts. 4 & 273)
302-737-6176



**GLORIOUS PRESENCE
CHURCH**

Sunday 8:30 a.m.
Acoustic Worship
Sunday 10:30 a.m.
Electric Worship
Pastoral Team
Curtis E. Leins, Ph.D
Robert F. McKnight
Theodore Lambert, III
James L. Ford
Located 1 1/2 miles North of Elkton
on Rt.213
(410) 392-3456
**Traditional
Worship Service**
5pm Saturday afternoon


**St. Barnabas'
Episcopal Church**
Serving Hockessin, Pike Creek, Mill Creek & Newark
Topic: Lent II: Are you troubled? Set your mind on the divine.
Worship Services:
Saturday 5:30pm & Sunday 7:30, 9:00 & 11:15 am
302-994-6607
www.stbarnabasde.org
2800 Duncan Road, Wilmington, DE 19808

Newark Church of Christ


Steve Mahoney, Minister
91 Salem Church Road
(near Christiana High School)
302-737-3781
www.newarkchurch.com
10:30AM Sunday Worship
Come and Join Us!

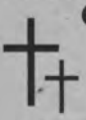
**TRINITY
PRESBYTERIAN CHURCH (PCA)**
SUNDAY WORSHIP 9:30 AM
Meeting at: First Church of the Nazarene
357 Papermill Road, Newark, DE
For more information please call
302-233-6995


**OGLETOWN
BAPTIST CHURCH**
316 Red Mill Rd., Newark, DE 19713
Phone: 302-737-2511 • Fax: 302-737-4356
www.ogletown.org
Sunday Services:
10:30am - Traditional
9:00am - Contemporary
Sunday School at both service times
Dr. Curtis Hill
Associate Pastor: Stan Gibson
Director of Collegiate Ministry: Emily Troutman
Minister of Preschool & Children: Connie Zinn
302-738-7630



**NEW LIFE CHRISTIAN
FELLOWSHIP**
Sunday Service 9:30 AM
Multimedia Children's Ministry!
Contemporary Worship!
Relevant messages!
Church Office: 999-1800
Check out our web page:
www.NewLifeDE.org
2712 Old Milltown Rd.
Wilmington, DE
(near Kirkwood Hwy & Milltown Rd)

CROSSROADS BIBLE CHURCH
Home of Elkton Christian Academy
144 Appleton Road, Elkton, MD
410-398-2688
Rev. Timothy W. Britton
Sunday
Bible Study, 10:00 am
Contemporary Service, 11:00 am
Small Groups, 6:00 pm
Wednesday, 6-8 pm
Dinner, Awana, Student
& Adult Ministries

Enjoy a cup of gourmet coffee
or cappuccino in our
Common Grounds Cafe

**NEWARK WESLEYAN
CHURCH**

708 West Church Rd
Newark, DE
(302)737-5190
Pastor James E. Yoder, III
Sunday School for all ages.....9:30am
Morning Worship10:30am
Children's Church & Nursery Provided
Choir - Sunday5:30pm
Youth Meeting - Sunday6:00pm
Mid-Week Bible Study
"A Family Church with a Friendly Heart"

You are welcome at

**Ebenezer
United Methodist Church**
SUN SERVICES 8:30 & 11:00am
SUNDAY SCHOOL 9:45am
525 Polly Drummond Road
Newark 302-731-9494
Handicapped Accessible • Child Care
TED DAY, PASTOR

Posted



ANNOUNCEMENT

NOTICES

CHESAPEAKE PUBLISHING never knowingly publishes advertising that is untruthful, fraudulent or misleading. We strive to promote ethical business practices in our market and to serve the best interest of our readers. If you have questions about the legitimacy of an ad or claim it is recommended that you contact the Better Business Bureau and check on the background of the business placing the ad.

ELECTRICAL APPRENTICESHIP
HCECA is accepting applications for classes starting Sept. 2009. Employment assistance available. HS diploma or GED required. For application call 410-879-5824

ENTERTAINMENT

COME DANCE THE NIGHT AWAY!

DANCIN' THRU THE DECADES
Live at the Sandbar!
713 N. Broad Street
Middletown, DE
Saturday, March 7
9pm-1am
Doors open at 8:30
Dance Contest and prizes!
For more info call
302-367-8370

LOST & FOUND

RINGS FOUND in parking lot of Elkton Food Lion Shopping Center on approx Wed 2/25 call 410-620-4993

CALL OR EMAIL CHESAPEAKE CLASSIFIED
800-220-1230
410-398-1230
www.chesapeakeclassified.com

STAPLEFORD'S CHEVROLET OLDSMOBILE
302-834-4568



ST. GEORGES, DE

VOLKSWAGEN
Smith
VOLKSWAGEN, LTD.
4304 Kirkwood Highway,
WILMINGTON, DE
302-998-0131
Drivers wanted



EMPLOYMENT

110 HELP WANTED FULL TIME

BUSINESS ANALYST SR. SPECIALIST INFO. TECHNOLOGY—Access Group, Wilmington, DE - Analyze, identify, define, conceptualize & document operational issues & business processes. MS in Comp. Sci or Eng. + 36 mos. exp. Mail resumes to Heather Dromgoole, PO Box 7430, Wilmington, DE 19803. Use Reference code 03/09DA.

DRIVER:

- Company drivers average \$1,000/week
 - Home weekly
 - Immediate benefits
 - Excellent equipment
 - CDL A w/ 1 year exp, 23 years of age
- Call NFI Sunday or anytime
877-691-5577
www.nficareers.com

Post Office Now Hiring Nationally!
Avg. pay \$20hr., \$57k yr. incl. Fed. ben., OT. Optional fee-based test prep materials. Not affiliated with the US Postal Service
1-866-475-2907

New Today

RESTAURANT-Seeking GENERAL MANAGER & SHIFT MANAGERS for Five Guys Burgers & Fries, Bear & Hockessin DE locations. Apply in person or fax resume to: 302-492-1554

115 HELP WANTED PART TIME

New Today

EXPERIENCED MIXOLOGIST Wanted P/T, Sunday & Monday nights with references. Call 410-398-3696 ask for John

MYSTERY SHOPPERS

Earn up to \$150/ day. Under cover shoppers needed to judge retail and dining establishments. Experience not req'd. 888-601-4874

120 JOBS WANTED

LOOKING FOR WORK?

Don't just sit there! Show potential employers what you've got to offer by advertising your skills in our "Jobs Wanted" section! Call today and ask about our extended online package!
410-398-1230
800-220-1230



RENTALS

305 APARTMENTS UNFURNISHED

New Today

CHERRY HILL 2Br. \$850/mo + sec dep. No pets. New carpet & paint. 410-620-2367

New Today

NORTH EAST- area, 1st flr, 2br, stove, frig, W/D hookup. **Yearly lease,** non smok env., no pets. \$700/mo + sec & utils. 443-350-4920

New Today

QUIET COUNTRY SETTING

in Rising Sun. **1 BR.** 2nd floor apt avail. Exc cond. Non smok env. No pets. \$800/ mo. incl. utils. Call 443-309-3946

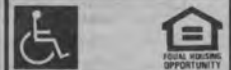


Offering 1 and 2 Bedroom Market & Affordable Housing Units

Income Guidelines Apply

13-D O'Daniel Avenue Newark, DE 19702

For rental information please call:
302-368-2357
Proudly Managed By Fairville Management Company, LLC



315 HOUSES FOR RENT

New Today

FAIR HILL- Farm house 4 br 2 ba access to Fair Hill, min's to Newark, Elkton & I-95 \$1200/m **410-920-6109**

NORTH EAST 3/4 br, 3 full bath, Possible n-law suite. Pets nego. \$1400. 410-287-7054

345 ROOMS FOR RENT

MIDDLETOWN- Room for Rent \$500.00/mo. Background check req. 302-540-1555

365 COMMERCIAL RENTALS

New Today

ELKTON ON RT 40 office retail 700 sq ft, \$1000/mo + sec call 443-309-4573

365 COMMERCIAL RENTALS

New Today

ELKTON- Office Bldg 3,523 sq. ft., close to Rt 40 & I-95. Ample parking. 443-553-1517



REAL ESTATE

422 TOWNHOUSE FOR SALE

PERRYVILLE. FSBO Chesapeake Landing TH 3BR, 1.5BA. Brick front, NICE! \$179k. 443-417-5564

432 MOBILE HOMES

MOBILE HOME removal, salvage & parts. Call for removal quote. 717-464-4461 or 410-658-9588



SERVICES

510 CHILD CARE SERVICES

MD/DE LINE Infant & up. 3pm-11pm shift avail. Lic# 154032 Call 410-920-2231

RID YOUR HOME OF ALL THAT CLUTTER! HAVE A YARD SALE AND ADVERTISE IT WITH US!

520 HOME IMPROVEMENT SERVICES

ADDITIONS, concrete, masonry, excavation work, backhoe rental. 410-620-0463 443-309-4466

ELECTRICIAN
Prompt service, recession rates, lic. & ins. **410-275-2804**
302-981-5000



GOT SKILLS? Make Money!! Showcase your service in our "We're at Your Service"

section and get the side jobs you need to make ends meet!!

Call for more information
410-398-1230
800-220-1230

WE BUY JUNK CARS, TRACTOR TRAILERS, Dump Trucks or any heavy equipment machinery. Cash paid.
302-650-4579



MERCHANDISE

Classified is the key to more sales.

602 ANIMALS/PETS



Attn: Dairy / Horse Farms, Farmettes etc. or just want to help!

3 Feral kitty cats- Mommy, brother & son. Brother & Son are neutered, shots etc. Mommy has resisted trap - but about ready to try again / she will be spayed. Loc in Elkton under bldg that's to be demolished - must relocate them to good homes only! Would like to keep together. Beautiful, well fed - Mr. Gray is gray & white, Mommy cat is orange & white, son is mostly creamy yellow. **Please help if you can! Eves 410-398-0887**

AMERICAN Bulldog pups. 10wks NKC reg. S & W. Parents on prem. \$500. 302-444-7607 or 302-275-9289

New Today

BULL MASTIFF puppies, shots, wormed, ready to go. ACA. Fawn & buff color. \$699. 410-275-1486

CHIHUAHUA 10 mts Great with kids! \$300.00
443-907-6310
443-350-9058

CLASSIFIEDS
410-398-1230
800-220-1230

I ADVERTISED MY PUG PUPPIES in all 12 of Chesapeake Publishing's community papers and with that amount of coverage, was able to sell all of my puppies. I ran the same ad in the "metro paper" and didn't receive nearly as many calls. Gary, Middletown.
THANKS, CHESAPEAKE PUBLISHING!

LAB PUPPIES. 3 males, 4 females, S & W, ready 03/13. \$200. Leave message 410-885-2387

NIGERIAN Dwarf Goats bottle fed babies, ready to go, males & females. Call 302-659-3271 after 5p

ROTTWEILER PUPS

ACA, born 01/01/09, S&W, vet check. Champ bloodline, family raised. Ready 02/26. \$750. 610-932-6169

SIBERIAN HUSKIES pure white, blue eyes, \$400. 410-287-7995

620 COMPUTERS & ACCESSORIES

DELL Laptop. Super fast, CD, DVD, wireless, Windows XP Pro Office. Like new. War. \$385. 410-941-0012

630 ELECTRONICS

BARGAIN
ORIGINAL XBOX w/ 5 games. \$90. Call 443-466-8535 or 443-406-0964

PUBLIC NOTICE OF AVAILABILITY ENVIRONMENTAL ASSESSMENT AND DRAFT FINDING OF NO SIGNIFICANT IMPACT FOR THE CONSTRUCTION OF AN ARMED FORCES RESERVE CENTER AND IMPLEMENTATION OF BRAC 2005 REALIGNMENT ACTIONS IN NEWARK, DE

Pursuant to the Council on Environmental Quality regulations for implementing the procedural provisions of the National Environmental Policy Act (40 CFR 1500) and 32 CFR 651 Environmental Analysis of Army Actions, the U.S. Army conducted an Environmental Assessment (EA) of the potential environmental and socioeconomic effects associated with implementing the Defense Base Closure and Realignment (BRAC) Commission's recommendations for Newark, DE. The new facilities included in the Proposed Action implementing the BRAC Commission's recommendations are proposed to be constructed at 1001 Ogletown Road, the former site of the Temple Inland Newark Box Plant, and include:

Armed Forces Reserve Center (AFRC) and supporting facilities. The proposed AFRC would provide an approximately 80,994 square foot (SF) 400-member training facility with administrative, educational, assembly, library, learning center, vault, weapons simulator, and physical fitness areas for four Army Reserve units and two DEARNG units. Associated support facilities include an approximately 8,050 SF Vehicle Maintenance Shop (VMS) and an approximately 1,361 SF unheated storage building. In addition, there would be approximately 4.28 acres of paved areas including approximately 2.47 acres of military equipment parking (MEP) areas and approximately 1.81 acres of privately-owned vehicle (POV) parking areas, walkways, and access roads. To accommodate the proposed facilities it is likely that some or all of five buildings existing on the preferred site would need to be demolished prior to construction of the proposed facilities. The five structures total 215,900 SF and include a free standing, one-story, steel manufacturing building and four storage/outbuildings.

The EA and Draft Finding of No Significant Impact (FNSI) will undergo a 30-day public comment period, from March 6, 2009 through April 4, 2009. This is in accordance with requirements specified in 32 CFR Part 651.14 Environmental Analysis of Army Actions. During this period the public may submit comments on the EA and the Draft FNSI.

The EA and Draft FNSI can be accessed on the World Wide Web at:
http://www.hqda.army.mil/acsim/brac/env_ea_review.htm

Printed copies of the EA and Draft FNSI can also be viewed at the following libraries: Newark Free Library, 750 Library Ave, Newark, DE 19711 and Wilmington Public Library, 10 E 10th St., Wilmington, DE 19801.

Comments on the EA and Draft FNSI should be submitted during the 30-day public comment period via mail, fax, or electronic mail to:

Mona Garrett
99th Regional Support Command
99 Soldiers Lane
Coraopolis, PA 15108-2550
email: mona.garrett@usar.army.mil
Fax No. (412) 604-8156

LEGAL NOTICE LEGAL NOTICE LEGAL NOTICE LEGAL NOTICE LEGAL NOTICE LEGAL NOTICE LEGAL NOTICE LEGAL NOTICE LEGAL NOTICE

SHERIFF'S SALE

The following Real Estate will be exposed for Public Sale at the CITY/COUNTY BLDG., 800 N. French Street, City of Wilmington, New Castle County, Delaware, by Michael P. Walsh, Sheriff, on **TUESDAY the 10th day of MARCH, 2009 at 10:00 a.m. The legal limit of 152 persons in Council Chambers will be enforced.**

SHERIFF'S SALE

By virtue of a writ of LEV FAC #1 JA, AD., 2009.
PARCEL NO. 10-032.40-100
PROPERTY ADDRESS: 6 Wright Circle, Newark, DE 19702

ALL that certain lot, piece or parcel of land, with the building thereon erected, known as 6 Wright Circle, situate in New Castle Hundred, New Castle County and State of Delaware, and being Lot No. 116 of the subdivision of Taylortowne, Microfilm Number 4188, and being more particularly bounded and described in accordance with a survey by The Pelsa company dated September 8, 1993.

BEING the same lands and premises which Susan M. Lord did by deed dated August 29, 2007 and recorded in the office aforesaid in Instrument No. 20070920-0083553 did grant and convey unto Frank Lare.

SEIZED AND TAKEN IN EXECUTION AS THE PROPERTY OF FRANK LARE.

TERMS OF SALE: 10% DOWN AT TIME OF SALE.
BALANCE DUE ON OR BEFORE APRIL 6, 2009.

JANUARY 31, 2009

SHERIFF'S SALE

By virtue of a writ of LEV FAC #12 JA, AD., 2009.
PARCEL NO. 09-023.30-024
PROPERTY ADDRESS: 111 Coral Reef Drive, Newark, DE 19713

ALL that certain lot, piece or parcel of land with the improvements thereon erected, known as 111 Coral Reef Drive, situate in White Clay Creek Hundred, New Castle County, State of Delaware, being Lot No. 8, Block C, on a Plan of Hillside Heights, Section 1, dated April 30, 1956, prepared by Edward H. Richardson Associates, Inc., Consulting Engineers and recorded in the Office of the Recorder of Deeds, in and for New Castle County, State of Delaware, in Flat Record 4, Page 9, and being more particularly bounded and described in accordance with a survey by Zebley & Associates, Professional Land Surveyors and Site Planners of Wilmington, Delaware, dated July 22, 1998, as follows, to-wit:

BEING the same lands and premises which Michael R. Cudd and Sheriff L. Cudd did grant and convey unto Katie L. Zanes by deed dated April 15, 2005 and recorded on May 3, 2005 in the Office of the Recorder of Deeds, in and for New Castle County, State of Delaware, in Deed Instrument 20050503-0041412.

SEIZED AND TAKEN IN EXECUTION AS THE PROPERTY OF KATIE L. ZANES.

TERMS OF SALE: 10% DOWN AT TIME OF SALE.
BALANCE DUE ON OR BEFORE APRIL 6, 2009.

JANUARY 31, 2009

SHERIFF'S SALE

By virtue of a writ of LEV FAC #14 JA, AD., 2009.
PARCEL NO. 11-015.30-063
PROPERTY ADDRESS: 39 Cedar Farms Drive, Newark, DE 19702

ALL that certain lot, piece or parcel of land, with the buildings thereon erected, known as 39 Cedar Farm Drive, situate in Pencader Hundred, New Castle County and State of Delaware and being Lot No. 19 on the Record resubdivision Plan of Cedar Farms, as said Plan is of record in the Office of the Recorder of Deeds in and for New Castle County, in Microfilm No. 8373 and being more particularly bounded and described in accordance with a recent survey by A.E.S. Surveyors, dated June 13, 2006, as follows, to-wit:

BEING the same lands and premises which James W. Siejk and Stephine L. Siejk did grant and convey unto Chitpraseuth Vilayvong and Vilayvone Vilayvong by deed dated June 22, 2006 in the Office of the Recorder of Deeds, in and for New Castle County, State of Delaware, in Deed Instrument 20060626-0060494.

SEIZED AND TAKEN IN EXECUTION AS THE PROPERTY OF CHITPRASEUTH VILAYVONG AND VILAYVONE VILAYVONG.

TERMS OF SALE: 10% DOWN AT TIME OF SALE.
BALANCE DUE ON OR BEFORE APRIL 6, 2009.

JANUARY 31, 2009

SHERIFF'S SALE

By virtue of a writ of ALIAS LEV FAC #15 JA, AD., 2009.
PARCEL NO. 11-019.30-059
PROPERTY ADDRESS: 151 Tuckahoe Lane, Bear, DE 19701

ALL that certain lot, piece or parcel of land, with the buildings thereon, situate in Pencader Hundred, New Castle County and State of Delaware, known as 151 Tuckahoe Lane, being Lot No. 68 on the Record Resub-

division Plan of The Village of Becks Pond, as the plan thereof is of record in the Office of the Recorder of Deeds in and for New Castle County, Delaware, in Microfilm No. 11614, and being more particularly bounded and described in accordance with a survey by East Coast survey, dated February, 2002, as follows, to-wit:

BEING the same lands and premises which Kendal M. Smith did grant and convey unto Rhonda Holley by deed dated December 22, 2006 and recorded on January 5, 2007 in the Office of the Recorder of Deeds, in and for New Castle County, State of Delaware, in Deed Instrument 20070105-0001405.

SEIZED AND TAKEN IN EXECUTION AS THE PROPERTY OF RHONDA HOLLEY.

TERMS OF SALE: 10% DOWN AT TIME OF SALE.
BALANCE DUE ON OR BEFORE APRIL 6, 2009.

JANUARY 31, 2009

SHERIFF'S SALE

By virtue of a writ of LEV FAC #21 JA, AD., 2009.
PARCEL NO. 11-027.40-059
PROPERTY ADDRESS: 744 Fox Chase Circle, Bear, DE 19701

ALL that certain lot, piece or parcel of land, with the building thereon erected, situate in Pencader Hundred, New Castle County, and State of Delaware known as 744 Fox Chase Circle, and being Lot No. 150, as shown on the Plan of Rosewood, as said Plan is of record in the Office of the Recorder of Deeds in and for New Castle County, Delaware in Microfilm No. 9396, and being more particularly bounded and described in accordance with a survey prepared by East Coast Survey, Professional Land Surveying dated August 2005, as follows, to-wit:

BEING the same lands and premises which Markos D. Zerefos and Eugene M. Zerefos, did grant and convey unto Eugene Guyton and Vista C. Guyton, by deed dated August 30, 2005 and recorded on September 14, 2005 in the Office of the Recorder of Deeds, in and for New Castle County, State of Delaware, in Deed Instrument 20050914-0093888.

SEIZED AND TAKEN IN EXECUTION AS THE PROPERTY OF EUGENE GUYTON AND VISTA C. GUYTON.

TERMS OF SALE: 10% DOWN AT TIME OF SALE.
BALANCE DUE ON OR BEFORE JANUARY 2, 2009.

JANUARY 31, 2009

SHERIFF'S SALE

By virtue of a writ of FIRST PLURIES LEV FAC #28 JA, AD., 2009.
PARCEL ID: 07-007.20-074
PROPERTY ADDRESS: 64 Darien Road, Newark, DE 19711

ALL that certain lot, piece or parcel of land in White Clay Creek Hundred, New Castle County and State of Delaware known as 64 Darien Road and being Lot No. 6, Section Four, Block B, on a Plan of Covered Bridge Farms, and being more particularly bounded and described in accordance with a recent survey by First State Mortgage Surveys, Inc., dated August 19, 1985, as follows, to-wit:

BEING the same lands and premises which Sharon H. Hudson did grant and convey unto Lloyd A. Hudson and Sharon H. Hudson by deed dated 3/18/92 and recorded 3/24/92 Office of the Recorder of Deeds, in and for New Castle County, State of Delaware, in Deed Book 1304, page 152.

SEIZED AND TAKEN IN EXECUTION AS THE PROPERTY OF LLOYD A. HUDSON AND SHARON H. HUDSON.

TERMS OF SALE: 10% DOWN AT TIME OF SALE.
BALANCE DUE ON OR BEFORE APRIL 6, 2009.

JANUARY 31, 2009

SHERIFF'S SALE

By virtue of a writ of LEV FAC #34 JA, AD., 2009.
PARCEL NO. 09-016.30-128
PROPERTY ADDRESS: 259 S Dillwyn Road, Newark, DE 19711

ALL that certain lot, piece or parcel of land with the improvements thereon erected, situate in White Clay Creek Hundred, New Castle County, Delaware, and known as Lot No. 260, Block K, on the Plan of Section 2, Windy Hills (now known as Wingate Park) as said Plan is of record in the Office of the Recorder of Deeds in and for New Castle County in Microfilm Plat Record No. 734 and being more particularly bounded and described in accordance with a mortgage inspection plan by The Pelsa company, Land Consultants and Surveyors of Newark, Delaware, dated August 2007, as follows, to-wit:

BEING the same lands and premises which Albert L. Powell Jr., did grant and convey unto Kenneth Neil Hall Sr., by deed dated September 24, 2007 and recorded on September 29, 2007 in the Office of the Recorder of Deeds, in and for New Castle County, State of Delaware, in Deed Instrument 20070926-0084979.

SEIZED AND TAKEN IN EXECUTION AS THE PROPERTY OF KENNETH NEIL HALL SR.

TERMS OF SALE: 10% DOWN AT TIME OF SALE.
BALANCE DUE ON OR BEFORE APRIL 6, 2009.

JANUARY 31, 2009

SHERIFF'S SALE

By virtue of a writ of LEV FAC #35 JA, AD., 2009.
PARCEL ID: 11-017.40-046
PROPERTY ADDRESS: 341 E. Edgewater Way, Newark, DE 19702

ALL that certain lot, piece or parcel of land situate in Pencader Hundred, New Castle County, State of Delaware, with a dwelling thereon erected, situate on the Plan of Four Seasons, being known as Lot 180, Block F, and being more particularly bounded and described in accordance to a survey by Zebley and Associates, Inc., Professional Land Surveyors of Wilmington, Delaware, dated January, 2002, as follows, to-wit:

BEING the same lands and premises which Walter J. Austin, Jr. and Karen A. Austin, did grant and convey unto David C. Sloan, by deed dated January, 2002 and recorded on February 1, 2002 in the Office of the Recorder of Deeds, in and for New Castle County, State of Delaware, in Deed Instrument 20020201-0010654.

SEIZED AND TAKEN IN EXECUTION AS THE PROPERTY OF DAVID C. SLOAN.

TERMS OF SALE: 10% DOWN AT TIME OF SALE.
BALANCE DUE ON OR BEFORE APRIL 6, 2009.

JANUARY 31, 2009

SHERIFF'S SALE

By virtue of a writ of LEV FAC #39 JA, AD., 2009.
PARCEL NO. 11-004.40-048
PROPERTY ADDRESS: 126 North Hunter Forge Road, Newark, DE 19713

ALL that certain lot, piece or parcel of land, with the building thereon erected known as 126 N. Hunter Forge Road, situate in Pencader Hundred, New Castle County and State of Delaware, and being Lot No. 53, Block B of the subdivision or Anvil Park (formerly known as Village of Sandy Brae), Microfilm Number 1719, and being more particularly bounded and described in accordance with a survey by The Pelsa Company dated July 17, 1995 as follows, to-wit:

BEING the same lands and premises which John E. Pryor and Barbara J. Pryor did grant and convey unto Barbara J. Pryor by deed dated February 1, 2005 and recorded on February 9, 2005 in the Office of the Recorder of Deeds, in and for New Castle County, State of Delaware, in Deed Instrument 20050209-0013618.

SEIZED AND TAKEN IN EXECUTION AS THE PROPERTY OF BARBARA J. PRYOR.

TERMS OF SALE: 10% DOWN AT TIME OF SALE.
BALANCE DUE ON OR BEFORE APRIL 6, 2009.

JANUARY 31, 2009

SHERIFF'S SALE

By virtue of a writ of LEV FAC #45 JA, AD., 2009.
PARCEL NO. 11-006.30-127
PROPERTY ADDRESS: 41 Bobby Drive, Newark, DE 19713

ALL that certain lot, piece or parcel of land with the dwelling thereon erected, situate in Pencader Hundred, New Castle County, Delaware, and known as Lot No. 31, Block J, on the Plan of Robscott Manor, Section One, as said Plan is of record in the Office of the Recorder of Deeds in Microfilm No. 707, begin more particularly bounded and described in accordance with a Survey prepared by A.E.S. Surveyors, Wilmington, Delaware, dated February 23, 2005.

AND BEING the same lands and premises conveyed unto Constance Newton by deed of Richard H. Shorter and Michelle E. Shorter, dated August 8, 2005 and of record in the Office of the Recorder of Deeds in and for New Castle County and State of Delaware at Instrument Number 20050809-0079203.

SEIZED AND TAKEN IN EXECUTION AS THE PROPERTY OF CONSTANCE NEWTON.

TERMS OF SALE: 10% DOWN AT TIME OF SALE.
BALANCE DUE ON OR BEFORE APRIL 6, 2009.

JANUARY 31, 2009

SHERIFF'S SALE

By virtue of a writ of LEV FAC #47 JA, AD., 2009.
PARCEL NO. 09-013.10-028
PROPERTY ADDRESS: 1014 Nottingham Road, Newark, DE 19711

ALL that certain lot, piece or parcel of land situate in White Clay Creek Hundred, New Castle County and State of Delaware, and being Lot No. 15, Tip Top Farms (f/k/a the plot plan of John P. and Virginia M. Diehl dated June 30, 1952), on the northeasterly side of Nottingham Road (at 60 feet wide), and more particularly bounded and described according to a Mortgagee's Inspection Plan prepared by Raymond F. Christian & Associates, Inc., dated November 10, 1995, as follows, to-wit:

BEING the same lands and premises which E. David Bailey and Kelly A. Bailey, husband and wife, By Deed dated June 16, 2003, and recorded in the Office of the Recorder of Deeds, in and for New Castle County, Delaware, at Instrument No. 20030619-0074074, did grant and convey unto Betty J. Fox, as sole owner.

(Continued)

LEGAL NOTICE LEGAL NOTICE LEGAL NOTICE LEGAL NOTICE LEGAL NOTICE LEGAL NOTICE LEGAL NOTICE LEGAL NOTICE LEGAL NOTICE

(Continued)

SHERIFF'S SALE

SEIZED AND TAKEN IN EXECUTION AS THE PROPERTY OF BETTY J. FOX.
TERMS OF SALE: 10% DOWN AT TIME OF SALE.
BALANCE DUE ON OR BEFORE APRIL 6, 2009.
JANUARY 31, 2009

SHERIFF'S SALE

By virtue of a writ of ALIAS LEV FAC #51 JA, AD., 2009.
PARCEL NO. 11-006.30-141
PROPERTY ADDRESS: 51 Gill Drive, Newark, Delaware

ALL that certain lot, piece or parcel of land with the dwelling thereon erected, situate in Pencader Hundred, New Castle County and State of Delaware and known as Lot 16, Block J on the Plan of Robscott Manor, Section One, as said plan is of record in the Office of the Recorder of Deeds in and for New Castle County, Delaware in Microfilm Record 797 and known and being more particularly bounded and described according to a survey prepared by Zebley & Associates dated February 10, 2001, to-wit:

AND BEING the same lands and premises which Helga M. Melton by deed dated February 12, 2001 and recorded in the office aforesaid in Deed Record 200103130017365 granted and conveyed to Lamont W. Sauerwald and Patricia A. Sauerwald, herein in fee.

SEIZED AND TAKEN IN EXECUTION AS THE PROPERTY OF LAMONT W. SAUERWALD AND PATRICIA A. SAUERWALD.

TERMS OF SALE: 10% DOWN AT TIME OF SALE.
BALANCE DUE ON OR BEFORE APRIL 6, 2009.
JANUARY 31, 2009

SHERIFF'S SALE

By virtue of a writ of LEV FAC #60 JA, AD., 2009.
PARCEL NO. 09-028.10-123
PROPERTY ADDRESS: 134 Lynch Farm Drive, Newark, DE

ALL that certain lot, piece or parcel of land with the dwelling thereon erected, situate in White Clay Creek Hundred, New Castle County and State of Delaware, and known as Lot No. 18, Block X, on the Plan of Todd Estates, Section 4, as said Plan is of record in the Office of the Recorder of Deeds in and for New Castle County, Delaware, in Microfilm Record 723, and being more particularly bounded and described in accordance with a recent survey of Howard L. Robertson, Inc., Professional Land Surveyors of Wilmington, Delaware dated March 1, 2005.

AND BEING the same lands and premises which Richard Nittoly and Nicholas Tsistinas by deed dated March 15, 2005 and recorded in the Office of the Recorder of Deeds in and for New Castle County, Delaware as Instrument No. 20050316-0024886 did grant and convey unto Melissa D. Dougherty, in fee.

SEIZED AND TAKEN IN EXECUTION AS THE PROPERTY OF MELISSA D. DOUGHERTY.

TERMS OF SALE: 10% DOWN AT TIME OF SALE.
BALANCE DUE ON OR BEFORE APRIL 6, 2009.
JANUARY 31, 2009

SHERIFF'S SALE

By virtue of a writ of LEV FAC #80 JA, AD., 2009.
PARCEL NO. 10-038.30-128
PROPERTY ADDRESS: 28 Wellington Drive, Newark, Delaware 19702

ALL that certain lot, piece or parcel of land with the dwelling thereon erected, known as 28 Wellington Drive, laurel Woods, situate in New Castle Hundred, New Castle County, Delaware, being Lot No. 172, as shown on the Record Major Land Development Plat of Section One, Wellington Woods, prepared by Edward H. Richardson Associates, Inc., Consulting Engineers, of Newark, Delaware, dated February 26, 1976, of record in the Office of the Recorder of Deeds in and for New Castle County, Delaware, in File No. 4116, and described in accordance with a survey prepared by the Pelsa Company, dated 12/13/90. The improvements thereon known as 28 Wellington Drive, Newark, DE 19702.

BEING the same lands and premises that Henry R. Murray, III and Marianne Comer by deed dated November 30, 2005 and recorded in the Office of the Recorder of Deeds in and for New Castle County, Delaware, in Deed Instrument 20081002-0066261, did grant and convey unto Henry R. Murray, III, in fee.

SEIZED AND TAKEN IN EXECUTION AS THE PROPERTY OF HENRY R. MURRAY, III.

TERMS OF SALE: 10% DOWN AT TIME OF SALE.
BALANCE DUE ON OR BEFORE APRIL 6, 2009.
JANUARY 31, 2009

SHERIFF'S SALE

By virtue of a writ of LEV FAC #83 JA, AD., 2009.
PARCEL NO. 10-043.30-246
PROPERTY ADDRESS: 415 Feather Drive, Newark, Delaware 19702

ALL that certain piece, parcel or tract of land, situate in New Castle Hundred, New Castle County, Delaware, being Lot 77 according to the Record Major Subdivision Plan of Raven Glen at Wellington Woods, as recorded in the Recorder of Deeds Office in and for New Castle County, on microfilm number 11345 and as per a plan prepared by Ramesh C. Batta Associates, P.A. Consulting Engineers and Land Surveyors, plan no. 85668-4-A-9584.

BEING the same lands and premises that Pulte Home Corporation by deed dated April 20, 1994 and recorded in the Office of the Recorder of Deeds in and for New Castle County, Delaware, in Deed Book 1724, Page 45, did grant and convey unto Angela A. Taylor, in fee.

SEIZED AND TAKEN IN EXECUTION AS THE PROPERTY OF ANGELA A. TAYLOR.

TERMS OF SALE: 10% DOWN AT TIME OF SALE.
BALANCE DUE ON OR BEFORE APRIL 6, 2009.
JANUARY 31, 2009

SHERIFF'S SALE

By virtue of a writ of THIRD PLURIES LEV FAC #86 JA, AD., 2009.

PARCEL NO. 11-017.40-138

PROPERTY ADDRESS: 29 Sunny Bend, Newark, Delaware 19702

ALL that certain lot, piece or parcel of land, with the buildings thereon erected, situate in Pencader Hundred, New Castle County, Delaware, being designated Lot 305, block L, as shown on the Record Subdivision Plan of Strawberry Run, in Four Seasons, of record in the Office of the Recorder of Deeds, New Castle County, Delaware, on Microfilm No. 3081, said lot also known as 29 Sunny Bend Drive and being described according to a survey by First State Mortgage Surveys, Inc., dated July 10, 1985.

BEING the same lands and premises that Robert D. Allen and Maryellen Allen, by Deed dated May 13, 1996 and recorded in the Office of the Recorder of Deeds, in and for New Castle County, State of Delaware, in Deed Book 2111, Page 88, did grant and convey unto Maryellen Allen, in fee.

SEIZED AND TAKEN IN EXECUTION AS THE PROPERTY OF MARYELLEN ALLEN.

TERMS OF SALE: 10% DOWN AT TIME OF SALE.
BALANCE DUE ON OR BEFORE APRIL 6, 2009.
JANUARY 31, 2009

SHERIFF'S SALE

By virtue of a writ of LEV FAC #98 JA, AD., 2009.
PARCEL NO. 09-015.40-034

PROPERTY ADDRESS: 2 Hillcroft Road, Newark, Delaware 19711

ALL that certain lot, piece or parcel of land situate in Windy Hills, White Clay Creek Hundred, New Castle County, Delaware, being part of Lot No. 126, Block G, as shown on the Final Plan of Windy Hills dated March, 1956, and revised December 10, 1956; and more particularly bounded and described according to a recent survey prepared by North Star Surveys, Professional Land Surveyors.

BEING the same lands and premises which Garfield Bratcher and Sheila L. Bratcher, by Deed dated January 8, 1999 and recorded January 19, 1999 in the Office of the Recorder of Deeds in and for New Castle County, Delaware in Deed Book 2574, Page 74, did grant and convey unto Harry Benson and Anita Benson.

SEIZED AND TAKEN IN EXECUTION AS THE PROPERTY OF HARRY BENSON AND ANITA BENSON.

TERMS OF SALE: 10% DOWN AT TIME OF SALE.
BALANCE DUE ON OR BEFORE APRIL 6, 2009.
JANUARY 31, 2009

SHERIFF'S SALE

By virtue of a writ of LEV FAC #103 JA, AD., 2009.
PARCEL NO. 09-027.20-227

PROPERTY ADDRESS: 28 Fleming Street, Newark, Delaware 19713

ALL those certain lots, pieces or parcels of land situate in White Clay Creek Hundred, New Castle County and State of Delaware, known as 28 Fleming Street and being lot No. 81, Block C, as shown on the Record Land Development Plan, Section 1, Kimberton as prepared by Howard L. Robertson, Civil Engineer and Surveyors, recorded August 25, 1971, in the Office of the Recorder of Deeds in and for New Castle County in Microfilm No. 1819, and being more recently described in accordance with a recent Mortgage Inspection Plan prepared by East Coast Survey, Inc., dated October 16, 2006.

BEING the same lands and premises which Matthew H. Henderson, Jr., by Deed dated October 27, 2006, and recorded in the Office of the Recorder of Deeds in and for New Castle County, Delaware, in Instrument No. 2006 1114-0107314, did grant and convey unto Beatrice Ndiba, in fee.

SEIZED AND TAKEN IN EXECUTION AS THE PROPERTY OF BEATRICE NDIBA.

TERMS OF SALE: 10% DOWN AT TIME OF SALE.
BALANCE DUE ON OR BEFORE APRIL 6, 2009.
JANUARY 31, 2009

SHERIFF'S SALE

By virtue of a writ of LEV FAC #107 JA, AD., 2009.
PARCEL NO. 08-012.00-154
PROPERTY ADDRESS: 4 Nathalie Drive, Hockessin, Delaware 19707

ALL that certain lot, piece or parcel of land with the buildings thereon erected, situate in Mill Creek Hundred, New Castle County and State of Delaware, known as 4 Nathalie Drive, being Lot No. 40 on the record major subdivision plat of Manley as said plan is of record in the Office of the Recorder of Deeds in and for New Castle County, Delaware in Microfilm No. 6483, and being more particularly bounded and described in accordance with a survey by North Star Surveys.

BEING the same lands which Baldini, Inc., by Deed dated December 20, 1995 and filed for record in the Office of the Recorder of Deeds in and for New Castle County, Delaware in Deed Record 319, Page 64, granted and conveyed unto Eugene S. Park and Herta Park, in fee.

BEING the same lands which Eugene S. Park f/k/a Sang Meo Park and Herta Park, by Deed dated October 21, 1998 and filed for record in the Office of the Recorder of Deeds in and for New Castle County, Delaware in Deed Record 2558, Page 103, granted and unto Young K. Kim and Chong M. Kim, in fee.

SEIZED AND TAKEN IN EXECUTION AS THE PROPERTY OF YOUNG K. KIM AND CHONG M. KIM.

TERMS OF SALE: 10% DOWN AT TIME OF SALE.
BALANCE DUE ON OR BEFORE APRIL 6, 2009.
JANUARY 31, 2009

SHERIFF'S SALE

By virtue of a writ of LEV FAC #109 JA, AD., 2009.
PARCEL NO. 08-038.20-306

PROPERTY ADDRESS: 25 St. John Drive, Wilmington, Delaware 19808

ALL that certain lot, piece or parcel of land, with the buildings thereon erected, known as 25 St. John Drive, situate in Mill Creek Hundred, New Castle County and State of Delaware, and known as Lot No. 19, Block H, on the Plan of Dunlinden Acres, said Plan is of record in the Office of the Recorder of Deeds in and for New Castle County and State of Delaware in Plat Record 2, Page 90 and being more particularly bounded and described in accordance with a survey by The Pelsa Company dated September 16, 1993.

BEING the same lands and premises which Clifton L. Sykes, Jr. and Lisa N. Duphily n/k/a Lisa M. Sykes, by Deed dated July 25, 2005 and recorded in the Office of the Recorder of Deeds in and for New Castle County, Delaware in Instrument No. 20050811-0079728, did grant and convey unto Clifton L. Sykes and Lisa M. Sykes, in fee.

SEIZED AND TAKEN IN EXECUTION AS THE PROPERTY OF CLIFTON L. SYKES AND LISA M. SYKES.

TERMS OF SALE: 10% DOWN AT TIME OF SALE.
BALANCE DUE ON OR BEFORE APRIL 6, 2009.
JANUARY 31, 2009

SHERIFF'S SALE

By virtue of a writ of ALIAS LEV FAC #154 JA, AD., 2009.

TAX PARCEL NO. 09-017.10-088
PROPERTY ADDRESS: 202 Ellsworth Drive, Newark, Delaware 19711

ALL that certain lot, piece or parcel or lot of land, with the buildings thereon erected, situate in White Clay Creek Hundred, New Castle County and State of Delaware, known as 202 Ellsworth Drive, and being Lot No. 20, Block H, on the Plan of Harmony Hills, and being more particularly bounded and described in accordance with a recent survey prepared by First State Mortgage Surveys.

SUBJECT TO Restrictions as contained in Deed Record X, Volume 558, Page 533, Deed Record B, Volume 56, Page 325, Deed Record Y, Volume 60, Page 188, New Castle County records.

SUBJECT TO Sewer Agreements as recorded in Deed Record Q, Volume 56, Page 551, New Castle County records.

SUBJECT TO Utility Agreement as recorded in Deed Record M, Volume 56, Page 395, New Castle County records.

SUBJECT TO the annual sewer charges as may be assessed by the Levy Court of New Castle County from time to time.

SUBJECT TO Easements and conditions as shown in Microfilm 311.

BEING the same lands and premises conveyed to Edward J. Gebhart and Judy A. Gebhart, by Deed from Anthony P. Boyle and Alicia Boyle, dated November 29, 1999, and recorded in the Office of the Recorder of Deeds, in and for New Castle County and State of Delaware, in Deed Book 2747, Page 171.

SEIZED AND TAKEN IN EXECUTION AS THE PROPERTY OF EDWARD J. GEBHART AND JUDY A. GEBHART.

TERMS OF SALE: 10% DOWN AT TIME OF SALE.
BALANCE DUE ON OR BEFORE APRIL 6, 2009.
JANUARY 31, 2009

(Continued)

625 FURNITURE / FURNISHINGS

END TABLE
round; **CONSOLE**
CHEST with top
shelf; **DINETTE**
TABLE with 2
chairs; extra **DINING**
CHAIRS; **COFFEE**
TABLE. Contact
410-885-5978 or
443-566-3159

646 MUSICAL

Chesapeake
Guitar Repairs &
Service Everything
from neck adjust-
ments, new frets, new
pick-ups. Electric or
acoustic. Call Jeff for
details 302-593-1946

CHECK OUT
OUR WEBSITE AT
WWW.CHEESAPEAKE
CLASSIFIED.COM

646 MUSICAL

GUITAR LESSONS
for beginners & up.
•Theory on all vari-
eties
•Ear training
•Timing training
For more info.
Call Jeff 443-309-
1464

Kohler Campbell
Spinet piano, paid
\$4500, will sacrifice
for \$1800 OBO
443-986-2230

670 MACHINERY & HEAVY EQUIP.

'99 FREIGHTLINER
FLD120 runs well, 75k
on inframe. All acces-
sories work. \$12,500.
443-243-4223

**TRANSPORTATION****815 POWERBOATS**

'08 Malibu
Wakesetter VLX T/A
trailer, 340 h.p.,
Monsoon Engine,
tower, Bimini,
2200lbs Ballast, sub-
woofer, Amps, Tower
Spkrs, Dual Batteries
& Much more. Call
443-553-3798

850 MOTORCYCLES & ATVs

KDX 200 '92 Good
cond., sell as is. Cash
only, \$1200 OBO. You
haul 443-768-4537

850 MOTORCYCLES & ATVs

Lots of Chrome!!
KAWASAKI VUL-
CAN 1500 Classic,
'02. Low miles, extras.
\$6900 firm.
256-679-4727

870 TRUCKS / SUVs

New Today
2007 DODGE
RAM 1500 pickup
Auto, 6 cyl, A/C, P/W,
P/S. New tires.
\$11,750. 302-455-9405

DODGE RAM 3500
'05. Diesel, quad cab,
not dully 6' bed, 92k.
Excellent!! \$17,000.
443-309-8714

JEEP WRANGLER
SAHARA '88 hard top,
factory a/c, runs great
\$3000 443-945-1482

Real Services Estate

To reserve your space call: **Betty Jo Trexler**
410-398-3311 Ext. 3090 • 800-220-3311 Ext. 3090



CHESAPEAKE BAY
349 E. Pulaski Hwy.
Elkton, MD 21921

Direct: (443)553-6726
Office: (410) 398-9000
E-mail: 511bill@mris.com



BILL STANDIFORD
Associate Broker, GRI
Cecil County Specialist

CecilBANK
www.cecilbank.com

410-392-LEND

Call **Sandy Feldman** or **John Nass** for all your financing needs
Local Lending with Local Servicing • Fixed and adjustable Rate Mortgages
• Construction to Permanent • Lot Loans • Bridge Loans
40 YEAR TERM AVAILABLE • FREE PRE-QUALIFICATION • NO APPLICATION FEES

LEGAL NOTICE LEGAL NOTICE LEGAL NOTICE LEGAL NOTICE LEGAL NOTICE LEGAL NOTICE LEGAL NOTICE LEGAL NOTICE LEGAL NOTICE

(Continued)

SHERIFF'S SALE

By virtue of a writ of LEV FAC #158 JA, AD., 2009.
PARCEL NO. 08-060.10-196
PROPERTY ADDRESS: 409 Hudson Drive, Newark,
Delaware 19711

ALL that certain lot, piece or parcel of land with the
buildings thereon erected known as 409 Hudson Drive,
situate in Mill Creek Hundred, New Castle County and
State of Delaware, being as Kit No. 14, Block G, on the
Plan of Sycamore Gardens, as said Plan is of record in
the Office for the Recording of Deeds, in and for New
Castle County, Delaware, in Plat Book 4, page 49, and
being more particularly bounded and described in ac-
cordance with a recent survey prepared by Howard L. Ro-
bertson, Inc., Civil Engineers and Surveyors, dated March
6, 1979.

BEING the same lands and premises conveyed to Lydia
J. Miller, by Deed from Solomon P. Miller, dated October
8, 1987, and recorded November 2, 1987, in the Office of
the Recorder of Deeds, in and for New Castle County and
State of Delaware, in Deed Book 619, Page 77.

SEIZED AND TAKEN IN EXECUTION AS THE
PROPERTY OF LYDIA J. MILLER.

TERMS OF SALE: 10% DOWN AT TIME OF SALE.
BALANCE DUE ON OR BEFORE APRIL 6, 2009.

JANUARY 31, 2009

SHERIFF'S SALE

By virtue of a writ of LEV FAC #159 JA, AD., 2009.
PARCEL NO. 18-044.00-116
PROPERTY ADDRESS: 8 W. Chestnut Hill Dr., Newark,
DE 19713

ALL that certain lot, piece or parcel of land with the
buildings erected in Pencader Hundred, New Castle
County and State of Delaware, known as Lot No. 10, block
A, on a Plan of Silverbrook Development, which Plan is
of record in the Office of the Recorder of Deeds in and
for New Castle County, also known as 8 Chestnut Hill
Road, being more particularly bounded and described in
accordance with a recent survey prepared by First State
Mortgage Survey, Inc., as follows, to-wit:

BEING the same lands and premises which Alan P.
Brown, III and Kelly Ann Brown, did grant and convey
unto Thomas W. Coker, by deed dated June 28, 2000 and
recorded on August 7, 2000 in the Office of the Recorder
of Deeds, in and for New Castle County, State of Dela-
ware, in Deed Book 2874 at Page 211.

SEIZED AND TAKEN IN EXECUTION AS THE
PROPERTY OF THOMAS W. COKER.

TERMS OF SALE: 10% DOWN AT TIME OF SALE.
BALANCE DUE ON OR BEFORE APRIL 6, 2009.

JANUARY 31, 2009

SHERIFF'S SALE

By virtue of a writ of LEV FAC #160 JA, AD., 2009.
PARCEL NO. 0902330317
PROPERTY ADDRESS: 101 Nathaniel Road, Newark,
DE 19713

ALL that certain lot, piece or parcel of land with the
building thereon erected, situate in White Clay Creek
Hundred, New Castle County, and State of Delaware,
known as 101 Nathaniel Road, and being Lot No. 348 of
Block L, as shown on the Plan of Birchwood Park, Section
2, as said Plan is of record in the Office of the Recorder
of Deeds in and for New Castle County, Delaware in Plat
Record 4, Page 24, and being more particularly bounded
and described in accordance with a survey prepared by
East Coast Survey, Professional Land Surveying, dated

June 2, 2005, as follows, to-wit:

BEING the same lands and premises which Terry W.
Brown and Wilma J. Brown, did grant and convey unto
Matthew Watson, by deed dated June 30, 2005 and re-
corded on July 5, 2005 in the Office of the Recorder of
Deeds, in and for New Castle County, State of Delaware,
in Deed Instrument 20050705-0066210.

SEIZED AND TAKEN IN EXECUTION AS THE
PROPERTY OF MATTHEW WATSON.

TERMS OF SALE: 10% DOWN AT TIME OF SALE.
BALANCE DUE ON OR BEFORE APRIL 6, 2009.

JANUARY 31, 2009

SHERIFF'S SALE

By virtue of a writ of LEV FAC #171 JA, AD., 2009.
PARCEL NO. 09-041.10-418

PROPERTY ADDRESS: 162 Darling Street, Newark, DE
19702

BEING the same lands and premises which Dawn M.
Mobley, did grant and convey unto Markysha R. Briscoe,
by deed dated September 9, 2005 and recorded on Oc-
tober 19, 2005 in the Office of the Recorder of Deeds, in
and for New Castle County, State of Delaware, in Deed
Instrument 20051019-0107045.

SEIZED AND TAKEN IN EXECUTION AS THE
PROPERTY OF MARKYSHA R. BRISCOE.

TERMS OF SALE: 10% DOWN AT TIME OF SALE.
BALANCE DUE ON OR BEFORE APRIL 6, 2009.

JANUARY 31, 2009

SHERIFF'S SALE

By virtue of a writ of LEV FAC #174 JA, AD., 2009.
PARCEL NO. 11-028.20-003

PROPERTY ADDRESS: 1015 San Remo Ct., Bear, DE
19701

ALL that certain lot, piece or parcel of land, with the
buildings thereon erected, situate in Pencader Hun-
dred, New Castle County and State of Delaware, known
as 1015 San Remo Court, Pine Woods, Bear, Delaware
19701, being Lot No. 188 on the Revised Record Plan of
Pine Woods, as said Plan is of record in the Office of the
Recorder of Deeds, in and for New Castle County and
State of Delaware, in Microfilm Record No. 10,148 and
being more particularly bounded and described in ac-
cordance with a survey prepared by Zebley & Associates,
Inc., Professional Land Surveyors, of Wilmington, Dela-
ware, dated May 22, 1992, and more recently according to
a Mortgage Inspection Plan prepared by AES Surveyors,
of Wilmington, Delaware, dated February 2, 2005, as fol-
lows, to-wit:

BEING the same lands and premises which Alison M.
Glembocki, did grant and convey unto Erinn E. Chioma,
by deed dated February 28, 2005 and recorded on Sep-
tember 11, 2007 in the Office of the Recorder of Deeds, in
and for New Castle County, State of Delaware, in Deed
Instrument 20070911-0080221.

SEIZED AND TAKEN IN EXECUTION AS THE
PROPERTY OF ERINN E. CHIOMA.

TERMS OF SALE: 10% DOWN AT TIME OF SALE.
BALANCE DUE ON OR BEFORE APRIL 6, 2009.

JANUARY 31, 2009

SHERIFF'S SALE

By virtue of a writ of LEV FAC #176 JA, AD., 2009.
PARCEL NO. 11-017.40-104

PROPERTY ADDRESS: 2 Sailboat Circle, Newark, DE
19702

ALL that certain lot, piece or parcel of land with the
buildings thereon erected, situate in Pencader Hundred,

New Castle County and State of Delaware and known as
2 Sailboat Circle, being Lot No. 272 on the Plan of Four
Seasons, as the Plan thereof is of record in the Office of
the Recorder of Deeds in and for New Castle County, Dela-
ware in Microfilm No. 2618, and being more particularly
bounded and described in accordance with a survey pre-
pared by East Coast Survey, Inc., Professional Surveyors,
dated 02/106, as follows, to-wit:

BEING the same lands and premises which Marjorie M.
Hawkins, did grant and convey unto Margie E. Frantz, by
deed dated February 24, 2006, and recorded on March 1,
2006, in the Office of the Recorder of Deeds, in and for
New Castle County, State of Delaware, in Deed Instru-
ment 20060301-0020306.

SEIZED AND TAKEN IN EXECUTION AS THE
PROPERTY OF MARGIE E. FRANTZ.

TERMS OF SALE: 10% DOWN AT TIME OF SALE.
BALANCE DUE ON OR BEFORE APRIL 6, 2009.

JANUARY 31, 2009

SHERIFF'S SALE

By virtue of a writ of VEM #188 JA, AD., 2009.
PARCEL NO. 11-002-40-228

ALL that certain lot, piece or parcel of land with any
buildings or improvements thereon erected, known as 35
Meadow Lane, Newark, New Castle County and State of
Delaware.

BEING the same lands and premises which were con-
veyed unto John E. Mahek and Lynn D. Mahek, his wife,
by deed of Harry C. Mullen, Jr. and Marybelle F. Mullen,
his wife, dated March 19, 1980, and recorded in the Office
of the Recorder of Deeds in and for New Castle County,
on March 20, 1980 in Deed Record Q, Volume 109, Page
85.

SEIZED AND TAKEN IN EXECUTION AS THE PROP-
ERTY OF JOHN E. MAHEK AND LYNN D. MAHEK.

TERMS OF SALE: FULL PURCHASE PRICE AT THE
TIME OF THE SALE. IN ACCORDANCE WITH 9DEL
C. SS8726, THIS SALE IS SUBJECT TO THE APPROV-
AL OF THE CHIEF FINANCIAL OF NEW CASTLE
COUNTY.

JANUARY 31, 2009

SHERIFF'S SALE

By virtue of a writ of VEM #189 JA, AD., 2009.
PARCEL NO. 11-031.30-120

ALL that certain lot, piece or parcel of land with any
buildings or improvements thereon erected, known as 9
Latour Lane, Newark, New Castle County and State of
Delaware.

BEING the same lands and premises which were con-
veyed unto Bryan K. Wilkerson and Gertrude J. Raikes-
Wilkerson, husband and wife, by deed of Meritage De-
velopment, LLC dated March 10, 2006, and recorded in
the Office of the Recorder of Deeds in and for New Castle
County, Delaware, on March 27, 2006, as Instrument No.
20060327-0029034.

SEIZED AND TAKEN IN EXECUTION AS THE PROP-
ERTY OF BRYAN K. WILKERSON AND GERTRUDE J.

RAIKES-WILKERSON,

TERMS OF SALE: FULL PURCHASE PRICE AT THE
TIME OF THE SALE. IN ACCORDANCE WITH 9DEL
C. SS8726, THIS SALE IS SUBJECT TO THE APPROV-
AL OF THE CHIEF FINANCIAL OF NEW CASTLE
COUNTY.

JANUARY 31, 2009

Michael P. Walsh, Sheriff
Sheriff's Office
Wilmington, Delaware

np 2/27,3/6

875 VANS
/MINI VANS

New Today
DODGE CARAVAN
'98 6 cyl auto, 136K,
clean, runs good. Md
insp. \$2600.
410-658-6945

880 AUTOS

New Today
BUICK REGAL '00
blue, loaded, new tires
runs good, 190K mi,
\$3000 302-559-8111

880 AUTOS

FORD MUSTANG
1998
Excellent Condition.
443-350-8415

New Today

LOADED!!!!
2005 ACURA RSX
Automatic. \$12,250.
302-455-9405

CLASSIFIEDS
410-398-1230
800-220-1230

880 AUTOS

Mazda Miata '91 sell
as is, needs battery, sell
for \$2800 Blue Book
value 443-768-4537

CHECK OUT
OUR WEBSITE AT
WWW.CHESAPEAKE
CLASSIFIED.COM

890 WANTED
To Buy

I BUY ANY CAR,
ANY CONDITION
410-398-5888 /
443-350-4541

WE BUY JUNK cars,
trucks & vans. \$100
and up. Call 302-420-
7411 or 302-650-4579

890 WANTED
To Buy

WE BUY SCRAP
METAL! Call for free
pick up and appraisal.
We buy from small
matchbox cars to large
industrial buildings!
302-650-4579

LEGAL NOTICE

The following Sentinel Self Storage sites will be holding public auctions on April 8, 2009. All sales are cash only and final. A \$100 cash deposit is required to purchase a unit.

SENTINEL SELF STORAGE

200 First State Boulevard
Wilmington DE, 19804
302-999-0704

Public auction to be held on April 8, 2009 at 11:00 a.m. The following units will be auctioned:

- #0285 - Mayna Arbolay - bed, mattress, kitchen chair, dresser, mirror, speakers, suitcase, dining table, 2 dirt bikes
- #0317 - Paul Alan Bartelt - bookcase, monitor, pictures, shelving, suitcase, tool box, 8 totes, TV, vacuum, work bench
- #1471 - Andre Nicole Butler - 2 bags, 5 boxes, radio, TV, 2 tennis racquets
- #2102 - Paul Alan Bartelt - bookcase, 50 boxes, desk, radio, tires, 2 tool boxes, 6 totes, vacuum, heater
- #3106 - Matthew Paoli - 4 boxes, lawn mower, rug, 4 totes
- #3112 - Georgie Brokenbrough - AC, bag, 8 boxes, kitchen chair, clothing, couch, dryer, ironing board, 2 totes
- #6279 - Paul C. Rigby - dryer, ice chest, refrigerator, shelving, washer, tools, hand truck, truck box
- #7103 - Audrey D. Thompson, Clayton T. Thompson, Sr. - 20 bags, bed frame, 15 boxes, dresser, rug, ironing board, shelving, tool box, 3 totes, wood
- #9273 - Jamel A. Frederick - 15 bags, bed, mattress, lamp, snack table, 1 tote, TV stand, CD's and tapes

SENTINEL SELF STORAGE

465 Pulaski Hwy.
New Castle, DE 19720
302-328-5810

A public auction will be held on Wednesday, April 8, 2009 at 1:00 p.m. The contents of the following storage units will be auctioned.

- #7000 - Marc Williamson - bookcase, clothing, fan, ice chest, ladder, stereo, tires, tool boxes, compressor, saw
- #4144 - Orien Epps - bags, boxes, dresser, hamper, lamp, suitcase, totes
- #4152 - Tracey Hardy - boxes, exercise equipment, suitcase, totes
- #5011 - Tina Pierce - boxes, clothing, dresser, fan, shelving, totes
- #4025 - Diana Clayton - bags, boxes, chair, clothing, suitcase, totes
- #2023 - Gaylia McLeod - box spring, mattress, boxes, china cabinet, chair, clothing, fan, rug, shelving, TV
- #4034 - William Horn - bicycle, boxes, clothing, stereo, suitcase, coffee table, end table, kitchen table
- #4114 - Alicia Moore - bags, boxes, hamper, ice chest, mirror, totes, TV, vacuums, cedar cabinet

SENTINEL SELF STORAGE

1100 Elkton Road
Newark, DE 19711
302-731-8108

A public auction will be held on Wednesday, April 8, 2009 at 10:00 a.m. The contents of the following storage units will be auctioned:

- #2011 - Patricia Sprout - boxes, tires, totes, car vacuum, boots, wooden chest
- #6010 - Justin M. Sharp - bags, boxes, computer, dresser, fishing equipment, floor lamp, power tools, tools, totes, gun safe, video games, 2 chain saws, hand tools, air tank, car parts, drill
- #6017 - Nadine A. Slack - baby crib, boxes, beach chair, clothing, suitcase, tool box, totes, vacuum, heater, motorcycle
- #6020 - Nadine Slack - boxes, kitchen chairs, sofa, entertainment centers, shelving, speaker, sports equipment, suitcase, tires, tool boxes, totes, vacuum, record player, albums, dollie
- #9014 - Jarrod Lake - box spring, mattress, folding chairs, sofa, fan, pictures, speakers, vacuum, albums, record player, heater, pool table, misc. household items

SENTINEL SELF STORAGE

333 E. Lea Blvd.
Wilmington, DE 19802
302-764-6300

Public auction to be held on April 8, 2009 at 12:00 p.m. at the above address. All sales are cash only. All sales are final. The units to be auctioned are as follows:

- #15 - Linda Day - bed frame, box spring, mattress, boxes, china cabinet, chair, chest of drawers, dresser, lamps, table, totes, sewing machine, vacuum
- #88 - Celeste Wilcher - air conditioner, bags, bed, mattress, bicycle, boxes, clothing, fan, ice chest, lamp, totes, water cooler
- #158 - Carmen Barnett - air conditioner, bags, bed, box spring, mattress, boxes, chest of drawers, mirrors, stool, TV, vacuum
- #280 - J. Ehrlich - speakers, stereo, audio tapes, magazines
- #434 - Robert L. Davis - bed frame, box spring, mattress, boxes, chair, fan, chest of drawers, fishing equipment, ice chest, stereo, speakers, love seat, vacuum, drums, shop vac

np 3/6,13

LEGAL NOTICE

THE COURT OF
COMMON PLEAS
FOR THE STATE
OF DELAWARE
IN AND FOR
NEW CASTLE
COUNTY

IN RE: CHANGE OF
NAME OF
Matthew Davidson
(father)

1. Olivia Alexis
Davidson
2. Lilianna Gloria
Johnson
3. Amir Anthony
Young
PETITIONER(S)

TO
Olivia Alexis
Johnson-Davidson
Lilianna Gloria John-
son-Davidson
Amir Anthony Young-
Davidson

NOTICE IS HEREBY
GIVEN that Matthew
Davidson (father) Oliva-
lexis Davidson, Lili-
anna Gloria Johnson,
Amir Anthony Young
intends to present a
Petition to the Court
of Common Pleas for
the State of Delaware
in and for New Castle
County, to change his/
her name to:
Olivia Alexis Johnson-
Davidson
Lilianna Gloria John-
son-Davidson
Amir Anthony Young-
Davidson.
Matthew Davidson
Petitioner

Dated: 2/23/09
np 2/27,3/6,13

LEGAL NOTICE

THE COURT OF
COMMON PLEAS
FOR THE STATE
OF DELAWARE
IN AND FOR
NEW CASTLE
COUNTY

IN RE: CHANGE OF
NAME OF
Susan D. Minkalis
PETITIONER(S)

TO
Susana D. Minkalis
NOTICE IS HEREBY
GIVEN that Susan D.
Minkalis intends to
present a Petition to
the Court of Common
Pleas for the State of
Delaware in and for
New Castle County,
to change her name to
Susana D. Minkalis.
Susan D. Minkalis
Petitioner

Dated: 2/23/09
np 2/27,3/6,13

LEGAL NOTICE

RE: DEADLY WEAPON

I, Melvin Robinson, Sr.
residing at, 304 Bran-
don Drive, Bear, DE
19701, will make appli-
cation to the judges of
the Superior Court of
the State of Delaware
in and for New Castle
County at Wilmington
for the next term for a
license to carry a con-
cealed deadly weap-
on, or weapons, for
the protection of my
person(s), or property,
or both.

Melvin Robinson, Sr.
2/27/09
np 3/6

CITY OF NEWARK DELAWARE BOARD OF ADJUSTMENT PUBLIC HEARING

MARCH 19, 2009 - 7:30 P.M.

Pursuant to Chapter 32, Article XIX of the Code of the City of Newark, Delaware, notice is hereby given of a public hearing at a regular meeting of the Board of Adjustment on Thursday, March 19, 2009 at 7:30 p.m. in the Council Chamber, Newark Municipal Building, 220 Elkton Road, Newark, Delaware, to hear the following appeal:

1. Appeal of Peter and Gabriella Cole, for the property at 6 Briar Lane, for the following variance:

- a) Ch. 32, Sec. 32-9 (c) - requires a minimum of 10 feet and an aggregate of 25 feet. Plan shows an aggregate of 14.2 feet, including the existing non-conforming 4.2 foot side setback on the north side of the house.

ZONING CLASSIFICATION: RS

2. Appeal of Kevin and Grace Frazer, for the property at 112 Bent Lane, for the following variances:

- a) Ch. 32, Sec. 32-9 (c) (2) - Total lot coverage limit is 20%; additions increase the total lot coverage to 26%.
- b) Ch. 32, Sec. 32-9 (c) (5) (c) - Minimum building front setback is 30 feet; plan shows a setback of 27 feet.
- c) Ch. 32, Sec. 32-9 (c) (7) (c) - Side yard requirements are 10 feet minimum with a 25 foot aggregate. Proposed additions would reduce the side yard to 1 foot with aggregate of 15.9 feet.

ZONING CLASSIFICATION: RS

3. Appeal of Matt Dutt, for the property at 91 South Chapel Street, for the following variance:

- a) Ch. 32, Sec. 32-51 (a) - Limits addition to 20% cubical content of the existing building; proposed addition increases cubical content to 44.4%.

ZONING CLASSIFICATION: BC

The application and related material may be examined at the City Secretary's Office, 366-7070, prior to the meeting.

Clayton S. Foster
Chairman

np 3/6

LEGAL NOTICE

CITY OF NEWARK
DELAWARE

COUNCIL MEETING AGENDA

March 9, 2009 - 7:30 PM - CC

1. **SILENT MEDITATION & PLEDGE OF ALLEGIANCE**

2. **CITY SECRETARY'S MINUTES FOR COUNCIL APPROVAL:**

A. Regular Council Meeting of February 23, 2009

3. **ITEMS NOT ON PUBLISHED AGENDA:**

- A. Public (5 minutes per speaker)
- B. University
 - (1) Administration
 - (2) Student Body Representative
- C. Council Members

4-A. **ITEMS NOT FINISHED AT PREVIOUS MEETING:** None

4-B. **FINANCIAL STATEMENT**

5. **RECOMMENDATIONS ON CONTRACTS & BIDS:** None

*6. **ORDINANCES FOR SECOND READING & PUBLIC HEARING:**

- A. Bill 09-03 - An Ordinance Amending Ch. 30, Water, By Establishing a Water Rate Schedule Effective 4/1/09
- B. Bill 09-06 - An Ordinance Annexing and Zoning to PL (Parkland) 1.69 Acres, to MI (General Industrial) 2.39 Acres and to OFD (Open Floodway District) 8.51 Acres, Said Property Situated Along the Christina Creek on the Stine Haskell Site Located on Elkton Road
- C. Bill 09-08 - An Ordinance Amending Ch. 32, Zoning, By Regulating the Size of "For Rent" Signs in Residential Districts

*7. **PLANNING COMMISSION/DEPARTMENT RECOMMENDATIONS:** None

8. **ORDINANCES FOR FIRST READING:**

- A. Bill 09-10 - An Ordinance Amending Ch. 25, Sewers, Article IV, Regulations on Non-domestic Waste Water Discharges Into the Public Sewer System, and Incorporating, By Reference, Chapter 38 of the New Castle County Code With Amendments Thereto (2nd Read. 3/23/09)
- B. Bill 09-11 - An Ordinance Amending Ch. 20, Motor Vehicles and Traffic, By Amending Schedule VI, By Prohibiting Parking During Certain Times on Bradford Lane from Devon Drive to the East End of the Street (2nd Read. 3/23/09)
- C. Bill 09-13 - An Ordinance Amending Ch. 21, Peddlers Vendors and Solicitors, By Replacing the Existing Chapter with Revised and Updated Language (2nd Read. 3/23/09)

9. **ITEMS SUBMITTED FOR PUBLISHED AGENDA:**

*A. **COUNCIL MEMBERS:**

1. Presentation on Newark's Civic Health - Temko

B. **COMMITTEES, BOARDS & COMMISSIONS:**

- 1. Appointments to Conservation Advisory Commission (Mayor and Districts 3 and 5 Appointments)
- 2. Planning Commission Minutes of March 3, 2009

*C. **OTHERS:** None

10. **SPECIAL DEPARTMENTAL REPORTS:**

A. Special Reports from Manager & Staff: None

B. Alderman's Report

*OPEN FOR PUBLIC COMMENT

The above agenda is intended to be followed, but is subject to changes, deletions, additions and modifications, as permitted under the Freedom of Information Act of the State of Delaware. Copies may be obtained at the City Secretary's Office, 220 Elkton Road, or online at www.cityofnewarkde.us
np 3/6

LEGAL NOTICE ANNUAL ASSESSMENT APPEALS

The Annual Assessment Roll for New Castle County for the tax year beginning **July 1, 2009**, may be inspected in the offices of the Assessment Division of the New Castle County Department of Land Use, Government Center, 87 Reads Way, New Castle, DE 19720 from 8:00 a.m. to 4:00 p.m., Monday through Friday.

Property owners who believe that their properties have been incorrectly assessed may appeal those assessments to the Board of Assessment Review of New Castle County. Forms to appeal annual assessments may be obtained from the Assessment Division at the address aforesaid. Appeal forms must be completed and filed with the Assessment Division no later than **4:00 p.m. on Monday, March 16, 2009**.

The Board of Assessment Review will sit in the New Castle County Government Center or some other public place to be announced to hear appeals. Appeal hearings will be scheduled by the Board. Persons who file appeals by the statutory deadline will, in accordance with 9 Del. C. Sec. 8311, be notified of the exact date and time at which their appeal will be heard.

np 3/6,13

PUBLIC SALE

Notice is hereby given that the undersigned will sell at a public sale on **March 27, 2009 at 11:00 a.m. at:**

**PS ORANGE CO PUBLIC STORAGE
425 NEW CHURCHMANS ROAD
NEW CASTLE, DE 19720**

The personal property heretofore stored with the undersigned by:

G040 - De'Ja May
C025 - Garron Fowler
F045 - Maureen Sartin
G001 - William Johnson Jr.
C136 - Tamara Cornish
C093 - Leonard Jackson
G047 - Ronald Bunch
C109 - Karen Miles Long
B056 - Masimo Ferrari
F013 - Masimo Ferrari
F054 - Rhiannan Vitello
F007 - Monique Parham
C118 - Fidel Cole
F096 - Jon Jude White
C189 - Cynthia Burton

The contents of the above listed units consists of bags, boxes, televisions, mattresses, box spring, appliances and general household goods.

All units sold in their entirety and **MUST** be vacated within 48 hours of sale. All goods remaining will be disposed of at purchasers cost.
np 2/27,3/6

THE COURT OF COMMON PLEAS FOR THE STATE OF DELAWARE IN AND FOR NEW CASTLE COUNTY

IN RE: CHANGE OF NAME OF
Isabella Marie McGrory-Vincente
PETITIONER(S)
TO
Isabella Marie McGrory
NOTICE IS HEREBY GIVEN that Lisa McGrory (mother) of Isabella Marie McGrory-Vincente intends to present a Petition to the Court of Common Pleas for the State of Delaware in and for New Castle County, to change her name to Isabella Marie McGrory.
Lisa McGrory
Petitioner

Dated: 02/17/09
np 2/27,3/6,13

THE COURT OF COMMON PLEAS FOR THE STATE OF DELAWARE IN AND FOR NEW CASTLE COUNTY

IN RE: CHANGE OF NAME OF
Lashineda Latoya Thomas
PETITIONER(S)
TO
Lashonda Latoya Thomas
NOTICE IS HEREBY GIVEN that Lashineda Latoya Thomas intends to present a Petition to the Court of Common Pleas for the State of Delaware in and for New Castle County, to change her name to Lashonda Latoya Thomas.
Lashineda L. Thomas
Petitioner

Dated: 2/26/09
np 3/6,13,20

THE COURT OF COMMON PLEAS FOR THE STATE OF DELAWARE IN AND FOR NEW CASTLE COUNTY

IN RE: CHANGE OF NAME OF
Lindsay Donnelly (mother)
Robert Xavier Brown
PETITIONER(S)
TO
Robert Xavier Donnelly
NOTICE IS HEREBY GIVEN that Lindsay Donnelly (mother) Robert Xavier Brown intends to present a Petition to the Court of Common Pleas for the State of Delaware in and for New Castle County, to change his/her name to Robert Xavier Donnelly.
Lindsay Donnelly
Petitioner

Dated: 2/12/09
np 2/20,273/6

THE COURT OF COMMON PLEAS FOR THE STATE OF DELAWARE IN AND FOR NEW CASTLE COUNTY

IN RE: CHANGE OF NAME OF
Nadine A. Nardo-Mathewson
PETITIONER(S)
TO
Nadine Nardo
NOTICE IS HEREBY GIVEN that Nadine A. Nardo-Mathewson intends to present a Petition to the Court of Common Pleas for the State of Delaware in and for New Castle County, to change her name to Nadine Nardo.
Nadine A. Nardo-Mathewson
Petitioner

Dated: 2/23/09
np 2/27,3/6,13

LEGAL NOTICE

THE COURT OF COMMON PLEAS FOR THE STATE OF DELAWARE IN AND FOR NEW CASTLE COUNTY

IN RE: CHANGE OF NAME OF
Bobby Lee Wildermuth
AKA: Bobby Friant
Wildermuth
PETITIONER(S)
TO
Bobby Lee Friant
NOTICE IS HEREBY GIVEN that Bobby Lee Wildermuth AKA: Bobby Friant Wildermuth intends to present a Petition to the Court of Common Pleas for the State of Delaware in and for New Castle County, to change his/her name to Bobby L. Friant.
Bobby Friant
Petitioner

Dated: 2/11/09
np 2/20,273/6

LEGAL NOTICE

RE: DEADLY WEAPON
I, Todd W. Nelson residing at, 25 Laurel Avenue, Newark, DE 19711, will make application to the judges of the Superior Court of the State of Delaware in and for New Castle County at Wilmington for the next term for a license to carry a concealed deadly weapon, or weapons, for the protection of my person(s), or property, or both.

Todd W. Nelson
2/27/09
np 3/6

THE COURT OF COMMON PLEAS FOR THE STATE OF DELAWARE IN AND FOR NEW CASTLE COUNTY

IN RE: CHANGE OF NAME OF
Lashina Cantrice Rivers;
Diamonte Ramsey Love Westfield
PETITIONER(S)
TO
Jamila Lashina Cantrice Rivers Ayyubi;
Jamil Muhammad Bin Shafiq Ayyubi
NOTICE IS HEREBY GIVEN that Lashina Cantrice Rivers; Diamonte Ramsey Love Westfield intends to present a Petition to the Court of Common Pleas for the State of Delaware in and for New Castle County, to change his/her name to Jamila Lashina Cantrice Rivers Ayyubi; Jamil Muhammad Bin Shafiq Ayyubi.
Jamila Ayyubi
Petitioner

Dated: 2/17/09
np 2/20,273/6

LEGAL NOTICE

RE: DEADLY WEAPON
I, Mark Alberti residing at, 208 Cloverlea Rd., Newark, DE 19711, will make application to the judges of the Superior Court of the State of Delaware in and for New Castle County at Wilmington for the next term for a license to carry a concealed deadly weapon, or weapons, for the protection of my person(s), or property, or both.

Mark Alberti
2/27/09
np 3/6

CLASSIFIEDS
410-398-1230 800-220-1230

AN UPDATED LOOK AT MORTGAGE RATES

ARDENT TITLE COMPANY

Susan M. Knight • Settlement Agent

149-151 E. Main Street, Elkton, MD 21921
(410) 996-9780 • Fax (410) 996-9784 • info@ardenttitle.com

LENDER	Phone Number	15 YEAR Fixed % PTS. APR	30 YEAR Fixed % PTS. APR	1 YEAR ARM % PTS. APR	3 YEAR ARM % PTS. APR	5 YEAR ARM % PTS. APR
APGFCU	1-888-LOAN-391	5.125/1.750/5.311	5.375/1.000/5.508	4.875/1.000/4.078	5.250/1.000/4.221	5.500/1.000/4.521
CECIL BANK	(410) 398-1650	*PLEASE CALL FOR RATES				
CECIL TRUST MORTGAGE & LOAN	(410) 287-1515	5.875/0/5.977	6.375/0/6.437	*PLEASE CALL FOR RATES		
CLASSIC MORTGAGE CORP	(302) 366-1661	4.75/1.0/4.98	4.875/2.0/5.19	CALL FOR MORE RATES		
DESTINY HOME MORTGAGE	(410) 620-4197	*PLEASE CALL FOR RATES destinyhomemortgage.com				
HARFORD BANK	(410) 642-9160	5.5/0/5.641	6.0/0/6.168	*PLEASE CALL FOR RATES		
MBA FINANCIAL SERVICES	(410) 287-5600	Please call for quotes. Many programs. All credit considered.		100% financing available-Interest only options! 1st time home buyers, 2nd homes & investment properties.		
PEOPLES BANK OF ELKTON	(410) 996-2265	4.875/0/5.00	5.375/0/5.45	5.50/1/3.685	5.375/0/3.881	5.25/0/4.105
WILMINGTON MORTGAGE	(410) 398-5607	PLEASE CALL FOR RATES.		FREE PRE-APPROVAL - NO APPLICATION FEE		

These rates, effective 2/25/09, were provided by the lenders and are subject to change. Other terms may be available. These rates are for existing first mortgages. Points may vary on refinances. Down payment requirements may vary. *Caps and length may vary on adjustable rates. The APR is based on a \$100,000 mortgage with a 20% down payment and is in addition to interest included points fees & other credit costs. To list your mortgage rates, call our Real Estate Sales Division at 410 398-3311 or 1-800-220-3311. These mortgage rates are a paid advertising feature of the Cecil Whig

WILMINGTON MORTGAGE

205 East Main Street, Elkton, MD 21921
Office: 410-398-5607
TOLL FREE: 800-607-5607



Phil Davis
Loan Officer



Kim Pettitt
Loan Officer



Bruce Fink
Loan Officer

- 100% Financing
- FHA, VA, and Rural Development
- Self Employed
- Bridge Loans
- Reverse Mortgages

Godlbauer's

The Furniture People,
Rt. 40, 2 miles West of
DE/MD line

Up to 80% OFF **See both locations!**

Inventory Clean Up. We are sweeping out
last year's inventory at unheard of low prices!
EVERYTHING MUST GO!



All Reasonable Offers Will Be Considered!
This Weekend Only Fri., Sat. and Sun., March 6th - 8th
6 months same as cash

It's not furniture unless it's Godlbauer's furniture!



901 E. Pulaski Hwy., Rt. 40, Elkton
410-398-6201



Sat Hours 10AM - 6PM Sun 12 noon - 5PM



701 E. Pulaski Hwy., Rt. 40, Elkton
410-398-5402