

## PLAYGROUND DRAMATIC PROGRAMS PLANNED

First To Be  
Presented In  
Auditorium  
On July 24

Plans for two dramatic programs, the first to be presented Wednesday evening, July 24, were announced yesterday by William K. Gillespie, director of the Newark Playground and Recreation Center. Skits and one-act plays will be included in the program. Characters and plays will be announced next week.

Twelve boys, under the supervision of Mr. Gillespie, enjoyed a bicycle race on Tuesday. Those in attendance were: Thomas Silk, Frank Ball, Robert Thompson, Clarence Lemmon, Roy Loyett, Mike Gillespie, Francis Green, Bernardo Nardo, Bill Correll, and Max Fisher.

Virginia Wells was judged the winner of the costume party staged for the last Wednesday afternoon under the direction of Miss Jeanne's direction. First prize was picked by Dr. John R. Jones and Mr. Gillespie who based their selection on the applause by the audience.

"Bicycling for Safety" is the subject of the moving picture to be presented at the school auditorium this afternoon at three o'clock. A two-reel comedy, "Girls Will Be Boys," will complete the program. "Drinking Health" will be shown next week.

Attendance figures, during the holiday interval, dropped due to the past week. The high mark was reached on Tuesday when a total of 110 children participated in the program while a low attendance mark was set on Friday when only 55 children took part.

Daily attendance figures for last week are as follows: Tuesday, July 2-90; Wednesday-75; Friday-55; Monday, July 8-110; Tuesday-90.

Plans for a lobby show and exhibit will be held during the final week and the playground's second annual picnic at Haden Farms are now being formulated.

Results of the novelty track meet held on the high school field last Saturday were as follows:

Three-legged race (over 9 years of age)—Won by Edmund Lewis and Allyn Vogel; three-legged race (under 9 years of age)—Won by Henry Correll and Joseph Stout; Siamese twin race (over 9 years of age)—Won by Bob and Bill Correll; Siamese twin race (under 9 years of age)—Won by Henry Lewis and Jay Steinouer; shuttlecock throw for distance (over 9 years of age)—Won by Tommy Silk; shuttlecock throw for distance (under 9 years of age)—Won by Jay Steinouer.

Shuttlecock throw for distance (under 9 years of age)—Won by Jim Kelly; second—Tallucci; shoe race—Won by Henry Correll; 50-yard dash (over 9 years of age)—Won by Edmund Lewis; second—Casho; third—Danny Hamilton; 50-yard dash (under 9 years of age)—Won by Roger Williams; second—Bill Correll; third—E. Stout.

Girls' events:

Three-legged race—Won by Nancy and Ella Jane Sheaffer; potato race (over 10 years of age)—Won by Ella Jane Sheaffer; potato race (under 10 years of age)—Won by Doris Dear; 400-yard ball carry race (over 10 years of age)—Won by Ella Jane Sheaffer; ping-pong ball carry race (under 10 years of age)—Won by Nancy Baylis; dash (over 10 years of age)—Won by Ella Jane Sheaffer; 50-yard dash (under 10 years of age)—Won by Doris Dear.

Mr. Gillespie officiated at the meet, aided by Paul Waters and John Correll.

The first in a series of grill's hikes was held yesterday morning with Miss Lee in charge of the group. The hike was composed of Jane Blake, Mae Rideout, Vera Jane Oster, Nancy Everhardt, Nancy Jernee, Walter Weaver, and Ella Jane Sheaffer. Hikes will be taken every Wednesday morning at eleven o'clock.

Facilities of the playground are offered to the fresh air boys and girls who are guests at Newark homes this week.

Agroes Jailed Here  
Returned To Norfolk

Four negroes who have been held in Newark jail for more than a week were returned to Norfolk, Virginia, yesterday when Virginia authorities came for them.

Extradition papers were signed by Governor McMillen before the negroes could be returned to Norfolk where they are wanted on several charges.

The four were picked up in Newark last week by Officers Tibbitts and Johnson. They were in a stolen car, a brown Buick sedan, when arrested.

Mrs. H. R. McKenry is visiting her parents in Pittsburgh, Pa.

Mrs. David Sloan, of Philadelphia, spent several days this week with her mother, Mrs. Katherine P. Steel, W. Main St.

Promoted



Captain Richard E. Ramsey

## RAMSEY PROMOTED TO RANK OF CAPTAIN

Took Over  
Command Of  
Battery E  
In December

Announcement was made last week of the promotion of Lieutenant Richard E. Ramsey, commanding officer of Battery E, Delaware National Guard, to the rank of captain.

Captain Ramsey succeeded Captain H. Wallace Cook in December as head of the local unit, a change that closed one of the longest service records in Delaware. Captain Cook, who had served Battery E for almost 13 years, was transferred to duty with Headquarters, 2nd Battalion, 198th Coast Artillery to fill the vacancy of executive officer.

Captain Ramsey was made second lieutenant in July, 1926, and in May, 1927, attained the rank of first lieutenant. His latest promotion comes following the completion of required work.

It was announced by the adjutant-general's office this week that rifle practice would be staged at the State Rifle Range, New Castle, every Sunday at eleven o'clock, for the purpose of selecting a team to represent the Delaware National Guard in national competition to be staged at Camp Perry, O., from September 11-21. A number of local men have stated their intentions of trying out for a spot on the team.

The local roster was increased to 118 men this week with the addition of Melvin Weaver, of Newark, and Lewis S. Chambers, of West Grove, Pa. Next week has been set as the recruiting deadline in order to give Battery E officers enough time to train the new men prior to the annual encampment which will be held next month.

FOOD STAMPS  
FOR COUNTY

A fifty per cent increase in the food purchasing power of 5,118 needy families, representing 13,708 individuals in New Castle County, will take place within a month, according to the Rev. Dr. Charles L. Candee, who announced that the Federal Food Stamp Plan was to be extended to that county. The secretary of agriculture yesterday notified Dr. Candee of the plans, application to the county.

The stamp plan, was made possible in the county through the provision of the \$32,000 revolving fund set up by the Levy Court. Selection of New Castle County for stamp plan operation was recommended by Regional Director Kris P. Bemis, head of the Surplus Marketing Administration in the Northeastern states.

Auto Thieves  
Active In Elkon

John M. McCool, head of the J. M. McCool Company, road contractors, reports that his Chevrolet coupe was stolen early Tuesday morning. He parked the car at the rear of his father's residence on North Street, and discovered it was missing yesterday.

Walter E. Buck of Port Deposit, clerk of the court of Cecil County, whose car was stolen last week, reports it has been found near Lancaster, Pa.

Mrs. David Sloan, of Philadelphia, spent several days this week with her mother, Mrs. Katherine P. Steel, W. Main St.

Mrs. H. W. Haigh and son Paul, will return to their home in Baltimore, Md., today after spending a week with Mrs. Haigh's parents, Mr. and Mrs. J. R. Ernest.

## DELAWARE BANKS MAKE 77,000 LOANS

Survey Reveals  
Drop In Use  
Of "Open Lines  
Of Credit"

Thirty-nine per cent of Delaware's commercial banks made more than 77,000 loans totaling over \$99,000,000 to business firms and individuals throughout the state during the year 1939, according to the second semi-annual survey of bank lending activity of the American Bankers Association.

The survey was participated in by 21 banks or 39 per cent of the 53 commercial banks of the state. The 21 banks reported that during 1939 they made 77,293 loans for a total of \$99,119,095, as follows: 15,969 new loans totaling \$41,332,423; 60,908 renewals of loans totaling \$54,452,543; 416 mortgage loans totaling \$3,334,129.

The survey reveals that business firms in the state are using less than half of the "open lines of credit" maintained for their use on the books of the banks. Nine banks in the larger centers of the state reported that they carried on their books during the second half of the year, \$9,376,025 in "open lines of credit" consisting of specific amounts of credit offered to and kept available for established borrowers for use as needed by them. Of this amount, \$3,857,599 or 41.1 per cent was actually used.

The average number of new loans made per bank was 760 and the average new loan was \$2,601. The average number of renewals per bank was 2,900 and the average renewal was for \$894. Average number of mortgage loans per bank was 20 and the average mortgage for \$7,534.

The Delaware survey was part of a national bank lending activity survey made by the American Bankers Association.

For the country as a whole, 6,333 or 44 per cent of the commercial banks reported that they made 24,998,000 credit extensions totaling \$39,810,810,000 during the year. These consisted of the following: 12,680,000 new loans totaling \$23,120,000,000; 12,033,000 renewals of loans totaling \$15,791,000,000; 285,000 new mortgage loans totaling \$999,810,000.

The number of new loans increased 10 per cent and the dollar volume increased 20 per cent, according to the report.

POLLING  
PLACES  
CHOSEN

Registration  
Dates Set  
For Election

Sixty-six registration and polling places for New Castle County were announced this week by the New Castle County Department of Elections. They will be used on the five registration dates, July 20, August 3, August 8, September 21, and October 19, and on election day, November 5.

Polling places for White Clay Creek Hundred, Representative District No. 9, were announced as follows:

District 1—Deer Park Hotel, Newark.

District 2—Washington House, Hotel, Newark.

District 3—Christiana Fire House, Christiana.

District 4—Girl Scout House, Academy Street, Newark.

District 5—Henry F. Mote's Garage, 57 Elkton Avenue, Newark.

In Pender Hundred, Representative District No. 11, registration may be made at Brooks Store, Glasgow for District 1, and at McElwee's Garage, Glasgow, for District 2.

Newark Postoffice To  
Be Painted, Improved

The Newark Postoffice, constructed in November, 1929 at a cost of \$85,000, will be given its first major repair job, Postmaster Cyrus E. Rittenhouse announced this week.

Specifications include painting of the interior, a new maple floor in the work room, and other miscellaneous details necessary to put the local postal plant in up-to-date order. Contracts have not yet been awarded, but work is expected to get underway sometime next month.

Mrs. H. W. Haigh and son Paul, will return to their home in Baltimore, Md., today after spending a week with Mrs. Haigh's parents, Mr. and Mrs. J. R. Ernest.

## AUGUST 2-3 DESIGNATED AS NEWARK DOLLAR DAYS

Committee  
Making Plans  
For Community  
Wide Observance

Newark's annual dollar days, regular gala occasions for shoppers who eagerly await the events each year, will be held throughout the community during the first week in August, it was decided yesterday.

George M. Haney, president, of the Newark Chamber of Commerce which sponsors the annual dollar days movement, announced that the committee in charge of arrangements would be headed by Meyer Pilnick, chairman, assisted by Herman Handloff, George F. Jackson and George W. Rhodes.

The committee met yesterday morning and definitely set Friday and Saturday, August 2 and 3, as Dollar Days to be observed this year. Placards publicizing the event will be printed and distributed by the Chamber of Commerce in an effort to attract as much attention and interest in the event as possible.

All merchants in town are invited to participate in these Dollar Days whether members of the Chamber of Commerce or not. There is no charge other than what newspaper advertising they use. All advertising will be sold direct by the newspaper at its regular rate.

Further details will be published during the remaining few weeks before Dollar Days.

LONGWOOD  
OPERETTA  
THIS MONTH

Brandywiners  
To Give Benefit  
Performance

One of Gilbert and Sullivan's most popular operettas, "The Pirates of Penzance" will be presented by the Brandywiners Ltd., in the Longwood Open Air Theatre on July 25, 26, and 27.

The Brandywiners, who in 1937 gave the premiere in this country of "Merrie England," decided to repeat "The Pirates of Penzance"—their first show—in honor of their ninth anniversary and the "coming of age" of Frederick, the hero of the show, who sings: "In 1940, I of age shall be..."

Other Brandywiner operettas include: "Iolanthe," "The Gondoliers," "Princess Ida," "H. M. S. Pinafore," "The Mikado," and "Naughty Marietta." A cast of 125 talented persons have already started rehearsals on "The Pirates of Penzance."

The Brandywiners have always offered an unique operatic performance due not only to the collective ability but also to the unsurpassed out-of-door setting which is afforded through the generosity of Mr. and Mrs. Pierre S. duPont. The performances annually attract thousands of music lovers from many distant points. A spectacular display of the fountains follows each performance.

This year's show will be given for the benefit of the People's Settlement House of Wilmington, and the Kennet Square Playground Association.

William Winder Laird, Jr., is president of the Brandywiners and one of its founders. Vice presidents are Hood Worthington and Gerard Berchet, the latter in charge of production this year. Mrs. Aubrey O. Bradley is secretary and Thomas Tatnall, treasurer.

General chairman for this year's show is Douglass Stewart and John T. Martin is production director.

Reservations for "The Pirates of Penzance" may be made by writing the Green Lantern Studio, 220 West Ninth St., Wilmington, Del.

Demonstration Club  
Report Given Tuesday

A meeting of the Glasgow Home Demonstration Club was held Tuesday at the home of Mrs. Amanda Johnson with the president, Mrs. Sarah Slack, in charge. Mrs. Mary Roberts, Glasgow representative at the short course recently at Newark, gave a report.

Hostess for the next meeting will be Mrs. Agnes Wright and the leaders will be Mrs. Elizabeth Correll and Mrs. Randolph Lindell.

Mr. and Mrs. Edward Tyler of Glasgow are being congratulated upon the birth of a daughter in the Wilmington General Hospital July 6. Mrs. Tyler is the former Miss Eleanor Wilson, daughter of Mr. and Mrs. Woodland Wilson of near Glasgow.

Dollar Day Chairman



Meyer Pilnick

## INSPECTION TO BE HELD HERE FROM JULY 15-24

Twelfth Annual  
Campaign To  
Be Staged By  
Vehicle Dept.

The twelfth annual Motor Vehicle Inspection Campaign, under the joint auspices of the Motor Vehicle Department, the State Highway Department, and the Delaware Safety Council will open on Monday, July 15, and will continue until August 31. It was announced this week by Motor Vehicle Commissioner William D. Denney.

Mr. Denney stated that five safety lanes will be in operation with two in Wilmington, one in rural New Castle County, one in Kent County, and one in Sussex County. The local lane, to be held again on Amstel Avenue, will be open from July 15 to July 24.

Under the provisions of the motor vehicle laws of the state, the department will be obliged to suspend the registrations of any motor vehicle which have not been examined and passed. The schedules for lanes was announced by Mr. Denney as follows: Lanes will be open from 8 A. M. to 5:30 P. M. E. S. T.

Lane No. 3—Newark, July 15 to July 24; Delaware City, July 25 to July 27; New Castle, July 29 to August 3; Middletown, August 5 to August 14; Smyrna, August 15 to August 24; August 26 to 31 to be announced.

Lane No. 4—Dover, July 15 to July 20; Milford, July 22 to July 30; Milton, July 31 to August 1; Bridgeville, August 2 to August 9; Harrington, August 10 to August 17; Frederica, August 19 to August 23; August 24 to 31 to be announced.

Lane No. 5—Georgetown, July 15 to July 23; Lewes, July 24 to July 26; Rehoboth, July 27 to July 30; Frankford, July 31 to August 6; Millsboro, August 7 to August 12; Delmar, August 13 to August 14; Laurel, August 15 to August 21; Seaford, August 22 to August 23; August 29 to 31 to be announced.

The inspection lane attendants will examine all cars to determine whether or not the following parts are in safe mechanical condition:

Licenses and plates, lights, front, and rear, and stop; tires, mirror, windshield and all glass. Windshield wiper, horn, emergency brake, steering gear, foot brake. In addition to these points, trucks will be examined to be sure that they carry flares in the event that they break down. Clearance lights will also be examined.

LIONS HEAR  
TRAVELOGUE

Newark Lions heard a first-hand account of the experience of Roscoe Sawyer, of the duPont Company, who made a flight to Honolulu recently via the Pan-American Airways "Clipper Ship," at the regular weekly dinner meeting held in the Country Club Tuesday evening.

Mr. Sawyer was the guest of Fred Evans, program chairman for the evening, and entertained those present with a humorous and interesting discussion of his trip.

Guests present at the meeting were Paul Griffin, 'Carty' Douglass and Dr. R. C. Dutrow, of Frederick, Md. President A. E. Tomhave presided. Next week's Lions Club program will be in charge of Ford McBerty.

Miss Eleanor Colmery and Miss Dora Gibb left last Saturday for California. They will be gone for a month.

Dr. Willard Humbert spent the past week end in Washington, D. C.

## SCOUTS ENJOY WEEK AT RODNEY

Local Boys  
Win Honors  
In Sports  
Competition

Thirty-three members of Troop No. 55, Boy Scouts of America, returned home on Sunday from a one-week encampment at Camp Rodney. Two members of the troop remained for another week.

Camp officers praised the local scouts for the appearance of their quarters and for the advancement made in scoutcrafts. Members of the health and safety committees of the Del-Mar-Va Council inspected the camp.

On July 4, a boating competition was held with Troop No. 55 placing second to the Sea Scout Division which included representatives from Wilmington and New Jersey. The troop also placed second in the large row boat race for seniors with a crew consisting of George Danby, Benjamin McCormick, and Edmund Lewis.

In the large row boat race for juniors, the troop again placed second with a crew consisting of Brandon Davis, William Schaan, and Ernest Cameron. Second places were also taken in the canoe races for senior and junior classes with George Danby and John Tierney rowing in the former race, and Daniel Boone and Edward Etzel in the latter.

Third honors in the war canoe went to the local organization, represented by Carol Poole, John Tierney, George Danby, Oliver Williams, Conrad Lewis, Sheridan Marshall, Oliver Suddard, Robert Doordan, Clyde Baylis, Benjamin McCormick, and Thomas Lilley.

Members of the Panther Patrol were judged the best unit and received the highest rating for inspection, advancement, and organization each camp day. Members of the Panther group are Conrad Lewis, Edmund Lewis, Oliver Williams, Robert Doordan, and Julian Rittenhouse.

Included in the week's schedule of activities were a canoe trip down the Northeast River to the Maryland State Park and two evening motor boat trips down the bay.

Night programs consisted of campfires, games, movies, and a display of poisonous and non-poisonous reptiles by a representative from the Philadelphia Zoological Gardens.

Camp officers were: John Tierney, senior patrol leader; Thomas Lilley, Clyde Bayles, and George Danby, Jr., assistant scoutmasters; Benjamin McCormick, and James Hicks, assistant patrol leaders, and Vernon Steele, Scoutmaster.

"Margin For Error" At  
Robin Hood Theatre

The first professional summer theatre production of "Margin for Error," Clare Boothe's satiric mystery play built around the murder of a Nazi consul in an American city, is the current attraction at the Robin Hood Theatre in Arden, Delaware, this week, July 9 to 13 inclusive, beginning nightly at 8:45.

Sydney Riggs, as the much-hated Nazi consul whose murder is the focal point of the plot, heads the Robin Hood's all-Equity cast, while Charles Mendick, a veteran at the Arden playhouse, will take the part of Officer Moe Finkelstein. Others in the cast include Mary Loane, popular leading lady, Frank Raymond, Barbara Willison, James Sherman, Martin Noble and Burton Mallory.

Miss Boothe, who also wrote "The Women" and "Kiss the Boys Goodbye," found the germ of her plot in Mayor LaGuardia's appointment of an all-Jewish police detail to guard the German consulate in New York City some two years ago. Her play proved almost prophetic when a German vice-consul was found murdered in his home a few months after the play opened.

Critics, who found "Margin for Error" a delightful caricature of murder mysteries as well as of the Nazis, pronounced it a delicious satire and first-rate entertainment.

Firemen Parade At  
Chesapeake City Tuesday

Eighteen members of the Aetna Hose, Hook & Ladder Company journeyed to Chesapeake City Tuesday evening in the large Stutz truck belonging to the local company and participated in a parade staged as part of the publicity for a carnival being sponsored by the Chesapeake City department.

About fifteen neighboring companies took part in the activities. The carnival is held annually under the sponsorship of many rural fire departments as an essential function in helping finance their years activities.

Dr. Willard Humbert spent the past week end in Washington, D. C.

## New, Dated Bread At A&P Super Markets

Newark's A&P Super Market announces, elsewhere in this issue, the offering of a new, dated loaf of bread which is quite an innovation in grocery merchandising.

Attractively packaged in moistproof, oiled paper, the new loaf, called Marvel, weighs one and one-half pounds and comes sliced with the date plainly printed on the outside wrapper to insure the shopper of strictly fresh bread.

Tested and approved by Good Housekeeping, the new loaf is on sale today at all A&P Super Markets and food stores. A more detailed description of the item is contained in an advertisement appearing in this newspaper.

## Legal Notices

### STATE OF DELAWARE Office of Secretary of State CERTIFICATE OF DISSOLUTION To All Whom These Presents May Come, Greeting:

Whereas, It appears to my satisfaction by duly authenticated record of the proceedings of the voluntary dissolution thereof, by the consent of all the stockholders deposited in my office, the J. A. FINLEY LUMBER COMPANY, a corporation of this State whose principal office is situated in the City of Townsend, County of New Castle, State of Delaware, Oscar G. Biddle, being agent therein, and in charge thereof, upon whom process may be served, has complied with the requirements of the Corporation Laws of the State of Delaware, as contained in 2033 Section 1, to 2546, Section 24, Chapter 63 of the Revised Code of 1935, as amended, preliminary to the issuing of this

CERTIFICATE OF DISSOLUTION. Now, therefore, I, Josiah Marvel, Jr., Secretary of State of the State of Delaware, do hereby certify that the said Corporation did on July A. D. 1940 file in the office a duly executed and attested consent, in writing, to the dissolution of said Corporation, executed by all the stockholders thereof, which said consent and the records of the proceedings aforesaid, are now on file in my office as provided by law.

In Testimony Whereof, I have hereunto set my hand and official seal, at Dover, this eighth day of July in the year of our Lord one thousand nine hundred and forty, Josiah Marvel, Jr., Secretary of State.

### Advertisement For Bids

Sealed proposals will be received by the State Highway Department at its office, Dover, Del., until 2:00 P. M. E. S. T. July 17, 1940, and at that time and place publicly opened for contracts involving the following approximate quantities:

- CONTRACT 679  
Warwick to Middletown  
New Castle County
- 22' Cement Concrete Pavement 1.40 Miles  
Federal Aid Project 183-A (1)
- 19,800 Cu. Yds. Unclassified Excavation  
1,000 Cu. Yds. Borrow  
700 Tons Broken Stone Base Course  
270 Tons Bituminous Concrete Surface Course
- 9,830 Cu. Yds. Cement Concrete Pavement  
2,400 Lin. Ft. 3/4" Slip Dowel Trans. Expansion Joint
- 10,100 Lin. Ft. Transverse Contraction Joint
- 19 Cu. Yds. Cement Concrete Masonry  
250 Lbs. Reinforcing Steel  
485 Lin. Ft. 12" T & G R. C. Pipe  
115 Lin. Ft. 15" R. C. Pipe  
233 Lin. Ft. 18" R. C. Pipe  
425 Lin. Ft. 24" R. C. Pipe  
57 Lin. Ft. 30" R. C. Pipe  
60 Lin. Ft. 36" R. C. Pipe  
125 Lin. Ft. Type No. 1 Cement Concrete Parkway Curb
- 6 Catch Basins  
1 Manhole  
3,000 Lbs. Castings  
210 Sq. Yds. Removal of Present Pavement

- CONTRACT 733  
Dagsboro to DuPont Road  
Sussex County
- 27' Cement Concrete Pavement 2.161 Miles  
Federal Aid Project 184-A (1)
- 1.6 As Clearing  
1.6 As Grubbing  
7,800 Cu. Yds. Unclassified Excavation  
800 Cu. Yds. Excavation for Structures  
2,600 Cu. Yds. Borrow  
5,720 Cu. Yds. Cement Concrete Pavement
- 2,100 Lin. Ft. 3/4" Slip Dowel Transverse Expansion Joint
- 3,400 Lin. Ft. Transverse Contraction Joint
- 260 Cu. Yds. Cement Concrete Masonry  
25,500 Lbs. Reinforcing Steel  
120 Lin. Ft. 12" T & G R. C. Pipe  
509 Lin. Ft. 15" R. C. Pipe  
120 Lin. Ft. 24" R. C. Pipe  
70 Lin. Ft. 10" Corrugated Metal Pipe  
1,130 Lin. Ft. Timber Piles  
3,634 Ft. B. M. Sheet Piles (Left in Place)
- 400 Lin. Ft. Wood Shoulder Curb  
2 Catch Basins  
1,000 Lbs. Castings  
350 Sq. Yds. Removal of Present Pavement

- CONTRACT 732-A  
Mott's Corner to Flemings Landing  
Kent County
- 12'-0" Crested Timber Bridge  
300 Cu. Yds. Excavation for Structures  
300 Cu. Yds. Borrow  
7.5M Ft. B. M. Crested Timber for Bridges
- 900 Lin. Ft. Crested Timber Piles  
6,534 Ft. B. M. Sheet Piles (Left in Place)

- CONTRACT 747  
Dover High School Service Drive  
Kent County 0.11 Mile
- 250 Cu. Yds. Unclassified Excavation  
600 Tons Broken Stone Base Course  
100 Cu. Yds. Gravel Surface Course  
200 Tons Bituminous Concrete Surface Course
- 600 Lin. Ft. 6" Cement Concrete Curb  
120 Lin. Ft. 8" Cement Concrete Curb  
2,200 Sq. Ft. 4" Cement Concrete Sidewalk

- CONTRACT 748  
Bituminous Concrete For Maintenance  
New Castle County
- 3,500 Tons Bituminous Concrete (Federal Classification H)
- To be delivered F. O. B. State Highway Department Trucks in New Castle County.

These contracts will come under the provisions of the regular Federal Highway Act, as amended.

The Employment Agency for contracts in New Castle County shall be the Employment Service Division of the Unemployment Compensation Commission, at 801 Shipley Street, Wilmington, Delaware; in Kent County, the Employment Service Division of the Unemployment Compensation Commission, Georgetown, Delaware; and in Sussex County, the Employment Service Division of the Unemployment Compensation Commission, Dover, Delaware; and in Sussex County, the Employment Service Division of the Unemployment Compensation Commission, Dover, Delaware.

The minimum wages paid will be: for New Castle County, skilled labor \$0.00 per hour; intermediate grade labor \$0.00 per hour; and unskilled labor \$0.00 per hour; for Kent and Sussex Counties, skilled labor \$0.00 per hour; intermediate grade labor \$0.00 per hour; and unskilled labor \$0.00 per hour.

Attention is called to the Special Provisions in the proposal, specifications and contract agreement.

## Legal Notices

Performance of contract shall commence within ten (10) days after execution of the contract and be completed as specified.

Monthly payments will be made for 90 per cent of the construction completed each month.

Bidders must submit proposals upon forms provided by the Department.

Each proposal must be accompanied by a surety bond, certified check, or money to the amount of at least ten (10) per centum of the total amount of the proposal.

The envelope containing the proposal must be marked "Proposal for the construction of State Highway Contract No. 748."

The contract will be awarded or rejected within twenty (20) days from the date of opening proposals.

The right is reserved to reject any or all bids.

Complete sets of plans and specifications may be obtained after July 1, 1940, upon receipt of two dollars (\$2.00) for each contract, which amount will not be refunded.

Make checks payable to the State Highway Department.

STATE HIGHWAY DEPARTMENT  
By: F. V. duPont, Chairman  
Dover, Delaware,  
June 19, 1940  
6-27-7-11-26c.

CERTIFICATE OF REDUCTION OF CAPITAL OF THE ESLOW CORPORATION

THE ESLOW CORPORATION, a corporation organized and existing under the General Corporation Law of the State of Delaware, DOES HEREBY CERTIFY as follows:

(1) That on the 31st day of December, A. D. 1939, there was filed with said corporation the written consent of the holders of record of the total number of shares of the corporation outstanding and having voting powers authorizing reduction of the capital of the corporation by the amount of Forty Thousand Dollars (\$40,000.00) in the following manner:

By reducing capital represented by the 430 issued shares of capital stock without par value from \$43,000.00 to \$3,000.00, and by the transfer of said amount from the capital account to the surplus account of the corporation.

(2) That the assets of the corporation remaining after such reduction are sufficient to pay any debts, the payment of which has not been otherwise provided for.

IN WITNESS WHEREOF, I have hereunto set my hand and official seal, at Dover, this eighth day of July in the year of our Lord one thousand nine hundred and forty, Josiah Marvel, Jr., Secretary of State.

RECEIVED FOR RECORD  
JULY 22 1940  
Albert Stetler, Recorder  
6-27-31c.

## Legal Notices

IN WITNESS WHEREOF, said THE ESLOW CORPORATION has caused its corporate seal to be affixed and this certificate to be signed by its President and its Secretary, this 21st day of June, A. D. 1940.

Edward G. Feisenthal  
President  
Richard M. Loewenstein  
Secretary

STATE OF ILLINOIS SS

COUNTY OF COOK

BE IT REMEMBERED that on this 21st day of June, A. D. 1940, personally came before me, HELEN F. BENESH, a Notary Public in and for the County and State aforesaid, EDWARD G. FEISENTHAL, President of THE ESLOW CORPORATION, a corporation of the State of Delaware, the corporation described in and which executed the foregoing certificate, known to me personally to be such, and he the said Edward G. Feisenthal, as such President duly executed said certificate before me and acknowledged the said certificate to be his act and deed and the act and deed of said corporation; that the signatures of the said President and of the Secretary of said corporation to said foregoing certificate are in the handwriting of the said President and Secretary of said company respectively, and that the seal affixed to said certificate is the common or corporate seal of said corporation.

IN WITNESS WHEREOF, I have hereunto set my hand and seal of office the day and year aforesaid.

HELEN F. BENESH  
Notary Public  
State of Delaware  
OFFICE OF SECRETARY OF STATE

1. JOSIAH MARVEL, JR., Secretary of State of the State of Delaware, DO HEREBY CERTIFY that the above and foregoing is a true and correct copy of Certificate of Reduction of Capital of "THE ESLOW CORPORATION," as received and filed in this office the twenty-second day of June, A. D. 1940, at 10 o'clock A. M.

IN TESTIMONY WHEREOF, I have hereunto set my hand and official seal, at Dover, this twenty-second day of June in the year of our Lord one thousand nine hundred and forty.

JOSIAH MARVEL, JR.,  
Secretary of State.

RECEIVED FOR RECORD  
JULY 22 1940  
Albert Stetler, Recorder  
6-27-31c.

## IN MEMORIAM

In loving memory of Betty Louise Schaefer, daughter of Mr. and Mrs. George Schaefer, who departed this life nine years ago, July 9, 1931. Gone but not forgotten, sadly missed by Mother, Father, Sister and Brothers.

## CARD OF THANKS

We wish to thank relatives, friends and neighbors for their flowers and kindnesses in the recent death of Miss Allie Wilson.

The Family

Declaring that public decency was safe because police in the case had to use flashlights to get evidence, Magistrate C. E. Solomon of Brooklyn freed four auto petters.

**"YOU PAID A LOT MORE FOR YOUR DODGE JOB-RATED TRUCK-DIDN'T YOU?"**

**"NO SIR-AND I GOT DODGE QUALITY PLUS A TRUCK THAT FITS MY JOB"**

## You're Miles and Money Ahead With DODGE Job-Rated TRUCKS

When you buy a Dodge Job-Rated truck, you get the QUALITY that gave Dodge its reputation for Dependability... and at a low, money-saving price! With a Dodge Job-Rated truck you can save money on the job—in gas, oil, tires and upkeep, because the truck fits your job. Each unit, from engine to rear axle, is "sized" to fit the truck, so the truck will fit YOUR job. Come in for a good "deal."

Get the Facts on the DODGE Job-Rated TRUCKS That Fit YOUR Job!

## LOOK! COMPARE DODGE TRUCKS WITH THOSE MADE BY TWO OTHER COMPANIES MANUFACTURING LOW-PRICED TRUCKS DODGE OFFERS FAR WIDER SELECTION

COMPARISON	DODGE TRUCKS	COMPANY "A"	COMPANY "B"
Number of ENGINES	6	1	3
Number of WHEELBASES	17	9	6
Number of GEAR RATIOS	16	6	9
Number of CAPACITIES	6	3	4
Number of STD. CHASSIS and BODY MODELS	106	58	42

PRICES begin at \$468 \$452 475.88

Prices shown are for 1 1/2-ton chassis with flat face cowl delivered at Main Factory, federal taxes included—state and local taxes extra. Prices subject to change without notice. Figures used in the above chart are based on published data.

## DEPEND ON DODGE Job-Rated TRUCKS

3-2-1 1/2-1 1/4-1 1/2-TON CAPACITIES... 106 STANDARD CHASSIS AND BODY MODELS ON 17 WHEELBASES

Job-Rated MEANS: A TRUCK THAT FITS YOUR JOB!

## RITTENHOUSE MOTOR COMPANY

24-28 SO. COLLEGE AVENUE

NEWARK, DELAWARE

## It Won't Be Long Now

until we'll be ready to greet you in

## Our New Home

which is being rushed to completion and will be ready for occupancy within a very short while.

When finished our new quarters will offer complete, modern one-stop service and will be sufficiently large to fulfill any required mechanical troubles.

## In The Meantime

our customers are invited to avail themselves of the usual Dennison Motor Company service which is being dispensed without interruption at our temporary building on Haines Street, between Main and Delaware Ave.

## Our Used Car Stock

is replete with many exceptional bargains. Many of these cars have only a few thousand miles on them and are in excellent condition. We invite you to visit us and inspect these cars—a demonstration will convince you of their value.

## New Studebaker & Nash Cars Delivered Promptly

Place your order now with

## Dennison Motor Co.

Haines Street Between Main and Delaware Avenue

Dial 4241

Newark, Delaware



## SEE THESE EXCEPTIONAL VALUES

- '34 Olds Sedan
- '35 Plymouth Sedan
- '37 Plymouth Sedan
- '33 Plymouth Sedan
- '36 Plymouth Coupe
- '38 Packard 120
- '37 Ford Coach
- '35 Ford Coach
- '38 Buick Sedan
- '36 Buick Victoria
- '37 Buick Sedan
- '36 Buick Sedan
- '38 Chev. Sedan
- '37 DeSoto Coupe
- '38 Pontiac Town Sedan

Other Low Priced Used Cars to Select From

## Wilmington Auto Sales Co.

164 E. Main St. Newark, Del. Dial 2991  
Used car lot at Elkton Rd. & Amstel Ave.

## LET'S GET TOGETHER.



THIS IS THE MONTH TO TRADE FOR DESOTO AND GET A REALLY SWELL DEAL!



Take DeSoto's Floating Ride... then See How Easy it is to Own!

TRADE NOW for DeSoto and be money ahead on the deal! Start enjoying 39 modern features that you're missing now in your 2, 3 or 4-year old car! Drive DeSoto today! You'll find seats up to 8" wider than your car's—50% to 65% better roadlight—a wonderful Floating Ride! It's a grand experience. Don't miss it!

Then check up—discover how little it actually costs to own a big, new DeSoto, engineered by Chrysler Corporation. Prices are lower than last year and you'll get top trade-in allowance on your present car. Come in get this swell deal on a big new DeSoto right away!

DELUXE COUPE | DELUXE SEDAN  
\$850 | \$910

Delivered at Detroit, Mich. Federal taxes included. Transportation, state, local taxes, if any, extra.

## \* DE SOTO \*

## MacKenzie & Strickland

ELKTON ROAD

NEWARK, DEL.

SEE YOUR DE SOTO DEALER TODAY!

## BONDS ARE REDEEMED BY BOARD

Balance Of \$17,000 Now Outstanding

By Miss Emma S. Maclary

Newport, July 10.—The Town Board of Newport on July 1st redeemed and paid off \$3,000 in bonds from the General Improvement Fund, leaving a balance of only \$17,000 in outstanding bonds. The commissioners have paid off bonds each year, thereby lessening expenses, and decreasing cost of town operations, due to cheaper interest charges. This recent payment was in line with their town budget as planned for this year.

The Commissioners at their meeting Friday evening, made arrangements to extend town facilities including sewer and water lines to the new College Hill Development on the John R. Mason property recently acquired by the Williams Construction Company, contractor. Excavation work has been started and it is planned to erect 23 miles of this site at a sale price of \$2,850 to \$3,500.

Deputies of the Krebs School at a meeting Friday evening, made plans for a school vote to be cast in this district on Saturday, July 13th on the matter of having refunded to this district from the State Board funds approximately \$3,000 which has been accumulated through excess payments on the School Bond Issue. The Board will act from 2 to 4 at the Krebs School. The situation has recently come to light and the Board is anxious to have the permission of the local residents to use this fund for local school improvements. This can only be recovered from the state by a vote of people of the district. Since there is now a \$100,000 fund on hand, the tax rate has been decreased to 4c per \$100 of assessment and a recurrence of this condition. The Krebs School Board has confirmed the re-appointment of Frank L. Eddy to the Krebs Board for a four year period. The appointment was made last week by Judge Speakman.

Work on the Krebs school playground and the Newport recreation center is being rushed to completion. Miss Mary Johnson and Miss Alice Thomas who have been on a month's trip to the West Coast have returned to their home here.

Mr. and Mrs. J. W. Wetherell left Friday on a month's vacation trip in Europe.

Mr. and Mrs. A. J. Savacool, of Torrington, Pa., and Miss Evelyn McCoy, Philadelphia, Pa., were guests over the week-end here of the Rev. and Mrs. J. C. McCoy.

## SERVICE TESTS TO BE HELD

The United States Civil Service Commission has announced open competitive examinations for the positions listed below. Applications must be on file with the Commission's Washington office not later than August 5. The salaries given in each case are subject to a deduction of 3 1-2 percent.

Engineering draftsman (aeronautical), \$1,800 a year; chief, \$2,600 a year; principal, \$2,300 a year; senior, \$2,000 a year; assistant, \$1,620 a year. Applicants must have had certain high school study; and, except for the substitutions of study in aeronautical engineering, must have had elementary drafting training or experience, and aeronautical drafting experience. They must not have passed their fifty-third birthday.

must not have passed their fifty-third birthday.

Engineer, \$3,800 a year; senior, \$4,600 a year; associate, \$3,200 a year; assistant, \$2,600 a year; various optional branches. Applicants must have had study in an engineering course in a recognized college, and professional engineering experience. They must not have passed their fifty-fifth birthday.

Senior inspector, boat construction (wood hulls), \$2,600 a year; inspector, boat construction (wood hulls), \$2,000 a year; Navy Department. Except for the substitution of college study in naval architecture, or apprenticeship as shipfitter or boatbuilder, applicants must have had experience in the inspection or testing of wood hull construction work. They must not have passed their fifty-third birthday.

Senior artistic lithographer, \$2,000 a year; artistic lithographer, \$1,800 a year; assistant artistic lithographer, \$1,620 a year; junior artistic lithographer, \$1,400 a year; negative cutter, \$1,800 a year; junior copper plate map engraver, \$1,440 a year. Appropriate

experience is necessary for these positions. Applicants must have reached their twentieth, but must not have passed their fifty-third birthday.

Apprentice copperplate map engraver, \$1,260 a year; apprentice artistic lithographer, \$1,260 a year. Applicants must have had 6 months of appropriate experience, which may include apprenticeship. They must have reached their sixteenth, but must not have passed their twenty-first birthday.

Psychophysicologist, \$3,800 a year; principal, \$5,600 a year; senior, \$4,600 a year; associate, \$3,200 a year; assistant, \$2,600 a year; National Institute of Health, Public Health Service. Applicants must have completed certain college study and must have had appropriate research or teaching experience, or graduate study. They must not have passed their fifty-third birthday.

Full information as to the requirements for these examinations, and application forms, may be obtained from C. S. Crompton, secretary of the Board of U. S. Civil Service Examiners, at the Newark post office.

# Only Ford

AT ITS PRICE GIVES SO MUCH EQUIPMENT AT NO EXTRA COST!



Not only are Ford prices low... but they include more equipment than you will find on the other cars! Every De Luxe Ford V-8, for instance, has equipment not found on one or more competing cars to a total retail value of nearly \$60! Get a Ford and get the best! Get a Ford and get the most!

We're giving better deals now than ever before! Come in today!

GET THE FACTS... AND YOU'LL BUY FORD!

**FADER MOTOR COMPANY**  
NEWARK, DELAWARE

## IT'S NEW! IT'S "DATED!" IT'S BIG!



A&P Bakers have always made a fine loaf of bread—but our Department of Research, like that in all other successful industries, has never let up in its efforts to improve upon or produce an even better product.

Today, A&P Food Stores and Super Markets bring you MARVEL, a brand new bread, with an old-time "bread" flavor... It's "Baked" from crust to crust and "DATED" each day so that you are sure the bread you buy is fresh! Try a loaf today!

(..and it weighs 1 1/2 lbs!)



JUST LOOK AT THE PRICE!

3 LARGE 1 1/2 LB. LOAVES 25¢

2 FOR 17¢ • EACH 9¢

AT ALL A&P SUPER MARKETS and FOOD STORES

## MARVEL BREAD

Now you can enjoy really fresh bread—with the date printed on the wrapper! Try a loaf today! For further news about A&P's New Marvel Bread please see page 3.



**SUPER MARKETS**



3 Large 1 1/2 lb Loaves 25¢  
2 For 17¢ • Each 9¢

A&P Super Markets Are Open Until 10 P. M. Fri. & Sat.

Prime Cuts From First Six Ribs of Beef

**RIB ROAST** 1b 25¢  
ONE PRICE—NONE PRICED HIGHER

CHICKENS Top Quality, Freshly Killed for Stewing 4 lbs and over, None Priced Higher 1b 22¢

LAMB Genuine 1940 Forequarter Spring Lamb Short Cut, None Priced Higher 1b 13¢

CHUCK ROAST All Cuts Same Price None Priced Higher 1b 17¢

BACON Canadian Style, 1/2 lb 37¢ Whole Or Half By The Piece 1b 35¢

BUTTS Armour's Star Smoked Boneless Butts Cotto Wrapped, None Priced Higher 1b 25¢

COLD CUTS Baked Loaf, Cheese Loaf Pickle and Pimento 1/2 lb 9¢ 1b 17¢

RUMP STEAKS Also Top Round NONE PRICED HIGHER 1b 35¢

SLICED BOILED HAM Fresh Little Neck or Cherrystone 50 for 25¢ 1/2 lb 19¢ 1b 37¢

Chowder Clams Med 25 for 18¢ Fresh 1b 19¢

Flounder Fillets Large Fresh 2 lbs 19¢

Mackerel or Croakers 2 lbs 19¢ Cleaned, scaled, heads on

**CRAB MEAT** 1b 33¢ can

California Crisp Iceberg

**LETTUCE** 2 Large Heads 15¢  
NONE PRICED HIGHER

WATERMELONS Large Tom Watsons Half 20¢ Whole 39¢ None Priced Higher Melon

PEACHES Large Hilley Belle Georgia Freestone 4 lbs 25¢

ORANGES California Valencia dozen 25¢

Cantaloupes or Honey Dews 2 for 25¢

Lemons or Limes doz 23¢ String Beans 1b 5¢

Apples New Green Large 3 lbs 25¢ New Cabbage 2 lbs 5¢

WHITE SAIL

**SOAP FLAKES**

2 large pkgs 23¢

Quick, gentle soap. Ideal for fine fabrics, dishes or tough household tasks.

Tea Balls

30 in 25¢ 15 in 13¢

50 in 36¢ 100 in 89¢

Tea Balls

30 in 25¢ 15 in 13¢

50 in 36¢ 100 in 89¢

Tea Balls

30 in 25¢ 15 in 13¢

50 in 36¢ 100 in 89¢

Tea Balls

30 in 25¢ 15 in 13¢

50 in 36¢ 100 in 89¢

Tea Balls

30 in 25¢ 15 in 13¢

50 in 36¢ 100 in 89¢

Tea Balls

30 in 25¢ 15 in 13¢

50 in 36¢ 100 in 89¢

Tea Balls

30 in 25¢ 15 in 13¢

50 in 36¢ 100 in 89¢

Tea Balls

30 in 25¢ 15 in 13¢

50 in 36¢ 100 in 89¢

Tea Balls

30 in 25¢ 15 in 13¢

50 in 36¢ 100 in 89¢

Tea Balls

Spam Hormel 15-oz can 25¢

Sunweet Prune Juice 12-oz can 5¢

Boscul Coffee 1-lb can 25¢

Nutley Oleo 1-lb packet 10¢

Dole's Pineapple Gems 3 cans 25¢

P&G Soap White Naphtha 6 bars 19¢

Silver Dust With Dish Towel pkg 21¢

Chips Flakes or Granules 1-lb pkg 19¢

Lifebuoy Soap 2 cakes 16¢

Lux Flakes 2 1-lb pkgs 39¢

Klek Formerly Super Soda 1-lb pkg 15¢

Pard Dog Food 3 1-lb cans 26¢

Mayonnaise HELLMANN'S pint jar 20¢

Evap. Milk White House 4 tall cans 25¢

Salad Dressing Ann Page quart jar 25¢

A & P PEAS 1940 NEW PACK 2 No 2 cans 25¢

CAMPBELL'S TOMATO JUICE 4 16-oz cans 25¢

FRUIT COCKTAIL SULTANA BRAND No. 1 10¢

PAN ROLLS Have you tried them baked the new way? 12 in 6¢

ANN PAGE MACARONI 2 1-lb pkgs 15¢

Also Ann Page Spaghetti, Vermicelli, Elbow Macaroni or Encore Sea Shells

ENCORE Flavorful (Quart Jar 37¢)

MAYONNAISE pint jar 21¢

Encore Mayonnaise is made by the makers of famous Ann Page Foods—Quality Ingredients!

Ann Page (16-oz bottle 17¢)

FRENCH DRESSING 8-oz bottle 9¢

New Low Prices!

**FLOUR**

SUNNYFIELD FAMILY 5-lb bag 15¢ 12-lb bag 33¢

PILLSBURY, GOLD MEDAL or CERESOTA 5-lb bag 22¢ 12-lb bag 47¢

Sunnyfield Lard 1-lb 7¢

Baking Powder Ann Page 12-oz can 12¢

Summer Feeding Pays Use "Daily" Feeds

SCRATCH FEED 25-lb bag 47¢ 100-lb bag \$1.83

LAYING MASH 25-lb bag 57¢ 100-lb bag \$2.23

25-lb bag 57¢ 100-lb bag \$2.23

25-lb bag 57¢ 100-lb bag \$2.23

25-lb bag 57¢ 100-lb bag \$2.23



Never Pre-Ground

ANOTHER REASON WHY EVERY 7th FAMILY BUYS A&P COFFEE

**EIGHT O'CLOCK COFFEE**

3-lb 39¢  
2 1-lb bags 27¢



# Social Events

To Wed Harlan Herdman, Jr., On Saturday



Miss Maralee Kennard

## NEED MORE SOCIAL AND PERSONAL ITEMS

The management of The Newark Post urges the cooperation of its friends and readers in securing more social and personal items for the society page of this newspaper.

Names make news and the people of this community are interested in neighborhood affairs and visitations. If you go or have visitors, are ill or have a baby—it's news and we want to print it.

Secretaries or representatives of fraternal and social organizations are requested to mail, phone or bring accounts of meetings or functions to our office.

This page should be completely filled with society and personal items each week. We urge your cooperation to this end—if it is not convenient to mail or bring your news items to the office just

PHONE 4941

Dr. and Mrs. Francis H. Squire were visitors in Washington, D. C., over the 4th of July holidays.

Mrs. Anna Marshall spent last week end in New York City, where she visited the World's Fair.

Mr. and Mrs. John Sanders celebrated their second wedding anniversary on July 3rd.

Word has been received here that Wilson Beck, son of Mr. and Mrs. William Beck, has recently undergone an operation for appendicitis in an Army hospital in Puerto Rico, where he is stationed with the Fort duPont Engineers.

Mr. and Mrs. George Kane, of Roselle, were Saturday evening guests of Mr. and Mrs. Walter H. Clark.

Mr. and Mrs. Norman Slack, Mr. and Mrs. Frank Glenn and Mr. Donald Jones, of West Palm Beach, Fla., motored to the Skyline Drive and through Virginia last week end.

Mr. and Mrs. Walter H. Clark were Sunday evening guests of Mr. and Mrs. David W. Chalmers.

Miss Lydia Williams is visiting friends in Wilmington.

Mr. and Mrs. Curtis Potts, of Baltimore, Md., left last week for Hawkeye Camp, at Hawkeye, Clinton County, N. Y.

Miss Adele Smith and Miss Catherine Ort spent the recent holidays at Rehoboth Beach.

Miss Betty Dean Pié entertained members of her graduating class from the Ursuline Academy, Wilmington, at a picnic supper at her home Wednesday evening.

Dr. and Mrs. J. C. Kakavas left this morning for Montpelier, Vt., where they will spend four weeks.

Mr. and Mrs. Richard Snyder spent the week end in Allentown, Pa.

Miss Louise Dameron entertained at her home Wednesday evening.

Edwin Trimble, of Hockessin, has been spending a few days with Mr. and Mrs. Edwin Shakespeare.

Miss Ann Noonan, of Wilmington, is the guest this week of Miss Betty Dean Pié.

Miss Margaret James spent the week end at Seaford.

Miss Sara Potts visited friends in Sassafras, Md., last week end.

Mrs. W. C. Brooks, of Glasgow, spent several days last week in Atlantic City, N. J.

## FLOWERS For All Occasions

CORSAGES, WEDDING BOUQUETS, FUNERAL DESIGNS AND OTHER PURPOSES

Phone Orders Receive Special Attention We Telephone Flowers Everywhere.

Newark FlowerMart

FLORENCE M. JARMON, Mgr.

152 E. Main Street Phone 2-8431

Visit Our Lending Library—Volumes from the Greenwood Book Shop

## CALENDAR

July 9-12

8:45 p. m.—"Margin for Error" to be presented at Robin Hood Theatre, Arden.

July 13-24

Twelfth annual Motor Vehicle Inspection Campaign at Amstel Avenue lane.

Saturday, July 20

10:00 a. m.—Food sale at Hershey's ice cream store, E. Main Street, sponsored by Women's Home and Foreign Missionary Society of First Presbyterian Church.

Wednesday, July 24

7:00 p. m.—Dramatic program at Newark High School to be presented by playground children.

August 2-3

"Dollar Days," sponsored by Newark Chamber of Commerce.

For the Girl of your choice the Ring of HER Choice

GENUINE REGISTERED Keepsake



Keepsake CLASSIC 6 Diamonds

99.75 Engagement Ring 75.00

Keepsake HUDSON 16 Diamonds

139.75 Engagement Ring 100.00

Keepsake TUCSON 16 Diamonds

175.00 Engagement Ring 125.00

We present these lovely new sets as advertised in leading magazines. With each Keepsake comes the Certificate of Quality and Registration.

Mervin S. Dale

Dial 322' Newark

This Store Closed Every Thursday Afternoon During July & August.

LIBERAL CREDIT

## Special!

During July and August THE NEWARK PHOTO SERVICE

Offers you the lowest printing and developing price in Newark.

30c a Roll

For all types and sizes of films. An increasing volume of business makes this amazing offer possible.

BRING YOUR VACATION SHOTS IN TODAY!

NEWARK NEWSTAND

70 E. MAIN ST. DIAL 2990

Miss Erma Beck and Miss Margaret Butler spent the past week-end at the World's Fair, N. Y.

Mr. and Mrs. Wm. C. Chalmers and son, Bill, Jr., spent the past week end at Federalburg, Del.

Fred Strickland, M. M. Daugherty and J. Melvin Barnes were fishing in Easter Bay last Saturday. They reported a light catch.

Mrs. J. M. Barnes Lumbrook, has gone to Rehoboth Beach where she will spend the rest of July and August.

Mr. and Mrs. Raymond L. Kramer, of Llanarch, Pa., spent Sunday with Mr. and Mrs. Robert Potts.

Miss Vera Gould, daughter of Dr. and Mrs. Joseph S. Gould, is a guest at Camp Aloha, Fairlee, Vermont, for the summer.

Mr. and Mrs. Leon A. Case of Cleveland Avenue have returned home after a week's vacation spent with relatives at Blossburg, Pa. While away, they attended the 60th wedding anniversary of Mr. Case's parents Mr. and Mrs. Frank B. Case.

Mr. Ott Widdows, Jr., spent his vacation at Sunset Lake.

Miss Annie and Margaret Derickson are visitors in Atlantic City, N. J.

Mr. Henry J. Wilkins, of Wichita, Kan., is visiting Newark friends.

Mrs. E. E. Weggenmann spent last week end in Ocean City, Md., visiting relatives.

## Suggestions Given For Summer Touring

According to the Delaware Safety Council, the summer touring season is wide open now and the countryside presents the annual battle of the open road. It is a battle wherein the fittest—and that means the safest—are going to survive to come back home happy with the memories of a grand vacation unspoiled by any accident.

The following are ten sensible rules for safe driving recommended by the Safety Council:

1. Keep your car in sound condition.
2. Keep your car under control. It is dangerous if you cannot stop in the assured clear distance ahead.
3. Keep your eyes on the road; one second's inattention may mean an accident.
4. Never fight for the right of way.
5. Go along with the procession. You have no more right to "DRAG" traffic than you have to jeopardize yourself and others by unnecessary "Cutting In."
6. Be as courteous on the road as you are in your own home. Give other drivers and especially pedestrians a fair chance.
7. Know your local traffic rules and obey them exactly. They are the motorists' safety code and book of etiquette combined.
8. Take pride in your driving skill. If normal people are nervous to ride with you, something is wrong with your driving.
9. Don't mix liquor, worry, or anger with gasoline.
10. Study local maps and experiment for shorter and less congested routes. You may be surprised at the time you will save.

## CLASSIFIED ADVERTISEMENTS

### Help Wanted

ASSISTANT COOK—female, experienced, white or colored. Ark Restaurant, 73 E. Main Street, Dial 2923. 6-6-tfc.

### For Sale

300 PULLETS—4 months old. Phone Newark 6541. 7-11-tfc.

FARMALL 12 on 9.00 x 40 rubber tires. O. A. Newton & Son Company, Bridgeville, Del. 7-11-2tc.

1 McCormick-Deering hay loader; 1 self-dump rake, practically new. O. A. Newton & Son Company, Bridgeville, Del. 7-11-2tc.

1 FARMALL TRACTOR: 1 McCormick-Deering hay loader; 1 self-dump rake; 1 Iron Age riding cultivator; 2 riding plows; several hand-crank dusters; 1 2-horse drawbar; 1 horse-drawn mower; 1 10-20 tractor; 2 sets tractor chains; 1 drill; 1 horse-drawn roller; 1 Oliver riding cultivator; 1 McCormick-Deering riding cultivator; 1 Deering corn planter. O. A. Newton & Son Company, Bridgeville, Del. 7-11-2tc.

SEED BARLEY. John Campbell, Cooch's Bridge, Del. 7-11-tfc.

TWO GOOD HORSES, one mare, one gelding. Good riders. Mrs. Allen P. Reed, R. D. 3, Newark, Del. 7-4-tfc.

PUPPIES—3 male pointer puppies, Devilly Joe and Seaview Rex breeding. Siennick Kennels, Walter H. Clark, 151 E. Main St., Newark. Phone 3412 after 4:30 p. m. 6-20-tfc.

DOUBLE HOUSE, 15 rooms and 2 baths, at 95-97 S. Chapel St., oil heat. Apply Barrow's Beauty Shop, phone Newark 6241. 4-18-tfc.

### For Rent

FURNISHED APARTMENT, 1st floor, 4 rms., bath, oil heat, 88 W. Park Place. Also 3 garages for rent. 6-27-tfc.

APARTMENTS—in Academy Apartments, Herman Handloff, Dial 3161. 6-6-tfc.

APARTMENT, 3 rooms, pantry, private bath and garage, heat and hot water, newly decorated throughout. Mrs. S. H. Morris, 372 S. College Ave., phone 20391. 6-20-tfc.

APARTMENT, N. College Ave., on Creek, 2d floor, 3 rms and bath, renov., private entrance, oil h. w. heat, el. gas range, refrig., garage, garden. Russell, Creek Road. 5-30-tfc.

HOUSE—160 Elton Rd., 6 rooms and bath, two-car garage. Poss. June 1. Call 4412. Henry F. Mote, 57 Elton Rd. 5-9-tfc.

APARTMENT—Orchard Road Apartments, Apply Herman Wollaston, 341 S. College Ave., Dial 8421. 4-11-tfc.

APARTMENT, 4 rooms and bath, 2nd floor, private entrance, hot water and oil heat. Phone 596. 3-29-tfc.

### Miscellaneous

POSTERS—showcards, and window cards. Made to order. Any size, shape or media. Made quickly. Charles Hollister, Jr., Chestnut Hill, Newark. 7-11-tfc.

PLUMBING and heating and pump work. Prices reasonable. Prompt service. John M. Singlet, 151 E. Main St., Newark. Dial 4501. 2-15-tfc.

## Prepare Your Car For Its Annual Inspection

Save Time, Trouble, & Expense By Checking With Us Before Taking Your Car Through the Inspection Lane.

## Featuring Bear Alignment

To Give You Added Safety And A Longer Life To Your Tires.

Faulty Steering Mechanism Or A Crooked Wheel May Change Your Shining Pleasure Car To A Funeral Coach.

BRAKES, Too, Must Be Perfect To Be Safe—Drive In Today For A Thorough Check-up.

Lee Tires Willard Batteries Mazda Bulbs

Auto-Lite and Delco-Remy Electric Parts

Raybestos Brakelining Windshield Wipers

Lights Checked and Adjusted

Let George Do It!

# HENRY F. MOTE

GEORGE MARTIN, Mgr.

Elkton Road

Dial 4812

INSPECTION DATES—JULY 15-24

## FARM BUREAU INSURANCE SERVICES

AUTOMOBILE

LIFE

REESE S. JARMON

Local Agent

Phone 8221

426 S. COLLEGE AVE.

NEWARK, DEL.

## R. T. Jones

Funeral Director

Upholstering

and Repair Work of All Kinds by Experienced Mechanics.

All Work Guaranteed

122 West Main Street

Newark

Phone 6221

## CATERING

For Luncheons, Teas, Dinners, Parties, Reunions

Pastries, Pies, Cakes, Croquettes, Salads, Bread, Rolls

ISABEL ANDERSON

(Mrs. Carl J. H. Anderson)

718 Academy Street

Dial 2-0552 Newark, Del.

NEWARK, DEL.

# Flashes

By  
Bill Fletcher



**WHEN A. E. BENTON** blasted out an 8 and 7 win over Don Tammany on Sunday to win the Newark Country Club golf championship, it was just an anti-climax for the Wilmington veteran who had fought his toughest battle in the semi-finals when he turned back B. F. (Sankie) Richards.

"Sankie" has always been by nemesis, Benton who promises to be a modest wearer of the crown, stated after his victory, and the new title evened up a lot of old scores when he eliminated Richards in the semis.

**BENTON HAS NOTHING BUT** praise for his youthful opponent. "He's not short off the tee, but not quite long enough," he said. "Give him a couple more years experience and he'll be a tough man for anyone to handle."

After the first nine, the match was never in doubt for Tammany's brief two-hole lead, gained at the fifth hole, disappeared as quickly as it came and Benton took the next four holes to lead two up at the turn, a margin that was boosted to six at the match's half-way point.

It wasn't exactly championship golf for Benton shot five over par for the 29 holes and still ended the match at 8 and 7. Tammany took a shellacking from par as well as from his opponent and was 12 over regulations figures when the curtain was finally rung down.

**THINGS PROBABLY WORKED OUT** as they should, however. Benton, the better golfer, finally won something he's been shooting at for a long time—the club championship and Tammany has gained experience that should aid him considerably in future golf wars.

We don't think Benton was merely being courteous to an opponent when he said Don had a lot on the ball and you can look forward to steadily improving golf from this gentleman in the future.

**A QUARTET OF LOCAL FISHER-**men did more crabbing on their return to Newark than they did at Woodlawn Beach Sunday when they returned after a seven-hour session with four dozen of the clawed creatures, only one of which had been pulled up by their own hands.

The disappointed party included Chris and George Laskaris, Lew Gato, and Mike, chef de cuisine at the Deluxe.

Asked why they stayed so long with such miserable luck tagging them, George, who has had several years of experience behind him, stated: "Sometimes I feel that there is a little of the pioneer in me. I enjoy fishing and crabbing when the going is tough and the fact that I kept the other three guys out there bucking against those odds, certainly shows my courage and determination."

For George's courage and determination we have every respect—but as far as his crabbing ability is concerned—poor.

**IT WOULD BE A SHAME IF THE** Newark baseball team, thick in the New Castle County League pennant fight, should be forced to disband due to a lack of funds.

While the brand of baseball has been spotty at times, the team has made a fine showing against players drawn from much larger areas and when the final whistle blows, you can expect to find the locals somewhere near the top—if the season is finished.

The debts are now wiped clean, thanks to funds derived from a watch raffle.

No debts, no funds.

The bills will start as soon as a game is played. The funds won't.

How about a little voluntary support? ? ? ? ? ?

## LOCAL GOLFERS CONQUER

### DuPont Club Falls In Team Match Here

Winning 11 of the 20 matches and tying one, the Newark Country Club representatives turned in a 36-24 victory over the DuPont Country Club linksmen Saturday afternoon on the local course.

B. F. (Sankie) Richards, playing for the Newark contingent, marked up the low medal score of the day, a 71, while V. Brodie led the invaders with a 76.

The two teams will meet in a return match on the Wilmington course.

NEWARK		DUPONT	
B. F. Richards	.3	H. B. Richards	.0
C. E. Grubb	.2	E. W. Tobin	.1
J. F. Anderson	.1	J. S. Tipka	.2
G. Dutton	.1	Tom Devaney	.1
Jack Sinclair	.1	R. L. Strabb	.2
F. K. Simon	.1	H. H. Wolf	.2
Dr. Sypherd	.1	F. Hammer	.2
H. J. Diekey	.2	G. Devaney	.1
R. Stewart, Sr.	.3	C. Helfrick	.2
H. B. Williamson	.3	R. Peterson	.0
R. Stewart, Jr.	.3	V. Brodie	.0
R. H. Morris	.0	Joe Scott	.3
L. A. Stearns	.3	J. V. Barry	.0
M. D. Darrell	.3	A. Pearce	.0
E. C. Greener	.2	E. Woodhouse	.1
Stacy Jones	.2	C. K. Sloan	.1
Wayne Brewer	.2	C. K. D'neuhauer	.1
C. W. Davis	.3	J. Sears	.0
J. E. Dougherty	.0	J. Gibson	.0
R. Groves	.1	A. Lindsay	.3
Total	.36	Total	.24

Six

## A. E. BENTON DOWNS DON TAMMANY IN LINKS FINAL

### Runner-Up Never In Battle After Fifth Hole As Opponent Over Comes Two-Hole Lead To March On To 8 And 7 Conquest

Taking command of the match at the sixth green, A. E. Benton, Wilmington linksmen, turned in an 8 and 7 victory over Don Tammany to capture the Newark Country Club championship on Sunday. He succeeds George F. Anderson, three-time winner of the title, who was eliminated in the initial round by B. F. (Sankie) Richards.

Benton negotiated the first 18 holes in 74, three over par, while Tammany was taking an 80, to lead six up at the half-way mark of the match. From that point, the winner stretched his margin to eight up during the third nine, and finally ended the battle at the twenty-ninth green.

After taking the first hole with a par five, Benton found the going tough as Tammany captured the second with a birdie two, the third with a par four, and after halving the fourth, the fifth with a par three, to move into a two-hole advantage.

At this point, however, the more experienced linksmen took command of the proceedings to take four straight holes and finish the first nine with a two-up margin. Tammany's blow-up started with a big seven on the par-five, 478-yard sixth and continued through the seventh and eighth when he took bogies on both holes. A par four on the ninth was bested by Benton's bird.

The new champion's streak continued through two holes of the second nine as he registered a par and a bird to increase his margin to four up. Tammany's par three on the 245-yard twelfth finally broke the streak, but another blow-up, this time on 487-yard, par five thirteenth made Benton's bogie six good. A bogie five again netted dividends for Benton, this time on the par-four fifteenth as Tammany took a six and a bird on the seventeenth increased the winner's margin to six holes at half-way point.

Playing deadlocked golf for the first four holes of the third nine, the break finally came when Tammany went one over on the par-three, 163-yard twenty-third, but the runner-up came right back to score a birdie four on the next hole to hold the margin at six. After halving the twenty-fifth with par four, Benton closed the round with two pars as Tammany took bogies and the round ended with the more experienced golfer sporting an eight-hole margin.

Tammany staved off defeat at the twenty-eighth when he parred the 511-yard hole, but went one over on the next green as Benton took a par and the match.

Benton moved through the first eighteen in 37-37 for a three-over par 74, while Tammany took a 31-39 for an 80. On the third nine, the new title-holder rapped out a 36 to go one over par, while Tammany accounted for a 38.

Benton rang up 16 par holes, four birds, and 9 bogies in the unexciting encounter while Tammany accounted for 13 pars, three birds, and 10 bogies. On three holes, the runner-up went two over par.

First Eighteen	
Par Out	5 3 4 4 3 3 4 4—35
Ben. Out	5 4 5 4 4 3 4 3—37
Tam. Out	6 2 4 4 3 7 5 4—39
Par In	5 3 3 5 3 4 5 4—36—71
Ben. In	5 2 4 6 4 5 4 3—37—74
Tam. In	6 3 3 7 4 6 4 4—41—39—80
Second Eighteen	
Par Out	5 3 4 4 3 3 4 4—35
Ben. Out	5 3 4 5 3 3 4 4—36
Ben. Out	5 3 4 5 3 3 4 4—36
Tam. Out	5 3 4 5 4 4 4 5—38
Par In	5 3
Ben. In	6 3
Tam. In	5 4

## Playground Calendar

Mondays	
2:00 p. m.	—Playground baseball league games.
6:00 p. m.	—New Castle County Junior League games.
Tuesdays	
10:00 a. m.	—Bicycle lunch trip.
6:30 p. m.	—Playground softball league games.
Wednesdays	
7:00 p. m.	—Special playground feature.
Thursdays	
3:00 p. m.	—Special moving picture shows.
6:00 p. m.	—Playground baseball league games.
Fridays	
6:00 p. m.	—American Legion junior baseball.
6:30 p. m.	—Playground softball league games.

Complaining that her husband bit her because she took too much time to comb her hair, Mrs. Charlotte Still of New York, recently sued for divorce.

## LEGION TOSSERS TRIUMPH

### Finally Take Measure Of City Rivals

Turned back in the first two games of a seven-tilt series, Newark's Junior Legion team, sponsored by the J. Allison O'Daniel Post No. 10, finally broke the ice and scored its initial triumph over the Delaware Post No. 1—sponsored Wilmington team.

The locals downed the host club, composed mostly of members of last season's Pierre S. duPont High School baseball team, by a 7-4 count Tuesday.

Off to a fast start, the Newark team scored three runs in the initial inning, but Wilmington pushed ahead with a single run in the second and a three-run scoring spurge in the third. The locals then knotted the count in the fifth and moved on to the conquest with another three-run rally in the sixth.

Norman Brooks, with three safeties in four trips to the plate, and Charlie Weldin, with two for four, led the locals, slugging assault, a seven-hit barrage on Pitcher Ganoudis. Mc Cormick held down the mound assignment for the Newark team and after weathering the third-inning storm, disposed of his opponents in easy style. He yielded seven safeties.

## CLUB MAY DISBAND

While Newark's entry in the New Castle County League is right in the thick of the top division, the club will have to disband unless financial support is forthcoming in the near future, Manager Jack Edmanson reported last night.

Resting in third place, only a game and a half behind the loop-leading Worth Steel contingent, the locals have displayed a good brand of ball throughout the competition, but the local customer just won't pay.

Eight home games to-date have netted the meagre sum of \$26.05—\$24 of which was paid out for officials. Other expenses included catcher's equipment, baseballs (2 at \$1 each per game), transportation to foreign diamonds, and a few other incidental charges.

Faced with a deficit, the club chanced off a watch, netted between \$45 and \$50, pooled this money with the collections and the returns from season tickets and wiped the books clean.

With four home games and the same number of away tilts still on the schedule, Edmanson estimated that \$35 will be needed to finish the season. An urgent plea for funds is now at the doorstep of the sportsman.

## SOUTHSIDE AT TOP IN PLAYGROUND SOFTBALL

### Setting Pace With Pair Of Wins; Toe Nail Alley Undeclared

Southside, scoring its second straight triumph over Continental, moved in undisputed possession of first place in the Playground Softball League this past week. Martin's Cue Stars were handed their first reverse, a 9-6 defeat at the hands of Playground A. C., but managed to cling to the second spot with a split in the two games played to-date, while Continental defeated Playground, 4-2 to create a third-place deadlock.

Continuation of the softball schedule was announced by William K. Gillespie, director, as follows:  
July 16—Playground A. C. vs. Continental; Martin's vs. Southside. July 19—Playground A. C. vs. Southside. July 23—Playground A. C. vs. Martin's. Southside vs. Continental. July 26—Martin's vs. Continental.

With a first-round victory within their grasp, the Toenail Alley diamond-men have only to take the measure of Cen-Choc to sew up one of the play-off spots in the Playground baseball circuit.

Now sporting three wins against nary a defeat, the leaders can be thrown into a deadlock for the top spot, however, should Cen-Choc upset the dope and win. Cen-Choc will also meet Lumbrook before the first round is closed.

In games played last week, Lumbrook trounced Southside, 13-5, while Cen-Choc knocked off the Cleveland Avenue Sluggers, 9-6.

The second round schedule has been announced as follows:

July 8—Cleveland Avenue vs. Cen-Choc; Toe Nail Alley vs. Southside. July 11—Cen-Choc vs. Southside; Cleveland Sluggers vs. Lumbrook Packers; July 15—Toe Nail Alley vs. Lumbrook Packers; Cleveland Sluggers vs. Southside; July 18—Cleveland Sluggers vs. Toe Nail Alley; Cen-Choc vs. Lumbrook Packers; July 22—Southside vs. Lumbrook Packers; Toe Nail Alley vs. Cen-Choc.

Winners in each of the three rounds will take part in a round-robin tournament for the purpose of deciding the championship.

Second round competition has already started with Southside and Cen-Choc pacing the field. The former team rapped out a 6-3 triumph over the strong Toenail Alley outfit, while Cen-Choc took the measure of the Cleveland Avenue Sluggers, 9-6.

**Playground Leagues**  
**Softball Results**  
Southside 9; Continental 6.  
Continental 4; Playground 2.  
Playground 9; Martin's 6.

Softball Standings	
Won	Lost
Southside	2 0
Martin's	1 1
Continental	1 2
Playground	1 2

**Baseball Results**  
Lumbrook 13; Southside 5.  
Cen-Choc 9; Cleveland Ave. 6.

Baseball Standings	
Won	Lost
Toenail Alley	3 0
Lumbrook	3 1
Southside	2 2
Cen-Choc	1 1
Cleveland Sluggers	0 4

A compilation of all Federal rules and regulations of various departments and bureaus is being completed. It will be issued in 17 volumes, totalling about 20,000 pages. But the rules are being changed so often that the compilation will soon be out of date.

## WORTH STEEL HOLDS FIRST PLACE IN COUNTY LEAGUE

### Claymont Outfit Downs Locals By 4-1 Count On Continental Field; Tommy Wright Hurls Four-Hit Ball But Errors Play Part In Downfall

Worth Steel kept a firm hold on the New Castle County League's first spot when the Claymont outfit turned in a 4-1 victory over Newark Tuesday night. The locals collected six hits behind Tommy Wright's four-hit hurling but were able to shove across only one run in the fourth frame.

## GLASGOW IN FRONT

### Set Hot Pace In Interstate Loop Test

Glasgow continued to set a hot pace in the Interstate League Tuesday night by ringing up its fifth straight conquest in the second half, an easy 14-2 victory over Port Penn. Yorklyn and Holly Oak are also undefeated, but these teams have played only one game.

The victors pounded out a total of 14 hits while Paul Sheats went the route for Glasgow and gave up only one hit. Port Penn's tallies came about as a result of faulty fielding. The locals were charged with seven miscues.

After a scoreless first frame, the local contingent started the fireworks in the second with a single tally, and then added two more in the third to set the stage for a seven-run barrage in the fourth. A four-run spurt in the fifth frame concluded the scoring. Port Penn was limited to a pair of runs in the fourth inning.

M. Brooks and Ogden, each with three hits in four trips to the plate, paced the locals' winning attack, while Passo came through with the only hit off Sheats in the fourth inning.

Standing of the Teams	
Won	Lost
Glasgow	5 0
Yorklyn	1 0
Holly Oak	1 0
Elmhurst	1 2
Port Penn	1 3
Town Point	0 4

### No Restrictions

Chester J. Tyson, rural rehabilitation supervisor for the Farm Security Administration in Delaware, says that there is no restriction placed on persons who can apply for tenant purchases loans under the Farm Security Program. According to the Bankhead-Jones Act which authorizes the program, any bona fide farm tenant or farm laborer is eligible. Tyson says, though, that final selection of the purchasers is made by a local committee on the basis of the applicant's character, his farming ability and whether or not he is able to assume responsibilities in connection with the tenant purchase loans which are made at the three per cent interest rate with a 40-year limit on repaying the principal.

Worth Steel moved into a fourth-inning lead by combining two safeties, a walk, and an error for three runs. Obale, the first man to face Wright, drew a pass and after F. Rommer and L. Rommer had grounded out, C. Albert reached first on Ogden's misplay. A double by R. Obale sent two runs across the plate and Thomas drove the third score with a well-hit single.

Mitchell set the stage for the local only score when he singled, moved on to third as Tyndal bobbled Obale's ground ball, and scored on Ogden's fly to centerfield.

Worth Steel's final run came in the sixth inning when L. Rommer, with one out, drew a pass, stole second, crossed the plate on Cuthbert's single down the third base line.

In dropping the decision to the Stepmen, the local contingent was shuffled back to third position as Elmhurst played to a 10-10 deadlock with Kentmere and moved into the second spot with a record of 13 wins against 10 losses. Newark has scored 12 wins and has suffered the same number of defeats.

St. Ann's, with 11 wins and 3 turnbacks, rounds out the closely-bunched first division while Fairview, with 11 conquests and 7 setbacks is only trailing the fourth-place outfit by a game and a half. Only two and a half games separates the first and fifth-place teams.

Kentmere is holding down sixth place with 8 wins and 8 losses while Eastlake, with 5 triumphs and 12 reversals, is seventh.

Standing of the Teams	
Won	Lost
Worth Steel	14 4
Elmhurst	13 5
Newark	12 5
St. Ann's	11 3
Fairview	12 7
Kentmere	8 9
Eastlake	5 12
Newport	0 18

## CHICKS

ALL BREEDING FLOCKS BLOOD-TESTED BY STATE OFFICIAL  
Barred Rocks  
New Hampshire Reds  
Rhode Island Reds  
Rock-Red Cross  
S. C. White Leghorns  
Mated to Pedigreed Males  
\$6.00 per 100  
AT THE HATCHERY  
Heavy mixed chicks \$5.00 per hundred  
50c each box extra for shipping  
100% live delivery Guaranteed  
Custom hatching of turkey eggs & hen eggs  
Started chicks  
SCARBOROUGH HATCHERY  
AND POULTRY FARM  
Phone 437 Millford, Del.

## HERE'S "TOPS" FOR THE MONEY

BIGGEST "VALUE PACKAGE" DODGE EVER OFFERED



Drive Your Present Car in for Appraisal!  
Come in today! See and drive the finest car ever to bear the name of Dodge. And get our appraisal on your present car. It may more than cover the full down-payment—balance on easy budget terms!  
This is a Detroit delivered price and includes all Federal taxes and all standard equipment transportation, state and local taxes (if any), extra.  
Time in on Major Bovee, Columbia, Newark, Thursday, 9 to 10 P. M. E. & A. T.

## Rittenhouse Motor Co.

24 So. College Avenue Newark, Del.

## STOCK CARS TO CLOSE LANGHORNE SEASON

200 Entrants  
Expected For  
Auto Race  
On August 4

A. Hankinson. The strictly stock car AAA event is the only race of its kind in the United States, the mile, hard surfaced bowl at Langhorne being ideal for stock car meets.

Because of the large field of entries, many of which are already entered a month before the race, plans have been made to qualify the cars a week in advance of the actual race, elimination trials scheduled for Sunday, July 28, when the field will be weeded out in a search for 42 of the fastest cars to start on August 4.

The events are open to any person owning a stock model car of American manufacture, produced in 1928, '39 and '40. Entries will not be allowed any additional equipment and must be run exactly as they came off the dealer's floor, even retaining fenders, headlights, running boards, etc.

The qualifying events on the Sunday before the actual running of the race will also serve to test the "gentlemen jockeys" at the same time the registered professional AAA chauffeurs prove their eligibility. Both the amateurs and professionals will be required to qualify before being allowed to run on August 4.

"The fact that there will be about 90 percent of the nation's professional drivers in the entry list should certainly make no difference to the pleasure

car speedsters," claimed Hankinson. "The two types of racing are so vastly different that AAA officials feel qualifying tests should be given both classes of drivers."

The August 4 stock car meet will be the final auto race meet of 1940 on the Langhorne Speedway, world's fastest mile race course.

Because some northern Delaware dairymen have been troubled with grassy milk flavors, New Castle County agricultural agent George M. Worrlow is suggesting that they take their cattle off of the pasture two hours or so before milking time.

### Registration Officials Meet At Glasgow

White Clay Creek, New Castle, Red Lion, Pencader, St. Georges, Appoquinimink and Blackbird hundred Republican registration officials assembled at Brooks Hall, Glasgow, last night in answer to the call of Recorder of Deeds Albert Stetser, chairman of the New Castle County Republican Executive Committee.

Similar meetings for registration officials from Brandywine, Christiansa and Mill Creek hundreds will be held at Republican party headquarters, Wilmington, on Thursday evening, July 18.

LOTS OF **GOOD** USED CARS  
AT **GOOD LOW** PRICES  
AT FORD DEALERS NOW!  
FADER MOTOR CO. Newark, Del.

Read the Newark Post — Your Neighbor Does

One Thrifty Shopper  
Asks Another —

# HOW CAN G-E GIVE SO MUCH VALUE FOR SO LITTLE MONEY?



Don't Miss Seeing The  
Big New G-E Refrigerator.  
Every Feature You Want  
... And A Real Bargain!

THEY'RE BUYING G-E REFRIGERATORS AT  
THE AMAZING RATE OF ONE-A-MINUTE!

General Electric offers the most complete, the thriftiest G-E of all time and at lowest prices in G-E history.

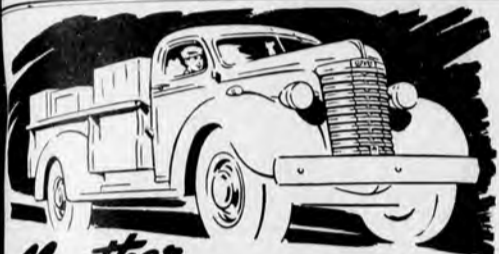
CONDITIONED AIR! Controlled humidity, temperature and constant circulation of sweet, freshened air keep foods better longer.

Invest only a dollar or two more in monthly payments and buy yourself one of the big, fully equipped G-E models—a Refrigerator that will give you the extra years of satisfactory service, convenience and enduring economy for which G-E Refrigerators are world famous.

EASY TO BUY!  
THRIFTY TO OWN!  
Monthly Payments  
As Little As  
**\$4.25**

Delaware Power & Light Co.  
600 Market Street Wilmington Phone 6211

GENERAL ELECTRIC



No other  
LIGHT-DUTY TRUCK  
can match **GMC GAS  
MILEAGE**

THE TRUCK OF VALUE.  
No other truck has the kind of engine you get in a GMC. Mileage Meter Tests are proving every day that GMC SUPER-DUTY Engines are the most economical of all. It will pay you to investigate GMC.

Check  
GMC PRICES  
AGAINST THE  
3 LOWEST

HENRY F. MOTE  
51 Elkton Road Dial 4812

**GMC TRUCKS** GASOLINE - DIESEL

# LET US DO YOUR PRINTING

the way you want it... when you want it... at prices you can afford to pay.

Patronize Newark's ONE newspaper and printing plant that cheerfully gives publicity to all

local events and happenings of interest.

Your printing patronage will help us make the Newark Post a better newspaper for you to read.

PHONE 4941

and a representative will call

## THE NEWARK POST

Printers Newark's ONE Newspaper Publishers

KS  
CKS BLOOD-  
OFFICIAL

Males  
100  
CHERY  
\$5.00 per  
for shipping  
Guaranteed  
turkey eggs &  
cks  
MATCHERY  
FARM  
Milford, Del.

OR

OFFERED

GE  
INER  
5  
red price  
eral taxes  
equipment  
late and  
extra.

Columbia Nat-  
M., E. D. S. F.

0.  
Newark, Del.

## CULTURAL PRACTICES HALT PLANT DISEASES

Slip Seeding Recommended By U. of D. Pathologist

Control of a group of troublesome plant diseases has been accomplished without the use of sprays, dusts or disinfectants. For there are several diseases attacking sweet potatoes being successfully controlled by many Delaware farmers through use of a cultural practice known as slip seeding. Included in the array of diseases which can be extremely harmful on sweet potatoes unless properly checked are black rot, wilt or yellows, scurf, pox and sunken spot.

Among the advocates of slip seed production to avoid sweet potato diseases, none has been so enthusiastic as Dr. T. F. Manns, plant pathologist for the Delaware Agricultural Extension Service. On this subject, Dr. Manns remarks:

"Many progressive sweet potato growers in Delaware have learned a practical and more economical way to cut down on losses from diseases. This relatively simple method is the use of cutting or slips, about 12 to 14 inches long, taken from the ends of healthy, growing vines and planted in soil free of the diseases on or before the middle of July. The land must be well-fertilized and carefully prepared for best growth of the slips."

"Certain of the sweet potato varieties like Maryland, Golden, Big Stem and Porto Rico are readily adapted to the slip seed production. The Uprisers or Jersey types are sometimes slower to take hold, but when properly planted they will produce 75 to 100 bushels per acre of excellent, disease-free seed."

Slips may be set with a transplanter, but best results are likely to follow when placed in the soil by hand or with a notched stick. The slips are doubled when planted and set three inches deep, covering at least two joints and leaving the growing point just out of the ground. Slips are planted about 14 to 16 inches apart.

## GUIDANCE PROGRAM HELD HERE TUESDAY

More Than 200 Educators Attend Session

More than 200 educators representing schools from Delaware, Pennsylvania, and Maryland attended the conference on guidance held at the University of Delaware on Tuesday. Prof. Raymond W. Heim and Prof. William A. Wilkinson, both members of the university faculty, were in charge of arrangements for the affair.

Speakers at the morning meeting held in Mitchell Hall were: Dr. Harry A. Jager, chief of the Occupational Information and Guidance Service, United States Office of Education, Washington, D. C.; Dean Marion Rex Trabue, of the Pennsylvania State College School of Education, and Dean C. E. Parich, of the Rutgers University school of education.

According to Dr. Jager, 12 states have adopted guidance programs in an effort to aid youth and five other states are making marked progress toward establishing similar set-ups.

The guidance plan has established information and trends among students that should be invaluable to the federal government in placing classes before taking them into key industries in the national defense program, he said.

Dr. Trabue warned the educators that too much emphasis on a particular phase of an occupation was dangerous to the student because such procedure left the student unprepared to cope with the changes and complexities of the industrial world. "Students in secondary schools must be guided toward obtaining knowledge and training so that they can be employed in many angles of the occupation which they may select for their life work," he said.

Dean Parich declared that youth must be guided and aided in every way to take a place in the business world and not just be given a test and then trained for a particular job.

According to the speaker, the ideal school should have a comprehensive guidance program that will aid the student in studying the different occupations, advise him soundly with full knowledge of the community's opportunities regarding an education, and direct his preparation or vocational education for his chosen occupation.

"Guidance Hurdles" was the subject of the panel discussion which followed luncheon in Kent Hall. Women's College. A reception at the home of Dr. and Mrs. Walter Hultihen concluded the meeting.

### Slip Seeding Advocate



Dr. T. A. Manns

## DELEGATES RETURN

Marshallton, July 10—Mrs. John H. Foard and Mrs. Katherine Thorne have returned from Ocean City, Md., where they attended the annual peninsula summer school of the Protestant Episcopal Diocese of Delaware. Mrs. Foard was a delegate from at Barnabas P. E. Church here.

The Ladies' Bible Class of Cedars Methodist Church is planning a watermelon party to be held July 25 at Augustine Beach. Mrs. Florence Proud is chairman of the committee on arrangements.

The group held a meeting and hot dog roast recently at Rockford Park and at that time voted to send \$5 to the Rev. Dan Lee, missionary of China, a native of Peiping, who recently returned home after graduating from Drew Theological Seminary, Madison, N. J. About 30 members and friends attended the outing. Mrs. Helen Magargal and Mrs. Jarrell were co-chairmen.

Wendell and Warren Smith, sons of Mr. and Mrs. Henry Smith of Hartford, Conn., are visiting their grand-parents, Mr. and Mrs. John H. Foard, of Marshallton.

The Ladies' Aid Society of Cedars Methodist Church held its final meeting until Sept. At the church this week and discussed activities for the remainder of the summer.

A picnic will be held at River View Beach, N. J., on August 6, and on August 14 a festival will be held on the church lawn under the chairmanship of Miss Mary Taylor.

A social hour followed the meeting in the form of a Fourth of July party with Miss Harriett Doud and Mrs. Pearl Magargal as hostesses.

## 2300 MEN AT CAMP DIX FOR TRAINING

New Jersey Post Host To C.M.T.C. Candidates For Next 30 Days

A cross-section of American youth was presented at Fort Dix, N. J., Friday when 2,300 young men from New York, New Jersey and Delaware arrived for 30 days training in one of the largest Citizens Military Training Camps in the United States. Colonel Eley P. Denson, 18th Infantry and C.M.T.C. commander, his staff and members of the 391st Infantry, commanded by Colonel Charles W. Rooth, met the citizen soldiers.

On Saturday, the youths were formally inducted in the C.M.T.C. Regiment. With right hands uplifted, the trainees repeated after Captain Al Rudner, 391st Infantry adjutant, the following oath: "I solemnly swear that I will bear true faith and allegiance to the United States of America, and while at this camp I will obey those in authority and observe all the rules and regulations of the camp to the best of my ability so help me God."

During this week regular training has been held. Military instruction in the School of the Soldier and School of the Squad were given by reserve officers and student noncommissioned officers. Special attention was given this year to the military bearing of the trainees. Instruction in anti-aircraft defense will be included in field exercises to the end that all candidates may become familiar with protective measures against aerial observation and attack.

It is the purpose of the C.M.T.C. to give, not only instruction in military science, but also to help each student to develop to the fullest extent. A complete athletic program has been organized by Lieut. R. H. York, athletic officer. The sport schedule is carried on during the afternoon and includes organized competition in baseball, softball, basketball, volleyball, tug-of-war, horseshoes, tennis, boxing, swimming, and track and field events. Outstanding athletes of West Point and civilian life will act as instructors.

## To the Ladies!

A fellow once tried to tell me that you couldn't interest ladies in commercial cars. Well, perhaps he was right—years ago. But, believe me, I find lots of ladies who seem pretty pleased that I sell Ford V-8 Commercial Cars to the folks around here.

In the first place, they like to see a trim, smart Ford V-8 Commercial Car drive up to the door. When it comes to looks—you can bet the Ford Commercial Car really has "it."

And they like the quick deliveries the Ford gives. It's always right on the job.

You know as well as I do that nothing upsets a household worse than having the marketing arrive an hour after dinnertime. And if a dress gets there too late for the party—boy, there's the Dickens to pay.

You see, the Ford Commercial Car is built to stand up on the job. But if something should break down, Ford owners can rely on the Ford Engine and Parts Exchange Plan to supply the needed parts in a jiffy. Even a whole reconditioned engine can be put in overnight.

Yes, sir, if you men who operate commercial cars want to make a real hit with the ladies, drop in and let's talk about what a new Ford V-8 Commercial Car can do for you.

A. J. Fader

FADER MOTOR CO.  
NEWARK, DEL.

## NEW LOWER PRICES

Now in effect, covering our complete line of Quality Poultry Feeds.

SAVE ON



Farmdale

POULTRY FEEDS

	25-lb. bag	100-lb. bag
GROWING MASH	55c	\$2.15
STARTING and Growing Mash	61c	2.39
BROILER MASH	61c	2.39
LAYING MASH	57c	2.23
SCRATCH GRAINS	47c	1.83
CHICK GRAINS	53c	2.07

Reduced prices also on half-ton lots and over.

Prices Effective in All Stores and Markets Operated by  
**AMERICAN STORES CO. ACME SUPER MARKETS**

# Acme Super Markets

Where Quality is Priced Low—Save the Most on the Best

## We're at the Seashore, Too!

You will find the modern Acme Super Market at seashore points so you may continue to enjoy real satisfaction and save money while on vacation. If you go to the shore, we invite you to visit the nearest Acme and take advantage of the hundreds of big values in quality foods which have made the Acme famous.

### Acme Quality Poultry & Meats

The high standards of quality characteristic of all Acme Poultry and Meats is the result of long experience in selecting only the quality we know will give complete satisfaction.



Fancy Fresh-Killed Long Island

**DUCKLINGS** lb 15c

A sensational price for this quality. An economical treat for the family.

**CHICKENS** Nearby Fresh-Killed FRYING All Sizes lb 27c  
**PORK SHOULDERS** Home Dressed lb 15c

Weighing 5 to 7 lbs. each. Cut from selected corn-fed little porkers.

Outstanding Values in Our SEA FOOD DEPTS.

Fresh Sea Bass lb 10c

Fresh Large Flounder lb 12c

Fresh Large Sea Scallops lb 19c

Fresh Picked Crab Meat lb 29c Regular Lump White

Nearby Milk-Fed **VEAL SHOULDERS** (Full) lb 16c  
**BREAST VEAL** (Full) lb 16c  
**NECK VEAL** (Full) lb 16c

Rump Veal Roast lb 23c  
Veal Cutlets lb 42c  
Sliced Boiled Ham 1/2 lb 19c  
Sliced Pressed Ham 1/4 lb 10c  
Spiced Luncheon Meat 1/4 lb 6c  
Ass'd. Baked Leaves 1/4 lb 5c

Tender Lamb LIVER lb 15c

Your Choice pound 16c

Rib Veal Chops lb 35c  
Loin Veal Chops lb 39c  
Juicy Club Franks lb 19c  
Sliced Long Bologna 1/4 lb 6c  
Sliced Lebanon Bologna 1/4 lb 6c  
Acme Smoked Sausage lb 27c

Sliced Breakfast BACON lb 17c



Just Arrived—New 1940 Pack

Packed only a few hours after picking.

Rob-ford Delicious

**STRINGLESS BEANS** 4 No. 2 cans 29c

Fancy Kadota Figs No. 2 1/2 lb 19c  
Tender Sweet Peas No. 2 1/2 lb 19c  
HEINZ Strained Foods 3 cans 20c  
F. D. Choice Tomatoes No. 2 1/2 lb 15c  
Wilson's Certified MOR 12-oz can 23c

Standard Quality No. 2 can **TOMATOES** Your Choice Each 5c  
Tender Lima Beans No. 2 1/2 lb 19c  
Mixed Vegetables No. 2 1/2 lb 19c  
Toasted Bread Crumbs No. 2 1/2 lb 19c  
Phillips Spaghetti No. 2 1/2 lb 19c

New Everyday Lower Flour Prices

Our Best Quality Family **FLOUR** (12-lb. bag 33c) 5-bag 15c

Our Best Pastry Flour (12-lb. bag 30c) 5-bag 13c

Cherries No. 2 1/2 lb 18c  
Fresh Prunes No. 2 1/2 lb 6c  
Whole Corn No. 2 1/2 lb 9c  
Mayonnaise No. 2 1/2 lb 17c  
Pink Salmon No. 2 1/2 lb 25c  
Cal. Mackerel No. 2 1/2 lb 25c  
Kraft's Cheese No. 2 1/2 lb 17c

EVAPORATED MILK No. 2 1/2 lb 25c

Special Mild Cheese lb 19c

Mild Cure Cheese lb 23c

Tootsie Ro's (Junior) No. 2 1/2 lb 10c  
Sugar Toasted Peanuts No. 2 1/2 lb 9c  
Our Best Gelatine Desserts No. 2 1/2 lb 10c  
Vogt's Philadelphia Scrapple No. 2 1/2 lb 23c  
Our Best Facial Tissues No. 2 1/2 lb 17c  
Sturdy Brooms No. 2 1/2 lb 45c  
Boraxo Hand Cleaner No. 2 1/2 lb 25c

SPECIAL—At Half Regular Value

Ladies' Smart Travel **Overnight Cases** \$1.59 with purchase totaling \$1.00 or over  
Sturdy Construction Waterproof Covering Attractively Finished Interior

Selected Fresh Fruits and Vegetables

Co-operating With the Georgia-Carolina Peach Growers

Georgia-Carolina Freestone **PEACHES** Hilley Belle lb 5c

Juicy California Oranges Good Size 19c  
Home Grown Carrots 5c  
Solid Slicing Tomatoes 15c  
Selected No. 1 New Potatoes 20c

Famous Tom Watson Large Ripe **Watermelons** Half 20c Whole 39c

OPEN Fri. and Sat. till 10 P. M.

62 East MAIN STREET  
Newark, Delaware

SAVE The Most on the Best