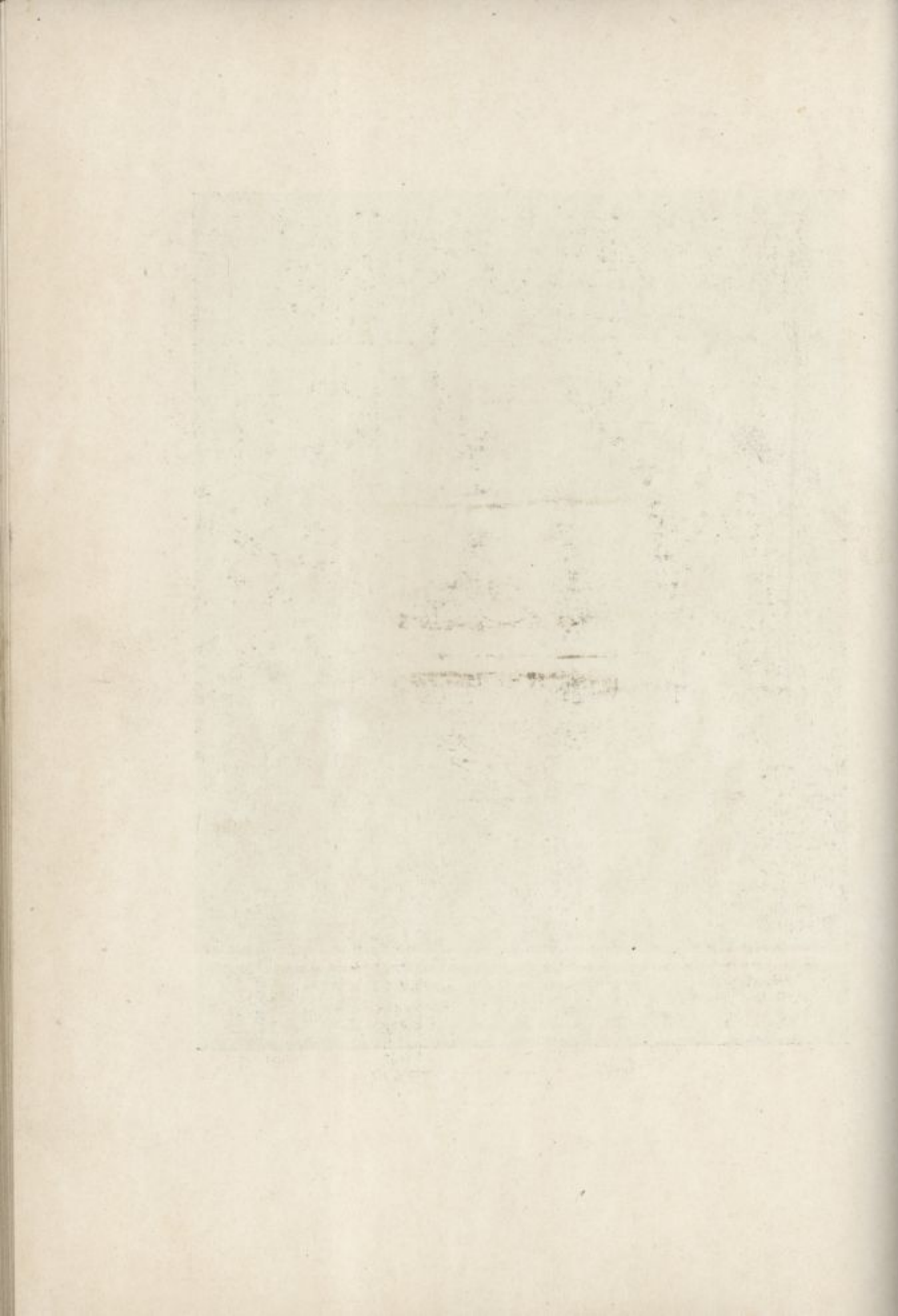


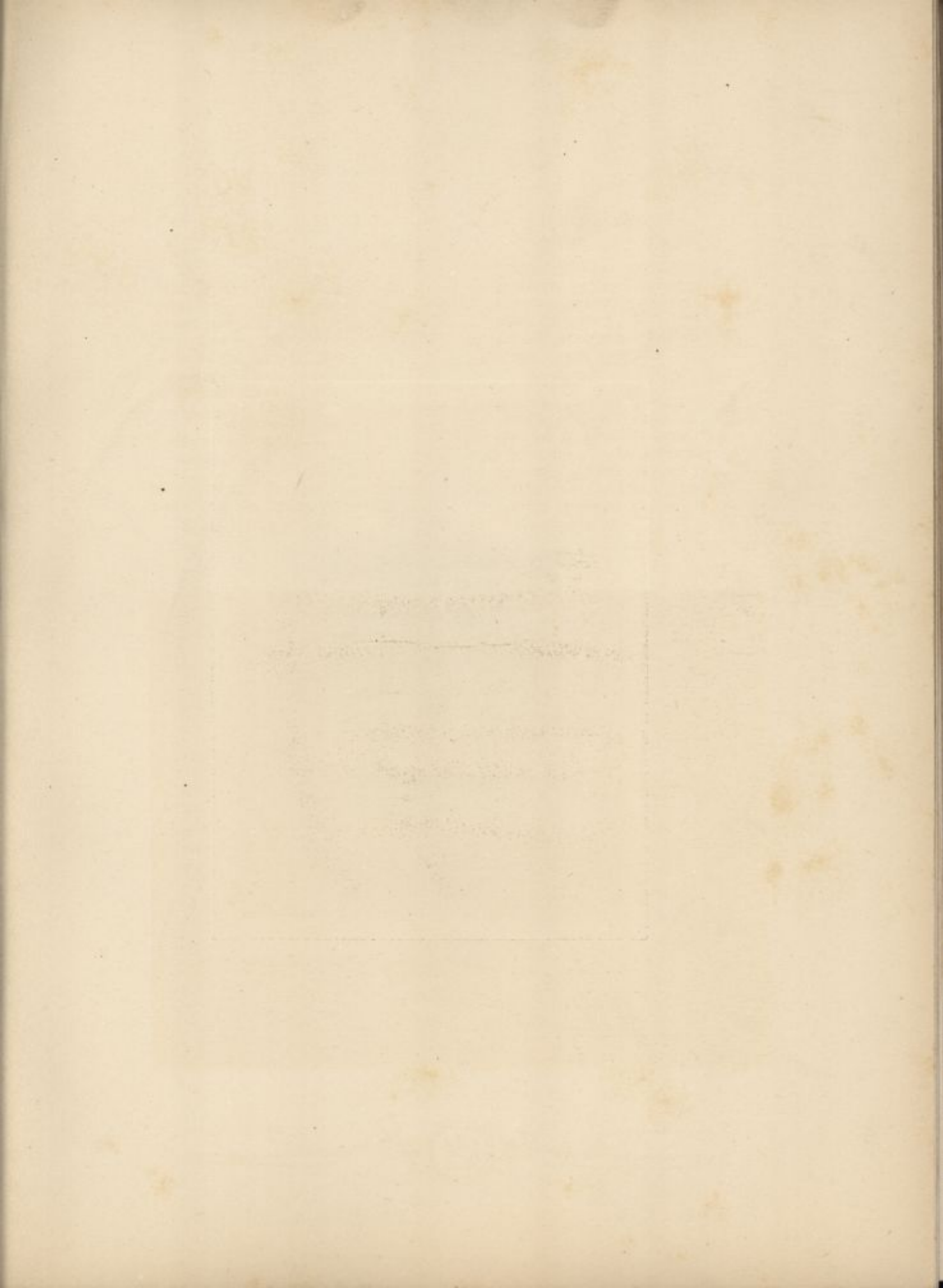


FRATERNITIES





CAHON & BROS. DEL. & FEA.  
1871





*Kappa Alpha Fraternity*

*Fratres in Facultate*

DEAN EDWARD LAURENCE SMITH  
PROF. GEORGE ELLIOTT DUTTON

*Seniors*

JAMES CARLTON HASTINGS

*Juniors*

IRVING REYNOLDS  
MORRIS RANDOLPH MITCHELL  
CHARLES FULMER MEYERS  
JOHN POOLE GUM  
HARRY BRATTON ALEXANDER  
MARVEL WILSON  
JOHN WILLIAM ALEXANDER

*Sophomores*

FRANK HOWELL TYSON  
NATHANIEL HICKMAN EVANS  
RUDOLPH YORK TAGGART  
LEONARD CALVERT STEPHENS  
GEORGE WILSON HEARNE  
HARRY WALTER LOOSE  
ROBERT TWILLEY MARSHALL

*Freshmen*

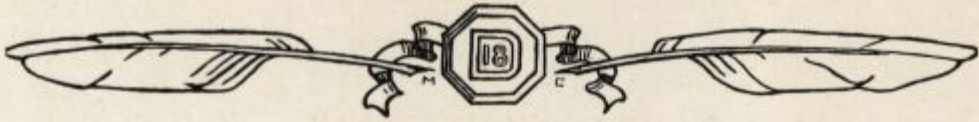
HARRY REED GOGGIN  
FRANK ROBINSON POOL, JR.  
REED GRAVES  
HASSAN TAYLOR TUNNELL  
WILLIAM ELLISON BARNARD  
GEORGE HARNEY MADDEN

*Pledges*

LEON HACKETT GORDY



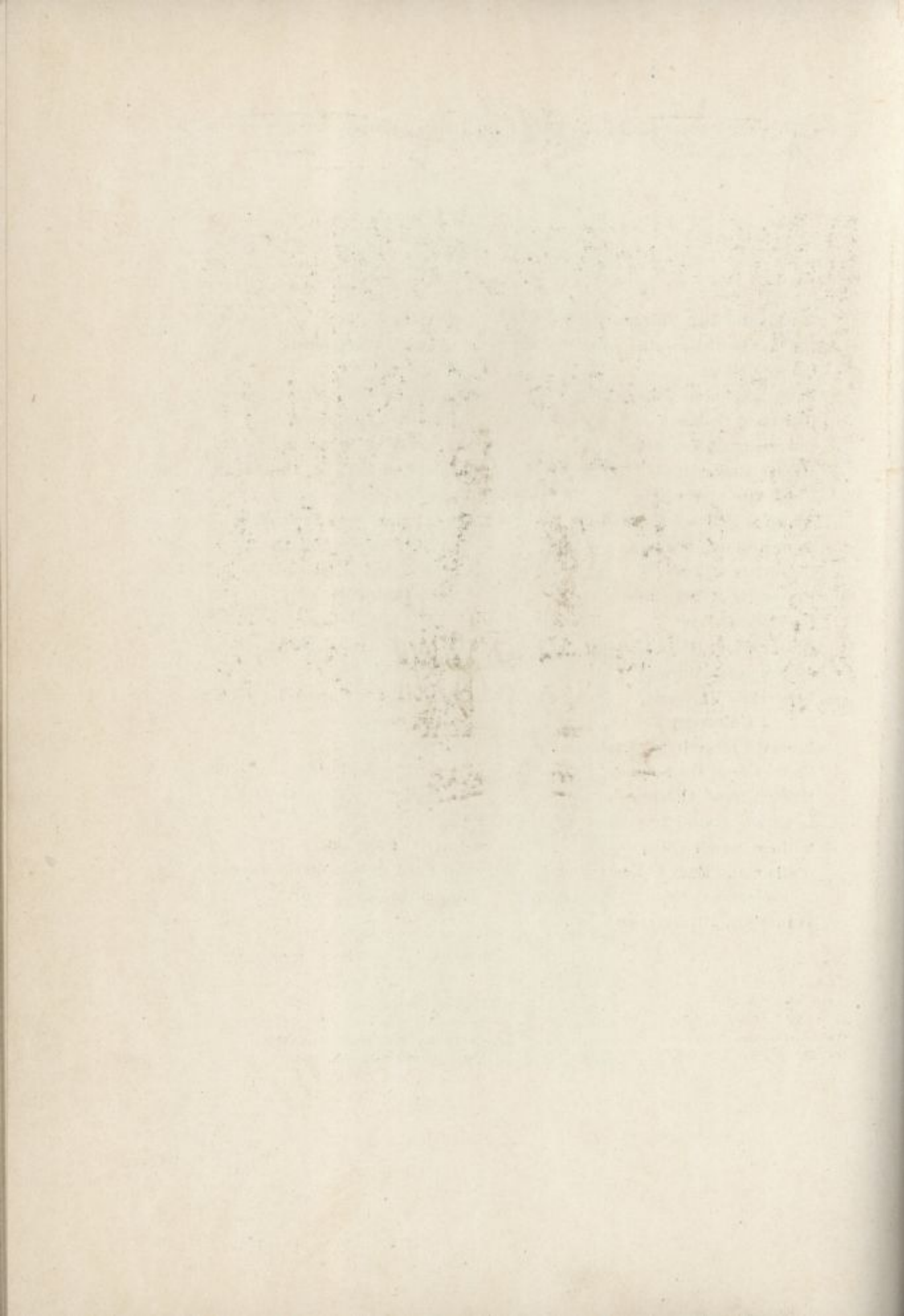
*Kappa Alpha Fraternity*



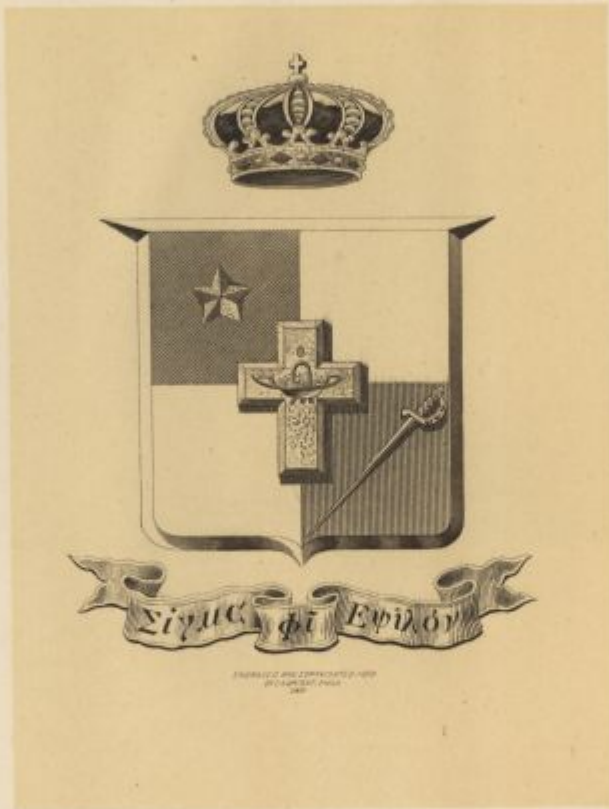
## *Kappa Alpha Chapter Roll*

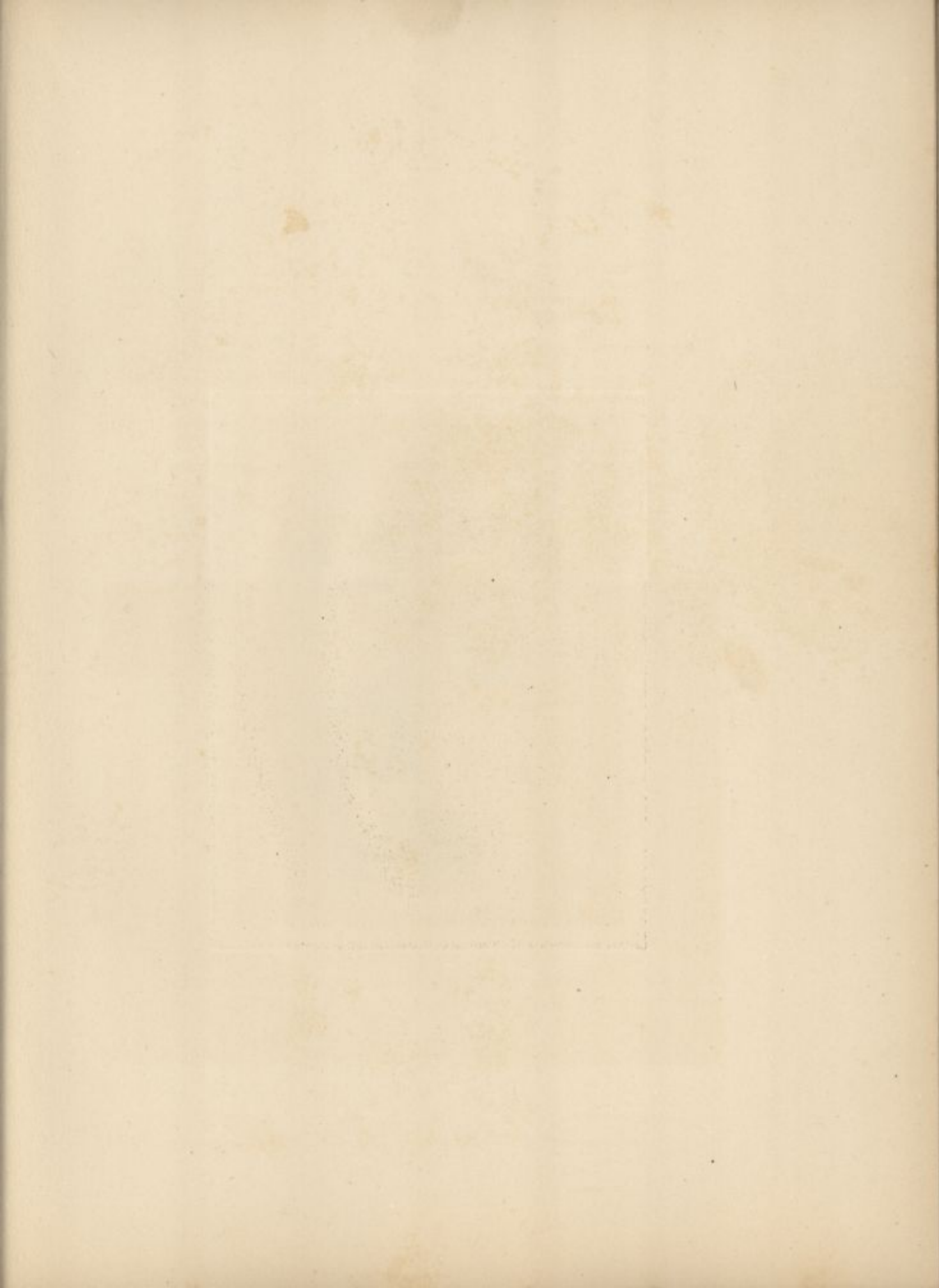
Washington-Lee University  
University of Georgia  
Emory College  
Randolph-Macon College  
Richmond College  
University of Kentucky  
Mercer University  
University of Virginia  
Alabama Polytechnic Institute  
Southwestern University  
University of Texas  
University of Tennessee  
Davidson College  
University of North Carolina  
Southwestern University  
Vanderbilt University  
Tulane University  
Central University of Kentucky  
University of the South  
University of Alabama  
Louisiana State University  
William Jewell College  
William and Mary College  
Westminster College  
Transylvania University

Centenary College  
University of Missouri  
Millsaps College  
The George Washington University  
University of California  
University of Arkansas  
Leland Stanford, Jr., University  
West Virginia University  
Georgia School of Technology  
Hampden-Sidney College  
University of Mississippi  
Trinity College  
N. C. A. & M. College  
Missouri School of Mines  
Bethany College  
College of Charleston  
Georgetown College  
Delaware College  
University of Florida  
University of Oklahoma  
Washington University  
Drury College  
Maryland Agricultural College  
St. John's College











*Sigma Phi Epsilon Fraternity*

*Fratres in Facultate*

HAROLD EDWARD TIFFANY  
WILBUR OWEN SYPHERD

*Seniors*

HAROLD MERCER VEASEY

*Juniors*

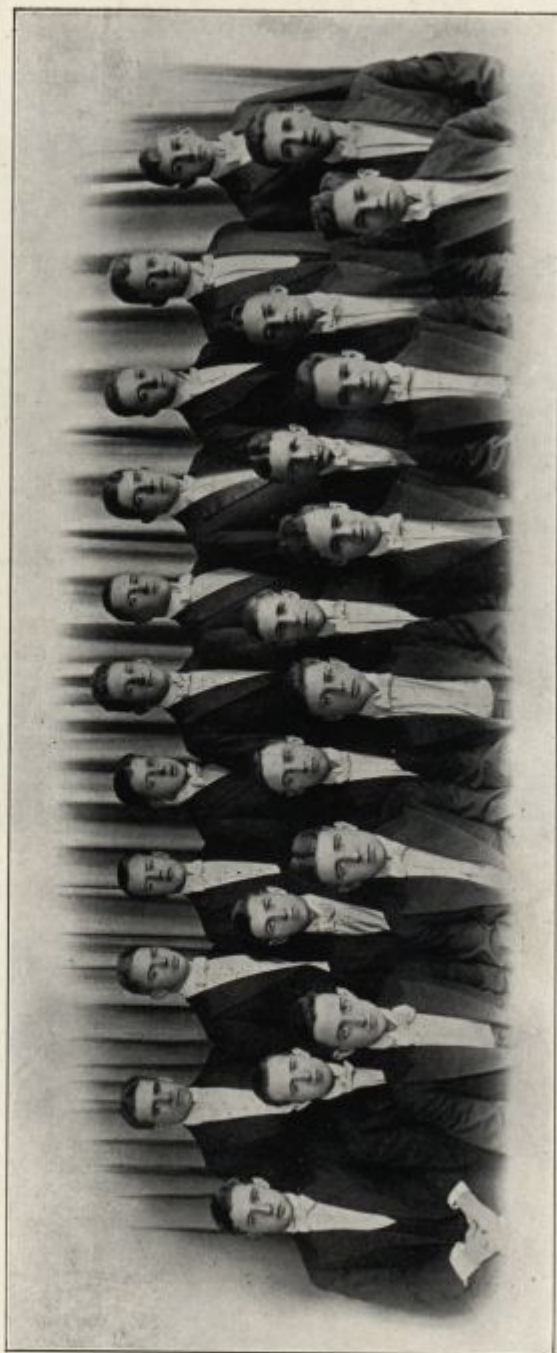
DAVID THOMPSON SWING  
CHESTER RICHARDSON SMITH  
ROBERT BAYNE WHEELER, 2D  
HENRY PAUL CLEAVER  
LEON BUSICK STAYTON  
KNOWLES RITCHIE BOWEN  
WILLIAM BIGELOW HOEY  
ERNEST MELSON MARKS

*Sophomores*

HERBERT FREDERICK WELDIN  
WILLIAM STUART, JR.  
ROBERT JAMES BARKLEY  
FRANCIS EDWARD PROCTOR  
JAMES WILLARD HUMPHREY  
WILLIAM MORRIS PIERSON  
JAMES PETHERAM TRUSS  
JAY ROBINSON  
STEWART ALEXANDER HAMILTON

*Freshmen*

FRANCIS BAYARD CARTER  
WILLIAM J. McCORKINDALE, JR.  
CHARLES VANTEER CLEAVER  
DRAPER SMITH  
ROBERT PAUL KITE  
SAMUEL TAYLOR LAMBERT  
JOHN MULFORD SWING

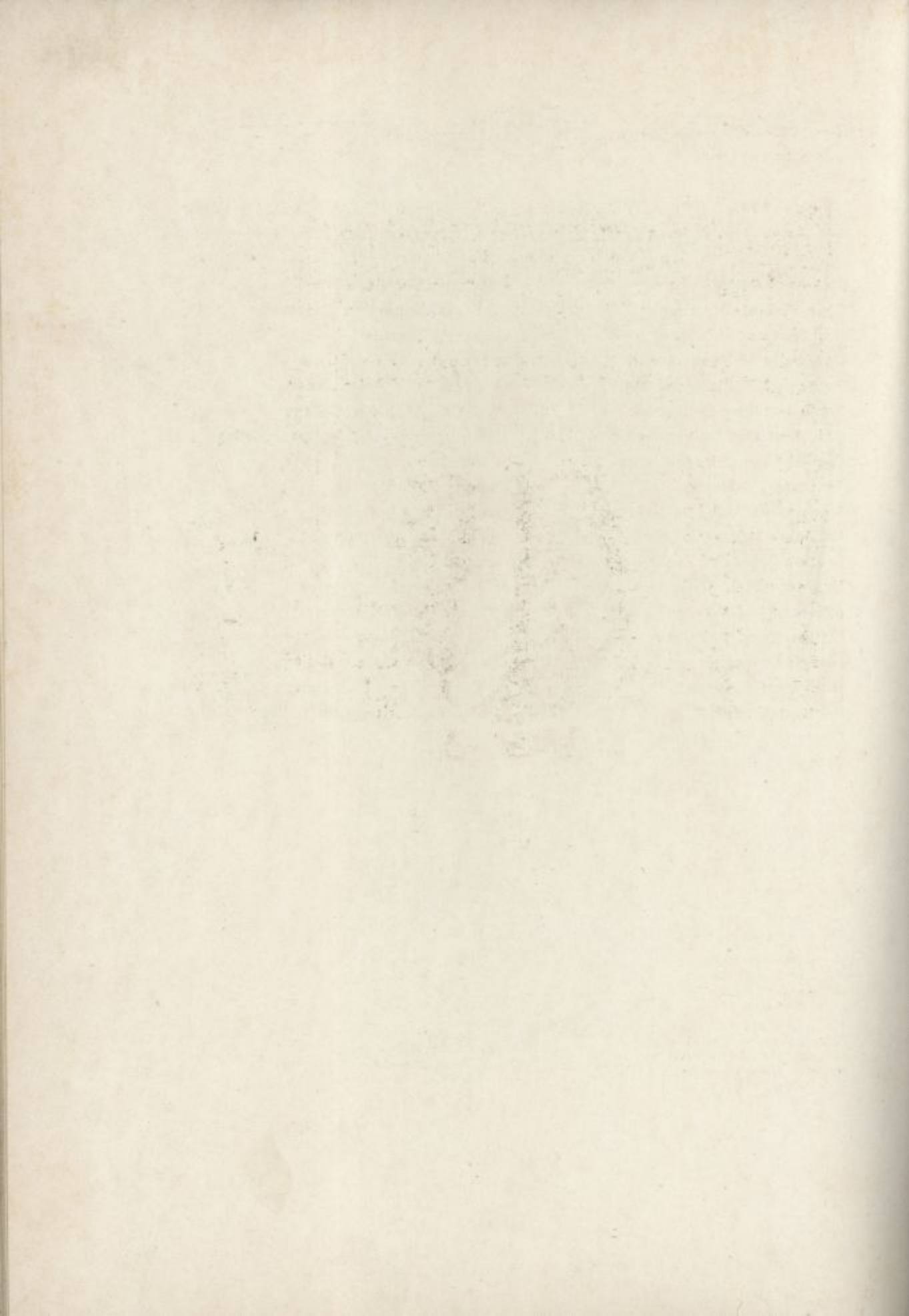


*Sigma Phi Epsilon Fraternity*



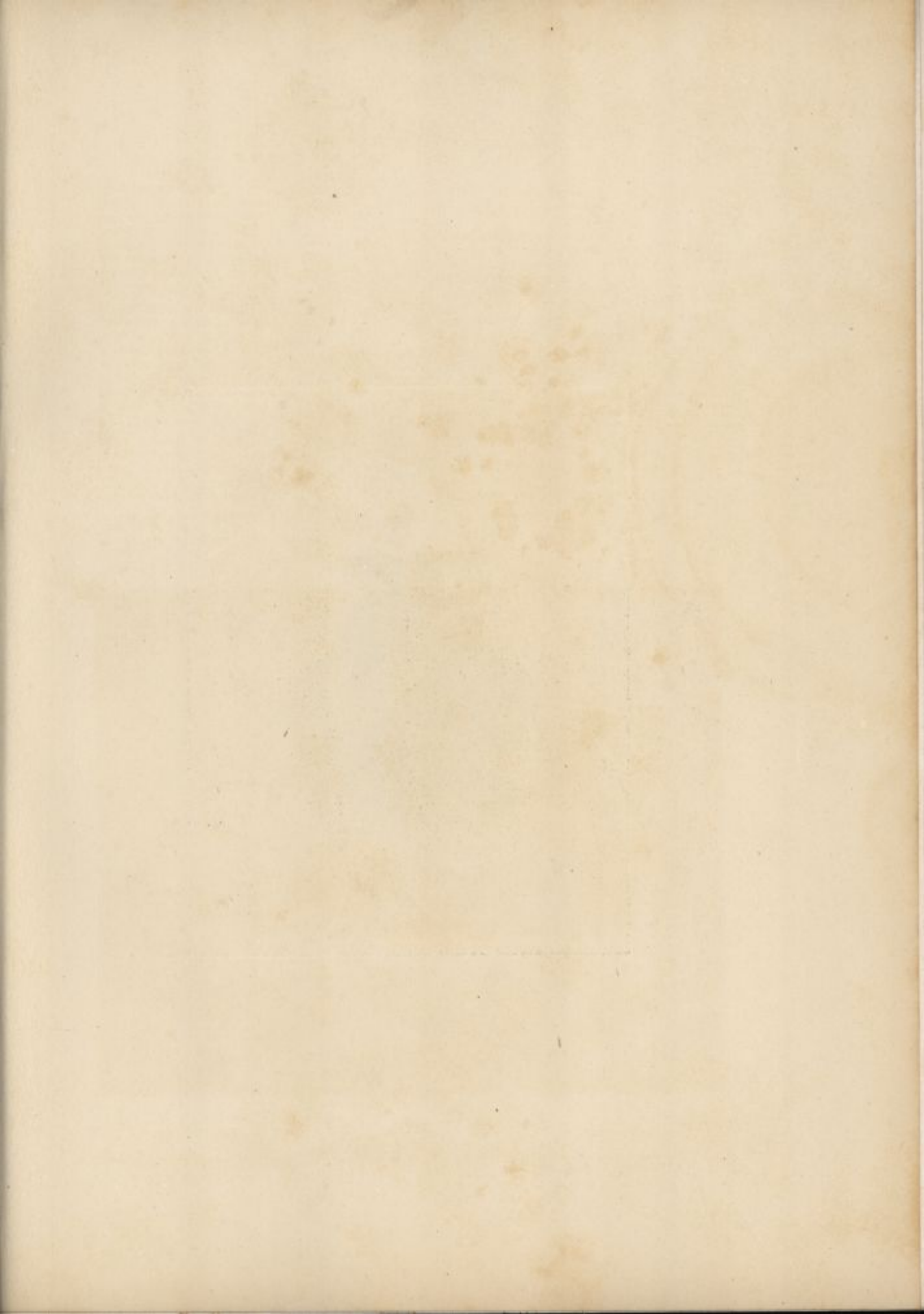
## *Sigma Phi Epsilon Chapter Roll*

Richmond College	Dartmouth College
West Virginia University	George Washington University
University of Colorado	Baker University
University of Pennsylvania	University of California
College of William and Mary	University of Nebraska
North Carolina College A. and M.	Washington State College
Ohio Northern University	Massachusetts Agricultural College
Purdue University	Cornell University
Syracuse University	Brown University
Washington and Lee University	University of Michigan
Randolph-Macon College	Iowa Wesleyan College
Georgia School of Technology	Denver University
Delaware State College	University of Tennessee
University of Virginia	University of Missouri
University of Arkansas	Lawrence College
Lehigh University	Pennsylvania State College
Ohio State University	Ohio Wesleyan University
Norwich University	Colorado Agricultural College
University of Alabama	University of Minnesota
Trinity College	Iowa State College





CAMPBELL  
1917







*Sigma Nu Fraternity*

*Fratres in Facultate*

PROF. CLARENCE E. SHORT  
 DR. GEORGE A. HARTER  
 PROF. CLAUDE C. SPIKER  
 PROF. ARTHUR C. WHITTIER  
 PROF. GEORGE A. KOERBER

*Seniors*

HAROLD WOLF HORSEY  
 RICHARD MORRISON APPLEBY  
 WILLIAM VIRDEN MARSHALL  
 JOHN WILSON O'DANIEL  
 HARVEY WILSON EWING  
 CARL RUDOLPH FISCHER  
 FRANKLIN TRACY CAMPBELL  
 L. LANGDON SMART

*Juniors*

ERNEST STATON WILSON  
 ROBERT LLEWELLYN SUMWALT  
 ROBERT PERKINS GOLDEY  
 ALLAN LOUIS LAURITSEN  
 DONALD PANCOAST HORSEY  
 DAVID LEONARD CROCKETT  
 HOWARD BRATTON

*Sophomores*

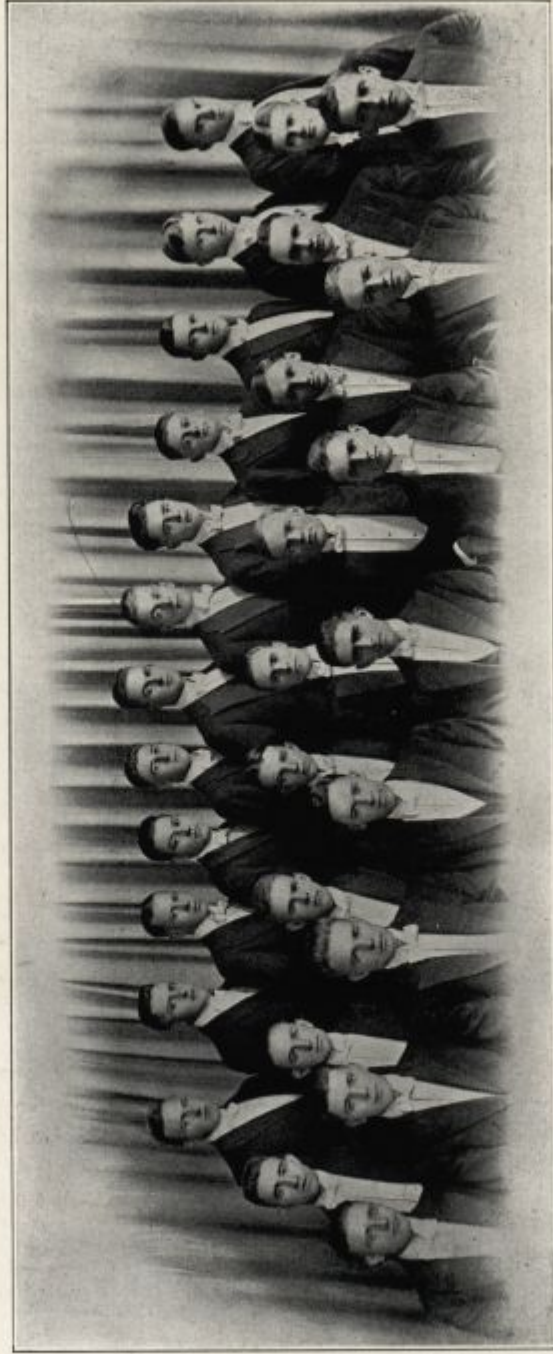
WILLIAM STEPHEN FITZPATRICK  
 EARL ELISHA EWING  
 RAYMOND BUEHM AKER  
 JOHN ALFRED MACKIE  
 HENRY WHITE MARSTON  
 JOHN GILBERT CRAIG  
 JAMES GORDON McMILLAN  
 HARVEY ROSE LINDSAY  
 IRVING HOOK BOGGS

*Freshmen*

FRANK PAUL McCARDELL  
 JOHN WOODWARD OLCOTT  
 WAYNE CURTIS BREWER  
 HAROL CAULK GRIER  
 JAMES BRADY CHAMBERS  
 LEONARD BARRETT DALY  
 HARRY CANON GREENE  
 THOMAS EDWARD WILLIAMS  
 JOSEPH THOMAS GOUGH

*Pledge*

PAUL EUGENE HARDIN



*Sigma Nu Fraternity*



## *Sigma Nu Chapter Roll*

Virginia Military Institute	University of Vermont
University of Virginia	Stevens Institute of Technology
University of Georgia	Lafayette College
University of Alabama	University of Oregon
Howard College	Colorado School of Mines
North Georgia Agricultural College	Cornell University
Washington and Lee University	State College of Kentucky
Bethany College	University of Colorado
Mercer University	University of Wisconsin
University of Kansas	University of Illinois
Emory College	University of Michigan
Lehigh University	Missouri School of Mines
University of Missouri	Washington University
University of Texas	West Virginia University
Vanderbilt University	Iowa State College
Louisiana State University	University of Minnesota
University of North Carolina	University of Arkansas
Tulane University	University of Montana
De Pauw University	Syracuse University
Alabama Polytechnic College	Case School of Applied Science
Purdue University	Dartmouth College
Ohio State University	Western Reserve University
Leland Stanford University	University of Oklahoma
Lombard University	Columbia University
Indiana University	Pennsylvania State College
Mt. Union College	University of Nebraska
University of California	Washington State College
University of Iowa	Delaware College
William Jewell College	Brown University
University of Pennsylvania	John B. Stetson University
University of Chicago	University of Maine
North Carolina A. & M. College	Kansas Agricultural College
Rose Polytechnic Institute	University of Nevada
Albion College	George Washington University
Georgia School of Technology	Colorado Agricultural College
University of Washington	University of Idaho
Northwestern University	Carnegie Institute of Technology









*Omega Alpha Fraternity*

*Fratres in Facultate*

ZACHARYA HARRY SRAGER

*Seniors*

ROBERT HOUSTON PEPPER  
 JAMES McCONNELL HEINEL  
 ARTHUR GARRETT HEINEL  
 FREDERICK COLIN McCAGHEY  
 JOHN ABEL HOPKINS  
 LeROY BAYARD STEELE

*Juniors*

ALFRED BAILEY THOMAS  
 VAUGHN ARCHELAUS HASTINGS  
 WILLIAM PRICE, JR.  
 CLYDE SIMPSON HOLLAND  
 ROBERT CLARKE HILL, JR.  
 NATHANIEL WATKINS TAYLOR  
 FRANK SAYLOR  
 PAUL GILBERT SWAYNE  
 THOMAS SMYTH CARSWELL  
 GEORGE ALLEN HUDSON  
 DeWITT CLINTON DAVIS TODD  
 WILLIAM HOMER SAVIN

*Sophomores*

FRED BOORMAN MARTENIS  
 WILBERT THOMAS WESSELS  
 CHARLES CURTIS WARNER  
 ARRIGO EUGENE MARCONETTI  
 IRVIENE REED McELWEE  
 HERMAN MCKAY  
 CHARLES GOTTLIEB MEIER

*Freshmen*

NORMAN THOMAS  
 JOHN WHITE ANDERSON, 3D  
 MERRILL HARDENBROOK ROBINSON  
 CHARLES WORTH CARSWELL  
 EVERETT CUTLER MONAHAN

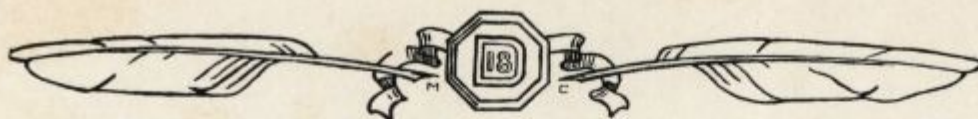
*Pledges*

GEORGE HENRY HUDSON, JR.  
 HARVEY LEWIS FELL  
 LEE ROACH  
 PHILLIP HENRY MARVEL



*Omega Alpha Fraternity*





## *Phi Kappa Phi*

Phi Kappa Phi, an honorary fraternity based upon scholarship, was founded at the University of Maine in 1898. It stands for the unity and democracy of education and receives the engineer, the agriculturist, the architect, or the chemist as heartily as it does the classicist or man of letters.

The chapters of the Phi Kappa Phi are located as follows:

- 1898 University of Maine
- 1899 Pennsylvania State College
- 1900 University of Tennessee
- 1901 Massachusetts Agricultural College
- 1904 Delaware College
- 1912 Iowa State College
- 1912 University of Florida

The badge is an eight-rayed representation of the sun surrounding the earth, across which there is a band displaying the letters  $\Phi K \Phi$ . The band represents union in a world of thoughtful men. The eight rays represent Art, History, Literature, Philosophy, Religion, Science, Philology and Sociology.

The Delaware chapter of Phi Kappa Phi was installed January 13, 1905, by Professor Benjamin F. Gill, M.A., of State College, Pa., treasurer-general of the fraternity.

### *Representing Delaware College Faculty*

GEORGE A. HARTER, M.A., Ph.D.	W. O. SYPHERD, Ph.D.
ELISHA CONOVER, M.A.	G. E. DUTTON, A.M.
EDW. LAURENCE SMITH, M.A.	CLINTON O. HOUGHTON, B.A.
MERRILL VAN G. SMITH, M.E.	ARTHUR E. GRANTHAM, B.A., B.S.A.
C. A. SHORT, M.S.	WILLIAM J. ROWAN, Ph.D.
CHARLES L. PENNY, M.A., Sc.D.	CHARLES A. McCUE, B.S.
EARNEST VAN COURT VAUGHN, M.A., Ph.D.	SAMUEL CHILES MITCHELL, Ph.D.

### OFFICERS:

*President*, MERRILL VAN G. SMITH

*Vice-President*, JOSEPH M. McVEY

*Secretary and Treasurer*, EDW. LAURENCE SMITH

### *Members of the Class of 1916*

LEO BLUMBERG  
DONALD ADAMS PRICE  
EDWARD WILLIAM MARTIN  
JOHN WESLEY JONES  
WARREN CHILDS NEWTON  
HOMER HAZEL EWING  
JOHN MICHAEL PRICE



## Dances

Last year there came, along with the beginning of that period of Delaware's greatest expansion, with her wonderful physical development and with the enlargement of her scope of influence, an awakening to the value of social activities. As a result the dances and other entertainments given in the course of the year showed, in the admirable manner in which they were carried out, the possibilities of properly conducted social life at Delaware.

A suitable place in which to hold dances was provided with the completion of the new State armory. The large drill room of this building furnishes a dance floor capacious enough to accommodate a large number of people.

**November 25, 1915.** The Thanksgiving dance held in the gymnasium was one of the biggest hits of the past season. Fifty-nine couples who were present all seemed to enjoy themselves. The music was excellent and contributed greatly to the success of the dance.

**December 10, 1915.** Sigma Nu held its annual dance in the new armory Friday evening, December 10th. Seventy couples were present. The music was furnished by Jacob's orchestra from Wilmington. The hall was tastefully decorated with laurel and with Delaware banners, the various banners of the fraternities that have chapters at Delaware, a number of pennants of the colleges in which Sigma Nu has chapters, and with bunting in Black, white and gold, the fraternity's colors. The dance was a success in every sense of the word.

**January 7, 1916.** On Friday evening, January 7th, the Sigma Phi Epsilon Fraternity held its annual dance in the armory. The hall was beautifully decorated with the colors of the fraternity, purple and red predominating. The refreshments were exceptionally enjoyable, and the music unusually good. The occasion was to the utmost and the dance proved one of the most successful affairs of the season.

**February 4, 1916.** The Junior Prom which was held in the armory was attended by more people than any Prom ever given in College before. Oglesby's orchestra from Chester was an added attraction, and because of the splendid music the dances were wonderful. Especial emphasis seemed to have been paid the music and eats. Everyone present highly complimented the refreshment committee. Taken as a whole, this Prom has never been equaled in College.

**May 19, 1916.** One hundred couples, many of them visitors, attended the twelfth annual dance of Beta Epsilon chapter of K. A. of Delaware College held in the armory Friday evening, May 19th. This fraternity has a reputation for its delightful dances and the one Friday night was no exception. The large dance room was tastefully decorated with flags, bunting and pennants.

The Omega fraternity gave two large and informal house parties on April 18 and April 29. Many smaller house parties were given by this fraternity after the big games during the season. With the house decorated and an orchestra from Wilmington, all of these dances were an immense success.