



fraternities



Caught in the act at the IFC dinner.

interfraternity  
council



IFC's Queen, Lilla Burris.





IFC President, Tom Leighty, greets freshman as rush activities begin.

The Interfraternity Council is an organization composed of the combined forces of all the fraternities on campus. Some of its chief activities include Greek Week, highlighted by Playbill and the selection of an IFC queen, the annual IFC dinner, and the smokers and other pledging activities.



Rushes sign in at Delt smoker.



J. M. FEDERLEIN M. A. COHEN A. S. LEDMAN



W. B. RYNBALM F. W. BERO D. MALLIS G. J. SMALLBERG H. C. HOROWITZ



J. E. MALLACE S. A. WEINTRAUB M. J. COHEN



K. J. LUTZ L. S. RAPKIN L. SOLOMON

# Alpha Epsilon Pi

19 64



## Delaware



A. D. COHEN I. S. ROSEFELD S. R. SPILLER



E. E. STEN K. E. HANDLOFF S. K. EHRMAN M. S. ABER



L. A. JACOBY M. D. SHORE H. G. JOHNSON A. J. FRIED



A. M. VAN BLERKEN R. S. HEITZES R. ROSEN M. A. LUNDY H. H. KAMENS



TARZAN



R. ECKERD R. SCAVRON R. A. LEVINE R. D. LEVIN D. S. LEVINE



M. J. BILLINGSLEY S. H. WALDMAN S. LEVINE R. DELINNOFF E. J. COLTON R. M. LUTZ D. S. LAVINE T. M. SHORE S. E. WEINBERG C. S. SILVERMAN W. H. HORWITZ S. J. HARRIS

## alpha epsilon pi

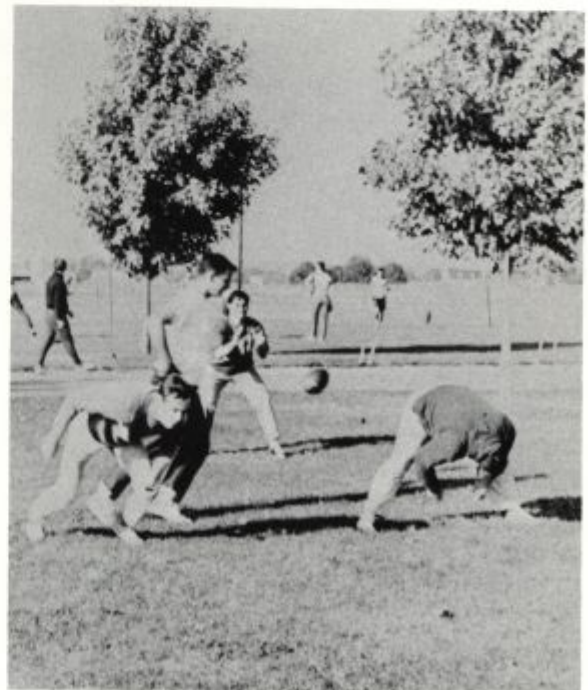
Alpha Epsilon Pi, whose history at Delaware dates back to 1925, is continuing its forward progress in all aspects of fraternal, cultural, and social living. This, coupled with our important emphasis on scholastic achievement, has created an ideal atmosphere where body and mind advance in the true tradition of Rho Deuteron chapter.

The renovation of our new house at 48 West Park Place is not yet complete, but it boasts of new furniture, bedding, and the like. Furthermore, the installation of a modern kitchen with full dining facilities is underway and will add immeasurably to our fraternal home.

As in years past, we are proud of those in AEPi who serve in positions of leadership in a multitude of campus activities, the Review, the Blue Hen, the IFC Council, and the national honor societies. This attests to our desire to expand the character of our brothers in every way possible.

In winning scholastic honors this year, the brotherhood again retired the IFC trophy as proof of our desire to maintain high proficiency in this most important aspect of college life. Always an integral part of our program, scholarship nonetheless has its counterparts. In our enthusiastic drive for leadership, we have attained high positions in Delaware's many service organizations; we excel in inter-fraternity athletics; and our social calendar provides the best. Thus, we instill in each brother an awareness where the physical, intellectual, and social spirits combine.









## alpha tau omega

Alpha Tau Omega is one of the oldest and largest national college fraternities. Founded in 1865, it has 122 chapters extending from Florida to British Columbia and from California to Maine. Established as a local fraternity in 1948 at the University, Alpha Sigma Delta was initiated in to the national as Epsilon Rho in 1949.

Though a relatively new house, our facilities have undergone intensive remodeling this past year. A chapter room with recreation areas has been installed; and in the memory of a former brother, the den has been reconverted, complete with a fireplace, panelling, trophy case, and hi-fi system. This vigorous growth has not been confined to the house alone, but has exhibited itself in our participation in campus activities. In these campus-wide activities the Taus won the fraternity Homecoming float award, were second in the Playbill and Spirit Trophy competition, and third in intramurals capturing the wrestling and tennis trophies. Our scholastic index has been consistently above all men's and frequently among the highest over-all cumulative index.

Epsilon Rho's interest in campus activities is also exemplified by the position of many of the brothers who serve the campus and who have achieved recognition for their accomplishments. Holding notable positions are the following: Bob Raun, President of the Senior Class; Tom Rice, Vice President of the Sophomore Class; Larry Kneisley, an officer of the IFC; Jim Wright, the IFC Rush Chairman; and John Whitesell, the former President of MRHA and currently President of Tau Beta Pi and Vice President of Omicron Delta Kappa honorary fraternities.



Several brothers have been initiated into the many campus honorary fraternities including: Omicron Delta Kappa, Alpha Beta, Beta Beta Beta, and Tau Beta Pi.

For every member of Alpha Tau Omega, the fraternity is more than a social organization that is to be joined and then forgotten. It is through Epsilon Rho that each man's principles become meaningful to him and, thus, his college career more successful.







LYN T. LOCKHART-MANNERY WERNER F. GOECKEL ROBERT E. BLOMQUIST ARCHE D. PEEL  
TOM SECRETARY ROBERT S. SPIEGEL  
TREASURER WILLIAM A. LOTZ  
PRESIDENT EDWARD L. FELSING  
VICE PRESIDENT R. WILLIAM SIMPSON JR.  
REC. SECRETARY H. MARTIN HALVORSEN JR. JAMES A. RAMBO JOHN W. MCGLOUO



WALTER B. MOORE JR. BRIAN G. KELLY TOM H. GLEDHILL JOERG D. AGIN

Delta Tau Delta  
1964



KENNETH N. BUTLER ROBERT D. RALSTON G. ROGERS WILLIAMS PAUL E. DAVIS



PETER G. HAM JOHN W. COVERDALE ROGER S. ALEXANDER WALTER MEDONIGAL JR. LAWRENCE C. AUER

University  
of  
Delaware



DAVID R. TARDITI ALAN G. GIBERSON JAN F. UHLER CHARLES E. FEIGLEY HAROLD S. ULMER



JOHN H. SPEIDEL ROBERT A. LAYTON EDWIN W. ANDERSON JR. CLINT G. DEDERICK JR. ARTHUR W. TWITCHELL ROBERT F. EASTMAN ROBERT E. MORRIS JAMES F. STANTON RICHARD B. STEWARD GARY W. DEVANEY WALTER J. KUCABA



RONALD T. GREENE PHILIP J. COLLORA JAMES L. GOODWILL JAMES D. GEARS JEFFREY S. ROLFE WALTER L. HERNSON JR. JACK S. WOLPERT JOSEPH E. BLAHA ERIC N. BURKETT DENNIS A. VIERLING MARK D. BRENNESHOLTZ

## delta tau delta

The Delta Upsilon Chapter of Delta Tau Delta, being a social fraternity, strives primarily to give her loyal members a full social life. Through interaction with many people—faculty or students—of various backgrounds and personalities, the brothers have every opportunity to attain a necessary and healthy supplement to their academic education here at the university.

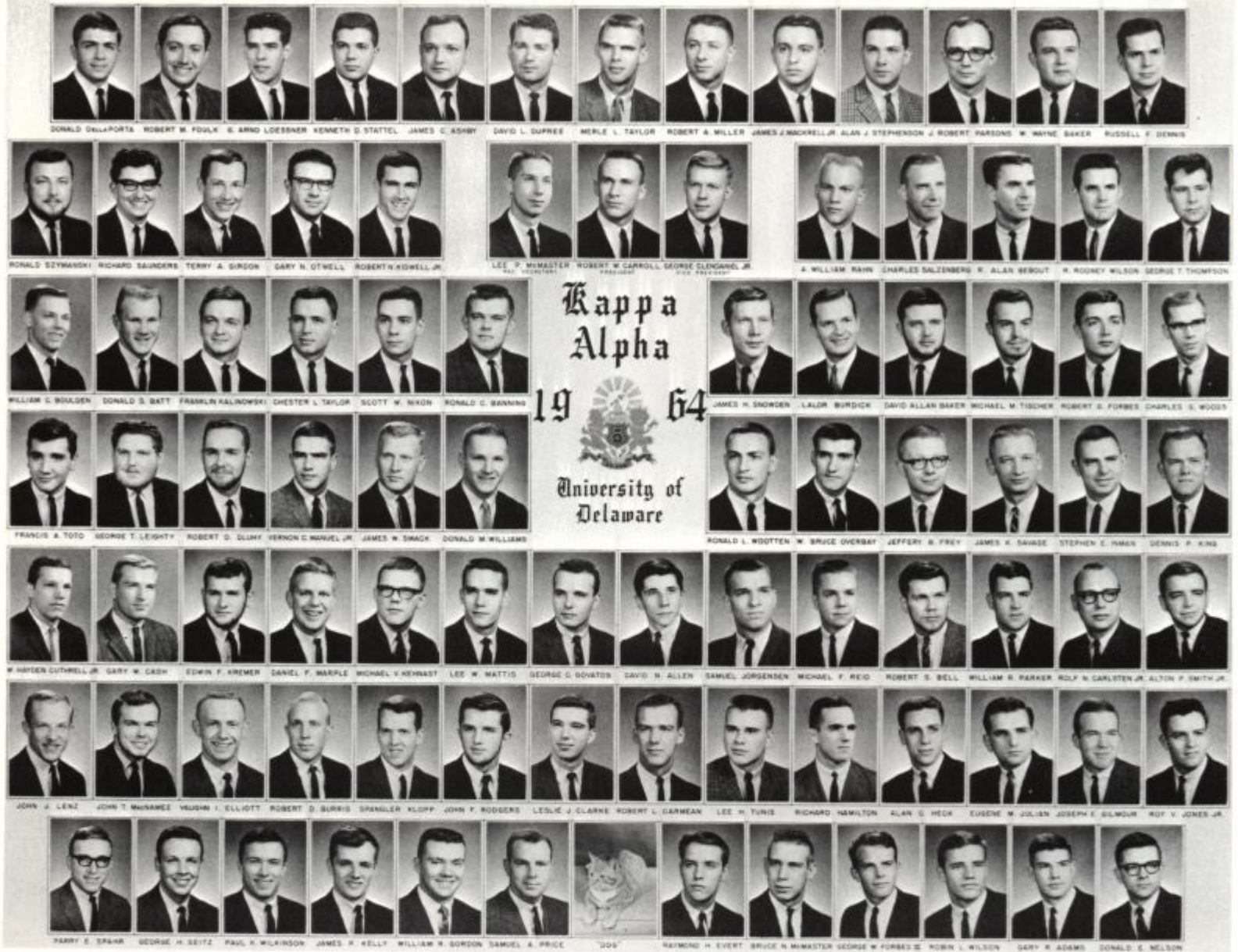
The Delts heartily participate in all phases of campus and fraternity life. They have retired the Homecoming Float Trophy and had an award winning entry this year. For their enthusiasm and united effort, the brothers captured the prized Spirit Trophy. Delts always provide an amusing booth at the annual Charity Carnival to help raise funds for deserving causes. Intramurals are an important part of every fraternity, and the Delts enjoy competing in all sports.

Delta Tau Delta endeavors to instill increased school and fraternity spirit within the brotherhood by claiming greater achievements in scholarship, athletic participation, and maintaining first-rate parties. The Delts will add to the beauty of the University of Delaware's campus with the construction of a new, modernistic Shelter this summer.









## kappa alpha

Beta Epsilon Chapter of the Kappa Alpha Order was founded on the Delaware Campus on April 19, 1904. Since its founding, Beta Epsilon has been and continues to be a credit to the Order and the University of Delaware. Leadership, academic awareness, and continual growth have been the core of this year's program.

Brother Lalor Burdick was honored by President Johnson at a White House reception after having been named the University's "Outstanding Senior." Brother Thomas Leighty has served with distinction as the current President of the IFC. He was instrumental in inaugurating the annual Greek Week program. Brother Joseph Gilmour has been elected President of the Association of Student Unions for Region Three. KA's serve in six high command ranks in the ROTC Brigade, while also maintaining the leadership of Scabbard and Blade, the national honorary military society. Class officers, SGA members, Junior Counselors, and Student Center Council members can be found in the Brotherhood of Beta Epsilon. The Brotherhood will continue to meet the challenge of student citizenship and responsibility as long as the University and the fraternity system can be strengthened.

Realizing that academic development is the primary goal of college, Beta Epsilon has continually achieved a scholastic index in the top half of all Delaware fraternities and has frequently been first or second. Since education can be gained outside of the classroom as well as in it, the Brotherhood has sponsored several speakers notably Senator J. C. Boggs, James H. Snowden, and economist T. Ellis, for the benefit of all interested students and faculty of the University.



Since its founding 100 years ago, the Kappa Alpha Order has grown to encompass over eighty chapters throughout the nation. Beth Epsilon has continued to grow as the Order has expanded. Plans for the fall of 1965 include the completion of the new addition to the Kastle. More rooms and dining facilities have been the primary objectives.

The KA social calender has added significance this year as it is the Order's centennial anniversary. Without a doubt this year's Old South Ball, especially the crowning of the "KA Rose," will occupy a special place in the annuals of Beta Epsilon. Anticipation of the Order's centennial celebration, which will be held in Lexington, Virginia during August, has given an exceptional impetus to this year's program. The Mason-Dixon concept has definitely gained a lasting place in the minds of the Brothers of Beta Epsilon.







ROW 1: R. VonDem Hagen, D. Coram, R. Fersch, D. McGinnis, J. Evans, C. Pack, J. Turner, T. Lower. ROW 2: K. Savage, S. Sloan, J. Dufresne, W. Phillips, J. Jefferson, K. Kerr, C. Funch, R. Starke, H. Measley, R. Corbett, S. Conary, M. Glaubitz. ROW 3: I. Roome, G. Wendelburg, W. Heuser, E. Andrews, L. Hipkins, C. Donovan, W. Cassel, L. Jacobs, T. Black, B. Pritchard.

## lambda chi alpha

Now in its sophomore year, Lambda Chi Alpha has almost doubled its size. From a nucleus of nineteen brothers in the local fraternity, Gamma Nu, it has expanded as a colony of Lambda Chi Alpha to a brotherhood of thirty-five enthusiastic and dedicated young men. They expect to have a charter next fall in one of the largest, strongest, and most respected national fraternities.

Lambda Chi Alphas on this campus are becoming known for participation in campus activities, service projects, intramurals, and the Interfraternity Council. Lambda Chi athletic teams are becoming more competitive, and successes in Playbill and songfests have impressed the campus community. Several Brothers have made names for themselves in Student Government and in the Interfraternity Council. The successful Campus Chest and Christmas Seal contribution drives have been a part of the program "Lambda Chi Alpha lends a helping hand."

This is Lambda Chi Alpha.







JAMES F. JORDAN MICHAEL R. CONNOR BRUCE R. MALCOLMSON HAROLD T. HANNA JR. J. ROBERT CROSSAN JOHN L. ERICKSON JOHN D. ANDERSON ALFRED T. LYNAM JR. WILLIAM E. WARREN WAYNE L. CURREY THOMAS A. MASON



DARWIN B. PALMER JR. RONALD T. WOOD JR. RONALD D. SAVIDGE



WILLIAM H. HOUSH THOMAS B. COLBURN WILLIAM A. HURD JR. RONALD A. BOERUM



CHARLES J. GRIFFITHS WILLIAM LENDERMAN JR. JOHN W. OWEN



R. JACKSON O'DAY JR. BASIL L. DUBROSKY THOMAS A. PARKER DONALD S. SUMNER

# Phi Kappa Tau

19 64



Delaware



CHARLES A. SHIPLEY RICHARD C. FELDINGER TIMOTHY FALKENBURG PAUL C. BASHORE JR.



L. ROBERT WATSON WILLIAM A. CROSS JR. ROBERT H. HILL E. CLAYTON BOGGS



JOHN C. RYDER JR. JOHN B. GIBBS JR. THOMAS W. WRIGHT DONALD R. JONES



ROY H. BRADER JOHN W. OTTINGER JOHN K. DIBOLT DANIEL A. DALVIN ROBERT M. HUNSICKER FREDERICK HARRISON CURTIS A. LIVERMORE JOHN A. LARSON JR. MATTHEW S. CRARY KERRY J. TOLL STEPHEN R. GRASECK



THOMAS W. RUNDLELL ANDREW L. SULLIVAN JOHN F. McIVER ROBERT A. VINYARD THOMAS F. GURLEY THOMAS G. PRESTON NEIL W. MARSHALL JOHN E. GREER JR. KENNETH F. VEITH JR. JAMES H. MEACHAM

## phi kappa tau

The year 1964 was truly rewarding for Phi Kappa Tau because a long-awaited goal was finally realized. In September the Brotherhood moved into the newly completed and furnished living complex at 720 Academy Street. The Chapter House, which was dedicated by our National Secretary in mid-November, now holds forty-five men in eleven study rooms. Three adequate lounge areas provide more than ample space for social events. Future plans include dining facilities and quarters for a house mother.

With a brotherhood of forty-eight men, Phi Tau now represents one of the most closely-knit fraternities on campus. With the initiation of scholarship, cultural, and social programs, Phi Tau now depicts every facet of university life. The "new" Phi Tau continues to uphold the ideals which originated when the Alpha Gamma Chapter of Phi Kappa Tau was founded in Harter Hall dormitory in 1924. In the past forty years Phi Tau has grown both in size and quality, reaching a prominent position among the leading fraternities on the University of Delaware campus.









ROBERT P. McCAFFREY



LYNN W. MARPLES  
TREASURER



ROBERT E. BEBON  
PRESIDENT



RICHARD B. CROSSLAND  
VICE PRESIDENT



JOHN L. MORRIS  
SECRETARY



CHARLES ST. C. PIE II



RICHARD W. BLISS



HOWARD K. TUCK

# Pi Kappa Alpha

## 1964



JOHN R. FELTON



GEORGE E. POLLOCK



W. BROOKS BIGELOW



RICHARD F. KLOSEWICZ



LEONARD A. LOUDIS

## University of Delaware



RICHARD A. SHARPE



FREDERIC W. PETZE



A. KENNETH COOK



KARL F. LOUCKS JR.



FREDERIC S. STOW III



ROBERT W. TRIBIT



JAMES P. PURVIS



ROBERT L. SMITH



DONALD BARTLETT



JOSEPH A. FISHER

## pi kappa alpha

In 1868, the Pi Kappa Alpha Fraternity was founded for the establishment of friendship on a firmer and more lasting basis. Toward this ideal, the Delta Eta chapter (on the Delaware campus since 1948) presents a well-rounded program of fraternity life. We work to combine high scholarship with a complete social program.

Working together, we prepare the Pi Kappa Alpha calendar and arrange for our annual Help Week. Our social season builds up to a climax in the spring semester with Founders Day and Spring Weekend. From Orientation Week to Commencement, the Big Red Fire Engine can be seen carrying the Pikes from pep fests to athletic contests.

In planning for the future, PiKA envisions a new house with increased study room, and a substantial growth in membership in a growing University.







JOSEPH GREEN III DAVID L. SYSKO FRANK A. WICKES JR. STILES W. ADKINS JAMES H. MILLER RONALD G. FORTNER FRANK W. COOL III EDWARD G. KELLY LAURENCE FITCHETT JR. GARY E. WATSON MAJOR L. WHITE III THOMAS V. LYONS R. NORMAN WILKINSON



MICHAEL F. WILSON DONALD GALLAGHER JR. HERMAN N. BRUCE WILLIAM G. ORR



FREDERICK C. DEARS II DONALD M. WEBB ROBERT A. YOUNG GARY T. COX



HAYLER H. OSBORN ORVILLE S. BASINSKI MARTIN L. DOORDAN DONALD M. FISHER



DONALD J. LOWE ROBERT A. RUTH J. PAUL MUELLER JAY H. HINSON CHARLES F. MOYER

# Sigma Nu



1964

University of Delaware



MARTIN S. GASSIDY BRUCE G. PETERS ALEXANDER C. KRAMER JOSEPH H. STEELE GARY B. MYERS



DENNIS O'BRIEN THOMAS W. GROPSKI THOMAS D. LYDN JAMES A. STAFFORD DEAN W. FITCH



THOMAS W. DIALONZO JOHN P. MULRINE STEVEN R. KARLSEN GLENN A. KILLE ROGER A. DAVIS



J. MICHAEL JAMES CRAIG W. JESTER JOHN W. HIMES ALEX D. SHALAWAY HERBERT H. MESSICK LEWIS H. BLUM WILLIAM P. TIBBETT NEIL H. DAVIS JOHN J. SIBBONS ANTHONY SLINKOWSKI MICHAEL J. FLEMING PAUL R. DARLEY JOHN J. MORROW



STEPHEN H. CRANE JOHN R. STARZMAN WALTER Z. FLETCHER ROBERT SOMMERLOTTE ROBERT J. FISHER THOMAS J. COLLINS JAMES D. MCGILL JOSEPH E. KINROGAN H. DONALD JONES JOHN C. PALMER III JAMES F. RIPPER WILLIAM R. MATE JEFFREY C. WEIL

## sigma nu

No better word than brotherhood can be used to describe Sigma Nu. Here, the ideals and goals of the fraternity are put to practical use, as can be seen by the unified spirit in which the Brothers participate in campus activities. On the intramural scene, Sigma Nu has been the dominate figure in the league for many years. This year is no exception, for now it is in first place by a substantial margin. Four brothers are captains of various varsity teams with twenty-five other men contributing to the varsity athletic program. The Brotherhood displays a high degree of campus leadership which can be seen by the number of Brothers participating in Student Government, IFC, Junior Counseling, and such honorary societies as Omicron Delta Kappa, Beta Beta Beta, Alpha Zeta, and Scabbard and Blade. This year saw the culmination of many years of hard work and planning with the completion of an addition to the House. The addition added a dining room, kitchen facilities, several study rooms, and provided living quarters for a House Mother. The Brotherhood considers itself very fortunate to have acquired the services of Mrs. Balderson for this position.









JOHN R. SEIBERT    DICK STEIN    STANLEY P. HUEY JR.    ROBERT J. GOSNEK    WILLIAM H. IRIDALE    DAVID C. BORGESON    HOLY F. ERKSEN    JESSE V. BROWN    JAMES J. GREGG    RICHARD J. CELLA    EARL C. EIKER



RONALD W. PETERSON    FRED W. WELCHER JR.    FRANK J. D-MOTTA



JOHN R. FERRICK    JOHN J. FLYNN JR.    ROBERT D. MOORE JR.    RANDOLPH R. BARKER    MARSHALL C. TYNDALL



CALVIN K. HEINRICH    ROBERT W. DEWELP JR.    GEORGE A. BROWN



LEONARD A. BIRD    DOUGLAS E. CRESAR    NORMAN J. NEIDE    AUBREY S. CLEMENS    JAMES S. GREGG

**Sigma Phi  
Epsilon**  
 19  64  
 University of  
Delaware



JACK R. ISTRICK    DALE J. PETERSON    DONALD F. ROCKOVEN    JOHN M. MISHINS    WESLEY N. FRITH



M. JOSEPH HICKEY JR.    R. BRANDON JONES    ROBERT H. DONAHAY    ROBERT G. DICER II    BRUCE E. GARLYLE



ALLAN R. FERGUSON    ARCHER A. OWENS JR.    WILLIAM L. WILDS JR.    DONALD C. REISTER    HAROLD L. ALING JR.



BRUCE H. SAUNDERS    GERALD R. SMITH    PETER H. FERRICK    H. THOMAS NAVNIGAN JR.    PETER F. BARR    PAUL N. GOSTELLO    MARTIN S. CLANCY    BRUNET KNORRSPESSE    ROBERT M. STEWART    HUGH J. MISHINS    WILLIAM F. SPANG    HAROLD E. TIFFANY



KENNETH G. BILLS JR.    GEORGE T. SIMLEY II    THOMAS J. MAXWELL    STEPHEN A. FODA    RICHARD L. HAWTHORNE    LEEA S. MORTON    BRIAN P. HALEY    RONALD E. SINGERICH    BRARD S. CLOTHIER    JAMES A. YOUNG    LAWRENCE E. BROPHY

## sigma phi epsilon

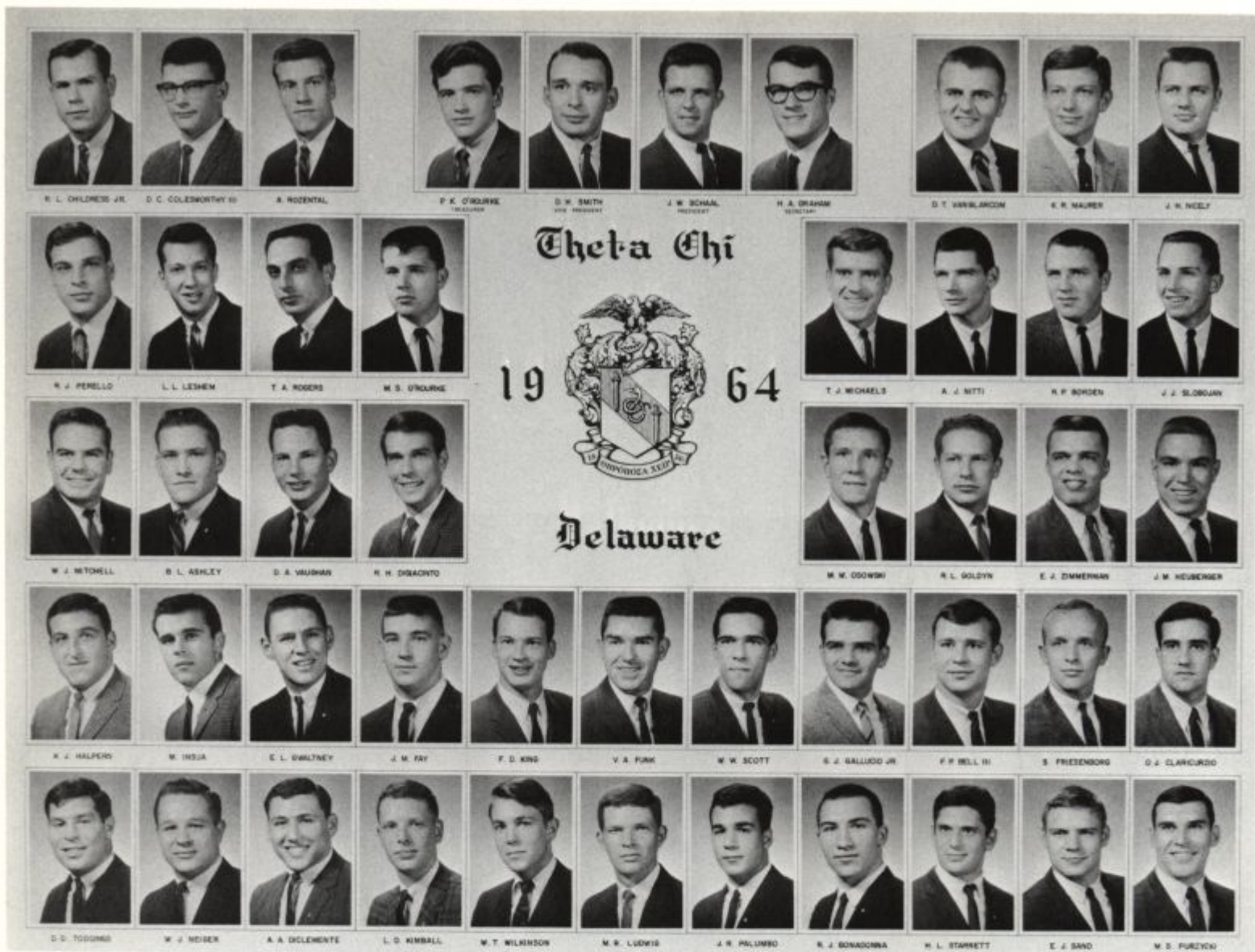
Sigma Phi Epsilon is a strong national fraternity which boasts of an outstanding chapter in Delaware Alpha. The brotherhood consists of well-rounded individuals, many of whom are student leaders. Participation in athletics, campus activities, general social life, as well as scholarship, creates the diverse personality that is a "Sig Ep."

A fine house mother, a desirable location, and dining facilities are but a few of the advantages of the fraternity. To be a part of Sigma Phi Epsilon is to be part of an organization drawn together by a common desire for high ideals and cemented with the spirit of brotherhood.









## theta chi

The Alpha Xi Chapter of Theta Chi Fraternity, being a social fraternity, plays a unique role in the university community. It is not another dorm with a fancy name, but an association of men. Theta Chi is continually promoting "individual" development in an atmosphere of growing disregard for individual worth and value, and in one laden with the implications of the "funcionario" product.

Theta Chi adds much pigment to the campus scene. It is the home, somewhat nomadic, of many outstanding athletes and out-of-state students. The Fraternity provides an urbane setting in a rural area by a balance of academic and social activities. Some of the legendary annual events include the Bowery Ball, the Spring Weekend, and the Senior Farewell.

Close cooperation with the IFC is a prime concern for the Brotherhood in establishing a united Greek community and in bringing life at the University of Delaware to a more truly collegiate level. To give exceptional men the opportunity to develop scholastically and socially, to meaningfully fulfill their whole potential as citizens and leaders in later life, to instill a feeling for culture, to cultivate friendships that will last through later years rather than the back-slapping buddy, to nourish an interest in the issues of humanity, and finally to inculcate in the individual an acknowledgment of his inherent worth and ability to select his values and to live true to them, are important considerations of Theta Chi, as well as other Greeks.



