



JULY 2010 LOCAL CLIMATOLOGICAL DATA

NOAA, National Climatic Data Center

WILMINGTON, DE
NEW CASTLE COUNTY AIRPORT (KILG)
Lat:39° 40'N Long: 75° 36'W Elev (Ground) 75 Feet
Time Zone : EASTERN WBAN: 13781 ISSN#: 0198-117X



Date 1	Temperature °F						Deg Days BASE 65°		WEATHER 10	SNOW/ICE ON GND(IN)		PRECIPITATION ON GND(IN)		PRESSURE (INCHES OF HG)		WIND SPEED = MPH DIR = TENS OF DEGREES								Date 24
	MAXIMUM 2	MINIMUM 3	AVERAGE 4	DEP FROM NORMAL 5	AVERAGE DEW PT 6	AVERAGE WET BULB 7	HEATING 8	COOLING 9		0700 LST 11	1300 LST 12	2400 LST 13	2400 LST 14	AVERAGE STATION 15	AVERAGE SEA LEVEL 16	RESULTANT SPEED 17	RES DIR 18	AVERAGE SPEED 19	MAXIMUM					
																			3-SEC		2-MIN			
01	80	56	68	-7	46	56	0	3		0		0.0	0.00	30.09	30.19	7.2	32	7.9	22	34	17	32	01	
02	82	54*	68*	-8	47	57	0	3		0		0.0	0.00	30.14	30.23	4.0	33	5.6	18	34	14	03	02	
03	87	58	73	-3	52	62	0	8		0		0.0	0.00	30.06	30.15	5.1	26	6.2	18	26	14	26	03	
04	94	64	79	3	57	66	0	14		0		0.0	0.00	29.95	30.03	4.5	24	5.4	23	27	13	22	04	
05	97	70	84	8	64	71	0	19	BR	0		0.0	0.00	29.91	30.00	5.0	28	5.8	18	31	15	30	05	
06	103	75	89	13	62	72	0	24	HZ	0		0.0	0.00	29.92	30.01	4.9	29	5.6	26	32	16	28	06	
07	103*	78	91*	15	66	74	0	26	HZ	0		0.0	0.00	29.91	30.00	3.4	02	7.8	23	01	17	18	07	
08	87	75	81	5	72	75	0	16	BR HZ	0		0.0	0.00	29.93	30.01	6.9	16	7.6	20	26	17	17	08	
09	89	73	81	5	71	74	0	16	RA	0		0.0	T	29.85	29.92	7.7	15	8.7	26	12	21	16	09	
10	78	71	75	-1	71	72	0	10	RA BR	0		0.0	0.76	29.75	29.84	1.8	34	5.2	14	04	12	04	10	
11	90	70	80	4	60	68	0	15	BR	0		0.0	0.00	29.78	29.87	5.8	31	6.4	15	28	12	28	11	
12	89	66	78	1	67	71	0	13	TS RA VCTS	0		0.0	T	29.82	29.90	4.5	14	6.8	25	17	20	16	12	
13	88	72	80	3	72	74	0	15	TSRA RA FG BR	0		0.0	2.45	29.80	29.88	2.2	17	6.7	23	21	18	22	13	
14	82	71	77	0	71	73	0	12	TS TSRA RA BR VCTS	0		0.0	1.32	29.80	29.89	3.2	34	7.0	23	36	20	36	14	
15	89	70	80	3	71	74	0	15	BR	0		0.0	0.00	29.93	30.02	1.0	14	6.4	20	15	14	15	15	
16	94	75	85	8	71	75	0	20	BR HZ	0		0.0	0.00	29.86	29.94	4.0	22	5.6	21	21	17	24	16	
17	92	71	82	5	68	73	0	17	TS TSRA RA BR HZ VCTS	0		0.0	0.72	29.84	29.92	5.0	24	5.9	38	26	29	25	17	
18	93	75	84	7	70	74	0	19		0		0.0	0.00	29.80	29.89	7.6	26	8.4	21	32	15	31	18	
19	92	73	83	6	71	74	0	18	RA BR HZ	0		0.0	0.23	29.78	29.86	6.1	24	7.7	39	32	33*	31	19	
20	86	73	80	3	70	73	0	15	RA	0		0.0	0.06	29.88	29.97	3.4	28	4.9	21	30	16	31	20	
21	91	72	82	5	71	75	0	17	RA	0		0.0	T	29.85	29.94	5.3	25	6.3	21	35	16	34	21	
22	90	71	81	4	64	70	0	16		0		0.0	0.00	29.90	30.00	7.0	30	7.3	25	31	20	29	22	
23	95	74	85	8	72	76	0	20		0		0.0	0.00	29.88	29.96	5.9	21	6.6	26	18	16	26	23	
24	97	81	89	12	74	78	0	24		0		0.0	0.00	29.80	29.88	6.8	25	8.5	36	29	16	28	24	
25	94	70	82	5	70	73	0	17	TS TSRA RA FG+ FG BR VCTS	0		0.0	0.60	29.77	29.86	5.9	29	7.4	43*	35	32	34	25	
26	86	64	75	-2	60	66	0	10		0		0.0	0.00	29.94	30.04	6.8	31	7.5	18	33	16	32	26	
27	86	64	75	-2	62	68	0	10	RA	0		0.0	T	30.01	30.09	2.7	19	5.2	17	16	14	14	27	
28	88	73	81	4	70	73	0	16		0		0.0	0.00	29.93	30.00	5.6	21	6.1	28	17	14	21	28	
29	90	74	82	5	70	74	0	17	RA HZ	0		0.0	0.01	29.78	29.86	4.1	32	7.0	21	01	15	01	29	
30	84	64	74	-3	55	63	0	9		0		0.0	0.00	29.85	29.94	4.3	35	6.4	25	18	10	04	30	
31	83	62	73	-4	58	64	0	8		0		0.0	0.00	29.85	29.95	1.3	14	6.0	18	19	14	16	31	

89.6	69.6	79.6	☼	65.3	70.6	0.0	14.9	< MONTHLY AVERAGES TOTALS >				0.0	6.15	29.88	29.97	2.6	26	6.6	< MONTHLY AVERAGES			
3.6	2.3	3.0		----- DEPARTURE FROM NORMAL -----								1.87	SUNSHINE, CLOUD, & VISIBILITY TABLES ON PAGE 3									

DEGREE DAYS				GREATEST 24-HR PRECIPITATION : 3.32 DATE : 13-14				SEA LEVEL PRESSURE			
MONTHLY				GREATEST 24-HR SNOWFALL : 0.0 DATE :				MAXIMUM : 30.28 02 0955			
SEASON TO DATE				GREATEST SNOW DEPTH : 0 DATE :				MINIMUM : 29.79 25 1351			
TOTAL DEPARTURE		TOTAL DEPARTURE		NUMBER OF -> DAYS WITH		MAXIMUM TEMP >= 90 : 15		MINIMUM TEMP <= 32 : 0		PRECIPITATION >= 0.01 INCH: 8	
HEATING : 0 -1		0 -1		THUNDERSTORMS : 5		MAXIMUM TEMP <= 32 : 0		MINIMUM TEMP <= 0 : 0		PRECIPITATION >= 0.10 INCH: 6	
COOLING : 462		94				HEAVY FOG : 1				SNOWFALL >= 1.0 INCH : 0	

JULY 2010
WILMINGTON, DE

HOURLY PRECIPITATION

(WATER EQUIVALENT IN INCHES)

WILMINGTON, DE (KILG)
JULY 2010

WBAN # 13781

Date	FOR HOUR (LST) ENDING AT												Date	FOR HOUR (LST) ENDING AT												Date	Sum of Hourly Data	2400 LST Water Equiv.
	1	2	3	4	5	6	7	8	9	10	11	12		13	14	15	16	17	18	19	20	21	22	23	24			
01													01												01	0.00	0.00	
02													02												02	0.00	0.00	
03													03												03	0.00	0.00	
04													04												04	0.00	0.00	
05													05												05	0.00	0.00	
06													06												06	0.00	0.00	
07													07												07	0.00	0.00	
08													08												08	0.00	0.00	
09													09												09	T	T	
10													10	0.01	0.01	T	0.01	0.01							10	0.76	0.76	
11													11												11	0.00	0.00	
12													12												12	T	T	
13													13												13	2.45	2.45	
14	0.01	0.36	0.41	0.10	0.78	1.04	0.07	0.35	0.01				14	T	0.43	0.01	T	T							14	1.32	1.32	
15													15												15	0.00	0.00	
16													16												16	0.00	0.00	
17													17												17	0.72	0.72	
18													18												18	0.00	0.00	
19													19												19	0.23	0.23	
20													20	0.01	T	T									20	0.06	0.06	
21													21												21	T	T	
22													22												22	0.00	0.00	
23													23												23	0.00	0.00	
24													24												24	0.00	0.00	
25													25												25	0.60	0.60	
26													26												26	0.00	0.00	
27													27												27	T	T	
28													28												28	0.00	0.00	
29													29	T	T										29	0.01	0.01	
30													30												30	0.00	0.00	
31													31												31	0.00	0.00	

* Indicates sum of Hourly and Daily disagree.

MAXIMUM SHORT DURATION PRECIPITATION (See Note)

Time Period (Minutes)	5	10	15	20	30	45	60	80	100	120	150	180
Precipitation (Inches)	0.37	0.69	0.91	1.20	1.63	1.78	1.81	1.82	1.83	1.83	1.92	2.11
Ending Date	13	13	13	13	13	13	13	13	13	13	13	13
Ending Time (Hr/Min)	0510	0515	0515	0515	0518	0519	0519	0519	0519	0602	0718	0723

Note : The hourly and daily precipitation totals are printed in the last 2 columns and hi-lighted in red when they disagree. NWS does not edit ASOS hourly values but may edit daily and monthly totals. Hourly, daily, and monthly totals are printed as reported by the ASOS site.

Date and time are not entered for TRACE amounts.

REFERENCE NOTES & SUPPLEMENTAL SUMMARIES

* = Extreme for the month (last occurrence if more than one).

T = Trace precipitation amount.

+ = also occurs on earlier date.

FG+ = Heavy fog, visibility .25 miles or less.

BLANK entries denote missing or unreported data.

Resultant wind is the vector sum of the wind speeds and directions divided by the number of observations.

Wind direction is recorded in tens of degrees (2 digits) clockwise from true north. '00' = calm, 'VR' = variable.

Precipitation is for the 24-hour period ending at the time indicated in the column heading.

Water Equivalent of snow on the ground is reported only when the depth is 2 or more inches.

NORMALS ARE FOR THE YEARS 1971-2000

WEATHER NOTATIONS

QUALIFIER	WEATHER PHENOMENA		
DESCRIPTOR	PRECIPITATION	OBSCURATION	OTHER
BC Patches	DZ Drizzle	BR Mist	DS Duststorm
BL Blowing	GR Hail	DU Widespread Dust	FC Funnel Cloud
DR Low Drifting	GS Small Hail and/or Snow Pellets	FG Fog	+FC Tornado Waterspout
FZ Freezing	IC Ice Crystals	FU Smoke	PO Well-Developed Dust/Sand Whirls
MI Shallow	PL Ice Pellets	HZ Haze	
PR Partial	RA Rain	PY Spray	SQ Squalls
SH Shower(s)	SG Snow Grains	SA Sand	SS Sandstorm
TS Thunderstorm	SN Snow	VA Volcanic Ash	GL Glaze
VC In the Vicinity	UP Unkown Precipitation		

Intensity (as indicated on pages 4 to 6):
'+' = Heavy '' = Moderate '-' = Light

WILMINGTON, DE JULY 2010

Ceilometer (30-second) data are used to derive cloudiness at or below 12,000 feet. This cloudiness is the mean cloud cover detected during sunrise to sunset (SR-SS), or midnight to midnight (MN-MN).

Satellite data are used to derive cloudiness above 12,000 feet. Effective Cloud Amount is based on the cloud cover and the transparency of the clouds within the satellite field of view (approx. 31x31 miles).

Sky Condition is based on the sum (not to exceed 8) of the sunrise to sunset cloud cover below and above 12,000 feet. Both ceilometer and satellite data must be present to compute Sky Condition. Clear = 0-2 oktas, Partly Cloudy = 3-6 oktas, Cloudy = 7-8 oktas.

A Heating (Cooling) Degree Day is the difference between the average daily temperature and 65 degrees F. The HDD season begins July 1, the CDD season begins January 1.

Dew Point is the temperature to which the air must be cooled to achieve 100% relative humidity. Wet Bulb is the temperature the air would have if cooled to saturation at constant pressure by evaporation of water into it.

Snow Depth, Snowfall, and Sunshine data may come from nearby sites that the National Weather Service deems Climatologically representative of this site.

ADDITIONAL NOTES:

Station Augmentation-BEAR 2 SW COOP
Lat/Lon:39.59167/-75.7325 Elevation:80
Distance:4 MI Dir:SE
Augmented Elements:Precip, Snow
Equipment:SRG, Snowfall

Date	SUNSHINE		CLOUDINESS (OKTAS)				VISIBILITY (MILES)		RESERVED
	TOTAL MINUTES	PERCENT POSSIBLE	SR-SS		MN-MN		MINIMUM	MAXIMUM	
			Sky Cover	Satellite	Sky Cover	Satellite			
01							10.00	10.00	
02							10.00	10.00	
03							10.00	10.00	
04							10.00	10.00	
05							5.00	10.00	
06							5.00	10.00	
07							6.00	10.00	
08							0.75	10.00	
09							10.00	10.00	
10							2.00	10.00	
11							6.00	10.00	
12							9.00	10.00	
13							1.25	10.00	
14							3.00	10.00	
15							6.00	10.00	
16							3.00	10.00	
17							5.00	10.00	
18							8.00	10.00	
19							3.00	10.00	
20							8.00	10.00	
21							7.00	10.00	
22							10.00	10.00	
23							7.00	10.00	
24							10.00	10.00	
25							3.00	10.00	
26							10.00	10.00	
27							10.00	10.00	
28							10.00	10.00	
29							5.00	10.00	
30							10.00	10.00	
31							10.00	10.00	
MONTHLY AVGS							6.87	10.00	
SUNSHINE (Minutes)									
Total : 0					Possible : 27255				
Percent Possible : 0									
NUMBER OF DAYS WITH : SKY CONDITION									
Clear		Partly CLDY			Cloudy			Missing	
MINIMUM VISIBILITY (MILES)									
<= .25			<= 3.0				>= 7.0		
0			7				17		

OBSERVATIONS AT 3-HOURLY INTERVALS

WILMINGTON, DE JULY 2010 KILG

WBAN # 13781

HOUR (LST)	SKY COVER	CEILING 100's of FT.	SATELLITE		WEATHER	TEMPERATURE °F			WIND		PRESSURE (INCHES, HG)		HOUR (LST)	SKY COVER	CEILING 100's of FT.	SATELLITE		WEATHER	TEMPERATURE °F			WIND		PRESSURE (INCHES, HG)					
			Observation Time (LST)	Eff Cld Amt Oktas		VISIBILITY (MILES)	DRY BULB	DEW POINT	WET BULB	RELATIVE HUMIDITY (PCT)	SPEED (MPH)	DIRECTION Tens of Deg				STATION	SEA LEVEL		Observation Time (LST)	Eff Cld Amt Oktas	VISIBILITY (MILES)	DRY BULB	DEW POINT	WET BULB	RELATIVE HUMIDITY (PCT)	SPEED (MPH)	DIRECTION Tens of Deg	STATION	SEA LEVEL
SUNRISE: 0438						JUL 01						SUNSET: 1934																	
01	CLR	NC				60	51	55	72	6	34	30.07	30.16	01	CLR	NC				9.00	79	64	69	60	5	30	29.91	29.99	
04	CLR	NC				57	48	52	72	6	34	30.09	30.18	04	CLR	NC				9.00	80	65	70	60	7	33	29.91	30.00	
07	CLR	NC				66	46	55	49	8	34	30.14	30.22	07	CLR	NC				9.00	86	67	73	53	7	36	29.94	30.02	
10	CLR	NC				72	43	57	35	9	30	30.12	30.21	10	CLR	NC				10.00	96	62	73	32	14	03	29.93	30.01	
13	CLR	NC				77	44	59	31	13	30	30.09	30.18	13	CLR	NC				10.00	100	59	73	26	5	36	29.91	29.99	
16	CLR	NC				77	43	59	30	13	30	30.07	30.16	16	SCT	090				10.00	101	59	73	25	9	05	29.88	29.96	
19	CLR	NC				73	43	57	34	11	31	30.09	30.17	19	CLR	NC				7.00	86	75	78	70	10	17	29.90	29.98	
22	CLR	NC				64	48	55	56	5	32	30.12	30.21	22	CLR	NC				7.00	82	76	78	82	6	16	29.93	30.00	
SUNRISE: 0439						JUL 02						SUNSET: 1934																	
01	CLR	NC				62	46	54	56	6	36	30.15	30.23	01	CLR	NC				6.00	HZ	79	73	75	82	0	00	29.93	30.01
04	CLR	NC				56	46	51	69	6	30	30.16	30.25	04	CLR	NC				4.00	BR	76	72	73	87	5	11	29.93	30.01
07	CLR	NC				66	48	56	52	7	32	30.19	30.27	07	CLR	NC				2.00	HZ	79	74	76	85	6	12	29.96	30.03
10	CLR	NC				75	46	59	36	11	03	30.19	30.28	10	CLR	NC				10.00	83	70	74	65	8	18	29.96	30.03	
13	FEW	070				77	45	59	32	7	VR	30.15	30.24	13	CLR	NC				10.00	85	72	76	65	9	16	29.94	30.02	
16	CLR	NC				81	45	61	28	7	VR	30.11	30.20	16	CLR	NC				10.00	85	71	75	63	8	18	29.91	29.99	
19	CLR	NC				78	47	61	34	0	00	30.09	30.18	19	CLR	NC				10.00	80	71	74	74	15	18	29.91	29.98	
22	CLR	NC				69	50	58	51	6	26	30.10	30.19	22	CLR	NC				10.00	77	70	72	79	7	12	29.94	30.02	
SUNRISE: 0439						JUL 03						SUNSET: 1934																	
01	CLR	NC				62	52	56	70	5	29	30.10	30.19	01	CLR	NC				10.00	75	72	73	90	5	12	29.93	30.01	
04	CLR	NC				61	52	56	72	0	00	30.11	30.20	04	FEW	020				10.00	73	70	71	90	0	00	29.91	29.99	
07	CLR	NC				69	51	59	53	8	29	30.14	30.23	07	CLR	NC				10.00	77	71	73	82	7	10	29.91	29.99	
10	CLR	NC				80	52	64	38	8	24	30.11	30.19	10	SCT	037				10.00	83	70	74	65	5	VR	29.88	29.97	
13	CLR	NC				85	50	64	30	7	32	30.06	30.14	13	CLR	NC				10.00	89	69	75	52	15	14	29.85	29.93	
16	CLR	NC				86	52	66	31	10	24	30.01	30.09	16	CLR	NC				10.00	84	70	74	63	15	16	29.78	29.85	
19	CLR	NC				82	51	64	34	7	24	29.98	30.07	19	CLR	NC				10.00	80	70	73	72	16	17	29.75	29.83	
22	CLR	NC				73	56	63	55	5	24	29.99	30.08	22	OVC	012				10.00	78	73	75	85	13	15	29.78	29.86	
SUNRISE: 0440						JUL 04						SUNSET: 1934																	
01	CLR	NC				69	60	64	73	0	00	29.99	30.07	01	BKN	013				10.00	76	72	73	87	5	13	29.73	29.82	
04	CLR	NC				67	60	63	78	7	29	29.99	30.07	04	BKN	060				10.00	75	71	72	87	3	20	29.73	29.81	
07	CLR	NC				73	58	64	59	5	27	30.01	30.08	07	OVC	055				10.00	75	72	73	90	5	20	29.73	29.81	
10	CLR	NC				86	57	68	37	5	27	29.98	30.06	10	OVC	023				4.00	RA BR	73	71	72	93	3	01	29.77	29.84
13	CLR	NC				92	53	68	27	8	23	29.94	30.02	13	BKN	060				10.00	75	71	72	87	7	03	29.77	29.84	
16	CLR	NC				94	51	68	23	8	22	29.90	29.97	16	BKN	044				8.00	-RA	75	71	72	87	7	35	29.77	29.85
19	CLR	NC				89	54	67	30	8	22	29.88	29.97	19	BKN	085				10.00	77	71	73	82	5	34	29.78	29.85	
22	CLR	NC				80	59	67	49	0	00	29.91	29.99	22	CLR	NC				10.00	73	71	72	93	5	30	29.80	29.88	
SUNRISE: 0440						JUL 05						SUNSET: 1933																	
01	CLR	NC				72	65	68	79	3	28	29.91	30.00	01	OVC	120				6.00	BR	72	70	71	93	8	32	29.78	29.86
04	CLR	NC				70	68	69	93	3	30	29.91	30.00	04	CLR	NC				7.00		71	69	70	93	5	33	29.77	29.85
07	CLR	NC				76	65	69	69	6	31	29.94	30.03	07	SCT	100				10.00	75	67	70	76	5	34	29.80	29.88	
10	CLR	NC				91	63	72	39	6	VR	29.94	30.02	10	SCT	100				10.00	82	59	68	46	9	32	29.82	29.90	
13	CLR	NC				95	61	73	32	10	27	29.91	29.99	13	CLR	NC				10.00	89	53	67	29	6	33	29.80	29.88	
16	CLR	NC				96	61	73	31	10	24	29.88	29.97	16	CLR	NC				10.00	89	54	67	30	6	29	29.78	29.85	
19	CLR	NC				92	62	72	37	6	25	29.90	29.98	19	CLR	NC				10.00	85	55	67	36	7	29	29.78	29.85	
22	CLR	NC				84	66	72	55	5	27	29.93	30.01	22	CLR	NC				10.00	77	56	64	48	5	23	29.80	29.88	
SUNRISE: 0441						JUL 06						SUNSET: 1933																	
01	CLR	NC				80	67	71	65	6	26	29.93	30.01	01	CLR	NC				10.00	70	59	63	68	5	26	29.82	29.89	
04	CLR	NC			HZ	76	67	70	74	5	26	29.93	30.01	04	CLR	NC				10.00	70	61	64	73	0	00	29.82	29.89	
07	CLR	NC				84	65	72	53	3	34	29.96	30.04	07	CLR	NC				10.00	74	66	69	76	0	00	29.83	29.91	
10	CLR	NC				97	66	76	36	0	00	29.96	30.04	10	CLR	NC				10.00	82	71	74	69	7	15	29.83	29.91	
13	CLR	NC				101	59	73	25	3	VR	29.93	30.01	13	CLR	NC				10.00	88	66	73	48	13	14	29.82	29.90	
16	CLR	NC				101	56	72	22	11	29	29.91	29.99	16	CLR	NC				10.00	82	69	73	65	20	16	29.78	29.87	
19	CLR	NC				94	58	71	30	7	29	29.90	29.98	19	FEW	031				10.00	77	72	74	85	6	01	29.82	29.90	
22	CLR	NC				86	63	71	46	7	26	29.91	30.00	22	OVC	110				10.00	77	71	73	82	6	07	29.85	29.93	

OBSERVATIONS AT 3-HOURLY INTERVALS

WILMINGTON, DE JULY 2010 KILG

WBAN # 13781

HOUR (LST)	SKY COVER	CEILING 100's of FT.	SATELLITE		VISIBILITY (MILES)	WEATHER	TEMPERATURE °F			WIND		PRESSURE (INCHES, HG)		
			Observation Time (LST)	Eff Cld Amt Oktas			DRY BULB	DEW POINT	WET BULB	RELATIVE HUMIDITY (PCT)	SPEED (MPH)	DIRECTION Tens of Deg	STATION	SEA LEVEL
		SUNRISE: 0446					JUL 13		SUNSET: 1931					
01	BKN	100			8.00		75	72	73	90	7	08	29.83	29.91
04	SCT	031			8.00	-RA	75	71	72	87	7	08	29.80	29.88
07	BKN	033			2.50	RA BR	75	72	73	90	6	04	29.82	29.89
10	OVC	030			10.00		79	73	75	82	3	32	29.82	29.89
13	SCT	041			10.00		86	72	76	63	8	22	29.80	29.88
16	SCT	050			10.00		83	75	77	77	11	17	29.77	29.85
19	FEW	029			10.00		83	72	75	70	7	22	29.78	29.85
22	CLR	NC			10.00	-RA	80	72	75	77	3	20	29.80	29.88
		SUNRISE: 0446					JUL 14		SUNSET: 1930					
01	SCT	110			10.00	-RA	73	70	71	90	0	00	29.80	29.87
04	CLR	NC			10.00		72	70	71	93	5	07	29.75	29.84
07	OVC	048			10.00		74	71	72	90	6	09	29.80	29.87
10	BKN	075			10.00		79	74	76	85	6	09	29.78	29.85
13	BKN	031			10.00	-TSRA	76	72	73	87	9	01	29.80	29.88
16	BKN	090			10.00		76	72	73	87	8	33	29.83	29.91
19	BKN	085			10.00		80	71	74	74	13	33	29.85	29.93
22	FEW	032			10.00		75	70	72	85	7	33	29.90	29.97
		SUNRISE: 0447					JUL 15		SUNSET: 1930					
01	CLR	NC			10.00		72	70	71	93	5	33	29.91	29.99
04	CLR	NC			10.00		71	69	70	93	3	31	29.91	29.98
07	CLR	NC			10.00		77	70	72	79	7	36	29.96	30.04
10	BKN	021			10.00		82	69	73	65	5	36	29.96	30.04
13	BKN	055			10.00		85	70	75	61	5	13	29.94	30.03
16	CLR	NC			10.00		88	70	76	55	10	17	29.93	30.01
19	CLR	NC			10.00		83	73	76	72	10	18	29.91	29.99
22	CLR	NC			8.00		77	74	75	91	5	14	29.94	30.02
		SUNRISE: 0448					JUL 16		SUNSET: 1929					
01	CLR	NC			7.00		77	74	75	91	7	18	29.93	30.01
04	CLR	NC			4.00	BR	75	73	74	94	3	18	29.91	29.99
07	SCT	008			4.00	BR	78	74	75	88	3	18	29.91	30.00
10	CLR	NC			8.00		87	75	78	68	6	VR	29.88	29.97
13	CLR	NC			10.00		93	70	77	47	8	21	29.83	29.91
16	FEW	046			10.00		93	72	78	51	13	20	29.80	29.88
19	CLR	NC			10.00		86	69	74	57	9	32	29.80	29.88
22	CLR	NC			10.00		80	68	72	67	3	32	29.82	29.90
		SUNRISE: 0449					JUL 17		SUNSET: 1929					
01	SCT	075			10.00		79	69	72	72	0	00	29.83	29.92
04	FEW	095			10.00		71	69	70	93	3	35	29.85	29.93
07	CLR	NC			6.00	BR	75	72	73	90	3	26	29.88	29.97
10	CLR	NC			10.00		85	69	74	59	5	30	29.88	29.96
13	CLR	NC			10.00		90	60	71	37	9	24	29.85	29.93
16	CLR	NC			10.00		89	66	74	47	8	22	29.80	29.89
19	CLR	NC			10.00		86	68	74	55	6	20	29.80	29.88
22	CLR	NC			10.00		82	71	74	69	7	23	29.80	29.88
		SUNRISE: 0449					JUL 18		SUNSET: 1928					
01	CLR	NC			8.00		79	73	75	82	8	23	29.78	29.87
04	CLR	NC			9.00		76	71	73	85	6	25	29.80	29.88
07	CLR	NC			10.00		80	69	73	69	10	25	29.83	29.90
10	CLR	NC			10.00		88	70	76	55	13	29	29.83	29.91
13	FEW	060			10.00		90	67	74	47	8	25	29.83	29.91
16	FEW	070			10.00		91	70	76	50	10	23	29.80	29.87
19	CLR	NC			10.00		88	70	76	55	5	23	29.80	29.87
22	CLR	NC			10.00		82	71	74	69	6	26	29.83	29.90
		SUNRISE: 0450					JUL 19		SUNSET: 1927					
01	CLR	NC			10.00		80	70	73	72	9	22	29.80	29.88
04	CLR	NC			10.00		77	70	72	79	0	00	29.78	29.85
07	CLR	NC			10.00		78	72	74	82	6	21	29.80	29.88
10	CLR	NC			10.00		83	74	77	74	7	18	29.78	29.87
13	CLR	NC			10.00		90	71	77	54	13	24	29.75	29.84
16	FEW	039			10.00		90	74	79	59	11	24	29.72	29.81
19	CLR	NC			10.00		79	70	73	74	8	27	29.78	29.86
22	CLR	NC			10.00		76	70	72	82	3	35	29.82	29.89
		SUNRISE: 0451					JUL 20		SUNSET: 1927					
01	CLR	NC			10.00		75	72	73	90	5	27	29.82	29.89
04	CLR	NC			10.00		73	69	70	87	3	28	29.83	29.91
07	CLR	NC			10.00		77	69	72	76	9	32	29.88	29.95
10	CLR	NC			10.00		84	68	73	59	6	27	29.90	29.97
13	BKN	065			10.00		75	71	72	87	6	35	29.93	30.02
16	CLR	NC			10.00		82	71	74	69	5	15	29.90	29.97
19	FEW	120			10.00		82	73	76	74	5	16	29.91	29.98
22	SCT	070			10.00		74	71	72	90	3	31	29.91	29.99
		SUNRISE: 0452					JUL 21		SUNSET: 1926					
01	CLR	NC			10.00		74	71	72	90	0	00	29.90	29.98
04	CLR	NC			8.00		73	70	71	90	0	00	29.90	29.97
07	CLR	NC			10.00		75	72	73	90	3	27	29.91	29.98
10	CLR	NC			10.00		85	71	75	63	3	26	29.88	29.97
13	CLR	NC			10.00		90	71	77	54	10	23	29.85	29.93
16	CLR	NC			10.00		88	72	77	59	11	22	29.80	29.89
19	CLR	NC			10.00		86	73	77	65	8	23	29.80	29.87
22	CLR	NC			10.00		82	71	74	69	7	26	29.83	29.91
		SUNRISE: 0453					JUL 22		SUNSET: 1925					
01	CLR	NC			10.00		77	68	71	74	9	30	29.86	29.94
04	CLR	NC			10.00		73	66	69	79	6	31	29.88	29.96
07	CLR	NC			10.00		79	67	71	67	8	31	29.93	30.01
10	CLR	NC			10.00		85	62	70	46	10	30	29.93	30.02
13	FEW	060			10.00		88	61	71	40	11	31	29.93	30.01
16	CLR	NC			10.00		88	62	71	42	9	31	29.91	29.99
19	CLR	NC			10.00		83	64	71	53	3	32	29.91	30.00
22	CLR	NC			10.00		79	66	71	65	3	20	29.94	30.02
		SUNRISE: 0453					JUL 23		SUNSET: 1925					
01	CLR	NC			10.00		76	68	71	76	0	00	29.94	30.02
04	CLR	NC			10.00		76	67	70	74	0	00	29.93	30.01
07	CLR	NC			8.00		79	73	75	82	0	00	29.93	30.01
10	CLR	NC			9.00		86	75	78	70	6	18	29.91	30.00
13	CLR	NC			10.00		93	71	78	49	10	22	29.88	29.95
16	CLR	NC			10.00		94	73	79	51	11	22	29.83	29.90
19	CLR	NC			10.00		90	73	78	57	11	20	29.80	29.89
22	CLR	NC			10.00		87	72	77	61	8	23	29.83	29.91
		SUNRISE: 0454					JUL 24		SUNSET: 1924					
01	CLR	NC			10.00		83	75	77	77	6	23	29.82	29.89
04	CLR	NC			10.00		81	74	76	79	5	22	29.78	29.87
07	CLR	NC			10.00		84	73	76	70	7	25	29.83	29.92
10	CLR	NC			10.00		92	73	78	54	11	28	29.85	29.92
13	FEW	047			10.00		95	74	80	51	11	31	29.83	29.92
16	CLR	NC			10.00		96	74	80	49	7	28	29.80	29.88
19	CLR	NC			10.00		91	76	80	62	7	18	29.77	29.84
22	CLR	NC			10.00		87	75	78	68	6	23	29.77	29.85

OBSERVATIONS AT 3-HOURLY INTERVALS

HOUR (LST)	SKY COVER	CEILING 100's of FT.	SATELLITE		WEATHER	TEMPERATURE °F			WIND		PRESSURE (INCHES, HG)							
			Observation Time (LST)	Eff Cld Amt Oktas		VISIBILITY (MILES)	DRY BULB	DEW POINT	WET BULB	RELATIVE HUMIDITY (PCT)	SPEED (MPH)	DIRECTION Tens of Deg	STATION	SEA LEVEL				
															Observation Time (LST)	Eff Cld Amt Oktas	VISIBILITY (MILES)	DRY BULB
SUNRISE: 0455													JUL 25		SUNSET: 1923			
01	CLR	NC				84	75	78	74	7	25	29.75	29.83					
04	CLR	NC				81	71	74	72	5	24	29.75	29.83					
07	CLR	NC				84	72	76	67	6	26	29.80	29.88					
10	CLR	NC				89	70	76	54	13	30	29.78	29.86					
13	CLR	NC				92	74	79	56	10	23	29.72	29.80					
16	FEW	095				73	66	69	79	14	01	29.75	29.84					
19	FEW	100				72	67	69	84	7	30	29.83	29.90					
22	CLR	NC				71	67	68	87	3	32	29.85	29.94					
SUNRISE: 0456													JUL 26		SUNSET: 1922			
01	CLR	NC				71	67	68	87	6	35	29.90	29.97					
04	CLR	NC				66	62	64	87	7	31	29.94	30.02					
07	CLR	NC				71	63	66	76	8	32	29.98	30.07					
10	CLR	NC				81	58	67	46	6	36	30.01	30.08					
13	CLR	NC				83	56	66	40	7	31	29.98	30.06					
16	CLR	NC				84	57	67	40	13	30	29.94	30.03					
19	CLR	NC				80	58	66	47	8	29	29.93	30.02					
22	CLR	NC				74	61	66	64	5	26	29.98	30.06					
SUNRISE: 0457													JUL 27		SUNSET: 1921			
01	CLR	NC				69	62	65	79	6	33	29.99	30.08					
04	CLR	NC				67	62	64	84	5	33	30.01	30.09					
07	CLR	NC				72	63	66	73	0	00	30.06	30.14					
10	CLR	NC				82	57	67	43	5	16	30.03	30.11					
13	FEW	060				85	61	70	45	10	15	30.02	30.10					
16	CLR	NC				85	61	70	45	9	25	29.99	30.08					
19	CLR	NC				82	62	69	51	3	19	29.98	30.06					
22	CLR	NC				77	68	71	74	5	17	29.99	30.08					
SUNRISE: 0458													JUL 28		SUNSET: 1920			
01	OVC	060				76	65	69	69	3	23	29.96	30.05					
04	BKN	060				74	67	69	79	0	00	29.98	30.07					
07	OVC	022				75	68	70	79	6	18	29.98	30.06					
10	OVC	032				80	71	74	74	9	21	29.96	30.05					
13	FEW	031				86	70	75	59	7	23	29.93	30.01					
16	SCT	040				87	71	76	59	10	19	29.88	29.96					
19	CLR	NC				85	71	75	63	5	23	29.86	29.95					
22	CLR	NC				81	73	75	77	7	19	29.85	29.93					
SUNRISE: 0459													JUL 29		SUNSET: 1919			
01	CLR	NC				78	72	74	82	0	00	29.83	29.91					
04	CLR	NC				77	74	75	91	5	18	29.78	29.87					
07	CLR	NC				81	75	77	82	7	26	29.80	29.88					
10	CLR	NC				86	74	78	68	6	27	29.80	29.88					
13	CLR	NC				86	72	76	63	14	35	29.78	29.85					
16	FEW	055				88	72	77	59	6	32	29.72	29.80					
19	CLR	NC				84	65	71	53	8	36	29.75	29.83					
22	CLR	NC				76	59	66	56	6	03	29.80	29.88					
SUNRISE: 0459													JUL 30		SUNSET: 1918			
01	CLR	NC				73	56	63	55	9	02	29.83	29.91					
04	CLR	NC				67	53	59	61	8	01	29.83	29.91					
07	CLR	NC				70	56	62	61	9	36	29.88	29.96					
10	CLR	NC				77	55	64	47	9	05	29.90	29.97					
13	FEW	065				80	53	64	39	0	00	29.88	29.95					
16	CLR	NC				80	54	64	41	3	VR	29.85	29.93					
19	CLR	NC				76	54	63	47	6	29	29.83	29.92					
22	CLR	NC				73	57	63	57	0	00	29.85	29.94					

HOUR (LST)	SKY COVER	CEILING 100's of FT.	SATELLITE		WEATHER	TEMPERATURE °F			WIND		PRESSURE (INCHES, HG)										
			Observation Time (LST)	Eff Cld Amt Oktas		VISIBILITY (MILES)	DRY BULB	DEW POINT	WET BULB	RELATIVE HUMIDITY (PCT)	SPEED (MPH)	DIRECTION Tens of Deg	STATION	SEA LEVEL							
															Observation Time (LST)	Eff Cld Amt Oktas	VISIBILITY (MILES)	DRY BULB	DEW POINT	WET BULB	RELATIVE HUMIDITY (PCT)
SUNRISE: 0500													JUL 31		SUNSET: 1917						
01	CLR	NC										10.00		64	58	60	81	3	33	29.86	29.95
04	CLR	NC										10.00		65	57	60	75	5	01	29.86	29.95
07	CLR	NC										10.00		71	58	63	64	0	00	29.90	29.98
10	CLR	NC										10.00		78	53	63	42	8	10	29.88	29.97
13	CLR	NC										10.00		81	56	66	42	6	22	29.86	29.94
16	BKN	060										10.00		82	57	67	43	0	00	29.83	29.92
19	BKN	060										10.00		79	63	69	58	13	16	29.83	29.91
22	CLR	NC										10.00		75	63	67	66	6	12	29.86	29.94

3-HOURLY OBSERVATION NOTES

Sky Cover is the amount of the sky obscured. CLR or SKC = 0, FEW = 1/8-2/8, SCT = 3/8-4/8, BKN = 5/8-7/8, OVC = 8/8, W = Vertical Visibility = 8/8

Ceiling is reported in hundreds of feet above ground level for clouds at or below 12,000 feet. NC = No Ceiling detected.

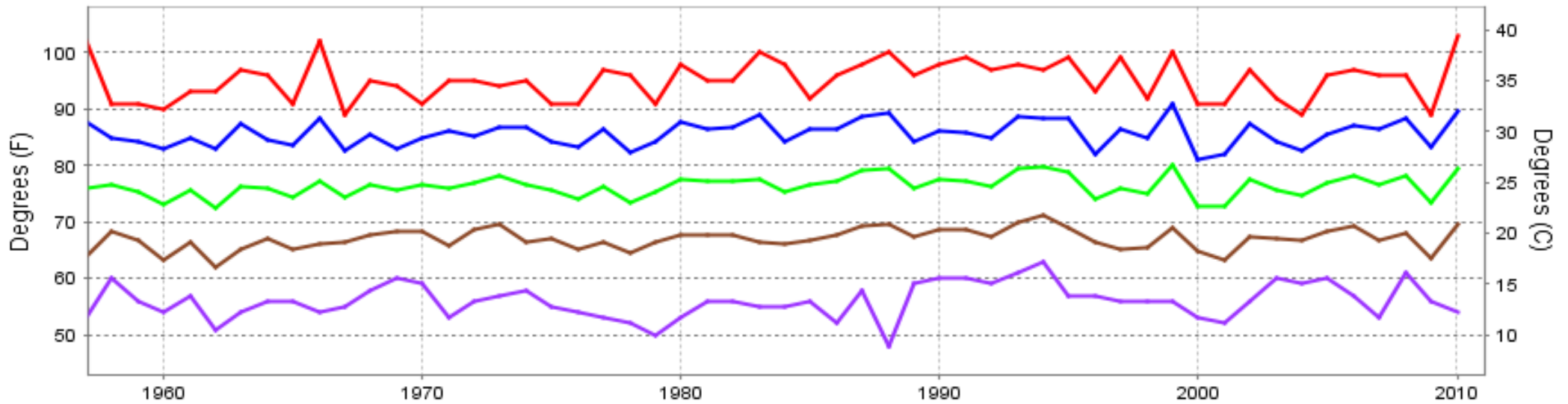
& = Original observation contained additional weather elements.

See page 3 for additional notes.

SUMMARY BY HOUR

HOUR (LST)	AVERAGES										RESULTANT WIND (MPH)	
	CEILOMETER	EFF CLD AMT	DRY BULB	DEW POINT	WET BULB	RELATIVE HUMIDITY	PRESSURE (Inches, HG)		VISIBILITY (Miles)	WIND SPEED (MPH)	SPEED	DIRECTION
							STATION	SEA LEVEL				
01			74	66	69	78	29.89	29.97	9.35	5	2	25
02			73	66	69	78	29.89	29.97	8.97	5	4	26
03			72	66	68	80	29.89	29.97	9.03	4	3	25
04			72	66	68	82	29.89	29.97	9.10	4	2	24
05			71	66	68	82	29.90	29.98	8.44	4	2	25
06			73	66	69	80	29.91	29.99	8.97	4	3	25
07			76	66	70	73	29.92	30.00	8.92	6	2	25
08			79	66	71	67	29.92	30.00	8.75	7	3	26
09			81	66	71	62	29.91	30.00	8.81	7	3	25
10			83	65	72	56	29.91	29.99	9.61	7	2	25
11			85	65	72	52	29.91	29.99	9.61	8	3	25
12			86	64	72	49	29.90	29.98	9.77	8	4	26
13			87	64	72	49	29.89	29.97	9.90	9	3	26
14			87	64	72	49	29.88	29.96	9.61	10	5	26
15			87	64	72	51	29.87	29.95	9.68	9	4	26
16			87	64	72	50	29.86	29.94	9.94	9	4	26
17			87	64	72	50	29.85	29.93	10.00	9	3	26
18			85	64	72	53	29.86	29.94	9.90	9	4	26
19			83	65	72	58	29.86	29.94	9.90	8	3	26
20			81	66	71	62	29.87	29.95	9.87	6	2	25
21			79	66	71	66	29.88	29.96	9.87	6	2	25
22			78	66	70	70	29.88	29.97	9.77	5	2	25
23			76	67	70	73	29.89	29.97	9.48	5	2	25
24			75	67	70	76	29.89	29.97	9.45	5	2	25

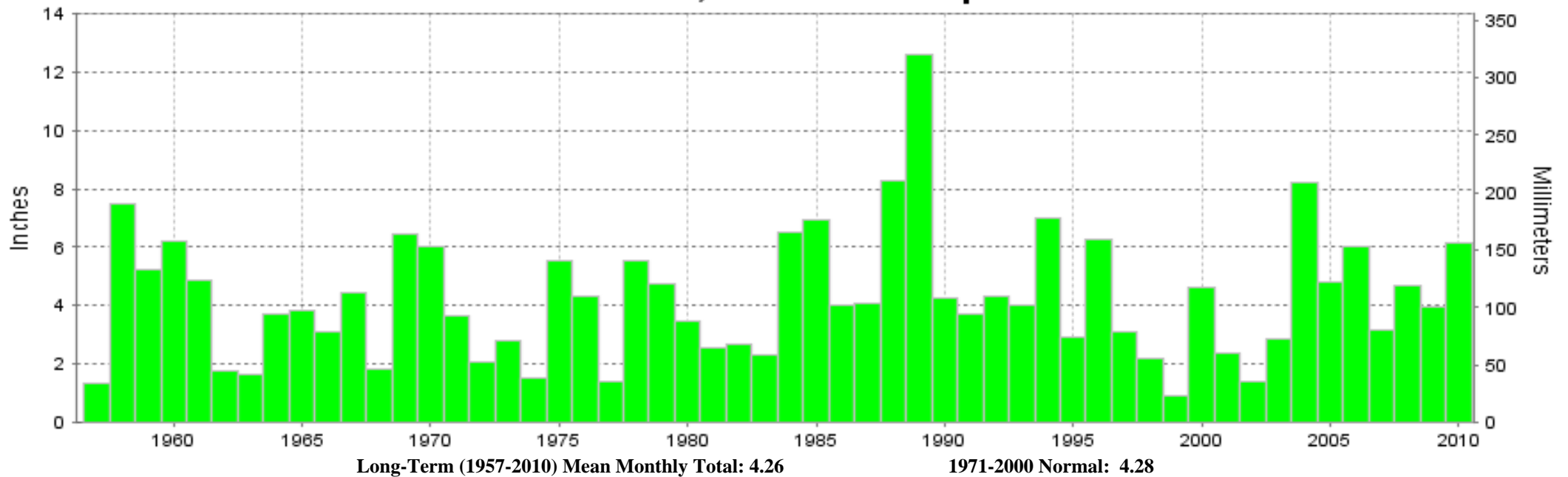
WILMINGTON, DE JULY Temperatures



— Extreme Max — Mean Max — Mean — Mean Min — Extreme Min

Long-Term (1957-2010) Mean: 76.3
1971-2000 Normal: 76.6

WILMINGTON, DE JULY Precipitation



Long-Term (1957-2010) Mean Monthly Total: 4.26

1971-2000 Normal: 4.28



JULY 2010
WILMINGTON, DE

LOCAL CLIMATOLOGICAL DATA NOAA, National Climatic Data Center

I certify that this is an official publication of the National Oceanic and Atmospheric Administration (NOAA). It is compiled using information from weather observing sites operated by NOAA-National Weather Service / Department Of Transportation-Federal Aviation Administration and received at the National Climatic Data Center (NCDC), Asheville, North Carolina 28801.

DIRECTOR

NCDC now offers an annual online subscription for the **Edited Local Climatological Data Publication**. When you purchase this subscription service, you will have **immediate online access** to all previous publications back to July 1996 and all publications thereafter until the expiration of the subscription. Your subscription is valid for one year after purchase. **The total cost for online delivery (including back issues) is significantly less than the cost for offline delivery.**

To order this and other subscriptions online with your credit card, go to: www.ncdc.noaa.gov and choose subscriptions.

We welcome your questions or comments, please contact us at:

Toll Free Number (866) 742-3322 (voice)

Fax Number : (304) 726-4409

TDD : (828) 271-4010

or Email : ncdc.info@noaa.gov

Local Climatological Data is available at www.ncdc.noaa.gov

NCDC Subscription Services Center
310 State Route 956 Building 300
Rocket Center, WV 26726
OFFICIAL BUSINESS, PENALTY FOR PRIVATE USE \$300

FIRST CLASS
POSTAGE AND FEES PAID
NOAA
PERMIT G-19

For address correction, please return a photocopy of this page to Subscription Services indicating changes