

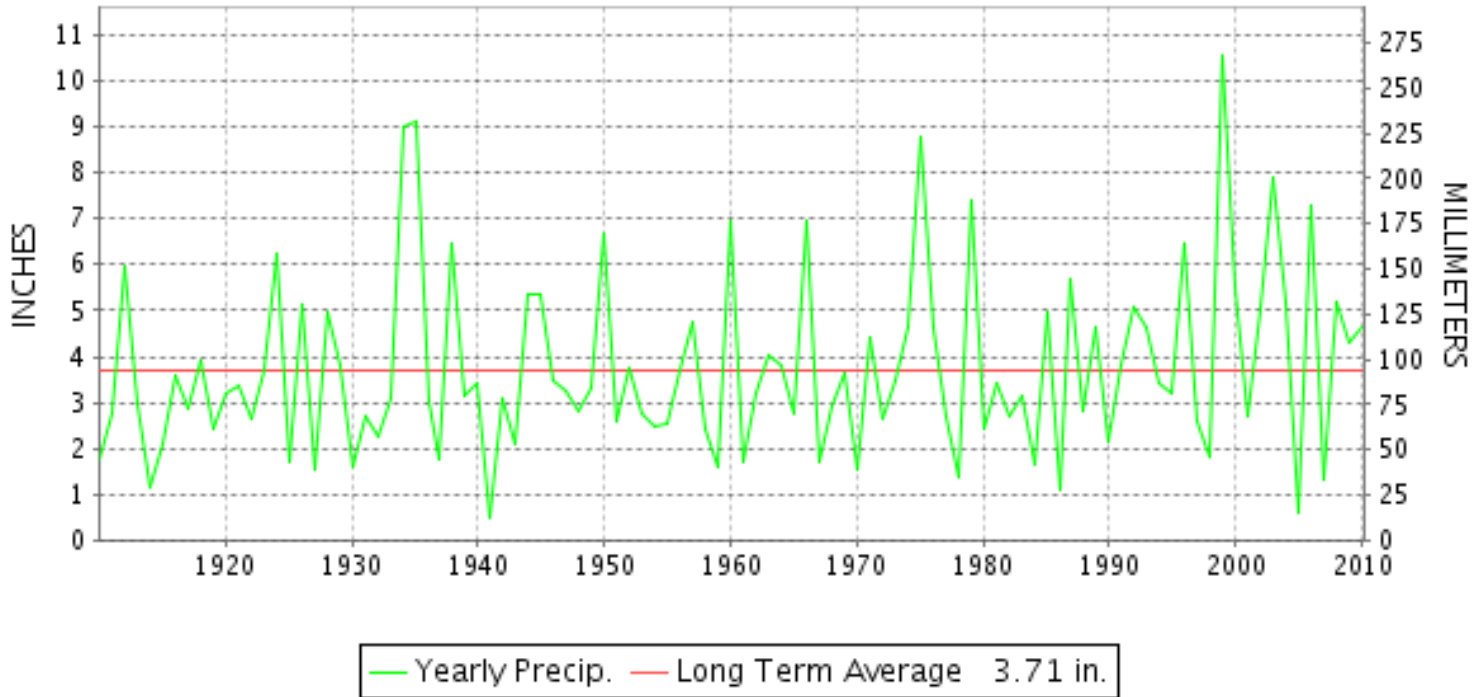


CLIMATOLOGICAL DATA MARYLAND AND DELAWARE



SEPTEMBER 2010
VOLUME 114 NUMBER 09
ISSN 0145-054

SEPTEMBER PRECIPITATION BY YEAR



TEMPERATURE AND PRECIPITATION EXTREMES

MARYLAND

HIGHEST TEMPERATURE	102	SEPTEMBER 2	CUMBERLAND 2
LOWEST TEMPERATURE	33	SEPTEMBER 11	OAKLAND 1 SE
GREATEST TOTAL PRECIPITATION	9.87		SOLOMONS
LEAST TOTAL PRECIPITATION	2.48		OAKLAND 1 SE
GREATEST 1 DAY PRECIPITATION	7.22	SEPTEMBER 30	SOLOMONS

"I certify that this is an official publication of the National Oceanic and Atmospheric Administration (NOAA) It is compiled using information from weather observing sites supervised by NOAA/National Weather Service and received at the National Climatic Data Center(NCDC), Asheville, North Carolina 28801."

Director
National Climatic Data Center

noaa

National
Oceanic and
Atmospheric Administration

National
Environmental Satellite, Data
and Information Service

National
Climatic Data Center
Asheville, North Carolina

DELAWARE

HIGHEST TEMPERATURE	96	SEPTEMBER 1	2 STATIONS
LOWEST TEMPERATURE	43	SEPTEMBER 21	BEAR 2 SW
GREATEST TOTAL PRECIPITATION	5.95		WILMINGTON NEW CASTLE R
LEAST TOTAL PRECIPITATION	2.13		DOVER
GREATEST 1 DAY PRECIPITATION	4.32	SEPTEMBER 30	WILMINGTON NEW CASTLE R

MONTHLY STATION AND DIVISION SUMMARY

STATION	TEMPERATURE (°F)											PRECIPITATION (IN)												
	AVERAGE MAXIMUM	AVERAGE MINIMUM	AVERAGE	DEPARTURE FROM NORMAL	HIGHEST	DATE	LOWEST	DATE	HEATING DEG. DAYS	COOLING DEG. DAYS	NO. OF DAYS				TOTAL	DEPARTURE FROM NORMAL	GREATEST 24 HOURS	DATE	ICE PELLETS, SNOW			NO. OF DAYS		
											MAX		MIN						TOTAL	MAX DEPTH ON GROUND	DATE	.10 OR MORE	.50 OR MORE	1.00 OR MORE
											>=90	<=32	<=32	<=0										
EMMITSBURG 2 SE	79.9	54.9	67.4	1.0	93	3	43	22	42	121	6	0	0	0	4.04	-.22	1.50	30	.0	0		7	3	2
FREDERICK 2 NNE	83.2	56.8	70.0		97	3+	46	21	14	169	9	0	0	0	4.34		1.74	30	.0	0		6	3	2
MILLERS 4 NE	81.2	56.4	68.8	3.2	93	2+	42	21	23	145	4	0	0	0	5.86	1.72	2.30	30	.0	0		7	4	2
SMITHSBURG 2NW	80.3	52.6	66.5		95	3	44	21+	60	110	7	0	0	0	4.26		1.65	28	.0	0		5	4	2
--DIVISIONAL DATA-----> APPALACHIAN MOUNTAIN 07			68.7	2.1											4.79	.46			.0					
CUMBERLAND 2	84.9	56.3	70.6	4.8	102	2	45	11	17	193	8	0	0	0	2.85	-.33	.81	17	.0	0		6	3	0
FROSTBURG 2	76.1	50.8	63.5	3.2	91	3+	44	19+	116	77	2	0	0	0	3.08	-.54	1.31	28	.0	0		6	2	1
SHARPSBURG 5 S	83.8	52.2	68.0		98	3+	44	22+	35	134	9	0	0	0	3.91		1.42	28	.0	0		5	3	2
WILLIAMSPORT	84.7	54.3	69.5		100	1	46	22+	15	156	9	0	0	0	3.00		1.10	28	.0	0		5	3	1
--DIVISIONAL DATA-----> ALLEGHENY PLATEAU 08			67.9	3.8											3.21	-.28			.0					
OAKLAND 1 SE	76.1	46.4	61.3	.5	89	3+	33	11	148	43	0	0	0	0	2.48	-1.08	.90	17	.0	0		6	2	0
SAVAGE RIVER DAM	76.7	50.1	63.4	1.9	91	3+	42	11+	111	71	2	0	0	0	2.56	-.92	.78	17	.0	0		6	2	0
--DIVISIONAL DATA-----> DELAWARE NORTHERN 01			62.4	1.9											2.52	-1.08			.0					
BEAR 2 SW	81.9	58.1	70.0		96	1	43	21	11	169	6	0	0	0	5.32		2.69	30	.0	0		6	2	1
WILMINGTON NEW CASTLE R	81.6	60.0	70.8	3.1	96	1	46	21	5	190	6	0	0	0	5.95	1.94	4.32	30	.0	0		6	1	1
WILMINGTON PORTER RES	80.1	61.6	70.9	4.1	95	1	52	21	6	187	4	0	0	0	5.17	1.22	3.10	30	.0	0		7	2	1
--DIVISIONAL DATA-----> SOUTHERN 02			70.6	3.2											5.48	1.16			.0					
DOVER	84.3	61.8	73.1	3.2	95	25+	48	21	2	251	10	0	0	0	2.13	-2.43	.90	30	.0	0		4	2	0
LEWES	M	M	M																M	M				
--DIVISIONAL DATA----->			73.1	4.8											2.13	-2.02			.0					

MARYLAND AND DELAWARE
 SEPTEMBER 2010

DAILY PRECIPITATION (INCHES)

STATION	TOTAL	DAY OF MONTH																														
		01	02	03	04	05	06	07	08	09	10	11	12	13	14	15	16	17	18	19	20	21	22	23	24	25	26	27	28	29	30	31
MARYLAND																																
SOUTHERN EASTERN																																
SHORE 01																																
ASSATEAGUE	3.58			.34								.37															.09	1.37	1.12	.01	.28	
PRINCESS ANNE	3.14			.15																						*	*	2.45	.19	.13	.22	
SALISBURY	3.26			.10								.54	.01														.08	1.31	.80	.07	.35	
SALISBURY FAA AP	4.99			.16								.71															.05	2.79	.10	.08	1.10	
SNOW HILL 4 N	3.40			.07								.53	.01														T	1.29	1.01	.05	.34	
CENTRAL EASTERN																																
SHORE 02																																
ROYAL OAK 2 SSW	M	-	-	-	-	-	-	-	-	-	-	-	-	-	-	-	-	-	-	-	-	-	-	-	-	-	-	-	-	-	-	
VIENNA	M	-	-	-	-	-	-	-	-	-	-	-	-	-	-	-	-	-	-	-	-	-	-	-	-	-	-	-	-	-	-	
LOWER SOUTHERN 03																																
MECHANICSVILLE 5 NE	8.63			T	.04							.48	.43														.06	.42	.30	3.83	3.04	
SOLOMONS	M 9.87			.01	-	T						*	.85															.79	.78	.20	7.22	
UPPER SOUTHERN 04																																
BALTIMORE WASH INTL AP R	8.26			T								.83				.06	.07										.15	1.03	.03	.07	6.02	
BELTSVILLE	4.09											.65	.17				.11										T	.30	.51		1.86	
DALECARLIA RSVR	3.25											.46	.05				.10											.20	.40		2.00	
LAUREL 3 W	6.41											1.27				.09	.02										.06	.51	.02	.02	4.22	
MD SCI CTR BALTIMORE R	8.18											1.01				.16	.05										.16	1.01	.02	.04	5.72	
NATL ARBORETUM DC	2.77											.54	.06				.06												.28	.07		1.76
OXON HILL	2.89											.35	.34				.08													.34	1.78	
UPPER MARLBORO 3 NNW	4.63											.04	.90				.05												.64	.08		2.92
NORTHERN EASTERN																																
SHORE 05																																
CHESTERTOWN	6.14			T								.40				.74											T	T	1.13	.48	.02	3.37
NORTHERN CENTRAL 06																																
ABERDEEN PHILLIPS FLD	5.25				.01								.21				.24											.14	.97	.22	.43	3.03
BRIGHTON DAM	5.60											.75				.20	.15											.12	.63	.15		3.60
CATOCTIN MTN PARK	4.00											.73					.71											.02	1.03	.84	.19	.46
CONOWINGO DAM	4.31											.07	.27				.18											.47	.55	.48	.14	2.15
CYLBURN	4.69											.64					.29											T	*	1.83		1.93
DAMASCUS 3 SSW	6.33											.45				.24	T											.11	.75	.41	T	4.37
EMMITSBURG 2 SE	4.04											.53	.19				.39												.23	1.01	.19	1.50
FREDERICK 2 NNE	4.34											.44	.11				.58												.26	1.20	.01	1.74
MILLERS 4 NE	5.86			T								.71				.08	.23											.39	1.04	.12	T	2.30
POTOMAC FLTR PLT	4.61											.40	.07			.70												.15	.63			2.63
SMITHSBURG 2NW	4.26											.50	.05				.68												.16	1.65	.07	1.10
APPALACHIAN																																

MARYLAND AND DELAWARE
 SEPTEMBER 2010

DAILY PRECIPITATION (INCHES)

STATION	TOTAL	DAY OF MONTH																															
		01	02	03	04	05	06	07	08	09	10	11	12	13	14	15	16	17	18	19	20	21	22	23	24	25	26	27	28	29	30	31	
MOUNTAIN 07																																	
CUMBERLAND 2	2.85				.01							.35					.81						.12				.27	.70	.01	.58			
FROSTBURG 2	3.08				.11							.23					.71	T					.06				.19	1.31	.04	.43			
SHARPSBURG 5 S	3.91											.56	.02				.46				T		T				.15	1.42		1.30			
WILLIAMSPORT	3.00											.41					.70										.16	1.10	.08	.55			
ALLEGHENY PLATEAU 08																																	
OAKLAND 1 SE	2.48				.05							.34					.90								.10		.27	.32		.50			
SAVAGE RIVER DAM	2.56				.05							.17					.78						.23		T	.28	.61	T	.44				
DELAWARE																																	
NORTHERN 01																																	
BEAR 2 SW	5.32			T								.25				.44	.05						.39			.08	.47	.95	T	2.69			
WILMINGTON NEW CASTLE R	5.95								T			.32				.41	.01						.38			.23	.19	.09	T	4.32			
WILMINGTON PORTER RES	5.17											.46				.86	.11						.06			.10	.33	.15	T	3.10			
SOUTHERN 02																																	
DOVER	2.13			.01								.31				.04											.51	.29	.07	.90			
LEWES	M	-	-	-	-	-	-	-	-	-	-	-	-	-	-	-	-	-	-	-	-	-	-	-	-	-	-	-	-	-	-	-	

DAILY TEMPERATURES (°F)

STATION	OB. TIME	MAX/MIN	DAY OF MONTH																															AVERAGE
			01	02	03	04	05	06	07	08	09	10	11	12	13	14	15	16	17	18	19	20	21	22	23	24	25	26	27	28	29	30	31	
NATL ARBORETUM DC	07	MAX	95	96	94	88	82	80	86	92	93	79	76	80	70	83	81	85	89	79	78	86	79	80	93	93	96	91	73	78	82	70	84.2	
		MIN	70	73	74	71	56	59	66	70	63	59	52	56	58	60	55	59	65	55	57	49	50	68	68	69	66	61	67	56	58	61.5		
OXON HILL	08	MAX	96	97	95	88	82	81	87	93	94	80	75	81	71	84	82	85	89	80	79	85	79	81	94	94	96	92	72	77	82	71	84.7	
		MIN	67	69	74	70	56	57	62	65	62	59	53	56	57	57	56	56	64	55	56	57	51	51	65	69	69	67	62	63	60	68	61.1	
UPPER MARLBORO 3 NNW	07	MAX	94	95	92	87	81	80	83	90	92	78	74	78	66	82	80	84	87	80	76	85	77	78	93	90	96	91	71	77	81	71	83.0	
		MIN	67	68	71	69	52	54	57	66	59	55	51	54	57	57	53	55	62	52	53	55	47	50	65	67	68	65	61	68	55	56	59.0	
NORTHERN EASTERN SHORE 05																																		
CHESTERTOWN	23	MAX	92	90	84	81	76	84	87	91	75	74	76	64	76	78	84	80	73	81	75	76	86	86	92	88	73	78	79	68	76	80.0		
		MIN	68	73	70	68	55	54	64	72	59	61	57	59	58	58	54	59	64	52	54	62	48	63	64	68	73	61	62	68	58	63	61.6	
NORTHERN CENTRAL 06																																		
ABERDEEN PHILLIPS FLD	07	MAX	94	94	91	88	80	76	82	88	92	77	73	75	63	76	78	79	79	79	74	80	76	76	85	86	92	89	70	77	81	72	80.7	
		MIN	67	68	73	66	52	52	56	63	58	58	55	55	60	58	53	53	62	50	51	53	46	46	65	67	70	63	59	67	57	59	58.7	
CATOCTIN MTN PARK	17	MAX	92	92	85	79	74	80	87	84	77	67	72	65	80	75	79	75	72	73	81	72	75	89	87	90	83	74	71	73	65	72	78.0	
		MIN	66	66	66	60	50	48	59	71	51	50	46	57	55	55	53	55	59	45	53	57	44	60	62	65	66	55	56	64	48	56	56.6	
CONOWINGO DAM	07	MAX	97	96	94	89	83	80	85	90	93	78	76	81	65	80	81	89	80	82	82	84	75	78	86	85	89	90	72	76	82	76	83.1	
		MIN	66	67	68	64	54	52	54	62	56	58	55	55	60	60	57	52	56	57	54	54	46	48	60	64	65	64	64	67	55	60	58.5	
CYLBURN	08	MAX	90	92	90	81	77	74	79	87	87	72	71	74	62	78	74	78	81	74	70	78	71	72	87	83	91	86	67	74	77	68	78.2	
		MIN	67	68	70	65	59	54	62	65	58	56	53	56	58	56	54	55	58	50	54	58	47	48	60	65	69	60	56	67	53	53	58.5	
DAMASCUS 3 SSW	22	MAX	94	93	86	78	77	83	90	89	75	71	76	68	83	76	82	76	76	74	82	75	77	90	89	94	88	73	72	79	64	75	80.2	
		MIN	67	68	70	62	52	59	62	70	54	53	50	51	59	59	52	62	62	49	54	60	46	61	63	66	68	56	64	64	52	62	59.2	
EMMITSBURG 2 SE	07	MAX	90	92	93	88	77	75	82	90	88	74	73	75	66	83	77	81	68	75	72	81	75	76	90	88	92	86	72	74	78	66	79.9	
		MIN	60	63	65	64	54	48	58	59	54	56	46	48	58	54	51	51	56	48	48	52	44	43	57	63	64	59	59	60	52	52	54.9	
FREDERICK 2 NNE	07	MAX	96	97	97	93	79	80	80	93	90	76	75	80	71	87	82	85	72	77	78	85	78	80	92	92	95	89	73	75	80	68	83.2	
		MIN	63	65	66	65	58	52	52	61	60	58	49	50	57	56	55	55	58	50	50	52	46	48	61	65	65	61	59	61	53	53	56.8	
MILLERS 4 NE	18	MAX	93	93	88	83	75	81	88	87	83	73	78	74	82	80	79	75	75	73	83	79	75	90	88	92	88	82	72	78	73	75	81.2	
		MIN	64	66	66	60	49	48	59	66	52	51	48	57	57	53	51	55	61	45	51	56	42	58	60	65	63	56	59	66	50	59	56.4	
SMITHSBURG 2NW	08	MAX	93	94	95	93	72	76	83	91	87	73	73	71	72	78	83	81	69	73	75	82	74	77	90	89	92	86	73	71	77	66	80.3	
		MIN	60	62	62	58	48	48	49	58	53	47	44	44	54	51	49	49	59	45	47	53	44	45	59	62	63	54	55	61	48	48	52.6	
APPALACHIAN MOUNTAIN 07																																		
CUMBERLAND 2	18	MAX	100	102	98	85	80	89	96	93	84	74	83	79	87	83	87	82	75	82	88	83	86	94	94	94	89	84	69	75	66	65	84.9	
		MIN	62	63	67	62	49	46	56	73	52	49	45	60	50	54	51	55	62	47	54	58	46	56	63	62	71	54	58	60	48	57	56.3	
FROSTBURG 2	07	MAX	89	91	91	89	67	70	83	89	79	67	64	78	70	78	73	78	62	66	77	80	73	80	86	85	87	77	65	62	66	60	76.1	
		MIN	59	60	60	54	45	45	45	57	50	47	45	45	48	53	50	50	55	44	44	55	45	46	60	60	64	47	47	53	46	46	50.8	
SHARPSBURG 5 S	07	MAX	97	98	98	96	79	80	86	93	91	77	75	79	76	87	81	85	73	76	78	86	79	80	96	94	95	88	72	74	80	66	83.8	
		MIN	58	62	64	56	48	45	45	57	48	46	44	44	56	55	49	49	56	46	46	52	44	44	58	61	64	57	56	59	49	49	52.2	
WILLIAMSPORT	06	MAX	100	98	99	97	79	81	87	94	95	77	75	80	75	88	83	87	69	78	78	85	86	81	96	95	96	88	74	74	79	66	84.7	
		OBS	***																															
		MIN	58	63	64	63	51	49	48	54	54	53	48	46	57	55	53	52	57	51	49	53	48	46	55	63	64	56	56	59	52	51	54.3	
		OBS	***																															
ALLEGHENY PLATEAU 08																																		

DAILY TEMPERATURES (°F)

STATION	OB. TIME	MAX/MIN	DAY OF MONTH																															AVERAGE
			01	02	03	04	05	06	07	08	09	10	11	12	13	14	15	16	17	18	19	20	21	22	23	24	25	26	27	28	29	30	31	
OAKLAND 1 SE	07	MAX	89	88	89	85	65	69	82	86	78	68	67	76	71	78	74	78	73	66	79	80	74	85	85	85	84	75	65	68	60	61	76.1	
		MIN	53	52	54	54	46	37	37	53	41	38	33	42	42	44	44	45	53	42	42	49	42	42	55	55	55	48	50	54	45	45	46.4	
SAVAGE RIVER DAM	08	MAX	91	89	91	88	70	71	81	87	80	68	69	75	74	79	73	79	64	69	76	83	76	78	87	86	85	77	65	64	65	60	76.7	
		MIN	58	58	58	57	46	42	42	60	50	45	42	43	47	47	49	49	49	46	46	54	44	44	55	59	59	51	51	55	49	49	50.1	
DELAWARE																																		
NORTHERN 01																																		
BEAR 2 SW M	MID	MAX	96	94	92	81	78	83	90	92	76	76	80	66	79	81	80	87	81	77	83	77	78	89	86	92	89	70	77	81	71	76	81.9	
		MIN	66	67	69	57	50	49	57	68	51	59	51	57	57	54	51	55	61	50	52	53	43	55	62	69	68	62	63	64	56	66	58.1	
WILMINGTON NEW CASTLE M	MID	MAX	96	94	91	82	78	81	90	92	77	75	79	67	79	81	80	85	80	77	83	78	75	89	83	92	89	69	77	81	72	77	81.6	
		MIN	68	72	72	59	53	53	61	64	56	58	52	60	57	57	55	60	58	52	54	55	46	60	64	69	67	62	66	64	57	68	60.0	
WILMINGTON PORTER RES M	MID	MAX	95	93	93	79	75	80	89	89	74	78	77	64	77	77	75	84	77	77	80	80	74	86	82	90	86	71	76	79	71	76	80.1	
		OBS									89																							
		MIN	76	71	71	63	57	60	60	65	58	59	57	59	57	60	59	59	59	53	53	60	52	61	66	67	71	60	64	67	57	66	61.6	
SOUTHERN 02																																		
DOVER	16	MAX	93	93	93	88	81	80	87	90	90	74	78	78	79	79	80	88	86	81	80	79	78	91	92	95	95	91	77	77	79	78	84.3	
		MIN	69	72	74	69	56	53	65	73	58	58	56	60	59	55	56	60	59	53	56	60	48	62	66	66	67	64	67	68	60	65	61.8	
LEWES	17	MAX																															M	
		MIN																																M

PAN EVAPORATION AND WIND

STATION		DAY OF MONTH																															TOTAL OR AVERAGE
		01	02	03	04	05	06	07	08	09	10	11	12	13	14	15	16	17	18	19	20	21	22	23	24	25	26	27	28	29	30	31	
MARYLAND UPPER SOUTHERN 04 BELTSVILLE	WIND	12	17	32	*	*	*	181	65	78	90	*	89	13	27	42	21	42	*	77	29	51	31	38	15	*	91	44	64	65	32	1246	
	EVAP	19	21	22	*	*	*	82	25	38	27	*	45	2	5	19	16	11	*	37	17	24	17	29	15	*	21	36	3	21	2	5.54	
	MAX	106	108	106	-	-	-	96	101	99	91	-	94	81	96	90	97	94	-	96	6	93	95	104	106	-	107	88	88	98	83	92.6	
	MIN	78	80	81	-	-	-	66	76	69	66	-	68	74	73	71	71	78	-	71	71	67	68	76	82	-	78	78	78	73	73	73.6	
UPPER MARLBORO 3 NNW	WIND	-	-	-	-	-	-	-	-	-	-	-	-	-	-	-	-	-	-	-	-	-	-	-	-	-	-	-	-	-	-	M	
	EVAP	19	22	22	*	*	*	71	23	35	1	*	*	48	15	*	32	12	*	*	45	19	16	16	15	*	*	52	1	15	-	4.95	
	MAX	100	100	98	86	87	88	90	94	93	85	76	86	69	87	85	89	85	87	88	90	86	85	94	96	92	93	75	78	84	68	87.1	
	MIN	69	70	70	64	56	56	59	63	59	57	56	56	63	63	59	59	65	58	58	59	54	54	61	68	66	64	64	65	58	58	61.0	

Evaporation: Is measured in hundredths of inches.

Wind: Is measured in miles.

Max and Min: The maximum and minimum temperatures (Fahrenheit) of the water in the evaporation pan.

STATION INDEX

STATION	INDEX NO.	DIVISION	COUNTY	LATITUDE	LONGITUDE	ELEVATION (IN FEET)	OBSERVATION TIME AND TABLES				OBSERVER	
							LOCAL STD TIME					
							TEMP	PRECIP	EVAP	SPECIAL SEE (NOTES)		
MARYLAND												
ABERDEEN PHILLIPS FLD	0015	06	HARFORD	39 28	76 10W	57	07	07			C H	US ARMY ABERDEEN TST CTR
ASSATEAGUE	0335	01	WORCESTER	38 4	75 13W	10	MID	MID			H	ASSATEAGUE IS NATL SEA
BALTIMORE WASH INTL AP R	0465	04	ANNE ARUNDEL	39 10	76 41W	156	MID	MID			C HJ	ASOS - FAA
BELTSVILLE	0700	04	PRINCE GEORG	39 2	76 56W	145	08	08	08		C H	USDA AG RESEARCH SVC
BRIGHTON DAM	1125	06	MONTGOMERY	39 11	77 0W	330		07			H	WA SUBURB SANIT COMM
CATOCTIN MTN PARK	1530	06	FREDERICK	39 39	77 29W	1610	17	17			H	CATOCTIN MOUNTAIN PK
CHESTERTOWN	1750	05	KENT	39 13	76 3W	40	23	23			H	THOMAS W ELIASON JR
CONOWINGO DAM	2060	06	HARFORD	39 39	76 11W	40	07	07			H	SUSQUEHANNA ELECTRIC CO
CUMBERLAND 2	2282	07	ALLEGANY	39 39	78 45W	730	18	18			H	TIMOTHY B THOMAS
CYLBURN	2308	06	BALTIMORE	39 22	76 38W	400	08	08			H	CYLBURN ARBORETUM
DALECARLIA RSVR	2325	04	PRINCE GEORG	38 56	77 7W	150	08	08			H	USA CORPS OF ENGINEERS
DAMASCUS 3 SSW	2336	06	MONTGOMERY	39 16	77 14W	697	22	22			H	ROBERT J LEFFLER
EMMITSBURG 2 SE	2906	06	FREDERICK	39 41	77 17W	403	07	07			H	ERIC E GLASS
FREDERICK 2 NNE	3353	06	FREDERICK	39 26	77 24W	280	07	07			H	DIR PUBLIC WORK WTP
FROSTBURG 2	3415	07	ALLEGANY	39 40	78 56W	2170	07	07			H	GREGORY P LATTA
LAUREL 3 W	5111	04	PRINCE GEORG	39 5	76 54W	400	MID	07			H	WA SUBURBAN SANITARY COM
MD SCI CTR BALTIMORE R	5718	04	BALTIMORE (C	39 17	76 37W	20	MID	MID			C H	ASOS - NWS
MECHANICVILLE 5 NE	5865	03	ST. MARY'S	38 28	76 42W	100	07	07			H	SANDRA J HASTINGS
MILLERS 4 NE	5934	06	CARROLL	39 43	76 48W	860	18	18			C H	ROBERT MILLER
NATL ARBORETUM DC	6350	04	PRINCE GEORG	38 55	76 58W	50	07	07			H	US NATIONAL ARBORETUM
OAKLAND 1 SE	6620	08	GARRETT	39 25	79 24W	2420	07	07			H	GARRETT CO MEM HOSPITAL
OXON HILL	6800	04	PRINCE GEORG	38 48	77 0W	120	08	08			H	BRIAN SMITH
POTOMAC FLTR PLT	7272	06	MONTGOMERY	39 2	77 15W	270		08			H	POTOMAC WATER FILT PLANT
PRINCESS ANNE	7330	01	SOMERSET	38 13	75 41W	20	17	17			H	UNIV OF MD EASTERN SHORE
ROYAL OAK 2 SSW	7806	02	TALBOT	38 43	76 11W	10	18	18			H	JOHN L SWAINE JR
SALISBURY	8000	01	WICOMICO	38 22	75 35W	10	16	16			H	CITY OF SALISBURY
SALISBURY FAA AP	8005	01	WICOMICO	38 20	75 31W	48	MID	MID			H	FAA
SAVAGE RIVER DAM	8065	08	GARRETT	39 31	79 8W	1495	08	08	08		C H	USA CORPS OF ENGINEERS
SHARPSBURG 5 S	8207	07	WASHINGTON	39 24	77 43W	500	07	07			H	DAVID DOWNIN
SMITHSBURG 2NW	8371	06	WASHINGTON	39 40	77 35W	670	08	08			H	SMITHSBURG WWTP
SNOW HILL 4 N	8380	01	WORCESTER	38 14	75 23W	30	17	17			H	CURTIS E SHOCKLEY
SOLOMONS	8405	03	CALVERT	38 19	76 27W	12	08	08			H	CHESAPEAKE BIOLOGIC LAB
UPPER MARLBORO 3 NNW	9070	04	PRINCE GEORG	38 52	76 47W	100	07	07	07		H	UNIVERSITY OF MARYLAND
VIENNA	9140	02	DORCHESTER	38 29	75 49W	10	18	18			H	DELMARVA POWER AND LIGHT
WILLIAMSPORT	9570	07	WASHINGTON	39 36	77 50W	360	06	06			H	R C WILSON TREATMENT PLT
DELAWARE												
BEAR 2 SW	1200	01	NEW CASTLE	39 36	75 44W	80	MID	MID			H	R GARY GALLAHER
DOVER	2730	02	KENT	39 16	75 31W	30	16	16			H	DEPT OF TRANSPORTATION
LEWES	5320	02	SUSSEX	38 47	75 8W	15	17	17			H	LEWES POWER PLANT
WILMINGTON NEW CASTLE R	9595	01	NEW CASTLE	39 40	75 36W	79	MID	MID			C HJ	ASOS - FAA
WILMINGTON PORTER RES	9605	01	NEW CASTLE	39 46	75 32W	270	MID	MID			H	WILMINGTON WATER DEPT

REFERENCE NOTES

DEFINITIONS

STATION NAMES: Name of the city, town or locality. Figures and letters following the station names indicate the distance in miles and direction from the post office or town community center.

DIVISIONS: Areas within a state of similar climatological characteristics. Division averages are calculated using data from stations that record both temperature and precipitation (i.e. not precipitation alone).

NORMALS: The average value of the meteorological element over a time period. Effective 1 January 2002, the averaging period is 1971 to 2000. The normals for National Weather Service localities have been adjusted so as to be representative for the current observation site.

MONTHLY DEGREE DAY TOTALS: One heating (cooling) degree day is accumulated for each whole degree that the daily mean temperature is below (above) 65 degrees Fahrenheit.

PRECIPITATION: Values shown in hundredths of inches are water equivalent totals, i.e., total of liquid and melted frozen precipitation. In the "Monthly Summarized Data" table the total snow and sleet values shown in tenths of inches are unmelted amounts. The max depth on ground values of snow and sleet shown in whole inches are cumulative unmelted amounts. The number of days with .10, .50, 1.00 or more refers to water equivalents.

PRECIPITATION QUALITY CONTROL: The NCDC quality control process may delete precipitation data that are spatially inconsistent; exceed climatological limits, or are inconsistent with prevailing weather patterns.

TEMPERATURE: Original and edited temperature values are given in the "Daily Temperature" table. Edited values are produced when an original value is missing or when surrounding stations indicated a suspect original value. When a line labeled OBS is present and contains either a daily temperature (suspect) or *** (missing), the temperature appearing directly above, on the line labeled MAX or MIN, is an edited value. Summary temperature information (averages, departures, extremes, monthly degree day totals) is based on the values labeled MAX/MIN.

WIND: (As shown in the "Evaporation and Wind" table) the total wind movement in miles over the evaporation pan as determined by an anemometer recorder located 6-8 inches above the pan.

SYMBOLS AND LETTERS USED IN THE STATION INDEX TABLE

Thermometers located in a rooftop shelter.
// Rain gage equipped with a windshield
AR Observation made "after rain" has occurred.
C Station is equipped with recording rain gage (R) but values in this bulletin are from a non-recording rain gage unless indicated by an R.
G Observations appear in the "Soil Temperatures" table.
H Observations appear in the "Snowfall and Snow on the Ground" table.
J Station also published as a Local Climatological Data publication.
MID Observation time is midnight.
MO Rain gage read once monthly, usually the last day.
OC Rain gage readings vary from a few weeks to several months.
R Amounts from recording rain gage.
SR Observation time near sunrise.

SS Observation time near sunset.
VAR Observation time varies.
WI Rain gage read weekly or irregularly.
WM Rain gage read weekly and last day of the month.

SYMBOLS AND LETTERS USED IN THE DATA TABLES

(DAILY DATA ARE FOR THE 24 HOURS IMMEDIATELY PRECEDING OBSERVATION TIME.)

BLANK Entries in the "Monthly Summarized Data" table indicate no record.

BLANK Entries in the "Daily Precipitation" and "Snowfall and Snow on the Ground" tables indicate zero.

BLANK Entries in the "Daily Temperature" table indicate a missing record where an edited value could not be determined. (See *** below)

- No record. Data not recorded, determined unreliable by quality control check, or not received in time for publication.

+ Precipitation or temperature extremes occurred on one or more previous dates during the month.

*** Missing original temperature which has been estimated during edit.

* Rain gage not read. Precipitation is included in the amount following the asterisks. Time distribution not known. A * preceding the monthly total indicates precipitation amount is being carried forward to next months total, and may include amounts from the previous month(s).
// Rain gage equipped with a windshield.

A Amount of precipitation is the total of observer's entries for the current month. It may include precipitation that occurred during the previous month. Refer to earlier bulletin to determine date of last reading. (Hawaii stations)

B Adjusted monthly value (estimated), (1-7 missing values for wind and evaporation).

M Insufficient or partial data. M is appended to average and/or total values computed with 1-9 daily values missing. M appears alone if 10 or more daily values are missing, (8 or more for wind and evaporation).

R Amounts from recording rain gage.

T Trace. An amount too small to measure.

V Includes total for previous month(s). (See * above)

V Includes total for previous month(s). (See * above)

SEASONAL TABLES: Monthly and seasonal snowfall and heating degree days for the 12 months ending with the June data are published in the July issue of this bulletin. Cooling degree days for the calendar year are published in the "Climatological Data Annual Summary."

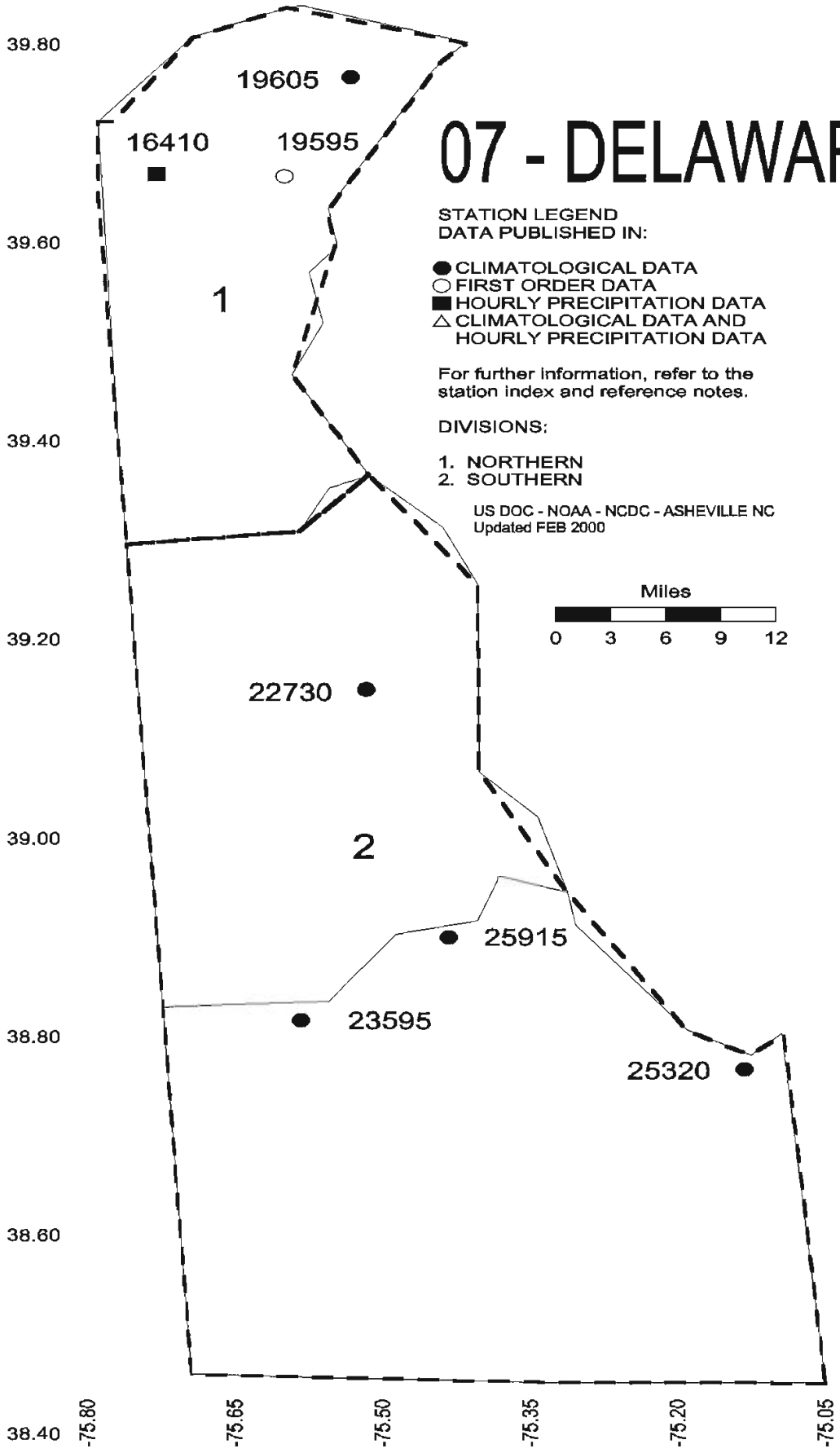
Information concerning the history of changes in locations, exposure, etc. of substations is kept on file at the National Climatic Data Center. Historical information of regular National Weather Service Offices may be obtained from the "Local Climatological Data" annual publication. The contents of this publication may be reprinted or otherwise used freely, with proper credit to the National Climatic Data Center. The data are also available in digital form on magnetic tape and diskette.

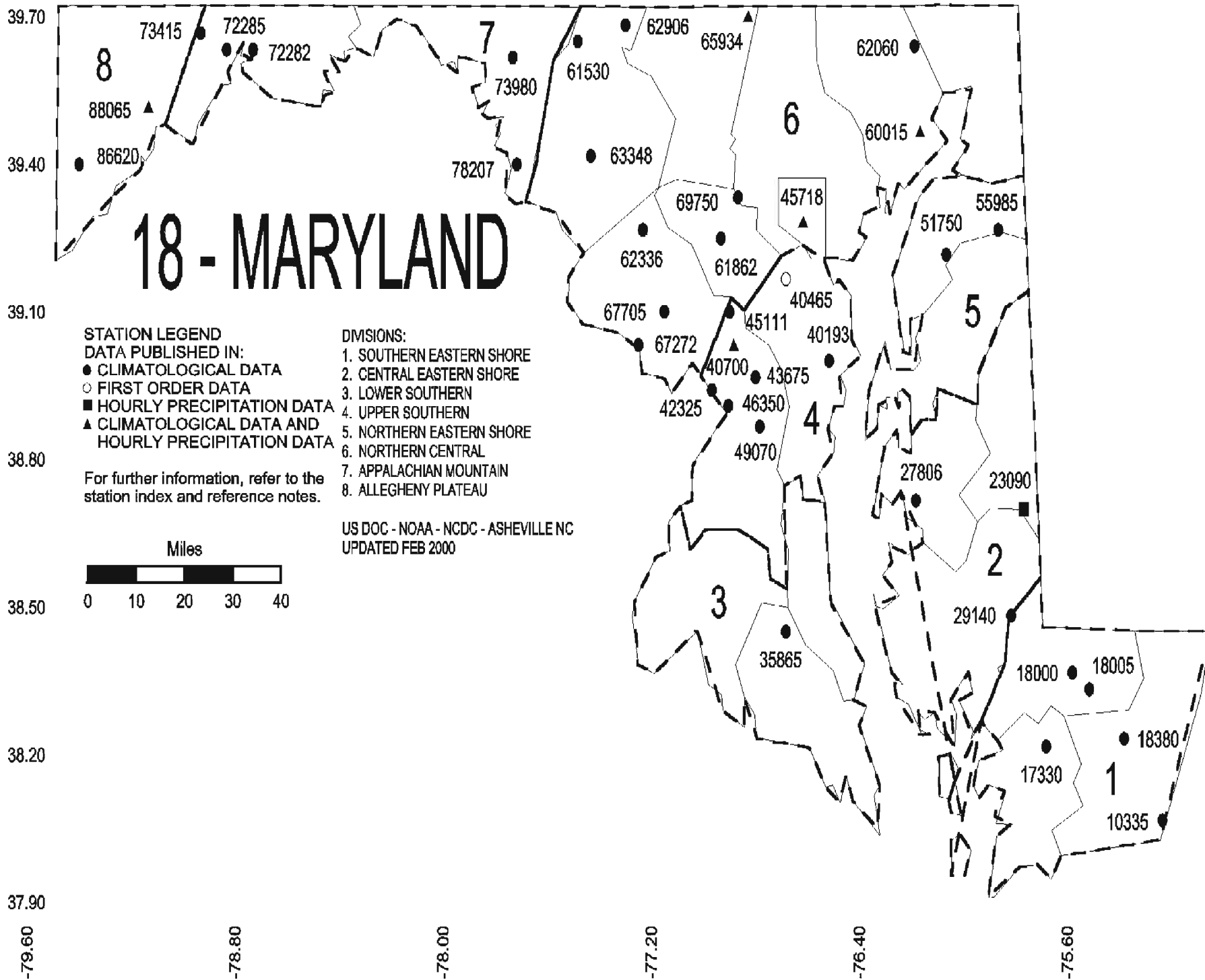
SUBSCRIPTION, PRICE, AND ORDERING INFORMATION AVAILABLE FROM:

NCDC Subscription Services Center
310 State Route 956
Building 300
Rocket Center, WV 26726

Toll free number: (866) 742-3322
Fax number: (304) 726-4409

07 - DELAWARE





These and other publications are available from the National Climatic Data Center

Hourly Precipitation Data

This publication contains hourly precipitation amounts obtained from recording rain gages located at National Weather Service, Federal Aviation Administration, and cooperative observer stations. Published data are displayed in inches and tenths or inches and hundredths at local standard time. HPD includes maximum precipitation for nine (9) time periods from 15 minutes to 24 hours, for selected stations.

Climatological Data

Monthly editions contain station daily maximum and minimum temperatures and precipitation. Some Stations provide daily snowfall, snow depth, evaporation, and soil temperature data. Each edition also contains monthly summaries for heating and cooling degree days (65 degree F base). The July issue contains a recap of monthly heating degree days and snow data for the preceding July through June.

The Annual issue contains monthly and annual averages of temperature, precipitation, temperature extremes, freeze data, soil temperatures, evaporation, and a recap of monthly cooling degree days.

Storm Data

Monthly issues contain a chronological listing, by states, of occurrences of storms and unusual weather phenomena. Reports contain information on storm paths, deaths, injuries, and property damage. An "Outstanding storms of the month" section highlights severe weather events with photographs, illustrations, and narratives. The December issue includes annual tornado, lightning, flash flood, and tropical cyclone summaries.

Monthly Climatic Data for the World

This publication contains monthly means for temperature, pressure, precipitation, vapor pressure, and sunshine for approximately 2,000 surface data collection stations worldwide and monthly mean upper air temperatures, dew point depressions, and wind velocities for approximately 500 observing sites.

Local Climatological Data

LCD publications summarize temperature, relative humidity, precipitation, cloudiness, wind speed and direction observations for several hundred cities in the U.S. and its territories. Each monthly publication also contains 3 hourly weather observations for that month and a hourly summary of precipitation. Annual LCD publications contain a summary of the past calendar year as well as historical averages and extremes.

For Information Call:

(866) 742-3322 (Toll free)

(828) 271-4010 (TDD)

(304) 726-4409 (Fax)

Subscription Service Center
310 State Route 956
Building 300
Rocket Center, WV 26726

PRSRT STD
POSTAGE & FEES PAID
United States Department of Commerce
NOAA Permit No. G-19

OFFICIAL BUSINESS
PENALTY FOR PRIVATE USE \$300
ADDRESS CORRECTION REQUESTED

To change your address, please return a copy of the mailing label along with your new address to:

NCDC Subscription Services Center
310 State Route 956
Building 300
Rocket Center, WV 26726

Toll free number : (866) 742-3322
TDD : (828) 271-4010
Fax number : (304) 726-4409

NCDC now offers an annual online subscription for the *Climatological Data* publication. When you purchase this subscription service, you will have **immediate online access** to all previous Climatological Data publications. Your subscription is valid for one year after purchase. **The total cost is \$42 for online delivery (including back issues) compared to \$52 for offline delivery.** To order this and other subscriptions online with your credit card, go to: <http://www.ncdc.noaa.gov/oa/mpp/> and choose subscription.