

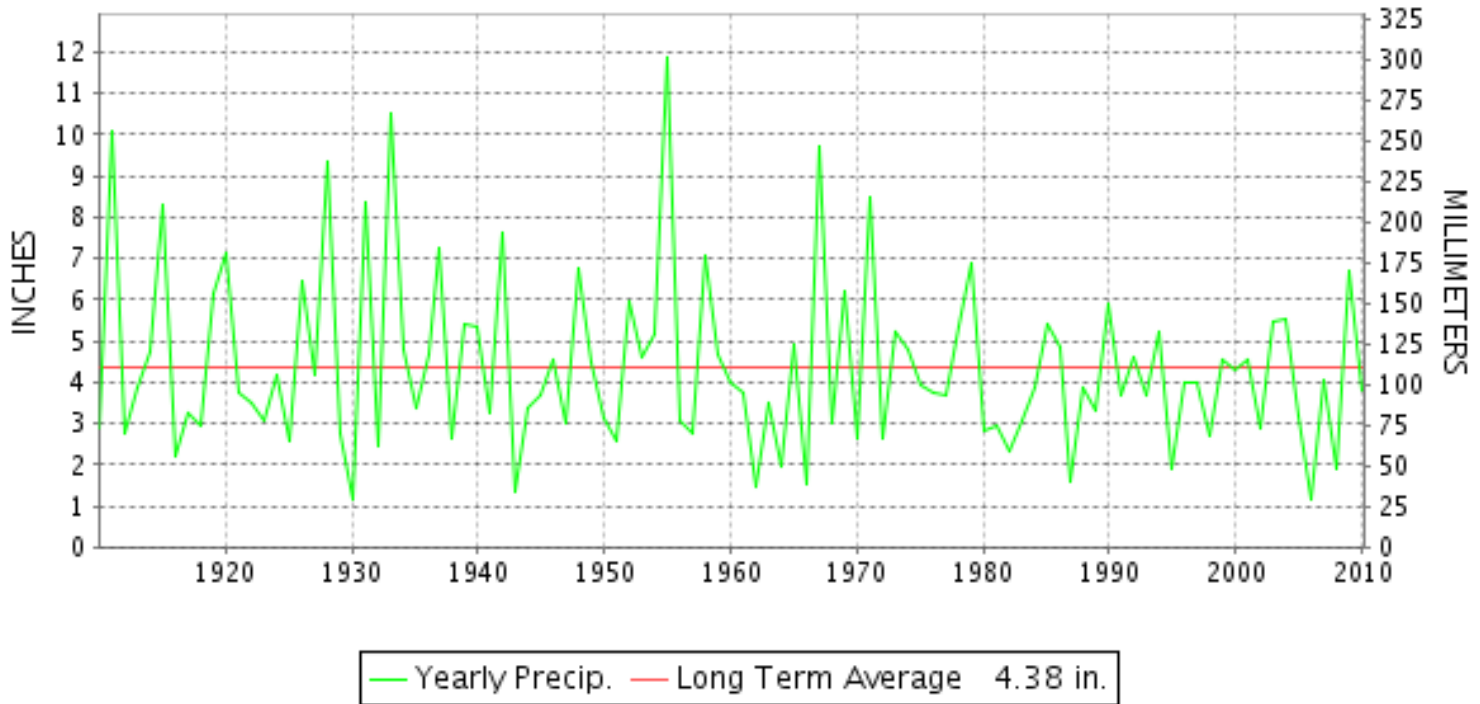


CLIMATOLOGICAL DATA MARYLAND AND DELAWARE



AUGUST 2010
VOLUME 114 NUMBER 08
ISSN 0145-054

AUGUST PRECIPITATION BY YEAR



TEMPERATURE AND PRECIPITATION EXTREMES

MARYLAND

HIGHEST TEMPERATURE	101	AUGUST 11	ASSATEAGUE
LOWEST TEMPERATURE	45	AUGUST 29	OAKLAND 1 SE
GREATEST TOTAL PRECIPITATION	7.06		DALECARLIA RSVR
LEAST TOTAL PRECIPITATION	1.23		SAVAGE RIVER DAM
GREATEST 1 DAY PRECIPITATION	3.90	AUGUST 12	DAMASCUS 3 SSW

"I certify that this is an official publication of the National Oceanic and Atmospheric Administration (NOAA) It is compiled using information from weather observing sites supervised by NOAA/National Weather Service and received at the National Climatic Data Center(NCDC), Asheville, North Carolina 28801."

Director
National Climatic Data Center

noaa

National
Oceanic and
Atmospheric Administration

National
Environmental Satellite, Data
and Information Service

National
Climatic Data Center
Asheville, North Carolina

DELAWARE

HIGHEST TEMPERATURE	97	AUGUST 31	4 STATIONS
LOWEST TEMPERATURE	52	AUGUST 27	2 STATIONS
GREATEST TOTAL PRECIPITATION	4.03		2 STATIONS
LEAST TOTAL PRECIPITATION	1.34		2 STATIONS
GREATEST 1 DAY PRECIPITATION	2.06	AUGUST 18	2 STATIONS

MONTHLY STATION AND DIVISION SUMMARY

STATION	TEMPERATURE (°F)											PRECIPITATION (IN)												
	AVERAGE MAXIMUM	AVERAGE MINIMUM	AVERAGE	DEPARTURE FROM NORMAL	HIGHEST	DATE	LOWEST	DATE	HEATING DEG. DAYS	COOLING DEG. DAYS	NO. OF DAYS				TOTAL	DEPARTURE FROM NORMAL	GREATEST 24 HOURS	DATE	ICE PELLETS, SNOW			NO. OF DAYS		
											MAX		MIN						TOTAL	MAX DEPTH ON GROUND	DATE	.10 OR MORE	.50 OR MORE	1.00 OR MORE
											>=90	<=32	<=32	<=0										
EMMITSBURG 2 SE	84.5	64.2	74.4	1.1	95	12+	53	28+	0	297	7	0	0	0	5.34	1.74	3.33	13	.0	0		4	2	2
FREDERICK 2 NNE	87.3	66.6	77.0		97	12+	57	28+	0	377	11	0	0	0	3.78		2.10	12	.0	0		6	2	1
MILLERS 4 NE	84.2	63.8	74.0	1.5	93	10	51	27	0	284	6	0	0	0	4.93	1.22	3.29	12	.0	0		6	2	1
SMITHSBURG 2NW	84.5	61.7	73.1		94	10	50	27	0	262	9	0	0	0	1.35		.75	13	.0	0		5	1	0
--DIVISIONAL DATA-----> APPALACHIAN MOUNTAIN 07			75.2	1.7											4.06	.22			.0					
CUMBERLAND 2	90.2	64.5	77.4	4.5	99	31+	53	28	0	389	19	0	0	0	2.21	-1.32	1.04	1	.0	0		4	2	1
FROSTBURG 2	79.9	59.1	69.5	2.3	90	30	49	27	12	159	1	0	0	0	1.78	-2.04	.47	5	.0	0		5	0	0
SHARPSBURG 5 S	87.5	63.0	75.3		98	12	51	28+	0	325	12	0	0	0	M 1.29				.0	0		1	0	0
WILLIAMSPORT	88.3	64.1	76.2		99	12	54	28+	0	355	15	0	0	0	1.41		.57	12	.0	0		3	1	0
--DIVISIONAL DATA-----> ALLEGHENY PLATEAU 08			74.6	3.4											1.80	-1.65			.0					
OAKLAND 1 SE	79.5	57.1	68.3	1.2	88	31+	45	29+	20	129	0	0	0	0	2.18	-1.97	.45	12	.0	0		7	0	0
SAVAGE RIVER DAM	81.5	60.3	70.9	2.6	91	31+	50	29+	3	195	4	0	0	0	1.23	-2.14	.38	22	.0	0		4	0	0
--DIVISIONAL DATA-----> DELAWARE NORTHERN 01			69.6	2.5											1.71	-2.20			.0					
BEAR 2 SW	86.5	66.0	76.3		97	31	52	27	0	358	11	0	0	0	1.65		.67	12	.0	0		4	1	0
WILMINGTON NEW CASTLE R	86.2	67.8	77.0	2.0	97	31	55	28	0	378	9	0	0	0	1.34	-2.17	.43	12	.0	0		5	0	0
WILMINGTON PORTER RES	84.1	69.2	76.7	2.9	93	31	59	27	0	365	5	0	0	0	1.61	-2.44	.62	12	.0	0		4	1	0
--DIVISIONAL DATA-----> SOUTHERN 02			76.7	2.2											1.53	-2.19			.0					
DOVER	86.8	68.8	77.8	1.6	95	12	59	28	0	405	10	0	0	0	4.03	-.70	2.06	18	.0	0		6	2	1
GREENWOOD 2NE	M	M	M																M	M				
LEWES	M	M	M																M	M				
--DIVISIONAL DATA----->			77.8	3.0											4.03	-.86			.0					

DAILY PRECIPITATION (INCHES)

STATION	TOTAL	DAY OF MONTH																															
		01	02	03	04	05	06	07	08	09	10	11	12	13	14	15	16	17	18	19	20	21	22	23	24	25	26	27	28	29	30	31	
MARYLAND																																	
SOUTHERN EASTERN																																	
SHORE 01																																	
ASSATEAGUE	5.54	.07			.93							.69	.39						1.82				1.47	.17									
PRINCESS ANNE	5.18				1.62						.03	2.32							1.15	.06													
SALISBURY	6.30	.08		.02		.60					.02	2.25							3.09	.10				.12	.02								
SALISBURY FAA AP	5.01	.01		T	.58				T		T	1.22							3.08				.12	T	T								
SNOW HILL 4 N	3.52	.09				1.27	.12					.90							.96	.10			.05	T	.03								
CENTRAL EASTERN																																	
SHORE 02																																	
ROYAL OAK 2 SSW	M	-	-	-	-	-	-	-	-	-	-	-	-	-	-	-	-	-	-	-	-	-	-	-	-	-	-	-	-	-	-	-	-
VIENNA	M	-	-	-	-	-	-	-	-	-	-	-	-	-	-	-	-	-	-	-	-	-	-	-	-	-	-	-	-	-	-	-	-
LOWER SOUTHERN 03																																	
MECHANICSVILLE 5 NE	5.61	.04	T	T	.02	T	.06						2.64			1.42		.65	.52				.18	.06	.02								
SOLOMONS	3.69	.08	.01	.18	.63		.23						.82			.12		1.07	.26	T			.28		.01								
UPPER SOUTHERN 04																																	
BALTIMORE WASH INTL AP R	4.74	.01	T		.59	.02						2.36	.13		.35		.89				T	.30	.09	T									
BELTSVILLE	6.65	.06	.01	.34	.07	.07						1.59	.65		T	.33	2.31	1.15				.02		.05									
DALECARLIA RSVR	7.06		.09	.42		1.10						1.27	1.25		.18		2.25	.45				.04	.01										
LAUREL 3 W	6.45		.02	.03	.64	.14						1.20	1.07		.21		2.24					.10	.76	.04									
MD SCI CTR BALTIMORE R	4.41		.01	.28								2.16	.03		.77		.95					.21											
NATL ARBORETUM DC	6.13	.07	.03	.03	.35		.69					1.50	.66		T	.18	2.00	.56				T	.06	T									
OXON HILL	4.39	.10	.06	T	.01	1.01							1.90	T		.18	.16	.60				T	.31	.06									
UPPER MARLBORO 3 NNW	5.61		.07	.03		.29							3.33			.15	.04	.74					.53	.38	.05								
NORTHERN EASTERN																																	
SHORE 05																																	
CHESTERTOWN	5.20			.50	T							2.37			.55		1.02					.76											
NORTHERN CENTRAL 06																																	
ABERDEEN PHILLIPS FLD	5.44	.02		T	.10	.34	.05						2.67			.74	.09	.17					1.26										
BRIGHTON DAM	6.65			.45	.50							1.70	1.10		.67		.90					.28	.02	1.03									
CATOCTIN MTN PARK	M	-	-	-	-	-	-	-	-	-	-	-	-	-	-	-	-	-	-	-	-	-	-	-	-	-	-	-	-	-	-	-	
CONOWINGO DAM	1.86				.09	.11							1.12	.09		.21		.03					.21										
CYLBURN	3.46		*	.05	.06	.07						1.33	.93		.02	*	.47	.20	.28				.05										
DAMASCUS 3 SSW	6.34	T		T	.20	.40						3.90	.35		.48		.92					T	.09	T									
EMMITSBURG 2 SE	5.34			.02	.38							1.25	3.33				.07	.05				.13	.05	.05	.01								
FREDERICK 2 NNE	3.78			.16								2.10	.93			.05	.05	.14				.22	.02	.11									
MILLERS 4 NE	4.93	T	.01	T	.96							3.29	.16	T	.12	.02	.19	.04	T			.13	T	.01									
POTOMAC FLTR PLT	2.78		.20	.03	.03							1.03	.90		.06	.27						.12	.07	.07									
SMITHSBURG 2NW	1.35												.75	.10								.25											
APPALACHIAN																																	

DAILY PRECIPITATION (INCHES)

STATION	TOTAL	DAY OF MONTH																															
		01	02	03	04	05	06	07	08	09	10	11	12	13	14	15	16	17	18	19	20	21	22	23	24	25	26	27	28	29	30	31	
MOUNTAIN 07																																	
CUMBERLAND 2	2.21	1.04			.03	.13								.01		.02				.03			.60		.35								
FROSTBURG 2	1.78	.05		.05	.47	.01							.02	.11		.06			.03			.40	.12	.37	.09								
SHARPSBURG 5 S	M 1.29			.03	.04	.01				*	*	*	*	*	*	1.06		.10				.03	.02	-	-								
WILLIAMSPORT	1.41			.03								.57	.38	.20		.04	.02		.05			.03		.08	.01								
ALLEGHENY PLATEAU 08																																	
OAKLAND 1 SE	2.18	.34		.05	.31	.04						.45				.10						.40	.11	.35		.03							
SAVAGE RIVER DAM	1.23	T		T	.35							T		.03	T	.12			T			.38	.05	.26	.04								
DELAWARE																																	
NORTHERN 01																																	
BEAR 2 SW	1.65			.04	.01	T						.67	.02		.30			.26				.35		T									
WILMINGTON NEW CASTLE R	1.34	T		.36		.07						.43	T		.20			.14			T	.13	T	.01									
WILMINGTON PORTER RES	1.61			.15	.04							.62			.36			.08				.36	T										
SOUTHERN 02																																	
DOVER	4.03			.23								.94	.12			.14		2.06	.04			.49		.01									
GREENWOOD 2NE	M	-	-	-	-	-	-	-	-	-	-	-	-	-	-	-	-	-	-	-	-	-	-	-	-	-	-	-	-	-	-	-	-
LEWES	M	-	-	-	-	-	-	-	-	-	-	-	-	-	-	-	-	-	-	-	-	-	-	-	-	-	-	-	-	-	-	-	-

DAILY TEMPERATURES (°F)

STATION	OB. TIME	MAX/MIN	DAY OF MONTH																															AVERAGE		
			01	02	03	04	05	06	07	08	09	10	11	12	13	14	15	16	17	18	19	20	21	22	23	24	25	26	27	28	29	30	31			
OXON HILL	08	MAX MIN	86 66	80 67	82 69	86 73	93 73	96 72	91 66	89 65	91 70	94 72	97 73	97 76	88 72	79 65	84 65	79 71	94 71	92 71	75 68	89 69	92 71	89 74	88 72	86 66	74 66	82 66	86 61	84 64	87 65	92 67	95 66	87.6		
UPPER MARLBORO 3 NNW	08	MAX MIN	87 67	81 68	80 69	88 73	93 72	96 70	88 62	90 63	88 69	93 74	98 74	95 72	86 71	79 64	83 68	78 71	92 72	93 69	72 68	87 69	91 72	88 72	88 68	84 65	73 61	82 65	85 58	83 62	84 62	92 65	93 63	86.8		
NORTHERN EASTERN SHORE 05																																				
CHESTERTOWN	23	MAX OBS MIN	83 68	86 68	86 70	88 74	92 73	88 73	86 65	88 68	91 70	96 75	93 76	85 70	76 71	80 64	76 68	88 72	89 74	75 66	85 68	88 70	87 67	85 73	82 70	71 63	77 65	83 65	71 59	82 61	89 61	91 61	93 67	84.8		
NORTHERN CENTRAL 06																																				
ABERDEEN PHILLIPS FLD	07	MAX MIN	84 64	82 68	81 70	86 74	90 72	92 72	90 63	84 64	89 66	92 70	94 75	95 75	85 74	77 73	76 69	74 69	90 74	91 69	76 69	86 69	90 68	86 69	83 70	84 65	74 65	79 65	83 58	79 59	82 59	88 60	92 67	85.0		
CATOCTIN MTN PARK	17	MAX MIN																																		M M
CONOWINGO DAM	07	MAX MIN	87 64	85 65	82 70	88 74	92 71	92 71	89 63	90 64	92 65	93 69	96 73	97 74	87 72	76 64	83 72	83 74	91 71	93 72	78 67	88 65	94 64	88 74	86 66	86 65	75 67	80 62	87 60	85 58	89 60	94 62	95 65	87.8		
CYLBURN	08	MAX MIN	80 64	80 67	77 69	83 72	87 70	86 72	84 61	82 64	86 70	89 72	91 72	87 69	82 68	74 63	77 65	74 70	88 71	83 66	70 60	81 66	83 67	84 71	82 68	77 63	69 62	74 63	78 57	77 59	80 60	87 65	86 63	81.2		
DAMASCUS 3 SSW	22	MAX MIN OBS	80 65	80 65	82 69	91 73	89 68	87 64	86 60	88 64	91 70	95 73	94 73	84 70	73 68	79 65	90 70	86 70	86 70	75 65	85 66	88 65	87 70	85 71	80 67	69 52	78 62	82 62	80 56	84 62	90 63	90 67	93 64	84.4		
EMMITSBURG 2 SE	07	MAX MIN	84 64	83 63	80 64	85 72	93 71	90 61	90 61	85 62	88 66	93 66	95 70	95 71	87 65	76 65	77 68	76 71	89 68	86 69	77 63	83 63	88 64	86 68	83 67	79 63	72 62	77 62	81 53	79 53	82 57	88 59	91 60	84.5		
FREDERICK 2 NNE	07	MAX MIN	88 65	84 65	82 67	87 73	95 74	94 72	89 63	89 64	90 65	95 70	97 74	97 71	88 70	78 67	79 68	78 72	93 71	91 69	74 66	88 66	91 66	89 70	87 69	82 63	74 64	82 65	85 57	85 57	87 58	94 60	93 63	87.3		
MILLERS 4 NE	18	MAX MIN	81 66	78 61	84 67	91 71	90 66	84 70	83 58	86 60	90 67	93 69	91 71	88 68	75 65	78 62	74 65	88 69	86 67	83 67	85 61	86 63	86 70	85 62	82 62	73 59	77 61	80 60	79 51	83 54	89 58	89 63	92 62	84.2		
SMITHSBURG 2NW	08	MAX OBS MIN OBS	87 90 57	79 90 58	85 86 56	86 86 65	92 91 68	91 90 69	90 81 55	88 88 64	94 93 56	93 93 67	90 93 71	83 95 69	74 95 67	77 95 66	80 90 65	89 89 63	90 90 63	80 80 61	82 85 60	85 80 63	80 89 71	89 88 61	89 89 61	87 78 61	72 76 61	76 81 50	81 82 51	85 85 54	90 90 57	92 92 61	84.5			
APPALACHIAN MOUNTAIN 07																																				
CUMBERLAND 2	18	MAX MIN	84 66	85 63	83 65	93 71	90 67	86 70	89 57	90 60	97 63	97 68	99 71	95 71	90 70	78 69	96 71	96 69	95 64	94 67	91 61	96 62	95 70	87 65	85 63	72 62	82 63	84 54	86 53	90 56	96 62	97 61	99 61	90.2		
FROSTBURG 2	07	MAX MIN	80 58	75 58	78 61	76 61	85 64	79 66	77 55	79 55	84 57	89 60	87 65	89 66	84 62	66 62	67 66	85 58	87 58	85 55	69 55	83 60	87 62	87 64	74 59	72 57	65 49	74 50	75 51	78 51	83 56	90 56	88 60	79.9		
SHARPSBURG 5 S	07	MAX MIN	87 59	82 66	84 68	85 69	94 67	94 67	89 56	88 56	91 61	96 66	97 68	98 68	90 69	75 68	78 68	83 68	92 66	90 67	75 65	88 62	93 66	89 63	87 63	84 60	73 60	81 51	86 55	84 51	87 55	95 56	96 58	87.5		
WILLIAMSPORT	06	MAX MIN	88 60	85 67	82 67	88 67	96 70	93 69	89 60	93 59	90 60	96 59	98 70	99 70	90 68	74 68	77 67	85 70	92 66	92 65	81 62	90 66	95 64	90 69	87 65	83 64	73 64	83 64	86 54	85 54	89 55	96 57	96 57	88.3		
ALLEGHENY PLATEAU 08																																				

DAILY TEMPERATURES (°F)

STATION	OB. TIME	MAX/MIN	DAY OF MONTH																															AVERAGE	
			01	02	03	04	05	06	07	08	09	10	11	12	13	14	15	16	17	18	19	20	21	22	23	24	25	26	27	28	29	30	31		
OAKLAND 1 SE	07	MAX	78	72	77	78	83	76	77	79	83	87	87	88	81	75	75	84	84	83	68	84	87	86	77	71	63	71	76	78	81	87	88	79.5	
		OBS MIN	58	56	59	62	66	66	51	53	55	56	60	63	65	64	65	65	57	52	52	83	52	57	58	62	60	58	57	47	45	45	52	52	57.1
SAVAGE RIVER DAM	08	MAX	80	75	79	82	86	80	81	82	84	84	88	91	85	70	70	86	88	86	70	86	90	90	78	75	66	76	78	79	83	89	91	81.5	
		OBS MIN	60	60	62	64	65	67	55	55	58	58	66	68	68	66	66	67	59	59	58	90	58	60	62	62	62	60	61	51	50	50	55	58	60.3
DELAWARE NORTHERN 01																																			
BEAR 2 SW M	MID	MAX	83	81	86	89	92	88	87	90	93	96	95	85	79	82	77	90	91	76	86	91	87	84	84	74	77	85	82	86	94	95	97	86.5	
		MIN	66	62	70	75	73	69	60	64	66	72	72	73	70	67	67	72	72	68	69	65	63	69	68	63	63	60	52	53	57	64	63	66.0	
WILMINGTON NEW CASTLE M	MID	MAX	83	82	85	89	90	86	85	88	89	96	95	86	81	80	78	90	90	76	87	92	86	84	85	72	77	85	82	86	95	94	97	86.2	
		MIN	70	64	71	76	74	69	62	70	71	74	74	71	70	68	70	73	73	70	66	67	66	70	66	63	65	63	56	55	59	66	69	67.8	
WILMINGTON PORTER RES M	MID	MAX	82	84	85	89	87	84	86	87	85	92	92	82	79	82	76	90	88	76	86	88	85	82	81	70	75	81	78	82	90	89	93	84.1	
		OBS MIN	66	66	70	75	77	72	68	67	75	74	78	70	69	68	68	73	74	68	67	71	69	71	65	62	62	66	59	61	66	72	75	69.2	
SOUTHERN 02																																			
DOVER	16	MAX	84	82	83	87	91	91	89	87	88	92	94	95	83	79	79	92	92	91	86	89	89	85	86	82	75	83	83	83	89	90	93	86.8	
		MIN	64	65	69	76	75	75	64	69	72	75	77	77	73	65	68	73	77	65	68	71	66	73	65	63	63	64	60	59	62	69	70	68.8	
GREENWOOD 2NE	07	MAX																																M	
LEWES	17	MIN																																M	
		MAX																																	M
		MIN																																M	

PAN EVAPORATION AND WIND

STATION		DAY OF MONTH																															TOTAL OR AVERAGE
		01	02	03	04	05	06	07	08	09	10	11	12	13	14	15	16	17	18	19	20	21	22	23	24	25	26	27	28	29	30	31	
MARYLAND UPPER SOUTHERN 04 BELTSVILLE	WIND	47	36	56	56	54	40	58	28	41	43	38	44	40	43	42	29	33	24	17	*	*	129	68	39	29	39	17	*	29	30	1189	
	EVAP	23	16	15	6	32	11	28	27	22	25	26	62	10	13	17	2	16	33	8	17	*	*	59	23	11	13	23	18	*	34	23	6.13
	MAX	92	86	88	90	98	98	94	96	98	101	103	101	97	85	91	83	101	103	81	100	-	-	102	97	84	92	97	98	-	106	103	95.2
	MIN	73	74	74	78	78	77	70	72	73	79	79	82	79	73	74	78	80	78	77	77	-	-	80	76	72	73	73	73	-	75	76	75.8
UPPER MARLBORO 3 NNW	WIND	-	-	-	-	-	-	-	-	-	-	-	-	-	-	-	-	-	-	-	-	-	-	-	-	-	-	-	-	-	-	-	M
	EVAP	-	-	12	15	24	18	*	*	60	33	21	-	-	*	*	40	19	*	27	19	*	*	52	18	9	11	19	*	*	51	23	5.41
	MAX	95	90	86	94	97	100	94	98	97	99	105	99	95	82	94	80	100	101	75	98	100	95	93	92	78	87	94	93	94	100	99	93.7
	MIN	67	69	70	71	73	71	67	67	67	71	73	75	74	66	67	71	72	74	72	72	73	74	73	70	66	67	66	66	68	68	69	70.0

Evaporation: Is measured in hundredths of inches.

Wind: Is measured in miles.

Max and Min: The maximum and minimum temperatures (Fahreheit) of the water in the evaporation pan.

STATION INDEX

STATION	INDEX NO.	DIVISION	COUNTY	LATITUDE	LONGITUDE	ELEVATION (IN FEET)	OBSERVATION TIME AND TABLES				OBSERVER	
							LOCAL STD TIME					
							TEMP	PRECIP	EVAP	SPECIAL SEE (NOTES)		
MARYLAND												
ABERDEEN PHILLIPS FLD	0015	06	HARFORD	39 28	76 10W	57	07	07			C H	US ARMY ABERDEEN TST CTR
ASSATEAGUE	0335	01	WORCESTER	38 4	75 13W	10	MID	MID			H	ASSATEAGUE IS NATL SEA
BALTIMORE WASH INTL AP R	0465	04	ANNE ARUNDEL	39 10	76 41W	156	MID	MID			C HJ	ASOS - FAA
BELTSVILLE	0700	04	PRINCE GEORG	39 2	76 56W	145	08	08	08		C H	USDA AG RESEARCH SVC
BRIGHTON DAM	1125	06	MONTGOMERY	39 11	77 0W	330		07			H	WA SUBURB SANIT COMM
CATOCTIN MTN PARK	1530	06	FREDERICK	39 39	77 29W	1610	17	17			H	CATOCTIN MOUNTAIN PK
CHESTERTOWN	1750	05	KENT	39 13	76 3W	40	23	23			H	THOMAS W ELIASON JR
CONOWINGO DAM	2060	06	HARFORD	39 39	76 11W	40	07	07			H	SUSQUEHANNA ELECTRIC CO
CUMBERLAND 2	2282	07	ALLEGANY	39 39	78 45W	730	18	18			H	TIMOTHY B THOMAS
CYLBURN	2308	06	BALTIMORE	39 22	76 38W	400	08	08			H	CYLBURN ARBORETUM
DALECARLIA RSVR	2325	04	PRINCE GEORG	38 56	77 7W	150	08	08			H	USA CORPS OF ENGINEERS
DAMASCUS 3 SSW	2336	06	MONTGOMERY	39 16	77 14W	697	22	22			H	ROBERT J LEFFLER
EMMITSBURG 2 SE	2906	06	FREDERICK	39 41	77 17W	403	07	07			H	ERIC E GLASS
FREDERICK 2 NNE	3353	06	FREDERICK	39 26	77 24W	280	07	07			H	DIR PUBLIC WORK WTP
FROSTBURG 2	3415	07	ALLEGANY	39 40	78 56W	2170	07	07			H	GREGORY P LATTA
LAUREL 3 W	5111	04	PRINCE GEORG	39 5	76 54W	400	MID	07			H	WA SUBURBAN SANITARY COM
MD SCI CTR BALTIMORE R	5718	04	BALTIMORE (C	39 17	76 37W	20	MID	MID			C H	ASOS - NWS
MECHANICVILLE 5 NE	5865	03	ST. MARY'S	38 28	76 42W	100	07	07			H	SANDRA J HASTINGS
MILLERS 4 NE	5934	06	CARROLL	39 43	76 48W	860	18	18			C H	ROBERT MILLER
NATL ARBORETUM DC	6350	04	PRINCE GEORG	38 55	76 58W	50	07	07			H	US NATIONAL ARBORETUM
OAKLAND 1 SE	6620	08	GARRETT	39 25	79 24W	2420	07	07			H	GARRETT CO MEM HOSPITAL
OXON HILL	6800	04	PRINCE GEORG	38 48	77 0W	120	08	08			H	BRIAN SMITH
POTOMAC FLTR PLT	7272	06	MONTGOMERY	39 2	77 15W	270		08			H	POTOMAC WATER FILT PLANT
PRINCESS ANNE	7330	01	SOMERSET	38 13	75 41W	20	17	17			H	UNIV OF MD EASTERN SHORE
ROYAL OAK 2 SSW	7806	02	TALBOT	38 43	76 11W	10	18	18			H	JOHN L SWAINE JR
SALISBURY	8000	01	WICOMICO	38 22	75 35W	10	16	16			H	CITY OF SALISBURY
SALISBURY FAA AP	8005	01	WICOMICO	38 20	75 31W	48	MID	MID			H	FAA
SAVAGE RIVER DAM	8065	08	GARRETT	39 31	79 8W	1495	08	08	08		C H	USA CORPS OF ENGINEERS
SHARPSBURG 5 S	8207	07	WASHINGTON	39 24	77 43W	500	07	07			H	DAVID DOWNIN
SMITHSBURG 2NW	8371	06	WASHINGTON	39 40	77 35W	670	08	08			H	SMITHSBURG WWTP
SNOW HILL 4 N	8380	01	WORCESTER	38 14	75 23W	30	17	17			H	CURTIS E SHOCKLEY
SOLOMONS	8405	03	CALVERT	38 19	76 27W	12	08	08			H	CHESAPEAKE BIOLOGIC LAB
UPPER MARLBORO 3 NNW	9070	04	PRINCE GEORG	38 52	76 47W	100	08	08	08		H	UNIVERSITY OF MARYLAND
VIENNA	9140	02	DORCHESTER	38 29	75 49W	10	18	18			H	DELMARVA POWER AND LIGHT
WILLIAMSPORT	9570	07	WASHINGTON	39 36	77 50W	360	06	06			H	R C WILSON TREATMENT PLT
DELAWARE												
BEAR 2 SW	1200	01	NEW CASTLE	39 36	75 44W	80	MID	MID			H	R GARY GALLAHER
DOVER	2730	02	KENT	39 16	75 31W	30	16	16			H	DEPT OF TRANSPORTATION
GREENWOOD 2NE	3595	02	SUSSEX	38 49	75 35W	45	07	07			H	CONNIE HOLMBERG
LEWES	5320	02	SUSSEX	38 47	75 8W	15	17	17			H	LEWES POWER PLANT
WILMINGTON NEW CASTLE R	9595	01	NEW CASTLE	39 40	75 36W	79	MID	MID			C HJ	ASOS - FAA
WILMINGTON PORTER RES	9605	01	NEW CASTLE	39 46	75 32W	270	MID	MID			H	WILMINGTON WATER DEPT

REFERENCE NOTES

DEFINITIONS

STATION NAMES: Name of the city, town or locality. Figures and letters following the station names indicate the distance in miles and direction from the post office or town community center.

DIVISIONS: Areas within a state of similar climatological characteristics. Division averages are calculated using data from stations that record both temperature and precipitation (i.e. not precipitation alone).

NORMALS: The average value of the meteorological element over a time period. Effective 1 January 2002, the averaging period is 1971 to 2000. The normals for National Weather Service localities have been adjusted so as to be representative for the current observation site.

MONTHLY DEGREE DAY TOTALS: One heating (cooling) degree day is accumulated for each whole degree that the daily mean temperature is below (above) 65 degrees Fahrenheit.

PRECIPITATION: Values shown in hundredths of inches are water equivalent totals, i.e., total of liquid and melted frozen precipitation. In the "Monthly Summarized Data" table the total snow and sleet values shown in tenths of inches are unmelted amounts. The max depth on ground values of snow and sleet shown in whole inches are cumulative unmelted amounts. The number of days with .10, .50, 1.00 or more refers to water equivalents.

PRECIPITATION QUALITY CONTROL: The NCDC quality control process may delete precipitation data that are spatially inconsistent; exceed climatological limits, or are inconsistent with prevailing weather patterns.

TEMPERATURE: Original and edited temperature values are given in the "Daily Temperature" table. Edited values are produced when an original value is missing or when surrounding stations indicated a suspect original value. When a line labeled OBS is present and contains either a daily temperature (suspect) or *** (missing), the temperature appearing directly above, on the line labeled MAX or MIN, is an edited value. Summary temperature information (averages, departures, extremes, monthly degree day totals) is based on the values labeled MAX/MIN.

WIND: (As shown in the "Evaporation and Wind" table) the total wind movement in miles over the evaporation pan as determined by an anemometer recorder located 6-8 inches above the pan.

SYMBOLS AND LETTERS USED IN THE STATION INDEX TABLE

Thermometers located in a rooftop shelter.
// Rain gage equipped with a windshield
AR Observation made "after rain" has occurred.
C Station is equipped with recording rain gage (R) but values in this bulletin are from a non-recording rain gage unless indicated by an R.
G Observations appear in the "Soil Temperatures" table.
H Observations appear in the "Snowfall and Snow on the Ground" table.
J Station also published as a Local Climatological Data publication.
MID Observation time is midnight.
MO Rain gage read once monthly, usually the last day.
OC Rain gage readings vary from a few weeks to several months.
R Amounts from recording rain gage.
SR Observation time near sunrise.

SS Observation time near sunset.
VAR Observation time varies.
WI Rain gage read weekly or irregularly.
WM Rain gage read weekly and last day of the month.

SYMBOLS AND LETTERS USED IN THE DATA TABLES

(DAILY DATA ARE FOR THE 24 HOURS IMMEDIATELY PRECEDING OBSERVATION TIME.)

BLANK Entries in the "Monthly Summarized Data" table indicate no record.

BLANK Entries in the "Daily Precipitation" and "Snowfall and Snow on the Ground" tables indicate zero.

BLANK Entries in the "Daily Temperature" table indicate a missing record where an edited value could not be determined. (See *** below)

- No record. Data not recorded, determined unreliable by quality control check, or not received in time for publication.

+ Precipitation or temperature extremes occurred on one or more previous dates during the month.

*** Missing original temperature which has been estimated during edit.

* Rain gage not read. Precipitation is included in the amount following the asterisks. Time distribution not known. A * preceding the monthly total indicates precipitation amount is being carried forward to next months total, and may include amounts from the previous month(s).
// Rain gage equipped with a windshield.

A Amount of precipitation is the total of observer's entries for the current month. It may include precipitation that occurred during the previous month. Refer to earlier bulletin to determine date of last reading. (Hawaii stations)

B Adjusted monthly value (estimated), (1-7 missing values for wind and evaporation).

M Insufficient or partial data. M is appended to average and/or total values computed with 1-9 daily values missing. M appears alone if 10 or more daily values are missing, (8 or more for wind and evaporation).

R Amounts from recording rain gage.

T Trace. An amount too small to measure.

V Includes total for previous month(s). (See * above)

SEASONAL TABLES: Monthly and seasonal snowfall and heating degree days for the 12 months ending with the June data are published in the July issue of this bulletin. Cooling degree days for the calendar year are published in the "Climatological Data Annual Summary."

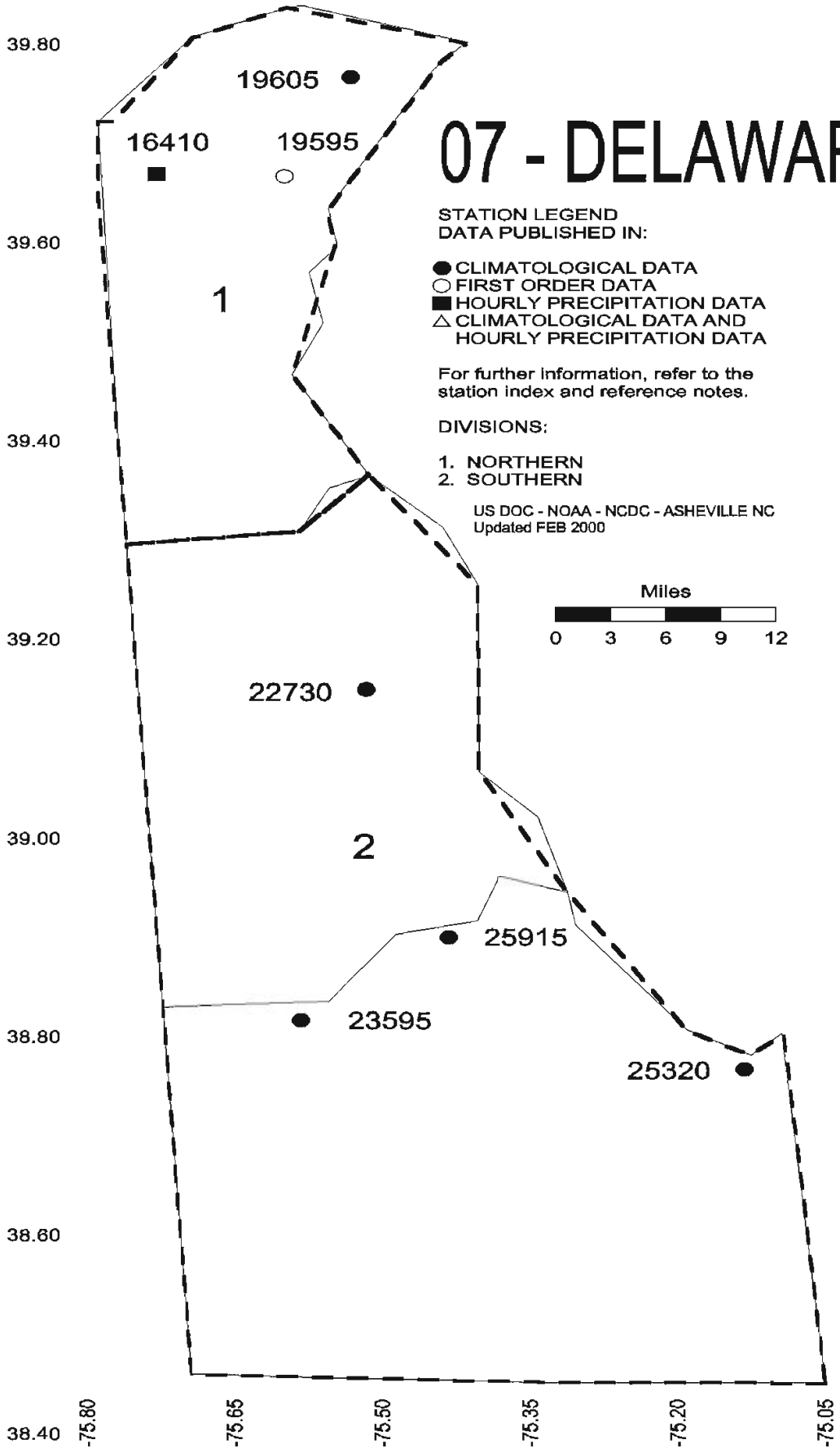
Information concerning the history of changes in locations, exposure, etc. of substations is kept on file at the National Climatic Data Center. Historical information of regular National Weather Service Offices may be obtained from the "Local Climatological Data" annual publication. The contents of this publication may be reprinted or otherwise used freely, with proper credit to the National Climatic Data Center. The data are also available in digital form on magnetic tape and diskette.

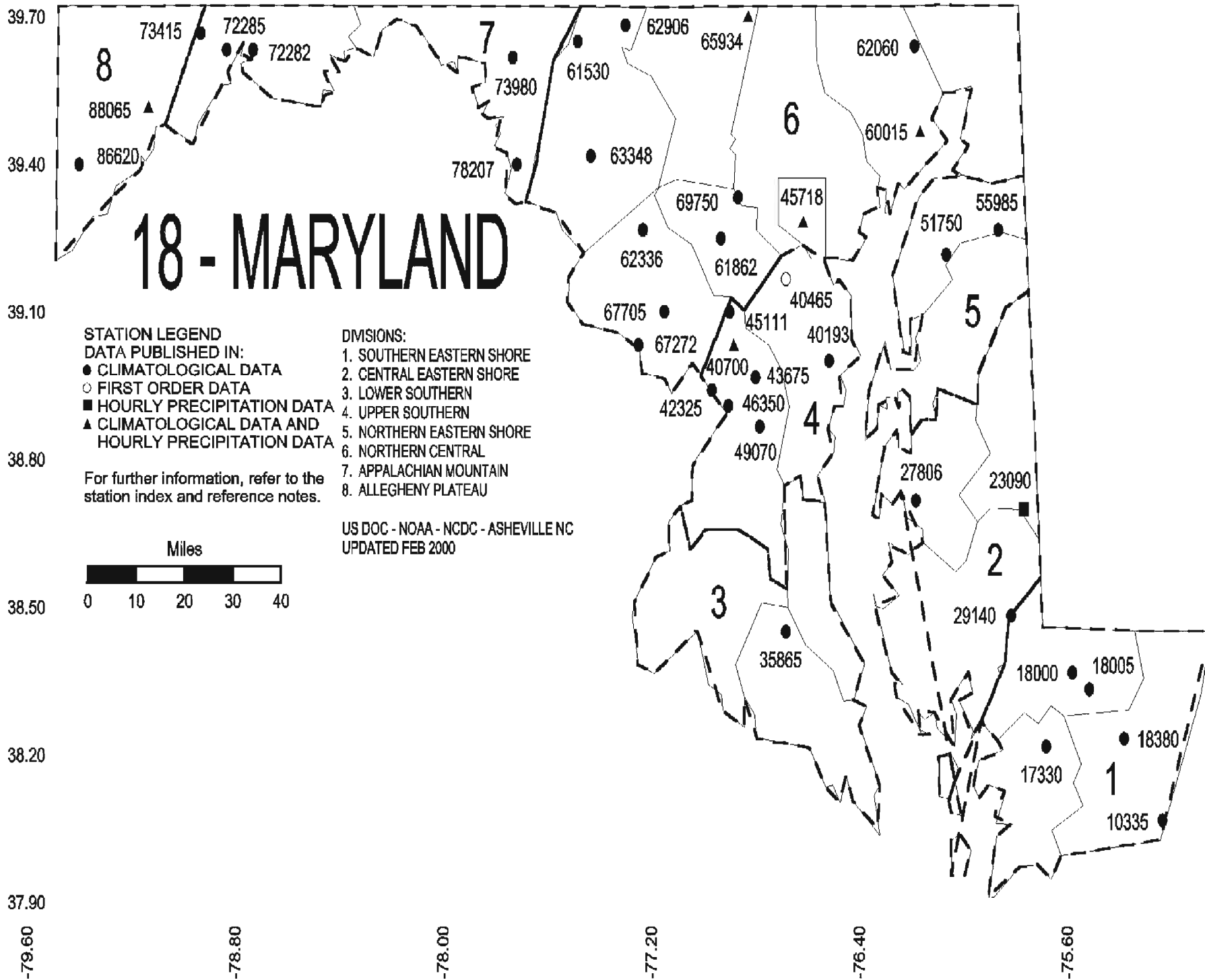
SUBSCRIPTION, PRICE, AND ORDERING INFORMATION AVAILABLE FROM:

NCDC Subscription Services Center
310 State Route 956
Building 300
Rocket Center, WV 26726

Toll free number: (866) 742-3322
Fax number: (304) 726-4409

07 - DELAWARE





These and other publications are available from the National Climatic Data Center

Hourly Precipitation Data

This publication contains hourly precipitation amounts obtained from recording rain gages located at National Weather Service, Federal Aviation Administration, and cooperative observer stations. Published data are displayed in inches and tenths or inches and hundredths at local standard time. HPD includes maximum precipitation for nine (9) time periods from 15 minutes to 24 hours, for selected stations.

Climatological Data

Monthly editions contain station daily maximum and minimum temperatures and precipitation. Some Stations provide daily snowfall, snow depth, evaporation, and soil temperature data. Each edition also contains monthly summaries for heating and cooling degree days (65 degree F base). The July issue contains a recap of monthly heating degree days and snow data for the preceding July through June.

The Annual issue contains monthly and annual averages of temperature, precipitation, temperature extremes, freeze data, soil temperatures, evaporation, and a recap of monthly cooling degree days.

Storm Data

Monthly issues contain a chronological listing, by states, of occurrences of storms and unusual weather phenomena. Reports contain information on storm paths, deaths, injuries, and property damage. An "Outstanding storms of the month" section highlights severe weather events with photographs, illustrations, and narratives. The December issue includes annual tornado, lightning, flash flood, and tropical cyclone summaries.

Monthly Climatic Data for the World

This publication contains monthly means for temperature, pressure, precipitation, vapor pressure, and sunshine for approximately 2,000 surface data collection stations worldwide and monthly mean upper air temperatures, dew point depressions, and wind velocities for approximately 500 observing sites.

Local Climatological Data

LCD publications summarize temperature, relative humidity, precipitation, cloudiness, wind speed and direction observations for several hundred cities in the U.S. and its territories. Each monthly publication also contains 3 hourly weather observations for that month and a hourly summary of precipitation. Annual LCD publications contain a summary of the past calendar year as well as historical averages and extremes.

For Information Call:

(866) 742-3322 (Toll free)

(828) 271-4010 (TDD)

(304) 726-4409 (Fax)

Subscription Service Center
310 State Route 956
Building 300
Rocket Center, WV 26726

PRSRT STD
POSTAGE & FEES PAID
United States Department of Commerce
NOAA Permit No. G-19

OFFICIAL BUSINESS
PENALTY FOR PRIVATE USE \$300
ADDRESS CORRECTION REQUESTED

To change your address, please return a copy of the mailing label along with your new address to:

NCDC Subscription Services Center
310 State Route 956
Building 300
Rocket Center, WV 26726

Toll free number : (866) 742-3322
TDD : (828) 271-4010
Fax number : (304) 726-4409

NCDC now offers an annual online subscription for the *Climatological Data* publication. When you purchase this subscription service, you will have **immediate online access** to all previous publications back to October 1997 and all publications thereafter until the expiration of the subscription. Your subscription is valid for one year after purchase. **The total cost is \$36 for online delivery (including back issues) compared to \$52 for offline delivery.** To order this and other subscriptions online with your credit card, go to: www.ncdc.noaa.gov/mpp.html and choose subscription.