



ISSN 0145-0549

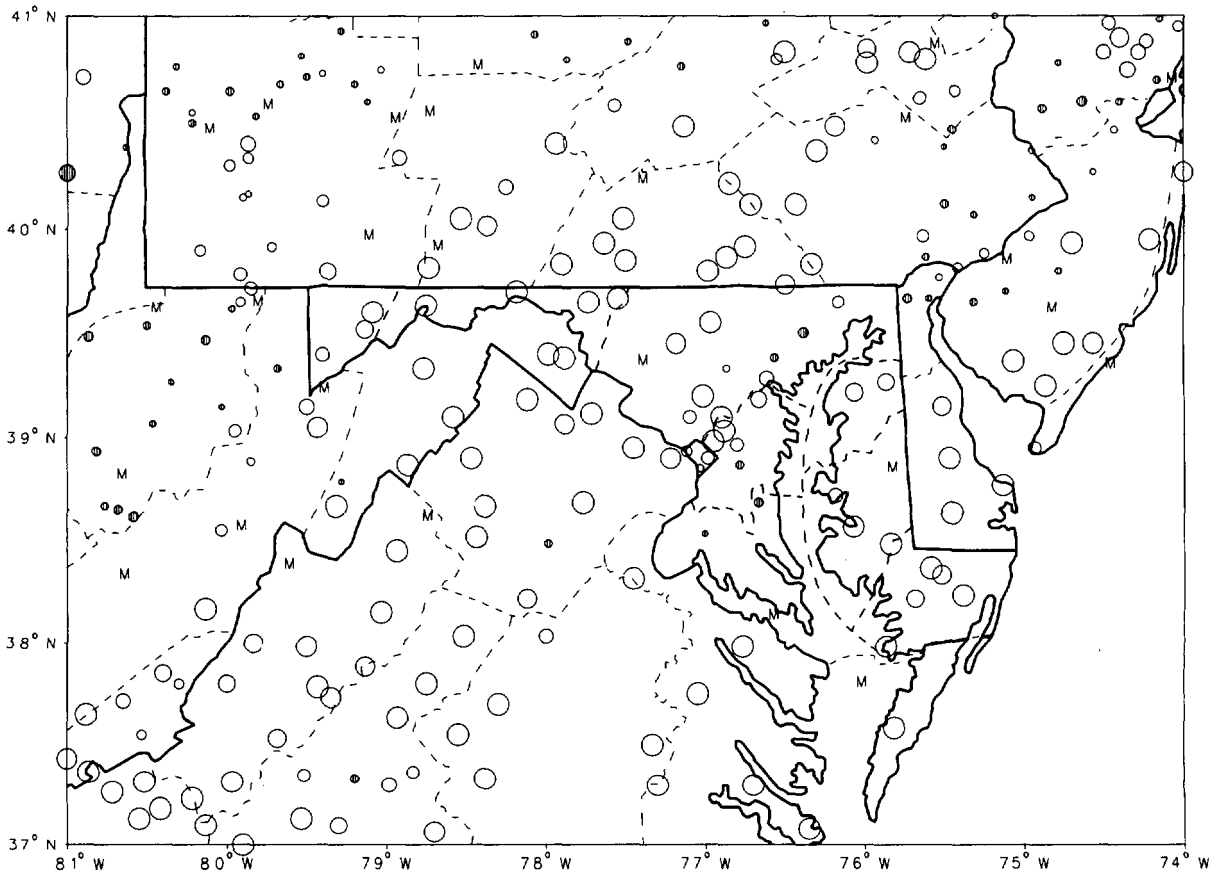
CLIMATOLOGICAL DATA MARYLAND AND DELAWARE

JUNE 1990

VOLUME 94 NUMBER 6

MONTHLY PRECIPITATION DEPARTURE FROM INDIVIDUAL STATION NORMALS (1951-1980)

- M INCOMPLETE DATA FOR THE MONTH
- ∇ EXACTLY NORMAL
- ○ ○ ○ ○ 5, 10, 20, ... 50% OR MORE BELOW NORMAL
- ● ● ● ● 10, 20, 40, ... 100% OR MORE ABOVE NORMAL



CIRCLE DIAMETER IS PROPORTIONAL TO DEPARTURE ON A CONTINUOUS SCALE

"I CERTIFY THAT THIS IS AN OFFICIAL PUBLICATION OF THE NATIONAL OCEANIC AND ATMOSPHERIC ADMINISTRATION (NOAA). IT IS COMPILED USING INFORMATION FROM WEATHER OBSERVING SITES SUPERVISED BY NOAA/NATIONAL WEATHER SERVICE AND RECEIVED AT THE NATIONAL CLIMATIC DATA CENTER (NCDC), ASHEVILLE, NORTH CAROLINA 28801."

Kenneth D. Halpern

DIRECTOR, NATIONAL CLIMATIC DATA CENTER

noaa

NATIONAL
OCEANIC AND
ATMOSPHERIC ADMINISTRATION

NATIONAL
ENVIRONMENTAL SATELLITE, DATA
AND INFORMATION SERVICE

NATIONAL
CLIMATIC DATA CENTER
ASHEVILLE NORTH CAROLINA

TEMPERATURE AND PRECIPITATION EXTREMES

MARYLAND AND
DELAWARE
JUNE 1990

MARYLAND
 HIGHEST TEMPERATURE 99
 LOWEST TEMPERATURE 36
 GREATEST TOTAL PRECIPITATION 6.70
 LEAST TOTAL PRECIPITATION .82
 GREATEST 1 DAY PRECIPITATION 2.44

DELAWARE
 HIGHEST TEMPERATURE 95
 LOWEST TEMPERATURE 45
 GREATEST TOTAL PRECIPITATION 5.37
 LEAST TOTAL PRECIPITATION .51
 GREATEST 1 DAY PRECIPITATION 2.12

JUNE 29
 JUNE 6+

JUNE 10

JUNE 29
 JUNE 5

JUNE 15

BALTIMORE WSO CITY R
 3 STATIONS
 BENSON POLICE BARRACKS
 CUMBERLAND 2
 MECHANICSVILLE 5 NE

MILFORD 4 SE
 NEWARK UNIVERSITY FARM
 NEWARK UNIVERSITY FARM
 GEORGETOWN 5 SW
 NEWARK UNIVERSITY FARM

MONTHLY SUMMARIZED STATION AND DIVISIONAL DATA

MARYLAND AND
DELAWARE
JUNE 1990

STATION	TEMPERATURE (°F)											PRECIPITATION (IN)							
	AVERAGE MAXIMUM	AVERAGE MINIMUM	AVERAGE	DEPARTURE FROM NORMAL	HIGHEST DATE	LOWEST DATE	HEATING DEGREE DAYS	COOLING DEGREE DAYS	NO. OF DAYS				TOTAL	DEPARTURE FROM NORMAL	GREATEST DAY DATE	SNOW			
									90 OR ABOVE	32 OR BELOW	32 OR BELOW	0 OR BELOW				TOTAL	DEPTH ON GROUND	NO. OF DAYS	
MARYLAND																			
SOUTHERN EASTERN SHORE 01																			
ASSATEAGUE IS NATL SEA	76.9	61.0	69.0		93	27	49	1	30	157	2	0	0	0	1.47		.72	10	
CRISFIELD SOMERS COVE	81.7	67.1	74.4	1.6	89	30+	55	5	33	294	0	0	0	1.65		.80	10		
PRINCESS ANNE	84.9	67.4	73.2	1.5	93	29+	47	1	55	256	0	0	0	2.14	-1.51	.30	10	3	
SALISBURY	85.0	62.0	73.5	1.9	94	29	49	5+	44	268	0	0	0	1.16	-2.46	.65	10	4	
SALISBURY FAA ARPT	85.9	62.0	72.9	1.3	93	29	47	1	44	268	0	0	0	2.11	-1.44	.67	9	4	
SNOW HILL 4 N	84.9	61.1	72.8	1.2	95	29+	47	1	8	252	6	0	0	1.40	-2.40	.81	10	5	
--DIVISIONAL DATA-->			72.6	.6										1.66	-1.77	.0			
CENTRAL EASTERN SHORE 02																			
CAMBRIDGE WATER TRMT P	85.7	63.9	74.8	2.3	97	29	49	6	3	303	8	0	0	1.88	-1.69	1.17	10	4	
DENTON 2 E	83.1	64.5	73.8	.3	92	29	52	5	4	276	3	0	0	2.52	-.91	.77	23	4	
ROYAL OAK 2 SSW	86.7	60.9	73.8	.8	96	9	46	5	6	278	11	0	0	1.02	-2.54	.79	10	2	
VIENNA	86.7	60.9	73.8	.8	96	9	46	5	6	278	11	0	0	1.02	-2.54	.79	10	2	
--DIVISIONAL DATA-->			74.1	1.2										1.81	-1.67	.0			
LOWER SOUTHERN 03																			
LA PLATA 1 W	81.5	61.9	71.7	.1	90	9	48	5	8	216	1	0	0	4.09	.31	1.35	10	6	
MECHANICSVILLE 5 NE	82.6	61.0	71.8		90	29+	45	5	7	220	2	0	0	5.60		2.44	10	4	
OWINGS FERRY LANDING	83.3	61.4	72.4	.2	91	10	47	5	2	229	3	0	0	5.41	1.70	2.20	10	4	
PATUXENT RIVER	83.4	64.1	73.8		94	29	51	5	4	273	4	0	0	5.07		2.37	15	6	
TALL TIMBERS																			
--DIVISIONAL DATA-->			72.4	.0										5.04	1.41	.0			
UPPER SOUTHERN 04																			
ANNAPOLIS POLICE BRKS	85.9	57.6	71.8		95	29	42	6	12	221	8	0	0	3.68		1.47	15	5	
BALTIMORE WSO ARPT	84.4	62.2	73.3	1.1	96	29	49	5	5	261	5	0	0	2.55	-1.21	.99	15	6	
BELTSVILLE	84.2	59.8	72.0	1.7	96	30	44	5	15	231	5	0	0	1.32	-2.57	.62	10	3	
COLLEGE PARK	85.0	62.7	73.9	1.0	97	30	47	5	10	281	8	0	0	1.75	-2.10	1.32	10	3	
DALECARLIA RESVR DC	87.1	56.0	71.6	-1.2	96	30+	40	5	11	214	10	0	0	3.08	-1.60	1.67	10	3	
GLENN DALE BELL STN	84.2	58.7	71.5	.3	94	29	44	5	16	214	4	0	0	2.95	-.92	1.16	15	4	
LAUREL 3 W	85.4	60.6	73.0	.4	98	29	45	5	6	254	8	0	0	1.66	-2.23	.44	22	5	
NATIONAL ARBORETUM DC	85.2	60.4	72.8	-.6	96	30	50	5	4	245	7	0	0	3.03	-.92	1.73	10	4	
UPPER MARLBORO 3 NNW	83.9	56.5	70.2		94	15	41	5	23	188	5	0	0	5.12	1.28	2.42	10	8	
--DIVISIONAL DATA-->			72.2	.3										2.79	-1.01	.0			
NORTHERN EASTERN SHORE 05																			
CHESTERTOWN	84.8	61.8	73.3	1.0	96	29	47	5	6	264	7	0	0	2.63	-1.61	1.28	15	5	
MILLINGTON 1 SE	82.8	60.0	71.4	.3	92	29	47	5+	8	210	3	0	0	2.37	-1.30	.83	15	5	
--DIVISIONAL DATA-->			72.4	.3										2.50	-1.36	.0			
NORTHERN CENTRAL 06																			
ABERDEEN PHILLIPS FLD	81.7	61.4	71.6		91	29	46	5	9	213	2	0	0	5.65		1.49	19	4	
BALTIMORE WSO CITY	87.1	67.4	77.3	2.0	99	29	51	5	2	376	10	0	0	2.65	-1.06	.80	15	6	
BENSON POLICE BARRACKS	85.6				95	30+	54	25			5	0	0	6.70	2.40	2.03	15	7	
BOYDS 2 NW	81.9	60.5	71.2		91	29	45	5	10	204	1	0	0	1.18		.61	9	4	
CATOCKIN MOUNTAIN PARK	77.7	59.3	68.5		86	30+	40	5	25	137	0	0	0	2.31		1.17	19	8	
CLARKSVILLE 3 NNE	84.2	58.1	71.1		94	29	41	5	17	211	5	0	0	1.90		.73	4	4	
CONOWINGO DAM	84.9	64.2	74.6	4.0	96	29+	42	5	5	299	6	0	0	3.44	-.85	.93	3	8	
DAMASCUS 2 SW	82.2	60.1	71.2		92	29	41	5	12	205	2	0	0	1.24		.52	9	4	

SEE REFERENCE NOTES FOLLOWING STATION INDEX

DAILY PRECIPITATION (INCHES)

MARYLAND AND
DELAWARE
JUNE 1990

STATION	TOTAL	DAY OF MONTH																																
		1	2	3	4	5	6	7	8	9	10	11	12	13	14	15	16	17	18	19	20	21	22	23	24	25	26	27	28	29	30	31		
MARYLAND																																		
SOUTHERN EASTERN SHORE 01																																		
ASSATEAGUE IS NATL SEA	1.47									.72			.05	T					T	T	T	T			.70				T					
CRISFIELD SOHERS COVE	1.65									.80																.35							.50	
PRINCESS ANNE	2.14									1.30															.35							.46		
SALISBURY	1.16				.18					.65							.02	T					.02			.12							.17	
SALISBURY FAA ARPT	2.11			.46						.67				.04	.06									.42			.16			.23			.07	
SNOW HILL 4 N CENTRAL EASTERN SHORE 02																																		
CAMBRIDGE WATER TRMT P	1.88				.03					.98	T			T	T								.03		.04									
DENTON 2 E	M	-	-	-	-	-	-	-	-	1.17	-	-	-	-	-	-	-	-	-	-	-	-	.11	.04	-	-	.18	-	-	-	-	-	.09	
ROYAL OAK 2 SSW	2.52				.08					.64							.34						.66			.77							.03	
VIENNA	1.02				.02					.79													.06			.15								
LOWER SOUTHERN 03																																		
LA PLATA 1 W	4.09				.03					1.35						.95			.90	.25					.48		T			.13	T			
MECHANICSVILLE 5 NE	5.60				.09					2.44	T					2.18			.42	.25				.07		T			.06		.09			
OWINGS FERRY LANDING	5.41				.01					2.20	T					1.78			.31	.31				1.10		T			.01					
PATUXENT RIVER	5.07			.43						1.06	T			T	2.37				.42	.11	T			.09					.53					
TALL TIMBERS	M	-	-	-	-	-	-	-	-	-	-	-	-	-	-	-	-	-	-	-	-	-	-	-	-	-	-	-	-	-	-	-		
UPPER SOUTHERN 04																																		
ANNAPOLIS POLICE BRKS	3.68				.03					.72						.16	.07						.49		.03		.72				.01			.05
BALTIMORE WSO ARPT	R 2.55		T	.38						.07		T				.99			.33	.15	T		.46	.01		.29					T			
BELTSVILLE	1.32									.62						.26			.04	.05	.06		.03	.46	.01		.29					T		
COLLEGE PARK	1.75									1.32						1.67			.21	.05	.05		.03	.14		.14								
DALECARLIA RESVR DC	3.08				.03					1.67						.01				.79	.01			.09		.57								
GLENN DALE BELL STN	2.95				T					1.15						1.16				.11	.03			.50										
LAUREL 3 W	1.66			.07						.17						.35				.35			.44	.08	.02									
NATIONAL ARBORETUM DC	3.03				.05			.30	.33	1.73						.29				.38	.46			.08	.02								.02	
UPPER MARLBORO 3 NW	5.12				.20					2.42						.75				.27	.32			.74							.31			.11
NORTHERN EASTERN SHORE 05																																		
CHESTERTOWN	2.63			.02				.12	.61					T	1.28								.32		.21								.07	
MILLINGTON 1 SE	2.37				.40					.26	T					.83							.62		.06	.20								
NORTHERN CENTRAL 06																																		
ABERDEEN PHILLIPS FLD	R 5.65		*	*	.74					.04	*	*	.58			1.16				1.49	.22	.22	.17	.46	*	*	1.29					T		
BALTIMORE WSO CITY	2.65			.55						.38						.80				.20	.22			.46										
BENSON POLICE BARRACKS	6.70			.02	1.33					.65	T					2.03				.66	.03		.31	.47	T									
BOYDS 2 NW	1.18			.19						.61										.10	.03			.21	.47	T						.02		
BRIGHTON DAM	1.54			1.00					.12	.07											.15			.20										
CATOCTIN MOUNTAIN PARK	2.31			.16					.15	.20	.02					.02				.19	1.17		.01	.03	.13		.15						.10	
CLARKSVILLE 3 NNE	1.90				.73					.22	T					.05				T	.67		.03	.21									T	
CONOWINGO DAM	3.44			.93					.05	.30	.19					.38				.91	.25	.01	.15	.19	.07									
DAMASCUS 2 SW	1.24			.29						.52		T								.02	.14	T	.03	.18	.02								.04	
EMMITSBURG 2 SE	1.88			.15					.10	.70	.10					T				.60	.17		.02	.04										
FREDERICK POLICE BRKS	1.32			.13						.05											.73		T	.20	.05								.16	
FREDERICK 3 E	M	-	-	-	-	-	-	-	-	-	-	-	-	-	-	-	-	-	-	-	-	-	-	-	-	-	-	-	-	-	-	-	-	
HILLERS 4 NE	2.32			.02	T				.08	.63	.08	T				.19				.02	1.22		.05	.03	T								T	
POTOMAC FILTER PLANT	3.24			.11						1.29										.75	.73		.35	.03	T								.01	
ROCKVILLE 1 NE TOWSON UNIONVILLE WESTMINSTER POLICE BRK WOODSTOCK																																		
ROCKVILLE 1 NE	3.03		T	.92						.63						T				.38	.43	T	.61	T							T	.06		
TOWSON	5.36		.01	.02	.57					.74	.12					1.69				.55	.22		.26	.98										
UNIONVILLE	2.32			.15						.04	.02									1.43	.26		T	.07	.03	.18								
WESTMINSTER POLICE BRK	1.13									.07	.04					.01					.64		.05	.04			.03						T	
WOODSTOCK	3.80			.51	.02					.21	.11					.16				.58	1.64		.12	.45								T		

SEE REFERENCE NOTES FOLLOWING STATION INDEX

DAILY PRECIPITATION (INCHES)

MARYLAND AND
DELAWARE
JUNE 1990

STATION	TOTAL	DAY OF MONTH																															
		1	2	3	4	5	6	7	8	9	10	11	12	13	14	15	16	17	18	19	20	21	22	23	24	25	26	27	28	29	30	31	
APPALACHIAN MOUNTAIN 07																																	
CUMBERLAND 2	.82			.17	.17					.12	T									.05	T	T		.23	.03	.02						.03	
EDGEMONT	2.13			.17	.10					.12	.03								1.43	.03			.11		.05							.09	
FROSTBURG 2	1.44			.33	.28	T		.08		.18	.05	T							.15	T	.02	T	.21	T	.05							.09	
HAGERSTOWN	1.59			.20	.04			.09		.22	.01				T				.88	.05			.05	.05	.05								
HANCOCK	1.21			.55	.08			.08		.15	.02								.05	.13			.02	.02	.01							.12	
ALLEGHENY PLATEAU 08																																	
MC HENRY 2 NW	2.44			.11	.47	.02		.22	T	.48	.42	.03				.16					T	.02	.02	.21	T	.23	T					.05	
HERRILL	.95			.05	.20			.14		.30													.16		.16								.01
OAKLAND 1 SE	3.25			.25	.33	.13	.12	.47	.07							.12			T	.17	T	.11	.25	.38	.08	.25				T		.52	
SAVAGE RIVER DAM	2.20			.22	.17	T		.03		.35	.83	T				T				T		.02	T	.32	.08	.17						.01	
DELAWARE NORTHERN 01																																	
NEWARK UNIVERSITY FARM	5.37				.44			.06		.47	.18					2.12								.75						.04			
WILMINGTON WSO ARPT R	3.94			.34				.07	.21	.21		T			.60	1.09			.18	.31		.24	.67	T							T		
WILMINGTON PORTER RSVR	3.81			.32				.10	.46	.19					.55	1.22			.26	.11		.08	.50	.02									
SOUTHERN 02																																	
DOVER	2.18				.00					.23	.11				.02	.26	.06			.13	.75	.14		.45								.03	
GEORGETOWN 5 SW	.51									.45					.05																		.01
GREENHOOD 2 NE	.85				.23					.27					.15					T	.00	.00		.20									
LENES	1.41				.18					.29	T		.03		T						.91			.00									.00
MILFORD 4 SE	1.82				.34					.80	T		.02		T	.08					.45			.13									

SEE REFERENCE NOTES FOLLOWING STATION INDEX

DAILY TEMPERATURES (°F)

MARYLAND AND
DELAWARE
JUNE 1990

STATION		OB. TIME	MAX/MIN	DAY OF MONTH																															AVERAGE
				1	2	3	4	5	6	7	8	9	10	11	12	13	14	15	16	17	18	19	20	21	22	23	24	25	26	27	28	29	30	31	
MARYLAND																																			
SOUTHERN EASTERN SHORE 01																																			
ASSATEAGUE IS NATL SEA	17	MAX OBS	67'	67'	74'	74'	71'	69' 92	75'	85'	76'	90'	82'	77'	71'	69'	67'	66'	66'	80'	71'	80'	81'	89'	81'	78' 93	81'	82'	93'	78'	84'	84'	76.9		
		MIN OBS	49'	59'	62'	69'	50'	50'	60'	62'	61'	64'	61'	54'	52'	55'	60'	59'	57'	59'	62'	64'	65'	67'	69'	67'	64'	62'	67'	67'	66'	66'	61.0		
CRISFIELD SOMERS COVE	17	MAX OBS	77'	79'	80'	82'	70'	76'	83'	85'	87'	83'	83'	77'	77'	75'	74'	78'	80'	83'	83'	80'	86'	89'	85'	84'	82'	83'	86'	86'	89'	89'	81.7		
		MIN OBS	59'	67'	69'	69'	54'	56'	71'	68'	75'	68'	67'	58'	55'	64'	61'	61'	63'	65'	68'	69'	74'	72'	72'	73'	68'	66'	73'	73'	76'	79'	67.1		
PRINCESS ANNE	17	MAX OBS	80'	81'	83'	82'	71'	78'	85'	85'	92'	90'	90'	79'	82'	76'	79'	82'	82'	86'	89'	82'	89'	91'	88'	88'	88'	85'	89'	90'	93'	92'	84.9		
		MIN OBS	47'	63'	68'	69'	50'	51'	65'	61'	72'	69'	61'	52'	48'	58'	60'	59'	56'	58'	65'	63'	69'	65'	70'	58'	57'	57'	63'	68'	66'	74'	61.4		
SALISBURY	17	MAX OBS	80'	82'	82'	83'	72'	78'	87'	85'	93'	90'	83'	81'	83'	76'	78'	82'	86'	86'	89'	83'	89'	91'	89'	86'	82'	86'	89'	91'	94'	93'	85.0		
		MIN OBS	49'	61'	65'	66'	49'	52'	64'	63'	71'	65'	62'	54'	51'	58'	60'	58'	58'	60'	63'	62'	68'	68'	68'	63'	61'	61'	66'	69'	70'	76'	62.0		
SALISBURY FAA ARPT	MID	MAX MIN	80' 47'	82' 62'	83' 68'	82' 59'	69' 51'	78' 51'	85' 64'	85' 61'	92' 74'	81' 69'	75' 59'	80' 56'	80' 51'	77' 61'	79' 60'	81' 60'	85' 63'	88' 70'	89' 65'	82' 65'	88' 70'	90' 66'	87' 66'	82' 64'	84' 58'	89' 64'	90' 69'	93' 67'	91' 76'	83.6 62.2			
SNOW HILL 4 N	18	MAX MIN	79' 48'	83' 63'	84' 66'	85' 69'	74' 49'	76' 50'	87' 60'	85' 60'	95' 70'	89' 66'	81' 60'	79' 54'	79' 47'	73' 57'	81' 57'	83' 62'	84' 65'	90' 60'	83' 69'	89' 66'	88' 69'	88' 61'	87' 59'	83' 57'	84' 62'	90' 67'	91' 67'	95' 72'	93' 72'	84.5 61.1			
CENTRAL EASTERN SHORE 02																																			
CAMBRIDGE WATER TRMT P	16	MAX MIN	79' 52'	84' 66'	85' 67'	85' 69'	72' 53'	78' 49'	85' 69'	85' 63'	95' 73'	94' 65'	84' 65'	79' 59'	87' 54'	82' 61'	78' 59'	80' 59'	84' 64'	85' 64'	82' 60'	82' 66'	89' 71'	92' 68'	91' 70'	87' 63'	84' 64'	86' 61'	91' 67'	93' 69'	97' 71'	96' 75'	85.7 63.9		
DENTON 2 E	17	MAX MIN																															M M		
ROYAL OAK 2 SSW	18	MAX MIN	78' 54'	81' 68'	82' 70'	79' 66'	69' 52'	79' 54'	84' 69'	84' 63'	91' 73'	89' 68'	78' 63'	78' 56'	80' 56'	80' 62'	77' 60'	80' 60'	83' 68'	86' 68'	85' 64'	81' 64'	88' 72'	89' 66'	85' 68'	81' 65'	81' 63'	84' 63'	89' 71'	89' 68'	92' 71'	91' 77'	83.1 64.5		
VIENNA	18	MAX OBS	81'	84'	84'	85'	73'	77'	87'	87'	96'	85'	85'	82'	85'	80'	81'	85'	90'	87'	88'	90'	92'	92'	91'	90'	85'	87'	90'	94'	95'	94'	86.7		
		MIN OBS	52'	62'	62'	64'	46'	50'	66'	60'	69'	63'	58'	56'	53'	57'	57'	56'	58'	60'	66'	61'	67'	68'	68'	62'	59'	58'	64'	66'	68'	70'	60.9		
LOWER SOUTHERN 03																																			
LA PLATA 1 W	18	MAX MIN	80' 51'	81' 66'	82' 70'	80' 63'	67' 48'	82' 52'	79' 69'	85' 63'	90' 73'	82' 66'	74' 59'	75' 53'	77' 53'	83' 61'	82' 60'	79' 58'	81' 61'	87' 64'	82' 67'	77' 59'	85' 70'	85' 63'	82' 61'	80' 59'	78' 57'	83' 62'	86' 67'	88' 63'	88' 71'	81.5 61.9			
MECHANICSVILLE 5 NE	19	MAX MIN	81' 48'	82' 65'	83' 68'	80' 63'	70' 45'	82' 50'	81' 70'	85' 63'	90' 72'	82' 65'	75' 59'	78' 53'	80' 49'	84' 58'	74' 59'	81' 55'	84' 57'	86' 63'	85' 67'	80' 60'	86' 68'	86' 63'	84' 68'	79' 59'	81' 56'	84' 65'	89' 65'	90' 67'	89' 70'	82.6 61.0			
OWINGS FERRY LANDING	17	MAX MIN	81' 50'	82' 65'	83' 68'	79' 65'	79' 47'	83' 50'	83' 67'	85' 62'	90' 70'	91' 67'	77' 59'	79' 54'	80' 51'	83' 59'	75' 59'	80' 57'	82' 59'	86' 64'	83' 67'	81' 58'	85' 68'	87' 63'	81' 67'	83' 59'	80' 56'	84' 60'	87' 66'	90' 68'	89' 71'	83.3 61.4			
PATUXENT RIVER	MID	MAX MIN	77' 53'	84' 67'	84' 68'	82' 58'	70' 51'	83' 56'	84' 67'	85' 67'	93' 66'	82' 69'	74' 63'	77' 60'	81' 57'	81' 60'	74' 57'	80' 57'	83' 63'	85' 65'	85' 67'	84' 64'	89' 71'	89' 67'	81' 69'	81' 65'	84' 64'	86' 64'	88' 70'	91' 71'	94' 71'	91' 76'	83.4 64.1		
TALL TIMBERS	17	MAX MIN																															M M		
UPPER SOUTHERN 04																																			
ANNAPOLIS POLICE BRKS	17	MAX OBS	80' 45'	85' 59'	86' 64'	83' 58'	72' 43'	81' 42'	85' 64'	86' 59'	92' 68'	92' 60'	83' 55'	83' 50'	83' 49'	84' 58'	82' 53'	83' 56'	85' 59'	86' 62'	87' 61'	86' 56'	90' 64'	92' 52'	86' 62'	87' 58'	83' 54'	85' 57'	90' 63'	91' 63'	95' 66'	94' 67'	85.9 57.6		
BALTIMORE WSO ARPT	MID	MAX MIN	82' 50'	84' 62'	83' 68'	77' 56'	71' 49'	83' 53'	83' 66'	83' 64'	92' 69'	82' 65'	76' 59'	81' 53'	82' 60'	86' 63'	77' 59'	84' 67'	85' 61'	89' 64'	86' 67'	83' 61'	89' 70'	88' 65'	84' 69'	80' 62'	80' 59'	87' 61'	92' 67'	93' 68'	96' 70'	93' 73'	84.4 62.2		
BELTSVILLE	08	MAX MIN	73' 47'	82' 62'	82' 69'	83' 61'	77' 44'	71' 49'	83' 61'	82' 59'	88' 68'	92' 66'	82' 58'	76' 51'	80' 49'	80' 58'	87' 59'	76' 56'	85' 60'	86' 61'	89' 67'	87' 57'	84' 67'	91' 61'	88' 68'	85' 53'	83' 58'	83' 58'	87' 66'	94' 64'	95' 66'	96' 70'	84.2 59.8		

SEE REFERENCE NOTES FOLLOWING STATION INDEX

DAILY TEMPERATURES (°F)

MARYLAND AND
DELAWARE
JUNE 1990

STATION	OB. TIME	MAX/MIN	DAY OF MONTH																															AVERAGE
			1	2	3	4	5	6	7	8	9	10	11	12	13	14	15	16	17	18	19	20	21	22	23	24	25	26	27	28	29	30	31	
COLLEGE PARK	09	MAX OBS MIN	76	85	85	85	77	71	85	83	89	94	82	73	79	80	89	75	85	87	91	90	85	91	91	86	82	81	88	93	94	97	85.0	
DALECARLIA RESVR DC	17	MAX OBS MIN	49	69	71	68	47	51	57	62	75	66	60	54	53	59	58	56	60	66	68	60	69	62	69	62	61	61	72	67	71	77	62.7	
GLENN DALE BELL STN	16	MAX OBS MIN	85	86	86	83	73	86	86	90	92	91	84	80	83	91	87	86	86	92	85	84	91	88	86	89	83	87	90	91	96	96	87.1	
LAUREL 3 W	MID	MAX OBS MIN	43	58	62	58	40	45	62	57	66	61	54	45	47	53	55	54	57	59	58	53	64	57	62	53	52	56	62	59	62	66	56.0	
UPPER MARLBORO 3 NNW	08	MAX OBS MIN	81	78	80	83	70	81	83	84	84	90	81	77	81	87	86	83	85	89	89	82	89	86	84	78	84	85	89	91	94	92	84.2	
NATIONAL ARBORETUM DC	08	MAX OBS MIN	45	50	66	61	44	47	65	58	71	67	57	47	47	57	57	54	58	61	66	56	66	58	69	60	58	56	63	62	64	70	58.7	
CHESTERTOWN	23	MAX OBS MIN	83	84	83	78	74	84	85	87	91	83	76	80	80	90	77	85	88	90	88	83	90	88	85	81	81	89	93	96	98	93	85.4	
MILLINGTON 1 SE	18	MAX OBS MIN	55	61	67	52	45	54	70	52	67	66	52	53	54	61	57	59	63	64	67	58	72	66	66	60	50	55	68	67	72	65	60.6	
NORTHERN EASTERN SHORE	05	MAX OBS MIN	75	83	84	84	79	72	84	84	89	94	82	76	81	81	88	77	86	89	91	88	83	91	90	88	83	84	89	92	93	96	85.2	
CHERTOWN	05	MAX OBS MIN	51	56	67	65	50	53	53	63	64	69	62	54	53	52	52	52	62	65	65	60	60	60	66	62	60	62	66	66	67	74	60.4	
BERDEEN PHILLIPS FLD	16	MAX OBS MIN	75	82	84	84	79	71	84	83	86	92	81	74	78	88	94	76	82	85	88	86	83	90	88	84	81	82	86	89	90	93	83.9	
BALTIMORE WSO CITY	MID	MAX OBS MIN	44	56	65	59	41	46	56	56	64	62	56	49	46	55	55	52	55	59	63	64	67	58	63	55	55	61	62	63	65	56.5		
BENSON POLICE BARRACKS	17	MAX OBS MIN	81	84	83	75	71	81	84	86	92	83	73	82	83	82	79	85	86	90	89	84	89	92	87	81	80	87	93	94	96	92	84.8	
BOYDS 2 NW	18	MAX OBS MIN	50	65	68	59	47	54	67	60	66	67	60	53	54	60	57	58	61	65	64	62	68	64	68	61	59	60	66	69	69	72	61.8	
CATOCOTIN MOUNTAIN PARK	17	MAX OBS MIN	79	82	82	82	70	79	83	84	89	89	74	80	82	77	76	83	84	86	84	82	86	86	83	79	78	85	88	91	92	90	82.8	
CLARKSVILLE 3 NNE	17	MAX OBS MIN	47	57	68	67	47	51	65	57	65	66	59	51	51	59	58	59	58	61	63	61	61	62	68	60	57	57	65	67	67	67	60.0	
CONOWINGO DAM	MID	MAX OBS MIN	82	88	86	79	74	86	87	86	95	88	75	81	83	86	78	86	87	92	90	87	93	92	87	83	85	90	95	95	99	97	87.1	
DAMASCUS 2 SW	19	MAX OBS MIN	59	68	70	56	51	60	74	70	73	70	64	53	63	67	60	66	70	70	66	70	70	72	72	68	64	69	72	75	77	78	67.4	
EMMITSBURG 2 SE	17	MAX OBS MIN	82	85	86	83	73	81	85	84	90	88	79	82	82	84	84	86	88	88	87	84	87	89	86	86	81	86	90	93	95	95	85.6	
FREDERICK POLICE BRKS	17	MAX OBS MIN	64	67	68	66	66	66	68	62	67	67	59	50	52	60	58	60	63	66	64	62	66	63	65	61	57	59	69	68	70	71	M	
MILLERS 4 NE	18	MAX OBS MIN	80	81	80	73	67	81	80	84	89	78	75	77	77	87	85	82	84	86	82	79	85	85	82	80	78	84	87	89	91	88	81.9	
MILLERS 4 NE	18	MAX OBS MIN	51	63	64	59	45	53	66	62	67	65	57	50	55	60	60	59	63	64	63	58	66	64	64	55	55	59	66	64	68	70	60.5	
NORTHEN CENTRAL	06	MAX OBS MIN	76	78	75	76	62	77	79	79	78	78	69	72	76	83	82	78	81	83	76	74	81	81	75	76	71	79	81	82	86	86	77.7	
CLARKSVILLE 3 NNE	17	MAX OBS MIN	50	60	62	53	40	52	62	61	67	62	56	49	58	62	58	60	60	64	64	54	63	63	62	59	54	60	64	64	68	67	59.3	
CLARKSVILLE 3 NNE	17	MAX OBS MIN	81	85	84	79	69	83	83	84	91	80	80	78	79	87	84	84	84	89	85	82	89	89	83	82	78	87	90	91	94	93	84.2	
CLARKSVILLE 3 NNE	17	MAX OBS MIN	43	54	65	62	41	49	68	56	64	67	57	48	47	56	59	55	56	60	60	59	67	57	67	58	57	56	65	61	63	67	58.1	
CONOWINGO DAM	MID	MAX OBS MIN	77	83	83	74	77	82	85	83	90	85	76	83	80	80	79	84	85	88	87	85	88	89	88	82	85	92	96	93	96	93	84.9	
CONOWINGO DAM	MID	MAX OBS MIN	57	56	59	58	42	54	68	64	66	66	61	53	62	63	62	68	69	68	70	63	72	71	54	71	71	71	69	72	74	73	64.2	
DAMASCUS 2 SW	19	MAX OBS MIN	81	83	81	71	68	81	80	84	87	78	73	77	77	87	80	83	86	89	82	79	86	87	85	77	79	85	88	90	92	89	82.2	
DAMASCUS 2 SW	19	MAX OBS MIN	52	63	64	56	41	53	65	61	68	63	56	50	54	60	60	58	62	65	65	54	66	62	63	59	55	59	66	63	69	70	60.1	
EMMITSBURG 2 SE	17	MAX OBS MIN	79	82	80	80	68	81	81	82	83	78	76	76	79	87	85	82	84	88	81	79	85	85	80	80	76	83	86	88	91	90	81.8	
EMMITSBURG 2 SE	17	MAX OBS MIN	50	58	64	59	44	51	65	54	65	63	58	46	48	56	62	57	57	63	62	57	64	56	66	64	57	52	61	59	63	69	58.3	
FREDERICK POLICE BRKS	17	MAX OBS MIN	82	85	84	83	69	82	84	84	89	91	82	80	82	93	93	86	87	90	90	87	89	90	86	85	82	88	91	92	95	96	86.6	
FREDERICK POLICE BRKS	17	MAX OBS MIN	49	63	64	63	46	55	67	61	68	67	58	51	54	60	63	60	65	65	66	61	68	64	64	64	60	59	66	66	70	72	62.0	
MILLERS 4 NE	18	MAX OBS MIN	78	81	79	74	67	79	79	80	82	77	74	76	57	86	78	82	83	86	80	78	83	84	80	78	76	81	85	87	89	87	80.2	
MILLERS 4 NE	18	MAX OBS MIN	48	61	63	59	44	51	64	56	63	65	57	49	51	57	59	57	61	64	62	58	63	60	66	60	55	55	63	63	66	68	58.9	

SEE REFERENCE NOTES FOLLOWING STATION INDEX

DAILY TEMPERATURES (°F)

MARYLAND AND
DELAWARE
JUNE 1990

STATION	OB. TIME	MAX/MIN	DAY OF MONTH																															AVERAGE	
			1	2	3	4	5	6	7	8	9	10	11	12	13	14	15	16	17	18	19	20	21	22	23	24	25	26	27	28	29	30	31		
ROCKVILLE 1 NE	MID	MAX MIN	80 50	82 66	80 67	73 54	68 46	83 57	79 65	86 63	88 65	79 65	75 59	78 53	80 51	86 61	73 60	82 58	85 62	87 67	81 65	79 59	85 70	85 64	83 69	75 62	76 58	85 62	86 70	88 66	91 71	89 72	81.6 61.9		
TOWSON	18	MAX MIN OBS	79 50 50	83 64 67	81 67	80 63	70 45	82 54	83 67	83 67	90 67	85 66	78 58	78 53	79 56	83 61	84 56	87 56	87 63	85 63	81 65	85 65	87 64	83 67	79 63	79 63	84 60	88 67	88 78	90 68	92 71	92 73	83.1 62.1		
UNIONVILLE	17	MAX MIN	81 43	83 60	81 65	73 59	68 39	82 48	82 65	85 54	87 63	83 61	75 53	78 43	79 45	89 56	85 61	84 51	86 58	88 60	80 62	80 53	86 65	85 57	83 67	83 56	78 53	85 53	87 63	88 59	91 63	89 67	82.8 56.7		
WESTMINSTER POLICE BRK	17	MAX MIN OBS	81 52 52	85 60 61	80 61	82 60	68 39	82 53	83 59	82 66	86 66	86 68	77 57	78 49	79 52	89 59	84 57	85 61	86 65	91 65	89 63	80 57	84 62	88 63	88 65	86 58	79 55	86 58	87 60	92 61	95 68	93 69	84.4 59.3		
WOODSTOCK	18	MAX MIN	83 45	85 59	82 65	72 62	72 42	83 50	84 68	86 58	90 65	85 64	79 56	81 50	80 49	88 57	82 59	87 56	90 60	85 61	83 65	88 66	89 60	85 67	81 60	80 56	86 57	90 64	92 63	93 65	92 70	84.6 59.2			
APPALACHIAN MOUNTAIN	07																																		
CUMBERLAND 2	18	MAX MIN OBS	84 49 49	85 59 58	83 58	79 42	70 43	87 53	85 57	87 58	86 62	79 60	76 48	75 52	83 58	91 62	86 62	86 64	90 64	89 64	84 54	79 58	86 57	84 64	79 63	74 56	80 55	88 57	87 59	89 63	92 66	89 64	83.7 58.1		
FROSTBURG 2	07	MAX MIN	69 38	78 44	79 56	75 55	55 38	64 37	79 51	73 56	80 58	78 53	67 45	67 45	68 45	78 65	78 56	83 63	77 60	79 61	82 61	81 62	69 52	75 52	77 57	78 56	73 56	64 52	70 51	80 50	78 57	82 58	84 60	74.7 53.4	
HAGERSTOWN	08	MAX MIN OBS	75 48 48	82 54 65	84 65	83 60	67 43	70 46	84 57	82 59	85 62	85 64	80 60	73 51	78 55	82 59	91 63	78 61	85 64	88 67	90 43	82 64	82 60	87 62	85 65	82 60	75 56	79 56	87 61	88 63	91 66	92 70	82.4 59.2		
HANCOCK	08	MAX MIN	72 42	83 47	85 55	84 56	63 46	68 47	88 58	81 56	82 60	83 57	79 59	75 45	78 55	81 55	90 62	79 60	86 59	89 61	91 61	80 56	82 58	87 55	87 54	85 60	76 58	79 51	86 55	86 57	91 60	93 68	82.3 55.8		
ALLEGHENY PLATEAU	08																																		
MC HENRY 2 NW	08	MAX MIN	70 43	78 51	80 60	75 46	48 36	68 36	78 58	71 56	79 59	74 56	68 50	68 44	73 49	80 58	82 62	80 59	83 59	86 64	80 60	68 51	74 52	76 57	80 54	71 53	62 48	70 52	80 52	78 58	81 59	83 63	74.8 53.5		
OAKLAND 1 SE	17	MAX MIN	76 36	80 49	73 62	72 45	65 37	77 45	76 60	79 49	79 61	77 58	68 52	69 38	49 54	81 54	79 55	85 61	82 61	77 59	85 48	82 60	77 48	72 60	75 48	72 54	70 51	71 45	77 51	80 52	83 53	77 65	76.2 52.7		
SAVAGE RIVER DAM	08	MAX MIN	73 36	80 43	83 56	78 53	55 39	69 42	82 53	75 56	84 56	80 59	73 56	71 43	73 46	82 56	85 62	81 63	81 61	85 61	83 61	73 53	78 56	79 56	80 54	75 57	62 55	74 50	81 51	81 56	86 59	86 60	77.6 53.7		
DELAWARE																																			
NORTHERN	01																																		
NEWARK UNIVERSITY FARM	17	MAX MIN	81 49	84 58	83 67	81 64	69 45	79 52	82 66	82 56	87 65	88 68	80 60	81 51	82 52	81 59	77 57	83 59	86 63	89 62	85 64	80 61	85 63	89 62	89 62	84 60	77 57	86 57	89 64	90 68	92 69	92 70	83.8 60.3		
WILMINGTON WSO ARPT	MID	MAX MIN	80 51	83 64	83 67	75 55	71 46	79 55	83 65	79 61	88 68	82 66	74 60	82 51	80 55	75 60	79 57	83 64	84 64	85 66	82 65	80 63	85 64	86 65	84 68	79 62	77 59	85 61	88 68	90 69	92 72	90 72	82.1 62.1		
WILMINGTON PORTER RSVR	MID	MAX MIN OBS	79 53 53	82 66 66	81 65 52	73 55	69 48	78 55	82 66	78 64	85 67	80 67	70 58	81 54	78 54	75 61	78 56	82 62	83 63	84 66	83 65	79 64	86 66	82 67	78 62	75 59	83 63	87 69	89 68	89 68	90 73	88 70	80.9 62.5		
SOUTHERN	02																																		
DOVER	17	MAX OBS MIN	76 49 49	80 56 61	86 61	81 58	69 47	77 51	82 69	79 68	88 70	85 66	74 62	79 55	72 52	80 60	74 59	79 57	84 61	88 60	88 61	88 61	80 62	84 68	88 65	84 68	82 61	79 57	80 60	88 68	90 71	93 70	90 71	82.3 61.4	
GEORGETOWN 5 SW	08	MAX OBS MIN	72 49 49	77 54 58	80 58	83 63	84 49	80 51	79 50	83 61	84 61	94 67	83 60	74 54	79 49	84 60	75 60	89 59	85 57	86 61	87 76	87 64	83 51	87 62	83 51	89 65	91 70	87 61	83 58	85 59	86 59	91 66	92 68	90 71	84.1 59.2
GREENWOOD 2 NE	18	MAX MIN	79 48	81 61	81 67	80 65	69 48	77 49	81 67	84 60	92 68	81 66	73 60	80 53	82 50	75 57	76 58	82 58	84 56	86 59	87 63	81 62	88 69	92 64	86 69	83 59	81 60	85 59	89 63	92 65	93 65	90 74	83.0 60.7		

SEE REFERENCE NOTES FOLLOWING STATION INDEX

DAILY TEMPERATURES (°F)

MARYLAND AND
DELAWARE
JUNE 1990

STATION	OB. TIME	MAX/MIN	DAY OF MONTH																															AVERAGE
			1	2	3	4	5	6	7	8	9	10	11	12	13	14	15	16	17	18	19	20	21	22	23	24	25	26	27	28	29	30	31	
LEWES	17	MAX	79'	84'	84'	84'	69'	77'	81'	82'	93'	90'	82'	76'	75'	75'	72'	75'	77'	83'	81'	83'	82'	88'	86'	84'	82'	83'	88'	89'	94'	93'	82.4	
		MIN OBS	53'	65'	65'	69'	56'	53'	67'	63'	68'	68'	62'	59'	52'	62'	61'	60'	58'	58'	64'	65'	70'	70'	71'	65'	63'	63'	63'	70'	70'	74'		63.6
MILFORD 4 SE	17	MAX	81'	84'	82'	82'	69'	79'	82'	82'	93'	87'	82'	79'	75'	74'	72'	77'	78'	88'	86'	85'	87'	87'	85'	82'	81'	85'	91'	90'	95'	91'	83.0	
		MIN OBS	51'	63'	67'	66'	49'	52'	66'	62'	69'	67'	60'	55'	51'	61'	60'	60'	56'	60'	66'	63'	69'	67'	69'	62'	61'	61'	66'	69'	71'	73'		62.4

SEE REFERENCE NOTES FOLLOWING STATION INDEX

EVAPORATION AND WIND

MARYLAND AND
DELAWARE
JUNE 1990

STATION	DAY OF MONTH																															TOTAL OR AVG	
	1	2	3	4	5	6	7	8	9	10	11	12	13	14	15	16	17	18	19	20	21	22	23	24	25	26	27	28	29	30	31		
MARYLAND																																	
UPPER SOUTHERN 04																																	
BELTSVILLE	WIND	14'	34'	60'	38'	52'	18'	52'	24'	44'	38'	38'	72'	22'	12'	48'	10'	14'	22'	32'	30'	22'	32'	32'	22'	46'	22'	42'	26'	18'	44'		
	EVAP	21'	21'	36'	7'	23'	21'	25'	20'	26'	24'	29'	26'	25'	17'	26'	9'	21'	27'	19'	22'	26'	29'	26'	19'	29'	20'	24'	28'	29'	28'		
	MAX	88'	90'	91'	88'	80'	89'	90'	85'	99'	95'	88'	80'	90'	83'	85'	83'	95'	97'	97'	92'	94'	93'	94'	93'	94'	88'	91'	97'	99'	96'		
	MIN	57'	61'	65'	65'	51'	51'	58'	65'	67'	70'	60'	55'	56'	61'	62'	62'	63'	68'	69'	62'	63'	67'	68'	65'	60'	60'	66'	70'	70'	70'		
DELAWARE																																	
NORTHERN 01																																	
NEWARK UNIVERSITY FARM	WIND	29'	39'	24'	60'	52'	30'	43'	31'	30'	50'	70'	44'	18'	12'	31'	19'	18'	18'	28'	36'	20'	18'	31'	50'	33'	17'	15'	20'	17'	41'		
	EVAP	34'	24'	9'	43'	20'	20'	24'	8'	29'	29'	14'	20'	24'	6'	20'	17'	14'	21'	47'	7'	15'	21'	47'	25'	5'	18'	24'	25'	25'	30'		
	MAX	-	-	-	-	-	-	-	-	-	-	-	-	-	-	-	-	-	-	-	-	-	-	-	-	-	-	-	-	-	-	-	
	MIN	-	-	-	-	-	-	-	-	-	-	-	-	-	-	-	-	-	-	-	-	-	-	-	-	-	-	-	-	-	-	-	
SOUTHERN 02																																	
GEORGETOWN 5 SW	WIND	45'	33'	89'	27'	19'	157'	50'	62'	107'	93'	99'	142'	62'	30'	31'	32'	59'	30'	98'	61'	73'	62'	90'	58'	67'	36'	87'	100'	34'	92'		
	EVAP	37'	26'	22'	42'	26'	35'	22'	24'	17'	55'	37'	22'	64'	-	-	38'	21'	25'	25'	27'	25'	30'	36'	41'	20'	28'	28'	38'	40'	56'		
	MAX	82'	86'	86'	83'	87'	86'	85'	88'	86'	97'	90'	75'	86'	92'	73'	90'	95'	91'	91'	91'	90'	93'	95'	90'	90'	92'	91'	94'	98'	93'		
	MIN	58'	59'	63'	62'	53'	52'	50'	54'	62'	68'	61'	55'	57'	61'	62'	61'	63'	63'	68'	65'	65'	71'	70'	64'	64'	63'	64'	69'	70'	73'		

EVAPORATION: IS MEASURED IN HUNDRETHS OF INCHES
WIND: IS MEASURED IN MILES
MAX AND MIN: THE MAXIMUM AND MINIMUM TEMPERATURES (FAHRENHEIT) OF THE WATER IN THE EVAPORATION PAN
SEE REFERENCE NOTES FOLLOWING STATION INDEX

STATION INDEX

MARYLAND AND
DELAWARE
JUNE 1990

STATION	INDEX NO.	DIVISION	COUNTY	LATITUDE	LONGITUDE	ELEVATION (IN FEET)	OBSERVATION TIME AND TABLES				OBSERVER	
							LOCAL STD TIME					
							TEMP	PRECIP	EVAP	SPECIAL (SEE NOTES)		
MARYLAND												
ABERDEEN PHILLIPS FLD	00115006		HARFORD	39 28	76 10W	57	16	16		C	H	ROSS AVIATION INC
ANNAPOLIS POLICE BRKS	01933004		ANNE ARUNDEL	38 59	76 30W	30	17	17				ANNAPOLIS POLICE BRKS
ASSATEAGUE IS NATL SEA	03355001		WORCESTER	38 14	75 8W	7	17	07				NATIONAL PARK SERVICE
BALTIMORE WSO ARPT	00465004		ANNE ARUNDEL	39 11	76 40W	148	MID	MID		C	H	NATL WEATHER SERVICE
BALTIMORE WSO CITY #	00470006	RR	BALTIMORE CI	39 17	76 37W	144	MID	MID		C	C	OCHI COMMANDING OFFICER
BELTSVILLE	07000004		PRINCE GEORG	39 2	76 53W	120	08	08		O	B	US DEPT OF AGRICULTURE
BENSON POLICE BARRACKS	07320006		HARFORD	39 30	76 23W	365	17	17				MARYLAND STATE POLICE
BOYDS 2 NW	10320006		MONTGOMERY	39 13	77 20W	581	18	18				HUNTER F STALEY
BRIGHTON DAM	11250006		MONTGOMERY	39 12	77 1W	331		MID				WASH SUB SANY COMM
CAMBRIDGE WATER TRMT P	13850002		DORCHESTER	38 34	76 4W	10	16	16				WASTEWATER TRMT PLANT
CATOCTIN MOUNTAIN PARK	15300006		FREDERICK	39 39	77 29W	1610	17	17		C	H	CATOCTIN MOUNTAIN PARK
CHESTERTOWN	17500005		KENT	39 13	76 4W	39	23	23				THOMAS W ELIASON JR
CLARKSVILLE 3 NNE	18620006		HOWARD	39 15	76 56W	365	17	17				UNIVERSITY OF MARYLAND
COLLEGE PARK	19950004		PRINCE GEORG	38 59	76 57W	90	09	09		C	H	UNIVERSITY OF MARYLAND
CONOWINGO DAM	20600006		HARFORD	39 39	76 10W	39	MID	MID				SUSQUEHANNA ELECTRIC CO
CRISFIELD SOMERS COVE	22150001		SOMERSET	37 59	75 52W	8	17	17				SOMERS COVE MARINA
CUMBERLAND 2	22820007		ALLEGANY	39 38	78 45W	730	18	07				TIMOTHY B THOMAS
DALECARLIA RESVR DC	23250004		DIS COLUMBIA	38 56	77 7W	151	17	17				U S CORPS OF ENGINEERS
DAMASCUS 2 SW	23350006		MONTGOMERY	39 16	77 14W	722	19	19				RICHARD W SCHWERDT
DENTON 2 E	25230002		CAROLINE	38 53	75 48W	49	17	17				ARTHUR REINHOLD
EDGEMONT	27700007		WASHINGTON	39 40	77 33W	905	17	07				JOHN W HARNE
EMMITSBURG 2 SE	29060006		FREDERICK	39 41	77 18W	420	17	17				MRS LUCILLE K BEALE
FREDERICK POLICE BRKS	33480006		FREDERICK	39 25	77 26W	381	17	17				MARYLAND STATE POLICE
FREDERICK 3 E	33550006		FREDERICK	39 24	77 22W	385	07	07				MISS I MARY STALEY
FROSTBURG 2	34150007		ALLEGANY	39 40	78 56W	2172	07	07				LEE K CLOSE
GLENN DALE BELL STN	36750004		PRINCE GEORG	38 58	76 48W	151	16	16				USDA PLT INTRODUCT STN
HAGERSTOWN	39750007		WASHINGTON	39 39	77 44W	659	08	08				HAGERSTOWN RESERVOIR
HANCOCK	40300007		WASHINGTON	39 42	78 11W	428	08	08		C	H	TOWN OF HANCOCK
LA PLATA 1 W	50800003		CHARLES	38 32	77 0W	140	18	18				C RUSSELL LEVERING
LAUREL 3 W	51110004		PRINCE GEORG	39 6	76 54W	400	MID	MID				WASH SUB SANY COMM
MC HENRY 2 NW	58320008		GARRETT	39 35	79 22W	2680	08	08		C	H	JOSEPH F JOHENNING
MECHANICSVILLE 5 NE	58650003		ST MARYS	38 27	76 41W	100	19	19				SANDRA J HASTINGS
MERRILL	58940008		GARRETT	39 36	79 5W	1791	09	09				DELWOOD E MERRILL
MILLERS 4 NE	59340006		CARROLL	39 43	76 48W	860	18	18		C	H	ROBERT P MILLER
MILLINGTON 1 SE	59850005		KENT	39 16	75 52W	30	18	18				HOWARD L HARVEY
NATIONAL ARBORETUM DC	63500004		DIS COLUMBIA	38 54	76 59W	49	08	08				U S NATL ARBORETUM
OKLAND 1 SE	66200008		GARRETT	39 24	79 24W	2421	17	17				BEA J CROSCO
OWINGS FERRY LANDING	67700003		CALVERT	38 41	76 40W	160	17	17				JAMES C RASMUSSEN
PATUXENT RIVER	69150003		ST MARYS	38 20	76 25W	38	MID	MID		C	H	NAVAL WEATHER SERVICE
POTOMAC FILTER PLANT	72720006		MONTGOMERY	39 2	77 15W	269	17	08				POTOMAC WATER FILT PLT
PRINCESS ANNE	73300001		SOMERSET	38 13	75 41W	20	17	17				UNIV OF MD EASTERN SHORE
ROCKVILLE 1 NE	77050006		MONTGOMERY	39 6	77 6W	440	MID	17				WASHINGTON GAS AND LIGHT
ROYAL OAK 2 SSW	78060002		TALBOT	38 43	76 11W	10	18	18				JOHN L SWAINE JR
SALISBURY	80000001		WICOMICO	38 22	75 35W	10	17	17				CITY OF SALISBURY
SALISBURY FAA ARPT #	80050001		WICOMICO	38 20	75 31W	48	MID	MID				FAA
SAVAGE RIVER DAM	80650008		GARRETT	39 31	79 8W	1495	08	08		O	B	US CORPS OF ENGINEERS
SNOW HILL 4 N	83800001		WORCESTER	38 14	75 23W	30	18	18				CURTIS E SHOCKLEY
TALL TIMBERS	87570003		ST MARYS	38 10	76 33W	12	17	17				RICHARD A EVERETT
TOWSON	88770006		BALTIMORE	39 23	76 34W	390	18	18				BENDIX FRIEZ
UNIONVILLE	90300006		FREDERICK	39 27	77 11W	430	17	07		C		RICHARD GETZANDANNER
UPPER MARLBORO 3 NNW	90700004		PRINCE GEORG	38 52	76 47W	98	08	08		O	B	UNIVERSITY OF MARYLAND
VIENNA	91400002		DORCHESTER	38 29	75 50W	10	18	18				DELMARVA POWER & LIGHT
WESTMINSTER POLICE BRK	94400006		CARROLL	39 33	76 58W	765	17	17				MARYLAND STATE POLICE

SEE REFERENCE NOTES FOLLOWING STATION INDEX

STATION INDEX

MARYLAND AND
DELAWARE
JUNE 1990

STATION	INDEX NO.	DIVISION	COUNTY	LATITUDE	LONGITUDE	ELEVATION (IN FEET)	OBSERVATION TIME AND TABLES				OBSERVER
							LOCAL STD TIME				
							TEMP	PRECIP	EVAP	SPECIAL (SEE NOTES)	
WOODSTOCK	9750	06	BALTIMORE	39 20	76 52W	459	18	18		H	JOHN A HILTZ
DELAWARE	2730	02	KENT	39 9	75 31W	30	17	17		H	STATE DIV OF HIGHWAYS
DOVER	3570	02	SUSSEX	38 38	75 27W	45	08	08	08	C	UNIV OF DEL SUBSTATION
GEORGETOWN 5 SW	3595	02	SUSSEX	38 50	75 35W	45	18	18		H	DANIEL M SWARTZENTRUBER
GREENWOOD 2 NE	5320	02	SUSSEX	38 46	75 8W	15	17	17		H	BOARD OF PUBLIC WORKS
LEWES	5915	02	SUSSEX	38 54	75 28W	30	17	17		H	DAVID S SCHLOTT
MILFORD 4 SE	6410	01	NEW CASTLE	39 40	75 44W	90	17	17	17	C	UNIV OF DEL AGRIC FARM
NEWARK UNIVERSITY FARM	9595	01	NEW CASTLE	39 40	75 36W	79	M	M		H	NATL WEATHER SERVICE
WILMINGTON WSO ARPT	9605	01	NEW CASTLE	39 46	75 32W	274	M	M		H	WATER DEPARTMENT
WILMINGTON PORTER RSVR											

SEE REFERENCE NOTES FOLLOWING STATION INDEX

REFERENCE NOTES

MARYLAND AND
DELAWARE
JUNE 1990

DEFINITIONS

STATION NAMES: Name of the city, town or locality. Figures and letters following the station names indicate the distance in miles and direction from the post office or town community center.

DIVISIONS: Areas within a state of similar climatological characteristics. Division averages are calculated using data from stations that record both temperature and precipitation (ie: not precipitation alone).

NORMALS: The average value of the meteorological element over a time period. Effective 1 January 1983, the averaging period is 1951 to 1980. The normals for National Weather Service localities have been adjusted so as to be representative for the current observation site.

MONTHLY DEGREE DAY TOTALS: One heating (cooling) degree day is accumulated for each whole degree that the daily mean temperature is BELOW (ABOVE) 65 degrees Fahrenheit.

PRECIPITATION: Values shown in hundredths of inches are water equivalent totals, i.e. total of liquid and melted frozen precipitation. In the "MONTHLY SUMMARIZED DATA" table the total snow and sleet values shown in tenths of inches are unmelted amounts. The max. depth on ground values of snow and sleet shown in whole inches are cumulative unmelted amounts. The no. of days with .10, .50, 1.00 or more refers to water equivalents.

TEMPERATURE: Original and edited temperature values are given in the Daily Temperature Table. Edited values are produced when an original value is missing or when surrounding stations indicate a suspect original value. When a line labeled OBS is present and contains either a daily temperature (suspect) or *** (missing), the temperature appearing directly above, on the line labeled MAX or MIN, is an edited value. Summary temperature information (averages, departures, extremes, monthly degree day totals) is based on the values labeled MAX/MIN.

WIND: (As shown in "Evaporation and Wind" table) The total wind movement in miles over the evaporation pan as determined by an anemometer recorder located 6-8 inches above the pan.

SYMBOLS AND LETTERS USED IN THE STATION INDEX TABLE

Thermometers located in a rooftop shelter.
// Rain Gage equipped with a windshield.
AR Observation made "after rain" has occurred.
C Station is equipped with recording rain gage (R) but values in this bulletin are from a non-recording rain gage unless indicated by an R.
G Observations appear in "Soil Temperatures" table.
H Observations appear in "Snowfall and Snow on Ground" table.
J Station also published as a Local Climatological Data publication.
MID Observation time is midnight.
MO Rain gage read once monthly, usually the last day.
OC Rain gage readings vary from a few weeks to several months.
R Amounts from recording rain gage.
SR Observation time near sunrise.
SS Observation time near sunset.
VAR Observation time varies.
WI Rain gage read weekly or irregularly.
WM Rain gage read weekly and last day of month.

SYMBOLS AND LETTERS USED IN THE DATA TABLES

(DAILY DATA ARE FOR THE 24 HOURS IMMEDIATELY PRECEDING OBSERVATION TIME.)

BLANK entries in the "Monthly Summarized Data" table indicate no record. BLANK entries in the "Daily Precipitation" and "Snowfall and Snow on Ground" tables indicate zero.

BLANK entries in the "Daily Temperature" table indicate a missing record where an edited value could not be determined. (See *** below)
- No record. Data not recorded, determined unreliable by quality control checks, or not received in time for publication.

+ Precipitation or temperature extremes occurred on one or more previous dates during the month.

*** Missing original temperature which has been estimated during edit.

* Rain gage not read. Precipitation is included in the amount following the asterisks. Time distribution not known. A * preceding the monthly total indicates precipitation amount is being carried forward to next months total, and may include amounts from the previous month(s).

// Rain gage equipped with a windshield.

A Amount of precipitation is the total of observer's entries for the current month. It may include precipitation that occurred during the previous month. Refer to earlier bulletin to determine date of last reading. (HAWAII stations)

B Adjusted monthly value (estimated), (1-7 missing values for wind and evaporation).

M Insufficient or partial data. M is appended to average and/or total values computed with 1-9 daily values missing. M appears alone if 10 or more daily values are missing, (8 or more for wind and evaporation).

R Amounts from recording rain gage.

T Trace. An amount too small to measure.

V Includes total for previous month(s). (See * above)

Seasonal Tables: Monthly and seasonal snowfall and heating degree days for the 12 months ending with the June data are published in the July issue of this bulletin. Cooling degree days for the calendar year are published in the "Climatological Data Annual Summary".

The graphic displays appearing in this publication were first produced for the January 1987 data month. The types of graphs and the information they portray may vary from month to month and from state to state in order to highlight climatic features of state, regional, and seasonal interest. Some graphs present information for "clusters". A cluster is a group of up to four (4) adjacent divisions that comprise an area of similar climate.

Information concerning the history of changes in locations, exposure, etc. of substations is kept on file at the National Climatic Data Center. Historical information for regular National Weather Service Offices may be obtained from the "Local Climatological Data" annual publication. The contents of this publication may be reprinted or otherwise used freely, with proper credit to the National Climatic Data Center. The data are also available in digital form on magnetic tape and diskette.

SUBSCRIPTION, PRICE AND ORDERING INFORMATION AVAILABLE FROM:

NATIONAL CLIMATIC DATA CENTER
FEDERAL BUILDING
ASHEVILLE, NC 28801-2696

USCOMM-NOAA-ASHEVILLE, N.C. JUNE 1990-0585

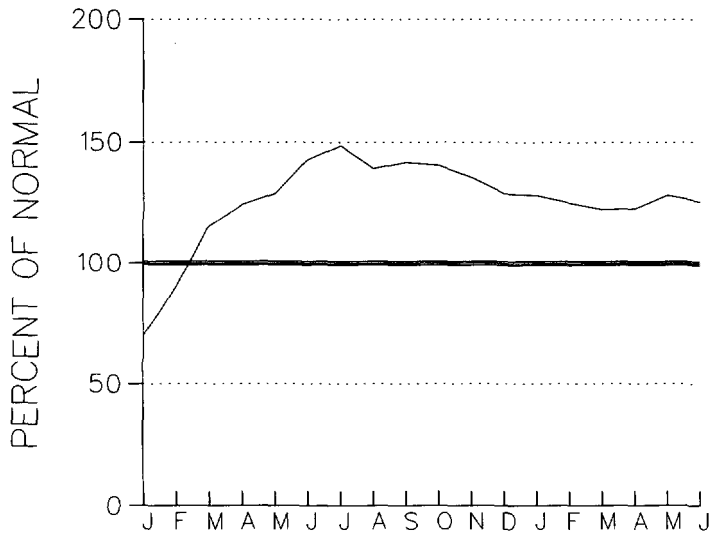
CUMULATIVE PRECIPITATION DEPARTURES FROM NORMAL (1951-1980)
FOR THE LAST 18 MONTHS
ENDING JUNE 1990
MARYLAND

CLUSTER 1 -DIVISION(S):
SOUTHERN EASTERN SHORE 01
CENTRAL EASTERN SHORE 02
LOWER SOUTHERN 03

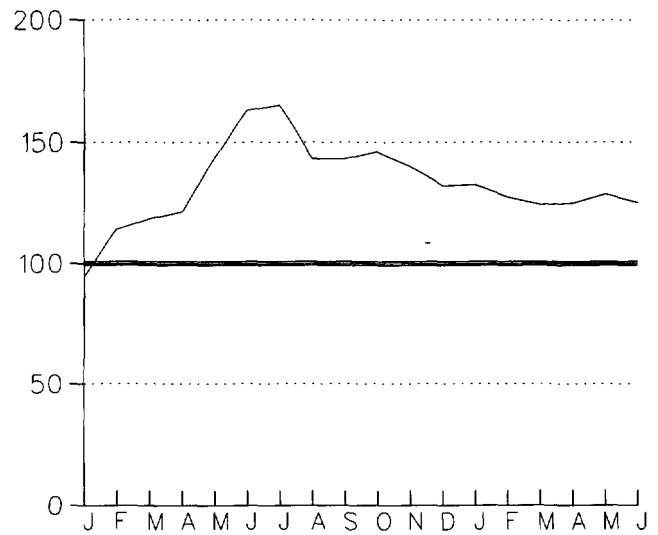
CLUSTER 2 -DIVISION(S):
UPPER SOUTHERN 04
NORTHERN EASTERN SHORE 05

CLUSTER 3 -DIVISION(S):
NORTHERN CENTRAL 06
APPALACHIAN MOUNTAIN 07

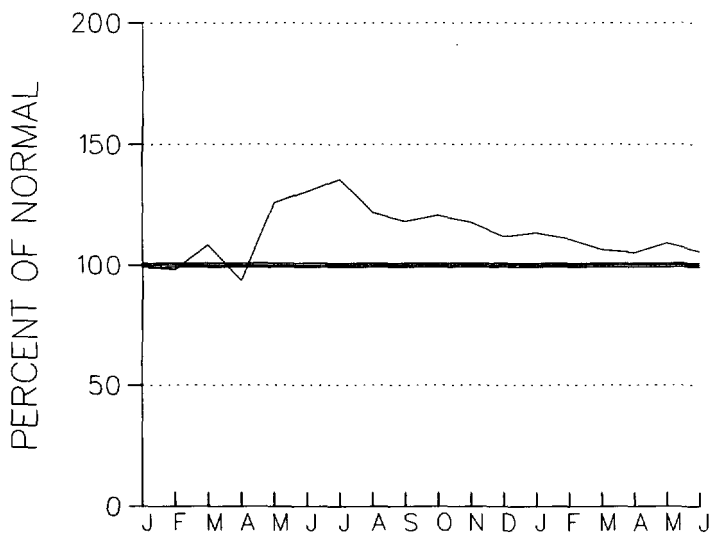
CLUSTER 4 -DIVISION(S):
ALLEGHENY PLATEAU 08



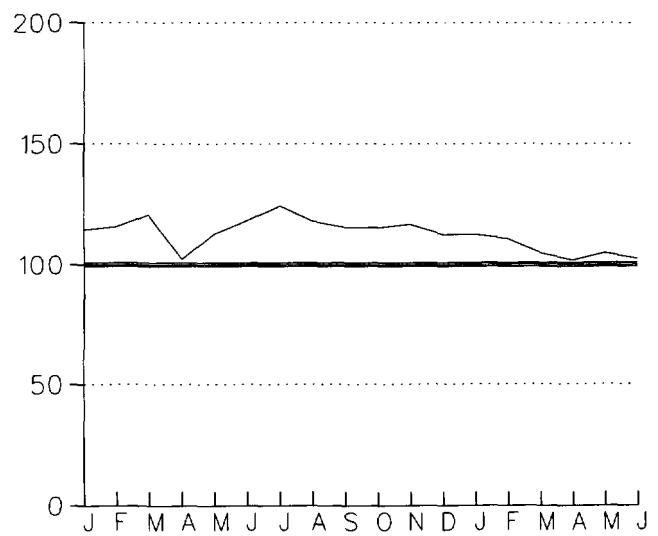
CLUSTER 1



CLUSTER 2



CLUSTER 3

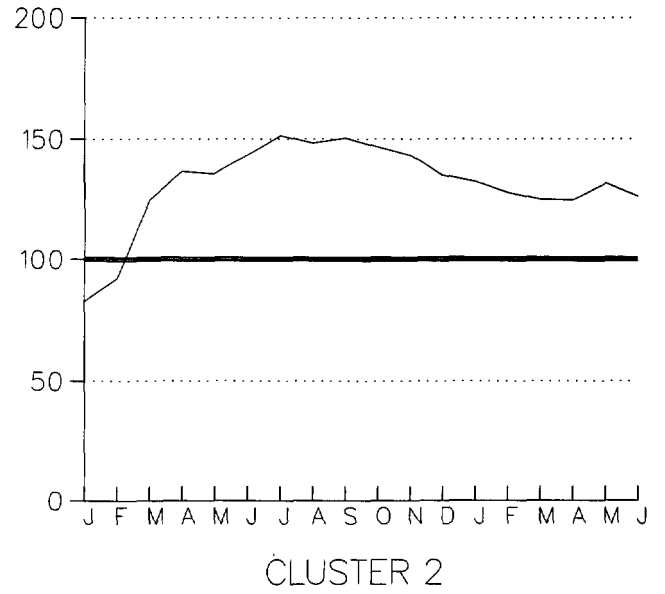
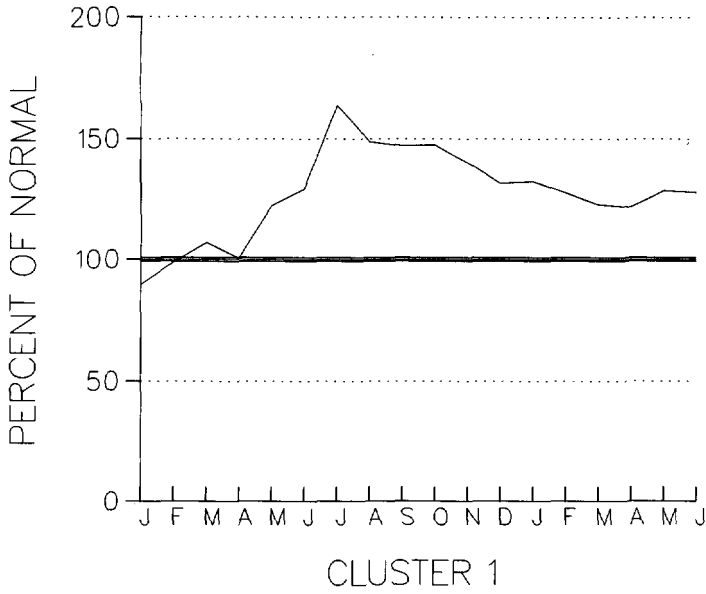


CLUSTER 4

CUMULATIVE PRECIPITATION DEPARTURES FROM NORMAL (1951-1980)
 FOR THE LAST 18 MONTHS
 ENDING JUNE 1990
 DELAWARE

CLUSTER 1 -DIVISION(S):
 NORTHERN 01

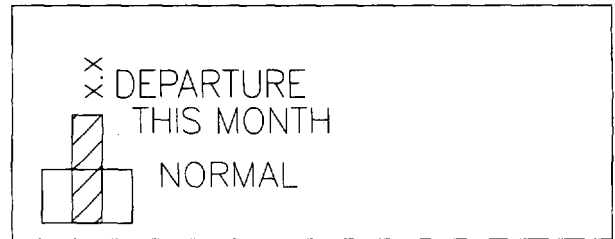
CLUSTER 2 -DIVISION(S):
 SOUTHERN 02



TEMPERATURE AND PRECIPITATION

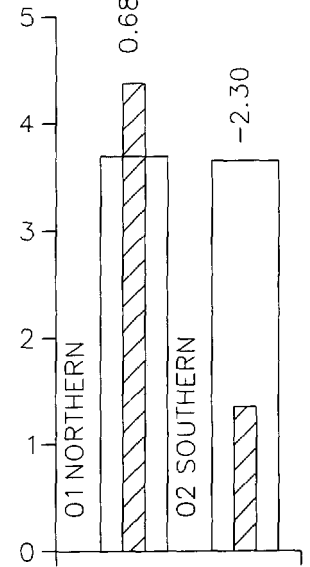
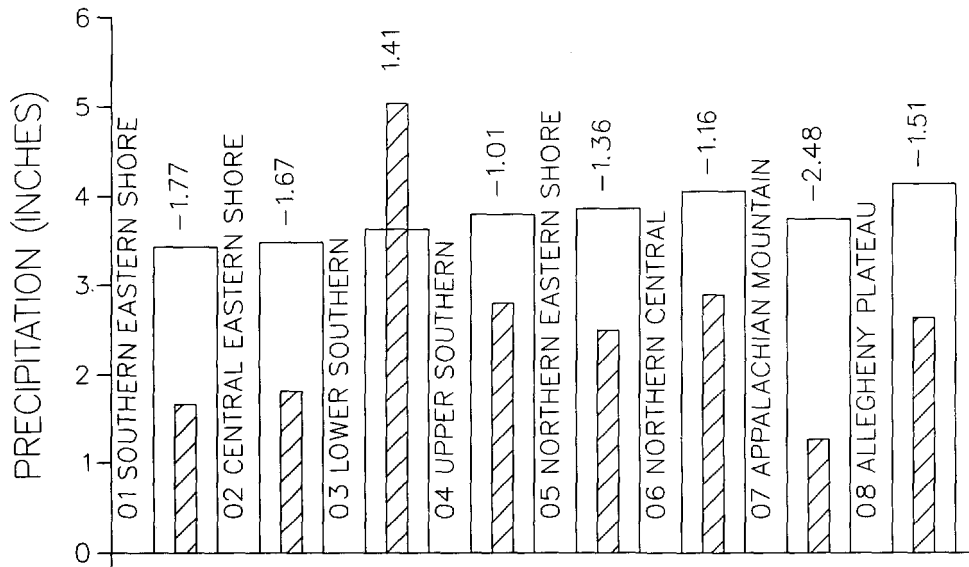
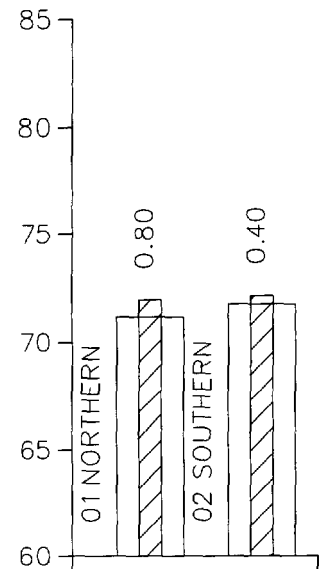
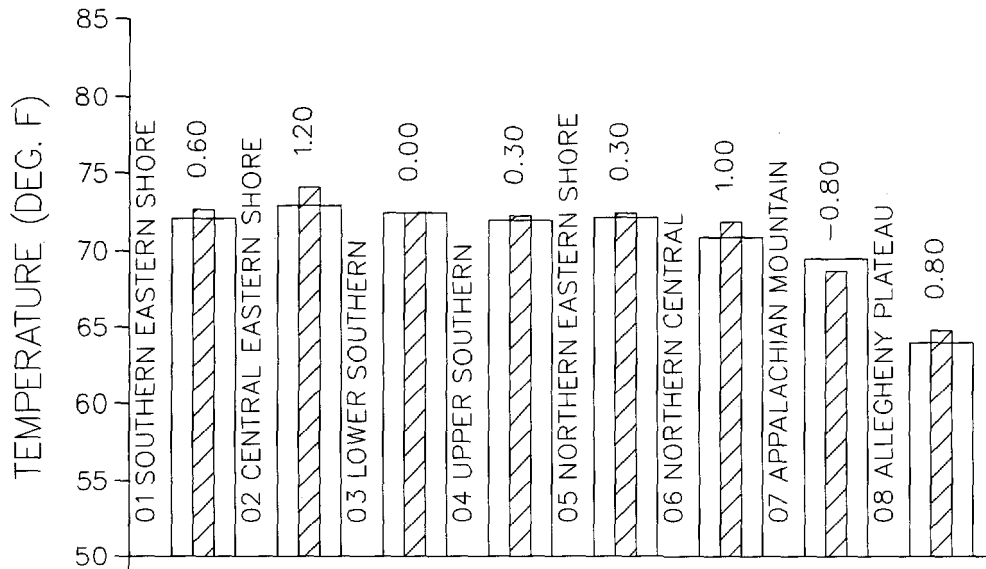
DIVISIONAL AVERAGES AND DEPARTURES FROM NORMAL (1951-1980)

JUNE 1990



MARYLAND

DELAWARE



DIVISIONS

DIVISIONS

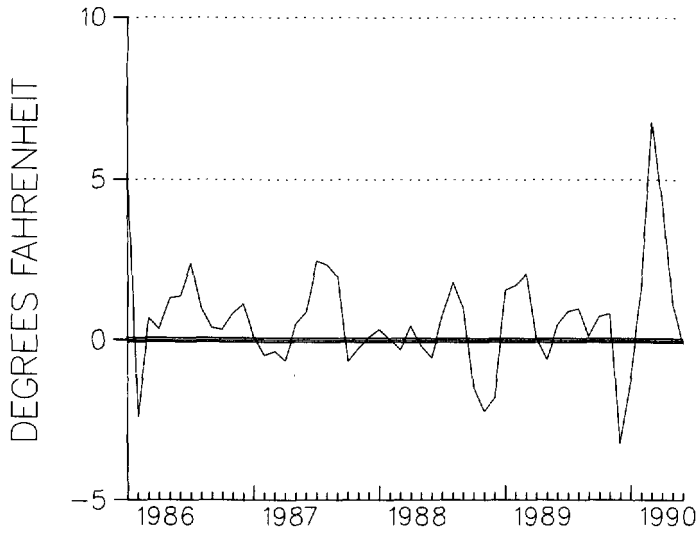
TEMPERATURE DEPARTURES FROM NORMAL (1951-1980)
 THREE MONTH RUNNING MEAN
 FOR THE 54 MONTHS ENDING WITH JUNE 1990 DATA
 MARYLAND

CLUSTER 1 -DIVISION(S):
 SOUTHERN EASTERN SHORE 01
 CENTRAL EASTERN SHORE 02
 LOWER SOUTHERN 03

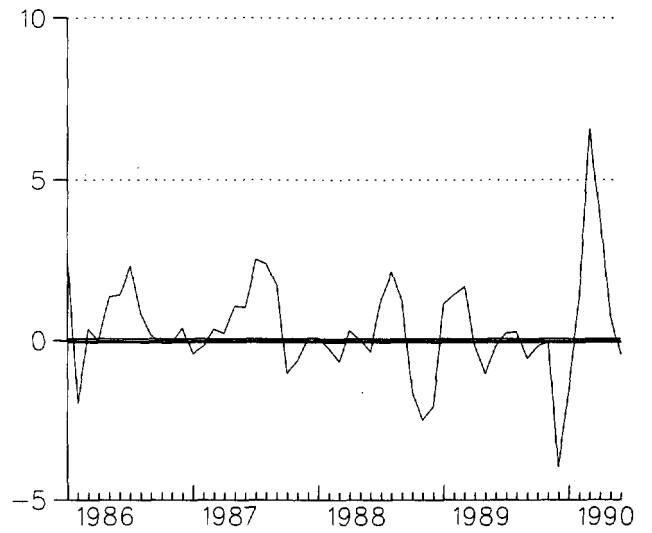
CLUSTER 2 -DIVISION(S):
 UPPER SOUTHERN 04
 NORTHERN EASTERN SHORE 05

CLUSTER 3 -DIVISION(S):
 NORTHERN CENTRAL 06
 APPALACHIAN MOUNTAIN 07

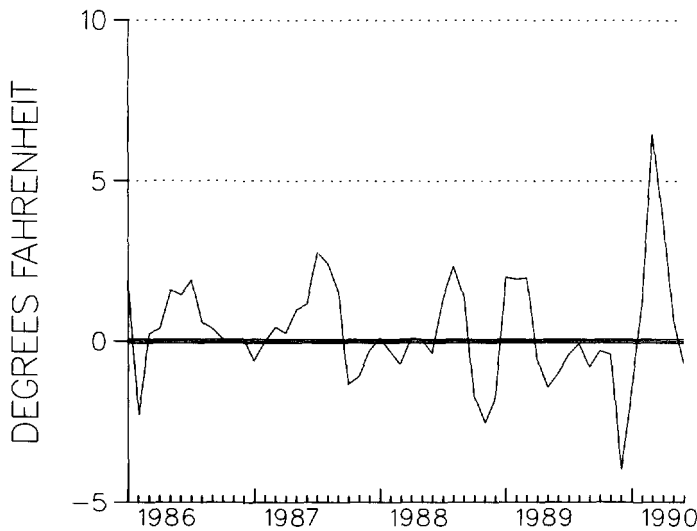
CLUSTER 4 -DIVISION(S):
 ALLEGHENY PLATEAU 08



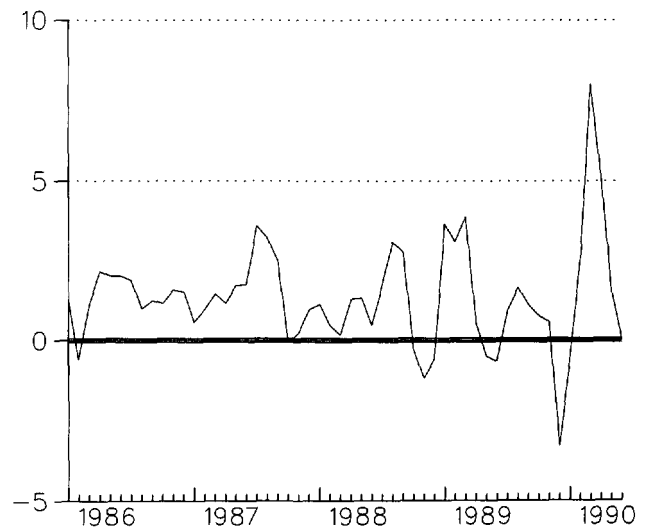
CLUSTER 1



CLUSTER 2



CLUSTER 3



CLUSTER 4

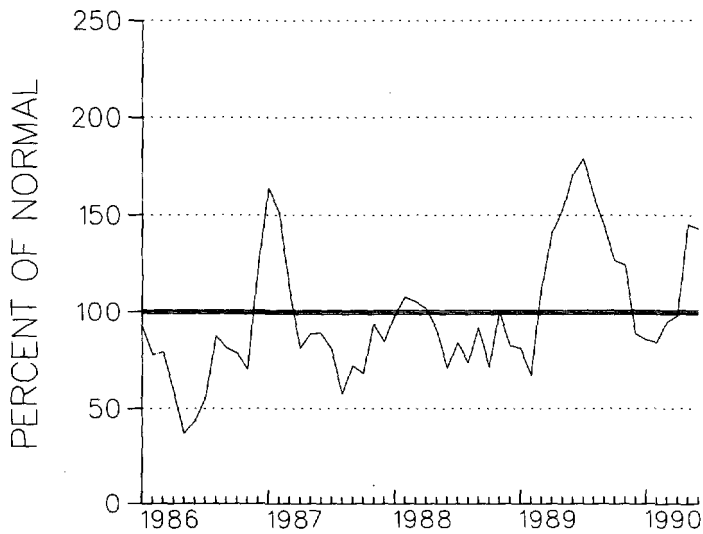
PRECIPITATION DEPARTURES FROM NORMAL (1951-1980)
 THREE MONTH RUNNING MEAN
 FOR THE 54 MONTHS ENDING WITH JUNE 1990 DATA
 MARYLAND

CLUSTER 1 -DIVISION(S):
 SOUTHERN EASTERN SHORE 01
 CENTRAL EASTERN SHORE 02
 LOWER SOUTHERN 03

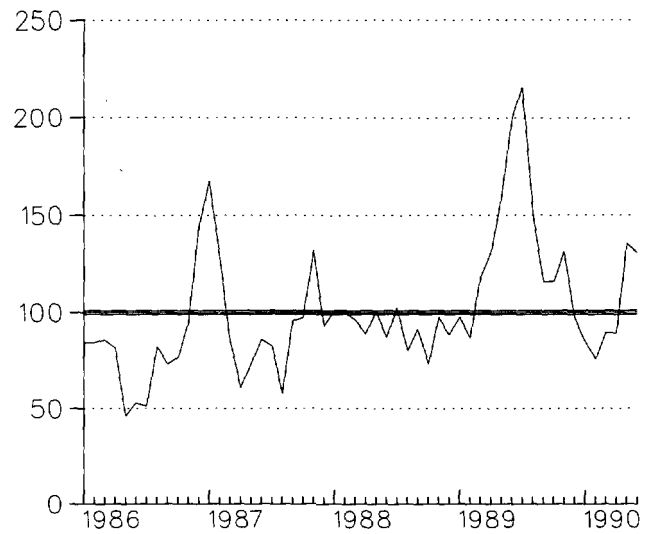
CLUSTER 2 -DIVISION(S):
 UPPER SOUTHERN 04
 NORTHERN EASTERN SHORE 05

CLUSTER 3 -DIVISION(S):
 NORTHERN CENTRAL 06
 APPALACHIAN MOUNTAIN 07

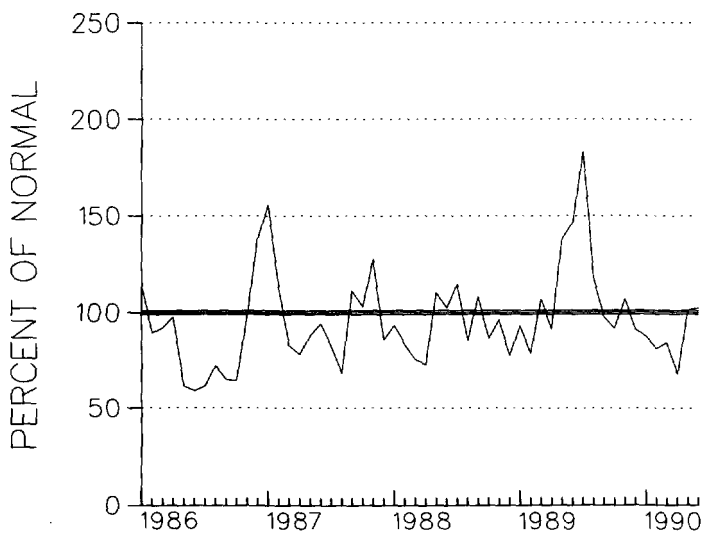
CLUSTER 4 -DIVISION(S):
 ALLEGHENY PLATEAU 08



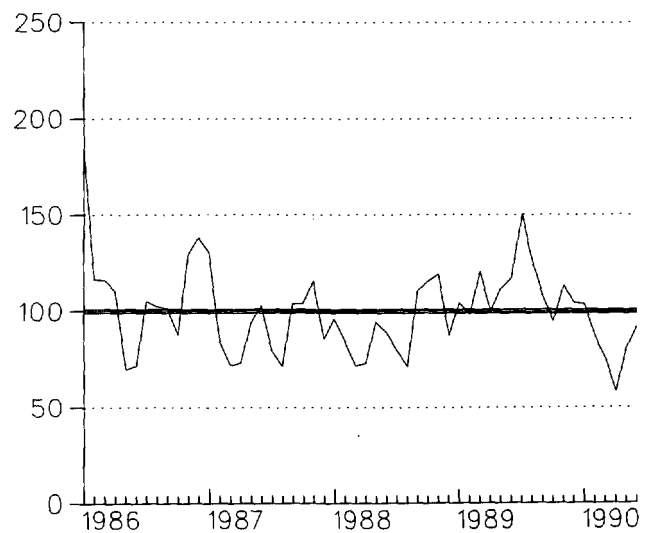
CLUSTER 1



CLUSTER 2



CLUSTER 3

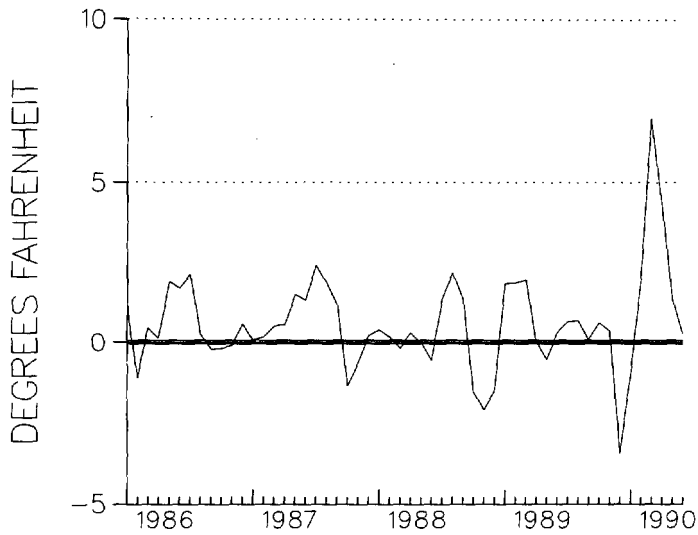


CLUSTER 4

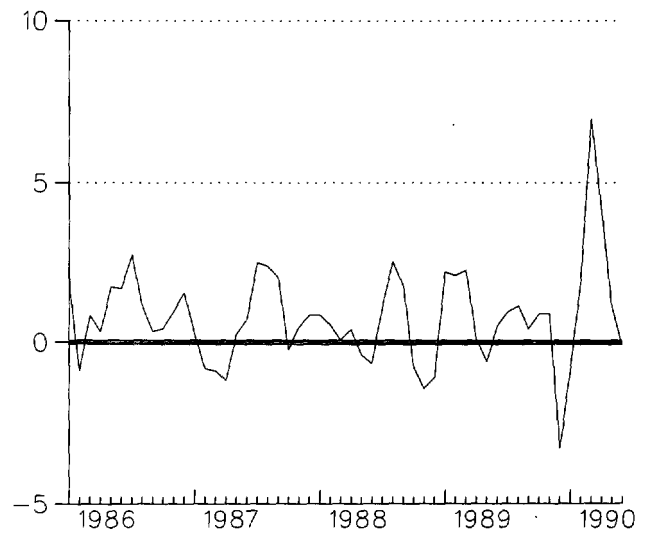
TEMPERATURE DEPARTURES FROM NORMAL (1951-1980)
THREE MONTH RUNNING MEAN
FOR THE 54 MONTHS ENDING WITH JUNE 1990 DATA
DELAWARE

CLUSTER 1 -DIVISION(S):
NORTHERN 01

CLUSTER 2 -DIVISION(S):
SOUTHERN 02



CLUSTER 1

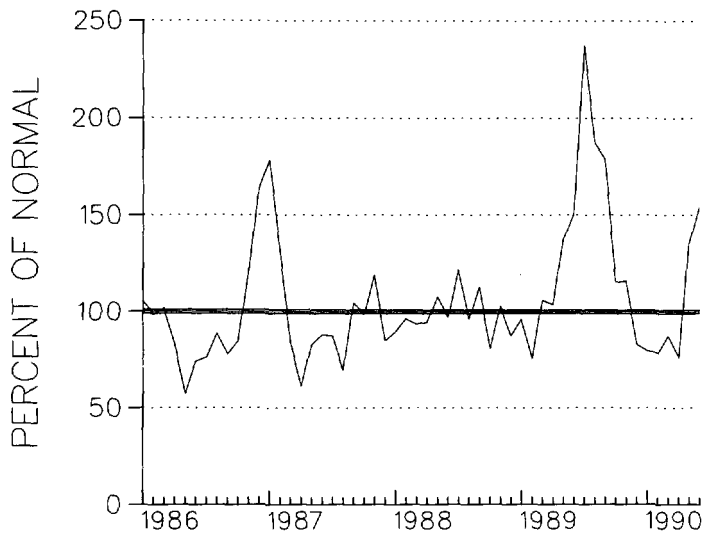


CLUSTER 2

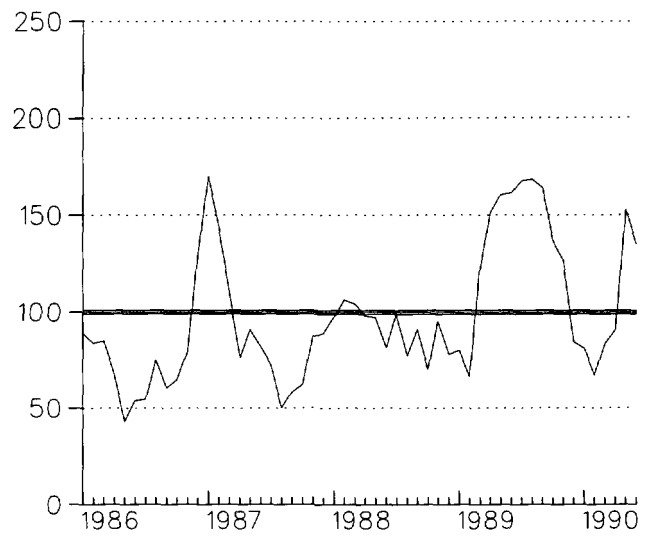
PRECIPITATION DEPARTURES FROM NORMAL (1951-1980)
THREE MONTH RUNNING MEAN
FOR THE 54 MONTHS ENDING WITH JUNE 1990 DATA
DELAWARE

CLUSTER 1 - DIVISION(S):
NORTHERN 01

CLUSTER 2 - DIVISION(S):
SOUTHERN 02



CLUSTER 1

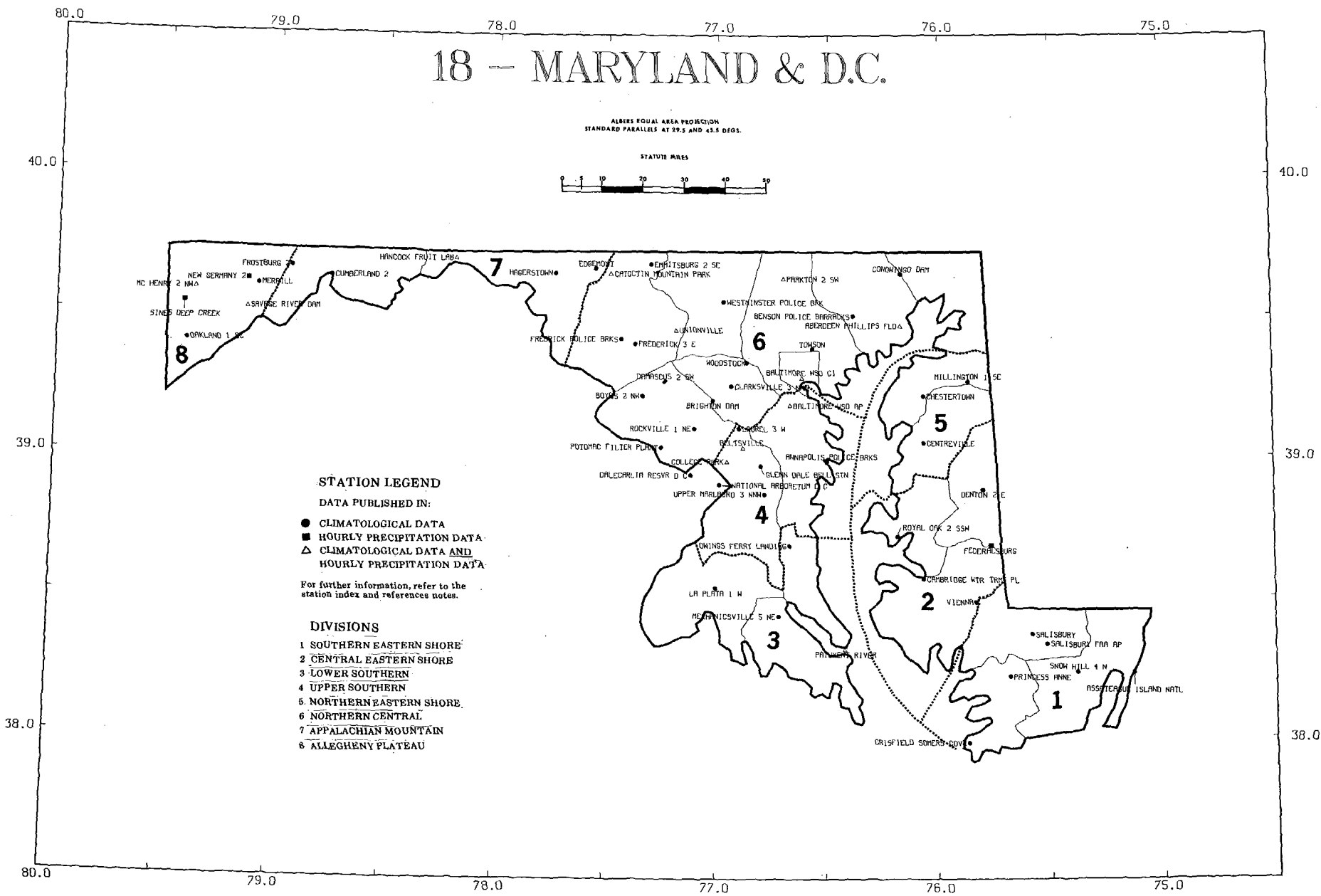
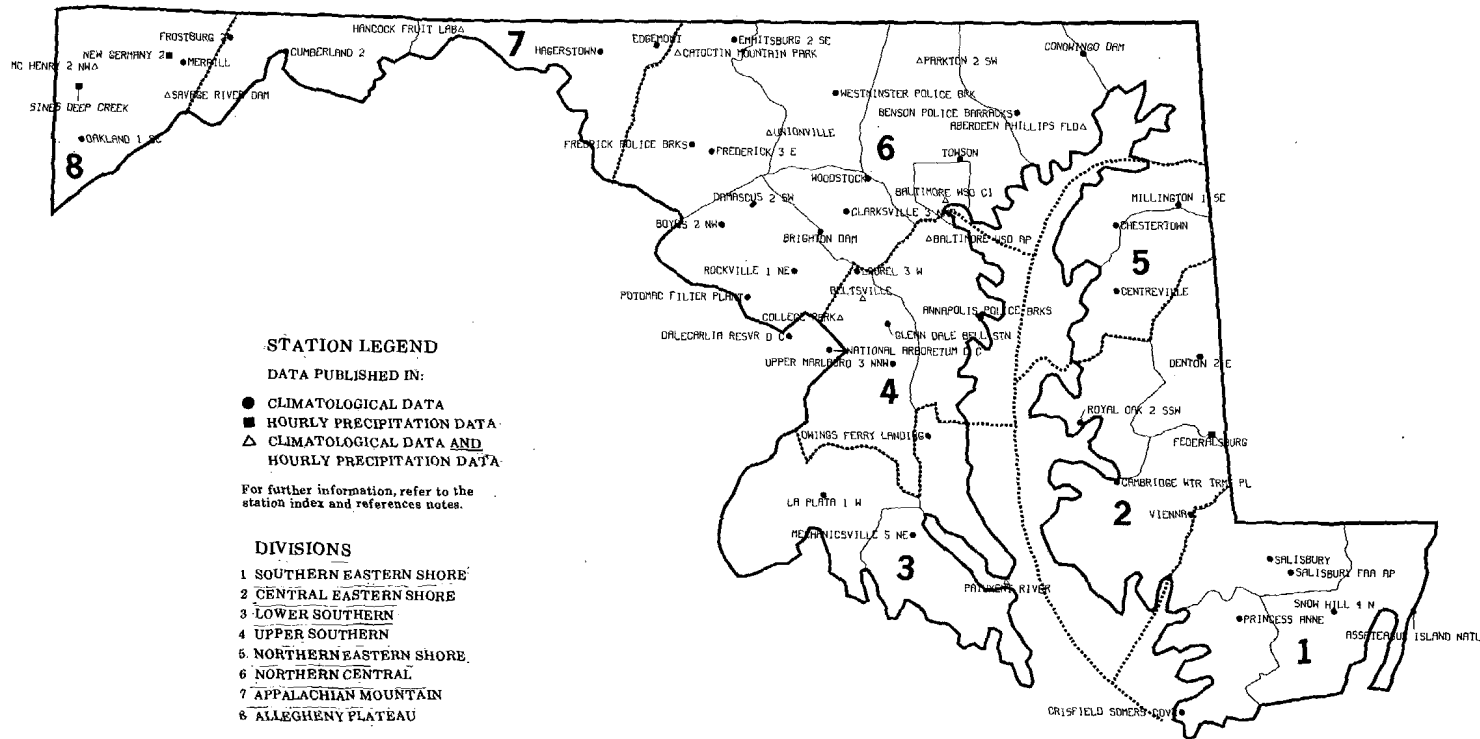


CLUSTER 2

18 - MARYLAND & D.C.

ALBERS EQUAL AREA PROJECTION
STANDARD PARALLELS AT 29.5 AND 45.5 DEGS.

STATUTE MILES



76.0
40.0

75.0

40.0

07 - DELAWARE

ALBERS EQUAL AREA PROJECTION
STANDARD PARALLELS AT 29.5 AND 45.5 DEGS.

STATUTE MILES



STATION LEGEND

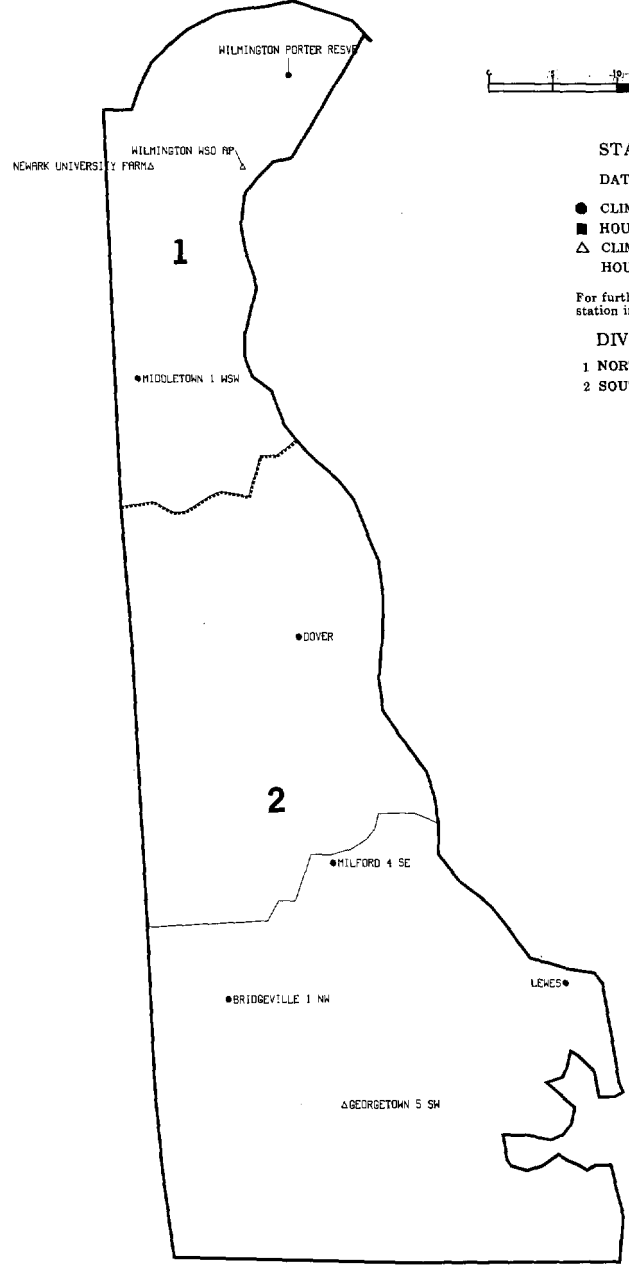
DATA PUBLISHED IN:

- CLIMATOLOGICAL DATA
- HOURLY PRECIPITATION DATA
- △ CLIMATOLOGICAL DATA AND HOURLY PRECIPITATION DATA

For further information, refer to the station index and references notes.

DIVISIONS

- 1 NORTHERN
- 2 SOUTHERN



39.0

39.0

76.0
38.0

75.0

38.0

CD
VALIDATED BY:

Ted Burlew
Betty Edstrom
Bruce Emory
Joyce Morgan
Betty Shuford

DEPARTMENT OF COMMERCE
NATIONAL OCEANIC AND ATMOSPHERIC ADMINISTRATION
NATIONAL ENVIRONMENTAL SATELLITE, DATA, AND INFORMATION SERVICE
NATIONAL CLIMATIC DATA CENTER
FEDERAL BUILDING
ASHEVILLE, N.C. 28801

*TO CHANGE YOUR ADDRESS, PLEASE RETURN A COPY OF
THE MAILING LABEL ALONG WITH YOUR NEW ADDRESS.*

**BULK RATE
POSTAGE & FEES PAID**
United States Department Of Commerce
NOAA Permit No. G - 19