



ISSN 0145-0549

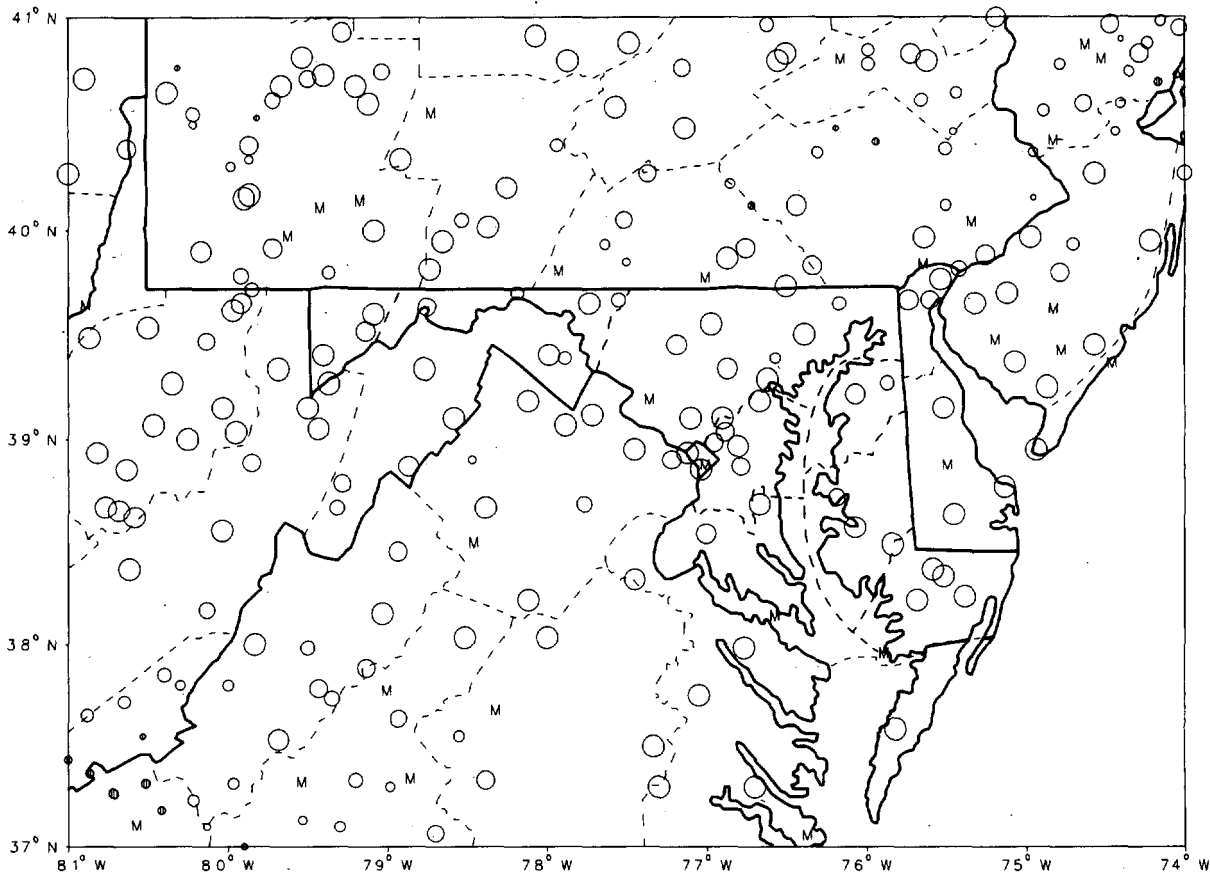
# CLIMATOLOGICAL DATA MARYLAND AND DELAWARE

MAY 1991

VOLUME 95 NUMBER 5

### MONTHLY PRECIPITATION DEPARTURE FROM INDIVIDUAL STATION NORMALS (1951-1980)

- M INCOMPLETE DATA FOR THE MONTH
- ∇ EXACTLY NORMAL
- ○ ○ ○ ○ 5, 10, 20, ... 50% OR MORE BELOW NORMAL
- ● ● ● ● 10, 20, 40, ... 100% OR MORE ABOVE NORMAL



CIRCLE DIAMETER IS PROPORTIONAL TO DEPARTURE ON A CONTINUOUS SCALE

"I CERTIFY THAT THIS IS AN OFFICIAL PUBLICATION OF THE NATIONAL OCEANIC AND ATMOSPHERIC ADMINISTRATION (NOAA). IT IS COMPILED USING INFORMATION FROM WEATHER OBSERVING SITES SUPERVISED BY NOAA/NATIONAL WEATHER SERVICE AND RECEIVED AT THE NATIONAL CLIMATIC DATA CENTER (NCDC), ASHEVILLE, NORTH CAROLINA 28801."

*Kenneth D. Haden*

DIRECTOR, NATIONAL CLIMATIC DATA CENTER

# noaa

NATIONAL  
OCEANIC AND  
ATMOSPHERIC ADMINISTRATION

NATIONAL  
ENVIRONMENTAL SATELLITE, DATA  
AND INFORMATION SERVICE

NATIONAL  
CLIMATIC DATA CENTER  
ASHEVILLE NORTH CAROLINA

# TEMPERATURE AND PRECIPITATION EXTREMES

MARYLAND AND  
DELAWARE  
MAY 1991

MARYLAND  
 HIGHEST TEMPERATURE 100  
 LOWEST TEMPERATURE 36  
 GREATEST TOTAL PRECIPITATION 3.34  
 LEAST TOTAL PRECIPITATION .65  
 GREATEST 1 DAY PRECIPITATION 1.53

DELAWARE  
 HIGHEST TEMPERATURE 97  
 LOWEST TEMPERATURE 38  
 GREATEST TOTAL PRECIPITATION 1.98  
 LEAST TOTAL PRECIPITATION 1.42  
 GREATEST 1 DAY PRECIPITATION 1.90

MAY 31

MAY 1

MAY 6

MAY 31

MAY 20

MAY 6

COLLEGE PARK  
 OAKLAND 1 SE  
 TOWSON  
 PRINCESS ANNE  
 CHESTERTOWN

DOVER  
 3 STATIONS  
 WILMINGTON WSO ARPT R  
 GEORGETOWN 5 SW  
 WILMINGTON WSO ARPT R

# MONTHLY SUMMARIZED STATION AND DIVISIONAL DATA

MARYLAND AND  
DELAWARE  
MAY 1991

STATION	TEMPERATURE (°F)												PRECIPITATION (IN)							
	AVERAGE MAXIMUM	AVERAGE MINIMUM	AVERAGE	DEPARTURE FROM NORMAL	HIGHEST DATE	LOWEST DATE	HEATING DEGREE DAYS	COOLING DEGREE DAYS	NO. OF DAYS				TOTAL	DEPARTURE FROM NORMAL	GREATEST DAY DATE	SNOW SLEET				
									90 OR ABOVE	32 OR BELOW	32 OR BELOW	0 OR BELOW				TOTAL	MAX. DEPTH ON GROUND	DATE	.10 OR MORE	.50 OR MORE
<b>MARYLAND</b>																				
<b>SOUTHERN EASTERN SHORE 01</b>																				
ASSATEAGUE IS NATL SEA	75.5	56.0	66.8	5.6	9331	3820	79	111	1	0	0	0	.76							
PRINCESS ANNE	82.5	60.2	71.4	6.6	9631	414	51	146	6	0	0	0	.65	-2.70	.30	7				
SALISBURY	82.5	60.3	71.4	6.6	9531	4520	28	233	7	0	0	0	1.39	-1.93	.60	28				
SALISBURY FAA ARPT	81.1	55.7	68.4	5.3	9531	4320	68	177	7	0	0	0	1.66	-1.72	.56	28				
SNOW HILL 4 N	83.9	57.9	70.9	7.4	9831	4320+	41	232	0	0	0	0	.66	-2.77	.21	7				
--DIVISIONAL DATA-->			69.2	5.4									1.02	-2.29	.0					
<b>CENTRAL EASTERN SHORE 02</b>																				
CAMBRIDGE WATER TRMT P	83.5	60.0	71.8	7.6	9830	473	29	245	9	0	0	0	.93	-2.67	.35	6				
ROYAL OAK 2 SSW	80.8	60.2	70.5	5.3	9530	4420	43	220	0	0	0	0	2.39	-1.24	.95	6				
VIENNA	77.4	54.5	66.0	1.2	9931	3820	109	145	7	0	0	0	1.15	-1.87	.34	6				
--DIVISIONAL DATA-->			69.4	4.8									1.49	-1.94	.0					
<b>LOWER SOUTHERN 03</b>																				
LA PLATA 1 W	80.0	59.4	69.7	5.7	9330	478+	39	192	2	0	0	0	1.94	-1.53	.62	6				
MECHANICSVILLE 5 NE	80.6	58.5	69.6	5.3	9430	448+	50	200	0	0	0	0	2.19		.77	17				
OWINGS FERRY LANDING	81.4	57.9	69.7	5.3	9531	4520+	46	198	5	0	0	0	1.97	-1.83	.62	7				
--DIVISIONAL DATA-->			69.7	5.1									2.03	-1.56	.0					
<b>UPPER SOUTHERN 04</b>																				
ANNAPOLIS POLICE BRKS	83.4	59.6	71.5	7.2	9830	478	29	240	11	0	0	0	1.98		.49	6				
BALTIMORE WSO ARPT	82.6	58.5	70.6	7.5	9830	458+	55	233	9	0	0	0	1.16	-2.28	.55	6				
BELTSVILLE	81.5	57.0	69.9	7.5	9631	428	56	196	7	0	0	0	2.32	-1.49	1.32	18				
COLLEGE PARK	83.6	60.8	72.2	7.5	10031	458	31	266	2	0	0	0	2.37	-1.48	1.10	18				
DALECARLIA RESVR DC	84.0	54.8	69.4	4.4	9731	408+	42	188	1	0	0	0	1.63	-2.14	.85	17				
GLENN DALE BELL STN	83.1	55.4	69.3	5.9	9531	418	50	190	9	0	0	0	2.07	-1.87	.80	18				
LAUREL 3 W	83.7	60.3	72.0	7.6	9830	4520+	32	257	12	0	0	0	2.01	-2.85	.50	6				
NATIONAL ARBORETUM DC	83.2	60.3	71.8	6.6	9831	478+	34	250	12	0	0	0	.91		.40	7				
UPPER MARLBORO 3 NNW	82.4	56.7	69.6	6.9	9731	423	48	198	7	0	0	0	2.18	-1.42	.86	6				
--DIVISIONAL DATA-->			70.6	6.9									1.87	-1.88	.0					
<b>NORTHERN EASTERN SHORE 05</b>																				
CHESTERTOWN	82.5	57.5	70.0	6.3	9531+	4120	52	219	10	0	0	0	2.06	-1.56	1.53	6				
MILLINGTON 1 SE	82.0	56.0	69.0	6.3	9430	3920	53	185	7	0	0	0	2.56	-.86	1.42	6				
--DIVISIONAL DATA-->			69.5	6.0									2.31	-1.14	.0					
<b>NORTHERN CENTRAL 06</b>																				
ABERDEEN PHILLIPS FLD	82.6M	59.2	70.9M	7.9	9331+	4320+	29	228	4	0	0	0	2.50							
BALTIMORE WSO CITY	83.6	64.7	74.2	7.9	9930	5120	11	304	9	0	0	0	1.14	-2.49	.55	17				
BENSON POLICE BARRACKS	85.4	58.7	72.1	9.7	9830	4220	27	283	12	0	0	0	1.61	-2.44	.57	6				
CATOCTIN MOUNTAIN PARK	77.5	57.4	67.5		8630	414	72	154	0	0	0	0	1.98							
CLARKSVILLE 3 NNE	83.8	54.4	69.1		9631+	398	52	187	8	0	0	0	1.93		1.04	6				
CONOWINGO DAM	84.1	52.0	68.1	6.1	9629	3920+	63	165	11	0	0	0	2.81	-.92	.95	13				
DAMASCUS 2 SW	79.8	57.9	68.9		9330	424	62	192	5	0	0	0	1.73		.67	17				
EMMITTSBURG 2 SE	79.6	54.4	67.0		9130	398+	79	150	2	0	0	0	1.99		.90	6				
FREDERICK POLICE BRKS	83.7	60.0	71.9		9631+	454	31	247	10	0	0	0	1.87		.77	17				
MILLERS 4 NE	79.0	56.7	67.9		9030+	404	73	168	2	0	0	0	1.62		.89	6				
ROCKVILLE 1 NE	80.7	60.1	70.4	6.5	9430	458	50	235	5	0	0	0	1.37	-2.40	.62	6				
TOWSON	81.9	59.9	70.9		9430	4520+	37	257	7	0	0	0	3.34	-.67	.72	6				

SEE REFERENCE NOTES FOLLOWING STATION INDEX

# MONTHLY SUMMARIZED STATION AND DIVISIONAL DATA

MARYLAND AND  
DELAWARE  
MAY 1991

STATION	TEMPERATURE (°F)													PRECIPITATION (IN)								
	AVERAGE MAXIMUM	AVERAGE MINIMUM	AVERAGE	DEPARTURE FROM NORMAL	HIGHEST DATE	LOWEST DATE	HEATING DEGREE DAYS	COOLING DEGREE DAYS	NO. OF DAYS				TOTAL	DEPARTURE FROM NORMAL	GREATEST DAY DATE	SNOW, SLEET			NO. OF DAYS			
									90 OR ABOVE	32 OR BELOW	32 OR BELOW	0 OR BELOW				TOTAL	MAX. DEPTH ON GROUND	DATE	.10 OR MORE	.50 OR MORE	1.00 OR MORE	
UNIONVILLE	81.6	53.8	67.7	6.8	9330	38	8	489	161	7	0	0	0	1.99	-1.68	.61	6			4	2	0
WESTMINSTER POLICE BRK	82.3	57.5	69.9	8.4	9431+	42	8+	509	209	7	0	0	0	1.54	-2.33	.61	6			4	1	0
WOODSTOCK	83.6	57.5	70.1	7.7	9431+	42	8+	509	211	9	0	0	0	2.09	-1.68	.73	6			4	1	0
-- DIVISIONAL DATA ----->			69.8	7.2										1.97	-1.85	.0						
APPALACHIAN MOUNTAIN 07																						
CUMBERLAND 2	82.1	56.5	69.3	6.5	9326	43	7	511	192	6	0	0	0	2.19	-1.42	.57	19			6	1	0
FROSTBURG 2	73.5	53.5	63.5		8530	40	4	136	96	0	0	0	0	2.11		.50	19			7	1	0
HAGERSTOWN	80.9	57.4	69.2	6.1	9431	42	4	66	197	0	0	0	0	1.59	-2.15	.78	7			4	1	0
HANCOCK	81.1	54.6	67.9	7.7	9231	39	8+	68	165	5	0	0	0	2.62	-1.79	.65	14			4	1	0
-- DIVISIONAL DATA ----->			67.5	5.9										2.13	-1.56	.0						
ALLEGHENY PLATEAU 08																						
MC HENRY 2 NW	74.4	53.0	63.7		8627	37	3	128	97	0	0	0	0	1.80		.38	19			7	0	0
OAKLAND 1 SE	76.0	50.8	63.4	7.1	8726	36	1	113	72	0	0	0	0	1.44	-3.00	.62	6			3	1	0
SAVAGE RIVER DAM	77.2	52.2	64.7	6.9	8730+	41	8	105	103	0	0	0	0	2.09	-1.58	.71	27			7	1	0
-- DIVISIONAL DATA ----->			63.9	7.3										1.78	-2.34	.0						
DELAWARE																						
NORTHERN 01																						
NEWARK UNIVERSITY FARM	82.6	55.8	69.2	6.5	9530	38	20+	63	200	9	0	0	0	1.93	-1.59	1.18	6			3	1	1
WILMINGTON WSO ARPT	80.7	57.5	69.1	6.9	9431+	41	4	61	197	8	0	0	0	1.98	-1.25	1.90	6			1	1	1
WILMINGTON PORTER RSVR	79.9	58.1	69.0	7.4	9330	42	20+	64	196	7	0	0	0	1.80	-1.77	1.74	6			1	1	1
-- DIVISIONAL DATA ----->			69.1	6.7										1.90	-1.46	.0						
SOUTHERN 02																						
DOVER	82.6	58.9	70.8	6.6	9731+	38	20	48	236	12	0	0	0	1.44	-2.06	.90	7			4	1	0
GEORGETOWN 5 SW	80.3	55.7	68.0	4.9	9631	41	20+	72	172	7	0	0	0	1.42	-1.84	.50	2			4	1	0
GREENWOOD 2 NE	80.2	56.4	68.3		9430	38	20	72	182	5	0	0	0	1.57		.50	6			5	1	0
LEWES	81.3	60.2	70.8	8.7	9530	47	20+	40	226	5	0	0	0	1.82	-1.72	.44	28			5	0	0
-- DIVISIONAL DATA ----->			69.5	6.1										1.56	-1.84	.0						

SEE REFERENCE NOTES FOLLOWING STATION INDEX



# DAILY PRECIPITATION (INCHES)

MARYLAND AND  
DELAWARE  
MAY 1991

STATION	TOTAL	DAY OF MONTH																														
		1	2	3	4	5	6	7	8	9	10	11	12	13	14	15	16	17	18	19	20	21	22	23	24	25	26	27	28	29	30	31
ALLEGHENY PLATEAU 08																																
MC HENRY 2 NW	1.80		.02	.03			.21	.14		.27	.11								.26	.38		T			.01							
MERRILL	1.68						.20	.05		.30			.03					.40	.35				.04		.01							
OAKLAND 1 SE	1.44		T	.05			.52			.45										.08												
SAVAGE RIVER DAM	2.09		T	.01			.13	.05		.27	.13				.01	T			.13	.32		.02			T							
DELAWARE																																
NORTHERN 01																																
NEWARK UNIVERSITY FARM	1.93			.01			1.18	.42							.25				.03									.02			.02	
WILMINGTON WSO ARPT R	1.98	T		T			1.90			T				.05				T									.03					
WILMINGTON PORTER RSVR	1.80						1.74							T				.06											T	T		
SOUTHERN 02																																
DOVER	1.44		.15	.10				.90		.02					.15				.08	.04												
GEORGETOWN 5 SW	1.42		.50	.01			.10	.45							.09					.01										.26		
GREENHOOD 2 NE	1.57		.18	.02			.50	.25		.01					.24				.05	T										.05		
LEWES	1.82		.34	.01			.35	.42		T					.26				T											.44		

SEE REFERENCE NOTES FOLLOWING STATION INDEX

# DAILY TEMPERATURES (°F)

MARYLAND AND  
DELAWARE  
MAY 1991

STATION	OB. TIME	MAX/MIN	DAY OF MONTH																															AVERAGE	
			1	2	3	4	5	6	7	8	9	10	11	12	13	14	15	16	17	18	19	20	21	22	23	24	25	26	27	28	29	30	31		
MARYLAND																																			
SOUTHERN EASTERN SHORE 01																																			
ASSATEAGUE IS NATL SEA	17	MAX OBS	67	71	64	64	62	70	70	70	72	71	83	86	83	81	80	70	80	80	54	61	74	78	86	74	85	83	80	87	75	87	93	75.5	
		MIN OBS	50	56	50	48	49	58	55	51	51	56	47	55	56	65	52	55	60	55	50	38	46	53	57	59	63	67	62	66	70	66	69	56.0	
PRINCESS ANNE	17	MAX MIN	81 55	73 54	73 44	72 41	74 43	80 59	78 55	75 44	75 53	78 58	77 43	85 50	89 63	88 68	87 61	86 53	86 54	85 58	62 50	71 42	79 46	84 53	88 61	85 57	89 64	92 65	92 70	91 76	93 64	95 64	96 74	82.5	
SALISBURY	17	MAX MIN	82 60	79 56	73 51	70 48	76 49	81 62	78 57	76 51	73 58	79 59	79 48	86 54	90 68	87 71	87 68	84 58	85 61	86 59	62 52	70 45	78 51	83 59	87 61	83 61	87 67	92 70	91 72	90 75	93 71	95 70	95 76	82.5	
SALISBURY FAA ARPT	MID	MAX MIN	80 56	73 49	65 45	70 44	75 45	81 61	70 51	76 46	66 54	79 50	76 44	87 49	91 65	85 69	85 55	83 53	86 53	76 55	61 45	70 43	79 47	84 56	88 60	84 56	88 64	92 68	90 69	91 74	93 67	94 67	95 72	81.1	
SNOW HILL 4 N	18	MAX MIN	82 58	75 57	74 46	72 43	75 44	83 62	79 57	79 46	77 55	80 67	77 43	88 53	93 65	90 69	86 64	84 50	86 55	84 59	62 52	69 43	81 48	87 56	90 62	88 59	91 66	94 67	93 70	94 75	96 66	98 64	98 75	83.9	
CENTRAL EASTERN SHORE 02																																			
CAMBRIDGE WATER TRMT P	16	MAX MIN	82 57	78 59	71 47	69 49	75 48	80 61	77 57	77 48	75 58	79 59	77 49	86 57	92 67	91 67	84 63	85 57	85 61	82 60	64 52	74 49	81 51	88 60	89 62	88 63	94 67	94 69	91 71	92 74	92 72	98 71	97 75	83.5	
ROYAL OAK 2 SSW	18	MAX MIN	79 55	74 55	67 49	69 45	73 49	80 61	68 53	75 50	71 59	78 58	73 50	84 59	88 65	86 63	87 63	81 58	84 65	80 60	63 51	71 44	77 57	84 63	86 64	83 67	90 70	91 71	90 74	90 74	92 68	95 72	93 74	80.8	
VIENNA	18	MAX OBS MIN OBS	76 53	70 52	69 45	61 41	67 44	68 55	62 50	67 44	67 55	70 53	72 43	80 54	88 62	83 64	80 59	77 52	80 55	75 53	58 46	64 38	73 44	76 44	74 42	81 59	91 63	92 66	93 68	94 68	95 65	98 66	99 72	77.4	
LOWER SOUTHERN																																			
LA PLATA 1 W	18	MAX MIN	81 53	75 53	70 47	70 47	75 55	80 59	78 48	74 47	72 56	77 57	73 52	84 54	87 63	85 67	85 62	84 59	85 62	72 59	59 52	64 49	76 58	83 59	85 62	83 65	88 69	89 69	88 73	86 74	88 68	93 70	91 72	80.0	
MECHANICSVILLE 5 NE	19	MAX MIN	82 53	73 51	67 44	72 45	74 51	80 62	70 50	76 44	71 56	78 57	73 50	86 56	89 65	89 65	85 62	83 56	85 59	72 53	60 47	67 57	78 58	84 58	87 64	83 64	90 68	90 72	88 75	90 68	91 69	93 73	93 73	80.6	
OWINGS FERRY LANDING	17	MAX OBS MIN OBS	80 51	72 45	68 46	71 46	74 50	80 61	80 49	76 45	75 57	78 56	74 49	87 54	89 54	87 65	84 62	83 57	85 62	77 60	62 51	69 45	78 57	85 59	86 62	85 66	90 67	90 69	88 71	89 73	91 67	94 68	95 71	81.4	
UPPER SOUTHERN																																			
ANNAPOLIS POLICE BRKS	17	MAX OBS MIN OBS	77 52	79 48	72 48	71 49	73 50	83 61	72 49	80 47	74 56	79 55	78 52	91 51	91 60	90 66	87 64	89 60	84 67	79 62	65 52	72 49	78 59	86 60	90 64	89 66	91 69	91 72	94 73	93 73	93 70	98 71	97 73	83.4	
BALTIMORE WSO ARPT	MID	MAX MIN	80 51	70 51	67 45	72 47	74 47	82 56	70 48	77 45	62 55	81 55	77 51	89 53	91 66	91 63	89 64	87 58	89 62	71 55	64 49	71 47	80 59	88 60	89 65	89 64	94 68	93 71	92 70	92 74	95 70	98 69	96 74	82.6	
BELTSVILLE	08	MAX MIN OBS	80 48	82 50	69 43	65 44	72 46	75 60	81 48	70 42	76 54	62 55	80 50	76 53	87 61	90 63	89 61	89 56	87 58	88 64	75 51	64 45	71 52	80 58	87 61	89 62	87 68	92 69	93 69	90 73	91 67	94 66	96 71	81.5	
COLLEGE PARK	09	MAX OBS MIN OBS	82 50	85 56	73 46	69 48	75 51	77 63	83 50	73 45	80 60	70 57	79 54	78 58	90 66	93 66	92 64	90 61	89 65	90 65	72 56	62 48	73 58	82 61	89 63	91 66	86 72	95 72	93 74	93 75	92 71	100 69	100 76	83.6	
DALECARLIA RESVR DC	17	MAX MIN OBS	84 43	83 45	71 48	71 40	75 46	83 54	81 51	80 40	77 50	81 49	77 58	90 48	89 65	90 57	88 56	87 53	90 58	74 59	68 45	69 44	82 52	87 56	90 60	88 63	92 60	93 63	91 66	91 66	93 62	97 64	97 76	84.0	
GLENN DALE BELL STN	16	MAX MIN OBS	82 46	80 50	70 42	70 42	76 45	79 45	81 46	78 41	79 55	81 52	79 48	84 52	90 61	91 61	91 60	87 55	87 57	75 50	60 49	70 43	79 57	86 56	89 60	88 60	90 67	92 68	91 68	89 72	93 64	94 65	95 68	83.1	

SEE REFERENCE NOTES FOLLOWING STATION INDEX

# DAILY TEMPERATURES (°F)

MARYLAND AND  
DELAWARE  
MAY 1991

STATION	OB. TIME	MAX/MIN	DAY OF MONTH																															AVERAGE	
			1	2	3	4	5	6	7	8	9	10	11	12	13	14	15	16	17	18	19	20	21	22	23	24	25	26	27	28	29	30	31		
LAUREL 3 W	MID	MAX MIN OBS	83 53	71 52	69 45	73 55	76 51	82 55	73 58	79 47	68 55	81 63	78 62	92 57	93 68	92 64	89 62	88 60	89 60	75 55	66 48	72 45	80 55	90 59	90 70	87 63	95 68	93 65	91 77	91 71	95 72	98 77	96 77	83.7 60.3	
NATIONAL ARBORETUM DC	08	MAX MIN	81 51	84 53	73 47	69 48	73 51	76 56	83 51	73 47	80 53	63 59	82 52	77 57	90 63	92 68	90 63	90 62	88 63	90 67	75 55	64 49	71 53	81 63	89 64	91 68	88 71	95 73	93 74	92 75	92 70	96 70	98 74	83.2 60.3	
UPPER MARLBORO 3 NNW	08	MAX MIN	81 48	81 55	73 42	68 44	73 46	77 60	82 50	82 43	79 56	66 55	80 49	75 53	89 62	91 64	89 60	87 55	85 59	88 64	73 51	63 43	70 50	80 57	87 60	89 62	87 65	93 68	92 68	92 70	91 72	94 66	97 65	82.4 56.7	
NORTHERN EASTERN SHORE	05																																		
CHESTERTOWN	23	MAX MIN	85 50	71 53	68 47	72 43	78 46	81 55	70 50	77 48	65 56	78 54	76 47	88 57	92 63	91 68	88 63	86 57	86 53	70 67	65 55	75 49	79 53	87 63	91 64	86 59	93 68	94 71	91 72	94 73	95 66	95 72	82.5 57.5		
MILLINGTON 1 SE	18	MAX MIN	81 48	79 51	67 46	70 40	75 42	76 61	77 49	76 44	74 54	77 53	76 45	86 52	89 61	87 63	86 63	84 55	82 55	80 60	64 51	71 39	78 51	86 59	89 60	89 57	92 65	91 69	90 70	91 74	92 63	94 66	93 70	82.0 56.0	
NORTHERN CENTRAL	06																																		
ABERDEEN PHILLIPS FLD	16	MAX MIN OBS	81 52	80 52	69 50		75 43	75 46	77 63	77 49	77 45	78 59		89 57	86 50	86 55	86 64	85 64	85 64		69 53	77 43	85 56	89 63	87 64									82.6 59.2	
BALTIMORE WSO CITY	MID	MAX MIN	84 61	76 65	72 57	76 55	76 60	86 64	77 58	79 58	67 58	82 58	76 58	90 59	93 73	91 69	87 70	84 67	86 66	73 57	64 53	72 51	80 61	89 65	88 72	86 68	94 72	89 76	91 72	93 76	95 74	99 73	97 81	83.6 64.7	
BENSON POLICE BARRACKS	17	MAX MIN	85 59	84 52	71 49	74 43	77 47	81 58	80 50	79 44	77 56	80 54	81 50	92 54	93 65	91 65	90 55	86 65	81 63	70 52	75 42	82 54	88 59	88 63	87 63	95 65	94 65	92 70	94 71	96 67	98 68	96 76	85.4 58.7		
CATOCTIN MOUNTAIN PARK	17	MAX MIN	79 57	74 49	63 42	69 41	70 51	75 52	63 45	72 49	72 52	77 53	76 51	84 59	83 64	82 62	85 61	83 63	82 60	77 57	60 45	64 45	76 51	81 60	82 66	82 64	84 68	85 70	83 67	83 67	85 68	86 68	85 71	77.5 57.4	
CLARKSVILLE 3 NNE	17	MAX MIN OBS	82 43	80 46	70 40	71 42	75 43	80 59	78 44	76 39	75 51	78 39	80 49	81 58	89 59	89 58	86 59	86 58	89 55	84 52	66 51	71 46	80 50	88 54	89 60	89 58	94 62	93 66	93 66	92 73	92 63	96 65	96 70	83.8 54.4	
CONOWINGO DAM	MID	MAX MIN OBS	83 47	74 47	73 45	76 39	78 41	82 49	70 42	80 40	71 50	82 44	78 48	92 48	89 59	89 58	93 51	89 54	88 57	73 48	68 45	73 39	83 47	91 57	92 58	89 55	92 60	90 65	92 62	94 68	96 61	94 62	84.1 52.0		
DAMASCUS 2 SW	19	MAX MIN	80 55	66 52	65 46	69 42	72 50	78 55	68 48	74 47	69 54	77 54	75 50	86 55	87 66	87 63	84 62	84 61	86 62	73 56	61 47	68 47	77 54	85 59	87 64	86 64	90 65	90 69	89 69	88 71	90 67	93 68	91 72	79.8 57.9	
EMMITSBURG 2 SE	16	MAX MIN	78 43	78 51	65 40	68 39	71 43	74 54	67 43	73 39	73 54	75 50	75 49	85 51	87 59	84 57	84 59	83 54	84 56	78 59	64 50	68 46	77 48	84 56	85 60	85 61	89 65	89 64	88 70	88 64	91 65	90 73	90 65	79.6 54.4	
FREDERICK POLICE BRKS	17	MAX MIN	82 52	80 56	69 47	70 45	72 52	78 56	77 50	76 46	79 56	79 55	80 54	89 59	90 71	90 66	91 65	88 62	87 63	80 60	72 50	69 51	80 53	87 61	88 66	89 67	94 68	92 70	92 70	91 73	93 73	96 70	96 74	83.7 60.0	
MILLERS 4 NE	18	MAX MIN	78 53	73 52	63 45	67 40	72 42	76 54	65 49	72 43	76 55	71 43	85 55	86 51	84 56	84 63	83 60	83 61	73 59	64 49	68 41	77 51	84 60	86 64	84 60	88 65	89 67	88 71	87 64	90 73	90 74	89 70	79.0 56.7		
ROCKVILLE 1 NE	MID	MAX MIN	81 53	68 52	66 47	70 46	72 52	82 55	70 45	76 45	62 57	78 56	78 51	86 56	86 68	88 67	88 63	85 66	87 65	73 55	62 51	70 51	81 58	86 61	88 64	87 67	92 68	91 74	88 73	87 74	90 73	91 70	80.7 60.1		
TOWSON	18	MAX MIN OBS	80 56	76 50	67 48	70 45	74 50	79 58	75 51	78 47	75 57	77 56	88 52	88 56	86 69	87 65	86 66	85 61	85 66	73 62	65 50	70 45	80 55	86 62	87 66	86 63	92 68	91 72	90 74	92 70	94 69	92 75	81.9 59.9		
UNIONVILLE	17	MAX MIN	80 41	75 50	67 40	70 39	75 43	78 52	70 42	77 38	73 54	77 50	76 47	87 51	88 57	87 58	86 57	85 54	86 55	76 60	65 51	71 45	79 48	87 55	88 60	86 61	92 62	91 65	90 66	90 72	92 69	93 67	92 76	81.6 53.8	
WESTMINSTER POLICE BRK	17	MAX MIN	82 59	79 51	68 43	68 42	75 47	80 54	67 48	75 42	75 55	76 50	77 50	86 55	87 68	87 66	87 63	87 61	85 65	78 52	68 45	72 51	81 58	87 61	89 65	89 62	92 69	92 68	91 70	90 72	92 69	94 71	94 76	82.3 57.5	
WOODSTOCK	18	MAX MIN	82 49	78 50	69 43	73 42	76 45	81 57	72 46	79 42	77 55	80 53	79 49	89 52	90 63	90 61	89 62	88 63	89 56	74 63	65 50	73 45	82 50	88 57	89 62	88 61	94 66	93 68	92 68	91 73	94 65	94 65	94 70	83.6 56.5	

SEE REFERENCE NOTES FOLLOWING STATION INDEX



# DAILY TEMPERATURES (°F)

MARYLAND AND  
DELAWARE  
MAY 1991

STATION	OB. TIME	MAX/MIN	DAY OF MONTH																															AVERAGE		
			1	2	3	4	5	6	7	8	9	10	11	12	13	14	15	16	17	18	19	20	21	22	23	24	25	26	27	28	29	30	31			
APPALACHIAN MOUNTAIN	07																																			
CUMBERLAND 2	18	MAX MIN	85 50	68 46	67 45	73 47	78 55	76 49	68 43	77 44	74 54	81 52	83 53	88 54	86 64	88 58	89 56	88 59	85 62	82 50	68 50	67 48	83 54	86 60	87 63	84 66	89 66	93 67	90 69	90 67	90 67	91 69	90 65	82.1 56.5		
FROSTBURG 2	07	MAX MIN	72 48	77 47	58 41	59 40	66 41	72 51	73 42	59 42	69 46	56 50	74 50	76 52	80 59	82 60	80 61	81 58	81 59	77 61	65 45	53 44	61 47	76 48	77 57	79 57	77 63	82 63	84 64	83 65	81 66	85 65	84 65	73.5 53.5		
HAGERSTOWN	08	MAX OBS MIN OBS	82 50	81 44	69 45	67 42	72 46	73 57	78 48	70 46	77 48	62 51	80 53	78 60	89 64	87 63	88 60	87 61	86 64	86 62	72 50	63 50	68 51	80 57	87 61	89 67	88 67	90 65	90 68	91 70	91 67	92 70	94 71	80.9 57.4		
HANCOCK	08	MAX MIN	83 42	84 47	70 40	66 39	75 42	76 54	76 52	70 39	78 42	63 55	82 51	82 55	88 63	87 61	87 57	87 54	88 55	87 58	74 53	62 54	66 47	82 50	86 60	88 62	85 62	90 65	91 63	90 68	89 65	91 69	92 69	81.1 54.6		
ALLEGHENY PLATEAU	08																																			
MC HENRY 2 NW	08	MAX MIN	71 47	77 44	58 37	61 38	66 44	74 51	72 39	60 40	70 46	61 48	75 52	80 56	80 57	82 60	79 59	83 58	82 60	75 61	74 45	50 43	65 46	77 54	79 56	80 62	79 62	81 64	86 62	83 63	80 63	83 64	82 63	74.4 53.0		
OAKLAND 1 SE	17	MAX MIN	77 36	72 46	60 39	64 41	74 46	73 52	59 41	70 41	68 51	73 47	78 42	79 44	82 52	78 54	81 56	81 49	79 56	74 61	68 46	63 47	77 43	79 52	79 51	82 61	84 57	87 57	84 57	80 66	84 61	84 59	83 59	76.0 50.8		
SAVAGE RIVER DAM	08	MAX MIN	74 42	81 45	62 45	64 43	69 44	75 50	75 45	64 41	74 44	62 49	78 47	84 49	84 52	84 58	83 56	84 52	84 55	80 60	74 48	55 47	63 46	78 47	81 56	82 58	83 60	87 61	86 62	85 63	84 64	87 64	86 65	77.2 52.2		
DELAWARE																																				
NORTHERN	01																																			
NEWARK UNIVERSITY FARM	17	MAX MIN	81 52	75 46	69 47	71 38	76 42	78 58	74 47	75 43	74 52	77 51	75 45	88 54	90 62	89 62	88 62	86 57	85 57	82 60	67 49	72 38	79 49	87 60	91 63	89 60	91 68	90 69	90 68	91 69	92 63	91 75	92 63	93 65	82.6 55.8	
WILMINGTON WSO ARPT	MID	MAX MIN	76 55	69 52	66 50	71 41	73 45	77 55	67 50	74 46	68 55	77 54	74 49	87 54	89 64	88 64	85 64	83 59	84 60	70 53	66 50	71 42	79 52	87 60	91 65	86 61	92 67	90 67	91 65	91 74	93 65	94 69	94 74	80.7 57.5		
WILMINGTON PORTER RSVR	MID	MAX MIN	76 59	68 51	65 51	70 42	72 46	75 55	66 49	72 49	66 55	75 54	74 51	87 54	87 68	88 65	84 64	83 63	83 60	70 52	66 50	71 42	78 50	87 61	90 64	85 60	92 68	89 67	89 68	90 75	89 65	90 69	92 75	93 69	92 75	79.9 58.1
SOUTHERN	02																																			
DOVER	17	MAX MIN OBS	75 55	70 49	67 50	71 48	71 55	68 54	70 51	77 46	75 56	78 57	83 48	90 64	91 65	92 67	87 60	86 56	87 60	84 50	66 51	66 38	80 57	86 63	90 65	90 68	94 70	94 71	95 72	91 69	94 70	97 71	97 71	82.6 58.9		
GEORGETOWN 5 SW	08	MAX MIN OBS	81 55	84 54	71 45	67 41	71 53	76 47	79 55	68 45	67 52	65 54	74 47	78 50	86 53	90 65	88 54	87 53	84 57	86 58	67 51	61 41	74 45	79 56	80 58	82 60	89 66	91 59	94 69	91 75	90 66	93 70	96 73	80.3 55.7		
GREENWOOD 2 NE	18	MAX MIN	81 56	70 53	65 46	69 42	75 43	78 56	66 50	74 44	68 55	76 55	75 44	85 51	88 62	87 68	85 61	84 55	83 60	78 55	60 48	71 38	78 46	85 59	87 61	82 57	90 66	91 68	89 70	89 74	92 65	91 68	91 71	80.2 56.4		
LEWES	17	MAX MIN	75 58	71 57	70 51	67 48	73 47	80 61	79 57	76 49	76 56	73 56	75 49	88 57	88 69	88 68	85 67	84 58	87 61	86 55	58 53	64 47	80 50	87 62	86 66	84 61	92 68	91 73	92 73	89 75	87 70	95 69	94 76	81.3 60.2		

SEE REFERENCE NOTES FOLLOWING STATION INDEX

# EVAPORATION AND WIND

MARYLAND AND  
DELAWARE  
MAY 1991

STATION	DAY OF MONTH																															TOTAL OR AVG				
	1	2	3	4	5	6	7	8	9	10	11	12	13	14	15	16	17	18	19	20	21	22	23	24	25	26	27	28	29	30	31					
MARYLAND																																				
UPPER SOUTHERN 04																																				
BELTSVILLE	WIND	7	47	67	54	16	55	26	34	20	7	25	29	22	20	20	22	37	26	54	20	21	32	17	24	35	18	40	39	27	19	28	908			
	EVAP	11	29	26	20	19	21	14	22	17	12	19	21	25	22	18	26	31	29	22	12	19	28	20	26	27	26	26	26	0	27	28	6.69			
	MAX	83	85	77	78	85	81	85	81	85	66	90	85	93	97	95	95	94	93	82	73	83	91	94	95	93	99	96	98	99	99	99	88.7			
	MIN	57	54	50	48	52	59	54	51	52	59	58	58	60	66	67	63	64	69	56	54	53	61	66	67	70	68	68	73	71	71	74	61.1			
UPPER MARLBORO 3 NNW	WIND	1	16	25	18	2	9	5	6	2	2	3	2	1	0	9	6	5	12	12	0	9	4	4	12	3	14	18	4	3	6	215				
	EVAP	10	28	25	21	20	21	18	23	17	1	17	20	18	21	15	24	22	18	13	17	14	24	23	21	23	20	30	29	21	28	24	6.26			
	MAX	78	74	82	80	86	80	75	83	70	65	85	74	92	72	92	96	94	94	72	70	70	88	82	96	94	97	98	99	100	100	100	85.1			
	MIN	66	56	51	50	50	60	58	55	55	60	58	59	60	70	68	62	64	66	56	54	53	62	62	66	68	70	72	74	72	72	72	62.0			
ALLEGHENY PLATEAU 08																																				
SAVAGE RIVER DAM	WIND	55	58	94	62	21	47	54	53	36	26	24	24	28	22	29	24	25	26	53	74	43	23	20	18	12	17	20	19	26	28	28	1089			
	EVAP	9	23	23	2	19	19	18	20	14	10	7	20	18	8	12	14	29	12	4	17	12	16	-	26	11	15	21	14	13	21	18	4.81B			
	MAX	-	-	-	-	-	-	-	-	-	-	-	-	-	-	-	-	-	-	-	-	-	-	-	-	-	-	-	-	-	-	-	-	M		
	MIN	-	-	-	-	-	-	-	-	-	-	-	-	-	-	-	-	-	-	-	-	-	-	-	-	-	-	-	-	-	-	-	-	M		
DELAWARE																																				
NORTHERN 01																																				
NEWARK UNIVERSITY FARM	WIND	20	56	60	45	27	41	48	39	36	33	19	43	32	36	32	19	18	43	57	20	25	23	16	25	23	22	22	22	20	23	41	986			
	EVAP	22	30	24	12	23	16	37	15	25	18	6	36	11	32	23	1	22	18	16	19	34	20	21	14	35	22	21	27	-	38	26	6.86B			
	MAX	-	-	-	-	-	-	-	-	-	-	-	-	-	-	-	-	-	-	-	-	-	-	-	-	-	-	-	-	-	-	-	-	-	M	
	MIN	-	-	-	-	-	-	-	-	-	-	-	-	-	-	-	-	-	-	-	-	-	-	-	-	-	-	-	-	-	-	-	-	-	M	
SOUTHERN 02																																				
GEORGETOWN 5 SW	WIND	31	74	67	16	31	15	10	6	17	38	65	82	56	58	13	0	3	6	36	42	46	56	48	64	21	7	31	29	1	33	44	59	98	2172	
	EVAP	15	45	33	-	50	46	33	20	14	16	29	18	18	37	40	22	27	32	17	1	16	16	9	10	11	14	32	-	13	31	47	7.61B			
	MAX	-	-	-	-	-	-	-	-	-	-	-	-	-	-	-	-	-	-	-	-	-	-	-	-	-	-	-	-	-	-	-	-	-	-	M
	MIN	-	-	-	-	-	-	-	-	-	-	-	-	-	-	-	-	-	-	-	-	-	-	-	-	-	-	-	-	-	-	-	-	-	-	M

EVAPORATION: IS MEASURED IN HUNDRETHS OF INCHES  
 WIND: IS MEASURED IN MILES  
 MAX AND MIN: THE MAXIMUM AND MINIMUM TEMPERATURES (FAHRENHEIT) OF THE WATER IN THE EVAPORATION PAN  
 SEE REFERENCE NOTES FOLLOWING STATION INDEX

# SNOWFALL AND SNOW ON GROUND (INCHES)

MARYLAND AND  
DELAWARE  
MAY 1991

STATION		DAY OF MONTH																															
		1	2	3	4	5	6	7	8	9	10	11	12	13	14	15	16	17	18	19	20	21	22	23	24	25	26	27	28	29	30	31	
MARYLAND																																	
DELAWARE																																	
NORTHERN	01																																
WILMINGTON WSO ARPT	R SNOWFALL SN ON GND WTR EQUIV						T																										

SNOWFALL: INCLUDES SNOW AND ICE. VALUES FOR NWS STATIONS (J INDEX NOTE) ARE MID-MID (LST).  
 SNOW ON GROUND: INCLUDES SNOW, SLEET, ICE AND HAIL. VALUES FOR NWS STATIONS (J INDEX NOTE) ARE OBSERVED AT 0000 UTC (GMT).  
 WATER EQUIVALENT: GIVEN FOR NWS STATIONS (J INDEX NOTE) ONLY, WHEN SNOW DEPTH IS 2 INCHES OR MORE.  
 SEE REFERENCE NOTES FOLLOWING STATION INDEX

# STATION INDEX

MARYLAND AND  
DELAWARE  
MAY 1991

STATION	INDEX NO.	DIVISION	COUNTY	LATITUDE	LONGITUDE	ELEVATION (IN FEET)	OBSERVATION TIME AND TABLES				OBSERVER
							LOCAL STD TIME				
							TEMP	PRECIP	EVAP	SPECIAL (SEE NOTES)	
MARYLAND											
ABERDEEN PHILLIPS FLD	0015506		HARFORD	39 28	76 10W	57	16	16			
ANNAPOLIS POLICE BRKS	0019304		ANNE ARUNDEL	38 59	76 30W	30	17	17		C	ROSS AVIATION INC
ASSATEAGUE IS NATL SEA	0033501		WORCESTER	38 14	75 8W	7	17	07			ANNAPOLIS POLICE BRKS
BALTIMORE WSO ARPT	0046504		ANNE ARUNDEL	39 11	76 40W	148	MID	MID			NATIONAL PARK SERVICE
BALTIMORE WSO CITY #	0047006	R	BALTIMORE CI	39 17	76 37W	14	MID	MID			NATL WEATHER SERVICE
BELTSVILLE	0070004		PRINCE GEORG	39 2	76 53W	120	08	08			OCMI COMMANDING OFFICER
BENSON POLICE BARRACKS	073206		HARFORD	39 30	76 23W	365	17	17		08	US DEPT OF AGRICULTURE
BOYDS 2 NW	103206		MONTGOMERY	39 13	77 20W	580	18	18			MARYLAND STATE POLICE
											INACTIVE 02/01/91
CAMBRIDGE WATER TRMT P	138502		DORCHESTER	38 34	76 4W	10	16	16			WASTEWATER TRMT PLANT
CATOCTIN MOUNTAIN PARK	153006		FREDERICK	39 39	77 29W	1610	17	17			CATOCTIN MOUNTAIN PARK
CHESTERTOWN	175005		KENT	39 13	76 4W	39	23	23			THOMAS W ELIASON JR
CLARKSVILLE 3 NNE	186206		HOWARD	39 15	76 56W	365	17	17			UNIVERSITY OF MARYLAND
COLLEGE PARK	199504		PRINCE GEORG	38 59	76 57W	90	09	09			UNIVERSITY OF MARYLAND
CONOWINGO DAM	2006006		HARFORD	39 39	76 10W	39	MID	MID			SUSQUEHANNA ELECTRIC CO
CRISFIELD SOMERS COVE	2221501		SOMERSET	37 59	75 52W	8	17	17			INACTIVE 03/01/91
CUMBERLAND 2	2228207		ALLEGANY	39 38	78 45W	730	18	07			TIMOTHY B THOMAS
DALECARLIA RESVR DC	2322504		DIS COLUMBIA	38 56	77 7W	151	17	17			U S CORPS OF ENGINEERS
DAMASCUS 2 SW	2333506		MONTGOMERY	39 16	77 14W	722	19	19			RICHARD W SCHWERDT
DENTON 2 E	252302		CAROLINE	38 53	75 48W	148	17	17			INACTIVE 04/01/90
EDGEMONT	277007		WASHINGTON	39 40	77 33W	905	07	07			JOHN W HARNE
EMMITSBURG 2 SE	2930606		FREDERICK	39 41	77 18W	420	16	17			MRS LUCILLE K BEALE
FREDERICK POLICE BRKS	3334806		FREDERICK	39 25	77 26W	381	17	17			MARYLAND STATE POLICE
FROSTBURG 2	341507		ALLEGANY	39 40	78 56W	2172	07	07			LEE K CLOSE
GLENN DALE BELL STN	367504		PRINCE GEORG	38 58	76 48W	151	16	16			USDA PLT INTRODUCT STN
HAGERSTOWN	397507		WASHINGTON	39 39	77 44W	659	08	08			HAGERSTOWN RESERVOIR
HANCOCK	403007		WASHINGTON	39 42	78 11W	428	08	08			TOWN OF HANCOCK
LA PLATA 1 W	508003		CHARLES	38 32	77 0W	140	18	18			C RUSSELL LEVERING
LAUREL 3 W	511104		PRINCE GEORG	39 6	76 54W	400	MID	MID			WASH SUB SANY COMM
MC HENRY 2 NW	5883208		GARRETT	39 35	79 22W	2680	08	08			JOSEPH F JOHENNING
MECHANICSVILLE 5 NE	5886503		ST MARYS	38 27	76 41W	100	19	19			SANDRA J HASTINGS
MERRILL	589408		GARRETT	39 36	79 5W	1791	09	09			DELWOOD E MERRILL
MILLERS 4 NE	593406		CARROLL	39 43	76 48W	860	18	18			ROBERT P MILLER
MILLINGTON 1 SE	598505		KENT	39 16	75 52W	30	18	18			HOWARD L HARVEY
NATIONAL ARBORETUM D.C.	635004		DIS COLUMBIA	38 54	76 59W	49	08	08			U S NATL ARBORETUM
OAKLAND 1 SE	662008		GARRETT	39 24	79 24W	2421	17	17			BEA J CROSCO
OWINGS FERRY LANDING	677003		CALVERT	38 41	76 40W	160	17	17			JAMES C RASMUSSEN
POTOMAC FILTER PLANT	727206		MONTGOMERY	39 2	77 15W	269	08	08			POTOMAC WATER FILT PLT
PRINCESS ANNE	733001		SOMERSET	38 13	75 41W	20	17	17			UNIV OF MD EASTERN SHORE
ROCKVILLE 1 NE	770506		MONTGOMERY	39 6	77 6W	440	MID	17			WASHINGTON GAS AND LIGHT
ROYAL OAK 2 SSW	780602		TALBOT	38 43	76 11W	10	18	18			JOHN L SWAINE JR
SALISBURY	8000001		WICOMICO	38 22	75 35W	10	17	17			CITY OF SALISBURY
SALISBURY FAA ARPT #	8000501		WICOMICO	38 20	75 31W	48	MID	MID			FAA
SAVAGE RIVER DAM	8066508		GARRETT	39 31	79 8W	1495	08	08		08	US CORPS OF ENGINEERS
SNOW HILL 4 N	838001		WORCESTER	38 14	75 23W	30	18	18			CURTIS E SHOCKLEY
TALL TIMBERS	875703		ST MARYS	38 10	76 33W	12	17	17			INACTIVE 01/01/91
TOWSON	887706		BALTIMORE	39 23	76 34W	390	18	18			BENDIX FRIEZ
UNIONVILLE	903006		FREDERICK	39 27	77 11W	430	17	07			RICHARD GETZANDANNER
UPPER HARLBORO 3 NNW	907004		PRINCE GEORG	38 52	76 47W	98	08	08		08	UNIVERSITY OF MARYLAND
VIENNA	914002		DORCHESTER	38 29	75 50W	10	18	18			DELMARVA POWER & LIGHT
WESTMINSTER POLICE BRK	944006		CARROLL	39 33	76 58W	765	17	17			MARYLAND STATE POLICE
WOODSTOCK	975006		BALTIMORE	39 20	76 52W	459	18	18			JOHN A HILTZ

SEE REFERENCE NOTES FOLLOWING STATION INDEX

# STATION INDEX

MARYLAND AND  
DELAWARE  
MAY 1991

STATION	INDEX NO.	DIVISION	COUNTY	LATITUDE	LONGITUDE	ELEVATION (IN FEET)	OBSERVATION TIME AND TABLES				OBSERVER
							LOCAL STD TIME				
							TEMP	PRECIP	EVAP	SPECIAL (SEE NOTES)	
DELAWARE											
DOVER	2730	02	KENT	39 9	75 31W	30	17	17		H	STATE DIV OF HIGHWAYS
GEORGETOWN 5 SW	3570	02	SUSSEX	38 38	75 27W	45	08	08	08C	H	UNIV OF DEL SUBSTATION
GREENWOOD 2 NE	3595	02	SUSSEX	38 50	75 35W	45	18	18		H	DANIEL M SWARTZENTRUBER
LEWES	5320	02	SUSSEX	38 46	75 38W	15	17	17		H	BOARD OF PUBLIC WORKS
MILFORD 4 SE	5915	02	SUSSEX	38 54	75 28W	30	17	17		H	INACTIVE 05/01/91
NEWARK UNIVERSITY FARM	6410	01	NEW CASTLE	39 40	75 44W	90	17	17	17C	H	UNIV OF DEL AGRIC FARM
WILMINGTON WSO ARPT	R 9595	01	NEW CASTLE	39 40	75 36W	79	MID	MID		H L	NATL WEATHER SERVICE
WILMINGTON PORTER RSVR	9605	01	NEW CASTLE	39 46	75 32W	274	MID	MID		H	WATER DEPARTMENT

SEE REFERENCE NOTES FOLLOWING STATION INDEX

# REFERENCE NOTES

MARYLAND AND  
DELAWARE  
MAY 1991

## DEFINITIONS

**STATION NAMES:** Name of the city, town or locality. Figures and letters following the station names indicate the distance in miles and direction from the post office or town community center.

**DIVISIONS:** Areas within a state of similar climatological characteristics. Division averages are calculated using data from stations that record both temperature and precipitation (ie: not precipitation alone).

**NORMALS:** The average value of the meteorological element over a time period. Effective 1 January 1983, the averaging period is 1951 to 1980. The normals for National Weather Service localities have been adjusted so as to be representative for the current observation site.

**MONTHLY DEGREE DAY TOTALS:** One heating (cooling) degree day is accumulated for each whole degree that the daily mean temperature is BELOW (ABOVE) 65 degrees Fahrenheit.

**PRECIPITATION:** Values shown in hundredths of inches are water equivalent totals, i.e. total of liquid and melted frozen precipitation. In the "MONTHLY SUMMARIZED DATA" table the total snow and sleet values shown in tenths of inches are unmelted amounts. The max. depth on ground values of snow and sleet shown in whole inches are cumulative unmelted amounts. The no. of days with .10, .50, 1.00 or more refers to water equivalents.

**TEMPERATURE:** Original and edited temperature values are given in the Daily Temperature Table. Edited values are produced when an original value is missing or when surrounding stations indicate a suspect original value. When a line labeled OBS is present and contains either a daily temperature (suspect) or \*\*\* (missing), the temperature appearing directly above, on the line labeled MAX or MIN, is an edited value. Summary temperature information (averages, departures, extremes, monthly degree day totals) is based on the values labeled MAX/MIN.

**WIND:** (As shown in "Evaporation and Wind" table) The total wind movement in miles over the evaporation pan as determined by an anemometer recorder located 6-8 inches above the pan.

## SYMBOLS AND LETTERS USED IN THE STATION INDEX TABLE

# Thermometers located in a rooftop shelter.  
// Rain Gage equipped with a windshield.  
AR Observation made "after rain" has occurred.  
C Station is equipped with recording rain gage (R) but values in this bulletin are from a non-recording rain gage unless indicated by an R.  
G Observations appear in "Soil Temperatures" table.  
H Observations appear in "Snowfall and Snow on Ground" table.  
J Station also published as a Local Climatological Data publication.  
MID Observation time is midnight.  
MO Rain gage read once monthly, usually the last day.  
OC Rain gage readings vary from a few weeks to several months.  
R Amounts from recording rain gage.  
SR Observation time near sunrise.  
SS Observation time near sunset.  
VAR Observation time varies.  
WI Rain gage read weekly or irregularly.  
WM Rain gage read weekly and last day of month.

## SYMBOLS AND LETTERS USED IN THE DATA TABLES

(DAILY DATA ARE FOR THE 24 HOURS IMMEDIATELY PRECEDING OBSERVATION TIME.)

BLANK entries in the "Monthly Summarized Data" table indicate no record. BLANK entries in the "Daily Precipitation" and "Snowfall and Snow on Ground" tables indicate zero.

BLANK entries in the "Daily Temperature" table indicate a missing record where an edited value could not be determined. (See \*\*\* below)

- No record. Data not recorded, determined unreliable by quality control checks, or not received in time for publication.

+ Precipitation or temperature extremes occurred on one or more previous dates during the month.

\*\*\* Missing original temperature which has been estimated during edit.

\* Rain gage not read. Precipitation is included in the amount following the asterisks. Time distribution not known. A \* preceding the monthly total indicates precipitation amount is being carried forward to next months total, and may include amounts from the previous month(s).

// Rain gage equipped with a windshield.

A Amount of precipitation is the total of observer's entries for the current month. It may include precipitation that occurred during the previous month. Refer to earlier bulletin to determine date of last reading. (HAWAII stations)

B Adjusted monthly value (estimated), (1-7 missing values for wind and evaporation).

M Insufficient or partial data. M is appended to average and/or total values computed with 1-9 daily values missing. M appears alone if 10 or more daily values are missing, (8 or more for wind and evaporation).

R Amounts from recording rain gage.

T Trace. An amount too small to measure.

V Includes total for previous month(s). (See \* above)

Seasonal Tables: Monthly and seasonal snowfall and heating degree days for the 12 months ending with the June data are published in the July issue of this bulletin. Cooling degree days for the calendar year are published in the "Climatological Data Annual Summary".

The graphic displays appearing in this publication were first produced for the January 1987 data month. The types of graphs and the information they portray may vary from month to month and from state to state in order to highlight climatic features of state, regional, and seasonal interest. Some graphs present information for "clusters". A cluster is a group of up to four (4) adjacent divisions that comprise an area of similar climate.

Information concerning the history of changes in locations, exposure, etc. of substations is kept on file at the National Climatic Data Center. Historical information for regular National Weather Service Offices may be obtained from the "Local Climatological Data" annual publication. The contents of this publication may be reprinted or otherwise used freely, with proper credit to the National Climatic Data Center. The data are also available in digital form on magnetic tape and diskette.

SUBSCRIPTION, PRICE AND ORDERING INFORMATION AVAILABLE FROM:

NATIONAL CLIMATIC DATA CENTER  
FEDERAL BUILDING  
ASHEVILLE, NC 28801-2696

USCOMM-NOAA-ASHEVILLE, N.C. MAY 1991-0585

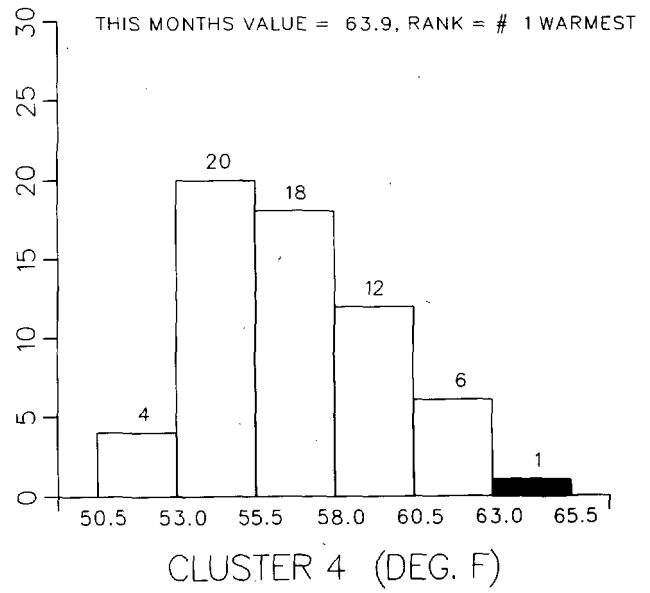
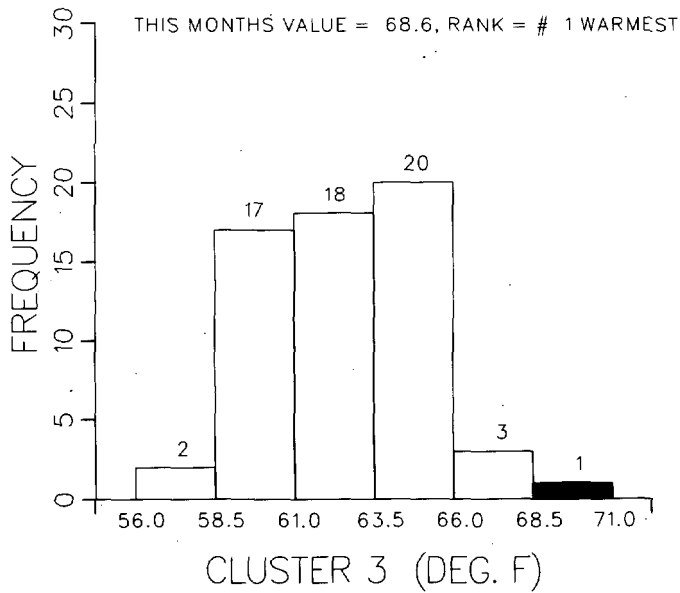
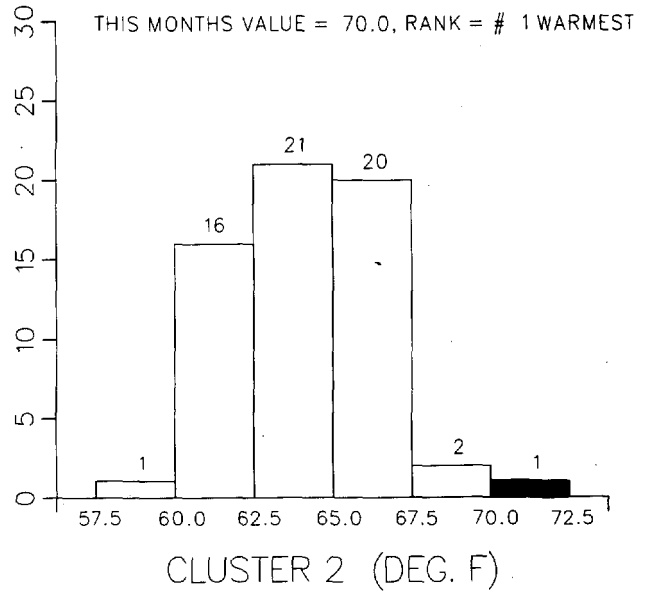
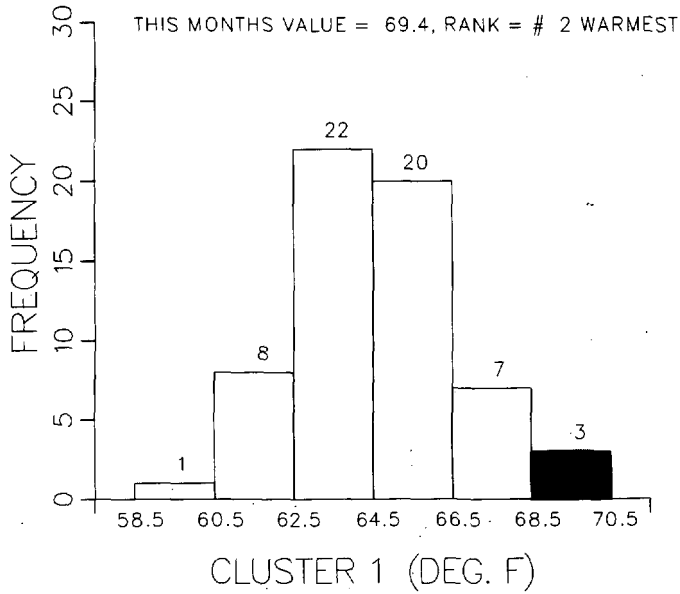
# MEAN MONTHLY TEMPERATURE FREQUENCY DISTRIBUTION FOR PERIOD OF RECORD 1931-1991 FOR MONTH OF MAY MARYLAND

CLUSTER 1 - DIVISION(S):  
SOUTHERN EASTERN SHORE 01  
CENTRAL EASTERN SHORE 02  
LOWER SOUTHERN 03

CLUSTER 2 - DIVISION(S):  
UPPER SOUTHERN 04  
NORTHERN EASTERN SHORE 05

CLUSTER 3 - DIVISION(S):  
NORTHERN CENTRAL 06  
APPALACHIAN MOUNTAIN 07

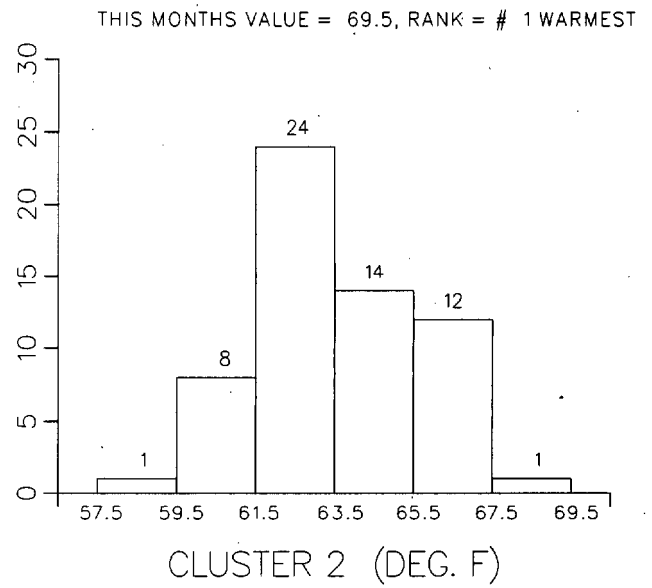
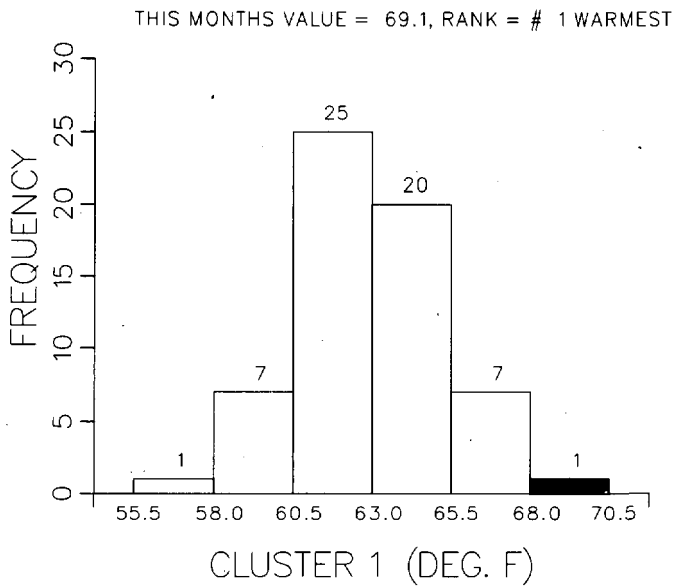
CLUSTER 4 - DIVISION(S):  
ALLEGHENY PLATEAU 08



# MEAN MONTHLY TEMPERATURE FREQUENCY DISTRIBUTION FOR PERIOD OF RECORD 1931-1991 FOR MONTH OF MAY DELAWARE

CLUSTER 1 -DIVISION(S):  
NORTHERN 01

CLUSTER 2 -DIVISION(S):  
SOUTHERN 02





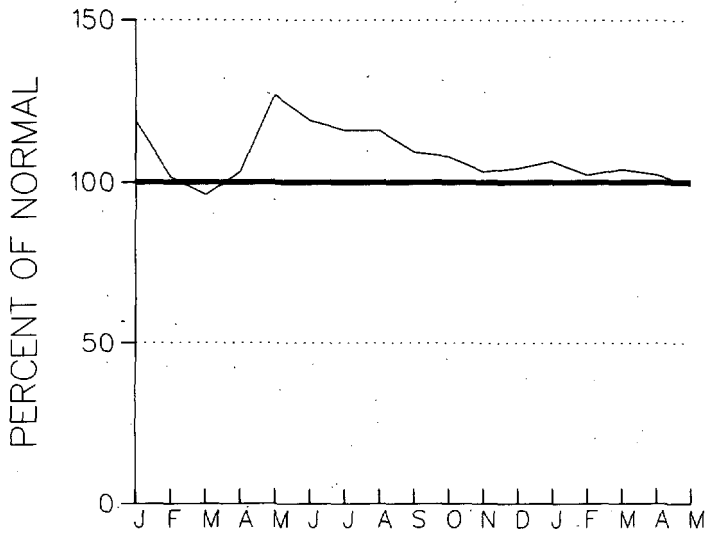
**CUMULATIVE PRECIPITATION DEPARTURES FROM NORMAL (1951-1980)  
FOR THE LAST 17 MONTHS  
ENDING MAY 1991  
MARYLAND**

CLUSTER 1 -DIVISION(S):  
SOUTHERN EASTERN SHORE 01  
CENTRAL EASTERN SHORE 02  
LOWER SOUTHERN 03

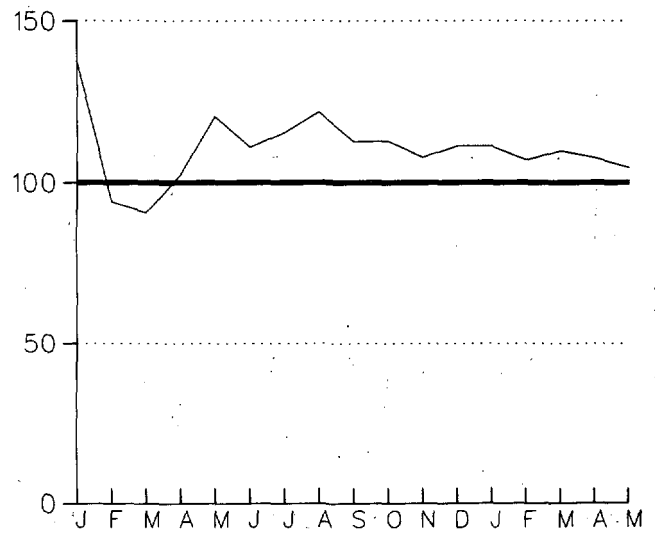
CLUSTER 2 -DIVISION(S):  
UPPER SOUTHERN 04  
NORTHERN EASTERN SHORE 05

CLUSTER 3 -DIVISION(S):  
NORTHERN CENTRAL 06  
APPALACHIAN MOUNTAIN 07

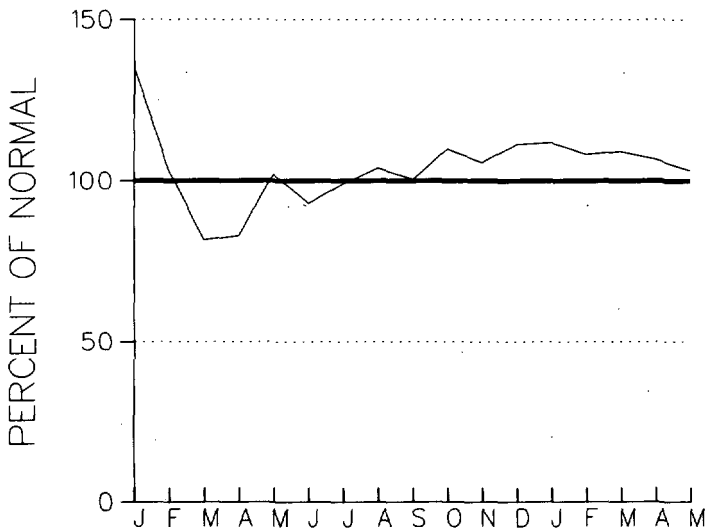
CLUSTER 4 -DIVISION(S):  
ALLEGHENY PLATEAU 08



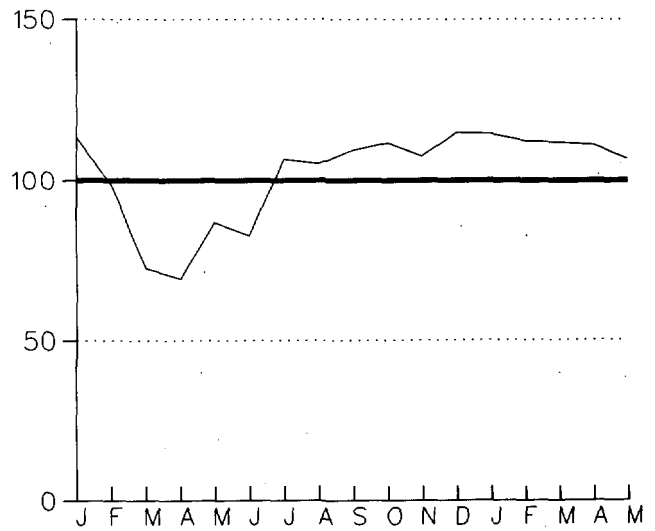
CLUSTER 1



CLUSTER 2



CLUSTER 3

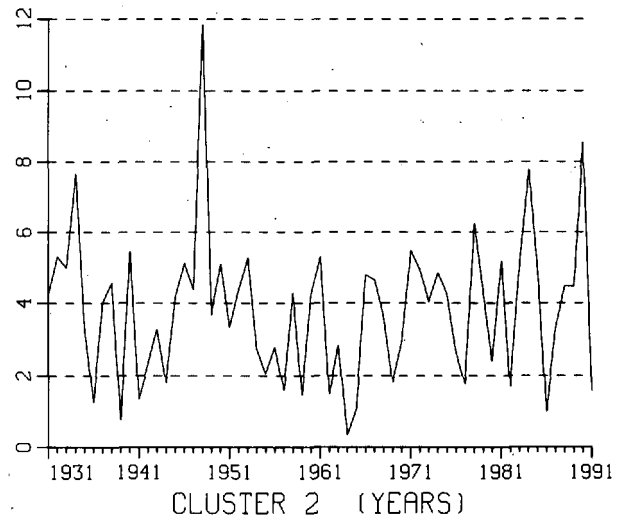
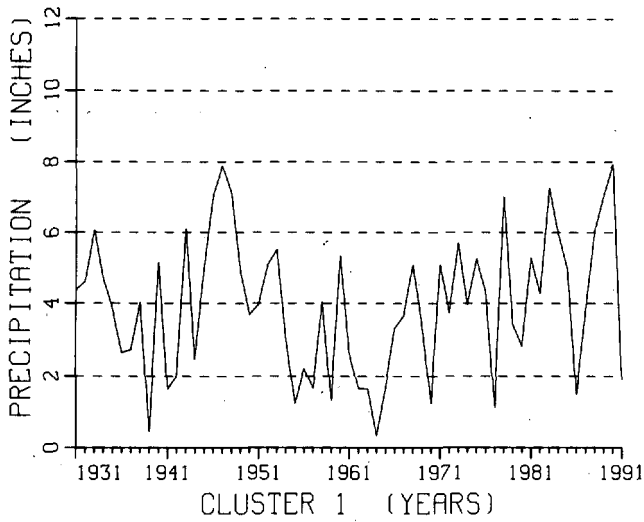


CLUSTER 4

MEAN MONTHLY PRECIPITATION FOR  
THE MONTH OF: MAY  
THE PERIOD OF: 1931 - 1991  
DELAWARE

CLUSTER 1 -DIVISION(S):  
NORTHERN 01

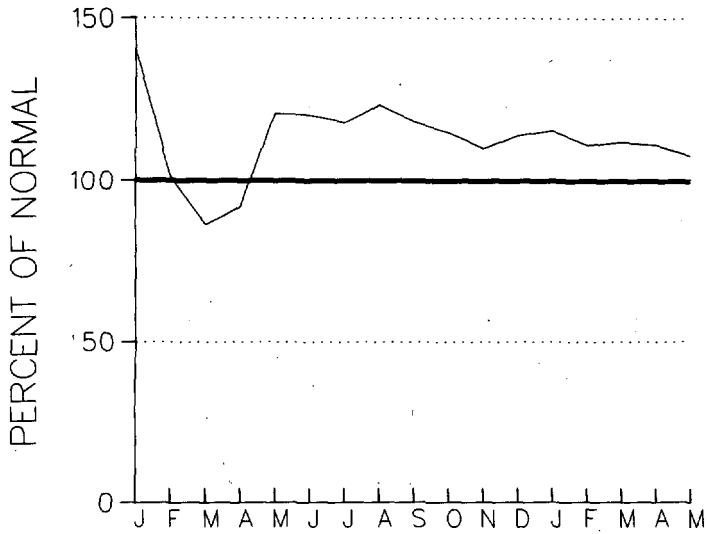
CLUSTER 2 -DIVISION(S):  
SOUTHERN 02



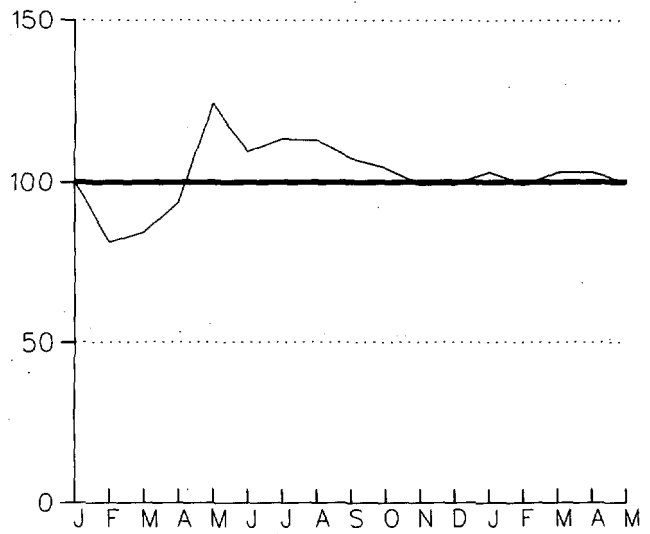
CUMULATIVE PRECIPITATION DEPARTURES FROM NORMAL (1951-1980)  
 FOR THE LAST 17 MONTHS  
 ENDING MAY 1991  
 DELAWARE

CLUSTER 1 - DIVISION(S):  
 NORTHERN 01

CLUSTER 2 - DIVISION(S):  
 SOUTHERN 02



CLUSTER 1



CLUSTER 2

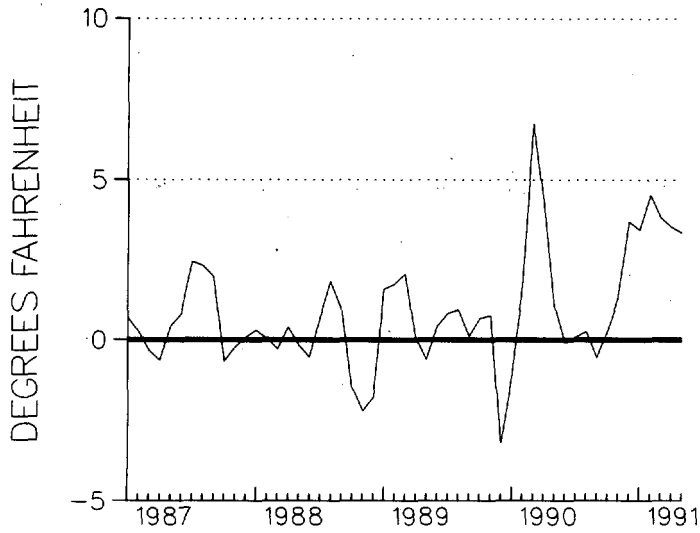
TEMPERATURE DEPARTURES FROM NORMAL (1951-1980)  
 THREE MONTH RUNNING MEAN  
 FOR THE 53 MONTHS ENDING WITH MAY 1991 DATA  
 MARYLAND

CLUSTER 1 -DIVISION(S):  
 SOUTHERN EASTERN SHORE 01  
 CENTRAL EASTERN SHORE 02  
 LOWER SOUTHERN 03

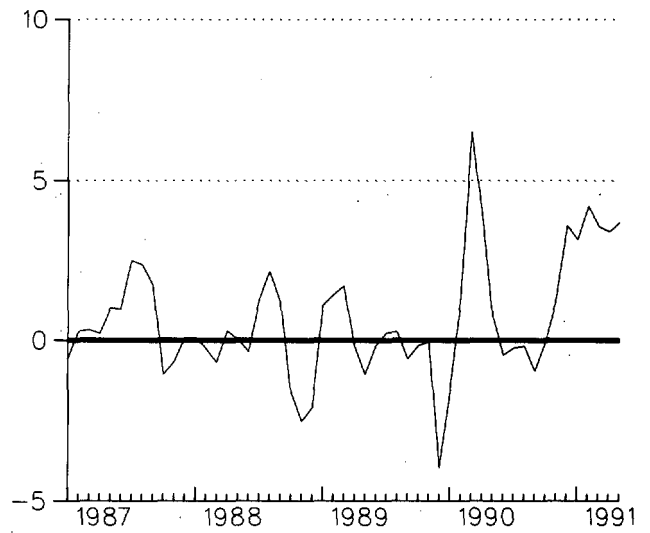
CLUSTER 2 -DIVISION(S):  
 UPPER SOUTHERN 04  
 NORTHERN EASTERN SHORE 05

CLUSTER 3 -DIVISION(S):  
 NORTHERN CENTRAL 06  
 APPALACHIAN MOUNTAIN 07

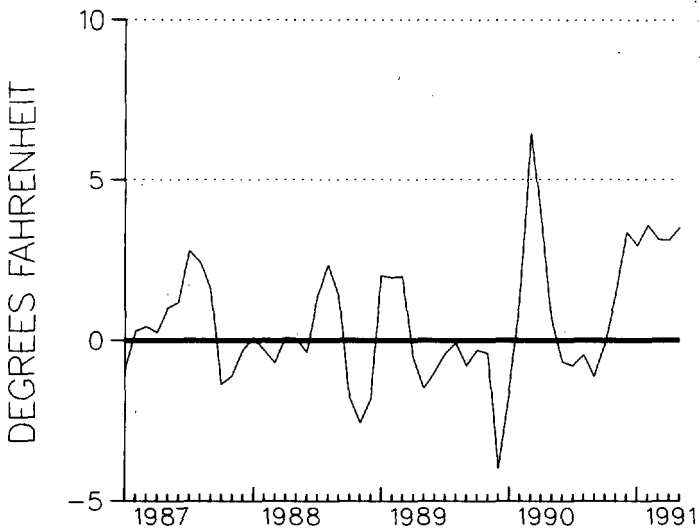
CLUSTER 4 -DIVISION(S):  
 ALLEGHENY PLATEAU 08



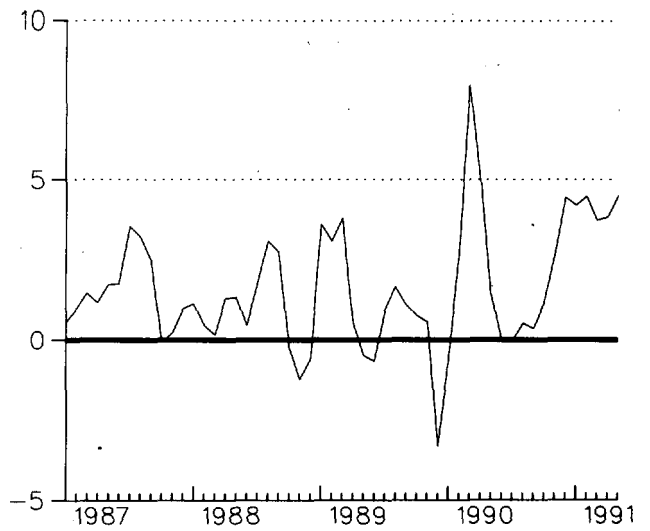
CLUSTER 1



CLUSTER 2



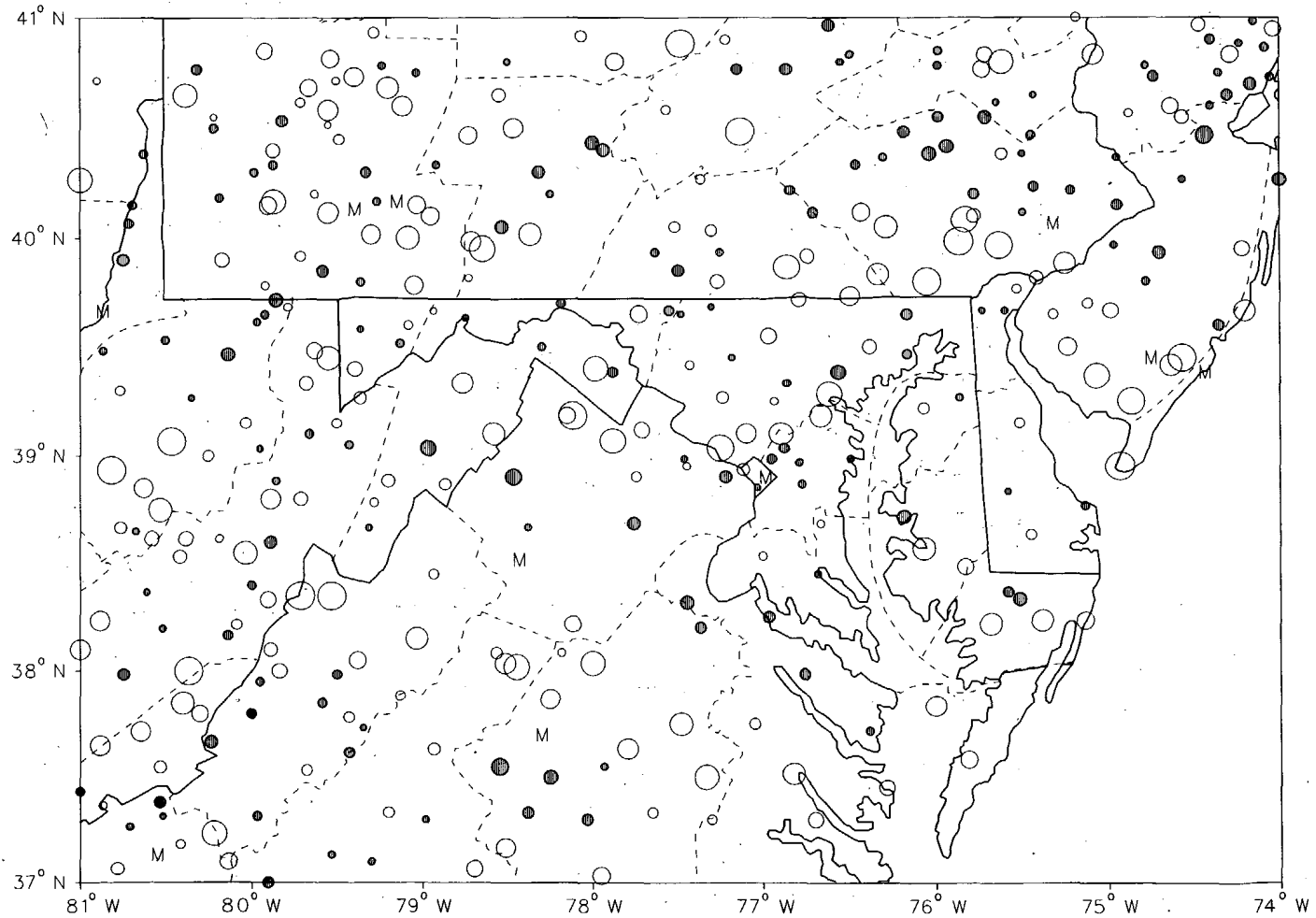
CLUSTER 3



CLUSTER 4

MONTHLY PRECIPITATION DEPARTURE FROM  
THE DIVISIONAL AVERAGE FOR  
MAY 1991  
MARYLAND & DELAWARE

- M DENOTES INCOMPLETE DATA FOR THE MONTH.
- ∇ ZERO DEPARTURE
- ○ ○ ○ ○ 5,10,20,... 50% OR MORE BELOW AVERAGE
- ● ● ● ● 10,20,40,...100% OR MORE ABOVE AVERAGE

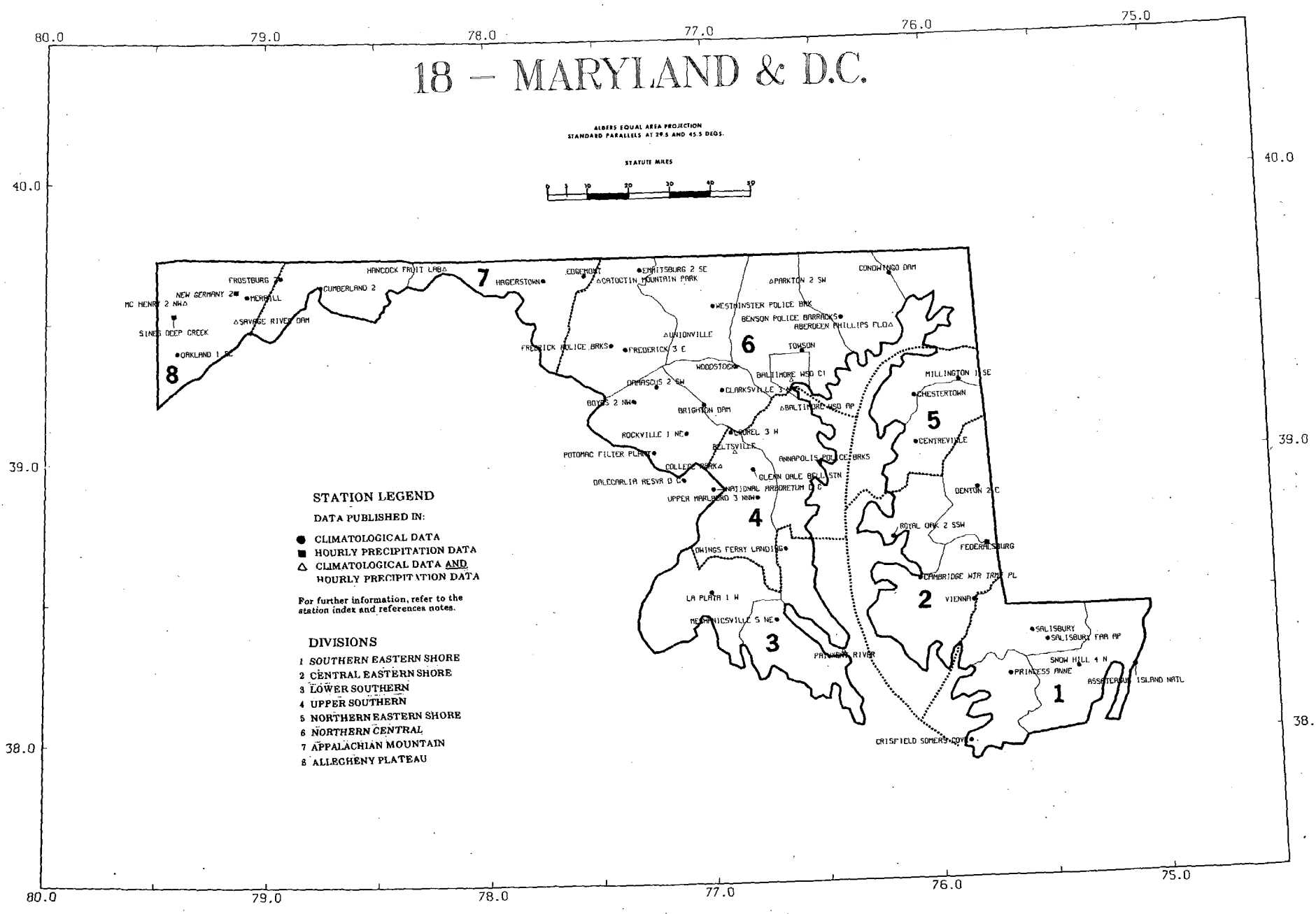


CIRCLE DIAMETER IS PROPORTIONAL TO DEPARTURE ON A CONTINUOUS SCALE

# 18 - MARYLAND & D.C.

ALBERS EQUAL AREA PROJECTION  
STANDARD PARALLELS AT 29.5 AND 45.3 DEGS.

STATUTE MILES



### STATION LEGEND

DATA PUBLISHED IN:

- CLIMATOLOGICAL DATA
- HOURLY PRECIPITATION DATA
- △ CLIMATOLOGICAL DATA AND HOURLY PRECIPITATION DATA

For further information, refer to the station index and reference notes.

### DIVISIONS

- 1 SOUTHERN EASTERN SHORE
- 2 CENTRAL EASTERN SHORE
- 3 LOWER SOUTHERN
- 4 UPPER SOUTHERN
- 5 NORTHERN EASTERN SHORE
- 6 NORTHERN CENTRAL
- 7 APPALACHIAN MOUNTAIN
- 8 ALLEGHENY PLATEAU

40.0 76.0

75.0

40.0

# 07 - DELAWARE

ALBERS EQUAL AREA PROJECTION  
STANDARD PARALLELS AT 29.5 AND 41.5 DEGS.

STATUTE MILES



## STATION LEGEND

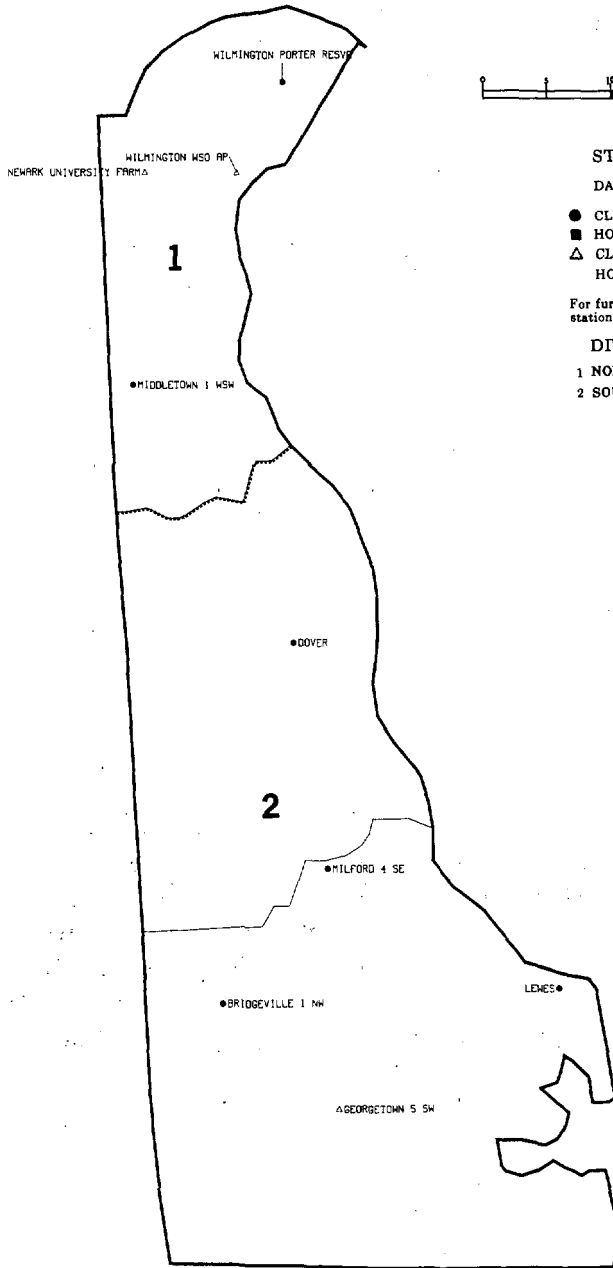
DATA PUBLISHED IN:

- CLIMATOLOGICAL DATA
- HOURLY PRECIPITATION DATA
- △ CLIMATOLOGICAL DATA AND HOURLY PRECIPITATION DATA

For further information, refer to the station index and references notes.

## DIVISIONS

- 1 NORTHERN
- 2 SOUTHERN



39.0

39.0

38.0 76.0

75.0

38.0

CD  
VALIDATED BY:

Gloria Anderson  
Betty Edstrom  
Rudy Kittel  
Joyce Morgan  
Beulah Taylor

Grant Goodge - Chief  
Quality Control

DEPARTMENT OF COMMERCE  
National Oceanic and Atmospheric Administration  
National Environmental Satellite, Data, and Information Service  
National Climatic Data Center  
Federal Building  
Asheville NC 28801

**BULK RATE**  
**POSTAGE & FEES PAID**  
United States Department Of Commerce  
NOAA Permit No. G - 19

*To change your address, please return a copy of the mailing label along with your new address.*