

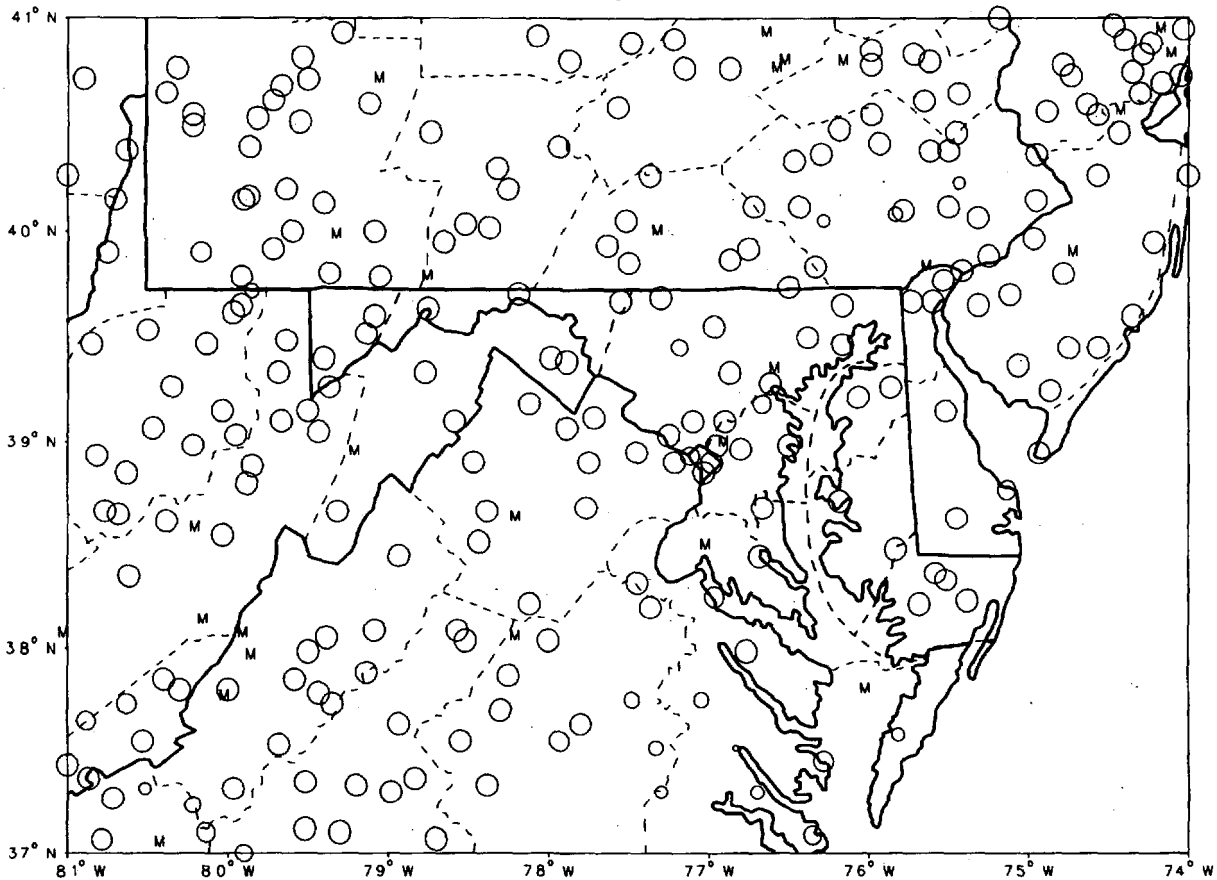


CLIMATOLOGICAL DATA MARYLAND AND DELAWARE

OCTOBER 1994
VOLUME 98 NUMBER 10

MONTHLY PRECIPITATION DEPARTURE FROM INDIVIDUAL STATION NORMALS (1961-1990)

- M INCOMPLETE DATA FOR THE MONTH
- ∇ EXACTLY NORMAL
- 5,10,20... 50% OR MORE BELOW NORMAL
- 10,20,40... 100% OR MORE ABOVE NORMAL



CIRCLE DIAMETER IS PROPORTIONAL TO DEPARTURE ON A CONTINUOUS SCALE

"I CERTIFY THAT THIS IS AN OFFICIAL PUBLICATION OF THE NATIONAL OCEANIC AND ATMOSPHERIC ADMINISTRATION (NOAA). IT IS COMPILED USING INFORMATION FROM WEATHER OBSERVING SITES SUPERVISED BY NOAA/NATIONAL WEATHER SERVICE AND RECEIVED AT THE NATIONAL CLIMATIC DATA CENTER (NCDC), ASHEVILLE, NORTH CAROLINA 28801."

Kenneth D. Hodson

DIRECTOR, NATIONAL CLIMATIC DATA CENTER

noaa

NATIONAL
OCEANIC AND
ATMOSPHERIC ADMINISTRATION

NATIONAL
ENVIRONMENTAL SATELLITE, DATA
AND INFORMATION SERVICE

NATIONAL
CLIMATIC DATA CENTER
ASHEVILLE NORTH CAROLINA

TEMPERATURE AND PRECIPITATION EXTREMES

MARYLAND AND
DELAWARE
OCTOBER 1994

MARYLAND
 HIGHEST TEMPERATURE 83
 LOWEST TEMPERATURE 20
 GREATEST TOTAL PRECIPITATION 2.14
 LEAST TOTAL PRECIPITATION .36
 GREATEST 1 DAY PRECIPITATION 1.18

DELAWARE
 HIGHEST TEMPERATURE 81
 LOWEST TEMPERATURE 30
 GREATEST TOTAL PRECIPITATION 1.95
 LEAST TOTAL PRECIPITATION .67
 GREATEST 1 DAY PRECIPITATION .90

OCTOBER 2+
 OCTOBER 28

OCTOBER 23

OCTOBER 9
 OCTOBER 28

OCTOBER 31

2 STATIONS
 OAKLAND 1 SE
 UNIONVILLE
 FROSTBURG 2
 FREDERICK POLICE BRKS

LEWES
 GEORGETOWN 5 SW
 LEWES
 2 STATIONS
 LEWES

MONTHLY SUMMARIZED STATION AND DIVISIONAL DATA

MARYLAND AND
DELAWARE
OCTOBER 1994

STATION	TEMPERATURE (°F)											PRECIPITATION (IN)									
	AVERAGE MAXIMUM	AVERAGE MINIMUM	AVERAGE	DEPARTURE FROM NORMAL	HIGHEST	DATE	LOWEST	DATE	HEATING DEGREE DAYS	COOLING DEGREE DAYS	NO. OF DAYS				TOTAL	DEPARTURE FROM NORMAL	GREATEST DAY	DATE	SNOW SLEET NO. OF DAYS		
											90 OR ABOVE	32 OR BELOW	32 OR BELOW	0 OR BELOW					TOTAL	DEPTH ON GROUND	DATE
MARYLAND																					
SOUTHERN EASTERN SHORE 01																					
ASSATEAGUE IS NATL SEA	66.4	52.1	59.4	-3.6	79	2	42	30	179	7	0	0	0	1.73	-1.34	.44	24				
PRINCESS ANNE	66.7	53.7	54.2	-1.4	80	10	42	30	228	0	0	0	0	1.34	-1.91	.72	23				
SALISBURY	66.5	45.8	57.7	-1.4	80	9	33	38	224	4	0	0	0	1.97	-2.26	.60	23				
SALISBURY FAA ARPT	66.4	42.6	55.5	-2.0	81	9	31	39	288	1	0	0	1	1.46	-1.95	.80	23				
SNOW HILL 4 N	66.7	42.9	56.0	-1.6	81	9	30	38	266	6	0	0	2	1.13	-2.11	.57	23				
--DIVISIONAL DATA-->			56.6	-2.1										1.33	-1.85	.0					
CENTRAL EASTERN SHORE 02																					
ROYAL OAK 2 SSW	67.9	46.9	57.4	-1.7	79	9+	36	12	236	8	0	0	0	.79	-2.36	.45	23				
VIENNA	69.6	45.2	57.4	-1.6	79	2	31	29+	236	8	0	0	2	.95	-2.05	.41	23				
--DIVISIONAL DATA-->			57.4	-1.4										.87	-2.20	.0					
LOWER SOUTHERN 03																					
MECHANICSVILLE 5 NE	65.6	44.1	54.9	-1.9	76	9+	32	28	309	1	0	0	1	1.01	-2.42	.51	23				
OWINGS FERRY LANDING	68.0	43.3	55.7	-1.9	79	9+	30	28	289	7	0	0	1	.90	-2.27	.58	23				
--DIVISIONAL DATA-->			55.3	-2.6										.96	-2.28	.0					
UPPER SOUTHERN 04																					
ANNAPOLIS POLICE BRKS	67.8	48.0	57.9	-.5	80	9+	36	28	230	11	0	0	0	1.16	-2.15	.45	23				
BALTIMORE WSO ARPT	68.1	45.4	56.8	-.2	80	9+	36	28	256	6	0	0	0	1.82	-1.16	.92	23				
COLLEGE PARK	68.6	43.9	56.8	-.4	83	2	33	28	253	3	0	0	0	1.58	-1.65	.73	24				
DALECARLIA RESERVOIR	70.1	42.5	56.3	-1.1	83	1	32	28	263	2	0	0	1	2.05	-1.45	.82	23				
GLENN DALE BELL STN	70.3	39.3	54.8	-1.6	80	30+	29	28	311	2	0	0	7	1.35	-2.08	.94	23				
LAUREL 3 W	68.6	47.3	58.0	-.7	81	1	39	25	218	7	0	0	0	1.71	-1.70	.77	23				
NATIONAL ARBORETUM DC	68.5	41.4	55.0	-2.1	81	2	34	29+	305	1	0	0	0	1.59	-1.69	.95	24				
--DIVISIONAL DATA-->			56.5	-.3										1.61	-1.70	.0					
NORTHERN EASTERN SHORE 05																					
CHESTERTOWN	67.9	41.3	54.6	-2.9	80	9	33	28+	317	2	0	0	0	1.18	-1.96	.53	23				
MILLINGTON 1 SE	68.3	41.5	54.9	-1.3	79	9	31	28	304	0	0	0	1	1.02	-2.11	.60	23				
--DIVISIONAL DATA-->			54.8	-2.5										1.10	-2.04	.0					
NORTHERN CENTRAL 06																					
ABERDEEN PHILLIPS FIEL	67.6	43.1	58.6	-1.4	72	8	35	28+	201	9	0	0	0	.80	-2.33	.0					
BALTIMORE CITY	71.0	49.5	57.9	1.4	79	30	42	28+	215	4	0	0	0	1.17	-1.81	.54	23				
BENSON POLICE BARRACKS	64.7	44.6	54.7	1.4	74	18+	34	28	316	0	0	0	0	1.12	-2.14	.72	23				
CATOCTIN MOUNTAIN PARK	68.5	44.9	56.7	1.6	78	9	36	15	255	4	0	0	0	1.44	-2.24	.53	22				
CONOWINGO DAM	68.4	40.0	53.5	1.6	77	1	36	15	378	4	0	0	0	.99	-2.24	.63	24				
DAMASCUS 2 SSW	66.4	38.7	52.2	1.8	77	1	27	28	380	0	0	0	7	1.34	-2.21	.67	23				
EMMITTSBURG 2 SE	66.3	38.7	52.2	1.8	77	1	27	28	380	0	0	0	7	1.24	-2.21	.52	23				
FREDERICK POLICE BRKS	66.3	43.7	56.9	1.8	80	2	33	28	257	3	0	0	0	1.90	-1.90	.18	23				
MILLERS 4 NE	66.2	42.6	53.9	1.8	76	9	32	12	336	1	0	0	1	1.27	-2.27	.82	23				
ROCKVILLE 1 NE	66.4	44.7	55.6	1.7	80	1	33	28	290	4	0	0	0	.92	-2.42	.57	23				
TOWSON	68.3	40.2	52.2	1.7	76	9+	30	28	391	0	0	0	8	2.14	-1.08	.95	23+				
UNIONVILLE	66.1	38.2	52.2	1.4	77	1	27	28	391	1	0	0	0	.88	-2.37	.50	23				
WESTMINSTER POL BRKS	67.2	45.3	56.3	1.2	78	1	36	12	267	3	0	0	0	.88	-2.37	.50	23				
WOODSTOCK	68.6	40.2	54.4	1.0	79	1	30	29+	321	3	0	0	4	1.58	-1.65	.80	23				
--DIVISIONAL DATA-->			55.2	-.5										1.29	-2.05	.0					

SEE REFERENCE NOTES FOLLOWING STATION INDEX

DAILY PRECIPITATION (INCHES)

MARYLAND AND
DELAWARE
OCTOBER 1994

STATION	TOTAL	DAY OF MONTH																														
		1	2	3	4	5	6	7	8	9	10	11	12	13	14	15	16	17	18	19	20	21	22	23	24	25	26	27	28	29	30	31
MARYLAND																																
SOUTHERN EASTERN SHORE 01																																
ASSATEAGUE IS NATL SEA	1.73								.01	.01					.30	.30								.44	.44	.01	.11	.11				
PRINCESS ANNE	1.34														.13	.09								.72	.72	.01	.13	.13				.27
SALISBURY	.97		T							.03				T	.02								.60	.03	.11	.11	.02				.16	
SALISBURY FAA ARPT	1.46	T	T						T					.14	T								.80	.80	.15	.15					.37	
SNOW HILL 4 N	1.13		.01											.09	.07						T		.57	.57	.18	.18					.21	
CENTRAL EASTERN SHORE 02																																
ROYAL OAK 2 SSW	.79		.10							.10				T	T					T	.01			.45	.45	.13	.13				.17	
VIENNA	.95		.07											.09	.02								.41	.41	.19	.19						
LOWER SOUTHERN 03																																
MECHANICSVILLE 5 NE	1.01		.01	T						.09				.20	T					T	.01			.51	.51	.19	.19					
OWINGS FERRY LANDING	.90		.02							.11				.02									.05	.05	.58	.58	.12	.12				
UPPER SOUTHERN 04																																
ANNAPOLIS POLICE BRKS	1.16		.43							.20												.02	.02	.45	.45	.03	.03				.03	
BALTIMORE HSO ARPT																																
BALTIMORE HSO ARPT	1.82	R	.75	.03					.10												.02	.02	.92	.92	.73	.73	T	T			T	
COLLEGE PARK	1.58			.16						.41											.05	T	.23	.23	.73	.73	T	T				
DALECARLIA RESERVOIR	2.05			.10						.42	.02										.60	.01	.82	.82	.01	.01	.07	.07				
GLENN DALE BELL STN	1.35			.10					.02	.21					T						.05	.05	.94	.94	.03	.03						
LAUREL 3 N	1.71		.70	.04					.20	.21											.05	.05	.94	.94	.03	.03						
NATIONAL ARBORETUM DC																																
NATIONAL ARBORETUM DC	1.59		.10							.34												.08	.08	.08	.08	.95	.95	T	.04			
NORTHERN EASTERN SHORE 05																																
CHESTERTOWN	1.18		.19	.24						.22	T													.53	.53	T	T				T	
MILLINGTON 1 SE	1.02			.32						.10														.60	.60	T	T					
NORTHERN CENTRAL 06																																
ABERDEEN PHILLIPS FIEL	.80		*	*	.21				*	*	.10										T	T	*	*	.49	.49	T	T				
BALTIMORE CITY	1.17	R	.25	.28					.10	.28													*	*	.54	.54	.49	.49	T	T		
BENSON POLICE BARRACKS																																
BENSON POLICE BARRACKS	1.12			.22						.14											.04	.04	.72	.72	.40	.40						
CATOCTIN MOUNTAIN PARK	1.44			.53					.41	.53										T	.10	.10	.40	.40	.63	.63						
CONOWINGO DAM	.99			.13						.19											.04	.04	.63	.63	.63	.63						
DAMASCUS 2 SSW	1.34		.43	T					.18	.18												.06	.06	.67	.67	.63	.63				T	
EMMITSBURG 2 SE	1.24		T	.40					T	.10												.22	.22	.52	.52	.63	.63					
FREDERICK POLICE BRKS																																
FREDERICK POLICE BRKS	1.90			.67						.05														1.18	1.18	.82	.82				T	
MILLERS 4 NE	1.27		T	.27					.09	.01											T	.08	.08	.82	.82	.20	.20				T	
POTOMAC FILTER PLANT	.66		.13	.05					.28	.05														.20	.20	.57	.57				T	
ROCKVILLE 1 NE	.92			.05					.20	.05													T	.57	.57	.57	.57				T	
TOMSON	H																															
UNIONVILLE																																
UNIONVILLE	2.14		T	.95					.07	.07													.12	.12	.95	.95	.82	.82			.05	
WESTMINSTER POL BRKS																																
WESTMINSTER POL BRKS	.88			.32						.06													.10	.10	.50	.50						
WOODSTOCK																																
WOODSTOCK	1.58		.05	.63					T	.06													.10	.10	.80	.80		T				
APPALACHIAN MOUNTAIN 07																																
APPALACHIAN MOUNTAIN																																
CUMBERLAND 2	.56		.02	.35						.02													.17	.17	.27	.27						
EDGE MONT	1.25			.49						.20												.07	.07	.13	.13	.27	.27					
FROSTBURG 2																																
FROSTBURG 2	.36		T	.21						.01												.08	.08	.04	.04	.02	.02	T	T			
HANCOCK	.48			.28						.01					T	.02						.15	.15	.02	.02	.02	.02	T	T			
ALLEGHENY PLATEAU 08																																
ALLEGHENY PLATEAU																																
MERRILL	.80			.62						.03												.15	.15	.07	.07	.01	.01					
OAKLAND 1 SE	.82			.44		T				.05											.08	.08	.12	.12	.07	.07						
SAVAGE RIVER DAM	1.06			.95			T			T												.09	.09	.01	.01	.01	.01					

SEE REFERENCE NOTES FOLLOWING STATION INDEX

DAILY PRECIPITATION (INCHES)

MARYLAND AND
DELAWARE
OCTOBER 1994

STATION	TOTAL	DAY OF MONTH																															
		1	2	3	4	5	6	7	8	9	10	11	12	13	14	15	16	17	18	19	20	21	22	23	24	25	26	27	28	29	30	31	
DELAWARE																																	
NORTHERN 01																																	
NEWMARK UNIVERSITY FARM	.67	.03	.16																														
WILMINGTON HSD ARPT	.85	.25	T																														
WILMINGTON PORTER RSVR	1.04	.17																															
SOUTHERN 02																																	
DOVER	.67		.30																														
GEORGETOWN 5 SW	.80		.24																														
GREENHOOD 2 NE	1.00		.30																														
LEMES	1.95		.12																														

SEE REFERENCE NOTES FOLLOWING STATION INDEX

DAILY TEMPERATURES (°F)

MARYLAND AND
DELAWARE
OCTOBER 1994

STATION	OB. TIME	MAX/MIN	DAY OF MONTH																													AVERAGE		
			1	2	3	4	5	6	7	8	9	10	11	12	13	14	15	16	17	18	19	20	21	22	23	24	25	26	27	28	29		30	31
MARYLAND																																		
SOUTHERN EASTERN SHORE 01																																		
ASSATEAGUE IS NATL SEA	07	MAX MIN	69 51	79 51	67 54	60 52	64 49	61 52	63 44	69 43	72 61	75 64	62 52	63 48	68 56	63 61	62 56	64 49	65 46	69 46	69 55	70 57	71 57	68 54	65 59	68 55	71 54	55 46	58 44	62 44	66 42	73 54	66.4 52.1	
PRINCESS ANNE	17	MAX MIN OBS	79 37	77 46	63 44	64 40	62 32	65 27	71 30	77 32	75 38	80 40	63 32	63 34	70 43	67 49	68 46	70 50	68 41	72 42	71 43	72 53	71 47	71 40	69 48	72 46	71 39	68 36	59 30	64 25	69 27	70 38	76 40	69.7 38.7
SALISBURY	17	MAX MIN	78 49	78 60	63 50	65 43	62 46	65 40	70 39	79 42	80 42	74 52	63 39	75 38	70 43	65 55	65 56	67 42	69 38	71 40	71 53	71 53	71 44	70 44	68 56	70 48	68 48	65 44	59 38	63 35	70 37	75 48	72 53	69.5 45.8
SALISBURY FAA ARPT	MID	MAX MIN	79 45	64 50	61 43	65 42	62 43	65 34	71 38	78 42	81 51	63 44	63 38	64 36	71 41	64 56	64 43	67 39	70 37	73 34	74 43	73 51	72 53	72 41	70 53	72 44	70 44	49 37	60 33	64 34	70 31	75 46	73 50	68.4 42.6
SNOW HILL 4 N	17	MAX MIN	80 45	78 61	62 49	66 40	64 39	66 33	70 35	77 40	81 50	73 57	62 34	64 33	70 39	65 54	63 55	65 39	67 35	74 34	77 45	73 53	72 52	70 38	70 53	72 43	69 43	67 42	58 35	65 30	70 31	77 44	70 48	69.7 42.9
CENTRAL EASTERN SHORE 02																																		
ROYAL OAK 2 SSW	18	MAX MIN	79 50	74 59	63 46	63 43	64 47	68 37	72 45	79 61	74 58	60 41	66 36	69 42	64 53	69 51	65 40	65 38	72 41	70 41	70 52	71 48	70 52	71 45	65 59	69 44	65 55	58 44	59 38	62 37	66 46	74 51	75 52	67.9 46.9
VIENNA	18	MAX MIN	74 48	79 58	64 47	65 42	66 44	66 35	71 40	75 44	78 58	64 38	66 34	72 43	67 53	66 61	69 39	70 40	71 38	71 52	71 53	72 51	72 51	72 45	71 44	72 44	70 49	66 42	60 37	64 31	62 31	72 49	73 49	69.6 45.2
LOWER SOUTHERN 03																																		
MECHANICSVILLE 5 NE	19	MAX MIN	76 48	72 58	58 50	62 39	61 44	63 36	67 37	71 42	76 56	68 51	58 36	61 39	64 39	59 55	64 54	66 39	66 38	69 37	68 44	69 52	70 50	69 42	64 57	68 41	64 47	51 41	57 35	60 32	67 35	75 50	71 49	65.6 44.1
OWINGS FERRY LANDING	17	MAX MIN OBS	79 48	79 59	62 49	63 41	62 45	63 35	69 38	73 42	79 57	73 51	60 36	64 37	64 37	64 37	67 39	69 37	73 36	69 37	71 37	73 36	69 36	71 41	68 54	69 40	66 47	61 40	58 34	61 30	67 36	75 46	73 49	68.0 43.3
UPPER SOUTHERN 04																																		
ANNAPOLIS POLICE BRKS	17	MAX MIN OBS	80 52	80 58	62 52	62 48	62 48	62 40	68 44	68 48	80 62	76 52	62 44	66 42	64 48	62 56	64 56	64 44	66 42	74 42	66 48	70 60	72 52	70 46	66 58	74 44	66 50	62 44	58 38	62 36	70 40	74 41	70 54	67.8 48.0
BALTIMORE WSO ARPT	MID	MAX MIN	80 50	70 52	62 48	63 44	63 45	65 39	71 43	74 46	80 58	64 48	63 39	65 37	64 43	63 54	67 45	71 40	74 40	75 46	72 46	72 51	66 51	66 44	70 44	64 44	56 41	60 41	63 36	68 37	78 45	68 50	68.1 45.4	
COLLEGE PARK	09	MAX MIN	73 49	83 51	71 49	62 42	66 47	64 39	66 40	73 44	75 51	79 51	65 37	65 36	67 41	66 46	63 49	67 39	70 37	73 38	76 38	72 56	76 51	74 44	73 58	67 43	72 45	73 39	57 41	61 33	64 34	68 43	77 51	69.6 43.9
DALECARLIA RESERVOIR	17	MAX MIN OBS	83 49	81 48	68 49	63 40	67 43	65 40	71 40	75 40	80 52	77 45	62 36	65 37	65 36	63 52	67 43	69 40	70 36	77 39	73 37	75 52	73 47	70 43	72 55	72 43	68 43	61 38	59 35	64 32	70 36	77 42	72 50	70.1 42.5
GLENN DALE BELL STN	16	MAX MIN OBS	74 46	70 43	70 43	64 35	64 40	67 32	74 33	76 40	80 54	77 47	63 31	67 31	67 36	64 51	60 38	68 40	72 32	75 34	75 40	72 57	73 43	73 40	76 44	74 37	69 40	63 33	60 30	65 29	70 31	80 41	77 47	70.3 39.3
LAUREL 3 W	07	MAX MIN OBS	81 51	71 56	62 47	64 49	63 47	66 44	72 47	74 48	78 57	64 48	64 41	66 40	64 44	62 55	68 48	70 45	72 45	76 46	70 50	72 59	76 53	71 41	67 45	72 51	65 39	58 43	59 40	64 40	68 41	77 50	70 55	68.6 47.3
NATIONAL ARBORETUM DC	07	MAX MIN OBS	72 49	81 49	69 49	62 42	65 43	64 37	66 38	71 42	75 40	80 51	64 36	62 35	65 37	66 43	62 49	67 39	70 35	70 35	75 39	71 45	74 47	71 44	72 45	69 44	72 43	64 38	56 38	60 34	63 34	68 40	77 43	68.5 41.4

SEE REFERENCE NOTES FOLLOWING STATION INDEX
7

DAILY TEMPERATURES (°F)

MARYLAND AND
DELAWARE
OCTOBER 1994

STATION	OB. TIME	MAX/MIN	DAY OF MONTH																															AVERAGE		
			1	2	3	4	5	6	7	8	9	10	11	12	13	14	15	16	17	18	19	20	21	22	23	24	25	26	27	28	29	30	31			
NORTHERN EASTERN SHORE	05																																			
CHESTERTOWN	23	MAX	77	70	61	63	63	64	72	76	80	64	63	65	67	61	61	68	69	74	72	71	71	73	63	72	65	55	60	65	68	78	75	67.9		
		MIN	46	49	40	39	43	35	38	42	54	43	34	33	38	47	43	36	36	37	41	54	49	42	50	40	41	37	37	33	36	41	45	41.3		
MILLINGTON 1 SE	18	MAX	77	73	65	61	61	63	71	74	79	73	62	66	67	60	67	67	67	74	74	69	70	72	66	71	66	59	60	64	67	77	74	68.3		
		MIN	46	56	42	40	40	35	39	41	41	41	34	33	38	50	51	36	34	36	42	56	48	41	55	40	47	39	34	31	36	43	43	41.5		
NORTHERN CENTRAL	06																																			
ABERDEEN PHILLIPS FIEL	16	MAX			60	60	60	64	67	72			60	63	63	63				67	71	71	67	70			69	67	63	58	60		70	M		
		MIN			45	43	46	36	40	44			36	35	41	53				37	37	43	59	48	46		41	50	44	42	35		48	43.1		
BALTIMORE CITY	MID	MAX	82	70	62	62	63	67	69	72	79	63	62	65	62	62	66	71	71	75	66	72	71	71	64	72	64	58	57	63	70	78	68	67.6		
		MIN	56	56	49	46	48	44	48	52	59	48	43	43	46	54	51	45	47	47	52	60	55	52	58	51	48	45	42	42	43	51	54	49.5		
BENSON POLICE BARRACKS	17	MAX	77	75	71	69	63	66	72	75	78	74	66	68	68	63	71	73	75	76	74	73	71	72	69	73	71	64	62	67	69	79	78	71.0		
		MIN	49	56	44	42	47	38	41	44	56	48	39	37	39	50	47	39	40	39	45	59	51	45	56	45	45	42	41	36	38	43	48	44.8		
CATOCTIN MOUNTAIN PARK	17	MAX	71	71	60	56	57	62	69	72	74	60	59	62	58	61	65	67	68	74	68	71	66	68	63	67	62	55	54	60	67	71	67	64.7		
		MIN	53	52	40	39	43	39	45	48	55	41	36	37	38	47	45	43	38	48	56	56	48	46	51	43	44	37	35	34	40	51	54	44.6		
CONOWINGO DAM	MID	MAX	73	72	66	64	62	67	72	72	78	65	70	64	69	64	67	69	72	68	73	73	72	62	62	72	67	62	64	65	72	76	68	68.5		
		MIN	53	50	43	50	44	48	48	46	60	46	43	47	52	50	36	39	37	42	48	47	47	46	47	39	39	41	38	39	38	44	46	44.9		
DAMASCUS 2 SSW	22	MAX	77	64	59	59	60	63	68	70	75	60	60	61	61	60	62	68	67	73	67	73	68	68	64	67	59	59	56	60	67	73	70	64.9		
		MIN	46	51	41	36	39	33	39	43	54	42	31	32	34	50	42	36	34	36	42	54	40	39	53	36	39	36	32	29	32	40	50	40.0		
EMMITSBURG 2 SE	17	MAX	77	67	65	61	59	63	68	71	75	66	66	62	60	63	64	67	66	72	69	67	67	66	67	67	66	59	59	60	65	72	66	66.2		
		MIN	46	56	41	38	44	33	36	39	47	44	31	31	33	50	44	35	30	33	38	57	41	38	52	35	38	32	33	27	29	29	41	38.7		
FREDERICK POLICE BRKS	17	MAX	78	80	70	61	61	65	69	73	77	76	61	69	63	64	65	68	74	75	75	74	74	70	70	70	70	60	56	61	73	74	72	69.3		
		MIN	47	49	46	43	48	38	38	45	55	50	38	36	39	52	51	40	36	38	45	59	45	45	45	47	41	43	33	35	37	47	43.7			
MILLERS 4 NE	18	MAX	75	65	61	58	56	61	69	71	76	63	58	64	65	62	63	66	69	74	74	71	67	68	62	66	62	55	54	60	67	71	68	65.2		
		MIN	46	53	41	42	43	34	39	43	56	46	35	32	36	49	45	37	42	37	46	58	46	42	53	41	44	37	33	33	37	46	51	42.6		
ROCKVILLE 1 NE	MID	MAX	80	68	60	61	61	64	69	72	77	61	60	61	62	63	66	68	69	75	68	73	68	69	67	71	61	54	55	63	68	75	70	66.4		
		MIN	48	52	46	43	43	37	41	45	58	47	39	37	40	53	45	40	39	38	44	58	51	44	56	54	44	41	39	33	36	43	51	44.7		
TOWSON	18	MAX	76	72	64	60	63	65	70	70	76	75	70	65	65	63	68	65	69	75	71	73	70	71	64	70	69	60	57	63	68	74	75	68.3		
		OBS																																	M	
		MIN																																		
		OBS																																		M
UNIONVILLE	17	MAX	77	75	61	60	58	65	70	73	76	61	61	64	58	62	62	65	70	75	64	73	68	70	68	69	63	56	59	62	65	70	70	66.1		
		MIN	45	56	41	34	40	33	36	39	53	43	31	29	34	49	44	42	28	32	38	56	37	37	48	34	37	32	28	27	28	33	41	38.2		
WESTMINSTER POL BRKS	17	MAX	78	76	66	66	61	59	68	71	77	75	59	61	61	63	63	66	66	74	73	73	71	68	65	68	68	60	55	61	67	72	71	67.2		
		MIN	50	55	44	43	46	41	46	42	57	52	40	36	40	50	46	41	41	42	41	57	49	46	57	44	45	40	38	39	38	47	51	45.3		
		OBS																																		
WOODSTOCK	18	MAX	79	70	69	62	62	65	71	75	78	67	64	64	63	63	67	71	73	78	69	75	71	72	68	70	63	58	58	65	70	77	70	68.6		
		MIN	45	55	40	37	41	34	36	40	55	44	33	31	34	48	46	35	33	35	40	57	44	41	54	38	39	37	32	30	30	37	45	40.2		
APPALACHIAN MOUNTAIN	07																																			
CUMBERLAND 2	17	MAX	81	76	66	64	60	67	75	77	72	61	63	65	60	67	69	73	74	80	73	74	70	68	75	70	64	56	54	65	75	77	70	69.1		
		MIN	49	42	36	36	35	35	38	44	41	31	31	32	38	44	39	32	32	35	47	44	42	42	38	38	36	36	29	29	30	34	49	37.5		
FROSTBURG 2	07	MAX	64	73	64	57	56	50	58	67	68	65	52	54	57	51	60	61	64	66	73	57	67	56	61	64	62	53	46	46	57	68	69	60.2		
		MIN	43	50	43	36	33	34	33	39	44	41	37	31	37	38	46	42	38	36	41	51	45	41	40	44	41	35	34	31	30	37	42	39.1		
HANCOCK	08	MAX	74	81	70	63	63	60	66	73	75	74	62	63	64	60	67	67	71	72	79	65	76	69	71	73	72	64	56	56	65	71	75	68		
		OBS																																		
		MIN	46	45	39	43	42	31	38	34	42	41	31	31	27	31	38	31	28	31	41	41	39	37	44	32	30	33	29	26	27	32	45	35.6		
		OBS																																		

SEE REFERENCE NOTES FOLLOWING STATION INDEX

DAILY TEMPERATURES (°F)

MARYLAND AND
DELAWARE
OCTOBER 1994

STATION	OB. TIME	MAX/MIN	DAY OF MONTH																															AVERAGE		
			1	2	3	4	5	6	7	8	9	10	11	12	13	14	15	16	17	18	19	20	21	22	23	24	25	26	27	28	29	30	31			
			ALLEGHENY PLATEAU 08	17	MAX MIN	72 39	74 52	65 42	58 28	54 42	62 30	71 30	72 33	71 40	53 36	56 23	59 31	57 41	60 46	61 37	68 29	73 25	72 28	71 37	66 54	63 37	66 31	63 43	61 29	57 39	52 29	46 29	63 20		66 23	69 25
OAKLAND 1 SE	08	MAX MIN	67 41	78 47	68 40	60 33	60 32	54 32	62 27	68 32	70 42	62 40	56 30	58 30	59 30	57 32	60 39	61 40	68 35	73 31	72 31	71 34	66 48	63 43	66 37	63 37	61 36	57 36	52 33	46 31	63 26	66 27	69 30	69 34	62.8 35.0	
SAVAGE RIVER DAM																																				
DELAWARE																																				
NORTHERN	01																																			
NEWARK UNIVERSITY FARM	17	MAX MIN	70 47	70 54	64 40	61 40	61 43	63 35	70 38	74 41	80 54	72 45	63 33	64 31	64 35	64 48	68 49	69 34	69 35	72 38	71 41	69 56	69 52	70 45	64 54	70 40	65 40	60 40	60 38	62 31	67 35	75 38	72 44	67.5 41.7		
WILMINGTON WSO ARPT	MID	MAX MIN	69 49	67 49	61 43	60 42	58 40	62 36	67 40	70 43	79 58	62 40	61 36	64 35	63 38	63 49	64 41	68 37	69 37	71 40	69 45	66 54	70 48	70 45	62 50	68 42	62 41	54 39	58 39	61 35	65 34	72 40	71 46	65.4 42.3		
WILMINGTON PORTER RSVR	MID	MAX OBS MIN	69 53	66 49	60 45	60 43	57 42	61 38	68 45	70 46	78 56	61 41	61 42	63 39	61 41	62 50	64 45	64 43	67 45	71 45	71 47	66 56	69 52	68 48	61 55	68 44	62 45	54 44	57 40	68 44	62 45	71 44	73 50	64.9 45.9		
SOUTHERN	02																																			
DOVER	17	MAX MIN	78 49	78 49	69 45	60 42	60 46	62 38	65 41	68 44	75 55	75 54	61 38	61 35	62 42	62 52	64 51	65 39	65 40	73 40	73 46	71 56	71 52	69 43	69 56	68 43	68 50	63 42	57 34	62 34	67 35	72 51	71 50	71 50	67.2 44.9	
GEORGETOWN 5 SW	08	MAX MIN	70 45	78 55	65 46	60 41	63 43	62 35	64 37	71 40	76 45	79 54	62 36	62 33	63 35	66 47	63 50	63 38	65 37	66 35	72 39	75 42	70 51	70 40	71 45	68 43	70 44	67 42	50 36	59 30	63 32	69 32	75 48	67.0 41.2		
GREENWOOD 2 NE	18	MAX MIN	78 46	67 57	61 44	63 40	62 42	63 34	71 38	75 41	78 51	73 54	61 35	63 34	66 37	60 52	63 53	67 36	68 39	74 36	74 47	73 44	70 51	71 41	65 54	69 41	66 46	59 42	57 34	62 31	68 36	75 46	75 46	67.6 42.8		
LEWES	17	MAX MIN	80 51	78 60	65 53	60 50	62 49	59 40	69 43	71 46	81 58	77 58	60 49	63 44	65 44	62 58	62 57	62 51	63 45	73 45	76 53	68 56	67 55	68 49	68 57	69 47	64 51	62 47	57 40	62 38	70 49	74 55	72 53	67.4 50.0		

SEE REFERENCE NOTES FOLLOWING STATION INDEX

EVAPORATION AND WIND

MARYLAND AND
DELAWARE
OCTOBER 1994

STATION	DAY OF MONTH																															TOTAL OR AVG	
	1	2	3	4	5	6	7	8	9	10	11	12	13	14	15	16	17	18	19	20	21	22	23	24	25	26	27	28	29	30	31		
MARYLAND ALLEGHENY PLATEAU 08 SAVAGE RIVER DAM	WIND EVAP MAX MIN	37	29	17	10	15	21	8	3	11	25	45	23	37	26	23	22	14	16	27	13	41	35	15	40	40	48	53	36	25	29	27	811 2.668 M M
DELAWARE NORTHERN 01 NEWARK UNIVERSITY FARM	WIND EVAP MAX MIN	14	28	24	29	31	20	13	12	15	42	26	22	20	18	49	18	19	11	5	8	42	31	4	19	23	24	46	13	11	11	16	664 2.258 M M

EVAPORATION: IS MEASURED IN HUNDRETHS OF INCHES
 WIND: IS MEASURED IN MILES
 MAX AND MIN: THE MAXIMUM AND MINIMUM TEMPERATURES (FAHRENHEIT) OF THE WATER IN THE EVAPORATION PAN
 SEE REFERENCE NOTES FOLLOWING STATION INDEX

STATION INDEX

MARYLAND AND
DELAWARE
OCTOBER 1994

STATION	INDEX NO.	DIVISION	COUNTY	LATITUDE	LONGITUDE	ELEVATION (IN FEET)	OBSERVATION TIME AND TABLES				OBSERVER
							LOCAL STD TIME				
							TEMP	PRECIP	EVAP	SPECIAL (SEE NOTES)	
MARYLAND ABERDEEN PHILLIPS FIEL	001506		HARFORD	39 28	76 10W	57	16	16		C H	PHILLIPS ARMY AIRFIELD
ANNAPOLIS POLICE BRKS	019304		ANNE ARUNDEL	38 59	76 30W	25	17	17		C H	ANNAPOLIS POLICE BRKS
ASSATEAGUE IS NATL SEA	033301		MORCESTER	38 14	75 8W	10	07	07		C H	NATIONAL PARK SERVICE
BALTIMORE WSO ARPT	044604	R	ANNE ARUNDEL	39 11	76 40W	148	MID	MID		C H J	NATL WEATHER SERVICE
BALTIMORE CITY #	047006	R	BALTIMORE CI	39 17	76 37W	14	MID	MID		C H	NATIONAL WEATHER SERVICE
BELTSVILLE	070000	R	PRINCE GEORG	39 2	76 53W	120	08	08	08	C H	INACTIVE 04/01/94
BENSON POLICE BARRACKS	073206		HARFORD	39 30	76 23W	365	17	17		C H	MARYLAND STATE POLICE
CATOCTIN MOUNTAIN PARK	153006		FREDERICK	39 39	77 29W	1610	17	17		C H	CATOCTIN MOUNTAIN PARK
CHESTERTOWN	175005		KENT	39 13	76 4W	40	23	23		H	THOMAS W ELIASON JR
CLARKSVILLE 3 NNE	182005		HOWARD	39 15	76 56W	370	17	17		C H	INACTIVE 09/01/93
COLLEGE PARK	199304		PRINCE GEORG	38 59	76 57W	90	09	09		C H	UNIVERSITY OF MARYLAND
CONOWINGO DAM	206606		HARFORD	39 39	76 10W	40	MID	MID		C H	SUSQUEHANNA ELECTRIC CO
CUMBERLAND 2	222807		ALLEGANY	39 38	78 45W	730	17	17		H	TIMOTHY B THOMAS
DALECARLIA RESERVOIR	232206		DIS COLUMBIA	38 56	77 7W	150	17	17		H	U S CORPS OF ENGINEERS
DAMASCUS 2 SW	233306		MONTGOMERY	39 16	77 14W	722	19	19		H	INACTIVE 01/01/92
DAMASCUS 2 SSH	233306		MONTGOMERY	39 16	77 14W	670	22	22		H	ROBERT J LEFFLER
EDGE MONT	277007		WASHINGTON	39 40	77 33W	905		07		H	JOHN W HARNE
EMMITSBURG 2 SE	290606		FREDERICK	39 41	77 18W	416	17	17		H	LUCILLE K BEALE
FREDERICK POLICE BRKS	334806		FREDERICK	39 25	77 26W	380	17	17		H	MARYLAND STATE POLICE
FROSTBURG 2	341507		ALLEGANY	39 40	78 56W	2168	07	07		H	KENNETH L CLOSE
GLENN DALE BELL STN	367504		PRINCE GEORG	38 58	76 48W	150	16	16		H	USDA PLANT INTRODUCT STN
HAGERSTOWN	397507		WASHINGTON	39 39	77 44W	660	08	08		H	INACTIVE 11/01/93
HANCOCK	403007		WASHINGTON	39 42	78 11W	428	08	08		C H	TOWN OF HANCOCK
LA PLATA 1 H	508003		CHARLES	38 32	77 0W	140	18	18		H	INACTIVE 02/28/94
LAUREL 3 H	511104		PRINCE GEORG	39 6	76 54W	400	07	07		H	WA SUBURBAN SANITARY COM
MECHANICSVILLE 5 NE	586503		ST MARYS	38 27	76 41W	100	19	19		H	SANDRA J HASTINGS
MERRILL	589408		GARRETT	39 36	79 5W	1790		09		H	DELWOOD E MERRILL
MILLERS 4 NE	593406		CARROLL	39 43	76 48W	860	18	18		C H	BOBBY MILLER
MILLINGTON 1 SE	598805		KENT	39 16	75 52W	30	18	18		H	HOWARD L HARVEY
NATIONAL ARBORETUM DC	635004		DIS COLUMBIA	38 54	76 59W	50	07	07		H	US NATIONAL ARBORETUM
OAKLAND 1 SE	662004		GARRETT	39 24	79 24W	2419	17	17		H	BEA J CROSCO
OWINGS FERRY LANDING	677003		CALVERT	38 41	76 40W	160	17	17		H	JAMES C RASMUSSEN
POTOMAC FILTER PLANT	727206		MONTGOMERY	39 2	77 15W	270		08		H	POTOMAC WATER FILT PLANT
PRINCESS ANNE	733001		SOMERSET	38 13	75 41W	20	17	17		H	UNIV OF MD EASTERN SHORE
ROCKVILLE 1 NE	770506		MONTGOMERY	39 6	77 6W	440	MID	17		H	WASHINGTON GAS & ELEC CO
ROYAL OAK 2 SSH	780602		TALBOT	38 43	76 11W	10	18	18		H	JOHN L SHWAIN JR
SALISBURY	800001		WICOMICO	38 22	75 35W	10	17	17		H	CITY OF SALISBURY
SALISBURY FAA ARPT #	800001		WICOMICO	38 20	75 31W	50	MID	MID		H	FAA
SAVAGE RIVER DAM	806608		GARRETT	39 31	79 8W	1495	08	08	08	C H	US CORPS OF ENGINEERS
SNOW HILL 4 N	838801		MORCESTER	38 14	75 23W	30	17	17		H	CURTIS E SHOCKLEY
TOWSON	887706		BALTIMORE	39 23	76 34W	390	18	18		C H	ENVIRONMENTAL TECH GROUP
UNIONVILLE	903006		FREDERICK	39 27	77 11W	430	17	17		C H	ROBERT YOUNG
UPPER MARLBORO 3 NNW	907004		PRINCE GEORG	38 52	76 47W	100	08	08	08	H	INACTIVE 09/01/93
VIENNA	914002		DORCHESTER	38 29	75 50W	10	18	18		H	DELMARVA POWER & LIGHT
WESTMINSTER POL BRKS	944006		CARROLL	39 33	76 58W	765	17	17		H	MARYLAND STATE POLICE
WOODSTOCK	975006		BALTIMORE	39 20	76 52W	460	18	18		H	JOHN A HILTZ
DELAWARE											
DOVER	273002		KENT	39 9	75 31W	30	17	17		H	STATE HIGHWAY DEPT
GEORGETOWN 5 SW	357002		SUSSEX	38 38	75 27W	45	08	08	08	C H	UNIV OF DEL SUBSTATION
GREENWOOD 2 NE	359502		SUSSEX	38 50	75 35W	45	18	18		H	DANIEL M SWARTZENTRUBER
LEWES	532002		SUSSEX	38 46	75 8W	15	17	17		H	BOARD OF PUBLIC WORKS
NEWARK UNIVERSITY FARM	641000		NEW CASTLE	39 40	75 44W	90	17	17	17	C H	UNIV OF DEL AGRIC FARM
WILMINGTON WSO ARPT	R 959501		NEW CASTLE	39 40	75 36W	74	MID	MID		C H J	NATIONAL WEATHER SERVICE

SEE REFERENCE NOTES FOLLOWING STATION INDEX

STATION INDEX

MARYLAND AND
DELAWARE
OCTOBER 1994

STATION	INDEX NO.	DIVISION	COUNTY	LATITUDE	LONGITUDE	ELEVATION (IN FEET)	OBSERVATION TIME AND TABLES				OBSERVER
							LOCAL		STD TIME		
							TEMP	PRECIP	EVAP	SPECIAL (SEE NOTES)	
WILMINGTON PORTER RSVR	9605	01	NEW CASTLE	39 46	75 32W	270	MID	MID		H	PUBLIC WORKS

SEE REFERENCE NOTES FOLLOWING STATION INDEX

REFERENCE NOTES

MARYLAND AND
DELAWARE
OCTOBER 1994

DEFINITIONS

STATION NAMES: Name of the city, town or locality. Figures and letters following the station names indicate the distance in miles and direction from the post office or town community center.

DIVISIONS: Areas within a state of similar climatological characteristics. Division averages are calculated using data from stations that record both temperature and precipitation (i.e. not precipitation alone).

NORMALS: The average value of the meteorological element over a time period. Effective 1 January 1993, the averaging period is 1961 to 1990. The normals for National Weather Service localities have been adjusted so as to be representative for the current observation site.

MONTHLY DEGREE DAY TOTALS: One heating (cooling) degree day is accumulated for each whole degree that the daily mean temperature is below (above) 65 degrees Fahrenheit.

PRECIPITATION: Values shown in hundredths of inches are water equivalent totals, i.e., total of liquid and melted frozen precipitation. In the "Monthly Summarized Data" table the total snow and sleet values shown in tenths of inches are unmelted amounts. The max depth on ground values of snow and sleet shown in whole inches are cumulative unmelted amounts. The number of days with .10, .50, 1.00 or more refers to water equivalents.

TEMPERATURE: Original and edited temperature values are given in the "Daily Temperature" table. Edited values are produced when an original value is missing or when surrounding stations indicated a suspect original value. When a line labeled OBS is present and contains either a daily temperature (suspect) or *** (missing), the temperature appearing directly above, on the line labeled MAX or MIN, is an edited value. Summary temperature information (averages, departures, extremes, monthly degree day totals) is based on the values labeled MAX/MIN.

WIND: (As shown in the "Evaporation and Wind" table) the total wind movement in miles over the evaporation pan as determined by an anemometer recorder located 6-8 inches above the pan.

SYMBOLS AND LETTERS USED IN THE STATION INDEX TABLE

Thermometers located in a rooftop shelter.
// Rain gage equipped with a windshield
AR Observation made "after rain" has occurred.
C Station is equipped with recording rain gage (R) but values in this bulletin are from a non-recording rain gage unless indicated by an R.
G Observations appear in the "Soil temperatures" table.
H Observations appear in the "Snowfall and Snow on the Ground" table.
J Station also published as a Local Climatological Data publication.
MID Observation time is midnight.
MO Rain gage read once monthly, usually the last day.
OC Rain gage readings vary from a few weeks to several months.
R Amounts from recording rain gage.
SR Observation time near sunrise.
SS Observation time near sunset.
VAR Observation time varies.
WI Rain gage read weekly or irregularly.
WM Rain gage read weekly and last day of the month.

SYMBOLS AND LETTERS USED IN THE DATA TABLES

(DAILY DATA ARE FOR THE 24 HOURS IMMEDIATELY PRECEDING OBSERVATION TIME.)
BLANK Entries in the "Monthly Summarized Data" table indicate no record.
BLANK Entries in the "Daily Precipitation" and "Snowfall and Snow on the Ground" tables indicate zero.
BLANK Entries in the "Daily Temperature" table indicate a missing record where an edited value could not be determined. (See *** below)
- No record. Data not recorded, determined unreliable by quality control check, or not received in time for publication.
+ Precipitation or temperature extremes occurred on one or more previous dates during the month.
*** Missing original temperature which has been estimated during edit.
* Rain gage not read. Precipitation is included in the amount following the asterisks. Time distribution not known. A * preceding the monthly total indicates precipitation amount is being carried forward to next months total, and may include amounts from the previous month(s).
// Rain gage equipped with a windshield.
A Amount of precipitation is the total of observer's entries for the current month. It may include precipitation that occurred during the previous month. Refer to earlier bulletin to determine date of last reading. (Hawaii stations)
B Adjusted monthly value (estimated), (1-7 missing values for wind and evaporation).
M Insufficient or partial data. M is appended to average and/or total values computed with 1-9 daily values missing. M appears alone if 10 or more daily values are missing, (8 or more for wind and evaporation).
R Amounts from recording rain gage.
I Trace. An amount too small to measure.
V Includes total for previous month(s). (See * above)

SEASONAL TABLES: Monthly and seasonal snowfall and heating degree days for the 12 months ending with the June data are published in the July issue of this bulletin. Cooling degree days for the calendar year are published in the "Climatological Data Annual Summary."

The graphic displays appearing in this publication were first produced for the January 1987 data month. The types of graphs and the information they portray may vary from month to month and from state to state in order to highlight climatic features of state, regional, and seasonal interest. Some graphs present information for "clusters". A cluster is a group of up to four adjacent divisions that comprise an area of similar climate.

Information concerning the history of changes in locations, exposure, etc. of substations is kept on file at the National Climatic Data Center. Historical information of regular National Weather Service Offices may be obtained from the "Local Climatological Data" annual publication. The contents of this publication may be reprinted or otherwise used freely, with proper credit to the National Climatic Data Center. The data are also available in digital form on magnetic tape and diskette.

SUBSCRIPTION, PRICE, AND ORDERING INFORMATION AVAILABLE FROM:

NATIONAL CLIMATIC DATA CENTER
ROOM 120
151 PATTON AVENUE
ASHEVILLE, NC 28801-5001

USCOMM-NOAA-ASHEVILLE, N.C. OCTOBER 1994-0425

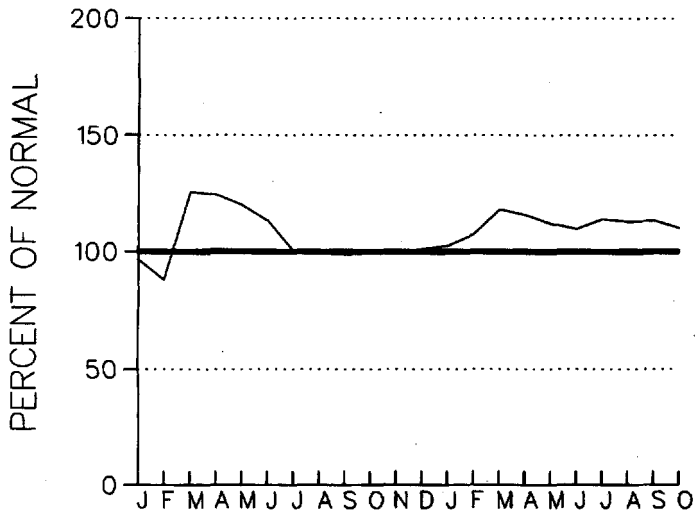
CUMULATIVE PRECIPITATION DEPARTURES FROM NORMAL (1961-1990)
FOR THE LAST 22 MONTHS
ENDING OCTOBER 1994
MARYLAND

CLUSTER 1 -DIVISION(S):
SOUTHERN EASTERN SHORE 01
CENTRAL EASTERN SHORE 02
LOWER SOUTHERN 03

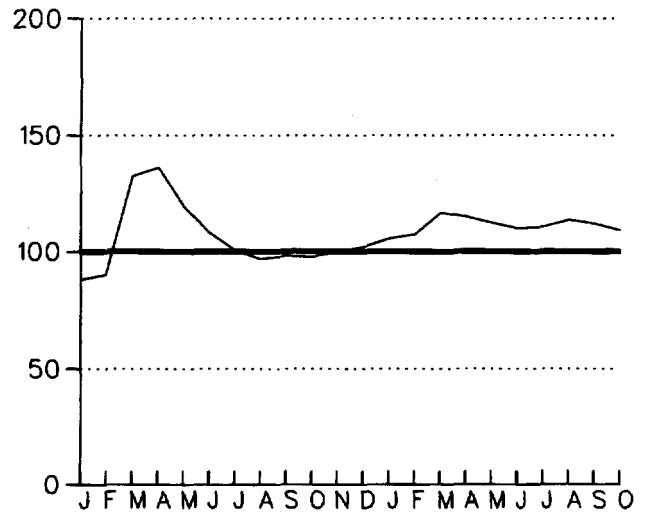
CLUSTER 2 -DIVISION(S):
UPPER SOUTHERN 04
NORTHERN EASTERN SHORE 05

CLUSTER 3 -DIVISION(S):
NORTHERN CENTRAL 06
APPALACHIAN MOUNTAIN 07

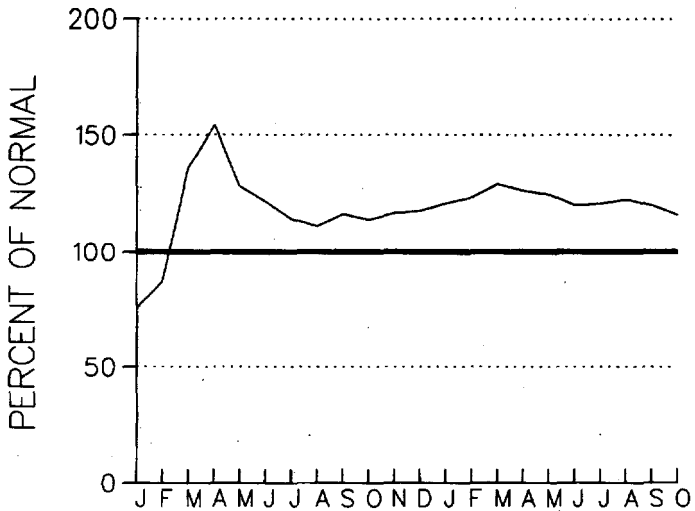
CLUSTER 4 -DIVISION(S):
ALLEGHENY PLATEAU 08



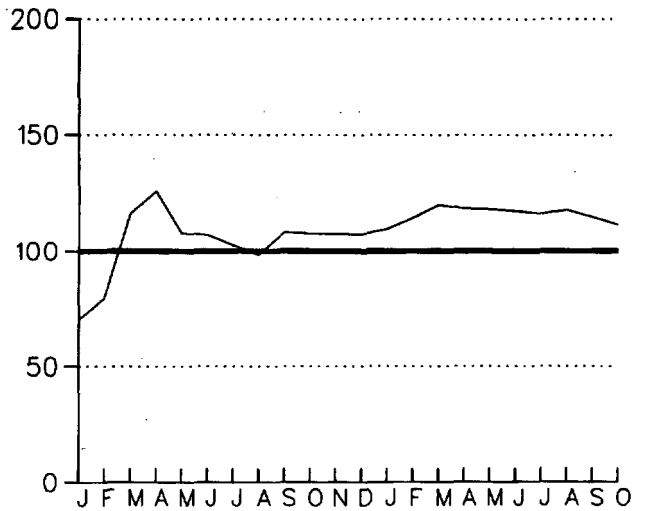
CLUSTER 1



CLUSTER 2



CLUSTER 3

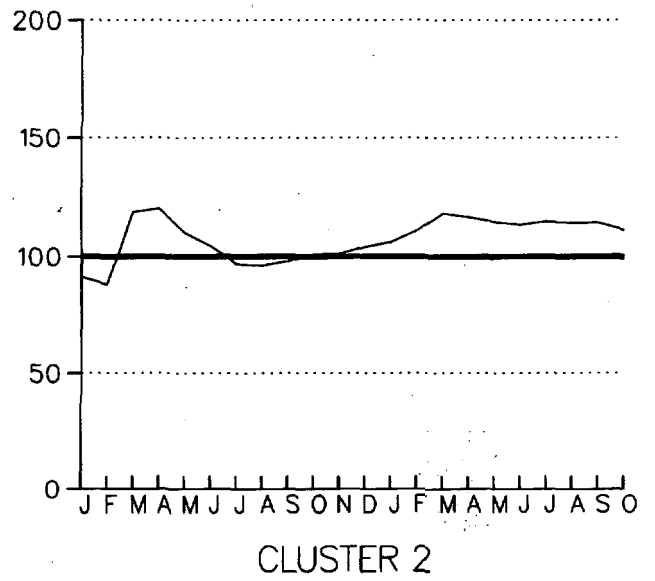
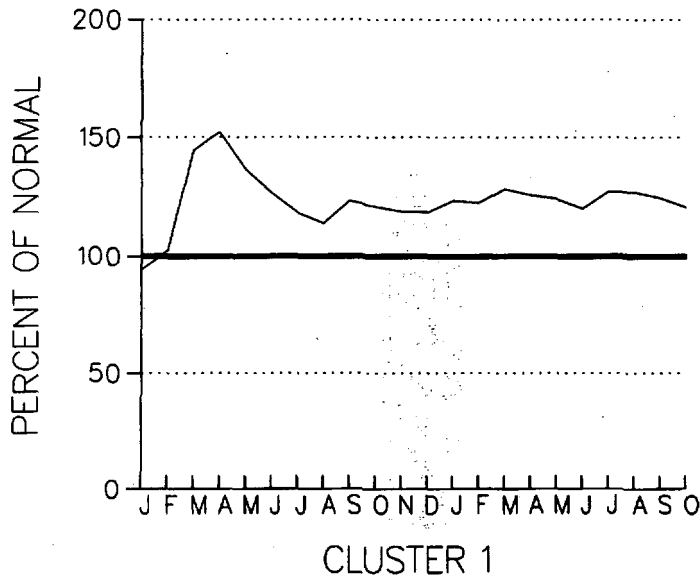


CLUSTER 4

CUMULATIVE PRECIPITATION DEPARTURES FROM NORMAL (1961-1990)
 FOR THE LAST 22 MONTHS
 ENDING OCTOBER 1994
 DELAWARE

CLUSTER 1 - DIVISION(S):
 NORTHERN 01

CLUSTER 2 - DIVISION(S):
 SOUTHERN 02



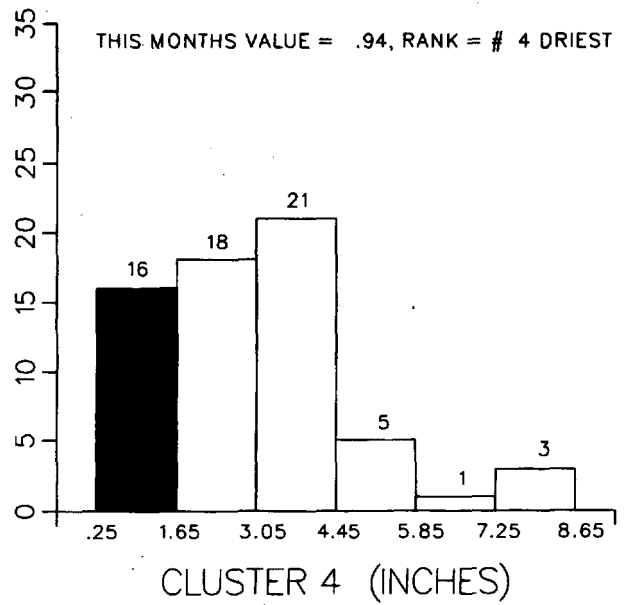
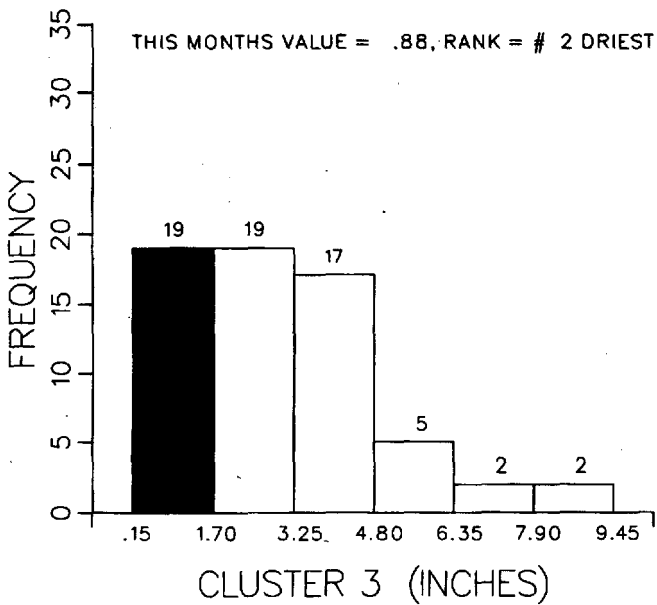
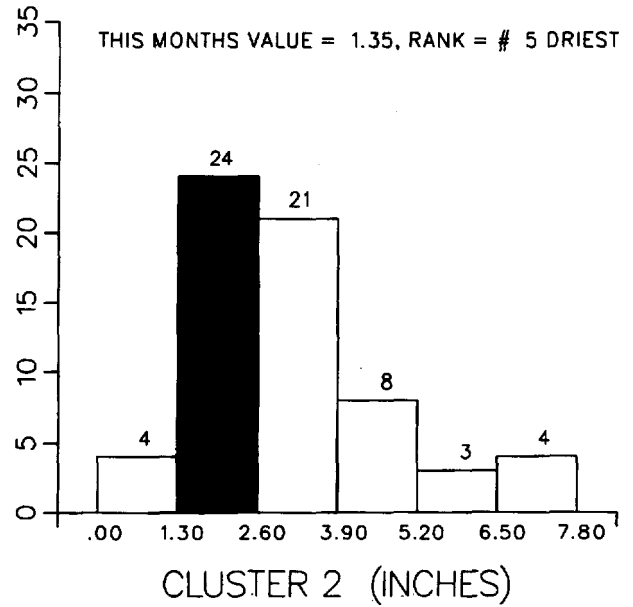
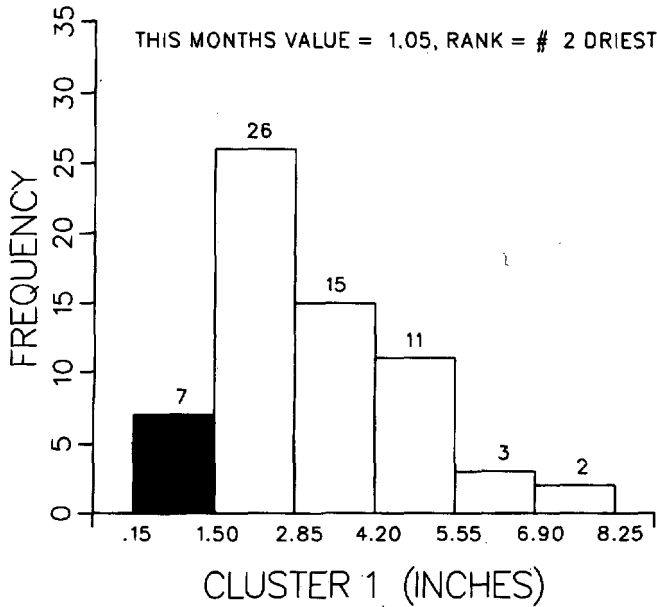
MEAN MONTHLY PRECIPITATION FREQUENCY DISTRIBUTION FOR PERIOD OF RECORD 1931-1994 FOR MONTH OF OCTOBER MARYLAND

CLUSTER 1 -DIVISION(S):
SOUTHERN EASTERN SHORE 01
CENTRAL EASTERN SHORE 02
LOWER SOUTHERN 03

CLUSTER 2 -DIVISION(S):
UPPER SOUTHERN 04
NORTHERN EASTERN SHORE 05

CLUSTER 3 -DIVISION(S):
NORTHERN CENTRAL 06
APPALACHIAN MOUNTAIN 07

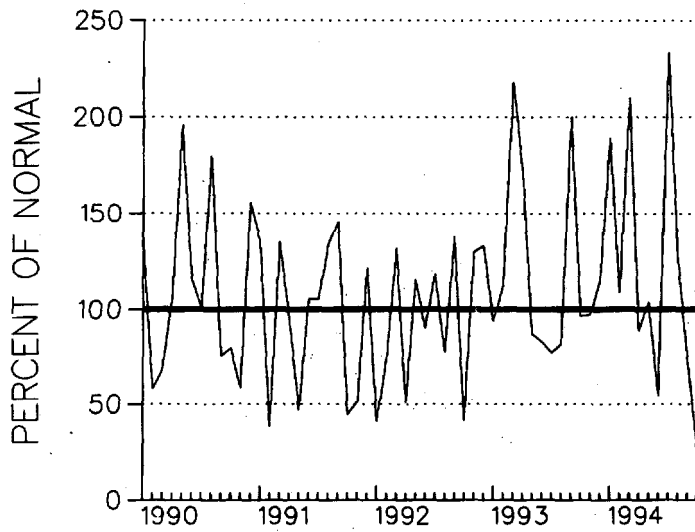
CLUSTER 4 -DIVISION(S):
ALLEGHENY PLATEAU 08



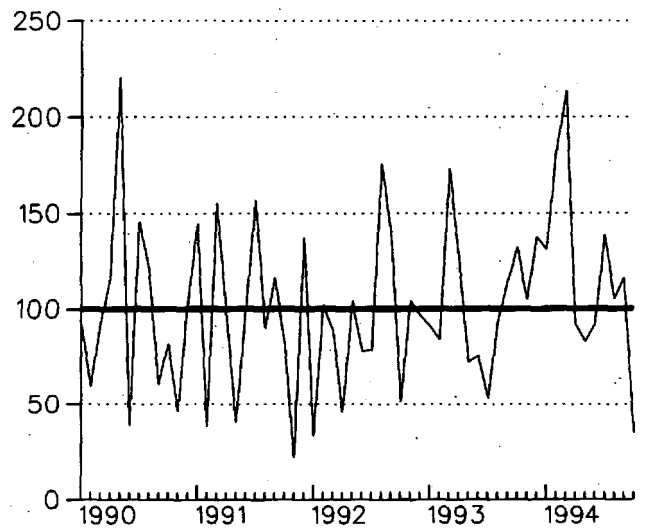
PRECIPITATION DEPARTURES FROM NORMAL (1961-1990)
FOR THE 58 MONTHS
ENDING OCTOBER 1994
DELAWARE

CLUSTER 1 - DIVISION(S):
NORTHERN 01

CLUSTER 2 - DIVISION(S):
SOUTHERN 02



CLUSTER 1



CLUSTER 2

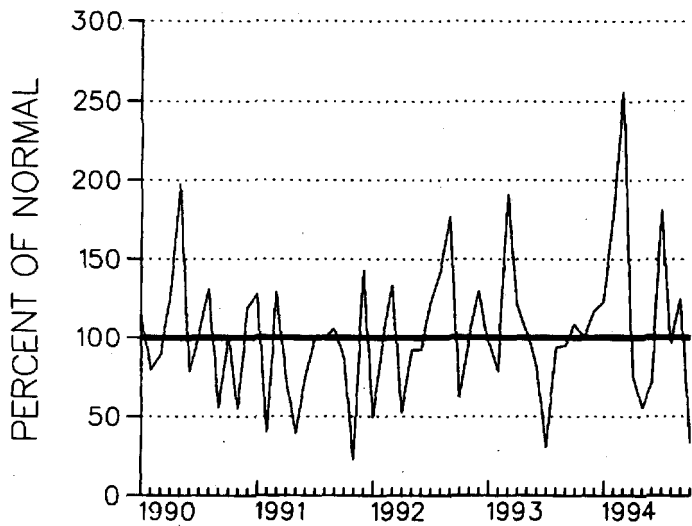
PRECIPITATION DEPARTURES FROM NORMAL (1961-1990)
 FOR THE 58 MONTHS
 ENDING OCTOBER 1994
 MARYLAND

CLUSTER 1 -DIVISION(S):
 SOUTHERN EASTERN SHORE 01
 CENTRAL EASTERN SHORE 02
 LOWER SOUTHERN 03

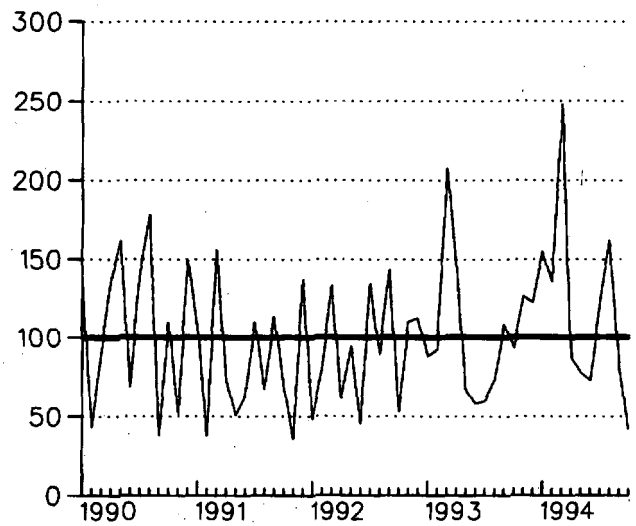
CLUSTER 2 -DIVISION(S):
 UPPER SOUTHERN 04
 NORTHERN EASTERN SHORE 05

CLUSTER 3 -DIVISION(S):
 NORTHERN CENTRAL 06
 APPALACHIAN MOUNTAIN 07

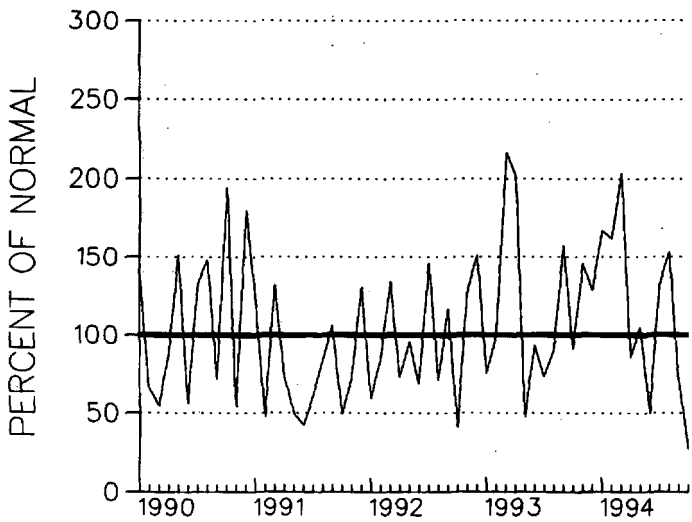
CLUSTER 4 -DIVISION(S):
 ALLEGHENY PLATEAU 08



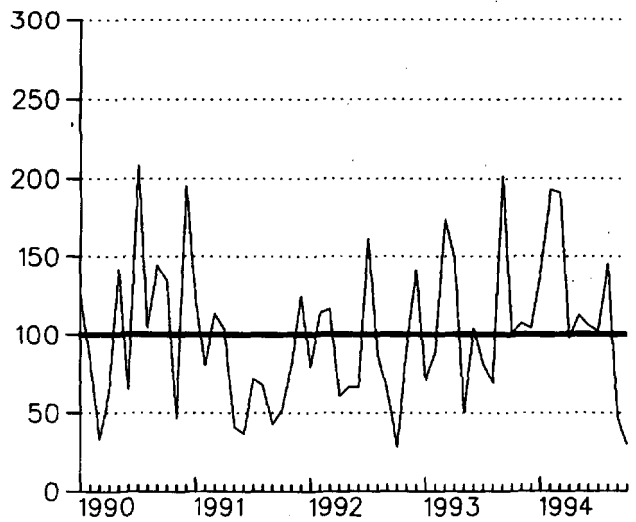
CLUSTER 1



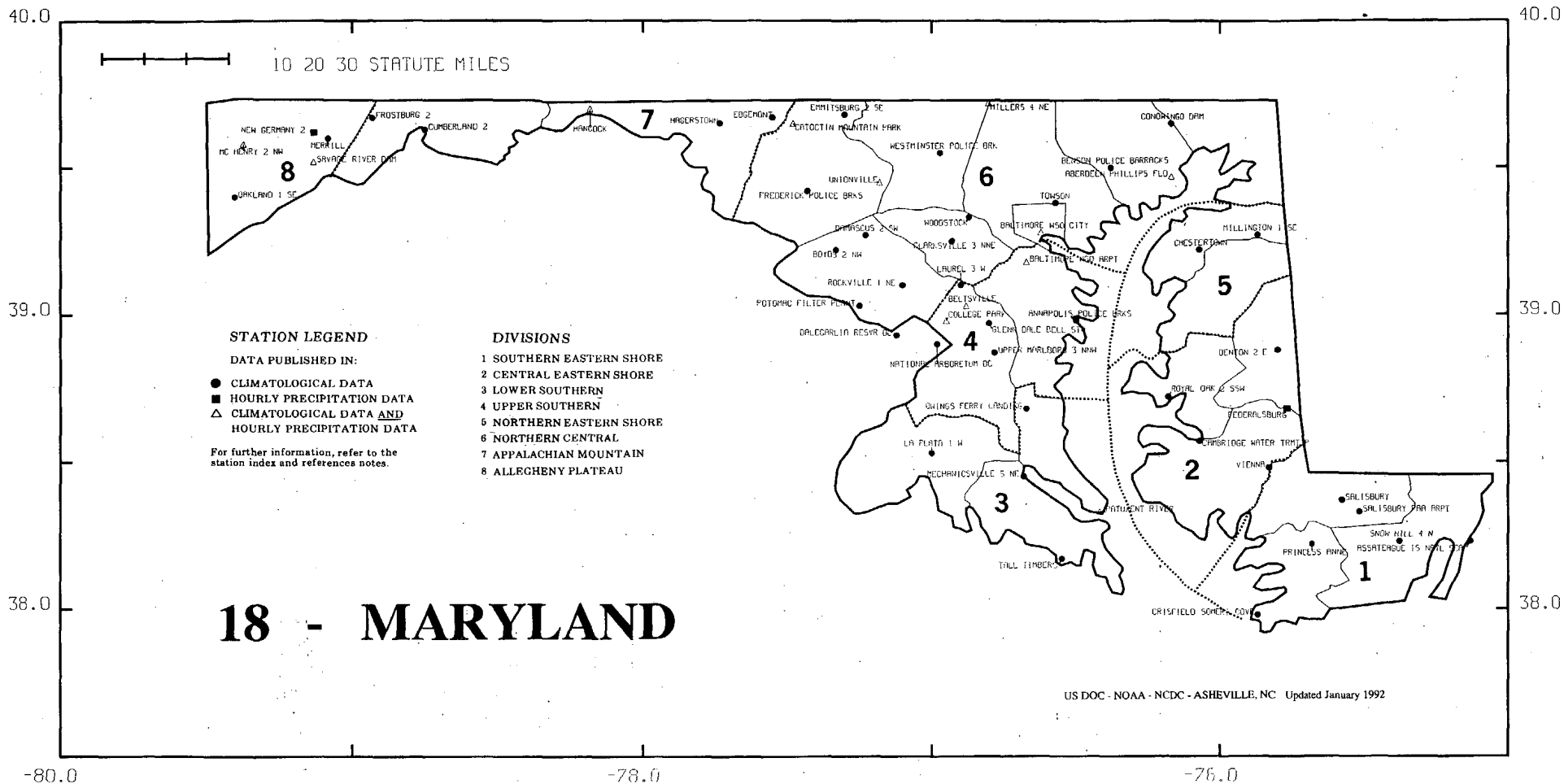
CLUSTER 2



CLUSTER 3



CLUSTER 4



40.0

40.0

10 20 30 STATUTE MILES

07 - DELAWARE

1

STATION LEGEND

DATA PUBLISHED IN:

- CLIMATOLOGICAL DATA
- HOURLY PRECIPITATION DATA
- △ CLIMATOLOGICAL DATA AND HOURLY PRECIPITATION DATA

For further information, refer to the station index and references notes.

DIVISIONS

- 1 NORTHERN
- 2 SOUTHERN

WILMINGTON PORTER RSVR

NEWARK UNIVERSITY FARM

WILMINGTON HSO ARPT

DOVER

2

MILFORD 4 SE

GREENWOOD 2 NE

LEWES

GEORGETOWN 5 SW

US DOC - NOAA - NCD - ASHEVILLE, NC
Updated January 1992

39.0

39.0

38.0
-76.0

-75.5

-75.0

38.0

MONTHLY PRECIPITATION TOTALS

ANNUAL 1987
NORTH CAROLINA

STATION	ANNUAL	MONTH											
		JAN	FEB	MAR	APR	MAY	JUN	JUL	AUG	SEP	OCT	NOV	DEC
NORTH CAROLINA													
ASHEVILLE WSO AP	34.57	1.11	1.85	2.75	0.67	3.55				4.19	5.29	4.28	
ASHEVILLE	25.57	0.71	1.57	1.81	0.52				2.77	4.15	2.94		
ASHFORD	36.74E	1.20	2.70	2.90	0.54E				3.80	4.90	4.60		
BRADIN	-	-	1.30	2.60	1.20E				2.40	4.10	2.90		
B EVERETT JORDAN DAM	-	1.70	1.50	3.60						1.70	-		
ASHEVILLE WSO AP													
BODMER 5 WSO	-	1.00	2.10	1.20									
BURLINGTON 3 WSO	-	0.80	1.92E										
CAPE MATTERS WSO	48.66	5.75											
CANTHADE 8 SE	-	1.70											
CATALDOOCHEE	-	0.5											
CHARLOTTE WSO AP													
CLINTON 2 NE	29.91												
GALTON	35.8												
DOBSON	-												
EDEN	-												
ELLIOTT													
ELLIOTT	-												
FRANK													
FRANK	-												
GREENS													
GREENS	-												
GREENVILLE													
MELTON	-												
HODUCKEN													
LAKE LURE	-												
LAURINBURG													
LORRY	-												
LEXINGTON													
MOORESVILLE 2	-												
MOOREHEAD CITY													
MOUNT PLEASANT	-												
MILKESBORO 12													
PLKTON 2 NE	-												
QUEBEC													
PALEIGH-CURHAN WSO	-												
ROANKE RAPIDS													
ROARING GAP 1 NW	-												
SHELBY 2													
SNEADS FERRY 2 ENG	-												
SHAWANNA 2 SSE													
WILMINGTON WSO AP	-												
WILSON 3 SW													
YACKINVILLE 6 E	-												

HOURLY PRECIPITATION DATA

NORTH CAROLINA

DECEMBER 1987
WITH ANNUAL SUPPLEMENT
VOLUME 37 NUMBER 12

- A WORLD OF CLIMATIC INFORMATION FOR**
- * Attorneys
 - * Colleges & Universities
 - * Construction
 - * Consultants
 - * Governmental Agencies
 - * Industry
 - * Insurance Companies
 - * Public Utilities
 - * Research & Development
 - * Energy

STATION INDEX

STATION	CO. DATA	COUNTY	STATE	LONGITUDE	STATION
NORTH CAROLINA					
ASHEVILLE WSO AP		ASHEVILLE	NC	82 23 17	35 52 10
ASHEVILLE		ASHEVILLE	NC	82 23 17	35 52 10
ASHFORD		ASHFORD	NC	82 23 17	35 52 10
BODMER 5 WSO		BODMER	NC	82 23 17	35 52 10
BURLINGTON 3 WSO		BURLINGTON	NC	82 23 17	35 52 10
CAPE MATTERS WSO		CAPE MATTERS	NC	82 23 17	35 52 10
CANTHADE 8 SE		CANTHADE	NC	82 23 17	35 52 10
CATALDOOCHEE		CATALDOOCHEE	NC	82 23 17	35 52 10
CHARLOTTE WSO AP		CHARLOTTE	NC	82 23 17	35 52 10
CLINTON 2 NE		CLINTON	NC	82 23 17	35 52 10
GALTON		GALTON	NC	82 23 17	35 52 10
DOBSON		DOBSON	NC	82 23 17	35 52 10
EDEN		EDEN	NC	82 23 17	35 52 10
ELLIOTT		ELIOTT	NC	82 23 17	35 52 10
FRANK		FRANK	NC	82 23 17	35 52 10
GREENS		GREENS	NC	82 23 17	35 52 10
GREENVILLE		GREENVILLE	NC	82 23 17	35 52 10
MELTON		MELTON	NC	82 23 17	35 52 10
HODUCKEN		HODUCKEN	NC	82 23 17	35 52 10
LAKE LURE		LAKE LURE	NC	82 23 17	35 52 10
LAURINBURG		LAURINBURG	NC	82 23 17	35 52 10
LORRY		LORRY	NC	82 23 17	35 52 10
LEXINGTON		LEXINGTON	NC	82 23 17	35 52 10
MOORESVILLE 2		MOORESVILLE	NC	82 23 17	35 52 10
MOOREHEAD CITY		MOOREHEAD CITY	NC	82 23 17	35 52 10
MOUNT PLEASANT		MOUNT PLEASANT	NC	82 23 17	35 52 10
MILKESBORO 12		MILKESBORO	NC	82 23 17	35 52 10
PLKTON 2 NE		PLKTON	NC	82 23 17	35 52 10
QUEBEC		QUEBEC	NC	82 23 17	35 52 10
PALEIGH-CURHAN WSO		PALEIGH-CURHAN	NC	82 23 17	35 52 10
ROANKE RAPIDS		ROANKE RAPIDS	NC	82 23 17	35 52 10
ROARING GAP 1 NW		ROARING GAP	NC	82 23 17	35 52 10
SHELBY 2		SHELBY	NC	82 23 17	35 52 10
SNEADS FERRY 2 ENG		SNEADS FERRY	NC	82 23 17	35 52 10
SHAWANNA 2 SSE		SHAWANNA	NC	82 23 17	35 52 10
WILMINGTON WSO AP		WILMINGTON	NC	82 23 17	35 52 10
WILSON 3 SW		WILSON	NC	82 23 17	35 52 10
YACKINVILLE 6 E		YACKINVILLE	NC	82 23 17	35 52 10

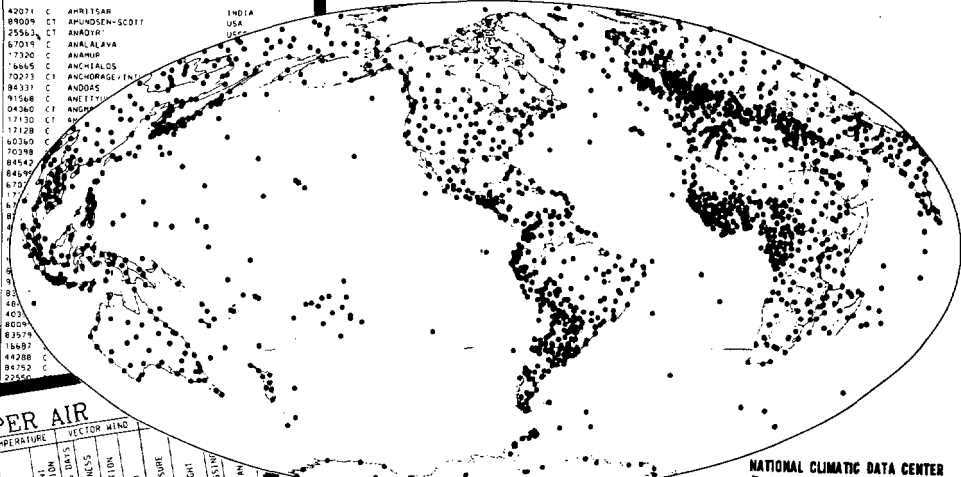
MONTHLY PRECIPITATION MAXIMA

STATION	MAXIMA FOR MEASUREMENT PERIODS OF											
	15 MINUTES	30	45	1 HOUR	2	3	6	9	12	15	30	60
NORTH CAROLINA												
ASHEVILLE WSO AP	18 01/14/87	18 01/14/87	18 01/14/87	18 01/14/87	20 01/14/87	20 01/14/87	20 01/14/87	20 01/14/87	20 01/14/87	20 01/14/87	20 01/14/87	20 01/14/87
ASHEVILLE	18 01/14/87	18 01/14/87	18 01/14/87	18 01/14/87	20 01/14/87	20 01/14/87	20 01/14/87	20 01/14/87	20 01/14/87	20 01/14/87	20 01/14/87	20 01/14/87
ASHFORD	18 01/14/87	18 01/14/87	18 01/14/87	18 01/14/87	20 01/14/87	20 01/14/87	20 01/14/87	20 01/14/87	20 01/14/87	20 01/14/87	20 01/14/87	20 01/14/87
BODMER 5 WSO	18 01/14/87	18 01/14/87	18 01/14/87	18 01/14/87	20 01/14/87	20 01/14/87	20 01/14/87	20 01/14/87	20 01/14/87	20 01/14/87	20 01/14/87	20 01/14/87
BURLINGTON 3 WSO	18 01/14/87	18 01/14/87	18 01/14/87	18 01/14/87	20 01/14/87	20 01/14/87	20 01/14/87	20 01/14/87	20 01/14/87	20 01/14/87	20 01/14/87	20 01/14/87
CAPE MATTERS WSO	18 01/14/87	18 01/14/87	18 01/14/87	18 01/14/87	20 01/14/87	20 01/14/87	20 01/14/87	20 01/14/87	20 01/14/87	20 01/14/87	20 01/14/87	20 01/14/87
CANTHADE 8 SE	18 01/14/87	18 01/14/87	18 01/14/87	18 01/14/87	20 01/14/87	20 01/14/87	20 01/14/87	20 01/14/87	20 01/14/87	20 01/14/87	20 01/14/87	20 01/14/87
CATALDOOCHEE	18 01/14/87	18 01/14/87	18 01/14/87	18 01/14/87	20 01/14/87	20 01/14/87	20 01/14/87	20 01/14/87	20 01/14/87	20 01/14/87	20 01/14/87	20 01/14/87
CHARLOTTE WSO AP	18 01/14/87	18 01/14/87	18 01/14/87	18 01/14/87	20 01/14/87	20 01/14/87	20 01/14/87	20 01/14/87	20 01/14/87	20 01/14/87	20 01/14/87	20 01/14/87
CLINTON 2 NE	18 01/14/87	18 01/14/87	18 01/14/87	18 01/14/87	20 01/14/87	20 01/14/87	20 01/14/87	20 01/14/87	20 01/14/87	20 01/14/87	20 01/14/87	20 01/14/87
GALTON	18 01/14/87	18 01/14/87	18 01/14/87	18 01/14/87	20 01/14/87	20 01/14/87	20 01/14/87	20 01/14/87	20 01/14/87	20 01/14/87	20 01/14/87	20 01/14/87
DOBSON	18 01/14/87	18 01/14/87	18 01/14/87	18 01/14/87	20 01/14/87	20 01/14/87	20 01/14/87	20 01/14/87	20 01/14/87	20 01/14/87	20 01/14/87	20 01/14/87
EDEN	18 01/14/87	18 01/14/87	18 01/14/87	18 01/14/87	20 01/14/87	20 01/14/87	20 01/14/87	20 01/14/87	20 01/14/87	20 01/14/87	20 01/14/87	20 01/14/87
ELIOTT	18 01/14/87	18 01/14/87	18 01/14/87	18 01/14/87	20 01/14/87	20 01/14/87	20 01/14/87	20 01/14/87	20 01/14/87	20 01/14/87	20 01/14/87	20 01/14/87
FRANK	18 01/14/87	18 01/14/87	18 01/14/87	18 01/14/87	20 01/14/87	20 01/14/87	20 01/14/87	20 01/14/87	20 01/14/87	20 01/14/87	20 01/14/87	20 01/14/87
GREENS	18 01/14/87	18 01/14/87	18 01/14/87	18 01/14/87	20 01/14/87	20 01/14/87	20 01/14/87	20 01/14/87	20 01/14/87	20 01/14/87	20 01/14/87	20 01/14/87
GREENVILLE	18 01/14/87	18 01/14/87	18 01/14/87	18 01/14/87	20 01/14/87	20 01/14/87	20 01/14/87	20 01/14/87	20 01/14/87	20 01/14/87	20 01/14/87	20 01/14/87
MELTON	18 01/14/87	18 01/14/87	18 01/14/87	18 01/14/87	20 01/14/87	20 01/14/87	20 01/14/87	20 01/14/87	20 01/14/87	20 01/14/87	20 01/14/87	20 01/14/87
HODUCKEN	18 01/14/87	18 01/14/87	18 01/14/87	18 01/14/87	20 01/14/87	20 01/14/87	20 01/14/87	20 01/14/87	20 01/14/87	20 01/14/87	20 01/14/87	20 01/14/87
LAKE LURE	18 01/14/87	18 01/14/87	18 01/14/87	18 01/14/87	20 01/14/87	20 01/14/87	20 01/14/87	20 01/14/87	20 01/14/87	20 01/14/87	20 01/14/87	20 01/14/87
LAURINBURG	18 01/14/87	18 01/14/87	18 01/14/87	18 01/14/87	20 01/14/87	20 01/14/87	20 01/14/87	20 01/14/87	20 01/14/87	20 01/14/87	20 01/14/87	20 01/14/87
LORRY	18 01/14/87	18 01/14/87	18 01/14/87	18 01/14/87	20 01/14/87	20 01/14/87	20 01/14/87	20 01/14/87	20 01/14/87	20 01/14/87	20 01/14/87	20 01/14/87
LEXINGTON	18 01/14/87	18 01/14/87	18 01/14/87	18 01/14/87	20 01/14/87	20 01/14/87	20 01/14/87	20 01/14/87	20 01/14/87	20 01/14/87	20 01/14/87	20 01/14/87
MOORESVILLE 2	18 01/14/87	18 01/14/87	18 01/14/87	18 01/14/87	20 01/14/87	20 01/14/87	20 01/14/87	20 01/14/87	20 01/14/87	20 01/14/87	20 01/14/87	20 01/14/87
MOOREHEAD CITY	18 01/14/87	18 01/14/87	18 01/14/87	18 01/14/87	20 01/14/87	20 01/14/87	20 01/14/87	20 01/14/87	20 01/14/87	20 01/14/87	20 01/14/87	20 01/14/87
MOUNT PLEASANT	18 01/14/87	18 01/14/87	18 01/14/87	18 01/14/87	20 01/14/87	20 01/14/87	20 01/14/87	20 01/14/87	20 01/14/87	20 01/14/87	20 01/14/87	20 01/14/87
MILKESBORO 12	18 01/14/87	18 01/14/87	18 01/14/87	18 01/14/87	20 01/14/87	20 01/14/87	20 01/14/87	20 01/14/87	20 01/14/87	20 01/14/87	20 01/14/87	20 01/14/87
PLKTON 2 NE	18 01/14/87	18 01/14/87	18 01/14/87	18 01/14/87	20 01/14/87	20 01/14/87	20 01/14/87	20 01/14/87	20 01/14/87	20 01/14/87	20 01/14/87	20 01/14/87
QUEBEC	18 01/14/87	18 01/14/87	18 01/14/87	18 01/14/87	20 01/14/87	20 01/14/87	20 01/14/87	20 01/14/87	20 01/14/87	20 01/14/87	20 01/14/87	20 01/14/87
PALEIGH-CURHAN WSO	18 01/14/87	18 01/14/87	18 01/14/87	18 01/14/87	20 01/14/87	20 01/14/87	20 01/14/87	20 01/14/87	20 01/14/87	20 01/14/87	20 01/14/87	20 01/14/87
ROANKE RAPIDS	18 01/14/87	18 01/14/87	18 01/14/87	18 01/14/87	20 01/14/							

CLIMATIC DATA STATIONS - WORLDWIDE

STATION LIST WMO PUB 9 VOL A

41244 C	ISPAHAR, IRAN	OPAN	42021 C	SHRITSAR, INDIA
40981 C	ABADAN, IRAN	IRAN, ISLAMIC REP	89009 CT	APUNDOSEN-SCOT, USA
41608 C	ABASHIRI, JAPAN	JAPAN	25562 CT	ANADIR, USA
71108 C	ABBOTSFORD, B C	CANADA	67019 C	ANK, ALABA
64756 C	ABECHO, CHAD	CHAD	7320 C	ANAMUR
37001 C	ABEJOQUE, MEXICO	MEXICO	7665 C	ANCHALOS
41112 C	ABHA, SAUDI ARABIA	SAUDI ARABIA	70211 CT	ANCHORAGE, ALASKA
45578 CT	ABIDJAN, COTE D'IVOIRE	COTE D'IVOIRE	86337 C	ANDOSAS
32264 C	ABILENE, TX, USA	USA	91548 C	ANETT
41214 C	ABU DHABI, U.A.E.	U.A.E.	04360 CT	ANGERS
41217 CT	ABU DHABI INTL AIRPORT, U.A.E.	U.A.E.	17130 CT	ANGOS
62840 C	ABU MARIUT, EGYPT	EGYPT	17128 C	ANGOUR
62795 C	ABU MARIUT, EGYPT	EGYPT	80300 C	ANGOUR
78850 C	ACAPULCO, MEXICO	MEXICO	70398	ANGOUR
78805 C	ACAPULCO, MEXICO	MEXICO	84542	ANGOUR
80427 C	ACERQUIA, ITALY	ITALY	84692	ANGOUR
17352 C	ACANA, TURKEY	TURKEY	670	ANGOUR
63450 CT	ADDIS ABABA, ETHIOPIA	ETHIOPIA	171	ANGOUR
74574 CT	ADDIS ABABA, ETHIOPIA	ETHIOPIA	171	ANGOUR
41461 C	ADDIS ABABA, ETHIOPIA	ETHIOPIA	171	ANGOUR
65595 C	ADDIS ABABA, ETHIOPIA	ETHIOPIA	171	ANGOUR
60820 C	ADDIS ABABA, ETHIOPIA	ETHIOPIA	171	ANGOUR
74679 CT	AEROP INTL MEXICO, MEXICO	MEXICO	171	ANGOUR
74644 CT	AEROP INTL MERIDA, MEXICO	MEXICO	171	ANGOUR
74376 CT	AEROP INTL MONTREAL, CANADA	CANADA	171	ANGOUR
87582 C	AEROPARQUE, ARGENTINA	ARGENTINA	171	ANGOUR
17180 C	AEROPARQUE, ARGENTINA	ARGENTINA	171	ANGOUR
61224 C	AGADEZ, ALGERIA	ALGERIA	171	ANGOUR
60250 C	AGADIR, MOROCCO	MOROCCO	171	ANGOUR
61874 C	AGALEGA, MAURITIUS	MAURITIUS	171	ANGOUR
42261 C	AGRA, INDIA	INDIA	171	ANGOUR
16672 C	AGRIKONIA, GREECE	GREECE	171	ANGOUR
42647 CT	AHMAHADABAD, INDIA	INDIA	171	ANGOUR
60560 C	AHMEDABAD, INDIA	INDIA	171	ANGOUR
61899 C	AIDOUN EL AHOUS, ALGERIA	ALGERIA	171	ANGOUR
07761 CT	AJACCIO, FRANCE	FRANCE	171	ANGOUR
31188 C	AJACCIO, FRANCE	FRANCE	171	ANGOUR
17184 C	AKHISAR, TURKEY	TURKEY	171	ANGOUR
47982 CT	AKHISAR, TURKEY	TURKEY	171	ANGOUR



NATIONAL CLIMATIC DATA CENTER



UPPER AIR

ASIA-JAPAN

LEVEL	TEMPERATURE	VECTOR WIND	LEVEL	TEMPERATURE	VECTOR WIND
MB	TEMP	DIR	SPD	TEMP	DIR
PREC	DEP	DIR	SPD	DEP	DIR
1000	15.0	090	10	10.0	090
900	12.0	090	15	7.0	090
800	9.0	090	20	4.0	090
700	6.0	090	25	1.0	090
600	3.0	090	30	-2.0	090
500	0.0	090	35	-5.0	090
400	-3.0	090	40	-8.0	090
300	-6.0	090	45	-11.0	090
200	-9.0	090	50	-14.0	090
100	-12.0	090	55	-17.0	090
50	-15.0	090	60	-20.0	090
20	-18.0	090	65	-23.0	090
10	-21.0	090	70	-26.0	090
5	-24.0	090	75	-29.0	090
2	-27.0	090	80	-32.0	090
1	-30.0	090	85	-35.0	090

SURFACE

EUROPE-NORWAY

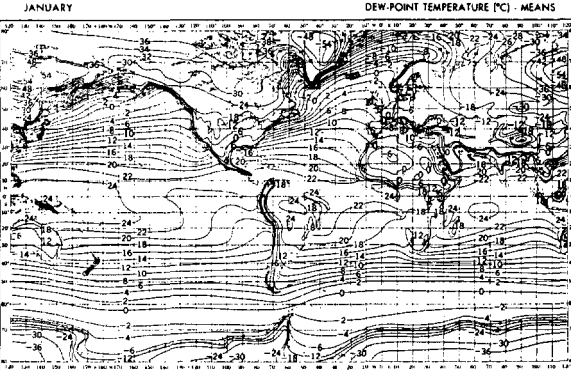
STATION	LATITUDE	LONGITUDE	ELEVATION	PRESSURE		TEMPERATURE		WIND		PRECIPITATION		SUNSHINE
				MEAN	MAX	MEAN	MAX	MEAN	MAX	TOTAL	NO. OF HRS	
7056N 0158E	70.56	15.80	100	1000.7	1000.7	10.0	10.0	0.0	0.0	0.0	0.0	14.0
6841N 0158E	68.41	15.80	100	1001.7	1001.7	10.0	10.0	0.0	0.0	0.0	0.0	14.0
6626N 0158E	66.26	15.80	100	1002.7	1002.7	10.0	10.0	0.0	0.0	0.0	0.0	14.0
6411N 0158E	64.11	15.80	100	1003.7	1003.7	10.0	10.0	0.0	0.0	0.0	0.0	14.0
6196N 0158E	61.96	15.80	100	1004.7	1004.7	10.0	10.0	0.0	0.0	0.0	0.0	14.0

JANUARY 1988
VOL 41 NO 1
ISSN 0027-0296



MONTHLY CLIMATIC DATA FOR THE WORLD

PREPARED IN COOPERATION WITH THE WORLD METEOROLOGICAL ORGANIZATION



MONTHLY CLIMATIC DATA for the WORLD (MCDW) is a publication of monthly summaries of climatic data from around the world. Data are prepared by Members of the World Meteorological Organization for selected stations and exchanged via the Global Telecommunications System in coded format.

Tables of both Surface and Upper Air data are presented. Surface data tables contain elements of pressure, temperature, vapor pressure, precipitation, and sunshine. Upper Air tables contain geopotential heights, temperatures, dew point depressions, and vector winds for ten selected pressure levels between the surface and thirty millibars (hectopascals). A Station List is also provided which, in the January and July editions, contains all stations authorized for publication. In other months the list contains only those stations from which data no more than two months old have been recently received.

Currently, world maps of long term mean temperatures, dew points, and sea level pressures are included on the cover of the MCDW. The maps are generally representative of conditions during the 1950's to mid-1970's, however some data may be from as early as the 1850's.

SHELF STOCK of the printed publication is maintained only for the most recent three years. Earlier years are available on microfiche or paper copies reproduced from microfiche. The data are also available in digital form on magnetic tape and diskette.

I CERTIFY THAT THIS IS AN OFFICIAL PUBLICATION OF THE NATIONAL OCEANIC AND ATMOSPHERIC ADMINISTRATION AND IS COMPILED FROM INFORMATION RECEIVED AT THE NATIONAL CLIMATIC DATA CENTER, ASHEVILLE, NORTH CAROLINA. 28801

Kenneth D. Hodson

DIRECTOR
NATIONAL CLIMATIC DATA CENTER

noaa

NATIONAL OCEANIC AND ATMOSPHERIC ADMINISTRATION
NATIONAL ENVIRONMENTAL SATELLITE, DATA AND INFORMATION SERVICE
NATIONAL CLIMATIC DATA CENTER
ASHEVILLE, NORTH CAROLINA

For further information,
call or write to the
NATIONAL CLIMATIC DATA CENTER
Room 120, 151 Patton Avenue, Asheville, NC 28801-5001
Phone (704) 271-4800 or (704) 271-4010 (TDD)
(704) 271-4876 (Fax)

CURRENT SERIAL PUBLICATIONS

A WORLD OF INFORMATION

For.....

- * Industry
- * Research and Development
- * Public Utilities
- * Government Agencies
- * Attorneys
- * Construction
- * Consultants
- * Insurance Companies
- * Colleges and Universities
- * Energy

HOURLY
PRECIPITATION DATA

ARIZONA

DECEMBER
WITH ANNUAL SUPPLEMENT

ISSN 0361

CLIMATOLOGICAL DATA
ANNUAL SUMMARY
ARIZONA

ISSN 0145-0267

NUMBER 13

HOURLY
PRECIPITATION DATA

ARIZONA

VOLUME 35 NUMBER

ISSN 0364-6084

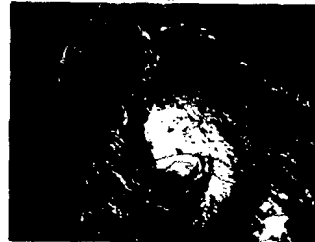
CLIMATOLOGICAL DATA
ARIZONA

ISSN 0145-0267

LOCAL
CLIMATOLOGICAL DATA
Monthly Summary

STATION	DATE	TEMPERATURE (F)	RELATIVE HUMIDITY (%)	WIND VELOCITY (MPH)	WIND DIRECTION	PRECIPITATION (IN)	WIND CHILL (F)	HEAT INDEX (F)	WIND COLD INDEX (F)	WIND WARM INDEX (F)
TUCSON	JAN 1980	58.0	65.0	10.0	000	0.00	50.0	65.0	50.0	65.0
TUCSON	FEB 1980	62.0	60.0	12.0	000	0.00	55.0	60.0	55.0	60.0
TUCSON	MAR 1980	68.0	55.0	15.0	000	0.00	60.0	55.0	60.0	55.0
TUCSON	APR 1980	75.0	45.0	20.0	000	0.00	65.0	45.0	65.0	45.0
TUCSON	MAY 1980	82.0	35.0	25.0	000	0.00	70.0	35.0	70.0	35.0
TUCSON	JUN 1980	88.0	25.0	30.0	000	0.00	75.0	25.0	75.0	25.0
TUCSON	JUL 1980	92.0	15.0	35.0	000	0.00	80.0	15.0	80.0	15.0
TUCSON	AUG 1980	95.0	10.0	40.0	000	0.00	85.0	10.0	85.0	10.0
TUCSON	SEP 1980	90.0	20.0	35.0	000	0.00	80.0	20.0	80.0	20.0
TUCSON	OCT 1980	85.0	30.0	30.0	000	0.00	75.0	30.0	75.0	30.0
TUCSON	NOV 1980	78.0	40.0	25.0	000	0.00	70.0	40.0	70.0	40.0
TUCSON	DEC 1980	70.0	50.0	20.0	000	0.00	65.0	50.0	65.0	50.0

STORM DATA



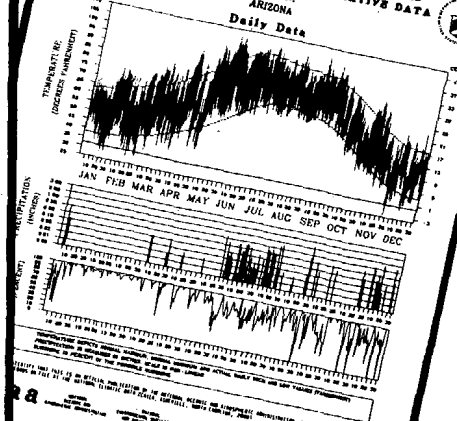
"I CERTIFY THAT THIS IS AN OFFICIAL PUBLICATION OF THE NATIONAL OCEANIC AND ATMOSPHERIC ADMINISTRATION AND IS SUPPLIED FROM INFORMATION RECEIVED AT THE NATIONAL CLIMATIC DATA CENTER, ASHEVILLE, N.C. 28801"

Thomas D. Williams
DIRECTOR
NATIONAL CLIMATIC DATA CENTER

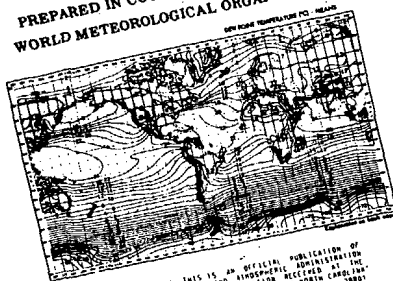
noaa NATIONAL OCEANIC AND ATMOSPHERIC ADMINISTRATION / NATIONAL ENVIRONMENTAL SATELLITE DATA AND INFORMATION SERVICE / NATIONAL CLIMATIC DATA CENTER ASHEVILLE, N.C.

LOCAL CLIMATOLOGICAL DATA
ANNUAL SUMMARY WITH COMPARATIVE DATA
TUCSON,
ARIZONA

Daily Data



MONTHLY CLIMATIC
DATA FOR THE WORLD
PREPARED IN COOPERATION WITH THE
WORLD METEOROLOGICAL ORGANIZATION



"I CERTIFY THAT THIS IS AN OFFICIAL PUBLICATION OF THE NATIONAL OCEANIC AND ATMOSPHERIC ADMINISTRATION AND IS SUPPLIED FROM INFORMATION RECEIVED AT THE NATIONAL CLIMATIC DATA CENTER, ASHEVILLE, N.C. 28801"

Director
NATIONAL CLIMATIC DATA CENTER

noaa

To change your address, please return a copy of the mailing label along with your new address to: National Climatic Data Center (Subscription Services).

Inquiries/Comments Call: (704) 271-4800 (Voice)
(704) 271-4010 (TDD)
(704) 271-4876 (Fax)

National Climatic Data Center
Room 120
151 Patton Avenue
Asheville, NC 28801-5001

OFFICIAL BUSINESS
PENALTY FOR PRIVATE USE \$300
ADDRESS CORRECTION REQUESTED

<p>BULK RATE POSTAGE & FEES PAID United States Department of Commerce NOAA Permit No. G-19</p>
--