

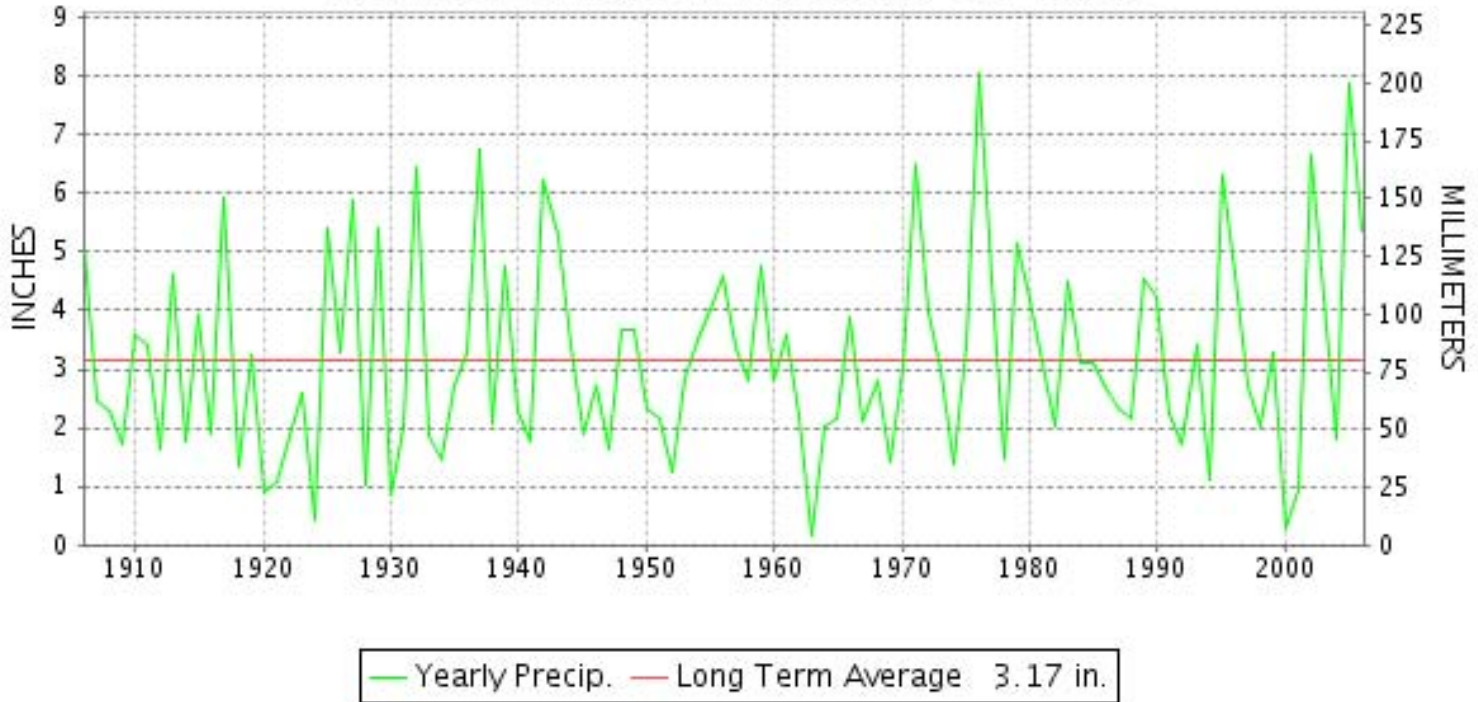


CLIMATOLOGICAL DATA MARYLAND AND DELAWARE



OCTOBER 2006
VOLUME 110 NUMBER 10
ISSN 0145-054

OCTOBER PRECIPITATION BY YEAR



TEMPERATURE AND PRECIPITATION EXTREMES

MARYLAND

HIGHEST TEMPERATURE	86	OCTOBER 4	CUMBERLAND 2
LOWEST TEMPERATURE	21	OCTOBER 16	OAKLAND 1 SE
GREATEST TOTAL PRECIPITATION	7.21		SNOW HILL 4 N
LEAST TOTAL PRECIPITATION	3.56		CUMBERLAND 2
GREATEST 1 DAY PRECIPITATION	3.05	OCTOBER 28	SNOW HILL 4 N
GREATEST TOTAL SNOWFALL	1.3		FROSTBURG 2
GREATEST DEPTH OF SNOW OR ICE	1	OCTOBER 29	FROSTBURG 2

"I certify that this is an official publication of the National Oceanic and Atmospheric Administration (NOAA) It is compiled using information from weather observing sites supervised by NOAA/National Weather Service and received at the National Climatic Data Center(NCDC), Asheville, North Carolina 28801."

Director
National Climatic Data Center

noaa

National
Oceanic and
Atmospheric Administration

National
Environmental Satellite, Data
and Information Service

National
Climatic Data Center
Asheville, North Carolina

DELAWARE

HIGHEST TEMPERATURE	84	OCTOBER 4	LEWES
LOWEST TEMPERATURE	30	OCTOBER 15	BEAR 2 SW
GREATEST TOTAL PRECIPITATION	6.16		WILMINGTON PORTER RSVR
LEAST TOTAL PRECIPITATION	5.30		GREENWOOD 2NE
GREATEST 1 DAY PRECIPITATION	1.86	OCTOBER 6	LEWES

MONTHLY STATION AND DIVISION SUMMARY

STATION	TEMPERATURE (°F)											PRECIPITATION (IN)												
	AVERAGE MAXIMUM	AVERAGE MINIMUM	AVERAGE	DEPARTURE FROM NORMAL	HIGHEST	DATE	LOWEST	DATE	HEATING DEG. DAYS	COOLING DEG. DAYS	NO. OF DAYS				TOTAL	DEPARTURE FROM NORMAL	GREATEST 24 HOURS	DATE	ICE PELLETS, SNOW			NO. OF DAYS		
											MAX		MIN						TOTAL	MAX DEPTH ON GROUND	DATE	.10 OR MORE	.50 OR MORE	1.00 OR MORE
											>=90	<=32	<=32	<=0										
FREDERICK 2 NNE	64.6	43.7	54.2		83	5+	31	15	342	15	0	0	2	0	5.18		1.99	28	.0	0		7	3	2
MILLERS 4 NE	62.4	42.1	52.3	-2.7	79	4+	27	13	391	3	0	0	5	0	4.54	1.10	2.03	28	T	T		5	3	2
PORT DEPOSIT 2 NE	M	M	M																M	M				
ROCKVILLE 1 NE	63.5	46.2	54.9	-2	82	4	34	15	324	20	0	0	0	0	4.79	1.43	1.11	6	.0	0		7	4	2
SMITHSBURG 2NW	62.3	41.2	51.8		81	5+	28	17+	406	5	0	0	5	0	4.10		1.56	28	.0	0		6	3	2
--DIVISIONAL DATA----->			53.4	-1.9											5.07	1.56			.0					
APPALACHIAN MOUNTAIN 07																								
CUMBERLAND 2	66.2	41.3	53.8	-1	86	4+	28	15+	354	13	0	0	5	0	3.56	.87	1.25	18	.0	0		8	2	2
CUMBERLAND POLICE BRK	M	M	M																M	M				
FROSTBURG 2	56.7	38.7	47.7	-1.6	77	4	27	16	533	2	0	0	9	0	4.26	1.05	1.40	18	1.3	1	29	12	2	1
HAGERSTOWN POLICE BRK	M	M	M																M	M				
SHARPSBURG 5 S	64.7M	42.1M	53.4M		84	5	29	15+	363	12	0	0	8	0	M 4.29		1.26	28	M .0	0		7	3	2
WILLIAMSPORT	65.0	44.0	54.5		84	5	29	15	328	10	0	0	3	0	4.16		1.50	28	.0	0		7	2	2
--DIVISIONAL DATA----->			52.4	-3											3.99	.91			.4					
ALLEGHENY PLATEAU 08																								
OAKLAND 1 SE	58.5	34.5	46.5	-3.5	77	4	21	16	566	0	0	0	13	0	M 4.00		.85	18	.0	0		10	3	0
SAVAGE RIVER DAM	57.7	39.5	48.6	-1.4	77	4	28	26+	499	0	0	0	7	0	4.63	1.82	1.34	18	.0	0		10	3	2
--DIVISIONAL DATA----->			47.6	-1.6											4.63	1.60			.0					
DELAWARE NORTHERN 01																								
BEAR 2 SW	64.9	43.3	54.1		81	4	30	15	339	9	0	0	4	0	5.39		1.27	28	.0	0		8	5	1
NEWARK UNIV FARM	67.2	45.6M	56.4M	.3	82	4	32	15	277	16	0	0	1	0	5.56	2.18	1.23	28	.0	0		8	5	2
WILMINGTON NEW CASTLE R	64.6	45.1	54.9	-9	81	4	33	30+	321	12	0	0	0	0	5.56	2.48	1.15	17	.0	0		8	5	2
WILMINGTON PORTER RSVR	62.6	46.3	54.5	-1.1	80	4	36	28+	332	13	0	0	0	0	6.16	2.86	1.48	28	.0	0		8	5	3
--DIVISIONAL DATA----->			55.0	-8											5.67	2.31			.0					
SOUTHERN 02																								
DOVER	67.5	48.7	58.1	-7	83	5+	35	30	234	29	0	0	0	0	5.52	2.26	1.60	6	.0	0		9	4	2
GREENWOOD 2NE	66.2	44.7	55.5	-5	83	5	32	16+	305	20	0	0	2	0	5.30	2.15	1.23	6	.0	0		9	4	3
LEWES	68.0	49.8	58.9	-3	84	4	37	30+	217	34	0	0	0	0	5.61	2.19	1.86	6	.0	0		10	4	2
--DIVISIONAL DATA----->			57.5	.2											5.48	2.10			.0					

MARYLAND AND DELAWARE
OCTOBER 2006

DAILY PRECIPITATION (INCHES)

STATION	TOTAL	DAY OF MONTH																																		
		01	02	03	04	05	06	07	08	09	10	11	12	13	14	15	16	17	18	19	20	21	22	23	24	25	26	27	28	29	30	31				
MARYLAND																																				
SOUTHERN EASTERN SHORE 01																																				
ASSATEAGUE	6.33	.07				2.97	.21				.05						.75	.34		.19								.55	1.20							
PRINCESS ANNE	4.69					.75					.35	1.19	.27	*	*	*	.85										*	.28	1.00							
SALISBURY	6.46	.04				2.35	.30	T			1.00	T					.56	.40		.31								.13	1.37							
SALISBURY FAA AP	6.90	.03				2.72	.24				.98						.85	T		.28			.01					.73	1.06							
SNOW HILL 4 N	7.21	.06				2.18	.68	.01			.07	.10					.36	.50		.20		T						T	3.05							
CENTRAL EASTERN SHORE 02																																				
ROYAL OAK 2 SSW	6.22	.27				2.45	.02				1.16						.41	.25		.28								.18	1.20							
VIENNA	7.07	.17			*	2.95	.22		.03		.54	.24					.72	.50		.34								.08	1.28							
LOWER SOUTHERN 03																																				
MECHANICSVILLE 5 NE	5.10	.15	T			1.71	.80	.01				.08					.02	.59		.31									1.43	T						
SOLOMONS	M 5.64	.15	.01			1.74	1.39	.03				.05		-	-		.57		.28		-	T	T					*	1.42							
UPPER SOUTHERN 04																																				
BALTIMORE WASH INTL AP R	5.75	.09		T		.19	1.30	.40			T	.03					.99	T	.11	.38								.90	1.36							
BELTSVILLE	5.22	.15				1.08	.55	.02				.08					.02	.79		.67									1.86							
DALECARLIA RESERVOIR	5.24	.17				1.40	.65	.13				.05					.03	.68		.52					.01				1.60							
GLENN DALE BELL STN	5.43	.22				1.25	.84					.12					.03	.65		.32									2.00							
LAUREL 3 W	5.77				.11	1.59	.48										.97		.64									.64	1.34							
MD SCI CTR BALTIMORE R	4.51	.05			.18	.86	.55					.07					.71		.04	.04								.83	1.18							
NATIONAL ARBORETUM DC	5.06	.20				1.31	.65	.07	T			.17					.03	.53	T	.31	.01							1.78								
OXON HILL	4.70	.20	.03	T	T	1.37	.71	T				.06					.01	.56	T	.25	T			T				1.50	.01							
UPPER MARLBORO 3 NNW	5.06	.14				1.93	.48	.07				.03					.02	.53		.39								1.47								
NORTHERN EASTERN SHORE 05																																				
CHESTERTOWN	5.49	.22			T	1.51	T				.25	1.02							.33	.60								.44	1.12							
NORTHERN CENTRAL 06																																				
ABERDEEN PHILLIPS FLD	5.43		.24			1.07				.14	.21	.09	T				.54	.19	.01	.94								.01	1.99							
CATOCTIN MOUNTAIN PARK	5.27	.17			.02	.75	.07	.01				.05					1.35	.01	.19	.19		.40						.25	2.00							
CONOWINGO DAM	5.00	.12	.08			.52	.38	.08				.18						.83		.50	.01							1.85	.45							
CYLBURN	5.93	.14				.85	.52	.25				.05					.01	1.36	T	.52			.02					2.15	.06							
DAMASCUS 3 SSW	5.41	.13		T		.07	1.30	.33			T	.08					1.11		T	.40		.02						.50	1.47							
FREDERICK 2 NNE	5.18	.17				.62	.22	.10				.04					.06	1.60		.33	.01							1.99	.04							
MILLERS 4 NE	4.54	.09		T	T	.81	.01	.03			T	T					1.11	.01	T	.29		T		.04	T			.11	2.03	.01						
PORT DEPOSIT 2 NE	M	-	-	-	-	-	-	-	-	-	-	-	-	-	-	-	-	-	-	-	-	-	-	-	-	-	-	-	-	-	-	-	-	-	-	
POTOMAC FILTER PLANT	4.87	.12				.22	1.12	.74			.03						.78	.03	.02	.58								.40	.83							
ROCKVILLE 1 NE	4.79	.09			.19	1.11	.65										.80		.07	.45								.43	1.00							
SMITHSBURG 2NW	4.10	.13				.65	.05	.05									.02	1.05		.30									1.56	.29						

MARYLAND AND DELAWARE
OCTOBER 2006

DAILY PRECIPITATION (INCHES)

STATION	TOTAL	DAY OF MONTH																														
		01	02	03	04	05	06	07	08	09	10	11	12	13	14	15	16	17	18	19	20	21	22	23	24	25	26	27	28	29	30	31
APPALACHIAN MOUNTAIN 07																																
CUMBERLAND 2	3.56	.23			.08	.36	.10	.14				.07					.11	1.25		.10	.01		.02						1.00	.09		
CUMBERLAND POLICE BRK	M	-	-	-	-	-	-	-	-	-	-	-	-	-	-	-	-	-	-	-	-	-	-	-	-	-	-	-	-	-	-	-
FROSTBURG 2	4.26	.23			.18	.43	.11	.13				.14	.04				.12	1.40		.05		.10	.13	.05	.03		T	.96	.16			
HAGERSTOWN POLICE BRK	M	-	-	-	-	-	-	-	-	-	-	-	-	-	-	-	-	-	-	-	-	-	-	-	-	-	-	-	-	-	-	-
SHARPSBURG 5 S	M 4.29	-	T	.02	.04	.74	.34	.29				.01					.05	1.23	.01	.12	*	*	.04				T	1.26	.14			
WILLIAMSPORT	4.16	.20		.05		.25	.36	.05	.01								.03	1.32		.25	.02							1.50	.12			
ALLEGHENY PLATEAU 08																																
OAKLAND 1 SE	M 4.00	-	.03		.60	.31	.05	.11				.36	.06				.35	.85	.02	.07	.10		.10	-	.01		.03	.75	T	.20		
SAVAGE RIVER DAM	4.63	.24		T	.26	.51	.16	.24				.15	.02				.31	1.34		.08	.02	T	.05	.02	T		T	1.03	.20			
DELAWARE NORTHERN 01																																
BEAR 2 SW	5.39	.20			.03	.99	.11				.27						.93	.02	.02	.73	T						.82	1.27				
NEWARK UNIV FARM	5.56		.21		.14	.98						.15					1.21			.82							.82	1.23				
WILMINGTON NEW CASTLE R	5.56	.18			.07	.96	.17				.43	T					1.15	T	.04	.71							.71	1.14				
WILMINGTON PORTER RSVR	6.16	.29		.02	.14	1.11					.56						1.17	.07	.04	.80							.48	1.48				
SOUTHERN 02																																
DOVER	5.52	.27				1.60	.35				.10	.60					.75	.38		.27									1.20			
GREENWOOD 2NE	5.30	.10				1.23	.95	T				.30					1.13		.19	.13								1.14	.13			
LEWES	5.61	.15	.02	T		1.86	.56	.01	.10		.13	.03					.70	.46	.02	.19		.02	T			.10	1.25	.01				

MARYLAND AND DELAWARE
OCTOBER 2006

DAILY TEMPERATURES (°F)

STATION	OB. TIME	MAX/MIN	DAY OF MONTH																															AVERAGE	
			01	02	03	04	05	06	07	08	09	10	11	12	13	14	15	16	17	18	19	20	21	22	23	24	25	26	27	28	29	30	31		
MARYLAND SOUTHERN EASTERN SHORE 01 ASSATEAGUE M	MID	MAX	75	76	76	80	79	72	67	67	70	72	75	72	58	64	65	66	69	76	75	73	64	64	65	60	53	57	59	73	63	62	70	68.3	
		OBS														78	80				66		78							61	72				
PRINCESS ANNE	17	MIN	60	55	57	65	63	56	62	60	55	64	53	39	36	35	37	58	60	58	48	42	40	44	39	41	38	40	50	41	37	51	49.6		
		OBS	43	60	55	57	65	63	56	62	60	55	64	53	39	36	46		36				52							49					
SALISBURY	17	MAX				84	83															78	77			68	54	56		55		70	73	M	
		MIN				39	60					45	47	50	60	59							53			33	34	35		36		30	43	M	
SALISBURY FAA AP M	MID	MAX	72	74	81	83	80	64	64	70	77	80	74	74	71	61	62	66	65	74	73	76	64	62	61	53	55	54	53	69	62	68	74	68.3	
		MIN	55	50	56	61	64	55	57	58	51	54	58	64	46	37	36	38	53	63	59	64	44	39	48	49	40	38	41	49	48	37	48	50.3	
SNOW HILL 4 N	17	MAX	71	73	81	82	72	61	64	69	77	81	68	73	57	61	62	65	64	74	73	76	60	61	56	51	55	54	58	69	60	67	73	66.7	
		MIN	45	40	52	56	56	55	58	47	46	47	50	51	33	29	31	49	54	54	44	36	33	44	39	38	34	37	48	31	30	48	43.4		
CENTRAL EASTERN SHORE 02 ROYAL OAK 2 SSW	18	MAX	75	76	83	85	84	64	65	71	77	81	77	77	73	64	65	67	65	73	73	77	68	64	60	54	57	57	55	73	64	71	75	70.0	
		MIN	49	45	51	57	63	54	55	58	47	48	53	62	49	30	29	32	49	64	55	62	36	34	47	35	36	34	36	49	43	31	42	46.3	
VIENNA	18	MAX	73	75	81	84	78	66	60	71	76	80	75	73	70	62	63	66	63	75	71	72	61	61	60	52	56	54	54	66	61	68	71	67.7	
		OBS	59	51	57	63	63	52	52	53	49	54	57	63	42	38	37	36	54	63	55	61	50	43	43	41	42	43	41	40	46	38	50	49.5	
MECHANICSVILLE 5 NE	07	MAX	73	75	80	83	76	65	62	70	76	81	71	75	75	62	64	68	66	75	77	77	69	63	62	52	55	55	54	68	65	68	72	68.8	
		MIN	57	48	48	59	62	47	51	54	48	51	54	62	42	36	34	39	54	62	57	63	43	41	40	39	41	36	38	46	44	36	49	47.8	
LOWER SOUTHERN 03 SOLOMONS	08	MAX	66	68	71	76	79	65	55	58	63	71	75	67	69	54	58	59	62	63	73	69	71	58	59	52	50	53	53	64	66	61	67	63.7	
		MIN	43	46	50	54	60	53	52	52	47	47	50	53	35	32	31	31	35	56	56	59	41	37	40	37	35	34	35	44	41	34	34	43.7	
BELTSVILLE	08	MAX	73	73	75	83	85	70	57	66	68	75	77	69	74	59	63	64	65	66	73	73	76	63	64	54	53	57	57	68	70	63	69	67.8	
		MIN	54	55	58	64	66	54	49	54	54	57	59	62	45	38	36	43	49	62	59	62	44	48	46	39	36	40	39	52	46	40	49	50.3	
UPPER SOUTHERN 04 BALTIMORE WASH INTL APM	MID	MAX	66	68	71	76	79	65	55	58	63	71	75	67	69	54	58	59	62	63	73	69	71	58	59	52	50	53	53	64	66	61	67	63.7	
		MIN	43	46	50	54	60	53	52	52	47	47	50	53	35	32	31	31	35	56	56	59	41	37	40	37	35	34	35	44	41	34	34	43.7	
DALECARLIA RESERVOIR	08	MAX	73	73	75	83	85	70	57	66	68	75	77	69	74	59	63	64	65	66	73	73	76	63	64	54	53	57	57	68	70	63	69	67.8	
		MIN	54	55	58	64	66	54	49	54	54	57	59	62	45	38	36	43	49	62	59	62	44	48	46	39	36	40	39	52	46	40	49	50.3	
GLENN DALE BELL STN	08	MAX	70	73	81	82	74	57	57	70	78	79	68	70	55	61	60	64	63	74	68	69	61	62	53	51	54	54	55	63	59	68	73	65.4	
		MIN	51	47	57	61	56	51	47	50	46	53	57	42	32	32	32	35	53	62	61	44	40	37	40	39	38	36	42	45	35	33	38	44.9	
BELTSVILLE	08	MAX	68	72	75	83	85	65	53	57	71	79	80	68	70	56	62	62	65	64	79	69	69	61	62	52	50	53	54	62	62	60	69	65.7	
		MIN	48	46	50	58	61	52	48	48	46	48	54	59	32	32	32	33	37	55	61	62	43	38	38	39	35	38	40	45	38	33	40	44.8	
DALECARLIA RESERVOIR	08	MAX	69	73	76	84	85	65	55	57	73	79	82	72	73	59	63	63	66	66	79	70	71	63	64	54	53	53	55	62	65	62	71	67.2	
		MIN	52	49	54	58	61	53	49	48	49	53	54	59	34	34	35	35	40	55	60	62	40	39	40	39	34	34	38	46	36	34	44	45.7	
GLENN DALE BELL STN	08	MAX	72	76	81	82	74																												
		MIN	72	76	81	82	74																												

MARYLAND AND DELAWARE
OCTOBER 2006

DAILY TEMPERATURES (°F)

STATION	OB. TIME	MAX/MIN	DAY OF MONTH																															AVERAGE			
			01	02	03	04	05	06	07	08	09	10	11	12	13	14	15	16	17	18	19	20	21	22	23	24	25	26	27	28	29	30	31				
MD SCI CTR BALTIMORE M	MID	MIN	48	44	44	42																														M	
		MAX	71	76	84	85	76	57	58				73																							77	68.2
		MIN	58	55	63	67	56	52	49				63																								51
NATIONAL ARBORETUM DC	07	MAX	68	72	76	82	84	66	54	57	71	78	80	68	72	57	63	63	65	64	79	69	69	62	63	52	52	55	55	62	62	62	62	70	66.2		
		MIN	48	48	52	59	64	52	49	48	48	50	55	58	34	36	34	36	39	56	61	64	42	40	41	40	39	39	37	46	40	36	46	46.4			
OXON HILL	08	MAX	70	73	78	81	83	67	55	57	72	78	80	69	72	58	63	62	65	64	77	69	69	63	62	52	52	55	54	63	65	62	69	66.4			
		MIN	49	49	50	58	62	53	50	50	50	50	55	58	34	35	36	38	40	57	61	64	44	41	43	41	39	38	41	47	41	38	39	46.8			
UPPER MARLBORO 3 NNW	08	MAX	68	74	76	83	84	67	54	56	71	79	82	70	73	57	62	63	65	64	78	69	70	63	62	51	52	55	55	64	64	62	70	66.5			
		MIN	46	45	47	56	61	52	48	48	45	47	52	56	31	31	30	31	35	56	58	62	42	36	37	38	35	38	38	45	40	33	33	43.6			
NORTHERN EASTERN SHORE 05																																					
CHESTERTOWN	23	MAX	70	72	80	82	74	59	58	69	76	79	78	72	56	67	61	64	63	74	70	69	59	62	55	55	55	53	49	68	58	66	74	66.0			
		OBS																																			
		MIN	56	56	57	63	59	50	48	51	49	53	63	54	36	37	36	37	53	60	59	46	42	37	46	40	42	36	39	46	40	36	43	47.4			
		OBS													***														***								
NORTHERN CENTRAL 06																																					
ABERDEEN PHILLIPS FLD	16	MAX		74	80	81	81	63				78	78	72	72			63	63	74	73	68			51	50	56	54	54			66	71	M			
		MIN		48	58	64	59	51				53	60	64	33			37	56	57	60	64			42	41	38	36	39			33	39	M			
CATOCTIN MOUNTAIN PARK	17	MAX	64	70	80	81	75	56	52	70	76	76	68	62	53	56	57	60	56	71	70	63	57	61	51	43	49	50	46	53	53	67	74	61.9			
		MIN	48	48	54	59	52	44	43	47	53	56	55	48	32	39	36	40	48	55	51	49	38	43	36	32	35	34	38	40	36	43	50	44.6			
CONOWINGO DAM	07	MAX	67	74	76	79	85	67	55	62	78	80	80	70	74	59	64	65	65	66	75	76	70	64	64	54	56	57	56	62	65	60	65	67.4			
		OBS	79																																		
		MIN	43	40	48	55	50	44	42	43	43	47	48	60	30	30	29	30	29	44	52	56	32	32	38	34	36	32	36	35	35	30	34	39.9			
		OBS											60																								
CYLBURN	08	MAX	62	66	71	81	80	65	52	54	66	75	77	67	66	55	58	57	63	62	72	70	65	59	58	51	49	53	52	60	55	54	67	62.6			
		MIN	53	44	49	57	58	50	45	45	48	54	55	58	32	33	33	36	36	53	59	62	43	38	42	37	37	39	38	43	41	35	40	44.9			
DAMASCUS 3 SSW	22	MAX	67	71	78	80	70	55	52	67	73	76	65	66	52	58	56	61	62	73	68	63	57	60	50	47	50	50	52	50	56	66	70	62.0			
		MIN	50	45	56	58	55	48	45	48	48	50	57	44	30	35	33	37	50	58	57	46	41	40	40	35	37	35	39	37	39	36	47	44.4			
FREDERICK 2 NNE	07	MAX	65	70	76	83	83	63	55	56	73	79	81	70	68	57	60	60	64	63	77	69	66	61	64	48	49	52	54	49	59	59	71	64.6			
		MIN	45	45	45	57	57	51	49	49	49	50	52	57	33	33	31	32	34	54	58	50	45	35	36	38	39	37	38	42	42	35	38	43.7			
MILLERS 4 NE	18	MAX	66	71	79	79	74	59	53	70	76	78	69	65	52	56	57	60	58	71	69	63	57	59	55	45	50	51	45	57	52	66	72	62.4			
PORT DEPOSIT 2 NE	07	MAX	48	44	51	54	51	46	44	45	45	53	53	52	27	28	29	30	48	57	53	50	38	37	38	33	34	35	33	39	37	32	42	M			
		MIN																																	M		
ROCKVILLE 1 NE M	MID	MAX	68	72	81	82	72	55	53	68	74	77	68	67	56	58	58	64	60	75	69	64	59	62	52	49	52	53	50	58	57	66	71	63.5			
		MIN	54	49	58	60	55	49	46	51	57	60	63	39	36	35	34	37	53	60	59	47	43	39	39	38	37	36	43	40	37	36	42	46.2			
		OBS																																			
SMITHSBURG 2NW	08	MAX	62	67	73	81	81	62	52	56	69	77	78	68	63	53	57	59	62	61	73	71	65	59	61	46	47	50	52	48	56	54	69	62.3			
		OBS																																			
		MIN	40	41	42	53	55	49	49	41	47	48	48	59	32	34	28	28	28	50	50	51	37	36	38	35	38	35	38	43	38	31	34	41.2			

DAILY TEMPERATURES (°F)

STATION	OB. TIME	MAX/MIN	DAY OF MONTH																															AVERAGE		
			01	02	03	04	05	06	07	08	09	10	11	12	13	14	15	16	17	18	19	20	21	22	23	24	25	26	27	28	29	30	31			
APPALACHIAN MOUNTAIN 07 CUMBERLAND 2 CUMBERLAND POLICE BRK FROSTBURG 2 HAGERSTOWN POLICE BRK SHARPSBURG 5 S WILLIAMSPORT ALLEGHENY PLATEAU 08 OAKLAND 1 SE SAVAGE RIVER DAM DELAWARE NORTHERN 01 BEAR 2 SW M NEWARK UNIV FARM WILMINGTON NEW CASTLE M WILMINGTON PORTER RSVRM SOUTHERN 02 DOVER		OBS																	27	27																
	18	MAX	71	81	86	86	82	54	53	66	76	79	76	64	56	58	63	60	61	79	75	72	64	63	58	47	49	56	50	55	58	76	77			
		MIN	41	41	53	55	50	49	49	50	50	51	54	33	29	28	28	33	48	52	52	41	34	34	38	38	31	31	42	39	33	33	40			
	17	MAX																																		
		MIN																																		
	07	MAX	53	63	72	77	76	56	45	47	64	72	72	62	48	49	47	54	55	60	71	74	55	55	60	36	40	42	47	42	48	49	66			
		OBS																																		
		MIN	40	43	44	55	56	44	40	39	44	46	50	47	29	29	29	27	34	43	49	50	35	35	33	30	30	30	31	36	31	34	38			
	17	MAX																																		
		MIN																																		
	07	MAX			77	82	84	63	53	52	70	75	78	69	69	58	60	62	63	62	76	71							50	52	54	49	59	59	71	
		MIN		43	43	55	57	51	48	48	46	49	58	29	29	29	30	32	51	51	55							32	32	35	45	36	32	33		
	06	MAX	64	71	76	82	84	65	59	55	77	76	78	70	64	57	60	62	62	75	71	63	64	64	57	49	54	55	47	58	59	74	65.0			
		MIN	45	45	45	55	55	51	48	49	47	53	54	56	34	32	29	38	34	52	52	52	45	36	35	38	42	43	42	42	45	31	38			
	OBS																																			
07	MAX	63	61	71	77	75	46	48	47	74	75	65	60	46	46	52	57	65	70	72	72	56	58	57	37	40	49	52	51	51	51	68				
	OBS																																			
	MIN	36	39	37	43	45	41	41	41	42	41	45	43	29	30	27	21	29	46	47	33	34	33	28	28	23	24	23	31	30	33	27				
	OBS																																			
08	MAX	53	64	73	77	76	59	49	49	59	71	72	66	51	49	52	53	55	57	71	74	55	55	61	38	42	45	50	45	50	51	66				
	OBS																																			
	MIN	41	42	42	49	51	47	43	43	46	46	50	49	30	31	28	28	34	46	50	50	40	34	37	34	35	28	31	39	35	32	35				
	OBS																																			
MID	MAX	69	72	80	81	73	55	59	72	78	79	68	71	56	61	60	65	63	74	66	69	60	61	53	49	54	52	51	66	58	65	71				
	MIN	50	44	53	60	55	50	47	48	46	51	53	47	31	31	30	32	50	57	59	41	39	35	42	39	37	34	34	45	33	33	36				
17	MAX	72	72	78	82	77	67	63	81	80	81	77	71	67	62	59	61	64	73	70	67	62	63	59	53	55	54	50	65	61	66	71				
	MIN		47	58	60	53	47	58	59	48	43	54	46	34	35	32	34	52	57	57	60	40	36	40	37	36	36	34	44	41	37	52				
	OBS																																			
MID	MAX	70	71	79	81	72	54	59	70	75	78	68	70	54	60	60	62	63	74	65	69	61	61	54	52	55	53	52	67	57	65	71				
	MIN	53	49	56	61	54	50	47	50	49	54	58	44	34	35	33	34	54	59	60	44	41	38	41	38	37	34	34	45	41	33	39				
MID	MAX	67	68	78	80	71	54	57	68	75	76	67	68	54	58	57	62	61	72	66	66	56	60	51	48	52	49	48	66	55	63	69				
	MIN	46	51	59	62	53	49	46	52	53	59	59	46	37	37	37	40	52	57	59	44	39	43	41	37	38	37	36	36	42	41	46				
16	MAX	70	72	82	83	83	64	61	67	73	80	80	70	72	61	60	64	65	73	73	69	63	61	60	50	54	54	58	65	65	67	74				
	MIN	55	52	57	63	60	54	52	52	50	50	58	62	40	38	38	39	53	60	58	62	43	41	39	39	39	39	40	48	42	35	52				

MARYLAND AND DELAWARE
OCTOBER 2006

DAILY TEMPERATURES (°F)

STATION	OB. TIME	MAX/MIN	DAY OF MONTH																															AVERAGE	
			01	02	03	04	05	06	07	08	09	10	11	12	13	14	15	16	17	18	19	20	21	22	23	24	25	26	27	28	29	30	31		
GREENWOOD 2NE	07	MAX	71	71	73	81	83	66	56	61	68	76	79	69	73	58	61	61	65	63	75	73	72	60	62	53	51	55	53	66	69	59	68	66.2	
		MIN	43	48	49	58	62	53	53	53	47	51	56	59	41	33	32	32	35	55	58	60	39	37	37	38	38	36	35	36	44	34	35	44.7	
LEWES	17	MAX	72	73	83	84	83	63	64	66	71	73	74	74	74	62	62	65	64	72	75	75	64	63	63	52	55	54	53	72	59	69	74	68.0	
		OBS																																	
		MIN	46	53	56	63	61	56	57	59	51	54	54	64	45	38	37	39	56	62	59	64	44	41	47	40	40	39	39	49	44	37	50	49.8	

EVAPORATION AND WIND

STATION		DAY OF MONTH																															TOTAL OR AVERAGE
		01	02	03	04	05	06	07	08	09	10	11	12	13	14	15	16	17	18	19	20	21	22	23	24	25	26	27	28	29	30	31	
MARYLAND UPPER SOUTHERN 04 BELTSVILLE	WIND	-	39	30	*	53	*	*	*	*	*	258	43	74	*	*	148	*	*	106	21	*	*	202	*	*	*	348	*	*	289	28	1694
	EVAP	-	17	12	*	33	*	*	*	*	*	45	3	21	*	*	38	*	*	14	4	*	*	29	*	*	*	56	*	*	46	9	3.38
UPPER MARLBORO 3 NNW	MAX	66	72	75	-	83	-	-	-	-	81	65	71	-	-	62	-	-	78	66	-	-	66	-	-	-	56	-	-	60	62	M	
	MIN	45	47	49	-	57	-	-	-	-	45	57	36	-	-	36	-	-	38	61	-	-	40	-	-	-	35	-	-	36	38	M	
	WIND	-	-	-	-	-	-	-	-	-	-	-	-	-	-	-	-	-	-	-	-	-	-	-	-	-	-	-	-	-	-	-	M
	EVAP	-	-	14	18	19	18	2	*	18	11	12	4	20	*	*	37	8	-	8	5	*	*	37	14	7	10	9	*	14	13	9	3.40
MAX	66	79	80	83	86	73	55	55	78	82	86	69	77	65	65	67	66	62	82	70	72	67	63	52	54	59	61	57	66	60	66	68.5	
MIN	51	54	54	61	65	54	49	49	51	53	58	60	40	39	39	39	42	54	62	63	44	44	44	38	38	37	38	46	39	39	39	47.8	

Evaporation: Is measured in hundredths of inches.

Wind: Is measured in miles.

Max and Min: The maximum and minimum temperatures (Fahreheit) of the water in the evaporation pan.

SNOWFALL AND SNOW ON GROUND (INCHES)

STATION		DAY OF MONTH																																
		01	02	03	04	05	06	07	08	09	10	11	12	13	14	15	16	17	18	19	20	21	22	23	24	25	26	27	28	29	30	31		
MARYLAND NORTHERN CENTRAL 06 MILLERS 4 NE SN ON GND APPALACHIAN MOUNTAIN 07 FROSTBURG 2	SNOWFALL																									T					T	T		
	SNOWFALL SN ON GND																								T	.4 T	.2 T						.7 1	
DELAWARE																																		

Snowfall: Includes snow and ice. Values for NWS stations (J index note) are Mid-Mid (LST).

Snow on ground: Includes snow, sleet, ice, and hail. Values for NWS stations (J index note) are observed at 12 UTC (GMT).

Water Equivalent: Given for NWS stations (J index note) only, when snow depth is 2 inches or more, and is measured at 18 UTC (GMT)

STATION INDEX

STATION	INDEX NO.	DIVISION	COUNTY	LATITUDE	LONGITUDE	ELEVATION (IN FEET)	OBSERVATION TIME AND TABLES				OBSERVER	
							LOCAL STD TIME					
							TEMP	PRECIP	EVAP	SPECIAL SEE (NOTES)		
MARYLAND												
ABERDEEN PHILLIPS FLD	0015	06	HARFORD	39 28	76 10W	57	16	16			C H	US ARMY ABERDEEN TEST CT
ASSATEAGUE	0335	01	WORCESTER	38 4	75 13W	10	MID	MID			H	ASSATEAGUE IS NATL SEA
BALTIMORE WASH INTL AP R	0465	04	ANNE ARUNDEL	39 10	76 41W	156	MID	MID			C HJ	ASOS - FAA
BELTSVILLE	0700	04	PRINCE GEORG	39 2	76 56W	145	08	08	08		C H	USDA AGRI RESEARCH CTR W
CATOCTIN MOUNTAIN PARK	1530	06	FREDERICK	39 39	77 29W	1610	17	17			H	CATOCTIN MOUNTAIN PK
CHESTERTOWN	1750	05	KENT	39 13	76 3W	40	23	23			H	THOMAS W ELIASON JR
CLARKSVILLE 3 NNE	1862	06	HOWARD	39 15	76 56W	370	17	17			H	INACTIVE 12/02/2004
CONOWINGO DAM	2060	06	HARFORD	39 39	76 11W	40	07	07			H	SUSQUEHANNA ELECTRIC CO
CUMBERLAND 2	2282	07	ALLEGANY	39 39	78 45W	730	18	18			H	TIMOTHY B THOMAS
CUMBERLAND POLICE BRK	2285	07	ALLEGANY	39 38	78 50W	970	17	17			H	MARYLAND STATE POLICE
CYLBURN	2308	06	BALTIMORE (C	39 22	76 38W	400	08	08			H	CYLBURN ARBORETUM
DALECARLIA RESERVOIR	2325	04	PRINCE GEORG	38 56	77 7W	150	08	08			H	USA CORPS OF ENGINEERS
DAMASCUS 3 SSW	2336	06	MONTGOMERY	39 16	77 14W	697	22	22			H	ROBERT J LEFFLER
EMMITSBURG 2 SE	2906	06	FREDERICK	39 41	77 17W	416	17	17			H	INACTIVE 10/01/2005
FREDERICK 2 NNE	3353	06	FREDERICK	39 26	77 24W	280	07	07			H	DIR PUBLIC WORK WTP
FROSTBURG 2	3415	07	ALLEGANY	39 40	78 56W	2170	07	07			H	GREGORY P LATTA
GLENN DALE BELL STN	3675	04	PRINCE GEORG	38 58	76 48W	150	08	08			H	US NATL ARBORETUM
HAGERSTOWN POLICE BRK	3980	07	WASHINGTON	39 36	77 44W	560	17	17			H	MARYLAND STATE POLICE
LAUREL 3 W	5111	04	PRINCE GEORG	39 5	76 54W	400		07			H	WA SUBURBAN SANITARY COM
MD SCI CTR BALTIMORE R	5718	04	BALTIMORE (C	39 17	76 37W	20	MID	MID			C H	ASOS - NWS
MECHANICSVILLE 5 NE	5865	03	ST. MARY'S	38 28	76 42W	100	07	07			H	SANDRA J HASTINGS
MILLERS 4 NE	5934	06	CARROLL	39 43	76 48W	860	18	18			C H	ROBERT MILLER
NATIONAL ARBORETUM DC	6350	04	DISTRICT OF	38 55	76 58W	50	07	07			H	US NATIONAL ARBORETUM
OAKLAND 1 SE	6620	08	GARRETT	39 25	79 24W	2420	07	07			H	GARRETT CO MEM HOSPITAL
OXON HILL	6800	04	PRINCE GEORG	38 48	77 0W	120	08	08			H	BRIAN SMITH
PORT DEPOSIT 2 NE	7230	06	CECIL	39 38	76 5W	300	07	07			H	ANTHONY E FESTA
POTOMAC FILTER PLANT	7272	06	MONTGOMERY	39 2	77 15W	270		08			H	POTOMAC WATER FILT PLANT
PRINCESS ANNE	7330	01	SOMERSET	38 13	75 41W	20	17	17			H	UNIV OF MD EAST SHORE
ROCKVILLE 1 NE	7705	06	MONTGOMERY	39 6	77 9W	440	MID	17			H	WASHINGTON GAS & ELEC CO
ROYAL OAK 2 SSW	7806	02	TALBOT	38 43	76 11W	10	18	18			H	JOHN L SWAINE JR
SALISBURY	8000	01	WICOMICO	38 22	75 35W	10	17	17			H	CITY OF SALISBURY
SALISBURY FAA AP	8005	01	WICOMICO	38 20	75 31W	48	MID	MID			H	FAA
SAVAGE RIVER DAM	8065	08	GARRETT	39 31	79 8W	1495	08	08	08		C H	USA CORPS OF ENGINEERS
SHARPSBURG 5 S	8207	07	WASHINGTON	39 24	77 43W	500	07	07			H	DAVID DOWNIN
SMITHSBURG 2NW	8371	06	WASHINGTON	39 40	77 35W	670	08	08			H	SMITHSBURG WWTP
SNOW HILL 4 N	8380	01	WORCESTER	38 14	75 23W	30	17	17			H	CURTIS E SHOCKLEY
SOLOMONS	8405	03	CALVERT	38 19	76 27W	12	08	08			H	CHESAPEAKE BIOLOGIC LAB
UPPER MARLBORO 3 NNW	9070	04	PRINCE GEORG	38 52	76 47W	100	08	08	08		H	UNIVERSITY OF MARYLAND
VIENNA	9140	02	DORCHESTER	38 29	75 49W	10	18	18			H	DELMARVA POWER & LIGHT
WILLIAMSPORT	9570	07	WASHINGTON	39 36	77 50W	360	06	06			H	R C WILSON TRTMT PLT
DELAWARE												
BEAR 2 SW	1200	01	NEW CASTLE	39 36	75 44W	80	MID	MID			H	R. GARY GALLAHER
DOVER	2730	02	KENT	39 16	75 31W	30	16	16			H	DEPT OF TRANSPORTATION
GREENWOOD 2NE	3595	02	SUSSEX	38 49	75 35W	45	07	07			H	DANIEL M SWARTZENTRUBER
LEWES	5320	02	SUSSEX	38 47	75 8W	15	17	17			H	BOARD OF PUBLIC WORKS
NEWARK UNIV FARM	6410	01	NEW CASTLE	39 40	75 45W	90	17	17	17		C H	UNIV OF DE AGR FARM
WILMINGTON NEW CASTLE R	9595	01	NEW CASTLE	39 40	75 36W	79	MID	MID			C HJ	ASOS - FAA
WILMINGTON PORTER RSVR	9605	01	NEW CASTLE	39 46	75 32W	270	MID	MID			H	WILMINGTON WATER DEPT

REFERENCE NOTES

DEFINITIONS

STATION NAMES: Name of the city, town or locality. Figures and letters following the station names indicate the distance in miles and direction from the post office or town community center.

DIVISIONS: Areas within a state of similar climatological characteristics. Division averages are calculated using data from stations that record both temperature and precipitation (i.e. not precipitation alone).

NORMALS: The average value of the meteorological element over a time period. Effective 1 January 2002, the averaging period is 1971 to 2000. The normals for National Weather Service localities have been adjusted so as to be representative for the current observation site.

MONTHLY DEGREE DAY TOTALS: One heating (cooling) degree day is accumulated for each whole degree that the daily mean temperature is below (above) 65 degrees Fahrenheit.

PRECIPITATION: Values shown in hundredths of inches are water equivalent totals, i.e., total of liquid and melted frozen precipitation. In the "Monthly Summarized Data" table the total snow and sleet values shown in tenths of inches are unmelted amounts. The max depth on ground values of snow and sleet shown in whole inches are cumulative unmelted amounts. The number of days with .10, .50, 1.00 or more refers to water equivalents.

PRECIPITATION QUALITY CONTROL: The NCDC quality control process may delete precipitation data that are spatially inconsistent; exceed climatological limits, or are inconsistent with prevailing weather patterns.

TEMPERATURE: Original and edited temperature values are given in the "Daily Temperature" table. Edited values are produced when an original value is missing or when surrounding stations indicated a suspect original value. When a line labeled OBS is present and contains either a daily temperature (suspect) or *** (missing), the temperature appearing directly above, on the line labeled MAX or MIN, is an edited value. Summary temperature information (averages, departures, extremes, monthly degree day totals) is based on the values labeled MAX/MIN.

WIND: (As shown in the "Evaporation and Wind" table) the total wind movement in miles over the evaporation pan as determined by an anemometer recorder located 6-8 inches above the pan.

SYMBOLS AND LETTERS USED IN THE STATION INDEX TABLE

Thermometers located in a rooftop shelter.
// Rain gage equipped with a windshield
AR Observation made "after rain" has occurred.
C Station is equipped with recording rain gage (R) but values in this bulletin are from a non-recording rain gage unless indicated by an R.
G Observations appear in the "Soil Temperatures" table.
H Observations appear in the "Snowfall and Snow on the Ground" table.
J Station also published as a Local Climatological Data publication.
MID Observation time is midnight.
MO Rain gage read once monthly, usually the last day.
OC Rain gage readings vary from a few weeks to several months.
R Amounts from recording rain gage.
SR Observation time near sunrise.

SS Observation time near sunset.
VAR Observation time varies.
WI Rain gage read weekly or irregularly.
WM Rain gage read weekly and last day of the month.

SYMBOLS AND LETTERS USED IN THE DATA TABLES

(DAILY DATA ARE FOR THE 24 HOURS IMMEDIATELY PRECEDING OBSERVATION TIME.)

BLANK Entries in the "Monthly Summarized Data" table indicate no record.

BLANK Entries in the "Daily Precipitation" and "Snowfall and Snow on the Ground" tables indicate zero.

BLANK Entries in the "Daily Temperature" table indicate a missing record where an edited value could not be determined. (See *** below)

- No record. Data not recorded, determined unreliable by quality control check, or not received in time for publication.

+ Precipitation or temperature extremes occurred on one or more previous dates during the month.

*** Missing original temperature which has been estimated during edit.

* Rain gage not read. Precipitation is included in the amount following the asterisks. Time distribution not known. A * preceding the monthly total indicates precipitation amount is being carried forward to next months total, and may include amounts from the previous month(s).
// Rain gage equipped with a windshield.

A Amount of precipitation is the total of observer's entries for the current month. It may include precipitation that occurred during the previous month. Refer to earlier bulletin to determine date of last reading. (Hawaii stations)

B Adjusted monthly value (estimated), (1-7 missing values for wind and evaporation).

M Insufficient or partial data. M is appended to average and/or total values computed with 1-9 daily values missing. M appears alone if 10 or more daily values are missing, (8 or more for wind and evaporation).

R Amounts from recording rain gage.

T Trace. An amount too small to measure.

V Includes total for previous month(s). (See * above)

SEASONAL TABLES: Monthly and seasonal snowfall and heating degree days for the 12 months ending with the June data are published in the July issue of this bulletin. Cooling degree days for the calendar year are published in the "Climatological Data Annual Summary."

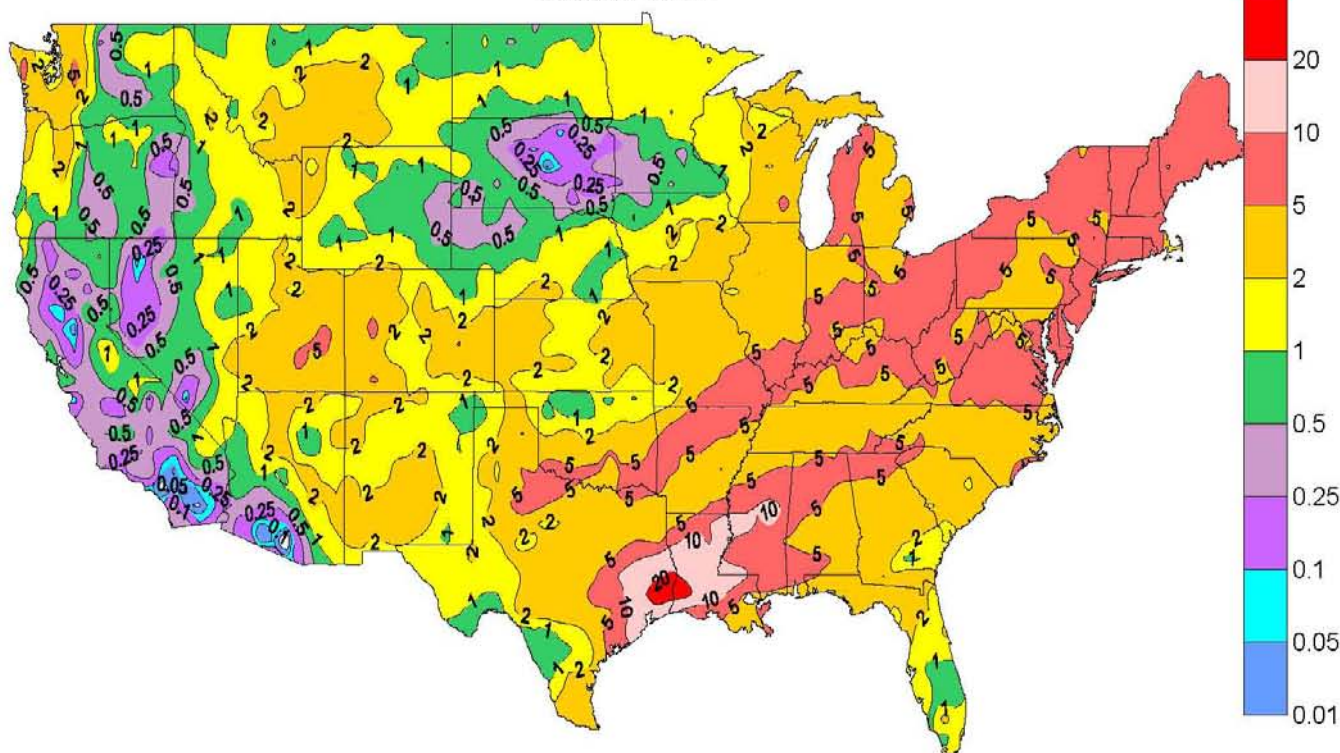
Information concerning the history of changes in locations, exposure, etc. of substations is kept on file at the National Climatic Data Center. Historical information of regular National Weather Service Offices may be obtained from the "Local Climatological Data" annual publication. The contents of this publication may be reprinted or otherwise used freely, with proper credit to the National Climatic Data Center. The data are also available in digital form on magnetic tape and diskette.

SUBSCRIPTION, PRICE, AND ORDERING INFORMATION AVAILABLE FROM:

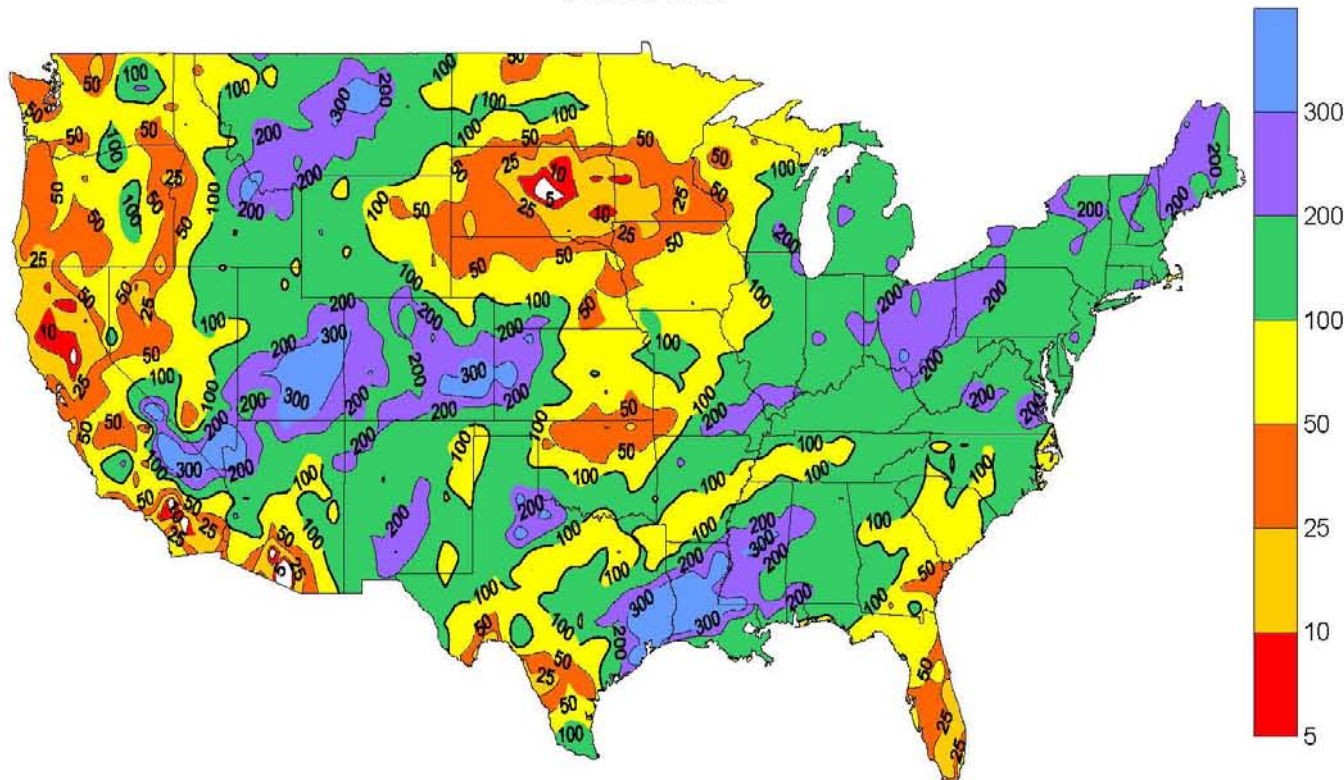
NCDC Subscription Services Center
310 State Route 956
Building 300
Rocket Center, WV 26726

Toll free number: (866) 742-3322
Fax number: (304) 726-4409

Total Precipitation (Inches)
October 2006

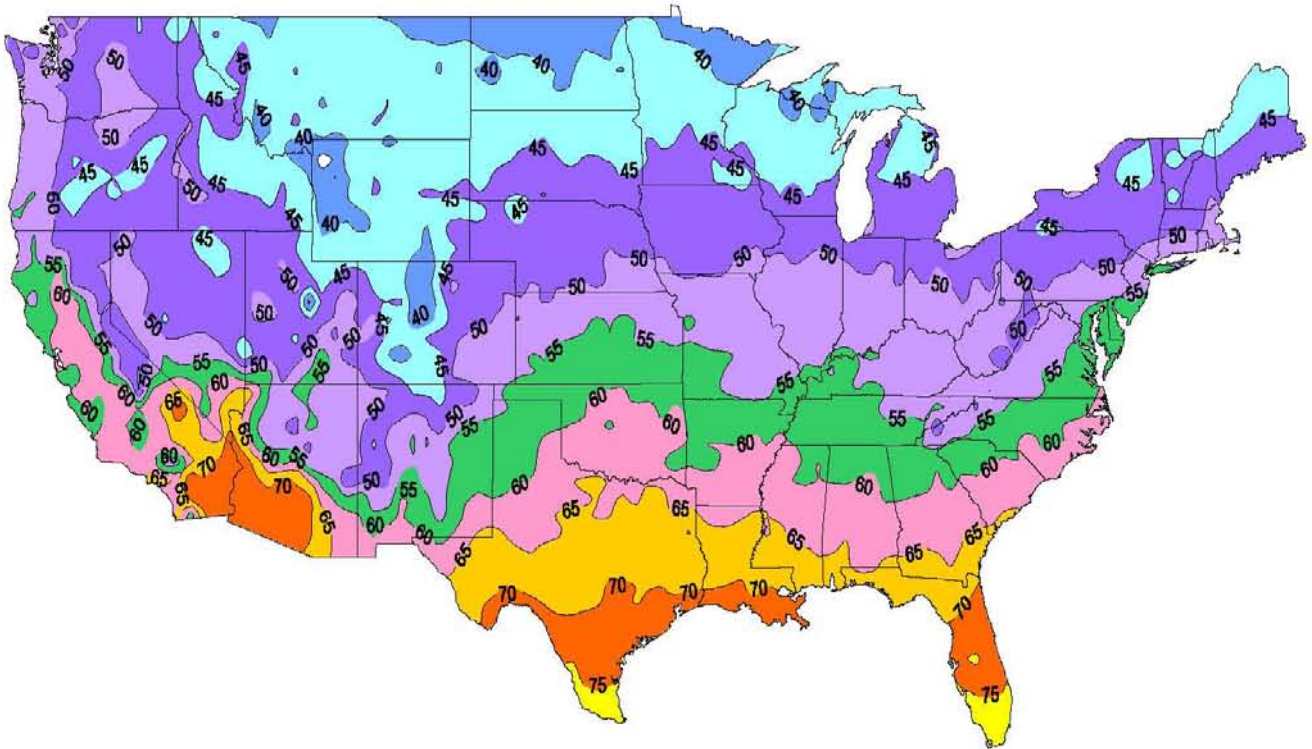


Percent of Normal
October 2006

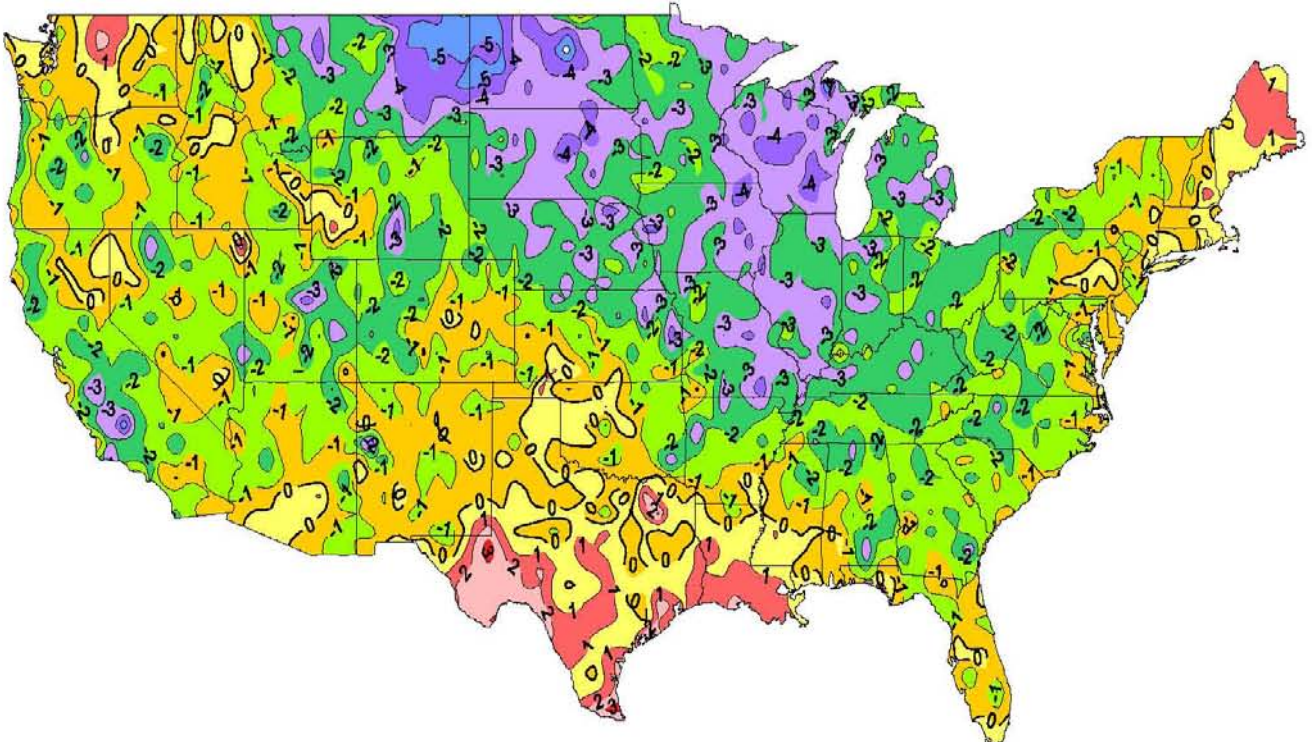


NOTE Contour maps are computer-generated and intended to show general temperature and precipitation patterns. Therefore, contours may not always account for individual datum points.

Average Temperature (Degrees F)
October 2006

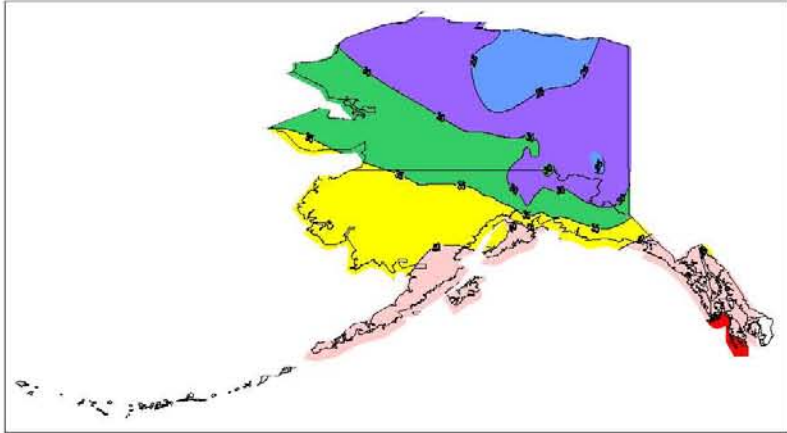


Departure of Average Temperature from Normal (Degrees F)
October 2006

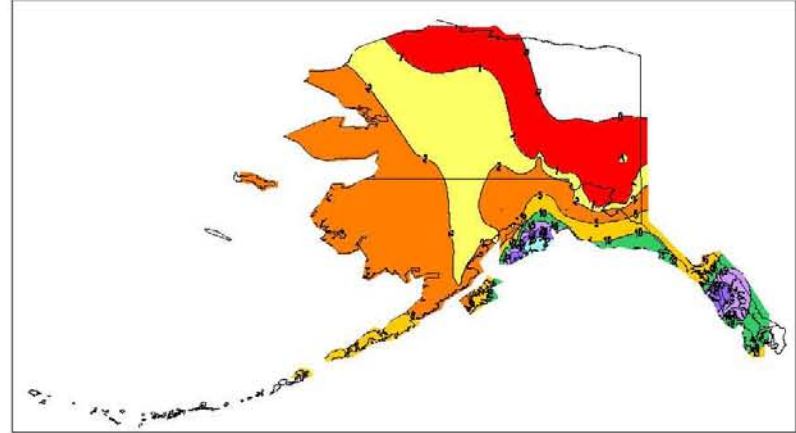


NOTE Contour maps are computer-generated and intended to show general temperature and precipitation patterns. Therefore, contours may not always account for individual datum points.

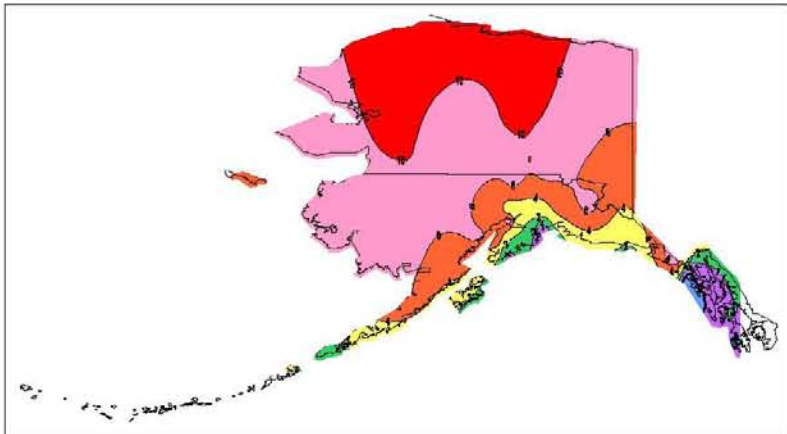
Average Temperature (Degrees F)
October 2006



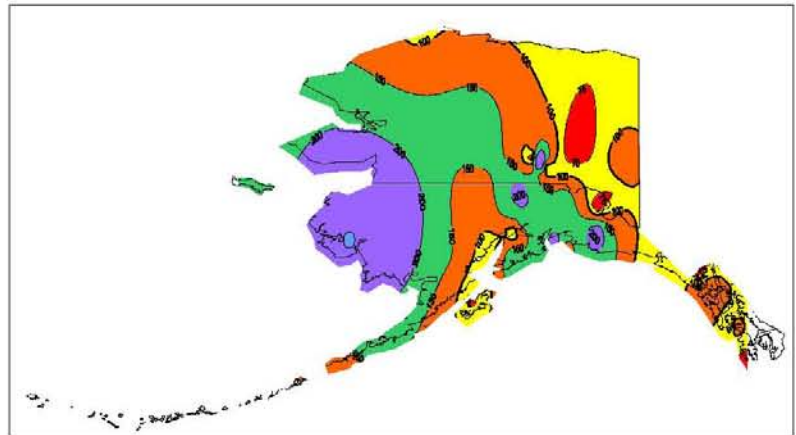
Alaska Precipitation (Inches)
October 2006



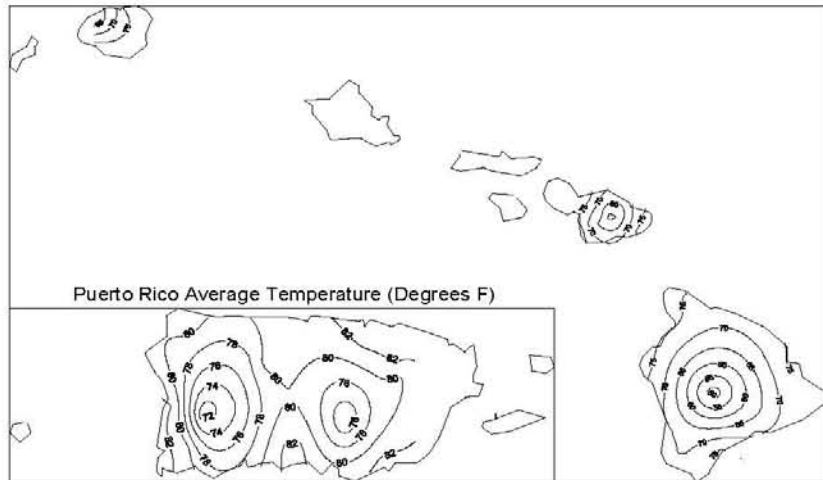
Departure of Average Temperature from Normal (Degrees F)
October 2006



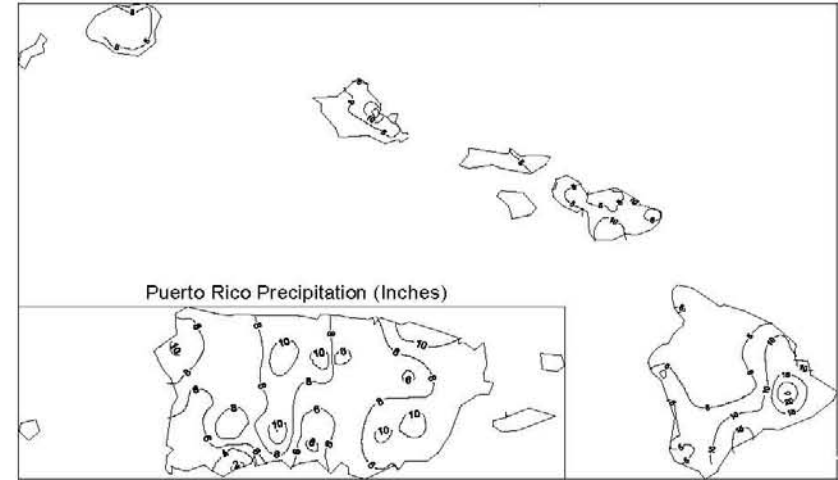
Percent of Normal Precipitation
October 2006



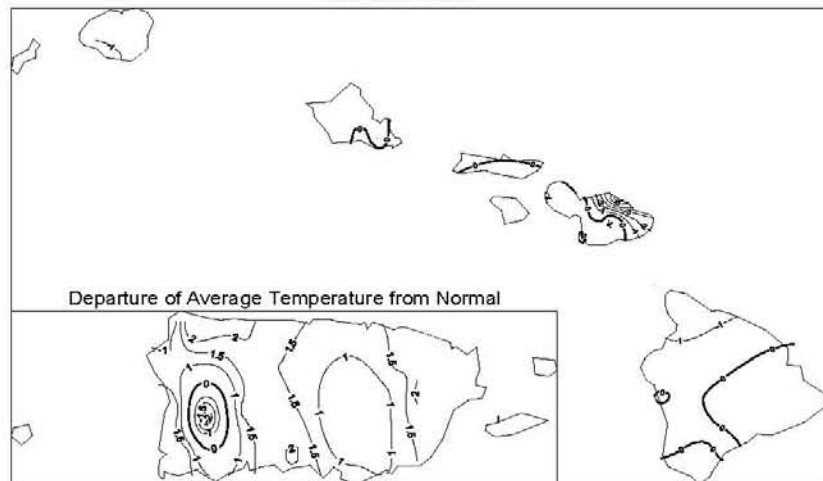
Hawaii Average Temperature (Degrees)
October 2006



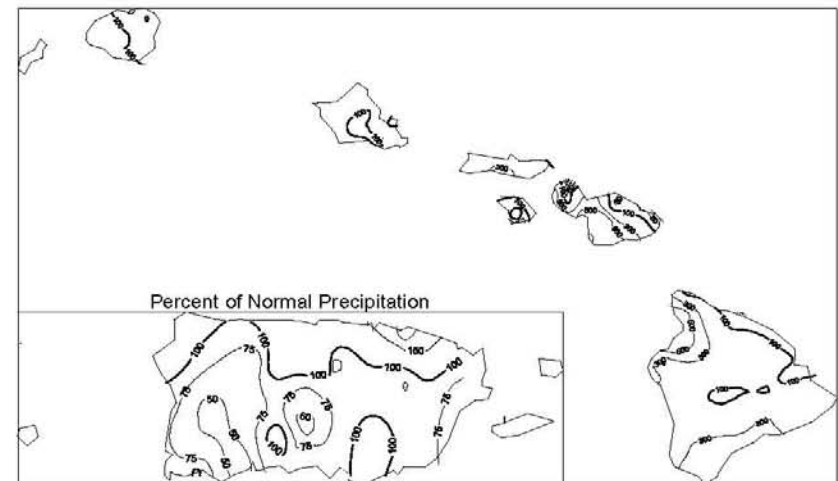
Hawaii Precipitation (Inches)
October 2006



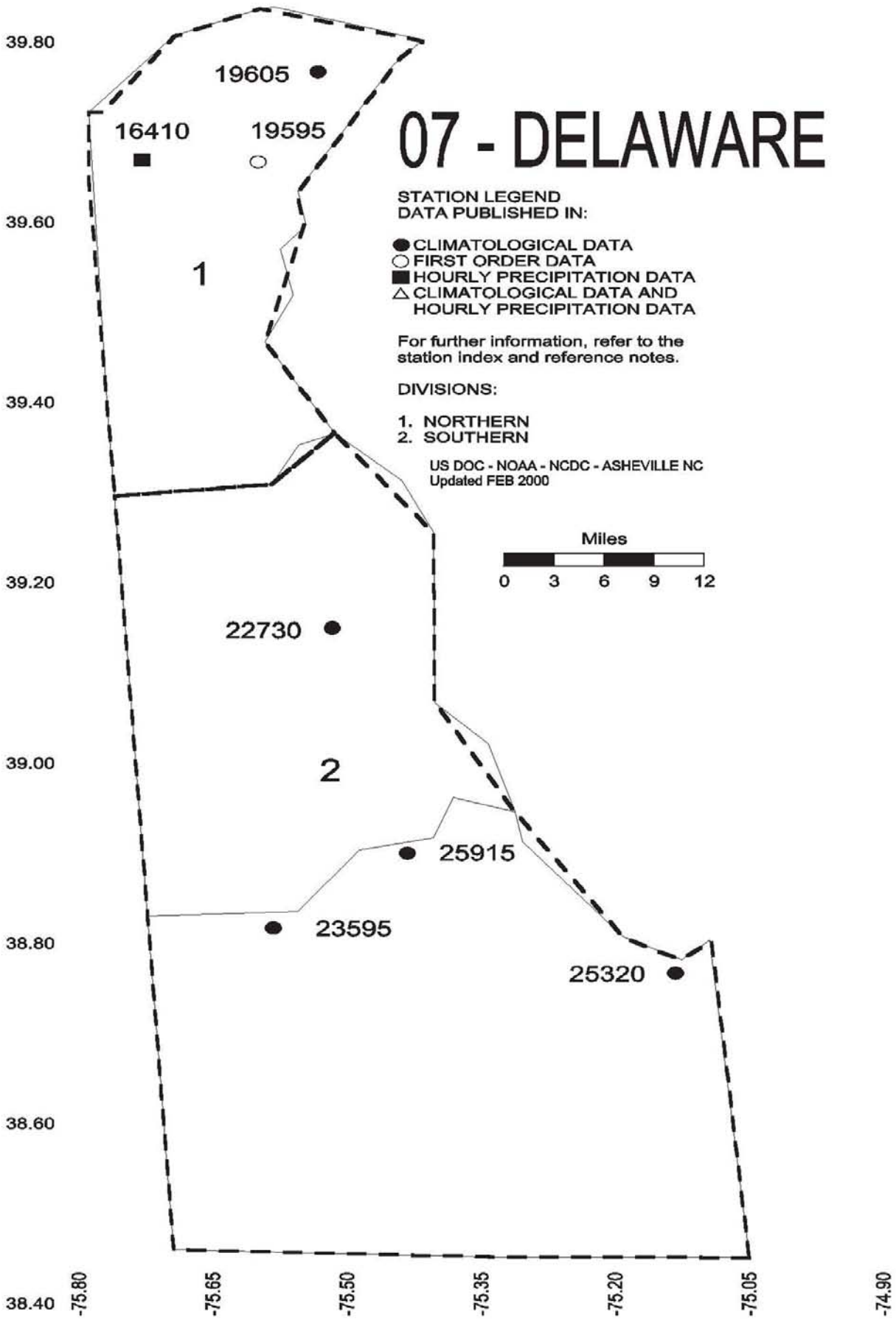
Departure of Average Temperature from Normal (Degrees)
October 2006

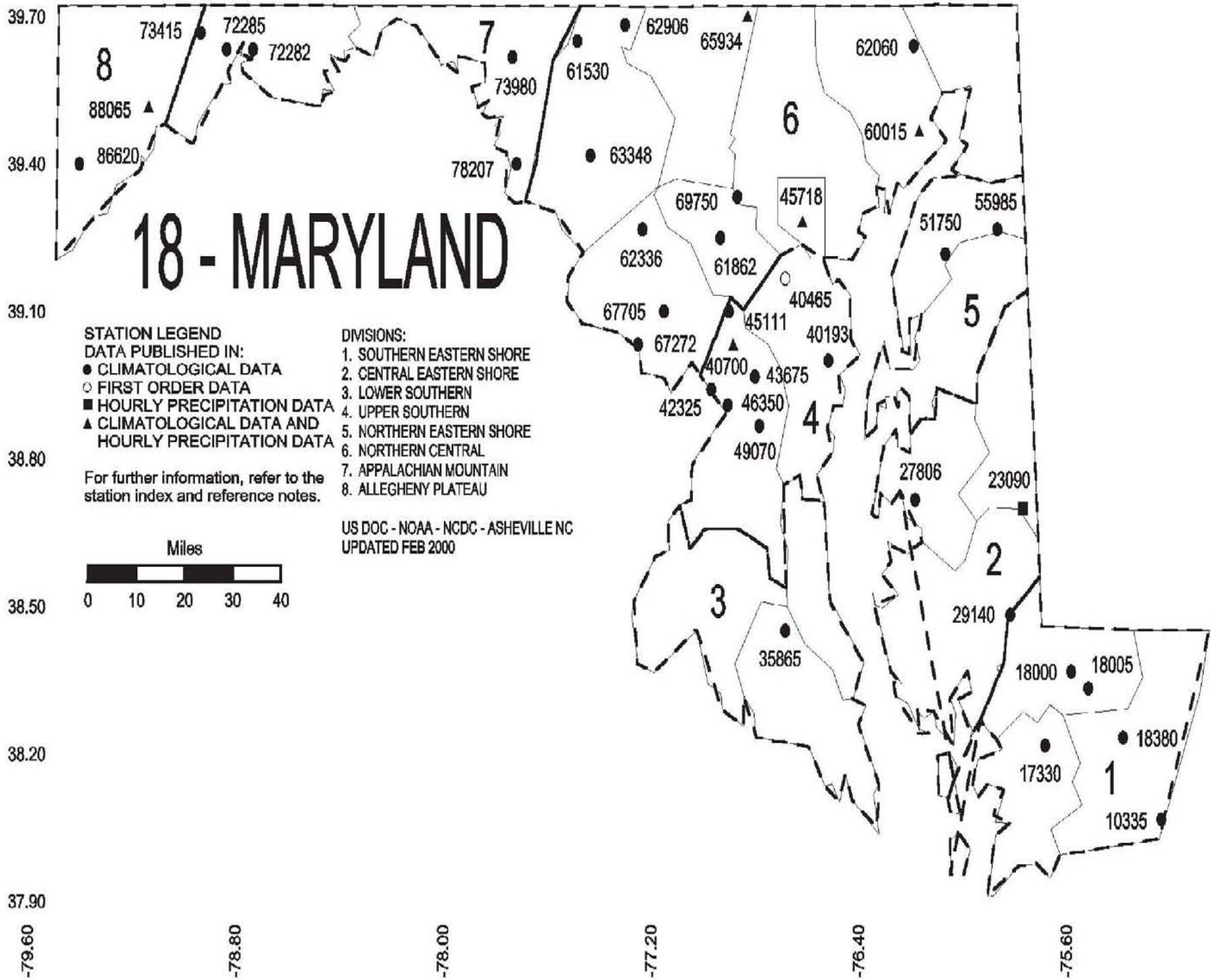


Hawaii Percent of Normal Precipitation
October 2006



07 - DELAWARE





These and other publications are available from the National Climatic Data Center

Hourly Precipitation Data

This publication contains hourly precipitation amounts obtained from recording rain gages located at National Weather Service, Federal Aviation Administration, and cooperative observer stations. Published data are displayed in inches and tenths or inches and hundredths at local standard time. HPD includes maximum precipitation for nine (9) time periods from 15 minutes to 24 hours, for selected stations.

Climatological Data

Monthly editions contain station daily maximum and minimum temperatures and precipitation. Some Stations provide daily snowfall, snow depth, evaporation, and soil temperature data. Each edition also contains monthly summaries for heating and cooling degree days (65 degree F base). The July issue contains a recap of monthly heating degree days and snow data for the preceding July through June.

The Annual issue contains monthly and annual averages of temperature, precipitation, temperature extremes, freeze data, soil temperatures, evaporation, and a recap of monthly cooling degree days.

Storm Data

Monthly issues contain a chronological listing, by states, of occurrences of storms and unusual weather phenomena. Reports contain information on storm paths, deaths, injuries, and property damage. An "Outstanding storms of the month" section highlights severe weather events with photographs, illustrations, and narratives. The December issue includes annual tornado, lightning, flash flood, and tropical cyclone summaries.

Monthly Climatic Data for the World

This publication contains monthly means for temperature, pressure, precipitation, vapor pressure, and sunshine for approximately 2,000 surface data collection stations worldwide and monthly mean upper air temperatures, dew point depressions, and wind velocities for approximately 500 observing sites.

Local Climatological Data

LCD publications summarize temperature, relative humidity, precipitation, cloudiness, wind speed and direction observations for several hundred cities in the U.S. and its territories. Each monthly publication also contains 3 hourly weather observations for that month and a hourly summary of precipitation. Annual LCD publications contain a summary of the past calendar year as well as historical averages and extremes.

For Information Call:

(866) 742-3322 (Toll free)

(828) 271-4010 (TDD)

(304) 726-4409 (Fax)

To change your address, please return a copy of the mailing label along with your new address to:

NCDC Subscription Services Center
310 State Route 956
Building 300
Rocket Center, WV 26726

Toll free number:(866) 742-3322
TDD: (828) 271-4010
Fax number: (304) 726-4409

NCDC now offers an annual online subscription for the *Climatological Data* publication. When you purchase this subscription service, you will have **immediate online access** to all previous publications back to October 1997 and all publications thereafter until the expiration of the subscription. Your subscription is valid for one year after purchase. **The total cost is \$36 for online delivery (including back issues) compared to \$50 for offline delivery.** To order this and other subscriptions online with your credit card, go to: **www.ncdc.noaa.gov/mpp.html** and choose subscriptions.

Inquiries/Comments Call: Toll free number:(866) 742-3322
TDD: (828) 271-4010
Fax number: (304) 726-4409

NCDC Subscription Services Center
310 State Route 956
Building 300
Rocket Center, WV 26726

PRSR STD POSTAGE & FEES PAID United States Department of Commerce NOAA Permit No. G-19

OFFICIAL BUSINESS
PENALTY FOR PRIVATE USE \$300
CHANGE SERVICE REQUESTED