

**MISSING  
PAGE(S)**



John Osburn, a long jumper on the Glasgow High track team, performs a martial arts-style ritual as he prepares to begin his run. Photos/Bulch Comegys

## Brans leads St. Mark's in Christiana relays

Spartan distance runner returns after serious leg injury

by Bruce Johnson

His time didn't reflect past performances but for a few brief moments at the Christiana Relays on Saturday, St. Mark's High School distance runner Martin Brans returned to form.

Brans returned to action this week after a five months spent recuperating from a broken leg suffered in a car accident last fall.

At the time of the crash, Brans was considered the best high school distance runner in the state, having captured the New Castle Cross Country Championships by 20 seconds.

At the Christiana Relays, Brans returned to anchor the Spartans' distance medley team and caught Salesianum's Kevin Keegan at the tape to secure the St. Mark's grip on fourth place.

And Keegan was no slouch, having placed second in the mile in the state indoor track championships.

Twenty-three schools from three states travelled to Christiana High School to participate in the third annual relay carnival. Delcastle ran off with the boys' title while Padua captured the girls' championship.

Newark placed seventh in the boys competition with Christiana taking 14th and Glasgow 15th. St. Mark's led the area girls teams with a fifth place finish. Christiana was close behind in sixth and Newark finished eighth.

For the St. Mark's boys team, winning wasn't nearly as important as having their old friend back in uniform.

"Having him back on the team gives us a lot of confidence because everybody feeds off



Martin Brans is happy to be back on track.

Martin's confidence," said Spartan distance runner Bryan Lennon. "He has an air about him that's almost cocky but it's really not. He's just confident that he can do it."

Yet, Brans' confidence was affected during the long layoff. Not only did he lose the foundation of his conditioning, but he lost that fighting edge as well.

"I'm getting out there and running in the morning to get back into shape," said Brans,

who suffered a second degree sprain of the ankle while trying to come back during the indoor track season and which kept him off the track for another three weeks.

"It's still hard for me but I'm hoping in a couple of weeks I'll be back. I just hope people aren't expecting too much from me too early. It's difficult to come back after such a long

See RELAYS/7b

## Blue Hen volleyball team cruises into Caribbean isle

University of Delaware head volleyball coach Barb Viera and 15 of her Blue Hen players are in Barbados this week to play four exhibition matches and give a series of clinics of the Caribbean island.

The Delaware contingent left on Sunday and arrived in Bridgetown, the nation's capital, where they will play

four matches against local teams and give clinics to coaches, players, and officials during their one-week stay. All the event will be held at Erdiston College in Bridgetown.

On Monday, the Delaware team took on the Maxwell Club Team which is a group made of all-star players from Barbados.

In addition to three other ex-

hibition matches, Viera will instruct two clinics for beginning players and coaches and a clinic for coaches of club teams. There will also be two clinics for volleyball officials.

Vierra, who has compiled a record of 386-1994 in her 14 seasons at Delaware, was named the East Coast Conference Coach of the Year this past

winter when she led a young Blue Hen squad to a record of 25-16 and a third place conference finish.

This will be her fourth trip to Barbados as a volleyball instructor and her second with a University of Delaware team. The 1982 Blue Hen volleyball team also traveled to Barbados for a series of exhibitions and

clinics.

Among the 15 Delaware players who will be competing during the trip are a group of eight local athletes. They are St. Mark's graduates Betsy Tong, Julie Earhart, and Nancy Griskowitz; Brandywine High School graduates Debbie

Delaney and Meg Gavin; Regina Knotts of Christiana High School; Patti Klocko of Achmere, and Carol Gwost of A.I. duPont.

Earhart, a freshman, ranked fourth in the nation in hitting percentage this last fall with a mark of .396.

## The hurdling Hulls

Glasgow High athletes follow in father's footsteps

by Bruce Johnson

Like father, like son, like daughter, the family that hurdles together huddles together.

Such is the philosophy of Glasgow High School's Hull family. Ron Hull, a science teacher and track coach at Glasgow, has the pleasure of coaching his children, Kelly and Kris, in the hurdling events.

And the younger Hulls were influenced by the elder Hull's interest in the sport.

"I ran the hurdles in high school for four years and in that time I don't think I ever got a first, but I must have gotten at least one," said Ron with a smile. "I was more of a depth person who got a lot of seconds and thirds."

Ron's hurdling developed into an interest in the technical aspects of the sport. Not as fast as other track members, he realized that only by perfecting his hurdling form would he be competitive. It is that form that he is teaching his children.

"I never had sprinter's speed but I always felt that I could beat the other kid over the hurdle," said Hull. "I suggested it to the kids figuring that they would have the same genes and

probably have the same lack of speed I had. I think it's neat that they picked it up."

The kids, Kelly and Kris, are glad that their father introduced them to the sport.

"I got interested in the hurdles because of the way my father would talk to us about it. You could just tell he liked it," said Kelly, a Glasgow junior with two varsity letters in track. "You have to know what you're doing. It takes a lot of technique and not just running around the track."

"I first tried it when my father and Kelly were in the backyard practicing it," said Kris, a sophomore at Glasgow. "I picked it up when I got here last year. It started out bad but once you get into it it's fun. It's just not straight running."

Both Kelly and Kris have encountered their father not only on the track, but in the classroom as well. Parent-child relationships can be strained by so much contact, but for the Hulls it has proved no problem.

"There have not really been any problems, although I thought there would have been," said Kelly, smiling.

"If any of the kids didn't like him, that would have had an effect on me. But I haven't seen any of that."

"In ninth grade he was my teacher and I got used to that

but I didn't like it very much. I call him Mr. Hull when we're in school, although he told me I could call him dad."

Peer pressure was also a concern of Ron's. After a short adjustment period, he discovered that everyone has adapted to their various daily roles.

"They might have some trouble differentiating between me as the coach and me as dad or teacher or even friend, but they handle it well," said Hull. "Peer pressure was a problem when they were new to the school. Now the kids in school know and see our relationship and it's not a big factor."

Such problems are not a factor in the Hull family because of one overriding factor: they simply enjoy being around each other.

"We always do things together and we just seem to have a lot of fun," said Kris. "You can talk to him about anything. You don't always do it but you know you can."

As for Kelly, who has welcomed a younger brother to the "Hurdling Hulls" act at Glasgow High, the more the merrier.

"I like it a lot and he's doing good," said Kelly. "I like rooting for him and having family on the team. It's nice to say he's my brother."



The hurdling Hulls — Kelly, Ron and Kris.

SPORTS

# Glasgow baseball team will rely on depth, teamwork

by Bruce Johnson

The rosters of most great professional baseball teams usually include one or two players who can win a game singlehandedly — Mike Schmidt of the Philadelphia Phillies, Eddie Murray of the Baltimore Orioles or "Mr. October" himself, Reggie Jackson.

Winning high school teams also rely on a key batter or pitcher to deliver during crunch time. Newark High School had Derrick May and Mike Reeder last year, while Seaford High has Delino DeShields this season.

Yet some teams can win without the star athlete to pull them through. They rely on teamwork to carry the burden of success. The Glasgow High School baseball team is hoping to develop just that type of winning formula.

"We just don't have that real dominant athlete who's going to come through for us on a routine basis," said Dragon head coach Dennis Dietrich. "We'll have to have one guy do it one day and another the next if we're to be successful. We're just going to need everyone pulling together on a daily basis."

The Dragons graduated only two starters from last year's 5-11 ballclub and return three starting pitchers. Dietrich is hoping last year's experience will provide a winning edge.

Despite the experience, the Dragons are still a young team with only three seniors.

"As young as we are I think attitude will be the key," said Dietrich. "If the kids can pull together and not get down when they make a mistake and develop a positive attitude, we'll go a long way."

"Anything we lack in ability we have to gain back by the player knowing that he's got a bench full of guys behind him."

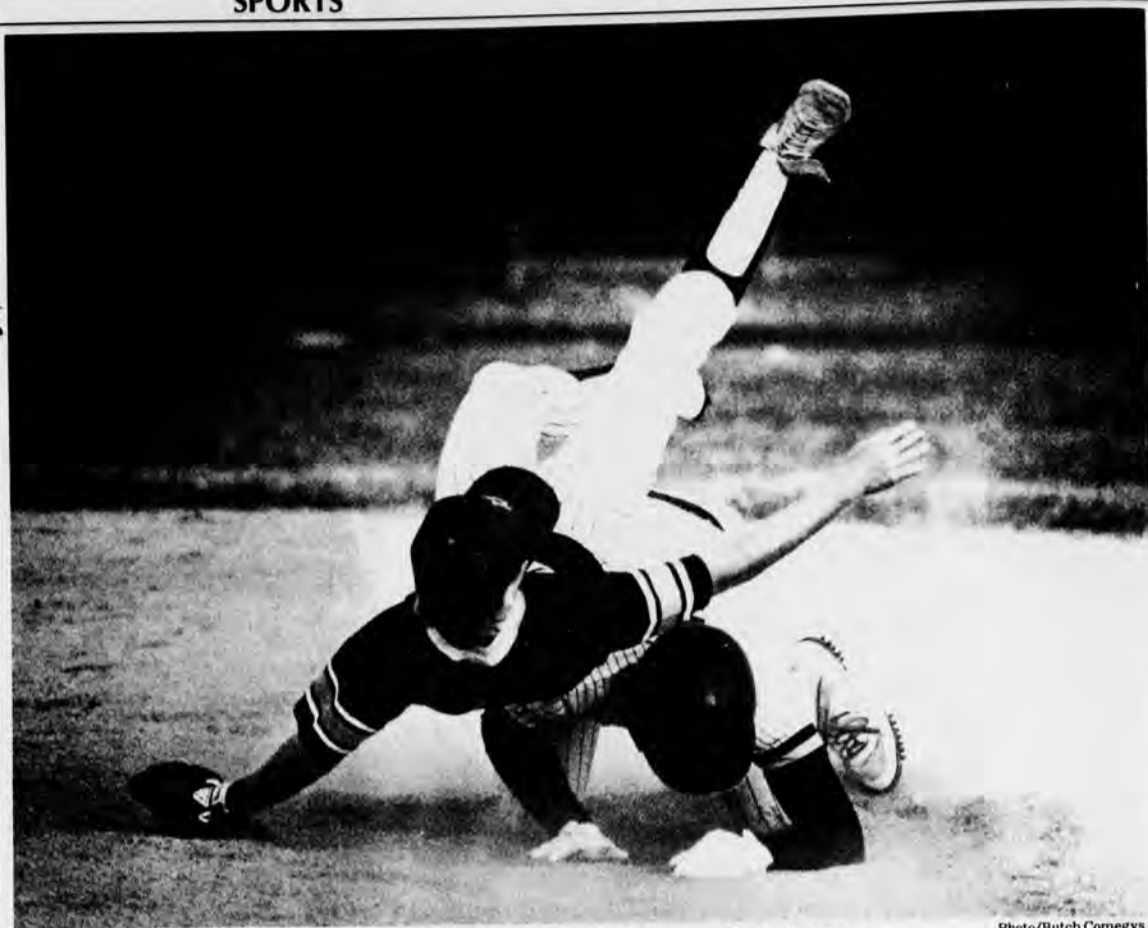
The Dragons will employ five pitchers this year headed by junior Matt Olson. Senior Dan Chopko will also spend time on the mound as will juniors Greg Hastings, Donny Davis and sophomore Bryan Bloomquist.

"If the young pitchers can develop, that will put us right in the ball game," said Dietrich. "We have a line-up that can score runs but it's not solid all the way through. The key to this season is if our pitching can keep us in the ballgame."

Handling the pitching staff this season will be catchers Danny Chopko and juniors Dan Coleman, Charlie Clausius and Tom Sheehan.

Because of the wealth of catchers, last year's starting catcher Chopko will also be stationed in the outfield and at first base when starting first baseman Matt Olson is pitching.

The rest of the infield will be occupied by junior Robbie Renn at second base, and with sophomore Paul McDonald or Steve Weaver at shortstop. Third base will be covered by



Photo/Butch Comegys

Glasgow High second baseman Robbie Renn tumbles over St. Mark's runner Pedro Swann.

junior Dan Coleman, senior Joe O'Neal and sophomore Matt Kwiatowski.

The outfield will find pitchers Chopko, Bloomquist, Hastings and Davis sharing playing time with juniors Rob Eastburn, Larry Eperson and Mike Ridgley.

"Last year we had primarily a sophomore-based team so we'll be looking to see how these young kids mature and develop," said Dietrich. "We're


hoping that the year of experience and their own individual physical growth will make them better. Already we've seen that the kids are stronger, particularly in their

arms." The Dragons have played two non-conference games this season as of Monday afternoon, losing to St. Mark's 8-0 and playing McKean to a 6-6 tie before

the game was stopped because of darkness.

Dietrich remains confident and believes the Dragons will improve with each game they play.

**MARVELOUS MARVIN HAGLER**



**Monday, April 6th**

**SUPER FIGHT**


EXCLUSIVE DELAWARE SHOWING

**Delaware Park**

STANTON, DE EXIT 4N I-95

**TICKETS**

**SUGAR RAY LEONARD**



ALL SEATS \$30.00 GATES OPEN 7:30 PM SERVICE CHARGE AT SOME OUTLETS

302/994-2521

GROUP SEATING AVAILABLE FIRST BOUT 9 PM

TICKET OUTLETS

DELAWARE PARK, Rt. 7 entrance only B&B TICKETTOWN, 322 W. 9th Street

NEWARK NEWSTAND, Main Street, Newark ALL TICKETRON OUTLETS



**IT'S A HIT!**

**NOW OPEN!**

- Baseball and Softball Batting Cages
- Instructional Academy
- Team Rates
- Pro Shop
- Birthday & Private Party Packages

"We guarantee that all the pitches will be strikes."

OPEN

Mon.-Wed.-Fri. 3 PM-10 PM  
Tues. & Thurs. Noon-10 PM  
Sat. & Sun. 9 AM-10 PM

200 Ruthar Dr.  
Harmony Bus. Park.  
Newark, DE 19711  
(302) 738-5588

## APPLIANCES

**19 Cu. Ft. Refrigerator**

- Top of the Line Deluxe with glass shelves
- 10 Year Warranty

**SAVE \$100**

NOW ONLY **\$589.00**

**LAUNDRY PAIR**

- Heavy Duty
- Large capacity Washer with 10 Year Limited Golden Warranty on Dura-Tub
- 2 cycle, single-speed washing action for Regular Permanent Press, Knits & Delicates
- Matching Electric or Gas Dryer with timed drying and easy-to-clean, up-front lint filter.

**DRYER WASHER**

**\$289 \$329**

**DISCOUNT APPLIANCES**

S. BRIDGE ST., ELKTON • 398-9282

OTHER CREDIT AVAILABLE

## body exposure:

*develop a sleek new body for summer. Just \$10\* gets you started.*

Is your body ready for summer exposure? Let Spa Lady's experts get you started on that sleek new summer body for only \$10.

Put some color in your life. Look and feel better this summer with the latest exercise programs including low impact aerobics and exhilarating body band classes. Relax in our sauna and whirlpool. Tan your body in our safe, even suntanning booths. Work-out with the most advanced muscle-toning Cam-Star equipment.

Call today. Develop your sleek summer body at Spa Lady, and get started for just \$10.






**Spa Lady**

*Spa Lady is introducing more of the most advanced fitness equipment and more of the most advanced facilities.*

**Big Elk Mall**  
**Elkton, MD**  
**(301) 398-8786**

\*Based on the renewable membership. First time visitors, 18 or older.

SPORTS

Newark High senior Andy Geiger will lead the Yellow-jacket golf squad this season. Geiger finished third in the 1986 state championships.



## Golfers swing into action

Newark area teams must play out of the rough this year

The 1987 high school golf season begins this week, with all four area high schools having been depleted by graduation and facing more questions than answers.

Of the four area teams, two letter winners from 1986 — seniors Joe Beaudet and four-year letter winner Steve Sywy. Both players will battle for the top two positions on the team and form the nucleus of the

position, followed by Kyle Mayhew. The other four spots will be filled by either juniors John Morneau and Alex Dombrowski, or sophomores Kevin

## Gymnasts to compete Sunday

A U.S. Association of Independent Gymnastics Clubs open optional meet will be held Sunday, April 5 at the University of Delaware Carpenter Sports Building off Main Street.

The meet, sponsored by Olympiad Gymnastics Club, will feature top gymnasts from Delaware, Maryland, Pennsylvania, New Jersey and Virginia. The athletes will be attempting to qualify for the national

meet to be held June 12-14 at the University of Delaware Fieldhouse. Action will start at 9:30 a.m. Sunday. Admission is \$2 for adults.

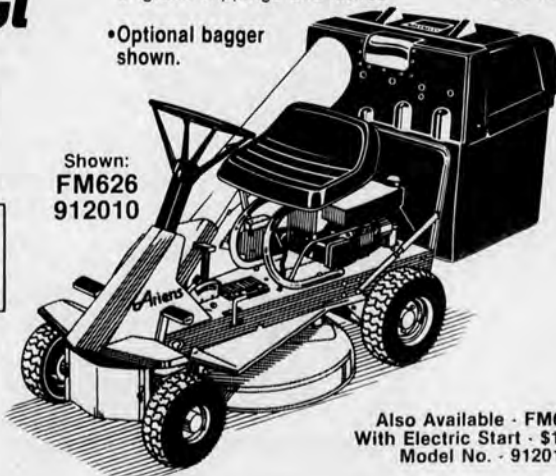
**Compact Rider. Compact Price.**

Ariens Fairway riding mower gives you a beautiful cut at a great price. This 6 HP compact model is easy to handle, easy to store, and includes these features:

- Versatile 6 HP cast-iron bore engine
- 4 forward speeds and reverse
- 26" Flex-N-Float® mower deck
- Bagger-Vac® Collection system vacuums up to 3.9 bushels of grass clippings and leaves
- Optional bagger shown.

NOW **\$979.95**

SAVE \$160.00!



Shown: FM626 912010

Also Available - FM626E With Electric Start - \$1079.95 Model No. - 912011

Get \$100 worth of Gardena products, FREE With The Purchase Of A New Ariens Riding Mower Before June 30, 1987

OFFER EXPIRES JUNE 30, 1987



Oscillating Sprinkler



Sprinkle Spray Gun Hose Cassette and Reel



**Ariens**  
THE EASY CHOICE FOR TOUGH CUSTOMERS.

\*Based on 15% down - 24 months APR 18% financing for qualified buyers only. Distributed by Lawn Equipment Parts Company. Available At These Servicing Dealers:

NEWARK  
**BOWERSOX LAWN & GARDEN EQUIPMENT**  
2860 Ogletown Road  
302-368-7006

### Bay Head

Hardware & Marine

- Prints-Frames
- Gifts-Flags
- NOS Charts
- Sport Clothing
- Fishing Tackle
- Boat Trailers
- SERVICE DEPT.
- Williamsburg Paint
- Johnson OB's
- Lawn-Boy
- Zodiac
- Boston Whaler
- PARTS DEPT.

Open 7 Days A Week  
207 S. Bridge Street (Rt. 213)  
Elkton, MD (301) 398-4211

CATCH THE SPIRIT



OF RENEWAL

Bethany Baptist Church

409 Washington St., Newport

Guest Speaker: REV. ROBERT L. MOORE

Sunday, April 5, 11:00 a.m.  
Nightly, April 5-8, 7:00 p.m.

Warm Christian Fellowship Revival Choir

Pastor: Dr. Wm. R. Dunning  
Church Office Phone: 994-1303

**\$5 \$10 \$15**

**S A L E !**

Gigantic Savings on Men's and Women's Fashion Footwear.

Now priced at **\$5, \$10, & \$15.**



**LA-Z-BOY®**  
**— CHAIR SALE —**

**2 GREAT LA-Z-BOY CHAIRS AT 1 GREAT LOW PRICE**

Our entire stock of over 2,000 genuine La-Z-Boy® Recliners and Swivel Rockers is included in this special sale event. No one can match La-Z-Boy's® famous quality and comfort backed by over 60 years of making America's favorite chairs. Don't buy any other chair until you've seen and sat in these exceptional values.

For a LIMITED TIME ONLY at your nearby LA-Z-BOY® Showcase Shoppes.

A pair of **Genuine La-Z-Rocker® Swivel Rockers**  
All the quality, style and comfort you expect from a La-Z-Boy® chair at an unbelievably low price.  
Suggested Retail Price For 2/\$578

**2 Swivel Rockers for \$398**

**Genuine La-Z-Boy® Reclina-Rest® Recliners**  
This slim contemporary design will meet your most demanding space requirements—not to mention your budget.  
Suggested Retail Price For 2/\$718

**2 Recliners for \$498**

**Genuine La-Z-Boy® Reclina-Rockers®**  
The best value anywhere! Your choice of either of these great traditional styles in a wide selection of fabrics and colors.  
Suggested Retail Price For 2/\$858

**2 Recliners for \$598**



**La-Z-Boy® Showcase shoppes**

NEWARK | WILMINGTON  
Meadowood Shopping Center 4723 Concord Pike, Wilmington, Delaware  
2651 Kirkwood Hwy., Newark, Delaware Near Concord Mall, next to the Sheraton  
(302) 737-9800 FREE DELIVERY (302) 478-1939 FREE DELIVERY  
Hours: Mon. thru Sat. 10-9, closed Sun. — July & August  
Up to \$1,000 Instant Credit to qualified buyers

# Glasgow baseball team will rely on depth, teamwork

by Bruce Johnson

The rosters of most great professional baseball teams usually include one or two players who can win a game singlehandedly — Mike Schmidt of the Philadelphia Phillies, Eddie Murray of the Baltimore Orioles or "Mr. October" himself, Reggie Jackson.

Winning high school teams also rely on a key batter or pitcher to deliver during crunch time. Newark High School had Derrick May and Mike Reeder last year, while Seaford High has Delino DeShields this season.

Yet some teams can win without the star athlete to pull them through. They rely on teamwork to carry the burden of success. The Glasgow High School baseball team is hoping to develop just that type of winning formula.

"We just don't have that real dominant athlete who's going to come through for us on a routine basis," said Dragon head coach Dennis Dietrich. "We'll have to have one guy do it one day and another the next if we're to be successful. We're just going to need everyone pulling together on a daily basis."

The Dragons graduated only two starters from last year's 5-11 ballclub and return three starting pitchers. Dietrich is hoping last year's experience will provide a winning edge.

Despite the experience, the Dragons are still a young team with only three seniors.

"As young as we are I think attitude will be the key," said Dietrich. "If the kids can pull together and not get down when they make a mistake and develop a positive attitude, we'll go a long way."

"Anything we lack in ability we have to gain back by the player knowing that he's got a bench full of guys behind him."

The Dragons will employ five pitchers this year headed by junior Matt Olson. Senior Dan Chopko will also spend time on the mound as will juniors Greg Hastings, Donny Davis and sophomore Bryan Bloomquist.

"If the young pitchers can develop, that will put us right in the ball game," said Dietrich. "We have a line-up that can score runs but it's not solid all the way through. The key to this season is if our pitching can keep us in the ballgame."

Handling the pitching staff this season will be catchers Danny Chopko and juniors Dan Coleman, Charlie Clausius and Tom Sheehan.

Because of the wealth of catchers, last year's starting catcher Chopko will also be stationed in the outfield and at first base when starting first baseman Matt Olson is pitching.

The rest of the infield will be occupied by junior Robbie Renn at second base, and with sophomore Paul McDonald or Steve Weaver at shortstop. Third base will be covered by



Photo/Butch Comegys

Glasgow High second baseman Robbie Renn tumbles over St. Mark's runner Pedro Swann.

junior Dan Coleman, senior Joe O'Neal and sophomore Matt Kwiatowski.

The outfield will find pitchers Chopko, Bloomquist, Hastings and Davis sharing playing time with juniors Rob Eastburn, Larry Eperson and Mike Ridgley.

"Last year we had primarily a sophomore-based team so we'll be looking to see how these young kids mature and develop," said Dietrich. "We're

hoping that the year of experience and their own individual physical growth will make them better. Already we've seen that the kids are stronger, particularly in their

arms."

The Dragons have played two non-conference games this season as of Monday afternoon, losing to St. Mark's 8-0 and playing McKean to a 6-6 tie before

the game was stopped because of darkness.

Dietrich remains confident and believes the Dragons will improve with each game they play.

## APPLIANCES

**19 Cu. Ft. Refrigerator**

- Top of the Line Deluxe with glass shelves
- 10 Year Warranty

**SAVE \$100**

**NOW ONLY \$589<sup>00</sup>**

**LAUNDRY PAIR**

- Heavy Duty
- Large capacity Washer with 10-Year Limited Golden Warranty on Dura-Tub
- 3 cycle, single speed washing action for Regular Permanent Press, Knits & Delicates
- Matching Electric or Gas Dryer with timed drying and easy-to-clean, up-front lint filter.

**DRYER WASHER**

**\$289 \$329**

**DISCOUNT APPLIANCES**

S. BRIDGE ST., ELKTON • 398-9282

OTHER CREDIT AVAILABLE

**MARVELOUS MARVIN HAGLER**

**Monday, April 6th**

# SUPER FIGHT

EXCLUSIVE DELAWARE SHOWING  
**Delaware Park**  
STANTON, DE EXIT 4N I-95

## TICKETS!

**SUGAR RAY LEONARD**

**ALL SEATS \$30.00 GATES OPEN 7:30 PM**

**302/994-2521**

**GROUP SEATING AVAILABLE FIRST BOUT 9 PM**

**TICKET OUTLETS**

DELAWARE PARK, Rt. 7 entrance only  
B&B TICKETTOWN, 322 W. 9th Street

NEWARK NEWSTAND, Main Street, Newark  
ALL TICKETRON OUTLETS

# IT'S A HIT!

## NOW OPEN!

- Baseball and Softball Batting Cages
- Instructional Academy
- Team Rates
- Pro Shop
- Birthday & Private Party Packages

"We guarantee that all the pitches will be strikes."

OPEN  
Mon.-Wed.-Fri. 3 PM-10 PM  
Tues. & Thurs. Noon-10 PM  
Sat. & Sun. 9 AM-10 PM

200 Ruthar Dr.  
Harmony Bus. Park.  
Newark, DE 19711  
(302) 738-5588

# body exposure:

develop a sleek new body for summer.  
Just \$10\* gets you started.

Is your body ready for summer exposure? Let Spa Lady's experts get you started on that sleek new summer body for only \$10.

Put some color in your life. Look and feel better this summer with the latest exercise programs including low impact aerobics and exhilarating body band classes. Relax in our sauna and whirlpool. Tan your body in our safe, even suntanning booths. Work-out with the most advanced muscle-toning Cam-Star equipment.

Call today. Develop your sleek summer body at Spa Lady, and get started for just \$10.

## Spa Lady

Spa Lady is introducing more of the most advanced fitness equipment and more of the most advanced facilities.

**Big Elk Mall**  
**Elkton, MD**  
**(301) 398-8786**

\*Based on the renewable membership. First time visitors, 18 or older.

# Gymnasts to compete Sunday

A U.S. Association of Independent Gymnastics Clubs open optional meet will be held Sunday, April 5 at the University of Delaware Carpenter Sports Building off Main Street. The meet, sponsored by Olym-

piad Gymnastics Club, will feature top gymnasts from Delaware, Maryland, Pennsylvania, New Jersey and Virginia.

The athletes will be attempting to qualify for the national

meet to be held June 12-14 at the University of Delaware Fieldhouse.

Action will start at 9:30 a.m. Sunday. Admission is \$2 for adults.

## Compact Rider. Compact Price.

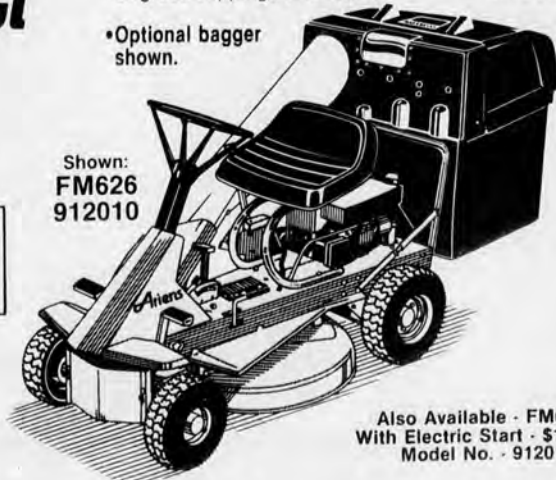
Ariens Fairway riding mower gives you a beautiful cut at a great price. This 6 HP compact model is easy to handle, easy to store, and includes these features:

- Versatile 6 HP cast-iron bore engine
- 4 forward speeds and reverse
- 26" Flex-N-Float® mower deck
- Bagger-Vac® Collection system vacuums up to 3.9 bushels of grass clippings and leaves

- Optional bagger shown.

NOW  
**\$979.95**

SAVE \$160.00!



Shown:  
FM626  
912010

Also Available - FM626E  
With Electric Start - \$1079.95  
Model No. - 912011

Get \$100 worth of Gardena products, FREE

With The Purchase Of A New Ariens Riding Mower Before June 30, 1987

OFFER  
EXPIRES  
JUNE 30, 1987



Oscillating  
Sprinkler



Sprinkle  
Spray Gun  
Hose Cassette  
and Reel



# Ariens

THE EASY CHOICE  
FOR TOUGH CUSTOMERS.

\*Based on 15% down - 24 months APR 18% financing for qualified buyers only.  
Distributed by Lawn Equipment Parts Company.  
Available At These Servicing Dealers:

NEWARK  
**BOWERSOX LAWN &  
GARDEN EQUIPMENT**  
2860 Ogletown Road  
302-368-7006

# LA-Z-BOY® — CHAIR SALE —

## 2 GREAT LA-Z-BOY CHAIRS AT 1 GREAT LOW PRICE

Our entire stock of over 2,000 genuine La-Z-Boy® Recliners and Swivel Rockers is included in this special sale event. No one can match La-Z-Boy's® famous quality and comfort backed by over 60 years of making America's favorite chairs. Don't buy any other chair until you've seen and sat in these exceptional values.

For a LIMITED TIME ONLY at your nearby LA-Z-BOY® Showcase Shoppes.



A pair of  
**Genuine La-Z-Rocker®  
Swivel Rockers**

All the quality, style and comfort you expect from a La-Z-Boy® chair at an unbelievably low price.  
Suggested Retail Price For 2/\$578

2 Swivel  
Rockers for **\$398**



**Genuine La-Z-Boy®  
Reclina-Rest® Recliners**

This slim contemporary design will meet your most demanding space requirements—not to mention your budget.

Suggested Retail Price For 2/\$718

2 Recliners for **\$498**



**Genuine La-Z-Boy®  
Reclina-Rockers®**

The best value anywhere! Your choice of either of these great traditional styles in a wide selection of fabrics and colors.

Suggested Retail Price For 2/\$858

2 Recliners for **\$598**



**La-Z-Boy®  
Showcase shoppes**



NEWARK | WILMINGTON  
Meadowood Shopping Center | 4723 Concord Pike, Wilmington, Delaware  
2651 Kirkwood Hwy. Newark, Delaware | Near Concord Mall, next to the Sheraton  
(302) 737-9800 FREE DELIVERY | (302) 478-1939 FREE DELIVERY  
Hours: Mon. thru Sat. 10-9, closed Sun. — July & August  
Up to \$1,000 Instant Credit to qualified buyers

important to the kids, and that's winning but also getting a chance to play. Although not everyone can play at one time I try to give everybody a chance. Nobody wants to ride the bench."

This year, giving everybody a chance to play could prove difficult. The Spartans have graduated only five players in the past two years and list a

baugh at third base.

The outfield will consist of senior Christine Schiavoni, juniors Jenny Reed, Jackie Conomon and Judy Conomon (two of the three Conomon triplets), and sophomore Erica Sneed.

"Defensively we've got some experienced kids with real strong throwing arms who know how to make the right plays," said Parkins.

**THE K40 SPRINT PORTABLE RADAR DETECTOR**

**THE WORLD'S FIRST RADAR DETECTORS WITH A GUARANTEE AGAINST SPEEDING TICKETS!**

REG. \$199 **SALE \$179**

**WE FIX SPEEDING TICKETS!**

THE K40 DASH RADAR DETECTOR reg. \$299.95 **SALE \$269.95**

THE ALL NEW K40 REMOTE CONTROLLED DASH RADAR DETECTOR

• MEASURES ONLY 1/4" HIGH BY 4" ACROSS  
• MOUNTS VIRTUALLY ANYWHERE IN THE CAR'S INTERIOR - SO GOOD THAT IF YOU GET A SPEEDING TICKET, K40 WILL PAY FOR IT!  
• GUARANTEED BY THE MANUFACTURER

reg. \$339.95 **SALE \$299.95**

**The K40™ CB ANTENNA**  
BY AMERICAN ANTENNA  
GUARANTEED TO TRANSMIT FARTHER AND CLEARER THAN ANY OTHER MOBILE CB ANTENNA MADE! OR YOUR MONEY BACK.

reg. \$48.95 **SALE \$38.95**  
Optional Magnet Mount... \$18.95

**LARACO ELECTRONICS**  
SALES — SERVICE — INSTALLATION  
3907 Kirkwood Hwy., Wilm. — Across from Millcreek Fire Co.  
Mon-Fri: 10 a.m. - 9 p.m.  
Sat: 10 a.m. - 5 p.m. **999-8044**

Calanger during 13-9 Saturday in Newark. Despite a sterling second half, the Blue Beams were unable to overcome a halftime deficit.

1st issue  
April 10th  
Don't Miss It!



**The MARINER**

A Guide To Boating & Leisure on the Chesapeake Bay

1987

Call For Info: (301) 398-3311

**90 DAYS SAME AS CASH\* ON TIRES** **Firestone** **SERVICE!**

**Firestone**

FIRESTONE STORE - 35 MARROWS RD. NEWARK, DE 731-8450

**MASTERCARE CAR SERVICE**

COUPON

**LUBE, OIL & FILTER** **ALIGNMENT**

We'll lubricate your vehicle's chassis, drain the old oil and install up to 5 quarts of new oil and a new oil filter. Most American cars and light trucks and most Datsuns, Toyotas, VW's and Hondas.

We'll align your vehicle's front wheels setting all adjustable angles to manufacturer's original specifications. American cars and many imports (Chevette Ioe only).

**\$12<sup>95</sup>** **\$19<sup>95</sup>** Parts extra if needed.

EXPIRES 5/9/87

COUPON

**MAINTENANCE ANALYSIS** **FLUSH & FILL**

14-point check on condition of your car's brakes, suspension, exhaust, belts, hoses, battery fluid levels and tires...

We'll flush your radiator and cooling system, check belts, hoses and water pump and re-fill system including up to 2 gallons of antifreeze/coolant.

**\$11<sup>95</sup>** **\$24<sup>95</sup>**

EXPIRES 5/9/87

COUPON

**TRANSMISSION** **FRONT DISC BRAKE SERVICE**

We'll install a new transmission filter, replace the pan gasket, clean and inspect the oil reservoir, add transmission fluid and road test car. Most rear wheel drive cars.

We'll install new front disc pads, Resurface rotors, Repack front wheel bearings, Inspect master cylinder, Inspect brake hoses, Add fluid, as needed, Road test the car.

**\$38<sup>95</sup>** **\$59<sup>95</sup>**

EXPIRES 5/9/87

**LOWEST RADIAL PRICE IN TOWN?**

**\$28<sup>95</sup>**

Whitewall Size	Price
P165/80R13	\$33.95
P185/80R13	36.95
P195/75R14	40.95
P205/75R14	44.95
P215/75R15	47.95
P225/75R15	49.95
P235/75R15	53.95

\*90 DAYS SAME AS CASH\* Buy Firestone tires and service on revolving charge and get 90 days some as cash at Firestone stores and many dealers. Minimum monthly payment required. All finance charges refunded when paid as agreed. We also honor Visa, MasterCard, Diners Club, Carte Blanche and American Express. Prices and credit plans shown are available at Firestone stores. See your independent dealers for their prices and credit plans. See starred (\*) locations for MasterCare service.

**CHURCH DIRECTORY** *A Guide To Area Worship Services*

<b>AGAPE FELLOWSHIP</b> A Spirit filled local expression of the Body of Christ. Sunday Worship: 10:00 A.M. at Howard Johnsons, Route 896 and I-95 Wednesday Home Meeting held at 7:30 P.M. 728-5907	<b>CALVARY BAPTIST</b> 215 E. Delaware Ave. Newark, DE 368-4904	<b>FIRST ASSEMBLY OF GOD</b> 129 Lovett Avenue Newark, Delaware 398-4276 731-8231	<b>GRACE EVANGELICAL FREE CHURCH</b> Meeting at Skyline Middle School (Skyline Dr. & Linden Hill Rd.) 8:45 a.m. Bible Classes 11:00 a.m. Worship Rev. Gregory L. Hullinger Pastor/Teacher (Th. M., Dallas Theological Seminary) 737-4421	<b>FIRST CHURCH OF CHRIST SCIENTIST</b> Sunday Service 10:00 A.M. Sunday School 10:00 A.M. Wed. Testimony Meeting 7:30 P.M. Reading Room Wed. 11:30-2 Sat. 10 A.M. - Noon Delaware Ave. & Haines St. Newark, DE ALL ARE WELCOME CHILD CARE PROVIDED	<b>FIRST PRESBYTERIAN CHURCH</b> 292 West Main Street Newark, DE Church School 9:15 Nursery Available Worship Service 10:30 The Reverend Dr. Robert L. Lowry, Pastor
<b>THE FELLOWSHIP</b> Meeting at Newark YWCA Corner of W. Park Place & College Ave., 738-5825 Sunday Bible Classes - all ages, 9:30 A.M. Worship Service (Nursery Avail.) 10:30 A.M. "Sharing Christ in Mutual Ministry"	<b>WEDNESDAY</b> Family Fellowship Covered Dish Dinner - 5:45 Bible Study Age Groups 6:45 Adult Choir Rehearsal 7:45 PASTOR Dr. David A. MacDonald	<b>THOMAS LAZAR Pastor</b> Our Services For The Week Are: Sunday, 8:30 a.m. Bible Study Hour: Classes For All 10:40 a.m. Morning Worship, Pastor's Church Junior Church, Teen Church Evening Service 7:00 p.m.	<b>NEWARK UNITED METHODIST CHURCH</b> 69 East Main Street, Newark (302) 368-8774 Sunday Worship 8:30, 9:30 & 11 a.m. Church School 9:30 & 11 a.m. U.M. Youth Fellowship 6:30 a.m. Wednesday Prayer 11:30 a.m. Wednesday Interfaith 12:30 p.m. Lenten Service 12:15 p.m. Thursday Eucharist 12:15 p.m. Clifford A. Armour, Senior Pastor John J. Park, Assoc. Pastor John Calisch, Jr. U.M. Campore Minister ALL WELCOME *Broadcast W/WRNK 1290 AM	<b>PENECADER PRESBYTERIAN CHURCH</b> Corner of Rt. 956 & Rt. 49 Worship 10:30 A.M. Adult & Children Sunday School 9:15 A.M. Youth Fellowship 9:00 P.M. "A Church proud of its past, with a vision for the future." John Oldman, Pastor 731-5924	<b>UNITARIAN UNIVERSALIST FELLOWSHIP OF NEWARK</b> 420 Wills Rd. (Off Park Place) 10:30 Sunday Sunday School & Child Care Provided Students & Newcomers Welcome
<b>CHURCH OF CHRIST</b> 81 Salem Church Road Minister Charles Meyers 737-3781	<b>GLASGOW CHURCH OF THE NAZARENE</b> Four Season's Pavilion 896 and Four Season's Pkwy. Newark, DE 738-4443	<b>OUR REDEEMER LUTHERAN CHURCH</b> Johnson at Augusta Chap. Hill Est. Newark 737-4176 Carl H. Kruehle Jr. Pastor Sunday School and Bible Classes 9:00 A.M. Divine Worship 10:42 A.M. Summer Worship 9 A.M. Holy Communion 1st Sunday, 3rd Sunday	<b>WHITE CLAY CREEK PRESBYTERIAN CHURCH</b> 16 Pally Drummond Hill Rd. 737-2106 Pastor Rev. Dr. Dennis Maclear 9:30 a.m. WORSHIP SERVICE 1:45 a.m. SUNDAY SCHOOL 11:00 a.m. WORSHIP SERVICE J.R. CHURCH NURSERY First Sunday Holy Communion LANDMARK BAPTIST CHURCH Now Meeting in Pencader Grange Hall on Rt. 896 at 40 - Glasgow Worship Sunday 10:45 A.M. Sunday School 10 A.M. Lenten Service Wilcoxon Levering 388-3600	<b>WELSTAN CHURCH</b> 708 Church Rd., Newark 737-4190 or 731-9487 SUNDAY SERVICES 9:30-10:30 a.m. 7:00 p.m. Thursday 7:00 p.m. Evangelism & Bible Study Pastor J. Calvin Alt "A church that cares and strengthens your faith"	
<b>CHURCH OF CHRIST</b> 81 Salem Church Road Minister Charles Meyers 737-3781	<b>MISSION OF CARE CHURCH CHRISTIAN LIFE CENTER</b> Sunday School 10 AM Worship Service 11 AM at Chapel, Gov. Bacon Center, Del. City. Sunday Camp Meeting at Camp Care Dixie Line Rd. off Old Baltimore Pike. All are welcome to a non-denominational church of faith and good works. 1302 322-4071 or (301) 392-5596 Pastor Rev. William J. Kitchline, Sr.	<b>FAITH LUTHERAN CHURCH</b> New worshipping at "Mother Hubbard's Day Care Center" Rt. 896 (Just South of Glasgow H.S.) Sunday School 9:15 Worship 10:30 For More Info Call 362-852-2727	<b>NEWARK ALLIANCE CHURCH</b> 853 Chestnut Hill Rd. 366-1857 Rev. John Perry, Pastor Sun. Sch. 11 a.m. Morning Worship 9:45 Eve. Service 7 p.m. Mid-Week Service 7:30 p.m. Nursery Provided	<b>EBENEZER UNITED METHODIST CHURCH</b> Pike Creek Valley 525 Polly Drummond Rd. Newark 731-8492 or 731-8495 Worship Service 9:30 & 11 AM Nursery Available Church School, all ages... 9:30 AM U.M.V.F. .... 7 PM Handicapped Accessible Ministers	
<b>PRaise ASSEMBLY</b> Meeting At 88 Old Baltimore Pike, Newark (Turning Point Bays' Ranch) Sunday 10 a.m. and 5 p.m. Thursday 7 p.m. Family Night (Youth Group, Royal Rangers, Ministries and Fellowship) Paul H. Walters, Pastor.	<b>SAINT NICHOLAS EPISCOPAL CHURCH</b> Old Newark Rd. & Chestnut Hill Rd. HOLY EUCHARIST 9:30 A.M. Holy Eucharist	<b>TO Let your church services, call 737-4724. Changes must be in Fri. at 2 p.m.</b>			

SPORTS

Newark High senior Andy Geiger will lead the Yellow-jacket golf squad this season. Geiger finished third in the 1986 state championships.



## Golfers swing into action

Newark area teams must play out of the rough this year

The 1987 high school golf season begins this week, with all four area high schools having been depleted by graduation and facing more questions than answers.

Of the four area teams, Newark High School appears to be the most talented.

The Yellowjackets return four letter winners from last year's club, including senior Andy Geiger who finished third in last year's state tournament.

Following Geiger in the number two position is junior Curtis Kingham with senior Ray Grehofsky playing third. Sophomore Tyler Tomashek will play fourth followed by senior Harold Land in the fifth position and freshman John Stritzinger at sixth.

"At this point in time it's tough to tell how good we're going to be," said Newark coach Richard Skovronski. "We should be among the top teams but how good depends on how much effort the kids put into it. It's hard to tell if we're just going to be good or very good. Our depth will help us."

Christiana High returns only

two letter winners from 1986 — seniors Joe Beaudet and four-year letter winner Steve Sywy. Both players will battle for the top two positions on the team and form the nucleus of the squad.

Following the two seniors are a group of five underclassmen, with only sophomores Bob Ziegler and Stewart White having had any experience. First-year players Rob Neugebauer, Jim Straub and freshman Korey Johnson will battle it out for the remaining four starting spots.

"If we go .500 percent than I'll be ecstatic," said Viking head coach Bill Perdew. "We just don't have any experience with only two returning letter winners and they'll be tied up in the first two spots. Unless we get a lot of improvement over the year we won't go over .500."

St. Mark's High also suffered from graduation, losing five of six starters and seven seniors overall.

The Spartans, who finished sixth in the 1986 state tournament, will relay on senior three-year letterman Tim Abrams. Abrams will play in the first

position, followed by Kyle Mayhew.

The other four spots will be filled by either juniors John Morneau and Alex Dombrowski, or sophomores Kevin Hetzenroder or Trevor Kokjohn. Depth will be provided by senior Jeff Ickes, junior Chris Timmins and sophomore Jason Mazanek.

Spartan head coach John Fiorelli bills 1987 as a rebuilding year but believes that Abrams and Mayhew could have productive seasons.

Glasgow High head coach Phil DeWeese believes his team will be better than last year, and he is hoping the Dragons will surprise a few teams this year.

"I return only three guys from last year's club so I really don't know what to expect," said DeWeese. "The new guys can hit the ball well but we'll have to see what they can do over the long haul. We should be improved from last year's club."

Playing for the Dragons this year will be Christopher Barton, Kenneth Brevoort, Reid Hubbard, Philip McKinney, John McLaughlin, Richard Alikus, and Micheal Miller.

**Bay Head Hardware & Marine**

- \*Prints-Frames
- \*Gifts-Flags
- \*NOS Charts
- \*Sport Clothing
- \*Fishing Tackle
- \*Boat Trailers
- \*SERVICE DEPT.
- \*Williamsburg Paint
- \*Johnson OB's
- \*Lawn-Boy
- \*Zodiac
- \*Boston Whaler
- \*PARTS DEPT.

Open 7 Days A Week  
207 S. Bridge Street (Rt. 213)  
Elkton, MD (301) 398-4211

**CATCH THE SPIRIT**

Bethany Baptist Church  
409 Washington St., Newport

Guest Speaker: REV. ROBERT L. MOORE

Sunday, April 5, 11:00 a.m.  
Nightly, April 5-8, 7:00 p.m.

Warm Christian Fellowship Revival Choir

Pastor: Dr. Wm. R. Dunning  
Church Office Phone 994-1503

**OF RENEWAL**

**\$5 \$10 \$15**

**S A L E !**

Gigantic Savings on Men's and Women's Fashion Footwear.

Now priced at **\$5, \$10, & \$15.**

Values To \$52<sup>99</sup>

**LOU'S SHOE BAZAAR**

WE MAKE FASHION AFFORDABLE

Lou's Shoe Bazaar's Newark, Delaware store only!

## Spring Home Improvement

Special Section with Color  
Coming April 15th

**Cecil Whig and NewArk Post**

• Reaching Over 42,500 Homes In Your Prime Market Area, Maryland and Delaware

Call and Reserve Space Today!

(301) 398-3311 (MD) (302) 737-0905 (DE)

Toll-Free 1-800-523-5397



**DO YOU HAVE QUESTIONS ABOUT YOUR HEALTH & FITNESS?**

CARDIO KINETIC'S PREVENTIVE MEDICINE CTR.  
AND UNION HOSPITAL OF CECIL COUNTY

INVITE YOU TO AN

**OPEN HOUSE**

**SAT., APRIL 11 - NOON-4:30**

52 N. Chapel St., Newark  
(302) 738-6635

Tour the Preventive Medicine Center facility and learn the facts about proper exercise and how you can get the MOST out of your running, walking or cycling.

Talk to Union Hospital representatives about their Health Check Programs such as Stop-Smoking, Weight Loss, Stress Management, Women's Health Issues, CPR and many other topics.

**FREE • FREE • FREE**

- Blood Pressure & Diabetes Screening
- Heart Test (measures Cardiovascular Health & Fitness Level)
- Body Fat Determination Test
- Health & Fitness Quizzes

SEE HOW STRESS TESTS ARE CONDUCTED  
NUTRITIONAL REFRESHMENTS!

REGISTER FOR A FREE ANNUAL PREVENTIVE MEDICINE CENTER MEMBERSHIP

**THE PREVENTIVE MEDICINE CENTER**

ESTABLISHED & OPERATED BY

CARDIO-KINETICS, INC.

"An Investment in Living"

52 N. Chapel St., Newark, DE 19711  
738-6635



SPORTS



University of Delaware quarterback Rich Gannon (center) is presented a certificate and a check for having been named the Chevrolet Player of the Game in the Blue Hens' 27-14 win over Navy on Nov. 15, 1986. Bill Stacy (right) of Chevrolet makes the presentation while Delaware coach Tubby Raymond looks on. The \$1,000 check will go to the university's general scholarship fund.

# Newarkers pace Hens

## Delaware track teams feature local runners

The University of Delaware men's and women's indoor track teams both placed third in the recent East Coast Conference championships with boosts from Newark area athletes.

Christiana High School graduate Rob Rainey led the Blue Hen men, winning the mile with a time of 4:13.19. He also ran the first leg of the two-mile medley relay, which Delaware won.

Tim Joines, a Glasgow High School graduate, also had a fine ECC meet, capturing sixth place in the 600-yard run and helping the Blue Hens' mile relay team to a second place finish.

Pat Castagno of Newark, a graduate of Salesianum School, also scored points in the ECC meet. He ran a leg of the two-mile relay, in which Delaware finished third.

Scoring points for the Blue

Hen women were Regina Knotts and Terri Norris, both graduates of Christiana High School.

Knotts, a Delaware sophomore, placed third in the ECC triple jump with a leap of 35 feet 6 3/4 inches. She also took fifth place in the long jump.

Norris captured fourth place in the shot put, with a toss of 33 feet 10 3/4 inches.

SPORTS FILE

All-Stars

Blue-Gold hoops

The 1987 Blue-Gold All-Star Basketball Game will be played Friday, April 3 at Smyrna High School with several local high school athletes participating.

The girls game will begin at 6 p.m. with the boys contest to follow at 8 p.m.

All proceeds will go to the Blue-Gold fund, which benefits Delaware's mentally retarded citizens.

Local girls representing the Blue squad will be Tawana Williams from Newark High School, Liz Burns from St. Mark's High School and Ronda VerCammen from Caravel Academy.

Area boys representing the Blue squad will be Newark's Aaron Gosa and Donny Wright and Christiana High School's David Chittum.

Lum's Pond

Fishing tournament

The Millcreek Lions Club will hold its sixth annual fishing tournament at Lum's Pond State Park near Newark on Saturday, May 2.

Offered will be \$1,000 in cash prizes, including \$500 for the largest bass by weight.

Tournament registration will be held 6-10 a.m. Saturday, May 2 at the park's main entrance or the boat launch area. The fee is \$15 for adults and \$10 for children under 16.

The contest will open at 7 a.m., with the final weigh-in at 3:30 p.m.

Proceeds benefit Lions Club projects: Special Olympics, the Blue-Gold All-Star Football Game, sight and hearing programs, and drug abuse prevention.

Wrestling

Newark club

The Newark Wrestling Club, a program for beginners and experienced wrestlers, is being conducted weekly through June 3 at Newark High School.

The program, sponsored by the Newark Department of Parks and Recreation, meets 7-9 p.m. Wednesdays in the school's back gymnasium. It is open to youths in sixth through 12th grades.

Paul McCloskey is the instructor, and there will be clinics and talks by guest coaches and experts.

Cost of the program is \$13 for city residents and \$15 for non-residents. The special clinics are free to members, and non-members can attend for \$3.

For more information about the Newark Wrestling Club, call the department at 366-7060 or visit its office in the Newark Municipal Building, 220 Elkton Rd.

Talk to us before you decide!  
Guaranteed quality and price!



Building Quality Pools for over 16 years.



CLARK'S POOL and SPA SHOPS

The Professional Pool and Spa People  
Pools • Spas • Patio Furniture • Chemicals • Service

140 Peoples Plaza  
Glasgow, DE  
(302) 834-0200

Dover, DE  
697-9009

MEMBER



Seaford, DE  
629-8835

\$2,000,000 Inventory Clearance

ROUND POOLS	SPAS	OVAL POOLS
12 ft. Classic IV - Reg. \$699 <b>\$499</b>	Tarreyton Reg. \$2,288 <b>\$1,788</b>	10x15 Crescent 1.5 Reg. \$699 <b>\$499</b>
15 Ft. Continental Reg. \$1,099 <b>\$849</b>	Mystic Reg. \$3,395 <b>\$2,895</b>	12x18 Crescent VI Reg. \$849 <b>\$599</b>
18 Ft. Almalite Reg. \$995 <b>\$749</b>	Newtown Reg. \$2,895 <b>\$2,495</b>	12x24 All Aluminum Reg. \$1,799 <b>\$1,599</b>
21 Ft. Classic VI Reg. \$1,199 <b>\$849</b>	Cape Cod Reg. \$3,295 <b>\$2,895</b>	15x30 All Aluminum Reg. \$2,295 <b>\$1,895</b>
(Many More To Choose From)		

COUPON

All Above Ground Replacement Liners

**20% OFF**

Blue Half Print Full Print

EXPIRES 4/9/87

COUPON

All Above & In-Ground SOLAR COVERS

**20% OFF**

EXPIRES 4/9/87

COUPON

**25% OFF ALL CHLORINE**

5 lbs. to 100 lbs.

EXPIRES 4/9/87

# STIHL® ALL-STAR TRIMMERS

BUY ANY LIGHTWEIGHT STIHL TRIMMER AND RECEIVE THIS LIGHTWEIGHT, DURABLE LINED JACKET

A \$3500 VALUE—FREE!

APRIL 1 TO MAY 16 ONLY!



TIM WITTMAN — #17 ALL-STAR DEFENDER FOR THE BALTIMORE BLAST

• QUALITY • SERVICE • STIHL®



THE WORLD'S LARGEST SELLING CHAINSAW BRAND. SPECIAL SAVINGS ALSO AVAILABLE ON THE STIHL "WOODBOS" CHAINSAW NOW \$299.99 ONLY

028 WITH 16" BAR AND CHAIN

**A \$6500 SAVINGS!**

\* PARTICIPATING DEALERS ONLY \* LIMITED QUANTITIES

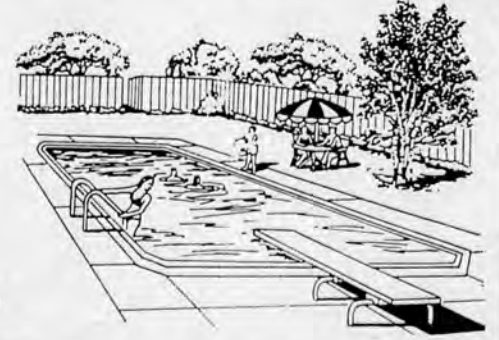


- |   |  |   |  |
|---|--|---|--|
| <b>CHESAPEAKE RENT-ALL</b><br>210 North Stokes Street<br>Havre de Grace<br>(301) 939-1720 | <b>HALLSTROM SAW SERVICE</b><br>2601 Pulaski Highway<br>North East<br>(301) 287-8959 | <b>COOPER LAWN AND HOME</b><br>2688 Pulaski Highway<br>Newark<br>(302) 834-0114 | <b>COOPER ENTERPRISES</b><br>364 Cecilton-Warwick Road<br>Cecilton<br>(301) 275-2195 |
|---|--|---|--|

INGROUND POOL

Quality vinyl lined pools, manufacturing from steel, aluminum, stainless steel, fiberglass or polymer, made to Joe Ordinis specs, for years of trouble free swimming pleasure available in 28 different shapes and sizes.

FROM **\$2888**  
Stop In And Consult Our Inground Pool Specialists To Discuss Your Needs



STORE HOURS:  
MON.-FRI. 10-9,  
SAT. 10-5  
SUN. 12-4

**JOE ORDINIS 368-SWIM**  
1620 Kirkwood Hwy.  
Newark, DE

### Wooden

#### Newark speech

John Wooden, the famed "Wizard of Westwood" who coached the UCLA Bruins to 10 national collegiate basketball championships in 12 years, will speak in Newark on Monday, April 13.

Wooden will be the featured guest during the second annual Blue Hen Hoop Club awards banquet, to be held at 7:30 p.m. in the University of Delaware's Clayton Hall.

Wooden is a native of Indiana who was an All-America basketball player at Purdue University before becoming a coach.

He coached for 40 years, recording an overall record of 885 wins and just 203 losses.

Wooden spent 27 years as head coach of UCLA, where his teams won 620 and lost just 147 games.

Under Wooden, UCLA won 10 NCAA championships in 12 years and seven consecutively. And his teams won 38 straight

NCAA tournament games.

In addition, UCLA holds the all-time NCAA win-streak record—88.

Tickets for the banquet cost \$25 for the general public and \$18 for students. For details, write the Blue Hen Hoop Club at P.O. Box 752, Wilmington, DE 19899.

### Wrestling

#### Summer camp

The Newark Wrestling Boosters Club will sponsor a summer wrestling camp Aug. 10-14 at Newark High School.

The camp, directed by former Newark High state champion and Lock Haven (Pa.) University star Dicky Howell, is designed for wrestlers of all ages and experience levels.

Among the instructors will be Howell's brothers, Brad and Kurt. The latter is a four-time state high school champion who as a Clemson University freshman is ranked 10th nationally in the 118-pound weight

class.

Also on hand will be Lock Haven wrestlers Matt Avery and John Barrett, Newark High assistant coach Paul McCloskey and Dick Howell, father of the Howells.

For details or a camp brochure, call 737-7655 or write: Wrestling Camp, c/o Dick Howell, 1172 Elkton Rd., Newark, DE 19711.

### Triathlon

#### Gore-Tex event

The fifth annual Gore-Tex Triathlon will be held Saturday, May 2 at Brandywine Creek State Park near Wilmington.

The event, which benefits the American Heart Association of Delaware, consists of a 12.1 miles of bicycle riding, a 4.7 mile run and 3 miles of flat-water canoeing.

Competing in this year's triathlon will be Olympic gold medalist Connie Carpenter Phinney and 1986 U.S. pro cycl-

ing champion Thomas Prehn.

Phinney will speak at the pre-race dinner Friday, May 1 at St. Anthony's Club, Fournier Hall, Wilmington.

The race entry fees are \$25 for individual entrants, \$40 for two-person teams and \$72 for four-person teams.

Entry deadline is Saturday, April 18. For entry forms, send a stamped self-addressed envelope to the American Heart Association of Delaware, 4-C Trolley Square, Wilmington, DE 19806.

The 1986 Gore-Tex Triathlon raised more than \$12,000 for the Heart Association.

### Tennis

#### Lessons offered

Registration for spring tennis classes is now being accepted by the Newark Department of Parks and Recreation.

The department has schedul-

ed classes for youths and adults, and has instituted the National Tennis Rating Program to help participants determine their skill levels.

NTRP clinics are scheduled April 4 and 7, and May 9, prior to the start of class sessions. All will be held at Barksdale Park.

Clinics for adults will be held 9-10:30 a.m. Saturday, April 4 and 6:30-8 p.m. Tuesday, April 7. A clinic for youths will be held 11 a.m. to 12:30 p.m. Saturday, April 4.

The May 9 clinic will be held 1-3 p.m. and will be for both youths and adults.

Classes will be held in two sessions, April 13 to May 9 and May 18 to June 15.

Cost of tennis classes are \$14 for city residents and \$16 for non-residents. For details, call 366-7060.

### Winners

#### Newark bowlers

Seven Newark area youths won prizes in the Delaware State

Young American Bowling Alliance tournament held March 21-22 at Midway Bowl in Rehoboth.

Lee Vanderhoef of Blue Hen Lanes took honors in boys Division IV, rolling a scratch all-events score of 1,189. He finished third in the singles tournament, rolling 539.

Angie Megahan of Blue Hens Lanes finished first in girls Division I singles action, rolling a 689.

In girls Division IV, Tammy Wallace of Pike Creek Lanes took top honors, rolling a 538.

Dawn Hopkins of Blue Hen Lanes tied for second in girls Division II with a 610 and Nicole Markey of Brookside Bowl placed third in girls Division III with a 541.

In the boys handicap all-events contest, Kevin Bowlby of Brookside Bowl won boys Division II with a total of 1,852 pins and David Atchley of Brookside Bowl won boys Division III with a total of 1,580 pins.

### RELAYS/from 1b

lay off, even though I ran well today."

Brans and the Spartan distance squad did run well Saturday against some stiff competition. The Spartan team of Brans, Lennon, James Fletcher and James Feeley took first place in the 4 x 1,600 meter relay (18:38.7).

The same team, with Dan Moye replacing Feeley, placed second in the distance medley (11:09) which insured the overall fourth place team finish.

"Martin's had a good recovery and he's about 75 percent in shape and it's his confidence that he's got to get back," said Spartan head coach Joe O'Neill. "He did a real nice job today as did all our runners. I couldn't be more pleased."

St. Mark's also won second place points in the discus relay (248-7 feet) with the team of Mike Murphy and Steve Torres. Christiana also did well in the discus, gaining third place with the team of Troy Rodulunas and Steve Marra (238).

Newark's sprint squad of Asbury Wilkens, Nathaniel Kent, Derrick Jackson and Loren Barton proved it was the fastest by claiming the 4 x 100 meter relay (44.5).

In the girls competition, Christiana was the only area school to record a first place finish. The Vikings captured the discus relay event (179-3) with the team of Wanda Brown and Krista Kendall.

Christiana also fared well in the 4 x 200 meter relay, capturing third place (1:50.5) with a team consisting of two sophomores, Bartina Cornish and Anya Mayfield, one junior, Laurie Copeland, and freshman sensation Dianna Pitts.

"I was really pleased with our efforts, particularly considering we're in a rebuilding year," said Viking girls coach Charles Micheal. "We're hoping to build some pride into our program and Saturday's results certainly helped."

St. Mark's gained three second place performances in the field events. Malla Madric and Chris Miller combined for a relay long jump of 29-11½ while the Spartan discus and shot put crew of Patty Welch and Carrie Rash combined for throws of 174-5 and 62-5½ respectively.

The Spartans also recorded a third place finish from it's 4 x 400 meter relay team of Pam Leffler, Julie Dombrowski, Carisa White and Madric (4:09.4).

## WOMEN 35 AND OLDER This May Concern You!

### Osteoporosis, A Woman's Issue...

Women have approximately 30% less bone mass than men to begin with, and at menopause, women lose bone twice as fast as men do. During the first 5-6 years after menopause, women lose bone mass up to six times as rapidly as men. This may result in the bones becoming too thin and weak to withstand the physical stresses of everyday living.

- Assessment and Counseling
  - Dual Photon Technique used for diagnosis.
  - Simple as Chest X-Ray
- Endorsed by American Medical Association & American College of Nuclear Physicians

## DELAWARE NUCLEAR MEDICINE

CALL: (302) 368-3000

For Information and Appointments  
Suite 330, Christiana Medical Center  
Newark, DE 19702  
Across From Christiana Mall

## QUALITY...THE GREATEST ECONOMY OF ALL.

"We Care Enough To Build It Better"



Pool Design, Advanced Engineering & Construction Methods Assure You a Lifetime of Swimming Pleasure

Now is the right time to buy  
at the right price

BE READY TO SWIM ALL SUMMER...

# Swift Pools

CALL NOW...  
OR VISIT OUR POOL PARK TODAY! OPEN 7 DAYS A WEEK!  
1123 Kirkwood Hwy., Newark, DE  
738-9800

## "Kick" the costly Electric Habit and switch to Money Saving LP GAS to heat your water

Call KEEN PROPANE for the facts about saving with Propane Gas.

# WE'LL PAY YOU \$20 TO CUT YOUR ELECTRIC WATER HEATING BILL IN HALF!

### Switch To A Gas Hot Water Heater And Save 3 Ways!

#### 1 SAVE UP TO 40 - 50% ON YOUR ELECTRIC WATER HEATING BILL

By converting to a high efficiency gas water heater save as much as \$300 a year\* for a family of four. The bigger the family, the bigger the savings. And the money you'll save in one year could easily cover the cost of conversion - heater, delivery, installation and gas hook-up.

#### 2 SAVE MONEY WITH GAS HOT WATER HEATING

Your local dealer recommends a new high efficiency gas hot water heater for quick recovery and low operating costs. Available in 30, 40, and 50 gallon sizes, the tank has 2 inches of styrofoam insulation and is glass lined to reduce stand-by heat loss dramatically. The high efficient gas hot water heater can pay for itself in one year with the savings realized on your energy bill!

#### 3 SAVE WITH A SPECIAL \$20 REBATE!

For a limited time the Delmarva Gas Association (through a participating dealer) is offering \$20 back on the purchase of your high efficient gas hot water heater.\* So don't delay...convert to gas right away!



Rodgers Rd.  
New Castle, DE  
Showroom Open  
Mon. thru Fri. 8 AM - 5 PM



WE SUPPORT  
GAS CHECK

Member of the  
DELMARVA GAS ASSOCIATION, INC.



PROpane SALES & SERVICE  
151 Rogers Rd.  
New Castle, DE  
(302) 584-4565

RT. 202  
1 1/2 Mi. So. of Rt. 11  
Concordville, PA 19331  
486-7625 or 2028

CURTIS AVE. & RT. 40  
Elkton, MD 21821  
215-458-4555  
1-800-632-8427

Main Plant:  
4963 New Castle Ave.  
Wilmington, DE 19829  
(302) 594-4545

126 N. NEW ST.  
Dover, DE 19901  
(302) 738-8814

ORANGE ST. & EDEN RD.  
Millsboro, NJ 08222  
(609) 327-3277

## Southern States

# April Shower of Values

**Dogwoods**  
2 ft.-3 ft.  
**\$12<sup>95</sup>**

5 ft.-6 ft.  
**\$13<sup>95</sup>**

**Azaleas**  
**2 for \$5<sup>00</sup>**  
Check Our Everyday Low Prices on

- Rhododendrons
- Flowering Shrubs
- Evergreen Shrubs

**Hyponex Potting Soil**  
**\$1<sup>49</sup>**  
40 lbs. After Double Rebate

**Peat Moss**  
**\$7<sup>99</sup>**  
cu. ft.

**Pine Mulch**  
3 cu. ft.  
**\$2<sup>59</sup>**  
after rebate

**Hyponex Top Soil**  
**99¢**  
40 lbs. After Double Rebate

YOUR  
LAWN &  
GARDEN  
CENTER

800 Ogletown Rd., Newark, DE 302-738-0330

SALE  
ENDS  
SATURDAY

## Quality for Everyone

BUSINESS

# International brews

Miller sees increased demand for beers from around the globe

by Neil Thomas

Take wine. Now there is a drink for folks who like to swirl, swish and argue for hours over minute differences in taste. And they keep notebooks on where it came from, when it was made and whose feet squashed the grapes.

Beer, on the other hand, is a Real Guy's drink. No swishing, no swirling. Just good old American chugging. And it all tastes the same, Bud, Miller, you name it. No need for some fancy cellar; just stow it in the fridge.

That, at least, used to be the popular perception of the two beverages. But Ed Miller of Peddler's Liquors in Christiana says things are beginning to change, with an increasing number of beer quaffers looking for variety and taking their drink a little more seriously.

To accommodate the growing market, Miller has begun expanding his selection of imported beers. And we're not just talking Molson Golden here.

Try Nordik Wolf from Sweden, Chihuahua from Mexico, Tsingtao from China, Red Stripe from Jamaica or Samuel Smith, "the celebrated oatmeal stout" from England.

In all, Miller carries more than 100 brands from 21 different countries.

"We saw a need for this about six months ago," Miller said of his imported beer section. "It started very small, maybe a case a week. Now we sell 15-20 cases a week."

And the beer buyers choose their brews much in the manner of wine connoisseurs, by the bottle or by the carefully selected six-pack, Miller said.

"Like people who like a burgundy wine, people who like

dark beer will try all the different dark beers," he said. "People who like light beer will try all the lights. Some will try everything from a particular country to see what they like, all Canadian or all English."

The beers are interesting in their variety. Lambic varieties — the most expensive at more than \$4 per bottle — are brewed for one whole year, after which fruit is added and the resulting broth is brewed a second time.

They are bottled with a cork and a cap, and Miller said they have "an extremely different taste, not like beer and not quite like wine either."

Another type of beer is brewed by Trappist monks, who do not filter it believing that takes away from the taste. One, from France, is made with champagne hops and yet another, from Belgium, is made with wild yeast.

And one claims on its label to be brewed in "Paradise," for which Miller had long been searching and found to be in New Guinea.

"There are a lot of different stories about the beers. It is as interesting to find out the stories as it is to drink the beers," Miller said.

"Like wine," he said, "beer drinking can be a social thing. People like to be able to talk about it, it's a conversation piece. There is a lot to say about wine, and a lot to say about beer."

"It is interesting to find out what makes one beer different from another, and to learn that little tidbit you wouldn't ordinarily know."

At his adjacent Peddler's Pub business, Miller has begun promoting the foreign beers with an "Around the World Beer Tour." Patrons who sample 88 of the 115 brands available will win a mug inscribed with their names and the dates of tour completion.

Miller is constantly trying to

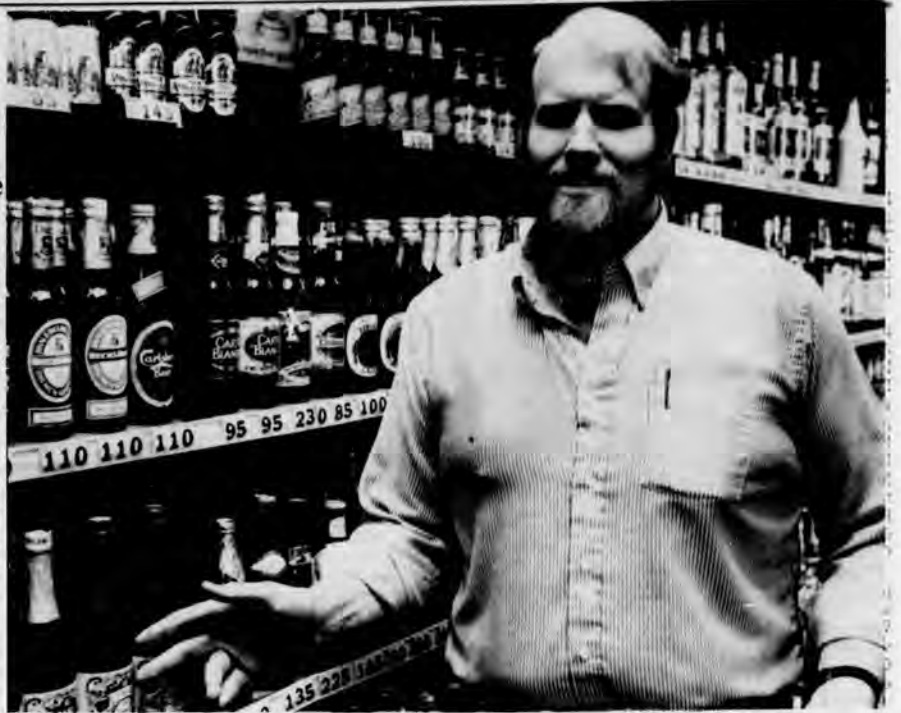
add to his collection, accepting tips from customers and putting out the word to distributors that he is in the market for unusual brews.

Currently he is trying — unsuccessfully — to land the Mexican beer Corona, which is having phenomenal popularity in the west.

But he'll keep trying. After all, it took nine months to land imported Swiss Lowenbrau.

And he is also building a stock of "boutique" beers from small American breweries. Anchor Steam, Boulder Pale Ale, and Schell, which is made in the U.S. under strict German brewing requirements.

In fact, Miller said the search is part of the fun. "The wine drinkers have always had thousands of choices. The beer drinkers didn't. Now they have choice."



Ed Miller with a small sampling of his large stock of imported beer.



The Newark Post will publish a directory on special hours of worship for Palm Sunday and Easter services on April 18th. Call today to participate. For More Information

Call Your Advertising Representative Today  
**737-0905**



**COMPLETE REBUILT  
AUTOMATIC TRANSMISSION**

\$23500

PLUS FLUID

100% WARRANTY PLUS FREE Local Towing

**WILMINGTON**  
"A" ST. &  
S. MARKET  
655-0275

**NEWARK**  
2860  
OGLETOWN RD.  
368-8234

DOVER 803 FOREST ST. 674-8112  
*15 Other Stores Throughout Delaware Valley*

89 & AWD NEWER CARS EXCEPT METRIC & FRONT WHEEL DRIVE  
**EACH SHOP LOCALLY OWNED AND OPERATED**

Sign Design and Construction  
is Our Only Business



TUPP  
SIGNS

457 E. New Churchman's Rd.  
New Castle, DE 19720

Call 322-1600

For 58 years, we designed and built signs for large and small companies in Delaware, New Jersey and Pennsylvania. That history is the best testimonial to our quality and skill.

Now Thru April 15th Only:

## SCHAGRINGAS Co.

WILL PAY YOU \$20  
TO CUT YOUR ELECTRIC  
WATER HEATING BILL  
IN HALF!

**FOR ELECTRIC HOMES...  
WITHOUT A CHIMNEY:**  
New! Through-The-Wall Gas Water Heater, by Bradford-White

**SPECIAL: Now through April 15th!**

\$319<sup>95</sup>

After Rebate  
(Before Rebate You Pay \$339.95)



(40 GAL. CAPACITY)

EXTRA BONUS!  
SAVE 1/2 OFF

Installation of your new LP Gas hot water heater. 3/15-4/15/87.

IF YOU'VE HELD OFF REPLACING YOUR ELECTRIC WATER HEATER TO A GAS MODEL,  
**NOW YOU HAVE NO EXCUSE!**



Switch to a Gas Hot Water Heater And Save Even More:

- SAVE UP TO \$350/YEAR, OR \$25-\$30 MONTHLY, OFF YOUR WATER HEATING BILL!  
By converting from an expensive to operate electric water heater to a high efficiency, foam insulated propane gas water heater—you'll be saving your family of four as much as \$350 per year!
- PROPANE GAS GIVES YOU OCEANS OF HOT WATER FOR 1/2 THE COMPARABLE COST OF ELECTRIC MODELS! Quick recovery means you can all shower, do laundry and dishes without waiting for hours for the water heater to heat up!
- THE HIGH EFFICIENCY GAS HOT WATER HEATER CAN PAY FOR ITSELF IN ONE YEAR, WITH THE SAVINGS YOU'LL POCKET ON YOUR ENERGY BILL!

★ SAVE WITH A SPECIAL \$20 REBATE! ★

Now through April 15th, 1987, the Delmarva Gas Association through SchagrInGas Co., is offering \$20 back on the purchase of a new gas hot water heater. Requirements for rebate are as follows: You must be replacing an electric water heater, & be a gas customer of SchagrInGas Co. This offer is valid only for new water heater installations between 3/15-4/15/87. Does not apply to prior sales, or natural gas replacements.

—UNDERGROUND GAS SERVICE INSTALLED PRACTICALLY ANYWHERE—

## - SCHAGRINGAS Co. -

24 HR. EMERGENCY SERVICE WITH RADIO DISPATCHED TRUCKS.

MEMBER OF THE DELMARVA GAS ASSOCIATION.

WE SUPPORT



1000 N. BROAD ST. MIDDLETOWN, Del. • 225 S. BRIDGE ST. (Rte. 213) ELKTON, Md.

Newark: 834-5160 • Wilm: 658-2000 • Elkton: (301) 398-3400 • Toll-free from PA, MD or NJ: 1-800-341-4022

Both Showrooms & Service Dept. Open Mon.-Fri. 8AM-5PM Saturdays Middletown 8AM-12 Noon Elkton 9AM-12 Noon

SINCE 1932: THE ORIGINAL ENERGY EXPERTS!



THE LARGEST INDEPENDENT PROPANE GAS DEALER IN DELAWARE! CALL OUR ENERGY EXPERTS TODAY!

BUSINESS

BUSINESS FILE

Christiana

Hilton opens

The Christiana Hilton Inn, located near Newark, celebrated its grand opening Thursday with a luncheon for the corporate community and a colonial theme party in the evening for potential clients.

The grand opening luncheon, a private gathering held in Ashley's Restaurant, was attended by more than 70 guests. In attendance at the luncheon were Sam Wells, president of American Trading Real Estate Properties, owner of the hotel; Robert James, president of MHM, Inc., the hotel's management company; and Lloyd Farwell, executive vice president of Hilton Inns, Hilton Hotel Corp.

A colonial theme party complete with such dignified guests as George and Martha Washington, Ben Franklin, Betsy Ross and Delaware's own Caesar Rodney, was held in the evening.

More than 700 guests embarked on a journey throughout the hotel, visiting eight locations including Ashley's Restaurant, Ashley's Lounge, Brasserie, The Conservatory, The Board Room and a meeting room.

The final stop, the Christiana Ballroom, was a colonial village revisited, with store fronts, a Delaware port and an array of delectable treats.

The Christiana Hilton Inn is a 205-room luxury lodging facility blending old-world colonial elegance with modern comforts.

The hotel is a development of American Trading Real Estate Properties, Inc., an established national developer of high quality commercial real estate from coast to coast.

USA

Graduate honored

James "Mark" Dolin of Charlestown, W.Va., a graduate of the Newark-based USA Training Academy home study course, has been honored by the National Home Study Council.

Dolin was named one of the nation's outstanding home study graduates, and was honored Feb. 25 at the Washington, D.C. Navy Yard Officer's Club.

He was one of 12 finalists chosen from among 72 nominees. A total of 97 schools enrolling two million students make up the NHSC.

Dolin was presented his award by Paul Teeven, president of USA Training Academy.

The academy, founded in 1970, offers a combination home study-resident course in tractor trailer driving. The home office is in Newark, and resident sites are located in Pensacola, Fla., Clarksville, Tenn. and Ripley, W.Va.

Easter bunny

Christiana Mall

The Easter bunny will be the special guest at a "Mad Hatter's Tea Party" at 9:30 a.m. Saturday, April 4 at Christiana Mall.

Children and parents are invited to attend the event, which will include "The Amazing Wonderland Looking Glass Revue" presented by Entertainment Originals.

Children will receive Easter coloring books.

After the party, the Easter bunny will return to his Wonderland-inspired house near the Marianne Shop. Children may visit and have their pictures taken with the Easter bunny from 11 a.m. to 8 p.m. Monday through Saturday and 11 a.m. to 6 p.m. Sunday through April 18.

Also, the revue will be performed at 3 and 5 p.m. Friday, April 3; at 1, 3 and 5 p.m. Saturday, April 4; and at noon, 2 and 4 p.m. Sunday, April 5.

New office

Liberty Mutual

Liberty Mutual Insurance has opened a new Newark office at 25 Prestbury Square Building.

The company's local representative is William McEntee.

Liberty Mutual opened its first office in Delaware in 1917 and currently employs 35 people in two offices in the state.

Liberty Mutual offers automobile, home, life and business insurance. It is the fifth largest property and casualty insurance company in the nation and has more than 20,000 employees.



The first customers make their way into the sparkling new Bradlee's department store in College Square Shopping Center Thursday following ribbon-cutting ceremonies.

Sale Ends April 15

MADE IN U.S.A. 2231 204 404

**TOUGH ON THE JOB... GENTLE ON YOUR FEET.**

Great comfort from extra narrow to extra wide

**\*\$10 OFF MEN'S \*\$6 OFF LADIES**

- \*Long wearing comfort insoles
- \*Steel shank foot support
- \*Red Wing's comfort SuperSole

**RED WING SHOES STORE**  
PRICES CORNER SHOPPING CENTER  
(302) 994-1210

**DOLLARS AND SENSE**  
By Charles E. Kennard

Question: For years we have heard the best investment on earth is earth. Is this still true post tax reform?

Answer: If you own your home, congratulations! Tax reform was kind to single family homeowners, leaving intact deductions for mortgage interest and property taxes. Otherwise, real estate took a tumble. Tax reform virtually eliminated passive losses from tax shelters, lengthened depreciation schedules, and ended preferential taxes on capital gains.

A capsule look at the treatment of real estate:

- \*Your home - Because the top tax rate will be lowered to 28%, deductions for mortgage interest and property taxes are worth less.
- \*Second home - If you use it as a vacation home, no change. You can still deduct mortgage interest and property taxes.
- \*Rental property - Losses up to \$25,000 could offset other income. That amount would be phased out for taxpayers with adjusted gross income between \$100,000 and \$150,000.
- \*Real estate syndications - Tax shelter syndications were hit hard. Syndication losses are only able to offset profits from income-oriented syndications.

Question: How can I calculate the amount of interest that will be deductible on my residence, if I refinance my mortgage?

Answer: The Tax Reform Act of 1986 allows the interest on your principal residence and other residence (like a vacation home) to remain deductible, but, as you are aware, with new limitations. The allowable interest deduction will only be on outstanding debt that does not exceed what you originally paid for your home, plus what you have spent to make improvements. An exception to this rule would be made for loans for educational or medical purposes.

Also deductible will be interest on home equity loans that work similar to a revolving credit account that is secured by your home as long as the above parameters are satisfied. Homes have traditionally been a source of long term financial security for families. Although many are rushing out to refinance their mortgage in order to pay off consumer debts, caution should be exercised. A total financial review should be completed before refinancing is undertaken.

**Delaware Financial Advisors, Inc.**  
100 Chapman Road  
P.O. Box 8118  
Newark, DE 19714  
302-731-7350

(KOREAN KARATE)  
**TAE KWON-DO**  
The Delaware Institute of Martial Arts  
Honoring God & Country

DEVELOP

- \*Self Confidence • Coordination • Self Control
- \*Physical Fitness • Self Defense • Perseverance

LOCATION: Fairwinds Christian School  
Seymour Ave., Bear, DE  
(Fairwinds Community Center)

Off U.S. Route 40 For Info. Call 731-5788

**Penn-Jersey AUTO STORES**

**KAR PRODUCTS DIST. INC.**  
2 LOCATIONS  
Cecil & Kent County's Most Complete Auto Stores

202 E. Pulaski Hwy. Elkton, Md. 398-2242

Kent Plaza Chestertown, Md. 778-2566

**TIRE WAREHOUSE COMPANY**

**THANK YOU**

We would like to sincerely thank everyone for their support of the GRAND OPENING of our Glasgow, Delaware Store. We appreciate the warm welcome and our opening week was a huge success!

Our John "Deere Season" Promotion is still going on!  
FREE GIFTS or INSTANT CASH DISCOUNTS WITH PURCHASE. ASK FOR DETAILS

Stop In & See The 1987 Line Of John Deere Mowers & Tractors

**Spring Savings Throughout Both Stores!**

Now There Are 2 Locations To Serve You

**COOPER ENTERPRISES**  
(Just 9 Miles S. Ches. City, Md.)  
CECILTON, MARYLAND  
(301) 275-2195

**COOPER'S LAWN and HOME**  
2688 Pulaski Hwy. (Rt. 40)  
GLASGOW, DELAWARE  
(302) 834-0114

VISA Use your John Deere Credit Card... 90 days same as cash

MasterCard

Now There Are 2 Locations To Serve You

**STEEL RADIAL TIRES Your Choice!**

Whitewall Deluxe Tires Glass Belted or 4-PLY POLY \$27.95

SIZE	PRICE	SIZE	PRICE
155/80R13	\$35.95	205/75R14	\$46.95
165/80R13	\$37.95	215/75R14	\$48.95
175/80R13	\$39.95	205/75R15	\$49.95
185/80R13	\$41.95	215/75R15	\$50.95
185/75R14	\$43.95	225/75R15	\$52.95
195/75R14	\$44.95	235/75R15	\$54.95

With All Tire Purchases - FREE MOUNTING, ROTATION, VALVE STEMS

**Special Tire BLOW OUT**

**STEEL RADIAL 165/75R13**  
Only 24 Left At

**\$26.95**

**UNIVERSAL JOINTS**  
To fit most popular cars.

**5.99** Ea.

289205-230

Limited to store stock.

**PROGRESSIVE CUSTOM WHEELER**

**MONTE CARLO LANDAU**

- \* European modular style
- \* Chrome plated rim & center with black studs.
- 29100-410

**CALIFORNIA DOUBLE WIRE BASKET**

- \* 72 spoke double wire basket
- \* Chrome plated
- 291420-425

YOUR CHOICE: **39.99** Ea.

Sizes 13"-14" x 6 Wheels

**DOMESTIC ALTERNATORS**  
Excluding 70 amp and above alternators.

**19.99** Exch.

282202-298

WITH INTEGRAL REGULATORS **29.99** Exch.

REMANUFACTURED

**STP**

**turtle wax SUPER HARD SHELL LIQUID PASTE** 18 oz. 9.5 oz.

YOUR CHOICE: **2.99**

**POWER STEERING FLUID 77c**

**Premier Batteries Universal UT-48**

- \* Fits most cars
- \* 4 Year Warranty

**\$39.95** Buy Now!

**Premier 24-24F-74**

- \* 4 Year Warranty

**Batteries \$36.88 NOW**

**Premier UT-48**

**turtle wax**

**POWER STEERING FLUID 77c**

**SHOP EITHER CHESTERTOWN OR ELKTON**

**#1 IN QUALITY, PRICE & SERVICE**

HOURS: Mon-Thurs 9am-7pm, Fri-Sat 9am-5pm, Sun 10am-4pm

- \* TIRES
- \* BRAKES
- \* WHEEL BAL
- \* FRONT END
- \* SHOCKS
- \* BATTERIES
- \* PARTS & ACC

**TIRE PRO**

# Dusty doodads, musty magazines highlight house tour

Ladies and gentlemen, you are about to embark on the first annual tour of my house. This is a unique tour because I am not going to display elegant rooms decorated by megabuck people. Nor are you to see historical beds, or fabulously expensive works of art like a lapis lazuli table with golden legs. I won't show you gardens, fountains or rare orchids that would light the envy of the director of Longwood Gardens.

What makes this tour a one-of-a-kind event is what you won't see. I am going to reveal the places that held all the things I threw out. That's right, this is an empty space tour — the very best kind of tour because it won't cost you a single, solitary cent to duplicate my astounding feat.

My doctor suspects the cause of all this untoward activity was a virulent case of cleaning-

out-itus that attacked me after returning from two weeks at the beach where the family got along quite nicely with two pots, a frying pan, six rickety chairs, paper plates and a change of clothes.

Let's start in the attic where you can view two empty footlockers which held old sheets and bedspreads that could have been used as drop cloths had we ever decided to paint the house. Next to them is a vacant space for six cans of gummy and hardening aquamarine paint intended for some bedroom, I forget which.

Coming down to the next floor, you can see the untenanted shelf in the linen closet that housed sheets waiting to audition for a place in the footlockers in the attic. That very same shelf was also home to the sheets, a wedding gift, so densely covered with

oranges, greens and purple fern fronds that restful night's sleep was out of the question. Two shelves down is a void that accommodated the towels my mother gave me when she cleaned her linen closet 19 years ago.

Then there are the children's closets. In the interest of family, we will pass those by. Suffice it to say that I did manage to excise a collection of crab claws my eldest had brought back from camp when he was a fourth grader.

In the kitchen you can ooh and ah at the spot that held handleless, scratched Teflon frying pan, a warped and blackened cookie tray, and the bottom part of the double boiler that my son lined with burned marshmallows.

This room also has (1) the cupboard that hosted 14 coffee mugs with broken handles and

two chipped saucers without cups; (2) the drawer that held four rusting vegetable knives and a meat fork with two bent tines; and (3) a spice cupboard inhabited by three yellow, rusting metal cans — each with one teaspoon of chili powder.

Moving into the dining room you must inspect the drawer that held eight sets of place mats — two which matched the purple and orange sheets in the linen closet, three of which were stained by cranberry jelly, and a linen set that required a professional ironer.

In another drawer you won't be able to see several dozen two- and three-inch candle stubs in assorted pastel shades — none matching. In this same room is the empty space for the iced-tea glasses that looked so elegant but were too tall to fit in the dishwasher.

Next is the family room with

## HOMEFRONT

by Dorothy Hall



six feet of shelves abandoned by National Geographics, and another three feet of shelves emptied of a dozen, minus-no-more-than-three-pieces, jigsaw puzzles.

In the basement, I am exhibiting the corner which possessed a rocker with only one rocker, four broken picture

frames and the fluorescent bulb converter kit we've been meaning to put in for the last three years.

What is so especially wonderful about all this is that now I have no room to store that kit for making a grandfather clock I saw in a catalog I almost threw out.

### LIFE FILE

#### ACS

##### Breast cancer campaign

A breast cancer awareness campaign will be undertaken this spring by the Delaware Division of the American Cancer Society.

The campaign is designed to educate health professionals and women about the life saving benefit of the early detection of breast cancer.

The campaign will open formally on Monday, April 6 at the Market Street Mall in Wilmington. It will include a conference April 25 at Wesley College in Dover entitled "Life, Getting on With It" for those who have had breast cancer.

For details, contact the ACS at 654-6267.

#### Divorce

##### Effects on children

The developmental effects of divorce on children will be discussed during the fourth annual Symposium on Developmental Disabilities to be held Friday, April 10 at the Alfred I. duPont Institute, Rockland Road, Wilmington. Dr. Melvin Roman of Albert

Einstein College of Medicine and the Bronx Municipal Hospital Center will deliver the keynote address on joint custody.

Roman, an internationally recognized expert on the psychological aspects of marriage and divorce, is the author of a landmark book on joint custody, "The Disposable Parent."

The symposium will also feature a panel discussion, including by Judge Robert D. Thompson of the Family Court of Delaware.

Cost is \$50. For details or to register, call 475-0110 or 764-5486.

#### Clinic

##### Freedom From Smoking

An American Lung Association Freedom From Smoking clinic will be held April 20-May 27 at the Newark Emergency Center, 324 E. Main St.

The seven-session program provides individuals who have decided to quit smoking information, encouragement and support.

Meetings will be held 7-9 p.m. April 20 and 27, and May 4, 6, 11, 18 and 27.

The fee is \$35. For details or to register, call the ALA of Delaware at 655-7258

#### Meeting

##### Mended Hearts

A meeting of the Mended Hearts of Delaware will be held at 7:30 p.m. Monday, April 6 in Room 1306 of Christiana Hospital.

Richard R. Shaw of Cardio-Kinetics Inc. will discuss "Exercise for the Recovering Cardiac Patient." Various types of equipment will be demonstrated.

Mended Hearts is a national organization which provides patients and their families with moral support before and after cardiac surgery. For details, call 798-8216.

#### Better Breathing

##### Support group

A Better Breathing support group for people with emphysema, chronic bronchitis and adult asthma will meet 7-8:30 p.m. Monday, April 6 at National Medical Homecare, 4637 Stanton-Ogletown Rd., Newark.

Charles Marvil of Christiana Hospital will speak on "Emotions and Lung Disease." To register, call 655-7258

THE PROFESSIONALS  
**Colonial** JEWELERS

**APRIL IS**  
**DIAMOND MONTH**

**DIAMOND SALE**

**DIAMOND SOLITAIRE SAVINGS**

SIZE	LIST	SALE
1/4 ct.	\$ 450	\$249 <sup>00</sup>
1/3 ct.	\$ 600	\$349 <sup>00</sup>
1/2 ct.	\$ 998	\$579 <sup>00</sup>
3/4 ct.	\$1600	\$999 <sup>00</sup>
1 ct.	\$2400	\$1599

UP TO **50% SAVINGS**

DIAMOND PENDANT & EARRING SET

**50% OFF**  
1/2 ct. T.W.

Reg. \$680  
**SALE \$339<sup>95</sup>**

**50% OFF**  
14KT DIAMOND BANGLE BRACELET

LIST	SALE
1/4 ct. TW \$ 895.00	\$499.00
1/2 ct. TW \$1200.00	\$599.00
1 ct. TW \$2000.00	\$999.00

OPEN AN IN-STORE CHARGE ACCT. SMALL DEPOSIT WILL LAYAWAY YOUR DIAMOND AT THESE SALE PRICES

**Colonial** JEWELERS  
116 E. Main St. 398-3100 Elkton

EVERY DIAMOND IS REDUCED DURING THE DIAMOND MONTH OF APRIL

**Grand Opening**

**PETS EMPORIUM II**

FULL LINE OF *Pet Supplies*

SPECIAL 10 GAL. STARTER AQUARIUM \$19<sup>99</sup>

PARAKEET STARTER SET Includes Bird, Cage & Food \$19<sup>99</sup>

TROPICAL & SALT WATER FISH • BIRDS • FERRETS BUNNIES • DOG & CAT SUPPLIES

Now In The **PEOPLES PLAZA** - RT. 896 & 40  
**(302) 834-1118**

Visit Our Kirkwood Hwy. Store In The Astro Sc. 453-0442

**Cooper TIRES**

**SAVE \$\$ - BEST TIRE VALUES ANYWHERE!!**

P. Metric Sizes	Prices	Sizes	Prices
P155/80R13	\$32.36	P215/75R15	\$45.61
P165/80R13	34.66	P225/75R15	48.34
P175/80R13	35.57	P235/75R15	49.95
P185/80R13	37.40	155/SR13 BIK.	29.95
P185/75R14	39.67	165/SR13 BIK.	31.95
P195/75R14	40.59	185/70SR14	BIK. 38.75
P205/75R14	41.96	195/70SR14	BIK. 39.95
P215/75R14	45.37	175/70SR13	BIK. 33.50
P225/75R14	49.95	185/70SR13	BIK. 36.95
P205/75R15	43.83	205/70SR14	BIK. 47.50

**Steel Belted Radials**  
\*Steel Belted Radial for Strength & Service  
\*Positive Traction When You Need It Most!  
\*Single Stripe Whitewall

**Special Purchase**

**Cooper COBRA SR/GT**

**Performance Speed Rated All Season TIRES**  
\*Aggressive Block Tread Design  
\*2 Steel Cord Belts w/ Polyester Cord

**Discoverer Steel Belted Radials**  
\*All season tread design

Sizes	Sale Price
P195/75R14	\$49.95
P215/75R15	67.95
P235/75R15	69.95
7.50R16LT	82.25
30x9.50R15LT	76.21
31x10.50R15LT	85.36
31x11.50R15LT	89.62
33x12.50R15LT	97.15
LT215/85R16	77.39
LT235/85R16	84.55
8.75R16.5LT	82.13
9.50R16.5LT	91.00

**Clip These Coupons And Save \$\$**

**GAS SAVING ENGINE TUNE-UP**  
A.C. OR N.O. SPARK PLUGS & STANDARD IGNITION

4 Cy = \$33.00 6 Cy = \$39.00  
8 Cy = \$44.00

\* Electronic ignition charging and starting systems analysis • Install new plugs • Set timing • Check carburetor  
\* Check belts, hoses & air filters • Includes most cars and light trucks  
Plus 9 Point Vehicle Check  
Coupon Expires April 30, 1987

**DISC OR DRUM BRAKE SERVICE**

Special SAVE \$43.00 **\$39<sup>95</sup>** REG. \$82.95

Install new front brake pads or shoes • Re-pack front wheel bearings (excluding sealed bearings) • Inspect calipers and hydraulic system • On most U.S. cars Does not include metallic linings  
Plus 9 Point Vehicle Check  
Coupon Expires April 30, 1987

**Palumbo's CAR CARE CENTER**  
2515 Pulaski Highway - Next To Glass Kitchen - Route 40  
GLASGOW, DE In Delaware Cecil County Toll Free  
**(302) 368-2800 398-9191**  
American Express - VISA - M/CARD - Citibank and WSFS

LIFESTYLE

LIFE FILE

Seminar

Wildflower gardening

A wildflower gardening seminar will be held from 9:30-11:30 a.m. Saturday, April 4 at the Ashland Nature Center near Hockessin.

Sponsored by the Delaware Nature Education Society, the seminar is designed for those who are interested in adding wildflowers and ferns to their landscapes.

Speaking will be Dr. Richard Lighty, director of the Mt. Cuba Botanical Gardens, and Dr. Donald Huttleston, retired Longwood Gardens plant taxonomist.

Cost is \$7. The center is located off Brackenville Road. For details, call 239-2334.

Nursing Mothers

Spring conference

Nursing Mothers will hold its seventh annual spring conference Saturday, April 4 at St. Mark's High School near Newark.

The conference, to be held from 8 a.m. to 4 p.m., will feature three sessions of workshops covering more than 20 nursing and parenting topics.

Susan Turnbull Shoemaker, instructor of history at the University of Delaware, will present the keynote address.

Child care and a catered lunch will be available. For details or to register, call 656-5454.

Nursing Mothers is a non-profit organization which offers support and non-medical advice for those mothers who choose to breastfeed their babies. For information on the organization, call June Carney, counseling coordinator, at 995-2494.

Pain

Conference April 11

The Delaware Mental Health Association and the Delaware Pain Clinic will sponsor the second annual Pain Update Con-

ference from 8:30 a.m. to noon Saturday, April 11 at the Academy of Medicine, 925 Loving Ave., Wilmington.

The conference is free and open to anyone living in chronic pain, or who must deal with someone who is.

There will be presentations on psychological treatment, support groups, medicine and spirituality and wellness.

For details or to register, call 656-8308.

AHA

'Dance for Heart'

Local aerobics aficionados will be raising money for the American Heart Association of Delaware when they "Dance for Heart" the second week of April.

Dancers will seek pledges or contributions based on the number of aerobic exercise classes they attend during the week. All who collect \$25 will receive a "Dance for Heart" t-shirt.

For information on the program, call 654-5269.

Meetings

Arthritis Foundation

Organizations sponsored by the Delaware Chapter of the Arthritis Foundation has schedule three meetings in April.

The daytime club will meet at 10 a.m. Thursday, April 2 at the Methodist Country House, 4830 Kennett Pike, near Wilmington. Dr. James H. Newman will discuss "Recent Developments in Arthritis Research."

The lupus club will meet at 7 p.m. Wednesday, April 8 in Concord Presbyterian Church, Fairfax Boulevard and Foulk Road, near Wilmington. Lisa Ramone of Blue Cross-Blue Shield of Delaware will present "An Overview of Health Insurance Benefits Available Today."

For more information on Arthritis Foundation clubs, call 764-8254.



Dave Tatnall will air garden reports.

Tatnall airs garden reports

Newark area gardeners can learn gardening remedies and receive recommendations from University of Delaware extension horticulturalist Dave Tatnall on two springtime radio shows.

Tatnall will be guest garden expert on Newark radio station WNRK-AM from 10-11 a.m. Saturdays, April 4, 11 and 18. He will discuss the popular avocation and accept call-in questions. Tatnall will also speak on WDEL-AM's "Garden Clinic" program from 9-10 a.m. every Saturday in April and May.

The horticulturalist, who has been on the air with WDEL for more than 20 years, said the topics each Saturday are set by the callers.

"At this time of year we generally get questions about

houseplants, reseeding lawns, fertilizers for lawns and vegetable gardens and pruning of shade and fruit trees," he said.

Later in the season, questions turn to weed control, insects and diseases.

From June 1 to Aug. 30, the WDEL programs will be broadcast just the first and third Saturday of each month, still from 9-10 a.m. Weekly programs will resume in September and October.

Tatnall holds a bachelors degree from Penn State University and a master in ornamental horticulture from the University of Delaware.

He has been with the Delaware Cooperative Extension Service since 1962.

**Foot Specialist**  
\*Podiatrist\*  
**Dr. Thomas Velotti**  
Now Accepting New Patients

- Bunions
- Heel Spurs, Heel Pain
- Diabetic Foot Care
- Hammertoes
- Infant Foot Problems
- Foot Injuries
- Ingrown Nails
- Corns & Calluses
- Foot Surgery
- Sports Medicine
- Warts
- Orthotics

Evening • Saturday Appointments Available  
218 East Pulaski Highway  
Rt. 40, Across From The Elkton K-Mart  
Elkton, MD 21921 398-6009

**TAX RETURNS PREPARED**  
Save time. Save money  
**738-3272**  
Ask For Tim

**M&M** "OVER 30 YEARS IN NEWARK..."

**DRY CLEANERS**

**TWO CONVENIENT LOCATIONS:**  
• 11 N. Chapel St., Newark  
• Coffee Run Shopping Ctr. (Next to Doc's Meat Mkt.) Hockessin

**NO LIMIT! BRING AS MANY GARMENTS AS YOU LIKE!**

<p><b>COUPON</b></p> <p>• SPORT COATS • SLACKS • PLAIN SKIRTS • SWEATERS</p> <p><b>\$240</b></p> <p>COUPON PRICE REGULARLY \$2.50 Expires 4/30/87</p>	<p><b>COUPON</b></p> <p>• 2 PIECE MEN'S &amp; LADIES' SUITS • LADIES' DRESSES (PLAIN)</p> <p><b>\$480</b></p> <p>COUPON PRICE REGULARLY \$5.00 Expires 4/30/87</p>
---	--

PLEASE PRESENT COUPON WITH INCOMING ORDER

**THURS. & FRI. ONLY GRAND OPENING**

**ORTHOPEDIC SALE**

CHECK - VISA - MASTERCARD

Mon.-Sat. 10-8  
Sun. 1-7

Twin \$3750  
Full \$4500  
Queen \$6750

**C.O.D. WELCOME**

FREE Removal of Old Set \$5.00 OFF With Ad.

<p>NO SAG INNERSRING 15 YEAR WARRANTY EXTRA FIRM 312 COILS</p> <p>TWIN \$248.95 NOW \$129.95 SET REGULAR \$349.95 NOW \$159.95 SET QUEEN \$429.95 NOW \$198.95 SET KING \$648.95 NOW \$289.95 SET</p>	<p><b>YOUR CHOICE</b> with any set sold</p> <p>FREE • Bed Frames FREE • Delivery Within 15 Miles</p>	<p>Orthopedic Back Support 20 YEAR WARRANTY BACK COMFORT SUPREME</p> <p>Reg. SALE TWIN \$349.95 \$159.95 SET FULL \$429.95 \$219.95 SET QUEEN \$549.95 \$259.95 SET KING \$749.95 \$339.95 SET</p>
---	--	--

**DIRECT FACTORY TO YOU PRICES**  
**MATTRESS OUTLET (302) 322-2511**  
1507 DuPont Hwy., #3 Parkway Plaza, New Castle, Del.

**Johnson**

**Bay Head HARDWARE & MARINE**

JOHNSON POWERED BOSTON WHALER - MIRRO CRAFT - HYDRO GLASS - ZODIAC INFLATABLES

**24th Annual Spring Open House & Clear Decks Sale**  
Saturday, March 28 to Sunday, April 5th  
**WIN A JOHNSON COLT OUTBOARD SHOW SPECIALS - CLOSE OUTS**

Save To 50%

VISIT OUR JOHNSON/OMC FACTORY AUTHORIZED SERVICE & PARTS DEPARTMENT

Largest Marine Store in The Area  
NOS CHARTS - GIFTS - CLOTHING - FISHING DEPTS.  
**OPEN 7 DAYS A WEEK**  
207 South Bridge St. (Md. Route 213)  
In Elkton 301-398-4211

**CRUISE NIGHT**

This Sat., April 4th

From 4 p.m. Til

See **STREET RODS • CUSTOM CARS AND ENJOY**

- Gourmet Ice Cream
- Hot & Cold Sandwiches
- Soft Serve Ice Cream
- Crab Soup
- Deli Sandwiches
- Ice Cream Pies

Need Something Different for your next party?  
**ICE CREAM CAKES**

**The Great American ICE CREAM FACTORY**  
Ice Cream Parlor & Restaurant  
Rt. 40, Elkton, MD • (301) 398-4919  
1/2 mi. East of Rt. 213 - 1.7 mi. from DE Line  
Open 11 AM Tues.-Sat., 1 PM-Sun., Closed Mon.

**BYE-BYE BIFOCALS.**

Chances are, you'll never have to wear bifocals again. Because with Varilux, you'll see clearly at all distances. And there's no bifocal line. Choose from the latest fashion frames, glass or plastic lenses. Say goodbye to bifocals. Call today and ask for Varilux.

**VARILUX**  
Better than bifocals.

For more information please contact  
**DR. HOWARD B. STROMWASSER**  
OPTOMETRIST

92 E. Main St. Newark, DE 19711 302-368-4424

3 E. Main St. Rising Sun, MD 21711 301-658-4920

SAVE YOUR VISION

**B.J.'s AUTO REPAIRS**

30 YEARS EXPERIENCE

- Auto & Truck Painting
- Insurance Help Available
- Inside & Outside Detailing
- Customizing
- Body Work
- Free Written Estimates
- Foreign & Domestic Body Work
- Dye Vinyl Tops

Hours 8:30-5:30  
Sat. 8:00-Noon

We'll Have Your Car Back To You As Soon As Possible!

**COUPON \$50 OFF BODY WORK OVER \$200 FOR APPRAISALS** Expires 4/7/87

98 A-ABLE DRIVE  
Old Baltimore Industrial Park  
Newark, DE  
**(302) 453-9190**

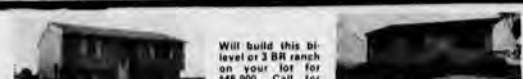






# LANDVEST REALTY

Builders • Developers



**NEW BI-LEVEL**  
2 BR, full basement, Andersen windows, rough-in bath in basement. Lot choice. \$58,900.

**NEW 3 BR RANCH**  
with full basement, Andersen windows, eat-in kitchen, wall to wall carpet. Lot choice. Elkon, \$58,900.

**3.2 ACRES**  
3 BR bi-level with 1 1/2 baths and country kitchen. Located just outside Elkon. Minutes from Newark, walking distance to Elem. School. Proposed construction. \$78,500.

**NORTH EAST**  
3/4 acre wooded lot. Quick access to Rt. 40 & 195. 3 BR ranch with full basement, Andersen windows, eat-in kitchen, wall-to-wall carpet. Proposed construction. \$58,900.

**DEER HAVEN**  
3 BR, bi-level, 1 1/2 baths, country kitchen, large area for family room, 1/2 acre lot with waterfront privileges for swimming, boating, fishing, proposed construction, minutes from Elkon. Only \$69,900.

**ARUNDEL-ELK NECK**  
1/2 A., 3 BR ranch, eat-in kitchen. Full basement, maintenance free, water rights to Elk River. \$58,900. Proposed construction. \$62,900.

**NORTH EAST**  
Mechanics Valley Rd., new construction, 3 BR ranch, full basement, public sewer, Andersen windows, eat-in kitchen, wall to wall carpet. \$62,900.

Build your new home with confidence. Landvest Builders are FHA approved builders. This means with every FHA built home, we offer a ten year warranty and can build your new home with LESS MONEY DOWN. Call immediately for details.

**BUILDING LOTS AVAILABLE**

Appleton Rd. - 2k Acres. 8 Acres. 4 Acres.  
Arundel - 1/2 Acre with waterfront privileges.  
Deerhaven - 1/2 Acre with waterfront privileges.  
Rt. 213 - Elkon - 3 Acres, 7 Acres, 12 Acres, Parcels.

We'll also build on your lot with your plans or choose from over 1,000 house plans of ours.

**ONE YEAR WARRANTY FOR BUYERS & SELLERS**

**FHA Approved BUILDERS 10 YR. WARRANTY**

**TEN YEAR WARRANTY**

**112 DELAWARE AVE. ELKTON, MD 398-2401**  
Evenings & Weekends 398-8326

In A Quiet Country Setting... Mon.-Fri. 9-5 Sat. 11-4, Sun. 12-5

## Winding Brook Gardens

**First Month's Rent Free**

Features Include:  
• Charming colonial architecture with handsome brick exteriors. • 1st floor patios and 2nd floor balconies with thermopane glass sliding doors. • Color co-ordinated kitchens with Formica counter tops, 2-door refrigerator-freezer. • Dishwasher • Garbage Disposal • Color co-ordinated ceramic tiled baths with full vanity. • Wall-to-wall carpeting throughout • Baseboard hot water heat with individually-controlled thermostats • Pre-wired cable TV and telephone outlets • Exceptional closet space • washer & dryer in each apt.

367 Fletchwood Rd., Cecil County, MD  
Between Elkon, MD & Newark, DE  
Call 398-9496 To Arrange A Personal Showing

## B. GARY SCOTT REALTORS

Relocation Experts

A WSPS company

**THE HIGHLANDS**-Cape Cod, 4 BR, 2 baths, family room has fireplace with raised hearth and mantle, glider door off country kitchen to screened-in patio. Very nice house in popular area. Community water and sewer. \$99,500. Call Jerry Voshell (302) 368-1621.

**DE LA PLAINE MANOR** - Close to the water, bi-level in woods, minutes to North East, MD. 3 BR, garage, central air, exciting property. #5225. \$76,900. Call Ben Wolfe (302) 368-1621.

**TWO RIVERS** - Elevated building lot in prime water-oriented community, mooring and beach rights. Perk approved in 1980. #5973. \$23,000. Call Jerry Voshell (302) 368-1621.

**CHERRY HILL RD.** - Ranch on 1 acre +/-, 3 BR with basement, convenient to Delaware and downtown Elkon. #5176. \$73,900. Call Ben Wolfe (302) 368-1621.

**(302) 368-1621**

**NOW SELLING OPEN SAT. & SUN. 12-4**

**PRESENTED BY**

**VALLEY STREAM**

**EVER GREEN ACRES**

Newark's finest community. Valley Stream is surrounded by a natural wood setting and offers 4 bedrooms, 2 1/2 bath Contemporaries constructed of wood and stone.

Reserve your lot now for one of the 14 remaining homes.

**Priced from \$147,900.**

DIR: Rt. 273 to Casho Mill Rd., R. on Church Rd., L. on Panorama Dr., R. on Woodshaw Rd.

For further information call DARLENE GREENE 998-3361 or construction trailer SAT. & SUN. 12-4 368-8418

**BRANDYWINE 478-4165**    **HERCULES PLAZA 429-0414**    **PIKE CREEK CENTER 998-3361**    **RELOCATION CENTER 654-3685**    **GREENVILLE CENTER 575-0880**

## Eastern Realty

"Your Quality Real Estate Professionals"

Main Street  
Elkon, Maryland 21921  
392-5115

**DON'T LET TIME SLIP AWAY...**

The agents at Eastern Realty will treat your home as if it were their own. DON'T PROCRASTINATE! Call one of our qualified agents at your convenience.

\*FREE MARKET ANALYSIS  
\*EXCELLENT WORKING RELATIONSHIP WITH FINANCIAL INSTITUTIONS FOR YOUR MORTGAGE NEEDS  
\*NEW CONSTRUCTION OPPORTUNITIES WITH THE COUNTY'S BEST MODULAR AND CUSTOM BUILDERS.  
\*EXTENSIVE ADVERTISING AVAILABLE FOR YOUR HOME IN CECIL COUNTY, HARFORD COUNTY AND DELAWARE PUBLICATIONS.

**PRIVACY ABOUND** on these 7 acres +/- of rolling, wooded countryside. Federal period home in need of renovation could be just the challenge for historic buffs. A second home on this property could be an income producer as well. Asking price: \$145,000. Call today for details.

Call one of our qualified Real Estate professionals at your convenience

Christopher Eastridge - Broker  
Joseph Bathon - 398-2511

Pam Feldscher - 398-8234  
Ursula Boudart - 1-658-5166

Be Our Neighbor

## Timber Brook

North East, MD

Open Sat. & Sun. 12-4  
Mon.-Fri. by Appointment  
Phone 301-287-2277

In Delaware Contact:  
Century 21 Goldborough  
Exclusive Agency  
302-836-1444

Located at the Head of the Chesapeake is **only** one reason the NEW Townhomes of Timberbrook are for you!

Country kitchens, finished basements, wooded lots, are just a few of the many options available to make this new home uniquely yours.

Plus you'll have boating, camping, fishing at your fingertips. Commuting made easy with I-95 1/2 mile away.

Reserve your lot NOW during our blueprint sale and receive up to **\$2,000** towards settlement costs or options. Priced from **\$59,900.00.**

Located on Route 272, just off Route 40, 1/4 mile from traffic light. Just past North East Plaza on the right.

A New P.L.D. Community With Something Special To Offer

## LARRY'S HOMES INC In Park

RT. 40 BEAR, DE 834-7009

PRE-OWNED HOMES Set Up & Ready To Move Into

**WHY RENT? YOU COULD BE BUYING YOUR OWN HOME!**

LOW DOWN PAYMENT LONG TERM FINANCING

OVER 100 LISTINGS

WE LIST & SELL PRIVATELY OWNED MOBILE HOMES READY FOR OCCUPANCY IN THESE AREA PARKS

- \*Glasgow Court \*Glasgow Pines I & II
- \*Maple Square \*Millcreek \*Park Place
- \*Summit Bridge \*Timberlane
- \*Village Brook \*Minquadele \*Stoney Chase
- \*Town & Country \*Whispering Pines

## SOUTHERN STATES PETROLEUM SERVICE

For all your gasoline, diesel, fuel & kerosene needs. See your Southern States dealer. We also have 24 hour burner service, automatic delivery, budget plans, radio dispatched delivery trucks.

### SOUTHERN STATES, ELKTON SERVICE

152 Railroad Ave., Elkon, MD  
Phone: MD 301-398-2181 or DE 302-366-1644

w/p 10/23-

**614 Commercial**

MEDICAL OFFICE, Furnished, for rent in Elkon. Located ideally on U.S. Rt. 40 in a professional building, with ample free parking. 301-398-6800.

**616 House for Rent**

ELKTON AREA Contemporary 3BR, 1 1/2 baths on 2 1/2 acres. Many features. \$725/mo. Available immediately.

Office space 1,650 square feet zoned R-1. \$600/mo. plus utilities. Available immediately.

Cape Cod 4BR, 1 1/2 baths. \$600/mo. plus utilities. Available immediately.

**ERA ALDN BUGHER ASSOCIATES 302-738-3200**

**602 Rooms**

Elkon & North East. Room or efficiency. Color TV. From \$45 w/ky. 301-398-4400 or 398-9855 or 287-9877.

NEWARK DE, room or efficiency. near Univ. from \$135/mo. 302-737-7319, 9am-5pm weekdays.

Newark near University Monthly. Room \$135; eff. \$175. 1 BR Apt. \$235. 3 BR house \$365. 302-737-7319, 9am-5pm weekdays.

Room or efficiency, Wilm. & New Castle area. Airport vicinity. Color TV, phone, refrig. From \$45 w/ky. 302-658-4191 or 328-7529.

**702 Housing for Sale**

**FOSSETT CO. REALTORS**

GREENFIELD ACRES RISING SUN 3 BR brick front rancher on approx. 1/2 acre. LR, kitchen/dining room combo, den, 2 full baths, 2 car garage, large basement. \$135,000.

NORTH HILLS RISING SUN 3 BR front rancher on approx. 1/2 acre. \$59,900.

NEAR RISING SUN CAPE COD 4 BR, 2 bath, kitchen, LR, DR, slate foyer, 2 car garage, large office, 2 out-buildings. Located close to Chamilly Manor Country Club & 195. Perfect for professional. 8 acres. \$135,000.

APPROX. 1/2 HOPEWILL RD., RISING SUN \$15,000.

3 1/2 ACRES Secluded, \$16,900. 1 ACRE Party wooded. \$9,500.

**FOSSETT CO. REALTORS**

FAIR HILL area-5 room office. Private bath & kitchen. Available April 15th, 1987. \$550/mo with security deposit. For appointment to see, call 301-398-2020 9am to 4:30pm.

**\$2,500 off to the first 10 buyers**

Now your dream home has a dream price.

Pre-Construction Homes starting at \$154,900.

Ridgewood Glen 4-bedroom homes come in three different models: The Homestead, The Savannah and The Middleburg; in three different architectural styles - Colonial, Victorian and Georgian - with such a wide range of standard features and options that each is virtually custom-designed.

To visit our Sales Center go North from Newark on Route 72 (Curtis Paper Mill Road). Turn right at Old Paper Mill Road. Open daily Noon to 5 P.M. (closed Mon. and Wed.). Or phone (302) 453-0900 for more information.

**Patterson Schwartz REAL ESTATE**    **RIDGEWOOD GLEN LEADER**

**THE LOG POND GROUP, INC.**

The Log Pond Group is offering you a rare opportunity to own a waterfront home complete with a deepwater boat slip at your front door. The Chesapeake Bay is your playground at The Log Pond an exclusive 51 unit waterfront community in the historic town of Havre de Grace. Located 40 miles northeast of Baltimore and 50 miles southwest of Philadelphia. The Log Pond is at the hub of the D.C.-Phila. corridor.

Craftsmanship. Attention to detail and architectural flair unparalleled in the area.

waterfront community, come together to produce a luxurious home. Each 3 1/2 4.5 bedroom townhome has spacious decks off the living room and bedrooms, sliding glass doors offering a panoramic view of the scenic Chesapeake. Skylights, a fireplace and wall to wall carpeting. A modern, fully-equipped kitchen complements a generous breakfast solarium. There is even a room for a whirlpool in the large master bath. And each cedar-sided, energy-efficient townhome has its own ground level, private access via a sheltered two-vehicle driveway.

Marinas, restaurants, shopping centers, churches, schools, and numerous cultural and recreational activities can be found in the greater Log Pond Community.

Seize the investment opportunity of the 80's the good life at the Log Pond

To purchase your share of the magnificent Chesapeake Bay, call **BCH REAL ESTATE, INC.**, exclusive agents **301-839-5056 or 575-7229**

501 CONCORD ST. P.O. BOX 423 HAVRE DE GRACE MD 21078

**355 Misc. Services**    **380 Upholstering**    **410 Building Supplies**

Freelance Photography Weddings, portraits, wedding pictures. Reasonable rates. Call Dawn Boyle, 301-658-2754.

**362 Painting**

**PLEASANT VALLEY PAINTING CO.** 302-454-1854

YOU'LL NEVER REGRET IT! RON'S PAINTING Licensed and insured. Satisfaction guaranteed. 302-994-9454 302-994-2838

**373 Sewing**

SEAMS TO BE BY "E" A complete professional sewing service offering Dressmaking, Alterations, Pattern Drafting, Tailoring, Weddings, Draperies, Etc. 302-368-3887

**380 Upholstering**

Let us wake up that antique bed with a custom made mattress and boxspring. We make any size. We also do custom upholstery and repairs. **FURNITURE CLINIC 302-834-5162**

**MARYSVILLE UPHOLSTERING**

\$150 for sofas, \$80 for chairs, plus the cost of your fabric. Free pick-up and delivery. 301-287-5244, or 287-3124 call anytime.

**PLEASANT HILL UPHOLSTERY**

Furniture Custom Upholstered, fast service, reasonable prices, pick up and delivery. Large selection of material. Cushions custom made. Over 15 years of experience! Call day or evening. 301-398-5822.

**GENERAL MERCHANDISE**

**402 Antiques**

Antiques and Fine Arts and Craft Show. Indoors. Sunday, May 3, 10-3pm. \$15/table. For reservations call Temple Beth El by April 26. 302-366-8330.

**MERRELL'S JEWELRY & ANTIQUES**

Kirkwood Hwy & DuPont Rd. Elmon, DE 302-994-1765 OPEN 10AM-7PM

**CASH FOR ANTIQUES**

Oak-Walnut Pine furniture in any condition. Glassware, China, Toys, crocks with blue decoration, tools, wooden decoys, 1940-45 Life magazines, 1950's T.V. Guides. 301-287-6072

**WANTED ANTIQUES**

Antique/Slot machines  
Gum or peanut machines  
Penny arcade machines  
Old juke boxes  
Anything in antique gambling

Call Collect (717) 844-1959 Ask For Jim

**412 Clothing**

**MARTHA'S ATTIC**  
Quality used clothing for men, women and children. Hours: Wed. & Thurs. 9am-4pm, Fri. Sat. & Sun. 9am-5pm. Rt. 40 at DE/MD line. Call 302-834-2115.

**TUXEDO JACKET**-Palm Beach Formal, single breasted, size 44XL. Good condition. \$40, or best offer. 302-737-0625 after 5pm.

**413 Computers**

NEW & USED computer systems \$500. up. Radio Shack Model II, NEC 8000 & 8800 & Epson Equity I. Mace Supply, One Horseshoe Rd., Rising Sun, MD. 21911. 301-658-6166

**416 Firewood**

Heavy slab fire wood \$75 per cord. Beautiful fireplace insert for sale \$300. Contact Lee Larson 301-392-5175.

**417 Fuel Oil**

**SOUTHERN STATES CO-OP ELKTON, MD FUEL OIL**

**SERVICES OFFERED**

- \*Automatic Delivery
- \*Budget Heating Plans
- \*24 Hour Emerg. Service
- \*Products Include: Fuel Oil, K-1 Kerosene Diesel Fuel & Regular unleaded gas
- \*Super no-lead

Call in Cecil County 301-398-2181 Toll Free from DE 302-366-1644

**420 Furniture**

**BAR STOOLS**

Solid Oak, 4, good condition. \$20, each. 302-475-4607.

**SPECIAL INCENTIVES ON ALL IN STOCK UNITS!**

**DON'T LET APRIL FOOL YOU! NOW Is The Time**



**DODGE • CHRYSLER • PLYMOUTH**  
 U.S. Rt. 40 - 1 Mile Below Delaware State Line  
 301-392-4200 1-800-848 CARS  
**NO MARYLAND TAX to Out-of-State Buyers**

**SAVE BIG BUCKS ON ALL DODGE TRUCKS!**

**GILPIN REALTORS**  
 INVESTMENTS!!!  
 1. Blair Village: Ideal investment property...  
 2. Great potential for the smart handyman...  
 3. Villa Belmont: Beautiful 2 bdrm. condo...  
 AFFORDABLE  
 Beautiful split newly painted. New oven/stove...  
 102 EAST MAIN ST. - NEWARK  
 302-738-5544

**SALE 181 ACRES RED TOAD ROAD**  
 8" water line on front of property. Owner may subdivide.  
 CALL P. GERALD WHITE (302) 655-9621  
 Commercial Realtors-Counselors

**702 Housing for Sale**

GREEN VALLEY. Attractive end unit, 3 BR, 2 1/2 baths, LR, DR, paneled den, garage w/opener, custom blinds, extras. \$90,200. Call 302-454-1832 after 5pm.

**I BUY HOUSES**

Need to sell fast? I pay cash for real estate. Any condition. Quick settlement. Call Mr. Seller 302-784-1400.

**INVESTMENT**

Seller will offer financing on this approx. 8 acres property containing 4 homes. (Main home has in-ground pool, porches, patio, fireplace, workshop with electrical) Small barn & pasture for horses. Call Lib Moran 301-388-3310 W.T.

**710 Housing Wanted**

Family of three wants to rent well-kept 3 BR house near Newark, June 1. Prefer fenced yard, basement, garage. Year lease. References, deposit, no pets. 302-738-3153.

**802 Motor Cycles**

HONDA V-65, 1984. 3200 miles. Excellent condition. 301-392-3882.  
 KAWASAKI 750 LTD, 1980. black, 6000 miles. Runs excellent, just tuned up. \$1000 or best offer. Call between noon-11pm. 302-366-8412.

**MUST SELL!! 650 MAXIM**

6200 Miles, Good Condition. For more information, call 301-392-3882.

**804 R/V's**

A.T.V.-250 Quad Racer-1986, water cooled, less than 30 hours on machine. Very good condition. \$1,650, or best offer. Call 301-378-2027.  
 MINI MOTOR HOME-1980 Honey 25', fully self contained. Roof A/C, sleeps 7. \$12,500. Call 301-656-5667 after 5pm.

**704 Property for Sale**

Lot at Chesapeake Isle \$14,000. Call Roger McCordell 301-392-3582 W.T.  
 MICHAEL COMPANY 301-398-6194

**708 Mobile Home/Sale**

24x60 Double wide, 4 BR, 2 baths, all appliances included, DW, 2 large decks, shed, C/A, backs to woods in Glasgow Court \$22,500. 302-834-2432.

**DAVITT MACKIE & POWELL REALTORS**  
**398-2025**  
 307 N. Bridge St., Elkton, MD

**ARE YOU WILLING**  
 To do a little work to save a lot in this 4 BR, 1 full bath, 2 story, large living room, eat-in kitchen, alum. siding exterior. Call now for details. \$44,900. #141-50.  
**CHESTNUT PT.**  
 A completely new experience, ideal for retired couple or first time buyer. Waterfront and beach privileges, boat slips in a top rated park, 2 BR, M.H., 8x10 shed, 2 car concrete patio, with many extras. Like new. Walking distance to your boat and beach. \$24,900. #136-82.  
**RISING SUN AREA**  
 Bi-level, 3 BR, 2 full baths, brick front, two car garage, heat pump on a 1/2 acre. \$69,900. #131-50.  
**ROOMY RANCHER**  
 Near Rising Sun. New 3 BR rancher, 2 full baths, heat pump, full basement, carpet on a nice 1/2 acre. Ready now. \$79,900. #129-50.  
**LOOKING FOR A DEAL?**  
 Nice 3 bedroom, large master bedroom, basement, fireplace, front porch on 3/4 acre lot. \$58,900. #139-50.  
**THIS IS IT!**  
 Very well kept rancher with 3 bedrooms, 1 1/2 baths, large family room, central air, basement, garage and more. \$89,900. #145-50.  
**YOUR FAMILY DESERVES THE BEST**  
 New 4 bedroom Cape Cod in Fair Hill. Central A/C, basement, 2 car garage. Lots of custom features. \$105,990. #143-20.  
**LARGE RANCH**  
 Like new. Eat in kitchen w/pantry and extra cabinets, formal dining room, laundry room, 3 bedroom, 2 full baths, oversized 2 car garage, central air & extras with view of countryside - must see to appreciate. \$127,900. #134-20.  
**NEAR ELKTON** - New 3 bedroom bi-level, full bath, country kitchen, brick, siding, deck and more. \$66,900. #127-20.  
**PERFECT LOCATION**  
 3 bedroom, family room with fireplace, 2 1/2 baths, garage, pool. \$94,900. #122-20.  
**COUNTRY SIDE VIEW**  
 Don't wait to see this 3 bedroom, brick/alum. rancher on a 1/2 acre lot. Will not last long at \$52,500. #142-50.  
**REFLECT YOUR SUCCESS**  
 In this striking new Colonial. 4 BRs, family rm., separate study, 2 1/2 baths, 2 car garage in a water-oriented community. \$134,900. #108-20.  
**ALL BRICK**  
 L shaped rancher. Secluded 2.8 acres in the woods. This large 3 BR home backs up to a 55 acre state parkland, includes two car garage with a 1 1/2 car detached. Two baths, fireplace and lots more. Call now for your special showing \$149,900. #138-40.  
**PEMBREY**  
 Restricted waterfront community w/34 acres and 2000' of community waterfront. 3/4 acre and up homesites. Priced from \$109,000.  
**CUSTOM AND QUALITY**  
 Brick/siding 3 bedrooms ranch, full basement w/outside entrance, 6x17 front porch, 10x16 rear deck, heat pump, on a nice size lot. \$69,900. #135-50.  
**LOOK OUT!**  
 That bargain is going right by you! Let us show you this 2 bedroom home in the Elkton area. \$48,900. #144-20.  
**NEW RANCHER**  
 3 bedrooms, full bath, full basement on a 1/2 acre. Call for more info. \$62,900. #132-50.  
**NEAR ELKTON**  
 New custom bi-level, dining room, heat pump, 2 car garage, rear deck, 1/2 acre in a nice convenient community. \$80,990. #103-20.  
**BEAT IT!**  
 Just try and beat the price on this snappy split level with 4 bedrooms, 2 baths, screened porch. Only minutes to Newark. Priced to sell \$57,900. #140-20.  
**DE LA PLAINE**  
 Beautiful custom Cape Cod 3 yrs. old, full basement, deck, Jenn Air Range. Call for more. \$69,900. #137-30.  
**BRANTWOOD**  
 Golf course community convenient to Elkton and Delaware. Model open Tues.-Sun. Priced from mid \$60's.

**NO ANSWER AT THE OFFICE? PLEASE CALL US AT HOME**  
 Charles Powell 658-3112 Mike Powell 287-9616 John Mackie 398-5844  
 Kathy Dean 287-5687 Gene Bandy 658-2645 Jerry Moran 398-3432  
 Elle Hirneisen 287-8722 Cathy Shaffer 287-3152  
**DON'T SEE WHAT YOU NEED? CALL US.**  
 We have information on over 400 additional listings  
**OUTSIDE OF MD 1-800-247-2761**  
 Since 1977 **WE BUILD**  
 Your plans or ours; ranchers, bi-levels, split levels, two stories, Cape Cods & contemporary styled homes.  
 \*Sample home located: 10 Brantwood Dr. (Just past golf course)  
 Hours: Tues.-Fri. 10 AM-6 PM, Sat. 10 AM-4 PM, Sun. 1-4, Mon. by Appointment

**806 Trucks/Vans** FORD F-150 '86 Auto, 6 cyl., 15,000, \$8995  
**806 Trucks/Vans** DODGE DAKOTA-1987 3,000 miles, V-8, prospect package, Auto, A/C, P/S, P/B, & more. Lease/Purchase \$188/mo 24mo./24,000 mile warranty  
**806 Trucks/Vans** NISSAN 4x4 '85 5 sp., 4 cyl., A/C, \$8995  
**808 Automobiles** CHEVY CELEBRITY '85 Auto, V-6, A/C, 4 dr., \$8,995  
**ROCKHILL PONTIAC** 738-6161 250 E. Cleveland Ave.  
**ANDERSON AUTO SALES** 301-392-5500 1633 Elkton Rd. (across from State Line Liquors)  
**CHEVROLET 4x4 TRUCKS** S-10 BLAZER-1984 40,000 miles, V-6, A/C, Auto, Tahoe Package, stereo w/tape, cruise, & more. Lease/Purchase \$188/mo.  
**CHEVY C-10 Silverado-1988** 21,000 miles, V-8, A/C, auto, stereo w/tape, cruise. Lease/Purchase \$219/mo.  
**CHEVY C-10 Scottsdale-1987** auto, V-8. Lease/Purchase \$255/mo.  
**24mo/24,000 mile warranty** ANDERSON AUTO SALES 301-392-5500 1633 Elkton Rd. (across from State Line Liquors)  
**JEEP C-J-7 '84** 5 sp., 6 cyl., 4 x 4, \$7995  
**ROCKHILL PONTIAC** 738-6161 250 E. Cleveland Ave.  
**TOYOTA 86-1986** Pick up, 4x4, 28,000 miles, extra cap, sunroof, stereo w/tape. 24mo/24,000 mile warranty  
**ANDERSON AUTO SALES** 301-392-5500 1633 Elkton Rd. (across from State Line Liquors)  
**CHEVY C-10 SILVERADO '85** Auto, V-8, A/C, loaded. \$10,495.  
**ROCKHILL PONTIAC** 738-6161 250 E. Cleveland Ave.  
**BUICK CENTURY '83** Auto, V-6, A/C, 4 dr., \$6,995.  
**ROCKHILL PONTIAC** 738-6161 250 E. Cleveland Ave.  
**BUICK LESABRE '84** Auto., A/C, 4 DR., CLEAN! \$7995.  
**ROCKHILL PONTIAC** 738-6161 250 E. Cleveland Ave.  
**CELEBRITY-1985** V-6, A/C, P/S, P/B, stereo, cruise, tilt, several to choose from. Was \$8995. Now \$4995. 12mo/12,000 mile warranty.  
**ANDERSON AUTO SALES** 301-392-5500 1633 Elkton Rd (across from State Line Liquors)  
**CHEVY CAMARO '85** Auto., V-8, A/C, Black! \$8995.  
**ROCKHILL PONTIAC** 738-6161 250 E. Cleveland Ave.

**1800 DISCOUNT** **1987 NEW YORKER**  
 Rosewood, 4 Door, Air, Power Locks, PB, PS, Rear Defroster, AM/FM Stereo \$17,364  
 -1,800 Discount  
 -1,000 Rebate from Chrysler  
**\$14,564** OTHERS IN STOCK AT SIMILAR SAVINGS  
 BRING THIS AD IN FOR YOUR GAMBA PORTA DISCOUNT  
**Gambacorta CHRYSLER PLYMOUTH**  
 421 WEST SEVENTH ST. IN HISTORIC NEW CASTLE 323-3003

**Going to use your married name at work?**  
 If so, you should have your name changed in Social Security records to make sure you get full credit for all your earnings.  
 It's easy and it's **ABSOLUTELY FREE!**  
 Just contact any Social Security office. Look in the telephone book for the address and phone number.  
 You'll need documentary evidence showing both your old and new name.  
 U.S. Department of Health and Human Services Social Security Administration

**Tristate Ford Congratulates Mitch Culley March's SALESMAN of the MONTH**  
 "Congratulations!" is due AGAIN, Mitch! When shopping for a car or truck, make sure you stop at Tristate and ask for Mitch Culley's knowledgeable and complete service.  
**tristate**  
 Rt. 40 at the MD/DE Line  
 398-3600 • (302) 737-4060

# LANDVEST REALTY

Builders • Developers

**NEW BI-LEVEL**  
2 BR., full basement, Andersen windows, rough in bath in basement. Lot choice. \$54,900.

**NEW 3 BR RANCH**  
with full basement, Andersen windows, eat-in kitchen, wall to wall carpet. Lot choice. Elktion, \$56,900.

**DEER HAVEN**  
3 BR. bi-level, 1 1/2 baths, country kitchen, large area for family room, 3/4 acre lot with waterfront privileges for swimming, boating, fishing, proposed construction, minutes from Elkton. Only \$63,900.

**ARUNDEL-ELK NECK**  
1/2 A., 3 BR ranch, eat-in kitchen, full basement, maintenance free, water rights to Elk River. \$56,900. Proposed construction.

**RISING SUN**  
Sunrise Estates, 3 BR ranch, LR, DR, kitchen, 1 full bath, sliding glass doors, leading out to large deck, convenient to schools, churches, and shopping. Lots of extras. Only 2 years old. Call for details \$62,900.

**NORTH EAST**  
Mechanics Valley Rd., new construction, 3 BR ranch, full basement, public sewer, Andersen windows, eat-in kitchen, wall to wall carpet. \$62,900.

**Build your new home with confidence. Landvest Builders are FHA approved builders. This means with every FHA built home, we offer a ten year warranty and can build your new home with LESS MONEY DOWN. Call immediately for details.**

**BUILDING LOTS AVAILABLE**

Appleton Rd. - 2k Acres, 8 Acres, 8 Acres, 8 Acres.  
Arundel - 1/2 Acre with waterfront privileges.  
Gaithersden - 5 Acres with waterfront privileges.  
Rt. 213 S. - Elkton - 3 Acres, 7 Acres, 12 Acres, Parcels.

We'll also build on your lot with your plans or choose from over 1,000 house plans of ours.

**ONE YEAR WARRANTY** FOR BUYERS & SELLERS

**FHA Approved BUILDERS** 10 YR. WARRANTY

**TEN YEAR WARRANTY** FOR SELLERS

**112 DELAWARE AVE. ELKTON, MD**

**398-2401** Evenings & Weekends **398-8326**

In A Quiet Country Setting... Mon.-Fri. 9-5 Sat. 11-4, Sun. 12-5

## Winding Brook Gardens

**First Month's Rent Free**

**Features Include:**

- Charming colonial architecture with handsome brick exteriors.
- 1st floor patios and 2nd floor balconies with thermopane glass sliding doors.
- Color co-ordinated kitchens with Formica counter tops, 2-door refrigerator-freezer.
- Dishwasher.
- Garbage Disposal.
- Color co-ordinated ceramic-tiled baths with full vanity.
- Walk-to-wall carpeting throughout.
- Baseboard hot water heat with individually-controlled thermostats.
- Pre-wired cable TV and telephone outlets.
- Exceptional closet space.
- washer & dryer in each apt.

24 Hr. Emerg. Maint.

367 Fletchwood Rd., Cecil County, MD  
Between Elkton, MD & Newark, DE

**Call 398-9496** To Arrange A Personal Showing

# B. GARY SCOTT

REALTORS

Relocation Experts

A WSPS company

**THE HIGHLANDS**- Cape Cod, 4 BR, 2 baths, family room has fireplace with raised hearth and mantle, glider door off country kitchen to screened-in patio. Very nice house in popular area. Community water and sewer. \$59,900. Call Jerry Voshell (302) 368-1621.

**CHERRY HILL RD.**- Ranch on 1 acre +, 3 BR with basement, convenient to Delaware and downtown Elkton. #5176. \$73,900. Call Ben Wolfe (302) 368-1621.

**DE LA PLAINE MANOR** - Close to the water, bi-level in woods, minutes to North East, MD. 3 BR, garage, central air, exciting property. #5225. \$76,900. Call Ben Wolfe (302) 368-1621.

**TWO RIVERS** - Elevated building lot in prime water-oriented community, mooring and beach rights. Park approved in 1980. #5973. \$23,000. Call Jerry Voshell (302) 368-1621.

**(302) 368-1621**

**355 Misc. Services**  
Freelance Photography Weddings, portraits, wedding pictures. Reasonable rates. Call Dawn Boyle, 301-858-2754.

**362 Painting**  
PLEASANT VALLEY PAINTING CO. 302-454-1654  
YOU'LL NEVER REGRET IT! RON'S PAINTING Licensed and insured Satisfaction guaranteed 302-994-9454 302-994-2838

**373 Sewing**  
SEAMS TO BE BY "E" A complete professional sewing service offering Dressmaking, Alterations, Pattern Drafting, Tailoring, Weddings, Draperies, Etc. 302-368-5887

**380 Upholstering**  
Let us wake up that antique bed with a custom made mattress and boxspring. We make any size. We also do custom upholstery and repairs. FURNITURE CLINIC 302-834-5162  
MARYSVILLE UPHOLSTERING \$150 for sofas, \$80 for chairs, plus the cost of your fabric. Free pick-up and delivery 301-287-5244 or 287-3124 call anytime.

**PLEASANT HILL UPHOLSTERY**  
Furniture Custom Upholstered, fast service, reasonable prices, pick up and delivery. Large selection of material. Cushions custom made. Over 15 years of experience! Call day or evening 301-398-5822.

**GENERAL MERCHANDISE**

**402 Antiques**  
Antiques and Fine Arts and Craft Show, indoors, Sunday, May 3, 10-3pm. \$15/table. For reservations call Temple Beth El by April 26. 302-366-8330.

**MERRELL'S JEWELRY & ANTIQUES**  
Kirkwood Hwy & DuPont Rd. Elsmere Wilm DE 302-994-1765 302-994-1765 OPEN 10AM-7PM  
**CASH FOR ANTIQUES**  
Oak-Walnut Pine furniture in any condition. Glassware, China, Toys, crocks with blue decoration, tools, wooden decays. 1940-45 Life magazines. 1950's T.V. Guides. 301-287-6072

**406 Bicycles & Mopeds**  
BICYCLE REPAIR All types. Free estimates. \$8/hr plus parts. Call Andy after 5pm, 302-322-9448. Saturdays after 12 noon.

**408 Boats & Motors**  
ARROWGLASS-1976 18' bowrider, 70hp Johnson, EZ load trailer, A-1 condition, garage kept. \$4950. 302-737-9075.  
BAYLINER 25', 1977, Good fish or family boat. D/F, VHF radio included. \$9500. Must be seen to be appreciated. See at Duffen Creek Marina, Georgetown, MD. Or call 215-279-8488.

**WANTED ANTIQUES**

Antique/Slot machines  
Gum or peanut machines  
Penny arcade machines  
Old juke boxes  
Anything in antique gambling

Call Collect  
**(717) 644-1959**  
Ask For Jim

**NOW SELLING OPEN SAT. & SUN. 12-4**

**PRESENTED BY**

**M&M BUILDERS**  
COMMUNITY DEVELOPERS

**VALLEY STREAM**

**EVERGREEN ACRES**

Newark's finest community. Valley Stream is surrounded by a natural wood setting and offers 4 bedrooms, 2 1/2 bath Contemporaries constructed of wood and stone.

Reserve your lot now for one of the 14 remaining homes.

**Priced from \$147,900.**

DIR: Rt. 273 to Casho Mill Rd., R. on Church Rd., L. on Panorama Dr., R. on Woodshaw Rd.

For further information call DARLENE GREENE 998-3361 or construction trailer SAT. & SUN. 12-4 368-8418

<b>BRANDYWINE</b> 478-4165	<b>HERCULES PLAZA</b> 429-0414	<b>PIKE CREEK CENTER</b> 998-3361	<b>RELOCATION CENTER</b> 654-3685	<b>GREENVILLE CENTER</b> 575-0880
-------------------------------	-----------------------------------	--------------------------------------	--------------------------------------	--------------------------------------

**Eastern Realty**

"Your Quality Real Estate Professionals"

Main Street  
Elkton, Maryland 21921  
392-5115

**DON'T LET TIME SLIP AWAY...**

The agents at Eastern Realty will treat your home as if it were their own. DON'T PROCRASTINATE! Call one of our qualified agents at your convenience.

\*FREE MARKET ANALYSIS  
\*EXCELLENT WORKING RELATIONSHIP WITH FINANCIAL INSTITUTIONS FOR YOUR MORTGAGE NEEDS  
\*NEW CONSTRUCTION OPPORTUNITIES WITH THE COUNTY'S BEST MODULAR AND CUSTOM BUILDERS.  
\*EXTENSIVE ADVERTISING AVAILABLE FOR YOUR HOME IN CECIL COUNTY, HARBOR COUNTY AND DELAWARE PUBLICATIONS.

**PRIVACY ABOUND** on these 7 acres +/- of rolling wooded countryside. Federal period home in need of renovation could be just the challenge for historic buffs. A second home on this property could be an income producer as well. Asking price: \$145,000. Call today for details.

Call one of our qualified Real Estate professionals at your convenience

Christopher Eastridge-Broker  
Joseph Bathon-398-2511

Pam Feldscher-398-9234  
Ursula Boudart-1-658-5166

**SOUTHERN STATES PETROLEUM SERVICE**

For all your gasoline, diesel, fuel & kerosene needs. See your Southern States dealer. We also have 24 hour burner service, automatic delivery, budget plans, radio dispatched delivery trucks.

**SOUTHERN STATES, ELKTON SERVICE**  
152 Railroad Ave., Elkton, MD  
Phone: MD 301-398-2181 or DE 302-366-1644  
w/p 10/23-

**428 Livestock**  
HORSES BOARDED  
New facility in small quiet barn with eight stalls. Daily turnout, individual care, cross country riding. Full board \$195. Grooming, clipping, light exercising available \$210. Two miles from Oxford, PA. Hopewell Hill Farm LTD. 215-932-4769.

**436 Pets**  
AKC Very Tiny White Toy Poodles Ready for Easter. Parents on premises. Also very tiny Red Toy Poodles. Weaned & ready to go. All shots. Will hold for Easter. 302-875-4848.  
PERSIAN: 15 month old Blue male, shots, \$150. Grown male mixed breed 1/2 Persian, \$25. 2 female BOXERS, LABRADOR RETRIEVERS, YORKSHIRE TERRIER, PUG. Also small mixed breed. All shots & wormed. 301-287-8250 days.

**430 Miscellaneous**  
Cash paid for military items: American, German or Japanese. Uniforms, helmets, hats, swords, medals, guns or anything military. 302-731-0348.  
HALF PRICE! Flashing arrow signs \$299! Lighted non-arrow \$289! Unlighted \$249! Free let-ter! See locally! Call today! Factory: 118001423-0163, anytime.

**HAY FOR HORSES** Mixed Alfalfa, Brome, Timothy & Orchard Grass 1st cutting \$2.75/bale, 3rd cutting \$3.75/bale. Cross Country Farm. 301-275-8608.

**RENTALS**

**602 Rooms**  
Elkton & North East. Room or efficiency. Color TV. From \$45 w/ky. 301-398-4400 or 398-9855 or 287-9677.  
NEWARK, DE, room or efficiency, near Univ. from \$135/mo. 302-737-7319, 9am-5pm weekdays.  
Newark near University. Monthly: Room \$135, eff. \$175. 1 BR Apt. \$235, 3 BR house \$365. 302-737-7319, 9am-5pm weekdays.  
Room or efficiency, Wilm. & New Castle area. Airport vicinity. Color TV, phone, refrig. From \$45 w/ky. 302-658-4191 or 328-7529.

**608 Unfurnished Apts.**  
COUNTRY SETTING 1 & 2 bedroom garden apartments. FREE FIRST MONTH RENT Includes all appliances. Private entrances. Call Winding Brook Garden Apartments. Weekdays 9-5pm, Saturday 11-4pm, Sunday 12-5pm. 301-398-9496 Equal Opportunity Housing.

**ELKTON apartment for 1 or 2 adults.** Call 301-885-5045

**RAILROAD TIES**  
Landscaping 3 grades Bundles of 20, \$85, or \$60. Loose 50' each. Bear, DE. Call Amtrack 302-834-2225.

**SPECIAL**  
Buy your Bryant 90 plus furnace now & get your 2 highest gas bills during 1986-87 heating season paid for by:

**GAS OIL!**  
Call today for free estimates.  
Gas Oil Products  
Glasgow  
302-368-1161  
SWIM CLUB MEMBERSHIPS  
Meeting House Hill \$160 for family, for season. No bond. Great family pool. 302-737-3386 for membership form.

**WHEELCHAIR-Rollie.** Used 5 wheels. \$400. Call after 3pm. 302-994-2801.

Be Our Neighbor

# Timberbrook

North East, MD

Open Sat. & Sun. 12-4  
Mon.-Fri. by Appointment  
Phone 301-287-2277

In Delaware Contact:  
Century 21 Goldborough  
Exclusive Agency  
302-836-1444

Located at the Head of the Chesapeake is **only** one reason the NEW Townhomes of Timberbrook are for you!

Country kitchens, finished basements, wooded lots, are just a few of the many options available to make this new home uniquely yours.  
Plus you'll have boating, camping, fishing at your fingertips. Commuting made easy with I-95 1/2 mile away.

Reserve your lot NOW during our blueprint sale and receive up to **\$2,000** towards settlement costs or options. Priced from **\$59,900.00.**

Located on Route 272, just off Route 40, 1/4 mile from traffic light. Just past North East Plaza on the right.

A New P.L.D. Community With Something Special To Offer

**LARRY'S HOMES INC**

**In Park**

**WHY RENT?**  
YOU COULD BE BUYING YOUR OWN HOME!  
LOW DOWN PAYMENT  
LONG TERM FINANCING  
OVER 100 LISTINGS

RT. 40 BEAR, DE  
**834-7009**

PRE-OWNED HOMES  
Set Up & Ready To Move Into

WE LIST & SELL PRIVATELY OWNED MOBILE HOMES READY FOR OCCUPANCY IN THESE AREA PARKS  
\*Glasgow Court \*Glasgow Pines I & II  
\*Maple Square \*Millcreek \*Park Place  
\*Summit Bridge \*Timberlane  
\*Village Brook \*Minquadale \*Stoney Chase  
\*Town & Country \*Whispering Pines

FOR SALE

**614 Commercial**  
MEDICAL OFFICE, Furnished, for rent in Elkton. Located ideally on U.S. Rt. 40 in a professional building, with ample free parking. 301-398-8800.

**616 House for Rent**  
ELKTON AREA  
Contemporary 3BR, 1 1/2 baths on 2 1/2 acres. Many features, \$725/mo. Available immediately.  
Office space 1,650 square feet zoned R-1. \$600/mo. plus utilities. Available immediately.  
Cape Cod 4BR, 1 1/2 baths. \$600/mo. plus utilities. Available immediately.

**ERA ALDIN BUGHER ASSOCIATES**  
302-738-3200

**REAL ESTATE**

**702 Housing for Sale**

**FOSSETT CO. REALTORS**

GREENFIELD ACRES RISING SUN 3 BR brick-front rancher on approx. 1/4 acre LR, kitchen/dining room combo, den, 2 full baths, 2 car garage, large basement.

**NORTH HILLS RISING SUN** 3 BR front rancher on approx. 1/2 acre. \$59,900.

**NEAR RISING SUN** CAPE COD 4 BR, 2 bath, kitchen, LR, DR, slate foyer, 2 car garage, large office, 2 out-buildings. Located close to Chantilly Manor Country Club & I-95. Perfect for professional. 8 acres. \$135,000.

APPROX. 1/2  
Hopewell Rd., Rising Sun, \$15,000.

3 1/2 ACRES Secluded, \$16,900. 1 ACRE Party wooded, \$9,500.

**FOSSETT CO. REALTORS**  
301-378-4556 or 658-5598

**\$2,500 off to the first 10 buyers**

Now your dream home has a dream price.

Pre-Construction Homes starting at \$154,900.

Ridgewood Glen 4-bedroom homes come in three different models: The Homestead, The Savannah and The Middleburg; in three different architectural styles - Colonial, Victorian and Georgian - with such a wide range of standard features and options that each is virtually custom-designed.

To visit our Sales Center go North from Newark on Route 72 (Curtis Paper Mill Road). Turn right at Old Paper Mill Road. Open daily Noon to 5 P.M. (closed Mon. and Wed.). Or phone (302) 453-0900 for more information.

Patterson Schwartz REALTORS

**RIDGEWOOD GLEN**

The Log Pond Group is offering you a rare opportunity to own a waterfront home complete with a deepwater boat slip at your front door. The Chesapeake Bay is your playground at The Log Pond, an exclusive \$1 unit waterfront community in the historic town of Havre de Grace. Located 40 miles northeast of Baltimore and 50 miles southwest of Philadelphia. The Log Pond is at the hub of the D.C.-Phila. corridor.

Craftsmanship, attention to detail, and architectural flair unparalleled in a waterfront community, come together to produce a luxurious home. Each 3,450 sq. ft. 4 bedroom townhome has spacious decks off the living room and bedrooms, sliding glass doors offering a panoramic view of the scenic Chesapeake, skylights, a fireplace and wall to wall carpeting. A modern, fully-equipped kitchen complements a generous breakfast solarium. There is even has its own grand level private access via a sheltered two-vehicle driveway.

Manias, restaurants, shopping centers, churches, schools, and numerous cultural and recreational activities can be found in the greater Log Pond Community.

Seize the investment opportunity of the 80's, the good life at the Log Pond.

To purchase your share of the magnificent Chesapeake Bay, call  
**BCH REAL ESTATE, INC.**, exclusive agents  
**301-939-5055 or 575-7229**

**THE LOG POND GROUP, INC.**  
501 CONCORD ST. P.O. BOX 423  
HAVRE DE GRACE MD 21078

**SPECIAL INCENTIVES ON ALL IN STOCK UNITS!**

# DON'T LET APRIL FOOL YOU!

## NOW Is The Time at Tristate

**DODGE • CHRYSLER • PLYMOUTH**  
 U.S. Rt. 40 - 1 Mile Below Delaware State Line  
 301-392-4200      1-800-848 CARS  
**NO MARYLAND TAX to Out-of-State Buyers**

**SAVE BIG BUCKS ON ALL DODGE TRUCKS!**

**GILPIN REALTORS**

*"SINCE 1865"*

**INVESTMENTS!!!**

- Blair Village: Ideal investment property in this small townhouse community. Now rented for \$600/mo. 3 bedrooms, 1 1/2 baths. 1 Year Warranty. Low \$70's. Call 738-5544.
- Great potential for the smart handyman. 2 blocks from campus. 4 bdrms., 2 baths. Corner lot with off-street parking. \$82,000. Call 738-5544. No. 4295N.
- Villa Belmont: Beautiful 2 bdrm. condo w/walk-in closet in MBR. Near I-95. Low \$60's. Call 738-5544. No. 4357N.

**AFFORDABLE**  
 Beautiful split newly painted. New oven/stove, wood stove in living room, up-graded system, fenced yard. \$64,900. Call 738-5544. No. 4307N.

**102 EAST MAIN ST. -NEWARK**  
 302-738-5544

**SALE 181 ACRES RED TOAD ROAD**

8" water line on front of property. Owner may subdivide.

**CALL P. GERALD WHITE (302) 655-9621**

Commercial Realtors-Counselors

**P. GERALD WHITE INC.**

**702 Housing for Sale**

GREEN VALLEY. Attractive end unit. 3 BR, 2 1/2 baths, LR, DR, paneled den, garage w/opener, custom blinds, extras. \$90,200. Call 302-454-1832 after 5pm.

**I BUY HOUSES**

Need to sell fast? I pay cash for real estate. Any condition. Quick settlement. Call Mr. Seller 302-764-1400.

**INVESTMENT**

Seller will offer financing on this approx. 8 acres property containing 4 homes. (Main home has in-ground pool, porch, patio, fireplace, workshop with electric) Small barn & pasture for horses. Call Lib Moran 301-398-3310 W.T.

**MICHAEL COMPANY 301-398-6194**

LIBERTY GROVE area. For sale BY OWNER: 3 BR brick rancher. LR, DR, large kitchen, 2 baths. Fireplace & woodstove. Full basement. 2 1/2 car attached garage. 6 acre plus/minus. Four doubles mushroom house, dirt shed & wharf. Spring & streams on property. Fenced pasture. Outbuildings & large truck garage. Principles only. \$134,900. 301-378-4218.

**802 Motor Cycles**

HONDA V-65, 1984. 3200 miles. Excellent condition. 301-382-3882.

KAWASAKI 750 LTD, 1980, black, 6000 miles. Runs excellent, just tuned up. \$1000 or best offer. Call between noon-11pm. 302-366-8412.

**MUST SELL! 650 MAXIM**

6200 Miles, Good Condition. For more information, call 301-382-3882.

**MICHAEL COMPANY 301-398-6194**

**704 Property for Sale**

Lot at Chesapeake Isle \$14,000  
 Call Roger McCordel 301-382-3982 W.T.

**MICHAEL COMPANY 301-398-6194**

**804 R/V's**

A.T.V.-250 Quad Racer-1986, water cooled, less than 30 hours on machine. Very good condition. \$1,650, or best offer. Call 301-378-2027.

**708 Mobile Home/Sale**

24x60 Double wide, 4 BR, 2 baths, all appliances included, DW, 2 large decks, shed, C/A, backs to woods in Glasgow Court. \$22,500. 302-634-2432.

**DAVITT MACKIE & POWELL REALTORS 398-2025**  
 307 N. Bridge St., Elkton, MD

**ARE YOU WILLING**

To do a little work to save a lot in this 4 BR, 1 full bath, 2 story, large living room, eat-in kitchen, alum. siding exterior. Call now for details. \$44,900. #141-50.

**CHESTNUT PT.**

A completely new experience, ideal for retired couple or first time buyer. Waterfront and beach privileges, boat slips in a top rated park, 2 BR, M.H., 8x10 shed, 2 car concrete patio, with many extras. Like new. Walking distance to your boat and beach. \$24,900. #136-82.

**RISING SUN AREA**

Bi-level, 3 BR, 2 full baths, brick front, two car garage, heat pump on a 1/2 acre. \$89,900. #131-50.

**ROOMY RANCHER**

Near Rising Sun. New 3 BR rancher, 2 full baths, heat pump, full basement, carport on a nice 1/2 acre. Ready now. \$79,900. #129-50.

**LOOKING FOR A DEAL?**

Nice 3 bedroom, large master bedroom, basement, fireplace, front porch on 3/4 acre lot. \$58,900. #139-50.

**THIS IS IT!**

Very well kept rancher with 3 bedrooms, 1 1/2 baths, large family room, central air, basement, garage and more. \$66,900. #145-50.

**YOUR FAMILY DESERVES THE BEST**

New 4 bedroom Cape Cod in Fair Hill. Central A/C, basement, 2 car garage. Lots of custom features. \$105,990. #143-20.

**LARGE RANCH**

Like new. Eat in kitchen w/pantry and extra cabinets, formal dining room, laundry room, 3 bedroom, 2 full baths, oversized 2 car garage, central air & extras with view of countryside - must see to appreciate. \$127,900. #134-20.

**NEAR ELKTON** - New 3 bedroom bi-level, full bath, country kitchen, brick, siding, deck and more. \$66,900. #127-20.

**PERFECT LOCATION**

3 bedroom, family room with fireplace, 2 1/2 baths, garage, pool. \$94,900. #122-20.

**COUNTRY SIDE VIEW**

Don't wait to see this 3 bedroom, brick/alum. rancher on a 1/2 acre lot. Will not last long at \$52,500. #142-50.

**REFLECT YOUR SUCCESS**

In this striking new Colonial. 4 BRs, family rm., separate study, 2 1/2 baths, 2 car garage in a water-oriented community. \$134,900. #108-20.

**ALL BRICK**

L shaped rancher. Secluded 2.8 acres in the woods. This large 3 BR home backs up to a 55 acre state parkland, includes two car garage with a 1 1/2 car detached. Two baths, fireplace and lots more. Call now for your special showing \$149,900. #138-40.

**PEMBREY**

Restricted waterfront community w/34 acres and 2000' of community waterfront. 3/4 acre and up homesites. Priced from \$109,000.

**CUSTOM AND QUALITY**

Brick/siding 3 bedrooms ranch, full basement w/outside entrance, 6x17 front porch, 10x16 rear deck, heat pump, on a nice size lot. \$69,900. #135-50.

**LOOK OUT!**

That bargain is going right by you! Let us show you this 2 bedroom home in the Elkton area. \$48,900. #144-20.

**NEW RANCHER**

3 bedrooms, full bath, full basement on a 1/2 acre. Call for more info. \$62,900. #132-50.

**NEAR ELKTON**

New custom bi-level, dining room, heat pump, 2 car garage, rear deck, 1/2 acre in a nice convenient community. \$80,990. #103-20.

**BEAT IT!**

Just try and beat the price on this snappy split level with 4 bedrooms, 2 baths, screened porch. Only minutes to Newark. Priced to sell \$57,900. #140-20.

**DE LA PLAINE**

Beautiful custom Cape Cod 3 yrs. old, full basement, deck, Jenn Air Range. Call for more. \$69,900. #137-30.

**BRANTWOOD**

Golf course community convenient to Elkton and Delaware. Model open Tues.-Sun. Priced from mid \$60's.

**NO ANSWER AT THE OFFICE? PLEASE CALL US AT HOME**

Charles Powell 658-3112	Mike Powell 287-9616	John Mackie 398-5844
Kathy Dean 287-5687	Gene Bandy 658-2645	Jerry Moran 398-3432
Elle Hirneisen 287-8722		Cathy Shaffer 287-3152

**DON'T SEE WHAT YOU NEED? CALL US.**  
 We have information on over 400 additional listings

**OUTSIDE OF MD 1-800-247-2761**

Since 1977 **THE DAVITT CO. BUILDERS**

**We Build**  
 Your plans or ours; ranchers, bi-levels, split levels, two stories, Cape Cods & contemporary styled homes.  
 \*Sample home located: 10 Brantwood Dr. (Just past golf course)  
 Hours: Tues.-Fri. 10 AM-6 PM, Sat. 10 AM-4 PM, Sun. 1-4, Mon. by Appointment

**1800 DISCOUNT**

**1987 NEW YORKER**



#3911  
 Rosewood, 4 Door, Air, Power Locks, PB, PS, Rear Defroster, AM/FM Stereo  
**\$17,364**  
 -1,800 Discount  
 -1,000 Rebate from Chrysler  
**\$14,564** OTHERS IN STOCK AT SIMILAR SAVINGS

BRING THIS AD IN FOR YOUR GAMBA :ORTA DISCOUNT

**Gambacorta CHRYSLER PLYMOUTH**  
 421 WEST SEVENTH ST. IN HISTORIC NEW CASTLE 323-3003

**Going to use your married name at work?**

If so, you should have your name changed in Social Security records to make sure you get full credit for all your earnings.

It's easy and it's **ABSOLUTELY FREE!**

Just contact any Social Security office. Look in the telephone book for the address and phone number.

You'll need documentary evidence showing both your old and new name.



U.S. Department of Health and Human Services  
 Social Security Administration

<p><b>806 Trucks/Vans</b></p> <p>FORD F-150 '86              Auto., 6 cyl., 15,000. \$8995</p> <p><b>ROCKHILL PONTIAC</b>              Newark 738-6161              250 E. Cleveland Ave.</p>	<p><b>806 Trucks/Vans</b></p> <p><b>DODGE DAKOTA-1987</b>              3,000 miles, V-6, prospector package, Auto, A/C, P/S, P/B, &amp; more.              Lease/Purchase \$188/mo              24mo./24,000 mile warranty</p> <p><b>ANDERSON AUTO SALES</b>              301-392-5500              1633 Elkton Rd. (across from State Line Liquors).</p>	<p><b>806 Trucks/Vans</b></p> <p>NISSAN 4x4 '85              5 sp., 4 cyl., A/C. \$8995</p> <p><b>ROCKHILL PONTIAC</b>              Newark 738-6161              250 E. Cleveland Ave.</p>	<p><b>808 Automobiles</b></p> <p>CHEVY CELEBRITY '85              Auto, V-6, A/C, 4 dr. \$8,995.</p> <p><b>ROCKHILL PONTIAC</b>              Newark 738-6161              250 E. Cleveland Ave.</p>
<p><b>CHEVROLET 4x4 TRUCKS</b></p> <p>S-10 BLAZER-1984              40,000 miles, V-8, A/C, Auto, Tahoe Package, stereo w/tape, cruise, &amp; more              Lease/Purchase \$189/mo.</p> <p>CHEVY C-10 Silverado-1986              21,000 miles, V-8, A/C, auto, stereo w/tape, cruise.              Lease/Purchase \$219/mo.</p> <p>CHEVY C-10 Scottsdale-1987              auto, V-8.              Lease/Purchase \$265/mo.</p> <p>24mo./24,000 mile warranty</p> <p><b>ANDERSON AUTO SALES</b>              301-392-5500              1633 Elkton Rd. (across from State Line Liquors).</p>	<p>FORD F-150 Supercab, 1981.              4-speed with over-drive, cassette, cap, low mileage, excellent condition. Call 302-738-7830.</p> <p>FORD F-150-1986              22,000 miles, V-8, 4x4, XLT Lariat, Auto, A/C, cruise, stereo, &amp; more              24mo./24,000 mile warranty</p> <p><b>ANDERSON AUTO SALES</b>              301-392-5500              1633 Elkton Rd. (across from State Line Liquors).</p> <p>JEEP CJ-7 '84              5 sp., 6 cyl., 4 x 4. \$7995</p> <p><b>ROCKHILL PONTIAC</b>              Newark 738-6161              250 E. Cleveland Ave.</p>	<p><b>808 Automobiles</b></p> <p>BUICK CENTURY '83              Auto, V-6, A/C, 4 dr., \$6,995.</p> <p><b>ROCKHILL PONTIAC</b>              Newark 738-6161              250 E. Cleveland Ave.</p> <p>BUICK LESABRE '84              Auto., A/C, 4 DR., CLEAN! \$7995.</p> <p><b>ROCKHILL PONTIAC</b>              Newark 738-6161              250 E. Cleveland Ave.</p> <p>CELEBRITY-1985              V-8, A/C, P/S, P/B, stereo, cruise, tilt, several to choose from.              Was \$5995. Now \$4995.              120/12,000 mile warranty.</p> <p><b>ANDERSON AUTO SALES</b>              301-392-5500              1633 Elkton Rd. (across from State Line Liquors).</p> <p>CHEVY CAMARO '85              Auto., V-6, A/C, Black! \$8995.</p> <p><b>ROCKHILL PONTIAC</b>              Newark 738-6161              250 E. Cleveland Ave.</p>	<p><b>Immortal.</b></p> <p>If you could look into the eyes of generations yet to come you would be proud to make a difference.</p> <p>AMERICAN CANCER SOCIETY</p>

**Tristate Ford Congratulates Mitch Culley March's SALESMAN of the MONTH**

"Congratulations!" is due AGAIN, Mitch! When shopping for a car or truck, make sure you stop at Tristate and ask for Mitch Culley's knowledgeable and complete service.



**Tristate**  
 Rt. 40 at the MD/DE Line  
 398-3600 • (302) 737-4060

**IT'S ONE FINE CAR!**  
MOTOR TRENDS '87 IMPORT  
CAR OF THE YEAR

**'87 ACURA**

precision crafted automobile  
from American Honda.



Acura Integra

**IMPRESSIVE SELECTION!**

**IMMEDIATE DELIVERY!**

**DISCOUNT FINANCING!**

**PRICED TO SELL!**



BECAUSE YOUR CAR IS SO IMPORTANT

CALL COLLECT (302) 323-1100

DUPONT HIGHWAY - WILMINGTON, DE  
ONE MILE SOUTH OF AIRPORT



737-0905  
puts you in the  
Classifieds

# ISUZU



**IMPULSE TURBO**  
5 speed, A.C. power steering & windows **Cash Rebate \$3000**  
A fully loaded sports coupe **On Gold Star only**

Or lease for **\$207.71\*** per month



**TROOPER II**  
4x4 of the year. All models Deluxe & LS 2 door and 4 door **Cash Rebate \$500**

Or lease for **\$218.08\*** per month



**I-MARK 4 Door Deluxe Sedan**  
5 speed, am fm stereo cassette, tilt wheel and many other options **Cash Rebate \$1000**

Or lease for **\$136.88\*** per month

\* 60 month closed end lease. Rebate included in price of vehicle. First payment & Security deposit at inception. Tax & tags additional.

## nucar ISUZU

172 North Du Pont Highway, New Castle, DE 322-2277

**Now, Oldsmobile announces...**

NEW  
**3.9%** ANNUAL PERCENTAGE RATE  
**G.M.A.C. FINANCING**

It's available on every 1987 Olds Delta 86, Cutlass Supreme, Cutlass Delta, Cutlass or Firenza. And that could mean big finance savings! Length of finance contract is limited. Just check with your participating Olds dealer for qualification details.

OR UP TO  
**\$1200**  
**CASH BACK**  
DIRECT FROM OLDS\*

The more options you get, the more cash you get back. Now on every Delta 86, Cutlass Supreme, Cutlass Delta and Cutlass Firenza. (Cash back not available on Firenza). Just check with your participating Olds dealer for details. Here's how the cash adds up:

Total Original Manufacturer's Suggested Retail Price	Olds CASH BACK DIRECT FROM OLDS
\$ 500- 999	\$ 200
1,000-1,499	400
1,500-1,999	600
2,000-2,999	800
3,000 AND UP	1,200

\*Available through 4/30/87 on new cars and vans. Cash back ends 4/30/87. Cash back will be applied to the first payment. Some restrictions apply. See your Olds dealer for details.

ON



The choice is yours. Whether you choose the finance savings of 3.9% G.M.A.C. financing or you add up the options for cash back direct from Olds, you'll be making a smart move. That's because you're moving out in a brand new 1987 Oldsmobile. Plus, every Oldsmobile is backed by the

GM Quality Commitment Plan—a 5-year/50,000-mile powertrain warranty and 3-year/50,000-mile full-through protection warranty. See your Oldsmobile dealer for the terms and conditions of the new limited warranty. And make your move to Oldsmobile Quality today! How many smiles?

Oldsmobile  
Oldsmobile Quality. Feel it.

## BAYSHORE AUTO, INC.

West End of High Street, Elkton, Md.

Your Oldsmobile - GMC Dealer

MD. 301-398-7770 or Dial 1-800-255-7770

## INTERNATIONAL<sup>®</sup> USED TRUCKS

- 83 PETERBUILT**  
Conv. Cab - Air Ride  
Cust. 80" Sleeper  
11-24.5 Tires
- 84 FREIGHTLINER**  
Jake Brake  
Conv. Cab - 400 Cat  
13 spd. Fuller - Lo-Pro  
11-24.5 Tires
- 74 INTERNATIONAL**  
1 Ton Dump - 8 cyl.  
Gas-One Owner  
10,000 miles
- 70 INTERNATIONAL**  
Horse Van - A-1  
Very Clean  
Make Offer
- 82 FREIGHTLINER**  
C/O 300 Cummins  
10 spd. Fuller  
11-24.5
- 82 GMC**  
C/O - 10 spd. Fuller  
10.00x20 Tires
- 78 WHITE**  
C/O 350 Cummins  
10 spd. Fuller  
11-25.5 Tires
- 78 S-1754**  
DT-466 - 180 HP  
218WB - 10.00x20  
5THDR - 2 spd.  
For 20' Body
- 88 GMC**  
Ten Wheel Dump  
30K Trans.  
4 Dump Body  
30K - Overhaul
- 72 INTERNATIONAL**  
Tri-Axle Dump  
19' Aluminum Body  
15 spd.

## BOULDEN

"SINCE 1911"

South Bridge Street 398-5700  
Pulaski Highway 398-1334  
Delaware 737-1607  
ELKTON, MARYLAND

## TRISTATE FORD LOT ATTENDANT

PART-TIME  
5 P.M. to 8 P.M.

Driver's License Required  
**398-3600**  
Ask For John Hodanics

**CAR OF THE WEEK!**

**'85 ARIES**  
4 Door, Air, Automatic, Power Steering, Power Brakes, AM/FM  
**\$5795.**

**'85 NISSAN SENTRA DELUXE**, 4 dr., auto, AM/FM, air, light blue metallic, cloth interior ..... **\$6295.**  
**'84 DODGE ARIES**, 4 dr., automatic, air ..... **\$4600.**  
**'84 DODGE D100 Pickup**, 6 cyl., auto., 8 ft. box, power steering, dark tan metallic ..... **\$5500.**  
**'84 DODGE COLT**, 2 door ..... **\$3295.**  
**'83 CHEVY CELEBRITY**, 4 dr., auto., air, cruise control ..... **\$4450.**  
**'83 TOYOTA COROLLA WAGON** ..... **\$3000.**  
**'82 AMC CONCORD**, loaded ..... **\$3000.**  
**'82 DODGE LANCER**, sports sedan, automatic, AM/FM, air, light blue metallic, cloth interior ..... **\$6295.**  
**'82 AMC EAGLE**, 4 dr., 4-wheel drive, standard ..... **\$2995.**  
**'81 OLDS CUTLASS WAGON**, fully equipped ..... **\$3750.**  
**'79 HONDA ACCORD**, 2 door ..... **\$1200.**  
**'78 HONDA ACCORD**, 2 door, auto., 43,000 miles ..... **\$1995.**  
**'76 DODGE**, 8 passenger van ..... **\$1695.**  
**'76 PLYMOUTH VOLARE**, Wagon, 4 speed ..... **\$900.**

MANY MORE TO CHOOSE FROM!

**Rittenhouse Motor Company**  
250 Elkton Rd., Newark • 368-9107

**YOUR WAIT IS OVER!**

**1987 HYUNDAI IS HERE NOW!**

CHOOSE FROM OUR LARGE SELECTION OF CARS THAT MAKE SENSE...

FROM \$5420  
WITH 6 MODELS UNDER \$7,000

**all priced to sell**

**FINE HYUNDAI**  
BECAUSE YOUR CAR IS SO IMPORTANT.

VISIT OUR NEW LOCATION  
DuPont Highway - One mile South of the airport  
323-1200

**808 Automobiles 808 Automobiles**

CORVETTE 1984 auto, loaded, black with red interior, sheepskins, mint, 8000 miles, car cover, \$18,500 or best offer. Days 302-722-1653, eves 302-798-8546.

DODGE 1970 Dart. Runs good, \$500 or best offer. Call Jim 302-737-1158.

**ROCKHILL PONTIAC**  
Newark 738-6161  
250 E. Cleveland Ave.

DODGE COLT '85  
4 sp., 4 cyl., hatchback \$3495.

**ROCKHILL PONTIAC**  
Newark 738-6161  
250 E. Cleveland Ave.

FORD 1970 Mustang for sale. Runs good, body in good condition. Interior good. \$500. Call 301-398-6049 or 301-398-4077, ask for Tod Paxton.

**ROCKHILL PONTIAC**  
Newark 738-6161  
250 E. Cleveland Ave.

HONDA ACCORD-1983, 4DR, Sep. AM/FM stereo cassette, A/C, sun roof, 52,000 miles. New Michelin tires. \$5,900. Call 301-398-5814.

**CALL TODAY RIDE TONIGHT MC COY**  
301-842-2422

**808 Automobiles 808 Automobiles 808 Automobiles 808 Automobiles 808 Automobiles 808 Automobiles**

FORD ESCORT '83  
4 sp., 4 cyl., Red! \$1995.

**ROCKHILL PONTIAC**  
Newark 738-6161  
250 E. Cleveland Ave.

FORD MUSTANG GT '85  
5 sp., V-8, A/C, T-tops, loaded! \$11,295.

**ROCKHILL PONTIAC**  
Newark 738-6161  
250 E. Cleveland Ave.

HONDA CIVIC '83  
5 sp., 4 cyl., 4DR., CLEAN \$4,995

**ROCKHILL PONTIAC**  
Newark 738-6161  
250 E. Cleveland Ave.

HONDA CRX '85  
5 sp., 4 cyl., 19,000 mi. \$6,995

**ROCKHILL PONTIAC**  
Newark 738-6161  
250 E. Cleveland Ave.

ISUZU IMPULSE '86  
5 sp., A/C, SUNROOF, 99,995

**ROCKHILL PONTIAC**  
Newark 738-6161  
250 E. Cleveland Ave.

LTD Wagon-1985  
A/C, P/S, P/B, stereo, tilt, defrost, cruise.  
Lease/Purchase \$99/mo.

**ANDERSON AUTO SALES**  
301-392-5500  
1633 Elkton Rd (across from State Line Liquors)

OLDS TORONADO CALIENTE  
Auto, V-8, A/C, loaded.  
\$12,995.

**ROCKHILL PONTIAC**  
Newark 738-6161  
250 E. Cleveland Ave.

PONTIAC FIREBIRD, 1987.  
Runs and looks good. 350ci engine. Automatic. Call 301-765-6747 or 301-287-2688.

**808 Automobiles 808 Automobiles 808 Automobiles 808 Automobiles 808 Automobiles 808 Automobiles**

VW Bus 1972. Body in good shape, engine needs work. Best offer. Call Jim 302-737-1158.

**ROCKHILL PONTIAC**  
Newark 738-6161  
250 E. Cleveland Ave.

PONTIAC FIREBIRD '85  
Auto, V-6, A/C, red. \$8,995.

**ROCKHILL PONTIAC**  
Newark 738-6161  
250 E. Cleveland Ave.

PONTIAC FIERO GT '85  
Auto, V-6, A/C, Sunroof. \$9495.

**ROCKHILL PONTIAC**  
Newark 738-6161  
250 E. Cleveland Ave.

PONTIAC GRAND AM '86  
Auto., A/C, 4 dr., 14,000 mi. \$9995.

**ROCKHILL PONTIAC**  
Newark 738-6161  
250 E. Cleveland Ave.

PONTIAC FIREBIRD '85  
Auto, V-6, A/C, red. \$8,995.

**ROCKHILL PONTIAC**  
Newark 738-6161  
250 E. Cleveland Ave.

PONTIAC GRAND AM '85  
Auto., A/C., 2 dr., only 18,000 miles. \$8995.

**ROCKHILL PONTIAC**  
Newark 738-6161  
250 E. Cleveland Ave.

PONTIAC 1982 J-2000. Auto, ps, pb, a/c, 46,000 miles. Excellent condition. Asking \$2875. Days: 302-658-7675, eves: 302-368-3057.

**ROCKHILL PONTIAC**  
Newark 738-6161  
250 E. Cleveland Ave.

PONTIAC BONNEVILLE BROGHAM '84  
Loaded, 4 DR., Beige, \$7,495.

**ROCKHILL PONTIAC**  
Newark 738-6161  
250 E. Cleveland Ave.

**812 Auto Parts**  
ENGINE: 1983 Chevrolet '305' V-8; 40,000 miles, \$550. Call Dave or Russ at 301-658-3056.

HONDA Civic parts. 1975-1978. Call 301-392-5826 9-4pm.

★ ★ ★ ★ ★ ★ ★ ★

**★ LOWEST ★  
★ PRICES! ★**

★ We will beat any legitimate deal. ★

★ 12 Month/12,000 ★

★ Mile Warranty on All ★

★ Cars ★

★ ANDERSON ★

★ A AUTO ★

★ SALES ★

★ 1633 Elkton Road ★

★ Across From State ★

★ Line Liquors ★

★ 301-392-5500 ★

★ ★ ★ ★ ★ ★ ★ ★

"The Roadster Now Available"



### 1987 TAURUS 4 DOOR SEDAN

Manual air conditioning, electronic digital clock, rear window defroster, tinted glass, dual electric remote control mirrors, rocker panel moldings, reclining passenger seat, speed control, interval windshield wipers, tilt steering column, paint stripe, clearcoat paint, automatic transaxle, P205/20R14 BSW tires, cloth split bench seat.

# \$10,999

# CAR MARATHON

Remember- buying from Lowell will keep you out of a hole!

## BIG CARS - LITTLE CARS

## Fords - Lincolns - Mercurys

### Fantastic Prices While Supply Lasts

**WE HAVE IN STOCK  
1 2 & 4 MUSTANG GT  
Ready For Immediate Delivery**

### 1987 AUTOMATIC ESCORT GL 2 DR HATCHBACK

Wide vinyl bodyside moldings, digital clock w/overhead console, tinted glass, power steering, interval windshield wipers, front & rear bumper guards, bumper rub strips, instrumentating group, dual electric mirrors, trim ribs, center hubs, 1.9 L EFI 4 cyl. engine, P165/80R13 B/S/W tires, cloth low back buckets.

# \$7199

"88 Lincolns Now Available"



### 1987 TEMPO GL 4 DOOR SEDAN

Tinted glass, dual electric remote mirrors, AM/FM stereo radio, 2.3 L. EFI HSC 4 cyl. engine, console/graphic system monitor, FLC automatic transaxle, P185/70-R14 B/S/W tires, manual control air conditioner, front center arm rest, styled steel wheels/trim rings, cloth/vinyl low back bucket seats, sound seal undercoating.

# \$9,299

**ALL NEW 1987 FORDS LINCOLNS AND MERCURYS NOW CARRY FORD MOTOR COMPANY'S 6 YEAR/60,000 MILE WARRANTY.**

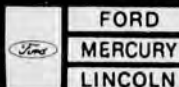
Many Others At Comparable Prices

**A FULL TANK OF GAS IN EVERY NEW VEHICLE THAT IS PURCHASED FROM McCOYS.**

Prices Include All Factory Incentives And Cash Rebates! (Extended thru 4-6-87)

# McCoy Motor Company, Inc.

Ford Motor Company's ONLY Full Line Authorized Direct Factory Dealer In The Three State Area!!!!  
Route 273, Rising Sun, Maryland  
Phone (301) 658-4801 • (301) 642-6700 • (302) 737-5038  
Also: Route 40, Perryville, - Phone: 301-642-2422



Financing Available As Low As 3.9% A.P.R.

**tristate USED CAR CORRAL**  
Specializing in Late Model Trades

<b>'85 FORD F-250 XLT</b> 4x4, auto., V8, full power & air, 8000 original miles. <b>SAVE \$\$</b>	<b>'85 FORD MUSTANG GT</b> Black T-tops, 8 cyl., auto., full power & air, 19,000 orig. miles. <b>SALE PRICE \$10,766.</b>	<b>'86 CHEVY MONTE CARLO SS</b> Burgundy 2 dr., 8 cyl., auto., full power & air, 5,000 original miles, remaining factory warranty. <b>SALE PRICE \$13,329.</b>
<b>'85 DODGE ROYAL SPORTSMAN VAN</b> Burgundy, auto., 8 cyl., full power & air, 8 pass., 16,000 orig. miles. <b>SAVE \$\$</b>	<b>'86 FORD MUSTANG LX</b> Midnight blue, auto., full power & air, sunroof, 14,000 original miles. <b>SALE PRICE \$8969.</b>	<b>'78 DODGE LITTLE RED EXPRESS PICKUP</b> Auto., 8 cyl., PS, PB, air, 54,000 original miles. <b>RARE!</b>
<b>'86 DODGE D-50 ROYAL</b> Auto., 4 cyl., PS, PB, air, 12,000 orig. miles. <b>SAVE \$\$</b>	<b>'83 PONTIAC GRAND PRIX BROUGHAM</b> Rosewood metallic, auto., 8 cyl., full power & air, 27,000 original miles. <b>SALE PRICE \$6922.</b>	<b>'86 CHRYSLER LEBARON</b> White, 4 dr., auto., full power & air, 12,000 original miles. <b>SALE PRICE \$9385.</b>
<b>'86 FORD TAURUS</b> Gold metallic, 4 dr., 6 cyl., auto., full power & air, 8000 original miles. <b>SALE PRICE \$11,744.</b>	<b>'85 DODGE LANCER ES</b> Turbo, gold, 4 dr., auto., full power & air. <b>SALE PRICE \$7719.</b>	<b>'86 DODGE RAM CHARGER ROYAL SE</b> 4x4, auto., 8 cyl., full power & air, 7,000 orig. miles. <b>SALE PRICE \$14,832</b>

U.S. Rt. 40, Elkton, Md. 1 mi. S. of the MD/DE Line  
1-800-848-CARS • 301-398-3600  
302-737-4060 • 301-392-4200

**Take a Time-out**  
CELLULAR from High Prices  
ONE Car Phones Installed

**1987 BUICK CENTURY**  
Air conditioning, power steering, power brakes, tinted glass, pulse wiper, sport mirrors, rear defogger, AM/FM stereo with seek and scan. Stock #3477.  
**LEASE \$219/mo.**

**1987 BUICK PARK AVENUE**  
Air conditioning, 3.8 liter SFI V-6, rear defogger, AM/FM stereo, w/cassette, 6 way power seat, power antenna, passenger recliner, much more. Stock #3386.  
**LEASE \$359/mo.**

**NO FIRST PAYMENT.  
NO SECURITY DEPOSIT.  
NO TAX & TAGS.**

**1ST PAYMENT DUE IN 30 DAYS**  
\*Included in Payment

**ASK YOUR FRIENDS ABOUT US!**

**Gambacorta BUICK**  
427 WEST SEVENTH ST. IN HISTORIC NEW CASTLE 323-3026  
Mr. Goodwrench

### LEGAL NOTICE LEGAL NOTICE LEGAL NOTICE

**LEGAL NOTICE**  
Estate of Frank Joseph Pokorny, Jr., Deceased.  
Notice is hereby given that Let-  
ters Testamentary upon the  
Estate of Frank Joseph Pokorny,  
Jr. late of 45 Bridleshire  
Road, Newark, De. deceased,  
were duly granted unto Rose  
Malinowski Pokorny on the  
tenth day of March A.D. 1987,  
and all persons indebted to the  
said deceased are requested to  
make payments to the Execu-  
trix without delay, and all  
persons having demands  
against the deceased are re-  
quired to exhibit and present the  
same duly probated to the said  
Executrix on or before the tenth  
day of September A.D. 1987, or  
abide by the law in this behalf.  
Rose Malinowski Pokorny  
Executrix

Piet H. vanOgdrop, Esquire  
206 East Delaware Avenue  
Newark, Delaware 19711  
np3/25-3

**IN THE COURT  
OF COMMON PLEAS  
FOR THE STATE  
OF DELAWARE  
IN AND FOR  
NEW CASTLE COUNTY**  
IN RE: CHANGE OF NAME OF  
KAY W. RICHARD  
PETITIONER(S)  
TO  
KAY ELLEN WHITTLE  
NOTICE IS HEREBY GIVEN  
that Kay W. Richard intends to  
present a Petition to the Court  
of Common Pleas for the State  
of Delaware in and for New Castle  
County, to change her name to  
Kay Ellen Whittle.  
Kay W. Richard  
Petitioner  
Dated: 3/8/87  
np 3/18-3

**IN THE COURT  
OF COMMON PLEAS  
FOR THE STATE  
OF DELAWARE  
IN AND FOR  
NEW CASTLE COUNTY**  
IN RE: CHANGE OF NAME OF  
ANN REUNBROUCK AND  
NICHOLAS PETER REUN-  
BROUCK,  
PETITIONERS,  
TO  
ANNEMARIE deVRIES and  
NICHOLAS PETER deVRIES.  
NOTICE IS HEREBY GIVEN  
that Anne Reunbrouck and  
Nicholas Peter Reunbrouck in-  
tend to present a Petition to the  
Court of Common Pleas for the  
State of Delaware in and for  
New Castle County, to change  
their names to Annemarie  
deVries and Nicholas Peter  
deVries, respectively.  
Ann Reunbrouck  
individually and  
as Guardian for  
Johannes Peter  
Reunbrouck.  
Dated: 3-8-87  
np 3/18-3

**IN THE COURT  
OF COMMON PLEAS  
FOR THE  
STATE OF DELAWARE  
IN AND FOR  
NEW CASTLE COUNTY**  
IN RE: CHANGE OF NAME OF  
LOIS MARIE SINLOCK COSBY  
PETITIONER (S)  
TO  
MARCIA LOIS SINLOCK  
COSBY  
NOTICE IS HEREBY GIVEN  
that Lois Marie Sinlock Cosby  
intends to present a Petition to  
the Court of Common Pleas for  
the State of Delaware in and for  
New Castle County, to change  
her name to Marcia Lois Sinlock  
Cosby.  
Marcia Lois Sinlock Cosby  
Petitioner(s)  
DATED: March 18, 1987  
np 3/25-3

**IN THE COURT  
OF COMMON PLEAS  
FOR THE STATE  
OF DELAWARE  
IN AND FOR  
NEW CASTLE COUNTY**  
IN RE: CHANGE OF NAME OF  
DONNA K. TYMITZ  
PETITIONER(S)  
TO  
DONNA MELANIE JEAN KELSCH  
NOTICE IS HEREBY GIVEN  
that Donna K. Tymitz intends to  
present a Petition to the Court of  
Common Pleas for the State of  
Delaware in and for New Castle  
County, to change his/her name  
to Donna Melanie Jean Kelsch.  
Donna K. Tymitz  
Petitioner(s)  
DATED: 3/23/87  
np 3/25-3

**CITY OF NEWARK  
DELAWARE  
BOARD OF  
ADJUSTMENT  
PUBLIC HEARING  
NOTICE**  
April 16, 1987 - 7:30 p.m.  
Pursuant to Chapter 32, Ar-  
ticle XIV of the Code of the City of  
Newark, Delaware, notice is  
hereby given of a public hearing  
of the Board of Adjustment on Thurs-  
day, April 16, 1987 at 7:30 p.m. in  
the Council Chamber, Newark  
Municipal Building, 220 Elkton  
Road, Newark, Delaware, to  
hear the following appeals:  
1. The appeal of Reid Rowlands  
for the property located at 280-  
282 East Main Street for the  
following variances:  
A variance to Ch. 32, Sec. 32-  
19(d)(7), which requires a side  
yard of eight (8) feet. Applicant  
is requesting a variance of approx-  
imately two feet.  
2. The appeal of Roland C. Mc-  
Kevey for the property located at  
929 Devon Drive for a  
variance to Ch. 32, Sec. 32-  
9(c)(7), which requires side  
yards to be twenty-five feet. Ap-  
plicant is requesting a three-foot  
variance.  
ZONING CLASSIFICATION:  
BC  
3. The appeal of James Baxter,  
Delaware Tire Center, 616 South  
College Avenue for a special ex-  
ception to the Sign Code, Ch. 32,  
Sec. 32-60(a)(2) requires max-  
imum area of instructional sign  
to be not more than two (2)  
square feet for each sign. Appli-  
cant's five signs are ten (10)  
square feet each.  
Ch. 32, Sec. 32-60(a)(2) also  
requires maximum area of  
advertising ground signs to not  
exceed fifteen (15) square feet.  
Applicant's proposed sign is  
thirty (30) square feet.  
ZONING CLASSIFICATION:  
BC  
Any questions regarding the  
above appeals may be directed  
to the City Secretary's Office,  
366-7078, prior to the meeting.  
Thomas J. Pelligrone  
Chairman

**LEGAL NOTICE**  
Estate of Patricia J. Williams,  
Deceased.  
Notice is hereby given that Let-  
ters Testamentary upon the  
Estate of Patricia J. Williams  
late of 21 Mackey Lane, Newark,  
De. deceased, were duly granted  
unto Nicholas G. Williams on the  
thirteenth day of March A.D.  
1987, and all persons indebted to  
the said deceased are requested  
to make payments to the Execu-  
trix without delay, and all  
persons having demands  
against the deceased are re-  
quired to exhibit and present the  
same duly probated to the said  
Executrix on or before the thir-  
teenth day of September A.D.  
1987 or abide by the law in this  
behalf.  
Nicholas G. Williams  
Executrix

Piet H. vanOgdrop, Esquire  
206 East Delaware Avenue  
Newark, Delaware 19711  
np3/25-3

**LEGAL NOTICE**  
Estate of Callista T. McKelvey,  
Deceased.  
Notice is hereby given that Let-  
ters Testamentary upon the  
Estate of Callista T. McKelvey  
late of 254 W. Main Street,  
Newark, De. deceased, were  
duly granted unto Callista T. Bar-  
wick on the twenty-third day of  
March A.D. 1987, and all persons  
indebted to the said deceased  
are requested to make pay-  
ments to the Executrix  
without delay, and all persons  
having demands against the  
deceased are required to exhibit  
and present the same duly pro-  
bated to the said Executrix on or  
before the twenty-third day of  
September A.D. 1987 or abide by  
the law in this behalf.  
Callista T. Barwick  
Executrix  
Dated: March 18, 1987  
np3/25-3

**LEGAL NOTICE**  
Estate of Callista T. McKelvey,  
Deceased.  
Notice is hereby given that Let-  
ters Testamentary upon the  
Estate of Callista T. McKelvey  
late of 254 W. Main Street,  
Newark, De. deceased, were  
duly granted unto Callista T. Bar-  
wick on the twenty-third day of  
March A.D. 1987, and all persons  
indebted to the said deceased  
are requested to make pay-  
ments to the Executrix  
without delay, and all persons  
having demands against the  
deceased are required to exhibit  
and present the same duly pro-  
bated to the said Executrix on or  
before the twenty-third day of  
September A.D. 1987 or abide by  
the law in this behalf.  
Callista T. Barwick  
Executrix  
Dated: March 18, 1987  
np3/25-3

**NOTICE OF  
DIVORCE ACTION**  
TO: Patrick J. Donohoe,  
Respondent.  
FROM: Clerk of Court - Divorce  
New Castle County  
Carol A. Donohoe, Petitioner,  
has brought suit against you for  
divorce in the Family Court of  
the State of Delaware for New  
Castle County in Petition No.  
421, 1987. If you do not serve a  
response to the petition on Peti-  
tioner's Attorney  
Joseph W. Benson  
1701 N. Market Street  
P.O. Box 248  
Wilmington, DE 19899  
or the petitioner if  
unrepresented, and the Court  
within 30 days after publication  
of this notice, exclusive of the  
date of publication, as required  
by statute, this action will be  
heard without further notice at  
Family Court.  
Date Mailed: 3/26/87  
4/1-1

**IN THE COURT  
OF COMMON PLEAS  
FOR THE  
STATE OF DELAWARE  
IN AND FOR  
NEW CASTLE COUNTY**  
IN RE: CHANGE OF NAME OF  
KRISTINE ELIZABETH GREEN  
PETITIONER(S)  
TO  
KRISTINE ELIZABETH KELLEHER  
NOTICE IS HEREBY GIVEN  
that Kristine Elizabeth Green  
intends to present a Petition to  
the Court of Common Pleas for  
the State of Delaware in and for  
New Castle County, to change  
her name to Kristine Elizabeth  
Kelleher.  
Kristine Elizabeth Green  
Petitioner(s)  
Dated: March 18, 1987  
np3/25-3

**LEGAL NOTICE**  
Estate of Callista T. McKelvey,  
Deceased.  
Notice is hereby given that Let-  
ters Testamentary upon the  
Estate of Callista T. McKelvey  
late of 254 W. Main Street,  
Newark, De. deceased, were  
duly granted unto Callista T. Bar-  
wick on the twenty-third day of  
March A.D. 1987, and all persons  
indebted to the said deceased  
are requested to make pay-  
ments to the Executrix  
without delay, and all persons  
having demands against the  
deceased are required to exhibit  
and present the same duly pro-  
bated to the said Executrix on or  
before the twenty-third day of  
September A.D. 1987 or abide by  
the law in this behalf.  
Callista T. Barwick  
Executrix  
Dated: March 18, 1987  
np3/25-3

Post

737-0905

Classifieds

# Garrett Miller

Your **SUPER**store



**RCA**

**RCA ProWonder Camcorder**



CMR200

- 1-piece record/playback convenience
- f1.2 lens with 6:1 power zoom
- Infrared auto focus system
- Electronic viewfinder with adjustable diopter
- 3-way AC/DC versatility
- Uses standard VHS cassettes

**\$995**

**SHARP**

**19" Diagonal COLOR TV**

- Automatic Color System (ACS)
- Automatic Fine Tuning (AFT)
- One Button Picture Balance Control

**\$199**



19MP17

**HITACHI**

A World Leader in Electronics

**13" DIAGONAL COLOR TV**

- Color Loc™ System
- Table Model Color TV 13" Diagonal Screen
- Quick-Start System
- 10/2/1 Limited Warranty

**\$169**



**RCA**

**19" Diagonal XL-100 COLOR TV REMOTE CONTROL**

- ChannelLock digital remote control
- Hi-Con™ picture tube screen
- Auto-Programming
- On-screen channel number display
- Quartz crystal cable tuning

**\$279**



FMR468WR

**Compact Microwave**

**MAGIC CHEF**

- 15-minute timer
- Easy-to-clean oven
- 5 Cubic foot oven
- Removable glass tray

**\$87**

5-year limited warranty



MB1

**HQ SHARP**

**CABLE READY 8 HRS. VHS VIDEO CASSETTE RECORDER with WIRELESS REMOTE CONTROL**

- 14-Day, 2-Event Programmable Timer
- 110-Channel Cable Compatible Tuner
- Automatic Power-On Function
- 11 Function Wireless Remote Control

**\$239**



VC7842

1 YEAR COMPLIMENTARY VIDEO CLUB MEMBERSHIP WITH PURCHASE

**RCA**

**ColorTrak 26" Diagonal**

- 18-button ChannelLock remote control
- Hi-Con™ square-corner 110" COTY picture tube
- Auto-Programming
- 94-channel quartz crystal cable tuning\*

**\$499**



FMR710R

**SPACE SAVER**

**Little Litton**

- Touch Controls
- 5 Cubic Foot
- 500 watts

Save counter space... mount Little Litton on a wall or under a kitchen cabinet with optional mounting kit.

**\$149**



Model 1130



**Garrett Miller**  
Appliance Warehouse  
37 Gormay Drive  
Gormay Industrial Park  
Wilmington, Delaware

Turn off Maryland Avenue at Mellon Bank  
**(302) 656-3170**

*for quality & savings you'll love our touch*

# Garrett Miller

Your **SUPER**store

Hours:  
Monday thru Friday 9 a.m. to 9 p.m.  
Saturday 9 a.m. to 5 p.m. Sunday 11 a.m. to 4 p.m.

**PARADE OF VALUES**

**White-Westinghouse 17.0 Cu. Ft. Frost-Free Refrigerator-Freezer**

- 12.4 Cu. Ft. Fresh Food Capacity
- 4.6 Cu. Ft. Freezer Capacity
- Energy Saver Switch
- Two Under-Over Shelves (Adjustable to Six Positions)
- Twin Covered Crispers

**ONLY \$399**



White Westinghouse Model RT171G

**White-Westinghouse Laundry Pair**

**MODEL LA271E Washer**

- Large Capacity
- Double-Action Washing
- Single-Speed Dial Control

**MODEL DE271E Dryer**

- Time Dry, Regular Heat
- Exclusive Cross-Vane Tumbling
- Up-Front Lint Collector

**WASHER \$209 DRYER \$169**



White Westinghouse LA271E Washer DE271E Dryer

**UNDERCOUNTER DISHWASHER**

**3 Automatic Cycles**

**NORMAL HEAVY NORMAL LIGHT & RINSE HOLD**

- Energy-Saving Air Dry Option
- Dual-Action Filtering System
- Porcelain-Enamel-On-Steel Interior

**\$279**



Whirlpool DU3000

**Amana Radarange**

MICROWAVE OVEN

- Exclusive Rotowave Cooking System
- 850 Watts Cooking Power
- BIG 1.2 Cu. Ft. Interior
- Only 21 1/2" Wide
- 10 Power Levels

**\$199**



RS40

**OVER-THE-RANGE**

**Litton-Aire Full Size! Full Power!**

- 1.1 cubic foot oven, interior oven light and 800 watts of microwave cooking power.
- "Push-In-One" cooking rack.
- Electronic Touch Control with 10 power levels, two-step cooking memory, Recipe Saver, Delay Start and "Thawing" Defrost.
- Cooks Cooks automatically cooks food by cubic quantity & determines cooking. Cooks Reset automatically cooks all sorts of meats.
- Temperature probe and Thaw-or-Defrost.
- Fits into standard 30" vent hood opening.
- Powerful built-in 3-speed exhaust fan with range surface light.

**\$379**



Model 2276

Quantities are limited—Hurry in today! All advertised specials subject to prior sale. All merchandise is priced for pickup... Free factory service (parts and labor) on all items.

**BEST SELECTION! CHOOSE FROM BEST VALUE!**

GE MAGNAVOX MITSUBISHI RCA SHARP SONY FISHER ZENITH AMANA CALORIC JENN-AIR EMERSON LITTON MAGIC CHEF MAYTAG WHITE-WESTINGHOUSE WHIRLPOOL HITACHI

**BEST SAVINGS!**

**MISSING  
ISSUE(S)**