

NEWARK POST

❖ Greater Newark's Hometown Newspaper Since 1910 ❖

101st Year, 48th Issue © 2010

December 10, 2010

www.newarkpostonline.com

Newark, Del.

Winter comes early to Newark



PHOTOS BY MARK CORRIGAN

Last Friday brought with it frigid temperatures, but also a warm feeling of community as Newark celebrated Winterfest in front of the Academy Building on Main St. Roasting chestnuts, carriage rides, tree lighting, ice carving demonstrations, live musical performances, hot chocolate and a visit from Santa Claus made this an event to remember. Delaware Special Olympics held their 2nd Annual Reindeer Run in conjunction with the event. The Ancient Order Hibernians, Division 2 - Newark also collected coats and non-perishable food items for local families and donations that will be distributed to support families of deployed troops.

Glasgow office offers help for those with & without jobs

By MARK CORRIGAN

MCCRIGAN@CHES PUB.COM

As seen in the last batch of elections, one of the hottest topics is job growth. Though the economy has shown signs of improvement, people in the area are still displeased at the present rate of unemployment. Compound this with the number of jobs lost when Avon, Chrysler, and General Motors shut their doors, and the ability to find another job can seem like a daunting task.

But, a local division within the Delaware Department of Labor has created a system to help relieve the stress for those looking for a job or trying to find a better job.

Using the motto, "Connecting people to jobs," the Pencader Division of Employment and Training (DET), located in the Pencader Corporate Center off of Route 896, south of Newark, provides counseling services for those in need of job assistance. But, the center, also home to the divisions of Unemployment Insurance and Vocational Rehabilitation Services, is not just the "unemployment agency." It has the resources to provide help to both the unemployed and employed.

"It's open to a lot more people than you would think," stated Beverly Benson, unit manager, Division of Employment and Training.

The center services the unemployed, but also the underemployed, or those working a series of one or more part-time jobs or who have a low-paying job just to make ends meet. But with the economy showing a slow recovery, around the state and around Newark too, the center



The Department of Labor office in Pencader Corporate Center, Glasgow.

has placed a significant focus on meeting the needs of the dislocated worker: an employee with experience who has been terminated by downsizing, layoffs, or by a company going out of business.

Calling itself a "one-stop" office, DET provides a host of services, including occupational skills training programs, re-employment services, job seeker services, veteran's services assistance, labor market information, and workshops.

The process begins with filling out a form and an evaluation where applicants are scored on the basis of need and the timeliness of completing documentation. Once approved, the applicant is paired with a case manager who provides assistance and counseling.

"The case manager will walk them through the process the rest of the way. That case manager will be their best friend. That person will try to help them re-sculpt their life; try to help them figure out what

See **JOBS**, 14 ►

HEATING & AIR CONDITIONING • SERVICE & INSTALLATION

• We Service & Install All Brands

• Competitively Priced

• Emergency Service

\$79⁰⁰ Heater Tune-Up
Oil Tune-Up \$159

ENHANCED
HEATING & AIR CONDITIONING

Integrity And Quality Is Our Policy

LICENSED • INSURED • BONDED

302-836-1921

Enhance your comfort this winter

Local, Dependable, Professional



\$25⁰⁰ OFF

Any Heating/AC Service Call

When you mention this ad.

(Excluding diagnostic fees & tune-ups)



INSIDE

The best downtown window displays ... 2

BRAC transferees come to area 15



IN THE NEWS



Mention this ad for 10% Off
THE FINE THYME
 FINE FURNITURE & ACCESSORIES
 28 South Main St. • North East • 410-287-1383

Gelato takes first prize for window decorations

Caffe Gelato took first prize in the annual Storefront Decorating Contest sponsored by the Downtown Newark Partnership. This year's competition drew in 62 downtown businesses. Flavor came in second place and Clothes in the Past Lane was third. Storefront decorations were judged by a panel of community representatives. Others in the top 10 were: Cereal Bowl, Flip Flop Shops, Gamble's Newark Florist, Grassroots, Kildare's Irish



Caffe Gelato (above) added a homey touch to its holiday display, while Clothes in the Past Lane (right) did not exactly have "stockings hung by the chimney with care."



Pub, Mizu Sushi, and Primo Hoagies. "This year the judging was difficult. There were so many great entries; even nar-

rowing it to the 10 finalists was hard," said Downtown Newark Partnership Administrator Maureen Feeney-Roser.



Yogo Berry coming soon

Though the temperatures have dropped recently, winter is still a good time to enjoy a frozen treat. Fans of TCBY, which closed its doors this year, will soon be able to indulge their taste buds when Yogo Berry Frozen Yogurt opens its doors at 129 E. Main St., in a few weeks. Construction has begun on-site and the owner revealed that the business will feature self-service, fat-free frozen yogurt in a variety of flavors. Hours have not been posted

yet, but Yogo will be open six days a week, Mon.-Sat.

Falafel Plus opens its doors

Recently, Newark added to its diversity of ethnic cuisine when Falafel Plus opened for business at 215 E. Main St. The menu consists of a few traditional Middle Eastern dishes, including chicken in a pita, hummus (pureed garbanzo beans with tahini sauce, garlic, and lemon juice), Baba-Ghannouj (a blend of roasted eggplant mixed with tahini, garlic, lemon juice, and drizzled with olive oil), and a December special of falafel and vegetables for only \$2.99. Hours are Mon.-Weds., 11 a.m.-10 p.m.; Thurs.-Sat., 11 a.m.-1 a.m.; and Sun., 11 a.m.-8 p.m. The store can be reached 302-525-4414 or at falafelplus@comcast.net. A website, www.falafelplus.com, is coming soon.



GIFT CERTIFICATES AVAILABLE
ENVY SPA AND SALON
 707 NORTH BRIDGE STREET
 ELKTON, MD 21921
 410.620.0711
 ENVYSPAANDSALON.COM

Happy Holidays...
 from our family to yours!



Give the gift of sight this Christmas... Stop by a Simon Eye Associates location and pick up a gift card today! Gift cards make a perfect stocking stuffer and can be used throughout the year on frames, contact lenses, sunglasses and accessories.

SIMON EYE ASSOCIATES

www.simoneye.com
 302.239.1933

Newark
 19 Haines Street
 Suite B

6 convenient locations
 Bear | Concord Pike | Hockessin/Pike Creek
 Middletown | Newark | Wilmington

Delaware National Bank
 Changing our name. Not our family.



Delaware National Bank is changing our name to Fulton Bank. Rest assured it's a change in name only, and we are still a member of the Fulton Financial Family. You will continue to receive the level of service you have come to expect, knowing that your financial relationship and the people you bank with will remain the same. We'll continue to provide a one-of-a-kind commitment to the values that have earned us the trust of friends, neighbors and Forbes.

This is the type of community banking you can count on - now with 114 branches across Delaware, Pennsylvania and Virginia. It's the convenience and access you need, with people you can trust.

Fulton Bank
 Delaware National Division

LISTENING IS JUST THE BEGINNING.®

888.291.2400
 delawarenational.com/merger



Fulton Bank, N.A. Member FDIC. Member of the Fulton Financial Family.



POLICE BLOTTER

Teen waiting for school bus killed when car goes out of control

Editor's note: The Police Blotter is compiled from reports from area law enforcement agencies. For the latest police news, log on to newarkpostonline.com.

A car went out of control Monday morning on Old Baltimore Pike killing a teenager waiting for a school bus, Delaware State Police reported. Troopers identified the victim of the crash as Bruce A. Mutter, 15, of Newark.

Delaware State Police reported that the crash occurred at approximately 7:05 a.m. as Malcolm Deshields, 21, of Newark, was driving a 1996 Acura TL and was traveling eastbound on Old Baltimore Pike approaching Whitaker Road, south of Newark.

For some reason, Deshields' vehicle crossed into the westbound lane of Old Baltimore Pike, still traveling in an eastbound direction. The vehicle then left the southern edge of the roadway where it entered a ditch.

It then traveled eastbound across Whitaker Road and struck a 15 year-old Newark youth who was standing on Whitaker Road waiting for a school bus to arrive. The Acura continued traveling in an eastbound direction and went into a ditch on the east side of Whitaker Road, where it came to rest.

After being struck, the victim landed in the ditch directly next to the Acura. He was pronounced dead at the scene of the crash. His body was turned over to the Medical Examiners office where an autopsy will be performed to determine the exact cause of death.

Malcolm Deshields was

transported by EMS to the Christiana Hospital where he was treated and released for minor injuries. Old Baltimore Pike was closed in both directions for approximately three hours.

State Police have charged Deshields with one count of Operation of a Motor Vehicle Causing the Death of Another Person. He was arraigned at JP Court 2 and released on \$1000.00 unsecured bail.

Duo accused of breaking into cars on Madison Drive

Newark Police, Sunday, arrested two males who were found gaining access into unsecured vehicles in the 100 and 200 block of Madison Drive. One of the subjects was seen attempting to open the handle of a blue sedan by an officer, who detained both subjects.

The suspects, Ruddy Diaz, 20, of Elkton, Md., and Duane Allen, 22, of Tamaqua, Pa., were both frisked and the officer found two GPS units with power cords on Diaz and a small amount of what was later identified as 4.5 grams of marijuana on Allen. Both were brought to headquarters for further questioning.

Both suspects told police they had met a nearby party and had walked behind some townhomes to attempt to open the vehicles in the vicinity. Both Diaz and Allen admitted to taking the GPS units, as well as other items, including two iPods, a pair of sunglasses, a coin purse, and a flashlight. Neither could

identify the vehicles that had been entered.

Allen was issued a \$1,500 unsecured bond and released and Diaz was issued a criminal summons and released. All stolen property has been placed in temporary evidence until the victims can be found.

Shoplifter resists arrest

Authorities have charged Arnold Tucker, 46, of Newark, with resisting arrest after an officer had stopped him for questioning over a shoplifting incident at the Sunoco gas station at 287 Elkton Rd.

Police had received a report of a black male wearing a black jacket and blue jeans who had removed two cartons of Newport 100's cigarettes from the gas station. The clerk told officers that the man asked for the cigarettes, reached over the counter to take them and then fled on foot in an unknown direction behind the store.

An officer located the suspect at the corner of W. Park Place and Orchard Lane, where he detained the man. During a brief contact, the officer said he felt a box-like object in the suspect's jacket sleeve, something that was consistent with a carton of cigarettes. Tucker pulled away and attempted to flee, with the officer holding on. During the attempt, the officer was pulled down and cut his pants and left knee. The suspect was subdued with a

shot from the officer's Taser and no further incidents were reported. A search of the detainee revealed the two cartons of cigarettes, one each hidden in the sleeves of the suspect's jacket.

Tucker was charged with shoplifting and resisting arrest and was released on a \$500 unsecured bond.

Man hurt in home invasion

Police are on the lookout for two suspects who held two males at gunpoint inside of their own residence at the West Knoll Apts., located at 260 Elkton Road.

The males, two Chinese students, told police that a white male and a black male had broken into the apartment as they were sleeping, early last Tuesday morning. One of the roommates had awakened and looked into the other student's bedroom to find him held at gunpoint by the black male. Both of the suspects forced the roommates onto the floor and shouted at them not to look at their faces. The suspects broke a laptop computer, ransacked the contents of the apartment, and fled.

A search of the premises revealed that the suspects had removed several pieces of computer equipment, the victims' cell phones, and an amount of cash. The white suspect was described as 5'6" to 5'8" tall, weighing 150 to 160 pounds, average build, and wearing a light colored or white sweatshirt. The black

suspect was described as 5'8" to 5'10" tall, weighing 160 to 175 pounds, with light brown skin, average build, wearing a black half-face mask, dark colored pants and dark colored hooded sweatshirt. He was also holding what appeared to be a black and silver revolver.

The case has been turned over to the Criminal Investigation Division for further review.

Jewelry targeted in break-ins

Newark Police are investigating a pair of home break-ins where a large amount of jewelry was taken from both homes.

The first incident occurred around November 2, on Wilson Road., in Newark, where the owner reported that she had left a small velvet bag of assorted pieces on her bed. She had left her house that day, but had not secured the garage door. Sometime later that week, the woman reported that the bag was missing. The total value of the property is estimated at \$16,000. The victim stated that she saw a Pontiac sports car, at around that time, being driven in the area by an unidentified 20 to 25 year-old woman. She also reported that she had seen a white female, 5'9" to 5'10" tall, with a large frame and brown hair acting suspiciously in the area. It is unknown if either subject has a connection to the homeowner.

The second incident

occurred on Monday, Nov. 29, and was discovered by the couple living at the residence. They stated that both of them saw that a pillow case had been removed from the bed and that several bedroom dresser drawers had been opened and emptied. An inventory showed that several men's watches and woman's jewelry pieces had been taken, along with a small amount of medication. The total value of all stolen items is estimated at \$12,000. A search by officers showed that the point of entry had been a small window on the side of the house. Four fingerprints were recovered from the woman's jewelry box. No suspects have been identified.

NEWARK POST

Suite 109, Pomeroy Station 218 E. Main St.
Newark, DE 19711.

HOURS: Mon. - Fri. 8:30 a.m. to 5 p.m.

PHONE: (302) 737-0724

FAX: (302) 737-9019

E-MAIL: postnews@chespub.com

SUBSCRIPTIONS: 1-800-220-3311

CLASSIFIED ADVERTISING

1-800-220-3311

DISPLAY ADVERTISING

(302) 737-0724

PUBLISHER / REGIONAL V.P.

DAVID FIKE

EDITOR

DOUG RAINEY

GENERAL MANAGER

RALPH BUSH

REGIONAL ADVERTISING DIRECTOR

KONRAD LA PRADE

ADVERTISING MANAGER

HARRY PORTER

MARKETING DIRECTOR

RENEE QUIETMEYER

ASSISTANT EDITOR /

RESEARCH DIRECTOR

MARK CORRIGAN

ART DIRECTOR

JONATHAN WADDELL

The Newark Post is published Friday by Chesapeake Publishing & Printing. News and local sales offices are located in Pomeroy Station, Suite 109, 218 E. Main St., Newark, DE 19711. All advertising and news are accepted and printed only at the sole discretion of the publisher. The Newark Post is a member of the Maryland-Delaware-D.C. Press Association, Suburban Newspapers of America and the National Newspaper Association.

POSTMASTER: Send address changes to: Newark Post, Suite 109, 218 E. Main Street, Newark, DE 19711. Periodicals postage paid at Newark, Del., and additional offices. (USPS #6465) Known office of publication 218 E. Main Street, Newark, DE 19711.

Don't Let Anything Cloud Your Vision

- Cataract and LASIK surgery
- Diabetic and Ocular Disease Management
- Glaucoma and Retina Evaluation and Treatment
- Eyeglasses and Contact Lenses

5 convenient locations to serve you!

DOVER MILFORD SMYRNA NEWARK BEAR
833 S. Governors Ave. 119 N.E. Front St. 10 S. Market St. 333 E. Main St. 1721 Pulaski Hwy.
674-1121 422-5155 653-9200 368-9105 836-5410

Accepting Most Insurances

Complete Eye Care
Schedule your appointment today!

800-900-2020

www.delawareeyecare.com

DELAWARE
EYE CARE
CENTER

Gary I. Markowitz, M.D.
Board Certified Ophthalmologist

BLACKSTONES

An Olde World Restaurant and Pub



New Chef and New Menu
Come Check us Out!

- Greater Newark's Largest Selection of British Beer
- Hurry Schedule Your Holiday Event Today
- Comfortable, Casual Atmosphere

Gift Cards Available

401 Louviers Dr. • Newark, DE. 19711

Located in the shops of Louviers • 302-266-0880

Hours:

11AM - 10PM Sunday - Wednesday • 11AM - 11PM Thursday • 11AM - 12PM Friday & Saturday

www.BLACKSTONESpub.com

COMMUNITY NEWS

Organizations participating in holiday drives

A number of businesses and organizations are coordinating holiday toy and charity drives. A listing of a few of them are presented below:

The Newark Police Department, in cooperation with Aetna Hose Hook and Ladder Fire Company of Newark and the United States Marine Corps Reserve, is hosting the annual Toys for Tots Campaign. The Newark Police Department will be accepting donated gifts for children up to 12 years of age. A donation barrel is located in

the lobby of the Newark Police Department, 220 Elkton Road, where new unwrapped toys can be left until December 15th.

Everyone can donate new toys and games from now until December 22 at Captain Blue Hen Comics. Bring unwrapped donations for children spending the holidays at Nemours/A.I. duPont Hospital in Wilmington. Toys go to the Child Life Program that works to meet the emotional needs of hospitalized children. Spread holiday cheer where it's needed most this year!

Creekside Nutrition is an official Toys for Tots drop off location. They are located at 1126 Capitol Trail, Newark.

Two location will be accept-

ing donations on behalf of Val's Needy Family Fund: Anthony Hair Salon, located in the Newark Shopping Center will honor both cash and food donations; Super Fresh supermarket, located in the Fairfield Shopping Center on New London Rd. will accept food donations only. Volunteers with the fund will be assembling and distributing gift baskets to needy families on Dec. 16, 17, and 18. Further information on the fund and other local charities can be found at <http://newarkareawelfare.org/programs.html>.

Help keep pets in their homes for the holidays with Delaware Humane Association's 3rd Annual Santa Paws Workshop, taking place now through the end of the holiday season. Your donations of food, cat litter, bedding, toys and other supplies can help local families in need care for their pets. Gift items will be accepted through December 24, at the following locations: Newark ToyotaWorld - 400 Ogletown Road, Newark, DE 19711; Camp Bow Wow - 301 Ruthar Drive, Newark, DE 19711.

Please check with the drop-off location of your choice for hours of operation. Tax deductible monetary donations can be made at <http://www.dehumane.org/donate>. Gift pick-up is available to pet owners in need at the Delaware Humane Association

on Saturday, December 11 from 12-4 p.m.; Friday, December 17 from 4-7 p.m.; and Saturday, December 18 from 12-4 p.m.

Family Shopping Day at Captain Blue Hen

Saturday, December 11 - Market East Plaza, 280 E. Main Street in Newark, 12-4 p.m. Two artists signing and sketching, gifts for \$10 or less including original art. Open to public. Free admission. Go to Captain Blue Hen's website at www.captainbluehen.com for directions and more information.

Wine Tasting Fundraiser

Newark Day Nursery and Children's Center (NDNCC) in conjunction with Deerfield Fine Wines is hosting its third annual Holiday Wine Tasting Fundraiser on December 10, 4-9 p.m. at Deerfield Fine Wines, 205 Louviers Drive, Newark, Delaware. Bring in the festive season with good friends and fine wine while listening to live music. A suggested donation of \$10 benefits NDNCC tuition assistance fund for children from low-income homes.

There will be a wide selection of wines including Chardonnays, Merlots, Cabernets, and dessert wines at several tasting stations. Additionally, a drawing and silent auction of outstanding items will be held beginning at 8 p.m. Free valet parking is also provided.

Partial List of Auction Items: 3'x4' original oil painting by Dan Gotel, \$500 value; tickets to

area theatres/performances, \$250 value; various gift baskets, \$100 value; restaurant gift certificates and much more.

Seventh Grade Achievers' Test

St. Mark's High School is offering a special opportunity for seventh grade students. Students who take the Seventh Grade Achievers' Test are eligible to participate in the Achievers' Gateway Summer Program to earn elective credit at St. Mark's.

The Achievers Test will be offered on Saturday, December 11. There is no charge to take the test and it is open to all seventh grade students. An application can be downloaded at www.stmarkshs.net/admissions. For more information, please call 302-757-8721.

Washington DC Trip

Newark Parks & Recreation Department is sponsoring a bus trip to Washington DC for the annual US Army Band Holiday Festival Concert on Saturday, December 11. Join us for this exciting visit to our nation's capital during the holiday season. We'll drop you off near the DAR Constitution Hall, site of the United States Army Band's Holiday Festival concert (3pm), which features the US Army Orchestra, Chorus, and Chorale. You will be on your own to enjoy the day and concert. Trip cost includes free group ticket to the concert (general admission seating) and motor coach transportation.

The bus departs from and returns to the City Municipal Building at 220 Elkton Rd. Bus will depart at 8 a.m. and return at 8 p.m. Registration Fee is \$39. The Newark Resident Discounted Fee is \$30. Trip cost includes motor coach transportation. Call 366-7060 for more information or register online at www.cityofnewarkde.us/park-recreation or at 220 Elkton Rd, Newark, DE.

Blue Christmas Service

Newark United Methodist Church, 69 E. Main St., will offer the annual Blue Christmas service at 3 p.m. on Sunday, Dec. 12. This special service offers a solemn space to bring hope to the aching heart. It is a service of light in the midst of darkness for those who struggle to join in the merriment of traditional holiday festivities because they have experienced grief or loss. For more information, please call the church office at 302-368-8774 or email Dr. Jim Faltot at jcfaltot@msn.com.

Troop 50 34th Annual Pancake Breakfast

Boy Scout Troop 50 of Pike Creek, Delmarva Council Boy Scouts of America, will hold its thirty-first annual pancake breakfast on Saturday, December 11, at the Limestone Presbyterian Church, 3201 Limestone Road.

The public is welcome to come for all-you-can-eat pancakes. Pancakes, sausage, and orange juice will be served from 7 a.m. to noon on Saturday



PHOTO BY MARK CORRIGAN

Val Nardo, center front, and a few volunteers take a break from unloading canned goods and turkeys to pose for a photo. The fund will be collecting food items and cash donations and will distribute them on Dec. 16-18.

Glasgow High School Annual

Christmas CRAFT FAIR

Saturday, December 11, 2010
9:00 am to 3:00 pm

Located on Route 896, south of
Route 95 Glasgow, DE

Happy Holiday's From Your Friends at Northside Pharmacy!



REMEDY HEADQUARTERS






Don't lose your FLEXIBLE SPENDING ACCOUNT money.


 Your needs! Your pharmacy!
 Pharmacy Fast, friendly, courteous service.

707 Bridge St., Suite B, Elkton, MD 21921 • 410-398-DRUG (3784)

COMMUNITY NEWS

morning. Cost is \$4.25 for adults and \$2.50 for children. Advance purchase tickets can be obtained from any Troop 50 scout. Tickets may also be purchased at the door. Proceeds benefit Troop 50 and support its scouting activities of camping, outdoor skills, community service and character-building for boys ages 11 through 18. Troop 50 is sponsored by the Ebenezer United Methodist Church and the Saint Philip's Lutheran Church.

Taize Prayer Services

Newark United Methodist Church, 69 E. Main St., presents Taize prayer services in the Sanctuary at 7 p.m. every Wednesday in Advent (December 15, and 22). Meditative music and scripture readings set the tone for this quiet, reflective service. Come unwind during this hectic season and feel the presence of the Lord. Please call the church office at 302-368-8774 or email Jim Faltot at jcfaltot@msn.com for more information.

Iron Hill's Annual X-mas Concert

This holiday season, Iron Hill Brewery & Restaurant will once again host their annual concert series, celebrating the season with a series of performances

by The Cartoon Christmas Trio, a musical group that performs authentic arrangements of musical selections from the classic holiday TV special A Charlie Brown Christmas.

Concert schedule is as follows: Iron Hill Newark on Wednesday, December 15 and Monday, December 20.

All performances will begin at 7 p.m., and run approximately two hours, with programs that include the score of A Charlie Brown Christmas along with selections from such other holiday favorites as The Grinch Who Stole Christmas, Rudolph the Red-Nosed Reindeer, Frosty the Snowman and The Little Drummer Boy.

Iron Hill Brewery & Restaurant is located at 147 East Main Street. For more information about Iron Hill Brewery & Restaurant, or to make a reservation at any of their locations, please visit www.ironhillbrewery.com.

Holiday Concert

Saturday, December 18, 7 p.m. Chesapeake Brass Band "In A Holiday Mood" Concert. Delaware's only all brass concert band plays traditional carols and selections from old favorites such as "White Christmas", "Sleigh Ride", and "Bells of Christmas".

Grace Episcopal Church, 4900 Concord Pike, Wilm., DE. Free will offering. For more info, please call 302-478-9533 or visit www.chesapeakebrassband.org.

Mocha, Music & More at Central Perk

On December 17, 7-9 p.m., Friends of Newark again offers live music and the spoken word to the community of Newark with its coffeehouse- Mocha, Music & More. This holiday coffeehouse will again be at Central Perk on Main Street, thanks to owner Pin Campbell.

The first performance of the evening is a reading by David Kozinski, award-winning writer and visual artist. His book Loopholes is now available from The Broadkill Press.

The second performance of the evening is Jason "J.D." Webb, singer/songwriter/guitarist, whose music, based on blues, folk and rock influences, conveys raw emotion while the imagery of his lyrics range from fiery rivers to quiet bedroom silhouettes to feet pounding the sidewalk miles from their destination.

The last act of the evening is Saved From Today, a quartet of musicians, who got together because they share a love of music that celebrates their Christian experience. The band is made up

of Tim Moore- Bass/Vocals, Josh Summers- Lead Guitar, Patrick Milner- Drums and Jon Beemler- Rhythm Guitar/Vocals.

Along with the entertainment, there will be again be a door prize, this month contributed by the Mid-Atlantic Ballet school now back on Main Street. The Mid-Atlantic Ballet is presenting The Nutcracker on Dec 17 and the 18 at Mitchell Hall. For more information, call MAB's office at (302) 266-6362 or visit www.midatlanticballet.org.

Mocha, Music & More is a coffeehouse venue that offers opportunities for artists to perform original or non-copy-right material live in an intimate

and friendly setting. If interested in performing, contact Scheduling Coordinator, Lori Bencoter at (302) 834-3385 or at bencoter2@comcast.net. If interested in getting involved with Friends of Newark's efforts, contact davidr41@hotmail.com or call 368-7158. Mocha, Music & More is free and open to the public.

New Ark Chorale: Forward to the Past

Saturday, December 18, 7 p.m. Newark United Methodist Church, 69 E. Main Street, Newark, DE 19711. This

holiday performance features Christmas music for the entire family, featuring songs from the Renaissance to the present day. This sacred season has been celebrated throughout the ages, and as such, New Ark Chorale honors music from all time periods. Audience participation is included throughout the program.

Tickets are \$15 general/\$12 seniors/\$5 students, with a group rate of \$10 for purchase of five or more tickets. Reserve by calling 302-368-4946 or go to www.mycommunitytickets.com or www.newarkchorale.org.

See NEWS, 6 ▶

Wishing You a Berry Christmas!



\$10 OFF
on orders over \$50.
Use Code:
NPDEC

FruitFlowers

Incredibly Edible Delites

Dazzling Tulips & Daisies™



Christmas in Paradise™



Majestic Holiday™

©2010 Incredible Franchise Corp.

Order Online at FruitFlowers.com

Delaware

(302) 636-0300

Chester County, PA

(610) 429-3302

Offer good at these locations only. May not be combined with any other promotions. Delivery and tax excluded. Expires 12/31/10



PANDORA™

UNFORGETTABLE MOMENTS



GIFT WITH PURCHASE
DEC. 1ST-31ST

RECEIVE A PANDORA SLEIGH ORNAMENT WITH
YOUR PANDORA PURCHASE OF \$100.*

*GOOD WHILE SUPPLIES LAST. LIMIT ONE PER CUSTOMER.

PANDORA™ STORE

CHRISTIANA MALL • NEWARK
302.453.1008

U.S. Pat. No. 7,007,507 • © • All rights reserved • PANDORA.NET

SPORTS

St. Mark's Spartans achieve gridiron perfection

By JON BUZBY

JONBUZBY@HOTMAIL.COM

St. Mark's completed its perfect season with a thrilling 37-25 come-from-behind win over Middletown in the Division I Football Tournament championship game.

Trailing by as many as 16 points, the Spartans scored 25 unanswered points in the second half to come away with the school's fourth state title and first since 1978.

After the game St. Mark's coach John Wilson alluded to the fact that his team had faced deficits before — St. Mark's gave up just 19 second-half

points all season — and was confident they wouldn't panic after falling behind.

"I didn't want our players making excuses, pointing fingers, or panicking, so I made sure to remind them of that, and I made sure to stay positive," Wilson said of his halftime speech. "I reminded them that we've been in this situation before and the outcome would be no different. The players and coaches believed just as they did all season, and there was no doubt we would play better in the second half and put ourselves in a position to win the game. Fortunately for us, it worked out just the way it has all year."

Newark's boys basketball team young but talented

If your team is only returning one player from the previous year, it's always nice when it's your leading scorer. Junior Taylor Reynolds is the lone Yellowjacket returning from last year's Newark team that advanced to the state tournament quarterfinals under first-year coach Shannon McCants.

The 6-foot-2 guard led the Yellowjackets in scoring with 9.7 points per game and was second in assists and steals from his shooting guard position. McCants says this year Reynolds will be asked to play at the point guard position as well.

"The point guard spot is

almost like playing quarterback," said Reynolds, who scored 13 points, dished out seven assists and had four steals in the Yellowjackets' 72-69 win over Howard in the team's opener. "I have to call the plays and make sure everyone is where they need to be in order for it to work, and I touch the ball mostly every possession so there was an easy adjustment coming from playing quarterback on the football team.

"But compared to shooting guard, now I have more of an important role this year and the pressure of making a mistake has increased because now I am the head of the team when I'm at point guard."

The only other starter with

significant playing experience is 6-foot-2 senior guard/forward Dominick Perry, who last season averaged seven points coming off the bench as the team's sixth man and scored 19 points against Howard in the opener. "Perry is a very versatile player who will almost double his productivity this year," McCants said. "He will have a great year for us."

McCants said junior Xavier Griffin and freshmen Provee Williams and Jerhun Greer will round out the starting lineup. Sophomores Xavier Purnell and Marquis Clark also are expected to see significant minutes.

"We will be a faster team this year," McCants said. "Not as much height, but our overall skill level is better. I like the

improvements I see every day with our talented freshman and sophomores. They seem hungry to prove to people that we are small but good."

Delaware hosts New Hampshire Friday night

The Fightin' Blue Hens will host New Hampshire Friday night at 8 in a Division I-AA (FCS) quarterfinal game.

To order tickets visit www.bluehens.com ... but if you're heading out to a holiday party or have other plans and want to get updates sent to your phone, sign up at www.twitter.com/nwkpost.

Send sports news and information to jonbuzby@hotmail.com.

NEWS, from 5

Story Time at Iron Hill Museum

The Iron Hill Museum wishes to present its Story Time at Iron Hill Museum, located at 1355 Old Baltimore Pike, Newark, for December 18. This

program is Dinosaurs! The programs will take place from 12 p.m. to 1 p.m. and 1 p.m. to 2 p.m. Bring your child to hear the story "Dinosaur Eggs" and make a really cool craft. Admission to the program is \$4.00 for kids (2 and younger free), \$1 for parents and those not participating in activities. You must register prior to the program for one of the two times. For more information or

to register, please contact the staff at the Iron Hill Museum at 302-368-5703, director@ironhill-museum.org, or visit their website at www.ironhill-museum.org.

Holiday Concert

Sunday, December 19, 3 p.m.
Chesapeake Brass Band "In A Holiday

Mood" Concert. Delaware's only all brass concert band plays traditional carols and selections from old favorites such as "White Christmas", "Sleigh Ride", and "Bells of Christmas". Music School of Delaware, 4101 Washington St. Adults \$10, Seniors and Students \$5. For more info, please call 302-762-1132 or visit www.chesapeakebrass-band.org.

POST STUMPER SOLVED



OPEN EAR HEARING

an exciting NEW technology that has everyone cheering!

Isn't all hearing "open ear"?

Not for people who wear hearing aids. When you think of hearing aids you think of big, bulky "horseshoes" on the ear... or what looks like a wad of pink "chewing gum" inside the ear... both of which plug up your ears... BUT NOT ANY MORE!



Open Ear Hearing Aids are virtually invisible!

Introducing Open Ear Hearing

- Great Hearing in Noisy Environments
- No "plugged Up" Feeling
- No Whistling
- Light weight... you won't notice it
- Small and discrete... no one else will notice it either!

PHONAK life is on



Please inquire about our FREE hearing counseling and RISK FREE program
Three Great Locations: Glasgow/People Plaza, Middletown and Dover
0% Finance Available, Excellent Warranty Options, Free one-year supply of batteries with hearing aid purchase

Kiijuana L. Cann Au. D, Doctor of Audiology
Lisa J. Marencin M.S. CCC-A, Clinical Audiologist
Stacy Sanders Au. D, Doctor of Audiology

Discover a Whole New World of Better Hearing

Hearing Services of Delaware 1-800-886-9871

\$700 OFF	Audeo IX	• Best Hearing in Noise • Best Sound Quality • Most Features
	<small>Valid thru 12/31/10. Binaural purchase only. Cannot be combined with any hearing aid insurance benefits or any other discounts. Prior sales excluded.</small>	
\$500 OFF	Audeo V	• Better Hearing in Noise • Better Sound Quality • Many Features
	<small>Valid thru 12/31/10. Binaural purchase only. Cannot be combined with any hearing aid insurance benefits or any other discounts. Prior sales excluded.</small>	
\$300 OFF	Audeo III	• Good Hearing in Noise • Good Sound Quality • Basic Features
	<small>Valid thru 12/31/10. Binaural purchase only. Cannot be combined with any hearing aid insurance benefits or any other discounts. Prior sales excluded.</small>	

OBITUARIES

■ *Obituaries are printed free of charge as space permits. Information is usually supplied to the newspaper by the funeral director.*

Sue Andrews

Sue Gwaltney Andrews, 81, died November 24, at her home in Newark.

Mrs. Andrews, a homemaker, was a talented artist and painter.

Surviving are her husband, Art; daughter, Jana Surdi (Richard); son, Donald Hemmer (Charlotte); stepchildren, Stephen, Susan, Scott, and Sheila Andrews; brothers, Jack and Max Gwaltney; sisters, Doris Mattingly and Harriett LaMar; five grandchildren; and two great grandchildren.

Graveside services were held in Poseyville, IN.

In lieu of flowers, donations can be made to Vitas Hospice Charitable Fund, 100 Commerce Drive, Suite 302, Newark, DE 19713

Winter Butler

Winter D. Butler Jr., 74, of Newark, died on November 28, at Christiana Hospital.

Winter was an Army veteran. He retired as an area technician for the DuPont Company, Chestnut Run Site. He was also a member of Red Lion Evangelical Church.

He was preceded in death by his wife Anita D. Butler. Winter is survived by his daughter Cheryl Miller and her husband Daniel and their son, Joshua.

A service was held on Friday, December 10, at the Chapel of the Delaware Veterans Memorial Cemetery. To send condolences, visit www.mccreryfuneralhome.com.

Pauline Clark

Mrs. Pauline May Clark, 91, of Newark, died on Sunday, November 28.

Mrs. Clark was born in Harrington on January 25, 1919, daughter of the late Nathan Stubbs and Ella Ruth Glandin Stubbs.

Mrs. Clark was a devout Christian and lifelong member

of the First Church of the Nazarene in Newark, where she taught Sunday School for many years. She was a talented musician, as well, and enjoyed both playing the mandolin and listening to gospel music.

In addition to her parents, she was preceded in death by her husband, Orville A. Clark, in 1993, and her daughter, Shirley A. Sharpe, in 2008. She is survived by her grandchildren, James W. Kelly of Newark, William M. Kelly (Alice) of Newark, Sharon Delgado (Jorge) of Bear, Carlene Glanden (Brian) of Elkton, MD, and David Kelly (Dolores) of Georgetown; niece, Marie Morris of Milford; nine great-grandchildren; and 13 great-great-grandchildren.

Visitation was held on Friday, December 3, at the Spicer-Mullikin Funeral Home, 121 West Park Place, Newark.



A funeral service was held on Saturday, December 4, at the funeral home. Entombment followed in Gracelawn Memorial Park, 2220 N. DuPont Parkway, New Castle.

In lieu of flowers, contributions may be made to the First Church of the Nazarene, 357 Papermill Road, Newark, DE 19711. To sign guest book, visit www.spicermullikin.com.

Buford Garrison Sr.

Buford "Basil" Garrison Sr., 87, of Newark, died on Sunday, November 28.

Basil proudly served with the U.S. Army during World War II and he earned the Bronze Star. He worked as an inspector for Chrysler for over 30 years before his retirement. Basil was a long time member of Fairwinds Baptist Church where he served as an usher and also as the main-



tenance man for Fairwinds Christian School.

Basil is survived by sons, Basil Garrison Jr. (Butch) and wife Vicki; Randy Garrison & wife Ann; daughters, Sharon Clymer & husband Jim, Beverly Seeger & husband Dale; sisters, Goldie Miller and Mildred Bailey; brother, Alfred Garrison; nine grandchildren; and 11 great-grandchildren. He was preceded in death by his wife, Jessie Garrison; and son, James Keys Jr. (Jim).

A visitation for family and friends was held on Friday, December 3, in Strano & Feeley Family Funeral Home, 635 Churchmans Road, Newark, followed by a service in celebration of Basil's life. Burial was held in Gracelawn Memorial Park.

In lieu of flowers, contributions may be sent to Childhelp National Headquarters, 15757 N. 78th St., Ste. B, Scottsdale, Arizona 85260 or The Arthritis Foundation, 100 W. 10th St.,

Wilmington, DE 19801. To express an online condolence, visit www.strano-feeley.com.

Dorothy Hatley

Dorothy Joan Hatley, 65, of Newark, died surrounded by loved ones on Tuesday, November 30.

She was born in Elkton, MD on July 13, 1945. Dorothy was the daughter of late Everett and Ida LaPointe.

She was a graduate of the old Newark High School, which was located on Academy Street.

Dorothy worked for the University of Delaware in Newark, and loved taking care of her students in Harrington Hall. She had retired after 15 years service, in 1985.

Left to cherish her memory is her loving husband and partner of 49 years, James L. Hatley and her

See **OBITS**, 8 ▶

Appliance Repair
All Makes And Models
Independent Authorized Repair Center

Haier, JENN-AIR, Electrolux, Statewide Appliance Services, Inc., KitchenAid, Speed Queen

Offering Police, Fire, Senior, Military Discounts
Service Center: 302-893-2182
Parts Center: 1-877-636-8632
www.statewideappliance.com
customerservice@statewideappliance.com

WET BASEMENTS STINK !!

Mold, mildew and water leakage into your basement causes health and foundation damage. What can be done to fix the problem? Allstate American Waterproofing is an honest, hardworking local company. We will give you a **FREE** evaluation and estimate and a fair price. We have repaired thousands of basements in the area; we can provide local references. When your neighbors needed waterproofing, they called Allstate American. Why don't you? Call now to receive a 20% discount with your **FREE ESTIMATE**. MHIC#36672

CALL 1 800 420 7783 NOW!

WILMINGTON & WESTERN RAILROAD
Create Childhood Memories!

December 4, 5, 11, 12, 18 & 19
SANTA CLAUS EXPRESS
12:30 & 2:30 PM
*Reservations Required

December 16-23rd & 26-30th
HOLIDAY LIGHTS EXPRESS
5:00, 6:00, 7:00 & 8:00 PM
*Reservations Required

Reservations can be made online at WWW.WWRR.COM or by calling 302-998-1930

Greenbank Station is on Newport-Gap Pike, Rt. 41N in Delaware 1/4 mile from intersection Kirkwood Hwy. Rt. 2

Make Christmas a time to Remember with a gift from **Minster's of Newark.**
Celebrating 115 Christmases serving our community!

Marilyn Minster Designs

Minster's of Newark
jewelers since 1895
Newark Shopping Center, Newark, DE
302-737-5947
Email: info@minstersjewelers.com • www.minstersjewelers.com

Open Sunday December 12th 12pm-4pm

Who will be the **losers?**

Some local and state politicians want to stop putting official notices in local newspapers and instead post them on their own websites. But what about people who don't have Internet access, or just don't want to use the Internet? According to the U.S. Census Bureau:

Only 35% of Americans over the age of 65 use the Internet.

Only 42% of Hispanics use it.

Only 50% of African Americans use it.

If you want to keep legal notices in newspapers where they belong, contact the Maryland-Delaware-D.C. Press Association at citizen@mddcpress.com or call 410-721-4000 ext 12 and leave a message.

Public Notice in Newspapers Keeping YOU in the know!

Source: U.S. Census Bureau, Current Population Survey, November 2007, Released June 2009

OBITUARIES

▶ OBITS, from 7

daughter Evelyn M. (Hatley) and husband Rick Conn; four grandchildren, Jamie Ewell, Emily and Danielle Conn, and Danny Klare Jr. She will be dearly missed by her surviving family; Ernest, Roland and Everett LaPointe, and sisters, Ruth Adkins and Beverly Nowell.

She was preceded in death by her daughter, Christine Hatley; brothers, Edward and Robert LaPointe and her sisters, Virginia Lodge, Elizabeth Temple, Frances Reed, and Peggy Mills.

Relatives and friends were invited to attend Dorothy's

viewing on Sunday, December 5, at the Beeson Funeral Home of Newark, 2053 Pulaski Hwy, Newark. Interment was at the Cherry Hill United Methodist Church Cemetery.

In lieu of flowers, the family is requesting donations be made to the Delaware Hospice, 3515 Silverside Road, Wilmington, DE 19810. To leave an online condolence, please visit www.griecocares.com.

Joseph E. Ironside

Age 81, of Millsboro, formerly of Newark, passed away Friday, November 26, 2010 as a result of injuries sustained in an

automobile accident Friday.

Joe was born in Kennett Square, PA, son of the late Joseph and Emilie (Buffington) Ironside.

He served with the U.S. Air Force during the Korean War. He then served in the Air National Guard for 26 years, retiring as a Senior Master Sergeant. After his service with the Air Force and Air National Guard, he worked as a Supervisor of Air Craft Maintenance.

Joe was a long time member of the American Legion Post #28 of Oak Orchard, where he served as Finance Officer and was a member of the Honor Guard. He was a volunteer in the Beebe

Medical Center Cardiac Unit, he served on the Board of Directors for the Oak Orchard Boys and Girls Club.

He is survived by his loving and devoted wife of 57 years, Marie (Klair) Ironside; two brothers, Don Ironside of Odessa, James Ironside of West Grove, PA; three sisters, Peggy Holcomb and Evelyn Schopfer, both of Kennett Square, PA and Emilie Reynolds of Newark.

A memorial service was held on Friday, December 3, at the American Legion Post #28, 31768 Legion Rd., Millsboro, followed by interment with military honors at the Delaware Veterans Memorial Cemetery in

Millsboro.

In lieu of flowers, the family suggests memorial contributions in Joe's memory to, Oak Orchard Boys & Girls Club, 31550 Oak Orchard Rd., Millsboro, DE 19966.

Online condolences can be sent by visiting www.melsonfuneralservices.com.

Guy Merrick


Guy E. Merrick, 82, of Newark, died peacefully at home on November 29.

Guy was born in Kentucky to the late Charlie and Iva Merrick and served his country during the Korean War while in the

Army. He was retired from Motor Wheel Corp. and the Winterthur Museum. Guy was a former member of Bethany Baptist Church, where he was a Deacon and a Sunday school teacher. For the past seven years he has been a member of Ogletown Baptist Church in Newark.

He is survived by his wife, Jean Merrick and three children, James Merrick of Sheffield Lake, OH; Debbie Price of Media, PA and Faye Tew of Newark, DE. Also left to cherish his memory are his five grandchildren who were the light of his life: Ryan and Drew Bullen of Newark,

See OBITS, 12 ▶



Main Street Dental

Thomas D. Cox, DDS
Erin E. Cox, DDS

96 East Main Street
Newark, DE 19711

302.368.2558
(Fax) 302.366.0911

LOOKING FOR A CHANGE?

Trade ya!
Your Club for ours!

NO CONTRACTS! GREAT RATES!

280 East Main Street | Newark, DE 19711

302.738.4580 • www.fusionfitnesscenter.com



Simply bring it in your membership card from another club, we'll exchange it for one of ours & you'll receive

Two months...for only \$29!

Come see what's new and exciting at Fusion Fitness Center and experience the difference!

At the end of 60 days - we bet that you'll want to exchange your old card for an offer that's even better — joining us!

*first-time guests only ~ Expires 12-31-10

10 min from Newark

WHEATLAND FARMS

Launches Deluxe Value Packages

We've taken three popular models, combined them with the most requested options to create Deluxe Value Packages offered at a reduced price, only until the end of 2010. Visit this scenic community of New Homes with 98 acres of reserved land for details.

GLEN ARBOR \$1526 per month*



Deluxe Package Price **\$388,090***

*based on a \$310,400 mortgage

ROOSEVELT \$1352 per month*



Package: \$343,630*

*based on a \$274,900 mortgage

STONEBRIDGE \$1625 per month*



Package: \$413,065*

*based on a \$330,400 mortgage

*Restrictions apply. Offer, pricing and rates subject to change without notice. Monthly payments reflect principle & interest at 4.25%, 30 year fixed APR 4.42% Photos are of similar models.

Open M-F 12-4, Sat/Sun 11-5
1925 New London Rd Lincoln University PA 19352
610-932-1000 or 610-444-7600 www.beiler-campbell.com

BEILER-CAMPBELL

REALTORS & APPRAISERS

tranzon AUCTIONS FORECLOSURE

Thurs, Dec. 16th

Former Restaurant

- ◆ To be held at premises: 2pm
- ◆ Stand Alone Restaurant
- ◆ 2,527+/-sf bldg on 0.27+/- acre lot
- ◆ The former Grist Mill Tavern

**648 Broad St.
Perryville, MD**

5 Residential Building Lots

- ◆ 2+/- acres per lot
- ◆ Auction held at:

Circuit court for Cecil Co
129 E. Main St., Elkton, MD @11am
**Damghan Dr.
Conowingo, MD**

tranzon FOX

888-621-2110 | www.tranzon.com

Use our
Convenient,
Time-saving
e-mail address
today!

postnews@chespub.com
For info,
call 737-0724



IN THE NEWS

OUT OF THE ATTIC

Newark High School Football State Champs - 1929

This week's Out of the Attic item is a photograph of the Newark High School 1929 State Championship football team. Newark High in the late 1920s and early 1930s was a football power as it has been many times since. Add the success over the years of the University of Delaware football team with conference championships and beyond.

The residents of the Greater Newark Area have for many decades been strong supporters of community, scholastic

and collegiate football and other sports.

Reader's help is needed to identify some of the 1929 champions. Row 1 - player 1 ?, 2 Roland Jackson, 3 Rip Smith, 4 Frank Mayer, 5?, 6?, 7 Charles Schwartz. Row 2 player 1 ?, 2 ?, 3 Harry Gallagher, 4 ?, 5 Grover Surratt, 6?, 7?, 8? Row 3 - player 1 Harold Walls, 2. ?, 3. Raymond Johnson, 4 ___ Collins, 5 Paul Griffith, 6?, 7?, 8? Row 4 - 1 Coach William K. Gillispie, 2 ___ Johnson, 3 Roger Dobson, 4? The picture is from the Newark Historical Society collection. Please contact the Society with name information.

Visit the Newark History

Museum located at the historic passenger train station on South College Avenue. The museum will be open during December through March by appointment only for groups, individuals, and special events. Call 368-9845 for arrangements. The Newark Historical Society invites donations or loans of objects,

stories, pictures and other artifacts of places, activities, people, and life styles in the Greater Newark Area for its permanent collections.

Contact the Newark Historical Society by voice mail at 302-224-2408, by postal mail to P.O. Box 711, Newark, DE 19715, or by email to newarkdehistoricalsociety@yahoo.com.



EARN YOUR BACHELOR OF EDUCATION DEGREE

— RIGHT IN CECIL COUNTY



Chalisa Smith
B.S. in Middle Level Education

Wilmington University has partnered with CECIL COLLEGE and now offers UNDERGRADUATE EDUCATION courses —right in downtown Elkton.

SPRING 2011 COURSES

- EDU 312 Integrated Curriculum in Schools
- EDU 313 Classroom Culture and Student Behavior
- EPY 302 Educational Assessment
- EPY 303 Advising, Mentoring and Counseling Techniques

Relevant curriculum.
Flexible schedules.
Convenient locations.



WILMINGTON UNIVERSITY

1-877-456-7003 | wilmu.edu/Cecil

ASSESSING NEEDS. INCREASING SCORES.

SAT/ACT prep

SAVE \$95
CALL TODAY!
Offer Good on Diagnostic Test Only.

PRIVATE TUTORING FOR SAT/ PSAT/ ACT
Prep for students seeking dramatic score improvements

Call (302) 737-1050

34 Liberty Plaza / 34 Possum Park Mall
Newark, DE 19711

www.newark.huntingtonlearning.com



Huntington LEARNING CENTER

©2006 Huntington Learning Centers, Inc. Independently owned and operated. SAT and PSAT are registered trademarks of the College Entrance Examination Board. ACT is a registered trademark of ACT, Inc. The College Entrance Examination Board and ACT Inc. were not involved in the production of and do not endorse this program.

Italian Grill **Ciao** Pizzeria

Bring in your shopping receipt from Christiana Mall & receive 10% Off your bill
exp 12/31/10

Open 7 Days a Week!
Carry Out
200 University Plaza Shopping Center,
Newark 302-738-6810

Your One-Stop Eye Care Solution

- Eye Examinations
- Contact Lenses
- Fashion Eyewear
- Treatment of Ocular Diseases
- Clear Explanations of Procedures
- Professional & Caring Staff
- Most Insurances & HMO's Accepted

KNEISLEY EYE CARE
Dr. Yvonne Kneisley
Optometrist
(302) 224-3000
The Main Street Galleria
45 East Main Street
Suite 201 * Newark
www.kneisleyeyecare.optometry.net



FINE ART FRAMING
622 NEWARK SHOPPING CENTER • NEWARK, DE 19711
HARDCASTLE'S NEWARK
SINCE 1888

- Custom Framing
- Paintings
- Reproductions
- Sculpture
- Ceramics
- Consulting
- Commissions
- Appraisals
- Restorations

www.hardcastlesince1888.com
hardcastlesnewark@yahoo.com

738-5003

BROOKSIDE LIONS CHRISTMAS TREE LOT

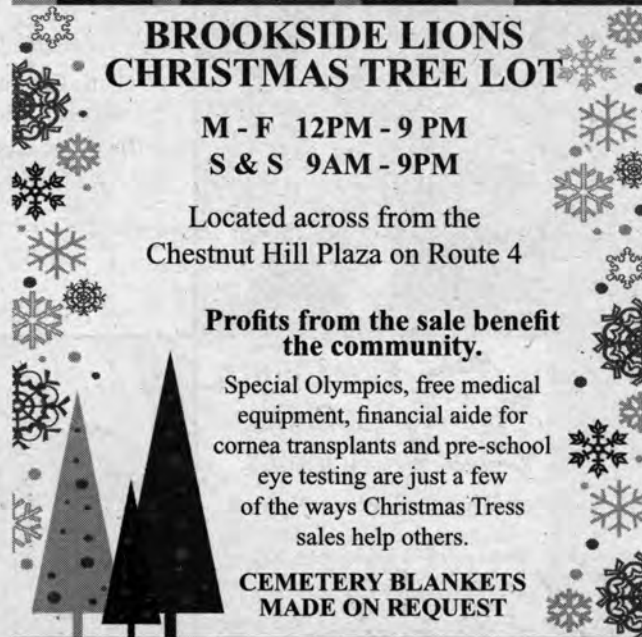
M - F 12PM - 9 PM
S & S 9AM - 9PM

Located across from the Chestnut Hill Plaza on Route 4

Profits from the sale benefit the community.

Special Olympics, free medical equipment, financial aide for cornea transplants and pre-school eye testing are just a few of the ways Christmas Tress sales help others.

CEMETERY BLANKETS
MADE ON REQUEST



Church Directory

To Advertise or make changes call Nancy Tokar 1-800-220-1230 or voice mail 443-245-5072. Prices starting as low as \$14.00 a week, but now includes the internet. Deadline for changes Friday 4:30pm for the following edition

"We get more hits from this one ad than any other advertising we do."

-Good Shepherd Episcopal Church
Call Nancy Tokar to place your ad at
1-800-220-1230

The Way Ministries

(an extension of Highway Gospel Community Temple, West Chester PA)

Highway Word of Faith Ministries is presently worshipping @ The George Wilson Community Center 303 New London Rd., Newark, DE

Sunday:

8:00-9:00am Christian Education classes for all ages
 9:00am Sunday Morning Celebration

Wednesday: Location

7:00-8:00pm Bible Enrichment Class at Prayer Temple
 49 New London Rd.
 Newark, DE 19711

Mailing Address: P.O. Box 220
 Bear, Delaware 19701-0220

Visit us online @ www.theway.ws or send us a note at...theway238@aol.com



Pastor Carl A. Turner Sr. & Lady Karen B. Turner
 For further information or directions please call:
302-834-9003



 **First Church of Christ, Scientist**

48 West Park Place, Newark

Sunday Service & Sunday School 10:00am
 Wednesday Testimony Meetings 7:30pm

Childcare available during services.

302-456-5808

ALL ARE WELCOME

www.fccsnewark.org



The Episcopal Church
 Welcomes You

St. Thomas's Parish

276 S. College Ave. at Park Place,
 Newark, DE 19711

Across from UD Health Center
 (302) 368-4644

Church Office: 9:00-1:00 Mon-Fri
www.stthomasparish.org

2010 Advent & Christmas Worship

Sundays in Advent
 8:00 a.m. Holy Eucharist I
 10:30 a.m. Holy Eucharist II
 5:30 p.m. Inclusive Language Liturgy with Holy Eucharist
 Mon.-Fri. 5:15 p.m. Evening Prayer
 Wednesdays 12:10 Holy Eucharist II (Healing on 2nd & 4th)
 Sunday 5:30 p.m.
 Christmas Pageant of St. Thomas' Parish

God meets you where you are!
 And So do we. Come and see...



Sunday 8:30 a.m.

Acoustic Worship

Sunday 10:30 a.m.

Electric Worship

Pastoral Team

Curtis E. Leins, Ph.D
 Robert F. McKnight
 Theodore Lambert, III
 James L. Ford

Located 1 1/2 miles N. of Elkton
 on Rt.213

(410) 392-3456

Wisdom from many sources



Sunday Service 10am
 Childcare and Sunday School

Unitarian Universalist Fellowship
 420 Willa Road, Newark
 302.368.2984 uufn.org

Come Join Us!
 Speaker: Rev. Greg Chute



Episcopal tradition,
 contemporary music

Join us for
 weekly worship on
 Sundays at 9:30 am
 at Beeson Funeral Home
 2053 Pulaski Hwy.
 302-650-3544

302 547-7849 • www.GoodShepherdDE.org

Sponsored by the Diocese of Delaware



**Sunday, December 12th
 at 10:30 a.m.**

The Choir will present
 an Advent/Christmas musical
Rise Up! A New Light A-Comin'
 By Lloyd Larson and Pamela Martin

"Sending the Light of Christmas into the World"
 Christmas Bell Concert
**Wednesday, Dec. 15th
 at 7:15 p.m.**



Hear some favorites

Jingle Bell Rock, Blue Christmas and Believe



First Presbyterian Church

Contemporary Worship - Sundays at 9:00 a.m.

Traditional Worship - Sundays at 10:30 a.m.

Adult and Children's Sunday School at 9:00 a.m.

292 West Main Street, Newark, DE 19711
 (302) 731-5644 • www.firstpresnewark.org

Rev. Steve Brundage, Pastor
 Rev. Beth Thomas, Children and Youth
 Handicapped Accessible

Worshipping, Knowing and Serving God



St. Barnabas'
 Episcopal Church

Advent Lessons & Carols Service
 with Holy Communion
 Sun., Dec. 12th, 2010 @ 10 AM

Worship Services:

Saturday 5:30 p.m. - Sunday 7:30, 10:00 a.m.
 Child Care (0-3) available during 10 a.m. service

302-994-6607

www.stbarnabasde.org

2800 Duncan Road, Wilmington, DE 19808



You are welcome at
Ebenezer

United Methodist Church

website: www.ebenzerumcnewark.org
 email: eumc1824@aol.com

SUN SERVICES 8:30 & 11:00am

SUNDAY SCHOOL 9:45am

Contemporary Worship

Every 3rd Saturday of the month 5:30 pm

525 Polly Drummond Road

Newark 302-731-9494

Handicapped Accessible • Child Care.

TED DAY, PASTOR

NEW LIFE CHRISTIAN FELLOWSHIP

Sunday Service 9:30 AM

Multimedia Children's Ministry!

Contemporary Worship!

Relevant messages!

Church Office: 999-1800

Check out our web page:

www.NewLifeDE.org

2712 Old Milltown Rd.

Wilmington, DE

(near Kirkwood Hwy & Milltown Rd)



IN THE NEWS

Union local protests UD construction

Local 626 of the Carpenters union, New Castle, has been campaigning against what it views are substandard wages for a project at the University of Delaware.

Informational picketers on Main Street refused to discuss the dispute or be photographed but did hand out a flier outlin-

ing their claim regarding the East Campus Utility Project at Academy Street & Lovett Avenue.

"WhitingTurnerContracting Co. has awarded the concrete package for this project to Daniel G. Schuster, Inc. from Owings Mills, Md. Daniel G. Schuster Inc. pays their carpen-

try employees wages and benefits that are substantially less than the are standard for carpenters working in this area," the flier stated.

The flier goes on to criticize the paychecks of UD President Patrick Harker and Executive Vice President Scott Douglass, suggesting that both should put

"their positions out to bid."

UD offered the following response:

"Qualified Delaware firms are always invited to bid on construction projects, and university construction managers understand that we prefer to use Delaware firms, all other cost and quality considerations

being equal. At the same time, the university has a fiduciary responsibility to steward its resources carefully.

"Over the last five months, UD has awarded more than \$70 million in contracts, half of which went to Delaware firms. In the case of the other half, Delaware firms either did not

bid, did not have the technical expertise to do the specialized work, or were more expensive.

"The University of Delaware is in the first phase of a multi-year program of capital projects and expects to have many additional opportunities for qualified Delaware firms to bid on future projects."

A Season To Celebrate



The Episcopal
Church
Welcomes You



St. Thomas's Parish

276 S. College Ave. at Park Place,
Newark, DE 19711

Across from UD Health Center
(302) 368-4644

Church Office: 9:00-1:00 Mon-Fri
www.stthomasparish.org

Christmas Eve Fri., Dec. 24

5:30 pm Congregational Singing of
Christmas Carols 6:00 pm Family

Service: Holy Eucharist II

10:30 pm Congregational Singing of
Christmas Carols 11:00 pm Festal

Service with Incense: Holy Eucharist II

Christmas Day Sat., Dec. 25

10:00 am Holy Eucharist II

COME HOME O COME ALL YE FAITHFUL

HOLY FAMILY CATHOLIC CHURCH
CELEBRATES
CHRISTMAS

15 GENDER RD., NEWARK, DE 19713
302-368-4665



Friday Evening, 24th December

4:00 p.m., 6:00 p.m., 8:00 p.m.
and Midnight

Saturday, 25th December

8:00 a.m., 10:00 a.m.
and 12:00 p.m.

Chesapeake
Classified.com

Find a home, a car, a job and more online!



OBITUARIES

▶ **OBITS, from 8**

DE, Chelsey and Hillary Price of Media, PA and Corinne Price Mole of Charleston, SC. Also surviving is his brother Calbert Merrick and his wife Sue of Princeton, KY.

A funeral service was held at McCrery Memorial Chapel, 3710 Kirkwood Hwy. Wilmington, on Monday, December 6. Burial followed at the Delaware Veterans Memorial Cemetery in Bear.

In lieu of flowers, contributions could be made to the Sunday Breakfast Mission, 110

N. Poplar Street, Wilmington DE 19801. For online condolences, please visit www.mccreryfuneralhome.com.

Barbara Westog

Barbara Emily Vaughn Westog, 74, of Lewes, formerly of Newark, died on Friday, November 26, 2010 at, Christiana Medical Center. She was born in New Rochelle, NY, on Thursday, December 26, 1935, daughter of the late Floyd Clinton Vaughn and Grace Pansy Christine Reid Vaughn.

Mrs. Westog was a graduate

of Vineland High School in New Jersey, Class of 1954. She was a secretary for many years for the Electrical Engineering Department of the University of Delaware retiring in the late 1990's.

She is survived by her husband of 53 years John T. Westog; her son Stephen Westog and wife Lynda; daughter Holly Focht and husband Gary; grandchildren: Madeline Westog, Eric Westog,



Jonathan Westog, Ashley Focht, Sean Focht and brother Floyd Vaughn.

Funeral Services were held on Thursday, December 2, at Parsell Funeral Homes & Crematorium, Atkins-Lodge Chapel, 16961 Kings Highway, Lewes. Burial followed the services at Delaware Veterans Memorial Cemetery, 26669 Patriots Way, Millsboro, DE.

Memorial contributions may be made to Felton United Methodist Church, 101 East Main Street, Felton, DE 19943-7322. Sign guestbook at www.parsellfuneralhomes.com.

Dianne Wilson

Ms. Dianne S. Wilson, 59, of Bear, died on Monday, November 29, at Christiana Hospital in Newark.

Born in Bayonne, NJ, on January 16, 1951, Ms. Wilson was employed in the credit card industry, working for both the Bank of New York and Chase-Manhattan Bank, until her retirement after a 34-year career. For the past seven years, she worked as a medical receptionist for Total Care Physicians in Newark.

She is survived by her son, Edward H. Wilson of Bear, DE;

mother, Irene Kolankiewicz Sutkowski of Bear, DE; sisters, Marilene Hausser (Daniel) of Jackson, NJ, and JoAnn Yagusesky (Robert) of Bossier City, LA; a niece and four nephews. She was preceded in death by her father, Edward Sutkowski.

Services were held privately and at the convenience of the family.

In lieu of flowers, the family suggests contributions to the American Cancer Society, 92 Read's Way, Ste. 205, New Castle, DE 19720. To sign guest book, visit spicermullikin.com.

ups MAILBAG plus FedEx
Copy & Design Center
 We Design & Host YOUR WEB SITE
ONLY \$200 per year. No other FEES
 Extended Holiday Hours starting December 4th & including Sunday's
 CLOSED DECEMBER 24TH AND 25TH

Happy Holiday's
 from your friends at
Mall Bag Plus & Mail Depot

We would like to help you make your holidays more festive for your friends & families that you are away from.

WE ARE OFFERING GUARANTEED DELIVERIES FOR THE CHRISTMAS HOLIDAY OR IT'S FREE.
 with NO TAX & FREE PACKAGING

No Tax & FREE Boxes
www.mailbagplus.com

Custom Made Rubber Stamps
STARTING \$16 & Up
 Unique Holiday Gift
 Made while you wait
 in North East

Elkton - Bridge Street
410-620-2021
 North East - Rt 40
410-287-5020

Gift that gives all year!

Gift Card - SOFT CLOTH WASH ONLY
 2 Convenient Locations - Card Honored At Both Sites

BEAR

3-Minute Express Car Wash
FREE VACUUMS
 SOFT CLOTH WASH ONLY

333 E. Pulaski Hwy., Elkton, Maryland
 1734 Pulaski Hwy., Bear, Delaware

HUGE SELECTION OF GUITARS

at **MIDDLETOWN MUSIC**
Great Selection • Lowest Prices
 PRS Guitars • Fender • Roland • Guild • Gretsch
Hundreds of Guitars In Stock ON SALE NOW!

Middletown Music 5238 Summit Bridge Road
 Middletown, DE 19709
(302) 376-7600
www.middletownmusic.com

VISA MASTERCARD DISCOVER

Four Special Holiday Lunches

It's time to try something truly unique with your friends and co-workers. Perfect for the smaller group gathering. Four special holiday buffets offered for the low price of \$17 per person, and full beverage service available. Call for reservations today, these events sell out quickly. For menus visit our website www.udel.edu/hotel/holiday.html

Christmas in the Alps • December 13

Seating at noon.

A UK Christmas • December 14

Seating at noon.

A German Holiday Feast • December 15

Seatings at 11 a.m. and 1 p.m.

A Southern Christmas • December 16

Seatings at 11 a.m. and 1 p.m.

The Courtyard Newark by Marriott® at the University of Delaware

400 David Hollowell Drive
 Newark, Delaware
 GPS use 200 New London Road,
 Newark, DE 19711

UNIVERSITY OF
 DELAWARE

WWW.UDEL.EDU/HOTEL • (302) 737-0900

COURTYARD
 Marriott
 IT'S A NEW STAY

IN THE NEWS

Two Delaware men face insider trading allegations

The U.S. Securities and Exchange Commission Tuesday charged a former information technology manager at a Delaware law firm and his brother-in-law with profiting from information on pending corporate deals. The law firm was not identified in the nearly 50-page com-

plaint filed against the two men who reside in the Newark area. The SEC alleges that Jeffery J. Temple, a former Information Systems and Security Manager at a Wilmington-based law firm, accessed material nonpublic information in the course of his employment and then traded in

advance of at least 22 merger and acquisition public announcements involving 20 companies that retained his former employer as counsel in some capacity. Temple also tipped his brother-in-law, Benedict M. Pastro, who allegedly traded in concert with Temple in advance

of 12 public announcements. The pair allegedly made more than \$182,000 in illegal profits during their insider trading scheme. Temple was terminated from his position on Oct. 11, once law enforcement authorities revealed that they had uncovered his scheme.

According to the SEC's complaint filed in the U.S. District Court in Wilmington, the scheme began in 2009 as Temple used his IT position to access nonpublic information about impending deals involving law firm clients. Temple, corresponded with his online brokerage

firm using his law firm e-mail address. Electronic login records for Temple's brokerage account reflect that he often placed trades from work. Frequent telephone calls around the time of the trades indicate that Temple closely coordinated his trading with Pastro.

CHRISTIANA SKATING CENTER
Home of The Best Private Birthday Parties

801 CHRISTIANA RD
NEWARK DE 19713
302-366-4473

Learn to Skate
Classes Every Saturday
8:00 - 9:45
Beginner to Advanced
Includes Morning Public
Session 10:00 - 1:00

Skate for Free
Buy 1 Admission Get 1 Admission Free
For Any Holiday Skating Session
Dec. 23rd & 24th and 27th - 31st.
12:00 to 3:00
28th & 30th from 6:30 to 9:00
Skate rental additional
Must present coupon 2010

FULLY STOCKED PRO SHOP - SKATING LESSONS
BIRTHDAY PARTIES -
PRIVATE BIRTHDAY PARTIES
Family Fun For Everyone

Dashing through the snow.
The Chamilia Holiday Collection

Buy 3 Beads Get 1 FREE!
(Of equal or lesser value) Offer expires 12/31/10.

CHAMILIA
YOUR LIFE. YOUR STYLE.

The Purr-Fect Gift

2413-17 Pulaski Highway, Glasgow, DE 19702
(Located Between Arby's and Wendy's on Rt 40)
Tues.-Sat. 10-6, Sun. 12-4, Monday closed.
302-737-6901

F & C Amish Structures, Inc.

Christmas Tree
sale

All Your great Christmas Trees
are in Stock Now!
Come pick out your favorite!

Special Holiday Hours: Monday Thru Saturday 8:30am-10pm
1967 Pulaski Highway
(Across from the Fox Run Shopping Center)
www.fncamishstructures.com
302-836-1976

Shop City Pharmacy's Gift Corner

- Unique Gifts
- Christmas Items
- Greeting Cards
- KnickKnacks
- Religious Articles
- Jewelry

Or Get An Always Popular GIFT CERTIFICATE

City Pharmacy

723 North Bridge St.
Elkton, MD
Mon.-Fri. 9am-9:30pm
Sat.-Sun. 9am-6pm

European Wellness Center™
A Health Spa
Cecil County's Original Spa
Hair • Massage • Skin • Nails

No Stocking is complete without a Gift Card from European Wellness

243 S. BRIDGE ST. ELKTON
410-392-3535
MON: BY APPOINTMENT;
TUES-FRI: 10AM-8PM; SAT: 9AM-5PM
www.europeanwellness.com

Gift Certificates are always the right color and fit!

Sun Cellular
Family Owned and Operated since 1995

Don't know what phone or accessory they would like to have?

Problem Solved with a Sun Cellular Gift Certificate

Elkton: Rt. 40 @ Chilis 410-620-0300
Rising Sun: Center Square 410-658-7010

VERIZON wireless

The Rendezvous Bar & Restaurant

Purchase a \$20 Gift Card & only pay \$15 while supplies last

GIVE A HOLIDAY Gift CARD

GREAT Daily Specials! GREAT Menu Selection! Live Weekend Entertainment

Visit our website for more information
www.thevousrestaurant.com

362 Front Street, Perryville • 410-642-0045

Visit our website for printable Gift Certificates www.blueirisspa.com

IT'S TIME FOR A **Spa Day**

BLUE IRIS Day Spa and Salon
Check Out Our Specials
One Stop Service

32 South Main Street, North East, Maryland 21901
410-287-1331

\$10 Gift Card FREE With any \$40 purchase

THE WEATHER OUTSIDE IS FRIGHTFUL A TAN WOULD BE DELIGHTFUL

Holiday Special Week 2
\$100 Gift Card, pay only \$75
Valid through 12/14/10 at Hollywood Tans of Elkton only

HOLLYWOOD TANS OF Elkton
Delancy Plaza | 1197 E Pulaski Hwy | Elkton, MD | 410-398-7804
Custom Airbrush • Mystic Spray Tan • 4 Levels of Tanning • Hydration Station
IT Boutique • Gift Certificates • Gift Baskets

IN THE NEWS

Getting a better job made easier

▶ JOBS, from 1

their career plans are," said Benson.

Though most applicants are seeking employment locally, DET has connected prospective employees in out-of-state

markets, as well. Case managers can also steer idealistic candidates away from "dead-end" career paths.

Citing an example of one person wanting to be a medical assistant after seeing several commercials on television, Benson said that the local econ-

omy may not show a great need for a desired career path, but DET's resources can help direct that person to a sector with greater job growth, whether in another geographic area or in another similar job path, such as working with medical insurance companies.

Though getting jobs for their clients is only one half of DET's name, the other half is about helping to get a better job. The training services available range from retraining; educational enhancements, such as obtaining a GED, high school

diploma, Bachelor's degree, or graduate degree; and upgrading skills, especially for those who have been out of the workplace for an extended period, those who graduated years, or even decades, ago, and those looking to learn the latest technology. DET also provides funding for qualifying applicants.

Those interested in learning more about the Pencader Division of Employment and Training (DET) can visit their offices at 225 Corporate Blvd., Suite 211, Newark, DE 19702 or call them at 302-368-6622.

WashCards make great GIFTS!

Special 25% Bonus

added to all cards purchased or reloaded
November 26 thru December 24, 2010

Stop in or Buy on-line at elktoncarwash.net

Voted #1
Car Wash

Quality, convenience, affordable!
501 North Bridge Street • Elkton, MD 21921
410-398-2022

GRAND OPENING

X-PERT

MARTIAL ARTS
HONOR DISCIPLINE RESPECT SUCCESS

Across the street from Walmart in Elkton

2 WEEK TRIAL
ONLY
\$19.99
Includes Uniform

CALL NOW! 302-670-5557

Mid-Atlantic
& Ballet
presents

the **Nutcracker**

Friday, December 17, 7:00pm
Saturday, December 18, 12:30 & 4:00pm

Mitchell Hall Theatre
University of Delaware

TICKETS **\$27** Adult
\$20 Children (17 and under)
& Senior Citizens (65 and older)
\$15 Side Balconies

Order tickets online: www.ticketmaster.com
by Phone: 1-800-745-3000
or at the UD Box Office
located at the Bob Carpenter Center
or Trabant Center

For information, call the MAB Studios
at 302-266-6362 or visit
www.midatlanticballet.org

This Program made possible in part by
Delaware Division of the Arts

Enjoy a 19th Century Christmas
Chesapeake City, Maryland

Candlelight House Tour
December 11, 2010
6-9 pm

Caroling, Unique Displays, Charming Homes
Carriage Rides

Proudly Supporting Toys for Tots
Please bring a new unwrapped toy.
\$10 advance \$15 door

For advance tickets and information call: Mary Ioppolo (443) 553-0071
For Online tickets and for our full event calendar visit us at:

chesapeakecity.com

SAXBYS COFFEE

BRING THIS AD!

Get any delicious muffin,
OR a bagel with cream cheese,
and a 12oz coffee...

Only \$2.50

Good through 12/31/2010. Limit one
per coupon.

FREE PARKING!
57 Elkton Rd
at Amstel Square
731-9500

Something terrible happens when
you don't advertise...Nothing!
Call 737-0724 to place an ad.

PREMIER AUTO & TIRE
KEEPING AMERICA ROLLING!

Free
Wheel Alignment
with purchase of 2 or more tires.

2 Convenient Locations
Main Street, 410-398-7749
Pulaski Hwy, 410-398-5095

IN THE NEWS

Prize winner



Ann Foster, right, accepts a \$250 check from Renee Quietmeyer, marketing director for the Upper Shore Division of ACM Chesapeake. Foster's name was drawn after she submitted her entry in the annual Newark Post/Middletown Flier annual Favorites promotion.

Locust Point Farm

Fresh Natural Turkeys
Taste the Difference!



ORDER NOW!

410-398-8765

DONATE YOUR CAR



to the Outreach Center "Car for Kids" Program

- Free Pick-up and Tow
- Any Model or Condition
- IRS Tax Deductible

1-800-601-7171

**LAST MINUTE
DISCOUNT TRAVEL
SAVE \$\$\$\$
AUTOMATED MESSAGE 24/7**

CALL FOR A COMPLETE LISTING

1-800-548-8546

ESTABLISHED 1957 - SAME OWNER
MEMBERS ARC, IATA, CLIA, ARTA

Visit us at www.hotlinespecials.com

City solicitor takes new post

By **MARK CORRIGAN**

MCCORRIGAN@CHESPUB.COM

Newark City Solicitor Roger Akin informally announced that he has accepted a position with the Delaware Secretary of State to serve as Chief Hearing Officer. Akin's new role, according to an e-mail sent to Mayor Vance Funk, City

Manager Kyle Sonnenberg, the City Council and others, "will be to serve as hearing officer when complaints are filed against a broad variety of licensed professionals in Delaware." Akin also announced a tentative starting date of January 3, 2011 for his new assignment.

Akin has served as Newark's City Solicitor for over 15 years.

The Mayor and Council are investigating several options to fill the role, including advertising for a new solicitor, creating a new staff position, contracting the work out to a legal firm, and promoting Deputy Solicitor Bruce Herron. Herron is a partner with Akin & Herron, P.A. in Wilmington.

Akin has made an offer to help the city with the process

by writing, "I stand ready to assist in any way possible in the transition to a new Solicitor, and that I will work diligently to wind up remaining projects on my desk."

Akin concluded his notice by stating, "Thank you again for the trust you have placed in me, and for the singular honor of serving as your city attorney."

Newark area sees BRAC transfers

A report is out on where BRAC transferees are relocating, following the movement of jobs from Ft. Monmouth, N.J. to the Aberdeen Proving Ground.

The report from the Chesapeake Science and Security Corridor shows the Proving Ground getting six out of 10 transfers.

In a distant second is Cecil County, with 18.2 percent of

the transfers.

Bel Air, in Harford County, is the prime spot for relocations with two of its zip codes accounting for 580 relocations.

Nearly 170 transfers came were in Elkton zip codes, with a comparable number from the Port Deposit and Perryville areas.

New Castle County is third with 6.7 percent of transferees with Baltimore County at 5.4

percent, a disappointing figure for that area, given its proximity to Aberdeen.

As for Delaware, transferees are choosing the Bear-Glasgow area with the 19701 and 19702 zip codes accounting for nearly 80 relocations. The Newark zip code of 19711 gained 35 residents and Middletown (19709) accounting for 35.

The current figures are based on about 2,700 reloca-

tions, with more than 350 personnel not accounted for in the figures provided by the U.S. Army. More than 8,000 jobs are coming directly to the Proving Ground, with thousands more in and around the base. Delaware is hoping that some of those jobs and companies might look to the east. One drawing card comes with the increasingly strong ties between the University of Delaware and the Proving Ground.

THE POST STUMPER

1	2	3	4	5	6	7	8	9		10	11	12
13					14					15		
16					17					18		
	19			20			21			22		
			23		24		25		26			
27	28	29			30	31			32	33	34	
35					36			37				38
39				40				41			42	
43			44				45				46	
	47					48			49	50		
			51		52			53	54			
	55	56			57		58		59		60	61
62					63			64		65		66
67					68					69		
70					71					72		

ACROSS

- Tubby the ___
- Zeus, for one
- Kilmer of *Tombstone*
- New couple, to a gossip columnist
- Hearing: prefix
- Where there's a will?
- ___ Alto
- Walk
- Author Paton
- Start for couture or cuisine
- You ___ There
- One of LBJ's dogs
- Harper's *Weekly* cartoonist
- Edison's middle name
- Scarlett's beloved
- Words accompanying waves
- Martial ___
- "How Dry ___" (2 wds.)
- Vogue
- Losing ___* (1994 Jessica Lange film)
- Brokaw's network
- Sheer fabric
- Agricultural loan gp.
- Weight watcher
- Gives the nod
- Spread out, as cards
- Final, e.g.
- Mrs., in Paris
- Piquancies
- Roof edge

DOWN

- Hold up!
- Nipped
- Ship's heading: abbr.
- Arterial trunk
- Old soldiers
- Fasten securely
- Fictional skipper
- You're Only Old ___!* (Dr. Seuss)
- Unsophisticated
- Humorous author "Bombeck"
- To the ___ degree
- Logan and Fitzgerald
- New Look introducer, in fashion
- Um's kin
- Orange part
- Thumb-sucking or chain-smoking
- Host
- "In hot water," e.g.
- Spats
- Begin's peaceful co-honoree
- Out of reach
- ___ Not Unusual"
- First name in fairy tales
- Kind of ray
- Move obliquely
- Type of fly
- Servile
- Place for a camel ride
- Type of income, for the IRS
- Phileas Fogg's creator
- Despises
- Out of shape
- Scratch's target
- Doctor of *Austin Powers*
- Hatcher of *Lois & Clark*
- Shooting need, for short
- Erich ___ Stroheim
- Topsy's playmate
- Rower's implement

Posted



8 AM
5 PM **800-220-3311** 410-398-1230 Fax us 24/7: 410-398-4044

ANNOUNCEMENT	ANNOUNCEMENT	EMPLOYMENT	RENTALS	RENTALS	RENTALS
20 NOTICES	30 ADOPTIONS	110 HELP WANTED FULL-TIME	ELKTON W. Main St 3br, 1st flr., wshr/dryr, pets cnsdrd. \$975 mo. 443-350-7684	Put a little jingle back in your pocket for the holidays! Discounted move in rent for qualified applicants. The Meadows @ Elk Creek, 439 Muddy Lane, Elkton, 410-398-0470, meadowsatelkcreek.com	New Today Affordable Homes-Elkton / North East 2-4 BR's Starting at \$975 410 620-1345
DECOYS, JEWELRY, WILDLIFE ART Bill Veasey presents for your consideration an exclusive showing of six of America's top wildlife artists, most recent works. Sat & Sun Dec 11 & 12, 10 am-6pm. 34 Cherry Lane, Elkton, MD 21921 in a working Artist's Studio. 302-383-2476	New Today WE ARE A LOVING Childless couple wishing to adopt and nurture along an infant or young child. Medical and legal expenses paid. Let's help each other. Multi cultural love comes in many colors. Please call Debbie and Dan 855-255-BABY (2229)	New Today KFW/CNA PROGRAM no HS Diploma or GED req. Call 302-533-6406	New Today ELKTON: 1 br \$750/mo util's incl. laundry on prem. No pets 410-398-6291	New Today CHES CITY waterfront rancher .rent w/opt buy 3br 2ba 3 car gar. \$2150 No pets 443-309-4450	New Today ELK NECK 3br, 1ba. \$1000 mo + sec. No pets, non smok envir. 410-287-8603
GUN & KNIFE SHOW Tall Cedars Building, at Putty Hill Shopping Center in Parkville, MD Dec 11 & Dec 12 Sat. 9-4 Sun 9-3 500 trade tables Admission \$7 717-697-3088	FOUND CAT Large gray and white female, de-clawed. Found in Gotham Bush area of Perryville off Cedar Corner Rd. 410-642-3302	RENTALS CECILTON- 2br apt. with your own washer & dryer, elevated deck, reserved off st parking, \$675/mo, 1 yr lease, 1mo sec dep. 410-275-2118	Fall Move in Special *1/2 off 1st months rent, for qualified applicants 1 & 2 BR Apts in historic down town North East. *Rents starting 1br \$695 - 2br \$825 BEACON 410-287-6111	New Today PORT DEPOSIT 2Br 2nd flr. Great kitchen, attic strg. W/D hk up Pets possible. \$675/mo+ util 410-378-2106	New Today ELKTON Turnquist TH, Super Clean, 2Br newly renovated. \$895 443-466-8666
LOST & FOUND	LARGE LONG hair all white female cat in Churchville area. 410-734-7248	APARTMENTS UNFURNISHED EARLEVILLE 2br on horse farm. \$750 mo. Absolutely NO pets allowed. Please call 410-275-1414	North East Priv. ent. from lrg. deck 2nd flr 2br Main St sec alarm cac elec heat w/d. \$725/ water incl'd + sec. dep & 1 mo. rent. No pets. 302-753-9233 Avail 01/01/11	New Today R. SUN- lrg. 2 & 3 br apt, incl. water, sewer/trash. \$900-\$950/mo No pets 410-658-2660	New Today Fair Hill/ Oxford 3br 2.5 ba 1 yr old on 1 ac \$1800/mo rent to own avail 410-398-5724
PUBLIC NOTICE View Public Notices from around the State of Maryland, visit: www.publicnoticeads.com/md	PERSONALS THANK YOU ST. JUDE NOVENA my prayers have been answered. R.L.S.	RENTALS NORTH EAST 1br, off street parking. \$600 mo. 410-287-2255	New Today ELKTON 2 Bedroom. \$600 per mo + security deposit Call 410-398-4104	New Today RISEING SUN 2br, w/d, a/c, no pets, ref's req., \$750/ mo + util's. 410-658-5705	New Today Elkton 3br split level \$1050/m fin bsmnt • 76 Old Field Acres Dr 2600 sq ft deluxe home \$2500/ option to buy • 3br Rancher f/place, dk, 1 car gar, \$1050/m 410-398-3447
	CLASSIFIEDS 410-398-1230 800-220-1230	RENTALS NORTH EAST- 2nd flr, 2br. Off st prking, No pets. \$690/mo + sec. 410-287-8888	RENTALS WWW.CHESAPEAKE CLASSIFIED.COM		

81% of people read the newspaper weekly

63% of people reading news online get information from local newspaper website

47% of people read the newspaper for the ads

The Cecil Whig newspaper is searching for a select few individuals that want to work for the dominant media source in Cecil County. We are looking for people who want to help local business owners grow their business by advertising in our print & online editions.

These advertising consultants will be compensated with a salary plus strong commission plan. Full benefits package is also offered.

If you are interested in a career that will be fulfilling both financially and emotionally, please send us your resume. Send to hporter@chespub.com

**Based on statistics from Reynolds Institute*

Win a gift certificate to Pat's Pizza and Family Restaurant!

Enter the "Write the Ending!" Reader Contest!!

The Cecil Whig started the story, now we want to see how you would finish it. The contest is open to non-published authors sixteen years or older.

Send your entries-of no more than 500 words-by email to: sgarcia@chespub.com or mail to "Write the Ending", c/o Shelley Garcia, PO Box 429., Elkton, MD 21921. Include your full name, address and contact phone number. Deadline for submission is 12/14/2010 at 3pm.

Winners will be notified by phone, and the top 3 stories will be published in Cecil Whig on 12/21/2010. *The top 3 winners will each receive a \$25 gift card to Pat's Pizza and Family Restaurant. Other entries will be placed online for our readers to enjoy.

*Chesapeake Publishing/Cecil Whig employees and their families are not eligible to win.

Nick was never fond of the Christmas season, and this season was no different. As he walked home from his dead-end job on Christmas Eve, second shift no less, he thought about his childhood memories of Christmas.

His mom worked two jobs, cashier by day, and office cleaner by night. Not that she wanted to work two jobs, but since Nick's Dad died and she became a single parent, she had had no choice. Even with two jobs, there was no money for anything as frivolous as Christmas. They were lucky to have enough money left over for a supper of chicken drumsticks and boxed stuffing. Gifts were trinkets from mom's cashier job or things that were left for the "cleaning lady" at her office job. She usually had to work on Christmas, so little time was spent on celebrating, or with Nick. What was there to celebrate anyway?

So, walking home to his small apartment he wasn't surprised to see it had started to snow. "Great," he thought, "I didn't pay the heat bill, so home to a cold apartment." No fancy Christmas Eve dinner either. He had 2 chili dogs wrapped in aluminum foil and a bag of chips in his pocket from the convenience store. He missed his mother, he hadn't seen her in years, and he was not looking forward to being alone tonight. He tucked his neck down into the collar of his coat and sullenly walked down the dark, snowy street feeling very sorry for himself.

As he rounded the corner onto Elm Street, he noticed all the street lamps were out, except for one. Under that single lamp Nick could see a figure standing there, looking like they were awaiting his approach. He suddenly got a little nervous, but told himself not to be silly, just walk on home.

As Nick walked toward the stranger, the street lamp flickered and he heard the figure say, "I have been waiting for you Nick"...

Write the ending...



RENTALS

New Today

N. EAST spacious 3BR 2 BA, Lg kit, CAC; W/D hookup DW; deck \$1,250. 410-287-5277

New Today

NORTH EAST 1Br. No pets. \$850/mo + elect & heat & sec dep 443-206-1265

New Today

North East New 3br, 2ba, gar. \$1100 mo. Water access. Ref's req'd. 443-553-0100

PORT DEPOSIT 2br 2ba, LR, DR kit w/breakfast nook, rear deck front encl patio full basement 1 & 1/2 ac lot in mature neighborhood in country 5 mins from new casino exit 93 on I 95. \$1050/mo + sec dep & oil, non smoking environ, no pets. 410-378-2661

New Today

RISING SUN t/h 3Br, walk out basement. \$1300/ mo. No pets. Debbie 410-658-9558

WWW.CHEESAPEAKE CLASSIFIED.COM



Call Us Today To Place Your Ad.

Let Chesapeake Classified Work For You!

410-398-1230
800-220-1230 or
www.chesapeakeclassified.com

LEGAL NOTICE

LEGAL NOTICE

RE: DEADLY

WEAPON

I, Karl M. Walters residing at 12 Berkley Dr., Newark, DE. 19702 will make application to the judges of the superior court of the State of Delaware in and for New Castle County at Wilmington for the next term for a license to carry a concealed deadly weapon, or weapons, for the protection of my person(s), or property, or both.

Karl M. Walters
12/2/10

np 12/10 2209464

Visit one of these local dealers and drive home happy!

VOLKSWAGEN

Smith

VOLKSWAGEN, LTD.
4304 Kirkwood Highway,
WILMINGTON, DE
302-998-0131
Drivers wanted™

Contact Laurie To Advertise

HERE
410-398-1230
800-220-1230

Lamici@chespub.com

REACH OVER 50,000 READERS WEEKLY!
Call Laurie at 800-220-3311 to Advertise Here!

LEGAL NOTICE

PUBLIC AUCTION
SENTINEL SELF STORAGE
1100 Elkton Road
Newark, DE 19711
(302) 731-8108

A Public Auction will be held on Wednesday, 01/12/2011 at 10:00 AM. The contents of the following storage units will be auctioned:
Unit # 1016 Stephen D. Mendala: bicycle, boxes, office chair, fish tank and stand, misc. household items
Unit # 3004 Adrine T. Stevenson: boxes, sofa, love seat, coffee table
Unit # 3015 Christina J. Billie: couch, love seat, shelving, tv stand, big screen tv

PUBLIC AUCTION
SENTINEL SELF STORAGE
200 First State Blvd
Wilmington, DE 19804
(302) 999-0704

A Public Auction will be held on Wednesday, January 12, 2011 at 11:00 AM. The contents of the following storage units will be auctioned:
Unit # 309: James Newton- Bags, boxes, books, ladder, pictures, stool, totes
Unit # 1105: Karla Coleman- Bags, bed frame, mattress, boxes, table lamp, pictures, speakers, stool, totes, portable TV, plant (tree)
Unit # 1336: Kasha Fryer- Bags, kitchen chair, coffee table, tool box, totes, portable TV
Unit # 6259: William Janvier - Boxes, ice chest, tool box, totes, fireplace door, camping equipment, air compressor

PUBLIC AUCTION
SENTINEL SELF STORAGE
465 Pulaski Hwy
New Castle, DE 19720
(302) 328-5810

A Public Auction will be held on Wednesday, January 12th, 2011 at 2:00 PM. The contents of the following storage units will be auctioned:

Unit-#2014-Kenneth Whorl-Boxes, Chair, Love Seat, Speakers, Kitchen Table, Totes, Toys, TV
Unit-# 4128-April Bungy-Bags, Bed Frame, Box Spring, Mattress, Boxes, Floor Lamp, Lawn Equipment, Totes, Hose, Grill
Unit-#140-Charles Hackney-Bags, Clothing, Suitcase, Lawn Equip.
Unit-#128-Lakaisha Oliver-Bags, Boxes, Totes
Unit-#104-Lakaisha Oliver-Baby Chair, Crib, Bags, Folding Chair
Unit-#2035-Stephen Hershberger-AC, Box Spring, Mattress, Office Chair, Sofa, Entertainment Center, End table, Folding Table, Sink
Unit-#119-Jose Salinas-Boxes, Totes, Vacuums
Unit-#4149-Theresa Uhrick-Bags, Bed Frame, Box Spring, Mattress, Boxes, Entertainment Center

Sentinel Self Storage
333 E. Lea Blvd.
Wilmington, DE 19802
302-764-6300

A Public Auction will be held on 1-12-11 at 12:00PM at the above address. All sales are cash only. All sales are final. The units to be auctioned are as follows:

Unit #10-Carolyn Virginia-Bags, Boxes, Fan, Hamper, Shelving, Doors, Golf Clubs
Unit #34-Elizabeth Wilson-Bags, Boxes, Clothing Closet, Entertainment Center, Fishing Equipment, Ice Chest, Ladder, Microwave, Suitcase, Toys
Unit #55-Ken Phillips Jr.-Boxes, Clothing, Computer, Hamper, Mirrors, Stereo, Suitcase, Tool Box
Unit #74-Diane E. Whittaker-Boxes, Chest of Drawers, Dresser, Drum Kit
Unit #67-Oliver Patterson-Bags, Boxes, Pictures, Suitcase, Snack Table, Totes, Heater, Alcohol
Unit #98-Shani Butcher-Baby Chair, Bags, Boxes, Clothing, Suitcase, Totes
Unit #197-Romaine Boyd-Boxes, Fan, Hamper, Ice Chest, Pictures, Shelving, Stool, Tool Box, Snow Blower, Pressure Washer, Helmet
Unit #236-Ronnie Douglas-Bags, Boxes, Clothing, Totes
Unit #237-Max Cross-Bags, Boxes, Ironing Board, Pictures
Unit #398-Irving L. Brown-Golf Ball Bag, Plastic Wheel Covers, Hamper, Duffel Bag, Shoes
Unit #447-Charlotte E. McKinley-Bags, Bed Frame, Box-Spring, Mattress, Boxes, Kitchen Chair, Rocking Chair, Chest of Drawers, Dresser, Table Lamp, Suitcase, Snack Table, TV, Sword

np 12/3,10

2206952

Cecil Whig, providing all the local news and events since 1841. The "go to" news source for Cecil County.

CHEESAPEAKE CLASSIFIED
410-398-1230
800-220-1230
www.chesapeakeclassified.com

LEGAL NOTICE

**CITY OF NEWARK
DELAWARE
COUNCIL MEETING AGENDA
December 13, 2010 - 7:00 PM - CC**

SILENT MEDITATION & PLEDGE OF ALLEGIANCE

1. ITEMS NOT ON PUBLISHED AGENDA:

- A. Public (5 minutes per speaker)
- B. University
 - (1) Administration
 - (2) Student Body Representative
- C. Council Members

2. APPROVAL OF CONSENT AGENDA:

- A. Approval of Regular Council Meeting Minutes - November 22, 2010
- B. Receipt of Alderman's Report - December 8, 2010
- C. Re-appointment of Gloria Hickey, 94 Kells Avenue, to Board of Election - three year term to expire January 2014
- D. Re-appointment of Alice Liechty, 101 Meriden Drive, to Board of Election - three year term to expire January 2014
- E. Re-appointment of Fred Dingle, 205 Hullihen Drive, John Brook, 22 Bridlebrook Lane, Heather Dunigan (WILMAPCO), Sally Miller, 203 Hullihen Drive, Lt. George Stanko (NPD), Dennis McFarland (Finance); and appointment of Joseph McCoy, 102 E. Main Street (Catherine Rooneys), Krista Milkovics, 26 Haines Street, and Ruth Mayer, 2821 Videre Drive, Wilmington (Newark Property Owner) to DNP Parking Committee - three year terms to expire January 2014

CONSENT AGENDA - Those items on the Consent Agenda are considered routine and non-controversial and will be acted upon by a single vote of the Council. There will be no separate discussion of these items unless a member of Council so requests, in which event the matter shall be removed from the Consent Agenda and considered a separate item.

3. ITEMS NOT FINISHED AT PREVIOUS MEETING: None

4. FINANCIAL STATEMENT - Next Meeting

5. RECOMMENDATIONS ON CONTRACTS & BIDS:

- A. Recommendation to Waive the Bidding Requirement and Extend Electric Line Tree Trimming Contract for an Additional Year
- B. Recommendation to Purchase a Valve Exerciser from a Competitively Solicited Purchase Contract in Association with the National Joint Powers Alliance
- C. Recommendation to Purchase Additional Video Surveillance Equipment in Association with System and Cameras Purchased in June of 2010

***6. ORDINANCES FOR SECOND READING & PUBLIC HEARING:** None

***7. RECOMMENDATIONS FROM THE PLANNING COMMISSION AND/OR PLANNING & DEVELOPMENT DEPARTMENT:**

- A. Request of Liborio Louviers LLC for a Revision to the Approved Subdivision Agreement of The Shoppes at Louviers, Parcel A, Paper Mill Road, Newark, Delaware, In Order to Modify Certain Deed Restriction to Permit the Sale of Beer and Spirits in the Wine-Only Package Store (Deerfield Wines) (Amended Agreement Presented)

***8 ITEMS SUBMITTED FOR PUBLISHED AGENDA:**

- A. Council Members:
 - 1. Presentation of Alcohol Study Conducted by Roberta E. Gealt (University of Delaware) - Temko
 - 2. **Resolution No. 10-__:** In Appreciation Roger A. Akin, City Solicitor
 - 3. Discussion re City Solicitor Position
- B. Others: None

9. SPECIAL DEPARTMENTAL REPORTS:

- A. Special Reports from Manager & Staff: None
- *OPEN FOR PUBLIC COMMENT** - The above agenda is intended to be followed, but is subject to changes, deletions, additions, and modifications, as permitted under the Freedom of Information Act of the State of Delaware. Copies may be obtained at the City Secretary's Office, 220 Elkton Road, or online at www.cityofnewark.de.us

np 12/10

2210155



RENTALS

**320 WATERFRONT
RENTALS**

New Today

NORTH EAST spacious 2br apt 2ba. master bedroom walk-in closet, laundry room with washer, dryer, cathedral ceilings, wrap a round deck, (sunset western view) nice yard. \$1300/mo + utils. 410-920-8006 or 410-920-6044



RENTALS

**332 TOWNHOUSE
FOR RENT**

New Today

ELKTON End T/H. 4Br, 1 bath & (2) 1/2 Ba's, fncd yard. \$975 per mo 410-398-2169

ELKTON Walnut Hill 3br 1.5 ba, stone 2 decks. \$1100 per month 410-398-5724

**WWW.CHESEAPEAKE
CLASSIFIED.COM**



RENTALS

New Today

RIISING SUN 3Br T/H 1.5Ba. Avail 1/1. No pets. \$900/mo + utils. 410-658-5727

**335 DUPLEXES
FOR RENT**

Rising Sun recently refurbished 3br duplex, nice yard, \$950/mo + sec. No pets. Call 410-658-9568

**CLASSIFIEDS
410-398-1230
800-220-1230**



RENTALS

**340 MANUFACTURED
HOMES FOR RENT**

New Today

N. EAST 2 br in Lakeside. No pets. \$650/mo + sec. & util's. Sec 8 ok. 302-668-5944

**345 ROOMS FOR
RENT**

New Today

ELKTON- room for rent, everything incl. \$400/mo. Call 443-760-6495



RENTALS

350 To Share

CHESEAPEAKE CITY Sunny room for rent on water. \$550 per mo. 443-566-0808

**365 COMMERCIAL
RENTALS**

CECIL CO. commercial property 2250 sq ft \$1200/mo 443-350-0621

CECIL CO - Office; Comm; Warehouse; Industrial. Outside storage 443-553-1517



RENTALS

FAIRHILL VILLAGE Store/office front Conv. loc. Rt 213 & Rt 273 410-398-5724

Are You Ready To Fill These Shoes?



Check Our Classified Pages Everyday For The Latest Job Opportunities Let Chesapeake Classifieds Work For You!

LEGAL NOTICE

THE COURT OF COMMON PLEAS FOR THE STATE OF DELAWARE IN AND FOR NEW CASTLE COUNTY IN RE: CHANGE OF NAME OF RENEE DEIRDRE OGARO Petitioner(s)

TO RENEE DEIRDRE OCHIENG NOTICE IS HEREBY GIVEN that RENEE DEIRDRE OGARO

Intends to present a Petition to the court of Common Pleas for the State of Delaware in and for New Castle County, to change his/her name to RENEE DEIRDRE OCHIENG

BRIAN D. OCHIENG FOR THE MINOR RENEE DEIRDRE OGARO Petitioner

Dated: 11-17-10

np 11/26,12/3,10

2206420

**CITY OF NEWARK
Delaware
Traffic Committee
December Meeting Notice**

The City of Newark Traffic Committee meeting scheduled for Tuesday, December 21, 2010 has been cancelled due to a lack of agenda items.

np 12/10

2210096

**PUBLIC HEARING SCHEDULED FOR
DECEMBER 20, 2010**

FY 2010 Annual Plan Amendment Public Hearing Notice

Reference: Firearms Policy Non Smoking Policy

The Newark Housing Authority invites residents and the public to attend a public hearing to discuss changes to the Public Housing Lease and Admissions and Continued Occupancy Policy to incorporate Firearms Policy and Non Smoking Policy. A copy of these policies can be reviewed during business hours from 9:00am - 12:00 noon and from 1:00pm - 4:00pm Monday through Friday. A copy of public hearing notice will be posted for 45 days in the lobby of the Administration Building. All comments be submitted in writing within the 45 day review period. Any comments received resulting in a change will be posted for review. A public hearing is scheduled for Monday, December 20th at 5:30 pm at the Newark Housing Authority's Administration Building located on 313 E. Main Street Newark, DE 19711.

np 10/29 - 12/17

2200401

LEGAL NOTICE

Estate of PHYLLIS K. FAUCETT, Deceased.

Notice is hereby given that **Letters Testamentary** upon the estate of PHYLLIS K. FAUCETT, aka PHYLLIS KATHRYN FAUCETT who departed this life on the 15th day of September, A.D. 2010, late of 303 MERIDEN DRIVE, NEWARK, DE 19711, were duly granted unto MICHELE K. FAUCETT on SEPTEMBER 30, 2010, and all persons indebted to the said deceased are requested to make payments to the **Personal Representative** without delay, and all persons having demands against the deceased are required to exhibit and present the same duly probated to the said **Personal Representative** on or before MAY 15, 2011 or abide by the law in this behalf.

Address MICHELE K. FAUCETT 303 MERIDEN DRIVE NEWARK, DE 19711

Personal Representative MICHELE K. FAUCETT. File # 149238

np 11/26,12/3,10

2197246

Estate of THOMAS W. MATNEY, Deceased.

Notice is hereby given that **Letters Testamentary** upon the estate of THOMAS W. MATNEY, aka THOMAS WILLIAM MATNEY who departed this life on the 17th day of October, A.D. 2010, late of 629 W. CHESTNUT HILL ROAD, NEWARK, DE 19713, were duly granted unto CHLOIS ILENE KEATLEY, aka ILENE KEATLEY on October 22, 2010, and all persons indebted to the said deceased are requested to make payments to the **Personal Representative** without delay, and all persons having demands against the deceased are required to exhibit and present the same duly probated to the said **Personal Representative** on or before **June 17, 2011** or abide by the law in this behalf.

Address CHLOIS ILENE KEATLEY 441 CAUSEY ROAD VASS, NC 28394

Personal Representative CHLOIS ILENE KEATLEY, aka ILENE KEATLEY File #149391

np 11/26,12/3,10

2206275

LEGAL NOTICE

THE COURT OF COMMON PLEAS FOR THE STATE OF DELAWARE IN AND FOR NEW CASTLE COUNTY IN RE: CHANGE OF NAME OF ISA AUMATU DEMBY Petitioner(s)

TO ISA ALIMATU AMARA NOTICE IS HEREBY GIVEN that ISA AUMATU DEMBY

Intends to present a Petition to the court of Common Pleas for the State of Delaware in and for New Castle County, to change his/her name to ISA ALIMATU AMARA

ISA ALIMATU AMARA Petitioner Dated: 11-29-10 2208302

np 12/3,10,17

SHERIFF'S SALE

By virtue of a writ of #10-019947 (287) DEC. 14, 2010. Parcel No. 09-023.30-377 Property Address: 306 S. Brownleaf Rd., Newark, DE 19713

ALL THAT CERTAIN LOT, PIECE OR PARCEL OF LAND WITH THE BUILDINGS THEREON ERECTED, SITUATE IN WHITE CLAY CREEK HUNDRED, NEW CASTLE COUNTY AND STATE OF DELAWARE, KNOWN AS 305 S. BROWNLEAF ROAD, BEING LOT NO. 281 ON THE PLAN OF BIRCHWOOD PARK, SECTION 2, AS THE PLAN THEREOF IS OF RECORD IN THE OFFICE OF THE RECORDER OF DEEDS IN AND FOR NEW CASTLE COUNTY, DELAWARE IN MICROFILM NO. 73 AND PLAT RECORD 4, PAGE 24, AND BEING MORE PARTICULARLY BOUNDED AND DESCRIBED IN ACCORDANCE WITH A SURVEY PREPARED BY EAST COAST SURVEY, PROFESSIONAL LAND SURVEYORS, DATED JULY 23, 2004, AS FOLLOWS, TO-WIT: BEING THE SAME LANDS AND PREMISES WHICH RALP COLALILLO, BY HIS ATTORNEY-IN-FACT, VICTORIA L. HACKNEY AND ELIZABETH MOODIE AKA ELIZABETH SALE COLALILLO DID GRANT AND CONVEY UNTO MELISSA F. HANLEY BY DEED DATED JULY 23, 2004 AND RECORDED ON JULY 30, 2004 IN THE OFFICE OF THE RECORDER OF DEEDS, IN AND FOR NEW CASTLE COUNTY, STATE OF DELAWARE, IN DEED INSTRUMENT NUMBER 20040730-0083664. SEIZED AND TAKEN IN EXECUTION AS THE PROPERTY OF MELISSA F. HANLEY TERMS OF SALE: 10% DOWN AT TIME OF SALE. BALANCE DUE ON OR BEFORE JANUARY 17, 2010.

np 12/3,10

2206725

FIND WHAT YOU'RE LOOKING FOR IN OUR CLASSIFIED SECTION!



- Yard Sales
- Lost Pets
- Used Vehicles
- Items for Sale



REAL ESTATE

430 MANUFACTURED HOMES FOR SALE



\$20,000, 2BR 2BA, owner finance, lot rent + loan = \$850, Newark 19713, call Debbie, 302-547-9338

440 LOTS/ACREAGE FOR SALE

New Today

Hacks Point Beach Earleville 2 perced acres corner of Glebe & Kitty Knight Rd's. \$89K 302-377-6181

CLASSIFIEDS
410-398-1230
800-220-1230
WEBSITE AT
WWW.CHEAPEAKE
CLASSIFIED.COM

Lost an Item? Found an Item?

It's FREE to run an ad in Chesapeake Classified!

We have great success in returning lost animals and items to their true owners.

Call and place your ad today!

410-398-1230
or toll free
800-220-1230

email to
classads
@chespub.com



LEGAL NOTICE

SHERIFF'S SALE
By virtue of a writ of #10-019328 (151) DEC. 14, 2010.
Property Address:
ALL that certain piece, parcel or tract of land situate in the City of Newark, New Castle County, State of Delaware, being known as Parcel 2 of the Fountainview Apartments according to the Administrative Subdivision Plan of Fountainview Apartments as prepared by McBride & Ziegler, Inc. plan no. 20033867; recorded in the Office of the Recorder of Deeds in and for the New Castle County on Instrument No. 20070606-0050757, and being more particularly bounded and described as follows, to with:

Lot#	Parcel#	Address
1	1803300080C0001	2 Fountainview Dr., Newark
2	1803300080C0002	4 Fountainview Dr., Newark
3	1803300080C0003	6 Fountainview Dr., Newark
4	1803300080C0004	8 Fountainview Dr., Newark
5	1803300080C0005	10 Fountainview Dr., Newark
6	1803300080C0006	14 Fountainview Dr., Newark
7	1803300080C0007	16 Fountainview Dr., Newark
8	1803300080C0008	18 Fountainview Dr., Newark
9	1803300080C0009	20 Fountainview Dr., Newark
10	1803300080C0010	22 Fountainview Dr., Newark
11	1803300080C0011	26 Fountainview Dr., Newark
12	1803300080C0012	30 Fountainview Dr., Newark
13	1803300080C0013	34 Fountainview Dr., Newark
14	1803300080C0014	36 Fountainview Dr., Newark
15	1803300080C0015	38 Fountainview Dr., Newark
16	1803300080C0016	40 Fountainview Dr., Newark
17	1803300080C0017	19 Fountainview Dr., Newark
18	1803300080C0018	17 Fountainview Dr., Newark
19	1803300080C0019	15 Fountainview Dr., Newark
20	1803300080C0020	13 Fountainview Dr., Newark
21	1803300080C0021	9 Fountainview Dr., Newark
22	1803300080C0022	7 Fountainview Dr., Newark
23	1803300080C0023	5 Fountainview Dr., Newark
24	1803300080C0024	3 Fountainview Dr., Newark
25	1803300080C0025	1 Fountainview Dr., Newark
26	1803300080	40 Fountainview Dr., Newark

BEING the same lands and premises which Fountainview Newark, LLC, a Delaware limited company, by Deed dated September 28, 2005 and recorded September 29, 2005 in the Office of the Recorder of Deeds in and for New Castle County, Delaware in Instrument No. 20050929-0099846, did grant and convey unto Fountainview Newark II, LLC, a Delaware limited liability company (now known as Corrozi-Fountainview, LLC by amendment to its Certificate of Formation), in fee.
SEIZED AND TAKEN IN EXECUTION AS THE PROPERTY OF CORROZI-FOUNTAINVIEW LLC
TERMS OF SALE: 10% DOWN AT TIME OF SALE. BALANCE DUE ON OR BEFORE JANUARY 17, 2010.

np 12/3,10

2206341



SERVICES

520 HOME IMPROVEMENT SERVICES



K. Spencer Home Improvements, Inc.

When Quality Comes First!

- Painting
- Garages
- Basements
- Kitchens & Baths
- Additions
- Crown Molding
- Porches
- Window / Door Replacement

FREE ESTIMATES

REFERENCES LICENSED & INSURED

No Job to small
MHIC#127618

410-378-9219

CHECK OUT OUR WEBSITE AT
WWW.CHEAPEAKE
CLASSIFIED.COM



MERCHANDISE

602 ANIMALS/PETS



BLACK LAB PUPS
AKC. First shots.
2 M, 1F. Ready now.
\$600 410-482-4127

CAT Black and white. Declawed and neutered male. Does not do well with other pets. Free to good home 410-398-0171

New Today

CHES BAY Retrievers AKC. Exc. temperment & hunting. Parents on prem. \$500-\$700. 410-482-7439

CHRISTMAS BUNNIES (3) Mixed-Mini Rexs/Jersey Wooley \$15 each 443-674-8049

CANARY Young male singer with cage. \$75. Please call 410-515-7547



MERCHANDISE

New Today

CHIHUAHUA puppies. Ready now. \$200 each. 410-275-2723

CHIHUAHUA PUPS
Long hair. Ready for loving homes 12/18. \$550 443-925-9462

DALMATIAN PUPS
For sale, cute & loveable, you can't resist! Champion Bloodline, males only. Call 410-378-9169

DACHSHUND PUPS: miniature, AKC reg., champ bloodline, vet checked \$400 Call Dave 410-739-0013

New Today

DOBERMAN Lrg 18 mo. male. Exc. bloodline. House trained. \$500. 302-438-3464

New Today

ENGLISH MASTIFF PUPS 5 fem - 5 mo's, 4M - 13 mo's. Raised w/ kids. 410-452-8460



MERCHANDISE

GERMAN SHEPHERD MIXED PUPS.
Vet check S&W fem \$150 males \$200 717-548-4644 ext 1

KITTENS: ALL AGES
Rescued, affectionate. Spayed, neutered and vaccinated. Please consider adopting rescued kittens rather than encouraging irresponsible pet owners. For more info call 302-834-2859

PUG PUPS. 2 males fawn w/black, AKC cert., & Litter cert. S&W. \$450 ea. 443-299-9356 Accepting deposits, pick up by 12/17. email or fireflie28@yahoo.com

PIT BULL Under 1 yr old. Female. Up to date on shots, housebroken, good with kids. Needs room to run. Free to good home 443-945-6975

PREVIOUSLY RESCUED CATS 1 male & 1 female, mother and son. Free to good home 302-312-0366

CECIL WHIG CLASSIFIEDS
410-398-1230 or 800-220-1230
WEBSITE AT
WWW.CHEAPEAKECLASSIFIED.COM



MERCHANDISE

New Today

PARROT. 7 yr. old Amazon. Excellent talker. Incl's lrg. cage \$1800. 302-438-3464

PIT BULL PUPS
Blue. Ready to go. \$500 each. Call for info 443-252-0830

New Today

PUG PUPPIES Black & fawn. AKC reg. Shots and wormed. \$425. 302-373-9473

PUREBRED JERSEY Wooley Female Christmas Bunny \$15 443-674-8049

RESCUED KITTENS need good homes. Beautiful, sterilized and vaccinated. Small adoption fee gratefully accepted. 410-920-5435.

13 ROLLS OF tar paper. Garage kept. \$15 a roll. 410-297-8886



MERCHANDISE

New Today

Tiny Yorkie Pups
Adorable, M&F, S&W. Family raised. 410-836-3187

CHECK OUT OUR WEBSITE AT
WWW.CHEAPEAKE
CLASSIFIED.COM

615 APPLIANCES

New Today

REFRIGERATORS. Used, 12 to 16 cu ft. \$50 to \$300 as is. 410-939-5078

WASHER, DRYER, FRIDGE. \$125 ea. Can deliver. Also repairs. 443-622-7562

617 BUILDING MATERIALS

New Today

LEGAL NOTICE

SHERIFF'S SALE
By virtue of a writ of #10-019687 (180) DEC. 14, 2010.
Property Address: 1 Coach Hill Drive, Newark, DE 19711
Tax Parcel No. 08-048.30-007
Creek Hundred, New Castle County and State of Delaware, being Lot No. 42 as shown on the Record Resubdivision Plan of Coach Hill, as said Plan is of record in the Office of the Recorder of Deeds in and for New Castle County, Delaware in Microfilm No. 8817 and more particularly bounded and described in accordance with a survey by Welsh Associates, Professional Land Surveyors, dated April 10, 1992.
BEING the same lands and premises which Joseph R. Miller, II and Kathleen R. Miller, by Deed recorded November 20, 1995, in the Office of the Recorder of Deeds in and for New Castle County, Delaware, in Deed Record 2013, Page 303, granted and conveyed unto Federal National Mortgage Association, in fee.
BEING the same premises which Federal National Mortgage Association, by Deed dated April 18, 1996, and recorded July 1, 1996, in the Office of the Recorder of Deeds in and for the County of New Castle, and State of Delaware in Deed Book Volume 2127, Page 0269, granted and conveyed unto Barbara Ann Dixon, grantor/mortgagor herein.
SEIZED AND TAKEN IN EXECUTION AS THE PROPERTY OF BARBARA ANN DIXON
TERMS OF SALE: 10% DOWN AT TIME OF SALE. BALANCE DUE ON OR BEFORE JANUARY 17, 2010.

np 12/3,10

2206560

LEGAL NOTICE

SHERIFF'S SALE
By virtue of a writ of #10-019637 (172) DEC. 14, 2010.
Property Address: 29 Mavista Circle, Newark, DE 19713
Tax Parcel No. 11-003.10-101
ALL that lot, piece or parcel of land with the buildings thereon, situate in Pencader Hundred, New Castle County, Delaware being designated as Lot 60 as shown on the Record Final Street and Lot Plan of BROOKSIDE PARK, SECTION M, of record in the Office of the Recorder of Deeds in and for New Castle County, Delaware on Microfilm No. Volume 3, Page 52, said lot also known as 29 Mavista Circle.
BEING the same lands and premises which were conveyed to Jack G. White and Dorothy M. White, his wife, by Deed of R. B. & S. Development Corporation, a Delaware corporation, dated September 6, 1960, and recorded in the Office of the Recorder of Deeds, in and for New Castle County and State of Delaware in Deed Book S. Volume 66, Page 301. Thereafter, the said Jack G. White died testate on March 31, 1996, leaving said lands and premises to Dorothy M. White, his wife.
BEING the same premises which Dorothy M. White, by Deed dated January 31, 2003, and recorded February 20, 2003, in the Office for the Recorder of Deeds in and for the County of New Castle, and State of Delaware in Deed Instrument No. 20030220-0021745, granted and conveyed unto Cathy L. Garrett grantor/mortgagor herin.
SEIZED AND TAKEN IN EXECUTION AS THE PROPERTY OF CATHY L. GARRETT
TERMS OF SALE: 10% DOWN AT TIME OF SALE. BALANCE DUE ON OR BEFORE JANUARY 17, 2010.

np 12/3,10

2206513

LEGAL NOTICE

SHERIFF'S SALE
By virtue of a writ of #10-019494 (170) DEC. 14, 2010.
Property Address: 8 Three Rivers Drive, Newark, DE 19702
Tax Parcel No. 10-043.30-161
ALL that certain lot, piece or parcel of land, with the building thereon erected, known as 8 Three Rivers Drive, situate in New Castle Hundred, New Castle County and State of Delaware, and being Lot No. 202 of the Subdivision of Wellington Woods, Section One, and being more particularly bounded and described in accordance with a survey by Zebley & Associates, Inc., dated September 25, 1984.
BEING the same premises which Kevin R. Fisher and Theresa M. Fisher, by Deed dated October 9, 1989, and recorded October 11, 1989, in the Office for the Recorder of Deeds in and for the County of New Castle, and State of Delaware in Deed Book Volume 939, Page 211, granted and conveyed unto Eleanor J. Gommer and Barry L. Gommer, grantor/mortgagor herein.
BEING the same premises which Barry L. Gommer (also known as Barry L. Gommer, Sr.) and Eleanor J. Gommer, by deed dated December 12, 2007 and recorded January 8, 2008 in the Office for the Recorder of Deeds in and for the County of New Castle, and State of Delaware in Instrument Number 20080108-0001879, granted and conveyed unto Barry L. Gommer, Sr., and Eleanor J. Gommer, husband and wife.
SEIZED AND TAKEN IN EXECUTION AS THE PROPERTY OF ELEANOR J. GOMMER AND BARRY L. GOMMER
TERMS OF SALE: 10% DOWN AT TIME OF SALE. BALANCE DUE ON OR BEFORE JANUARY 17, 2010.

np 12/3,10

2206387

LEGAL NOTICE

SHERIFF'S SALE
By virtue of a writ #10-018596 (18) DEC. 14, 2010.
PARCEL NO. 11-025.10-147
PROPERTY ADDRESS: 521 LAUREL LANE, NEWARK, DE 19702
ALL that certain lot, piece or parcel of land, with the dwelling thereon erected, known as 521 Laurel Lane, situate in Pencader Hundred, New Castle County and State of Delaware, being Lot No. 80, as shown on the Record Major Subdivision Plan of BARRINGTON, as said Plan is of record in the Office of the Recorder of Deeds in and for New Castle County, Delaware, in Microfilm No. 12961, and being more particularly bounded and described in accordance with a recent survey prepared by A.E.S. Surveyors, dated April 30, 2004.
BEING the same lands and premises which Srinivasarao Chitikela and Bhavani Allu, by Deed dated May 14, 2004 and recorded in the Office of the Recorder of Deeds, in and for New Castle County and State of Delaware, in Instrument # 20040519-0054601, did grant and convey unto Gregory Alkins and Cindy Alkins.
SEIZED AND TAKEN IN EXECUTION AS THE PROPERTY OF GREGORY G. ALKINS AND CINDY L. ALKINS.
TERMS OF SALE: 10% DOWN AT TIME OF SALE. BALANCE DUE ON OR BEFORE JANUARY 17, 2010.

np 12/3,10 2206040

LEGAL NOTICE

SHERIFF'S SALE
The following Real Estate will be exposed for Public Sale at the CITY/COUNTY BLDG. 800 N. French Street, City of Wilmington, New Castle County, Delaware, by Michael P. Walsh, Sheriff, on **TUESDAY the 14TH day of DECEMBER, 2010 at 10:00 A.M.**
By the virtue of a writ of #10-018560 (13) DEC. 14, 2010
PARCEL: 10-043.20-062
ADDRESS: 8 James Court, Newark, DE 19702
ALL that certain lot, piece of land with the buildings thereon erected, situate in New Castle Hundred, New Castle County and State of Delaware, being Lot 18, Building C, as shown on the subdivision Plan of Glendale Town-houses, and being more particularly bounded and described as follows, to wit:
BEING the same lands and premises Patricia J. Young by Deed dated April 5, 1979 and recorded in the Office of the Recorder of Deeds, in and for New Castle County and State of Delaware, in Deed Book 105. Page 26, did grant and convey unto Bruce Lee Young.
SEIZED AND TAKEN IN EXECUTION AS THE PROPERTY OF BRUCE LEE YOUNG
TERMS OF SALE: 10% DOWN AT TIME OF SALE. BALANCE DUE ON OR BEFORE JANUARY 17, 2010.

np 12/3,10 2205723

SHERIFF'S SALE
By virtue of a writ of #10-018787 (69) DEC. 14, 2010.
Property Address: 29 Tiverton Circle, Newark, DE 19702
Tax Parcel No. 09-034.20-162
All that certain lot, piece or parcel of land with the buildings thereon erected, situate in White Clay Creek Hundred, New Castle County and State of Delaware, known as 29 Tiverton Circle, and being Lot No. 7, Block D, on the Plan of Varlano, said plan being of record in the Office of the Recorder of Deeds in and for New Castle County and State of Delaware in Microfilm No. 940, and being more particularly bounded and described in accordance with a recent survey by AES Surveyors, dated November 7, 2006.
BEING the same lands and premises which Gregory Grimshaw by Deed dated May 30, 2006, and recorded in the Office of the Recorder of Deeds in and for New Castle County, State of Delaware, as Instrument No. 20060530-0051223, did grant and convey unto Larry N. Calio and Cynthia L. Calio, husband and wife, in fee.
BEING the same premises which, by Deed dated November 28, 2006, and recorded November 29, 2006, in the Office of the Recorder of Deeds in and for the County of New Castle, and State of Delaware in Deed Instrument No. 20061129-0112035, granted and conveyed unto Jeffrey B. Street and Pennie M. Scalf, grantor/mortgagor herein.
SEIZED AND TAKEN IN EXECUTION AS THE PROPERTY OF JEFFREY B. STREET AND PENNIE M. SCAL
TERMS OF SALE: 10% DOWN AT TIME OF SALE. BALANCE DUE ON OR BEFORE JANUARY 17, 2010.

np 12/3,10 2206096

SHERIFF'S SALE
By virtue of a writ of #10-018699 (42) DEC. 14, 2010
Property Address: 30 Currant Drive, Newark DE 19702
ALL THAT certain lot, piece or parcel of land with the buildings thereon erected, situate in White Clay Creek Hundred, New Castle County and State of Delaware, known as 30 Currant Drive, Newark, DE 19702 and being Lot No. 32 on the Record subdivision Plan of SUMMER HILL, Phase 1, as said Plan is of record in the Office of the Recorder of Deeds in and for New Castle County in Microfilm No 8737 and being more particularly bounded and described in accordance with a recent survey by David G. Williams, Professional Land Surveyor, Wilmington, DE, dated May 9, 1988.
BEING the same lands and premises which Dennis W. and Rhonda M. Walters by Deed dated January 30, 1998, and recorded in the Office of the Recorder of Deeds in and for New Castle County and State of Delaware, in Deed Book 2396, Page 216 did grant and convey unto Rhonda M. Walters, in fee.
BEING the same premises which Rhonda M. Walters, by Deed dated January 30, 1998, and recorded February 10, 1998, in the Office of the Recorder of Deeds in and for the County of New Castle, and State of Delaware in Deed Book Volume 2396, Page 0218, granted and conveyed unto Harold M. Figgs, Jr. and Rhonda M. Walters, grantor/mortgagor herein.
SEIZED AND TAKEN IN EXECUTION AS THE PROPERTY OF HAROLD M. FIGGS JR. AND RHONDA M. WALTERS
TERMS OF SALE: 10% DOWN AT TIME OF SALE. BALANCE DUE ON OR BEFORE JANUARY 17, 2010.

np 12/3,10 2206067



MERCHANDISE

New Today

RED KOHLER long bowl toilet, \$85. Filco cellar door, 20"H x50" Wx70 1/2"L, very good cond., \$95.
410-287-2946

[WWW.CHESAPEAKE CLASSIFIED.COM](http://WWW.CHESAPEAKECLASSIFIED.COM)



MERCHANDISE

New Today

WINDOWS (3) New, Anderson. \$150 each.
410-287-3670

CLASSIFIEDS
410-398-1230
800-220-1230
WEBSITE AT
[WWW.CHESAPEAKE CLASSIFIED.COM](http://WWW.CHESAPEAKECLASSIFIED.COM)

LEGAL NOTICE

SHERIFF'S SALE
By virtue of a writ of #10-019278 (138) DEC. 14, 2010.
Parcel No. 11-020.20-106
Property Address: 5 Dalton Dr., Newark, DE 19702
ALL that certain lot, parcel or tract of land, situate and lying in the, County of New Castle and State of Delaware being more particularly described as Parcel No. 11-020.20-106.
BEING the same lands and premises which Tanya A. Jenkins did grant and convey unto Tanya A. Jenkins and Larry G. Jenkins by deed dated November 14, 2005 and recorded on November 14, 2005 in the Office of the Recorder of Deeds, in and for New Castle County, State of Delaware, Deed instrument number 20051114-0116980.
SEIZED AND TAKEN IN EXECUTION AS THE PROPERTY OF LARRY G. JENKINS AND TANYA A. JENKINS
TERMS OF SALE: 10% DOWN AT TIME OF SALE. BALANCE DUE ON OR BEFORE JANUARY 17, 2010.

np 12/3,10 2206161

SHERIFF'S SALE
By virtue of a writ of #10-018698 (41) DEC. 14, 2010
Property Address: 9 Juniper Drive, Newark DE 19702
Tax Parcel No. 09-034.40-136
All that certain lot, piece or parcel of land, situate in White Clay Creek Hundred, New Castle County and State of Delaware, known as 9 Juniper Drive, being Lot No. 27 on the record Major Subdivision plan of Raintree Village, as said plan is of record in the Office of the Recording of Deeds in and for New Castle County, Delaware, in Microfilm Record No. 7667 and being more particularly bounded and described according to a recent survey prepared by A.E.S. Surveyors, dated August 28, 2008.
BEING the same lands and premises, which Candant Mobility Financial Corporation, a Delaware Corporation, by Deed dated March 4, 2002, and recorded in the Office of the Recorder of Deeds in and for New Castle County, State of Delaware in Instrument Number 200204030031844, did grant and convey unto James R. Cassity, IV and Jennifer M. Cassity, f/k/a Jennifer M. Lisowski, in fee.
BEING the same premises which James R. Cassity, IV and Jennifer M. Cassity, f/k/a Jennifer M. Lisowski, by Deed dated October 3, 2008, in the Office of the Recorder of Deeds in and for the County of New Castle, and State of Delaware, in Deed Instrument No. 20081010-0067804, granted and conveyed unto Mark Scott and Lauren Scott, grantor/mortgagor herein.
SEIZED AND TAKEN IN EXECUTION AS THE PROPERTY OF MARK SCOTT
TERMS OF SALE: 10% DOWN AT TIME OF SALE. BALANCE DUE ON OR BEFORE JANUARY 17, 2010.

np 12/3,10 2206058



MERCHANDISE

New Today

OAK ENTERTAINMENT CENTER exc cond can email pic \$175 410-441-9312

PINE dining rm set table, 4 chairs, & hutch. \$175 nice set.
410-378-4698

CHILDREN / BABY ITEMS

BABY BOUNCER Chair. Excellent condition \$20 410-658-1523

FISHER PRICE Rainforest baby swing \$25. F/P take along swing \$20 Exc. cond. 410-658-1523

PRINCESS BIKE 12" w/ trng whls. Pristine. \$25. Radio Flyer tricycle. Pristine. \$25 410-658-3553

Classified is the key to more sales.



MERCHANDISE

New Today

ACE HARDWOODS Firewood. 1 yr seasoned, Oak and hard woods. \$185/cord. Free Delivery.
410-392-3732

A-1 Seasoned Firewood, oak & other quick delivery, full cord \$185, 1/2 cord \$115 410-392-5175

GENERAL MERCHANDISE

2 Eagles logo caps \$5 each
610-932-3332

8 FT ARTIFICIAL Christmas tree, very full with lights. Orig price. \$300. Sell for \$75. 410-877-0477

CHRISTMAS table runner with 12matching placemats, \$10. Tiffany look table lamp \$30 2 flood lamps, \$10. 410-920-0577

CRAFTSMAN GARAGE door opener. Chain drive. No remote but works good \$35 obo 410-920-2989

LEGAL NOTICE

SHERIFF'S SALE
By virtue of a writ of #10-019004 (83) DEC. 14, 2010.
Property Address: 5030 Stanton Ogle-town Road, Newark, DE 19713
Tax Parcel No. 09-011.00-016
All that certain lot, piece or parcel of land, with the buildings thereon erected, known as Lot No. 5, situate in White Clay Creek Hundred, New Castle County and State of Delaware, on the Northerly side of the Stanton-Ogletown Road, more particularly bounded and described in accordance with a survey made by Harnea & McLaughlin, Consulting Engineers, dated 1955.
BEING the same lands and premises which Jesse C. Church and Ardelle L. Church, by Deed dated May 6, 1964, and recorded in the Office of the Recorder of Deeds in and for New Castle County and the State of Delaware, in Deed Record Y, Volume 72, Page 294, did grant and convey unto Robert L. Leasure and Kathryn M. Leasure, in fee.
BEING the same premises which Robert L. Leasure and Kathryn M. Leasure, by Deed dated October, 1996 and recorded October 24, 2006 in the Office of the Recorder of Deeds in and for the County of New Castle, and State of Delaware in Deed Book Volume 2189, Page 181, granted and conveyed Robert Lewis Leasure, Jr. and Linda M. Leasure.
SEIZED AND TAKEN IN EXECUTION AS THE PROPERTY OF LINDA M. LEASURE AND ROBERT LEWIS LEASURE JR.
TERMS OF SALE: 10% DOWN AT TIME OF SALE. BALANCE DUE ON OR BEFORE JANUARY 17, 2010.

np 12/3,10 2206119



MERCHANDISE

CHILDS 2 SEATER Electric Barbie Jeep w/charger. Good condition \$50 410-658-3553

CHRISTMAS DECORATIONS for the yard. Lights, etc. \$50 obo 410-398-9315

New Today

DOLLS (40) Beautiful! From a lady's collection. \$25 each.
410-939-3902

HUNTING VEST XL, never worn \$20. Coveralls, never worn \$10 410-272-0850

JAPANESE ANIME Wall Scrolls \$20 for all 410-836-7069

PLAYSTATION 2 game system \$50
Call 410-287-7581

New Today

SNOW BLOWER Brand new. 24" gas. 3 stage, 6.5hp, elect start & hand pull. \$500 410-688-9614

SEWING MACHINE Brother LS2125i \$50 Like new!! Call 410-392-5534

SEWING MACHINE Morse Deluxe. \$29 b/o 610-932-3332

WOODEN HANDED fireplace tool set. Black powder coated and brass, stand with tools. \$25. obo 410-392-2707

New Today

WESTERN 7' snow plow for full size truck. \$450. Call Mike 443-827-0832

YOUTH BED \$25 & microwave \$20. 45644564Call 410-398-5909

SPORTING GOODS

New Today

FINAL APPROACH X-land'r Layout Blind, Shadow Grass camo. \$160. Call Ron 443-807-1556

New Today

GERMAN SWORD with case. \$5000. 410-202-5758

Boss just step out of the office? Now is the perfect time to check out what is in the **Chesapeake Classifieds** section of your paper or go to www.chesapeakeclassified.com





MERCHANDISE



MERCHANDISE



MERCHANDISE

New Today

POOL TABLE
Olhausen 4x8. Mint cond. \$1900 delivered & set up. Please call 443-243-6382

666 MUSICAL

STEREO Thomas Bacconi. Complete audio system & cherry cabinet. \$45. Call 410-392-2707

660 YARD SALES

CHRISTMAS BAZAAR Sat 12/11 8:30-2 \$25/ table. 302-750-0930 Gauger-Cobbs Middle School @ 50 Gender Rd Newark, DE INSIDE



ANY WAY YOU LOOK AT IT, CHESAPEAKE CLASSIFIED CAN WORK FOR YOU!

410-398-1230
800-220-1230
www.chesapeakeclassified.com

CHESAPEAKE CLASSIFIED

What's in it for you?

410-398-1230 800-220-1230

whigclassified@chespub.com whigclassified@chespub.com

Chesapeake Classified

What's in it for you?

410-398-1230

toll free

800-220-1230

email to classads
@chespub.com



MERCHANDISE

New Today



Hacks Point Fire Company

Holiday Craft Show

Sat Dec 11, 10a-3p

35 Vendors

including; Mary Kay,

AVON, toys,

jewelry, & purses.

Holiday decorations,

pastries, baked

goods & refresh-

ments available.

For more

info 410-275-2430

LEGAL NOTICE

LEGAL NOTICE

SHERIFF'S SALE

By virtue of a writ of #10-018770 (61) DEC. 14, 2010
PARCEL: 11-002.40-211
ADDRESS: 55 Martindale Drive, Newark, DE 19713

ALL that certain lot, piece or parcel of land, with the buildings and improvements thereon erected, situate, lying and being in Pencader Hundred, New Castle County, State of Delaware, known as Lot No. 323 on a certain plat entitled "Brookside Park, Section M", prepared by Whitman Reuquardt and Associates, Consulting Engineers, dated May 7, 1953, and being more particularly bounded and described in accordance with a Location Survey Plan prepared by A.E.S. Surveyors, Inc., dated November 17, 1994, as follows, to-wit:

BEING the same lands and premises Nancy Dputy Deed dated March 31, 2008 and recorded in the Office of the Recorder of Deeds, in and for New Castle County and State of Delaware, in Instrument No. 20080408-0023849, did grant and convey unto Erika Deputy.

SEIZED AND TAKEN IN EXECUTION AS THE PROPERTY OF ERIKA DEPUTY
TERMS OF SALE: 10% DOWN AT TIME OF SALE. BALANCE DUE ON OR BEFORE JANUARY 17, 2010.

np 12/3,10

2206073

SHERIFF'S SALE

By virtue of a writ of #10-018562 (14) DEC. 14, 2010
PARCEL NO. 09-023.30-010
PROPERTY ADDRESS: 801 GREENTREE ROAD, NEWARK, DE 19713

ALL that certain lot or parcel of land with the improvements thereon erected, situate in White Clay Creek Hundred, New Castle County, State of Delaware, comprising Lot No. 22, Block A, known as 801 Greentree Road, on a Plan of HILLSIDE HEIGHTS, Section 1, dated April 30, 1956, prepared by Edward H. Richardson Associates, Inc., Consulting Engineers, and recorded in the Office of the Recorder of Deeds for New Castle County, State of Delaware, in the Plat Record L, Page 3, on June 7, 1956.

BEING the same lands and premises which Magness & Staib Construction Co. by Deed dated December 6, 1957 and recorded in the Office of the Recorder of Deeds, in and for New Castle County and State of Delaware, in Deed Book G61, Page 201, did grant and convey unto Maurice Edward Park and Rachel A. Park.

SEIZED AND TAKEN IN EXECUTION AS THE PROPERTY OF MAURICE EDWARD AND RACHEL A. PARK
TERMS OF SALE: 10% DOWN AT TIME OF SALE. BALANCE DUE ON OR BEFORE JANUARY 17, 2010.

np 12/3,10

2205791

LEGAL NOTICE

SHERIFF'S SALE

By the virtue of a writ of #10-019784 (220) DEC. 14, 2010.

ALL that certain lot, piece or parcel of land with the dwelling thereon erected, situate in Pencader Hundred, New Castle County and State of Delaware and known as Lot No. 24, Block F, on the Plan of Robscott Manor, Section One, as said Plan is of record in the Office for the Recording of Deeds in and for New Castle County, Delaware, in Microfilm Record 797, and being more particularly bounded and described in accordance with a survey by East Coast Surveying, dated August 28, 2003, as follows, to-wit:

BEING the same lands and premises which Robert H. Niggebrugge did grant and convey unto Robert H. Niggebrugge and Deanna Niggebrugge by deed dated July 5, 2005 and recorded on August 9, 2005 in the Office of the Recorder of Deeds, in and for New Castle County, State of Delaware, Deed instrument number 20050809-0079191.

SEIZED AND TAKEN IN EXECUTION AS THE PROPERTY OF ROBERT H. NIGGEBRUGGE AND DEANNA NIGGEBRUGGE
TERMS OF SALE: 10% DOWN AT TIME OF SALE. BALANCE DUE ON OR BEFORE JANUARY 17, 2010.

np 12/3,10

2206618

LEGAL NOTICE

SHERIFF'S SALE

By virtue of a writ #10-018689 (37) DEC. 14, 2010.

Property Address: 20 Sumac Court, Newark, DE. 19702

Tax Parcel No. 09-038.30-209

ALL that certain lot, piece or parcel of land with the building thereon erected, known as 20 Sumac Court, situate in White Clay Creek Hundred, New Castle County and State of Delaware, and being Lot NO. 156 of the subdivision of Summer Hill, Phase II, Microfilm Number 3578 and being more particularly bounded and described in accordance with a recent mortgage in inspection plan dated March 15, 2000 by Zebley & Associates, Inc.

BEING the same lands and premises which Stephen R. Minner, by deed later January 5, 2006 in the Office of the Recorder of Deeds in and for New Castle County in Instrument No. 20060203-0012444, granted and conveyed unto Jerel Morton, in fee. **SEIZED AND TAKEN IN EXECUTION AS THE PROPERTY OF JERREL MORTON**
TERMS OF SALE: 10% DOWN AT TIME OF SALE. BALANCE DUE ON OR BEFORE JANUARY 17, 2010.

np 12/3,10

2206053

SHERIFF'S SALE

By virtue of a writ of #10-019752 (202) DEC. 14, 2010.
Parcel No. 10-038.30-141
Property Address: 26 Danbury Drive, Newark, DE 19702

ALL that certain lot, piece or parcel of land, with the buildings thereon erected, situate in New Castle County and State of Delaware, known as 26 Danbury Drive, being Lot No. 131, on the Plan of Wellington Woods, as the Plan thereof is of record in the Office of the Recorder of Deeds, in and for New Castle County in Microfilm No. 4115, and being more particularly bounded and described in accordance with a survey prepared by AES Surveyors, Professional Land Surveyors, dated August 25, 2005, as follows, to-wit:

Being the same lands and premises which Gary S. Nitsche, by his attorney-in-Fact Joseph T. Nitsche, Jr., Joseph T. Nitsche, Jr., Joseph T. Nitsche, Sr., by this Attorney in Face Joseph T. Nitsche, Jr. and Vincent L. DeSeta, Jr., by his Attorney-in-Fact Joseph T. Nitsche, Jr. did grant and convey unto Frank Trower and Camela Trower by deed dated September 29, 2005 and recorded on September 30, 2005 in the Office of the Recorder of Deeds, in and for New Castle County, State of Delaware, in Deed instrument number 20050930-0100599.

SEIZED AND TAKEN IN EXECUTION AS THE PROPERTY OF FRANK L. TOWER AND CAMELA E. TROWER
TERMS OF SALE: 10% DOWN AT TIME OF SALE. BALANCE DUE ON OR BEFORE JANUARY 17, 2010.

np 12/3,10

2206607

SHERIFF'S SALE

By virtue of a writ of #10-019356 (165) DEC. 14, 2010.
Property Address: 1406 Flanders Way, Newark, DE 19702
Tax Parcel No. 09-030.30-158

ALL that certain lot, piece or parcel of land, with the buildings thereon erected, situate in White Clay Creek Hundred, New Castle County and State of Delaware, known as 1406 Flanders Way, being Lot No. 104, on the Plan of Christiana Village, as the Plan thereof is of record in the Office of the Recorder of Deeds, in and for New Castle County in Microfilm No. 4260.

BEING the same lands and premises which Derrick W. Whetzel and Evette R. Whetzel, by Deed dated June 8, 2001, and recorded in the Office of the Recorder of Deeds in and for New Castle County, State of Delaware, as Instrument No. 20010615-0047392, did grant and convey unto Angela B. Jones, in fee.

BEING the same premises which Angela B. Jones, by Deed dated March 22, 2007 and recorded March 23, 2007 in the Office of the Recorder of Deeds in and for the County of New Castle, and State of Delaware in Deed Instrument Number 20070323-0027620, granted and conveyed unto Melvin C. Hoil, Jr., grantor/mortgagor herein. **SEIZED AND TAKEN IN EXECUTION AS THE PROPERTY OF MELVIN C. HOIL JR.**
TERMS OF SALE: 10% DOWN AT TIME OF SALE. BALANCE DUE ON OR BEFORE JANUARY 17, 2010.

np 12/3,10

2206352

SHERIFF'S SALE

By virtue of a writ #10-019304 (144) DEC. 14, 2010.
Property Address: 7 Cartier Court, Newark, DE 19711
Tax Parcel No. 08-042.30-232

ALL that certain lot, piece or parcel of land, with the buildings thereon erected, situate in Mill Creek Hundred, New Castle County and State of Delaware, known as 7 Cartier Court, being Lot No. 36, on the Plan of Drummond Ridge, as the Plan thereof is of record in the Office of the Recorder of Deeds, in and for New Castle County in Microfilm No. 4214.

BEING the same lands and premises which Pamela A. Jurga-Hall n/k/a, Pamela A. Jurga by Deed dated September 29, 1999, and recorded October 1, 1999, in the Office of the Recorder of Deeds in and for New Castle County, Delaware, in Deed Book 2719, Page 0339, did grant and convey unto David Berger and Laura Berger, in fee.

BEING the same premises which David Berger and Laura Berger, husband and wife, by Deed dated April 27, 2004, and recorded April 28, 2004 in the Office of the Recorder of Deeds in and for the County of New Castle, and State of Delaware in deed Instrument 20040428-0047070, granted and conveyed unto Jeffrey Longshaw, grantor/mortgagor herein.

SEIZED AND TAKEN IN EXECUTION AS THE PROPERTY OF JEFFREY R. LONGSHAW
TERMS OF SALE: 10% DOWN AT TIME OF SALE. BALANCE DUE ON OR BEFORE JANUARY 17, 2010.

np 12/3,10

2206198

SHERIFF'S SALE

By virtue of a writ of #10-019919 (273) DEC. 14, 2010.

Parcel No. 11-014.30-001-c517a
Property Address: 517 Cobble Creek Curve, Newark, DE 19702

All that certain unit or real property existing under and by virtue of the Unit Property Act of Delaware, known as Unit No. 517A Stones Throw, a condominium, situate in Pencader Hundred, New Castle, Delaware, as said unit is more particularly bounded and described in (1) the Declaration of the party of the first part dated April 16, 1975 and recorded in the Office of the Recorder of Deeds in and for New Castle County, Delaware, in Deed Record I, Volume 90, Page 564, and (2) the Declaration Plan of Stones Throw prepared by Howard H. Richardson Associates, Inc., Consulting Engineers, date March 20, 1975, and recorded in the Office aforesaid, in Microfilm No. 2904.

Being the same lands and premises which BAJ Enterprises, Inc. did grant and convey unto Katy M. Vogel deed dated 4/23/2007 and recorded 4/24/2007 Office of the Recorder of Deeds, in and for New Castle County, State of Delaware, in Deed Record 20070424-0037020.

SEIZED AND TAKEN IN EXECUTION AS THE PROPERTY OF KATY VOGEL
TERMS OF SALE: 10% DOWN AT TIME OF SALE. BALANCE DUE ON OR BEFORE JANUARY 17, 2010.

np 12/3,10

664 LAWN & GARDEN EQUIPMENT

ECHO BLOWER.
\$50. 410-378-4698

670 MACHINERY & HEAVY EQUIPMENT

FORD 420 LOADER BACKHOE Very good cond. Gas, high and low range. Used very little. Tires 90%, no oil leaks. Ready to work. Could use paint. \$5,900 410-378-3032

680 WANTED TO BUY

CASH FOR GOLD/SILVER Coins, 14K, Sterling, Scrap. 443-449-1262

New Today

TRAINS WANTED. Buying Lionel, Ives, Voltamp. 410-913-9484. Save this ad!

New Today

LOOK

WANTED; DIABETIC TEST STRIPS up to \$18/ box. Cash on the spot. Any kind/ any brand. Unopened will pick up. Debbie 410-820-6540

CLASSIFIEDS
410-398-1230
800-220-1230

125 CHRISTMAS TREES & PLANTS

New Today

20' STANDING Blue Spruce tree. You cut, you haul. Beautiful! 443-350-7681

LEGAL NOTICE

SHERIFF'S SALE

By virtue of a writ of #10-019279 (139) DEC. 14, 2010.

ALL that certain lot, piece or parcel of land with the dwelling thereon erected, situate in White Clay Creek Hundred, New Castle County and State of Delaware and known as Lot No. 53, Block B, on the Plan of Rutherford, Section One, as said Plan is of record in the Office for the Recording of Deeds in and for New Castle County, Delaware, in Microfilm Record 882, and being more particularly bounded and described in accordance with a survey by Edward H. Richardson Associates, Inc., Registered Surveyors, Newark, Delaware, dated August 1, 1969, to-wit:

BEING the same lands and premises which Janice Davis-Rogers did grant and convey unto Donte Davis by deed dated February 23, 2007 and recorded on February 27, 2007 in the Office of the Recorder of Deeds, in and for New Castle County, State of Delaware, Deed Instrument Number 20070227-0018615.

SEIZED AND TAKEN IN EXECUTION AS THE PROPERTY OF DONTA L. DAVIS
TERMS OF SALE: 10% DOWN AT TIME OF SALE. BALANCE DUE ON OR BEFORE JANUARY 17, 2010.

np 12/3,10

2206187

LEGAL NOTICE

SHERIFF'S SALE

By virtue of a writ of #10-018591 (15) DEC. 14, 2010

PARCEL NO. 09-028.20-203
PROPERTY ADDRESS: 208 TESSA COURT, NEWARK, DE 19713

ALL that certain lot, piece or parcel of land, with the building thereon erected, known as 208 Tessa Court, situate in White Clay Creek Hundred, New Castle County, and State of Delaware, and being Lot No. 14 of the Subdivision of Christiana's Brace, Microfilm No. 11082, and being more particularly bounded and described in accordance with a survey by AES Surveyors dated May 14, 2007, as follows, to-wit: BEING the same lands and premises which Joseph A. Rayfield and Jeanette Rayfield by Deed dated May 31, 2007 and recorded in the Office of the Recorder of Deeds, in and for New Castle County and State of Delaware, in Instrument Number 20070604-0049755, did grant and convey unto Brent D. Cromer.

SEIZED AND TAKEN IN EXECUTION AS THE PROPERTY OF BRENT D. CROMER
TERMS OF SALE: 10% DOWN AT TIME OF SALE. BALANCE DUE ON OR BEFORE JANUARY 17, 2010.

np 12/3,10

2206025

LEGAL NOTICE

PUBLIC NOTICE

Nordstrom, Inc d/b/a Nordstrom Sixth and Pine has on December 6, 2010 applied with the Alcoholic Beverage Control Commissioner for Restaurant that includes Sundays for a premises located at 100 Christiana Mall in Newark. Persons who are against this application should provide written notice of their objections to the Commissioner. For the Commissioner to be required to hold a hearing to consider additional input from persons against this application, the Commissioner must receive one or more documents containing a total of at least 10 signatures of residents or property owners located within 1 mile of the premises or in any incorporated areas located within 1 mile of the premises. The protest(s) must be filed with the Alcoholic Beverage Control Commissioner at the 3rd Floor, Carvel State Office Building, 820 North French Street, Wilmington, DE 19801. The protest(s) must be received by the Commissioner's office on or before January 6, 2011. Failure to file such a protest may result in the Commissioner considering the application without further notice, input, or hearing. If you have questions regarding this matter please contact the Commissioner's Office.

np 12/10,17,24

2209628

LEGAL NOTICE

SHERIFF'S SALE

By virtue of a writ of #10-019945 (286) DEC. 14, 2010.

Parcel No. 18-013.00-187
Property Address: 25 Corbit St., Newark, DE 19711

ALL THAT CERTAIN LOT, PIECE OR PARCEL OF LAND SITUATE ON THE NORTHWEST SIDE OF CORBIT STREET, IN THE CITY OF NEWARK, WHITE CLAY CREEK HUNDRED NEW CASTLE COUNTY AND STATE OF DELAWARE, AS FOLLOWS, TO-WIT:

BEING THE SAME LANDS AND PREMISES WHICH DELORES D. HACKETT AS EXECUTRIX OF THE ESTATE OF NAOMI LEWIS DID GRANT AND CONVEY UNTO CARMEN D. HACKETT AND ROSLYN L. HACKETT BY DEED DATED FEBRUARY 23, 2006 AND RECORDED ON APRIL 13, 2006 IN THE OFFICE OF THE RECORDER OF DEEDS, IN AND FOR NEW CASTLE COUNTY, STATE OF DELAWARE IN DEED INSTRUMENT NUMBER 20060413-0034949.

SEIZED AND TAKEN IN EXECUTION AS THE PROPERTY OF CARMEN HACKETT AND ROSLYN L. HACKETT
TERMS OF SALE: 10% DOWN AT TIME OF SALE. BALANCE DUE ON OR BEFORE JANUARY 17, 2010.

np 12/3,10

2206716

SHERIFF'S SALE

By virtue of a writ of #10-019736 (197) DEC. 14, 2010.

Parcel No. 09-040.20-280

Property Address: 1 Radka Drive, Newark, DE 19702

ALL that certain lot, piece or parcel of land with the buildings thereon erected, situate in White Clay Creek Hundred, New Castle County and State of Delaware, known as 1 Radka Drive and being Lot No. 609 on the Record Major Subdivision Plan to Salem Woods, Phase III, as said plan is of record in the Office of the Recorder of Deeds in and for New Castle County in Microfilm No. 10150 and being more particularly bounded and described according to a recent survey by East Coast Surveys Professional Land Surveyor, Wilmington, Delaware, dated August 22, 2005, as follows, to-wit:

Being the same lands and premises which William Blake and Judith Blake, did grant and convey unto Trang P. Nguyen, by deed dated August 26, 2005 and recorded on September 14, 2005 in the Office of the Recorder of Deeds, in and for New Castle County, State of Delaware, in Deed Instrument 20050914-0093706.

SEIZED AND TAKEN IN EXECUTION AS THE PROPERTY OF TRANG P. NGUYEN AND LE NGOC NGUYEN
TERMS OF SALE: 10% DOWN AT TIME OF SALE. BALANCE DUE ON OR BEFORE JANUARY 17, 2010.

np 12/3,10

2206602

SHERIFF'S SALE

By virtue of a writ of #10-019265 (131) DEC. 14, 2010.

Parcel No. 09-038.10-338

Property Address: 102 Cannonball Lane, Newark, DE 19702

All that certain lot, piece or parcel of land with the buildings thereon erected, situate in White Clay Creek Hundred, New Castle County, Delaware being designated Lot 2 as shown on the record resubdivision plan of Christina Green Phase 3 of record in the Office of the recorder of deeds in and for New Castle County, Delaware on Microfilm No. 10747 said lot also known as 102 Cannonball Lane and being more particularly described according to survey by Associated Engineers & Surveyors, dated April 29, 1992, as follows, to-wit:

Being the same lands and premises which The First National Bank of Chicago, as Trustee under that certain pooling and servicing agreement for KTC, did grant and convey unto Linda J. Barczak, by deed dated September 20, 2000 and recorded on October 26, 2000 in the Office of the Recorder of Deeds, in and for New Castle County, State of Delaware, in Deed Book 2914 at Page 323.

SEIZED AND TAKEN IN EXECUTION AS THE PROPERTY OF LINDA J. BARCZAK
TERMS OF SALE: 10% DOWN AT TIME OF SALE. BALANCE DUE ON OR BEFORE JANUARY 17, 2010.

np 12/3,10

2206150

SHERIFF'S SALE

By virtue of a writ of #10-019118 (103) DEC. 14, 2010.

Parcel No. 11-020.20-113

PROPERTY ADDRESS: 2 Falkirk Court, Newark, DE 19702

All that certain piece, lot or tract or land designated Map/Tax Parcel 11-020.20-113 addressed 2 Falkirk Court, being Lot 49 as shown on a record major land development plan recorded in and for New Castle County on Microfilm 13522, for the Deerborne Woods Subdivision, situated Pencader Hundred, New Castle County, the First State; Delaware, being more particularly located by the following metes and bounds description, written by the PELSA Company, Inc., Land Consultants and Surveyors, in accordance with the location given for Lot 49, as shown on said record plan above, thus bounded and described to-wit:

BEING the same lands and premises which Handler Builders, Inc. by Deed dated May 31, 2005 and recorded in the Office of the Recorder of Deeds, in and for New Castle County and State of Delaware, in Instrument Number 20050606-0054056, did grant and convey unto Diana M. Nakirigya.

SEIZED AND TAKEN IN EXECUTION AS THE PROPERTY OF DIANE M. NAKIRIGYA
TERMS OF SALE: 10% DOWN AT TIME OF SALE. BALANCE DUE ON OR BEFORE JANUARY 17, 2010.

np 12/3,10

2206138

SHERIFF'S SALE

By virtue of a writ of #10-019954 (291) DEC. 14, 2010.

Property No. 09-027.20-076

Property Address: 2 Chaucer Drive, Newark, DE 19713

All that certain lot, piece or parcel of land with the improvements thereon erected, situate in White Clay Creek Hundred, New Castle County and State of Delaware, known as Lot No. 78, on the Plan of Brookside Park, Section C, of record in the Office of the Recorder of Deeds in and for New Castle County, Delaware, in Plat Book 2, Page 85, and being more particularly bounded and described in accordance with a recent survey by Zebley & Associates, Inc., as follows to-wit:

Being the same lands and premises which Paula E. Hickam did grant and convey unto Paula E. Lander and Benjamin J. Lander by deed dated November 24, 2003 and recorded on January 20, 2004 in the Office of the Recorder of Deeds, in and for New Castle County, State of Delaware, in Deed Instrument number 20040120-0008000.

SEIZED AND TAKEN IN EXECUTIONS AS THE PROPERTY OF BENJAMIN J. LANDER AND PAULA E. LANDER
TERMS OF SALE: 10% DOWN AT TIME OF SALE. BALANCE DUE ON OR BEFORE JANUARY 17, 2010.

np 12/3,10

2206732



TRANSPORTATION

BOATS/OTHER

DONATE A CAR, boat, RV or motorcycle and receive the maximum legal tax deduction. For a FREE evaluation of your potential donation contact the Colonial Chapter of Paralyzed Veterans of America. Qualified donations will be picked up free of charge.

1-877-280-4581

CAMPERS/POP-UPS

New Today

30' Keystone Cougar '04. Lrg slideout, 4 bunks, queen. Slips 10 Great cond. \$12,000 obo. 410-829-6282

MOTORCYCLES/ATVS

2007 POLARIS HAWKEY 4x4 very good condition. \$3,200 OBO, **2007 KAWASAKI Prairie 360 4x4** very good condition. \$3,700 OBO. Contact Courtney 443-553-6838

AUTO PARTS & ACCESSORIES

(2) **GOODYEAR 255/65/R16.** \$45. 410-658-2651

(2) **P175/70R14** with very good tread. \$25. 410-658-2651

TRUCKS/SPORT UTILITY VEHICLES

New Today

FORD F150 4X4 '93 Runs good, 6 cyl, 70K on new motor. \$1500 410-287-3670

ANTIQUA AUTOS

1972 MUSTANG convertible. 351C, auto, solid car, solid restoration. \$25,000 obo. 410-457-0158

New Today

'68 FORD MUSTANG Coupe, 98% restored, GT Clone, \$17,000 obo. Call for details. 410-399-0187

CHECK OUT OUR WEBSITE AT WWW.CHEESAPEAKECLASSIFIED.COM

Knickknack Paddywack

Give a dog a home

All You Have To Do Is Click or Pick Up the Phone

800-220-1230 or 410-398-1230

www.chesapeakeclassified.com





TRANSPORTATION



TRANSPORTATION



TRANSPORTATION

880 AUTOS

CHEVY Silverado 2500 series '05, 6.0L engine, new tires & brakes like new, incl's Meyer snow plow, like new. \$10,500 obo. 443-309-1060

RECLINE, RELAX & RESELL

Donate a car, boat, RV or motorcycle and receive the maximum legal tax deduction. For a FREE evaluation of your potential donation contact the Colonial Chapter of Paralyzed Veterans of America. Qualified donations will be picked up free of FREE of charge. 1-877-280-4581

WWW.CHESAPEAKECLASSIFIED.COM

FORD FreeStyle '05, 69k mi, 1 owner seats 7, ac, abs, a/b am/fm/cd, new tires tract cont, elec dr seat c/c, \$12,500 410-398-5249

MERCURY Mystique GS '97 Beige, 4dr. sedan. Great cond. Easy on gas. \$1600 obo. 410-658-5822 after 5pm



Go ahead, be

FRUGAL!



Take advantage of the garage sales listed in the Classifieds and pinch a few pennies. To learn more or to place an ad, call 410-398-1230 or 800-220-1230 24 hours a day 7 days a week

LEGAL NOTICE

LEGAL NOTICE

LEGAL NOTICE

LEGAL NOTICE

SHERIFF'S SALE
By virtue of a writ of #10-019920 (274) DEC. 14, 2010.
Parcel No. 10-043.10-738
Property Address: 12 Kelston Drive, Newark, DE 19702
ALL that certain lot, piece or parcel of land with the building thereon erected, situate in New Castle Hundred, New Castle County and State of Delaware, known as 12 Kelston Drive, being Lot No. 313 on the Record Resubdivision Plan of Wellington Woods, Sections II & III, as the Plan thereof is of record in the Office of the Recorder of Deeds in and for New Castle County, Delaware in Microfilm No. 10595, and being more particularly bounded and described in accordance with a survey prepared by East Coast Survey, Professional Land Surveyors, dated March 2, 2001, as follows to wit:
BEING the same lands and premises which Jung Sun Kim did grant and convey unto Martin D. Jones by deed dated March 15, 2001 and recorded on March 16, 2001 in the Office of the Recorder of Deeds, in and for New Castle County, State of Delaware, in Deed instrument number 20010318-0019383.
SEIZED AND TAKEN IN EXECUTION AS THE PROPERTY OF MARTIN D. JONES
TERMS OF SALE: 10% DOWN AT TIME OF SALE. BALANCE DUE ON OR BEFORE JANUARY 17, 2010.
np 12/3,10 2206696

SHERIFF'S SALE
By virtue of a writ of #10-019870 (252) DEC. 14, 2010.
Parcel No. 08-049.30-154
Property Address: 107 White Fawn Road, Newark, DE 19711
ALL that certain lot, piece or parcel of land with the dwelling house thereon erected, situate in Mill Creek Hundred, New Castle County, State of Delaware, being Lot No. 280, Block O, on the plan of MEADOWOOD, SECTION II, as prepared by Mann-Talley, Inc., Civil Engineers and Surveyors, of Wilmington, Delaware, dated May 5, 1960, and recorded in the Office of the Recorder of Deeds, in Microfilm No. 753, and more particularly bounded and described as follows, to-wit:
Being the same lands and premises which William C. Forsman and Jane C. Forsman, did grant and convey unto Henri P. Niggebrugge and Rickel Niggebrugge, by deed dated July 23, 1965 and recorded on July 23, 1965 in the Office of the Recorder of Deeds, in and for New Castle County, State of Delaware, in Deed Book L75 at Page 335.
SEIZED AND TAKEN IN EXECUTION AS THE PROPERTY OF HENRI P. NIGGEBRUGGE AND RICKEL NIGGEBRUGGE
TERMS OF SALE: 10% DOWN AT TIME OF SALE. BALANCE DUE ON OR BEFORE JANUARY 17, 2010.
np 12/3,10 2206659

SHERIFF'S SALE
By virtue of a writ of #10-019829 (230) DEC. 14, 2010.
Parcel No. 09-038.30-044
Property Address: 515 Sparrow Court, Newark, DE 19702
ALL that certain lot, piece or parcel of land with the buildings thereon erected, situate in White Clay Creek Hundred, New Castle County and State of Delaware, known as 515 Sparrow Court, being Lot No. 229 on the Plan of Country Creek, as the Plan thereof is of record in the Office of the Recorder of Deeds in and for New Castle County, Delaware, and being more particularly bounded and described in accordance with a survey prepared by East Coast Survey, Professional Land Surveyors, dated October 11, 2002, as follows, to-wit:
Being the same lands and premises which Mark Strouse, did grant and convey unto Michael D. Strouse, by deed dated August 19, 2005 and recorded on August 28, 2005 in the Office of the Recorder of Deeds, in and for New Castle County, State of Delaware, in Deed Instrument 20050826-0086539.
SEIZED AND TAKEN IN EXECUTION AS THE PROPERTY OF MICHAEL STROUSE
TERMS OF SALE: 10% DOWN AT TIME OF SALE. BALANCE DUE ON OR BEFORE JANUARY 17, 2010.
np 12/3,10 2206640

SHERIFF'S SALE
By virtue of a writ of #10-019002 (82) DE. 14, 2010.
Property Address: 17 Victoria Boulevard, Newark, DE 19702
Tax Parcel No. 10-033.30-297
ALL that certain lot, piece or parcel of land with the buildings thereon erected, situate in New Castle Hundred, New Castle County and State of Delaware, known as 17 Victoria Boulevard, being Lot No. 9 on the Plan of Newton Village as the plan thereof is or record in the Office of the Recorder of Deeds in and for New Castle County in Microfilm No. 9855, and being more particularly bounded and described in accordance with a survey by East Coast Survey, dated November 20, 1998.
BEING the same premises which were conveyed unto the Secretary of Housing and Urban Development in Instrument No. 20040324-0032629 from Michael P. Walsh, Sheriff of New Castle County.
BEING the same premises which were conveyed unto April Desai in Instrument No. 20040830-0096806 from the Secretary of Housing and Urban Development.
SEIZED AND TAKEN IN EXECUTION AS THE PROPERTY OF APRIL DESAI
TERMS OF SALE: 10% DOWN AT TIME OF SALE. BALANCE DUE ON OR BEFORE JANUARY 17, 2010.
np 12/3,10 2206105

SHERIFF'S SALE
By virtue of a writ of #10-019922 (276) DEC. 14, 2010.
Parcel No. 09-038.30-078
Property Address: 401 Barley Drive, Newark, DE 19702
All that certain lot, piece or parcel of land with the building, thereon erected, situated in City of White Clay Creek Hundred, New Castle County and State of Delaware, being Described as Lot 195 as shown on the Record Major Subdivision Plan of Country CREEK, as the same appears of record in the Office of the Recorder of Deeds in and for New Castle County, Delaware in Microfilm No. 7904, said lot also known as 401 Barley Drive, being more particularly bounded and described in accordance with a recent survey by A.E.S., Surveyors, dated June 02, 2004, as follows, to wit:
BEING the same lands and premises which Linnea M. Keith did grant and convey unto Paul Reese by deed dated August 20, 2004 and recorded on August 24, 2004 in the Office of the Recorder of Deeds, in and for New Castle County, State of Delaware in Deed instrument number 20040824-00093593.
SEIZED AND TAKEN IN EXECUTION AS THE PROPERTY OF PAUL REESE
TERMS OF SALE: 10% DOWN AT TIME OF SALE. BALANCE DUE ON OR BEFORE JANUARY 17, 2010.
np 12/3,10 2206702

SHERIFF'S SALE
By virtue of a writ of #10-019895 (264) DEC. 14, 2010.
Parcel No. 11-023.20-098
Property Address: 6 Whitburn Place, Newark, DE 19702
ALL that certain lot, piece or parcel of land with the buildings thereon erected, situate in Pencader Hundred, New Castle County, and State of Delaware, known as 6 Whitburn Place, and being Lot No. 56, on the Plan of Glasgow Pines, Phase 2, as said Plan is of record in the Office of the Recorder of Deeds in and for New Castle County, Delaware, and being more particularly bounded and described in accordance with a survey prepared by A.E.S. Surveyors, dated February 20, 2007, as follows, to-wit:
BEING the same lands and premises which Brian A. Reid and Robin H. Reid, by her attorney-in-fact, Brian A. Reid, did grant and convey unto Divine Awahmukalah, by deed dated March 15, 2007 and recorded on March 19, 2007 in the Office of the Recorder of Deeds, in and for New Castle County, State of Delaware, in Deed instrument number 20070319-0025717.
SEIZED AND TAKEN IN EXECUTION AS THE PROPERTY OF DIVINE AWAHMUKALAH
TERMS OF SALE: 10% DOWN AT TIME OF SALE. BALANCE DUE ON OR BEFORE JANUARY 17, 2010.
np 12/3,10 2206667

SHERIFF'S SALE
By virtue of a writ of #10-019835 (235) DEC. 14, 2010.
Tax Parcel No. 11-023.10-185
Property Address: Two Ravenworth Court, Newark, DE 19702
ALL certain lot, piece or parcel of land with the building thereon erected, situated in Pencader Hundred, New Castle County, and State of Delaware, being designated Lot No. 91 as shown on the Record Resubdivision Plan of Glasgow Pines, as said Plan is of record in the Office of the Recorder of Deeds, in and for New Castle County, Delaware, in Microfilm No. 5352, said lot also known as Ravenworth Court, with a recent survey by The Pelsa Company dated 12-10-99 as follows, to-wit:
BEING the same lands and premises conveyed to David A. Flores by Dee from Janice Magana and Michelle E. Griner, dated December 16, 1999, and recorded January 6, 2000, in the Office of the Recorder of Deeds, in and for New Castle County and State of Delaware, in Deed Book 2766, Page 187.
SEIZED AND TAKEN IN EXECUTION AS THE PROPERTY OF DAVID A. FLORES
TERMS OF SALE: 10% DOWN AT TIME OF SALE. BALANCE DUE ON OR BEFORE JANUARY 17, 2010.
np 12/3,10 2206649

SHERIFF'S SALE
By virtue of a writ of #10-019732 (195) DEC. 14, 2010.
Parcel No. 0805510516
Property Address: 10 Maryland Avenue, Newark, DE 19711
All that certain lot, piece or parcel of land with the buildings thereon erected, situate in Mill Creek Hundred, New Castle County and State of Delaware, being Lot No. 4 as shown on the Record Minor Subdivision Plan of the Cox Property, as said Plan is of Record in the Office of the Recorder of Deeds in and for New Castle County and State of Delaware in Microfilm No. 12981, and being more particularly bounded and described in accordance with a recent survey prepared by North Star Surveys dated May 2000, as follow, to-wit:
Being the same lands and premises which Jeffrey E. Gross did grant and convey unto Michael Bozzo and Dana Bozzo by deed dated May 24, 2000 and recorded on June 5, 2000 in the Office of the Recorder of Deeds, in and for New Castle County, State of Delaware, in Deed Book 2839 Page 210.
SEIZED AND TAKEN IN EXECUTION AS THE PROPERTY OF MICHAEL A. BOZZO AND DANA BOZZO
TERMS OF SALE: 10% DOWN AT TIME OF SALE. BALANCE DUE ON OR BEFORE JANUARY 17, 2010.
np 12/3,10 2206571

IN THE NEWS



EAT



SHOP



ENJOY



**DOWNTOWN NEWARK
GIFT CARD GIVE-AWAY!**

SPEND \$250 AT PARTICIPATING DOWNTOWN NEWARK
BUSINESSES BY NEW YEAR'S DAY AND GET A
**\$25 DOWNTOWN
NEWARK GIFT CARD**
FOR FREE!

VISIT OUR WEBSITE FOR DETAILS.



www.enjoydowntownnewark.com

HOLIDAY EVENTS

WONDERFUL WINTER WEDNESDAYS EVENINGS THROUGH DECEMBER
ENJOY RETAIL AND DINING SPECIALS AT SELECT DOWNTOWN NEWARK LOCATIONS

HOLIDAY MOVIE MATINEES NEWARK CINEMA CENTER 11AM
ENJOY FREE ADMISSION WITH A NON-PERISHABLE FOOD DONATION FOR THE
NEWARK AREA WELFARE CLOSET

12/11 TBA

12/18 IT'S A WONDERFUL LIFE - SPONSORED BY NEWARK NATURAL FOODS CO-OP

12/24 POLAR EXPRESS - SPONSORED BY NEWARK DAY NURSERY AND CHILDREN'S CENTER

ENJOY FREE PARKING ALL DAY, EVERY DAY 12/18 - 12/26!

**The Holidays Come Around
So Fast, It's Already Time
to Plan for Next Year.**



There's no better time than now to prepare
for the next Christmas Holiday Shopping Season!

Open a Christmas Club Account Today!

- Only \$10 Minimum deposit to open
- Make deposits anytime
- Earn interest on your deposit.



★★★★★
Member FDIC
LENDER



#1 Rated Bank in Delaware
by The Weiss Ratings

For more Information Call: **302-326-4200**

www.AppliedBank.com

601 Delaware Avenue, Wilmington, DE • Rt. 896 - Four Seasons Plaza, Glasgow, DE
Applied Bank Café, Intersection Rt.1 & Rehoboth Ave, Rehoboth Beach, DE19971