

# NEWARK POST

❖ Greater Newark's Hometown Newspaper Since 1910 ❖

101st Year, 47th Issue © 2010

December 3, 2010

www.newarkpostonline.com

Newark, Del.

## Into the wild blue yonder!



Shown are Grandmother Arlene Wisniewski, age 75, in red; daughter Andrea Majewski, in blue, age 50; and granddaughter Katie Majewski, 24, in green.

**B**irthday celebrations are special for one Newark family and this year's milestones called for something out of the ordinary, according to Arlene Wisniewski, who resides the Chapel Hill community in Newark.

After all, Arlene Wisniewski was celebrating her 75th birthday, with daughter Andrea Wisniewski Madewski marking No. 50 and granddaughter Katie Madewski approaching her 25th.

To honor the occasion,

the three ladies decided tandem skydiving was the way to go.

The three generations gathered at the airport in Laurel on a chilly November day to begin the adventure.

After 30 minutes of lessons at Skydive Delmarva and after donning jumpsuits, harnesses, headpieces, goggles and gloves, they headed to the plane, along with their instructors.

They loaded on to the aircraft, along with family member Bob Wisniewski who served as co-pilot.

After additional harness adjustments and after being

secured to an experienced skydiver, there was no turning back and no one backed out, Arlene reported.

The door of the plane opened with a rush of cold air (it's zero degrees at more than 13,000 feet) and the mother, daughter and granddaughter took the plunge.

"The dive was a thrill beyond thrills, with one minute of free falling before the parachute opens," Arlene said, adding that the "view was fantastic."

The landings proved to be gentle and Arlene said the trio is looking forward to their next sky dive.

## Students robbed in home invasion

Two University of Delaware students were the victims of a home invasion robbery on Tuesday morning.

The incident occurred around 2:10 a.m. at the West Knoll Apartments, 260 Elkton Road. One resident was inside his bedroom when the two suspects walked in. One suspect was armed with a handgun. When the second occupant walked down the apartment hallway, he was ordered into the bedroom. Both were held in the bed-

room by the gunman while the second suspect went through the apartment.

Both victims were assaulted by the suspect as he ordered the residents not to look at him. After several minutes, the second suspect returned to the bedroom, and both left the apartment. Stolen property includes a computer, cell phones, and cash. At this time, it is not known why the apartment was targeted. Both victims, males, ages 20 and 21 years, suffered minor injuries in the

assault. They were treated and released for lacerations and contusions at Christiana Hospital.

Suspects were listed as follows:

- Light-skinned black male, 18-22 years of age, 5' 8" to 5' 10", 160 - 175 lbs, wearing dark pants, dark hooded sweatshirt, and a black mask that covered half of his face.

- White male, 5' 6" to 5' 8", 150 - 160 lbs, wearing a light colored hooded sweatshirt.

## Dollar Tree, Food Lion opening

Dollar Tree, Inc. is adding another store in Pencader Plaza, just south of Newark, Delaware, at Routes 72 and 4. Opening is slated for January.

Pencader Plaza, one of those shopping centers that struggled a time, took on new life a few years ago when BJ's Wholesale Club opened a store in the former location of the long-defunct Caldor.

Joining Dollar Tree at the site is Food Lion, the North Carolina-based grocery chain that operates smaller stores. The stores aim to get shoppers out the door more quickly than their bigger counterparts.

The 12,245 square-foot store Dollar Tree typically employs 10-12 associates, according to a company release.

Dollar Tree operates with different formats. While the Pencader location keeps prices under \$1, up the road in Newark Shopping Center, the company offers Dollar Tree Deals, a store with prices that typically stay under \$5.

Dollar Tree has 4,000 stores in 48 states and employs more than 50,000. Dollar Tree trades publicly on the NASDAQ Global Select Market. The company is based in Chesapeake, Va.



DOLLAR TREE



## INSIDE

Community enjoys Thanksgiving fellowship .....	2
Blue Hens host Lehigh in second round of playoffs .....	6
Students aid those less fortunate .....	14



## IN THE NEWS

# A Thanksgiving tradition

On a damp Thanksgiving morning, Newark families came together at the George Wilson Center to celebrate the holiday as a community during the 24th Annual Thanksgiving Day Breakfast. Organized by the city's Parks and Recreation Department, the breakfast has become a tradition for resi-

dents—allowing neighbors to enjoy a relaxing morning before the rush of preparing the Thanksgiving day meal. "It's a great way to start off the holiday," explained George Wilson Center Coordinator Tyler DeBruin. "It's an out-of-the-box idea open to the whole community. It really brings

people together," he continued. With donations from local businesses and restaurants as well as a crew of hostesses, servers, cooks and cleanup personnel comprised entirely of volunteers, the Thanksgiving Day Breakfast is certainly a community-wide effort. For \$3 per person, residents enjoyed a

full pancake breakfast, a short performance by The Greater Philadelphia Minghui School Dance Team, and the chance to win a host of door prizes. "Newark itself is a very close-knit town, and this is a wonderful opportunity to reach out," said Mike Regan, a community center volunteer.



PHOTOS BY MELISSA MARSHALL



## The Holidays Come Around So Fast, It's Already Time to Plan for Next Year.

There's no better time than now to prepare for the next Christmas Holiday Shopping Season!

**Open a Christmas Club Account Today!**



• Only \$10 Minimum deposit to open • Make deposits anytime • Earn interest on your deposit.

**AppliedBank**  
Making the most of your time and money



Member FDIC



#1 Rated Bank in Delaware  
by The Weiss Ratings.

For more Information Call: **302-326-4200**

[www.AppliedBank.com](http://www.AppliedBank.com)

601 Delaware Avenue, Wilmington, DE • Rt. 896 - Four Seasons Plaza, Glasgow, DE  
Applied Bank Café, Intersection Rt.1 & Rehoboth Ave, Rehoboth Beach, DE19971

POLICE BLOTTER

# Counterfeiting suspects arrested in Newark

*Editor's note: Police Blotter items are from reports of local police agencies. For the latest in police news, log on to newarkpostonline.com.*

Three men have been arrested on charges related to counterfeiting, after a witness description of distinctive tattoos led Newark police to the suspects.

Officers reported that on October 19, a person made a purchase with a counterfeit \$20 bill at the Halloween Spirit store in the College Square Shopping Center. After the transaction was made and the customer left the store, employees realized the money was not legitimate.

On Nov. 16, a person attempted to use a counterfeit \$50 bill at the McDonalds restaurant on Main St. Employees challenged the legitimacy of the bill and the customer began to argue, but left the restaurant when management called the police.

Based on information provided by the stores' employees, including distinct vis-

ible tattoos, the investigation focused on Larry Sexton, 31, of Earlington Lane, Newark.

An arrest warrant was obtained, and surveillance was established on areas that Sexton was known to frequent. Sexton was ultimately taken into custody by Newark Police officers on November 19 outside the McDonald's at the Harmony Plaza Shopping Center.

When searched, three counterfeit \$20 bills were found in his pocket. At the time of his arrest, Sexton was accompanied by Jason Gallagher, 28 of Richfield Drive, Newark and Jeffrey McCann, 30, of Smyrna. A search of Gallagher turned up six counterfeit \$20 bills in his pocket.

On the same date, a search warrant was executed at a house on Betts Lane in New Castle, where Sexton was known to spend time. The search resulted in the seizure of the equipment Sexton used to produce the counterfeit bills, including a computer, scanner, and printer. Also found were an additional 148 counterfeit \$20 bills.

The investigation and sur-

veillance determined that Jeffrey McCann was intentionally attempting to conceal Sexton's location from the police, knowing an arrest warrant had been obtained against Sexton.

Sexton was charged with 4 counts of Forgery 1st Degree for possession of counterfeit money: 1) at Halloween Spirit, 2) at McDonalds on Main Street, 3) on his person at the time of arrest, and 4) the counterfeit bills found at the New Castle house. Additionally, he was charged with one count of Possession of Forgery Devices for the computer equipment used to make the bills, and with one count of Theft by False Pretense for the transaction at the Halloween store. After an initial appearance at JP Court 11, he was held in default of \$11,000 bail.

Gallagher was charged with one count of Forgery 1st Degree. He was released on an unsecured bond of \$2,000.

McCann was charged with Hindering Prosecution. He was held in default of \$4,000 bail.

## Duo takes bikes from stop

Last Friday, a DART bus driver reported that two males were observed stealing bicycles from the DART bus hub located at 250 E. Delaware Ave. The driver stated that she saw a maroon Ford pickup truck, driven by a black male with a white male in the passenger seat, pull up to the site. Both men exited the vehicle and took eight bicycles from the rack, putting them into the bed of the truck. The driver took a picture of the vehicle as it left on Delaware Ave. Police are asking the victims to contact the Newark Police department. So far, no one has reported any thefts.

## Test drive turns bad

Employees at Porter Ford told Newark Police officers that, last Wednesday, a 31 year-old Elkton man came into the business and asked if he could test drive a 2008 Ford Mustang. Three new tires were placed on the vehicle prior to the man taking the car. He was asked to return the car by 6 p.m. that day.

After the curfew had passed, a phone call was made to the man, who stated that he was at an event in North East, Md. and wasn't going to leave. Police contacted the man at approximately 8:30

p.m. and told authorities that he was returning the car after the event was over.

When the man returned the car after 9:00 p.m., employees noticed that the two rear tires had been damaged and that over 258 miles had been registered on the odometer.

The man was charged with Criminal Mischief Under \$1,000 Property Damage. The tire damage is estimated at \$500.

## Deer chased by pit bull breaks door

A resident on Heather Court in Newark reported that a front storm door of her house had been broken when a deer being chased by a pit bull had entered the residence. Both animals ran into the kitchen, turned around, and exited the house through the front door. The dog was returned to its owner on Grays Ave., who was warned to keep the animal on its leash to prevent further incidents.

## Dump truck causes blockage on roadway

Police cited a dump truck driver for a traffic offense when his load of dirt and rocks was deposited on the intersection of Nottingham Rd. and Casho Mill Rd.

Police had flagged down the man after the driver had

inspected the dropped materials, re-entered his truck, and continued to drive away. When questioned, the driver stated that he had been ferrying loads from the University of Delaware to Maryland, and that some debris may have been on his tailgate. Newark Public Works was contacted to remove the material in the road.

## Adjacent businesses victims of robberies

Police are investigating a series of robberies that occurred last Saturday night at two businesses on Interchange Blvd.

The owner of Allura Bath

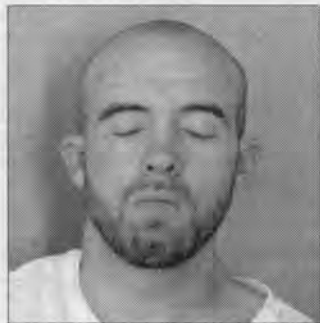
See **POLICE**, 8 ►



Larry Sexton



Jeffrey McCann



Jason Gallagher

## Main Street Dental

Thomas D. Cox, DDS  
Erin E. Cox, DDS

96 East Main Street  
Newark, DE 19711

**302.368.2558**  
(Fax) 302.366.0911

Visit us online at [www.newarkpostonline.com](http://www.newarkpostonline.com)

*Now Taking Orders for Christmas!*

**Christmas Yule Logs • Christmas Tree Danish  
Christmas Wreaths • Petit Fours  
Christmas Butter Cookies**  
*Packed in a One Pound Box or Cookie Trays  
in 1, 2 or 3 lbs. Makes a Great Gift!*

*Specialty Cakes*  
Cannoli Cakes • Carrot Cakes • Strawberry Shortcake  
Italian Rum Cakes • Red Velvet &  
German Chocolate Cakes

Don't Forget About  
Our Large Selection of  
Christmas Candy & Gifts!

Having a Holiday  
Party? Leave the Desserts  
to Bing's Bakery

**Bing's Bakery**  
CALL & ORDER TODAY!  
[www.bingsbakery.com](http://www.bingsbakery.com)  
NOW TWO LOCATIONS!

**10 W. Green St.**  
Across from Town Hall, Middletown, DE  
Wed.-Sat. 9am-5pm  
**(302) 449-1500**

**253 East Main Street**  
Newark, DE 19711 • Mon.-Sat. 7am-6pm  
**(302) 737-5310**

*Delivery Available*

## NEWARK POST

Suite 109, Pomeroy Station 218 E. Main St.  
Newark, DE 19711.

HOURS: Mon. - Fri. 8:30 a.m. to 5 p.m.  
PHONE: (302) 737-0724  
FAX: (302) 737-9019  
E-MAIL: [postnews@chespub.com](mailto:postnews@chespub.com)  
SUBSCRIPTIONS: 1-800-220-3311  
CLASSIFIED ADVERTISING  
1-800-220-3311  
DISPLAY ADVERTISING  
(302) 737-0724

PUBLISHER / REGIONAL V.P.  
DAVID FIKE  
EDITOR  
DOUG RAINEY  
GENERAL MANAGER  
RALPH BUSH  
REGIONAL ADVERTISING DIRECTOR  
KONRAD LA PRADE  
ADVERTISING MANAGER  
HARRY PORTER  
MARKETING DIRECTOR  
RENEE QUIETMEYER  
ASSISTANT EDITOR /  
RESEARCH DIRECTOR  
MARK CORRIGAN  
ART DIRECTOR  
JONATHAN WADDELL

The Newark Post is published Friday by Chesapeake Publishing & Printing. News and local sales offices are located in Pomeroy Station, Suite 109, 218 E. Main St., Newark, DE 19711. All advertising and news are accepted and printed only at the sole discretion of the publisher. The Newark Post is a member of the Maryland-Delaware-D.C. Press Association, Suburban Newspapers of America and the National Newspaper Association.

POSTMASTER: Send address changes to: Newark Post, Suite 109, 218 E. Main Street, Newark, DE 19711. Periodicals postage paid at Newark, Del., and additional offices. (USPS #6465) Known office of publication 218 E. Main Street, Newark, DE 19711.

IN THE NEWS

# UD receives \$10 million gift from alumnus

A University of Delaware alumnus, who wishes to remain anonymous, has made a major investment in the future of graduate education at UD, gifting \$10 million to fund graduate fellowships in the Department of Chemical Engineering.

It is the largest gift to the University from an individual since 1995 and the largest outright gift ever to the College of Engineering.

"This is an incredible gift," UD President Patrick Harker says. "It will elevate UD's chemical engineering program -- already one of the best in the country -- by helping us recruit the world's most talented doctoral students and fund discovery and innovation on a precedent-setting scale. Gifts like this can remake departments, colleges, entire universities. We couldn't be more grateful."

A. Gilchrist Sparks, chairman of the Board of Trustees of the University, expressed similar sentiment. "This gift is a strong endorsement not only of the Department of Chemical Engineering, but of the vision laid out by President Harker in the University's strategic plan, the Path to Prominence, for the University to be recognized as a premier research and graduate university. We are grateful for this donor's leadership and gen-

erosity, as well as the donor's commitment to a key University priority to provide full support for our graduate students."

This gift will provide an endowed fellowship for approximately 20 incoming chemical engineering doctoral students for their first two semesters at UD. This will allow monies typically spent to fund these students to be reallocated for other departmental priorities, thereby further expanding the impact of this gift. After the fellows' first two semesters, they will complete their studies with funding available through research grants in their area of focus.

These fellows will be viewed internationally as outstanding scholars thriving within a greatly strengthened program.

According to Norman Wagner, the Alvin B. and Julia O. Stiles Professor of Chemical Engineering and chairperson of the department, the magnitude of this gift sets a new standard of giving, placing UD on par with peer institutions.

"This groundbreaking gift greatly enhances and enriches our ability to meet our department's mission of creating knowledge, educating students and serving society in the coming years," Wagner said. "We are immensely thankful to this

donor for believing so strongly in the impact our students have not only on our university, but in the world at large."

Engineering at UD ranks within the top 10 programs in the nation. It consistently is one of the largest producers of chemical engineering doctorates in the U.S. and among the leading chemical engineering departments in research funding. The department's distinguished faculty includes 13 National Science Foundation CAREER or equivalent award winners, 13 named professors, three members of the National Academy of Engineering and three Alison Professors.

"This is a transformational gift for chemical engineering, the College of Engineering and the University. It allows us to compete for the most talented graduate students world-wide, an integral goal of the college's strategic plan," says Dean Michael J. Chajes. "The gift is also a wonderful endorsement of the many great things that are happening in chemical engineering and throughout campus. We are most grateful to the donor for helping to propel us further along on the Path to Prominence."

Article by Karen B. Roberts, University of Delaware

# Eat a little and enjoy a lot

By MARIA PIPPIDIS

NCC EXTENSION OFFICE

The holiday gatherings have started and with food everywhere, many of us are challenged with keeping it all in balance. Statistics say on average there is a five-pound weight gain during the festive 6 weeks between Thanksgiving and New Year's Day. But with these updated tips, you can have your goodies during the holiday feasts in the weeks to come and the success of keeping the pounds off.

Be realistic and focus on maintaining your current weight. You can get back on track with weight loss when the diet danger zones of November and December have passed. Also, don't let yourself justify binge eating over the holidays because you expect to restrict food after Jan. 1. Plan in advance to eat a little more when you face holiday temptations. This way, you can enjoy treats more often, and you'll be less likely to binge.

Don't go to a holiday event hungry. We eat more and faster when we're hungry. Eat healthy throughout the day to keep glucose levels stable and to boost metabolism. This will work to reduce hunger for an evening event. Choose a high-protein snack before an event, such as an apple with peanut butter, yogurt, unsalted almonds or walnuts, hardboiled eggs, or nonfat mozzarella cheese.

Treat yourself to a nice drink,

sweets or creamy dips without guilt, but keep portion sizes under control. This is a great way to sample different foods. Commit to the idea of "small plate, no piling."

Survey party buffets before filling your plate. Decide what you're going to eat in advance, and make only one trip to the buffet. Fill a small plate with 1/2 vegetables, 1/4 lean meat and 1/4 starches.

Avoid recreational eating. It takes about 30 minutes for the message to get from the stomach to the brain that it's full. During this time, you can pile on the calories through social eating -- food is there and everyone else is eating. Enjoy your choices, and then wait at least 30 minutes before deciding if you would like a bit more.

Make sure whatever you're offered is splurge-worthy. We all have some favorites that we look forward to during this time of year. Why waste calories on foods you can have anytime (chips, salted mixed nuts, dip, etc)? Try rating food options on a scale of 1 to 10 (10 is best) and have a bit more of the foods that are truly special and unique to the season.

Make a conscious choice to limit high-fat items. If it's creamy, fried, or cheese-filled, it's going to be loaded with calories. Commit to tasting portions. Low-fat, high-fiber foods allow you to eat a larger amount for fewer calories and not feel deprived.

Use intense mints, gums and strips. These dull the taste buds

and also trigger satisfied messages to the brain. So use one when you arrive and more when you find yourself wanting to nibble.

Choose alcoholic beverages wisely. Alcohol is high in calories -- liquors, sweet wines and sweet mixed drinks may contain up to 450 calories per 6 ounces! Alcohol can lessen inhibitions and induce overeating. Also, calories from alcohol tend to be stored in the abdomen. If you choose to drink, select light wines and beers and use non-alcoholic mixers such as water and diet soda. Ask for your drink in a tall, slender glass so that you actually receive less while giving the illusion of more.

Go easy on eggnog and punch. Many holiday beverages are packed with calories. An eight-ounce glass of non-alcoholic eggnog made with whole milk has 342 calories. Choose calorie-free water or diet sodas to help fill your stomach and keep you hydrated.

The best tip is to remember to maintain perspective. Overeating one day won't make or break your eating plan. And it certainly won't make you gain weight. It takes days and days of overeating to gain weight. If you do overindulge, don't just give up. Plan to get back on track the next day. There are going to be a few bumps on the road to healthier eating and we have to acknowledge this to avoid guilt and despair. With these tips, you'll be able to eat a little and enjoy the holidays a lot!

## ASSESSING NEEDS. INCREASING SCORES.

# SAT/ACT prep

SAVE \$95 CALL TODAY! Offer Good on Diagnostic Test Only.

PRIVATE TUTORING FOR SAT/ PSAT/ ACT  
Prep for students seeking dramatic score improvements

Call (302) 737-1050

34 Liberty Plaza / 34 Possum Park Mall  
Newark, DE 19711

www.newark.huntingtonlearning.com



©2006 Huntington Learning Centers, Inc. Independently owned and operated. SAT and PSAT are registered trademarks of the College Entrance Examination Board. ACT is a registered trademark of ACT, Inc. The College Entrance Examination Board and ACT Inc. were not involved in the production of and do not endorse this program.

## EARN YOUR BACHELOR OF EDUCATION DEGREE

- RIGHT IN CECIL COUNTY



Wilmington University has partnered with CECIL COLLEGE and now offers UNDERGRADUATE EDUCATION courses --right in downtown Elkton.

### SPRING 2011 COURSES

- EDU 312 Integrated Curriculum in Schools
- EDU 313 Classroom Culture and Student Behavior
- EPY 302 Educational Assessment
- EPY 303 Advising, Mentoring and Counseling Techniques

Relevant curriculum.  
Flexible schedules.  
Convenient locations.



WILMINGTON UNIVERSITY

1-877-456-7003

wilmu.edu/Cecil

## Don't Let Anything Cloud Your Vision

- Cataract and LASIK surgery
- Diabetic and Ocular Disease Management
- Glaucoma and Retina Evaluation and Treatment
- Eyeglasses and Contact Lenses

5 convenient locations to serve you!

DOVER 833 S. Governors Ave. 674-1121	MILFORD 110 N.E. Front St. 422-5155	SMYRNA 10 S. Market St. 653-9200	NEWARK 333 E. Main St. 368-9105	BEAR 1721 Pulaski Hwy. 836-5410
--	---	--	---------------------------------------	---------------------------------------

Accepting Most Insurances



DELAWARE EYE CARE CENTER

Complete Eye Care  
Schedule your appointment today!

800-900-2020

www.delawareeyecare.com

Gary I. Markowitz, M.D.  
Board Certified Ophthalmologist

## OBITUARIES

■ *Obituaries are printed free of charge as space permits. Information is usually supplied to the newspaper by the funeral director.*

### Howard Arnold, 90, first Gore Associate



Mr. Howard W. Arnold, 90, of Newark, died on Thursday, November 25, at his home.

Born in Stow, OH, on January 25, 1920, Mr. Arnold was the son of the late Warren Arnold and Fannie (Singer) Arnold. He proudly served his country in the U.S. Army during World War II and some years later accepted a position as the first associate of W.L. Gore and Associates, where he made significant contributions to the growth of the enterprise. After a long and rewarding career, Arnold retired from Gore as a global leader of manufacturing and engineering. He served on the company's board of directors from 1958 to 1998.

He and his wife traveled worldwide for both business and pleasure. Mr. Arnold was responsible for the design and construction of 13 homes.

In addition to his parents, he was preceded in death by his son, John W. Arnold. He is survived by his beloved wife of 71 years, Anna Mae Smith Arnold; daughter, Leslie A. Hill and her husband Ron of Newark, DE; grandchildren, Jayne and her husband Tim, Jack and his wife Nicki, Carrie and her husband David, Debi, and David and his wife Mandy; and 11 great grandchildren.

Services were held privately and at the convenience of the family.

In lieu of flowers, contributions in memory of Mr. Arnold may be made to the ALS Association (Lou Gehrig's Disease), 321 Norristown Road, Ste. 260, Ambler, PA 19002 or at [www.alsphiladelphia.org](http://www.alsphiladelphia.org). To sign guest book, visit [www.spicermullikin.com](http://www.spicermullikin.com).

### Helen DiFerdinando

Helen E. DiFerdinando, 83, formerly of Claymont and Newark, died on November 20, at Heartland Hospice House. She was the wife of the late Benjamin P. DiFerdinando who passed away in 1992 and Leonard Carpenter who passed away in 1950.

Born in Rock Run, PA she was the daughter of the late Fred W. and Lydia Rhoades Estheimer. She was employed as a waitress at many restaurants in the area.

Helen is survived by her sons, John Estheimer and wife Sally and Thomas Carpenter and wife Marcia; stepsons, Everett and Jerry Carpenter; brother, Fred W. Estheimer; seven grandchildren; eight great-grandchildren; son-in-law Robert Collins. She was preceded in death by her daughter, Joyce Collins.

Relatives and friends were invited to attend the funeral service on Tuesday, November 23, at Gebhart Funeral Home, 3401 Philadelphia pike, Claymont. Interment was private.

Memorial contributions may be made to Heartland Hospice House, 5661 Ochletree Lane, Wilmington DE 19808. To send a condolence, please visit [www.griecocares.com](http://www.griecocares.com).

### Alice Furness

Alice (Swedberg) Furness died at the Methodist Country House, Greenville on November 20.

Alice was born on November 24, 1911 on Staten Island, NY, the daughter of the late Adolph and Elise (Berg) Swedberg. She attended secretarial school and worked as a secretary on Wall Street before her marriage to Peter Donald Furness, Sr. They resided in Newark, DE and Town Point, MD. Alice belonged to the Newark Country Club was also a member of the St. Francis Junior Board.

After 64 years of marriage, Peter D. Furness, Sr. died on June 1, 2000. In addition to her parents and husband, she was predeceased by her siblings, John and William Swedberg and Karen Sylvia Swedberg Winter.

Mrs. Furness is survived by her four children and their spouses, Peter D. Furness Jr. and Nan of Town Point, MD, Elise Furness Crowe and James of Hockessin, Virginia Furness Vaughan and William of Greenville and Susan Furness Lucey and Brian of Wilmington; her twelve grandchildren, Laura McNew, Dr.

Peter D. Furness, III, Jennifer Simko, Cynthia Ortt, Susan Trentham, Brian Crowe, Alice Maccari, Michael Lucey, Stephen Lucey, Anne Lucey, Jeffrey Vaughan and Kristen Axtell; her twenty great-grandchildren, two step great-grandchildren and one great-granddaughter.

Funeral services were held on Saturday evening November 27, at the Mealey Funeral Home, 2509 Limestone Road. A private burial was held at the Delaware Veterans Memorial Cemetery, Bear.

Kindly omit flowers and, in lieu of them, contributions may be made to the Delaware SPCA, 455 Stanton Christiana Road, Newark, DE 19713. Condolences can be made by visiting [www.mealeyfuneral-homes.com](http://www.mealeyfuneral-homes.com).

### Jonathan Harman

Mr. Jonathan David Harman, 26, of Hartley, DE, formerly of Newark, died on Tuesday, November 23.

Mr. Harman was a native Delawarean, born in Wilmington on April 28, 1984. A graduate of Newark High School, he was employed with Boilermakers Union Local 13.

He was preceded in death by his father, David M. Harman. He is survived by his mother, Kathleen Thomas Harman of Newark, DE; brother, Stephen M. Harman of Newark, DE; grandmother, Jackie Thomas of Newark, DE; and girlfriend, Kelly Jackson of Chesapeake City, MD.

Visitation was held on Monday, November 29, at the Spicer-Mullikin Funeral Home, 121 W. Park Place, Newark. A funeral service was held on Tuesday, November 30, in the chapel of Gracelawn Memorial Park, 2220 N. DuPont Parkway, New Castle. Interment followed in the adjoining memorial park.

To sign guest book, visit [www.spicermullikin.com](http://www.spicermullikin.com).

### Georgianna Hemphill

Georgianna M. Hemphill, 64, of Newark, died peacefully surrounded by family after a long battle of cancer.

Georgianna is survived by her son, Joseph Hemphill, Jr.; daughter, Maria Coates and husband Chris; brother, Mark Ferris; sisters, Sharon Brittingham and Debbie Mealy; and 2 grandchildren. She was preceded in death by her brother, Thomas Ferris.

A visitation for family and friends was held on Friday,

November 26, in Strano & Feeley Family Funeral Home, 635 Churchmans Road, Newark, followed by a service in celebration of Georgianna's life. Burial was in All Saints Cemetery.

In lieu of flowers, donations may be sent to Compassionate Care Hospice, 5610 Kirkwood Hwy., Wilmington, DE 19808. To express an online condolence, visit [www.strano-feeley.com](http://www.strano-feeley.com).

### Richard Maier

Richard Maier, 82, of Newark, died on Tuesday, November 23.

Born in Richmond Hill NY, he received his BS in Chemistry from City College of New York in 1951.

Mr. Maier was a chemical engineer for Firestone Plastic from 1956-1965, then Stauffer Chemical from 1965-1981, which became Formosa Plastic, which he worked from 1981-1986.

He is survived by his daughter, Caroline Maier, her husband, Eldo Kuzhikandathil and their daughter, Sara of West Orange, NJ and his sisters, Claire Gartner and her husband, Frederick of Garden City, NY and Gloria Garcia and her husband, Robert of Escondido, CA.

Services and burial were

private at the Delaware Veterans Memorial Cemetery, Bear, DE. To send condolences, visit [www.dohertyfh.com](http://www.dohertyfh.com).

### Donald Shortlidge

Donald Shortlidge Sr., 69, of Newark, died on November 22.

Donald was born in West Grove, PA on June 13, 1941 and was the son of the late Albert and Helen (Messimer) Shortlidge. Donald worked for Chrysler for over 40 years as a millwright. He was a member of the VFW Post #1875 in Elkton, VFW Post #475 in Newark, DE, the Elkton Fraternal Order of the Moose among others.

He is survived by his sons, Donald E. Shortlidge, Jr. and his wife, Hazel of Newark, DE and Dale Shortlidge of Bear, DE; daughter, Sonya Loy and her husband Kenneth of Newark, DE; grandchildren, Krystal, Kelly, Samuel, William, Anastasia, Gwendolyn and Elizabeth; brothers, Earl Shortlidge of West Grove, PA and James Shortlidge of Parkesburg, PA; and sisters, Alice Osborne of Oxford, PA and Elaine Ticknor of Earleville, MD.

Services were held on Saturday, November 27, at R.T. Foard and Jones, Inc., 122 W. Main Street, Newark.

Memorial contributions may be made to the Elkton VFW Post #1875, c/o R.T. Foard and Jones, Inc. To send condolences, visit [www.rtfoard.com](http://www.rtfoard.com).

### Ann Todd

Mrs. Ann Todd, 77, of Newark, died on Tuesday, November 23.

Mrs. Todd was born in Cambridge, MA, on November 21, 1933. She was a long-time member of the Delaware Saengerbund and greatly enjoyed creating beautiful quilts as gifts for family and friends.

Her beloved husband, Alton M. Todd, died in 2008. She is survived by her children, Roger Blanchard (Charlene) of Middletown, DE, Steven Blanchard (Tammy) of Phoenix, AZ, and Barbara Blanchard of Phoenix, AZ; sister, Jeannette Lundquist (David) of N. Reading, MA; and seven grandchildren.

Services were held privately and at the convenience of the family.

In lieu of flowers, contributions may be made to the American Red Cross of the Delmarva Peninsula, 100 W. 10th Street, Ste. 501, Wilmington, DE 19801.

To sign guest book, visit [www.spicermullikin.com](http://www.spicermullikin.com).

## tranzon AUCTIONS FORECLOSURE

### Thurs, Dec. 16<sup>th</sup>

### Former Restaurant

- ◆ To be held at premises: 2pm
- ◆ Stand Alone Restaurant
- ◆ 2,527+/-sf bldg on 0.27+/- acre lot
- ◆ The former Grist Mill Tavern

648 Broad St.  
Perryville, MD

### 5 Residential Building Lots

- ◆ 2+/- acres per lot
  - ◆ Auction held at:  
Circuit court for Cecil Co  
129 E. Main St., Elkton, MD @11am
- Damghan Dr.  
Conowingo, MD

tranzon FOX

888-621-2110 | [www.tranzon.com](http://www.tranzon.com)

## SPORTS

# St. Marks advances to title game over Salesianum

## UD faces familiar gridiron opponent

By **JON BUZBY**

JONBUZBY@HOTMAIL.COM

St. Mark's sailed into the Div. I state title game with a 24-10 victory over longtime rival Salesianum Friday night at Baynard Stadium.

Following a Salesianum fumble with just over a minute to go in the first half, junior quarterback Jeff Ziemba hit Ryan Taylor in stride in the corner of the end zone to put St. Mark's up 14-10 and give the Spartans all the points they would need. It was Ziemba's 12th touchdown pass of the season.

"Jeff has done a terrific job this year," St. Mark's coach John Wilson said. "What is often overlooked with him is his mental toughness. I'm very tough on him in practice, and he has handled being coached better than I could have expected. He went through a period towards the end of the season where he put some unnecessary pressure on himself, but he has

really settled down these last two games, two of the biggest this year, and he has been able to protect the ball, and make some key throws to help his team put points up on the board. The nice thing is he is only a junior."

Another junior, running back Jabree Lolly, finished with 109 yards on 13 carries, scored two rushing touchdowns (1 and 3 yards) and set up T.J. DeMatteis' 27-yard field goal with a 62-yard run. But it was the junior cornerback's interception midway through the fourth quarter that sealed the win and gave the Spartans their second win of the season over their longtime rival.

"I don't think we would have had the kind of year we're having if our seniors hadn't learned to deal with disappointment and failure [against Salesianum] like they did in the past," said coach John Wilson when asked if this win against their longtime rival got the monkey off his team's back. "It wasn't so

much competing with Sallies but learning to compete with ourselves."

St. Mark's (11-0) will face No. 2 Middletown in the championship game Saturday at 7:30 p.m. at Delaware State University. The top-ranked Spartans, who will vie for the school's fourth football state championship but first since the 1970s, will be favored over the Cavaliers, but Wilson isn't worried about his team being overconfident.

"I remind the players all the time to focus on the process," Wilson said. "Our process began in 2008 when several of our seniors lost to undefeated Caesar Rodney in the semifinals, and then beat undefeated A.I. du Pont in the 2009 semifinals. There's been a commitment from day one of this season to get better every day. I've been very happy with the attitude of the players to want to get better each and every game. Beating Sallies twice shouldn't do anything to change that mind set."

Wilson wasted no time watching the game film from Friday night's big win and by Saturday morning had already found facets of his team's game that need to be improved prior to the title game.

"I think it was difficult for our team having a bye week," he said in an e-mail Saturday morning. "This was unfamiliar territory for us. There were many mistakes we saw on film that will need to be corrected, especially in our running game. Ziemba will need to make a few key throws, and we will need to do a better job of defending against the pass on defense. I will say the same thing I tell my team every Monday, 'We need to practice this week with the intent of getting better.'"

## Blue Hens to host Lehigh in football playoffs

The No. 5 Blue Hens will host No. 19 Lehigh Saturday at 12 p.m. in the second round of the NCAA Football Championship Subdivision playoffs. Lehigh (10-2, 5-0 Patriot League) advanced after defeating Northern Iowa, 14-7, in the first round.

"Lehigh is very aggressive, very confident, and they run a lot of trick plays," UD coach K.C. Keeler said at his weekly press conference. "The kids

are excited and having Lehigh right down the road should increase the crowd. We should have a pretty good match with a Lehigh team that is playing their best football right now."

Senior quarterback Pat Devlin, considered by many to be the top Div. I-AA quarterback in the country, is confident his team is ready to compete for a national championship and excited to be part of the playoff atmosphere at Delaware Stadium.

"The play of the offensive line has just been incredible," Devlin said at Monday's press conference. "We can run the ball and we play great defense. I think it will be exciting. Just the fact that it's one-and-done, it's exciting for the players."

Delaware and Lehigh have played 45 times since 1912 with the Blue Hens holding a decisive 29-16 advantage. Delaware won the last meeting between the schools, 34-33, in overtime at Delaware Stadium in the 2005 season opener.

Delaware native Jay Campbell is the starting tailback for Lehigh. "He is a tremendously hard worker and you can't help but be impressed by the quality of person he is," Lehigh coach Andy Coen said of the Wilmington Charter graduate.

To purchase tickets visit [www.bluehens.com](http://www.bluehens.com).

## Boys Soccer All-State team announced

Several local athletes were named to the Boys All-State Soccer Team as selected by the Delaware High School Soccer Coaches Association.

First XI: Brock Niggebrugge (sr., Caravel)

All Representative First Team: Paul Amponsah (sr., Glasgow); Second Team: Nate Kehel (jr., Glasgow), T.J. DeMatteis (sr., St. Mark's), Chris Hyderkhan (jr., St. Mark's), Mickey Junkins (jr., Newark), Victor Moran (sr., Hodgson), Tre Robinson (sr., Christiana), Zach Wilson (sr., Caravel); Third Team: Jake Beck (soph., St. Mark's), Lance Berry (jr., Caravel), Michael Martin (jr., St. Mark's), Adam Pugh (sr., Caravel), Maliek Shammack (sr., Christiana), Josh Wollaston (sr., Caravel).

Send sports news and information to [jonbuzby@hotmail.com](mailto:jonbuzby@hotmail.com).

## POST STUMPER SOLVED



## Glasgow High School Annual

# Christmas CRAFT FAIR

Saturday, December 11, 2010

9:00 am to 3:00 pm

Located on Route 896, south of  
Route 95 Glasgow, DE

## We Are Here For You!



Michael Spinn PharmD, Becky Marshall PharmD,  
Chai Gadde R.Ph, David Ayres R.Ph

*Northside*   
Pharmacy

Your needs! Your pharmacy!  
Fast, friendly, courteous service.

707 Bridge St., Suite B, Elkton, MD 21921 • 410-398-DRUG (3784)



REMEDY HEADQUARTERS

Get Immunized against  
the Flu Here

Call for appointment



**POLICE BLOTTER**

**► POLICE, from 3**

and Kitchen Center, located at 704 Interchange Blvd., showed police a video surveillance tape of two unknown suspects attempting to pry open a garage door and a rear door at the site with what appeared to be a crowbar. The suspects worked on the door for almost an hour before leaving the area in an unknown direction. The owner also reported the theft of \$950 from a safe inside the business' office and showed additional footage of someone punching in the safe's combination on the keypad. Though the tape does not show a face, the owner believes that a disgruntled former employee broke into the safe in an attempt to buy drugs with the stolen money. Police received a description

and information on the suspect and are attempting to contact him for questioning.

Employees at Boulden, located at 714 Interchange Blvd., also reported that unknown suspects had broken into a van parked next to the building and removed over \$5,000 of equipment. A second van was also broken into, but no equipment was removed. Owners suspect a former employee who was fired in September and who has been harassing a manager with hostile text messages. Also, due to the specific items that were taken and the fact that others were left behind, owners believe that only an employee would have the specific knowledge of the business' inventory. Two fingerprints were lifted and are being entered into a central database for comparison.

**Rock used in Main St. business break-in**

Last Thursday, police responded to an alarm and phone report at Main-St. Cameras, at 165 E. Main St., and found that unknown suspects had hurled a rock through the front window and entered the business.

A witness at the scene reported that he had been walking along Main St. when he saw two males dressed in black throwing a rock several times at the front window. The suspects entered the premises and exited the store approximately one minute later carrying armloads of boxes. The suspects were then seen running southbound along Traders Alley.

An inspection of the interior showed that several glass shelves and cases were broken with a hammer that had been left behind. An inventory revealed that several dozen cameras had been stolen from the site, worth a total of over \$15,000. Owners

are providing authorities with a listing of serial numbers.

**Infant left in vehicle**

A Newark-area man was arrested for allegedly leaving his infant son in car while returned an item at an outlet store.

The incident occurred on Saturday at 6:27 p.m. as troopers were called to the parking lot of the Sears Outlet 500 Eagle Run Road, south of Newark, for a report of an infant left alone in a vehicle with the engine running. Upon arrival, Troopers located the car and saw the four month-old infant locked inside with the engine running.

At 6:50 p.m. the infant's father, William Moultrie, 40, of Newark, returned to the car where he stated that he was returning an item, and thought it was only going to take five minutes. Troopers estimated that the 4 month-old infant was left alone for at least 25 minutes in the vehicle.

Moultrie was arrested and charged with Endangering the Welfare of a Child. He was arraigned and released on \$200 unsecured bond.

**Man escapes after witnesses report beating**

The Delaware State Police are looking for a 39 year-old Wilmington man who led officers on a vehicle chase after a domestic related assault on Thursday morning.

The incident began at approximately 7:30 a.m. Thursday as a witness called 911 after seeing a male subject repeatedly punching a female inside of a Land Rover that was traveling on Route 896 at I-95 near Newark. The witness said the vehicle was entering the interstate and was traveling northbound. A trooper observed the vehicle pass him traveling at a high rate of speed on northbound I-95 just north of

Basin Road in New Castle. The trooper turned on his emergency equipment in an effort to get the operator to stop; however, the vehicle continued traveling. The trooper, who was joined by a second patrol unit, followed the Land Rover onto northbound I-495, northbound Route 13, northbound south Heald Street, D. Street, and then finally onto south Buttonwood Avenue in Wilmington. It was here that the Land Rover struck a Chrysler Sebring and stopped. The operator of the vehicle, later identified as Ronald K. Barnett, 39, of Market Street, Wilmington then exited the car and fled on foot. Troopers were unable to apprehend him. The female victim in the Land Rover, a woman from Dover, received facial injuries, however, she refused treatment. There were no other injuries.

Barnett is described as a black male, 5'11", 190 lbs, medium complexion, black hair, brown eyes. He faces a host of charges.

**Need Holiday Cash?**  
**CASH PAID FOR SCRAP!**  
 Cash for all types of metals & cars including:  
**Steel • Batteries • Aluminum**  
**Stainless • Brass • Copper**  
**Demolition Services Available**  
**ELKTON RECYCLING**  
**410-392-2980**  
 53 Dogwood Rd., Elkton, MD  
 (Corner of Blueball & Dogwood Road)  
[www.elktonrecycling.com](http://www.elktonrecycling.com)

**BROOKSIDE LIONS CHRISTMAS TREE LOT**  
**M - F 12PM - 9 PM**  
**S & S 9AM - 9PM**  
 Located across from the Chestnut Hill Plaza on Route 4  
**Profits from the sale benefit the community.**  
 Special Olympics, free medical equipment, financial aide for cornea transplants and pre-school eye testing are just a few of the ways Christmas Tress sales help others.  
**CEMETERY BLANKETS MADE ON REQUEST**

*Aunt Margaret's*  
**Antique Mall**  
 L.L.C.  
**OPEN 7 Days a week til 5 pm**  
 Avoid the crowded Malls!  
 We have Great Gift Ideas!  
 Mon. - Sat. 10 - 5 pm, Sun. 12 - 5 pm  
[www.auntmargaretsantiquemall.com](http://www.auntmargaretsantiquemall.com)   
 294 E. Main Street, Newark, DE 19711 • 302-454-8007

**FINE ART FRAMING**  
 622 NEWARK SHOPPING CENTER • NEWARK, DE 19711  
**HARDCASTLE'S NEWARK**  
 SINCE 1888  
 • Custom Framing • Sculpture • Commissions  
 • Paintings • Ceramics • Appraisals  
 • Reproductions • Consulting • Restorations  
[www.hardcastlesince1888.com](http://www.hardcastlesince1888.com)  
[hardcastlesnewark@yahoo.com](mailto:hardcastlesnewark@yahoo.com)  
**738-5003**

**Locust Point Farm**  
**Fresh Natural Turkeys**  
 Taste the Difference!  
  
**ORDER NOW!**  
**410-398-8765**

**Your One-Stop Eye Care Solution**  
 Eye Examinations  
 Contact Lenses  
 Fashion Eyewear  
 Treatment of Ocular Diseases  
 • Clear Explanations of Procedures  
 • Professional & Caring Staff  
 • Most Insurances & HMO's Accepted  
  
**KNEISLEY EYE CARE**  
 Dr. Yvonne Kneisley  
 Optometrist  
 (302) 224-3000  
 The Main Street Galleria  
 45 East Main Street  
 Suite 201 • Newark  
[www.kneisleyeyecare.optometry.net](http://www.kneisleyeyecare.optometry.net)

Visit us online at [www.newarkpostonline.com](http://www.newarkpostonline.com)



## IN THE NEWS

# 75 years in prison for gunning down woman during robbery

By **CARL HAMILTON**

CAHAMILTON@CECILWHIG.COM

An Elkton man who gunned down a woman during a home invasion near Chesapeake City last year was sentenced Monday to 75 years in prison. Karl Gladden-Postles, 22, won't be eligible for a parole hearing until he is nearly 60 years old.

In September, Gladden-Postles pleaded guilty to shooting 40-year-old Terri Ann McCoy five times during a robbery inside her parents' home in the 3700 block of Augustine Herman Highway, south of Chesapeake City, on Nov 4, 2009.

Gladden-Postles is the last of four accomplices to be convicted in the robbery and the first to be sentenced.

Joel Thomas Milburn, a 20-year-old resident of Elk Mills, and Seth Dallas Jedlicka, a 17-year-old resident of Middletown also have been convicted of first-degree murder, while 17-year-old Anthony Michael Melchor of Elkton pleaded guilty to armed robbery after cooperating with police and prosecutors.

They are scheduled for sentencing early next year.

All four have pleaded guilty to McCoy's murder, which was committed while they were in the process of stealing \$500,000 worth of jewelry from a safe.

Gladden-Postles' three accomplices have all said he pulled the trigger, while they were holding McCoy's parents at gunpoint in the master bedroom.

Three of the gunmen later sold the stolen jewelry in Philadelphia for \$30,000. Melchor claims he was cut out of the proceeds.

Deputy State's Attorney Kerwin A. Miller agreed Gladden-Postles previously agreed would face between 50 and 75 years of active incarceration in exchange for his guilty plea.

On Monday, Administrative Judge V. Michael Whelan imposed a life term on Gladden-Postles, but suspended all but 75 years of the sentence.

The judge rejected defense attorney Michael J. Halter's claim that Gladden-Postles fired at McCoy in fear when she emerged on a second-floor landing during the robbery. Halter noted that he fired five rounds instead of firing a single shot and running.

"You've done a terrible thing," Whelan told Gladden-Postles in front of a packed courtroom. "It



Gladden-Postles

was just a senseless act."

Clad in an orange jail jumpsuit, Gladden-Postles asked the judge for mercy.

"I'm really, really sorry," he said. "I caused (the McCoy family) more trouble and misery than they ever could imagine. I committed a terrible, terrible crime. I'm pleading for a life. I took one, but I'm begging for leniency. I'm still so young."

Earlier in the hearing, Miller told the judge that Gladden-Postles "showed zero remorse" since his Feb. 26 arrest.

Miller reminded the judge that Gladden-Postles reportedly told his accomplices, "I'm good," moments after gunning down McCoy, who "lay bleeding to death" on the second-floor landing.

"He's going to get a release date. He's going to get a number," Miller told the judge, referring to Gladden-Postles' prison term. "Terri Ann received a death penalty, no leniency, no mercy ... He's sorry, but he's not remorseful."

Miller also refuted the defense's contention that Milburn planned the robbery and Gladden-Postles simply followed along.

"Sometimes, you don't just fall into the wrong crowd," Miller said. "Sometimes, you are the wrong crowd."

Several relatives and friends of Terri McCoy gave emotional statements to the judge during the hearing.

"My heart is so broken, I can't mend it," her mother, Geraldine McCoy, said as she cried while standing beside her husband, Terry, at the podium. "I will take this sadness to my grave."

Tara McCoy, the victim's partner for 10 years, recalled hiding under the bed in a panic after shots rang out and calling 911 before coming to Terri McCoy's aid.

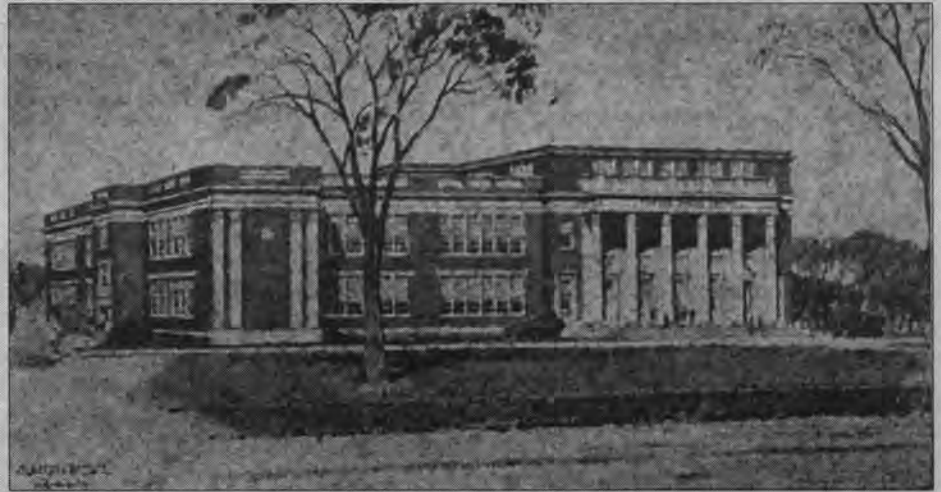
"I was holding towels against her chest and blood was just rushing out. She said, 'I love you and I'm not going to make it,'" she said. "I watched Terri die in front of me eyes. We were together for 10 years and they were the best years of my life. My spouse was taken from me. I wish it was me instead or I as well."

Several people also spoke on Gladden-Postles' behalf, including his mother, Andrea Gladden-Postles, who expressed her "deepest sympathy" to the McCoy family.

Noting that she raised her son to have "strong moral values," she listed several of his admirable qualities and expressed shock over his crime.

"Everyone sees him as a monster, and I understand that and respect that," she said. "But I see him as my son. He will always be a part of me. Yes, I am here asking for leniency."

## OUT OF THE ATTIC



This week's Out of the Attic item is a 1925 picture of the new Newark High School published in the Newark Post datelined Wednesday, November 18, 1925. The new school on the east side of Academy Street just north of Lovett Avenue was built to resolve the overcrowding at the Academy Building that had housed the high school since 1898. Public high school grades were first offered in Newark in 1895 at the 83 East Main Street school. When the Newark Academy closed in 1898 the public high school moved there to ease overcrowding at the 83 East Main building that was serving grades 1 to 8 and high school. Note that the south wing of the building as it stands today had not

yet been built. This building is now the University of Delaware's Pearson Hall.

The Newark Post article announced the dedication ceremony to take place the next Saturday afternoon. Pierre S. du Pont, president of the Service Citizens of Delaware and foremost benefactor of Delaware schools was the dedication speaker.

Also listed to speak was Dr. Walter Hullahen, president of the University, Dr. Joseph H.

Odell, director of the Service Citizens, and Dr. H. V. Holloway, State Superintendent of Public Instruction. The picture is from the collection of the Newark Historical Society courtesy of the Newark Post.

Visit the Newark History Museum located at the historic passenger train station on South College Avenue. The museum will be open during December through March by appointment only for groups, individuals, and special events. Call 302-368-9845 for arrangements. The Newark Historical Society invites donations or loans of objects, stories, pictures and other artifacts of places, activities, people, and life styles in the Greater Newark Area for its permanent collections.

Contact the Newark Historical Society by voice mail at 302-224-2408, by postal mail to P.O. Box 711, Newark, DE 19715, or by email to [newarkdehistoricalsociety@yahoo.com](mailto:newarkdehistoricalsociety@yahoo.com).

Italian Grill **Ciao** Pizzeria

Bring in your shopping receipt  
from Christiana Mall & receive  
10% Off your bill

exp 12/31/10

Open 7 Days a Week!

Carry Out

200 University Plaza Shopping Center,  
Newark 302-738-6810

LOOKING FOR A  
CHANGE?

Trade ya!  
Your Club for ours!

Simply bring it in your membership card from another club,  
we'll exchange it for one of ours & you'll receive

Two months...for only \$29!

Come see what's new and exciting at Fusion Fitness Center  
and experience the difference!

At the end of 60 days - we bet that you'll want to exchange  
your old card for an offer that's even better - joining us!

\*first-time guests only ~ Expires 12-31-10

NO CONTRACTS! GREAT RATES!

find us on  
Facebook

follow us on  
twitter

foursquare

280 East Main Street | Newark, DE 19711

302.738.4580 • [www.fusionfitnesscenter.com](http://www.fusionfitnesscenter.com)

# Church Directory

To Advertise or make changes call Nancy Tokar 1-800-220-1230 or voice mail 443-245-5072. Prices starting as low as \$14.00 a week, but now includes the internet. Deadline for changes Friday 4:30pm for the following edition

**"We get more hits from this one ad than any other advertising we do."**

*-Good Shepherd Episcopal Church*  
Call Nancy Tokar to place your ad at  
**1-800-220-1230**

## The Way Ministries

(an extension of Highway Gospel Community Temple, West Chester PA)

Highway Word of Faith Ministries is presently worshipping @ The George Wilson Community Center 303 New London Rd., Newark, DE

### Sunday:

8:00-9:00am Christian Education classes for all ages

9:00am Sunday Morning Celebration

### Wednesday: Location

7:00-8:00pm Bible Enrichment Class at Prayer Temple 49 New London Rd. Newark, DE 19711

Mailing Address: P.O. Box 220 Bear, Delaware 19701-0220

Visit us online @ [www.theway.ws](http://www.theway.ws) or send us a note at...[theway238@aol.com](mailto:theway238@aol.com)



Pastor Carl A. Turner Sr. & Lady Karen B. Turner  
For further information or directions please call:  
**302-834-9003**



The Episcopal Church  
Welcomes You

## St. Thomas's Parish

276 S. College Ave. at Park Place,  
Newark, DE 19711

Across from UD Health Center  
(302) 368-4644

Church Office: 9:00-1:00 Mon-Fri  
[www.stthomasparish.org](http://www.stthomasparish.org)

## 2010 Advent & Christmas Worship

Sundays in Advent

8:00 a.m. Holy Eucharist I

10:30 a.m. Holy Eucharist II

5:30 p.m. Inclusive Language Liturgy with Holy Eucharist

Mon.-Fri. 5:15 p.m. Evening Prayer

Wednesdays 12:10 Holy Eucharist II

(Healing on 2nd & 4th)

Sun., Dec. 5th 5:30 p.m.

Advent Service of Lessons & Carols

God meets you where you are!  
And So do we. Come and see...



Episcopal tradition,  
contemporary music

Join us for  
weekly worship on  
Sundays at 9:30 am  
at Beeson Funeral Home  
2053 Pulaski Hwy.  
302-650-3544

Brightening lives, nourishing souls, connecting to God

302 547-7849 • [www.GoodShepherdDE.org](http://www.GoodShepherdDE.org)

Sponsored by the Diocese of Delaware

Wisdom from many sources



Sunday Service 10am  
Childcare and Sunday School

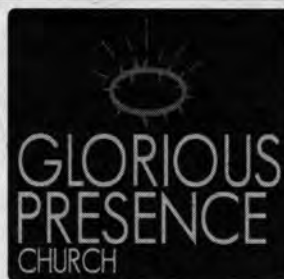
Unitarian Universalist Fellowship  
420 Willa Road, Newark  
302.368.2984 [uufn.org](http://uufn.org)

Come Join Us!  
Speaker: Rev. Greg Chute

Advertise Your Church in the  
Christmas Church Services  
Page. Runs Dec. 10 & Dec. 17.

Deadline Dec. 2.

Call Nancy Tokar for details  
443-245-5072.



Sunday 8:30 a.m.  
Acoustic Worship  
Sunday 10:30 a.m.  
Electric Worship

Pastoral Team

Curtis E. Leins, Ph.D

Robert F. McKnight

Theodore Lambert, III

James L. Ford

Located 1 1/2 miles N. of Elkton  
on Rt.213

(410) 392-3456



The Church Directory  
is now on the net!

See it on

[www.newarkpostonline.com](http://www.newarkpostonline.com)

Prices are as low as 14.00 per week.

Call Nancy Tokar to Advertise

1-800-220-1230

## First Presbyterian Church

Contemporary Worship - Sundays at 9:00 a.m.

Traditional Worship - Sundays at 10:30 a.m.

Adult and Children's Sunday School at 9:00 a.m.

292 West Main Street, Newark, DE 19711

(302) 731-5644 • [www.firstpresnewark.org](http://www.firstpresnewark.org)

Rev. Steve Brundage, Pastor

Rev. Beth Thomas, Children and Youth

Handicapped Accessible

Worshipping, Knowing and Serving God



St. Barnabas'  
Episcopal Church

Advent Lessons & Carols Service  
with Holy Communion  
Sun., Dec. 12th, 2010 @ 10 AM

Worship Services:

Saturday 5:30 p.m. - Sunday 7:30, 10:00 a.m.

Child Care (0-3) available during 10 a.m. service

302-994-6607

[www.stbarnabasde.org](http://www.stbarnabasde.org)

2800 Duncan Road, Wilmington, DE 19808



First Church  
of Christ,  
Scientist

48 West Park Place, Newark

Sunday Service & Sunday School 10:00am

Wednesday Testimony Meetings 7:30pm

Childcare available during services.

302-456-5808

ALL ARE WELCOME

[www.fccsnewark.org](http://www.fccsnewark.org)

## NEW LIFE CHRISTIAN FELLOWSHIP

Sunday Service 9:30 AM

Multimedia Children's Ministry!

Contemporary Worship!

Relevant messages!

Church Office: 999-1800

Check out our web page:

[www.NewLifeDE.org](http://www.NewLifeDE.org)

2712 Old Milltown Rd.

Wilmington, DE

(near Kirkwood Hwy & Milltown Rd)



You are welcome at  
Ebenezer

United Methodist Church  
website: [www.ebenzerumcnewark.org](http://www.ebenzerumcnewark.org)

email: [eumc1824@aol.com](mailto:eumc1824@aol.com)

SUN SERVICES 8:30 & 11:00am

SUNDAY SCHOOL 9:45am

Contemporary Worship

Every 3rd Saturday of the month 5:30 pm

525 Polly Drummond Road

Newark 302-731-9494

Handicapped Accessible • Child Care

TED DAY, PASTOR

### COMMUNITY NEWS

#### Toys for Tots Donations

The Newark Police Department, in cooperation with Aetna Hose Hook and Ladder Fire Company of Newark and the United States Marine Corps Reserve, is commencing the annual Toys for Tots Campaign. The Newark Police Department will be accepting donated gifts for children up to 12 years of age. A donation barrel is located in the lobby of the Newark Police Department, 220 Elkton Road, where new unwrapped toys can be left until December 15th.

On December 20th, Santa Claus, aboard a fire truck from the Aetna Hose Hook and

Ladder Company and escorted by Newark police officers and members of the USMC Reserve, will deliver the gifts to deserving children in several Newark neighborhoods.

Any questions about this program should be directed to M/Cpl. Gerald Bryda, Administration Unit, at (302) 366-7110 ext. 129 or Gerald.Bryda@cj.state.de.us.

#### Newark's Winterfest

Winterfest promises to be a wonderful addition to the holiday season. Holiday tree lighting, ice carving demonstrations live musical performances, and more will fill this wonderful evening of fun for the whole

family.

The event will be held on Friday, December 3 (Rain date Saturday, December 4) from 6 until 8 p.m. on Main and Academy Streets in Newark. Santa's arrival and the holiday tree lighting will take place at 6:30 p.m.

In case of inclement weather, please call the Leisure Time Hotline at (302) 366-7147.

Winterfest is a joint effort by the Newark Parks and Recreation Department and the Downtown Newark Partnership and is supported by the Delaware Division of the Arts.

#### Food Drive

Boy Scout Troop 255 is having a food drive which will benefit the food closet at Newark United Methodist Church. The food drive will be held in front of Pathmark at College Square Shopping Center in Newark. The dates and times are as follows: Friday, December 3, 6-9 p.m.; Saturday, December 4, 3-6 p.m.; Sunday, December 5, 12:30-2:30 p.m.

#### "Comic Potential"

The Chapel Street Players will perform "Comic Potential" by Alan Ayckbourn at The Chapel Street Playhouse, 27 N. Chapel Street, Newark DE 19711. Show times are December 3 & 4 at 8 pm and December 4 at 2 pm.

"Comic Potential" is the story of an ambitious, young writer who falls in love with a robotic actress. While the setting may be futuristic, the universal emotions of infatuation, heart-break and love hold true no matter what decade human beings inhabit. The show examines the effects that art can have on bringing people together and the ways that love can sometimes overcome any obstacle, including fiber-optic circuitry. Buster

Keaton, spit

takes, sleazy hotels and televised soap operas all combine to create a future world that is still very much like our own.

Price: \$5 for Students, \$10 for Seniors and \$15 for adults. Please call 302-368 - 2248 or by visiting www.chapelstreet-players.org. Directed by Joseph Pukatsch ("Talk Radio", "The Dirty Old Man").

#### Holiday Toy Drive

Everyone can donate new toys and games from December 4th -22nd at Captain Blue Hen Comics. Bring unwrapped donations for children spending the holidays at Nemours/A.I. duPont Hospital in Wilmington. Toys go to the Child Life Program that works to meet the emotional needs of hospitalized children. Spread holiday cheer where it's needed most this year!

Holiday Fun Days at Captain Blue Hen: December 3, 4, 11

Friday, December 3 - Early Christmas Eve at Captain Blue Hen - Market East Plaza, 280 E. Main Street in Newark, from 5:30-7:30 p.m. Artist signing and sketching, tree trimming, story telling, kids' shopping. Open to public. Free admission

Saturday, December 4 - CBH Presents A Christmas Story at Newark Cinema Center - Newark Shopping Center, E. Main Street in Newark, 11 a.m. 6th Annual showing of the movie A Christmas Story. Open to public. For free admission donate a canned food item

Saturday, December 4 - Holiday Kick-Off at Captain Blue Hen - Market East Plaza, 280 E. Main Street in Newark, 12-4 p.m. Two artists signing and sketching, superheroes appearing. Open to public. Free admission.

Saturday, December 11 - Family Shopping Day at Captain Blue Hen - Market East Plaza, 280 E. Main Street in Newark,

12-4 p.m. Two artists signing and sketching, gifts for \$10 or less including original art. Open to public. Free admission.

Go to Captain Blue Hen's website at www.captainbluehen.com for directions and more information.

#### Newark's Secret Santa Shoppe

Children are invited to participate in Santa's Secret Shoppe on Saturday, December 4 from 9 a.m. until 12 p.m. at the George Wilson Center in Newark. This unique and cost effective holiday event gives children the opportunity to purchase gifts for family and friends with a pint sized price tag. All items will be priced between \$.75 and \$5.00 and will be gift wrapped for free. Volunteers will be on hand to assist children with shopping. Admission is free to the public.

Contact the Recreation office for more information at 366-7060, 366-7033 ext. 200 after 5 p.m. and on weekends or visit our website at www.cityofnewarkde.us.

#### Advent Festival

Newark United Methodist Church, 69 E. Main St., presents an Advent Festival from 5-8 p.m. on Friday, December 3. The festival will begin with a pizza dinner and feature crafts and a carol sing. Hot chocolate and cookies will complete the evening. Cost is \$4/person. Please call Mary Bell at 302-368-8774, ext. 217, or email mbell@newark-umc.org, by Nov. 21st to register.

#### New York City Trip

Newark Parks & Recreation

See NEWS, 12 ▶

## Moose Lodge lends a hand



Thanks to the generosity of the members of Newark Moose Lodge 630 and Chapter 705 Family Center, they delivered several boxes of snacks and other goods to a Dupont office to assist in the "Stockings for Soldiers" program. Left to right are Calvin Pettit, Past Governor; Adelina, Office Manager; Bessie Staab-Hickman, Government Relations; and Theresa Smiley, Senior Regent.

### Christmas Open House at JEMAR Pet Supply - All Invited

December 3, 4 & 5th - 9-5 Fri. • 9-4 Sat. • 9-4 Sun. \*\*

\*\*Sunday PET PICTURES with Santa 10-3 ~ No appointment necessary

Don't Miss Out on Tons of Great Bargains Great Gift Ideas, and Great Refreshments!



For information or appt. call 410-658-6707  
794 Biggs Hwy., Rising Sun, MD

## Gift that gives all year!

Gift Card - SOFT CLOTH WASH ONLY  
2 Convenient Locations - Card Honored At Both Sites

3-Minute Express Car Wash  
FREE VACUUMS  
SOFT CLOTH WASH ONLY

333 E. Pulaski Hwy. - Elkton, Maryland  
1714 Pulaski Hwy. - Bear, Delaware

HUGE SELECTION OF GUITARS

at MIDDLETOWN MUSIC

Great Selection • Lowest Prices

PRS Guitars • Fender • Roland • Guild • Gretsch

Hundreds of Guitars In Stock ON SALE NOW!

Middletown Music 5238 Summit Bridge Road  
Middletown, DE 19709

(302) 376-7600

www.middletownmusic.com

SAXBYS COFFEE

Delicious Holiday Lattes!

White Chocolate Mint Truffle  
Snow Peak  
Eggnog Chai  
Gingerbread

Looking for special holiday items?  
We have Mugs, hot and cold Tumblers, Teas, Holiday Baskets, Syrups, and your favorite fresh-ground Saxbys coffee!

FREE PARKING!  
57 Elkton Rd  
at Amstel Square  
731-9500

## IN THE NEWS

## ► NEWS, from 11

Department is sponsoring a bus trip to New York City on Saturday, December 4. We'll drop you off near Radio City Music Hall! This will put you right in the heart of the theater district and just a few blocks from Central Park, Madison

Avenue and many other points of interest.

The bus departs from and returns to the City Municipal Building at 220 Elkton Rd. Bus will depart at 8 a.m. and return at 10 p.m. Registration Fee is \$59. The Newark Resident Discounted Fee is \$49. Trip cost includes motor coach transportation. Call 366-7060 for more

information or register online at [www.cityofnewarkde.us/park-srecreation](http://www.cityofnewarkde.us/park-srecreation) or at 220 Elkton Rd, Newark, DE.

## Phred Heads

Don't miss Club Phred performing at The Hotel DuPont immediately following the Wilmington Grand Opera House's 2010 Grand Gala. Once again the Horn Section from the "Late Show with David Letterman" will be taking the stage with Club Phred!

The Grand Gala is December 4, 8 p.m. at The Grand Opera House. Club Phred will perform immediately following at The Hotel DuPont. For more information go to [http://www.thegrandwilmington.org/Support/Grand\\_Gala](http://www.thegrandwilmington.org/Support/Grand_Gala).

If you're planning on attending the Grand Gala The Hotel Du Pont is offering a special \$99 room rate on December 4th, for gala attendees. Contact the hotel directly to take advantage of this offer, 302-594-3100. Visit Club Phred at <http://www.clubphred.com>

## Seventh Grade Achievers' Test

St. Mark's High School is offering a special opportunity for

seventh grade students. Students who take the Seventh Grade Achievers' Test are eligible to participate in the Achievers' Gateway Summer Program to earn elective credit at St. Mark's.

The Achievers Test will be offered on Saturday, December 4 and December 11. There is no charge to take the test and it is open to all seventh grade students. An application can be downloaded at [www.stmark-shs.net/admissions](http://www.stmark-shs.net/admissions). For more information, please call 302-757-8721.

## St. Elizabeth Placement Test

The St. Elizabeth High School Placement Test will be given on two days. Choose between Saturday, December 4 at 8:30 a.m., and Sunday, December 5 at noon. A Placement Test Preparation Course will also be given at St. E from November 1 - 4 from 3:30 - 5:40 p.m. for students interested in maximizing their scores on the Placement Test for any high school. Contact Matt Haney, Director of Admissions at 302-656-3369, Ext. 3039, or [mhaney@viking-pvt.k12.de.us](mailto:mhaney@viking-pvt.k12.de.us). Test scores play an important part in the selection of scholarship awards.

## Pokémon City Championships coming to Newark

Sunday, December 5, at 10 a.m. Tournament location and registration at: The Days of Knights, 173 East Main Street, Newark, DE 19711.

The area's Pokémon™ Trading Card Game (TCG) players will meet in Newark to compete in exciting one-on-one battles in the 2010 Pokémon City Championships for the prestigious title—Pokémon City Champion. Sanctioned by The Pokémon Company International, the City Championships provide local players the opportunity to test their Pokémon TCG skills, strategy, and creativity.

Competitors are divided equally into three divisions: Junior (born in 2000 or later), Senior (born in 1996-1999), and Masters (born in 1995 or earlier). Players in all divisions will compete for various Pokémon prizes, including Pokémon TCG booster packs and a City Championships medal. Pokémon City Championships are the first title events in the Championship Series, and Premier Rating Points awarded there go toward a potential invitation to the 2011 Pokémon World Championships

held in San Diego, California, next August.

The Pokémon TCG City Championships is a free event open to all players, regardless of previous involvement in any Premier Event. For more information, including rules and regulations, prizes, tournament locations, and times, please visit <http://www.pokemon.com/us/organized-play>.

## Conversation on Education

On Monday, December 6 at 7 p.m., the Greater Newark Network will host a public conversation on education in the greater Newark area. The conversation will take place at Newark High School in the cafeteria. This will not be a standard public meeting with a parade of talking heads at the front of the room telling you what they believe. Instead, we will break up into "conversation groups" so that every attendee will have an opportunity to express their views and converse with their neighbors on the subject. All feedback will then be synthesized and returned to you in the form of a report following the meeting. We hope you will join us for this important public conversation. Not only that, we hope you will encourage your friends and neighbors to attend as well.

## Holiday Music Program

The Cecil County Choral Society presents a program of sacred and secular holiday music on Tuesday, December 7 at 7:30 pm, at St. Paul's Lutheran Church, Newark. The program features guest artists Dr. Robert and Kara Brandt. Admission is free; donations are gladly accepted. The church is located at 701 S. College Avenue, with parking lot access from Old Chestnut Hill Rd. or Park Dr. For more information, call the church at (302) 368-0064.

## Washington DC Trip

Newark Parks & Recreation Department is sponsoring a bus trip to Washington DC for the annual US Army Band Holiday Festival Concert on Saturday, December 11. Join us for this exciting visit to our nation's capital during the holiday season. We'll drop you off near the DAR Constitution Hall, site of the United States Army Band's Holiday Festival concert (3pm), which features the US Army Orchestra, Chorus, and Chorale.

See NEWS, 13 ►



**European Wellness Center™**  
A Health Spa  
Cecil County's Original Spa  
Hair • Massage • Skin • Nails

No Stocking is complete without a Gift Card from European Wellness

243 S. BRIDGE ST. ELKTON  
410-392-3535  
MON: BY APPOINTMENT;  
TUES-FRI: 10AM-8PM; SAT: 9AM-5PM  
[www.europeanwellness.com](http://www.europeanwellness.com)


Gift Certificates are always the right color and fit!

**Shop City Pharmacy's Gift Corner**


- Unique Gifts
- Christmas Items
- Greeting Cards
- KnickKnacks
- Religious Articles
- Jewelry



Or Get An Always Popular  
**GIFT CERTIFICATE**



723 North Bridge St.  
Elkton, MD  
Mon.-Fri. 9am-9:30pm  
Sat.-Sun. 9am-6pm




**Sun Cellular**  
Family Owned and Operated since 1995

Voted FAVORITE in Cecil County by WHIO READERS 2010

Don't know what phone or accessory they would like to have?

**Problem Solved with a Sun Cellular Gift Certificate**



Elkton Rt. 40 @ Chillis 410-620-0300  
Rising Sun Center Square 410-658-7010

verizon wireless

Delaware National Bank  
**Changing our name. Not our family.**



Delaware National Bank is changing our name to Fulton Bank. Rest assured it's a change in name only, and we are still a member of the Fulton Financial Family. You will continue to receive the level of service you have come to expect, knowing that your financial relationship and the people you bank with will remain the same. We'll continue to provide a one-of-a-kind commitment to the values that have earned us the trust of friends, neighbors and Forbes.

This is the type of community banking you can count on - now with 114 branches across Delaware, Pennsylvania and Virginia. It's the convenience and access you need, with people you can trust.

**Fulton Bank**  
Delaware National Division

LISTENING IS JUST THE BEGINNING.®

888.291.2400  
[delawarenational.com/merger](http://delawarenational.com/merger)



Fulton Bank, N.A. Member FDIC. Member of the Fulton Financial Family.

## IN THE NEWS

## NEWS, from 12

You will be on your own to enjoy the day and concert. Trip cost includes free group ticket to the concert (general admission seating) and motor coach transportation.

The bus departs from and returns to the City Municipal Building at 220 Elkton Rd. Bus will depart at 8 a.m. and return at 8 p.m. Registration Fee is \$39. The Newark Resident Discounted Fee is \$30. Trip cost includes motor coach transportation. Call 366-7060 for more information or register online at [www.cityofnewarkde.us/park-creation](http://www.cityofnewarkde.us/park-creation) or at 220 Elkton Rd, Newark, DE.

## Taize Prayer Services

Newark United Methodist Church, 69 E. Main St., presents Taize prayer services in the Sanctuary at 7 p.m. every Wednesday in Advent (December 8, 15, and 22). Meditative music and scripture readings set the tone for this quiet, reflective service. Come unwind during this hectic season and feel the pres-

ence of the Lord. Please call the church office at 302-368-8774 or email Jim Faltot at [jcfaltot@msn.com](mailto:jcfaltot@msn.com) for more information.

## Troop 50 34th Annual Pancake Breakfast

Boy Scout Troop 50 of Pike Creek, Delmarva Council Boy Scouts of America, will hold its thirty-first annual pancake breakfast on Saturday, December 11, at the Limestone Presbyterian Church, 3201 Limestone Road.

The public is welcome to come for all-you-can-eat pancakes. Pancakes, sausage, and orange juice will be served from 7 a.m. to noon on Saturday morning. Cost is \$4.25 for adults and \$2.50 for children. Advance purchase tickets can be obtained from any Troop 50 scout. Tickets may also be purchased at the door. Proceeds benefit Troop 50 and support its scouting activities of camping, outdoor skills, community service and character-building for boys ages 11 through 18. Troop 50 is sponsored by the Ebenezer United Methodist Church and the Saint Philip's Lutheran Church.

## Holiday Concert

Saturday, December 18, 7 p.m. Chesapeake Brass Band "In A Holiday Mood" Concert. Delaware's only all brass concert band plays traditional carols and selections from old favorites such as "White Christmas", "Sleigh Ride", and "Bells of Christmas". Grace Episcopal Church, 4900 Concord Pike, Wilm., DE. Free will offering. For more info, please call 302-478-9533 or visit [www.chesapeakebrassband.org](http://www.chesapeakebrassband.org).

## New Ark Chorale: Forward to the Past

Saturday, December 18, 7 p.m. Newark United Methodist Church, 69 E. Main Street, Newark, DE 19711. This holiday performance features Christmas music for the entire family, featuring songs from the Renaissance to the present day. This sacred season has been celebrated throughout the ages, and as such, New Ark Chorale honors music from all time periods. Audience participation is included throughout the program.

Tickets are \$15 general/\$12

seniors/\$5 students, with a group rate of \$10 for purchase of five or more tickets. Reserve by calling 302-368-4946 or go to [www.mycommunitytickets.com](http://www.mycommunitytickets.com) or [www.newarkchorale.org](http://www.newarkchorale.org).

## Blue Christmas Service

Newark United Methodist Church, 69 E. Main St., will offer the annual Blue Christmas service at 3 p.m. on Sunday, Dec. 12. This special service offers a solemn space to bring hope to the aching heart. It is a service of light in the midst of darkness for those who struggle to join in the merriment of traditional holiday festivities because they have experienced grief or loss. For more information, please call the church office at 302-368-8774 or email Dr. Jim Faltot at [jcfaltot@msn.com](mailto:jcfaltot@msn.com).

## Holiday Concert

Sunday, December 19, 3 p.m. Chesapeake Brass Band "In A Holiday Mood" Concert. Delaware's only all brass concert band plays traditional carols and

selections from old favorites such as "White Christmas", "Sleigh Ride", and "Bells of Christmas". Music School of Delaware, 4101 Washington St. Adults \$10, Seniors and Students \$5. For more info, please call 302-762-1132 or visit [www.chesapeakebrassband.org](http://www.chesapeakebrassband.org).

## Story Time at Iron Hill Museum

The Iron Hill Museum wishes to present its Story Time at Iron Hill Museum, located at 1355 Old Baltimore Pike, Newark, for December 18. This program

is Dinosaurs! The programs will take place from 12 p.m. to 1 p.m. and 1 p.m. to 2 p.m. Bring your child to hear the story "Dinosaur Eggs" and make a really cool craft. Admission to the program is \$4.00 for kids (2 and younger free), \$1 for parents and those not participating in activities. You must register prior to the program for one of the two times. For more information or to register, please contact the staff at the Iron Hill Museum at 302-368-5703, [director@ironhill-museum.org](mailto:director@ironhill-museum.org), or visit their website at [www.ironhill-museum.org](http://www.ironhill-museum.org).

## WET BASEMENTS STINK !!

Mold, mildew and water leakage into your basement causes health and foundation damage. What can be done to fix the problem? Allstate American Waterproofing is an honest, hardworking local company. We will give you a FREE evaluation and estimate and a fair price. We have repaired thousands of basements in the area; we can provide local references. When your neighbors needed waterproofing, they called Allstate American. Why don't you? Call now to receive a 20% discount with your FREE ESTIMATE. MHIC#36672

**CALL 1 800 420 7783 NOW!**

We carry elegant, unique, whimsical, traditional & fun furniture & accessories.

Some New Some Old

Mention this ad for 10% Off

**THE FINE THYME**  
FINE FURNITURE & ACCESSORIES  
28 South Main St. • North East • 410-287-1383

**PREMIER AUTO & TIRE**  
KEEPING AMERICA ROLLING!

**\$17.95**  
Oil Change & Filter  
Not Valid with any other offers.  
Expires 12/30/10

2 Convenient Locations  
Main Street, 410-398-7749  
Pulaski Hwy, 410-398-5095

Visit our website for printable Gift Certificates [www.blueirisspa.com](http://www.blueirisspa.com)

IT'S TIME FOR A Spa Day

**BLUE IRIS**  
Day Spa and Salon  
Check Out Our Specials

One Stop Service  
32 South Main Street, North East, Maryland 21901  
410-287-1331

**Chances to Win**  
3 month Tanning package  
or 5pk Mystic Sunless Spray Tan

**Tans for Cans**  
Bring in 3 can goods

or  
One unwrapped toy for TOYS FOR TOTS

And be entered into the Drawing! Enter as many times as you like!  
Winner will be drawn at the end of December!

Hollywood Tans of Elkton  
Delancy Plaza • 1197 E. Pulaski Hwy • Elkton, MD 21921  
410-398-7804

**Envy**  
SPA & SALON

GIFT CERTIFICATES AVAILABLE

**ENVY SPA AND SALON**  
707 NORTH BRIDGE STREET  
ELKTON, MD 21921  
410.620.0711  
[ENVYSPAANDSALON.COM](http://ENVYSPAANDSALON.COM)

**GRAND OPENING**

**X-PERT**

**MARTIAL ARTS**  
HONOR DISCIPLINE RESPECT SUCCESS

Across the street from Walmart in Elkton

**2 WEEK TRIAL ONLY \$19.99**  
Includes Uniform

**CALL NOW! 302-670-5557**

IN THE NEWS

# Students pitch in

Last month, the Shue-Medill Middle School FCCLA Club helped WJBR-FM and the Ministry of Caring collect turkeys and food donations to feed homeless and low income families in Delaware. Shue-Medill students unloaded cars and put all donations into the WJBR van for distribution to home-

less shelters. The students were reported to be amazed at the generosity of the community to help those in need, including one person who dropped off 10 turkeys for the cause. The students were also excited when they heard the club recognized across the air waves on WJBR.



## Event to aid Food Bank

Taste Artisanal Market in Newark will hold its Holiday Open House on Saturday, December 4 from 10:00 a.m. to 7:00 p.m. Five percent of the day's proceeds will be donated to the Food Bank of Delaware, and customers will have the opportunity to purchase products from the store to donate directly to the food bank. The event will feature samples of Taste's products, hors d'oeuvres, and holiday gift shopping. Local musicians, Slyte of Hand and John Pollard will be performing at 1 to 3 p.m. and from 5-7 p.m. respectively.

"With more than 241,000 Delawareans depending on emergency food assistance this year, the support of our community is needed now more than ever," said Food Bank of Delaware Community Relations Manager Kim Kostas. "We are appreciative to have partners

like Taste Artisanal Market that are helping us to alleviate hunger in Delaware."

Taste Artisanal Market is a new European-inspired market. Located in the Shoppes At Louviers in Newark, Taste features artisanal cheeses, charcuterie, fresh olives, gourmet pantry items and over fifty varieties of chocolates and confections. The market specializes in products from Europe—from England, France, Germany, Greece, Italy, Poland, Russia and the Baltics—as well as from local and regional artisans. It stocks many organic, gluten-free and fair-trade items. The Market can create gift baskets, care packages and artisanal cheese platters for special occasions or events.

You can also find more information on [www.tasteartisanalmarket.com](http://www.tasteartisanalmarket.com).

**EYE CARE**  
*for life.*

Providing 27 years of quality family eye care

- 12 competent and experienced doctors
- Most insurances & HMO's accepted
- Comprehensive adult and pediatric eye care
- LASIK
- Contact Lenses
- Thousands of affordable and designer frames
- Accepting new patients and outside prescriptions

**SIMON EYE ASSOCIATES**

<b>Bear</b>	<b>Newark</b>
Fox Run Shopping Ctr.	19 Haines Street
116 Fox Hunt Drive	Suite B

[www.simoneye.com](http://www.simoneye.com)  
302.239.1933

6 convenient locations

Bear | Concord Pike | Hockessin/Pike Creek  
Middletown | Newark | Wilmington

## Newark resident promoted

Salem Community College in Carney's Point, N.J. has named Ken Robell Academic Coordinator - Mathematics and Technology.

In this new position, Robell supervises all full-time and adjunct faculty in mathematics and technology, and assists in recruiting and hiring instructors in those areas. Robell is also responsible for the following programs: business administration, computer graphic art, computer science, digital media, glass art, industrial design, scientific glass technology and sport management.

Robell has been a math instructor at SCC since 2003,



teaching a variety of courses including calculus, college algebra and developmental math. In addition, he taught math at Delaware Technical

and Community College.

Robell brings experience to his position from the engineering field as well as management skills in budgeting, planning and personnel management, honed while serving in the United States Navy and working at Johnson & Johnson.

The Newark resident received a master's of business administration degree from the Merrick School of Business at the University of Baltimore. Robell earned a master's degree from the University of Maryland and a bachelor's degree from the United States Naval Academy, both in aerospace engineering.

IN THE NEWS

# Kaufman gives Senate papers to university

The University of Delaware has added the U.S. Senate papers and archives of Sen. Theodore "Ted" Kaufman (D-Del.) to its collection of political papers that spans more than two centuries.

Kaufman, whose two-year Senate career concluded on Nov. 15 when newly elected

U.S. Sen. Chris Coons (D-Del.) was sworn in, joined UD President Patrick Harker and Susan Brynteson, vice provost and May Morris Director of Libraries, to sign the official papers during a ceremony held on Tuesday, Nov. 23, in the President's House on the UD campus.

"I just want to say that this is a great day for me and my family and my wife, Lynne," Kaufman said. "The University of Delaware is a great university, and I hope my papers will help."

Appointed to fill the term of former U.S. Sen. Joseph R. Biden, Jr., who resigned in November 2008 to become vice president of the United States, Kaufman said his gift to UD reflects an old African proverb -- "When an old man dies, it is like a library burning."

"I think that when you reach my age, one of the things you are trying to do is to use that library in any way you can," Kaufman said. "Hopefully, in 71 years I have learned a thing or two. That is why I enjoy teaching and that is why I enjoyed my two years in the Senate."

Kaufman added a light touch to the signing when he noted that "I don't know where

to start in terms of how many great schools and scholars you have here at UD. Not only that, but the [UD] Board of Trustees was smart enough to make an engineer president, an engineer who was also at Wharton."

In welcoming Kaufman and the 40 guests who attended the signing ceremony, Harker noted that the University has enjoyed "an incredibly warm and close relationship with the senator, and we're thrilled that his papers will have a home here."

"UD's political profile has risen dramatically in the last couple of years, and we have notable alumni in positions of considerable influence and power," Harker said. "Our Center for Political Communication is serving as a national resource for research on the role of new media in politics and policy. Sen. Kaufman's papers will only enhance our reputation as a political presence and as a resource for

political scholarship."

Harker also said future students, faculty and researchers outside of UD will be able to access the Kaufman papers that will enhance the already substantial collection of political materials housed in the Special Collections Department of the UD Library.

"Special Collections are a defining attribute of any good research institution and research library, and the University's are a unique and vital resource," Harker said. "Our collections feature materials of enduring importance, and we're thrilled that Sen. Kaufman's papers will now be a key attraction there."

Brynteson noted that the papers will join the rich content of papers and archives of elected officials that reside in Special Collections.

"The University has a strong commitment to the rich content of papers and archives of elected officials for schol-

arly research," Brynteson said. "The Sen. Edward E. Kaufman Papers and Archives will join the congressional papers of Delaware U.S. Sen. Thomas R. Carper and former Delaware U.S. Sens. John J. Williams and J. Allen Frear Jr., among others, also in the UD Library,"

The Kaufman materials include papers and other records in multiple formats, including written, recorded, electronic, media, web pages and more from his service in the Senate, Brynteson said.

"Given that such a large percentage of the senator's materials are in the electronic format, this will bring new challenges and opportunities to the library as it prepares the materials for scholarly research," Brynteson said. "The library will process, conserve and make available the senator's papers, with a projected availability date of January 2013."

A reception followed the signing ceremony.

## Wine tasting aids Flower Market

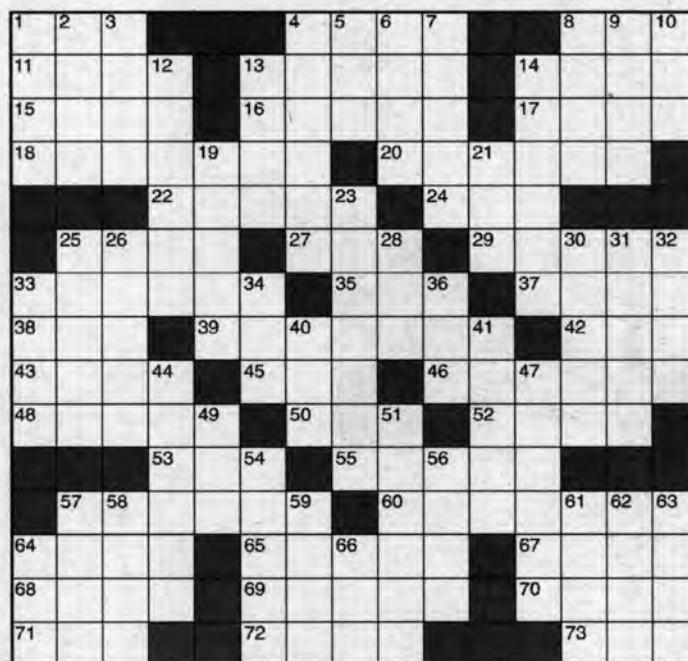
A Wine Tasting, Bring Cheers to Delaware's Children, was held last month at Deerfield Fine Wines in Newark, to benefit the Wilmington Flower Market, Delaware's largest children's charitable organization.

In attendance was the Mayor of Newark, Vance A. Funk, III. Also in attendance was Roger Morris, acclaimed author and blogger on wine, who offered his expertise and refined palate to the event. Dean Cesario of Deerfield Fine Wines, host of the event, offered his guidance on the characteristics of many of the labels in selection of wines. Many Flower Market volunteers and supporters as well as wine enthusiasts from the area enjoyed learning and discovering the distinctions among wines.

Karen Laughlin, this year's General Chairman of the Wilmington Flower Market, said: "It was wonderful to see so many people come out to enjoy the Wine Tasting. I'm sure many of the guests left with a much

higher appreciation for the distinctions in wines from different regions and vintages, and many bought new labels. Each bottle purchased during the event included a contribution to the Flower Market. Thanks again to Mayor Funk for stopping in, and Roger Morris, author and blogger on fine wines."

Donations and raffle proceeds, along with a percentage of sales during the event donated by Deerfield Fine Wines, contributed to the Wilmington Flower Market and its mission of raising funds to support Delaware's children.



## THE POST STUMPER

### ACROSS

1. You're Getting to \_\_\_ Habit with Me (2 wds.)
4. Exclamation of relief
5. \_\_\_ Bones
11. "The Art of Love" poet
13. Petrarch's inspiration
14. Spydrom surname
15. Change over
16. Torpid
17. Egyptian sun god
18. Scared stiff
20. Arguments
22. Jason's enchantress
24. Bear or bunny
25. \_\_\_ is that music... (Keats)
27. Dirt road feature
29. Kingdom
33. Editor Steinem
35. Prevent speech
37. Leo's sound
38. Marker letters
39. Graduate
42. Pumpemickel's kin
43. Hold firmly
45. Supplement, with "out"
46. Coined
48. Teen girls' mag
50. Aim
52. Lacrimal product
53. Poetic contraction

### DOWN

55. Bracing quaff
57. State of extreme lethargy
60. Some chickens
64. Boor
65. Jewish teacher
67. Over again
68. Clinton's third choice for A.G.
69. Pamper
70. Gossip purveyor
71. Homage
72. School attended by Prince William
73. Evening Shade paper boy
19. They may be mixed in a collage
21. Where to find Fin. and Ger.
23. Increase
25. Native plants
26. Jazz trumpeter
28. Basker's goal
30. Body artery
31. Coat
32. Vocal palomino
33. Jobs for musicians
34. Cakes and \_\_\_
36. Kookaburra's tree
40. Godfrey's instrument, for short
41. Type of protest
44. Sham
47. Drink of the gods
49. Slangy agreement
51. Generic horse
54. Like the Vikings
56. Hammer's target
57. Husky's load
58. Stress of voice
59. Oblivious to all else
61. Presently
62. Appetizing reading
63. Gob
64. \_\_\_-Magnon
66. To Kill a Mockingbird character

ANSWERS ON PAGE 6

## DONATE YOUR CAR

to the Outreach Center "Car for Kids" Program

- Free Pick-up and Tow
- Any Model or Condition
- IRS Tax Deductible

Help Kids in Need  
**1-800-601-7171**

**FETTERVILLE SALES**  
SINCE 1960

Post Frame Buildings are:

- More efficient
- Cost less
- Stronger
- More durable
- Have greater flexibility in design

**www.fettervillesales.com**

Agricultural • Commercial • Residential

**800-331-1875**  
Lic. #PA024688

## IN THE NEWS

## Tips for teen drivers offered

This time of year can be a dangerous one for new teen drivers — they'll be on the road after dark, maybe for the first time, driving to school dances and games. This is when the crash risk among teenage drivers is particularly high — during their first months of driving solo. "This is a good time for parents to remind their teens to avoid distractions," said local GEICO representative, John Scharp.

As your teen heads out the door this year, Scharp offers these simple tips to help stay safe on the road:

- Cell phones are for emergency use only on the road — if you have to use your phone, pull safely over to the side of the road.
- Absolutely NO texting.
- Limit your passengers — the risk of fatal crashes increases with every additional passenger.
- Stay focused while driving — avoid distractions such as loud music, eating or interacting too much with friends.
- ALWAYS wear your safety belt.
- Underage drinking and drug use is illegal — driving under the influence of alcohol or drugs can cost you your license — or even your life.



For more information on teens and safe driving, visit John Scharp at his office located at 4565 Kirkwood Hwy. Wilmington,, or call 302-998-9192.

To order teen safe driving materials from GEICO at no cost, visit GEICO's <http://www.geicoteendriving.com>.

## Reindeer run slated for Friday

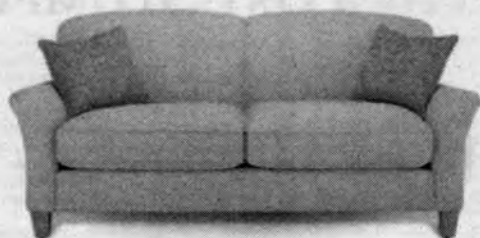
The fifth annual 5K Reindeer Run and Romp to benefit Special Olympics Delaware will be held in conjunction with the City of Newark's Winterfest on Friday, December 3. Race time is 6:30 p.m. Both the 5K race and the 5K walk will begin on Academy Street near the Delaware Avenue intersection and proceed south to Courtney Street. Participants then will run west on Courtney and Ashley Road, north on Chapel Street, west on Wyoming Road and South on Duke Street. Runners will then take the James Hall trail back to Academy Street and head north to the finish line, located near the start of the race. A unique feature of both events is a luminary-lit course to guide



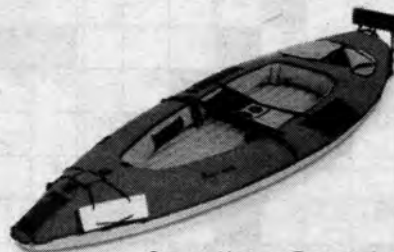
the participants. Employees from Bank of New York Mellon will join University of Delaware sororities, fraternities and other community organizations to line the course providing encouragement. The entry fee for runners and walkers is \$20 for pre-regis-

tered participants, \$25 day-of, and includes a long-sleeve event T-shirt, discount coupons for Main Street merchants and post-event refreshments. Last year's event had over 750 participants raise over \$27,000 for Special Olympics Delaware.

Visit us online at [www.newarkpostonline.com](http://www.newarkpostonline.com)



Furniture



Sporting Goods



Real Estate



Pets...and more!

# Click Shop Smile

*Open Twenty-four Hours*

**Chesapeake  
Classified.com**



# Posted

8 AM  
5 PM **800-220-3311** 410-398-1230



ANNOUNCEMENT



ANNOUNCEMENT

## NOTICES

### GUN & KNIFE SHOW

Tall Cedars Building, at Putty Hill Shopping Center in Parkville, MD  
Dec 11 & Dec 12  
Sat. 9-4 Sun 9-3  
500 trade tables  
Admission \$7  
717-697-3088

### PUBLIC NOTICE



View Public Notices from around the State of Maryland, visit:  
www.publicnoticeads.com/md

## New Today

**Showboat Casino**  
Sat, 12/11 depart from Peoples Plaza 10a for Atlantic City \$35, \$25 back 410-275-1222

## ADOPTIONS

**WE ARE A LOVING** Childless couple wishing to adopt and nurture along an infant or young child. Medical and legal expenses paid. Let's help each other. Please call Debbie and Dan 855-255-BABY (2229)

## LOST & FOUND

**FOUND: POSSIBLE ROTTWEILER MIX** Young male, black & tan. Very friendly. Found on Catswamp Rd in Elkton (near Barksdale) 410-398-9430

**LOST CAT** near Zion. Young Calico female, recently spayed. Still has scar on tummy. Her name is Cally. 410-920-2606 or 2608



EMPLOYMENT

### PLUMBING MECHANIC

J.F. Sobieski Mechanical Contractors of Wilmington, Delaware is searching for an experienced Plumbing Mechanic for the Cecil County and Northern Baltimore Area of Maryland.

The successful candidate will have a minimum of five years experience and must successfully pass a pre employment background check and drug screening. Please submit your resume to

ajenkins@sobieskiinc.com



EMPLOYMENT

## HELP WANTED FULL-TIME

## New Today

**KFW/CNA PROGRAM** no HS Diploma or GED req. Call 302-533-6406

**MACHINE OPERATOR & OFFICE ASSISTANT** Tim Plastics 97 N. Leslie Rd, North East, MD

## New Today

**Now Accepting Applications** Management, Hostesses, Waitstaff, Bar Staff, & Kitchen Staff

**MILK BAR**  
801 E. Pulaski Hwy  
Elkton, MD 21921  
**VILLAGE OF ELKTON SHOPPING CENTER**



Call Us Today To Place Your Ad.

Let Chesapeake Classified Work For You!

410-398-1230  
800-220-1230 or  
www.chesapeakeclassified.com



RENTALS

**ELKTON.** Room for rent in house. Full privs. \$500 per mo. 443-207-1378

**Fall Move in Special** \*1/2 off 1st months rent, for qualified applicants **1 & 2 BR Apts** in historic down town North East. \*Rents starting **1br \$695 - 2br \$825 BEACON 410-287-6111**

## New Today

**N. EAST / R SUN** renovated 3Br 2nd flr w/laundry room, new appls & outdoor deck. No pets. Non smkg env. \$1100 + elec sec & lse. 302-593-5330



RENTALS

## New Today

**PERRYVILLE/CECILTON:** accepting applications for Senior Apts. at Perry Villa and Earleton Village. Must be age 62 or handicapped. Rent is 30% of adjusted income. Federal income guidelines apply. Call Betty Davis at 410-778-6000. E.H.O.

## New Today

**Rising Sun 2br, AC.** \$700 mo. + utils & sec. No pets. Non smoking env. 443-553-0099

## HOUSES FOR RENT

## New Today

**Affordable Homes-Elkton / North East** 2-4 BR's Starting at \$975 410 620-1345



RENTALS

**CHES CITY** waterfront rancher rent w/opt buy 3br 2ba 3 car gar. \$2150 No pets 443-309-4450

## New Today

**CHARLESTOWN** 2br, all new flooring, \$750/mo. + util's. No pets 410-398-9779

## New Today

**ELKTON Turnquist TH.** 3br, 1.5ba, bsmt, gas heat, fen yrd. No pets. \$950 mo. + sec. 443-480-0233

## New Today

**Elkton Hollingsworth Manor** 2br. CAC, W/D. No pets. Quiet. \$650 + sec. 410-287-3202

**CLASSIFIEDS**  
410-398-1230  
800-220-1230



RENTALS

## New Today

**ELKTON Turnquist TH.** Super Clean, 2Br newly renovated. \$950 443-466-8666

## New Today

**FAIR HILL.** 3br new carpet/ paint, WD hk up \$925/mo + sec. no pets 410-392-6504

## New Today

**Elkton NEW 3br** split level \$1050/m finished basement

**Old Field** excl., bldr foreclosure \$2650/m opt to buy, 410-398-3447



RENTALS

## New Today

**N. EAST** spacious 3BR 2 BA, Lg kit; CAC; W/D hookup DW; deck \$1,250. 410-287-5277

## New Today

**N EAST 2BR,** lg. yard, quiet area, off st. parking, \$875/mo. + sec. dep. 410-444-2954

## New Today

**NORTH EAST 4Br,** full basement, fenced yard. \$1250 per month 410-287-6572



RENTALS

**PORT DEPOSIT 2br** 2ba, LR, DR kit w/breakfast nook, rear deck front encl patio full basement 1 & 1/2 ac lot in mature neighborhood in country 5 mins from new casino exit 93 on I 95. \$1050/mo + sec dep & oil, non smoking environ, no pets. 410-378-2661

## New Today

**RISING SUN** (Calvert) lg. 3br, 2ba, rancher, w/gar. 1/2 ac, & more no pets Owner agent \$1400/mo + sec 410-398-7160

Classified is the key to more sales.

**81%** of people read the newspaper weekly  
**63%** of people reading news online get information from local newspaper website  
**47%** of people read the newspaper for the ads

The Cecil Whig newspaper is searching for a select few individuals that want to work for the dominant media source in Cecil County. We are looking for people who want to help local business owners grow their business by advertising in our print & online editions.

These advertising consultants will be compensated with a salary plus strong commission plan. Full benefits package is also offered.

If you are interested in a career that will be fulfilling both financially and emotionally, please send us your resume. Send to [hporter@chespub.com](mailto:hporter@chespub.com)

\*Based on statistics from Reynolds Institute

# Who will be the Losers?



Some local and state politicians want to stop putting official notices in local newspapers and instead post them on their own websites. But what about people who don't have Internet access, or just don't want to use the Internet? According to the U.S. Census Bureau:

**Only 35% of Americans over the age of 65 use the Internet.**

**Only 42% of Hispanics use it.**

**Only 50% of African Americans use it.**

If you want to keep legal notices in newspapers where they belong, contact the Maryland-Delaware-D.C. Press Association at [citizen@mddcpress.com](mailto:citizen@mddcpress.com) or call 410-721-4000 ext 12 and leave a message.

**Public Notice in Newspapers Keeping YOU in the know!**

Source: U.S. Census Bureau, Current Population Survey, November 2007. Released June 2009.



RENTALS

**New Today**

**RISING SUN** t/h 3Br, walk out basement. \$1300/ mo. No pets. Debbie 410-658-9558

**New Today**

**TOWN OF PORT DEPOSIT** 3br, water & sewer incl., baseboard heat, w/d hk up, off st parking, no pets \$850 mo. sec. dep. & ref's req. call 410-688-4038

**320 WATERFRONT RENTALS**



**BOZMAN** Newly renovated 2Br, 2Ba cottage. LR / DR, galley kitch, 2 full Ba, w/d, cntrl a/c / ht Non smk env. \$1400 610-649-1041 david england34@hotmail.com

**New Today**

**PORT DEPOSIT** 2br, 2ba condo. 141 N. Main St. Shows well. Ready for immed occupancy. \$1095 mo. Kay Deitz Garceau Realty 410-652-8400

**330 CONDOS FOR RENT**

**New Today**

**NEWARK** Villa Belmont. 1Br. Basic cable incl, enclosed balcony \$790. 302-378-9614

**332 TOWNHOUSE FOR RENT**

**ELKTON** 3Br T/H, 1.5ba, full basement. \$935 per mo + sec. No pets. 410-398-2487

**New Today**

**RISING SUN** 3Br T/H 1.5Ba. Avail 1/1. No pets. \$950/ mo + utils. 410-658-5727

**New Today**

**RISING SUN** Newly renovated 3br, 1.5ba. \$900/mo + sec. Ref's req'd. 717-495-1481



RENTALS

**345 ROOMS FOR RENT**

**ELKTON** small room Full house privileges, must like pets, \$450 per mo 443-617-4621

**ELKTON:** Rooms/eff's. All utilities, HBO included. Weekly rentals. 410-398-3727

**350 To Share**

**CHESAPEAKE CITY** Sunny room for rent on water. \$550 per mo. 443-566-0808

**365 COMMERCIAL RENTALS**

**CECIL CO - Office;** Comm; Warehouse; Industrial. Outside storage 443-553-1517

**New Today**

**NORTH EAST** Salon-retail-office space avail. on Main St. 302-275-0937

**CHESAPEAKE CLASSIFIEDS**  
410-398-1230 800-220-1230  
www.chesapeakeclassified.com



REAL ESTATE

**405 HOUSES FOR SALE**

**ELKTON FSBO.** Perfect starter home. 3Br, 1Ba, full bsmnt, detached grg on 1.6 ac. Public boat ramp nearby. \$225,000 Call 302-521-4374 or 410-920-5383

**New Today**

**Wilmington, DE** 2 apt house, 2502 North Market St, as is, \$40,000 or b/o 443-309-3763

**CLASSIFIEDS**  
410-398-1230  
800-220-1230  
WEBSITE AT  
WWW.CHEESAPEAKE  
CLASSIFIED.COM

**440 LOTS/ACREAGE FOR SALE**

**New Today**

**Rising Sun, MD** 14 ac's, rich soil, perfect setting for farming / home business. \$350K 410-658-6233 /443-907-4745



SERVICES

**520 HOME IMPROVEMENT SERVICES**

**K. Spencer Home Improvements, Inc.**  
When Quality Comes First!

- Painting
- Garages
- Basements
- Kitchens & Baths
- Additions
- Crown Molding
- Porches
- Window / Door Replacement

**FREE ESTIMATES**  
**REFERENCES LICENSED & INSURED**  
No Job too small  
MHIC#127618  
**410-378-9219**

**ANY WAY YOU LOOK AT IT, CHESAPEAKE CLASSIFIED CAN WORK FOR YOU!**

**440 LOTS/ACREAGE FOR SALE**

**New Today**

**Rising Sun, MD** 14 ac's, rich soil, perfect setting for farming / home business. \$350K 410-658-6233 /443-907-4745



MERCHANDISE

**602 ANIMALS/PETS**

**2 JACK RUSSELL TERRIERS** 1 males short haired, 1 female wire hair, 5 yrs old. Have all papers & medical records. \$250 each. 410-245-5545

**3 FEMALE AKC/CKC Pom Pups** In time 4 x-mas. Taking Deposits \$625 ea. Call 717-548-2284

**BLACK LAB PUPS** AKC. First shots. 2 M, 1F. Ready now. \$600 410-482-4127

**BEAGLE PUPS** S&W, good hunting stock. Ready \$100 to \$150. 302-335-3282

**Beautiful Bengal kittens** (F5's) 10 wks old, friendly & sweet. \$600. 410-378-4111



MERCHANDISE

**CANE CORSO - BULL MASTIFF PUPS** 3M, 3F, tails docked, dewclaws done, 1st shots, wormed. Ready 1st week Dec. \$600. Call 410-920-8937

**DALMATIAN PUPS** for sale, cute & loveable, you can't resist! Champion Bloodline, males only. Call 410-378-9169

**DACHSHUND PUPS:** miniature, AKC reg., champ bloodline, vet checked \$400 Call Dave 410-739-0013

**WWW.CHEESAPEAKE CLASSIFIED.COM**



MERCHANDISE

**New Today**

**GERMAN shepherd** mixed pups. Vet check S&W females \$150 males \$200 717-548-4644 ext 1

**GUARD DOGS!!** German Shepherd Pups, AKC. European bloodlines. S/W. Call 717-786-8358

**KITTENS: ALL AGES** Rescued, affectionate. Spayed, neutered and vaccinated. Please consider adopting rescued kittens rather than encouraging irresponsible pet owners. For more info call 302-834-2859

**WWW.CHEESAPEAKE CLASSIFIED.COM**

LEGAL NOTICE

PUBLIC HEARING SCHEDULED FOR DECEMBER 20, 2010

FY 2010 Annual Plan Amendment Public Hearing Notice

Reference: Firearms Policy Non Smoking Policy

The Newark Housing Authority invites residents and the public to attend a public hearing to discuss changes to the Public Housing Lease and Admissions and Continued Occupancy Policy to incorporate Firearms Policy and Non Smoking Policy. A copy of these policies can be reviewed during business hours from 9:00am - 12:00 noon and from 1:00pm - 4:00pm Monday through Friday. A copy of public hearing notice will be posted for 45 days in the lobby of the Administration Building. All comments be submitted in writing within the 45 day review period. Any comments received resulting in a change will be posted for review. A public hearing is scheduled for Monday, December 20th at 5:30 pm at the Newark Housing Authority's Administration Building located on 313 E. Main Street Newark, DE 19711. np 10/29 - 12/17 2200401

LEGAL NOTICE

Estate of **THOMAS W. MATNEY**, Deceased. Notice is hereby given that **Letters Testamentary** upon the estate of **THOMAS W. MATNEY, aka THOMAS WILLIAM MATNEY** who departed this life on the 17th day of October, A.D. 2010, late of 629 W. CHESTNUT HILL ROAD, NEWARK, DE 19713, were duly granted unto **CHLOIS ILENE KEATLEY, aka ILENE KEATLEY** on October 22, 2010, and all persons indebted to the said deceased are requested to make payments to the **Personal Representative** without delay, and all persons having demands against the deceased are required to exhibit and present the same duly probated to the said **Personal Representative** on or before **June 17, 2011** or abide by the law in this behalf.

Address  
**CHLOIS ILENE KEATLEY**  
441 CAUSEY ROAD  
VASS, NC 28394

**Personal Representative**  
**CHLOIS ILENE KEATLEY, aka ILENE KEATLEY**  
File #149391

np 11/26,12/3,10 2206275

LEGAL NOTICE

**SHERIFF'S SALE**  
By virtue of a writ of #10-019118 (103) PARCEL NO. 11-020.20-113 PROPERTY ADDRESS: 2 Falkirk Court, Newark, DE 19702  
All that certain piece, lot or tract or land designated Map/Tax Parcel 11-020.20-113 addressed 2 Falkirk Court, being Lot 49 as shown on a record major land development plan recorded in and for New Castle County on Microfilm 13522, for the Deerborne Woods Subdivision, situated Pencader Hundred, New Castle County, the First State; Delaware, being more particularly located by the following metes and bounds description, written by the PELSA Company, Inc., Land Consultants and Surveyors, in accordance with the location given for Lot 49, as shown on said record plan above, thus bounded and described to wit.  
BEING the same lands and premises which Handler Builders, Inc. by Deed dated May 31, 2005 and recorded in the Office of the Recorder of Deeds, in and for New Castle County and State of Delaware, in Instrument Number 20050606-0054056, did grant and convey unto Diana M. Nakirigya.  
**SEIZED AND TAKEN IN EXECUTION AS THE PROPERTY OF DIANE M. NAKIRIGYA**  
**TERMS OF SALE: 10% DOWN AT TIME OF SALE. BALANCE DUE ON OR BEFORE JANUARY 17, 2010.**

np 12/3,10 2206138

CITY OF NEWARK DELAWARE PUBLIC HEARING NOTICE

December 13, 2010 - 7:00 PM

Pursuant to Chapter 27-21(b)(2)(e) of the City of Newark Subdivision and Development Regulations, Notice is hereby given of a Public Hearing in the Council Chamber, Newark Municipal Building, 220 Elkton Road, on Monday, December 13, 2010, at 7:00 pm., at which time the Council will consider the request of Liborio Louviers LLC, for a revision to the approved subdivision agreement for The Shoppes at Louviers, Parcel A, Paper Mill Road, Newark, Delaware, in order to modify certain deed restrictions to permit the sale of beer and spirits in the wine-only package store (Deerfield Wines).  
**ZONING CLASSIFICATION - BB (Business)**

Patricia M. Fogg, CMC  
City Secretary

np 11/26,12/3 2204283

THE COURT OF COMMON PLEAS FOR THE STATE OF DELAWARE IN AND FOR NEW CASTLE COUNTY

IN RE: CHANGE OF NAME OF **RENEE DEIRDRE OGARO** Petitioner(s)  
TO **RENEE DEIRDRE OCHIENG**  
NOTICE IS HEREBY GIVEN that **RENEE DEIRDRE OGARO** Intends to present a Petition to the court of Common Pleas for the State of Delaware in and for New Castle County, to change his/her name to **RENEE DEIRDRE OCHIENG**  
**BRIAN D. OCHIENG**  
FOR THE MINOR **RENEE DEIRDRE OGARO**  
Petitioner  
Dated: 11-17-10  
np 11/26,12/3,10 2206420

Estate of **PHYLLIS K. FAUCETT**, Deceased.

Notice is hereby given that **Letters Testamentary** upon the estate of **PHYLLIS K. FAUCETT, aka PHYLLIS KATHRYN FAUCETT** who departed this life on the 15th day of September, A.D. 2010, late of 303 MERIDEN DRIVE, NEWARK, DE 19711, were duly granted unto **MICHELE K. FAUCETT** on **SEPTEMBER 30, 2010**, and all persons indebted to the said deceased are requested to make payments to the **Personal Representative** without delay, and all persons having demands against the deceased are required to exhibit and present the same duly probated to the said **Personal Representative** on or before **MAY 15, 2011** or abide by the law in this behalf.

Address  
**MICHELE K. FAUCETT**  
303 MERIDEN DRIVE  
NEWARK, DE 19711

**Personal Representative**  
**MICHELE K. FAUCETT.**  
File # 149238

np 11/26,12/3,10 2197246

**CECIL WHIG CLASSIFIEDS**  
410-398-1230 or 800-220-1230  
WEBSITE AT  
WWW.CHEESAPEAKECLASSIFIED.COM

Visit one of these local dealers and drive home happy!

**VOLKSWAGEN**  
**Smith**  
VOLKSWAGEN, LTD.  
4304 Kirkwood Highway,  
WILMINGTON, DE  
302-998-0131  
Drivers wanted™

Contact **Laurie To Advertise HERE**  
410-398-1230  
800-220-1230  
Lamici@chespub.com

REACH OVER 50,000 READERS WEEKLY!  
Call Laurie at 800-220-3311 to Advertise Here!



**MERCHANDISE**

**KITTENS** (2) male, 11 weeks old. Free to good homes only. 443-987-5900

**KITTENS** Free to good homes. 8 weeks old. Gray & black stripe 410-838-3994

**LABRADOR PUPPY** yellow male, 2 vaccinations, 2 worm treatments, Vet checked, AKC registered born September 17, 2010, mother & father are family owned. \$600 to \$400 443-553-2756

**PUG PUPS.** 2 males fawn w/black, AKC cert., & Liter cert. S&W. \$450 ea. 443-299-9356 Accepting deposits, pick up by 12/17. email or fireflie28@yahoo.com

**Previously rescued,** calico cat, indoor / outdoor, approx 1 1/2 yrs old, **free to good home 443-466-1670**

**RESCUED KITTENS** need good homes. Beautiful, sterilized and vaccinated. Small adoption fee gratefully accepted. 410-920-5435.



**MERCHANDISE**

**SIBERIAN Husky** puppies 5 males white w/ blue eyes. 1st shots & wormed. \$425 410-287-7995

**TOY RAT TERRIER PUPPY.** Chocolate & white, UKC reg. parents 10lbs. 1st shots. \$375. 410-378-9339

**HORSES/TACK/ EQUIP./SUPPLIES**

**15" BROWN B Bar B saddle** in very good condition. \$200 firm. 410-378-3621

**APPLIANCES**

**ASKO** White apartment sized washer & T700 Butterfly Dryer \$300 443-207-2421

**ELECTRIC RANGE** Whirlpool Gold 30". Black. Glasstop, convection cooking, Accubake, steam-clean. Never used! \$500 443-207-2421



**MERCHANDISE**

**HALF PINT** Microwave, w/ carousel, \$20. Call 410-392-2707

**KENMORE REFRIG.** 18 cu ft. Top Mount 9 months old \$150.00 410-658-2390

**REFRIGERATOR** KitchenAid Superba stainless steel side by side \$400 443-207-2421

**WASHER, DRYER, FRIDGE.** \$125 ea. Can deliver. Also repairs. 443-622-7562

**ELECTRONICS**

**NUMARK** stereo equalizer. 20 band. Exc. cond. \$50. Joe 443-798-5416



**MERCHANDISE**

**FURNITURE/ FURNISHINGS**

**3 PC RATTAN GLASS TOP TABLE SET** & 2 chairs, table w/ shelf \$150. or b/o 410-378-2872

**RECLINE, RELAX & RESELL**

**DARK OAK** laminate, full size bed rm set headboard, dble dresser, w/mirror & chest \$150 or b/o 410-378-2872



**MERCHANDISE**

**QUEEN SOFA SLEEPER** in excellent condition (84x35½), to include solid oak in front, solid wood end tables (2) 27x21½ with storage underneath to include coffee table with solid wood that turns (40Lx27). All in excellent condition. The entire price for ALL is \$350 410-638-2444 located in Bel Air, MD.

**WOW!**

**WWW.CHESAPEAKE CLASSIFIED.COM**

**CHILDREN/ BABY ITEMS**

**IKEA CHILD'S table** with 2 chairs. \$25. 410-398-5909



**MERCHANDISE**

**A-1 Seasoned Firewood,** oak & other quick delivery, full cord \$185, 1/2 cord \$115 410-392-5175

**FREE WOOD U cut,** u haul. Conowingo area. 321-243-8503

**WOOD boiler/ furnace.** Indoor / outdoor Greenwood 200. 10,000 sq ft heating cap. New, never used. \$5800. 610-932-4354

**WOODSTOVE** 30"x 24". Like new. \$300. 410-679-6809

**GENERAL MERCHANDISE**

**2 Eagles logo caps** \$7 each 610-932-3332



**MERCHANDISE**

**DOLLS (40)** Beautiful! From a lady's collection. \$25 each. 410-939-3902

**ELECTRIC MEAT BAND SAW** Biro model 33. 220V. Extra blades, good working cond. \$500. Please call 410-378-3032

**HO SLOT CARS.** Never run. Mint. (4) for \$50. Joe in Perry Hall 443-798-5416

**INSULATED HIP Boots-Size 9** \$45 Call 410-398-5814

**IONIC BREEZE** air purifier. Like new. (2) for \$50. 410-398-5909

**JAPANESE ANIME** Wall Scrolls (4) excellent condition \$5 each 410-836-7069



**MERCHANDISE**

**LARGE BOXES** of paper products- food storage containers, drink cups, plastic champagne cups, etc. \$10 per large box. Call 410-620-3171

**LARGE** framed sofa picture. Professionally framed & matted pd. \$300 asking \$50 obo. 717-456-6116

**WWW.CHESAPEAKE CLASSIFIED.COM**



**MERCHANDISE**

**LADIES CAR COAT** New with tags. Brown with dark brown fur 2X \$30 410-920-0577

**CALL OR EMAIL CHESAPEAKE CLASSIFIED** 800-220-1230 410-398-1230 www.chesapeakeclassified.com

**LEGAL NOTICE**

THE COURT OF COMMON PLEAS FOR THE STATE OF DELAWARE IN AND FOR NEW CASTLE COUNTY IN RE: CHANGE OF NAME OF VINITHA PERIYADAN KADINHAPALLY Petitioner(s) TO VINITHA NAMBIAR NOTICE IS HEREBY GIVEN that VINITHA PERIYADAN KADINHAPALLY Intends to present a Petition to the court of Common Pleas for the State of Delaware in and for New Castle County, to change his/her name to VINITHA NAMBIAR

ISA ALIMATU AMARA Petitioner Dated: 11-29-10 2204398

np 11/19,26,12/3

THE COURT OF COMMON PLEAS FOR THE STATE OF DELAWARE IN AND FOR NEW CASTLE COUNTY IN RE: CHANGE OF NAME OF ISA AUMATU DEMBY Petitioner(s) TO ISA ALIMATU AMARA NOTICE IS HEREBY GIVEN that ISA AUMATU DEMBY Intends to present a Petition to the court of Common Pleas for the State of Delaware in and for New Castle County, to change his/her name to ISA ALIMATU AMARA

ISA ALIMATU AMARA Petitioner Dated: 11-29-10 2208302

np 12/3,10,17

**SHERIFF'S SALE** By virtue of a writ #10-018689 (37) DEC. 14, 2010. Property Address: 20 Sumac Court, Newark, DE. 19702 Tax Parcel No. 09-038.30-209 ALL that certain lot, piece or parcel of land with the building thereon erected, known as 20 Sumac Court, situate in White Clay Creek Hundred, New Castle County and State of Delaware, and being Lot NO. 156 of the subdivision of Summer Hill, Phase II, Microfilm Number 3578 and being more particularly bounded and described in accordance with a recent mortgage in inspection plan dated March 15, 2000 by Zebley & Associates, Inc. BEING the same lands and premises which Stephen R. Minner, by deed later January 5, 2006 in the Office of the Recorder of Deeds in and for New Castle County in Instrument No. 20060203-0012444, granted and conveyed unto Jerrel Morton, in fee. SEIZED AND TAKEN IN EXECUTION AS THE PROPERTY OF JERREL MORTON TERMS OF SALE: 10% DOWN AT TIME OF SALE. BALANCE DUE ON OR BEFORE JANUARY 17, 2010.

np 12/3,10 2206053

**LEGAL NOTICE**

**LEGAL NOTICE**

**SHERIFF'S SALE** By virtue of a writ of #10-019947 (287) DEC. 14, 2010. Parcel No. 09-023.30-377 Property Address: 306 S. Brownleaf Rd., Newark, DE 19713 ALL THAT CERTAIN LOT, PIECE OR PARCEL OF LAND WITH THE BUILDINGS THEREON ERECTED, SITUATE IN WHITE CLAY CREEK HUNDRED, NEW CASTLE COUNTY AND STATE OF DELAWARE, KNOWN AS 305 S. BROWNLEAF ROAD, BEING LOT NO. 281 ON THE PLAN OF BIRCHWOOD PARK, SECTION 2, AS THE PLAN THEREOF IS OF RECORD IN THE OFFICE OF THE RECORDER OF DEEDS IN AND FOR NEW CASTLE COUNTY, DELAWARE IN MICROFILM NO. 73 AND PLAT RECORD 4, PAGE 24, AND BEING MORE PARTICULARLY BOUNDED AND DESCRIBED IN ACCORDANCE WITH A SURVEY PREPARED BY EAST COAST SURVEY, PROFESSIONAL LAND SURVEYORS, DATED JULY 23, 2004, AS FOLLOWS, TO-WIT: BEING THE SAME LANDS AND PREMISES WHICH RALP COLALILLO, BY HIS ATTORNEY-IN-FACT, VICTORIA L. HACKNEY AND ELIZABETH MOODIE AKA ELIZABETH SALE COLALILLO DID GRANT AND CONVEY UNTO MELISSA F. HANLEY BY DEED DATED JULY 23, 2004 AND RECORDED ON JULY 30, 2004 IN THE OFFICE OF THE RECORDER OF DEEDS, IN AND FOR NEW CASTLE COUNTY, STATE OF DELAWARE, IN DEED INSTRUMENT NUMBER 20040730-0083664. SEIZED AND TAKEN IN EXECUTION AS THE PROPERTY OF MELISSA F. HANLEY TERMS OF SALE: 10% DOWN AT TIME OF SALE. BALANCE DUE ON OR BEFORE JANUARY 17, 2010.

np 12/3,10 2206725

**SHERIFF'S SALE** By virtue of a writ of #10-019687 (180) DEC. 14, 2010. Property Address: 1 Coach Hill Drive, Newark, DE 19711 Taz Parcel No. 08-048.30-007 Creek Hundred, New Castle County and State of Delaware, being Lot No. 42 as shown on the Record Resubdivision Plan of Coach Hill, as said Plan is of record in the Office of the Recorder of Deeds in and for New Castle County, Delaware in Microfilm No. 8817 and more particularly bounded and described in accordance with a survey by Welsh Associates, Professional Land Surveyors, dated April 10, 1992. BEING the same lands and premises which Joseph R. Miller, II and Kathleen R. Miller, by Deed recorded November 20, 1995, in the Office of the Recorder of Deeds in and for New Castle County, Delaware, in Deed Record 2013, Page 303, granted and conveyed unto Federal National Mortgage Association, in fee. BEING the same premises which Federal National Mortgage Association, by Deed dated April 18, 1996, and recorded July 1, 1996, in the Office for the Recorder of Deeds in and for the County of New Castle, and State of Delaware in Deed Book Volume 2127, Page 0269, granted and conveyed unto Barbara Ann Dixon, grantor/mortgagor herein. SEIZED AND TAKEN IN EXECUTION AS THE PROPERTY OF BARBARA ANN DIXON TERMS OF SALE: 10% DOWN AT TIME OF SALE. BALANCE DUE ON OR BEFORE JANUARY 17, 2010.

np 12/3,10 2206560

**SHERIFF'S SALE** By virtue of a writ of #10-019328 (151) DEC. 14, 2010. Property Address: ALL that certain piece, parcel or tract of land situate in the City of Newark, New Castle County, State of Delaware, being known as Parcel 2 of the Fountainview Apartments according to the Administrative Subdivision Plan of Fountainview Apartments as prepared by McBride & Ziegler, Inc. plan no. 20033867; recorded in the Office of the Recorder of Deeds in and for the New Castle County on Instrument No. 20070606-0050757, and being more particularly bounded and described as follows, to with:

Lot#	Parcel#	Address
1	1803300080C0001	2 Fountainview Dr., Newark
2	1803300080C0002	4 Fountainview Dr., Newark
3	1803300080C0003	6 Fountainview Dr., Newark
4	1803300080C0004	8 Fountainview Dr., Newark
5	1803300080C0005	10 Fountainview Dr., Newark
6	1803300080C0006	14 Fountainview Dr., Newark
7	1803300080C0007	16 Fountainview Dr., Newark
8	1803300080C0008	18 Fountainview Dr., Newark
9	1803300080C0009	20 Fountainview Dr., Newark
10	1803300080C0010	22 Fountainview Dr., Newark
11	1803300080C0011	26 Fountainview Dr., Newark
13	1803300080C0013	30 Fountainview Dr., Newark
15	1803300080C0015	34 Fountainview Dr., Newark
16	1803300080C0016	36 Fountainview Dr., Newark
17	1803300080C0017	19 Fountainview Dr., Newark
18	1803300080C0018	17 Fountainview Dr., Newark
19	1803300080C0019	15 Fountainview Dr., Newark
20	1803300080C0020	13 Fountainview Dr., Newark
21	1803300080C0021	9 Fountainview Dr., Newark
22	1803300080C0022	7 Fountainview Dr., Newark
23	1803300080C0023	5 Fountainview Dr., Newark
24	1803300080C0024	3 Fountainview Dr., Newark
25	1803300080C0025	1 Fountainview Dr., Newark
	1803300080	40 Fountainview Dr., Newark

BEING the same lands and premises which Fountainview Newark, LLC, a Delaware limited company, by Deed dated September 28, 2005 and recorded September 29, 2005 in the Office of the Recorder of Deeds in and for New Castle County, Delaware in Instrument No. 20050929-0099846, did grant and convey unto Fountainview Newark II, LLC, a Delaware limited liability company (now known as Corrozi-Fountainview, LLC by amendment to its Certificate of Formation), in fee. SEIZED AND TAKEN IN EXECUTION AS THE PROPERTY OF CORROZI-FOUNTAINVIEW LLC TERMS OF SALE: 10% DOWN AT TIME OF SALE. BALANCE DUE ON OR BEFORE JANUARY 17, 2010.

np 12/3,10 2206341



**MERCHANDISE**

**LAWSON** fastener boxes 8/\$35. Roll-around shop cart, lock drawer \$40. 21/4 ton floor jack \$40. HVLP spraygun NIB \$30. Plastic bedliner, 8ft, 09 Silverado \$75. Clamshell strut spring compressor Snap-on \$35. 65 Mustang l/f fender \$25. 4pc rocker molding \$35. 10 1/2 chew bellhousing \$25. 69 sbc camaro headers \$50. 443-206-1335



**MERCHANDISE**

**WANTED.** Used snow board for son for Christmas. Willing to buy. 443-553-3933

**646 MUSICAL**

**New Today**

**BEAUTIFUL** Spinnet piano with matching storage bench. \$250. 717-456-6116



**MERCHANDISE**

**New Today**

**HARKE 12"** Kick back bass amp, \$350. Fender 12" rumble bass amp, \$200. Fender Champion guitar amp, \$100. 443-206-0321



**MERCHANDISE**

**New Today**

**YAMAHA P65** keyboard. 88 graded hammer keys & more. \$450. 410-963-8791

**WWW.CHEESAPEAKE CLASSIFIED.COM**



**MERCHANDISE**

**660 YARD SALES**

**CHRISTMAS BAZAAR** Sat 12/11 8:30-2 \$25/ table. 302-750-0930 Gauger-Cobbs Middle School @ 50 Gender Rd Newark, DE INSIDE



**MERCHANDISE**

**New Today**

Elkton 482 Blake Rd, Cline Mum Farm Sat, Dec 4, 10a-3pm. Yard / Bazaar sale Baked goods, apple butter, fudge, pillow quilts & much more Please no early birds



**MERCHANDISE**

**Multi Family**

**NORTH EAST 98** Walton Lane Fri 12/3 & Sat 12/4 8a-4p Christmas items, furn., clothing, HH items, CDs and more.



**MERCHANDISE**

**MOVING SALE**

**NORTH EAST 192** Red Point Rd Fri, 12/3 Sat 12/4, Sun 12/5 8am. Furn., exercise equip, bikes & more



**MERCHANDISE**

**New Today**

**SIMPLY SMITTEN** - Elkton- 2 Heather Court in Kensington Court. Saturday Dec 4th, 9am-2pm. Sale featuring unique homemade items for home and children.

**LOST AN ITEM? FOUND AN ITEM?**

It's FREE to run an ad in **Chesapeake Classified!** We have great success in returning lost animals and items to their true owners. Call and place your ad today! **410-398-1230** or toll free **800-220-1230** email to **classads@chespub.com**

**MORSE DELUXE SEWING MACHINE** \$39 or b/o 34533453610-932-3332

**Old baseball cards & Football- WANTED 1973 and older** 302-420-5866

**PORCELAIN MUSICAL** "Little Drummer Boy" Ashton Drake \$40 410-836-7069

**PICNIC TABLE STURDY WOOD 6FT \$40 443-907-7116**

**PAULIN HEATER-COOKER** 9-15,000 BTU \$35 410-398-5814

**New Today**

**TRAINS** & accessories for sale. Dec. 4th & 5th. Dec. 11th & 12th 10am-3pm. 922 Frenchtown Rd Perryville. 443-206-2620

**TIFFANY LOOK** table lamp. Very pretty! \$35 410-920-0577

**VENT-FREE** propane gas fire place set. 1desa comfort glow, reconditioned, still in box. \$50. 410-557-6260

**642 SPORTING GOODS**

**2 BIKES** (1) \$25 & (1) \$35 410-642-0067

**New Today**

**820 ELLIPTICAL** Trainer. 16" stride length, HD fly wheel & brake. Like new. \$200. 410-671-4341

**GUN CABINET** Oak, holds 5 guns. Drawer underneath. Antique. Glass drs w/ lock. \$50 410-287-8278

**SENTRY GUN** safe. Holds 14 guns, excellent condition. \$250. 410-398-7645

**LEGAL NOTICE**

**SHERIFF'S SALE**  
By virtue of a writ of #10-019829 (230) DEC. 14, 2010.  
Parcel No. 09-038.30-044  
Property Address: 515 Sparrow Court, Newark, DE 19702

ALL that certain lot, peice or parcel of land with the buildings thereon erected, situate in White Clay Creek Hundred, New Castle County and State of Delaware, known as 515 Sparrow Court, being Lot No. 229 on the Plan of Country Creek, as the Plan thereof is of record in the Office of the Recorder of Deeds in and for New Castle County, Delaware, and bein gmore particularly bounded and described in accordance with a survey prepared by East Coast Survey, Professional Land Surveyors, dated October 11, 2002, as follows, to-wit:  
Being the same lands and premises which Mark Strouse, did grant and convey unto Michael D. Strouse, by deed dated August 19, 2005 and recorded on August 28, 2005 in the Office of the Recorder of Deeds, in and for New Castle County, State of Delaware, in Deed Instrument 20050826-0086539.  
**SEIZED AND TAKEN IN EXECUTION AS THE PROPERTY OF MICHAEL STROUSE**  
**TERMS OF SALE: 10% DOWN AT TIME OF SALE. BALANCE DUE ON OR BEFORE JANUARY 17, 2010.**

np 12/3,10 2206640

**LEGAL NOTICE**

**SHERIFF'S SALE**  
By virtue of a writ of #10-019002 (82) DE. 14, 2010.  
Property Address: 17 Victoria Boulevard, Newark, DE 19702  
Tax Parcel No. 10-033.30-297

ALL that certain lot, piece or parcel of land with the buildings thereon erected, situate in New Castle Hundred, New Castle County and State of Delaware, known as 17 Victoria Boulevard, being Lot No. 9 on the Plan of Newton Village as the plan thereof is or record in the Office of the Recorder of Deeds in and for New Castle County in Microfilm No. 9855, and being more particularly bounded and described in accordance with a survey by East Coast Survey, dated November 20, 1998.  
BEING the same premises which were conveyed unto the Secretary of Housing and Urban Development in Instrument No. 20040324-0032629 from Michael P. Walsh, Sheriff of New Castle County.  
BEING the same premises which were conveyed unto April Desai in Instrument No. 20040830-0096806 from the Secretary of Housing and Urban Development.  
**SEIZED AND TAKEN IN EXECUTION AS THE PROPERTY OF APRIL DESAI**  
**TERMS OF SALE: 10% DOWN AT TIME OF SALE. BALANCE DUE ON OR BEFORE JANUARY 17, 2010.**

np 12/3,10 2206105

**LEGAL NOTICE**

**SHERIFF'S SALE**  
By virtue of a writ #10-018596 (18) DEC. 14, 2010.  
PARCEL NO. 11-025.10-147  
PROPERTY ADDRESS: 521 LAUREL LANE, NEWARK, DE 19702

ALL that certain lot, piece or parcel of land, with the dwelling thereon erected, known as 521 Laurel Lane, situate in Pencader Hundred, New Castle County and State of Delaware, being Lot No. 80, as shown on the Record Major Subdivision Plan of BARRINGTON, as said Plan is of record in the Office of the Recorder of Deeds in and for New Castle County, Delaware, in Microfilm No. 12961, and being more particularly bounded and described in accordance with a recent survey prepared by A.E.S. Surveyors, dated April 30, 2004.  
BEING the same lands and premises which Srinivasarao Chitikela and Bhavani Allu, by Deed dated May 14, 2004 and recorded in the Office of the Recorder of Deeds, in and for New Castle County and State of Delaware, in Instrument # 20040519-0054601, did grant and convey unto Gregory Alkins and Cindy Alkins.  
**SEIZED AND TAKEN IN EXECUTION AS THE PROPERTY OF GREGORY G. ALKINS AND CINDY L. ALKINS.**  
**TERMS OF SALE: 10% DOWN AT TIME OF SALE. BALANCE DUE ON OR BEFORE JANUARY 17, 2010.**

np 12/3,10 2206040

**LEGAL NOTICE**

**SHERIFF'S SALE**  
The following Real Estate will be exposed for Public Sale at the CITY/COUNTY BLDG. 800 N. French Street, City of Wilmington, New Castle County, Delaware, by Michael P. Walsh, Sheriff, on **TUESDAY the 14TH day of DECEMBER, 2010 at 10:00 A.M.**  
By the virtue of a writ of #10-018560 (13) DEC. 14, 2010  
PARCEL: 10-043.20-062  
ADDRESS: 8 James Court, Newark, DE 19702

ALL that certain lot, piece of land with the buildings thereon erected, situate in New Castle Hundred, New Castle County and State of Delaware, being Lot 18, Building C, as shown on the subdivision Plan of Glendale Town-houses, and being more particularly bounded and described as follows, to wit:  
BEING the same lands and premises Patricia J. Young by Deed dated April 5, 1979 and recorded in the Office of the Recorder of Deeds, in and for New Castle County and State of Delaware, in Deed Book 105, Page 26, did grant and convey unto Bruce Lee Young.  
**SEIZED AND TAKEN IN EXECUTION AS THE PROPERTY OF BRUCE LEE YOUNG**  
**TERMS OF SALE: 10% DOWN AT TIME OF SALE. BALANCE DUE ON OR BEFORE JANUARY 17, 2010.**

np 12/3,10 2205723

**LEGAL NOTICE**

**SHERIFF'S SALE**  
By virtue of a writ of #10-019835 (235) DEC. 14, 2010.  
Tax Parcel No. 11-023.10-185  
Property Address: Two Ravenworth Court, Newark, DE 19702

ALL certain lot, piece or parcel of land with the building thereon erected, situated in Pencader Hundred, New Castle County, and State of Delaware, being designated Lot No. 91 as shown on the Record Resubdivision Plan of Glasgow Pines, as said Plan is of record in the Office of the Recorder of Deeds, in and for New Castle County, Delaware, in Microfilm No. 5352, said lot also known as Ravenworth Court, with a recent survey by The Pelsa Company dated 12-10-99 as follows, to-wit:  
BEING the same lands and premises conveyed to David A. Flores by Dee from Janice Magana and Michelle E. Griner, dated December 16, 1999, and recorded January 6, 2000, in the Office of the Recorder of Deeds, in and for New Castle County and State of Delaware, in Deed Book 2766, Page 187.  
**SEIZED AND TAKEN IN EXECUTION AS THE PROPERTY OF DAVID A. FLORES**  
**TERMS OF SALE: 10% DOWN AT TIME OF SALE. BALANCE DUE ON OR BEFORE JANUARY 17, 2010.**

np 12/3,10 2206649

**LEGAL NOTICE**

**SHERIFF'S SALE**  
By virtue of a writ of #10-019732 (195) DEC. 14, 2010.  
Parcel No. 0805510516  
Property Address: 10 Maryland Avenue, Newark, DE 19711

All that certain lot, piece or parcel of land, with the buildings thereon erected, situate in Mill Creek Hundred, New Castle County and State of Delaware, being Lot No. 4 as shown on the Record Minor Subdivision Plan of the Cox Property, as said Plan is of Record in the Office of the Recorder of Deeds in and for New Castle County and State of Delaware, in Microfilm No. 12981, and being more particularly bounded and described in accordance with a recent survey prepared by North Star Surveys dated May 2000, as follow, to-wit:  
Being the same lands and premises which Jeffrey E. Gross did grant and convey unto Michael Bozzo and Dana Bozzo by deed dated May 24, 2000 and recorded on June 5, 2000 in the Office of the Recorder of Deeds, in and for New Castle County, State of Delaware, in Deed Book 2839 Page 210.  
**SEIZED AND TAKEN IN EXECUTION AS THE PROPERTY OF MICHAEL A. BOZZO AND DANA BOZZO**  
**TERMS OF SALE: 10% DOWN AT TIME OF SALE. BALANCE DUE ON OR BEFORE JANUARY 17, 2010.**

np 12/3,10 2206571

**LEGAL NOTICE**

**SHERIFF'S SALE**  
By virtue of a writ of #10-018770 (61) DEC. 14, 2010  
PARCEL: 11-002.40-211  
ADDRESS: 55 Martindale Drive, Newark, DE 19713

ALL that certain lot, piece or parcel of land, with the buildings and improvements thereon erected, situate, lying and being in Pencader Hundred, New Castle County, State of Delaware, known as Lot No. 323 on a certain plat entitled "Brookside Park, Section M", prepared by Whitman Requardt and Associates, Consulting Engineers, dated May 7, 1953, and being more particularly bounded and described in accordance with a Location Survey Plan prepared by A.E.S. Surveyors, Inc., dated November 17, 1994, as follows, to wit:  
BEING the same lands and premises Nancy Dputy Deed dated March 31, 2008 and recorded in the Office of the Recorder of Deeds, in and for New Castle County and State of Delaware, in Instrument No. 20080408-0023849, did grant and convey unto Erika Deputy.  
**SEIZED AND TAKEN IN EXECUTION AS THE PROPERTY OF ERIKA DEPUTY**  
**TERMS OF SALE: 10% DOWN AT TIME OF SALE. BALANCE DUE ON OR BEFORE JANUARY 17, 2010.**

np 12/3,10 2206073

**LEGAL NOTICE**

**SHERIFF'S SALE**  
By virtue of a writ of #10-018562 (14) DEC. 14, 2010  
PARCEL NO. 09-023.30-010  
PROPERTY ADDRESS: 801 GREENTREE ROAD, NEWARK, DE 19713

All that certain lot or parcel of land with the improvements thereon erected, situate in White Clay Creek Hundred, New Castle County, State of Delaware, comprising Lot No. 22, Block A, known as 801 Greentree Road, on a Plan of HILLSIDE HEIGHTS, Section 1, dated April 30, 1956, prepared by Edward H. Richardson Associates, Inc., Consulting Engineers, and recorded in the Office of the Recorder of Deeds for New Castle County, State of Delaware, in the Plat Record L, Page 3, on June 7, 1956.  
BEING the same lands and premises which Magness & Staib Construction Co. by Deed dated December 6, 1957 and recorded in the Office of the Recorder of Deeds, in and for New Castle County and State of Delaware, in Deed Book G61, Page 201, did grant and convey unto Maurice Edward Park and Rachel A. Park.  
**SEIZED AND TAKEN IN EXECUTION AS THE PROPERTY OF MAURICE EDWARD AND RACHEL A. PARK**  
**TERMS OF SALE: 10% DOWN AT TIME OF SALE. BALANCE DUE ON OR BEFORE JANUARY 17, 2010.**

np 12/3,10 2205791



**MERCHANDISE**

**664 LAWN & GARDEN EQUIPMENT**

**GRASS CATCHER ATTACHMENT**  
for 21" mower. \$10  
410-392-2707

**670 MACHINERY & HEAVY EQUIPMENT**

**New Today**

**FORD 420 LOADER BACKHOE** Very good cond. Gas, high and low range. Used very little. Tires 90%, no oil leaks. Ready to work. Could use paint. \$5,900 410-378-3032

**672 TOOLS**

**7 1/4" sliding compound Miter saw w/ laser track on stand** \$150 410-642-3182

**New Today**

Generac 4kw generator, used less than 1 hour. \$500. 410-557-6260

**680 WANTED TO BUY**

**LOOK**

**WANTED; DIABETIC TEST STRIPS** up to \$18/ box. Cash on the spot. Any kind/ any brand. Unopened will pick up. Debbie 410-820-6540



**TRANSPORTATION**

**815 POWER BOATS**

2008, Tracker 1648 T-Blind Duck Edition. \$5400. Trailer included. Less than 10 hrs. Full Camo- Call 410-827-8080

**LEGAL NOTICE**

**SHERIFF'S SALE**

By virtue of a writ of #10-019945 (286) DEC. 14, 2010.  
Parcel No. 18-013.00-187  
Property Address: 25 Corbit St., Newark, DE 19711

ALL THAT CERTAIN LOT, PIECE OR PARCEL OF LAND SITUATE ON THE NORTHWEST SIDE OF CORBIT STREET, IN THE CITY OF NEWARK, WHITE CLAY CREEK HUNDRED NEW CASTLE COUNTY AND STATE OF DELAWARE, AS FOLLOWS, TO-WIT:

BEING THE SAME LANDS AND PREMISES WHICH DELORES D. HACKETT AS EXECUTRIX OF THE ESTATE OF NAOMI LEWIS DID GRANT AND CONVEY UNTO CARMEN D. HACKETT AND ROSLYN L. HACKETT BY DEED DATED FEBRUARY 23, 2006 AND RECORDED ON APRIL 13, 2006 IN THE OFFICE OF THE RECORDER OF DEEDS, IN AND FOR NEW CASTLE COUNTY, STATE OF DELAWARE IN DEED INSTRUMENT NUMBER 20060413-0034949.

**SEIZED AND TAKEN IN EXECUTION AS THE PROPERTY OF CARMEN HACKETT AND ROSLYN L. HACKETT**  
TERMS OF SALE: 10% DOWN AT TIME OF SALE. BALANCE DUE ON OR BEFORE JANUARY 17, 2010.

np 12/3,10 2206716

**LEGAL NOTICE**

**SHERIFF'S SALE**

By virtue of a writ of #10-019954 (291) DEC. 14, 2010.  
Property No. 09-027.20-076  
Property Address: 2 Chaucer Drive, Newark, DE 19713

All that certain lot, piece or parcel of land with the improvements thereon erected, situate in White clay Creek Hundred, New Castle County and State of Delaware, known as Lot No. 78, on the Plan of Brookside Park, Section C, of record in the Office of the Recorder of Deeds in and for New Castle County, Delaware, in Plat Book 2, Page 85, and being more particularly bounded and described in accordance with a recent survey by Zebley & Associates, Inc., as follows to-wit:

Being the same lands and premises which Paula E. Hickam did grant and convey unto Paula E. Lander and Benjamin J. Lander by deed dated November 24, 2003 and recorded on January 20, 2004 in the Office of the Recorder of Deeds, in and for New Castle County, State of Delaware, in Deed instrument number 20040120-0008000.

**SEIZED AND TAKEN IN EXECUTIONS AS THE PROPERTY OF BENJAMIN J. LANDER AND PAULA E. LANDER**  
TERMS OF SALE: 10% DOWN AT TIME OF SALE. BALANCE DUE ON OR BEFORE JANUARY 17, 2010.

np 12/3,10 2206732

**LEGAL NOTICE**

**SHERIFF'S SALE**

By virtue of a writ of #10-019922 (276) DEC. 14, 2010.  
Parcel No. 09-038.30-078  
Property Address: 401 Barley Drive, Newark, DE 19702

All that certain lot, piece or parcel of land with the building, thereon erected, situated in City of White Clay Creek Hundred, New Castle County and State of Delaware, being Described as Lot 195 as shown on the Record Major Subdivision Plan of Country CREEK, as the same appears of record in the Office of the Recorder of Deeds in and for New Castle County, Delaware an Microfilm No. 7904, said lot also known as 401 Barley Drive, being more particularly bounded and described in accordance with a recent survey by A.E.S., Surveyors, dated June 02, 2004, as follows, to wit:

BEING the same lands and premises which Linnea M. Keith did grant and convey unto Paul Reese by deed dated August 20, 2004 and recorded on August 24, 204 in the Office of the Recorder of Deeds, in and for New Castle County, State of Delaware in Deed Instrument number 20040824-00093593.

**SEIZED AND TAKEN IN EXECUTION AS THE PROPERTY OF PAUL REESE**  
TERMS OF SALE: 10% DOWN AT TIME OF SALE. BALANCE DUE ON OR BEFORE JANUARY 17, 2010.

np 12/3,10 2206702

**LEGAL NOTICE**

**SHERIFF'S SALE**

By virtue of a writ of #10-019895 (264) DEC. 14, 2010.  
Parcel No. 11-023.20-098  
Property Address: 6 Whitburn Place, Newark, DE 19702

ALL that certain lot, piece or parcel of land, with the buildings thereon erected, situate in Pencader Hundred, New Castle County, and State of Delaware, known as 6 Whitburn Place, and being Lot No. 56, on the Plan of Glasgow Pines, Phase 2, as said Plan is of record in the Office of the Recorder of Deeds in and for New Castle County, Delaware, and being more particularly bounded and described in accordance with a survey prepared by A.E.S. Surveyors, dated February 20, 2007, as follows, to-wit:

BEING the same lands and premises which Brian A. Reid and Robin H. Reid, by her attorney-in-fact, Brian A. Reid, did grant and convey unto Divine Awahmukalah, by deed dated March 15, 2007 and recorded on March 19, 2007 in the Office of the Recorder of Deeds, in and for New Castle County, State of Delaware, in Deed instrument number 20070319-0025717.

**SEIZED AND TAKEN IN EXECUTION AS THE PROPERTY OF DIVINE AWAHMUKALAH**  
TERMS OF SALE: 10% DOWN AT TIME OF SALE. BALANCE DUE ON OR BEFORE JANUARY 17, 2010.

np 12/3,10 2206667

**SHERIFF'S SALE**

By virtue of a writ of #10-019637 (172) DEC. 14, 2010.  
Property Address: 29 Mavista Circle, Newark, DE 19713  
Tax Parcel No. 11-003.10-101

ALL that lot, piece or parcel of land with the buildings thereon, situate in Pencader Hundred, New Castle County, Delaware being designated as Lot 60 as shown on the Record Final Street and Lot Plan of BROOKSIDE PARK, SECTION M, of record in the Office of the Recorder of Deeds in and for New Castle County, Delaware on Microfilm No. Volume 3, Page 52, said lot also known as 29 Mavista Circle.

BEING the same lands and premises which were conveyed to Jack G. White and Dorothy M. White, his wife, by Deed of R. B. & S. Development Corporation, a Delaware corporation, dated September 6, 1960, and recorded in the Office of the Recorder of Deeds, in and for New Castle County and State of Delaware in Deed Book S. Volume 66, Page 301. Thereafter, the said Jack G. White died testate on March 31, 1996, leaving said lands and premises to Dorothy M. White, his wife.

BEING the same premises which Dorothy M. White, by Deed dated January 31, 2003, and recorded February 20, 2003, in the Office of the Recorder of Deeds in and for the County of New Castle, and State of Delaware in Deed Instrument No. 20030220-0021745, granted and conveyed unto Cathy L. Garrett grantor/mortgagor herein.

**SEIZED AND TAKEN IN EXECUTION AS THE PROPERTY OF CATHY L. GARRETT**  
TERMS OF SALE: 10% DOWN AT TIME OF SALE. BALANCE DUE ON OR BEFORE JANUARY 17, 2010.

np 12/3,10 2206513

**SHERIFF'S SALE**

By virtue of a writ of #10-019494 (170) DEC. 14, 2010.  
Property Address: 8 Three Rivers Drive, Newark, DE 19702  
Tax Parcel No. 10-043.30-161

ALL that certain lot, piece or parcel of land, with the building thereon erected, known as 8 Three Rivers Drive, situate in New Castle Hundred, New Castle County and State of Delaware, and being Lot No. 202 of the Subdivision of Wellington Woods, Section One, and being more particularly bounded and described in accordance with a survey by Zebley & Associates, Inc., dated September 25, 1984.

BEING the same premises which Kevin R. Fisher and Theresa M. Fisher, by Deed dated October 9, 1989, and recorded October 11, 1989, in the Office of the Recorder of Deeds in and for the County of New Castle, and State of Delaware in Deed Book Volume 939, Page 211, granted and conveyed unto Eleanor J. Gommer and Barry L. Gommer, grantor/mortgagor herein.

BEING the same premises which Barry L. Gommer (also known as Barry L. Gommer, Sr.) and Eleanor J. Gommer, by deed dated December 12, 2007 and recorded January 8, 2008 in the Office of the Recorder of Deeds in and for the County of New Castle, and State of Delaware in Instrument Number 20080108-0001879, granted and conveyed unto Barry L. Gommer, Sr., and Eleanor J. Gommer, husband and wife.

**SEIZED AND TAKEN IN EXECUTION AS THE PROPERTY OF ELEANOR J. GOMMER AND BARRY L. GOMMER**  
TERMS OF SALE: 10% DOWN AT TIME OF SALE. BALANCE DUE ON OR BEFORE JANUARY 17, 2010.

np 12/3,10 2206387

**SHERIFF'S SALE**

By virtue of a writ of #10-018787 (69) DEC. 14, 2010.  
Property Address: 29 Tiverton Circle, Newark, DE 19702  
Tax Parcel No. 09-034.20-162

All that certain lot, piece or parcel of land with the buildings thereon erected, situate in White Clay Creek Hundred, New Castle County and State of Delaware, known as 29 Tiverton Circle, and being Lot No. 7, Block D, on the Plan of Varlano, said plan being of record in the Office of the Recorder of Deeds in and for New Castle County and State of Delaware in Microfilm No. 940, and being more particularly bounded and described in accordance with a recent survey by AES Surveyors, dated November 7, 2006.

BEING the same lands and premises which Gregory Grimshaw by Deed dated May 30, 2006, and recorded in the Office of the Recorder of Deeds in and for New Castle County, State of Delaware, as Instrument No. 20060530-0051223, did grant and convey unto Larry N. Callo and Cynthia L. Callo, husband and wife, in fee.

BEING the same premises which, by Deed dated November 28, 2006, and recorded November 29, 2006, in the Office of the Recorder of Deeds in and for the County of New Castle, and State of Delaware in Deed Instrument No. 20061129-0112035, granted and conveyed unto Jeffrey B. Street and Pennie M. Scalf, grantor/mortgagor herein.

**SEIZED AND TAKEN IN EXECUTION AS THE PROPERTY OF JEFFREY B. STREET AND PENNIE M. SCAL**  
TERMS OF SALE: 10% DOWN AT TIME OF SALE. BALANCE DUE ON OR BEFORE JANUARY 17, 2010.

np 12/3,10 2206096

**SHERIFF'S SALE**

By virtue of a writ of #10-018699 (42) DEC. 14, 2010  
Property Address: 30 Currant Drive, Newark DE 19702

ALL THAT certain lot, piece or parcel of land with the buildings thereon erected, situate in White Clay Creek Hundred, New Castle County and State of Delaware, known as 30 Currant Drive, Newark, DE 19702 and being Lot No. 32 on the Record subdivision Plan of SUMMER HILL, Phase 1, as said Plan is of record in the Office of the Recorder of Deeds in and for New Castle County in Microfilm No 8737 and being more particularly bounded and described in accordance with a recent survey by David G. Williams, Professional Land Surveyor, Wilmington, DE, dated May 9, 1988.

BEING the same lands and premises which Dennis W. and Rhonda M. Walters by Deed dated January 30, 1998, and recorded in the Office of the Recorder of Deeds in and for New Castle County and State of Delaware, in Deed Book 2396, Page 216 did grant and convey unto Rhonda M. Walters, in fee.

BEING the same premises which Rhonda M. Walters, by Deed dated January 30, 1998, and recorded February 10, 1998, in the Office of the Recorder of Deeds in and for the County of New Castle, and State of Delaware in Deed Book Volume 2396, Page 0218, granted and conveyed unto Harold M. Figgs, Jr. and Rhonda M. Walters, grantor/mortgagor herein.

**SEIZED AND TAKEN IN EXECUTION AS THE PROPERTY OF HAROLD M. FIGGS JR. AND RHONDA M. WALTERS**  
TERMS OF SALE: 10% DOWN AT TIME OF SALE. BALANCE DUE ON OR BEFORE JANUARY 17, 2010.

np 12/3,10 2206067

**LOST AN ITEM? FOUND AN ITEM?**

It's FREE to run an ad in **Chesapeake Classified!**

We have great success in returning lost animals and items to their true owners.



Call and place your ad today!

410-398-1230 or toll free 800-220-1230 email to [classads@chespub.com](mailto:classads@chespub.com)





TRANSPORTATION



TRANSPORTATION



TRANSPORTATION



TRANSPORTATION



TRANSPORTATION



TRANSPORTATION



TRANSPORTATION



TRANSPORTATION

**825 BOATS/OTHER**

**DONATE A CAR, boat, RV or motorcycle** and receive the maximum legal tax deduction. For a FREE evaluation of your potential donation contact the Colonial Chapter of Paralyzed Veterans of America. Qualified donations will be picked up free of charge.  
1-877-280-4581

**878 ANTIQUE AUTOS**

**New Today**  
**1972 MUSTANG** convertible. 351C, auto, solid car, solid restoration. \$25,000 obo. 410-457-0158  
**CLASSIFIEDS**  
410-398-1230  
800-220-1230

**880 AUTOS**

**New Today**  
**CHEVY** Silverado 2500 series '05. 6.0L engine, new tires & brakes Like new. incl's Meyer snow plow, like new. \$10,500 obo. 443-309-1060  
**WWW.CHESAPEAKECLASSIFIED.COM**

**CHEVROLET CORVETTE**  
'98. Garage kept 6 speed in exc. cond. Tuned exhaust. Performance rotors & brakes. New Z06 rims. \$17,000. 410-253-2821, lv. msg.

**CHEVY COBALT SS '07 27K** - Like new. Blue. \$13,500 b/o 410-399-0599  
**DODGE INTREPID '04** Exc mechanical repairs done. No a/c. Runs well. \$1600. Call 302-266-7373  
**RECLINE, RELAX & RESELL**

**Donate a car, boat, RV or motorcycle** and receive the maximum legal tax deduction. For a FREE evaluation of your potential donation contact the Colonial Chapter of Paralyzed Veterans of America. Qualified donations will be picked up free of FREE of charge.  
1-877-280-4581  
**WWW.CHESAPEAKE CLASSIFIED.COM**

**New Today**  
**FORD FreeStyle '05**, 69k mi, 1 owner seats 7, ac, abs, a/b am/fm/cd, new tires tract cont, elec dr seat c/c, \$12,500 410-398-5249  
**CECIL WHIG CLASSIFIEDS**  
410-398-1230 or 800-220-1230  
WEBSITE AT  
**WWW.CHESAPEAKECLASSIFIED.COM**

**Toyota Avalon XLS '00**. 39k, new tires, batt. 1 own, gar. kept, loaded exc cond \$7995 302-545-4152

**HELP WANTED**  
**CHECK OUT CHESAPEAKE CLASSIFIEDS EVERYDAY FOR THAT NEW JOB!**

**833 MARINE SERVICES**  
**WINTER SERVICE** Shrink wrap, storage. Service on Mercury and Yamaha. Call Today 410-827-8080 Chesapeake Whaler-towne.

**845 CAMPERS/POP-UPS**

**17' COACHMAN TRAVEL TRAILER '07**  
Full bath, kitchen with microwave, stove, fridge & freezer. A/C, heat, dual axle, dual batteries, dual LP tanks, solar battery charger, like new awning. Recent MD inspection. \$8,000 443-907-4403  
**REDUCED!!**

**CHECK OUT OUR WEBSITE AT WWW.CHESAPEAKE CLASSIFIED.COM**

**860 AUTO PARTS & ACCESSORIES**  
**1992 CHEVY 2500** truck, 4+4 parts only front + rear, 150 each auto trans 300 454 complete 500. Call Wally 443-466-4665

**New Today**  
**1932 FORD** frame rails and boxing plates and crossbars. New. \$975 410-392-5019  
**(2) TIRES** P/215/70 R15. Brand new. Definity. \$130 for both 443-309-5189

**LEGAL NOTICE**

**SHERIFF'S SALE**  
By virtue of a writ of #10-019278 (138) DEC. 14, 2010.  
**Parcel No. 11-020.20-106**  
**Property Address: 5 Dalton Dr., Newark, DE 19702**  
ALL that certain lot, piece or tract of land, situate and lying in the County of New Castle and State of Delaware being more particularly described as Parcel No. 11-020.20-106.  
BEING the same lands and premises which Tanya A. Jenkins did grant and convey unto Tanya A. Jenkins and Larry G. Jenkins by deed dated November 14, 2005 and recorded on November 14, 2005 in the Office of the Recorder of Deeds, in and for New Castle County, State of Delaware, Deed instrument number 20051114-0116980.  
**SEIZED AND TAKEN IN EXECUTION AS THE PROPERTY OF LARRY G. JENKINS AND TANYA A. JENKINS**  
**TERMS OF SALE: 10% DOWN AT TIME OF SALE. BALANCE DUE ON OR BEFORE JANUARY 17, 2010.**  
np 12/3,10 2206161

**SHERIFF'S SALE**  
By virtue of a writ #10-019304 (144) DEC. 14, 2010.  
**Property Address: 7 Cartier Court, Newark, DE 19711**  
**Tax Parcel No. 08-042.30-232**  
ALL that certain lot, piece or parcel of land, with the buildings thereon erected, situate in Mill Creek Hundred, New Castle County and State of Delaware, known as 7 Cartier Court, being Lot No. 36, on the Plan of Drummond Ridge, as the Plan thereof is of record in the Office of the Recorder of Deeds, in and for New Castle County in Microfilm No. 4214.  
BEING the same lands and premises which Pamela A. Jurga-Hall n/k/a, Pamela A. Jurga by Deed dated September 29, 1999, and recorded October 1, 1999, in the Office of the Recorder of Deeds in and for New Castle County, Delaware, in Deed Book 2719, Page 0339, did grant and convey unto David Berger and Laura Berger, in fee.  
BEING the same premises which David Berger and Laura Berger, husband and wife, by Deed dated April 27, 2004, and recorded April 28, 2004 in the Office of the Recorder of Deeds in and for the County of New Castle, and State of Delaware in deed Instrument 20040428-0047070, granted and conveyed unto Jeffrey Longshaw, grantor/mortgagor herin.  
**SEIZED AND TAKEN IN EXECUTION AS THE PROPERTY OF JEFFREY R. LONGSHAW**  
**TERMS OF SALE: 10% DOWN AT TIME OF SALE. BALANCE DUE ON OR BEFORE JANUARY 17, 2010.**  
np 12/3,10 2206198

**LEGAL NOTICE**

**SHERIFF'S SALE**  
By the virtue of a writ of #10-019784 (220) DEC. 14, 2010.  
ALL that certain lot, piece or parcel of land with the dwelling thereon erected, situate in Pencader Hundred, New Castle County and State of Delaware and known as Lot No. 24, Block F, on the Plan of Robscott Manor, Section One, as said Plan is of record in the Office for the Recording of Deeds in and for New Castle County, Delaware, in Microfilm Record 797, and being more particularly bounded and described in accordance with a survey by East Coast Surveying, dated August 28, 2003, as follows, to-wit:  
BEING the same lands and premises which Robert H. Niggebrugge did grant and convey unto Robert H. Niggebrugge and Deanna Niggebrugge by deed dated July 5, 2005 and recorded on August 9, 2005 in the Office of the Recorder of Deeds, in and for New Castle County, State of Delaware, Deed instrument number 20050809-0079191.  
**SEIZED AND TAKEN IN EXECUTION AS THE PROPERTY OF ROBERT H. NIGGEBRUGGE AND DEANNA NIGGEBRUGGE**  
**TERMS OF SALE: 10% DOWN AT TIME OF SALE. BALANCE DUE ON OR BEFORE JANUARY 17, 2010.**  
np 12/3,10 2206618

**SHERIFF'S SALE**  
By virtue of a writ of #10-019919 (273) DEC. 14, 2010.  
**Parcel No. 11-014.30-001-c517a**  
**Property Address: 517 Cobble Creek Curve, Newark, DE 19702**  
All that certain unit or real property existing under and by virtue of the Unit Property Act of Delaware, known as Unit No. 517A Stones Throw, a condominium, situate in Pencader Hundred, New Castle, Delaware, as said unit is more particularly bounded and described in (1) the Declaration of the party of the first part dated April 16, 1975 and recorded in the Office of the Recorder of Deeds in and for New Castle County, Delaware, in Deed Record I, Volume 90, Page 564, and (2) the Declaration Plan of Stones Throw prepared by Howard H. Richardson Associates, Inc., Consulting Engineers, date March 20, 1975, and recorded in the Office aforesaid, in Microfilm No. 2904.  
Being the same lands and premises which BAJ Enterprises, Inc. did grant and convey unto Katy M. Vogel deed dated 4/23/2007 and recorded 4/24/2007 Office of the Recorder of Deeds, in and for New Castle County, State of Delaware, in Deed Record 20070424-0037020.  
**SEIZED AND TAKEN IN EXECUTION AS THE PROPERTY OF KATY VOGEL**  
**TERMS OF SALE: 10% DOWN AT TIME OF SALE. BALANCE DUE ON OR BEFORE JANUARY 17, 2010.**  
np 12/3,10

**LEGAL NOTICE**

**SHERIFF'S SALE**  
By virtue of a writ of #10-019279 (139) DEC. 14, 2010.  
ALL that certain lot, piece or parcel of land with the dwelling thereon erected, situate in White Clay Creek Hundred, New Castle County and State of Delaware and known as Lot No. 53, Block B, on the Plan of Rutherford, Section One, as said Plan is of record in the Office for the Recording of Deeds in and for New Castle County, Delaware, in Microfilm Record 882, and being more particularly bounded and described in accordance with a survey by Edward H. Richardson Associates, Inc., Registered Surveyors, Newark, Delaware, dated August 1, 1969, to-wit:  
BEING the same lands and premises which Janice Davis-Rogers did grant and convey unto Donte Davis by deed dated February 23, 2007 and recorded on February 27, 2007 in the Office of the Recorder of Deeds, in and for New Castle County, State of Delaware, Deed Instrument Number 20070227-0018615.  
**SEIZED AND TAKEN IN EXECUTION AS THE PROPERTY OF DONTA L. DAVIS**  
**TERMS OF SALE: 10% DOWN AT TIME OF SALE. BALANCE DUE ON OR BEFORE JANUARY 17, 2010.**  
np 12/3,10 2206187

**SHERIFF'S SALE**  
By virtue of a writ of #10-019736 (197) DEC. 14, 2010.  
**Parcel No. 09-040.20-280**  
**Property Address: 1 Radka Drive, Newark, DE 19702**  
ALL that certain lot, piece of parcel of land with the buildings thereon erected, situate in White Clay Creek Hundred, New Castle County and State of Delaware, known as 1 Radka Drive and being Lot No. 609 on the Record Major Subdivision Plan to Salem Woods, Phase III, as said plan is of record in the Office of the Recorder of Deeds in and for New Castle County in Microfilm No. 10150 and being more particularly bounded and described according to a recent survey by East Coast Surveys Professional Land Surveyor, Wilmington, Delaware, dated August 22, 2005, as follows, to-wit:  
Being the same lands and premises which William Blake and Judith Blake, did grant and convey unto Trang P. Nguyen, by deed dated August 26, 2005 and recorded on September 14, 2005 in the Office of the Recorder of Deeds, in and for New Castle County, State of Delaware, in Deed Instrument 20050914-0093706.  
**SEIZED AND TAKEN IN EXECUTION AS THE PROPERTY OF TRANG P. NGUYEN AND LE NGOC NGUYEN**  
**TERMS OF SALE: 10% DOWN AT TIME OF SALE. BALANCE DUE ON OR BEFORE JANUARY 17, 2010.**  
np 12/3,10 2206602

**LEGAL NOTICE**

**SHERIFF'S SALE**  
By virtue of a writ of #10-018591 (15) DEC. 14, 2010  
**PARCEL NO. 09-028.20-203**  
**PROPERTY ADDRESS: 208 TESSA COURT, NEWARK, DE 19713**  
ALL that certain lot, piece or parcel of land, with the building thereon erected, known as 208 Tessa Court, situate in White Clay Creek Hundred, New Castle County, and State of Delaware, and being Lot No. 14 of the Subdivision of Christiana's Brace, Microfilm No. 11082, and being more particularly bounded and described in accordance with a survey by AES Surveyors dated May 14, 2007, as follows, to-wit:  
BEING the same lands and premises which Joseph A. Rayfield and Jeanette Rayfield by Deed dated May 31, 2007 and recorded in the Office of the Recorder of Deeds, in and for New Castle County and State of Delaware, in Instrument Number 20070604-0049755, did grant and convey unto Brent D. Cromer.  
**SEIZED AND TAKEN IN EXECUTION AS THE PROPERTY OF BRENT D. CROMER**  
**TERMS OF SALE: 10% DOWN AT TIME OF SALE. BALANCE DUE ON OR BEFORE JANUARY 17, 2010.**  
np 12/3,10 2206025

**SHERIFF'S SALE**  
By virtue of a writ of #10-019265 (131) DEC. 14, 2010.  
**Parcel No. 09-038.10-338**  
**Property Address: 102 Cannonball Lane, Newark, DE 19702**  
All that certain lot, piece or parcel of land with the buildings thereon erected, situate in White Clay Creek Hundred, New Castle County, Delaware being designated Lot 2 as shown on the record resubdivision plan of Christina Green Phase 3 of record in the Office of the recorder of deeds in and for New Castle County, Delaware on Microfilm No. 10747 said lot also known as 102 Cannonball Lane and being more particularly described according to survey by Associated Engineers & Surveyors, dated April 29, 1992, as follows, to-wit:  
Being the same lands and premises which The First National Bank of Chicago, as Trustee under that certain pooling and servicing agreement for KTC, did grant and convey unto Linda J. Barczak, by deed dated September 20, 2000 and recorded on October 26, 2000 in the Office of the Recorder of Deeds, in and for New Castle County, State of Delaware, in Deed Book 2914 at Page 323.  
**SEIZED AND TAKEN IN EXECUTION AS THE PROPERTY OF LINDA J. BARCZAK**  
**TERMS OF SALE: 10% DOWN AT TIME OF SALE. BALANCE DUE ON OR BEFORE JANUARY 17, 2010.**  
np 12/3,10 2206150

Boss just step out of the office? Now is the perfect time to check out what is in the Chesapeake Classifieds section of your paper or go to [www.chesapeakeclassified.com](http://www.chesapeakeclassified.com)



**LEGAL NOTICE**

**SHERIFF'S SALE**  
By virtue of a writ of #10-019870 (252) DEC. 14, 2010.  
Parcel No. 08-049.30-154  
Property Address: 107 White Fawn Road, Newark, DE 19711  
ALL that certain lot, piece or parcel of land, with the dwelling house thereon erected, situate in Mill Creek Hundred, New Castle County, State of Delaware, being Lot No. 280, Block O, on the plan of MEADOWOOD, SECTION II, as prepared by Mann-Talley, Inc., Civil Engineers and Surveyors, of Wilmington, Delaware, dated May 5, 1960, and recorded in the Office for the Recorder of Deeds, in and for New Castle County, State of Delaware, in Deed Book L75 at Page 335.  
**SEIZED AND TAKEN IN EXECUTION AS THE PROPERTY OF HENRI P. NIGGEBRUGGE AND RICKEL NIGGEBRUGGE**  
TERMS OF SALE: 10% DOWN AT TIME OF SALE. BALANCE DUE ON OR BEFORE JANUARY 17, 2010.

np 12/3,10 2206659

**SHERIFF'S SALE**  
By virtue of a writ of #10-019920 (274) DEC. 14, 2010.  
Parcel No. 10-043.10-738  
Property Address: 12 Kelston Drive, Newark, DE 19702  
ALL that certain lot, piece or parcel of land with the building thereon erected, situate in New Castle Hundred, New Castle County and State of Delaware, known as 12 Kelston Drive, being Lot No. 313 on the Record Resubdivision Plan of Wellington Woods, Sections II & III, as the Plan thereof is of record in the Office of the Recorder of Deeds in and for New Castle County, Delaware in Microfilm No. 10595, and being more particularly bounded and described in accordance with a survey prepared by East Coast Survey, Professional Land Surveyors, dated March 2, 2001, as follows to wit:  
BEING the same lands and premises which Jung Sun Kim did grant and convey unto Martin D. Jones by deed dated March 15, 2001 and recorded on March 16, 2001 in the Office of the Recorder of Deeds, in and for New Castle County, State of Delaware, in Deed instrument number 20010318-0019383.  
**SEIZED AND TAKEN IN EXECUTION AS THE PROPERTY OF MARTIN D. JONES**  
TERMS OF SALE: 10% DOWN AT TIME OF SALE. BALANCE DUE ON OR BEFORE JANUARY 17, 2010.

np 12/3,10 2206696

**LEGAL NOTICE**

**PUBLIC AUCTION  
SENTINEL SELF STORAGE  
1100 Elkton Road  
Newark, DE 19711  
(302) 731-8108**

A Public Auction will be held on Wednesday, 01/12/2011 at 10:00 AM. The contents of the following storage units will be auctioned:  
**Unit 1016** Stephen D. Mendala: bicycle, boxes, office chair, fish tank and stand, misc. household items  
**Unit 3004** Adrine T. Stevenson: boxes, sofa, love seat, coffee table  
**Unit 3015** Christina J. Billie: couch, love seat, shelving, tv stand, big screen tv

**PUBLIC AUCTION  
SENTINEL SELF STORAGE  
200 First State Blvd  
Wilmington, DE 19804  
(302) 999-0704**

A Public Auction will be held on Wednesday, January 12, 2011 at 11:00 AM. The contents of the following storage units will be auctioned:

- Unit # 309:** James Newton- Bags, boxes, books, ladder, pictures, stool, totes
- Unit # 1105:** Karla Coleman- Bags, bed frame, mattress, boxes, table lamp, pictures, speakers, stool, totes, portable TV, plant (tree)
- Unit # 1336:** Keshia Fryer- Bags, kitchen chair, coffee table, tool box, totes, portable TV
- Unit # 6259:** William Janvier - Boxes, ice chest, tool box, totes, fireplace door, camping equipment, air compressor

**PUBLIC AUCTION  
SENTINEL SELF STORAGE  
465 Pulaski Hwy  
New Castle, DE 19720  
(302) 328-5810**

A Public Auction will be held on Wednesday, January 12th, 2011 at 2:00 PM. The contents of the following storage units will be auctioned:

- Unit-#2014-Kenneth Whorl-**Boxes, Chair, Love Seat, Speakers, Kitchen Table, Totes, Toys, TV
  - Unit-# 4128-**April Bungy-Bags, Bed Frame, Box Spring, Mattress, Boxes, Floor Lamp, Lawn Equipment, Totes, Hose, Grill
  - Unit-#140-Charles Hackney-**Bags, Clothing, Suitcase, Lawn Equip.
  - Unit-#128-Lakaisha Oliver-**Bags, Boxes, Totes
  - Unit-#104-Lakaisha Oliver-**Baby Chair, Crib, Bags, Folding Chair
  - Unit-#2035-Stephen Hershberger-**AC, Box Spring, Mattress, Office Chair, Sofa, Entertainment Center, End table, Folding Table, Sink
  - Unit-#119-Jose Salinas-**Boxes, Totes, Vacuums
  - Unit-#4149-Theresa Uhrick-**Bags, Bed Frame, Box Spring, Mattress, Boxes, Entertainment Center
- Sentinel Self Storage  
333 E. Lea Blvd.  
Wilmington, DE 19802  
302-764-6300**

A Public Auction will be held on 1-12-11 at 12:00PM at the above address. All sales are cash only. All sales are final. The units to be auctioned are as follow:

- Unit #10-Carolyn Virginia-**Bags, Boxes, Fan, Hamper, Shelving, Doors, Golf Clubs
- Unit #34-Elizabeth Wilson-**Bags, Boxes, Clothing Closet, Entertainment Center, Fishing Equipment, Ice Chest, Ladder, Microwave, Suitcase, Toys
- Unit #55-Ken Phillips Jr.-**Boxes, Clothing, Computer, Hamper, Mirrors, Stereo, Suitcase, Tool Box
- Unit #74-Diane E. Whittaker-**Boxes, Chest of Drawers, Dresser, Drum Kit
- Unit #67-Oliver Patterson-**Bags, Boxes, Pictures, Suitcase, Snack Table, Totes, Heater, Alcohol
- Unit #98-Shani Butcher-**Baby Chair, Bags, Boxes, Clothing, Suitcase, Totes
- Unit #197-Romaine Boyd-**Boxes, Fan, Hamper, Ice Chest, Pictures, Shelving, Stool, Tool Box, Snow Blower, Pressure Washer, Helmet
- Unit #236-Ronnie Douglas-**Bags, Boxes, Clothing, Totes
- Unit #237-Max Cross-**Bags, Boxes, Ironing Board, Pictures
- Unit #398-Irving L. Brown-**Golf Ball Bag, Plastic Wheel Covers, Hamper, Duffel Bag, Shoes
- Unit #447-Charlotte E. McKinley-**Bags, Bed Frame, Box-Spring, Mattress, Boxes, Kitchen Chair, Rocking Chair, Chest of Drawers, Dresser, Table Lamp, Suitcase, Snack Table, TV, Sword

np 12/3,10 2206952

**LEGAL NOTICE**

**SHERIFF'S SALE**  
By virtue of a writ of #10-019752 (202) DEC. 14, 2010.  
Parcel No. 10-038.30-141  
Property Address: 26 Danbury Drive, Newark, DE 19702

ALL that certain lot, piece or parcel of land, with the buildings thereon erected, situate in New Castle County and State of Delaware, known as 26 Danbury Drive, being Lot No. 131, on the Plan of Wellington Woods, as the Plan thereof is of record in the Office of the Recorder of Deeds, in and for New Castle county in Microfilm No. 4115, and being more particularly bounded and described in accordance with a survey prepared by AES Surveyors, Professional Land Surveyors, dated August 25, 2005, as follows, to-wit: Being the same lands and premises which Gary S. Nitsche, by his attorney-in-Fact Joseph T. Nitsche, Jr., Joseph T. Nitsche, Sr., Joseph T. Nitsche, Sr., by this Attorney in Face Joseph T. Nitsche, Jr. and Vincent L. DeSeta, Jr., by his Attorney-in-Fact Joseph T. Nitsche, Jr. did grant and convey unto Frank Trower and Camela Trower by deed dated September 29, 2005 and recorded on September 30, 2005 in the Office of the Recorder of Deeds, in and for New Castle County, State of Delaware, in Deed instrument number 20050930-0100599.

**SEIZED AND TAKEN IN EXECUTION AS THE PROPERTY OF FRANK L. TOWER AND CAMELA E. TROWER**  
TERMS OF SALE: 10% DOWN AT TIME OF SALE. BALANCE DUE ON OR BEFORE JANUARY 17, 2010.

np 12/3,10 2206607

**SHERIFF'S SALE**

By virtue of a writ of #10-019004 (83) DEC. 14, 2010.  
Property Address: 5030 Stanton Ogle-town Road, Newark, DE 19713  
Tax Parcel No. 09-011.00-016

All that certain lot, piece or parcel of land, with the buildings thereon erected, known as Lot No. 5, situate in White Clay Creek Hundred, New Castle County and State of Delaware, on the Northerly side of the Stanton-Ogletown Road, more particularly bounded and described in accordance with a survey made by Hamea & McLaughlin, Consulting Engineers, dated 1955.

BEING the same lands and premises which Jesse C. Church and Ardelle L. Church, by Deed dated May 6, 1964, and recorded in the Office of the Recorder of Deeds in and for New Castle County and the State of Delaware, in Deed Record Y, Volume 72, Page 294, did grant and convey unto Robert L. Leasure and Kathryn M. Leasure, in fee. BEING the same premises which Robert L. Leasure and Kathryn M. Leasure, by Deed dated October, 1996 and recorded October 24, 2006 in the Office for the Recorder of Deeds in and for the County of New Castle, and State of Delaware in Deed Book Volume 2189, Page 181, granted and conveyed Robert Lewis Leasure, Jr. and Linda M. Leasure.

**SEIZED AND TAKEN IN EXECUTION AS THE PROPERTY OF LINDA M. LEASURE AND ROBERT LEWIS LEASURE JR.**  
TERMS OF SALE: 10% DOWN AT TIME OF SALE. BALANCE DUE ON OR BEFORE JANUARY 17, 2010.

np 12/3,10 2206119

**LEGAL NOTICE**

**SHERIFF'S SALE**  
By virtue of a writ of #10-019356 (165) DEC. 14, 2010.  
Property Address: 1406 Flanders Way, Newark, DE 19702  
Tax Parcel No. 09-030.30-158

ALL that certain lot, piece or parcel of land, with the buildings thereon erected, situate in White Clay Creek Hundred, New Castle County and State of Delaware, known as 1406 Flanders Way, being Lot No. 104, on the Plan of Christiana Village, as the Plan thereof is of record in the Office of the Recorder of Deeds, in and for New Castle County in Microfilm No. 4260.

BEING the same lands and premises which Derrick W. Whetzel and Evette R. Whetzel, by Deed dated June 8, 2001, and recorded in the Office of the Recorder of Deeds in and for New Castle County, State of Delaware, as Instrument No. 20010615-0047392, did grant and convey unto Angela B. Jones, in fee.

BEING the same premises which Angela B. Jones, by Deed dated March 22, 2007 and recorded March 23, 2007 in the Office for the Recorder of Deeds in and for the County of New Castle, and State of Delaware in Deed Instrument Number 20070323-0027620, granted and conveyed unto Melvin C. Hoil, Jr., grantor/mortgagor herein.

**SEIZED AND TAKEN IN EXECUTION AS THE PROPERTY OF MELVIN C. HOIL JR.**  
TERMS OF SALE: 10% DOWN AT TIME OF SALE. BALANCE DUE ON OR BEFORE JANUARY 17, 2010.

np 12/3,10 2206352

**SHERIFF'S SALE**

By virtue of a writ of #10-018698 (41) DEC. 14, 2010  
Property Address: 9 Juniper Drive, Newark DE 19702  
Tax Parcel No. 09-034.40-136

All that certain lot, piece or parcel of land, situate in White Clay Creek Hundred, New Castle County and State of Delaware, known as 9 Juniper Drive, being Lot No. 27 on the record Major Subdivision plan of Raintree Village, as said plan is of record in the Office for the Recording of Deeds in and for New Castle County, Delaware, in Microfilm Record No. 7667 and being more particularly bounded and described according to a recent survey prepared by A.E.S. Surveyors, dated August 28, 2008.

BEING the same lands and premises, which Candant Mobility Financial Corporation, a Delaware Corporation, by Deed dated March 4, 2002, and recorded in the Office of the Recorder of Deeds in and for New Castle County, State of Delaware in Instrument Number 200204030031844, did grant and convey unto James R. Cassity, IV and Jennifer M. Cassity, f/k/a Jennifer M. Lisowski, in fee.

BEING the same premises which James R. Cassity, IV and Jennifer M. Cassity, f/k/a Jennifer M. Lisowski, by Deed dated October 3, 2008, in the Office for the Recorder of Deeds in and for the County of New Castle, and State of Delaware, in Deed Instrument No. 20081010-0067804, granted and conveyed unto Mark Scott and Lauren Scott, grantor/mortgagor herein.

**SEIZED AND TAKEN IN EXECUTION AS THE PROPERTY OF MARK SCOTT**  
TERMS OF SALE: 10% DOWN AT TIME OF SALE. BALANCE DUE ON OR BEFORE JANUARY 17, 2010.

np 12/3,10 2206058

**SELLING YOUR CAR?**

**WE HAVE GREAT PACKAGES FOR AUTOS WITH COVERAGE NO ONE ELSE CAN GIVE YOU!**  
GET YOUR AD IN FRONT OF MORE EYES THAN WITH ANY OTHER LOCAL PUBLICATION.  
**CALL TODAY! 410-398-1230 or TOLL FREE 800-220-1230**  
**EMAIL TO CLASSADS@CHES PUB.COM**



**F & C Amish Structures, Inc.**

after Thanksgiving **sale** **25% OFF**  
All Indoor Furniture

Sale Good Friday, November 24th  
Thru Friday, December 3rd  
Sale valid on all items in stock

**15% OFF** All Outdoor/Lawn Furniture

**5% OFF** Sheds

Special Holiday Hours: Monday Thru Saturday 8:30am-10pm  
1967 Pulaski Highway  
(Across from the Fox Run Shopping Center)  
www.fncamishstructures.com  
**302-836-1976**

Melt her heart.

**Buy 3 Beads  
Get 1 FREE!**  
(Of Equal or Lesser Value)  
Offer expires 12/31/10

**CHAMILIA**  
YOUR LIFE. YOUR STYLE

*The Purr-Fect Gift*

2413-17 Pulaski Highway, Glasgow, DE 19702  
(Located Between Arby's and Wendy's on Rt 40)  
Tues.-Sat. 10-6, Sun. 12-4. Monday closed.  
**302-737-6901**

**CHRISTIANA SKATING CENTER**  
Home of The Best  
Private Birthday Parties

501 CHRISTIANA RD  
NEWARK DE 19713  
302-366-0473

Learn to Skate  
Classes Every Saturday  
9:00 - 9:45  
Beginner to Advanced  
Includes Morning Public  
Session 10:00 - 1:00

**Skate for Free**  
Buy 1 Admission Get 1 Admission Free  
For Any Holiday Skating Session  
Dec. 23rd & 24th and 27th - 31st  
12:00 to 3:00  
28th & 30th from 6:30 to 9:00  
Skate rental additional  
Must present coupon 2010

FULLY STOCKED PRO SHOP - SKATING LESSONS  
BIRTHDAY PARTIES -  
PRIVATE BIRTHDAY PARTIES  
Family Fun For Everyone

**WashCards make great GIFTS!**  
Special 25% Bonus  
added to all cards purchased or reloaded  
November 26 thru December 24, 2010

Stop in or Buy on-line at [elktoncarwash.net](http://elktoncarwash.net)

**Voted #1  
Car Wash**

Quality, convenience, affordable!  
501 North Bridge Street • Elkton, MD 21921  
**410-398-2022**

**The Rendezvous  
Bar & Restaurant**

Purchase a \$20 Gift Card  
& only pay \$15  
while supplies last

**GIVE A HOLIDAY  
Gift CARD**

GREAT Daily Specials! GREAT Menu Selection!  
Live Weekend Entertainment

Visit our website for more information  
[www.thevousrestaurant.com](http://www.thevousrestaurant.com)

362 Front Street, Perryville • 410-642-0045

**ups MAILBAG plus FedEx**  
Copy & Design Center

We Design & Host YOUR WEB SITE  
ONLY \$200 per year. No other FEES

Extended Holiday Hours starting December 4th & including Sunday's  
CLOSED DECEMBER 24TH AND 25TH

Happy Holiday's  
from your friends at  
**Mail Bag Plus & Mail Depot**

We would like to help you make your holidays more festive for  
your friends & families that you are away from.  
WE ARE OFFERING GUARANTEED DELIVERIES  
FOR THE CHRISTMAS HOLIDAY OR IT'S FREE.  
with NO TAX & FREE PACKAGING

Custom Made  
Rubber Stamps  
**\$16 & Up**  
Unique Holiday Gift  
Made while you wait  
in North East

Elkton - Bridge Street  
**410-620-2021**  
North East - Rt 40  
**410-287-5020**

**No Tax & FREE Boxes**  
[www.mailbagplus.com](http://www.mailbagplus.com)

# Four Special Holiday Lunches

It's time to try something truly unique with your friends and co-workers. Perfect for the smaller group gathering. Four special holiday buffets offered for the low price of \$17 per person, and full beverage service available. Call for reservations today, these events sell out quickly. For menus visit our website [www.udel.edu/hotel/holiday.html](http://www.udel.edu/hotel/holiday.html)

**Christmas in the Alps • December 13**  
Seating at noon.

**A UK Christmas • December 14**  
Seating at noon.

**A German Holiday Feast • December 15**  
Seatings at 11 a.m. and 1 p.m.

**A Southern Christmas • December 16**  
Seatings at 11 a.m. and 1 p.m.

The Courtyard  
Newark by Marriott®  
at the University of  
Delaware

400 David Hollowell Drive  
Newark, Delaware  
GPS use 200 New London Road,  
Newark, DE 19711



[WWW.UDEL.EDU/HOTEL](http://WWW.UDEL.EDU/HOTEL) • (302) 737-0900

