

# NEWARK POST

◆ Greater Newark's Hometown Newspaper Since 1910 ◆

100th Year, 29th Issue © 2009

August 7, 2009

www.newarkpostonline.com

Newark, Del.

## Fire companies on parade



PHOTOS BY MATT BASHAM

The Cumberland Valley Fireman's Association held a parade to wrap up their convention in Newark. Shown with antique truck are Aetna Hose, Hook & Ladder Co. Deputy Chief Brian Spicer, Director and Past Chief Jeff Smith and 71-year Senior Member William Frasier. Also attending were North East Md. Fire Co. members Stephanie Bloom, Jeff Isaacs, Andrew Rapczak and Koty Williams.

## Planning body Oks hotel, with conditions

By MARK CORRIGAN

MCORRIGAN@CHESPUB.COM

The Newark Planning Commission tacked on a number of transportation-related conditions, but approved plans for a 101-room Candlewood Suites hotel, in spite of fierce opposition from neighbors.

The commission approved the major subdivision and issuance of a special use permit to SSN Hotel Management LLC for the proposed six-story hotel that will be at the corner of South College Ave. (Route 896) and Welsh Tract Road. A Howard Johnson's hotel, owned by SSN, and a Friendly's Restaurant are cur-

rently located on the property.

Residents of the neighborhoods adjacent the hotel filled council chambers to voice their concerns over a number of issues that included:

- Increased traffic flow on Route 896 and Welsh Tract Road.

- The impact that additional vehicles will have on access to and from the neighborhoods and the adjacent industrial area.

- The possibility of increased crime in the vicinity, and dangers to pedestrians.

Several citizens asked how the area will deal with the trucks and tractors trailers that

See **HOTEL, 2** ▶

## Chef battle coming to Taste of Newark

September's Taste of Newark will take a page from popular cable shows with an "Iron Chef" style Battle of the Chefs.

The popular annual event will also feature offerings from more than 45 Newark restaurants, who will be joined by area wine distributors.

The newest touch will be the addition of chefs from five Newark restaurants who will have one hour to concoct offerings from a secret list of ingredients. The competitors are:

- Eric Aber – Homegrown Café
- Mark Chopko – Courtyard Café at the University of Delaware
- Brad Dawson – Caffè Gelato

- Jason Dietteric – Stone Balloon Winehouse

- Dick Schmidt – Blue Crab Grill

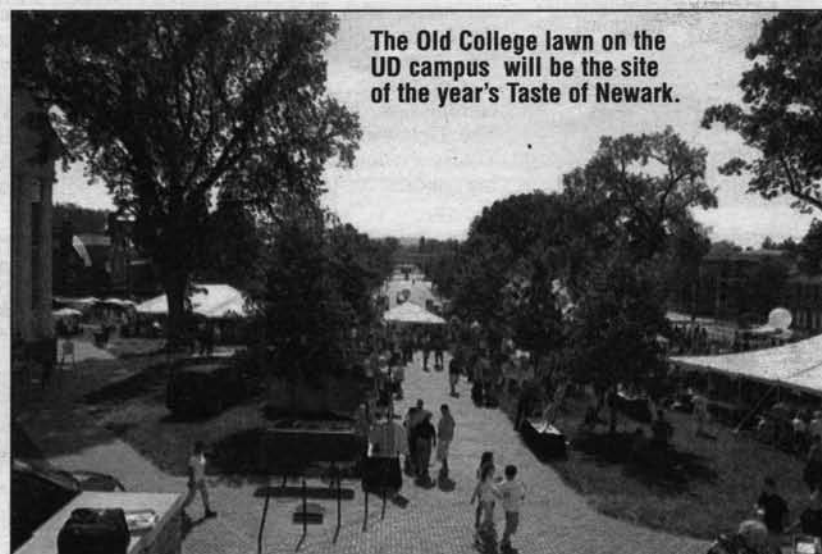
Joining the culinary line up are featured chefs John Ondo of Lana Restaurant in Charleston, S.C. and Matt Haley from Comcast Food Show. Ondo is known for merging fresh ingredients with flavors of the Mediterranean. Haley is Executive Chef at five Delaware beach restaurants.

The 2009 version of the Taste of Newark takes place on Sunday, September 27th from noon to three p.m. on the Old College Lawn, just off Main Street on the University of Delaware campus.

Sponsors say the event could be

even better than last year's dining experience. The event will host more than 1,000 attendees under its white tents. Each person will receive a commemorative wine glass and menu book containing the chefs' menus.

Tickets are now on sale for \$40 and can be purchased at the Taste of Newark office, 273 East Main Street and in the City's Planning and Development Department, 220 Elkton Road. On the day of the event there will be a limited number of tickets available for \$50. For more information call 368-2561 x 12 or visit the Downtown Newark Partnership web page at [www.eat-downtownnewark.com](http://www.eat-downtownnewark.com).



The Old College lawn on the UD campus will be the site of the year's Taste of Newark.

UD PHOTO: KATHY ATKINSON

### INSIDE

## Party like it's 1969

Newark Arts Alliance holds a GrooveFest on Friday..... Page 5



## IN THE NEWS

# Council again dealing with housing, parking

By **MARK CORRIGAN**

MCORRIGAN@CHESPUB.COM

Once again, the City Council is faced with two of the most troubling issues in Newark: parking and housing.

In its meeting last week, council voted to table a proposal to modify the deed restriction on the Holly Woods property, located at 162 S. Chapel Street. Chris Cochran and Lisa Bartolozzi, principals of 162 S. Chapel Street LLC, have requested to increase the number of unrelated tenants to five per unit from four, specified in their original agreement. The Council has granted a 90-day limit to resubmit the request.

Two of the issues at hand are whether there is sufficient room to allow for a redesign of the present floor plan and whether the property can provide enough parking spaces on the site. Presently, each unit is allowed three spaces per unit. Cochran and Bartolozzi are asking for permission to allow four spaces per unit to accommodate the possible 15 additional tenants.

Visit us online at  
[www.newarkpostonline.com](http://www.newarkpostonline.com)

In a departmental review, Planning and Development Director Roy Lopata stated that according to the International Residential Code, "there is sufficient room within each unit to accommodate a fifth bedroom and, therefore, an additional tenant." The report further states that both the Police Department and the Planning and Development Department have concerns about the avail-

ability of on-site parking. According to the review, police have issued 13 parking violations since January, 2008.

While both Mayor Vance Funk and council agree on the good job that Cochran and Bartolozzi have done as landlords, if the measure passes, they fear approval could open up the floodgates for requests from other owners looking to amend their agreements. City

Solicitor Roger Akin was asked to explore the issue and told council members that granting approval is a privilege, not a right. Since each situation is different, it is up to the discretion of the council to review each application on a case-by-case basis, therefore creating a huge backlog for future meetings.

In other news, the council issued the first reading an

amendment that will increase the threshold for property crime misdemeanors from \$1,000 to \$1,500. The increase is in response to Governor Jack Markell's recent signing of legislation and will bring local laws in compliance with the state.

The following sections of Chapter 22, Police Offenses, Code of the City of Newark, Delaware will be amended: Section 22-43, dealing with

Petit Theft; Section 22-49, Misapplication of Property; Section 22-50, Receiving Stolen Property; Section 22-54, Prosecution For Theft and Stolen or Misappropriated Property; and Section 22-58, Unlawful Use of Credit Card.

The second reading for the amendment is scheduled for the August 10 Town Council meeting at 7:30 p.m. at City Hall on Elkton Road.

## Conditions attached to endorsement

### ▶ HOTEL, from 1

use the present parking lot as an illegal u-turn zone. Others stated that the height of the hotel will block their view of Iron Hill. Many referred to the project as an "eyesore" and a "white elephant".

Representatives for SSN Management assured the commission that the project is in agreement with all city building codes and that all criteria have been met.

Conditions, set by the commission, hinge on traffic. The Delaware Department of Transportation is still conducting studies on traffic flow in

and out of the two entrances located at Route 896 and Welsh Tract Road. Additional studies will include the number of cars affected at rush hours and peak off-times, adjustments to the timing of present stoplights, vehicular sight lines around the hotel, and the possible addition of handicap-access ramps, crosswalks, pedestrian signals, sidewalks and yield signs.

Responding to the many complaints from residents, the Planning Commission added several recommendations to the original proposal, such as getting DelDOT to engage in a more comprehensive traffic study of the intersections and traffic points surrounding the



A rendering of the Candlewood Suites project that will be on the corner of Route 896 and Welsh Tract Road.

entire property, the addition of a fence along the Old Cooches Bridge Road side of the site, and a study to ensure the great-

est protection to pedestrians in the area.

Though many voiced opposition to the addition of a new

hotel on this site, City Planner Roy Lopata stated that a project like this should be looked upon in a favorable light, due to the fact that owners are willing to upgrade a present property, and not develop a greenfield site.

The issue, with the commission's recommendations, will be reviewed by the City Council and will be voted on at a future council meeting.

Since the proposed hotel meets zoning requirements, the Planning Commission and Council only have the power to require that the project meets city codes. DelDOT has some authority regarding traffic improvements.



**Escape completely.**



16-day Europe cruise.  
Princess brings you more of Europe.

\* FARES FROM **\$1,195**

- Unequaled dining - Choose traditional or flexible Anytime Dining™
- Unsurpassed Service - Providing an unforgettable escape
- Unparalleled fleet - Big Ship variety with a Small Ship Feel™
- Unforgettable views - More affordable balconies




**PRINCESS CRUISES**  
escape completely.

The Cruise Shoppe  
250 E. Chestnut Hill Road, Suite 2, Newark DE 19713  
**302-737-7220** [www.cruiseshoppe.us](http://www.cruiseshoppe.us)

\*Fares are per person, based on double occupancy, credit only, subject to availability, capacity controlled. Cruise travel agency for more details. Princess reserves the right to require a full registration of up to \$50 per person per day on all passengers if the NYPE or other applicable Princess brochure for terms, conditions and definitions that will apply to your booking. Offer available to residents of U.S. and Canada. ©2009 Princess Cruises. Ships of Britannia and British registry.

**DELAWARE EYE CARE CENTER** Complete Eye Care  
Schedule your appointment today!  
**800-900-2020**



**Gary I. Markowitz, M.D.** Board Certified Ophthalmologist  
**Edward H. Hu, M.D.** Board Eligible Ophthalmologist

Specializing in:

- Cataract and LASIK surgery
- Diabetic and Ocular Disease Management
- Glaucoma and Retina Evaluation and Treatment
- Eyeglasses and Contact Lenses

Accepting Most Insurances

**5 convenient locations to serve you!**

<b>DOVER</b> 832 S. Governors Ave. 674-1121	<b>MILFORD</b> 110 N.E. Front St. 422-5155	<b>NEWARK</b> 333 E. Main St. 368-9105	<b>SMYRNA</b> 10 S. Market St. 653-9200	<b>BEAR</b> 1721 Pulaski Hwy. 836-5410
---	--	--	---	--

[www.delawareeyecare.com](http://www.delawareeyecare.com)

Enjoy the latest Fashion  
with a  
**Minster Design**



Minster Designs  
Crafted in our shop  
Made in America  
Starting at \$100.00

**Minster's**  
of Newark  
jewelers since 1895

Newark Shopping Center, Newark, DE  
302-737-5947

Email: [info@minstersjewelers.com](mailto:info@minstersjewelers.com) Web: [www.minstersjewelers.com](http://www.minstersjewelers.com)



# Opinion

editorials • columns • letters to the editor • out of the attic

## A professor, a policeman, a President

During the presidential campaign, President Obama made his very ambitious national health care plan an essential part of "our future." After being elected, he continued this emphasis and expected to sign the bill into law before Congress took its August vacation. He promised that "no distraction" would get in the way.

Unfortunately his own words were just the distraction necessary to allow Congress to pack their bags without putting anything on his desk. What was going to be a few days problem in Cambridge, Massachusetts, turned into what the media now call a national "firestorm," thanks to his unne-

cessary comments about an "incident" at Harvard.

Professor Gates was having trouble getting into his house in Cambridge — one media version (and by now there are many) is that the professor lost his key and somehow forced his way in. A neighbor saw it — and called another neighbor to tell her, and she called 911.

Sergeant Cowley responded quickly and got to Professor Gates' home where Gates — who knew it was his home — took a very negative view of the ques-

tions the sergeant was asking him and heatedly accused the policeman of "racism."

It could have been kept in Cambridge, but the President was asked his opinion, and he quickly declared that the policeman "acted stupidly" in dealing with his good friend Gates.

Nobody but Gates and the policeman really know what was said between them, but many were the suggestions, guesses, and downright media fibs. It all diverted attention away from health reform. Congress went home to get their constituents' (i.e. voters) opinions before they came down on either side. A significant part of the "must do"

legislation's appeal was at least temporarily lost.

The usually unflappable Obama had let himself distract the public and Congress from his imperative health reform. As one national news magazine put it, he "shoulda stayed out of it!"

The President backtracked — but too late! He called "stupidly" a mere unfortunate choice of words. (You think???) Then he made it worse — he admitted that he spoke "without knowing all the facts." Oh, really?

Congress will not vote on the health reform until September — if then!

See HUMMEL, 5 ▶



Hummel

## OUT OF THE ATTIC



This week's Out of the Attic features an early 1900s view of Steele's Meat Market in its original location on Main Street east of South College Avenue next to the Delaware House. About 1918, this white clapboard building with the neat gingerbread trim was moved westward to a location diagonally across from the Deer Park Hotel. There it served successively as McMullen's and Herman's meat markets. This building and its neighbors were razed to make way for the present University of Delaware parking garage.

The picture is on loan to the Newark Post from the Newark Historical Society collection. The Society is seeking pictures and other artifacts of places, activities, and life styles in the Greater Newark Area. The Newark History Museum has an exhibit in the lobby of the Newark Municipal Building showing glimpses from Newark history.

Contact the Newark Historical Society by voice mail at 302-224-2408, by postal mail to P.O. Box 711, Newark, DE 19715, or by email to [newarkdehistoricalsociety@yahoo.com](mailto:newarkdehistoricalsociety@yahoo.com).

YOUR COLLEGE.  
YOUR FRIENDS.  
YOUR FUTURE.

CECIL COLLEGE

REGISTER NOW

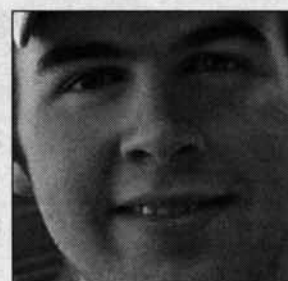
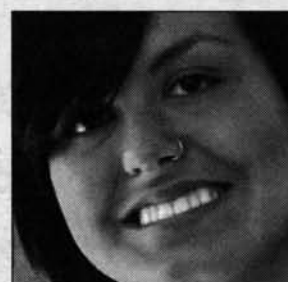
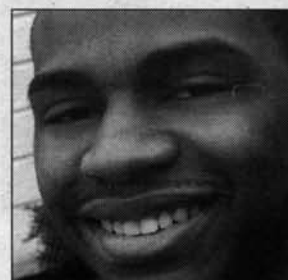
GET STARTED at Cecil in ONE day!

EXPRESS REGISTRATION DAY • North East Campus

August 13, 2009 • 8 a.m. - 7 p.m.

Fall classes begin August 31.

www.cecil.edu • 410-287-1000 Toll Free • 866-966-1001 • TTY • 410-287-2701



REAL STUDENTS.  
REAL SUCCESS.

## NEED A LAWYER?

Offering affordable legal services at 1400 Peoples Plaza, Suite 121 EXPERIENCE COUNTS Over 25 years in practice

- Auto Accidents
- Divorce & Custody
- PFA
- Work Injuries
- Bankruptcy
- Criminal Law/DUI

Our firm's goal is to provide affordable legal services to our clients. We utilize a team approach combining the efforts of experienced paralegals and attorneys, coupled with aggressive, affordable representation, maximizing your recovery, protecting your rights, to provide the most effective personal legal services available.

Rahaim & Saints

ATTORNEYS AT LAW

1400 Peoples Plaza Suite 121 Newark, Delaware 302-832-1800 www.rahaimandsaints.com 2055 Limestone Road Suite 211 302-892-9200

Something terrible happens when you don't advertise...Nothing!  
Call 737-0724 to place an ad.

IN THE NEWS

# Take a trip back to the 60s

Create your own tie-dyed T-shirt—and take a trip back to the '60s with the Newark Arts Alliance. The GrooveFest party will be held Friday, August 7, from 7-11 p.m. at the NAA.

Dyemaster Rich Stevenson will be on hand to teach partygoers how to create a mind-blowing design and then dip the shirt in the colors of their choice. Bring your own tee and

the cost is \$10, or choose a shirt with the NAA logo for \$20.

Also included are live music by the GrooveFest Jam Band, psychedelic body painting, and a "love feast" — just bring a snack or appetizer to share. There is a \$5 cover for this event. Beer and wine will also be sold.

The NAA is closed during regular hours through August 13, while Camp Imagine, the NAA's arts camp for children, is held on-site. Evening events, activities, and meetings will be held.

"Camp Imagine and Friends," a show featuring work by the young artists from the NAA's summer camps and classes, opens Friday, August 14, with a reception from 6-8 p.m. The exhibit runs through August 29.

The NAA is located at 276 East Main Street in the Market East Plaza. Hours are Tuesday, Wednesday & Friday, 11 a.m.-3 p.m.; Thursday, 11 a.m.-7 p.m.; Saturday & Sunday, 10 a.m.-2 p.m., closed Mondays.

The Newark Arts Alliance is a nonprofit organization dedicated to "developing community through the arts." For more information on NAA events, exhibits, and classes, visit the Web site ([www.newarkartsalliance.org](http://www.newarkartsalliance.org)) or call 302-266-7266.



**GrooveFest**

A PARTY TO DYE FOR!  
FRIDAY, AUGUST 7, 7-11PM  
AT THE NEWARK ARTS ALLIANCE  
TAKE A TRIP BACK TO THE '60S!  
CREATE A MIND-BLOWING TIE-DYE SHIRT FOR \$20. LIVE MUSIC BY THE SUNDAY JAM MUSICIANS, PSYCHEDELIC BODY PAINTING AND A "LOVE FEAST" JUST BRING AN APPETIZER TO SHARE. BEER AND WINE WILL ALSO BE AVAILABLE.  
\$5 COVER \* ADULTS ONLY EVENT.

NEWARK ARTS ALLIANCE  
"developing community through the arts"  
276 E. Main St., Suite 102, Newark, DE  
Market East Plaza - Free Parking  
[www.newarkartsalliance.org](http://www.newarkartsalliance.org) 302-266-7266

## A great diversion

► HUMMEL, from 4

Will the opponents of the plan (and they are many) be accused of voting stupidly? And will they counter with "We want the FACTS before we vote!"

To put out the firestorm, the President has invited (ordered) the professor and the policeman to join him at the White House for a "friendly beer."

Meanwhile, those who live (and die!) without medical insurance look past the tankards of foam being shared in the White House by the professor, the policeman, and the President and look forward anxiously to September

## Implant Dentistry

*Something to Smile About!*

An exciting alternative to bridges or dentures. Laugh, talk and eat confidently with teeth that feel and look like your own

**Dr. Barry Kayne, D.D.S.**

Specialist with over 25 years experience

Omega Professional Center  
Suite F-58 • Newark, DE 19713  
Across from Christiana Hospital

**302-456-0400**

Fax: 302-456-0396

[www.delawareperio.com](http://www.delawareperio.com)




#1 THE NUMBER ONE ATHLETIC BRAND IN AMERICA AT THE LOWEST PRICES!

HUGE SELECTION OF LEADING FOOTWEAR & APPAREL BRANDS

**30-60% OFF**

SPORTING GOOD STORES

HAPPENING NOW!

BACK TO SCHOOL ROCKS!

**RUGGED WEARHOUSE**

Big Name Brands At Shocking Low Prices.

**Bowie** - Free State Mall

**College Park** - College Park Shopping

**Frederick** - Prospect Plaza

**Gaithersburg** - Gaithers town Plaza

**Laurel Brockbridge** - Shopping Center

**North Baltimore** - North Plaza Shopping Center

**Pasadena** - Pasadena Crossroads

**Salisbury** - The Commons at Salisbury

**Glasgow** - Summit Bridge Rd.

**Wilmington** - Prices Corner Shopping

Visit us online at [www.newarkpostonline.com](http://www.newarkpostonline.com)

## COMMUNITY NEWS

## Tired of high costs and low returns?

- ▶ Home Insurance
- ▶ Life Insurance
- ▶ Auto Insurance
- ▶ Investments

**Save Money Now.**  
Call Dan at 455-9520.



## Daniel DeFoe

DeFoe-Insurance@Comcast.net  
302-455-9520



Discounts for Delaware State Employees and U of D Alumni

## QUALITY SERVICE YOU CAN DEPEND ON

- Brakes • Auto Inspection • Electrical
- Suspension Systems • Transmissions
- Differential 4x4 • Fuel Injection • Engine Repairs

## PETE'S GARAGE

## FLEET &amp; DIESEL REPAIR

**302-286-6069**

## SERVICING THE BEAR &amp; NEWARK AREAS

Chrysler • Jeep • Dodge Specialist

78 Albe Dr., Newark, DE

[www.fixyourcarnow.com](http://www.fixyourcarnow.com)



**\$10 OFF**  
with this coupon  
Expires 8/31/09

## Local students earn honors

The following students have earned honors at their university or college:

Erica Jackey of Newark was named to the Dean's List for the spring 2009 semester at Washington University in St. Louis. Jackey is a graduate of Archmere Academy and is enrolled in the university's College of Arts & Sciences.

Alyssa Sharkey and Colin McMillan, both from Newark, have made the Dean's List for Franklin and Marshall College's spring 2009 semester. Christian Hartranft and Natasha Loomis, also both from Newark, have made the Honors List for Franklin & Marshall's spring 2009 semester.

## Book published

PublishAmerica announced the publication of Cast Thy Bread upon the Waters: Poems of Inspiration by Rita McKinney of Newark.

"Families and dear friends, I hope that you have enjoyed these poems of inspiration, that through them you have received a message for yourself in each one," McKinney said.

PublishAmerica is a tra-

ditional publishing company whose primary goal is to encourage and promote the works of new, previously undiscovered writers. Books are available through bookstores.

## Summer concert series

Join us for a lively and diverse outdoor concert at the band stage in Carpenter Recreation Area in the White Clay Creek State

Park at 425 Wedgewood Rd., Newark. Bring your picnic supper, blanket, or lawn chairs and don't forget to visit the Friends of White Clay Creek State Park's booth where they will be selling water ice. Concerts generally last from 6:30-8 p.m. Please call the Nature Center at 302-368-6900 for updates or weather delays. August 12 - Scott Bandy and the Texas Heat (country); August 19 - The Draw (60s, 70s, 80s rock).

## "An Evening in the Garden"

Come join the UD College of Agriculture and Natural Resources and the Food Bank of Delaware for an evening in the garden. On August 13 from 5:30 to 8 p.m., enjoy garden-fresh food, fine wine and live entertainment as we celebrate the bounty of the University of Delaware's Garden for the Community (Off Rte. 896 behind the Girl Scouts building in Newark). This event also includes a guest lecture from Carrie Murphy and Anna Stoops, UD Cooperative Extension educators, on the importance of community gardens. Registration is \$25/person which includes dinner, wine and entertainment. Please bring a bag of non perishable goods for Delaware Does more. RSVP by Thursday, August 6 to Kim Kostas at (302) 292-1305 ext 220 or [kkostas@fbd.org](mailto:kkostas@fbd.org). Online registration is available at [www.fbd.org](http://www.fbd.org). For more information about the Garden for the Community, visit <http://ag.udel.edu/communitygarden/index.html>.

## Sports Card &amp; Collectible Show

Sunday, August 16, 10am-3 pm, Aetna Fire Hall, 400 Ogletown Rd., Newark. Admission \$2; ages 12 and under, free. For info, call 302-983-2636 or email [a2zshows1@yahoo.com](mailto:a2zshows1@yahoo.com).

## UD Alumni Night at the Blue Rocks

The University of Delaware Kent/Sussex and New Castle County Alumni Clubs will hold an alumni night event at the Blue Rocks on Friday, August 21, 2009 beginning at 5:45pm. Join UD alumni and the UD New Castle County Alumni Club for College Alumni Night at the Blue Rocks. All attendees are asked to wear UD colors to show their Blue Hen pride. Prior to the game, Blue Hens and friends will gather for a buffet-style dinner in the Blue Rocks Cafe at 5:45 p.m. Food includes BBQ chicken, ham, pasta, top round steak, salad, potato salad and dessert. The Cafe is located on the luxury suite level behind home plate. Registration is \$35/person and includes the pre-game meal and a ticket to the game. For more details & to register: <http://www.udconnection.com/ncc>.

## Simpson, Burns announce engagement



Jennifer Burns Newark, 2006 Graduate of the University of Delaware, daughter of Jim and Leslie Burns of Newark. Curtis Simpson, Middletown, 2008 Graduate of the University of Delaware, son of Carey and John Simpson of Middletown. A fall of 2010 wedding is planned

## Bring In for Special Offer

**50% OFF**  
Rebate On Your First Interest Payment!



**Payday Loans up to \$1,000**

Takes 15 Minutes

JUST BRING IN:

• Valid driver's license • Most recent pay stub • Most recent bank statement • Check Book

Don't let money get in the way of *what you need.*

**EZ LOAN\$**

661 College Square, Newark DE

**(302) 709-3340**

322 Fox Hunt Dr. Bear, DE (302) 834-1800

Not valid with any other offer - New loans only. Only one coupon per 90 days. Payday advances should be used for short-term financial needs only, not as a long-term financial solution. Customers with credit difficulties should seek credit counseling.

Toll FREE: 877-297-0011 • [ezloansdelmarva.com](http://ezloansdelmarva.com)

Get a free rate quote today.

**GEICO**  
Local Office

• Auto • Home • Cycle • Boat • RV  
Licensed in DE, MD, PA and NJ



**302-998-9192**

4565 Kirkwood Hwy • Wilmington, DE 19808

M-F 9-6, Sat. 9-1

Some discounts, coverages, payment plans and features are not available in all states or in all GEICO companies. Motorcycle, ATV and RV insurance are currently not available in some states. Boat and PWC coverages are written through non-affiliated insurance companies and are secured through Insurance Counselors Inc., the GEICO Property Agency, doing business as GEICO Insurance Agency in CA, MA, MI, NJ, NY, OK, SD, UT. Government Employees Insurance Co. • GEICO General Insurance Co. • GEICO Indemnity Co. • GEICO Casualty Co. These companies are subsidiaries of Berkshire Hathaway Inc. GEICO: Washington, DC 20076. ©2009 GEICO

# Sports

high schools • UD • leagues

## Glasgow returns young team to gridiron

By **JON BUZBY**

JONBUZBY@HOTMAIL.COM

"I believe we will have the youngest team in the state," Riley says of his squad, which finished 6-4 overall and 4-3 in Flight

A last season and came up just short of securing a spot in the state tournament. "We have one senior starter returning on both sides of the ball. I can realistically see seven sophomores starting for us. But even though we will be young, we have a lot of talent."

The Dragons must replace 15 starters, most notably quarterback Chris Cruz, a second-team All-State selection. Cruz's main target was then-senior MacKenzie Williams, also a second-team All-State selection. The Dragons only returning starters on offense are senior Kevin Lane (center) and sophomore Cliff Armstead (RB).



Buzby

Defensively, the Dragons lost defensive back Malachi Freeman (second-team All-State selection) to graduation. Riley will look to Jaleel Crenshaw (sr., DL), Dylan Billy (jr., LB) and Cliff Armstead (soph., DB) to hold together a young, but talented, defensive squad.

Despite the key losses and few returning players with experience, Riley anticipates another successful year.

"This has been our hardest working team since I took the Glasgow job," Riley said about the offseason workouts. "I am looking forward to the challenge of keeping our young team at a high level."

St. Mark's returns several starters but has big shoes to fill.

St. Mark's (8-4) is coming off a solid season during which they reached the state semifinal round before losing to eventual state champion Caesar Rodney.

Coach John Wilson's team returns 12 players (5 offense, 7 defense), but must replace Kyle Sullivan, the state's Offensive Player of the Year who will walk-on to kick at Rutgers this fall.

The Spartans will rely on a returning core group of defensesmen, led by Jake Quinn (DL), Brandon Baker (DB/WR), Matt Lennon (LB/FB), Chaz Malewski (DT/OL) and Luke Horney (DT/OL).

"Our strength will lie within the trenches of our offensive and defensive lineman," Wilson said.

St. Mark's also returns two players, Baker and Tyler Hrycak, who each saw playing time at the quarterback position last season.

"I like the fact that we have two quarterbacks returning with experience, which will be vital to the leadership of our offense as we look to find some other players to step in and produce offensively without Sullivan," Wilson added.

St. Mark's hopes the 2009 campaign returns even better results than the final polls in 2008, and Wilson is confident his team will be ready for the long season ahead.

"Overall, expectations are high and the players have worked hard in the offseason to prepare for their upcoming season."

### The Buzz from the Hive

Beginning August 15, the Newark Post will host a new online feature: The Buzz from the Hive — a nightly report from Newark High's preseason football training camp.

The nightly column will include news and notes from the Yellowjackets' day at practice, along with player information and quotes from Delaware's all-time leader in wins, head coach Butch Simpson.

### News and Notes

The Delaware Diamonds 14U travel baseball team (based in Middletown) is looking for players to tryout for the 2010 season. Players who competed as 12- or 13-year-olds during the spring of 2009 are eligible. Please contact Dave Cochran at 302-376-7283 or dave.cochran@oneida.com if interested.

## Monte Ross Basketball Camp



PHOTOS BY MARK CORRIGAN



Last Friday marked the end of the final week at the 4th Annual Monte Ross Basketball Camp held at the University of Delaware Field House. Over 400 boys and girls participated in the four one-week programs held throughout June and July. Ross, head coach of the UD Men's Basketball team, was on hand to present certificates and medals and to congratulate all the children and parents.

## WILMINGTON & WESTERN RAILROAD

Create Childhood Memories!

August 7, 14, 21 & 28th  
**MT. CUBA EXPRESS (Fridays)**  
12:30 & 2:30PM

August 1, 8, 15, 22  
**MT. CUBA EXPRESS (Saturdays)**  
12:30 & 2:30PM

August 2, 9, 23 & 30  
**MT. CUBA EXPRESS (Sundays)**  
12:30 & 2:30PM

August 29th  
**MT. CUBA EXPRESS**  
12:30PM

August 29th  
**HOCKESSIN EXPRESS**  
2:30PM

August 11  
**HUNTER'S DEN DINNER TRAIN**  
*\*reservations required*

August 16th  
**PUFFERBELLY DAY**  
12:30 & 2:30PM  
*\*reservations recommended*

Reservations can be made online at  
[www.wwrtr.com](http://www.wwrtr.com) or by calling **302-998-1930**

Greenbank Station is on Newport-Gap Pike, Rt. 41N in Delaware  
1/4 mile from intersection Kirkwood Hwy. Rt. 2

Tatami Room • Sushi Bar • Cocktails  
Catering • Private Parties • Take-Out

Imaginative  
Japanese Cuisine  
**Okura**

Open 7 Days A Week  
[www.okurarestaurant.net](http://www.okurarestaurant.net)

Wellington Plaza  
703 Ace Memorial Drive • Hockessin  
**302.239.8486**  
Fax 302.239.6892

(On Rt. 41 N. 1/2 mile from Wawa, Next to Toadstool)

Lunch: Mon. - Sat. 11a.m. - 2:30 p.m.  
Dinner: Mon. - Thurs. 4p.m. - 10p.m. • Fri. & Sat. 4p.m. - 11p.m.  
Sun. 3p.m. - 10p.m.

2008  
**BEST OF DELAWARE**  
2005-2008

jazzercise®

**1 DAY SALE**

Monday, August 17, 2009

**\$99**

\$99 for unlimited classes through  
Dec. 2009 (plus joining fee)  
- Delaware locations

\$99 for 3 months (NO joining fee)  
- Maryland locations

Bring a friend.  
Share the savings.

Elkton/North East (302) 838-5776

Newark (610) 345-1695

Middletown (302) 383-4604

Bear/Ogletown/Pike Creek (302) 690-3447

Valid only on August 17, 2009. Joining fee applies in Delaware.  
New customers only. No refunds or cash value. Other restrictions may apply.

[jazzercise.com](http://jazzercise.com) • (800)FIT-IS-IT

## OBITUARIES

■ *Obituaries are printed free of charge as space permits. Information is usually supplied to the newspaper by the funeral director.*

**Eleanor Bachmura**

Eleanor D. Bachmura (Schlink), 86, of Newark, DE died on July 27.

She was a secretary for DuPont, Chestnut Run retiring in 1985 after 30 years service. Her husband, Joseph P. Bachmura died in 2005.

Eleanor is survived by her children, Christine Pratt and her husband, John M. of North Star, and Jay

R. Schlink, Sr. and his wife, Michele L. of Townsend. Affectionately known as Mimi to her five grandchildren, Michael, Chris, Maribeth, Melissa, and Jay, Jr.; and five great grandchildren. She was preceded in death by her brother, Marvin Denney.

Visitation was on Thursday evening, July 30, from 6-8 pm at the McCrery Memorial Chapel, 3710 Kirkwood Highway at Duncan Road. A funeral service was on Friday, July 31, 2009 at 11 am at Christ United Methodist Church, 6 N. Clifton Ave., Roselle. Interment was in Gracelawn Memorial Park.

In lieu of flowers please make

contributions to Johns Hopkins Alzheimer's Disease Research Center, 720 Rutland Ave, Ross 558, Baltimore, MD 21205.

**David Barrell**

David B. Barrell, 52, of Newark, DE, died peacefully on Tuesday, July 28, at home surrounded by his loving family.

Dave was born and raised in Reading, PA, the son of the late George and Betty (Bissey) Barrell and has made Newark, DE his home for the past 30 years. Dave was a veteran of the US Army. He was a Machinist for AMTRACK, Wilmington Shops, for 30 years.

Dave will be dearly missed by his family; wife and best friend, Pamela Barrell with whom he shared over 29 years of his life; son, Nathan D. Barrell; daughter, Nadine D. Barrell

both of Newark, DE; granddaughter, Leslie Ann Barrell; brothers, George Barrell of Kutztown, PA, Steve Barrell of Temple, PA and Scott Barrell of Fleetwood, PA; sisters, Elaine Miller of Kutztown, PA and Beth Ann Breisch of Fleetwood, PA; aunt, Cass Endy of Temple, PA and aunt and uncle, Willy and George Bissey of Milton, DE.

Family and friends were invited to Dave's viewing and visitation with his family on Saturday August 1, from 12-3 pm at the Beeson Funeral Home of Newark, 2053 Pulaski Highway, Fox Run. Committal services were held privately.

In memory of Dave a contribution may be made to The Helen F. Graham Cancer Center, 4701 Stanton-Ogletown Road, Newark, DE 19713.

**Estella Hyson**

Estella T. Hyson, 88, of Newark, DE, died on Tuesday, July 28, at Christiana Hospital, Newark.

Mrs. Hyson was born on December 6, 1920 in Red Lion, PA to the late Henry B. and Mary Grove Tyson. She was a homemaker who enjoyed gardening and viewing beautiful landscapes.

Hyson was preceded in death by her husband, Arch M. Hyson, who died in 1983 and her brother, Dr. Mervyn Tyson. She is survived by three sons, Wayne E. and his wife, Nancy of Elkton, MD, Dr. Eric A. and his wife, Mary of Cheshire, CT,

and Craig R. and his wife, Vanessa of Halifax, PA; sister, Charlotte Paris of Bath, NY; nine grandchildren, Chris, Katie, Brett, Ryan, David, Emily, Ashley, Arianna, and Zach; one great grandson, Nate; and many nieces and nephews.

A memorial service was held at 11 am, on Tuesday, August 4, at White Clay Creek Presbyterian Church, 15 Polly Drummond Hill Road, Newark, 19711.

**Elizabeth Loftus**

Ms. Elizabeth Ann Loftus ("Betty"), 55, of Newark, DE, died suddenly on Sunday, July 26.

Born in Wilmington, DE, on September 27, 1953, Loftus was a 1971 graduate of Christiana High School. She had been employed with General Motors at the Boxwood Road site in Wilmington for over 20 years.

Loftus was preceded in death by her father, John P. Loftus, her niece, Madeline Elizabeth, and her companion, Randall Hunt. She is survived by her mother, Elizabeth Dunn Loftus of Newark, DE; brother, Paul J. Loftus (Marcy) of Bethesda, MD; nieces, Margaret and Catherine; nephews, John and William; and her Italian Miniature Greyhound, Prancer.

A funeral service was held at 11:30 am, on Friday, July 31, at the Spicer-Mullikin Funeral Home, 121 West Park Place, Newark, DE. Interment was held privately.

In lieu of flowers, the family suggests contributions to the Society for

the Prevention of Cruelty to Animals (SPCA), 455 Stanton-Christiana Road, Newark, DE 19713.

**Krystal Michalik**

Krystal L. Michalik, 23, of Panama City Beach, FL, formerly of Newark, DE and Lowell, MA, died unexpectedly Thursday morning July 23, in Florida from injuries sustained in an automobile accident.

Born in Muskegon, MI on November 12, 1985, she was the daughter of Donna (Michalik) Fink and her husband John of Newark, DE. She received her early education in the Lowell, MA school system prior to moving to Delaware where she finished her education at Middleton High School. Krystal had recently moved to Florida from Delaware and was working as a waitress and pursuing a career in Cosmetology.

In addition to her mother and step father, she is survived by her maternal grandmother, Kazimiera Michalik of Lowell, MA, aunts, uncles, many dear cousins and friends; her father, Ralph Maldonado of Florida, and her step sister, Jasmine Maldonado also of Florida.

Her funeral was held at Dracut Funeral Home, 2159 Lakeview Avenue, Dracut, MA, on Tuesday, July 28, from 4-8 pm., followed by her Funeral Mass celebrated at 10 am, in Holy Trinity Church, High St., Lowell, MA. Interment was in Holy Trinity Cemetery, Lowell, MA.

**Don't waste time and money on that same old DO?**

Let Mr. Anthony give you a new look!

Complete Color & Cut Make-Over **\$95.00**

**SALON BY ANTHONY, INC.**

321 Newark Shopping Center, Newark, DE 19711

**(302) 737-5869**

Daily: 10-7, Sat 8-3, Closed Sun & Mon



FREE BOTTLE OF SHAMPOO WITH ANY CHEMICAL SERVICE

Anthony Barcola Jr.,  
Owner & Operator

308946-NP0602109

■ *Additional local obituaries are posted each week on the Newark Post Web site. Obituaries of the following persons will be posted on the web this week:*

Eleanor Bachmura  
David Barrell  
Estella Hyson  
Elizabeth Loftus  
Krystal Michalik  
Susan Pezzuto  
Louis Schaefer  
Angel Zurlo

HOSTED BY WILMINGTON JAYCEES

**COLE BROS. CIRCUS OF THE STARS**  
THE WORLD'S LARGEST CIRCUS UNDER THE BIG TOP

**COMING TO NEWARK**  
OUR LADY OF GRACE HOME GROUNDS  
457 EAST CHESTNUT HILL RD.

<b>FRI. 21</b> <b>AUG. 21</b>	<b>SAT. 22</b> <b>AUG. 22</b>	<b>SUN. 23</b> <b>AUG. 23</b>
4:30 PM 7:30 PM	1:30 PM 4:30 PM 7:30 PM	1:30 PM 4:30 PM

SAVE \$5 ON ADVANCE PURCHASE OF ADULT ADMISSION  
BUY ADVANCE TICKETS THRU 8/20 AT  
BOSCOV'S - CHRISTIANA MALL & CONCORD MALL  
TICKETS.COM OR 1-888-332-5200

**SEE 7 MAN PYRAMID ON HIGH WIRE!**  
GLOBE OF DEATH • CAMELS • ELEPHANTS  
WHEEL OF DESTINY • DOGS • CLOWNS • JUGGLERS  
ACROBATS • AERIAL BALLET • COMEDY MULE  
THE HUMAN CANNONBALL  
AND MUCH, MUCH MORE!

COME EARLY!  
ELEPHANT RIDES  
CAMEL RIDES  
PONY RIDES  
FACE PAINTING  
GREAT FOOD ON CIRCUS MIDWAY

**FREE TICKETS FOR KIDS AT FREEKIDSTICKETS.COM**

Adult \$17 • Child \$12 • Reserved Seat Add \$3 • VIP Seat Add \$5

★ GOTO THE CIRCUS.COM ★ INFO 1-800-796-5672 M-F 9-5 ★

**Eyecare Facts**  
by Dr. Yvonne Kneisley  
Optometrist

**Up Close and Personal**

Nearsighted individuals tend to become more so until around age twenty. Then, during much of their 30s and 40s their lens prescriptions do not change all that much. Beyond that, as a general matter, the eye begins to lose its accommodating ability. As our up-close focusing system begins to falter, nearly everyone experiences trouble reading. In the meantime, myopic individuals may find that the nearsightedness they experienced due to excessive accommodation is offset by the age-related loss of near-focusing power. This seemingly good turn in their vision fortunes may continue throughout their 50s and 60s. However it soon becomes apparent that, after years of enjoying milder prescriptions,

older nearsighted individuals again become more nearsighted and likely need bifocals.

Do you have difficulty reading the newspaper or restaurant menu? Our eyes, like the rest of our bodies, change as we get older. Modern lenses come in a variety of materials and designs to help people see clearly near, far and in between. Annual eye exams are the cornerstone to healthy eyes. Please call **KNEISLEY EYE CARE** at 302-224-3000 to schedule a comprehensive eye health examination that includes thorough examination of the eyes and prescription determination. We are the exclusive dispenser for COACH in Newark. We are located at 45 East Main St., on the 2nd floor of the Main Street Galleria.

**Kneisley Eye Care**  
302-224-3000 • 45 East Main St., Newark DE

**STONE BALLOON Winehouse**  
est. 1972  
SHOP - RESTAURANT - BAR

**SUNDAY BRUNCH 11am-3pm**  
\$1 BLOODY MARYS AND MIMOSAS

**TUESDAY PRIX FIXE**  
\$28.00 PER PERSON / 3 COURSES

**WINE DOWN WEDNESDAY 5-7pm**  
\$10 UNLIMITED WINE TASTING AND CHEESE

Casual Dining - Outdoor Seating - Lunch & Dinner - Wine & Cheese Shop

**MAIN ST., NEWARK • 302.266.8111**  
Must be 21 to enter • Free garage parking • Reservations suggested

**STONEBALLOONWH.COM**



# Church Directory

To Advertise or make changes call


Nancy Tokar at 1-800-220-1230 or voice mail 443-245-5072

Prices starting as low as as \$12.00 a week!

Changes can be made by Friday, 4:30 p.m. for the following Friday's edition.



**Evangelical  
Presbyterian Church (PCA)**  
Christ Centered • Biblically Based  
Sunday Worship 10:45am & 6pm  
9:30 Sunday School  
308 Possum Park Rd., Newark  
302-737-2300  
www.epcnewark.org



The Episcopal Church  
Welcomes You  
**St. Thomas's Parish**  
276 S. College Ave. at Park Place,  
Newark, DE 19711  
Across from UD Health Center  
(302) 368-4644  
Church Office: (9:00-1:00 Mon-Fri)  
www.stthomasparish.org


**"We get more hits  
from this one  
ad than any  
other advertising  
we do."**  
- Rev. Jay - Good Shepherd  
Episcopal Church  
Call Nancy Tokar to place  
your ad at  
**1-800-220-1230**

**Families. Worship. And You.**  
Rev. Jay Angerer and Family



*good shepherd*  
EPISCOPAL CHURCH  
Join us for worship at our new  
time and location!  
St. Nicholas Episcopal Church,  
10 Old Newark Road in Newark.  
Fellowship time at 10:45am with  
service beginning at 11am.  
302 547-7849  
www.GoodShepherdDE.org  
Sponsored by the Diocese of Delaware

**The Way  
Ministries**  
(an extension of Highway Gospel Com-  
munity Temple, West Chester PA)  
Highway Word of Faith Ministries is  
presently worshipping @ The George  
Wilson Community Center  
303 New London Rd., Newark, DE  
**Sunday:**  
8:00-9:00am Christian Education  
classes for all ages  
9:00am Sunday Morning Celebration  
**Wednesday: Location**  
7:00-8:00pm Bible Enrichment Class at  
Prayer Temple  
49 New London Rd.  
Newark, DE 19711  
Mailing Address: P.O. Box 220  
Bear, Delaware 19701-0220  
Visit us online @ www.theway.ws or send us  
a note at...theway238@aol.com



Pastor Carl A. Turner Sr. & Lady Karen B. Turner  
For further information or directions please call:  
**302-834-9003**

**Sunday Worship**  
Sunday Service times:  
8am, 10:30am & 5:30pm  
Sunday Adult Education Programs  
9:30-10:15am  
The Rev. Paul Gennett  
Marc F. Cheban,  
Organist & Choir Master  
Wandering? Wondering? Wounded?  
God meets you where you are!  
And So do we.  
Come and see...

Wisdom from many sources



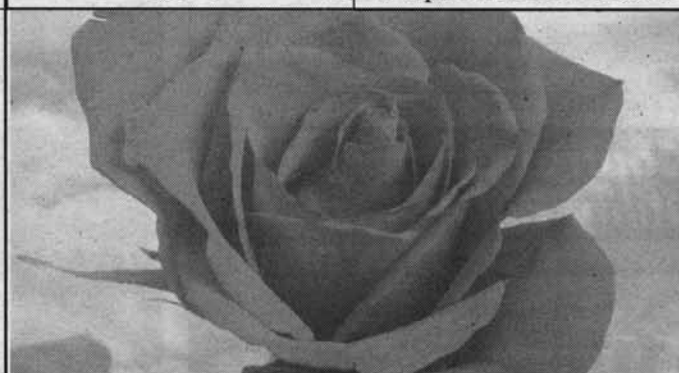
Sunday Service 10am  
Childcare and Sunday School  
**Unitarian Universalist Fellowship**  
420 Willa Road, Newark  
302.368.2984 uufn.org  
**Come Join Us!**  
Speaker: Rev. Greg Chute



**MISSIONARY  
MEETINGS:**  
The Old Apostolic Lutheran  
Church will hold Missionary  
Meetings at the University  
of Delaware's Bob Carpenter  
Center in Newark, on Friday  
and Saturday, August 21 and  
22, at 11:00 a.m. and 6:00  
p.m., and on Sunday, August  
23, at 11:00 a.m. Elders sent  
by the congregation in Sweden  
will speak. All are welcome.



**GLORIOUS  
PRESENCE  
CHURCH**  
Sunday 8:30 a.m.  
Acoustic Worship  
Sunday 10:30 a.m.  
Electric Worship  
Pastoral Team  
Curtis E. Leins, Ph.D  
Robert F. McKnight  
Theodore Lambert, III  
James L. Ford  
Located 1 1/2 miles N. of Elkton  
on Rt.213  
(410) 392-3456



**TRINITY  
PRESBYTERIAN CHURCH (PCA)**  
**SUNDAY WORSHIP 9:30 AM**  
Meeting at: First Church of the Nazarene  
357 Papermill Road, Newark, DE  
For more information please call  
302-233-6995

**NEW LIFE CHRISTIAN  
FELLOWSHIP**  
Sunday Service 9:30 AM  
Multimedia Children's Ministry!  
Contemporary Worship!  
Relevant messages!  
Church Office: 999-1800  
Check out our web page:  
www.NewLifeDE.org  
2712 Old Milltown Rd.  
Wilmington, DE  
(near Kirkwood Hwy & Milltown Rd)



**First Church  
of Christ,  
Scientist**  
48 West Park Place, Newark  
Sunday Service & Sunday School 10:00am  
Wednesday Testimony Meetings 7:30pm  
Childcare available during services.  
302-456-5808  
ALL ARE WELCOME  
www.fccsnewark.org

**NEWARK WESLEYAN  
CHURCH**  
708 West Church Rd  
Newark, DE  
(302)737-5190  
Pastor James E. Yoder, III  
Sunday School for all ages.....9:30am  
Morning Worship.....10:30am  
Children's Church & Nursery Provided  
Choir - Sunday.....5:30pm  
Youth Meeting - Sunday.....6:00pm  
Mid-Week Bible Study  
"A Family Church with a Friendly Heart"



**NEW LIFE CHRISTIAN  
FELLOWSHIP**  
Sunday Service 9:30 AM  
Multimedia Children's Ministry!  
Contemporary Worship!  
Relevant messages!  
Church Office: 999-1800  
Check out our web page:  
www.NewLifeDE.org  
2712 Old Milltown Rd.  
Wilmington, DE  
(near Kirkwood Hwy & Milltown Rd)



You are welcome at  
**Ebenezer  
United Methodist Church**  
SUN SERVICES 8:30 & 11:00am  
SUNDAY SCHOOL 9:45am  
525 Polly Drummond Road  
Newark 302-731-9494  
Handicapped Accessible • Child Care  
TED DAY, PASTOR

## POLICE BLOTTER

## ▶ BLOTTER, from 3

## Accused taggers caught

A Pennsylvania man and a juvenile accomplice were arrested Aug. 1 by DNREC Park Rangers on charges of graffiti spray-painting a restroom at White Clay State Park.

Ronald J. Heath Jr., 22, of Peach Bottom, Pa., was charged with Graffiti to Real or Personal Property with Damage under \$1,500 and Conspiracy Third Degree related to the incident. A juvenile in his company was charged with the same offenses.

Heath was committed to the Howard R. Young Correctional Institution in Wilmington after failing to post \$4,000 cash bond. The juvenile subject was released to a parent.

The arrests were made after park rangers were called to the Nature Center parking lot at White Clay Creek State Park following a witness reporting that the two suspects had spray painted the interior of the men's restroom building. The witness heard the discharge of aerosol cans in the restroom, then saw one of the suspects leave carrying a can of spray paint.

The witness took down the license plate of the suspects' vehicle as they left the park and

rangers later learned that the suspects were in the area visiting relatives. When the relatives were contacted and shown a picture of the restroom, they noted the similarity to other drawings made by the suspect.

Damage to the restroom was estimated at \$500 for removal of graffiti.

## Hotel customer spits on cop

Police were dispatched to the Sleep Inn at 630 S. College Ave. to subdue a drunk and unruly customer at the front desk. The front desk clerk, Avonda Walker-Brooking, reported that a white male was yelling and cursing at her in the lobby of the hotel.

Police interviewed the male

and detected a strong smell of alcohol from him. The male told police that he was on level 3 probation and that he was out past his curfew. Officers attempted to administer a preliminary breath test, but the underage suspect tried to flee on foot.

The male was held and began to flail and yell at officers. He was told to stop but continued to curse and buck. He was handcuffed and placed in a police cruiser for questioning, where he spat at and struck an officer in the shirt/neck area.

At the station, the suspect's mother was notified and picked her son. The male was charged with offensive touching, possession/consumption of alcohol by a minor, underage consumption of liquor, resisting arrest

and disturbing the peace/public nuisance.

## Newark man arrested on heroin charges

A Newark man was among three arrested on trafficking heroin and related offenses.

New Castle County Police arrested the three last week at the Wawa on Memorial Drive in New Castle, after heroin was found in their vehicle.

Undercover officers from MET and the drug unit were watching the location when a white Nissan Altima arrived with three occupants.

The undercover officers moved in and detained all three subjects. After an extensive

search of the vehicle, officers located a "log" of heroin (10 bundles) hidden underneath the gear shift. The officers seized the car and \$1,101 in suspected drug proceeds from the suspects.

Suspects were identified as:

- Michael McIntosh, a 31 year old male who resides in the 1100 block of Linden Street in Wilmington.

- Branden Wallace, a 27 year old male who resides in the unit block of Chaucer Drive in Newark.


- Leandra Hart, a 23 year old, who resides in Bronx, NY. All three were committed to the Howard Young Prison and the Women's Correctional Institute after failing to post \$45,000 secured bail.

## Fast and Furious theft

Blockbuster, at 260 College Square Shopping Center, reported the theft of 20 copies of Fast and Furious, valued at \$21.99 each. Employees reported seeing a white male, early to late 20's, 6' 00, facial hair, wearing a white t-shirt, blue baseball cap, and plaid shorts was with a white female, about 27-28 years old, 5' 07, dark curly hair in a bun, wearing hoop earrings, black top and jeans shorts, and carrying a brown purse.

The pair was stopped at the front door when the sensor alarm went off. The male removed the contents of his pockets and went through the sensors again with negative results. The manager followed both people out into the parking lot where they entered a tan Ford minivan and left the scene.

A check of the vehicle's temporary registration plate has yielded has yielded few leads. Police are checking several letter and number combinations of the plate to produce a possible suspect.



1000 Village Circle  
Salem Village  
Newark, DE 19713  
302-368-2028

\* "Setting up the foundation for success" \*

New Owner - Licenced by the State of Delaware

- \* We accept Purchase of care
- \* Bilingual (Se habla español)
- \* Ages 6 weeks to 5 Years Old

**Take Control Of Your Utility Bills!**

**Power Off?**  
We Sell Generators!

2008 PRESIDENTS AWARD





**Hentkowski, Inc.**  
"Your Key To Comfort"  
Heating, Air Conditioning & Electrical

INFINITY SYSTEM    SewAssure DEALERS

**302-998-2257**

"Doing Business since 1968"

www.hentkowski.com



# eyeWear

AFFORDABLE & DESIGNER EYEWEAR  
CONTACT LENSES

BVLGARI

COACH

Dior

FENDI

GUCCI

---

MICHAEL KORS

PRADA

VERSACE

Schmitt

EYE EXAMS  
MOST INSURANCES/HMO'S ACCEPTED  
STATE-OF-THE-ART-TECHNOLOGY INCLUDING  
iZON HIGH-DEFINITION LENSES  
WIDE SELECTION OF CONTACT LENSES

SIMON EYE ASSOCIATES

Eyewear Boutique

"Eye Care for Life"

302.239.1933 | www.simoneye.com

Bear

Middletown

Newark

Pike Creek

Concord Pike

Union Street

AIR CONDITIONING & HEATING • SERVICE & INSTALLATION

- We Service & Install All Brands
- Competitively Priced
- Emergency Service
- Local, Dependable and Professional

\$79<sup>00</sup>

A/C Tune-Up

# ENHANCED

HEATING & AIR CONDITIONING

Integrity And Quality Is Our Policy

LICENSED • INSURED • BONDED

302-836-1921

Enhance your comfort this summer



Any Heating/AC Service Call

Excluding diagnostic fees & tune-ups.

\$25<sup>00</sup>

OFF



Local, Dependable, Professional

# Elkton Christian Academy 2009-2010

## Tuition Economic Stimulus Package For Kindergarten & Elementary Classes



Readers' Choice Award  
Cecil County's Favorite

*Compare ECA's kindergarten program to day care programs.*

- Structured *A Beka* Curriculum
- Phonics & Reading Development
- Letters & Writing Development
- Character & Language Enrichment Visuals
- New Elementary Library
- Trained & Certified Teachers w/ Assistants
- Weekly Children's Chapel w/ Music & Puppets
- Planned Local Field Trips
- Spacious Classrooms & Secured Facilities



**\$3,300 K-3 through K-5**

**\$4,700 1st - 5th grade**

**Call Today!**

**410-398-6444**

Limited classroom seats available

Experience excellence in the classroom

*A Beka* curriculum from K-3 through 12th grade

*Price of Registration, books, before school and after school care is not included. After school care until 6PM.*

**144 Appleton Rd., Elkton, MD 21921**

**www.elktonchristian.org**

# Posted

8 AM  
5 PM **800-220-3311** 410-398-1230 Fax us 24/7: 410-398-4044

• Real Estate  
• Automotive  
• Help Wanted  
• Services  
• Merchandise

**YARD SALES**  
• Auctions  
• Appliances  
• Furniture

See More on  
**chesapeakeclassified.com**

**ANNOUNCEMENT**

**10 PUBLIC NOTICES**

**PUBLIC NOTICE**



View Public Notices from around the State of Maryland, visit:

[www.publicnoticeads.com/md](http://www.publicnoticeads.com/md)

**20 NOTICES**

**ATTENTION: GRADUATES OF BOHEMIA MANOR CLASS '89, '90, '91**

We are trying to get in contact with missing graduates for a reunion in October '09. Please email Abigail Davis for ticket information at [bohemia\\_manor\\_reunion@yahoo.com](mailto:bohemia_manor_reunion@yahoo.com). Please reply by August 26, 2009.

**CLASSIFIEDS**  
410-398-1230  
800-220-1230

**EMPLOYMENT**

**110 HELP WANTED FULL-TIME**

**New Today**

**OTR FLATBED DRIVERS**

Min 2yrs Flatbed Exp. Home Wknds, Great Pay, Health Ins, Pd vaca. / Holidays, Life Ins. 800-332-6644

[WWW.CHEESAPEAKECLASSIFIED.COM](http://WWW.CHEESAPEAKECLASSIFIED.COM)

**110 HELP WANTED FULL-TIME**

**Sales ACCOUNT EXECUTIVE**

FT Advertising Sales position for an established, growing company. This sales position will require a person with the ability to sell, service, and develop new accounts in multiple publications. Established accounts, medical, dental, paid vacation and sick leave, 401K. Send resume w/salary history to: General Manager, P.O. Box 190, Aberdeen MD 21001 or e-mail information to: [cnimmo@chespub.com](mailto:cnimmo@chespub.com)

No phone calls, please.  
EOE

**200 BUSINESS OPPORTUNITIES**

**JUST LAUNCHED** new to Maryland be the first internet phenomenon, 12,000 distributors in less than 30 days. Shelley Laroque 800-770-9892

**RENTALS**

**305 APARTMENTS UNFURNISHED**

**New Today**

**Fair Hill 2br apt 2nd flr** w/lg eat in kit, wall to wall cabinets. Located on 2 ac wooded lot. \$750/mo + \$750 sec dep Sorry, no pets. 410-398-3696

**315 HOUSES FOR RENT**

**CALVERT:** Pretty single home. 3 bed & more. 410-392-5487

**New Today**

**CHARLESTOWN-** Small 2 br, no pets. \$750/ mo + sec dep. 443-206-5007 5p-9p

**Elkton 3br 2b** no pets no smoking environ \$1200 + utilities 410-620-3991

**New Today**

**ELKTON 5br, 2.5ba** + workshop & sheds. Water access, 2 blks to beach / ramp. 6 car parking. Lg yd., .7 acres. Pets ok. Only \$1500 + utils. Call 917-817-5467

**332 TOWNHOUSE FOR RENT**

**ELKTON 3Br T/H,** 1.5ba, full basement. \$900 per mo + sec. No pets. 410-398-2487

**NORTH EAST.** 3br, 1.5 ba full/unfin. walk-out bsmt., w/d, backs to woods, great privacy. New carpet & paint. Clean-must see! \$1,100/mo. + utils. Call Tiffany 443-655-0034 for more details.

**New Today**

**WINDING BROOK** 3br 1.5 ba nice yard \$750/mo call 443-907-2136

**345 ROOMS FOR RENT**

**New Today**

**ELKTON HEIGHTS** 2br, 1ba. Poss own fin., to qualified buyer. Cr Ref's & substantial down payment req'd. 410-398-5471

**370 WANTED TO RENT**

**HUNTING LAND** WANTED to lease for deer & duck hunting. 717-278-2022

**REAL ESTATE**

**405 HOUSES FOR SALE**

**New Today**

**ELKTON Winding Brook** 4br t/h fen yd closed in gazebo, corner lot 410-620-1343

**432 MOBILE HOMES FOR SALE**

**MOBILE HOME** removal, salvage & parts. Call for removal quote. 717-464-4461 or 410-658-9588

**440 LOTS/ACREAGE FOR SALE**

**ABANDONED FARM** WITH MTN STREAM! 42 ACRES \$69,832. Perfect mix of open pastures & hardwoods. Paved road frontage, electric. Ready to enjoy! Owner financing. Call now 877-526-3764

**MERCHANDISE**

**602 ANIMALS/PETS**

**AMERICAN Bulldog** pups. 8 weeks Johnson bloodline NKC reg. \$700. 302-565-9429 / 302-275-9289

**Human Services**

Bring your great attitude and make a difference in your community! Community Interactions, Inc. is seeking candidates to fill several positions in Delaware State.

**Registered Nurse**

Positions available in DE to be responsible for oversight of services and staffing supports for individuals with disabilities residing in community settings. Responsibilities include: implementation of support and coordination of healthcare services, and quality of life for individuals served.

**Minimum qualifications:** Delaware licensed Registered Nurse and 3 years of nursing to include 1 year of experience supporting individuals with disabilities. Excellent customer service skills to interface with consumers and their families.

**Community Support Associate**

Full Time, Part Time and Per Diem positions available to be responsible for oversight of services and staffing supports for individuals with disabilities residing in community settings. Responsibilities include: implementation of support and coordination of healthcare services, fiscal operation and quality of life for individuals served.

**Minimum qualifications:** Caring, Compassion and patient to work with individuals with developmental disabilities. Excellent customer service skills to interface with consumers and their families. A valid driver's license with a good driving record. Drug testing required. Ability to respond during emergencies and the ability to physically assist individuals in need.

We provide excellent benefits. Salary commensurate with education and experience

**Forward resumes by 08-14-09 to Community Interactions, Inc. c/o Human Resources Department 740 South Chester Road Swarthmore, PA 19081 recruit@ciinc.org**

Community Interaction, Inc. is an Equal Opportunity Employer and we comply with the Drug Free Workplace Act

[www.ciinc.org](http://www.ciinc.org)

**Classified is the key to more sales.**



**DELAWARE TECH**

Stanton Campus

**PARALEGAL CERTIFICATE COURSE**

Live Lecture course begins **August 29, 2009** \$1,050 14 weeks

Call 302-453-3072 to register [www.legalstudies.com](http://www.legalstudies.com)

**Corolla, NC Vacation Homes!**

**DISCOUNTS! DISCOUNTS! DISCOUNTS!**

**Brindley Beach**

VACATIONS & SALES

Over 500 Vacation Homes from Duck to Corolla, Oceanfront to Soundfront, Private Pools, Hot Tubs, Pets and More...

Book Online at [www.brindleybeach.com](http://www.brindleybeach.com)  
**1-877-64-BEACH**  
"SERVICE FIRST... FUN ALWAYS!"

**GREAT DEAL**

**ELKTON** 2/3/4BR starting at \$750 month. Must See! **NO PETS** 443-309-1602 [www.thehomesforlife.com](http://www.thehomesforlife.com)

**HUD HOMES!** 3bd. 2 ba. Home only \$201/mo! 4 bd. 2 ba only \$350/mo! 5% dn, 30 yrs @ 8% apr! For Listings 800-585-3617 ext T296

**New Today**

**N EAST 2BR** lg yard, quiet area. \$875/mo + sec dep & utils. + 1 mo req. 410-444-2954

**POOL SALE!**

**100% Financing!** \*w.a.c.

**NOW ONLY! \$825** installation opt/extra

[www.sapphirepools.biz](http://www.sapphirepools.biz)

The Diplomat

**HUGE! 31'x19' w/sundeck, fence & filter**

**WHILE SUPPLIES LAST!**

**3-Day Installation!**

**CALL NOW! Free Home Survey!**

**Sapphire Pools, LLC 1-866-237-2217**

**PLACE YOUR CLASSIFIED AD 24 HOURS A DAY • 7 DAYS A WEEK CALL OR EMAIL CHESAPEAKE CLASSIFIED 410-398-1230 • 800-220-1230 www.chesapeakeclassified.com**

**CHESAPEAKE CLASSIFIED**  
410-398-1230 800-220-1230  
[www.chesapeakeclassified.com](http://www.chesapeakeclassified.com)

**602 ANIMALS/PETS**

**New Today**

**AUSTRALIAN BLUE HEELER** Pup. 8 weeks old, 1st set of shots. She is all blue no masks. \$100. Call George 410-378-5258

**602 ANIMALS/PETS**

**New Today**

**BLACK LAB PUPS** no papers, ready now. \$100 each. 7males, 1 female. Call 410-658-7286

**602 ANIMALS/PETS**

**CHOCOLATE LABS** (9) \$100 each. Call 443-206-4189

**New Today**

**COCKER SPANIEL.** 3 yr. old AKC female. \$300. 443-674-8049

**602 ANIMALS/PETS**

**CAT** 2yrs old name d "Kia" very pleasant allergic can't keep free to good home 443-350-9860

**CHIHUAHUA** puppy. Adorable female, sweet personality. Black, white & tan, 9 wks. old. Parents on premises. A great buy. \$250. 410-398-1510

**602 ANIMALS/PETS**

**CHIA POM PUPPIES** Male & female, all colors, very small, 1st S & W. \$250 & up. 410-658-2463

**New Today**

**LAB PUPS - AKC** Purebred. Champion bloodlines, shots & wrmd. 443-630-0279

**LABS PUPS.** AKC, adorable chocolates & blacks. Exceptionally friendly & playful. Males \$450. Females \$500. 410-392-5179

**MACAWS (2)** Blue & Gold & Scarlet. both males \$1500 together, or \$1000 each firm. Come w/ cages 410-808-6288 or 410-838-2926

**New Today**

**OLD ENGLISH** bulldogs. Pure breed IOEBA reg. Parent on prem. 304-497-2211

**WELSH CORGI'S** AKC. 7 weeks old, red & white, 1st shots. Females \$450. Males \$400. 410-836-1288

**605 HORSES/TACK/EQUIP./SUPPLIES**

**MINIATURE HORSE.** Colt, black & white, friendly, halter broke, can be registered. Will make great pet. \$500 OBO. 410-378-2645

**615 APPLIANCES**

**Microwave Sharp** white 1 year old \$30.00 Please call: 410-658-6121

**New Today**

**MAYTAG WASHER** (7 months old) & **DRYER.** Both in very good cond. \$275. **GE PORTABLE DISHWASHER** very good cond \$200. Call 410-378-2821

**611 BUILDING MATERIALS**

**VINYL SHUTTERS** 3 short sets " 4 long sets " \$5.00 a set need painting 410-398-8729

**New Today**

**WANTED: BRICK PAVERS** Reasonable. 443-553-3228

**620 COMPUTERS & ACCESSORIES**

**PANASONIC** 5 disk CD • Scanner Microtek Scan Maker • Printer HP Desk Jet **ALL FREE** Call 410-287-8667

**625 FURNITURE/FURNISHINGS**

**New Today**

**CHINA CABINET** Lg 2 pc. Lighted, Cherry veneer. Exc cond. \$500 410-378-3378

**625 FURNITURE/FURNISHINGS**

Cherry Bedroom Set. Solid Wood, never used, brand new in factory boxes. English Dovetail. Original cost \$4500. Sell for \$795. Call deliver. 240-482-8721

WWW.CHEESAPEAKECLASSIFIED.COM

**625 FURNITURE/FURNISHINGS**

**GIRLS BEDROOM** SET twin bed, dresser/ mirror, chest of drawers & 2 night stands. \$600 obo. Call 410-658-7871

CHECK OUT OUR WEBSITE AT WWW.CHEESAPEAKECLASSIFIED.COM

**625 FURNITURE/FURNISHINGS**

**Kitchen Table,** small, with 2 chairs. Good condition \$35 call 410-392-0953

New six foot O'Sullivan entertainment center \$50 Call: 443-206-2620

RID YOUR HOME OF ALL THAT CLUTTER! HAVE A YARD SALE AND ADVERTISE IT WITH US!

RECLINE, RELAX & RESELL

OUR WEBSITE MIGHT HAVE WHAT YOU'RE LOOKING FOR! www.cecilwhig.com

CHECK OUT OUR WEBSITE AT WWW.CHEESAPEAKECLASSIFIED.COM

**Here's My Card**

Local Businesses At A Glance



**CONSTRUCTION**

Free Estimates Voice Mail 717-786-0271  
**Double E Construction Ltd.**  
Quarryville, PA  
• New Construction  
• Roofing & Siding  
• Barns & Garages  
• Additions  
• Decks  
Ephraim Smucker  
Customer Satisfaction Keeps Us In Business

**KITCHEN & BATH REMODELING**

**APEX KITCHEN AND BATH**  
All Aspects of Kitchen & Bath Remodeling  
Hardwood, Laminate & Ceramic Floor Installation  
Specializing In Ceramic Tile & Custom Moldings  
**610-255-1668** **FREE ESTIMATES**  
Rick Warwick, Owner  
Lic/Ins DE, PA & NJ  
Apexcontracting@comcast.net

To advertise your services in Here's My Card  
Call Susie Moore 410-398-3311 ext. 3004  
Cell: 302-650-0212

WILMINGTON UNIVERSITY

Wherever You Want to Be...

**Start Here.**

Undergraduate and Graduate Degrees  
Register Anytime  
Classes start every 8 weeks!

**WILMINGTON UNIVERSITY**

DELAWARE • NEW JERSEY • ONLINE

WILMU.EDU 1-877-967-5464

**YAMAHA MODEL YEAR END SALE EVENT**

2008 XV19MX ROADLINER MIDNIGHT. 113 CUBIC INCHES Sale Price \$9,799\* MSRP \$13,880

2008 YFM25RX RAPTOR 250 Sale Price \$2,699\* MSRP \$3,899

2008 FZ10 Sale Price \$6,999\* MSRP \$9,299

71 Years Family Owned and Operated

Payments as low as \$69/month for 24 months — or — Financing as low as 6.99%

BEL AIR • 344 Route 1 (3 blocks North of Harford Mall)  
Just 30 minutes from the Delaware Line!  
410-879-3586 • www.petescycle.com  
Store Hours: Mon, Tues, Thurs & Fri 10-8 • Wed 10-6 • Sat 10-5

**We're at Your Service**

VISIT THE FOLLOWING BUSINESSES FOR QUALITY SERVICE AND CUSTOMER SATISFACTION.

**520 HOME IMPROVEMENT SERVICES**  
HAS YOUR BUILDING SHIFTED OR SETTLED? Contact Woodford Brothers Inc, for straightening, leveling, foundation and wood frame repairs at 1-800-OLD-BARN. www.woodfordbrothers.com, license #121861

**540 CLEANING SERVICES**  
**New Today**  
Cleaning Services. Lic., Ins'd, Bnd. Total Home Care (610) 274-3288 www.totalhomecare.net

**550 LAWN & GARDEN SERVICES**  
**MARK REESE ROOFING**  
Roofing, siding gutters & trim. All ext. renovations Free estimates & ref's 410-620-4980 or 443-207-1280  
**WE BUY JUNK CARS, TRACTOR TRAILERS, DUMP TRUCKS** or any heavy equipment machinery. Cash paid. 302-650-4579

**570 INSTRUCTION**  
**ATTEND COLLEGE ONLINE** from Home. \*Medical, \*Business, \*Paralegal, \*Computers, \*Criminal Justice. Job placement assistance. Computer available. Financial Aid if qualified. Call 866-858-2121 www.CenturaOnline.com

WWW.CHEESAPEAKECLASSIFIED.COM

Visit one of these local dealers and drive home happy!

**Contact Laurie To Advertise HERE**

**VOLKSWAGEN**  
Smith VOLKSWAGEN LTD. 4304 Kirkwood Highway, WILMINGTON, DE 302-998-0131 Drivers wanted

**STAPLEFORD'S CHEVROLET OLDSMOBILE**  
302-834-4568  
ST. GEORGES, DE

**Contact Laurie To Advertise HERE**  
410-398-1230  
800-220-1230  
Lamici@chespub.com

REACH OVER 50,000 READERS WEEKLY!  
Call Laurie at 800-220-3311 to Advertise Here!

LEGAL NOTICE LEGAL NOTICE LEGAL NOTICE LEGAL NOTICE LEGAL NOTICE LEGAL NOTICE LEGAL NOTICE LEGAL NOTICE LEGAL NOTICE LEGAL NOTICE

**SHERIFF'S SALE**

The following Real Estate will be exposed for Public Sale at the CITY/COUNTY BLDG., 800 N. French Street, City of Wilmington, New Castle County, Delaware, by Michael P. Walsh, Sheriff, on **TUESDAY the 11th day of AUGUST, 2009 at 10:00 a.m. The legal limit of 152 persons in Council Chambers will be enforced.**

**SHERIFF'S SALE**

By virtue of a writ of LEV FAC #2 JN, AD., 2009.

PARCEL NO. 11-032.00-127

PROPERTY ADDRESS: 3 Phoenix Drive, Bear, DE 19701

ALL that certain lot, piece or parcel of land, with the buildings thereon erected, situate in Pencader Hundred, New Castle County and State of Delaware, known as 3 Phoenix Drive, being Lot No. 51, Section I, on the Plan of Caravel Farms II, as the Plan thereof is of record in the Office of the Recorder of Deeds, in and for New Castle County and being more particularly bounded and described in accordance with a survey prepared by East Cost Surveyors, Professional Land Surveyors.

BEING the same lands and premises which Janet H. Schwanker and Richard W. Schwanker, Trustees of the Janet H. Schwanker Living Trust did by deed dated April 25, 2006 and recorded in the office aforesaid in Instrument No. 20060502-0041923 did grant and convey unto Tyrone L. Fountain and Jo-setta Smith.

SEIZED AND TAKEN IN EXECUTION AS THE PROPERTY OF TYRONE L. FOUNTAIN AND JOSETTA SMITH.

TERMS OF SALE: 10% DOWN AT TIME OF SALE. BALANCE DUE ON OR BEFORE SEPTEMBER 21, 2009.

JUNE 30, 2009

**SHERIFF'S SALE**

By virtue of a writ of LEV FAC #28 JN, AD., 2009.

PARCEL ID: 1804400173

PROPERTY ADDRESS: 319 Cannons Way, Newark, DE 19713

ALL that certain lot, piece or parcel of land with the buildings thereon erected, situate in the City of Newark, New Castle County, Delaware being designated Lot 5, as shown on the Record Major Subdivision Plan of Cannons Gate, of record in the Office of the Recorder of Deeds in and for New Castle County, Delaware on Microfilm 8610, said lot also known as 319 Cannon's Way and being more particularly described in according to a survey by A.E.S. Surveyors, dated June 14, 2001, as follows, to wit:

BEING the same lands and premises which Mel R. Martinez, did grant and convey unto Sylvester Marchman, Jr., by deed dated June 25, 2001 and recorded on June 25, 2001 in the Office of the Recorder of Deeds, in and for New Castle County, State of Delaware, in Deed Instrument 20010625-0049694.

SEIZED AND TAKEN IN EXECUTION AS THE PROPERTY OF SYLVESTER MARCHMAN, JR.

TERMS OF SALE: 10% DOWN AT TIME OF SALE. BALANCE DUE ON OR BEFORE SEPTEMBER 21, 2009.

JUNE 30, 2009

**SHERIFF'S SALE**

By virtue of a writ of LEV FAC #35 JN, AD., 2009.

TAX PARCEL NO. 11-015.30-143

PROPERTY ADDRESS: 105 W. Flagstone Drive, Newark, DE 19702

ALL that certain lot, piece or parcel of land, with the buildings thereon erected, situate in Pencader Hundred, New Castle County and State of Delaware, known as 105 West Flagstone Drive, being Lot No. 143, on the Plan of Gray Acres, as the Plan thereof is of record in the Office of the Recorder of Deeds, in and for New Castle County, Delaware, on Microfilm No. 10952, and being more particularly bounded and described in accordance with a survey prepared by A.E.S. Surveyors, Professional Land Surveyors, dated December 5, 2002.

BEING the same lands and premises which Christopher J. Jones and Helene D. Jones, by Deed dated December 16, 2005, and recorded December 21, 2005, in the Office of the Recorder of Deeds in and for New Castle County, Delaware, in Document No. 20051221-0131486, did grant and convey unto Melissa Byrd, in fee.

SEIZED AND TAKEN IN EXECUTION AS THE PROPERTY OF MELISSA BYRD.

TERMS OF SALE: 10% DOWN AT TIME OF SALE. BALANCE DUE ON OR BEFORE SEPTEMBER 21, 2009.

JUNE 30, 2009

**SHERIFF'S SALE**

By virtue of a writ of LEV FAC #54 JN, AD., 2009.

PARCEL NO. 11-006.20-200

PROPERTY ADDRESS: 118 Scottfield Drive, Newark, DE

ALL that certain lot, piece or parcel of land with dwelling

thereon erected, situate in Pencader Hundred, New Castle County and State of Delaware, and known as Lot No. 171, Block K, on the Plan of Scottfield, Section Two, as said plan is of record in the Office of the Recorder of Deeds in and for New Castle County, Delaware, on Microfilm No. 1702, and being more particularly bounded and described in accordance with a recent survey by Raymond F. Christian & Associates, Inc., dated June 9, 1999.

BEING the same lands and premises which Daniel W. Connor and Donna M. Connor did by deed dated June 14, 1999, and recorded in the Office of the Recorder of Deeds, New Castle County, Delaware in Deed Book 2657 Page 230 did grant and convey unto Kenneth E. Bryant and Diane E. Geistel.

SEIZED AND TAKEN IN EXECUTION AS THE PROPERTY OF KENNETH E. BRYANT AND DIANE E. GEISTEL.

TERMS OF SALE: 10% DOWN AT TIME OF SALE. BALANCE DUE ON OR BEFORE SEPTEMBER 21, 2009.

JUNE 30, 2009

**SHERIFF'S SALE**

By virtue of a writ of LEV FAC #63 JN, AD., 2009.

PARCEL NO. 11-033.00-078

PROPERTY ADDRESS: 129 Carlotta Drive, Bear, DE 19701

ALL that certain piece, parcel or lot of land with the improvements erected, situate in 15 Carlotta Drive, now known as 129 Carlotta Drive, in Wrangle Hill Estates, Pencader Hundred, New Castle County and State of Delaware being Lot 15 and being more particularly bounded and described in accordance with a survey by Hanley-Lisinski, Professional Land Surveyors, dated November 12, 1984.

BEING the same lands and premises which James F. Wooleyhan, Jr. and Susan L. Walton did by deed dated March 25, 2003 and recorded in the Office of the Recorder of Deeds, New Castle County, Delaware in Instrument No. 20030403-0041171 did grant and convey unto Kenneth C. Wooleyhan.

SEIZED AND TAKEN IN EXECUTION AS THE PROPERTY OF KENNETH C. WOOLEYHAN.

TERMS OF SALE: 10% DOWN AT TIME OF SALE. BALANCE DUE ON OR BEFORE SEPTEMBER 21, 2009.

JUNE 30, 2009

**SHERIFF'S SALE**

By virtue of a writ of LEV FAC #65 JN, AD., 2009.

PARCEL NO. 10-048.20-209

PROPERTY ADDRESS: 303 Sun Blvd., Bear, DE 19701

ALL that certain piece or tract of land situate in New Castle Hundred, New Castle County, Delaware and being lot 147 according to the Record Resubdivision Plan of Meridian Crossing as recorded at the Recorder of Deeds in and for New Castle County as instrument number 20060425-0038920, as per a more recent survey prepared by KCI Technologies, Inc.

BEING the same lands and premises which NVR, Inc. did by deed dated September 7, 2007, and recorded in the Office of the Recorder of Deeds, New Castle County, in Instrument No. 20070910-0079726 did grant and convey unto Stacey Maxwell and Valory Shepperson.

SEIZED AND TAKEN IN EXECUTION AS THE PROPERTY OF STACEY MAXWELL AND VALORY SHEPPERSON.

TERMS OF SALE: 10% DOWN AT TIME OF SALE. BALANCE DUE ON OR BEFORE SEPTEMBER 21, 2009.

JUNE 30, 2009

**SHERIFF'S SALE**

By virtue of a writ of LEV FAC #67 JN, AD., 2009.

PARCEL NO. 08-049.30-364

PROPERTY ADDRESS: 10 Rockrose Drive, Newark, DE 19711

ALL that certain lot, piece or parcel of land, with the improvements thereon erected, situate in Mill Creek Hundred, New Castle County, Delaware, being Lot No. 59, Block C, as shown on the Plan of Meadowood, Section 1 prepared by Mann-Talley, Inc., Civil Engineers and Surveyors, of Wilmington, Delaware, dated May 7, 1959 and recorded in the Office of the Recorder of Deeds, New Castle County, Delaware in Microfilm No. 726.

BEING the same lands and premises which Garner L. Morton did by deed dated May 3, 2002 and recorded in the office aforesaid in Instrument No. 2002607-0054729 did grant and convey unto Garner L. Morton and Hazel W. Morton.

SEIZED AND TAKEN IN EXECUTION AS THE PROPERTY OF GARNER L. MORTON AND HAZEL W. MORTON.

TERMS OF SALE: 10% DOWN AT TIME OF SALE. BALANCE DUE ON OR BEFORE SEPTEMBER 21, 2009.

JUNE 30, 2009

**SHERIFF'S SALE**

By virtue of a writ of LEV FAC #69 JN, AD., 2009.

TAX PARCEL NO. 10-043.10-314

PROPERTY ADDRESS: 5 Wellington Drive, Newark, DE 19702

ALL that certain lot, piece or parcel of land with the buildings thereon erected, situate in New Castle Hundred, New Castle County and State of Delaware, known as 5 Wellington Drive and being Lot No. 121 as shown on a record Plan of Wellington Woods, Section One, as recorded in Microfile No. 4115; and being more particularly bounded and described in accordance with a recent survey by East Coast Survey, dated July 6, 2006.

BEING the same lands and premises which Dan R. Franklin, by Deed dated July 21, 2006 and recorded in the Office of the Recorder of Deeds in and for New Castle County, Delaware, in Instrument No. 20060724-0069896, did grant and convey unto Randolph Haith, in fee.

SEIZED AND TAKEN IN EXECUTION AS THE PROPERTY OF RANDOLPH HAITH.

TERMS OF SALE: 10% DOWN AT TIME OF SALE. BALANCE DUE ON OR BEFORE SEPTEMBER 21, 2009.

JUNE 30, 2009

**SHERIFF'S SALE**

By virtue of a writ of ALIAS LEV FAC #70 JN, AD., 2009.

TAX PARCEL NO. 10-020.20-198

PROPERTY ADDRESS: 204 Single Avenue, New Castle, Delaware 19720

ALL that certain lot, piece or parcel of land with the buildings thereon erected, situate in New Castle Hundred, New Castle County and State of Delaware, known as 204 Single Avenue, being Lot No. 251, block L, on the Plan of Collins Park, as said Plan is of record in the Office of the Recording of Deeds, in and for New Castle County and State of Delaware, in Plat Record 1, Page 95, and being more particularly bounded and described in accordance with a recent survey made by Phillips and Dickenson, Civil Engineers and Surveyors.

BEING the same lands and premises that Leo Hirschhorn and Hilda Hirschhorn by deed dated August 30, 1985 and recorded in the Office of the Recorder of Deeds in and for New Castle County, State of Delaware, in Deed Book 278, Page 161, did grant and convey unto Mark D. Gagnon and Anna Marie Gagnon, in fee.

SEIZED AND TAKEN IN EXECUTION AS THE PROPERTY OF MARK D. GAGNON AND ANNA MARIE GAGNON.

TERMS OF SALE: 10% DOWN AT TIME OF SALE. BALANCE DUE ON OR BEFORE SEPTEMBER 21, 2009.

JUNE 30, 2009

**SHERIFF'S SALE**

By virtue of a writ of ALIAS LEV FAC #71 JN, AD., 2009.

TAX PARCEL NO. 08-038.20-135

PROPERTY ADDRESS: 2615 Darby Drive, Wilmington, Delaware 19808

ALL that certain lot, piece or parcel of land with the buildings thereon, situate in Mill Creek Hundred, New Castle County and State of Delaware, being designated at Lot 8, block J, on the Plan of Sherwood Park, Section 2, as said plan appears of record in the Office of the Recorder of Deeds, in and for New Castle County, Delaware, in Plat Record 3, Page 75, said lot also known as 2615 Darby Drive and being more particularly bounded and described in accordance with a recent mortgage inspection survey by Zebley & Associates, dated May 21, 1997.

AND BEING the same property conveyed to Zbigniew Karas by Deed recorded in Deed Book 2279, page 77, dated May 14, 1997, recorded June 2, 1997 in the Office of the Recorder of Deeds for New Castle County.

AND BEING the same property conveyed by Zbigniew Karas by Deed dated August 12, 2005, recorded August 29, 2005 at Deed Instrument 20050829-0087107, to Theresa Kindbeiter, in fee.

SEIZED AND TAKEN IN EXECUTION AS THE PROPERTY OF THERESA KINDBEITER.

TERMS OF SALE: 10% DOWN AT TIME OF SALE. BALANCE DUE ON OR BEFORE SEPTEMBER 21, 2009.

JUNE 30, 2009

**SHERIFF'S SALE**

By virtue of a writ of ALIAS LEV FAC #73 JN, AD., 2009.

TAX PARCEL NO. 08-055.30-218-C0049

PROPERTY ADDRESS: 2401 Creekside Drive, Newark, Delaware 19711

All that certain unit of real property existing under and by virtue of the Unit Property Act of the State of Delaware, known as Unit 240 Creekside Drive, in Creekside at Green Valley, a condominium situated in Mill Creek Hundred, New Castle County, Delaware, as said Unit is more particularly bounded and described in (1) that certain Enabling Declaration of Reston Corporation, dated October 21, 1986, and recorded in Deed Book 483, Page 166, and (2) the Condominium Declaration Plan of Creekside at Green Valley, prepared by Ramesh C. Batta Associates, dated October 21, 1986 and recorded in the Office of the Recorder of Deeds, aforesaid, in Microfilm No. 8467.

(Continued)

LEGAL NOTICE LEGAL NOTICE LEGAL NOTICE LEGAL NOTICE LEGAL NOTICE LEGAL NOTICE LEGAL NOTICE LEGAL NOTICE LEGAL NOTICE LEGAL NOTICE

(Continued)

BEING the same lands and premises which Dennis J. Swarbrick, by Deed dated February 8, 2006 and recorded on February 13, 2006, in the Office of the Recorder of Deeds, in and for New Castle County and State of Delaware, in Deed Instrument #20060213-00151118, did grant and convey unto Lashonda L. Roberts, in fee.

SEIZED AND TAKEN IN EXECUTION AS THE PROPERTY OF LASHONDA L. ROBERTS.

TERMS OF SALE: 10% DOWN AT TIME OF SALE. BALANCE DUE ON OR BEFORE SEPTEMBER 21, 2009.  
JUNE 30, 2009

**SHERIFF'S SALE**

By virtue of a writ of LEV FAC #77 JN, AD., 2009.  
PARCEL NO. 10-043.10-725  
PROPERTY ADDRESS: 21 Foxtan Drive, Newark, Delaware

ALL that certain lot, piece or parcel of land, with the buildings thereon erected, situate in New Castle Hundred, New Castle County, Delaware, being designated lot 300, also known as 21 Foxtan Drive, Wellington Woods, Section II, as shown on the Record Resubdivision Plan of Wellington Woods, Section II and III, as said plan is of record in the Office of the Recorder of Deeds, under Microfilm No. 10595; and being more particularly bounded and described in accordance with a recent survey prepared by Welsh & Associates, dated February 7, 1992.

BEING the same lands and premises which Gilman Development Company, a Delaware corporation, by Deed dated February 7, 1992 and recorded in the Office of the Recorder of Deeds in and for New Castle County, Delaware, in Deed Book 1297 page 215 did grant and convey unto Shawn D. Wilson and Norma Jean Wilson, as tenants in common.

SEIZED AND TAKEN IN EXECUTION AS THE PROPERTY OF SHAWN D. WILSON AND NORMA JEAN WILSON.

TERMS OF SALE: 10% DOWN AT TIME OF SALE. BALANCE DUE ON OR BEFORE SEPTEMBER 21, 2009.  
JUNE 30, 2009

**SHERIFF'S SALE**

By virtue of a writ of FIRST PLURIES LEV FAC #92 JN, AD., 2009.  
PARCEL NO. 12-019.00-049  
PROPERTY ADDRESS: 4010 Kirkwood Street, Georges Road, Bear, DE 19701-2295

ALL that certain lot, piece or parcel of land situate in Red Lion Hundred, New Castle County and State of Delaware, lying on the North side of the Black Top Public Road leading from St. Georges to Kirkwood, and is bounded on the North by the lands of the Wilmington Girl Scouts Council, on the East by a Twenty Foot Right of Way, on the South by a Thirty Foot Right of Way and on the West by other lands and premises of Margaret I. Segers, and being more fully described as parcel Number One in accordance with a survey made by John Swan, Surveyor, during April 1956, as follows, to wit:

BEING the same lands and premises which Jess Francis Baker did grant and convey unto Jess Francis Baker and Susan Baker by deed dated June 16, 2006 and recorded on June 27, 2006 in the Office of the Recorder of Deeds, in and for New Castle County, State of Delaware, in Deed Instrument 20060627-0060959.

SEIZED AND TAKEN IN EXECUTION AS THE PROPERTY OF JESS FRANCIS BAKER AND SUSAN BAKER.

TERMS OF SALE: 10% DOWN AT TIME OF SALE. BALANCE DUE ON OR BEFORE SEPTEMBER 21, 2009.  
JUNE 30, 2009

**SHERIFF'S SALE**

By virtue of a writ of ALIAS LEV FAC #116 JN, AD., 2009.  
PARCEL ID: 09-021.40-151  
PROPERTY ADDRESS: 19 Clarion Court, Newark, DE 19713

ALL that certain lot or parcel of land situate in the New Castle Hundred, County of New Castle, State of Delaware, and being more particularly described as follows:

BEING the same lands and premises which Jane L. Neff, now known as Jane L. Sweeney, did grant and convey unto Alford Stanford and Floretta Stanford by deed dated 8/3/2006 and recorded 8/8/2006 Office of the Recorder of Deeds in and for New Castle County, State of Delaware, in Deed Record 20060808-0075387.

SEIZED AND TAKEN IN EXECUTION AS THE PROPERTY OF ALFORD STANFORD AND FLORETTA STANFORD.

TERMS OF SALE: 10% DOWN AT TIME OF SALE. BALANCE DUE ON OR BEFORE SEPTEMBER 21, 2009.  
JUNE 30, 2009

**SHERIFF'S SALE**

By virtue of a writ of LEV FAC #121 JN, AD., 2009.  
PARCEL NO. 10-033.30-058

PROPERTY ADDRESS: 5 Ross Court, Newark, DE 19702

ALL that certain lot, piece or parcel of land with the buildings thereon erected, situate in New Castle Hundred, New Castle County and State of Delaware, known as No. 5 Ross Court, Princeton Woods II, being Lot No. 38 on the record major land development plan of Centennial Village Section B as said plan is of record in the Office of the Recorder of Deeds in and for New Castle County, Delaware, in Microfilm record No. 4523, and being more particularly bounded and described in accordance with a survey prepared by Pelsa Company, Professional Land Surveyors of Newark, Delaware dated May 24, 2000, as follows, to wit:

BEING the same lands and premises which Bernard Johnson did grant and convey unto Elijah Word and Juanita Word by deed dated December 5, 2005 and recorded on April 12, 2006 in the Office of the Recorder of Deeds, in and for New Castle County, State of Delaware, in Deed Instrument 20060412-0034704.

SEIZED AND TAKEN IN EXECUTION AS THE PROPERTY OF ELIJAH WORD AND JUANITA WORD.

TERMS OF SALE: 10% DOWN AT TIME OF SALE. BALANCE DUE ON OR BEFORE SEPTEMBER 21, 2009.  
JUNE 30, 2009

**SHERIFF'S SALE**

By virtue of a writ of LEV FAC #132 JN, AD., 2009.  
PARCEL ID: 18-008.00-012

PROPERTY ADDRESS: 331-333 Papermill Road, Newark, DE 19711

ALL that certain lot, piece or parcel of land with the important thereon erected, known as 331 and 333 Paper Mill Road, Newark, DE 19711 as more particularly bounded and described by a survey prepared by Clifton L. Bakhsh, Jr., Inc. Professional Land surveyors dated May 8, 1988, as follows to wit:

BEING the same lands and premises which Connie Jean Trivits, did grant and convey unto Jamie R. Duncan, by deed dated July 28, 2005 and recorded on August 4, 2005 in the Office of the Recorder of Deeds, in and for New Castle County, State of Delaware, in Deed Instrument 20050804-0077312.

SEIZED AND TAKEN IN EXECUTION AS THE PROPERTY OF JAMIE R. DUNCAN.

TERMS OF SALE: 10% DOWN AT TIME OF SALE. BALANCE DUE ON OR BEFORE SEPTEMBER 21, 2009.  
JUNE 30, 2009

**SHERIFF'S SALE**

By virtue of a writ of LEV FAC #134 JN, AD., 2009.  
PARCEL NO. 09-039.20-010

PROPERTY ADDRESS: 148 Torington Way, Newark, DE 19702

ALL that certain lot, piece or parcel of land with the buildings thereon erected, situate in White Clay Creek Hundred, New Castle County, Delaware, known as 148 Torington Way, being Lot No. 30, on the Plan of Huntington, as the Plan thereof is of record in the Office of the Recorder of Deeds, in and for New Castle County in Microfilm No. 10,591, and being more particularly bounded and described in accordance with a survey prepared by Zebly and Associates, Professional Land Surveyors, dated De-

ember 28, 2000, as follows, to-wit:

BEING the same lands and premises which Michael F. McGarrity, did grant and convey unto Gerald M. Surratte and Rachel M. Surratte, by deed dated January 26, 2001 and recorded on January 29, 2001 in the Office of the Recorder of Deeds, in and for New Castle County, State of Delaware, in Deed Instrument 20010129-0005956.

SEIZED AND TAKEN IN EXECUTION AS THE PROPERTY OF GERALD M. SURRATTE AND RACHEL M. SURRATTE.

TERMS OF SALE: 10% DOWN AT TIME OF SALE. BALANCE DUE ON OR BEFORE SEPTEMBER 21, 2009.  
JUNE 30, 2009

**SHERIFF'S SALE**

By virtue of a writ of LEV FAC #135 JN, AD., 2009.  
PARCEL ID: 10-043.20-137

PROPERTY ADDRESS: 4 Swansea Lane, Newark, DE 19702

ALL that certain lot, piece or parcel of land, with the buildings thereon, situate in New Castle Hundred, New Castle County, Delaware, being designated Lot 161, as shown on the Record Resubdivision Plan of Wellington Woods, Section II & III, of record in the Office of the Recorder of Deeds, in and for New Castle County, Delaware on Microfilm No. 10595, said lot also known as 4 Swansea Lane and being more particularly described by A.E.S. Surveyors in a survey dated June 14, 1995, as follows to wit:

BEING the same lands and premises which Andrew M. Cuomo, Secretary of Housing and Urban Development, of Washington, D.C., acting by and through the Federal Housing Commissioner, did grant and convey unto Lindalee Helen Thompson, by deed dated March 20, 2000 and recorded on March 27, 2000 in the Office of the Recorder of Deeds, in and for New Castle County, State of Delaware, in Deed Book 2803 at Page 75.

SEIZED AND TAKEN IN EXECUTION AS THE PROPERTY OF LINDALEE HELEN THOMPSON.

TERMS OF SALE: 10% DOWN AT TIME OF SALE. BALANCE DUE ON OR BEFORE SEPTEMBER 21, 2009.  
JUNE 30, 2009

**SHERIFF'S SALE**

By virtue of a writ of LEV FAC #137 JN, AD., 2009.  
PARCEL ID: 11-013.30-022

PROPERTY ADDRESS: 4 Cobblestone Crossing, Newark, DE 19702

ALL that certain lot, piece or parcel of land with the buildings thereon erected, situate in Pencader Hundred, New Castle County and State of Delaware, known as 4 Cobblestone Crossing, being Lot No. 7 on the record Major Subdivision Plan of Cinnamon Station, as the Plan thereof is of record in the Office of the Recorder of Deeds in and for New Castle County, Delaware in Microfilm No. 13913, and being more particularly bounded and described in accordance with a survey prepared by East Coast Survey, Professional Land Surveyors, dated January 28, 2002, as follows, to-wit:

BEING the same lands and premises which Cinnamon Station, LLC, did grant and convey unto Richard W. Saltzman and Marisa L. Saltzman, by deed dated February 8, 2002 and recorded on February 11, 2002 in the Office of the Recorder of Deeds, in and for New Castle County, State of Delaware, in Deed Instrument 20020211-0013802.

SEIZED AND TAKEN IN EXECUTION AS THE PROPERTY OF RICHARD W. SALTSMAN AND MARISA L. SALTSMAN.

TERMS OF SALE: 10% DOWN AT TIME OF SALE. BALANCE DUE ON OR BEFORE SEPTEMBER 21, 2009.  
JUNE 30, 2009

**SHERIFF'S SALE**

By virtue of a writ of LEV FAC #141 JN, AD., 2009.  
PARCEL ID: 11-047.10-063

PROPERTY ADDRESS: 30 Forsythia Ln., Bear, DE 19701

ALL that certain lot, piece or parcel of land, with the buildings thereon erected, situate in Pencader Hundred, New

(Continued)

LEGAL NOTICE LEGAL NOTICE LEGAL NOTICE LEGAL NOTICE LEGAL NOTICE LEGAL NOTICE LEGAL NOTICE LEGAL NOTICE LEGAL NOTICE LEGAL NOTICE

(Continued)

Castle County and State of Delaware, known as 30 Forsythia Lane, being Lot No. 240, on the Plan of Brennan Estates, as the Plan thereof is of record in the Office of the Recorder of Deeds, in and for New Castle County in Microfilm No. 12612, and being more particularly bounded and described in accordance with a survey prepared by On Point, Inc. Land Surveying, Professional Land Surveying, professional Land Surveyors, dated June 29, 2003, as follows, to-wit:

BEING the same lands and premises which Lisa Young, did grant and convey unto Emery Young, by deed dated February 6, 2006 and recorded on February 10, 2006 in the Office of the Recorder of Deeds, in and for New Castle County, State of Delaware, in Deed Instrument 20060210-0014664.

SEIZED AND TAKEN IN EXECUTION AS THE PROPERTY OF EMERY YOUNG.

TERMS OF SALE: 10% DOWN AT TIME OF SALE. BALANCE DUE ON OR BEFORE SEPTEMBER 21, 2009.

JUNE 30, 2009

**SHERIFF'S SALE**

By virtue of a writ of LEV FAC #148 JN, AD., 2009.

PARCEL ID: 10-040.40-293

PROPERTY ADDRESS: 803 Dorothea Moors Lane aka 700 Dora Moors Lane, New Castle, DE 19720

ALL that certain lot, piece or parcel of land, with the Improvements thereon, situate in New Castle Hundred, New Castle County, State of Delaware, known as Lot No. 91 (a/k/a 803 Dorothea Moors Lane in Bayview Manor II, as shown on the Record Resubdivision Plan for Bayview Manor II), prepared by Karins and Associates, Professional engineers and Land Surveyors, dated March 22, 2002 and recorded November 14, 2002 in the Office of the Recorder of Deeds, in and for New Castle County, State of Delaware, in Instrument Number 200211140110577 and being more particularly bounded and described in accordance with a survey by Karins and Associates dated February, 2004, as follows, to-wit:

BEING the same lands and premises which NVR, Inc., a Virginia Corporation, trading as Ryan Homes, did grant and convey unto Victor O. Buckland and Kim M. Buckland, by deed dated February 12, 2004 and recorded on April 14, 2004 in the Office of the Recorder of Deeds, in and for New Castle County, State of Delaware, in Deed Instrument 20040414-0041161.

SEIZED AND TAKEN IN EXECUTION AS THE PROPERTY OF VICTOR O. BUCKLAND AND KIM M. BUCKLAND.

TERMS OF SALE: 10% DOWN AT TIME OF SALE. BALANCE DUE ON OR BEFORE SEPTEMBER 21, 2009.

JUNE 30, 2009

**SHERIFF'S SALE**

By virtue of a writ of LEV FAC #169 JN, AD., 2009.

PARCEL NO. 11-002.40-077

PROPERTY ADDRESS: 15 Metten Road, Newark, Delaware 19713

ALL that certain lot, piece or parcel of land, with the buildings and improvements thereon erected, situate, lying and being in the Pencader Hundred, New Castle County and State of Delaware, and bounded described and/or designated as follows:

Lot No. 133 on a certain plat entitled "Brookside Park" Section M, prepared by Whitman Requardt and Associates Consulting Engineers, dated May 7, 1953 and recorded in the Office of the Recorder of Deeds, in and for New Castle County, at Wilmington, Delaware in Plat Book 3, Page 10 on June 25, 1953.

BEING the same lands and premises which Betty J. Grabowski, as surviving tenant by the entirety, by Deed dated July 19, 2007 and recorded in the Office of the Recorder of Deeds, in and for New Castle County and New Castle County, in Instrument #20070731-0067268, did grant and convey unto Betty J. Grabowski and Elizabeth Bowman.

SEIZED AND TAKEN IN EXECUTION AS THE PROPERTY OF BETTY J. GRABOWSKI AND ELIZABETH BOWMAN.

TERMS OF SALE: 10% DOWN AT TIME OF SALE. BALANCE DUE ON OR BEFORE SEPTEMBER 21, 2009.

JUNE 30, 2009

**SHERIFF'S SALE**

By virtue of a writ of LEV FAC #170 JN, AD., 2009.

PARCEL NO: 11-023.20-251

PROPERTY ADDRESS: 106 Lake Arrowhead Circle, Bear, DE

ALL that certain lot, piece or parcel of land with the buildings thereon erected, situate in Pencader Hundred, New Castle County and State of Delaware, known as 106 Lake Arrowhead Circle being Lot No. 66 on the record resubdivision of Beck's Woods as said plan is of record in the Office of the Recorder of Deeds in and for New Castle County, Delaware, in Microfilm Zebley and Associates, Inc. Professional Land Surveyors, dated December 1, 2003, as follows:

BEING the same lands and premises which Deborah L. Balance n/k/a Deborah L. Norsworthy did by deed dated December 16, 2003 and recorded in the Office of the Recorder of Deeds, New Castle County, Delaware in Instrument N. 20031218-0165695 did grant and convey unto Virginia Ablertson.

SEIZED AND TAKEN IN EXECUTION AS THE PROPERTY OF VIRGINIA ALBERTSON.

TERMS OF SALE: 10% DOWN AT TIME OF SALE. BALANCE

DUE ON OR BEFORE SEPTEMBER 21, 2009.

JUNE 30, 2009

**SHERIFF'S SALE**

By virtue of a writ of LEV FAC #171 JN, AD., 2009.

PARCEL NO. 09-022.20-104

PROPERTY ADDRESS: 3 Acapella Ct., Newark, DE 19713

ALL that certain lot, piece or parcel of land with the buildings thereon, situate in White Clay Creek Hundred, New Castle County, Delaware being designated Lot 428, as shown on the record Resubdivision Plan of Harmony Crest, Section III, Page 2 of record in the Office of the Recorder of Deeds in and for New Castle County, Delaware on Microfilm No. 9672, said lot also known as 3 Acapella Court and being more particularly bounded and described in accordance with a recent survey prepared by East Coast Survey dated April 2002.

BEING the same lands and premises which Anne Magness Properties, Inc. did by deed dated April 26, 2002 and recorded in the office aforesaid in Instrument No. 20020429-0039469 did grant and convey unto Frank Carter and Margaret Carter.

SEIZED AND TAKEN IN EXECUTION AS THE PROPERTY OF FRANK CARTER AND MARGARET CARTER.

TERMS OF SALE: 10% DOWN AT TIME OF SALE. BALANCE DUE ON OR BEFORE SEPTEMBER 21, 2009.

JUNE 30, 2009

**SHERIFF'S SALE**

By virtue of a writ of LEV FAC #173 JN, AD., 2009.

PARCEL NO. 08-050.20-004

PROPERTY ADDRESS: 1901 Telegraph Road, Wilmington, DE 19804

ALL that certain lot, piece or parcel of land with the improvements thereon, situate in Mill Creek Hundred, New Castle County and State of Delaware, being a part of the property as defined in Deed Record 734, page 127, dated July 19, 1988 of record in the Office of the Recorder of Deeds in and for New Castle County, and being more particularly bounded and described in accordance with a survey prepared by Ramesh C. Batta Associates, P.A., Consulting Engineers, Land Surveyors.

BEING the same lands and premises which Ruth M. Bennett, by Deed dated February 22, 1991 and recorded in the Office of the Recorder of Deeds, in and for New Castle County and State of Delaware, in Deed Book 1144 Page 167, did grant and convey unto Donald A. Bennett and Phyllis K. Bennett.

SEIZED AND TAKEN IN EXECUTION AS THE PROPERTY OF PHYLLIS K. BENNETT.

TERMS OF SALE: 10% DOWN AT TIME OF SALE. BALANCE DUE ON OR BEFORE SEPTEMBER 21, 2009.

JUNE 30, 2009

**SHERIFF'S SALE**

By virtue of a writ of LEV FAC #174 JN, AD., 2009.

PARCEL NO. 09-02-259

PROPERTY ADDRESS: 349 Stanley Plaza Blvd., Newark, DE 19713

ALL that certain lot, piece or parcel of land, with the dwelling thereon erected, situate in White Clay Creek Hundred, New Castle County and State of Delaware, being known as Lot No. 40, said lot is also known as 349 Stanley Plaza Boulevard, and being more particularly bounded and described in accordance with a recent survey by The Pelsa Company, Inc., Land consultants and Surveyors, dated July, 2005.

BEING the same lands and premises which Nan Zhoua did by deed dated July 26, 2005 and recorded in the office aforesaid in Instrument No. 2005727-0074107 did grant and convey unto Sylvain E. Clissa and Christina Kardos.

SEIZED AND TAKEN IN EXECUTION AS THE PROPERTY OF SYLVAIN E. CLISSA AND CHRISTINA KARDOS.

TERMS OF SALE: 10% DOWN AT TIME OF SALE. BALANCE DUE ON OR BEFORE SEPTEMBER 21, 2009.

JUNE 30, 2009

**SHERIFF'S SALE**

By virtue of a writ of LEV FAC #176 JN, AD., 2009.

PARCEL NO: 11-028.20-231

PROPERTY ADDRESS: 997 Rue Madora, Bear, DE 19701

ALL that certain lot, piece or parcel of land with the dwelling thereon erected situate in Pencader Hundred, New Castle County and State of Delaware known as 997 Rue Madora, Lot No. 43 as shown on the Plan of Forest Glen at Pinewoods II as said Plan is recorded in the Office of the Recorder of Deeds in and for New Castle County, Delaware, in Microfilm No. 11698 and being more particularly bounded and described according to a survey by Merestone Consultants, Inc., Professional Consultants, Inc., Professional Land Surveyors, dated September 5, 2000.

BEING the same lands and premises which Greenwich Investors IX, LLC Delaware Limited Liability Company did by deed dated October 17, 2000, and recorded in the office aforesaid in Deed Book 2911 Page 153 did grant and convey unto Ensa N. Revelle and Robert Revelle, Jr.

SEIZED AND TAKEN IN EXECUTION AS THE PROPERTY OF ENSA N. REVELLE AND ROBERT REVELLE, JR.

TERMS OF SALE: 10% DOWN AT TIME OF SALE. BALANCE

DUE ON OR BEFORE SEPTEMBER 21, 2009.

JUNE 30, 2009

**SHERIFF'S SALE**

By virtue of a writ of LEV FAC #186 JN, AD., 2009.

TAX PARCEL NO. 09-030.30-105

PROPERTY ADDRESS: 1907 Lowland Way, Newark, Delaware

ALL that certain lot, piece or parcel of land with the buildings thereon erected, situate in White Clay Creek Hundred, New Castle County and State of Delaware, being Lot No. 51 on the record resubdivision plan of Christina Village, as said plan is of record in the Office of the Recording of Deeds in and for New Castle County, Delaware, in Microfilm Record No. 4260.

BEING the same lands and premises conveyed to Julia Pantoja by Deed for Rafael Pantoja, dated October 24, 2004, and recorded November 23, 2004, in the Office of the Recorder of Deeds, in and for New Castle County, and State of Delaware, in Instrument No. 20041123-0126155.

SEIZED AND TAKEN IN EXECUTION AS THE PROPERTY OF JULIA PANTOJA.

TERMS OF SALE: 10% DOWN AT TIME OF SALE. BALANCE DUE ON OR BEFORE SEPTEMBER 21, 2009.

JUNE 30, 2009

**SHERIFF'S SALE**

By virtue of a writ of LEV FAC #188 JN, AD., 2009.

PARCEL NO. 10-033.30-488

PROPERTY ADDRESS: 33 Highland Way, Newark, DE 19702

ALL that certain lot, piece or parcel of land, with the buildings thereon erected, situate in New Castle Hundred, New Castle County and State of Delaware, known as 33 Highland Way, being Lot No. 123, on the Plan of Pemberley, as the Plan thereof is of record in the Office of the Recorder of Deeds, in and for New Castle County in Microfilm No. 11711, and being more particularly bounded and described in accordance with a survey prepared by First State Mortgage Survey, Inc., Professional Land Surveyors, dated September 26, 2002, as follows, to-wit:

BEING the same lands and premises which Edward W. Rodgers and Joan B. Rodgers did grant and convey unto Karla S. Gonzalez by deed dated September 28, 2001 and recorded on October 12, 2001 in the Office of the Recorder of Deeds, in and for New Castle County, State of Delaware, in Deed Instrument 20011012-0084585.

SEIZED AND TAKEN IN EXECUTION AS THE PROPERTY OF KARLA S. GONZALEZ.

TERMS OF SALE: 10% DOWN AT TIME OF SALE. BALANCE DUE ON OR BEFORE SEPTEMBER 21, 2009.

JUNE 30, 2009

**SHERIFF'S SALE**

By virtue of a writ of VEND EX #195 JN, AD., 2009.

PARCEL NO. 10-034.30-030

PROPERTY ADDRESS: 23 Pulaski Highway, Bear, Delaware

ALL that certain land, place or parcel situate in New Castle Hundred, New Castle County and State of Delaware and being part of Lot No. 2 on the Plan of Fairwinds, as said Plan is of record in the Office of the Recorder of Deeds in and for New Castle County and State aforesaid in Plat book 1, page 74, and being more particularly described in accordance with a survey prepared by the Pelsa Company, dated February 12, 1999, as follows to wit:

AND BEING the same lands and premises which August F. Ellis, III and Jill Hastings-Ellis, by Deed dated June 30, 2004 and recorded in the Office of the Recorder of Deeds in and for New Castle County, Delaware in Deed Record 20040708-0075012 granted and conveyed to Jennifer C. Geisler and Pamela E. Trefz herein in fee.

SEIZED AND TAKEN IN EXECUTION AS THE PROPERTY OF JENNIFER C. GEISLER AND PAMELA E. TREFZ.

TERMS OF SALE: 10% DOWN AT TIME OF SALE. BALANCE DUE ON OR BEFORE SEPTEMBER 21, 2009.

JUNE 30, 2009

**SHERIFF'S SALE**

By virtue of a writ of LEV FAC #199 JN, AD., 2009.

PARCEL ID: 11-023.10-141

PROPERTY ADDRESS: 737 Kilgor Court, Newark, DE 19702

ALL that certain lot, piece or parcel of land with the buildings thereon erected situate in Pencader Hundred, New Castle County and State of Delaware known as 737 Kilgor Court, being Lot No. 158, on the Plan of Glasgow Pines, as the Plan thereof is of record in the Office of the Recorder of Deeds, in and for New Castle County in Microfilm No. \_\_, and being more particularly bounded and described in accordance with a survey prepared by ABS Surveyors, Professional Land surveyors, dated, as follows, to wit:

BEING the same lands and premises which Geoffrey M. Schmier and Melinda L. Anderson-Schmier, f/n/a Melinda L. Anderson, did grant and convey unto Charity Irving and Nicholas Irving, by deed dated March 31, 2006, and recorded on April 6, 2006 in the Office of the Recorder of Deeds, in and for New Castle County, State of Delaware, in Deed Instrument 20060406-0032652.

SEIZED AND TAKEN IN EXECUTION AS THE PROPERTY OF CHARITY IRVING AND NICHOLAS IRVING.

TERMS OF SALE: 10% DOWN AT TIME OF SALE. BALANCE DUE ON OR BEFORE SEPTEMBER 21, 2009.

JUNE 30, 2009

(Continued)



**625 FURNITURE/ FURNISHINGS**

**New Today**

**OUTDOOR furn.,** lounge chairs & straw umbrella & wire fence all new 410-398-1196

**SOLID PINE** (dark coffee table (Country Style) \$25 2 end tables step type maple \$25 or b/o Call 410-398-8729

**627 CHILDREN/ BABY ITEMS**

**Old spring Hobby Horse** geat gift approx \$120 asking \$50 firm 410-398-8729

**630 FIREWOOD**

**New Today**

**NAPOLEON WOODSTOVE** \$500. Call 410-378-2821 or 1-443-466-5705

**640 GENERAL MERCHANDISE**

**12 Foot Aluminum Extension Ladder** \$45.00. 410-658-6994

**ANTIQUE TOY BOAT** Early 1950's. New in box. Also new motor in box. \$75 b/o 302-559-9240

**Classified is the key** to more sales.

**640 GENERAL MERCHANDISE**

I sold the canning jars advertised in the Chesapeake Classified by 8 a.m. the first day my ad hit the newspaper. This is the second item that sold immediately. My shed is clearing out. I feel so good!!! Thanks.  
Carol

WWW.CHEESAPEAKECLASSIFIED.COM

**640 GENERAL MERCHANDISE**

**New Today**

**NASCAR collection.** From 1990-2007 1:24, 1:18, 1:32, 1:64. So many cars, so many drivers. 410-287-9631

**PORTABLE A/C** Everstart. Gray / silver color. New - great condition. Paid \$500, asking \$200. Please call: 410-398-4715

**640 GENERAL MERCHANDISE**

**SANYO 13 inch TV** + Sansui VCR works fine both for \$10 Call 410-287-8667

**Special Edition 1996** 25th Walt Disney World Barbie excellent condition. \$50.00 Call: 410-836-7069

**RECLINE, RELAX & RESELL**

**640 GENERAL MERCHANDISE**

**STAMP:** US Olympic commemorative 23 karat gold 1980 Olympic stamp. Proof - replica. 4 in package \$35 302-559-9240

**642 SPORTING GOODS**

**Eagles Reebok** Brian Westbrook Jersey. New, size LG. \$40 call 410-392-0953

WWW.CHEESAPEAKECLASSIFIED.COM

**642 SPORTING GOODS**

**EXER EQUIP** Treadmill \$200 Total Gym \$100 302-740-9343 aft 5pm

**GOLF CLUBS.** one mens left handed Pro set w/ OS Graphite woods, complete with ball bag and putter. \$100. 302-423-1641

**LEUPOLD SCOPES** (2) VarixII 2x7x32 & 3x9x40. \$200 each or both for \$375 443-553-6613

**642 SPORTING GOODS**

**REM 7600 30-06** cal \$375 REM 788 223 cal \$300 443-309-7432

**New Today**

**SHOTGUN:** Winchester mod. 12. 12 guage, full choke. Super X 3" shells. Good cond. \$700 410-398-9377

WWW.CHEESAPEAKECLASSIFIED.COM

**YARD SALES**

**660 YARD SALES**

**New Today**

**ANNUAL YARD-SALE** Principio Methodist Church Rte. 7, Perryville Aug. 8, 8am-2pm, Many, many items.

**HUGE BARGAINS!** CALVERT. 210 N. Fieldcrest Dr on Sat Aug 8 from 10a-4p.

**ELKTON-102 Windsor Drive** in Thompson Estates Saturday Aug 8th, 7am-? Wide variety/ don't miss this one. Raindate Sunday August 9th, 7am.

WWW.CHEESAPEAKECLASSIFIED.COM

**660 YARD SALES**

**ELKTON. 1610 W. Pulaski Hwy,** next to Dianas Thiftshop Sat 8/8 7a-2p. Business attire, 8-12 petite.

**New Today**

**ELKTON 368** Friendship Rd in Friendship Heights off High St. Sat, Aug 8, 8am-2pm. Toys, boys & girls clothes, glassware, houseware, books, bikes, lawnmower, furniture, etc.

**Multi Family** **ELKTON. 611 E. Pulaski Hwy,** Sat 8/8 & Sun. 8/9 9a until? Furniture, comforters, linen & more.

**660 YARD SALES**

**ELKTON. 407 Casparus Way,** St. Johns manor Fri 8/7 & Sat 8/8 8a-2p. MOVING!! Boating equip., some antiques, HH items, nautical items & more

**ELKTON. 8 Matthew Bathon Ct.,** off Leeds Rd. Sat Aug 8th 9a-2 Furniture, linens, Christmas decor, dishes, glassware, kit gadgets, collectibles, women's & men's clothing, accessories. **Something for everyone!**

**FLEA MARKET ELKTON** Marley Depot 1610 West Pulaski Hwy. Sat & Sun 8/8 & 8/9. 7am-5pm. Lighthouses, Buoy's etc. 410-441-1314 Vendors welcome

**660 YARD SALES**

**New Today**

**GARAGE SALE**

**FAIRHILL - 67** Poplar Hill Lane, 2700 Block of Singlerley Rd (Rt. 213). Park in field walk to 4 garages. Fri 8/7, Sat 8/8 & Sun 8/9. Items from White Hall Estate Antiques out of business sale. Everthing must go.

**Classified is the key** to more sales.

**660 YARD SALES**

**FLEA MARKET SALE**

Candi & Rick (of Clearview Ave) at North East VFW Sat. 8/8 from 7:30 to 3 pm. **LOADS OF NEAT STUFF**

from auctions & sales, fishing rods, reels, tackle, tools, hardware, vintage & antique ephemera, advertising, books, home décor, costume jewelry, household, great variety. Action Hero comics 1990s Batman, Mask, Superman, Fantastic 4, Wonder Woman, Green Arrow, Tarzan, Avengers, Captain America, Phantom, Spiderman. Come browse, make offers. **Rain or Shine!**

**660 YARD SALES**

**NORTH EAST. 96** Piney Ridge Lane, off Old Bayview & Bailiff. Sat Aug. 8th from 8a-2p. Tools, drill press, Troy Bilt lawn vac, joiner, 7pc patio set. Misc. HH items, few Christmas items.

**New Today**

**OXFORD- 325** Chrome Road (272 & Chrome). Fri & Sat Aug 7th & 8th. 7:30 -? Longaberger Baskets, furniture and household goods, organ, upright freezer.

**RECLINE, RELAX & RESELL**

**660 YARD SALES**

**Garage Sale**

**PORT DEPOSIT.** 159 McCormick Drive on Sat Aug. 8th at 8am. Kids clothes, all sizes, toys, HH items, electronics, ext. Rain or shine.

**HUGE BARGAINS!** R. SUN: 2 Meadow Court, left of James M Church. Fri. 8/7 & Sat 8/8 7:30a-? Baby stuff, craft supplies, HH items, table & chairs. LOTS!!!!

WWW.CHEESAPEAKECLASSIFIED.COM

**HUGE Flea Market & Yard Sale**

**August 7th and 8th 7am-? 19 Cokebury Rd., Port Deposit**

Located on a field in a great location

**Space Available!!**

Antiques, clothing of all sizes, Christmas items, vintage clothing, household items, chairs, oak roll top desk, collector plates, 6 drawer white wicker dresser, trunks, bedding, curtains, pictures, country decorations, pine 4 post canopy bed, lamps, rugs, books, toys and much more. **Too much to mention!**

**SPACE AVAILABLE**

443-907-3545 for info and directions.

**LEGAL NOTICE**

**SHERIFF'S SALE**

(Continued)  
By virtue of a writ of LEV FAC #201 JN, AD., 2009. PARCEL NO. 10-039.10-109  
PROPERTY ADDRESS: 1907 Dumas Place, Newark, DE 19702  
ALL that certain lot, piece or parcel of land, with the buildings thereon erected, known as No. 1907 Dumas Place, situate in New Castle Hundred, New Castle County and State of Delaware, and being Lot No. 3-30, Cobblestones-II, as shown on the record Minor Subdivision Plan of Cobblestones-II, Taylortowne, prepared by C&C Engineers, Inc., of Newark, Delaware, dated march 19, 1981 and recorded in the Office of the Recorder of Deeds, in and for New Castle County, Delaware, in microfilm No. 5939, and being more particularly bounded and described in accordance with a recent mortgages inspection plan by Ramesh C. Batta Associates, P.A. Consulting engineer, Planner and Land Surveyors, Plan No. 864997-A-10518, dated June 27, 1995 as follows to wit:  
BEING the same lands and premises which James A. Kennedy, did grant and convey unto Joseph J. Kennedy, by deed dated March 30, 2006 and recorded on August 5, 2006 in the Office of the Recorder of Deeds, in and for New Castle County, State of Delaware, in Deed Instrument 20060406-0032520.  
SEIZED AND TAKEN IN EXECUTION AS THE PROPERTY OF JOSEPH J. KENNEDY.  
TERMS OF SALE: 10% DOWN AT TIME OF SALE. BALANCE DUE ON OR BEFORE SEPTEMBER 21, 2009. JUNE 30, 2009

**SHERIFF'S SALE**

By virtue of a writ of LEV FAC #202 JN, AD., 2009. PARCEL ID: 10-039.30-100  
PROPERTY ADDRESS: 32 N. Sherman Dr., Bear, DE 19701  
ALL that certain lot, piece or parcel of land with the improvements

thereon, situate in New Castle County Hundred, New Castle County and State of Delaware, being Lot Number 88 as shown on the Record Major Subdivision Plan of Stone Mill of record in the Office of the Recorder of Deeds in and for New Castle County, Delaware in Microfilm No. 13017, said lot also known as 32 North Sherman Drive and being more particularly bounded and described in accordance with a survey prepared by A.E.S. Surveyors, dated September 21, 2000, as follows, to wit:  
BEING the same lands and premises which Kim S. Davis and Maryann E. Davis, did grant and convey unto Vernay C. Francis by deed dated October 24, 2000 and recorded on November 3, 2000 in the Office of the Recorder of Deeds, in and for New Castle County, State of Delaware, in Deed Book 2920 at Page 339.  
SEIZED AND TAKEN IN EXECUTION AS THE PROPERTY OF VERNAY C. FRANCIS.  
TERMS OF SALE: 10% DOWN AT TIME OF SALE. BALANCE DUE ON OR BEFORE SEPTEMBER 21, 2009. JUNE 30, 2009

**SHERIFF'S SALE**

By virtue of a writ of LEV FAC #205 JN, AD., 2009. PARCEL ID: 10-043.40-132  
PROPERTY ADDRESS: 503 Eldridge Court, Bear, DE 19701  
ALL that certain lot, piece or parcel of land, with the buildings thereon erected, situate in New Castle Hundred, New Castle County and State of Delaware, known as 503 Eldridge Court, being Lot No. 69, on the Plan of Wynnefield, as the Plan thereof is of record in the Office of the Recorder of Deeds, in and for New Castle County in Microfilm No. Deed Instrument No. 20021118-0111723, and being more particularly bounded and described in accordance with a survey prepared by AES Surveyors, Professional Land Surveyors, dated March 29, 2007, as follows, to wit:

BEING the same lands and premises which Kevin Gray and Denise Gray, did grant and convey unto Joseph Aouad, by deed dated April 10, 2007 and recorded on April 24, 2007 in the Office of the Recorder of Deeds, in and for New Castle County, State of Delaware, in Deed Instrument 20070424-0036872.  
SEIZED AND TAKEN IN EXECUTION AS THE PROPERTY OF JOSEPH AOUD.  
TERMS OF SALE: 10% DOWN AT TIME OF SALE. BALANCE DUE ON OR BEFORE SEPTEMBER 21, 2009. JUNE 30, 2009

**SHERIFF'S SALE**

By virtue of a writ of VEM #96 JN, AD., 2009. PARCEL NO. 11-012.00-028  
ALL that certain lot, piece or parcel of land with any buildings or improvements thereon erected, known as 9 Pleasant Wood Road, Newark, New Castle County and State of Delaware.  
BEING the same lands and premises which were conveyed unto Charles G. Simons, by deed of Charles G. Simons and Lillian L. Simons, his wife dated August 7, 1981, and recorded in the Office of the Recorder of Deeds in and for New Castle County, Delaware, on May 17, 1982, in Deed Record L., Volume 118, Page 248.  
SEIZED AND TAKEN IN EXECUTION AS THE PROPERTY OF CHARLES G. SIMONS.  
TERMS OF SALE: 10% DOWN AT TIME OF SALE. BALANCE DUE ON OR BEFORE SEPTEMBER 21, 2009. JUNE 30, 2009

Michael P. Walsh, Sheriff  
Sheriff's Office  
Wilmington, Delaware

**LEGAL NOTICE**

**CITY OF NEWARK  
DELAWARE  
COUNCIL MEETING AGENDA  
August 10, 2009 - 7:30 PM - CC**

1. **SILENT MEDITATION & PLEDGE OF ALLEGIANCE**
2. **CITY SECRETARY'S MINUTES FOR COUNCIL APPROVAL:**
3. **ITEMS NOT ON PUBLISHED AGENDA:**
  - A. Regular Council Meeting of July 27, 2009
  - A. Public (5 minutes per speaker)
  - B. University
    - (1) Administration
    - (2) Student Body Representative
  - C. Council Members
- 4-A. **ITEMS NOT FINISHED AT PREVIOUS MEETING:** None
- 4-B. **FINANCIAL STATEMENT:** Next Meeting
5. **RECOMMENDATIONS ON CONTRACTS & BIDS:** None
- \*6. **ORDINANCES FOR SECOND READING & PUBLIC HEARING:**
  - A. Bill 09-29 - An Ordinance Amending Ch. 22, Police Offenses, By Increasing the Monetary Threshold for Property Crime Misdemeanors to Conform to State Code
- \*7. **PLANNING COMMISSION/DEPARTMENT RECOMMENDATIONS:**
  - A. Request of John and Elizabeth Mayer for a Minor Subdivision of a 1.76 Acre Property Located at the Northwest Corner of the Intersection of Woodlawn and Elm Avenues In Order to Develop Five Single-Family Parcels (Resolution and Agreement Presented)
8. **ORDINANCES FOR FIRST READING:**
  - A. Bill 09-24 - An Ordinance Amending Ch. 2, Administration and Ch. 20, Motor Vehicles & Traffic, By Increasing Court Costs Payable By Defendants Who Elect to Enter the First Offender DUI Program and By Increasing the Fine For First and Second Offense DUI Convictions to Conform to State Code (2nd Read. 8/24/09)
  - B. Bill 09-25 - An Ordinance Amending Ch. 30, Water, By Establishing a Water Rate Schedule Effective October 1, 2009 (2nd Read 8/24/09)
9. **ITEMS SUBMITTED FOR PUBLISHED AGENDA:**
  - \*A. **COUNCIL MEMBERS:**
    1. Discussion re Domestic Partners
    2. Resolution 09-\_: Retirement of Robert "Rob" Berndt
  - B. **COMMITTEES, BOARDS & COMMISSIONS:**
    1. Planning Commission Minutes of July 7, 2009
  - \*C. **OTHERS:** None
10. **SPECIAL DEPARTMENTAL REPORTS**
  - A. Special Reports from Manager & Staff:
    1. Real Estate Tax Assessment Actual Annual Billing Roll Annual Billings for the Period of July 1, 2009 - June 30, 2010
    2. Setting Date for Public Hearing of the 2010-2014 Capital Improvement Program (August 24, 2009)
  - B. Alderman's Report

**\*OPEN FOR PUBLIC COMMENT**  
The above agenda is intended to be followed, but is subject to changes, deletions, additions, and modifications, as permitted under the Freedom of Information Act of the State of Delaware. Copies may be obtained at the City Secretary's Office, 220 Elkton Road, or online at [www.cityof-newarkde.us](http://www.cityof-newarkde.us)

np 8/7 2081795

**PLACE YOUR CLASSIFIED AD  
24 HOURS A DAY • 7 DAYS A WEEK  
CALL OR EMAIL  
CHESAPEAKE CLASSIFIED  
410-398-1230 • 800-220-1230  
[www.chesapeakeclassified.com](http://www.chesapeakeclassified.com)**

**LEGAL NOTICE**

The following Sentinel Self Storage sites will be holding public auctions on September 9, 2009. All sales are cash only and final. A \$100 cash deposit is required to purchase a unit.

**SENTINEL SELF STORAGE**  
200 First State Boulevard  
Wilmington DE, 19804  
302-999-0704

Public auction to be held on **September 9, 2009 at 11:00 a.m.** The following units will be auctioned:  
#1425 - Lidia Moyano - 4 bags, 2 boxes, suitcase, 2 totes, large coffee pot  
#3117 - Kevin Justiniano - bed frame, folding bed, monitor, suitcase, toolbox, carpet, padding, vinyl tiles, vacuum  
#5117 - Miranda Lincoln - baby crib, 3 bags, folding bed, 6 boxes, kitchen chairs, chest of drawers, dryer, floor lamp, table lamp, night table, 12 totes  
#9133 - Ronnette Cunningham - mattress, 5 boxes, kitchen chairs, clothing closet, table lamp, coffee table, 3 totes, trunk, portable TV, wrapped curio  
#6183 - Dennis Dorsey, Cynnovia Saunders - 6 bags, 7 boxes, 2 suitcases, end table  
#9251 - Timothy L. Davis - books, 10 boxes, office chair, pictures, shelving suitcase, record albums

**SENTINEL SELF STORAGE**  
465 Pulaski Hwy.  
New Castle, DE 19720  
302-328-5810

A public auction will be held on **Wednesday, September 9, 2009 at 1:00 p.m.** The contents of the following storage units will be auctioned:  
#5108 - Deandre Thomas - bags, clothing, desk, suitcase, totes, TV, vacuum, hand truck, duffel bags  
#4040 - Dayla Tucker - washer, dryer  
#2022 - Rodney Grobes - boxes, filing cabinet, office chair, computer, totes, office furniture, waiting room furniture  
#3014 - Crystal Williams - bags, bicycle, totes, toys, record albums, musical instruments

**SENTINEL SELF STORAGE**  
1100 Elkton Road  
Newark, DE 19711  
302-731-8108

A public auction will be held on **Wednesday, September 9, 2009 at 10:00 a.m.** The contents of the following storage units will be auctioned:  
#4107 - David M. Bosworth - boxes, kitchen chairs, night table, box fan, misc. household items  
#6017 - Nadine A. Slack - baby crib, boxes, beach chair, upholstered chair, clothing, suitcase, tool box, totes, heater, old motorcycle

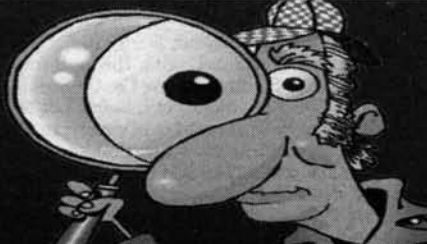
**SENTINEL SELF STORAGE**  
333 E. Lea Blvd.  
Wilmington, DE 19802  
302-764-6300

Public auction to be held on **September 9, 2009 at 12:00 p.m.** at the above address. All sales are cash only. All sales are final. The units to be auctioned are as follows:  
#130 - Joyce A. Dixon - bags, boxes, ladder, microwave, mirrors, rug, suitcase, folding table, snack table  
#150 - Vincent Fahr - bags, entertainment center, ice chest, microwave, shelving, suitcase, totes, shop vac, hand truck, clock  
#184 - Romaine Boyd - fan, floor lamp, shelving, tool box, totes, trunk, weight bench, weights, Honda motorcycle, shop vac, power washers, helmets, hoses  
#237 - Max Cross - bags, boxes, ironing board, pictures, speakers, stereo  
#251 - Maurice Carter - baby stroller, bags, bed, boxes, folding chair, totes, office chair, floor lamp, table lamp, love seat, microwave, monitor, pictures, radio, coffee table, end table  
#284 - Angelo Manerchia - filing cabinet, tires, tool box, air compressor, electronic motor tester, rolling tool chest, work bench  
#326 - Louise Ares - bags, boxes, clothing, couch, stereo, totes  
np 7/31,8/7

2077890

**FIND WHAT  
YOU'RE  
LOOKING  
FOR IN OUR  
CLASSIFIED  
SECTION!**

Yard Sales  
Lost Pets  
Used Vehicles  
Items for Sale



**664 LAWN & GARDEN EQUIPMENT**

**RIDING MOWER.**  
Hydrostatic trans twin cycle. \$200 OBO.  
410-658-7346

**670 MACHINERY & HEAVY EQUIPMENT**

**New Today**  
18' TRAILER with ramps. Dual axle. No title. New deck. \$450  
717-919-4252

**670 MACHINERY & HEAVY EQUIPMENT**

**2002 John Deere 5205 Diesel**, price \$4300, Mower, Loader, 4WD, pictures and details at [robbr45r@gmail.com](mailto:robbr45r@gmail.com), 410-697-6134

[WWW.CHESAPEAKECLASSIFIED.COM](http://WWW.CHESAPEAKECLASSIFIED.COM)

**672 TOOLS**

**New Today**  
MILLER welding machine brand new cond. model Dynasty SD, all attachments & extras incl many welding tools incl \$2200 or b/o 443-206-0081

**RECLINE, RELAX & RESELL**

**680 WANTED TO BUY**

1984 ELKTON high school year book. Good cond. 443-466-8924 leave msg

**740 FARM SUPPLIES /EQUIPMENT**

**New Today**  
'86 FARMALL DIESEL 3 pt hitch and good PA & clutch. Call for info. 443-553-9513

**LEGAL NOTICE**

**CITY OF NEWARK  
DELAWARE  
BOARD OF ADJUSTMENT  
PUBLIC HEARING  
AUGUST 20, 2009 - 7:30 P.M.**

Pursuant to Chapter 32, Article XIX of the Code of the City of Newark, Delaware, notice is hereby given of a public hearing at a regular meeting of the Board of Adjustment on **Thursday, August 20, 2009 at 7:30 p.m.** in the Council Chamber, Newark Municipal Building, 220 Elkton Road, Newark, Delaware, to hear the following applications:

1. Appeal of H. Gibbons Young, for the property at 203 New London Road, for the following variances to permit the construction of a 2-story 3 unit apartment building:
  - a) Ch. 32, Sec. 32-11 (a) (1) (h) - requires a minimum of 1 acre. Plan shows .56 acre.
  - b) Ch. 32, Sec. 32-11 (c) (5) (a) - requires each part of a building, excluding cornices, uncovered steps and porches, to have a setback of 30 feet from all perimeter streets. Plan shows a setback of 20.5 feet from New London Road.
  - c) Ch. 32, Sec. 32-11 (c) (7) (b) - requires a minimum side yard of 20 feet. Plan shows a side yard of 12.3 feet.
  - d) Ch. 32, Sec. 32-11 (a) (1) (j) - requires uncovered parking spaces to be located at least 10 feet from abutting perimeter streets and property lines. Plan shows a 6 foot setback.

ZONING CLASSIFICATION: RM  
2. Appeal of American Sign & Graphics for the property at 850 Library Avenue, for the following variance:

- a) Ch. 32, Sec. 32-60 (a) (2) restricts an area of 60 feet for an illuminated ground sign. The proposed sign occupies an area of 79 feet. A minimum distance of 100 feet from a residential district is required; plan shows approximately 96 feet.

ZONING CLASSIFICATION: BL  
3. Appeal of Mark Manno, for the property at 123 Casho Mill Road, for the following variance:

- a) Ch. 32, Sec. 56.6 - limits the height of a fence in a front yard to a maximum of 3 feet. Plan shows a 6 foot height.

ZONING CLASSIFICATION: RS  
4. Appeal of Fusco Enterprises for the property at 601 Ogletown Road, for the following variance:

- a) Ch. 32, Sec. 45 (a) - A minimum of 109 parking spaces is required for a proposed convenience store with gas pumps. Plan shows 89 parking spaces.

ZONING CLASSIFICATION: BB  
The applications and related materials may be examined at the City Secretary's Office, 366-7070, prior to the meeting.

Clayton S. Foster  
Chairman

np 8/7

**LEGAL NOTICE**

**THE COURT OF COMMON PLEAS FOR THE STATE OF DELAWARE IN AND FOR NEW CASTLE COUNTY**

IN RE: CHANGE OF NAME OF Diana Stimson Gilmore PETITIONER(S) TO Diana Stimson  
NOTICE IS HEREBY GIVEN that Diana Stimson Gilmore intends to present a Petition to the Court of Common Pleas for the State of Delaware in and for New Castle County, to change his/her name to Diana Stimson.

D.S. Gilmore  
Petitioner  
Dated: July 14, 2009  
np 7/24,31,8/7

**THE COURT OF COMMON PLEAS FOR THE STATE OF DELAWARE IN AND FOR NEW CASTLE COUNTY**

IN RE: CHANGE OF NAME OF Timothy Paul Coulby, Tomoko Coulby PETITIONER(S) TO Timothy Paul Komiyama Coulby, Tomoko Komiyama Coulby

NOTICE IS HEREBY GIVEN that Timothy Paul Coulby, Tomoko Coulby intends to present a Petition to the Court of Common Pleas for the State of Delaware in and for New Castle County, to change his/her name to Timothy Paul Komiyama Coulby, Tomoko Komiyama Coulby.

Timothy P. Coulby  
Petitioner  
Tomoko Coulby  
Petitioner

Dated: July 31, 2009  
np 8/7,14,21 2081798

**LEGAL NOTICE**

**THE COURT OF COMMON PLEAS FOR THE STATE OF DELAWARE IN AND FOR NEW CASTLE COUNTY**

IN RE: CHANGE OF NAME OF Matthew Young-Herrington PETITIONER(S) TO Matthew Young  
NOTICE IS HEREBY GIVEN that Matthew Young-Herrington intends to present a Petition to the Court of Common Pleas for the State of Delaware in and for New Castle County, to change his/her name to Matthew Young.

Lois Young  
Matthew Young-Herrington  
Petitioner  
Dated: July 8, 2009  
np 7/24,31,8/7

**THE COURT OF COMMON PLEAS FOR THE STATE OF DELAWARE IN AND FOR NEW CASTLE COUNTY**

IN RE: CHANGE OF NAME OF Jonnie Lee Spells Junior PETITIONER(S) TO Xavier Nathan Wroten

NOTICE IS HEREBY GIVEN that Jonnie Lee Spells Junior intends to present a Petition to the Court of Common Pleas for the State of Delaware in and for New Castle County, to change his/her name to Xavier Nathan Wroten.

*Xavier Nathan Wroten*  
Petitioner

Dated: 7/30/09  
np 8/7,14,21 2081426

**740 FARM SUPPLIES /EQUIPMENT**

**HAY RAKE** 3 point hitch wheel rake. \$1,000. Cash only. 410-838-7488

**815 POWER BOATS**

**27' SEARAY 1997**, low hrs, gd cond. Bravo 3 merc eng., heat, air, camper pkg, many new parts. \$27,500. 410-642-6081

**820 SAILBOATS**

**New Today**  
**30' CATALINA TALL RIG: '84**, Exc cond. Lots of Extras Great Deal \$15,000 Please call: 410-822-0534

**850 MOTORCYCLES/ATVs**

**CR250R '01**. Just rebuilt, many extras. Runs great. \$1700 OBO. 443-553-2460

**850 MOTORCYCLES/ATVs**

**VICTORY HAMMER '05**, 100-cu inch eng, custom paint. Chrome wheels, drag pipes, extra chrome pkg. 250 rear wheel, 7,500 miles. Show room cond. \$12,900. Neg. Call 443-845-1973

**New Today**

**ORCHARD GRASS HAY** for sale. \$3 per bale. Must pick up. 410-658-4953

**New Today**

**24' MARATHON '88** cabin cruiser. Nice open deck. Fresh 350 motor. I/O, h/w heater, shower. Bimini, Sleeps 5. Wholesale \$10,900. Your price \$3900 717-919-4252

**840 RECREATIONAL VEHICLES**

**1990 MH-COACHMEN 22' E350** Ford, 351 engine. 43,500 mls, insp, good cond. \$8,500 obo. 410-557-2906 Jarrettsville, 443-722-7912

**New Today**

**CUSTOM HARLEY '00** One owner, only 2500 miles, show-room cond. \$12,000. Call 410-398-1202

**870 TRUCKS/SPORT UTILITY VEHICLES**

**DODGE DAKOTA RT '03**. Loaded. Exc. cond. 6400 miles. \$7500 OBO. Call 443-350-1658 for details



**TRANSPORTATION**

**815 POWER BOATS**

**20' PONTOON LOWE '90** 90hp w/ trlr \$3,000 Ready for water! 410-688-2271

**Jackson Marine Sales annual open house & boat sales**

August 14th - 16th 9AM-5PM  
New Donzi, Robalo and Regals in the water. Over 115 used boats in stock. Marine store specials and flea market. North East, MD. 410-287-9400 jacksonmarine sales.com

**850 MOTORCYCLES/ATVs**

**1978 HARLEY Davidson FLH 75th anniversary edition.** Call US1 Sales & Service 410-838-4902

**850 MOTORCYCLES/ATVs**

**POLARIS '00 Trail-blazer 250 2 stroke** ATV, rebuilt top half engine, carb., new battery, R/tires, rims brakes, clutches, belt, CDI, coil rear plastic in & out ball joints bushings, too much to list \$3000 or b/o or trade for JD Gator & 300 Polaris, 2 stroke ATV great cond \$2000 or b/o 410-879-4942

**DODGE RAM 1500 QUAD CAB, 2007**, 4x4, 45k miles, exc cond. Must sell. \$16,000 obo. 410-287-2719

**New Today**

**21.8' Carolina Skiff DLV Hull '07** GPS Plotter 150 Optima Max Mercury motor \$17,000 443-786-5460

**RECLINE, RELAX & RESELL**

**RID YOUR HOME OF ALL THAT CLUTTER! HAVE A YARD SALE AND ADVERTISE IT WITH US!**

**850 MOTORCYCLES/ATVs**

**'96 FXR Kenny Royce Pro Street** Frame. Fresh S&S motor, 10 over, custom paint, inverted front end, new tires. \$8900 302-593-9313

**New Today**

**SUZUKI LT F-250 '99** 3,000 miles, red, runs great. \$1500. Call 410-378-5842

**FORD EXPEDITION '98** 4x4 loaded gar kept very gd cond. 410-658-9907

**FORD E350 '98 12'** box truck w/power lift gate. 99k, inspected. \$4995. US1 Sales & Service 410-838-4902

**FORD F350 '97** crew cab dump truck. 2WD, V8 auto, ac gas, insp. \$4900. US1 Sales & Service 410-838-4902

**RID YOUR HOME OF ALL THAT CLUTTER! HAVE A YARD SALE AND ADVERTISE IT WITH US!**

**RID YOUR HOME OF ALL THAT CLUTTER! HAVE A YARD SALE AND ADVERTISE IT WITH US!**

**RID YOUR HOME OF ALL THAT CLUTTER! HAVE A YARD SALE AND ADVERTISE IT WITH US!**

**SUZUKI DR 650 '07** Dual Sport, black, 2,800 miles. Great bike! \$4,300. Please call 410-378-5842

**CLASSIFIEDS**  
410-398-1230  
800-220-1230

WWW.CHESAPEAKE CLASSIFIED.COM

**CITY OF NEWARK DELAWARE TRAFFIC COMMITTEE MEETING NOTICE**

The Traffic Committee meeting scheduled for **Tuesday, August 18, 2009** has been cancelled due to a lack of agenda items. np 8/7

**THE COURT OF COMMON PLEAS FOR THE STATE OF DELAWARE IN AND FOR NEW CASTLE COUNTY**

**IN RE: CHANGE OF NAME OF**  
Raven Alexandria Brown  
PETITIONER(S)  
TO  
Raven Alexandria Dawson  
**NOTICE IS HEREBY GIVEN** that Raymond Aleander Dawson II for Raven Alexandria Brown intends to present a Petition to the Court of Common Pleas for the State of Delaware in and for New Castle County, to change his/her name to Raven Alexandria Dawson.  
Raymond A. Dawson II  
Petitioner  
Dated: 7/22,2009  
np 7/31,8/7,14 2078150

**THE COURT OF COMMON PLEAS FOR THE STATE OF DELAWARE IN AND FOR NEW CASTLE COUNTY**

**IN RE: CHANGE OF NAME OF**  
Luke T. Baynard Jr.  
PETITIONER(S)  
TO  
Luke Timothy Sheffield  
**NOTICE IS HEREBY GIVEN** that Lonja Smith, the mother of Luke is changing his name due to the fact that DNA proves Luke's not the father, intends to present a Petition to the Court of Common Pleas for the State of Delaware in and for New Castle County, to change his/her name to Luke T. Sheffield because you know he's not your child Luke Baynard.  
Lonja Smith  
Petitioner  
Dated: 7/30/09  
np 8/7,14,21 2081428

**CITY OF NEWARK DELAWARE PUBLIC HEARING NOTICE**

**August 24, 2009 - 7:30 P.M.**

Pursuant to Chapter 32, Zoning, Section 32-78, and Section 32-9(b)(6) Code of the City of Newark, Delaware, notice is hereby given of a public hearing in the Council Chamber, Newark Municipal Building, 220 Elkton Road, on **Monday, August 24, 2009 at 7:30 p.m.**, to consider the request of Michele Richmond of Creative Beginnings Learning Center, for a Special Use Permit to operate a day care facility for no more than 22 children in an existing building located immediately to the rear of the St. Thomas Episcopal Church located at 276 S. College Avenue, Newark, Delaware. One-Family, Detached Residential).

Patricia M. Fogg, CMC  
City Secretary  
2081458

np 8/7,14

**LEGAL NOTICE RE: DEADLY WEAPON**

**RE: DEADLY WEAPON**  
I, James Stanley McKelvey residing at, 48 Winslow Rd., Newark, Delaware 19711, will make application to the judges of the Superior Court of the State of Delaware in and for New Castle County at Wilmington for the next term for a license to carry a concealed deadly weapon, or weapons, for the protection of my person(s), or property, or both.  
J.S. McKelvey  
7/28/09  
2081450

np 8/7, 2081428

**LEGAL NOTICE RE: DEADLY WEAPON**

**RE: DEADLY WEAPON**  
I, Daniel F. Williams residing at, 14 Merion Rd., Newark, DE 19713, will make application to the judges of the Superior Court of the State of Delaware in and for New Castle County at Wilmington for the next term for a license to carry a concealed deadly weapon, or weapons, for the protection of my person(s), or property, or both.  
Daniel F. Williams  
7/29/09  
2081430

np 8/7, 2081450



**ARDENT TITLE COMPANY**

**Susan M. Knight • Settlement Agent**  
149-151 E. Main Street, Elkton, MD 21921  
(410) 996-9780 • Fax (410) 996-9784 • info@ardentitle.com

LENDER	Phone Number	15 YEAR Fixed % PTS. APR	30 YEAR Fixed % PTS. APR	1 YEAR ARM % PTS. APR	3 YEAR ARM % PTS. APR	5 YEAR ARM % PTS. APR	
APGFCU	1-888-LOAN-391	5.375/0/5.51	5.375/0/5.8	6.50/0/4.016	5.875/0/4.253	6.375/0/4.744	
CECIL BANK	(410) 398-1650	*PLEASE CALL FOR RATES					
CLASSIC MORTGAGE	(302) 366-1661	4.875/0/5.10	5.37/0/5.60		4.5/0/4.7	4.37/0/4.6	
MBA FINANCIAL SERVICES	(410) 287-5600	Please call for quotes. Many programs. All credit considered.			100% financing available-Interest only options! 1st time home buyers, 2nd homes & investment properties.		
PEOPLES BANK OF ELKTON	(410) 996-2265	4.875/0/5.00	5.50/0/5.58	5.625/1.375/3.586	5.375/0/3.83	5.875/1.125/4.315	
WILMINGTON MORTGAGE	(410) 398-5607	PLEASE CALL FOR RATES.			FREE PRE-APPROVAL - NO APPLICATION FEE		

These rates, effective 8/4/09, were provided by the lenders and are subject to change. Other terms may be available. These rates are for existing first mortgages. Points may vary on refinances. Down payment requirements may vary. \*Caps and length may vary on adjustable rates. The APR is based on a \$100,000 mortgage with a 20% down payment and is in addition to interest included points fees & other credit costs. To list your mortgage rates, call our Real Estate Sales Division at 410 398-3311 or 1-800-220-3311. These mortgage rates are a paid advertising feature of the Cecil Whig

**WILMINGTON MORTGAGE**

205 East Main Street, Elkton, MD 21921  
Office: 410-398-5607 • TOLL FREE: 800-607-5607



**Phil Davis**  
Loan Officer



**Kim Pettitt**  
Loan Officer



**Bruce Fink**  
Loan Officer

- 100% Financing
- FHA, VA, and Rural Development
- Self Employed
- Bridge Loans
- Reverse Mortgages

**875** VANS/  
MINI VANS

**TOYOTA SIENNA**  
LE '01 exc cond 97k  
ac ps pw pd cd \$6195  
obo 717-548-3730

WWW.CHEESAPEAKE  
CLASSIFIED.COM

**876** ANTIQUE AUTOS

**1987 CHEVY**  
Corvette convertible.  
58k original miles.  
MINT! Inspected.  
US1 Sales & Service.  
410-838-4902

**876** ANTIQUE AUTOS

**1930 MODEL A**  
Ford sedan. 2 door,  
steel body, many  
updates. New 350  
crate motor. 350 auto  
turbo trans. \$32,500  
410-398-6242

**876** ANTIQUE AUTOS

**New Today**  
**DUSTER '72 V8,**  
318 auto. Flat black.  
Runs, good interior.  
\$4800 443-421-5575

**880** AUTOS

**2001 CORVETTE**  
COUPE, Magnetic  
red, auto, 46K,  
loaded, Power every-  
thing. The **cleanest**  
**low mileage car at this**  
**price!** \$18,950. Call  
Nick at (410)688-  
9909

**880** AUTOS

**VW JETTA '00 '08**  
rims & tires, 5 spd,  
s/roof, 137K, VR6.  
\$3800 302-593-9313

CHECK OUT  
OUR WEBSITE AT  
WWW.CHEESAPEAKE  
CLASSIFIED.COM

**890** WANTED  
TO BUY

**A BIG AMOUNT OF**  
**CASH PAID** for all  
cars & trucks. Free  
towing. 443-378-2612

**WE BUY JUNK**  
**cars, trucks & vans.**  
\$100 & up. 302-420-  
7411 or 302-650-4579

**890** WANTED  
TO BUY

**WE BUY SCRAP**  
**METAL!** Call for free  
pick up and appraisal.  
We buy from small  
matchbox cars to  
large industrial build-  
ings! 302-650-4579

**LEGAL NOTICE**

**RE: DEADLY WEAPON**  
I, Carol Ruth McKelvey residing at, 48 Winslow Rd., Newark, Delaware 19711, will make application to the judges of the Superior Court of the State of Delaware in and for New Castle County at Wilmington for the next term for a license to carry a concealed deadly weapon, or weapons, for the protection of my person(s), or property, or both.

Carol R. McKelvey  
7/28/09  
np 8/7 2081452

**LEGAL NOTICE**

**RE: DEADLY WEAPON**  
I, Bruno Saggese residing at, 56 Quartz Mill Rd., Newark, DE 19711, will make application to the judges of the Superior Court of the State of Delaware in and for New Castle County at Wilmington for the next term for a license to carry a concealed deadly weapon, or weapons, for the protection of my person(s), or property, or both.

Bruno Saggese  
7/28/09  
np 7/31,8/7,14 2078976 np 8/7 2081454

**LEGAL NOTICE**

**THE COURT OF COMMON PLEAS FOR THE STATE OF DELAWARE IN AND FOR NEW CASTLE COUNTY**

**IN RE: CHANGE OF NAME OF Elizabeth Ann Crosman PETITIONER(S) TO Elizabeth Ann Crosman Georgian NOTICE IS HEREBY GIVEN that Elizabeth Ann Crosman intends to present a Petition to the Court of Common Pleas for the State of Delaware in and for New Castle County, to change his/her name to Elizabeth Ann Crosman Georgian.**  
Elizabeth A. Crosman  
Petitioner

Dated: July 23, 2009  
np 7/31,8/7,14 2078976 np 8/7 2081423

**LEGAL NOTICE**

**GARAGE KEEPER SALE**  
**6 NORTH PARK DRIVE**  
**WILMINGTON, DE 19805**  
**SEPTEMBER 8, 2009 @ 10:00 AM**

1995 GMC YUKON.....	VIN #1GKEK13K3S1723202
2003 CHEVY 1500.....	VIN #1GCEC14X332348711
2001 CHEVY TRACKER.....	VIN #2CNBE634016951704
1994 FORD EXPLORER.....	VIN #1FMDU34X2RUA86430
1991 OLDSMOBILE 88.....	VIN #1G3HY54C5MH313422
2001 FORD FOCUS.....	VIN #1FAFP38351W284557
2005 CADILLAC DEVILLE.....	VIN #1G6KD54Y85U211590
2001 FORD EXPLORER.....	VIN #1FMDU72612A12766
1997 NISSAN MAXIMA.....	VIN #JN1CA21D2VM508478
1998 VOLVO S70.....	VIN #YV1LS5572W1519350
2002 CHEVY SILVERADO.....	VIN #1GCHK29U22E107619
1996 TOYOTA TACOMA.....	VIN #4TANL42N2TZ157442
1998 CADILLAC SEVILLE.....	VIN #1G6KY5493WU922502
1999 FORD MUSTANG.....	VIN #1FAFP42K6X112936
2002 DODGE NEON.....	VIN #1B3E576F62D524528
1998 NISSAN MAXIMA.....	VIN #JN1CA21D0WT611647
1998 LINCOLN TOWN CAR.....	VIN #1LNFM82W6WY659317
2008 FORD ESCAPE.....	VIN #1FMCU93128KC70109
2002 HONDA CIVIC.....	VIN #1HGEM21642L013099
2001 INFINITI 130.....	VIN #JNKA31A21T015648
2001 MITSUBISHI GALANT.....	VIN #4A3AA46G61E184164
1998 JEEP WRANGLER.....	VIN #1J4FY29P2WP775196
1997 NISSAN SENTRA.....	VIN #1N4AB1D1VC718269

**DONATE VEHICLE:**  
Receive \$1000 GROCERY COUPONS, Your Choice. NOAH'S ARC, NO KILL Animal Shelters. Advanced Veterinary Treatments. Free Towing, IRS TAX DEDUCTION. Non-runners 1-866-912-GIVE

**New Today**  
**FORD '96 F-350**  
4x4, power stroke  
diesle, 5 spd. 76k  
miles. Parts or whole.  
443-553-9513

**PONTIAC Grand**  
Prix '02. Silver. AC,  
cruise, auto, all power,  
89k. Will inspect. Exc  
cond. \$5900. 410-  
734-7358

**PONTIAC Solstice**  
'07. Convert., auto,  
red w/blk top, gar.  
kept. ONLY 4k miles.  
Exc. cond. \$17,500.  
443-206-2616

**Real Services Estate**



**410-392-LEND**  
Call Sandy Feltman or John Ness for all your financing needs.

Local Lending with Local Servicing • Fixed and Adjustable Rate Mortgages  
• Construction to Permanent • 1st Loans • Bridge Loans  
40 YEAR TERM AVAILABLE • FREE PRE-QUALIFICATION • NO APPLICATION FEES

To reserve your space call: **Michael Adams**  
**443-245-5031 • 800-220-3311**

THE 46TH ANNUAL  
**HAVRE DE GRACE ART SHOW**

PRESENTED BY  
SOROPTIMIST INTERNATIONAL OF HAVRE DE GRACE

**JURIED ARTISTS & CRAFTSMEN EXHIBIT & SALE AUGUST 15-16**

10AM-5PM TYDINGS MEMORIAL PARK  
FOOD • ENTERTAINMENT • NO ADMISSION  
I-95 EXIT 89 FOLLOW SIGNS • 410-939-9342

HDGARTSHOW.COM  
HDGARTSHOW@HOTMAIL.COM

SOROPTIMIST INTERNATIONAL OF HAVRE DE GRACE  
Improving the lives of women and girls in our local community and throughout the world.

Overlooking Susquehanna River & Chesapeake Bay Boaters Welcome.  
Special thanks to:

