

NEWARK POST

❖ Greater Newark's Hometown Newspaper Since 1910 ❖

100th Year, 25th Issue © 2009

July 10, 2009

www.newarkpostonline.com

Newark, Del.

Delays expected as road projects continue

Daytime driving will be a little tougher in Newark in coming weeks.

The Delaware Department of Transportation announces that motorists will encounter daytime lane closures beginning on Monday, July 13 and ending mid-September for the repaving of three roadways in Newark.

These closures will occur from 8 a.m. to 4 p.m., Monday through Friday. Weekends may be used as a make-up day. This project is

funded through President Obama's landmark American Recovery & Reinvestment Act (ARRA) also known as the stimulus bill.

Monday, July 13 through Friday, August 14

- Main Street in Newark from railroad crossing tracks to the Maryland state line

- New London Road from Covered Bridge Lane to the Maryland state line

This project will also include Americans with Disabilities Act

curb ramps, pedestrian signalization, and loop detection replacement at the following intersection:

- Route 273/Nottingham Road at Casho Mill Road/Delren Drive

No work will be permitted to conflict with the following City of Newark events:

- Food & Brew Festival on Saturday, July 25

- Firemen's Convention & Parade on Saturday, August 1

After this work is completed,

the contractor will begin milling and paving at Greenbank Road from Old Capitol Trail to Route 41.

A-Del Construction Company submitted a bid of \$1,040,112.55, the lowest of six bids received. Construction is expected to be completed within 60 calendar days, pending weather.

For more information about DelDOT's ARRA project go to www.deldot.gov or www.recovery.delaware.gov.



DEL. DEPARTMENT OF TRANSPORTATION PHOTO

A sign on Route 4, east of Newark highlights the use of Recovery Act funds for roadwork.

Newark girl 11 appearing on game show Jeopardy

Answer: Sophia Marianiello. Question: What local resident will be appearing on Kids Week Jeopardy in July?

Sophia Marianiello, 11, daughter of Vince and Lucy Marianiello, of Newark will be appearing on Kids Week Jeopardy, which airs on ABC the week of July 13-17. She is a former student of Montessori Center for Learning preschool and Downes Elementary School and will enter sixth grade at Newark Charter School this fall.

Just how was she selected to participate? While watching Jeopardy!, Sophia and her family saw a TV commercial inviting 10-12 year olds to try out. Sophia, the youngest of four children, took the online test in mid-January.

A week later, Sophia received word that she'd been invited for an in-person audition in New York City. In early February, Sophia, her parents and older sis-

ter Vanessa, went to New York where Sophia took another test, participated in a mock-version of the game and had a brief interview with some of the contestant producers. At the end of the audition, the families were told that several hundred children still had to be interviewed and decisions would be made in mid-March. From the thousands of students who applied via the online test, only 15 children nationwide would be selected to play.

After a month passed with no call, family expected the chosen 15 had already been notified. Then one evening they were pleasantly surprised with a phone request for Sophia to play the game on national TV. In late March, a couple days after her 11th birthday, Sophia, her mom and older brother, Leo, flew out to Los Angeles for the taping of the shows. (Since school was still in session, her dad, sister and other brother Andre stayed



Sophia Marianiello on the Jeopardy set.

home.) The Kids Week rules are different from the other Jeopardy! games. You play one and are done, regardless of whether you win or not. Sophia's particular episode will air on Tuesday July 14th.

How did she do? As you may know, she's not allowed to discuss the results of the shows that were taped that day. She can tell that this was her first time flying, first time walking in the Pacific Ocean and first time she saw a 3D movie in an IMAX theatre. As she put it, it was the best birthday present ever.

Crash claims life of civil rights pioneer Mitchell

Civil rights pioneer Littleton Michell, was killed in a two-vehicle accident near the Valero Refinery in Delaware City. Mitchell, who grew up in Milford, was the longtime president of the NAACP of Delaware. He received numerous honors for his contributions to his untiring efforts to rid the state of segregation.

Mitchell remained active in political and circles until the end of his life. He was an active supporter of the gubernatorial bid of Jack Markell and Markell praised Mitchell in remarks at a rally held by then Presidential candidate Barack Obama. The rally was followed by a victory by Obama in the Delaware primary.

"Lit Mitchell was a man of incredible strength and courage," Vice President Joe Biden said in a statement. "He was a hero to many, including me. A man who overcame so much to fight for his country in countless ways - serving as a Tuskegee Airman in World War II, leading the civil rights movement in Delaware and helping integrate schools nationwide - Lit was a remarkable force. It has been an honor to count Lit and his late wife Jane as friends

these past 40 years. Jill and I both send out our heartfelt thoughts and prayers to his family. As Shakespeare said, we shall not look upon his like again. Lit will be sorely missed, and I have no doubt his impact on our state will be felt for generations to come."

A 2008 GMC Savanna, operated by a 55 year old male identified as Richard F. Pilichowski was traveling westbound on Wrangle Hill Road (Route 9) from the Delaware City area.

A 2009 Toyota Prius being operated by Mitchell, 90, of Delaware City, was traveling eastbound on Wrangle Hill Road toward Delaware City. The Prius drifted across the center line, with the Toyota and the GMC colliding head-on in the area of the north side shoulder of Wrangle Hill Road.

The GMC was pushed off the north side of the roadway and traveled into the fence surrounding the Valero refinery property. The Toyota Prius rotated from the initial impact in a counter-clockwise direction and continued eastbound to its final resting place

See MITCHELL, 3 ▶

INSIDE

Newark Girls Stater meets her elected counterpart Page 4

Transplant screening event aims to aid UD senior Page 10



LIBRARY
UNIVERSITY OF DE

JUL 14 2009

NEWARK, DELAWARE

181 S COLLEGE AVE SERIALS UNIT
NEWARK DE 19717

UNIVERSITY OF DELAWARE LIBRARY
KAREN DICK
000054 07/18/2
197-0111-3-01111 197

Can we help?

Offices: The paper's offices are located conveniently in Suite 109, Pomeroy Station, 218 E. Main St., Newark, DE 19711. Office hours are 8:30 a.m. to 5 p.m. weekdays.

Phone: (302) 737-0724

Facsimile: (302) 737-9019

E-mail: postnews@chespub.com

To subscribe: To begin a convenient home-delivery subscription, call 1-800-220-3311.

To place a classified ad: Call 1-800-220-3311.

To place a display ad: Call 737-0724.

THE STAFF of the *Newark Post* is eager to assist readers and advertisers. Reporters, writers, editors and salespeople can be contacted as listed:

Doug Rainey is the Editor of the *Newark Post* he leads the day-to-day operation of the newsroom. Call him at 737-0724.

Mark Corrigan serves as Assistant Editor and can be reached at 737-0724.

Jonathan Waddell is our Design Director. He handles design and composition of our pages.

Renee Quietmeyer is the *Newark Post's* advertising manager who manages the local sales team. She can be reached at 1-443-245-5003.

Jim Galoff handles accounts in the New Castle County area and is an automotive account specialist. Call him at 737-0724.

Mike Adams sells real estate advertising. He can be reached by calling 1-443-245-5031.

Robin Burgess sells ads in the downtown Newark, Middletown and surrounding area. She can be reached by calling 737-0724.

Our circulation manager is **Mary Ferguson**. For information regarding subscriptions, call 1-800-220-3311.

The *Newark Post* is published Friday by Chesapeake Publishing & Printing. News and local sales offices are located in Pomeroy Station, Suite 109, 218 E. Main St., Newark, DE 19711. All advertising and news are accepted and printed only at the sole discretion of the publisher. The *Newark Post* is a member of the Maryland-Delaware-D.C. Press Association, Suburban Newspapers of America and the National Newspaper Association.

POSTMASTER: Send address changes to: *Newark Post*, Suite 109, 218 E. Main Street, Newark, DE 19711. Periodicals postage paid at Newark, Del., and additional offices. (USPS #6465) Known office of publication 218 E. Main Street, Newark, DE 19711.

Robber puts knife to victim's throat

Editor's note: Police Blotter items are from reports from the Newark, Delaware State, New Castle County and University of Delaware Police. For updated information, log on to newark-postonline.com.

On July 4, police responded to a robbery call at Scottfield Drive, Newark. Victim Christopher Robinson, 37, of Lewes, told officers that he, his children, and several friends were walking back from the fireworks display at the University of Delaware when an unknown white male approached from the woods brandishing a cutting instrument.

Robinson described it as a one foot long piece of sheet metal resembling a knife or machete. The suspect held the "knife" to Robinson's throat and demanded money. Robinson refused to pay and yelled to his family to run.

Robinson pushed the attacker when he was distracted and ran himself. He then found his two children on the ground after they had fallen. The suspect approached the family and Robinson began to shout and defend his children. The suspect fled when a white female carrying a child came out of the woods and told the suspect to come back to the car.

The suspect is described as a white male in his twenties, 170-180 pounds, normal size, approximately 5' 07 to 5' 09 wearing a dark pants, gray hoodie, and black sneakers. The female was wearing a white tank top and sweatpants. No further description was given. Witnesses stated that they had seen a gray car, possibly a hatchback, backed in on South Kingston Drive.

Road rage turns ugly in parking lot

Victim Sherrie McClellan, 29, of New Castle, reported that she and her boyfriend had been threatened in the parking lot of Sleep Inn after they had watched the fireworks show on Saturday. McClellan told police that she had been in her minivan with her boyfriend and two children waiting to leave the lot, when a car drove the wrong way in an attempt to avoid the traffic.

Several drivers, including boyfriend Christopher Scully, yelled at the suspect. The suspect stopped his vehicle and spat in McClellan's face when she exited her car. Two females also exited and began to punch McClellan. Scully attempted to break up the fight and saw the male threatening him with a tire iron. McClellan reported that the suspect hit her car with an unknown object and caused damage. Police ran the vehicle registration and it listed Branden Wallace as the owner of the car. McClellan positively identified Wallace in a photo lineup. Police also discovered that Wallace lives with girlfriend Johanna Garcia. A warrant has been prepared for both Wallace and Garcia.

Dad charged with assaulting daughter's male friend

The father of a 17 year-old girl has been charged with multiple offenses in the assault of a male friend of the daughter. He was identified as Hassan Abdul Mageid, 49, of Sue Lane, Newark. On Monday, at around 2:30 p.m., Mageid arrived home

to find his daughter and the 17 year-old friend unsupervised inside the living room of the house, watching television.

Newark Police report Mageid immediately began to assault the victim, repeatedly punching him. The victim was able to free himself from the assault, at which point the defendant grabbed a large knife and a meat cleaver from the kitchen. The defendant held the weapons in a threatening manner and would not allow the boy to leave the house.

Mageid put the cleaver down and demanded the boy to write his parents' names and phone numbers on a piece of paper. Mageid took the victim's cell phone, threw it to the floor, and stomped on it, causing it to shatter.

The victim attempted to leave and Mageid hit him several times on the back with the flat side of the knife blade. The victim went to his car, and the defendant followed. As the victim was seated in car, the defendant threatened to kill the victim if he returned to the house. The defendant then made a stabbing motion at the car window with the knife, causing the knife blade to break. The victim was able to drive away.

Mageid was charged with three felonies: Assault 2nd Degree, Aggravated Menacing, and Possession of a Deadly Weapon During the Commission of a Felony, along with 4 misdemeanors: Unlawful Imprisonment, Terroristic Threatening, Criminal Mischief, and Endangering the Welfare of a Child. He was released after

posting bond in the amount of \$21,600. He was ordered to have no contact with the victim.

The victim, from the Pike Creek displayed reddening of the skin on his face, and marks on his back from being struck with the knife blade. He did not seek immediate medical attention.

Graffiti suspect

Newark Police have charged a juvenile with two acts of graffiti.

The 17-year-old male from the Windermere neighborhood in Stanton was arrested July 2 and charged with two counts of graffiti and two counts of possession of graffiti implements. In this incident, the word "Kanon" was tagged on Panera Bread at 140 East Main St. and also on the pillars of the South College Avenue bridge.

Identification of the defendant was aided by information gathered by the New Castle County Graffiti Task Force. Anyone with information about this investigation or other graffiti in Newark should contact Cpl. Jeff Schwagel at (302) 366-7110, ext. 406 or by e-mail to [Jeffrey.Schwagel@cj.state.de.us].

Exposure case

A man accused of indecent exposure stayed around long enough to find himself under arrest.

On Friday at around 9 p.m., three victims were in their parked car at the College Square Shopping Center when the suspect stopped along side of them in his White Chevrolet Impala. The driver of the Chevy exposed himself and remained parked

next to the female victims for a period of time, drove away, and then circled around and returned, still exposing himself, and drove away.

While the police officer was speaking to the victims at the shopping center, the suspect returned. He saw the police vehicle and attempted to drive behind the buildings, but was intercepted by the officer. He was positively identified by the victims and was taken into custody. He is identified as Lamarr Johnson, 34, of Chester, Pa.

He was charged with three counts of Indecent Exposure 2nd Degree and was committed to the Howard Young Correctional Facility in default of \$750 bond. If released, he is to have no contact with the victims or the College Square Shopping Center.

The victims were three females, ages 32, 29, and 20, all from the New Castle area.

Persons with information regarding this incident, or who may have been a victim of Lamarr Johnson's actions, should contact Officer Michael Watson at 302-366-7110 ext 453 or Michael.Watson@cj.state.de.us.

Girlfriend hit with hammer

A Newark man has been arrested for allegedly assaulting his girlfriend with a hammer.

Last last month, Delaware State Troopers were called to a report of a physical altercation in the parking lot of the 7-11 on Red Mill Road in Newark.

Troopers discovered that the 30-year old female victim and her boyfriend (suspect Anderson) had been in a verbal argument in her vehicle in the parking lot. During the altercation, Omarsharif Anderson, 31, Newark, allegedly struck his girlfriend in the head with a hammer he located in the car, causing a wound to her head.

Anderson fled from the vehicle on foot toward the area of the Red Mill Square Shopping

See **BLOTTER**, 8 ►

POLICE BLOTTER



Mageid



Johnson



Anderson

Take Control Of Your Utility Bills!

2008 PRESIDENTS AWARD

Hentkowski, Inc.
"Your Key To Comfort"
Heating, Air Conditioning & Electrical

Power Off? We Sell Generators!

INFINITY SYSTEM SewAssure DEALERS

302-998-2257

"Doing Business since 1968"
www.hentkowski.com

Lift the weight off your shoulders...

NEWARK BARBER SHOP
Est. 1956

Newark Barber Shop

- Licensed Barbers
- Reasonable Cost
- True Barber Shop Atmosphere

241 Elkton Road • Newark, DE
(Located across from City Hall)
www.newarkbarbershop.com
302-368-5666

Mon. Closed
Tues. 9:00 - 5:30
Wed. 9:00 - 5:30
Thurs. 9:00 - 6:30
Fri. 9:00 - 5:30
Sat. 8:00 - 12:00
Sun. Closed

300993 NF070008

IN THE NEWS

St. Mark's grad to head State Police

Coupe founded pipe and drum group

Governor Jack A. Markell joined Lewis D. Schiliro, Secretary of Safety and Homeland Security, to announce the appointment of Captain Robert M. Coupe as Superintendent of the Delaware State Police.

Col. Coupe, 46, a graduate of St. Mark's High School, assumes command of the State's largest police agency following the retirement of Col. Thomas F. MacLeish. Col. Coupe, a 24-year veteran of the State Police, most recently served as the Troop 2 (Bear) Criminal Investigative Unit Commander since May 2006.

Markell and Schiliro moved quickly to fill the post, which is filled by current members of the State Police. MacLeish earned high marks for his work as superintendent, following a period of turmoil.

"The Delaware State Police is an exceptionally good law enforcement agency. Robert Coupe has the type of leadership

style and wealth of experience to put himself in the shoes of the troopers he commands and the Delawareans he serves," Markell said. "Col. Coupe will bring great energy to this critical position, and not only is he up to the task of filling Col. MacLeish's shoes, he is ready and able to make several strides forward in them."

"As with most service oriented careers the greatest challenge is to never lose sight of why you entered that career, never lose your passion for the mission, and never give up on the cause. As a Delaware State Trooper I have been blessed with working with some of the finest men and women who make up the civilian and sworn members of the Division," said Col. Coupe. "Their commitment and dedication continue to inspire me to serve the citizens of this State. I graciously accept the responsibility of the Colonel's position and

See **COUPE**, 11 ►



Mitchell lived to help others

► MITCHELL, from 1

on the south side of Wrangle Hill Road facing westbound. Both operators were transported to Christiana Hospital Emergency Pilichowski was treated and released with minor injuries. Mitchell was pronounced dead of multiple injuries while in surgery.

Among the honors received over the years, Mitchell was presented the University of Delaware's Medal of Merit in recognition of his contributions to human progress.

In presenting the medal, then-President David Roselle said, "Littleton P. Mitchell has championed the cause of civil and human rights for minorities in the state of Delaware for more than 30 years. A lifelong advocate for desegregation in the state, Mitchell promoted the elimination of migrant labor camps in Delaware. For his efforts, he has received the Region II NAACP Gloster B. Currant Medal of Achievement Award, as well as the Wilmington Branch Distinguished Service

Award, the West Chester University Distinguished Achievement Award, the Mayor's Community Service Award, the Delaware State Education Association Award and was named Outstanding Black Delawarean by Delaware State College."

Born in Milford, Mitchell graduated from West Chester University and worked as a teacher/counselor for socially and emotionally disturbed children. He has served as president and vice president of Region II of the NAACP (Maine to Delaware).

His wife, Jane, received the University's Medal of Merit in 1980. She preceded him in death.

In accepting his award, Mitchell paid tribute to God, his family, friends and former teachers for shaping his life and even mentioned the truck drivers who used to pick him up each day as he hitchhiked to West Chester from Milford. He recalled a time in the early 1960s when he, along with several national political leaders, was banned from speaking on campus.

"To anyone who thinks the

University does not change, I ask you to listen. In the early 1960s, when (I was) sometimes referred to as a radical hothead, at times I was invited to speak to classes here at the University. (A close friend called to say,) 'I have bad news; the University has decided that you are to be prohibited from speaking to any classes here on this campus. The good news is that they have also done the same thing for Sen. Hatfield, Sen. Kennedy and William F. Buckley Jr. Mitchell, you're in excellent company.'"

SCIATICA?

NEWARK – According to a recently released back pain relief report, most back pain sufferers have no idea how to eliminate their back pain. Some use heat. Others use ice. From sleeping on the floor, to pillows underneath their legs, back pain relief techniques vary. But thanks to a new **FREE** report, local back pain sufferers finally know exactly what to do! To get a copy of the **CONTROVERSIAL** free report, call the toll free, 24 hour recorded message at 1-888-821-2403 or go to www.HurtBackReport.com.

ADVERTISEMENT

Tired of high costs and low returns?

- Home Insurance
- Life Insurance **Save Money Now.**
- Auto Insurance **Call Dan at 455-9520.**
- Investments



Daniel DeFoe
DeFoe-Insurance@Comcast.net
302-455-9520



Discounts for Delaware State Employees and U of D Alumni

Enjoy the latest Fashion
with a
Minster Design



Minster Designs

Crafted in our shop
Made in America
Starting at \$100.00

Minster's
of Newark
jewelers since 1895

Newark Shopping Center, Newark, DE
302-737-5947

Email: info@minstersjewelers.com Web: www.minstersjewelers.com

F & C Amish Structures, Inc.



Gazebos
Many Styles

**Gliders
Picnic Tables
Gazebos
Sheds
Garages**



Customized
Sheds & Garages

**BEST
QUALITY
CRAFTSMANSHIP**

1967 Pulaski Hwy. • Bear, DE 19701
302-836-1976 • www.fcamishstructures.com

Hours: M & F 8:30 - 6 • T, W, Th 8:30 - 5 • Sat 8:30 - 4:30

310742 CWNV 071009

IN THE NEWS

Local students earn honors

Sara Montague, Andrew Royer and Allison Rudolph, all of Newark, have been placed on the Dean's Honor List for the Spring 2009 semester at Gettysburg College. Andrew Royer graduated cum laude with a bachelor's degree in history on May 17.

Kamile McNeil, of Newark, was named to the Winston-Salem State University Spring 2009 Dean's List.

Salem Community College held its thirty-seventh annual commencement ceremony on the evening of May 20. The following Newark residents earned degrees or certificates:

Karlyn Brockenbrough, Associate in Science Degree,

Nursing; Karen Ceska, Associate in Science Degree, Nursing; David Hall, Associate in Science Degree, Nursing; Claire Kagwira, Certificate, Practical Nursing; Alex Kimani, Certificate, Practical Nursing; Jennifer Sorrell, Certificate, Practical Nursing; Rachel Thuku, Associate in Science Degree, Nursing.

Escape to an Art Oasis at the NAA

Get away to a cool, creative place – it's waiting for you at the Newark Arts Alliance's "Art Oasis." This series of four classes for ages 14 to adult is held Thursday evenings, July 9-30, from 7-9:30 p.m.

Take your pick or sign up for all four. Instructor Terry Foreman teaches polymer clay pins the first week, followed by classes on beaded jewelry, petit collages, and decoupage mirrors or boxes. The per-class fee is \$30 for NAA members, \$33 for non-members.

Download a brochure with registration form at www.newarkartsalliance.org, or call 302-266-7266. Classes are held at the NAA, 276 East Main Street, in Market East Plaza.

Deer Park Tavern Calendar of Events

Deer Park Tavern, 106 W. Main St., Newark. Fridays (July 10, 17, 24) – DJ Dance Party featuring Double E. No cover. Sundays (July 12, 19) – Chorduroy. No cover. Tuesdays (July 14, 21) – Hubb & Friends. No cover. Wednesdays (July 15, 22)

– Showtime Trivia. No cover. Thursdays & Saturdays – live music with local and regional bands. Please call 302-894-1200 for schedule and times.

Creekin' for Critters

Saturday, July 11, 10 a.m., White Clay Creek State Park, 425 Wedgewood Rd., Newark. Join the naturalist on a creek exploration. Be prepared to get your feet wet. This program starts at the Nature Center, but quickly leads to the creek. Call the park office to register, 302-368-6900.

Artsy Summer Fun for Kids at the NAA

The youngsters couldn't wait for school to get out. Are they bored yet? Or maybe they'd just love a five-day session of creative fun at the Newark Arts Alliance. These July "mini-camps" offer lots of options for creative kids.

Classes include:

• Artes de Mexico, July 13-17, 9 a.m.-noon, for ages 8-12. Instructor: Malissa Reese

Projects include yarn art, clay nativity scenes, wooden sculptures, and landscapes – all inspired by pieces the instructor brought back from

her Mexican journeys.

• Pass the Paper Mache, Please! July 20-24, 9 a.m.-noon, for ages 8-12. Instructor: Malissa Reese. Kids get messy making tabletop witches, wizards, fashion models, and families as they sketch designs, build forms, cover them with paper mache, and then decorate them.

• Around the World With Art, July 13-17, 12:30-2:30 p.m., for ages 6-7. Instructor: Terry Foreman. The trip includes creating "dreamings" paintings from Australia, sand art from India, Mexican motif jewelry, fish kites from Japan, and more.

• Clay Sculpture – Functional or Not, July 21-24 and July 27, 1-2:30 p.m., for ages 9-12. Instructor: Carole Fox. In this experience with pottery, the participants create a bowl or cup with sculptural elements.

All classes are held at the Newark Arts Alliance, 276 East Main Street, in the Market East Plaza. Fees range from \$75 to \$135 for NAA members, \$82 to \$148 for non-members, depending on the class. For more information, download the brochure at www.newarkartsalliance.org, or call 302-266-7266.

See NEWS, 7 ►

Brooks meets counterpart

Elizabeth Brooks, a resident of Newark and incoming senior at The Sanford School, recently spent a day with Delaware Secretary of State Jeffrey Bullock as part of the 2009 Delaware Girls State program, sponsored by the American Legion Auxiliary. Brooks served as the Girls State Secretary of State and was given the opportunity to meet her real-life counterpart in Dover. Since the inception of the Girls State program in 1937, nearly 1 million young women throughout the U.S. have had the opportunity to learn firsthand how their state and local government works.

got scrap?

TOP DOLLAR PAID FOR SCRAP!

#1
STEEL

"CASH FOR
ALL TYPES
OF METALS
AND CARS!"

LITE
IRON

WE BUY BATTERIES, COPPER, BRASS, ALUMINUM,
STAINLESS, ELECTRIC MOTORS, OLD FARM EQUIPMENT,
& COMPLETE JUNK VEHICLES!

ELKTON RECYCLING

410-392-2980

Get ready NOW for college!

SAT/ACT
prep



Higher Scores = Better choices = Scholarship opportunities

Call Huntington TODAY!

Huntington
LEARNING CENTER

302-737-1050

34 Liberty Plaza, Kirkwood Highway, Newark, DE 19711

SAVE \$95

on Diagnostic Testing.
Act Now!
Offer ends in 30 Days

Opinion

editorials • columns • letters to the editor • out of the attic

Telling our good news story

By **DOUG RAINEY**

DRAINEY@CHESPUB.COM

Last month, I had the opportunity to speak before the Newark Morning Rotary.

My topic was the Newark Post and its place in the current media environment.

It was the last meeting of the group at the Blue and Gold Club on the University of Delaware. The Blue and Gold is closing, although it will be available for events for a while. The club's new home will be the Courtyard by Marriott on the northern end of the University of Delaware campus.

Members of the club were curious on the future of the print media, specifically the Post. No doubt, they had also heard reports about our pending demise, a tale that is often tied to similar speculation about our sister five-day daily The Cecil Whig. They have

also read or heard about the bankruptcies and shutdowns at metropolitan dailies.

It can be dangerous to comment in rumors. I have seen cases where the rumors

are denied, only to see those spreading the tales cite the denial as evidence that their speculation is correct.

I came to the meeting with good news. Small dailies, like

the Whig and weeklies like the Post are doing reasonably well in a deep recession. The same cannot be said about large

See **GOOD NEWS, 7** ▶

letter to the editor

**From the superintendent
To Editor**

From: Marcia V. Lyles, Ed.D.

It is my honor to accept the invitation of the Christina School Board to serve as superintendent of the Christina School District. This is an exciting time for the Christina School District and I am looking forward to partnering with staff, students, families and the community in Christina's quest for excellence for every child, in every class, in every school.

I know that over the next few months I will be talking to many of you to learn more

about your vision for Christina, what you believe is working well, what you believe should be improved, and the role you want to play in Christina's rise to the top. I will want to discover how you believe the people, programs and practices in our schools and communities enrich the academic and social lives of our students, provide them with the knowledge, skills and attitudes to shape the present, and prepare them for their future.

I already know that we share a belief in the need for high expectations and standards for everyone, in the importance of

supported, talented and qualified educators and in the power of the home, school and community collaboration. I also know that while there will be challenges ahead, there is no more important mission we must undertake, and we will only succeed if we undertake it together.

As Sandra Day O'Connor noted, "We don't accomplish anything in this world alone... and whatever happens is the result of the whole tapestry of life and all the weavings of individual threads from one to another that creates something."

OUT OF THE ATTIC



This week's Out of the Attic features an undated view of Powell's Restaurant located on East Main Street where the Main Street Galleria now stands. Powell's served Newark's citizens from the early 1900's to World War II. They were especially noted for their homemade ice cream and oysters. The popular Malt Shoppe with its sandwiches and ice cream treats and offices were tenants when the building was razed in 1995. The picture is on loan to the Newark Post from the Newark Historical Society collection. The society is seeking pictures and other artifacts of places, activities, and life styles in the Greater Newark area.

Contact the Newark Historical Society by voice mail at 302-224-2408, by postal mail to P.O. Box 711, Newark, DE 19715, or by email to newarkdehistoricalsociety@yahoo.com.

LOUVIERS FEDERAL CREDIT UNION

Isn't It Time We Met?

You may not know us, but we've been serving our valued members for 41 years. Our membership is now also open to anyone who lives, works, worships or attends school in the city of Wilmington or the city of Newark.

Every great new relationship starts with an introduction. Stop by or call us and let's get to know each other.

HERE ARE JUST SOME OF OUR SERVICES:

- No-Fee Interest Earning Savings and Checking Accounts
- First and Second Mortgages
- Low Interest Rate Vehicle, Home Equity and Personal Loans
- Visa Platinum Card with Cash Back Feature
- 24-Hour Account Remote Access to ATM, Visa Check Card, Home Banking or Teller Phone
- Retirement Plans for Small Business Members

Newark Office

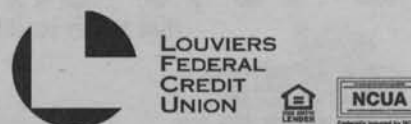
2612 Kirkwood Highway
in the Meadowood II Shopping Center
Newark, DE 19711
(302) 733-0426
Monday and Wednesday: 8 a.m. – 4 p.m.
Tuesday, Thursday, Friday: 8 a.m. – 6 p.m.

Wilmington Office

City Center @ Nemours
10th and Orange Streets, First Floor
Wilmington, DE 19898
(302) 571-9515
Monday through Friday: 8 a.m. – 4 p.m.

Maryland Avenue Office

401 Maryland Avenue
Wilmington, DE 19805
¡Se habla español!
(302) 695-0003 or (302) 695-0004
Monday through Friday: 8 a.m. – 4 p.m.



WWW.LOUVIERS.COM

IN THE NEWS

City planners approve two new projects

By **MARK CORRIGAN**

MCORRIGAN@CHESPUB.COM

The Newark Planning Commission, at its July 7 meeting, approved plans for properties located at 136 Elkton Road and 129 E. Main Street.

The Commission also reviewed and approved the Capital Improvements Program for years 2010-2014. Newark City Manager Kyle Sonnenberg and Finance Director Dennis McFarland were on-hand to present the plan to the Planning Commission.

Elkton Plaza Associates LLC, owners of 136 Elkton Road, have submitted a proposal for a three-story, 10,600 sq. ft., commercial/mixed use facility that will contain 14 upper floor apartments. The current site houses Eagle Diner, Happy Garden restaurant, Papa John's Pizza, the University of Delaware's English Language Institute Annex, and Christiana School District's "Networks" Program.

Though the Commission

unanimously approved the project, there was much discussion about pedestrian safety along the Elkton Road corridor. Of immediate concern was the width of the sidewalk in front of the building. With a number of new projects coming to Elkton Road, members feel that, with a larger number of students and residents visiting the businesses the area, more safety measures will need to be installed to prevent pedestrians from being endangered by traffic.

Planning and Development Director Roy Lopata relayed to members that the roadway will be re-laned and that safety measures, such as more crosswalks and a reduction of the speed limit, have already been taken into account. Still, members discussed the fact that future projects must step back their buildings in an effort to allow for an easier flow of foot traffic.

The plans for 129 East Main Street, home of Formal Affairs, call for the building of a three-story, 5,000 sq. ft. structure that will almost match the footprint of the

present site. The project will also include anywhere from four to six apartments on the second and third floors. The Commission also approved the issue of a special parking permit that will allow 12 parking spaces to be placed at the site. The project will

include a small green space adjacent to the building and a narrowing of the alleyway next to it. Presently, the alley is wide enough to allow vehicles to turn onto Main Street, but the new plan will only allow pedestrian traffic in the future.

While the Commission approved both plans, there was concern over future residential projects in the area. Several members discussed the need for imposing occupancy restrictions on apartment renters to prevent safety violations. Lopata stated the

need for Newark to emulate other college towns and to develop housing that accommodates both graduate students and recent graduates. And also said was the need for increased pedestrian safety and, as always, more parking.

Council takes another crack at 'predatory towing'

The Newark City Council will take another look at "predatory towing" at its meeting Tuesday night.

A proposed amendment to the ordinance calls for a ban on towing at private lots an hour before the business opens, unless the owner identifies and authorizes towing of specific vehicles. It is the first reading of the ordinance and if approved would move on to the next council meeting for a public hearing and final consideration.

Despite earlier adoption of an ordinance barring aggressive towing, the city has continued to receive complaints about vehicles being taken away during the morning hours by truck operators with claims that lookouts are being used to target vehicles. Complaints have been made of cars being towed, even though the owners were shopping at the store or retail complex.

Council members and city officials have expressed frustration with the practice,

which reinforces the image of downtown as a tow-happy area that discourages shopping and dining.

The council will also consider the annexation of an area of Marrows Road for use as an 80,000-square-foot armed forces training center. The site is part of the Base Realignment and Closing program that aims to consolidate training facilities.

Councilmen will also be asked to approve a special use permit for a Chipotle Grill at the former Copy

Maven store on Main Street. The fast-growing chain offers what it calls fresh Mexican-style burritos and tacos in a cafeteria setting.

Dining chains are staking out locations on Main Street and Elkton Road with IHOP slated later in the year at the former diner building on Main Street. Also coming to the Elkton Road area is Claymont Steak Shop.

The meeting begins at 7:30 p.m. in Council Chambers in City Hall.

We have Marshalltown Tools on sale!!



Save 10% off all Tools that are in stock!!

POWER AMERICA
SALES • SERVICE • RENTALS
410-620-6570

555 Blue Ball Road,
Elkton, MD
Near intersection of Route 279
www.PowerAmericaInc.com

309148 CM071009

Bring In for Special Offer

50% OFF

Rebate On Your First Interest Payment!



Payday Loans up to \$1,000

Takes 15 Minutes

JUST BRING IN:

• Valid driver's license • Most recent pay stub • Most recent bank statement • Check Book

Don't let money get in the way of *what you need.*



EZ LOAN\$

661 College Square, Newark DE
(302) 709-3340

322 Fox Hunt Dr. Bear, DE (302) 834-1800

Not valid with any other offer - New loans only. Only one coupon per 90 days. Payday advances should be used for short-term financial needs only, not as a long-term financial solution. Customers with credit difficulties should seek credit counseling.

Toll FREE: 877-297-0011 • ezloansdelmarva.com

302028 N0001009

IN THE NEWS

▶ NEWS, from 4

Basic ESOL (English for Speakers of Other Languages)

Cecil College, 107 Railroad Ave., Elkton, Md. 21921. Summer morning class, July 13-August 19. Mondays and Wednesdays, 9 a.m. to 11:30 p.m. in Room 328. Reading comprehension, pronunciation practice, grammar lessons and vocabulary drills. Call 410-392-3366 and ask for Carolyn Fletcher for further information and on how to register, or just come to the first day of class, Room 328.

Girls Softball Camp

Goldey-Beacom College will host a softball camp for girls ages 9-16 on July 13-16 from 6-8 p.m. for \$65.00. The all-skills clinic will provide segments in hitting, fielding, throwing, pitching, baserunning, video skills analysis, strength training/conditioning and individual contests. For additional information, call 302-225-6219 or grasso@gbc.edu. No walk-ins accepted.

Baseball Camp

Fun, teamwork, sportsmanship and learning the fundamentals of America's pastime are included in this camp being held July 13-17th from 9am-12pm for ages 8-12 at Leroy Hill Field. Drills and scrimmages will be used to instruct the basics and enhance the skills of participants in hitting, throwing, catching, fielding and base running. Bring your own glove; all other equipment is provided. This camp takes place outdoors. Fee is \$70 with the Newark resi-

dent discounted fee of \$60. For more information contact the Recreation office 302-366-7060, visit www.cityofnewarkde.us or register at 220 Elkton Road, Newark, DE.

Swimming Lessons

Newark Parks and Recreation Department is currently taking registration for its Swimming Classes for ages 3 and up. All classes are held mornings at the George Wilson Pool. Two levels are offered, Beginning and Advanced. Weeklong sessions (Monday - Friday) will be offered July 13-17 and July 20-24. Parent/Tot swimming (ages 1-3) will be offered July 20-24. Registration Fee is \$40. The Newark Resident Discounted Fee is \$30. Call 366-7060 for more information or register at 220 Elkton Rd, Newark, DE.

Red Cross schedules volunteer orientation

The American Red Cross of the Delmarva Peninsula is seeking volunteers to help them in local communities. A Volunteer Orientation is scheduled on July 14, 2009 from 3:30 pm to 4:30 pm. It will be held at the Red Cross Office in Elkton, MD. To register for this Volunteer Orientation, residents are encouraged to call the local Red Cross at 1-800-777-6620, option 7 or send an email to volunteer@redcrossdelmarva.org. For more information about the Red Cross in your community, please visit www.redcrossdelmarva.org.

Summer concert series

Join us for a lively and diverse outdoor concert at the band stage in Carpenter Recreation Area in the White Clay Creek State Park

at 425 Wedgewood Rd., Newark. Bring your picnic supper, blanket, or lawn chairs and don't forget to visit the Friends of White Clay Creek State Park's booth where they will be selling water ice. Concerts generally last from 6:30-8 p.m. Please call the Nature Center at 302-368-6900 for updates or weather delays. July 15 - Dean Sapp & Harford Express (bluegrass); July 22 - Libby McDowell (jazz).

Friends of Newark Continues to Celebrate

On Friday, July 17th from 7 to 9 PM, Mocha, Music & More continues to build live entertainment for the Newark community on Main Street. Friends of Newark (FON), a community organization dedicated to building community, is grateful to Pin Campbell of Central Perk, 42 East Main Street, for providing space for the July FON coffeehouse. This month's coffeehouse will continue to offer a variety of music and also the spoken word. Mocha, Music & More is free and open to the public.

The evening begins with Brent Hancock, keyboardist and composer, who performs his own music. The second performer of the evening, Karoline Wilczek, a Newark-based artist and poet, has been creating art for over twenty years. The last act of the evening is My Version of It, a part punk, part hard rock, part classic rock band, that according to Beachcomber Magazine makes a wonderful racket that sounds something like Black Flag Jamming in the garage with Iggy Pop and the Stooges.

Mocha, Music & More is sponsored by Friends of Newark in partnership with the Newark Heritage Alliance and

offers opportunities for artists to perform original or non-copy-right material live in an intimate and friendly setting. Those who are interested in performing, please contact the Scheduling Coordinator, Lori Bencoter at (302) 834-3385 or at Bencoter2@aol.com.

Club Phred celebrates a milestone

If you find yourself with some time on your hands, hungry and looking "for a good time," there is a fun event occurring soon! Multi-award winning classic rock band (and more), CLUB PHRED, will be performing on Saturday, July 18, 2009 at The Hockessin Fire Hall. A scrumptious Hockessin Fire Hall Buffet will be available with wine, beer and soda included in the admission charge of \$25.00 per person in-advance, \$30.00 at the door. A cash bar will also be available. Buffet begins at 7:00 pm with music starting at 8:00 pm and going to midnight. Proceeds of this event will benefit the Hockessin Fire Hall and Club Phred. Please call the Fire Hall at 302-239-5279 for advance tickets. Also keep in mind that you need to be at least age 21 with ID to gain entrance. Buy your tickets ASAP as rumor has it, they will go fast and seating is limited!

Ice Cream Social and Music

Sunday, July 19, from 3-5 p.m. Free, rain or shine, at St. Nicholas' Episcopal Church, at the corner of Chestnut Hill and Old Newark Roads. Fun entertainment by virtuoso pianist, David Zipse. Make your own sundae. Hot dogs and lemonade also available. Bring your own lawn chairs or blankets. Donations welcome to support St. Nicholas Emergency Food Fund. For info, contact Jean Grieten at 302-731-4659 or St. Nicholas' Church at 302-368-4655.

Summer Fun Day!

Sunday, July 12th 11am-5pm

Admission: \$5 adults
Children 12 & under FREE

- Lawnmower Races
- Classy Car Show
- Ice Cream-eating contest
- Frog Jumping, Turtle Races
- Children's Games & Crafts
- Food • Museum Store Open

at **Steppingstone Museum**
in beautiful Susquehanna State Park

1-888-419-1762 • 410-939-2299

461 Quaker Bottom Road, Havre de Grace, MD
Just 3 miles from I-95, Exit 89

www.steppingstonemuseum.org • email:steppingstonemuseum@msn.com

Rudy's
PIZZERIA & FAMILY RESTAURANT

Four Seasons Shopping Center
(Rt.896, a Mile North of Rt.40)

We Deliver!
Beer & Wine Available



2 Large Cheese Pizzas
(With One Topping Only)
12 Wings & One 2 Liter Soda

Only Pick up Delivery. With Coupon. Cannot be combined with any other offer. Must present coupon. Expires 07/31/09.

Monday & Tuesday Night
\$2.99 Spaghetti w/Meatballs & Garlic Bread
Dine in only. Must present coupon. Expires 07/31/09.

302-737-4150
www.rudyspizzaitalian.com

Newark Post is still here

▶ GOOD NEWS, from 5

metro dailies, which have seen a free fall in revenue.

Based on industry figures, small papers have seen a decline in revenue in line with the slowing of the economy, a 10 percent drop is one figure that is tossed about. By contrast, some large metros have declines of 20 and even 40 percent, moving some toward bankruptcy court, particularly those that piled on debt.

It has not been easy. Costs had to be cut, particularly as it became clear that the economy will not snap back quickly. Evidence this week points to sluggishness into next year, although the frightening ride of late last year is a bit smoother.

On the plus side, the Newark economy has shown some strength, even with plant closings.

And our advertisers have shown their loyalty during this difficult period.

As I told the Morning Rotary, our goal is to continue to get as many names into the paper as possible. Our readers have responded by sending us more and more items and even during a slow week in July, we had to delay publication of some stories until next week.

Again, thanks for your support and another tip of the hat to the Morning Rotary for giving us a chance to tell our good news story.

Imaginative Japanese Cuisine

Okura

Tatami Room • Sushi Bar • Cocktails
Catering • Private Parties • Take-Out

Wellington Plaza
703 Ace Memorial Drive • Hockessin
302.239.8486
FAX 302.239.8892
(On Rt. 41 N. 1/2 mile from Wawa, Next to Toadstool)

BEST
Delaware
2005-2008

Open 7 Days A Week
www.okurarestaurant.net

Lunch: Mon. - Sat. 11a.m. - 2:30 p.m.
Dinner: Mon. - Thurs. 4p.m. - 10p.m. • Fri. & Sat. 4p.m. - 11p.m.
Sun. 3p.m. - 10p.m.

POLICE BLOTTER

James Rice, Jr., Construction Co., Inc.

Builder and General Contractor

Kitchens | Baths | Additions
Custom Homes | Remodeling
All Phases Home Improvements



Newark, DE

(302) 731-9323

(610) 255-3625 • Fax (610) 255-3627
Email jriceconst@aol.com

307019 MP061909

Implant Dentistry

Something to Smile About!

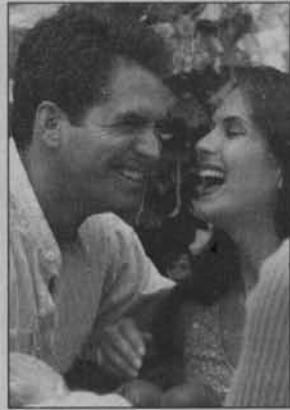
An exciting alternative to bridges or dentures. Laugh, talk and eat confidently with teeth that feel and look like your own

Dr. Barry Kayne, D.D.S.
Specialist with over 25 years experience

Omega Professional Center
Suite F-58 • Newark, DE 19713
Across from Christiana Hospital

302-456-0400

Fax: 302-456-0396
www.delawereperio.com



▶ BLOTTER, from 2

Center. Responding Troopers located Anderson, and he was apprehended in the nearby parking lot. Two of the victim's children (age 8 and 11) were present in the vehicle during the altercation. Anderson was charged with Assault 1st, Possession of a Deadly Weapon during the Commission of a Felony and two counts of Endangering the Welfare of a Child. Anderson was committed to the Young Correctional Institute in default of a \$22,000.00 secured bond.

The victim was treated and released from Christiana Hospital.

No pants, no wallet = charges

A Delaware man didn't have a driver's license when a deputy stopped him for speeding near Rising Sun, Md. on Saturday. But that wasn't all he lacked.

"When the deputy looked down, he noticed that the driver wasn't wearing any pants or underpants," said Lt. Bernard Chiominto, a spokesman for the Cecil County Sheriff's Office. "He was driving commando."

Dfc. George Reynolds discovered the motorist, who police identified as 41-year-old Jonathan William Schultz of Newark, at about 2:45 a.m. Saturday after clocking a 1993 GMC pickup truck traveling 69 mph in the westbound lane of Route 273 near Wood Valley Road, police said.

"When Deputy Reynolds reached the driver, he detected a strong odor of alcohol," Chiominto said.

Seconds later, the deputy discovered that Schultz didn't possess a driver's license and that he was in his birthday suit from the waist down.

"He didn't have a driver's license because he didn't have any place to hold it," Chiominto said. "He told Deputy Reynolds that he was uncomfortable wearing the pants so he took them off."

The deputy ordered Reynolds to put on his pants, which were on passenger's side seat, police said. Reynolds also asked Schultz to perform a field sobriety test, which he refused, police added.

Reynolds charged Schultz with driving while impaired, driving without a license, driving without insurance and operating an unregistered vehicle, according to Chiominto.

Authorities impounded Schultz' truck before releasing him without bond.

Burglar robs Main Street business

Last Wednesday, employees at DP Dough, a pizza shop located on 127 E. Main Street, reported that an unknown suspect had taken cash receipts from the register and had stolen the business' safe.

Computer records showed that the register had last been opened at 2:20 a.m. the night before. Manager Michael Peters showed police where the safe had been located in the back office. An investigation showed the drag marks where the 100 pound safe had been taken out of a side door. Police found no signs of forced entry, though several footprints and fingerprints were also found and are still being processed. No present employees are suspected, though Peters said that a former employee could possibly have a key.

Lost dog results in arrest

Police were dispatched to a residence on Dove Drive to investigate an assault charge last Saturday. Newark residents Karen and Andrew Frosch reported that they had found a lost dog in front of their home on Lark Drive. They had secured the dog in their yard and called the owner, Daniel Gilardi, 46, to come retrieve the animal. Gilardi said that he would be right over. After waiting for awhile, the Frosch's left their home to run some errands.

When police arrived, they contacted the victims who reportedly heard three or four gunshots fired outside and found bullet holes inside their homes.

Witnesses reportedly observed a single male subject carrying a gun as he walked along Whitburn Drive. They noted the subject took the gun out of his pocket and placed it inside a blue Chevrolet that

In that time, according to witnesses, Gilardi, in an inebriated state, attempted to free the dog and passed out on the retaining wall near the back yard. When the Frosch family returned, they found Gilardi and tried to revive him. Gilardi became belligerent and started yelling at Frosch. Frosch told him to leave, which Gilardi did.

About 30 minutes later, Frosch returned to Lark Dr. with a torque wrench and demanded that his dog be returned to him. Frosch stated that Gilardi opened the back gate and freed the animal. Gilardi continued to threaten Frosch and even began to dismantle the retaining wall. A pushing match ensued, which witnesses broke up. When police arrived, Gilardi was found waiting up the street. When approached, Gilardi ran. He was later found asleep under some bushes, a quarter mile away, half buried in mulch in an attempt to camouflage himself.

Gilardi was charged with Aggravated Menacing, Criminal Trespass Third Degree, Aggravated Assault, Resisting Arrest, and Disorderly Conduct.

Man accused of firing into houses

New Castle County Police have arrested Curtis Walston, 29, of the 100 block of Whitburn Drive in the community of Newtown Green in the Glasgow Pines area, off Route 40 in Bear. He was charged with weapon related offenses after he intentionally fired several gunshots into two townhouses adjacent to his residence Sunday morning. The eight occupants of the two homes were not injured.

When police arrived, they contacted the victims who reportedly heard three or four gunshots fired outside and found bullet holes inside their homes.

Witnesses reportedly observed a single male subject carrying a gun as he walked along Whitburn Drive. They noted the subject took the gun out of his pocket and placed it inside a blue Chevrolet that

was parked in the 100 block of Whitburn Drive. The subject then walked into a home located across from the parked car.

Officers arrested the occupant, Walston without incident. Police later found the handgun inside the car. The investigation has revealed Walston had had a confrontation with another man prior to the shooting.

Walston has been charged with eight counts of reckless endangering, two counts of criminal mischief, possession of a deadly weapon during the commission of a felony, and possession of a deadly weapon by a person prohibited (due to a previous felony conviction). He has been arraigned and committed to the Howard Young Prison after failing to post \$50,000 secured bail.



Walston

Police hit jackpot in traffic stop

During a traffic stop last Thursday, Newark police officers discovered that the registration for the white Chevy Silverado they had stopped was actually for a 2005 Ford Ranger pickup truck.

The driver, Richard Eldreth, 40, of Elkton, was also driving with a suspended license and no proof of insurance for the vehicle. An active capias for failure to appear in traffic court also was found for Eldreth. During a search of the vehicle and the five occupants in it, police discovered nine hypodermic needles, three marijuana pipes and other narcotic paraphernalia in the property of occupant William Jones, 40, also of Elkton.

Mexican restaurant loses umbrella

Santa Fe Mexican Restaurant reported that one of their Corona patio umbrellas was stolen. Owner Javier Acuna-Sanchez reported seeing a white male, approximately 5' 10 to 6' tall, about 180 to 200 pounds, wearing a white t-shirt and blue shorts, leaning against the outside railing, using his cell phone. When Acuna-Sanchez walked into the restaurant, the suspect grabbed the umbrella and ran with it. The umbrella is a Corona promotional item and is worth \$100. Police conducted a neighborhood search with negative results.

Summer Specials!

at Bings Bakery

Delawares Longest Running Bakery

Sheet Cake Sale

1/4 Sheet Cake, 1 filling - **\$20.00***

1/2 Sheet Cake, 1 filling - **\$30.00***

Full Sheet Cake, 1 filling - **\$60.00***

Filling selection: strawberry, cannoli cream, banana, cherry, lemon, pineapple, peach, french cream, chocolate mousse, vanilla custard, chocolate cream, raspberry
Icing: cake icing or whip cream, real butter cream available at additional charge.
*Limited design selection on sale items. Expires 8/28/09. Coupon required.

Cupcake Sale

1 Dozen - **\$8.95**

1/2 Dozen - **\$4.50**

Expires 8/28/09. Coupon required. Limited to in store only.

BING'S BAKERY

"DELAWARE'S LONGEST RUNNING BAKERY"

253 E. Main St., Newark, DE

302-737-5310

www.bingsbakery.com

Reg. Hours: Mon - Sat 7:00a.m. to 6:00p.m.

Now Open
\$10 worth of any
Good Neighbor Pharmacy Product
When you fill your prescription at Northside Pharmacy
Offer expires 7/31/09

Northside
Pharmacy



Your needs! Your pharmacy!

707 Bridge St., Suite B, Elkton, MD 21921 • 410-398-DRUG (3784)

Sports

high schools • UD • leagues

Bear Babe Ruth team hopes to repeat as national champs

By JON BUZBY

JONBUZBY@HOTMAIL.COM

At this time of year, as baseball all-star games are underway all over the country, most teams at any level have new faces on the rosters, with nerves playing a major role as players face the pressure of tournament baseball for the first time.

But on the Bear Babe Ruth 13-year-old all-star team, there are ten players returning from a 12-year-old team that went as far as possible last summer — all the way to Tennessee for the Babe Ruth League World Series ... and then returned home as national champions of the Cal Ripken 12-Year-Old Major 60' Division.

According to league vice-president Tony Marengo, that championship run — capped with a 3-2 win over Kennebec (Wash.) in the finals — put Delaware on the national baseball map.

"It is a once-in-a-lifetime situation to have a semblance of talent from such a small town in one of the smallest states do what those boys did," he said with pride during a recent interview. "It was such a memorable experience for those young men and coaches."

With so many players returning from that squad, this year's

team, participating in the Babe Ruth 13-Year-Old Division, will not be overlooked by any team from another state of any size. But returning manager Scott Rowe does not feel the pressure will affect this team and hopes that last year's title run was not just a once-in-a-lifetime experience.

"This group is the loosest team I have ever seen," said Rowe, who will be assisted by Marshall Parker and Sonny Pacana. "They just love playing the game and playing with each other, so I will be very surprised if there are any nerves or if they will feel any pressure."

Two newcomers, Matthew Fleming and Sean Stevens, will be joined by returning players Brendan Erne, Jake Fraley, Lonnie Funderburk, Hunter Gaston (whose 16 hits broke Jimmy Rollins' World Series record), Michael Hand, Shawn Pacana, DeVante Parker, Eric Rowe, Sam Sartin and Bailey Spence.

"The main thing I will stress is that we play hard and never give up," added Rowe, who was a member of a World Series championship team as a player. "Our goal as coaches is to win, but more importantly to keep teaching them."

"We will be on the big field this year with 90 feet between the bases, so there is more stuff to go over with them. Our pitching has always been dominant, but now pitching from a further distance, the defense will play a bigger part; and with the bases being longer, speed and base-running will also be important."

Bear will play a best-of-three series against Piedmont Babe Ruth, located in Hockessin, beginning on July 17. Bear will host the first and third games at Red Lion Christian Academy, with Piedmont hosting game two. The winner will advance to the regional tournament in

Williamsport, Pa., starting on August 6.

Rowe savors the memories from last year's experience, but would like the past to stay in the past as this year's team prepares for the rigors of the tournament. But the reality is he knows this team will carry

the target of being defending champions on its back.

"We have to make sure that the players don't take anything for granted and let them know that everyone will be gunning for us. If we go out and play like we have in the past everything will be fine."

News and Notes

David Summerfield and Louis Fedele, the two members of last year's Bear team not returning, chose instead to participate in wrestling activities this summer.



Buzby

Football guide judged best in nation

The 2008 University of Delaware Football Media Guide has been judged "Best in the Nation" by the College Sports Information Directors of America (CoSIDA) as part of its annual publications contest.

The 184-page publication, which was edited by UD Assistant Director of Athletics and Sports Information Director Scott Selheimer and Assistant Sports Information Director Kevin Tritt and designed by UD Senior Art Director Keith Heckert, was judged "Best

in the Nation" by a three-person panel coordinated by University of Virginia at Wise Sports Information Director Chris Myers. The panel consists of media members and those in the printing and publications business.

The contest is open to all 123 NCAA Division I Football Championship Subdivision (formerly known as NCAA I-AA) schools. Appalachian State finished second in this year's judging followed by Liberty and Youngstown State. The University of Massachusetts was honored for having the "Best Cover".

Guides are judged on such topics as overall appearance, layout, design, writing style, amount of information, and ease of reading and finding information.

The University of Delaware football guide is published each year and distributed to media members both locally and nationally for their coverage of the Blue Hens during the season. The publication is also distributed to recruits and donors and is sold at Delaware Stadium on gamedays during the fall. The publication includes staff and player profiles, season infor-

mation, season recaps, historical information, and photos.

This year's award marks the 28th time since the 1976 season that the Delaware Football Media Guide has earned either a district or national award by CoSIDA — including four other "Best in the Nation" citations in 1997, 1990, 1981, and 1977 and a "Best Cover" award in 2005. The publication has been honored as one of the top five guides in the nation 17 times.

The 2009 publication is currently being completed and will be available for distribution in mid-August.

NEED A LAWYER?

Offering affordable legal services at **1400 Peoples Plaza, Suite 121** EXPERIENCE COUNTS *Over 25 years in practice*

- Auto Accidents
- Work Injuries
- Divorce & Custody
- Bankruptcy
- PFA
- Criminal Law/DUI

Our firm's goal is to provide affordable legal services to our clients. We utilize a team approach combining the efforts of experienced paralegals and attorneys, coupled with aggressive, affordable representation, maximizing your recovery, protecting your rights, to provide the most effective personal legal services available.

Rahaim & Saints

ATTORNEYS AT LAW
302-832-1800
 1400 Peoples Plaza Suite 121 Newark, Delaware
 2055 Limestone Road Suite 211
 302-892-9200
 www.rahaimandsaints.com

Check out our **BRAND NEW** web site!

www.mayerflooringde.com

Design a new room with our virtual design tool.

Check out all our flooring, from the economical to the very best. 100's & 100's of samples.

MAYER, INC.

1014 Elkton Rd., Newark, DE 19711 • 366-1311

BBB MEMBER DELAWARE

Something terrible happens when you don't advertise... Nothing!
 Call 737-0724 to place an ad.

STONE BALLOON Winehouse
 est. 1972
 SHOP - RESTAURANT - BAR

MAIN STREET, NEWARK
 Casual Dining Restaurant!!!

Outdoor Seating
 Lunch and Dinner
 Sunday Brunch
 Local, Organic, Seasonal Menu
 Artisan Cheeses

Visit our Wine Shop!!!
 Over 250 Labels

Must be 21 to Enter Best Prices Free Parking Garage

www.stoneballoonwh.com (302) 266-8111

IN THE NEWS

Bone marrow donor drive planned for Sunday

Event offers hope for UD senior

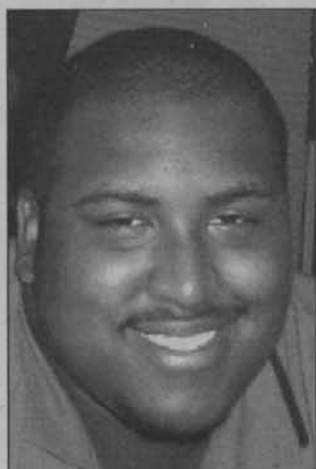
Colin Hines is 25 years old and was diagnosed with Acute Myelogenous Leukemia in March of 2009. After undergoing several rounds of chemotherapy, Colin's best chance for survival is a bone marrow transplant.

He is a senior at the University of Delaware.

DKMS, the world's largest bone marrow donor center is teaming up with Colin and his family and friends to organize a life-saving bone marrow donor drive at John Dickinson High School on July 12th, 11am to 4pm, to find a match for Colin and thousands of other patients just like him who are battling this life-threatening blood disease and depend on you for survival.

"At 25 years old, I feel like I am in the prime of my life, and being diagnosed with leukemia put a devastating halt on all of my plans. All the love and support I have received have been an unexpected gift that have lifted my spirits and my faith in humanity. For those of us who are facing a potentially fatal diagnosis, we realize how precious life truly is.

"My family, friends, and I are asking you to come out



Colin Hines

and give the most precious gift of all, for me and others in need of a transplant. I have lived my life by the motto 'Make Life Count;' now I ask you to do the same by granting the gift of life to another," Colin Hines said.

The general public has the power to give hope to Colin and his family and other families going through the same heartache and pain by attending the drive on Sunday, July 12, from 11 a.m. to 4 p.m. at Dickinson High School, 1801 Milltown Road.

"Seventy percent of patients depend on a complete stranger to give them a second chance at life," stated Katharina Harf, EVP, DKMS

Americas. "Today, a stranger like you can save Jana or someone like her. Tomorrow a stranger might help save you or someone you love."

Registering to become a bone marrow donor is more than a cheek swab; it is a commitment to help save a life. You must be in good general health and between the ages of 18 and 55. When you register with DKMS, you will be also listed on the national Be The Match registry and can be found as a donor match for any patient in need of a bone marrow transplant. Learn more about your commitment and check if you meet the medical eligibility requirements.

There are two possible ways a person may be asked to donate: Peripheral Blood Stem Cell Collection - a medication enables the number of the donor's blood stem cells to increase and these cells are collected directly from the blood stream (this procedure is called apheresis) - or bone marrow donation where the stem cells are directly collected from the pelvic bone.

As a non-profit organization, DKMS relies on the generosity of individuals to help finance the \$65 cost DKMS pays to tissue type each bone marrow donor who registers. Donations are voluntary. 100% of your donation will be used to register donors and add them on the national Be

The Match registry.

DKMS began in Germany with the mission of one man. In 1990, Peter Harf was desperate to find a donor for his wife Mechtild, who was diagnosed with acute leukemia. The search seemed hopeless because, at the time, there were only 3,000 unrelated donors available in Germany. He worked tirelessly gathering friends, family and volunteers to organize donor drives, successfully recruiting more than

65,000 donors in one year.

DKMS or "Deutsche Knochenmarkspenderdatei" (German Bone Marrow Donor Center in English) was officially founded in 1991 by Peter Harf and his wife's physician, Dr. Gerhard Ehninger. Their goal was simple: to build a major bone marrow donor center to help leukemia patients worldwide find their life-saving match. Today, DKMS is the largest bone marrow donor center in the world with nearly

2 million registered donors. Since its founding, DKMS has facilitated over 17,000 transplants.

In 2004, DKMS opened an office in New York City to diversify its donor pool, by registering more bone marrow donors in the U.S. Since 2006, DKMS has registered more than 70,000 donors, which allowed more than 80 patients to receive a life-saving transplant.

Respite care network launched in state

Delaware Lifespan Respite Care Network officially launched their new website www.delrespite.org.

This new website will enable the nearly 160,000 Delawareans providing unpaid care for a relative, friend or loved one with the resources to find quality respite care. Respite care is the temporary relief or "break" provided for caregivers and families who are caring for those with disabilities, chronic or terminal illnesses or the elderly.

Easter Seals Delaware & Maryland's Eastern Shore, the lead agency for the project, is overseeing the Delaware Lifespan Respite Care Network, a statewide initiative

that will help Delaware caregivers who have been challenged by the lack of centralized information to find respite services, inadequate supply of quality respite care and lack of financial resources to pay for the care. The Network will be a service delivery system dedicated to helping people identify and secure respite care. Those involved in the collaboration include Easter Seals, the University of Delaware Center for Disabilities Studies, the State of Delaware Division of Services for Aging and Adults with Physical Disabilities and Division for Developmental Disabilities Services, and Children & Families First, among others.

"The pressures of around-the-clock care for an individual with significant health or other challenges sometimes can be unbearable for families and loved ones. We hope this new website and the free information and referral ser-

vice will offer meaningful relief to the thousands of family members, who, quite simply, need a break from continuous caregiving," said Bill Adami, President and CEO of Easter Seals.

In addition to their new website, the Network has launched a Respite Information & Referral Service that is available by calling 888.610.5572 or 302.479.1690. Financial Assistance is also available to caregivers and others providing care by applying online, by downloading an application from the website or by calling either the toll-free or local telephone numbers.

Supported in part by a \$92,000 program grant from the Delaware Community Foundation as well as grants from the Longwood Foundation and Welfare Foundation, these are the initial efforts of the Network to provide support for First State caregivers.

Prosthetic Services
We Are Certified for All Amputation Levels

~ABC Certified Prosthetists

We Build & Design On-Site

- ~Lifelike & Specialty Designs
- ~Complete Prosthetic Systems
- ~Insurance Verifications
- ~Routine Maintenance
- ~Warranty Service

Call for a Free Consultation
DE~(302) 392-1947
MD~(410) 569-0606

www.**RealLifeProsthetics.com**

E

scape completely.

16-day Europe cruise.
Princess brings you more of Europe.

* FARES FROM **\$1,195**

- Unequaled dining - Choose traditional or Flexible Anytime Dining™
- Unsurpassed Service - Providing an unforgettable escape
- Unparalleled fleet - Big Ship variety with a Small Ship Feel™
- Unforgettable views - More affordable balconies

PRINCESS CRUISES
escape completely.

The Cruise Shoppe
250 E. Chestnut Hill Road, Suite 2, Newark DE 19713
302-737-7220 www.cruiseshoppe.us

*Fares are per person, based on double occupancy, cruise only, subject to availability, capacity controlled. Call the above agency for more details. Princess reserves the right to replace a full replacement of up to \$5 per person per day on all coverages if the maximum price exceeds \$70 per person, even if the fare has already been paid in full. Government fees and taxes are additional. All ship and air fares are available. See applicable Princess brochure for terms, conditions and definitions that will apply to your booking. Offer available to residents of U.S. and Canada. ©2009 Princess Cruises. All rights reserved.

QUALITY SERVICE YOU CAN DEPEND ON

- Brakes • Auto Inspection • Electrical
- Suspension Systems • Transmissions
- Differential 4x4 • Fuel Injection • Engine Repairs

PETE'S GARAGE

FLEET & DIESEL REPAIR

302-286-6069

SERVICING THE BEAR & NEWARK AREAS

Chrysler • Jeep • Dodge Specialist

78 Albe Dr., Newark, DE

www.fixyourcarnow.com

\$10 OFF
with this coupon



Expires 8/31/09

IN THE NEWS

50th cruise for Newark travel agent

In 2005, Newark resident Joanne Raffel was asked to follow her passion when her cruise travel agent recruited her to join his company based on her interest and knowledge of cruising. She now owns a franchise with Cruise Planners, an American Express affiliated company. On June 28, Joanne returned from sailing on her 50th cruise on one of the world's largest cruise ships—the Freedom of the Seas.

Joanne has cruised on all of the major mass market cruise lines including Carnival, Celebrity, Costa, Cunard, Disney, Holland America, MSC, Norwegian, Princess, and Royal Caribbean. She has traveled the world to the Caribbean, Alaska, Hawaii, Baltic, Mediterranean, Southeast Asia, Australia... having visited every continent except for Antarctica. (Yes, that is on her to do list.)

Joanne points out that despite the current recession, business is brisk. "Cruise ships need to fill

cabins to make money. When times are difficult, customers can get great deals." She cites recent deals such as a balcony accommodation on a cruise to Alaska on a Celebrity Millennium class ship for about \$900 per person total. Recently a seven day cruise on a Royal Caribbean Freedom class ship was purchased for \$500 per person.

What is her favorite cruise line? "It depends...." she says. It depends on who is traveling, what the itinerary will be, and what the primary goal of the vacation is. For example, Joanne and her husband, Jeff, a UD professor in the School of Urban Affairs & Public Policy, just enjoyed a cruise on the Freedom (Royal Caribbean cruise lines) with their children (Newark High grads Allison, Lori, and Ken) and their spouses and six grandchildren. The ship had an indoor ice skating rink (ice skating in the Caribbean!), rock climbing wall several decks high, Irish pub, promenade/

mall, water play zone, and a day camp.

They swam in Labadee, Haiti, snorkeled in Cozumel, Mexico, enjoyed one of the most beautiful beaches in the world in Grand Cayman, and climbed Dunn's River Falls in Ocho Rios, Jamaica. But when she and Jeff cruise as a couple they might prefer a line more focused on fine food, martinis, and upscale entertainment. Unique itineraries might also be a factor in the perfect cruise line choice.

Joanne, who formerly worked for DuPont, Anderson Consulting/Accenture, and PricewaterhouseCoopers, prides herself on her detailed knowledge of her business—which cabins have larger balconies, which

ships have larger cabins, and which offer the best discounts for clients on what days. (Do you believe that on some days Delaware residents can get a lower price on select sailings?)

Although Joanne specializes in mass market cruising, she has a wide knowledge of other destinations. She participates in many learning opportunities such as site inspections and seminars. "All-inclusive resort vacations to destinations like Punta Cana and the Riviera Maya have become very popular. Cruises are great but are not always the appropriate vacation", she says. Personalized attention and product knowledge are the two mainstays of Joanne's business.

Joanne began cruising as



Joanne Raffel on a recent cruise

a 7 year old with her family. Joanne's dream: to go on a 3-month around-the-world cruise after her husband retires. But for now she enjoys trying out new ships like the Oasis of the Seas; she is scheduled for a

two-day pre-inaugural cruise in November with husband, Jeff. Joanne's husband Jeff says, "I can't conceive of Joanne having a better job....for me!"

She can be reached at jraffel@cruiseplanners.com.

Coupe joins State Police

▶ **COUPE**, from 3

pledge my commitment to serve with dignity and honor befitting the integrity of the Division."

Col. Coupe joined the DSP ranks in 1985 and has served as Troop Commander, Internal Affairs Investigator, Homicide Detective, Training Officer at the DSP Training Academy and a member of the DSP Honor Guard Unit. In addition, Col. Coupe is a graduate of the Federal Bureau of Investigation

National Academy—the West Point of law enforcement.

In 2001, Col. Coupe received the Exceptional Performance Award for his role in helping to create the DSP Pipes and Drums. He still performs with the band as a bagpiper. He also earned the Life Saving Award in 1996 for coming to the aid of a suicidal subject.

Col. Coupe, a St. Mark's High School graduate, resides in Claymont with his wife, Pamela. He is the father of two children, Jocelyn and Tyler.

State enforcement effort targets speeders

Aggressive drivers are those who not only speed, but also tailgate, weave in and out of traffic, run red lights and stop signs and pull into traffic without giving others adequate room or time to maneuver. When motorists see examples of these dangerous behaviors, they are being asked to call 911 when it's safe to do so (or have a passenger call for them), and provide dispatch-

ers with a description of the vehicle, a license plate number when possible and the vehicle's direction of travel. Alerts will then be sent to officers in the surrounding area to be on the lookout for the aggressive driver, make contact with him/her and cite that person for the offenses they observe. Drivers should not call or email OHS to report aggressive drivers.

OHS officials say in addi-

tion to the possibility of losing your life, speeding will cost you money from citations, higher insurance costs from points on your license, and more money for gas.

Drivers ticketed for going 10 mph over the speed limit, will receive 4 points on their license and be fined \$77.40 after court costs are assessed. Fines and points increase from there putting your driving privileges at risk.

The Stop Aggressive Driving campaign is the third initiative in the 120 Days of Summer HEAT campaign, a summertime crackdown on traffic violators. For more information about the Stop Aggressive Driving campaign and OHS's other safety initiatives, please visit our website at www.ohs.delaware.gov or follow our updates on Twitter at www.twitter.com/DEHighwaySafe.

Join us all summer long in celebrating our

9 YEAR ANNIVERSARY

HOME GROWN BLUES & BREWS
AUGUST 15TH & 16TH

ALL WEEKEND ENJOY MANY GREAT BLUES BANDS
& OUR BLUES BRUNCH SEE WEB FOR DETAILS

126 East Main • Newark, DE 19711 • (302) 266-6993 • www.homegrowncafe.com

got scrap?

TOP DOLLAR PAID FOR SCRAP!

"CASH FOR ALL TYPES OF METALS AND CARS!"

#1 STEEL

LITE IRON

WE BUY BATTERIES, COPPER, BRASS, ALUMINUM, STAINLESS, ELECTRIC MOTORS, OLD FARM EQUIPMENT, & COMPLETE JUNK VEHICLES!

ELKTON RECYCLING

410-392-2980

DELAWARE EYE CARE CENTER

Complete Eye Care
Schedule your appointment today!
800-900-2020

Specializing in:

- Comprehensive Eye Exams and Diagnostic Evaluation
- Treatment of Diabetic Eye Diseases
- Eyeglasses and Contacts
- Retina Evaluation and Treatment
- No-stitch, No patch Cataract Surgery
- Visx Custom-Vue LASIK & Epi-LASIK
- Glaucoma Evaluation and Treatment

We accept Superior Vision, VSP, UBA, Davis and most other insurance plans.

Delaware Eye Care Center
333 E. Main Street, Newark
302-368-9105

www.delawareeyecare.com

Godbauer's
4th of July Spectacular Sale

The Furniture People, Rte 40 Elkton,
 2 miles west of DE/MD line



Freedom to Choose

Great savings on all our
 quality name brands!



- FREE Bedding**
- FREE Delivery**
- FREE Financing**
- FREE pick up of old mattress**



HELD OVER
 Hurry Final Days!
 Sale Ends
 Sunday July 12th

Everything is on sale!

All manufacturers including:

Broyhill • Lane • Fairmont • Aspen • Flexsteel • Yutzi Solid Wood (hand crafted by the Amish)

Buy any bedroom get a set of bedding FREE!

Value up to \$399. See store for details



901 E. Pulaski Hwy., Rt. 40, Elkton
 410-398-6201



Business Office 410-398-6200



701 E. Pulaski Hwy., Rt. 40, Elkton
 410-398-5402

OBITUARIES

■ *Obituaries are printed free of charge as space permits. Information is usually supplied to the newspaper by the funeral director.*

Vincent Beardsley

Vincent C. Beardsley, 16, of Millsboro, DE, died Sunday June 28.

He was born in Newark, DE, son of Anthony Pupillo and Denise Alvarez. Vincent enjoyed football, fishing, surfing MySpace, vacationing in North Carolina and hanging out with his friends.

He was preceded in death by his aunt, Francine. He is survived by his father, Anthony Pupillo of Georgetown; his mother Denise Beardsley and step-father, James E. Beardsley, III; his maternal mom-mom Marie Urban and her husband Tony; his great maternal mom-mom Theresa Reeder; paternal grandmother Evelyn Pupillo; his girlfriend Amber; his siblings, Nick, Ashley, and Summer Beardsley and Chrysti Dawson; his uncle, Chris; his aunts, Debbie, Deja, Alicia, Maryann and Tina.

A Celebration of Vince's life was held on Friday, July 3, from 11 am to 3 pm at the AM Vets Post#2 on Long Neck Road, Millsboro, DE. Interment was private.

To help defray funeral expenses donations are being accepted at the AM Vets Post #2 on Long Neck Rd.

Ralph Dewey

Ralph M. Dewey, 90, of Newark, DE, died peacefully on June 29, at home.

Born in Canaan, CT, he was the oldest son of the late Ralph F. and Grace Merrihew Dewey. He was a WWII veteran serving in the infantry and a member of the VFW and the American Legion. Ralph was a member of the Sons of the American Revolution and the Mayflower Society, holding senior offices in both.

Ralph is survived by his loving wife, Betty Dewey of 66 years. He also survived by his sisters, Lillian Eva Barringer and Ruth Ida Lord; his children, Jay and wife, Vivian of Maryland, John of Florida, Kathy Graham of Pennsylvania, Lawrence and wife, Christy of Florida, Andy and wife, Vicky of Nevada, Matt and his late wife, Suzie of North Carolina, and Lyn Dugger and husband Bryan of Maryland. He has nine grandchildren and four great-grand-

children.

A Mass of Christian Burial was held on Friday, July 3 at 11 am at St Mary of the Assumption Church, 7200 Lancaster Pike Hockessin. Burial was in Rosendale Cemetery, Rosendale, NY on Tuesday, July 7.

Wilhelmina Doll

Mrs. Wilhelmina Marble Doll, of Newark, DE, died on Friday, June 26, at Christiana Hospital in Newark, just three days short of her 101st birthday.

Born in a farmhouse near Wellsboro, PA on June 29, 1908, Doll was the daughter of the late Frederick Eugene Marble and Amelia Hannah Schimpf Marble. She graduated from Charleston (PA) High School in 1925 as the class valedictorian, and later earned a diploma from Wellsboro High School in 1926. In 1930, she received her bachelor's degree in math education from Mansfield Teachers College, and, in 1957, her master's degree in education from the University of Delaware. She continued to take advanced coursework throughout her working life, earning 45 additional graduate credits. Doll began her career as an educator in Pennsylvania, teaching in Emporium, Montrose, Kingston, and Susquehanna. After moving to Delaware, she taught in Newport at the Krebs School until her retirement in 1974.

She is survived by four

children, Paul J. Doll of Tunkhannock, PA; E. Charles Doll of Newark, DE; Roberta D. Davis (Charles H.) of Rome, PA; and Patricia D. Campbell (Forrest C. Jr.) of West Grove, PA; grandchildren, Charles T. Davis (Christel) of Massena, NY; Robert H. Davis of Rome, PA; and Raymond A. Davis of Mansfield, PA; and great grandchildren, Tim Reissman (Megan), Kristen Davis, Stefanie Davis, and Zachary Davis.

A funeral service was held at 7 pm, on Wednesday, July 1, at Spicer-Mullikin Funeral Home, 121 West Park Place, Newark, DE. A second funeral service was held at 11 am, on Friday, July 3, at Tussey-Mosher Funeral Home, 139 Main Street, Wellsboro, PA. Interment followed in Wellsboro (PA) Cemetery.

Donald Galbraith

CMSGT Donald M. (Gabe) Galbraith, 79, of Elkton, MD, died on Tuesday, June 30, at his home after a long battle with leukemia.

Don was born in Newark, DE to the late Sidney and Janetta (Mann) Galbraith. In the early 1950s, he began his military career with the Delaware Air National Guard, where he served his country for 35 years. During his tenure with the Guard, he served as an A&E mechanic with the 142 Technical Airlift Group. He later served with 166 TAG as a flight engineer on the C-97 and C-130A&H models

and traveled all over the world, including many war zone missions. He also held the position of Inspector General of the 166 TAG before his retirement.

He is survived by his beloved wife of 59 years and high school sweetheart, Mary Jo (Summerfield) Galbraith; their devoted children, Donna Newton and her husband, Carl, of Kill Devil Hills, NC; Karen Galbraith and her husband, Lou DeChiaro, of Middletown, DE; Mark Galbraith and his wife, Bonnie, of Newark, DE; and Donald M. Galbraith II and his wife, Victoria, of Elkton, MD; five grandchildren, Brian (Erin), Kevin (Melanie), Donald III, and Kaitlin Galbraith, and Kealey Newton; a great granddaughter, Meka (Kevin) Galbraith; and numerous nieces and nephews. In addition to his parents, he was preceded in death by his brothers, Kenneth, Robert, and J. Leland Galbraith.

A funeral service was held at 11:30 am on Tuesday, July 7, at the Spicer-Mullikin Funeral Home, 121 West Park Place, Newark, DE. Interment with military honors followed in Delaware Veterans Memorial Cemetery, 2465 Chesapeake City Road, Bear, DE.

In lieu of flowers, contributions may be made to Helen F. Graham Cancer Center, c/o Christiana Care Foundation,

P.O. Box 1668, Wilmington, DE 19899.

Charlotte Oldham

Charlotte M. Oldham, 74, of Newark, DE, died June 30, in Heartland Hospice Home, Wilmington, DE.

Mrs. Oldham was born on May 17, 1935 in Earleville, MD, daughter of the late Rayner and Gladys Edmundson Matthews. She was a 1953 graduate of Cecilton High School. Mrs. Oldham had worked as a bookkeeper for Sassafras Boat Company for many years, until moving to

Elkton in 1990, where she retired from K-Mart in 2001. For the last nine years she has lived with her son in Newark.

Oldham is preceded in death by her husband of 46 years, John D. Oldham in 2001 and a sister, Dorothy Wintermute. She is survived by her sons; John Oldham and his wife Gabrielle of North East, MD and Michael Oldham with whom she lived; two sisters, Kathryn Horne of Swarthmore, PA and Frances Germaine Blocksom of Woodlyn, PA; and two broth-

See **OBITS**, 14 ▶

Don't waste time and money on that same old DO?

Let Mr. Anthony give you a new look!

Complete Color & Cut Make-Over **\$95⁰⁰**

SALON BY ANTHONY, INC.

321 Newark Shopping Center, Newark, DE 19711

(302) 737-5869

Daily: 10-7, Sat 8-3, Closed Sun & Mon

Anthony Barcola Jr.,
Owner & Operator



eyeWear

AFFORDABLE & DESIGNER EYEWEAR
CONTACT LENSES

BVLGARI

CELINE

Dior

FENDI

GUCCI

MICHAEL KORS

PRADA

VERSACE

silhouette

EYE EXAMS
MOST INSURANCES/HMO'S ACCEPTED
STATE-OF-THE-ART TECHNOLOGY INCLUDING
iZON HIGH-DEFINITION LENSES
WIDE SELECTION OF CONTACT LENSES

SIMON EYE
ASSOCIATES

EyeWear Boutique

"Eye Care for Life"

302.239.1933 | www.simoneye.com

Bear | Middletown | Newark | Pike Creek | Concord Pike | Union Street

Mirage Hardwood

Summer Sale

10% OFF

Factory Sale

2 9/16 and 5" Engineered Plank

Oak • Maple • Ash • American Cherry • Birch
American Walnut • Sapele • Brazilian Cherry
Santos Mahogany • Koubari • Herringbone
Various Color & Stains

No Shipping Cost on 300 S. F. or more

Mayer Inc Try our virtual design
1014 Elkton Road
Newark, Delaware 19711 tool at our new website
302-366-1311 www.mayerflooringde.com

IN THE NEWS

▶ OBITS, from 13

ers, William Matthews of Panama City, FL and George Matthews of Elkton, MD.

Funeral service was held on Monday, July 6 at 11am in the Galena Funeral Home of Stephen L. Schaech, 118 W. Cross St. Galena, MD. Burial

was held privately by family. Memorials may be offered to Northern Chesapeake Hospice Foundation c/o the funeral home.

Reba Rash

Reba D. Rash, 85, of Newark, DE died on July 1, at the home of her daughter,

Eleanor Gommer with whom she lived for 22 years.

Rash was a line inspector for Webb's Cleaners before retiring.

She was preceded in death by her husband, Howard T. Rash and her sister, Eleanor Hubbard. Reba is survived by her children, Evelyn Walker and husband Robert, Dorothy McGrath and husband James, all of Wilmington, Carolyn Daisey and husband Terry of Dagsboro, DE, Eleanor Gommer and husband Barry of Newark and Harry Rash and wife Diane of Ocala, FL; 12 grandchildren, 17 great grandchildren and four great great grandchildren.

The funeral service was held on Friday July 3 at 2 pm in the chapel of Gracelawn Memorial Park, N. Dupont Highway, New Castle. Burial was in the adjoining memorial park.

In lieu of flowers contributions may be made to Delaware Hospice, 3515 Silverside Rd. Wilmington, DE 19810.

Ronald Smallwood

Mr. Ronald E. Smallwood, 73, of Newark, DE, died on Wednesday, July 1, at home.

Born on December 23, 1935, Ron was a son of the late Samuel Elmer and Elsie Eileen (Bryan) Smallwood. He graduated from Conrad High School in 1953 and served in the Coast Guard Reserve for 17 years and worked for Hatzel & Buehler in Wilmington for 47 years. During his electrical contracting career, Ron worked as a journeyman, foreman, and superintendent; he was named manager of the Wilmington office in 1975 and vice president in 1977. He retired on January 1, 2001. Ron first became involved in the Delaware Contractor's Association in 1976. He served

on several committees and in each of the offices, including president. In 2002, Ron received the association's Lifetime Achievement Award.

Ron is survived by his wife, Nancy (Moore) Smallwood; sister-in-law, Gail Moore of Yardley, PA; stepchildren, Rob Maniscalco (Tracey) of Glen Mills, PA; Cheri Winterberg (Doug) of Leominster, MA; and Mike Maniscalco of Newark, DE; brothers, James B. Smallwood (Phyllis) of Florida; Charles E. Smallwood, (Delores) of Newport, DE; and William K. Smallwood (Janice) of Wilmington, DE; seven grandchildren, nieces, nephews and his devoted golf buddies. He has a daughter, Sherry.

A gathering of family and friends was held at Arsh Hall, University of Delaware Wilmington Campus, 2800 Pennsylvania Avenue, Wilmington, DE, from 5 pm to 8 pm on Monday, July 6.

In lieu of flowers, the family suggests contributions to the Ronald E. Smallwood Scholarship Fund, Penn-Del-Jersey Chapter NECA, 1500 Walnut St., Suite 1630, Philadelphia, PA 19102; or Tri-State Bird Rescue and Research, 110 Possum Hollow Road, Newark, DE 19711 (302-737-9543 / tristatebird.org); or Faithful Friends, 12-A Germay Dr., Wilmington, DE 19804 (302-427-8514 / faithfulfriends.us).

Kadeem Young

Kadeem Sekayi Young, 17, of Newark, DE, died June 28. Service, 11 am & viewing 9-11 am Fri., July 3 at The Resurrection Ctr, 3301 N. Market St., Wilm. Viewing was 6-8pm Thurs., July 2 at The House of Wright Mortuary, 208 E. 35th St., Wilm.

C & D Furniture

Quality Furniture
by Amish Craftsmen

Picnic Tables



See our selection.
We have one to
fit your needs

**SPECIAL PRICES ON
DISPLAY PLAYSETS!**

Selection of Dining Room & Bedroom Furniture

Rt 213, Chesapeake City, MD • 410-885-2572

3 miles So. of the Chesapeake City Bridge at the 2nd Light

- Bedrooms
- Dining Rooms
- Tables & Chairs
- Hutches
- Desks
- Playsets

SHEDS & STORAGE BUILDINGS

Custom Built to fit your needs. You choose the style, size and color from our "Amish Built" catalogs. Give us a try-our prices are right.

Lawn Furniture
Chairs, Rockers, Swings,
Gliders and much more.

3098034 NP070309

WILMINGTON & WESTERN RAILROAD

Create Childhood Memories!

July 3rd, 10th, 17th, 24th and 31st
MT.CUBA EXPRESS (Fridays)
12:30 & 2:30PM

July 4th, 11th & 18th
MT.CUBA EXPRESS (Saturdays)
12:30 & 2:30PM

July 12th & 19th
MT.CUBA EXPRESS (Sundays)
12:30 & 2:30PM

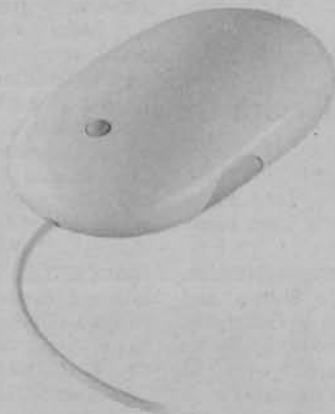
July 5th
COMMUNITY APPRECIATION DAY
12:30, 2:00 and 3:30pm

Reservations can be made online at
www.wwr.com or by calling **302-998-1030**

Greenbank Station is on Newport-Gap Pike, Rt. 41N in Delaware
1/4 mile from intersection Kirkwood Hwy. Rt. 2

809020 WWR03

OPEN 24 HOURS



Chesapeake
Classified.com

ABSOLUTE AUCTION

New 4 Bedrooms -
5 Bathrooms Home

Villages of Elk Neck

114 Lake Forest Drive,
Elkton, Maryland

PREVIEW: Sunday, July 19, 1 to 3 p.m.
AUCTION: Saturday, July 25 at 10 a.m.

For Brochure call or visit
www.rcburkheimer.com

R.C. BURKHEIMER
Realtor & Auctioneer
410-920-2228

Financing Available

Tools for any Project are on sale!!



STANLEY

Save 10% off all Tools

that are in stock!

**POWER
AMERICA**
SALES • SERVICE • RENTALS
410-620-6570

555 Blue Ball Road,
Elkton, MD
Near Intersection of Route 279
www.PowerAmerica.com

309147 01070809

Follow me to
great rates on
car insurance.



There's a GEICO office in your neighborhood! With low down payments and convenient payment plans, saving on auto and motorcycle insurance is easy.

GEICO
Local Office

AUTO • HOME • RENTERS • MOTORCYCLE • BOAT

Call Now!
302-998-9192
M-F 9-6, Sat 9-1

050809NP-301989

Home, renters, and boat coverages are written through non-affiliated insurance companies and are secured through Insurance Counorsers Inc, the GEICO Property Agency. Some discounts, coverages, payment plans and features are not available in all states or in all GEICO companies. © 2007 GEICO. The GEICO gecko image © GEICO 1999-2007

Church Directory

To Advertise or make changes call

Nancy Tokar at 1-800-220-1230 or voice mail 443-245-5072

Prices starting as low as as \$12.00 a week!

Changes can be made by Friday, 4:30 p.m. for the following Friday's edition.



**Evangelical
Presbyterian Church (PCA)**
Christ Centered • Biblically Based

Sunday Worship 10:45am & 6pm
9:30 Sunday School
308 Possum Park Rd., Newark
302-737-2300
www.epcnewark.org



The Episcopal Church
Welcomes You

St. Thomas's Parish
276 S. College Ave. at Park Place,
Newark, DE 19711
Across from UD Health Center
(302) 368-4644
Church Office: (9:00-1:00 Mon-Fri)
www.stthomasparish.org

**"We get more hits
from this one
ad than any
other advertising
we do."**

- Rev. Jay - Good Shepherd
Episcopal Church

Call Nancy Tokar to place
your ad at
1-800-220-1230

Families. Worship. And You.

Rev. Jay Angerer and Family



good shepherd
EPISCOPAL CHURCH
Join us for worship at our new
time and location!
St. Nicholas Episcopal Church,
10 Old Newark Road in Newark.
Fellowship time at 10:45am with
service beginning at 11am.


302 547-7849
www.GoodShepherdDE.org
Sponsored by the Diocese of Delaware

**The Way
Ministries**
(an extension of Highway Gospel Com-
munity Temple, West Chester PA)

Highway Word of Faith Ministries is
presently worshipping @ The George
Wilson Community Center
303 New London Rd., Newark, DE

Sunday:
8:00-9:00am Christian Education
classes for all ages
9:00am Sunday Morning Celebration

Wednesday: Location
7:00-8:00pm Bible Enrichment Class at
Prayer Temple
49 New London Rd.
Newark, DE 19711
Mailing Address: P.O. Box 220
Bear, Delaware 19701-0220
Visit us online @ www.theway.ws or send us
a note at...theway238@aol.com




Pastor Carl A. Turner Sr. & Lady Karen B. Turner
For further information or directions please call:
302-834-9003

Sunday Worship
Sunday Service times:
8am, 10:30am & 5:30pm
Sunday Adult Education Programs
9:30-10:15am

The Rev. Paul Gennett
Marc F. Cheban,
Organist & Choir Master

Wandering? Wondering? Wounded?
God meets you where you are!
And So do we.
Come and see...



Wisdom from many sources



Sunday Service 10am
Childcare and Sunday School

Unitarian Universalist Fellowship
420 Willa Road, Newark
302.368.2984 uufn.org

Come Join Us!
Speaker: Rev. Greg Chute



**GLORIOUS
PRESENCE
CHURCH**

Sunday 8:30 a.m.
Acoustic Worship
Sunday 10:30 a.m.
Electric Worship

Pastoral Team
Curtis E. Leins, Ph.D
Robert F. McKnight
Theodore Lambert, III
James L. Ford

Located 1 1/2 miles N. of Elkton
on Rt.213

(410) 392-3456

**TRINITY
PRESBYTERIAN CHURCH (PCA)**
SUNDAY WORSHIP 9:30 AM

Meeting at: First Church of the Nazarene
357 Papermill Road, Newark, DE

For more information please call
302-233-6995



**First Church
of Christ,
Scientist**

48 West Park Place, Newark
Sunday Service & Sunday School 10:00am
Wednesday Testimony Meetings 7:30pm
Childcare available during services.

302-456-5808
ALL ARE WELCOME
www.fccsnewark.org

**NEWARK WESLEYAN
CHURCH**

708 West Church Rd
Newark, DE
(302)737-5190

Pastor James E. Yoder, III

Sunday School for all ages.....9:30am
Morning Worship.....10:30am
Children's Church & Nursery Provided
Choir - Sunday.....5:30pm
Youth Meeting - Sunday.....6:00pm
Mid-Week Bible Study

"A Family Church with a Friendly Heart"



**NEW LIFE CHRISTIAN
FELLOWSHIP**

Sunday Service 9:30 AM
Multimedia Children's Ministry!
Contemporary Worship!
Relevant messages!

Church Office: 999-1800
Check out our web page:
www.NewLifeDE.org
2712 Old Milltown Rd.
Wilmington, DE
(near Kirkwood Hwy & Milltown Rd)



You are welcome at

Ebenezer
United Methodist Church

SUN SERVICES 8:30 & 11:00am
SUNDAY SCHOOL 9:45am

525 Polly Drummond Road
Newark 302-731-9494
Handicapped Accessible • Child Care
TED DAY, PASTOR

Posted

8 AM 5 PM 800-220-3311 410-398-1230



ANNOUNCEMENT

NOTICES

New Today

WE ARE LOOKING for places to dump wood & chips in the Chestertown, Galena, & Cecil Co areas. Call to negotiate prices & availability. Johnson Tree and Landscaping 410-778-9775

LOST & FOUND

ARE YOU THE family I have been searching for? I am a lost female grey tabby cat. A nice couple found me, rescued me, but can't keep me. All I want is to do is love & be loved. I will make a wonderful companion. Please will someone help me? It is too hot to be living outside. Call: 443-466-5119

LOST TIGER STRIPED CAT Male, 1 yr old. Black, gray & white w/ white belly and "mask like" face. Gold eyes. May have been hurt and limping. Last seen at Meadows of Elk Creek, Elkton. Answers to "Zorro" OWNERS GRIEVING. PLEASE CALL 443-945-5659 *REWARD*



LOST

at West Chestnut Hill & Arbour Rd in Newark DE. Lhasa Apso dog. Cream colored female with floppy ears & long tail, about 17lbs. Answers to Winnie. Lost on 5/19 at 11pm 302-507-6567 **REWARD**



ANY WAY YOU LOOK AT IT, CHESAPEAKE CLASSIFIED CAN WORK FOR YOU!

LOST & FOUND

REWARD!



\$1000 LOST CHIHUAHUA/TERRIER MIX

Black and white male with brown on face, approx 18lbs. Lost on 3/19 in the vicinity of Rt 7 (Elkton area). Answers to "Chewy" Family is heartbroken. Bring him home! Call 443-309-9002 Call anytime.



EMPLOYMENT

HELP WANTED FULL-TIME

BOAT SALES- Several marine dealerships on the Chesapeake Bay, are seeking intelligent, exp'd. sales reps. Please send your resume to: **savistaffing@bellsouth.net** or fax resume to 267-781-2915

New Today

ELECTRICIAN w/ min 4 yrs experience. Fax resume to 302-455-9446

New Today

HORSE HELP FT/PT Prominent horse farm in Middletown, DE seeks person to help preparing TB horses for yearling sales. Must have good horse experience. 302-378-7192

RECLINE, RELAX & RESELL

110 HELP WANTED FULL-TIME

New Today

Production Shift Supervisor FT - Newark, DE

Responsible for all facets of production. Direct responsibility for employee performance, quality & safety. Supervisory exp req'd. Exp in plastics manufacturing pr'd. HS diploma or equivalent. Salary commensurate w/ exp. Medical ins. and retirement bnfts. Capable of working any shift in a 24-hr production environ. Mail resumes to PO Box 429 "P" Elkton, MD 21922.

SALES- Account Executive needed for established boating publication. Boating sales and/or advertising sales preferred. Send resume to: Sales PO Box 429 S, Elkton, MD 21922

RENTALS

305 APARTMENTS UNFURNISHED

BEAR AREA- large 1 bedroom, above garage apt. Quiet. 302-832-7367 details

305 APARTMENTS UNFURNISHED

CHARLESTOWN lg 2BR, w/d, off st pkg, pool privil Exc cond. \$820/mo + sec dep & ref's. 443-350-1678

New Today

CLASSIFIEDS 410-398-1230 800-220-1230

305 APARTMENTS UNFURNISHED

New Today

ELKTON efficiency Apartment \$510/mo + util's in excellent cond 443-907-3745

ELKTON: 1 BR, \$525 or 2BR \$625 per month Proof of income req'd. 410-459-8927

New Today

ELKTON. Unfurnished 2BR. In the Historical Hermitage W/D. \$850/ mo. + util's. & sec. dep. w/ref's. 443-907-3745

N. EAST 2BR, in town, quiet, W/D, very nice. \$775. 302-593-6400

PERRYVILLE. 1BR, \$450/mo, util's included, shared bath. 410-642-0086

310 APARTMENTS FURNISHED

New Today

ELKTON: 1Br, basement apartment. \$700/mo. + sec dep. 443-945-0645

New Today

PERRYVILLE Studio in apartment bldg. Laundry, parking. All utilities incl. Sec dep, credit check. \$659 per mo. 410-642-3362 or 410-937-3643

315 HOUSES FOR RENT

2 JONES PLACE, Bear. 3bd, 2.5ba Princeton Woods, end-unit twhome, mstr suite, laundry rm, garage, fenced yrd. \$975.

2 MAYWOOD DRIVE, Newark. 3bd, 1.5ba ranch home, hdwd flrs, w/d, fncd yrd, spacious rms, great kitchen. \$1250.

91 E MAIN ST, Newark. 1bd, 1ba convenient location, walk to class, above Grassroots, elevator, water allowance \$965

Brandywine Mgmt 302-656-1058

New Today

(2) Hollingsworth Manor brand new cond. 2br from \$650 **Elkton - Winding Brook,** 3br, newly renovated, a/c, yd, \$795/mo 410-398-3447

New Today

Chesapeake City beautiful 3br 2ba, single family home, pets ok \$1450/mo call 410-698-6066

CALL OR EMAIL CHESAPEAKE CLASSIFIED 800-220-1230 410-398-1230 www.chesapeakeclassified.com

New Today

QUEEN ANNE, 3bdr, 2ba, rancher on 2acres, horses and dogs welcome. References, Pet/ Sec Dep required. \$1550/mo 410-703-8257

315 HOUSES FOR RENT

New Today

ELKTON- 2br, exc cond. \$890/mo + sec & util's. Call 443-466-3745

ELKTON- 3br, 2 bath w/ detached in-law suite. Call 443-466-5171

ELKTON Free slip! 3br/3ba/ garage/ big yard/ PET OK \$1350 410-620-5505

GEORGETOWN, MD (Cecil County near Kent border) 3br, 1 ba \$800/mo Call 410-620-9977

GREAT DEAL

ELKTON 2/3/4BR starting at \$750 month. Must See! **NO PETS** 443-309-1602 www.thehomesforlife.com

LOOK

NORTH EAST. 3 br 2.5ba bsmt & garage. CAC. no pets \$1595 mo. 443-309-1602

New Today

QUEEN ANNE, 3bdr, 2ba, rancher on 2acres, horses and dogs welcome. References, Pet/ Sec Dep required. \$1550/mo 410-703-8257

330 CONDOS FOR RENT

New Today

NEWARK. 2br, 1.5ba, condo w/deck. Lrg. yard faces woods w/pond, fin bsmt. \$1250 mo util's. 1st & last. 302-422-2590

332 TOWNHOUSE FOR RENT

New Today

ELKTON Persimmon Creek 2br 2.5ba, no pets \$1000/mo + sec 302-293-5367

345 ROOMS FOR RENT

New Today

ELKTON Full house priviledges. \$700/mo + sec., inclds util's. Call Pam at 443-693-2632

Classified is the key to more sales.

365 COMMERCIAL RENTALS

New Today

NEWARK AREA 700 sq ft. office space. Includes util's & parking. 302-455-9405

N. EAST- Main St. \$625/mo + util's. Available August 1st. Great location for Antiques or gifts. 410-287-2255

FOR SALE

REAL ESTATE

405 HOUSES FOR SALE

New Today

NEWARK- 609 Academy St. 3BR 1/2 block to UD. 302-354-0755 Or RE/MAX Sunvest 302-442-4200



SERVICES

520 HOME IMPROVEMENT SERVICES

New Today

INTERIOR / EXTERIOR PAINTING & shrub & root removal. Call John 373-1654

WE BUY JUNK CARS, TRACTOR TRAILERS, Dump Trucks or any heavy equipment machinery. Cash paid. 302-650-4579

ANY WAY YOU LOOK AT IT, CHESAPEAKE CLASSIFIED CAN WORK FOR YOU!



Chesapeake Publishing and Printing is growing and going strong!

We are currently hiring for:

OUTSIDE ADVERTISING SALES

Chesapeake Publishing and Printing is seeking an Outside Sales Representative to service current business and develop new accounts. If you would like to be part of a successful, established, growing company, then this is the position for you. We are looking for a proven producer to sell advertising in multiple publications including *The Delaware Business Ledger, Newark Post and Cecil Whig.* Advertising sales and business networking a must. Basic computer skills required.

What's in it for you?

- ◆ A competitive commission plan
- ◆ Established territory
- ◆ Paid mileage
- ◆ A great office atmosphere
- ◆ Being part of a strong team

If interested in this exciting position, please email your resume to:

rquietmeyer@chespub.com or mail it to:

Outside Sales, 601 Bridge Street, Elkton, MD 21921 Attn: Renee Quietmeyer No Phone calls, Please!

Chesapeake Publishing is an Equal Opportunity Employer



Here's My Card

Local Businesses At A Glance



CONSTRUCTION

Free Estimates Voice Mail 717-786-0271

Double E Construction Ltd.
Quarryville, PA

- New Construction
- Roofing & Siding
- Barns & Garages
- Additions
- Decks

Custom Built To Fit Your Needs

Ephraim Smucker Customer Satisfaction Keeps Us In Business

KITCHEN & BATH REMODELING

APEX
KITCHEN AND BATH

All Aspects of Kitchen & Bath Remodeling
Hardwood, Laminate & Ceramic Floor Installation
Specializing In Ceramic Tile & Custom Moldings

610-255-1668 **FREE ESTIMATES**

Rick Warwick, Owner
Lic/Ins DE, PA & NJ
Apexcontracting@comcast.net

540 CLEANING SERVICES

Cleaning Services.
Lic., Ins'd, Bnd.
Total Home Care
(610) 274-3288
www.totalhomecare.net



MERCHANDISE

602 ANIMALS/PETS

New Today

AKC REG LAB PUPS 1 ST SHOTS READY TO GO 410-778-4498



AM BULLDOG. NK cred., 6 mo. old female. Friendly \$600 OBO. 443-309-4009

ARE YOU THE family I have been searching for? I am a lost female grey tabby cat. A nice couple found me, rescued me, but can't keep me. All I want is to do is love & be loved. I will make a wonderful companion. Please will someone help me? It is too hot to be living outside. Call: 443-466-5119

CORGI ACA, puppies, raised in home. Guar health, \$450. 717-548-2251

New Today

CAT RESCUE in desperate need of good foster homes & volunteers. To help save lives, call 443-920-1831

HAZANESE PUPS 12 wks old, all shots & wormed. Parents on premises. \$700. Call 410-452-8896



KITTENS (2) Free to good homes. 1 male, 1 female. Litter trained, very friendly. Earleville area. 410-275-2645 leave message.

602 ANIMALS/PETS

KITTENS. Black & White. 8 weeks old. Free. 410-620-5689

LABS (2) Purebred, AKC. About 5-6 yrs old. 410-275-9267

New Today

LAB PUPS AKC, hunting background, champion bloodline. Shots, wormed. 302-292-1806

LAB PUPPIES English American. Beautiful silky black stock. Bred for friendly disposition. AKC, OFA. \$800 443-477-2162

RABBITS- Rex and mini-lop, free to good homes. 410-755-6626

605 HORSES/TACK/EQUIP./SUPPLIES

GYMKHANA HORSE SHOW in Elkton Md. All ages welcome, 2nd Sat. of every mo. til Nov. 14th. For info call Linda 410-441-1888 Susi at 443-406-5665

New Today

MIXED GRASS HAY No rain. \$3-4 per bale 443-910-0875

615 APPLIANCES

KOHLER SINK porcelain over steel. White, 33 x 22 incl faucet, about 2 yrs old. \$50. Kitchen stove, electric GE, glass top, island drop in type profile series 4 yrs old \$150. 610-255-0769

LEGAL NOTICE

LEGAL NOTICE
RE: DEADLY WEAPON
I, Fedor Yarovoy residing at, 100 Bartley Dr., Newark, DE 19702, will make application to the judges of the Superior Court of the State of Delaware in and for New Castle County at Wilmington for the next term for a license to carry a concealed deadly weapon, or weapons, for the protection of my person(s), or property, or both.

Fedor Yarovoy
7/1/09
np 7/10

622 ELECTRONICS

DVD/CD player, Magnavox w/4 head video cass. recorder. Like new, incl. remotes & manual. \$20. Call:443-257-6475

TV- 27" Toshiba cable ready color TV. Includes manual and remote. \$40. Please call:443-257-6475

625 FURNITURE/FURNISHINGS

New Today

2 END TABLES and cocktail table exc cond. \$75. Amish made chest w/ carved farm scene on front. \$30. Love seat/ slpr sofa, yellow & blue floral, new, \$100. 610-255-0769

BR SET, grills, hand-painted (green, lavender, yellow, blue floral) Twin bed, complete, 2 dressers, night stand. All for \$100. Please call:410-763-6992

New Today

ENT CENTER lg oak \$100. Green Broy Hill Sofa & ottoman \$350, Kiki sofa & ottoman \$300. Lg computer desk \$100. Matching coffee table, sofa table, 2 end tables all for \$100. All in exc cond, prices are firm. 302-521-1061 aft 5pm

CHECK OUT OUR WEBSITE AT WWW.CHEESAPEAKE CLASSIFIED.COM

625 FURNITURE/FURNISHINGS

NIGHT STAND- 2 drawers, dark wood. \$24. 410-658-5812

Ornate Oak Sideboard with Mirror 5' W x 6' H x 2'-1/2" D. \$850.00. Please call:410-658-2390

SOLID CHERRY Roll-Top desk; good cond. Asking \$200. Call 410-658-9953

627 CHILDREN/BABY ITEMS

STROLLER, play yard and booster seat for eating. For boy or girl, \$50 for all. Call: 410-398-0710

640 GENERAL MERCHANDISE

2008 PAYNE HEAT AND AC SYSTEM, 1 1/2 ton, never used. Still in original boxes. \$800. 410-287-8260

FLATWARE SET- Brand new, stainless steel. Service for 12 plus 8 serving pieces. Wooden chest for storage. \$30 obo. Call: 410-378-3312

IN LINE SKATES Men's size 12. Ultra wheels ZX500 (gently used). Also includes Deluxe helmet, knee and elbow pads. \$40. Call 443-350-3960

TRAMPOLINE 15' w/net. New was \$400, will take \$125. Call 410-287-5017

CLASSIFIEDS 410-398-1230 800-220-1230

642 SPORTING GOODS

GOLF CART '07 Club Car. Gas. Mint cond. \$3,400. Call 443-309-5347

GOLF CART 2005, ELECTRIC Club Car. W/ charger. \$2000 obo. 443-309-4850

646 MUSICAL

New Today

GUITARS WANTED (also banjos & mandolins)

Collector paying top \$\$ for Gibson, Fender, Martin & others. Any condition. 410-419-1795

660 YARD SALES

Multi Family

5 FAMILIES ELKTON- Ross Street, (off Delaware Ave and Creswell), follow signs. Saturday July 11th, 8-? **NO EARLY BIRDS.** Household, tools, horse tack, and misc. Way too much to mention!

WWW.CHEESAPEAKE CLASSIFIED.COM

660 YARD SALES

New Today **CHESAPEAKE CITY** 42 Chestnut Springs Rd., Saturday July 11th, 8-1. Lenox, Boyd's & furn/ hh. **ALL PRICED TO SELL!**

ELKTON Shaw Valley - 20 Ralph Dr. off Blueball Rd. Sat, July 11, 8am-3pm. Furniture, toys, clothes, lots of misc items

660 YARD SALES

ELKTON- Oldfield Pt. Road & Arundel Lane. Antiques, baby grand piano, misc items, 7/11, 7/12, 7/18, 7/19, 7/25, 7/26. 8-5.

YARD SALE

ELKTON- 30 Hall Road, July 11th, 2009. 8am-2pm.

YARD SALE!

ELKTON 161 Brewster Bridge Rd, near Appleton Rd, Sat 7/11 8-2 kids clothes, tools h/h & misc

New Today

ELKTON- 1158 Leeds Road, Saturday July 11th, 9-12. Tools, music equipment, and all types of items.

ANY WAY YOU LOOK AT IT, CHESAPEAKE CLASSIFIED CAN WORK FOR YOU!

660 YARD SALES

New Today **ELKTON** Shaw Valley - 20 Ralph Dr. off Blueball Rd. Sat, July 11, 8am-3pm. Furniture, toys, clothes, lots of misc items

ELKTON- Marley Depot 1610 West Pulaski Highway. Saturday July 11th, 7-1. Junior clothing Abercrombie, AE, Hollister, all sizes small to large. Furn, h/h and more.

660 YARD SALES

ELKTON- 30 Hall Road, July 11th, 2009. 8am-2pm.

YARD SALE

ELKTON 161 Brewster Bridge Rd, near Appleton Rd, Sat 7/11 8-2 kids clothes, tools h/h & misc

YARD SALE!

ELKTON- 1158 Leeds Road, Saturday July 11th, 9-12. Tools, music equipment, and all types of items.

New Today

ELKTON- 501 Bow Street next to Immaculate Conception Church. Sat & Sun 7/11 & 12. 7:30-4. Party Lite candles, sports memorabilia, collectibles, stereo equip, tools, clothing, furniture, Starbucks expresso machine & collectibles. Much more.

RECLINE, RELAX & RESELL

660 YARD SALES

New Today **ELKTON** Shaw Valley - 20 Ralph Dr. off Blueball Rd. Sat, July 11, 8am-3pm. Furniture, toys, clothes, lots of misc items

ELKTON- Marley Depot 1610 West Pulaski Highway. Saturday July 11th, 7-1. Junior clothing Abercrombie, AE, Hollister, all sizes small to large. Furn, h/h and more.

660 YARD SALES

ELKTON- 30 Hall Road, July 11th, 2009. 8am-2pm.

YARD SALE

ELKTON 161 Brewster Bridge Rd, near Appleton Rd, Sat 7/11 8-2 kids clothes, tools h/h & misc

YARD SALE!

ELKTON- 1158 Leeds Road, Saturday July 11th, 9-12. Tools, music equipment, and all types of items.

New Today

ELKTON- 501 Bow Street next to Immaculate Conception Church. Sat & Sun 7/11 & 12. 7:30-4. Party Lite candles, sports memorabilia, collectibles, stereo equip, tools, clothing, furniture, Starbucks expresso machine & collectibles. Much more.

RECLINE, RELAX & RESELL

660 YARD SALES

New Today **ELKTON** Shaw Valley - 20 Ralph Dr. off Blueball Rd. Sat, July 11, 8am-3pm. Furniture, toys, clothes, lots of misc items

ELKTON- Marley Depot 1610 West Pulaski Highway. Saturday July 11th, 7-1. Junior clothing Abercrombie, AE, Hollister, all sizes small to large. Furn, h/h and more.

660 YARD SALES

ELKTON- 30 Hall Road, July 11th, 2009. 8am-2pm.

YARD SALE

ELKTON 161 Brewster Bridge Rd, near Appleton Rd, Sat 7/11 8-2 kids clothes, tools h/h & misc

YARD SALE!

ELKTON- 1158 Leeds Road, Saturday July 11th, 9-12. Tools, music equipment, and all types of items.

New Today

ELKTON- 501 Bow Street next to Immaculate Conception Church. Sat & Sun 7/11 & 12. 7:30-4. Party Lite candles, sports memorabilia, collectibles, stereo equip, tools, clothing, furniture, Starbucks expresso machine & collectibles. Much more.

RECLINE, RELAX & RESELL

LEGAL NOTICE

PUBLIC SALE

Notice is hereby given that the undersigned will sell at public sale on **AUGUST 14, 2009** at **PS ORANGECO INC./PUBLIC STORAGE, 201 Bellevue Rd., Newark, DE 19713** at 12:00 p.m., the personal property heretofore stored with the undersigned by:

- A013 - Deanna Hall - electronics, furniture, boxes
 - A022 - Francisco Rodriguez - boxes, bags, furniture
 - A061 - Lawrence Stuart - boxes, furniture, tires
 - B062 - Sheridan Lane - furniture, bedding, electronics
 - C013 - Lynette Curtis - furniture, boxes, electronics
 - C044 - Michael Fellenbaum - totes, bedding, electronics
 - D028 - Rosalyn Waller - furniture, bedding, electronics
 - E077 - Alphonso Smith - totes, bedding, furniture
 - F111 - Vonetta McNair - bags, furniture, electronics
 - F031 - Carmen Thompson - computer, monitor, boxes
- np 7/10, 17

LEGAL NOTICE

PUBLIC AUCTION

Notice is hereby given that the undersigned will sell at a public auction on **8/14/09** at 1:00 p.m. at:

PS ORANGECO INC./PUBLIC STORAGE 3800 KIRKWOOD HWY., WILMINGTON, DE 19808 302-998-0125

- the personal property heretofore stored with the undersigned by:
- 1012 - Ronald Deptula - 2 totes, furniture, electronics
 - 1082 - Aaron Wilson - kitchen chair, table lamp, armoire
 - 2006 - Patricia Tew - 20 boxes, furniture, bedding
 - 2017 - Nader Ramadan - 25 boxes
 - 2024 - Cynthia Anderson - 10 totes
 - 2044 - Willette Taylor - furniture, bedding
 - 3026 - Lawrence Smith Jr. - 5 boxes, furniture
 - 5049 - Marcela Quintero - boxes, bags, furniture
 - 5093 - Nader Ramadan - 25 bags
 - 6004 - Anna Marini - 20 boxes, bags, furniture, books, files, cabinets
- np 7/10, 17

Real Services Estate

CecilBANK
www.cecilbank.com

410-392-LEND
Call Sandy Feltnan or John Ness for all your financing needs

Local Lending with Local Servicing • Fixed and Adjustable Rate Mortgages
• Construction to Permanent • Lot Loans • Bridge Loans
40 YEAR TERM AVAILABLE • FREE PRE-QUALIFICATION • NO APPLICATION FEES

To reserve your space call: Michael Adams 443-245-5031 • 800-220-3311

660 YARD SALES

PERRYVILLE. 54 Riverview Dr off RT40 on Sat July 11th at 8am. HH items, tools, clothes, collectibles, much more.

New Today

RISING SUN: 263 Biggs Hwy. across from firehouse. Fri & Sat, 7/10 & 7/11, 8am-?

Multi Family

RISING SUN 12 Hitching Post Dr off Red Pump Rd. Fri & Sat, July 10 & 11, 7am-? This is huge! 4 tents & a garage! New & used items, furn, h/h, Bath & Body works, jewelry, more.

Multi Family

RISING SUN 140 Red Pump Rd, Fri 7/10, 8-?, Sat 7/11, 8-12. Nce kids/ adlt clths, boy 12-24 mths, grl 4-7, toys, baby items, tdlr race car bed, hsehold itms, lts of gd stf

672 TOOLS

WOODWORKING tools w/ stands, Jointer, Sander, Bandsaw. 410-378-4662



TRANSPORTATION

815 POWER BOATS

New Today

26' PENN YEN SPORT FISH Family cruise or great to fish. Large cockpit, 2 steering stations, sleeps 4, warranty on inboard motor. \$12,500. Must see. 410-808-3954

New Today

2004 BAYLINER 22' and trailer, cuddy cabin, 5.0, am/fm stereo, life jackets, portapot, full cava, nice boat. Can be seen at Sam's Marina. \$11,000 obo. Call 410-459-5700

WWW.CHESEAPEAKECLASSIFIED.COM

820 SAILBOATS

New Today
30' CATALINA TALL RIG: '84, Exc cond. Lots of Extras Great Deal \$15,000 Please call: 410-822-0534

840 RECREATIONAL VEHICLES

28' SHASTA C '88. 39k, good cond. Runs great. \$8000. 410-252-5422

New Today

'99 31' SEAVIEW 40,300 miles, Ford v-10 eng, great cond. 12' kitch/dinette slide-out, master br, split bath. Garage kept. \$35,900. 410-287-9081 or 302-547-5822

New Today

Are You Ready To Fill These Shoes?

Check Our Classified Pages Everyday For The Latest Job Opportunities Let Chesapeake Classifieds Work For You!

850 MOTORCYCLES/ATVs

HONDA FOREMAN Rubican '04 hunter green, garage kept \$3000 410-620-2191

HARLEY DAVIDSON dyna wide glide '02 Must see! 1,900 orig miles. \$16,000 obo 443-309-4850

HARLEY DAVIDSON

Heritage Softail Classic '06. Gar. kept, dealer maint., woman owned. Like new cond. Stage 1 kit, Vance & Hines pipes & many extras. 7200 miles. \$15,500 OBO. 410-275-2705

New Today

POLARIS '94 4 wheel drive, 350cc automatic. \$1200 Call 443-309-0439

CALL OR EMAIL CHESEAPEAKE CLASSIFIED
410-398-1230
800-220-1230
www.chesapeakeclassified.com

850 MOTORCYCLES/ATVs

VICTORY HAMMER '05, 100 cu inch eng, custom paint. Chrome wheels, drag pipes, extra chrome pkg. 250 rear wheel, 7,500 miles. Show room cond. \$12,900. Neg. Call 443-845-1973

860 AUTO PARTS & ACCESSORIES

LOOK

250 Chevy Engine OHV 4.1 for 79-82 Van or Truck Still in Box never used \$600 410-658-0994

New Today

'74 1/2 MGB / GT complete rear hatch, windshield, rear windows, brand new muffler, misc parts. \$260 443-876-4822

870 TRUCKS/SPORT UTILITY VEHICLES

'79 Jeep CJ-7 Golden Eagle, V-8, hardtop & door, lift, 35" tires, runs, needs owrk \$3200 OBO 443-553-9910

870 TRUCKS/SPORT UTILITY VEHICLES

New Today

'88 CHEVY PICK UP good 350 motor, trans, body fair, needs fuel pump, has cracked windshield. 260k miles. \$400. 410-287-6281

FORD Explorer '92. 41k orig. miles. Needs stering col. \$1200 obo. 302-354-8468

New Today

HYUNDAI SUV SANTA FE GLS '04 Silver, 24K, exc cond. \$11,500 410-275-1326

875 VANS/ MINI VANS

FORD WINDSTAR LX '99. 3.8 V6. No rust, 93k, new struts, cold air, 2 new tires. \$3500. 410-392-3946

878 ANTIQUE AUTOS

1930 MODEL A Ford sedan. 2 door, steel body, many updates. New 350 crate motor. 350 auto turbo trans. \$34,999. 410-398-6242

880 AUTOS

MUSTANG GT '06. Gar. kept, 5sp man, 14k, leather. \$20,000. 410-639-2008

PONTIAC Grand Prix '02. Silver. AC, cruise, auto, all power, 89k. Will inspect. Exc cond. \$5900. 410-734-7358

WHAT A RESPONSE!

I placed an ad for a car for sale in Chesapeake Classified, and within 2 days I had at least 40 calls and sold it the second day! I will definitely place ads with you again! Thanks, David

890 WANTED TO BUY

WE BUY JUNK cars, trucks & vans. \$100 & up. 302-420-7411 or 302-650-4579

New Today

WE BUY SCRAP METAL! Call for free pick up and appraisal. We buy from small matchbox cars to large industrial buildings! 302-650-4579

LEGAL NOTICE

CITY OF NEWARK NEWARK, DELAWARE TRAFFIC COMMITTEE MEETING NOTICE

The Traffic Committee will meet on **Tuesday, July 21, 2009, at 5:00 p.m.** in the Police Department upper level conference room to discuss the following:

1. Request for a 3-way stop intersection at Bent Lane and Tanglewood Lane.

The Traffic Committee may add items to the agenda at the time of the meeting and make recommendations to the City Manager on all issues discussed.

Any questions regarding the above topics may be directed to Chief Paul Tiernan of Newark, Police Department, at 366-7104, prior to the meeting. np 7/10

CITY OF NEWARK DELAWARE PUBLIC HEARING NOTICE

July 27, 2009 - 7:30 P.M.

Pursuant to Chapter 32, Zoning, Section 32-78, Code of the City of Newark, Delaware, notice is hereby given of a public hearing in the Council Chamber, Newark Municipal Building, 220 Elkton Road, on **Monday, July 27 2009 at 7:30 p.m.**, to consider the request of the MK Properties, LLC, for a Special Use Permit to allow three apartments at 44-46 E. Main Street, Newark, Delaware.

ZONING CLASSIFICATION: BB (Central Business)

Patricia M. Fogg, CMC City Secretary

np 7/10,24



ARDENT TITLE COMPANY

Susan M. Knight • Settlement Agent

149-151 E. Main Street, Elkton, MD 21921

(410) 996-9780 • Fax (410) 996-9784 • info@ardentitle.com

LENDER	Phone Number	15 YEAR Fixed % PTS. APR	30 YEAR Fixed % PTS. APR	1 YEAR ARM % PTS. APR	3 YEAR ARM % PTS. APR	5 YEAR ARM % PTS. APR
APGFCU	1-888-LOAN-391	5.375/0/5.51	5.375/0/5.8	6.50/0/4.016	5.875/0/4.253	6.375/0/4.744
CECIL BANK	(410) 398-1650	*PLEASE CALL FOR RATES				
CLASSIC MORTGAGE	(302) 366-1661	4.75/0/4.96	5.375/0/5.60	Call for more rates!		
MBA FINANCIAL SERVICES	(410) 287-5600	Please call for quotes. Many programs. All credit considered.		100% financing available-Interest only options! 1st time home buyers, 2nd homes & investment properties.		
PEOPLES BANK	(410) 996-2265	4.875/0/5.00	5.375/0/5.45	5.875/0/3.552	5.50/0/3.827	6.125/0/4.358
WILMINGTON MORTGAGE	(410) 398-5607	PLEASE CALL FOR RATES.		FREE PRE-APPROVAL - NO APPLICATION FEE		

These rates, effective 7/7/09, were provided by the lenders and are subject to change. Other terms may be available. These rates are for existing first mortgages. Points may vary on refinances. Down payment requirements may vary. *Caps and length may vary on adjustable rates. The APR is based on a \$100,000 mortgage with a 20% down payment and is in addition to interest included points fees & other credit costs. To list your mortgage rates, call our Real Estate Sales Division at 410 398-3311 or 1-800-220-3311. These mortgage rates are a paid advertising feature of the Cecil Whig

WILMINGTON MORTGAGE

205 East Main Street, Elkton, MD 21921

Office: 410-398-5607 • TOLL FREE: 800-607-5607



Phil Davis
Loan Officer



Kim Pettitt
Loan Officer



Bruce Fink
Loan Officer

- 100% Financing
- FHA, VA, and Rural Development
- Self Employed
- Bridge Loans
- Reverse Mortgages

LEGAL NOTICE LEGAL NOTICE LEGAL NOTICE LEGAL NOTICE LEGAL NOTICE LEGAL NOTICE LEGAL NOTICE LEGAL NOTICE LEGAL NOTICE LEGAL NOTICE

SHERIFF'S SALE

The following Real Estate will be exposed for Public Sale at the CITY/COUNTY BLDG., 800 N. French Street, City of Wilmington, New Castle County, Delaware, by Michael P. Walsh, Sheriff, on **TUESDAY the 14th day of JULY, 2009 at 10:00 a.m.** The legal limit of 152 persons in Council Chambers will be enforced.

SHERIFF'S SALE

By virtue of a writ of LEV FAC #4 MY, AD., 2009.

PARCEL NO. 09-023.40-059

PROPERTY ADDRESS: 726 South Harmony Road, Newark, Delaware 19713

ALL that certain lot, piece or parcel of land, with the buildings thereon erected, situate in White Clay Creek Hundred, New Castle County, Delaware, known as 716 South Harmony Road, being Lot No. 6, Block 49, Section 6, on the Plan of Tanglewood, as the Plan thereof is of record in the Office of the Recorder of Deeds, New Castle County, in Microfilm No. 704, and described in accordance with a survey prepared by Merestone Consultants, Inc., dated October 7, 2003.

BEING the same land and premises that Marcella L. Blasi by deed dated May 18, 2007 and recorded in the Office of the Recorder of Deeds, New Castle County, Delaware, in Deed Instrument 20070525-0047514, did grant and convey unto Rodney Gibson and Marcella L. Blasi, in fee.

SEIZED AND TAKEN IN EXECUTION AS THE PROPERTY OF RODNEY GIBSON AND MARCELLA L. BLASI.

TERMS OF SALE: 10% DOWN AT TIME OF SALE. BALANCE DUE ON OR BEFORE AUGUST 3, 2009.

MAY 31, 2009

SHERIFF'S SALE

By virtue of a writ of LEV FAC #13 MY, AD., 2009.

PARCEL NO. 11-019.40-120

PROPERTY ADDRESS: 3 Grand Teton Drive, Bear, DE

ALL that certain lot, piece or parcel of land with the buildings thereon erected, situate in the Pencader Hundred, New Castle County and State of Delaware, known as 3 Grand Teton Drive, being Lot No. 235 on the Record Resubdivision Plan for Becks Woods, as said plan is of record in the Office of the Recorder of Deeds in and for New Castle County, State of Delaware as Microfilm No. 10869 and being more particularly bounded and described in accordance with the said Record Resubdivision Plan Drawing No. 81495-C-7276, Sheet 5 of 6, as prepared by East Coast Survey, dated April, 2002.

BEING the same lands and premises which Hava Gunaydin did by deed dated October 20, 2006 and recorded in the office of the office aforesaid in Instrument No. 20061204-0113277 did grant and convey unto Mehmet Er and Celalettin Er.

SEIZED AND TAKEN IN EXECUTION AS THE PROPERTY OF MEHMET ER AND CELALETIN ER.

TERMS OF SALE: 10% DOWN AT TIME OF SALE. BALANCE DUE ON OR BEFORE AUGUST 3, 2009.

MAY 31, 2009

SHERIFF'S SALE

By virtue of a writ of LEV FAC #17 MY, AD., 2009.

PARCEL NO. 1104140030

PROPERTY ADDRESS: 40 Decidedly La, Bear, DE 19701

ALL that certain lot, piece or parcel of land with the buildings thereon erected, situate in Pencader Hundred, New Castle County and State of Delaware, being Lot No. 35 on the Record Major Subdivision Plan for Clear Creek at Lexington Farms as said Plan is of record in the Office of the Recorder of Deeds, in and for New Castle County, Delaware in Microfilm record No. 11,028, and being more particularly bounded and described in accordance with a recent survey by AES Surveyors, Inc., dated June 17, 2004, as follows, to wit:

BEING the same property conveyed to Vankata Subbaraja Kanumuri and Pushpavathi Kanumuri, husband and wife by deed from Thomas P. McGuire, by his attorney in fact Steven Jones and Melissa McGuire, recorded July 14, 2004, Instrument #200407140078013, county of New Castle, Delaware.

SEIZED AND TAKEN IN EXECUTION AS THE PROPERTY OF VANKATA SUBBARAJA KANUMURI AND PUSHPAVATHI KANUMURI.

TERMS OF SALE: 10% DOWN AT TIME OF SALE. BALANCE DUE ON OR BEFORE AUGUST 3, 2009.

MAY 31, 2009

SHERIFF'S SALE

By virtue of a writ of FIRST PLURIES LEV FAC #18 MY, AD., 2009.

PARCEL NO. 10-034.30-082

PROPERTY ADDRESS: 127 Nursery Drive, Bear, DE 19701

ALL that certain lot, piece or parcel of land with all improve-

ments thereon erected, situate in New Castle Hundred, New Castle County and State of Delaware, being designated Lot 15 as shown on the Record Major Sub-division Plan of School Bell Gardens of record in the Office of the Recorder of Deeds, in and for New Castle County aforesaid, in Microfilm No. 10452 said lot also known as 127 Nursery Drive and being more particularly bounded and described in accordance with a survey prepared by Associated Engineers & Surveyors, Inc. dated October 9, 1991.

AND BEING the same lands and premises conveyed unto Marc W. Landis and Catherine Landis, by deed of Di Felice, Inc., dated October 28, 1991, and of record in the Office of the Recorder of Deeds in and for New Castle County and State of Delaware in deed book 1246 page 235.

SEIZED AND TAKEN IN EXECUTION AS THE PROPERTY OF MARC W. LANDIS AND CATHERINE LANDIS.

TERMS OF SALE: 10% DOWN AT TIME OF SALE. BALANCE DUE ON OR BEFORE AUGUST 3, 2009.

MAY 31, 2009

SHERIFF'S SALE

By virtue of a writ of SECOND PLURIES LEV FAC #22 MY, AD., 2009.

PARCEL ID: 09-023.10-147

PROPERTY ADDRESS: 1005 Stinsford Road, Newark, DE 19713

ALL that certain lot, piece or parcel of land with the buildings thereon erected, situate in White Clay Creek Hundred, New Castle County and State of Delaware, known as 1005 Stinsford Road, being Lot No. 9 on the Plan of Hillside Heights, Second 2 as the Plan thereof is of record in the Office of the Recorder of Deeds in and for New Castle County, Delaware in Microfilm No. 703 and being more particularly bounded and described in accordance with a survey prepared by East Coast Survey, Professional Land Surveyors, dated September 29, 2004.

AND BEING the same lands and premises as conveyed unto Megan Victoria Bradley by deed of Richard A. Peacock dated October 1, 2004 and recorded in the Office of the Recorder of Deeds in and for New Castle County, State of Delaware as Instrument No. 20041004-0108505.

SEIZED AND TAKEN IN EXECUTION AS THE PROPERTY OF MEGAN VICTORIA BRADLEY.

TERMS OF SALE: 10% DOWN AT TIME OF SALE. BALANCE DUE ON OR BEFORE AUGUST 3, 2009.

MAY 31, 2009

SHERIFF'S SALE

By virtue of a writ of FIRST PLURIES LEV FAC #23 MY, AD., 2009.

PARCEL NO. 09-029.10-351

PROPERTY ADDRESS: 21 Stallion Drive, Newark, DE 19713

ALL that certain lot, piece or parcel of land with the buildings thereon erected, situate in White Clay Creek Hundred, New Castle County and State of Delaware, being Lot No. 12, Block D on the Plan of Sherwood Forest, Section II, and the Plan thereof is of record in the Office of the Recorder of Deeds, in and for New Castle County and State of Delaware, on Microfilm No. 1902 and being more particularly bounded and described in accordance with a recent survey prepared by The Pelsa Company, dated April 5, 2005.

BEING the same lands and premises which Daniel C. Shelton by Deed dated April 13, 2005, of record in the Office of the Recorder of Deeds in and for New Castle County and State of Delaware, instrument number 20050426-0039362, did grant and convey unto David T. Boltz.

SEIZED AND TAKEN IN EXECUTION AS THE PROPERTY OF DAVID T. BOLTZ.

TERMS OF SALE: 10% DOWN AT TIME OF SALE. BALANCE DUE ON OR BEFORE AUGUST 3, 2009.

MAY 31, 2009

SHERIFF'S SALE

By virtue of a writ of LEV FAC #26 MY, AD., 2009.

TAX PARCEL NO. 11-006.20-043

PROPERTY ADDRESS: 10 S. Kingston Rd., Newark, DE 19713

ALL that certain lot, piece or parcel of land, with the building thereon situate, in Pencader Hundred, New Castle County, State of Delaware, and being Lot No. 247, Section K, on the Plan of Brookside Park, as said Plan is of record in the Office of the Recorder of Deeds in and for New Castle County, Delaware, in Plat record 2, Page 79, and being more particularly bounded and described in accordance with a survey prepared A.B.S. Surveyors dated November 13, 2004.

BEING the same lands and premises which Allene Gilbert did by deed dated November 2, 2004 and recorded in the office aforesaid in Instrument No. 20041202-0129707 did grant and convey unto James Stephen Messier and Judy Kay Messier.

SEIZED AND TAKEN IN EXECUTION AS THE PROPERTY OF JAMES STEPHEN MESSIER AND JUDY KAY MESSIER.

TERMS OF SALE: 10% DOWN AT TIME OF SALE. BALANCE DUE ON OR BEFORE AUGUST 3, 2009.

MAY 31, 2009

SHERIFF'S SALE

By virtue of a writ of LEV FAC #30 MY, AD., 2009.

PARCEL NO. 10-033.30-582

PROPERTY ADDRESS: 204 Gladstone Way, Bear, DE 19701

ALL that certain lot, piece or parcel of land with the buildings thereon erected, situate in New Castle Hundred, New Castle County and State of Delaware, known as 204 Gladstone Way, being Lot No. 80 on the Plan of Crossings as Christiana, in the record Major Subdivision Plan of Barrington, as the Plan thereof is of record in the Office of the Recorder of Deeds in and for New Castle County, Delaware in Microfilm No. 20030117-0007570, and being more particularly bounded and described in accordance with a survey prepared by East Coast survey, Professional Land Surveyors, dated June 25, 2004.

BEING the same lands and premises which Benchmark Builders Inc. did by deed dated July 7, 2004 and recorded in the office aforesaid in Instrument No. 20040708-0075294 did grant and convey unto Tyrone L. Smith and Diana Smith.

SEIZED AND TAKEN IN EXECUTION AS THE PROPERTY OF TYRONE L. SMITH AND DIANA SMITH.

TERMS OF SALE: 10% DOWN AT TIME OF SALE. BALANCE DUE ON OR BEFORE AUGUST 3, 2009.

MAY 31, 2009

SHERIFF'S SALE

By virtue of a writ of ALIAS LEV FAC #44 MY, AD., 2009.

PARCEL NO. 12-020.00-046

PROPERTY ADDRESS: 202 Remi Drive, Newark, DE 19702

ALL that certain lot, piece or parcel of land with the buildings thereon erected, situate in Red Lion Hundred, New Castle County and State of Delaware, known as 202 Remi Drive, being Lot No. 3 on the Record Major subdivision Plan for No View as said Plan is of record in the Office of the Recorder of Deeds, in and for New Castle County, Delaware, in Instrument No. 20041012-0111204, and being more particularly bounded and described in accordance with a survey by Zebley and Associates, Inc., Professional Land Surveyors of Wilmington, Delaware, dated March 23, 2006, as follows, to wit:

BEING the same lands and premises which Northern View Homes, LLC f/k/a Double s. Homes, LLC did grant and convey unto Ta-Tanisha Homes by deed dated March 20, 2006 and recorded on March 31, 2006 in the Office of the Recorder of Deeds, in and for New Castle County, State of Delaware, in Deed Instrument 20060331-0030767.

SEIZED AND TAKEN IN EXECUTION AS THE PROPERTY OF TA-TANISHA HOMES.

TERMS OF SALE: 10% DOWN AT TIME OF SALE. BALANCE DUE ON OR BEFORE AUGUST 3, 2009.

MAY 31, 2009

SHERIFF'S SALE

By virtue of a writ of ALIAS LEV FAC #52 MY, AD., 2009.

PARCEL NO. 09-038.10-340

PROPERTY ADDRESS: 106 Cannon Ball Lane, Newark, DE 19720

ALL that certain lot, piece or parcel of land with the improvements thereon erected, situate in White Clay Creek Hundred, New Castle County and State of Delaware, being Lot No. 4, on the Record Major Re-subdivision Plan of Christiana Green, Phase Three, as said Plan is of record in the Office of the Recorder of Deeds, in and for New Castle County, State of Delaware, in Microfilm No. 10747, said lot also known as 106 Cannonball Lane and being more particularly bounded and described in accordance with a Mortgage Inspection Plan prepared by Zebley & Associates, Inc., Professional Land surveyors, of Wilmington, Delaware, dated July 26, 2005, as follows, to-wit:

BEING the same lands and premises which Ryan D. Hick did grant and convey unto James J. Avritte and Melanie I. Avritte by deed dated August 3, 2005 and recorded on August 8, 2005 in the Office of the Recorder of Deeds, in and for New Castle County, State of Delaware, in Deed Instrument 20050808-0078636.

SEIZED AND TAKEN IN EXECUTION AS THE PROPERTY OF JAMES J. AVRITTE AND MELANIE I. AVRITTE.

TERMS OF SALE: 10% DOWN AT TIME OF SALE. BALANCE DUE ON OR BEFORE AUGUST 3, 2009.

MAY 31, 2009

SHERIFF'S SALE

By virtue of a writ of SECOND PLURIES LEV FAC #53 MY, AD., 2009.

PARCEL NO. 0902330377

PROPERTY ADDRESS: 306 South Brownleaf Road, Newark, DE 19713

(Continued)

(Continued)

ALL that certain lot, piece or parcel of land with the building thereon erected, situate in White Clay Creek Hundred, New Castle County and State of Delaware, known as 305 S. Brownleaf Road, being Lot No. 281 on the Plan of Birchwood Park, Section 2, as the plan thereof is of Record in the Office of the Recorder of Deeds in and for New Castle County, Delaware in Microfilm No. 73 and Plat Record 4, Page 24, and being more particularly bounded and described in accordance with a survey prepared by East Coast Survey, Professional Land Surveyors, dated July 23, 2004, as follows, to-wit:

BEING the same lands and premises which Ralph Colalillo, by his attorney-in-fact, Victoria L. Hackney and Elizabeth Moodie f/k/a Elizabeth Dale Colalillo did grant and convey unto Melissa F. Hanley by deed dated 7/23/04 and recorded on 7/30/04 in the Office of the Recorder of Deeds, in and for New Castle County, State of Delaware, in Deed Record 20040730-0083664.

SEIZED AND TAKEN IN EXECUTION AS THE PROPERTY OF MELISSA F. HANLEY.

TERMS OF SALE: 10% DOWN AT TIME OF SALE. BALANCE DUE ON OR BEFORE AUGUST 3, 2009.

MAY 31, 2009

SHERIFF'S SALE

By virtue of a writ of FIRST PLURIES LEV FAC #65 MY, AD., 2009.

PARCEL NO. 09-040.20-282

PROPERTY ADDRESS: 48 Sherin Drive, Newark, Delaware 19702

ALL that certain lot, piece or parcel of land with the buildings thereon erected, situate in White Clay Creek Hundred, New Castle County, Delaware, being designated Lot 607, as shown on the record major subdivision plan of Salem Woods, Phase III, of record in the Office of the Recorder of Deeds in and for New Castle County, Delaware on Microfilm No. 10150, said lot also known as 48 Sherin Drive, and being now more particularly described by First State Mortgage Surveys by a survey dated July 6, 1994, as follows, to wit:

BEING the same lands and premises which Richard Barnaby Castro, by Deed dated December 27, 2006 and recorded in the Office of the Recorder of Deeds, in and for New Castle County and State of Delaware, in Instrument # 20070731-0067434, did grant and convey unto Aaliyah Misty Castro.

SEIZED AND TAKEN IN EXECUTION AS THE PROPERTY OF AALIYAH MISTY CASTRO.

TERMS OF SALE: 10% DOWN AT TIME OF SALE. BALANCE DUE ON OR BEFORE AUGUST 3, 2009.

MAY 31, 2009

SHERIFF'S SALE

By virtue of a writ of LEV FAC #66 MY, AD., 2009.

PARCEL NO. 11-001.40-134

PROPERTY ADDRESS: 36 Kensington Lane, Newark, DE 19713

ALL that certain lot, piece or parcel of land, with the improvements thereon erected, known as No. 36 Kensington Lane, situate in Pencader Hundred, New Castle County, State of Delaware, known as Lot No. 38, Section "M", on a Plan of Brookside Park, as the Plan is of record in the Office of the Recorder of Deeds, in and for New Castle County in Plat Book No. 3, 1953, Page 10.

BEING the same lands and premises which Olive W. Clark did by deed dated July 29, 1999 and recorded in the office aforesaid in Deed Book 2685 Page 331 did grant and convey unto Kenneth Austin and Kimberly Austin.

SEIZED AND TAKEN IN EXECUTION AS THE PROPERTY OF KENNETH AUSTIN AND KIMBERLY AUSTIN.

TERMS OF SALE: 10% DOWN AT TIME OF SALE. BALANCE DUE ON OR BEFORE AUGUST 3, 2009.

MAY 31, 2009

SHERIFF'S SALE

By virtue of a writ of LEV FAC #79 MY, AD., 2009.

PARCEL NO. 10-039.10-599

PROPERTY ADDRESS: 201 Bellweather Ct., Newark, DE

ALL that certain lot, piece or parcel of land, known as Lot No. 1 situate in New Castle Hundred, New Castle County, State of Delaware, as shown on the Record Major Subdivision Plan of Bellwether Manor, prepared by Landmark Engineering, dated September 15, 1994, and recorded in the Office of the Recorder of Deeds in and for New Castle County, State of Delaware, in

Microfilm No. 12379.

BEING the same lands and premises which Jo Anna Francis did by deed dated June 30, 2003 and recorded in the Office of the Recorder of Deeds, in and for New Castle County, Delaware in Instrument No. 2030702-0079174 did grant and convey unto Jo Anna McRae.

SEIZED AND TAKEN IN EXECUTION AS THE PROPERTY OF JO ANNA MCRAE.

TERMS OF SALE: 10% DOWN AT TIME OF SALE. BALANCE DUE ON OR BEFORE AUGUST 3, 2009.

MAY 31, 2009

SHERIFF'S SALE

By virtue of a writ of LEV FAC #84 MY, AD., 2009.

TAX PARCEL NO. 08-013.30-076

PROPERTY ADDRESS: 1761 Brackenville Road, Hockessin, DE 19707

ALL that certain lot, piece or parcel of land with the improvements thereon erected, situate in Mill Creek Hundred, New Castle County and State of Delaware, being Lot No. 19 on the Plan of Runnymede, and being more particularly bounded and described in accordance with a survey by Zebley & Associates, Inc., dated May 21, 1990.

AND BEING the same lands and premises conveyed unto Denise Garrett by deed of Unique Homes, Inc., dated June 26, 2002 and of record in the Office of the Recorder of Deeds in and for New Castle County and State of Delaware at Instrument Number 20040627-0062275.

SEIZED AND TAKEN IN EXECUTION AS THE PROPERTY OF DENISE GARRETT.

TERMS OF SALE: 10% DOWN AT TIME OF SALE. BALANCE DUE ON OR BEFORE AUGUST 3, 2009.

MAY 31, 2009

SHERIFF'S SALE

By virtue of a writ of ALIAS LEV FAC #92 MY, AD., 2009.

PARCEL NO. 11-037.30-169

PROPERTY ADDRESS: 50 Marble House Drive, Bear, DE 19701

All that certain lot, piece or parcel of land with the buildings thereon erected, known as 50 Marble House Drive, situate in Pencader Hundred, New Castle County and State of Delaware and being Lot No. 305 as shown on a Record Major Subdivision Plan recorded in the Office of the Recorder of Deeds, in and for New Castle County and State of Delaware, in Microfilm No. 13982 and being more particularly bounded and described in accordance with a survey and legal description prepared by The Pelsa Company, dated August 13, 2003, as follows, to-wit:

Beginning at a point on the easterly side of Marble House Drive (26 feet wide) located at a corner in the division line for Lots 305 and 306, said point being found the following single line and course as measured along the easterly side of Marble House Drive, from the southwesterly end of a 25 feet radius junction curve joining its northeasterly end with the westerly side of Mandalay Drive (26 feet wide): along an arch of a curve turning right on a radius of 212 feet, an arc distance of 223.60 feet (Delta=60 degrees 25 minutes 51 seconds with a chord bearing of 212.38 feet) to the point and place of beginning; thence, beginning from and leaving said located point of beginning and running along the easterly side of said Marble House Drive, said line being the westerly side of a 10 feet wide permanent construction and access easement, along an arc of a curve turning right on a radius of 212 feet, an arc distance of 35.06 feet with a chord bearing of North 07 degrees 44 minutes 55 seconds West, 35.02 feet to a point; thence, running along the division line for Lots 305 and 304, North 84 degrees 11 minutes 26 seconds East, 100.39 feet: intersecting the end of a dwelling division "party wall" passing through the centerline of same and continuing to a point; thence, running along the division line for Lots 305 and 309, South 05 degrees 48 minutes 34 seconds East, 35.00 feet to a point; thence, running along aforesaid division line for Lots 305 and 306 South 84 degrees 11 minutes 26 seconds West, 113.33 feet: intersecting the end of a dwelling division "Party wall", passing through centerline of same, and continuing to the said easterly side of Marble House Road, arriving at the first mentioned point and original place of beginning. Containing within said described metes and bound, .0919 acres of and be the same more or less.

AND BEING the same lands and premises conveyed unto Kendra Todd, by deed of Mark J. Klenk and Angela M. Moore dated December 13, 2005 and of record in the Office of the Recorder of Deeds in and for New Castle County and State of Delaware in deed Instrument No. 20051216-0129660.

SEIZED AND TAKEN IN EXECUTION AS THE PROPERTY OF KENDRA TODD.

TERMS OF SALE: 10% DOWN AT TIME OF SALE. BALANCE DUE ON OR BEFORE AUGUST 3, 2009.

MAY 31, 2009

SHERIFF'S SALE

By virtue of a writ of LEV FAC #97 MY, AD., 2009.

PARCEL NO. 08-055.10-326

PROPERTY ADDRESS: 253 East Green Valley Circle, Newark, Delaware 19711

ALL that certain lot, piece or parcel of land with the buildings thereon erected, situate in Mill Creek Hundred, New Castle County and State of Delaware, being Lot No. 253 as shown on the Record Major Subdivision Plan of Green Valley, remainder of Phase IIa, of record in the Office of the Recorder of Deeds in and for New Castle County, Delaware on Microfilm No. 8176, said lot also known as 253 East Green Valley Circle and being more particularly bounded and described in accordance with a survey by East Coast Survey, dated May 29, 2002.

BEING the same lands and premises conveyed to John Covelli and Angela K. Covelli, husband and wife, by Deed from Angela K. Adkinson, n/k/a Angela K. Covelli, dated May 25, 2006, and recorded on June 2, 2006, in the Office of the Recorder of Deeds, in and for New Castle County, State of Delaware, as Instrument No. 20060602-0052651.

SEIZED AND TAKEN IN EXECUTION AS THE PROPERTY OF JOHN COVELLI AND ANGELA K. COVELLI.

TERMS OF SALE: 10% DOWN AT TIME OF SALE. BALANCE DUE ON OR BEFORE AUGUST 3, 2009.

MAY 31, 2009

SHERIFF'S SALE

By virtue of a writ of SECOND PLURIES LEV FAC #98 MY, AD., 2009.

PARCEL NO. 09-023.30-135

PROPERTY ADDRESS: 1301 Gray Rock Road, Newark, DE 19713

ALL that certain lot, piece or parcel of land with the dwelling thereon erected, situate in White Clay Creek Hundred, New Castle County, Delaware, known as 1301 Grayrock Road, Lot No. 16, Block L, on the Plan of Hillside Heights, Section 2, said Plan recorded in the Office of the Recorder of Deeds for New Castle County on Microfilm No. 703, and being described in accordance with a survey by East Coast Survey, Inc. dated February 16, 2000.

BEING the same lands and premises which Billy J. Small, Jr., by Deed dated April 12, 2000, and recorded in the Office of the Recorder of Deeds, in and for New Castle County, Delaware, in Deed Book 2814, Page 69, did grant and convey unto Michael S. Haumesser and Teresa Haumesser, in fee.

SEIZED AND TAKEN IN EXECUTION AS THE PROPERTY OF MICHAEL S. HAUMESSER AND TERESA HAUMESSER.

TERMS OF SALE: 10% DOWN AT TIME OF SALE. BALANCE DUE ON OR BEFORE AUGUST 3, 2009.

MAY 31, 2009

SHERIFF'S SALE

By virtue of a writ of LEV FAC #99 MY, AD., 2009.

TAX PARCEL NO. 0-037.20-095

PROPERTY ADDRESS: 19 Mapleshade Drive, Newark, DE 19702

ALL that certain lot, piece or parcel of land with the building thereon erected, situate in White Clay Creek Hundred, New Castle County and State of Delaware, being designated as Lot 11 as shown on Record Major Subdivision Plan of Salem Trace, as said plan appears of record in the Office of the Recorder of Deeds in and for New Castle County and State of Delaware on Microfilm No. 12397, said Lot also known as 19 Mapleshade Drive, and being more particularly bounded and described in accordance with a recent survey prepared by A.E.S. Surveyors, dated August 13, 1999.

BEING the same lands and premises conveyed unto Deborah Pratt from Avinash C. Patel and Mrudulla Patel, in a Deed dated 2/28/2005 and recorded in the Office of the Recorder of Deeds, in and for New Castle County, State of Delaware, Instrument No. 20050706-0066836.

SEIZED AND TAKEN IN EXECUTION AS THE PROPERTY OF DEBORAH PRATT.

TERMS OF SALE: 10% DOWN AT TIME OF SALE. BALANCE DUE ON OR BEFORE AUGUST 3, 2009.

MAY 31, 2009

(Continued)

(Continued)

SHERIFF'S SALE

By virtue of a writ of LEV FAC #100 MY, AD., 2009.

TAX PARCEL NO. 11-019.30-148

PROPERTY ADDRESS: 162 Tuckahoe Lane, Bear, DE 19701

ALL that certain lot, piece or parcel of land with the buildings thereon erected, known as 162 Tuckahoe Lane, situate in Pencader Hundred, New Castle County and State of Delaware, being Lot No. 133 as shown on the Record Resubdivision Plan of Village of Beck's Pond, as said Plan is of record in the Office of the Recorder of Deeds, in and for New Castle County and State of Delaware, on Microfilm No. 11614 and being more particularly bounded and described in accordance with a recent survey prepared by the Pelsa Company, dated November 10, 2003.

BEING the same lands and premises conveyed unto Cathy M. Wright, as sole owner, from Marylou Sambora, a sole owner, in a Deed dated 4/30/2004, and recorded in the Office of the Recorder of Deeds, in and for New Castle County, State of Delaware, in Instrument no. 20040614-0064277.

SEIZED AND TAKEN IN EXECUTION AS THE PROPERTY OF CATHY M. WRIGHT.

TERMS OF SALE: 10% DOWN AT TIME OF SALE. BALANCE DUE ON OR BEFORE AUGUST 3, 2009.

MAY 31, 2009

SHERIFF'S SALE

By virtue of a writ of LEV FAC #106 MY, AD., 2009.

PARCEL NO. 11-042.10-074

PROPERTY ADDRESS: 301 Meadow Glen Drive, Bear, Delaware 19701

ALL that certain lot, piece or parcel of land with the buildings thereon erected, situate in Pencader Hundred, New Castle County, Delaware, and being Lot No. 1 on the Record Major Subdivision Plan for Meadow Glen as said plan is of record in the Office of the Recorder of Deeds in and for New Castle County, Delaware, in Microfilm Record 11,949, and described according to survey by East Coast Survey, Professional Land Surveying, dated May 28, 2003.

BEING the same lands and premises that Sean McKeown and Regina McKeown by deed dated June 9, 2006 and recorded in the Office of the Recorder of Deeds in and for New Castle County, Delaware, in Deed Instrument 20060615-0057245, did grant and convey unto Regina McKeown.

SEIZED AND TAKEN IN EXECUTION AS THE PROPERTY OF REGINA MCKEOWN.

TERMS OF SALE: 10% DOWN AT TIME OF SALE. BALANCE DUE ON OR BEFORE AUGUST 3, 2009.

MAY 31, 2009

SHERIFF'S SALE

By virtue of a writ of LEV FAC #110 MY, AD., 2009.

PARCEL NO. 11-037.40-058

PROPERTY ADDRESS: 108 Mt. Vernon Drive, Bear, Delaware 19701

ALL that certain lot, piece or parcel of land with the dwelling thereon erected, situate in Pencader Hundred, New Castle County and State of Delaware, known as No. 108 Mt. Vernon Drive, and being Lot 12 as shown on a Record Major Subdivision Plan for Mansion Farm Phase I, dated December 9, 1994, and recorded June 29, 1995, in the Office of the Recorder of Deeds in and for New Castle County and State of Delaware, in Microfilm No. 12470, and being more particularly bounded and described in accordance with a survey prepared by The Pelsa Company, Consultants & Surveyors, dated February 23, 1998.

AND BEING the same lands and premises conveyed unto Warren A. Pinckney and Bobby D. Pinckney, by Deed of Warren A. Pinckney and Bobby D. Pinckney II, heirs of the Estate of Mattie B. Pinckney, dated _____, 2007 and of record in the Office of the Recorder of Deeds in and for New Castle County and State of Delaware in Deed Instrument No. 20070511-0043220.

SEIZED AND TAKEN IN EXECUTION AS THE PROPERTY OF WARREN A. PINCKNEY AND BOBBY D. PINCKNEY.

TERMS OF SALE: 10% DOWN AT TIME OF SALE. BALANCE DUE ON OR BEFORE AUGUST 3, 2009.

MAY 31, 2009

SHERIFF'S SALE

By virtue of a writ of FIRST PLURIES LEV FAC #122 MY, AD., 2009.

PARCEL ID: 09-028.10-123

PROPERTY ADDRESS: 134 Lynch Farm Drive, Newark, DE

ALL that certain lot, piece or parcel of land with the dwelling thereon erected, situate in White Clay Creek Hundred, New Castle County and State of Delaware, and known as Lot No. 18, Block X, on the Plan of Todd Estates, Section 4, as said Plan is of record in the Office of the Recorder of Deeds in and for New Castle County, Delaware, in Microfilm record 723, and being more particularly bounded and described in accordance with a recent survey of Howard L. Robertson, Inc., Professional Land Surveyors of Wilmington, Delaware dated March 1, 2005.

AND BEING the same lands and premises which Richard Nitoly and Nicholas Tsistinas by deed dated March 15, 2005 and re-

corded in the Office of the Recorder of Deeds in and for New Castle County, Delaware as Instrument No. 20050316-0024886 did grant and convey unto Melissa D. Dougherty, in fee.

SEIZED AND TAKEN IN EXECUTION AS THE PROPERTY OF MELISSA D. DOUGHERTY.

TERMS OF SALE: 10% DOWN AT TIME OF SALE. BALANCE DUE ON OR BEFORE AUGUST 3, 2009.

MAY 31, 2009

SHERIFF'S SALE

By virtue of a writ of LEV FAC #125 MY, AD., 2009.

TAX PARCEL NO. 10-032.20-244

PROPERTY ADDRESS: 1 Mozart Way, Newark, DE 19702

ALL that certain lot, piece or parcel of land with the improvements thereon erected, situate in New Castle Hundred, New Castle County, Delaware, being Lot No. 329, as shown on the Record Resubdivision Plan of Taylortowne, as said Plan is recorded in the Office of the Recorder of Deeds, in and for New Castle County, in Microfilm No. 6398, and being more particularly bounded and described in accordance with a recent mortgage inspection survey by East Coast Survey, Professional Land surveying, Wilmington, Delaware, dated August 18, 2004.

BEING the same lands and premises which John D. Kaess, Jr. and Angelia J. Kaess, husband and wife, by Indenture dated August 20, 2004, and recorded in the Office of the Recorder of Deeds, in and for New Castle County, in Instrument No. 20040823-0093340 did grant and convey unto Michelle Rufen-Blanchette, in fee.

SEIZED AND TAKEN IN EXECUTION AS THE PROPERTY OF MICHELLE RUFEN-BLANCHETTE.

TERMS OF SALE: 10% DOWN AT TIME OF SALE. BALANCE DUE ON OR BEFORE AUGUST 3, 2009.

MAY 31, 2009

SHERIFF'S SALE

By virtue of a writ of ALIAS LEV FAC #130 MY, AD., 2009.

PARCEL NO. 08-011.20-094

PROPERTY ADDRESS: 5 Heather Court, Hockessin, Delaware 19707

ALL that certain lot, piece or parcel of land, with the buildings thereon, situate in Mill Creek Hundred, New Castle County, Delaware, being designated Lot 6, as shown on the Record Major Subdivision Plan of Southwood Estates, of record in the Office of the Recorder of Deeds, New Castle County, Delaware, on Microfilm No. 10046, said lot also known as 5 Heather Court and described according to a survey by Associated Engineers & Surveyors, Inc., dated 5/22/93.

BEING the same land and premises and Lynn A. Moroz and Helene M. Moroz by Deed dated April 14, 2005 and recorded in the Office of the Recorder of Deeds, New Castle County, Delaware, in Deed Instrument 20050425-0038549, did grant and convey unto Lynn N. Moroz and Helene M. Moroz, in fee.

SEIZED AND TAKEN IN EXECUTION AS THE PROPERTY OF LYNN A. MOROZ AND HELENE M. MOROZ.

TERMS OF SALE: 10% DOWN AT TIME OF SALE. BALANCE DUE ON OR BEFORE AUGUST 3, 2009.

MAY 31, 2009

SHERIFF'S SALE

By virtue of a writ of LEV FAC #137 MY, AD., 2009.

TAX PARCEL NO. 11-027.20-232

PROPERTY ADDRESS: 310 Skeet Avenue, Bear, DE 19701

ALL that certain lot, piece or parcel of land, with the building thereon erected, known as 310 Skeet Avenue, situate in Pencader Hundred, New Castle County and State of Delaware, and being Lot No. 400 of the subdivision of Fox Run, Phase 1, Microfilm Number 8068, and being more particularly bounded and described in accordance with a survey by the Pelsa Company dated January 18, 1994.

BEING the same lands and premises which Efitia M. Zerefos by Deed dated May 7, 2004 and recorded in the Office of the Recorder of Deeds in and for New Castle County, Delaware, at Instrument No. 20040520-0054686 did grant and convey unto Enver Akbay and Nukhel Akbay, in fee.

SEIZED AND TAKEN IN EXECUTION AS THE PROPERTY OF ENVER AKBAY AND NUKHEL AKBAY.

TERMS OF SALE: 10% DOWN AT TIME OF SALE. BALANCE DUE ON OR BEFORE AUGUST 3, 2009.

MAY 31, 2009

SHERIFF'S SALE

By virtue of a writ of VEND EX #153 MY, AD., 2009.

TAX PARCEL NO: 09-028.10-123

PROPERTY ADDRESS: 2 Garvey Lane, Newark, Delaware 19702

ALL that certain lot, piece or parcel of land with the buildings thereon erected, situate in Pencader Hundred, New Castle County and State of Delaware known as 2 Garvey Lane, being Lot No. 1 on the record major subdivision plan of Pencader Village as said plan is of record in the Office of the Recorder of Deeds in and for New Castle County, Delaware in Microfilm Record No. 7366 and being more particularly bounded and described in accordance with a recent survey by Zebley & Associates, Inc., professional land sur-

veyors of Wilmington, Delaware, dated March 25, 1988.

BEING the same lands and premises that Herbert L. Bostwick and Leslie Ann Adams by Quit Claim Deed dated July 8, 1996 and recorded in the Office of the Recorder of Deeds in and for New Castle County, State of Delaware in Deed Book 2156 Page 0091, did grant and convey unto Glen L. Pellegrino, Jr. and Leslie Ann Adams.

SEIZED AND TAKEN IN EXECUTION AS THE PROPERTY OF GLEN L. PELLEGRINO, JR.

TERMS OF SALE: 10% DOWN AT TIME OF SALE. BALANCE DUE ON OR BEFORE AUGUST 3, 2009.

MAY 31, 2009

SHERIFF'S SALE

By virtue of a writ of LEV FAC #162 MY, AD., 2009.

PARCEL ID: 09-039.20-039

PROPERTY ADDRESS: 233 Romney Boulevard, Newark, DE 19702

ALL that certain lot, piece or parcel of land, situate in the White Clay Creek Hundred, New Castle County and State of Delaware, known as 233 Romney Boulevard, being Lot No. 10 on the Record Major Resubdivision Plan for Huntington, as said plan is of record in the Office of the Recorder of Deeds in and for New Castle County, Delaware as Microfilm No. 10591, and being more particularly bounded and described in accordance with the said Record Major Subdivision Plan Drawing No. 9002714.3703, consisting of four sheets as prepared by Pelsa Company, of Newark, Delaware, dated 8/13/04, as follows to wit:

BEING the same lands and premises which Michael J. Machmer and Susan V. Machmer, did grant and convey unto John W. Sharp, III and John J. Connor, by deed dated August 27, 2004 and recorded on August 31, 2004 in the Office of the Recorder of Deeds, in and for New Castle County, State of Delaware, in Deed Instrument 20040831-0097433.

SEIZED AND TAKEN IN EXECUTION AS THE PROPERTY OF JOHN W. SHARP, III AND JOHN J. CONNOR.

TERMS OF SALE: 10% DOWN AT TIME OF SALE. BALANCE DUE ON OR BEFORE AUGUST 3, 2009.

MAY 31, 2009

SHERIFF'S SALE

By virtue of a writ of LEV FAC #164 MY, AD., 2009.

PARCEL ID: 11-025.40-048

PROPERTY ADDRESS: 14 Montceau Drive, Newark, DE 19702

ALL that certain lot, piece or parcel of land situate in Pencader Hundred, New Castle County, State of Delaware, known as 14 Montceau Drive, being Lot No. 256 as shown on the record resubdivision plan of Frenchtown Woods, prepared by Kidda Consultants, Inc., recorded in the Office of the Recorder of Deeds in and for New Castle County, Delaware on August 31, 1989, in Microfilm No. 9996, and being more particularly bounded and described in accordance to a survey by Franco Bella Pants Associates, dated May 10, 2003, as follows, to-wit:

BEING the same lands and premises which Cynthia R. Gruttadauria, did grant and convey unto Charles G. Gruttadauria, by deed dated March 16, 1995 and recorded on March 17, 1995 in the Office of the Recorder of Deeds, in and for New Castle County, State of Delaware, in Deed Book 1894 at Page 124.

SEIZED AND TAKEN IN EXECUTION AS THE PROPERTY OF CHARLES G. GRUTTADAURIA.

TERMS OF SALE: 10% DOWN AT TIME OF SALE. BALANCE DUE ON OR BEFORE AUGUST 3, 2009.

MAY 31, 2009

SHERIFF'S SALE

By virtue of a writ of LEV FAC #168 MY, AD., 2009.

PARCEL NO. 09-015.40-145

PROPERTY ADDRESS: 528 Stafford Avenue, Newark, DE 19711

ALL that certain lot, piece or parcel of land, with the improvements thereon erected, situate in White Clay Creek Hundred, New Castle County, Delaware, being Lot No. 36, as shown on the Plan of Stafford-II, as said Plan is recorded in the Office of the Recorder of Deeds, in and for New Castle County, Delaware, in Microfilm No. 8323, and being more particularly bounded and described in accordance with a recent mortgage inspection survey by East Coast Survey, professional Land Surveying, Wilmington, Delaware, dated September 15, 2005, as follows, to wit:

BEING the same lands and premises which James R. Jones, Jr., did grant and convey unto Christopher W. Allen and Kristin J. Allen, by deed dated September 23, 2005 and recorded on September 23, 2005 in the Office of the Recorder of Deeds, in and for New Castle County, State of Delaware, in Deed Instrument 20050923-0097457.

SEIZED AND TAKEN IN EXECUTION AS THE PROPERTY OF CHRISTOPHER W. ALLEN AND KRISTIN J. ALLEN.

TERMS OF SALE: 10% DOWN AT TIME OF SALE. BALANCE DUE ON OR BEFORE AUGUST 3, 2009.

MAY 31, 2009

SHERIFF'S SALE

By virtue of a writ of LEV FAC #171 MY, AD., 2009.

PARCEL ID: 09-034.30-205

PROPERTY ADDRESS: 4 Savoy Road, Newark, DE 19702

(Continued)

Visit one of these local dealers and drive home happy!

Contact Laurie To Advertise HERE

STAPLEFORD'S CHEVROLET OLDSMOBILE 302-834-4568



ST. GEORGES, DE

VOLKSWAGEN Smith VOLKSWAGEN, LTD. 4304 Kirkwood Highway, WILMINGTON, DE 302-998-0131 Drivers wanted

Contact Laurie To Advertise HERE 410-398-1230 800-220-1230

Lamici@chespub.com

REACH OVER 50,000 READERS WEEKLY! Call Laurie at 800-220-3311 to Advertise Here!

PUBLIC AUCTION

Notice is hereby given that the undersigned will sell at public auction, on **AUGUST 14, 2009 at 3:00 p.m.**, at **PS ORANGE CO INC./PUBLIC STORAGE, 3801 Dupont Parkway, New Castle, DE 19720**, the personal property heretofore stored with the undersigned by:

- E901 - Annette Walker-Henry
- C600 - Carolyn Frisby
- D829 - Gail Williams
- B353 - Cheryl Perry
- E1004 - Leon Moss
- E1013 - Donna Smallwood
- G1104 - Melody King-Thomas
- G1113 - Rebecca Rivera
- A143 - Jamila Reed
- A213 - James Edwards
- F1064 - Jallsha Fortso
- D824 - Cedric Beacham
- D822 - Donald Gatling
- E1035 - Claude Jones
- A115 - Shawn Christopher
- H1179 - Johnny L. Snow
- H1167 - Alicia Watson

Contents of above units include bags, boxes, televisions, household goods, general appliances and bedding.

ALL UNITS SOLD IN THEIR ENTIRETY AND MUST BE VACATED WITHIN 48 HOURS OF SALE.

np 7/10/17

LEGAL NOTICE

CITY OF NEWARK DELAWARE CITY COUNCIL PUBLIC HEARING NOTICE

JULY 13, 2009 - 7:30 P.M.

Pursuant to Section 402.2 of the City Charter and Section 32-79 of the Code of the City of Newark, Delaware, notice is hereby given of a public hearing at a regular meeting of the Council in the Council Chamber at the Municipal Building, 220 Elkton Road, Newark, Delaware, on **Monday, July 13, 2009 at 7:30 p.m.**, at which time the Council will consider for Second Reading and Final Passage the following proposed Ordinances:

Bill 09-20 - An Ordinance Annexing & Zoning to RH (Single-Family, Detached) a .86 Acre Parcel of Land Located at 207 Mason Drive & the Adjoining .25 Acre Mason Drive Right-of-Way

Bill 09-21 - An Ordinance Annexing & Zoning to MI (General Industrial) a 20.5809 Acre Parcel of Land at 1001 Ogletown Road & the Adjoining 2.151 Acre Ogletown Road Right-of-Way

Patricia M. Fogg, CMC City Secretary

np 6/26,7/10

LIEN SALE

Notice is hereby given that the undersigned will sell at a lien sale on **AUG. 14, 2009 at 2:00 p.m.** at:

PS ORANGE CO PUBLIC STORAGE 425 NEW CHURCHMANS ROAD NEW CASTLE, DE 19720

The personal property heretofore stored with the undersigned by:

- C066 - Jonda Green - furniture, electronics
- C174 - Janice Rodgers - washer, refrigerator
- C093 - David Smiley - washer, boxes
- E005 - Juan Seide - bedding, furniture, boxes
- E042 - Lula Sessoms - lawn mower, furniture, totes
- F007 - Monique Parham - treadmill, bedding, totes
- F030 - Ladjamie Nabede - furniture, boxes
- F036 - Tinisha Wright - furniture, bedding, electronics
- F101 - Emanuelle Cooper - bags, totes
- F109 - Harold Jenkins - furniture, bags
- F137 - Janice Davis - bags, boxes
- H035 - Laura Ruda - furniture, bedding, washer, dryer
- C153 - Andy Ruffin - clothes, pictures, furniture

np 7/10,17

WWW.CHESAPEAKECLASSIFIED.COM

LEGAL NOTICE LEGAL NOTICE LEGAL NOTICE LEGAL NOTICE LEGAL NOTICE LEGAL NOTICE LEGAL NOTICE LEGAL NOTICE LEGAL NOTICE LEGAL NOTICE LEGAL NOTICE

(Continued)

ALL that certain lot, piece or parcel of land with the buildings thereon erected, situate in White Clay Creek Hundred, New Castle County, Delaware, known as 4 Savoy Road, being Lot No. 28 on the Record Major subdivision Plan of Norwegian Woods, Section 1, and of record in the Office of the Recorder of Deeds in and for New Castle County, Delaware, in Microfilm No. 12526 and being more particularly bounded and described in accordance with a recent survey prepared by A.E.S. Surveyors dated July 28, 2005, as follows, to wit:

BEING the same lands and premises which Johanes M. Rizaldi, did grant and convey unto Wendell Moore, by deed dated August 10, 2005 and recorded on August 31, 2005 in the Office of the Recorder of Deeds, in and for New Castle County, State of Delaware, in Deed Instrument 2050831-0087897.

SEIZED AND TAKEN IN EXECUTION AS THE PROPERTY OF WENDELL MOORE.

TERMS OF SALE: 10% DOWN AT TIME OF SALE. BALANCE DUE ON OR BEFORE AUGUST 3, 2009.

MAY 31, 2009

SHERIFF'S SALE

By virtue of a writ of ALIAS LEV FAC #199 MY, AD., 2009. PARCEL NO. 07-010.00-075

PROPERTY ADDRESS: 3 Trimble Turn, Hockessin, DE 19707 ALL that certain lot, piece or parcel of land, with the improvements thereon erected, situate in Christiana Hundred, New Castle County, State of Delaware, known as 3 Trimble Turn, being Lot No. 10 on the Record Resubdivision Plan of Centreville Meadows, as said Plan is of record in the Office of the Recorder of Deeds, in and for New Castle County, State of Delaware, in Microfilm No. 9421, and being more particularly bounded and described, as follows, to-wit:

BEING the same lands and premises which F. Lance Sumser, Inc. did grant and convey unto F. L. Sumser by deed dated March 28, 2007 and recorded on April 4, 2007 in the Office of the Recorder of Deeds, in and for New Castle County, State of Delaware, in Deed Instrument 20070404-0031374.

SEIZED AND TAKEN IN EXECUTION AS THE PROPERTY OF F.L. SUMSER.

TERMS OF SALE: 10% DOWN AT TIME OF SALE. BALANCE DUE ON OR BEFORE AUGUST 3, 2009.

MAY 31, 2009

SHERIFF'S SALE

By virtue of a writ of LEV FAC #202 MY, AD., 2009. PARCEL NO. 10-043.10-118

PROPERTY ADDRESS: 172 Flamingo Drive, Newark, DE 19702 ALL that certain lot, piece or parcel of land with the buildings thereon, situate in New Castle Hundred, New Castle County and State of Delaware, known as 172 Flamingo Drive, being Lot No. 181, Block B, on the Plan of Brookmont Farms, (now known as Sparrow Run) and being more particularly bounded and described in accordance with a recent survey by East Coast Survey, professional Land Surveyors of Wilmington, Delaware, dated October 16, 2006, as follows, to wit:

BEING the same lands and premises which Joan A. Tancreti did grant and convey unto Joseph B. Litz and Marla Litz by deed dated

December 7, 2006 and recorded on December 13, 2006 in the Office of the Recorder of Deeds, in and for New Castle County, State of Delaware, in Deed Instrument 20061213-0116629.

SEIZED AND TAKEN IN EXECUTION AS THE PROPERTY OF JOSEPH B. LITZ AND MARLA LITZ.

TERMS OF SALE: 10% DOWN AT TIME OF SALE. BALANCE DUE ON OR BEFORE AUGUST 3, 2009.

MAY 31, 2009

SHERIFF'S SALE

By virtue of a writ of LEV FAC #203 MY, AD., 2009. PARCEL NO. 18-047.00-065

PROPERTY ADDRESS: 332 Matthew Flocco Drive, Newark, Delaware 19713

ALL that certain lot, piece or parcel of land, situate in City of Newark, State of Delaware, being Lot #35, (also known as #332 Edjil Drive), as shown on the Record Subdivision Plan of Yorkshire Woods - Section II, prepared by Woodin, Wentling & Associates, Inc., dated December 12, 2000 and recorded in the Office of the Recorder of Deeds in and for New Castle County, State of Delaware in Microfilm No. The said parcel of land being more particularly bounded and described as follows to wit:

BEING the same lands and premises which Yorkshire Land Development, LLC did grant and convey unto Deborah K. Taylor and Allen L. Taylor by deed dated May 4, 2001 and recorded on May 15, 2001 in the Office of the Recorder of Deeds, in and for New Castle County, State of Delaware, in Deed Instrument 20010515-0036514.

SEIZED AND TAKEN IN EXECUTION AS THE PROPERTY OF DEBORAH K. TAYLOR.

TERMS OF SALE: 10% DOWN AT TIME OF SALE. BALANCE DUE ON OR BEFORE AUGUST 3, 2009.

MAY 31, 2009

SHERIFF'S SALE

By virtue of a writ of LEV FAC #208 MY, AD., 2009. PARCEL NO. 08-042.40-020

PROPERTY ADDRESS: 50 Boyds Valley Road, Newark, DE 19711 ALL that certain lot, piece or parcel of land with the buildings there on erected, situate in Mill Creek Hundred, New Castle County and State of Delaware, known as 50 Boyds Valley Road, being Lot No. 215 on the Recorded plan of the Village of Meeting House Hill in Pike Creek Valley as said Plan is of record in the Office of the Recorder of Deeds in and for New Castle County, Delaware in Microfilm Record No. 913, and being more particularly bounded and described in accordance with a recent survey and legal description by Zebley and Associates, Inc., Professional Land Surveyors of Wilmington, Delaware, dated 26 November 2002, as follows, to-wit:

BEING the same lands and premises which Eugene R. Reamer and Alethea Reamer did grant and convey unto Kevin F. Speakman, II by deed dated December 18, 2002 and recorded on January 9, 2003 in the Office of the Recorder of Deeds, in and for New Castle County, State of Delaware, in Deed Instrument 20030109-0003282.

SEIZED AND TAKEN IN EXECUTION AS THE PROPERTY OF KEVIN F. SPEAKMAN, II.

TERMS OF SALE: 10% DOWN AT TIME OF SALE. BALANCE

DUE ON OR BEFORE AUGUST 3, 2009.

MAY 31, 2009

SHERIFF'S SALE

By virtue of a writ of LEV FAC #211 MY, AD., 2009. TAX PARCEL NO. 11-021.10-022

PROPERTY ADDRESS: 147 Coopers Drive, Newark, DE 19702

ALL that certain lot, piece or parcel of land, with the buildings thereon, situate in Pencader Hundred, New Castle County, Delaware being designated Lot 60, as shown on the Record Major Subdivision Plan of Cooper's Run, of record in the Office of the Recorder of Deeds in and for New Castle County, Delaware on Microfilm No. 9857, said lot also known as 147 Cooper's Drive and being now more particularly described in accordance with a mortgage inspection plan by Zebley & Associates, Professional Land Surveyors dated October 30, 2002, as follows, to-wit:

BEING the same lands and premises which Bonnie B. Simpkins, n/k/a Bonnie Sayers did grant and convey unto Mark A. Hutton by deed dated November 12, 2002 and recorded on November 13, 2002 in the Office of the Recorder of Deeds, in and for New Castle County, State of Delaware, in Deed Instrument 20021113-0109510.

SEIZED AND TAKEN IN EXECUTION AS THE PROPERTY OF MARK A. HUTTON.

TERMS OF SALE: 10% DOWN AT TIME OF SALE. BALANCE DUE ON OR BEFORE AUGUST 3, 2009.

MAY 31, 2009

SHERIFF'S SALE

By virtue of a writ of LEV FAC #125 MY, AD., 2009. TAX PARCEL NO. 11-019.30-003

PROPERTY ADDRESS: 9 Ellendale Ct., Newark, DE 19701

ALL that certain lot, piece or parcel of land, with the buildings thereon erected, situate in Pencader Hundred, New Castle County and State of Delaware, known as 9 Ellendale Court, being Lot No. 121, on the Record Resubdivision Plan of The Village of Becks Pond, as the Plan thereof is of record in the Office of the Recorder of Deeds, in and for New Castle County in Microfilm No. 11405, and being more particularly bounded and described in accordance with a survey prepared by A.E.S. Surveyors, Professional Land Surveyors, dated October 30, 2007.

BEING the same lands and premises which Thomas Miller and Sallie B. Miller, husband and wife, by Deed dated November 30, 2007, and recorded November 26, 2007, in the Office of the Recorder of Deeds in and for New Castle County, Delaware, in Deed Instrument #20071126-01126-0100553, did grant and convey unto Jennifer Kafer, in fee.

SEIZED AND TAKEN IN EXECUTION AS THE PROPERTY OF JENNIFER KAFER.

TERMS OF SALE: 10% DOWN AT TIME OF SALE. BALANCE DUE ON OR BEFORE AUGUST 3, 2009.

MAY 31, 2009

Michael P. Walsh, Sheriff Sheriff's Office Wilmington, Delaware

np 7/3,10

The following Sentinel Self Storage sites will be holding public auctions on Aug. 12, 2009. All sales are cash only and final. A \$100 cash deposit is required to purchase a unit.

SENTINEL SELF STORAGE

200 First State Boulevard
Wilmington DE, 19804
302-999-0704

Public auction to be held on Aug. 12, 2009 at 11:00 a.m. The following units will be auctioned:

- #0115 - Maria Collazo - 2 bags, mattress, 13 boxes, china cabinet, dining room chairs, microwave, desk, fan, ice chest, loveseat, end tables, dining room tables, 2
- #0239 - Rashidah Roane - 2 bags, bed frame, box spring, mattress, entertainment center, monitor, speakers, 4 tires, 2 totes, jack
- #0322 - Margaret Nichols - air conditioner, baby chair, 9 bags, 5 boxes, fish tanks, rug, 2 totes, TV stand
- #1263 - Anthony L. Cheeks - box spring, mattress, desk, entertainment center, floor lamp, TV
- #3150 - Keith Rineer - 4 bags, 5 boxes, rug, 2 totes, toys, curio cabinet
- #5107 - Cecilia Cross - 1 bag, headboard, 3 boxes, kitchen chairs, chest of drawers, dresser, ironing board
- #4115 - Clayburn J. Creppon - baby stroller, clothing, sofa, lamp, loveseat, totes

SENTINEL SELF STORAGE

465 Pulaski Hwy.
New Castle, DE 19720
302-328-5810

A public auction will be held on Wednesday, Aug. 12, 2009 at 1:00 p.m. The contents of the following storage units will be auctioned.

- #2011 - Daneen Harrington - bags, bed frame, mattress, box spring, boxes, chest of drawers, dresser, floor lamp, table lamp, coffee table, end table, totes, heater
- #4010 - Hillary and Renee James Dandridge - box spring, boxes, upholstered chair, dresser, exercise equipment, stereo, coffee table, dining table, totes, TV, vacuum
- #2012 - Javier Santiago - bags, mattress, boxes, kitchen cabinet, chair, clothing closet, monitor, speakers, trophies, 2 rolling tool boxes
- #4114 - Alicia Moore - bags, boxes, ice chest, totes, TV, 3 vacuums, corner hutch

SENTINEL SELF STORAGE

1100 Elkton Road
Newark, DE 19711
302-731-8108

A public auction will be held on Wednesday, Aug. 12, 2009 at 10:00 a.m. The contents of the following storage units will be auctioned:

- #1016 - Stephen D. Mendala - clothing, boxes, bicycle, fish tank and stand, sleighs, jugs, surf boards, shelving, table, misc. household items
- #2008 - Brent Frye - bags, bicycle, shelving, totes, misc. household items
- #2203 - Frank Winn - totes
- #4003 - Brent D. Frye - bed frame, box springs, mattresses, dressers, books, book case, boxes, small refrigerator, shelving, totes, large dog crate, printer

SENTINEL SELF STORAGE

333 E. Lea Blvd.
Wilmington, DE 19802
302-764-6300

Public auction to be held on Aug. 12, 2009 at 12:00 p.m. at the above address. All sales are cash only. All sales are final. The units to be auctioned are as follows:

- #65 - Tammy I. Bolden - bed frame, box spring, mattress, boxes, folding chair, floor lamp, folding table, night table, TV, vacuum, Christmas tree
- #236 - Cynthia Johnson-Watts - bags, clothing, totes, vacuum, basket
- #254 - Cynthia Johnson-Watts - bags, boxes, kitchen cabinet, clothing, fan, stereo, microwave, suitcase, folding table, totes, weights, hand truck
- #292 - Kenneth Kilgore - air conditioner, bags, bed, box spring, mattress, boxes, chest of drawers, love seat, suitcase, totes, end table, toys, TV, grandfather clock
- #300 - Rudolph Sessoms - baby chair, bags, bed, mattress, kitchen chair, chest of drawers, clothing, table lamp, pictures, refrigerator, suitcase, end table, TV
- #319 - Geneva J. Freeman - book cases, boxes, filing cabinet, kitchen chair, freezer, mirrors, kitchen table, TV, cedar chest
- #362 - Marilyn Facciolo - bed, box spring, mattress, boxes, kitchen chair, couch, love seat, totes, TV
- #513 - Juanita Richardson - bags, bed frame, bed, boxes, china cabinet, fan, beach chair, fan, table lamp, totes

np 7/3,10

**CITY OF NEWARK
DELAWARE
PUBLIC HEARING
NOTICE**

July 27, 2009 - 7:30 P.M.

Pursuant to Chapter 32, Zoning, Section 32-78, and Section 32-18(b)(14) Code of the City of Newark, Delaware, notice is hereby given of a public hearing in the Council Chamber, Newark Municipal Building, 220 Elkton Road, on Monday, July 27, 2009 at 7:30 p.m., to consider the request of Joseph and Gerry McCoy for a Special Use Permit for the sale of alcoholic beverages in a proposed two floor, full-service restaurant (Catherine Rooney's) to be located at 102 E. Main Street (Bank of Newark Building) Newark, Delaware.

Patricia M. Fogg, CMC
City Secretary

np 7/10,24

**CITY OF NEWARK
DELAWARE
COUNCIL MEETING AGENDA
July 13, 2009 - 7:30 PM - CC**

1-A. SILENT MEDITATION & PLEDGE OF ALLEGIANCE

1-B. 10-A-1. APPROVAL OF 2009 AUDIT REPORT

2. CITY SECRETARY'S MINUTES FOR COUNCIL APPROVAL:

A. Regular Council Meeting of June 22, 2009

3. ITEMS NOT ON PUBLISHED AGENDA:

A. Public (5 minutes per speaker)

B. University

- (1) Administration
- (2) Student Body Representative

C. Council Members

4-A. ITEMS NOT FINISHED AT PREVIOUS MEETING: None

4-B. FINANCIAL STATEMENT: None

5. RECOMMENDATIONS ON CONTRACTS & BIDS:

A. Recommendation for Improvements to the Police Department Security System

***6. ORDINANCES FOR SECOND READING & PUBLIC HEARING:**

A. Bill 09-09 - An Ordinance Amending Ch. 20, Motor Vehicles & Traffic, By Revising Schedule II, Speed Limits

B. Bill 09-20 - An Ordinance Annexing & Zoning to RH (Single-Family, Detached) a .86 Acre Parcel of Land Located at 207 Mason Drive & the Adjoining .25 Acre Mason Drive Right-of-Way

C. Bill 09-21 - An Ordinance Annexing & Zoning to MI (General Industrial) a 20.5809 Acre Parcel of Land at 1001 Ogletown Road & the Adjoining 2.151 Acre Ogletown Road Right-of-Way

***7. PLANNING COMMISSION/DEPARTMENT RECOMMENDATIONS:**

A. Request of Chipotle Mexican Grill of Colorado, LLC, for a Special Use Permit for a "Cafeteria-Style" Restaurant to be Known as Chipotle Mexican Grill Located at 136 E. Main Street, Newark, Delaware

8. ORDINANCES FOR FIRST READING:

A. Bill 09-22 - An Ordinance Amending Ch. 20, Motor Vehicles & Traffic, By Prohibiting Non-consensual Towing From Private Parking Areas Within One Hour of the Opening of a Business (2nd Read. 7/27/09)

9. ITEMS SUBMITTED FOR PUBLISHED AGENDA:

*A. COUNCIL MEMBERS: None

B. COMMITTEES, BOARDS & COMMISSIONS: None

*C. OTHERS: None

10. SPECIAL DEPARTMENTAL REPORTS:

A. Special Reports from Manager & Staff:

1. Approval of 2009 Audit Report (See Item 1-B)

B. Alderman's Report

***OPEN FOR PUBLIC COMMENT**

The above agenda is intended to be followed, but is subject to changes, deletions, additions, and modifications, as permitted under the Freedom of Information Act of the State of Delaware. Copies may be obtained at the City Secretary's Office, 220 Elkton Road, or online at www.cityofnewarkde.us

np 7/10

LEGAL NOTICE

THE COURT OF COMMON PLEAS FOR THE STATE OF DELAWARE IN AND FOR NEW CASTLE COUNTY

IN RE: CHANGE OF NAME OF Amari Tavian Demié Benson PETITIONER(S) TO

Amari Tavian Demié Johniken

NOTICE IS HEREBY GIVEN that Amari Tavian Demié Benson intends to present a

Petition to the Court of Common Pleas for the State of Delaware in and for New Castle County, to change his/her name to Amari Tavian Demié Johniken.

Candanace Benson Petitioner

Dated: 6/22/09
np 6/26,7/3,10

LEGAL NOTICE

THE COURT OF COMMON PLEAS FOR THE STATE OF DELAWARE IN AND FOR NEW CASTLE COUNTY

Muslim Family with Arizona birth certificate IN RE: CHANGE OF NAME OF

No Name Graves PETITIONER(S) TO

Alia Safia Abdullah

NOTICE IS HEREBY GIVEN that No Name Graves intends to present a Petition to the Court of Common Pleas for the State of Delaware in and for New Castle County, to change his/her name to Alia Safia Abdullah.

Alia Abdullah Yasmin Abdullah Petitioner

Dated: 6/18/09
np 6/26,7/3,10

LEGAL NOTICE

SSM Retail, LLC, t/a Liquor Zone, has on June 30, 2009 applied with the Office of the Alcoholic Beverage Control Commissioner for a liquor store license for a premises located at 1945 Capitol Trail, Newark, DE 19711.

Persons who are against this application should provide written notice of their objections to the Commissioner. For the Commissioner to be required to hold a hearing to consider additional input from persons against the application, the Commissioner must receive one or more documents containing a total of at least 10 signatures of residents of property owners located within 1 mile of the premises or in any incorporated areas located within 1 mile of the premises. The protest(s) must be filed with the Office of the Alcoholic Beverage Control Commissioner at the 3rd Floor, Carvel State Building, 820 North French Street, Wilmington, Delaware 19801. The protest(s) must be received by the Commissioner's office on or before July 30, 2009. Failure to file such a protest may result in the Commissioner considering the application without further notice, input or hearing. If anyone has questions regarding this matter, please contact the Commissioner's office.

np 7/3,10,17

LEGAL NOTICE

The Cube Restaurant and Bar - Melissa and Keith McIntire has on 7/6/09 applied with the Alcoholic Beverage Control Commissioner for Restaurant on and Sunday license for premises located at 16 Marrows Rd., Newark, DE 19713. Persons who are against this application should provide written notice of their objections to the Commissioner. For the Commissioner to be required to hold a hearing to consider additional input from persons against this application, the Commissioner must receive one or more documents containing a total of at least 10 signatures of residents or property owners located within 1 mile of the premises or in any incorporated areas located within 1 mile of the premises. The protest(s) must be filed with the Alcoholic Beverage Control Commissioner at the 3rd Floor, Carvel State Office Building, 820 North French Street, Wilmington, DE 19801. The protest(s) must be received by the Commissioner's office on or before 8/6/09. Failure to file such a protest may result in the Commissioner considering the application without further notice, input, or hearing. If you have questions regarding this matter please contact the Commissioner's Office.

np 7/10,17,24

THE COURT OF COMMON PLEAS FOR THE STATE OF DELAWARE IN AND FOR NEW CASTLE COUNTY

IN RE: CHANGE OF NAME OF

Thomas Anagnostou PETITIONER(S) TO

Thomas Androxman

NOTICE IS HEREBY GIVEN that Thomas Anagnostou intends to present a Petition to the Court of Common Pleas for the State of Delaware in and for New Castle County, to change his/her name to Thomas Androxman.

Thomas Anagnostou Petitioner

Dated: June 26, 2009
np 7/3,10,17

THE COURT OF COMMON PLEAS FOR THE STATE OF DELAWARE IN AND FOR NEW CASTLE COUNTY

IN RE: CHANGE OF NAME OF

Jennifer Lynn Garnett PETITIONER(S) TO

Jennifer Lynn Knight

NOTICE IS HEREBY GIVEN that Jennifer Garnett intends to present a Petition to the Court of Common Pleas for the State of Delaware in and for New Castle County, to change his/her name to Jennifer Knight.

Jennifer Garnett Petitioner

Dated: 6/30/09
np 7/10,17,24

**ABSOLUTE
REAL ESTATE AUCTION
SAT, JULY 25 @ 12:00 NOON
NICE CLEAN ALL BRICK HOME**

- *3 Bedrooms
- *Full bath up
- *Living Room
- *Hardwood Floors
- *Full basement
- *Full attic
- *1/2 Bath down
- *Dining room
- *Hot water
- Baseboard Heat



Personal Property Starting at 10:00 a.m.

PARTIAL LISTING: Slant front desk - Chipendale style, tea cart, country cabinet, 3 pillow back chairs, dry sink, oak wine storage table, Victorian walnut table 4 leaves, Victorian table, vanity beveled S-Hook mirror, oak chest 2 over 4 drawer, rock maple bed & dresser, wardrobe, child's rocker, 6 drawer chest, pine desk, Empire table, 4 drawer bachelor chest, wicker rocker, full size cherry bed w/canopy, 1930 wardrobe spoon feet, pine chest stand over 2 drawers, cut nails circa 1860, nice collectible glassware, shadow box picture frames, old linens & quilts, 12 place china set - Royal Gallery, plated sterling silver tray by Sheffield, 1850 dress - good condition, refrigerator, washer, dryer, 3 window AC units.

Terms: Cash, check, Visa, MasterCard, American Express, Discover
Real Estate: \$15,000 Dep. day of auction
Personal check OK, settlement on or before 45 days from auction date.
Other announcements day of auction.

Estate of
Ernestine E. Woodmansee
159 Haines St.
Newark, DE

Auction Service By:
Hunter's Auction Service
Rising Sun, MD - Phone 410-658-6400
Auctioneers: Norman E. Hunter, CAI
Carol A. Hunter, CAI
Show Dates: Thurs., July 23 & Friday, July 24 - 10:00 a.m.-2:00 p.m.
Auctioneers Note: Mrs. Woodmansee lived in the home for over 50 years.



Grand In the Hand

Want \$1000 for Free?

Keep your eyes on the Cecil Whig & the
Newark Post. We're giving One reader
ONE THOUSAND DOLLARS!

Grand
In the
Hand

Watch for the Grand in the Hand logo in advertisements in the Cecil Whig and Newark Post from July 13th to July 30th. Visit one or all 20 participating businesses to register.

Don't be caught empty handed.
Put a grand in your hand!

*No purchase necessary. Chesapeake Publishing & Printing employees and family members not eligible.